

# UConn VOLLEYBALL

<b>2015 HUSKIES</b>	<b>2</b>
<b>QUICK FACTS</b>	<b>3</b>
<b>2015 SCHEDULE</b>	<b>4</b>
<b>FACILITIES</b>	<b>5</b>
<b>2015 PREVIEW</b>	<b>6</b>
<b>PLAYER PROFILES</b>	<b>7</b>
<b>COACH PROFILES</b>	<b>18</b>
<b>2014 REVIEW</b>	<b>20</b>
<b>ALL-TIME RESULTS</b>	<b>22</b>
<b>ALL-TIME SERIES</b>	<b>26</b>
<b>ALL-TIME LETTERWINNERS</b>	<b>27</b>
<b>CAREER RECORDS</b>	<b>28</b>
<b>SEASON RECORDS</b>	<b>29</b>
<b>ANNUAL LEADERS</b>	<b>30</b>
<b>SUPPORT STAFF</b>	<b>31</b>
<b>THE AMERICAN</b>	<b>32</b>
<b>UNIVERSITY OF CONNECTICUT</b>	<b>33</b>



# 2015 UCONN HUSKIES

No.	NAME	POSITION	HEIGHT	CLASS	HOMETOWN/PREVIOUS SCHOOL
1	Elizabeth Kline	L/DS	5-6	Fr.	Pittsburgh, Pa./Shaler Area
2	Danielle Cabel	OH	6-2	So.	Bettendorf, Iowa/Iowa
3	Jade Strawberry	OH	5-11	Jr.	Tallahassee, Fla./Maclay School
4	Emma Turner	S	5-10	Fr.	Winter Park, Fla./Lake Highland Prep
6	Kayla Williams	OH/PH	5-9	Fr.	Manhattan, N.Y./Seward Park
7	Kenya Cason	OH	5-11	So.	Columbus, Ohio/St. Francis DeSales
8	Immanuella Anagu	MB	6-1	Sr.	Culver City, Calif./Notre Dame Academy
9	Camille Evans	OH	6-0	Jr.	Chicago, Ill./St. Ignatius
10	Phoebe Wong	DS	5-4	Fr.	East Greenwich, RI/East Greenwich
11	Erika Thomas	MB/RSH	6-3	Sr.	Ocoee, Fla./The First Academy
12	Jessika Long	S	5-9	R-Jr.	Sandy, Utah/Arionza
13	Tosin Adeniyi	MB	6-2	So.	Springfield, Ill./Chatham-Glenwood
14	Hayley Cmajdalka	MB	6-2	Jr.	College Station, Texas/A&M Consolidated
15	Iman McGary	OH	5-11	Fr.	Rockford, Ill./Keith School
16	Rebecca Rivera	S	5-7	Jr.	Mississauga, Ontario/Albany
18	Kennedy Arundel	DS	5-6	Fr.	Chicago, Ill./Mother McAuley

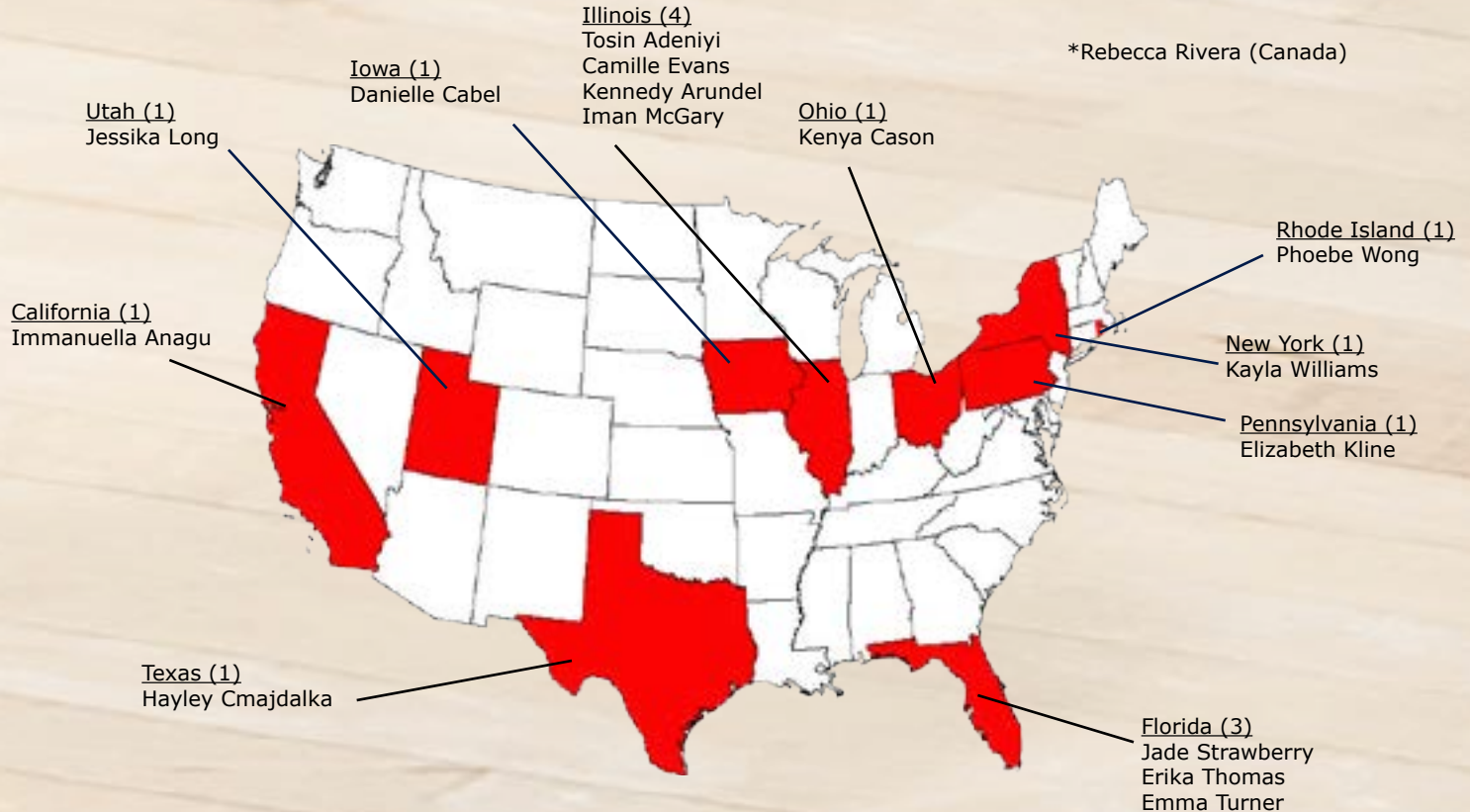
**HEAD COACH:** Kris Grunwald (George Mason '91, Florida State '93)

**ASSISTANT COACH:** Ellen Herman (Ohio '10)

**ASSISTANT COACH:** Ed Tolentino (Detroit Mercy '97)

**VOLUNTEER ASSISTANT COACH:** Rob Belden

## NATIONWIDE HUSKIES



Connecticut's roster features 15 student-athletes from 10 states, spanning the continental United States from New England to Florida to California and back.



# QUICK FACTS

## THE UNIVERSITY OF CONNECTICUT

Location.....	Storrs, Conn.
Founded.....	1881
Enrollment.....	31,119
Colors.....	National Flag Blue (Navy) & White
Nickname.....	Huskies, UConn
Conference.....	American Athletic Conference
President.....	Susan Herbst
Director of Athletics.....	Warde Manuel
Senior Associate Director of Athletics/Sports Administration (SWA).....	Debbie Corum
Athletic Phone.....	(860) 486-2725
Athletic Fax.....	(860) 486-3300
Athletic Ticket Office.....	(860) 486-2724
Facility (Volleyball Capacity).....	Harry A. Gampel Pavilion [10,241]

## UConn VOLLEYBALL

Head Coach.....	Kris Grunwald (George Mason '91)
Record at UConn.....	12-19, second season
Overall Head Coaching Record.....	53-39, three seasons
Assistant Coach.....	Sarah Cullen (DePaul '10)
Assistant Coach.....	Ed Tolentino (Detroit Mercy '97)
Office Phone.....	(860) 486-2612
2014 Overall Record.....	12-19
2014 The American Record.....	5-15
2014 The American Finish.....	10th
Starters Returning/Lost.....	4/1+libero
Letterwinners Returning/Lost.....	9/5
Newcomers.....	7

## ATHLETIC COMMUNICATIONS

Volleyball Contact.....	Candace Johnson (Guilford '14)
E-Mail.....	candace.johnson@uconn.edu
Cell.....	301-814-0432
Communications Office.....	(860) 486-1498
Communications Fax.....	(860) 486-5085
Athletics Web Site.....	UConnHuskies.com





# 2015 SCHEDULE

## AUGUST

28	vs. Hartford &	Hartford, Conn.	12:30 p.m.
28	vs. Rhode Island &	Hartford, Conn.	5 p.m.
<b>29</b>	<b>SYRACUSE &amp;</b>	<b>Storrs, Conn.</b>	<b>3 p.m.</b>

## SEPTEMBER

<b>4</b>	<b>BRYANT @</b>	<b>Storrs, Conn.</b>	<b>12:30 p.m.</b>
<b>4</b>	<b>UMBC @</b>	<b>Storrs, Conn.</b>	<b>7:30 p.m.</b>
<b>5</b>	<b>JAMES MADISON @</b>	<b>Storrs, Conn.</b>	<b>1 p.m.</b>
12	vs. West Virginia #	Hanover, N.H.	5 p.m.
13	at Dartmouth #	Hanover, N.H.	2 p.m.
18	vs. Harvard ^	Cambridge, Mass.	6 p.m.
19	vs. Boston College ^	Cambridge, Mass.	10:30 a.m.
19	vs. Northeastern ^	Cambridge, Mass.	4:30 p.m.
25	at UCF *	Orlando, Fla.	7 p.m.
27	at USF *	Tampa, Fla.	1 p.m.

## OCTOBER

<b>2</b>	<b>CINCINNATI *</b>	<b>Storrs, Conn.</b>	<b>7 p.m.</b>
<b>4</b>	<b>MEMPHIS *</b>	<b>Storrs, Conn.</b>	<b>1 p.m.</b>
9	at Tulsa *	Tulsa, Okla.	8 p.m.
11	at SMU *	Dallas, Texas	1 p.m.
<b>14</b>	<b>TEMPLE *</b>	<b>Storrs, Conn.</b>	<b>5 p.m.</b>
<b>16</b>	<b>EAST CAROLINA *</b>	<b>Storrs, Conn.</b>	<b>7 p.m.</b>
<b>23</b>	<b>TULANE *</b>	<b>Storrs, Conn.</b>	<b>7 p.m.</b>
<b>25</b>	<b>HOUSTON *</b>	<b>Storrs, Conn.</b>	<b>1 p.m.</b>
30	at Memphis *	Memphis, Tenn.	8 p.m.

## NOVEMBER

1	at Cincinnati *	Cincinnati, Ohio	2 p.m.
6	at Houston *	Houston, Texas	8 p.m.
8	at Tulane *	New Orleans, La.	2 p.m.
<b>13</b>	<b>USF *</b>	<b>Storrs, Conn.</b>	<b>7 p.m.</b>
<b>15</b>	<b>UCF *</b>	<b>Storrs, Conn.</b>	<b>1 p.m.</b>
18	at Temple *	Philadelphia, Pa.	5 p.m.
<b>20</b>	<b>SMU *</b>	<b>Storrs, Conn.</b>	<b>7 p.m.</b>
<b>22</b>	<b>TULSA *</b>	<b>Storrs, Conn.</b>	<b>1 p.m.</b>
25	at East Carolina *	Greenville, N.C.	1 p.m.

& UConn Invite (Hartford & Storrs, Conn.)

@ Dog Pound Challenge (Storrs, Conn.)

# Dartmouth Tournament (Hanover, N.H.)

^ New England Challenge (Cambridge, Mass.)

\* indicates American Athletic Conference game

**All home games in BOLD and CAPS take place at Gampel Pavilion in Storrs, Conn.**

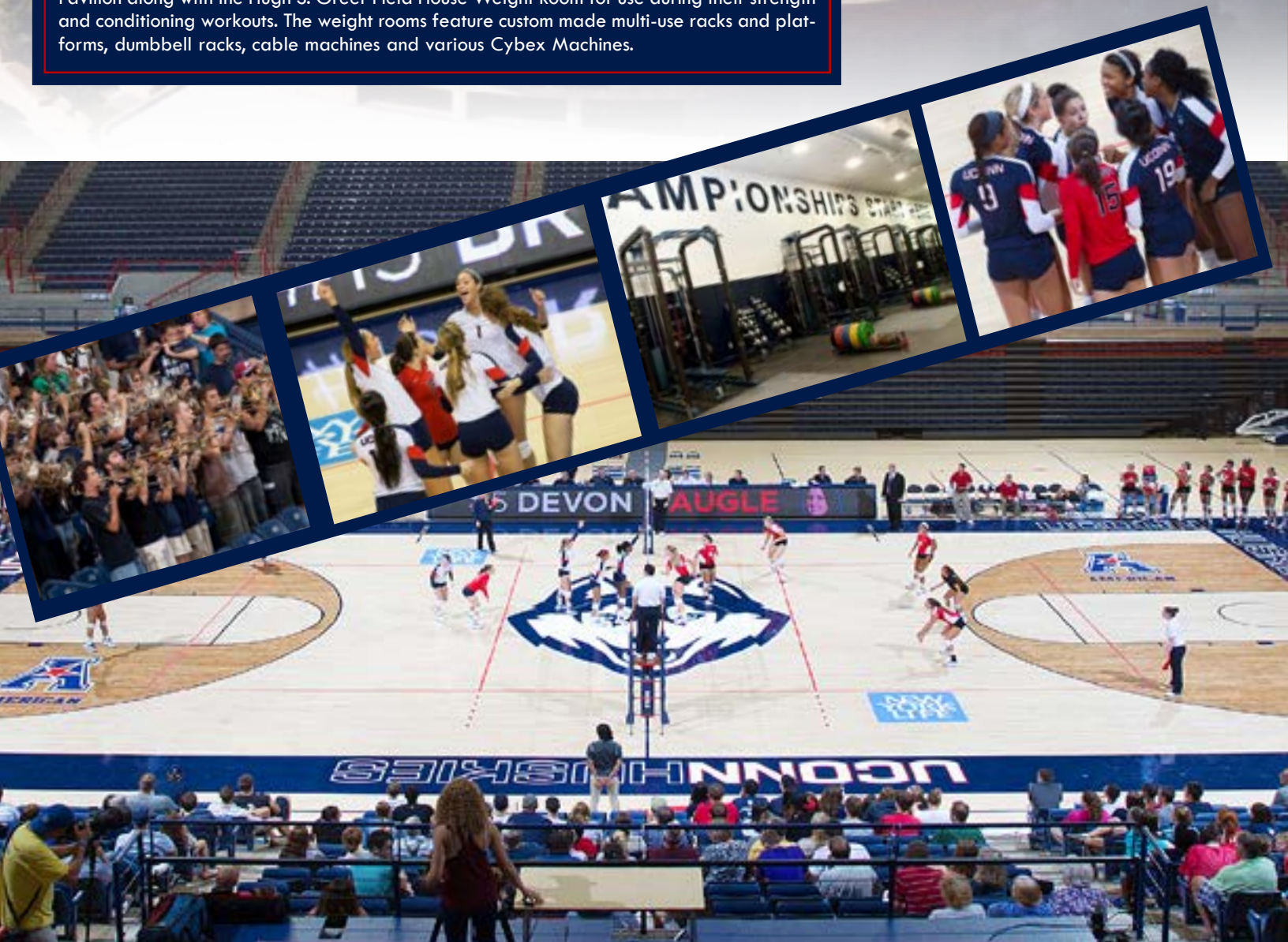


# GAMPEL PAVILION

The UConn Huskies play all of their home matches in Harry A. Gampel Pavilion, a spacious, state-of-the-art building that opened in January of 1990 and houses more than 10,000 spectators. Gampel Pavilion was a \$28 million project and totals more than 171,000 square feet in the domed area. The brilliant aluminum dome of the building towers more than 130 feet in the air from ground level. Following the 2009 season of volleyball, new scoreboards and video boards were installed, along with separate displays that showcase team and individual statistics.

The 2015 season marks the 22nd year in Gampel for the UConn volleyball team, which has compiled an impressive overall record of 202-93 since beginning play in the Pavilion in 1993. This season, Connecticut will play at least 14 matches in front of a home crowd at Gampel Pavilion. The home slate includes American Athletic Conference matches against all 10 of UConn's league counterparts.

The UConn volleyball team has access to two different weight rooms in Gampel Pavilion along with the Hugh S. Greer Field House Weight Room for use during their strength and conditioning workouts. The weight rooms feature custom made multi-use racks and platforms, dumbbell racks, cable machines and various Cybex Machines.





# 2015 SEASON PREVIEW

## MAN AT THE HELM

UConn Volleyball is entering its second season under head coach Kris Grunwald. He was named the head coach on April 2, 2014 after serving as an assistant coach at Auburn for two seasons. Grunwald, who has a coaching career that dates back to 1991, led Auburn to a 41-20 record as head coach in 1998-99 and helped pace the Tigers to eight winning seasons during his two stints. As a player at George Mason from 1988-91, Grunwald was a three-time Honorable Mention All-American and three-time All-East First Team performer. In the Patriot career records book, he is second in kills (1,764), fourth in digs (676) and seventh in blocks (394).

## FACING OFF

The Huskies prepare to face each of their American Athletic Conference opponents twice this year, a slate featuring 20 conference matchups via home-and-home series with each league member. As a whole, UConn has battled every foe on its 2015 schedule at least once in program history.

## TOURNAMENT TIME

UConn is looking forward to its early home court advantage, opening the 2015 season hosting back-to-back tournaments in Gampel Pavillion. The Huskies will host Hartford, Rhode Island and Syracuse in the UConn Invite Match then Bryant, UMBC and James Madison at the Dog Pound Challenge Match.

## PROTECTING THE NET

The Huskies' 2015 roster features two of UConn's most dominate blockers. Senior **Immanuella Anagu** (Culver City, Calif.) led the team in solo blocks (14), block assists (92) and total blocks (106) in 2014. She ranks seventh among career leaders in school history with 317 blocks. Classmate **Erika Thomas** (Ocoee, Fla.) stands sixth with 325 blocks in UConn's history books.

## MIXING IT UP

UConn will face schools from seven different conferences this season (America East, Atlantic 10, ACC, Northeast, CAA, Big 12 and Ivy League). The Huskies will complete their non-conference schedule in under a month.

## STAYING TOGETHER

The Huskies return nine letterwinners from last year's 12-19 squad and are anchored by two seniors. Overall, seven of UConn's 16 players will be upperclassmen during the 2015 season.

## FRESH FACES

UConn's nine returning letterwinners will be bolstered by Grunwald's strong incoming six-member freshman class and sophomore transfer. The balanced crop of rookies includes outsider hitters **Danielle Cabel** (Bettendorf, Iowa), **Kayla Williams** (Manhattan, N.Y.) and **Iman McGary** (Rockford, Ill.) along with setter **Emma Turner** (Winter Park, Fla.) and defensive specialist **Elizabeth Kline** (Glenshaw, Pa.) , **Phoebe Wong** (East Greenwich, RI) and **Kennedy Arundel** (Oak Lawn, Ill.) Each comes to Storrs after decorated prep and club careers and will look to make immediate impacts for the Huskies.

# IMMANUELLA ANAGU

8

MIDDLE BLOCKER | SENIOR | 6-1

Culver City, Calif. | Notre Dame Academy | Sunshine Volleyball



**2014 Season:** Saw time in all 31 matches, playing in 123 sets... Tallied a team-high 297 kills and hit a team-best .320... Led the squads in total blocks (106) and solo blocks (14)... Notched 19 kills on two occasions and recorded 10-plus kills in 14 different matches... Became the first player in American Athletic Conference history to be selected as both the Offensive and Defensive Player of the Week in the same season... Tallied a double-double (11 kills, 10 block assists) in the Huskies' setback to Indiana on Aug. 30.



**2013 Season:** Appeared in all 33 matches for the Huskies... finished second on UConn in kills with 256 while hitting at a .208 percentage... second in total blocks with 127 and 1.03 blocks per set... recorded 11 double digit kill performances... named to The American Weekly Honor Roll on Oct. 28... posted a career high 19 kills at USF on (Oct. 6)... registered 10 kills in three straight games. converted 15 kills in the first match of the season vs. SIU (Aug. 30)... notched 12 kills and a career best 8 total blocks against Memphis (Sept. 22).



**2012 Season:** Appeared in 88 sets for the Huskies... totaled 84 blocks, 142 kills, and 22 digs... registered .95 blocks per set and 1.61 kills per set... notched a .286 killing percentage throughout the season... at USF she registered a .667 kill percentage with 15 kills (10/19)... named to the Big East Honor Roll for the week ending October 21... recorded a season-high eight blocks against Rutgers (10/27)... set a season-best mark for kills with 17 against Seton Hall (10/28) and was named the BIG EAST Rookie of the Week for the Week ending October 28.

**Before UConn:** Earned two varsity letters in volleyball at Notre Dame Academy... led the team in hitting percentage at .598 as a senior, while ranking seventh in the state... twice earned player of the week honors in her senior season and was named to the Royal Volleyball All-Tournament Team as a junior... qualified for Junior Olympics in Atlanta with Sunshine Volleyball Club in 2011.

**Personal:** Immanuella Anagu... born Apr. 13, 1994... daughter of Godwin and Ukamaka Anagu... has three sisters, Olive, Whitney and Hazel... a business major.

## CAREER HIGHS

**Kills** ..... 19, at Temple (11/12/14)  
**Hitting Percentage** ..... .667, at Houston (10/19/14)  
**Assists** ..... 1, eight times  
**Service Aces** ..... 2, at Georgetown (11/7/12)  
**Digs** ..... 5, at USF (10/3/14)  
**Blocks** ..... 10, vs Central Conn. (8/30/14)

## CAREER STATISTICS

Year	SP-MP	K	K/S	E	TA	PCT	A	A/S	SA	SA/S	SE	DIG	D/S	RE	BS	BA	TB	B/S
2012	88-29	142	1.61	55	304	.286	4	0.05	2	0.02	5	22	0.25	1	20	64	84	0.95
2013	124-34	256	2.06	116	685	.204	3	.002	1	.001	14	33	0.27	0	21	106	127	1.02
2014	123-31	297	2.41	87	657	.320	1	0.01	1	0.01	4	39	0.32	0	14	92	106	0.86
<b>TOTAL</b>	<b>335-94</b>	<b>695</b>	<b>2.07</b>	<b>258</b>	<b>1,646</b>	<b>.265</b>	<b>8</b>	<b>0.02</b>	<b>4</b>	<b>0.01</b>	<b>23</b>	<b>94</b>	<b>0.28</b>	<b>1</b>	<b>55</b>	<b>262</b>	<b>317</b>	<b>0.95</b>



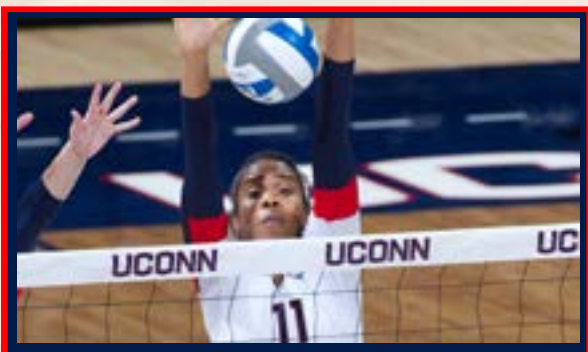
# ERIKA THOMAS

MIDDLE BLOCKER/RIGHT SIDE HITTER | SENIOR | 6-3

Ocoee, Fla. | The First Academy



11



**2014 Season:** Played in 30 of the Huskies' 31 matches... Ranked third on the team with 249 total kills and held a 2.06 kills/set mark... Served as one of three team captains... Scooped 56 digs and was one of three Huskies with at least 80 total blocks (83)... Exploded for 19 kills and seven total blocks in UConn's 3-2 win over Central Connecticut on Aug. 30... Reached 10-plus kills on nine different occasions.

**2013 Season:** Appeared in all 33 matches for the Huskies... finished the season third on the team with 244 kills while posting a team-high .257 attack percentage... led UConn with 138 total blocks and 1.10 blocks per set... logged 46 digs and 17 service aces... named to The American Weekly Honor Roll (Sept. 22)...All-Tournament at the IPFW Invitational (Aug. 31)...recorded 10 double digit kill performances... picked up a career high 17 kills (Sept. 21) against URI... converted 13 kills and seven blocks vs. UNH (Sept. 20)... tallied 10 kills nine blocks (Sept. 29) against Houston... registered a career-high 12 blocks (Oct. 25) against Cincinnati, the second highest single match total in UConn history.

**2012 Season:** Appeared in 96 sets including 24 starts in 29 games played for the Huskies... totaled 154 kills, a kill percentage of .233 and averaged 1.60 kills per set... recorded 104 total blocks and averaged 1.08 per set... registered double figures in four games including 10 kills and a .526 kill percentage while also adding a season high nine blocks against Harvard (9/14).

**Before UConn:** Played three years of varsity volleyball at The First Academy...named the District MVP as a senior, while serving as the team captain...twice helped guide team to 2A State Championship and was named an All-State Honorable Mention in 2011...earned one varsity letter in basketball...member of the National Honors Society.

**Personal:** Erika Thomas...born Mar. 1, 1994...daughter of Victor Thomas...has one brother, Victor and three sisters, Krystal, Loren and Kelli...a education major.

## CAREER HIGHS

**Kills** ..... 19, vs. Central Conn. (08/30/14)  
**Hitting Percentage** ..... .526, Harvard (9/14/12)  
**Assists** ..... 1 seven times  
**Service Aces**.....4, vs. Southwern Illinois (08/30/13)  
**Digs** ..... 8, at Rutgers (11/15/13)  
**Blocks**.....12 vs. Cincinnati (10/25/13)

## CAREER STATISTICS

Year	SP-MP	K	K/S	E	TA	PCT	A	A/S	SA	SA/S	SE	DIG	D/S	RE	BS	BA	TB	B/S
2012	96-29	154	1.60	59	407	.233	2	0.02	0	0.00	1	14	0.15	0	18	86	104	1.08
2013	125-33	244	1.95	99	564	.257	4	0.03	17	0.14	41	46	0.37	0	22	116	138	1.10
2014	121-30	249	2.06	113	748	.182	2	0.02	2	0.02	11	56	0.46	1	3	80	83	0.69
<b>TOTAL</b>	<b>342-92</b>	<b>647</b>	<b>1.89</b>	<b>271</b>	<b>1,719</b>	<b>.219</b>	<b>8</b>	<b>0.02</b>	<b>19</b>	<b>0.06</b>	<b>53</b>	<b>116</b>	<b>0.34</b>	<b>1</b>	<b>43</b>	<b>282</b>	<b>325</b>	<b>1.10</b>



# HALEY CMAJDALKA

MIDDLE BLOCKER | JUNIOR | 6-2

College Station, Texas | A&M Consolidated | Woodlands



**2014 Season:** Saw action in 20 matches this season for the Huskies... tallied 91 kills, 28 blocks, and 27 digs... Averaged 1.42 kills per set while hitting at a .189 percentage... Put together a monster game (15 kills, five block assists) against East Carolina on Nov. 16... Rejected a season-high five attempts twice... Reached at least seven kills in five different matches.



**2013 Season:** Appeared in 23 matches for UConn... recorded 53 kills and 48 total blocks... posted a career best 10 kills and three blocks in a victory over Rutgers (Oct. 11)... tallied six blocks in consecutive games against SMU (Sept. 27) and Houston (Sept. 29)... converted a career-high seven blocks against Cincinnati (Oct. 25).



**Before UConn:** Named All-District Offensive Player of the Year as a senior at A&M Consolidated... selected to the 5A Texas All-State Team...honored as a First Team All-Brazos Valley member...Academic All-District honoree, 5A Academic All-State and Academic Varsity MVP.

**Personal:** Hayley Rosalie Cmajdalka...born Dec. 1, 1994... daughter of Michael and Shelly Cmajdalka...has two sisters, Macy and Jennifer...an environmental engineering major.

## CAREER HIGHS

**Kills** ..... 15, vs. East Carolina (11/16/14)  
**Hitting Percentage** ..... .500 vs. East Carolina (11/16/14)  
**Assists** ..... 1, two times  
**Service Aces**..... 2, at USF (10/3/14)  
**Digs** ..... 5, at SMU (11/21/14)  
**Blocks**..... 7, vs. Cincinnati (10/25/13)

## CAREER STATISTICS

Year	SP-MP	K	K/S	E	TA	PCT	A	A/S	SA	SA/S	SE	DIG	D/S	RE	BS	BA	TB	B/S
2013	50-23	53	1.06	30	162	.142	1	0.02	0	0.00	6	7	0.14	0	1	47	48	0.96
2014	64-20	91	1.42	38	280	.189	1	0.02	3	0.05	7	27	0.42	0	1	27	28	0.44
<b>TOTAL</b>	<b>114-43</b>	<b>144</b>	<b>1.26</b>	<b>68</b>	<b>442</b>	<b>.172</b>	<b>2</b>	<b>0.02</b>	<b>3</b>	<b>0.03</b>	<b>13</b>	<b>34</b>	<b>0.30</b>	<b>0</b>	<b>2</b>	<b>74</b>	<b>76</b>	<b>0.67</b>



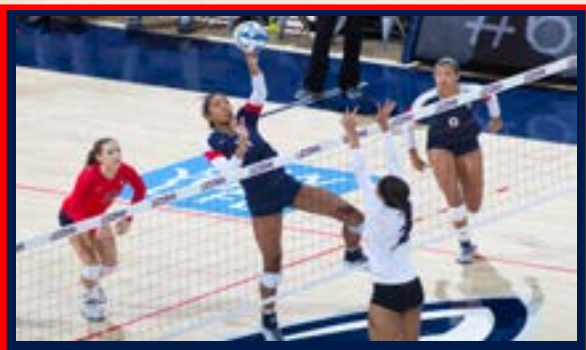
# CAMILLE EVANS

OUTSIDE HITTER | JUNIOR | 6-0

Chicago, Ill. | St. Marcellinus Secondary | Michio VBA/Blue



9



**2014 Season:** Made an appearance in 18 matches for UConn ... Recorded 20 blocks, 40 kills, and 20 digs... Averaged 1.0 kills per set, swinging at a .082 percentage... Slammed down a season-best nine kills on 25 swings against Houston on Oct. 19... Scooped four digs on two separate occasions.

**2013 Season:** Saw action in 26 matches... notched 115 kills and a 1.64 kills per set ratio... recorded a .121 attack percentage and 22 total blocks... tallied a season-high 12 kills and three blocks against Houston on (Sept. 29)... registered 10 kills in the next match at UCF (Oct. 4).

**Before UConn:** Spent high school career at St. Ignatius College Prep and played club for Michio Chicago VBA and Blue Smoke... named a two-time All-Girls Catholic Athletic Conference member... featured as one of the Top 50 Players in Illinois and Prep Volleyball Top 250 Players in the United States in 2012... two-time AAU All-American and AVCA All-America Watch List... led St. Ignatius to the 2012 GCAC Championship and regional championship... helped her club teams to third and fifth place finishes at the AAU Junior Nationals.

**Personal:** Camille Dominique Evans... born Sept. 27, 1995... daughter of Clifford and Fawne Evans... has a younger sister, Yasmine... a biological sciences major.

## CAREER HIGHS

**Kills** ..... 12, vs Houston (09/29/13)  
**Hitting Percentage** ..... .750, vs. Tulsa (10/24/14)  
**Assists** ..... N/A  
**Service Aces** ..... N/A  
**Digs** ..... 4, two times  
**Blocks** ..... 4, vs. Houston (11/26/14)

## CAREER STATISTICS

Year	SP-MP	K	K/S	E	TA	PCT	A	A/S	SA	SA/S	SE	DIG	D/S	RE	BS	BA	TB	B/S
2013	70-26	115	1.64	65	413	.131	0	0.00	0	0.00	0	14	0.20	0	0	22	22	0.31
2014	40-18	40	1.00	27	158	.082	0	0.00	0	0.00	0	20	0.50	0	0	20	20	0.50
<b>TOTAL</b>	<b>110-44</b>	<b>155</b>	<b>1.41</b>	<b>92</b>	<b>571</b>	<b>.110</b>	<b>0</b>	<b>0.00</b>	<b>0</b>	<b>0.00</b>	<b>0</b>	<b>34</b>	<b>0.31</b>	<b>0</b>	<b>0</b>	<b>42</b>	<b>42</b>	<b>0.38</b>



# JADE STRAWBERRY

OUTSIDE HITTER | JUNIOR | 5-11

Tallahassee, Fla. | Maclay School | ProStyle Tallahassee Premier



3



**2014 Season:** Appeared in 25 matches for the Huskies... Finished the season with 146 kills and 1.72 average kills per set... Had 15 blocks on the season including three solo... Recorded 185 digs with an average of 2.18 per set... Notched double-digit kills on seven occasions, including three-straight matches from Oct. 26-Nov. 2... Tallied a career-best 16 digs against USF on Nov. 9... Was one of seven different Huskies to record at least 10 service aces.

**2013 Season:** Appeared in 24 matches on the year... tallied 161 kills, 15 service aces, and 53 total blocks... notched 179 digs while posting 1.92 digs per set... All-Tournament at the IPFW Invitational (Aug. 31)...named to The American Weekly Honor Roll (Sept. 2)...had four double digit kill performances and 11 matches with at least 10 digs... had at least ten digs in eight consecutive matches (Aug. 30-Sept. 14)... recorded a career-high 17 digs while notching eight kills in a win vs. URI on (Sept. 21)... picked up a career best 11 kills with 12 digs and four blocks in the first match of the year vs. SIU (Aug. 30).

**Before UConn:** Played at Maclay School and for ProStyle Tallahassee Premier...named an All-Big Bend performer for three years in a row and was a co-captain of the team as a junior and senior...nominated to play in the Under Armour All-America Volleyball Match. She was named the MVP of both her high school and club teams for three consecutive years.

**Personal:** Jade Monique Strawberry...born May 20, 1995... daughter of nine-time MLB All-Star Darryl Strawberry and Charisse Strawberry...has four siblings, brothers Chase and Chandler and sisters Jordan and Jewel...an exploratory major.

## CAREER HIGHS

**Kills** ..... 12, vs. Memphis (10/10/14)  
**Hitting Percentage** ..... .444, vs. Duquesne (08/31/13)  
**Assists** ..... 2, two times  
**Service Aces**..... 3, at USF (10/3/14)  
**Digs** ..... 18, vs. Northeastern (09/06/13)  
**Blocks**..... 6, vs. Northeastern (09/06/13)

## CAREER STATISTICS

Year	SP-MP	K	K/S	E	TA	PCT	A	A/S	SA	SA/S	SE	DIG	D/S	RE	BS	BA	TB	B/S
2013	93-24	161	1.73	75	559	.154	10	0.10	15	0.16	24	179	1.92	20	3	50	53	0.55
2014	85-25	146	1.72	117	552	.053	8	0.09	13	0.15	32	185	2.18	17	3	12	15	0.18
<b>TOTAL</b>	<b>181-52</b>	<b>307</b>	<b>1.70</b>	<b>192</b>	<b>1,111</b>	<b>.104</b>	<b>18</b>	<b>0.10</b>	<b>28</b>	<b>0.15</b>	<b>56</b>	<b>364</b>	<b>2.01</b>	<b>37</b>	<b>6</b>	<b>62</b>	<b>68</b>	<b>0.38</b>



# REBECCA RIVERA

SETTER | JUNIOR | 5-7

Mississauga, Ontario | St. Marcellinus Secondary



**2014 Season:** Appeared in 29 matches for UConn as the primary setter... Led the Huskies with 664 total assists and an average of 5.58 assists per set... Recorded 14 service aces, seven kills, and 211 digs with an average of 1.77 digs per set... Notched a season-best 34 helpers against Temple on Nov. 12... Scooped double-digit digs on seven occasions, including a season-best 14 against East Carolina on Nov. 16.

**2013 Season (Albany):** Served as the primary setter in non-conference play, also serving as a back row player... Finished the year with 188 assists and 142 digs... Had double digit assists in first nine matches, near double-double twice with nine digs... Career-high 13 digs at Colgate (Oct. 16) and UMBC (Nov. 3).

**Before UConn:** Four-year letterwinner at St. Marcellinus Secondary School... Led the Spirit to a 31-3 record over four years with a pair of appearances in the national championship, leading the team to the Canadian National and Quebec Provincial Championship in 2013.

**Personal:** Rebecca Paige Rivera... Plans to major in history... Daughter of Leo and Myra Rivera... Has a brother, Brandon-Sage and a sister, Amanda Leigh... 12, 1995.

## CAREER HIGHS

Kills ..... 1, five times  
 Hitting Percentage ..... N/A  
 Assists ..... 34, at Temple (11/12/14)  
 Service Aces ..... 2, three times  
 Digs ..... 14, vs. East Carolina (11/16/14)  
 Blocks ..... N/A

## CAREER STATISTICS

Year	SP-MP	K	K/S	E	TA	PCT	A	A/S	SA	SA/S	SE	DIG	D/S	RE	BS	BA	TB	B/S
2014	119-29	7	0.06	1	24	.250	663	5.57	14	0.12	34	211	1.77	0	0	0	0	0.00
<b>TOTAL</b>	<b>119-29</b>	<b>7</b>	<b>0.06</b>	<b>1</b>	<b>24</b>	<b>.250</b>	<b>663</b>	<b>5.57</b>	<b>14</b>	<b>0.12</b>	<b>34</b>	<b>211</b>	<b>1.77</b>	<b>0</b>	<b>0</b>	<b>0</b>	<b>0</b>	<b>0.00</b>



# JESSIKA LONG

SETTER | REDSHIRT JUNIOR | 5-9

Sandy, Utah | Arizona | Juan Diego



**2014 Season:** Saw action as a setter in a pair of matches for UConn before missing the rest of the season due to a knee injury... Totaled 31 assists and 14 digs in the two UConn wins.

**2013 Season (Arizona):** Played in three matches during her freshman campaign...Recorded a dig in a three-set victory over Wofford on Sept. 21...Also earned playing time in Hawaii against both Portland State and Hawaii.

**Before UConn:** Was a two-time team captain and four-year starter at Juan Diego High School...Was on the all-state team in addition to being a Utah Gatorade Player of the Year nominee and the Juan Diego Player of the Year.

**Personal:** Daughter of Joe and Kristie Long...Born on February 21, 1995...Has a younger brother, Bo...Her father played college football at Weber State.

## CAREER HIGHS

Kills	N/A
Hitting Percentage	N/A
Assists	17, vs. Central Conn. (8/30/14)
Service Aces	N/A
Digs	8, vs. New Hampshire (8/29/14)
Blocks	N/A

## CAREER STATISTICS

Year	SP-MP	K	K/S	E	TA	PCT	A	A/S	SA	SA/S	SE	DIG	D/S	RE	BS	BA	TB	B/S
2014	8-2	0	0.00	0	0	.000	31	3.88	0	0.00	2	14	1.75	0	0	0	0	0.00
<b>TOTAL</b>	<b>8-2</b>	<b>0</b>	<b>0.00</b>	<b>0</b>	<b>0</b>	<b>.000</b>	<b>31</b>	<b>3.88</b>	<b>0</b>	<b>0.00</b>	<b>2</b>	<b>14</b>	<b>1.75</b>	<b>0</b>	<b>0</b>	<b>0</b>	<b>0</b>	<b>0.00</b>



# KENYA CASON

OUTSIDE HITTER | SOPHOMORE | 5-11

Columbus, Ohio | St. Francis DeSales | COVBC/Mintovette



**2014 Season:** Saw action in 24 matches for UConn... Registered 16 blocks and 207 kills... notched 178 digs with 2.28 per set... Was second on the team in average kills per set at 2.65... Also recorded eight assists and 11 service aces... Reached double-digit kills in seven matches, highlighted by two 19-kill efforts against Hofstra on Sep. 20 and UCF on Nov. 7... Picked up a career-best 17 digs in UConn's 3-1 win at East Carolina on Sept. 26... Tallied four serve aces in the Huskies' setback to Hofstra on Sept. 20.

**Before Uconn:** Had a decorated career both for St. Francis DeSales in the Central Catholic League and for COVBC and Mintovette on the club circuit...led her team in blocks as a freshman in 2010 and again as a sophomore in 2011, earning three consecutive First Team All-CCL nods from 2011-13...helped St. Francis DeSales to three consecutive district titles, two regional championships and the 2012 Central Catholic League Crown...also led her squad in kills in 2012 and 2013... was named 2013 Central Catholic League Player of the Year and Second Team All-Ohio...finished her career among the top-20 all-time in kills in the state of Ohio...spent 12 straight quarters on the honor roll during her freshman, sophomore and junior years and was a member of the National Honor Society.

**Personal:** Kenya Cason...born May 8, 1997...daughter of Robert and Neta Cason...major is undecided.

## CAREER HIGHS

**Kills** ..... 19, two times  
**Hitting Percentage** ..... .600, vs. Columbia (9/19/14)  
**Assists** ..... 2, at Temple (12/12/14)  
**Service Aces** ..... 4, vs. Hofstra (9/20/14)  
**Digs** ..... 19, at Temple (12/12/14)  
**Blocks** ..... 2, four times

## CAREER STATISTICS

Year	SP-MP	K	K/S	E	TA	PCT	A	A/S	SA	SA/S	SE	DIG	D/S	RE	BS	BA	TB	B/S
2014	78-24	207	2.65	103	679	.153	8	0.10	11	0.14	14	178	2.28	23	3	13	16	0.21
<b>TOTAL</b>	<b>78-24</b>	<b>207</b>	<b>2.65</b>	<b>103</b>	<b>679</b>	<b>.153</b>	<b>8</b>	<b>0.10</b>	<b>11</b>	<b>0.14</b>	<b>14</b>	<b>178</b>	<b>2.28</b>	<b>23</b>	<b>3</b>	<b>13</b>	<b>16</b>	<b>0.21</b>



# TOSIN ADENIYI

MIDDLE BLOCKER | SOPHOMORE | 6-2

Springfield, Ill. | Chatham-Glenwood



**2014 Season:** Appeared in all 31 matches for UConn... Recorded 140 kills on the season with a .170 kill percentage and 1.11 kills per set... Was second overall on the team in total blocks with 88, including 11 solo... Tallied 34 digs and three assists... Set a career-high with 12 kills on 25 attempts in the Huskies' 3-2 victory over Houston on Nov. 26... Notched eight block assists against Houston on Oct. 19... hit at least .250 in seven different matches.

**High School:** Played high school volleyball at Chatham-Glenwood High School in Chatham, Ill. ...earned All-Conference honors in Illinois as a junior and senior, and captained her squad during her senior campaign...also a two-time Academic All-Conference performer.

**Personal:** Tosin Adeniyi.

## CAREER HIGHS

**Kills** ..... 12, vs. Houston (11/26/14)  
**Hitting Percentage** ..... .500, at East Carolina (9/26/14)  
**Assists** ..... 2, at Tulane (10/17/14)  
**Service Aces** ..... N/A  
**Digs** ..... 3, three times  
**Blocks** ..... 8, at Houston (10/19/14)

## CAREER STATISTICS

Year	SP-MP	K	K/S	E	TA	PCT	A	A/S	SA	SA/S	SE	DIG	D/S	RE	BS	BA	TB	B/S
2014	126-31	140	1.11	72	400	.170	3	0.02	0	0.00	0	34	0.27	0	11	77	88	0.70
<b>TOTAL</b>	<b>126-31</b>	<b>140</b>	<b>1.11</b>	<b>72</b>	<b>400</b>	<b>.170</b>	<b>3</b>	<b>0.02</b>	<b>0</b>	<b>0.00</b>	<b>0</b>	<b>34</b>	<b>0.27</b>	<b>0</b>	<b>11</b>	<b>77</b>	<b>88</b>	<b>0.70</b>





2



**High School:** A Iowa transfer and member of the Fusion Volleyball Club, Cabel played four seasons of volleyball under head coach Kyle Condon at Assumption High School, earning a pair of First Team All-MAC honors. After securing a nod as a 2010 All-MAC honorable mention, she was placed on the conference's second team during her sophomore season. In addition to earning All-Conference First Team honors in 2013, she was tabbed as an Iowa Class 3A First Team member. She helped lead her team to state tournament appearances in both 2012 and 2013 and earned a spot on the 2013 Class 3A All-State Tournament team.

**Personal:** Off the court, she was a two-year member of the National Honors Society and was placed on the High Honor Roll in each of her four years at Assumption. The daughter of David and Julie Cabel, she has one brother, Matt.

## Danielle Cabel

OUTSIDE HITTER | SOPHOMORE | 6-2  
BETTENDORF, IOWA | ASSUMPTION | FUSION

4



**High School:** A three-year standout at Lake Highland Prep in Winter, Park, Fla and a member of the Orlando Volleyball Academy, Turner served as a team captain in both 2013 and 2014. As a senior, she notched 883 assists and scooped 137 digs en route to being named Team MVP. She led her squad to a second-place finish at the 2013 state championship and also was a member of the 2013 AAU National Championship runner-up team. In 2013, she was tabbed as both a AAU All-American, as well as a Junior National Championship All-Star.

**Personal:** In the classroom, she was a member of the President's List during all four years of her high school career and was a member of the National Honors Society. The daughter of Jeff and Dee Dee Turner, she has one sister, Allie.

## Emma Turner

SETTER | FRESHMAN | 5-10  
WINTER PARK, FLA. | LAKE HIGHLAND | ORLANDO

1



**High School:** Played A four-year letter winner at Shaler Area High School and a member of the Renaissance Volleyball Club, Kline served as team captain for three seasons. She earned First Team All-Western Pennsylvania Interscholastic Athletic League Honors in both her junior and senior seasons and was tabbed as team MVP on three occasions. A four-year First Team All-Section member, Kline led her squad in digs during each of her four seasons at Shaler, helping the team win a Section Championship during her final two campaigns.

**Personal:** Kline also earned letters in high school for basketball and track. The daughter of Alex and Ellen Kline, she has one brother, Alex Jr., and two sisters, Chelsea and Tori.

## Elizabeth Kline

DEFENSIVE SPECIALIST | FRESHMAN | 5-6  
SANDY, UTAH | SHALER AREA | REINAISSANCE





15



**High School:** A four-year player at Keith Country Day School under head coach Steve Williams and a member of Fusion Volleyball Club, McGary is a two-time All-Conference MVP. In 2013, she led her squad to a state championship, compiling 323 kills, 29 blocks and 46 service aces. She was tabbed as a 2014 McNamara All-Tournament team member and also was an All-American and National Player of the Year finalist. In 2012, she was chosen to the AVCA Phenom Senior Watch List and attended the Phenom College Prep Program in Louisville, K.Y. prior to the NCAA competition in December 2012.

**Iman McGary**

OUTSIDE HITTER | FRESHMAN | 5-11  
ROCKFORD, ILL. | KEITH COUNTRY DAY | FUSION

**Personal:** The daughter of Michael and Linda McGary, she has one sister, India.

10



**High School:** A four-year standout at East Greenwich High School under head coach Ryan Garno and member of the Blast Volleyball Club, Wong served as a team captain in both 2014 and 2015. She earned first team All-Division and second team All-State honors during her sophomore and junior years. As a senior, she led her squad to a state championship and was tabbed as a first team All-Division and first team All-State member. She was also chosen as the Rhode Island All-Tournament MVP and Rhode Island Division II Player of the Year.

**Phoebe Wong**

DEFENSIVE SPECIALIST | FRESHMAN | 5-4  
EAST GREENWICH, RI | EAST GREENWICH | BLAST

**Personal:** The daughter of Jason and Jennifer Wong, she has one brother, Patrick.

6



**High School:** A member of the All-Star Volleyball Association, Williams earned four letters under head coach Sonia Colon in her high school career. As a senior, her 204 regular season kills topped the PSAL, while her 62 service aces were good for 15th in the league. She was tabbed as team MVP in 2012, 2013 and 2015 and served as captain in both the 2014 and 2015 campaigns.

**Kayla Williams**

PIN HITTER | FRESHMAN | 5-9  
STATEN ISLAND, N.Y. | SHALER AREA | ALL-STAR

**Personal:** In addition to her time on the court, she captained the school's tennis team and was selected as team MVP in 2014. The daughter of Marc Williams and Charlene Threewitts, she has three sisters, Angela, Ciarra, Mya, and three brothers, Jorrell, Jalen and Leon.

18



**High School:** Playing at Mother McAuley in Chicago, Ill. under head coach Jen Dejardly and at Michio volleyball academy, Arundel was tabbed as the MVP of the 15's Junior National Championship Open Division and also selected as the MVP of both the 15's Open National Junior Classic and the 16's Open President's Day Challenge.

**Kennedy Arundel**

DEFENSIVE SPECIALIST | FRESHMAN | 5-6  
CHICAGO, ILL. | MOTHER MCAULEY

**Personal:** Off the court, Arundel was a member of the GCAC All-Academic Team. The daughter of Michael and Marla Arundel, she has one brother, Michael, and two sisters, Ireland and Ryan.





# KRIS GRUNWALD

HEAD COACH | SECOND SEASON

George Mason '91, Florida State '93

53-39 Overall Head Coaching Record | 1996 SEC Western Division Champion

Kris Grunwald, who spent 2012 and 2013 as an assistant coach at Auburn and was the Tigers' head coach from 1998-99, was named the head coach of the University of Connecticut volleyball team on April 2, 2014.

A native of Germantown, N.Y., Grunwald was an assistant coach at Auburn from 1994-97 then took over the head coaching reigns for two years. As an assistant coach, he led Auburn to an SEC Western Division championship in 1996. In his two years back at Auburn as an assistant coach, the Tigers had a 17-13 mark in '12 and was 19-11 in '13.

Auburn has had a winning record in all eight years that Grunwald had been on the Tiger staff. "I am incredibly excited to become the head volleyball coach at UConn and I consider it an amazing opportunity," said Grunwald. "I am looking forward to being part of this amazing University with its rich tradition in athletics and such a strong academic reputation. I think we have a very talented roster of current student-athletes in this program already and I look forward to getting to know them and develop their skills. As a native of the Northeast, I think this school and this program is a great fit for me."

"I am very pleased to welcome Kris to our UConn family and am extremely excited about the direction of our volleyball program," said UConn Director of Athletics Warde Manuel. "Kris brings a wide variety of collegiate athletics experience to our program, including many years of coaching the sport at the highest level. I believe that Kris will be an excellent mentor for both the athletic and academic success of our volleyball student-athletes."

Grunwald returned to Auburn in 2012 after spending the previous four years as an assistant at Arkansas. Under Grunwald's leadership as head coach, Auburn amassed a 41-20 record over two seasons, posting a 22-win campaign in 1998 and 19 wins the following season.

Grunwald was a three-time Honorable Mention All-American and three-time All-East First Team performer for the George Mason volleyball team (1988-91), which reached the national semifinals in 1988. In the George



Mason career records book, he is second in kills (1,764), fourth in digs (676) and seventh in blocks (394).

He moved on to Florida State for his graduate work where he served as an assistant coach for three seasons (1991-93). He assumed a larger role as the recruiting coordinator when he joined the Auburn staff as an assistant in 1994.

Grunwald was the compliance service coordinator at Michigan from 2000-02, assisting with student-athlete certification, eligibility and NCAA rules interpretation. He returned to coaching in 2002 as an assistant coach at Mississippi, a position he held through the 2005 season. From his spot with the Rebels, Grunwald became the associate head coach at Morehead State until accepting the position at Arkansas prior to the 2008 season.

Grunwald is a 1991 graduate of George Mason University with a bachelor's degree in mathematics. He earned his master's degree in mathematics education at Florida State in 1993.

## Grunwald Year-by-Year

	Florida State Asst. Coach 1991-1993
	Auburn Asst. Coach 1994-1997
	Auburn HEAD COACH 1998-99
	Mississippi Asst. Coach 2002-05
	Moorehead State Assoc. Coach 2005-07
	Arkansas Asst. Coach 2008-11
	Auburn Asst. Coach 2012-13
	UConn HEAD COACH 2014- pres





# ED TOLENTINO

## ASSISTANT COACH | FIRST SEASON

### Detroit Mercy '97

Ed Tolentino, a 1997 graduate of Detroit Mercy, is in his first season as an assistant volleyball coach at the University of Connecticut.

Tolentino, who boasts 17 years of college coaching experience, joins the staff after two seasons at Morehead State. In addition to his time with the Eagles, he served as the head coach at Oakland University (Mich.) for three seasons and also completed assistant stints at Georgia Tech, Michigan, Michigan State, Eastern Michigan and Madonna (Mich.).

The Detroit, Mich. native will coach alongside second-year leader Grunwald, as well assistant coach Ellen Herman. In addition to his duties on the court, Tolentino will assist the program in recruiting, as well as aid in the completion of administrative activities.

He joined the Morehead State staff in the 2013 campaign, helping the team win its 12th overall Ohio Volleyball Conference championships and fourth-straight regular season conference crown. Following the season, he was promoted to associate head coach. He served four seasons as an assistant at Georgia Tech, where he mentored three players who earned American Volleyball Coaches Association All-America nods. The Yellow Jackets compiled 72 wins during his tenure and earned an NCAA Tournament invite in 2009.

Prior to his time in Atlanta, he spent three seasons on the staff at Madonna, where he helped guide the Crusaders to 108 victories, three NAIA national championship berths and three Wolverine-Hoosier Athletic Conference titles. He mentored six all-America honorees, three conference Players of the Year, one Libero of the Year, and one Freshman of the Year.

Tolentino served as an interim assistant volleyball coach at the University of Michigan in 2005, where he assisted in player development and recruiting while coordinating scouting reports. He joined the staff of Premier Volleyball and M-Junior Volleyball in January, 2005, serving as head trainer for Premier for four years and director of M-Juniors for the last three.

Before joining the staff at Premier Volleyball, Tolentino was an assistant coach at Michigan State University, where he assisted with all aspects of the program, including coordinating travel and scouting reports while assisting in development and recruiting.

His stint in East Lansing came after spending two seasons as an assistant coach at Eastern Michigan, where he helped guide the Eagles to a pair of MAC Tournament appearances and a 27-7 record in 2002. After spending two years (1997-98) as an assistant coach at Oakland University, Tolentino was promoted to head coach - a position he held for three seasons before joining the Eastern Michigan volleyball staff.

Tolentino began his coaching career at Bishop Foley High School in Madison Heights, Mich., where he served as the head varsity volleyball coach from 1994-96. He was a brief member of the Cranbrook Kingswood volleyball staff in early 1997 before earning his first collegiate coaching role at Oakland later the same year. Between his assistant and head coaching positions at Oakland, Tolentino spent 10 months as a certified athletic trainer with the Detroit Tigers' Gulf Coast League team.

He is currently a member of the American Volleyball Coaches Association (AVCA) and National Athletic Trainers Association (NATA).

Cullen was a member of the AVP Pro Beach Volleyball Tour and has worked with the strength and conditioning programs at both Northwestern University and Loyola (Ill.) University.

# ELLEN HERMAN

## ASSISTANT COACH | SECOND SEASON

### Ohio '10



Ellen Herman is entering the first year of her second stint with the Huskies, re-joining the Huskies in 2014 after also serving as an assistant in 2011. Herman joins the UConn staff after playing professionally in Europe and after a standout career at Ohio University.

The Toledo, Ohio native most recently played professionally with Sagres NUC, one of the top teams in the LNA, the top professional league in Switzerland. During the 2011-2012 season, she was match MVP three times, and helped them out of Neuchatel, Switzerland club finish second in the league. Sagres also reached the Swiss Cup final and the quarterfinals of the CEV Challenge Cup, a European-wide Championship. Returning to Neuchatel the following season, she was awarded match MVP five times and the team finished third place in the LNA.

In 2010, she competed for VT Aurubis Hamburg, a member of Germany's 14-team premier league, the Bundesliga. During her brief stint in Germany, she received MVP honors during two matches.

Prior to her professional career, Herman trained with the U.S. National Team during the summer of 2009 and competed with the U.S. National Team on their Tour of China during February of 2010. She also competed with the U.S. A2 Team, earning Most Valuable Player honors at the Adult Open Championship in 2008.

Herman, a two-time All-American, led the Bobcats to four successful seasons during her collegiate career, including three Mid American Conference regular season championships, three MAC tournament championships and four NCAA tournament berths. She was named the MAC Player of the Year as a junior and senior and also earned MAC Freshman of the Year accolades during her rookie campaign. The four-time first team All-MAC selection left Ohio University as the OU and MAC all-time leader in kills, as well as OU's all-time leader in points and attacks.

Herman, who earned Academic All-MAC honors three times during her collegiate career, graduated with a Bachelor of health administration from Ohio University in June 2010.





# 2014 SEASON RECAP

## **AMERICAN RISING**

After more than 30 years in the Big East, the Huskies transitioned to the American Athletic Conference for the 2013 season. UConn picked up its first American win in a four-set thriller vs. Rutgers on Oct. 11.

## **GAMPEL STRONG**

Over the past three years, the Huskies are over .500 in games played on their home court in Gampel Pavillion. From 2012-14, UConn has concluded each year with a regular season victory.

## **DATTI DEFENSE**

Brianna Datti put together an excellent senior campaign in 2014, tallying 539 total digs which was seventh-most in UConn single-season history behind her sixth-best mark of 541 digs from the 2013 season. Her 4.28 digs/set ranked seventh-best in The American and was 70th nationally.

## **MAUGLE IN THE RECORD BOOKS**

Senior Devon Maugle finished with a team-best 331 kills and a 2.69 kills/set mark. She scooped 356 digs for a 2.89 digs/set result. Maugle became the seventh-ever Husky player to record at least 1,000 career kills and 1,000 career digs when she achieved the feat on Nov. 26 against Houston. She closed out her career with 1,049 kills and 1,032 digs.

## **CONFERENCE RECOGNITION**

In her junior campaign, Immanuella Anagu became the first player in The American to earn both Offensive and Defensive Player of the Week honors in the same season. She led the team in solo blocks (14), block assists (92) and total blocks (106). She ranks seventh among career leaders in school history with 317 total blocks.

## **STAYING NEUTRAL**

The Huskies finished the year with a 2-1 record on neutral courts and now sport a 15-9 neutral mark over the past four seasons.

# 2014 SEASON STATISTICS

##	NAME	SP-MS	K	K/SET	E	TA	HIT PCT.	A	A/SET	SA	SA/SET	SE	D	D/SET	BS	BA	TB
5	Maugle, Devon	123 30	331	2.69	162	1,154	.146	18	0.15	34	0.28	68	354	2.88	3	22	25
8	Anagu, Immanuella	123 27	297	2.41	87	657	.320	1	0.01	1	0.01	4	39	0.32	14	92	106
11	Thomas, Erika	121 28	249	2.06	113	748	.182	2	0.02	2	0.02	11	56	0.46	3	80	83
7	Cason, Kenya	78 19	207	2.65	103	679	.153	8	0.10	11	0.14	14	178	2.28	3	13	16
3	Strawberry, Jade	85 12	146	1.72	117	552	.053	8	0.09	13	0.15	32	185	2.18	3	12	15
13	Tosin, Adeniyi	126 11	140	1.11	72	400	.170	3	0.02	0	0.00	0	34	0.27	11	77	88
14	Cmajdalka, Hayley	64 14	91	1.42	38	280	.189	1	0.02	3	0.05	7	27	0.42	1	27	28
6	Towslee, Katherine	39 7	42	1.08	33	138	.065	1	0.03	0	0.00	0	11	0.28	0	10	10
9	Evans, Camille	40 6	40	1.00	27	158	.082	0	0.00	0	0.00	0	20	0.50	0	20	20
16	Rivera, Rebecca	119 23	7	0.06	1	24	.250	663	5.57	14	0.12	34	211	1.77	0	0	0
15	Datti, Brianna	126 1	3	0.02	1	16	.125	117	0.93	30	0.24	27	539	4.28	0	0	0
4	Esposito, Sage	120 8	3	0.03	4	24	-.042	560	4.67	26	0.22	25	222	1.85	0	0	0
10	Christensen, Amy	100 0	2	0.02	0	8	.250	15	0.15	12	0.12	13	158	1.58	0	1	1
1	Ratliff, Karson	2 0	0	0.00	0	0	0.00	1	0.50	0	0.00	0	0	0.00	0	0	0
2	Crosby, Courtney	1 0	0	0.00	0	0	.000	0	0.00	0	0.00	0	2	2.00	0	0	0
12	Long, Jessika	8 0	0	0.00	0	0	.000	31	3.88	0	0.00	2	14	1.75	0	0	0

## 2014 NCAA LEADERS

### TEAM

16.27 digs/set | 63rd nationally

12.37 kills/set | 195th nationally

1.16 aces/set | 196th nationally

#### Brianna Datti

539 total digs  
70th nationally

#### Immanuella Anagu

.320 hitting percentage  
144th nationally





# ALL-TIME RESULTS

## Kris Grunwald 2014-Present 12-19 (.632)

**2014 (12-19, 5-15 The American)**

8/29	vs. NEW HAMPSHIRE#	W, 3-0
8/30	vs. CENTRAL CONNECTICUT#	W, 3-2
	vs. INDIANA#	L, 2-3
9/05	vs. Toledo@	W, 3-0
9/06	vs. Rice@	L, 2-3
	at N.C. State@	L, 1-3
9/12	vs. Cornell\$	W, 3-0
9/13	at Bucknell\$	W, 3-1
9/19	COLUMBIA^	W, 3-2
9/20	BRYANT^	W, 3-1
	HOFSTRA^	L, 1-3
9/24	vs. TEMPLE*	W, 3-0
9/26	at East Carolina*	W, 3-1
10/03	at USF*	L, 1-3
10/05	at UCF*	L, 3-0
10/10	vs. MEMPHIS*	L, 1-3
10/12	vs. CINCINNATI*	L, 1-3
10/17	at Tulane*	L, 2-3
10/19	at Houston*	L, 2-3
10/24	vs. TULSA*	L, 0-3
10/26	vs. SMU*	L, 1-3
10/31	at Cincinnati*	W, 3-2
11/02	at Memphis*	L, 1-3
11/07	vs. UCF*	L, 1-3
11/09	vs. USF*	L, 1-3
11/12	at Temple*	L, 2-3
11/16	vs. EAST CAROLINA*	L, 2-3
11/21	at SMU*	L, 1-3
11/23	at Tulsa*	L, 0-3
11/26	vs. HOUSTON*	W, 3-2
11/28	vs. TULANE*	W, 3-0

# UConn Classic (Storrs, Conn.)  
@ NC State Tournament I (Raleigh, N.C.)  
\$ Bucknell Tournament (Lewisburg, Pa.)  
^ Husky Tournament (Storrs, Conn.)  
\* indicates American Athletic Conference game

## Holly Strauss-O'Brien 2005-2013 140-128 (.522)

**2013 (14-19, 5-13 The American)**

8/30	vs. Southern Illinois^	L, 2-3
8/31	vs. Duquesne^	W, 3-0
	at IPFW^	L, 1-3
9/03	HARTFORD	W, 3-0
9/06	NORTHEASTERN#	L, 2-3
9/07	ALBANY#	W, 3-0
	PITTSBURGH#	L, 2-3
9/13	vs. Troy\$	W, 3-2
9/14	vs. St. John's\$	W, 3-0
	at Georgia Tech\$	L, 0-3
9/20	vs. New Hampshire@	W, 3-1
	at Dartmouth@	W, 3-0
9/21	vs. Minnesota@	L, 1-3
	vs. Rhode Island	W, 3-2
9/27	SMU*	L, 0-3
9/29	HOUSTON*	L, 2-3
10/04	at UCF*	L, 2-3
10/06	at USF*	L, 0-3
10/08	SACRED HEART	W, 3-2
10/11	RUTGERS*	W, 3-1
10/18	at Temple*	L, 0-3
10/20	at Memphis*	L, 2-3
10/25	CINCINNATI*	W, 3-2
10/27	LOUISVILLE*	L, 0-3
11/01	at Houston*	L, 0-3
11/03	at SMU*	L, 0-3
11/08	USF*	L, 0-3
11/10	UCF*	L, 1-3
11/15	at Rutgers*	W, 3-0
11/22	MEMPHIS*	W, 3-0
11/24	TEMPLE*	L, 0-3
11/27	at Louisville*	L, 1-3
11/29	at Cincinnati*	W, 3-2

\* American Athletic Conference Match  
^ IPFW Invitational (Fort Wayne, Ind.)  
# UConn Classic (Storrs, Conn.)  
\$ Courtyard Classic (Atlanta, Ga.)  
@ Dartmouth Duo (Hanover, N.H.)

**2012 (19-12, 10-5 BIG EAST)**

8/24	at Loyola Marymount+	L, 0-3
8/25	vs. UC Santa Barbara+	W, 3-0
8/25	vs. Iona+	L, 1-3
8/31	DARTMOUTH#	W, 3-0
9/1	FAIRFIELD#	W, 3-0
9/1	MICHIGAN STATE#	L, 0-3
9/4	at Hartford	W, 3-1
9/7	vs. New Orleans^	W, 3-0
9/7	at Missouri State^	L, 0-3
9/8	vs. Nebraska-Omaha^	W, 3-2
9/8	vs. Northern Illinois	L, 1-3
9/14	HARVARD	W, 3-0

9/15	vs. Boston College^	W, 3-0
9/15	at Northeastern^	L, 0-3
9/19	at Sacred Heart	W, 3-0
9/21	VILLANOVA*	W, 3-1
9/23	GEORGETOWN	W, 3-1
9/29	at St. John's*	L, 0-3
10/6	at Notre Dame*	L, 0-3
10/7	at DePaul*	W, 3-1
10/12	CINCINNATI*	L, 2-3
10/14	LOUISVILLE*	L, 1-3
10/19	at USF*	W, 3-2
10/21	at Pittsburgh	W, 3-1
10/27	RUTGERS*	W, 3-0
10/28	SETON HALL*	W, 3-2
11/2	at Marquette*	L, 1-3
11/4	at Syracuse	W, 3-0
11/7	at Georgetown	W, 3-1
11/9	USF*	W, 3-1
11/16	vs. Cincinnati%	L, 2-3

\* BIG EAST Conference Match  
+ LMU Invitational (Los Angeles, Calif.)  
# UConn Classic (Storrs, Conn.)  
^ Dr. Mary Jo Wynn Invitational (Springfield, Mo.)  
! New England Challenge (Storrs, Conn. and Boston, Mass.)  
% BIG EAST Tournament (Milwaukee, Wis.)

**2011 (14-15, 4-10 BIG EAST)**

8/26	vs. Grambling State+	W, 3-0
8/27	vs. Texas Tech+	L, 0-3
8/27	at TCU+	L, 0-3
9/2	HOLY CROSS#	W, 3-0
9/3	HOWARD#	W, 3-0
9/3	BINGHAMTON#	W, 3-0
9/6	SACRED HEART	L, 1-3
9/9	vs. Fairfield^	W, 3-1
9/10	vs. Indiana State^	L, 0-3
9/10	at New Hampshire^	W, 3-0
9/16	vs. Chattanooga	W, 3-0
9/17	at Virginia Tech	L, 1-3
9/17	vs. Virginia	W, 3-1
9/23	at Cincinnati*	L, 0-3
9/25	at Louisville*	L, 0-3
10/1	MARQUETTE*	L, 1-3
10/2	SYRACUSE*	L, 0-3
10/4	HARTFORD	W, 3-0
10/5	at USF*	L, 2-3
10/11	FORDHAM	W, 3-1
10/15	ST. JOHN'S*	W, 3-1
10/21	at Villanova*	L, 1-3
10/23	at Georgetown*	L, 2-3
10/29	NOTRE DAME*	W, 3-2
10/30	DEPAUL*	W, 3-1
11/4	WEST VIRGINIA*	W, 3-1
11/6	PITTSBURGH*	L, 1-3
11/12	at Rutgers*	L, 0-3
11/13	at Seton Hall*	L, 2-3

\* BIG EAST Conference Match  
+ TCU Tournament (Fort Worth, Texas)  
# UConn Toyota Classic (Storrs, Conn.)  
^ Holly Young Invitational (Durham, N.H.)  
! Hokie Classic (Blacksburg, Va.)

**2010 (6-19, 4-10 BIG EAST)**

9/3	HARTFORD^	W, 3-0
9/4	BROWN^	W, 3-0
9/4	SOUTHERN ILLINOIS^	L, 0-3
9/10	vs. Belmont&	L, 0-3
9/10	at Purdue&	L, 0-3
9/11	vs. Duquesne&	L, 1-3
9/14	at Northeastern	L, 0-3
9/17	vs. Cornell#	L, 2-3
9/18	vs. Akron#	L, 0-3
9/18	at Colgate#	L, 0-3
9/24	NEW HAMPSHIRE	L, 2-3
9/26	VILLANOVA*	L, 0-3
10/1	LOUISVILLE*	L, 0-3
10/3	CINCINNATI*	L, 0-3
10/8	at Syracuse*	L, 1-3
10/10	at Marquette*	L, 1-3
10/17	ST. JOHN'S*	L, 2-3
10/22	SETON HALL*	L, 2-3
10/24	RUTGERS*	W, 3-0
10/30	at DePaul*	W, 3-2
10/31	at Notre Dame*	L, 1-3
11/5	GEORGETOWN*	L, 2-3
11/7	USF*	W, 3-0
11/13	at Pittsburgh*	L, 1-3
11/14	at West Virginia*	W, 3-2

\* BIG EAST Conference Match  
^ UConn Toyota Classic (Storrs, Conn.)  
# Purdue Tournament (West Lafayette, Ind.)  
# Colgate Tournament (Hamilton, N.Y.)

**2009 (14-17, 7-7 BIG EAST)**

8/28	vs. Saint Mary's College%	L, 1-3
8/28	at Nevada%	L, 2-3
8/29	vs. UC Irvine%	L, 2-3
8/30	vs. No. 6 California	L, 0-3
9/4	LONG ISLAND^	W, 3-0
9/5	NEW HAMPSHIRE^	W, 3-1
9/5	TEXAS CHRISTIAN^	L, 2-3
9/8	at Harvard	W, 3-2
9/11	at Dayton&	L, 0-3
9/12	vs. Creighton&	W, 3-2
9/12	vs. Samford&	W, 3-1
9/16	NORTHEASTERN	W, 3-2
9/18	at Boston College#	L, 2-3
9/19	vs. Rhode Island#	L, 0-3

9/19	vs. Hartford#	W, 3-1
9/25	NOTRE DAME*	L, 1-3
9/27	DEPAUL*	W, 3-0
10/2	at USF*	W, 3-2
10/4	at Georgetown*	W, 3-0
10/9	MARQUETTE*	W, 3-1
10/11	SYRACUSE*	L, 1-3
10/17	at Villanova*	L, 1-3
10/21	at Fairfield	L, 2-3
10/24	at St. John's*	W, 3-2
10/30	WEST VIRGINIA*	L, 1-3
11/1	PITTSBURGH*	L, 0-3
11/7	at Rutgers*	W, 3-2
11/8	at Seton Hall*	W, 3-1
11/14	at Cincinnati*	L, 0-3
11/15	at Louisville*	L, 1-3
11/20	vs. Cincinnati\$	L, 1-3

\* BIG EAST Conference Match  
% Nevada Marriott Courtyard/Fairfield Invitational (Reno, Nev.)  
^ UConn Toyota Classic (Storrs, Conn.)  
# Dayton Tournament (Dayton, Ohio)  
\$ Boston College Tournament (Chestnut Hill, Mass.)  
% BIG EAST Tournament (Louisville, Ky.)

**2008 (21-11, 10-4 BIG EAST)**

8/29	vs. Cleveland State#	W, 3-1
8/30	at Northern Illinois#	W, 3-0
8/30	vs. Chicago State#	W, 3-0
9/5	vs. Wright State%	W, 3-1
9/6	at Albany%	L, 0-3
9/6	vs. Buffalo%	W, 3-0
9/12	vs. UW-Milwaukee^	L, 2-3
9/13	at Michigan State^	L, 0-3
9/13	vs. Florida A&M^	W, 3-0
9/17	FAIRFIELD	W, 3-0
9/19	CORNELL\$	W, 3-1
9/20	MAINES	L, 2-3
9/20	TEMPLES	W, 3-1
9/26	LOUISVILLE*	L, 1-3
9/28	CINCINNATI*	W, 3-2
10/3	at Syracuse*	L, 1-3
10/5	at Marquette*	W, 3-0
10/8	HARTFORD	W, 3-1
10/12	RUTGERS*	W, 3-0
10/15	SACRED HEART	W, 3-0
10/18	at St. John's*	L, 2-3
10/24	at Pittsburgh*	W, 3-1
10/26	at West Virginia*	W, 3-1
10/31	SETON HALL*	W, 3-0
11/2	VILLANOVA*	W, 3-0
11/8	GEORGETOWN*	W, 3-0

11/9	USF*	W, 3-0
11/14	at DePaul*	W, 3-0
11/16	at Notre Dame*	L, 0-3
11/21	vs. Notre Dame*	L, 0-3
11/28	vs. No. 22 Saint Louis	L, 0-3
11/28	at Middle Tennessee State	L, 2-3

# Northern Illinois Tournament (DeKalb, Ill.)  
% Albany Tournament (Albany, N.Y.)  
^ Michigan State Tournament (East Lansing, Mich.)  
\$ UConn Toyota Classic (Storrs, Conn.)  
& BIG EAST Tournament (Pittsburgh, Pa.)

**2007 (18-11, 7-6 BIG EAST)**

8/24	at Hartford	W, 3-0
8/25	MANHATTAN	W, 3-0
8/31	vs. High Point&	W, 3-0
9/1	at Davidson&	W, 3-0
9/1	vs. James Madison&	W, 3-1
9/7	vs. IUPUI#	W, 3-0
9/8	vs. Southeast Mo.#	L, 1-3
9/8	at Saint Louis#	L, 1-3
9/12	NORTHEASTERN	W, 3-2
9/14	HOFSTRA\$	L, 0-3
9/15	LONG ISLAND\$	W, 3-1
9/15	MIDDLE TENNESSEE STATES\$	L, 1-3
9/22	at Villanova*	L, 2-3
9/23	at Seton Hall*	W, 3-0
9/29	WEST VIRGINIA*	W, 3-0
9/30	PITTSBURGH*	L, 0-3
10/5	at Cincinnati*	L, 1-3
10/7	at Louisville*	L, 0-3
10/14	at Fordham	L, 1-3
10/19	ST. JOHN'S*	L, 0-3
10/24	CENTRAL CONNECTICUT	W, 3-0
10/27	NOTRE DAME*	W, 3-1
10/28	DePAUL*	W, 3-0
11/3	MARQUETTE*	W, 3-2
11/4	SYRACUSE*	W, 3-0
11/9	at USF*	L, 0-3
11/11	at Georgetown*	W, 3-0
11/16	vs. St. John's^	L, 0-3
11/24	at Arkansas	W, 3-2

& Davidson Invitational (Davidson, N.C.)  
# Billiken Invitational (Saint Louis, Mo.)  
\$ UConn Toyota Classic (Storrs, Conn.)  
% BIG EAST Tournament (Milwaukee, Wisc.)

**2006 (19-11, 8-6 BIG EAST)**

8/26	HARTFORD	W, 3-0
------	----------	--------

9/1	at Gonzaga#	W, 3-0
9/2	vs. Portland State#	W, 3-0
9/2	vs. Gardner-Webb#	W, 3-0
9/6	at Northeastern	W, 3-0
9/8	BOSTON COLLEGE\$	W, 3-2
9/9	QUINNIPAC	W, 3-0
9/9	NORTHERN ILLINOIS\$	W, 3-0
9/12	at Yale	L, 2-3
9/15	at Minnesota^	L, 0-3
9/16	vs. Dayton^	L, 1-3
9/16	vs. Tulane^	W, 3-0
9/20	FORDHAM	W, 3-0
9/23	at West Virginia*	W, 3-0
9/24	at Pittsburgh*	L, 1-3
9/29	CINCINNATI*	L, 1-3
10/1	LOUISVILLE*	L, 1-3
10/4	at Wagner	W, 3-0
10/8	SETON HALL*	W, 3-0
10/11	at Central Connecticut	L, 1-3
10/14	ST. JOHN'S*	L, 0-3
10/20	at Notre Dame*	L, 0-3
10/22	at DePaul*	W, 3-1
10/27	USF*	W, 3-0
10/29	GEORGETOWN*	W, 3-0
11/3	at Marquette*	L, 1-3
11/5	at Syracuse*	W, 3-1
11/11	VILLANOVA*	W, 3-0
11/12	RUTGERS*	W, 3-0
11/17	vs. Louisville%	L, 1-3

# Gonzaga Tournament (Spokane, Wash.)  
\$ UConn Toyota Classic (Storrs, Conn.)  
^ Minnesota Diet Coke Classic (Minneapolis, Minn.)  
% BIG EAST Tournament (Cincinnati, Ohio)

**2005 (15-13, 7-7 BIG EAST)**

9/2	vs. Clemson#	L, 1-3
9/2	vs. Kentucky#	L, 0-3
9/3	vs. Western Carolina#	W, 3-0
9/9	NEW HAMPSHIRE&	W, 3-0
9/9	BROWN&	W, 3-0
9/10	MANHATTAN&	W, 3-0
9/13	YALE	L, 0-3
9/16	vs. Arizona\$	L, 0-3

## Kelli Myers 1998-2004 134-78 (.632)

9/16	vs. North Carolina\$	L, 1-3
9/17	vs. Rhode Island\$	W, 3-0
9/24	at Louisville*	L, 0-3
9/25	at Cincinnati*	L, 1-3
9/28	at Fairfield	W, 3-1
10/2	at Seton Hall*	W, 3-2
10/4	HARVARD	W, 3-0
10/8	DePAUL*	W, 3-0
10/9	NOTRE DAME*	L, 0-3
10/11	NORTHEASTERN	W, 3-0
10/14	at St. John's*	L, 0-3
10/18	at Albany	L, 0-3
10/22	SYRACUSE*	L, 1-3
10/23	MARQUETTE*	L, 1-3
10/28	at Georgetown*	W, 3-0
10/30	at USF*	W, 3-0
11/5	at Rutgers*	W, 3-1
11/6	at Villanova*	L, 0-3
11/11	PITTSBURGH*	W, 3-1
11/13	WEST VIRGINIA*	W, 3-0

# Clemson Tournament (Clemson, S.C.)  
\$ UConn Toyota Classic (Storrs, Conn.)  
& Rhode Island Tournament (Kingston, R.I.)

**2004 (17-11, 6-4 BIG EAST)**

9/3	vs. Marshall&	L, 2-3
9/4	vs. South Carolina&	L, 1-3
9/4	vs. Wake Forest&	L, 0-3
9/7	NEW HAMPSHIRE	W, 3-0
9/10	HOLY CROSS^	W, 3-0
9/10	LONG ISLAND^	W, 3-0
9/11	STONY BROOK^	W, 3-0
9/14	at Northeastern	L, 2-3
9/24	MARQUETTES	L, 1-3
9/25	MARYLAND-E. SHORES	W, 3-0
9/29	FAIRFIELD	W, 3-0
10/1	vs. Villanova#	W, 3-1
10/2	vs. Boston College#	L, 2-3
10/6	QUINNIPAC	W, 3-0



<b>2003 (20-12, 5-7 BIG EAST)</b>	
8/29 WESTERN MICHIGAN#	L, 1-3
8/30 QUINNIPAC#	W, 3-0
8/30 IDAHO#	L, 0-3
9/5 at New Hampshire\$	L, 1-3
9/6 vs. Ball State\$	L, 1-3
9/6 vs. Fairfield\$	W, 3-0
9/12 AKRON%	W, 3-2
9/13 MANHATTAN%	W, 3-0
9/13 ILLINOIS%	L, 0-3
9/19 vs. University of Denver^	W, 3-2
9/19 vs. Yale^	W, 3-0
9/20 at Maine^	W, 3-0
9/24 NORTHEASTERN*	L, 1-3
9/26 FLORIDA ATLANTIC&	W, 3-1
9/27 MARYLAND-BC&	W, 3-0
9/27 MAINE&	W, 3-0
10/4 SYRACUSE*	W, 3-1
10/5 NOTRE DAME*	L, 1-3
10/10 at Pittsburgh*	L, 1-3
10/12 at West Virginia*	L, 1-3
10/15 ST. JOHN'S*	L, 0-3
10/17 at Texas A&M-CC	W, 3-1
10/18 vs. Texas-Pan American@	W, 3-2
10/25 MIAMI*	W, 3-1
10/26 VIRGINIA TECH*	L, 2-3
10/31 at Rutgers*	W, 3-0
11/2 at Seton Hall*	L, 1-3
11/5 at Yale	W, 3-0
11/9 BOSTON COLLEGE*	W, 3-0
11/11 at Fairfield	W, 3-0
11/14 at Georgetown	W, 3-1
11/16 at Villanova*	W, 3-1
# IKON Husky Classic (Storrs, Conn.)	
\$ Wildcat Classic (Durham, N.H.)	
% UConn Invitational (Storrs, Conn.)	
^ Maine Invitational (Orono, Maine)	
& UConn Autumn Classic (Storrs, Conn.)	
@ at Texas A&M-Corpus Christi	
<b>2002 (14-15, 9-4 BIG EAST)</b>	
8/30 vs. Western Michigan#	W, 3-0
8/31 vs. Kansas State#	L, 0-3
8/31 at Colorado State#	L, 0-3
9/6 TEMPLE\$	W, 3-2
9/7 UW-MILWAUKEE\$	W, 3-0
9/7 SACRAMENTO STATES\$	L, 0-3
9/13 vs. Jacksonville State%	W, 3-0
9/14 at Illinois%	L, 0-3
9/20 RHODE ISLAND^	L, 2-3
9/21 OHIO^	L, 0-3
9/21 UW-GREEN BAY^	L, 0-3
9/27 at Notre Dame*	L, 1-3
9/29 at Syracuse*	W, 3-0
10/1 at New Hampshire	L, 0-3
10/4 WEST VIRGINIA*	W, 3-0
10/6 PITTSBURGH*	W, 3-1
10/11 at St. John's*	L, 2-3
10/15 at Northeastern	L, 0-3
10/18 FAIRFIELD&	W, 3-1
10/19 LONG BEACH STATE&	L, 0-3
10/25 VILLANOVA*	W, 3-0
10/27 GEORGETOWN*	W, 3-0
11/1 at Virginia Tech*	W, 3-0
11/3 at Miami (Fla.)*	L, 0-3
11/8 SETON HALL*	W, 3-2
11/10 RUTGERS*	W, 3-1
11/15 at Boston College*	L, 2-3
11/17 at Providence*	W, 3-0
11/23 vs. Notre Dame@	L, 1-3
# Colorado St. Univ. Park Inn Classic (Ft. Collins, Colo.)	
\$ IKON Husky Classic (Storrs, Conn.)	
% Illinois Invitational (Champaign, Ill.)	
^ Connecticut Invitational (Storrs, Conn.)	
& UConn Autumn Classic (Storrs, Conn.)	
@ BIG EAST Tournament (Pittsburgh, Pa.)	
<b>2001 (21-7, 9-3 BIG EAST)</b>	
8/31 MASSACHUSETTS#	W, 3-0
8/31 TEXAS CHRISTIAN#	W, 3-0
9/1 NEW HAMPSHIRE#	W, 3-0
9/2 CALIFORNIA#	W, 3-2
9/7 vs. Northwestern^	W, 3-2
9/8 at Pacific^	L, 0-3
9/8 vs. George Washington^	W, 3-0
9/21 at Rutgers*	L, 0-3
9/23 at Villanova*	W, 3-0
9/28 ST. PETER'S%	W, 3-1
9/28 NORTHEASTERN%	L, 1-3
9/29 BROWN%	W, 3-0
9/30 FAIRFIELD%	W, 3-0
10/5 SYRACUSE*	W, 3-0
10/7 NOTRE DAME*	L, 1-3
10/12 at Pittsburgh*	W, 3-1
10/14 at West Virginia*	W, 3-0
10/17 at Rhode Island	L, 1-3

10/20 MANHATTAN	W, 3-0
FORDHAM	10/24 W, 3-1
10/26 SETON HALL*	W, 3-0
10/28 ST. JOHN'S*	W, 3-0
11/2 at Georgetown*	L, 0-3
11/4 at Virginia Tech*	W, 3-1
11/8 at Fairfield	W, 3-2
11/10 PROVIDENCE*	W, 3-0
11/11 at Boston College*	W, 3-1
11/17 vs. Notre Dame!	L, 0-3
# IKON Husky Classic (Storrs, Conn.)	
^ Nike Pacific Challenge (Stockton, Calif.)	
% nerac.com UConn Invitational (Storrs, Conn.)	
! BIG EAST Tournament (Pittsburgh, Pa.)	
<b>2000 (20-13, 7-4 BIG EAST)</b>	
9/1 NEW ORLEANS#	
9/1 ILLINOIS STATE#	W, 3-0
9/2 ST. PETER'S (N.J.)#	W, 3-0
9/2 MONTANA#	W, 3-1
9/8 vs. Central Michigan^	W, 3-0
9/9 vs. Indiana State^	W, 3-1
9/9 at Loyola Marymount^	L, 0-3
9/15 vs. Ohio State@!	L, 0-3
9/15 at Western Michigan@	L, 1-3
9/16 vs. Liberty@	W, 3-0
9/22 FAIRFIELD%	L, 1-3
9/23 BROWN%	W, 3-0
9/23 OREGON STATE%	L, 1-3
9/26 HARVARD	W, 3-1
9/30 at Seton Hall*	W, 3-0
10/1 at Rutgers*	L, 0-3
10/6 PROVIDENCE*	W, 3-1
10/8 BOSTON COLLEGE*	W, 3-0
10/14 at Maryland	L, 2-3
10/17 at Massachusetts	L, 2-3
10/20 at Pittsburgh*	L, 0-3
10/22 at West Virginia*	W, 3-2
10/25 YALE	W, 3-0
10/28 SYRACUSE*	W, 3-0
10/29 NOTRE DAME*	L, 2-3
11/1 RHODE ISLAND	W, 3-0
11/4 at Georgetown*	W, 3-0
11/5 at Villanova*	W, 3-0
11/10 at St. John's*	W, 3-0
11/14 CENTRAL CONNECTICUT	W, 3-0
11/18 at Notre Dame+	L, 0-3
11/24 vs. UCLA&	W, 3-1
11/25 vs. UNLV&	W, 3-1
# IKON Husky Classic (Storrs, Conn.)	
^ Loyola Marymount Tournament (Los Angeles, Calif.)	

@ Western Michigan Tournament (Kalamazoo, Mich.)	
% V.I.C.E. Script Connecticut Invitational (Storrs, Conn.)	
+ BIG EAST Tournament (South Bend, Ind.)	
& Baylor Classic (Waco, Texas)	
! Ohio State forfeited match (ineligible player)	
<b>1999 (20-9, 7-4 BIG EAST)</b>	
9/1 at Rhode Island	
9/3 DELAWARE#	W, 3-0
9/4 MURRAY STATE#	L, 1-3
9/4 FLORIDA ATLANTIC#	W, 3-2
9/10 vs. Indiana%	L, 1-3
9/11 vs. Mercer%	W, 3-0
9/12 at North Carolina State	W, 3-1
9/24 HARVARD&	W, 3-0
9/24 NEW MEXICO&	W, 3-0
9/25 S. METHODIST UNIVERSITY&	L, 1-3
9/25 NEW HAMPSHIRE&	W, 3-2
9/29 BROWN	W, 3-1
10/2 at Providence College*	W, 3-2
10/3 at Boston College*	L, 2-3
10/6 at Yale	W, 3-0
10/9 PITTSBURGH*	W, 3-2
10/10 WEST VIRGINIA*	W, 3-1
10/13 at Northeastern	W, 3-1
<b>Ellen Crandall</b>	
1992-1997	
142-67 (.679)	
10/22 at Syracuse*	L, 1-3
10/24 at Notre Dame*	L, 0-3
10/30 GEORGETOWN*	L, 1-3
10/31 VILLANOVA*	W, 3-1
11/1 MASSACHUSETTS	W, 3-0
11/5 ST. JOHN'S*	W, 3-0
11/6 at Fairfield	L, 0-3
11/13 SETON HALL*	W, 3-0
11/14 RUTGERS*	W, 3-2
11/19 vs. Rutgers^	W, 3-0
11/20 vs. Notre Dame!	L, 1-3
# V.I.C.E./Connecticut Invitational (Storrs, Conn.)	
% Duke Classic (Durham, N.C.)	
& IKON Husky Classic (Storrs, Conn.)	
<b>1998 (22-11, 11-1 BIG EAST)</b>	
<b>BIG EAST Regular Season</b>	
<b>Co-Champions</b>	
9/1 at New Hampshire	
9/4 at Arizona State#	L, 2-3
9/4 vs. Loyola Marymount#	W, 3-0
9/5 vs. George Washington#	L, 1-3
9/11 vs. Dayton\$	L, 1-3
9/11 at Kent State\$	L, 1-3
9/12 vs. Tennessee Tech\$	L, 0-3

9/12 vs. Cleveland State\$	W, 3-1
9/18 vs. Cal Poly SLO%	L, 1-3
9/18 vs. Cal Irvine%	W, 3-0
9/19 vs. Cal Fullerton%	W, 3-0
9/19 vs. Nevada-Reno%	L, 2-3
9/23 BROWN	W, 3-0
9/25 vs. Bucknell&	W, 3-0
9/25 vs. Princeton&	W, 3-0
9/26 vs. Morgan State&	W, 3-0
9/26 at Delaware&	W, 3-0
10/2 at West Virginia*	W, 3-1
10/4 at Pittsburgh*	W, 3-1
10/7 HARTFORD	W, 3-0
10/9 NOTRE DAME*	W, 3-2
10/11 SYRACUSE*	W, 3-0
10/19 PROVIDENCE*	W, 3-0
10/20 at Massachusetts	W, 3-0
10/23 at Villanova*	W, 3-2
10/25 at Georgetown*	L, 2-3
10/30 COLGATE	W, 3-0
11/1 ST. JOHN'S*	W, 3-0
11/6 at Rutgers*	W, 3-0
11/8 at Seton Hall*	W, 3-0
11/14 PROVIDENCE*	W, 3-0
11/15 BOSTON COLLEGE*	W, 3-0
11/21 vs. Notre Dame!	L, 2-3
# Sun Devil/Phoenix Airport Hilton Challenge (Tempe, Ariz.)	
\$ Kent State Invitational (Kent, Ohio)	
% San Jose St./St. Mary's Tournament (San Jose, Calif.)	
& Asics/Delaware Invitational (Newark, Del.)	
! BIG EAST Tournament Semifinals (Pittsburgh, Pa.)	
<b>1997 (22-12, 8-3 BIG EAST)</b>	
8/29 vs. Southern Illinois#	W, 3-2
8/30 vs. Virginia Tech#	W, 3-1
8/31 at North Carolina State	W, 3-2
9/5 PENN STATE@	L, 0-3
9/6 STANFORD@	L, 0-3
9/6 MISSOURI@	L, 0-3
9/8 CENTRAL CONNECTICUT	W, 3-1
9/12 at Louisiana State%	L, 2-3
9/13 vs. Michigan%	L, 0-3
9/13 vs. Central Florida%	L, 1-3
9/19 HARVARD&	W, 3-0
9/20 BOSTON COLLEGE&	W, 3-0
9/20 IDAHO&	L, 1-3
9/23 at New Hampshire	W, 3-1
9/24 FAIRFIELD	W, 3-0
9/26 NEW HAMPSHIRE^	W, 3-0
9/27 FAIRLEIGH DICKINSON^	W, 3-0
9/27 BROWN^	W, 3-1
10/3 at Syracuse*	W, 3-2
10/5 at Notre Dame*	L, 0-3
10/10 GEORGETOWN*	W, 3-2
10/12 VILLANOVA*	L, 0-3
10/14 at Rhode Island	L, 2-3
10/21 at Massachusetts	W, 3-1
10/25 at St. John's*	W, 3-0
11/1 SETON HALL*	W, 3-1
11/2 RUTGERS*	W, 3-0
11/7 at Providence*	L, 1-3
11/8 at Boston College*	W, 3-0
11/11 DARTMOUTH	W, 3-0
11/15 PITTSBURGH*	W, 3-0
11/16 WEST VIRGINIA*	W, 3-0
11/22 vs. West Virginia!	W, 3-0
11/22 vs. Villanova!	L, 1-3
# Nike Fall Classic (Chapel Hill, N.C.)	
@ IKON/Husky Invitational (Storrs, Conn.)	
% Tiger Classic (Baton Rouge, La.)	
& Jammin' Connecticut Classic (Storrs, Conn.)	
^ Kaiser Permanente Conn. Challenge (Storrs, Conn.)	
! BIG EAST Tournament (South Orange, N.J.)	
<b>1996 (18-13, 6-5 BIG EAST)</b>	
8/30 NEW HAMPSHIRE@	W, 3-0
8/31 BOSTON COLLEGE@	W, 3-0
8/31 LOYOLA-CHICAGO@	W, 3-1
9/6 at Penn State#	L, 0-3
9/7 vs. Massachusetts#	L, 0-3
9/7 vs. St. Bonaventure#	W, 3-2
9/13 at Idaho%	L, 0-3
9/14 vs. DePaul%	W, 3-1
9/14 vs. Eastern Washington%	L, 1-3
9/20 vs. Bradley^	W, 3-0
9/21 at Illinois^	L, 1-3
9/27 BROWN&	W, 3-1
9/28 ARMY&	W, 3-0
9/28 WESTERN ILLINOIS&	W, 3-0
10/2 HARTFORD	W, 3-0
10/5 NORTH CAROLINA	L, 1-3
10/8 at Rhode Island	L, 0-3
10/11 at Villanova*	L, 1-3





10/13	at Georgetown*	L, 2-3
10/16	CENTRAL CONNECTICUT	W, 3-0
10/19	at St. John's*	W, 3-0
10/26	at Seton Hall*	W, 3-1
10/27	at Rutgers*	W, 3-0
10/30	MASSACHUSETTS	W, 3-1
11/2	PROVIDENCE*	W, 3-0
11/3	BOSTON COLLEGE*	W, 3-0
11/8	at Syracuse*	L, 0-3
11/10	at Pittsburgh*	L, 1-3
11/16	NOTRE DAME*	L, 0-3
11/17	WEST VIRGINIA*	W, 3-1
11/23	vs. Syracuse!	L, 2-3

@ Jammin' Connecticut Classic (Storrs, Conn.)  
 # Penn State Invitational (Univ. Park, Pa.)  
 # Idaho Safeco Tournament (Moscow, Ind.)  
 ^ Illini Classic (Champaign, Ill.)  
 & Husky Invitational (Storrs, Conn.)  
 ! BIG EAST Tournament (South Bend, Ind.)

**1995 (24-9, 9-2 BIG EAST)**

9/1	vs. New Orleans@	W, 3-1
9/2	vs. Wyoming@	L, 1-3
9/2	at Loyola-Chicago@	L, 1-3
9/8	at Maryland#	L, 3-0
9/9	vs. Villanova#	L, 3-2
9/9	vs. William & Mary#	W, 3-0
9/12	HARTFORD	W, 3-0
9/15	vs. St. Bonaventure%	W, 3-0
9/16	vs. Lehigh%	W, 3-1
9/16	at Penn State%	L, 0-3
9/20	at Massachusetts	W, 3-2
9/22	HARVARD^	W, 3-0
9/23	FAIRLEIGH DICKINSON^	W, 3-0
9/23	HOFSTRA^	W, 3-0
9/29	ST. JOHN'S* &	W, 3-0
9/30	COLGATE&	W, 3-0
9/30	Va. COMMONWEALTH&	W, 3-0
10/2	BROWN	W, 3-0
10/6	at American	L, 0-3
10/7	at Maryland-BC	W, 3-0
10/7	at James Madison	W, 3-0
10/13	SETON HALL*	W, 3-2
10/16	RUTGERS*	W, 3-1
10/21	at Providence*	W, 3-1
10/22	at Boston College*	W, 3-1
10/27	SYRACUSE*	W, 3-1
10/29	PITTSBURGH*	L, 0-3
10/31	FAIRFIELD	W, 3-0
11/3	at West Virginia*	W, 3-1
11/5	at Notre Dame*	L, 0-3
11/10	GEORGETOWN*	W, 3-1
11/12	VILLANOVA*	W, 3-2
11/18	vs. Georgetown!	L, 3-2

@ Loyola Invitational (Chicago, Ill.)  
 # Maryland Invitational (College Park, Md.)  
 % Penn State Invitational (Univ. Park, Pa.)  
 ^ Jammin Connecticut Classic (Storrs, Conn.)  
 & Reebok/Connecticut Challenge (Storrs, Conn.)  
 ! BIG EAST Tournament (Notre Dame, Ind.)

**1994 (26-11, 8-1 BIG EAST)**

**BIG EAST Tri-Champions**

9/2	vs. UW-Green Bay@	W, 3-0
9/2	vs. Utah State@	W, 3-0
9/3	vs. Furman@	W, 3-0
9/3	at Loyola@	W, 3-2
9/5	at Chicago State	W, 3-0
9/9	MASSACHUSETTS#	L, 0-3
9/10	FAIRLEIGH DICKINSON#	W, 3-0
9/10	LaSALLE#	W, 3-0
9/16	vs. St. Bonaventure%	W, 3-0
9/17	vs. Kent State%	W, 3-1
9/17	at Penn State%	L, 0-3
9/23	FAIRFIELD^	W, 3-0
9/23	BROWN^	W, 3-0
9/23	HARVARD^	W, 3-0
9/27	at Rhode Island	W, 3-1
9/30	ARMY&	W, 3-0
10/1	HARTFORD&	W, 3-0
10/1	AMERICAN UNIVERSITY&	L, 2-3
10/5	BOSTON COLLEGE*	W, 3-2
10/9	VILLANOVA*	W, 3-0
10/14	GEORGETOWN*	W, 3-0
10/16	at Syracuse*	W, 3-0
10/22	PROVIDENCE*	W, 3-0
10/26	at Seton Hall*	L, 0-3
10/29	at Pittsburgh*	W, 3-1
10/30	at St. John's*	W, 3-0
11/4	vs. Maryland-BC\$	W, 3-1
11/5	at George Mason\$	L, 1-3
11/5	vs. Delaware\$	L, 0-3
11/11	PROVIDENCE*	W, 3-1
11/14	HARTFORD	W, 3-0
11/19	vs. Pittsburgh!	L, 1-3

11/20	vs. Providence!	W, 3-0
12/2	vs. Minnesota+	L, 0-3
12/2	vs. Sam Houston State+	L, 0-3
12/3	vs. Oregon State+	L, 0-3
12/3	vs. Cal. State Northridge+	L, 0-3
@ Loyola Invitational (Chicago, Ill.)		
# Jammin Connecticut Classic (Storrs, Conn.)		
% Penn State Invitational (Univ. Park, Pa.)		
^ Hertz/Connecticut Challenge (Storrs, Conn.)		
& Subway/Husky Invitational (Storrs, Conn.)		
\$ George Mason Patriot Tournament (Fairfax, Va.)		
! BIG EAST Tournament (South Orange, N.J.)		
+ National Invitational Champ. (Kansas City, Mo.)		

**1993 (28-7, 5-2 BIG EAST)**

9/4	at Hartford@	W, 3-0
9/4	vs. Providence@	W, 3-2
9/5	vs. Army@	L, 2-3
9/5	vs. Colgate@	W, 3-1
9/10	CENTRAL CONNECTICUT#	W, 3-0
9/11	MASSACHUSETTS#	W, 3-1
9/11	HARTFORD#	W, 3-1
9/17	vs. Lehigh\$	W, 3-1
9/18	vs. St. Bonaventure\$	W, 3-0
9/18	at Penn State\$	L, 0-3
9/24	RUTGERS%	W, 3-0
9/25	FAIRFIELD%	W, 3-0
9/25	YALE%	W, 3-0
10/1	ARMY^	W, 3-0
10/2	HOLY CROSS^	W, 3-0
10/2	DELAWARE^	W, 3-0
10/3	PITTSBURGH*	L, 1-3
10/8	at Georgetown*	W, 3-0
10/10	at Villanova*	W, 3-1
10/16	SETON HALL*	L, 2-3
10/19	at Army	L, 1-3
10/22	at Va. Commonwealth&	W, 3-2
10/23	vs. Maryland-Eastern Shore&	W, 3-0
10/23	vs. St. Francis (Pa.)&	W, 3-0
10/27	at Providence*	W, 3-2
10/29	vs. Morgan State+	W, 3-0
10/30	vs. LaSalle+	W, 3-0
10/30	at Delaware+	L, 2-3
11/5	SYRACUSE*	W, 3-2
11/7	at Boston College*	W, 3-0
11/9	BROWN	W, 3-0
11/14	at Rhode Island	W, 3-0
11/20	vs. Syracuse!	W, 3-0
11/20	vs. Seton Hall!	L, 0-3
11/21	at Villanova!	W, 3-1

**Maureen Walsh**  
 1988-1991  
 64-78 (.451)

@ Hartford Tournament (West Hartford, Conn.)  
 # Jammin Connecticut Classic, (Storrs, Conn.)  
 \$ Penn State Invitational (University Park, Pa.)  
 % Connecticut Challenge (Storrs, Conn.)  
 ^ Husky Invitational (Storrs, Conn.)  
 & Virginia Commonwealth Tournament (Richmond, Va.)  
 + Blue Hen Tournament (Newark, Del.)  
 ! BIG EAST Tournament (Villanova, Pa.)

**1992 (23-14, 2-5 BIG EAST)**

9/5	vs. Central Connecticut@	W, 3-0
9/5	vs. Providence@	L, 1-3
9/5	vs. Army@	W, 3-1
9/6	at Hartford@	W, 3-1
9/6	vs. Holy Cross@	W, 3-0
9/12	at George Washington	L, 1-3
9/12	vs. Pennsylvania (at G.W.)	W, 3-0
9/13	at George Mason	L, 1-3
9/24	at Hartford	W, 3-1
9/25	at Fairfield	W, 3-0
9/30	BOSTON COLLEGE*	W, 3-1
10/2	VILLANOVA* #	W, 3-1
10/3	VERMONT#	W, 3-1
10/3	NORTHEASTERN#	W, 3-0
10/4	GEORGETOWN*	L, 2-3
10/7	at Seton Hall*	L, 1-3
10/9	vs. Colgate (at Syracuse)	L, 1-3
10/10	at Syracuse*	L, 1-3
10/14	PROVIDENCE*	L, 0-3
10/23	at Iona	W, 3-0
10/24	vs. Boston College (at Iona)	W, 3-0
10/29	vs. Colgate (at Syracuse)	L, 1-3
10/10	at Syracuse*	L, 1-3
10/14	PROVIDENCE*	L, 0-3
10/23	at Iona	W, 3-0
10/24	vs. Boston College (at Iona)	W, 3-0
10/24	vs. Bucknell (at Iona)	W, 3-0
10/28	at Army	L, 0-3
10/30	at Duquesne	W, 3-2
10/31	at Robert Morris	W, 3-0

11/1	at Pittsburgh*	L, 2-3
11/4	at Yale	W, 3-2
11/6	vs. Winthrop%	W, 3-0
11/6	at Navy%	W, 3-0
11/7	vs. UNC-Wilmington%	L, 1-3
11/7	at Navy%	W, 3-0
11/7	vs. Maryland-BC%	W, 3-1
11/13	ST. BONAVENTURE&	W, 3-2
11/14	JAMES MADISON&	W, 3-1
11/14	PROVIDENCE&	L, 1-3
11/21	vs. Providence!	L, 2-3
11/21	vs. Villanova!	L, 2-3

@ Hartford Tournament (West Hartford, Conn.)  
 # Husky Invitational (Storrs, Conn.)  
 % U.S.N.A. Forrestral Classic (Annapolis, Md.)  
 & Connecticut Challenge (Storrs, Conn.)  
 ! BIG EAST Tournament (Pittsburgh, Pa.)

**1991 (10-19, 2-6 BIG EAST)**

8/30	vs. Western Michigan@	L, 0-3
8/31	vs. Northeastern@	L, 0-3
8/31	at Rhode Island@	L, 0-3
9/6	vs. Loyola#	L, 0-3
9/6	vs. Ohio#	L, 0-3
9/7	vs. Murray State#	L, 0-3
9/7	at Wright State#	L, 2-3
9/13	CENTRAL CONNECTICUT%	W, 3-1
9/14	FAIRFIELD%	W, 3-1
9/14	HARTFORD%	L, 0-3
9/21	at Central Connecticut	W, 3-2
9/21	MARYLAND-BC	W, 3-2
9/25	at Hofstra	L, 0-3
10/2	SETON HALL*	L, 2-3
10/12	SYRACUSE*	L, 0-3
10/16	PROVIDENCE*	W, 3-1
10/18	DREXEL^	W, 3-2
10/19	FAIRLEIGH DICKINSON^	W, 3-0
10/19	NORTHEASTERN^	W, 3-2
10/20	PITTSBURGH*	L, 0-3
10/26	at Georgetown *	L, 0-3
10/27	at Villanova*	L, 2-3
11/1	at Boston College*	W, 3-2
11/2	at Providence*	L, 0-3
11/15	VA COMMONWEALTH&	W, 3-1
11/16	ARMY&	L, 0-3
11/16	MEMPHIS STATE&	L, 1-3
11/23	vs. Villanova!	L, 1-3
11/23	vs. Seton Hall!	L, 1-3
@ Rhode Island Tournament (Kingston, R.I.)		
# Wright State Tournament (Dayton, Ohio)		
% Constitution Classic (Storrs, Conn.)		
^ Husky Invitational (Storrs, Conn.)		
& Connecticut Challenge (Storrs, Conn.)		
! BIG EAST Tournament (Pittsburgh, Pa.)		

**1990 (13-26, 2-7 BIG EAST)**

8/31	vs. Virginia@	L, 0-3
9/1	at Georgetown* @	L, 0-3
9/2	vs. Alabama@	L, 0-3
9/3	MINNESOTA	L, 0-3
9/7	vs. Arizona#	L, 0-3
9/7	at Rhode Island#	L, 0-3
9/8	vs. Northeastern#	L, 0-3
9/18	at Providence*	L, 0-3
9/21	at Oklahoma%	L, 0-3
9/22	vs. Auburn%	L, 0-3
9/22	vs. SW Texas State%	L, 0-3
9/23	at Pittsburgh*	L, 0-3
9/26	at Army	L, 2-3
9/28	FAIRFIELD^	W, 3-0
9/28	FAIRLEIGH DICKINSON^	W, 3-0
9/29	HARVARD^	W, 3-1
9/29	HARTFORD^	L, 2-3
10/5	VERMONT&	W, 3-0
10/6	YALE&	W, 3-1
10/6	HOLY CROSS&	W, 3-0
10/10	BOSTON COLLEGE*	W, 3-0
10/12	at Syracuse* +	L, 0-3
10/13	vs. Army+	W, 3-1
10/13	vs. Northeastern+	L, 0-3
10/13	vs. Colgate+	W, 3-0
10/16	MASSACHUSETTS	W, 3-1
10/19	GEORGETOWN*	L, 1-3
10/21	VILLANOVA*	W, 3-0
10/25	PROVIDENCE*	L, 0-3
10/30	at Seton Hall*	L, 2-3
11/2	at Penn State	L, 0-3
11/2	vs. Liberty (at PSU)	L, 0-3
11/6	ARMY	W, 3-2
11/9	RHODE ISLAND=	L, 2-3
11/9	NORTHEASTERN=	L, 0-3
11/9	WRIGHT STATE=	L, 0-3
11/17	vs. Syracuse!	L, 0-3
11/17	vs. Providence!	W, 3-2
11/18	vs. Villanova!	L, 0-3
@ Georgetown Tournament (Wash., D.C.)		

# Village Inn Classic (Providence, R.I.)  
 % Oklahoma Open (Norman, Okla.)  
 ^ Sideout/Husky Invitational (Storrs, Conn.)  
 & Mikasa/Nutmeg Classic (Storrs, Conn.)  
 + Syracuse Invitational (Syracuse, N.Y.)  
 = Reebok Challenge (Storrs, Conn.)  
 ! BIG EAST Tournament (Providence, R.I.)

**1989 (21-19, 6-4 BIG EAST)**

9/8	vs. Syracuse* @	L, 0-3
9/9	at Villanova* @	L, 0-3
9/9	vs. Seton Hall* @	W, 3-2
9/12	HOLY CROSS	W, 3-0
9/15	vs. St. Francis#	W, 3-0
9/15	vs. Columbia#	W, 3-0
9/16	vs. Iona#	W, 3-0
9/16	vs. Yale#	W, 3-1
9/16	vs. Fairleigh Dickinson#	L, 2-3
9/17	at Cal-Irvine	L, 0-3
9/19	at Providence*	W, 3-2
9/29	HARVARD%	L, 1-3
9/29	COLGATE%	W, 3-0
9/30	FAIRLEIGH DICKINSON%	W, 3-2
9/30	HARTFORD%	W, 3-1
9/30	FAIRLEIGH DICKINSON%	L, 1-3
10/1	PENN STATE (Danbury, Conn.)	L, 0-3
10/7	vs. Northeastern (at Univ. Penn)	L, 1-3
10/7	at Pennsylvania	W, 3-0
10/8	at Temple	L, 1-3
10/11	PROVIDENCE*	L, 2-3
10/13	CENTRAL CONNECTICUT^	W, 3-0
10/14	YALE^	W, 3-1
10/20	vs. Cornell<	W, 3-0
10/20	vs. Boston College* <	W, 3-1
10/21	vs. Drexel<	L, 2-3
10/21	at Syracuse*	L, 0-3
10/27	BOSTON COLLEGE* &	W, 3-0
10/28	SETON HALL* &	W, 3-0
10/28	PROVIDENCE* &	W, 3-2
10/30	at Massachusetts	W, 3-0
11/3	at Northeastern	L, 1-3
11/7	HARVARD	W, 3-1
11/10	at Wright State+	L, 0-3
11/10	vs. Mississippi State+	L, 0-3
11/11	vs. Eastern Illinois+	L, 0-3
11/11	vs. West Virginia+	L, 1-3
11/17	vs. Georgetown!	L, 0-3
11/17	vs. Boston College!	W, 3-2
11/18	at Providence!	L, 1-3

@ Villanova Invitational Tournament (Villanova, Pa.)  
 # Central Conn. Classic (New Britain, Conn.)  
 % Jayfro/Husky Invitational (Storrs, Conn.)  
 ^ Mikasa/Nutmeg Classic (Storrs, Conn.)  
 < Syracuse Tournament (Syracuse, N.Y.)  
 & Reebok Connecticut Cup (Storrs, Conn.)  
 + Wright State Classic (Dayton, Ohio)  
 ! BIG EAST Tournament (Providence, R.I.)

**1988 (20-14, 4-3 BIG EAST)**

9/9	vs. LaSalle@	W, 3-2
9/9	vs. George Mason@	W, 3-1
9/10	vs. American University@	L, 1-3
9/10	vs. Temple@	L, 0-3
9/13	at Holy Cross	L, 0-3

**Linda Gottlieb**  
 1986-1987  
 32-47 (.405)

9/16	vs. Fairfield#	W, 3-1
9/16	vs. Vermont#	W, 3-0
9/17	vs. Hartford#	W, 3-1
9/17	vs. Lehigh#	W, 3-0
9/17	vs. Holy Cross#	L, 0-3
9/20	PROVIDENCE*	W, 3-2
9/23	SYRACUSE*	L, 0-3
9/28	YALE	W, 3-1
9/30	FAIRFIELD%	W, 3-0
9/30	MARIST%	W, 3-0
9/30	COLGATE%	W, 3-0
9/30	HARTFORD%	W, 3-0
9/30	FAIRLEIGH DICKINSON%	W, 3-1
10/1	BOSTON COLLEGE*	W, 3-0
10/1	SETON HALL*	W, 3-0
10/10	at Central Connecticut	W, 3-0
10/		



11/3	at Boston College*	W, 3-0
11/6	at Harvard	L, 0-3
11/8	vs. Providence!	L, 0-3
11/8	vs. Boston College!	L, 2-3
@ Reebok-Lady Owl Tournament (Phil., Pa.)		
# Central Connecticut Tourn. (New Britain, Conn.)		
% Husky Invitational (Storrs, Conn.)		
^ Marine Midland Tournament (Syracuse, N.Y.)		
! BIG EAST Tournament (Pittsburgh, Pa.)		

**1987 (22-22, 1-8 BIG EAST)**

9/9	HOLY CROSS	W, 3-2
9/11	vs. George Mason@	W, 3-1
9/11	vs. Bucknell@	W, 3-0
9/11	vs. Bowling Green@	L, 0-3
9/12	vs. Providence* @	L, 0-3
9/12	vs. James Madison@	L, 0-3
9/12	vs. James Madison@	L, 1-3
9/15	CENTRAL CONNECTICUT	W, 3-0
9/18	vs. Brown#	W, 3-0
9/18	vs. Fairfield#	W, 3-0
9/19	vs. Fordham#	W, 3-0
9/19	vs. Brown#	W, 3-0
9/19	vs. Holy Cross#	W, 3-2
9/22	at Providence*	L, 0-3
9/25	SYRACUSE*	L, 2-3
9/30	at Yale	L, 2-3
10/3	HARTFORD	W, 3-0
10/3	CENTRAL CONNECTICUT%	W, 3-0
10/3	COLGATE%	W, 3-0
10/4	TOWSON STATE%	W, 3-0
10/4	FAIRLEIGH DICKINSON%	L, 1-3
10/6	at Boston College*	L, 1-3
10/9	at Syracuse* ^	L, 1-3
10/9	vs. Brown^	L, 1-3
10/10	vs. Fairleigh Dickinson^	W, 3-1
10/10	vs. Fairleigh Dickinson^	W, 3-2
10/14	BROWN	L, 0-3
10/21	PROVIDENCE*	L, 0-3
10/21	vs. Central Connecticut&	W, 3-1
10/21	vs. Siena&	W, 3-0
10/21	at Hartford&	W, 3-1
10/21	vs. Yale&	W, 3-2
10/27	at Hartford	W, 3-1
11/3	at Massachusetts	L, 0-3
11/5	BOSTON COLLEGE*	W, 3-0
11/10	HARVARD	W, 3-0
11/12	at Northeastern	L, 0-3
11/13	vs. Villanova* +	L, 2-3
11/14	at Providence* +	L, 0-3
11/14	vs. Rhode Island+	L, 1-3
11/21	vs. Pittsburgh!	L, 0-3
11/21	vs. Villanova!	L, 0-3
11/22	vs. Georgetown!	L, 0-3
11/22	vs. Seton Hall!	L, 2-3

@ Reebok-Lady Owl Tournament (Phil., Pa.)  
 # Central Connecticut Tournament (New Britain, Conn.)  
 % Husky Invitational (Storrs, Conn.)  
 ^ Marine Midland Invitational (Syracuse, N.Y.)  
 & Hartford Invitational (West Hartford, Conn.)  
 + Providence Tournament (Providence, R.I.)  
 ! BIG EAST Tournament (Providence, R.I.)

**1986 (10-25, 2-8 BIG EAST)**

at Massachusetts	L, 0-2
vs. Boston College*	L, 1-2
at Holy Cross	L, 1-3
PROVIDENCE*	L, 2-3
SYRACUSE*	L, 0-3
HARTFORD	L, 1-3

**Avron Abraham**  
 1983-1985  
 48-53 (.475)

CENTRAL CONNECTICUT	W, 3-0
YALE	W, 3-1
BOSTON COLLEGE*	L, 0-3
at Syracuse*	L, 0-3
vs. Holy Cross@	W, 3-2
vs. Brown@	L, 2-3
vs. Fairleigh Dickinson@	W, 3-2
at Brown	L, 0-3
at Holy Cross#	L, 2-3
vs. Brooklyn College#	W, 3-0 forf.
vs. Vermont#	W, 3-0
at Providence*	L, 0-3
at Boston College*	L, 0-3
at New York Tech	L, 0-3
vs. Fairleigh Dickinson	L, 0-3
vs. Howard%	L, 1-2
vs. Towson State%	L, 1-2
vs. Colgate%	L, 0-2

vs. Columbia%	W, 3-1
vs. Boston College* %	W, 2-0
vs. New York Tech%	L, 1-2
MASSACHUSETTS	L, 0-3
vs. Rice&	L, 0-3
at Villanova* &	L, 1-3
vs. Boston College* &	W, 3-2
at Harvard	W, 3-0
NORTHEASTERN	L, 2-3
vs. Providence!	L, 0-3
vs. Villanova!	L, 2-3
@ Syracuse Invitational (Syracuse, N.Y.)	W, 3-2
# Holy Cross Tournament (Worcester, Mass.)	L, 0-3
% Drexel Invitational (Philadelphia, Pa.)	L, 2-3
& Villanova Tournament (Villanova, Pa.)	L, 2-3
! BIG EAST Tournament (Pittsburgh, Pa.)	W, 3-0

**1985 (20-15, 6-4)**

at Hofstra	L, 0-3
w/Bucknell	W, 3-0
w/Virginia	L, 1-3
at Providence	L, 0-3
PROVIDENCE	L, 0-3
w/BROWN	W, 2-1
at Boston College	W, 3-0
w/Northeastern	L, 0-3
vs. Cornell#	L, 2-3
vs. Brown#	W, 3-2
vs. Syracuse	L, 1-3
NEW YORK TECH	W, 3-2
FAIRLEIGH DICKINSON	W, Forf.
Boston College+	W, 2-0
vs. Holy Cross+	L, 0-2
vs. Vermont+	W, 2-0
vs. St. Lawrence	W, 2-0
vs. New Hampshire+	W, 2-0
vs. Queens+	L, 0-2
at Central Connecticut	W, 3-0
vs. Boston College\$	W, 3-1
vs. Rutgers\$	W, 3-0
vs. Colgate\$	W, 3-1
vs. Cornell\$	L, 1-3
HARVARD	W, 2-0
BOSTON COLLEGE	W, 3-1
SPRINGFIELD	L, 1-2
EASTERN CONNECTICUT	W, 2-0
at Holy Cross	L, 1-3
vs. Providence&	L, 0-3
vs. New York Tech&	L, 2-3
vs. Boston College&	W, 3-0
vs. Syracuse!	L, 1-3
vs. Boston College!	L, 0-3

W, 3-1	vs. Villanova!
W, 3-0	# Syracuse Invitational (Syracuse, N.Y.)
	+ Vermont Invitational (Burlington, Vt.)
	\$ Colgate Invitational (Hamilton, N.Y.)

**Ruth Mead**  
 1975-1982  
 106-69 (.606)

& Providence Invitational (Providence, R.I.)  
 ! BIG EAST Championship (Providence, R.I.)

**1984 (12-17)**

Bridgeport	W, 3-0
vs. Boston College#	W, 2-0
at Providence#	L, 0-2
vs. Rhode Island	L, 0-2
vs. New Hampshire#	L, 1-2
Brown	L, 0-3
Syracuse*	L, 0-3
Providence*	L, 0-3
Boston College*	W, 3-0
Boston College*	W, 2-0
Northeastern	L, 0-2
Hofstra	W, 3-0
vs. Colgate\$	W, 3-0
vs. Fairleigh Dickinson\$	L, 1-3
vs. Cornell\$	L, 1-3
at Syracuse\$	L, 0-3
Fairleigh Dickinson	W, 2-1
New York Tech	W, 2-1
New Hampshire	L, 1-2
Central Connecticut	L, 0-2
Seton Hall	L, 1-3
Harvard	W, 3-2
Springfield	W, 2-0
Eastern Conn.	L, 0-2
C.W. Post	L, 0-2
Southern Conn.	W, 2-0
Villanova!	L, 1-3
Boston College!	W, 2-1
Georgetown!	L, 1-2
# Providence Tournament (Providence, R.I.)	
\$ Syracuse Classic (Syracuse, N.Y.)	
! BIG EAST Tournament (Providence, R.I.)	

**1983 (17-19)**

Yale	L, 0-2
Bridgeport	W, 2-0
New Hampshire\$	W, 3-0
Rhode Island College\$	W, 3-0
Providence\$	L, 1-3
Williams	W, 2-0
Smith	W, 2-0
Georgetown#	L, 0-3

Temple#	L, 0-3
Villanova#	L, 1-3
Army#	W, 3-1
Brown	W, 3-1
Providence*	L, 0-3
Syracuse*	L, 1-3
Boston College*	W, 3-0
Northeastern	L, 0-2
Boston College	W, 2-0
Hofstra	L, 0-3
Southern Connecticut	W, 2-1
C.W. Post	L, 0-2
New York Tech	L, 0-3
Central Conn.	W, 3-2
Central Conn.	W, 3-2
C.W. Post**	L, 0-2
Stonybrook**	W, 2-0
Columbia**	W, 2-0
Elmira**	W, 2-1
Brooklyn**	L, 0-2
C.W. Post**	L, 0-2
Harvard	W, 3-0
Eastern Connecticut	L, 0-2
Springfield	L, 0-2
Georgetown!	L, 1-2
Providence!	L, 0-2
Syracuse!	W, 2-1
Syracuse!	L, 0-1 (tiebreaker)

\$ Providence Tournament (Providence, R.I.)  
 # Temple Tournament (Philadelphia, Pa.)  
 \*\* Queens Tournament  
 ! BIG EAST Tournament (Providence, R.I.)

**1982 (5-11)**

YALE	W, 2-0
BRIDGEPORT	W, 2-1
WILLIAMS	W, 2-0
SMITH	L, 0-2
at Brown	L, 1-3
at Northeastern	L, 0-2
w/Boston College	L, 0-2
at Hofstra	L, 0-3
SOUTHERN CONNECTICUT	L, 1-2
C.W. POST	L, 0-2
at New York Tech	L, 0-2
w/Mercy	W, 2-0
CENTRAL CONNECTICUT	W, 3-2
at Harvard	L, 2-3
SPRINGFIELD	L, 0-2
EASTERN CONNECTICUT	L, 0-2

**1981 (8-12)**

Bridgeport	W, 3-0
Yale	W, 3-0 forf.
at Smith	W, 3-0
w/Williams	W, 3-0
BROWN	W, 3-0
at Boston College	W, 2-1
w/Northeastern	L, 0-2
at New Hampshire	L, 0-2
w/Hofstra	L, 0-2
Southern Connecticut	L, 0-2
NEW YORK TECH	W, 3-0
MASSACHUSETTS	L, 0-2
at Rutgers	L, 0-2
w/Navy	L, 0-2
PROVIDENCE	L, 0-2
Harvard	L, 1-2
at Springfield	L, 0-3
w/Vermont	W, 3-0 forf.
Eastern Connecticut	L, 0-3
Central Connecticut	L, 1-3

**1980 (18-8)**

at Providence	L, 0-2
at Bates	W, 2-0
at Massachusetts	W, 2-0
BRIDGEPORT	W, 2-0
YALE	W, 2-1
CONNECTICUT COLLEGE	W, 2-0
EASTERN CONNECTICUT	L, 1-2
at Brown	W, 2-1
at Wellesley	W, 2-0
at Harvard	W, 2-0
at Central Connecticut	L, 2-3
BOSTON COLLEGE	W, 2-0
SOUTHERN CONNECTICUT	W, 2-0
NORTHEASTERN	W, 2-0
HARVARD	W, 2-0
NEW HAMPSHIRE	W, 2-0
HOFSTRA	L, 0-2
at Williams	L, 0-2
Herkimer	W, 2-0
SMITH	W, 2-1
RUTGERS	L, 0-2





# ALL-TIME SERIES RECORDS

Opponent	W	L	Last Meeting	Opponent	W	L	Last Meeting	Opponent	W	L	Last Meeting
Akron	1	1	L, 0-3, 9/17/10	Hofstra	3	8	L, 3-1, 9/20/14	Portland State	1	0	W, 3-0, 9/2/06
Alabama	0	1	L, 0-3, 9/2/90	Holy Cross	8	6	W, 3-0, 9/2/11	Princeton	2	2	W, 3-0, 9/25/98
Albany	3	0	W, 3-0, 09/7/13	<b>Houston</b>	<b>1</b>	<b>3</b>	<b>W, 3-2, 11/26/14</b>	Providence	20	31	W, 3-0, 11/17/02
American	0	3	L, 0-3, 10/6/95	Howard	1	1	W, 3-0, 9/3/11	Purdue	0	1	L, 0-3, 9/11/10
Arizona	0	2	L, 0-3, 9/16/05	Idaho	0	3	L, 0-3, 8/30/03	Queens	1	1	L, 0-2, 1985
Arizona State	0	1	L, 2-3, 9/4/98	Illinois	0	3	L, 0-3, 9/13/03	Quinnipiac	3	0	W, 3-0, 9/9/06
Arkansas	1	0	W, 3-2, 11/24/07	Illinois State	1	0	W, 3-0, 9/1/00	<b>Rhode Island</b>	<b>8</b>	<b>14</b>	<b>W, 3-2, 9/21/13</b>
Army	7	5	W, 3-0, 9/28/96	Indiana	0	2	L, 2-3, 8/30/14	Rhode Island College	1	0	W, 3-0, 1983
Auburn	0	1	L, 0-3, 9/22/90	Indiana State	1	1	L, 0-3, 9/10/11	Rice	0	2	L, 2-3, 9/6/14
Ball State	0	1	L, 1-3, 9/6/03	Iona	3	1	L, 1-3, 8/25/12	Robert Morris	1	1	L, 1-3, 11/14/04
Barrington	2	2	W, 3-0, 1979	IPFW	0	1	L, 1-3, 08/31/13	Rutgers	22	8	W, 3-0, 11/15/13
Bates	2	0	W, 2-0, 1980	Ithaca	0	1	L, 1-2, 1979	Sacramento State	0	1	L, 0-3, 9/7/02
Belmont	0	1	L, 0-3, 9/10/10	IUPUI	1	0	W, 3-0, 9/7/07	Sacred Heart	3	1	W, 3-2, 10/08/13
Binghamton	1	0	W, 3-0, 9/3/11	Jacksonville State	1	0	W, 3-0, 9/13/02	Saint Louis	0	2	L, 0-3, 11/28/08
<b>Boston College</b>	<b>39</b>	<b>11</b>	<b>W, 3-0, 9/15/12</b>	<b>James Madison</b>	<b>3</b>	<b>2</b>	<b>W, 3-1, 9/1/07</b>	St. Bonaventure	5	0	W, 3-2, 9/7/96
Bowling Green	0	1	L, 0-3, 9/11/87	Kansas State	0	1	L, 0-3, 8/31/02	St. Francis (Pa.)	2	0	W, 3-0, 10/23/93
Bradley	1	0	W, 3-0, 9/20/96	Keene State	1	1	L, 0-3, 1979	St. John's	12	9	W, 3-0, 9/14/13
Bridgeport	9	0	W, 3-0, 1984	Kent State	1	1	L, 1-3, 9/11/98	St. Mary's (Calif.)	0	1	L, 1-3, 8/28/09
Bridgewater	2	2	W, 3-1, 1979	Kentucky	0	1	L, 0-3, 9/2/05	St. Lawrence	1	0	W, 2-0, 1985
Brockport	2	1	L, 0-2, 1979	LaSalle	3	0	W, 3-0, 9/10/94	St. Peter's (N.J.)	2	0	W, 3-1, 9/28/01
Brooklyn College	1	1	W, 3-0, 1986	Lehigh	3	0	W, 3-1, 9/16/95	Salisbury State	1	0	W, 2-0, 1979
Brown	22	7	W, 3-0, 9/4/10	Liberty	1	1	W, 3-0, 9/16/00	Samford	1	0	W, 3-1, 9/12/09
<b>Bryant</b>	<b>1</b>	<b>0</b>	<b>W, 3-1, 9/20/14</b>	Long Beach State	0	1	L, 0-3, 10/19/02	Sam Houston State	0	1	L, 0-3, 12/2/94
Bucknell	5	0	W, 3-1, 9/13/14	Long Island University	3	0	W, 3-0, 9/4/09	Seton Hall	18	12	W, 3-2, 10/28/12
Buffalo	1	0	W, 3-0, 9/6/08	Louisiana State	0	1	L, 2-3, 9/12/97	Siena	1	0	W, 3-0, 10/21/87
California-Berkeley	0	2	L, 0-3, 8/30/09	Louisville	0	11	L, 1-3, 11/27/13	Smith	7	1	W, 2-0, 1983
California-Fullerton	1	0	W, 3-0, 9/19/98	Loyola-Chicago	2	2	W, 3-1, 8/31/96	South Carolina	0	1	L, 1-3, 9/4/04
California-Irvine	1	2	L, 2-3, 8/29/09	Loyola-Marymount	0	3	L, 0-3, 8/24/12	<b>South Florida</b>	<b>7</b>	<b>6</b>	<b>L, 1-3, 11/9/14</b>
California-LA	0	1	L, 0-3, 11/24/00	Maine (Augusta)	1	0	W, 2-1, 1976	Southeastern Mass.	1	0	W, 2-1, 1976
Cal.-Santa Barbara	1	0	W, 3-0, 8/25/12	Maine (Orono)	4	3	L, 2-3, 9/20/08	Southern Connecticut	3	7	W, 2-0, 1984
Cal-Poly SLO	0	1	L, 1-3, 9/18/98	Maine (Portland)	1	0	W, 2-0, 1976	Southern Illinois	1	2	L, 2-3, 8/30/13
Cal. State Northridge	0	1	L, 0-3, 12/3/94	Manhattan	4	0	W, 3-0, 8/25/07	<b>Southern Methodist</b>	<b>0</b>	<b>5</b>	<b>L, 1-3, 11/21/14</b>
Central Connecticut	23	7	W, 3-2, 8/30/14	Marist	1	0	W, 3-0, 9/30/88	Southeast Missouri	1	0	W, 3-1, 9/8/07
<b>Central Florida</b>	<b>0</b>	<b>3</b>	<b>L, 1-3, 11/7/14</b>	Marquette	3	6	L, 1-3, 11/2/12	SW Texas State	0	1	L, 0-3, 9/22/90
Central Michigan	1	0	W, 3-0, 9/8/00	Marshall	0	1	L, 2-3, 9/3/04	Springfield	3	7	L, 1-2, 1985
Chicago State	1	0	W, 3-0, 8/30/08	Maryland	0	2	L, 2-3, 10/14/00	Stanford	0	1	L, 0-3, 9/6/97
<b>Cincinnati</b>	<b>4</b>	<b>10</b>	<b>W, 3-2, 10/31/14</b>	<b>Md.-Baltimore County</b>	<b>5</b>	<b>0</b>	<b>W, 3-0, 9/27/03</b>	SUNY Stony Brook	2	0	W, 3-0, 9/11/04
Clemson	0	1	L, 1-3, 9/2/05	Md.-Eastern Shore	2	0	W, 3-0, 9/25/04	<b>Syracuse</b>	<b>14</b>	<b>29</b>	<b>W, 3-0, 11/4/12</b>
Cleveland State	3	0	W, 3-1, 8/29/10	Massachusetts	14	9	W, 3-0, 8/31/01	<b>Temple</b>	<b>3</b>	<b>8</b>	<b>L, 2-3, 11/12/14</b>
Colgate	9	3	L, 0-3, 9/18/10	<b>Memphis</b>	<b>1</b>	<b>4</b>	<b>L, 1-3, 11/2/14</b>	UT-Chattanooga	1	0	W, 3-0, 9/16/11
Colorado State	0	1	L, 0-3, 8/31/02	Mercer	1	0	W, 3-0, 9/11/99	Tennessee Tech	0	1	L, 0-3, 9/12/98
Columbia	4	0	W, 3-2, 9/19/14	Mercy	1	0	W, 2-0, 1982	Texas A&M-Corpus Christi	1	0	W, 3-1, 10/17/03
Connecticut College	3	2	W, 2-0, 1980	Miami	1	1	W, 3-1, 10/25/03	Texas Christian	1	2	L, 0-3, 8/27/11
Cornell	3	4	W, 3-0, 9/12/14	Michigan	0	1	L, 0-3, 9/13/97	Texas-Pan American	1	0	W, 3-2, 10/18/03
C.W. Post	1	5	L, 0-2, 1984	Michigan State	0	2	L, 0-3, 9/1/12	Texas Tech	0	1	L, 0-3, 8/27/11
Creighton	1	0	W, 3-2, 9/12/09	Middle Tennessee State	0	2	L, 2-3, 11/28/08	Toledo	1	0	W, 3-0, 9/5/14
<b>Dartmouth</b>	<b>3</b>	<b>0</b>	<b>W, 3-0, 9/20/13</b>	Minnesota	0	4	L, 1-3, 9/21/13	Towson State	1	1	W, 3-0, 10/4/87
Davidson	1	0	W, 3-0, 9/1/07	Mississippi State	0	1	L, 0-3, 11/10/89	Troy	1	0	W, 3-2, 09/13/13
Dayton	0	3	L, 0-3, 9/11/09	Missouri	0	1	L, 0-3, 9/6/97	<b>Tulane</b>	<b>2</b>	<b>1</b>	<b>W, 3-0, 11/28/14</b>
Delaware	3	2	W, 3-0, 9/3/99	Missouri State	0	1	L, 0-3, 9/7/12	<b>Tulsa</b>	<b>0</b>	<b>2</b>	<b>L, 0-3, 11/23/14</b>
Denver	1	0	W, 3-2, 9/19/03	Montana	1	0	W, 3-1, 9/2/00	Utah State	1	0	W, 3-0, 9/2/94
DePaul	9	0	W, 3-1, 10/7/12	Morgan State	2	0	W, 3-0, 9/26/98	Vermont	11	0	W, 3-1, 10/3/92
Drexel	1	1	W, 3-2, 10/18/91	Murray State	0	2	L, 1-3, 9/4/99	Villanova	18	20	W, 3-1, 9/21/11
Duquesne	2	1	W, 3-0, 8/31/13	Navy	2	1	W, 3-0, 11/6/92	Virginia	1	2	W, 3-1, 9/17/11
<b>East Carolina</b>	<b>1</b>	<b>1</b>	<b>L, 2-3, 11/16/14</b>	Nebraska-Omaha	1	0	W, 3-2, 9/8/12	Virginia Commonwealth	3	0	W, 3-0, 9/30/95
East Stroudsburg	0	1	L, 1-2m, 1979	UNLV	1	0	W, 3-1, 11/25/00	Virginia Tech	3	1	L, 2-3, 10/26/03
Eastern Connecticut	4	5	W, 2-0, 1985	Nevada-Reno	0	2	L, 2-3, 8/28/09	Wagner	1	0	W, 3-0, 10/4/06
Eastern Illinois	0	1	L, 0-3, 11/11/89	New Hampshire	18	7	W, 3-0, 8/29/14	Wake Forest	0	1	L, 0-3, 9/4/04
Eastern Nazarene	1	0	W, 2-0, 1980	New Mexico	1	0	W, 3-0, 9/24/99	Wellesley	1	0	W, 2-0, 1980
Eastern Washington	0	1	L, 1-3, 9/14/96	New Orleans	3	0	W, 3-0, 9/7/12	<b>West Virginia</b>	<b>16</b>	<b>3</b>	<b>W, 3-1, 11/4/11</b>
Edinboro	0	1	L, 0-2, 1979	New York Tech	3	5	L, 1-2, 1986	Western Carolina	1	0	W, 3-0, 9/3/05
Elmira	1	0	W, 2-1, 1983	UNC-Chapel Hill	0	3	L, 1-3, 9/16/05	Western Illinois	1	0	W, 3-0, 9/28/96
Fairfield	20	3	W, 3-0, 9/1/12	UNC-Wilmington	0	1	L, 1-3, 11/7/92	Western Michigan	1	3	L, 1-3, 8/29/03
Fairleigh Dickinson	12	5	W, 3-0, 9/27/07	North Carolina State	2	1	L, 1-3, 9/6/14	Westfield	3	0	W, 3-0, 1978
Florida A&M	1	0	W, 3-0, 9/13/08	<b>Northeastern</b>	<b>12</b>	<b>21</b>	<b>L, 2-3, 9/06/13</b>	William & Mary	1	0	W, 3-0, 9/9/95
Florida Atlantic	2	0	W, 3-1, 9/26/03	Northern Illinois	2	1	L, 3-1, 9/8/12	Williams	4	1	W, 2-0, 1983
Fordham	4	1	W, 3-1, 10/11/11	Northwestern	1	0	W, 3-2, 9/7/01	Winthrop	1	0	W, 3-0, 11/6/92
Furman	1	0	W, 3-0, 9/3/94	Notre Dame	3	21	L, 0-3, 10/6/12	UW-Green Bay	1	1	L, 0-3, 9/21/02
Gardner-Webb	1	0	W, 3-0, 9/2/06	Ohio	0	2	L, 0-3, 9/21/02	UW-Milwaukee	1	1	L, 2-3, 9/12/08
George Mason	2	2	L, 1-3, 11/5/94	Ohio State	0	1	L, 0-3, 9/15/00	Wright State	1	4	W, 3-1, 9/5/08
George Washington	1	2	W, 3-0, 9/8/01	Oklahoma	0	1	L, 0-3, 9/21/90	Wyoming	0	1	L, 1-3, 9/2/95
Georgetown	15	16	W, 3-1, 11/7/12	Oneonta	1	0	W, 2-1, 1979	Yale	15	4	L, 2-3, 9/12/06
Georgia Tech	0	1	L, 0-3, 09/14/13	Oregon State	0	2	L, 1-3, 9/23/00				
Gonzaga	1	0	W, 3-0, 9/1/06	Pacific	0	1	L, 0-3, 9/8/01				
Grambling State	1	0	W, 3-0, 8/26/11	Penn State	0	7	L, 0-3, 9/5/07				
<b>Harford</b>	<b>25</b>	<b>3</b>	<b>W, 3-0 9/3/13</b>	Pennsylvania	2	0	W, 3-0, 9/12/92				
<b>Harvard</b>	<b>17</b>	<b>4</b>	<b>W, 3-0, 9/14/12</b>	Pittsburgh	9	17	L, 2-3, 09/27/13				
Herkimer	1	0	W, 2-0, 1980								
High Point	1	0	W, 3-0, 8/31/07								

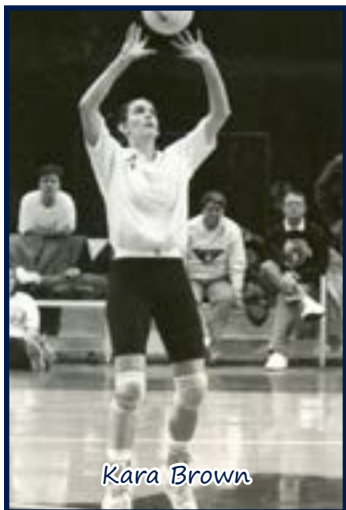
2015 Opponents in Bold





# ALL-TIME LETTERWINNERS

<b>aAa</b>		Megan Crawley.....'02, '03, '04, '05	Sheila Keane.....'75	Sheryl Reall.....'75, '77	
Laena Abare.....'86, '87, '88, '89	Courtney Crosby.....'13, '14	Kelly Kincheloe.....'01	Hope Ricciotti.....'81, '82	Francene Rioux.....'83	
Keeley Abram.....'09	Annamarie Csom.....'86	Jordan Kirk.....'08, '09, '10, '11	<b>Rebecca Rivera</b> .....'14	Ashley Robbins.....'04	
<b>Tosin Adeniyi</b> .....'14	Mary Ann Curylo.....'77, '78, '79, '80	Jenelle Koester.....'95, '96, '97, '98	Ann Roberson.....'95, '96, '97, '98	Laura Roberson.....'78, '79, '80, '81	
Debbie Allen.....'85	<b>dDd</b>		Katie Robinson.....'11	Angela Roidt.....'10, '11, '12	
Nell-Ayn Aloï.....'87, '88, '89, '90	Lynn D'Agostino.....'79	Elizabeth Dedman.....'87, '88	Laura Rubino.....'78, '79	Annette Rynn.....'95, '96, '97, '98	
Mary Amiccuci.....'86, '87, '88, '89	Brianna Datti.....'11, '12, '13, '14	Renee de la Houssaye.....'89, '90	<b>sSs</b>		
<b>Immanuella Anagu</b> .....'12, '13, '14	Debbie Dayo.....'85	Margot Deméré.....'07, '08	Kristin Santini.....'00	Jane Savitska.....'74	
Lisa Anderson.....'89, '90	Elizabeth Dedman.....'87, '88	Olga DeNovellis.....'77	Lorelle Schaub.....'05, '06	Stephanie Schindel.....'97, '98, '99, '00	
Laurie Anthony.....'94, '95, '96, '97	Renee de la Houssaye.....'89, '90	Bridget Denson-Dorman.....'06, '07	Molly Schmitt.....'88	Ellen Schumey.....'79, '80, '81, '82	
Michele Apel.....'86, '87, '88, '89	Margot Deméré.....'07, '08	Darla Donohue.....'86	Sonya Seifert.....'93	Kate Seabaugh.....'06, '07, '08	
Janel Apuna.....'93, '94	Olga DeNovellis.....'77	Claire Doyle.....'80, '81, '82, '83	Maria Shaker.....'98, '99, '00, '01	Mary Shaw.....'03, '04	
Samantha Arriaran.....'09	Bridget Denson-Dorman.....'06, '07	Leslie Dunn.....'93	Clare Sherman.....'89	Megan Silver.....'03, '04, '05, '06	
Heather Ashley.....'02, '03, '04, '05	Debbie Dayo.....'85	Mary Dunphy.....'75, '76	Lisa Simses.....'77	Sarah Singer.....'05, '06	
Paula Astramowicz.....'79, '80	Elizabeth Dedman.....'87, '88	Dafney Durant.....'77	Helen Snelgrove.....'79	Heather Sokol.....'93, '94, '95, '96	
Becky Audi.....'92	Renee de la Houssaye.....'89, '90	Janice Dykema.....'99, '00	Regina Stankaitis.....'74	Chris Steneck.....'89, '90	
<b>bBb</b>		Lynn D'Agostino.....'79	Michelle Mullins.....'91	Peggy Stepuchin.....'75, '76, '77, '78	
Allison Baker.....'02	Nola Eddy.....'78, '79	Chelle Maffeo.....'84, '85, '87, '88	Brittany Stewart.....'04, '05	<b>Jade Strawberry</b> .....'13, '14	
Kimberly Barker.....'79, '80	Julie Erbez.....'00, '01, '02, '03	Amy Mang.....'90, '91	<b>tTt</b>		
Kenya Barr.....'86, '87, '88, '89	Sage Esposito.....'11, '12, '13, '14	Sophia Mar.....'13	<b>Erika Thomas</b> .....'12, '13, '14	Nancy Thompson.....'75, '76	
Paige Barry.....'99	Sage Esposito.....'11, '12, '13, '14	Devon Maugle.....'11, '12, '13, '14	Mary Tierney.....'76	Sarah Toomey.....'91	
Mandy Beck.....'91	<b>Camille Evans</b> .....'13, '14	Kelsey Maving.....'09, '10, '11, '12	Terry Toth.....'77	Beth Tyson.....'94, '95	
Samantha Bell.....'03, '04	<b>eEe</b>		<b>vVv</b>		
Karen Bennett.....'78, '79, '80	Devon Farrell.....'06, '07, '08, '09	Kathy Maxwell.....'90, '91	Katie Valentine.....'03	Tracy Varvell.....'82, '83, '84, '85	
Christina Bergmann.....'83, '84, '85, '86	Nancy Finneran.....'81, '82, '83, '84	Kathleen McQuillan.....'83	Mia Vollkommer.....'91	<b>wWw</b>	
Pamela Betts.....'74	Erin Flaherty.....'87, '88	Mari-Elena Melendez.....'91	Tatum Wales.....'95, '96	Katrine Walsh.....'80	
Colby Billhardt.....'10, '11	Kim Foland.....'86	Chauntay Mickens.....'07, '08, '09	Sarah Walton.....'99, '00, '01, '02	Sarah Warren.....'80, '81	
Raffyn Birath.....'00, '01, '02, '03	Megan Frey.....'05, '06, '07, '08	Sharon Mohrman.....'86, '87	Shelly Wattles.....'10, '11, '12, '13	Jackie Wattles.....'10, '11, '12, '13	
Liz Blanchard.....'85	Rae Frigault.....'77	Despina Morris.....'96, '97, '98	Judy Weiss.....'76	Allison Wills.....'85, '86, '87	
Georgeann Bossers.....'91	<b>gGg</b>		Laura Wooley.....'99, '00, '01	Melissa Wooley.....'00, '01, '02	
Nicole Boyd.....'04	Melanie Garcia.....'92	Lisa Orensteen.....'76, '77	Tina Woznick.....'86	<b>zZz</b>	
Erin Breeze.....'93, '94	Kerry Ginty.....'97, '98, '99, '00	Michelle Oslander.....'89	Patricia Zamoic.....'75	Stephanie Ziemann.....'99, '00, '01, '02	
Shirley Breuer.....'78	Pam Gostowski.....'82, '83, '84, '85	<b>pPp</b>		Donna Zigmont.....'78, '79	
Jane Brigantic.....'76, '77, '78, '79	Amy Gronkowski.....'92, '93, '94, '95	Laura Parker.....'80	<b>qQq</b>		
Cayla Broadwater.....'09, '10, '11	Sarah Grossman.....'77, '78, '79	Sandy Patterson.....'96, '97, '98, '99	Mattison Quayle.....'09, '10, '11, '12	<b>rRr</b>	
Gail Bronson.....'82, '83, '84	Holly Gyuriesko.....'82, '83, '84	Kristen Paul.....'84, '85, '86, '87	Michele Rametta.....'80, '81, '82, '83	<b>rRr</b>	
Amanda Brown.....'90	<b>hHh</b>		Karson Ratliff.....'11, '12, '13, '14	<b>rRr</b>	
Kara Brown.....'89, '90, '91, '92	Jamie Hadenfeldt.....'01, '02, '03, '04	Josephine Perniciaro.....'86, '87, '88, '89	<b>Active players in bold</b>		
Lauren Brown.....'75	Virginia Hahn.....'80, '81	Diane Pettee.....'77			
Kelly Burt.....'98	Jennifer Halusek.....'93, '94, '95, '96	Nancy Phillips.....'74, '75			
Erika Butkus.....'96, '97, '98, '99	Julia Hamer.....'10, '11	Julie Pickard.....'04, '05, '06, '07			
<b>cCc</b>		Erika Hanson.....'91, '92, '93, '94			
Debi Callari.....'96, '98, '00	Beth Harris.....'85, '86	Shelly Pilon.....'75			
Nancy Cammarata.....'79	Chanice Harris.....'96, '97, '98, '99	Janice Piro.....'77			
Theresa Carey.....'83, '85	Sarah Hartman.....'97, '98	Ruth Plumb.....'83			
<b>Kenya Cason</b> .....'13, '14	Ann Hauptmann.....'91, '92, '93	Jessica Poggi.....'93, '94, '95			
Alanna Castle.....'03	Gina Heiderman.....'06, '07	Anne-Marie Pontes.....'87, '88			
Sadé Chambers.....'04, '05, '06, '07	Carole Henderson.....'80, '81, '82, '83	Cynthia Portner.....'81, '82, '83, '84			
Tanya Cheatham.....'91, '92	<b>ili</b>				
Amy Christensen.....'11, '12, '13, '14	Jessica Isaac.....'06, '07, '08, '09	Marissa Prinzbach.....'12, '13			
<b>Hayley Cmajdalka</b> .....'13, '14	<b>iji</b>				
Darsi Cocozza.....'90	Gina Jacobellis.....'75				
Sheryl Combs.....'90, '91, '92	Dawn Jakiela.....'78, '79				
Brittany Conover.....'01, '02, '03, '04	Karin Jinbo.....'93, '94				
Joy Contos.....'81, '82, '83, '84	<b>kKk</b>				
Donna Cordeiro.....'87, '88, '89, '90	Sarah Kamm.....'90				
Hanah Corell.....'08, '09	Virge Kask.....'75, '76, '77				
Xaimara Coss.....'00, '01, '02, '03					
Kaitly Craig.....'03, '04, '05, '06					
Machel Craig.....'00					



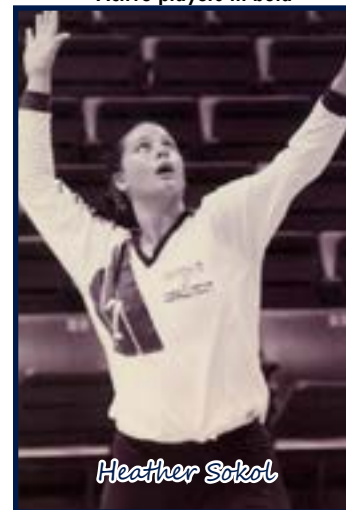
Kara Brown



Megan Frey



Jenny Neelands



Heather Sokol





# UConn RECORD BOOK: CAREER

## KILLS

1. Jenelle Koester	1,724	1995-98
2. Annette Rynn	1,508	1995-98
3. Melissa Wooley	1,362	1999-02
4. Jamie Hadenfeldt	1,357	2001-04
5. Kim Lobach	1,189	1990-93
6. Jen Halusek	1,165	1993-96
7. Rebecca Murray	1,143	2007-10
Jordan Kirk	1,143	2008-11
9. Mattison Quayle	1,077	2009-12
10. Chanice Harris	1,073	1996-99



## DIGS

1. Jessica Issac	2,064	2006-09
2. Kelsey Maving	1,881	2009-12
3. Heather Sokol	1,729	1993-96
4. Annette Rynn	1,722	1995-98
5. Brianna Datti	1,418	2011-14
6. Erika Hanson	1,405	1991-94
7. Jamie Hadenfeldt	1,399	2001-04
8. Jen Halusek	1,393	1993-96
9. Kim Lobach	1,332	1990-93
10. Kara Brown***	1,186	1990-92

## BLOCKS

1. Chanice Harris	570	1996-99
2. Kim Lobach	471	1990-93
3. Christine Lambert	427	1999-02
4. Jenelle Koester	381	1995-98
5. Rebecca Murray	351	2007-10
6. <b>Erika Thomas</b>	<b>325</b>	<b>2012-Pres</b>
7. <b>Immanuella Anagu</b>	<b>317</b>	<b>2012-Pres</b>
6. Megan Crawley	316	2002-05
7. Erika Hanson	310	1991-94
8. Heather Kohnken	285	1996-99

## ACES

1. Heather Sokol	186	1993-96
2. Jenelle Koester	176	1995-98
3. Ann Roberson	168	1995-98
4. Kim Lobach	146	1990-93
5. Annette Rynn	131	1995-98
6. Jessica Isaac	129	2006-09
7. Melissa Wooley	124	1999-02
8. Jen Halusek	118	1993-96
9. Rebecca Murray	117	2007-10
10. Kara Brown***	112	1990-92

## UConn's DOUBLE THOUSANDS

Only seven players in the history of Connecticut volleyball have collected both 1,000 kills and 1,000 digs during their Husky careers, including two members of the class of 1998. **Kim Lobach** was the first to accomplish such a feat when she collected 1,189 kills and 1,332 digs from 1990-93. **Jennifer Halusek** became the second member of the elite group after just three seasons at UConn, and upon finishing her four-year career, she totaled 1,165 kills and 1,393 digs from 1993-96. **Heather Sokol** joined the group in 1996, finishing a stellar career with 1,005 kills and 1,729 digs from 1993-96. **Annette Rynn** (1995-98) became the fourth Husky to reach the milestone, accomplishing the feat as a junior in 1997, and recorded 1,508 kills and 1,722 digs by graduation. **Jenelle Koester** (1995-98) became UConn's all-time career kills leader as a junior, finishing her collegiate career with a total of 1,724, and joined this elite group when she completed her senior season with an even 1,000 digs. Most recently, **Devon Maugle** (2011-14) joined the list her senior season, totaling 1,049 kills and 1,032 digs.

## SETS PLAYED

1. Kim Lobach	475	1990-93
2. Erika Hanson	467	1991-94
3. Jenelle Koester	466	1995-98
4. Heather Sokol	459	1993-96
5. Jessica Isaac	453	2006-09
6. Ann Roberson	446	1995-98
7. Chanice Harris	445	1996-99
8. Rebecca Murray	439	2007-10
9. Mattison Quayle	436	2009-12
10. Brianna Datti	435	2011-14

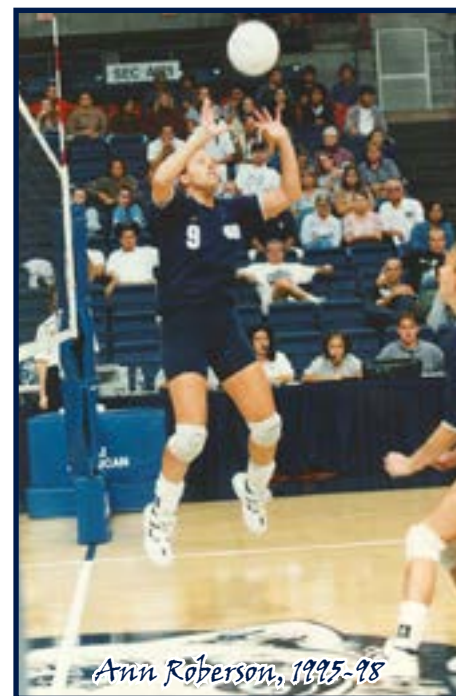
## HITTING PERCENTAGE

1. Heather Kohnken	.376	1993-95
2. Megan Crawley	.289	2002-05
3. Christine Lambert	.274	1999-02
4. Julie Erbez	.269	2000-03
5. Erika Butkus	.267	1996-99
6. <b>Immanuella Anagu</b>	<b>.265</b>	<b>2012-Pres</b>
7. Jenelle Koester	.258	1995-98
8. Jen Halusek	.258	1993-96
9. Kim Lobach	.257	1990-93
10. Erika Hanson	.255	1991-94

## ASSISTS

1. Ann Roberson	4,950	1995-98
2. Kara Brown***	4,476	1989-92
3. Julie Erbez	3,441	2000-03
4. Maria Shaker	3,114	1998-01
5. Bridget Denson-Dorman	2,627	2006-07

\* Career and single season records begin with the 1990 season; statistics prior are unavailable.  
 \*\* Single match records were compiled using statistics beginning with the 1995 season; complete match-by-match statistics prior are unavailable.  
 \*\*\* Kara Brown also played in 1989; with the exception of assists, her statistics from the 1989 season have not been factored into her career totals.  
 NOTE: season hitting percentage requires minimum of 100 kills and career hitting percentage requires minimum of 400 kills





# UConn RECORD BOOK: SEASON

## /// KILLS ///

1. Jenelle Koester	507	1997
2. Annette Rynn	503	1997
3. Jamie Hadenfeldt	501	2003
4. Annette Rynn	486	1998
5. Jenelle Koester	480	1998
6. Sheryl Combs	456	1992
Stephanie Schindel	445	2000
8. Heather Kohnken	420	1995
9. Megan Crawley	417	2003
10. Kim Lobach	415	1992
Jamie Hadenfeldt	415	2004

## /// HITTING PERCENTAGE ///

1. Heather Kohnken	.404	1994
2. Heather Kohnken	.365	1995
3. Gina Heiderman	.358	2006
4. Megan Crawley	.341	2003
5. Janice Dykema	.339	2000
6. Kim Lobach	.325	1992
7. Megan Crawley	.322	2004
<b>8. Immanuella Anagu</b>	<b>.320</b>	<b>2014</b>
9. Kaity Craig	.319	2004
10. Megan Frey	.317	2008

## /// ASSISTS ///

1. Kara Brown	1,533	1992
2. Ann Roberson	1,434	1997
3. Karin Jinbo	1,351	1994
4. Bridget Denson-Dorman	1,324	2007
5. Maria Shaker	1,321	1999
6. Bridget Denson-Dorman	1,303	2006
7. Ann Roberson	1,239	1995
8. Marissa Prinzbach	1,221	2013
9. Karin Jinbo	1,215	1993
10. Ann Roberson	1,179	1996



## /// DIGS ///

1. Sarah Toomey	693	1992
2. Kesley Maving	602	2012
2. Kelsey Maving	578	2011
3. Xaimara Coss	571	2003
4. Annette Rynn	567	1998
5. Annette Rynn	566	1997
6. Brianna Datti	541	2013
7. Brianna Datti	539	2014
8. Kara Brown	538	1992
9. Jessica Isaac	536	2006
10. Jessica Isaac	533	2007

## /// BLOCKS ///

1. Chanice Harris	171	1999
2. Christine Lambert	150	2002
3. Kim Lobach	148	1993
4. Christine Lambert	144	2000
5. Chanice Harris	143	1998
6. Beth Tyson	140	1994
7. Erika Thomas	138	2013
8. Brittany Conover	132	2003
9. Chanice Harris	130	1997
Janice Dykema	130	2000

## /// ACES ///

1. Chris Steneck	72	1990
2. Annie Luhsen	65	2008
3. Heather Sokol	64	1993
4. Sheryl Combs	53	1992
Jenelle Koester	53	1995
Ann Roberson	53	1995
7. Heather Sokol	52	1994
8. Karin Jinbo	51	1993
9. Melanie Garcia	49	1992
Sheryl Combs	49	1991

## /// GAMES PLAYED ///

1. Kara Brown	141	1992
2. Sarah Toomey	138	1992
3. Kara Brown	132	1990
4. Kim Lobach	130	1990
5. Ann Roberson	128	1997
Donna Cordeiro	128	1990
7. Jenelle Koester	127	1997
Jen Halusek	127	1994
Heather Kohnken	127	1994
Brianna Datti	127	2013



### CONNECTICUT INDIVIDUAL MATCH RECORDS

**31 Kills**  
 Heather Kohnken vs. Providence (10/21/1995)  
 Annette Rynn vs. Providence (11/7/1997)

**40 Digs**  
 Kelsey Maving vs. Notre Dame (10/29/2011)

**79 Assists**  
 Maria Shaker vs. Providence (10/2/1999)

**.857 Hitting Percentage**  
 Jenelle Koester (18k, 0e, 21ta) vs. Rutgers (11/6/1998)

**13 Total Blocks**  
 Chanice Harris vs. West Virginia (10/10/1999)  
 Chanice Harris vs. West Virginia (11/22/1997)

**8 Services Aces**  
 Jamie Hadenfeldt vs. Holy Cross (9/10/2004)





# ANNUAL LEADERS

## KILLS

2014	331	Devon Maugle
2013	365	Karson Ratliff
2012	372	Mattison Quayle
2011	337	Jordan Kirk
2010	278	Rebecca Murray
2009	326	Rebecca Murray
2008	347	Chauntay Mickens
2007	368	Sade Chambers
2006	304	Kate Seabaugh
2005	324	Megan Crawley
2004	415	Jamie Hadenfeldt
2003	501	Jamie Hadenfeldt
2002	395	Melissa Wooley
2001	385	Melissa Wooley
2000	445	Stephanie Schindel
1999	355	Chanice Harris
1998	486	Annette Rynn
1997	507	Jenelle Koester
1996	402	Jenelle Koester
1995	420	Heather Kohnken

## ATTACK ATTEMPTS

2014	1,154	Devon Maugle
2013	1,048	Karson Ratliff
2012	1,180	Mattison Quayle
2011	971	Mattison Quayle
2010	816	Rebecca Murray
2009	844	Rebecca Murray
2008	889	Chauntay Mickens
2007	886	Sade Chambers
2006	901	Kate Seabaugh
2005	795	Heather Ashley
2004	1,227	Jamie Hadenfeldt
2003	1,548	Jamie Hadenfeldt
2002	1,113	Melissa Wooley
2001	950	Melissa Wooley
2000	1,098	Stephanie Schindel
1999	936	Stephanie Schindel
1998	1,304	Annette Rynn
1997	1,331	Annette Rynn
1996	958	Jenelle Koester
1995	928	Jennifer Halusek

## HITTING PERCENTAGE

2014	.320	Immanuella Anagu
2013	.257	Erika Thomas
2012	.286	Immanuella Anagu
2011	.267	Allison Nickel
2010	.231	Angela Roidt
2009	.271	Allison Nickel
2008	.317	Megan Frey
2007	.276	Bridget Denson-Dorman
2006	.358	Gina Hedierman
2005	.357	Jenny Neelands
2004	.322	Megan Crawley
2003	.341	Megan Crawley
2002	.285	Christine Lambert
2001	.307	Christine Lambert
2000	.339	Janice Dykema
1999	.313	Erika Butkus
1998	.286	Jenelle Koester
1997	.312	Michelle Kuzma
1996	.274	Ann Roberson
1995	.365	Heather Kohnken

## ASSISTS

2014	663	Rebecca Rivera
2013	1,221	Marissa Prinzbach
2012	847	Marissa Prinzbach
2011	1,038	Angela Roidt
2010	684	Angela Roidt
2009	1,104	Samantha Arriaran
2008	1,165	Annie Luhrsen
2007	1,324	Bridget Denson-Dorman
2006	1,303	Bridget Denson-Dorman
2005	1,133	Jenny Neelands
2004	1,139	Jenny Neelands
2003	1,068	Julie Erbez
2002	1,145	Julie Erbez
2001	883	Maria Shaker
2000	903	Julie Erbez
1999	1,321	Maria Shaker
1998	1,098	Ann Roberson
1997	1,434	Ann Roberson
1996	1,179	Ann Roberson
1995	N/A	

## DIGS

2014	539	Brianna Datti
2013	541	Brianna Datti
2012	602	Kelsey Maving
2011	578	Kelsey Maving
2010	456	Kelsey Maving
2009	515	Jessica Isaac
2008	469	Jessica Isaac
2007	533	Jessica Isaac
2006	536	Jessica Isaac
2005	294	Julie Pickard
2004	392	Jamie Hadenfeldt
2003	571	Xaimara Coss
2002	391	Stephanie Ziemann
2001	268	Laura Wooley
2000	403	Stephanie Schindel
1999	356	Stephanie Schindel
1998	567	Annette Rynn
1997	566	Annette Rynn
1996	402	Heather Sokol
1995	401	Jennifer Halusek

## ACES

2014	34	Devon Maugle
2013	29	Brianna Datti
2012	21	Brianna Datti/Devon Maugle
2011	28	Mattison Quayle
2010	48	Rebecca Murray
2009	34	Rebecca Murray
2008	65	Annie Luhrsen
2007	37	Jessica Isaac
2006	45	Bridget Denson-Dorman
2005	35	Megan Crawley
2004	29	Jamie Hadenfeldt
2003	42	Jamie Hadenfeldt
2002	31	Christine Lambert
2001	34	Melissa Wooley
2000	42	Stephanie Schindel
1999	39	Laura Wooley
1998	43	Jenelle Koester
1997	46	Ann Roberson
1996	42	Jenelle Koester
1995	53	Jenelle Koester
1994	52	Heather Sokol

## TOTAL BLOCKS

2014	106	Immanuella Anagu
2013	138	Erika Thomas
2012	104	Erika Thomas
2011	77	Jackie Wattles
2010	83	Morgan Freeman
2009	108	Rebecca Murray
2008	113	Rebecca Murray
2007	98	Rebecca Murray
2006	125	Megan Silver
2005	73	Megan Crawley
2004	98	Kaity Craig
2003	132	Brittany Conover
2002	150	Christine Lambert
2001	129	Christine Lambert
2000	144	Christine Lambert
1999	171	Chanice Harris
1998	143	Chanice Harris
1997	130	Chanice Harris
1996	126	Chanice Harris
1995	127	Heather Kohnken

## BLOCK ASSISTS

2014	92	Immanuella Anagu
2013	116	Erika Thomas
2012	86	Erika Thomas
2011	69	Jackie Wattles
2010	70	Morgan Freeman
2009	84	Rebecca Murray
2008	93	Rebecca Murray
2007	87	Rebecca Murray
2006	117	Megan Silver
2005	67	Megan Crawley
2004	83	Kaity Craig
2003	121	Brittany Conover
2002	117	Christine Lambert
2001	107	Christine Lambert
2000	124	Christine Lambert
1999	151	Chanice Harris
1998	127	Chanice Harris
1997	106	Chanice Harris

## BLOCK SOLOS

2014	14	Immanuella Anagu
2013	22	Erika Thomas
2012	20	Immanuella Anagu
2011	9	Jordan Kirk
2010	13	Morgan Freeman
2009	24	Rebecca Murray
2008	20	Rebecca Murray
2007	17	Sade Chambers
2006	9	Lorelle Schaub
2005	13	Megan Silver
2004	15	Kaity Craig
2003	17	Megan Crawley
2002	33	Christine Lambert
2001	22	Christine Lambert
2000	20	Christine Lambert
1999	20	Chanice Harris
1998	16	Chanice Harris
1997	24	Chanice Harris

\* Stats available from 1994 to present.





# SUPPORT STAFF



**INGRID HOHMANN**  
CPIA COUNSELOR

## /// CPIA ///

Ingrid Hohmann begins her 14th year as an academic counselor at the University of Connecticut. Hohmann attended the University of Delaware, where she was a member of the women's track and field team and earned a bachelor's degree in psychology. Following her time at Delaware, she attended Springfield College where she received her master's degree in academic counseling.

Hohmann worked as a therapist for two years with emotionally disturbed youth before accepting an internship at the University of Utah's Athletic Academic Support Office. She then moved on to Rutgers University as an athletic academic adviser before coming to work in the Counseling Program for Intercollegiate Athletes at UConn. Currently she is working with the women's soccer, women's tennis and lacrosse programs.



**SUPPORT STAFF**  
SPORTS MEDICINE

## /// SPORTS MEDICINE ///

The Department of Sports Medicine in the University of Connecticut Division of athletics works as an integrated multidisciplinary team whose purpose is to provide the optimal, safe environment for each of UConn's intercollegiate student-athletes to train and participate in their respective sports. The staff takes great pride in the individual attention paid to each student-athlete.

The sports medicine staff is devoted to preventing injury, rapidly diagnosing and treating injury and maximizing athletic performance. The disciplines of athletic training, strength and conditioning, sports medicine, orthopedic sports medicine, optometry, nutrition, exercise physiology and psychology work in concert to provide comprehensive care for the student-athlete.

The Orthopedic Sports Medicine Specialists for the team include: Dr. Michael Joyce of the Orthopedic Sports Specialists in Glastonbury; Dr. Robert Arciero, Dr. Thomas DeBerardino, and Dr. Augustus Mazzocca of the New England Musculoskeletal Institute at the University of Connecticut Health Center in Farmington.

The Department of Sports Medicine works intimately with the Departments of Kinesiology and Nutritional Sciences on the University of Connecticut campus. This working relationship affords the student-athletes with the input of several nationally recognized exercise scientists. This cooperation also keeps the sports medicine staff on the cutting edge of developments in the fields of human performance and sports nutrition. Members of the sports medicine staff are actively engaged in research that directly benefits the care of each student-athlete.

The UConn Sports Medicine team is housed in state-of-the-art facilities in the Hugh S. Greer Field House and the Harry A. Gampel Pavilion, as well as a new and expanded sports medicine treatment center located in the Burton Family Football Complex.

The Department of Sports Medicine at the University of Connecticut administers to the daily needs of 650 male and female intercollegiate student-athletes, who are a part of 24 different varsity programs.

The Department of Sports Medicine at Connecticut plays a critical role in assuring that all UConn student-athletes have access to the best medical support and health care possible. Through patient care and ongoing research and education, the department continues to provide Husky teams a competitive edge from the medical perspective.



**AMANDA KIMBALL**  
ASST. S/C COACH

## /// STRENGTH & CONDITIONING ///

The Strength and Conditioning staff, under the direction of Jerry Martin, provides services for all 24 of the University of Connecticut's intercollegiate sports.

UConn volleyball players have the use of two different weight rooms in the Harry A. Gampel Pavilion and Hugh S. Greer Field House. In all, there are over 8,000 square feet of weight training facilities available to all UConn athletes.

The weight room in Gampel is a free weight facility and supplies the team areas in which to perform their power and Olympic lifts. The facility in the Greer Field House is fitted with more free weights so that the UConn players can incorporate circuit training, speed training and heavy negative workouts into their total strength program.

Each program can be manipulated in order to fulfill the specific needs of the individual athlete. Specific testing is done to each student-athlete to monitor progress in strength, power, body composition, anaerobic conditioning and flexibility. These tests provide coaches and the medical staff with an accurate athletic program of each player.





# THE AMERICAN ATHLETIC CONFERENCE

Not entirely unlike the nation that provides its namesake, the American Athletic Conference was born from an ideal in which members with ambitious goals are provided with the means to succeed in their quests for excellence.



With roots that extend to three conferences, the American Athletic Conference membership in 2014-15 consists of 11 institutions: the University of Central Florida, the University of Cincinnati, East Carolina University, the University of Connecticut, the University of Houston, the University of Memphis, the University of South Florida, Southern Methodist University, Temple University, Tulane University and the University of Tulsa.



The 2015-16 season sees the U.S. Naval Academy join the ranks in football only.



Under the leadership of commissioner Mike Aresco, The American, which operated as the Big East Conference from 1979 to 2013, has immediately taken a place at the forefront of Division I athletics, with schools that have played in four Bowl Championship Series games, won four NCAA men's basketball titles since 1999, and won nine NCAA women's basketball championships since 1995.



The American Athletic Conference holds television partnerships with ESPN and CBS Sports which will give the conference unprecedented national exposure. The football portion of the contract, which begins in the 2014 season, calls for nearly 90 percent of conference-controlled games on national broadcast or national cable platforms. The first American Athletic Conference Football Championship, which will be played in 2015, will be carried either on ABC or ESPN on Championship Saturday.



The American Athletic Conference administers to its membership from a state-of-the-art office located in Providence, R.I. The location of the conference headquarters – just steps from the city's Amtrak station and 10 minutes from T.F. Green International Airport – gives the conference easy access to its member schools.





2014 AMERICAN STANDINGS

School	American	Pct.	Overall	Pct
UCF	18-2	.900	25-8	.758
SMU	15-5	.750	26-6	.813
Temple	15-5	.750	24-8	.750
Tulsa	14-6	.700	22-9	.710
Memphis	13-7	.650	23-11	.676
USF	8-12	.400	14-18	.438
Cincinnati	7-13	.350	15-17	.469
Houston	6-14	.300	14-18	.438
East Carolina	6-14	.300	15-16	.484
<b>UConn</b>	<b>5-15</b>	<b>.250</b>	<b>12-19</b>	<b>.387</b>
Tulane	3-17	.150	5-27	.156

**Player of the Year**  
DeLaina Sarden, UCF

**Libero of the Year**  
Morgan Heise, SMU

**Setter of the Year**  
Sandra Sydlik, Temple

**Freshman of the Year**  
Dara Peric, Temple

**Coach of the Year**  
Todd Dagenais, UCF



CONFERENCE TOURNAMENT RESULTS

<b>2012</b> .....Lost to Cincinnati (2-3), Quarterfinals	.....Lost to Villanova (0-3), Consolation
<b>2009</b> .....Lost to Cincinnati (1-3), Quarterfinals	<b>1989</b> .....Lost to Georgetown (0-3), First Round
<b>2008</b> .....Lost to Notre Dame (0-3), Quarterfinals	.....Defeated Boston College (3-2), Consolation
<b>2007</b> .....Lost to St. John's (0-3), Quarterfinals	.....Lost to Providence (1-3), Consolation
<b>2006</b> .....Lost to Louisville (1-3), Quarterfinals	<b>1988</b> .....Lost to Providence (0-3), First Round
<b>2002</b> .....Lost to Notre Dame (1-3), Semifinals	.....Lost to Boston College (2-3), Consolation
<b>2001</b> .....Lost to Notre Dame (0-3), Semifinals	<b>1987</b> .....Lost to Pittsburgh (0-3), First Round
<b>2000</b> .....Lost to Notre Dame (0-3), Semifinals	.....Lost to Villanova (0-3), First Round
<b>1999</b> .....Lost to Notre Dame (1-3), Semifinals	.....Lost to Georgetown (0-3), First Round
.....Defeated Rutgers (3-0), First Round	.....Lost to Seton Hall (2-3), First Round
<b>1998</b> .....Lost to Notre Dame (2-3), Semifinals	<b>1986</b> .....Lost to Providence (0-3), First Round
<b>1997</b> .....Lost to Villanova (1-3), Semifinals	.....Lost to Villanova (2-3), Consolation
.....Defeated West Virginia (3-0), First Round	<b>1985</b> .....Lost to Syracuse (1-3), First Round
<b>1996</b> .....Lost to Syracuse (2-3), First Round	.....Defeated Boston College (3-1), Consolation
<b>1995</b> .....Lost to Georgetown (2-3), First Round	.....Defeated Villanova (3-0), Consolation
<b>1994</b> .....Lost to Pittsburgh (1-3), Semifinal	<b>1984</b> .....Lost to Villanova (1-3), First Round
.....Defeated Providence (3-0), Consolation	.....Defeated Boston College (2-1), Consolation
<b>1993</b> .....Lost to Seton Hall (0-3), Semifinals	.....Lost to Georgetown (1-2), Consolation
.....Defeated Syracuse (3-0), First Round	<b>1983</b> .....Lost to Georgetown (1-2), First Round
.....Defeated Villanova (3-1), Consolation	.....Lost to Providence (0-2), First Round
<b>1992</b> .....Lost to Providence (2-3), First Round	.....Defeated Syracuse (2-1), First Round
.....Lost to Villanova (2-3), Consolation	.....Lost to Syracuse (0-1), Playoff
<b>1991</b> .....Lost to Villanova (1-3), First Round	<b>1982</b> .....Lost to Providence (0-2), First Round
.....Lost to Seton Hall (1-3), Consolation	.....Lost to Georgetown (0-2), First Round
<b>1990</b> .....Lost to Syracuse (0-3), First Round	* Results based on a compilation of UConn and BIG EAST records
.....Defeated Providence (3-2), Consolation	

CONFERENCE ACADEMIC ALL-STARS

Laena Abare.....	1988-89, 89-90	Madeline Kuppe.....	2012-13
<b>Tosin Adeniyi</b> .....	<b>2014-15</b>	Michelle Kuzma.....	1998-99, 99-00
Mary Amicucci.....	1988-89, 89-90	Christine Lambert.....	2001-02, 02-03
<b>Immanuella Anagu</b> .....	<b>2012-13, 14-15</b>	Lauren Lambert.....	2008-09
Heather Ashley.....	2005-06	Annie Luhrs.....	2008-09
Paige Berry.....	1999-00	Devon Maugle.....	2012-13, 13-14
Colby Billhardt.....	2011-12	Kelsey Maving.....	2011-12, 12-13
Georgeann Bossers.....	1991-92	Chauntey Mickens.....	2009-10
<b>Kenya Cason</b> .....	<b>2014-15</b>	Rebecca Murray.....	2009-10
Amy Christensen.....	2011-12, 12-13, 13-14, 14-15	Jenny Neelands.....	2005-06
<b>Hayley Cmajdalka</b> .....	<b>2014-15</b>	Allison Nickel.....	2008-09
Brittany Conover.....	2002-03, 04-05	Sandra Patterson.....	1999-00
Xaimara Coss.....	2002-03, 03-04	Julie Pickard.....	2006-07
Kaitly Craig.....	2006-07	Jessica Poggi.....	1995-96
Courtney Crosby.....	2013-14	Karson Ratliff.....	2012-13
Brianna Datti.....	2011-12, 12-13, 13-14, 14-15	Ann Roberson.....	1998-99
Janice Dykema.....	1999-00	Angela Roidt.....	2011-12, 12-13
Julie Erbez.....	2002-03, 03-04	Annette Rynn.....	1998-99
Sage Esposito.....	2011-12, 12-13	Kristin Santini.....	1999-00
<b>Camille Evans</b> .....	<b>2014-15</b>	Kate Seabaugh.....	2006-07, 07-08, 08-09
Devon Farrell.....	2008-09, 09-10	Maria Shaker.....	1998-99, 99-00, 01-02
Megan Frey.....	2006-07, 07-08, 08-09	Megan Silver.....	2003-04, 04-05, 05-06, 06-07
Amy Gronkowski.....	1995-96	Heather Sokol.....	1994-95, 95-96, 96-97
Jamie Hadenfeldt.....	2001-02	<b>Erika Thomas</b> .....	<b>2014-15</b>
Jen Halusek.....	1995-96	Tatum Wales.....	1996-97
Sarah Hartman.....	1997-98	Jackie Wattles.....	2010-11, 11-12, 12-13, 13-14
Anna Hauptmann.....	1992-93, 93-94	Melissa Wooley.....	2002-03
Jessica Isaac.....	2006-07, 07-08, 08-09, 09-10	Stephanie Ziemann.....	2002-03
Jordan Kirk.....	2008-09, 09-10, 11-12		
Heather Kohnken.....	1995-96		





# INDIVIDUAL ACCOLADES



From L-R:  
Ann Roberson  
Jenelle Koester  
Jamie Hadenfeldt  
Jordan Kirk  
Melissa Wooley  
Chanice Harris  
Annette Rynn

### All-Conference First Team

- 2012 .....Mattison Quayle
- 2008 ..... Annie Luhrsen
- 2007 .....Sadé Chambers
- 2004 ..... Jamie Hadenfeldt
- 2002 ..... Christine Lambert
- 2001 ..... Melissa Wooley
- 1999 ..... Chanice Harris
- 1998 .....Jenelle Koester, Annette Rynn
- 1997 ..... Annette Rynn
- 1996 ..... Jenelle Koester
- 1995 .....Heather Kohnken
- 1994 .....Heather Kohnken
- 1993 ..... Kim Lobach

### All-Conference Second Team

- 2013 ..... Karson Ratliff
- 2011 ..... Jordan Kirk
- 2009 ..... Rebecca Murray
- 2008 ..... Chauntay Mickens
- 2007 .....Bridget Denson-Dorman
- 2006 .....Bridget Denson-Dorman
- 2005 ..... Jenny Neelands
- 2003 ..... Jamie Hadenfeldt
- 2001 ..... Christine Lambert
- 2000 ..... Stephanie Schindel
- 1998 ..... Ann Roberson
- 1997 ..... Jenelle Koester
- 1996 ..... Ann Roberson
- 1995 ..... Jen Halusek
- 1994 .....Jen Halusek, Karin Jinbo
- 1993 .....Erika Hanson, Jen Halusek,  
..... Heather Sokol

### Conference Rookie of the Year

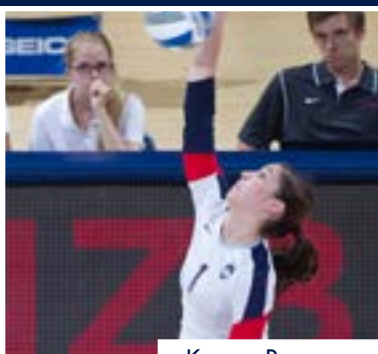
- 2008 ..... Annie Luhrsen
- 1995 ..... Ann Roberson
- 1993 ..... Jen Halusek
- 1992 ..... Sarah Toomey
- 1986 .....Mary Amicucci

### Conference All-Rookie Team

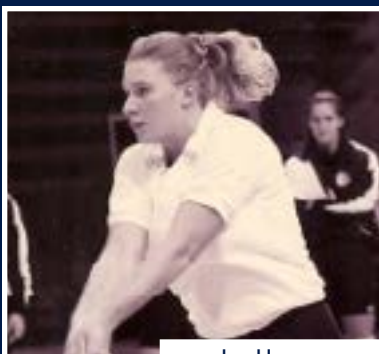
- 2000 ..... Julie Erbez, Laura Wooley
- 1999 ..... Janice Dykema, Melissa Wooley
- 1996 ..... Chanice Harris

### Conference Coach of the Year

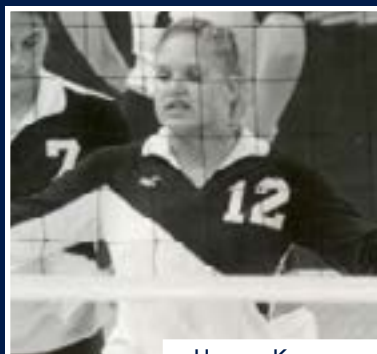
- 2012 .....Holly Strauss-O'Brien
- 1994 ..... Ellen Crandall
- 1993 ..... Ellen Crandall
- 1989 ..... Maureen Walsh



KARSON RATLIFF



JEN HALUSEK



HEATHER KOHNKEN



SARAH TOOMEY

