

UCLA TRACK & FIELD – DRAKE STADIUM
2021 Track & Field Season Event Day Guidance for Visiting Teams



UCLA Athletics looks forward to welcoming you to Drake Stadium. Due to the COVID-19 pandemic, UCLA Athletics, in collaboration with multiple public health entities and medical professionals, have put together extensive protocols to create a safe and healthy environment for teams visiting Drake Stadium this season.

Face Coverings / Physical Distancing. Face coverings must be worn at all times, except when you are actively participating or warming up on the competition field or actively eating or drinking in your designated team seating area. Face coverings must be worn properly (covering your mouth and nose). Face shields may be worn as well, but you must be wearing a face covering under your face shield. Remember to practice physical distancing of six feet from others at whenever possible.

Symptoms (COVID-19). Please visit the CDC Coronavirus Symptom list on the CDC website ([click here](#)) for most up-to-date symptoms. If you are experiencing any of the symptoms that have been outlined you must not come to the meet. Should you end up testing positive for COVID-19 within 48-hours of being on campus, please contact your UCLA Event Manager to make them aware.

Drake Stadium Parking. All parking will be located in structure 7, located off Sunset Blvd on the north side of campus. Parking is free of charge and access to the parking area will only be available to individuals who have received advance approval. Please see separate parking instructions to obtain your courtesy parking code. If you are traveling by bus please park in the bus cut-out located on Charles E. Young Dr. North, located on the north side of Drake Stadium.

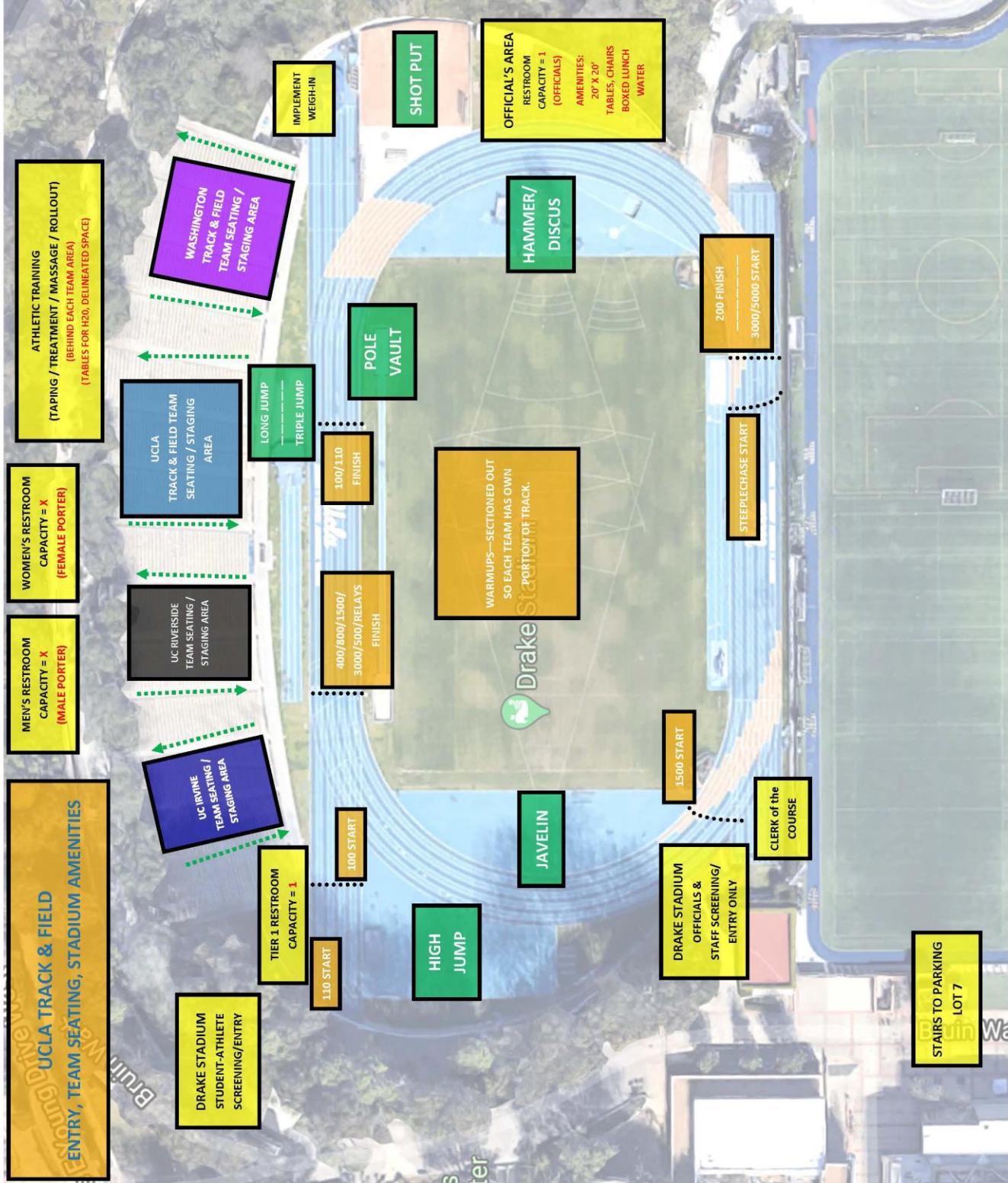
Entry Process. All student-athletes, coaches, and staff will enter the stadium via the top concourse and proceed directly to your designated seating area. Prior to arriving on UCLA campus, we ask the athletic trainer or coach to temperature check and symptom screen all members of the travel party to ensure no one entering the facility is experiencing COVID-19 symptoms. You will be required to sign the Daily Wellness Document (see document on page 4) attesting all members of your travel party are cleared to enter the facility. Upon entrance into the stadium you will receive your event packet including wristbands signifying you are participants in the meet.

Food & Beverage Consumption/Break Areas. Food must be consumed in your designated team area inside Drake Stadium (per L.A. County guidelines), which is outlined on the attached map. Beverage consumption (Powerade, water, etc...) and small fueling snacks (granola bar, banana, etc...) are permissible while on the competition area, but meals must be consumed in the stands. There will be water stations located in various spots on the competition area if you need to refill your personal water bottle. If you plan on having a food delivery to the stadium please ensure 1 point of contact is receiving the meal and bringing it inside the facility, outside vendors are not permitted to enter Drake Stadium.

Stadium Operations. The restrooms located on the upper concourse and lower southeast corner of the track are for Tier 1 (student-athletes, coaches, team personnel) only. The temporary restrooms located on the north end of the track are designed for Tier 2 individuals, officials and staff. Please pay attention to the signs on the restrooms to ensure you are using the appropriate one. Your patience and cooperation is appreciated.

UCLA Athletics staff has worked closely with its custodial service partner Swayzers to develop a robust sanitization plan for the facility. Swayzers staff will be on hand to sanitize high touch point areas and restrooms on a frequent basis. Additionally, you will find hand sanitizer located throughout Drake Stadium, as well as sanitization kits offering disinfectant supplies, gloves, and extra face coverings should any of these materials be needed. Should you have a maintenance concern during your time at the facility, please notify your supervisor who can report issues UCLA Athletics staff.

**Please see the 2021 Track and Field map and familiarize yourself with the location of your team area.
Please report directly to your area and minimize your movement around the facility as much as possible.
Thank you for your corporation in helping us run a safe and efficient event!**



ATHLETIC TRAINING
 (TAPING / TREATMENT / MASSAGE / ROLLOUT)
 (BEHIND EACH TEAM AREA)
 (TABLES FOR H2O, DELINEATED SPACE)

WOMEN'S RESTROOM
 CAPACITY = X
 (FEMALE PORTER)

MEN'S RESTROOM
 CAPACITY = X
 (MALE PORTER)

UCLA TRACK & FIELD
 ENTRY, TEAM SEATING, STADIUM AMENITIES

DRAKE STADIUM
 STUDENT-ATHLETE
 SCREENING/ENTRY

TIER 1 RESTROOM
 CAPACITY = 1

UC IRVINE
 TEAM SEATING /
 STAGING AREA

UC RIVERSIDE
 TEAM SEATING /
 STAGING AREA

UCLA TRACK & FIELD TEAM
 SEATING / STAGING
 AREA

WASHINGTON
 TRACK & FIELD
 TEAM SEATING /
 STAGING AREA

LONG JUMP
 TRIPLE JUMP

POLE VAULT

100/110
 FINISH

**400/800/1500/
 3000/5000/RELAYS**
 FINISH

HIGH JUMP

JAVELIN

WARMUPS—SECTIONED OUT
 SO EACH TEAM HAS OWN
 PORTION OF TRACK

SHOT PUT

OFFICIAL'S AREA
 RESTROOM
 CAPACITY = 1
 (OFFICIALS)
 AMENITIES:
 TABLES, CHAIRS
 BOXED LUNCH
 WATER

**HAMMER/
 DISCUS**

1500 START

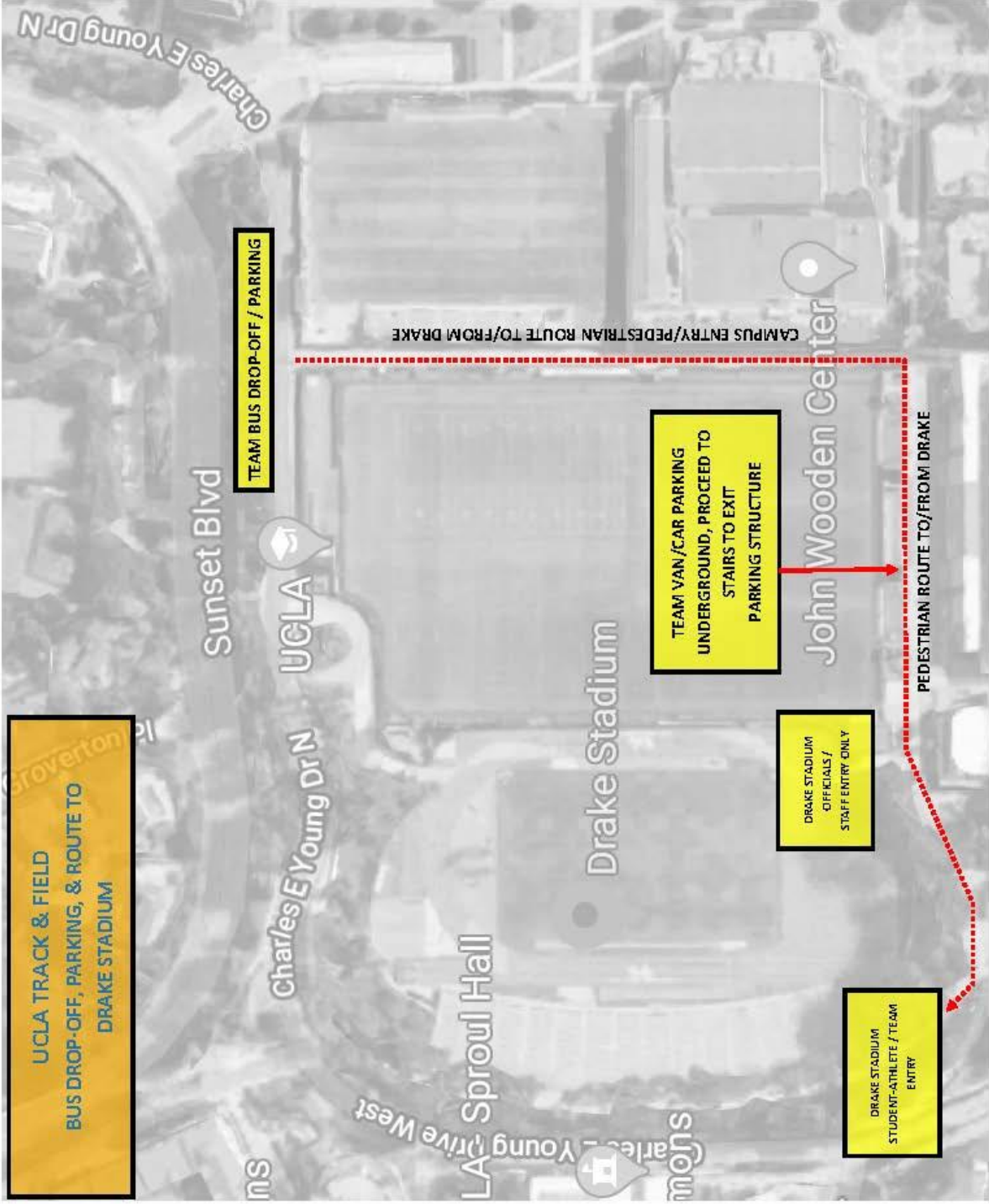
DRAKE STADIUM
 OFFICIALS &
 STAFF SCREENING/
 ENTRY ONLY

**CLERK of the
 COURSE**

STEEPLECHASE START

200 FINISH
 3000/5000 START

STAIRS TO PARKING
 LOT 7





PLEASE CHECK IN AT THE TOP ENTRANCE TO DRAKE STADIUM PRIOR TO ANYONE ENTERING THE FACILITY. EACH TEAM MUST HAVE A REPRESENTATIVE CHECK-IN & COMPLETE THIS FORM. MEMBERS OF THE TEAM TRAVEL PARTY WILL BE ISSUED WRISTBANDS SIGNIFYING THEY ARE CLEARED TO ENTER THE FACILITY AND ALLOWED ACCESS ONTO THE TRACK & FIELD COMPETITION AREA.

COVID-19 DAILY SYMPTOM SCREENING

I AM ATTESTING THAT NO ONE WITHIN OUR TEAM TRAVEL PARTY HAVE EXPERIENCED ANY OF THE SYMPTOMS BELOW WITHIN THE 24 HOURS

- FEVER
- CHILLS
- COUGH
- SHORTNESS OF BREATH
- SORE THROAT
- MYALGIA
- DIARRHEA
- SEVERE FATIGUE
- HEADACHE & FATIGUE
- NASAL CONGESTION
- LOSS OF TASTE OR SMELL

Institution: _____

Signature: _____

Date: _____