



UCLA GYMNASTICS

UCLA Athletic Communications / J.D. Morgan Center / 325 Westwood Plaza / Los Angeles, CA 90095 / (310) 206-8140
Gymnastics Contact: Liza David (LDavid@athletics.ucla.edu)

2018 SCHEDULE

January

Sat. 6	#22 Ohio State	W 196.250-193.200
Sun. 14	at Elevate the Stage	1st, 197.200
	vs. Stanford, #3 Utah, Washington (Reno, Nev.)	
Sat. 20	at #17 Arizona	W 197.300-195.750
Sat. 27	at Metroplex Challenge	1st, 197.625
	vs. #2 LSU, #14 Washington, NC State (Fort Worth, Texas)	

February

Sun. 4	#1 Oklahoma	L 198.050-197.950
Sat. 10	at California	W 197.750-197.225
Sun. 18	#3 Utah	L 197.550-197.425
Sun. 25	#8 Oregon State	W 198.075-196.525

March

Sun. 4	at Masters Classic (Lincoln, Neb.)	1st, 197.500
	vs. #16 Nebraska, #23 Iowa State, Kent State	
Sun. 11	at Stanford	W 197.800-196.650
Tue. 13	San Jose State	W 198.275-194.850
Sat. 24	at Pac-12 Championships	1st, 197.500
	(Tucson, Ariz.)	

April

Sat. 7	at NCAA Regionals (Columbus, Ohio)	3 p.m.
Fri. 20	at NCAA Semifinals	ESPN2 10 a.m.
	(St. Louis, Mo.)	
Sat. 21	at NCAA Super Six	ESPNU 4 p.m.
	(St. Louis, Mo.)	

All times are listed in PT time.

QUICK FACTS

Gymnastics History

First Season	1974
All-Time Record	728-210-4 (.775)
NCAA Championship Appearances	33
NCAA Championships	6 (last 2010)
NCAA Regional Titles	22
Pac-12 Conference Championships	18

Team Information

2017 Record	13-4-1
2017 Pac-12 Record (finish)	5-1 (T-3rd)
Gymnasts Returning/Lost	16/5

CAREER-BEST MARKS

Gymnast	V	UB	BB	FX	AA
N. Dennis	9.950	9.925	9.875	9.975	39.425
R. Dennis	9.725	9.850	—	—	—
A. Glenn	9.900	9.875	9.900	—	—
G. Glenn	—	—	9.950	—	—
Hall	9.975	—	—	9.900	—
Hano	9.925	9.025	9.725	10.00	38.650
Honest	9.900	9.950	—	9.925	—
Kocian	9.875	10.00	9.950	9.950	39.625
Kooyman	—	9.875	—	9.825	—
Kramer	9.925	—	—	9.950	—
Lee	9.925	10.00	10.00	—	—
Meraz	9.875	9.900	9.900	9.900	39.400
Nguyen	—	—	9.900	9.900	—
Ohashi	9.875	9.950	10.00	10.00	39.575
Ross	9.925	10.00	10.00	9.900	39.700
Sanchez	—	<u>9.750</u>	<u>9.750</u>	—	—
Sawidou	9.800	9.900	9.825	9.925	—
Toronjo	—	—	<u>9.850</u>	9.950	—
Tratz	9.925	—	—	9.925	—

No. 3 UCLA at NCAA Columbus Regional

Saturday, Apr. 7, 2018 – 6 p.m. ET
Columbus, Ohio (St. John Arena)

MEET INFORMATION

Venue:	St. John Arena
Time:	6 p.m. ET / 3 p.m. PT
Live Stream:	ohiostatebuckeyes.com
Live Stats:	ohiostatebuckeyes.com
Tickets:	\$15 adults, \$10 students/seniors

ROTATION ORDER

Rot.	V	Bye	UB	BB	Bye	FX
1	KSU	OSU	PITT	ARK	BSU	UCLA
2	UCLA	KSU	OSU	PITT	ARK	BSU
3	BSU	UCLA	KSU	OSU	PITT	ARK
4	ARK	BSU	UCLA	KSU	OSU	PITT
5	PITT	ARK	BSU	UCLA	KSU	OSU
6	OSU	PITT	ARK	BSU	UCLA	KSU

UCLA VIES FOR NCAA CHAMPIONSHIP BERTH AT COLUMBUS REGIONAL

No. 3 UCLA (22-2) is the No. 1 seed at the NCAA Columbus Regional and will compete for one of two available berths in the NCAA Championships, which will be held in St. Louis, Mo. Apr. 20-21. The NCAA Regional meet will take place at The Ohio State University's St. John Arena on Saturday, Apr. 7 at 6 pm ET/3 pm PT. Also competing at the Regional are No. 10 Arkansas, No. 15 Boise State, No. 25 Ohio State, No. 33 Pittsburgh and No. 34 Kent State.

FOLLOW LIVE

A live stream, as well as live stats, will be provided on ohiostatebuckeyes.com. Live updates can be found on Twitter by following @UCLAGymnastics.

ROTATION ORDER

The rotation order for the Regional was determined by blind draw prior to the selections. The No. 1 seed Bruins will begin the meet on floor exercise in rotation one and will conclude competition in rotation five on balance beam, sitting out rotation six with a bye. Kent State begins on vault, Ohio State starts on a bye before bars, Pittsburgh begins on bars, Arkansas is on beam, and Boise State begins on a bye before floor.

REGIONAL CHAMPIONSHIP HISTORY

The Bruins have won 22 NCAA Regional titles, most recently last season at the Champaign Regional, where Madison Kocian won the uneven bars and floor exercise titles. This is the second time in four years that the Bruins are competing at the Columbus Regional. In 2015, UCLA won the Columbus Regional, with Christine Peng-Peng Lee taking first place on all three events in which she competed (vault, bars and beam). Then-freshmen JaNay Honest and Sonya Meraz also competed at the meet, with Honest participating on vault and Meraz on bars and beam.

PAC-12 CHAMPIONS

UCLA made a strong second-half comeback to win its 18th Pac-12 Gymnastics Championship, outscoring defending champion Utah, 197.500-197.350. The Bruins found themselves in third place after scoring 49.275 on vault in the first rotation and then had a nearly disastrous rotation two on uneven bars, with three scores under 9.8, including a 9.65 and 9.45. Kyla Ross, though, stopped the bleeding with a meet-high 9.975 to salvage a team score of 49.15, keeping the Bruins just .125 behind first-place Utah and .050 behind Cal. The Bruins came roaring back on balance beam in the third rotation, scoring 49.600, led by Christine Peng-Peng Lee's 10.0, and then clinched the victory with a 49.475 on floor exercise in the final rotation. Ross won a share of the all-around and uneven bars titles, Lee won balance beam, and Katelyn Ohashi tied for first on floor exercise.

OHASHI SELECTED PAC-12 SPECIALIST OF THE YEAR

After a vote of conference coaches, junior Katelyn Ohashi became UCLA's second consecutive Pac-12 Specialist of the Year winner, following in the footsteps of 2017 winner Christine Peng-Peng Lee. Ohashi, who competes on bars, beam and floor, ranks in the Top 3 on beam and floor, tying for first on floor and ranking third on beam. She has scored a national-best three perfect 10s on floor and has scored 9.95 or higher on her last seven floor routines. She also scored season-highs of 9.95 on bars and 9.975 on beam.

LEE NAMED PAC-12 GYMNASTICS SCHOLAR-ATHLETE OF THE YEAR

Senior Christine Peng-Peng Lee was honored as the Pac-12 Gymnastics Scholar-Athlete of the Year, which is awarded to the top senior student-athlete who is a standout both academically and in their sport. Lee, a Sociology major, currently holds a 3.49 cumulative grade-point average and is a four-time Pac-12 All-Academic honoree and a National Association of Collegiate Gymnastics Coaches / Women (NACGC/W) Scholastic All-American. Her achievements on the competition floor include being named the 2017 West Region Gymnast of the Year, the 2017 Pac-12 Specialist of the Year and an AAI Award Finalist. The eight-time All-American set a conference record with nine career Pac-12 Specialist of the Week awards. Lee has scored eight career perfect 10s; three in 2017 (two on bars, one on beam) and five in 2018 (one on bars, four on beam).

BRUINS EARN PAC-12 ALL-ACADEMIC HONORS

A total of six gymnasts from UCLA's Pac-12 championship squad earned Pac-12 All-Academic honors in 2018. Sophomore Madison Kocian earned second-team honors, while seniors Napualani Hall, Christine Peng-Peng Lee and Sonya Meraz and sophomores Gracie Kramer and Kyla Ross earned honorable mention nods.

WEEK FIVE RANKINGS (as of 3/26)

RK	TEAM	RQS	Average
1	Oklahoma	198.120	198.375
2	LSU	197.890	198.175
3	UCLA	197.840	198.275
4	Utah	197.540	198.150
5	Florida	197.390	198.150
6	Alabama	197.165	197.525
7	Michigan	197.160	197.550
8	Washington	196.960	197.400
9	California	196.890	197.500
10	Arkansas	196.820	197.300
11	Nebraska	196.815	197.175
12	Kentucky	196.800	197.100
13	Denver	196.785	197.300
14	Oregon State	196.780	197.300
15	Boise State	196.745	197.000
16	Auburn	196.595	197.000
17	Arizona State	196.545	196.800
18	Georgia	196.515	197.525
19	George Washington	196.460	196.875
20	North Carolina State	196.440	196.800
21	BYU	196.430	196.625
22	Missouri	196.360	196.925
23	Illinois-Champaign	196.265	196.850
24	Minnesota	196.250	196.675
25	Ohio State	196.215	196.775

NATIONAL RANKINGS - TOP 25 as of 3/26

Gymnast	V	UB	BB	FX	AA
G. Glenn	–	–	6t	–	–
Hall	9	–	–	–	–
Hano	15t	–	–	7t	–
Lee	–	9	1	–	–
Ohashi	–	–	3	1t	–
Ross	19t	1t	18t	–	6
Tratz	–	–	–	22t	–
Team	4	4	2	1	3

EVENT TITLES

Gymnast	V	UB	BB	FX	AA
Dennis	1	1	–	–	–
G. Glenn	–	–	2	–	–
Hall	3	–	–	1	–
Hano	1	–	–	4	–
Kramer	–	–	–	1	–
Lee	–	3	9	–	–
Ohashi	–	1	4	6	1
Ross	2	9	–	1	5
Tratz	1	–	–	2	–

TOP 3 FINISHES

Gymnast	V	UB	BB	FX	AA
Dennis	2	5	–	1	2
A. Glenn	–	1	1	–	–
G. Glenn	–	–	7	–	–
Hall	7	–	–	1	–
Hano	6	–	–	6	–
Honest	–	1	–	–	–
Kocian	–	–	1	1	–
Kramer	–	–	–	5	–
Lee	–	7	10	–	–
Meraz	–	–	–	1	–
Nguyen	–	–	2	–	–
Ohashi	2	3	7	8	3
Ross	4	11	6	2	8
Tratz	4	–	–	4	–

UCLA TOPS WITH SIX ALL-AMERICANS

Six Bruins - Grace Glenn, Napualani Hall, Felicia Hano, Christine Peng-Peng Lee, Katelyn Ohashi and Kyla Ross - have earned regular season All-America honors for 2018, as awarded by the National Association of College Gymnastics Coaches/Women (NACGC/W). The six student-athletes honored are the most by any school in the nation this year. Two Bruins earned their first-ever All-America honors, as Glenn was a first-team honoree on beam, and Hall received second-team acclaim on vault. Hano earned first-team honors on floor and second-team on vault. Lee received first-team honors on beam and second-team on bars. Ohashi earned first-team acclaim on beam and floor, and Ross was a first-team honoree in the all-around and on bars.

EIGHT CLAP FOR EIGHT ALL-PAC-12 HONOREES

Eight UCLA gymnasts earned a total of 14 All-Pac-12 honors in 2018, the most in the conference this season. Kyla Ross led UCLA with a total of four honors, being selected to the first team in the all-around and uneven bars and to the second team on vault and balance beam. Katelyn Ohashi was a first-team honoree on both balance beam and floor exercise, and Christine Peng-Peng Lee earned first-team acclaim on uneven bars and balance beam. Two other Bruins earned first-team honors, with senior Napualani Hall honored on vault and freshman Grace Glenn honored on balance beam. Sophomore Felicia Hano earned second-team honors on both vault and floor exercise, and Bruin freshmen Nia Dennis and Pauline Tratz each earned second-team honors on uneven bars and floor exercise, respectively.

IN THE RANKINGS

UCLA finished the regular season ranked No. 3 in the nation with a RQS of 197.840. The RQS takes teams' Top 6 scores, three of which must be on the road, throwing out the high and averaging the remaining five. UCLA is ranked No. 1 on floor exercise (49.575), No. 2 on beam (49.570), and No. 4 on vault (49.435) and bars (49.425). Three Bruins rank in the Top 25 on vault - No. 9 Napualani Hall, No. 15 Felicia Hano, and No. 19 Kyla Ross. Two are in the Top 10 on bars - No. 1 Ross and No. 9 Christine Peng-Peng Lee. UCLA has four in the Top 20 on balance beam, with No. 1 Lee, No. 3 Katelyn Ohashi, No. 6 Grace Glenn and No. 18 Ross. Three Bruins rank in the Top 25 on floor - No. 1 Ohashi, No. 7 Hano and No. 22 Pauline Tratz. Ross is UCLA's lone all-arounder in the Top 25 at No. 6.

THREE NUMBER ONES

Three Bruins ended the regular season ranked No. 1 on three separate events. Kyla Ross tied for first with three other gymnasts with a RQS of 9.960. Christine Peng-Peng Lee finished first on beam with a RQS of 9.985. Katelyn Ohashi tied for first on floor exercise with a 9.970 RQS. This is the second consecutive year Ross has finished the year ranked No. 1 on bars. Ohashi finished 2017 ranked No. 1 on beam.

OHASHI GOES VIRAL

Katelyn Ohashi's floor exercise routine, set to music by Michael Jackson, is sweeping the nation, with nearly 40 million views on Facebook and front page status on Reddit. Ohashi won a share of the Pac-12 title on floor exercise in the Bruins' last competition and has scored a total of three perfect 10s this season. She finished the regular season ranked No. 1 in the nation and has scored 9.95 or higher on her last seven routines. Since changing her last pass on floor exercise from a double tuck to a front handspring/front full/front half/split jump to the ground at the Metroplex Challenge, Ohashi has averaged 9.969 with three 10s and a 9.975 and no score lower than 9.925. This is the third consecutive year that a UCLA floor exercise routine has gone viral. Sophina DeJesus was the first in 2016, with her hip-hop routine getting her on Ellen. Hallie Mossett's Beyoncé routine in 2017 was posted on Entertainment Weekly and People and got her a guest spot on Hallmark Channel's Home & Family talk show.

PERFECT PENG

Sixth-year senior Christine Peng-Peng Lee earned her fifth perfect 10 of the season at the Pac-12 Championships, scoring her fourth of the year on balance beam. Lee, who had a perfect meet on Mar. 11 at Stanford with a pair of perfect 10s on bars and beam, holds the school record with five career 10s on beam, and she has eight career 10s overall, tied for fifth-most in UCLA history.

ROSS REACHES PERFECTION

Sophomore Kyla Ross recorded her first perfect 10 of the season on Mar. 11, nabbing her third career 10 on bars and fifth 10 overall in her career. Christine Peng-Peng Lee and Ross went back-to-back on bars, becoming the first Bruins ever to score back-to-back 10s on the event. Ross and Lee rank second all-time at UCLA for perfect 10s on bars, tied with Mohini Bhardwaj. Only Jamie Dantzscher with seven, has scored more for the Bruins.

FLOORS UP

UCLA finished the regular season ranked No. 1 in the nation on floor exercise, where the Bruins have their highest season average on any one event (49.470). UCLA has scored 49.4 or higher in nine meets and 49.6 or higher in three meets, with a national season-high of 49.775 set Feb. 25 vs. Oregon State. That mark was the third-highest floor score in school history and the highest since the Bruins scored a school record 49.875 on Feb. 22, 2004. Every Bruin in the lineup scored 9.9 or above to achieve the 49.775 team score - Madison Kocian with a 9.9 leadoff on her first floor routine of the season, Gracie Kramer with a career-high 9.95, Kyla Ross with a career-high-tying 9.9, Nia Dennis with a career-high 9.975, Felicia Hano with a 9.95 and Katelyn Ohashi with a perfect 10. Eight Bruins have season averages of 9.86 or better on floor this year - Hano (9.925), Ohashi (9.925), Napualani Hall (9.9), Ross (9.886), Kramer (9.871), Kocian (9.865), Pauline Tratz (9.864) and Sonya Meraz (9.863). UCLA tumbling on floor has been impressive, with Hano and Ohashi starting with double layouts, Kramer doing a front double full-punch front, Kocian with a front double full, Dennis with a piked full-in, Tratz with a tucked full-in, Ross starting with a whip-double back, and Hall tumbling a 1.5 through to a double back.

BRUIN PERFECT 10S

Felicia Hano (1)

2018 - FX (2/4)

Madison Kocian (1)

2017 - UB (2/11)

Christine Peng-Peng Lee (8)

2017 - UB (2/11, 3/12), BB (4/15)

2018 - UB (3/11), BB (1/27, 2/4, 3/11, 3/24)

Katelyn Ohashi (5)

2017 - BB (3/5, 3/12)

2018 - FX (2/4, 2/25, 3/13)

Kyla Ross (5)

2017 - UB (1/28, 2/18), BB (2/20, 3/18)

2018 - UB (3/11)

9.95+ SCORES

Gymnast	V	UB	BB	FX	Total
Dennis	1	–	–	1	2
G. Glenn	–	–	1	–	1
Hall	3	–	–	–	3
Hano	–	–	–	5	5
Kramer	–	–	–	1	1
Lee	–	3	8	–	11
Ohashi	–	1	4	7	12
Ross	–	7	2	–	9
Team	4	11	15	14	44

9.9+ SCORES

Gymnast	V	UB	BB	FX	Total
Dennis	3	3	–	2	8
A. Glenn	1	–	1	–	2
G. Glenn	–	–	7	–	7
Hall	5	–	–	1	6
Hano	5	–	–	7	11
Honest	–	2	–	–	2
Kocian	–	–	2	2	4
Kramer	–	–	–	4	4
Lee	–	7	8	–	14
Meraz	–	1	–	1	2
Nguyen	–	–	2	–	1
Ohashi	–	3	8	8	17
Ross	5	11	5	4	25
Tratz	3	–	–	6	8
Team	22	27	33	35	117

BEAM QUEENS

UCLA ranks No. 2 in the nation on balance beam with a RQS of 49.570 and season average of 49.452. The Bruins have three gymnasts in the Top 6 - No. 1 Christine Peng-Peng Lee, No. 3 Katelyn Ohashi and No. 6 Grace Glenn. Defending NCAA beam champion Kyla Ross is also in the Top 20, at No. 18. All six gymnasts who have been regulars in the beam lineup have scored at least 9.9 this year. Brielle Nguyen tied her career-best of 9.9 at the Pac-12 Championships. Madison Kocian has a season-high of 9.925 and career-high of 9.95. Grace Glenn has scored 9.95 three times this year. Ohashi has scored two perfect 10s in her career and has scored a season-high of 9.975 twice. Ross also has two career perfect 10s and a season-best of 9.975, and Lee has scored five career 10s on beam, including four this year.

PERFECT 10 NOTES

Christine Peng-Peng Lee's five career 10s on beam establishes a new school record ... Lee is the first Bruin ever to score three or more 10s on beam in one season ... Lee and Kyla Ross each have three career 10s on bars, tied for second all-time at UCLA with Mohini Bhardwaj ... Katelyn Ohashi is the first Bruin to score three 10s on floor in a season since Kate Richardson in 2004 ... Ohashi is just the fourth Bruin ever to score a perfect 10 on both beam and floor, joining Kristen Maloney, Bhardwaj and Richardson ... UCLA has scored three 10s in one meet twice this year - Feb. 4 (Lee on beam, Felicia Hano and Ohashi on floor) and Mar. 11 (Lee and Ross on bars, Lee on beam) ... Lee and Ross were the first-ever Bruins to score back-to-back 10s on bars at Stanford on Mar. 11 ... Hano and Ohashi became the first pair of Bruins to score back-to-back 10s on floor since Richardson and Antolin on Feb. 22, 2004 ... The six 10s scored in the UCLA-Oklahoma meet were the most in Pauley Pavilion since there were eight scored by five gymnasts at the 2002 UCLA Invitational, including three by UCLA's Jamie Dantzscher ... Lee scored two consecutive perfect 10s on beam Jan. 27 and Feb. 4, joining Ohashi as the only Bruins ever to record perfect 10s on beam in consecutive meets ... Around the country, Hano had the first perfect 10 of the season on floor, and Ohashi was the first gymnast to record multiple 10s on floor this year ... Lee was the first gymnast in the nation to record multiple 10s on beam this season.

HONORING A LEGACY

Felicia Hano's floor exercise routine this season is a legacy routine originally performed by All-American Sydney Sawa in 2014 and passed down to Hano. Sawa scored a perfect 10 on that routine on Feb. 22, 2014 and was the last UCLA gymnast to score a perfect 10 on floor until Hano did it with the same routine on Feb. 4, 2018. Hano, along with Katelyn Ohashi, leads UCLA this season with a 9.925 season average on floor.

TWINNING

For the first time this season, identical twins Anna and Grace Glenn competed on the same event in a meet, with Grace leading off and Anna competing third on beam against San Jose State on Mar. 13. Not surprisingly, they each scored identical marks of 9.9 to tie for second place. Grace, who has competed on beam in every meet this year, currently ranks No. 6 in the nation on the event. Anna has competed on vault in the last seven meets and has scored a high of 9.9. Anna has also competed twice on bars, with a high of 9.875 to place third on Feb. 25. Each won a Pac-12 award this season, with Grace earning a Specialist of the Week award and Anna a Freshman of the Week honor. The twins sat out all of last season with torn labrums, which were injured on the same skill in preseason.

KOCIAN BACK ON TWO EVENTS

Two-time Olympic medalist and three-time World champion Madison Kocian took another big step forward in her recovery process, competing on floor exercise for the first time on Feb. 25 and scoring 9.9. Kocian, who has been competing on beam since Jan. 20, is also now cleared on uneven bars. The four-time All-American has competed in the last 10 meets on balance beam and scored 9.875 or higher five times, with a season-high of 9.925 at Cal on Feb. 10. She posted a season-high 9.925 on floor at Stanford to place third. Kocian had an impressive freshman campaign despite competing with a torn labrum that she suffered at the 2016 Olympic Trials. She competed in the all-around in all but two meets in 2017 and amassed a total of 16 individual victories, including the NCAA Regional bars and floor titles.

FOLLOW THE LEADOFF

Nia Dennis put the lead in leadoff against Utah Feb. 18, starting the Bruins out on both vault and uneven bars with meet-winning scores of 9.95 and 9.925, respectively. Dennis kicked off the meet with a perfect score on her Yurchenko layout full vault, which has a start value of 9.95, helping the Bruins take the first rotation lead with a 49.45. On uneven bars in rotation two, she led off with a career-high 9.925 to take first place and lead UCLA to a team score of 49.3. The event wins were the first of her career. Dennis also led off on bars on Feb. 25 against Oregon State and scored 9.9 to place second and led off on vault Mar. 11 at Stanford, scoring 9.9 to tie for second.

BY THE NUMBERS

Since scoring 48.5 on vault in the first rotation of the season Jan. 6, UCLA has scored 49+ in 47 straight rotations, 16 of which have gone 49.5 or higher ... UCLA has scored 49+ on beam in its last 25 meets and 49+ on floor in its last 19 meets ... The Bruins have scored 49.4 or better on beam in 10 straight meets ... JaNay Honest has competed in 40 straight meets ... Christine Peng-Peng Lee has won beam in 11 of her last 12 meets dating back to last season ... Kyla Ross is 41-for-41 this season, with no score lower than 9.825 ... Ross has scored 9.9 or higher on bars in 20 of her last 22 meets with five straight wins ... Since changing her last pass on floor exercise at the Metroplex Challenge, Katelyn Ohashi has averaged 9.969 with three 10s and a 9.975 ... Associate head coach Chris Waller improved to 3-1 in his career as acting head coach when he led the Bruins to a season-opening win over Ohio State as head coach Valorie Kondos Field was out with the flu.

2018 HONORS

Nia Dennis

All-Pac-12 (2nd team - UB)

Anna Glenn

Pac-12 Freshman of the Week (3/20)

Grace Glenn

Regular Season All-American (1st team - BB)

All-Pac-12 (1st team - BB)

Pac-12 Specialist of the Week (1/23)

Napualani Hall

Regular Season All-American (2nd team - V)

All-Pac-12 (1st team - V)

Honorable mention Pac-12 All-Academic

Pac-12 Specialist of the Week (2/13)

Felicia Hano

Regular Season All-American (1st team - FX, 2nd team - V)

All-Pac-12 (2nd team - V, FX)

Pac-12 Specialist of the Week (2/6)

Madison Kocian

2nd-team Pac-12 All-Academic

Gracie Kramer

Honorable mention Pac-12 All-Academic

Christine Peng-Peng Lee

AAI Award Finalist

Regular Season All-American (1st team - BB, 2nd team - UB)

Pac-12 Scholar-Athlete of the Year

All-Pac-12 (1st team - UB, BB)

Honorable mention Pac-12 All-Academic

Pac-12 Specialist of the Week (1/9, 1/16, 1/30, 2/27, 3/12)

Sonya Meraz

Honorable mention Pac-12 All-Academic

Katelyn Ohashi

Regular Season All-American (1st team - BB, FX)

Pac-12 Specialist of the Year

All-Pac-12 (1st team - BB, FX)

Pac-12 Specialist of the Week (2/20, 3/20)

UCLA/Muscle Milk Student-Athlete of the Week (3/20)

Kyla Ross

Regular Season All-American (1st team - AA, UB)

All-Pac-12 (1st team - AA, UB, 2nd team - V, BB)

Honorable mention Pac-12 All-Academic

Pac-12 Gymnast of the Week (1/30)

UCLA/Muscle Milk Student-Athlete of the Week (1/9, 1/30, 3/27)

Pauline Tratz

All-Pac-12 (2nd team - FX)

UCLA SETS NEW SEASON ATTENDANCE RECORD

Bruin fans attended home meets in record numbers this year. UCLA's average home attendance was a new school record of 7,756, sixth-best in the nation. A season-high 11,085 fans attended the UCLA-Utah meet on Feb. 18, and 9,611 came on Super Bowl Sunday to watch UCLA and Oklahoma in the Together We Rise meet.

KONDOS FIELD EARNS CAREER WIN 500

UCLA head coach Valorie Kondos Field surpassed 500 career coaching victories with the Bruins' win at Metroplex Jan. 27. The Pac-12 Gymnastics Coach of the Century now holds a career coaching record of 516-120-3 (.810) in 28 years as UCLA's head coach. Kondos Field has won six NCAA Championships and four national coach of the year honors, and in 2010, she became the second active coach ever to be inducted into the UCLA Athletic Hall of Fame.

FRESH FACES

UCLA's newcomers have been strong this season. Nia Dennis has averaged 39.233 in the all-around, with a high of 39.425 set Feb. 10 at Cal, where she also recorded career-highs on bars (9.9) and beam (9.875). She had a standout meet on Feb. 18 against Utah, scoring career-highs of 9.95 on vault and 9.925 on bars to win her first two career events, and she scored a career-high 9.975 on floor against Oregon State on Feb. 26. Pauline Tratz averages 9.864 on floor and has career-highs of 9.925 on both floor and vault. Redshirt freshman Grace Glenn has competed on beam in each meet, ranking sixth nationally and averaging 9.871. She won Pac-12 Specialist of the Week honors after scoring a career-high 9.95 at Arizona and has scored 9.95 three times this year and 9.875 or higher in her last seven meets. Anna Glenn won Pac-12 Freshman of the Week honors after scoring career-highs of 9.9 on vault and beam against San Jose State. Anna also has a career-best of 9.875 on bars. Junior transfer Brielle Nguyen tied for second on beam at Elevate the Stage in her UCLA competitive debut and placed third at the Pac-12 Championships on beam with a career-high-tying 9.9. Savannah Kooyman made her competitive debut at the Metroplex Challenge and contributed a clutch 9.825 as the anchor on bars. Kooyman competed in two events at Cal, scoring a career-high 9.875 on bars and 9.825 in her floor debut.

ROLLING IN THE DEEP

UCLA continues to showcase its depth, competing 14 gymnasts against Utah and at Metroplex and a season-high 15 in the win at Cal. A total of 17 Bruins performed at Cal, with Mercedes Sanchez and Kendal Poston performing exhibition routines. At Arizona, 13 Bruins competed, with six different gymnasts taking home individual titles (Katelyn Ohashi in the all-around with a career-high 39.45 and on beam with a 9.95; Felicia Hano on vault and floor with 9.9s; Kyla Ross on bars with a 9.925, Grace Glenn and Christine Peng-Peng Lee tying for first with Ohashi on beam, and Pauline Tratz tying Hano for first on floor).

FOURTEEN ON DIRECTOR'S HONOR ROLL

A total of 14 Bruin gymnasts made the UCLA Director's Honor Roll for Fall 2017. Six had 3.5 or higher GPAs for the quarter - Madison Kocian, Gracie Kramer, Christine Peng-Peng Lee, Sonya Meraz, Kendal Poston and Pauline Tratz. The other eight had GPAs between 3.0 and 3.49 - Napualani Hall, Felicia Hano, JaNay Honest, Rebecca Karlous, Julianna Pino, Mercedes Sanchez, Macy Toronjo and Lilia Waller.

BRUINS SIGN FRAZIER, WRIGHT FOR 2019 SEASON

U.S. National Team member Margzetta Frazier (Erial, N.J.) and Level 10 vault champion Sekai Wright (Paramount, Calif.) signed national letters of intent with UCLA in November and will join the Bruin squad in 2019. Frazier, who trains at Parkettes, is a rising star coming off a fifth-place national all-around finish at the P&G Championships in August. She earned selection to the U.S. National Team for the first time in her career and won silver in the all-around at her first international assignment at the World Cup in Birmingham on Mar. 22. Wright, who trains at American Gymnastics Academy, is a two-time Level 10 National vault champion, winning the Junior E division in 2016 and the Junior B division in 2015. She also won the Region 1 vault title and the State all-around, vault, and floor titles in 2017 and the Region 1 vault and State beam titles in 2016.

NO. 1 IN SOCIAL MEDIA FOLLOWERS

UCLA Gymnastics has the largest social media followings in all of women's collegiate sports, ranking No. 1 across all women's sports in combined followers on Facebook, Instagram and Twitter, a total over 370,000. The Bruins rank first among all NCAA gymnastics teams on both Instagram (194k) and Facebook (155k) and third on Twitter (24.7k). Among all UCLA teams, gymnastics ranks first on Instagram and Facebook, and UCLA Gymnastics is the most followed collegiate women's team Instagram account in the nation. Follow the Bruins at @UCLAGymnastics on Instagram and Twitter and on Facebook at facebook.com/uclagymnastics. The team's Snapchat name is also uclagymnastics.

INTERNATIONAL COMPETITORS

UCLA's roster is filled with international competitors, led by Olympic gold medalists Madison Kocian and Kyla Ross. Kocian is a three-time World Champion, having won a share of the uneven bars title in 2015 and team titles in 2014 and 2015. Ross was also part of the 2014 World Championship team and won a total of four individual medals in 2013 and 2014. Stella Savvidou, Julianna Pino and Pauline Tratz competed at the 2015 Worlds along with Kocian, with Savvidou representing Cyprus, Pino representing Ecuador and Tratz competing for Germany. Christine Peng-Peng Lee competed at the 2011 World Championships for Canada. Katelyn Ohashi has American Cup (2013) and Pacific Rim Championship (2012 juniors) all-around championship titles to her credit. The 2012 Pacific Rim Championship podium had a decidedly UCLA-flavor to it, as Jordyn Wieber, Ross and Lee went 1-2-3 in the senior competition, and Ohashi won the all-around, bars, beam and floor titles in the junior competition. Nia Dennis and Ross both competed at the 2014 Pacific Rim Championship, with Dennis winning team gold and all-around and vault silver in the junior competition and Ross winning beam and team gold and all-around silver in the senior division.

MEDIA INFORMATION

UCLA Athletic Communications

J.D. Morgan Center, Suite 128

325 Westwood Plaza, Los Angeles, CA 90095

Gymnastics Contact	Liza David
David Office Phone	(310) 206-8140
David Cell Phone	(310) 621-8398
David E-Mail	ldavid@athletics.ucla.edu
Website	www.uclabruins.com

Media Availability

Please contact the Athletic Communications Office early in the week to confirm post-practice media availability, as days may vary from week to week. Practices take place at Yates Gym in the John Wooden Center in the morning. Media requests should be made 24 hours in advance.

Credentials

Credential requests for both home and road meets must be made at least 24 hours in advance by emailing Liza David (ldavid@athletics.ucla.edu).

Credential Pickup

Credentials for home meets are available for pickup at the northwest entrance of Pauley Pavilion.

Media Seating

Media seating is available on the floor on the north side of Pauley Pavilion (vault side).

Photography Areas

Credentialed photographers are permitted to shoot on the floor but must stay off the mats and cannot be in the sightlines of the judges and fans. During the third and fourth rotations only, photographers are permitted to sit on the vault runway to shoot floor exercise. Please consult with Athletic Communications staff to confirm other locations. Flash and strobe photography are strictly forbidden.

Postmeet Procedure

Head coach Valorie Kondos Field and selected gymnasts will be available in the media room after results are announced.

Last Meet - at Pac-12 Championships (Mar. 24)

UCLA used a strong second half to win its 18th Pac-12 Gymnastics championship, outscoring defending champion Utah, 197.500-197.350. The Bruins overcame a nearly disastrous uneven bars rotation, roaring back on balance beam with a 49.600 and then clinching the victory with a 49.475 on floor exercise in the final rotation. Kyla Ross won a share of the all-around and uneven bars title. Christine Peng-Peng Lee won balance beam with her fourth perfect 10 on beam this season. Katelyn Ohashi closed the meet with a 9.95 performance that got her a share of the floor exercise title.

Vault - 49.275

Nia Dennis	9.825 (17t)
Anna Glenn	9.800 (26t)
Pauline Tratz	9.825 (17t)
Kyla Ross	9.900 (3t)
Felicia Hano	9.850 (13t)
Napualani Hall	9.875 (11t)

Bars - 49.150

Nia Dennis	9.850 (11t)
JaNay Honest	9.900 (4t)
Sonya Meraz	9.775 (31t)
Katelyn Ohashi	9.650 (42)
Peng-Peng Lee	9.425 (44)
Kyla Ross	9.975 (1t)

Beam - 49.600

Grace Glenn	9.875 (9t)
Madison Kocian	9.850 (17t)
Brielle Nguyen	9.900 (3t)
Katelyn Ohashi	9.900 (3t)
Kyla Ross	9.925 (2)
Peng-Peng Lee	10.00 (1)

Floor - 49.475

Madison Kocian	9.825 (21t)
Gracie Kramer	9.850 (14t)
Kyla Ross	9.875 (10t)
Pauline Tratz	9.900 (4t)
Felicia Hano	9.900 (4t)
Katelyn Ohashi	9.950 (1t)

2018 UCLA GYMNASTICS ROSTER

Name	Ht.	Yr.	Hometown (High School/Last School/Club)
Nia Dennis	5-1	Fr.	Columbus, Ohio (Meteva Valley HS/Legacy Elite Gymnastics)
Rechelle Dennis	5-4	Sr.	Dix Hills, N.Y. (Half Hollow Hills HS/Gold Medal Gymnastics Huntington)
Anna Glenn	5-1	RFr.	Charlotte, N.C. (South Mecklenburg/Southeastern Gymnastics)
Grace Glenn	5-2	RFr.	Charlotte, N.C. (South Mecklenburg/Southeastern Gymnastics)
Sofia Gonzalez	5-0	Fr.	Manila, Philippines (Brethren Christian HS/Gym-Max)
Napualani Hall	5-4	Sr.	Kansas City, Mo. (North Kansas City HS/Fuzion Gymnastics)
Felicia Hano	5-2	So.	San Gabriel, Calif. (San Gabriel HS/Gym-Max)
JaNay Honest	5-2	Sr.	Visalia, Calif. (El Diamante HS/Central California Gymnastics Institute)
Rebecca Karlous	5-2	Fr.	Costa Mesa, Calif. (Newport Harbor HS/South Coast Gymnastics)
Madison Kocian	5-3	So.	Dallas, Texas (Spring Creek Academy/WOGA)
Savannah Kooyman	5-3	Fr.	Laguna Hills, Calif. (Aliso Niguel HS/Precision Gymnastics)
Gracie Kramer	5-3	So.	San Clemente, Calif. (JSerra Catholic/Wildfire Gymnastics)
Christine Peng-Peng Lee	5-2	RSr.	Toronto, Ontario, Canada (Northview Heights Secondary/ Sport Seneca/Oakville Gymnastics Club)
Sonya Meraz	5-1	Sr.	Santa Monica, Calif. (Santa Monica HS/All Olympia Gymnastics Center)
Brielle Nguyen	5-1	Jr.	Tustin, Calif. (Foothill HS/University of Illinois/Gym-Max)
Katelyn Ohashi	4-10	Jr.	Seattle, Wash. (Plano Senior HS/WOGA)
Giulianna Pino	5-2	So.	Miami, Fla. (Gulliver Preparatory/Universal Gymnastics)
Kendal Poston	5-0	Fr.	Foothill Ranch, Calif. (Trabuco Hills HS/Azarian Gymnastics)
Kyla Ross	5-7	So.	Aliso Viejo, Calif. (Aliso Niguel HS/Gym-Max)
Mercedes Sanchez	5-5	So.	Agoura Hills, Calif. (Agoura HS/Matrix Gymnastics)
Stella Savvidou	5-2	Jr.	Melbourne, Australia (Methodist Ladies College/ Methodist Ladies College Gymnastics Club)
Macy Toronjo	4-11	RSo.	Huntsville, Texas (Coppell HS/Texas Dreams)
Pauline Tratz	5-7	Fr.	Karlsruhe, Germany (Otto-Hahn Gymnasium/Karlsruhe Gymnastics)
Lillia Waller	5-5	Fr.	Santa Clarita, Calif. (Hart HS/ Waller's GymJam Academy)

COACHING STAFF

Valorie Kondos Field	Head Coach (28th season)	UCLA '87
Chris Waller	Associate Head Coach (16th season)	UCLA '91
Randy Lane	Associate Head Coach (14th season)	Illinois '89
Jordyn Wieber	Volunteer Assistant Coach (2nd season)	UCLA '17
Hallie Mossett	Undergraduate Assistant Coach	

PRONUNCIATION GUIDE

Nia Dennis	KNEE-uh	Katelyn Ohashi	oh-HAH-she
Napualani Hall	nuh-POOH-a-LAH-nee	Giulianna Pino	Julie-AH-nah PEA-no
Felicia Hano	HA-no	Kendal Poston	POST-un
Rebecca Karlous	CAR-los	Stella Savvidou	SAH-vi-doo
Madison Kocian	CO-shun	Macy Toronjo	toe-RON-joe
Savannah Kooyman	COY-mun	Pauline Tratz	paw-LEAN-uh TRAHTZ
Sonya Meraz	muh-ROZ	Valorie Kondos Field	CON-dose
Brielle Nguyen	bree-ELL WIN	Hallie Mossett	HAL-ee Mo-ZET

2018 Team Meet-by-Meet Scores/Placements

Date	V	UB	BB	FX	Total
1/6	48.500 (2)	49.300 (1)	49.025 (1)	49.425 (1)	196.250 (1)
1/14	49.400 (2)	49.375 (1)	49.025 (1t)	49.400 (2)	197.200 (1)
1/20	49.300 (1)	49.250 (1)	49.250 (1)	49.225 (1)	197.300 (1)
1/27	49.400 (1)	49.200 (2t)	49.625 (1)	49.400 (1)	197.625 (1)
2/4	49.500 (2)	49.250 (2)	49.525 (2)	49.675 (1)	197.950 (2)
2/10	49.425 (1)	49.525 (1)	49.525 (1)	49.275 (1)	197.750 (1)
2/18	49.450 (1)	49.300 (1t)	49.400 (1t)	49.275 (2)	197.425 (2)
2/25	49.125 (1)	49.450 (1)	49.725 (1)	49.775 (1)	198.075 (1)
3/4	49.050 (2)	49.475 (1)	49.400 (1)	49.575 (1)	197.500 (1)
3/11	49.375 (1)	49.250 (1)	49.575 (1)	49.600 (1)	197.800 (1)
3/13	49.625 (1)	49.625 (1)	49.475 (1)	49.550 (1)	198.275 (1)
3/24	49.275 (3)	49.150 (5)	49.600 (1)	49.475 (1)	197.500 (1)
4/1					
4/14					
4/15					
Average	49.285	49.346	49.452	49.471	197.554
18 High	49.625	49.625	49.725	49.775	198.075
Record	49.725	49.825	49.725	49.875	198.875



NIA DENNIS

5-1 / Freshman
Columbus, Ohio
Meteva Valley HS
Legacy Elite Gymnastics

Second-team All-Pac-12 on bars ... Led off vault with a 9.875 vs. San Jose State to lead UCLA to a season-high 49.625 team score ... Tied for second on vault with a 9.9 leadoff at Stanford and also scored 9.9 on floor ... Scored career-high 9.975 on floor vs. Oregon State after changing her opening tumbling pass to a piked full-in ... Placed second on floor and bars (9.9 in the leadoff spot) vs. Oregon State ... Won vault and bars while competing in the leadoff spot against Utah, scoring career-highs of 9.95 on vault and 9.925 on bars ... Placed second in the all-around with a career-high 39.425 and third on bars with a career-best 9.9 at Cal ... Also recorded a new career-high on beam at Cal with a 9.875 ... Set new career-bests with a 9.925 on vault and 9.875 on floor vs. Oklahoma ... Recorded career-best marks on vault (9.875) and floor (9.85) at the Metroplex Challenge ... Earned career-high marks on vault (9.85) and bars (9.875) at Arizona ... Sixth in the all-around at Elevate the Stage with 39.225 ... Second in the all-around in the season opener vs. Ohio State, scoring 39.050, and tied for third on bars with a 9.825 ... Member of U.S. National Team from 2013-15 ... Level 10 national all-around champion in 2017.

2018 Meet-by-Meet Scores/Placements

Date	V	UB	BB	FX	AA
1/6	9.775 (5t)	9.825 (3t)	9.750 (5t)	9.700 (10)	39.050 (2)
1/14	9.850 (10t)	9.825 (9t)	9.750 (12t)	9.800 (15t)	39.225 (6)
1/20	9.850 (4)	9.875 (3t)	—	9.625 (12)	—
1/27	9.875 (3t)	9.825 (9t)	—	9.850 (9t)	—
2/4	9.925 (4)	9.800 (8t)	—	9.875 (6t)	—
2/10	9.825 (10t)	9.900 (3t)	9.875 (6)	9.825 (7t)	39.425 (2)
2/18	9.950 (1t)	9.925 (1)	—	9.625 (11)	—
2/25	9.825 (4)	9.900 (2)	—	9.975 (2)	—
3/4	9.850 (9)	9.875 (5t)	—	9.850 (9t)	—
3/11	9.900 (2t)	9.300 (10)	—	9.900 (5t)	—
3/13	9.875 (7)	9.825 (6)	—	—	—
3/24	9.825 (17t)	9.850 (11t)	—	—	—
4/7	—	—	—	—	—
4/20	—	—	—	—	—
4/21	—	—	—	—	—
Average	9.858	9.810	9.792	9.803	39.233
18 High	9.950	9.925	9.875	9.975	39.425
Career-Hi	9.950	9.925	9.875	9.975	39.425



ANNA GLENN

5-1 / Redshirt Freshman
Charlotte, N.C.
South Mecklenburg HS
Southeastern Gymnastics

Named Pac-12 Freshman of the Week Mar. 20 after scoring a pair of career-high 9.9s on vault and beam vs. San Jose State ... Stuck her vault at Stanford and scored 9.85 ... Scored a career-high and team-high 9.875 as the leadoff on vault at the Masters Classic ... Made her competitive debut on bars on Feb. 25 against Oregon State and tied for third with a 9.875 ... Also competed on vault (9.75) and exhibitioned on beam (9.8) against the Beavers ... Competed on vault and exhibitioned on bars and beam against Utah, scoring 9.8 on vault and bars and 9.825 on beam ... Made competitive debut at Cal with a 9.8 on vault ... Saw first action with a pair of exhibition routines at Arizona, where she scored 9.8 on vault and 9.85 on beam ... Redshirted the 2017 season after undergoing surgery for a torn labrum ... JO National Champion on uneven bars in 2012.

2018 Meet-by-Meet Scores/Placements

Date	V	UB	BB	FX	AA
1/6	—	—	—	—	—
1/14	—	—	—	—	—
1/20	9.800	—	9.850	—	—
1/27	—	—	—	—	—
2/4	—	—	—	—	—
2/10	9.800 (12)	—	—	—	—
2/18	9.800 (8t)	9.800	9.825	—	—
2/25	9.750 (11t)	9.875 (3t)	9.800	—	—
3/4	9.875 (4)	—	—	—	—
3/11	9.850 (5t)	9.525 (9)	9.800	—	—
3/13	9.900 (4t)	—	9.900 (2t)	—	—
3/24	9.800 (26t)	—	—	—	—
4/7	—	—	—	—	—
4/20	—	—	—	—	—
4/21	—	—	—	—	—
Average	9.825	9.700	9.900	—	—
18 High	9.900	9.875	9.900	—	—
Career-Hi	9.900	9.875	9.9900	—	—



GRACE GLENN

5-2 / Redshirt Freshman
Charlotte, N.C.
South Mecklenburg HS
Southeastern Gymnastics

First-team regular season All-American and first-team All-Pac-12 on beam ... Competed on beam in every meet ... Moved to the leadoff position since the Stanford meet, where she placed third with a 9.925 ... Tied for second vs. San Jose State and at the Masters Classic with 9.9s ... Recorded her third 9.95 score of the season vs. Oregon State ... Captured her second beam win with a 9.95 at Cal ... Tied for third on beam at Metroplex with a 9.9 ... Pac-12 Specialist of the Week Jan. 23 after tying for first on beam with a career-high 9.95 ... Redshirted in 2017 after undergoing surgery for a torn labrum ... JO National Champion on uneven bars in 2012.

2018 Meet-by-Meet Scores/Placements

Date	V	UB	BB	FX	AA
1/6	—	—	9.725 (6t)	—	—
1/14	—	—	9.750 (12t)	—	—
1/20	—	—	9.950 (1t)	—	—
1/27	—	—	9.900 (3t)	—	—
2/4	—	—	9.750 (11)	—	—
2/10	—	—	9.950 (1t)	—	—
2/18	—	—	9.875 (5t)	—	—
2/25	—	—	9.950 (3t)	—	—
3/4	—	—	9.900 (2t)	—	—
3/11	—	—	9.925 (3)	—	—
3/13	—	—	9.900 (2t)	—	—
3/24	—	—	9.875 (9t)	—	—
4/7	—	—	—	—	—
4/20	—	—	—	—	—
4/21	—	—	—	—	—
Average	—	—	9.871	—	—
18 High	—	—	9.950	—	—
Career-Hi	—	—	9.950	—	—



NAPUALANI HALL

5-4 / Senior
Kansas City, Mo.
North Kansas City HS
Fuzion Gymnastics

Second-team regular season All-American and first-team All-Pac-12 on vault ... Honorable mention Pac-12 All-Academic for the second-straight year ... Scored a career-high 9.975 on vault to place first vs. San Jose State ... Captured her second vault win of the season, tying for first against Oregon State with a 9.875 ... Won vault and floor at Cal, scoring career-highs of 9.95 and 9.9, respectively, to earn Pac-12 Specialist of the Week honors for Feb. 13 ... Her floor win was the first of her career, and the vault win was her second ... Scored a career-high 9.95 on vault, getting a 10 from one judge, against Oklahoma ... Stuck her Yurchenko 1.5 vault at the Metroplex Challenge to tie her career-high with a second-place score of 9.9 ... Tied for second on vault at Arizona with a 9.875 ... Tied her career high on vault at Elevate the Stage with a 9.9 to tie for third place ... 2017 Honorable mention Pac-12 All-Academic honoree ... 2013 JO National vault champion ... Two-time VISA National Championships qualifier.

2018 Meet-by-Meet Scores/Placements

Date	V	UB	BB	FX	AA
1/6	9.250 (11)	—	—	—	—
1/14	9.900 (3t)	—	—	—	—
1/20	9.875 (2t)	—	—	—	—
1/27	9.900 (2)	—	—	—	—
2/4	9.950 (3)	—	—	—	—
2/10	9.950 (1)	—	—	9.900 (1t)	—
2/18	9.300 (12)	—	—	—	—
2/25	9.875 (1t)	—	—	—	—
3/4	9.650 (11)	—	—	—	—
3/11	9.850 (5t)	—	—	—	—
3/13	9.975 (1)	—	—	—	—
3/24	9.875 (11t)	—	—	—	—
4/7					
4/20					
4/21					
Average	9.779	—	—	9.900	—
18 High	9.975	—	—	9.900	—
Career-Hi	9.975	—	—	9.900	—



FELICIA HANO

5-2 / Sophomore
San Gabriel, Calif.
San Gabriel HS
Gym-Max

First-team regular season All-American on floor and second-team on vault ... Second-team All-Pac-12 on vault and floor ... Averaging a team-high 9.925 on floor ... Tied her career-high on vault with a 9.925 and scored 9.95 on floor to place second on both events vs. San Jose State ... Captured her fourth floor title with a 9.95 at the Masters Classic ... Tied for third on floor vs. Oregon State with a 9.95 ... Won floor with a 9.975 for her third-straight win on the event, and tied for third on vault with a career-high 9.925 against Utah ... Tied her career-high on vault with a 9.9 in her only event at Cal ... Pac-12 Specialist of the Week after scoring her first-ever perfect 10 on floor vs. Oklahoma Feb. 4 ... Her floor was the first by a Bruin since Sydney Sawa in 2014; Hano's floor routine is a legacy routine using Sawa's music and choreography ... Limited to one event at Metroplex Challenge due to the flu and scored 9.825 on vault ... Earned her first career victories at Arizona, taking first on vault and floor with scores of 9.9 ... Competed all-around for the first time as a Bruin at Arizona, scoring 38.650, and earned career-high marks on each event ... Set a career-high on vault with a 9.9 and tied her career-best on floor with a 9.875 at Elevate the Stage ... Tied for second on vault (9.825) and tied for fourth on floor (9.875) in the season opener ... Second-team All-American on vault ... Member of the U.S. Senior National Team in 2014-15 ... Won the J.O. National all-around and vault championships in 2013 and 2012.

2018 Meet-by-Meet Scores/Placements

Date	V	UB	BB	FX	AA
1/6	9.825 (2t)	—	9.725 (6t)	9.875 (4t)	—
1/14	9.900 (3t)	—	9.625	9.875 (7t)	—
1/20	9.900 (1)	9.025 (12)	9.825 (6t)	9.900 (1t)	38.650 (4)
1/27	9.825 (9t)	—	—	—	—
2/4	9.875 (7)	—	—	10.00 (1t)	—
2/10	9.900 (3t)	—	—	—	—
2/18	9.925 (3t)	—	—	9.975 (1t)	—
2/25	9.750 (11t)	—	—	9.950 (3t)	—
3/4	9.850 (5t)	—	—	9.950 (1t)	—
3/11	9.875 (4)	—	—	9.875 (8t)	—
3/13	9.925 (2t)	—	—	9.950 (2)	—
3/24	9.850 (13t)	—	—	9.900 (4t)	—
4/7					
4/20					
4/21					
Average	9.867	9.025	9.775	9.925	38.650
18 High	9.925	9.025	9.825	10.00	38.650
Career-Hi	9.925	9.025	9.825	10.00	38.650



JANAY HONEST

5-2 / Senior
 Visalia, Calif.
 El Diamante HS
 Central California Gymnastics Institute

Scored 9.9 for the second-straight meet at the Pac-12 Championships, tying for fourth ... Recorded a season-best 9.9 on bars vs. San Jose State and earned 9.8 in an exhibition floor performance ... Scored 9.8 or higher on bars in the last six meets and earned a season-best 9.875 at the Masters Classic ... Scored 9.85 on leadoff bars routine to help UCLA win Elevate the Stage ... Tied for third on bars with a 9.825 vs. Ohio State ... 2016 Pac-12 uneven bars co-champion ... Went 36-for-36 in 2016 and was UCLA's top points contributor on uneven bars.

2018 Meet-by-Meet Scores/Placements

Date	V	UB	BB	FX	AA
1/6	—	9.825 (3t)	—	—	—
1/14	—	9.850 (8t)	—	<u>9.725</u>	—
1/20	—	9.775 (9t)	—	—	—
1/27	—	9.750 (20)	—	<u>9.750</u>	—
2/4	—	9.825 (7)	—	—	—
2/10	—	9.850 (6t)	—	—	—
2/18	—	9.800 (9t)	—	—	—
2/25	—	9.825 (8)	—	—	—
3/4	—	9.875 (5t)	—	—	—
3/11	—	9.850 (6)	—	—	—
3/13	—	9.900 (4t)	—	<u>9.800</u>	—
3/24	—	9.900 (4t)	—	—	—
4/7					
4/20					
4/21					
Average	—	9.835	—	—	—
18 High	—	9.900	—	—	—
Career-Hi	9.900	9.950	—	9.925	—



MADISON KOCIAN

5-3 / Sophomore
 Dallas, Texas
 Spring Creek Academy
 WOGA

Second-team Pac-12 All-Academic ... Had shoulder surgery in August and returned on Jan. 20 at Arizona to compete on beam ... Has scored 9.875 or better on beam in five meets ... Scored a season-high 9.925 on floor to tie for third at Stanford ... Competed on two events for the first time this season against Oregon State on Feb. 25, scoring 9.875 on beam and leading off floor with a 9.9 ... Scored 9.9 on beam to place fourth against Utah and tied for third place with a season-high 9.925 on beam at Cal ... Scored 9.875 on beam at the Metroplex Challenge and 9.85 vs. Oklahoma... Two-time Olympic medalist (team gold, uneven bars silver in 2016) and three-time World Championship gold medalist ... Four-time All-American ... Scored a perfect 10 on bars on Feb. 11, 2017 ... NCAA Regional bars and floor champion ... Totaled 16 event victories in 2017, including a team-high six in the all-around.

2018 Meet-by-Meet Scores/Placements

Date	V	UB	BB	FX	AA
1/6	—	—	—	—	—
1/14	—	—	—	—	—
1/20	—	—	9.225 (11)	—	—
1/27	—	—	9.875 (6t)	—	—
2/4	—	—	9.850 (8t)	—	—
2/10	—	—	9.925 (3t)	—	—
2/18	—	—	9.900 (4)	—	—
2/25	—	—	9.875 (5)	9.900 (5t)	—
3/4	—	—	9.750 (12t)	9.875 (5t)	—
3/11	—	—	9.825 (9t)	9.925 (3t)	—
3/13	—	—	9.875 (4)	9.800 (6)	—
3/24	—	—	9.850 (17t)	9.825 (21t)	—
4/7					
4/20					
4/21					
Average	—	—	9.795	9.865	—
18 High	—	—	9.925	9.925	—
Career-Hi	9.875	10.00	9.950	9.950	39.625



SAVANNAH KOOYMAN

5-3 / Freshman
Laguna Hills, Calif.
Aliso Viejo HS
Precision Gymnastics

Scored a career-high 9.875 on bars along with a 9.825 in her floor debut at Cal ... In her competitive debut, delivered a clutch 9.825 routine on uneven bars in the anchor position at the Metroplex Challenge ... Competed on bars at the Masters Classic ... Four-time Level 10 State champion.

2018 Meet-by-Meet Scores/Placements

Date	V	UB	BB	FX	AA
1/6	—	<u>9.275</u>	—	<u>9.100</u>	—
1/14	—	<u>9.700</u>	—	—	—
1/20	—	<u>9.700</u>	—	—	—
1/27	—	9.825 (9t)	—	—	—
2/4	—	—	—	—	—
2/10	—	9.875 (5)	—	9.825 (7t)	—
2/18	—	—	—	—	—
2/25	—	<u>9.775</u>	—	—	—
3/4	—	9.700 (21)	—	—	—
3/11	—	—	—	—	—
3/13	—	<u>9.825</u>	—	—	—
3/24	—	—	—	—	—
4/7	—	—	—	—	—
4/20	—	—	—	—	—
4/21	—	—	—	—	—
Average	—	9.800	—	9.825	—
18 High	—	9.875	—	9.825	—
Career-Hi	—	9.875	—	9.825	—



GRACIE KRAMER

5-3 / Sophomore
San Clemente, Calif.
JSerra Catholic HS
Wildfire Gymnastics

Pac-12 honorable mention All-Academic ... Scored 9.85 or higher on floor in nine of 10 meets ... Tied for third vs. San Jose State with a 9.9 leadoff score ... Recorded a career-best 9.95 on floor vs. Oregon State to tie for third place ... Scored a then-career-high 9.9 on floor in the first two meets and earned her first career event victory, tying for first vs. Ohio State ... Tied for third on floor at Metroplex and at Cal with 9.875s ... Scored a season-high 9.85 on vault at Cal ... Tied for second on vault with a 9.925 in a Feb. 11, 2017 meet vs. Stanford ... 2015 Level 10 state all-around champion and Region 1 vault champion.

2018 Meet-by-Meet Scores/Placements

Date	V	UB	BB	FX	AA
1/6	9.150 (12)	—	—	9.900 (1t)	—
1/14	<u>9.825</u>	—	—	9.900 (4t)	—
1/20	—	—	—	9.850 (4t)	—
1/27	<u>9.775</u>	—	—	9.875 (3t)	—
2/4	—	—	—	9.875 (6t)	—
2/10	9.850 (7t)	—	—	9.875 (3t)	—
2/18	<u>9.775</u>	—	—	9.675 (10)	—
2/25	<u>9.700</u>	—	—	9.950 (3t)	—
3/4	—	—	—	—	—
3/11	—	—	—	—	—
3/13	—	—	—	9.900 (3t)	—
3/24	—	—	—	9.850 (14t)	—
4/7	—	—	—	—	—
4/20	—	—	—	—	—
4/21	—	—	—	—	—
Average	9.500	—	—	9.865	—
18 High	9.850	—	—	9.950	—
Career-Hi	9.925	—	—	9.950	—



CHRISTINE PENG-PENG LEE

5-2 / Sixth-Year Senior
Toronto, Ont., Canada
Northview Heights Secondary
Oakville Gymnastics Club/
Sport Seneca

AAI Finalist ... First-team regular season All-American on beam, second-team on bars ... First-team All-Pac-12 on bars and beam ... Pac-12 Scholar-Athlete of the Year ... Honorable mention Pac-12 All-Academic ... Won Pac-12 beam title with a 10.0, her fourth 10 on beam this season ... Won beam with a 9.95 and placed third on bars with a 9.925 vs. San Jose State ... Had a perfect meet at Stanford on Mar. 11, scoring perfect 10s on her two events - bars and beam - and was selected Pac-12 Specialist of the Week for a Pac-12 record ninth time in her career ... Won beam with a 9.95 and was second on bars with a 9.925 at the Masters Classic ... Named Pac-12 Specialist of the Week Feb. 27 after winning beam with a 9.975 and tying for third on bars with a 9.875 against Oregon State ... Won beam in her first five meets until her streak was broken Feb. 18 against Utah ... Won bars in her only event at Cal with a 9.95 ... Recorded her second-straight 10.0 on beam vs. Oklahoma Feb. 4 and also scored 9.9 on bars ... Scored her second beam 10.0 and fourth perfect 10 overall Jan. 27 at the Metroplex Challenge and was named the Pac-12 Specialist of the Week for Jan. 30 ... Won her third beam title with a 9.95 at Arizona ... Pac-12 Specialist of the Week for the second-straight week after clinching the UCLA win at Elevate the Stage with a 9.925 on bars ... Also tied for second on beam at Elevate the Stage with a 9.825 ... Won bars (9.975) and beam (9.9) in the season opener vs. Ohio State and was named Pac-12 Specialist of the Week ... 2017 AAI Award Finalist, West Region Gymnast of the Year and Pac-12 Specialist of the Year ... Six-time All-American ... Two-time Scholastic All-American ... Three-time Pac-12 All-Academic honoree ... Had to sit out the 2013 and 2014 seasons due to knee surgery ... Honorary team captain for Canada at the 2012 Olympics ... 2011 World Championships competitor ... Three-time medalist at the 2012 Pacific Rim Championships.

2018 Meet-by-Meet Scores/Placements

Date	V	UB	BB	FX	AA
1/6	-	9.975 (1)	9.925 (1)	-	-
1/14	-	9.925 (3)	9.825 (1t)	-	-
1/20	-	9.775 (9t)	9.950 (1t)	-	-
1/27	-	9.875 (4t)	10.00 (1)	-	-
2/4	-	9.900 (4t)	10.00 (1t)	-	-
2/10	-	9.950 (1t)	-	-	-
2/18	-	9.800 (9t)	9.800 (11)	-	-
2/25	-	9.875 (3t)	9.975 (1t)	-	-
3/4	-	9.925 (2)	9.950 (1)	-	-
3/11	-	10.00 (1t)	10.00 (1)	-	-
3/13	-	9.925 (3)	9.950 (1)	-	-
3/24	-	9.425 (44)	10.00 (1)	-	-
4/7	-	-	-	-	-
4/20	-	-	-	-	-
4/21	-	-	-	-	-
Average	-	9.863	9.943	-	-
18 High	-	10.00	10.00	-	-
Career-Hi	9.925	10.00	10.00	-	-



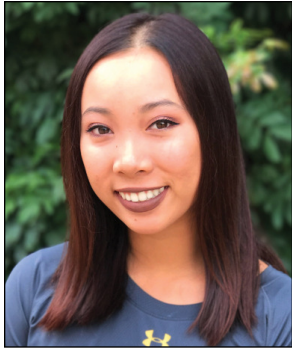
SONYA MERAZ

5-1 / Senior
Santa Monica, Calif.
Santa Monica HS
All Olympia Gymnastics Center

Honorable mention Pac-12 All-Academic ... Scored career-highs of 9.9 on bars and floor vs. San Jose State ... Competed in a team-high 45 consecutive meets until her streak was snapped Feb. 25 ... Scored 9.875 on beam, 9.825 on floor and 9.775 on vault in exhibitions at the Masters Classic ... Scored 9.85 on floor in all three meets in which she has competed that event ... Earned season-high 9.825 on beam at Cal ... Made her season debut on floor at Arizona and came in fourth with a 9.85 ... Repeated her score on floor at the Metroplex Challenge and finished ninth ... Scored 9.8 on vault and 9.825 on bars at Elevate the Stage ... Two-time second-team Pac-12 All-Academic as a biochemistry major ... 2017 Scholastic All-American ... Led UCLA in total points scored in 2016.

2018 Meet-by-Meet Scores/Placements

Date	V	UB	BB	FX	AA
1/6	-	9.750 (7t)	9.525 (10)	-	-
1/14	9.800 (17t)	9.825 (9t)	-	-	-
1/20	9.800 (5t)	-	-	9.850 (4t)	-
1/27	-	-	-	9.850 (9t)	-
2/4	-	9.800 (8t)	-	-	-
2/10	-	-	9.825 (9t)	9.850 (5t)	-
2/18	-	9.125 (12)	-	-	-
2/25	-	-	-	-	-
3/4	<u>9.775</u>	-	<u>9.875</u>	<u>9.825</u>	-
3/11	-	<u>9.850</u>	-	-	-
3/13	<u>9.625</u>	9.900 (4t)	<u>9.725</u>	9.900 (3t)	-
3/24	-	9.775 (31t)	-	-	-
4/7	-	-	-	-	-
4/20	-	-	-	-	-
4/21	-	-	-	-	-
Average	9.800	9.680	9.675	9.863	-
18 High	9.800	9.900	9.850	9.900	-
Career-Hi	9.875	9.900	9.900	9.900	39.400



BRIELLE NGUYEN

5-0 / Junior
Tustin, Calif.
Foothill HS / Univ. of Illinois
Gym-Max

Tied her career-high on beam with a 9.9 to tie for third at the Pac-12 Championships ... Leadoff on beam for eight meets, where she tied her career-high of 9.9 vs. Oklahoma ... Moved to the No. 3 spot on Mar. 11 at Stanford and scored 9.85 ... Made her UCLA debut at Elevate the Stage, tying for second on beam with a leadoff 9.825 ... Winter quarter transfer from Illinois, where she earned second-team All-Big Ten honors in 2017 ... 2014 Level 10 state beam champion.

2018 Meet-by-Meet Scores/Placements

Date	V	UB	BB	FX	AA
1/6	—	—	9.775	—	—
1/14	—	—	9.825 (2t)	—	—
1/20	—	—	9.850 (5)	—	—
1/27	—	—	9.825 (15t)	—	—
2/4	—	—	9.900 (7)	—	—
2/10	—	—	9.800 (12)	—	—
2/18	—	—	9.825 (9t)	—	—
2/25	—	—	9.150 (12)	—	—
3/4	—	—	9.750 (12t)	—	—
3/11	—	—	9.850 (8)	—	—
3/13	—	—	—	—	—
3/24	—	—	9.900 (3t)	—	—
4/7	—	—	—	—	—
4/20	—	—	—	—	—
4/21	—	—	—	—	—
Average	—	—	9.768	—	—
18 High	—	—	9.900	—	—
Career-Hi	—	—	9.900	9.900	—



KATELYN OHASHI

4-10 / Junior
Seattle, Wash.
Plano Senior HS
WOGA

Finished the regular season ranked No. 1 in the nation on floor exercise ... Has scored three perfect 10s on floor in 2018 ... First-team regular season All-American and All-Pac-12 on beam and floor ... 2018 Pac-12 Specialist of the Year ... Won a share of the Pac-12 floor exercise title with a 9.95 on a routine that has gone viral with over 45 million views ... Named Pac-12 Specialist of the Week for the second time this season after scoring her third perfect 10 of the year on floor and setting a career-high on bars with a 9.95 vs. San Jose State ... Also named the UCLA/Muscle Milk Student-Athlete of the Week Mar. 20 ... Scored 9.975 on beam, 9.95 on floor and 9.875 on bars at Stanford ... Captured her fourth consecutive floor title with a 9.95 at the Masters Classic and also tied for second on beam with a 9.9 ... Scored her second perfect 10 of the year on floor against Oregon State and also won beam with a season-best 9.975 and placed second in the all-around with a career-high 39.575 ... Pac-12 Specialist of the Week for Feb. 20 after winning beam (9.925) and floor (9.975) and tying for second with a season-high 9.9 on bars against Utah ... Tied for first on beam with a 9.95 at Cal ... Scored her first perfect 10 on floor vs. Oklahoma ... Earned career-highs of 9.875 on vault and 9.925 on floor to finish in the Top 3 at the Metroplex Challenge ... Competed all-around for the first time in two years at Arizona and won with a career-high 39.450 ... Earned a career-high 9.875 on vault and scored season-highs on bars (9.9) and beam (9.95) at Arizona ... Made her season debut on beam at Elevate the Stage, scoring 9.8 ... In the season opener, she tied for fourth on floor with a 9.875 and competed on bars for the first time in two years, scoring 9.775 ... Two-time All-American on beam ... In 2017, she scored back-to-back perfect 10s on beam Mar. 5 and 12 ... Two-time Pac-12 Specialist of the Week in 2017 and a four-time Pac-12 Freshman of the Week in 2016 ... Four-year U.S. National Team member ... 2013 AT&T American Cup all-around champion.

2018 Meet-by-Meet Scores/Placements

Date	V	UB	BB	FX	AA
1/6	—	—	9.775 (6)	—	9.875 (4t)
1/14	—	—	9.175 (21)	9.800 (7t)	9.825 (11t)
1/20	9.875 (2t)	9.900 (2)	9.950 (1t)	9.725 (9)	39.450 (1)
1/27	9.875 (3t)	9.550 (22)	9.875 (6t)	9.925 (2)	39.225 (7t)
2/4	9.775 (11)	9.075 (12)	9.925 (6)	10.00 (1t)	38.775 (3)
2/10	—	9.850 (6t)	9.950 (1t)	—	—
2/18	—	9.900 (2t)	9.925 (1t)	9.975 (1t)	—
2/25	9.800 (5t)	9.800 (9t)	9.975 (1t)	10.00 (1)	39.575 (2)
3/4	—	9.850 (9t)	9.900 (2t)	9.950 (1t)	—
3/11	—	9.875 (4t)	9.975 (2)	9.950 (2)	—
3/13	—	9.950 (1t)	9.850 (5t)	10.00 (1)	—
3/24	—	9.650 (42)	9.900 (3t)	9.950 (1t)	—
4/7	—	—	—	—	—
4/20	—	—	—	—	—
4/21	—	—	—	—	—
Average	9.831	9.696	9.911	9.925	39.256
18 High	9.875	9.950	9.975	10.00	39.575
Career-Hi	9.875	9.950	10.00	10.00	39.575



KYLA ROSS

5-7 / Sophomore
 Aliso Viejo, Calif.
 Aliso Niguel HS
 Gym-Max

Pac-12 all-around and uneven bars co-champion ... First-team regular season All-American in the all-around and on bars ... First-team All-Pac-12 in the all-around and on bars and second-team on vault and beam ... Honorable mention Pac-12 All-Academic ... Won bars for the fourth-straight meet with a 9.95 vs. San Jose State ... Scored her first perfect 10 on the year with a 10.0 on bars at Stanford Mar. 11 ... Also tied her career-high on floor with a 9.9 and tied for second place on vault with a stuck vault that scored 9.9 ... Won all-around for the fourth time this season with a 39.575 at the Masters Classic ... Also captured her sixth bars title with a 9.95 ... Tied her career-high in the all-around with a meet-winning 39.7 and on floor with a 9.9 against Oregon State and also won vault (9.875) and bars (season-high 9.975) ... Tied for first on bars with a 9.95 in her only event at Cal ... Earned a career-high 39.7 in the all-around to win the Metroplex Challenge and also captured first on vault (career-high-tying 9.925) and bars (9.925) ... Named Pac-12 Gymnast of the Week and UCLA/Muscle Milk Student-Athlete of the Week ... Won bars for the second-straight meet in her only performance at Arizona ... Tied for first on bars with a 9.95 and tied her career-high on floor with a second-straight 9.9 at Elevate the Stage ... Won the all-around with a 39.5 and tied for first on floor with a career-high 9.9 in the 2018 season opener and was named UCLA/Muscle Milk Student-Athlete of the Week ... Made history by becoming the first female gymnast ever to win an Olympic, World and NCAA Championship ... 2017 NCAA balance beam champion and uneven bars co-champion ... Pac-12 Freshman of the Year ... Scored a total of four perfect 10s in 2017, two each on bars and beam ... Scored the first perfect 10 on beam in Pac-12 Championship history to become the Pac-12 beam champion ... Her four perfect 10s were the most by a UCLA gymnast in a single season since Tasha Schwikert had four in 2005 ... Five-time All-American ... Led UCLA with 18 individual event wins during the season (seven on bars, five on vault and beam, and one in the all-around) ... 2012 Olympic gold medalist ... Five-time World Championship medalist.

2018 Meet-by-Meet Scores/Placements

Date	V	UB	BB	FX	AA
1/6	9.800 (4)	9.900 (2)	9.900 (2)	9.900 (1t)	39.500 (1)
1/14	9.875 (6t)	9.950 (1t)	9.825 (2t)	9.900 (4t)	39.550 (3)
1/20	—	9.925 (1)	—	—	—
1/27	9.925 (1)	9.925 (1t)	9.975 (2)	9.875 (3t)	39.700 (1)
2/4	9.900 (5t)	9.925 (3)	9.850 (8t)	9.875 (6t)	39.550 (2)
2/10	—	9.950 (1t)	—	—	—
2/18	9.850 (7)	9.875 (5)	9.875 (5t)	9.875 (7)	39.475 (4)
2/25	9.875 (1t)	9.975 (1)	9.950 (3t)	9.900 (5t)	39.700 (1)
3/4	9.850 (5t)	9.950 (1)	9.900 (2t)	9.875 (5t)	39.575 (1)
3/11	9.900 (2t)	10.00 (1t)	9.825 (9t)	9.900 (5t)	39.625 (2)
3/13	9.900 (4t)	9.950 (1)	9.850 (5t)	—	—
3/24	9.900 (3t)	9.975 (1t)	9.925 (2)	9.875 (10t)	39.675 (1t)
4/7	—	—	—	—	—
4/20	—	—	—	—	—
4/21	—	—	—	—	—
Average	9.878	9.942	9.888	9.886	39.594
18 High	9.925	10.00	9.975	9.900	39.700
Career-Hi	9.925	10.00	10.00	9.900	39.700



PAULINE TRATZ

5-7 / Freshman
 Karlsruhe, Germany
 Otto-Hahn Gymnasium
 Kunstturn Region Karlsruhe

Second-team All-Pac-12 on floor ... Tied her career-high on vault with a 9.925 vs. San Jose State ... Tied her career-high on floor with a 9.925 to place third at both Stanford and at the Masters Classic ... Scored a career-high 9.925 on vault vs. Utah ... Earned a career-high 9.9 on vault at Cal to tie for third place ... Scored a career-high 9.925 on floor vs. Oklahoma ... Third on floor at Metroplex with a 9.875 ... Won floor with a 9.9 at Arizona ... Recorded career-highs on vault (9.875) and floor (9.9) at Elevate the Stage ... Won vault in her collegiate debut, scoring 9.85 vs. Ohio State ... Two-time German National vault champion (2017 and 2016) ... Alternate for the 2016 German Olympic team ... 2015 World Championships competitor.

2018 Meet-by-Meet Scores/Placements

Date	V	UB	BB	FX	AA
1/6	9.850 (1)	—	—	9.875 (4t)	—
1/14	9.875 (6t)	—	—	9.900 (4t)	—
1/20	9.775 (8)	—	—	9.900 (1t)	—
1/27	9.775 (17t)	—	—	9.875 (3t)	—
2/4	9.850 (8t)	—	—	9.925 (4)	—
2/10	9.900 (3t)	—	—	9.725 (12)	—
2/18	9.925 (3t)	—	—	9.775 (9)	—
2/25	9.150 (24)	—	—	9.925 (3t)	—
3/4	9.825 (7t)	—	—	9.925 (3t)	—
3/11	9.925 (2t)	—	—	9.775 (7t)	—
3/13	9.825 (17t)	—	—	9.900 (4t)	—
3/24	—	—	—	—	—
4/7	—	—	—	—	—
4/20	—	—	—	—	—
4/21	—	—	—	—	—
Average	9.789	—	—	9.864	—
18 High	9.925	—	—	9.925	—
Career Hi	9.925	—	—	9.925	—