



UCLA BASKETBALL

UCLA Athletic Communications • J.D. Morgan Center • 325 Westwood Plaza • Los Angeles, CA 90095

Men's Basketball Contact: Alex Timiraos • atimiraos@athletics.ucla.edu • o: (310) 206-0524 • c: (310) 847-9231

UCLA'S LEADING SCORERS

No.	Player	GP	GS	MPG	RPG	APG	PPG
22	TJ Leaf	12	12	30.3	9.3	3.0	17.8
10	Isaac Hamilton	12	12	31.0	3.9	3.3	17.3
20	Bryce Alford	12	12	33.2	2.5	2.8	15.9
3	Aaron Holiday	12	0	26.0	3.1	4.1	14.4
2	Lonzo Ball	12	12	34.4	5.9	8.7	14.3

2016-17 SCHEDULE

Exhibition Game

Nov. 1	The Master's University	P12N	W	100-58
--------	-------------------------	------	---	--------

November

Fri. 11	Pacific	P12N	W	119-80
Sun. 13	CSUN	P12N	W	102-87
Thu. 17	San Diego	P12N	W	88-68
Sun. 20	Long Beach State	P12N	W	114-77
Thu. 24	vs. Portland ¹	ESPN2	W	99-77
Fri. 25	vs. Nebraska ¹	ESPN2	W	82-71
Sun. 27	vs. Texas A&M ²	ESPN	W	74-67
Wed. 30	UC Riverside	P12N	W	98-56

December

Sat. 3	at (1) Kentucky	CBS	W	97-92
Sat. 10	Michigan	ESPN2	W	102-84
Wed. 14	UC Santa Barbara	P12N	W	102-62
Sat. 17	vs. Ohio State ³	CBS	W	86-73
Wed. 21	Western Michigan	P12N		8 p.m.
Wed. 28	at (20) Oregon*	ESPN2		6 p.m.
Fri. 30	at Oregon State*	P12N		8 p.m.

January

Thu. 5	California*	ESPN		6 p.m.
Sun. 8	Stanford*	FS1		5 p.m.
Thu. 12	at Colorado*	FS1		9 p.m. (MT)
Sat. 14	at Utah*	P12N		4 p.m. (MT)
Thu. 19	Arizona State*	FS1		8 p.m.
Sat. 21	(18) Arizona*	CBS		1 p.m.
Wed. 25	at (23) USC*	FS1		8 p.m.

February

Wed. 1	at Washington State	P12N		6 p.m.
Sat. 4	at Washington	P12N		7:30 p.m.
Thu. 9	(20) Oregon	ESPN		7 p.m.
Sun. 12	Oregon State*	FS1		2 p.m.
Sat. 18	(23) USC*	P12N		7 p.m.
Thu. 23	at Arizona State*	ESPN/2		7 p.m. (MT)
Sat. 25	at (18) Arizona*	ESPN/2		TBD

March

Wed. 1	Washington*	FS1		8 p.m.
Sat. 4	Washington State*	ESPNU		6:30 p.m.
8-11	Pac-12 Tournament*	TBD		TBD

* Pac-12 Conference games
ranking in parenthesis indicates this week's AP top 25 poll

1 Wooden Legacy (at Cal State Fullerton, Titan Gym)

2 Wooden Legacy (at Honda Center, Anaheim)

3 CBS Sports Classic (at T-Mobile Arena, Las Vegas)

4 Pac-12 Tournament (at T-Mobile Arena, Las Vegas)

UCLA ON SOCIAL MEDIA

Men's Basketball Twitter: @UCLAMBB

Men's Basketball Instagram: @UCLAMBB

Men's Basketball Snapchat: UCLAMBB

Men's Basketball Facebook: /UCLAMensBasketball

UCLA Athletics Twitter: @UCLAathletics

UCLA Athletics Instagram: @UCLAathletics

UCLA Athletics Facebook: /UCLAathletics

#GoBruins

Western Michigan Broncos (3-7) at No. 2 UCLA Bruins (12-0)

Wednesday, Dec. 21, 2016 – 8 p.m. PT

Los Angeles, Calif. (Pauley Pavilion)

GAME INFORMATION

Venue: Pauley Pavilion (13,800)

Tipoff Time: 8:06 p.m. (PT)

Television: Pac-12 Network

TV Talent: Spero Dedes (play-by-play), Steve Lavin (analyst)

Radio (UCLA Sports Network from IMG College): AM 570

Radio Talent: Josh Lewin (play-by-play), Tracy Murray (analyst)

SIRIUS/XM Radio Channels: Ch. 84/Ch. 84

SIRIUS App. Channel: Ch. 84



vs.



3-7

12-0

All-Time Series: First Meeting

UCLA has opened its season with 12 consecutive wins for the first time since 2006-07, when the team began 14-0.

WHAT'S NEXT?

UCLA closes the non-conference portion of its regular season against Western Michigan on Wednesday at 8 p.m. in Pauley Pavilion. The Bruins (12-0) look to close the non-conference portion of their regular-season schedule with a perfect record for the first time since 1994-95. That Bruins' squad went 9-0 in non-conference action during the regular season before winning six straight NCAA Tournament games to win the NCAA title. UCLA has never before faced Western Michigan (3-7), which dropped a 92-86 decision at Washington on Sunday evening.

WELCOME BACK: Former UCLA standout Larry Farmer returns to Pauley Pavilion on Wednesday as an assistant coach for Western Michigan. Farmer was a forward on UCLA's national title teams in 1971, 1972 and 1973, helping the Bruins compile an 89-1 record in three varsity seasons. He was an assistant coach at UCLA in 1973-74 and from 1975-81 before serving as the program's head coach from 1982-84.

LAST WEEK

- Aaron Holiday and Bryce Alford each scored 20 points to lead UCLA past Ohio State, 86-73, in Las Vegas (T-Mobile Arena) last Saturday in the third annual CBS Sports Classic. The Bruins led at halftime, 40-37, before opening a double-digit lead midway through the second half. Isaac Hamilton finished with 17 points and TJ Leaf had 13.
- Freshmen TJ Leaf (25 pts, 10 rbs, 8 ast) and Lonzo Ball (13 pts, 10 rbs, 7 ast) each came close to registering triple-doubles in UCLA's 102-62 win against UC Santa Barbara on Dec. 14. Leaf had 17 points, eight rebounds and six assists by halftime, scoring 14 of his 17 first-half point during UCLA's 17-0 scoring run.
- Freshman TJ Leaf secured Pac-12 Player of the Week honors on Monday, after having averaged 19.0 points, 9.0 rebounds and 4.5 assists in the Bruins' wins over UC Santa Barbara (Dec. 14) and Ohio State (Dec. 17). Leaf has scored in double figures in all 12 games and has recorded five double-doubles midway through his freshman year.

HIGH-SCORING EFFORT

- With a 102-84 win over Michigan on Dec. 10, the Bruins improved their all-time record against the Wolverines to 12-5. In fact, UCLA became the first team since Duke on Dec. 8, 2001, to have eclipsed the 100-point mark against the Wolverines. UCLA has compiled a 3-0 record this season against teams from the Big Ten Conference.
- The Bruins shot 67.2 percent against Michigan (39/58), the highest mark by any UCLA team since Dec. 23, 2005, when the team shot 67.3% (37/55) against Sacramento State. UCLA's 62.5 three-point percentage against Michigan was its highest since Nov. 29, 2013, when the team shot 76.5% from downtown (13/17) against Northwestern.

OTHER KEY NOTES

- After defeating Kentucky (then ranked No. 1) on Saturday, Dec. 3, the Bruins climbed to the No. 2 spot in each of that week's AP and USA Today Coaches polls. UCLA had not been ranked as high as No. 2 since Nov. 26, 2007, when the Bruins were tabbed No. 2 in the AP poll and No. 1 in the USA Today Coaches poll.
- UCLA has opened 12-0 for the first time since 2006-07, when the Bruins began the season with 14 consecutive wins. UCLA's 2006-07 team advanced to the Final Four. With a victory on Wednesday night, the Bruins can extend their win streak to 13 games, UCLA's longest such streak since taking 14 straight in February and March of 2008.
- This marks the second straight year UCLA has defeated Kentucky when the Wildcats were ranked No. 1. UCLA downed Kentucky in Pauley Pavilion, 87-77, on Dec. 3, 2015. One year to the day (Dec. 3, 2016), the Bruins earned a 97-92 win at Kentucky's Rupp Arena, UCLA's first-ever game in that venue.
- UCLA has played the nation's No. 1-ranked team (AP poll) five times during head coach Steve Alford's four seasons in Westwood. The Bruins have played Kentucky each of the last three years (each time in December), with the Wildcats having been ranked No. 1 in both major polls at the time of all three games.
- The Bruins' 97-92 win at Kentucky on Dec. 3 marked UCLA's first win on the road at the nation's No. 1-ranked team since defeating Stanford, 79-73, at Maples Pavilion on Feb. 3, 2001. In fact, UCLA had not played a true road game at the country's No. 1-ranked team since Feb. 13, 2003 (lost at No. 1 Arizona, 106-70).
- UCLA's victory at Kentucky snapped the Wildcats' 42-game win streak in Rupp Arena. Kentucky had not lost at home since a 71-67 overtime setback to Arkansas on Feb. 27, 2014. In addition, the Bruins' 97 points were the most surrendered by any Kentucky team under eighth-year head coach John Calipari (his first season at UK was 2009-10).

NATIONAL LEADERBOARD

- Through Dec. 19, UCLA ranked first in the nation in field goal percentage (55.4), total assists (285) and assists per game (23.8) and second in points per game (96.9), 3-point percentage (43.9) and assist-turnover ratio (1.95). In addition the Bruins were fifth in defensive rebounds per game (31.9) and 11th in blocks per game (6.2).
- Freshman guard Lonzo Ball ranks second, nationally, in assists per game (8.7), behind Creighton's Maurice Watson Jr. (9.2 apg). Ball has five double-doubles in 12 games, four of the point-assist variety. He was two rebounds shy of a triple-double in the season opener (Nov. 11) and was three assists from a triple-double against UCSB (Dec. 14).

MEDIA INFORMATION

UCLA Athletic Communications
J.D. Morgan Center, Suite 128
325 Westwood Plaza, Los Angeles, CA 90095

Men's Basketball Contact	Alex Timiraos
Office Phone	(310) 206-0524
Cell Phone	(310) 847-9231
Fax	(310) 825-8664
E-mail	atimiraos@athletics.ucla.edu
Website	www.uclabruins.com

Media Availability

Steve Alford's weekly media availability typically takes place on the court in Pauley Pavilion at approximately 2:30 p.m. on Tuesdays (prior to practice). Players are available to the media after Coach Alford speaks. Members of the media are welcome to observe and record the first 15 minutes of practice those days. Media availability is not open to the public.

Credentials

Admission to the press seating and media room is by credential only. All credential requests should be made through UCLA's credential website at least two days prior to the game. Website address and instructions can be obtained by emailing Alex Timiraos (atimiraos@athletics.ucla.edu). Members of the media covering UCLA should request credentials for road games through Timiraos (via email, or phone at 310-206-0524).

Credential Pickup

Credentials are available during the week at the Athletic Communications Office. Credentials not claimed prior to game day will be available at Pauley Pavilion's "Will Call" window (Northwest corner of the arena). The media will call window and entrance opens two hours prior to tip-off.

Media Seating

A press pass enables entrance at Pauley Pavilion's Northwest media gate (across from the intramural field). Press seating is located in the upper level (Section 215) of the arena's south side (opposite team benches). Pauley Pavilion's media workroom is located in the Southeast corner of the building on the event level, adjacent to the Southeast elevator.

Postgame Procedure

Head coach Steve Alford and selected players will be available to the media in Pauley Pavilion's media room following a 10-minute cooling off period after each game. UCLA's locker room is closed to the media. To access the media room during or after the game, follow the stairwell down to the court and proceed to the southeast corner (elevator access available at the arena's southeast corner). The visiting team's head coach will be available following a 10-minute cooling off period outside the visiting locker room (northwest corner, event level).

QUICK FACTS

School Information

Founded	1919
Enrollment	43,239
Nickname	Bruins
Colors	Blue and Gold
Home Arena (capacity)	Pauley Pavilion (13,800)
Affiliation	NCAA Division I
Conference	Pac-12
Chancellor	Gene Block
Director of Athletics	Dan Guerrero
Athletic Dept. Phone	(310) 825-8699
Ticket Office Phone	(310) 825-2101

Men's Basketball History

First Season	1919-20
All-Time Record	1835-822 (.690)
NCAA Tournament Appearances	47
NCAA Final Four Appearances	18
NCAA Championships	11
Regular-Season Conference Titles	31

Team Information

2015-16 Record	15-17
2015-16 Pac-12 Record (finish)	6-12 (10th)
2015-16 Home/Road/Neutral	11-6-/3-7-/1-4
Lettermen Returning/Lost	10-/3
Starters Returning/Lost	4-/1
2015-16 Final Ranking	not ranked
2016-17 Newcomers	5
Head Coach	Steve Alford (4th year at UCLA)
Alford at UCLA	77-40 (4th season)
Alford Overall	540-275 (26th season)
Assistant Coaches	Duane Broussard (4th year at UCLA)
	Ed Schilling (4th year at UCLA)
	David Grace (4th year at UCLA)

2016-17 UCLA NUMERICAL ROSTER

No.	Name	Yr.	Pos.	Ht.	Wt.	Hometown (Previous School)
0	Alex Olesinski	So.	F	6-10	200	Roswell, N.M. (La Lumiere School [IN])
2	Lonzo Ball	Fr.	G	6-6	190	Chino Hills, Calif. (Chino Hills HS)
3	Aaron Holiday	So.	G	6-1	185	Chatsworth, Calif. (Campbell Hall HS)
4	Isaac Wulff	Fr.	G	6-3	175	Laguna Beach, Calif. (Laguna Beach HS)
5	Armani Dodson	Fr.	G	6-5	190	Fontana, Calif. (Kaiser HS)
10	Isaac Hamilton	Sr.	G	6-5	195	Los Angeles, Calif. (St. John Bosco HS)
13	Ike Anigbogu	Fr.	F/C	6-10	250	Corona, Calif. (Centennial HS)
14	György "G.G." Golomán	Jr.	F	6-11	215	Körmend, Hungary (The Sagemont School [FL])
15	Jerrold Smith	Sr.	G	6-0	165	Los Angeles, Calif. (St. Bernard's HS)
20	Bryce Alford	Sr.	G	6-3	185	Albuquerque, N.M. (La Cueva HS)
21	Alec Wulff	Jr.	G	6-3	185	Laguna Beach, Calif. (Laguna Beach HS)
22	TJ Leaf	Fr.	F	6-10	225	El Cajon, Calif. (Foothills Christian HS)
23	Prince Ali	So.	G	6-3	190	The Bronx, N.Y. (The Sagemont School [FL])
34	Ikenna Okwarabizie	Jr.	C	6-9	250	Lagos, Nigeria (Tyler Junior College [TX])
40	Thomas Welsh	Jr.	C	7-0	245	Redondo Beach, Calif. (Loyola HS)

2016-17 UCLA ALPHABETICAL ROSTER

No.	Name	Yr.	Pos.	Ht.	Wt.	Hometown (Previous School)
20	Bryce Alford	Sr.	G	6-3	185	Albuquerque, N.M. (La Cueva HS)
23	Prince Ali	So.	G	6-3	190	The Bronx, N.Y. (The Sagemont School [FL])
13	Ike Anigbogu	Fr.	F/C	6-10	250	Corona, Calif. (Centennial HS)
2	Lonzo Ball	Fr.	G	6-6	190	Chino Hills, Calif. (Chino Hills HS)
5	Armani Dodson	Fr.	G	6-5	190	Fontana, Calif. (Kaiser HS)
14	György "G.G." Golomán	Jr.	F	6-11	215	Körmend, Hungary (The Sagemont School [FL])
10	Isaac Hamilton	Sr.	G	6-5	195	Los Angeles, Calif. (St. John Bosco HS)
3	Aaron Holiday	So.	G	6-1	185	Chatsworth, Calif. (Campbell Hall HS)
22	TJ Leaf	Fr.	F	6-10	225	El Cajon, Calif. (Foothills Christian HS)
34	Ikenna Okwarabizie	Jr.	C	6-9	250	Lagos, Nigeria (Tyler Junior College [TX])
0	Alex Olesinski	So.	F	6-10	200	Roswell, N.M. (La Lumiere School [IN])
15	Jerrold Smith	Sr.	G	6-0	165	Los Angeles, Calif. (St. Bernard's HS)
40	Thomas Welsh	Jr.	C	7-0	245	Redondo Beach, Calif. (Loyola HS)
21	Alec Wulff	Jr.	G	6-3	185	Laguna Beach, Calif. (Laguna Beach HS)
4	Isaac Wulff	Fr.	G	6-3	175	Laguna Beach, Calif. (Laguna Beach HS)

COACHING STAFF

Steve Alford	Head Coach (4th season)	Indiana '87
Duane Broussard	Assistant Coach (4th season)	Bradley '93
Ed Schilling	Assistant Coach (4th season)	Miami (Ohio) '88
David Grace	Assistant Coach (4th season)	Park '03

SUPPORT STAFF

Tyus Edney	Director of Operations	UCLA '97
Doug Erickson	Director of Administration	San Jose State '90
Wes Long	Athletic Performance Coach	Texas '03
Briana Walker	Staff Associate	Florida State '09
Kory Barnett	Director of Player Development/Scouting	Indiana '12
Kory Alford	Video Coordinator	UCLA '15
Shane Besedick	Athletic Trainer	Long Beach State '08
Kenny Simpson	Equipment Manager	N.C. State '07
Veronica Rodriguez-Mora	Academic Advisor	NYU '02
Alex Timiraos	Athletic Communications Contact	Boston College '06

PRONUNCIATION GUIDE

Alford (ALL-ferd)
Ali (ah-LEE)
Ike Anigbogu (EE-kay ah-nee-BOH-goo)
Broussard (bru-SARD)
G.G. Golomán (G.G. GOH-lo-mun)
Ikenna Okwarabizie (ee-KAY-nuh oak-war-uh-BEE-zee-eh)
Olesinski (oll-eh-SHIN-skee)
Jerrold Smith (JEH-rolld Smith)
Wulff (WOLF)

<div> <div>AP Poll</div> <div>(Week 6 – Dec. 12, 2016)</div> </div>			
RK	TEAM	RECORD	PTS
1	Villanova (56)	11-0	1,614
2	UCLA (3)	12-0	1,514
3	Kansas	10-1	1,450
4	Baylor (6)	11-0	1,439
5	Duke	10-1	1,385
6	Kentucky	10-1	1,337
7	Gonzaga	11-0	1,211
8	North Carolina	10-2	1,170
9	Creighton	11-0	1,058
10	Louisville	10-1	1,044
11	West Virginia	9-1	937
12	Virginia	9-1	886
13	Butler	10-1	821
14	Wisconsin	10-2	781
15	Purdue	9-2	754
16	Indiana	8-2	719
17	Xavier	9-2	542
18	Arizona	10-2	501
19	Saint Mary's	8-1	389
20	Oregon	10-2	299
21	Florida State	11-1	290
22	South Carolina	9-1	218
23	USC	10-0	212
24	Cincinnati	9-2	202
25	Notre Dame	9-2	188

Also receiving votes: Florida (48), Virginia Tech (40), Maryland (27), Seton Hall (15), Oklahoma State (8), Valparaiso (7), Minnesota (6), Miami (5), Northwestern (4), Iowa State (1), Clemson (1), Kansas State (1), Loyola-Chicago (1).

<div> <div>USA Today Coaches Poll</div> <div>(Week 6 – Dec. 12, 2016)</div> </div>			
RK	TEAM	RECORD	PTS
1	Villanova (28)	11-0	796
2	UCLA (2)	12-0	755
3	Kansas (1)	10-1	712
4	Duke (1)	10-1	688
5	Kentucky	10-1	667
6	Baylor	11-0	658
7	Gonzaga	11-0	611
8	North Carolina	10-2	563
9	Creighton	11-0	539
10	Virginia	9-1	476
11	Louisville	10-1	469
12	West Virginia	9-1	460
13	Butler	10-1	388
14	Wisconsin	10-2	366
15	Purdue	9-2	337
16	Indiana	8-2	319
17	Xavier	9-2	295
18	Arizona	10-2	229
19	Saint Mary's	8-1	197
20	South Carolina	9-1	180
21	Oregon	10-2	145
22	Florida State	11-1	111
23	Cincinnati	9-2	108
24	Notre Dame	9-2	92
25	USC	10-0	88

Also receiving votes: Florida (30), Oklahoma State (21), Maryland (20), Arkansas (15), Miami (13), Virginia Tech (8), California (7), Middle Tennessee (7), Wichita State (7), Seton Hall (7), TCU (6), Texas Tech (3), Nevada (2), Colorado (2), Michigan State (1), Minnesota (1), Valparaiso (1).

PRESEASON PROJECTIONS

UCLA was selected third in the preseason Pac-12 media poll, announced at Pac-12 media day in San Francisco (Oct. 21). Oregon was picked to finish first, collecting 23 of 27 first-place votes, while Arizona was selected second and UCLA, third. The Bruins last won the Pac-12 regular-season title in 2012-13 and won the Pac-12 Tournament in 2014.

PREDICTIONS: Members of the media have correctly picked the regular-season winner of the conference 14 times in 24 tries, while the winner has been accurately chosen in 16 of the 27 all-time preseason votes. This marks the first time in the history of the 28-year preseason poll in which Oregon has been selected to finish first.

HE'S BALLIN'

- Freshman Lonzo Ball set UCLA's single-game freshman assists record (13) against UC Riverside on Nov. 30, surpassing Pooh Richardson's 12-assist total set on Jan. 11, 1986, in a double-overtime win at Washington State.
- Ball has nearly as many assists (104) as he does shot attempts (109). He is the only player in the nation to be averaging at least 14.0 points, 5.0 rebounds and 8.0 assists per game.
- Ball and Oregon guard Payton Pritchard are the only freshmen in the nation with at least 13 assists in one game this season. Ball had 13 against UC Riverside (Nov. 30) and Pritchard had 13 versus Savannah State (Dec. 3).
- Ball is currently averaging 8.7 assists per game. No other player in the Pac-12 has averaged as many as 6.5 assists per game. Pooh Richardson owns the school's single-season assists per game record (7.6 apg as a senior, 1988-89).

UNDEFEATED

The Bruins (12-0) are off to their best start since opening the 2006-07 campaign with 14 consecutive wins. This marks the 14th time in school history in which UCLA has opened with at least 12 consecutive wins (nine of those previous 13 seasons culminated with a national title). Since head coach John Wooden retired following the 1974-75 season, the Bruins have been 12-0 (or better) four times – 2016-17, 2006-07, 1993-94 and 1991-92.

STARTING FIVE, PLUS ONE

- Bryce Alford** ranks No. 19 on UCLA's all-time scoring list. He enters this Wednesday's game having scored 1,555 points in 117 career games (13.3 ppg). Alford has scored in double figures in 11 of 12 games this season and ranks third on the team with 15.9 points per game. He ranks second in the Pac-12 in free throw percentage (88.2, 45/51).
- Isaac Hamilton** ranks fourth in the Pac-12 in scoring (17.3 ppg) and tied for 11th in assists per game (3.3). He has scored at least 12 points in all 12 games this year. Dating back to the start of 2015-16, he has scored in double figures in 41 of UCLA's last 44 contests. He crossed the school's career 1,100-point plateau one week ago.
- Lonzo Ball**, regarded as a prolific passer, ranks first in the Pac-12 in assists per game (8.7) and assist-turnover ratio (3.5), sixth in three-point field goal percentage (45.3), sixth in made three-pointers per game (2.4) and 13th in field goal percentage (54.1). Ball ranks No. 20, nationally, in assist-turnover ratio (3.5).
- TJ Leaf** has scored at least 20 points in a team-best five games and ranks first on the squad and third in the Pac-12 in scoring (18.3 ppg). The freshman has five double-doubles, including a 17-point, 13-rebound game against Kentucky (Dec. 3) and, more recently, a 25-point, 10-rebound effort against UC Santa Barbara (Dec. 14).
- Thomas Welsh** ranks seventh in the Pac-12 in field goal percentage (57.3) and is just one block shy of cracking UCLA's top-10 career blocks list (currently at 91 blocked shots). Welsh has registered five double-doubles this season and has made all 14 free throw attempts. He missed UCLA's last three games nursing a bruised right knee.
- Aaron Holiday** leads all Pac-12 players in three-point field goal percentage (53.3, 24/45) and ranks fifth in assists per game (4.1). Holiday, who has scored in double figures in 10 of 12 games, has become UCLA's first player since Jordan Adams in Nov. 2012 to score at least 20 or more points off the bench in back-to-back games.

SCORING BALANCE

Seven UCLA players scored in double figures against Pacific (Nov. 11). In addition, six Bruins scored in double figures against San Diego (Nov. 17), Long Beach State (Nov. 20), Portland (Nov. 24) and Kentucky (Dec. 3). Prior to this season, UCLA had not seen seven of its players score in double figures in the same game since Dec. 19, 1998 (UCLA def. CSUN, 114-97). UCLA's previous games with at least six double-figure scorers took place in wins over Montana State (Nov. 14, 2014 – Pauley Pavilion) and against Stanford in overtime (March 4, 2000 – Maples Pavilion, at Stanford).

SHARING THE BALL

UCLA has recorded a season-high 29 assists in three games this year (vs. Pacific on Nov. 11, vs. Portland on Nov. 24 and vs. UC Riverside on Nov. 30). Previously, UCLA had not had as many as 29 assists since Dec. 31, 2006 (vs. Washington). UCLA last reached the 30-assist total in a game on Feb. 23, 1995, recording 32 assists at California (UCLA won, 104-88). The Bruins also had 32 assists on Nov. 27, 1993 (against Loyola Marymount) and on Feb. 23, 1989 (versus Washington). UCLA totaled 38 assists on Dec. 2, 1990 in the team's 149-98 win over Loyola Marymount.

TRIPLE-DOUBLE NOTES

UCLA has four triple-doubles in its record book (three since the assist became an official NCAA stat in 1983-84). Most recently, Kyle Anderson had a triple-double as a sophomore in Nov. 2013. Lonzo Ball was two rebounds shy of a triple-double in his debut, totaling 19 points, 11 assists and eight rebounds in a 119-80 win over Pacific (Nov. 11).

PLAYER	DATE	OPPONENT	RESULT	PTS	RBS	AST	BLK
Kyle Anderson	11/22/2013	Morehead State	W, 81-70	13	12	11	3
Toby Bailey	12/18/1995	Stephen F. Austin	W, 109-88	23	10	10	1
Jelani McCoy	12/09/1995	Maryland	W, 73-63	15	10	0	11
Bill Walton	12/08/1973	SMU	W, 77-60	25	16	11	—

SINGLE-GAME ASSISTS

Earl Watson owns the school's single-game assist record – 16 against Maryland on March 18, 2000 (UCLA won that game, 105-70). Next on the list are Darrick Martin (vs. Pittsburgh, Feb. 2, 1991) and Darren Collison (vs. Arizona, Feb. 17, 2007), who each had 15 assists. The most assists in one game by any UCLA freshman is 13, set by Lonzo Ball in the Bruins' 98-56 win over UC Riverside (Nov. 30). Previously, Pooh Richardson had 12 assists as a freshman (Jan. 11, 1986). The assist became an official NCAA statistic during the 1983-84 season. UCLA has consistently tracked the stat since the 1971-72 season.

Team	Points
1. Oregon (23)	320
2. Arizona (4)	298
3. UCLA	259
4. California	209
5. Colorado	199
6. Washington	167
7. USC	163
8. Utah	142
9. Oregon State	122
10. Stanford	119
11. Arizona State	78
12. Washington State	30

UCLA'S SINGLE-GAME RECORD

Player	Assists	Date
Earl Watson	16	03/18/00
Darren Collison	15	02/17/07
Darrick Martin	15	02/02/91
Pooh Richardson	14	03/17/89
Pooh Richardson	14	12/13/86
Pooh Richardson	14	12/06/86
Roy Hamilton	14	03/05/78
Andre McCarter	14	03/31/75
14 times ^	13	—

^ Lonzo Ball had 13 vs. UC Riverside (11/30/16)

ACTIVE LEADERS – RECORD WATCH

UCLA's ALL-TIME SCORING LEADERS

No.	Player	Points	PPG
1.	Don MacLean (1989-92)	2608	20.5
2.	Kareem Abdul-Jabbar (1967-69)	2325	26.4
3.	Jason Kapono (2000-03)	2095	16.5
–	Reggie Miller (1984-87)	2095	17.2
5.	Toby Bailey (1995-98)	1846	14.3
6.	Ed O'Bannon (1992-95)	1815	15.1
7.	J.R. Henderson (1995-98)	1801	14.2
8.	Trevor Wilson (1987-90)	1798	14.3
9.	Tracy Murray (1990-92)	1792	18.3
10.	Charles O'Bannon (1994-97)	1784	13.3
11.	Bill Walton (1972-74)	1767	20.3
12.	Josh Shipp (2005-09)	1730	12.4
13.	David Greenwood (1976-79)	1721	14.8
14.	Gail Goodrich (1963-65)	1691	18.9
15.	Marques Johnson (1974-77)	1659	14.4
16.	Kenny Fields (1981-84)	1638	14.9
17.	Darren Collison (2006-09)	1634	11.7
18.	Shon Tarver (1991-94)	1575	12.8
19.	Bryce Alford (2014-present)	1555	13.3
20.	Arron Affalo (2005-07)	1540	14.7

*NOTE: Senior guard Isaac Hamilton has scored 1,126 career points and currently ranks 46th on the Bruins' all-time list.

UCLA's CAREER 3-POINT FIELD GOALS MADE

No.	Player	Years	3FGM
1.	Jason Kapono	2000-03	317
2.	Bryce Alford	2014-present	245
3.	Arron Affalo	2005-07	209
	Michael Roll	2006-10	209
5.	Josh Shipp	2005-08	198
6.	Tracy Murray	1990-92	197
7.	Toby Bailey	1995-98	171
8.	Darren Collison	2006-09	164
9.	Isaac Hamilton	2015-present	152
10.	Billy Knight	1998-02	137

UCLA's CAREER ASSISTS

No.	Player	Years	3FGM
1.	Pooh Richardson	1986-89	833
2.	Tyus Edney	1992-95	652
3.	Darrick Martin	1989-92	636
4.	Earl Watson	1998-01	607
5.	Darren Collison	2006-09	577
6.	Ralph Jackson	1981-84	523
7.	Roy Hamilton	1976-79	512
8.	Bryce Alford	2014-present	478
9.	Toby Bailey	1995-98	458
10.	Cameron Dollar	1994-97	451

UCLA's CAREER FREE THROW PERCENTAGE

No.	Player	Years	3FGM
1.	Rod Foster	1980-83	309-351
2.	Don MacLean	1989-92	711-827
3.	Darren Collison	2006-09	349-410
4.	Jordan Adams	2013-14	287-342
5.	Reggie Miller	1984-87	488-584
6.	Bryce Alford	2014-present	374-449
7.	Jason Kapono	2000-03	380-458
8.	Gary Cunningham	1960-62	201-244
9.	Henry Bibby	1970-72	275-334
10.	Nikola Dragovic	2007-10	128-156

* minimum 150 attempts

UCLA's CAREER FREE THROWS MADE

No.	Player	Years	FTM
1.	Don MacLean	1989-92	711
2.	Reggie Miller	1984-87	488
3.	Tyus Edney	1992-95	450
4.	Lew Alcindor	1967-69	439
5.	J.R. Henderson	1995-98	435
6.	Gail Goodrich	1963-65	416
7.	John Green	1960-62	404
8.	Walt Hazzard	1962-64	385
9.	Trevor Wilson	1987-90	384
10.	Jason Kapono	2000-03	380
–	Bryce Alford	2014-present	374

UCLA's CAREER BLOCKS

No.	Player	Years	3FGM
1.	Jelani McCoy	1996-98	188
2.	Dan Gadzunic	1999-02	184
3.	Charles O'Bannon	1994-97	118
4.	Lorenzo Mata-Real	2005-08	117
5.	Ryan Hollins	2003-06	101
6.	Tyler Honeycutt	2010-11	99
7.	Rodney Zimmerman	1991-94	97
8.	Ed O'Bannon	1992-95	95
9.	Tony Parker	2013-16	94
10.	Travis Wear	2012-14	92
–	Thomas Welsh	2015-present	91

ABOUT WESTERN MICHIGAN

Currently in his 14th season as head coach, Steve Hawkins brought in eight newcomers to this season's team, which has recorded wins against Marygrove (Nov. 11), Central Arkansas (Nov. 26) and James Madison (Dec. 10). Junior Thomas Wilder enters this Wednesday's contest having averaged a team-leading 16.1 points per game, shooting 47.2 percent from 3-point range. Freshman forward Brandon Johnson has recorded a team-best 6.7 rebounds per game.

NOW THAT'S IMPROVEMENT

UCLA's top three returning guards – senior Bryce Alford, senior Isaac Hamilton and sophomore Aaron Holiday – have all seen legitimate spikes in their shooting percentages. Alford has shot 45.6 percent this season (57/125) after entering his senior campaign having shot 39 percent in three seasons. Hamilton is currently shooting 50.6 percent as a senior (81/160) after having shot 44.5 percent his first two years at UCLA. Holiday leads the trio in field goal percentage (54.5 percent) after having made 39.4 percent of his total shots during his freshman season (2015-16).

LAST TIME SINCE?

Currently averaging 96.9 points per game (the second-best average in the country), UCLA has averaged well above its league-record 92.3 points per game average that was set in 1967-68. The Bruins have not averaged as many as 85.0 points per game since 1994-95 (87.5 ppg) and haven't logged 90.0 or more points per game since 1990-91 (92.3 ppg). In addition, the Bruins are averaging a nation-leading 23.8 assists per game. While the assist was not a formally recorded NCAA statistic until 1983-84, UCLA did set a school record with 22.4 assists per game in 1973-74.

TOURNAMENT TITLE

With three wins in four days at the 2016 Wooden Legacy in Orange County, UCLA captured its first outright in-season tournament title since winning the 2007 O'Reilly Auto Parts CBE Classic (St. Louis, Mo.). This marked UCLA's first Wooden Legacy championship in two trips to the eight-team tournament. UCLA also played in the event in Nov. 2009 when it was named the 76 Classic. Lonzo Ball had 16 points and 10 assists in UCLA's title victory over Texas A&M.

IN REVIEW: UCLA defeated Portland (99-77) on Thanksgiving night before taking down Nebraska (82-71) the following day at Cal State Fullerton (Nov. 25). That Sunday (Nov. 27), UCLA recorded a 74-67 win over Texas A&M to win the tournament title. Lonzo Ball was named the tournament's Most Valuable Player.

MCDONALD'S ALL-AMERICANS

UCLA has seen 41 of its student-athletes compete in the annual McDonald's All-American Game, with only Duke and Kentucky having enrolled more McDonald's All-Americans. Ball tied the single-game record with 13 assists, joining with Leaf to help lift the West past the East, 114-107. Four of UCLA's players on this season's roster have competed in the McDonald's All-American Game – Ball and TJ Leaf in 2016, Thomas Welsh in 2014 and Isaac Hamilton in 2013.

THREE-POINT THREAT

Bryce Alford ranks first in school history in single-season 3-pointers made and is second in career three-pointers. He made a school-record 93 treys in 2014-15 (sophomore) and has now made 245 three-pointers, second-most at UCLA behind Jason Kapono (317, played from 2000-03). Alford made 73 three-pointers last season to become UCLA's first player since Arron Affalo (in 2005-06, 2006-07) to have made at least 70 three-pointers in consecutive seasons.

UCLA: Single-Season Three-Point Field Goals Made

Total	Name	Season	Class	Percentage	3p-FG/FGA
93	Bryce Alford	2014-15	SO	.391	93/238
87	Arron Affalo	2006-07	JR	.375	87/232
87	Jason Kapono	2001-02	JR	.453	87/192

THAT'S A LONG STREAK: The Bruins have made at least one 3-point attempt in each of their previous 564 games. The last game UCLA played in which it didn't make a 3-pointer was against Stanford on Feb. 3, 2000.

POINTS AND ASSISTS

Bryce Alford has become the fifth player in school history, on record, to have scored at least 1,400 career points and registered 400 or more assists. Alford has become the first UCLA player to equal or eclipse those two career totals since Darren Collison, who amassed 1,634 points and 577 assists over four seasons (2006-09).

Player	Seasons	Points	Assists	Games	PPG	APG	FG/FGA	FG Pct.
Toby Bailey	1995-1998	1846	458	129	14.3	3.6	679/1479	.459
Darren Collison	2006-2009	1634	577	142	11.5	4.1	563/1185	.475
Tyus Edney	1992-1995	1515	652	125	12.1	5.2	484/1007	.481
Pooh Richardson	1986-1989	1461	833	122	12.0	6.8	600/1170	.513
Bryce Alford	2014-present	1555	478	117	13.3	4.1	468/1181	.396

*assists were first officially recorded at UCLA in 1973-74

INJURY UPDATE

Prince Ali (torn meniscus, right knee) had surgery on July 15 and could return to action in early January. Thomas Welsh (bruised right knee) did not play in UCLA's previous three games and is questionable for this Wednesday's game. Alex Olesinski (stress reaction, left foot) has been out since mid-November and is doubtful this week.

MO OSTIN BASKETBALL CENTER

Construction has begun on the men's and women's basketball programs' new on-campus training and performance facility, known going forward as the Mo Ostin Basketball Center. Named after legendary music industry executive and philanthropist Morris "Mo" Ostin, who generously committed \$10 million to the project, the comprehensive, state-of-the-art facility will be located near Pauley Pavilion at the south end of the Los Angeles Tennis Center.

The Bruins' new training and performance center is expected to be completed in the fall of 2017. Designed by award-winning architectural design firm Kevin Daly Architects in partnership with globally acclaimed high-performance design firm AECOM, the Mo Ostin Basketball Center will include locker rooms, athletic training areas, a strength and conditioning facility, coaches' offices, team meeting rooms, equipment rooms and video rooms among its various amenities. In addition, the facility will incorporate several elements paying homage to the rich history of UCLA Basketball.

The project and its corresponding campaign to raise private funds is part of the \$4.2 billion campus-wide UCLA Centennial Campaign that was announced on May 15, 2014. The UCLA Athletic Department aims to surpass its \$260 million goal by 2019. The Mo Ostin Basketball Center directly addresses the Department's primary Centennial Campaign objective: to create a financially sustainable future to build upon UCLA's standing as the premier intercollegiate athletics program in the nation.

BRUINS IN THE NBA (DECEMBER 2016)

Player	NBA Team	NBA Season	Years in NBA	Years at UCLA
Arron Afflalo	Sacramento Kings	10th season	2008-2016	2005-2007
Kyle Anderson	San Antonio Spurs	3rd season	2015-2016	2013-2014
Trevor Ariza	Houston Rockets	13th season	2005-2016	2004
Matt Barnes	Sacramento Kings	13th season	2004-2016	1999-2002
Darren Collison	Sacramento Kings	7th season	2010-2016	2006-2009
Jrue Holiday	New Orleans Pelicans	8th season	2010-2016	2009
Zach LaVine	Minnesota Timberwolves	3rd season	2015-2016	2014
Kevon Looney	Golden State Warriors	2nd season	2016-present	2015
Kevin Love	Cleveland Cavaliers	9th season	2009-2016	2008
Luc Richard Mbah a Moute	Los Angeles Clippers	9th season	2009-2016	2006-2008
Shabazz Muhammad	Minnesota Timberwolves	4th season	2014-2016	2013
Norman Powell	Toronto Raptors	2nd season	2016-present	2012-2015
Russell Westbrook	Oklahoma City Thunder	9th season	2009-2016	2007-2008

• Since 1948, UCLA has produced the second-most NBA draft selections (114) ... Kentucky tops that list with 121 draft picks. Trailing Kentucky and UCLA on the all-time list are North Carolina (110) and Duke (86) ... with 13 former players on NBA rosters, UCLA leads all Pac-12 programs in that category and ranks fifth, nationally ... last season, 16 Bruins competed in the NBA, including five players from UCLA's 2013-14 squad.

• Former UCLA standout Russell Westbrook earned MVP honors at the 2016 NBA All-Star Game (Feb. 14) for the second straight season ... Westbrook was selected to compete in his fifth career All-Star Game, making his first-ever start ... Westbrook concluded the regular season having averaged 23.5 points, 7.8 rebounds and 10.4 assists per game.

• Former UCLA guards stole the show at both NBA All-Star Weekends in 2015 (New York) and 2016 (Toronto) ... during each All-Star Weekend, Zach LaVine won the annual Slam Dunk Contest one night before Westbrook captured NBA All-Star Game Most Valuable Player (MVP) accolades.

• Seven UCLA players under head coach Steve Alford have advanced to the NBA. Four of those Bruins were first-round NBA draft picks (Zach LaVine, Jordan Adams, Kyle Anderson and Kevon Looney). In addition, Norman Powell was a second-round pick in 2015, while Travis Wear and David Wear joined NBA teams as undrafted free agents.

UCLA AND THE NBA

Matt Barnes entered the 2016-17 NBA season as the most veteran former UCLA player in the league (now in his 14th season). A second-round pick (No. 46 overall) by the Memphis Grizzlies in 2002, Barnes didn't make his NBA debut until Jan. 19, 2004, for the Los Angeles Clippers. He entered this season having played in 855 career NBA contests. UCLA's second-most veteran current NBA player is Trevor Ariza, who spent the 2003-04 campaign in Westwood as a freshman. Ariza enters 13th season in the league, his third consecutive year with the Houston Rockets.

AGAINST TOP-RANKED FOES

Since the start of the Bruins' 2015-16 campaign, UCLA has registered three wins over top-10 ranked teams. Last season, the Bruins defeated No. 1 Kentucky and No. 7 Arizona. Earlier this month, UCLA took down No. 1 Kentucky.

The last time that UCLA ...

Faced a top-10 team:	at No. 1 Kentucky	W, 97-92	Dec. 3, 2016
Faced a top-10 team at home:	vs. No. 9 Oregon	L, 76-68	March 2, 2016
Faced a top-10 team in a true road game:	at No. 1 Kentucky	W, 97-92	Dec. 3, 2016
Defeated a top-10 team:	vs. No. 7 Arizona	W, 87-84	Jan. 7, 2016
Defeated a top-10 team in a true road game:	at No. 1 Kentucky	W, 97-92	Dec. 3, 2016
Faced a top-10 non-conference team:	at No. 1 Kentucky	W, 97-92	Dec. 3, 2016
Faced a top-10 non-conference team at home:	vs. No. 1 Kentucky	W, 87-77	Dec. 3, 2015
Defeated a top-10 non-conference team:	at No. 1 Kentucky	W, 97-92	Dec. 3, 2016
Defeated a top-10 non-conference team at home:	vs. No. 1 Kentucky	W, 87-77	Dec. 3, 2015
Defeated a top-10 non-conference team (road/neutral):	at No. 1 Kentucky	W, 97-92	Dec. 3, 2016

AGAINST NUMBER ONE

UCLA has faced the nation's No. 1-ranked team five times since the start of the 2013-14 season. The Bruins defeated No. 1 Kentucky on Dec. 3, 2016, in their first-ever trip to Rupp Arena. Last season, UCLA downed No. 1 Kentucky, 87-77, in Pauley Pavilion on Dec. 3, 2015. Other recent games against No. 1 teams include versus Kentucky in Chicago (Dec. 20, 2014), at home against Arizona (Jan. 9, 2014) and in the NCAA Tournament's Sweet 16 against Florida (March 27, 2014). UCLA has gone 12-22 all-time against the Associated Press' No. 1-ranked team.

The Last Time ...	Date	Result	Score	Opponent	Venue
Played No. 1 team	12/03/2016	W	97-92	Kentucky	Rupp Arena
Defeated No. 1 team	12/03/2016	W	97-92	Kentucky	Rupp Arena
Defeated No. 1 team at home	12/03/2015	W	87-77	Kentucky	Pauley Pavilion
Defeated No. 1 team on road	12/03/2016	W	97-92	Kentucky	Rupp Arena

• Before registering back-to-back wins over No. 1 Kentucky in Dec. 2015 and Dec. 2016, UCLA had not downed the nation's top-ranked team in five previous tries. UCLA had last defeated the No. 1 team on March 13, 2003, upending Arizona, 96-89, in overtime in a first-round Pac-10 Tournament game. The Bruins were unable to get wins against top-ranked Stanford (Feb. 2004), Kansas (Dec. 2009), Arizona (Jan. 2014), Florida (March 2014) and Kentucky (Dec. 2014).

• UCLA's win at Kentucky on Dec. 3, 2016, marked the program's first victory in a true road game against the nation's top-ranked team since Feb. 3, 2001, when the Bruins defeated Stanford, 79-73, in Maples Pavilion. Since the start of the 1999-2000 season, UCLA has gone 6-8 against the nation's No. 1-ranked team.

• The Bruins have faced Kentucky in three consecutive seasons, with the Wildcats having been ranked No. 1 in each of those meetings (12/20/2014, 12/3/2015, 12/3/2016). UCLA's 97-92 win over Kentucky earlier this season marked the most point that any Kentucky team has surrendered under eighth-year head coach John Calipari.

• UCLA's win over Kentucky last season (Dec. 3, 2015), marked the program's first victory over a top-10 team (AP poll) since March 15, 2014, when the Bruins edged No. 4 Arizona, 75-71, in the Pac-12 Tournament title game. UCLA landed its first home win over the nation's No. 1 team since Jan. 12, 2002 (vs. No. 1 Kansas, 87-77).



Josh Lewin and Tracy Murray

UCLA BASKETBALL ON THE AIR

For the ninth straight season, UCLA men's basketball games will be produced by the UCLA Sports Network from IMG, with AM 570 Fox Sports LA in Los Angeles serving as the flagship station for the network. This is the 20th year of UCLA's partnership with AM 570 Fox Sports LA owner Clear Channel. Other stations on the UCLA Sports Network from IMG include KXEX (1550 AM) in Fresno and KSLK (96.1 FM) in Visalia.

In 2016-17, all 31 regular-season basketball games will be televised live. The Bruins will have at least 10 games broadcast by the ESPN family of networks. Six games will be televised by FOX Sports, and 12 will be carried by Pac-12 Networks. CBS will televise UCLA's game against Ohio State on Dec. 17 in Las Vegas and the Bruins' home game against Arizona on Jan. 21.

UCLA hired Josh Lewin as the program's new play-by-play voice in June 2016. He took over for Bill Roth, who was named to the position in April 2015. In addition to calling UCLA men's basketball and football games, Lewin is currently in his 12th season as the voice of the San Diego Chargers and recently completed his fifth season handling play-by-play duties for the New York Mets.

Lewin brings to Westwood over two decades of experience calling NFL, MLB, NHL and NCAA football and basketball contests. From 2002-2010, he was the television play-by-play broadcaster for the Texas Rangers and was a part of Fox's Saturday national baseball coverage including serving as the "dugout reporter" for the American League Championship Series and National League Championship Series.

Joining Lewin at his broadcast position will be Tracy Murray, who will begin his eighth season as an analyst. Murray, who played at UCLA from 1990-92 before enjoying a 12-year NBA career, spent the 2015-16 season as a shooting coach for the Los Angeles Lakers. He served as a radio analyst with UCLA from the 2007-08 season through the Bruins' 2014-15 campaign, working alongside Chris Roberts.

One of the most decorated players in UCLA basketball history, Murray currently ranks ninth on the program's all-time scoring list, having recorded 1,792 points in 98 career games. A three-year standout for the Bruins, Murray averaged 18.3 points and 6.4 rebounds per game while helping lead UCLA to three straight appearances in the NCAA Tournament – including a Sweet 16 trip in 1990 and an Elite Eight trip in 1992.

Murray, who starred at Glendora High School (Glendora, Calif.), was selected in the first round of the 1992 NBA Draft by the San Antonio Spurs following his junior season with the Bruins (1991-92).

Fans around the nation can also follow select UCLA games on SIRIUS and XM Satellite Radio. Broadcasts can be heard online by visiting www.uclabruins.com.

LISTEN WITH "TUNE IN"

UCLA men's basketball games can be heard at AM 570 or via the TuneIn Radio app, available free of charge by visiting www.tunein.com.

The TuneIn Radio app allows fans to listen to the world's sports, news, talk and music online and through mobile devices.

UCLA vs. RANKED TEAMS (AP poll)

Games spanning 12 seasons			Opp	UCLA
Date	Team	Score	Rank	Rank
12/03/16	Kentucky	W 97-92	1	11
03/02/16	Oregon	L 68-76	9	---
02/12/16	Arizona	L 75-81	17	---
01/07/16	Arizona	W 87-84	7	---
12/19/15	North Carolina	L 76-89	11	22
12/12/15	Gonzaga	W 71-66	20	---
12/03/15	Kentucky	W 87-77	1	---
11/24/15	Kansas	L 73-92	5	---
03/27/15	Gonzaga	L 62-74	7	---
03/19/15	SMU	W 60-59	20	---
03/13/15	Arizona	L 64-70	5	---
02/21/15	Arizona	L 47-57	7	---
01/29/15	Utah	W 69-59	11	---
01/04/15	Utah	L 39-71	10	---
12/20/14	Kentucky	L 44-83	1	---
12/13/14	Gonzaga	L 74-87	9	---
11/27/14	North Carolina	L 56-78	5	22
03/27/14	Florida	L 68-79	1	20
03/15/14	Arizona	W 75-71	4	---
01/16/14	Colorado	W 69-56	21	25
01/09/14	Arizona	L 75-79	1	---
12/19/13	Duke	L 63-80	8	---
03/15/13	Arizona	W 66-64	18	24
03/02/13	Arizona	W 74-69	11	---
01/24/13	Arizona	W 84-73	6	---
01/19/13	Oregon	L 67-76	21	24
12/28/12	Missouri	W 97-94 (OT)	7	---
12/01/12	San Diego State	L 69-78	23	24
11/23/11	Michigan	L 63-79	15	---
11/22/11	Kansas	L 56-72	14	---
03/19/11	Florida	L 65-73	15	---
02/26/11	Arizona	W 71-49	10	---
12/18/10	BYU	W 86-79	16	---
12/02/10	Kansas	L 76-77	4	---
11/24/10	Villanova	L 70-82	7	---
12/06/09	Kansas	L 61-73	1	---
11/27/09	Butler	L 67-69	12	---
03/21/09	Villanova	L 69-89	11	18
02/19/09	Washington	W 85-76	22	20
02/12/09	Arizona State	L 67-74	18	11
01/17/09	Arizona State	L 58-61 (OT)	16	9
12/04/08	Texas	L 64-68	8	12
04/05/08	Memphis	L 63-78	2	3
03/29/08	Xavier	W 76-57	12	3
03/15/08	Stanford	W 67-64	11	3
03/06/08	Stanford	W 77-67 (OT)	7	3
02/07/08	Washington St.	W 67-59	17	5
01/12/08	Washington St.	W 81-74	4	5
01/03/08	Stanford	W 76-67	20	5
12/02/07	Texas	L 61-63	8	2
11/20/07	Michigan State	W 68-63	10	2
03/31/07	Florida	L 66-76	3	7
03/24/07	Kansas	W 68-55	2	7
03/22/07	Pittsburgh	W 64-55	10	7
03/01/07	Washington St.	W 53-45	13	2
02/17/07	Arizona	W 81-66	19	5
02/07/07	USC	W 70-65	19	2
02/01/07	Oregon	W 69-57	9	5
01/20/07	Arizona	W 73-69	11	3
01/06/07	Oregon	L 66-68	16	1
12/31/06	Washington	W 96-74	13	1
12/09/06	Texas A&M	W 65-62	6	1
11/22/06	Georgia Tech	W 88-73	19	5
11/21/06	Kentucky	W 73-68	20	5
04/03/06	Florida	L 57-73	10	7
04/01/06	LSU	W 59-45	19	7
03/25/06	Memphis	W 50-45	4	7
03/23/06	Gonzaga	W 73-71	5	7
02/11/06	Washington	L 67-70	21	13
01/21/06	West Virginia	L 56-60	12	18
01/14/06	Washington	L 65-69	13	11
01/05/06	Arizona	W 85-79	21	17
12/10/05	Nevada	W 67-56	17	16
11/23/05	Memphis	L 80-88	11	16

Last season, the Bruins went 3-4 against teams ranked in that week's AP top 25 poll. This list also includes all postseason games versus ranked opponents. UCLA's seven regular-season games against top 25 ranked teams in 2015-16 marked the Bruins' highest such total since 2007-08 (which was also six).

POSITIONAL WATCH LISTS

Four of UCLA's players, including two freshmen, have been named to 20-man positional watch lists, as announced in October by the Naismith Memorial Basketball Hall of Fame. Below is a synopsis of UCLA's four "watch list" candidates.

BOB COUSY AWARD: 6-foot-6 freshman Lonzo Ball has been named to the Bob Cousy Award watch list. The Cousy Award is annually awarded to the nation's premier point guard.

JERRY WEST AWARD: Senior Isaac Hamilton, UCLA's leading returning scorer from last season, has been named to the watch list for the Jerry West Award, bestowed annually to the nation's top shooting guard.

KARL MALONE AWARD: 6-foot-10 freshman TJ Leaf, who excelled at Foothills Christian High School, is among 20 watch list candidates for the Karl Malone Award, annually presented to the nation's top power forward.

KAREEM ABDUL-JABBAR AWARD: 7-foot center Thomas Welsh, a junior from Redondo Beach, Calif., has been named as a watch list candidate for the Kareem Abdul-Jabbar Award, honoring the game's top center.

EXPERIENCED TRAVELERS

Over the course of the last four years, the UCLA basketball program has accrued plenty of mileage. Destinations away from the West Coast have included foreign trips to China (Aug. 2012) and Australia (Aug. 2016), the Battle 4 Atlantis tournament in the Bahamas (Nov. 2014), last season's Maui Invitational in Lahaina (Nov. 2015), three trips to New York City (2012, 2013 and 2015), a trip to Chicago (Nov. 2014) and postseason games in Austin, Texas (March 2013), San Diego (March 2014), Memphis, Tenn. (March 2014), Louisville, Ky. (March 2015) and Houston, Texas (March 2015).

TRAVELING TO CHINA: UCLA will open its 2017-18 season against Georgia Tech in Shanghai, China, as announced on Nov. 11, 2016, by the Pac-12 Conference. UCLA and Georgia Tech will face off in the 2017 Pac-12 China Game. The Bruins traveled to China for a six-day Pac-12 goodwill tour from Aug. 23-29, 2012.

BRUINS DOWN UNDER

UCLA spent 10 full days in Australia in August 2016, going 2-1 in three preseason games (NCAA rules allow college programs to take a foreign trip once every four years). The Bruins spent four days in Sydney, three in Melbourne and three in Gold Coast before returning to Los Angeles the morning of Aug. 31. UCLA cruised past Sydney University, 123-76, in its first game. The Bruins followed with two games against professional teams in Australia's National Basketball League (NBL), losing to the Melbourne United (89-84) and defeating the Brisbane Bullets (94-91).

OVERSEAS HIGHLIGHTS: Among several off-the-court highlights for UCLA while in Australia included a tour of the Sydney Opera House, hiking to the top of the Sydney Harbour Bridge, a one-hour bike tour in Melbourne and a group surfing lesson in Surfer's Paradise, located in Gold Coast (nearly one hour south of Brisbane).

UCLA SIGNS FIVE HIGH SCHOOL STANDOUTS FOR 2017

Bruins recruiting class currently ranked No. 2 by ESPN.com, Scout.com and Rivals.com

UCLA signed five high school seniors – Li'Angelo Ball, Jaylen Hands, Jalen Hill, Cody Riley and Kris Wilkes – to National Letters of Intent during the early signing period. These five players will enroll at UCLA in 2017 and be freshmen in 2017-18.

LI'ANGELO BALL

A 6-foot-6, 240-pound guard at Chino Hills High School (Chino Hills, Calif.), Li'Angelo Ball averaged a team-leading 27.4 points per game as a junior (2015-16) ... he played alongside his older brother, Lonzo Ball (currently a freshman at UCLA), during his first three years of high school ... helped Chino Hills post a perfect 35-0 record during his junior season, culminating in the 2016 CIF State Open Division Championship ... Chino Hills defeated De La Salle (Concord, Calif.), 70-50, in the title game ... his Chino Hills team in 2015-16 scored at least 100 points in 18 games ... as a junior (2015-16), was named to the Los Angeles Times' All-Star boys basketball team ... as a sophomore (2014-15), helped guide Chino Hills to the CIF Division I state title game.

JAYLEN HANDS

A 6-foot-3, 170-pound guard at Foothills Christian High School (El Cajon, Calif.), Jaylen Hands has been ranked the No. 26 player in his high school class by Rivals.com ... he was also rated No. 27 by Scout.com and No. 31 by ESPN.com ... spent his first two seasons of high school at Mater Dei Catholic High School (Chula Vista, Calif.) ... was named the Most Valuable Player of the 2016 adidas Nations tournament last summer, leading his team to the tournament title with an 18-point performance in a game nationally televised by ESPNU ... as a sophomore (2014-15), secured San Diego Metro League Player of the Year honors ... also was named a first-team CIF All-San Diego Section honoree, a first-team CIF All-State selection and a first-team All-Trinity League selection ... as a freshman in 2013-14, earned second-team All-Trinity League acclaim in leading his high school team to the CIF San Diego Section title ... led Mater Dei Catholic to back-to-back Trinity League championships.

JALEN HILL

A 6-foot-8 forward from Corona, Calif., Jalen Hill has been ranked the No. 50 player in his high school class, nationally, by ESPN.com ... also has been listed as the No. 61 player by Rivals.com and the No. 87 player by Scout.com ... plays at Centennial High School in Corona (during his previous two

seasons, Hill played alongside current UCLA freshman Ike Anigbogwu) ... as a junior (2015-16), Hill averaged 13.3 points and 8.8 rebounds per game ... as a sophomore (2014-15), he led Centennial to a 26-6 record and the CIF Southern Section Regional title ... posted season averages of 6.5 ppg, 5.8 rpg and 1.3 bpg ... as a freshman (2013-14), Hill helped Centennial to a 29-4 record, including the Big VIII League title and a runner-up finish in the CIF Southern Section Division I playoffs ... while competing for USA Basketball, helped lead Team USA to the 2015 FIBA Americas U-16 Championship.

CODY RILEY

A 6-foot-8 forward from Chatsworth, Calif., Cody Riley is currently a senior at Sierra Canyon High School ... he has been ranked as high as No. 30, nationally, in his high school class by Scout.com ... also has been listed No. 34 by Rivals.com and No. 45 by ESPN.com ... has twice earned first-team All-Area honors from Los Angeles Daily News (2015, 2016), in addition to securing third-team All-State acclaim from Cal-Hi Sports ... during his junior season, Sierra Canyon lost in the CIF Southern Section Open Division final to eventual state champion Chino Hills High School ... has been a three-time CIF Southern Section Division V John Wooden Award winner (high school player of the year) ... in his first three high school seasons, guided his teams to a perfect 30-0 mark in league games ... as a junior (2015-16), averaged 12.5 points, 7.9 rebounds and 1.8 blocks per game at Sierra Canyon High School ... led Sierra Canyon to a 26-5 overall record and a 10-0 mark in league play during his junior campaign ... as a sophomore (2014-15), registered 15.6 points and 9.4 rebounds per game, leading his high school program to a 26-4 overall record and a 10-0 mark in league games ... as a freshman (2013-14), logged 14.5 ppg and 7.7 rpg.

KRIS WILKES

A 6-foot-8 guard from Indianapolis, Ind., Kris Wilkes has been ranked by Scout.com as the nation's No. 4 power forward in his high school class ... Wilkes has also been tabbed as the No. 1 player in the state of Indiana this year by the Indianapolis Star ... he was listed as one of six Indy Star Indiana Junior All-Stars in March 2016, as selected through votes from the Indiana Basketball Coaches Association ... averaged 22.6 points and 5.6 rebounds per game at North Central High School during his junior season (2015-16) ... in addition, Wilkes has been ranked No. 14, nationally, in his high school class by ESPN.com and No. 18 by both Scout.com and Rivals.com.

HEAD COACH STEVE ALFORD'S YEAR-BY-YEAR TOTALS

Year	School	Record	Pct.	League	Pct.	Postseason
1991-92	Manchester College	4-16	.200	3-11	.214	---
1992-93	Manchester College	20-8	.714	7-5	.583	NCAA Division III (0-1)
1993-94	Manchester College	23-4	.852	10-2	.833	NCAA Division III (0-1)
1994-95	Manchester College	31-1	.969	12-0	1.000	NCAA Division III (3-1), National Runner-up
1995-96	Missouri State	16-12	.571	11-7	.611	---
1996-97	Missouri State	24-9	.727	12-6	.667	NIT (0-1)
1997-98	Missouri State	16-16	.500	11-7	.611	---
1998-99	Missouri State	22-11	.667	11-7	.611	NCAA (2-1)
1999-00	Iowa	14-16	.467	6-10	.375	---
2000-01	Iowa	23-12	.657	7-9	.438	NCAA (1-1), Big Ten Tournament Champs
2001-02	Iowa	19-16	.543	5-11	.313	NIT (0-1)
2002-03	Iowa	17-14	.548	7-9	.438	NIT (2-1)
2003-04	Iowa	16-13	.552	9-7	.563	NIT (0-1)
2004-05	Iowa	21-12	.636	7-9	.438	NCAA (0-1)
2005-06	Iowa	25-9	.735	11-5	.688	NCAA (0-1), Big Ten Tournament Champs
2006-07	Iowa	17-14	.548	9-7	.563	---
2007-08	New Mexico	24-9	.727	11-5	.688	NIT (0-1)
2008-09	New Mexico	22-12	.647	12-4	.750	NIT (1-1)
2009-10	New Mexico	30-5	.857	14-2	.875	NCAA (1-1)
2010-11	New Mexico	22-13	.629	8-8	.500	NIT (1-1)
2011-12	New Mexico	28-7	.800	10-4	.714	NCAA (1-1), MWC Tournament Champs
2012-13	New Mexico	29-6	.829	13-3	.813	NCAA (0-1), MWC Tournament Champs
2013-14	UCLA	28-9	.757	12-6	.667	NCAA (2-1), Pac-12 Tournament Champs
2014-15	UCLA	22-14	.611	11-7	.611	NCAA (2-1)
2015-16	UCLA	15-17	.469	6-12	.333	---
2016-17	UCLA	12-0	1.000	0-0	.000	---
4 seasons at Manchester College		78-29	.729	32-18	.640	3 NCAA D-III Tournaments
4 seasons at Missouri State		78-48	.619	45-27	.625	1 NCAA Tournament, 1 Sweet 16
8 seasons at Iowa		152-106	.589	61-67	.477	3 NCAA Tournaments
6 seasons at New Mexico		155-52	.749	68-26	.723	3 NCAA Tournaments
4th season at UCLA		77-40	.658	29-25	.537	2 NCAA Tournaments, 2 Sweet 16s
26th SEASON OVERALL		540-275	.663	235-163	.590	12 NCAA Tournaments

NOTES ON UCLA HEAD COACH STEVE ALFORD

- Leads all coaches, age 52 and under, in career NCAA victories with 540 (Steve Alford turned 52 on Nov. 23, 2016) ... entered the 2016-17 season with a 528-275 record in 25 years and a 450-246 record at the NCAA Division I level the past 21 seasons ... has averaged 24.4 wins per season the previous nine years (2007-08 through 2015-16).
- In his first season as UCLA's head coach (2013-14), he steered the Bruins to a 28-9 overall record, a trip to the NCAA Tournament's Sweet 16 and the Pac-12 Tournament title ... in 2014-15, he guided UCLA back to the NCAA Tournament's Sweet 16 after having advanced to the Pac-12 Tournament semifinals.
- While in Albuquerque, helped New Mexico secure four MWC regular-season championships and two tournament titles ... coached the Lobos to its two highest single-season victory totals (30 wins in 2009-10, 29 wins in 2012-13).
- Only head coach in school history at Iowa to have led the Hawkeyes to the Big Ten Tournament's title game (accomplishing that feat in 2001, 2002 and 2006) ... led Iowa to the Big Ten Tournament Championship in 2001 and 2006 ... established a school-record seven consecutive winning seasons at Iowa (2001-2007).
- Guided Missouri State (then named Southwest Missouri State) to its only appearance in the NCAA Tournament's "Sweet 16" in 1999 ... took over as head coach at Missouri State in the summer of 1995 at age 31 after having led Manchester College to the NCAA Division III championship game in March 1995.

HEAD COACH STEVE ALFORD



Record at UCLA
77-40 (4th season)

Overall Record
540-275 (26th season)

Steve Alford enters his 26th season as a collegiate head coach in 2016-17. In his first two seasons at UCLA, he led the Bruins to two Sweet 16 appearances (2014, 2015) and one Pac-12 Tournament crown (2014).

ELITE COMPANY

Steve Alford is one of 12 head coaches to have led at least four NCAA Division I programs to the NCAA Tournament (Missouri State, Iowa, New Mexico and UCLA). His UCLA teams advanced to the Sweet 16 of the NCAA Tournament in 2014 and 2015. In 2014, he became UCLA's first head coach to lead the Bruins to the Pac-12 Tournament title in his first year as head coach.

The other 11 coaches to have led at least four NCAA Division I teams to the NCAA Tournament include John Beilein, Lefty Driesell, Cliff Ellis, Larry Eustachy, Jim Harrick, Lon Kruger, Fran McCaffery, Tom Penders, Rick Pitino, Tubby Smith and Eddie Sutton. Eight of those 11 coaches are active head coaches.

Of the 12 coaches who have led four different schools to the NCAA Division I Tournament, only five have won at least one game at all four schools. Lon Kruger has won at least one game at five schools.

Steve Alford

Missouri State, Iowa, New Mexico, UCLA

Jim Harrick

Pepperdine, UCLA, Rhode Island, Georgia

Lon Kruger

Kansas State, Florida, Illinois, UNLV, Oklahoma

Tubby Smith

Tulsa, Georgia, Kentucky, Minnesota

Eddie Sutton

Creighton, Arkansas, Kentucky, Oklahoma State

Steve Alford's Career Records vs. NCAA D-I Opponents

Air Force	15-1	Dayton	1-1	Indiana State	8-2	Nebraska	2-0	Sacramento State	1-0	UAB	2-0
Alabama	1-3	Detroit Mercy	2-0	Iowa State	5-4	Nevada	3-0	Saint Louis	6-3	UC Riverside	3-0
Alabama State	1-0	Drake	14-2	Kansas	1-1	New Mexico State	10-2	San Diego	6-0	UC Santa Barbara	2-0
Arizona	2-4	Drexel	1-0	Kentucky	3-2	New Orleans	1-0	San Diego State	7-8	UMKC (Missouri-Kansas City)	2-0
Arizona State	6-2	Duke	0-3	Liberty	1-0	Nicholls State	2-0	Santa Clara	1-0	UNC Asheville	1-0
Boise State	4-0	Duquesne	1-0	Long Beach State	6-0	North Carolina	0-3	SMU	1-0	UNC Charlotte	0-1
Boston College	1-0	East Carolina	0-1	Longwood	1-0	North Dakota	1-0	South Dakota State	0-1	UNC Greensboro	1-0
Boston University	1-0	Eastern Illinois	2-0	Louisiana Tech	3-0	Northern Arizona	1-0	Southeast Missouri State	2-0	UNC Wilmington	1-0
Bowling Green	2-0	Eastern Washington	2-0	Louisiana-Lafayette	2-1	Northern Illinois	1-0	Southern Illinois	6-2	UNLV	8-7
Bradley	6-5	Evansville	3-6	Louisville	2-1	Northern Iowa	11-6	Southern Methodist	1-0	USC	7-3
Butler	1-1	Fairfield	1-0	Loyola Marymount	1-0	Northwestern	8-6	Southern Mississippi	2-0	Utah	7-7
BYU	5-4	Florida	0-1	LSU	0-1	Northwestern State	2-1	Southern Utah	1-0	Valparaiso	3-0
Cal Poly	1-0	Florida Atlantic	1-0	Maryland	0-1	Northwood	1-0	St. Bonaventure	1-0	VCU	0-1
Cal State Bakersfield	1-0	Kansas	1-3	Maryland Eastern Shore	2-0	Notre Dame	0-1	Stanford	4-4	Villanova	0-1
Cal State Fullerton	1-0	Florida State	0-1	McNeese State	1-0	Oakland	1-0	Stephen F. Austin	2-0	Virginia Tech	0-1
California	4-4	Fresno State	3-0	Memphis	1-0	Ohio	1-0	TCU	8-4	Wake Forest	0-1
Centenary	2-0	George Mason	1-0	Mercer	2-0	Ohio State	9-8	Tennessee	1-1	Washington	2-3
Central Florida	0-1	Georgia State	1-0	Miami (Ohio)	1-0	Oklahoma	0-1	Tennessee State	1-0	Washington State	3-2
Chattanooga	2-0	Georgia Tech	1-1	Michigan	7-7	Oklahoma State	1-0	Tennessee-Martin	1-0	Weber State	2-0
Cincinnati	1-2	Gonzaga	1-2	Michigan State	6-9	Oral Roberts	1-1	Texas	1-1	Western Carolina	1-0
Coastal Carolina	1-0	Grambling State	1-0	Minnesota	11-5	Oregon	3-4	Texas A&M	2-0	Western Illinois	1-0
Colgate	1-0	Harvard	0-1	Mississippi	1-1	Oregon State	4-3	Texas El Paso	2-1	Wichita State	5-3
Colorado	6-1	Hawaii	3-0	Mississippi State	0-1	Pacific	1-0	Texas Pan American	2-0	Wisconsin	5-12
Colorado State	10-2	Houston Baptist	1-0	Missouri	3-5	Penn State	11-4	Texas San Antonio	2-0	Wisconsin Green Bay	1-0
Connecticut	2-0	Idaho	2-1	Missouri State	1-0	Pepperdine	1-0	Texas Southern	3-0	Wisconsin Milwaukee	1-0
Coppin State	1-0	Idaho State	1-0	Monmouth	0-1	Portland	2-0	Texas Tech	4-4	Wyoming	12-2
Cornell	1-0	Illinois	4-10	Montana	1-0	Prairie View A&M	1-0	The Citadel	2-0		
Creighton	8-7	Illinois Chicago	1-0	Montana State	3-0	Presbyterian	1-0	Toledo	1-0		
CSUN	3-0	Illinois State	4-6	Morehead State	2-0	Purdue	9-6	Troy State	1-0		
Davidson	1-0	Indiana	8-7	N.C. State	1-1	Robert Morris	1-0	Tulsa	4-1		

ABOUT UCLA'S COACHING STAFF

Duane Broussard

Alma Mater: Bradley '93

Assistant Coach, 4th season at UCLA



• Currently in his fourth season on UCLA's coaching staff ... spent 10 seasons working with the men's basketball program at the University of New Mexico prior to his arrival in Westwood ... is the only member of this coaching staff who worked with Steve Alford at the University of New Mexico.

• Entering his ninth season working alongside Steve Alford, Broussard has helped UCLA post a 65-40 record the previous three seasons ... led the Bruins to consecutive Sweet 16 trips (2014, 2015) ... through 22 previous years on college staffs, his teams have gone 447-253 (.639 win percentage).

• UNM posted a .655 win percentage in his 10 seasons on staff ... in his final two years, the Lobos won the Mountain West Conference's regular-season and tournament titles (combined 57-13 record).

• While at UCLA and New Mexico, he has been responsible for nine NBA Draft selections (eight first-round picks) ... at UCLA: Zach LaVine (2014), Jordan Adams (2014), Kyle Anderson (2014), Kevon Looney (2015) and Norman Powell (2015) ... at New Mexico: Danny Granger (2005), J.R. Giddens (2008), Darrington Hobson (2010) and Tony Snell (2013).

• Served on the men's basketball staff at Bradley University (Peoria, Ill.) for nine seasons, working as an assistant coach the final six years (1997-2002) under head coach Jim Molinari ... was a four-year basketball letterwinner at Bradley from 1990-93 ... graduated from Bradley in 1993 with degrees in criminal justice and sociology ... continued his education by earning a master's degree in public service administration from Bradley in 1997.



Ed Schilling

Alma Mater: Miami (Ohio) '88

Assistant Coach, 4th season at UCLA

• Now in his fourth season on the Bruins' coaching staff after an extensive career working with NBA, NCAA Division I and high school programs ... in his first two seasons at UCLA, helped send seven players to the NBA (including four first-round NBA Draft selections).

• Through three seasons at UCLA, has helped guide the Bruins to a 65-40 overall record, including back-to-back trips to the Sweet 16 in 2014 and 2015.

• Prior to arriving at UCLA in April 2013, Schilling spent the previous four years as head coach at Park Tudor High School (Indiana) in addition to specializing in individual skills development programs with NBA players (St. Vincent's Sports Performance and its NBA readiness program) ... he also worked with Adidas Nations and Champions Academy.

• Pre-draft preparation with the St. Vincent's Sports Performance program included working with No. 1 NBA Draft selection Greg Oden, Mike Conley, Mario Chalmers, Gordon Hayward, Jeff Teague, Marquis Teague, Carl Landry and many others.

• Served as head coach at Wright State from 1997-2003 ... was an assistant coach under John Calipari at Memphis in 2003-04 and 2004-05 ... also worked with Coach Calipari with the New Jersey Nets in 1996-97 and at the University of Massachusetts (Amherst) on the Minutemen's NCAA Final Four team in 1995-96.

• When John Calipari was named the New Jersey Nets' VP of Basketball Operations and basketball coach in 1996-97, Schilling joined him as an assistant coach ... Schilling's rise in the coaching profession was chronicled in Sports Illustrated, as he became the only coach to advance from the high school coaching ranks to the Final Four and then to the bench of an NBA team in a period of 310 days.



David Grace

Alma Mater: Park University '03

Assistant Coach, 4th season at UCLA

• Joined the staff in April 2013 after five seasons as an assistant coach at Oregon State ... has helped lead UCLA to a 65-40 mark in three seasons at UCLA.

• Played a major role in UCLA advancing to the Sweet 16 in 2014 and 2015 ... helped UCLA's program secure an incoming class in 2014-15 rated as high as No. 3, nationally (by Scout.com) ... during his two years on staff at UCLA, seven Bruins have advanced to the NBA.

• At Oregon State, Grace established himself as one of the Pac-12's top recruiters ... in five seasons at OSU, helped lead the program to their most wins (78) since 1988 to 1992.

• Grace proved instrumental in recruiting Roberto Nelson and Joe Burton from southern California to Oregon State ... Nelson led the Pac-12 in scoring in conference games in 2012-13 and was conference's leading scorer in 2013-14 ... Burton served as team captain during his senior year (2012-13) and produced over 1,000 career points, 700 rebounds and 300 assists over four seasons.

• A decorated military veteran who served in Operation Desert Storm, Grace quickly rose through the high school and college coaching ranks prior to his arrival at Oregon State ... has played, coached and refereed basketball games across America and on three continents ... broke into the NCAA Division I coaching ranks at Sacramento State in 2006-07 before serving as an assistant coach at the University of San Francisco.

• Worked as a high school teacher and head coach in Arizona in the mid-2000s after having served 20 years in the United States' Air Force ... has degrees in logistical and social services from the Air Force and earned his bachelor's of science degree in management and human resources from Park University in 2003 ... began coaching basketball with Boo Williams' AAU program in Hampton, Virginia in 2003.



Tyus Edney

Alma Mater: UCLA '97

Director of Operations, 7th season at UCLA

• Among the all-time great point guards at UCLA, Edney is now in his seventh season as the program's director of operations ... serves as a liaison to the athletic administration and other school officials in his current role and handles day-to-day operational duties.

• As a four-year letterwinner, Edney led UCLA to the 1995 NCAA title as a senior ... one of the nation's top point guards, he enjoyed a tremendous career in Westwood from 1992-95.

• After his collegiate career concluded, he played four seasons in the NBA (1996-98, 2001) and spent nearly 10 years playing internationally in Europe ... at UCLA, Edney was a three-time first-team All-Pac-10 selection ... in UCLA's career record book, he still ranks second all-time on the assists list (652).

MISCELLANEOUS STATS

CAREER TOTALS (alphabetical by class)

PLAYER	GP	PTS	REB	AST
Bryce Alford	117	1555	331	478
Isaac Hamilton	80	1126	304	262
Jerrold Smith	14	5	1	2
György G.G. Golomán	61	132	136	34
Ikenna Okwarabizie	14	1	10	0
Thomas Welsh	76	586	486	32
Alec Wulff	15	12	1	3
Prince Ali	29	113	31	11
Aaron Holiday	44	504	133	176
Alex Olesinski	23	28	46	4
Ike Anigbogu	7	34	29	4
Lonzo Ball	12	171	71	104
TJ Leaf	12	214	111	36
Isaac Wulff	4	5	2	0

PLAYER	GAMES PLAYED		STARTS	
	16-17	CAREER	16-17	CAREER
Bryce Alford	12	117	12	81
Prince Ali	0	29	0	0
Ike Anigbogu	7	7	0	0
Lonzo Ball	12	12	12	12
György G.G. Golomán	11	61	3	3
Isaac Hamilton	12	80	12	80
Aaron Holiday	12	44	0	32
TJ Leaf	12	12	12	12
Ikenna Okwarabizie	7	14	0	0
Alex Olesinski	0	23	0	0
Jerrold Smith	6	14	0	0
Thomas Welsh	9	76	9	38
Alec Wulff	6	15	0	0
Isaac Wulff	4	4	0	0

PLAYER	DOUBLE-FIGURE POINTS		REBOUNDS	
	16-17	CAREER	16-17	CAREER
Ike Anigbogu	0	0	0	0
Bryce Alford	11	79	0	0
Prince Ali	0	3	0	0
Lonzo Ball	10	10	1	1
György G.G. Golomán	1	1	0	0
Isaac Hamilton	12	72	0	2
Aaron Holiday	10	30	0	0
TJ Leaf	12	12	5	5
Thomas Welsh	7	29	5	17

DOUBLE-DOUBLES

PLAYER	2016-17	CAREER
Thomas Welsh	5	15
Lonzo Ball &	5	5
TJ Leaf	5	5
Isaac Hamilton ^	0	3
Bryce Alford *	0	3

& four are point-assist double-doubles

* three point-assist double-doubles

^ one point-assist double-double

30+ POINTS

PLAYER	2016-17	CAREER
Bryce Alford	1	3
Isaac Hamilton	0	1

20+ POINTS

PLAYER	2016-17	CAREER
Bryce Alford	3	22
Isaac Hamilton	2	15
TJ Leaf	5	5
Thomas Welsh	0	3
Aaron Holiday	2	2
Lonzo Ball	1	1

10+ ASSISTS

PLAYER	2016-17	CAREER
Lonzo Ball	5	5
Bryce Alford	0	4
Isaac Hamilton	0	1

2016-17 UCLA RADIO/TV ROSTER



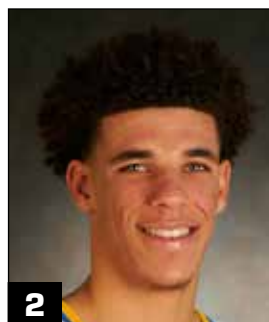
0

Alex Olesinski

SO, F - 6-10, 200

PPG: -- RPG: --

GP/GS: --/--



2

Lonzo Ball

FR, G - 6-6, 190

PPG: 14.3 RPG: 5.9 APG: 8.6

GP/GS: 12/12



3

Aaron Holiday

SO, G - 6-1, 185

PPG: 15.9 RPG: 2.5 APG: 4.1

GP/GS: 12/0



4

Isaac Wulff

FR, G - 6-3, 175

PPG: 1.3 RPG: 0.5

GP/GS: 4/0



5

Armani Dodson

FR, G - 6-5, 190

PPG: -- RPG: --

GP/GS: --/--



10

Isaac Hamilton

SR, G - 6-5, 195

PPG: 17.3 RPG: 3.9 APG: 3.3

GP/GS: 12/12



13

Ike Anigbogu

FR, F/C - 6-10, 250

PPG: 4.9 RPG: 4.1

GP/GS: 7/0



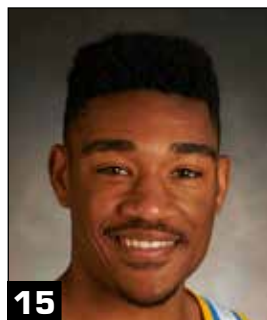
14

György "G.G." Golomán

JR, F - 6-11, 215

PPG: 5.1 RPG: 3.8

GP/GS: 11/3



15

Jerrold Smith

SR, G - 6-0, 165

PPG: 0.8 RPG: 0.0

GP/GS: 6/0



20

Bryce Alford

SR, G - 6-3, 185

PPG: 15.9 RPG: 2.5

GP/GS: 12/12



21

Alec Wulff

JR, G - 6-3, 185

PPG: 1.0 RPG: 0.2

GP/GS: 6/0



22

TJ Leaf

FR, F - 6-10, 225

PPG: 17.8 RPG: 9.3 APG: 3.0

GP/GS: 12/12



23

Prince Ali

SO, G - 6-3, 190

PPG: -- RPG: --

GP/GS: --/--



34

Ikenna Okwarabizie

JR, C - 6-9, 250

PPG: 0.1 RPG: 0.9

GP/GS: 7/0



40

Thomas Welsh

JR, C - 7-0, 245

PPG: 11.1 RPG: 9.6

GP/GS: 9/9



Steve Alford

Head Coach

4th Year at UCLA

26th Year Overall



Duane Broussard

Assistant Coach

4th Year at UCLA



Ed Schilling

Assistant Coach

4th Year at UCLA



David Grace

Assistant Coach

4th Year at UCLA



Tyus Edney

Director of Operations

7th Year at UCLA

PAC-12 CONFERENCE

2016-17 Pac-12 Standings (thru 12/19)

Team	Pac-12	Pct.	GB	Overall	Pct.
UCLA	0-0	.000	---	12-0	1.000
USC	0-0	.000	----	10-0	1.000
Arizona	0-0	.000	----	10-2	.833
Oregon	0-0	.000	----	10-2	.833
California	0-0	.000	----	9-2	.818
Utah	0-0	.000	----	7-2	.778
Colorado	0-0	.000	----	8-3	.727
Stanford	0-0	.000	----	7-3	.700
Arizona State	0-0	.000	----	6-5	.545
Washington State	0-0	.000	----	6-5	.545
Washington	0-0	.000	----	5-5	.500
Oregon State	0-0	.000	----	3-9	.250

2015-16 Final Pac-12 Standings

Team	Pac-12	Pct.	GB	Overall	Pct.
Oregon	14-4	.778	----	31-7	.816
Utah	13-5	.722	1.0	27-9	.750
California	12-6	.667	2.0	25-9	.735
Arizona	12-6	.667	2.0	23-11	.676
Colorado	10-8	.556	4.0	22-12	.647
Oregon State	9-9	.500	5.0	19-13	.594
USC	9-9	.500	5.0	21-13	.618
Washington	9-9	.500	5.0	19-15	.559
Stanford	8-10	.444	6.0	15-15	.500
UCLA	6-12	.333	8.0	15-17	.469
Arizona State	5-13	.278	9.0	15-17	.469
Washington State	1-17	.056	13.0	9-22	.290

Pac-12 Scoreboard

Wednesday, Dec. 14

at UCLA 102, UC Santa Barbara 62

at Arizona 64, Grand Canyon 54

Friday, Dec. 16

at Stanford 79, Cal State East Bay 55

Long Beach State 71, Oregon State 67 ^{POR}

Saturday, Dec. 17

Arizona 67, Texas A&M 63 ^{LONE}

at Colorado 81, Fort Hays State 71

UCLA 86, Ohio State 73 ^{LV}

at Washington State 69, Santa Clara 68

at Utah 92, Prairie View A&M 60

at California 81, Cal Poly 55

New Mexico State 81, at Arizona State 70

at USC 82, Troy 77

at Oregon 83, UNLV 63

Sunday, Dec. 18

Portland 53, Oregon State 45 ^{POR}

at Washington 92, Western Michigan 86

Upcoming Pac-12 Games

Monday, Dec. 19

Colorado at Air Force (CBS-SN) 6 p.m.

Stanford at SMU (ESPN2) 6 p.m.

Cornell at USC (P12N) 7:30 p.m.

Tuesday, Dec. 20

New Mexico at Arizona (P12N) 6 p.m.

Crieghton at Arizona State (ESPN2) 6 p.m.

Fresno State at Oregon (P12N) 8 p.m.

Cal Poly at Washington (P12N) 8 p.m.

Wednesday, Dec. 21

Sacramento State at Washington State (P12N) 6 p.m.

Virginia at California (ESPN2) 7 p.m.

Kent State at Oregon State (ESPNU) 8 p.m.

Western Michigan at UCLA (P12N) 8 p.m.

Thursday, Dec. 22

Central Arkansas at Arizona State (P12N) 12 p.m.

Eastern Washington at Colorado (P12N) 5:30 p.m.

Washington at Seattle 7 p.m.

Idaho at Stanford (P12N) 7:30 p.m.

San Francisco at Utah (P12N) 8 p.m.

Missouri State at USC (FS1) 8 p.m.

(LONE) Lone Star Shootout at the Toyota Center (Houston)

(LV) CBS Sports Classic at T-Mobile Arena (Las Vegas)

(POR) Dam City Classic in Portland, Ore.

Game times listed are Pacific.

UCLA'S RECORD WHEN ...

UCLA leads at halftime	10-0
UCLA trails at halftime	0-1
Tied at halftime	1-0

UCLA builds a 10-point lead	11-0
UCLA trails by 10 points	0-0
UCLA leads with five minutes left	12-0
UCLA trails with five minutes left	0-0
There is a tie with five minutes left	0-0
UCLA leads with one minute left	12-0
UCLA trails with one minute left	0-0
There is a tie with one minute left	0-0

UCLA shoots better from the field	11-0
UCLA shoots worse from the field	1-0
UCLA shoots the same from the field	0-0

UCLA shoots 50% or better from the field	9-0
UCLA shoots less than 50% from the field	2-0
OPP shoots 50% or better from the field	2-0
OPP shoots less than 50% from the field	10-0

UCLA makes more 3-point field goals	9-0
UCLA makes fewer 3-point field goals	1-0
Three-point field goals are the same	2-0

UCLA shoots better from 3-point range	10-0
UCLA shoots worse from 3-point range	2-0
UCLA shoots the same from 3-point range	0-0

UCLA shoots > than 40% from 3-point range	7-0
UCLA shoots < than 40% from 3-point range	4-0
OPP shoots > than 40% from 3-point range	3-0
OPP shoots < than 40% from 3-point range	9-0

UCLA makes the same or more free throws	8-0
UCLA makes less free throws	4-0
UCLA attempts the same or more FTs	7-0
UCLA attempts less free throws	5-0

UCLA shoots > than 75% at free-throw line	6-0
UCLA shoots < than 75% at free-throw line	6-0
OPP shoots > than 75% at free-throw line	4-0
OPP shoots < than 75% at free-throw line	8-0

UCLA outrebounds opponent	10-0
UCLA is outrebounded by opponent	1-0
Rebounds are the same	1-0

UCLA has more offensive rebounds	2-0
UCLA has fewer offensive rebounds	9-0
Offensive rebounds are the same	1-0

UCLA has more defensive rebounds	12-0
UCLA has fewer defensive rebounds	0-0
Defensive rebounds are the same	0-0

UCLA commits more fouls	4-0
UCLA commits fewer fouls	8-0
Fouls are the same	0-0

UCLA has more assists	12-0
UCLA has fewer assists	0-0
Assists are the same	0-0

UCLA commits more turnovers	5-0
UCLA commits fewer turnovers	5-0
Turnovers are the same	2-0

UCLA has more blocks	9-0
UCLA has fewer blocks	1-0
Blocks are the same	2-0

UCLA has more steals	6-0
UCLA has fewer steals	6-0
Steals are the same	0-0

UCLA's starting frontline outscores OPP's	10-0
OPP's starting frontline outscores UCLA's	2-0
Frontline scoring is the same	0-0

UCLA's starting backcourt outscores OPP's	10-0
OPP's starting backcourt outscores UCLA's	1-0
Backcourt scoring is the same	1-0

UCLA's bench outscores OPP's bench	7-0
OPP's bench outscores UCLA's bench	4-0
Bench scoring is the same	1-0

Record on Mondays	0-0
Record on Tuesdays	0-0
Record on Wednesdays	2-0
Record on Thursdays	2-0
Record on Fridays	2-0
Record on Saturdays	3-0
Record on Sundays	3-0

Record in November	8-0
Record in December	4-0
Record in January	0-0
Record in February	0-0
Record in March	0-0

UCLA scores first	9-0
OPP scores first	3-0

UCLA scores fewer than 60 points	0-0
UCLA scores between 60-69 points	0-0
UCLA scores between 70-79 points	1-0
UCLA scores between 80-89 points	3-0
UCLA scores between 90-99 points	3-0
UCLA scores 100 or more points	5-0

OPP scores 100 or more points	0-0
OPP scores between 90-99 points	1-0
OPP scores between 80-89 points	3-0
OPP scores between 70-79 points	4-0
OPP scores between 60-69 points	3-0
OPP scores fewer than 60 points	1-0

The game is decided by 1-2 points	0-0
The game is decided by 3-4 points	0-0
The game is decided by 5-6 points	1-0
The game is decided by 7-9 points	1-0
The game is decided by 10-19 points	4-0
The game is decided by 20-plus points	6-0

UCLA has one double-figure scorer	0-0
UCLA has two double-figure scorers	0-0
UCLA has three double-figure scorers	0-0
UCLA has four double-figure scorers	3-0
UCLA has five double-figure scorers	4-0
UCLA has six double-figure scorers	4-0
UCLA has seven double-figure scorers	1-0

OPP has zero double-figure scorers	0-0
OPP has one double-figure scorer	0-0
OPP has two double-figure scorers	2-0
OPP has three double-figure scorers	4-0
OPP has four double-figure scorers	4-0
OPP has five double-figure scorers	2-0
OPP has six double-figure scorers	0-0
OPP has seven double-figure scorers	0-0

UCLA has more double-figure scorers	10-0
UCLA has fewer double-figure scorers	0-0
Double-figure scorers are the same	2-0

THE LAST TIME ...

100 Points Scored

By UCLA	102 vs. UC Santa Barbara (12/14/16)
By Opponent	107 at Arizona (2/14/04)

40+ Point Victory

By UCLA	40 (102-62) vs. UC Santa Barbara (12/14/16)
By Opponent	41 (109-68) vs. North Carolina (11/27/97)

30+ Point Victory

By UCLA	40 (102-62) vs. UC Santa Barbara (12/14/16)
By Opponent	32 (71-39) at Utah (1/4/15)

20+ Point Victory

By UCLA	40 (102-62) vs. UC Santa Barbara (12/14/16)
By Opponent	24 (95-71) vs. USC (3/9/16)

Overtime Game

UCLA Win	86-81 vs. Stanford (2-OT) (1/8/15)
UCLA Loss	93-96 at Washington (2-OT) (1/1/16)

Double Overtime Game

UCLA Win	86-81 vs. Stanford (1/8/15)
UCLA Loss	93-96 at Washington (1/1/16)

Six or More Players in Double-Figure Scoring

By UCLA	6 at Kentucky (12/3/16)
By Opponent	6 vs. USC (3/9/16)

Five or More Players In Double-Figure Scoring

By UCLA	5 vs. UC Santa Barbara (12/14/16)
By Opponent	5 vs. Michigan (12/10/16)

Zero Players Scoring in Double Figures

By UCLA	none since prior to 1991-92
By Opponent	0 vs. CSUN (11/29/15)

Made 30-39 Field Goals

By UCLA	31-of-64 vs. Ohio State (12/17/16)
By Opponent	33-of-80, at Kentucky (12/3/16)

Made 40-49 Field Goals

By UCLA	46-of-71 vs. Long Beach State (11/20/16)
By Opponent	41-of-80 at Duke (2/22/98)

Made 50 or More Field Goals

By UCLA	none since prior to 1991-92
By Opponent	none since prior to 1991-92

Made Fewer Than 20 Field Goals

By UCLA	16 at Arizona (2/21/15)
By Opponent	19 vs. Colorado (2/20/16)

Had 70-79 Field Goal Attempts

By UCLA	71 vs. UC Santa Barbara (12/14/16)
By Opponent	70 vs. UC Riverside (11/30/16)

Had 80-89 Field Goal Attempts

By UCLA	84 vs. Cal State Fullerton (11/16/09)
By Opponent	83 vs. UC Santa Barbara (12/14/16)

Had 90-99 Field Goal Attempts

By UCLA	91 vs. Cincinnati (3/17/02)
By Opponent	none since prior to 1991-92

Had Fewer Than 40 Field Goal Attempts

By UCLA	39 vs. Oregon State (2/12/11)
By Opponent	39 at Oregon State (1/2/09)

Shot 50 Percent Or Better From The Field

By UCLA	54.9 (39-71) vs. UC Santa Barbara (12/14/16)
By Opponent	61.2 (30-49) at Stanford (2/27/16)

Shot 60 Percent Or Better From The Field

By UCLA	67.2 (39-58) vs. Michigan (12/10/16)
By Opponent	61.2 (30-49) at Stanford (2/27/16)

Shot Less Than 30 Percent From The Field

By UCLA	28.1 (15-52) at Utah (1/4/15)
By Opponent	29.3 (17-58) vs. CSUN (11/29/15)

Made 10 or More 3-Pointers

By UCLA	10-of-31 vs. Ohio State (12/17/16)
By Opponent	14-of-26 vs. Michigan (12/10/16)

Made 15 or More 3-Pointers

By UCLA	15-of-24 vs. Michigan (12/10/16)
By Opponent	15-of-31 vs. Stanford (1/8/15)

Made Zero 3-Pointers

By UCLA	0-for-14 vs. Stanford (2/3/00)
By Opponent	0-for-13 vs. California (1/3/13)

Attempted 30 or More 3-Pointers

By UCLA	31 (10-31) vs. Ohio State (12/17/16)
By Opponent	32 (14-32) vs. Portland (11/24/16)

Shot Over 60 Percent From 3-Point Range

By UCLA	62.5 (15-24) vs. Michigan (12/10/16)
By Opponent	69.2 (9-13) at Oregon (1/24/15)

Shot Over 70 Percent From 3-Point Range

By UCLA	76.5 (13-17) vs. Northwestern (11/29/13)
By Opponent	90.9 (10-11) vs. Middle Tennessee State (11/15/11)

Shot Less Than 20 Percent From 3-Point Range

By UCLA	9.1 (1-11) at Utah (1/4/15)
By Opponent	9.1 (1-11) vs. CSUN (11/29/15)

Made 30-39 Free Throws

By UCLA	31-of-39 vs. CSUN (11/13/16)
By Opponent	30-of-42 vs. Wake Forest (11/25/15)

Made 40 or More Free Throws

By UCLA	none since prior to 1991-92
By Opponent	none since prior to 1991-92

Made 5 or Fewer Free Throws

By UCLA	5-of-9 vs. Oregon (3/2/16)
By Opponent	5-for-9 vs. McNeese State (12/22/15)

Had 40-49 Free Throw Attempts

By UCLA	38-of-50 at Washington (1/1/16)
By Opponent	29-of-45 at Arizona (2/12/16)

Had 50 or More Free Throw Attempts

By UCLA	38-of-50 at Washington (1/1/16)
By Opponent	none since prior to 1991-92

Shot 80 Percent or Better From the Free Throw Line

By UCLA	83.3 (10-12) vs. Ohio State (12/17/16)
By Opponent	92.3 (12-13) vs. Michigan (12/10/16)

Shot 90 Percent or Better From the Free Throw Line

By UCLA	90.9 (10-11) vs. Long Beach State (11/20/16)
By Opponent	92.3 (12-13) vs. Michigan (12/10/16)

Shot 100 Percent From the Free Throw Line

By UCLA	6-for-6 at Arizona (2/17/07)
By Opponent	3-for-3 vs. Idaho State (12/15/07)

Had 50-59 Rebounds

By UCLA	59 at Washington (1/1/16)
By Opponent	50 vs. UC Santa Barbara (12/14/16)

Had 60 or More Rebounds

By UCLA	60 vs. Monmouth (11/13/15)
By Opponent	None since prior to 1991-92

Had 20-29 Assists

By UCLA	27 vs. UC Santa Barbara (12/14/16)
By Opponent	20 at Washington State (1/3/16)

Had 30 or More Assists

By UCLA	32 at California (2/23/95)
By Opponent	None since prior to 1991-92

Had 10 or More Blocks

By UCLA	10 vs. UC Santa Barbara (12/14/16)
By Opponent	13 vs. Kentucky (12/20/14)

Had 15 or More Steals

By UCLA	15 vs. Long Beach State (11/23/14)
By Opponent	16 vs. Monmouth (11/13/15)

Had 20 or More Steals

By UCLA	20 vs. Wyoming (12/23/08)
By Opponent	22 vs. Maryland (11/27/98)

Forced 20 or More Turnovers

By UCLA	23 vs. Long Beach State (11/20/16)
By Opponent	20 vs. CSUN (11/13/16)

Committed Fewer Than 10 Turnovers

By UCLA	8 vs. UC Santa Barbara (12/14/16)
By Opponent	8 vs. Michigan (12/10/16)

THE LAST TIME A PLAYER ...

30 or More Points Scored

UCLA	30, Bryce Alford, vs. Pacific (11/11/16)
Opponent	35, Andrew Andrews, at Washington (1/1/16)

35 or More Points Scored

UCLA	36, Isaac Hamilton, vs. USC (3/12/15)
Opponent	35, Andrew Andrews, at Washington (1/1/16)

40 or More Points Scored

UCLA	44, Jason Kapono, at Washington State (1/4/03)
Opponent	40, Eddie House, Arizona State (2/17/00)

Two or More Players Scored 20+ Points

UCLA	Bryce Alford (20), Aaron Holiday (20), vs. Ohio State (12/17/16)
Opponent	Malik Monk (24), De'Aaron Fox (20), at Kentucky (12/3/16)

Three or More Players Scored 20+ Points

UCLA	B. Alford (28), Powell (23), Parker (20), vs. Nicholls State (11/20/14)
Opponent	J. Brown (22), J. Clarkson (21), E. Ross (20), Missouri (12/7/13)

Two or More Players Scored 25+ Points

UCLA	N. Powell (27), J. Adams (25), vs. James Madison (11/15/12)
Opponent	C. Douglas-Roberts (28), D. Rose (25), Memphis (4/5/08)

Made 15 or More Field Goals

UCLA	15 (15-23), Don MacLean, at Arizona (1/11/92)
Opponent	15 (15-22), Eddie House, Arizona State (2/17/00)

Made 20 or More Field Goals

UCLA	none since prior to 1991-92
Opponent	none since prior to 1991-92

Made 6 or More 3-Pointers

UCLA	Isaac Hamilton, 7-for-12, vs. UC Riverside (11/30/16)
Opponent	Reese Morgan, 6-for-10, Cal Poly (11/15/15)

Made 7 or More 3-Pointers

UCLA	Isaac Hamilton, 7-for-12, vs. UC Riverside (11/30/16)
Opponent	Jalil Abdul-Bassit, 7-for-12, Oregon (2/14/15)

Made 8 or More 3-Pointers

UCLA	Bryce Alford, 9-for-11, SMU (3/19/15)
Opponent	Tyler Bernardini, 8-for-12, Pennsylvania (12/10/11)

Made 9 or More 3-Pointers

UCLA	Bryce Alford, 9-for-11, SMU (3/19/15)
Opponent	none since prior to 1996-97

Made 10 or More 3-Pointers

UCLA	has never occurred
Opponent	none since prior to 1996-97

Made 15 or More Field Goals (and 5 or More 3-Pointers)

UCLA	none since prior to 1996-97
Opponent	none since prior to 1996-97

Made 10 or More Free Throws

UCLA	Bryce Alford, 17-of-18, at Washington (1/1/16)
Opponent	Edrice "Bam" Adebayo, 10-of-13, at Kentucky (12/3/16)

Made 15 or More Free Throws

UCLA	Bryce Alford, 17-of-18, at Washington (1/1/16)
Opponent	Andrew Andrews, 17-of-19, at Washington (1/1/16)

Attempted 20 or More Free Throws

UCLA	none since prior to 1996-97
Opponent	none since prior to 1996-97

Was Perfect With 15 or More Free Throws

UCLA	Jordan Adams, 16-of-16, vs. UC Irvine (11/13/12)
Opponent	none since prior to 1996-97

Had 15 or More Rebounds

UCLA	TJ Leaf, 15, vs. Pacific (11/11/16)
Opponent	Ryan Anderson, 15, Arizona (1/7/16)

Had 20 or More Rebounds

UCLA	Kevin Love, 21, at Oregon State (1/26/08)
Opponent	Mike Moser, 20, Oregon (2/27/14)

Had 25 or More Rebounds

UCLA	none since prior to 1996-97
Opponent	none since prior to 1996-97

Two Players Had 10 or More Rebounds

UCLA	Lonzo Ball (10), TJ Leaf (10), vs. UC Santa Barbara (12/14/16)
Opponent	Tyrone Wallace (10), Jaylen Brown (10), California (2/25/16)

Two or More Players Had Double-Doubles

UCLA	Lonzo Ball (13 p, 10 r), TJ Leaf (25 p, 10 r), vs. UC Santa Barbara (12/14/16)
Opponent	J. Brown (16p, 10 r), T. Wallace (14p, 10 r), California (2/25/16)

Shot 100 Percent From the Field (min. 10 attempts)

By UCLA	none since prior to 1991-92
By Opponent	none since prior to 1991-92

Shot 100 Percent from 3-Point Range (min. 5 attempts)

By UCLA	Aaron Holiday, 5-for-5, vs. Michigan (12/10/16)
By Opponent	Jared Stohl, 5-for-5, Portland (11/26/09)

Had 10 or More Assists

By UCLA	Lonzo Ball, 13, vs. UC Riverside (11/30/16)
By Opponent	Jordan McLaughlin, 10, USC (2/4/16)

Had 10 or More Assists and Zero Turnovers

By UCLA	Bryce Alford, 11 assists, at Arizona State (2/14/16)
By Opponent	Zack Rosen, 10 assists, Pennsylvania (12/10/11)

Had 15 or More Assists

By UCLA	Darren Collison, 15, at Arizona (2/17/07)
By Opponent	Phil Pressey, 19, Missouri (12/28/12)

Had 20+ Points and 10+ Rebounds

By UCLA	TJ Leaf (25 pts, 10 rbs), vs. UC Santa Barbara (12/14/16)
By Opponent	Josh Hawkinson (20 pts, 10 rbs), Washington State (1/3/16)

Had 20+ Points and 15+ Rebounds

By UCLA	TJ Leaf (22 pts, 15 rbs), vs. Pacific (11/11/16)
By Opponent	Shawn Long (26 pts, 16 rbs), Louisiana-Lafayette (12/15/15)

Had 25+ Points and 15+ Rebounds

By UCLA	Kevon Looney (27 pts, 19 rbs), vs. Stanford (1/8/15)
By Opponent	Shawn Long (26 pts, 16 rbs), Louisiana-Lafayette (12/15/15)

Had 10+ Points and 10+ Assists

By UCLA	Lonzo Ball (16 points, 10 assists), vs. Texas A&M (11/27/16)
By Opponent	T.J. McConnell (10 pts, 11 ast), Arizona (3/13/15)

Had 15+ Points and 10+ Assists

By UCLA	Lonzo Ball (16 points, 10 assists), vs. Texas A&M (11/27/16)
By Opponent	Askia Booker (16 pts, 12 ast), Colorado (2/13/14)

Had 20+ Points and 10+ Assists

By UCLA	Lonzo Ball (20 pts, 11 ast), vs. Long Beach State (11/20/16)
By Opponent	Draymond Green (23 pts, 10 ast), Michigan State (3/17/11)

Had 5 or More Steals

By UCLA	Aaron Holiday, 5, vs. Ohio State (12/17/16)
By Opponent	Malik Monk, 5, at Kentucky (12/3/16)

Had 9 or More Steals

By UCLA	Darren Collison, 9, at Oregon State (1/28/06)
By Opponent	none since prior to 1996-97

Had 5 or More Blocks

By UCLA	Thomas Welsh, 5, vs. Monmouth (11/13/15)
By Opponent	Josh Huestis, 5, Stanford (2/22/14)

Had 7 or More Blocks

By UCLA	Tyler Honeycutt, 8, vs. Oregon State (2/12/11)
By Opponent	Jarvis Varnado, 7, vs. Mississippi State (12/12/09)

Had 20+ Points and 5+ Blocks

By UCLA	Jerome Moiso (22 pts, 5 blocks), vs. Arizona State (1/22/00)
By Opponent	Josh Huestis (22 pts, 5 blocks), Stanford (2/22/14)

Recorded a Triple-Double

By UCLA	Kyle Anderson (13p, 12r, 11a), vs. Morehead State (11/22/13)
By Opponent	Draymond Green (23p, 11r, 10a), Michigan State (3/17/11)

Played 45 or More Minutes

By UCLA	Bryce Alford, 48, at Washington, 2-OT (1/1/16)
By Opponent	Dejounte Murray, 47, at Washington, 2-OT (1/1/16)

Scored 20 or More Points off the Bench

By UCLA	Aaron Holiday, 20, vs. Ohio State (12/17/16)
By Opponent	Andre Spight, 21, at Arizona State (2/14/16)

Scored 25 or More Points off the Bench

By UCLA	Jordan Adams, 25, vs. James Madison (11/15/12)
By Opponent	Trevor Releford, 34, Alabama (12/28/13)

Recorded 10 or More Rebounds off the Bench

By UCLA	Thomas Welsh, 12, vs. Oregon State (3/5/16)
By Opponent	Chimezie Metu, 11, USC (3/9/16)

Game No. 1 – November 11, 2016
Pauley Pavilion – Los Angeles, Calif.
(16) UCLA 119, Pacific 80

PACIFIC 80

NAME	FG	3FG	FT	R	PF	TP	A	MIN
Vuko	3-4	1-1	0-0	8	2	7	0	22
Bowles	3-10	1-4	7-10	2	2	14	2	32
Eleraky	1-3	0-0	0-4	3	2	2	0	15
Wallace	8-15	2-5	3-6	3	4	21	0	24
Taylor	4-7	3-3	0-0	6	4	11	1	20
Montague	0-3	0-2	0-0	1	4	0	1	17
Williams	3-7	2-5	0-0	2	0	8	0	15
Tinsley	1-1	0-0	1-2	0	0	3	0	2
Ursery	3-7	0-0	1-2	3	4	7	2	20
Rector	0-1	0-1	0-0	0	0	0	0	2
Lampkin	1-4	0-1	2-3	2	1	4	1	14
Smith	0-3	0-3	0-1	0	1	0	0	9
Theodorou	1-1	1-1	0-0	1	1	3	0	8
TOTALS	28-66	10-26	14-28	33	25	80	7	200

UCLA 119

NAME	FG	3FG	FT	R	PF	TP	A	MIN
Leaf	9-13	2-5	2-5	15	2	22	4	37
Welsh	3-9	0-0	0-0	6	4	6	0	26
Ball	6-8	3-4	4-5	8	2	19	11	34
Hamilton	7-12	3-7	0-0	1	3	17	8	29
Alford	9-13	6-9	6-7	2	3	30	1	32
Holiday	6-10	4-5	2-2	3	5	18	5	24
Wulff, I.	1-1	0-0	1-2	2	0	3	0	2
Goloman	1-1	0-0	2-3	3	5	4	0	6
Smith	0-2	0-0	0-0	0	2	0	0	2
Wulff, A.	0-0	0-0	0-0	1	0	0	0	2
Okwarabizie	0-0	0-0	0-0	1	1	0	0	6
TOTALS	42-69	18-30	17-24	43	27	119	29	200

Halftime Score – UCLA 63, Pacific 39. Team Rebounds – Pacific 2, UCLA 1. Turnovers – Pacific 14, UCLA 12. Technicals – UCLA: Lonzo Ball. Attendance: 8,743. Officials – Bill Vinovich, Shawn Lehigh, Coban Lopez.

Game No. 2 – November 13, 2016
Pauley Pavilion – Los Angeles, Calif.
(16) UCLA 102, CSUN 87

CSUN 87

NAME	FG	3FG	FT	R	PF	TP	A	MIN
Lubin	3-6	0-0	2-5	13	5	8	0	20
Johns	1-2	0-0	0-0	0	4	2	0	16
Smith	8-14	1-3	4-5	4	3	21	4	34
Johnson	6-13	1-3	2-5	0	2	15	2	32
Parks	7-11	2-2	2-2	3	5	18	1	23
Warren	0-4	0-3	2-3	2	2	2	2	28
Dawson	7-11	1-2	3-3	9	4	18	1	28
Kaba-Camara	1-1	0-0	1-1	0	1	3	0	5
Richardson	0-0	0-0	0-0	0	4	0	0	4
Wilbut	0-4	0-2	0-0	0	0	0	0	6
Theus Jr.	0-0	0-0	0-0	0	0	0	0	4
TOTALS	33-66	5-15	16-24	31	30	87	10	200

UCLA 102

NAME	FG	3FG	FT	R	PF	TP	A	MIN
Leaf	4-6	0-1	4-6	6	4	12	4	18
Welsh	3-12	0-0	4-4	13	3	10	2	30
Ball	4-6	1-3	4-6	8	2	13	6	38
Hamilton	9-14	1-4	3-4	3	4	22	1	34
Alford	5-13	2-4	8-8	0	2	20	3	34
Holiday	3-9	1-3	6-7	4	3	13	5	29
Goloman	5-7	0-1	2-4	8	3	12	2	15
Okwarabizie	0-0	0-0	0-0	0	1	0	0	2
TOTALS	33-67	5-16	31-39	44	23	102	23	200

Halftime Score – CSUN 42, UCLA 40. Team Rebounds – UCLA 2, CSUN 0. Turnovers – UCLA 20, CSUN 18. Technicals – None. Attendance: 7,149. Officials – Verne Harris, Chris Rastatter, Eric Curry.

Game No. 3 – November 17, 2016
Pauley Pavilion – Los Angeles, Calif.
(16) UCLA 88, San Diego 68

SAN DIEGO 68

NAME	FG	3FG	FT	R	PF	TP	A	MIN
Neubauer	6-9	1-4	1-1	3	3	14	1	25
Bailey	7-14	3-4	5-6	9	4	22	3	32
Barrino	1-7	0-0	0-0	6	4	2	4	27
Williams	1-6	1-2	0-0	4	2	3	1	36
Carter III	5-19	3-10	0-0	4	2	13	3	28
Carbone	2-13	2-11	0-0	5	3	6	2	28
Gray	1-4	0-0	2-2	2	0	4	0	11
Ryder	2-3	0-0	0-0	2	2	4	0	13
TOTALS	25-75	10-31	8-9	38	20	68	14	200

UCLA 88

NAME	FG	3FG	FT	R	PF	TP	A	MIN
Leaf	11-13	0-1	4-4	10	1	26	1	30
Welsh	4-7	0-0	4-4	11	1	12	0	26
Ball	4-11	1-6	4-6	7	0	13	8	38
Hamilton	5-11	1-6	1-2	3	2	12	6	29
Alford	2-8	1-5	5-5	3	1	10	3	36
Holiday	4-8	2-4	1-1	5	1	11	2	27
Goloman	2-3	0-0	0-0	1	4	4	1	14
TOTALS	32-61	5-22	19-22	43	10	88	21	200

Halftime Score – UCLA 41, San Diego 33. Team Rebounds – San Diego 3, UCLA 3. Turnovers – UCLA 8, San Diego 7. Technicals – None. Attendance: 6,893. Officials – Mike Reed, Keith Kimble, D.G. Nelson.

Game No. 4 – November 20, 2016
Pauley Pavilion – Los Angeles, Calif.
(16) UCLA 114, Long Beach State 77

LONG BEACH STATE 77

NAME	FG	3FG	FT	R	PF	TP	A	MIN
Levin	3-6	1-2	1-4	9	1	8	2	30
Prince	3-5	0-0	4-5	3	2	10	1	20
Payne	3-8	1-3	0-0	0	3	7	0	15
Griffin	4-8	3-5	0-0	1	0	11	0	15
Bibbins	3-6	2-3	0-0	3	3	8	5	33
Jackson	5-10	0-2	5-7	1	3	15	6	26
Blackwell	4-9	4-6	0-0	0	1	12	1	19
Yussuf	1-3	0-0	0-0	4	1	2	3	11
Riggins	0-0	0-0	0-0	0	0	0	0	4
Shropshire	1-1	0-0	0-0	1	0	2	0	3
Rifkind	0-1	0-1	0-0	0	0	0	0	3
Ogalue	0-0	0-0	0-0	0	0	0	1	3
Moye	0-0	0-0	0-0	1	0	0	0	3
Williams	0-1	0-0	2-4	2	0	2	0	8
Jackson, J.	0-0	0-0	0-0	1	1	0	0	7
TOTALS	27-58	11-22	12-20	28	15	77	19	200

UCLA 114

NAME	FG	3FG	FT	R	PF	TP	A	MIN
Leaf	8-12	1-2	4-5	9	3	21	1	30
Welsh	6-9	0-0	0-0	7	4	12	0	23
Ball	8-11	2-3	2-2	2	1	20	11	31
Hamilton	7-13	4-6	0-0	2	1	18	4	27
Alford	5-8	5-6	0-0	2	1	15	6	32
Holiday	7-10	0-2	2-2	2	2	16	5	25
Wulff, I.	0-0	0-0	0-0	0	0	0	0	3
Goloman	3-5	0-0	2-2	3	2	8	0	18
Smith	2-2	0-0	0-0	0	1	4	0	3
Wulff, A.	0-1	0-1	0-0	0	1	0	0	3
Okwarabizie	0-0	0-0	0-0	2	1	0	0	5
TOTALS	46-71	12-20	10-11	32	17	114	27	200

Halftime Score – UCLA 56, Long Beach State 37. Team Rebounds – UCLA 3, Long Beach State 2. Turnovers – Long Beach State 23, UCLA 11. Technicals – None. Attendance: 8,294. Officials – Mike Scyphers, Tony Padilla, Scott Brown.

Game No. 5 – November 24, 2016
Titan Gym – Fullerton, Calif.
(14) UCLA 99, Portland 77

PORTLAND 77

NAME	FG	3FG	FT	R	PF	TP	A	MIN
Taylor	2-9	1-6	1-2	4	1	6	1	31
Marshall	3-6	2-3	2-2	2	2	10	0	23
Hartwich	0-0	0-0	0-0	6	2	0	0	15
Wintering	5-15	1-2	2-2	6	3	13	2	30
Johnson	9-16	4-7	3-3	2	1	25	4	31
Jackson	2-5	2-3	0-0	1	1	6	1	12
Tyson	5-14	4-11	2-2	4	3	16	0	28
Ferguson	0-0	0-0	0-0	1	1	0	1	7
Barreno	0-3	0-0	0-0	6	3	0	0	14
Smoyer	0-1	0-0	1-2	3	2	1	1	9
TOTALS	26-69	14-32	11-13	37	19	77	10	200

UCLA 99

NAME	FG	3FG	FT	R	PF	TP	A	MIN
Leaf	6-9	1-1	1-1	9	3	14	4	28
Welsh	8-10	0-0	0-0	10	3	16	0	26
Ball	6-9	4-7	2-3	4	2	18	11	27
Hamilton	5-13	4-9	2-2	3	0	16	6	30
Alford	4-10	3-8	2-2	1	3	13	2	34
Holiday	4-9	2-4	4-6	5	2	14	5	26
Goloman	3-6	0-0	1-2	6	2	7	1	17
Smith	0-0	0-0	0-0	0	0	0	0	4
Wulff, A.	0-0	0-0	0-0	0	1	0	0	4
Okwarabizie	0-0	0-0	1-2	0	0	1	0	4
TOTALS	36-66	14-29	13-18	40	15	99	29	200

Halftime Score – UCLA 45, Portland 37. Team Rebounds – Portland 2, UCLA 2. Turnovers – Portland 15, UCLA 11. Technicals – None. Attendance: 3,816. Officials – Tom Eades, Earl Walton, Donnie Eppley.

Game No. 6 – November 25, 2016
Titan Gym – Fullerton, Calif.
(14) UCLA 82, Nebraska 71

NEBRASKA 71

NAME	FG	3FG	FT	R	PF	TP	A	MIN
McVeigh	0-8	0-5	1-2	2	1	1	0	27
Jacobson	3-8	0-2	0-0	6	4	6	0	24
Morrow Jr.	4-6	0-0	0-1	7	1	8	0	25
Webster	8-16	2-3	1-3	7	3	19	7	36
Watson Jr.	10-18	3-7	4-4	3	4	27	3	36
Gill	1-10	1-6	0-0	5	1	3	1	16
Horne	0-1	0-1	0-0	0	1	0	0	7
Taylor	0-1	0-0	0-1	0	0	0	0	8
Roby	1-2	0-0	1-2	1	1	3	0	8
Fuller	0-1	0-0	0-0	0	0	0	0	1
Tshimanga	2-4	0-0	0-0	6	2	4	0	12
TOTALS	29-75	6-24	7-13	42	18	71	11	200

UCLA 82

NAME	FG	3FG	FT	R	PF	TP	A	MIN
Leaf	4-9	3-4	1-2	4	2	12	4	26
Welsh	5-8	0-0	2-2	11	1	12	2	28
Ball	5-9	3-5	0-0	3	5	13	7	30
Hamilton	5-12	3-7	2-2	5	3	15	0	34
Alford	7-14	0-6	4-4	6	1	18	2	35
Holiday	3-6	0-1	0-1	5	2	6	3	29
Anigbogu	1-1	0-0	0-0	2	2	2	1	6
Goloman	2-3	0-0	0-1	4	1	4	2	12
TOTALS	32-62	9-23	9-12	42	17	82	21	200

Game No. 7 – November 27, 2016
Honda Center – Anaheim, Calif.
(14) UCLA 74, Texas A&M 67

TEXAS A&M 67

NAME	FG	3FG	FT	R	PF	TP	A	MIN
Hogg	4-18	0-8	0-0	6	3	8	4	36
Davis	7-13	0-0	2-5	8	2	16	1	27
Trocha-Morelos	4-8	3-6	0-0	9	1	11	1	30
Gilder	6-12	3-6	2-3	5	2	17	3	37
Hampton	1-5	1-2	0-0	1	2	3	2	33
Vila	0-1	0-0	0-2	0	0	0	0	9
Collins	0-0	0-0	0-0	0	0	0	0	1
Miller	0-0	0-0	0-0	0	0	0	0	4
Williams	4-8	0-0	4-5	3	2	12	4	23
TOTALS	26-65	7-22	8-15	36	12	67	15	200

UCLA 74

NAME	FG	3FG	FT	R	PF	TP	A	MIN
Leaf	6-9	1-1	0-1	9	3	13	0	32
Welsh	3-7	0-0	0-0	8	4	6	0	27
Ball	6-14	4-9	0-0	5	1	16	10	36
Hamilton	7-15	3-8	0-0	7	2	17	2	30
Alford	3-7	2-5	5-6	3	1	13	3	32
Holiday	2-3	2-3	1-4	2	0	7	3	23
Anigbogu	1-3	0-0	0-0	2	3	2	0	12
Goloman	0-1	0-0	0-2	1	0	0	1	8
TOTALS	28-59	12-26	6-13	42	14	74	19	200

Halftime Score – UCLA 35, Texas A&M 34. Team Rebounds – UCLA 5, Texas A&M 3. Turnovers – UCLA 15, Texas A&M 12. Technicals – None. Attendance: 4,221. Officials – Tom Eades, Ted Valentine, Tony Padilla.

UCLA wins the 2016 Wooden Legacy.

Game No. 8 – November 30, 2016
Pauley Pavilion – Los Angeles, Calif.
(11) UCLA 98, UC Riverside 56

UC RIVERSIDE 56

NAME	FG	3FG	FT	R	PF	TP	A	MIN
Johnson	7-18	1-6	2-3	6	4	17	1	33
Larsson	1-6	0-0	1-2	2	3	3	0	20
Murray	4-12	2-5	3-4	7	0	13	2	32
Thames	1-9	0-3	0-0	4	0	2	1	23
Martin	2-8	1-3	0-0	2	2	5	0	28
Thomas	4-10	4-5	0-0	3	1	12	2	24
Rwahwire	0-2	0-2	0-0	0	0	0	0	6
Rosser	0-0	0-0	0-0	1	5	0	0	12
Flippin	0-0	0-0	0-0	0	0	0	0	3
Dijkstra	1-4	0-1	0-0	3	2	2	1	16
Jackson	1-1	0-0	0-0	1	0	2	1	3
TOTALS	21-70	8-25	6-9	30	17	56	8	200

UCLA 98

NAME	FG	3FG	FT	R	PF	TP	A	MIN
Leaf	9-12	0-1	0-1	10	0	18	2	27
Welsh	6-6	0-0	0-0	12	2	12	3	25
Ball	2-3	0-1	1-2	2	0	5	13	36
Hamilton	9-15	7-12	2-2	6	0	27	1	29
Alford	1-6	1-5	2-2	5	3	5	4	33
Holiday	6-12	3-5	3-3	4	2	18	5	28
Wulff, I.	1-1	0-0	0-0	0	1	2	0	3
Anigbogu	1-4	0-0	3-6	4	3	5	0	10
Smith	0-0	0-0	0-0	0	0	0	0	3
Wulff, A.	2-3	2-3	0-0	0	0	6	1	3
Okwarabizie	0-0	0-0	0-0	2	0	0	0	3
TOTALS	37-62	13-27	11-16	46	11	98	29	200

Halftime Score – UCLA 42, UC Riverside 27. Team Rebounds – UC Riverside 1, UCLA 1. Turnovers – UC Riverside 12, UCLA 12. Technicals – None. Attendance: 6,328. Officials – Tony Padilla, Eric Curry, Marques Pettigrew.

Game No. 9 – December 3, 2016
Rupp Arena – Lexington, Ky.
(11) UCLA 97, (1) Kentucky 92

UCLA 97

NAME	FG	3FG	FT	R	PF	TP	A	MIN
Leaf	7-12	1-2	2-2	13	3	17	5	32
Welsh	5-7	0-0	4-4	8	5	14	0	19
Ball	5-12	2-8	2-2	6	2	14	7	38
Hamilton	7-13	3-5	2-3	4	1	19	1	33
Alford	4-10	2-5	4-6	0	2	14	1	35
Holiday	4-7	2-3	3-4	0	4	13	4	20
Anigbogu	3-4	0-0	0-0	6	5	6	0	17
Goloman	0-1	0-0	0-0	3	2	0	0	6
TOTALS	35-66	10-23	17-21	41	24	97	18	200

KENTUCKY 92

NAME	FG	3FG	FT	R	PF	TP	A	MIN
Adebayo	4-12	0-0	10-13	13	3	18	0	33
Gabriel	1-2	0-1	0-0	8	1	2	0	17
Fox	8-20	1-4	3-5	2	4	20	9	34
Monk	10-19	4-8	0-0	3	3	24	0	36
Briscoe	4-14	0-5	4-7	4	4	12	3	34
Humphries	0-2	0-0	0-0	2	2	0	2	8
Hawkins	2-4	1-2	0-0	1	2	5	0	16
Willis	4-7	2-4	1-2	4	3	11	2	22
TOTALS	33-80	8-24	18-27	38	22	92	16	200

Halftime Score – UCLA 49, Kentucky 45. Team Rebounds – Kentucky 1, UCLA 1. Turnovers – UCLA 18, Kentucky 9. Technicals – None. Attendance: 23,976. Officials – Doug Shows, John Higgins, Bryon Jarrett.

Game No. 10 – December 10, 2016
Pauley Pavilion – Los Angeles, Calif.
(2) UCLA 102, Michigan 84

MICHIGAN 84

NAME	FG	3FG	FT	R	PF	TP	A	MIN
Wilson	3-6	2-3	0-0	1	3	8	2	24
Wagner	3-4	2-3	3-3	1	4	11	0	20
Walton Jr.	2-7	1-3	4-4	4	2	9	2	33
Abdur-Rahkman	4-11	1-3	2-2	2	3	11	2	32
Irvine	7-14	4-6	0-0	5	1	18	7	37
Simpson	0-0	0-0	0-0	0	1	0	1	9
Wright-Jones	0-0	0-0	0-0	0	1	0	0	1
Teske	0-0	0-0	0-0	2	0	0	0	1
Lonergan	0-0	0-0	0-0	0	0	0	0	1
Robinson	4-8	2-4	3-4	4	2	13	2	22
Watson	1-3	0-2	0-0	0	0	2	0	2
Donnal	5-5	2-2	0-0	2	0	12	0	18
TOTALS	29-58	14-26	12-13	23	17	84	16	200

UCLA 102

NAME	FG	3FG	FT	R	PF	TP	A	MIN
Goloman	3-3	0-0	0-0	2	5	6	1	10
Leaf	10-14	1-2	0-1	8	4	21	2	36
Ball	5-8	4-7	5-10	7	1	19	4	34
Hamilton	6-12	2-4	0-0	4	0	14	7	32
Alford	6-10	3-6	3-3	4	1	18	3	32
Holiday	6-7	5-5	0-0	0	1	17	5	27
Wulff, I.	0-0	0-0	0-0	0	0	0	0	1
Anigbogu	3-4	0-0	0-2	4	3	6	1	25
Smith	0-0	0-0	1-2	0	0	1	0	1
Wulff, A.	0-0	0-0	0-0	0	0	0	0	1
Okwarabizie	0-0	0-0	0-0	0	0	0	0	1
TOTALS	39-58	15-24	9-18	30	15	102	23	200

Halftime Score – UCLA 50, Michigan 50. Team Rebounds – Michigan 2, UCLA 1. Turnovers – Michigan 8, UCLA 8. Technicals – None. Attendance: 13,571. Officials – Verne Harris, David Hall, Eric Curry.

Game No. 11 – December 14, 2016
Pauley Pavilion – Los Angeles, Calif.
(2) UCLA 102, UC Santa Barbara 62

UC SANTA BARBARA 62

NAME	FG	3FG	FT	R	PF	TP	A	MIN
Canty	4-10	0-0	1-4	7	3	9	1	22
Lakouj	5-14	0-0	1-2	12	2	11	0	25
Childress	3-9	1-4	0-0	1	4	7	3	29
Vincent	3-18	2-9	2-2	2	4	10	1	33
Heidegger	4-10	1-4	0-0	4	0	9	1	22
Blackmon	0-4	0-0	0-0	2	0	0	0	5
Powell Jr.	3-7	0-0	2-4	2	2	8	0	11
Kupchak	0-1	0-0	0-0	3	1	0	0	12
Osifeso	0-0	0-0	0-0	1	0	0	0	2
Hart	1-3	0-0	0-0	5	2	2	0	13
Walters	1-1	1-1	0-0	0	0	3	0	2
Terrell	1-5	0-2	1-1	7	2	3	3	20
White	0-0	0-0	0-0	0	0	0	0	2
Slajchert	0-1	0-0	0-0	1	0	0	0	2
TOTALS	25-83	5-20	7-13	50	20	62	9	200

UCLA 102

NAME	FG	3FG	FT	R	PF	TP	A	MIN
Goloman	3-3	0-0	1-2	7	2	7	1	23
Leaf	11-17	3-4	0-1	10	1	25	8	30
Ball	5-10	3-6	0-0	10	1	13	7	33
Hamilton	6-15	1-9	0-0	1	2	13	1	31
Alford	5-12	3-10	2-3	2	1	15	2	29
Holiday	5-8	1-4	9-9	3	1	20	6	29
Anigbogu	4-5	0-0	1-1	7	3	9	1	18
Smith	0-0	0-0	0-0	0	0	0	1	2
Wulff, A.	0-1	0-1	0-0	0	0	0	0	2
Okwarabizie	0-0	0-0	0-0	1	0	0	0	3
TOTALS	39-71	11-34	13-16	46	11	102	27	200

Halftime Score – UCLA 54, UC Santa Barbara 30. Team Rebounds – UCLA 5, UC Santa Barbara 3. Turnovers – UC Santa Barbara 14, UCLA 8. Technicals – None. Attendance: 7,484. Officials – Mike Scyphers, Dick Cartmell, Michale Greenstein.

Game No. 12 – December 21, 2016
T-Mobile Arena – Las Vegas, Nev.
(2) UCLA 86, Ohio State 73

OHIO STATE 73

NAME	FG	3FG	FT	R	PF	TP	A	MIN
Potter	1-3	0-1	1-2	8	1	3	0	16
Tate	7-13	0-1	1-1	2	4	15	1	34
Loving	7-11	3-6	2-2	6	3	19	3	37
Lyle	1-7	1-5	5-6	1	3	8	6	35
Williams	4-11	1-6	0-0	0	2	9	3	25
Jackson	1-2	0-1	0-0	1	2	2	2	5
Thompson	2-3	0-0	0-0	8	3	4	0	23
Bates-Diop	6-12	0-4	1-1	3	2	13	2	25
TOTALS	29-62	5-24	10-12	31	20	73	17	200

UCLA 86

NAME	FG	3FG	FT	R	PF	TP	A	MIN
Ball	3-8	2-5	0-0	9	2	8	9	38
Hamilton	8-15	1-5	0-0	8	2	17	3	34
Goloman	1-1	0-0	2-2	4	0	4	1	17
Alford	6-14	4-11	4-5	2	0	20	3	35
Leaf	6-11	1-4	0-2	8	1	13	1	38
Holiday	5-12	2-6	8-10	4	4	20	1	25
Anigbogu	2-3	0-0	0-0	4	4	4	1	13
TOTALS	31-64	10-31	14-19	41	13	86	19	200

Halftime Score – UCLA 40, Ohio State 37. Team Rebounds – Ohio State 2, UCLA 2. Turnovers – Ohio State 18, UCLA 15. Technicals – None. Attendance: 19,298. Officials – Ted Valentine, Randy McCall, Dick Cart

BRYCE ALFORD (20)
SENIOR – G – 6-3, 185 – Albuquerque, N.M. (La Cueva HS)

SEASON/CAREER BEST PERFORMANCES

Category	Season High	Career High
Points	30 vs. Pacific (11/11/16)	31 vs. Oregon (2/27/14)
Rebounds	6 vs. Nebraska (11/25/16)	7 vs. USC (3/12/15)
Assists	6 vs. Long Beach State (11/20/16)	13 vs. Nicholls State (11/20/14)
Steals	4 vs. Long Beach State (11/20/16)	5 at Missouri (12/7/13)
Blocks	1 vs. Portland (11/24/16)	1 (6 times), last vs. Portland (11/24/16)
Minutes	36 vs. San Diego (11/17/16)	49 vs. Oregon (2/27/14)
FG Made	9 vs. Pacific (11/11/16)	10 vs. Louisiana-Lafayette (12/15/15)
FG Att.	14 (twice), last vs. Ohio State (12/17/16)	21 at Washington (1/1/16)
3PFG Made	6 vs. Pacific (11/11/16)	9 vs. SMU (3/21/15)
3PFG Att.	11 vs. Ohio State (12/17/16)	13 at Oregon State (1/22/15)
FT Made	8 vs. CSUN (11/13/16)	17 at Washington (1/1/16)
FT Att.	8 vs. CSUN (11/13/16)	18 at Washington (1/1/16)

KEY NOTES ON BRYCE ALFORD

- Has averaged 15.9 points, 2.5 rebounds and 2.8 assists per game, starting all 12 contests
- Through Sunday, Dec. 19, ranked second in the Pac-12 in free throw percentage (88.2%, 45 of 51)
- Currently ranks No. 19 on the school's all-time scoring list (1,555 points in 117 career games) ... has averaged 13.3 points per game in his UCLA career
- Scored a season-high 30 points in the team's season-opening win against Pacific (Nov. 11) ... has scored at least 20 points in three games this season
- Has scored in double figures in 79 career games, including 69 of UCLA's last 80 contests – since the start of his sophomore year (2014-15)
- Ranks second all-time at UCLA in career three-point field goals made (245), trailing all-time leader Jason Kapono (317) by 72 three-pointers

BRYCE ALFORD'S 2016-17 GAME-BY-GAME STATISTICS

Opponent	Date	gs	min	Total		3-Pointers		Free throws		Rebounds												
				fg-fga	pct	3fg-fga	pct	ft-fa	pct	off	def	tot	avg	pf	a	t/o	blk	stl	pts	avg		
PACIFIC	11/11/16	*	32	9-13	.692	6-9	.667	6-7	.857	1	1	2	2.0	3	1	2	0	2	30	30.0		
CSUN	11/13/16	*	34	5-13	.385	2-4	.500	8-8	1.000	0	0	0	1.0	2	3	2	0	1	20	25.0		
SAN DIEGO	11/17/16	*	36	2-8	.250	1-5	.200	5-5	1.000	0	3	3	1.7	1	3	1	0	0	10	20.0		
LONG BEACH STATE	11/20/16	*	32	5-8	.625	5-6	.833	0-0	.000	0	2	2	1.8	1	6	2	0	4	15	18.8		
vs Portland	11/24/16	*	34	4-10	.400	3-8	.375	2-2	1.000	0	1	1	1.6	3	2	0	1	1	13	17.6		
vs Nebraska	11/25/16	*	35	7-14	.500	0-6	.000	4-4	1.000	2	4	6	2.3	1	2	0	0	0	18	17.7		
vs Texas A&M	11/27/16	*	32	3-7	.429	2-5	.400	5-6	.833	1	2	3	2.4	1	3	0	0	2	13	17.0		
UC RIVERSIDE	11/30/16	*	33	1-6	.167	1-5	.200	2-2	1.000	0	5	5	2.8	3	4	1	0	0	5	15.5		
at Kentucky	12/03/16	*	35	4-10	.400	2-5	.400	4-6	.667	0	0	0	2.4	2	1	3	0	0	14	15.3		
MICHIGAN	12/10/16	*	32	6-10	.600	3-6	.500	3-3	1.000	0	4	4	2.6	1	3	2	0	0	18	15.6		
UC SANTA BARBARA	12/14/16	*	29	5-12	.417	3-10	.300	2-3	.667	0	2	2	2.5	1	2	0	0	1	15	15.5		
vs Ohio State	12/17/16	*	35	6-14	.429	4-11	.364	4-5	.800	0	2	2	2.5	0	3	1	0	0	20	15.9		
Totals			12	399		57-125	.456	32-80	.400	45-51	.882	4	26	30	2.5	19	33	14	1	11	191	15.9

BRYCE ALFORD'S CAREER STATISTICS

Season	gp-gs	min/avg	Total		3-Point		F-Throws		Rebounds											Scoring	
			fg-fga	pct	fg-fga	pct	ft-fa	pct	off	def	tot	avg	pf	fo	ast	to	blk	stl	pts	avg	
2013-14	37-1	855/23.1	83-216	.384	47-122	.385	82-102	.804	4	61	65	1.8	45	0	102	48	4	30	295	8.0	
2014-15	36-36	1307/36.3	171-432	.396	93-238	.391	119-142	.838	6	108	114	3.2	54	1	176	89	1	34	554	15.4	
2015-16	32-32	1160/36.2	157-408	.385	73-199	.367	128-154	.831	9	113	122	3.8	41	0	167	63	0	23	515	16.1	
2016-17	12-12	399/33.2	57-125	.456	32-80	.400	45-51	.882	4	26	30	2.5	19	0	33	14	1	11	191	15.9	
TOTAL	117-81	3721/31.8	468-1181	.396	245-639	.383	374-449	.833	23	308	331	2.8	159	1	478	214	6	98	1555	13.3	

PRINCE ALI (23)
SOPHOMORE – G – 6-3, 190 – The Bronx, N.Y. (The Sagemont School (FL))

SEASON/CAREER BEST PERFORMANCES

Category	Season High	Career High
Points	---	12 (twice), last at Arizona State (2/4/16)
Rebounds	---	5 vs. Long Beach State (12/6/15)
Assists	---	2 (3 times), last vs. Utah (2/18/16)
Steals	---	2 (twice), last vs. Colorado (2/20/16)
Blocks	---	1 (3 times), last at Arizona State (2/14/16)
Minutes	---	22 at Arizona State (2/14/16)
FG Made	---	4 (4 times), last at Arizona State (2/14/16)
FG Att.	---	9 vs. CSUN (11/29/15)
3PFG Made	---	2 (3 times), last at Arizona State (2/14/16)
3PFG Att.	---	4 (twice), last vs. CSUN (11/29/15)
FT Made	---	7 vs. Pepperdine (11/19/15)
FT Att.	---	7 vs. Pepperdine (11/19/15)

KEY NOTES ON PRINCE ALI

- Underwent surgery to repair a torn meniscus (right knee) on July 15, 2016 ... could return by late December 2016
- Played in 29 of UCLA's 32 games during the 2015-16 season, averaging 3.9 points and 1.1 rebounds in 11.8 minutes per game
- Scored in double figures in three games during his freshman campaign

PRINCE ALI'S CAREER STATISTICS

Season	Yr.	G-GS	MIN	MPG	FG-FGA	PCT	3FG-A	PCT	FT-FTA	PCT	OR	DR	TOT	RPG	PF-DQ	A	TO	BS	S	PTS	PPG
2015-16	FR	29-0	342	11.8	40-103	.388	12-40	.300	21-37	.568	5	26	31	1.1	36-0	11	23	3	11	113	3.9
CAREER		29-0	342	11.8	40-103	.388	12-40	.300	21-37	.568	5	26	31	1.1	36-0	11	23	3	11	113	3.9

IKE ANIGBOGU (13)
FRESHMAN – F/C – 6-10, 250 – Corona, Calif. (Centennial HS)

SEASON/CAREER BEST PERFORMANCES

Category	Season High	Career High
Points	9 vs. UC Santa Barbara (12/14/16)	9 vs. UC Santa Barbara (12/14/16)
Rebounds	7 vs. UC Santa Barbara (12/14/16)	7 vs. UC Santa Barbara (12/14/16)
Assists	1 (4 times), last vs. Ohio State (12/17/16)	1 (4 times), last vs. Ohio State (12/17/16)
Steals	1 vs. UC Riverside (11/30/16)	1 vs. UC Riverside (11/30/16)
Blocks	4 (twice), last vs. UC Santa Barbara (12/14/16)	4 (twice), last vs. UC Santa Barbara (12/14/16)
Minutes	25 vs. Michigan (12/10/16)	25 vs. Michigan (12/10/16)
FG Made	4 vs. UC Santa Barbara (12/14/16)	4 vs. UC Santa Barbara (12/14/16)
FG Att.	5 vs. UC Santa Barbara (12/14/16)	5 vs. UC Santa Barbara (12/14/16)
3PFG Made	---	---
3PFG Att.	---	---
FT Made	3 vs. UC Riverside (11/30/16)	3 vs. UC Riverside (11/30/16)
FT Att.	6 vs. UC Riverside (11/30/16)	6 vs. UC Riverside (11/30/16)

KEY NOTES ON IKE ANIGBOGU

- Has averaged 4.9 points, 4.1 rebounds and 2.1 blocks per game in seven contests
- Had nine points, seven rebounds and four blocks in the team's 102-62 win over UC Santa Barbara (Dec. 14)
- Made his collegiate debut in the Bruins' 82-71 victory over Nebraska (Nov. 25), totaling two points, two rebounds and two blocks in six minutes
- Had arthroscopic surgery on his right knee on Oct. 25, 2016, and missed the first four weeks of the regular season

IKE ANIGBOGU'S 2016-17 GAME-BY-GAME STATISTICS

Opponent	Date	gs	min	Total		3-Pointers		Free throws		Rebounds												
				fg-fga	pct	3fg-fga	pct	ft-fa	pct	off	def	tot	avg	pf	a	t/o	blk	stl	pts	avg		
PACIFIC	11/11/16	dnp		-	-	-	-	-	-	-	-	-	-	-	-	-	-	-	-	-	-	-
CSUN	11/13/16	dnp		-	-	-	-	-	-	-	-	-	-	-	-	-	-	-	-	-	-	-
SAN DIEGO	11/17/16	dnp		-	-	-	-	-	-	-	-	-	-	-	-	-	-	-	-	-	-	-
LONG BEACH STATE	11/20/16	dnp		-	-	-	-	-	-	-	-	-	-	-	-	-	-	-	-	-	-	-
vs Portland	11/24/16	dnp		-	-	-	-	-	-	-	-	-	-	-	-	-	-	-	-	-	-	-
vs Nebraska	11/25/16	6		1-1	1.000	0-0	.000	0-0	.000	0	2	2	2.0	2	1	1	2	0	2	2.0		
vs Texas A&M	11/27/16	12		1-3	.333	0-0	.000	0-0	.000	1	1	2	2.0	3	0	1	2	0	2	2.0		
UC RIVERSIDE	11/30/16	10		1-4	.250	0-0	.000	3-6	.500	2	2	4	2.7	3	0	0	1	1	5	3.0		
at Kentucky	12/03/16	17		3-4	.750	0-0	.000	0-0	.000	4	2	6	3.5	5	0	2	2	0	6	3.8		
MICHIGAN	12/10/16	25		3-4	.750	0-0	.000	0-2	.000	1	3	4	3.6	3	1	0	4	0	6	4.2		
UC SANTA BARBARA	12/14/16	18		4-5	.800	0-0	.000	1-1	1.000	0	7	7	4.2	3	1	1	4	0	9	5.0		
vs Ohio State	12/17/16	13		2-3	.667	0-0	.000	0-0	.000	1	3	4	4.1	4	1	2	0	0	4	4.9		
Totals		0	101	15-24	.625	0-0	.000	4-9	.444	9	20	29	4.1	23	4	7	15	1	34	4.9		

IKE ANIGBOGU'S CAREER STATISTICS

			Total		3-Point		F-Throws		Rebounds											Scoring	
Season	gp-gs	min/avg	fg-fga	pct	fg-fga	pct	ft-fa	pct	off	def	tot	avg	pf	fo	ast	to	blk	stl	pts	avg	
2016-17	7-0	101/14.4	15-24	.625	0-0	.000	4-9	.444	9	20	29	4.1	23	1	4	7	15	1	34	4.9	
TOTAL	7-0	101/14.4	15-24	.625	0-0	.000	4-9	.444	9	20	29	4.1	23	1	4	7	15	1	34	4.9	

LONZO BALL (2)

FRESHMAN – G – 6-6, 190 – Chino Hills, Calif. (Chino Hills HS)

SEASON/CAREER BEST PERFORMANCES

Category	Season High	Career High
Points	20 vs. Long Beach State (11/20/16)	20 vs. Long Beach State (11/20/16)
Rebounds	10 vs. UC Santa Barbara (12/14/16)	10 vs. UC Santa Barbara (12/14/16)
Assists	13 vs. UC Riverside (11/30/16)	13 vs. UC Riverside (11/30/16)
Steals	3 (3 times), last vs. Ohio State (12/17/16)	3 (3 times), last vs. Ohio State (12/17/16)
Blocks	3 vs. Texas A&M (11/27/16)	3 vs. Texas A&M (11/27/16)
Minutes	38 (4 times), last vs. Ohio State (12/17/16)	38 (3 times), last vs. Ohio State (12/17/16)
FG Made	8 vs. Long Beach State (11/20/16)	8 vs. Long Beach State (11/20/16)
FG Att.	14 vs. Texas A&M (11/27/16)	14 vs. Texas A&M (11/27/16)
3PFG Made	4 (3 times), last vs. Michigan (12/10/16)	4 (3 times), last vs. Michigan (12/10/16)
3PFG Att.	9 vs. Texas A&M (11/27/16)	9 vs. Texas A&M (11/27/16)
FT Made	5 vs. Michigan (12/10/16)	5 vs. Michigan (12/10/16)
FT Att.	10 vs. Michigan (12/10/16)	10 vs. Michigan (12/10/16)

KEY NOTES ON LONZO BALL

- Has averaged 14.3 points, 5.9 rebounds and 8.7 assists per game through 12 contests ... through Dec. 19, ranked second in the nation in assists per game (8.7)
- Set the UCLA freshman single-game assists record (13) against UC Riverside on Nov. 30 ... has totaled 10 or more assists in five of UCLA's 12 games
- Ball is one of two freshmen in country, along with Oregon's Payton Pritchard, with 13 assists or more in one game (Pritchard had 13 versus Savannah State, Dec. 3)
- Named Wooden Legacy tournament MVP (Nov. 27) and Pac-12 Player of the Week (Nov. 28) after having averaged 15.7 points, 9.3 assists and 4.0 rebounds in three wins
- Became UCLA's first player to record a point-assist double-double in his debut as a freshman (19 points, 11 assists and eight rebounds versus Pacific, Nov. 11)

LONZO BALL'S 2016-17 GAME-BY-GAME STATISTICS

Opponent	Date	gs	min	Total		3-Pointers		Free throws		Rebounds												
				fg-fga	pct	3fg-fga	pct	ft-fga	pct	off	def	tot	avg	pf	a	t/o	blk	stl	pts	avg		
PACIFIC	11/11/16	*	34	6-8	.750	3-4	.750	4-5	.800	0	8	8	8.0	2	11	1	0	2	19	19.0		
CSUN	11/13/16	*	38	4-6	.667	1-3	.333	4-6	.667	3	5	8	8.0	2	6	5	0	2	13	16.0		
SAN DIEGO	11/17/16	*	38	4-11	.364	1-6	.167	4-6	.667	1	6	7	7.7	0	8	1	2	1	13	15.0		
LONG BEACH STATE	11/20/16	*	31	8-11	.727	2-3	.667	2-2	1.000	0	2	2	6.3	1	11	2	0	1	20	16.3		
vs Portland	11/24/16	*	27	6-9	.667	4-7	.571	2-3	.667	0	4	4	5.8	2	11	2	0	2	18	16.6		
vs Nebraska	11/25/16	*	30	5-9	.556	3-5	.600	0-0	.000	1	2	3	5.3	5	7	1	1	0	13	16.0		
vs Texas A&M	11/27/16	*	36	6-14	.429	4-9	.444	0-0	.000	1	4	5	5.3	1	10	5	3	1	16	16.0		
UC RIVERSIDE	11/30/16	*	36	2-3	.667	0-1	.000	1-2	.500	0	2	2	4.9	0	13	1	2	3	5	14.6		
at Kentucky	12/03/16	*	38	5-12	.417	2-8	.250	2-2	1.000	0	6	6	5.0	2	7	6	1	1	14	14.6		
MICHIGAN	12/10/16	*	34	5-8	.625	4-7	.571	5-10	.500	2	5	7	5.2	1	4	3	0	3	19	15.0		
UC SANTA BARBARA	12/14/16	*	33	5-10	.500	3-6	.500	0-0	.000	2	8	10	5.6	1	7	1	0	0	13	14.8		
vs Ohio State	12/17/16	*	38	3-8	.375	2-5	.400	0-0	.000	1	8	9	5.9	2	9	2	0	3	8	14.3		
Totals			12	413		59-109	.541	29-64	.453	24-36	.667	11	60	71	5.9	19	104	30	9	19	171	14.3

LONZO BALL'S CAREER STATISTICS

Season	gp-gs	min/avg	Total		3-Point		F-Throws		Rebounds										Scoring	
			fg-fga	pct	fg-fga	pct	ft-fta	pct	off	def	tot	avg	pf	fo	ast	to	blk	stl	pts	avg
2016-17	12-12	413/34.4	59-109	.541	29-64	.453	24-36	.667	11	60	71	5.9	19	1	104	30	9	19	171	14.3
TOTAL	12-12	413/34.4	59-109	.541	29-64	.453	24-36	.667	11	60	71	5.9	19	1	104	30	9	19	171	14.3

ARMANI DODSON (5)
FRESHMAN – G – 6-5, 190 – Fontana, Calif. (Kaiser HS)

SEASON/CAREER BEST PERFORMANCES

Category	Season High	Career High
Points	---	---
Rebounds	---	---
Assists	---	---
Steals	---	---
Blocks	---	---
Minutes	---	---
FG Made	---	---
FG Att.	---	---
3PFG Made	---	---
3PFG Att.	---	---
FT Made	---	---
FT Att.	---	---

KEY NOTES ON ARMANI DODSON

- Was sidelined through the first five weeks of the season with an injured right shoulder ... has returned to practice
- Enters his freshman season after a strong career playing varsity basketball and football at Kaiser High School in Fontana, Calif.
- As a senior at Kaiser HS, secured first-team All-CIF Southern Section honors, averaging 16.0 ppg, 10.5 rpg, 3.8 apg and 1.5 spg

GYÖRGY “G.G.” GOLOMAN (14)
JUNIOR – F – 6-11, 215 – Körmend, Hungary (The Sagemont School [FL])

SEASON/CAREER BEST PERFORMANCES

Category	Season High	Career High
Points	12 vs. CSUN (11/13/16)	12 vs. CSUN (11/13/16)
Rebounds	8 vs. CSUN (11/13/16)	8 vs. CSUN (11/13/16)
Assists	2 (twice), last vs. Nebraska (11/25/16)	3 (twice), last vs. USC (3/12/15)
Steals	1 (4 times), last vs. Ohio State (12/17/16)	4 at Oregon State (1/22/15)
Blocks	3 (twice), last vs. UC Santa Barbara (12/14/16)	3 (twice), last vs. UC Santa Barbara (12/14/16)
Minutes	23 vs. UC Santa Barbara (12/14/16)	28 vs. USC (3/12/15)
FG Made	5 vs. CSUN (11/13/16)	5 vs. CSUN (11/13/16)
FG Att.	7 vs. CSUN (11/13/16)	7 (twice), last vs. CSUN (11/13/16)
3PFG Made	---	2 vs. USC (3/12/15)
3PFG Att.	1 vs. CSUN (11/13/16)	3 (twice), last vs. USC (3/12/15)
FT Made	2 (4 times), last vs. Ohio State (12/17/16)	2 (5 times), last vs. Ohio State (12/17/16)
FT Att.	4 vs. CSUN (11/13/16)	4 (twice), last vs. CSUN (11/13/16)

KEY NOTES ON GYÖRGY “G.G.” GOLOMAN

- Has averaged 5.1 points and 3.8 rebounds in 11 games ... did not play against UC Riverside on Nov. 30 (sprained right ankle)
- Recorded career highs (12 points, eight rebounds) in the team's 102-87 win versus CSUN (Nov. 13)
- Has started in place of center Thomas Welsh (bruised right knee) in UCLA's last three games (vs. Michigan, UC Santa Barbara and Ohio State)

GYÖRGY “G.G.” GOLOMAN'S 2016-17 GAME-BY-GAME STATISTICS

Opponent	Date	gs	min	Total		3-Pointers		Free throws		Rebounds				pf	a	t/o	blk	stl	pts	avg
				fg-fga	pct	3fg-fga	pct	ft-fa	pct	off	def	tot	avg							
PACIFIC	11/11/16		6	1-1	1.000	0-0	.000	2-3	.667	2	1	3	3.0	5	0	2	0	0	4	4.0
CSUN	11/13/16		15	5-7	.714	0-1	.000	2-4	.500	3	5	8	5.5	3	2	1	3	1	12	8.0
SAN DIEGO	11/17/16		14	2-3	.667	0-0	.000	0-0	.000	0	1	1	4.0	4	1	2	1	0	4	6.7
LONG BEACH STATE	11/20/16		18	3-5	.600	0-0	.000	2-2	1.000	0	3	3	3.8	2	0	1	0	0	8	7.0
vs Portland	11/24/16		17	3-6	.500	0-0	.000	1-2	.500	1	5	6	4.2	2	1	1	1	0	7	7.0
vs Nebraska	11/25/16		12	2-3	.667	0-0	.000	0-1	.000	2	2	4	4.2	1	2	1	2	1	4	6.5
vs Texas A&M	11/27/16		8	0-1	.000	0-0	.000	0-2	.000	0	1	1	3.7	0	1	0	0	0	0	5.6
UC RIVERSIDE	11/30/16	dnp		-	-	-	-	-	-	-	-	-	-	-	-	-	-	-	-	-
at Kentucky	12/03/16		6	0-1	.000	0-0	.000	0-0	.000	0	3	3	3.6	2	0	0	0	0	0	4.9
MICHIGAN	12/10/16	*	10	3-3	1.000	0-0	.000	0-0	.000	2	0	2	3.4	5	1	0	0	0	6	5.0
UC SANTA BARBARA	12/14/16	*	23	3-3	1.000	0-0	.000	1-2	.500	1	6	7	3.8	2	1	1	3	1	7	5.2
vs Ohio State	12/17/16	*	17	1-1	1.000	0-0	.000	2-2	1.000	2	2	4	3.8	0	1	1	1	1	4	5.1
Totals		3	146	23-34	.676	0-1	.000	10-18	.556	13	29	42	3.8	26	10	10	11	4	56	5.1

GYÖRGY “G.G.” GOLOMAN'S CAREER STATISTICS

			Total		3-Point		F-Throws		Rebounds										Scoring	
Season	gp-gs	min/avg	fg-fga	pct	fg-fga	pct	ft-fa	pct	off	def	tot	avg	pf	fo	ast	to	blk	stl	pts	avg
2014-15	35-0	377/10.8	19-42	.452	6-12	.500	2-9	.222	8	45	53	1.5	63	0	20	18	10	15	46	1.3
2015-16	15-0	181/12.1	11-33	.333	2-9	.222	6-16	.375	18	23	41	2.7	34	1	4	10	6	5	30	2.0
2016-17	11-3	146/13.3	23-34	.676	0-1	.000	10-18	.556	13	29	42	3.8	26	2	10	10	11	4	56	5.1
TOTAL	61-3	704/11.5	53-109	.486	8-22	.364	18-43	.419	39	97	136	2.2	123	3	34	38	27	24	132	2.2

ISAAC HAMILTON (10)
SENIOR – G – 6-5, 195 – Los Angeles, Calif. (St. John Bosco HS)

SEASON/CAREER BEST PERFORMANCES

Category	Season High	Career High
Points	27 vs. UC Riverside (11/30/16)	36 vs. USC (3/12/15)
Rebounds	8 vs. Ohio State (12/17/16)	11 vs. McNeese State (12/22/15)
Assists	8 vs. Pacific (11/11/16)	10 vs. Washington (2/25/15)
Steals	2 (twice), last vs. UC Santa Barbara (12/14/16)	4 (twice), last vs. McNeese State (12/22/15)
Blocks	1 (twice), last at Kentucky (12/3/16)	1 (10 times), last at Kentucky (12/3/16)
Minutes	34 (3 times), last vs. Ohio State (12/17/16)	43 (twice), last at Washington (1/1/16)
FG Made	9 (twice), last vs. UC Riverside (11/30/16)	13 vs. USC (3/12/15)
FG Att.	15 (4 times), last vs. Ohio State (12/17/16)	23 vs. Oregon State (3/5/16)
3PFG Made	7 vs. UC Riverside (11/30/16)	7 (twice), last vs. UC Riverside (11/30/16)
3PFG Att.	12 vs. UC Riverside (11/30/16)	13 vs. Oregon State (3/5/16)
FT Made	3 vs. CSUN (11/13/16)	6 (twice), last vs. Arizona State (1/9/16)
FT Att.	4 vs. CSUN (11/13/16)	8 vs. Kentucky (12/13/15)

KEY NOTES ON ISAAC HAMILTON

- Has totaled 1,126 career points midway through his third season playing at UCLA
- Crossed the 1,000 career point mark during the Bruins' 99-77 win over Portland (Nov. 24) at Cal State Fullerton in the Wooden Legacy
- Ranks fourth among all Pac-12 players in scoring (17.3 ppg) and is tied for 11th in assists per game (3.3), through games played Sunday, Dec. 19
- Isaac Hamilton and TJ Leaf are UCLA's only players to have scored in double figures in all 12 games
- Has scored in double figures in 41 of UCLA's last 44 games, dating back to the start of the Bruins' 2015-16 campaign
- Totaled a season-high 27 points in the win over UC Riverside (Nov. 30) ... has scored at least 20 points in two games this season
- Entered the 2016-17 season as the Pac-12 Conference's leading returning scorer from one year ago (16.8 ppg last year)

ISAAC HAMILTON'S 2016-17 GAME-BY-GAME STATISTICS

Opponent	Date	gs	min	Total		3-Pointers		Free throws		Rebounds				pf	a	t/o	blk	stl	pts	avg	
				fg-fga	pct	3fg-fga	pct	ft-fga	pct	off	def	tot	avg								
PACIFIC	11/11/16	*	29	7-12	.583	3-7	.429	0-0	.000	0	1	1	1.0	3	8	3	0	1	17	17.0	
CSUN	11/13/16	*	34	9-14	.643	1-4	.250	3-4	.750	1	2	3	2.0	4	1	3	0	0	22	19.5	
SAN DIEGO	11/17/16	*	29	5-11	.455	1-6	.167	1-2	.500	0	3	3	2.3	2	6	1	0	1	12	17.0	
LONG BEACH STATE	11/20/16	*	27	7-13	.538	4-6	.667	0-0	.000	0	2	2	2.3	1	4	1	0	1	18	17.3	
vs Portland	11/24/16	*	30	5-13	.385	4-9	.444	2-2	1.000	0	3	3	2.4	0	6	4	0	2	16	17.0	
vs Nebraska	11/25/16	*	34	5-12	.417	3-7	.429	2-2	1.000	1	4	5	2.8	3	0	4	0	0	15	16.7	
vs Texas A&M	11/27/16	*	30	7-15	.467	3-8	.375	0-0	.000	1	6	7	3.4	2	2	3	1	1	17	16.7	
UC RIVERSIDE	11/30/16	*	29	9-15	.600	7-12	.583	2-2	1.000	0	6	6	3.8	0	1	1	0	0	27	18.0	
at Kentucky	12/03/16	*	33	7-13	.538	3-5	.600	2-3	.667	1	3	4	3.8	1	1	2	1	1	19	18.1	
MICHIGAN	12/10/16	*	32	6-12	.500	2-4	.500	0-0	.000	2	2	4	3.8	0	7	0	0	0	14	17.7	
UC SANTA BARBARA	12/14/16	*	31	6-15	.400	1-9	.111	0-0	.000	0	1	1	3.5	2	1	2	0	2	13	17.3	
vs Ohio State	12/17/16	*	34	8-15	.533	1-5	.200	0-0	.000	4	4	8	3.9	2	3	1	0	1	17	17.3	
Totals			12	372	81-160	.506	33-82	.402	12-15	.800	10	37	47	3.9	20	40	25	2	10	207	17.3

ISAAC HAMILTON'S CAREER STATISTICS

			Total		3-Point		F-Throws		Rebounds										Scoring	
Season	gp-gs	min/avg	fg-fga	pct	fg-fga	pct	ft-fta	pct	off	def	tot	avg	pf	fo	ast	to	blk	stl	pts	avg
2014-15	36-36	1222/33.9	139-340	.409	59-152	.388	44-64	.688	38	84	122	3.4	83	1	116	83	6	32	381	10.6
2015-16	32-32	1128/35.2	206-436	.472	60-159	.377	66-82	.805	31	104	135	4.2	69	1	106	76	2	33	538	16.8
2016-17	12-12	372/31.0	81-160	.506	33-82	.402	12-15	.800	10	37	47	3.9	20	0	40	25	2	10	207	17.3
TOTAL	80-80	2722/34.0	426-936	.455	152-393	.387	122-161	.758	79	225	304	3.8	172	2	262	184	10	75	1126	14.1

AARON HOLIDAY (3)
SOPHOMORE – G – 6-1, 185 – Chatsworth, Calif. (Campbell Hall HS)

SEASON/CAREER BEST PERFORMANCES

Category	Season High	Career High
Points	20 (twice), last vs. Ohio State (12/17/16)	20 (twice), last vs. Ohio State (12/17/16)
Rebounds	5 (3 times), last vs. Nebraska (11/25/16)	8 vs. Kentucky (12/3/15)
Assists	6 vs. UC Santa Barbara (12/14/16)	7 (4 times) .ast vs. Colorado (2/20/16)
Steals	4 vs. UC Santa Barbara (12/14/16)	5 vs. Cal Poly (11/15/15)
Blocks	1 (twice), last vs. UC Santa Barbara (12/14/16)	3 vs. McNeese State (12/22/15)
Minutes	29 (3 times), last vs. UC Santa Barbara (12/14/16)	36 vs. Pepperdine (11/19/15)
FG Made	7 vs. Long Beach State (11/20/16)	7 (twice), last vs. Long Beach State (11/20/16)
FG Att.	12 (twice), last vs. Ohio State (12/17/16)	15 at Washington State (1/3/16)
3PFG Made	5 vs. Michigan (12/10/16)	5 vs. Michigan (12/10/16)
3PFG Att.	5 (3 times), last vs. Michigan (12/10/16)	6 vs. Monmouth (11/13/15)
FT Made	9 vs. UC Santa Barbara (12/14/16)	9 vs. UC Santa Barbara (12/14/16)
FT Att.	10 vs. Ohio State (12/17/16)	10 vs. Ohio State (12/17/16)

KEY NOTES ON AARON HOLIDAY

- Through 12 games as a sophomore, has averaged 14.4 points, 3.1 rebounds and 4.1 assists per game
- Scored a career-high 20 points in each of UCLA's consecutive wins against UC Santa Barbara (Dec. 14) and Ohio State (Dec. 17)
- Ranks first in the Pac-12 in 3-point percentage (53.3%, 24 for 45) and No. 12 in overall field goal percentage (54.5%, 55 for 101), through Sunday, Dec. 19
- In 44 collegiate games, has scored in double figures 30 times, including in 10 of the 12 games this season

AARON HOLIDAY'S 2016-17 GAME-BY-GAME STATISTICS

Opponent	Date	gs	min	Total		3-Pointers		Free throws		Rebounds				pf	a	t/o	blk	stl	pts	avg
				fg-fga	pct	3fg-fga	pct	ft-fta	pct	off	def	tot	avg							
PACIFIC	11/11/16		24	6-10	.600	4-5	.800	2-2	1.000	1	2	3	3.0	5	5	0	0	1	18	18.0
CSUN	11/13/16		29	3-9	.333	1-3	.333	6-7	.857	1	3	4	3.5	3	5	4	0	0	13	15.5
SAN DIEGO	11/17/16		27	4-8	.500	2-4	.500	1-1	1.000	0	5	5	4.0	1	2	3	0	1	11	14.0
LONG BEACH STATE	11/20/16		25	7-10	.700	0-2	.000	2-2	1.000	0	2	2	3.5	2	5	2	0	2	16	14.5
vs Portland	11/24/16		26	4-9	.444	2-4	.500	4-6	.667	1	4	5	3.8	2	5	1	0	1	14	14.4
vs Nebraska	11/25/16		29	3-6	.500	0-1	.000	0-1	.000	0	5	5	4.0	2	3	1	0	0	6	13.0
vs Texas A&M	11/27/16		23	2-3	.667	2-3	.667	1-4	.250	0	2	2	3.7	0	3	4	0	1	7	12.1
UC RIVERSIDE	11/30/16		28	6-12	.500	3-5	.600	3-3	1.000	1	3	4	3.8	2	5	5	0	1	18	12.9
at Kentucky	12/03/16		20	4-7	.571	2-3	.667	3-4	.750	0	0	0	3.3	4	4	1	1	1	13	12.9
MICHIGAN	12/10/16		27	6-7	.857	5-5	1.000	0-0	.000	0	0	0	3.0	1	5	3	0	0	17	13.3
UC SANTA BARBARA	12/14/16		29	5-8	.625	1-4	.250	9-9	1.000	0	3	3	3.0	1	6	2	1	4	20	13.9
vs Ohio State	12/17/16		25	5-12	.417	2-6	.333	8-10	.800	2	2	4	3.1	4	1	3	0	5	20	14.4
Totals		0	312	55-101	.545	24-45	.533	39-49	.796	6	31	37	3.1	27	49	29	2	17	173	14.4

AARON HOLIDAY'S CAREER STATISTICS

			Total		3-Point		F-Throws		Rebounds										Scoring	
Season	gp-gs	min/avg	fg-fga	pct	fg-fga	pct	ft-fta	pct	off	def	tot	avg	pf	fo	ast	to	blk	stl	pts	avg
2015-16	32-32	1013/31.7	114-289	.394	39-93	.419	64-88	.727	19	77	96	3.0	103	7	127	92	8	45	331	10.3
2016-17	12-0	312/26.0	55-101	.545	24-45	.533	39-49	.796	6	31	37	3.1	27	1	49	29	2	17	173	14.4
TOTAL	44-32	1325/30.1	169-390	.433	63-138	.457	103-137	.752	25	108	133	3.0	130	8	176	121	10	62	504	11.5

TJ LEAF (22)
FRESHMAN – F – 6-10, 225 – El Cajon, Calif. (Foothills Christian HS)

SEASON/CAREER BEST PERFORMANCES

Category	Season High	Career High
Points	26 vs. San Diego (11/17/16)	26 vs. San Diego (11/17/16)
Rebounds	15 vs. Pacific (11/11/16)	15 vs. Pacific (11/11/16)
Assists	8 vs. UC Santa Barbara (12/14/16)	8 vs. UC Santa Barbara (12/14/16)
Steals	2 vs. Ohio State (12/17/16)	2 vs. Ohio State (12/17/16)
Blocks	2 (5 times), last vs. UC Santa Barbara (12/14/16)	2 (5 times), last vs. UC Santa Barbara (12/14/16)
Minutes	38 vs. Ohio State (12/17/16)	38 vs. Ohio State (12/17/16)
FG Made	11 (twice), last vs. UC Santa Barbara (12/14/16)	11 (twice), last vs. UC Santa Barbara (12/14/16)
FG Att.	17 vs. UC Santa Barbara (12/14/16)	17 vs. UC Santa Barbara (12/14/16)
3PFG Made	3 (twice), last vs. UC Santa Barbara (12/14/16)	3 (twice), last vs. UC Santa Barbara (12/14/16)
3PFG Att.	5 vs. Pacific (11/11/16)	5 vs. Pacific (11/11/16)
FT Made	4 (3 times), last vs. Long Beach State (11/20/16)	4 (3 times), last vs. Long Beach State (11/20/16)
FT Att.	6 vs. CSUN (11/13/16)	6 vs. CSUN (11/13/16)

KEY NOTES ON TJ LEAF

- Ranks third in the Pac-12 in scoring (17.8 ppg), sixth in rebounding (9.3 rpg), and 14th in assists per game (3.0 apg), through games played Sunday, Dec. 18
- Entered the week as the Pac-12's leader in overall field goal percentage (66.4%), also ranking No. 10 in the nation in that statistic
- Earned Pac-12 Player of the Week honors on Dec. 5 (wins over UC Riverside and at Kentucky) and Dec. 19 (wins over UC Santa Barbara and Ohio State)
- Has totaled five double-doubles in 12 games, finishing one rebound shy of a double-double in three contests
- TJ Leaf and Isaac Hamilton are UCLA's only players to have scored in double figures in all 12 games
- Finished with 25 points, 10 rebounds and eight assists in the team's 102-62 victory over UC Santa Barbara (Dec. 14)

TJ LEAF'S 2016-17 GAME-BY-GAME STATISTICS

Opponent	Date	gs	min	Total		3-Pointers		Free throws		Rebounds				pf	a	t/o	blk	stl	pts	avg	
				fg-fga	pct	3fg-fga	pct	ft-fga	pct	off	def	tot	avg								
PACIFIC	11/11/16	*	37	9-13	.692	2-5	.400	2-5	.400	6	9	15	15.0	2	4	3	1	1	22	22.0	
CSUN	11/13/16	*	18	4-6	.667	0-1	.000	4-6	.667	2	4	6	10.5	4	4	3	2	0	12	17.0	
SAN DIEGO	11/17/16	*	30	11-13	.846	0-1	.000	4-4	1.000	2	8	10	10.3	1	1	0	2	1	26	20.0	
LONG BEACH STATE	11/20/16	*	30	8-12	.667	1-2	.500	4-5	.800	1	8	9	10.0	3	1	1	1	1	21	20.3	
vs Portland	11/24/16	*	28	6-9	.667	1-1	1.000	1-1	1.000	2	7	9	9.8	3	4	1	0	0	14	19.0	
vs Nebraska	11/25/16	*	26	4-9	.444	3-4	.750	1-2	.500	0	4	4	8.8	2	4	0	2	0	12	17.8	
vs Texas A&M	11/27/16	*	32	6-9	.667	1-1	1.000	0-1	.000	3	6	9	8.9	3	0	2	1	1	13	17.1	
UC RIVERSIDE	11/30/16	*	27	9-12	.750	0-1	.000	0-1	.000	1	9	10	9.0	0	2	3	2	0	18	17.3	
at Kentucky	12/03/16	*	32	7-12	.583	1-2	.500	2-2	1.000	4	9	13	9.4	3	5	2	1	1	17	17.2	
MICHIGAN	12/10/16	*	36	10-14	.714	1-2	.500	0-1	.000	2	6	8	9.3	4	2	0	0	0	21	17.6	
UC SANTA BARBARA	12/14/16	*	30	11-17	.647	3-4	.750	0-1	.000	5	5	10	9.4	1	8	1	2	1	25	18.3	
vs Ohio State	12/17/16	*	38	6-11	.545	1-4	.250	0-2	.000	2	6	8	9.3	1	1	4	0	2	13	17.8	
Totals			12	364	91-137	.664	14-28	.500	18-31	.581	30	81	111	9.3	27	36	20	14	8	214	17.8

TJ LEAF'S CAREER STATISTICS

			Total		3-Point		F-Throws		Rebounds											Scoring	
Season	gp-gs	min/avg	fg-fga	pct	fg-fga	pct	ft-fta	pct	off	def	tot	avg	pf	fo	ast	to	blk	stl	pts	avg	
2016-17	12-12	364/30.3	91-137	.664	14-28	.500	18-31	.581	30	81	111	9.3	27	0	36	20	14	8	214	17.8	
TOTAL	12-12	364/30.3	91-137	.664	14-28	.500	18-31	.581	30	81	111	9.3	27	0	36	20	14	8	214	17.8	

IKENNA OKWARABIZIE (34)
JUNIOR – C – 6-9, 250 – Lagos, Nigeria (Tyler Junior College [TX])

SEASON/CAREER BEST PERFORMANCES

Category	Season High	Career High
Points	1 vs. Portland (11/25/16)	1 vs. Portland (11/25/16)
Rebounds	2 (3 times), last vs. UC Riverside (11/30/16)	2 (3 times), last vs. UC Riverside (11/30/16)
Assists	---	---
Steals	1 vs. Portland (11/25/16)	1 vs. Portland (11/25/16)
Blocks	---	---
Minutes	6 vs. Pacific (11/11/16)	6 vs. Pacific (11/11/16)
FG Made	---	---
FG Att.	---	1 (twice), last at Arizona State (2/14/16)
3PFG Made	---	---
3PFG Att.	---	---
FT Made	1 vs. Portland (11/25/16)	1 vs. Portland (11/25/16)
FT Att.	2 vs. Portland (11/25/16)	2 vs. Portland (11/25/16)

KEY NOTES ON IKENNA OKWARABIZIE

- Has played in seven games this season, recording a career-high six minutes in the team's season-opening win against Pacific (Nov. 11)
- Now in his second season at UCLA, has played in 14 career games ... transferred to UCLA in the summer of 2015 from Tyler Junior College (Texas)
- Grew up in Lagos, Nigeria and spent his final two years of high school in the United States (St. Louis, Mo., and Iowa City, Iowa)

IKENNA OKWARABIZIE'S 2016-17 GAME-BY-GAME STATISTICS

Opponent	Date	gs	min	Total		3-Pointers		Free throws		Rebounds				pf	a	t/o	blk	stl	pts	avg
				fg-fga	pct	3fg-fga	pct	ft-fta	pct	off	def	tot	avg							
PACIFIC	11/11/16		6	0-0	.000	0-0	.000	0-0	.000	0	1	1	1.0	1	0	0	0	0	0	0.0
CSUN	11/13/16		2	0-0	.000	0-0	.000	0-0	.000	0	0	0	0.5	1	0	1	0	0	0	0.0
SAN DIEGO	11/17/16		dnp	-	-	-	-	-	-	-	-	-	-	-	-	-	-	-	-	-
LONG BEACH STATE	11/20/16		5	0-0	.000	0-0	.000	0-0	.000	0	2	2	1.0	1	0	1	0	0	0	0.0
vs Portland	11/24/16		4	0-0	.000	0-0	.000	1-2	.500	0	0	0	0.8	0	0	1	0	1	1	0.3
vs Nebraska	11/25/16		dnp	-	-	-	-	-	-	-	-	-	-	-	-	-	-	-	-	-
vs Texas A&M	11/27/16		dnp	-	-	-	-	-	-	-	-	-	-	-	-	-	-	-	-	-
UC RIVERSIDE	11/30/16		3	0-0	.000	0-0	.000	0-0	.000	0	2	2	1.0	0	0	0	0	0	0	0.2
at Kentucky	12/03/16		dnp	-	-	-	-	-	-	-	-	-	-	-	-	-	-	-	-	-
MICHIGAN	12/10/16		1	0-0	.000	0-0	.000	0-0	.000	0	0	0	0.8	0	0	0	0	0	0	0.2
UC SANTA BARBARA	12/14/16		3	0-0	.000	0-0	.000	0-0	.000	0	1	1	0.9	0	0	0	0	0	0	0.1
vs Ohio State	12/17/16		dnp	-	-	-	-	-	-	-	-	-	-	-	-	-	-	-	-	-
Totals		0	24	0-0	.000	0-0	.000	1-2	.500	0	6	6	0.9	3	0	3	0	1	1	0.1

IKENNA OKWARABIZIE'S CAREER STATISTICS

			Total		3-Point		F-Throws		Rebounds											Scoring	
Season	gp-gs	min/avg	fg-fga	pct	fg-fga	pct	ft-fta	pct	off	def	tot	avg	pf	fo	ast	to	blk	stl	pts	avg	
2015-16	7-0	13/1.9	0-2	.000	0-0	.000	0-0	.000	1	3	4	0.6	4	0	0	2	0	0	0	0.0	
2016-17	7-0	24/3.4	0-0	.000	0-0	.000	1-2	.500	0	6	6	0.9	3	0	0	3	0	1	1	0.1	
TOTAL	14-0	37/2.6	0-2	.000	0-0	.000	1-2	.500	1	9	10	0.7	7	0	0	5	0	1	1	0.1	

ALEX OLESINSKI (0)
SOPHOMORE – F – 6-10, 200 – Roswell, N.M. (La Lumiere School (IN))

SEASON/CAREER BEST PERFORMANCES

Category	Season High	Career High
Points	---	7 vs. Monmouth (11/13/15)
Rebounds	---	7 vs. Wake Forest (11/25/15)
Assists	---	1 (4 times), last vs. Louisiana-Lafayette (12/15/15)
Steals	---	1 (5 times), last vs. Colorado (2/20/16)
Blocks	---	---
Minutes	---	19 vs. Kansas (11/24/15)
FG Made	---	3 vs. Monmouth (11/13/15)
FG Att.	---	6 vs. Monmouth (11/13/15)
3PFG Made	---	1 vs. Monmouth (11/13/15)
3PFG Att.	---	2 vs. Kansas (11/24/15)
FT Made	---	3 (twice), last at Washington (1/1/16)
FT Att.	---	4 (twice), last at Washington (1/1/16)

KEY NOTES ON ALEX OLESINSKI

- Has missed UCLA's first 12 games of the season while recovering from a stress reaction in his left foot
- During the team's overseas trip to Australia (Aug. 2016), averaged 6.3 points and 4.0 rebounds per game in three contests
- As a freshman in 2015-16, averaged 1.2 points and 2.0 rebounds in 7.0 minutes per game (23 games)

ALEX OLESINSKI'S CAREER STATISTICS

Season	Yr.	G-GS	MIN	MPG	FG-FGA	PCT	3FG-A	PCT	FT-FTA	PCT	OR	DR	TOT	RPG	PF-DQ	A	TO	BS	S	PTS	PPG
2015-16	FR	23-0	161	7.0	7-26	.269	1-7	.143	13-20	.650	21	25	46	2.0	34-0	4	10	0	5	28	1.2
CAREER		23-0	161	7.0	7-26	.269	1-7	.143	13-20	.650	21	25	46	2.0	34-0	4	10	0	5	28	1.2

JERROLD SMITH (15)
SENIOR – G – 6-0, 165 – Los Angeles, Calif. (St. Bernard's HS)

SEASON/CAREER BEST PERFORMANCES

Category	Season High	Career High
Points	4 vs. Long Beach State (11/20/16)	4 vs. Long Beach State (11/20/16)
Rebounds	---	1 vs. Colorado (2/20/16)
Assists	1 vs. UC Santa Barbara (12/14/16)	1 (twice), last vs. UC Santa Barbara (12/14/16)
Steals	1 (twice), last vs. UC Santa Barbara (12/14/16)	1 (twice), last vs. UC Santa Barbara (12/14/16)
Blocks	---	---
Minutes	4 vs. Portland (11/24/16)	4 vs. Portland (11/24/16)
FG Made	2 vs. Long Beach State (11/20/16)	2 vs. Long Beach State (11/20/16)
FG Att.	2 vs. Long Beach State (11/20/16)	2 vs. Long Beach State (11/20/16)
3PFG Made	---	---
3PFG Att.	---	1 vs. Colorado (2/20/16)
FT Made	1 vs. Michigan (12/10/16)	1 vs. Michigan (12/10/16)
FT Att.	2 vs. Michigan (12/10/16)	2 vs. Michigan (12/10/16)

KEY NOTES ON JERROLD SMITH

- Has played in 14 games in three seasons with the Bruins, including six contests this season (senior year) ... did not play in 2014-15
- Was a three-year varsity basketball standout at St. Bernard's High School in Playa del Rey, Calif., earning All-Del Rey League honors as a senior

JERROLD SMITH'S 2016-17 GAME-BY-GAME STATISTICS

Opponent	Date	gs	min	Total		3-Pointers		Free throws		Rebounds				pf	a	t/o	blk	stl	pts	avg	
				fg-fga	pct	3fg-fga	pct	ft-fga	pct	off	def	tot	avg								
PACIFIC	11/11/16		2	0-2	.000	0-0	.000	0-0	.000	0	0	0	0.0	2	0	1	0	0	0	0.0	
CSUN	11/13/16		dnp	-	-	-	-	-	-	-	-	-	-	-	-	-	-	-	-	-	
SAN DIEGO	11/17/16		dnp	-	-	-	-	-	-	-	-	-	-	-	-	-	-	-	-	-	
LONG BEACH STATE	11/20/16		3	2-2	1.000	0-0	.000	0-0	.000	0	0	0	0.0	1	0	1	0	0	4	2.0	
vs Portland	11/24/16		4	0-0	.000	0-0	.000	0-0	.000	0	0	0	0.0	0	0	0	0	0	0	1.3	
vs Nebraska	11/25/16		dnp	-	-	-	-	-	-	-	-	-	-	-	-	-	-	-	-	-	
vs Texas A&M	11/27/16		dnp	-	-	-	-	-	-	-	-	-	-	-	-	-	-	-	-	-	
UC RIVERSIDE	11/30/16		3	0-0	.000	0-0	.000	0-0	.000	0	0	0	0.0	0	0	0	0	0	0	1.0	
at Kentucky	12/03/16		dnp	-	-	-	-	-	-	-	-	-	-	-	-	-	-	-	-	-	
MICHIGAN	12/10/16		1	0-0	.000	0-0	.000	1-2	.500	0	0	0	0.0	0	0	0	0	1	1	1.0	
UC SANTA BARBARA	12/14/16		2	0-0	.000	0-0	.000	0-0	.000	0	0	0	0.0	0	1	0	0	1	0	0.8	
vs Ohio State	12/17/16		dnp	-	-	-	-	-	-	-	-	-	-	-	-	-	-	-	-	-	
Totals			0	15	2-4	.500	0-0	.000	1-2	.500	0	0	0	0.0	3	1	2	0	2	5	0.8

JERROLD SMITH'S CAREER STATISTICS

			Total		3-Point		F-Throws		Rebounds										Scoring	
Season	gp-gs	min/avg	fg-fga	pct	fg-fga	pct	ft-fa	pct	off	def	tot	avg	pf	fo	ast	to	blk	stl	pts	avg
2015-16	8-0	10/1.3	0-2	.000	0-1	.000	0-0	.000	1	0	1	0.1	0	0	1	1	0	0	0	0.0
2016-17	6-0	15/2.5	2-4	.500	0-0	.000	1-2	.500	0	0	0	0.0	3	0	1	2	0	2	5	0.8
TOTAL	14-0	25/1.8	2-6	.333	0-1	.000	1-2	.500	1	0	1	0.1	3	0	2	3	0	2	5	0.4

THOMAS WELSH (40)

JUNIOR – C – 7-0, 245 – Redondo Beach, Calif. (Loyola HS)

SEASON/CAREER BEST PERFORMANCES

Category	Season High	Career High
Points	16 vs. Portland (11/24/16)	22 vs. Cal Poly (11/15/15)
Rebounds	13 vs. CSUN (11/13/16)	16 (twice), last at California (2/25/16)
Assists	3 vs. UC Riverside (11/30/16)	3 vs. UC Riverside (11/30/16)
Steals	2 vs. CSUN (11/13/16)	2 (4 times), last vs. CSUN (11/13/16)
Blocks	4 (twice), last vs. San Diego (11/17/16)	5 vs. Monmouth (11/13/15)
Minutes	30 vs. CSUN (11/13/16)	39 vs. Monmouth (11/13/15)
FG Made	8 vs. Portland (11/24/16)	10 vs. Cal Poly (11/15/15)
FG Att.	12 vs. CSUN (11/13/16)	16 vs. McNeese State (12/22/15)
3PFG Made	---	---
3PFG Att.	---	---
FT Made	4 (3 times), last at Kentucky (12/3/16)	5 vs. Kentucky (12/3/15)
FT Att.	4 (3 times), last at Kentucky (12/3/16)	6 (twice), last at Washington (1/1/16)

KEY NOTES ON THOMAS WELSH

- Has averaged 11.1 points and team-highs of 9.6 rebounds and 2.2 blocks per game (started UCLA's first nine games)
- Did not play in UCLA's previous three games (vs. Michigan, UC Santa Barbara and Ohio State) ... sustained a bruised right knee (in practice on Dec. 7)
- Has totaled five point-rebound double-doubles, most recently totaling 12 points and 12 rebounds versus UC Riverside (Nov. 30, 2016)
- Has shot 68.5 percent from the field (37/54) in his last seven games after opening the year with six field goals in 21 attempts (28.5 percent)
- As a sophomore last season, registered 11.2 points and 8.5 rebounds per game (played in 31 of UCLA's 32 games)

THOMAS WELSH'S 2016-17 GAME-BY-GAME STATISTICS

Opponent	Date	gs	min	Total		3-Pointers		Free throws		Rebounds				pf	a	t/o	blk	stl	pts	avg
				fg-fga	pct	3fg-fga	pct	ft-fta	pct	off	def	tot	avg							
PACIFIC	11/11/16	*	26	3-9	.333	0-0	.000	0-0	.000	0	6	6	6.0	4	0	0	3	1	6	6.0
CSUN	11/13/16	*	30	3-12	.250	0-0	.000	4-4	1.000	2	11	13	9.5	3	2	1	4	2	10	8.0
SAN DIEGO	11/17/16	*	26	4-7	.571	0-0	.000	4-4	1.000	2	9	11	10.0	1	0	0	4	0	12	9.3
LONG BEACH STATE	11/20/16	*	23	6-9	.667	0-0	.000	0-0	.000	2	5	7	9.3	4	0	0	3	1	12	10.0
vs Portland	11/24/16	*	26	8-10	.800	0-0	.000	0-0	.000	0	10	10	9.4	3	0	1	1	0	16	11.2
vs Nebraska	11/25/16	*	28	5-8	.625	0-0	.000	2-2	1.000	0	11	11	9.7	1	2	0	1	0	12	11.3
vs Texas A&M	11/27/16	*	27	3-7	.429	0-0	.000	0-0	.000	1	7	8	9.4	4	0	0	1	0	6	10.6
UC RIVERSIDE	11/30/16	*	25	6-6	1.000	0-0	.000	0-0	.000	2	10	12	9.8	2	3	1	3	0	12	10.8
at Kentucky	12/03/16	*	19	5-7	.714	0-0	.000	4-4	1.000	2	6	8	9.6	5	0	1	0	0	14	11.1
MICHIGAN	12/10/16		dnp	-	-	-	-	-	-	-	-	-	-	-	-	-	-	-	-	-
UC SANTA BARBARA	12/14/16		dnp	-	-	-	-	-	-	-	-	-	-	-	-	-	-	-	-	-
vs Ohio State	12/17/16		dnp	-	-	-	-	-	-	-	-	-	-	-	-	-	-	-	-	-
Totals		9	230	43-75	.573	0-0	.000	14-14	1.000	11	75	86	9.6	27	7	4	20	4	100	11.1

THOMAS WELSH'S CAREER STATISTICS

Season	gp-gs	min/avg	Total		3-Point		F-Throws		Rebounds				pf	fo	ast	to	blk	stl	Scoring	
			fg-fga	pct	fg-fga	pct	ft-fta	pct	off	def	tot	avg							pts	avg
2014-15	36-3	565/15.7	62-132	.470	0-0	.000	14-23	.609	54	83	137	3.8	85	1	8	17	39	14	138	3.8
2015-16	31-26	832/26.8	157-266	.590	0-0	.000	34-45	.756	100	163	263	8.5	86	6	17	25	32	8	348	11.2
2016-17	9-9	230/25.6	43-75	.573	0-0	.000	14-14	1.000	11	75	86	9.6	27	1	7	4	20	4	100	11.1
TOTAL	76-38	1627/21.4	262-473	.554	0-0	.000	62-82	.756	165	321	486	6.4	198	8	32	46	91	26	586	7.7

ALEC WULFF (21)
JUNIOR – G – 6-3, 185 – Laguna Beach, Calif. (Laguna Beach HS)

SEASON/CAREER BEST PERFORMANCES

Category	Season High	Career High
Points	6 vs. UC Riverside (11/30/16)	6 vs. UC Riverside (11/30/16)
Rebounds	1 vs. Pacific (11/11/16)	1 (3 times), last vs. Pacific (11/11/16)
Assists	1 vs. UC Riverside (11/30/16)	1 (3 times), last vs. UC Riverside (11/30/16)
Steals	1 vs. UC Riverside (11/30/16)	1 (twice), last vs. UC Riverside (11/30/16)
Blocks	---	---
Minutes	4 vs. Portland (11/24/16)	4 vs. Portland (11/24/16)
FG Made	2 vs. UC Riverside (11/30/16)	2 vs. UC Riverside (11/30/16)
FG Att.	2 vs. UC Riverside (11/30/16)	2 vs. UC Riverside (11/30/16)
3PFG Made	2 vs. UC Riverside (11/30/16)	2 vs. UC Riverside (11/30/16)
3PFG Att.	3 vs. UC Riverside (11/30/16)	3 vs. UC Riverside (11/30/16)
FT Made	---	---
FT Att.	---	---

KEY NOTES ON ALEC WULFF

- Has made 4 of 7 career 3-pointers, totaling 12 points and three assists in 15 career games
- Shot 2-for-3 from beyond the 3-point arc in the Bruins' non-conference win over UC Riverside (Nov. 30, 2016)

ALEC WULFF'S 2016-17 GAME-BY-GAME STATISTICS

Opponent	Date	gs	min	Total		3-Pointers		Free throws		Rebounds				pf	a	t/o	blk	stl	pts	avg	
				fg-fga	pct	3fg-fga	pct	ft-fta	pct	off	def	tot	avg								
PACIFIC	11/11/16		2	0-0	.000	0-0	.000	0-0	.000	0	1	1	1.0	0	0	0	0	0	0.0		
CSUN	11/13/16		dnp	-	-	-	-	-	-	-	-	-	-	-	-	-	-	-	-		
SAN DIEGO	11/17/16		dnp	-	-	-	-	-	-	-	-	-	-	-	-	-	-	-	-		
LONG BEACH STATE	11/20/16		3	0-1	.000	0-1	.000	0-0	.000	0	0	0	0.5	1	0	0	0	0	0.0		
vs Portland	11/24/16		4	0-0	.000	0-0	.000	0-0	.000	0	0	0	0.3	1	0	0	0	0	0.0		
vs Nebraska	11/25/16		dnp	-	-	-	-	-	-	-	-	-	-	-	-	-	-	-	-		
vs Texas A&M	11/27/16		dnp	-	-	-	-	-	-	-	-	-	-	-	-	-	-	-	-		
UC RIVERSIDE	11/30/16		3	2-3	.667	2-3	.667	0-0	.000	0	0	0	0.3	0	1	0	0	1	6	1.5	
at Kentucky	12/03/16		dnp	-	-	-	-	-	-	-	-	-	-	-	-	-	-	-	-		
MICHIGAN	12/10/16		1	0-0	.000	0-0	.000	0-0	.000	0	0	0	0.2	0	0	0	0	0	1.2		
UC SANTA BARBARA	12/14/16		2	0-1	.000	0-1	.000	0-0	.000	0	0	0	0.2	0	0	0	0	0	1.0		
vs Ohio State	12/17/16		dnp	-	-	-	-	-	-	-	-	-	-	-	-	-	-	-	-		
Totals			0	15	2-5	.400	2-5	.400	0-0	.000	0	1	1	0.2	2	1	0	0	1	6	1.0

ALEC WULFF'S CAREER STATISTICS

Season	gp-gs	min/avg	Total		3-Point		F-Throws		Rebounds				pf	fo	ast	to	blk	stl	Scoring	
			fg-fga	pct	fg-fga	pct	ft-fta	pct	off	def	tot	avg							pts	avg
2014-15	4-0	5/1.3	0-1	.000	0-1	.000	0-0	.000	0	0	0	0.0	0	0	1	0	0	1	0	0.0
2015-16	5-0	7/1.4	2-2	1.000	2-2	1.000	0-0	.000	0	0	0	0.0	0	0	1	0	0	0	6	1.2
2016-17	6-0	15/2.5	2-5	.400	2-5	.400	0-0	.000	0	1	1	0.2	2	0	1	0	0	1	6	1.0
TOTAL	15-0	27/1.8	4-8	.500	4-8	.500	0-0	.000	0	1	1	0.1	2	0	3	0	0	2	12	0.8

ISAAC WULFF (21)
FRESHMAN – G – 6-3, 175 – Laguna Beach, Calif. (Laguna Beach HS)

SEASON/CAREER BEST PERFORMANCES

Category	Season High	Career High
Points	3 vs. Pacific (11/11/16)	3 vs. Pacific (11/11/16)
Rebounds	2 vs. Pacific (11/11/16)	2 vs. Pacific (11/11/16)
Assists	---	---
Steals	---	---
Blocks	---	---
Minutes	4 vs. Portland (11/24/16)	4 vs. Portland (11/24/16)
FG Made	1 (twice), last vs. UC Riverside (11/30/16)	1 (twice), last vs. UC Riverside (11/30/16)
FG Att.	1 (twice), last vs. UC Riverside (11/30/16)	1 (twice), last vs. UC Riverside (11/30/16)
3PFG Made	---	---
3PFG Att.	---	---
FT Made	1 vs. Pacific (11/11/16)	1 vs. Pacific (11/11/16)
FT Att.	2 vs. Pacific (11/11/16)	2 vs. Pacific (11/11/16)

KEY NOTES ON ISAAC WULFF

- Enters his first season at UCLA ... made his collegiate debut in the second half of UCLA's season-opening win over Pacific (Nov. 11)
- Isaac's older brother, Alec, is currently a junior on the team ... both Wulff brothers starred at Laguna Beach High School

ISAAC WULFF'S 2016-17 GAME-BY-GAME STATISTICS

Opponent	Date	gs	min	Total		3-Pointers		Free throws		Rebounds				pf	a	t/o	blk	stl	pts	avg
				fg-fga	pct	3fg-fga	pct	ft-fta	pct	off	def	tot	avg							
PACIFIC	11/11/16		2	1-1	1.000	0-0	.000	1-2	.500	1	1	2	2.0	0	0	0	0	0	3	3.0
CSUN	11/13/16		dnp	-	-	-	-	-	-	-	-	-	-	-	-	-	-	-	-	-
SAN DIEGO	11/17/16		dnp	-	-	-	-	-	-	-	-	-	-	-	-	-	-	-	-	-
LONG BEACH STATE	11/20/16		3	0-0	.000	0-0	.000	0-0	.000	0	0	0	1.0	0	0	0	0	0	0	1.5
vs Portland	11/24/16		dnp	-	-	-	-	-	-	-	-	-	-	-	-	-	-	-	-	-
vs Nebraska	11/25/16		dnp	-	-	-	-	-	-	-	-	-	-	-	-	-	-	-	-	-
vs Texas A&M	11/27/16		dnp	-	-	-	-	-	-	-	-	-	-	-	-	-	-	-	-	-
UC RIVERSIDE	11/30/16		3	1-1	1.000	0-0	.000	0-0	.000	0	0	0	0.7	1	0	0	0	0	2	1.7
at Kentucky	12/03/16		dnp	-	-	-	-	-	-	-	-	-	-	-	-	-	-	-	-	-
MICHIGAN	12/10/16		1	0-0	.000	0-0	.000	0-0	.000	0	0	0	0.5	0	0	0	0	0	0	1.3
UC SANTA BARBARA	12/14/16		dnp	-	-	-	-	-	-	-	-	-	-	-	-	-	-	-	-	-
vs Ohio State	12/17/16		dnp	-	-	-	-	-	-	-	-	-	-	-	-	-	-	-	-	-
Totals			0	9	2-2	1.000	0-0	.000	1-2	.500	1	1	2	0.5	1	0	0	0	5	1.3

ISAAC WULFF'S CAREER STATISTICS

Season	gp-gs	min/avg	Total		3-Point		F-Throws		Rebounds				pf	fo	ast	to	blk	stl	Scoring	
			fg-fga	pct	fg-fga	pct	ft-fta	pct	off	def	tot	avg							pts	avg
2016-17	4-0	9/2.3	2-2	1.000	0-0	.000	1-2	.500	1	1	2	0.5	1	0	0	0	0	0	5	1.3
TOTAL	4-0	9/2.3	2-2	1.000	0-0	.000	1-2	.500	1	1	2	0.5	1	0	0	0	0	0	5	1.3

2016-17 STARTING LINEUPS & STAT LEADERS

STARTING LINEUPS

DATE	OPPONENT	W/L	SCORE					
11/11/16	Pacific	W	119-80	Lonzo Ball	Bryce Alford	Isaac Hamilton	TJ Leaf	Thomas Welsh
11/13/16	CSUN	W	102-87	Lonzo Ball	Bryce Alford	Isaac Hamilton	TJ Leaf	Thomas Welsh
11/17/16	San Diego	W	88-68	Lonzo Ball	Bryce Alford	Isaac Hamilton	TJ Leaf	Thomas Welsh
11/20/16	Long Beach State	W	114-77	Lonzo Ball	Bryce Alford	Isaac Hamilton	TJ Leaf	Thomas Welsh
11/24/16	vs. Portland ^	W	99-77	Lonzo Ball	Bryce Alford	Isaac Hamilton	TJ Leaf	Thomas Welsh
11/25/16	vs. Nebraska ^	W	82-71	Lonzo Ball	Bryce Alford	Isaac Hamilton	TJ Leaf	Thomas Welsh
11/27/16	vs. Texas A&M ^	W	74-67	Lonzo Ball	Bryce Alford	Isaac Hamilton	TJ Leaf	Thomas Welsh
11/30/16	UC Riverside	W	98-56	Lonzo Ball	Bryce Alford	Isaac Hamilton	TJ Leaf	Thomas Welsh
12/03/16	at Kentucky	W	97-92	Lonzo Ball	Bryce Alford	Isaac Hamilton	TJ Leaf	Thomas Welsh
12/10/16	Michigan	W	102-84	Lonzo Ball	Bryce Alford	Isaac Hamilton	TJ Leaf	G.G. Goloman
12/14/16	UC Santa Barbara	W	102-62	Lonzo Ball	Bryce Alford	Isaac Hamilton	TJ Leaf	G.G. Goloman
12/17/16	vs. Ohio State #	W	86-73	Lonzo Ball	Bryce Alford	Isaac Hamilton	TJ Leaf	G.G. Goloman
12/21/16	Western Michigan							
12/28/16	at Oregon*							
12/30/16	at Washington State*							
01/05/17	California *							
01/08/17	Stanford*							
01/12/17	at Colorado*							
01/14/17	at Utah*							
01/19/17	Arizona State*							
01/21/17	Arizona*							
01/25/17	at USC*							
02/01/17	at Washington State*							
02/04/17	at Washington*							
02/09/17	Oregon*							
02/12/17	Oregon State*							
02/18/17	USC*							
02/23/17	at Arizona State*							
02/25/17	at Arizona*							
03/01/17	Washington*							
03/04/17	Washington State*							

^ Wooden Legacy (Fullerton and Anaheim, Calif.)

CBS Sports Classic game, at T-Mobile Arena (Las Vegas, Nev.)

* Pac-12 Conference game

STATISTICAL LEADERS

DATE	OPPONENT	W/L	SCORE	POINTS	REBOUNDS	ASSISTS	STEALS	BLOCKS					
11/11/16	Pacific	W	119-80	Alford	30	Leaf	15	Ball	11	Alford, Ball	2	Welsh	3
11/13/16	CSUN	W	102-87	Hamilton	22	Welsh	13	Ball	6	Ball, Welsh	2	Welsh	4
11/17/16	San Diego	W	88-68	Leaf	26	Welsh	11	Ball	8	4 players	1	Welsh	4
11/20/16	Long Beach State	W	114-77	Leaf	21	Leaf	9	Ball	11	Alford	4	Welsh	3
11/24/16	vs. Portland ^	W	99-77	Ball	18	Welsh	10	Ball	11	Ball, Hamilton	2	Alford, Goloman, Welsh	1
11/25/16	vs. Nebraska ^	W	82-71	Alford	18	Welsh	11	Ball	7	Goloman	1	Anigbogu, Goloman, Leaf	1
11/27/16	vs. Texas A&M ^	W	74-67	Hamilton	17	Leaf	9	Ball	10	Alford	2	Ball	3
11/30/16	UC Riverside	W	98-56	Hamilton	27	Welsh	12	Ball	13	Ball	3	Welsh	3
12/03/16	at Kentucky	W	97-92	Hamiton	19	Leaf	13	Ball	7	4 players	1	Anigbogu	2
12/10/16	Michigan	W	102-84	Leaf	21	Leaf	8	Hamilton	7	Ball	3	Anigbogu	4
12/14/16	UC Santa Barbara	W	102-62	Leaf	25	Ball, Leaf	10	Leaf	8	Holiday	4	Anigbogu	4
12/17/16	vs. Ohio State #	W	86-73	Alford, Holiday	20	Ball	9	Ball	9	Holiday	5	Goloman	1
12/21/16	Western Michigan												
12/28/16	at Oregon*												
12/30/16	at Oregon State*												
01/05/17	California*												
01/08/17	Stanford*												
01/12/17	at Colorado*												
01/14/17	at Utah*												
01/19/17	Arizona State*												
01/21/17	Arizona*												
01/25/17	at USC*												
02/01/17	at Washington State*												
02/04/17	at Washington*												
02/09/17	Oregon*												
02/12/17	Oregon State*												
02/18/17	USC*												
02/23/17	at Arizona State*												
02/25/17	at Arizona*												
03/01/17	Washington*												
03/04/17	Washington State*												

^ Wooden Legacy (Fullerton and Anaheim, Calif.)

CBS Sports Classic game, at T-Mobile Arena (Las Vegas, Nev.)

* Pac-12 Conference game

2016-17 POINTS-REBOUNDS-ASSISTS

OPPONENT	ALFORD	ALI	ANIGBOGU	BALL	DODSON	GOLOMAN	HAMILTON	HOLIDAY
Pacific (Nov. 11)	30-2-1	DNP	DNP	19-8-11	DNP	4-3-0	17-1-8	18-3-5
CSUN (Nov. 13)	20-0-3	DNP	DNP	13-8-6	DNP	12-8-2	22-3-1	13-4-5
San Diego (Nov. 17)	10-3-3	DNP	DNP	13-7-8	DNP	4-1-1	12-3-6	11-5-2
Long Beach State (Nov. 20)	15-2-6	DNP	DNP	20-2-11	DNP	8-3-0	18-2-4	16-2-5
vs. Portland (Nov. 24)	13-1-2	DNP	DNP	18-4-11	DNP	7-6-1	16-3-6	14-5-5
vs. Nebraska (Nov. 25)	18-6-2	DNP	2-2-1	13-3-7	DNP	4-4-2	15-5-0	6-5-3
vs. Texas A&M (Nov. 27)	13-3-3	DNP	2-2-0	16-5-10	DNP	0-1-1	17-7-2	7-2-3
UC Riverside (Nov. 30)	5-5-4	DNP	5-4-0	5-2-13	DNP	DNP	27-6-1	18-4-5
at Kentucky (Dec. 3)	14-0-1	DNP	6-6-0	14-6-7	DNP	0-3-0	19-4-1	13-0-4
Michigan (Dec. 10)	18-4-3	DNP	6-4-1	19-7-4	DNP	6-2-1	14-4-7	17-0-5
UC Santa Barbara (Dec. 14)	15-2-2	DNP	9-7-1	13-10-7	DNP	7-7-1	13-1-1	20-3-6
vs. Ohio State (Dec. 17)	20-2-3	DNP	4-4-1	8-9-9	DNP	4-4-1	17-8-3	20-4-1
Western Michigan (Dec. 21)								
at Oregon (Dec. 28)								
at Oregon State (Dec. 30)								
California (Jan. 5)								
Stanford (Jan. 8)								
at Colorado (Jan. 12)								
at Utah (Jan. 14)								
Arizona State (Jan. 19)								
Arizona (Jan. 21)								
at USC (Jan. 25)								
at Washington State (Feb. 1)								
at Washington (Feb. 4)								
Oregon (Feb. 9)								
Oregon State (Feb. 12)								
USC (Feb. 18)								
at Arizona State (Feb. 23)								
at Arizona (Feb. 25)								
Washington (March 1)								
Washington State (March 4)								

2016-17 POINTS-REBOUNDS-ASSISTS

OPPONENT	LEAF	OKWARABIZIE	OLESIANSKI	SMITH	WELSH	WULFF, A.	WULFF, I.
Pacific (Nov. 11)	22-15-4	0-1-0	DNP	0-0-0	6-6-0	0-1-0	3-2-0
CSUN (Nov. 13)	12-6-4	0-0-0	DNP	DNP	10-13-2	DNP	DNP
San Diego (Nov. 17)	26-10-1	DNP	DNP	DNP	12-11-0	DNP	DNP
Long Beach State (Nov. 20)	21-9-1	0-2-0	DNP	4-0-0	12-7-0	0-0-0	0-0-0
vs. Portland (Nov. 24)	14-9-4	1-0-0	DNP	0-0-0	16-10-0	0-0-0	DNP
vs. Nebraska (Nov. 25)	12-4-4	DNP	DNP	DNP	12-11-2	DNP	DNP
vs. Texas A&M (Nov. 27)	13-9-0	DNP	DNP	DNP	6-8-0	DNP	DNP
UC Riverside (Nov. 30)	18-10-2	DNP	DNP	0-0-0	12-12-3	6-0-1	2-0-0
at Kentucky (Dec. 3)	17-13-5	DNP	DNP	DNP	14-8-0	DNP	DNP
Michigan (Dec. 10)	21-8-2	0-0-0	DNP	1-0-0	DNP	0-0-0	0-0-0
UC Santa Barbara (Dec. 14)	25-10-8	0-1-0	DNP	0-0-1	DNP	0-0-0	DNP
vs. Ohio State (Dec. 17)	13-8-1	DNP	DNP	DNP	DNP	DNP	DNP
Western Michigan (Dec. 21)							
at Oregon (Dec. 28)							
at Oregon State (Dec. 30)							
California (Jan. 5)							
Stanford (Jan. 8)							
at Colorado (Jan. 12)							
at Utah (Jan. 14)							
Arizona State (Jan. 19)							
Arizona (Jan. 21)							
at USC (Jan. 25)							
at Washington State (Feb. 1)							
at Washington (Feb. 4)							
Oregon (Feb. 9)							
Oregon State (Feb. 12)							
USC (Feb. 18)							
at Arizona State (Feb. 23)							
at Arizona (Feb. 25)							
Washington (March 1)							
Washington State (March 4)							

UCLA's SEASON/CAREER STATS

2016-17 ROSTER

SEASON STATISTICS

CAREER STATISTICS

SUMMARY	gp-gs	min/g	fg%	3fg%	ft%	r/g	a/g	stl	blk	pts/g	gp-gs	min/g	fg%	3fg%	ft%	r/g	a/g	stl	blk	pts/g
Leaf, TJ	12-12	30.3	.664	.500	.581	9.3	3.0	8	14	17.8	12-12	30.3	.664	.500	.581	9.3	3.0	8	14	17.8
Hamilton, Isaac	12-12	31.0	.506	.402	.800	3.9	3.3	10	2	17.3	80-80	34.0	.455	.387	.758	3.8	3.3	75	10	14.1
Alford, Bryce	12-12	33.2	.456	.400	.882	2.5	2.8	11	1	15.9	117-81	31.8	.396	.383	.833	2.8	4.1	98	6	13.3
Holiday, Aaron	12-0	26.0	.545	.533	.796	3.1	4.1	17	2	14.4	44-32	30.1	.433	.457	.752	3.0	4.0	62	10	11.5
Ball, Lonzo	12-12	34.4	.541	.453	.667	5.9	8.7	19	9	14.3	12-12	34.4	.541	.453	.667	5.9	8.7	19	9	14.3
Welsh, Thomas	9-9	25.6	.573	.000	1.000	9.6	0.8	4	20	11.1	76-38	21.4	.554	.000	.756	6.4	0.4	26	91	7.7
Goloman, Gyorgy	11-3	13.3	.676	.000	.556	3.8	0.9	4	11	5.1	61-3	11.5	.486	.364	.419	2.2	0.6	24	27	2.2
Anigbogu, Ike	7-0	14.4	.625	.000	.444	4.1	0.6	1	15	4.9	7-0	14.4	.625	.000	.444	4.1	0.6	1	15	4.9
Wulff, Isaac	4-0	2.3	1.000	.000	.500	0.5	0.0	0	0	1.3	4-0	2.3	1.000	.000	.500	0.5	0.0	0	0	1.3
Wulff, Alec	6-0	2.5	.400	.400	.000	0.2	0.2	1	0	1.0	15-0	1.8	.500	.500	.000	0.1	0.2	2	0	0.8
Smith, Jerrold	6-0	2.5	.500	.000	.500	0.0	0.2	2	0	0.8	14-0	1.8	.333	.000	.500	0.1	0.1	2	0	0.4
Okwarabizie, Ikenna	7-0	3.4	.000	.000	.500	0.9	0.0	1	0	0.1	14-0	2.6	.000	.000	.500	0.7	0.0	1	0	0.1

SCORING	fg-fga	fg%	3fg-fga	3fg%	ft-fta	ft%	pts	pts/g	fg-fga	fg%	3fg-fga	3fg%	ft-fta	ft%	pts	pts/g
Leaf, TJ	91-137	.664	14-28	.500	18-31	.581	214	17.8	91-137	.664	14-28	.500	18-31	.581	214	17.8
Hamilton, Isaac	81-160	.506	33-82	.402	12-15	.800	207	17.3	426-936	.455	152-393	.387	122-161	.758	1126	14.1
Alford, Bryce	57-125	.456	32-80	.400	45-51	.882	191	15.9	468-1181	.396	245-639	.383	374-449	.833	1555	13.3
Holiday, Aaron	55-101	.545	24-45	.533	39-49	.796	173	14.4	169-390	.433	63-138	.457	103-137	.752	504	11.5
Ball, Lonzo	59-109	.541	29-64	.453	24-36	.667	171	14.3	59-109	.541	29-64	.453	24-36	.667	171	14.3
Welsh, Thomas	43-75	.573	0-0	.000	14-14	1.000	100	11.1	262-473	.554	0-0	.000	62-82	.756	586	7.7
Goloman, Gyorgy	23-34	.676	0-1	.000	10-18	.556	56	5.1	53-109	.486	8-22	.364	18-43	.419	132	2.2
Anigbogu, Ike	15-24	.625	0-0	.000	4-9	.444	34	4.9	15-24	.625	0-0	.000	4-9	.444	34	4.9
Wulff, Isaac	2-2	1.000	0-0	.000	1-2	.500	5	1.3	2-2	1.000	0-0	.000	1-2	.500	5	1.3
Wulff, Alec	2-5	.400	2-5	.400	0-0	.000	6	1.0	4-8	.500	4-8	.500	0-0	.000	12	0.8
Smith, Jerrold	2-4	.500	0-0	.000	1-2	.500	5	0.8	2-6	.333	0-1	.000	1-2	.500	5	0.4
Okwarabizie, Ikenna	0-0	.000	0-0	.000	1-2	.500	1	0.1	0-2	.000	0-0	.000	1-2	.500	1	0.1

TOTALS	o-reb	d-reb	t-reb	pf	fo	ast	to	a/to	o-reb	d-reb	t-reb	pf	fo	ast	to	a/to
Leaf, TJ	30	81	111	27	0	36	20	1.8	30	81	111	27	0	36	20	1.8
Hamilton, Isaac	10	37	47	20	0	40	25	1.6	79	225	304	172	2	262	184	1.4
Alford, Bryce	4	26	30	19	0	33	14	2.4	23	308	331	159	1	478	214	2.2
Holiday, Aaron	6	31	37	27	1	49	29	1.7	25	108	133	130	8	176	121	1.5
Ball, Lonzo	11	60	71	19	1	104	30	3.5	11	60	71	19	1	104	30	3.5
Welsh, Thomas	11	75	86	27	1	7	4	1.8	165	321	486	198	8	32	46	0.7
Goloman, Gyorgy	13	29	42	26	2	10	10	1.0	39	97	136	123	3	34	38	0.9
Anigbogu, Ike	9	20	29	23	1	4	7	0.6	9	20	29	23	1	4	7	0.6
Wulff, Isaac	1	1	2	1	0	0	0	0.0	1	1	2	1	0	0	0	0.0
Wulff, Alec	0	1	1	2	0	1	0	0.0	0	1	1	2	0	3	0	0.0
Smith, Jerrold	0	0	0	3	0	1	2	0.5	1	0	1	3	0	2	3	0.7
Okwarabizie, Ikenna	0	6	6	3	0	0	3	0.0	1	9	10	7	0	0	5	0.0

2016-17 OVERALL STATISTICS

Overall: 12-0 Home: 7-0 Away: 1-0 Neutral: 4-0 Pac-12: 0-0

#	Player	gp-gs	min	avg	Total		3-Point		F-Throw		Rebounds										pts	avg
					fg-fga	fg%	3fg-fga	3fg%	ft-fa	ft%	off	def	tot	avg	pf	dq	a	to	blk	stl		
22	Leaf, TJ	12-12	364	30.3	91-137	.664	14-28	.500	18-31	.581	30	81	111	9.3	27	0	36	20	14	8	214	17.8
10	Hamilton, Isaac	12-12	372	31.0	81-160	.506	33-82	.402	12-15	.800	10	37	47	3.9	20	0	40	25	2	10	207	17.3
20	Alford, Bryce	12-12	399	33.2	57-125	.456	32-80	.400	45-51	.882	4	26	30	2.5	19	0	33	14	1	11	191	15.9
03	Holiday, Aaron	12-0	312	26.0	55-101	.545	24-45	.533	39-49	.796	6	31	37	3.1	27	1	49	29	2	17	173	14.4
02	Ball, Lonzo	12-12	413	34.4	59-109	.541	29-64	.453	24-36	.667	11	60	71	5.9	19	1	104	30	9	19	171	14.3
40	Welsh, Thomas	9-9	230	25.6	43-75	.573	0-0	.000	14-14	1.000	11	75	86	9.6	27	1	7	4	20	4	100	11.1
14	Goloman, Gyorgy	11-3	146	13.3	23-34	.676	0-1	.000	10-18	.556	13	29	42	3.8	26	2	10	10	11	4	56	5.1
13	Anigbogu, Ike	7-0	101	14.4	15-24	.625	0-0	.000	4-9	.444	9	20	29	4.1	23	1	4	7	15	1	34	4.9
04	Wulff, Isaac	4-0	9	2.3	2-2	1.000	0-0	.000	1-2	.500	1	1	2	0.5	1	0	0	0	0	0	5	1.3
21	Wulff, Alec	6-0	15	2.5	2-5	.400	2-5	.400	0-0	.000	0	1	1	0.2	2	0	1	0	0	1	6	1.0
15	Smith, Jerrold	6-0	15	2.5	2-4	.500	0-0	.000	1-2	.500	0	0	0	0.0	3	0	1	2	0	2	5	0.8
34	Okwarabizie, Ikenna	7-0	24	3.4	0-0	.000	0-0	.000	1-2	.500	0	6	6	0.9	3	0	0	3	0	1	1	0.1
Team											12	16	28		1		2					
Total.....		12	2400		430-776	.554	134-305	.439	169-229	.738	107	383	490	40.8	198	6	285	146	74	78	1163	96.9
Opponents.....		12	2400		331-827	.400	103-291	.354	129-196	.658	150	267	417	34.8	235	-	152	156	20	80	894	74.5

TEAM STATISTICS	UCLA	OPP	Date	Opponent	Score	Att.
SCORING	1163	894	11/11/16	PACIFIC	w 119-80	8743
Points per game	96.9	74.5	11/13/16	CSUN	w 102-87	7149
Scoring margin	+22.4	-	11/17/16	SAN DIEGO	w 88-68	6893
FIELD GOALS-ATT	430-776	331-827	11/20/16	LONG BEACH STATE	w 114-77	8294
Field goal pct	.554	.400	1 11/24/16	vs Portland	w 99-77	3816
3 POINT FG-ATT	134-305	103-291	1 11/25/16	vs Nebraska	w 82-71	5153
3-point FG pct	.439	.354	2 11/27/16	vs Texas A&M	w 74-67	4221
3-pt FG made per game	11.2	8.6	11/30/16	UC RIVERSIDE	w 98-56	6328
FREE THROWS-ATT	169-229	129-196	12/03/16	at Kentucky	w 97-92	23976
Free throw pct	.738	.658	12/10/16	MICHIGAN	w 102-84	13571
F-Throws made per game	14.1	10.8	12/14/16	UC SANTA BARBARA	w 102-62	7484
REBOUNDS	490	417	3 12/17/16	vs Ohio State	w 86-73	19298
Rebounds per game	40.8	34.8				
Rebounding margin	+6.1	-				
ASSISTS	285	152				
Assists per game	23.8	12.7				
TURNOVERS	146	156				
Turnovers per game	12.2	13.0				
Turnover margin	+0.8	-				
Assist/turnover ratio	2.0	1.0				
STEALS	78	80				
Steals per game	6.5	6.7				
BLOCKS	74	20				
Blocks per game	6.2	1.7				
ATTENDANCE	58462	56464				
Home games-Avg/Game	7-8352	1-23976				
Neutral site-Avg/Game	-	4-8122				

* = Conference game

1 = Wooden Legacy, at Cal State Fullerton (Fullerton, Calif.)

2 = Wooden Legacy, Championship, at Honda Center (Anaheim, Calif.)

3 = CBS Sports Classic, at T-Mobile Arena (Las Vegas, Nev.)

Score by Periods	1st	2nd	Totals
UCLA	553	610	1163
Opponents	436	458	894