

# I,000-Point Club



**Denise Curry — No. 12, Forward, Davis, CA (Davis HS)**

Years	Record	G-GS	FG-A	Pct.	3FG-A	Pct.	FT-A	Pct.	REB	Avg.	A	S	BS	PTS	Avg.
1980-81	29-7	36	390-647	.603	---	---	150-192	.781	360	10.0	133	58	22	930	25.8
1979-80	18-12	30	361-599	.603	---	---	133-149	.893	337	11.2	83	42	12	855	28.5
1978-79	24-10	34	355-586	.606	---	---	93-115	.809	340	10.0	94	54	25	803	23.6
1977-78	27-3	30	280-451	.621	---	---	50-65	.769	273	9.1	43	46	15	610	20.3
<b>TOTALS</b>	<b>98-32</b>	<b>130</b>	<b>1386-2283</b>	<b>.607</b>	<b>---</b>	<b>---</b>	<b>426-521</b>	<b>.818</b>	<b>1310</b>	<b>10.1</b>	<b>353</b>	<b>200</b>	<b>74</b>	<b>3198</b>	<b>24.6</b>



**Maylana Martin — No. 13, Forward, Perris, CA (Perris HS)**

Years	Record	G-GS	FG-A	Pct.	3FG-A	Pct.	FT-A	Pct.	REB	Avg.	A	S	BS	PTS	Avg.
1999-00	18-11	29-29	193-353	.547	0-1	.000	120-205	.585	252	8.7	49	56	38	506	17.4
1998-99	26-8	31-29	205-379	.541	1-3	.333	154-216	.713	292	9.4	62	74	23	565	18.2
1997-98	20-9	29-29	206-384	.536	0-1	.000	134-186	.720	216	7.4	31	43	23	546	18.8
1996-97	13-14	27-27	171-306	.559	0-2	.000	142-190	.747	175	6.5	34	64	12	484	17.9
<b>TOTALS</b>	<b>77-42</b>	<b>116-114</b>	<b>775-1422</b>	<b>.545</b>	<b>1-7</b>	<b>.143</b>	<b>550-797</b>	<b>.690</b>	<b>935</b>	<b>8.1</b>	<b>176</b>	<b>237</b>	<b>96</b>	<b>2101</b>	<b>18.1</b>



**Rehema Stephens — No. 20, Guard/Forward, Vallejo, CA (Oakland Technical HS)**

Years	Record	G-GS	FG-A	Pct.	3FG-A	Pct.	FT-A	Pct.	REB	Avg.	A	S	BS	PTS	Avg.
1991-92	21-10	30-28	236-594	.397	9-47	.192	114-139	.820	231	7.7	55	44	18	595	19.8
1990-91	15-13	28-28	273-617	.442	47-120	.392	116-165	.703	225	8.0	64	56	11	709	25.3
1989-90	17-12	29-28	238-596	.399	11-55	.200	96-137	.701	187	6.4	42	45	6	583	20.1
<b>TOTALS</b>	<b>53-35</b>	<b>87-84</b>	<b>747-1807</b>	<b>.413</b>	<b>67-222</b>	<b>.302</b>	<b>326-441</b>	<b>.739</b>	<b>643</b>	<b>7.4</b>	<b>161</b>	<b>145</b>	<b>35</b>	<b>1887</b>	<b>21.7</b>



**Nirra Fields — No. 21, Guard, Montreal, Quebec, Canada (Mater Dei HS/CA)**

Years	Record	G-GS	FG-A	Pct.	3FG-A	Pct.	FT-A	Pct.	REB	Avg.	A	S	BS	PTS	Avg.
2015-16	26-9	34-33	201-484	.415	30-91	.330	89-142	.627	182	5.4	64	73	19	521	15.3
2014-15	19-18	36-33	212-547	.388	37-136	.272	80-128	.625	195	5.4	66	81	12	541	15.0
2013-14	13-18	31-30	197-506	.389	50-165	.303	102-147	.694	194	6.3	70	67	18	546	17.6
2012-13	26-8	33-2	104-279	.373	21-58	.362	30-49	.612	116	3.5	34	41	14	259	7.8
<b>TOTALS</b>	<b>84-53</b>	<b>134-98</b>	<b>714-1816</b>	<b>.393</b>	<b>138-450</b>	<b>.307</b>	<b>301-466</b>	<b>.646</b>	<b>687</b>	<b>5.1</b>	<b>234</b>	<b>262</b>	<b>63</b>	<b>1867</b>	<b>13.9</b>



**Noelle Quinn — No. 45, Guard, Los Angeles, CA (Bishop Montgomery HS)**

Years	Record	G-GS	FG-A	Pct.	3FG-A	Pct.	FT-A	Pct.	REB	Avg.	A	S	BS	PTS	Avg.
2006-07	14-18	32-32	207-507	.408	32-84	.381	103-128	.805	211	6.6	184	37	11	549	17.2
2005-06	21-11	32-32	228-481	.474	25-67	.373	99-133	.744	263	8.2	123	47	25	580	18.1
2004-05	16-12	16-16	111-266	.417	6-20	.300	42-56	.750	113	7.1	58	52	8	270	16.9
2003-04	17-13	27-26	167-395	.423	18-69	.261	78-109	.716	207	7.7	85	60	10	430	15.9
<b>TOTALS</b>	<b>68-54</b>	<b>107-106</b>	<b>713-1649</b>	<b>.432</b>	<b>81-240</b>	<b>.338</b>	<b>322-426</b>	<b>.756</b>	<b>794</b>	<b>7.4</b>	<b>450</b>	<b>196</b>	<b>54</b>	<b>1829</b>	<b>17.1</b>



**Natalie Williams — No. 24, Center/Forward, Taylorsville, UT (Taylorsville HS)**

Years	Record	G-GS	FG-A	Pct.	3FG-A	Pct.	FT-A	Pct.	REB	Avg.	A	S	BS	PTS	Avg.
1993-94	15-12	24-24	243-426	.570	---	---	75-145	.517	314	13.1	31	73	23	561	23.4
1992-93	13-14	23-23	201-425	.473	---	---	86-115	.748	310	13.5	27	57	33	488	21.2
1991-92	21-10	23-23	197-352	.560	---	---	101-160	.631	318	13.8	29	65	29	495	21.5
1990-91	15-13	19-16	104-208	.500	---	---	61-91	.670	195	10.3	14	31	12	269	14.2
<b>TOTALS</b>	<b>64-49</b>	<b>89-86</b>	<b>745-1411</b>	<b>.528</b>	<b>---</b>	<b>---</b>	<b>323-511</b>	<b>.632</b>	<b>1137</b>	<b>12.8</b>	<b>101</b>	<b>226</b>	<b>97</b>	<b>1813</b>	<b>20.4</b>



**Nikki Blue — No. 32, Guard, Bakersfield, CA (West HS)**

Years	Record	G-GS	FG-A	Pct.	3FG-A	Pct.	FT-A	Pct.	REB	Avg.	A	S	BS	PTS	Avg.
2005-06	21-11	32-31	130-328	.396	38-91	.418	103-146	.705	151	4.7	189	67	6	401	12.5
2004-05	16-12	27-27	147-353	.416	28-80	.350	136-189	.720	136	5.0	162	91	6	458	16.9
2003-04	17-13	30-29	156-394	.396	24-64	.375	121-167	.725	169	5.6	148	89	4	457	15.2
2002-03	18-11	29-29	181-447	.405	24-86	.279	95-135	.704	160	5.5	103	78	8	481	16.6
<b>TOTALS</b>	<b>72-47</b>	<b>118-116</b>	<b>614-1522</b>	<b>.403</b>	<b>114-321</b>	<b>.355</b>	<b>455-637</b>	<b>.714</b>	<b>616</b>	<b>5.2</b>	<b>602</b>	<b>325</b>	<b>24</b>	<b>1797</b>	<b>15.2</b>



**Anita Ortega — No. 11, Guard, Los Angeles, CA (Los Angeles HS)**

Years	Record	G-GS	FG-A	Pct.	3FG-A	Pct.	FT-A	Pct.	REB	Avg.	A	S	BS	PTS	Avg.
1978-79	24-10	34	214-494	.433	---	---	120-173	.694	169	5.0	130	84	26	548	16.1
1977-78	27-3	29	224-449	.499	---	---	87-142	.613	129	4.4	107	64	8	535	18.4
1976-77	20-3	23	137-302	.454	---	---	66-107	.617	133	5.8	39	46	2	340	14.8
1975-76	19-4	23	130-291	.447	---	---	68-110	.618	128	5.6	41	46	6	328	14.3
<b>TOTALS</b>	<b>90-20</b>	<b>109</b>	<b>705-1536</b>	<b>.459</b>	<b>---</b>	<b>---</b>	<b>341-532</b>	<b>.641</b>	<b>559</b>	<b>5.1</b>	<b>317</b>	<b>240</b>	<b>42</b>	<b>1751</b>	<b>16.1</b>



**Michelle Greco — No. 20, Guard, LaCrescenta, CA (Crescenta Valley HS)**

Years	Record	G-GS	FG-A	Pct.	3FG-A	Pct.	FT-A	Pct.	REB	Avg.	A	S	BS	PTS	Avg.
2002-03	18-11	29-29	203-442	.459	25-89	.281	118-145	.814	138	4.8	66	81	7	549	18.9
2001-02	3-2	5-5	37-76	.487	12-23	.522	32-40	.800	25	5.0	13	13	2	118	23.6
2000-01	6-23	27-27	205-554	.370	50-171	.292	77-89	.865	104	3.9	57	63	1	537	19.9
1999-00	18-11	26-6	93-195	.477	14-41	.341	38-44	.864	84	3.2	60	58	2	238	9.2
1998-99	26-8	34-3	97-220	.441	0-1	.000	71-95	.747	117	3.4	94	73	2	265	7.8
<b>TOTALS</b>	<b>71-55</b>	<b>121-70</b>	<b>635-1487</b>	<b>.427</b>	<b>101-325</b>	<b>.311</b>	<b>336-413</b>	<b>.814</b>	<b>468</b>	<b>3.9</b>	<b>290</b>	<b>288</b>	<b>14</b>	<b>1707</b>	<b>14.1</b>

# I,000-Point Club



## Ann Meyers — No. 15, Guard/Forward, LaHabra, CA (Sonora HS)

Years	Record	G-GS	FG-A	Pct.	3FG-A	Pct.	FT-A	Pct.	REB	Avg.	A	S	BS	PTS	Avg.
1977-78	27-3	29	221-420	.526	---	---	96-120	.800	278	9.6	182	125	31	538	18.6
1976-77	20-3	22	160-317	.505	---	---	82-99	.828	161	7.3	109	77	29	402	18.3
1975-76	19-4	23	129-303	.426	---	---	65-89	.730	189	8.2	128	82	16	323	14.0
1974-75	18-4	23	183-346	.528	---	---	56-73	.767	191	8.3	125	119	25	422	18.3
<b>TOTALS</b>	<b>84-14</b>	<b>97</b>	<b>693-1386</b>	<b>.500</b>	<b>---</b>	<b>---</b>	<b>299-381</b>	<b>.785</b>	<b>819</b>	<b>8.4</b>	<b>544</b>	<b>403</b>	<b>101</b>	<b>1685</b>	<b>17.4</b>



## Lisa Willis — No. 40, Guard, Long Beach, CA (Narbonne HS)

Years	Record	G-GS	FG-A	Pct.	3FG-A	Pct.	FT-A	Pct.	REB	Avg.	A	S	BS	PTS	Avg.
2005-06	21-11	32-32	216-471	.459	70-193	.363	68-90	.756	187	5.8	100	115	24	570	17.8
2004-05	16-12	28-28	158-392	.403	70-194	.361	69-86	.802	192	6.9	65	102	15	455	16.3
2003-04	17-13	30-30	157-365	.430	70-189	.370	44-62	.710	162	5.4	64	100	11	428	14.3
2002-03	18-11	29-0	79-215	.367	46-134	.343	20-27	.741	104	3.6	22	55	7	224	7.7
<b>TOTALS</b>	<b>72-47</b>	<b>119-90</b>	<b>610-1443</b>	<b>.423</b>	<b>256-710</b>	<b>.361</b>	<b>201-265</b>	<b>.758</b>	<b>645</b>	<b>5.4</b>	<b>251</b>	<b>323</b>	<b>57</b>	<b>1677</b>	<b>14.1</b>



## Dora Dome — No. 44, Guard/Forward, Los Angeles, CA (Fairfax HS)

Years	Record	G-GS	FG-A	Pct.	3FG-A	Pct.	FT-A	Pct.	REB	Avg.	A	S	BS	PTS	Avg.
1987-88	19-11	30-30	252-512	.492	1-5	.200	87-127	.685	242	8.1	89	54	1	592	19.7
1986-87	18-10	28-27	196-448	.438	---	---	76-119	.639	176	6.3	66	47	6	468	16.7
1985-86	12-16	28-16	136-303	.449	---	---	52-94	.553	157	5.6	50	32	4	324	11.6
1984-85	20-10	29-6	85-232	.366	---	---	35-52	.673	99	3.4	47	26	5	205	7.1
<b>TOTALS</b>	<b>69-47</b>	<b>115-79</b>	<b>669-1495</b>	<b>.447</b>	<b>1-5</b>	<b>.200</b>	<b>250-392</b>	<b>.638</b>	<b>674</b>	<b>5.9</b>	<b>252</b>	<b>159</b>	<b>16</b>	<b>1589</b>	<b>13.8</b>



## Atonye Nyingifa — No. 11, Forward, Torrance, CA (Redondo Union HS)

Years	Record	G-GS	FG-A	Pct.	3FG-A	Pct.	FT-A	Pct.	REB	Avg.	A	S	BS	PTS	Avg.
2013-14	13-18	31-30	206-489	.421	1-9	.111	152-233	.652	266	8.6	65	70	12	565	18.2
2012-13	26-8	34-29	160-332	.482	1-4	.250	73-97	.753	243	7.1	42	42	12	394	11.6
2011-12	14-16	9-9	48-105	.457	0-1	.000	36-58	.621	80	8.9	12	18	11	132	14.7
2010-11	28-5	33-27	114-221	.516	0-1	.000	63-87	.724	179	5.4	38	56	10	291	8.8
2008-09	19-12	31-16	73-157	.465	1-2	.500	41-61	.672	152	4.9	20	40	11	188	6.1
<b>TOTALS</b>	<b>100-59</b>	<b>138-111</b>	<b>593-1303</b>	<b>.455</b>	<b>3-17</b>	<b>.176</b>	<b>365-536</b>	<b>.681</b>	<b>920</b>	<b>6.7</b>	<b>177</b>	<b>226</b>	<b>56</b>	<b>1570</b>	<b>11.4</b>



## Lindsey Pluimer — No. 14, Forward, San Clemente, CA (San Clemente HS)

Years	Record	G-GS	FG-A	Pct.	3FG-A	Pct.	FT-A	Pct.	REB	Avg.	A	S	BS	PTS	Avg.
2007-08	16-15	31-31	161-385	.418	35-91	.385	81-97	.835	200	6.5	48	25	33	438	14.1
2006-07	14-18	32-32	186-381	.488	29-77	.377	94-115	.817	183	5.7	58	33	27	495	15.5
2005-06	21-11	32-32	131-270	.485	7-27	.259	70-88	.795	174	5.4	47	22	16	339	10.6
2004-05	16-12	28-28	115-267	.458	13-43	.302	41-54	.759	180	6.4	17	27	17	284	10.1
<b>TOTALS</b>	<b>67-56</b>	<b>123-123</b>	<b>593-1303</b>	<b>.455</b>	<b>84-238</b>	<b>.353</b>	<b>286-354</b>	<b>.808</b>	<b>737</b>	<b>6.0</b>	<b>170</b>	<b>107</b>	<b>93</b>	<b>1556</b>	<b>12.7</b>



## Necie Thompson — No. 25, Center, Cerritos, CA (Gahr HS)

Years	Record	G-GS	FG-A	Pct.	3FG-A	Pct.	FT-A	Pct.	REB	Avg.	A	S	BS	PTS	Avg.
1982-83	18-11	29	170-330	.515	---	---	124-206	.602	328	11.3	46	56	27	464	16.0
1981-82	16-14	28	215-381	.564	---	---	128-217	.590	298	10.6	44	48	21	558	20.0
1980-81	29-7	36	203-360	.564	---	---	108-218	.495	314	8.7	33	62	53	514	14.2
<b>TOTALS</b>	<b>63-32</b>	<b>93</b>	<b>588-1071</b>	<b>.549</b>	<b>---</b>	<b>---</b>	<b>360-641</b>	<b>.562</b>	<b>940</b>	<b>10.1</b>	<b>123</b>	<b>166</b>	<b>101</b>	<b>1536</b>	<b>16.5</b>



## Anne Dean — No. 43, Guard, Santa Ana, CA (Foothill HS)

Years	Record	G-GS	FG-A	Pct.	3FG-A	Pct.	FT-A	Pct.	REB	Avg.	A	S	BS	PTS	Avg.
1985-86	12-16	28-26	188-391	.481	---	---	25-40	.625	109	3.9	79	34	0	401	14.3
1984-85	20-10	30-19	180-364	.495	---	---	68-74	.919	106	3.5	93	44	2	428	14.3
1983-84	17-12	29-29	131-281	.466	---	---	55-73	.753	116	4.0	96	40	7	317	10.9
1982-83	18-11	29	92-218	.422	---	---	34-44	.773	59	2.0	42	16	2	218	7.5
<b>TOTALS</b>	<b>67-49</b>	<b>116</b>	<b>591-1254</b>	<b>.471</b>	<b>---</b>	<b>---</b>	<b>182-231</b>	<b>.788</b>	<b>390</b>	<b>3.4</b>	<b>310</b>	<b>134</b>	<b>11</b>	<b>1364</b>	<b>11.8</b>



## Markel Walker — No. 23, Guard/Forward, Philadelphia, PA (Schenley HS)

Years	Record	G-GS	FG-A	Pct.	3FG-A	Pct.	FT-A	Pct.	REB	Avg.	A	S	BS	PTS	Avg.
2012-13	26-8	33-28	128-332	.386	8-55	.145	86-134	.642	239	7.2	187	83	3	350	10.6
2011-12	14-16	23-19	124-311	.399	13-38	.342	82-123	.667	252	11.0	87	54	5	343	14.9
2010-11	28-5	33-21	101-228	.443	4-18	.222	74-115	.643	179	5.4	105	57	11	280	8.5
2009-10	25-9	34-27	141-294	.480	3-13	.231	81-112	.723	255	7.5	88	68	10	366	10.8
<b>TOTALS</b>	<b>93-38</b>	<b>123-95</b>	<b>494-1165</b>	<b>.424</b>	<b>28-124</b>	<b>.226</b>	<b>323-484</b>	<b>.667</b>	<b>925</b>	<b>7.5</b>	<b>467</b>	<b>262</b>	<b>29</b>	<b>1283</b>	<b>10.9</b>



## Doreena Campbell — No. 21, Guard, Arlington, VA (Edison HS)

Years	Record	G-GS	FG-A	Pct.	3FG-A	Pct.	FT-A	Pct.	REB	Avg.	A	S	BS	PTS	Avg.
2010-11	28-5	33-32	115-297	.387	10-54	.185	62-81	.765	107	3.2	97	62	8	302	9.2
2009-10	25-9	34-34	115-307	.375	26-64	.406	76-86	.884	110	3.2	105	38	6	332	9.8
2008-09	19-12	30-30	129-323	.399	26-65	.400	103-129	.798	121	4.0	112	41	8	387	12.9
2007-08	16-15	30-30	101-238	.424	23-53	.434	37-48	.771	127	4.2	101	47	4	262	8.7
<b>TOTALS</b>	<b>88-41</b>	<b>127-126</b>	<b>460-1165</b>	<b>.395</b>	<b>85-236</b>	<b>.360</b>	<b>278-344</b>	<b>.808</b>	<b>465</b>	<b>3.7</b>	<b>415</b>	<b>188</b>	<b>26</b>	<b>1283</b>	<b>10.1</b>

# I,000-Point Club



**Janae Hubbard — No. 34, Center, Fresno, CA (Fresno HS)**

Years	Record	G-GS	FG-A	Pct.	3FG-A	Pct.	FT-A	Pct.	REB	Avg.	A	S	BS	PTS	Avg.
1999-00	18-11	29-29	129-274	.471	0-2	.000	50-79	.633	214	7.4	17	25	18	308	10.6
1998-99	26-8	34-33	182-354	.514	2-6	.333	60-88	.682	268	7.9	14	38	15	426	12.5
1997-98	20-9	29-25	131-243	.539	0-2	.000	57-94	.606	177	6.1	12	16	18	319	11.0
1996-97	13-14	27-1	64-143	.448	0-1	.000	41-69	.594	139	5.1	5	11	7	169	6.3
<b>TOTALS</b>	<b>77-42</b>	<b>119-88</b>	<b>506-1014</b>	<b>.499</b>	<b>2-10</b>	<b>.200</b>	<b>208-330</b>	<b>.630</b>	<b>798</b>	<b>6.7</b>	<b>48</b>	<b>90</b>	<b>58</b>	<b>1222</b>	<b>10.3</b>



**Amy Jalewalia — No. 25, Forward/Guard, Fountain Valley, CA (La Quinta HS)**

Years	Record	G-GS	FG-A	Pct.	3FG-A	Pct.	FT-A	Pct.	REB	Avg.	A	S	BS	PTS	Avg.
1993-94	15-12	27-27	161-362	.445	3-9	.333	62-106	.585	117	4.3	89	52	9	387	14.3
1992-93	13-14	26-26	130-256	.508	2-3	.667	54-71	.761	119	4.6	53	35	6	316	12.2
1991-92	21-10	31-11	115-241	.477	0-2	.000	56-85	.659	138	4.5	34	39	6	286	9.2
1990-91	15-13	28-27	80-193	.415	0-1	.000	52-77	.675	159	5.7	35	33	5	212	7.6
<b>TOTALS</b>	<b>64-49</b>	<b>112-91</b>	<b>486-1052</b>	<b>.462</b>	<b>5-15</b>	<b>.333</b>	<b>224-339</b>	<b>.661</b>	<b>533</b>	<b>4.8</b>	<b>211</b>	<b>159</b>	<b>26</b>	<b>1201</b>	<b>10.7</b>



**Debbie Willie — No. 10, Guard, Santa Barbara, CA (San Marcos HS)**

Years	Record	G-GS	FG-A	Pct.	3FG-A	Pct.	FT-A	Pct.	REB	Avg.	A	S	BS	PTS	Avg.
1980-81	29-7	36	107-254	.421	---	---	14-26	.538	71	2.0	103	43	2	228	6.3
1979-80	18-12	30	175-375	.467	---	---	39-58	.672	125	4.2	93	59	3	389	13.0
1978-79	24-10	34	212-420	.505	---	---	32-52	.615	191	5.6	99	43	4	456	13.4
1977-78	27-3	25	57-129	.442	---	---	13-26	.500	68	2.7	19	19	3	127	5.1
<b>TOTALS</b>	<b>98-32</b>	<b>125</b>	<b>551-1178</b>	<b>.468</b>	<b>---</b>	<b>---</b>	<b>98-162</b>	<b>.605</b>	<b>455</b>	<b>3.6</b>	<b>314</b>	<b>164</b>	<b>12</b>	<b>1200</b>	<b>9.6</b>



**Sandra VanEmbricqs — No. 33, Forward, Soest, The Netherlands (Alberdingk)**

Years	Record	G-GS	FG-A	Pct.	3FG-A	Pct.	FT-A	Pct.	REB	Avg.	A	S	BS	PTS	Avg.
1989-90	17-12	29-28	165-323	.511	---	---	78-139	.561	278	9.6	51	89	29	408	14.1
1988-89	12-16	28-27	137-302	.454	---	---	104-154	.675	219	7.8	36	78	18	378	13.5
1987-88	19-11	30-30	120-259	.463	---	---	59-103	.573	218	7.3	38	62	29	299	10.0
1986-87	18-10	16-14	45-96	.469	---	---	17-46	.370	96	6.0	3	29	19	107	6.7
<b>TOTALS</b>	<b>66-49</b>	<b>103-99</b>	<b>467-980</b>	<b>.476</b>	<b>---</b>	<b>---</b>	<b>258-442</b>	<b>.548</b>	<b>811</b>	<b>7.9</b>	<b>128</b>	<b>258</b>	<b>95</b>	<b>1192</b>	<b>11.6</b>



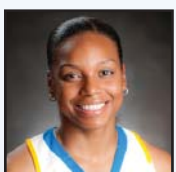
**Jackie Joyner — No. 23, Forward, East St. Louis, IL (Lincoln HS)**

Years	Record	G-GS	FG-A	Pct.	3FG-A	Pct.	FT-A	Pct.	REB	Avg.	A	S	BS	PTS	Avg.
1984-85	20-10	29-29	150-323	.464	---	---	68-148	.459	264	9.1	41	60	3	368	12.7
1982-83	18-11	28	101-244	.414	---	---	44-67	.657	156	5.6	51	28	5	246	8.8
1981-82	16-14	30	86-226	.381	---	---	67-99	.677	174	5.8	69	39	4	239	8.0
1980-81	29-7	34	126-249	.506	---	---	62-98	.633	158	4.6	78	41	1	314	9.2
<b>TOTALS</b>	<b>83-42</b>	<b>121</b>	<b>463-1042</b>	<b>.444</b>	<b>---</b>	<b>---</b>	<b>241-412</b>	<b>.585</b>	<b>752</b>	<b>6.2</b>	<b>239</b>	<b>168</b>	<b>13</b>	<b>1167</b>	<b>9.6</b>



**Dianne Frierson — No. 31, Guard, Nashville, TN (Hillwood HS)**

Years	Record	G-GS	FG-A	Pct.	3FG-A	Pct.	FT-A	Pct.	REB	Avg.	A	S	BS	PTS	Avg.
1979-80	18-12	30	115-267	.431	---	---	22-36	.611	58	1.9	126	45	3	252	8.4
1978-79	24-10	34	128-268	.478	---	---	31-38	.816	71	2.1	113	39	3	287	8.4
1977-78	27-3	30	140-299	.468	---	---	34-47	.723	58	1.9	132	32	9	314	10.5
1976-77	20-3	23	121-256	.473	---	---	39-49	.796	52	2.3	83	42	1	281	12.2
<b>TOTALS</b>	<b>89-28</b>	<b>117</b>	<b>504-1090</b>	<b>.462</b>	<b>---</b>	<b>---</b>	<b>126-170</b>	<b>.741</b>	<b>239</b>	<b>2.0</b>	<b>454</b>	<b>158</b>	<b>16</b>	<b>1134</b>	<b>9.7</b>



**Darxia Morris — No. 3, Guard, Pasadena, CA (Muir HS)**

Years	Record	G-GS	FG-A	Pct.	3FG-A	Pct.	FT-A	Pct.	REB	Avg.	A	S	BS	PTS	Avg.
2010-11	28-5	33-33	164-360	.456	29-96	.302	47-68	.691	104	3.2	82	61	1	404	12.2
2009-10	25-9	34-26	120-304	.395	20-61	.328	33-56	.589	93	2.7	106	37	3	293	8.6
2008-09	19-12	27-11	89-214	.416	5-14	.357	36-50	.720	59	2.2	68	37	4	219	8.1
2007-08	16-15	28-12	82-205	.400	3-17	.176	42-66	.636	60	2.1	66	46	6	209	7.5
<b>TOTALS</b>	<b>88-41</b>	<b>122-82</b>	<b>455-1083</b>	<b>.420</b>	<b>57-188</b>	<b>.303</b>	<b>158-240</b>	<b>.658</b>	<b>316</b>	<b>2.6</b>	<b>322</b>	<b>181</b>	<b>14</b>	<b>1125</b>	<b>9.2</b>



**Rebekah Gardner — No. 35, Guard, Upland, CA (Ayala HS)**

Years	Record	G-GS	FG-A	Pct.	3FG-A	Pct.	FT-A	Pct.	REB	Avg.	A	S	BS	PTS	Avg.
2011-12	14-16	30-30	182-439	.415	30-114	.263	83-113	.735	191	6.4	63	61	4	477	15.9
2010-11	28-5	32-11	93-218	.427	23-65	.354	45-60	.750	106	3.3	32	40	10	254	7.9
2009-10	25-9	34-7	89-215	.414	21-70	.300	35-42	.833	73	2.1	32	47	25	234	6.9
2008-09	19-12	31-1	44-127	.346	18-52	.346	30-39	.769	55	1.8	10	19	5	136	4.4
<b>TOTALS</b>	<b>86-42</b>	<b>127-49</b>	<b>408-999</b>	<b>.408</b>	<b>92-301</b>	<b>.36</b>	<b>193-254</b>	<b>.760</b>	<b>425</b>	<b>3.3</b>	<b>137</b>	<b>167</b>	<b>44</b>	<b>1101</b>	<b>8.7</b>



**Jaime Brown — No. 20, Guard, Carson City, NV (Carson City HS)**

Years	Record	G-GS	FG-A	Pct.	3FG-A	Pct.	FT-A	Pct.	REB	Avg.	A	S	BS	PTS	Avg.
1987-88	19-11	30-7	97-233	.416	2-7	.286	41-46	.891	54	1.8	17	21	0	237	7.9
1986-87	18-10	27-21	146-314	.465	---	---	62-83	.747	112	4.1	31	18	3	354	13.3
1985-86	12-16	28-11	127-275	.462	---	---	72-92	.783	92	3.3	36	20	2	326	11.6
1984-85	20-10	25-9	74-171	.433	---	---	23-31	.742	44	1.8	41	21	0	171	6.8
<b>TOTALS</b>	<b>69-47</b>	<b>110-48</b>	<b>444-993</b>	<b>.447</b>	<b>2-7</b>	<b>.286</b>	<b>198-252</b>	<b>.786</b>	<b>302</b>	<b>2.7</b>	<b>125</b>	<b>80</b>	<b>5</b>	<b>1088</b>	<b>9.9</b>

# I,000-Point Club



**Nicole Anderson — No. 23, Guard, La Jolla, CA (La Jolla HS)**

Years	Record	G-GS	FG-A	Pct.	3FG-A	Pct.	FT-A	Pct.	REB	Avg.	A	S	BS	PTS	Avg.
1992-93	13-14	27-27	125-320	.391	1-4	.250	108-137	.788	107	4.0	136	100	4	359	13.3
1991-92	21-10	30-30	97-225	.431	0-3	.000	69-107	.645	100	3.3	140	78	1	263	8.8
1990-91	15-13	28-28	98-239	.410	0-1	.000	60-79	.759	92	3.3	98	57	0	256	9.1
1989-90	17-12	26-26	77-184	.418	1-2	.500	45-70	.643	78	3.0	96	39	1	200	7.7
<b>TOTALS</b>	<b>66-49</b>	<b>111-111</b>	<b>397-968</b>	<b>.410</b>	<b>2-10</b>	<b>.200</b>	<b>282-393</b>	<b>.718</b>	<b>377</b>	<b>3.4</b>	<b>470</b>	<b>274</b>	<b>6</b>	<b>1078</b>	<b>9.7</b>



**Jasmine Dixon — No. 33, Forward, Long Beach, CA (Long Beach Poly HS)**

Years	Record	G-GS	FG-A	Pct.	3FG-A	Pct.	FT-A	Pct.	REB	Avg.	A	S	BS	PTS	Avg.
2012-13	26-8	32-24	103-229	.450	0-0	.000	56-81	.691	178	5.6	39	32	15	262	8.2
2010-11	28-5	31-28	146-276	.529	0-0	.000	82-148	.554	227	7.3	47	74	18	374	12.1
2009-10	25-9	27-27	165-300	.550	3-10	.300	80-155	.516	216	8.0	37	60	11	413	15.3
<b>TOTALS</b>	<b>79-22</b>	<b>90-79</b>	<b>414-805</b>	<b>.514</b>	<b>3-10</b>	<b>.300</b>	<b>218-384</b>	<b>.568</b>	<b>621</b>	<b>6.9</b>	<b>123</b>	<b>166</b>	<b>44</b>	<b>1049</b>	<b>11.7</b>



**Thea Lemberger — No. 1, Guard, Santa Monica, CA (Santa Monica HS)**

Years	Record	G-GS	FG-A	Pct.	3FG-A	Pct.	FT-A	Pct.	REB	Avg.	A	S	BS	PTS	Avg.
2013-14	13-18	29-29	136-378	.360	49-155	.316	115-148	.777	72	2.5	115	49	2	436	15.0
2012-13	26-8	28-24	83-198	.419	27-88	.307	49-65	.754	64	2.3	74	25	2	242	8.6
2011-12	14-16	30-29	121-325	.372	40-135	.296	77-108	.713	68	2.3	89	41	2	359	12.0
2010-11	28-5	14-0	2-19	.105	1-10	.100	3-5	.600	3	0.2	9	5	1	8	0.6
<b>TOTALS</b>	<b>81-47</b>	<b>101-82</b>	<b>342-920</b>	<b>.372</b>	<b>117-388</b>	<b>.302</b>	<b>244-326</b>	<b>.748</b>	<b>207</b>	<b>2.0</b>	<b>287</b>	<b>120</b>	<b>7</b>	<b>1045</b>	<b>10.3</b>

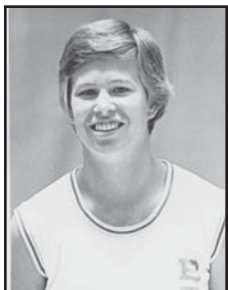


**Marie Philman — No. 5, Forward, Huntington Beach, CA (Edison HS)**

Years	Record	G-GS	FG-A	Pct.	3FG-A	Pct.	FT-A	Pct.	REB	Avg.	A	S	BS	PTS	Avg.
1999-00	18-11	29-28	86-203	.424	12-28	.429	42-59	.712	142	4.9	52	30	2	226	7.8
1998-99	26-8	34-33	150-310	.484	18-53	.340	59-88	.670	171	5.0	57	60	8	377	11.1
1997-98	20-9	28-25	110-237	.464	0-12	.000	62-92	.674	106	3.8	53	34	3	282	10.1
1996-97	13-14	27-0	57-140	.407	0-10	.000	27-43	.628	69	2.6	21	24	2	141	5.2
<b>TOTALS</b>	<b>77-42</b>	<b>118-86</b>	<b>403-890</b>	<b>.453</b>	<b>30-103</b>	<b>.291</b>	<b>190-282</b>	<b>.674</b>	<b>488</b>	<b>4.1</b>	<b>183</b>	<b>148</b>	<b>15</b>	<b>1026</b>	<b>8.7</b>



# The Bruin Elite



**Ann Meyers**  
1975-1978  
Guard

Considered the pioneer of collegiate women's basketball, **Ann Meyers** was the first female athlete ever to earn a four-year scholarship to UCLA, and she finished her collegiate career as the first four-time All-American in her sport.

In her senior season (1978), she led UCLA to the AIAW national championship, won the Broderick Award as the women's basketball player of the year and went on to win the prestigious Broderick Cup as the Collegiate Female Athlete of the Year in any sport. Also that year, she became the only player in UCLA history to record a quadruple-double, recording 20 points, 14 rebounds, 10 assists and 10 steals in a game against Stephen F. Austin.

For almost two decades, Meyers held the school record for assists in a game (15) and was the school leader in career assists (544) until the marks were broken in 1999. She remains the school leader in steals (403) and blocked shots (101-tied) and is ninth in scoring (1685).

Meyers, who won a silver medal as a member of the 1976 U.S. Olympic team, has been inducted into the Naismith, FIBA and Women's Basketball Halls of Fame. In 1988, her first year of eligibility, she was the first woman inducted into UCLA's Hall of Fame, and two years later, she had her uniform #15 retired.

The widow of the late Major League Baseball Hall of Famer Don Drysdale, she has worked for years as a radio/television broadcaster (called the action at the 2008 Olympic Games). In the summer of 2006, she was named the general manager of the WNBA's Phoenix franchise, which has won the 2007, 2009 and 2014 WNBA Championships.



**Anita Ortega**  
1976-1979  
Guard

After scoring a game-high 23 points in the 1978 national championship game against Maryland, **Anita Ortega** forever etched her name in Bruin lore as she led UCLA to the AIAW title.

Ortega, who also led the Bruins to the 1979 Final Four, still ranks seventh in career scoring with 1751 points and is in the Top 20 in rebounding with 559 rebounds. She is also listed amongst the Bruin leaders in all-time scoring average (16.1), field goals made (705), steals (240) and double-digit scoring games (91). Ortega, a four-year starter, was a three-time first-team all-conference performer (1977-79).

Following her career at UCLA, she went on to earn All-Pro honors in the Women's Professional Basketball League. She later served as an assistant coach for the Bruins from 1981-83 and was inducted into the UCLA Athletic Hall of Fame in 2002.

Ortega retired as a captain in the Los Angeles Police Department in June of 2016. She was one of only two female African-Americans who have ever held the rank of captain in the LAPD. She also remains involved in women's basketball as a Division I college basketball official.



**Denise Curry**  
1977-1981  
Forward

The consistent **Denise Curry**, a three-time All-American, set a collegiate record by scoring in double figures in all 130 games she played for the Bruins.

The Davis, CA native set 14 school records in her career at Westwood and still ranks No. 1 in career scoring (3,198) and rebounding (1,310) in addition to eight other categories. She played in two Final Fours and helped lead UCLA to the 1978 AIAW National Championship as a freshman. From 1977-81, Curry's teams won 98 games, including a school-record 29 during her senior season.

Curry won a gold medal at the 1984 Olympic Games, four years after being selected to the 1980 U.S. Olympic Team that did not compete due to the U.S. boycott. Curry went on to play professional ball in Europe for several seasons.

In 1990, UCLA retired her uniform number (#12), and she was inducted into the UCLA Hall of Fame in 1994 and into the Naismith Basketball Hall of Fame in 1997.

Curry was an assistant coach with the San Jose franchise of the American Basketball League in 1996-97 and then went on to serve as the head coach at Cal State Fullerton from 1998-2000. She has also worked as an assistant coach at Long Beach State, working on the staff of fellow Bruin alum Mary Hegarty.



# The Bruin Elite



**Rehema Stephens**  
1989-1992 • Guard

**Rehema Stephens**, a third-team All-American as a senior and a three-time All-Pac-10 selection (1990-92), finished her career ranked second at UCLA in career points (1,887), second in scoring average (21.7) and eighth in career rebounds (643).

She twice led the Pac-10 in scoring (1990 - 20.1 average; 1991 - 25.3 average) and helped the Bruins reach the NCAA Tournament in two (1990 and 1992) of her three seasons. The 1992 squad advanced to the Sweet 16 round of the NCAA Tournament and finished the season ranked 18th in the USA Today poll. Her 34-point effort against Oregon in a 1991 game is the most points ever scored by a Bruin in a game played in the Wooden Center. Stephens' 25.3 points-per-game mark in the 1991 season still ranks as the third-best in UCLA history.

Stephens earned a bronze medal while representing the United States as a member of its 1991 Jones Cup team. In 1987, she took home gold in the USA Olympic Sports Festival.

Stephens was selected by the Richmond franchise in the 1996 American Basketball League draft and went on to play with the Sacramento Monarchs of the WNBA in 1998.



**Natalie Williams**  
1990-1994 • Forward

**Natalie Williams**, a 2004 UCLA Hall of Fame inductee, dominated the backboards like no other player. Her career average of 12.8 rebounds is more than 2.5 rebounds higher than any other Bruin and ranked first in Pac-10 Conference history until 2016 when Oregon's Jillian Alleyne surpassed her mark.

She led the Pac-10 in rebounding three times (the three highest averages in league history at the time) and twice led the Pac-10 in scoring. She held the Pac-10 records for career rebound average and single-game rebounds. At UCLA, she ranks No. 5 in scoring (1,813) and No. 3 in scoring average (20.4).

Williams, a two-time first-team All-American, was selected to the 1994 Kodak All-America team and was named Pac-10 Player of the Year as a senior.

She was also an All-American in volleyball, earning National Player of the Year honors twice. She accumulated a total of 16 Pac-10 Player of the Week honors (eight in each sport), and in February of 1996, she was selected the Pac-10 Female Athlete of the Decade (1987-96).

Professionally, she enjoyed an MVP season in 1997-98 with Portland of the ABL, leading the league in both scoring and rebounding for a second-straight season. In 1999, she ranked first in the WNBA in rebounding and fourth in scoring. In the summer of 2000, she helped the U.S. win the gold medal at the Olympic Games. She retired from professional basketball at the end of the 2005 season.



**Maylana Martin**  
1997-2000 • Forward

**Maylana Martin** led the Bruins to 77 wins in her career which saw her help take UCLA to its only Pac-10 championship, the Elite Eight of the NCAA tournament in 1999 and a school-best three-straight NCAA tournaments overall.

She became just the third player ever selected first-team All-Pac-10 in all four seasons and was chosen the 1997 Pac-10 Freshman of the Year and the 1999 Pac-10 Player of the Year. Martin earned first-team Kodak All-America honors in 1999 after leading the Bruins to the Pac-10 Championship and to 26 victories.

Martin is one of only two Bruins to have surpassed the 2,000-point barrier, and she still ranks in the school's all-time top-five in 11 categories. She ended her collegiate career ranked eighth on the all-time conference rebound list with 935 boards and sixth on the all-time conference scoring list with 2,101 points.

The No. 10 overall selection in the 2000 WNBA Draft, Martin played two seasons with the Minnesota Lynx and also played with the Charlotte Sting. She was an assistant coach at the University of Portland before returning to UCLA as an assistant in the summer of 2004. As a Bruin coach (2004-08), she helped lead UCLA to its first Pac-10 Tournament title in the 2006 season. After her playing career, she moved into coaching and was an assistant coach at Portland, UCLA and Pepperdine.



**Michelle Greco**  
1999-2003 • Guard

**Michelle Greco**, a finalist for the State Farm Wade Trophy as a senior, helped the Bruins win 71 games in her career and their first Pac-10 Conference title. She also played a large role in UCLA's run to the Elite Eight in 1999 after being thrust into the starting point guard role in the West Regionals as a true freshman. Her play in the regional earned her All-NCAA West Regional honors.

Greco led the Pac-10 in scoring twice during her career (2001-19.9, 2003-18.9) and was selected first-team all-conference in 2001 and 2003. She also led the Pac-10 in free throw percentage in 2001 (.865) and in steals in 2003 (2.8). With 1,707 total points, she finished her career ranked sixth on the school scoring list. In addition, she concluded her career ranked amongst the Top 10 in 10 other statistical categories.

In her rookie season in the WNBA in 2004, she won a WNBA title with the Seattle Storm. Greco currently plays in Italy.





# The Bruin Elite



**Nikki Blue**  
2003-2006 • Guard

One of the Pac-10's all-time great point guards, **Nikki Blue** became just the fifth player in conference history to be named to the All-Conference team four straight years.

She finished her career ranked fifth on the all-time UCLA list in scoring (1,797), second in assists (602), third in steals (325), fourth in made three-point shots (114), seventh in three-point shooting percentage (.355) and second in career made free throws (455).

Blue, a two-time honorable mention All-American and four-time Pac-10 All-Tournament selection, produced 89 double-figure scoring games for her career. Her 189 assists were the most ever by a Bruin senior, and she became the first Bruin to lead the Pac-10 in assists. Blue wound up her UCLA career ranked second on the Pac-10 career list for steals, eighth in assists and 18th in scoring. In 2006, she helped to lead the Bruins to their first Pac-10 Conference Tournament title.

She was selected in the second round of the 2006 WNBA draft by the Washington Mystics and is serving as an assistant coach at CSU Bakersfield.



**Lisa Willis**  
2003-2006 • Guard

The best three-point shooter in UCLA history, **Lisa Willis** finished her career as the school's all-time leader in three-point shots made with 256 and the Pac-10's all-time leader in career steals with 368.

She also left UCLA ranked ninth on the school scoring list (1,677), fifth on the games played list (120), 13th on the rebounding list (625) and eighth on the free throw percentage list (76%). Her total of 87 double-digit scoring games ranked sixth at UCLA.

She finished her career ranked first on the all-time Pac-10 steals list, second on the conference made three-point shot list and 21st in scoring. Willis was the Pac-10 leader in steals in her last three seasons and was the first player in UCLA history to record three-straight seasons with 100 or more steals. Willis was a two-time first-team all-conference selection and was named Most Valuable Player of the 2006 Pac-10 Tournament and an honorable mention All-American in 2006.

Willis was selected with the fifth pick in the first round of the 2006 WNBA draft by the Los Angeles Sparks and also went on to play with the New York Liberty.



**Noelle Quinn**  
2004-2007 • Guard

**Noelle Quinn** achieved something no other Bruin basketball player, male or female, has ever done - total at least 1,700 points, 700 rebounds and 400 assists for a career. She concluded her career just short of becoming only the second player in Pac-10 history to have reached 1,800 points, 800 rebounds and 400 assists.

Quinn finished her career ranked in the school's top 10 in 14 different categories, including points (4th), rebounds (8th) and assists (7th). She earned first-team All-Pac-10 honors as a freshman, junior and senior and earned Pac-10 All-Tournament honors in 2006 and 2007. Quinn was the leading scorer for the Bruins in the championship game at the 2006 Pac-10 Tournament, scoring the game-tying basket with five seconds remaining to force overtime in the eventual Bruin victory over Stanford.

She was honored a Pac-10 record eight times in her career as the conference Player of the Week and was a two-time honorable mention All-American.

Quinn was selected by the Minnesota Lynx with the fourth pick of the first round of the 2007 WNBA draft. She is currently playing overseas and with the Phoenix Mercury.



**Lindsey Pluimer**  
2005-2008 • Forward

**Lindsey Pluimer**, a fixture in the Bruin starting lineup from day one, became the first UCLA player in the NCAA era to earn a start in every game of her career, 123 games, third-most in school history.

After those 123 games, she became one of just five Bruin players ever to record career totals of 1,500 points, 700 rebounds and 75 blocks. She completed her career ranked 12th on UCLA's career scoring list with 1,558 points, 10th in rebounds with 737, sixth in blocked shots with 93 and seventh in 3-point field goals made (84).

In her senior season, Pluimer led the team in scoring, rebounding, blocked shots and three-pointers and ranked in the Pac-10's Top 10 in six of 13 individual categories, including sixth in scoring (14.1) and tied for eighth in rebounding (6.5).

A three-time Academic All-District VIII and two-time first-team Pac-10 All-Academic selection, Pluimer was named the 2007-08 Toyo Tires Pac-10 Scholar Athlete of the Year for women's basketball.

She was the second round selection (No. 20 overall) of the Washington Mystics in the 2008 WNBA draft. She has played professionally in Australia and currently plays in Spain.





# The Bruin Elite

## UCLA Honors 15 Greatest Players and 1978 National Championship Team



UCLA's 1978 National Championship Team. Top row, (l-r): Head coach Billie Moore, Heidi Nestor, Denise Corlett, Denise Curry, Tam Breckenridge, Ann Meyers. Bottom row (l-r): Sports Information Director Michael Sondheimer, Beth Moore, Dianne Frierson, Debbie Willie, assistant coach Colleen Matsuhara, Yvette Duran.



UCLA Olympians (l-r) Denise Curry (1980, 1984), coach Billie Moore (1976), Ann Meyers (1976) and Natalie Williams (2000)

UCLA women's basketball's past and present merged February 21, 1998 when UCLA honored its 15 greatest players of all-time at halftime of the UCLA-USC game. It was an all-around day of celebration for the UCLA program, as the current team defeated USC, 87-73, to complete a season sweep against its cross-town rival in front of what was then a Pauley Pavilion regular season record crowd of 7,258. The 1978 team was also honored on the 20th anniversary of UCLA's first national title in women's basketball.

The list of 15 included two Naismith Basketball Hall of Famers (Denise Curry and Ann Meyers), the Pac-10 Conference Female Athlete of the Decade (Natalie Williams) and a winner of six Olympic medals (Jackie Joyner).

These 15 greatest players were selected by a committee that included current UCLA coaches, former UCLA players and coaches and current and former UCLA administrators. The number 15 was chosen to mirror the amount of scholarships available in the sport of women's basketball.

### UCLA Women's Basketball's 15 Greatest Players (alphabetical order, as selected 2/21/98):

Player	Years
Sheila Adams	(early 1970's)
Nicole Anderson	1990-93
Denise Curry	1978-81
Anne Dean	1983-86
Dora Dome	1985-88
Dianne Frierson	1977-80
Mary Hegarty	1981-84
Jackie Joyner	1981-85
Ann Meyers	1975-78
Karen Nash	1975-77
Anita Ortega	1976-79
Rehema Stephens	1990-92
Necie Thompson	1981-83
Sandra VanEmbricqs	1987-90
Natalie Williams	1991-94



UCLA's 15 Greatest Players. Top row (l-r): Dora Dome, Denise Curry, Necie Thompson, Sheila Adams, Natalie Williams, Ann Meyers, Althea Ford (for Sandra VanEmbricqs). Bottom row (l-r): Mary Hegarty, Anne Dean, Nicole Anderson, Dianne Frierson.



# Retired Numbers



On Feb. 3, 1990, four of the greatest players in UCLA basketball history — Kareem Abdul-Jabbar (Lew Alcindor), Bill Walton, Ann Meyers and Denise Curry — had their uniform numbers retired. This special ceremony was the key moment in 1989-90's "Pauley at 25" celebration and marked the first time that any Bruin basketball numbers had been retired. All four players earned consensus first-team All-America honors three times, the criteria used for deciding which of UCLA's many outstanding players should have their numbers retired. The quartet are also in the National Basketball Hall of Fame, the Naismith Hall of Fame and the UCLA Athletic Hall of Fame.



## #12 Denise Curry

The consistent Curry, a three-time All-American, set a collegiate record by scoring in double figures in each of the 130 games in which she played for the Bruins. The Davis, CA native set 14 school records in her career at Westwood and still ranks first in 10 career categories. In 1997, she was inducted into the Naismith Memorial Basketball Hall of Fame in Springfield, MA. Prior to her gold medal-winning performance on the 1984 U.S. Olympic team, she had previously been selected to the 1980 team. Curry played professionally in Europe for several seasons and served as an assistant women's basketball coach at California. She became the head coach at Cal State Fullerton after working as an assistant with the San Jose franchise of the American Basketball League. Curry has also served as an assistant basketball coach at Long Beach State.



## #15 Ann Meyers

Meyers, who was inducted into the Naismith Memorial Basketball Hall of Fame in May of 1993, was the first woman to earn a full scholarship at UCLA and went on to become the first four-time women's basketball All-American. In 1978, she was named College Player of the Year and winner of the prestigious Broderick Cup after helping to lead the Bruins to the national championship. Meyers is still the school leader in steals (403) and blocked shots (101-tied) along with being the only player in UCLA history to have posted a quadruple-double with 20 points, 14 rebounds, 10 assists and 10 steals in a game vs. S.F. Austin in 1978. In addition, she earned a silver medal as a member of the 1976 U.S. Olympic Team, which was coached by former UCLA mentor Billie Moore. She has worked extensively as a television commentator for men's and women's college and professional basketball. She is currently the general manager for the WNBA's Phoenix franchise, which captured the 2007, 2009 and 2014 championships.



# UCLA Hall of Fame Coaches



## John Wooden

UCLA's basketball program has the international reputation of being No. 1. There is a major reason for that — his name is John Robert Wooden, who announced his retirement after the 1974-75 season (his 27th campaign) as the Bruins' head coach with the winningest record in all of the sport's history.

Wooden's 885-203 overall career win-loss record (a percentage of .813) is unequaled. A large part of that success was at UCLA. In 27 years as Bruin coach, his teams registered 620 wins and only 147

losses while earning far more national honors than any other university.

Under Wooden, UCLA won an unprecedented 10 NCAA championships, including seven consecutive (1966-73). Included in the string is one of the most amazing win streaks in all of sports, 38-straight NCAA tournament victories.

In addition, there is the all-time NCAA consecutive winning-streak record of 88 games over four seasons, which included consecutive 30-0 seasons in 1971-72 and 1972-73. UCLA also won 149 of 151 games in Pauley Pavilion during his Bruin tenure.

Wooden is the only coach to compile four undefeated seasons of 30-0, and his Bruin teams captured 19 conference championships (the record of which Wooden is most proud). He is also the first person to be inducted into the National Basketball Hall of Fame as both a player and coach.

At Purdue University, he won letters in basketball and baseball his freshman year and later earned All-American honors as a guard on the basketball team from 1930-32. He captained Purdue's basketball teams of 1931 and 1932 and led the Boilermakers to two Big Ten titles and the 1932 national championship.

In July of 2003, Wooden received the highest honor awarded to a U.S. citizen, the U.S. Medal of Freedom. Coach passed away on June 4, 2010.

Wooden and his wife, Nell, who died in Los Angeles on March 21, 1985, were married for 53 years. Parents of a son, James Hugh, and a daughter, Nancy Anne, John had seven grandchildren and 11 great-grandchildren. On Dec. 20, 2003, the basketball floor in Pauley Pavilion was dedicated "Nell and John Wooden Court."



Coach Wooden with Noelle Quinn at the 2003 McDonald's All-American Game



## Billie Moore

Naismith Memorial Basketball Hall of Fame and Women's Basketball Hall of Fame inductee Billie Moore was the first coach to lead two schools to national women's basketball championships - Cal State Fullerton and UCLA.

In 1970, her very first season at Cal State Fullerton, Moore led her team to the AIAW national title, and in her second season at UCLA in 1978, she guided the Bruins to their first and only national championship.

Moore was UCLA head coach for 16 years (1977-93) and compiled a 296-181 (.621) record. Along with the AIAW Championship, she led her team to a fourth-place finish in 1979, and her Bruin teams finished ninth nationally in 1985 and 1992.

At Cal State Fullerton, she recorded a 140-15 record in eight seasons, and her overall coaching record at both schools was 436-196 over 24 years. Her UCLA and Cal State Fullerton teams won 10 conference championships and advanced to the post-season 16 times with a 59-18 record. Moore, who coached fellow Hall of Famers Ann Meyers and Denise Curry, became the eighth coach in women's basketball history to reach the 400-win mark.

Moore coached the first U.S. women's Olympic basketball team to a silver medal at the Olympic Games in Montreal in 1976. She also led the 1973 and 1975 entries to the World University Games and the 1975 U.S. Pan American Games team.

Many of Coach Moore's former players (Ann Meyers, Denise Curry, Anita Ortega and Pat Summitt) have gone on to excel in athletic endeavors including college coaching, professional basketball, radio/television broadcasting and community service. Pat Summitt has been quoted as saying, "Billie Moore has had more influence on my coaching career than anyone. She was my mentor. She's had a huge impact on my coaching style."

Moore is a Westmoreland, Kansas native who received her undergraduate degree from Washburn University in Kansas and earned her Master's degree from Southern Illinois University. In 1999, she received her Honorary Doctorate of Humane Letters from Washburn University.



Hall of Fame coach Billie Moore



# Individual Career Statistics - 1975-Present

Player (10g minimum)	Years	G	FG-A	Pct.	3FG-A	Pct.	FT-A	Pct.	REB	Avg.	A	S	BS	PTS	Avg.
Alexander, Moniquee	2007-10	124	171-357	.479	0-0	.000	97-195	.497	435	3.5	11	35	42	439	3.5
Allen, Lori	1975-77	62	91-238	.382	—	—	61-120	.508	215	3.5	25	78	4	255	4.1
Allen, Shalada	2001-02	54	128-311	.412	0-1	.000	42-75	.560	215	3.9	14	41	14	298	5.5
Alston, Tonya	1983	28	22-58	.379	—	—	18-35	.514	93	3.3	8	9	8	62	2.2
Anderson, Nicole	1990-93	111	397-968	.410	2-10	.200	282-393	.718	377	3.4	470	274	6	1078	9.7
Arranaga, Gennifer	2001-04	113	228-617	.370	35-106	.330	84-116	.724	245	2.2	102	118	4	575	5.1
Arredondo, Allison	1993-96	100	177-456	.388	67-190	.353	39-62	.629	222	2.2	52	32	6	460	4.6
Baird, Chrissy	2015-16	23	3-9	.333	0-0	.000	3-4	.750	10	0.4	1	0	1	9	0.4
Batchie, Alma	1986-88	44	24-54	.444	—	—	8-24	.333	60	1.4	11	11	7	56	1.3
Beauprey, Jeanne	1980-81	60	160-346	.462	—	—	75-119	.630	319	5.3	46	77	13	395	6.6
Bennett, Kellie	1995	27	96-228	.421	24-51	.471	38-58	.655	141	5.2	55	41	3	254	9.4
Biggs, Shari	1984-87	108	330-707	.466	—	—	100-125	.800	453	4.2	115	80	5	760	7.0
Billings, Monique	2015-16	72	259-535	.484	0-0	.000	140-238	.588	469	6.5	46	94	106	658	9.1
Blue, Nikki	2003-06	118	614-1522	.403	114-321	.355	455-637	.714	616	5.2	602	325	24	1797	15.2
Bouldin, Sheri	1987-90	96	210-520	.404	—	—	116-198	.586	507	5.3	35	55	32	536	5.6
Bradley, Jalina	2000-03	91	137-452	.303	17-89	.191	80-115	.695	173	1.9	96	73	2	371	4.1
Breckenridge, Tam	1977-78	43	78-168	.464	—	—	63-110	.573	204	4.7	17	44	9	219	5.1
Brewer, Alyssia	2013	33	151-316	.478	0-0	.000	64-101	.634	255	7.7	60	43	25	366	11.1
Brooks (Poteet), Madeline	2012-14	53	27-88	.307	20-66	.303	4-7	.571	50	0.9	30	8	0	78	1.5
Brown, Candice	2008-09	41	23-64	.359	0-0	.000	18-39	.462	79	1.9	6	17	12	64	1.6
Brown, Jaime	1985-88	110	444-993	.447	2-7	.286	198-252	.786	302	2.7	125	80	5	1088	9.9
Burke, Kennedy	2016	35	76-186	.409	21-65	.323	30-53	.566	128	3.7	36	44	25	203	5.8
Caldwell, Recce'	2015	17	42-125	.336	21-75	.280	12-16	.750	34	2.0	43	7	2	117	6.9
Campbell, Doreena	2008-11	127	460-1165	.395	85-236	.360	278-344	.808	465	3.7	415	188	26	1283	10.1
Canada, Jordin	2015-16	68	341-868	.393	19-84	.226	250-325	.769	250	3.7	341	148	5	951	14.0
Childs, Dana	1986-89	99	139-300	.463	—	—	110-197	.558	268	2.7	17	31	14	388	3.9
Cohen, Jane	1975	23	60-154	.390	—	—	15-33	.455	81	3.5	20	33	5	137	6.0
Collins, Laura	1991, 1993-95	75	75-191	.393	0-1	.000	39-79	.494	155	2.1	25	18	7	189	2.5
Connolly, Merja	1982	23	37-79	.468	—	—	9-11	.818	54	2.3	7	9	6	83	3.6
Corlett, Denise	1977-80	109	272-669	.407	—	—	210-282	.745	691	6.3	112	113	10	754	6.9
Corinne Costa	2011-15	117	236-537	.439	0-2	.000	29-50	.580	473	4.0	90	51	179	501	4.3
Crampton, Cyd	1977, 1979	41	75-179	.419	—	—	31-44	.705	213	5.2	20	26	30	181	4.4
Curry, Denise	1978-81	130	1386-2283	.607	—	—	426-521	.818	1310	10.1	353	200	74	3198	24.6
Dean, Anne	1983-86	116	591-1254	.471	—	—	182-231	.788	390	3.4	310	134	11	1364	11.8
Dixon, Jasmine	2010-11, 2013	90	414-805	.514	3-10	.300	218-384	.568	621	6.9	123	166	44	1049	11.7
Dome, Dora	1985-88	115	669-1495	.447	—	—	250-392	.638	674	5.9	252	159	16	1589	13.8
Drummer, Lajahna	2015-16	66	143-363	.394	0-0	.000	92-155	.594	340	5.2	30	45	22	378	5.7
Earl, Nina	2008-11	124	268-607	.442	7-34	.206	132-229	.576	279	2.3	119	136	17	675	5.4
Eulert, Kendee	1981-82	32	52-122	.426	—	—	18-30	.600	72	2.3	20	19	2	122	3.8
Fields, Nirra	2013-16	134	714-1816	.393	138-450	.307	301-466	.646	687	5.1	234	262	63	1867	13.9
Fitzgerald, Cathy	1975	21	20-59	.339	—	—	25-48	.521	69	3.3	7	25	1	59	2.8
Flannigan, LaCresha	1998-00	90	284-637	.446	22-82	.268	191-306	.624	189	2.1	75	87	6	772	8.7
Ford, Althea	1986-89	112	236-525	.450	—	—	119-202	.589	518	4.6	32	63	26	591	5.3
Francis, Teik	1986-87	26	13-29	.448	—	—	0-4	.000	37	1.4	6	7	9	26	1.0
Francis, Tia	1984-85	45	51-123	.415	—	—	57-101	.564	107	2.4	9	13	4	159	3.5
Franken, Tessa	1986	28	27-73	.370	—	—	10-15	.667	23	0.8	64	12	2	64	2.3
Frierson, Dianne	1977-80	117	504-1090	.462	—	—	126-170	.741	239	2.0	454	158	16	1134	9.7
Funicello, Carly	1997-00	110	207-406	.510	—	—	114-185	.616	397	3.6	61	76	59	528	4.8
Gardner, Rebekah	2009-12	127	408-999	.408	92-301	.306	193-254	.760	425	3.3	137	167	44	1101	8.7
Gardner, Rhema	2011-12, 2014	78	73-205	.356	2-13	.154	30-61	.492	210	2.7	21	38	29	178	2.3
Gomez, Erica	1996, 1998-00	113	295-828	.356	81-281	.288	264-386	.684	333	2.9	697	224	14	935	8.3
Greco, Michelle	1999-03	121	635-1487	.427	101-325	.311	336-413	.814	468	3.9	290	288	14	1707	14.1
Grimes, Tawana	1995-98	110	299-703	.425	29-97	.299	153-225	.680	416	3.8	381	256	16	780	7.1
Hanible, Dietra	1980-82	45	94-230	.409	—	—	29-48	.604	66	1.5	113	92	3	217	4.8
Hardy, Angel	1982-85	111	331-791	.481	—	—	69-112	.616	259	2.3	412	183	12	731	6.6
Hayes, Kelli	2015-16	71	95-231	.411	7-34	.206	32-44	.727	132	1.9	40	32	19	229	3.2
Hearn, Ashley	2016	22	3-20	.150	0-0	.000	0-0	.000	27	1.2	8	6	12	6	0.3
Hegarty, Mary	1981-84	113	215-477	.451	—	—	129-161	.801	137	1.2	528	215	11	559	4.9
Henderson, Tierra	2005-09	115	218-594	.367	26-122	.213	101-190	.532	344	3.0	210	182	5	563	4.9
Hersler, Paulina	2015-16	62	45-132	.341	17-50	.340	17-24	.708	76	1.2	15	15	5	124	2.0
Hilbert, Nickey	1993-96	82	349-894	.390	54-199	.271	145-225	.644	267	3.3	136	134	13	897	10.9
Holiday, Lauren	2013-14	12	15-40	.375	2-4	.500	7-12	.583	46	3.8	15	12	0	39	3.3
Hopkins, Janet	1978-81	87	121-272	.445	—	—	37-52	.712	91	1.0	68	39	3	279	3.2
Horn, Melanie	1979-82	111	115-245	.469	—	—	68-128	.531	304	2.7	44	30	58	297	2.7
Houser, Carla	1997-98	44	28-68	.412	—	—	24-38	.632	76	1.7	15	13	7	80	1.8
Hubbard, Janae	1997-00	119	506-1014	.499	2-10	.200	208-330	.630	798	6.7	48	90	58	1222	10.3
Hughes, Kisa	1994-96	81	411-729	.564	0-0	.000	113-270	.419	652	8.0	20	88	40	935	11.5
Ibekwe, Chinyere	2005-09	122	252-536	.470	0-3	.000	126-252	.500	623	5.1	29	87	68	630	5.2
Jackson, Nancy	1975-76	45	95-282	.337	—	—	28-57	.491	81	1.8	96	80	5	235	5.2
Jackson, Takiyah	1997-98, 00	79	131-357	.367	19-64	.297	83-113	.735	188	2.4	77	71	15	364	4.6
Jalewalia, Amy	1991-94	112	486-1052	.462	5-15	.333	224-339	.661	533	4.8	211	159	26	1201	10.7
James, Vera	1980, 1982	28	43-98	.439	—	—	17-25	.680	41	1.5	34	7	3	103	3.7
Jarrett, Natalie	2000-03	64	54-158	.342	5-40	.125	25-46	.543	111	1.7	6	25	11	138	2.2
Johnson, Krystle	2002-03	46	27-72	.375	0-0	.000	39-60	.650	62	1.3	8	2	11	93	2.0
Jones, Char	1982-84	76	417-821	.508	—	—	127-201	.632	580	7.6	105	122	46	961	12.6
Jones, Whitney	2001-04	100	264-679	.389	88-288	.305	114-156	.731	474	4.7	140	165	12	730	7.3
Joyner, Jackie	1981-85	121	463-1042	.444	—	—	241-412	.585	752	6.2	239	168	13	1167	9.6
Kaczmariski, Nicole	2000	29	122-300	.407	36-101	.356	58-69	.841	108	3.7	55	44	1	338	11.7
Kamrath, Lynn	1989-92	106	175-473	.370	—	—	78-158	.494	434	4.1	86	83	83	428	4.0
Keur, Annette	1984-85	58	362-670	.540	—	—	121-204	.593	440	7.6	37	80	55	845	14.6

# Individual Career Statistics - 1975-Present

Player	Years	G	FG-A	Pct.	3FG-A	Pct.	FT-A	Pct.	REB	Avg.	A	S	BS	PTS	Avg.
Korver, Kari	2013, 2015-16	106	238-617	.386	179-474	.378	153-184	.832	294	2.8	150	55	8	808	7.6
Kristich, Zrinka	1993-96	106	273-560	.488	—	—	122-212	.575	547	5.2	142	105	38	668	6.3
Kuypers, Ricarda	1994-96	77	134-392	.342	56-164	.341	67-107	.626	95	1.2	168	48	3	391	5.1
Leatham, Malika	2001-02	58	121-397	.305	0-1	.000	125-230	.543	318	5.5	28	45	38	367	6.3
Lemberger, Thea	2011-14	101	342-920	.372	117-388	.302	244-326	.748	207	2.0	287	120	7	1045	10.3
LeWinter, Judy	1975-76	46	243-497	.489	—	—	47-67	.701	152	3.3	131	77	8	533	11.6
Lewis, Eugenie	1989	28	52-146	.356	3-12	.250	14-30	.467	106	3.8	50	22	7	121	4.3
Lezcano, Consuelo	2004-07	75	43-105	.410	—	—	39-56	.696	73	1.1	11	15	15	125	1.7
Livingston, Amanda	2004-07	121	318-666	.477	0-1	.000	131-185	.708	414	3.4	109	82	37	784	6.5
Livulo, Luiana	2014-15	66	86-238	.361	0-2	.000	45-79	.570	215	3.3	37	26	32	217	3.3
Lockhart, Detra	1991-94	113	269-737	.365	30-102	.294	214-312	.686	288	2.5	341	210	10	782	6.9
Martin, Maylana	1997-00	116	775-1422	.545	1-7	.143	550-797	.690	935	8.1	176	237	96	2101	18.1
McCoy, Michelle	1983-84	45	177-424	.417	—	—	55-91	.604	92	2.0	181	91	3	409	9.1
McFadden, Dorice	1983	22	49-119	.412	—	—	6-17	.353	29	1.3	21	17	1	104	4.7
Mead, Susan	1985-87	83	112-274	.409	—	—	51-132	.368	452	5.4	35	73	52	275	3.3
Meyers, Ann	1975-78	97	693-1386	.500	—	—	299-381	.785	819	8.4	544	403	101	1685	17.4
Miles, Michelle	1988-90	38	37-89	.416	—	—	41-66	.621	68	1.8	131	44	2	115	3.0
Moore, Beth	1976-79	101	127-311	.406	—	—	82-133	.617	119	1.2	216	107	4	336	3.3
Moore, Kristi	1986-87	56	122-315	.387	—	—	94-120	.783	97	1.7	248	79	1	338	6.0
Morris, Darxia	2008-11	122	455-1083	.420	57-188	.303	158-240	.658	316	2.6	322	181	14	1125	9.2
Mosman, DeDe	1989-92	113	347-885	.392	136-361	.377	90-120	.750	321	2.8	247	96	4	920	8.1
Nakase, Natalie	2000-03	98	157-439	.358	41-122	.336	132-189	.698	198	2.1	358	149	2	487	4.9
Nash, Karen	1975-77	62	281-686	.410	—	—	116-196	.592	264	4.3	82	155	10	680	11.0
Nestor, Heidi	1976-78	73	224-502	.446	—	—	93-142	.655	515	7.1	40	58	14	541	7.4
Nishi, Teiko	1985-88	73	45-112	.402	—	—	31-56	.554	67	0.9	186	122	2	121	1.7
Nyingifa, Atonye	2009, 2011-14	138	601-1304	.461	3-17	.176	365-536	.681	920	6.7	177	226	56	1570	11.4
Nzekwe, Christina	2008-11	127	154-416	.364	12-45	.267	115-190	.605	455	3.6	61	101	44	435	3.4
Oenning, Jamie	1995-98	70	32-94	.340	9-32	.281	26-34	.765	50	0.7	32	23	0	100	1.4
Oren, Ortal	2003-06	97	119-332	.358	20-77	.260	47-78	.603	142	1.5	83	33	2	305	3.1
Ortega, Anita	1976-79	109	705-1536	.459	—	—	341-532	.641	559	5.1	317	240	42	1751	16.1
Palmisano, Michelle	1993	27	100-306	.327	48-146	.329	66-92	.717	98	3.6	56	39	0	314	11.6
Pearson, Melanie	1997-99	83	274-647	.423	115-287	.401	115-159	.723	254	3.1	125	87	22	778	9.4
Pedersen, Lauren	2005-06	54	44-130	.338	29-85	.341	18-23	.783	89	1.6	40	37	6	135	2.5
Philman, Marie	1997-00	118	403-890	.453	30-103	.291	190-282	.674	488	4.1	183	148	15	1026	8.7
Pickett, Sissy	2002-05	54	46-97	.474	—	—	12-18	.667	61	1.1	2	3	6	104	1.9
Pitts, Julia	2003-04, 06-07	57	70-143	.490	—	—	39-77	.506	142	2.5	21	18	15	179	3.1
Pluimer, Lindsey	2005-08	123	593-1303	.455	84-238	.353	286-354	.808	737	6.0	170	107	93	1556	12.7
Porter, Kristee	1999, 01-02	32	136-346	.393	0-1	.000	83-167	.497	223	6.9	14	46	51	363	11.3
Quinn, Noelle	2004-07	107	713-1649	.432	81-240	.338	322-426	.756	794	7.4	450	196	54	1829	17.1
Rembert, Ayesha	1999-00	38	23-59	.389	0-1	.000	20-28	.714	54	1.4	8	12	4	66	1.7
Rogers, Regina	2007-08	31	78-181	.431	0-0	.000	39-69	.565	144	4.6	17	14	19	195	6.3
Roulier, Rachelle	1988-91	89	212-504	.421	18-42	.429	129-158	.816	189	2.1	123	70	7	571	6.4
Silva, Amy Jo	1992-93	42	24-72	.333	—	—	39-66	.591	96	2.3	9	8	4	87	2.1
Stephens, Rehema	1990-92	87	747-1807	.413	67-222	.302	326-441	.739	643	7.4	161	145	35	1887	21.7
Kacy Swain	2012-13, 2015-16	122	188-532	.353	3-8	.375	131-184	.712	503	4.1	42	70	71	510	4.2
Swenson, Susie	1980-82	94	339-758	.447	—	—	164-241	.680	319	3.4	239	189	11	842	9.0
Taka, Allison	2007-10	53	22-78	.282	19-69	.275	21-26	.808	12	0.3	26	18	0	84	1.6
Tautolo, Emma	2003-06	85	67-179	.374	0-1	.000	21-36	.583	93	1.1	19	9	1	155	1.8
Thompson, Necie	1981-83	93	588-1071	.549	—	—	360-641	.562	940	10.1	123	166	101	1536	16.5
Thurston, Deborah	1981-84	119	177-434	.408	—	—	52-97	.536	286	2.4	80	66	18	406	3.4
Tideback, Molly	1989-90	32	158-318	.497	—	—	90-125	.720	140	4.4	19	33	24	406	12.7
Tomich, Laura	1996-97	30	15-51	.294	6-22	.273	8-12	.667	16	0.5	17	10	0	44	1.5
Trapnell, Leslie	1975-76	46	147-329	.447	—	—	79-137	.577	313	6.8	29	101	13	373	8.1
Tukiainen, Erica	2007-10	128	267-672	.397	103-265	.389	119-168	.708	279	2.2	109	86	24	756	5.9
VandeLagemaat, Herma	1985	24	21-46	.457	—	—	13-24	.542	111	4.6	9	7	12	55	2.3
VanEmbricqs, Sandra	1987-90	103	467-980	.476	—	—	258-442	.548	811	7.9	128	258	95	1192	11.6
VanHelvoort, Marja	1984	29	159-283	.562	—	—	74-115	.643	195	6.7	20	25	17	392	13.5
VanOostveen, Gene	1991-93	60	44-95	.463	—	—	30-50	.600	129	2.2	17	18	7	118	2.0
Veasley, Aisha	1995-98	110	204-472	.432	0-3	.000	127-226	.562	417	3.8	98	186	22	535	4.9
Veasley, Jamila	2001-04	115	103-285	.361	1-3	.333	47-102	.461	408	3.5	62	90	33	254	2.2
Walker, Markel	2010-13	123	494-1165	.424	28-124	.226	323-484	.667	925	7.5	467	262	29	1339	10.9
Williams, Dominique	2014-15	57	11-26	.423	4-15	.267	5-15	.333	77	1.4	51	17	2	31	0.5
Williams, Jerica	2007	29	13-40	.325	6-20	.300	6-7	.857	22	0.8	7	10	0	38	1.3
Williams, Mariah	2010-13	125	151-399	.378	10-39	.256	64-106	.604	161	1.3	236	93	4	376	3.0
Williams, Natalie	1991-94	89	745-1411	.528	—	—	323-511	.632	1137	12.8	101	226	97	1813	20.4
Willie, Debbie	1978-81	125	551-1178	.468	—	—	98-162	.605	455	3.6	314	164	12	1200	9.6
Willis, Lisa	2003-06	119	610-1443	.423	256-710	.361	201-265	.758	645	5.4	251	372	57	1677	14.1
Winn, Brianna	2002	25	37-153	.242	17-88	.193	26-44	.591	30	1.2	15	14	1	117	4.7
Wootton, Michele	1987-90	112	294-702	.419	—	—	249-390	.638	534	4.8	174	126	19	837	7.5
Wortman, Jane	1975	22	23-83	.277	—	—	18-31	.581	27	1.2	27	39	0	60	2.7
Wright, Charlene	1975-76	36	31-101	.307	—	—	14-31	.452	90	2.5	12	47	13	76	2.1
Wright, Lynn	1977	21	29-71	.408	—	—	15-25	.600	32	1.5	38	18	2	73	3.5
Young, Nicole	1990-91, 93-94	101	133-350	.380	0-4	.000	116-187	.620	287	2.8	57	66	9	382	3.8
Youngs, Elaine	1989-90	25	56-140	.400	13-50	.260	18-31	.581	66	2.6	20	17	2	143	5.7
Zaidi, Shaina	2004-07	65	62-158	.392	45-114	.395	24-31	.774	56	0.9	31	8	1	133	2.1



# Year-by-Year Team Statistics

Year	G	FG-A	Pct.	3FG-A	Pct.	FT-A	Pct.	REB	Avg.	PF/DQ	A	TO	BS	S	PTS	Avg.
2015-16	35	963-2342	.411	149-456	.327	508-732	.694	1,506	43.0	656/15	466	511	166	346	2,583	73.8
Opponents		808-2188	.369	172-664	.259	451-636	.709	1,395	39.9	623/16	438	633	89	234	2,239	64.0
2014-15	37	906-2268	.399	160-479	.334	474-720	.658	1,502	40.6	667/12	451	584	182	319	2,446	66.1
Opponents		855-228	.384	246-765	.322	504-698	.722	1,451	39.2	614/9	509	589	113	256	2,460	66.5
2013-14	31	714-1856	.385	121-397	.305	427-636	.671	1,150	37.1	551/21	402	430	117	248	1,976	63.7
Opponents		766-1851	.414	184-568	.324	409-585	.699	1,279	41.3	580/15	471	506	87	221	2,125	68.5
2012-13	34	879-2084	.422	100-329	.304	436-632	.690	1,460	42.9	593/4	556	609	103	338	2,294	67.5
Opponents		723-1980	.365	163-566	.288	443-649	.683	1,215	35.7	562/9	380	612	109	301	2,052	60.4
2011-12	30	705-1798	.392	107-369	.290	346-513	.674	1,137	37.9	520/14	369	497	103	264	1,863	62.1
Opponents		690-1750	.394	138-486	.284	365-528	.691	1,168	38.9	477/4	392	533	82	221	1,883	62.8
2010-11	33	832-1871	.445	68-251	.271	434-661	.657	1,229	37.2	523/6	484	559	77	420	2,166	65.6
Opponents		629-1633	.385	173-566	.306	395-548	.721	1,014	30.7	543/13	375	717	83	265	1,826	55.3
2009-10	34	879-1999	.440	126-366	.344	421-641	.657	1,332	39.2	657/9	485	601	107	362	2,307	67.9
Opponents		649-1748	.371	169-552	.306	489-685	.714	1,103	32.4	584/	388	689	104	248	1,956	57.5
2008-09	31	762-1850	.412	107-318	.336	434-649	.669	1,269	40.9	607/7	382	620	90	333	2,065	66.6
Opponents		666-1661	.401	146-456	.320	431-597	.722	999	32.2	588/22	380	641	103	255	1,909	61.6
2007-08	31	786-1945	.404	96-301	.319	415-654	.635	1,309	42.4	599/11	401	586	102	317	2,083	67.2
Opponents		716-1876	.382	183-552	.332	441-613	.719	1,236	39.9	565/21	424	614	112	254	2,056	66.3
2006-07	32	808-1887	.428	131-365	.359	422-621	.680	1,282	40.1	612/10	453	628	90	244	2,169	67.8
Opponents		831-1989	.418	167-538	.310	415-555	.748	1,135	35.5	589/19	497	508	80	257	2,244	70.1
2005-06	32	943-2072	.455	161-440	.366	428-636	.673	1,266	39.6	621/16	555	441	94	334	2,475	77.3
Opponents		823-1972	.417	168-530	.317	456-655	.696	1,226	38.3	576/12	478	591	80	254	2,270	70.9
2004-05	28	743-1822	.408	148-435	.340	383-534	.717	1,087	38.8	498/9	404	441	81	333	2,017	72.0
Opponents		667-1666	.400	194-590	.329	376-530	.709	1,140	40.7	477/5	421	591	77	217	1,904	68.0
2003-04	30	754-1855	.406	150-449	.334	354-501	.707	1,115	37.2	513/10	425	497	55	369	2,012	67.1
Opponents		687-1674	.410	184-536	.343	357-520	.687	1,136	37.9	503/8	411	616	66	243	1,915	63.8
2002-03	29	793-1907	.416	147-468	.314	384-536	.716	1,061	36.6	533/10	409	454	59	383	2,117	73.0
Opponents		716-1716	.417	148-478	.310	365-548	.666	1,217	42.0	496/10	408	653	86	193	1,945	67.1
2001-2002	29	623-1825	.341	94-367	.256	372-583	.638	1,146	39.5	574/11	329	563	68	286	1,712	59.0
Opponents		717-1739	.412	190-534	.356	446-641	.696	1,289	44.4	556/11	464	653	129	232	2,070	71.4
2000-2001	29	664-1824	.364	89-334	.266	362-597	.606	1,089	37.6	571/24	297	563	72	324	1,779	61.3
Opponents		740-1685	.439	147-451	.326	448-644	.696	1,280	44.1	580/9	459	653	119	239	2,075	71.6
1999-2000	29	804-1826	.440	97-300	.323	453-689	.657	1,209	41.7	579/9	421	598	82	321	2,158	74.4
Opponents		733-1845	.397	140-492	.285	439-650	.675	1,147	39.6	577/20	428	593	58	268	2,045	70.5
1998-99	34	1081-2272	.476	92-281	.327	642-905	.709	1,473	43.3	690/20	565	692	86	435	2,896	85.2
Opponents		881-2200	.400	158-561	.282	559-826	.677	1,303	38.3	714/22	488	763	91	306	2,479	72.9
1997-98	29	872-1835	.475	81-229	.354	492-737	.668	1,167	40.2	619/10	473	631	86	342	2,317	79.9
Opponents		726-1737	.418	149-476	.313	513-738	.695	1,054	36.3	605/14	385	682	63	307	2,114	72.9
1996-97	27	701-1556	.451	59-177	.333	443-661	.670	1,087	40.3	595/27	353	684	69	339	1,904	70.5
Opponents		637-1531	.416	141-438	.322	465-696	.668	941	34.9	563/17	401	665	68	262	1,880	69.9
1995-96	27	762-1732	.440	88-310	.284	340-575	.591	1,018	37.7	535/14	439	583	48	343	1,952	72.3
Opponents		728-1598	.456	108-342	.316	419-610	.687	1,075	39.8	488/10	447	669	61	293	1,983	73.4
1994-95	27	704-1674	.421	89-289	.308	331-574	.577	1,136	42.1	515/8	395	617	39	266	1,828	67.7
Opponents		747-1758	.425	106-354	.299	340-531	.640	1,113	41.2	538/17	422	566	71	305	1,940	71.9
1993-94	27	839-1889	.444	75-210	.357	360-623	.578	1,189	44.0	491/5	419	609	70	350	2,113	78.3
Opponents		751-1765	.426	97-327	.297	396-560	.707	1,127	41.7	515/12	432	665	56	290	1,995	73.9
1992-93	27	754-1839	.410	70-199	.352	404-575	.703	1,147	42.5	531/19	389	511	62	311	1,982	73.4
Opponents		731-1657	.441	105-288	.365	352-570	.618	1,083	40.1	486/15	415	608	96	255	1,919	71.1
1991-92	31	962-2187	.440	58-191	.304	490-730	.671	1,432	46.2	611/9	470	604	100	350	2,472	79.7
Opponents		865-2094	.413	91-294	.310	423-634	.667	1,304	42.1	631/19	444	685	70	319	2,244	72.4
1990-91	28	853-2014	.424	91-233	.391	457-662	.690	1,315	47.0	607/18	378	606	65	292	2,254	80.5
Opponents		808-1892	.427	85-292	.291	512-739	.693	1,191	42.5	583/22	440	583	83	318	2,213	79.0
1989-90	29	806-1903	.424	58-178	.326	419-679	.617	1,222	42.1	566/17	368	574	74	311	2,089	72.0
Opponents		777-1832	.424	83-241	.344	430-624	.689	1,227	42.3	591/21	424	636	72	248	2,067	71.3
1988-89	28	740-1758	.421	32-115	.278	449-686	.655	1,209	43.2	616/25	392	653	77	294	1,961	70.0
Opponents		734-1751	.419	54-197	.274	478-700	.683	1,117	39.9	585/23	413	582	49	305	2,000	71.4
1987-88	30	851-1917	.444	3-17	.176	447-658	.679	1,306	43.5	579/15	442	625	63	289	2,152	71.7
Opponents		799-1863	.429	47-166	.283	371-582	.637	1,081	36.0	591/22	456	584	74	273	2,016	67.2
1986-87	28	784-1797	.436			400-645	.620	1,240	44.3	605/27	328	578	73	257	1,968	70.3
Opponents		740-1760	.420			413-624	.662	1,076	38.4	579/28	416	545	75	286	1,893	67.6
1985-86	28	784-1759	.446			288-470	.613	1,106	39.5	565/15	414	558	50	224	1,856	66.3
Opponents		760-1689	.450			398-590	.675	1,049	37.5	520/9	462	529	83	289	1,918	68.5
1984-85	30	904-2002	.452			370-610	.607	1,339	44.6	584/21	502	604	66	336	2,178	72.6
Opponents		815-1827	.446			363-576	.630	1,127	37.6	565/14	492	643	94	313	1,993	66.4
1983-84	29	916-1867	.491			381-596	.639	1,160	40.0	578/16	515	603	90	299	2,213	76.3
Opponents		799-1804	.443			390-615	.634	1,052	36.3	553/18	435	610	84	327	1,988	68.6

# Year-by-Year Team Statistics

Year	G	FG-A	Pct.	3FG-A	Pct.	FT-A	Pct.	REB	Avg.	PF/D	A	TO	BS	S	PTS	Avg.
1982-83	29	908-2032	.447			344-553	.622	1,261	43.5	560/14	476	564	65	329	2,160	74.5
Opponents		804-1816	.443			353-556	.635	1,121	38.7	522/22	451	715	97	306	1,961	67.6
1981-82	30	906-1956	.463			414-650	.636	1,253	41.8	599/13	518	634	90	345	2,226	74.2
Opponents		820-1848	.444			479-686	.698	1,098	36.6	577/18	469	626	113	314	2,119	70.6
1980-81	36	1214-2356	.515			515-810	.636	1,499	41.6	656/10	722	812	108	435	2,943	81.8
Opponents		1093-2443	.447			373-615	.607	1,320	36.7	708/28	667	775	89	424	2,559	71.1
1979-80	30	1036-2154	.481			405-571	.709	1,325	44.2	585/13	589	633	49	360	2,477	82.6
Opponents		884-1968	.449			417-613	.680	1,122	37.4	564/25	528	640	87	337	2,185	72.8
1978-79	34	1194-2455	.486			419-588	.713	1,424	41.9	651/18	636	703	94	325	2,807	82.6
Opponents		1064-2378	.447			441-656	.672	1,333	39.2	572/15	585	700	92	339	2,569	75.6
1977-78	30	1216-2404	.506			453-674	.672	1,471	49.0	531/15	621	608	76	408	2,885	96.2
Opponents		860-2177	.395			329-497	.662	1,150	38.3	596/21	423	773	82	236	2,049	68.3
1976-77	23	804-1761	.457			408-598	.682	1,170	50.9	495/17	408	473	76	522	2,016	87.7
Opponents		518-1458	.355			338-528	.640	924	40.2	502/28	243	622	63	357	1,374	59.7
1975-76	23	778-1815	.429			342-560	.611	1,117	48.6	453/13	417	515	47	464	1,898	82.5
Opponents		554-1491	.372			272-427	.637	952	41.4	502/22	227	698	50	223	1,380	60.0
1974-75	24	792-1900	.416			284-491	.578	1,093	45.5	498/14	389	531	78	628	1,879	78.3