

2015-16 TEXAS STATE BASKETBALL

GAME 25 // TEXAS STATE (11-13, 5-10 SUN BELT) VS. ARKANSAS STATE (11-16, 7-9 SBC)
FEBRUARY 25, 2016 // 7:45 P.M. // JONESBORO, ARK. // CONVOCATION CENTER

DATE	OPPONENT	TIME/RESULT
11/16	UT Tyler	W 84-49
11/21	UTEP	L, 62-77
11/24	Okla. Panhandle St. (exh)	W, 93-62
11/28	McNeese State	W, 70-67
12/2	UTSA	W, 76-53
12/5	Texas A&M-Corpus Christi	L, 39-47
12/13	UT Rio Grande Valley	W, 68-59
12/16	Prairie View A&M	W, 62-44
12/18	Washington State	L, 73-78 OT
12/21	Howard Payne	W, 92-43
12/30	Georgia Southern*	W, 80-66
1/2	Georgia State*	L, 46-58
1/9	Appalachian State*	L, 56-76
1/14	South Alabama*	W, 78-67
1/16	Troy*	L, 57-66
1/21	Little Rock*	L, 74-77 OT
1/23	Arkansas State*	W, 78-68
1/28	UL Lafayette*	L, 54-80
1/30	UL Monroe*	L, 59-72
2/4	Georgia State*	L, 56-59
2/6	Georgia Southern*	L, 62-66
2/9	UT Arlington*	L, 53-65
2/11	Appalachian State*	W, 69-68
2/18	UL Monroe*	L, 57-76
2/20	UL Lafayette*	W, 61-57
2/25	Arkansas State*	7:45 p.m.
2/27	Little Rock*	6 p.m.
3/1	UT Arlington*	7:15 p.m.
3/3	Troy*	7:30 p.m.
3/5	South Alabama*	4:30 p.m.
3/10-13	Sun Belt Tournament	TBD

*- Sun Belt Conference opponent; all times are Central and subject to change.

TEXAS STATE SPORTS INFORMATION

Address: 601 University Dr., San Marcos, Texas 78666

Assistant AD of Communications: Rick Poulter

Office: 512-245-2966 // Cell: 512-738-0697

Email: rpoulter@txstate.edu

Assistant SID/MBB Contact: Phillip Pongratz

Office: 512-245-4387 // Cell: 931-446-4001

Email: pdp30@txstate.edu

Assistant SID: Jen Lawson

Office: 512-245-2988 // Cell: 217-369-4402

Email: jlawsone@txstate.edu

Assistant SID: Joshua Flanagan

Office: 512-245-2988 // Cell: 940-390-6853

Email: jcf65@txstate.edu



**Texas State
BOBCATS**

AT A GLANCE

DateFebruary 25, 2016
 Time 7:45 p.m.
 Location Jonesboro, Ark.
 Arena Convocation Center
 Capacity 10,563
 Live Stats astatedwolves.com
 Audio txstatebobcats.com
 TV ESPN3
 Radio 1300 The Zone/KTSW
 Series Record ASU leads 3-2
 Last Meeting TXST won 78-68 (1/23/16)



**UL Lafayette
RAGIN' CAJUNS**

TEXAS STATE PREVIOUS STARTERS

No.	Name	Ht	Wt	Pos	Yr./Exp.	PPG	RPG	Ast	Stl	Career Scoring Highs
1	Kavin Gilder-Tilbury	6-7	210	F	Jr./2L	11.8	4.0	1.8	1.1	22 vs. UTRGV (12/13/15)
21	Emani Gant	6-8	225	F	Sr./2L	13.2	7.5	1.4	0.8	26 vs. Appalachian State (2/11/16)
24	Cameron Naylor	6-7	210	F	Sr./1L	8.9	4.9	0.5	0.4	20 vs. Arkansas State (1/23/16)
5	Ojai Black	6-1	195	G	Jr./1L	6.9	2.1	3.1	1.4	14 thrice
15	Ethan Montalvo	6-0	175	G	Sr./1L	10.6	1.9	1.3	1.2	28 vs. Little Rock (1/21/16)

OTHER PLAYERS

No.	Name	Ht	Wt	Pos	Yr./Exp.	PPG	RPG	Ast	Stl	Career Scoring Highs
0	Bobby Conley	6-1	195	G	Jr./TR	2.9	2.0	1.3	0.4	10 at Appalachian State (1/9/16)
2	Nathan Josephs	5-10	180	G	Fr./HS	1.0	0.2	0.5	0.1	4 vs. Howard Payne (12/21/15)
3	Maljhum McCrea	6-7	215	F	Jr./TR	2.8	2.5	0.3	0.1	11 vs. UT Tyler (11/16/15)
4	Courtney Julien	6-4	180	G	Fr./HS	1.9	0.5	0.1	0.2	14 vs. Howard Payne (12/21/15)
10	D'Angelo West	6-2	180	G	Fr./HS	1.6	0.6	0.2	0.1	9 vs. UT Arlington (2/9/16)
14	K. J. Malveau	5-10	180	G	Fr./HS	2.0	0.6	0.5	0.3	13 vs. Howard Payne (12/21/15)
23	Anthony Roberson	6-5	180	G	Jr./TR	4.7	5.5	0.8	0.6	12 at Washington State (12/18/15)
31	Austin Evans	6-11	225	F	So./1L	0.9	0.7	0.1	0.0	6 vs. Huston-Tillotson (12/20/14)
32	Kendell Ramlal	6-7	217	F	Jr./2L	1.4	1.7	0.2	0.2	7 at UL Monroe (1/30/16)

HEAD COACH DANNY KASPAR

• Head coach Danny Kaspar returns for his third season as head coach after leading Texas State to its best turnaround season since 2006-07 after the Bobcats finished the 2014-15 campaign with six more wins than the previous year. One of the winningest coaches in Texas and one of the Top 25 winningest active NCAA Division I coaches, Kaspar has a 498-246 career record.

COUNTDOWN TO 500

• Head coach Danny Kaspar is now two victories away from reaching 500 in his career after the Bobcats defeated UL Lafayette 61-57 Saturday in Strahan coliseum. He now has a career record of 498-246.

TV Game

• For the ninth time this season, the Bobcats will have a game broadcast on television or online via the ESPN3 network. Matt Stolz (play-by-play) and Nelson Catalina (analyst) will be the announcers for Thursday's game.

ABOUT THE BOBCATS

• The Bobcats look to improve their record to 12-13 on the season and 6-10 in the Sun Belt Conference on Thursday at Arkansas State.

• Texas State is back on the road for the final road swing of the regular season. The next three contests are on the road beginning at Arkansas State, followed by a Saturday game against Little Rock and concludes on Tuesday at UT Arlington. The Bobcats finish the regular season with two home games.

• In Sun Belt Conference action, three players are averaging over 10 points a game. Kavin Gilder-Tilbury leads the way at 12.4 followed by Ethan Montalvo's 11.8 and Emani Gant's 11.5. Gant paces the team with 7.2 rebounds per contest and right behind him is Anthony Roberson at 5.2. Ojai Black is dishing out 3.4 assists per game and leads the team with 18 steals.

MEN'S BASKETBALL

TELEVISION/RADIO CHART



Bobby Conley
G • 6-1 • 195 • Jr.
Massillon, Ohio



Kevin Gilder-Tilbury
F • 6-7 • 210 • Jr.
Houston, Texas



Nathan Josephs
G • 5-10 • 180 • Fr.
San Antonio, Texas



Maljhum McCrea
F • 6-7 • 215 • Jr.
Miami, Fla.



Courtney Julien
G • 6-4 • 180 • Fr.
Gonzales, La.



Ojai Black
G • 6-1 • 195 • Jr.
Killeen, Texas



D'Angelo West
G • 6-2 • 180 • Fr.
Jackson, Miss.



K.J. Malveau
G • 5-10 • 180 • Fr.
Fort Worth, Texas



Ethan Montalvo
G • 6-0 • 175 • Sr.
Omaha, Neb.



Emani Gant
F • 6-8 • 225 • Sr.
Los Angeles, Calif.



Anthony Roberson
G • 6-5 • 180 • So.
Converse, Texas



Cameron Naylor
F • 6-7 • 195 • Sr.
Jacksonville, Fla.



Austin Evans
F • 6-11 • 225 • So.
Plano, Texas



Kendell Ramlal
F • 6-7 • 217 • Jr.
Houston, Texas



Danny Kaspar
Head Coach



Rob Flaska
Assistant Coach



Jim Shaw
Assistant Coach



Terrence Johnson
Assistant Coach



Alex Hausladen
Director of Operations



Cody San Miguel
Graduate Assistant

2015-16 TEXAS STATE MEN'S BASKETBALL ROSTER

NUMERICAL ROSTER

NO.	NAME	HT	WT	POS	YR.	EXP.	HOMETOWN	PREVIOUS SCHOOL
0	Bobby Conley	6-1	195	G	Jr.	TR	Massillon, Ohio	Palm Beach State
1	Kavin Gilder-Tilbury	6-7	210	F	Jr.	2L	Houston, Texas	Cypress Falls HS
2	Nathan Josephs	5-10	180	G	Fr.	HS	San Antonio, Texas	Tom C Clark HS
3	Maljhum McCrea	6-7	215	F	Jr.	TR	Miami, Fla.	St. Petersburg College
4	Courtney Julien	6-4	180	G	Fr.	HS	Gonzales, La.	St. Amant HS
5	Ojai Black	6-1	195	G	Jr.	1L	Killeen, Texas	McLennan CC
10	D'Angelo West	6-2	180	G	Fr.	HS	Jackson, Miss.	Louisville Trinity HS
14	K.J. Malveau	5-10	180	G	Fr.	HS	Fort Worth, Texas	Everman HS
15	Ethan Montalvo	6-0	175	G	Sr.	1L	Omaha, Neb.	North Platte CC
21	Emani Gant	6-8	225	F	Sr.	2L	Los Angeles, Calif.	Bartsow CC
23	Anthony Roberson	6-5	180	G	Jr.	TR	Converse, Texas	Weatherford College
24	Cameron Naylor	6-7	210	F	Sr.	1L	Jacksonville, Fla	Tallahassee CC
31	Austin Evans	6-11	225	F	So.	1L	Plano, Texas	Plano HS
32	Kendell Ramlal	6-7	217	F	Jr.	2L	Houston, Texas	Episcopal HS

ALPHABETICAL ROSTER

NO.	NAME	POS
0	Bobby Conley	G
1	Kavin Gilder-Tilbury	F
2	Nathan Josephs	G
3	Maljhum McCrea	F
4	Courtney Julien	G
5	Ojai Black	G
10	D'Angelo West	G
14	K.J. Malveau	G
15	Ethan Montalvo	G
21	Emani Gant	F
23	Anthony Roberson	G
24	Cameron Naylor	F
31	Austin Evans	F
32	Kendell Ramlal	F

Head Coach - Danny Kaspar (Third Season at Texas State)

Assistant Coach - Rob Flaska (Seventh Season at Texas State)

Assistant Coach - Terrence Johnson (First Season at Texas State)

Assistant Coach - Jim Shaw (Third Season at Texas State)

Director of Operations - Alex Hausladen (Second Season at Texas State)

Graduate Assistant - Cody San Miguel (First Season at Texas State)

STRAHAN COLISEUM

Press row for Texas State basketball games is located on the west side concourse level on the baseline. The media entrance to the arena is from the southeast corner of the Coliseum, and the southeast entrance is also used for Will Call pick up of credentials. Parking is located just off the southeast corner of the Coliseum for media with proper credentials.

MEDIA AND PHOTO CREDENTIALS

Credentials for Texas State home basketball games are issued for working media only and must be requested through the sports information office, preferably in advance. Only photographers on assignment from an accredited media agency will be issued credentials. Photographers are required to abide by the guidelines set forth by the NCAA on shooting limitations from the sidelines. Those not complying with the guidelines may be removed.

MEDIA SERVICES

Pregame packets including notes, statistics and game-day programs will be available prior to tip-off. Timeout, halftime, and final statistics, plus a running play-by-play and post game notes will be provided. Final statistics will be distributed via email following the conclusions of the game. To be added to the post game distribution list, call Rick Poulter in the Sports Information office at 512-245-2966.

INTERVIEWS

Following a brief cooling off period, Texas State head coach Danny Kaspar and selected players will be available for interviews in the Strahan Coliseum media room located on the northwest corner of the concourse level. Texas State's locker room will remain closed at all times. Requests for selected players must be submitted to the Texas State Sports Information staff.

All other interviews with basketball players or staff members must be arranged through the Sports Information Office with at least 24 hours notice. Media should never contact a player or coach directly.

TELEPHONES/INTERNET

Strahan Coliseum is equipped with wireless Internet services. There will be one courtesy telephone line and Ethernet line available for each team's "official" radio broadcast station, on the concourse level behind the team benches. Stations and writers wishing to have other phone lines installed should make arrangements through Texas State Telecom Services at 512-245-4822.

TXST, NOT 'TSU'

In editorial references to Texas State Athletics, media outlets are asked to refrain from the use of the "TSU" acronym. Print and broadcast outlets are asked to use "Texas State" and "Bobcats". For those using acronyms, **please use "TXST"**.

LAST TIME OUT

• Texas State used a 20-2 run in the first half to jump out to a 16-point advantage in the first half and led the rest of the way to a 61-57 victory over UL Lafayette on Saturday. It was the first ever win for the Bobcats in eight meetings with the Ragin' Cajuns. The victory kept TXST within 1.5 games of a three-way tie for sixth place in the Sun Belt Conference standings.

• Emani Gant led the Bobcats with 19 points on 6-of-9 shooting and went 7-for-9 at the free throw line. He also grabbed a team-high eight rebounds, dished out an assist and blocked a shot, the 50th of his career.

• Ojai Black matched his career-high with 14 points after making 5-of-9 field goal attempts and hitting 4-of-6 at the charity stripe. He also tied his career-high with five rebounds. The senior point guard handed out a team best four assists and was credited with two steals.

• Grabbing eight rebounds as well was Cameron Naylor. All of his boards came off the defensive glass. He led the team with two blocked shots to set a new season best.

• Ethan Montalvo scored eight points but made just 3-of-13 field goal attempts and was 1-for-10 from beyond the arc. He did grab two boards and hand out two assists.

• Anthony Roberson made his only field goal attempt of the game, a three-pointer. It was the first triple he had made as a member of the Texas State program.

• Texas State shot 44.0% from the field but struggled going 3-for-14 from long range. Defensively, the team held the ULL to 29.0% shooting, its lowest percentage of the season. The Bobcats were also helped out as the Cajuns were 17-for-30 at the free throw line.

• At the free throw line, the Bobcats made 14-of-21 (66.7%) of their attempts. It was the first time in five contests that they failed to shoot over 70% and just the second occurrence in the last 10 games.

• Texas State blocked eight shots against the Ragin' Cajuns to set a new season best. The previous mark was seven against

QUICK FACTS

GENERAL

Location	San Marcos, Texas
Founded	1899
Enrollment	38,006
Nickname	Bobcats
School Colors	Maroon & Gold
Home Arena/Capacity	Strahan Coliseum/7,200
Record at Strahan Coliseum	261-160
Conference	Sun Belt
President	Dr. Denise M. Trauth
Director of Athletics	Dr. Larry Teis
Faculty Representative	Dr. Paul Gowens

HISTORY

First Year of Basketball	1920
Overall Record	1,228-1,092 (.529)
Conference Championships	11
Southland Conference	Two (1997 & 1999)
Lone Star Conference	Nine (1950, 1951, 1952, 1955, 1959, 1960, 1974, 1979 & 1980)
Conference Tournament Championships	2
SLC Tournament Titles	Two (1994 & 1997)
NCAA Tournament Appearances	Two (0-2/1994 & 1997)
NAIA National Championship	1959-60

COACHING STAFF

Head Coach	Danny Kaspar
Alma Mater	North Texas, 1978
Record at Texas State	22-40 (2 seasons)
Career Division I Record	268-181 (15 seasons)
Overall Record	487-233 (24 seasons)
Basketball Office	(512) 245-3832
Fax Number	(512) 245-8807
Assistant Coach	Rob Flaska (Michigan Tech, 1982)
Assistant Coach	Terrence Johnson (Southern, 2001)
Assistant Coach	Jim Shaw (Grinnell, 2003)
Director of MBB Operations	Alex Hausladen (Arkansas, 2006)

2015-16 TEAM INFORMATION

2014-15 Record	14-17
Sun Belt Record	7-13
Starters Returning/Lost	3/2
Letterwinners Returning/Lost	7/7
Percent of Scoring Returning	63.5
Percent of Rebounding Returning	58.8

Howard Payne. The eight rejections are tied for the most against ULL this season, matching the total by Alabama on Nov. 20.

A LOOK AT ARKANSAS STATE

Arkansas State heads into Thursday's game with an 11-16 record and are 7-9 in the Sun Belt Conference. The Red Wolves are tied with Georgia State and South Alabama for sixth in the conference standings and are 1.5 games up on Texas State.

They have lost five straight and nine of their last 12. The last win for ASU was on Feb. 4 at home over South Alabama 79-73 in overtime.

At home this year, the Red Wolves are 9-4 with a 5-3 mark against conference teams. Their four non-conference wins were over Arkansas-Monticello, Central Arkansas, Lyon College and Jackson State.

Devin Carter leads the team at 17.3 points per game, 78 three-pointers and with a 42.4 three-point field goal percentage. Overall, he is making 47.0 percent of his shots and has converted 69.7 percent at the free throw line. Carter has 20 steals this season and is averaging 4.5 rebounds per contest.

Leading the team in rebounding is Anthony Livingston at 9.0 per game. He has also made an ASU best 88.0 percent of his free throws. The big man ranks second with 15.7 ppg and 25 blocks.

Donte Thomas is averaging 11.4 ppg but has played in only three of the Red Wolves' last eight games. During that span, he is averaging 2.3 ppg and has made 2-of-13 shots. The JUCO transfer is second in the SBC at 5.7 assists per contest.

The fourth player for ASU to average double digits scoring is Sean Gardner at 10.5. He has made 34 threes but is making only 30.4 percent of the long distance shots. He is tied with Thomas for the team lead in steals with 26.

Nouhoum Bocoum has made a team-high 47.7 percent of his shots while coming off the bench 21 times.

Charles Waters has started 14 of the team's 27 games and is averaging 13.7 minutes per contest. His 31 shots are the most on the squad.

ASU is scoring 73.9 ppg while shooting 41.8 percent from the field and 32.1 percent on treys. The Red Wolves are grabbing 40.2 rebounds per game but are being slightly outrebounded by their opponents by a margin of 0.9. They also average 12.8 assists, 12.9 turnovers, 5.2 steals and 4.8 blocks per contest.

Opponents are averaging 75.3 ppg, 1.5 more than ASU, with 38.8 field goal percentage and 35.3 percent on long distance shots. Opposing teams retrieve 41.1 rpg. The Red Wolves allow 12.4 assists, 6.5 steals and 3.2 blocks per contest.

John Brady is in his eighth and final season at the helm of the Arkansas State program. He announced his resignation at the beginning of the season. In his time in Jonesboro, Brady has compiled a 121-125. He is 402-341 overall in his career that included 11 years at LSU and leading the Tigers to the 2006 Final Four.

ALL-TIME VS. RED WOLVES

Arkansas State leads the all-time series 3-2 following Texas

State's 78-68 victory back on Jan. 23 in Strahan Coliseum.

A win would give the Bobcats their first season sweep of the Red Wolves ever.

The first three meetings all went in ASU's favor as every game ended in a five-point margin.

Texas State's first victory came on Feb. 28, 2015 by the score of 70-60. Both of the Bobcats' wins have been by 10 points, the largest margin of victory by either team.

NATIONAL RANKINGS

Texas State ranks in the top 100 nationally in five categories.

Category	Rank	Value
Fewest Fouls	23rd	447
Scoring Defense	20th	64.1
Turnover Margin	34th	+2.5
Fewest Turnovers	28th	293
Turnovers Forced/Game	48th	14.71

FANS IN STRAHAN

This seasons fans have come out to Strahan Coliseum to see the Bobcats play. The average attendance this season at home has been 2,361. The season record is 2,286 set during the 2003-04 season.

Texas State will record its eighth season of averaging an attendance of least 2,000. So far 28,334 fans have seen the Bobcats play this season in 12 contests with two games still left at home.

This is also the third time Texas State has posted 2,000+ attendance in back-to-back seasons. The previous two times were 1988-89 (2,226) & 1989-90 (2,262) and 2010-11 (2,084) & 2011-12 (2,020).

TEXAS STATE IN SBC PLAY

Entering Saturday's game, Texas State is 16-37 all-time in Sun Belt conference games. This season the Bobcats are 5-10 after going 7-13 last season and 4-14 in their first campaign in 2013-14.

Season	Record
2015-16	5-10
2014-15	7-13
2013-14	4-14
Total	16-37

DISHING DIMES

Over the last eight games, senior point guard Ojai Black has been on a roll dishing out assists. He has totaled 30 assists for an average 3.8 per contest. His run started with a career-high eight against Arkansas State.

In the first 15 games of the season, Black had been averaging 2.7 assists per game.

Three times Black has finished a game with zero turnovers. Two of them have occurred in the last two games.

He also sports a 3.8 assists-to-turnover ratio having committed eight turnovers over the same span.

DOUBLE-DOUBLE FOR NAYLOR

Cameron Naylor recorded his first double-double of the season and second of his Texas State career. He finished with 16 points and 10 rebounds against UL Monroe on Feb. 18.

BOBCATS RECORD WHEN...

	15-16	Kaspar
Leading at the half	11-1	31-13
Trailing at the half	0-12	2-39
Tied at the half	0-0	0-0
Leading w/5 minutes to play	11-1	31-8
Trailing w/5 minutes to play	0-12	1-44
Tied w/5 minutes to play	0-0	1-1
+5/-5 w/5 minutes to play	3-3	10-25
Scores 90 or more points	1-0	2-0
80-89	2-0	4-0
70-79	4-2	13-5
60-69	4-2	13-16
Less than 60	0-8	1-32
Opp. scores 90 or more pts	0-0	0-0
80-89	0-1	0-6
70-79	0-6	3-15
60-69	5-3	12-20
Less than 60	6-3	18-12
Outrebounding an opponent	7-5	21-16
Opponent outrebounds TXST	4-8	12-35
Rebounds are even	0-0	0-2
More Turnovers than opp.	4-3	12-22
Fewer	7-10	20-28
Same	0-0	1-3
Shooting .500 or better	3-0	15-4
.400-.499	8-6	17-18
Less than .400	0-7	1-31
FG% better than opp.	10-0	27-7
Opponent shoots .500 or better	1-8	3-19
.400-.499	4-4	10-26
.300-.399	3-0	13-7
Less than .300	3-1	7-1
Shooting .500 or better on 3FG	1-0	5-0
.400-.499	3-3	9-7
.300-.399	3-4	11-13
Less than .300	4-6	8-33
Opp. shoots .500 or better on 3FG	0-2	1-10
.400-.499	2-5	7-13
.300-.399	3-5	8-19
Less than .300	6-1	17-11
Attempts 30 or more 3FG	0-0	0-1
20-29	2-1	4-7
Less than 20	9-12	29-45
Shooting .900 or better on FT	0-0	1-0
.750-.899	3-4	8-13
.600-.749	5-6	20-29
Less than .600	3-3	4-11
More Assists than opponent	10-2	29-13
Fewer	1-11	4-36
Same	0-0	0-3
More Blocks than opponent	7-5	18-14
Fewer	1-6	8-32
Same	3-2	6-7
More Steals than opponent	7-5	16-19
Fewer	3-8	10-22
Same	1-0	7-12
Record in November	2-1	7-7
December	5-2	11-8
January	2-6	7-18
February	2-4	7-14
March	0-0	1-6
Record on Sunday	1-0	2-1
Monday	2-0	3-5
Tuesday	0-1	1-2
Wednesday	3-0	7-2
Thursday	2-4	8-13
Friday	0-1	2-3
Saturday	3-7	10-26

- Naylor is the only other Bobcat to record a double-double this season other than Emani Gant, who has five this year.

1K POINTS

- Emani Gant is closing in 1,000 career points with the Bobcats. He enters Thursday with 948 points. The senior forward is 41 points away from tying Ryan White (2007-11) for 20th on the program's career scoring list.
- Kevin Gilder-Tilbury is also on pace to crack 1,000 career points some time during the 2016-17 season. He currently has 715 career points.

Rk	Name	Years	Points
17	Lynwood Wade	1992-94	1,061
18	J.C. Maze	1948-52	1,026
19	Joel Wright	2012-14	1,034
20	Ryan White	2007-11	989
---	Emani Gant	2013-Pres.	948
---	Kavin Gilder-Tilbury	2013-Pres.	715

CAREER REBOUNDS

- After grabbing three rebounds against Appalachian State, Emani Gant now has 527 career rebounds, the 18th most in program history. Next on the list is Lynwood Wade (1992-94) with 529. The Bobcat's all-time leader is J.C. Maze (1948-52) with 1,960.

Rk	Name	Years	Reb.
15	Byron Hobbs	1998-02	555
16	Richard Bryant	1974-76	534
17	Lynwood Wade	1992-94	529
18	Emani Gant	2013-Pres.	527
19	Torgeir Bryn	1987-89	502
20	Matt Staff	2010-13	498
	David Skyes	1999-03	498

CAREER BLOCKS

- Emani Gant added his name to the Texas State record book on Feb. 18 against UL Monroe in blocked shots. He recorded two to move into 10th place. He currently has 50 in his career, one behind Melih Yavsaner's (2000-02) career total. The all-time leader is Jeff Foster (1995-99) with 111.

Rk	Name	Years	Blk
7	Cameron Johnson	2007-11	55
8	Trevor Cook	2005-06	53
9	Melih Yavsaner	2000-02	51
10	Emani Gant	2013-Pres.	50

Career 3-Pointers Made

- Ethan Montalvo is closing in on breaking into the top 10 in school history in made three-pointers. The Omaha, Nebraska native has made 99 in his nearly two-year Bobcat career. In 10th place on the career list is Brent Holder (2006-08) with 111. The program's all-time leader is Clay Clark (1998-02) with 177.

Rk	Name	Years	3-Pt FG
7	John Rybak	2008-10	121
	Wesley Williams	1996-00	121
9	Troy Washington	1990-92	119
10	Brent Holder	2006-08	111
---	Ethan Montalvo	2014-Pres.	99

CAREER GAMES STARTED

- Emani Gant surpassed Cameron Johnson (2007-11) for fourth place on the program's career games started list. Gant has started 82 games in his career. Next on the list is Jeff

Foster (1995-99) with 89. The all-time leader is Donte Mathis (1995-99) with 99.

Rk	Name	Years	GS
3	Jeff Foster	1995-99	89
4	Emani Gant	2013-Pres.	82
5	Cameron Johnson	2007-11	79
6	Dameon Sansom	1993-97	77
7	Kevin Stiner	1985-89	76
8	John Bowman	2008-12	71
9	Matt Staff	2011-13	64
	Wes Davis	2011-15	64

TEXAS STATE IN STRAHAN COLISEUM

- Texas State improved to 269-164 all-time in Strahan Coliseum after a 61-57 victory over UL Lafayette on Saturday. The Bobcats are now 8-4 this year in home games. Last season, the Cats posted a 9-6 record.

- Twice Texas State has gone undefeated at home since the 1982-83 season. The first was in 1993-94 with a 14-0 record. An 11-0 mark was posted in the 1996-97 campaign.

20-10 FOR GANT

- Emani Gant posted his second 20-10 game of his career at home against Appalachian State. The senior finished with 26 points, a career-high, and 12 rebounds.

- The first 20-10 contest for Gant came earlier this season at South Alabama on Jan. 14. He finished with 22 points and 14 rebounds.

- The last time a Bobcat posted multiple 20-10 games in a season was during the 2012-13 campaign. Matt Staff had two such games and Joel Wright recorded three, one being a 33-point, 12-rebound performance.

DOUBLE-DIGIT SCORING STREAK SNAPPED

- Kavin Gilder-Tilbury saw his double-digit scoring streak come to an end last Thursday against Appalachian State at 13 games. He was held to nine points, all in the first half. His streak is tied for the longest since Kaspar became the head coach with Emani Gant.

- The last time Gilder-Tilbury failed to reach 10 points in a game was on Dec. 18, 2015 at Washington State when he was held to seven.

- Former Bobcat Joel Wright also had a 13-game streak from Dec. 17, 2012 to Feb. 2, 2013.

- The longest streak in recent memory is 14 by Brooks Ybarra. His run began on Dec. 20, 2011 and lasted until Feb. 8, 2012.

NAYLOR HEATS UP

- Cameron Naylor got off to a hot start against Arkansas State in his second straight start. He was 6-for-7 from the field in the first half and began the game with a three-pointer, his first ever in Strahan Coliseum. The senior forward finished with 20 points, a new career-high, on 8-of-12 shooting and nine rebounds in the 10-point victory.

MONTALVO'S CAREER NIGHT

- Ethan Montalvo recorded a career night offensively at home against Little Rock. He recorded a new career-high of 28 points as he was 7-for-14 shooting, was 5-for-10 from beyond the arc and nailed all nine of his free throw attempts.

- He is the first player since Danny Kaspar was hired to crack

BOBCATS SUPERLATIVES

Double-Digit Scoring Games	15-16	Career
Kavin Gilder-Tilbury	17	37
Emani Gant	16	53
Ethan Montalvo	13	23
Cameron Naylor	11	20
Ojai Black	7	7
Anthony Roberson	2	2
Courtney Julien	1	1
K.J. Malveau	1	1
Maljhum McCrea	1	1
20-Point Scoring Games		
Emani Gant	3	5
Kavin Gilder-Tilbury	1	2
Ethan Montalvo	1	2
Cameron Naylor	1	1
10+Rebounding Games		
Emani Gant	6	11
Anthony Roberson	2	2
Cameron Naylor	1	2
5+ Assist Games		
Ojai Black	7	7
Kavin Gilder-Tilbury	2	3
Emani Gant	1	3
Ethan Montalvo	-	1
2+ Blocked Shot Games		
Emani Gant	3	11
Kendell Ramlal	3	10
Anthony Roberson	3	3
Maljhum McCrea	2	2
Kavin Gilder-Tilbury	1	5
Cameron Naylor	1	2
Ojai Black	1	1
3+ Steal Games		
Ethan Montalvo	4	5
Ojai Black	4	4
Kavin Gilder-Tilbury	2	6
Emani Gant	1	8
3+ 3-Point Field Goal Games		
Ethan Montalvo	8	15
Kavin Gilder-Tilbury	1	6
K.J. Malveau	1	1
Double-Doubles		
Emani Gant	5	9
Cameron Naylor	1	2
Games as Leading Scorer		
Emani Gant	7	28
Kavin Gilder-Tilbury	6	15
Ethan Montalvo	5	8
Cameron Naylor	4	9
Ojai Black	2	2
Games as Leading Rebounder		
Emani Gant	11	39
Cameron Naylor	7	14
Anthony Roberson	5	5
Kavin Gilder-Tilbury	4	11
Bobby Conley	2	2
Maljhum McCrea	2	2
Kendell Ramlal	1	2

STATISTICAL COMPARISON

TXST	Stat	ASU
65.4	Scoring Offense	73.9
64.4	Scoring Defense	75.3
+1.0	Scoring Margin	-1.5
41.9%	FG Pct.	41.8%
44.1%	FG Pct. Defense	38.8%
32.8%	3pt FG Pct.	32.1%
35.6%	3pt FG Pct. Defense	35.3%
68.0%	FT Pct.	74.1%
33.8	Rebounds	40.2
+0.1	Rebound Margin	-0.9
11.3	Assists	12.8
12.2	Turnovers	12.9
+2.8	TO Margin	-1.1
0.9	A/TO Ratio	1.0
6.5	Steals	5.2
3.3	Blocks	4.8

STATISTICAL LEADERS

TXST	Stat	ASU
Emani Gant, 12.9	Points	Devin Carter, 17.3
Emani Gant, 7.4	Rebounds	Anthony Livingston, 9.0
Ojai Black, 3.1	Assists	Donte Thomas, 5.7
Emani Gant, 49.3%	FG%	Nouhoum Bocoum, 47.7%
Ethan Montalvo, 37.3%	3pt FG%	Devin Carter, 42.4%
Ethan Montalvo, 86.5%	FT%	Anthony Livingston, 88.0%

the 25-point barrier. The last time a Bobcat scored at least 25 points in a game was Joel Wright on Mar. 14, 2013 against Denver in the Western Athletic Conference Tournament when he tallied 32.

UP & DOWN FREE THROWS

- Thru the first six games of the season Texas State had struggled at the free throw line. The Bobcats were making only 64.6% of their attempts and hit a then season-low of 52.6% against Texas-Rio Grande Valley.
- The next four games saw TXST go a combined 73-for-98 at the line, a 74.5% clip. During the stretch, Ethan Montalvo made all 15 of his attempts, Ojai Black converted 11-of-14 and Emani Gant was 17-for-23.
- However, the Bobcats made just 55.0% (44-of-80) of their charity stripe shots in the next four games. Their 50.0 percentage (13-for-26) at Appalachian State is the lowest by the team this season.
- Texas State shook off their charity stripe woes with a 20-for-28 performance (71.4%) in a near upset of Little Rock at home. The Bobcats followed by going 19-of-27 (70.4%) against Arkansas State. In Louisiana, TXST made 13-of-18 (72.2%) at UL Lafayette and followed with a 5-for-6 (83.3%) performance at UL Monroe.
- After shooting 62.5% (10-of-16) at the charity stripe at Georgia State, TXST responded with a 13-for-18 (72.2%) mark at Georgia Southern. The Bobcats followed with an 18-for-24 (75.0%) performance against UT Arlington. They have recorded a 70+ percentage in six of the last seven games.

INJURY BUG

- Injuries have bitten the Bobcats this season for key players. Thankfully none have seen the athletes miss more than one game because of the same ailment. Four of the game have been on the road with two bing at home, UT Tyler and Georgia State. In the games that players have missed, Texas State is 2-4.

Player	Game Missed	Result
Gant	UT Tyler	W, 84-49
Roberson	at UTEP	L, 62-77
Naylor	at McNeese St.	W, 70-67
Gant	at Texas A&M-CC	L, 39-47
Montalvo	Georgia State	L, 46-58*
Montalvo	at Appalachian St.	L, 56-76

* - Montalvo played first 4 minutes before suffering an injury.

MONTALVO HEARTS ALABAMA

- Ethan Montalvo excelled when playing South Alabama and Troy on the road. He averaged 15.8 points, 2.3 rebounds and 1.5 assists per game. Of his 20 made field goals, 16 of them were three-pointers. Montalvo shot 45.7 percent from long range.
- The best game of his Bobcat career occurred on Dec. 30, 2014 at South Alabama. He scored 20 points with six three-pointers and dished out four assists.

SBC ROAD OPENERS

- Texas State saw their Sun Belt Conference road opener winning streak end at two after their loss at Appalachian State. In the 2013-14 season, the Bobcats downed UL Monroe 61-36 and last year they defeated Troy 57-46.

SUN BELT OPENERS

- Texas State improved to 2-1 all-time in Sun Belt Conference openers after defeating Georgia Southern 80-66. The Bobcats defeated Troy on the road 57-46 last season. In its first season of play (2013-14), TXST fell at home to Little Rock 63-59.

ROBERSON GRABS THE BOARDS - PART II

- Anthony Roberson cleaned up the glass against Georgia Southern. The junior forward grabbed 12 rebounds to account for a third of the Bobcats' total. His individual performance on the boards also tied his career-high that he set earlier this season at Prairie View A&M.

GANT'S CAREER NIGHT

- Emani Gant picked the right night to post a career-high in points. The senior forward scored 24 points against Washington State on 10-of-19 shooting and went 4-for-6 at the free throw line. His previous career best in points was 22 set against South Alabama on Jan. 15, 2015.

SUFFOCATING DEFENSE

- During the first half against Howard Payne, the Bobcats held the Panthers to 19 points in the first half. It was the 16th time that Texas State has held an opponent to 20 points or below in a half.
- 13 of the lowest scoring halves by the Bobcats' defense have come in the first half.
- Four times this season the Bobcats' opponents have scored less than 20 points in a half. The fewest is 15 by UT Tyler in the season opener.
- Last season, Texas State posted 11 halves of 20 points or less. The fewest was 13 against Texas Lutheran on Dec. 3, 2014. Below are the fewest points allowed in a half under Kaspar.

Opponent	Pts Allowed	Half	Date
ULM	9	2nd	1/11/14
Texas Lutheran	13	2nd	12/3/14
Troy	15	1st	12/30/14
UT Tyler	15	1st	11/16/15
Lamar	17	1st	11/19/14
Howard Payne	18	1st	11/30/14
Texas Lutheran	18	1st	12/3/14
South Alabama	18	1st	2/4/15
UL Lafayette	18	1st	3/13/15
Georgia Southern	19	1st	1/3/15
Georgia State	19	1st	1/7/15
Texas A&M-CC	19	1st	12/5/15
Howard Payne	19	1st	12/21/15
Seattle	20	2nd	11/14/14
UALR	20	1st	1/8/15
Prairie View A&M	20	1st	12/16/15

BOBCATS VS. POWER 5 TEAMS

- The Bobcats almost picked up the 11th win against a Power 5 team (ACC, SEC, Big Ten, Big 12, Pac-12) in program history at Washington State.
- Of the 10 victories, nine have been against schools from Texas (Texas - 5, Texas A&M - 3, Texas Tech - 1). The last victory over a Power 5 program for Texas State was against Miami (Fla.) on Dec. 4, 1992 (60-57) on the road.

ROBERSON GRABS THE BOARDS

- Anthony Roberson set a new career-high with 12 rebounds at Prairie View A&M. His previous best was eight in the season opener against UT Tyler. The junior forward matched

AP TOP 25 POLL

Rk.	School	Record	Pts.	1st PV	Prev.
1	Villanova	24-3	1,604	45	1
2	Kansas	23-4	1,580	20	2
3	Virginia	21-5	1,391	0	7
3	Oklahoma	21-5	1,393	0	3
5	Xavier	24-3	1,368	0	8
6	Michigan State	22-5	1,346	0	8
7	North Carolina	22-5	1,241	0	5
8	Iowa	20-6	1,144	0	4
9	Arizona	22-5	1,028	0	12
10	Maryland	23-5	976	0	6
11	Louisville	21-6	902	0	18
12	Miami (Fla.)	21-5	851	0	11
13	Oregon	21-6	842	0	16
14	West Virginia	20-7	772	0	10
15	Duke	20-7	674	0	20
16	Kentucky	20-7	627	0	14
17	Iowa State	19-8	616	0	13
18	Indiana	22-6	571	0	22
19	Baylor	20-7	521	0	25
20	Purdue	21-7	357	0	17
21	Texas A&M	20-7	283	0	NR
22	Utah	21-7	253	0	NR
23	Notre Dame	18-8	185	0	19
24	SMU	22-4	154	0	21
25	Texas	17-10	104	0	24

Others receiving votes: Dayton 80, Providence 48, California 34, Wichita St. 33, Texas Tech 31, Wisconsin 27, St. Joseph's 20, VCU 19, South Carolina 12, Hawaii 12, St. Mary's 10, Valparaiso 3, Cincinnati 3, USC 2, San Diego St. 2, UAB 1, Connecticut 1, **Little Rock 1**, Stephen F. Austin 1

Dropped Out: Dayton 15, Providence 23

Bold denotes 2015-16 opponent

ESPN/USA TODAY COACHES POLL

Rk.	School	Record	Pts.	1st PV	Prev.
1	Villanova	24-3	792	25	1
2	Kansas	23-4	751	7	2
3	Virginia	21-5	679	0	8
4	Oklahoma	21-5	668	0	3
5	Xavier	24-3	652	0	7
6	North Carolina	22-5	639	0	4
7	Michigan State	22-5	626	0	9
8	Iowa	20-6	561	0	6
9	Maryland	23-5	527	0	5
10	Arizona	22-5	512	0	12
11	Miami (Fla.)	21-5	446	0	10
12	West Virginia	20-7	366	0	11
13	Oregon	21-6	365	0	17
14	Kentucky	20-7	333	0	14
15	Indiana	22-6	317	0	21
16	Baylor	20-7	305	0	22
17	Iowa State	19-8	304	0	15
18	Duke	20-7	303	0	19
19	Purdue	21-7	245	0	16
20	Notre Dame	18-8	176	0	18
21	Texas A&M	20-7	172	0	24
22	Dayton	21-5	121	0	13
23	Utah	27-7	120	0	NR
24	Providence	19-8	102	0	20
25	Texas	17-10	66	0	25

Others receiving votes: South Carolina 47, St. Mary's 42, Wichita State 32, Texas Tech 30, Pittsburgh 18, Wisconsin 15, California 11, St. Joseph's 10, Seton Hall 6, USC 6, VCU 6, Hawaii 3, LSU 3, Michigan 1, St. Bonaventure 1, San Diego State 1

Dropped out: South Carolina 23

Bold denotes 2015-16 opponent

that mark in the first half versus the Panthers.

CAREER GAME FOR GILDER-TILBURY

- Kevin Gilder-Tilbury recorded a career game against Texas-Rio Grande Valley. The junior forward set a new career-high with 22 points and tied his career best of four steals.
- His previous high in points was 20, which came against UL Lafayette on Jan. 31, 2015. Gilder-Tilbury also recorded four steals on Dec. 3, 2014 against Texas Lutheran.

GANT MISSES ISLANDERS GAME

- Senior forward Emani Gant missed his second game of the season against Texas A&M-Corpus Christi after suffering an injury in Friday's practice. The preseason All-Sun Belt selection leads Texas State with 13.3 ppg, 8.0 rpg and 1.7 bpg.

MONTALVO TIES BOBCAT STEAL MARK

- Ethan Montalvo tied the Texas State single-game steal record with eight against I-35 rival UTSA. The senior guard became the fourth Bobcat to reach the mark. The other three to record eight steals in a contest were Terry Conerway (Dec. 21, 2002; at Arkansas), Wesley Davis (Jan. 28, 2012; UT Arlington) and Russell Ponds (Jan. 7, 1993; Sam Houston State).
- His total against the Roadrunners is tied for the fourth most this season in Division I. Also recording eight steals in a game this season are Justin Browning (Western Carolina), Kris Dunn (Providence), Kahlil Felder (Oakland), Marcus Graves (Sacramento State) and Tra-Deon Hollins (Omaha). James Daniel (Howard), Rashaun Madison (N.C. Central) and Craig Ponder (UNC-Wilmington) have posted a nine-steal effort this season.

BOBCATS IN THE SUN BELT

- Emani Gant:

Category	Rank	Value
Scoring	14th	13.2
Rebounding	5th	7.5
FG Percentage	7th	50.0%
Off. Rebounds	4th	2.8
Def. Rebounds	7th	4.7

- Kevin Gilder-Tilbury

Category	Rank	Value
Scoring	19th	11.8
Steals	15th	1.1

- Ethan Montalvo

Category	Rank	Value
Scoring	28th	10.6
FT Pct.	3rd	85.2%
Steals	14th	1.2
3-Pt FG Made	5th	2.1

- Cameron Naylor

Category	Rank	Value
Rebounding	20th	4.9

- Anthony Roberson

Category	Rank	Value
Rebounding	13th	5.5
Blocks	9th	0.7
Off. Rebounds	7th	2.5

- Ojai Black

Category	Rank	Value
Assists	9th	3.1

Steals	7th	1.4
A/T Ratio	5th	2.0

- Kendell Ramlal

Category	Rank	Value
Blocks	11th	0.7

- Team

Category	Rank	Value
Scoring Defense	3rd	64.1
Reb. Defense	3rd	34.2
Turnover Margin	3rd	+2.50
Blocked Shots	5th	3.5

SEASON OPENERS UNDER KASPAR

- Texas State improved to 2-1 in season-openers under Danny Kaspar with its win over UT Tyler. The Bobcats also won at Seattle to open the 2014-15 season.

GANT SITS OUT FIRST GAME

- Senior forward Emani Gant sat out Texas State's first game against UT Tyler after suffering an injury in preseason practice. Gant was named a preseason All-Sun Belt Conference First Team selection in a poll of SBC head coaches after averaging 12.7 points and 6.9 rebounds per game in 2014-15.

REFLECTING ON LAST YEAR

- Texas State ranked 23rd nationally and led the Sun Belt Conference in scoring defense after allowing just 59.8 points per game.
- The Bobcats finished the season with a 14-17 record after winning just eight games in 2013-14.
- Texas State earned a berth into the Sun Belt Conference Tournament for the first time since joining the league in 2013 and advanced to the quarterfinals with a first-round victory over UT Arlington.
- Emani Gant earned All-Sun Belt Conference Second Team honors and enters the 2015-16 season listed as a preseason All-SBC selection by league coaches.
- The Bobcats also return senior forward Cameron Naylor, who averaged 8.2 points, and 4.9 rebounds and started 16 games last season. Junior forward Kevin Gilder-Tilbury also chipped in 7.9 points and 3.5 rebounds per game last season. In addition, Ethan Montalvo averaged 7.7 points and made 11 starts last season.
- Texas State also returns three other lettermen from last year. They are Ojai Black, Austin Evans and Kendell Ramlal. Black is expected to step in as Texas State's starting point guard after splitting time with D. J. Brown last season.

NEW ADDITIONS

- Head coach Danny Kaspar added three junior college transfers and four freshmen. The three junior college transfers are Bobby Conley, Maljhum McCrea and Anthony Roberson. Texas State's four freshmen are Nathan Josephs, Courtney Julien, D'Angelo West and K. J. Malveau.

FINAL TIDBITS

- Texas State returns 63.5 percent of its scoring and 58.8 percent of its rebounding from last season.

UP NEXT

- Texas State travels to take on Little Rock at 6 p.m. Saturday.

STARTING LINEUPS

W-L Listed in order of position 1-5

7-3	Black, Montalvo, Roberson, Gilder-Tilbury, Gant
3-8	Black, Montalvo, Gilder-Tilbury, Naylor, Gant
1-0	Black, Montalvo, Gilder-Tilbury, Naylor, McCrea
0-1	Black, Conley, Roberson, Gilder-Tilbury, Gant
0-1	Black, Montalvo, Roberson, Gilder-Tilbury, McCrea

HIGHS/LOWS

Most Points Scored

Texas State	92, Howard Payne, 12/21
Opponents	80, at UL Lafayette, 1/28

Fewest Points Scored

Texas State	39, at Texas A&M-Corpus Christi, 12/5
Opponents	43, Howard Payne, 12/21

Most 1st Half Points

Texas State	42, Howard Payne, 12/21
Opponents	42, at Appalachian State, 1/9

Fewest 1st Half Points

Texas State	13, at Texas A&M-Corpus Christi, 12/5
Opponents	15, UT Tyler, 11/16

Largest Halftime Lead

Texas State	24, UT Tyler, 11/16
Opponents	19, UL Monroe, 2/18

Most 2nd Half Points

Texas State	50, Howard Payne, 12/21
Opponents	45, at UL Lafayette, 1/28

Fewest 2nd Half Points

Texas State	21, Little Rock, 1/21
Opponents	24, at PVAMU, 12/16 / Howard Payne, 12/21

Largest Lead

Texas State	49 (92-43), Howard Payne, 12/21
Opponents	29 (51-80), at UL Lafayette, 1/28

Largest Deficit Overcome

Texas State	6, (2-8, 16:41 1st) at McNeese State, 11/28
Opponents	14, (35-21, 1:46 1st) Little Rock, 1/21

Largest Margin of Victory

Texas State	49, Howard Payne, 12/21
Opponents	26, at UL Lafayette, 1/28

Head Coach Danny Kaspar



• Voted as the 2013 top mid-major coach in the country by *CollegiateInsider.com*.

• 24th Winningest Active Division I Coach Nationally with an overall career record of 498-245.

• Winningest Division I Coach in the State of Texas from 2007-13.

• Had seven 20-win seasons at Stephen F. Austin.

• Won eight conference regular season championships (5 at Incarnate Word, 3 at Stephen F. Austin) and six conference/district tournament championships (5 at Incarnate Word, 1 at Stephen F. Austin).

• His teams have made one NCAA Tournament appearance (2009) and two NIT appearances (2008 and 2013).

• Posted an overall record of 219 wins and 52 losses while at the University of Incarnate Word; the best record for any four-year institution in Texas during the 1990s.

• Led the nation in scoring defense in 2012-13 with 51.2 points per game allowed. Also led the country 2010-11 in scoring defense with an average of 54.4 points per game allowed and finished second in 2007-08 and 2008-09.

• Led the nation in combined scoring defense from 2007-13, averaging 55.8 points per game.

• Was one of two teams along with the University of Wisconsin, to finish inside the top-10 in scoring defense nationally from 2007-13.

• Coached six All-Americans during his career; three at the University of Incarnate Word and three at Stephen F. Austin.

• Named Small College Coach of the Year by the *Sporting News* in 1999.

Danny Kaspar's Year-by-Year Record

Season	School	Overall	Pct.
1991-92	Incarnate Word	21-9	.700
1992-93	Incarnate Word	28-4	.875
1993-94	Incarnate Word	24-6	.800
1994-95	Incarnate Word	26-8	.765
1995-96	Incarnate Word	20-9	.690
1996-97	Incarnate Word	25-4	.862
1997-98	Incarnate Word	26-5	.839
1998-99	Incarnate Word	28-2	.933
1999-00	Incarnate Word	21-5	.808
2000-01	Stephen F. Austin	9-17	.346
2001-02	Stephen F. Austin	13-15	.464
2002-03	Stephen F. Austin	21-8	.724
2003-04	Stephen F. Austin	21-9	.700
2004-05	Stephen F. Austin	12-15	.444
2005-06	Stephen F. Austin	17-12	.586
2006-07	Stephen F. Austin	15-14	.517
2007-08	Stephen F. Austin	26-6	.813
2008-09	Stephen F. Austin	24-8	.750
2009-10	Stephen F. Austin	23-9	.719
2010-11	Stephen F. Austin	18-11	.621
2011-12	Stephen F. Austin	20-12	.625
2012-13	Stephen F. Austin	27-5	.844
2013-14	Texas State	8-23	.267
2014-15	Texas State	14-17	.452
2015-16	Texas State	11-13	.458
Overall Record		498-246	.669

Among the National Leaders

Danny Kaspar is currently ranked 24th in the country in terms of total win percentage and 25th overall in total wins among active coaches. Below are the tables of where he ranks.

BY WIN PERCENTAGE

No.	Coach	School	Yrs.	Won	Lost	Pct.	15-16 Record
1.	Mark Few	Gonzaga	17	459	110	.807	21-6
2.	Roy Williams	North Carolina	28	772	207	.789	22-5
3.	John Calipari	Kentucky	24	614	182	.771	21-7
4.	Mike Krzyzewski	Duke	41	1038	317	.766	20-7
5.	Bill Self	Kansas	23	583	187	.757	24-4
6.	Thad Matta	Ohio State	16	419	136	.755	18-11
7.	Sean Miller	Arizona	12	305	104	.746	22-5
7.	Jim Boenheim	Syracuse	40	980	338	.744	14-5
9.	Dave Rose	BYU	11	278	96	.743	21-8
10.	Rick Pitino	Louisville	31	743	260	.741	21-6
11.	Jamie Dixon	Pittsburgh	13	326	118	.734	19-7
12.	Shaka Smart	Texas	7	181	66	.733	18-10
13.	Bruce Pearl	Auburn	21	487	181	.729	10-16
14.	Tim Cluess	Iona	10	233	87	.728	17-10
15.	Larry Brown	SMU	11	254	98	.722	13-4
16.	Tim Izzo	Michigan State	21	518	204	.717	23-5
17.	Gregg Marshall	Wichita State	18	419	166	.716	21-7
18.	Bob Huggins	West Virginia	34	786	319	.711	21-7
19.	Josh Pastner	Memphis	7	163	70	.700	15-12
20.	Tony Bennett	Virginia	10	226	103	.687	21-6
21.	Randy Bennett	St. Mary's (Calif.)	15	326	149	.686	22-4
22.	Mike Lonergan	George Washington	23	466	223	.676	20-7
23.	Tubby Smith	Texas Tech	25	556	272	.671	18-9
24.	Danny Kaspar	Texas State	25	498	246	.669	11-13
25.	Mike Brey	Notre Dame	21	449	225	.666	18-8

BY VICTORIES

	15-16	Career
1. Mike Krzyzewski, Duke	20	1038
2. Jim Boenheim, Syracuse	14	980
3. Cliff Ellis, Coastal Carolina	16	786
4. Bob Huggins, West Virginia	21	786
5. Roy Williams, North Carolina	22	772
6. Rick Pitino, Louisville	21	743
7. Rick Byrd, Belmont	20	731
8. Jerry Slocum, Youngstown St.	10	709
9. Larry Hunter, Western Carolina	13	677
10. John Beilein, Michigan	19	661
11. Rick Barnes, Tennessee	13	617
12. John Calipari, Kentucky	21	614
13. Jim Larranaga, Miami (FL)	22	583
13. Bill Self, Kansas	24	583
14. Lon Kruger, Oklahoma	21	582
16. Tubby Smith, Texas Tech	18	556
17. Dana Altman, Oregon	21	554
18. Greg Kampe, Oakland	20	553
19. Tony Shaver, William & Mary	18	532
19. Kelvin Sampson, Houston	19	532
21. Steve Alford, UCLA	15	528
22. Fran Dunphy, Temple	17	520
23. Tom Izzo, Michigan State	23	518
24. Bob McKillop, Davidson	17	513
25. Danny Kaspar, Texas St.	11	498
26. Bruce Pearl, Auburn	10	487
27. Larry Eustachy, Colorado State	15	486
27. Bob Williams, UC Santa Barbara	13	486
29. Dave Loss, Austin Peay	12	485
30. John Giannini, LaSalle	6	474
30. Bob Hoffman, Mercer	18	473
32. Jim Baron, Canisius	12	460

CAREER BY THE NUMBERS

Vs. the ACC.....	0-1
Vs. the American Athletic Conference	1-3
Vs. the America East.....	1-0
Vs. the Atlantic 10.....	0-1
Vs. the Atlantic Sun	1-0
Vs. the Big 10	0-1
Vs. the Big 12	3-12
Vs. the Big East.....	0-0
Vs. the Big Sky.....	1-0
Vs. the Big West	1-0
Vs. Conference USA.....	18-16
Vs. the MEAC	1-1
Vs. the MAC	0-0
Vs. the Missouri Valley Conference.....	2-0
Vs. the Northeast Conference	0-1
Vs. the Ohio Valley	0-1
Vs. the Pac 12	0-5
Vs. the Patriot League	0-1
Vs. the SEC.....	1-7
Vs. the Southland Conference	116-63
Vs. the Summit League.....	1-1
Vs. the Sun Belt Conference.....	44-50
Vs. the SWAC.....	12-5
Vs. the WAC	3-1
Vs. the West Coast	3-1

Note: Records vs. conferences reflect schools that are currently in those conferences.

When allowing 40 points or less.....	17-1
When allowing 41-50 points	56-7
When allowing 51-60 points	88-41
When allowing 61-70 points	73-82
When allowing 71-80 points	16-36
When allowing 81+ points.....	5-14

When scoring 40 points or less.....	0-7
When scoring 41-50 points.....	5-32
When scoring 51-60 points.....	24-71
When scoring 61-70 points.....	95-59
When scoring 71-80 points.....	79-15
When scoring 81+ points	50-0

SUN BELT CONFERENCE PRESEASON

COACHES POLL

RK.	Team (First place votes)	Points
1.	UL Lafayette (9)	119 pts
2.	Georgia State (2)	108 pts
3.	UL Monroe	97 pts
4.	Arkansas State	71 pts
5.	Little Rock	68 pts
6.	Appalachian State	64 pts
7.	South Alabama	56 pts
8.	Texas State	48 pts
	UT Arlington	48 pts
10.	Georgia Southern	28 pts
11.	Troy	19 pts

ALL-SBC PRESEASON TEAMS

All-SBC First Team

Anthony Livingston (Arkansas State, Jr., F)
Shawn Long (UL Lafayette, Sr., F/C)
Ken Williams (South Alabama, Jr., G)
Emani Gant (Texas State, Sr., F)
Wesley Person (Troy, So., G)

All-SBC Second Team

Frank Eaves (Appalachian State, Sr., G)
Markus Crider (Georgia State, Sr., F)
Kevin Ware (Georgia State, Sr., G)
Josh Hagins (Little Rock, Sr., G)
Majok Deng (UL Monroe, Sr., F)

All-SBC Third Team

Jeremy Hollowell (Georgia State, R-Jr., F)
Roger Woods (Little Rock, Sr., F)
Devonta Walker (UL Lafayette, Sr., F)
Jay Wright (UL Lafayette, Jr., G)
Nick Coppola (UL Monroe, Jr., G)

Student-Athlete of the Year

Shawn Long (UL Lafayette, Sr., F/C)



SUN BELT CONFERENCE STANDINGS

School	Sun Belt		Overall		Home	Away	Neutral	L10	Streak
	W-L	Pct	W-L	Pct					
Little Rock	14-2	.875	24-3	.889	11-0	12-3	1-0	9-1	W 3
UL Monroe	11-5	.688	15-12	.556	11-0	4-10	0-2	9-1	W 5
UL Lafayette	10-6	.625	14-11	.560	11-1	3-10	0-0	7-3	L 3
UT Arlington	9-6	.600	18-8	.692	10-2	8-6	0-0	5-5	L 1
Georgia Southern	9-8	.529	13-14	.481	9-4	4-9	0-1	7-3	W 1
South Alabama	7-9	.438	12-15	.444	7-5	4-9	1-1	5-5	W 1
Arkansas State	7-9	.438	11-16	.407	9-4	2-12	0-0	2-8	L 5
Georgia State	7-10	.412	14-12	.538	11-3	3-9	0-0	2-8	L 1
Texas State	5-10	.333	11-13	.458	8-4	3-9	0-0	3-7	W 1
Appalachian State	5-11	.313	7-20	.259	4-7	2-10	1-3	3-7	W 1
Troy	4-12	.250	9-18	.333	4-8	4-8	1-2	3-7	L 1

UPCOMING SCHEDULE

February 25

*Appalachian State at Georgia Southern, 6:30 p.m.
*UL Monroe at South Alabama, 7:05 p.m.
*UT Arlington at Little Rock, 7:15 p.m.
*UL Lafayette at Troy, 7:30 p.m.
*Texas State at Arkansas State, 7:45 p.m.

February 27

*Appalachian State at Georgia State, 1:30 p.m.
*UL Lafayette at South Alabama, 4:05 p.m.
*UL Monroe at Troy, 4:15 p.m.
*Texas State at Little Rock, 6 p.m.
*UT Arlington at Arkansas State, 7:05 p.m.

March 1

*Texas State at UT Arlington, 7:15 p.m.
*Arkansas State at Little Rock, 7:15 p.m.

March 3

*Little Rock at Appalachian State, 6:30 p.m.
*Georgia Southern at UL Monroe, 7 p.m.
*Georgia State at UL Lafayette, 7:15 p.m.
*South Alabama at UT Arlington, 7:15 p.m.
*Troy at Texas State, 7:30 p.m.

RESULTS

February 23

Georgia Southern 54, Georgia State 52

February 20

Georgia State, 69, Arkansas State 61
Appalachian State 78, Troy 74
Texas State 61, UL Lafayette 57
Little Rock 75, Georgia Southern 61
UL Monroe 64, UT Arlington 61

February 18

Georgia Southern, 90, Arkansas State 59
South Alabama 75, Appalachian State 71
Little Rock 57, Georgia State 49
UT Arlington 84, UL Lafayette 83 OT
UL Monroe 76, Texas State 57

February 16

Troy 61, South Alabama 54

February 13

UL Monroe 78, Arkansas State 73
South Alabama 80, Georgia Southern 76
Little Rock 68, UL Lafayette 64
Tory 54, Georgia State 53
UT Arlington 91, Appalachian State 60

STATISTICAL RANKINGS

Team	No.	NCAA	SBC
Scoring Offense	65.3	320	10
Scoring Defense	64.1	20	2
Scoring Margin	1.2	181	6
FG Percentage	42.0	269	7
FG Percentage Defense	43.4	176	8
3FG Made/Game	4.7	338	11
3FG Percentage	32.4	274	7
3FG Percentage Defense	35.4	235	9
FT Percentage	68.0	245	9
Rebounds/Game	34.13	275	10
Rebound Margin	0.0	202	6
Offensive Rebounds/Game	11.46	121	7
Defensive Rebounds/Game	22.67	325	11
Assists/Game	11.3	304	9
Assist/Turnover Ratio	0.93	258	9
Blocks/Game	3.5	161	5
Steals/Game	6.3	140	8
Fewest Turnovers	293	30	2
Turnovers Forced	14.71	50	3
Turnover Margin	2.5	34	3
Fewest Fouls	447	26	1

Individual

Ojai Black

Category	No.	NCAA	SBC
Assist-to-Turnover Ratio	2.03	144	5
Steals/Game	1.38	220	7

Emani Gant

Category	No.	NCAA	SBC
Field Goal Pct.	50.0	98	3
Rebounds/Game	7.5	153	5
Offensive Rebounds/Game	2.77	105	4
Defensive Rebounds/Game	4.68	249	7
Double-Doubles	5	173	5

Ethan Montalvo

Category	No.	NCAA	SBC
3Pt. FG/Game	2.09	243	5

Anthony Roberson

Category	No.	NCAA	SBC
Offensive Rebounds/Game	2.50	149	7



THE LAST TIME...

TEAM

Scored 90 or more points

92 vs. Howard Payne, 12/21/15 (W, 92-43)

Scored 100 or more points

103 vs. Houston Baptist, 12/3/11 (W, 103-76)

Scored 110 or more points

126 vs. Our Lady of the Lake, 11/24/10 (L, 126-127)

Scored 120 or more points

126 vs. Our Lady of the Lake, 11/24/10 (L, 126-127)

Scored less than 50 points

46 vs. Georgia State, 1/2/16 (L, 46-58)

Allowed 90 or more points

90 vs. Idaho, 3/2/13 (L, 90-81)

Allowed 100 or more points

100 at Long Island, 12/20/11 (L, 84-100)

Allowed less than 50 points

43 vs. Howard Payne, 12/21/15 (W, 92-43)

Scored 100 points in two consecutive games

111 vs. Dallas Baptist, 01/09/78 (W, 111-59) & 112 vs. St. Edward's, 01/12/78 (W, 112-63)

Won by 50 points or more

52 vs. Houston-Tillotson, 12/28/11 (W, 99-47)

Game decided by one point

vs. Appalachian State, 2/11/16 (W, 69-68)

Game decided by two points

vs. Georgia Southern 1/22/15 (L, 45-43)

Game decided by three points

at Georgia State, 2/4/16 (L, 56-59)

Two consecutive games decided by one point

vs. Texas-Arlington, 1/30/93 (L, 67-66) & Stephen F. Austin, 2/04/93 (L, 63-62)

Three consecutive games decided by one point

Never

Made 30 FG

30 vs. Howard Payne, 12/21/15

Made 35 FG

36 vs. Central Arkansas, 2/8/12

Made 40 FG

43 vs. Our Lady of the Lake, 11/24/10

Shot 50% FG or better

53.2% (25-47) vs. Georgia Southern, 12/30/15

Shot 60% FG or better

60.4% (29-48) vs. Prairie View A&M, 12/11/14

Shot 70% FG or better

71.7% (36-46), vs. Concordia Lutheran, 11/30/91

Made 10 3-pointers

10 vs. South Alabama, 1/15/15 (10-17)

Made 11 3-pointers

11 vs. Northern Kentucky, 11/30/13 (11-17)

Made 12 3-pointers

12 vs. UT Arlington, 1/12/13 (12-28)

Made 13 3-pointers

13 at UTSA, 02/25/12 (13-33)

Made 14 3-pointers

15 vs. UTSA, 01/21/12 (15-33)

Made 15 3-pointers

15 vs. UTSA, 1/21/12 (15-33)

Made 16 3-pointers

16, at Wyoming, 11/26/08 (16-33)

Attempted 30 3-pointers

30, vs. UT Arlington, 2/12/15

Attempted 40 3-pointers

41, at TCU, 11/24/09

Shot 50 % or better on 3-pointers

52.9% (9-17) vs. Huston-Tillotson, 12/20/14

Shot 60 % or better on 3-pointers

60.0% (9-15) vs. Arkansas State, 1/23/16

Made 30 FT

33 vs. Our Lady of the Lake (33-55), 11/24/10

Attempted 40 FT

vs. Appalachian State, 12/23/10 (25-42)

Attempted 50 FT

vs. Our Lady of the Lake, 11/24/10 (33-55)

Shot 80% or better from the free throw line

81.3% (13-16) vs. Appalachian State, 2/11/16

Shot 90% or better on FTs

91.3% (21-23) at Texas Pan-American, 11/19/11

Shot 50% or less on FTs

50.0% (13-26) at Appalachian State, 1/9/16

Played an OT game

vs. Little Rock, 1/21/16 (L, 74-77)

Won an OT game

vs. UALR 1/8/15 (W 77-74, 20T)

Lost an OT game

vs. Little Rock, 1/21/16 (L, 74-77)

Played double OT game

vs. UALR 1/8/15 (W 77-74 2 OT)

Played triple OT game

at TCU, 11/24/09 (L, 108-99)

Played quadruple overtimes game

Never

Played consecutive games to OT

1/5/15 at Georgia State (W, 77-74) & 1/8/15 vs. UALR (W, 77-74)

Played consecutive games that went to double OT

1/5/15 at Georgia State (W, 77-74) & 1/8/15 vs. UALR (W, 77-74)

Grabbed 50 rebounds

50 (17-33) vs. Howard Payne, 12/21/15

Grabbed 55 rebounds

63 (27-36) vs. Our Lady of the Lake, 11/24/10

Grabbed 60 rebounds

63 (27-36) vs. UT Tyler, 11/24/10



THE LAST TIME...

INDIVIDUAL

Scored 25 points

Emani Gant (26) vs. Appalachian State, 2/11/16

Scored 30 points

Joel Wright (32) vs. Denver, 3/14/13

Scored 35 points

Joel Wright (37) at Idaho, 1/24/13

Scored 40 points

J.B. Conley (42) vs. Northwestern St., 2/27/10

Scored 50 points

Charles Sharp (53), vs. Texas Wesleyan, 12/28/59

Two players had 20 points in a game

Reid Koenen (26) & Joel Wright (21) vs. South Alabama, 2/20/14

Scored 20 points in two straight games

Joel Wright (26) vs. Seattle, 3/12/13; (32) vs. Denver, 3/14/13

Scored in double figures in 10 straight games

Kavin Gilder-Tilbury (13) 12/21/15-2/9/16

Scored in double figures in 14 straight games

Brooks Ybarra (14) 12/20/11 - 2/8/12

Five players scored in double figures

Cameron Naylor (18), Emani Gant (17), D.J. Brown (13), Kavin Gilder-Tilbury (11) & Ethan Montalvo (11), at Georgia State, 1/15/15

Six players scored in double figures

Brooks Ybarra (18), Matt Staff (11), Eddie Rios (17), John Bowman (10), Travis Jones (13), Gordon Ball (10) vs. Texas Lutheran (11/11/11)

Four players with 15 or more points

Vonn Jones (18), Brooks Ybarra (29), Matt Staff (15), Reid Koenen (17) vs. South Dakota (2/18/12)

Double-Double

Cameron Naylor (16 pts, 10 rebs) vs. UL Monroe, 2/18/16

20-10 game

Emani Gant (26 pts, 12 rebs) vs. Appalachian State, 2/11/16

30-10 game

Joel Wright (33 pts, 12 rebs) vs. Denver, 2/2/13

Back-to-back 20-10 games

Matt Staff at Southeastern La. (21 pts, 13 rebs) 2/22/12; at UTSA (28 pts, 12 rebs) 2/25/12

Double-Double in points and rebounds

Cameron Naylor (16 pts, 10 rebs) vs. UL Monroe, 2/18/16

Double-Double in points and assists

Ryan White (21 pts, 11 assists) vs. Our Lady of the Lake, 11/24/10

Double-Double in two consecutive games

Joel Wright at ULM (1/11/14) & at UL-Lafayette (1/13/14)

Double-Double in three consecutive games

Matt Staff at Southeastern La. (2/22/12), at UTSA (2/25/12), vs. Lamar (2/29/12)

Two players record double-doubles

Matt Staff (16 pts, 10 rebs), Joel Wright (17 pts, 11 rebs) vs. Utah, 11/30/12

Three players record double-doubles

Tony Bishop (20 points, 11 rebounds), Ryan White (21 points, 11 assists) & Cameron Johnson (17 points, 10 rebounds) vs. Our Lady of the Lake, 11/24/10

Made 10 FG

Emani Gant (10) vs. Appalachian State, 2/11/16

Made 11 FG

Emani Gant (11) vs. South Alabama, 1/15/15

Made 12 FG

Joel Wright (12) at Lamar, 2/23/13

Made 13 FG

J.B. Conley (14) at Northwestern State, 2/27/10

Made 14 FG

J.B. Conley (14) at Northwestern State, 2/27/10

Attempted 17 FG

Emani Gant (19) at Washington State, 12/18/15

Attempted 18 FG

Emani Gant (19) at Washington State, 12/18/15

Attempted 19 FG

Emani Gant (19) at Washington State, 12/18/15

Attempted 20 FG

Joel Wright (23) at Lamar, 2/23/13

Attempted 21 FG

Joel Wright (23) at Lamar, 2/23/13

Attempted 22 FG

Joel Wright (23) at Lamar, 2/23/13

Attempted 23 FG

Joel Wright (23) at Lamar, 2/23/13

Made 5 3-pointers

Ethan Montalvo (5) vs. Arkansas State, 1/23/16

Made 6 3-pointers

Ethan Montalvo (6) at Troy 12/30/14

Made 7 3-pointers

John Rybak (8) at TCU, 11/24/09

Made 8 3-pointers

John Rybak (8) at TCU, 11/24/09

Made 9 3-pointers

Brent Benson (9) vs. McMurry, 12/30/08

Attempted 10 3-pointers

Ethan Montalvo (10) vs. UL Lafayette, 2/20/16

Attempted 15 3-pointers

John Rybak (18) at TCU, 11/24/09

Made 8 FT

Ethan Montalvo (9) vs. Little Rock, 1/21/16

Made 9 FT

Ethan Montalvo (9) vs. Little Rock, 1/21/16

Made 10 FT

Joel Wright (14) vs. Denver, 3/14/13

Made 11 FT

Joel Wright (14) vs. Denver, 3/14/13

Made 12 FT

Joel Wright (14) vs. Denver, 3/14/13

Made 13 FT

Joel Wright (14) vs. Denver, 3/14/13

Made 14 FT

Joel Wright (14) vs. Denver, 3/14/13

Attempted 15 FT

Joel Wright (14) vs. Denver, 3/14/13

Attempted 20 FT

J.B. Conley (20) at Northwestern State, 2/27/10

10 Rebs

Cameron Naylor (10) vs. UL Monroe, 2/18/16

11 Rebs

Emani Gant (12) vs. Appalachian State, 2/11/16

12 Rebs

Emani Gant (12) vs. Appalachian State, 2/11/16

13 Rebs

Emani Gant (14) at South Alabama, 1/14/16

14 Rebs

Emani Gant (14) at South Alabama, 1/14/16

15 Rebs

Emani Gant (15) at McNeese State, 11/28/15

16 Rebs

Cameron Naylor (16) vs. Howard Payne, 11/30/14

17 Rebs

Emmanuel Bidas A' Moute (17) vs. Lamar, 1/23/10

10+ Rebounds in two consecutive games

Emani Gant (2) 2/4/16 - 2/6/16

10+ Rebounds in three consecutive games

Matt Staff (3) 2/22/12 - 2/29/12

Two players had 10 rebounds

Anthony Roberson (12) & Emani Gant (11) at Prairie View A&M, 12/16/15

8 Assists

Ojai Black (8) vs. Arkansas State, 1/23/16

9 Assists

Ryan White (9) vs. Stephen F. Austin, 2/9/11

10 Assists

Ryan White (11) at Sam Houston State, 1/19/11

11 Assists

Ryan White (11) at Sam Houston State, 1/19/11

4 Steals

Ojai Black (4), at UL Lafayette, 1/28/16

5 Steals

Ethan Montalvo (8) vs. UTSA, 12/2/15

6 Steals

Ethan Montalvo (8) vs. UTSA, 12/2/15

7 Steals

Ethan Montalvo (8) vs. UTSA, 12/2/15

8 Steals

Ethan Montalvo (8) vs. UTSA, 12/2/15

4 Blocks

Anthony Roberson (4) vs. Georgia Southern, 12/30/15

5 Blocks

A.J. Stewart (5) at Houston Baptist, 12/4/10

6 Blocks

A.J. Stewart (6) vs. Our Lady of the Lake, 11/24/10

7 Blocks

Trevor Cook (7) vs. UT Pan American, 1/16/06

Technical foul

Head coach Danny Kaspar vs. Appalachian State, 2/11/16

Fouled out

Ojai Black at Georgia Southern, 2/6/16

Two players fouled out

Kavin Gilder-Tilbury, Maljhum McCrea at UTEP, 11/21/15

Three players fouled out

Joel Wright, Reid Koenen, Corey Stern vs. Idaho, 3/2/13



BOBBY CONLEY

#0

GUARD • 6-1 • 195 • JUNIOR • TR
MAJOR: CRIMINAL JUSTICE

MASSILLON, OHIO
PALM BEACH STATE/MASSILLON WASHINGTON HS

SEASON & CAREER HIGHS										GAME-BY-GAME																									
Points										Opponent	Date	GS	Min	FG	FGA	Pct	3FG	3FGA	Pct	FT	FTA	Pct	Off	Def	Tot	Avg	PF	FO	A	TO	Blk	Stl	Pts	Avg	
Season 10, at Appalachian State (1/9/16)										UT Tyler	11/16/15		17	2	7	.286	0	1	.000	2	2	1.000	0	1	1	1.0	0	0	1	1	0	2	6	6.0	
Career Same										@ UTEP	11/21/15		28	0	7	.000	0	2	.000	3	4	.750	2	4	6	3.5	2	0	4	1	0	0	3	4.5	
Assists										@ McNeese State	11/28/15		6	0	0	.000	0	0	.000	0	0	.000	0	2	2	3.0	1	0	0	1	0	0	0	3.0	
Season 4, at UTEP (11/21/15)										UTSA	12/2/15		13	0	2	.000	0	0	.000	0	0	.000	0	0	0	2.3	0	0	2	0	1	0	0	2.3	
Career Same										@ Texas A&M-CC	12/5/15		11	0	1	.000	0	0	.000	2	2	1.000	0	1	1	2.0	0	0	1	2	0	0	2	2.2	
Rebounds										UT-Rio Grande Valley	12/13/15		8	0	0	.000	0	0	.000	0	0	.000	0	2	2	2.0	0	0	0	0	1	1	0	1.8	
Season 6, 2x, last UT Arlington (2/9/16)										@ Prairie View A&M	12/16/15		13	2	3	.667	1	1	1.000	0	0	.000	1	0	1	1.9	1	0	1	1	0	0	5	2.3	
Career Same										@ Washington State	12/18/15		5	0	1	.000	0	0	.000	0	0	.000	0	1	1	1.8	0	0	1	0	0	0	0	2.0	
FG Made										Howard Payne	12/21/15		15	1	2	.500	1	1	1.000	0	0	.000	0	3	3	1.9	3	0	1	3	0	0	3	2.1	
Season 4, at Appalachian State (1/9/16)										Georgia Southern	12/30/15		23	3	4	.750	1	1	1.000	0	0	.000	0	5	5	2.2	2	0	2	2	0	0	7	2.6	
Career Same										Georgia State	1/2/16		26	2	7	.286	1	5	.200	1	2	.500	1	2	3	2.3	0	0	2	1	2	0	6	2.9	
FG Attempts										@ Appalachian State	1/9/16	*	29	4	8	.500	0	3	.000	2	4	.500	0	2	2	2.3	1	0	2	1	0	0	10	3.5	
Season 8, 2x, last at UL Monroe (1/30/16)										@ South Alabama	1/14/16		10	1	3	.333	1	2	.500	0	0	.000	0	1	1	2.2	0	0	2	0	0	1	3	3.5	
Career Same										@ Troy	1/16/16		15	0	1	.000	0	1	.000	0	0	.000	0	2	2	2.1	2	0	1	1	0	0	0	3.2	
3FG Made										Little Rock	1/21/16		11	1	4	.250	1	3	.333	0	1	.000	0	0	0	2.0	1	0	1	0	0	0	3	3.2	
Season 3, at UL Monroe (1/30/16)										Arkansas State	1/23/16		8	0	2	.000	0	1	.000	2	2	1.000	1	0	1	1.9	0	0	0	0	1	2	2	3.1	
Career Same										@ UL Lafayette	1/28/16		22	2	5	.400	0	1	.000	0	0	.000	0	4	4	2.1	1	0	1	0	0	1	4	3.2	
3FG Attempts										@ UL Monroe	1/30/16		29	3	8	.375	3	5	.600	0	0	.000	1	1	2	2.1	2	0	3	1	1	0	9	3.5	
Season 5, 2x, last at UL Monroe (1/30/16)										@ Georgia State	2/4/16		6	0	0	.000	0	0	.000	0	0	.000	0	0	0	1.9	3	0	1	1	0	0	0	3.3	
Career Same										@ Georgia Southern	2/6/16		8	0	2	.000	0	1	.000	0	0	.000	0	0	0	1.9	1	0	2	0	0	0	0	3.2	
FT Made										UT Arlington	2/9/16		19	2	6	.333	0	2	.000	1	4	.250	2	4	6	2.0	0	0	1	0	0	1	5	3.2	
Season 3, at UTEP (11/21/15)										Appalachian State	2/11/16		9	0	2	.000	0	0	.000	0	0	.000	0	1	1	2.0	0	0	1	0	0	0	0	3.1	
Career Same										UL Monroe	2/18/16		11	0	0	.000	0	0	.000	0	0	.000	0	0	0	1.9	2	0	0	1	0	1	0	3.0	
FT Attempts										UL Lafayette	2/20/16		11	1	2	.500	0	0	.000	0	0	.000	1	2	3	2.0	1	0	1	1	1	0	2	2.9	
Season 4, 3x, last UT Arlington (2/9/16)										Totals			1	353	24	77	.312	9	30	.300	13	21	.619	9	38	47	2.0	23	0	31	18	7	9	70	2.9
Career Same																																			
Blocks																																			
Season 2, Georgia State (1/2/16)																																			
Career Same																																			
Steals																																			
Season 2, 2x, last Arkansas State (1/23/16)																																			
Career Same																																			
Minutes																																			
Season 29, 2x, last at UL Monroe (1/30/16)																																			
Career Same																																			

CAREER STATISTICS																									
Year	GP	GS	Min	Avg	FG	FGA	Pct	3FG	FGA	Pct	FT	FTA	Pct	Off	Def	Tot	Avg	PF	FO	Ast	TO	Blk	Stl	Pts	Avg
2015-16	24	1	353	14.7	24	77	.312	9	30	.300	13	21	.619	9	38	47	2.0	23	0	31	18	7	9	70	2.9
TOTAL	24	1	353	14.7	24	77	.312	9	30	.300	13	21	.619	9	38	47	2.0	23	0	31	18	7	9	70	2.9
SBC	GP	GS	Min	Avg	FG	FGA	Pct	3FG	FGA	Pct	FT	FTA	Pct	Off	Def	Tot	Avg	PF	FO	Ast	TO	Blk	Stl	Pts	Avg
2015-16	15	1	237	15.8	19	54	.352	7	25	.280	6	13	.462	6	24	30	2.0	16	0	20	9	5	6	51	3.4
TOTAL	15	1	237	15.8	19	54	.352	7	25	.280	6	13	.462	6	24	30	2.0	16	0	20	9	5	6	51	3.4



KAVIN GILDER-TILBURY

#1

FORWARD • 6-7 • 210 • JUNIOR • 2L
MAJOR: GENERAL STUDIES

HOUSTON, TEXAS
CYPRESS FALLS HS

SEASON & CAREER HIGHS

Points
Season 22, UT-Rio Grande Valley (12/13/15)
Career Same

Assists
Season 6, UTSA (12/2/15)
Career Same

Rebounds
Season 8, 3x, last at Georgia Southern (2/6/16)
Career 9, at Troy (12/30/14)

FG Made
Season 8, UT-Rio Grande Valley (12/13/15)
Career Same

FG Attempts
Season 15, 2x, last UTSA (12/2/15)
Career Same

3FG Made
Season 3, Arkansas State (1/23/16)
Career 3, 6x, last Arkansas State (1/23/16)

3FG Attempts
Season 6, Georgia State (1/2/16)
Career 7, Southeast Missouri State (12/1/13)

FT Made
Season 7, at McNeese State (11/28/15)
Career 7, 4x, last at McNeese State (11/28/15)

FT Attempts
Season 12, at McNeese State (11/28/15)
Career Same

Blocks
Season 2, UT Arlington (2/9/16)
Career 3, at UL Lafayette (1/13/14)

Steals
Season 4, UT-Rio Grande Valley (12/13/15)
Career 4, 2x, last UT-Rio Grande Valley (12/13/15)

Minutes
Season 38, 2x, last UT-Rio Grande Valley (12/13/15)
Career 39, 2x, last at Georgia State (1/5/15)

GAME-BY-GAME

Opponent	Date	GS	Min	FG	FGA	Pct	3FG	3FGA	Pct	FT	FTA	Pct	Off	Def	Tot	Avg	PF	FO	A	TO	Blk	Stl	Pts	Avg
UT Tyler	11/16/15	*	23	6	10	.600	1	3	.333	2	2	1.000	3	5	8	8.0	0	0	1	2	0	1	15	15.0
@ UTEP	11/21/15	*	17	1	4	.250	1	3	.333	0	0	.000	1	0	1	4.5	5	1	1	4	0	0	3	9.0
@ McNeese State	11/28/15	*	38	5	15	.333	0	5	.000	7	12	.583	3	4	7	5.3	1	0	3	1	0	1	17	11.7
UTSA	12/2/15	*	30	5	15	.333	2	4	.500	3	4	.750	2	4	6	5.5	1	0	6	2	1	0	15	12.5
@ Texas A&M-CC	12/5/15	*	31	2	7	.286	2	4	.500	3	4	.750	2	4	6	5.6	4	0	1	1	0	2	9	11.8
UT-Rio Grande Valley	12/13/15	*	38	8	12	.667	1	3	.333	5	8	.625	1	2	3	5.2	3	0	1	4	0	4	22	13.5
@ Prairie View A&M	12/16/15	*	35	4	9	.444	0	2	.000	0	0	.000	2	5	7	5.4	3	0	4	5	0	1	8	12.7
@ Washington State	12/18/15	*	29	3	8	.375	1	3	.333	0	0	.000	0	3	3	5.1	5	1	0	1	0	0	7	12.0
Howard Payne	12/21/15	*	17	3	7	.429	2	4	.500	3	4	.750	1	0	1	4.7	1	0	4	1	1	1	11	11.9
Georgia Southern	12/30/15	*	28	4	9	.444	1	2	.500	6	7	.857	4	2	6	4.8	2	0	2	2	0	2	15	12.2
Georgia State	1/2/16	*	37	5	14	.357	2	6	.333	3	6	.500	5	3	8	5.1	2	0	0	2	0	1	15	12.5
@ Appalachian State	1/9/16	*	31	4	10	.400	1	1	1.000	4	7	.571	0	5	5	5.1	1	0	2	1	1	1	13	12.5
@ South Alabama	1/14/16	*	21	3	4	.750	2	3	.667	3	6	.500	0	2	2	4.8	4	0	2	2	1	1	11	12.4
@ Troy	1/16/16	*	25	4	9	.444	2	4	.500	2	2	1.000	0	0	0	4.5	5	1	0	4	0	1	12	12.4
Little Rock	1/21/16	*	37	5	10	.500	2	4	.500	3	5	.600	2	2	4	4.5	4	0	3	3	1	1	15	12.5
Arkansas State	1/23/16	*	27	5	9	.556	3	5	.600	4	4	1.000	2	2	4	4.4	4	0	0	1	0	0	17	12.8
@ UL Lafayette	1/28/16	*	30	5	11	.455	1	4	.250	2	4	.500	1	2	3	4.4	4	0	2	1	1	3	13	12.8
@ UL Monroe	1/30/16	*	25	6	13	.462	1	5	.200	1	1	1.000	0	2	2	4.2	3	0	1	1	0	1	14	12.9
@ Georgia State	2/4/16	*	37	4	10	.400	0	3	.000	5	5	1.000	4	2	6	4.3	2	0	5	3	0	1	13	12.9
@ Georgia Southern	2/6/16	*	30	5	9	.556	1	2	.500	0	0	.000	2	6	8	4.5	3	0	3	1	1	1	11	12.8
UT Arlington	2/9/16	*	27	5	11	.455	1	4	.250	2	2	1.000	0	4	4	4.5	4	0	0	3	2	1	13	12.8
Appalachian State	2/11/16	*	35	3	8	.375	0	1	.000	3	3	1.000	2	0	2	4.4	1	0	1	4	1	0	9	12.6
UL Monroe	2/18/16	*	23	0	4	.000	0	2	.000	2	2	1.000	0	0	0	4.2	2	0	1	1	0	1	2	12.2
UL Lafayette	2/20/16	*	19	2	3	.667	0	1	.000	0	0	.000	0	0	0	4.0	4	0	0	1	1	1	4	11.8
Totals		24	690	97	221	.439	27	78	.346	63	88	.716	37	59	96	4.0	68	3	43	51	11	26	284	11.8

CAREER STATISTICS

Year	GP	GS	Min	Avg	FG	FGA	Pct	3FG	FGA	Pct	FT	FTA	Pct	Off	Def	Tot	Avg	PF	FO	Ast	TO	Blk	Stl	Pts	Avg
2013-14	30	10	638	21.3	66	154	.429	28	75	.373	25	44	.568	25	57	82	2.7	60	1	25	41	14	19	185	6.2
2014-15	31	22	714	23.0	76	206	.369	26	72	.361	68	90	.756	37	72	109	3.5	75	1	38	53	6	34	246	7.9
2015-16	24	24	690	28.8	97	221	.439	27	78	.346	63	88	.716	37	59	96	4.0	68	3	43	51	11	26	284	11.8
TOTAL	85	56	2042	24.0	239	581	.411	81	225	.360	156	222	.703	99	188	287	3.4	203	5	106	145	31	79	715	8.4

SBC	GP	GS	Min	Avg	FG	FGA	Pct	3FG	FGA	Pct	FT	FTA	Pct	Off	Def	Tot	Avg	PF	FO	Ast	TO	Blk	Stl	Pts	Avg
2013-14	17	5	337	19.8	27	72	.375	12	34	.353	8	18	.444	12	29	41	2.4	35	0	12	25	7	11	74	4.4
2014-15	20	11	454	22.7	48	138	.348	18	52	.346	53	68	.779	27	47	74	3.7	48	0	24	33	1	16	167	8.4
2015-16	15	15	432	28.8	60	134	.448	17	47	.362	40	54	.741	22	32	54	3.6	45	1	22	30	9	16	177	11.8
TOTAL	52	31	1223	23.5	135	344	.392	47	133	.353	101	140	.721	61	108	169	3.3	128	1	58	88	17	43	418	8.0



NATHAN JOSEPHS

#2

GUARD • 5-10 • 180 • FRESHMAN • HS
MAJOR: MANAGEMENT

SAN ANTONIO, TEXAS
TOM C CLARK HS

SEASON & CAREER HIGHS										GAME-BY-GAME																												
Points										Opponent	Date	GS	Min	FG	FGA	Pct	3FG	3FGA	Pct	FT	FTA	Pct	Off	Def	Tot	Avg	PF	FO	A	TO	Blk	Stl	Pts	Avg				
Season 4, Howard Payne (12/21/15)										UT Tyler	11/16/15		6	1	4	.250	0	3	.000	1	1	1.000	0	0	0	0.0	0	0	0	0	0	1	0	0	0	3	3.0	
Career Same										@ UTEP	11/21/15		0+	0	0	.000	0	0	.000	0	0	.000	0	0	0	0.0	0	0	0	0	0	0	0	0	0	1.5		
Assists										@ McNeese State	11/28/15											DNP																
Season 1, 5x, last UT Arlington (2/9/16)										UTSA	12/2/15		1	0	0	.000	0	0	.000	0	0	.000	0	0	0	0.0	0	0	0	0	0	1	0	0	0	0	1.0	
Career Same										@ Texas A&M-CC	12/5/15											DNP																
Rebounds										UT-Rio Grande Valley	12/13/15											DNP																
Season 2, Howard Payne (12/21/15)										@ Prairie View A&M	12/16/15											DNP																
Career Same										@ Washington State	12/18/15											DNP																
FG Made										Howard Payne	12/21/15		10	1	2	.500	0	0	.000	2	3	.667	0	2	2	0.5	1	0	0	1	0	1	4	1	4	1.8		
Season 1, 2x, last Howard Payne (12/21/15)										Georgia Southern	12/30/15												DNP															
Career Same										Georgia State	1/2/16												DNP															
FG Attempts										@ Appalachian State	1/9/16		8	0	2	.000	0	0	.000	0	0	.000	0	0	0	0.4	0	0	0	0	0	0	0	0	0	1.4		
Season 4, UT Tyler (11/16/15)										@ South Alabama	1/14/16												DNP															
Career Same										@ Troy	1/16/16												DNP															
3FG Made										Little Rock	1/21/16												DNP															
Season -										Arkansas State	1/23/16												DNP															
Career -										@ UL Lafayette	1/28/16		3	0	1	.000	0	1	.000	1	2	.500	0	0	0	0.3	0	0	1	1	0	0	1	0	0	1	1.3	
3FG Attempts										@ UL Monroe	1/30/16		1	0	0	.000	0	0	.000	0	0	.000	0	0	0	0.3	0	0	0	0	0	0	0	0	0	1.1		
Season 3, UT Tyler (11/16/15)										@ Georgia State	2/4/16		3	0	0	.000	0	0	.000	0	0	.000	0	0	0	0.3	0	0	1	1	0	0	0	0	0	1.0		
Career Same										@ Georgia Southern	2/6/16												DNP															
FT Made										UT Arlington	2/9/16		2	0	1	.000	0	0	.000	2	2	1.000	0	0	0	0.2	0	0	1	0	0	0	0	2	1	1.1		
Season 2x, last UT Arlington (2/9/16)										Appalachian State	2/11/16												DNP															
Career Same										UL Monroe	2/18/16		2	0	2	.000	0	1	.000	0	0	.000	0	0	0	0.2	0	0	0	0	0	0	0	0	0	1.0		
FT Attempts										UL Lafayette	2/20/16												DNP															
Season 3, Howard Payne (12/21/15)										Totals			0	36	2	12	.167	0	5	.000	6	8	.750	0	2	2	0.2	1	0	5	3	0	1	10	1	10	1.1	
Career Same																																						
Blocks																																						
Season -																																						
Career -																																						
Steals																																						
Season 1, Howard Payne (12/21/15)																																						
Career Same																																						
Minutes																																						
Season 10, Howard Payne (12/21/15)																																						
Career Same																																						

CAREER STATISTICS																									
Year	GP	GS	Min	Avg	FG	FGA	Pct	3FG	FGA	Pct	FT	FTA	Pct	Off	Def	Tot	Avg	PF	FO	Ast	TO	Blk	Stl	Pts	Avg
2015-16	10	0	36	3.6	2	12	.167	0	5	.000	6	8	.750	0	2	2	0.2	1	0	5	3	0	1	10	1.0
TOTAL	10	0	36	3.6	2	12	.167	0	5	.000	6	8	.750	0	2	2	0.2	1	0	5	3	0	1	10	1.0
SBC	GP	GS	Min	Avg	FG	FGA	Pct	3FG	FGA	Pct	FT	FTA	Pct	Off	Def	Tot	Avg	PF	FO	Ast	TO	Blk	Stl	Pts	Avg
2015-16	6	0	19	3.2	0	6	.000	0	2	.000	3	4	.750	0	0	0	0.0	0	0	3	2	0	0	3	0.5
TOTAL	6	0	19	3.2	0	6	.000	0	2	.000	3	4	.750	0	0	0	0.0	0	0	3	2	0	0	3	0.5



MALJHUM MCCREA

#3

FORWARD • 6-7 • 215 • JUNIOR • TR
MAJOR: CRIMINAL JUSTICE

MIAMI, FLA.
ST. PETERSBURG COLLEGE/NORLAND HS

SEASON & CAREER HIGHS

Points
Season 11, UT Tyler (11/16/15)
Career Same

Assists
Season 1, 4x, last UT Arlington (2/19/16)
Career Same

Rebounds
Season 9, UT Tyler (11/16/15)
Career Same

FG Made
Season 5, UT Tyler (11/16/15)
Career Same

FG Attempts
Season 7, UT Tyler (11/16/15)
Career Same

3FG Made
Season -
Career -

3FG Attempts
Season 1, 2x, last at UL Monroe (1/30/16)
Career Same

FT Made
Season 2, UT Arlington (2/19/16)
Career Same

FT Attempts
Season 3, 3x, last Little Rock (1/21/16)
Career Same

Blocks
Season 2, 2x, last at Prairie View A&M (12/16/15)
Career Same

Steals
Season ... 1, at Texas A&M-Corpus Christi (12/5/15)
Career Same

Minutes
Season 27, Little Rock (1/21/16)
Career Same

GAME-BY-GAME

Opponent	Date	GS	Min	FG	FGA	Pct	3FG	3FGA	Pct	FT	FTA	Pct	Off	Def	Tot	Avg	PF	FO	A	TO	Blk	Stl	Pts	Avg
UT Tyler	11/16/15	*	15	5	7	.714	0	0	.000	1	3	.333	1	8	9	9.0	3	0	1	2	0	0	11	11.0
@ UTEP	11/21/15		9	1	2	.500	0	0	.000	1	3	.333	1	2	3	6.0	5	1	0	0	0	0	3	7.0
@ McNeese State	11/28/15		8	0	2	.000	0	0	.000	0	0	.000	1	1	2	4.7	1	0	0	1	0	0	0	4.7
UTSA	12/2/15		12	2	5	.400	0	0	.000	0	0	.000	3	1	4	4.5	1	0	0	0	2	0	4	4.5
@ Texas A&M-CC	12/5/15	*	17	3	6	.500	0	1	.000	0	1	.000	3	2	5	4.6	3	0	0	2	0	1	6	4.8
UT-Rio Grande Valley	12/13/15		6	1	4	.250	0	0	.000	0	0	.000	1	2	3	4.3	0	0	0	0	0	0	2	4.3
@ Prairie View A&M	12/16/15		11	2	4	.500	0	0	.000	0	0	.000	0	2	2	4.0	2	0	0	0	2	0	4	4.3
@ Washington State	12/18/15		6	1	2	.500	0	0	.000	1	2	.500	2	0	2	3.8	1	0	0	1	0	0	3	4.1
Howard Payne	12/21/15		21	2	2	1.000	0	0	.000	1	2	.500	3	3	6	4.0	3	0	1	4	0	0	5	4.2
Georgia Southern	12/30/15		17	3	5	.600	0	0	.000	0	2	.000	0	1	1	3.7	2	0	0	2	0	0	6	4.4
Georgia State	1/2/16		11	0	1	.000	0	0	.000	0	2	.000	0	1	1	3.5	0	0	0	1	0	0	0	4.0
@ Appalachian State	1/9/16		7	0	2	.000	0	0	.000	0	0	.000	0	2	2	3.3	4	0	0	0	0	0	0	3.7
@ South Alabama	1/14/16		8	1	2	.500	0	0	.000	0	0	.000	0	0	0	3.1	2	0	0	1	0	0	2	3.5
@ Troy	1/16/16		7	1	2	.500	0	0	.000	0	0	.000	0	2	2	3.0	2	0	0	2	1	0	2	3.4
Little Rock	1/21/16		27	4	5	.800	0	0	.000	0	3	.000	2	4	6	3.2	3	0	1	3	0	0	8	3.7
Arkansas State	1/23/16		5	0	1	.000	0	0	.000	0	2	.000	1	0	1	3.1	1	0	0	0	0	0	0	3.5
@ UL Lafayette	1/28/16		7	0	1	.000	0	0	.000	0	0	.000	0	0	0	2.9	1	0	0	0	0	0	0	3.3
@ UL Monroe	1/30/16		3	0	3	.000	0	1	.000	0	0	.000	0	0	0	2.7	0	0	0	0	0	0	0	3.1
@ Georgia State	2/4/16												DNP											
@ Georgia Southern	2/6/16		2	0	1	.000	0	0	.000	0	0	.000	0	0	0	2.6	2	0	0	0	0	0	0	2.9
UT Arlington	2/9/16		10	1	3	.333	0	0	.000	2	2	1.000	1	1	2	2.6	2	0	1	0	0	0	4	3.0
Appalachian State	2/11/16												DNP											
UL Monroe	2/18/16		6	0	2	.000	0	0	.000	0	0	.000	1	0	1	2.5	0	0	1	0	0	0	0	2.9
UL Lafayette	2/20/16		9	0	1	.000	0	0	.000	1	2	.500	1	2	3	2.5	0	0	1	0	1	0	1	2.8
Totals		2	224	27	63	.429	0	2	.000	7	24	.292	21	34	55	2.5	38	1	6	19	6	1	61	2.8

CAREER STATISTICS

Year	GP	GS	Min	Avg	FG	FGA	Pct	3FG	FGA	Pct	FT	FTA	Pct	Off	Def	Tot	Avg	PF	FO	Ast	TO	Blk	Stl	Pts	Avg
2015-16	22	2	224	10.2	27	63	.429	0	2	.000	7	24	.292	21	34	55	2.5	38	1	6	19	6	1	61	2.8
TOTAL	22	2	224	10.2	27	63	.429	0	2	.000	7	24	.292	21	34	55	2.5	38	1	6	19	6	1	61	2.8
SBC	GP	GS	Min	Avg	FG	FGA	Pct	3FG	FGA	Pct	FT	FTA	Pct	Off	Def	Tot	Avg	PF	FO	Ast	TO	Blk	Stl	Pts	Avg
2015-16	13	0	119	9.2	10	29	.345	0	1	.000	3	13	.231	6	13	19	1.5	19	0	4	9	2	0	23	1.8
TOTAL	13	0	119	9.2	10	29	.345	0	1	.000	3	13	.231	6	13	19	1.5	19	0	4	9	2	0	23	1.8



COURTNEY JULIEN

#4

GUARD • 6-4 • 180 • FRESHMAN • HS
MAJOR: EXERCISE AND SPORTS SCIENCE

GONZALES, LA.
ST. AMANT HS

SEASON & CAREER HIGHS

Points
Season 14, Howard Payne (12/21/15)
Career Same

Assists
Season 1, Howard Payne (12/21/15)
Career Same

Rebounds
Season 1, 6x, last UT Arlington (2/9/16)
Career Same

FG Made
Season 3, 2x, last Howard Payne (12/21/15)
Career Same

FG Attempts
Season 6, UT Tyler (11/16/15)
Career Same

3FG Made
Season 2, UT Tyler (11/16/15)
Career Same

3FG Attempts
Season 4, UT Tyler (11/16/15)
Career Same

FT Made
Season 7, Howard Payne (12/21/15)
Career Same

FT Attempts
Season 8, Howard Payne (12/21/15)
Career Same

Blocks
Season 1, Howard Payne (12/21/15)
Career Same

Steals
Season 2, Howard Payne (12/21/15)
Career Same

Minutes
Season 17, Howard Payne (12/21/15)
Career Same

GAME-BY-GAME

Opponent	Date	GS	Min	FG	FGA	Pct	3FG	3FGA	Pct	FT	FTA	Pct	Off	Def	Tot	Avg	PF	FO	A	TO	Blk	Stl	Pts	Avg	
UT Tyler	11/16/15		11	3	6	.500	2	4	.500	0	0	.000	1	0	1	1.0	1	0	0	0	0	1	8	8.0	
@ UTEP	11/21/15		2	0	2	.000	0	1	.000	0	0	.000	1	0	1	1.0	0	0	0	0	0	0	0	4.0	
@ McNeese State	11/28/15		1	0	0	.000	0	0	.00	0	0	.000	0	1	1	1.0	0	0	0	0	0	0	0	2.7	
UTSA	12/2/15		2	0	0	.000	0	0	.000	0	0	.000	0	1	1	1.0	0	0	0	0	0	0	0	2.0	
@ Texas A&M-CC	12/5/15											DNP													
UT-Rio Grande Valley	12/13/15											DNP													
@ Prairie View A&M	12/16/15											DNP													
@ Washington State	12/18/15											DNP													
Howard Payne	12/21/15		17	3	5	.600	1	2	.500	7	8	.875	0	1	1	1.0	2	0	1	0	1	2	14	4.4	
Georgia Southern	12/30/15											DNP													
Georgia State	1/2/16		3	0	1	.000	0	1	.000	0	0	.000	0	0	0	0.8	0	0	0	0	0	0	0	3.7	
@ Appalachian State	1/9/16		7	0	2	.000	0	2	.000	0	0	.000	0	0	0	0.7	0	0	0	0	0	0	0	3.1	
@ South Alabama	1/14/16											DNP													
@ Troy	1/16/16		1	0	1	.000	0	0	.000	0	0	.000	0	0	0	0.6	0	0	0	0	0	0	0	2.8	
Little Rock	1/21/16											DNP													
Arkansas State	1/23/16											DNP													
@ UL Lafayette	1/28/16		5	0	0	.000	0	0	.000	0	0	.000	0	0	0	0.6	1	0	0	1	0	0	0	2.4	
@ UL Monroe	1/30/16		0+	0	0	.000	0	0	.000	0	0	.000	0	0	0	0.5	0	0	0	0	0	0	0	2.2	
@ Georgia State	2/4/16		2	0	0	.000	0	0	.000	0	0	.000	0	0	0	0.5	0	0	0	0	0	0	0	2.0	
@ Georgia Southern	2/6/16											DNP													
UT Arlington	2/9/16		5	0	0	.000	0	0	.000	0	0	.000	0	1	1	0.5	0	0	0	0	0	0	0	1.8	
Appalachian State	2/11/16											DNP													
UL Monroe	2/18/16		3	1	3	.333	1	2	.500	0	0	.000	0	0	0	0.5	0	0	0	0	0	0	3	1.9	
UL Lafayette	2/20/16											DNP													
Totals			0	59	7	20	.350	4	12	.333	7	8	.875	2	4	6	0.5	4	0	1	1	1	3	25	1.9

CAREER STATISTICS

Year	GP	GS	Min	Avg	FG	FGA	Pct	3FG	FGA	Pct	FT	FTA	Pct	Off	Def	Tot	Avg	PF	FO	Ast	TO	Blk	Stl	Pts	Avg
2015-16	13	0	59	4.5	7	20	.350	4	12	.333	7	8	.875	2	4	6	0.5	4	0	1	1	1	3	25	1.9
TOTAL	13	0	59	4.5	7	20	.350	4	12	.333	7	8	.875	2	4	6	0.5	4	0	1	1	1	3	25	1.9

SBC	GP	GS	Min	Avg	FG	FGA	Pct	3FG	FGA	Pct	FT	FTA	Pct	Off	Def	Tot	Avg	PF	FO	Ast	TO	Blk	Stl	Pts	Avg
2015-16	8	0	26	3.3	1	7	.143	1	5	.200	0	0	.000	0	1	1	0.1	1	0	0	1	0	0	3	0.4
TOTAL	8	0	26	3.3	1	7	.143	1	5	.200	0	0	.000	0	1	1	0.1	1	0	0	1	0	0	3	0.4



OJAI BLACK

#5

GUARD • 6-4 • 170 • JUNIOR • 1L
MAJOR: HEALTH AND FITNESS MANAGEMENT

KILLEEN, TEXAS
ELLISON HS • McLENNAN CC

SEASON & CAREER HIGHS		GAME-BY-GAME																											
Points	Opponent	Date	GS	Min	FG	FGA	Pct	3FG	3FGA	Pct	FT	FTA	Pct	Off	Def	Tot	Avg	PF	FO	A	TO	Blk	Stl	Pts	Avg				
Season 14, 3x, last UL Lafayette (2/20/16)	UT Tyler	11/16/15	*	24	3	5	.600	0	1	.000	2	4	.500	0	2	2	2.0	3	0	2	1	0	0	8	8.0				
Career Same	@ UTEP	11/21/15	*	39	4	6	.667	0	1	.000	2	3	.667	0	0	0	1.0	4	0	5	2	0	0	10	9.0				
Assists	@ McNeese State	11/28/15	*	35	7	10	.700	0	0	.000	0	0	.000	0	5	5	2.3	5	1	3	5	0	3	14	10.7				
Season 8, Arkansas State (1/23/16)	UTSA	12/2/15	*	34	3	6	.500	0	0	.000	0	0	.000	0	1	1	2.0	1	0	3	0	0	1	6	9.5				
Career Same	@ Texas A&M-CC	12/5/15	*	36	3	12	.250	0	1	.000	5	6	.833	1	1	2	2.0	4	0	0	2	0	2	11	9.8				
Rebounds	UT-Rio Grande Valley	12/13/15	*	34	1	5	.200	0	1	.000	2	2	1.000	0	0	0	1.7	3	0	4	0	0	1	4	8.8				
Season 5, 2x, last UL Lafayette (2/20/16)	@ Prairie View A&M	12/16/15	*	32	1	7	.143	0	1	.000	3	4	.750	1	2	3	1.9	4	0	2	1	0	2	5	8.3				
Career Same	@ Washington State	12/18/15	*	41	3	9	.333	1	2	.500	2	2	1.000	0	0	0	1.6	2	0	3	2	1	3	9	8.4				
FG Made	Howard Payne	12/21/15	*	12	0	1	.000	0	0	.000	0	0	.000	0	0	0	1.4	0	0	1	0	0	1	0	7.4				
Season 7, at McNeese State (11/28/15)	Georgia Southern	12/30/15	*	28	1	2	.500	0	1	.000	6	8	.750	0	4	4	1.7	3	0	3	3	0	2	8	7.5				
Career Same	Georgia State	1/2/16	*	38	1	4	.250	0	2	.000	0	0	.000	1	3	4	1.9	3	0	5	2	0	2	2	7.0				
FG Attempts	@ Appalachian State	1/9/16	*	24	0	5	.000	0	0	.000	0	0	.000	0	3	3	2.0	5	1	1	1	0	0	0	6.4				
Season 12, 2x, last Little Rock (1/21/16)	@ South Alabama	1/14/16	*	31	2	6	.333	0	2	.000	1	3	.333	1	1	2	2.0	2	0	2	4	1	1	5	6.3				
Career Same	@ Troy	1/16/16	*	34	2	8	.250	0	0	.000	0	0	.000	0	1	1	1.9	1	0	5	0	0	0	4	6.1				
3FG Made	Little Rock	1/21/16	*	38	4	12	.333	0	2	.000	5	5	1.000	1	1	2	1.9	4	0	2	4	0	2	13	6.6				
Season 1, 3x, last at Georgia State (2/4/16)	Arkansas State	1/23/16	*	30	2	3	.667	0	0	.000	3	6	.500	0	2	2	1.9	4	0	8	0	1	1	7	6.6				
Career 1, 4x, last at Georgia State (2/4/16)	@ UL Lafayette	1/28/16	*	31	4	6	.667	1	2	.500	5	7	.714	0	3	3	2.0	3	0	5	1	0	4	14	7.1				
3FG Attempts	@ UL Monroe	1/30/16	*	27	2	8	.250	0	1	.000	1	1	1.000	1	1	2	2.0	0	0	1	1	0	0	5	6.9				
Season 4, at Georgia State (2/4/16)	@ Georgia State	2/4/16	*	35	4	7	.571	1	4	.250	0	1	.000	0	2	2	2.0	2	0	5	2	1	0	9	7.1				
Career Same	@ Georgia Southern	2/6/16	*	19	3	4	.750	0	0	.000	2	2	1.000	0	0	0	1.9	5	1	1	2	1	2	8	7.1				
FT Made	UT Arlington	2/9/16	*	28	0	7	.000	0	1	.000	3	4	.750	0	3	3	2.0	1	0	3	2	0	3	3	6.9				
Season 6, Georgia Southern (12/30/15)	Appalachian State	2/11/16	*	27	1	6	.167	0	0	.000	0	0	.000	1	2	3	2.0	3	0	5	0	1	1	2	6.7				
Career Same	UL Monroe	2/18/16	*	29	2	3	.667	0	0	.000	0	0	.000	0	1	1	2.0	1	0	2	0	0	0	4	6.6				
FT Attempts	UL Lafayette	2/20/16	*	37	5	9	.556	0	1	.000	4	6	.667	0	5	5	2.1	2	0	4	2	1	2	14	6.9				
Season 8, Georgia Southern (12/30/15)	Totals			24	743	58	151	.384	3	23	.130	46	64	.719	7	43	50	2.1	65	3	75	37	7	33	165	6.9			
Career Same																													
Blocks																													
Season 1, 7x, last UL Lafayette (2/20/16)																													
Career 1, 9x, last UL Lafayette (2/20/16)																													
Steals																													
Season 4, at UL Lafayette (1/28/16)																													
Career Same																													
Minutes																													
Season 41, at Washington State (12/18/15)																													
Career Same																													

CAREER STATISTICS																											
Year	GP	GS	Min	Avg	FG	FGA	Pct	3FG	FGA	Pct	FT	FTA	Pct	Off	Def	Tot	Avg	PF	FO	Ast	TO	Blk	Stl	Pts	Avg		
2014-15	31	1	377	12.2	12	41	.293	4	14	.286	13	17	.765	5	23	28	0.9	32	0	23	21	2	11	41	1.3		
2015-16	24	24	743	31.0	58	151	.384	3	23	.130	46	64	.719	7	43	50	2.1	65	3	75	37	7	33	165	6.9		
TOTAL	55	25	1120	20.4	70	192	.365	7	37	.189	59	81	.728	12	66	78	1.4	97	3	98	58	9	44	206	3.7		
SBC	GP	GS	Min	Avg	FG	FGA	Pct	3FG	FGA	Pct	FT	FTA	Pct	Off	Def	Tot	Avg	PF	FO	Ast	TO	Blk	Stl	Pts	Avg		
2014-15	20	0	252	12.6	8	25	.320	4	11	.364	9	12	.750	5	17	22	1.1	21	0	16	12	1	6	29	1.5		
2015-16	15	15	456	30.4	33	90	.367	2	16	.125	30	43	.698	5	32	37	2.5	39	2	52	24	6	20	98	6.5		
TOTAL	35	15	708	20.2	41	115	.357	6	27	.222	39	55	.709	10	49	59	1.7	60	2	68	36	7	26	127	3.6		



D'ANGELO WEST

#10

GUARD • 6-2 • 180 • FRESHMAN • HS
MAJOR: COMMUNICATION STUDIES

LOUISVILLE, KY.
TRINITY HS

SEASON & CAREER HIGHS

Points
Season9, UT Arlington (2/9/16)
CareerSame
Assists
Season1, 3x, last UT Arlington (2/9/16)
CareerSame
Rebounds
Season1, 5x, last at UL Lafayette (1/28/16)
CareerSame
FG Made
Season2, UT Arlington (2/9/16)
CareerSame
FG Attempts
Season6, Georgia State (1/2/16)
CareerSame
3FG Made
Season2, UT Arlington (2/9/16)
CareerSame
3FG Attempts
Season5, Georgia State (1/2/16)
CareerSame
FT Made
Season3, UT Arlington (2/9/16)
CareerSame
FT Attempts
Season3, UT Arlington (2/9/16)
CareerSame
Blocks
Season1, Howard Payne (12/21/15)
CareerSame
Steals
Season1, Georgia State (1/2/16)
CareerSame
Minutes
Season12, Howard Payne (12/21/15)
CareerSame

GAME-BY-GAME

Opponent	Date	GS	Min	FG	FGA	Pct	3FG	3FGA	Pct	FT	FTA	Pct	Off	Def	Tot	Avg	PF	FO	A	TO	Blk	Stl	Pts	Avg
UT Tyler	11/16/15	12	1	6	.167	1	5	.200	0	0	.000	0	1	1	1.0	3	0	0	0	0	0	3	3.0	
@ UTEP	11/21/15	6	0	2	.000	0	2	.000	1	2	.500	0	0	0	0.5	0	0	0	0	0	0	1	2.0	
@ McNeese State	11/28/15	1	0	0	.000	0	0	.000	0	0	.000	0	0	0	0.3	0	0	0	0	0	0	0	1.3	
UTSA	12/2/15	2	0	0	.000	0	0	.000	1	2	.500	0	0	0	0.3	1	0	0	0	0	0	1	1.3	
@ Texas A&M-CC	12/5/15														DNP									
UT-Rio Grande Valley	12/13/15	5	0	1	.000	0	0	.000	0	0	.000	0	0	0	0.2	0	0	0	0	0	0	0	1.0	
@ Prairie View A&M	12/16/15														DNP									
@ Washington State	12/18/15	0+	0	0	.000	0	0	.000	0	0	.000	0	0	0	0.2	0	0	0	0	0	0	0	0.8	
Howard Payne	12/21/15	12	1	4	.250	0	2	.000	0	0	.000	0	1	1	0.3	1	0	1	2	1	0	2	1.0	
Georgia Southern	12/30/15														DNP									
Georgia State	1/2/16	7	1	6	.167	0	5	.000	0	0	.000	1	0	1	0.4	1	0	1	1	0	1	2	1.1	
@ Appalachian State	1/9/16	8	1	1	1.000	1	1	1.000	1	1	1.000	0	0	0	0.3	1	0	0	2	0	0	4	1.4	
@ South Alabama	1/14/16														DNP									
@ Troy	1/16/16	3	0	1	.000	0	1	.000	0	0	.000	1	0	1	0.4	1	0	0	0	0	0	0	1.3	
Little Rock	1/21/16														DNP									
Arkansas State	1/23/16														DNP									
@ UL Lafayette	1/28/16	3	0	0	.000	0	0	.000	0	0	.000	0	1	1	0.5	0	0	0	0	0	0	0	1.2	
@ UL Monroe	1/30/16	3	0	0	.000	0	0	.000	0	0	.000	0	0	0	0.4	1	0	0	0	0	0	0	1.1	
@ Georgia State	2/4/16														DNP									
@ Georgia Southern	2/6/16														DNP									
UT Arlington	2/9/16	11	2	4	.500	2	4	.500	3	3	1.000	0	3	3	0.6	2	0	1	0	0	0	9	1.7	
Appalachian State	2/11/16														DNP									
UL Monroe	2/18/16	5	0	1	.000	0	1	.000	0	0	.000	0	0	0	0.6	0	0	0	0	0	0	0	1.6	
UL Lafayette	2/20/16														DNP									
Totals		0	78	6	26	.231	4	21	.190	6	8	.750	2	6	8	0.6	11	0	3	5	1	1	22	1.6

CAREER STATISTICS

Year	GP	GS	Min	Avg	FG	FGA	Pct	3FG	FGA	Pct	FT	FTA	Pct	Off	Def	Tot	Avg	PF	FO	Ast	TO	Blk	Stl	Pts	Avg
2015-16	14	0	78	5.6	6	26	.231	4	21	.190	6	8	.750	2	6	8	0.6	11	0	3	5	1	1	22	1.6
TOTAL	14	0	78	5.6	6	26	.231	4	21	.190	6	8	.750	2	6	8	0.6	11	0	3	5	1	1	22	1.6
SBC	GP	GS	Min	Avg	FG	FGA	Pct	3FG	FGA	Pct	FT	FTA	Pct	Off	Def	Tot	Avg	PF	FO	Ast	TO	Blk	Stl	Pts	Avg
2015-16	7	0	40	5.7	4	13	.308	3	12	.250	4	4	1.000	2	4	6	0.9	6	0	2	3	0	1	15	2.1
TOTAL	7	0	40	5.7	4	13	.308	3	12	.250	4	4	1.000	2	4	6	0.9	6	0	2	3	0	1	15	2.1



K.J. MALVEAU

#14

GUARD • 5-10 • 180 • FRESHMAN • HS
MAJOR: EXPLORATORY STUDIES

FORT WORTH, TEXAS
EVERMAN HS

SEASON & CAREER HIGHS

Points
Season 13, Howard Payne (12/21/15)
Career Same

Assists
Season 2, 3x, last at UL Monroe (1/30/16)
Career Same

Rebounds
Season 4, Howard Payne (12/21/15)
Career Same

FG Made
Season 5, Howard Payne (12/21/15)
Career Same

FG Attempts
Season 7, Howard Payne (12/21/15)
Career Same

3FG Made
Season 3, Howard Payne (12/21/15)
Career Same

3FG Attempts
Season 4, Howard Payne (12/21/15)
Career Same

FT Made
Season 3, at McNeese State (11/28/15)
Career Same

FT Attempts
Season 4, at McNeese State (11/28/15)
Career Same

Blocks
Season -
Career -

Steals
Season 2, Appalachian State (2/11/16)
Career Same

Minutes
Season 21, at Georgia Southern (2/6/16)
Career Same

GAME-BY-GAME

Opponent	Date	GS	Min	FG	FGA	Pct	3FG	3FGA	Pct	FT	FTA	Pct	Off	Def	Tot	Avg	PF	FO	A	TO	Blk	Stl	Pts	Avg
UT Tyler	11/16/15	10	2	4	.500	2	4	.500	0	0	.000	0	2	2	2.0	1	0	2	2	0	0	6	6.0	
@ UTEP	11/21/15	1	0	0	.000	0	0	.000	0	0	.000	0	0	0	1.0	0	0	0	0	0	0	0	3.0	
@ McNeese State	11/28/15	5	0	0	.000	0	0	.000	3	4	.750	0	0	0	0.7	0	0	0	3	0	0	3	3.0	
UTSA	12/2/15	5	1	2	.500	0	0	.000	0	0	.000	0	0	0	0.5	0	0	0	0	0	0	2	2.8	
@ Texas A&M-CC	12/5/15	3	0	1	.000	0	0	.000	0	0	.000	0	0	0	0.4	0	0	0	1	0	0	0	2.2	
UT-Rio Grande Valley	12/13/15	6	0	1	.000	0	1	.000	0	0	.000	0	0	0	0.3	0	0	0	0	0	0	0	1.8	
@ Prairie View A&M	12/16/15	8	0	2	.000	0	1	.000	0	0	.000	0	1	1	0.4	1	0	0	0	0	1	0	1.6	
@ Washington State	12/18/15	11	1	1	1.000	1	1	1.000	0	0	.000	0	0	0	0.4	0	0	0	0	0	1	3	1.8	
Howard Payne	12/21/15	18	5	7	.714	3	4	.750	0	1	.000	0	4	4	0.8	3	0	0	3	0	1	13	3.0	
Georgia Southern	12/30/15	12	0	1	.000	0	1	.000	0	0	.000	0	0	0	0.7	0	0	2	0	0	0	0	2.7	
Georgia State	1/2/16	2	0	0	.000	0	0	.000	0	0	.000	0	0	0	0.6	1	0	0	1	0	0	0	2.5	
@ Appalachian State	1/9/16	8	0	2	.000	0	0	.000	0	0	.000	0	2	2	0.8	0	0	1	1	0	0	0	2.3	
@ South Alabama	1/14/16	9	2	2	1.000	2	2	1.000	0	0	.000	0	0	0	0.7	1	0	0	0	0	0	6	2.5	
@ Troy	1/16/16	6	1	1	1.000	1	1	1.000	0	0	.000	0	1	1	0.7	0	0	0	0	0	0	3	2.6	
Little Rock	1/21/16	7	0	0	.000	0	0	.000	0	0	.000	0	1	1	0.7	0	0	1	0	0	0	0	2.4	
Arkansas State	1/23/16	10	0	1	.000	0	1	.000	0	0	.000	0	0	0	0.7	0	0	1	1	0	0	0	2.3	
@ UL Lafayette	1/28/16	6	0	1	.000	0	1	.000	2	2	1.000	0	0	0	0.6	1	0	1	1	0	0	2	2.2	
@ UL Monroe	1/30/16	12	0	0	.000	0	0	.000	0	0	.000	0	0	0	0.6	0	0	2	1	0	0	0	2.1	
@ Georgia State	2/4/16	1	0	0	.000	0	0	.000	0	0	.000	0	0	0	0.6	0	0	0	1	0	0	0	2.0	
@ Georgia Southern	2/6/16	21	0	5	.000	0	3	.000	0	0	.000	0	1	1	0.6	1	0	1	0	0	0	0	1.9	
UT Arlington	2/9/16	10	0	2	.000	0	1	.000	0	0	.000	0	1	1	0.6	2	0	0	0	0	1	0	1.8	
Appalachian State	2/11/16	13	1	3	.333	0	1	.000	2	2	1.000	0	1	1	0.6	0	0	1	1	0	2	4	1.9	
UL Monroe	2/18/16	9	1	1	1.000	1	1	1.000	0	0	.000	0	1	1	0.7	0	0	1	2	0	0	3	2.0	
UL Lafayette	2/20/16	3	1	1	1.000	1	1	1.000	0	0	.000	0	0	0	0.6	1	0	0	0	0	0	3	2.0	
Totals		0	196	15	38	.395	11	24	.458	7	9	.778	0	15	15	0.6	12	0	13	18	0	6	48	2.0

CAREER STATISTICS

Year	GP	GS	Min	Avg	FG	FGA	Pct	3FG	FGA	Pct	FT	FTA	Pct	Off	Def	Tot	Avg	PF	FO	Ast	TO	Blk	Stl	Pts	Avg
2015-16	24	0	196	8.2	15	38	.395	11	24	.458	7	9	.778	0	15	15	0.6	12	0	13	18	0	6	48	2.0
TOTAL	24	0	196	8.2	15	38	.395	11	24	.458	7	9	.778	0	15	15	0.6	12	0	13	18	0	6	48	2.0

SBC	GP	GS	Min	Avg	FG	FGA	Pct	3FG	FGA	Pct	FT	FTA	Pct	Off	Def	Tot	Avg	PF	FO	Ast	TO	Blk	Stl	Pts	Avg
2015-16	15	0	129	8.6	6	20	.300	5	13	.385	4	4	1.000	0	8	8	0.5	7	0	11	9	0	3	21	1.4
TOTAL	15	0	129	8.6	6	20	.300	5	13	.385	4	4	1.000	0	8	8	0.5	7	0	11	9	0	3	21	1.4



ETHAN MONTALVO

#15

GUARD • 6-0 • 175 • SENIOR • 1L
MAJOR: ECONOMICS

OMAHA, NEB.
OMAHA BRYAN HS/NORTH PLATTE CC

SEASON & CAREER HIGHS

Points

Season 28, Little Rock (1/21/16)
Career Same

Assists

Season 4, at Washington State (12/18/15)
Career 6, at Georgia State (1/5/15)

Rebounds

Season 5, at UTEP (11/21/15)
Career Same

FG Made

Season 7, Little Rock (1/21/16)
Career Same

FG Attempts

Season 16, at South Alabama (1/14/16)
Career Same

3FG Made

Season 5, 2x, last Arkansas State (1/23/16)
Career 6, at Troy (12/30/14)

3FG Attempts

Season 12, at South Alabama (1/14/16)
Career Same

FT Made

Season 9, Little Rock (1/21/16)
Career Same

FT Attempts

Season 9, Little Rock (1/21/16)
Career Same

Blocks

Season -
Career 1, 4x, last vs. UL Lafayette (3/13/15)

Steals

Season 8, UTSA (12/2/15)
Career Same

Minutes

Season 39, Little Rock (1/21/16)
Career Same

GAME-BY-GAME

Opponent	Date	GS	Min	FG	FGA	Pct	3FG	3FGA	Pct	FT	FTA	Pct	Off	Def	Tot	Avg	PF	FO	A	TO	Blk	Stl	Pts	Avg
UT Tyler	11/16/15	*	12	1	3	.333	1	2	.500	0	0	.000	0	1	1	1.0	3	0	2	1	0	0	3	3.0
@ UTEP	11/21/15	*	37	4	9	.444	4	7	.571	4	4	1.000	1	4	5	3.0	0	0	1	4	0	0	16	9.5
@ McNeese State	11/28/15	*	34	4	11	.364	2	5	.400	1	1	1.000	0	4	4	3.3	2	0	3	1	0	1	11	10.0
UTSA	12/2/15	*	25	2	6	.333	1	3	.333	1	2	.500	1	1	2	3.0	2	0	3	0	0	8	6	9.0
@ Texas A&M-CC	12/5/15	*	34	1	8	.125	1	5	.200	1	2	.500	0	2	2	2.8	1	0	2	1	0	4	4	8.0
UT-Rio Grande Valley	12/13/15	*	28	4	8	.500	1	4	.250	0	0	.000	0	0	0	2.3	0	0	0	0	0	3	9	8.2
@ Prairie View A&M	12/16/15	*	29	6	13	.462	2	6	.333	4	4	1.000	0	3	3	2.4	2	0	1	2	0	2	18	9.6
@ Washington State	12/18/15	*	36	2	9	.222	1	4	.250	8	8	1.000	0	0	0	2.1	1	0	4	1	0	2	13	10.0
Howard Payne	12/21/15	*	13	1	5	.200	0	3	.000	0	0	.000	0	3	3	2.2	0	0	0	0	0	0	2	9.1
Georgia Southern	12/30/15	*	34	6	12	.500	4	8	.500	3	3	1.000	0	3	3	2.3	0	0	1	1	0	0	19	10.1
Georgia State	1/2/16	*	4	0	0	.000	0	0	.000	0	0	.000	0	0	0	2.1	0	0	0	0	0	0	0	9.2
@ Appalachian State	1/9/16															DNP								
@ South Alabama	1/14/16	*	33	6	16	.375	4	12	.333	2	3	.667	1	2	3	2.2	2	0	2	2	0	1	18	9.9
@ Troy	1/16/16	*	32	3	8	.375	2	6	.333	2	5	.400	0	1	1	2.1	0	0	0	0	0	0	10	9.9
Little Rock	1/21/16	*	39	7	14	.500	5	10	.500	9	9	1.000	0	3	3	2.1	2	0	2	1	0	0	28	11.2
Arkansas State	1/23/16	*	36	5	13	.385	5	7	.714	0	0	.000	0	4	4	2.3	1	0	2	1	0	0	15	11.5
@ UL Lafayette	1/28/16	*	20	1	3	.333	1	2	.500	0	0	.000	0	0	0	2.1	1	0	0	1	0	0	3	10.9
@ UL Monroe	1/30/16	*	28	1	4	.250	0	3	.000	0	0	.000	0	3	3	2.2	0	0	1	0	0	0	2	10.4
@ Georgia State	2/4/16	*	37	5	12	.417	4	10	.400	0	0	.000	0	1	1	2.1	2	0	1	2	0	1	14	10.6
@ Georgia Southern	2/6/16	*	33	4	13	.308	2	10	.200	6	6	1.000	0	0	0	2.0	1	0	1	5	0	0	16	10.9
UT Arlington	2/9/16	*	20	0	7	.000	0	5	.000	0	0	.000	0	0	0	1.9	1	0	1	0	0	1	0	10.4
Appalachian State	2/11/16	*	36	6	14	.429	4	9	.444	0	0	.000	0	3	3	2.0	1	0	1	1	0	3	16	10.6
UL Monroe	2/18/16	*	24	3	5	.600	3	5	.600	4	5	.800	0	1	1	1.9	0	0	0	2	0	1	13	10.7
UL Lafayette	2/20/16	*	37	3	13	.231	1	10	.100	1	2	.500	0	2	2	1.9	3	0	2	2	0	0	8	10.6
Totals		23	661	75	206	.364	48	136	.353	46	54	.852	3	41	44	1.9	25	0	30	28	0	27	244	10.6

CAREER STATISTICS

Year	GP	GS	Min	Avg	FG	FGA	Pct	3FG	FGA	Pct	FT	FTA	Pct	Off	Def	Tot	Avg	PF	FO	Ast	TO	Blk	Stl	Pts	Avg
2014-15	31	11	664	21.4	73	209	.349	51	162	.315	41	51	.804	3	38	41	1.3	46	2	42	37	4	18	238	7.7
2015-16	23	23	661	28.7	75	206	.364	48	136	.353	46	54	.852	3	41	44	1.9	25	0	30	28	0	27	244	10.6
TOTAL	54	34	1325	24.5	148	415	.357	99	298	.332	87	105	.829	6	79	85	1.6	71	2	72	65	4	45	482	8.9
SBC	GP	GS	Min	Avg	FG	FGA	Pct	3FG	FGA	Pct	FT	FTA	Pct	Off	Def	Tot	Avg	PF	FO	Ast	TO	Blk	Stl	Pts	Avg
2014-15	20	11	487	24.4	51	153	.333	39	123	.317	36	42	.857	2	30	32	1.6	34	2	32	27	2	13	177	8.9
2015-16	14	14	413	29.5	50	134	.373	35	97	.361	27	33	.818	1	23	24	1.7	14	0	14	18	0	7	162	11.6
TOTAL	34	25	900	26.5	101	287	.352	74	220	.336	63	75	.840	3	53	56	1.6	48	2	46	45	2	20	339	10.0



EMARI GANT

#21

FORWARD • 6-8 • 225 • SENIOR • 2L
MAJOR: GENERAL STUDIES

LOS ANGELES, CALIF.
ST. BERNARD'S HS/BARSTOW CC

SEASON & CAREER HIGHS

Points	
Season	26, Appalachian State (2/11/16)
Career	Same
Assists	
Season	6, at UL Monroe (1/30/16)
Career	7, Huston-Tillotson (12/20/14)
Rebounds	
Season	15, at McNeese State (11/28/15)
Career	Same
FG Made	
Season	10, 2x, last Appalachian State (2/11/16)
Career	11, South Alabama (1/15/15)
FG Attempts	
Season	19, at Washington State (12/18/15)
Career	Same
3FG Made	
Season	-
Career	1, at Georgia State (1/15/15)
3FG Attempts	
Season	1, at Washington State (12/18/15)
Career	1, 2x, last at Washington State (12/18/15)
FT Made	
Season	8, Georgia Southern (12/30/15)
Career	8, 2x, last Georgia Southern (12/30/15)
FT Attempts	
Season	10, Georgia Southern (12/30/15)
Career	10, 3x, last Georgia Southern (12/30/15)
Blocks	
Season	2, 3x, last UL Monroe (2/18/16)
Career	2, 8x, last UL Monroe (2/18/16)
Steals	
Season	3, UTSA (12/2/15)
Career	4, 2x, last at Troy (12/30/14)
Minutes	
Season	39, at Washington State (12/18/15)
Career	Same

GAME-BY-GAME

Opponent	Date	GS	Min	FG	FGA	Pct	3FG	3FGA	Pct	FT	FTA	Pct	Off	Def	Tot	Avg	PF	FO	A	TO	Blk	Stl	Pts	Avg
UT Tyler	11/16/15																							
@ UTEP	11/21/15	*	31	4	9	.444	0	0	.000	3	4	.750	1	3	4	4.0	2	0	0	2	2	0	11	11.0
@ McNeese State	11/28/15	*	21	4	12	.333	0	0	.000	5	7	.714	5	10	15	9.5	2	0	1	4	2	0	13	12.0
UTSA	12/2/15	*	21	6	12	.500	0	0	.000	4	5	.800	2	3	5	8.0	1	0	0	3	1	3	16	13.3
@ Texas A&M-CC	12/5/15																							
UT-Rio Grande Valley	12/13/15	*	28	5	9	.556	0	0	.000	3	7	.429	2	4	6	7.5	0	0	4	2	1	2	13	13.3
@ Prairie View A&M	12/16/15	*	27	7	14	.500	0	0	.000	1	2	.500	3	8	11	8.2	2	0	2	0	0	1	15	13.6
@ Washington State	12/18/15	*	39	10	19	.526	0	1	.000	4	6	.667	1	6	7	8.0	4	0	0	1	0	2	24	15.3
7Howard Payne	12/21/15	*	14	7	10	.700	0	0	.000	4	5	.800	3	4	7	7.9	2	0	0	0	1	2	18	15.7
Georgia Southern	12/30/15	*	22	4	6	.667	0	0	.000	8	10	.800	0	4	4	7.4	4	0	0	2	0	0	16	15.8
Georgia State	1/2/16	*	27	3	10	.300	0	0	.000	2	2	1.000	2	5	7	7.3	2	0	1	2	0	0	8	14.9
@ Appalachian State	1/9/16	*	18	4	9	.444	0	0	.000	2	4	.500	3	1	4	7.0	2	0	0	1	0	0	10	14.4
@ South Alabama	1/14/16	*	32	8	13	.615	0	0	.000	6	8	.750	8	6	14	7.6	3	0	4	1	1	0	22	15.1
@ Troy	1/16/16	*	33	6	10	.600	0	0	.000	1	1	1.000	2	6	8	7.7	2	0	2	2	0	2	13	14.9
Little Rock	1/21/16	*	10	1	2	.500	0	0	.000	0	0	.000	1	2	3	7.3	5	1	1	1	0	1	2	13.9
Arkansas State	1/23/16	*	28	4	10	.400	0	0	.000	1	2	.500	1	6	7	7.3	1	0	1	2	0	1	9	13.6
@ UL Lafayette	1/28/16	*	20	3	11	.273	0	0	.000	0	0	.000	0	3	3	7.0	4	0	1	1	1	0	6	13.1
@ UL Monroe	1/30/16	*	27	5	7	.714	0	1	.000	0	0	.000	4	4	8	7.1	2	0	6	4	0	0	10	12.9
@ Georgia State	2/4/16	*	32	2	7	.286	0	0	.000	1	2	.500	3	8	11	7.3	3	0	1	2	0	0	5	12.4
@ Georgia Southern	2/6/16	*	32	5	9	.556	0	0	.000	4	4	1.000	6	5	11	7.5	2	0	1	2	0	2	14	12.5
UT Arlington	2/9/16	*	23	2	7	.286	0	0	.000	2	2	1.000	3	3	6	7.4	1	0	1	3	1	0	6	12.2
Appalachian State	2/11/16	*	31	10	16	.625	0	0	.000	6	6	1.000	7	5	12	7.7	1	0	1	0	0	1	26	12.9
UL Monroe	2/18/16	*	30	5	11	.455	0	0	.000	4	5	.800	1	2	3	7.4	2	0	2	1	2	0	14	12.9
UL Lafayette	2/20/16	*	33	6	9	.667	0	0	.000	7	9	.778	3	5	8	7.5	3	0	1	2	1	0	19	13.2
Totals		22	579	111	222	.500	0	2	.000	68	91	.747	61	103	164	7.5	50	1	30	38	13	17	290	13.2

CAREER STATISTICS

Year	GP	GS	Min	Avg	FG	FGA	Pct	3FG	FGA	Pct	FT	FTA	Pct	Off	Def	Tot	Avg	PF	FO	Ast	TO	Blk	Stl	Pts	Avg
2013-14	31	30	741	23.9	118	216	.546	0	0	.000	40	70	.571	61	95	156	5.0	82	3	38	51	20	18	276	8.9
2014-15	30	30	917	30.6	145	305	.475	1	1	1.000	91	142	.641	75	132	207	6.9	89	6	49	77	17	37	382	12.7
2015-16	22	22	579	26.3	111	222	.500	0	2	.000	68	91	.747	61	103	164	7.5	50	1	30	38	13	17	290	13.2
TOTAL	83	82	2237	27.0	374	743	.503	1	3	.333	199	303	.657	197	330	527	6.3	221	10	117	166	50	72	948	11.4
SBC	GP	GS	Min	Avg	FG	FGA	Pct	3FG	FGA	Pct	FT	FTA	Pct	Off	Def	Tot	Avg	PF	FO	Ast	TO	Blk	Stl	Pts	Avg
2013-14	18	17	411	22.8	59	114	.518	0	0	.000	22	37	.595	26	54	80	4.4	46	2	16	30	12	6	140	7.8
2014-15	20	20	611	30.6	89	206	.432	1	1	1.000	60	91	.659	54	84	138	6.9	60	4	21	54	9	18	239	12.0
2015-16	15	15	398	26.5	68	137	.496	0	1	.000	44	55	.800	44	65	109	7.3	37	1	23	26	6	7	180	12.0
TOTAL	53	52	1420	26.8	216	457	.473	1	2	.500	126	183	.689	124	203	327	6.2	143	7	60	110	27	31	559	10.5



ANTHONY ROBERSON

#23

FORWARD • 6-5 • 180 • JUNIOR • TR
MAJOR: APPLIED ARTS AND SCIENCES

CONVERSE, TEXAS
WEATHERFORD COLLEGE/KAREN WAGNER HS

SEASON & CAREER HIGHS

Points
Season 12, at Washington State (12/18/15)
Career Same

Assists
Season 3, 2x, last Howard Payne (12/21/15)
Career Same

Rebounds
Season 12, 2x last Georgia Southern (12/30/15)
Career Same

FG Made
Season 6, at Washington State (12/18/15)
Career Same

FG Attempts
Season 10, at Washington State (12/18/15)
Career Same

3FG Made
Season 1, UL Lafayette (2/20/16)
Career Same

3FG Attempts
Season 1, 4x, last UL Lafayette (2/20/16)
Career Same

FT Made
Season 6, Arkansas State (1/23/16)
Career Same

FT Attempts
Season 7, Arkansas State (1/23/16)
Career Same

Blocks
Season 4, Georgia Southern (12/30/15)
Career Same

Steals
Season 2, 4x, last UT Arlington (2/9/16)
Career Same

Minutes
Season 38, at Washington State (12/18/15)
Career Same

GAME-BY-GAME

Opponent	Date	GS	Min	FG	FGA	Pct	3FG	3FGA	Pct	FT	FTA	Pct	Off	Def	Tot	Avg	PF	FO	A	TO	Blk	Stl	Pts	Avg
UT Tyler	11/16/15		25	2	4	.500	0	0	.000	3	6	.500	5	3	8	8.0	2	0	3	0	0	1	7	7.0
@ UTEP	11/21/15												DNP											
@ McNeese State	11/28/15	*	36	3	6	.500	0	0	.000	2	3	.667	3	3	6	7.0	2	0	1	1	0	0	8	8.5
UTSA	12/2/15	*	27	5	9	.556	0	1	.000	0	1	.000	4	2	6	6.7	3	0	0	1	0	2	10	8.3
@ Texas A&M-CC	12/5/15	*	24	0	2	.000	0	0	.000	2	2	1.000	1	5	6	6.5	5	1	0	0	1	0	2	6.8
UT-Rio Grande Valley	12/13/15	*	17	3	3	1.000	0	0	.000	0	2	.000	2	1	3	5.8	4	0	0	1	0	0	6	6.6
@ Prairie View A&M	12/16/15	*	33	2	4	.500	0	0	.000	1	2	.500	5	7	12	6.8	1	0	1	2	1	2	5	6.3
@ Washington State	12/18/15	*	38	6	10	.600	0	1	.000	0	1	.000	3	0	3	6.3	3	0	2	1	3	1	12	7.1
Howard Payne	12/21/15	*	18	3	4	.750	0	0	.000	1	1	1.000	2	2	4	6.0	1	0	3	0	0	0	7	7.1
Georgia Southern	12/30/15	*	23	2	5	.400	0	0	.000	1	2	.500	6	6	12	6.7	5	1	2	0	4	1	5	6.9
Georgia State	1/2/16	*	18	1	1	1.000	0	0	.000	3	6	.500	2	2	4	6.4	4	0	2	0	0	0	5	6.7
@ Appalachian State	1/9/16	*	23	0	2	.000	0	0	.000	1	4	.250	2	1	3	6.1	4	0	0	0	1	2	1	6.2
@ South Alabama	1/14/16	*	32	3	8	.375	0	0	.000	1	2	.500	2	6	8	6.3	2	0	1	1	1	1	7	6.3
@ Troy	1/16/16	*	18	0	0	.000	0	0	.000	1	2	.500	1	2	3	6.0	4	0	0	1	0	1	1	5.8
Little Rock	1/21/16		17	0	1	.000	0	0	.000	0	1	.000	2	4	6	6.0	2	0	1	0	0	0	0	5.4
Arkansas State	1/23/16		22	1	3	.333	0	0	.000	6	7	.857	3	3	6	6.0	3	0	0	0	0	0	8	5.6
@ UL Lafayette	1/28/16		19	1	3	.333	0	1	.000	0	0	.000	1	2	3	5.8	1	0	0	0	0	0	2	5.4
@ UL Monroe	1/30/16												DNP											
@ Georgia State	2/4/16		5	0	2	.000	0	0	.000	0	0	.000	1	0	1	5.5	1	0	0	0	0	0	0	5.1
@ Georgia Southern	2/6/16		17	1	1	1.000	0	0	.000	1	2	.500	2	5	7	5.6	0	0	1	0	0	0	3	4.9
UT Arlington	2/9/16		17	1	2	.500	0	0	.000	1	3	.333	3	1	4	5.5	3	0	0	2	1	2	3	4.8
Appalachian State	2/11/16		24	3	3	1.000	0	0	.000	1	3	.333	0	3	3	5.4	2	0	0	1	1	1	7	5.0
UL Monroe	2/18/16		19	0	3	.000	0	0	.000	2	2	1.000	3	5	8	5.5	2	0	1	2	2	0	2	4.8
UL Lafayette	2/20/16		14	1	1	1.000	1	1	1.000	0	0	.000	2	2	4	5.5	2	0	0	2	1	0	3	4.7
Totals		12	486	38	77	.494	1	4	.250	27	52	.519	55	65	120	5.5	56	2	18	15	16	14	104	4.7

CAREER STATISTICS

Year	GP	GS	Min	Avg	FG	FGA	Pct	3FG	FGA	Pct	FT	FTA	Pct	Off	Def	Tot	Avg	PF	FO	Ast	TO	Blk	Stl	Pts	Avg
2015-16	22	12	486	22.1	38	77	.494	1	4	.250	27	52	.519	55	65	120	5.5	56	2	18	15	16	14	104	4.7
TOTAL	22	12	486	22.1	38	77	.494	1	4	.250	27	52	.519	55	65	120	5.5	56	2	18	15	16	14	104	4.7

Year	GP	GS	Min	Avg	FG	FGA	Pct	3FG	FGA	Pct	FT	FTA	Pct	Off	Def	Tot	Avg	PF	FO	Ast	TO	Blk	Stl	Pts	Avg
2015-16	14	5	268	19.1	14	35	.400	1	2	.500	18	34	.529	30	42	72	5.1	35	1	8	9	11	8	47	3.4
TOTAL	14	5	268	19.1	14	35	.400	1	2	.500	18	34	.529	30	42	72	5.1	35	1	8	9	11	8	47	3.4



CAMERON NAYLOR

#24

FORWARD • 6-7 • 22 • SENIOR • 1L
MAJOR: COMMUNICATION STUDIES

JACKSONVILLE, FLA.
PROVIDENCE DAY SCHOOL/TALLAHASSEE CC

SEASON & CAREER HIGHS

Points
Season20, Arkansas State (1/23/16)
CareerSame

Assists
Season 4, UT-Rio Grande Valley (12/13/15)
CareerSame

Rebounds
Season10, UL Monroe (2/18/16)
Career 16, Howard Payne (11/30/14)

FG Made
Season 8, Arkansas State (1/23/16)
Career 9, at Georgia State (1/5/15)

FG Attempts
Season14, 2x, last UL Monroe (2/18/16)
Career16, at Georgia State (1/5/15)

3FG Made
Season 1, 5x, last UL Monroe (2/18/16)
CareerSame

3FG Attempts
Season 2, 2x, last UL Monroe (2/18/16)
CareerSame

FT Made
Season 7, Howard Payne (12/21/15)
CareerSame

FT Attempts
Season8, 2x, last Howard Payne (12/21/15)
CareerSame

Blocks
Season 2, UL Lafayette (2/20/16)
Career3, Lamar (11/19/14)

Steals
Season 2, Howard Payne (12/21/15)
Career 2, 2x, last Howard Payne (12/21/15)

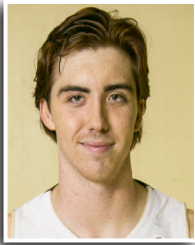
Minutes
Season 32, Little Rock (1/21/16)
Career38, at Georgia State (1/5/15)

GAME-BY-GAME

Opponent	Date	GS	Min	FG	FGA	Pct	3FG	3FGA	Pct	FT	FTA	Pct	Off	Def	Tot	Avg	PF	FO	A	TO	Blk	Stl	Pts	Avg	
UT Tyler	11/16/15	*	20	3	5	.600	0	0	.000	1	4	.250	2	1	3	3.0	2	0	1	3	0	0	7	7.0	
@ UTEP	11/21/15	*	30	5	12	.417	0	0	.000	5	6	.833	3	5	8	5.5	3	0	0	1	0	1	15	11.0	
@ McNeese State	11/28/15												DNP												
UTSA	12/2/15		18	5	8	.625	0	0	.000	4	4	1.000	1	3	4	5.0	2	0	0	0	0	0	14	12.0	
@ Texas A&M-CC	12/5/15		21	0	4	.000	0	0	.000	4	8	.500	2	4	6	5.3	2	0	0	2	0	0	4	10.0	
UT-Rio Grande Valley	12/13/15		24	5	9	.556	0	0	.000	0	0	.000	2	5	7	5.6	5	1	4	3	0	0	10	10.0	
@ Prairie View A&M	12/16/15		10	1	5	.200	0	0	.000	0	0	.000	1	2	3	5.2	3	0	0	2	0	0	2	8.7	
@ Washington State	12/18/15		20	1	2	.500	0	0	.000	0	1	.000	1	3	4	5.0	4	0	1	0	0	0	2	7.7	
Howard Payne	12/21/15		18	3	4	.750	0	0	.000	7	8	.875	3	4	7	5.3	1	0	0	2	0	2	13	8.4	
Georgia Southern	12/30/15		12	2	3	.667	0	0	.000	0	0	.000	0	0	0	4.7	4	0	0	1	0	0	4	7.9	
Georgia State	1/2/16		27	3	7	.429	0	1	.000	2	2	1.000	2	5	7	4.9	2	0	0	2	0	0	8	7.9	
@ Appalachian State	1/9/16		22	5	10	.500	1	1	1.000	3	6	.500	0	2	2	4.6	1	0	0	2	0	1	14	8.5	
@ South Alabama	1/14/16		24	2	3	.667	0	0	.000	0	0	.000	2	3	5	4.7	5	1	2	4	0	0	4	8.1	
@ Troy	1/16/16		24	5	11	.455	1	2	.500	1	2	.500	0	3	3	4.5	2	0	0	0	0	1	12	8.4	
Little Rock	1/21/16	*	32	1	5	.200	0	0	.000	3	4	.750	0	5	5	4.6	4	0	0	2	1	0	5	8.1	
Arkansas State	1/23/16	*	27	8	12	.667	1	1	1.000	3	4	.750	1	8	9	4.9	1	0	1	1	0	1	20	8.9	
@ UL Lafayette	1/28/16	*	16	1	4	.250	0	1	.000	2	2	1.000	0	0	0	4.6	3	0	0	0	0	0	4	8.6	
@ UL Monroe	1/30/16	*	32	5	14	.357	0	0	.000	2	2	1.000	2	4	6	4.6	4	0	0	0	1	0	12	8.8	
@ Georgia State	2/4/16	*	34	5	8	.625	1	1	1.000	4	6	.667	1	7	8	4.8	1	0	0	0	0	2	15	9.2	
@ Georgia Southern	2/6/16	*	32	5	13	.385	0	0	.000	0	4	.000	2	4	6	4.9	2	0	0	1	1	1	10	9.2	
UT Arlington	2/9/16	*	19	2	5	.400	0	0	.000	2	2	1.000	0	1	1	4.7	2	0	0	3	1	0	6	9.1	
Appalachian State	2/11/16	*	16	1	3	.333	0	0	.000	1	2	.500	0	0	0	4.5	2	0	0	1	0	0	3	8.8	
UL Monroe	2/18/16	*	33	6	14	.429	1	2	.500	3	5	.600	3	7	10	4.7	2	0	0	2	0	0	16	9.1	
UL Lafayette	2/20/16	*	28	2	8	.250	0	0	.000	1	2	.500	0	8	8	4.9	2	0	2	1	2	0	5	8.9	
Totals			12	539	76	169	.450	5	9	.556	48	74	.649	28	84	112	4.9	59	2	11	33	6	9	205	8.9

CAREER STATISTICS

Year	GP	GS	Min	Avg	FG	FGA	Pct	3FG	FGA	Pct	FT	FTA	Pct	Off	Def	Tot	Avg	PF	FO	Ast	TO	Blk	Stl	Pts	Avg
2014-15	30	16	722	24.1	98	230	.426	0	6	.000	50	67	.746	45	103	148	4.9	51	2	14	46	9	10	246	8.2
2015-16	23	12	539	23.4	76	169	.450	5	9	.556	48	74	.649	28	84	112	4.9	59	2	11	33	6	9	205	8.9
TOTAL	53	28	1261	23.8	174	399	.436	5	15	.333	98	141	.965	73	187	260	4.9	110	4	25	79	15	19	451	8.5
SBC	GP	GS	Min	Avg	FG	FGA	Pct	3FG	FGA	Pct	FT	FTA	Pct	Off	Def	Tot	Avg	PF	FO	Ast	TO	Blk	Stl	Pts	Avg
2014-15	20	14	481	24.1	59	152	.388	0	4	.000	34	45	.756	30	68	98	4.9	35	2	8	27	6	3	152	7.6
2015-16	15	10	378	25.2	53	120	.442	5	9	.556	27	43	.628	13	57	70	4.7	37	1	5	20	6	6	138	9.2
TOTAL	35	24	859	24.5	112	272	.412	5	13	.385	61	88	.693	43	125	168	4.8	72	3	13	47	12	9	290	8.3



AUSTIN EVANS

#31

FORWARD • 6-11 • 230 • SOPHOMORE • 1L
MAJOR: BUSINESS MANAGEMENT

PLANO, TEXAS
PLANO HS

SEASON & CAREER HIGHS

Points

Season 3, at UL Lafayette (11/28/16)

Career 6, Huston-Tillotson (12/20/14)

Assists

Season 1, UT Tyler (11/16/15)

Career Same

Rebounds

Season 3, UT Tyler (11/16/15)

Career 3, 2x, last UT Tyler (11/16/15)

FG Made

Season 1, 3x, last UT Arlington (2/9/16)

Career 3, Huston-Tillotson (12/20/14)

FG Attempts

Season 1, 3x, last UT Arlington (2/9/16)

Career 4, Huston-Tillotson (12/20/14)

3FG Made

Season -

Career -

3FG Attempts

Season -

Career -

FT Made

Season 2, UT Tyler (11/16/15)

Career Same

FT Attempts

Season 4, UT Tyler (11/16/15)

Career Same

Blocks

Season 1, at Appalachian State (1/9/16)

Career 1, 2x, last at Appalachian State (1/9/16)

Steals

Season -

Career -

Minutes

Season 7, UT Tyler (11/16/15)

Career 12, Howard Payne (11/30/14)

GAME-BY-GAME

Opponent	Date	GS	Min	FG	FGA	Pct	3FG	3FGA	Pct	FT	FTA	Pct	Off	Def	Tot	Avg	PF	FO	A	TO	Blk	Stl	Pts	Avg	
UT Tyler	11/16/15		7	0	0	.000	0	0	.000	2	4	.500	1	2	3	3.0	5	1	1	1	0	0	2	2.0	
@ UTEP	11/21/15		0+	0	0	.000	0	0	.000	0	0	.000	0	0	0	1.5	0	0	0	0	0	0	0	1.5	
@ McNeese State	11/28/15		1	0	0	.000	0	0	.000	0	0	.000	0	0	0	1.0	1	0	0	0	0	0	0	0.7	
UTSA	12/2/15		1	0	0	.000	0	0	.000	0	0	.000	0	1	1	1.0	1	0	0	0	0	0	0	0.5	
@ Texas A&M-CC	12/5/15											DNP													
UT-Rio Grande Valley	12/13/15											DNP													
@ Prairie View A&M	12/16/15											DNP													
@ Washington State	12/18/15											DNP													
Howard Payne	12/21/15											DNP													
Georgia Southern	12/30/15											DNP													
Georgia State	1/2/16											DNP													
@ Appalachian State	1/9/16		3	1	1	1.000	0	0	.000	0	0	.000	1	0	1	1.0	0	0	0	0	1	0	2	0.8	
@ South Alabama	1/14/16											DNP													
@ Troy	1/16/16		1	0	0	.000	0	0	.000	0	0	.000	0	0	0	0.8	0	0	0	0	0	0	0	0.7	
Little Rock	1/21/16											DNP													
Arkansas State	1/23/16											DNP													
@ UL Lafayette	1/28/16		3	1	1	1.000	0	0	.000	1	1	1.000	0	1	1	0.9	1	0	0	0	0	0	3	1.0	
@ UL Monroe	1/30/16		0+	0	0	.000	0	0	.000	0	0	.000	0	0	0	0.8	0	0	0	0	0	0	0	0.9	
@ Georgia State	2/4/16											DNP													
@ Georgia Southern	2/6/16											DNP													
UT Arlington	2/9/16		2	1	1	1.000	0	0	.000	0	0	.000	0	0	0	0.7	0	0	0	0	0	0	2	1.0	
Appalachian State	2/11/16											DNP													
UL Monroe	2/18/16		3	0	0	.000	0	0	.000	0	0	.000	0	1	1	0.7	0	0	0	0	0	0	0	0.9	
UL Lafayette	2/20/16											DNP													
Totals			0	21	3	3	1.000	0	0	.000	3	5	.600	2	5	7	0.7	8	0	1	1	1	0	9	0.9

CAREER STATISTICS

Year	GP	GS	Min	Avg	FG	FGA	Pct	3FG	FGA	Pct	FT	FTA	Pct	Off	Def	Tot	Avg	PF	FO	Ast	TO	Blk	Stl	Pts	Avg
2014-15	9	0	29	3.2	4	8	.500	0	0	.000	2	7	.286	1	6	7	0.8	3	0	0	2	1	0	10	1.1
2015-16	10	0	21	2.1	3	3	1.000	0	0	.000	3	5	.600	2	5	7	0.7	8	1	1	1	1	0	9	0.9
TOTAL	19	0	50	2.6	7	11	.636	0	0	.000	5	12	.417	3	11	14	0.7	11	1	1	3	2	0	19	1.0
SBC	GP	GS	Min	Avg	FG	FGA	Pct	3FG	FGA	Pct	FT	FTA	Pct	Off	Def	Tot	Avg	PF	FO	Ast	TO	Blk	Stl	Pts	Avg
2014-15	5	0	7	1.4	1	2	.500	0	0	.000	0	1	.000	0	1	1	0.2	0	0	0	0	0	0	2	0.4
2015-16	6	0	12	2.0	3	3	1.000	0	0	.000	1	1	1.000	1	2	3	0.5	1	0	0	0	1	0	7	1.2
TOTAL	11	0	19	1.7	4	5	.800	0	0	.000	1	2	.500	1	3	4	0.4	1	0	0	0	1	0	9	0.8



KENDALL RAMLAL

#32

FORWARD • 6-7 • 217 • JUNIOR • 2L
MAJOR: ACCOUNTING

HOUSTON, TEXAS
EPISCOPAL HS

SEASON & CAREER HIGHS

Points
Season 7, at UL Monroe (1/30/16)
Career Same

Assists
Season 2, Howard Payne (12/21/15)
Career 2, 2x, last Howard Payne (12/21/15)

Rebounds
Season 7, Howard Payne (12/21/15)
Career 7, 2x, last Howard Payne (12/21/15)

FG Made
Season 3, at UL Monroe (1/30/16)
Career Same

FG Attempts
Season 4, Appalachian State (2/11/16)
Career 5, at Georgia State (2/17/14)

3FG Made
Season
Career

3FG Attempts
Season
Career

FT Made
Season 3, UT Tyler (11/16/15)
Career Same

FT Attempts
Season 4, UT Tyler (11/16/15)
Career Same

Blocks
Season 4, UT Tyler (11/16/15)
Career 4, 2x, last UT Tyler (11/16/15)

Steals
Season 1, 5x, last Appalachian State (2/11/16)
Career 1, 6x, last Appalachian State (2/11/16)

Minutes
Season 23, at Texas A&M-CC (12/5/15)
Career 23, 2x, last at Texas A&M-CC (12/5/15)

GAME-BY-GAME

Opponent	Date	GS	Min	FG	FGA	Pct	3FG	3FGA	Pct	FT	FTA	Pct	Off	Def	Tot	Avg	PF	FO	A	TO	Blk	Stl	Pts	Avg
UT Tyler	11/16/15	18	1	2	.500	0	0	.000	3	4	.750	3	1	4	4.0	2	0	0	1	4	1	5	5.0	
@ UTEP	11/21/15	0+	0	0	.000	0	0	.000	0	0	.000	0	0	0	2.0	1	0	0	2	0	0	0	2.5	
@ McNeese State	11/28/15	14	2	3	.667	0	0	.000	0	0	.000	2	1	3	2.3	1	0	0	0	1	0	4	3.0	
UTSA	12/2/15	9	1	2	.500	0	0	.000	0	0	.000	1	1	2	2.3	1	0	1	1	0	0	2	2.8	
@ Texas A&M-CC	12/5/15	23	0	1	.000	0	0	.000	1	2	.500	2	4	6	3.0	3	0	0	3	1	0	1	2.4	
UT-Rio Grande Valley	12/13/15	6	1	2	.500	0	0	.000	0	0	.000	0	0	0	2.5	3	0	0	1	0	1	2	2.3	
@ Prairie View A&M	12/16/15	2	0	0	.000	0	0	.000	0	0	.000	0	0	0	2.1	0	0	0	0	0	0	0	2.0	
@ Washington State	12/18/15														DNP									
Howard Payne	12/21/15	15	0	1	.000	0	0	.000	0	2	.000	2	5	7	2.8	2	0	2	2	3	0	0	1.8	
Georgia Southern	12/30/15	1	0	0	.000	0	0	.000	0	0	.000	0	0	0	2.4	0	0	0	0	0	0	0	1.6	
Georgia State	1/2/16														DNP									
@ Appalachian State	1/9/16	12	1	3	.333	0	0	.000	0	0	.000	2	0	2	2.4	0	0	1	0	0	0	2	1.6	
@ South Alabama	1/14/16														DNP									
@ Troy	1/16/16	1	0	0	.000	0	0	.000	0	0	.000	0	0	0	2.2	0	0	0	0	1	0	0	1.5	
Little Rock	1/21/16	7	0	0	.000	0	0	.000	0	0	.000	0	1	1	2.1	0	0	0	0	1	1	0	1.3	
Arkansas State	1/23/16	7	0	1	.000	0	0	.000	0	0	.000	3	0	3	2.2	2	0	0	0	0	0	0	1.2	
@ UL Lafayette	1/28/16	15	1	3	.333	0	0	.000	0	0	.000	0	0	0	2.0	3	0	1	2	1	0	2	1.3	
@ UL Monroe	1/30/16	13	3	3	1.000	0	0	.000	1	2	.500	1	2	3	2.1	0	0	0	0	1	0	7	1.7	
@ Georgia State	2/4/16	8	0	0	.000	0	0	.000	0	2	.000	0	0	0	1.9	2	0	0	1	0	1	0	1.6	
@ Georgia Southern	2/6/16	6	0	0	.000	0	0	.000	0	0	.000	1	0	1	1.9	1	0	0	2	0	0	0	1.5	
UT Arlington	2/9/16	7	0	0	.000	0	0	.000	0	0	.000	1	0	1	1.8	1	0	0	0	0	0	0	1.4	
Appalachian State	2/11/16	9	1	4	.250	0	0	.000	0	0	.000	0	0	0	1.7	2	0	0	0	2	1	2	1.4	
UL Monroe	2/18/16	3	0	0	.000	0	0	.000	0	0	.000	0	0	0	1.7	0	0	0	0	0	0	0	1.4	
UL Lafayette	2/20/16	9	1	3	.333	0	0	.000	0	0	.000	1	1	2	1.7	3	0	0	0	0	0	2	1.4	
Totals		0	185	12	28	.429	0	0	.000	5	12	.417	19	16	35	1.7	27	0	5	15	15	5	29	1.4

CAREER STATISTICS

Year	GP	GS	Min	Avg	FG	FGA	Pct	3FG	FGA	Pct	FT	FTA	Pct	Off	Def	Tot	Avg	PF	FO	Ast	TO	Blk	Stl	Pts	Avg
2013-14	19	0	146	7.7	12	22	.545	0	0	.000	5	8	.625	15	14	29	1.5	11	0	6	8	7	1	29	1.5
2014-15	31	1	289	9.3	20	41	.488	0	0	.000	7	18	.389	20	30	50	1.6	30	0	9	14	20	4	47	1.5
2015-16	21	0	185	8.8	12	28	.429	0	0	.000	5	12	.417	19	16	35	1.7	27	0	5	15	15	5	29	1.4
TOTAL	71	1	620	8.7	44	91	.484	0	0	.000	17	38	.447	54	60	114	1.6	68	0	20	37	42	10	105	1.5

SBC	GP	GS	Min	Avg	FG	FGA	Pct	3FG	FGA	Pct	FT	FTA	Pct	Off	Def	Tot	Avg	PF	FO	Ast	TO	Blk	Stl	Pts	Avg
2013-14	11	0	79	7.2	7	13	.538	0	0	.000	1	2	.500	3	9	12	1.1	6	0	2	2	4	0	15	1.4
2014-15	20	0	201	10.1	14	26	.538	0	0	.000	5	12	.417	14	20	34	1.7	16	0	5	9	10	3	33	1.7
2015-16	13	0	98	7.5	7	17	.412	0	0	.000	1	4	.250	9	4	13	1.0	14	0	2	5	6	3	15	1.2
TOTAL	44	0	378	8.6	28	56	.500	0	0	.000	7	18	.389	26	33	59	1.3	36	0	9	16	20	6	63	1.4

Texas St. Combined Team Statistics (as of Feb 20, 2016)
All games

RECORD:	OVERALL	HOME	AWAY	NEUTRAL
ALL GAMES	11-13	8-4	3-9	0-0
CONFERENCE	5-10	4-4	1-6	0-0
NON-CONFERENCE	6-3	4-0	2-3	0-0

#	Player	gp-gs	min	avg	Total		3-Point		F-Throw		Rebounds				pf	dq	a	to	blk	stl	pts	avg
					fg-fga	fg%	3fg-fga	3fg%	ft-fita	ft%	off	def	tot	avg								
21	Gant, Emani	22-22	579	26.3	111-222	.500	0-2	.000	68-91	.747	61	103	164	7.5	50	1	30	38	13	17	290	13.2
01	Gilder-Tilbury, K.	24-24	690	28.8	97-221	.439	27-78	.346	63-88	.716	37	59	96	4.0	68	3	43	51	11	26	284	11.8
15	Montalvo, Ethan	23-23	661	28.7	75-206	.364	48-136	.353	46-54	.852	3	41	44	1.9	25	0	30	28	0	27	244	10.6
24	Naylor, Cameron	23-12	539	23.4	76-169	.450	5-9	.556	48-74	.649	28	84	112	4.9	59	2	11	33	6	9	205	8.9
05	Black, Ojai	24-24	743	31.0	58-151	.384	3-23	.130	46-64	.719	7	43	50	2.1	65	3	75	37	7	33	165	6.9
23	Roberson, Anthony	22-12	486	22.1	38-77	.494	1-4	.250	27-52	.519	55	65	120	5.5	56	2	18	15	16	14	104	4.7
00	Conley, Bobby	24-1	353	14.7	24-77	.312	9-30	.300	13-21	.619	9	38	47	2.0	23	0	31	18	7	9	70	2.9
03	McCrea, Maljhum	22-2	224	10.2	27-63	.429	0-2	.000	7-24	.292	21	34	55	2.5	38	1	6	19	6	1	61	2.8
14	Malveau, K.J.	24-0	196	8.2	15-38	.395	11-24	.458	7-9	.778	0	15	15	0.6	12	0	13	18	0	6	48	2.0
04	Julien, Courtney	13-0	59	4.5	7-20	.350	4-12	.333	7-8	.875	2	4	6	0.5	4	0	1	1	1	3	25	1.9
10	West, D'Angelo	14-0	78	5.6	6-26	.231	4-21	.190	6-8	.750	2	6	8	0.6	11	0	3	5	1	1	22	1.6
32	Ramlal, Kendell	21-0	185	8.8	12-28	.429	0-0	.000	5-12	.417	19	16	35	1.7	27	0	5	15	15	5	29	1.4
02	Josephs, Nathan	10-0	36	3.6	2-12	.167	0-5	.000	6-8	.750	0	2	2	0.2	1	0	5	3	0	1	10	1.0
31	Evans, Austin	10-0	21	2.1	3-3	1.000	0-0	.000	3-5	.600	2	5	7	0.7	8	1	1	1	1	0	9	0.9
Team											29	29	58					11				
Total.....		24	4850		551-1313	.420	112-346	.324	352-518	.680	275	544	819	34.1	447	13	272	293	84	152	1566	65.2
Opponents.....		24	4850		539-1243	.434	146-412	.354	314-455	.690	240	580	820	34.2	486	8	256	353	76	139	1538	64.1

TEAM STATISTICS	TXST	OPP	Date	Opponent	Score	Att.
SCORING	1566	1538	11/16/15	UT TYLER	w 84-49	2196
Points per game	65.2	64.1	11/21/15	at UTEP	L 62-77	7311
Scoring margin	+1.2	-	11/28/15	at McNeese	w 70-67	0
FIELD GOALS-ATT	551-1313	539-1243	12/02/15	UTSA	w 76-53	3220
Field goal pct	.420	.434	12/5/15	at Texas A&M-Corpus Christi	L 39-47	1586
3 POINT FG-ATT	112-346	146-412	12/13/15	UT RIO GRANDE VALLEY	w 68-59	1389
3-point FG pct	.324	.354	12/16/15	at Prairie View A&M	w 62-44	268
3-pt FG made per game	4.7	6.1	12/18/15	at Washington State	Lot 73-78	1233
FREE THROWS-ATT	352-518	314-455	12/21/15	HOWARD PAYNE	w 92-43	1346
Free throw pct	.680	.690	* 12/30/15	GEORGIA SOUTHERN	w 80-66	1822
F-Throws made per game	14.7	13.1	* 01/02/16	GEORGIA STATE	L 46-58	1808
REBOUNDS	819	820	* 01/09/16	at Appalachian State	L 56-76	1246
Rebounds per game	34.1	34.2	* 01/14/16	at South Alabama	w 78-67	2084
Rebounding margin	+0.0	-	* 1/16/16	at Troy	L 57-66	1492
ASSISTS	272	256	* 01/21/16	LITTLE ROCK	Lot 74-77	3357
Assists per game	11.3	10.7	* 01/23/16	ARKANSAS STATE	w 78-68	2857
TURNOVERS	293	353	* 01/28/16	at Louisiana	L 54-80	4460
Turnovers per game	12.2	14.7	* 01/30/16	at ULM	L 59-72	1319
Turnover margin	+2.5	-	* 02/04/16	at Georgia State	L 56-59	1482
Assist/turnover ratio	0.9	0.7	* 02/06/16	at Georgia Southern	L 62-66	2213
STEALS	152	139	* 02/09/16	UT ARLINGTON	L 53-65	3408
Steals per game	6.3	5.8	* 02/11/16	APPALACHIAN STATE	w 69-68	2375
BLOCKS	84	76	* 02/18/16	ULM	L 57-76	2452
Blocks per game	3.5	3.2	* 02/20/16	LOUISIANA	w 61-57	2104
ATTENDANCE	28334	24694				
Home games-Avg/Game	12-2361	12-2058	* = Conference game			
Neutral site-Avg/Game	-	0-0				

Score by Periods	1st	2nd	OT	Totals
Texas St.	725	819	22	1566
Opponents	691	817	30	1538

Texas St. Combined Team Statistics (as of Feb 20, 2016)
Conference games

RECORD:	OVERALL	HOME	AWAY	NEUTRAL
ALL GAMES	5-10	4-4	1-6	0-0
CONFERENCE	5-10	4-4	1-6	0-0
NON-CONFERENCE	0-0	0-0	0-0	0-0

#	Player	gp-gs	min	avg	Total		3-Point		F-Throw		Rebounds				pf	dq	a	to	blk	stl	pts	avg
					fg-fga	fg%	3fg-fga	3fg%	ft-fa	ft%	off	def	tot	avg								
21	Gant, Emani	15-15	398	26.5	68-137	.496	0-1	.000	44-55	.800	44	65	109	7.3	37	1	23	26	6	7	180	12.0
01	Gilder-Tilbury, K.	15-15	432	28.8	60-134	.448	17-47	.362	40-54	.741	22	32	54	3.6	45	1	22	30	9	16	177	11.8
15	Montalvo, Ethan	14-14	413	29.5	50-134	.373	35-97	.361	27-33	.818	1	23	24	1.7	14	0	14	18	0	7	162	11.6
24	Naylor, Cameron	15-10	378	25.2	53-120	.442	5-9	.556	27-43	.628	13	57	70	4.7	37	1	5	20	6	6	138	9.2
05	Black, Ojai	15-15	456	30.4	33-90	.367	2-16	.125	30-43	.698	5	32	37	2.5	39	2	52	24	6	20	98	6.5
00	Conley, Bobby	15-1	237	15.8	19-54	.352	7-25	.280	6-13	.462	6	24	30	2.0	16	0	20	9	5	6	51	3.4
23	Roberson, Anthony	14-5	268	19.1	14-35	.400	1-2	.500	18-34	.529	30	42	72	5.1	35	1	8	9	11	8	47	3.4
10	West, D'Angelo	7-0	40	5.7	4-13	.308	3-12	.250	4-4	1.000	2	4	6	0.9	6	0	2	3	0	1	15	2.1
03	McCrea, Maljhum	13-0	119	9.2	10-29	.345	0-1	.000	3-13	.231	6	13	19	1.5	19	0	4	9	2	0	23	1.8
14	Malveau, K.J.	15-0	129	8.6	6-20	.300	5-13	.385	4-4	1.000	0	8	8	0.5	7	0	11	9	0	3	21	1.4
31	Evans, Austin	6-0	12	2.0	3-3	1.000	0-0	.000	1-1	1.000	1	2	3	0.5	1	0	0	0	1	0	7	1.2
32	Ramlal, Kendell	13-0	98	7.5	7-17	.412	0-0	.000	1-4	.250	9	4	13	1.0	14	0	2	5	6	3	15	1.2
02	Josephs, Nathan	6-0	19	3.2	0-6	.000	0-2	.000	3-4	.750	0	0	0	0.0	0	0	3	2	0	0	3	0.5
04	Julien, Courtney	8-0	26	3.3	1-7	.143	1-5	.200	0-0	.000	0	1	1	0.1	1	0	0	1	0	0	3	0.4
Team											19	17	36				7					
Total.....		15	3025		328-799	.411	76-230	.330	208-305	.682	158	324	482	32.1	271	6	166	172	52	77	940	62.7
Opponents.....		15	3025		362-783	.462	100-267	.375	197-284	.694	150	366	516	34.4	278	5	173	182	41	87	1021	68.1

TEAM STATISTICS	TXST	OPP	Date	Opponent	Score	Att.
SCORING	940	1021	* 12/30/15	GEORGIA SOUTHERN	W 80-66	1822
Points per game	62.7	68.1	* 01/02/16	GEORGIA STATE	L 46-58	1808
Scoring margin	-5.4	-	* 01/09/16	at Appalachian State	L 56-76	1246
FIELD GOALS-ATT	328-799	362-783	* 01/14/16	at South Alabama	W 78-67	2084
Field goal pct	.411	.462	* 1/16/16	at Troy	L 57-66	1492
3 POINT FG-ATT	76-230	100-267	* 01/21/16	LITTLE ROCK	Lot 74-77	3357
3-point FG pct	.330	.375	* 01/23/16	ARKANSAS STATE	W 78-68	2857
3-pt FG made per game	5.1	6.7	* 01/28/16	at Louisiana	L 54-80	4460
FREE THROWS-ATT	208-305	197-284	* 01/30/16	at ULM	L 59-72	1319
Free throw pct	.682	.694	* 02/04/16	at Georgia State	L 56-59	1482
F-Throws made per game	13.9	13.1	* 02/06/16	at Georgia Southern	L 62-66	2213
REBOUNDS	482	516	* 02/09/16	UT ARLINGTON	L 53-65	3408
Rebounds per game	32.1	34.4	* 02/11/16	APPALACHIAN STATE	W 69-68	2375
Rebounding margin	-2.3	-	* 02/18/16	ULM	L 57-76	2452
ASSISTS	166	173	* 02/20/16	LOUISIANA	W 61-57	2104
Assists per game	11.1	11.5				
TURNOVERS	172	182				
Turnovers per game	11.5	12.1				
Turnover margin	+0.7	-				
Assist/turnover ratio	1.0	1.0				
STEALS	77	87				
Steals per game	5.1	5.8				
BLOCKS	52	41				
Blocks per game	3.5	2.7				
ATTENDANCE	20183	14296				
Home games-Avg/Game	8-2523	7-2042				
Neutral site-Avg/Game	-	0-0				

* = Conference game

Score by Periods	1st	2nd	OT	Totals
Texas St.	443	482	15	940
Opponents	475	528	18	1021

INDIVIDUAL GAME HIGHS AND LOWS

TEXAS STATE INDIVIDUAL GAME HIGHS		
Points	28	Ethan Montalvo, Little Rock (1/21/16)
Field Goals Made	10	Emani Gant, Appalachian State (2/11/16)
	10	Emani Gant, at Washington State (12/18/15)
Field Goal Att.	19	Emani Gant, at Washington State (12/18/15)
FG Pct (min 5 made)	.714 (5-7)	K.J. Malveau, Howard Payne (12/21/15)
	.714 (5-7)	Maljhum McCrea, UT Tyler (11/16/15)
3-Point FG Made	5	Ethan Montalvo, Arkansas State (1/23/16)
	5	Ethan Montalvo, Little Rock (1/21/16)
3-Point FG Att.	12	Ethan Montalvo, at South Alabama (1/14/16)
3-Pt FG Pct (min 3 made)	.750 (3-4)	K.J. Malveau, Howard Payne (12/21/15)
Free Throws Made	9	Ethan Montalvo, Little Rock (1/21/16)
Free Throw Att.	12	Kavin Gilder-Tilbury, at McNeese St. (11/28/15)
FT Pct (min 4 made)	1.000 (9-9)	Ethan Montalvo, Little Rock (1/21/16)
	1.000 (8-8)	Ethan Montalvo, at Washington State (12/18/15)
	1.000 (6-6)	Emani Gant, Appalachian State (2/11/16)
	1.000 (6-6)	Ethan Montalvo, at Georgia Southern (2/6/16)
	1.000 (5-5)	Kavin Gilder-Tilbury, at Georgia State (2/4/16)
	1.000 (4-4)	Kavin Gilder-Tilbury, at Georgia Southern (2/6/16)
	1.000 (4-4)	Kavin Gilder-Tilbury, Arkansas State (1/23/16)
	1.000 (4-4)	Ethan Montalvo, at Prairie View A&M (12/16/15)
	1.000 (4-4)	Cameron Naylor, UTSA (12/2/15)
	1.000 (4-4)	Ethan Montalvo, at UTEP (11/21/15)
Rebounds	15	Emani Gant, at McNeese St. (11/28/15)
Assists	8	Ojai Black, Arkansas State (1/23/16)
Steals	8	Ethan Montalvo, UTSA (12/2/15)
Blocked Shots	4	Anthony Roberson, Georgia Southern (12/30/15)
	4	Kendell Ramlal, UT Tyler (11/16/15)
Turnovers	5	Ethan Montalvo, at Georgia Southern (2/6/16)
	5	Kavin Gilder-Tilbury, at Prairie View A&M (12/16/15)
	5	Ojai Black, at McNeese St. (11/28/15)

OPPONENT INDIVIDUAL GAME HIGHS		
Points	30	Frank Eaves, Appalachian State (1/9/16)
Field Goals Made	11	Nick Coppola, UL Monroe (1/30/16)
Field Goal Att.	17	Nick Coppola, UL Monroe (1/30/16)
	17	Jeremy Hollimon, Troy (1/16/16)
	17	Jamaya Burr, McNeese St. (11/28/15)
FG Pct (min 5 made)	.800 (8-10)	Tookie Brown, Georgia Southern (2/6/16)
3-Point FG Made	5	Jamaya Burr, McNeese St. (11/28/15)
3-Point FG Att.	8	Wesley Person, Troy (1/16/16)
	8	Frank Eaves, Appalachian State (1/9/16)
3-Pt FG Pct (min 3 made)	1.000 (3-3)	Sean Gardner, Arkansas State (1/23/16)
Free Throws Made	8	Devonta Walker, UL Lafayette (1/28/16)
	8	Josh Hagins, Little Rock (1/21/16)
	8	Ike Smith, Georgia Southern (12/30/15)
	8	Josh Hawkinson, Washington State (12/18/15)
Free Throw Att.	12	Rashawn Thomas, Texas A&M-CC (12/5/15)
FT Pct (min 4 made)	1.000 (8-8)	Devonta Walker, UL Lafayette (1/28/16)
	1.000 (8-8)	Josh Hagins, Little Rock (1/21/16)
	1.000 (7-7)	Frank Eaves, Appalachian State (1/9/16)
	1.000 (6-6)	J.J. Thompson, UTRGV (12/13/15)
	1.000 (5-5)	Sean Gardner, Arkansas State (1/23/16)
	1.000 (5-5)	Mike Hughes, Georgia Southern (12/30/15)
	1.000 (5-5)	J.R. Harris, UTSA (12/2/15)
	1.000 (4-4)	Jalen Jones, UT Arlington (2/9/16)
	1.000 (4-4)	Kevin Ware, Georgia State (2/4/16)
	1.000 (4-4)	Ronshad Shabazz, Appalachian State (1/9/16)
	1.000 (4-4)	Devonte Boykins, Georgia Southern (12/30/15)
Rebounds	19	Rashawn Thomas, Texas A&M-CC (12/5/15)
Assists	9	Dominic Artis, UTEP (11/21/15)
Steals	4	Hameed Ali, Texas A&M-CC (12/5/15)
Blocked Shots	4	Jacob Lawson, Appalachian State (2/11/16)
	4	Craig McFerrin, McNeese St. (11/28/15)
Turnovers	8	Ryan Bowie, UTSA (12/2/15)

SEASON SUPERLATIVES

Texas State - GAME HIGHS

POINTS	92	Howard Payne (12/21/15)
FIELD GOALS MADE	30	Howard Payne (12/21/15)
	30	UTSA (12/2/15)
	30	UT Tyler (11/16/15)
FIELD GOAL ATTEMPTS	67	UTSA (12/2/15)
FIELD GOAL PERCENTAGE	.556 (30-54)	Howard Payne (12/21/15)
3 PT FIELD GOALS MADE	9	Arkansas State (1/23/16)
	9	at South Alabama (1/14/16)
3 PT FG ATTEMPTS	23	UT Tyler (11/16/15)
3 PT FG PERCENTAGE	.600 (9-15)	Arkansas State (1/23/16)
FREE THROWS MADE	25	Howard Payne (12/21/15)
FREE THROW ATTEMPTS	34	Howard Payne (12/21/15)
FREE THROW PERCENTAGE	.833 (5-6)	at UL Monroe (1/30/16)
REBOUNDS	50	Howard Payne (12/21/15)
ASSISTS	16	UTSA (12/2/15)
STEALS	14	UTSA (12/2/15)
BLOCKED SHOTS	8	UL Lafayette (2/20/16)
TURNOVERS	19	Howard Payne (12/21/15)

Opponent - GAME HIGHS

POINTS	80	UL Lafayette (1/28/16)
FIELD GOALS MADE	31	UL Monroe (2/18/16)
FIELD GOAL ATTEMPTS	62	UL Lafayette (2/20/16)
FIELD GOAL PERCENTAGE	.542 (26-48)	UTEP (11/21/15)
3 PT FIELD GOALS MADE	11	UTEP (11/21/15)
3 PT FG ATTEMPTS	27	Appalachian State (1/9/16)
3 PT FG PERCENTAGE	.667 (10-15)	Little Rock (1/21/16)
FREE THROWS MADE	28	Georgia Southern (12/30/15)
FREE THROW ATTEMPTS	34	Georgia Southern (12/30/15)
FREE THROW PERCENTAGE	1.000 (10-10)	UTSA (12/2/15)
REBOUNDS	45	UL Lafayette (2/20/16)
ASSISTS	16	UTEP (11/21/15)
STEALS	10	South Alabama (1/14/16)
BLOCKED SHOTS	10	McNeese State (11/28/15)
TURNOVERS	26	UTSA (12/2/15)

Texas State - GAME LOWS

POINTS	39	at Texas A&M-Corpus Christi (12/5/15)
FIELD GOALS MADE	9	at Texas A&M-Corpus Christi (12/5/15)
FIELD GOAL ATTEMPTS	42	at Texas A&M-Corpus Christi (12/5/15)
FIELD GOAL PERCENTAGE	.214 (9-42)	at Texas A&M-Corpus Christi (12/5/15)
3 PT FIELD GOALS MADE	2	UTRGV (12/13/15)
	2	at McNeese State (11/28/15)
3 PT FG ATTEMPTS	8	at Appalachian State (1/9/16)
	8	UTSA (12/2/15)
3 PT FG PERCENTAGE	.150 (3-20)	Georgia State (1/2/16)
FREE THROWS MADE	5	at UL Monroe (1/30/16)
FREE THROW ATTEMPTS	6	at UL Monroe (1/30/16)
FREE THROW PERCENTAGE	.500 (13-26)	at Appalachian State (1/9/16)
REBOUNDS	18	at UL Lafayette (1/28/16)
ASSISTS	4	at Texas A&M-Corpus Christi (12/5/15)
STEALS	1	at UL Monroe (1/30/16)
	1	at UTEP (11/21/15)
BLOCKED SHOTS	1	at Georgia State (2/4/16)
TURNOVERS	6	Arkansas State (1/23/16)

Opponent - GAME LOWS

POINTS	43	Howard Payne (12/21/15)
FIELD GOALS MADE	12	Howard Payne (12/21/15)
FIELD GOAL ATTEMPTS	42	UTRGV (12/13/15)
FIELD GOAL PERCENTAGE	.226 (12-53)	Howard Payne (12/21/15)
3 PT FIELD GOALS MADE	1	Prairie View A&M (12/16/15)
3 PT FG ATTEMPTS	10	Georgia State (2/4/16)
	10	Howard Payne (12/21/15)
3 PT FG PERCENTAGE	.077 (1-13)	Prairie View A&M (12/16/15)
FREE THROWS MADE	5	UL Monroe (2/18/16)
FREE THROW ATTEMPTS	7	UL Monroe (2/18/16)
FREE THROW PERCENTAGE	.500 (15-30)	Little Rock (1/21/16)
REBOUNDS	25	Georgia Southern (12/30/15)
ASSISTS	4	Howard Payne (12/21/15)
STEALS	2	Troy (1/16/16)
	2	Washington State (12/18/15)
	2	UT Tyler (11/16/15)
BLOCKED SHOTS	1	UL Lafayette (2/20/16)
	1	Georgia Southern (2/6/16)
	1	Georgia State (2/4/16)
	1	UL Monroe (1/30/16)
	1	Arkansas State (1/23/16)
	1	Howard Payne (12/21/15)
	1	UTEP (11/21/15)
	1	UT Tyler (11/16/15)
TURNOVERS	7	UL Lafayette (2/20/16)