

GAME INFORMATION

TV/VIDEO:

Rowdy Zone

RADIO/AUDIO:

goUTSA.com | Stu Paul (play-by-play)

LIVE STATS:

goUTSA.com

SOCIAL MEDIA:

Twitter - @utsawbb

Facebook - /UTSA Women's Basketball

Instagram - @utsaathletics

2016-17 Schedule

October

28 Texas A&M International # W, 75-34

November

5 Trinity # W, 91-67

11 Angelo State L, 77-85

13 at UT Arlington L, 54-75

16 Texas A&M-Kingsville W, 70-44

20 at Oregon L, 63-77

UTSA Thanksgiving Classic - San Antonio, Texas

25 Northern Colorado 4 p.m.

27 Tulane 2 p.m.

29 Abilene Christian 7 p.m.

December

1 Texas State 7 p.m.

17 at Texas (LHN) 5 p.m.

UTSA Holiday Classic - San Antonio, Texas

19 Houston 6 p.m.

20 Liberty 6 p.m.

January

1 at UTEP * 3 p.m.

5 Southern Miss * 7 p.m.

7 Louisiana Tech * 2 p.m.

12 at Florida Atlantic * 6 p.m.

14 at FIU * 1 p.m.

21 UTEP * 2 p.m.

26 Marshall * 7 p.m.

28 WKU * 2 p.m.

February

2 at Middle Tennessee * (ESPN3) 6:30 p.m.

4 at UAB * 2 p.m.

9 at Southern Miss * 6 p.m.

11 at Louisiana Tech * 1 p.m.

16 Rice * 7 p.m.

18 North Texas * 2 p.m.

23 FIU * 7 p.m.

25 Florida Atlantic * 2 p.m.

March

2 at Charlotte * 6 p.m.

4 at Old Dominion * 12 p.m.

- Denotes exhibition game

* - Denotes Conference USA game

NORTHERN COLORADO

GAME 5



UTSA ROADRUNNERS (1-3)

Head coach: Lubomir Lichonczak (Idaho, '76)

Record at UTSA: 41-53 | Career record: 199-212



NORTHERN COLORADO BEARS (3-1)

Head coach: Kamie Ethridge (Texas, '86)

Record at Northern Colorado: 38-30 | Career record: 38-30

UTSA PROJECTED STARTERS



6-0 • F • Sr.
#1 Kiejdrowska

PPG - 6.5
RPG - 4.0
APG - 0.3
FG% - .344
3FG% - .273
FT% - .500



6-1 • F • Fr.
#15 Toth

PPG - 1.8
RPG - 4.5
APG - 0.3
FG% - .250
3FG% - .000
FT% - .500



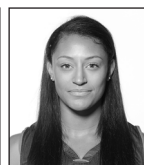
6-1 • F • Fr.
#21 Benson

PPG - 4.8
RPG - 5.8
APG - 0.0
FG% - .438
3FG% - .000
FT% - .625



6-0 • G • Jr.
#31 Heineman

PPG - 12.8
RPG - 2.8
APG - 0.0
FG% - .450
3FG% - .435
FT% - .625



5-9 • G • Jr.
#32 Goodwin

PPG - 22.8
RPG - 4.8
APG - 5.3
FG% - .460
3FG% - .250
FT% - .638

SERIES: First meeting

LAST MEETING: N/A

UTSA AT A GLANCE: UTSA hosts its annual Thanksgiving Classic on Nov. 25 and 27. The Roadrunners will welcome a trio of teams but will face only Northern Colorado and Tulane (Eastern Michigan is the only team UTSA will not face). The Roadrunners head into the holiday classic off a 77-63 loss to Oregon. UTSA burst out with 24 points in the fourth quarter but it wasn't enough to make up the deficit against the Ducks. Goodwin scored in double figures for the fourth time this season and is second in Conference USA in scoring average with 22.8 a night. Carlie Heineman is the only other player averaging double figures with 12.8 per game. Defensively, Tesha Smith leads the charge with 7.0 boards per game and is shooting 70 percent (7-of-10) from the free throw line.

OPPONENT AT A GLANCE: Northern Colorado and UTSA will meet for the first time in program history this weekend as the Bears head to the Lone Star State with a 3-1 overall record and winners of its last three. Northern Colorado will face its first road test as the Bears have played all four games, in addition to two exhibition games, in the friendly confines of the Bank of Colorado Arena. The Bears have won their last two games on a combined six points. UNC's first win this season was by a 20-point margin against Denver. Leading the way for the Bears is redshirt sophomore Savannah Smith. The guard is averaging 18.8 points a night with 4.0 rebounds, 3.3 assists and 1.3 steals per game. Smith is also 19-of-21 from the charity stripe. Defensively, sophomore Courtney Smith is grabbing 6.8 rebounds per game is joined by Kianna Williams' 6.3 per night. When looking at the Bears' quarter breakdown, UNC's best scoring quarter is in the third as they hold a 79-48 advantage over opponents.

QUICK FACTS

General Information

Name	The University of Texas at San Antonio
Location	San Antonio, Texas
Founded	1969
Enrollment	28,628 (24,342 undergraduate)
Nickname	Roadrunners
School Colors	Navy Blue, White and Orange
Home Arena	Convocation Center / 2,650
Affiliation	Division I
Conference	Conference USA
President	Dr. Ricardo Romo
Director of Athletics	Lynn Hickey
Athletic Department Phone	210-458-4161

Coaching Staff

Head Coach	Lubomyr Lichonczak (Idaho, '78)
Record at UTSA	41-54 (third season)
Career record	199-212 (14th season)
Associate Head Coach	Kristen Holt
Assistant Coach	Nicole Dunson
Assistant Coach	Ela Mukosiej
Director of Operations	Emily Sherman
Athletic Trainer	Brenna Ellis

Team Information

2015-16 overall record	10-19
2015-16 Conference USA record/Finish	6-12/T-11
Final ranking	N/A
Starters R/L	0/5
Letter winners R/L	5/6
Newcomers	6
Key returners	Tesha Smith
Key Losses	Akunna Elonu, Mathilde Hergott
Key newcomers	-

Women's Basketball History

First year	1981-82
All-time record	493-501
NCAA Postseason appearances	2 (2008, 2009)
Last Tournament appearance	2009 (vs. Baylor; L, 87-82 (OT))
Southland Conference championships	3 (2003 regular season and 2009 (west division); 2008 tournament)

Athletics Communications

Assistant Director	Zena Rex (women's basketball contact)
Email	zena.rex@utsa.edu
Cell	(966) 739-4878
Facebook	/UTSA Women's Basketball
Twitter	@utsawbb
Instagram	@utsaathletics
Hashtag	#birdsups #CUSAWBK or #ALLDAYCUSA

MEDIA

WE ARE UTSA | When referencing The University of Texas at San Antonio athletics, please use the acronym UTSA and the nickname Roadrunners. Please refrain from using Texas-San Antonio, UT-San Antonio, UT-SA or any other variation.

Media Coverage | The UTSA Athletics Communication Office assists members of the media with their coverage of all Roadrunners sports by providing player and coach interviews, feature ideas, pregame notes and updated statistics.

Interviews | All interviews with coaches and student-athletes must be arranged at least 24 hours in advance through women's basketball contact Zena Rex. Telephone interviews are available to the media on a "call-back" basis at a time that is convenient for the coach or student-athlete. Post-game interviews with coaches and student-athletes will be conducted in the media room following a 10-minute cooling off period.

Internet Radio Broadcasts | All of UTSA's games for the 2015-16 season are slated to be broadcast live (audio) on goUTSA.com this season. Video streaming (subscription required) will also be available for all home games.

LAST TIME OUT

EUGENE, Ore. — UTSA burst out with 24 points in the fourth quarter and held Oregon to its lowest scoring quarter but it wasn't enough to make up the deficit as the Ducks defeated the Roadrunners 77-63 Sunday afternoon at Matthew Knight Arena.

The Roadrunners' nine points in the opening stanza was the lowest scoring total in a quarter this season for UTSA, who drops to 1-3 in the early season.

Collectively, the Roadrunners fired 35 percent (22-of-62) from the field and were led by Loryn Goodwin, Carlie Heineman and Kasia Kiejdrowska. The trio combined for 44 of the team's points with 18, 15 and 11 respectively.

Oregon (2-0) got the action started early as Ruthy Hebard drew the foul and made one of her two free throws. The Ducks' lead was taken back a minute later when Heineman drained her first triple of the night to give UTSA a 3-1 advantage with 8:29 remaining. Heineman finished 3-of-7 from behind the arc and made three of the team's five 3-pointers.

The Ducks held UTSA scoreless for over four minutes before Goodwin went in for a layup to cut Oregon's lead in half, 10-5, with 4:08 on the clock. By halftime, Oregon held a 19-point lead at 40-21.

The Roadrunners finally made up some ground in the fourth quarter as they cut the deficit down to 12 points at the 2:55 mark on jumper by Kiejdrowska to make it 73-61.

Freshman Sabrina Ionescu led Oregon with 26 points on 9-of-14 shooting while Lexi Bando chipped in with 10 points.

UTSA Women's Basketball Roster

No.	Name	Pos.	Ht.	Yr.-Exp.	Hometown (Previous School)
1	Kasia Kiejdrowska	F	6-0	Jr.-1L	Gdynia, Poland (Mineral Area College)
3	Alexus Dukes	G	5-5	So.-1L	Harker Heights, Texas (Harker Heights HS)
4	Crystal Chidomere	G	5-11	Jr.-2L	Richmond, Texas (Bush HS)
13	Deja Cousin	G	5-9	Fr.-HS	Burlington, N.C. (The Burlington School)
15	Timea Toth	F	6-1	Fr.-HS	Dunakeszi, Hungary (Dunakeszi Radnoti Miklos Gimnaziuma)
20	Kourtney Kekec	F	5-10	So.-TR	Bonne Terre, Mo. (Mineral Area College)
21	Marie Benson	F	6-1	Fr.-HS	Waco, Texas (Midland HS)
23	Tija Hawkins	F	6-1	Fr.-HS	Killeen, Texas (Shoemaker HS)
30	Tesha Smith	C	6-1	Sr.-3L	San Antonio, Texas (Wagner HS)
31	Carlie Heineman	G	6-0	Jr.-3L	San Antonio, Texas (Brennan HS)
32	Loryn Goodwin	G	5-9	Jr.-TR	Houston, Texas (Butler)
40	Billie Marlow	C	6-3	Jr.-TR	Copenhagen, Denmark (Collin College)

Head Coach: Lubomyr Lichonczak (Fourth season | Idaho State, '78)

Associate Head Coach: Kristen Holt (Fourth season | Ohio, '72)

Assistant Coach: Nicole Dunson (Fourth season | UTSA, '05)

Assistant Coach: Ela Mukosiej (Second season | Seton Hall '07)

Director of Operations: Courtney Cremer (First season | Portland State University, '12)

PRONUNCIATIONS

Kasia Kiejdrowska	caw-SHA key-DRO-ska
Timea Toth	thee-MA thoht
Kekec	key-keck
Tija	tie-ZJAH
Tesha	TEE-sha
Loryn	(pronounced like Lauren)
Lubomyr Lichonczak	LU-ba-meer li-KON-zack
Mukosiej	moo-COE-shay
Cremer	(pronounced like Kramer)

**Runners selected seventh in C-USA Preseason Poll**

UTSA was picked to finish 11th in this year's Conference USA Preseason Poll. The Roadrunners finished 10-19 one year ago with a 6-12 mark in conference. Head coach Lubomyr Lichonczak returns just five letter winners from last season, including leading scorer and rebounder Tesha Smith.

UTSA to have a pair of contests televised

The Roadrunners will hit the airwaves twice this upcoming season. UTSA will appear on the Longhorn Network on Dec. 17 with its match-up against Texas. The Roadrunners will then make their debut on ESPN3 on the road in Murfreesboro when they take on Middle Tennessee on Feb. 2.

Lichonczak adds six for 2016-17 season

With only five letter winners returning for the upcoming season, head women's basketball coach Lubomyr Lichonczak welcomes six new faces to the roster with four true freshman (Deja Cousin, G; Timea Toth, F; Marie Benson, F; Tija Hawkins, F) and two JUCO transfers (Kourtney Kekec, F; Billie Marlow, C).

Making the NCAA record books

On Monday, Dec. 28, UTSA and Texas Southern combined for 29 total blocks to set the NCAA record in blocked shots by both teams, surpassing the previous mark of 23 set in 2009.

UTSA totaled 16 blocks, which was also the single-game record, passing the previous mark of 14 set in 2001. TSU also matched the program record of blocks against with 13.

2016-17 TV/MEDIA ROSTER



1 Kasia KIEJDROWSKA
F • 6-0 • Senior
Gdynia, Poland



3 Alexis DUKES
G • 5-5 • Sophomore
Harker Heights, Texas



4 Crystal CHIDOMERE
G • 5-11 • Junior
Richmond, Texas



13 Deja COUSIN
G • 5-9 • Freshman
Burlington, N.C.



15 Timea TOTH
F • 6-1 • Freshman
Dunakeszi, Hungary



20 Kourtney KEKEC
F • 5-10 • Sophomore
Bonne Terre, Mo.



21 Marie BENSON
F • 6-1 • Freshman
Waco, Texas



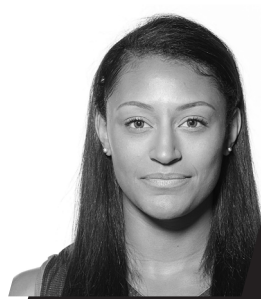
23 Tija HAWKINS
F • 6-1 • Freshman
Killeen, Texas



30 Tesha SMITH
C • 6-1 • Senior
San Antonio, Texas



31 Carlisle HEINEMAN
G • 6-0 • Junior
San Antonio, Texas



32 Loryn GOODWIN
G • 5-9 • Junior
Cypress, Texas



40 Billie MARLOW
C • 6-3 • Junior
Copenhagen, Denmark



lubomyr LICHONCZAK
Head coach
Fourth season



kristen HOLT
Associate Head Coach
Fourth season



nicole DUNSON
Assistant coach
Fourth season



ela MUKOSIEJ
Assistant coach
Second season



courtney CREMER
Director of Operations
First season

Roadrunners Trends

At Convocation Center	1-1
On the road	0-2
At a neutral site	0-0
Last 5 games	1-3
Against ranked opponents	0-0
Longest win streak	1
Longest losing streak	2

Scoreboard

Up after the first quarter	1-0
Trailing after the first quarter	0-3
Tied after the first quarter	0-0
Up after the second quarter	1-1
Trailing after the second quarter	0-2
Tied after the second quarter	0-0

Up after the third quarter	1-0
Trailing after the third quarter	0-3
Tied after the third quarter	0-0

Overtime	0-0
----------	-----

In November	1-3
In December	0-0
In January	0-0
In February	0-0
In March	0-0

On Sundays	0-2
On Mondays	0-0
On Tuesdays	0-0
On Wednesdays	1-0
On Thursdays	0-0
On Fridays	0-1
On Saturdays	0-0

UTSA scores first	1-1
Opponents scores first	0-2

UTSA - More 3-pointers in game	1-0
Opp. - More 3-pointers in game	0-2
Tied	0-1

UTSA - More free throws in game	1-1
Opp. - More free throws in game	0-2
Tied	0-0

UTSA - More rebounds in game	1-1
Opp. - More rebounds in game	0-2
Tied	0-0

UTSA - More blocks in game	0-1
Opp. - More blocks in game	0-2
Tied	1-0

UTSA - More steals in game	1-0
Opp. - More steals in game	0-1
Tied	0-2

UTSA - More turnovers in game	0-2
Opp. - More turnovers in game	1-1
Tied	0-0

When UTSA...**Field Goals**

Shoots 20-29%	0-0
Shoots 30-39%	1-1
Shoots 40-49%	0-2
Shoots 50-59%	0-0
Shoots 60-69%	0-0

Three-Point Field Goals

Shoots 0-19%	0-0
Shoots 20-29%	0-1
Shoots 30-39%	1-2
Shoots 40-49%	0-0
Shoots 50-59%	0-0
Shoots 60-69%	0-0
Shoots 70-79%	0-0

Free Throws

Shoots 30-39%	0-0
Shoots 40-49%	0-0
Shoots 50-59%	0-2
Shoots 60-69%	0-1
Shoots 70-79%	0-0
Shoots 80-89%	1-0

Scored less than 49 points	0-0
Scores between 50-59 points	0-1
Scores between 60-69 points	0-1
Scores between 70-79 points	1-1
Scores more than 80 points	0-0

Allows less than 49 points	1-0
Allows between 50-59 points	0-0
Allows between 60-69 points	0-0
Allows between 70-79 points	0-2
Allows more than 80 points	0-1

Leading with 5:00 left	1-0
Trailing with 5:00 left	0-3
Tied with 5:00 left	0-0

2016-17 DOUBLE-DOUBLES

STARTERS BY GAME

Date	Opponent	Starting 5	Result
Nov. 11	Angelo State	Kiejdrowska, Toth, Benson, Heineman, Goodwin	L, 77-85
Nov. 13	at UT Arlington	Kiejdrowska, Toth, Benson, Heineman, Goodwin	L, 54-75
Nov. 16	Texas A&M-Kingsville	Kiejdrowska, Toth, Benson, Heineman, Goodwin	W, 70-44
Nov. 20	at Oregon	Kiejdrowska, Toth, Benson, Heineman, Goodwin	L, 63-77
Nov. 25	Northern Colorado		
Nov. 27	Tulane		
Nov. 29	Abilene Christian		
Dec. 1	Texas State		
Dec. 17	at Texas		
Dec. 19	Houston		
Dec. 20	Liberty		
Jan. 1	at UTEP		
Jan. 5	Southern Miss		
Jan. 7	Louisiana Tech		
Jan. 12	at Florida Atlantic		
Jan. 14	at FIU		
Jan. 21	UTEP		
Jan. 26	Marshall		
Jan. 28	WKU		
Feb. 2	at Middle Tennessee		
Feb. 4	at UAB		
Feb. 9	at Southern Miss		
Feb. 11	at Louisiana Tech		
Feb. 16	Rice		
Feb. 18	North Texas		
Feb. 23	FIU		
Feb. 25	Florida Atlantic		
March 2	at Charlotte		
March 4	at Old Dominion		

Starting lineup combination W-L (1)

Kasia Kiejdrowska, Timea Toth, Marie Benson, Carlie Heineman, Loryn Goodwin (4)

1-3

**2016-17 Preseason All-Conference Team**

Lefty Webster (Charlotte / Jr. / Guard)
 Ty Petty (Middle Tennessee / Sr. / Guard)
 Alex Johnson (Middle Tennessee / So. / Forward)
 Jennie Simms (Old Dominion / Jr. / Guard)
 Jenzel Nash (UTEP / RSr. / Guard)
 Sparkle Taylor (UTEP / Sr. / Guard)
 Tashia Brown (WKU / Jr. / Forward)
 *Kendall Noble (WKU / RSr. / Guard)
 * Denotes Preseason Player of the Year

Preseason Poll

1. WKU (6)
2. Middle Tennessee (5)
3. Old Dominion (2)
4. Charlotte
5. UTEP
6. North Texas
7. Rice
8. Southern Miss
9. UAB
10. Marshall
11. UTSA (1)
12. Louisiana Tech
13. Florida Atlantic
14. FIU

This Week in Conference USA**Tuesday, November 22**

North Texas at Arizona - 12 p.m.
 LSU vs. UTEP - 2:15 p.m.
 Louisiana Tech at Clemson - 4 p.m.
 Georgetown at FIU - 6 p.m.
 Old Dominion at Duke - 6 p.m.
 High Point at UAB - 7 p.m.
 Grand Canyon at Rice - 7 p.m.

Friday, November 25

Weber State at FIU - 11 a.m.
 Jacksonville State at Florida Atlantic - 11 a.m.
 DePaul vs. WKU - 12:30 p.m.
 Utah vs. Charlotte - 2 p.m.
 NC State vs. UTEP - 2:15 p.m.
 Northern Colorado at UTSA - 4 p.m.
 Sam Houston vs. Marshall - 5:30 p.m.
 Alcorn State at Southern Miss - TBA

Saturday, November 27

LSU-Alexandria at Louisiana Tech - 1 p.m.
 Rice at Oklahoma State - 1 p.m.
 Boise State vs. Charlotte - 2 p.m.
 Kansas State vs. UTEP - 2:15 p.m.
 Iona at North Texas - 3 p.m.
 Prairie View A&M vs. Marshall - 5:30 p.m.
 TBA vs. Florida Atlantic - TBA
 TBA vs. Southern Miss - TBA
 TBA vs. WKU - TBA

*Check out conferenceusa.com for a full schedule

Conference USA Standings

As of November 20

Team	Conference USA		Overall	
	W	L	W	L
Marshall	0	0	3	0
Southern Miss	0	0	3	1
Charlotte	0	0	3	1
WKU	0	0	2	1
Rice	0	0	2	1
Florida Atlantic	0	0	2	2
Louisiana Tech	0	0	1	1
Old Dominion	0	0	1	1
UTEP	0	0	1	2
UAB	0	0	1	2
Middle Tennessee	0	0	1	2
UTSA	0	0	1	3
FIU	0	0	0	2
North Texas	0	0	0	3

Conference USA Team Comparison - As of Nov. 20

Leader	Statistic	UTSA
WKU - 83.0	Scoring offense	8th - 66.0
Southern Miss - 55.2	Scoring defense	9th - 70.2
WKU - +24.0	Scoring margin	10th - -4.2
Louisiana Tech - .482	Field goal percentage	11th - .394
Charlotte - .344	Field goal percentage - defense	9th - .403
WKU - .390	3-pt field goal percentage	8th - .310
Rice - .188	3-pt field goal - defense	9th - .315
Florida Atlantic - 8.3	3-point FG made per game	T10th - 4.5
FIU - .792	Free throw percentage	11th - .610
UTEP - 51.7	Rebounding offense	7th - 41.0
Southern Miss - 33.2	Rebounding defense	10th - 41.5
UTEP - +16.0	Rebounding margin	7th - -0.5
Southern Miss - +10.0	Turnover margin	7th - -1.0
Marshall - 8.0	Blocked shots	14th - 1.5
Louisiana Tech - 18.0	Assists	13th - 8.8
Southern Miss - 17.5	Steals	T3rd - 8.8

Conference-only games (2015-16 FINAL)

CHAR - 73.8	Scoring offense	11th - 59.7
USM - 59.7	Scoring defense	6th - 63.6
MT - +9.1	Scoring margin	11th - -3.8
FIU - .784	Free throw percentage	14th - .634
MT - .460	Field goal percentage	14th - .377
UTSA - .385	Field goal percentage - defense	1st
FAU - .358	3-pt field goal percentage	9th - .297
UTEP - .271	3-pt field goal - defense	4th - .296
ODU - 40.5	Rebounding offense	5th - 38.4
UAB - 32.5	Rebounding defense	12th - 38.3
ODU - +6.3	Rebounding margin	10th - +0.1
UAB - 4.2	Blocked shots	4th - 3.7
MT - 15.6	Assists	14th - 9.4
UTEP - 11.6	Steals	5th - 8.0
WKU - +5.7	Turnover margin	6th - -0.3
FAU - 10.0	3-point FG made	14th - 4.1

2016-17 Conference USA Players of the Week

Player of the Week

Nov. 14 - L. Webster, CHAR | S. Gore, MAR
 Nov. 21 - Tashia Brown, WKU
 Nov. 28 -
 Dec. 5 -
 Dec. 12 -
 Dec. 19 -
 Dec. 26 -
 Jan. 2 -
 Jan. 9 -
 Jan. 16 -
 Jan. 23 -
 Jan. 30 -
 Feb. 6 -
 Feb. 13 -
 Feb. 20 -
 Feb. 27 -
 March 6 -

Freshman of the Week

Nov. 14 - Miyah Barnes, UAB
 Nov. 21 - Miyah Barnes, UAB
 Nov. 28 -
 Dec. 5 -
 Dec. 12 -
 Dec. 19 -
 Dec. 26 -
 Jan. 2 -
 Jan. 9 -
 Jan. 16 -
 Jan. 23 -
 Jan. 30 -
 Feb. 6 -
 Feb. 13 -
 Feb. 20 -
 Feb. 27 -
 March 6 -

Honor Roll

Nov. 14 - Loryn Goodwin, UTSA
 Nov. 21 - None
 Nov. 28 -
 Dec. 5 -
 Dec. 12 -
 Dec. 19 -
 Dec. 26 -
 Jan. 2 -
 Jan. 9 -
 Jan. 16 -
 Jan. 23 -
 Jan. 30 -
 Feb. 6 -
 Feb. 13 -
 Feb. 20 -
 Feb. 27 -
 March 6 -



The 2017 Conference USA Basketball Championships returns to Birmingham, Ala. and will return to just a 12-team field for the four-day event. The tournament is scheduled to run from Wednesday, March 8, through Saturday, March 11. Games will be held at the Birmingham-Jefferson Civic Center and Bartow Arena.

The first two days of the tournament will be played at Bartow Arena with the semifinals and championship game played at Legacy Arena. The four teams with the best regular-season records in conference play will be seeded 1-4 and will earn a bye to advance directly to the quarterfinals.

UAB will serve as the host institution and has hosted the past three championships, as well as the 1999 C-USA Men's Basketball Championship and the 1996 C-USA Women's Basketball Championship.

STAT LEADERS

Overall conference individual leaders - As of Nov. 20

Scoring	No.	Avg./G
2. Loryn Goodwin	91	22.8
18. Carlie Heineman	51	12.8
Rebounding		
T12. Tesha Smith	28	7.0
Assists		
3. Loryn Goodwin	21	5.3
Steals		
15. Loryn Goodwin	9	2.3
3-pt field goal percentage		
13. Carlie Heineman	10-23	.435
3-pt field goals made per game		
T4. Carlie Heineman	10	2.5
Assist/Turnover ratio		
6. Loryn Goodwin	21/12	1.8
Offensive rebounds per game		
T12. Tesha Smith	11	2.8

UTSA/Northern Colorado Statistical Comparison

Statistic	UTSA	Northern Colorado
Record	1-3	3-1
RPI (As of 3/13/16)	268	185
Scoring offense	66.0	65.3
Scoring defense	70.3	64.0
Scoring margin	-4.3	+1.3
Field goal percentage	.394	.387
Field goal percentage - defense	.403	.358
3-point field goal percentage	.310	.337
3-point FG percentage - defense	.315	.342
Free throw percentage	.610	.815
Free throw percentage - defense	.608	.627
Rebounding offense	41.0	41.3
Rebounding defense	41.5	45.0
Rebounding margin	-0.5	-3.7
Assists	8.8	14.8
Turnovers	16.3	17.3
Steals	8.8	7.5
Blocked shots	1.5	4.3

Radford connection

During head women's basketball coach Lubomyr Lichonczak's first stint as a head coach at Radford, he coached Nicole Gardiner who is the mother of current player Deja Cousin.

Goodwin to the rescue

After serving her one season on the bench due to the NCAA transfer rule, Houston native Loryn Goodwin will finally make her debut in a Roadrunners uniform in 2016-17. Goodwin transferred from Butler where she garnered All-BIG EAST Honorable Mention accolades and was the Bulldogs leading scorer.

Roadrunners in season openers

In the program's 36 years of existence, UTSA has gone 16-20 in season openers. Under the direction of Lubomyr Lichonczak, the Roadrunners have gone 0-3.

Facing the competition

The USA Today Coaches Preseason Poll, released on Oct. 27, has one of the Roadrunners opponents ranked. The Texas Longhorns check in at No. 8 after finishing 31-5 during the 2015-16 season. In addition, three other teams received votes (WKU, Oregon, Tulane).

...in conference openers

UTSA is 10-15 in conference openers. This spans between four different conferences. The Roadrunners first competed in the Oil Country Athletic Conference for two seasons before joining the Southland Conference during the 1992-93 season. Since then, UTSA made a transition from the Western Athletic Conference (2012-13) to Conference USA (2013-14 to present).

SCOUTING THE OPPONENT

Northern Colorado • November 25 • 4 p.m.

- All-time record against Oregon: First meeting
- Last time out: N/A
- Northern Colorado and UTSA will meet for the first time in program history on Friday, Nov. 25, as the Bears head to the Lone Star State with a 3-1 overall record - winners of its last three
- Northern Colorado will face its first road test as the Bears have played all four games, in addition to two exhibition games, in the friendly confines of the Bank of Colorado Arena
- The Bears have won their last two games on a combined six points. UNC's first win this season was by a 20-point margin against Denver
- Leading the way for the Bears is redshirt sophomore Savannah Smith. The guard is averaging 18.8 points a night with 4.0 rebounds, 3.3 assists and 1.3 steals per game. Smith is also 19-of-21 from the charity stripe
- Defensively, sophomore Courtney Smith is grabbing 6.8 rebounds per game and is joined by Kianna Williams' 6.3 per night
- Quarter breakdown: The Bears' best scoring quarter is in the third as they hold a 79-48 advantage over opponents
- UNC has gone into overtime once against Florida Gulf Coast and took two overtimes to complete the victory

Rough start

UTSA started its 2016-17 season 0-2 and is the second straight year under head coach Lubomyr Lichonczak that the Roadrunners have begun 0-2. In his four years at the helm, Lichonczak has started 0-2 in three of his four seasons.

Rough start pt 2

The Roadrunners have begun the 2016-17 campaign with a 1-3 record with its last loss coming on the road at Oregon, 77-63. The last time UTSA started 1-3 was back in the 2011-12 season when the Roadrunners finished 8-21.

SCORING BY THE QUARTER

Opponent	1st	2nd	Half	3rd	4th	2Half	OT	F
Angelo State	12	29	41	16	20	36		77
at UT Arlington	10	15	25	19	10	29		54
Texas A&M-Kingsville	12	18	30	25	15	40		70
at Oregon	9	12	21	18	24	42		63
Northern Colorado								
Tulane								
Abilene Christian								
Texas State								
at Texas								
Houston								
Liberty								
at UTEP								
Southern Miss								
Louisiana Tech								
at Florida Atlantic								
at FIU								
UTEP								
Marshall								
WKU								
at Middle Tennessee								
at UAB								
at Southern Miss								
at Louisiana Tech								
Rice								
North Texas								
FIU								
Florida Atlantic								
at Charlotte								
at Old Dominion								

AP Top-25 Coaches' Poll - Nov. 21, 2016

School	Record	Points	Previous
1. Notre Dame (16)	4-0	804	1
2. Connecticut (16)	3-0	797	3
3. South Carolina (1)	2-0	755	4
4. Louisville	5-0	707	5
5. Baylor	3-1	704	2
6. Maryland	4-0	665	6
7. Mississippi State	3-0	614	10
8. Ohio State	3-1	591	7
9. UCLA	3-1	533	9
10. Florida State	3-1	502	12
11. Stanford	3-1	448	11
11. Syracuse	3-0	448	14
13. Oklahoma	3-0	389	16
14. Texas	1-2	376	8
15. Washington	3-1	348	17
16. Florida	3-0	300	19
17. Tennessee	3-1	257	13
18. DePaul	3-0	256	20
19. West Virginia	3-0	214	21
20. Kentucky	3-1	205	15
21. Miami (FL)	3-1	155	22
22. Oregon State	3-0	147	24
23. Arizona State	2-1	98	18
24. Michigan State	4-0	84	NR
25. Gonzaga	3-0	62	NR

Others receiving votes: Auburn 55, Missouri 52, Colorado 41, Indiana 27, Texas A&M 26, Marquette 18, South Dakota St. 12, South Florida 8, Green Bay 7, NC State 7, Saint Louis 6, Western Kentucky 3, California 2, Duke 1, Boise St. 1

USA Today Top-25 DI Basketball Coaches' Poll - Nov. 15, 2016

School (First-Place Votes)	Record	Points	Previous
1. Notre Dame (13)	2-0	765	2
2. Connecticut (13)	1-0	758	1
3. South Carolina (4)	1-0	748	3
4. Baylor (2)	2-0	712	4
5. Maryland	1-0	646	5
6. Louisville	2-0	630	8
7. Stanford	2-0	584	10
8. Ohio State	1-1	548	T6
9. Mississippi State	2-0	521	11
10. Texas	0-1	507	T6
11. UCLA	1-1	463	9
12. Florida State	1-1	462	12
13. Tennessee	2-0	394	14
14. Syracuse	2-0	382	13
15. Washington	2-0	343	15
16. Arizona State	2-0	326	16
17. Oklahoma	1-0	273	18
18. Oregon State	2-0	241	17
19. Kentucky	2-0	233	19
20. DePaul	2-0	155	21
21. Michigan State	2-0	126	22
22. Miami (FL)	1-1	107	20
23. Florida	2-0	97	24
24. Texas A&M	1-0	82	23
25. West Virginia	1-0	62	25

Dropped out: none

Others receiving votes: Indiana (2-0) 59; Michigan (2-0) 34; South Dakota State (2-0) 25; Missouri (2-0) 22; Duke (2-0) 16; Auburn (1-0) 15; South Florida (0-0) 14; St. John's (1-0) 11; **WKU (1-0) 6**; North Carolina State (1-0) 5; Oklahoma State (1-0) 5; California (2-0) 4; Temple (2-0) 4; Drake (1-0) 3; Georgia (2-0) 3; Saint Louis (2-0) 3; Gonzaga (2-0) 2; Wisconsin-Green Bay (2-0) 2; Georgia Tech (2-0) 1; **Tulane (1-0) 1**

Attendance Records			
Date	Opponent	Results	Attendance
March 3, 2012	UT-Arlington	L, 75-65	2,611
Feb. 7, 2004	McNeese State	W, 64-56 (OT)	2,311
Jan. 27, 1996	Texas State	L, 78-57	2,021
Feb. 9, 1991	SMU	W, 93-77	2,000
Nov. 12, 2010	Our Lady of the Lake	W, 79-66	1,789
Jan. 29, 1994	North Texas	L, 74-65	1,786
Feb. 26, 2005	UT-Arlington	W, 48-46	1,736
Feb. 24, 2007	A&M-Corpus Christi	W, 61-43	1,699
Nov. 19, 2010	No. 23 TCU	L, 83-59	1,563
Jan. 21, 2004	Texas State	L, 44-43	1,445



KASIA KIEJDROWSKA

F • Senior
Gdynia, Poland • Mineral Area College

1

#01 KIEJDROWSKA, Kasia

Opponent	Date	gs	min	Total		3-Pointers		Free throws		Rebounds				pf	a	t/o	blk	stl	pts	avg
				fg-fga	pct	3fg-fga	pct	ft-fa	pct	off	def	tot	avg							
ANGELO STATE	11/11/16	*	10	1-4	.250	0-1	.000	0-0	.000	0	0	0	0.0	3	0	0	0	1	2	2.0
at UT Arlington	11/13/16	*	34	3-9	.333	0-3	.000	1-2	.500	2	8	10	5.0	0	0	4	2	7	4.5	
TEXAS A&M-KINGSVILLE	11/16/16	*	27	2-7	.286	2-3	.667	0-0	.000	2	4	6	5.3	1	0	0	0	6	5.0	
at Oregon	11/20/16	*	19	5-12	.417	1-4	.250	0-0	.000	0	0	0	4.0	2	1	0	0	11	6.5	
Totals			4	90	11-32	.344	3-11	.273	1-2	.500	4	12	16	4.0	6	1	4	0	26	6.5

Games played: 4
Minutes/game: 22.5
Points/game: 6.5
FG Pct: 34.4
3FG Pct: 27.3
FT Pct: 50.0

Rebounds/game: 4.0
Assists/game: 0.3
Turnovers/game: 1.0
Assist/turnover ratio: 0.3
Steals/game: 1.0

Career Records

Points

31 vs. Marshalltown (1/27/15)

Rebounds

14 vs. Howard Payne (12/15/15)

Field Goals

13 vs. Marshalltown (1/27/15)

3-point FGs

7 at Crowder (2/14/15)

Free Throws

8 at St. Louis (12/16/13)

Assists

7 (2x) last vs. State Fair (2/28/15)

Blocks

2 vs. St. Clair County (11/15/14)

Steals

8 vs. Jefferson (Mo.)(1/14/15)

Season	GP-GS	Min./Avg.	Career Stats																	
			Total		3-PT		FT		Rebounds						Scoring					
			FG-FGA	Pct.	FG-FGA	Pct.	FT-FTA	Pct.	Off	Def	Tot	Avg.	PF	FO	A	TO	BLK	STL	PTS	Avg.
2016-17	4-4	90/22.5	11-32	.344	3-11	.273	1-2	.500	4	12	16	4.0	6	0	1	4	0	4	26	6.5
2015-16	26-5	416/16.0	55-161	.342	28-84	.333	14-20	.700	9	53	62	2.4	46	2	13	23	4	9	152	5.8
2014-15*	31-30	783/25.3	148-372	.398	63-164	.384	50-70	.714	24	106	130	4.2	72	3	97	66	10	52	409	13.2
2012-13*	29-12	668/23.0	45-138	.326	48-125	.384	59-66	.894	18	73	91	3.1	59	1	77	77	5	48	293	10.1
TOTAL	90-51	1957/21.7	259-703	.368	142-384	.370	124-158	.785	55	244	299	3.3	183	6	188	170	19	113	880	9.8

* denotes stats from previous school

2016-17 Player Notes:

- Grabbed a season-high 10 rebounds against UT Arlington



ALEXUS DUKES

G • Sophomore

Harker Heights, Texas • Harker Heights HS

3

#03 DUKES, Alexus

Opponent	Date	gs	min	Total		3-Pointers		Free throws		Rebounds				pf	a	t/o	blk	stl	pts	avg
ANGELO STATE	11/11/16	dnp		-	-	-	-	-	-	-	-	-	-	-	-	-	-	-	-	-
at UT Arlington	11/13/16	dnp		-	-	-	-	-	-	-	-	-	-	-	-	-	-	-	-	-
TEXAS A&M-KINGSVILLE	11/16/16	dnp		-	-	-	-	-	-	-	-	-	-	-	-	-	-	-	-	-
at Oregon	11/20/16	16	16	1-6	.167	0-1	.000	0-0	.000	1	2	3	3.0	1	2	1	0	0	2	2.0
Totals		0	16	1-6	.167	0-1	.000	0-0	.000	1	2	3	3.0	1	2	1	0	0	2	2.0

Games played: 1
Minutes/game: 16.0
Points/game: 2.0
FG Pct: .167
3FG Pct: 0.0

Rebounds/game: 3.0
Assists/game: 2.0
Turnovers/game: 1.0
Assist/turnover ratio: 2.0

Career Records

Points

18 at Texas (11/14/15)

Rebounds

6 at Texas (11/14/15)

Field Goals

6 (2x) last vs. Houston Baptist (11/29/15)

3-point FGs

6 at Texas (11/14/15)

Free Throws

4 vs. Howard Payne (12/15/15)

Assists

6 vs. Howard Payne (12/15/15)

Blocks

1 (4x) last at UTEP (1/17/16)

Steals

4 vs. Houston Baptist (11/29/15)

Season	GP-GS	Min./Avg.	Career Stats																	
			Total		3-PT		FT		Rebounds				Scoring							
			FG-FGA	Pct.	FG-FGA	Pct.	FT-FTA	Pct.	Off	Def	Tot	Avg.	PF	FO	A	TO	BLK	STL	PTS	Avg.
2016-17	1-0	16/16.0	1-6	.167	0-1	.000	0-0	.000	1	2	3	3.0	1	0	2	1	0	0	2	2.0
2015-16	26-9	446/17.2	49-155	.316	11-46	.239	19-32	.594	9	33	42	1.6	48	1	44	48	4	22	128	4.9
TOTAL	27-9	462/17.1	50-161	.311	11-47	.234	19-32	.594	10	35	45	1.7	49	1	46	49	4	22	130	4.8

2016-17 Player Notes:

4

Rebounds/game: 3.3
Assists/game: 2.3
Turnovers/game: 3.5
Assist/turnover ratio: 0.6
Steals/game: 1.5
Blocks/game: 0.5

4 (3x) last vs. Louisiana Tech (1/28/16)

13



DEJA COUSIN

G • Freshman

Burlington, N.C. • The Burlington School

13

#13 COUSIN, Deja

Opponent	Date	gs	min	Total		3-Pointers		Free throws		Rebounds				pf	a	t/o	blk	stl	pts	avg
				fg-fga	pct	3fg-fga	pct	ft-fa	pct	off	def	tot	avg							
ANGELO STATE	11/11/16	2		0-0	.000	0-0	.000	0-0	.000	0	0	0	0.0	1	0	0	0	0	0	0.0
at UT Arlington	11/13/16	dnp		-	-	-	-	-	-	-	-	-	-	-	-	-	-	-	-	-
TEXAS A&M-KINGSVILLE	11/16/16	7		0-2	.000	0-2	.000	0-0	.000	0	0	0	0.0	0	0	0	0	0	0	0.0
at Oregon	11/20/16	1		0-1	.000	0-1	.000	0-0	.000	0	0	0	0.0	0	0	0	0	0	0	0.0
Totals		0	10	0-3	.000	0-3	.000	0-0	.000	0	0	0	0.0	1	0	0	0	0	0	0.0

Games played: 3
 Minutes/game: 3.3
 FG Pct: 0.0
 3FG Pct: 0.0

Career Records

Points

-

Rebounds

-

Field Goals

-

3-point FGs

-

Free Throws

-

Assists

-

Blocks

-

Steals

-

Season	GP-GS	Min./Avg.	Total		3-PT		Career Stats FT		Rebounds				Scoring					
			FG-FGA	Pct.	FG-FGA	Pct.	FT-FTA	Pct.	Off	Def	Tot	Avg.	PF	FO	A	TO	BLK	STL
2016-17	3-0	10/3.3	0-3	.000	0-3	.000	0-0	.000	0	0	0	0.0	1	0	0	0	0	0
TOTAL	3-0	10/3.3	0-3	.000	0-3	.000	0-0	.000	0	0	0	0.0	1	0	0	0	0	0

2016-17 Player Notes:



TIMEA TOTH

F • Freshman

Dunakeszi, Hungary • Dunakeszi Radnoti Miklos Gimnaziuma

15

Career Records

Points
4 vs. TAMUK (11/16/16)

Rebounds
10 vs. Angelo State (11/11/16)

Field Goals
2 vs. TAMUK (11/16/16)

3-point FGs
-

Free Throws
1 at Oregon (11/20/16)

Assists
1 at Oregon (11/20/16)

Blocks
1 vs. Angelo State (11/11/16)

Steals
2 vs. Angelo State (11/11/16)

#15 TOTH, Timea

Opponent	Date	gs	min	Total		3-Pointers		Free throws		Rebounds				pf	a	t/o	blk	stl	pts	avg
				fg-fga	pct	3fg-fga	pct	ft-fa	pct	off	def	tot	avg							
ANGELO STATE	11/11/16	*	32	1-4	.250	0-0	.000	0-0	.000	4	6	10	10.0	2	0	3	1	2	2	2.0
at UT Arlington	11/13/16	*	12	0-1	.000	0-0	.000	0-0	.000	1	0	1	5.5	1	0	0	0	0	0	1.0
TEXAS A&M-KINGSVILLE	11/16/16	*	15	2-5	.400	0-0	.000	0-0	.000	3	1	4	5.0	3	0	1	0	1	4	2.0
at Oregon	11/20/16	*	25	0-2	.000	0-0	.000	1-2	.500	1	2	3	4.5	4	1	4	0	1	1	1.8
Totals			4	84	3-12	.250	0-0	1-2	.500	9	9	18	4.5	10	1	8	1	4	7	1.8

Games played: 4
Minutes/game: 21.0
Points/game: 1.8
FG Pct: 25.0
FT Pct: 50.0

Rebounds/game: 4.5
Assists/game: 0.3
Turnovers/game: 2.0
Assist/turnover ratio: 0.1
Steals/game: 1.0
Blocks/game: 0.3

Season	GP-GS	Min./Avg.	Career Stats																	
			Total		3-PT		FT		Rebounds				Scoring							
			FG-FGA	Pct.	FG-FGA	Pct.	FT-FTA	Pct.	Off	Def	Tot	Avg.	PF	FO	A	TO	BLK	STL	PTS	Avg.
2016-17	4-4	84/21.0	3-12	.250	0-0	.000	1-2	.500	9	9	18	4.5	10	0	1	8	1	4	7	1.8
TOTAL	4-4	84/21.0	3-12	.250	0-0	.000	1-2	.500	9	9	18	4.5	10	0	1	8	1	4	7	1.8

2016-17 Player Notes:



KOURTNEY KEKEC

G • Sophomore

Bonne Terre, Mo. • Mineral Area College

20

#20 KEKEC, Kourtney

Opponent	Date	gs	min	Total		3-Pointers		Free throws		Rebounds				pf	a	t/o	blk	stl	pts	avg
				fg-fga	pct	3fg-fga	pct	ft-fa	pct	off	def	tot	avg							
ANGELO STATE	11/11/16	5		0-1	.000	0-1	.000	0-0	.000	0	0	0	0.0	1	0	0	0	0	0	0.0
at UT Arlington	11/13/16	1		0-0	.000	0-0	.000	0-0	.000	0	0	0	0.0	1	0	0	0	0	0	0.0
TEXAS A&M-KINGSVILLE	11/16/16	9		0-2	.000	0-0	.000	0-0	.000	0	1	1	0.3	1	1	0	0	0	0	0.0
at Oregon	11/20/16	4		0-0	.000	0-0	.000	0-0	.000	1	0	1	0.5	1	0	0	0	0	0	0.0
Totals		0	19	0-3	.000	0-1	.000	0-0	.000	1	1	2	0.5	4	1	0	0	0	0	0.0

Games played: 4
Minutes/game: 4.8
FG Pct: 0.0
3FG Pct: 0.0

Rebounds/game: 0.5
Assists/game: 0.3
Assist/turnover ratio: 99.9

Career Records

Points

20 vs. State Fair (1/23/16)

Rebounds

11 vs. Illinois Central (1/27/16)

Field Goals

8 vs. State Fair (1/23/16)

3-point FGs

2 (2x) last vs. State Fair (2/27/16)

Free Throws

8 (2x) last vs. Jefferson(Mo.)(2/3/16)

Assists

4 (3x) last vs. Crowder (2/6/16)

Blocks

2 vs. Jefferson County (11/13/15)

Steals

3 vs. Des Moines Area (11/20/15)

			Career Stats																	
Season	GP-GS	Min./Avg.	Total		3-PT		FT		Rebounds				Scoring							
			FG-FGA	Pct.	FG-FGA	Pct.	FT-FTA	Pct.	Off	Def	Tot	Avg.	PF	FO	A	TO	BLK	STL	PTS	Avg.
2016-17	4-0	19/4.8	0-3	.000	0-1	.000	0-0	.000	1	1	2	0.5	4	0	1	0	0	0	0	0.0
2015-16*	28-18	693/24.7	81-197	.411	18-57	.316	63-91	.692	41	95	136	4.9	91	5	59	64	7	20	243	8.7
TOTAL	32-18	712/22.3	81-200	.405	18-58	.310	63-91	.692	42	96	138	4.3	95	5	60	64	7	20	243	7.6

* denotes stats from previous school

2016-17 Player Notes:



MARIE BENSON

F • Freshman

Waco, Texas • Midland HS

21

#21 BENSON, Marie

Opponent	Date	gs	min	Total		3-Pointers		Free throws		Rebounds				pf	a	t/o	blk	stl	pts	avg	
				fg-fga	pct	3fg-fga	pct	ft-fa	pct	off	def	tot	avg								
ANGELO STATE	11/11/16	*	20	0-1	.000	0-0	.000	0-0	.000	3	4	7	7.0	3	0	4	0	0	0	0.0	
at UT Arlington	11/13/16	*	16	2-4	.500	0-0	.000	2-4	.500	3	1	4	5.5	2	0	0	0	2	6	3.0	
TEXAS A&M-KINGSVILLE	11/16/16	*	22	2-5	.400	0-0	.000	2-2	1.000	2	3	5	5.3	2	0	3	0	1	6	4.0	
at Oregon	11/20/16	*	20	3-6	.500	0-1	.000	1-2	.500	1	6	7	5.8	5	0	0	0	1	7	4.8	
Totals			4	78	7-16	.438	0-1	.000	5-8	.625	9	14	23	5.8	12	0	7	0	4	19	4.8

Games played: 4
Minutes/game: 19.5
Points/game: 4.8
FG Pct: 43.8
3FG Pct: 0.0
FT Pct: 62.5

Rebounds/game: 5.8
Turnovers/game: 1.8
Steals/game: 1.0

Career Records

Points
7 at Oregon (11/20/16)

Rebounds
7 (2x) last at Oregon (11/20/16)

Field Goals
3 at Oregon (11/20/16)

3-point FGs
-

Free Throws
2 (2x) last vs. TAMUK (11/16/16)

Assists
-

Blocks
-

Steals
2 at UT Arlington (11/13/16)

Season	GP-GS	Min./Avg.	Career Stats																	
			Total		3-PT		FT		Rebounds				Scoring							
			FG-FGA	Pct.	FG-FGA	Pct.	FT-FTA	Pct.	Off	Def	Tot	Avg.	PF	FO	A	TO	BLK	STL	PTS	Avg.
2016-17	4-4	78/19.5	7-16	.438	0-1	.000	5-8	.625	9	14	23	5.8	12	1	0	7	0	4	19	4.8
TOTAL	4-4	78/19.5	7-16	.438	0-1	.000	5-8	.625	9	14	23	5.8	12	1	0	7	0	4	19	4.8

2016-17 Player Notes:



TIJA HAWKINS
F • Freshman
Killeen, Texas • Shoemaker HS

23

#23 HAWKINS, Tija

Opponent	Date	gs	min	Total		3-Pointers		Free throws		Rebounds				pf	a	t/o	blk	stl	pts	avg
				fg-fga	pct	3fg-fga	pct	ft-fa	pct	off	def	tot	avg							
ANGELO STATE	11/11/16	2		0-0	.000	0-0	.000	0-0	.000	0	0	0	0.0	2	0	1	0	0	0	0.0
at UT Arlington	11/13/16	4		0-2	.000	0-0	.000	0-0	.000	0	1	1	0.5	0	0	0	0	0	0	0.0
TEXAS A&M-KINGSVILLE	11/16/16	16		2-5	.400	0-0	.000	0-0	.000	0	5	5	2.0	1	0	0	1	0	4	1.3
at Oregon	11/20/16	2		0-0	.000	0-0	.000	0-0	.000	0	0	0	1.5	1	0	0	0	0	0	1.0
Totals		0	24	2-7	.286	0-0	.000	0-0	.000	0	6	6	1.5	4	0	1	1	0	4	1.0

Games played: 4
Minutes/game: 6.0
Points/game: 1.0
FG Pct: 28.6

Rebounds/game: 1.5
Turnovers/game: 0.3
Blocks/game: 0.3

Career Records

Points
4 vs. TAMUK (11/16/16)

Rebounds
5 vs. TAMUK (11/16/16)

Field Goals
2 vs. TAMUK (11/16/16)

3-point FGs
-

Free Throws
-

Assists
-

Blocks
1 vs. TAMUK (11/16/16)

Steals
-

Season	GP-GS	Min./Avg.	Total		3-PT		Career Stats FT		Rebounds				Scoring					
			FG-FGA	Pct.	FG-FGA	Pct.	FT-FTA	Pct.	Off	Def	Tot	Avg.	PF	FO	A	TO	BLK	STL
2016-17	4-0	24/6.0	2-7	.286	0-0	.000	0-0	.000	0	6	6	1.5	4	0	0	1	1	0
TOTAL	4-0	24/6.0	2-7	.286	0-0	.000	0-0	.000	0	6	6	1.5	4	0	0	1	1	0

2016-17 Player Notes:



TESHA SMITH
C • Senior
San Antonio, Texas • Wagner HS
30

Career Records

Points
29 vs. Howard Payne (12/15/15)

Rebounds
17 vs. Louisiana Tech (1/28/16)

Field Goals
12 vs. Howard Payne (12/15/15)

3-point FGs
-

Free Throws
10 vs. East Carolina (2/20/14)

Assists
2 (2x) last vs. Middle Tennessee (1/9/16)

Blocks
3 (3x) last vs. Middle Tennessee (1/9/16)

Steals
3 at UT Arlington (11/13/16)

#30 SMITH, Tesha

Opponent	Date	gs	min	Total		3-Pointers		Free throws		Rebounds				pf	a	t/o	blk	stl	pts	avg
				fg-fga	pct	3fg-fga	pct	ft-fa	pct	off	def	tot	avg							
ANGELO STATE	11/11/16	17		3-8	.375	0-0	.000	5-8	.625	2	6	8	8.0	4	0	1	1	1	11	11.0
at UT Arlington	11/13/16	23		5-10	.500	0-0	.000	0-0	.000	4	5	9	8.5	2	0	5	0	3	10	10.5
TEXAS A&M-KINGSVILLE	11/16/16	13		2-8	.250	0-0	.000	2-2	1.000	4	3	7	8.0	1	0	1	0	2	6	9.0
at Oregon	11/20/16	15		1-3	.333	0-0	.000	0-0	.000	1	3	4	7.0	2	0	3	0	0	2	7.3
Totals		0	68	11-29	.379	0-0	.000	7-10	.700	11	17	28	7.0	9	0	10	1	6	29	7.3

Games played: 4
Minutes/game: 17.0
Points/game: 7.3
FG Pct: 37.9
FT Pct: 70.0

Rebounds/game: 7.0
Turnovers/game: 2.5
Steals/game: 1.5
Blocks/game: 0.3

Season	GP-GS	Min./Avg.	Total		3-PT		Career Stats FT		Rebounds				Scoring							
			FG-FGA	Pct.	FG-FGA	Pct.	FT-FTA	Pct.	Off	Def	Tot	Avg.	PF	FO	A	TO	BLK	STL	PTS	Avg.
2016-17	4-0	68/17.0	11-29	.379	0-0	.000	7-10	.700	11	17	28	7.0	9	0	0	10	1	6	29	7.3
2015-16	26-8	581/22.3	108-211	.512	0-0	.000	49-83	.590	82	134	216	8.3	74	3	9	60	22	12	265	10.2
2014-15	31-0	542/17.5	97-199	.487	0-0	.000	43-83	.518	69	118	187	6.0	92	6	6	61	13	7	237	7.6
2013-14	30-7	480/16.0	85-160	.531	0-0	.000	49-75	.653	60	108	168	5.6	82	1	4	33	20	13	219	7.3
TOTAL	91-15	1671/18.4	301-599	.503	0-0	.000	148-251	.590	222	377	599	6.6	257	10	19	164	56	38	750	8.2

2016-17 Player Notes:

- CAREER DOUBLE-DOUBLES: 14
 - 2015-16: 7 double-doubles
 - 2014-15: 3 double-doubles
 - 2013-14: 4 double-doubles

31

2 (2x) last at North Texas (1/1/16)

Season	GP-GS	Min./Avg.	Career Stats																	
			Total		3-PT		FT		Rebounds				Scoring							
			FG-FGA	Pct.	FG-FGA	Pct.	FT-FTA	Pct.	Off	Def	Tot	Avg.	PF	FO	A	TO	BLK	STL	PTS	Avg.
2016-17	4-4	136/34.0	18-40	.450	10-23	.435	5-8	.625	2	9	11	2.8	7	0	0	7	1	2	51	12.8
2015-16	28-9	427/15.3	45-131	.344	35-92	.380	16-26	.615	10	32	42	1.5	21	0	18	13	5	8	141	5.0
2014-15	20-1	220/11.0	25-78	.321	22-65	.338	2-2	1.000	5	7	12	0.6	15	0	9	10	1	6	74	3.7
TOTAL	52-14	783/15.1	88-249	.353	67-180	.372	23-36	.638	17	48	65	1.3	43	0	27	30	7	16	266	5.1



LORYN GOODWIN

G • Junior

Cypress, Texas • Butler

32

#32 GOODWIN, Loryn

Opponent	Date	gs	min	Total		3-Pointers		Free throws		Rebounds				pf	a	t/o	blk	stl	pts	avg
				fg-fga	pct	3fg-fga	pct	ft-fa	pct	off	def	tot	avg							
ANGELO STATE	11/11/16	*	40	12-25	.480	3-6	.500	10-17	.588	2	3	5	5.0	2	4	2	0	1	37	37.0
at UT Arlington	11/13/16	*	39	4-11	.364	0-1	.000	6-10	.600	1	2	3	4.0	2	6	5	0	1	14	25.5
TEXAS A&M-KINGSVILLE	11/16/16	*	31	8-12	.667	0-2	.000	6-8	.750	0	5	5	4.3	1	4	3	0	2	22	24.3
at Oregon	11/20/16	*	39	5-15	.333	0-3	.000	8-12	.667	1	5	6	4.8	1	7	2	0	5	18	22.8
Totals		4	149	29-63	.460	3-12	.250	30-47	.638	4	15	19	4.8	6	21	12	0	9	91	22.8

Games played: 4
Minutes/game: 37.2
Points/game: 22.8
FG Pct: 46.0
3FG Pct: 25.0
FT Pct: 63.8

Rebounds/game: 4.8
Assists/game: 5.3
Turnovers/game: 3.0
Assist/turnover ratio: 1.8
Steals/game: 2.3

Career Records

Points

37 vs. Angelo State (11/11/16)

Rebounds

15 vs. Creighton (1/4/15)

Field Goals

12 vs. Angelo State (11/11/16)

3-point FGs

7 (2x) last at La.-Monroe (2/14/13)

Free Throws

10 vs. Angelo State (11/11/16)

Assists

7 (3x) last at Oregon (11/20/16)

Blocks

1 (5x) last at Creighton (2/1/15)

Steals

8 at New Mexico (11/23/12)

Season	GP-GS	Min./Avg.	Total		3-PT		Career Stats FT		Rebounds				Scoring									
			FG-FGA	Pct.	FG-FGA	Pct.	FT-FTA	Pct.	Off	Def	Tot	Avg.	PF	FO	A	TO	BLK	STL	PTS	Avg.		
2016-17	4-4	149/37.2	29-63	.460	3-12	.250	30-47	.638	4	15	19	4.8	6	0	21	12	0	9	91	22.8		
2014-15*	23-21	811/35.3	125-321	.389	23-73	.315	86-118	.729	28	117	145	6.3	56	1	78	83	5	48	359	15.6		
2012-13*	30-19	843/28.1	122-338	.361	65-177	.367	83-113	.735	43	90	133	4.4	60	1	35	68	0	86	392	13.1		
TOTAL	57-44	1803/31.6	276-722	.382	91-262	.347	199-278	.716	75	222	297	5.2	122	2	134	163	5	143	842	14.8		

* denotes stats from previous school

2016-17 Player Notes:

- Scored 37 points in debut with UTSA and was three points shy of matching the program record of 40 points in a game set by Starlite Williams in 1986
- Tabbed Conference USA Honor Roll Player of the Week in first week of awards



BILLIE MARLOW

C • Junior

Copenhagen, Denmark • Collin County

40

Career Records

Points

13 at Southwestern Christian (2/20/16)

Rebounds

10 at Paris (11/7/15)

Assists

4 at Paris (11/7/15)

Field Goals

4 (3x) last vs. Midland (3/4/16)

3-point FGs

2 (2x) last vs. Midland (3/4/16)

Free Throws

5 at Southwestern Christian (2/20/16)

Blocks

4 at Southern-Shreveport (10/31/15)

Steals

4 vs. Midland (3/4/16)

#40 MARLOW, Billie

Opponent	Date	gs	min	Total		3-Pointers		Free throws		Rebounds				pf	a	t/o	blk	stl	pts	avg
				fg-fga	pct	3fg-fga	pct	ft-fa	pct	off	def	tot	avg							
ANGELO STATE	11/11/16	6	0-0	.000	0-0	.000	0-0	.000	0	0	0	0.0	0	0	0	0	0	0	0.0	
at UT Arlington	11/13/16	2	0-1	.000	0-0	.000	0-0	.000	0	0	0	0.0	0	0	0	0	0	0	0.0	
TEXAS A&M-KINGSVILLE	11/16/16	13	2-6	.333	1-3	.333	1-1	1.000	2	3	5	1.7	0	0	0	0	0	6	2.0	
at Oregon	11/20/16	7	1-3	.333	1-2	.500	0-0	.000	0	1	1	1.5	1	0	1	0	0	3	2.3	
Totals		0	28	3-10	.300	2-5	.400	1-1	1.000	2	4	6	1.5	1	0	1	0	9	2.3	

Games played: 4
Minutes/game: 7.0
Points/game: 2.3
FG Pct: 30.0
3FG Pct: 40.0
FT Pct: 100.0

Rebounds/game: 1.5
Turnovers/game: 0.3

			Career Stats																		
			Total		3-PT		FT		Rebounds											Scoring	
Season	GP-GS	Min./Avg.	FG-FGA	Pct.	FG-FGA	Pct.	FT-FTA	Pct.	Off	Def	Tot	Avg.	PF	FO	A	TO	BLK	STL	PTS	Avg.	
2016-17	4-0	28/7.0	3-10	.300	2-5	.400	1-1	1.000	2	4	6	1.5	1	0	0	1	0	0	9	2.3	
2015-16*	32-10	509/15.9	52-132	.394	6-17	.353	22-30	.733	52	95	147	4.6	47	0	26	30	17	19	132	4.1	
2014-15*	29-2	455/15.7	32-67	.478	0-0	.000	8-11	.727	44	65	109	3.8	57	2	10	30	14	23	72	2.5	
TOTAL	65-12	992/15.3	87-209	.416	8-22	.364	31-42	.738	98	164	262	4.0	105	2	36	61	31	42	213	3.3	

*denotes stats from previous school

2016-17 Player Notes:

Team Records

Most Points

Game - 113 vs. Schreiner (11/24/90)
Season - 2,392 vs. 30 games (1990-91)

Fewest Points

Game - 30 at TCU (11/14/11)
Half - 10 at UT Arlington (1/27/97)
Quarter - 4 (2x) last at Southern Miss (2/20/16)
Season - 1,455 in 28 games (2001-02)

Highest Victory Margin

67 (105-38) vs. Prairie View A&M (12/7/93)
67 (96-29) vs. Prairie View A&M (2/10/83)

Highest Loss Margin

57 (39-96) at Texas Tech (12/2/98)

Highest Scoring Average

Season - 79.7 in 30 games (1990-91)

Lowest Scoring Average

Season - 51.9 in 28 games (2001-02)

Most Field Goals Made

Game - 45 vs. Schreiner (11/24/90)
Season - 872 (1983-84)

Fewest Field Goals Made

Game - 8 at TCU (11/14/11)
Season - 516 (2001-02)

Most Field Goals Attempted

Game - 78 at Rice (1/4/10)
Season - 2,069 (2008-09)

Fewest Field Goals Attempted

Game - 36 at Baylor (12/16/96)
36 vs. South Alabama (11/15/11)
Season - 1,367 (1998-99)

Highest Field Goal Percentage

Game - .706 vs. Texas Southern (12/5/96)
Season - .478 (800-1,675); 1984-85

Lowest Field Goal Percentage

Game - .133 (8-60) at TCU (11/14/11)
Season - .344 (549-1,596); 2011-12

Most Free Throws Made

Game - 33 vs. Oral Roberts (2/22/86)
33 at Texas Tech (12/17/88)
Season - 531 (1990-91)

Fewest Free Throws Made

Game - 0 vs. St. Bonaventure (12/21/10)
Season - 277 (2015-16)

Most Free Throws Attempted

Game - 45 vs. Texas State (12/22/13)
Season - 789 (1990-91)

Fewest Free Throws Attempted

Game - 3 vs. St. Mary's (2/14/84)
3 vs. St. Bonaventure (12/21/10)
Season - 427 (1981-82)

Highest Free Throw Percentage

Game - .944 (17-18) vs. UNT (1/22/96)
Season - .726 (462-636); 2010-11

Lowest Free Throw Percentage

Game - .000 (0-3) vs. St. Bonaventure (12/21/10)
Season - .619 (289-467); 1993-94

Most 3-point Field Goals Made

Game - 13 vs. Tulsa (1/5/09)
13 vs. Tulsa (3/11/14)
Season - 229 (2008-09)

Fewest 3-point Field Goals Made

Game - 0 multiple times
Season - 47 (1996-97)

Most 3-point Field Goals Attempted

Game - 37 vs. UT-Arlington (2/14/09)
Season - 698 (2008-09)

Most Rebound

Game - 64 vs. Prairie View A&M (2/8/90)
Season - 1,441 (2008-09)

Fewest Rebounds

Game - 21 at UT-Arlington (1/23/07)
Season - 863 (1998-99)

Most Assists

Game - 34 vs. Southwestern (11/22/83)
34 vs. Oklahoma City (2/27/84)
Season - 529 (1981-82)

Fewest Assists

Game - 1 at Creighton (2/10/87)
Season - 265 (2011-12)

Most Steals

Game - 32 at Hardin Simmons (2/6/84)
Season - 373 (1986-87)

Fewest Steals

Game - 0 multiple times
Season - 163 (1998-99)

Most Blocked Shots

Game - 16 vs. Texas Southern (12/28/15)
Season - 138 (2010-11, 2011-12)

Fewest Blocked Shots

Game - 0 multiple times
Season - 22 (1996-97)

Most Turnovers

Game - 38 vs. Sam Houston St. (1/12/95)
Season - 679 (1991-92)

Fewest Turnovers

Game - 5 vs. McNeese St. (2/5/12)
Season - 420 (1997-98)

Most Fouls

Game - 36 vs. Louisiana Tech (1/28/16)
Season - 653 (1983-84)

Fewest Fouls

Game - 8 vs. A&M-Corpus Christi (2/2/08)
Season - 471 (2002-03)

Most Disqualifications

Season - 31 (2011-12)

Individual Records

Points

Game - 40 by Starlite Williams vs. St. Mary's (12/16/86)
 Season - 583 by Tammy Rogers (1990-91)
 Career - 1,607 by Starlite Williams (1983-87)

Scoring Average

Season - 20.7 by Starlite Williams (1986-87)
 Career - 16.6 by Starlite Williams (1983-87)

Field Goals Made

Game - 16 by Starlite Williams vs. St. Mary's (12/16/86)
 Season - 229 by Starlite Williams (1986-87)
 Career - 674 by Starlite Williams (1983-87)

Field Goals Attempted

Game - 33 by Tammy Rogers vs. Alaska Anchorage (2/23/91)
 Season - 482 by Tammy Rogers (1990-91)
 Career - 1,305 by Starlite Williams (1983-87)

Field Goal Percentage (minimum attempts)

Game (10) - .928 (13-14) by Starlite Williams vs. Alabama (12/5/86)
 Season (200) - .657 (184-280) by Margaret Martinovich (1984-85)
 Career - .566 (589-1,039) by Margaret Martinovich (1981-85)

Free Throws Made

Game - 17 by Amber Gregg vs. Texas State (2/26/11)*
 17 by Monica Gibbs vs. Texas State (3/4/09)*
 Season - 167 by Monica Gibbs (2008-09)
 167 by Tammy Rogers (1990-91)
 Career - 553 by Angel Singleton (1993-98)*

Free Throws Attempted

Game - 24 vs. Monica Gibbs vs. Texas State (3/4/09)*
 Season - 282 by Angel Singleton (1996-97)
 Career - 811 by Angel Singleton (1993-98)

Free Throw Percentage (minimum)

Game (10) - 1.000 (12-12) by Whitney York vs. Central Arkansas (2/10/10)
 1.000 (11-11) by Starlite Williams vs. Nevada (11/29/86)
 Season (25) - .903 (28-31) by Rhonda Hoffman (1983-84)
 Career (100) - .822 (259-315) by Amber Gregg (2007-11)*

3-point Field Goals Made

Game - 8 by Terrie Davis vs. Lamar (1/12/08)
 Season - 82 by Terrie Davis (2007-08)*
 Career - 200 by Amber Gregg (2007-11)*

Consecutive 3-pointers Made

8 by Nicole Dunson

3-point Field Goals Attempted

Game - 16 by Jordan Stark vs. UT-Arlington (3/14/09)
 16 by Simone Young at TCU (12/5/12)
 Season - 224 by Terrie Davis (2007-08)
 Career - 633 by Amber Gregg (2007-11)

3-point Percentage (minimum)

Game (5) - .875 (7-8) by Rosie Smith vs. SFA (1/8/98)*
 Season (75) - .441 (52-118) by Nicole Dunson (2005-06)
 Career (150) - .419 (98-234) by Nicole Dunson (2004-06)

Rebounds

Game - 24 by Margaret Martinovich vs. A&M-Kingsville (11/27/81)
 Season - 351 by Onika Anderson (2008-09)
 Career - 990 by Monica Gibbs (2005-09)

Rebound Average (minimum)

Season (25) - 10.6 (26 games) by Onika Anderson (2008-09)
 Career (50) - 9.8 (59 games) by Onika Anderson (2007-09)

Assists

Game - 15 by Monica Gibbs vs. Huston-Tillotson (12/6/08)*
 Season - 221 by Monica Gibbs (2008-09)*
 Career - 693 by Monica Gibbs (2005-09)*

Steals

Game - 9 by Rhonda Hoffman vs. Sam Houston State (1/27/84)
 Season - 92 by Starlite Williams (1986-87)
 Career - 281 by Starlite Williams (1983-87)

Blocked Shots

Game - 8 by Alysse Davis vs. Huston-Tillotson (11/14/10)
 8 by Kim Duncan vs. Texas State (1/24/85)
 Season - 78 by Alysse Davis (2010-11)*
 Career - 105 by Whitney Wright (2009-13)

Games Played

123 by Monica Gibbs (2005-09)

Double-doubles

Season - 16 by Onika Anderson (2008-09)
 Career - 21 by Monica Gibbs (2005-09)

Triple-doubles

Season - 3 by Monica Gibbs (2008-09)
 Career - 3 by Monica Gibbs (2005-09)

100-point Games

Score.....	Opponent	Date
113-89.....	Schreiner	11/24/90
113-91.....	Oklahoma City.....	2/27/84
106-65	Howard Payne.....	12/15/15
105-38	Prairie View A&M.....	12/7/93
100-62	St. Mary's	1/24/89
100-46	Southwestern	11/28/83

90-point Games

Score.....	Opponent	Date
99-93 (OT)	at Tulane	2/16/91
99-65	UTEP	3/1/86
99-73	Texas State	1/3/84
98-84	New Mexico State	12/31/90
97-89 (OT)	at Central Arkansas	2/11/09
96-78	Sam Houston State	1/29/91
96-29	Prairie View A&M.....	2/10/83
93-62	at Texas A&M-Corpus Christi	2/23/11
93-55	Huston-Tillotson	12/6/08
93-77	SMU	2/9/91
93-48	Texas A&M-Commerce	1/12/87
92-52	Nicholls.....	2/17/94
92-79	UTEP	2/11/84
92-56	Huston-Tillotson	1/29/83
92-57	Texas Lutheran.....	12/2/82
91-30	Texas Southern	12/5/96
90-89	Tulsa.....	3/11/14
90-89 (2OT) ...	vs. Miami (Ohio)	12/29/07
90-53	Southeastern Louisiana	3/3/01
90-41	Hardin-Simmons	2/20/84

Opponent Records
(against UTSA)

Individual Opponent Records		
Points Scored		
45 by Kelia Shelton, Louisiana Tech (2/7/13)		
Points Scored/Conference Game		
45 by Kelia Shelton, Louisiana Tech (2/7/13)		
Field Goals		
16 by Lisa Foss, No. Illinois (2/22/91)		
16 by Kelia Shelton, Louisiana Tech (2/7/13)		
Field Goals/Conference Game		
16 by Kelia Shelton, Louisiana Tech (2/7/13)		
Free Throws		
18 by Jennie Simms, Old Dominion (2/27/16)		
Free Throws/Conference Game		
18 by Jennie Simms, Old Dominion (2/27/16)		
Free Throw Attempts		
21 by Jennie Simms, Old Dominion (2/27/16)		
21 by Katrina Price, SFA (3/5/98)		
Free Throw Attempts/Conference		
21 by Jennie Simms, Old Dominion (2/27/16)		
21 by Katrina Price, SFA (3/5/98)		
3-Point FG		
9 by Carin Stites, Oklahoma (1/21/91)		
9 by Angela Branch, ULM (12/30/93)		
3-Point FG/Conference Game		
9 by Angela Branch, ULM (12/30/93)		
Rebounds		
21 by Kris Veatch, New Mexico St., (1/23/88) 21		
by Yolanda Wilkerson, Texas St. (12/24/96)		
Rebounds/Conference Game		
21 by Yolanda Wilkerson, Texas St. (12/24/96)		
Assists		
14 by Amy Sheiron, Sam Houston (2/18/99)		
Turnovers		
12 by Lakeita Richardson, Sam Houston (2/10/94)		
Blocked Shots		
8 by Cheyenne Parker, Middle Tenn. (1/29/15)		
8 by Kianna Vines, Texas Southern (12/28/15)		

Steals		
11 by Leslie Hale, Sam Houston (2/11/95)		
Team Records		
Points Scored		
115 by Houston (12/18/89)		
Points Scored/Conference Game		
102 by Stephen F. Austin (2/3/96)		
Points Scored in a Half		
66 (1st half) by Houston (12/18/89)		
60 (2nd half) by Houston (11/27/90)		
Fewest Points Scored		
26 by Prairie View A&M (1/29/83)		
Fewest Points/Conference Game		
37 by Texas A&M-Corpus Christi (2/17/10)		
Fewest Points Scored in a Half/Quarter		
8 (1st half) by Prairie View A&M (12/3/96)		
2 (1st quarter) by Texas A&M-Kingsville (11/16/16)		
Most Field Goals Made		
47 by Houston (11/27/90)		
Fewest Field Goals Made		
7 by Schreiner (11/15/09)		
Fewest Field Goals/Conference Game		
12 by Southeastern Louisiana (1/4/01)		
Fewest Field Goals in a Half		
1 by Prairie View A&M (12/3/96)		
1 by Schreiner (11/15/09)		
Most FG Attempts		
90 by Houston (11/27/90)		
Highest FG Percentage		
67.8% (40-59) by Stephen F. Austin (1/8/00)		
Highest FG Percentage in a Half		
72% by Baylor (12/16/96)		
Lowest FG Percentage		
14% (7-50) by Schreiner (11/15/09)		
14% (4-28) by Texas A&M-Kingsville (11/16/16)		
Most Free Throws Made		
33 by Oral Roberts (2/22/86)		

33 by Texas Tech (12/17/88)		
Fewest Free Throws Made		
1 by 5 opponents, most recent by Texas St. (1/28/09)		
Most 3-Point FG		
13 by Oklahoma (1/21/91)		
13 by Howard Payne (12/15/15)		
Most 3-Point FG Made/Conference Game		
11 by Sam Houston St. (1/19/06)		
Most 3-Point FG Attempts		
40 by New Mexico St. (12/31/90)		
Most 3-Point FG Attempts/Conference Game		
34 by Nicholls (2/19/11)		
Highest 3-Point FG Percentage		
66.7% by four opponents, most recent by UAB (6-of-9)(1/31/15)		
Most Rebounds		
64 by Prairie View A&M (2/8/90)		
64 by Louisiana-Monroe (12/30/93)		
Most Rebounds/Conference Game		
64 by Louisiana-Monroe (12/30/93)		
Most Assists		
38 by Northwestern St. (2/20/93)		
Most Assists/Conference Game		
38 by Northwestern St. (2/20/93)		
Most Turnovers		
43 by A&M-Commerce (1/12/87)		
Most Fouls		
36 by Angelo St. (1/11/82)		
Most Fouls/Conference Game		
28 by UTEP (3/3/16)		
Fewest Fouls		
7 by McNeese St. (2/19/94)		
Most Blocks		
13 by Idaho (1/26/13); Southern Miss (12/28/15)		
Most Steals		
31 by Houston (11/27/90)		

ALL-TIME VS. RANKED OPPONENTS

By Date		
Dec. 5, 1985	vs. No. 25 Houston	L, 52-63
Dec. 13, 1986	at No. 22 Texas Tech	L, 62-75
Jan. 9, 1988	at No. 25 Stephen F. Austin	L, 58-81
Dec. 19, 1988	vs. No. 19 Stephen F. Austin	L, 59-66
Nov. 22, 1997	vs. No. 19 Texas Tech	L, 44-57
Dec. 2, 1998	at No. 12 Texas Tech	L, 39-96
Dec. 30, 2001	vs. No. 19 Auburn	L, 50-73
Dec. 31, 2003	vs. No. 11 Kansas State	L, 45-75
Dec. 19, 2005	at No. 10 Arizona State	L, 64-78
Dec. 20, 2006	vs. No. 13 Purdue	L, 50-75
March 22, 2008	vs. No. 8 Texas A&M	L, 52-91
Nov. 16, 2008	at No. 24 TCU	L, 60-73
March 22, 2009	vs. No. 5 Baylor	L, 82-87 (OT)
Nov. 13, 2009	at No. 10 Texas	L, 60-71
Dec. 19, 2009	vs. No. 6 Florida State	L, 50-65
Nov. 19, 2010	vs. No. 23 TCU	L, 59-83
Nov. 15, 2014	vs. No. 9 Texas	L, 68-48
Jan. 24, 2015	vs. No. 24 WKU	W, 64-63
Nov. 14, 2015	at No. 11 Texas	L, 53-90
Dec. 13, 2015	at No. 17 Oklahoma	L, 80-41
March 3, 2016	vs. No. 25 UTEP	W, 69-64
2-19		

By Rank		
March 22, 2009	vs. No. 5 Baylor	L, 82-87 (OT)
Dec. 19, 2009	vs. No. 6 Florida State	L, 50-65
March 22, 2008	vs. No. 8 Texas A&M	L, 52-91
Nov. 15, 2014	vs. No. 9 Texas	L, 68-48
Dec. 19, 2005	at No. 10 Arizona State	L, 64-78
Nov. 13, 2009	at No. 10 Texas	L, 60-71
Dec. 31, 2003	vs. No. 11 Kansas State	L, 45-75
Nov. 14, 2015	at No. 11 Texas	L, 53-90
Dec. 2, 1998	at No. 12 Texas Tech	L, 39-96
Dec. 20, 2006	vs. No. 13 Purdue	L, 50-75
Dec. 13, 2015	at No. 17 Oklahoma	L, 80-41
Dec. 19, 1988	vs. No. 19 Stephen F. Austin	L, 59-66
Nov. 22, 1997	vs. No. 19 Texas Tech	L, 44-57
Dec. 30, 2001	vs. No. 19 Auburn	L, 50-73
Dec. 13, 1986	at No. 22 Texas Tech	L, 62-75
Nov. 19, 2010	vs. No. 23 TCU	L, 59-83
Nov. 16, 2008	at No. 24 TCU	L, 60-73
Jan. 24, 2015	vs. No. 24 WKU	W, 64-63
Dec. 5, 1985	vs. No. 25 Houston	L, 52-63
Jan. 9, 1988	at No. 25 Stephen F. Austin	L, 58-81
March 3, 2016	vs. No. 25 UTEP	W, 69-64
2-19		

Career Top-10

Points

Name	Yr.	Points
1. Starlite Williams	1983-87	1,607
2. Angel Singleton	1994-98	1,565
3. Margaret Martinovich	1981-85	1,480
4. Monica Gibbs	2005-09	1,460
5. Tisha Boldt	1986-91	1,379
6. Kamra King	2011-15	1,367
7. Tammy Rogers	1987-91	1,343
8. Michelle Martin	1989-93	1,192
9. Sharon Wilson	1985-89	1,173
10. Amber Gregg	2007-11	1,143

Scoring Average

Name	Games	Avg
1. Starlite Williams (83-87)	97	16.5
2. Rosie Smith (97-99)	54	16.3
3. Valerie Wells (82-84)	54	15.3
4. Angel Singleton (93-98)	105	14.9
5. Nikki Hendrix (01-04)	78	14.4
6. Vivian Ewalefo (05-07)	60	14.1
Denise Forestier (99-02)	38	14.1
Karen Gaskin (88-90)	54	14.1
9. Tammy Rogers (87-91)	96	14.0
10. Margaret Martinovich (81-85)	108	13.7

Field Goals Made

Name	Games	FG
1. Starlite Williams (83-87)	97	674
2. Margaret Martinovich (81-85)	108	589
3. Tisha Boldt (86-91)	111	561
4. Angel Singleton (93-98)	105	506
5. Kim Maxwell (81-84)	81	502
6. Monica Gibbs (05-09)	123	490
7. Sharon Wilson (85-89)	102	460
8. Tammy Rogers (87-91)	96	451
9. Michelle Martin (89-93)	103	444
10. Nikki Hendrix (01-04)	81	426

Field Goal Percentage (min. 200)

Name	Games	FG%
1. Margaret Martinovich (81-85)	108	.567
2. Onika Anderson (07-09)	59	.527
3. Starlite Williams (83-87)	97	.516
4. Valerie Wells (82-84)	54	.514
5. Angel Singleton (93-98)	105	.511
6. Karen Gaskin (88-90)	54	.509
7. Tisha Boldt (86-91)	111	.505
8. Tesha Smith (2013-P)	91	.503
9. Akunna Elonu (2012-16)	110	.495
10. Kim Maxwell (81-84)	81	.479

Rebounds

Name	Games	Reb
1. Monica Gibbs (05-09)	123	990
2. Margaret Martinovich (81-85)	108	778
3. Angel Singleton (93-98)	105	730
4. Tisha Boldt (86-91)	111	675
5. Starlite Williams (83-87)	97	636
6. Akunna Elonu (2012-15)	110	607
7. Tesha Smith (2013-P)	91	599
8. Michelle Martin (89-93)	103	590
9. Onika Anderson (07-09)	59	579
10. Debbye Groves (84-88)	101	550

Rebounding Average

Name	Games	Avg
1. Onika Anderson (07-09)	59	9.8
2. Ashleigh Franklin (09-11)	58	8.7
3. Monica Gibbs (05-09)	123	8.0
4. Vivian Ewalefo (05-07)	60	7.6
5. Valerie Wells (82-84)	54	7.4
6. Margaret Martinovich (81-85)	108	7.2
7. Angel Singleton (93-98)	105	7.0
8. Tesha Smith (2013-P)	91	6.6
Keelah Williams (98-00)	52	6.6
Starlite Williams (83-87)	97	6.6
10. Mantha Emory (93-95)	52	6.4

3-point Field Goals Made

Name	Games	3-pt
1. Amber Gregg (07-11)	118	200
2. Terrie Davis (04-08)	118	195
3. Ashley Spaletta (2011-15)	119	174
4. Kamra King (2011-15)	121	128
5. Philicia Ross (90-94)	96	121
6. Jordan Stark (07-09)	53	111
7. Alysse Davis (08-11)	57	102
8. Nicole Dunson (04-06)	54	98
9. Rosie Smith (96-98)	54	94
10. Tammy Rogers (87-91)	96	86

Assists

Name	Games	Asst
1. Monica Gibbs (05-09)	123	693
2. Tammy Rogers (87-91)	96	377
3. Rhonda Hoffman (83-87)	102	375
4. Sharon Wilson (85-89)	102	355
5. Joyce Howard (96-98)	53	333
6. Shelley Seale (81-83)	54	296
7. Kim Reed (01-05)	112	272
8. Karen Kroen (83-87)	73	263
9. Kim Maxwell (81-84)	81	259
10. Whitney York (2007-13)	96	249

Steals

Name	Games	Steals
1. Starlite Williams (83-87)	97	281
2. Kamra King (2011-15)	121	240
3. Michelle Martin (89-93)	103	227
4. Sharon Wilson (85-89)	102	223
5. Rhonda Hoffman (83-87)	102	222
6. Monica Gibbs (05-09)	123	207
7. Terrie Davis (04-08)	118	173
8. Tammy Rogers (87-91)	96	165
9. Ashley Spaletta (2011-15)	119	153
10. Latifa Northern (98-02)	109	144

Blocks

Name	Games	Bk
1. Whitney Wright (09-13)	114	105
2. Alysse Davis (08-11)	57	98
3. Kim Duncan (83-85)	55	93
4. Starlite Williams (83-87)	97	88
5. Mantha Emory (93-95)	52	81
6. Lacy Mingee (01-06)	113	70
7. Monica Gibbs (05-09)	90	69
8. Katie Sandefur (02-06)	116	66
Ryba Pawlaczyk (07-09)	60	66
10. Keelah Wilson (98-00)	52	61

Games Played

Name	Yrs.	Games
1. Monica Gibbs	2005-09	123
2. Kamra King	2011-15	121
3. Ashley Spaletta	2011-15	119
4. Terrie Davis	2004-08	118
Amber Gregg	2007-11	118
6. Katie Sandefur	2002-06	116
7. Lacy Mingee	2001-06	115
8. Whitney Wright	2009-13	114
9. Kim Reed	2001-05	112
10. Tisha Boldt	1987-91	111

Games Started

Name	Yrs.	Starts
1. Kamra King	2011-15	118
2. Monica Gibbs	2005-09	113
3. Angel Singleton	1994-98	101
4. Terrie Davis	2004-08	99
5. Starlite Williams	1983-87	92
6. Tammy Rogers	1987-91	90
Tisha Boldt	1986-91	87
8. Amber Gregg	2007-11	86
9. Latifa Northern	1998-02	84
Whitney York	2008-13	84

2016-17 UTSA Roadrunners Basketball
UTSA Combined Team Statistics (as of Nov 20, 2016)
All games

RECORD:	OVERALL	HOME	AWAY	NEUTRAL
ALL GAMES	1-3	1-1	0-2	0-0
CONFERENCE	0-0	0-0	0-0	0-0
NON-CONFERENCE	1-3	1-1	0-2	0-0

##	Player	gp-gs	min	avg	Total		3-Point		F-Throw		Rebounds										pts	avg
					fg-fga	fg%	3fg-fga	3fg%	ft-fa	ft%	off	def	tot	avg	pf	dq	a	to	blk	stl		
32	GOODWIN, Loryn	4-4	149	37.2	29-63	.460	3-12	.250	30-47	.638	4	15	19	4.8	6	0	21	12	0	9	91	22.8
31	HEINEMAN, Carlie	4-4	136	34.0	18-40	.450	10-23	.435	5-8	.625	2	9	11	2.8	7	0	0	7	1	2	51	12.8
30	SMITH, Tesha	4-0	68	17.0	11-29	.379	0-0	.000	7-10	.700	11	17	28	7.0	9	0	0	10	1	6	29	7.3
01	KIEJDROWSKA, Kasia	4-4	90	22.5	11-32	.344	3-11	.273	1-2	.500	4	12	16	4.0	6	0	1	4	0	4	26	6.5
04	CHIDOMERE, Crystal	4-0	98	24.5	13-28	.464	0-1	.000	0-4	.000	3	10	13	3.3	9	0	9	14	2	6	26	6.5
21	BENSON, Marie	4-4	78	19.5	7-16	.438	0-1	.000	5-8	.625	9	14	23	5.8	12	1	0	7	0	4	19	4.8
40	MARLOW, Billie	4-0	28	7.0	3-10	.300	2-5	.400	1-1	1.000	2	4	6	1.5	1	0	0	1	0	0	9	2.3
03	DUKES, Alexis	1-0	16	16.0	1-6	.167	0-1	.000	0-0	.000	1	2	3	3.0	1	0	2	1	0	0	2	2.0
15	TOTH, Timea	4-4	84	21.0	3-12	.250	0-0	.000	1-2	.500	9	9	18	4.5	10	0	1	8	1	4	7	1.8
23	HAWKINS, Tija	4-0	24	6.0	2-7	.286	0-0	.000	0-0	.000	0	6	6	1.5	4	0	0	1	1	0	4	1.0
13	COUSIN, Deja	3-0	10	3.3	0-3	.000	0-3	.000	0-0	.000	0	0	0	0.0	1	0	0	0	0	0	0	0.0
20	KEKEC, Kourtney	4-0	19	4.8	0-3	.000	0-1	.000	0-0	.000	1	1	2	0.5	4	0	1	0	0	0	0	0.0
Team											8	11	19									
Total.....		4	800		98-249	.394	18-58	.310	50-82	.610	54	110	164	41.0	70	1	35	65	6	35	264	66.0
Opponents.....		4	800		104-258	.403	28-89	.315	45-74	.608	56	110	166	41.5	76	1	56	61	10	32	281	70.2

TEAM STATISTICS	UTSA	OPP
SCORING	264	281
Points per game	66.0	70.2
Scoring margin	-4.2	-
FIELD GOALS-ATT	98-249	104-258
Field goal pct	.394	.403
3 POINT FG-ATT	18-58	28-89
3-point FG pct	.310	.315
3-pt FG made per game	4.5	7.0
FREE THROWS-ATT	50-82	45-74
Free throw pct	.610	.608
F-Throws made per game	12.5	11.3
REBOUNDS	164	166
Rebounds per game	41.0	41.5
Rebounding margin	-0.5	-
ASSISTS	35	56
Assists per game	8.8	14.0
TURNOVERS	65	61
Turnovers per game	16.3	15.3
Turnover margin	-1.0	-
Assist/turnover ratio	0.5	0.9
STEALS	35	32
Steals per game	8.8	8.0
BLOCKS	6	10
Blocks per game	1.5	2.5
ATTENDANCE	651	2509
Home games-Avg/Game	2-326	2-1254
Neutral site-Avg/Game	-	0-0

Date	Opponent		Score	Att.
11/11/16	ANGELO STATE	L	77-85	395
11/13/16	at UT Arlington	L	54-75	592
11/16/16	TEXAS A&M-KINGSVILLE	W	70-44	256
11/20/16	at Oregon	L	63-77	1917

* - Conference game

Score by Periods	1st	2nd	3rd	4th	Totals
UTSA	43	74	78	69	264
Opponents	61	64	76	80	281

Official Basketball Box Score -- Game Totals -- Final Statistics
UTSA vs Oregon
11/20/16 2:00 PM at Eugene, Ore. (Matthew Knight Arena)

UTSA 63 • 1-3

##	Player		Total		3-Ptr	Rebounds			PF	TP	A	TO	Blk	Stl	Min
			FG-FGA	FG-FGA	FT-FTA	Off	Def	Tot							
01	KIEJDROWSKA, Kasia	f	5-12	1-4	0-0	0	0	0	2	11	1	0	0	1	19
15	TOTH, Timea	f	0-2	0-0	1-2	1	2	3	4	1	1	4	0	1	25
21	BENSON, Marie	f	3-6	0-1	1-2	1	6	7	5	7	0	0	0	1	20
31	HEINEMAN, Carlie	g	4-11	3-7	4-6	1	3	4	1	15	0	2	0	0	35
32	GOODWIN, Loryn	g	5-15	0-3	8-12	1	5	6	1	18	7	2	0	5	39
03	DUKES, Alexis		1-6	0-1	0-0	1	2	3	1	2	2	1	0	0	16
04	CHIDOMERE, Crystal		2-3	0-0	0-0	0	0	0	0	4	0	1	0	0	17
13	COUSIN, Deja		0-1	0-1	0-0	0	0	0	0	0	0	0	0	0	1
20	KEKEC, Kourtney		0-0	0-0	0-0	1	0	1	1	0	0	0	0	0	4
23	HAWKINS, Tija		0-0	0-0	0-0	0	0	0	1	0	0	0	0	0	2
30	SMITH, Tesha		1-3	0-0	0-0	1	3	4	2	2	0	3	0	0	15
40	MARLOW, Billie		1-3	1-2	0-0	0	1	1	1	3	0	1	0	0	7
Team						4	3	7							
Totals			22-62	5-19	14-22	11	25	36	19	63	11	14	0	8	200
1st - FG %: 3-12 25.0% 2nd: 5-18 27.8% 3rd: 6-17 35.3% 4th: 8-15 53.3% Game: 22-62 35.5% Deadball 3FG %: 1-4 25.0% 0-6 0.0% 1-4 25.0% 3-5 60.0% 5-19 26.3% Rebounds FT %: 2-5 40.0% 2-4 50.0% 5-5 100.0% 5-8 62.5% 14-22 63.6% 4															

Oregon 77 • 3-0

##	Player		Total		3-Ptr	Rebounds			PF	TP	A	TO	Blk	Stl	Min
			FG-FGA	FG-FGA	FT-FTA	Off	Def	Tot							
15	Vandenberg, Jacinta	f	1-2	0-0	2-2	0	3	3	2	4	3	1	0	1	16
24	Hebard, Ruthy	f	2-2	0-0	1-2	1	6	7	2	5	0	2	0	0	17
05	Cazorla, Maite	g	3-8	1-4	0-0	1	0	1	1	7	4	3	0	3	26
10	Bando, Lexi	g	3-7	2-4	2-2	0	2	2	2	10	0	2	0	1	21
20	Ionescu, Sabrina	g	9-14	5-7	3-5	0	8	8	2	26	4	2	0	2	26
02	Yaeger, Morgan		0-4	0-4	0-0	0	0	0	0	0	0	0	0	0	12
11	Woods, Jayde		1-2	1-1	0-0	0	0	0	2	3	2	0	0	1	12
12	Trinder, Megan		0-0	0-0	0-0	1	1	2	1	0	3	2	0	0	14
13	Moore, Mar'Shay		0-1	0-1	1-2	0	0	0	2	1	0	0	0	0	6
14	Giomi, Lydia		1-3	0-0	0-2	1	2	3	0	2	0	0	0	0	7
22	Yearwood, Lauren		1-3	0-0	1-2	1	3	4	0	3	2	2	1	0	15
32	Gildon, Oti		1-2	0-0	0-0	0	1	1	1	2	0	0	0	0	9
44	McGwire, Mallory		2-5	0-0	2-3	2	3	5	2	6	0	1	1	0	10
52	Campisano, Sierra		4-7	0-1	0-0	1	2	3	2	8	0	1	1	0	9
Team						2	1	3	1						
Totals			28-60	9-22	12-20	10	32	42	20	77	18	16	3	8	200
1st - FG %: 7-13 53.8% 2nd: 7-15 46.7% 3rd: 8-13 61.5% 4th: 6-19 31.6% Game: 28-60 46.7% Deadball 3FG %: 2-4 50.0% 3-7 42.9% 4-7 57.1% 0-4 0.0% 9-22 40.9% Rebounds FT %: 3-5 60.0% 4-6 66.7% 4-4 100.0% 1-5 20.0% 12-20 60.0% 5,1															

Officials: Lisa Jones, Cathi Cornell, Kim Hobbs
 Technical fouls: UTSA-None. Oregon-TEAM.
 Attendance: 1917

Score by periods	1st	2nd	3rd	4th	Total
UTSA	9	12	18	24	63
Oregon	19	21	24	13	77