



# TRUMAN STATE

# WOMEN'S BASKETBALL

## 2024-25 SCHEDULE

N8	at Cedarville (Ohio) <sup>1</sup>	W 74-61
N9	vs. Ursuline (Ohio) <sup>1</sup>	W 81-60
N15	at Concordia-St. Paul (Minn.)	L 68-57
N16	at Winona St. (Minn.)	L 70-64
N22	WASHBURN (Kan.)	L 81-59
N23	QUINCY (Ill.)	L 85-76
N26	vs. Newman (Kan.) <sup>2</sup>	W 80-48
N27	vs. Arkansas-Fort Smith <sup>2</sup>	L 75-73
N30	ROCKHURST (Mo.) *	W 82-64

D5	at Southwest Baptist (Mo.) *	W 77-63
D7	at Drury (Mo.) *	L 97-72
D19	vs. Fort Hays State (Kan.) <sup>3</sup>	L 77-57
D21	at Hawaii-Hilo	L 68-61

J3	MISSOURI S&T *	L 74-72
J9	at Illinois Springfield *	L 73-50
J11	at McKendree (Ill.) *	L 72-60
J16	UPPER IOWA *	L 88-77
J18	LEWIS (Ill.) *	W 69-60
J20	LINCOLN (MO.) *	W 78-59
J25	at Quincy (Ill.) *	L 82-69
J30	at Rockhurst (Mo.) *	W 84-59

F1	at William Jewell (Mo.) *	W 73-61
F6	DRURY (MO.) *	L 88-64
F8	SOUTHWEST BAPTIST (MO.)*	W 84-77
F13	at Lincoln (Mo.) *	W 78-42
F15	at Missouri S&T *	L 70-67 OT
F20	MARYVILLE (MO.) *	W 86-79
F22	MISSOURI-ST. LOUIS *	W 67-59
F27	at Indianapolis *	W 72-61

M1	WILLIAM JEWELL (MO.) *	L 70-69
----	------------------------	---------

### GLVC BASKETBALL TOURNAMENT

M6	vs. #1 Lewis	6 p.m.
M8	Semifinals	
M9	Championship	

<sup>1</sup> - in Cedarville, Ohio

<sup>2</sup> - in Springfield, Mo.

<sup>3</sup> - in Hilo, Hawaii

\* - GLVC

GLVC Tournament will be played in Hyland Arena on the campus of Lindenwood University in St. Charles, Mo.



## GAMEDAY CENTRAL

GAME 31 | Mar. 6 | Saint Charles, Mo. | 6:00 p.m.

Lewis (25-2; 19-1 GLVC) <b>FLYERS</b>
<b>SERIES HISTORY</b>
Overall ..... Lewis 13-8
Home ..... Lewis 6-4
Road ..... Lewis 4-3
Neutral ..... Lewis 3-1
Last Meeting ..... Truman 69-60
Last 5 ..... Lewis 4-1

Truman State (14-16; 11-9 GLVC) <b>BULLDOGS</b>
<b>LEADERS</b>
Points ..... Jordan Cunningham (16.1)
Rebounds ..... Jordan Cunningham (5.0)
Assists ..... Jordan Cunningham (3.2)
Steals ..... Jordan Cunningham (1.6)
Blocks ..... Jordan Cunningham (0.9)
Minutes ..... Jordan Cunningham (33.5)



### GAME NOTES

KIRKSVILLE, Mo. – Truman State's quest for a conference championship will begin on Thursday evening as the Bulldog women square off against the regular season champions of the Great Lakes Valley Conference, Lewis University. Tip-off time is slated for 6 p.m. at Hyland Arena, on the campus of Lindenwood University in Saint Charles, Missouri.

The last time these two teams met, back on January 18th in Pershing Arena, the Lewis Flyers were riding a 12-game winning streak while the Bulldogs had lost seven straight. The result was a 69-60 Truman State win powered by a 30-point fourth quarter by Truman State. Fast forward to Thursday, and Lewis once again has won 12 straight games, with Truman coming off a tough home loss to William Jewell after leading by 18 points in the second half.

These two schools have met four previous times in the GLVC Postseason Tournament. In 2014, the Bulldogs defeated the Flyers 84-70 on their path to winning the league's crown that season. Lewis won 71-61 in 2018. The teams played in both 2022 and 2023 at the conference tournament, and the Flyers took both games by scores of 83-75 and 68-65, the latter occurring in the semifinal round.

Lewis was the preseason favorite to win the conference and has now steadily moved up the national rankings, sitting at 14th in the Women's Basketball Coaches Association poll. They boast a 25-2 overall record and went 19-1 in the GLVC.

That one loss circles back to January 18.

Lewis led for the majority of the game but by no more than six points. The Flyers led 42-39 at the end of the third quarter, but it was the start of the fourth that turned the tide of the game. Tori Stander ignited an 8-2 run and tied the game with a three-pointer coming out of the quarter break.

Truman would go up nine points at 62-53 with 2:52 to play and got clutch shots from the entire team down the stretch. The Bulldogs went 9-of-12 from the field in the fourth, made all three three-point attempts, and were 9-of-10 from the foul line.

Jordan Cunningham went over 1,000 career points during the game and finished with a game-high 19 for the Bulldogs while adding three blocked shots. She was

### QUICK COMPARISON

	LEWIS 25-2	TSU 14-16
Record	25-2	14-16
PPG	68.1	71.1
Opp PPG	56.3	69.7
Margin	+11.9	+1.4
FG%	.437	.417
Opp FG%	.364	.418
3pt %	.333	.308
3pt/ g	6.4	7.4
Opp 3pt%	.308	.315
Opp 3pt/g	5.8	7.2
FT%	.747	.739
FT/g	12.1	15.5
Opp FT %	.690	.738
Opp FT/g	10.2	10.2
RPG	37.3	34.2
Reb. Margin	+4.9	-4.1
APG	13.8	12.4
TOPG	14.1	14.9
SPG	7.5	7.5
BPG	3.3	2.6

### PROBABLE STARTERS



**MOLLY JOYCE**  
5-7/So./Algonia, Iowa  
PPG ..... 15.1  
RPG ..... 4.2  
APG ..... 2.2  
MPG ..... 30.9



**BRYAR DUWE**  
5-6/So./Decorah, Iowa  
PPG ..... 9.5  
RPG ..... 3.1  
APG ..... 1.3  
MPG ..... 26.8



**KATELYN ODEM**  
5-8/Fr./Mequon, Wis.  
PPG ..... 4.5  
RPG ..... 2.1  
APG ..... 0.8  
MPG ..... 18.9



**EMMA BULMAN**  
5-10/Sr./Ames, Iowa  
PPG ..... 5.4  
RPG ..... 3.7  
APG ..... 1.0  
MPG ..... 18.1



**JORDAN CUNNINGHAM**  
6-0/Gr./Grimes, Iowa  
PPG ..... 16.1  
RPG ..... 5.0  
APG ..... 3.2  
MPG ..... 33.5



## GAME NOTES

joined in double figures by Bryar Duwe with 11, Emma Bulman with 10, and Standefer with 10.

Lewis got 18 points each from Taylor Gugliuzza and Jenna Badali while having their 12-game overall winning streak snapped, 19-game streak within GLVC games stopped, and 12-straight road game winning streak ended.

The Flyers have not tasted defeat since that January 18th date. In the 12 victories since, they picked up a two-point win over Drury in Springfield, a five-point win on the road at McKendree, a one-point victory over Maryville in St. Louis, and a three-point spread over Quincy at home.

The Bulldogs found their own footing after that win over Lewis and claimed triumphs in eight of their last 12 contests. Key wins over Maryville and Missouri-St. Louis helped push Truman State into the tournament field, and the road win at Indianapolis last Thursday punched their ticket to the GLVC dance.

However, the long road trip to Indianapolis on Thursday may have taken the gas out of the tank late against William Jewell on Saturday. Molly Joyce's layup midway through the third quarter gave the Bulldogs a 49-31 advantage over the Cardinals. William Jewell scored the next eight points, and the lead was trimmed to five points to start the fourth.

The Cardinals tied the game at 57 apiece, but the Bulldogs regained the lead and went up by as many as five with two minutes showing. A pair of three-pointers by Kirsten Hauck tightened things back up to 69-68 with under a minute to go, and Kate Hillyer's driving layup with 11 seconds left put Jewell in front for the first time since the first quarter. The Bulldogs had one last chance, but a 10-foot jumper was off the mark, and the Cardinals snapped a 10-game losing streak to the Bulldogs, winning 70-69.

**Truman In The GLVC Tournament:** Since joining the conference in 2013-14, this will mark the 11th postseason tournament for the Bulldogs. The 2023-24 season was the first time the team did not make the GLVC tournament. Truman State won the championship in 2013-14 and played in the title game in 2021. They made it to the semifinal round three times, the last in 2023 in the three-point loss to Lewis.

**About the Bulldogs:** Graduate player Jordan Cunningham and Molly Joyce, both expected to earn all-conference honors, lead the Bulldogs this season. Cunningham is the statistical leader on the squad in points (16.1), rebounds (5.0), assists (3.2), steals (1.6), blocks (0.9), and minutes played (33.5).

Cunningham finished third behind Upper Iowa's Mia Huberty and McKendree's Baylie Parks with nine 20-point or more games this season. She was fifth in the conference in overall scoring per game and fourth in conference-only scoring at 17.1 per night. She earned the GLVC's Player of the Week honor on February 24 and has three double-doubles this season while starting all 30 games.

Joyce led the league in 30-point games with three this season. She was the GLVC's Freshman of the Year last season and followed up that campaign with a 15.1 points per night average this season. Joyce set a career high with 34 points back on November 9th against Ursuline and is one of the top free throw shooters in the GLVC at 84.8%. She has made 134 out of 158 free throws this season, and in conference games, Joyce leads the league at 88.8% with 87 makes out of 98 attempts. The 98 attempts are the fifth most by a player in the GLVC.

Bryar Duwe has finished her sophomore season strong, scoring in double-figures in four of the last seven games with three 17-point efforts and a career-high 20 against Indianapolis last Thursday. Duwe took over the team lead in three-pointers made with 50 this season, and she has made 13 in the last four games. She played in only seven games as a freshman but has started 29 of 30 as a sophomore.

Emma Bulman is also closing her Bulldog career on an upswing. Bulman has started the last four games and responded by averaging 11.5 points in those games with eight three-pointers and 21 rebounds. Bulman made 11 starts as a junior and has played in 114 career games, all in a Truman State uniform.

Freshman Katelyn Odem has started 18 of the last 19 games and has provided nearly 20 minutes a game with 4.5 points and 2.1 rebounds.

Departing seniors Gracie Neff, Tori Standefer, and Kaitlyn Patke have each played key roles down the stretch for the Bulldogs. Neff has knocked down a pair of three-pointers in the final three games with an average of around 12 minutes per contest. Standefer scored 12 points with a 3-for-3 night from outside against Jewell on Saturday and has averaged over five points in 20 league games. Patke got her first collegiate start on Senior Day, and in the last four games, she has scored 25 of her 51 season points.

As a team, the Bulldogs are third in GLVC games in scoring at 72.5 points, third in three-pointers made per game at 7.8, and second in free throw shooting at 76%.

Theo Dean is completing his sixth season at the helm of the Bulldogs and is third in all-time wins at the school with 96. He has a 57% overall winning percentage and a 62% winning percentage in conference games.

## Double-Figure Games

By Class - Career				
Player	Pts (20/30)	Rebs	Asts	Dbl/Dbls
Hope	-	-	-	-
Odem	3	-	-	-
Rogers	-	-	-	-
Huss	-	-	-	-
Ott	1	1	-	1
Boehm	-	-	-	-
Duwe	13 (1/0)	-	-	-
Joyce	34 (12/3)	2	-	2
White	7	2	-	2
Larson	-	-	-	-
Patke	-	-	-	-
Williams	29 (2)	14	-	13
Bulman	14	-	-	-
Cunningham	47 (9/0)	3	-	3
Neff	7	-	2	1
Standefer	7	-	-	-

## Truman State Facts

<b>Location:</b>	Kirksville, Mo. (18,000)
<b>Enrollment:</b>	4,000
<b>Conference:</b>	Great Lakes Valley
<b>University President:</b>	Dr. Sue Thomas
<b>Director of Athletics:</b>	Signe Coombs
<b>Head Coach:</b>	Theo Dean
<b>Assistant Coach:</b>	Dajae Black
<b>Basketball Athletic Trainer:</b>	Cassie DeBlauw
<b>Team Physician:</b>	Dr. John Bailey
<b>Athletics Communications:</b>	Justin Thomas/Kevin White

## On The Air

<b>Video:</b>	GLVCSN.com (PPV)
<b>Home Radio:</b>	88.7 FM KTRM (Student Radio)
<b>Home Online Audio:</b>	NEMOPressbox.com (Free)
<b>Live Stats:</b>	TrumanBulldogs.com

## 2024-25 Truman State Bulldogs

#	Name	Pos.	Ht.	Yr.	Hometown	High School/Previous
0	Gracie Neff	G	5-8	Gr.	Kansas City, Mo.	Staley HS/ Lindenwood (Mo.) Univ.
1	Molly Joyce	G	5-7	So.	Algona, Iowa	Bishop Garrigan HS
3	Tori Standefer	G	5-7	Sr.	Bethalto, Ill.	Civic Memorial HS/Missouri-St. Louis
4	Bryar Duwe (Doo-we)	G	5-6	So.	Decorah, Iowa	Decorah HS
10	Sophia Hope	F	5-10	Fr.	Waukee, Iowa	Waukee HS
11	Lizzie Boehm (Bame)	G	5-7	So.	Kansas City, Mo.	Staley HS
12	Katelyn Odem	G	5-8	Fr.	Mequon, Wis.	Homestead HS
14	Nicky Huss	F	6-1	R-Fr.	Omaha, Neb.	Duchesne Academy
20	Braylee Rogers	G	5-9	Fr.	Olathe, Kan.	Olathe East HS
21	Emma Bulman	F	5-10	Sr.	Ames, Iowa	Gilbert HS
22	Lexie White	G	5-11	So.	Merrill, Wis.	Wausau West HS
25	Kaitlyn Patke (pat-key)	F	6-0	Jr.	Washington, Mo.	St. Francis Borgia HS
33	McKenna Williams	F	5-10	Jr.	Darien, Wis.	Delavan-Darien HS/Rock Valley Col.
34	Avery Larson	C	6-3	R-So.	Antioch, Ill.	Antioch HS
35	Mallory Ott	F	5-11	R-Fr.	Oshkosh, Wis.	Oshkosh North HS
40	Jordan Cunningham	G	6-0	Gr.	Grimes, Iowa	Dallas Center-Grimes HS/Mo. Western

**Head Coach:** Theo Dean (6th Season)

**Associate Head Coach:** Dajae Black

**Graduate Assistant Coach:** Trinitee Jackson



## GLVC Standings

School	Conf.	Pct.	Over	Pct.	Home	Away	Neutral	Streak	PRS
Lewis -x	19-1	.950	25-2	.926	12-0	12-1	1-1	W12	4.80 (1)
Drury -x	17-3	.850	21-6	.778	12-3	9-2	0-1	W5	4.38 (2)
Quincy -x	16-4	.800	22-7	.759	11-3	8-3	3-1	W1	4.20 (3)
Missouri-St. Louis -x	13-7	.650	19-8	.704	9-4	10-4	0-0	L2	3.73 (4)
Maryville -x	12-8	.600	14-14	.500	9-4	5-9	0-1	W3	3.58 (5)
Missouri S&T -x	10-10	.500	15-11	.577	10-5	5-6	0-0	L3	3.38 (6)
Upper Iowa -x	10-10	.500	13-13	.500	8-4	5-9	0-0	L1	3.33 (7)
Truman -x	11-9	.550	14-16	.467	6-6	6-8	2-2	L1	3.30 (8)
McKendree	11-9	.550	15-11	.577	10-3	3-8	2-0	W2	3.18 (9)
Rockhurst	8-12	.400	10-16	.385	7-7	3-7	0-2	W1	2.83 (10)
Southwest Baptist	6-14	.300	8-18	.308	6-7	2-9	0-2	L6	2.50 (12)
Indianapolis	6-14	.300	8-20	.286	3-11	5-9	0-0	L4	2.70 (11)
William Jewell	6-14	.300	8-18	.308	5-9	3-9	0-0	W3	2.50 (12)
Illinois Springfield	4-16	.200	5-23	.179	3-10	2-11	0-2	L7	2.28 (14)
Lincoln	1-19	.050	2-24	.077	2-11	0-13	0-0	W1	1.93 (15)

## Weekly Awards

Date	Player	School
11/11	Molly Joyce	Truman State
11/18	Baylie Parks	McKendree
11/25	Rhi Gibbons	Drury
12/1	Franchesca Metz	Missouri S&T
12/9	Mia Huberty	Upper Iowa
12/16	Mariann Blass	Quincy
12/23	Ally Cesarini	Lewis
1/6	Baylie Parks	McKendree
1/13	Clare Breden	McKendree
1/20	Caitlynn Daniels	Drury
1/27	Taylor Gugliuzza	Lewis
2/3	Halie Gilbert	Indianapolis
2/10	Cymirah Williams	Quincy
2/17	Anna Finley	Missouri S&T
2/24	Jordan Cunningham	Truman State
3/3	Baylie Parks	McKendree

## Upcoming Games

## Thursday, March 6

#8 Truman State vs. #1 Lewis  
#7 Upper Iowa vs. #2 Drury

## Friday, March 7

#5 Maryville vs. #4 Missouri-St. Louis  
#6 Missouri S&T vs. #3 Quincy

## Saturday, March 8

GLVC Semifinals

## Sunday, March 9

GLVC Championship

## Polls

## WBCA Coaches Poll

Rk	School (Record)	Points	Prev.
1	Texas Woman's (28-1)	573	1
2	Grand Valley State (29-2)	549	2
3	Bentley (28-1)	523	3
4	Cal St.Dominguez Hills (29-1)	500	5
5T	Ashland (27-3)	453	7
5T	Texas Tyler (25-3)	453	4
7	North Georgia (26-2)	438	8
8	Pittsburg State (26-3)	385	10
9	Fort Hays State (25-3)	370	6
10	Concordia-St. Paul (27-2)	367	11
11	Lubbock Christian (27-3)	350	12
12	Union, TN (26-3)	316	14
13	Cal Poly Pomona (24-4)	277	16
14	Lewis (25-2)	249	17
15	Embry-Riddle (23-4)	208	9
16	Gannon (24-5)	204	18
17	Southwest Minn. State (26-3)	204	19
18	Tampa (25-5)	194	23
19	Fairmont State (24-4)	143	22
20	Alaska Anchorage (25-4)	130	15
21	Colorado Mesa (23-4)	129	25
22	Coker (24-4)	121	13
23	Seton Hill (22-5)	75	20
24	Azusa Pacific (22-5)	69	RV
25	Montana State Billings (25-6)	52	21

## Recent Results

## Saturday, March 1

Southwest Baptist 56, McKendree 81  
Rockhurst 64, Illinois Springfield 63  
Missouri S&T 59, Drury 68  
Indianapolis 69, Quincy 79  
William Jewell 70, Truman 69  
Lewis 84, Upper Iowa 58

## Thursday, February 27

Truman 72, Indianapolis 61  
Southwest Baptist 59, Maryville 75  
Drury 62, Missouri-St. Louis, 55  
William Jewell 73, Illinois Springfield 57  
Rockhurst 70, McKendree 81  
Missouri S&T 53, Lincoln 61  
Quincy 63, Lewis 66

## Monday, February 24

Lincoln 62, Maryville 74

## Saturday, February 22

Missouri S&T 60, Rockhurst 65  
Drury 88, Southwest Baptist 63  
Missouri-St. Louis 59, Truman 67  
Illinois Springfield 52, Lewis 78  
McKendree 66, Upper Iowa 68  
Lincoln 49, William Jewell 71  
Maryville 94, Quincy 86

## GLVC Coaches Poll

Rk	School (Record)	Points
1.	Lewis	190 (9)
2.	Drury	183 (5)
3.	McKendree	158 (1)
4.	Maryville	140
5.	Upper Iowa	130
6.	Rockhurst	128
7.	Missouri-St. Louis	109
	Quincy	109
10.	Illinois Springfield	80
11.	Truman State	75
12.	Missouri S&T	70
13.	Southwest Baptist	47
14.	Lincoln	26
15.	William Jewell	25



## 2024-25 Truman St. Women's Basketball Combined Team Statistics All games

Page 1/1  
as of Mar 04, 2025

### Game Records

Record	Overall	Home	Away	Neutral
ALL GAMES	14-16	6-6	6-8	2-2
CONFERENCE	11-9	6-4	5-5	0-0
NON-CONFERENCE	3-7	0-2	1-3	2-2

### Score by Periods

Team	1st	2nd	3rd	4th	OT	TOT
Truman St.	511	531	533	549	8	2132
Opponents	527	502	547	504	11	2091

### Team Box Score

No. Player					Total		3-Point		F-Throw		Rebounds														
		GP-GS	MIN	AVG	FG-FGA	FG%	3FG-3FGA	3FG%	FT-FTA	FT%	OFF	DEF	TOT	AVG	PF	DQ	A	TO	BLK	STL	PTS	AVG			
40	CUNNINGHAM, Jordan	30-30	1021:34	34.1	168-367	.458	41-128	.320	107-149	.718	17	133	150	5.0	71	1	95	92	26	49	484	16.1			
1	JOYCE, Molly	30-29	945:49	31.5	137-346	.396	46-152	.303	134-158	.848	27	99	126	4.2	68	0	65	85	9	38	454	15.1			
30	NIEMEIER, Maddie	5-5	130:09	26.0	24-46	.522	0-1	.000	6-9	.667	5	18	23	4.6	18	1	10	7	1	5	54	10.8			
4	DUWE, Bryar	30-29	822:10	27.4	104-243	.428	50-128	.391	28-40	.700	15	78	93	3.1	37	0	40	56	1	27	286	9.5			
22	WHITE, Lexie	26-26	610:01	23.5	61-165	.370	22-75	.293	27-37	.730	23	108	131	5.0	67	1	30	32	15	20	171	6.6			
21	BULMAN, Emma	30-4	551:42	18.4	50-125	.400	14-56	.250	47-69	.681	23	87	110	3.7	57	3	30	46	11	18	161	5.4			
3	STANDEFER, Tori	23-1	354:25	15.4	35-81	.432	16-42	.381	35-41	.854	26	37	63	2.7	38	0	15	13	0	11	121	5.3			
35	OTT, Mallory	11-6	169:26	15.4	20-54	.370	3-19	.158	11-15	.733	15	28	43	3.9	13	0	5	8	1	7	54	4.9			
12	ODEM, Katelyn	30-18	564:47	18.8	52-119	.437	9-36	.250	21-40	.525	12	50	62	2.1	52	0	23	33	2	22	134	4.5			
25	PATKE, Kaitlyn	16-1	140:46	8.8	19-47	.404	1-11	.091	12-16	.750	10	14	24	1.5	10	0	8	16	5	10	51	3.2			
33	WILLIAMS, McKenna	20-0	165:20	8.3	19-48	.396	4-19	.211	19-24	.792	11	27	38	1.9	14	0	6	10	3	6	61	3.1			
0	NEFF, Gracie	30-1	458:15	15.3	25-68	.368	13-42	.310	14-20	.700	9	31	40	1.3	29	0	43	33	3	10	77	2.6			
11	BOEHM, Lizzie	7-0	52:48	7.5	5-15	.333	3-10	.300	0-4	.000	3	4	7	1.0	3	0	1	2	0	1	13	1.9			
34	LARSON, Avery	6-0	20:38	3.4	4-5	.800	0-0	.000	3-6	.500	4	3	7	1.2	3	0	1	3	0	1	11	1.8			
14	HUSS, Nicky	6-0	17:10	2.9	0-3	.000	0-2	.000	0-0	.000	0	4	4	0.7	0	0	0	3	0	1	0	0.0			
Team											41	62	103					7							
Total		30	6025		723-1732	.417	222-721	.308	464-628	.739	241	783	1024	34.1	480	6	372	446	77	226	2132	71.1			
Opponents		30	6025		784-1877	.418	216-686	.315	307-416	.738	322	826	1148	38.3	570	17	370	467	50	203	2091	69.7			

### Team Statistics

	TSU	OPP
<b>Scoring</b>	<b>2132</b>	<b>2091</b>
Points per game	71.1	69.7
Scoring margin	+1.4	-
<b>Field goals-att</b>	<b>723-1732</b>	<b>784-1877</b>
Field goal pct	.417	.418
<b>3 point fg-att</b>	<b>222-721</b>	<b>216-686</b>
3-point FG pct	.308	.315
3-pt FG made per game	7.4	7.2
<b>Free throws-att</b>	<b>464-628</b>	<b>307-416</b>
Free throw pct	.739	.738
F-Throws made per game	15.5	10.2
<b>Rebounds</b>	<b>1024</b>	<b>1148</b>
Rebounds per game	34.1	38.3
Rebounding margin	-4.1	-
<b>Assists</b>	<b>372</b>	<b>370</b>
Assists per game	12.4	12.3
<b>Turnovers</b>	<b>446</b>	<b>467</b>
Turnovers per game	14.9	15.6
Turnover margin	+0.7	-
Assist/turnover ratio	0.8	0.8
<b>Steals</b>	<b>226</b>	<b>203</b>
Steals per game	7.5	6.8
<b>Blocks</b>	<b>77</b>	<b>50</b>
Blocks per game	2.6	1.7
<b>Winning streak</b>	<b>0</b>	<b>-</b>
Home win streak	0	-
<b>Attendance</b>	<b>2746</b>	<b>6036</b>
Home games-Avg/Game	12-229	14-431
Neutral site-Avg/Game	-	4-184

### Team Results

Date	Opponent	Score	Att.
11/08/2024	at Cedarville	W 74-61	455
11/09/2024	vs Ursuline	W 81-60	150
11/15/2024	at Concordia-St. Paul	L 57-68	325
11/16/2024	at Winona St.	L 64-70	825
11/22/2024	Washburn	L 59-81	1232
11/23/2024	Quincy	L 76-85	200
11/26/2024	vs Newman	W 80-48	263
11/27/2024	vs Ark.-Fort Smith	L 73-75	217
11/30/2024	Rockhurst	W 82-64	83
12/05/2024	at Southwest Baptist	W 77-63	322
12/07/2024	at Drury	L 72-97	1207
12/19/2024	vs Fort Hays St.	L 57-77	107
12/21/2024	at Hawaii Hilo	L 61-68	217
01/03/2025	Missouri S&T	L 72-74	1
01/09/2025	at Ill. Springfield	L 50-73	115
01/11/2025	at McKendree	L 60-72	157
01/16/2025	Upper Iowa	L 77-88	200
01/18/2025	Lewis	W 69-60	175
01/20/2025	Lincoln (MO)	W 78-59	150
01/25/2025	at Quincy	L 69-82	546
01/30/2025	at Rockhurst	W 84-59	225
02/01/2025	at William Jewell	W 73-61	467
02/06/2025	Drury	L 64-88	50
02/08/2025	Southwest Baptist	W 84-77	150
02/13/2025	at Lincoln (MO)	W 78-42	409
02/15/2025	at Missouri S&T	Lot 67-70	545
02/20/2025	Maryville (MO)	W 86-79	125
02/22/2025	Mo.-St. Louis	W 67-59	140
02/27/2025	at UIndy	W 72-61	221
03/01/2025	William Jewell	L 69-70	240



# THEO DEAN

**Head Coach // 6th Season At Truman**  
**96-71 (.575) Overall // 73-45 (.619) GLVC**

Theo Dean begins his sixth season at the helm of the Truman Women's Basketball team.

Dean has been a part of the program in some capacity for over ten years. He was a student manager and graduate assistant from 2010-14; Dean then returned to Kirksville to become the full-time assistant and recruiting coordinator from June 2016-August 2019. Dean was promoted to interim head coach on August 23, 2019, and on January 13, 2020, after a 9-3 start to the season, including a school-record five-game winning streak to start Great Lakes Valley Conference play, the interim tag was removed, and Dean became the 11th full-time head coach in program history and the first African-American head coach in school history.

By increasing fan and alumni involvement with a fast-paced style of play, Dean's impact on the program has been very evident over the past four seasons, and fans of Truman Women's Basketball have seen continued success for the Bulldogs' program.

Since his return to Truman in 2016, Dean has coached 22 All-GLVC performers (10 being named to the First Team), two Freshman of the Year selections, four 1,000-point scorers, one 1,000 rebounder, two WBCA All-Americans, one D2CCA All-American, six CoSIDA/CSC Academic All-District selections, three D2CCA All-Midwest Region selections, one Academic All-American, one GLVC Player of the Year and one GLVC Women's Basketball Female Student-Athlete of the Year. Dean has also coached over 55 Academic All-GLVC players and has coached three WBCA Academic Top 25 teams (2019, 2021 & 2023).

Overall, Dean has been on the sideline with the Bulldogs for five of the program's eight 20-win seasons, one Great Lakes Valley Conference tournament title, two Great Lakes Valley Conference tournament championship games, three NCAA Tournaments appearances, and one NCAA Tournament victory.

After graduating from Truman, Dean assisted the Lansing (Kansas) High School Boys Basketball program from 2014-16. Dean was the assistant coach to the father of former First Team All-GLVC performer, GLVC Conference Champion, and former Bulldog Associate Head Coach, Amy Briggs. While at Lansing, Dean focused on guard development for the boys' team, overall player development for the girls' team and also supervised the team managers, implementing a hustle and shot chart system into practices and games. In his first year at Lansing, he helped lead the 2014-15 team to the Kansas Substate Championship game, and Dean was then promoted to top assistant in his second season.

A Chicago, IL native, Theo Dean came to Truman in 2008 as a freshman and received his Bachelor of Fine Arts in Visual Communications degree from Truman State University in 2012 and his Master's degree in Leadership, with a concentration in Coaching and Sport Management, from Truman in 2014.

Dean, his wife, Presley (who also holds Bachelor's and Master's degrees from Truman), their son, Theo IV, and their daughter, Mina, reside in Kirksville.



## Series Records

Arkansas Fort Smith	0-1
Ashland (Ohio)	0-1
Augustana (S.D.)	0-1
Avila (Mo.)	1-0
Bellarmine	0-1
Cedarville	3-0
Central Missouri	0-1
Concordia-St. Paul	0-2
Davenport (Mich.)	1-0
Drury *	1-8
Eckerd (Fla.)	0-1
Florida Southern	1-0
Fort Hays (Kan.) State	0-1
Hannibal-LaGrange	1-0
Hawaii-Hilo	0-1
Hillsdale (Mich.)	0-1
Illinois Springfield *	4-3
Indianapolis *	5-4
Lewis *	6-6
Lincoln	2-1
Lindenwood *	1-3
Maryville *	10-1
Minot (N.D.) State	1-0
Missouri S&T *	5-3
Missouri St. Louis	6-3
Missouri Western	0-1
McKendree *	6-3
Newman (Kan.)	1-0
Northern Michigan	1-0
Northwood (Mich.)	1-0
Quincy *	7-4
Rockhurst *	6-3
Saginaw Valley St.	0-1
Sioux Falls	0-1
Southern Indiana *	2-2
Southwest Baptist *	6-3
Southwest Minn. State	1-0
Union (Tenn.)	0-1
Upper Iowa	2-3
Ursuline (Ohio)	3-2
UW-Parkside *	1-1
Washburn (Kan.)	0-1
William Jewell *	10-1
Winona (Minn.) State	1-1

Truman Overall	96-71 (.575)
Home Record	44-25
Away Record	39-33
GLVC Record	73-45
GLVC Home Record	39-21
GLVC Away Record	35-24
Non-Conference Record	23-25
vs. Division I	0-0
vs. Division II	22-26
vs. Division III	0-0
vs. NAIA/Other	2-0
NC Home	3-4
NC Road	4-7
Neutral Site	14-13
Postseason	5-5
Overtime	1-5



## Assistant Coach

**Dajae Black** (2nd Season)

2022-23 - Univ. of Akron  
 (Assistant Coach)

2020-22 - Grand Canyon (Ariz.)  
 (Graduate Assistant)

## Playing career:

Lewis University (2016-2020)

## All-Time Coaches

- Amy Eagan .....111-62 (6 yrs)
- Mary Jo Murray .....100-80 (7 yrs)
- Theo Dean.....96-71 (6yrs)**
- John Sloop .....87-131 (8 yrs)
- Karin Nichols .....71-64 (5 yrs)
- Michael Smith .....68-68 (5 yrs)
- Tarry Parrish .....44-115 (6 yrs)
- Lois Herren.....31-48 (3 yrs)
- Jan Conner.....19-58 (3 yrs)
- Pam Wood.....13-14 (2 yrs)
- Kathy Austin.....12-11 (2 yrs)

## #0 Gracie Neff



**Graduate**  
**5-8**  
**Guard**  
**Kansas City, Mo.**  
**Staley HS**  
**Lindenwood**

				Field Goals		3-Point		F-Throws		Rebounds										Scoring	
SEASON	TEAM	GP-GS	MIN/AVG	FG-FGA	FG%	3FG-3FGA	3FG%	FT-FTA	FT%	OFF	DEF	TOT	AVG	PF-FO	A	TO	BLK	STL	PTS	AVG	
2020-21	Linden	19-18	468/24.6	18-58	.310	11-41	.268	3-8	.375	1	25	26	1.4	26-0	60	46	0	10	50	2.6	
2021-22	Linden	26-17	558/21.4	19-56	.339	3-20	.150	13-21	.619	8	20	28	1.1	30-0	103	65	0	12	54	2.1	
2022-23	TSU	30-0	361/12.0	20-50	.400	12-32	.375	23-29	.793	0	35	35	1.2	21-0	58	38	1	1	75	2.5	
2023-24	TSU	28-21	726/25.9	31-87	.356	22-62	.355	27-38	.711	5	44	49	1.8	37-0	117	74	2	17	111	4.0	
2024-25	TSU	30-1	458/15.3	25-68	.368	13-42	.310	14-20	.700	9	31	40	1.3	29-0	43	33	3	10	77	2.6	
TOTAL FOR TSU		88-22	1545/17.6	76-205	.371	47-136	.346	64-87	.736	14	110	124	1.4	87-0	218	145	6	28	263	3.0	
TOTAL		133-57	2571/19.3	113-319	.354	61-197	.310	80-116	.690	23	155	178	1.3	143-0	381	256	6	50	367	2.8	

### Single Game Highs

Statistic	Value	
Points	13	vs Drury 01/20/24
Rebounds	6	at William Jewell 02/01/25
Assists	11	vs Quincy 12/02/21
Steals	3	vs McKendree 02/01/24, vs Southwest Baptist 01/30/21
Blocks	1	6 times
FG Made	4	5 times
FG Attempts	9	at Ulndy 02/10/24
3FG Made	4	vs Drury 01/20/24
3FG Attempts	6	vs Drury 01/20/24
FT Made	5	vs Ulndy 01/03/24
FT Attempts	6	vs Ulndy 01/03/24, vs Maryville (MO) 11/29/21

## #1 Molly Joyce



**Sophomore**  
**5-7**  
**Guard**  
**Algona, Iowa**  
**Bishop Garrigan**

				Field Goals		3-Point		F-Throws		Rebounds										Scoring	
SEASON	TEAM	GP-GS	MIN/AVG	FG-FGA	FG%	3FG-3FGA	3FG%	FT-FTA	FT%	OFF	DEF	TOT	AVG	PF-FO	A	TO	BLK	STL	PTS	AVG	
2023-24	TSU	28-14	675/24.1	104-277	.375	29-102	.284	67-87	.770	16	79	95	3.4	61-0	39	62	9	31	304	10.9	
2024-25	TSU	30-29	946/31.5	137-346	.396	46-152	.303	134-158	.848	27	99	126	4.2	68-0	65	85	9	38	454	15.1	
TOTAL		58-43	1620/27.9	241-623	.387	75-254	.295	201-245	.820	43	178	221	3.8	129-0	104	147	18	69	758	13.1	

### Single Game Highs

Statistic	Value	
Points	34	vs Ursuline 11/09/24
Rebounds	10	vs Ill. Springfield 02/22/24, vs Maryville (MO) 02/20/25
Assists	6	vs Maryville (MO) 02/20/25
Steals	5	at Rockhurst 01/25/24
Blocks	2	vs Maryville (MO) 02/15/24, vs Quincy 02/24/24, vs Winona St. 11/17/23
FG Made	10	vs Ursuline 11/09/24, at Missouri S&T 02/15/25
FG Attempts	25	at Missouri S&T 02/15/25
3FG Made	6	vs Ursuline 11/09/24
3FG Attempts	11	vs Ark.-Fort Smith 11/27/24
FT Made	12	vs Maryville (MO) 02/20/25
FT Attempts	14	vs Maryville (MO) 02/20/25



## #3 Tori Standefer



**Graduate**  
**5-7**  
**Guard**  
**Bethalto, Ill.**  
**Civic Memorial**  
**Mo.-St. Louis**

				Field Goals		3-Point		F-Throws		Rebounds									Scoring	
SEASON	TEAM	GP-GS	MIN/AVG	FG-FGA	FG%	3FG-3FGA	3FG%	FT-FTA	FT%	OFF	DEF	TOT	AVG	PF-FO	A	TO	BLK	STL	PTS	AVG
2021-22	UMSL	9-0	57/6.3	4-15	.267	1-9	.111	8-8	1.000	2	5	7	0.8	4-0	4	2	0	1	17	1.9
2022-23	UMSL	16-0	115/7.2	5-18	.278	1-7	.143	8-13	.615	6	8	14	0.9	15-1	2	12	0	6	19	1.2
2023-24	UMSL	23-0	233/10.1	13-52	.250	6-29	.207	7-10	.700	9	18	27	1.2	14-0	9	15	0	7	39	1.7
2024-25	TSU	23-1	354/15.4	35-81	.432	16-42	.381	35-41	.854	26	37	63	2.7	38-0	15	13	0	11	121	5.3
<b>TOTAL FOR TSU</b>		<b>23-1</b>	<b>354/15.4</b>	<b>35-81</b>	<b>.432</b>	<b>16-42</b>	<b>.381</b>	<b>35-41</b>	<b>.854</b>	<b>26</b>	<b>37</b>	<b>63</b>	<b>2.7</b>	<b>38-0</b>	<b>15</b>	<b>13</b>	<b>0</b>	<b>11</b>	<b>121</b>	<b>5.3</b>
<b>TOTAL</b>		<b>71-1</b>	<b>760/10.7</b>	<b>57-166</b>	<b>.343</b>	<b>24-87</b>	<b>.276</b>	<b>58-72</b>	<b>.806</b>	<b>43</b>	<b>68</b>	<b>111</b>	<b>1.6</b>	<b>71-1</b>	<b>30</b>	<b>42</b>	<b>0</b>	<b>25</b>	<b>196</b>	<b>2.8</b>

### Single Game Highs

Statistic	Value	
Points	15	at Rockhurst 01/30/25
Rebounds	6	vs William Jewell 03/01/25
Assists	2	5 times
Steals	2	vs Wis.-Parkside 12/31/22, vs Ill. Springfield 01/21/23, vs McKendree 02/25/23
FG Made	5	vs Lincoln (MO) 01/20/25
FG Attempts	11	vs Lincoln (MO) 01/20/25
3FG Made	3	vs William Jewell 03/01/25
3FG Attempts	5	vs Lincoln (MO) 01/20/25
FT Made	8	at Rockhurst 01/30/25
FT Attempts	9	at Rockhurst 01/30/25

## #4 Bryar Duwe



**Sophomore**  
**5-6**  
**Guard**  
**Decorah, Iowa**  
**Decorah HS**

				Field Goals		3-Point		F-Throws		Rebounds									Scoring	
SEASON	TEAM	GP-GS	MIN/AVG	FG-FGA	FG%	3FG-3FGA	3FG%	FT-FTA	FT%	OFF	DEF	TOT	AVG	PF-FO	A	TO	BLK	STL	PTS	AVG
2023-24	TSU	7-0	31/4.4	5-14	.357	3-9	.333	4-4	1.000	1	0	1	0.1	1-0	0	1	0	2	17	2.4
2024-25	TSU	30-29	822/27.4	104-243	.428	50-128	.391	28-40	.700	15	78	93	3.1	37-0	40	56	1	27	286	9.5
<b>TOTAL</b>		<b>37-29</b>	<b>853/23.1</b>	<b>109-257</b>	<b>.424</b>	<b>53-137</b>	<b>.387</b>	<b>32-44</b>	<b>.727</b>	<b>16</b>	<b>78</b>	<b>94</b>	<b>2.5</b>	<b>38-0</b>	<b>40</b>	<b>57</b>	<b>1</b>	<b>29</b>	<b>303</b>	<b>8.2</b>

### Single Game Highs

Statistic	Value	
Points	20	at UIndy 02/27/25
Rebounds	7	vs Ark.-Fort Smith 11/27/24, at Missouri S&T 02/15/25
Assists	4	at Cedarville 11/08/24, at Southwest Baptist 12/05/24
Steals	3	at McKendree 01/11/25
Blocks	1	vs William Jewell 03/01/25
FG Made	7	vs Southwest Baptist 02/08/25, at UIndy 02/27/25
FG Attempts	13	vs Southwest Baptist 02/08/25
3FG Made	5	at UIndy 02/27/25
3FG Attempts	9	at UIndy 02/27/25
FT Made	5	vs Lewis 01/18/25
FT Attempts	6	vs Fort Hays St. 12/19/24, vs Lewis 01/18/25

## #10 Sophie Hope



**Freshman**  
**5-10**  
**Waukee, Iowa**  
**Waukee**

## #11 Lizzie Boehm



**Sophomore**  
**5-7**  
**Guard**  
**Kansas City, Mo.**  
**Staley HS**

				Field Goals		3-Point		F-Throws		Rebounds										Scoring	
SEASON	TEAM	GP-GS	MIN/AVG	FG-FGA	FG%	3FG-3FGA	3FG%	FT-FTA	FT%	OFF	DEF	TOT	AVG	PF-FO	A	TO	BLK	STL	PTS	AVG	
2023-24	TSU	23-0	308/13.4	14-58	.241	4-29	.138	15-19	.789	11	16	27	1.2	41-1	25	37	1	16	47	2.0	
2024-25	TSU	7-0	53/7.5	5-15	.333	3-10	.300	0-4	.000	3	4	7	1.0	3-0	1	2	0	1	13	1.9	
TOTAL		30-0	361/12.0	19-73	.260	7-39	.179	15-23	.652	14	20	34	1.1	44-1	26	39	1	17	60	2.0	

### Single Game Highs

Statistic	Value
Points	7 at Lincoln (MO) 02/13/25
Rebounds	3 6 times
Assists	4 vs Mo.-St. Louis 02/03/24
Steals	3 at Southwest Baptist 02/29/24
Blocks	1 at Southwest Baptist 02/29/24
FG Made	3 at Lincoln (MO) 02/13/25
FG Attempts	7 at William Jewell 01/27/24, vs Maryville (MO) 02/20/25
3FG Made	1 7 times
3FG Attempts	5 vs Maryville (MO) 02/20/25
FT Made	4 vs Ill. Springfield 02/22/24
FT Attempts	4 vs Ill. Springfield 02/22/24



# #12 Katelyn Odem



**Freshman**  
**5-8**  
**Guard**  
**Mequon, Wis.**  
**Homestead**

				Field Goals		3-Point		F-Throws		Rebounds										Scoring	
SEASON	TEAM	GP-GS	MIN/AVG	FG-FGA	FG%	3FG-3FGA	3FG%	FT-FTA	FT%	OFF	DEF	TOT	AVG	PF-FO	A	TO	BLK	STL	PTS	AVG	
2024-25	TSU	30-18	565/18.8	52-119	.437	9-36	.250	21-40	.525	12	50	62	2.1	52-0	23	33	2	22	134	4.5	
TOTAL		30-18	565/18.8	52-119	.437	9-36	.250	21-40	.525	12	50	62	2.1	52-0	23	33	2	22	134	4.5	

## Single Game Highs

Statistic	Value	
Points	13	at Hawaii Hilo 12/21/24
Rebounds	6	vs Fort Hays St. 12/19/24, at Missouri S&T 02/15/25, at UIndy 02/27/25
Assists	5	vs Mo.-St. Louis 02/22/25
Steals	3	vs Upper Iowa 01/16/25
Blocks	1	at Drury 12/07/24, at Quincy 01/25/25
FG Made	6	at Hawaii Hilo 12/21/24
FG Attempts	9	at Hawaii Hilo 12/21/24
3FG Made	2	vs Missouri S&T 01/03/25
3FG Attempts	4	vs Fort Hays St. 12/19/24
FT Made	3	at Drury 12/07/24
FT Attempts	5	at Drury 12/07/24

# #14 Nicky Huss



**R-Freshman**  
**6-1**  
**Omaha, Neb.**  
**Duchesne**

				Field Goals		3-Point		F-Throws		Rebounds										Scoring	
SEASON	TEAM	GP-GS	MIN/AVG	FG-FGA	FG%	3FG-3FGA	3FG%	FT-FTA	FT%	OFF	DEF	TOT	AVG	PF-FO	A	TO	BLK	STL	PTS	AVG	
2024-25	TSU	6-0	17/2.9	0-3	.000	0-2	.000	0-0	.000	0	4	4	0.7	0-0	0	3	0	1	0	0.0	
TOTAL		6-0	17/2.9	0-3	.000	0-2	.000	0-0	.000	0	4	4	0.7	0-0	0	3	0	1	0	0.0	

## Single Game Highs

Statistic	Value	
Rebounds	3	at Lincoln (MO) 02/13/25
Steals	1	at Lincoln (MO) 02/13/25
FG Attempts	1	vs Newman 11/26/24, vs Lincoln (MO) 01/20/25, at Lincoln (MO) 02/13/25
3FG Attempts	1	vs Lincoln (MO) 01/20/25, at Lincoln (MO) 02/13/25



## #20 Braylee Rogers



**Freshman**  
**5-9**  
**Olathe, Kan.**  
**Olathe East**

## #21 Emma Bulman



**Senior**  
**5-10**  
**Ames, Iowa**  
**Gilbert**

				Field Goals		3-Point		F-Throws		Rebounds				Scoring						
SEASON	TEAM	GP-GS	MIN/AVG	FG-FGA	FG%	3FG-3FGA	3FG%	FT-FTA	FT%	OFF	DEF	TOT	AVG	PF-FO	A	TO	BLK	STL	PTS	AVG
2021-22	TSU	26-0	247/9.5	20-43	.465	4-10	.400	9-12	.750	4	47	51	2.0	20-0	9	11	4	5	53	2.0
2022-23	TSU	30-0	483/16.1	56-138	.406	15-36	.417	39-53	.736	11	91	102	3.4	28-0	20	51	10	6	166	5.5
2023-24	TSU	28-11	584/20.9	49-126	.389	15-60	.250	60-69	.870	14	63	77	2.8	58-1	37	65	5	21	173	6.2
2024-25	TSU	30-4	552/18.4	50-125	.400	14-56	.250	47-69	.681	23	87	110	3.7	57-3	30	46	11	18	161	5.4
<b>TOTAL</b>		<b>114-15</b>	<b>1866/16.4</b>	<b>175-432</b>	<b>.405</b>	<b>48-162</b>	<b>.296</b>	<b>155-203</b>	<b>.764</b>	<b>52</b>	<b>288</b>	<b>340</b>	<b>3.0</b>	<b>163-4</b>	<b>96</b>	<b>173</b>	<b>30</b>	<b>50</b>	<b>553</b>	<b>4.9</b>

### Single Game Highs

Statistic	Value	
Points	18	at McKendree 11/25/23
Rebounds	9	vs Lincoln (MO) 11/21/23
Assists	6	vs Winona St. 11/17/23
Steals	3	vs Lewis 01/18/25
Blocks	2	vs Maryville (MO) 01/26/23, at Rockhurst 01/25/24, vs William Jewell 03/01/25
FG Made	7	at McKendree 11/25/23
FG Attempts	10	at Quincy 01/11/24
3FG Made	4	vs Maryville (MO) 02/20/25
3FG Attempts	6	at Quincy 01/25/25, vs Maryville (MO) 02/20/25
FT Made	8	vs Ill. Springfield 02/22/24
FT Attempts	8	4 times



## #22 Lexie White



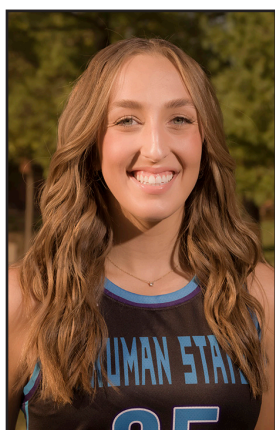
**Sophomore**  
**5-11**  
**Merrill, Wis.**  
**Wausau West**

				Field Goals		3-Point		F-Throws		Rebounds										Scoring	
SEASON	TEAM	GP-GS	MIN/AVG	FG-FGA	FG%	3FG-3FGA	3FG%	FT-FTA	FT%	OFF	DEF	TOT	AVG	PF-FO	A	TO	BLK	STL	PTS	AVG	
2023-24	TSU	11-0	176/16.0	17-52	.327	3-20	.150	8-11	.727	6	25	31	2.8	28-0	11	17	6	13	45	4.1	
2024-25	TSU	26-26	610/23.5	61-165	.370	22-75	.293	27-37	.730	23	108	131	5.0	67-1	30	32	15	20	171	6.6	
TOTAL		37-26	786/21.2	78-217	.359	25-95	.263	35-48	.729	29	133	162	4.4	95-1	41	49	21	33	216	5.8	

### Single Game Highs

Statistic	Value	
Points	16	at Quincy 01/25/25
Rebounds	11	vs Rockhurst 11/30/24
Assists	5	at Missouri S&T 02/15/25
Steals	3	vs Ursuline 11/10/23
Blocks	3	at Concordia-St. Paul 11/15/24
FG Made	6	at McKendree 01/11/25, at Quincy 01/25/25
FG Attempts	14	vs Missouri S&T 01/03/25
3FG Made	3	at Drury 12/07/24, at Quincy 01/25/25
3FG Attempts	6	vs Fort Hays St. 12/19/24, at Quincy 01/25/25
FT Made	4	vs Rockhurst 11/30/24
FT Attempts	6	vs Fort Hays St. 12/19/24

## #25 Kaitlyn Patke



**Junior**  
**6-0**  
**Forward**  
**Washington, Mo.**  
**Borgia**

				Field Goals		3-Point		F-Throws		Rebounds										Scoring	
SEASON	TEAM	GP-GS	MIN/AVG	FG-FGA	FG%	3FG-3FGA	3FG%	FT-FTA	FT%	OFF	DEF	TOT	AVG	PF-FO	A	TO	BLK	STL		PTS	AVG
2022-23	TSU	15-0	76/5.1	11-18	.611	1-5	.200	6-12	.500	2	6	8	0.5	5-0	2	11	0	2		29	1.9
2023-24	TSU	8-0	29/3.6	9-12	.750	2-5	.400	2-3	.667	0	2	2	0.3	5-0	1	0	0	2		22	2.8
2024-25	TSU	16-1	141/8.8	19-47	.404	1-11	.091	12-16	.750	10	14	24	1.5	10-0	8	16	5	10		51	3.2
TOTAL		39-1	246/6.3	39-77	.506	4-21	.190	20-31	.645	12	22	34	0.9	20-0	11	27	5	14		102	2.6

### Single Game Highs

Statistic	Value	
Points	8	at Rockhurst 01/30/25, vs Maryville (MO) 02/20/25, at UIndy 02/27/25
Rebounds	5	at UIndy 02/27/25
Assists	3	vs Maryville (MO) 02/20/25, vs William Jewell 03/01/25
Steals	2	at William Jewell 02/01/25, vs Maryville (MO) 02/20/25
Blocks	1	5 times
FG Made	3	vs Maryville (MO) 02/20/25, vs Mo.-St. Louis 02/22/25, at UIndy 02/27/25
FG Attempts	10	at UIndy 02/27/25
3FG Made	1	4 times
3FG Attempts	3	vs William Jewell 03/01/25
FT Made	4	at Missouri S&T 01/19/23, at Rockhurst 01/30/25
FT Attempts	4	at Rockhurst 01/30/25, at Missouri S&T 01/19/23



## #33 McKenna Williams



**Junior**  
**5-10**  
**Forward**  
**Darien, Wis.**  
**Delavan-Darien**  
**Rock Valley**

				Field Goals		3-Point		F-Throws		Rebounds										Scoring	
SEASON	TEAM	GP-GS	MIN/AVG	FG-FGA	FG%	3FG-3FGA	3FG%	FT-FTA	FT%	OFF	DEF	TOT	AVG	PF-FO	A	TO	BLK	STL	PTS	AVG	
2024-25	TSU	20-0	165/8.3	19-48	.396	4-19	.211	19-24	.792	11	27	38	1.9	14-0	6	10	3	6	61	3.1	
TOTAL		20-0	165/8.3	19-48	.396	4-19	.211	19-24	.792	11	27	38	1.9	14-0	6	10	3	6	61	3.1	

### Single Game Highs

Statistic	Value	
Points	15	vs Fort Hays St. 12/19/24
Rebounds	6	at Ill. Springfield 01/09/25
Assists	2	at Drury 12/07/24
Steals	1	6 times
Blocks	1	vs Quincy 11/23/24, vs Newman 11/26/24, vs Ark.-Fort Smith 11/27/24
FG Made	5	vs Fort Hays St. 12/19/24
FG Attempts	7	vs Fort Hays St. 12/19/24
3FG Made	1	4 times
3FG Attempts	3	at Southwest Baptist 12/05/24
FT Made	4	vs Fort Hays St. 12/19/24
FT Attempts	5	vs Fort Hays St. 12/19/24

## #34 Avery Larson



**R-Sophomore**  
**6-3**  
**Center**  
**Antioch, Ill.**  
**Antioch**

				Field Goals		3-Point		F-Throws		Rebounds									Scoring	
SEASON	TEAM	GP-GS	MIN/AVG	FG-FGA	FG%	3FG-3FGA	3FG%	FT-FTA	FT%	OFF	DEF	TOT	AVG	PF-FO	A	TO	BLK	STL	PTS	AVG
2022-23	TSU	7-0	24/3.4	3-8	.375	0-0	.000	4-5	.800	1	5	6	0.9	3-0	1	1	0	0	10	1.4
2024-25	TSU	6-0	21/3.4	4-5	.800	0-0	.000	3-6	.500	4	3	7	1.2	3-0	1	3	0	1	11	1.8
TOTAL		13-0	44/3.4	7-13	.538	0-0	.000	7-11	.636	5	8	13	1.0	6-0	2	4	0	1	21	1.6

### Single Game Highs

Statistic	Value	
Points	5	vs Newman 11/26/24
Rebounds	3	at Southwest Baptist 12/05/24
Assists	1	vs Ursuline 11/13/22, at Lincoln (MO) 02/13/25
Steals	1	vs Fort Hays St. 12/19/24
FG Made	2	vs Newman 11/26/24
FG Attempts	4	vs William Jewell 01/12/23
FT Made	3	at William Jewell 02/25/23
FT Attempts	4	at William Jewell 02/25/23, at Lincoln (MO) 02/13/25



## #35 Mallory Ott



**R-Freshman**  
**5-11**  
**Forward**  
**Oshkosh, Wis.**  
**Oshkosh North**

				Field Goals		3-Point		F-Throws		Rebounds									Scoring	
SEASON	TEAM	GP-GS	MIN/AVG	FG-FGA	FG%	3FG-3FGA	3FG%	FT-FTA	FT%	OFF	DEF	TOT	AVG	PF-FO	A	TO	BLK	STL	PTS	AVG
2024-25	TSU	11-6	169/15.4	20-54	.370	3-19	.158	11-15	.733	15	28	43	3.9	13-0	5	8	1	7	54	4.9
TOTAL		11-6	169/15.4	20-54	.370	3-19	.158	11-15	.733	15	28	43	3.9	13-0	5	8	1	7	54	4.9

### Single Game Highs

Statistic	Value	
Points	14	vs Quincy 11/23/24
Rebounds	10	at Southwest Baptist 12/05/24
Assists	2	vs Ark.-Fort Smith 11/27/24
Steals	2	vs Newman 11/26/24, vs Rockhurst 11/30/24
Blocks	1	vs Ark.-Fort Smith 11/27/24
FG Made	5	vs Quincy 11/23/24, at Southwest Baptist 12/05/24
FG Attempts	13	at Southwest Baptist 12/05/24
3FG Made	1	vs Ark.-Fort Smith 11/27/24, vs Rockhurst 11/30/24, at Southwest Baptist 12/05/24
3FG Attempts	7	vs Ark.-Fort Smith 11/27/24
FT Made	4	vs Quincy 11/23/24
FT Attempts	5	vs Quincy 11/23/24

## #40 Jordan Cunningham



**Graudate**  
**6-0**  
**Guard**  
**Grimes, Iowa**  
**Dallas Center/Grimes**  
**Mo. Western**

				Field Goals		3-Point		F-Throws		Rebounds										Scoring	
SEASON	TEAM	GP-GS	MIN/AVG	FG-FGA	FG%	3FG-3FGA	3FG%	FT-FTA	FT%	OFF	DEF	TOT	AVG	PF-FO	A	TO	BLK	STL	PTS	AVG	
2020-21	MW	22-13	533/24.2	43-120	.358	18-60	.300	17-27	.630	7	45	52	2.4	41-0	33	43	7	22	121	5.5	
2021-22	MW	34-30	898/26.4	86-206	.417	22-91	.242	55-78	.705	13	60	73	2.1	51-0	73	55	7	28	249	7.3	
2022-23	MW	31-26	761/24.5	68-154	.442	13-51	.255	51-74	.689	11	87	98	3.2	39-1	51	46	12	25	200	6.5	
2023-24	MW	31-1	520/16.8	49-102	.480	8-35	.229	13-19	.684	6	68	74	2.4	51-0	36	30	13	17	119	3.8	
2024-25	TSU	30-30	1022/34.1	168-367	.458	41-128	.320	107-149	.718	17	133	150	5.0	71-1	95	92	26	49	484	16.1	
TOTAL FOR TSU		30-30	1022/34.1	168-367	.458	41-128	.320	107-149	.718	17	133	150	5.0	71-1	95	92	26	49	484	16.1	
TOTAL		148-100	3733/25.2	414-949	.436	102-365	.279	243-347	.700	54	393	447	3.0	253-2	288	266	65	141	1173	7.9	

### Single Game Highs

Statistic	Value	
Points	29	vs Upper Iowa 01/16/25
Rebounds	12	vs Lincoln (MO) 01/20/25
Assists	7	vs Newman 02/16/21, at Newman 01/20/22, vs Quincy 11/23/24
Steals	5	vs Mo.-St. Louis 02/22/25
Blocks	4	vs Fort Hays St. 02/01/24
FG Made	10	vs Rockhurst 11/30/24
FG Attempts	23	at Drury 12/07/24
3FG Made	4	at Concordia-St. Paul 11/15/24
3FG Attempts	8	at Northeastern St. 11/21/20, vs Emporia St. 02/02/21, vs Quincy 11/23/24
FT Made	9	vs Upper Iowa 01/16/25
FT Attempts	12	at Ill. Springfield 01/09/25

2024-25 Truman St. Women's Basketball  
Combined Team Statistics  
In Conference gamesPage 1/1  
as of Mar 04, 2025

## Game Records

Record	Overall	Home	Away	Neutral
ALL GAMES	11-9	6-4	5-5	0-0
CONFERENCE	11-9	6-4	5-5	0-0
NON-CONFERENCE	0-0	0-0	0-0	0-0

## Score by Periods

Team	1st	2nd	3rd	4th	OT	TOT
Truman St.	357	359	359	367	8	1450
Opponents	362	319	371	335	11	1398

## Team Box Score

No.	Player				Total		3-Point		F-Throw		Rebounds											
		GP-GS	MIN	AVG	FG-FGA	FG%	3FG-3FGA	3FG%	FT-FTA	FT%	OFF	DEF	TOT	AVG	PF	DQ	A	TO	BLK	STL	PTS	AVG
40	CUNNINGHAM, Jordan	20-20	685:14	34.3	119-260	.458	28-91	.308	75-106	.708	9	99	108	5.4	50	1	61	63	19	32	341	17.1
1	JOYCE, Molly	20-19	649:25	32.5	84-217	.387	26-91	.286	87-98	.888	19	66	85	4.3	45	0	50	63	6	25	281	14.1
4	DUWE, Bryar	20-19	530:49	26.5	71-162	.438	34-84	.405	19-28	.679	9	50	59	3.0	21	0	20	34	1	19	195	9.8
22	WHITE, Lexie	16-16	369:41	23.1	44-102	.431	14-44	.318	16-17	.941	10	82	92	5.8	41	1	22	21	10	12	118	7.4
35	OTT, Mallory	3-3	50:15	16.8	7-20	.350	2-8	.250	4-4	1.000	5	11	16	5.3	5	0	2	2	0	2	20	6.7
21	BULMAN, Emma	20-4	370:03	18.5	36-83	.434	13-39	.333	41-60	.683	20	63	83	4.2	45	3	22	34	11	13	126	6.3
3	STANDEFER, Tori	20-1	327:52	16.4	32-75	.427	15-39	.385	33-39	.846	23	33	56	2.8	34	0	13	12	0	8	112	5.6
12	ODEM, Katelyn	20-16	413:56	20.7	40-86	.465	7-25	.280	20-32	.625	11	36	47	2.4	36	0	19	24	2	15	107	5.4
25	PATKE, Kaitlyn	14-1	133:15	9.5	18-44	.409	1-9	.111	12-16	.750	10	14	24	1.7	10	0	8	14	5	9	49	3.5
0	NEFF, Gracie	20-1	320:00	16.0	16-47	.340	11-30	.367	11-14	.786	7	25	32	1.6	18	0	30	22	3	6	54	2.7
33	WILLIAMS, McKenna	11-0	97:60	8.9	8-29	.276	1-11	.091	11-14	.786	10	15	25	2.3	11	0	4	6	0	4	28	2.5
11	BOEHM, Lizzie	6-0	51:16	8.5	5-15	.333	3-10	.300	0-4	.000	3	4	7	1.2	3	0	0	2	0	1	13	2.2
34	LARSON, Avery	4-0	13:39	3.4	2-3	.667	0-0	.000	2-4	.500	2	3	5	1.3	2	0	1	3	0	0	6	1.5
14	HUSS, Nicky	4-0	11:35	2.9	0-2	.000	0-2	.000	0-0	.000	0	3	3	0.8	0	0	0	3	0	1	0	0.0
Team											25	35	60					4				
Total		20	4025		482-1145	.421	155-483	.321	331-436	.759	163	539	702	35.1	321	5	252	307	57	147	1450	72.5
Opponents		20	4025		517-1264	.409	139-440	.316	225-295	.763	217	536	753	37.7	385	13	228	304	31	132	1398	69.9

## Team Statistics

	TSU	OPP
Scoring	1450	1398
Points per game	72.5	69.9
Scoring margin	+2.6	-
Field goals-att	482-1145	517-1264
Field goal pct	.421	.409
3 point fg-att	155-483	139-440
3-point FG pct	.321	.316
3-pt FG made per game	7.8	7.0
Free throws-att	331-436	225-295
Free throw pct	.759	.763
F-Throws made per game	16.6	11.3
Rebounds	702	753
Rebounds per game	35.1	37.7
Rebounding margin	-2.6	-
Assists	252	228
Assists per game	12.6	11.4
Turnovers	307	304
Turnovers per game	15.4	15.2
Turnover margin	-0.2	-
Assist/turnover ratio	0.8	0.8
Steals	147	132
Steals per game	7.4	6.6
Blocks	57	31
Blocks per game	2.9	1.6
Winning streak	0	-
Home win streak	0	-
Attendance	1314	4214
Home games-Avg/Game	10-131	10-421
Neutral site-Avg/Game	-	0-0

## Team Results

Date	Opponent		Score	Att.
11/30/2024	Rockhurst	W	82-64	83
12/05/2024	at Southwest Baptist	W	77-63	322
12/07/2024	at Drury	L	72-97	1207
01/03/2025	Missouri S&T	L	72-74	1
01/09/2025	at Ill. Springfield	L	50-73	115
01/11/2025	at McKendree	L	60-72	157
01/16/2025	Upper Iowa	L	77-88	200
01/18/2025	Lewis	W	69-60	175
01/20/2025	Lincoln (MO)	W	78-59	150
01/25/2025	at Quincy	L	69-82	546
01/30/2025	at Rockhurst	W	84-59	225
02/01/2025	at William Jewell	W	73-61	467
02/06/2025	Drury	L	64-88	50
02/08/2025	Southwest Baptist	W	84-77	150
02/13/2025	at Lincoln (MO)	W	78-42	409
02/15/2025	at Missouri S&T	Lot	67-70	545
02/20/2025	Maryville (MO)	W	86-79	125
02/22/2025	Mo.-St. Louis	W	67-59	140
02/27/2025	at Ulndy	W	72-61	221
03/01/2025	William Jewell	L	69-70	240



TRUMAN STATE UNIVERSITY — BULLDOGS

Home Venue: Pershing  
Capacity: 2400  
Built: 1959

WOMEN'S BASKETBALL HC		Overall	14-16	L1	FG%	3PT%	FT%	TO +/-	PTS	REB / GM	ST / GM	PTSA	RANKING	HI / LOW
Theo Dean (6th)		Conference	11-9	L1	41.7	30.8	73.9	0.7	71.1	34.13	7.5	69.7		
Truman St.	96-71 (.575)	Home	6-6	L1	7   76	9   124	3   72	7   119	5   49	12   242	7   193	11   232		
Career	96-71 (.575)	Road	6-8	W1	FGM	3FG	FT	TO	PTS	TOT REB	STL	PF		
		Neutral	2-2	L2	723	222	464	446	2132	1024	226	480		
		Non-Division	0-0	L1	0   0	0   0	0   0	0   0	0   0	0   0	0   0	0   0		

0	Gracie		PTS	AVG	FG%	FG	3FG%	3PT	FT%	FT	
	Neff		77 (9)	2.57	36.76 (3)	25 / 68	30.95 (3)	13 / 42	70 (4)	14 / 20	
		G/GS	MIN / GM	TOT REB	TO	STL	AST	BLK	PF / GM		
		Sr. G 5-8 Kansas City, MO (Staley)	30 / 1	15.27	40 (6)	33 (3)	10 (2)	43 (8)	3 (1)	1.0	
1	Molly		PTS	AVG	FG%	FG	3FG%	3PT	FT%	FT	
	Joyce		454 (34)	15.13	39.6 (10)	137 / 346	30.26 (6)	46 / 152	84.81 (12)	134 / 158	
		G/GS	MIN / GM	TOT REB	TO	STL	AST	BLK	PF / GM		
		So. G 5-7 Algona, IA (Bishop Garrigan HS)	30 / 29	31.52	126 (10)	85 (6)	38 (4)	65 (6)	9 (1)	2.3	
3	Tori		PTS	AVG	FG%	FG	3FG%	3PT	FT%	FT	
	Standefer		121 (15)	5.26	43.21 (5)	35 / 81	38.1 (3)	16 / 42	85.37 (8)	35 / 41	
		G/GS	MIN / GM	TOT REB	TO	STL	AST	BLK	PF / GM		
		Sr. G 5-7 Bethalto, IL (Civic Memorial)	23 / 1	15.40	63 (6)	13 (2)	11 (1)	15 (2)	()	1.7	
4	Bryar		PTS	AVG	FG%	FG	3FG%	3PT	FT%	FT	
	Duwe		286 (20)	9.53	42.8 (7)	104 / 243	39.06 (5)	50 / 128	70 (5)	28 / 40	
		G/GS	MIN / GM	TOT REB	TO	STL	AST	BLK	PF / GM		
		So. G 5-6 Decorah, IA (Decorah)	30 / 29	27.40	93 (7)	56 (7)	27 (3)	40 (4)	1 (1)	1.2	
11	Lizzie		PTS	AVG	FG%	FG	3FG%	3PT	FT%	FT	
	Boehm		13 (7)	1.86	33.33 (3)	5 / 15	30 (1)	3 / 10	0 ()		
		G/GS	MIN / GM	TOT REB	TO	STL	AST	BLK	PF / GM		
		So. G 5-7 Kansas City, MO (Staley HS)	7 / 0	7.50	7 (3)	2 (1)	1 (1)	1 (1)	()	0.4	
12	Katelyn		PTS	AVG	FG%	FG	3FG%	3PT	FT%	FT	
	Odem		134 (13)	4.47	43.7 (6)	52 / 119	25 (2)	9 / 36	52.5 (3)	21 / 40	
		G/GS	MIN / GM	TOT REB	TO	STL	AST	BLK	PF / GM		
		Fy. G 5-8 Mequon, WI (Homestead)	30 / 18	18.82	62 (6)	33 (3)	22 (3)	23 (5)	2 (1)	1.7	
14	Nicky		PTS	AVG	FG%	FG	3FG%	3PT	FT%	FT	
	Huss		()		0 ()		0 ()		()		
		G/GS	MIN / GM	TOT REB	TO	STL	AST	BLK	PF / GM		
		So. F 6-1 Omaha, NE (Duchesne Academy)	6 / 0	2.85	4 (3)	3 (1)	1 (1)	()	()	0.0	
21	Emma		PTS	AVG	FG%	FG	3FG%	3PT	FT%	FT	
	Bulman		161 (17)	5.37	40 (5)	50 / 125	25 (4)	14 / 56	68.12 (6)	47 / 69	
		G/GS	MIN / GM	TOT REB	TO	STL	AST	BLK	PF / GM		
		Sr. G 5-10 Ames, IA (Gilbert HS)	30 / 4	18.38	110 (8)	46 (4)	18 (3)	30 (3)	11 (2)	1.9	
22	Lexie		PTS	AVG	FG%	FG	3FG%	3PT	FT%	FT	
	White		171 (16)	6.58	36.97 (6)	61 / 165	29.33 (3)	22 / 75	72.97 (4)	27 / 37	
		G/GS	MIN / GM	TOT REB	TO	STL	AST	BLK	PF / GM		
		So. G 5-11 Merrill, WI (Wausau West HS)	26 / 26	23.46	131 (11)	32 (5)	20 (2)	30 (5)	15 (3)	2.6	
25	Kaitlyn		PTS	AVG	FG%	FG	3FG%	3PT	FT%	FT	
	Patke		51 (8)	3.19	40.43 (3)	19 / 47	9.09 (1)	1 / 11	75 (4)	12 / 16	
		G/GS	MIN / GM	TOT REB	TO	STL	AST	BLK	PF / GM		
		Jr. F 5-10 Washington, MO (St. Francis Borgia HS)	16 / 1	8.78	24 (5)	16 (3)	10 (2)	8 (3)	5 (1)	0.6	
33	McKenna		PTS	AVG	FG%	FG	3FG%	3PT	FT%	FT	
	Williams		61 (15)	3.05	39.58 (5)	19 / 48	21.05 (1)	4 / 19	79.17 (4)	19 / 24	
		G/GS	MIN / GM	TOT REB	TO	STL	AST	BLK	PF / GM		
		Jr. F 5-10 Darien, WI (Delavan-Darien)	20 / 0	8.26	38 (6)	10 (4)	6 (1)	6 (2)	3 (1)	0.7	
34	Avery		PTS	AVG	FG%	FG	3FG%	3PT	FT%	FT	
	Larson		11 (5)	1.83	80 (2)	4 / 5	()		50 (2)	3 / 6	
		G/GS	MIN / GM	TOT REB	TO	STL	AST	BLK	PF / GM		
		Jr. F 6-3 Antioch, IL (Antioch HS)	6 / 0	3.40	7 (3)	3 (2)	1 (1)	1 (1)	()	0.5	
35	Mallory		PTS	AVG	FG%	FG	3FG%	3PT	FT%	FT	
	Ott		54 (14)	4.91	37.04 (5)	20 / 54	15.79 (1)	3 / 19	73.33 (4)	11 / 15	
		G/GS	MIN / GM	TOT REB	TO	STL	AST	BLK	PF / GM		
		So. F 5-11 Oshkosh, WI (Oshkosh North)	11 / 6	15.39	43 (10)	8 (2)	7 (2)	5 (2)	1 (1)	1.2	
40	Jordan		PTS	AVG	FG%	FG	3FG%	3PT	FT%	FT	
	Cunningham		484 (29)	16.13	45.78 (10)	168 / 367	32.03 (4)	41 / 128	71.81 (9)	107 / 149	
		G/GS	MIN / GM	TOT REB	TO	STL	AST	BLK	PF / GM		
		Sr. G 6-0 Grimes, IA (Dallas Center-Grimes)	30 / 30	34.04	150 (12)	92 (8)	49 (5)	95 (7)	26 (3)	2.4	

Truman State's Last 4		
Feb 20	Maryville (MO)	W 86-79
Feb 22	Mo.-St. Louis	W 67-59
Feb 27	@ UIndy	W 72-61
Mar 1	William Jewell	L 69-70

Truman State's Next 10		
Mar 6	#1 Lewis	@Saint Charles, MO / 2025 GLVC WBR Toumar

GLVC RECENT RESULTS		
Thu Feb 27	Southwest Baptist 99 X	Maryville 104
Thu Feb 27	Drury 60 X	Missouri-St. Louis 66
Thu Feb 27	Missouri S&T 79	Lincoln 75 X
Thu Feb 27	William Jewell 78	Illinois Springfield 58 X
Sat Mar 1	Rockhurst 81	Illinois Springfield 73 X
Sat Mar 1	William Jewell 83	Truman 70 X
Sat Mar 1	Lewis 99 X	Upper Iowa 103
Sat Mar 1	Indianapolis 77 X	Quincy 89
Sat Mar 1	Southwest Baptist 54 X	McKendree 76
Sat Mar 1	Missouri S&T 77 X	Drury 89

GLVC UPCOMING SCHEDULE		
Thu Mar 6	Missouri S&T	McKendree
Thu Mar 6	Missouri-St. Louis	Rockhurst
Fri Mar 7	Lincoln	Lewis
Fri Mar 7	Upper Iowa	Truman

GLVC STANDINGS	
Lewis -x	25-2 (19-1) — W12
Drury -x	21-6 (17-3) — W5
Quincy -x	22-7 (16-4) — W1
Missouri-St. Louis -x	19-8 (13-7) — L2
Maryville -x	14-14 (12-8) — W3
Missouri S&T -x	15-11 (10-10) — L3
Upper Iowa -x	13-13 (10-10) — L1
Truman -x	14-16 (11-9) — L1
McKendree	15-11 (11-9) — W2
Rockhurst	10-16 (8-12) — W1
Southwest Baptist	8-18 (6-14) — L6
Indianapolis	8-20 (6-14) — L4
William Jewell	8-18 (6-14) — W3
Illinois Springfield	5-23 (4-16) — L7
Lincoln	2-24 (1-19) — W1