



TRUMAN STATE WOMEN'S BASKETBALL

2024-25 SCHEDULE

N8	at Cedarville (Ohio) ¹	W 74-61
N9	vs. Ursuline (Ohio) ¹	W 81-60
N15	at Concordia-St. Paul (Minn.)	L 68-57
N16	at Winona St. (Minn.)	L 70-64
N22	WASHBURN (Kan.)	L 81-59
N23	QUINCY (Ill.)	L 85-76
N26	vs. Newman (Kan.) ²	W 80-48
N27	vs. Arkansas-Fort Smith ²	L 75-73
N30	ROCKHURST (Mo.) *	W 82-64

D5	at Southwest Baptist (Mo.) *	W 77-63
D7	at Drury (Mo.) *	L 97-72
D19	vs. Fort Hays State (Kan.) ³	L 77-57
D21	at Hawaii-Hilo	L 68-61

J3	MISSOURI S&T *	L 74-72
J9	at Illinois Springfield *	L 73-50
J11	at McKendree (Ill.) *	L 72-60
J16	UPPER IOWA *	L 88-77
J18	LEWIS (Ill.) *	W 69-60
J20	LINCOLN (MO.) *	W 78-59
J25	at Quincy (Ill.) *	L 82-69
J30	at Rockhurst (Mo.) *	W 84-59

F1	at William Jewell (Mo.) *	W 73-61
F6	DRURY (MO.) *	L 88-64
F8	SOUTHWEST BAPTIST (MO.)*	W 84-77
F13	at Lincoln (Mo.) *	5:30 p.m.
F15	at Missouri S&T *	1 p.m.
F20	MARYVILLE (MO.) *	5:15 p.m.
F22	MISSOURI-ST. LOUIS *	1 p.m.
F27	at Indianapolis *	5:30 p.m. (ET)

M1	WILLIAM JEWELL (MO.) *	1 p.m.
----	------------------------	--------

GLVC BASKETBALL TOURNAMENT

M6	Quarterfinals
M8	Semifinals
M9	Championship

¹ - in Cedarville, Ohio

² - in Springfield, Mo.

³ - in Hilo, Hawaii

* - GLVC

GLVC Tournament will be played in Hyland Arena on the campus of Lindenwood University in St. Charles, Mo.



GAMEDAY CENTRAL

GAME 25 | Feb. 13 | Jefferson City, Mo. | 5:30p.m.

GAME 26 | Feb. 15 | Rolla, Mo. | 1 p.m.



Lincoln (1-19; 0-14 GLVC)

BLUE TIGERS

SERIES HISTORY

Overall	Truman 48-15
Home	Truman 29-4
Road	Truman 16-10
Neutral	Tied 1-1
Last Meeting	Truman 78-59
Last 5	Truman 4-1



Truman State (10-14; 7-7 GLVC)

BULLDOGS

LEADERS

Points	Jordan Cunningham (16.7)
Rebounds	Jordan Cunningham (5.0)
Assists	Jordan Cunningham (3.1)
Steals	Jordan Cunningham (1.3)
Blocks	Jordan Cunningham (1.0)
Minutes	Jordan Cunningham (33.2)



Missouri S&T (12-8; 7-7 GLVC)

MINERS

SERIES HISTORY

Overall	Truman 40-26
Home	Truman 19-13
Road	Truman 19-13
Neutral	Truman 2-0
Last Meeting	MST 74-72
Last 5	TSU 3-2

GAME NOTES

KIRKSVILLE, Mo. – The Truman State Women's Basketball team heads to Jefferson City and Rolla, Missouri this weekend as the push for a spot in the Great Lakes Valley Conference postseason tournament heats up.

The Bulldogs are fractions of a point outside the top eight in the league's points ratings system and have three games left against teams that are .500 or above in conference play and three games left against teams below .500. Road wins typically earn more points toward the ratings than home wins so two important games dot the schedule this week.

Truman has split the 14 conference games played so far but their 3.11 rating has them ninth behind Upper Iowa (7-8/3.13) and McKendree (8-6/3.25). The Bulldogs are most likely the only remaining team to challenge for a spot in the tournament as the remaining six teams below Truman State have ratings in the two-point range. The Bulldogs are three-tenths of a point in front of 10th place Indianapolis (5-10/2.73).

The first stop on the tour will be a return to Jason Gymnasium on the campus of Lincoln University for the first time since 2013. The Bulldogs picked up the 19-point win over the Blue Tigers in the teams' first meeting back on January 20th.

Truman State won every quarter in that game in Pershing Arena and outscored Lincoln 43-32 in the second half on the road to the 78-59 win. Jordan Cunningham led the Bulldogs with 20 points and 12 rebounds while Tori Standifer (14 points) and Lexie White (10 points) also scored in double-figures. Hanne Hybo led three Blue Tiger players in scoring with 16.

After winning the first game of the season, Lincoln has lost 19 straight games, including all 14 played in the GLVC this season.

Saturday's action moves to Rolla where the Bulldogs will hope to avenge

QUICK COMPARISON

	LU 1-19	TSU 10-14	MST 12-7
Record	52.2	70.5	67.7
PPG	74.4	71.3	60.1
Opp PPG	-22.2	-0.7	+7.6
Margin	.332	.411	.421
FG%	.454	.427	.368
Opp FG%	.243	.282	.299
3pt %	4.4	6.8	5.9
3pt/ g	.347	.315	.299
Opp 3pt%	6.5	7.3	6.1
Opp 3pt/g	.693	.738	.676
FT%	10.4	15.5	10.9
FT/g	.707	.751	.750
Opp FT %	11.2	10.3	9.0
Opp FT/g	30.6	33.5	38.1
RPG	-13.7	-5.9	+2.0
Reb. Margin	8.1	12.0	12.6
APG	16.0	14.6	13.4
TOPG	6.7	7.7	7.6
SPG	1.6	2.5	3.7
BPG			

PROBABLE STARTERS



MOLLY JOYCE
5-7/So./Algona, Iowa
PPG 14.5
RPG 4.0
APG 2.1
MPG 30.2



BRYAR DUWE
5-6/So./Decorah, Iowa
PPG 8.8
RPG 2.9
APG 1.4
MPG 26.3



KATELYN ODEM
5-8/Fr./Mequon, Wis.
PPG 4.2
RPG 1.7
APG 0.5
MPG 18.4



LEXIE WHITE
5-11/So./Merrill, Wis.
PPG 6.8
RPG 4.8
APG 1.0
MPG 23.0



JORDAN CUNNINGHAM
6-0/Gr./Grimes, Iowa
PPG 16.7
RPG 5.0
APG 3.1
MPG 33.2



GAME NOTES

a two-point loss to the Miners back on January 3rd. Missouri S&T's Chorus Bavis scored on a fast break off a rebound in the closing seconds to break the tie and give the Miners the 74-72 victory.

The Miners had an eight-point advantage after the first half but the Bulldogs battled back with a strong third quarter and it was back and forth down the stretch. Each team had four starters in double-figures with the Bulldogs led by Jordan Cunningham's 25 points and the Miners by Norah Gum with 13.

Missouri S&T has the sixth-best rating in the GLVC at 3.36 and is 7-7 in conference games. They lost both of their games last week on the road against Lewis and Indianapolis. They will host William Jewell on Thursday.

Outside of losses to two of the top three teams in the conference, the Bulldogs are winners of five of their last seven games including Saturday's 84-77 win over Southwest Baptist in Pershing Arena. That win came on the heels of a loss to the number three team in the GLVC, Drury 88-64 on Thursday.

Molly Joyce was the scoring leader last week with 22 against Drury and 28 in the win over SBU. She has scored in double-figures in five straight games and it was the first time in her career that she has posted back-to-back 20+ point games. In her 52 career games thus far, she has been in double figures in 40 with nine of 20 or more and two of 30 or more, both this season.

Joyce's scoring average climbed up to 14.5 points overall and 12.6 in the GLVC. She has made 103 of 124 free throw attempts this season (83%) and is fifth in the conference in free throw shooting this season. Her two 30-point games are tied with Mia Huberty of Upper Iowa for the most by a conference player.

Jordan Cunningham is closing in on 1,100 career points as she sits with 1,090 entering the weekend. Cunningham leads the Bulldogs in scoring, rebounding, assists, blocked shots and minutes played. She has scored 401 points in her first season with the Bulldogs after four with Missouri Western.

She averages 16.7 points overall and 18.4 in conference games, which is the third-highest average. Her nine games of 20 or more points are the most by any player within the conference. She also has three double-doubles this season.

Bryar Duwe scored a career-high on Saturday with 17 points against Southwest Baptist. After playing in just seven games as a freshman, Duwe has started all 24 this season and is averaging 8.8 points with 34 made three-pointers, tying Joyce for the team lead in that category. She made four in a game against Quincy back on January 25.

Lexie White has started all 24 as well and has a pair of double-doubles this season. She had 12 points and 11 rebounds earlier against Rockhurst and 11 points, 10 boards against Missouri S&T. Her single-game high in points was 16 against Quincy. She has averaged 6.8 points overall and 7.9 in conference.

Katelyn Odem has started the past 13 games and has played in all 24. She is currently sitting on 100 points for the season (4.2/game) and has a single-game high of 13 coming against Hawaii Hilo on December 21.

Seniors Gracie Neff and Emma Bulman are the other two players that have played in each game this season. Both bring over 200 combine games experience to the team. Neff is 23 assists shy of 400 for her collegiate career and has 214 in her 82 games with Truman State. Bulman has reached 100 points for the third straight season and has 25 career blocks to go with 48 steals.

Tori Standefer, in her first season as a Bulldog and third as a collegiate, has played in all 14 GLVC games and has averaged 6.3 points in each. Standefer scored a season and career-high 15 points in the January 30th game against Rockhurst and has made 12-of-28 three-point attempts.

Truman State is in the top three in the conference scoring at 72.2 points per game but in the bottom three in points allowed in conference games at 72.6 per night.

Up Next:

Two important home games are on the schedule next week with both Maryville and Missouri-St. Louis. It will be the only meeting between these teams and both are inside the top eight with winning percentages above .600 entering play.

Double-Figure Games

By Class - Career				
Player	Pts (20/30)	Rebs	Asts	Dbl/Dbls
Hope	-	-	-	-
Odem	2	-	-	-
Rogers	-	-	-	-
Huss	-	-	-	-
Ott	1	1	-	1
Boehm	-	-	-	-
Duwe	10	-	-	-
Joyce	30 (9/2)	1	-	1
White	7	2	-	2
Larson	-	-	-	-
Patke	-	-	-	-
Williams	29 (2)	14	-	13
Bulman	12	-	-	-
Cunningham	42 (9/0)	3	-	3
Neff	7	-	2	1
Standefer	6	-	-	-

Truman State Facts

Location:	Kirksville, Mo. (18,000)
Enrollment:	4,000
Conference:	Great Lakes Valley
University President:	Dr. Sue Thomas
Director of Athletics:	Signe Coombs
Head Coach:	Theo Dean
Assistant Coach:	Dajae Black
Basketball Athletic Trainer:	Cassie DeBlauw
Team Physician:	Dr. John Bailey
Athletics Communications:	Justin Thomas/Kevin White

On The Air

Video:	GLVCSN.com (PPV)
Home Radio:	88.7 FM KTRM (Student Radio)
Home Online Audio:	NEMOPressbox.com (Free)
Live Stats:	TrumanBulldogs.com

2024-25 Truman State Bulldogs

#	Name	Pos.	Ht.	Yr.	Hometown	High School/Previous
0	Gracie Neff	G	5-8	Gr.	Kansas City, Mo.	Staley HS/ Lindenwood (Mo.) Univ.
1	Molly Joyce	G	5-7	So.	Algona, Iowa	Bishop Garrigan HS
3	Tori Standefer	G	5-7	Sr.	Bethalto, Ill.	Civic Memorial HS/Missouri-St. Louis
4	Bryar Duwe (Doo-we)	G	5-6	So.	Decorah, Iowa	Decorah HS
10	Sophia Hope	F	5-10	Fr.	Waukee, Iowa	Waukee HS
11	Lizzie Boehm (Bame)	G	5-7	So.	Kansas City, Mo.	Staley HS
12	Katelyn Odem	G	5-8	Fr.	Mequon, Wis.	Homestead HS
14	Nicky Huss	F	6-1	R-Fr.	Omaha, Neb.	Duchesne Academy
20	Braylee Rogers	G	5-9	Fr.	Olathe, Kan.	Olathe East HS
21	Emma Bulman	F	5-10	Sr.	Ames, Iowa	Gilbert HS
22	Lexie White	G	5-11	So.	Merrill, Wis.	Wausau West HS
25	Kaitlyn Patke (pat-key)	F	6-0	Jr.	Washington, Mo.	St. Francis Borgia HS
33	McKenna Williams	F	5-10	Jr.	Darien, Wis.	Delavan-Darien HS/Rock Valley Col.
34	Avery Larson	C	6-3	R-So.	Antioch, Ill.	Antioch HS
35	Mallory Ott	F	5-11	R-Fr.	Oshkosh, Wis.	Oshkosh North HS
40	Jordan Cunningham	G	6-0	Gr.	Grimes, Iowa	Dallas Center-Grimes HS/Mo. Western

Head Coach: Theo Dean (6th Season)

Associate Head Coach: Dajae Black

Graduate Assistant Coach: Trinitee Jackson

GLVC Standings

School	Conf.	Pct.	Over	Pct.	Home	Away	Neutral	Streak	PRS
Lewis	13-1	.929	19-2	.905	9-0	9-1	1-1	W6	4.46 (1)
Quincy	12-2	.857	18-5	.783	9-2	6-2	3-1	W12	4.21 (2)
Drury	12-3	.800	16-6	.727	9-3	7-2	0-1	L1	4.20 (3)
Missouri-St. Louis	11-4	.733	17-5	.773	8-2	9-3	0-0	W1	3.93 (4)
Maryville	9-5	.643	11-11	.500	7-2	4-8	0-1	W3	3.61 (5)
McKendree	8-6	.571	12-8	.600	7-2	3-6	2-0	W1	3.25 (7)
Missouri S&T	7-7	.500	12-8	.600	8-5	4-3	0-0	W1	3.36 (6)
Truman	7-7	.500	10-14	.417	4-5	4-7	2-2	W1	3.11 (9)
Upper Iowa	7-8	.467	10-11	.476	6-3	4-8	0-0	L1	3.13 (8)
Southwest Baptist	6-9	.400	8-13	.381	6-4	2-7	0-2	L1	2.57 (11)
Indianapolis	5-10	.333	7-16	.304	3-10	4-6	0-0	L2	2.73 (10)
Rockhurst	4-10	.286	6-14	.300	5-7	1-5	0-2	W1	2.43 (13)
Illinois Springfield	4-11	.267	5-18	.217	3-7	2-9	0-2	L2	2.50 (12)
William Jewell	3-11	.214	5-15	.250	4-8	1-7	0-0	L3	2.29 (14)
Lincoln	0-14	.000	1-19	.050	1-9	0-10	0-0	L19	1.71 (15)

Weekly Awards

Date	Player	School
11/11	Molly Joyce	Truman State
11/18	Baylie Parks	McKendree
11/25	Rhi Gibbons	Drury
12/1	Franchesca Metz	Missouri S&T
12/9	Mia Huberty	Upper Iowa
12/16	Mariann Blass	Quincy
12/23	Ally Cesarini	Lewis
1/6	Baylie Parks	McKendree
1/13	Clare Breden	McKendree
1/20	Caitlynn Daniels	Drury
1/27	Taylor Gugliuzza	Lewis
2/3	Halie Gilbert	Indianapolis
2/10	Cymirah Williams	Quincy

Upcoming Games

Thursday, February 13

Upper Iowa at Maryville
Truman at Lincoln
Lewis at McKendree
Indianapolis at Illinois Springfield
William Jewell at Missouri S&T
Quincy at Missouri-St. Louis
Rockhurst at Drury

Thursday, February 20

Illinois Springfield at Upper Iowa
Lincoln at Rockhurst
Maryville at Truman
Missouri-St. Louis at William Jewell
Missouri S&T at Southwest Baptist
McKendree at Quincy
Indianapolis at Lewis

Saturday, February 15

William Jewell at Drury
Indianapolis at McKendree
Quincy at Lincoln
Rockhurst at Southwest Baptist
Upper Iowa at Missouri-St. Louis
Truman at Missouri S&T
Lewis at Maryville

Saturday, February 22

Missouri S&T at Rockhurst
Drury at Southwest Baptist
Missouri-St. Louis at Truman
Illinois Springfield at Lewis
McKendree at Upper Iowa
Lincoln at William Jewell
Maryville at Quincy

Recent Results

Saturday, February 1

Quincy 77, Rockhurst 62
Upper Iowa 64, SW Baptist 63
McKendree 50, Missouri-St. Louis 68
Indianapolis 64, Missouri S&T 59
Lewis 75, Drury 73
Illinois Springfield 53, Lincoln 44
Truman 73, William Jewell 61

Saturday, January 25

SW Baptist 48, Indianapolis 70
Truman 69, Quincy 82
Drury 85, Illinois Springfield 65
Missouri S&T 79, McKendree 65
Rockhurst 67, Lewis 78
William Jewell 86, Upper Iowa 78
Lincoln at Maryville, ppd

Thursday, January 30

McKendree 65, Maryville 69
Truman 84, Rockhurst 59
Quincy 66, Southwest Baptist 54
Lewis 59, Missouri S&T 49
Illinois Springfield 48, Mo. St. Louis 49
Indianapolis 68, Lincoln 53
Upper Iowa 67, Drury 74

Thursday, January 23

Southwest Baptist 57, Lewis 71
Rockhurst 49, Upper Iowa 65
Drury 58, Indianapolis 56
Missouri-St. Louis 57, Maryville 52
Missouri S&T 56, Illinois Springfield 63
Lincoln 58, McKendree 80
William Jewell 67, Quincy 89

Polls

WBCA Coaches Poll

Rk	School (Record)	Points	Prev.
1	Grand Valley State (24-1)	574	1
2	Texas Woman's (23-1)	548	2
3	Cal St. Dominguez Hills (24-0)	527	3
4	Bentley (22-1)	508	4
5	Pittsburg State (21-2)	457	6
6	Texas-Tyler (21-2)	449	7
7	Fort Hays State (20-2)	432	8
8	Ashland (22-3)	380	10
9	Coker (21-1)	349	12
10	North Georgia (19-2)	348	5
11	Embry-Riddle (19-2)	340	13
12	Concordia-St. Paul (22-2)	296	14t
13	Lubbock Christian (22-3)	278	14t
14	Seton Hill (20-3)	270	9
15	Union, TN, (20-3)	253	17
16	Montana State Billings (21-4)	236	18
17	SW Minnesota State (22-2)	231	19
18	Azusa Pacific (19-4)	152	14t
19	Tampa (21-4)	147	23
20	Alaska Anchorage (20-3)	136	25
21	Cal Poly Pomona (18-4)	97	22
22	Lewis (19-2)	89	RV
	Gannon (20-5)	72	11
	Nova Southeastern (18-4)	72	20
25	Minnesota State Mankato (19-5)	57	21

GLVC Coaches Poll

Rk	School (Record)	Points
1.	Lewis	190 (9)
2.	Drury	183 (5)
3.	McKendree	158 (1)
4.	Maryville	140
5.	Upper Iowa	130
6.	Rockhurst	128
7.	Missouri-St. Louis	109
	Quincy	109
10.	Illinois Springfield	80
11.	Truman State	75
12.	Missouri S&T	70
13.	Southwest Baptist	47
14.	Lincoln	26
15.	William Jewell	25



2024-25 Truman St. Women's Basketball Combined Team Statistics All games

Page 1/1
as of Feb 11, 2025

Game Records

Record	Overall	Home	Away	Neutral
ALL GAMES	10-14	4-5	4-7	2-2
CONFERENCE	7-7	4-3	3-4	0-0
NON-CONFERENCE	3-7	0-2	1-3	2-2

Score by Periods

Team	1st	2nd	3rd	4th	OT	TOT
Truman St.	410	417	427	439	0	1693
Opponents	440	431	434	405	0	1710

Team Box Score

No.	Player				Total		3-Point		F-Throw		Rebounds													
		GP-GS	MIN	AVG	FG-FGA	FG%	3FG-3FGA	3FG%	FT-FTA	FT%	OFF	DEF	TOT	AVG	PF	DQ	A	TO	BLK	STL	PTS	AVG		
40	CUNNINGHAM, Jordan	24-24	815:12	34.0	138-301	.458	30-101	.297	95-132	.720	17	103	120	5.0	54	1	74	74	23	32	401	16.7		
1	JOYCE, Molly	24-24	745:18	31.1	106-275	.385	34-126	.270	103-124	.831	20	75	95	4.0	54	0	51	64	5	34	349	14.5		
30	NIEMEIER, Maddie	5-5	130:09	26.0	24-46	.522	0-1	.000	6-9	.667	5	18	23	4.6	18	1	10	7	1	5	54	10.8		
4	DUWE, Bryar	24-24	649:50	27.1	76-190	.400	34-99	.343	24-33	.727	12	58	70	2.9	30	0	33	48	0	23	210	8.8		
22	WHITE, Lexie	24-24	557:11	23.2	59-159	.371	21-72	.292	25-35	.714	22	94	116	4.8	63	1	24	30	15	20	164	6.8		
3	STANDEFER, Tori	17-0	235:32	13.9	28-57	.491	12-28	.429	29-33	.879	16	24	40	2.4	28	0	10	7	0	6	97	5.7		
35	OTT, Mallory	11-6	169:26	15.4	20-54	.370	3-19	.158	11-15	.733	15	28	43	3.9	13	0	5	8	1	7	54	4.9		
21	BULMAN, Emma	24-0	409:11	17.0	35-97	.361	5-39	.128	29-40	.725	19	61	80	3.3	37	1	19	33	6	16	104	4.3		
12	ODEM, Katelyn	24-13	441:58	18.4	40-98	.408	8-32	.250	12-30	.400	8	33	41	1.7	41	0	13	26	2	20	100	4.2		
33	WILLIAMS, McKenna	18-0	155:53	8.7	18-44	.409	4-18	.222	19-24	.792	10	26	36	2.0	14	0	6	10	3	5	59	3.3		
0	NEFF, Gracie	24-0	379:16	15.8	23-57	.404	11-32	.344	10-16	.625	9	23	32	1.3	25	0	39	27	2	8	67	2.8		
25	PATKE, Kaitlyn	11-0	62:38	5.7	8-20	.400	0-6	.000	8-9	.889	3	6	9	0.8	5	0	2	8	3	6	24	2.2		
34	LARSON, Avery	4-0	15:18	3.8	3-4	.750	0-0	.000	1-2	.500	4	1	5	1.3	3	0	0	2	0	1	7	1.8		
11	BOEHM, Lizzie	5-0	23:31	4.7	1-5	.200	1-4	.250	0-2	.000	1	2	3	0.6	1	0	1	0	0	1	3	0.6		
14	HUSS, Nicky	4-0	09:37	2.4	0-2	.000	0-1	.000	0-0	.000	0	1	1	0.3	0	0	0	1	0	0	0	0.0		
Team											34	55	89					5						
Total		24	4800		579-1409	.411	163-578	.282	372-504	.738	195	608	803	33.5	386	4	287	350	61	184	1693	70.5		
Opponents		24	4800		644-1508	.427	175-556	.315	247-329	.751	260	685	945	39.4	462	14	303	381	40	163	1710	71.3		

Team Statistics

	TSU	OPP
Scoring	1693	1710
Points per game	70.5	71.3
Scoring margin	-0.7	-
Field goals-att	579-1409	644-1508
Field goal pct	.411	.427
3 point fg-att	163-578	175-556
3-point FG pct	.282	.315
3-pt FG made per game	6.8	7.3
Free throws-att	372-504	247-329
Free throw pct	.738	.751
F-Throws made per game	15.5	10.3
Rebounds	803	945
Rebounds per game	33.5	39.4
Rebounding margin	-5.9	-
Assists	287	303
Assists per game	12.0	12.6
Turnovers	350	381
Turnovers per game	14.6	15.9
Turnover margin	+1.3	-
Assist/turnover ratio	0.8	0.8
Steals	184	163
Steals per game	7.7	6.8
Blocks	61	40
Blocks per game	2.5	1.7
Winning streak	1	-
Home win streak	1	-
Attendance	2241	4861
Home games-Avg/Game	9-249	11-442
Neutral site-Avg/Game	-	4-184

Team Results

Date	Opponent	Score	Att.
11/08/2024	at Cedarville	W 74-61	455
11/09/2024	vs Ursuline	W 81-60	150
11/15/2024	at Concordia-St. Paul	L 57-68	325
11/16/2024	at Winona St.	L 64-70	825
11/22/2024	Washburn	L 59-81	1232
11/23/2024	Quincy	L 76-85	200
11/26/2024	vs Newman	W 80-48	263
11/27/2024	vs Ark.-Fort Smith	L 73-75	217
11/30/2024	Rockhurst	W 82-64	83
12/05/2024	at Southwest Baptist	W 77-63	322
12/07/2024	at Drury	L 72-97	1207
12/19/2024	vs Fort Hays St.	L 57-77	107
12/21/2024	at Hawaii Hilo	L 61-68	217
01/03/2025	Missouri S&T	L 72-74	1
01/09/2025	at Ill. Springfield	L 50-73	115
01/11/2025	at McKendree	L 60-72	157
01/16/2025	Upper Iowa	L 77-88	200
01/18/2025	Lewis	W 69-60	175
01/20/2025	Lincoln (MO)	W 78-59	150
01/25/2025	at Quincy	L 69-82	546
01/30/2025	at Rockhurst	W 84-59	225
02/01/2025	at William Jewell	W 73-61	467
02/06/2025	Drury	L 64-88	50
02/08/2025	Southwest Baptist	W 84-77	150



THEO DEAN

Head Coach // 6th Season At Truman
92-69 (.571) Overall // 69-43 (.616) GLVC

Theo Dean begins his fifth season at the helm of the Truman Women's Basketball team.

Dean has been a part of the program in some capacity for over ten years. He was a student manager and graduate assistant from 2010-14; Dean then returned to Kirksville to become the full-time assistant and recruiting coordinator from June 2016-August 2019. Dean was promoted to interim head coach on August 23, 2019, and on January 13, 2020, after a 9-3 start to the season, including a school-record five-game winning streak to start Great Lakes Valley Conference play, the interim tag was removed, and Dean became the 11th full-time head coach in program history and the first African-American head coach in school history.

By increasing fan and alumni involvement with a fast-paced style of play, Dean's impact on the program has been very evident over the past four seasons, and fans of Truman Women's Basketball have seen continued success for the Bulldogs' program.

Since his return to Truman in 2016, Dean has coached 22 All-GLVC performers (10 being named to the First Team), two Freshman of the Year selections, four 1,000-point scorers, one 1,000 rebounder, two WBCA All-Americans, one D2CCA All-American, six CoSIDA/CSC Academic All-District selections, three D2CCA All-Midwest Region selections, one Academic All-American, one GLVC Player of the Year and one GLVC Women's Basketball Female Student-Athlete of the Year. Dean has also coached over 55 Academic All-GLVC players and has coached three WBCA Academic Top 25 teams (2019, 2021 & 2023).

Overall, Dean has been on the sideline with the Bulldogs for five of the program's eight 20-win seasons, one Great Lakes Valley Conference tournament title, two Great Lakes Valley Conference tournament championship games, three NCAA Tournaments appearances, and one NCAA Tournament victory.

After graduating from Truman, Dean assisted the Lansing (Kansas) High School Boys Basketball program from 2014-16. Dean was the assistant coach to the father of former First Team All-GLVC performer, GLVC Conference Champion, and former Bulldog Associate Head Coach, Amy Briggs. While at Lansing, Dean focused on guard development for the boys' team, overall player development for the girls' team and also supervised the team managers, implementing a hustle and shot chart system into practices and games. In his first year at Lansing, he helped lead the 2014-15 team to the Kansas Substate Championship game, and Dean was then promoted to top assistant in his second season.

A Chicago, IL native, Theo Dean came to Truman in 2008 as a freshman and received his Bachelor of Fine Arts in Visual Communications degree from Truman State University in 2012 and his Master's degree in Leadership, with a concentration in Coaching and Sport Management, from Truman in 2014.

Dean, his wife, Presley (who also holds Bachelor's and Master's degrees from Truman), their son, Theo IV, and their daughter, Mina, reside in Kirksville.



All-Time Coaches

1. Amy Eagan111-62 (6 yrs)
2. Mary Jo Murray100-80 (7 yrs)
3. **Theo Dean.....92-69 (6yrs)**
4. John Sloop87-131 (8 yrs)
5. Karin Nichols71-64 (5 yrs)
6. Michael Smith68-68 (5 yrs)
7. Tarry Parrish44-115 (6 yrs)
8. Lois Herren.....31-48 (3 yrs)
8. Jan Conner.....19-58 (3 yrs)
10. Pam Wood.....13-14 (2 yrs)
11. Kathy Austin.....12-11 (2 yrs)

Series Records

Arkansas Fort Smith	0-1
Ashland (Ohio)	0-1
Augustana (S.D.)	0-1
Avila (Mo.)	1-0
Bellarmino	0-1
Cedarville	3-0
Central Missouri	0-1
Concordia-St. Paul	0-2
Davenport (Mich.)	1-0
Drury *	1-8
Eckerd (Fla.)	0-1
Florida Southern	1-0
Fort Hays (Kan.) State	0-1
Hannibal-LaGrange	1-0
Hawaii-Hilo	0-1
Hillsdale (Mich.)	0-1
Illinois Springfield *	4-3
Indianapolis *	4-4
Lewis *	6-6
Lincoln	1-1
Lindenwood *	1-3
Maryville *	9-1
Minot (N.D.) State	1-0
Missouri S&T*	5-2
Missouri St. Louis	5-3
Missouri Western	0-1
McKendree *	6-3
Newman (Kan.)	1-0
Northern Michigan	1-0
Northwood (Mich.)	1-0
Quincy *	7-4
Rockhurst *	6-3
Saginaw Valley St.	0-1
Sioux Falls	0-1
Southern Indiana *	2-2
Southwest Baptist *	6-3
Southwest Minn. State	1-0
Union (Tenn.)	0-1
Upper Iowa	2-3
Ursuline (Ohio)	3-2
UW-Parkside *	1-1
Washburn (Kan.)	0-1
William Jewell *	10-0
Winona (Minn.) State	1-1

Truman Overall	92-69 (.571)
Home Record	42-24
Away Record	37-32
GLVC Record	69-43
GLVC Home Record	37-20
GLVC Away Record	33-23
Non-Conference Record	23-25
vs. Division I	0-0
vs. Division II	22-26
vs. Division III	0-0
vs. NAIA/Other	2-0
NC Home	3-4
NC Road	4-7
Neutral Site	14-13
Postseason	5-5
Overtime	1-4



Assistant Coach

Dajae Black (2nd Season)

2022-23 - Univ. of Akron
 (Assisant Coach)

2020-22 - Grand Canyon (Ariz.)
 (Graduate Assistant)

Playing career:

Lewis University (2016-2020)

#0 Gracie Neff



Graduate
5-8
Guard
Kansas City, Mo.
Staley HS
Lindenwood

				Field Goals		3-Point		F-Throws		Rebounds										Scoring	
SEASON	TEAM	GP-GS	MIN/AVG	FG-FGA	FG%	3FG-3FGA	3FG%	FT-FTA	FT%	OFF	DEF	TOT	AVG	PF-FO	A	TO	BLK	STL	PTS	AVG	
2020-21	Linden	19-18	468/24.6	18-58	.310	11-41	.268	3-8	.375	1	25	26	1.4	26-0	60	46	0	10	50	2.6	
2021-22	Linden	26-17	558/21.4	19-56	.339	3-20	.150	13-21	.619	8	20	28	1.1	30-0	103	65	0	12	54	2.1	
2022-23	TSU	30-0	361/12.0	20-50	.400	12-32	.375	23-29	.793	0	35	35	1.2	21-0	58	38	1	1	75	2.5	
2023-24	TSU	28-21	726/25.9	31-87	.356	22-62	.355	27-38	.711	5	44	49	1.8	37-0	117	74	2	17	111	4.0	
2024-25	TSU	24-0	379/15.8	23-57	.404	11-32	.344	10-16	.625	9	23	32	1.3	25-0	39	27	2	8	67	2.8	
TOTAL FOR TSU		82-21	1466/17.9	74-194	.381	45-126	.357	60-83	.723	14	102	116	1.4	83-0	214	139	5	26	253	3.1	
TOTAL		127-56	2492/19.6	111-308	.360	59-187	.316	76-112	.679	23	147	170	1.3	139-0	377	250	5	48	357	2.8	

Single Game Highs

Statistic	Value	
Points	13	vs Drury 01/20/24
Rebounds	6	at William Jewell 02/01/25
Assists	11	vs Quincy 12/02/21
Steals	3	vs McKendree 02/01/24, vs Southwest Baptist 01/30/21
Blocks	1	5 times
FG Made	4	5 times
FG Attempts	9	at Ulndy 02/10/24
3FG Made	4	vs Drury 01/20/24
3FG Attempts	6	vs Drury 01/20/24
FT Made	5	vs Ulndy 01/03/24
FT Attempts	6	vs Ulndy 01/03/24, vs Maryville (MO) 11/29/21

#1 Molly Joyce



Sophomore
5-7
Guard
Algona, Iowa
Bishop Garrigan

JOYCE, Molly

				Field Goals		3-Point		F-Throws		Rebounds										Scoring	
SEASON	TEAM	GP-GS	MIN/AVG	FG-FGA	FG%	3FG-3FGA	3FG%	FT-FTA	FT%	OFF	DEF	TOT	AVG	PF-FO	A	TO	BLK	STL	PTS	AVG	
2023-24	TSU	28-14	675/24.1	104-277	.375	29-102	.284	67-87	.770	16	79	95	3.4	61-0	39	62	9	31	304	10.9	
2024-25	TSU	24-24	745/31.1	106-275	.385	34-126	.270	103-124	.831	20	75	95	4.0	54-0	51	64	5	34	349	14.5	
TOTAL		52-38	1420/27.3	210-552	.380	63-228	.276	170-211	.806	36	154	190	3.7	115-0	90	126	14	65	653	12.6	

Single Game Highs

Statistic	Value	
Points	34	vs Ursuline 11/09/24
Rebounds	10	vs Ill. Springfield 02/22/24
Assists	5	vs Missouri S&T 01/03/25, vs Southwest Baptist 02/08/25
Steals	5	at Rockhurst 01/25/24
Blocks	2	vs Quincy 02/24/24, vs Maryville (MO) 02/15/24, vs Winona St. 11/17/23
FG Made	10	vs Ursuline 11/09/24
FG Attempts	23	at Winona St. 11/16/24
3FG Made	6	vs Ursuline 11/09/24
3FG Attempts	11	vs Ark.-Fort Smith 11/27/24
FT Made	11	vs Southwest Baptist 02/08/25
FT Attempts	12	4 times



#3 Tori Standefer



Graduate
5-7
Guard
Bethalto, Ill.
Civic Memorial
Mo.-St. Louis

				Field Goals		3-Point		F-Throws		Rebounds									Scoring	
SEASON	TEAM	GP-GS	MIN/AVG	FG-FGA	FG%	3FG-3FGA	3FG%	FT-FTA	FT%	OFF	DEF	TOT	AVG	PF-FO	A	TO	BLK	STL	PTS	AVG
2021-22	UMSL	9-0	57/6.3	4-15	.267	1-9	.111	8-8	1.000	2	5	7	0.8	4-0	4	2	0	1	17	1.9
2022-23	UMSL	16-0	115/7.2	5-18	.278	1-7	.143	8-13	.615	6	8	14	0.9	15-1	2	12	0	6	19	1.2
2023-24	UMSL	23-0	233/10.1	13-52	.250	6-29	.207	7-10	.700	9	18	27	1.2	14-0	9	15	0	7	39	1.7
2024-25	TSU	17-0	236/13.9	28-57	.491	12-28	.429	29-33	.879	16	24	40	2.4	28-0	10	7	0	6	97	5.7
TOTAL FOR TSU		17-0	236/13.9	28-57	.491	12-28	.429	29-33	.879	16	24	40	2.4	28-0	10	7	0	6	97	5.7
TOTAL		65-0	641/9.9	50-142	.352	20-73	.274	52-64	.813	33	55	88	1.4	61-1	25	36	0	20	172	2.6

Single Game Highs

Statistic	Value	
Points	15	at Rockhurst 01/30/25
Rebounds	5	4 times
Assists	2	4 times
Steals	2	vs Wis.-Parkside 12/31/22, vs Ill. Springfield 01/21/23, vs McKendree 02/25/23
FG Made	5	vs Lincoln (MO) 01/20/25
FG Attempts	11	vs Lincoln (MO) 01/20/25
3FG Made	2	5 times
3FG Attempts	5	vs Lincoln (MO) 01/20/25
FT Made	8	at Rockhurst 01/30/25
FT Attempts	9	at Rockhurst 01/30/25

#4 Bryar Duwe



Sophomore
5-6
Guard
Decorah, Iowa
Decorah HS

				Field Goals		3-Point		F-Throws		Rebounds									Scoring	
SEASON	TEAM	GP-GS	MIN/AVG	FG-FGA	FG%	3FG-3FGA	3FG%	FT-FTA	FT%	OFF	DEF	TOT	AVG	PF-FO	A	TO	BLK	STL	PTS	AVG
2023-24	TSU	7-0	31/4.4	5-14	.357	3-9	.333	4-4	1.000	1	0	1	0.1	1-0	0	1	0	2	17	2.4
2024-25	TSU	24-24	650/27.1	76-190	.400	34-99	.343	24-33	.727	12	58	70	2.9	30-0	33	48	0	23	210	8.8
TOTAL		31-24	681/22.0	81-204	.397	37-108	.343	28-37	.757	13	58	71	2.3	31-0	33	49	0	25	227	7.3

Single Game Highs

Statistic	Value	
Points	17	vs Southwest Baptist 02/08/25
Rebounds	7	vs Ark.-Fort Smith 11/27/24
Assists	4	at Cedarville 11/08/24, at Southwest Baptist 12/05/24
Steals	3	at McKendree 01/11/25
FG Made	7	vs Southwest Baptist 02/08/25
FG Attempts	13	vs Southwest Baptist 02/08/25
3FG Made	4	at Quincy 01/25/25
3FG Attempts	8	vs Missouri S&T 01/03/25
FT Made	5	vs Lewis 01/18/25
FT Attempts	6	vs Fort Hays St. 12/19/24, vs Lewis 01/18/25

#10 Sophie Hope



Freshman
5-10
Waukee, Iowa
Waukee

#11 Lizzie Boehm



Sophomore
5-7
Guard
Kansas City, Mo.
Staley HS

				Field Goals		3-Point		F-Throws		Rebounds										Scoring	
SEASON	TEAM	GP-GS	MIN/AVG	FG-FGA	FG%	3FG-3FGA	3FG%	FT-FTA	FT%	OFF	DEF	TOT	AVG	PF-FO	A	TO	BLK	STL	PTS	AVG	
2023-24	TSU	23-0	308/13.4	14-58	.241	4-29	.138	15-19	.789	11	16	27	1.2	41-1	25	37	1	16	47	2.0	
2024-25	TSU	5-0	24/4.7	1-5	.200	1-4	.250	0-2	.000	1	2	3	0.6	1-0	1	0	0	1	3	0.6	
TOTAL		28-0	332/11.8	15-63	.238	5-33	.152	15-21	.714	12	18	30	1.1	42-1	26	37	1	17	50	1.8	

Single Game Highs

Statistic	Value	
Points	6	vs Southwest Baptist 01/18/24, at UIndy 02/10/24, at Drury 03/02/24
Rebounds	3	5 times
Assists	4	vs Mo.-St. Louis 02/03/24
Steals	3	at Southwest Baptist 02/29/24
Blocks	1	at Southwest Baptist 02/29/24
FG Made	2	4 times
FG Attempts	7	at William Jewell 01/27/24
3FG Made	1	5 times
3FG Attempts	4	at McKendree 11/25/23, vs McKendree 02/01/24
FT Made	4	vs Ill. Springfield 02/22/24
FT Attempts	4	vs Ill. Springfield 02/22/24



#12 Katelyn Odem



Freshman
5-8
Guard
Mequon, Wis.
Homestead

				Field Goals		3-Point		F-Throws		Rebounds									Scoring	
SEASON	TEAM	GP-GS	MIN/AVG	FG-FGA	FG%	3FG-3FGA	3FG%	FT-FTA	FT%	OFF	DEF	TOT	AVG	PF-FO	A	TO	BLK	STL	PTS	AVG
2024-25	TSU	24-13	442/18.4	40-98	.408	8-32	.250	12-30	.400	8	33	41	1.7	41-0	13	26	2	20	100	4.2
TOTAL		24-13	442/18.4	40-98	.408	8-32	.250	12-30	.400	8	33	41	1.7	41-0	13	26	2	20	100	4.2

Single Game Highs

Statistic	Value	
Points	13	at Hawaii Hilo 12/21/24
Rebounds	6	vs Fort Hays St. 12/19/24
Assists	3	at McKendree 01/11/25
Steals	3	vs Upper Iowa 01/16/25
Blocks	1	at Drury 12/07/24, at Quincy 01/25/25
FG Made	6	at Hawaii Hilo 12/21/24
FG Attempts	9	at Hawaii Hilo 12/21/24
3FG Made	2	vs Missouri S&T 01/03/25
3FG Attempts	4	vs Fort Hays St. 12/19/24
FT Made	3	at Drury 12/07/24
FT Attempts	5	at Drury 12/07/24

#14 Nicky Huss



R-Freshman
6-1
Omaha, Neb.
Duchesne

				Field Goals		3-Point		F-Throws		Rebounds										Scoring	
SEASON	TEAM	GP-GS	MIN/AVG	FG-FGA	FG%	3FG-3FGA	3FG%	FT-FTA	FT%	OFF	DEF	TOT	AVG	PF-FO	A	TO	BLK	STL	PTS	AVG	
2024-25	TSU	4-0	10/2.4	0-2	.000	0-1	.000	0-0	.000	0	1	1	0.3	0-0	0	1	0	0	0	0.0	
TOTAL		4-0	10/2.4	0-2	.000	0-1	.000	0-0	.000	0	1	1	0.3	0-0	0	1	0	0	0	0.0	

Single Game Highs

Statistic	Value	
Rebounds	1	vs Newman 11/26/24
FG Attempts	1	vs Newman 11/26/24, vs Lincoln (MO) 01/20/25
3FG Attempts	1	vs Lincoln (MO) 01/20/25

#20 Braylee Rogers



Freshman
5-9
Olathe, Kan.
Olathe East

#21 Emma Bulman



Senior
5-10
Ames, Iowa
Gilbert

				Field Goals		3-Point		F-Throws		Rebounds										Scoring	
SEASON	TEAM	GP-GS	MIN/AVG	FG-FGA	FG%	3FG-3FGA	3FG%	FT-FTA	FT%	OFF	DEF	TOT	AVG	PF-FO	A	TO	BLK	STL	PTS	AVG	
2021-22	TSU	26-0	247/9.5	20-43	.465	4-10	.400	9-12	.750	4	47	51	2.0	20-0	9	11	4	5	53	2.0	
2022-23	TSU	30-0	483/16.1	56-138	.406	15-36	.417	39-53	.736	11	91	102	3.4	28-0	20	51	10	6	166	5.5	
2023-24	TSU	28-11	584/20.9	49-126	.389	15-60	.250	60-69	.870	14	63	77	2.8	58-1	37	65	5	21	173	6.2	
2024-25	TSU	24-0	409/17.0	35-97	.361	5-39	.128	29-40	.725	19	61	80	3.3	37-1	19	33	6	16	104	4.3	
TOTAL		108-11	1723/16.0	160-404	.396	39-145	.269	137-174	.787	48	262	310	2.9	143-2	85	160	25	48	496	4.6	

Single Game Highs

Statistic	Value	
Points	18	at McKendree 11/25/23
Rebounds	9	vs Lincoln (MO) 11/21/23
Assists	6	vs Winona St. 11/17/23
Steals	3	vs Lewis 01/18/25
Blocks	2	vs Maryville (MO) 01/26/23, at Rockhurst 01/25/24
FG Made	7	at McKendree 11/25/23
FG Attempts	10	at Quincy 01/11/24
3FG Made	2	vs Southwest Baptist 01/18/24, at McKendree 11/25/23, vs Lincoln (MO) 11/21/23
3FG Attempts	6	at Quincy 01/25/25
FT Made	8	vs Ill. Springfield 02/22/24
FT Attempts	8	at Southwest Baptist 12/10/22, at Rockhurst 01/25/24, vs Ill. Springfield 02/22/24



#22 Lexie White



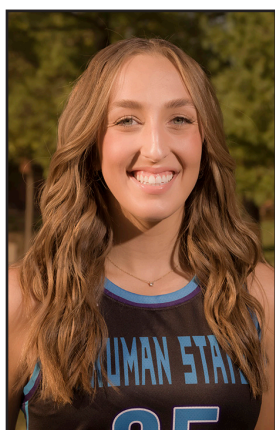
Sophomore
5-11
Merrill, Wis.
Wausau West

				Field Goals		3-Point		F-Throws		Rebounds											Scoring	
SEASON	TEAM	GP-GS	MIN/AVG	FG-FGA	FG%	3FG-3FGA	3FG%	FT-FTA	FT%	OFF	DEF	TOT	AVG	PF-FO	A	TO	BLK	STL			PTS	AVG
2023-24	TSU	11-0	176/16.0	17-52	.327	3-20	.150	8-11	.727	6	25	31	2.8	28-0	11	17	6	13			45	4.1
2024-25	TSU	24-24	557/23.2	59-159	.371	21-72	.292	25-35	.714	22	94	116	4.8	63-1	24	30	15	20			164	6.8
TOTAL		35-24	733/21.0	76-211	.360	24-92	.261	33-46	.717	28	119	147	4.2	91-1	35	47	21	33			209	6.0

Single Game Highs

Statistic	Value	
Points	16	at Quincy 01/25/25
Rebounds	11	vs Rockhurst 11/30/24
Assists	4	vs Southwest Baptist 02/08/25
Steals	3	vs Ursuline 11/10/23
Blocks	3	at Concordia-St. Paul 11/15/24
FG Made	6	at McKendree 01/11/25, at Quincy 01/25/25
FG Attempts	14	vs Missouri S&T 01/03/25
3FG Made	3	at Drury 12/07/24, at Quincy 01/25/25
3FG Attempts	6	vs Fort Hays St. 12/19/24, at Quincy 01/25/25
FT Made	4	vs Rockhurst 11/30/24
FT Attempts	6	vs Fort Hays St. 12/19/24

#25 Kaitlyn Patke



Junior
6-0
Forward
Washington, Mo.
Borgia

				Field Goals		3-Point		F-Throws		Rebounds											Scoring	
SEASON	TEAM	GP-GS	MIN/AVG	FG-FGA	FG%	3FG-3FGA	3FG%	FT-FTA	FT%	OFF	DEF	TOT	AVG	PF-FO	A	TO	BLK	STL			PTS	AVG
2022-23	TSU	15-0	76/5.1	11-18	.611	1-5	.200	6-12	.500	2	6	8	0.5	5-0	2	11	0	2			29	1.9
2023-24	TSU	8-0	29/3.6	9-12	.750	2-5	.400	2-3	.667	0	2	2	0.3	5-0	1	0	0	2			22	2.8
2024-25	TSU	11-0	63/5.7	8-20	.400	0-6	.000	8-9	.889	3	6	9	0.8	5-0	2	8	3	6			24	2.2
TOTAL		34-0	168/4.9	28-50	.560	3-16	.188	16-24	.667	5	14	19	0.6	15-0	5	19	3	10			75	2.2

Single Game Highs

Statistic	Value	
Points	8	at Rockhurst 01/30/25
Rebounds	2	7 times
Assists	1	5 times
Steals	2	at William Jewell 02/01/25
Blocks	1	at Southwest Baptist 12/05/24, vs Lincoln (MO) 01/20/25, at William Jewell 02/01/25
FG Made	2	7 times
FG Attempts	4	at Drury 03/02/24, at Rockhurst 01/30/25
3FG Made	1	vs William Jewell 01/12/23, vs Winona St. 11/17/23, at Rockhurst 01/25/24
3FG Attempts	2	4 times
FT Made	4	at Missouri S&T 01/19/23, at Rockhurst 01/30/25
FT Attempts	4	at Missouri S&T 01/19/23, at Rockhurst 01/30/25

#33 McKenna Williams



Junior
5-10
Forward
Darien, Wis.
Delavan-Darien
Rock Valley

				Field Goals		3-Point		F-Throws		Rebounds									Scoring	
SEASON	TEAM	GP-GS	MIN/AVG	FG-FGA	FG%	3FG-3FGA	3FG%	FT-FTA	FT%	OFF	DEF	TOT	AVG	PF-FO	A	TO	BLK	STL	PTS	AVG
2024-25	TSU	18-0	156/8.7	18-44	.409	4-18	.222	19-24	.792	10	26	36	2.0	14-0	6	10	3	5	59	3.3
TOTAL		18-0	156/8.7	18-44	.409	4-18	.222	19-24	.792	10	26	36	2.0	14-0	6	10	3	5	59	3.3

Single Game Highs

Statistic	Value	
Points	15	vs Fort Hays St. 12/19/24
Rebounds	6	at Ill. Springfield 01/09/25
Assists	2	at Drury 12/07/24
Steals	1	5 times
Blocks	1	vs Quincy 11/23/24, vs Newman 11/26/24, vs Ark.-Fort Smith 11/27/24
FG Made	5	vs Fort Hays St. 12/19/24
FG Attempts	7	vs Fort Hays St. 12/19/24
3FG Made	1	4 times
3FG Attempts	3	at Southwest Baptist 12/05/24
FT Made	4	vs Fort Hays St. 12/19/24
FT Attempts	5	vs Fort Hays St. 12/19/24

#34 Avery Larson



R-Sophomore
6-3
Center
Antioch, Ill.
Antioch

				Field Goals		3-Point		F-Throws		Rebounds								Scoring		
SEASON	TEAM	GP-GS	MIN/AVG	FG-FGA	FG%	3FG-3FGA	3FG%	FT-FTA	FT%	OFF	DEF	TOT	AVG	PF-FO	A	TO	BLK	STL	PTS	AVG
2022-23	TSU	7-0	24/3.4	3-8	.375	0-0	.000	4-5	.800	1	5	6	0.9	3-0	1	1	0	0	10	1.4
2024-25	TSU	4-0	15/3.8	3-4	.750	0-0	.000	1-2	.500	4	1	5	1.3	3-0	0	2	0	1	7	1.8
TOTAL		11-0	39/3.5	6-12	.500	0-0	.000	5-7	.714	5	6	11	1.0	6-0	1	3	0	1	17	1.5

Single Game Highs

Statistic	Value	
Points	5	vs Newman 11/26/24
Rebounds	3	at Southwest Baptist 12/05/24
Assists	1	vs Ursuline 11/13/22
Steals	1	vs Fort Hays St. 12/19/24
FG Made	2	vs Newman 11/26/24
FG Attempts	4	vs William Jewell 01/12/23
FT Made	3	at William Jewell 02/25/23
FT Attempts	4	at William Jewell 02/25/23



#35 Mallory Ott



R-Freshman
5-11
Forward
Oshkosh, Wis.
Oshkosh North

				Field Goals		3-Point		F-Throws		Rebounds									Scoring	
SEASON	TEAM	GP-GS	MIN/AVG	FG-FGA	FG%	3FG-3FGA	3FG%	FT-FTA	FT%	OFF	DEF	TOT	AVG	PF-FO	A	TO	BLK	STL	PTS	AVG
2024-25	TSU	11-6	169/15.4	20-54	.370	3-19	.158	11-15	.733	15	28	43	3.9	13-0	5	8	1	7	54	4.9
TOTAL		11-6	169/15.4	20-54	.370	3-19	.158	11-15	.733	15	28	43	3.9	13-0	5	8	1	7	54	4.9

Single Game Highs

Statistic	Value	
Points	14	vs Quincy 11/23/24
Rebounds	10	at Southwest Baptist 12/05/24
Assists	2	vs Ark.-Fort Smith 11/27/24
Steals	2	vs Newman 11/26/24, vs Rockhurst 11/30/24
Blocks	1	vs Ark.-Fort Smith 11/27/24
FG Made	5	vs Quincy 11/23/24, at Southwest Baptist 12/05/24
FG Attempts	13	at Southwest Baptist 12/05/24
3FG Made	1	vs Ark.-Fort Smith 11/27/24, vs Rockhurst 11/30/24, at Southwest Baptist 12/05/24
3FG Attempts	7	vs Ark.-Fort Smith 11/27/24
FT Made	4	vs Quincy 11/23/24
FT Attempts	5	vs Quincy 11/23/24

#40 Jordan Cunningham



Graudate
6-0
Guard
Grimes, Iowa
Dallas Center/Grimes
Mo. Western

				Field Goals		3-Point		F-Throws		Rebounds								Scoring		
SEASON	TEAM	GP-GS	MIN/AVG	FG-FGA	FG%	3FG-3FGA	3FG%	FT-FTA	FT%	OFF	DEF	TOT	AVG	PF-FO	A	TO	BLK	STL	PTS	AVG
2020-21	MW	22-13	533/24.2	43-120	.358	18-60	.300	17-27	.630	7	45	52	2.4	41-0	33	43	7	22	121	5.5
2021-22	MW	34-30	898/26.4	86-206	.417	22-91	.242	55-78	.705	13	60	73	2.1	51-0	73	55	7	28	249	7.3
2022-23	MW	31-26	761/24.5	68-154	.442	13-51	.255	51-74	.689	11	87	98	3.2	39-1	51	46	12	25	200	6.5
2023-24	MW	31-1	520/16.8	49-102	.480	8-35	.229	13-19	.684	6	68	74	2.4	51-0	36	30	13	17	119	3.8
2024-25	TSU	24-24	815/34.0	138-301	.458	30-101	.297	95-132	.720	17	103	120	5.0	54-1	74	74	23	32	401	16.7
TOTAL FOR TSU		24-24	815/34.0	138-301	.458	30-101	.297	95-132	.720	17	103	120	5.0	54-1	74	74	23	32	401	16.7
TOTAL		142-94	3527/24.8	384-883	.435	91-338	.269	231-330	.700	54	363	417	2.9	236-2	267	248	62	124	1090	7.7

Single Game Highs

Statistic	Value	
Points	29	vs Upper Iowa 01/16/25
Rebounds	12	vs Lincoln (MO) 01/20/25
Assists	7	vs Newman 02/16/21, at Newman 01/20/22, vs Quincy 11/23/24
Steals	4	5 times
Blocks	4	vs Fort Hays St. 02/01/24
FG Made	10	vs Rockhurst 11/30/24
FG Attempts	23	at Drury 12/07/24
3FG Made	4	at Concordia-St. Paul 11/15/24
3FG Attempts	8	at Northeastern St. 11/21/20, vs Emporia St. 02/02/21, vs Quincy 11/23/24
FT Made	9	vs Upper Iowa 01/16/25
FT Attempts	12	at Ill. Springfield 01/09/25



2024-25 Truman St. Women's Basketball Combined Team Statistics In Conference games

Page 1/1
as of Feb 11, 2025

Game Records

Record	Overall	Home	Away	Neutral
ALL GAMES	7-7	4-3	3-4	0-0
CONFERENCE	7-7	4-3	3-4	0-0
NON-CONFERENCE	0-0	0-0	0-0	0-0

Score by Periods

Team	1st	2nd	3rd	4th	OT	TOT
Truman St.	256	245	253	257	0	1011
Opponents	275	248	258	236	0	1017

Team Box Score

No.	Player				Total		3-Point		F-Throw		Rebounds											
		GP-GS	MIN	AVG	FG-FGA	FG%	3FG-3FGA	3FG%	FT-FTA	FT%	OFF	DEF	TOT	AVG	PF	DQ	A	TO	BLK	STL	PTS	AVG
40	CUNNINGHAM, Jordan	14-14	478:52	34.2	89-194	.459	17-64	.266	63-89	.708	9	69	78	5.6	33	1	40	45	16	15	258	18.4
1	JOYCE, Molly	14-14	448:54	32.1	53-146	.363	14-65	.215	56-64	.875	12	42	54	3.9	31	0	36	42	2	21	176	12.6
4	DUWE, Bryar	14-14	358:28	25.6	43-109	.394	18-55	.327	15-21	.714	6	30	36	2.6	14	0	13	26	0	15	119	8.5
22	WHITE, Lexie	14-14	316:51	22.6	42-96	.438	13-41	.317	14-15	.933	9	68	77	5.5	37	1	16	19	10	12	111	7.9
35	OTT, Mallory	3-3	50:15	16.8	7-20	.350	2-8	.250	4-4	1.000	5	11	16	5.3	5	0	2	2	0	2	20	6.7
3	STANDEFER, Tori	14-0	208:59	14.9	25-51	.490	11-25	.440	27-31	.871	13	20	33	2.4	24	0	8	6	0	3	88	6.3
12	ODEM, Katelyn	14-11	291:07	20.8	28-65	.431	6-21	.286	11-22	.500	7	19	26	1.9	25	0	9	17	2	13	73	5.2
21	BULMAN, Emma	14-0	227:32	16.3	21-55	.382	4-22	.182	23-31	.742	16	37	53	3.8	25	1	11	21	6	11	69	4.9
0	NEFF, Gracie	14-0	241:02	17.2	14-36	.389	9-20	.450	7-10	.700	7	17	24	1.7	14	0	26	16	2	4	44	3.1
33	WILLIAMS, McKenna	9-0	88:33	9.8	7-25	.280	1-10	.100	11-14	.786	9	14	23	2.6	11	0	4	6	0	3	26	2.9
25	PATKE, Kaitlyn	9-0	55:07	6.1	7-17	.412	0-4	.000	8-9	.889	3	6	9	1.0	5	0	2	6	3	5	22	2.4
34	LARSON, Avery	2-0	08:19	4.2	1-2	.500	0-0	.000	0-0	.000	2	1	3	1.5	2	0	0	2	0	0	2	1.0
11	BOEHM, Lizzie	4-0	21:59	5.5	1-5	.200	1-4	.250	0-2	.000	1	2	3	0.8	1	0	0	0	0	1	3	0.8
14	HUSS, Nicky	2-0	04:02	2.0	0-1	.000	0-1	.000	0-0	.000	0	0	0	0.0	0	0	0	1	0	0	0	0.0
Team											18	28	46					2				
Total		14	2800		338-822	.411	96-340	.282	239-312	.766	117	364	481	34.4	227	3	167	211	41	105	1011	72.2
Opponents		14	2800		377-895	.421	98-310	.316	165-208	.793	155	395	550	39.3	277	10	161	218	21	92	1017	72.6

Team Statistics

	TSU	OPP
Scoring		
Points per game	72.2	72.6
Scoring margin	-0.4	-
Field goals-att		
Field goal pct	.411	.421
3 point fg-att		
3-point FG pct	.282	.316
3-pt FG made per game	6.9	7.0
Free throws-att		
Free throw pct	.766	.793
F-Throws made per game	17.1	11.8
Rebounds		
Rebounds per game	34.4	39.3
Rebounding margin	-4.9	-
Assists		
Assists per game	11.9	11.5
Turnovers		
Turnovers per game	15.1	15.6
Turnover margin	+0.5	-
Assist/turnover ratio	0.8	0.7
Steals		
Steals per game	7.5	6.6
Blocks		
Blocks per game	2.9	1.5
Winning streak		
Home win streak	1	-
Attendance		
Home games-Avg/Game	7-116	7-434
Neutral site-Avg/Game	-	0-0

Team Results

Date	Opponent		Score	Att.
11/30/2024	Rockhurst	W	82-64	83
12/05/2024	at Southwest Baptist	W	77-63	322
12/07/2024	at Drury	L	72-97	1207
01/03/2025	Missouri S&T	L	72-74	1
01/09/2025	at Ill. Springfield	L	50-73	115
01/11/2025	at McKendree	L	60-72	157
01/16/2025	Upper Iowa	L	77-88	200
01/18/2025	Lewis	W	69-60	175
01/20/2025	Lincoln (MO)	W	78-59	150
01/25/2025	at Quincy	L	69-82	546
01/30/2025	at Rockhurst	W	84-59	225
02/01/2025	at William Jewell	W	73-61	467
02/06/2025	Drury	L	64-88	50
02/08/2025	Southwest Baptist	W	84-77	150



TRUMAN STATE UNIVERSITY — BULLDOGS

Home Venue: Pershing
Capacity: 2400
Built: 1959

WOMEN'S BASKETBALL HC		Overall	10-14	W1	FG%	3PT%	FT%	TO +/-	PTS	REB / GM	ST / GM	PTSA	RANKING	H / L / W
Theo Dean (6th)		Conference	7-7	W1	41.1	28.2	73.8	1.29	70.5	33.46	7.7	71.3		
Truman St.	92-69 (.571)	Home	4-5	W1	8 88	14 195	3 70	6 105	5 58	12 257	6 188	13 247		
Career	92-69 (.571)	Road	4-7	W2	FGM	3FG	FT	TO	PTS	TOT REB	STL	PF		
		Neutral	2-2	L2	579	163	372	350	1693	803	184	386	HI / LOW	
		Non-Division	0-0	L1	0 TI 0	0 TI 0	0 TI 0	0 TI 0	0 TI 0	0 TI 0	0 TI 0	0 TI 0		

0	Gracie		PTS	AVG	FG%	FG	3FG%	3PT	FT%	FT	
	Neff		67 (9)	2.79	40.35 (3)	23 / 57	34.38 (3)	11 / 32	62.5 (4)	10 / 16	
		G/GS	MIN / GM	TOT REB	TO	STL	AST	BLK	PF / GM		
		Sr. G 5-8 Kansas City, MO (Staley)	24 / 0	15.80	32 (6)	27 (3)	8 (2)	39 (8)	2 (1)	1.0	
1	Molly		PTS	AVG	FG%	FG	3FG%	3PT	FT%	FT	
	Joyce		349 (34)	14.54	38.55 (10)	106 / 275	26.98 (6)	34 / 126	83.06 (11)	103 / 124	
		G/GS	MIN / GM	TOT REB	TO	STL	AST	BLK	PF / GM		
		So. G 5-7 Algona, IA (Bishop Garrigan HS)	24 / 24	31.05	95 (9)	64 (6)	34 (4)	51 (5)	5 (1)	2.3	
3	Tori		PTS	AVG	FG%	FG	3FG%	3PT	FT%	FT	
	Standefer		97 (15)	5.71	49.12 (5)	28 / 57	42.86 (2)	12 / 28	87.88 (8)	29 / 33	
		G/GS	MIN / GM	TOT REB	TO	STL	AST	BLK	PF / GM		
		Sr. G 5-7 Bethalto, IL (Civic Memorial)	17 / 0	13.84	40 (5)	7 (2)	6 (1)	10 (2)	()	1.6	
4	Bryar		PTS	AVG	FG%	FG	3FG%	3PT	FT%	FT	
	Duwe		210 (17)	8.75	40 (7)	76 / 190	34.34 (4)	34 / 99	72.73 (5)	24 / 33	
		G/GS	MIN / GM	TOT REB	TO	STL	AST	BLK	PF / GM		
		So. G 5-6 Decorah, IA (Decorah)	24 / 24	27.06	70 (7)	48 (7)	23 (3)	33 (4)	()	1.3	
11	Lizzie		PTS	AVG	FG%	FG	3FG%	3PT	FT%	FT	
	Boehm		3 (3)	0.6	20 (1)	1 / 5	25 (1)	1 / 4	0 ()		
		G/GS	MIN / GM	TOT REB	TO	STL	AST	BLK	PF / GM		
		So. G 5-7 Kansas City, MO (Staley HS)	5 / 0	4.66	3 (1)	()	1 (1)	1 (1)	()	0.2	
12	Katelyn		PTS	AVG	FG%	FG	3FG%	3PT	FT%	FT	
	Odem		100 (13)	4.17	40.82 (6)	40 / 98	25 (2)	8 / 32	40 (3)	12 / 30	
		G/GS	MIN / GM	TOT REB	TO	STL	AST	BLK	PF / GM		
		Fy. G 5-8 Mequon, WI (Homestead)	24 / 13	18.40	41 (6)	26 (3)	20 (3)	13 (3)	2 (1)	1.7	
14	Nicky		PTS	AVG	FG%	FG	3FG%	3PT	FT%	FT	
	Huss		()		0 ()		0 ()		()		
		G/GS	MIN / GM	TOT REB	TO	STL	AST	BLK	PF / GM		
		So. F 6-1 Omaha, NE (Duchesne Academy)	4 / 0	2.34	1 (1)	1 (1)	()	()	()	0.0	
21	Emma		PTS	AVG	FG%	FG	3FG%	3PT	FT%	FT	
	Bulman		104 (11)	4.33	36.08 (5)	35 / 97	12.82 (1)	5 / 39	72.5 (5)	29 / 40	
		G/GS	MIN / GM	TOT REB	TO	STL	AST	BLK	PF / GM		
		Sr. G 5-10 Ames, IA (Gilbert HS)	24 / 0	17.05	80 (8)	33 (4)	16 (3)	19 (2)	6 (1)	1.5	
22	Lexie		PTS	AVG	FG%	FG	3FG%	3PT	FT%	FT	
	White		164 (16)	6.83	37.11 (6)	59 / 159	29.17 (3)	21 / 72	71.43 (4)	25 / 35	
		G/GS	MIN / GM	TOT REB	TO	STL	AST	BLK	PF / GM		
		So. G 5-11 Merrill, WI (Wausau West HS)	24 / 24	23.21	116 (11)	30 (5)	20 (2)	24 (4)	15 (3)	2.6	
25	Kaitlyn		PTS	AVG	FG%	FG	3FG%	3PT	FT%	FT	
	Patke		24 (8)	2.18	40 (2)	8 / 20	0 ()		88.89 (4)	8 / 9	
		G/GS	MIN / GM	TOT REB	TO	STL	AST	BLK	PF / GM		
		Jr. F 5-10 Washington, MO (St. Francis Borgia HS)	11 / 0	5.67	9 (2)	8 (2)	6 (2)	2 (1)	3 (1)	0.5	
33	McKenna		PTS	AVG	FG%	FG	3FG%	3PT	FT%	FT	
	Williams		59 (15)	3.28	40.91 (5)	18 / 44	22.22 (1)	4 / 18	79.17 (4)	19 / 24	
		G/GS	MIN / GM	TOT REB	TO	STL	AST	BLK	PF / GM		
		Jr. F 5-10 Darien, WI (Delavan-Darien)	18 / 0	8.64	36 (6)	10 (4)	5 (1)	6 (2)	3 (1)	0.8	
34	Avery		PTS	AVG	FG%	FG	3FG%	3PT	FT%	FT	
	Larson		7 (5)	1.75	75 (2)	3 / 4	()		50 (1)	1 / 2	
		G/GS	MIN / GM	TOT REB	TO	STL	AST	BLK	PF / GM		
		Jr. F 6-3 Antioch, IL (Antioch HS)	4 / 0	3.80	5 (3)	2 (2)	1 (1)	()	()	0.8	
35	Mallory		PTS	AVG	FG%	FG	3FG%	3PT	FT%	FT	
	Ott		54 (14)	4.91	37.04 (5)	20 / 54	15.79 (1)	3 / 19	73.33 (4)	11 / 15	
		G/GS	MIN / GM	TOT REB	TO	STL	AST	BLK	PF / GM		
		So. F 5-11 Oshkosh, WI (Oshkosh North)	11 / 6	15.39	43 (10)	8 (2)	7 (2)	5 (2)	1 (1)	1.2	
40	Jordan		PTS	AVG	FG%	FG	3FG%	3PT	FT%	FT	
	Cunningham		401 (29)	16.71	45.85 (10)	138 / 301	29.7 (4)	30 / 101	71.97 (9)	95 / 132	
		G/GS	MIN / GM	TOT REB	TO	STL	AST	BLK	PF / GM		
		Sr. G 6-0 Grimes, IA (Dallas Center-Grimes)	24 / 24	33.96	120 (12)	74 (8)	32 (4)	74 (7)	23 (3)	2.3	

Truman State's Last 4		
Jan 30	@ Rockhurst	W 84-59
Feb 1	@ William Jewell	W 73-61
Feb 6	Drury	L 64-88
Feb 8	Southwest Baptist	W 84-77
Truman State's Next 10		
Feb 13	@ Lincoln (MO)	
Feb 15	@ Missouri S&T	
Feb 20	Maryville (MO)	
Feb 22	Mo.-St. Louis	
Feb 27	@ UIndy	
Mar 1	William Jewell	
GLVC RECENT RESULTS		
Thu Feb 6	McKendree 79	Illinois Springfield 75 X
Thu Feb 6	Drury 63 X	Truman 79
Thu Feb 6	Missouri S&T 91	Quincy 82 X
Sat Feb 8	Drury 90	Quincy 72 X
Sat Feb 8	Southwest Baptist 73 X	Truman 79
Sat Feb 8	Missouri S&T 85 X	Upper Iowa 100
Sat Feb 8	Maryville 80 X	Illinois Springfield 84
Sat Feb 8	Lincoln 69	Lewis 64 X
Sat Feb 8	Rockhurst 78 X	William Jewell 80
Sat Feb 8	Missouri-St. Louis 71	Indianapolis 70 X
GLVC UPCOMING SCHEDULE		
Thu Feb 13	Indianapolis	Illinois Springfield
Thu Feb 13	Truman	Lincoln
Thu Feb 13	Upper Iowa	Maryville
Thu Feb 13	Lewis	McKendree
Thu Feb 13	William Jewell	Missouri S&T
Thu Feb 13	Quincy	Missouri-St. Louis
Thu Feb 13	Rockhurst	Drury
Sat Feb 15	Indianapolis	McKendree
Sat Feb 15	Lewis	Maryville
Sat Feb 15	Upper Iowa	Missouri-St. Louis
GLVC STANDINGS		
Lewis	19-2 (13-1) — W6	
Quincy	18-5 (12-2) — W12	
Drury	16-6 (12-3) — L1	
Missouri-St. Louis	17-5 (11-4) — W1	
Maryville	11-11 (9-5) — W3	
McKendree	12-8 (8-6) — W1	
Missouri S&T	12-8 (7-7) — W1	
Truman	10-14 (7-7) — W1	
Upper Iowa	10-11 (7-8) — L1	
Southwest Baptist	8-13 (6-9) — L1	
Indianapolis	7-16 (5-10) — L2	
Rockhurst	6-14 (4-10) — W1	
Illinois Springfield	5-18 (4-11) — L2	
William Jewell	5-15 (3-11) — L3	
Lincoln	1-19 (0-14) — L19	