



# TRUMAN STATE WOMEN'S BASKETBALL

## 2024-25 SCHEDULE

N8	at Cedarville (Ohio) <sup>1</sup>	W 74-61
N9	vs. Ursuline (Ohio) <sup>1</sup>	W 81-60
N15	at Concordia-St. Paul (Minn.)	L 68-57
N16	at Winona St. (Minn.)	L 70-64
N22	WASHBURN (Kan.)	L 81-59
N23	QUINCY (Ill.)	L 85-76
N26	vs. Newman (Kan.) <sup>2</sup>	W 80-48
N27	vs. Arkansas-Fort Smith <sup>2</sup>	L 75-73
N30	ROCKHURST (Mo.) *	W 82-64

D5	at Southwest Baptist (Mo.) *	W 77-63
D7	at Drury (Mo.) *	L 97-72
D19	vs. Fort Hays State (Kan.) <sup>3</sup>	L 77-57
D21	at Hawaii-Hilo	L 68-61

J3	MISSOURI S&T *	L 74-72
J9	at Illinois Springfield *	5:30 p.m.
J11	at McKendree (Ill.) *	1 p.m.
J16	UPPER IOWA *	5:15 p.m.
J18	LEWIS (Ill.) *	1 p.m.
J20	LINCOLN (MO.) *	5 p.m.
J25	at Quincy (Ill.) *	1 p.m.
J30	at Rockhurst (Mo.) *	5:30 p.m.

F1	at William Jewell (Mo.) *	1 p.m.
F6	DRURY (MO.) *	5:15 p.m.
F8	SOUTHWEST BAPTIST (MO.) *	1 p.m.
F13	at Lincoln (Mo.) *	5:30 p.m.
F15	at Missouri S&T *	1 p.m.
F20	MARYVILLE (MO.) *	5:15 p.m.
F22	MISSOURI-ST. LOUIS *	1 p.m.
F27	at Indianapolis *	5:30 p.m. (ET)

M1	WILLIAM JEWELL (MO.) *	1 p.m.
----	------------------------	--------

### GLVC BASKETBALL TOURNAMENT

M6	Quarterfinals
M8	Semifinals
M9	Championship

<sup>1</sup> - in Cedarville, Ohio

<sup>2</sup> - in Springfield, Mo.

<sup>3</sup> - in Hilo, Hawaii

\* - GLVC

GLVC Tournament will be played in Hyland Arena on the campus of Lindenwood University in St. Charles, Mo.



## GAMEDAY CENTRAL

GAME 16 | Jan. 9 | Springfield, Ill. | 5:30 p.m.

GAME 17 | Jan. 11 | Lebanon, Ill. | 1 p.m.



Illinois Springfield (2-11; 1-4 GLVC)	
<b>PRAIRIE STARS</b>	
SERIES HISTORY	
Overall .....	TSU 15-3
Home .....	TSU 12-1
Road .....	TSU 3-2
Neutral .....	n/a
Last Meeting .....	TSU 98-83 (2024)
Last 5 .....	TSU 3-2



Truman State (5-9; 2-2 GLVC)	
<b>BULLDOGS</b>	
LEADERS	
Points .....	Jordan Cunningham (17.4)
Rebounds .....	Lexie White (4.7)
Assists .....	Jordan Cunningham (3.1)
Steals .....	Jordan Cunningham (1.6)
Blocks .....	Jordan Cunningham (0.9)
Minutes .....	Jordan Cunningham (32.7)



McKendree (8-3; 4-1 GLVC)	
<b>BEARCATS</b>	
SERIES HISTORY	
Overall .....	TSU 20-3
Home .....	TSU 10-1
Road .....	TSU 10-2
Neutral .....	n/a
Last Meeting .....	MCK 74-61 (2024)
Last 5 .....	TSU 3-2

### GAME NOTES

KIRKSVILLE, Mo. – The Truman State Women's Basketball team will venture into Illinois for a pair of Great Lakes Valley Conference games after mother nature wreaked havoc during the previous weekend.

The Bulldogs (5-9 overall/2-2 GLVC) will first square off with the University of Illinois Springfield (2-11 overall/1-4 GLVC) on Thursday night starting at 5:30 p.m. then will head south to Lebanon, Illinois to face the McKendree University Bearcats (8-3 overall/4-1 GLVC) on Saturday afternoon.

Truman State came up just short in Friday's encounter with Missouri S&T falling 74-72 on a late basket by the Miners but "Winter Storm Blair" struck Missouri starting Saturday night and forced the postponement of Sunday's game with Lincoln (Mo.) University. The game was first pushed back to Monday, then to Tuesday before logistics dictated the game be moved to Monday, January 20th in Pershing Arena.

The Prairie Stars broke their 11-game losing streak when the calendar turned to 2025. They won a non-conference game with St. Ambrose (Iowa) 72-44 then downed the University of Indianapolis on the road 67-58 on Sunday.

Truman State had one of its highest-scoring nights of the season against UIS last year, winning 98-83 in Kirksville. This avenged the earlier season loss in Springfield by a 75-56 margin. The Bulldogs have taken 15 of the 18 meetings between the two schools but two of the Prairie Stars wins in the series have come within the last five games.

Saturday's tilt will be against one of the three GLVC schools to earn a first-place vote in the preseason coaches poll. McKendree was picked third in the survey but garnered the attention of at least one league coach for their top choice. The Bearcats opened the season with seven straight wins but has dropped three of their last four games, including a conference game to league-leader Lewis on Sunday 84-80. McKendree will host William Jewell on Thursday night.

Like UIS, Truman State has had previous dominance over McKendree in

### QUICK COMPARISON

	UIS	TSU	MCK
Record	2-11	5-9	8-3
PPG	61.5	70.4	79.6
Opp PPG	74.1	70.8	64.8
Margin	-12.5	-0.4	+14.8
FG%	.407	.409	.471
Opp FG%	.465	.424	.389
3pt %	.297	.270	.337
3pt/ g	5.4	6.6	5.5
Opp 3pt%	.322	.309	.291
Opp 3pt/g	7.4	7.7	7.0
FT%	.731	.727	.766
FT/g	7.5	15.0	17.3
Opp FT %	.720	.735	.719
Opp FT/g	10.1	9.5	10.9
RPG	31.8	33.1	39.5
Reb. Margin	-5.1	-7.2	+6.6
APG	10.2	11.7	15.7
TOPG	20.2	14.2	14.0
SPG	9.8	8.1	9.3
BPG	1.3	2.3	2.5

### PROBABLE STARTERS



**MOLLY JOYCE**  
5-7/So./Algona, Iowa  
PPG ..... 15.4  
RPG ..... 3.6  
APG ..... 2.0  
MPG ..... 29.0

**BRYAR DUWE**  
5-6/So./Decorah, Iowa  
PPG ..... 8.9  
RPG ..... 3.1  
APG ..... 1.9  
MPG ..... 28.3

**KATELYN ODEM**  
5-8/Fr./Mequon, Wis.  
PPG ..... 3.6  
RPG ..... 1.5  
APG ..... 0.4  
MPG ..... 14.7

**LEXIE WHITE**  
5-11/So./Merrill, Wis.  
PPG ..... 6.8  
RPG ..... 4.7  
APG ..... 0.7  
MPG ..... 24.7

**JORDAN CUNNINGHAM**  
6-0/Gr./Grimes, Iowa  
PPG ..... 17.4  
RPG ..... 4.5  
APG ..... 3.1  
MPG ..... 32.7



## GAME NOTES

the all-time series winning 20 of 23 games played however the Bearcats have won the last two over the Bulldogs. They swept the season series last year with a 76-71 win in Lebanon in late November of 2023 and won in Kirksville 74-61 on February 1st.

The Bulldogs will be looking to snap a four-game losing streak over the holiday season that continued on Friday with a tough home loss to Missouri S&T. The Miners raced out to a 10-2 lead but a 9-0 run gave Truman the early lead. A 13-0 run by Missouri S&T towards the end of the first quarter gave the Miners a 23-15 advantage.

The Bulldogs battled back and following a three-pointer by Tori Standefer with just over four minutes left to play, had a six-point lead at 65-59. Truman led 72-69 as the clock turned under a minute to play. A clutch three-pointer by Addyson Kent knotted the game and following a miss on the offensive end, the Miners raced out with Chorus Davis making a layup with one second remaining for the win.

Jordan Cunningham led the Bulldogs with 25 points. Bryar Duwe scored 13, Lexie White added 11 with 10 rebounds and Molly Joyce added 10.

Cunningham continues to lead the team in most offensive categories with 17.4 points per game and has made 83 field goals with 20 from beyond the arc. She has a team-high 12 blocked shots and 22 steals. She is only five points shy of topping her single-season mark of 249 points set as a sophomore at Missouri Western in 2021-22 and is 68 points away from 1,000 for her collegiate career in 132 games played.

Joyce is second in scoring at 15.4 points per night and leads the team in triples made with 22. She has been to the free throw line a team-high 77 times already with an 81.8% success rate. She went to the line 87 times all of last season. She has the Bulldogs single-game high this year in points scored with 34 against Ursuline (Ohio) which earned her the GLVC Player of the Week award. She is the reigning "Freshman of the Year" in the conference.

Duwe is the third Bulldog with at least 20 three-pointers made this year with 21 and is averaging just under nine points per outing. In 14 starts, Duwe has been in double-figures seven times with a high of 13 points coming twice, most recently Friday against Missouri S&T.

White has two double-doubles this season and has been in double-figures in three of the last six games. She had 11 with 10 rebounds against Missouri S&T and matched her season-high with 35 minutes played in the game. She has also played and started in all 14 games this season.

Freshman Katelyn Odem has started the last three games and has averaged over 20 minutes of playing time in the last four games. She had a season-high 13 points against Hawaii-Hilo on December 21. Odem scored eight points with two from outside against Missouri S&T in her last time out.

Coming off the bench in a majority of the games this season has been Gracie Neff, Emma Bulman and McKenna Williams.

The Bulldogs are averaging 70.4 points scored against 70.8 points allowed this year. They are shooting 41% overall from the field and 27% from three-point range. Truman State takes 41% of their shots from beyond the arc per game and makes 6.6 per night.

The team has lost the rebounding battle in 11 of the 14 games this season and are a minus 7.2 in rebounding margin. They have a positive turnover margin to their opponents at plus 2.6 with 14.2 turnovers made to 16.9 turnovers forced per night and average 8.1 steals per game.

Head Coach Theo Dean is in his sixth season at Truman State and is tied for third on the all-time wins list with 87 with John Sloop. His .576 winning percentage is only second to his predecessor Amy Eagan (.642). Of his 87 wins, Dean has 64 GLVC victories which is only four behind Eagan for the program's record.

### About the Opponents:

Illinois Springfield is near the bottom of the conference in scoring (61.5 ppg) and defense (74.1 ppg). The Prairie Stars are led by Kayla Rice at 16.5 points per game and she had made 37 three-pointers thus far. She along with teammate Saharra Murphy are the top two players in the GLVC in steals with 71 between them in 13 games played.

McKendree won 20 games last season and is second in the GLVC in scoring offense with 79.9 points per game. Baylie Parks is a two-time recipient of the GLVC Player of the Week award this season, having won it most recently this past Monday. Parks averages 17.6 points per game and 9.8 rebounds per outing.

### Up Next:

Truman State will return home for three straight games. They will open the home stand with Upper Iowa on January 16, Lewis on January 18 and the make-up with Lincoln on January 20.

## Double-Figure Games

By Class - Career				
Player	Pts (20/30)	Rebs	Asts	Dbl/Dbls
Hope	-	-	-	-
Odem	2	-	-	-
Rogers	-	-	-	-
Huss	-	-	-	-
Ott	1	1	-	1
Boehm	-	-	-	-
Duwe	7	-	-	-
Joyce	24 (7/2)	1	-	1
White	4	2	-	2
Larson	-	-	-	-
Patke	-	-	-	-
Williams	29 (2)	14	-	13
Bulman	10	-	-	-
Cunningham	35 (5/0)	1	-	1
Neff	7	-	2	1
Standefer	1	-	-	-

## Truman State Facts

Location:	Kirksville, Mo. (18,000)
Enrollment:	4,000
Conference:	Great Lakes Valley
University President:	Dr. Sue Thomas
Director of Athletics:	TBA
Head Coach:	Theo Dean
Assistant Coach:	Dajae Black
Basketball Athletic Trainer:	Cassie DeBlauw
Team Physician:	Dr. John Bailey
Athletics Communications:	Justin Thomas/Kevin White

## On The Air

Video:	GLVCSN.com (PPV)
Radio:	88.7 FM KTRM (Student Radio)
Online Audio:	NEMOPressbox.com (Free)
Live Stats:	TrumanBulldogs.com

## 2024-25 Truman State Bulldogs

#	Name	Pos.	Ht.	Yr.	Hometown	High School/Previous
0	Gracie Neff	G	5-8	Gr.	Kansas City, Mo.	Staley HS/ Lindenwood (Mo.) Univ.
1	Molly Joyce	G	5-7	So.	Algona, Iowa	Bishop Garrigan HS
3	Tori Standefer	G	5-7	Sr.	Bethalto, Ill.	Civic Memorial HS/Missouri-St. Louis
4	Bryar Duwe (Doo-we)	G	5-6	So.	Decorah, Iowa	Decorah HS
10	Sophia Hope	F	5-10	Fr.	Waukee, Iowa	Waukee HS
11	Lizzie Boehm (Bame)	G	5-7	So.	Kansas City, Mo.	Staley HS
12	Katelyn Odem	G	5-8	Fr.	Mequon, Wis.	Homestead HS
14	Nicky Huss	F	6-1	R-Fr.	Omaha, Neb.	Duchesne Academy
20	Braylee Rogers	G	5-9	Fr.	Olathe, Kan.	Olathe East HS
21	Emma Bulman	F	5-10	Sr.	Ames, Iowa	Gilbert HS
22	Lexie White	G	5-11	So.	Merrill, Wis.	Wausau West HS
25	Kaitlyn Patke (pat-key)	F	6-0	Jr.	Washington, Mo.	St. Francis Borgia HS
33	McKenna Williams	F	5-10	Jr.	Darien, Wis.	Delavan-Darien HS/Rock Valley Col.
34	Avery Larson	C	6-3	R-So.	Antioch, Ill.	Antioch HS
35	Mallory Ott	F	5-11	R-Fr.	Oshkosh, Wis.	Oshkosh North HS
40	Jordan Cunningham	G	6-0	Gr.	Grimes, Iowa	Dallas Center-Grimes HS/Mo. Western

**Head Coach:** Theo Dean (6th Season)

**Associate Head Coach:** Dajae Black

**Graduate Assistant Coach:** Trinitee Jackson

## GLVC Standings

School	Conf.	Pct.	Over	Pct.	Home	Away	Neutral	Streak	PRS
Lewis	5-0	1.000	11-1	.917	4-0	6-0	1-1	W10	
Drury	5-0	1.000	9-3	.750	6-2	3-0	0-1	W3	
McKendree	4-1	.800	8-3	.727	4-1	2-2	2-0	L1	
Missouri S&T	3-1	.750	8-2	.800	7-1	1-1	0-0	W3	
Missouri-St. Louis	3-2	.600	9-3	.750	4-2	5-1	0-0	L1	
Upper Iowa	3-2	.600	6-5	.545	4-1	2-4	0-0	L1	
Maryville	3-3	.500	5-9	.357	4-1	1-7	0-1	W1	
Quincy	2-2	.500	8-5	.615	3-2	2-2	3-1	W2	
Truman	2-2	.500	5-9	.357	1-3	2-4	2-2	L4	
Rockhurst	2-3	.400	4-7	.364	4-4	0-1	0-2	L1	
Southwest Baptist	2-3	.400	4-7	.364	4-2	0-3	0-2	L2	
William Jewell	1-3	.250	3-7	.300	3-3	0-4	0-0	L1	
Illinois Springfield	1-4	.200	2-11	.154	1-3	1-6	0-2	W2	
Indianapolis	0-5	.000	2-11	.154	1-6	1-5	0-0	L8	
Lincoln	0-5	.000	1-10	.091	1-4	0-6	0-0	L10	

## Weekly Awards

Date	Player	School
11/11	Molly Joyce	Truman State
11/18	Baylie Parks	McKendree
11/25	Rhi Gibbons	Drury
12/1	Franchesca Metz	Missouri S&T
12/9	Mia Huberty	Upper Iowa
12/16	Mariann Blass	Quincy
12/23	Ally Cesarini	Lewis
1/6	Baylie Parks	McKendree

## Upcoming Games

### Thursday, January 9

Upper Iowa at Lewis  
 Southwest Baptist at Missouri-St. Louis  
 Quincy at Indianapolis  
 Rockhurst at Maryville  
 Truman at Illinois Springfield  
 Drury at Lincoln  
 William Jewell at McKendree

### Thursday, January 16

Upper Iowa at Truman State  
 Illinois Springfield at Southwest Baptist  
 Lewis at William Jewell  
 Missouri-St. Louis at Lincoln  
 Indianapolis at Rockhurst  
 Maryville at Missouri S&T  
 McKendree at Drury

### Saturday, January 11

Upper Iowa at Indianapolis  
 William Jewell at Maryville  
 Truman at McKendree  
 Southwest Baptist at Lincoln  
 Quincy at Illinois Springfield  
 Drury at Missouri S&T  
 Rockhurst at Missouri-St. Louis

## Recent Results

### Sunday, January 5

Drury 67, Rockhurst 61  
 Illinois Springfield 67, Indianapolis 58  
 McKendree 80, Lewis 84  
 Maryville 80, Upper Iowa 79

### Friday, January 3

McKendree 84, Indianapolis 75  
 Missouri-St. Louis 44, Upper Iowa 56  
 Southwest Baptist 59, Rockhurst 73  
 Missouri S&T 74, Truman 72  
 Lincoln 49, Quincy 80  
 Drury 88, William Jewell 55  
 Maryville 45, Lewis 57

### Thursday, January 2

Saint Ambrose 44, Ill. Springfield 72

## Polls

### WBCA Coaches Poll

Rk	School (Record)	Points	Prev.
1	Grand Valley State (9-0)	573	1
2	Texas Woman's (9-1)	524	2
3	Montana State Billings (9-1)	508	3
4	Gannon (12-1)	459	6
5	Bentley (9-1)	450	5
6	Fort Hays State (9-0)	429	7
7	Lubbock Christian (9-1)	411	4
8	Pittsburg State (8-1)	379	8
9	Cal St. Dominguez Hills (10-0)	370	12
10	Carson-Newman (8-1)	348	11
11	Azusa Pacific (7-1)	294	14
12	Minnesota St. Mankato (7-2)	265	16
13	Concordia-St. Paul (9-0)	252	19
14	Seton Hill (10-0)	244	21
15	Tampa (8-2)	235	17
16	Union, TN (6-2)	176	20
17	Texas-Tyler (6-1)	170	18
18	Nova Southeastern (7-1)	150	24
19	Ferris State (7-2)	133	23
20	Ashland (7-3)	132	10
21	Lee, TN (7-1)	109	15
22	Thomas Jefferson (6-2)	102	13
23	North Georgia (7-0)	101	RV
24	Cal Poly Pomona (7-1)	94	25
25	Northern Michigan (8-0)	85	RV

### GLVC Coaches Poll

Rk	School (Record)	Points
1.	Lewis	190 (9)
2.	Drury	183 (5)
3.	McKendree	158 (1)
4.	Maryville	140
5.	Upper Iowa	130
6.	Rockhurst	128
7.	Missouri-St. Louis	109
	Quincy	109
10.	Illinois Springfield	80
11.	Truman State	75
12.	Missouri S&T	70
13.	Southwest Baptist	47
14.	Lincoln	26
15.	William Jewell	25





## 2024-25 Truman St. Women's Basketball Combined Team Statistics All games

Page 1/1  
as of Jan 07, 2025

### Game Records

Record	Overall	Home	Away	Neutral
ALL GAMES	5-9	1-3	2-4	2-2
CONFERENCE	2-2	1-1	1-1	0-0
NON-CONFERENCE	3-7	0-2	1-3	2-2

### Score by Periods

Team	1st	2nd	3rd	4th	OT	TOT
Truman St.	227	252	249	257	0	985
Opponents	257	254	242	238	0	991

### Team Box Score

No. Player					Total		3-Point		F-Throw		Rebounds													
		GP-GS	MIN	AVG	FG-FGA	FG%	3FG-3FGA	3FG%	FT-FTA	FT%	OFF	DEF	TOT	AVG	PF	DQ	A	TO	BLK	STL	PTS	AVG		
40	CUNNINGHAM, Jordan	14-14	467:38	33.4	83-172	.483	20-59	.339	57-72	.792	12	51	63	4.5	31	0	44	35	12	22	243	17.4		
1	JOYCE, Molly	14-14	417:18	29.8	65-173	.376	22-82	.268	63-77	.818	10	40	50	3.6	31	0	28	34	3	21	215	15.4		
30	NIEMEIER, Maddie	5-5	130:09	26.0	24-46	.522	0-1	.000	6-9	.667	5	18	23	4.6	18	1	10	7	1	5	54	10.8		
4	DUWE, Bryar	14-14	408:08	29.2	45-113	.398	21-65	.323	14-22	.636	7	36	43	3.1	23	0	27	30	0	14	125	8.9		
22	WHITE, Lexie	14-14	345:51	24.7	31-94	.330	13-45	.289	20-29	.690	17	49	66	4.7	36	0	10	17	8	12	95	6.8		
35	OTT, Mallory	11-6	169:26	15.4	20-54	.370	3-19	.158	11-15	.733	15	28	43	3.9	13	0	5	8	1	7	54	4.9		
33	WILLIAMS, McKenna	13-0	117:08	9.0	14-31	.452	3-13	.231	16-20	.800	7	18	25	1.9	9	0	4	7	3	4	47	3.6		
12	ODEM, Katelyn	14-3	202:26	14.5	20-47	.426	4-16	.250	6-15	.400	2	19	21	1.5	23	0	5	15	1	10	50	3.6		
21	BULMAN, Emma	14-0	248:45	17.8	17-51	.333	2-19	.105	8-13	.615	5	36	41	2.9	18	0	9	20	1	8	44	3.1		
34	LARSON, Avery	3-0	13:11	4.4	3-3	1.000	0-0	.000	1-2	.500	4	1	5	1.7	3	0	0	2	0	1	7	2.3		
3	STANDEFER, Tori	7-0	45:31	6.5	5-10	.500	2-5	.400	4-6	.667	3	5	8	1.1	5	0	2	1	0	3	16	2.3		
0	NEFF, Gracie	14-0	202:27	14.5	10-29	.345	3-17	.176	4-8	.500	3	12	15	1.1	14	0	18	16	1	4	27	1.9		
25	PATKE, Kaitlyn	5-0	21:34	4.3	4-8	.500	0-4	.000	0-1	.000	1	2	3	0.6	1	0	1	3	1	2	8	1.6		
11	BOEHM, Lizzie	2-0	02:51	1.4	0-1	.000	0-0	.000	0-0	.000	1	0	1	0.5	0	0	1	0	0	0	0	0.0		
14	HUSS, Nicky	3-0	07:36	2.5	0-1	.000	0-0	.000	0-0	.000	0	1	1	0.3	0	0	0	0	0	0	0	0.0		
Team											21	34	55					4						
Total		14	2800		341-833	.409	93-345	.270	210-289	.727	113	350	463	33.1	225	1	164	199	32	113	985	70.4		
Opponents		14	2800		375-885	.424	108-349	.309	133-181	.735	157	407	564	40.3	276	8	193	236	24	94	991	70.8		

### Team Statistics

	TSU	OPP
<b>Scoring</b>	<b>985</b>	<b>991</b>
Points per game	70.4	70.8
Scoring margin	-0.4	-
<b>Field goals-att</b>	<b>341-833</b>	<b>375-885</b>
Field goal pct	.409	.424
<b>3 point fg-att</b>	<b>93-345</b>	<b>108-349</b>
3-point FG pct	.270	.309
3-pt FG made per game	6.6	7.7
<b>Free throws-att</b>	<b>210-289</b>	<b>133-181</b>
Free throw pct	.727	.735
F-Throws made per game	15.0	9.5
<b>Rebounds</b>	<b>463</b>	<b>564</b>
Rebounds per game	33.1	40.3
Rebounding margin	-7.2	-
<b>Assists</b>	<b>164</b>	<b>193</b>
Assists per game	11.7	13.8
<b>Turnovers</b>	<b>199</b>	<b>236</b>
Turnovers per game	14.2	16.9
Turnover margin	+2.6	-
Assist/turnover ratio	0.8	0.8
<b>Steals</b>	<b>113</b>	<b>94</b>
Steals per game	8.1	6.7
<b>Blocks</b>	<b>32</b>	<b>24</b>
Blocks per game	2.3	1.7
<b>Winning streak</b>	<b>0</b>	<b>-</b>
Home win streak	0	-
<b>Attendance</b>	<b>1516</b>	<b>3351</b>
Home games-Avg/Game	4-379	6-559
Neutral site-Avg/Game	-	4-184

### Team Results

Date	Opponent		Score	Att.
11/08/2024	at Cedarville	W	74-61	455
11/09/2024	vs Ursuline	W	81-60	150
11/15/2024	at Concordia-St. Paul	L	57-68	325
11/16/2024	at Winona St.	L	64-70	825
11/22/2024	Washburn	L	59-81	1232
11/23/2024	Quincy	L	76-85	200
11/26/2024	vs Newman	W	80-48	263
11/27/2024	vs Ark.-Fort Smith	L	73-75	217
11/30/2024	Rockhurst	W	82-64	83
12/05/2024	at Southwest Baptist	W	77-63	322
12/07/2024	at Drury	L	72-97	1207
12/19/2024	vs Fort Hays St.	L	57-77	107
12/21/2024	at Hawaii Hilo	L	61-68	217
01/03/2025	Missouri S&T	L	72-74	1



# THEO DEAN

**Head Coach // 6th Season At Truman**  
**87-64 (.576) Overall // 64-38 (.627) GLVC**

Theo Dean begins his fifth season at the helm of the Truman Women's Basketball team.

Dean has been a part of the program in some capacity for over ten years. He was a student manager and graduate assistant from 2010-14; Dean then returned to Kirksville to become the full-time assistant and recruiting coordinator from June 2016-August 2019. Dean was promoted to interim head coach on August 23, 2019, and on January 13, 2020, after a 9-3 start to the season, including a school-record five-game winning streak to start Great Lakes Valley Conference play, the interim tag was removed, and Dean became the 11th full-time head coach in program history and the first African-American head coach in school history.

By increasing fan and alumni involvement with a fast-paced style of play, Dean's impact on the program has been very evident over the past four seasons, and fans of Truman Women's Basketball have seen continued success for the Bulldogs' program.

Since his return to Truman in 2016, Dean has coached 22 All-GLVC performers (10 being named to the First Team), two Freshman of the Year selections, four 1,000-point scorers, one 1,000 rebounder, two WBCA All-Americans, one D2CCA All-American, six CoSIDA/CSC Academic All-District selections, three D2CCA All-Midwest Region selections, one Academic All-American, one GLVC Player of the Year and one GLVC Women's Basketball Female Student-Athlete of the Year. Dean has also coached over 55 Academic All-GLVC players and has coached three WBCA Academic Top 25 teams (2019, 2021 & 2023).

Overall, Dean has been on the sideline with the Bulldogs for five of the program's eight 20-win seasons, one Great Lakes Valley Conference tournament title, two Great Lakes Valley Conference tournament championship games, three NCAA Tournaments appearances, and one NCAA Tournament victory.

After graduating from Truman, Dean assisted the Lansing (Kansas) High School Boys Basketball program from 2014-16. Dean was the assistant coach to the father of former First Team All-GLVC performer, GLVC Conference Champion, and former Bulldog Associate Head Coach, Amy Briggs. While at Lansing, Dean focused on guard development for the boys' team, overall player development for the girls' team and also supervised the team managers, implementing a hustle and shot chart system into practices and games. In his first year at Lansing, he helped lead the 2014-15 team to the Kansas Substate Championship game, and Dean was then promoted to top assistant in his second season.

A Chicago, IL native, Theo Dean came to Truman in 2008 as a freshman and received his Bachelor of Fine Arts in Visual Communications degree from Truman State University in 2012 and his Master's degree in Leadership, with a concentration in Coaching and Sport Management, from Truman in 2014.

Dean, his wife, Presley (who also holds Bachelor's and Master's degrees from Truman), their son, Theo IV, and their daughter, Mina, reside in Kirksville.



## Series Records

Arkansas Fort Smith	0-1
Ashland (Ohio)	0-1
Augustana (S.D.)	0-1
Avila (Mo.)	1-0
Bellarmine	0-1
Cedarville	3-0
Central Missouri	0-1
Concordia-St. Paul	0-2
Davenport (Mich.)	1-0
Drury *	1-7
Eckerd (Fla.)	0-1
Florida Southern	1-0
Fort Hays (Kan.) State	0-1
Hannibal-LaGrange	1-0
Hawaii-Hilo	0-1
Hillsdale (Mich.)	0-1
Illinois Springfield *	4-2
Indianapolis *	4-4
Lewis *	5-6
Lincoln	0-1
Lindenwood *	1-3
Maryville *	9-1
Minot (N.D.) State	1-0
Missouri S&T *	5-2
Missouri St. Louis	5-3
Missouri Western	0-1
McKendree *	6-2
Newman (Kan.)	1-0
Northern Michigan	1-0
Northwood (Mich.)	1-0
Quincy *	7-3
Rockhurst *	5-3
Saginaw Valley St.	0-1
Sioux Falls	0-1
Southern Indiana *	2-2
Southwest Baptist *	5-3
Southwest Minn. State	1-0
Union (Tenn.)	0-1
Upper Iowa	2-2
Ursuline (Ohio)	3-2
UW-Parkside *	1-1
Washburn (Kan.)	0-1
William Jewell *	9-0
Winona (Minn.) State	1-1

<b>Truman Overall</b>	<b>87-64 (.576)</b>
<b>Home Record</b>	<b>39-22</b>
<b>Away Record</b>	<b>35-29</b>
<b>GLVC Record</b>	<b>64-38</b>
<b>GLVC Home Record</b>	<b>34-18</b>
<b>GLVC Away Record</b>	<b>31-20</b>
<b>Non-Conference Record</b>	<b>23-25</b>
vs. Division I	0-0
vs. Division II	22-26
vs. Division III	0-0
vs. NAIA/Other	2-0
<b>NC Home</b>	<b>3-4</b>
<b>NC Road</b>	<b>4-7</b>
<b>Neutral Site</b>	<b>14-13</b>
<b>Postseason</b>	<b>5-5</b>
<b>Overtime</b>	<b>1-4</b>



## Assistant Coach

**Dajae Black** (2nd Season)

2022-23 - Univ. of Akron  
 (Assistant Coach)

2020-22 - Grand Canyon (Ariz.)  
 (Graduate Assistant)

## Playing career:

Lewis University (2016-2020)

## All-Time Coaches

- Amy Eagan .....111-62 (6 yrs)
- Mary Jo Murray .....100-80 (7 yrs)
- John Sloop .....87-131 (8 yrs)
- Theo Dean..... 87-64 (6yrs)**
- Karin Nichols .....71-64 (5 yrs)
- Michael Smith .....68-68 (5 yrs)
- Tarry Parrish .....44-115 (6 yrs)
- Lois Herren.....31-48 (3 yrs)
- Jan Conner.....19-58 (3 yrs)
- Pam Wood.....13-14 (2 yrs)
- Kathy Austin.....12-11 (2 yrs)

## #0 Gracie Neff



**Graduate**  
**5-8**  
**Guard**  
**Kansas City, Mo.**  
**Staley HS**  
**Lindenwood**

				Field Goals		3-Point		F-Throws		Rebounds										Scoring	
SEASON	TEAM	GP-GS	MIN/AVG	FG-FGA	FG%	3FG-3FGA	3FG%	FT-FTA	FT%	OFF	DEF	TOT	AVG	PF-FO	A	TO	BLK	STL	PTS	AVG	
2020-21	Linden	19-18	468/24.6	18-58	.310	11-41	.268	3-8	.375	1	25	26	1.4	26-0	60	46	0	10	50	2.6	
2021-22	Linden	26-17	558/21.4	19-56	.339	3-20	.150	13-21	.619	8	20	28	1.1	30-0	103	65	0	12	54	2.1	
2022-23	TSU	30-0	361/12.0	20-50	.400	12-32	.375	23-29	.793	0	35	35	1.2	21-0	58	38	1	1	75	2.5	
2023-24	TSU	28-21	726/25.9	31-87	.356	22-62	.355	27-38	.711	5	44	49	1.8	37-0	117	74	2	17	111	4.0	
2024-25	TSU	14-0	202/14.5	10-29	.345	3-17	.176	4-8	.500	3	12	15	1.1	14-0	18	16	1	4	27	1.9	
TOTAL FOR TSU		72-21	1290/17.9	61-166	.367	37-111	.333	54-75	.720	8	91	99	1.4	72-0	193	128	4	22	213	3.0	
TOTAL		117-56	2315/19.8	98-280	.350	51-172	.297	70-104	.673	17	136	153	1.3	128-0	356	239	4	44	317	2.7	

### Single Game Highs

Statistic	Value	
Points	13	vs Drury 01/20/24
Rebounds	5	vs McKendree 02/01/24, vs Quincy 02/23/21
Assists	11	vs Quincy 12/02/21
Steals	3	vs McKendree 02/01/24, vs Southwest Baptist 01/30/21
Blocks	1	4 times
FG Made	4	5 times
FG Attempts	9	at UIndy 02/10/24
3FG Made	4	vs Drury 01/20/24
3FG Attempts	6	vs Drury 01/20/24
FT Made	5	vs UIndy 01/03/24
FT Attempts	6	vs UIndy 01/03/24, vs Maryville (MO) 11/29/21

## #1 Molly Joyce



**Sophomore**  
**5-7**  
**Guard**  
**Algona, Iowa**  
**Bishop Garrigan**

				Field Goals		3-Point		F-Throws		Rebounds										Scoring	
SEASON	TEAM	GP-GS	MIN/AVG	FG-FGA	FG%	3FG-3FGA	3FG%	FT-FTA	FT%	OFF	DEF	TOT	AVG	PF-FO	A	TO	BLK	STL	PTS	AVG	
2023-24	TSU	28-14	675/24.1	104-277	.375	29-102	.284	67-87	.770	16	79	95	3.4	61-0	39	62	9	31	304	10.9	
2024-25	TSU	14-14	417/29.8	65-173	.376	22-82	.268	63-77	.818	10	40	50	3.6	31-0	28	34	3	21	215	15.4	
TOTAL		42-28	1092/26.0	169-450	.376	51-184	.277	130-164	.793	26	119	145	3.5	92-0	67	96	12	52	519	12.4	

### Single Game Highs

Statistic	Value	
Points	34	vs Ursuline 11/09/24
Rebounds	10	vs Ill. Springfield 02/22/24
Assists	5	vs Missouri S&T 01/03/25
Steals	5	at Rockhurst 01/25/24
Blocks	2	vs Winona St. 11/17/23, vs Maryville (MO) 02/15/24, vs Quincy 02/24/24
FG Made	10	vs Ursuline 11/09/24
FG Attempts	23	at Winona St. 11/16/24
3FG Made	6	vs Ursuline 11/09/24
3FG Attempts	11	vs Ark.-Fort Smith 11/27/24
FT Made	10	at Rockhurst 01/25/24, vs Ark.-Fort Smith 11/27/24
FT Attempts	12	vs Ark.-Fort Smith 11/27/24, at Hawaii Hilo 12/21/24





## #3 Tori Standefer



**Graduate**  
**5-7**  
**Guard**  
**Bethalto, Ill.**  
**Civic Memorial**  
**Mo.-St. Louis**

				Field Goals		3-Point		F-Throws		Rebounds				Scoring						
SEASON	TEAM	GP-GS	MIN/AVG	FG-FGA	FG%	3FG-3FGA	3FG%	FT-FTA	FT%	OFF	DEF	TOT	AVG	PF-FO	A	TO	BLK	STL	PTS	AVG
2021-22	UMSL	9-0	57/6.3	4-15	.267	1-9	.111	8-8	1.000	2	5	7	0.8	4-0	4	2	0	1	17	1.9
2022-23	UMSL	16-0	115/7.2	5-18	.278	1-7	.143	8-13	.615	6	8	14	0.9	15-1	2	12	0	6	19	1.2
2023-24	UMSL	23-0	233/10.1	13-52	.250	6-29	.207	7-10	.700	9	18	27	1.2	14-0	9	15	0	7	39	1.7
2024-25	TSU	7-0	46/6.5	5-10	.500	2-5	.400	4-6	.667	3	5	8	1.1	5-0	2	1	0	3	16	2.3
<b>TOTAL FOR TSU</b>		<b>7-0</b>	<b>46/6.5</b>	<b>5-10</b>	<b>.500</b>	<b>2-5</b>	<b>.400</b>	<b>4-6</b>	<b>.667</b>	<b>3</b>	<b>5</b>	<b>8</b>	<b>1.1</b>	<b>5-0</b>	<b>2</b>	<b>1</b>	<b>0</b>	<b>3</b>	<b>16</b>	<b>2.3</b>
<b>TOTAL</b>		<b>55-0</b>	<b>451/8.2</b>	<b>27-95</b>	<b>.284</b>	<b>10-50</b>	<b>.200</b>	<b>27-37</b>	<b>.730</b>	<b>20</b>	<b>36</b>	<b>56</b>	<b>1.0</b>	<b>38-1</b>	<b>17</b>	<b>30</b>	<b>0</b>	<b>17</b>	<b>91</b>	<b>1.7</b>

### Single Game Highs

Statistic	Value	
Points	13	at Principia 12/18/21
Rebounds	5	at Davenport 11/11/23
Assists	2	at Grand Valley St. 11/10/23, vs Newman 11/26/24
Steals	2	vs Wis.-Parkside 12/31/22, vs Ill. Springfield 01/21/23, vs McKendree 02/25/23
FG Made	3	at Principia 12/18/21, vs Principia 11/20/23
FG Attempts	6	at Principia 12/18/21
3FG Made	2	at Truman St. 02/03/24
3FG Attempts	4	at Principia 12/18/21, vs Purdue Northwest 12/19/23
FT Made	6	at Principia 12/18/21
FT Attempts	6	at Principia 12/18/21

## #4 Bryar Duwe



**Sophomore**  
**5-6**  
**Guard**  
**Decorah, Iowa**  
**Decorah HS**

				Field Goals		3-Point		F-Throws		Rebounds				Scoring						
SEASON	TEAM	GP-GS	MIN/AVG	FG-FGA	FG%	3FG-3FGA	3FG%	FT-FTA	FT%	OFF	DEF	TOT	AVG	PF-FO	A	TO	BLK	STL	PTS	AVG
2023-24	TSU	7-0	31/4.4	5-14	.357	3-9	.333	4-4	1.000	1	0	1	0.1	1-0	0	1	0	2	17	2.4
2024-25	TSU	14-14	408/29.2	45-113	.398	21-65	.323	14-22	.636	7	36	43	3.1	23-0	27	30	0	14	125	8.9
<b>TOTAL</b>		<b>21-14</b>	<b>439/20.9</b>	<b>50-127</b>	<b>.394</b>	<b>24-74</b>	<b>.324</b>	<b>18-26</b>	<b>.692</b>	<b>8</b>	<b>36</b>	<b>44</b>	<b>2.1</b>	<b>24-0</b>	<b>27</b>	<b>31</b>	<b>0</b>	<b>16</b>	<b>142</b>	<b>6.8</b>

### Single Game Highs

Statistic	Value	
Points	13	at Winona St. 11/16/24, vs Missouri S&T 01/03/25
Rebounds	7	vs Ark.-Fort Smith 11/27/24
Assists	4	at Cedarville 11/08/24, at Southwest Baptist 12/05/24
Steals	2	5 times
FG Made	5	at Winona St. 11/16/24, vs Missouri S&T 01/03/25
FG Attempts	11	vs Ursuline 11/09/24
3FG Made	3	vs Missouri S&T 01/03/25, vs Ark.-Fort Smith 11/27/24, vs Ursuline 11/09/24
3FG Attempts	8	vs Missouri S&T 01/03/25
FT Made	4	vs Fort Hays St. 12/19/24
FT Attempts	6	vs Fort Hays St. 12/19/24

## #10 Sophie Hope



**Freshman**  
**5-10**  
**Waukee, Iowa**  
**Waukee**

## #11 Lizzie Boehm



**Sophomore**  
**5-7**  
**Guard**  
**Kansas City, Mo.**  
**Staley HS**

			Field Goals		3-Point		F-Throws		Rebounds										Scoring	
SEASON	TEAM	GP-GS	MIN/AVG	FG-FGA	FG%	3FG-3FGA	3FG%	FT-FTA	FT%	OFF	DEF	TOT	AVG	PF-FO	A	TO	BLK	STL	PTS	AVG
2023-24	TSU	23-0	308/13.4	14-58	.241	4-29	.138	15-19	.789	11	16	27	1.2	41-1	25	37	1	16	47	2.0
2024-25	TSU	2-0	3/1.4	0-1	.000	0-0	.000	0-0	.000	1	0	1	0.5	0-0	1	0	0	0	0	0.0
TOTAL		25-0	311/12.4	14-59	.237	4-29	.138	15-19	.789	12	16	28	1.1	41-1	26	37	1	16	47	1.9

### Single Game Highs

Statistic	Value	
Points	6	vs Southwest Baptist 01/18/24, at UIndy 02/10/24, at Drury 03/02/24
Rebounds	3	5 times
Assists	4	vs Mo.-St. Louis 02/03/24
Steals	3	at Southwest Baptist 02/29/24
Blocks	1	at Southwest Baptist 02/29/24
FG Made	2	4 times
FG Attempts	7	at William Jewell 01/27/24
3FG Made	1	4 times
3FG Attempts	4	at McKendree 11/25/23, vs McKendree 02/01/24
FT Made	4	vs Ill. Springfield 02/22/24
FT Attempts	4	vs Ill. Springfield 02/22/24





## #12 Katelyn Odem



**Freshman**  
**5-8**  
**Guard**  
**Mequon, Wis.**  
**Homestead**

				Field Goals		3-Point		F-Throws		Rebounds										Scoring	
SEASON	TEAM	GP-GS	MIN/AVG	FG-FGA	FG%	3FG-3FGA	3FG%	FT-FTA	FT%	OFF	DEF	TOT	AVG	PF-FO	A	TO	BLK	STL	PTS	AVG	
2024-25	TSU	14-3	202/14.5	20-47	.426	4-16	.250	6-15	.400	2	19	21	1.5	23-0	5	15	1	10	50	3.6	
TOTAL		14-3	202/14.5	20-47	.426	4-16	.250	6-15	.400	2	19	21	1.5	23-0	5	15	1	10	50	3.6	

### Single Game Highs

Statistic	Value	
Points	13	at Hawaii Hilo 12/21/24
Rebounds	6	vs Fort Hays St. 12/19/24
Assists	1	5 times
Steals	2	vs Washburn 11/22/24, vs Fort Hays St. 12/19/24
Blocks	1	at Drury 12/07/24
FG Made	6	at Hawaii Hilo 12/21/24
FG Attempts	9	at Hawaii Hilo 12/21/24
3FG Made	2	vs Missouri S&T 01/03/25
3FG Attempts	4	vs Fort Hays St. 12/19/24
FT Made	3	at Drury 12/07/24
FT Attempts	5	at Drury 12/07/24

## #14 Nicky Huss



**R-Freshman**  
**6-1**  
**Omaha, Neb.**  
**Duchesne**

				Field Goals		3-Point		F-Throws		Rebounds									Scoring	
SEASON	TEAM	GP-GS	MIN/AVG	FG-FGA	FG%	3FG-3FGA	3FG%	FT-FTA	FT%	OFF	DEF	TOT	AVG	PF-FO	A	TO	BLK	STL	PTS	AVG
2024-25	TSU	3-0	8/2.5	0-1	.000	0-0	.000	0-0	.000	0	1	1	0.3	0-0	0	0	0	0	0	0.0
TOTAL		3-0	8/2.5	0-1	.000	0-0	.000	0-0	.000	0	1	1	0.3	0-0	0	0	0	0	0	0.0

### Single Game Highs

Statistic	Value	
Rebounds	1	vs Newman 11/26/24
FG Attempts	1	vs Newman 11/26/24

## #20 Braylee Rogers



**Freshman**  
**5-9**  
**Olathe, Kan.**  
**Olathe East**

## #21 Emma Bulman



**Senior**  
**5-10**  
**Ames, Iowa**  
**Gilbert**

				Field Goals		3-Point		F-Throws		Rebounds									Scoring	
SEASON	TEAM	GP-GS	MIN/AVG	FG-FGA	FG%	3FG-3FGA	3FG%	FT-FTA	FT%	OFF	DEF	TOT	AVG	PF-FO	A	TO	BLK	STL	PTS	AVG
2021-22	TSU	26-0	247/9.5	20-43	.465	4-10	.400	9-12	.750	4	47	51	2.0	20-0	9	11	4	5	53	2.0
2022-23	TSU	30-0	483/16.1	56-138	.406	15-36	.417	39-53	.736	11	91	102	3.4	28-0	20	51	10	6	166	5.5
2023-24	TSU	28-11	584/20.9	49-126	.389	15-60	.250	60-69	.870	14	63	77	2.8	58-1	37	65	5	21	173	6.2
2024-25	TSU	14-0	249/17.8	17-51	.333	2-19	.105	8-13	.615	5	36	41	2.9	18-0	9	20	1	8	44	3.1
TOTAL		98-11	1563/15.9	142-358	.397	36-125	.288	116-147	.789	34	237	271	2.8	124-1	75	147	20	40	436	4.4

### Single Game Highs

Statistic	Value	
Points	18	at McKendree 11/25/23
Rebounds	9	vs Lincoln (MO) 11/21/23
Assists	6	vs Winona St. 11/17/23
Steals	2	7 times
Blocks	2	vs Maryville (MO) 01/26/23, at Rockhurst 01/25/24
FG Made	7	at McKendree 11/25/23
FG Attempts	10	at Quincy 01/11/24
3FG Made	2	vs Lincoln (MO) 11/21/23, at McKendree 11/25/23, vs Southwest Baptist 01/18/24
3FG Attempts	5	vs Lincoln (MO) 11/21/23, at Quincy 01/11/24
FT Made	8	vs Ill. Springfield 02/22/24
FT Attempts	8	at Southwest Baptist 12/10/22, at Rockhurst 01/25/24, vs Ill. Springfield 02/22/24



## #22 Lexie White



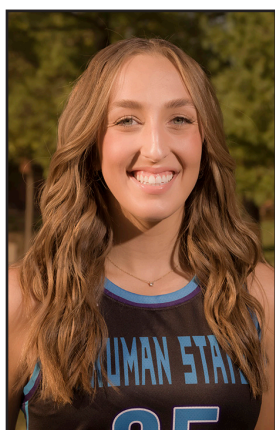
**Sophomore**  
**5-11**  
**Merrill, Wis.**  
**Wausau West**

				Field Goals		3-Point		F-Throws		Rebounds									Scoring	
SEASON	TEAM	GP-GS	MIN/AVG	FG-FGA	FG%	3FG-3FGA	3FG%	FT-FTA	FT%	OFF	DEF	TOT	AVG	PF-FO	A	TO	BLK	STL	PTS	AVG
2023-24	TSU	11-0	176/16.0	17-52	.327	3-20	.150	8-11	.727	6	25	31	2.8	28-0	11	17	6	13	45	4.1
2024-25	TSU	14-14	346/24.7	31-94	.330	13-45	.289	20-29	.690	17	49	66	4.7	36-0	10	17	8	12	95	6.8
TOTAL		25-14	522/20.9	48-146	.329	16-65	.246	28-40	.700	23	74	97	3.9	64-0	21	34	14	25	140	5.6

### Single Game Highs

Statistic	Value	
Points	15	at Drury 12/07/24
Rebounds	11	vs Rockhurst 11/30/24
Assists	3	at McKendree 11/25/23
Steals	3	vs Ursuline 11/10/23
Blocks	3	at Concordia-St. Paul 11/15/24
FG Made	5	vs Ursuline 11/10/23, at Drury 12/07/24, vs Missouri S&T 01/03/25
FG Attempts	14	vs Missouri S&T 01/03/25
3FG Made	3	at Drury 12/07/24
3FG Attempts	6	vs Fort Hays St. 12/19/24
FT Made	4	vs Rockhurst 11/30/24
FT Attempts	6	vs Fort Hays St. 12/19/24

## #25 Kaitlyn Patke



**Junior**  
**6-0**  
**Forward**  
**Washington, Mo.**  
**Borgia**

				Field Goals		3-Point		F-Throws		Rebounds										Scoring	
SEASON	TEAM	GP-GS	MIN/AVG	FG-FGA	FG%	3FG-3FGA	3FG%	FT-FTA	FT%	OFF	DEF	TOT	AVG	PF-FO	A	TO	BLK	STL	PTS	AVG	
2022-23	TSU	15-0	76/5.1	11-18	.611	1-5	.200	6-12	.500	2	6	8	0.5	5-0	2	11	0	2	29	1.9	
2023-24	TSU	8-0	29/3.6	9-12	.750	2-5	.400	2-3	.667	0	2	2	0.3	5-0	1	0	0	2	22	2.8	
2024-25	TSU	5-0	22/4.3	4-8	.500	0-4	.000	0-1	.000	1	2	3	0.6	1-0	1	3	1	2	8	1.6	
TOTAL		28-0	126/4.5	24-38	.632	3-14	.214	8-16	.500	3	10	13	0.5	11-0	4	14	1	6	59	2.1	

### Single Game Highs

Statistic	Value	
Points	6	vs William Jewell 01/12/23, at Missouri S&T 01/19/23, at Drury 03/02/24
Rebounds	2	4 times
Assists	1	4 times
Steals	1	6 times
Blocks	1	at Southwest Baptist 12/05/24
FG Made	2	6 times
FG Attempts	4	at Drury 03/02/24
3FG Made	1	vs William Jewell 01/12/23, vs Winona St. 11/17/23, at Rockhurst 01/25/24
3FG Attempts	2	4 times
FT Made	4	at Missouri S&T 01/19/23



## #33 McKenna Williams



**Junior**  
**5-10**  
**Forward**  
**Darien, Wis.**  
**Delavan-Darien**  
**Rock Valley**

				Field Goals		3-Point		F-Throws		Rebounds								Scoring		
SEASON	TEAM	GP-GS	MIN/AVG	FG-FGA	FG%	3FG-3FGA	3FG%	FT-FTA	FT%	OFF	DEF	TOT	AVG	PF-FO	A	TO	BLK	STL	PTS	AVG
2024-25	TSU	13-0	117/9.0	14-31	.452	3-13	.231	16-20	.800	7	18	25	1.9	9-0	4	7	3	4	47	3.6
TOTAL		13-0	117/9.0	14-31	.452	3-13	.231	16-20	.800	7	18	25	1.9	9-0	4	7	3	4	47	3.6

### Single Game Highs

Statistic	Value	
Points	15	vs Fort Hays St. 12/19/24
Rebounds	5	at Drury 12/07/24
Assists	2	at Drury 12/07/24
Steals	1	4 times
Blocks	1	vs Quincy 11/23/24, vs Newman 11/26/24, vs Ark.-Fort Smith 11/27/24
FG Made	5	vs Fort Hays St. 12/19/24
FG Attempts	7	vs Fort Hays St. 12/19/24
3FG Made	1	vs Ursuline 11/09/24, vs Fort Hays St. 12/19/24, at Hawaii Hilo 12/21/24
3FG Attempts	3	at Southwest Baptist 12/05/24
FT Made	4	vs Fort Hays St. 12/19/24
FT Attempts	5	vs Fort Hays St. 12/19/24

## #34 Avery Larson



**R-Sophomore**  
**6-3**  
**Center**  
**Antioch, Ill.**  
**Antioch**

				Field Goals		3-Point		F-Throws		Rebounds								Scoring		
SEASON	TEAM	GP-GS	MIN/AVG	FG-FGA	FG%	3FG-3FGA	3FG%	FT-FTA	FT%	OFF	DEF	TOT	AVG	PF-FO	A	TO	BLK	STL	PTS	AVG
2022-23	TSU	7-0	24/3.4	3-8	.375	0-0	.000	4-5	.800	1	5	6	0.9	3-0	1	1	0	0	10	1.4
2024-25	TSU	3-0	13/4.4	3-3	1.000	0-0	.000	1-2	.500	4	1	5	1.7	3-0	0	2	0	1	7	2.3
TOTAL		10-0	37/3.7	6-11	.545	0-0	.000	5-7	.714	5	6	11	1.1	6-0	1	3	0	1	17	1.7

### Single Game Highs

Statistic	Value	
Points	5	vs Newman 11/26/24
Rebounds	3	at Southwest Baptist 12/05/24
Assists	1	vs Ursuline 11/13/22
Steals	1	vs Fort Hays St. 12/19/24
FG Made	2	vs Newman 11/26/24
FG Attempts	4	vs William Jewell 01/12/23
FT Made	3	at William Jewell 02/25/23
FT Attempts	4	at William Jewell 02/25/23



## #35 Mallory Ott



**R-Freshman**  
**5-11**  
**Forward**  
**Oshkosh, Wis.**  
**Oshkosh North**

				Field Goals		3-Point		F-Throws		Rebounds												Scoring	
SEASON	TEAM	GP-GS	MIN/AVG	FG-FGA	FG%	3FG-3FGA	3FG%	FT-FTA	FT%	OFF	DEF	TOT	AVG	PF-FO	A	TO	BLK	STL	PTS	AVG			
2024-25	TSU	11-6	169/15.4	20-54	.370	3-19	.158	11-15	.733	15	28	43	3.9	13-0	5	8	1	7	54	4.9			
<b>TOTAL</b>		<b>11-6</b>	<b>169/15.4</b>	<b>20-54</b>	<b>.370</b>	<b>3-19</b>	<b>.158</b>	<b>11-15</b>	<b>.733</b>	<b>15</b>	<b>28</b>	<b>43</b>	<b>3.9</b>	<b>13-0</b>	<b>5</b>	<b>8</b>	<b>1</b>	<b>7</b>	<b>54</b>	<b>4.9</b>			

### Single Game Highs

Statistic	Value	
Points	14	vs Quincy 11/23/24
Rebounds	10	at Southwest Baptist 12/05/24
Assists	2	vs Ark.-Fort Smith 11/27/24
Steals	2	vs Newman 11/26/24, vs Rockhurst 11/30/24
Blocks	1	vs Ark.-Fort Smith 11/27/24
FG Made	5	vs Quincy 11/23/24, at Southwest Baptist 12/05/24
FG Attempts	13	at Southwest Baptist 12/05/24
3FG Made	1	vs Ark.-Fort Smith 11/27/24, vs Rockhurst 11/30/24, at Southwest Baptist 12/05/24
3FG Attempts	7	vs Ark.-Fort Smith 11/27/24
FT Made	4	vs Quincy 11/23/24
FT Attempts	5	vs Quincy 11/23/24

## #40 Jordan Cunningham



**Graudate**  
**6-0**  
**Guard**  
**Grimes, Iowa**  
**Dallas Center/Grimes**  
**Mo. Western**

				Field Goals		3-Point		F-Throws		Rebounds												Scoring	
SEASON	TEAM	GP-GS	MIN/AVG	FG-FGA	FG%	3FG-3FGA	3FG%	FT-FTA	FT%	OFF	DEF	TOT	AVG	PF-FO	A	TO	BLK	STL	PTS	AVG			
2020-21	MW	22-13	533/24.2	43-120	.358	18-60	.300	17-27	.630	7	45	52	2.4	41-0	33	43	7	22	121	5.5			
2021-22	MW	34-30	898/26.4	86-206	.417	22-91	.242	55-78	.705	13	60	73	2.1	51-0	73	55	7	28	249	7.3			
2022-23	MW	31-26	761/24.5	68-154	.442	13-51	.255	51-74	.689	11	87	98	3.2	39-1	51	46	12	25	200	6.5			
2023-24	MW	31-1	520/16.8	49-102	.480	8-35	.229	13-19	.684	6	68	74	2.4	51-0	36	30	13	17	119	3.8			
2024-25	TSU	14-14	468/33.4	83-172	.483	20-59	.339	57-72	.792	12	51	63	4.5	31-0	44	35	12	22	243	17.4			
<b>TOTAL FOR TSU</b>		<b>14-14</b>	<b>468/33.4</b>	<b>83-172</b>	<b>.483</b>	<b>20-59</b>	<b>.339</b>	<b>57-72</b>	<b>.792</b>	<b>12</b>	<b>51</b>	<b>63</b>	<b>4.5</b>	<b>31-0</b>	<b>44</b>	<b>35</b>	<b>12</b>	<b>22</b>	<b>243</b>	<b>17.4</b>			
<b>TOTAL</b>		<b>132-84</b>	<b>3179/24.1</b>	<b>329-754</b>	<b>.436</b>	<b>81-296</b>	<b>.274</b>	<b>193-270</b>	<b>.715</b>	<b>49</b>	<b>311</b>	<b>360</b>	<b>2.7</b>	<b>213-1</b>	<b>237</b>	<b>209</b>	<b>51</b>	<b>114</b>	<b>932</b>	<b>7.1</b>			

### Single Game Highs

Statistic	Value	
Points	27	at Southwest Baptist 12/05/24
Rebounds	10	vs Rockhurst 11/30/24
Assists	7	vs Newman 02/16/21, at Newman 01/20/22, vs Quincy 11/23/24
Steals	4	5 times
Blocks	4	vs Fort Hays St. 02/01/24
FG Made	10	vs Rockhurst 11/30/24
FG Attempts	23	at Drury 12/07/24
3FG Made	4	at Concordia-St. Paul 11/15/24
3FG Attempts	8	at Northeastern St. 11/21/20, vs Emporia St. 02/02/21, vs Quincy 11/23/24
FT Made	8	at Southwest Baptist 12/05/24, at Drury 12/07/24
FT Attempts	10	at Southwest Baptist 12/05/24