



TRUMAN STATE WOMEN'S BASKETBALL

2024-25 SCHEDULE

N8	at Cedarville (Ohio) ¹	W 74-61
N9	vs. Ursuline (Ohio) ¹	W 81-60
N15	at Concordia-St. Paul (Minn.)	L 68-57
N16	at Winona St. (Minn.)	L 70-64
N22	WASHBURN (Kan.)	L 81-59
N23	QUINCY (Ill.)	L 85-76
N26	vs. Newman (Kan.) ²	W 80-48
N27	vs. Arkansas-Fort Smith ²	L 75-73
N30	ROCKHURST (Mo.) *	W 82-64

D5	at Southwest Baptist (Mo.) *	W 77-63
D7	at Drury (Mo.) *	L 97-72
D19	vs. Fort Hays State (Kan.) ³	L 77-57
D21	at Hawaii-Hilo	L 68-61

J3	MISSOURI S&T *	L 74-72
J9	at Illinois Springfield *	L 73-50
J11	at McKendree (Ill.) *	L 72-60
J16	UPPER IOWA *	L 88-77
J18	LEWIS (Ill.) *	W 69-60
J20	LINCOLN (MO.) *	W 78-59
J25	at Quincy (Ill.) *	L 82-69
J30	at Rockhurst (Mo.) *	5:30 p.m.

F1	at William Jewell (Mo.) *	1 p.m.
F6	DRURY (MO.) *	5:15 p.m.
F8	SOUTHWEST BAPTIST (MO.) *	1 p.m.
F13	at Lincoln (Mo.) *	5:30 p.m.
F15	at Missouri S&T *	1 p.m.
F20	MARYVILLE (MO.) *	5:15 p.m.
F22	MISSOURI-ST. LOUIS *	1 p.m.
F27	at Indianapolis *	5:30 p.m. (ET)

M1	WILLIAM JEWELL (MO.) *	1 p.m.
----	------------------------	--------

GLVC BASKETBALL TOURNAMENT

M6	Quarterfinals
M8	Semifinals
M9	Championship

¹ - in Cedarville, Ohio

² - in Springfield, Mo.

³ - in Hilo, Hawaii

* - GLVC

GLVC Tournament will be played in Hyland Arena on the campus of Lindenwood University in St. Charles, Mo.



GAMEDAY CENTRAL

GAME 21 | Jan. 30 | Kansas City, Mo. | 5:15 p.m.

GAME 22 | Feb. 1 | Liberty, Mo. | 1 p.m.

Rockhurst (5-12; 3-8 GLVC)
HAWKS
SERIES HISTORY
Overall.....TSU 21-10
Home.....TSU 12-3
Road.....TSU 9-7
Neutral.....N/A
Last Meeting.....TSU 82-64 (2024)
Last 5.....RU 3-2

Truman State (7-13; 4-6 GLVC)
BULLDOGS
LEADERS
Points.....Jordan Cunningham (17.3)
Rebounds.....Lexie White (5.0)
Assists.....Jordan Cunningham (3.1)
Steals.....Molly Joyce (1.6)
Blocks.....Jordan Cunningham (1.0)
Minutes.....Jordan Cunningham (33.7)

William Jewell (5-12; 3-8 GLVC)
CARDINALS
SERIES HISTORY
Overall.....TSU 18-4
Home.....TSU 10-0
Road.....TSU 6-3
Neutral.....TSU 2-1
Last Meeting.....TSU 61-58 (2024)
Last 5.....TSU 5-0

GAME NOTES

KIRKSVILLE, Mo. – The Truman State Women's Basketball team will embark on a Kansas City swing as the Bulldogs look to push upward in the Great Lakes Valley Conference standings. Rockhurst will be the opponent on Thursday night at 5:15 p.m. followed by William Jewell on Saturday at 1 p.m.

All three teams find themselves in the same boat in terms of the league standings. Truman State is 4-6 in conference play while the Hawks and Cardinals are both sitting at 3-8. The first release of the GLVC Points Ratings System rankings will be unveiled on Saturday night and will give a snapshot of where the schools are at in terms of the top eight for a conference tournament spot.

The GLVC PSR is based on the strength of wins and losses in conference games. Teams earn points based on the location and the opponents winning percentage with those points averaged at the end of the season to determine the top eight teams and their seeds. The most points earned in a game is seven against a team on the road that has a .750 or above winning percentage at the end of the season. A team earns no points if it loses at home to a team below a .250 winning percentage.

It will be the second of two meetings with Rockhurst as Truman State used a strong third quarter to pull away from the Hawks for an 82-64 win back on November 30th. The Bulldogs outpaced the Hawks 24-11 in the third and turned a four-point advantage at half into a 17-point spread heading into the final 10 minutes. Jordan Cunningham scored a game-high 25 points for the Bulldogs on 10-of-15 shooting and added 10 rebounds. Lexie White also had a double-double with 12 points and 11 boards and Molly Joyce dropped in 18 points.

Rockhurst was led by Rebeca Garcia with 19 followed by Keegan Sullivan with 14 and Chloe Frank with 12.

The Hawks have taken the last three against the Bulldogs played in Mason-Halpin Fieldhouse. They won 88-67 last January and 53-44 in February of 2023. Truman State holds a slim 9-7 advantage in games played in KC.

QUICK COMPARISON

	RU	TSU	WJC
Record	5-12	7-13	5-12
PPG	63.8	69.4	63.5
Opp PPG	69.4	71.3	71.8
Margin	-5.5	-1.9	-8.4
FG%	.349	.411	.367
Opp FG%	.427	.437	.431
3pt %	.289	.280	.325
3pt/ g	6.7	6.7	7.5
Opp 3pt%	.334	.319	.301
Opp 3pt/g	6.5	7.3	6.1
FT%	.725	.720	.712
FT/g	14.9	14.4	13.8
Opp FT %	.695	.753	.706
Opp FT/g	13.4	10.2	13.0
RPG	36.8	32.6	32.1
Reb. Margin	-2.1	-6.2	-10.3
APG	10.4	11.8	9.4
TOPG	15.4	14.6	13.8
SPG	7.0	8.0	7.4
BPG	4.5	2.5	2.7

PROBABLE STARTERS

1 MOLLY JOYCE 5-7/So./Algona, Iowa	4 BRYAR DUWE 5-6/So./Decorah, Iowa	12 KATELYN ODEM 5-8/Fr./Mequon, Wis.	22 LEXIE WHITE 5-11/So./Merrill, Wis.	40 JORDAN CUNNINGHAM 6-0/Gr./Grimes, Iowa
PPG.....13.4	PPG.....8.8	PPG.....4.2	PPG.....7.5	PPG.....17.3
RPG.....3.9	RPG.....2.8	RPG.....1.8	RPG.....5.0	RPG.....4.8
APG.....2.1	APG.....1.6	APG.....0.6	APG.....0.8	APG.....3.1
MPG.....30.0	MPG.....27.5	MPG.....17.8	MPG.....24.0	MPG.....33.7



GAME NOTES

On Saturday, the Bulldogs will head up Interstate 35 to Liberty for the first of two meetings with William Jewell. Truman State overtook the Cardinals in the final two minutes of their only matchup last season and won 61-58 to extend their winning streak over William Jewell to nine straight games. Emma Bulman had a strong game for Truman State with 14 points including seven of seven from the free throw line.

Truman and William Jewell will wrap up the regular season in Pershing Arena on March 1st in the return encounter.

Truman is coming off an 82-69 loss to Quincy on Saturday. The Bulldogs grabbed a two-point lead at 37-35 a minute into the third quarter but watched as the Hawks went on a 16-0 run over the next five minutes to go up 51-37. Truman got it to within six points at 63-57 following a three-pointer by Bryar Duwe with under seven minutes left to play but the Hawks went on another burst to push the margin back to 10 points and never looked back.

Jordan Cunningham was held to her second-lowest point total of the season with six points but Lexie White and Bryar Duwe picked up the slack with each scoring their single-game highs. White scored 16 points on three made three-pointers and Duwe knocked in four triples on her way to 14 points.

Cunningham dropped to fifth in overall scoring among conference players at 17.3 points per game and is second in GLVC games at 20.3 points. She trails Mia Huberty of Upper Iowa in the conference-only scoring race as Huberty is averaging 20.5 points per night.

Cunningham has been the Bulldogs leading scorer in 10 games this season and is tied for the league-lead with eight games of 20 or more points. Her single-game high this year is 29 against Upper Iowa.

Molly Joyce has the Bulldogs top scoring game and has two 30-point scoring performances this season. Joyce tallied 34 points against Ursuline (Ohio) and 30 against Arkansas Fort Smith to be one of four GLVC players to hit 30 points in a game this season. She is averaging 13.4 points overall but in league games that average has dipped to 9.4 points. She has 19 steals in 10 conference games and along with Cunningham is on the floor over 30 minutes per game.

White edged past Joyce in conference scoring this past Saturday and averages 9.7 per game. She has made 12-of-32 three-point attempts and is shooting over 90% from the free-throw line in GLVC play. She had 12 blocked shots on the season with seven in conference. As mentioned above, White is coming off her single-game scoring high of 16 at Quincy and has two double-doubles this season.

Duwe has tied for the team lead in three-pointers made with 28 this season. She has made 12 in the 10 conference games and has been a steady eight points per night this season while starting all 20 games. She is also coming off her single-game high in points with 14 at Quincy.

Katelyn Odem has started the past seven conference games and has averaged 5.6 points and 2.0 rebounds in 10 total league games. She scored a single-game high of 13 points against Hawaii-Hilo.

Tori Standerfer has been a valuable contributor with double-figure games in her last three outings. She went 6-of-9 from beyond the arc in last week's games and was also a perfect 6-of-6 at the free throw line. For the season, Standerfer has played in 12 games with a 4.7 points per game mark.

Emma Bulman, Gracie Neff and Tori Standerfer have come off the bench in all 10 conference games. All three are averaging around 15 minutes each per game. Bulman has played in 104 games at Truman State and has averaged 4.5 points per outing with 38 three-pointers made. Her single-game high is 18 coming 2023 against McKendree.

Neff has appeared in 78 games at Truman and 123 overall after her first two seasons at Lindenwood. She had 366 total assists with 203 coming as a Bulldog. Her game high in points is 13 against Drury in 2024.

Standerfer has found her stride with the Bulldogs after spending the previous three seasons at the University of Missouri-St. Louis. She has made 7-of-16 three-pointers in conference games this season and has also made 13-of-16 free throw attempts. Her career high was 14 points against Lincoln on January 20th.

Head Coach Theo Dean is in his sixth season at the helm of the Bulldogs and has won 89 games, third most by a coach for the purple and white. His teams have a 66-42 GLVC record and are 31-23 in conference road games.

Up Next:

Truman State returns home for a pair of league games as they welcome Drury on Thursday and Southwest Baptist on Saturday. The Bulldogs split their trip to southwest Missouri back in December winning against the Bearcats in Bolivar 77-63 but falling to the Lady Panthers in Springfield, 97-72.

Double-Figure Games

By Class - Career				
Player	Pts (20/30)	Rebs	Asts	Dbl/Dbls
Hope	-	-	-	-
Odem	2	-	-	-
Rogers	-	-	-	-
Huss	-	-	-	-
Ott	1	1	-	1
Boehm	-	-	-	-
Duwe	9	-	-	-
Joyce	26 (7/2)	1	-	1
White	7	2	-	2
Larson	-	-	-	-
Patke	-	-	-	-
Williams	29 (2)	14	-	13
Bulman	11	-	-	-
Cunningham	39 (8/0)	2	-	2
Neff	7	-	2	1
Standerfer	4	-	-	-

Truman State Facts

Location:	Kirkville, Mo. (18,000)
Enrollment:	4,000
Conference:	Great Lakes Valley
University President:	Dr. Sue Thomas
Director of Athletics:	Sigme Coombs
Head Coach:	Theo Dean
Assistant Coach:	Dajae Black
Basketball Athletic Trainer:	Cassie DeBlauw
Team Physician:	Dr. John Bailey
Athletics Communications:	Justin Thomas/Kevin White

On The Air

Video:	GLVCSN.com (PPV)
Home Radio:	88.7 FM KTRM (Student Radio)
Home Online Audio:	NEMOPressbox.com (Free)
Live Stats:	TrumanBulldogs.com

2024-25 Truman State Bulldogs

#	Name	Pos.	Ht.	Yr.	Hometown	High School/Previous
0	Gracie Neff	G	5-8	Gr.	Kansas City, Mo.	Staley HS/ Lindenwood (Mo.) Univ.
1	Molly Joyce	G	5-7	So.	Algona, Iowa	Bishop Garrigan HS
3	Tori Standerfer	G	5-7	Sr.	Bethalto, Ill.	Civic Memorial HS/Missouri-St. Louis
4	Bryar Duwe (Doo-we)	G	5-6	So.	Decorah, Iowa	Decorah HS
10	Sophia Hope	F	5-10	Fr.	Waukee, Iowa	Waukee HS
11	Lizzie Boehm (Bame)	G	5-7	So.	Kansas City, Mo.	Staley HS
12	Katelyn Odem	G	5-8	Fr.	Mequon, Wis.	Homestead HS
14	Nicky Huss	F	6-1	R-Fr.	Omaha, Neb.	Duchesne Academy
20	Braylee Rogers	G	5-9	Fr.	Olathe, Kan.	Olathe East HS
21	Emma Bulman	F	5-10	Sr.	Ames, Iowa	Gilbert HS
22	Lexie White	G	5-11	So.	Merrill, Wis.	Wausau West HS
25	Kaitlyn Patke (pat-key)	F	6-0	Jr.	Washington, Mo.	St. Francis Borgia HS
33	McKenna Williams	F	5-10	Jr.	Darien, Wis.	Delavan-Darien HS/Rock Valley Col.
34	Avery Larson	C	6-3	R-So.	Antioch, Ill.	Antioch HS
35	Mallory Ott	F	5-11	R-Fr.	Oshkosh, Wis.	Oshkosh North HS
40	Jordan Cunningham	G	6-0	Gr.	Grimes, Iowa	Dallas Center-Grimes HS/Mo. Western

Head Coach: Theo Dean (6th Season)

Associate Head Coach: Dajae Black

Graduate Assistant Coach: Trinitee Jackson

GLVC Standings

School	Conf.	Pct.	Over	Pct.	Home	Away	Neutral	Streak	PRS
Drury	10-1	.909	14-4	.778	8-2	6-1	0-1	W4	
Lewis	9-1	.900	15-2	.882	7-0	7-1	1-1	W2	
Quincy	8-2	.800	14-5	.737	7-2	4-2	3-1	W8	
Missouri-St. Louis	8-3	.727	14-4	.778	6-2	8-2	0-0	W1	
McKendree	7-4	.636	11-6	.647	7-2	2-4	2-0	L1	
Missouri S&T	6-4	.600	11-5	.688	8-3	3-2	0-0	W1	
Maryville	6-5	.545	8-11	.421	6-2	2-8	0-1	L2	
Upper Iowa	5-6	.455	8-9	.471	5-2	3-7	0-0	L1	
Southwest Baptist	5-6	.455	7-10	.412	6-2	1-6	0-2	L2	
Truman	4-6	.400	7-13	.350	3-4	2-7	2-2	L1	
Rockhurst	3-8	.273	5-12	.294	5-5	0-5	0-2	L2	
William Jewell	3-8	.273	5-12	.294	4-5	1-7	0-0	W1	
Indianapolis	3-8	.273	5-14	.263	3-8	2-6	0-0	W1	
Illinois Springfield	3-8	.273	4-15	.211	3-5	1-8	0-2	L1	
Lincoln	0-10	.000	1-15	.062	1-7	0-8	0-0	L15	

Weekly Awards

Date	Player	School
11/11	Molly Joyce	Truman State
11/18	Baylie Parks	McKendree
11/25	Rhi Gibbons	Drury
12/1	Franchesca Metz	Missouri S&T
12/9	Mia Huberty	Upper Iowa
12/16	Mariann Blass	Quincy
12/23	Ally Cesarini	Lewis
1/6	Baylie Parks	McKendree
1/13	Clare Breden	McKendree
1/20	Caitlynn Daniels	Drury
1/27	Taylor Gugliuzza	Lewis

Upcoming Games

Thursday, January 30

McKendree at Maryville
Truman at Rockhurst
Quincy at Southwest Baptist
Lewis at Missouri S&T
Illinois Springfield at Mo. St. Louis
Indianapolis at Lincoln
Upper Iowa at Drury

Thursday, February 6

Maryville at Indianapolis
Lincoln at Upper Iowa
Drury at Truman
Missouri S&T at Quincy
McKendree at Illinois Springfield
Missouri-St. Louis at Lewis
Southwest Baptist at William Jewell

Saturday, February 1

Quincy at Rockhurst
Upper Iowa at SW Baptist
McKendree at Missouri-St. Louis
Indianapolis at Missouri S&T
Lewis at Drury
Illinois Springfield at Lincoln
Truman at William Jewell

Saturday, February 8

Missouri-St. Louis at Indianapolis
Drury at Quincy
Southwest Baptist at Truman
Lincoln at Lewis
Rockhurst at William Jewell
Missouri S&T at Upper Iowa
Maryville at Illinois Springfield

Recent Results

Saturday, January 25

SW Baptist 48, Indianapolis 70
Truman 69, Quincy 82
Drury 85, Illinois Springfield 65
Missouri S&T 79, McKendree 65
Rockhurst 67, Lewis 78
William Jewell 86, Upper Iowa 78
Lincoln at Maryville, ppd

Monday, January 20

Missouri S&T 63, William Jewell 55
Missouri-St. Louis 53, Quincy 64
Lincoln 59, Truman 78

Saturday, January 18

Illinois Springfield 50, Rockhurst 63
McKendree 65, Southwest Baptist 75
Lewis 60, Truman 69
Missouri-St. Louis 72, Missouri S&T 61
Upper Iowa 62, Quincy 72
Maryville 69, Drury 90
Indianapolis 46, William Jewell 58

Thursday, January 23

Southwest Baptist 57, Lewis 71
Rockhurst 49, Upper Iowa 65
Drury 58, Indianapolis 56
Missouri-St. Louis 57, Maryville 52
Missouri S&T 56, Illinois Springfield 63
Lincoln 58, McKendree 80
William Jewell 67, Quincy 89

Polls

WBCA Coaches Poll

Rk	School (Record)	Points	Prev.
1	Grand Valley State (17-1)	574	1
2	Texas Woman's (17-1)	548	2
3	Cal St. Dominguez Hills (18-0)	526	3
4	Bentley (17-1)	507	4
5	Seton Hill (16-1)	447	9
6	Minnesota St. Mankato (17-2)	440	10
7	North Georgia (15-1)	411	5
8	Pittsburg State (16-2)	387	12
9	Texas-Tyler (15-2)	375	13
10	Embry-Riddle (15-1)	336	15
11	Fort Hays State (14-2)	306	7
12	Ashland (16-3)	297	14
13	Azusa Pacific (15-2)	294	8
14	Coker (15-1)	281	16t
15	Gannon (16-3)	252	16t
16	Cal Poly Pomona (14-2)	205	19
17	Nova Southeastern (15-2)	192	20
18	Lubbock Christian (16-3)	183	18
19	Union, TN (15-3)	155	21
20	Montana State Billings (16-4)	135	6
21	Belmont Abbey (14-2)	121	21t
22	Concordia-St. Paul (16-2)	117	21t
23	Southwest Minnesota St. (16-2)	110	23
24	Tampa (15-4)	61	24
25	Carson-Newman (14-4)	50	25

GLVC Coaches Poll

Rk	School (Record)	Points
1.	Lewis	190 (9)
2.	Drury	183 (5)
3.	McKendree	158 (1)
4.	Maryville	140
5.	Upper Iowa	130
6.	Rockhurst	128
7.	Missouri-St. Louis	109
	Quincy	109
10.	Illinois Springfield	80
11.	Truman State	75
12.	Missouri S&T	70
13.	Southwest Baptist	47
14.	Lincoln	26
15.	William Jewell	25



2024-25 Truman St. Women's Basketball Combined Team Statistics All games

Page 1/1
as of Jan 27, 2025

Game Records

Record	Overall	Home	Away	Neutral
ALL GAMES	7-13	3-4	2-7	2-2
CONFERENCE	4-6	3-2	1-4	0-0
NON-CONFERENCE	3-7	0-2	1-3	2-2

Score by Periods

Team	1st	2nd	3rd	4th	OT	TOT
Truman St.	327	355	345	361	0	1388
Opponents	372	360	354	339	0	1425

Team Box Score

No.	Player				Total		3-Point		F-Throw		Rebounds											
		GP-GS	MIN	AVG	FG-FGA	FG%	3FG-3FGA	3FG%	FT-FTA	FT%	OFF	DEF	TOT	AVG	PF	DQ	A	TO	BLK	STL	PTS	AVG
40	CUNNINGHAM, Jordan	20-20	683:36	34.2	118-260	.454	26-85	.306	84-115	.730	14	81	95	4.8	45	1	62	60	20	27	346	17.3
1	JOYCE, Molly	20-20	610:14	30.5	82-224	.366	28-105	.267	75-92	.815	17	60	77	3.9	47	0	41	51	4	32	267	13.4
30	NIEMEIER, Maddie	5-5	130:09	26.0	24-46	.522	0-1	.000	6-9	.667	5	18	23	4.6	18	1	10	7	1	5	54	10.8
4	DUWE, Bryar	20-20	562:42	28.1	62-158	.392	28-85	.329	23-32	.719	9	46	55	2.8	28	0	31	43	0	20	175	8.8
22	WHITE, Lexie	20-20	478:47	23.9	53-138	.384	20-63	.317	24-34	.706	21	78	99	5.0	54	1	16	28	12	18	150	7.5
35	OTT, Mallory	11-6	169:26	15.4	20-54	.370	3-19	.158	11-15	.733	15	28	43	3.9	13	0	5	8	1	7	54	4.9
3	STANDEFER, Tori	13-0	169:59	13.1	19-39	.487	8-19	.421	15-18	.833	13	11	24	1.8	17	0	6	5	0	4	61	4.7
12	ODEM, Katelyn	20-9	350:29	17.5	34-78	.436	7-26	.269	8-22	.364	8	27	35	1.8	34	0	11	21	2	16	83	4.2
21	BULMAN, Emma	20-0	336:55	16.8	30-78	.385	4-30	.133	13-20	.650	11	51	62	3.1	33	1	16	26	4	13	77	3.9
33	WILLIAMS, McKenna	17-0	146:56	8.6	18-41	.439	4-17	.235	16-20	.800	8	25	33	1.9	11	0	6	10	3	5	56	3.3
0	NEFF, Gracie	20-0	292:49	14.6	16-40	.400	6-23	.261	10-16	.625	4	14	18	0.9	20	0	28	21	1	7	48	2.4
34	LARSON, Avery	4-0	15:18	3.8	3-4	.750	0-0	.000	1-2	.500	4	1	5	1.3	3	0	0	2	0	1	7	1.8
25	PATKE, Kaitlyn	7-0	31:29	4.5	4-10	.400	0-4	.000	2-3	.667	2	5	7	1.0	3	0	2	4	2	3	10	1.4
11	BOEHM, Lizzie	4-0	11:35	2.9	0-2	.000	0-1	.000	0-2	.000	1	1	2	0.5	0	0	1	0	0	1	0	0.0
14	HUSS, Nicky	4-0	09:37	2.4	0-2	.000	0-1	.000	0-0	.000	0	1	1	0.3	0	0	0	1	0	0	0	0.0
Team											30	42	72					5				
Total		20	4000		483-1174	.411	134-479	.280	288-400	.720	162	489	651	32.6	326	4	235	292	50	159	1388	69.4
Opponents		20	4000		538-1230	.437	145-455	.319	204-271	.753	205	570	775	38.8	375	9	260	326	32	142	1425	71.3

Team Statistics

	TSU	OPP
Scoring	1388	1425
Points per game	69.4	71.3
Scoring margin	-1.9	-
Field goals-att	483-1174	538-1230
Field goal pct	.411	.437
3 point fg-att	134-479	145-455
3-point FG pct	.280	.319
3-pt FG made per game	6.7	7.3
Free throws-att	288-400	204-271
Free throw pct	.720	.753
F-Throws made per game	14.4	10.2
Rebounds	651	775
Rebounds per game	32.6	38.8
Rebounding margin	-6.2	-
Assists	235	260
Assists per game	11.8	13.0
Turnovers	292	326
Turnovers per game	14.6	16.3
Turnover margin	+1.7	-
Assist/turnover ratio	0.8	0.8
Steals	159	142
Steals per game	8.0	7.1
Blocks	50	32
Blocks per game	2.5	1.6
Winning streak	0	-
Home win streak	2	-
Attendance	2041	4169
Home games-Avg/Game	7-292	9-463
Neutral site-Avg/Game	-	4-184

Team Results

Date	Opponent		Score	Att.
11/08/2024	at Cedarville	W	74-61	455
11/09/2024	vs Ursuline	W	81-60	150
11/15/2024	at Concordia-St. Paul	L	57-68	325
11/16/2024	at Winona St.	L	64-70	825
11/22/2024	Washburn	L	59-81	1232
11/23/2024	Quincy	L	76-85	200
11/26/2024	vs Newman	W	80-48	263
11/27/2024	vs Ark.-Fort Smith	L	73-75	217
11/30/2024	Rockhurst	W	82-64	83
12/05/2024	at Southwest Baptist	W	77-63	322
12/07/2024	at Drury	L	72-97	1207
12/19/2024	vs Fort Hays St.	L	57-77	107
12/21/2024	at Hawaii Hilo	L	61-68	217
01/03/2025	Missouri S&T	L	72-74	1
01/09/2025	at Ill. Springfield	L	50-73	115
01/11/2025	at McKendree	L	60-72	157
01/16/2025	Upper Iowa	L	77-88	200
01/18/2025	Lewis	W	69-60	175
01/20/2025	Lincoln (MO)	W	78-59	150
01/25/2025	at Quincy	L	69-82	546



THEO DEAN

Head Coach // 6th Season At Truman
89-68 (.567) Overall // 66-42 (.611) GLVC

Theo Dean begins his fifth season at the helm of the Truman Women's Basketball team.

Dean has been a part of the program in some capacity for over ten years. He was a student manager and graduate assistant from 2010-14; Dean then returned to Kirksville to become the full-time assistant and recruiting coordinator from June 2016-August 2019. Dean was promoted to interim head coach on August 23, 2019, and on January 13, 2020, after a 9-3 start to the season, including a school-record five-game winning streak to start Great Lakes Valley Conference play, the interim tag was removed, and Dean became the 11th full-time head coach in program history and the first African-American head coach in school history.

By increasing fan and alumni involvement with a fast-paced style of play, Dean's impact on the program has been very evident over the past four seasons, and fans of Truman Women's Basketball have seen continued success for the Bulldogs' program.

Since his return to Truman in 2016, Dean has coached 22 All-GLVC performers (10 being named to the First Team), two Freshman of the Year selections, four 1,000-point scorers, one 1,000 rebounder, two WBCA All-Americans, one D2CCA All-American, six CoSIDA/CSC Academic All-District selections, three D2CCA All-Midwest Region selections, one Academic All-American, one GLVC Player of the Year and one GLVC Women's Basketball Female Student-Athlete of the Year. Dean has also coached over 55 Academic All-GLVC players and has coached three WBCA Academic Top 25 teams (2019, 2021 & 2023).

Overall, Dean has been on the sideline with the Bulldogs for five of the program's eight 20-win seasons, one Great Lakes Valley Conference tournament title, two Great Lakes Valley Conference tournament championship games, three NCAA Tournaments appearances, and one NCAA Tournament victory.

After graduating from Truman, Dean assisted the Lansing (Kansas) High School Boys Basketball program from 2014-16. Dean was the assistant coach to the father of former First Team All-GLVC performer, GLVC Conference Champion, and former Bulldog Associate Head Coach, Amy Briggs. While at Lansing, Dean focused on guard development for the boys' team, overall player development for the girls' team and also supervised the team managers, implementing a hustle and shot chart system into practices and games. In his first year at Lansing, he helped lead the 2014-15 team to the Kansas Substate Championship game, and Dean was then promoted to top assistant in his second season.

A Chicago, IL native, Theo Dean came to Truman in 2008 as a freshman and received his Bachelor of Fine Arts in Visual Communications degree from Truman State University in 2012 and his Master's degree in Leadership, with a concentration in Coaching and Sport Management, from Truman in 2014.

Dean, his wife, Presley (who also holds Bachelor's and Master's degrees from Truman), their son, Theo IV, and their daughter, Mina, reside in Kirksville.



Series Records

Arkansas Fort Smith	0-1
Ashland (Ohio)	0-1
Augustana (S.D.)	0-1
Avila (Mo.)	1-0
Bellarmine	0-1
Cedarville	3-0
Central Missouri	0-1
Concordia-St. Paul	0-2
Davenport (Mich.)	1-0
Drury *	1-7
Eckerd (Fla.)	0-1
Florida Southern	1-0
Fort Hays (Kan.) State	0-1
Hannibal-LaGrange	1-0
Hawaii-Hilo	0-1
Hillsdale (Mich.)	0-1
Illinois Springfield *	4-3
Indianapolis *	4-4
Lewis *	6-6
Lincoln	1-1
Lindenwood *	1-3
Maryville *	9-1
Minot (N.D.) State	1-0
Missouri S&T *	5-2
Missouri St. Louis	5-3
Missouri Western	0-1
McKendree *	6-3
Newman (Kan.)	1-0
Northern Michigan	1-0
Northwood (Mich.)	1-0
Quincy *	7-4
Rockhurst *	5-3
Saginaw Valley St.	0-1
Sioux Falls	0-1
Southern Indiana *	2-2
Southwest Baptist *	5-3
Southwest Minn. State	1-0
Union (Tenn.)	0-1
Upper Iowa	2-3
Ursuline (Ohio)	3-2
UW-Parkside *	1-1
Washburn (Kan.)	0-1
William Jewell *	9-0
Winona (Minn.) State	1-1

Truman Overall	89-67 (.567)
Home Record	41-23
Away Record	35-32
GLVC Record	66-42
GLVC Home Record	36-19
GLVC Away Record	31-23
Non-Conference Record	23-25
vs. Division I	0-0
vs. Division II	22-26
vs. Division III	0-0
vs. NAIA/Other	2-0
NC Home	3-4
NC Road	4-7
Neutral Site	14-13
Postseason	5-5
Overtime	1-4



Assistant Coach

Dajae Black (2nd Season)

2022-23 - Univ. of Akron
 (Assistant Coach)

2020-22 - Grand Canyon (Ariz.)
 (Graduate Assistant)

Playing career:

Lewis University (2016-2020)

All-Time Coaches

- Amy Eagan111-62 (6 yrs)
- Mary Jo Murray100-80 (7 yrs)
- Theo Dean.....89-68 (6yrs)**
- John Sloop87-131 (8 yrs)
- Karin Nichols71-64 (5 yrs)
- Michael Smith68-68 (5 yrs)
- Tarry Parrish44-115 (6 yrs)
- Lois Herren.....31-48 (3 yrs)
- Jan Conner.....19-58 (3 yrs)
- Pam Wood.....13-14 (2 yrs)
- Kathy Austin.....12-11 (2 yrs)

#0 Gracie Neff



Graduate
5-8
Guard
Kansas City, Mo.
Staley HS
Lindenwood

				Field Goals		3-Point		F-Throws		Rebounds										Scoring	
SEASON	TEAM	GP-GS	MIN/AVG	FG-FGA	FG%	3FG-3FGA	3FG%	FT-FTA	FT%	OFF	DEF	TOT	AVG	PF-FO	A	TO	BLK	STL	PTS	AVG	
2020-21	Linden	19-18	468/24.6	18-58	.310	11-41	.268	3-8	.375	1	25	26	1.4	26-0	60	46	0	10	50	2.6	
2021-22	Linden	26-17	558/21.4	19-56	.339	3-20	.150	13-21	.619	8	20	28	1.1	30-0	103	65	0	12	54	2.1	
2022-23	TSU	30-0	361/12.0	20-50	.400	12-32	.375	23-29	.793	0	35	35	1.2	21-0	58	38	1	1	75	2.5	
2023-24	TSU	28-21	726/25.9	31-87	.356	22-62	.355	27-38	.711	5	44	49	1.8	37-0	117	74	2	17	111	4.0	
2024-25	TSU	20-0	293/14.6	16-40	.400	6-23	.261	10-16	.625	4	14	18	0.9	20-0	28	21	1	7	48	2.4	
TOTAL FOR TSU		78-21	1380/17.7	67-177	.379	40-117	.342	60-83	.723	9	93	102	1.3	78-0	203	133	4	25	234	3.0	
TOTAL		123-56	2405/19.6	104-291	.357	54-178	.303	76-112	.679	18	138	156	1.3	134-0	366	244	4	47	338	2.7	

Single Game Highs

Statistic	Value	
Points	13	vs Drury 01/20/24
Rebounds	5	vs McKendree 02/01/24, vs Quincy 02/23/21
Assists	11	vs Quincy 12/02/21
Steals	3	vs McKendree 02/01/24, vs Southwest Baptist 01/30/21
Blocks	1	4 times
FG Made	4	5 times
FG Attempts	9	at UIndy 02/10/24
3FG Made	4	vs Drury 01/20/24
3FG Attempts	6	vs Drury 01/20/24
FT Made	5	vs UIndy 01/03/24
FT Attempts	6	vs UIndy 01/03/24, vs Maryville (MO) 11/29/21

#1 Molly Joyce



Sophomore
5-7
Guard
Algona, Iowa
Bishop Garrigan

JOYCE, Molly

				Field Goals		3-Point		F-Throws		Rebounds										Scoring	
SEASON	TEAM	GP-GS	MIN/AVG	FG-FGA	FG%	3FG-3FGA	3FG%	FT-FTA	FT%	OFF	DEF	TOT	AVG	PF-FO	A	TO	BLK	STL	PTS	AVG	
2023-24	TSU	28-14	675/24.1	104-277	.375	29-102	.284	67-87	.770	16	79	95	3.4	61-0	39	62	9	31	304	10.9	
2024-25	TSU	20-20	610/30.5	82-224	.366	28-105	.267	75-92	.815	17	60	77	3.9	47-0	41	51	4	32	267	13.4	
TOTAL		48-34	1285/26.8	186-501	.371	57-207	.275	142-179	.793	33	139	172	3.6	108-0	80	113	13	63	571	11.9	

Single Game Highs

Statistic	Value	
Points	34	vs Ursuline 11/09/24
Rebounds	10	vs Ill. Springfield 02/22/24
Assists	5	vs Missouri S&T 01/03/25
Steals	5	at Rockhurst 01/25/24
Blocks	2	vs Quincy 02/24/24, vs Maryville (MO) 02/15/24, vs Winona St. 11/17/23
FG Made	10	vs Ursuline 11/09/24
FG Attempts	23	at Winona St. 11/16/24
3FG Made	6	vs Ursuline 11/09/24
3FG Attempts	11	vs Ark.-Fort Smith 11/27/24
FT Made	10	at Rockhurst 01/25/24, vs Ark.-Fort Smith 11/27/24
FT Attempts	12	vs Ark.-Fort Smith 11/27/24, at Hawaii Hilo 12/21/24



#3 Tori Standefer



Graduate
5-7
Guard
Bethalto, Ill.
Civic Memorial
Mo.-St. Louis

				Field Goals		3-Point		F-Throws		Rebounds								Scoring		
SEASON	TEAM	GP-GS	MIN/AVG	FG-FGA	FG%	3FG-3FGA	3FG%	FT-FTA	FT%	OFF	DEF	TOT	AVG	PF-FO	A	TO	BLK	STL	PTS	AVG
2021-22	UMSL	9-0	57/6.3	4-15	.267	1-9	.111	8-8	1.000	2	5	7	0.8	4-0	4	2	0	1	17	1.9
2022-23	UMSL	16-0	115/7.2	5-18	.278	1-7	.143	8-13	.615	6	8	14	0.9	15-1	2	12	0	6	19	1.2
2023-24	UMSL	23-0	233/10.1	13-52	.250	6-29	.207	7-10	.700	9	18	27	1.2	14-0	9	15	0	7	39	1.7
2024-25	TSU	13-0	170/13.1	19-39	.487	8-19	.421	15-18	.833	13	11	24	1.8	17-0	6	5	0	4	61	4.7
TOTAL FOR TSU		13-0	170/13.1	19-39	.487	8-19	.421	15-18	.833	13	11	24	1.8	17-0	6	5	0	4	61	4.7
TOTAL		61-0	575/9.4	41-124	.331	16-64	.250	38-49	.776	30	42	72	1.2	50-1	21	34	0	18	136	2.2

Single Game Highs

Statistic	Value	
Points	14	vs Lincoln (MO) 01/20/25
Rebounds	5	at Davenport 11/11/23
Assists	2	at Grand Valley St. 11/10/23, vs Newman 11/26/24, vs Upper Iowa 01/16/25
Steals	2	vs Wis.-Parkside 12/31/22, vs Ill. Springfield 01/21/23, vs McKendree 02/25/23
FG Made	5	vs Lincoln (MO) 01/20/25
FG Attempts	11	vs Lincoln (MO) 01/20/25
3FG Made	2	4 times
3FG Attempts	5	vs Lincoln (MO) 01/20/25
FT Made	6	at Principia 12/18/21
FT Attempts	6	at Principia 12/18/21

#4 Bryar Duwe



Sophomore
5-6
Guard
Decorah, Iowa
Decorah HS

				Field Goals		3-Point		F-Throws		Rebounds										Scoring	
SEASON	TEAM	GP-GS	MIN/AVG	FG-FGA	FG%	3FG-3FGA	3FG%	FT-FTA	FT%	OFF	DEF	TOT	AVG	PF-FO	A	TO	BLK	STL	PTS	AVG	
2023-24	TSU	7-0	31/4.4	5-14	.357	3-9	.333	4-4	1.000	1	0	1	0.1	1-0	0	1	0	2	17	2.4	
2024-25	TSU	20-20	563/28.1	62-158	.392	28-85	.329	23-32	.719	9	46	55	2.8	28-0	31	43	0	20	175	8.8	
TOTAL		27-20	593/22.0	67-172	.390	31-94	.330	27-36	.750	10	46	56	2.1	29-0	31	44	0	22	192	7.1	

Single Game Highs

Statistic	Value	
Points	14	at Quincy 01/25/25
Rebounds	7	vs Ark.-Fort Smith 11/27/24
Assists	4	at Cedarville 11/08/24, at Southwest Baptist 12/05/24
Steals	3	at McKendree 01/11/25
FG Made	5	at Winona St. 11/16/24, vs Missouri S&T 01/03/25, at Quincy 01/25/25
FG Attempts	12	at McKendree 01/11/25
3FG Made	4	at Quincy 01/25/25
3FG Attempts	8	vs Missouri S&T 01/03/25
FT Made	5	vs Lewis 01/18/25
FT Attempts	6	vs Fort Hays St. 12/19/24, vs Lewis 01/18/25

#10 Sophie Hope



Freshman
5-10
Waukee, Iowa
Waukee

#11 Lizzie Boehm



Sophomore
5-7
Guard
Kansas City, Mo.
Staley HS

				Field Goals		3-Point		F-Throws		Rebounds									Scoring	
SEASON	TEAM	GP-GS	MIN/AVG	FG-FGA	FG%	3FG-3FGA	3FG%	FT-FTA	FT%	OFF	DEF	TOT	AVG	PF-FO	A	TO	BLK	STL	PTS	AVG
2023-24	TSU	23-0	308/13.4	14-58	.241	4-29	.138	15-19	.789	11	16	27	1.2	41-1	25	37	1	16	47	2.0
2024-25	TSU	4-0	12/2.9	0-2	.000	0-1	.000	0-2	.000	1	1	2	0.5	0-0	1	0	0	1	0	0.0
TOTAL		27-0	320/11.8	14-60	.233	4-30	.133	15-21	.714	12	17	29	1.1	41-1	26	37	1	17	47	1.7

Single Game Highs

Statistic	Value	
Points	6	vs Southwest Baptist 01/18/24, at UIndy 02/10/24, at Drury 03/02/24
Rebounds	3	5 times
Assists	4	vs Mo.-St. Louis 02/03/24
Steals	3	at Southwest Baptist 02/29/24
Blocks	1	at Southwest Baptist 02/29/24
FG Made	2	4 times
FG Attempts	7	at William Jewell 01/27/24
3FG Made	1	4 times
3FG Attempts	4	at McKendree 11/25/23, vs McKendree 02/01/24
FT Made	4	vs Ill. Springfield 02/22/24
FT Attempts	4	vs Ill. Springfield 02/22/24



#12 Katelyn Odem



Freshman
5-8
Guard
Mequon, Wis.
Homestead

			Field Goals		3-Point		F-Throws		Rebounds										Scoring	
SEASON	TEAM	GP-GS	MIN/AVG	FG-FGA	FG%	3FG-3FGA	3FG%	FT-FTA	FT%	OFF	DEF	TOT	AVG	PF-FO	A	TO	BLK	STL	PTS	AVG
2024-25	TSU	20-9	350/17.5	34-78	.436	7-26	.269	8-22	.364	8	27	35	1.8	34-0	11	21	2	16	83	4.2
TOTAL		20-9	350/17.5	34-78	.436	7-26	.269	8-22	.364	8	27	35	1.8	34-0	11	21	2	16	83	4.2

Single Game Highs

Statistic	Value	
Points	13	at Hawaii Hilo 12/21/24
Rebounds	6	vs Fort Hays St. 12/19/24
Assists	3	at McKendree 01/11/25
Steals	3	vs Upper Iowa 01/16/25
Blocks	1	at Drury 12/07/24, at Quincy 01/25/25
FG Made	6	at Hawaii Hilo 12/21/24
FG Attempts	9	at Hawaii Hilo 12/21/24
3FG Made	2	vs Missouri S&T 01/03/25
3FG Attempts	4	vs Fort Hays St. 12/19/24
FT Made	3	at Drury 12/07/24
FT Attempts	5	at Drury 12/07/24

#14 Nicky Huss



R-Freshman
6-1
Omaha, Neb.
Duchesne

			Field Goals		3-Point		F-Throws		Rebounds										Scoring	
SEASON	TEAM	GP-GS	MIN/AVG	FG-FGA	FG%	3FG-3FGA	3FG%	FT-FTA	FT%	OFF	DEF	TOT	AVG	PF-FO	A	TO	BLK	STL	PTS	AVG
2024-25	TSU	4-0	10/2.4	0-2	.000	0-1	.000	0-0	.000	0	1	1	0.3	0-0	0	1	0	0	0	0.0
TOTAL		4-0	10/2.4	0-2	.000	0-1	.000	0-0	.000	0	1	1	0.3	0-0	0	1	0	0	0	0.0

Single Game Highs

Statistic	Value	
Rebounds	1	vs Newman 11/26/24
FG Attempts	1	vs Newman 11/26/24, vs Lincoln (MO) 01/20/25
3FG Attempts	1	vs Lincoln (MO) 01/20/25

#20 Braylee Rogers



Freshman
5-9
Olathe, Kan.
Olathe East

#21 Emma Bulman



Senior
5-10
Ames, Iowa
Gilbert

				Field Goals		3-Point		F-Throws		Rebounds										Scoring	
SEASON	TEAM	GP-GS	MIN/AVG	FG-FGA	FG%	3FG-3FGA	3FG%	FT-FTA	FT%	OFF	DEF	TOT	AVG	PF-FO	A	TO	BLK	STL	PTS	AVG	
2021-22	TSU	26-0	247/9.5	20-43	.465	4-10	.400	9-12	.750	4	47	51	2.0	20-0	9	11	4	5	53	2.0	
2022-23	TSU	30-0	483/16.1	56-138	.406	15-36	.417	39-53	.736	11	91	102	3.4	28-0	20	51	10	6	166	5.5	
2023-24	TSU	28-11	584/20.9	49-126	.389	15-60	.250	60-69	.870	14	63	77	2.8	58-1	37	65	5	21	173	6.2	
2024-25	TSU	20-0	337/16.8	30-78	.385	4-30	.133	13-20	.650	11	51	62	3.1	33-1	16	26	4	13	77	3.9	
TOTAL		104-11	1651/15.9	155-385	.403	38-136	.279	121-154	.786	40	252	292	2.8	139-2	82	153	23	45	469	4.5	

Single Game Highs

Statistic	Value	
Points	18	at McKendree 11/25/23
Rebounds	9	vs Lincoln (MO) 11/21/23
Assists	6	vs Winona St. 11/17/23
Steals	3	vs Lewis 01/18/25
Blocks	2	vs Maryville (MO) 01/26/23, at Rockhurst 01/25/24
FG Made	7	at McKendree 11/25/23
FG Attempts	10	at Quincy 01/11/24
3FG Made	2	vs Lincoln (MO) 11/21/23, at McKendree 11/25/23, vs Southwest Baptist 01/18/24
3FG Attempts	6	at Quincy 01/25/25
FT Made	8	vs Ill. Springfield 02/22/24
FT Attempts	8	at Southwest Baptist 12/10/22, at Rockhurst 01/25/24, vs Ill. Springfield 02/22/24



#22 Lexie White



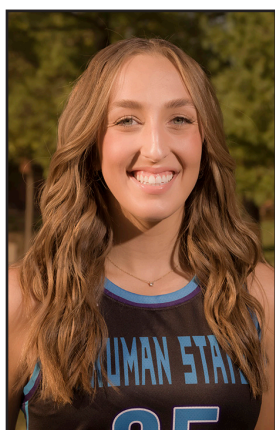
Sophomore
5-11
Merrill, Wis.
Wausau West

				Field Goals		3-Point		F-Throws		Rebounds										Scoring	
SEASON	TEAM	GP-GS	MIN/AVG	FG-FGA	FG%	3FG-3FGA	3FG%	FT-FTA	FT%	OFF	DEF	TOT	AVG	PF-FO	A	TO	BLK	STL	PTS	AVG	
2023-24	TSU	11-0	176/16.0	17-52	.327	3-20	.150	8-11	.727	6	25	31	2.8	28-0	11	17	6	13	45	4.1	
2024-25	TSU	20-20	479/23.9	53-138	.384	20-63	.317	24-34	.706	21	78	99	5.0	54-1	16	28	12	18	150	7.5	
TOTAL		31-20	655/21.1	70-190	.368	23-83	.277	32-45	.711	27	103	130	4.2	82-1	27	45	18	31	195	6.3	

Single Game Highs

Statistic	Value	
Points	16	at Quincy 01/25/25
Rebounds	11	vs Rockhurst 11/30/24
Assists	3	at McKendree 11/25/23
Steals	3	vs Ursuline 11/10/23
Blocks	3	at Concordia-St. Paul 11/15/24
FG Made	6	at McKendree 01/11/25, at Quincy 01/25/25
FG Attempts	14	vs Missouri S&T 01/03/25
3FG Made	3	at Drury 12/07/24, at Quincy 01/25/25
3FG Attempts	6	vs Fort Hays St. 12/19/24, at Quincy 01/25/25
FT Made	4	vs Rockhurst 11/30/24
FT Attempts	6	vs Fort Hays St. 12/19/24

#25 Kaitlyn Patke



Junior
6-0
Forward
Washington, Mo.
Borgia

				Field Goals		3-Point		F-Throws		Rebounds										Scoring	
SEASON	TEAM	GP-GS	MIN/AVG	FG-FGA	FG%	3FG-3FGA	3FG%	FT-FTA	FT%	OFF	DEF	TOT	AVG	PF-FO	A	TO	BLK	STL	PTS	AVG	
2022-23	TSU	15-0	76/5.1	11-18	.611	1-5	.200	6-12	.500	2	6	8	0.5	5-0	2	11	0	2	29	1.9	
2023-24	TSU	8-0	29/3.6	9-12	.750	2-5	.400	2-3	.667	0	2	2	0.3	5-0	1	0	0	2	22	2.8	
2024-25	TSU	7-0	31/4.5	4-10	.400	0-4	.000	2-3	.667	2	5	7	1.0	3-0	2	4	2	3	10	1.4	
TOTAL		30-0	136/4.5	24-40	.600	3-14	.214	10-18	.556	4	13	17	0.6	13-0	5	15	2	7	61	2.0	

Single Game Highs

Statistic	Value	
Points	6	vs William Jewell 01/12/23, at Missouri S&T 01/19/23, at Drury 03/02/24
Rebounds	2	6 times
Assists	1	5 times
Steals	1	7 times
Blocks	1	at Southwest Baptist 12/05/24, vs Lincoln (MO) 01/20/25
FG Made	2	6 times
FG Attempts	4	at Drury 03/02/24
3FG Made	1	vs William Jewell 01/12/23, vs Winona St. 11/17/23, at Rockhurst 01/25/24
3FG Attempts	2	4 times
FT Made	4	at Missouri S&T 01/19/23
FT Attempts	4	at Missouri S&T 01/19/23

#33 McKenna Williams



Junior
5-10
Forward
Darien, Wis.
Delavan-Darien
Rock Valley

				Field Goals		3-Point		F-Throws		Rebounds									Scoring	
SEASON	TEAM	GP-GS	MIN/AVG	FG-FGA	FG%	3FG-3FGA	3FG%	FT-FTA	FT%	OFF	DEF	TOT	AVG	PF-FO	A	TO	BLK	STL	PTS	AVG
2024-25	TSU	17-0	147/8.6	18-41	.439	4-17	.235	16-20	.800	8	25	33	1.9	11-0	6	10	3	5	56	3.3
TOTAL		17-0	147/8.6	18-41	.439	4-17	.235	16-20	.800	8	25	33	1.9	11-0	6	10	3	5	56	3.3

Single Game Highs

Statistic	Value	
Points	15	vs Fort Hays St. 12/19/24
Rebounds	6	at Ill. Springfield 01/09/25
Assists	2	at Drury 12/07/24
Steals	1	5 times
Blocks	1	vs Quincy 11/23/24, vs Newman 11/26/24, vs Ark.-Fort Smith 11/27/24
FG Made	5	vs Fort Hays St. 12/19/24
FG Attempts	7	vs Fort Hays St. 12/19/24
3FG Made	1	4 times
3FG Attempts	3	at Southwest Baptist 12/05/24
FT Made	4	vs Fort Hays St. 12/19/24
FT Attempts	5	vs Fort Hays St. 12/19/24

#34 Avery Larson



R-Sophomore
6-3
Center
Antioch, Ill.
Antioch

				Field Goals		3-Point		F-Throws		Rebounds								Scoring		
SEASON	TEAM	GP-GS	MIN/AVG	FG-FGA	FG%	3FG-3FGA	3FG%	FT-FTA	FT%	OFF	DEF	TOT	AVG	PF-FO	A	TO	BLK	STL	PTS	AVG
2022-23	TSU	7-0	24/3.4	3-8	.375	0-0	.000	4-5	.800	1	5	6	0.9	3-0	1	1	0	0	10	1.4
2024-25	TSU	4-0	15/3.8	3-4	.750	0-0	.000	1-2	.500	4	1	5	1.3	3-0	0	2	0	1	7	1.8
TOTAL		11-0	39/3.5	6-12	.500	0-0	.000	5-7	.714	5	6	11	1.0	6-0	1	3	0	1	17	1.5

Single Game Highs

Statistic	Value	
Points	5	vs Newman 11/26/24
Rebounds	3	at Southwest Baptist 12/05/24
Assists	1	vs Ursuline 11/13/22
Steals	1	vs Fort Hays St. 12/19/24
FG Made	2	vs Newman 11/26/24
FG Attempts	4	vs William Jewell 01/12/23
FT Made	3	at William Jewell 02/25/23
FT Attempts	4	at William Jewell 02/25/23



#35 Mallory Ott



R-Freshman
5-11
Forward
Oshkosh, Wis.
Oshkosh North

				Field Goals		3-Point		F-Throws		Rebounds				Scoring						
SEASON	TEAM	GP-GS	MIN/AVG	FG-FGA	FG%	3FG-3FGA	3FG%	FT-FTA	FT%	OFF	DEF	TOT	AVG	PF-FO	A	TO	BLK	STL	PTS	AVG
2024-25	TSU	11-6	169/15.4	20-54	.370	3-19	.158	11-15	.733	15	28	43	3.9	13-0	5	8	1	7	54	4.9
TOTAL		11-6	169/15.4	20-54	.370	3-19	.158	11-15	.733	15	28	43	3.9	13-0	5	8	1	7	54	4.9

Single Game Highs

Statistic	Value	
Points	14	vs Quincy 11/23/24
Rebounds	10	at Southwest Baptist 12/05/24
Assists	2	vs Ark.-Fort Smith 11/27/24
Steals	2	vs Newman 11/26/24, vs Rockhurst 11/30/24
Blocks	1	vs Ark.-Fort Smith 11/27/24
FG Made	5	vs Quincy 11/23/24, at Southwest Baptist 12/05/24
FG Attempts	13	at Southwest Baptist 12/05/24
3FG Made	1	vs Ark.-Fort Smith 11/27/24, vs Rockhurst 11/30/24, at Southwest Baptist 12/05/24
3FG Attempts	7	vs Ark.-Fort Smith 11/27/24
FT Made	4	vs Quincy 11/23/24
FT Attempts	5	vs Quincy 11/23/24

#40 Jordan Cunningham



Graudate
6-0
Guard
Grimes, Iowa
Dallas Center/Grimes
Mo. Western

				Field Goals		3-Point		F-Throws		Rebounds				Scoring						
SEASON	TEAM	GP-GS	MIN/AVG	FG-FGA	FG%	3FG-3FGA	3FG%	FT-FTA	FT%	OFF	DEF	TOT	AVG	PF-FO	A	TO	BLK	STL	PTS	AVG
2020-21	MW	22-13	533/24.2	43-120	.358	18-60	.300	17-27	.630	7	45	52	2.4	41-0	33	43	7	22	121	5.5
2021-22	MW	34-30	898/26.4	86-206	.417	22-91	.242	55-78	.705	13	60	73	2.1	51-0	73	55	7	28	249	7.3
2022-23	MW	31-26	761/24.5	68-154	.442	13-51	.255	51-74	.689	11	87	98	3.2	39-1	51	46	12	25	200	6.5
2023-24	MW	31-1	520/16.8	49-102	.480	8-35	.229	13-19	.684	6	68	74	2.4	51-0	36	30	13	17	119	3.8
2024-25	TSU	20-20	684/34.2	118-260	.454	26-85	.306	84-115	.730	14	81	95	4.8	45-1	62	60	20	27	346	17.3
TOTAL FOR TSU		20-20	684/34.2	118-260	.454	26-85	.306	84-115	.730	14	81	95	4.8	45-1	62	60	20	27	346	17.3
TOTAL		138-90	3395/24.6	364-842	.432	87-322	.270	220-313	.703	51	341	392	2.8	227-2	255	234	59	119	1035	7.5

Single Game Highs

Statistic	Value	
Points	29	vs Upper Iowa 01/16/25
Rebounds	12	vs Lincoln (MO) 01/20/25
Assists	7	vs Newman 02/16/21, at Newman 01/20/22, vs Quincy 11/23/24
Steals	4	5 times
Blocks	4	vs Fort Hays St. 02/01/24
FG Made	10	vs Rockhurst 11/30/24
FG Attempts	23	at Drury 12/07/24
3FG Made	4	at Concordia-St. Paul 11/15/24
3FG Attempts	8	at Northeastern St. 11/21/20, vs Emporia St. 02/02/21, vs Quincy 11/23/24
FT Made	9	vs Upper Iowa 01/16/25
FT Attempts	12	at Ill. Springfield 01/09/25



2024-25 Truman St. Women's Basketball Combined Team Statistics In Conference games

Page 1/1
as of Jan 27, 2025

Game Records

Record	Overall	Home	Away	Neutral
ALL GAMES	4-6	3-2	1-4	0-0
CONFERENCE	4-6	3-2	1-4	0-0
NON-CONFERENCE	0-0	0-0	0-0	0-0

Score by Periods

Team	1st	2nd	3rd	4th	OT	TOT
Truman St.	173	183	171	179	0	706
Opponents	207	177	178	170	0	732

Team Box Score

No. Player					Total		3-Point		F-Throw		Rebounds													
		GP-GS	MIN	AVG	FG-FGA	FG%	3FG-3FGA	3FG%	FT-FTA	FT%	OFF	DEF	TOT	AVG	PF	DQ	A	TO	BLK	STL	PTS	AVG		
40	CUNNINGHAM, Jordan	10-10	347:16	34.7	69-153	.451	13-48	.271	52-72	.722	6	47	53	5.3	24	1	28	31	13	10	203	20.3		
22	WHITE, Lexie	10-10	238:27	23.8	36-75	.480	12-32	.375	13-14	.929	8	52	60	6.0	28	1	8	17	7	10	97	9.7		
1	JOYCE, Molly	10-10	313:50	31.4	29-95	.305	8-44	.182	28-32	.875	9	27	36	3.6	24	0	26	29	1	19	94	9.4		
4	DUWE, Bryar	10-10	271:20	27.1	29-77	.377	12-41	.293	14-20	.700	3	18	21	2.1	12	0	11	21	0	12	84	8.4		
35	OTT, Mallory	3-3	50:15	16.8	7-20	.350	2-8	.250	4-4	1.000	5	11	16	5.3	5	0	2	2	0	2	20	6.7		
12	ODEM, Katelyn	10-7	199:38	20.0	22-45	.489	5-15	.333	7-14	.500	7	13	20	2.0	18	0	7	12	2	9	56	5.6		
3	STANDEFER, Tori	10-0	143:27	14.3	16-33	.485	7-16	.438	13-16	.813	10	7	17	1.7	13	0	4	4	0	1	52	5.2		
21	BULMAN, Emma	10-0	155:16	15.5	16-36	.444	3-13	.231	7-11	.636	8	27	35	3.5	21	1	8	14	4	8	42	4.2		
33	WILLIAMS, McKenna	8-0	79:36	9.9	7-22	.318	1-9	.111	8-10	.800	7	13	20	2.5	8	0	4	6	0	3	23	2.9		
0	NEFF, Gracie	10-0	154:34	15.5	7-19	.368	4-11	.364	7-10	.700	2	8	10	1.0	9	0	15	10	1	3	25	2.5		
25	PATKE, Kaitlyn	5-0	23:58	4.8	3-7	.429	0-2	.000	2-3	.667	2	5	7	1.4	3	0	2	2	2	2	8	1.6		
34	LARSON, Avery	2-0	08:19	4.2	1-2	.500	0-0	.000	0-0	.000	2	1	3	1.5	2	0	0	2	0	0	2	1.0		
11	BOEHM, Lizzie	3-0	10:03	3.3	0-2	.000	0-1	.000	0-2	.000	1	1	2	0.7	0	0	0	0	0	1	0	0.0		
14	HUSS, Nicky	2-0	04:02	2.0	0-1	.000	0-1	.000	0-0	.000	0	0	0	0.0	0	0	0	1	0	0	0	0.0		
Team											14	15	29					2						
Total		10	2000		242-587	.412	67-241	.278	155-208	.745	84	245	329	32.9	167	3	115	153	30	80	706	70.6		
Opponents		10	2000		271-617	.439	68-209	.325	122-150	.813	100	280	380	38.0	190	5	118	163	13	71	732	73.2		

Team Statistics

	TSU	OPP
Scoring	706	732
Points per game	70.6	73.2
Scoring margin	-2.6	-
Field goals-att	242-587	271-617
Field goal pct	.412	.439
3 point fg-att	67-241	68-209
3-point FG pct	.278	.325
3-pt FG made per game	6.7	6.8
Free throws-att	155-208	122-150
Free throw pct	.745	.813
F-Throws made per game	15.5	12.2
Rebounds	329	380
Rebounds per game	32.9	38.0
Rebounding margin	-5.1	-
Assists	115	118
Assists per game	11.5	11.8
Turnovers	153	163
Turnovers per game	15.3	16.3
Turnover margin	+1.0	-
Assist/turnover ratio	0.8	0.7
Steals	80	71
Steals per game	8.0	7.1
Blocks	30	13
Blocks per game	3.0	1.3
Winning streak	0	-
Home win streak	2	-
Attendance	609	2347
Home games-Avg/Game	5-122	5-469
Neutral site-Avg/Game	-	0-0

Team Results

Date	Opponent		Score	Att.
11/30/2024	Rockhurst	W	82-64	83
12/05/2024	at Southwest Baptist	W	77-63	322
12/07/2024	at Drury	L	72-97	1207
01/03/2025	Missouri S&T	L	72-74	1
01/09/2025	at Ill. Springfield	L	50-73	115
01/11/2025	at McKendree	L	60-72	157
01/16/2025	Upper Iowa	L	77-88	200
01/18/2025	Lewis	W	69-60	175
01/20/2025	Lincoln (MO)	W	78-59	150
01/25/2025	at Quincy	L	69-82	546



TRUMAN STATE UNIVERSITY — BULLDOGS

Home Venue: Pershing
Capacity: 2400
Built: 1959

WOMEN'S BASKETBALL HC				Overall	7-13	L1	FG%	3PT%	FT%	TO +/-	PTS	REB / GM	ST / GM	PTSA	RANKING
Theo Dean (6th)		Conference	4-6	L1	41.1	28	72	1.7	69.4	32.55	8	71.3			
Truman St.	89-68 (.567)	Home	3-4	W2	8 98	14 205	7 112	5 87	8 78	12 267	8 174	12 243			
Career	89-68 (.567)	Road	2-7	L5	FGM	3FG	FT	TO	PTS	TOT REB	STL	PF			
		Neutral	2-2	L2	483	134	288	292	1388	651	159	326			
		Non-Division	0-0	L1	0 11.0	0 11.0	0 11.0	0 11.0	0 11.0	0 11.0	0 11.0	0 11.0			

0	Gracie	PTS	AVG	FG%	FG	3FG%	3PT	FT%	FT	
	Neff	48 (8)	2.4	40 (3)	16 / 40	26.09 (1)	6 / 23	62.5 (4)	10 / 16	
	Sr. G 5-8 Kansas City, MO (Staley)	G/GS	MIN / GM	TOT REB	TO	STL	AST	BLK	PF / GM	
3	Tori	PTS	AVG	FG%	FG	3FG%	3PT	FT%	FT	
	Standefer	61 (14)	4.69	48.72 (5)	19 / 39	42.11 (2)	8 / 19	83.33 (3)	15 / 18	
	Sr. G 5-7 Bethalto, IL (Civic Memorial)	G/GS	MIN / GM	TOT REB	TO	STL	AST	BLK	PF / GM	
4	Bryar	PTS	AVG	FG%	FG	3FG%	3PT	FT%	FT	
	Duwe	175 (14)	8.75	39.24 (5)	62 / 158	32.94 (4)	28 / 85	71.88 (5)	23 / 32	
	So. G 5-6 Decorah, IA (Decorah)	G/GS	MIN / GM	TOT REB	TO	STL	AST	BLK	PF / GM	
10	Sophia	PTS	AVG	FG%	FG	3FG%	3PT	FT%	FT	
	Hope									
	Fy. F 5-10 Waukee, IA (Waukee)	G/GS	MIN / GM	TOT REB	TO	STL	AST	BLK	PF / GM	
11	Lizzie	PTS	AVG	FG%	FG	3FG%	3PT	FT%	FT	
	Boehm	0		0 (0)		0 (0)		0 (0)		
	So. G 5-7 Kansas City, MO (Staley HS)	G/GS	MIN / GM	TOT REB	TO	STL	AST	BLK	PF / GM	
12	Katelyn	PTS	AVG	FG%	FG	3FG%	3PT	FT%	FT	
	Odem	83 (13)	4.15	43.59 (6)	34 / 78	26.92 (2)	7 / 26	36.36 (3)	8 / 22	
	Fy. G 5-8 Mequon, WI (Homestead)	G/GS	MIN / GM	TOT REB	TO	STL	AST	BLK	PF / GM	
14	Nicky	PTS	AVG	FG%	FG	3FG%	3PT	FT%	FT	
	Huss	0		0 (0)		0 (0)		0		
	So. F 6-1 Omaha, NE (Duchesne Academy)	G/GS	MIN / GM	TOT REB	TO	STL	AST	BLK	PF / GM	
20	Braylee	PTS	AVG	FG%	FG	3FG%	3PT	FT%	FT	
	Rogers									
	Fy. G 5-9 Olathe, KS (Olathe East)	G/GS	MIN / GM	TOT REB	TO	STL	AST	BLK	PF / GM	
21	Emma	PTS	AVG	FG%	FG	3FG%	3PT	FT%	FT	
	Bulman	77 (11)	3.85	38.46 (5)	30 / 78	13.33 (1)	4 / 30	65 (3)	13 / 20	
	Sr. G 5-10 Ames, IA (Gilbert HS)	G/GS	MIN / GM	TOT REB	TO	STL	AST	BLK	PF / GM	
22	Lexie	PTS	AVG	FG%	FG	3FG%	3PT	FT%	FT	
	White	150 (16)	7.5	38.41 (6)	53 / 138	31.75 (3)	20 / 63	70.59 (4)	24 / 34	
	So. G 5-11 Merrill, WI (Wausau West HS)	G/GS	MIN / GM	TOT REB	TO	STL	AST	BLK	PF / GM	
25	Kaitlyn	PTS	AVG	FG%	FG	3FG%	3PT	FT%	FT	
	Patke	10 (4)	1.43	40 (2)	4 / 10	0 (0)		66.67 (2)	2 / 3	
	Jr. F 5-10 Washington, MO (St. Francis Borgia HS)	G/GS	MIN / GM	TOT REB	TO	STL	AST	BLK	PF / GM	
30	Maddie	PTS	AVG	FG%	FG	3FG%	3PT	FT%	FT	
	Niemeier	54 (22)	10.8	52.17 (11)	24 / 46	0 (0)		66.67 (3)	6 / 9	
	Sr. F 6-2 Liberty, MO (Liberty North HS)	G/GS	MIN / GM	TOT REB	TO	STL	AST	BLK	PF / GM	
34	Avery	PTS	AVG	FG%	FG	3FG%	3PT	FT%	FT	
	Larson	7 (5)	1.75	75 (2)	3 / 4	0		50 (1)	1 / 2	
	Jr. F 6-3 Antioch, IL (Antioch HS)	G/GS	MIN / GM	TOT REB	TO	STL	AST	BLK	PF / GM	
35	Mallory	PTS	AVG	FG%	FG	3FG%	3PT	FT%	FT	
	Ott	54 (14)	4.91	37.04 (5)	20 / 54	15.79 (1)	3 / 19	73.33 (4)	11 / 15	
	So. F 5-11 Oshkosh, WI (Oshkosh North)	G/GS	MIN / GM	TOT REB	TO	STL	AST	BLK	PF / GM	
40	Jordan	PTS	AVG	FG%	FG	3FG%	3PT	FT%	FT	
	Cunningham	346 (29)	17.3	45.38 (10)	118 / 260	30.59 (4)	26 / 85	73.04 (9)	84 / 115	
	Sr. G 6-0 Grimes, IA (Dallas Center-Grimes)	G/GS	MIN / GM	TOT REB	TO	STL	AST	BLK	PF / GM	

Truman State's Last 4		
Jan 16	Upper Iowa	L 77-88
Jan 18	Lewis	W 69-60
Jan 20	Lincoln (MO)	W 78-59
Jan 25	@ Quincy	L 69-82

Truman State's Next 10		
Jan 30	@ Rockhurst	
Feb 1	@ William Jewell	
Feb 6	Drury	
Feb 8	Southwest Baptist	
Feb 13	@ Lincoln (MO)	
Feb 15	@ Missouri S&T	
Feb 20	Maryville (MO)	
Feb 22	Mo.-St. Louis	
Feb 27	@ Uindy	

GLVC RECENT RESULTS		
Thu Jan 23	Southwest Baptist 53 X	Lewis 77
Thu Jan 23	William Jewell 67	Quincy 65 X
Thu Jan 23	Rockhurst 71 X	Upper Iowa 84
Sat Jan 25	Southwest Baptist 62 X	Indianapolis 78
Sat Jan 25	Drury 64 X	Illinois Springfield 73
Sat Jan 25	Lincoln null X	Maryville null
Sat Jan 25	Rockhurst 86	Lewis 85 X
Sat Jan 25	Missouri S&T 84	McKendree 69 X
Sat Jan 25	Truman 80	Quincy 76 X
Sat Jan 25	William Jewell 55 X	Upper Iowa 75

GLVC UPCOMING SCHEDULE		
Thu Jan 30	Indianapolis	Lincoln
Thu Jan 30	McKendree	Maryville
Thu Jan 30	Lewis	Missouri S&T
Thu Jan 30	Illinois Springfield	Missouri-St. Louis
Thu Jan 30	Truman	Rockhurst
Thu Jan 30	Quincy	Southwest Baptist
Thu Jan 30	Upper Iowa	Drury
Sat Feb 1	Quincy	Rockhurst
Sat Feb 1	Upper Iowa	Southwest Baptist
Sat Feb 1	Truman	William Jewell

GLVC STANDINGS	
Drury	14-4 (10-1) — W4
Lewis	15-2 (9-1) — W2
Quincy	14-5 (8-2) — W8
Missouri-St. Louis	14-4 (8-3) — W1
McKendree	11-6 (7-4) — L1
Missouri S&T	11-5 (6-4) — W1
Maryville	8-11 (6-5) — L2
Upper Iowa	8-9 (5-6) — L1
Southwest Baptist	7-10 (5-6) — L2
Truman	7-13 (4-6) — L1
Rockhurst	5-12 (3-8) — L2
William Jewell	5-12 (3-8) — W1
Indianapolis	5-14 (3-8) — W1
Illinois Springfield	4-15 (3-8) — L1
Lincoln	1-15 (0-10) — L15