



TRUMAN STATE

WOMEN'S BASKETBALL

2024-25 SCHEDULE

N8	at Cedarville (Ohio) ¹	W 74-61
N9	vs. Ursuline (Ohio) ¹	W 81-60
N15	at Concordia-St. Paul (Minn.)	L 68-57
N16	at Winona St. (Minn.)	L 70-64
N22	WASHBURN (Kan.)	L 81-59
N23	QUINCY (Ill.)	L 85-76
N26	vs. Newman (Kan.) ²	W 80-48
N27	vs. Arkansas-Fort Smith ²	L 75-73
N30	ROCKHURST (Mo.) *	W 82-64

D5	at Southwest Baptist (Mo.) *	W 77-63
D7	at Drury (Mo.) *	L 97-72
D19	vs. Fort Hays State (Kan.) ³	L 77-57
D21	at Hawaii-Hilo	L 68-61

J3	MISSOURI S&T *	L 74-72
J9	at Illinois Springfield *	L 73-50
J11	at McKendree (Ill.) *	L 72-60
J16	UPPER IOWA *	5:15 p.m.
J18	LEWIS (Ill.) *	1 p.m.
J20	LINCOLN (MO.) *	5 p.m.
J25	at Quincy (Ill.) *	1 p.m.
J30	at Rockhurst (Mo.) *	5:30 p.m.

F1	at William Jewell (Mo.) *	1 p.m.
F6	DRURY (MO.) *	5:15 p.m.
F8	SOUTHWEST BAPTIST (MO.) *	1 p.m.
F13	at Lincoln (Mo.) *	5:30 p.m.
F15	at Missouri S&T *	1 p.m.
F20	MARYVILLE (MO.) *	5:15 p.m.
F22	MISSOURI-ST. LOUIS *	1 p.m.
F27	at Indianapolis *	5:30 p.m. (ET)

M1	WILLIAM JEWELL (MO.) *	1 p.m.
----	------------------------	--------

GLVC BASKETBALL TOURNAMENT

M6	Quarterfinals
M8	Semifinals
M9	Championship

¹ - in Cedarville, Ohio

² - in Springfield, Mo.

³ - in Hilo, Hawaii

* - GLVC

GLVC Tournament will be played in Hyland Arena on the campus of Lindenwood University in St. Charles, Mo.



GAMEDAY CENTRAL

GAME 20 | Jan. 25 | Quincy, Ill. | 1:00 p.m.

Truman State (7-12; 4-5 GLVC)
BULLDOGS
LEADERS
PointsJordan Cunningham (17.9)
Rebounds Lexie White/Cunningham (4.9)
AssistsJordan Cunningham (3.1)
StealsMolly Joyce (1.5)
BlocksJordan Cunningham (1.0)
MinutesJordan Cunningham (33.6)

Quincy (12-5; 6-2 GLVC)
HAWKS
SERIES HISTORY
OverallTruman 31-28
HomeTruman 18-11
RoadQuincy 16-11
NeutralTruman 2-1
Last Meeting...Quincy 85-76 (Nov. 23)
Last 5Quincy 3-2

GAME NOTES

KIRKSVILLE, Mo. – Building on the momentum of two straight wins, including one of the league's top teams, the Truman State Women's Basketball program will look to avenge an earlier season loss when they head to Quincy (Ill.) University on Saturday.

The two squads met in November in a non-conference game in Pershing Arena with the Hawks winning 85-76. The Bulldogs led by eight in the third quarter but Quincy made 11-of-14 shots down the stretch, including three triples in outpacing Truman State 29-18. Jordan Cunningham set a then-career-high with 26 points with QU's Nicole McDermott and Mariann Blass each tallying 19. It was their third straight win over the Bulldogs.

The Bulldogs had a statement win on Saturday afternoon when they downed Lewis 69-60. The Flyers were atop the conference standings at the time of the loss. Two days later, the Bulldogs took care of business with a 78-59 decision over Lincoln (Mo.) University. Those wins snapped a seven-game losing streak and started an upward trajectory for the team with 11 conference games remaining on the schedule.

Cunningham has moved into second place in overall scoring at 17.9 points per game and leads the league in scoring within conference games at 21.9 points. She has the most 20+plus games of any player in the GLVC at eight, with four in the last six outings. Cunningham set a new career high with 29 points last Thursday evening at home against Upper Iowa while playing 39 of 40 minutes. She also achieved 1,000 collegiate career points over the weekend. She has a pair of double-doubles this season, most recently on Monday against Lincoln

QUICK COMPARISON

	QU	TSU
Record	12-5	7-12
PPG	75.1	69.4
Opp PPG	65.3	70.7
Margin	+9.8	-1.3
FG%	.433	.410
Opp FG%	.386	.434
3pt %	.323	.275
3pt/ g	4.8	6.6
Opp 3pt%	.294	.319
Opp 3pt/g	5.4	7.3
FT%	.724	.723
FT/g	14.8	14.4
Opp FT %	.745	.751
Opp FT/g	13.4	10.3
RPG	43.8	32.8
Reb. Margin	+11.6	-5.9
APG	14.8	11.7
TOPG	16.5	14.3
SPG	8.0	8.1
BPG	4.2	2.4

PROBABLE STARTERS



MOLLY JOYCE
5-7/So./Algona, Iowa
PPG13.4
RPG3.7
APG1.9
MPG29.6



BRYAR DUWE
5-6/So./Decorah, Iowa
PPG8.5
RPG2.7
APG1.6
MPG27.3



KATELYN ODEM
5-8/Fr./Mequon, Wis.
PPG4.0
RPG1.7
APG0.5
MPG17.4



LEXIE WHITE
5-11/So./Merrill, Wis.
PPG7.1
RPG4.9
APG0.8
MPG24.3



JORDAN CUNNINGHAM
6-0/Gr./Grimes, Iowa
PPG17.9
RPG4.9
APG3.1
MPG33.6

with 20 points and a career-best 12 rebounds.

Cunningham ranks first in the league in field goals made and second in attempted, first in free throws made and third in assists and fourth in blocks.

Molly Joyce is fourth in three-pointers attempted with 103 and holds the team lead in makes with 28. She is sixth in the GLVC in points at 13.4/game and fourth in free throws attempted. Joyce has two of the three 30-point individual scoring games in the conference this season with 34 against Ursuline and 30 against Arkansas Fort Smith. Mia Huberty of Upper Iowa has the conference single-game high of 38 against Quincy.

Bryar Duwe and Lexie White have each started all 19 games. Duwe is averaging 7.8 points in nine GLVC games thus far with 12 steals and White is at nine points in nine conference games with a team-high 6.1 rebounds per game. Duwe has scored 13 points in two games this season and White has scored 15 in two games.

Katelyn Odem has started the past six conference games and has averaged 5.4 points and 1.9 rebounds in nine total league games. She scored a single-game high of 13 points against Hawaii-Hilo.

The Bulldog bench has been a boost in the last two wins with 23 points against Lewis and 30 against Lincoln. Tori Standerfer has been a valuable contributor with double-figure games in her last three outings. She went 6-of-9 from beyond the arc in last week's games and was also a perfect 6-of-6 at the free throw line. For the season, Standerfer has played in 12 games with a 4.7 points per game mark.

Emma Bulman, Gracie Neff and McKenna Williams have been the regulars coming off the bench this season. Bulman has played in all 19 games at a 16.6 minutes per game clip. She has played in 103 career games and has a single-game point high of 18 points against McKendree. Neff has played in 122 career games and all 19 this season and has 365 assists with a scoring high of 13 points against Drury last season. Williams is a junior transfer with 17 games this season and a high of 15 points against Fort Hays State.

Bulldogs Against Opponents:

Quincy is one of the oldest rivals on the Bulldog schedule with this Saturday being the 60th all-time meeting between the two schools. Truman State holds a 31-28 margin in games played but are 11-16 in road contests.

The Hawks have won the last three games after the Bulldogs has won 12 straight from 2016 until 2023. The dozen wins in-a-row was the longest by any team in the series.

Quincy is in third place in the GLVC with a 6-2 conference record prior to their Thursday night game with William Jewell. They currently have the longest winning streak in the conference at six games.

Up Next:

Truman State returns to their Thursday/Saturday routine with road games at Rockhurst on January 30 and at William Jewell on February 1st. The Bulldogs won round one against Rockhurst 82-64 on November 30th while this will be the first of two scheduled encounters with William Jewell.

Double-Figure Games

By Class - Career

Player	Pts (20/30)	Rebs	Asts	Dbl/Dbls
Hope	-	-	-	-
Odem	2	-	-	-
Rogers	-	-	-	-
Huss	-	-	-	-
Ott	1	1	-	1
Boehm	-	-	-	-
Duwe	8	-	-	-
Joyce	25 (7/2)	1	-	1
White	6	2	-	2
Larson	-	-	-	-
Patke	-	-	-	-
Williams	29 (2)	14	-	13
Bulman	11	-	-	-
Cunningham	39 (8/0)	2	-	2
Neff	7	-	2	1
Standerfer	4	-	-	-

Truman State Facts

Location:	Kirksville, Mo. (18,000)
Enrollment:	4,000
Conference:	Great Lakes Valley
University President:	Dr. Sue Thomas
Director of Athletics:	TBA
Head Coach:	Theo Dean
Assistant Coach:	Dajae Black
Basketball Athletic Trainer:	Cassie DeBlauw
Team Physician:	Dr. John Bailey
Athletics Communications:	Justin Thomas/Kevin White

On The Air

Video:	GLVCSN.com (PPV)
Radio:	88.7 FM KTRM (Student Radio)
Online Audio:	NEMOPressbox.com (Free)
Live Stats:	TrumanBulldogs.com

2024-25 Truman State Bulldogs

#	Name	Pos.	Ht.	Yr.	Hometown	High School/Previous
0	Gracie Neff	G	5-8	Gr.	Kansas City, Mo.	Staley HS/ Lindenwood (Mo.) Univ.
1	Molly Joyce	G	5-7	So.	Algona, Iowa	Bishop Garrigan HS
3	Tori Standerfer	G	5-7	Sr.	Bethalto, Ill.	Civic Memorial HS/Missouri-St. Louis
4	Bryar Duwe (Doo-we)	G	5-6	So.	Decorah, Iowa	Decorah HS
10	Sophia Hope	F	5-10	Fr.	Waukee, Iowa	Waukee HS
11	Lizzie Boehm (Bame)	G	5-7	So.	Kansas City, Mo.	Staley HS
12	Katelyn Odem	G	5-8	Fr.	Mequon, Wis.	Homestead HS
14	Nicky Huss	F	6-1	R-Fr.	Omaha, Neb.	Duchesne Academy
20	Braylee Rogers	G	5-9	Fr.	Olathe, Kan.	Olathe East HS
21	Emma Bulman	F	5-10	Sr.	Ames, Iowa	Gilbert HS
22	Lexie White	G	5-11	So.	Merrill, Wis.	Wausau West HS
25	Kaitlyn Patke (pat-key)	F	6-0	Jr.	Washington, Mo.	St. Francis Borgia HS
33	McKenna Williams	F	5-10	Jr.	Darien, Wis.	Delavan-Darien HS/Rock Valley Col.
34	Avery Larson	C	6-3	R-So.	Antioch, Ill.	Antioch HS
35	Mallory Ott	F	5-11	R-Fr.	Oshkosh, Wis.	Oshkosh North HS
40	Jordan Cunningham	G	6-0	Gr.	Grimes, Iowa	Dallas Center-Grimes HS/Mo. Western

Head Coach: Theo Dean (6th Season)

Associate Head Coach: Dajae Black

Graduate Assistant Coach: Trinitee Jackson

GLVC Standings

School	Conf.	Pct.	Over	Pct.	Home	Away	Neutral	Streak	PRS
Drury	8-1	.889	12-4	.750	8-2	4-1	0-1	W2	
Lewis	7-1	.875	13-2	.867	5-0	7-1	1-1	L1	
Quincy	6-2	.750	12-5	.706	5-2	4-2	3-1	W6	
Missouri-St. Louis	7-3	.700	13-4	.765	6-2	7-2	0-0	L1	
McKendree	6-3	.667	10-5	.667	6-1	2-4	2-0	L2	
Missouri S&T	5-3	.625	10-4	.714	8-3	2-1	0-0	W1	
Maryville	6-4	.600	8-10	.444	6-1	2-8	0-1	L1	
Southwest Baptist	5-4	.556	7-8	.467	6-2	1-4	0-2	W3	
Upper Iowa	4-5	.444	7-8	.467	4-1	3-7	0-0	L1	
Truman	4-5	.444	7-12	.368	3-4	2-6	2-2	W2	
Rockhurst	3-6	.333	5-10	.333	5-5	0-3	0-2	W1	
William Jewell	2-7	.222	4-11	.267	4-5	0-6	0-0	L1	
Indianapolis	2-7	.222	4-13	.235	2-7	2-6	0-0	L1	
Illinois Springfield	2-7	.222	3-14	.176	2-4	1-8	0-2	L3	
Lincoln	0-9	.000	1-14	.067	1-7	0-7	0-0	L14	

Weekly Awards

Date	Player	School
11/11	Molly Joyce	Truman State
11/18	Baylie Parks	McKendree
11/25	Rhi Gibbons	Drury
12/1	Francesca Metz	Missouri S&T
12/9	Mia Huberty	Upper Iowa
12/16	Mariann Blass	Quincy
12/23	Ally Cesarini	Lewis
1/6	Baylie Parks	McKendree
1/13	Clare Breden	McKendree
1/20	Caitlynn Daniels	Drury

Upcoming Games

Thursday, January 23

Southwest Baptist at Lewis
 Rockhurst at Upper Iowa
 Drury at Indianapolis
 Missouri-St. Louis at Maryville
 Missouri S&T at Illinois Springfield
 Lincoln at McKendree
 William Jewell at Quincy

Thursday, January 30

McKendree at Maryville
 Truman at Rockhurst
 Quincy at Southwest Baptist
 Lewis at Missouri S&T
 Illinois Springfield at Mo. St. Louis
 Indianapolis at Lincoln
 Upper Iowa at Drury

Saturday, January 25

SW Baptist at Indianapolis
 Truman at Quincy
 Drury at Illinois Springfield
 Missouri S&T at McKendree
 Rockhurst at Lewis
 William Jewell at Upper Iowa
 Lincoln at Maryville

Saturday, February 1

Quincy at Rockhurst
 Upper Iowa at SW Baptist
 McKendree at Missouri-St. Louis
 Indianapolis at Missouri S&T
 Lewis at Drury
 Illinois Springfield at Lincoln
 Truman at William Jewell

Recent Results

Monday, January 20

Missouri S&T 63, William Jewell 55
 Missouri-St. Louis 53, Quincy 64
 Lincoln 59, Truman 78

Saturday, January 18

Illinois Springfield 50, Rockhurst 63
 McKendree 65, Southwest Baptist 75
 Lewis 60, Truman 69
 Missouri-St. Louis 72, Missouri S&T 61
 Upper Iowa 62, Quincy 72
 Maryville 69, Drury 90
 Indianapolis 46, William Jewell 58

Thursday, January 16

Upper Iowa 88, Truman State 77
 Illinois Springfield 78, SW Baptist 81
 Lewis 74, William Jewell 65
 Missouri-St. Louis 78, Lincoln 53
 Indianapolis 63, Rockhurst 60
 Maryville 72, Missouri S&T 57
 McKendree 66, Drury 77

Saturday, January 11

Upper Iowa 49, Indianapolis 67
 William Jewell 52, Maryville 81
 Truman 60, McKendree 72
 Southwest Baptist 77, Lincoln 52
 Quincy 80, Illinois Springfield 64
 Drury 57, Missouri S&T 63
 Rockhurst 52, Missouri-St. Louis 70

Polls

WBCA Coaches Poll

Rk	School (Record)	Points	Prev.
1	Grand Valley State (16-1)	571	1
2	Texas Woman's (15-1)	544	2
3	Cal St. Dominguez Hills (16-0)	525	3
4	Bentley (15-1)	503	4
5	North Georgia (13-0)	469	6
6	Montana State Billings (16-2)	468	5
7	Fort Hays State (13-1)	426	7
8	Azusa Pacific (14-1)	403	8
9	Seton Hill (15-1)	371	10
10	Minnesota St. Mankato (15-2)	361	11
11	Union, TN (14-2)	322	12
12	Pittsburg State (14-2)	304	13
13	Texas-Tyler (13-2)	274	14
14	Ashland (14-3)	241	15
15	Embry-Riddle (13-1)	237	16
16t	Coker (13-1)	205	17
16t	Gannon (15-3)	205	9
18	Lubbock Christian (14-3)	171	18
19	Cal Poly Pomona (12-2)	170	21
20	Nova Southeastern (13-2)	165	20
21t	Belmont Abbey (12-2)	98	23
21t	Concordia-St. Paul (14-2)	98	24
23	Southwest Minnesota St. (14-2)	83	25
24	Tampa (13-4)	50	19
25	Carson-Newman (12-4)	39	22

GLVC Coaches Poll

Rk	School (Record)	Points
1.	Lewis	190 (9)
2.	Drury	183 (5)
3.	McKendree	158 (1)
4.	Maryville	140
5.	Upper Iowa	130
6.	Rockhurst	128
7.	Missouri-St. Louis	109
	Quincy	109
10.	Illinois Springfield	80
11.	Truman State	75
12.	Missouri S&T	70
13.	Southwest Baptist	47
14.	Lincoln	26
15.	William Jewell	25



2024-25 Truman St. Women's Basketball Combined Team Statistics All games

Page 1/1
as of Jan 21, 2025

Game Records

Record	Overall	Home	Away	Neutral
ALL GAMES	7-12	3-4	2-6	2-2
CONFERENCE	4-5	3-2	1-3	0-0
NON-CONFERENCE	3-7	0-2	1-3	2-2

Score by Periods

Team	1st	2nd	3rd	4th	OT	TOT
Truman St.	311	339	329	340	0	1319
Opponents	355	342	332	314	0	1343

Team Box Score

No.	Player				Total		3-Point		F-Throw		Rebounds													
		GP-GS	MIN	AVG	FG-FGA	FG%	3FG-3FGA	3FG%	FT-FTA	FT%	OFF	DEF	TOT	AVG	PF	DQ	A	TO	BLK	STL	PTS	AVG		
40	CUNNINGHAM, Jordan	19-19	647:37	34.1	117-249	.470	26-81	.321	80-109	.734	14	79	93	4.9	43	1	59	53	19	27	340	17.9		
1	JOYCE, Molly	19-19	574:59	30.3	78-214	.364	28-103	.272	71-86	.826	16	55	71	3.7	45	0	37	48	3	28	255	13.4		
30	NIEMEIER, Maddie	5-5	130:09	26.0	24-46	.522	0-1	.000	6-9	.667	5	18	23	4.6	18	1	10	7	1	5	54	10.8		
4	DUWE, Bryar	19-19	533:10	28.1	57-150	.380	24-80	.300	23-32	.719	8	44	52	2.7	28	0	30	40	0	20	161	8.5		
22	WHITE, Lexie	19-19	459:24	24.2	47-129	.364	17-57	.298	23-33	.697	21	73	94	4.9	50	1	15	23	11	17	134	7.1		
35	OTT, Mallory	11-6	169:26	15.4	20-54	.370	3-19	.158	11-15	.733	15	28	43	3.9	13	0	5	8	1	7	54	4.9		
3	STANDEFER, Tori	12-0	151:56	12.7	18-38	.474	8-19	.421	12-14	.857	11	10	21	1.8	15	0	6	5	0	4	56	4.7		
12	ODEM, Katelyn	19-8	325:50	17.1	31-73	.425	6-25	.240	8-22	.364	7	25	32	1.7	34	0	10	20	1	16	76	4.0		
21	BULMAN, Emma	19-0	315:48	16.6	27-70	.386	3-24	.125	13-20	.650	11	48	59	3.1	29	1	15	25	3	12	70	3.7		
33	WILLIAMS, McKenna	17-0	146:56	8.6	18-41	.439	4-17	.235	16-20	.800	8	25	33	1.9	11	0	6	10	3	5	56	3.3		
0	NEFF, Gracie	19-0	276:47	14.6	16-39	.410	6-23	.261	8-12	.667	4	14	18	0.9	20	0	27	20	1	7	46	2.4		
34	LARSON, Avery	4-0	15:18	3.8	3-4	.750	0-0	.000	1-2	.500	4	1	5	1.3	3	0	0	2	0	1	7	1.8		
25	PATKE, Kaitlyn	7-0	31:29	4.5	4-10	.400	0-4	.000	2-3	.667	2	5	7	1.0	3	0	2	4	2	3	10	1.4		
11	BOEHM, Lizzie	4-0	11:35	2.9	0-2	.000	0-1	.000	0-2	.000	1	1	2	0.5	0	0	1	0	0	1	0	0.0		
14	HUSS, Nicky	4-0	09:37	2.4	0-2	.000	0-1	.000	0-0	.000	0	1	1	0.3	0	0	0	1	0	0	0	0.0		
Team											28	41	69					5						
Total		19	3800		460-1121	.410	125-455	.275	274-379	.723	155	468	623	32.8	312	4	223	271	45	153	1319	69.4		
Opponents		19	3800		504-1162	.434	139-436	.319	196-261	.751	191	544	735	38.7	360	9	241	310	30	126	1343	70.7		

Team Statistics

	TSU	OPP
Scoring	1319	1343
Points per game	69.4	70.7
Scoring margin	-1.3	-
Field goals-att	460-1121	504-1162
Field goal pct	.410	.434
3 point fg-att	125-455	139-436
3-point FG pct	.275	.319
3-pt FG made per game	6.6	7.3
Free throws-att	274-379	196-261
Free throw pct	.723	.751
F-Throws made per game	14.4	10.3
Rebounds	623	735
Rebounds per game	32.8	38.7
Rebounding margin	-5.9	-
Assists	223	241
Assists per game	11.7	12.7
Turnovers	271	310
Turnovers per game	14.3	16.3
Turnover margin	+2.1	-
Assist/turnover ratio	0.8	0.8
Steals	153	126
Steals per game	8.1	6.6
Blocks	45	30
Blocks per game	2.4	1.6
Winning streak	2	-
Home win streak	2	-
Attendance	2041	3623
Home games-Avg/Game	7-292	8-453
Neutral site-Avg/Game	-	4-184

Team Results

Date	Opponent		Score	Att.
11/08/2024	at Cedarville	W	74-61	455
11/09/2024	vs Ursuline	W	81-60	150
11/15/2024	at Concordia-St. Paul	L	57-68	325
11/16/2024	at Winona St.	L	64-70	825
11/22/2024	Washburn	L	59-81	1232
11/23/2024	Quincy	L	76-85	200
11/26/2024	vs Newman	W	80-48	263
11/27/2024	vs Ark.-Fort Smith	L	73-75	217
11/30/2024	Rockhurst	W	82-64	83
12/05/2024	at Southwest Baptist	W	77-63	322
12/07/2024	at Drury	L	72-97	1207
12/19/2024	vs Fort Hays St.	L	57-77	107
12/21/2024	at Hawaii Hilo	L	61-68	217
01/03/2025	Missouri S&T	L	72-74	1
01/09/2025	at Ill. Springfield	L	50-73	115
01/11/2025	at McKendree	L	60-72	157
01/16/2025	Upper Iowa	L	77-88	200
01/18/2025	Lewis	W	69-60	175
01/20/2025	Lincoln (MO)	W	78-59	150



THEO DEAN

Head Coach // 6th Season At Truman
89-67 (.571) Overall // 66-41 (.617) GLVC

Theo Dean begins his fifth season at the helm of the Truman Women's Basketball team.

Dean has been a part of the program in some capacity for over ten years. He was a student manager and graduate assistant from 2010-14; Dean then returned to Kirksville to become the full-time assistant and recruiting coordinator from June 2016-August 2019. Dean was promoted to interim head coach on August 23, 2019, and on January 13, 2020, after a 9-3 start to the season, including a school-record five-game winning streak to start Great Lakes Valley Conference play, the interim tag was removed, and Dean became the 11th full-time head coach in program history and the first African-American head coach in school history.

By increasing fan and alumni involvement with a fast-paced style of play, Dean's impact on the program has been very evident over the past four seasons, and fans of Truman Women's Basketball have seen continued success for the Bulldogs' program.

Since his return to Truman in 2016, Dean has coached 22 All-GLVC performers (10 being named to the First Team), two Freshman of the Year selections, four 1,000-point scorers, one 1,000 rebounder, two WBCA All-Americans, one D2CCA All-American, six CoSIDA/CSC Academic All-District selections, three D2CCA All-Midwest Region selections, one Academic All-American, one GLVC Player of the Year and one GLVC Women's Basketball Female Student-Athlete of the Year. Dean has also coached over 55 Academic All-GLVC players and has coached three WBCA Academic Top 25 teams (2019, 2021 & 2023).

Overall, Dean has been on the sideline with the Bulldogs for five of the program's eight 20-win seasons, one Great Lakes Valley Conference tournament title, two Great Lakes Valley Conference tournament championship games, three NCAA Tournaments appearances, and one NCAA Tournament victory.

After graduating from Truman, Dean assisted the Lansing (Kansas) High School Boys Basketball program from 2014-16. Dean was the assistant coach to the father of former First Team All-GLVC performer, GLVC Conference Champion, and former Bulldog Associate Head Coach, Amy Briggs. While at Lansing, Dean focused on guard development for the boys' team, overall player development for the girls' team and also supervised the team managers, implementing a hustle and shot chart system into practices and games. In his first year at Lansing, he helped lead the 2014-15 team to the Kansas Substate Championship game, and Dean was then promoted to top assistant in his second season.

A Chicago, IL native, Theo Dean came to Truman in 2008 as a freshman and received his Bachelor of Fine Arts in Visual Communications degree from Truman State University in 2012 and his Master's degree in Leadership, with a concentration in Coaching and Sport Management, from Truman in 2014.

Dean, his wife, Presley (who also holds Bachelor's and Master's degrees from Truman), their son, Theo IV, and their daughter, Mina, reside in Kirksville.



Series Records

Arkansas Fort Smith	0-1
Ashland (Ohio)	0-1
Augustana (S.D.)	0-1
Avila (Mo.)	1-0
Bellarmine	0-1
Cedarville	3-0
Central Missouri	0-1
Concordia-St. Paul	0-2
Davenport (Mich.)	1-0
Drury *	1-7
Eckerd (Fla.)	0-1
Florida Southern	1-0
Fort Hays (Kan.) State	0-1
Hannibal-LaGrange	1-0
Hawaii-Hilo	0-1
Hillsdale (Mich.)	0-1
Illinois Springfield *	4-3
Indianapolis *	4-4
Lewis *	6-6
Lincoln	1-1
Lindenwood *	1-3
Maryville *	9-1
Minot (N.D.) State	1-0
Missouri S&T *	5-2
Missouri St. Louis	5-3
Missouri Western	0-1
McKendree *	6-3
Newman (Kan.)	1-0
Northern Michigan	1-0
Northwood (Mich.)	1-0
Quincy *	7-3
Rockhurst *	5-3
Saginaw Valley St.	0-1
Sioux Falls	0-1
Southern Indiana *	2-2
Southwest Baptist *	5-3
Southwest Minn. State	1-0
Union (Tenn.)	0-1
Upper Iowa	2-3
Ursuline (Ohio)	3-2
UW-Parkside *	1-1
Washburn (Kan.)	0-1
William Jewell *	9-0
Winona (Minn.) State	1-1

Truman Overall	89-66 (.571)
Home Record	41-23
Away Record	35-31
GLVC Record	66-41
GLVC Home Record	36-19
GLVC Away Record	31-22
Non-Conference Record	23-25
vs. Division I	0-0
vs. Division II	22-26
vs. Division III	0-0
vs. NAIA/Other	2-0
NC Home	3-4
NC Road	4-7
Neutral Site	14-13
Postseason	5-5
Overtime	1-4



Assistant Coach

Dajae Black (2nd Season)

2022-23 - Univ. of Akron
 (Assistant Coach)

2020-22 - Grand Canyon (Ariz.)
 (Graduate Assistant)

Playing career:

Lewis University (2016-2020)

All-Time Coaches

- Amy Eagan111-62 (6 yrs)
- Mary Jo Murray100-80 (7 yrs)
- Theo Dean.....89-67 (6yrs)**
- John Sloop87-131 (8 yrs)
- Karin Nichols71-64 (5 yrs)
- Michael Smith68-68 (5 yrs)
- Tarry Parrish44-115 (6 yrs)
- Lois Herren.....31-48 (3 yrs)
- Jan Conner.....19-58 (3 yrs)
- Pam Wood.....13-14 (2 yrs)
- Kathy Austin.....12-11 (2 yrs)

#0 Gracie Neff



Graduate
5-8
Guard
Kansas City, Mo.
Staley HS
Lindenwood

				Field Goals		3-Point		F-Throws		Rebounds										Scoring	
SEASON	TEAM	GP-GS	MIN/AVG	FG-FGA	FG%	3FG-3FGA	3FG%	FT-FTA	FT%	OFF	DEF	TOT	AVG	PF-FO	A	TO	BLK	STL	PTS	AVG	
2020-21	Linden	19-18	468/24.6	18-58	.310	11-41	.268	3-8	.375	1	25	26	1.4	26-0	60	46	0	10	50	2.6	
2021-22	Linden	26-17	558/21.4	19-56	.339	3-20	.150	13-21	.619	8	20	28	1.1	30-0	103	65	0	12	54	2.1	
2022-23	TSU	30-0	361/12.0	20-50	.400	12-32	.375	23-29	.793	0	35	35	1.2	21-0	58	38	1	1	75	2.5	
2023-24	TSU	28-21	726/25.9	31-87	.356	22-62	.355	27-38	.711	5	44	49	1.8	37-0	117	74	2	17	111	4.0	
2024-25	TSU	19-0	277/14.6	16-39	.410	6-23	.261	8-12	.667	4	14	18	0.9	20-0	27	20	1	7	46	2.4	
TOTAL FOR TSU		77-21	1364/17.7	67-176	.381	40-117	.342	58-79	.734	9	93	102	1.3	78-0	202	132	4	25	232	3.0	
TOTAL		122-56	2389/19.6	104-290	.359	54-178	.303	74-108	.685	18	138	156	1.3	134-0	365	243	4	47	336	2.8	

Single Game Highs

Statistic	Value	
Points	13	vs Drury 01/20/24
Rebounds	5	vs McKendree 02/01/24, vs Quincy 02/23/21
Assists	11	vs Quincy 12/02/21
Steals	3	vs McKendree 02/01/24, vs Southwest Baptist 01/30/21
Blocks	1	4 times
FG Made	4	5 times
FG Attempts	9	at UIndy 02/10/24
3FG Made	4	vs Drury 01/20/24
3FG Attempts	6	vs Drury 01/20/24
FT Made	5	vs UIndy 01/03/24
FT Attempts	6	vs UIndy 01/03/24, vs Maryville (MO) 11/29/21

#1 Molly Joyce



Sophomore
5-7
Guard
Algona, Iowa
Bishop Garrigan

JOYCE, Molly

				Field Goals		3-Point		F-Throws		Rebounds										Scoring	
SEASON	TEAM	GP-GS	MIN/AVG	FG-FGA	FG%	3FG-3FGA	3FG%	FT-FTA	FT%	OFF	DEF	TOT	AVG	PF-FO	A	TO	BLK	STL	PTS	AVG	
2023-24	TSU	28-14	675/24.1	104-277	.375	29-102	.284	67-87	.770	16	79	95	3.4	61-0	39	62	9	31	304	10.9	
2024-25	TSU	19-19	575/30.3	78-214	.364	28-103	.272	71-86	.826	16	55	71	3.7	45-0	37	48	3	28	255	13.4	
TOTAL		47-33	1250/26.6	182-491	.371	57-205	.278	138-173	.798	32	134	166	3.5	106-0	76	110	12	59	559	11.9	

Single Game Highs

Statistic	Value	
Points	34	vs Ursuline 11/09/24
Rebounds	10	vs Ill. Springfield 02/22/24
Assists	5	vs Missouri S&T 01/03/25
Steals	5	at Rockhurst 01/25/24
Blocks	2	vs Winona St. 11/17/23, vs Maryville (MO) 02/15/24, vs Quincy 02/24/24
FG Made	10	vs Ursuline 11/09/24
FG Attempts	23	at Winona St. 11/16/24
3FG Made	6	vs Ursuline 11/09/24
3FG Attempts	11	vs Ark.-Fort Smith 11/27/24
FT Made	10	at Rockhurst 01/25/24, vs Ark.-Fort Smith 11/27/24
FT Attempts	12	vs Ark.-Fort Smith 11/27/24, at Hawaii Hilo 12/21/24



#3 Tori Standefer



Graduate
5-7
Guard
Bethalto, Ill.
Civic Memorial
Mo.-St. Louis

				Field Goals		3-Point		F-Throws		Rebounds				Scoring						
SEASON	TEAM	GP-GS	MIN/AVG	FG-FGA	FG%	3FG-3FGA	3FG%	FT-FTA	FT%	OFF	DEF	TOT	AVG	PF-FO	A	TO	BLK	STL	PTS	AVG
2021-22	UMSL	9-0	57/6.3	4-15	.267	1-9	.111	8-8	1.000	2	5	7	0.8	4-0	4	2	0	1	17	1.9
2022-23	UMSL	16-0	115/7.2	5-18	.278	1-7	.143	8-13	.615	6	8	14	0.9	15-1	2	12	0	6	19	1.2
2023-24	UMSL	23-0	233/10.1	13-52	.250	6-29	.207	7-10	.700	9	18	27	1.2	14-0	9	15	0	7	39	1.7
2024-25	TSU	12-0	152/12.7	18-38	.474	8-19	.421	12-14	.857	11	10	21	1.8	15-0	6	5	0	4	56	4.7
TOTAL FOR TSU		12-0	152/12.7	18-38	.474	8-19	.421	12-14	.857	11	10	21	1.8	15-0	6	5	0	4	56	4.7
TOTAL		60-0	557/9.3	40-123	.325	16-64	.250	35-45	.778	28	41	69	1.2	48-1	21	34	0	18	131	2.2

Single Game Highs

Statistic	Value	
Points	14	vs Lincoln (MO) 01/20/25
Rebounds	5	at Davenport 11/11/23
Assists	2	at Grand Valley St. 11/10/23, vs Newman 11/26/24, vs Upper Iowa 01/16/25
Steals	2	vs Wis.-Parkside 12/31/22, vs Ill. Springfield 01/21/23, vs McKendree 02/25/23
FG Made	5	vs Lincoln (MO) 01/20/25
FG Attempts	11	vs Lincoln (MO) 01/20/25
3FG Made	2	4 times
3FG Attempts	5	vs Lincoln (MO) 01/20/25
FT Made	6	at Principia 12/18/21
FT Attempts	6	at Principia 12/18/21

#4 Bryar Duwe



Sophomore
5-6
Guard
Decorah, Iowa
Decorah HS

				Field Goals		3-Point		F-Throws		Rebounds				Scoring						
SEASON	TEAM	GP-GS	MIN/AVG	FG-FGA	FG%	3FG-3FGA	3FG%	FT-FTA	FT%	OFF	DEF	TOT	AVG	PF-FO	A	TO	BLK	STL	PTS	AVG
2023-24	TSU	7-0	31/4.4	5-14	.357	3-9	.333	4-4	1.000	1	0	1	0.1	1-0	0	1	0	2	17	2.4
2024-25	TSU	19-19	533/28.1	57-150	.380	24-80	.300	23-32	.719	8	44	52	2.7	28-0	30	40	0	20	161	8.5
TOTAL		26-19	564/21.7	62-164	.378	27-89	.303	27-36	.750	9	44	53	2.0	29-0	30	41	0	22	178	6.8

Single Game Highs

Statistic	Value	
Points	13	at Winona St. 11/16/24, vs Missouri S&T 01/03/25
Rebounds	7	vs Ark.-Fort Smith 11/27/24
Assists	4	at Cedarville 11/08/24, at Southwest Baptist 12/05/24
Steals	3	at McKendree 01/11/25
FG Made	5	at Winona St. 11/16/24, vs Missouri S&T 01/03/25
FG Attempts	12	at McKendree 01/11/25
3FG Made	3	vs Ark.-Fort Smith 11/27/24, vs Missouri S&T 01/03/25, vs Ursuline 11/09/24
3FG Attempts	8	vs Missouri S&T 01/03/25
FT Made	5	vs Lewis 01/18/25
FT Attempts	6	vs Fort Hays St. 12/19/24, vs Lewis 01/18/25

#10 Sophie Hope



Freshman
5-10
Waukee, Iowa
Waukee

#11 Lizzie Boehm



Sophomore
5-7
Guard
Kansas City, Mo.
Staley HS

			Field Goals		3-Point		F-Throws		Rebounds										Scoring	
SEASON	TEAM	GP-GS	MIN/AVG	FG-FGA	FG%	3FG-3FGA	3FG%	FT-FTA	FT%	OFF	DEF	TOT	AVG	PF-FO	A	TO	BLK	STL	PTS	AVG
2023-24	TSU	23-0	308/13.4	14-58	.241	4-29	.138	15-19	.789	11	16	27	1.2	41-1	25	37	1	16	47	2.0
2024-25	TSU	4-0	12/2.9	0-2	.000	0-1	.000	0-2	.000	1	1	2	0.5	0-0	1	0	0	1	0	0.0
TOTAL		27-0	320/11.8	14-60	.233	4-30	.133	15-21	.714	12	17	29	1.1	41-1	26	37	1	17	47	1.7

Single Game Highs

Statistic	Value	
Points	6	vs Southwest Baptist 01/18/24, at UIndy 02/10/24, at Drury 03/02/24
Rebounds	3	5 times
Assists	4	vs Mo.-St. Louis 02/03/24
Steals	3	at Southwest Baptist 02/29/24
Blocks	1	at Southwest Baptist 02/29/24
FG Made	2	4 times
FG Attempts	7	at William Jewell 01/27/24
3FG Made	1	4 times
3FG Attempts	4	at McKendree 11/25/23, vs McKendree 02/01/24
FT Made	4	vs Ill. Springfield 02/22/24
FT Attempts	4	vs Ill. Springfield 02/22/24



#12 Katelyn Odem



Freshman
5-8
Guard
Mequon, Wis.
Homestead

				Field Goals		3-Point		F-Throws		Rebounds									Scoring	
SEASON	TEAM	GP-GS	MIN/AVG	FG-FGA	FG%	3FG-3FGA	3FG%	FT-FTA	FT%	OFF	DEF	TOT	AVG	PF-FO	A	TO	BLK	STL	PTS	AVG
2024-25	TSU	19-8	326/17.1	31-73	.425	6-25	.240	8-22	.364	7	25	32	1.7	34-0	10	20	1	16	76	4.0
TOTAL		19-8	326/17.1	31-73	.425	6-25	.240	8-22	.364	7	25	32	1.7	34-0	10	20	1	16	76	4.0

Single Game Highs

Statistic	Value	
Points	13	at Hawaii Hilo 12/21/24
Rebounds	6	vs Fort Hays St. 12/19/24
Assists	3	at McKendree 01/11/25
Steals	3	vs Upper Iowa 01/16/25
Blocks	1	at Drury 12/07/24
FG Made	6	at Hawaii Hilo 12/21/24
FG Attempts	9	at Hawaii Hilo 12/21/24
3FG Made	2	vs Missouri S&T 01/03/25
3FG Attempts	4	vs Fort Hays St. 12/19/24
FT Made	3	at Drury 12/07/24
FT Attempts	5	at Drury 12/07/24

#14 Nicky Huss



R-Freshman
6-1
Omaha, Neb.
Duchesne

				Field Goals		3-Point		F-Throws		Rebounds										Scoring	
SEASON	TEAM	GP-GS	MIN/AVG	FG-FGA	FG%	3FG-3FGA	3FG%	FT-FTA	FT%	OFF	DEF	TOT	AVG	PF-FO	A	TO	BLK	STL	PTS	AVG	
2024-25	TSU	4-0	10/2.4	0-2	.000	0-1	.000	0-0	.000	0	1	1	0.3	0-0	0	1	0	0	0	0.0	
TOTAL		4-0	10/2.4	0-2	.000	0-1	.000	0-0	.000	0	1	1	0.3	0-0	0	1	0	0	0	0.0	

Single Game Highs

Statistic	Value	
Rebounds	1	vs Newman 11/26/24
FG Attempts	1	vs Newman 11/26/24, vs Lincoln (MO) 01/20/25
3FG Attempts	1	vs Lincoln (MO) 01/20/25

#20 Braylee Rogers



Freshman
5-9
Olathe, Kan.
Olathe East

#21 Emma Bulman



Senior
5-10
Ames, Iowa
Gilbert

				Field Goals		3-Point		F-Throws		Rebounds										Scoring	
SEASON	TEAM	GP-GS	MIN/AVG	FG-FGA	FG%	3FG-3FGA	3FG%	FT-FTA	FT%	OFF	DEF	TOT	AVG	PF-FO	A	TO	BLK	STL	PTS	AVG	
2021-22	TSU	26-0	247/9.5	20-43	.465	4-10	.400	9-12	.750	4	47	51	2.0	20-0	9	11	4	5	53	2.0	
2022-23	TSU	30-0	483/16.1	56-138	.406	15-36	.417	39-53	.736	11	91	102	3.4	28-0	20	51	10	6	166	5.5	
2023-24	TSU	28-11	584/20.9	49-126	.389	15-60	.250	60-69	.870	14	63	77	2.8	58-1	37	65	5	21	173	6.2	
2024-25	TSU	19-0	316/16.6	27-70	.386	3-24	.125	13-20	.650	11	48	59	3.1	29-1	15	25	3	12	70	3.7	
TOTAL		103-11	1630/15.8	152-377	.403	37-130	.285	121-154	.786	40	249	289	2.8	135-2	81	152	22	44	462	4.5	

Single Game Highs

Statistic	Value	
Points	18	at McKendree 11/25/23
Rebounds	9	vs Lincoln (MO) 11/21/23
Assists	6	vs Winona St. 11/17/23
Steals	3	vs Lewis 01/18/25
Blocks	2	vs Maryville (MO) 01/26/23, at Rockhurst 01/25/24
FG Made	7	at McKendree 11/25/23
FG Attempts	10	at Quincy 01/11/24
3FG Made	2	vs Lincoln (MO) 11/21/23, at McKendree 11/25/23, vs Southwest Baptist 01/18/24
3FG Attempts	5	vs Lincoln (MO) 11/21/23, at Quincy 01/11/24
FT Made	8	vs Ill. Springfield 02/22/24
FT Attempts	8	at Southwest Baptist 12/10/22, at Rockhurst 01/25/24, vs Ill. Springfield 02/22/24



#22 Lexie White



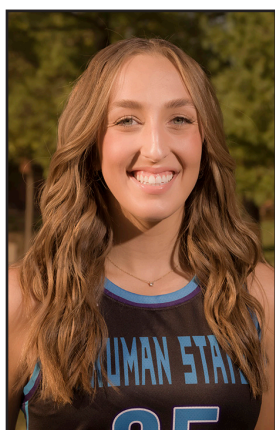
Sophomore
5-11
Merrill, Wis.
Wausau West

				Field Goals		3-Point		F-Throws		Rebounds											Scoring	
SEASON	TEAM	GP-GS	MIN/AVG	FG-FGA	FG%	3FG-3FGA	3FG%	FT-FTA	FT%	OFF	DEF	TOT	AVG	PF-FO	A	TO	BLK	STL			PTS	AVG
2023-24	TSU	11-0	176/16.0	17-52	.327	3-20	.150	8-11	.727	6	25	31	2.8	28-0	11	17	6	13			45	4.1
2024-25	TSU	19-19	459/24.2	47-129	.364	17-57	.298	23-33	.697	21	73	94	4.9	50-1	15	23	11	17			134	7.1
TOTAL		30-19	635/21.2	64-181	.354	20-77	.260	31-44	.705	27	98	125	4.2	78-1	26	40	17	30			179	6.0

Single Game Highs

Statistic	Value	
Points	15	at Drury 12/07/24, at McKendree 01/11/25
Rebounds	11	vs Rockhurst 11/30/24
Assists	3	at McKendree 11/25/23
Steals	3	vs Ursuline 11/10/23
Blocks	3	at Concordia-St. Paul 11/15/24
FG Made	6	at McKendree 01/11/25
FG Attempts	14	vs Missouri S&T 01/03/25
3FG Made	3	at Drury 12/07/24
3FG Attempts	6	vs Fort Hays St. 12/19/24
FT Made	4	vs Rockhurst 11/30/24
FT Attempts	6	vs Fort Hays St. 12/19/24

#25 Kaitlyn Patke



Junior
6-0
Forward
Washington, Mo.
Borgia

				Field Goals		3-Point		F-Throws		Rebounds											Scoring	
SEASON	TEAM	GP-GS	MIN/AVG	FG-FGA	FG%	3FG-3FGA	3FG%	FT-FTA	FT%	OFF	DEF	TOT	AVG	PF-FO	A	TO	BLK	STL			PTS	AVG
2022-23	TSU	15-0	76/5.1	11-18	.611	1-5	.200	6-12	.500	2	6	8	0.5	5-0	2	11	0	2			29	1.9
2023-24	TSU	8-0	29/3.6	9-12	.750	2-5	.400	2-3	.667	0	2	2	0.3	5-0	1	0	0	2			22	2.8
2024-25	TSU	7-0	31/4.5	4-10	.400	0-4	.000	2-3	.667	2	5	7	1.0	3-0	2	4	2	3			10	1.4
TOTAL		30-0	136/4.5	24-40	.600	3-14	.214	10-18	.556	4	13	17	0.6	13-0	5	15	2	7			61	2.0

Single Game Highs

Statistic	Value	
Points	6	vs William Jewell 01/12/23, at Missouri S&T 01/19/23, at Drury 03/02/24
Rebounds	2	6 times
Assists	1	5 times
Steals	1	7 times
Blocks	1	at Southwest Baptist 12/05/24, vs Lincoln (MO) 01/20/25
FG Made	2	6 times
FG Attempts	4	at Drury 03/02/24
3FG Made	1	vs William Jewell 01/12/23, vs Winona St. 11/17/23, at Rockhurst 01/25/24
3FG Attempts	2	4 times
FT Made	4	at Missouri S&T 01/19/23
FT Attempts	4	at Missouri S&T 01/19/23

#33 McKenna Williams



Junior
5-10
Forward
Darien, Wis.
Delavan-Darien
Rock Valley

				Field Goals		3-Point		F-Throws		Rebounds									Scoring	
SEASON	TEAM	GP-GS	MIN/AVG	FG-FGA	FG%	3FG-3FGA	3FG%	FT-FTA	FT%	OFF	DEF	TOT	AVG	PF-FO	A	TO	BLK	STL	PTS	AVG
2024-25	TSU	17-0	147/8.6	18-41	.439	4-17	.235	16-20	.800	8	25	33	1.9	11-0	6	10	3	5	56	3.3
TOTAL		17-0	147/8.6	18-41	.439	4-17	.235	16-20	.800	8	25	33	1.9	11-0	6	10	3	5	56	3.3

Single Game Highs

Statistic	Value	
Points	15	vs Fort Hays St. 12/19/24
Rebounds	6	at Ill. Springfield 01/09/25
Assists	2	at Drury 12/07/24
Steals	1	5 times
Blocks	1	vs Quincy 11/23/24, vs Newman 11/26/24, vs Ark.-Fort Smith 11/27/24
FG Made	5	vs Fort Hays St. 12/19/24
FG Attempts	7	vs Fort Hays St. 12/19/24
3FG Made	1	4 times
3FG Attempts	3	at Southwest Baptist 12/05/24
FT Made	4	vs Fort Hays St. 12/19/24
FT Attempts	5	vs Fort Hays St. 12/19/24

#34 Avery Larson



R-Sophomore
6-3
Center
Antioch, Ill.
Antioch

				Field Goals		3-Point		F-Throws		Rebounds								Scoring		
SEASON	TEAM	GP-GS	MIN/AVG	FG-FGA	FG%	3FG-3FGA	3FG%	FT-FTA	FT%	OFF	DEF	TOT	AVG	PF-FO	A	TO	BLK	STL	PTS	AVG
2022-23	TSU	7-0	24/3.4	3-8	.375	0-0	.000	4-5	.800	1	5	6	0.9	3-0	1	1	0	0	10	1.4
2024-25	TSU	4-0	15/3.8	3-4	.750	0-0	.000	1-2	.500	4	1	5	1.3	3-0	0	2	0	1	7	1.8
TOTAL		11-0	39/3.5	6-12	.500	0-0	.000	5-7	.714	5	6	11	1.0	6-0	1	3	0	1	17	1.5

Single Game Highs

Statistic	Value	
Points	5	vs Newman 11/26/24
Rebounds	3	at Southwest Baptist 12/05/24
Assists	1	vs Ursuline 11/13/22
Steals	1	vs Fort Hays St. 12/19/24
FG Made	2	vs Newman 11/26/24
FG Attempts	4	vs William Jewell 01/12/23
FT Made	3	at William Jewell 02/25/23
FT Attempts	4	at William Jewell 02/25/23



#35 Mallory Ott



R-Freshman
5-11
Forward
Oshkosh, Wis.
Oshkosh North

				Field Goals		3-Point		F-Throws		Rebounds											Scoring	
SEASON	TEAM	GP-GS	MIN/AVG	FG-FGA	FG%	3FG-3FGA	3FG%	FT-FTA	FT%	OFF	DEF	TOT	AVG	PF-FO	A	TO	BLK	STL	PTS	AVG		
2024-25	TSU	11-6	169/15.4	20-54	.370	3-19	.158	11-15	.733	15	28	43	3.9	13-0	5	8	1	7	54	4.9		
TOTAL		11-6	169/15.4	20-54	.370	3-19	.158	11-15	.733	15	28	43	3.9	13-0	5	8	1	7	54	4.9		

Single Game Highs

Statistic	Value	
Points	14	vs Quincy 11/23/24
Rebounds	10	at Southwest Baptist 12/05/24
Assists	2	vs Ark.-Fort Smith 11/27/24
Steals	2	vs Newman 11/26/24, vs Rockhurst 11/30/24
Blocks	1	vs Ark.-Fort Smith 11/27/24
FG Made	5	vs Quincy 11/23/24, at Southwest Baptist 12/05/24
FG Attempts	13	at Southwest Baptist 12/05/24
3FG Made	1	vs Ark.-Fort Smith 11/27/24, vs Rockhurst 11/30/24, at Southwest Baptist 12/05/24
3FG Attempts	7	vs Ark.-Fort Smith 11/27/24
FT Made	4	vs Quincy 11/23/24
FT Attempts	5	vs Quincy 11/23/24

#40 Jordan Cunningham



Graudate
6-0
Guard
Grimes, Iowa
Dallas Center/Grimes
Mo. Western

				Field Goals		3-Point		F-Throws		Rebounds								Scoring		
SEASON	TEAM	GP-GS	MIN/AVG	FG-FGA	FG%	3FG-3FGA	3FG%	FT-FTA	FT%	OFF	DEF	TOT	AVG	PF-FO	A	TO	BLK	STL	PTS	AVG
2020-21	MW	22-13	533/24.2	43-120	.358	18-60	.300	17-27	.630	7	45	52	2.4	41-0	33	43	7	22	121	5.5
2021-22	MW	34-30	898/26.4	86-206	.417	22-91	.242	55-78	.705	13	60	73	2.1	51-0	73	55	7	28	249	7.3
2022-23	MW	31-26	761/24.5	68-154	.442	13-51	.255	51-74	.689	11	87	98	3.2	39-1	51	46	12	25	200	6.5
2023-24	MW	31-1	520/16.8	49-102	.480	8-35	.229	13-19	.684	6	68	74	2.4	51-0	36	30	13	17	119	3.8
2024-25	TSU	19-19	648/34.1	117-249	.470	26-81	.321	80-109	.734	14	79	93	4.9	43-1	59	53	19	27	340	17.9
TOTAL FOR TSU		19-19	648/34.1	117-249	.470	26-81	.321	80-109	.734	14	79	93	4.9	43-1	59	53	19	27	340	17.9
TOTAL		137-89	3359/24.5	363-831	.437	87-318	.274	216-307	.704	51	339	390	2.8	225-2	252	227	58	119	1029	7.5

Single Game Highs

Statistic	Value	
Points	29	vs Upper Iowa 01/16/25
Rebounds	12	vs Lincoln (MO) 01/20/25
Assists	7	vs Newman 02/16/21, at Newman 01/20/22, vs Quincy 11/23/24
Steals	4	5 times
Blocks	4	vs Fort Hays St. 02/01/24
FG Made	10	vs Rockhurst 11/30/24
FG Attempts	23	at Drury 12/07/24
3FG Made	4	at Concordia-St. Paul 11/15/24
3FG Attempts	8	at Northeastern St. 11/21/20, vs Emporia St. 02/02/21, vs Quincy 11/23/24
FT Made	9	vs Upper Iowa 01/16/25
FT Attempts	12	at Ill. Springfield 01/09/25



2024-25 Truman St. Women's Basketball Combined Team Statistics In Conference games

Page 1/1
as of Jan 21, 2025

Game Records

Record	Overall	Home	Away	Neutral
ALL GAMES	4-5	3-2	1-3	0-0
CONFERENCE	4-5	3-2	1-3	0-0
NON-CONFERENCE	0-0	0-0	0-0	0-0

Score by Periods

Team	1st	2nd	3rd	4th	OT	TOT
Truman St.	157	167	155	158	0	637
Opponents	190	159	156	145	0	650

Team Box Score

No.	Player				Total		3-Point		F-Throw		Rebounds													
		GP-GS	MIN	AVG	FG-FGA	FG%	3FG-3FGA	3FG%	FT-FTA	FT%	OFF	DEF	TOT	AVG	PF	DQ	A	TO	BLK	STL	PTS	AVG		
40	CUNNINGHAM, Jordan	9-9	311:17	34.6	68-142	.479	13-44	.295	48-66	.727	6	45	51	5.7	22	1	25	24	12	10	197	21.9		
1	JOYCE, Molly	9-9	278:35	31.0	25-85	.294	8-42	.190	24-26	.923	8	22	30	3.3	22	0	22	26	0	15	82	9.1		
22	WHITE, Lexie	9-9	219:04	24.3	30-66	.455	9-26	.346	12-13	.923	8	47	55	6.1	24	1	7	12	6	9	81	9.0		
4	DUWE, Bryar	9-9	241:48	26.9	24-69	.348	8-36	.222	14-20	.700	2	16	18	2.0	12	0	10	18	0	12	70	7.8		
35	OTT, Mallory	3-3	50:15	16.8	7-20	.350	2-8	.250	4-4	1.000	5	11	16	5.3	5	0	2	2	0	2	20	6.7		
12	ODEM, Katelyn	9-6	174:59	19.4	19-40	.475	4-14	.286	7-14	.500	6	11	17	1.9	18	0	6	11	1	9	49	5.4		
3	STANDEFER, Tori	9-0	125:24	13.9	15-32	.469	7-16	.438	10-12	.833	8	6	14	1.6	11	0	4	4	0	1	47	5.2		
21	BULMAN, Emma	9-0	134:09	14.9	13-28	.464	2-7	.286	7-11	.636	8	24	32	3.6	17	1	7	13	3	7	35	3.9		
33	WILLIAMS, McKenna	8-0	79:36	9.9	7-22	.318	1-9	.111	8-10	.800	7	13	20	2.5	8	0	4	6	0	3	23	2.9		
0	NEFF, Gracie	9-0	138:32	15.4	7-18	.389	4-11	.364	5-6	.833	2	8	10	1.1	9	0	14	9	1	3	23	2.6		
25	PATKE, Kaitlyn	5-0	23:58	4.8	3-7	.429	0-2	.000	2-3	.667	2	5	7	1.4	3	0	2	2	2	2	8	1.6		
34	LARSON, Avery	2-0	08:19	4.2	1-2	.500	0-0	.000	0-0	.000	2	1	3	1.5	2	0	0	2	0	0	2	1.0		
11	BOEHM, Lizzie	3-0	10:03	3.3	0-2	.000	0-1	.000	0-2	.000	1	1	2	0.7	0	0	0	0	0	1	0	0.0		
14	HUSS, Nicky	2-0	04:02	2.0	0-1	.000	0-1	.000	0-0	.000	0	0	0	0.0	0	0	0	1	0	0	0	0.0		
Team											12	14	26					2						
Total		9	1800		219-534	.410	58-217	.267	141-187	.754	77	224	301	33.4	153	3	103	132	25	74	637	70.8		
Opponents		9	1800		237-549	.432	62-190	.326	114-140	.814	86	254	340	37.8	175	5	99	147	11	55	650	72.2		

Team Statistics

	TSU	OPP
Scoring	637	650
Points per game	70.8	72.2
Scoring margin	-1.4	-
Field goals-att	219-534	237-549
Field goal pct	.410	.432
3 point fg-att	58-217	62-190
3-point FG pct	.267	.326
3-pt FG made per game	6.4	6.9
Free throws-att	141-187	114-140
Free throw pct	.754	.814
F-Throws made per game	15.7	12.7
Rebounds	301	340
Rebounds per game	33.4	37.8
Rebounding margin	-4.3	-
Assists	103	99
Assists per game	11.4	11.0
Turnovers	132	147
Turnovers per game	14.7	16.3
Turnover margin	+1.7	-
Assist/turnover ratio	0.8	0.7
Steals	74	55
Steals per game	8.2	6.1
Blocks	25	11
Blocks per game	2.8	1.2
Winning streak	2	-
Home win streak	2	-
Attendance	609	1801
Home games-Avg/Game	5-122	4-450
Neutral site-Avg/Game	-	0-0

Team Results

Date	Opponent		Score	Att.
11/30/2024	Rockhurst	W	82-64	83
12/05/2024	at Southwest Baptist	W	77-63	322
12/07/2024	at Drury	L	72-97	1207
01/03/2025	Missouri S&T	L	72-74	1
01/09/2025	at Ill. Springfield	L	50-73	115
01/11/2025	at McKendree	L	60-72	157
01/16/2025	Upper Iowa	L	77-88	200
01/18/2025	Lewis	W	69-60	175
01/20/2025	Lincoln (MO)	W	78-59	150



TRUMAN STATE UNIVERSITY — BULLDOGS

Home Venue: Pershing
Capacity: 2400
Built: 1959

WOMEN'S BASKETBALL HC		Overall	7-12	W2	FG%	3PT%	FT%	TO +/-	PTS	REB / GM	ST / GM	PTSA
Theo Dean (6th)		Conference	4-5	W2	41	27.5	72.3	2.05	69.4	32.79	8.1	70.7
Truman St.	89-67 (.571)	Home	3-4	W2	8 100	14 211	6 105	4 81	8 82	12 262	7 173	13 239
Career	89-67 (.571)	Road	2-6	L4	FGM	3FG	FT	TO	PTS	TOT REB	STL	PF
		Neutral	2-2	L2	460	125	274	271	1319	623	153	312
		Non-Division	0-0	L1	0 11 0	0 11 0	0 11 0	0 11 0	0 11 0	0 11 0	0 11 0	

0	Gracie Neff	Sr. G 5-8 Kansas City, MO (Staley)	PTS	AVG	FG%	FG	3FG%	3PT	FT%	FT A/M
			46	2.42	41.0	16/39	26.1	6/23	66.7	8/12
			G/GS	MIN / GM	TOT REB	TO	STL	AST	BLK	PF / GM
			19/0	14.55	18	20	7	27	1	1.1
1	Molly Joyce	So. G 5-7 Algona, IA (Bishop Garrigan HS)	PTS	AVG	FG%	FG	3FG%	3PT	FT%	FT A/M
			255	13.42	36.5	78/214	27.2	28/103	82.6	71/86
			G/GS	MIN / GM	TOT REB	TO	STL	AST	BLK	PF / GM
			19/19	30.24	71	48	28	37	3	2.4
3	Tori Standefer	Sr. G 5-7 Bethalto, IL (Civic Memorial)	PTS	AVG	FG%	FG	3FG%	3PT	FT%	FT A/M
			56	4.67	47.4	18/38	42.1	8/19	85.7	12/14
			G/GS	MIN / GM	TOT REB	TO	STL	AST	BLK	PF / GM
			12/0	12.63	21	5	4	6		1.3
4	Bryar Duwe	So. G 5-6 Decorah, IA (Decorah)	PTS	AVG	FG%	FG	3FG%	3PT	FT%	FT A/M
			161	8.47	38.0	57/150	30.0	24/80	71.9	23/32
			G/GS	MIN / GM	TOT REB	TO	STL	AST	BLK	PF / GM
			19/19	28.06	52	40	20	30		1.5
11	Lizzie Boehm	So. G 5-7 Kansas City, MO (Staley HS)	PTS	AVG	FG%	FG	3FG%	3PT	FT%	FT A/M
					0.0		0.0		0.0	
			G/GS	MIN / GM	TOT REB	TO	STL	AST	BLK	PF / GM
			4/0	2.84	2		1	1		0.0
12	Katelyn Odem	Fy. G 5-8 Mequon, WI (Homestead)	PTS	AVG	FG%	FG	3FG%	3PT	FT%	FT A/M
			76	4	42.5	31/73	24.0	6/25	36.4	8/22
			G/GS	MIN / GM	TOT REB	TO	STL	AST	BLK	PF / GM
			19/8	17.13	32	20	16	10	1	1.8
14	Nicky Huss	So. F 6-1 Omaha, NE (Duchesne Academy)	PTS	AVG	FG%	FG	3FG%	3PT	FT%	FT A/M
					0.0		0.0			
			G/GS	MIN / GM	TOT REB	TO	STL	AST	BLK	PF / GM
			4/0	2.34	1	1				0.0
21	Emma Bulman	Sr. G 5-10 Ames, IA (Gilbert HS)	PTS	AVG	FG%	FG	3FG%	3PT	FT%	FT A/M
			70	3.68	38.6	27/70	12.5	3/24	65.0	13/20
			G/GS	MIN / GM	TOT REB	TO	STL	AST	BLK	PF / GM
			19/0	16.60	59	25	12	15	3	1.5
22	Lexie White	So. G 5-11 Merrill, WI (Wausau West HS)	PTS	AVG	FG%	FG	3FG%	3PT	FT%	FT A/M
			134	7.05	36.4	47/129	29.8	17/57	69.7	23/33
			G/GS	MIN / GM	TOT REB	TO	STL	AST	BLK	PF / GM
			19/19	24.17	94	23	17	15	11	2.6
25	Kaitlyn Patke	Jr. F 5-10 Washington, MO (St. Francis Borgia HS)	PTS	AVG	FG%	FG	3FG%	3PT	FT%	FT A/M
			10	1.43	40.0	4/10	0.0		66.7	2/3
			G/GS	MIN / GM	TOT REB	TO	STL	AST	BLK	PF / GM
			7/0	4.47	7	4	3	2	2	0.4
33	McKenna Williams	Jr. F 5-10 Darien, WI (Delavan-Darien)	PTS	AVG	FG%	FG	3FG%	3PT	FT%	FT A/M
			56	3.29	43.9	18/41	23.5	4/17	80.0	16/20
			G/GS	MIN / GM	TOT REB	TO	STL	AST	BLK	PF / GM
			17/0	8.62	33	10	5	6	3	0.6
34	Avery Larson	Jr. F 6-3 Antioch, IL (Antioch HS)	PTS	AVG	FG%	FG	3FG%	3PT	FT%	FT A/M
			7	1.75	75.0	3/4			50.0	1/2
			G/GS	MIN / GM	TOT REB	TO	STL	AST	BLK	PF / GM
			4/0	3.80	5	2	1			0.8
35	Mallory Ott	So. F 5-11 Oshkosh, WI (Oshkosh North)	PTS	AVG	FG%	FG	3FG%	3PT	FT%	FT A/M
			54	4.91	37.0	20/54	15.8	3/19	73.3	11/15
			G/GS	MIN / GM	TOT REB	TO	STL	AST	BLK	PF / GM
			11/6	15.39	43	8	7	5	1	1.2
40	Jordan Cunningham	Sr. G 6-0 Grimes, IA (Dallas Center-Grimes)	PTS	AVG	FG%	FG	3FG%	3PT	FT%	FT A/M
			340	17.89	47.0	117/249	32.1	26/81	73.4	80/109
			G/GS	MIN / GM	TOT REB	TO	STL	AST	BLK	PF / GM
			19/19	34.07	93	53	27	59	19	2.3

Truman State's Last 4		
Jan 11	@ McKendree	L 60-72
Jan 16	Upper Iowa	L 77-88
Jan 18	Lewis	W 69-60
Jan 20	Lincoln (MO)	W 78-59
Truman State's Next 10		
Jan 25	@ Quincy	
Jan 30	@ Rockhurst	
Feb 1	@ William Jewell	
Feb 6	Drury	
Feb 8	Southwest Baptist	
Feb 13	@ Lincoln (MO)	
Feb 15	@ Missouri S&T	
Feb 20	Maryville (MO)	
Feb 22	Mo.-St. Louis	
Feb 27	@ UIndy	

GLVC RECENT RESULTS		
Sat Jan 18	Illinois Springfield 50 X	Rockhurst 63
Sat Jan 18	McKendree 65 X	Southwest Baptist 75
Sat Jan 18	Lewis 60 X	Truman 69
Sat Jan 18	Missouri-St. Louis 72	Missouri S&T 61 X
Sat Jan 18	Upper Iowa 62 X	Quincy 72
Sat Jan 18	Maryville 69 X	Drury 90
Sat Jan 18	Indianapolis 46 X	William Jewell 58
Mon Jan 20	Missouri S&T 63	William Jewell 55 X
Mon Jan 20	Missouri-St. Louis 53	Quincy 64
Mon Jan 20	Lincoln 59 X	Truman 78
GLVC UPCOMING SCHEDULE		
Thu Jan 23	Drury	Indianapolis
Thu Jan 23	Rockhurst	Upper Iowa
Thu Jan 23	Missouri-St. Louis	Maryville
Thu Jan 23	Lincoln	McKendree
Thu Jan 23	Missouri S&T	Illinois Springfield
Thu Jan 23	Southwest Baptist	Lewis
Thu Jan 23	William Jewell	Quincy
Sat Jan 25	Southwest Baptist	Indianapolis
Sat Jan 25	Rockhurst	Lewis
Sat Jan 25	Drury	Illinois Springfield

GLVC STANDINGS	
Drury	12-4 (8-1) — W2
Lewis	13-2 (7-1) — L1
Quincy	12-5 (6-2) — W6
Missouri-St. Louis	13-4 (7-3) — L1
McKendree	10-5 (6-3) — L2
Missouri S&T	10-4 (5-3) — W1
Maryville	8-10 (6-4) — L1
Southwest Baptist	7-8 (5-4) — W3
Upper Iowa	7-8 (4-5) — L1
Truman	7-12 (4-5) — W2
Rockhurst	5-10 (3-6) — W1
William Jewell	4-11 (2-7) — L1
Indianapolis	4-13 (2-7) — L1
Illinois Springfield	3-14 (2-7) — L3
Lincoln	1-14 (0-9) — L14