



TRUMAN STATE WOMEN'S BASKETBALL

2024-25 SCHEDULE

N8	at Cedarville (Ohio) ¹	W 74-61
N9	vs. Ursuline (Ohio) ¹	W 81-60
N15	at Concordia-St. Paul (Minn.)	L 68-57
N16	at Winona St. (Minn.)	L 70-64
N22	WASHBURN (Kan.)	L 81-59
N23	QUINCY (Ill.)	L 85-76
N26	vs. Newman (Kan.) ²	W 80-48
N27	vs. Arkansas-Fort Smith ²	L 75-73
N30	ROCKHURST (Mo.) *	W 82-64

D5	at Southwest Baptist (Mo.) *	W 77-63
D7	at Drury (Mo.) *	L 97-72
D19	vs. Fort Hays State (Kan.) ³	L 77-57
D21	at Hawaii-Hilo	L 68-61

J3	MISSOURI S&T *	5:15 p.m.
J5	LINCOLN (MO.) *	1 p.m.
J9	at Illinois Springfield *	5:30 p.m.
J11	at McKendree (Ill.) *	1 p.m.
J16	UPPER IOWA *	5:15 p.m.
J18	LEWIS (Ill.) *	1 p.m.
J25	at Quincy (Ill.) *	1 p.m.
J30	at Rockhurst (Mo.) *	5:30 p.m.

F1	at William Jewell (Mo.) *	1 p.m.
F6	DRURY (MO.) *	5:15 p.m.
F8	SOUTHWEST BAPTIST (MO.) *	1 p.m.
F13	at Lincoln (Mo.) *	5:30 p.m.
F15	at Missouri S&T *	1 p.m.
F20	MARYVILLE (MO.) *	5:15 p.m.
F22	MISSOURI-ST. LOUIS *	1 p.m.
F27	at Indianapolis *	5:30 p.m. (ET)

M1 WILLIAM JEWELL (MO.) * 1 p.m.

GLVC BASKETBALL TOURNAMENT

M6	Quarterfinals
M8	Semifinals
M9	Championship

¹ - in Cedarville, Ohio

² - in Springfield, Mo.

³ - in Hilo, Hawaii

* - GLVC

GLVC Tournament will be played in Hyland Arena on the campus of Lindenwood University in St. Charles, Mo.



GAMEDAY CENTRAL

GAME 15 | Jan. 3 | Kirksville, Mo. | 5:15 p.m.

GAME 16 | Jan. 5 | Kirksville, Mo. | 1 p.m.



Missouri S&T (7-2; 2-1 GLVC)
MINERS

SERIES HISTORY

Overall	TSU 40-25
Home	TSU 19-12
Road	TSU 19-13
Neutral	TSU 2-0
Last Meeting	MST 70-64 (2024)
Last 5	TSU 4-1



Truman State (5-8; 2-1 GLVC)
BULLDOGS

LEADERS

Points	Jordan Cunningham (16.8)
Rebounds	Jordan Cunningham (4.6)
Assists	Jordan Cunningham (3.2)
Steals	Jordan Cunningham (1.6)
Blocks	Jordan Cunningham (0.8)
Minutes	Jordan Cunningham (33.0)



Lincoln (1-9; 0-4 GLVC)
BLUE TIGERS

SERIES HISTORY

Overall	TSU 47-15
Home	TSU 28-4
Road	TSU 16-10
Neutral	3-1
Last Meeting	LU 85-73 (2023)
Last 5	TSU 4-1

GAME NOTES

KIRKSVILLE, Mo. – Turning the calendar to 2025 and the Truman State Women's Basketball team sets their sights on the march through the Great Lakes Valley Conference continuing this weekend with a pair of league home games.

The Bulldogs are 2-1 in conference play with wins over Rockhurst and Southwest Baptist and a loss at Drury, all of which were played over a month ago.

Truman State will entertain Missouri S&T on Friday and Lincoln University on Sunday. The Friday game will be played after the men's tilt with the Miners, which will tip off at 3 p.m. while the Sunday game will be played at the traditional afternoon slot of 1 p.m. to kick off the twinbill.

During their Christmas break, the Bulldogs traveled to Hawaii for the Big Island Classic. The number five ranked team in Division II, Fort Hays (Kan.) State downed Truman State 77-57 in the first game and the host school, the University of Hawaii at Hilo, defeated the Bulldogs 68-61.

The undefeated Tigers raced out to a 26-8 first quarter lead and never looked back in defeating the Bulldogs. Jordan Cunningham and McKenna Williams led the team with 15 points each and Bryar Duwe chipped in 11. Truman State struggled from distance, making three of 27 three-point field goal attempts on the evening.

Hawaii-Hilo put the Bulldogs behind early with 15 straight points and held on to win 68-61 on their home court. Molly Joyce was the leader in scoring for Truman State with 18 points while adding nine rebounds. Freshman Katelyn Odem, making her second straight start, scored a season-high 13 points and Cunningham added 12. It was again a struggle from long range for Truman State as the Bulldogs connected on only four of 21 three-point shot attempts in the contest.

Cunningham has been the Bulldogs leading scorer in seven games thus far and leads the team individually in scoring at 16.8 points, rebounding at 4.6, assists at 3.2, steals at 1.6, blocked shots with 11 and minutes per game at 33 this season. She has scored in double-figures in all but two games in her first season with the Bulldogs and has four 20-point or more games with a high of 27 against Southwest Baptist. In her five-year career, with the first four played at Missouri Western, Cunningham is nearly 1,000 points with 907 in 131 games

QUICK COMPARISON

	MST 7-2	TSU 5-8	LU 1-9
Record	7-2	5-8	1-9
PPG	74.9	70.2	54.7
Opp PPG	54.7	70.5	76.3
Margin	+20.2	-0.3	-21.6
FG%	.454	.410	.341
Opp FG%	.348	.417	.446
3pt %	.328	.270	.247
3pt/ g	6.7	6.5	4.8
Opp 3pt%	.260	.307	.343
Opp 3pt/g	5.0	7.9	6.9
FT%	.643	.725	.673
FT/g	12.2	15.4	10.5
Opp FT %	.768	.726	.705
Opp FT/g	7.0	9.4	12.2
RPG	39.8	33.3	30.7
Reb. Margin	+5.8	-7.2	-14.7
APG	15.2	11.6	9.0
TOPG	12.7	14.3	16.5
SPG	10.0	8.3	6.3
BPG	4.2	2.2	1.5

PROBABLE STARTERS



MOLLY JOYCE
5-7/So./Algonia, Iowa
PPG 15.8
RPG 3.5
APG 1.8
MPG 29.7



BRYAR DUWE
5-6/So./Decorah, Iowa
PPG 8.6
RPG 3.2
APG 2.0
MPG 28.8



KATELYN ODEM
5-8/Fr./Mequon, Wis.
PPG 3.2
RPG 1.5
APG 0.3
MPG 14.2



LEXIE WHITE
5-11/So./Merrill, Wis.
PPG 6.5
RPG 4.3
APG 0.6
MPG 23.9



JORDAN CUNNINGHAM
6-0/Gr./Grimes, Iowa
PPG 16.8
RPG 4.6
APG 3.2
MPG 33.0



GAME NOTES

played.

Molly Joyce has been the scoring leader in six games as a sophomore and has the top single-game mark of 34 points earlier this year against Ursuline (Ohio). Joyce has made and taken the most three-pointers by a Bulldog with 22 connections out of 77 tries. She is averaging 15.8 points per outing and has been in double figures in 11 of 13 games started. Joyce is the reigning GLVC Freshman of the Year and was the league's first recipient of the Player of the Week award this season. Joyce just passed over 500 career points in 41 games as a Bulldog.

Bryar Duwe is third in active scoring at 8.6 per night and has started all 13 games this season. Duwe was in double-figures in the first four game of the year and has scored 10 or more points in six contests with a high of 13 against Winona State. Duwe has 18 three-pointers made.

Lexie White is the fourth player that has made all 13 starts. White played in the first 11 games as a freshman before having her season cut short. She averages 6.5 points and 3.6 rebounds per game and posted a season-high 15 points against Drury and 11 rebounds over Rockhurst this year.

Katelyn Odem stepped into the fifth starting spot in Hawaii after Mallory Ott had started the previous six games but left early against Drury on December 7th. The freshman had seen action in the first 11 games before entering the starting lineup against Fort Hays State on December 19. She scored 13 points on 6-of-9 shooting with a three-pointer against Hawaii-Hilo in the Bulldogs last time on the court.

Emma Bulman, Gracie Neff and McKenna Williams have each been valuable off the pine for the team. Bulman gives the Bulldogs 18.5 minutes per night while scoring 3.4 points and adding 3.1 rebounds per contest. She has played in 97 career games at Truman State and scored a career-high 18 points against McKendree last season.

Neff was the team leader in assists a season ago with 117 and has 355 helpers in 116 games throughout five seasons. Her last three years have been at Truman State after playing two years at Lindenwood. She had 11 assists against Quincy in 2021 and her bench mark in points scored is 13 against Drury in 2024.

Williams has appeared in 12 games and scored a season-high 15 points against Fort Hays State while out in Hawaii. She started all 36 games last year at Rock Valley (Ill.) College and aided the Golden Eagles to a 34-2 record and a NJCAA Region 4 Championship. She averaged 8.8 points and 7.2 rebounds during that season.

The Bulldogs are averaging 70.2 points scored against 70.5 points allowed this year. They are shooting 41% overall from the field and 27% from three-point range. Truman State takes 41% of their shots from beyond the arc per game and makes 6.5 per night.

The team has lost the rebounding battle in 10 of the 13 games this season and are a minus 7.2 in rebounding margin. They have a positive turnover margin to their opponents at plus 2.3 with 14.3 turnovers made to 16.6 turnovers forced per night and average 8.3 steals per game.

Head Coach Theo Dean is in his sixth season at Truman State and is tied for third on the all-time wins list with 87 with John Sloop. His .580 winning percentage is only second to his predecessor Amy Eagan (.642). Of his 87 wins, Dean has 64 GLVC victories which is only four behind Eagan for the program's record.

About the Opponents:

Missouri S&T was picked to finish just behind the Bulldogs in the league race by the coaches. The Miners accumulated 70 points to Truman State 75 points to rank 12th in the preseason poll after an 8-22 overall record and 5-17 conference ledger.

The Miners are just one win shy of matching last year's win total and are off to a 7-2 start in 2024. They hold league wins over Lincoln and Upper Iowa but were defeated by Quincy. Of their nine games, eight have been played at home this season and the Miners have not been on the road for a game since the opener back on November 12th.

Katelynne Roberts leads the team with 10.7 points per game with Addyson Kent connecting on the most three-pointers with 23. The Miners have an impressive scoring margin at plus 20.2 per game.

Lincoln will make their first trip to Pershing Arena as a member of the Great Lakes Valley Conference on Sunday. The Blue Tigers will be at Quincy to open 2025 on Friday.

The Blue Tigers last visit to Kirksville was in the 2013 campaign and joined the GLVC as a full-time member in July of 2024. They broke a 25-game losing streak to the Bulldogs in a non-conference tilt last year in Springfield, Missouri as part of the Drury Thanksgiving Classic. Lincoln tripped up Truman State 85-73.

Lincoln has struggled to a 1-9 start with eight straight losses. Their win came in the opener over Harris-Stowe (Mo.) 58-42. Their three conference losses entering the week have been at the hands of Southwest Baptist (102-67), Missouri S&T (70-49) and Upper Iowa (69-56).

Hanne Nybo and Ayreona Carter lead the Blue Tigers in scoring at 11.6 and 10.3 points per game respectively.

Up Next:

Truman State will be at Illinois Springfield and Lewis next week. The Prairie Stars are currently the only team in the GLVC without a victory while Lewis is leading the conference and has won 11 straight games. Illinois Springfield will be on Thursday and Lewis on Saturday.

Double-Figure Games

By Class - Career

Player	Pts (20/30)	Rebs	Asts	Dbl/Dbls
Hope	-	-	-	-
Odem	2	-	-	-
Rogers	-	-	-	-
Huss	-	-	-	-
Ott	1	1	-	1
Boehm	-	-	-	-
Duwe	6	-	-	-
Joyce	23 (7/2)	1	-	1
White	3	1	-	1
Larson	-	-	-	-
Patke	-	-	-	-
Williams	29 (2)	14	-	13
Bulman	10	-	-	-
Cunningham	34 (4/0)	1	-	1
Neff	7	-	2	1
Standefor	1	-	-	-

Truman State Facts

Location:	Kirksville, Mo. (18,000)
Enrollment:	4,000
Conference:	Great Lakes Valley
University President:	Dr. Sue Thomas
Director of Athletics:	TBA
Head Coach:	Theo Dean
Assistant Coach:	Dajae Black
Basketball Athletic Trainer:	Cassie DeBlauw
Team Physician:	Dr. John Bailey
Athletics Communications:	Justin Thomas/Kevin White

On The Air

Video:	GLVCSN.com (PPV)
Radio:	88.7 FM KTRM (Student Radio)
Online Audio:	NEMOPressbox.com (Free)
Live Stats:	TrumanBulldogs.com

2024-25 Truman State Bulldogs

#	Name	Pos.	Ht.	Yr.	Hometown	High School/Previous
0	Gracie Neff	G	5-8	Gr.	Kansas City, Mo.	Staley HS/ Lindenwood (Mo.) Univ.
1	Molly Joyce	G	5-7	So.	Algona, Iowa	Bishop Garrigan HS
3	Tori Standefor	G	5-7	Sr.	Bethalto, Ill.	Civic Memorial HS/Missouri-St. Louis
4	Bryar Duwe (Doo-we)	G	5-6	So.	Decorah, Iowa	Decorah HS
10	Sophia Hope	F	5-10	Fr.	Waukee, Iowa	Waukee HS
11	Lizzie Boehm (Bame)	G	5-7	So.	Kansas City, Mo.	Staley HS
12	Katelyn Odem	G	5-8	Fr.	Mequon, Wis.	Homestead HS
14	Nicky Huss	F	6-1	R-Fr.	Omaha, Neb.	Duchesne Academy
20	Braylee Rogers	G	5-9	Fr.	Olathe, Kan.	Olathe East HS
21	Emma Bulman	F	5-10	Sr.	Ames, Iowa	Gilbert HS
22	Lexie White	G	5-11	So.	Merrill, Wis.	Wausau West HS
25	Kaitlyn Patke (pat-key)	F	6-0	Jr.	Washington, Mo.	St. Francis Borgia HS
33	McKenna Williams	F	5-10	Jr.	Darien, Wis.	Delavan-Darien HS/Rock Valley Col.
34	Avery Larson	C	6-3	R-So.	Antioch, Ill.	Antioch HS
35	Mallory Ott	F	5-11	R-Fr.	Oshkosh, Wis.	Oshkosh North HS
40	Jordan Cunningham	G	6-0	Gr.	Grimes, Iowa	Dallas Center-Grimes HS/Mo. Western

Head Coach: Theo Dean (6th Season)

Associate Head Coach: Dajae Black

Graduate Assistant Coach: Trinitee Jackson



GLVC Standings

School	Conf.	Pct.	Over	Pct.	Home	Away	Neutral	Streak	PRS
Lewis	3-0	1.000	9-1	.900	2-0	6-0	1-1	W8	
McKendree	3-0	1.000	7-2	.778	4-1	1-1	2-0	L2	
Drury	3-0	1.000	7-3	.700	6-2	1-0	0-1	W1	
Missouri-St. Louis	3-1	.750	9-2	.818	4-2	5-0	0-0	W2	
Missouri S&T	2-1	.667	7-2	.778	7-1	0-1	0-0	W2	
Upper Iowa	2-1	.667	5-4	.556	3-0	2-4	0-0	L1	
Truman	2-1	.667	5-8	.385	1-2	2-4	2-2	L3	
Southwest Baptist	2-2	.500	4-6	.400	4-2	0-2	0-2	L1	
Maryville	2-2	.500	4-8	.333	4-1	0-6	0-1	L2	
Quincy	1-2	.333	7-5	.583	2-2	2-2	3-1	W1	
William Jewell	1-2	.333	3-6	.333	3-2	0-4	0-0	W1	
Rockhurst	1-2	.333	3-6	.333	3-3	0-1	0-2	W1	
Indianapolis	0-3	.000	2-9	.182	1-4	1-5	0-0	L6	
Lincoln	0-4	.000	1-9	.100	1-4	0-5	0-0	L9	
Illinois Springfield	0-4	.000	0-11	.000	0-3	0-6	0-2	L11	

Weekly Awards

Date	Player	School
11/11	Molly Joyce	Truman State
11/18	Baylie Parks	McKendree
11/25	Rhi Gibbons	Drury
12/1	Franchesca Metz	Missouri S&T
12/9	Mia Huberty	Upper Iowa
12/16	Mariann Blass	Quincy
12/23	Ally Cesarini	Lewis

Upcoming Games

Thursday, January 2
Saint Ambrose at Ill. Springfield

Friday, January 3
McKendree at Indianapolis
Missouri-St. Louis at Upper Iowa
Southwest Baptist at Rockhurst
Missouri S&T at Truman
Lincoln at Quincy
Drury at William Jewell
Maryville at Lewis

Sunday, January 5
Drury at Rockhurst
Illinois Springfield at Indianapolis
Lincoln at Truman

Missouri-St. Louis at Quincy
McKendree at Lewis
Maryville at Upper Iowa
Missouri S&T at William Jewell

Thursday, January 9
Upper Iowa at Lewis
Southwest Baptist at Missouri-St. Louis
Quincy at Indianapolis
Rockhurst at Maryville
Truman at Illinois Springfield
Drury at Lincoln
William Jewell at McKendree

Recent Results

Sunday, December 22
Quincy 74, Western Washington 68

Saturday, December 21
Upper Iowa 79, Lake Superior St. 82
McKendree 61, Davenport 79
Indianapolis 60, Walsh 63
Eureka 27, Missouri S&T 85
Maryville 85, Florida Southern 90
Emporia St. 73, Lincoln 62
Northeastern St. 66, Drury 84
Truman 61, Hawaii Hilo 68

Friday, December 20
Maryville 51, Eckerd 59
Illinois Springfield 55, Ferris St. 82
Quincy 60, Fort Hays St. 73

Thursday, December 19
Harris-Stowe 50, Missouri S&T 80
Ill. Springfield 56, Lake Superior St. 63
Truman 57, Fort Hays St. 77

Wednesday, December 18
Judson 46, Upper Iowa 89
Okla. Wesleyan 67, SW Baptist 60
Baker 78, Rockhurst 80 OT
Lewis 64, Davenport 47
Ottawa 54, William Jewell 82

Polls

WBCA Coaches Poll

Rk	School (Record)	Points	Prev.
1	Grand Valley State (9-0)	573	1
2	Texas Woman's (9-1)	524	2
3	Montana State Billings (9-1)	508	3
4	Gannon (12-1)	459	6
5	Bentley (9-1)	450	5
6	Fort Hays State (9-0)	429	7
7	Lubbock Christian (9-1)	411	4
8	Pittsburg State (8-1)	379	8
9	Cal St. Dominguez Hills (10-0)	370	12
10	Carson-Newman (8-1)	348	11
11	Azusa Pacific (7-1)	294	14
12	Minnesota St. Mankato (7-2)	265	16
13	Concordia-St. Paul (9-0)	252	19
14	Seton Hill (10-0)	244	21
15	Tampa (8-2)	235	17
16	Union, TN (6-2)	176	20
17	Texas-Tyler (6-1)	170	18
18	Nova Southeastern (7-1)	150	24
19	Ferris State (7-2)	133	23
20	Ashland (7-3)	132	10
21	Lee, TN (7-1)	109	15
22	Thomas Jefferson (6-2)	102	13
23	North Georgia (7-0)	101	RV
24	Cal Poly Pomona (7-1)	94	25
25	Northern Michigan (8-0)	85	RV

GLVC Coaches Poll

Rk	School (Record)	Points
1.	Lewis	190 (9)
2.	Drury	183 (5)
3.	McKendree	158 (1)
4.	Maryville	140
5.	Upper Iowa	130
6.	Rockhurst	128
7.	Missouri-St. Louis	109
	Quincy	109
10.	Illinois Springfield	80
11.	Truman State	75
12.	Missouri S&T	70
13.	Southwest Baptist	47
14.	Lincoln	26
15.	William Jewell	25



2024-25 Truman St. Women's Basketball Combined Team Statistics All games

Page 1/1
as of Dec 23, 2024

Game Records

Record	Overall	Home	Away	Neutral
ALL GAMES	5-8	1-2	2-4	2-2
CONFERENCE	2-1	1-0	1-1	0-0
NON-CONFERENCE	3-7	0-2	1-3	2-2

Score by Periods

Team	1st	2nd	3rd	4th	OT	TOT
Truman St.	212	235	228	238	0	913
Opponents	234	236	226	221	0	917

Team Box Score

No. Player					Total		3-Point		F-Throw		Rebounds													
		GP-GS	MIN	AVG	FG-FGA	FG%	3FG-3FGA	3FG%	FT-FTA	FT%	OFF	DEF	TOT	AVG	PF	DQ	A	TO	BLK	STL	PTS	AVG		
40	CUNNINGHAM, Jordan	13-13	429:39	33.0	74-158	.468	18-54	.333	52-65	.800	11	49	60	4.6	28	0	41	35	11	21	218	16.8		
1	JOYCE, Molly	13-13	386:34	29.7	62-160	.388	22-77	.286	59-73	.808	8	37	45	3.5	27	0	23	31	3	20	205	15.8		
30	NIEMEIER, Maddie	5-5	130:09	26.0	24-46	.522	0-1	.000	6-9	.667	5	18	23	4.6	18	1	10	7	1	5	54	10.8		
4	DUWE, Bryar	13-13	374:27	28.8	40-103	.388	18-57	.316	14-22	.636	6	35	41	3.2	22	0	26	28	0	13	112	8.6		
22	WHITE, Lexie	13-13	310:30	23.9	26-80	.325	13-41	.317	19-28	.679	15	41	56	4.3	35	0	8	14	6	10	84	6.5		
35	OTT, Mallory	11-6	169:26	15.4	20-54	.370	3-19	.158	11-15	.733	15	28	43	3.9	13	0	5	8	1	7	54	4.9		
33	WILLIAMS, McKenna	12-0	109:14	9.1	14-29	.483	3-12	.250	16-20	.800	6	17	23	1.9	8	0	4	6	3	4	47	3.9		
21	BULMAN, Emma	13-0	240:39	18.5	17-50	.340	2-18	.111	8-13	.615	4	36	40	3.1	17	0	9	19	1	8	44	3.4		
12	ODEM, Katelyn	13-2	184:53	14.2	17-42	.405	2-13	.154	6-15	.400	2	18	20	1.5	19	0	4	13	1	10	42	3.2		
34	LARSON, Avery	3-0	13:11	4.4	3-3	1.000	0-0	.000	1-2	.500	4	1	5	1.7	3	0	0	2	0	1	7	2.3		
3	STANDEFER, Tori	6-0	38:30	6.4	4-9	.444	1-4	.250	4-6	.667	3	5	8	1.3	5	0	2	1	0	3	13	2.2		
0	NEFF, Gracie	13-0	187:20	14.4	10-25	.400	3-16	.188	4-8	.500	2	12	14	1.1	13	0	17	16	1	4	27	2.1		
25	PATKE, Kaitlyn	4-0	16:21	4.1	3-6	.500	0-3	.000	0-0	.000	1	2	3	0.8	1	0	1	3	1	2	6	1.5		
11	BOEHM, Lizzie	1-0	01:32	1.5	0-0	.000	0-0	.000	0-0	.000	0	0	0	0.0	0	0	1	0	0	0	0	0.0		
14	HUSS, Nicky	3-0	07:36	2.5	0-1	.000	0-0	.000	0-0	.000	0	1	1	0.3	0	0	0	0	0	0	0	0.0		
Team											20	31	51					3						
Total		13	2600		314-766	.410	85-315	.270	200-276	.725	102	331	433	33.3	209	1	151	186	29	108	913	70.2		
Opponents		13	2600		346-829	.417	103-335	.307	122-168	.726	149	377	526	40.5	263	8	180	216	24	89	917	70.5		

Team Statistics

	TSU	OPP
Scoring	913	917
Points per game	70.2	70.5
Scoring margin	-0.3	-
Field goals-att	314-766	346-829
Field goal pct	.410	.417
3 point fg-att	85-315	103-335
3-point FG pct	.270	.307
3-pt FG made per game	6.5	7.9
Free throws-att	200-276	122-168
Free throw pct	.725	.726
F-Throws made per game	15.4	9.4
Rebounds	433	526
Rebounds per game	33.3	40.5
Rebounding margin	-7.2	-
Assists	151	180
Assists per game	11.6	13.8
Turnovers	186	216
Turnovers per game	14.3	16.6
Turnover margin	+2.3	-
Assist/turnover ratio	0.8	0.8
Steals	108	89
Steals per game	8.3	6.8
Blocks	29	24
Blocks per game	2.2	1.8
Winning streak	0	-
Home win streak	1	-
Attendance	1515	3351
Home games-Avg/Game	3-505	6-559
Neutral site-Avg/Game	-	4-184

Team Results

Date	Opponent		Score	Att.
11/08/2024	at Cedarville	W	74-61	455
11/09/2024	vs Ursuline	W	81-60	150
11/15/2024	at Concordia-St. Paul	L	57-68	325
11/16/2024	at Winona St.	L	64-70	825
11/22/2024	Washburn	L	59-81	1232
11/23/2024	Quincy	L	76-85	200
11/26/2024	vs Newman	W	80-48	263
11/27/2024	vs Ark.-Fort Smith	L	73-75	217
11/30/2024	Rockhurst	W	82-64	83
12/05/2024	at Southwest Baptist	W	77-63	322
12/07/2024	at Drury	L	72-97	1207
12/19/2024	vs Fort Hays St.	L	57-77	107
12/21/2024	at Hawaii Hilo	L	61-68	217



THEO DEAN

Head Coach // 6th Season At Truman
87-63 (.580) Overall // 64-37 (.634) GLVC

Theo Dean begins his fifth season at the helm of the Truman Women's Basketball team.

Dean has been a part of the program in some capacity for over ten years. He was a student manager and graduate assistant from 2010-14; Dean then returned to Kirksville to become the full-time assistant and recruiting coordinator from June 2016-August 2019. Dean was promoted to interim head coach on August 23, 2019, and on January 13, 2020, after a 9-3 start to the season, including a school-record five-game winning streak to start Great Lakes Valley Conference play, the interim tag was removed, and Dean became the 11th full-time head coach in program history and the first African-American head coach in school history.

By increasing fan and alumni involvement with a fast-paced style of play, Dean's impact on the program has been very evident over the past four seasons, and fans of Truman Women's Basketball have seen continued success for the Bulldogs' program.

Since his return to Truman in 2016, Dean has coached 22 All-GLVC performers (10 being named to the First Team), two Freshman of the Year selections, four 1,000-point scorers, one 1,000 rebounder, two WBCA All-Americans, one D2CCA All-American, six CoSIDA/CSC Academic All-District selections, three D2CCA All-Midwest Region selections, one Academic All-American, one GLVC Player of the Year and one GLVC Women's Basketball Female Student-Athlete of the Year. Dean has also coached over 55 Academic All-GLVC players and has coached three WBCA Academic Top 25 teams (2019, 2021 & 2023).

Overall, Dean has been on the sideline with the Bulldogs for five of the program's eight 20-win seasons, one Great Lakes Valley Conference tournament title, two Great Lakes Valley Conference tournament championship games, three NCAA Tournaments appearances, and one NCAA Tournament victory.

After graduating from Truman, Dean assisted the Lansing (Kansas) High School Boys Basketball program from 2014-16. Dean was the assistant coach to the father of former First Team All-GLVC performer, GLVC Conference Champion, and former Bulldog Associate Head Coach, Amy Briggs. While at Lansing, Dean focused on guard development for the boys' team, overall player development for the girls' team and also supervised the team managers, implementing a hustle and shot chart system into practices and games. In his first year at Lansing, he helped lead the 2014-15 team to the Kansas Substate Championship game, and Dean was then promoted to top assistant in his second season.

A Chicago, IL native, Theo Dean came to Truman in 2008 as a freshman and received his Bachelor of Fine Arts in Visual Communications degree from Truman State University in 2012 and his Master's degree in Leadership, with a concentration in Coaching and Sport Management, from Truman in 2014.

Dean, his wife, Presley (who also holds Bachelor's and Master's degrees from Truman), their son, Theo IV, and their daughter, Mina, reside in Kirksville.



Series Records

Arkansas Fort Smith	0-1
Ashland (Ohio)	0-1
Augustana (S.D.)	0-1
Avila (Mo.)	1-0
Bellarmine	0-1
Cedarville	3-0
Central Missouri	0-1
Concordia-St. Paul	0-2
Davenport (Mich.)	1-0
Drury *	1-7
Eckerd (Fla.)	0-1
Florida Southern	1-0
Fort Hays (Kan.) State	0-1
Hannibal-LaGrange	1-0
Hawaii-Hilo	0-1
Hillsdale (Mich.)	0-1
Illinois Springfield *	4-2
Indianapolis *	4-4
Lewis *	5-6
Lincoln	0-1
Lindenwood *	1-3
Maryville *	9-1
Minot (N.D.) State	1-0
Missouri S&T *	5-1
Missouri St. Louis	5-3
Missouri Western	0-1
McKendree *	6-2
Newman (Kan.)	1-0
Northern Michigan	1-0
Northwood (Mich.)	1-0
Quincy *	7-3
Rockhurst *	5-3
Saginaw Valley St.	0-1
Sioux Falls	0-1
Southern Indiana *	2-2
Southwest Baptist *	5-3
Southwest Minn. State	1-0
Union (Tenn.)	0-1
Upper Iowa	2-2
Ursuline (Ohio)	3-2
UW-Parkside *	1-1
Washburn (Kan.)	0-1
William Jewell *	9-0
Winona (Minn.) State	1-1

Truman Overall	87-63 (.580)
Home Record	39-21
Away Record	35-29
GLVC Record	64-37
GLVC Home Record	34-17
GLVC Away Record	31-20
Non-Conference Record	23-25
vs. Division I	0-0
vs. Division II	22-26
vs. Division III	0-0
vs. NAIA/Other	2-0
NC Home	3-4
NC Road	4-7
Neutral Site	14-13
Postseason	5-5
Overtime	1-4



Assistant Coach

Dajae Black (2nd Season)

2022-23 - Univ. of Akron
 (Assistant Coach)

2020-22 - Grand Canyon (Ariz.)
 (Graduate Assistant)

Playing career:

Lewis University (2016-2020)

All-Time Coaches

- Amy Eagan111-62 (6 yrs)
- Mary Jo Murray100-80 (7 yrs)
- John Sloop87-131 (8 yrs)
- Theo Dean.....87-63 (6yrs)**
- Karin Nichols71-64 (5 yrs)
- Michael Smith68-68 (5 yrs)
- Tarry Parrish44-115 (6 yrs)
- Lois Herren.....31-48 (3 yrs)
- Jan Conner.....19-58 (3 yrs)
- Pam Wood.....13-14 (2 yrs)
- Kathy Austin.....12-11 (2 yrs)

#0 Gracie Neff



Graduate
5-8
Guard
Kansas City, Mo.
Staley HS
Lindenwood

				Field Goals		3-Point		F-Throws		Rebounds				Scoring						
SEASON	TEAM	GP-GS	MIN/AVG	FG-FGA	FG%	3FG-3FGA	3FG%	FT-FTA	FT%	OFF	DEF	TOT	AVG	PF-FO	A	TO	BLK	STL	PTS	AVG
2020-21	Linden	19-18	468/24.6	18-58	.310	11-41	.268	3-8	.375	1	25	26	1.4	26-0	60	46	0	10	50	2.6
2021-22	Linden	26-17	558/21.4	19-56	.339	3-20	.150	13-21	.619	8	20	28	1.1	30-0	103	65	0	12	54	2.1
2022-23	TSU	30-0	361/12.0	20-50	.400	12-32	.375	23-29	.793	0	35	35	1.2	21-0	58	38	1	1	75	2.5
2023-24	TSU	28-21	726/25.9	31-87	.356	22-62	.355	27-38	.711	5	44	49	1.8	37-0	117	74	2	17	111	4.0
2024-25	TSU	13-0	187/14.4	10-25	.400	3-16	.188	4-8	.500	2	12	14	1.1	13-0	17	16	1	4	27	2.1
TOTAL FOR TSU		71-21	1275/18.0	61-162	.377	37-110	.336	54-75	.720	7	91	98	1.4	71-0	192	128	4	22	213	3.0
TOTAL		116-56	2300/19.8	98-276	.355	51-171	.298	70-104	.673	16	136	152	1.3	127-0	355	239	4	44	317	2.7

Single Game Highs

Statistic	Value	
Points	13	vs Drury 01/20/24
Rebounds	5	vs McKendree 02/01/24, vs Quincy 02/23/21
Assists	11	vs Quincy 12/02/21
Steals	3	vs McKendree 02/01/24, vs Southwest Baptist 01/30/21
Blocks	1	4 times
FG Made	4	5 times
FG Attempts	9	at UIndy 02/10/24
3FG Made	4	vs Drury 01/20/24
3FG Attempts	6	vs Drury 01/20/24
FT Made	5	vs UIndy 01/03/24
FT Attempts	6	vs UIndy 01/03/24, vs Maryville (MO) 11/29/21

#1 Molly Joyce



Sophomore
5-7
Guard
Algona, Iowa
Bishop Garrigan

				Field Goals		3-Point		F-Throws		Rebounds				Scoring						
SEASON	TEAM	GP-GS	MIN/AVG	FG-FGA	FG%	3FG-3FGA	3FG%	FT-FTA	FT%	OFF	DEF	TOT	AVG	PF-FO	A	TO	BLK	STL	PTS	AVG
2023-24	TSU	28-14	675/24.1	104-277	.375	29-102	.284	67-87	.770	16	79	95	3.4	61-0	39	62	9	31	304	10.9
2024-25	TSU	13-13	387/29.7	62-160	.388	22-77	.286	59-73	.808	8	37	45	3.5	27-0	23	31	3	20	205	15.8
TOTAL		41-27	1061/25.9	166-437	.380	51-179	.285	126-160	.788	24	116	140	3.4	88-0	62	93	12	51	509	12.4

Single Game Highs

Statistic	Value	
Points	34	vs Ursuline 11/09/24
Rebounds	10	vs Ill. Springfield 02/22/24
Assists	4	vs Missouri S&T 02/17/24, at Drury 12/07/24, vs Ill. Springfield 02/22/24
Steals	5	at Rockhurst 01/25/24
Blocks	2	vs Winona St. 11/17/23, vs Maryville (MO) 02/15/24, vs Quincy 02/24/24
FG Made	10	vs Ursuline 11/09/24
FG Attempts	23	at Winona St. 11/16/24
3FG Made	6	vs Ursuline 11/09/24
3FG Attempts	11	vs Ark.-Fort Smith 11/27/24
FT Made	10	at Rockhurst 01/25/24, vs Ark.-Fort Smith 11/27/24
FT Attempts	12	vs Ark.-Fort Smith 11/27/24, at Hawaii Hilo 12/21/24



#3 Tori Standefer



Graduate
5-7
Guard
Bethalto, Ill.
Civic Memorial
Mo.-St. Louis

				Field Goals		3-Point		F-Throws		Rebounds				Scoring						
SEASON	TEAM	GP-GS	MIN/AVG	FG-FGA	FG%	3FG-3FGA	3FG%	FT-FTA	FT%	OFF	DEF	TOT	AVG	PF-FO	A	TO	BLK	STL	PTS	AVG
2021-22	UMSL	9-0	57/6.3	4-15	.267	1-9	.111	8-8	1.000	2	5	7	0.8	4-0	4	2	0	1	17	1.9
2022-23	UMSL	16-0	115/7.2	5-18	.278	1-7	.143	8-13	.615	6	8	14	0.9	15-1	2	12	0	6	19	1.2
2023-24	UMSL	23-0	233/10.1	13-52	.250	6-29	.207	7-10	.700	9	18	27	1.2	14-0	9	15	0	7	39	1.7
2024-25	TSU	6-0	38/6.4	4-9	.444	1-4	.250	4-6	.667	3	5	8	1.3	5-0	2	1	0	3	13	2.2
TOTAL FOR TSU		6-0	38/6.4	4-9	.444	1-4	.250	4-6	.667	3	5	8	1.3	5-0	2	1	0	3	13	2.2
TOTAL		54-0	444/8.2	26-94	.277	9-49	.184	27-37	.730	20	36	56	1.0	38-1	17	30	0	17	88	1.6

Single Game Highs

Statistic	Value	
Points	13	at Principia 12/18/21
Rebounds	5	at Davenport 11/11/23
Assists	2	at Grand Valley St. 11/10/23, vs Newman 11/26/24
Steals	2	vs Wis.-Parkside 12/31/22, vs Ill. Springfield 01/21/23, vs McKendree 02/25/23
FG Made	3	at Principia 12/18/21, vs Principia 11/20/23
FG Attempts	6	at Principia 12/18/21
3FG Made	2	at Truman St. 02/03/24
3FG Attempts	4	at Principia 12/18/21, vs Purdue Northwest 12/19/23
FT Made	6	at Principia 12/18/21
FT Attempts	6	at Principia 12/18/21

#4 Bryar Duwe



Sophomore
5-6
Guard
Decorah, Iowa
Decorah HS

				Field Goals		3-Point		F-Throws		Rebounds				Scoring						
SEASON	TEAM	GP-GS	MIN/AVG	FG-FGA	FG%	3FG-3FGA	3FG%	FT-FTA	FT%	OFF	DEF	TOT	AVG	PF-FO	A	TO	BLK	STL	PTS	AVG
2023-24	TSU	7-0	31/4.4	5-14	.357	3-9	.333	4-4	1.000	1	0	1	0.1	1-0	0	1	0	2	17	2.4
2024-25	TSU	13-13	374/28.8	40-103	.388	18-57	.316	14-22	.636	6	35	41	3.2	22-0	26	28	0	13	112	8.6
TOTAL		20-13	405/20.3	45-117	.385	21-66	.318	18-26	.692	7	35	42	2.1	23-0	26	29	0	15	129	6.5

Single Game Highs

Statistic	Value	
Points	13	at Winona St. 11/16/24
Rebounds	7	vs Ark.-Fort Smith 11/27/24
Assists	4	at Cedarville 11/08/24, at Southwest Baptist 12/05/24
Steals	2	5 times
FG Made	5	at Winona St. 11/16/24
FG Attempts	11	vs Ursuline 11/09/24
3FG Made	3	vs Ursuline 11/09/24, vs Ark.-Fort Smith 11/27/24
3FG Attempts	7	vs Ursuline 11/09/24
FT Made	4	vs Fort Hays St. 12/19/24
FT Attempts	6	vs Fort Hays St. 12/19/24

#10 Sophie Hope



Freshman
5-10
Waukee, Iowa
Waukee

#11 Lizzie Boehm



Sophomore
5-7
Guard
Kansas City, Mo.
Staley HS

				Field Goals		3-Point		F-Throws		Rebounds									Scoring	
SEASON	TEAM	GP-GS	MIN/AVG	FG-FGA	FG%	3FG-3FGA	3FG%	FT-FTA	FT%	OFF	DEF	TOT	AVG	PF-FO	A	TO	BLK	STL	PTS	AVG
2023-24	TSU	23-0	308/13.4	14-58	.241	4-29	.138	15-19	.789	11	16	27	1.2	41-1	25	37	1	16	47	2.0
2024-25	TSU	1-0	2/1.5	0-0	.000	0-0	.000	0-0	.000	0	0	0	0.0	0-0	1	0	0	0	0	0.0
TOTAL		24-0	310/12.9	14-58	.241	4-29	.138	15-19	.789	11	16	27	1.1	41-1	26	37	1	16	47	2.0

Single Game Highs

Statistic	Value	
Points	6	vs Southwest Baptist 01/18/24, at UIndy 02/10/24, at Drury 03/02/24
Rebounds	3	5 times
Assists	4	vs Mo.-St. Louis 02/03/24
Steals	3	at Southwest Baptist 02/29/24
Blocks	1	at Southwest Baptist 02/29/24
FG Made	2	4 times
FG Attempts	7	at William Jewell 01/27/24
3FG Made	1	4 times
3FG Attempts	4	at McKendree 11/25/23, vs McKendree 02/01/24
FT Made	4	vs Ill. Springfield 02/22/24
FT Attempts	4	vs Ill. Springfield 02/22/24



#12 Katelyn Odem



Freshman
5-8
Guard
Mequon, Wis.
Homestead

			Field Goals		3-Point		F-Throws		Rebounds								Scoring			
SEASON	TEAM	GP-GS	MIN/AVG	FG-FGA	FG%	3FG-3FGA	3FG%	FT-FTA	FT%	OFF	DEF	TOT	AVG	PF-FO	A	TO	BLK	STL	PTS	AVG
2024-25	TSU	13-2	185/14.2	17-42	.405	2-13	.154	6-15	.400	2	18	20	1.5	19-0	4	13	1	10	42	3.2
TOTAL		13-2	185/14.2	17-42	.405	2-13	.154	6-15	.400	2	18	20	1.5	19-0	4	13	1	10	42	3.2

Single Game Highs

Statistic	Value	
Points	13	at Hawaii Hilo 12/21/24
Rebounds	6	vs Fort Hays St. 12/19/24
Assists	1	4 times
Steals	2	vs Washburn 11/22/24, vs Fort Hays St. 12/19/24
Blocks	1	at Drury 12/07/24
FG Made	6	at Hawaii Hilo 12/21/24
FG Attempts	9	at Hawaii Hilo 12/21/24
3FG Made	1	vs Ark.-Fort Smith 11/27/24, at Hawaii Hilo 12/21/24
3FG Attempts	4	vs Fort Hays St. 12/19/24
FT Made	3	at Drury 12/07/24
FT Attempts	5	at Drury 12/07/24

#14 Nicky Huss



R-Freshman
6-1
Omaha, Neb.
Duchesne

				Field Goals		3-Point		F-Throws		Rebounds										Scoring	
SEASON	TEAM	GP-GS	MIN/AVG	FG-FGA	FG%	3FG-3FGA	3FG%	FT-FTA	FT%	OFF	DEF	TOT	AVG	PF-FO	A	TO	BLK	STL	PTS	AVG	
2024-25	TSU	3-0	8/2.5	0-1	.000	0-0	.000	0-0	.000	0	1	1	0.3	0-0	0	0	0	0	0	0.0	
TOTAL		3-0	8/2.5	0-1	.000	0-0	.000	0-0	.000	0	1	1	0.3	0-0	0	0	0	0	0	0.0	

Single Game Highs

Statistic	Value	
Rebounds	1	vs Newman 11/26/24
FG Attempts	1	vs Newman 11/26/24

#20 Braylee Rogers



Freshman
5-9
Olathe, Kan.
Olathe East

#21 Emma Bulman



Senior
5-10
Ames, Iowa
Gilbert

				Field Goals		3-Point		F-Throws		Rebounds									Scoring	
SEASON	TEAM	GP-GS	MIN/AVG	FG-FGA	FG%	3FG-3FGA	3FG%	FT-FTA	FT%	OFF	DEF	TOT	AVG	PF-FO	A	TO	BLK	STL	PTS	AVG
2021-22	TSU	26-0	247/9.5	20-43	.465	4-10	.400	9-12	.750	4	47	51	2.0	20-0	9	11	4	5	53	2.0
2022-23	TSU	30-0	483/16.1	56-138	.406	15-36	.417	39-53	.736	11	91	102	3.4	28-0	20	51	10	6	166	5.5
2023-24	TSU	28-11	584/20.9	49-126	.389	15-60	.250	60-69	.870	14	63	77	2.8	58-1	37	65	5	21	173	6.2
2024-25	TSU	13-0	241/18.5	17-50	.340	2-18	.111	8-13	.615	4	36	40	3.1	17-0	9	19	1	8	44	3.4
TOTAL		97-11	1555/16.0	142-357	.398	36-124	.290	116-147	.789	33	237	270	2.8	123-1	75	146	20	40	436	4.5

Single Game Highs

Statistic	Value	
Points	18	at McKendree 11/25/23
Rebounds	9	vs Lincoln (MO) 11/21/23
Assists	6	vs Winona St. 11/17/23
Steals	2	7 times
Blocks	2	vs Maryville (MO) 01/26/23, at Rockhurst 01/25/24
FG Made	7	at McKendree 11/25/23
FG Attempts	10	at Quincy 01/11/24
3FG Made	2	vs Lincoln (MO) 11/21/23, at McKendree 11/25/23, vs Southwest Baptist 01/18/24
3FG Attempts	5	vs Lincoln (MO) 11/21/23, at Quincy 01/11/24
FT Made	8	vs Ill. Springfield 02/22/24
FT Attempts	8	at Southwest Baptist 12/10/22, at Rockhurst 01/25/24, vs Ill. Springfield 02/22/24



#22 Lexie White



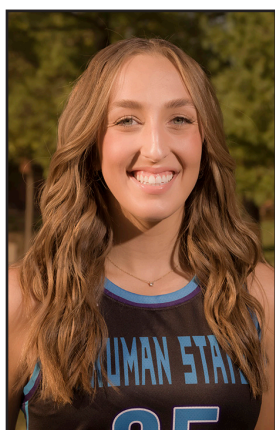
Sophomore
5-11
Merrill, Wis.
Wausau West

				Field Goals		3-Point		F-Throws		Rebounds									Scoring	
SEASON	TEAM	GP-GS	MIN/AVG	FG-FGA	FG%	3FG-3FGA	3FG%	FT-FTA	FT%	OFF	DEF	TOT	AVG	PF-FO	A	TO	BLK	STL	PTS	AVG
2023-24	TSU	11-0	176/16.0	17-52	.327	3-20	.150	8-11	.727	6	25	31	2.8	28-0	11	17	6	13	45	4.1
2024-25	TSU	13-13	310/23.9	26-80	.325	13-41	.317	19-28	.679	15	41	56	4.3	35-0	8	14	6	10	84	6.5
TOTAL		24-13	487/20.3	43-132	.326	16-61	.262	27-39	.692	21	66	87	3.6	63-0	19	31	12	23	129	5.4

Single Game Highs

Statistic	Value	
Points	15	at Drury 12/07/24
Rebounds	11	vs Rockhurst 11/30/24
Assists	3	at McKendree 11/25/23
Steals	3	vs Ursuline 11/10/23
Blocks	3	at Concordia-St. Paul 11/15/24
FG Made	5	vs Ursuline 11/10/23, at Drury 12/07/24
FG Attempts	11	at Hawaii Hilo 12/21/24
3FG Made	3	at Drury 12/07/24
3FG Attempts	6	vs Fort Hays St. 12/19/24
FT Made	4	vs Rockhurst 11/30/24
FT Attempts	6	vs Fort Hays St. 12/19/24

#25 Kaitlyn Patke



Junior
6-0
Forward
Washington, Mo.
Borgia

				Field Goals		3-Point		F-Throws		Rebounds										Scoring	
SEASON	TEAM	GP-GS	MIN/AVG	FG-FGA	FG%	3FG-3FGA	3FG%	FT-FTA	FT%	OFF	DEF	TOT	AVG	PF-FO	A	TO	BLK	STL	PTS	AVG	
2022-23	TSU	15-0	76/5.1	11-18	.611	1-5	.200	6-12	.500	2	6	8	0.5	5-0	2	11	0	2	29	1.9	
2023-24	TSU	8-0	29/3.6	9-12	.750	2-5	.400	2-3	.667	0	2	2	0.3	5-0	1	0	0	2	22	2.8	
2024-25	TSU	4-0	16/4.1	3-6	.500	0-3	.000	0-0	.000	1	2	3	0.8	1-0	1	3	1	2	6	1.5	
TOTAL		27-0	121/4.5	23-36	.639	3-13	.231	8-15	.533	3	10	13	0.5	11-0	4	14	1	6	57	2.1	

Single Game Highs

Statistic	Value	
Points	6	vs William Jewell 01/12/23, at Missouri S&T 01/19/23, at Drury 03/02/24
Rebounds	2	4 times
Assists	1	4 times
Steals	1	6 times
Blocks	1	at Southwest Baptist 12/05/24
FG Made	2	6 times
FG Attempts	4	at Drury 03/02/24
3FG Made	1	vs William Jewell 01/12/23, vs Winona St. 11/17/23, at Rockhurst 01/25/24
3FG Attempts	2	4 times
FT Made	4	at Missouri S&T 01/19/23



#33 McKenna Williams



Junior
5-10
Forward
Darien, Wis.
Delavan-Darien
Rock Valley

				Field Goals		3-Point		F-Throws		Rebounds								Scoring		
SEASON	TEAM	GP-GS	MIN/AVG	FG-FGA	FG%	3FG-3FGA	3FG%	FT-FTA	FT%	OFF	DEF	TOT	AVG	PF-FO	A	TO	BLK	STL	PTS	AVG
2024-25	TSU	12-0	109/9.1	14-29	.483	3-12	.250	16-20	.800	6	17	23	1.9	8-0	4	6	3	4	47	3.9
TOTAL		12-0	109/9.1	14-29	.483	3-12	.250	16-20	.800	6	17	23	1.9	8-0	4	6	3	4	47	3.9

Single Game Highs

Statistic	Value	
Points	15	vs Fort Hays St. 12/19/24
Rebounds	5	at Drury 12/07/24
Assists	2	at Drury 12/07/24
Steals	1	4 times
Blocks	1	vs Quincy 11/23/24, vs Newman 11/26/24, vs Ark.-Fort Smith 11/27/24
FG Made	5	vs Fort Hays St. 12/19/24
FG Attempts	7	vs Fort Hays St. 12/19/24
3FG Made	1	vs Ursuline 11/09/24, vs Fort Hays St. 12/19/24, at Hawaii Hilo 12/21/24
3FG Attempts	3	at Southwest Baptist 12/05/24
FT Made	4	vs Fort Hays St. 12/19/24
FT Attempts	5	vs Fort Hays St. 12/19/24

#34 Avery Larson



R-Sophomore
6-3
Center
Antioch, Ill.
Antioch

				Field Goals		3-Point		F-Throws		Rebounds								Scoring		
SEASON	TEAM	GP-GS	MIN/AVG	FG-FGA	FG%	3FG-3FGA	3FG%	FT-FTA	FT%	OFF	DEF	TOT	AVG	PF-FO	A	TO	BLK	STL	PTS	AVG
2022-23	TSU	7-0	24/3.4	3-8	.375	0-0	.000	4-5	.800	1	5	6	0.9	3-0	1	1	0	0	10	1.4
2024-25	TSU	3-0	13/4.4	3-3	1.000	0-0	.000	1-2	.500	4	1	5	1.7	3-0	0	2	0	1	7	2.3
TOTAL		10-0	37/3.7	6-11	.545	0-0	.000	5-7	.714	5	6	11	1.1	6-0	1	3	0	1	17	1.7

Single Game Highs

Statistic	Value	
Points	5	vs Newman 11/26/24
Rebounds	3	at Southwest Baptist 12/05/24
Assists	1	vs Ursuline 11/13/22
Steals	1	vs Fort Hays St. 12/19/24
FG Made	2	vs Newman 11/26/24
FG Attempts	4	vs William Jewell 01/12/23
FT Made	3	at William Jewell 02/25/23
FT Attempts	4	at William Jewell 02/25/23



#35 Mallory Ott



R-Freshman
5-11
Forward
Oshkosh, Wis.
Oshkosh North

				Field Goals		3-Point		F-Throws		Rebounds											Scoring	
SEASON	TEAM	GP-GS	MIN/AVG	FG-FGA	FG%	3FG-3FGA	3FG%	FT-FTA	FT%	OFF	DEF	TOT	AVG	PF-FO	A	TO	BLK	STL	PTS	AVG		
2024-25	TSU	11-6	169/15.4	20-54	.370	3-19	.158	11-15	.733	15	28	43	3.9	13-0	5	8	1	7	54	4.9		
TOTAL		11-6	169/15.4	20-54	.370	3-19	.158	11-15	.733	15	28	43	3.9	13-0	5	8	1	7	54	4.9		

Single Game Highs

Statistic	Value	
Points	14	vs Quincy 11/23/24
Rebounds	10	at Southwest Baptist 12/05/24
Assists	2	vs Ark.-Fort Smith 11/27/24
Steals	2	vs Newman 11/26/24, vs Rockhurst 11/30/24
Blocks	1	vs Ark.-Fort Smith 11/27/24
FG Made	5	vs Quincy 11/23/24, at Southwest Baptist 12/05/24
FG Attempts	13	at Southwest Baptist 12/05/24
3FG Made	1	vs Ark.-Fort Smith 11/27/24, vs Rockhurst 11/30/24, at Southwest Baptist 12/05/24
3FG Attempts	7	vs Ark.-Fort Smith 11/27/24
FT Made	4	vs Quincy 11/23/24
FT Attempts	5	vs Quincy 11/23/24

#40 Jordan Cunningham



Graudate
6-0
Guard
Grimes, Iowa
Dallas Center/Grimes
Mo. Western

				Field Goals		3-Point		F-Throws		Rebounds										Scoring	
SEASON	TEAM	GP-GS	MIN/AVG	FG-FGA	FG%	3FG-3FGA	3FG%	FT-FTA	FT%	OFF	DEF	TOT	AVG	PF-FO	A	TO	BLK	STL	PTS	AVG	
2020-21	MW	22-13	533/24.2	43-120	.358	18-60	.300	17-27	.630	7	45	52	2.4	41-0	33	43	7	22	121	5.5	
2021-22	MW	34-30	898/26.4	86-206	.417	22-91	.242	55-78	.705	13	60	73	2.1	51-0	73	55	7	28	249	7.3	
2022-23	MW	31-26	761/24.5	68-154	.442	13-51	.255	51-74	.689	11	87	98	3.2	39-1	51	46	12	25	200	6.5	
2023-24	MW	31-1	520/16.8	49-102	.480	8-35	.229	13-19	.684	6	68	74	2.4	51-0	36	30	13	17	119	3.8	
2024-25	TSU	13-13	430/33.0	74-158	.468	18-54	.333	52-65	.800	11	49	60	4.6	28-0	41	35	11	21	218	16.8	
TOTAL FOR TSU		13-13	430/33.0	74-158	.468	18-54	.333	52-65	.800	11	49	60	4.6	28-0	41	35	11	21	218	16.8	
TOTAL		131-83	3141/24.0	320-740	.432	79-291	.271	188-263	.715	48	309	357	2.7	210-1	234	209	50	113	907	6.9	

Single Game Highs

Statistic	Value	
Points	27	at Southwest Baptist 12/05/24
Rebounds	10	vs Rockhurst 11/30/24
Assists	7	vs Newman 02/16/21, at Newman 01/20/22, vs Quincy 11/23/24
Steals	4	5 times
Blocks	4	vs Fort Hays St. 02/01/24
FG Made	10	vs Rockhurst 11/30/24
FG Attempts	23	at Drury 12/07/24
3FG Made	4	at Concordia-St. Paul 11/15/24
3FG Attempts	8	at Northeastern St. 11/21/20, vs Emporia St. 02/02/21, vs Quincy 11/23/24
FT Made	8	at Southwest Baptist 12/05/24, at Drury 12/07/24
FT Attempts	10	at Southwest Baptist 12/05/24