



TRUMAN STATE WOMEN'S BASKETBALL

2024-25 SCHEDULE

N8	at Cedarville (Ohio) ¹	W 74-61
N9	vs. Ursuline (Ohio) ¹	W 81-60
N15	at Concordia-St. Paul (Minn.)	L 68-57
N16	at Winona St. (Minn.)	L 70-64
N22	WASHBURN (Kan.)	L 81-59
N23	QUINCY (Ill.)	L 85-76
N26	vs. Newman (Kan.) ²	W 80-48
N27	vs. Arkansas-Fort Smith ²	L 75-73
N30	ROCKHURST (Mo.) *	W 82-64

D5	at Southwest Baptist (Mo.) *	W 77-63
D7	at Drury (Mo.) *	L 97-72
D19	vs. Fort Hays State (Kan.) ³	L 77-57
D21	at Hawaii-Hilo	L 68-61

J3	MISSOURI S&T *	L 74-72
J9	at Illinois Springfield *	L 73-50
J11	at McKendree (Ill.) *	L 72-60
J16	UPPER IOWA *	5:15 p.m.
J18	LEWIS (Ill.) *	1 p.m.
J20	LINCOLN (MO.) *	5 p.m.
J25	at Quincy (Ill.) *	1 p.m.
J30	at Rockhurst (Mo.) *	5:30 p.m.

F1	at William Jewell (Mo.) *	1 p.m.
F6	DRURY (MO.) *	5:15 p.m.
F8	SOUTHWEST BAPTIST (MO.) *	1 p.m.
F13	at Lincoln (Mo.) *	5:30 p.m.
F15	at Missouri S&T *	1 p.m.
F20	MARYVILLE (MO.) *	5:15 p.m.
F22	MISSOURI-ST. LOUIS *	1 p.m.
F27	at Indianapolis *	5:30 p.m. (ET)

M1	WILLIAM JEWELL (MO.) *	1 p.m.
----	------------------------	--------

GLVC BASKETBALL TOURNAMENT

M6	Quarterfinals
M8	Semifinals
M9	Championship

¹ - in Cedarville, Ohio

² - in Springfield, Mo.

³ - in Hilo, Hawaii

* - GLVC




GLVC Tournament will be played in Hyland Arena on the campus of Lindenwood University in St. Charles, Mo.



GAMEDAY CENTRAL

GAME 18 | Jan. 16 | Kirksville, Mo. | 5:15 p.m.

GAME 19 | Jan. 18 | Kirksville, Mo. | 1 p.m.

 Upper Iowa (6-7; 3-4 GLVC) PEACOCKS SERIES HISTORY Overall TSU 7-2 Home TSU 3-1 Road TSU 3-1 Neutral TSU 1-0 Last Meeting UIU 82-63 (2023) Last 5 TSU 3-2	 Truman State (5-11; 2-4 GLVC) BULLDOGS LEADERS Points Jordan Cunningham (17.0) Rebounds Lexie White (3.8) Assists Jordan Cunningham (3.3) Steals Jordan Cunningham (1.5) Blocks Jordan Cunningham (0.9) Minutes Jordan Cunningham (33.1)	 Lewis (6-0; 12-1 GLVC) FLYERS SERIES HISTORY Overall Lewis 13-7 Home Lewis 6-3 Road Lewis 4-3 Neutral Lewis 3-1 Last Meeting Lewis 71-57 (2024) Last 5 Lewis 4-1
---	---	--

GAME NOTES

KIRKSVILLE, Mo. – The Truman State Women's Basketball team will hope the friendly confines of Pershing Arena will help turn things around as the Bulldogs play host to three games over the next five days.

The home swing will begin on Thursday night when Upper Iowa visits Kirksville for a 5:15 p.m. evening contest followed by conference-leader Lewis (Ill.) on Saturday afternoon at 1 p.m. Lincoln (Mo.) University will be the opponent on Monday, January 20th at 5 p.m., which is the make-up date from an earlier matchup that was postponed due to weather.

The Bulldogs are mired in a six-game losing streak that began at Drury (Mo.) back on December 7th. Their two most recent defeats came on the road in conference play last weekend when they dropped a 73-50 decision to Illinois Springfield last Thursday and a 72-60 game to McKendree (Ill.) on Saturday.

Graduate transfer Jordan Cunningham has continued to be a bright spot for the team as she is third in overall scoring within the Great Lakes Valley Conference at 17 points per game and first in conference-only scoring at 21.5 points per night. She had scored in double-figures in 11 of the last 12 games including six games of 20 or more points.






Cunningham is nearing 1,000 career points scored in her fifth season of college basketball. She has 961 in 134 games played and has already established a season benchmark in scoring with 272 points this season. Her previous season-best total was 249 as a sophomore at Missouri Western. Her single-game career-high is 27 points, which came against Southwest Baptist on December 5th.

Lexie White is second in scoring during conference action at 10.3 points per outing. White matched her season-high with 15 points on Saturday against McKendree and was 6-of-8 from the field while adding nine

QUICK COMPARISON

	UIU 6-7	TSU 5-11	LU 12-1
Record	6-7	5-11	12-1
PPG	72.2	68.4	66.8
Opp PPG	63.3	71.0	54.5
Margin	+8.9	-2.6	+12.3
FG%	.429	.403	.429
Opp FG%	.382	.429	.368
3pt %	.402	.260	.347
3pt/ g	8.8	6.4	6.9
Opp 3pt%	.321	.312	.321
Opp 3pt/g	5.2	7.4	6.7
FT%	.712	.717	.713
FT/g	9.7	14.4	10.3
Opp FT %	.710	.749	.702
Opp FT/g	10.5	10.1	8.7
RPG	39.5	32.9	34.5
Reb. Margin	+2.5	-6.7	+0.6
APG	16.6	11.8	14.2
TOPG	14.4	14.6	12.7
SPG	5.2	7.9	9.2
BPG	4.1	2.3	2.7

PROBABLE STARTERS

 1 MOLLY JOYCE 5-7/So./Algona, Iowa PPG 14.3 RPG 3.7 APG 1.9 MPG 29.4	 4 BRYAR DUWE 5-6/So./Decorah, Iowa PPG 8.6 RPG 3.0 APG 1.7 MPG 27.8	 12 KATELYN ODEM 5-8/Fr./Mequon, Wis. PPG 3.6 RPG 1.6 APG 0.5 MPG 15.9	 22 LEXIE WHITE 5-11/So./Merrill, Wis. PPG 7.2 RPG 4.9 APG 0.8 MPG 24.8	 40 JORDAN CUNNINGHAM 6-0/Gr./Grimes, Iowa PPG 17.0 RPG 4.4 APG 3.3 MPG 33.1
---	--	---	---	--



GAME NOTES

rebounds. She had an 11-rebound performance earlier against Rockhurst on November 11th and a 10-rebound night against Missouri S&T on January 3rd. She is third in conference stats in free-throw shooting percentage with 12 connections on 13 attempts (90%). White has started all 16 games this season and averages 7.2 points overall.

Molly Joyce is the team leader in three-pointers made overall with 24 and scores at a 14.3 points per game clip. Joyce has launched a team-high 92 triples this season after firing 102 during her freshman season last year. After starting the season with 10 games of double-digit scoring, including two 30-point plus nights, Joyce has topped 10 points or more in just two of the last six games. Joyce is fourth overall in the GLVC in free throw attempts with 80 and seventh in percentage at 81%.

Bryar Duwe is the fourth Bulldog to start all 16 games thus far. She is second on the team in triples made with 23 and averages 8.6 points per game. Duwe scored 13 points in a pair of games this season, first against Winona (Minn.) State and most recently against Missouri S&T on January 3rd.

Katelyn Odem has been thrust into the starting lineup in the last five games after coming off the bench in the first 11. She scored a season-high 13 points in 29 minutes against Hawaii-Hilo on December 21st.

Emma Bulman (3.2/g), Gracie Neff (2.1/g), Tori Standefer (2.4/g) and McKenna Williams (3.6/g) have come off the bench in all six conference games thus far. Bulman played in her 100th collegiate game last Saturday at McKendree, Neff has appeared in 119 games over the course of five seasons and has 362 career assists. Standefer is in her first season with Truman State after playing in 48 games at the University of Missouri-St. Louis and Williams is a transfer from Rock Valley College.

As a team, Truman State averages 68 points and allows 71 points per game. They shoot 40% from the field. The Bulldogs average 24.5 three-point attempts per game (41% of shots taken) but are making only 6.4 triples a game (26%). The Bulldogs take the second-most three-pointers in conference games at 25.7/game (43% of shots taken) while Maryville leads at 27.3 (42% of shots taken).

The highest single-game scoring this season was 82 points against Rockhurst and the lowest point total was 50 at Illinois Springfield.

Bulldogs Against Opponents:

Upper Iowa swept the season series with Truman State in their first season in the GLVC last year. They won 88-86 in overtime in Pershing Arena on December 2nd of 2023 and won going away 82-63 in Fayette, Iowa a week later on December 9th. The Bulldogs had won the previous seven meetings.

Upper Iowa was picked fifth in the GLVC preseason poll and are at 3-4 in conference games. They have dropped three straight against Maryville, Lewis and Indianapolis.

Lewis has taken five out of the last six games with the Bulldogs, including four straight heading into Saturday's matchup. The Flyers swept the series last year with a 72-68 victory in Kirksville on November 27, 2023 and a 71-57 win at home on February 8th. Truman State's last win came on the road in 2022 when they prevailed 71-65.

The Flyers enter the week on the longest winning streak in the conference at 11 games and are the only team without a loss at 6-0.

Lincoln picked up a win over Truman State when the two teams met in a non-conference tilt in November of 2023 at the Thanksgiving tournament hosted by Drury. The Blue Tigers won 85-73. It was their first game against the Bulldogs in nearly a decade. All time, Truman State holds a commanding 47-15 mark against Lincoln.

The Blue Tigers are the only team in the conference without a win. They enter the week at 0-7 with a game with Missouri-St. Louis on Thursday and a bye from conference action on Saturday.

Up Next:

The Bulldogs will be off on Thursday and then make the quick trip over the rival Quincy on Saturday at 1 p.m. The two teams played a non-conference game back on November 23 in Kirksville and the Hawks won 85-76.

Double-Figure Games

By Class - Career				
Player	Pts (20/30)	Rebs	Asts	Dbl/Dbls
Hope	-	-	-	-
Odem	2	-	-	-
Rogers	-	-	-	-
Huss	-	-	-	-
Ott	1	1	-	1
Boehm	-	-	-	-
Duwe	7	-	-	-
Joyce	24 (7/2)	1	-	1
White	5	2	-	2
Larson	-	-	-	-
Patke	-	-	-	-
Williams	29 (2)	14	-	13
Bulman	10	-	-	-
Cunningham	36 (6/0)	1	-	1
Neff	7	-	2	1
Standefer	1	-	-	-

Truman State Facts

Location:	Kirksville, Mo. (18,000)
Enrollment:	4,000
Conference:	Great Lakes Valley
University President:	Dr. Sue Thomas
Director of Athletics:	TBA
Head Coach:	Theo Dean
Assistant Coach:	Dajae Black
Basketball Athletic Trainer:	Cassie DeBlauw
Team Physician:	Dr. John Bailey
Athletics Communications:	Justin Thomas/Kevin White

On The Air

Video:	GLVCSN.com (PPV)
Radio:	88.7 FM KTRM (Student Radio)
Online Audio:	NEMOPressbox.com (Free)
Live Stats:	TrumanBulldogs.com

2024-25 Truman State Bulldogs

#	Name	Pos.	Ht.	Yr.	Hometown	High School/Previous
0	Gracie Neff	G	5-8	Gr.	Kansas City, Mo.	Staley HS/ Lindenwood (Mo.) Univ.
1	Molly Joyce	G	5-7	So.	Algona, Iowa	Bishop Garrigan HS
3	Tori Standefer	G	5-7	Sr.	Bethalto, Ill.	Civic Memorial HS/Missouri-St. Louis
4	Bryar Duwe (Doo-we)	G	5-6	So.	Decorah, Iowa	Decorah HS
10	Sophia Hope	F	5-10	Fr.	Waukee, Iowa	Waukee HS
11	Lizzie Boehm (Bame)	G	5-7	So.	Kansas City, Mo.	Staley HS
12	Katelyn Odem	G	5-8	Fr.	Mequon, Wis.	Homestead HS
14	Nicky Huss	F	6-1	R-Fr.	Omaha, Neb.	Duchesne Academy
20	Braylee Rogers	G	5-9	Fr.	Olathe, Kan.	Olathe East HS
21	Emma Bulman	F	5-10	Sr.	Ames, Iowa	Gilbert HS
22	Lexie White	G	5-11	So.	Merrill, Wis.	Wausau West HS
25	Kaitlyn Patke (pat-key)	F	6-0	Jr.	Washington, Mo.	St. Francis Borgia HS
33	McKenna Williams	F	5-10	Jr.	Darien, Wis.	Delavan-Darien HS/Rock Valley Col.
34	Avery Larson	C	6-3	R-So.	Antioch, Ill.	Antioch HS
35	Mallory Ott	F	5-11	R-Fr.	Oshkosh, Wis.	Oshkosh North HS
40	Jordan Cunningham	G	6-0	Gr.	Grimes, Iowa	Dallas Center-Grimes HS/Mo. Western

Head Coach: Theo Dean (6th Season)

Associate Head Coach: Dajae Black

Graduate Assistant Coach: Trinitee Jackson

GLVC Standings

School	Conf.	Pct.	Over	Pct.	Home	Away	Neutral	Streak	PRS
Lewis	6-0	1.000	12-1	.923	5-0	6-0	1-1	W11	
McKendree	6-1	.857	10-3	.769	6-1	2-2	2-0	W2	
Drury	6-1	.857	10-4	.714	6-2	4-1	0-1	L1	
Missouri S&T	4-1	.800	9-2	.818	8-1	1-1	0-0	W4	
Missouri-St. Louis	5-2	.714	11-3	.786	6-2	5-1	0-0	W2	
Quincy	4-2	.667	10-5	.667	3-2	4-2	3-1	W4	
Maryville	5-3	.625	7-9	.438	6-1	1-7	0-1	W3	
Upper Iowa	3-4	.429	6-7	.462	4-1	2-6	0-0	L3	
Southwest Baptist	3-4	.429	5-8	.385	4-2	1-4	0-2	W1	
Truman	2-4	.333	5-11	.312	1-3	2-6	2-2	L6	
Rockhurst	2-5	.286	4-9	.308	4-4	0-3	0-2	L3	
Illinois Springfield	2-5	.286	3-12	.200	2-4	1-6	0-2	L1	
William Jewell	1-5	.167	3-9	.250	3-3	0-6	0-0	L3	
Indianapolis	1-6	.143	3-12	.200	2-7	1-5	0-0	W1	
Lincoln	0-7	.000	1-12	.077	1-6	0-6	0-0	L12	

Weekly Awards

Date	Player	School
11/11	Molly Joyce	Truman State
11/18	Baylie Parks	McKendree
11/25	Rhi Gibbons	Drury
12/1	Franchesca Metz	Missouri S&T
12/9	Mia Huberty	Upper Iowa
12/16	Mariann Blass	Quincy
12/23	Ally Cesarini	Lewis
1/6	Baylie Parks	McKendree

Upcoming Games

Thursday, January 16

Upper Iowa at Truman State
 Illinois Springfield at Southwest Baptist
 Lewis at William Jewell
 Missouri-St. Louis at Lincoln
 Indianapolis at Rockhurst
 Maryville at Missouri S&T
 McKendree at Drury

Monday, January 20

Missouri S&T at William Jewell
 Missouri-St. Louis at Quincy
 Lincoln at Truman

Thursday, January 23

Southwest Baptist at Lewis
 Rockhurst at Upper Iowa
 Drury at Indianapolis
 Missouri-St. Louis at Maryville
 Missouri S&T at Illinois Springfield
 Lincoln at McKendree
 William Jewell at Quincy

Saturday, January 18

Illinois Springfield at Rockhurst
 McKendree at Southwest Baptist
 Lewis at Truman
 Missouri-St. Louis at Missouri S&T
 Upper Iowa at Quincy
 Maryville at Drury
 Indianapolis at William Jewell

Recent Results

Saturday, January 11

Upper Iowa 49, Indianapolis 67
 William Jewell 52, Maryville 81
 Truman 60, McKendree 72
 Southwest Baptist 77, Lincoln 52
 Quincy 80, Illinois Springfield 64
 Drury 57, Missouri S&T 63
 Rockhurst 52, Missouri-St. Louis 70

Thursday, January 9

Upper Iowa 62, Lewis 64
 SW Baptist 47, Missouri-St. Louis 64
 Quincy 73, Indianapolis 54
 Rockhurst 54, Maryville 78
 Truman 50, Illinois Springfield 73
 Drury 68, Lincoln 47
 William Jewell 51, McKendree 64

Polls

WBCA Coaches Poll

Rk	School (Record)	Points	Prev.
1	Grand Valley State (14-1)	570	1
2	Texas Woman's (13-1)	542	2
3	Cal St. Dominguez Hills (14-0)	510	5
4	Bentley (13-1)	506	4
5	Montana State Billings (14-2)	463	6
6	North Georgia (12-0)	449	7
7	Fort Hays State (12-1)	402	3
8	Azusa Pacific (12-1)	383	8
9	Gannon (14-2)	377	9
10	Seton Hill (13-1)	348	11
11	Minnesota St. Mankato (13-2)	345	10
12	Union, TN (12-2)	310	13
13	Pittsburg State (12-2)	308	14
14	Texas-Tyler (11-2)	248	18
15	Ashland (12-3)	220	19
16	Embry-Riddle (11-1)	186	21
17	Coker (12-1)	168	23
18	Lubbock Christian (12-3)	153	20
19	Tampa (12-3)	151	12
20	Nova Southeastern (11-2)	148	22
21	Cal Poly Pomona (10-2)	139	17
22	Carson-Newman (11-3)	130	15
23	Belmont Abbey (11-2)	93	24
24	Concordia-St. Paul (13-2)	83	16
25	SW Minnesota State (12-2)	79	25

GLVC Coaches Poll

Rk	School (Record)	Points
1.	Lewis	190 (9)
2.	Drury	183 (5)
3.	McKendree	158 (1)
4.	Maryville	140
5.	Upper Iowa	130
6.	Rockhurst	128
7.	Missouri-St. Louis	109
	Quincy	109
10.	Illinois Springfield	80
11.	Truman State	75
12.	Missouri S&T	70
13.	Southwest Baptist	47
14.	Lincoln	26
15.	William Jewell	25



2024-25 Truman St. Women's Basketball Combined Team Statistics All games

Page 1/1
as of Jan 13, 2025

Game Records

Record	Overall	Home	Away	Neutral
ALL GAMES	5-11	1-3	2-6	2-2
CONFERENCE	2-4	1-1	1-3	0-0
NON-CONFERENCE	3-7	0-2	1-3	2-2

Score by Periods

Team	1st	2nd	3rd	4th	OT	TOT
Truman St.	262	288	273	272	0	1095
Opponents	305	288	274	269	0	1136

Team Box Score

No.	Player				Total		3-Point		F-Throw		Rebounds											
		GP-GS	MIN	AVG	FG-FGA	FG%	3FG-3FGA	3FG%	FT-FTA	FT%	OFF	DEF	TOT	AVG	PF	DQ	A	TO	BLK	STL	PTS	AVG
40	CUNNINGHAM, Jordan	16-16	539:29	33.7	93-197	.472	21-66	.318	65-88	.739	12	59	71	4.4	38	1	52	45	14	24	272	17.0
1	JOYCE, Molly	16-16	483:14	30.2	70-187	.374	24-92	.261	65-80	.813	14	45	59	3.7	38	0	30	40	3	22	229	14.3
30	NIEMEIER, Maddie	5-5	130:09	26.0	24-46	.522	0-1	.000	6-9	.667	5	18	23	4.6	18	1	10	7	1	5	54	10.8
4	DUWE, Bryar	16-16	457:30	28.6	49-133	.368	23-75	.307	16-24	.667	8	40	48	3.0	24	0	27	35	0	17	137	8.6
22	WHITE, Lexie	16-16	396:42	24.8	39-109	.358	14-50	.280	23-33	.697	18	61	79	4.9	44	1	12	19	9	15	115	7.2
35	OTT, Mallory	11-6	169:26	15.4	20-54	.370	3-19	.158	11-15	.733	15	28	43	3.9	13	0	5	8	1	7	54	4.9
12	ODEM, Katelyn	16-5	251:19	15.7	23-59	.390	5-20	.250	7-17	.412	5	21	26	1.6	27	0	8	19	1	11	58	3.6
33	WILLIAMS, McKenna	15-0	138:40	9.2	17-39	.436	4-16	.250	16-20	.800	7	24	31	2.1	10	0	5	9	3	5	54	3.6
21	BULMAN, Emma	16-0	266:37	16.7	19-57	.333	2-21	.095	11-17	.647	7	38	45	2.8	20	0	10	22	2	9	51	3.2
3	STANDEFER, Tori	9-0	88:16	9.8	7-20	.350	2-10	.200	6-8	.750	6	9	15	1.7	9	0	3	3	0	4	22	2.4
34	LARSON, Avery	3-0	13:11	4.4	3-3	1.000	0-0	.000	1-2	.500	4	1	5	1.7	3	0	0	2	0	1	7	2.3
0	NEFF, Gracie	16-0	230:50	14.4	13-32	.406	4-18	.222	4-8	.500	4	12	16	1.0	17	0	24	18	1	4	34	2.1
25	PATKE, Kaitlyn	6-0	24:09	4.0	4-8	.500	0-4	.000	0-1	.000	1	4	5	0.8	1	0	1	3	1	2	8	1.3
11	BOEHM, Lizzie	2-0	02:51	1.4	0-1	.000	0-0	.000	0-0	.000	1	0	1	0.5	0	0	1	0	0	0	0	0.0
14	HUSS, Nicky	3-0	07:36	2.5	0-1	.000	0-0	.000	0-0	.000	0	1	1	0.3	0	0	0	0	0	0	0	0.0
Team											23	36	59					4				
Total		16	3200		381-946	.403	102-392	.260	231-322	.717	130	397	527	32.9	262	3	188	234	36	126	1095	68.4
Opponents		16	3200		428-997	.429	119-381	.312	161-215	.749	169	465	634	39.6	306	8	215	265	26	115	1136	71.0

Team Statistics

	TSU	OPP
Scoring	1095	1136
Points per game	68.4	71.0
Scoring margin	-2.6	-
Field goals-att	381-946	428-997
Field goal pct	.403	.429
3 point fg-att	102-392	119-381
3-point FG pct	.260	.312
3-pt FG made per game	6.4	7.4
Free throws-att	231-322	161-215
Free throw pct	.717	.749
F-Throws made per game	14.4	10.1
Rebounds	527	634
Rebounds per game	32.9	39.6
Rebounding margin	-6.7	-
Assists	188	215
Assists per game	11.8	13.4
Turnovers	234	265
Turnovers per game	14.6	16.6
Turnover margin	+1.9	-
Assist/turnover ratio	0.8	0.8
Steals	126	115
Steals per game	7.9	7.2
Blocks	36	26
Blocks per game	2.3	1.6
Winning streak	0	-
Home win streak	0	-
Attendance	1516	3623
Home games-Avg/Game	4-379	8-453
Neutral site-Avg/Game	-	4-184

Team Results

Date	Opponent		Score	Att.
11/08/2024	at Cedarville	W	74-61	455
11/09/2024	vs Ursuline	W	81-60	150
11/15/2024	at Concordia-St. Paul	L	57-68	325
11/16/2024	at Winona St.	L	64-70	825
11/22/2024	Washburn	L	59-81	1232
11/23/2024	Quincy	L	76-85	200
11/26/2024	vs Newman	W	80-48	263
11/27/2024	vs Ark.-Fort Smith	L	73-75	217
11/30/2024	Rockhurst	W	82-64	83
12/05/2024	at Southwest Baptist	W	77-63	322
12/07/2024	at Drury	L	72-97	1207
12/19/2024	vs Fort Hays St.	L	57-77	107
12/21/2024	at Hawaii Hilo	L	61-68	217
01/03/2025	Missouri S&T	L	72-74	1
01/09/2025	at Ill. Springfield	L	50-73	115
01/11/2025	at McKendree	L	60-72	157



THEO DEAN

Head Coach // 6th Season At Truman
87-66 (.569) Overall // 64-40 (.615) GLVC

Theo Dean begins his fifth season at the helm of the Truman Women's Basketball team.

Dean has been a part of the program in some capacity for over ten years. He was a student manager and graduate assistant from 2010-14; Dean then returned to Kirksville to become the full-time assistant and recruiting coordinator from June 2016-August 2019. Dean was promoted to interim head coach on August 23, 2019, and on January 13, 2020, after a 9-3 start to the season, including a school-record five-game winning streak to start Great Lakes Valley Conference play, the interim tag was removed, and Dean became the 11th full-time head coach in program history and the first African-American head coach in school history.

By increasing fan and alumni involvement with a fast-paced style of play, Dean's impact on the program has been very evident over the past four seasons, and fans of Truman Women's Basketball have seen continued success for the Bulldogs' program.

Since his return to Truman in 2016, Dean has coached 22 All-GLVC performers (10 being named to the First Team), two Freshman of the Year selections, four 1,000-point scorers, one 1,000 rebounder, two WBCA All-Americans, one D2CCA All-American, six CoSIDA/CSC Academic All-District selections, three D2CCA All-Midwest Region selections, one Academic All-American, one GLVC Player of the Year and one GLVC Women's Basketball Female Student-Athlete of the Year. Dean has also coached over 55 Academic All-GLVC players and has coached three WBCA Academic Top 25 teams (2019, 2021 & 2023).

Overall, Dean has been on the sideline with the Bulldogs for five of the program's eight 20-win seasons, one Great Lakes Valley Conference tournament title, two Great Lakes Valley Conference tournament championship games, three NCAA Tournaments appearances, and one NCAA Tournament victory.

After graduating from Truman, Dean assisted the Lansing (Kansas) High School Boys Basketball program from 2014-16. Dean was the assistant coach to the father of former First Team All-GLVC performer, GLVC Conference Champion, and former Bulldog Associate Head Coach, Amy Briggs. While at Lansing, Dean focused on guard development for the boys' team, overall player development for the girls' team and also supervised the team managers, implementing a hustle and shot chart system into practices and games. In his first year at Lansing, he helped lead the 2014-15 team to the Kansas Substate Championship game, and Dean was then promoted to top assistant in his second season.

A Chicago, IL native, Theo Dean came to Truman in 2008 as a freshman and received his Bachelor of Fine Arts in Visual Communications degree from Truman State University in 2012 and his Master's degree in Leadership, with a concentration in Coaching and Sport Management, from Truman in 2014.

Dean, his wife, Presley (who also holds Bachelor's and Master's degrees from Truman), their son, Theo IV, and their daughter, Mina, reside in Kirksville.



Series Records

Arkansas Fort Smith	0-1
Ashland (Ohio)	0-1
Augustana (S.D.)	0-1
Avila (Mo.)	1-0
Bellarmine	0-1
Cedarville	3-0
Central Missouri	0-1
Concordia-St. Paul	0-2
Davenport (Mich.)	1-0
Drury *	1-7
Eckerd (Fla.)	0-1
Florida Southern	1-0
Fort Hays (Kan.) State	0-1
Hannibal-LaGrange	1-0
Hawaii-Hilo	0-1
Hillsdale (Mich.)	0-1
Illinois Springfield *	4-3
Indianapolis *	4-4
Lewis *	5-6
Lincoln	0-1
Lindenwood *	1-3
Maryville *	9-1
Minot (N.D.) State	1-0
Missouri S&T *	5-2
Missouri St. Louis	5-3
Missouri Western	0-1
McKendree *	6-3
Newman (Kan.)	1-0
Northern Michigan	1-0
Northwood (Mich.)	1-0
Quincy *	7-3
Rockhurst *	5-3
Saginaw Valley St.	0-1
Sioux Falls	0-1
Southern Indiana *	2-2
Southwest Baptist *	5-3
Southwest Minn. State	1-0
Union (Tenn.)	0-1
Upper Iowa	2-2
Ursuline (Ohio)	3-2
UW-Parkside *	1-1
Washburn (Kan.)	0-1
William Jewell *	9-0
Winona (Minn.) State	1-1

Truman Overall	87-66 (.569)
Home Record	39-22
Away Record	35-31
GLVC Record	64-40
GLVC Home Record	34-18
GLVC Away Record	31-22
Non-Conference Record	23-25
vs. Division I	0-0
vs. Division II	22-26
vs. Division III	0-0
vs. NAIA/Other	2-0
NC Home	3-4
NC Road	4-7
Neutral Site	14-13
Postseason	5-5
Overtime	1-4



Assistant Coach

Dajae Black (2nd Season)

2022-23 - Univ. of Akron
 (Assistant Coach)

2020-22 - Grand Canyon (Ariz.)
 (Graduate Assistant)

Playing career:

Lewis University (2016-2020)

All-Time Coaches

- Amy Eagan111-62 (6 yrs)
- Mary Jo Murray100-80 (7 yrs)
- John Sloop87-131 (8 yrs)
- Theo Dean.....87-66 (6yrs)**
- Karin Nichols71-64 (5 yrs)
- Michael Smith68-68 (5 yrs)
- Tarry Parrish44-115 (6 yrs)
- Lois Herren.....31-48 (3 yrs)
- Jan Conner.....19-58 (3 yrs)
- Pam Wood.....13-14 (2 yrs)
- Kathy Austin.....12-11 (2 yrs)

#0 Gracie Neff



Graduate
5-8
Guard
Kansas City, Mo.
Staley HS
Lindenwood

				Field Goals		3-Point		F-Throws		Rebounds										Scoring	
SEASON	TEAM	GP-GS	MIN/AVG	FG-FGA	FG%	3FG-3FGA	3FG%	FT-FTA	FT%	OFF	DEF	TOT	AVG	PF-FO	A	TO	BLK	STL	PTS	AVG	
2020-21	Linden	19-18	468/24.6	18-58	.310	11-41	.268	3-8	.375	1	25	26	1.4	26-0	60	46	0	10	50	2.6	
2021-22	Linden	26-17	558/21.4	19-56	.339	3-20	.150	13-21	.619	8	20	28	1.1	30-0	103	65	0	12	54	2.1	
2022-23	TSU	30-0	361/12.0	20-50	.400	12-32	.375	23-29	.793	0	35	35	1.2	21-0	58	38	1	1	75	2.5	
2023-24	TSU	28-21	726/25.9	31-87	.356	22-62	.355	27-38	.711	5	44	49	1.8	37-0	117	74	2	17	111	4.0	
2024-25	TSU	16-0	231/14.4	13-32	.406	4-18	.222	4-8	.500	4	12	16	1.0	17-0	24	18	1	4	34	2.1	
TOTAL FOR TSU		74-21	1318/17.8	64-169	.379	38-112	.339	54-75	.720	9	91	100	1.4	75-0	199	130	4	22	220	3.0	
TOTAL		119-56	2343/19.7	101-283	.357	52-173	.301	70-104	.673	18	136	154	1.3	131-0	362	241	4	44	324	2.7	

Single Game Highs

Statistic	Value	
Points	13	vs Drury 01/20/24
Rebounds	5	vs McKendree 02/01/24, vs Quincy 02/23/21
Assists	11	vs Quincy 12/02/21
Steals	3	vs McKendree 02/01/24, vs Southwest Baptist 01/30/21
Blocks	1	4 times
FG Made	4	5 times
FG Attempts	9	at UIndy 02/10/24
3FG Made	4	vs Drury 01/20/24
3FG Attempts	6	vs Drury 01/20/24
FT Made	5	vs UIndy 01/03/24
FT Attempts	6	vs UIndy 01/03/24, vs Maryville (MO) 11/29/21

#1 Molly Joyce



Sophomore
5-7
Guard
Algona, Iowa
Bishop Garrigan

				Field Goals		3-Point		F-Throws		Rebounds										Scoring	
SEASON	TEAM	GP-GS	MIN/AVG	FG-FGA	FG%	3FG-3FGA	3FG%	FT-FTA	FT%	OFF	DEF	TOT	AVG	PF-FO	A	TO	BLK	STL	PTS	AVG	
2023-24	TSU	28-14	675/24.1	104-277	.375	29-102	.284	67-87	.770	16	79	95	3.4	61-0	39	62	9	31	304	10.9	
2024-25	TSU	16-16	483/30.2	70-187	.374	24-92	.261	65-80	.813	14	45	59	3.7	38-0	30	40	3	22	229	14.3	
TOTAL		44-30	1158/26.3	174-464	.375	53-194	.273	132-167	.790	30	124	154	3.5	99-0	69	102	12	53	533	12.1	

Single Game Highs

Statistic	Value	
Points	34	vs Ursuline 11/09/24
Rebounds	10	vs Ill. Springfield 02/22/24
Assists	5	vs Missouri S&T 01/03/25
Steals	5	at Rockhurst 01/25/24
Blocks	2	vs Winona St. 11/17/23, vs Maryville (MO) 02/15/24, vs Quincy 02/24/24
FG Made	10	vs Ursuline 11/09/24
FG Attempts	23	at Winona St. 11/16/24
3FG Made	6	vs Ursuline 11/09/24
3FG Attempts	11	vs Ark.-Fort Smith 11/27/24
FT Made	10	at Rockhurst 01/25/24, vs Ark.-Fort Smith 11/27/24
FT Attempts	12	vs Ark.-Fort Smith 11/27/24, at Hawaii Hilo 12/21/24



#3 Tori Standefer



Graduate
5-7
Guard
Bethalto, Ill.
Civic Memorial
Mo.-St. Louis

				Field Goals		3-Point		F-Throws		Rebounds				Scoring						
SEASON	TEAM	GP-GS	MIN/AVG	FG-FGA	FG%	3FG-3FGA	3FG%	FT-FTA	FT%	OFF	DEF	TOT	AVG	PF-FO	A	TO	BLK	STL	PTS	AVG
2021-22	UMSL	9-0	57/6.3	4-15	.267	1-9	.111	8-8	1.000	2	5	7	0.8	4-0	4	2	0	1	17	1.9
2022-23	UMSL	16-0	115/7.2	5-18	.278	1-7	.143	8-13	.615	6	8	14	0.9	15-1	2	12	0	6	19	1.2
2023-24	UMSL	23-0	233/10.1	13-52	.250	6-29	.207	7-10	.700	9	18	27	1.2	14-0	9	15	0	7	39	1.7
2024-25	TSU	9-0	88/9.8	7-20	.350	2-10	.200	6-8	.750	6	9	15	1.7	9-0	3	3	0	4	22	2.4
TOTAL FOR TSU		9-0	88/9.8	7-20	.350	2-10	.200	6-8	.750	6	9	15	1.7	9-0	3	3	0	4	22	2.4
TOTAL		57-0	494/8.7	29-105	.276	10-55	.182	29-39	.744	23	40	63	1.1	42-1	18	32	0	18	97	1.7

Single Game Highs

Statistic	Value	
Points	13	at Principia 12/18/21
Rebounds	5	at Davenport 11/11/23
Assists	2	at Grand Valley St. 11/10/23, vs Newman 11/26/24
Steals	2	vs Wis.-Parkside 12/31/22, vs Ill. Springfield 01/21/23, vs McKendree 02/25/23
FG Made	3	at Principia 12/18/21, vs Principia 11/20/23
FG Attempts	7	at Ill. Springfield 01/09/25
3FG Made	2	at Truman St. 02/03/24
3FG Attempts	4	at Principia 12/18/21, vs Purdue Northwest 12/19/23, at Ill. Springfield 01/09/25
FT Made	6	at Principia 12/18/21
FT Attempts	6	at Principia 12/18/21

#4 Bryar Duwe



Sophomore
5-6
Guard
Decorah, Iowa
Decorah HS

				Field Goals		3-Point		F-Throws		Rebounds				Scoring						
SEASON	TEAM	GP-GS	MIN/AVG	FG-FGA	FG%	3FG-3FGA	3FG%	FT-FTA	FT%	OFF	DEF	TOT	AVG	PF-FO	A	TO	BLK	STL	PTS	AVG
2023-24	TSU	7-0	31/4.4	5-14	.357	3-9	.333	4-4	1.000	1	0	1	0.1	1-0	0	1	0	2	17	2.4
2024-25	TSU	16-16	458/28.6	49-133	.368	23-75	.307	16-24	.667	8	40	48	3.0	24-0	27	35	0	17	137	8.6
TOTAL		23-16	488/21.2	54-147	.367	26-84	.310	20-28	.714	9	40	49	2.1	25-0	27	36	0	19	154	6.7

Single Game Highs

Statistic	Value	
Points	13	at Winona St. 11/16/24, vs Missouri S&T 01/03/25
Rebounds	7	vs Ark.-Fort Smith 11/27/24
Assists	4	at Cedarville 11/08/24, at Southwest Baptist 12/05/24
Steals	3	at McKendree 01/11/25
FG Made	5	at Winona St. 11/16/24, vs Missouri S&T 01/03/25
FG Attempts	12	at McKendree 01/11/25
3FG Made	3	vs Ursuline 11/09/24, vs Ark.-Fort Smith 11/27/24, vs Missouri S&T 01/03/25
3FG Attempts	8	vs Missouri S&T 01/03/25
FT Made	4	vs Fort Hays St. 12/19/24
FT Attempts	6	vs Fort Hays St. 12/19/24

#10 Sophie Hope



Freshman
5-10
Waukee, Iowa
Waukee

#11 Lizzie Boehm



Sophomore
5-7
Guard
Kansas City, Mo.
Staley HS

				Field Goals		3-Point		F-Throws		Rebounds									Scoring	
SEASON	TEAM	GP-GS	MIN/AVG	FG-FGA	FG%	3FG-3FGA	3FG%	FT-FTA	FT%	OFF	DEF	TOT	AVG	PF-FO	A	TO	BLK	STL	PTS	AVG
2023-24	TSU	23-0	308/13.4	14-58	.241	4-29	.138	15-19	.789	11	16	27	1.2	41-1	25	37	1	16	47	2.0
2024-25	TSU	2-0	3/1.4	0-1	.000	0-0	.000	0-0	.000	1	0	1	0.5	0-0	1	0	0	0	0	0.0
TOTAL		25-0	311/12.4	14-59	.237	4-29	.138	15-19	.789	12	16	28	1.1	41-1	26	37	1	16	47	1.9

Single Game Highs

Statistic	Value	
Points	6	vs Southwest Baptist 01/18/24, at UIndy 02/10/24, at Drury 03/02/24
Rebounds	3	5 times
Assists	4	vs Mo.-St. Louis 02/03/24
Steals	3	at Southwest Baptist 02/29/24
Blocks	1	at Southwest Baptist 02/29/24
FG Made	2	4 times
FG Attempts	7	at William Jewell 01/27/24
3FG Made	1	4 times
3FG Attempts	4	at McKendree 11/25/23, vs McKendree 02/01/24
FT Made	4	vs Ill. Springfield 02/22/24
FT Attempts	4	vs Ill. Springfield 02/22/24



#12 Katelyn Odem



Freshman
5-8
Guard
Mequon, Wis.
Homestead

				Field Goals		3-Point		F-Throws		Rebounds				Scoring						
SEASON	TEAM	GP-GS	MIN/AVG	FG-FGA	FG%	3FG-3FGA	3FG%	FT-FTA	FT%	OFF	DEF	TOT	AVG	PF-FO	A	TO	BLK	STL	PTS	AVG
2024-25	TSU	16-5	251/15.7	23-59	.390	5-20	.250	7-17	.412	5	21	26	1.6	27-0	8	19	1	11	58	3.6
TOTAL		16-5	251/15.7	23-59	.390	5-20	.250	7-17	.412	5	21	26	1.6	27-0	8	19	1	11	58	3.6

Single Game Highs

Statistic	Value	
Points	13	at Hawaii Hilo 12/21/24
Rebounds	6	vs Fort Hays St. 12/19/24
Assists	3	at McKendree 01/11/25
Steals	2	vs Washburn 11/22/24, vs Fort Hays St. 12/19/24
Blocks	1	at Drury 12/07/24
FG Made	6	at Hawaii Hilo 12/21/24
FG Attempts	9	at Hawaii Hilo 12/21/24
3FG Made	2	vs Missouri S&T 01/03/25
3FG Attempts	4	vs Fort Hays St. 12/19/24
FT Made	3	at Drury 12/07/24
FT Attempts	5	at Drury 12/07/24

#14 Nicky Huss



R-Freshman
6-1
Omaha, Neb.
Duchesne

				Field Goals		3-Point		F-Throws		Rebounds				Scoring						
SEASON	TEAM	GP-GS	MIN/AVG	FG-FGA	FG%	3FG-3FGA	3FG%	FT-FTA	FT%	OFF	DEF	TOT	AVG	PF-FO	A	TO	BLK	STL	PTS	AVG
2024-25	TSU	3-0	8/2.5	0-1	.000	0-0	.000	0-0	.000	0	1	1	0.3	0-0	0	0	0	0	0	0.0
TOTAL		3-0	8/2.5	0-1	.000	0-0	.000	0-0	.000	0	1	1	0.3	0-0	0	0	0	0	0	0.0

Single Game Highs

Statistic	Value	
Rebounds	1	vs Newman 11/26/24
FG Attempts	1	vs Newman 11/26/24

#20 Braylee Rogers



Freshman
5-9
Olathe, Kan.
Olathe East

#21 Emma Bulman



Senior
5-10
Ames, Iowa
Gilbert

				Field Goals		3-Point		F-Throws		Rebounds										Scoring	
SEASON	TEAM	GP-GS	MIN/AVG	FG-FGA	FG%	3FG-3FGA	3FG%	FT-FTA	FT%	OFF	DEF	TOT	AVG	PF-FO	A	TO	BLK	STL	PTS	AVG	
2021-22	TSU	26-0	247/9.5	20-43	.465	4-10	.400	9-12	.750	4	47	51	2.0	20-0	9	11	4	5	53	2.0	
2022-23	TSU	30-0	483/16.1	56-138	.406	15-36	.417	39-53	.736	11	91	102	3.4	28-0	20	51	10	6	166	5.5	
2023-24	TSU	28-11	584/20.9	49-126	.389	15-60	.250	60-69	.870	14	63	77	2.8	58-1	37	65	5	21	173	6.2	
2024-25	TSU	16-0	267/16.7	19-57	.333	2-21	.095	11-17	.647	7	38	45	2.8	20-0	10	22	2	9	51	3.2	
TOTAL		100-11	1581/15.8	144-364	.396	36-127	.283	119-151	.788	36	239	275	2.8	126-1	76	149	21	41	443	4.4	

Single Game Highs

Statistic	Value	
Points	18	at McKendree 11/25/23
Rebounds	9	vs Lincoln (MO) 11/21/23
Assists	6	vs Winona St. 11/17/23
Steals	2	7 times
Blocks	2	vs Maryville (MO) 01/26/23, at Rockhurst 01/25/24
FG Made	7	at McKendree 11/25/23
FG Attempts	10	at Quincy 01/11/24
3FG Made	2	vs Lincoln (MO) 11/21/23, at McKendree 11/25/23, vs Southwest Baptist 01/18/24
3FG Attempts	5	vs Lincoln (MO) 11/21/23, at Quincy 01/11/24
FT Made	8	vs Ill. Springfield 02/22/24
FT Attempts	8	at Southwest Baptist 12/10/22, at Rockhurst 01/25/24, vs Ill. Springfield 02/22/24



#22 Lexie White



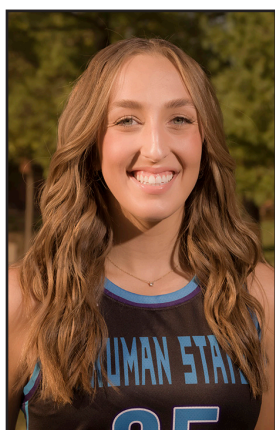
Sophomore
5-11
Merrill, Wis.
Wausau West

				Field Goals		3-Point		F-Throws		Rebounds										Scoring	
SEASON	TEAM	GP-GS	MIN/AVG	FG-FGA	FG%	3FG-3FGA	3FG%	FT-FTA	FT%	OFF	DEF	TOT	AVG	PF-FO	A	TO	BLK	STL	PTS	AVG	
2023-24	TSU	11-0	176/16.0	17-52	.327	3-20	.150	8-11	.727	6	25	31	2.8	28-0	11	17	6	13	45	4.1	
2024-25	TSU	16-16	397/24.8	39-109	.358	14-50	.280	23-33	.697	18	61	79	4.9	44-1	12	19	9	15	115	7.2	
TOTAL		27-16	573/21.2	56-161	.348	17-70	.243	31-44	.705	24	86	110	4.1	72-1	23	36	15	28	160	5.9	

Single Game Highs

Statistic	Value	
Points	15	at Drury 12/07/24, at McKendree 01/11/25
Rebounds	11	vs Rockhurst 11/30/24
Assists	3	at McKendree 11/25/23
Steals	3	vs Ursuline 11/10/23
Blocks	3	at Concordia-St. Paul 11/15/24
FG Made	6	at McKendree 01/11/25
FG Attempts	14	vs Missouri S&T 01/03/25
3FG Made	3	at Drury 12/07/24
3FG Attempts	6	vs Fort Hays St. 12/19/24
FT Made	4	vs Rockhurst 11/30/24
FT Attempts	6	vs Fort Hays St. 12/19/24

#25 Kaitlyn Patke



Junior
6-0
Forward
Washington, Mo.
Borgia

				Field Goals		3-Point		F-Throws		Rebounds										Scoring	
SEASON	TEAM	GP-GS	MIN/AVG	FG-FGA	FG%	3FG-3FGA	3FG%	FT-FTA	FT%	OFF	DEF	TOT	AVG	PF-FO	A	TO	BLK	STL	PTS	AVG	
2022-23	TSU	15-0	76/5.1	11-18	.611	1-5	.200	6-12	.500	2	6	8	0.5	5-0	2	11	0	2	29	1.9	
2023-24	TSU	8-0	29/3.6	9-12	.750	2-5	.400	2-3	.667	0	2	2	0.3	5-0	1	0	0	2	22	2.8	
2024-25	TSU	6-0	24/4.0	4-8	.500	0-4	.000	0-1	.000	1	4	5	0.8	1-0	1	3	1	2	8	1.3	
TOTAL		29-0	129/4.4	24-38	.632	3-14	.214	8-16	.500	3	12	15	0.5	11-0	4	14	1	6	59	2.0	

Single Game Highs

Statistic	Value	
Points	6	vs William Jewell 01/12/23, at Missouri S&T 01/19/23, at Drury 03/02/24
Rebounds	2	5 times
Assists	1	4 times
Steals	1	6 times
Blocks	1	at Southwest Baptist 12/05/24
FG Made	2	6 times
FG Attempts	4	at Drury 03/02/24
3FG Made	1	vs William Jewell 01/12/23, vs Winona St. 11/17/23, at Rockhurst 01/25/24
3FG Attempts	2	4 times
FT Made	4	at Missouri S&T 01/19/23
FT Attempts	4	at Missouri S&T 01/19/23

#33 McKenna Williams



Junior
5-10
Forward
Darien, Wis.
Delavan-Darien
Rock Valley

				Field Goals		3-Point		F-Throws		Rebounds								Scoring		
SEASON	TEAM	GP-GS	MIN/AVG	FG-FGA	FG%	3FG-3FGA	3FG%	FT-FTA	FT%	OFF	DEF	TOT	AVG	PF-FO	A	TO	BLK	STL	PTS	AVG
2024-25	TSU	15-0	139/9.2	17-39	.436	4-16	.250	16-20	.800	7	24	31	2.1	10-0	5	9	3	5	54	3.6
TOTAL		15-0	139/9.2	17-39	.436	4-16	.250	16-20	.800	7	24	31	2.1	10-0	5	9	3	5	54	3.6

Single Game Highs

Statistic	Value	
Points	15	vs Fort Hays St. 12/19/24
Rebounds	6	at Ill. Springfield 01/09/25
Assists	2	at Drury 12/07/24
Steals	1	5 times
Blocks	1	vs Quincy 11/23/24, vs Newman 11/26/24, vs Ark.-Fort Smith 11/27/24
FG Made	5	vs Fort Hays St. 12/19/24
FG Attempts	7	vs Fort Hays St. 12/19/24
3FG Made	1	4 times
3FG Attempts	3	at Southwest Baptist 12/05/24
FT Made	4	vs Fort Hays St. 12/19/24
FT Attempts	5	vs Fort Hays St. 12/19/24

#34 Avery Larson



R-Sophomore
6-3
Center
Antioch, Ill.
Antioch

				Field Goals		3-Point		F-Throws		Rebounds								Scoring		
SEASON	TEAM	GP-GS	MIN/AVG	FG-FGA	FG%	3FG-3FGA	3FG%	FT-FTA	FT%	OFF	DEF	TOT	AVG	PF-FO	A	TO	BLK	STL	PTS	AVG
2022-23	TSU	7-0	24/3.4	3-8	.375	0-0	.000	4-5	.800	1	5	6	0.9	3-0	1	1	0	0	10	1.4
2024-25	TSU	3-0	13/4.4	3-3	1.000	0-0	.000	1-2	.500	4	1	5	1.7	3-0	0	2	0	1	7	2.3
TOTAL		10-0	37/3.7	6-11	.545	0-0	.000	5-7	.714	5	6	11	1.1	6-0	1	3	0	1	17	1.7

Single Game Highs

Statistic	Value	
Points	5	vs Newman 11/26/24
Rebounds	3	at Southwest Baptist 12/05/24
Assists	1	vs Ursuline 11/13/22
Steals	1	vs Fort Hays St. 12/19/24
FG Made	2	vs Newman 11/26/24
FG Attempts	4	vs William Jewell 01/12/23
FT Made	3	at William Jewell 02/25/23
FT Attempts	4	at William Jewell 02/25/23



#35 Mallory Ott



R-Freshman
5-11
Forward
Oshkosh, Wis.
Oshkosh North

				Field Goals		3-Point		F-Throws		Rebounds												Scoring	
SEASON	TEAM	GP-GS	MIN/AVG	FG-FGA	FG%	3FG-3FGA	3FG%	FT-FTA	FT%	OFF	DEF	TOT	AVG	PF-FO	A	TO	BLK	STL	PTS	AVG			
2024-25	TSU	11-6	169/15.4	20-54	.370	3-19	.158	11-15	.733	15	28	43	3.9	13-0	5	8	1	7	54	4.9			
TOTAL		11-6	169/15.4	20-54	.370	3-19	.158	11-15	.733	15	28	43	3.9	13-0	5	8	1	7	54	4.9			

Single Game Highs

Statistic	Value	
Points	14	vs Quincy 11/23/24
Rebounds	10	at Southwest Baptist 12/05/24
Assists	2	vs Ark.-Fort Smith 11/27/24
Steals	2	vs Newman 11/26/24, vs Rockhurst 11/30/24
Blocks	1	vs Ark.-Fort Smith 11/27/24
FG Made	5	vs Quincy 11/23/24, at Southwest Baptist 12/05/24
FG Attempts	13	at Southwest Baptist 12/05/24
3FG Made	1	vs Ark.-Fort Smith 11/27/24, vs Rockhurst 11/30/24, at Southwest Baptist 12/05/24
3FG Attempts	7	vs Ark.-Fort Smith 11/27/24
FT Made	4	vs Quincy 11/23/24
FT Attempts	5	vs Quincy 11/23/24

#40 Jordan Cunningham



Graudate
6-0
Guard
Grimes, Iowa
Dallas Center/Grimes
Mo. Western

				Field Goals		3-Point		F-Throws		Rebounds												Scoring	
SEASON	TEAM	GP-GS	MIN/AVG	FG-FGA	FG%	3FG-3FGA	3FG%	FT-FTA	FT%	OFF	DEF	TOT	AVG	PF-FO	A	TO	BLK	STL	PTS	AVG			
2020-21	MW	22-13	533/24.2	43-120	.358	18-60	.300	17-27	.630	7	45	52	2.4	41-0	33	43	7	22	121	5.5			
2021-22	MW	34-30	898/26.4	86-206	.417	22-91	.242	55-78	.705	13	60	73	2.1	51-0	73	55	7	28	249	7.3			
2022-23	MW	31-26	761/24.5	68-154	.442	13-51	.255	51-74	.689	11	87	98	3.2	39-1	51	46	12	25	200	6.5			
2023-24	MW	31-1	520/16.8	49-102	.480	8-35	.229	13-19	.684	6	68	74	2.4	51-0	36	30	13	17	119	3.8			
2024-25	TSU	16-16	539/33.7	93-197	.472	21-66	.318	65-88	.739	12	59	71	4.4	38-1	52	45	14	24	272	17.0			
TOTAL FOR TSU		16-16	539/33.7	93-197	.472	21-66	.318	65-88	.739	12	59	71	4.4	38-1	52	45	14	24	272	17.0			
TOTAL		134-86	3251/24.3	339-779	.435	82-303	.271	201-286	.703	49	319	368	2.7	220-2	245	219	53	116	961	7.2			

Single Game Highs

Statistic	Value	
Points	27	at Southwest Baptist 12/05/24
Rebounds	10	vs Rockhurst 11/30/24
Assists	7	vs Newman 02/16/21, at Newman 01/20/22, vs Quincy 11/23/24
Steals	4	5 times
Blocks	4	vs Fort Hays St. 02/01/24
FG Made	10	vs Rockhurst 11/30/24
FG Attempts	23	at Drury 12/07/24
3FG Made	4	at Concordia-St. Paul 11/15/24
3FG Attempts	8	at Northeastern St. 11/21/20, vs Emporia St. 02/02/21, vs Quincy 11/23/24
FT Made	8	at Southwest Baptist 12/05/24, at Drury 12/07/24
FT Attempts	12	at Ill. Springfield 01/09/25



SPOT BOARD



TRUMAN STATE UNIVERSITY — BULLDOGS

Home Venue: Pershing
Capacity: 2400
Built: 1959

WOMEN'S BASKETBALL HC		Overall	5-11	L6	FG%	3PT%	FT%	TO +/-	PTS	REB / GM	ST / GM	PTSA
Theo Dean (6th)		Conference	2-4	L4	40.3	26	71.7	1.94	68.4	32.94	7.9	71.0
Truman St.	87-66 (.569)	Home	1-3	L1	9 121	15 243	4 110	5 89	8 95	12 260	8 177	11 238
Career	87-66 (.569)	Road	2-6	L4	FGM	3FG	FT	TO	PTS	TOT REB	STL	PF
		Neutral	2-2	L2	381	102	231	234	1095	527	126	262
		Non-Division	0-0	L1	29 TL 17	11 TL 3	29 TL 9	24 TL 9	82 TL 50	43 TL 27	24 TL 9	21 TL 11

0	Gracie Neff	Sr. G 5-8 Kansas City, MO (Staley)	PTS	AVG	FG%	FG	3FG%	3PT	FT%	FT A/M	Game High: 8 vs. Newman
			34	2.13	40.6	13/32	22.2	4/18	50.0	4/8	362 Career Assists
			G/GS	MIN / GM	TOT REB	TO	STL	AST	BLK	PF / GM	
			16/0	14.41	16	18	4	24	1	1.1	
1	Molly Joyce	So. G 5-7 Algona, IA (Bishop Garrigan HS)	PTS	AVG	FG%	FG	3FG%	3PT	FT%	FT A/M	Game High 34: vs. Ursuline
			229	14.31	37.4	70/187	26.1	24/92	81.3	65/80	24 GLVC Freshman of Year
			G/GS	MIN / GM	TOT REB	TO	STL	AST	BLK	PF / GM	
			16/16	30.20	59	40	22	30	3	2.4	
3	Tori Standefer	Sr. G 5-7 Bethalto, IL (Civic Memorial)	PTS	AVG	FG%	FG	3FG%	3PT	FT%	FT A/M	Game High 4 vs. Two Teams
			22	2.44	35.0	7/20	20.0	2/10	75.0	6/8	Transfer from UMSL
			G/GS	MIN / GM	TOT REB	TO	STL	AST	BLK	PF / GM	
			9/0	9.80	15	3	4	3		1.0	
4	Bryar Duwe	So. G 5-6 Decorah, IA (Decorah)	PTS	AVG	FG%	FG	3FG%	3PT	FT%	FT A/M	Game High 13 vs. Two Teams
			137	8.56	36.8	49/133	30.7	23/75	66.7	16/24	Played only 7 games Fr Season
			G/GS	MIN / GM	TOT REB	TO	STL	AST	BLK	PF / GM	
			16/16	28.58	48	35	17	27		1.5	
11	Lizzie Boehm	So. G 5-7 Kansas City, MO (Staley HS)	PTS	AVG	FG%	FG	3FG%	3PT	FT%	FT A/M	Game High: 0 Pts
					0.0						
			G/GS	MIN / GM	TOT REB	TO	STL	AST	BLK	PF / GM	
			2/0	1.26	1			1		0.0	
12	Katelyn Odem	Fy. G 5-8 Mequon, WI (Homestead)	PTS	AVG	FG%	FG	3FG%	3PT	FT%	FT A/M	Game High: 13 vs. Hilo
			58	3.63	39.0	23/59	25.0	5/20	41.2	7/17	Started last 5 games
			G/GS	MIN / GM	TOT REB	TO	STL	AST	BLK	PF / GM	
			16/5	15.70	26	19	11	8	1	1.7	
14	Nicky Huss	So. F 6-1 Omaha, NE (Duchesne Academy)	PTS	AVG	FG%	FG	3FG%	3PT	FT%	FT A/M	Game High: 0 pts
					0.0						
			G/GS	MIN / GM	TOT REB	TO	STL	AST	BLK	PF / GM	
			3/0	2.45	1					0.0	
21	Emma Bulman	Sr. G 5-10 Ames, IA (Gilbert HS)	PTS	AVG	FG%	FG	3FG%	3PT	FT%	FT A/M	Game High: 11 vs Newman
			51	3.19	33.3	19/57	9.5	2/21	64.7	11/17	100 Career Games
			G/GS	MIN / GM	TOT REB	TO	STL	AST	BLK	PF / GM	
			16/0	16.65	45	22	9	10	2	1.3	
22	Lexie White	So. G 5-11 Merrill, WI (Wausau West HS)	PTS	AVG	FG%	FG	3FG%	3PT	FT%	FT A/M	Game High: 15 vs. Two Teams
			115	7.19	35.8	39/109	28.0	14/50	69.7	23/33	Played 11 games as a freshman
			G/GS	MIN / GM	TOT REB	TO	STL	AST	BLK	PF / GM	
			16/16	24.78	79	19	15	12	9	2.8	
25	Kaitlyn Patke	Jr. F 5-10 Washington, MO (St. Francis Borgia HS)	PTS	AVG	FG%	FG	3FG%	3PT	FT%	FT A/M	Game High: 4 vs. Drury
			8	1.33	50.0	4/8	0.0		0.0		
			G/GS	MIN / GM	TOT REB	TO	STL	AST	BLK	PF / GM	
			6/0	4.02	5	3	2	1	1	0.2	
33	McKenna Williams	Jr. F 5-10 Darien, WI (Delavan-Darien)	PTS	AVG	FG%	FG	3FG%	3PT	FT%	FT A/M	Game High: 15 vs. Fort Hays St.
			54	3.6	43.6	17/39	25.0	4/16	80.0	16/20	Transfer from Rock Valley
			G/GS	MIN / GM	TOT REB	TO	STL	AST	BLK	PF / GM	
			15/0	9.23	31	9	5	5	3	0.7	
34	Avery Larson	Jr. F 6-3 Antioch, IL (Antioch HS)	PTS	AVG	FG%	FG	3FG%	3PT	FT%	FT A/M	Game High: 5 vs Newman
			7	2.33	100.0	3/3			50.0	1/2	
			G/GS	MIN / GM	TOT REB	TO	STL	AST	BLK	PF / GM	
			3/0	4.37	5	2	1			1.0	
35	Mallory Ott	So. F 5-11 Oshkosh, WI (Oshkosh North)	PTS	AVG	FG%	FG	3FG%	3PT	FT%	FT A/M	Game High: 14 vs. Quincy
			54	4.91	37.0	20/54	15.8	3/19	73.3	11/15	
			G/GS	MIN / GM	TOT REB	TO	STL	AST	BLK	PF / GM	
			11/6	15.39	43	8	7	5	1	1.2	
40	Jordan Cunningham	Sr. G 6-0 Grimes, IA (Dallas Center-Grimes)	PTS	AVG	FG%	FG	3FG%	3PT	FT%	FT A/M	Game High: 27 vs. SW Baptist
			272	17	47.2	93/197	31.8	21/66	73.9	65/88	Transfer from Mo. Western
			G/GS	MIN / GM	TOT REB	TO	STL	AST	BLK	PF / GM	961 Career Points
			16/16	33.71	71	45	24	52	14	2.4	

Truman State's Last 4		
Dec 21	@ Hawaii Hilo	L 61-68
Jan 3	Missouri S&T	L 72-74
Jan 9	@ Ill. Springfield	L 50-73
Jan 11	@ McKendree	L 60-72
Truman State's Next 10		
Jan 16	Upper Iowa	
Jan 18	Lewis	
Jan 20	Lincoln (MO)	
Jan 25	@ Quincy	
Jan 30	@ Rockhurst	
Feb 1	@ William Jewell	
Feb 6	Drury	
Feb 8	Southwest Baptist	
Feb 13	@ Lincoln (MO)	
Feb 15	@ Missouri S&T	

GLVC RECENT RESULTS		
Thu Jan 9	Truman 50 X	Illinois Springfield 73
Thu Jan 9	Upper Iowa 62 X	Lewis 64
Thu Jan 9	Drury 68	Lincoln 47 X
Sat Jan 11	Upper Iowa 49 X	Indianapolis 67
Sat Jan 11	Southwest Baptist 77	Lincoln 52 X
Sat Jan 11	Quincy 80	Illinois Springfield 64 X
Sat Jan 11	Drury 57 X	Missouri S&T 63
Sat Jan 11	Rockhurst 52 X	Missouri-St. Louis 70
Sat Jan 11	Truman 60 X	McKendree 72
Sat Jan 11	William Jewell 52 X	Maryville 81
GLVC UPCOMING SCHEDULE		
Thu Jan 16	Indianapolis	Rockhurst
Thu Jan 16	Upper Iowa	Truman
Thu Jan 16	Lewis	William Jewell
Thu Jan 16	Illinois Springfield	Southwest Baptist
Thu Jan 16	Missouri-St. Louis	Lincoln
Thu Jan 16	Maryville	Missouri S&T
Thu Jan 16	McKendree	Drury
Sat Jan 18	Illinois Springfield	Rockhurst
Sat Jan 18	Lewis	Truman
Sat Jan 18	McKendree	Southwest Baptist

GLVC STANDINGS	
Lewis	12-1 (6-0) — W11
McKendree	10-3 (6-1) — W2
Drury	10-4 (6-1) — L1
Missouri S&T	9-2 (4-1) — W4
Missouri-St. Louis	11-3 (5-2) — W2
Quincy	10-5 (4-2) — W4
Maryville	7-9 (5-3) — W3
Upper Iowa	6-7 (3-4) — L3
Southwest Baptist	5-8 (3-4) — W1
Truman	5-11 (2-4) — L6
Rockhurst	4-9 (2-5) — L3
Illinois Springfield	3-12 (2-5) — L1
William Jewell	3-9 (1-5) — L3
Indianapolis	3-12 (1-6) — W1
Lincoln	1-12 (0-7) — L12