



TRUMAN STATE WOMEN'S BASKETBALL

2024-25 SCHEDULE

N8	at Cedarville (Ohio) ¹	W 74-61
N9	vs. Ursuline (Ohio) ¹	W 81-60
N15	at Concordia-St. Paul (Minn.)	L 68-57
N16	at Winona St. (Minn.)	L 70-64
N22	WASHBURN (Kan.)	L 81-59
N23	QUINCY (Ill.)	L 85-76
N26	vs. Newman (Kan.) ²	W 80-48
N27	vs. Arkansas-Fort Smith ²	L 75-73
N30	ROCKHURST (Mo.) *	W 82-64

D5	at Southwest Baptist (Mo.) *	W 77-63
D7	at Drury (Mo.) *	L 97-72
D19	vs. Fort Hays State (Kan.) ³	4 p.m. (HT)
D21	at Hawaii-Hilo	5 p.m. (HT)

J3	MISSOURI S&T *	5:15 p.m.
J5	LINCOLN (MO.) *	1 p.m.
J9	at Illinois Springfield *	5:30 p.m.
J11	at McKendree (Ill.) *	1 p.m.
J16	UPPER IOWA *	5:15 p.m.
J18	LEWIS (Ill.) *	1 p.m.
J25	at Quincy (Ill.) *	1 p.m.
J30	at Rockhurst (Mo.) *	5:30 p.m.

F1	at William Jewell (Mo.) *	1 p.m.
F6	DRURY (MO.) *	5:15 p.m.
F8	SOUTHWEST BAPTIST (MO.) *	1 p.m.
F13	at Lincoln (Mo.) *	5:30 p.m.
F15	at Missouri S&T *	1 p.m.
F20	MARYVILLE (MO.) *	5:15 p.m.
F22	MISSOURI-ST. LOUIS *	1 p.m.
F27	at Indianapolis *	5:30 p.m. (ET)

M1	WILLIAM JEWELL (MO.) *	1 p.m.
----	------------------------	--------

GLVC BASKETBALL TOURNAMENT

M6	Quarterfinals
M8	Semifinals
M9	Championship

¹ - in Cedarville, Ohio

² - in Springfield, Mo.

³ - in Hilo, Hawaii

* - GLVC

GLVC Tournament will be played in Hyland Arena on the campus of Lindenwood University in St. Charles, Mo.



GAMEDAY CENTRAL

GAME 13 | Dec. 19 | Hilo, Hawaii | 8 p.m. (CST)

GAME 14 | Dec. 21 | Hilo, Hawaii | 9 p.m. (CST)



Fort Hays State (9-0; 2-0 MIAA)
TIGERS

SERIES HISTORY

Overall	Tied 7-7
Home	TSU 4-3
Road	FHSU 4-2
Neutral	TSU 1-0
Last Meeting	TSU 57-55 (2013)
Last 5	TSU 3-2



Truman State (5-6; 2-1 GLVC)
BULLDOGS

LEADERS

Points	Jordan Cunningham (17.4)
Rebounds	Jordan Cunningham (4.7)
Assists	Jordan Cunningham (3.2)
Steals	Molly Joyce (1.7)
Blocks	Jordan Cunningham (0.8)
Minutes	Jordan Cunningham (32.3)



Univ. of Hawaii-Hilo (1-5; 0-2 Pac West)
VULCANS

SERIES HISTORY

Overall	First Meeting
Home	NA
Road	NA
Neutral	NA
Last Meeting	NA
Last 5	NA

GAME NOTES

KIRKSVILLE, Mo. – The Truman State Women's Basketball team has ventured across the Pacific Ocean to Hawaii for the Big Island Classic this week. Not only will the Bulldogs enjoy the sun and surf but they will face one of Division II's hottest teams in #6 and undefeated Fort Hays (Kan.) State on Thursday and host Hawaii-Hilo on Saturday.

This will be the program's third trip to Hawaii with the previous two coming first in 2007 and again in 2015. They are 3-1 in the Aloha state.

The Bulldogs have been idle since a 97-72 loss to Drury (Mo.) University on December 7th. They are sitting at 5-6 overall and 2-1 in the Great Lakes Valley Conference.

Jordan Cunningham has been on a personal terror lately with three straight 20-point or more games. All three have come in conference play with 25 against Rockhurst on November 30, 27 against Southwest Baptist on December 5 and 23 in the loss against Drury. She is averaging a team-best 17.4 points per game and is already within striking distance (58 points) of matching the most single-season points she has scored in her college career. Cunningham notched 249 points as a sophomore at Missouri Western in 34 games while she is currently at 191 points in 11 at Truman State. She is 20 points shy of scoring 900 for her collegiate career.

Cunningham leads the Bulldogs in rebounds (4.7/g), assists (3.2/g), blocks (0.8/g) and minutes played (32.3/g).

Molly Joyce had her 10-game double-digit scoring streak stopped at Drury when she went 0-6 from the field with just two made free throws against the Panthers. That dropped her scoring average from 18.4 ppg to 16.9 ppg, good for second on the team. It was the third game this

QUICK COMPARISON

	FHSU	TSU	HH
Record	9-0	5-6	1-5
PPG	76.2	72.3	53.5
Opp PPG	51.8	70.2	64.0
Margin	+24.4	+2.1	-10.5
FG%	.460	.421	.334
Opp FG%	.310	.407	.371
3pt %	.313	.292	.214
3pt/ g	5.2	7.1	3.5
Opp 3pt%	.233	.306	.345
Opp 3pt/g	5.4	8.3	6.3
FT%	.702	.739	.643
FT/g	12.6	15.2	12.3
Opp FT %	.723	.728	.712
Opp FT/g	9.0	9.7	12.3
RPG	44.9	33.4	33.7
Reb. Margin	+11.4	-6.8	-12.0
APG	18.6	12.3	9.0
TOPG	13.9	14.4	12.0
SPG	10.7	8.5	5.8
BPG	3.9	2.5	3.2

PROBABLE STARTERS



MOLLY JOYCE
5-7/So./Algona, Iowa
PPG 16.9
RPG 3.2
APG 1.7
MPG 30.1



BRYAR DUWE
5-6/So./Decorah, Iowa
PPG 8.7
RPG 3.4
APG 2.3
MPG 27.8



LEXIE WHITE
5-11/So./Merrill, Wis.
PPG 6.5
RPG 3.9
APG 0.5
MPG 22.6



MALLORY OTT
5-11/RFr./Oshkosh, Wis.
PPG 4.9
RPG 3.9
APG 0.5
MPG 15.3



JORDAN CUNNINGHAM
6-0/Gr./Grimes, Iowa
PPG 17.4
RPG 4.7
APG 3.2
MPG 32.3



GAME NOTES

season that Joyce did not register a made three-pointer and the sophomore has made only two of her last 15 attempts from distance. Joyce has been solid from the free throw stripe with 52 out of 59 attempts made (88.1%).

Bryar Duwe and Lexie White have both started all 11 games this season. Duwe is second on the team with 25 assists and an 8.7 points per game mark and White is second to Cunningham in blocked shots with six and has averaged 6.5 points per game.

Mallory Ott has rounded out the starting five for the past six games but left after only a few minutes of game action. Freshman Katelyn Odem logged her most game minutes as a replacement at 24 and scored a season-high 11 points on 4-of-6 shooting and 3-of-5 from the line.

Emma Bulman and Gracie Neff have each donned the starting lineup in past seasons and have both provided valuable minutes off the bench in each game this season. Bulman plays over 20 minutes a night with 3.7 points and 3.2 rebounds a game. Neff led the team in assists as a junior and has 15 this season with 2.5 points per night. Neff has a career-high 11 assists in a game against Quincy in 2021 and has 353 in her fifth season.

As a team, Truman State averages 72.3 points per contest while allowing 70.2. The Bulldogs have averaged 71 three-pointers while shooting 29% from distance. Opponents are making 8.3 three-pointers against the Bulldogs and shooting 31% from outside.

Head Coach Theo Dean is in his sixth season at Truman State and is tied for third on the all-time wins list with 87 with John Sloop. His .588 winning percentage is only second to his predecessor Amy Eagan (.642).

About the Opponents:

Like the Bulldogs, Fort Hays State has been off since December 7th and has rolled to a 9-0 start for the season. The Tigers were the media's top choice to win the Mid-America Intercollegiate Athletics Association title and second in the coaches poll. They opened the 2024-25 campaign ranked 23rd in the national Division II poll and have since climbed up to number six following their second-straight 30-point conference win over Washburn 83-53.

Olivia Hollenbeck is one of three Tigers' players averaging over 10 points per game as the four-time all-MIAA player is averaging 16.4 points, shooting 67% from the field with 14 blocks and 29 steals through nine games. She has scored over 1,550 points in 131 games played.

The Tigers' average margin of victory has been 24.4 points with only 5.2 three-pointers per game but a whopping 11.4 advantage on rebounds.

The Bulldogs and Tigers have a short history. They were both members of the MIAA from 2007-2013. Fort Hays won seven of the 13 games played under the MIAA banner, with Truman State winning the last encounter 57-55 in January 2013.

The host school Hawaii Hilo will be the opponent for the final game of 2024. The Vulcans are 1-5 on the year after finishing 13-13 a season ago. They will play Western Washington on Friday night before facing the Bulldogs on Saturday.

It will be the first meeting between the two schools as Truman State's other two Hawaii trips saw the team facing Hawaii Pacific University.

Up Next:

Following the holiday break, conference season will ramp up starting with home games on January 3rd and 5th. The Bulldogs welcome Missouri S&T for a 5:15 p.m. start, following the men's afternoon game that Friday, and later will play GLVC newcomer Lincoln (Mo.) to Pershing Arena for the first time since 2013 for a Sunday 1 p.m. tipoff.

Double-Figure Games

By Class - Career				
Player	Pts (20/30)	Rebs	Asts	Dbl/Dbls
Hope	-	-	-	-
Odem	1	-	-	-
Rogers	-	-	-	-
Huss	-	-	-	-
Ott	1	1	-	1
Boehm	-	-	-	-
Duwe	5	-	-	-
Joyce	22 (7/2)	1	-	1
White	3	1	-	1
Larson	-	-	-	-
Patke	-	-	-	-
Williams	28 (2)	14	-	13
Bulman	10	-	-	-
Cunningham	32 (4/0)	1	-	1
Neff	7	-	2	1
Standefor	1	-	-	-

Truman State Facts

Location:	Kirksville, Mo. (18,000)
Enrollment:	4,000
Conference:	Great Lakes Valley
University President:	Dr. Sue Thomas
Director of Athletics:	TBA
Head Coach:	Theo Dean
Assistant Coach:	Dajae Black
Basketball Athletic Trainer:	Cassie DeBlauw
Team Physician:	Dr. John Bailey
Athletics Communications:	Justin Thomas/Kevin White

On The Air

Video:	GLVCSN.com (PPV)
Radio:	88.7 FM KTRM (Student Radio)
Online Audio:	NEMOPressbox.com (Free)
Live Stats:	TrumanBulldogs.com

2024-25 Truman State Bulldogs

#	Name	Pos.	Ht.	Yr.	Hometown	High School/Previous
0	Gracie Neff	G	5-8	Gr.	Kansas City, Mo.	Staley HS/ Lindenwood (Mo.) Univ.
1	Molly Joyce	G	5-7	So.	Algona, Iowa	Bishop Garrigan HS
3	Tori Standefor	G	5-7	Sr.	Bethalto, Ill.	Civic Memorial HS/Missouri-St. Louis
4	Bryar Duwe (Doo-we)	G	5-6	So.	Decorah, Iowa	Decorah HS
10	Sophia Hope	F	5-10	Fr.	Waukee, Iowa	Waukee HS
11	Lizzie Boehm (Bame)	G	5-7	So.	Kansas City, Mo.	Staley HS
12	Katelyn Odem	G	5-8	Fr.	Mequon, Wis.	Homestead HS
14	Nicky Huss	F	6-1	R-Fr.	Omaha, Neb.	Duchesne Academy
20	Braylee Rogers	G	5-9	Fr.	Olathe, Kan.	Olathe East HS
21	Emma Bulman	F	5-10	Sr.	Ames, Iowa	Gilbert HS
22	Lexie White	G	5-11	So.	Merrill, Wis.	Wausau West HS
25	Kaitlyn Patke (pat-key)	F	6-0	Jr.	Washington, Mo.	St. Francis Borgia HS
33	McKenna Williams	F	5-10	Jr.	Darien, Wis.	Delavan-Darien HS/Rock Valley Col.
34	Avery Larson	C	6-3	R-So.	Antioch, Ill.	Antioch HS
35	Mallory Ott	F	5-11	R-Fr.	Oshkosh, Wis.	Oshkosh North HS
40	Jordan Cunningham	G	6-0	Gr.	Grimes, Iowa	Dallas Center-Grimes HS/Mo. Western

Head Coach: Theo Dean (6th Season)

Associate Head Coach: Dajae Black

Graduate Assistant Coach: Trinitee Jackson

GLVC Standings

School	Conf.	Pct.	Over	Pct.	Home	Away	Neutral	Streak	PRS
McKendree	3-0	1.000	7-0	1.000	4-0	1-0	2-0	W7	
Lewis	3-0	1.000	7-1	.875	1-0	5-0	1-1	W6	
Drury	3-0	1.000	6-3	.667	5-2	1-0	0-1	L1	
Missouri-St. Louis	3-1	.750	8-2	.800	4-2	4-0	0-0	W1	
Missouri S&T	2-1	.667	5-2	.714	5-1	0-1	0-0	L1	
Upper Iowa	2-1	.667	4-3	.571	2-0	2-3	0-0	W1	
Truman	2-1	.667	5-6	.455	1-2	2-3	2-1	L1	
Southwest Baptist	2-2	.500	4-5	.444	4-1	0-2	0-2	W1	
Maryville	2-2	.500	3-6	.333	3-1	0-5	0-0	W2	
Quincy	1-2	.333	6-4	.600	2-2	2-2	2-0	L1	
Rockhurst	1-2	.333	2-6	.250	2-3	0-1	0-2	L1	
William Jewell	1-2	.333	2-6	.250	2-2	0-4	0-0	L2	
Indianapolis	0-3	.000	2-8	.200	1-4	1-4	0-0	L5	
Lincoln	0-4	.000	1-7	.125	1-3	0-4	0-0	L7	
Illinois Springfield	0-4	.000	0-9	.000	0-3	0-4	0-2	L9	

Weekly Awards

Date	Player	School
11/11	Molly Joyce	Truman State
11/18	Baylie Parks	McKendree
11/25	Rhi Gibbons	Drury
12/1	Franchesca Metz	Missouri S&T
12/9	Mia Huberty	Upper Iowa
12/16	Mariann Blass	Quincy

Upcoming Games

Wednesday, December 18

Judson at Upper Iowa
Okla. Wesleyan at SW Baptist
Baker at Rockhurst
Lewis at Davenport
Ottawa at William Jewell

Thursday, December 19

Harris-Stowe at Missouri S&T
Illinois Springfield at Lake Superior St.
Truman vs. Fort Hays St.

Friday, December 20

Maryville at Eckerd
Illinois Springfield at Ferris St.
Quincy vs. Fort Hays St.

Saturday, December 21

Upper Iowa at Lake Superior St.
McKendree at Davenport
Indianapolis at Walsh
Eureka at Missouri S&T
Maryville at Florida Southern
Emporia St. at Lincoln
Northeastern St. at Drury
Truman at Hawaii Hilo

Sunday, December 22

Quincy at Western Washington

Polls

WBCA Coaches Poll

Rk	School (Record)	Points	Prev.
1	Grand Valley State (9-0)	573	1
2	Texas Woman's (9-1)	524	2
3	Montana State Billings (9-1)	508	3
4	Gannon (12-1)	459	6
5	Bentley (9-1)	450	5
6	Fort Hays State (9-0)	429	7
7	Lubbock Christian (9-1)	411	4
8	Pittsburg State (8-1)	379	8
9	Cal St. Dominguez Hills (10-0)	370	12
10	Carson-Newman (8-1)	348	11
11	Azusa Pacific (7-1)	294	14
12	Minnesota St. Mankato (7-2)	265	16
13	Concordia-St. Paul (9-0)	252	19
14	Seton Hill (10-0)	244	21
15	Tampa (8-2)	235	17
16	Union, TN (6-2)	176	20
17	Texas-Tyler (6-1)	170	18
18	Nova Southeastern (7-1)	150	24
19	Ferris State (7-2)	133	23
20	Ashland (7-3)	132	10
21	Lee, TN (7-1)	109	15
22	Thomas Jefferson (6-2)	102	13
23	North Georgia (7-0)	101	RV
24	Cal Poly Pomona (7-1)	94	25
25	Northern Michigan (8-0)	85	RV

Recent Results

Tuesday, December 17

Missouri Western at McKendree
Lincoln at Central Missouri

Monday, December 16

UHSP at Maryville
Roosevelt at Lewis

Sunday, December 15

Drury 63, Grand Valley St. 104

Saturday, December 14

Missouri-St. Louis 58, PR-Mayaguez 28
Principia 58, Lincoln 46
UW Parkside 77, Illinois Springfield 43
Missouri Valley 66, Rockhurst 56

Friday, December 13

Grand Valley St. 73, Quincy 58

Wednesday, December 11

Governors State 69, Indianapolis 62

GLVC Coaches Poll

Rk	School (Record)	Points
1.	Lewis	190 (9)
2.	Drury	183 (5)
3.	McKendree	158 (1)
4.	Maryville	140
5.	Upper Iowa	130
6.	Rockhurst	128
7.	Missouri-St. Louis	109
	Quincy	109
10.	Illinois Springfield	80
11.	Truman State	75
12.	Missouri S&T	70
13.	Southwest Baptist	47
14.	Lincoln	26
15.	William Jewell	25



2024-25 Truman St. Women's Basketball Combined Team Statistics All games

Page 1/1
as of Dec 16, 2024

Game Records

Record	Overall	Home	Away	Neutral
ALL GAMES	5-6	1-2	2-3	2-1
CONFERENCE	2-1	1-0	1-1	0-0
NON-CONFERENCE	3-5	0-2	1-2	2-1

Score by Periods

Team	1st	2nd	3rd	4th	OT	TOT
Truman St.	196	201	199	199	0	795
Opponents	187	204	189	192	0	772

Team Box Score

No.	Player				Total		3-Point		F-Throw		Rebounds											
		GP-GS	MIN	AVG	FG-FGA	FG%	3FG-3FGA	3FG%	FT-FTA	FT%	OFF	DEF	TOT	AVG	PF	DQ	A	TO	BLK	STL	PTS	AVG
40	CUNNINGHAM, Jordan	11-11	354:37	32.2	67-136	.493	17-46	.370	40-50	.800	10	42	52	4.7	27	0	35	31	9	17	191	17.4
1	JOYCE, Molly	11-11	332:24	30.2	56-141	.397	22-70	.314	52-59	.881	5	30	35	3.2	20	0	19	27	3	19	186	16.9
30	NIEMEIER, Maddie	5-5	130:09	26.0	24-46	.522	0-1	.000	6-9	.667	5	18	23	4.6	18	1	10	7	1	5	54	10.8
4	DUWE, Bryar	11-11	308:32	28.0	35-87	.402	16-47	.340	10-16	.625	5	32	37	3.4	20	0	25	24	0	11	96	8.7
22	WHITE, Lexie	11-11	249:24	22.7	22-62	.355	12-31	.387	16-22	.727	9	34	43	3.9	29	0	6	11	6	9	72	6.5
35	OTT, Mallory	11-6	169:26	15.4	20-54	.370	3-19	.158	11-15	.733	15	28	43	3.9	13	0	5	8	1	7	54	4.9
21	BULMAN, Emma	11-0	221:53	20.2	16-44	.364	2-16	.125	7-12	.583	2	33	35	3.2	15	0	9	18	1	8	41	3.7
34	LARSON, Avery	2-0	10:47	5.4	3-3	1.000	0-0	.000	1-2	.500	4	1	5	2.5	2	0	0	2	0	0	7	3.5
33	WILLIAMS, McKenna	10-0	88:44	8.9	8-21	.381	1-10	.100	12-15	.800	5	13	18	1.8	8	0	4	2	3	4	29	2.9
0	NEFF, Gracie	11-0	167:17	15.2	10-23	.435	3-15	.200	4-8	.500	2	12	14	1.3	11	0	15	13	1	4	27	2.5
12	ODEM, Katelyn	11-0	124:19	11.3	9-25	.360	1-7	.143	6-14	.429	2	10	12	1.1	12	0	3	11	1	7	25	2.3
25	PATKE, Kaitlyn	3-0	13:47	4.6	3-6	.500	0-3	.000	0-0	.000	1	2	3	1.0	1	0	1	2	1	2	6	2.0
3	STANDEFER, Tori	4-0	21:57	5.5	2-4	.500	1-2	.500	2-4	.500	1	3	4	1.0	1	0	2	0	0	1	7	1.8
11	BOEHM, Lizzie	1-0	01:32	1.5	0-0	.000	0-0	.000	0-0	.000	0	0	0	0.0	0	0	1	0	0	0	0	0.0
14	HUSS, Nicky	2-0	05:12	2.6	0-1	.000	0-0	.000	0-0	.000	0	1	1	0.5	0	0	0	0	0	0	0	0.0
Team											16	26	42					2				
Total		11	2200		275-653	.421	78-267	.292	167-226	.739	82	285	367	33.4	177	1	135	158	27	94	795	72.3
Opponents		11	2200		287-706	.407	91-297	.306	107-147	.728	128	314	442	40.2	222	7	143	187	23	74	772	70.2

Team Statistics

	TSU	OPP
Scoring	795	772
Points per game	72.3	70.2
Scoring margin	+2.1	-
Field goals-att	275-653	287-706
Field goal pct	.421	.407
3 point fg-att	78-267	91-297
3-point FG pct	.292	.306
3-pt FG made per game	7.1	8.3
Free throws-att	167-226	107-147
Free throw pct	.739	.728
F-Throws made per game	15.2	9.7
Rebounds	367	442
Rebounds per game	33.4	40.2
Rebounding margin	-6.8	-
Assists	135	143
Assists per game	12.3	13.0
Turnovers	158	187
Turnovers per game	14.4	17.0
Turnover margin	+2.6	-
Assist/turnover ratio	0.9	0.8
Steals	94	74
Steals per game	8.5	6.7
Blocks	27	23
Blocks per game	2.5	2.1
Winning streak	0	-
Home win streak	1	-
Attendance	1515	3134
Home games-Avg/Game	3-505	5-627
Neutral site-Avg/Game	-	3-210

Team Results

Date	Opponent		Score	Att.
11/08/2024	at Cedarville	W	74-61	455
11/09/2024	vs Ursuline	W	81-60	150
11/15/2024	at Concordia-St. Paul	L	57-68	325
11/16/2024	at Winona St.	L	64-70	825
11/22/2024	Washburn	L	59-81	1232
11/23/2024	Quincy	L	76-85	200
11/26/2024	vs Newman	W	80-48	263
11/27/2024	vs Ark.-Fort Smith	L	73-75	217
11/30/2024	Rockhurst	W	82-64	83
12/05/2024	at Southwest Baptist	W	77-63	322
12/07/2024	at Drury	L	72-97	1207



THEO DEAN

Head Coach // 6th Season At Truman
87-61 (.588) Overall // 64-37 (.634) GLVC

Theo Dean begins his fifth season at the helm of the Truman Women's Basketball team.

Dean has been a part of the program in some capacity for over ten years. He was a student manager and graduate assistant from 2010-14; Dean then returned to Kirksville to become the full-time assistant and recruiting coordinator from June 2016-August 2019. Dean was promoted to interim head coach on August 23, 2019, and on January 13, 2020, after a 9-3 start to the season, including a school-record five-game winning streak to start Great Lakes Valley Conference play, the interim tag was removed, and Dean became the 11th full-time head coach in program history and the first African-American head coach in school history.

By increasing fan and alumni involvement with a fast-paced style of play, Dean's impact on the program has been very evident over the past four seasons, and fans of Truman Women's Basketball have seen continued success for the Bulldogs' program.

Since his return to Truman in 2016, Dean has coached 22 All-GLVC performers (10 being named to the First Team), two Freshman of the Year selections, four 1,000-point scorers, one 1,000 rebounder, two WBCA All-Americans, one D2CCA All-American, six CoSIDA/CSC Academic All-District selections, three D2CCA All-Midwest Region selections, one Academic All-American, one GLVC Player of the Year and one GLVC Women's Basketball Female Student-Athlete of the Year. Dean has also coached over 55 Academic All-GLVC players and has coached three WBCA Academic Top 25 teams (2019, 2021 & 2023).

Overall, Dean has been on the sideline with the Bulldogs for five of the program's eight 20-win seasons, one Great Lakes Valley Conference tournament title, two Great Lakes Valley Conference tournament championship games, three NCAA Tournaments appearances, and one NCAA Tournament victory.

After graduating from Truman, Dean assisted the Lansing (Kansas) High School Boys Basketball program from 2014-16. Dean was the assistant coach to the father of former First Team All-GLVC performer, GLVC Conference Champion, and former Bulldog Associate Head Coach, Amy Briggs. While at Lansing, Dean focused on guard development for the boys' team, overall player development for the girls' team and also supervised the team managers, implementing a hustle and shot chart system into practices and games. In his first year at Lansing, he helped lead the 2014-15 team to the Kansas Substate Championship game, and Dean was then promoted to top assistant in his second season.

A Chicago, IL native, Theo Dean came to Truman in 2008 as a freshman and received his Bachelor of Fine Arts in Visual Communications degree from Truman State University in 2012 and his Master's degree in Leadership, with a concentration in Coaching and Sport Management, from Truman in 2014.

Dean, his wife, Presley (who also holds Bachelor's and Master's degrees from Truman), their son, Theo IV, and their daughter, Mina, reside in Kirksville.



All-Time Coaches

- Amy Eagan111-62 (6 yrs)
- Mary Jo Murray100-80 (7 yrs)
- John Sloop87-131 (8 yrs)
- Theo Dean.....87-61 (6yrs)**
- Karin Nichols71-64 (5 yrs)
- Michael Smith68-68 (5 yrs)
- Tarry Parrish44-115 (6 yrs)
- Lois Herren.....31-48 (3 yrs)
- Jan Conner.....19-58 (3 yrs)
- Pam Wood.....13-14 (2 yrs)
- Kathy Austin.....12-11 (2 yrs)

Series Records

Arkansas Fort Smith	0-1
Ashland (Ohio)	0-1
Augustana (S.D.).....	0-1
Avila (Mo.).....	1-0
Bellarmine.....	0-1
Cedarville.....	3-0
Central Missouri.....	0-1
Concordia-St. Paul	0-2
Davenport (Mich.).....	1-0
Drury *	1-7
Eckerd (Fla.).....	0-1
Florida Southern	1-0
Hannibal-LaGrange.....	1-0
Hillsdale (Mich.).....	0-1
Illinois Springfield *.....	4-2
Indianapolis *.....	4-4
Lewis *	5-6
Lincoln.....	0-1
Lindenwood *	1-3
Maryville *	9-1
Minot (N.D.) State.....	1-0
Missouri S&T*	5-1
Missouri St. Louis.....	5-3
Missouri Western.....	0-1
McKendree *	6-2
Newman (Kan.).....	1-0
Northern Michigan.....	1-0
Northwood (Mich.).....	1-0
Quincy *	7-3
Rockhurst *	5-3
Saginaw Valley St.	0-1
Sioux Falls	0-1
Southern Indiana *	2-2
Southwest Baptist *	5-3
Southwest Minn. State	1-0
Union (Tenn.).....	0-1
Upper Iowa.....	2-2
Ursuline (Ohio).....	3-2
UW-Parkside *	1-1
Washburn (Kan.)	0-1
William Jewell *	9-0
Winona (Minn.) State.....	1-1
Total.....	87-61
Truman Overall	87-61 (.588)
Home Record.....	39-21
Away Record	35-28
GLVC Record.....	64-37
GLVC Home Record.....	34-17
GLVC Away Record	31-20
Non-Conference Record	23-23
vs. Division I.....	0-0
vs. Division II.....	22-24
vs. Division III.....	0-0
vs. NAIA/Other	2-0
NC Home	3-4
NC Road	4-6
Neutral Site.....	14-12
Postseason.....	5-5
Overtime.....	1-4



Assistant Coach

Dajae Black (2nd Season)

2022-23 - Univ. of Akron
 (Assisant Coach)

2020-22 - Grand Canyon (Ariz.)
 (Graduate Assistant)

Playing career:

Lewis University (2016-2020)

#0 Gracie Neff



Graduate
5-8
Guard
Kansas City, Mo.
Staley HS
Lindenwood

				Field Goals		3-Point		F-Throws		Rebounds										Scoring	
SEASON	TEAM	GP-GS	MIN/AVG	FG-FGA	FG%	3FG-3FGA	3FG%	FT-FTA	FT%	OFF	DEF	TOT	AVG	PF-FO	A	TO	BLK	STL	PTS	AVG	
2020-21	Linden	19-18	468/24.6	18-58	.310	11-41	.268	3-8	.375	1	25	26	1.4	26-0	60	46	0	10	50	2.6	
2021-22	Linden	26-17	558/21.4	19-56	.339	3-20	.150	13-21	.619	8	20	28	1.1	30-0	103	65	0	12	54	2.1	
2022-23	TSU	30-0	361/12.0	20-50	.400	12-32	.375	23-29	.793	0	35	35	1.2	21-0	58	38	1	1	75	2.5	
2023-24	TSU	28-21	726/25.9	31-87	.356	22-62	.355	27-38	.711	5	44	49	1.8	37-0	117	74	2	17	111	4.0	
2024-25	TSU	11-0	167/15.2	10-23	.435	3-15	.200	4-8	.500	2	12	14	1.3	11-0	15	13	1	4	27	2.5	
TOTAL FOR TSU		69-21	1255/18.2	61-160	.381	37-109	.339	54-75	.720	7	91	98	1.4	69-0	190	125	4	22	213	3.1	
TOTAL		114-56	2280/20.0	98-274	.358	51-170	.300	70-104	.673	16	136	152	1.3	125-0	353	236	4	44	317	2.8	

Single Game Highs

Statistic	Value	
Points	13	vs Drury 01/20/24
Rebounds	5	vs McKendree 02/01/24, vs Quincy 02/23/21
Assists	11	vs Quincy 12/02/21
Steals	3	vs McKendree 02/01/24, vs Southwest Baptist 01/30/21
Blocks	1	4 times
FG Made	4	5 times
FG Attempts	9	at UIndy 02/10/24
3FG Made	4	vs Drury 01/20/24
3FG Attempts	6	vs Drury 01/20/24
FT Made	5	vs UIndy 01/03/24
FT Attempts	6	vs UIndy 01/03/24, vs Maryville (MO) 11/29/21

#1 Molly Joyce



Sophomore
5-7
Guard
Algona, Iowa
Bishop Garrigan

				Field Goals		3-Point		F-Throws		Rebounds										Scoring	
SEASON	TEAM	GP-GS	MIN/AVG	FG-FGA	FG%	3FG-3FGA	3FG%	FT-FTA	FT%	OFF	DEF	TOT	AVG	PF-FO	A	TO	BLK	STL	PTS	AVG	
2023-24	TSU	28-14	675/24.1	104-277	.375	29-102	.284	67-87	.770	16	79	95	3.4	61-0	39	62	9	31	304	10.9	
2024-25	TSU	11-11	332/30.2	56-141	.397	22-70	.314	52-59	.881	5	30	35	3.2	20-0	19	27	3	19	186	16.9	
TOTAL		39-25	1007/25.8	160-418	.383	51-172	.297	119-146	.815	21	109	130	3.3	81-0	58	89	12	50	490	12.6	

Single Game Highs

Statistic	Value	
Points	34	vs Ursuline 11/09/24
Rebounds	10	vs Ill. Springfield 02/22/24
Assists	4	vs Missouri S&T 02/17/24, vs Ill. Springfield 02/22/24, at Drury 12/07/24
Steals	5	at Rockhurst 01/25/24
Blocks	2	vs Winona St. 11/17/23, vs Maryville (MO) 02/15/24, vs Quincy 02/24/24
FG Made	10	vs Ursuline 11/09/24
FG Attempts	23	at Winona St. 11/16/24
3FG Made	6	vs Ursuline 11/09/24
3FG Attempts	11	vs Ark.-Fort Smith 11/27/24
FT Made	10	at Rockhurst 01/25/24, vs Ark.-Fort Smith 11/27/24
FT Attempts	12	vs Ark.-Fort Smith 11/27/24



#3 Tori Standefer



Graduate
5-7
Guard
Bethalto, Ill.
Civic Memorial
Mo.-St. Louis

				Field Goals		3-Point		F-Throws		Rebounds				Scoring						
SEASON	TEAM	GP-GS	MIN/AVG	FG-FGA	FG%	3FG-3FGA	3FG%	FT-FTA	FT%	OFF	DEF	TOT	AVG	PF-FO	A	TO	BLK	STL	PTS	AVG
2021-22	UMSL	9-0	57/6.3	4-15	.267	1-9	.111	8-8	1.000	2	5	7	0.8	4-0	4	2	0	1	17	1.9
2022-23	UMSL	16-0	115/7.2	5-18	.278	1-7	.143	8-13	.615	6	8	14	0.9	15-1	2	12	0	6	19	1.2
2023-24	UMSL	23-0	233/10.1	13-52	.250	6-29	.207	7-10	.700	9	18	27	1.2	14-0	9	15	0	7	39	1.7
2024-25	TSU	4-0	22/5.5	2-4	.500	1-2	.500	2-4	.500	1	3	4	1.0	1-0	2	0	0	1	7	1.8
TOTAL FOR TSU		4-0	22/5.5	2-4	.500	1-2	.500	2-4	.500	1	3	4	1.0	1-0	2	0	0	1	7	1.8
TOTAL		52-0	427/8.2	24-89	.270	9-47	.191	25-35	.714	18	34	52	1.0	34-1	17	29	0	15	82	1.6

Single Game Highs

Statistic	Value	
Points	13	at Principia 12/18/21
Rebounds	5	at Davenport 11/11/23
Assists	2	at Grand Valley St. 11/10/23, vs Newman 11/26/24
Steals	2	vs Wis.-Parkside 12/31/22, vs Ill. Springfield 01/21/23, vs McKendree 02/25/23
FG Made	3	at Principia 12/18/21, vs Principia 11/20/23
FG Attempts	6	at Principia 12/18/21
3FG Made	2	at Truman St. 02/03/24
3FG Attempts	4	at Principia 12/18/21, vs Purdue Northwest 12/19/23
FT Made	6	at Principia 12/18/21
FT Attempts	6	at Principia 12/18/21

#4 Bryar Duwe



Sophomore
5-6
Guard
Decorah, Iowa
Decorah HS

				Field Goals		3-Point		F-Throws		Rebounds				Scoring						
SEASON	TEAM	GP-GS	MIN/AVG	FG-FGA	FG%	3FG-3FGA	3FG%	FT-FTA	FT%	OFF	DEF	TOT	AVG	PF-FO	A	TO	BLK	STL	PTS	AVG
2023-24	TSU	7-0	31/4.4	5-14	.357	3-9	.333	4-4	1.000	1	0	1	0.1	1-0	0	1	0	2	17	2.4
2024-25	TSU	11-11	309/28.0	35-87	.402	16-47	.340	10-16	.625	5	32	37	3.4	20-0	25	24	0	11	96	8.7
TOTAL		18-11	339/18.8	40-101	.396	19-56	.339	14-20	.700	6	32	38	2.1	21-0	25	25	0	13	113	6.3

Single Game Highs

Statistic	Value	
Points	13	at Winona St. 11/16/24
Rebounds	7	vs Ark.-Fort Smith 11/27/24
Assists	4	at Cedarville 11/08/24, at Southwest Baptist 12/05/24
Steals	2	4 times
FG Made	5	at Winona St. 11/16/24
FG Attempts	11	vs Ursuline 11/09/24
3FG Made	3	vs Ark.-Fort Smith 11/27/24, vs Ursuline 11/09/24
3FG Attempts	7	vs Ursuline 11/09/24
FT Made	2	6 times
FT Attempts	4	vs Rockhurst 11/30/24, at Southwest Baptist 12/05/24

#10 Sophie Hope



Freshman
5-10
Waukee, Iowa
Waukee

#11 Lizzie Boehm



Sophomore
5-7
Guard
Kansas City, Mo.
Staley HS

			Field Goals		3-Point		F-Throws		Rebounds										Scoring	
SEASON	TEAM	GP-GS	MIN/AVG	FG-FGA	FG%	3FG-3FGA	3FG%	FT-FTA	FT%	OFF	DEF	TOT	AVG	PF-FO	A	TO	BLK	STL	PTS	AVG
2023-24	TSU	23-0	308/13.4	14-58	.241	4-29	.138	15-19	.789	11	16	27	1.2	41-1	25	37	1	16	47	2.0
2024-25	TSU	1-0	2/1.5	0-0	.000	0-0	.000	0-0	.000	0	0	0	0.0	0-0	1	0	0	0	0	0.0
TOTAL		24-0	310/12.9	14-58	.241	4-29	.138	15-19	.789	11	16	27	1.1	41-1	26	37	1	16	47	2.0

Single Game Highs

Statistic	Value	
Points	6	vs Southwest Baptist 01/18/24, at UIndy 02/10/24, at Drury 03/02/24
Rebounds	3	5 times
Assists	4	vs Mo.-St. Louis 02/03/24
Steals	3	at Southwest Baptist 02/29/24
Blocks	1	at Southwest Baptist 02/29/24
FG Made	2	4 times
FG Attempts	7	at William Jewell 01/27/24
3FG Made	1	4 times
3FG Attempts	4	at McKendree 11/25/23, vs McKendree 02/01/24
FT Made	4	vs Ill. Springfield 02/22/24
FT Attempts	4	vs Ill. Springfield 02/22/24



#12 Katelyn Odem



Freshman
5-8
Guard
Mequon, Wis.
Homestead

				Field Goals		3-Point		F-Throws		Rebounds								Scoring		
SEASON	TEAM	GP-GS	MIN/AVG	FG-FGA	FG%	3FG-3FGA	3FG%	FT-FTA	FT%	OFF	DEF	TOT	AVG	PF-FO	A	TO	BLK	STL	PTS	AVG
2024-25	TSU	11-0	124/11.3	9-25	.360	1-7	.143	6-14	.429	2	10	12	1.1	12-0	3	11	1	7	25	2.3
TOTAL		11-0	124/11.3	9-25	.360	1-7	.143	6-14	.429	2	10	12	1.1	12-0	3	11	1	7	25	2.3

Single Game Highs

Statistic	Value	
Points	11	at Drury 12/07/24
Rebounds	3	at Drury 12/07/24
Assists	1	vs Ursuline 11/09/24, vs Quincy 11/23/24, vs Ark.-Fort Smith 11/27/24
Steals	2	vs Washburn 11/22/24
Blocks	1	at Drury 12/07/24
FG Made	4	at Drury 12/07/24
FG Attempts	6	at Drury 12/07/24
3FG Made	1	vs Ark.-Fort Smith 11/27/24
3FG Attempts	2	vs Ursuline 11/09/24, vs Ark.-Fort Smith 11/27/24, at Drury 12/07/24
FT Made	3	at Drury 12/07/24
FT Attempts	5	at Drury 12/07/24

#14 Nicky Huss



R-Freshman
6-1
Omaha, Neb.
Duchesne

				Field Goals		3-Point		F-Throws		Rebounds									Scoring	
SEASON	TEAM	GP-GS	MIN/AVG	FG-FGA	FG%	3FG-3FGA	3FG%	FT-FTA	FT%	OFF	DEF	TOT	AVG	PF-FO	A	TO	BLK	STL	PTS	AVG
2024-25	TSU	2-0	5/2.6	0-1	.000	0-0	.000	0-0	.000	0	1	1	0.5	0-0	0	0	0	0	0	0.0
TOTAL		2-0	5/2.6	0-1	.000	0-0	.000	0-0	.000	0	1	1	0.5	0-0	0	0	0	0	0	0.0

Single Game Highs

Statistic	Value	
Rebounds	1	vs Newman 11/26/24
FG Attempts	1	vs Newman 11/26/24

#20 Braylee Rogers



Freshman
5-9
Olathe, Kan.
Olathe East

#21 Emma Bulman



Senior
5-10
Ames, Iowa
Gilbert

				Field Goals		3-Point		F-Throws		Rebounds									Scoring	
SEASON	TEAM	GP-GS	MIN/AVG	FG-FGA	FG%	3FG-3FGA	3FG%	FT-FTA	FT%	OFF	DEF	TOT	AVG	PF-FO	A	TO	BLK	STL	PTS	AVG
2021-22	TSU	26-0	247/9.5	20-43	.465	4-10	.400	9-12	.750	4	47	51	2.0	20-0	9	11	4	5	53	2.0
2022-23	TSU	30-0	483/16.1	56-138	.406	15-36	.417	39-53	.736	11	91	102	3.4	28-0	20	51	10	6	166	5.5
2023-24	TSU	28-11	584/20.9	49-126	.389	15-60	.250	60-69	.870	14	63	77	2.8	58-1	37	65	5	21	173	6.2
2024-25	TSU	11-0	222/20.2	16-44	.364	2-16	.125	7-12	.583	2	33	35	3.2	15-0	9	18	1	8	41	3.7
TOTAL		95-11	1536/16.2	141-351	.402	36-122	.295	115-146	.788	31	234	265	2.8	121-1	75	145	20	40	433	4.6

Single Game Highs

Statistic	Value	
Points	18	at McKendree 11/25/23
Rebounds	9	vs Lincoln (MO) 11/21/23
Assists	6	vs Winona St. 11/17/23
Steals	2	7 times
Blocks	2	vs Maryville (MO) 01/26/23, at Rockhurst 01/25/24
FG Made	7	at McKendree 11/25/23
FG Attempts	10	at Quincy 01/11/24
3FG Made	2	vs Lincoln (MO) 11/21/23, at McKendree 11/25/23, vs Southwest Baptist 01/18/24
3FG Attempts	5	vs Lincoln (MO) 11/21/23, at Quincy 01/11/24
FT Made	8	vs Ill. Springfield 02/22/24
FT Attempts	8	at Southwest Baptist 12/10/22, at Rockhurst 01/25/24, vs Ill. Springfield 02/22/24



#22 Lexie White



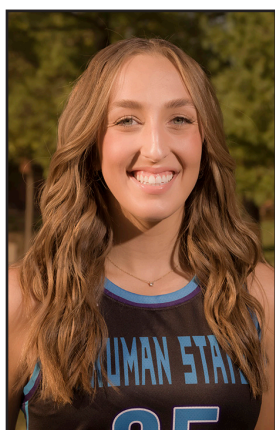
Sophomore
5-11
Merrill, Wis.
Wausau West

				Field Goals		3-Point		F-Throws		Rebounds										Scoring	
SEASON	TEAM	GP-GS	MIN/AVG	FG-FGA	FG%	3FG-3FGA	3FG%	FT-FTA	FT%	OFF	DEF	TOT	AVG	PF-FO	A	TO	BLK	STL	PTS	AVG	
2023-24	TSU	11-0	176/16.0	17-52	.327	3-20	.150	8-11	.727	6	25	31	2.8	28-0	11	17	6	13	45	4.1	
2024-25	TSU	11-11	249/22.7	22-62	.355	12-31	.387	16-22	.727	9	34	43	3.9	29-0	6	11	6	9	72	6.5	
TOTAL		22-11	425/19.3	39-114	.342	15-51	.294	24-33	.727	15	59	74	3.4	57-0	17	28	12	22	117	5.3	

Single Game Highs

Statistic	Value	
Points	15	at Drury 12/07/24
Rebounds	11	vs Rockhurst 11/30/24
Assists	3	at McKendree 11/25/23
Steals	3	vs Ursuline 11/10/23
Blocks	3	at Concordia-St. Paul 11/15/24
FG Made	5	vs Ursuline 11/10/23, at Drury 12/07/24
FG Attempts	10	vs Ursuline 11/10/23
3FG Made	3	at Drury 12/07/24
3FG Attempts	5	vs Rockhurst 11/30/24
FT Made	4	vs Rockhurst 11/30/24
FT Attempts	4	at Cedarville 11/08/24, vs Newman 11/26/24, vs Rockhurst 11/30/24

#25 Kaitlyn Patke



Junior
6-0
Forward
Washington, Mo.
Borgia

				Field Goals		3-Point		F-Throws		Rebounds										Scoring	
SEASON	TEAM	GP-GS	MIN/AVG	FG-FGA	FG%	3FG-3FGA	3FG%	FT-FTA	FT%	OFF	DEF	TOT	AVG	PF-FO	A	TO	BLK	STL	PTS	AVG	
2022-23	TSU	15-0	76/5.1	11-18	.611	1-5	.200	6-12	.500	2	6	8	0.5	5-0	2	11	0	2	29	1.9	
2023-24	TSU	8-0	29/3.6	9-12	.750	2-5	.400	2-3	.667	0	2	2	0.3	5-0	1	0	0	2	22	2.8	
2024-25	TSU	3-0	14/4.6	3-6	.500	0-3	.000	0-0	.000	1	2	3	1.0	1-0	1	2	1	2	6	2.0	
TOTAL		26-0	119/4.6	23-36	.639	3-13	.231	8-15	.533	3	10	13	0.5	11-0	4	13	1	6	57	2.2	

Single Game Highs

Statistic	Value	
Points	6	vs William Jewell 01/12/23, at Missouri S&T 01/19/23, at Drury 03/02/24
Rebounds	2	4 times
Assists	1	4 times
Steals	1	6 times
Blocks	1	at Southwest Baptist 12/05/24
FG Made	2	6 times
FG Attempts	4	at Drury 03/02/24
3FG Made	1	vs William Jewell 01/12/23, vs Winona St. 11/17/23, at Rockhurst 01/25/24
3FG Attempts	2	4 times
FT Made	4	at Missouri S&T 01/19/23

#33 McKenna Williams



Junior
5-10
Forward
Darien, Wis.
Delavan-Darien
Rock Valley

				Field Goals		3-Point		F-Throws		Rebounds								Scoring		
SEASON	TEAM	GP-GS	MIN/AVG	FG-FGA	FG%	3FG-3FGA	3FG%	FT-FTA	FT%	OFF	DEF	TOT	AVG	PF-FO	A	TO	BLK	STL	PTS	AVG
2024-25	TSU	10-0	89/8.9	8-21	.381	1-10	.100	12-15	.800	5	13	18	1.8	8-0	4	2	3	4	29	2.9
TOTAL		10-0	89/8.9	8-21	.381	1-10	.100	12-15	.800	5	13	18	1.8	8-0	4	2	3	4	29	2.9

Single Game Highs

Statistic	Value	
Points	6	vs Quincy 11/23/24
Rebounds	5	at Drury 12/07/24
Assists	2	at Drury 12/07/24
Steals	1	4 times
Blocks	1	vs Quincy 11/23/24, vs Newman 11/26/24, vs Ark.-Fort Smith 11/27/24
FG Made	2	vs Quincy 11/23/24
FG Attempts	5	at Southwest Baptist 12/05/24
3FG Made	1	vs Ursuline 11/09/24
3FG Attempts	3	at Southwest Baptist 12/05/24
FT Made	3	vs Rockhurst 11/30/24, at Southwest Baptist 12/05/24
FT Attempts	4	vs Rockhurst 11/30/24, at Southwest Baptist 12/05/24

#34 Avery Larson



R-Sophomore
6-3
Center
Antioch, Ill.
Antioch

				Field Goals		3-Point		F-Throws		Rebounds									Scoring	
SEASON	TEAM	GP-GS	MIN/AVG	FG-FGA	FG%	3FG-3FGA	3FG%	FT-FTA	FT%	OFF	DEF	TOT	AVG	PF-FO	A	TO	BLK	STL	PTS	AVG
2022-23	TSU	7-0	24/3.4	3-8	.375	0-0	.000	4-5	.800	1	5	6	0.9	3-0	1	1	0	0	10	1.4
2024-25	TSU	2-0	11/5.4	3-3	1.000	0-0	.000	1-2	.500	4	1	5	2.5	2-0	0	2	0	0	7	3.5
TOTAL		9-0	34/3.8	6-11	.545	0-0	.000	5-7	.714	5	6	11	1.2	5-0	1	3	0	0	17	1.9

Single Game Highs

Statistic	Value	
Points	5	vs Newman 11/26/24
Rebounds	3	at Southwest Baptist 12/05/24
Assists	1	vs Ursuline 11/13/22
FG Made	2	vs Newman 11/26/24
FG Attempts	4	vs William Jewell 01/12/23
FT Made	3	at William Jewell 02/25/23
FT Attempts	4	at William Jewell 02/25/23



#35 Mallory Ott



R-Freshman
5-11
Forward
Oshkosh, Wis.
Oshkosh North

				Field Goals		3-Point		F-Throws		Rebounds												Scoring	
SEASON	TEAM	GP-GS	MIN/AVG	FG-FGA	FG%	3FG-3FGA	3FG%	FT-FTA	FT%	OFF	DEF	TOT	AVG	PF-FO	A	TO	BLK	STL	PTS	AVG			
2024-25	TSU	11-6	169/15.4	20-54	.370	3-19	.158	11-15	.733	15	28	43	3.9	13-0	5	8	1	7	54	4.9			
TOTAL		11-6	169/15.4	20-54	.370	3-19	.158	11-15	.733	15	28	43	3.9	13-0	5	8	1	7	54	4.9			

Single Game Highs

Statistic	Value	
Points	14	vs Quincy 11/23/24
Rebounds	10	at Southwest Baptist 12/05/24
Assists	2	vs Ark.-Fort Smith 11/27/24
Steals	2	vs Newman 11/26/24, vs Rockhurst 11/30/24
Blocks	1	vs Ark.-Fort Smith 11/27/24
FG Made	5	vs Quincy 11/23/24, at Southwest Baptist 12/05/24
FG Attempts	13	at Southwest Baptist 12/05/24
3FG Made	1	vs Ark.-Fort Smith 11/27/24, vs Rockhurst 11/30/24, at Southwest Baptist 12/05/24
3FG Attempts	7	vs Ark.-Fort Smith 11/27/24
FT Made	4	vs Quincy 11/23/24
FT Attempts	5	vs Quincy 11/23/24

#40 Jordan Cunningham



Graudate
6-0
Guard
Grimes, Iowa
Dallas Center/Grimes
Mo. Western

				Field Goals		3-Point		F-Throws		Rebounds												Scoring	
SEASON	TEAM	GP-GS	MIN/AVG	FG-FGA	FG%	3FG-3FGA	3FG%	FT-FTA	FT%	OFF	DEF	TOT	AVG	PF-FO	A	TO	BLK	STL	PTS	AVG			
2020-21	MW	22-13	533/24.2	43-120	.358	18-60	.300	17-27	.630	7	45	52	2.4	41-0	33	43	7	22	121	5.5			
2021-22	MW	34-30	898/26.4	86-206	.417	22-91	.242	55-78	.705	13	60	73	2.1	51-0	73	55	7	28	249	7.3			
2022-23	MW	31-26	761/24.5	68-154	.442	13-51	.255	51-74	.689	11	87	98	3.2	39-1	51	46	12	25	200	6.5			
2023-24	MW	31-1	520/16.8	49-102	.480	8-35	.229	13-19	.684	6	68	74	2.4	51-0	36	30	13	17	119	3.8			
2024-25	TSU	11-11	355/32.2	67-136	.493	17-46	.370	40-50	.800	10	42	52	4.7	27-0	35	31	9	17	191	17.4			
TOTAL FOR TSU		11-11	355/32.2	67-136	.493	17-46	.370	40-50	.800	10	42	52	4.7	27-0	35	31	9	17	191	17.4			
TOTAL		129-81	3066/23.8	313-718	.436	78-283	.276	176-248	.710	47	302	349	2.7	209-1	228	205	48	109	880	6.8			

Single Game Highs

Statistic	Value	
Points	27	at Southwest Baptist 12/05/24
Rebounds	10	vs Rockhurst 11/30/24
Assists	7	vs Newman 02/16/21, at Newman 01/20/22, vs Quincy 11/23/24
Steals	4	5 times
Blocks	4	vs Fort Hays St. 02/01/24
FG Made	10	vs Rockhurst 11/30/24
FG Attempts	23	at Drury 12/07/24
3FG Made	4	at Concordia-St. Paul 11/15/24
3FG Attempts	8	at Northeastern St. 11/21/20, vs Emporia St. 02/02/21, vs Quincy 11/23/24
FT Made	8	at Southwest Baptist 12/05/24, at Drury 12/07/24
FT Attempts	10	at Southwest Baptist 12/05/24