

TEXAS TECH TRACK & FIELD

@TEXASTECHTF | @TECHATHLETICS



Red Raider Open

Texas Tech Sports Performance Center • Friday, January 18, 2019

IMPORTANT UPDATE: Visiting teams may no longer have meals delivered to the facility. Meals will not be allowed inside. Teams may eat meals outside or in their buses. General snacks/drinks for the team are still allowed.

Meet Information

Teams Attending: Angelo State, Barton CC, Dallas Baptist, Eastern New Mexico, Hardin-Simmons, Houston, Incarnate Word, LSU, Lubbock Christian, Midwestern State, New Mexico Jr College, Prairie View A&M, South Plains, Stephen F Austin, Tarleton, Texas A&M-Commerce, Texas A&M – Corpus Christi, Texas Tech, Texas Wesleyan, Univ of San Francisco, Univ of Southwest, UTSA, Wayland Baptist, West Texas A&M, Western Texas

Entries: Deadline is Monday, January 14 at noon (CST). Entry fee is \$600 per gender per team or \$43 per athlete for team entering less than 14 athletes. All entries should be done through Direct Athletics (www.directathletics.com).

Entry Restrictions: This is a popular meet so there are restrictions. Six entries per event per school per gender. Only four relay teams will be allowed per team per gender. Meet management may consider additional team entries. Contact Lana Jones at lane.f.jones@ttu.edu or 806-834-5692 for consideration. The following field events will have limits to entries – throws: 16 entries, long and triple jump: 28 entries and pole vault: 18 entries. Life-time best is what will be used as entry mark. Accepted entries will be posted at www.texastech.com by Wednesday, January 16.

Individual Entries: A limited number of open, club, and unattached entries will be accepted to enhance the fields for the meet. Interested individuals may request an invitation by emailing Coach Jon Murray at jonathan.murray@ttu.edu. Please include the event(s) you are wanting and your performances in those event(s) from 2018 and 2019. Not all requests will be accepted. Those accepted will be emailed entry instructions.

Facility Flow: Packet pick-up is at team entry at south end of Sports Performance Center. Check-in, team camps and warm-up will be in the indoor football complex. Please consult attached maps.

Time Schedule: The enclosed time schedule will be revised based on the entries received. The final schedule will be sent to coaches and posted on www.texastech.com on Wednesday, January 16.

Credentials: Wrist bands will be issued to competing athletes, managers, coaches, media and trainers for entry into warm-up football complex, access to the track and general admissions seating.

Timing and Results: Conducted by Prime Time Timing, www.pttiming.com Live results will be posted on this site. Final results will be available at www.texastech.com or www.tfrrs.org

Heat Sheet: posted at www.texastech.com on the track page by Thursday, January 17 by 5:00pm.

Preferred Lanes: Straight Sprint Races 4-5-3-6-2-7-1-8
Oval Sprint Lanes 5-6-4-3-2-1
Oval Distance Races Random

Advancement Procedure: Seeding will be done by times/distances submitted. Finals will be determined according to the following criteria.

Running Events –

60m/60m hurdles, top 16 times from prelim rounds.

All other running events – run in seeded sections against time.

Field Events – top 9 from prelim round to final round.

Opening Heights: will be listed on heat sheets. Projected starting heights for entry purposes – high jump 5-1 (w) and 6-3 (m); pole vault 11-4 (w) and 15-0 (m).

Meet Rules:

No headphones or personal sound system (mp3, iPod, etc.) allowed while warming-up in the indoor track or football complex.

No athletes allowed in the coaching areas.

Spikes: Only 1/4-inch pyramid spike allowed except for high jump where 3/8-inch or 9mm is allowed

No needle or Christmas tree spike allowed

No permanent spike shoes allowed if not ¼ inch length.

Shoes will be checked at last call in the clerk area and prior to getting on track.

Runway marks: White athletic tape and cones may be used on runways. Chalk is not permitted.

Implement Inspection: The implement weigh-in room is at the southeast corner of indoor track. Implements need to be there at least 90 minutes before the competition.

Facility Availability: If you are wanting to use the indoor track on Thursday, January 17, please contact Lana Jones at ana.f.jones@ttu.edu or 806-834-5692.

Competition Warm-up and Athlete Check-In:

No warming up will be allowed on the track. Warm-up is only allowed in the indoor football complex.

Running events – report to the clerking area ready to run when your event is called.

Field events – must check-in at the event area. Flights will be given access to the event site on the following schedule:

Shot Put, Weight Throw, Long Jump and Triple Jump – competitors will be allowed at competition site 60 minutes prior to start of competition. The final 15 minutes will be reserved for competitors in the first flight. The remaining competitors will return to the warm-up area. A report call for the next flight will be given at the end of the flight in progress. The next flight will then be escorted to the competition area.

High Jump – competitors will be allowed at the competition site 60 minutes prior to the start.

Pole Vault – competitors will be allowed at the competition site 75 minutes prior to the start.

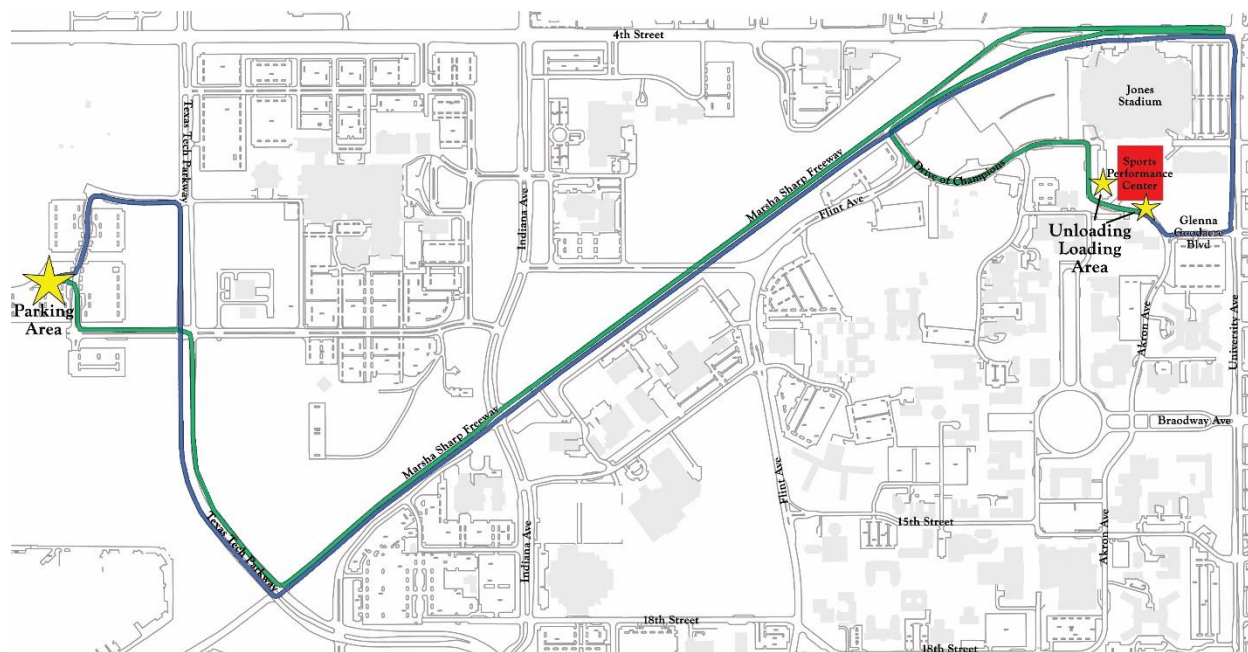
Awards: An award will be presented to the winner of each event.

Spectator entrance and tickets: entrance and tickets for spectators can be purchased at the north entrance of the track. Any team wanting to use a pass list can send it to ana.f.jones@ttu.edu by Thursday, January 17. The Texas Tech ticket office will bill each school separately.

Questions: contact Lana Jones at ana.f.jones@ttu.edu or 806-834-5692. Updates will be posted at www.texastech.com on the track page.

Parking: Due to it being a school day, parking will be regulated for team buses. Team vans and vehicles can drop off at south end of Sports Performance Center on Akron Ave and park in Lot C1 (west of football stadium). Team buses must park in remote parking. The driver can use the TTU bus system to get back to the Sports Performance Center.

Parking map for team buses.



Parking map for team vans and vehicles.

