



TEXAS TECH 2016 SOCCER

4 NCAA TOURNAMENT APPEARANCES
2012 • 2013 • 2014 • 2015

4-STRAIGHT SECOND ROUND NCAA BERTHS
2012 • 2013 • 2014 • 2015

2015 BIG 12 CHAMPIONS

10TH SEASON UNDER HEAD COACH TOM STONE

1

#19 TEXAS TECH (0-0-0) vs. New Mexico (0-0-0)

Aug. 19 • 7 p.m. • Lubbock, Texas • John Walker Soccer Complex (2,000)
Live Stream: TexasTech.TV • Radio: KTXT 88.1 FM

2

#19 TEXAS TECH (0-0-0) vs. Missouri State (0-0-0)

Aug. 21 • 7 p.m. • Lubbock, Texas • John Walker Soccer Complex (2,000)
Live Stream: TexasTech.TV • Radio: KTXT 88.1 FM

2016 SCHEDULE/RESULTS

Texas Tech (0-0-0 • 0-0-0 Big 12)

H: 0-0-0 • A: 0-0-0

AUGUST

13	#	at Denver	W, 2-0
19		NEW MEXICO	7 PM
21		MISSOURI STATE	7 PM
26		ARIZONA	7 PM
28		NORTHEASTERN	7 PM

SEPTEMBER

2		CALIFORNIA	7 PM
4		ABILENE CHRISTIAN	1 PM
9		ORAL ROBERTS	7 PM
11		at Appalachian State	Noon
16		at Loyola Marymount	7 pm
18		at San Diego State	7 pm
23	*	at Kansas	7 pm
25	*	IOWA STATE	1 PM

OCTOBER

7	*	OKLAHOMA STATE	7 PM
9	*	BAYLOR	1 PM
14	*	at West Virginia	7 pm
21	*	at Texas	7 pm
23	*	at TCU	3 pm
28	*	OKLAHOMA	7 PM

NOVEMBER

2-6	@	BIG 12 CHAMPIONSHIP	TBD
11-13		NCAA FIRST ROUND	TBD
18-20		NCAA SECOND & THIRD ROUNDS	TBD
25-27		NCAA QUARTERFINALS	TBD

DECEMBER

2-4		NCAA COLLEGE CUP	TBD
-----	--	------------------	-----

- Exhibition

* - Conference Match

@ - Big 12 Championship is in Kansas City, Missouri



@TexasTechSoccer & @TechAthletics



@TTUSoccer & @TexasTechAthletics



/TTUSoccer & /TTUAthletics



MATCHES 1 & 2



**TEXAS TECH
RED RAIDERS**
(0-0-0)



**NEW MEXICO
LOBOS**
(0-0-0)



**MISSOURI STATE
BEARS**
(0-0-0)

QUICK KICKS

- Texas Tech begins the 2016 campaign on Friday, Aug. 19, against New Mexico at 7 p.m. at the John Walker Soccer Complex. On Sunday, the Red Raiders will host the Missouri State Bears, which is also set for a 7 p.m. kickoff.
- The weekend series marks the first two games in a seven-match homestand at the John Walker Soccer Complex. Tech will square off with No. 20 Arizona, Northeastern, No. 18 California, Abilene Christian and Oral Roberts over the four week stretch.
- The Red Raiders appeared in the National Soccer Coaches Association of America preseason poll at No. 19. It's the 15th consecutive week Tech has been ranked inside the top 25 of the rankings. Along with No. 18 California (Sept. 2) and No. 20 Arizona (Aug. 26), the Red Raiders will also battle with two other ranked opponents this year: at No. 6 West Virginia (Oct. 14) and at No. 25 Loyola Marymount (Sept. 16).
- The all-time series with New Mexico dates back to 1995, but there have only been nine meetings between the two programs. The overall matchup is tied 4-4-1, but Tech has won each of the last three matches: 2-0 in 2012, 1-0 in 2013 and 1-0 in 2015. Sunday will mark the first meeting between the Red Raiders and Missouri State.
- The Red Raiders return 17 letterwinners from last year's squad, including seven starters.

WHO TO WATCH



JADE KING
5-1 • F • FR

Freshman Jade King had an impressive exhibition against Denver last weekend, tallying both of Texas Tech's goals. She also registered six shots in her 58 minutes of play. King has an opportunity to be one of Tech's top attackers this fall, as she racked up 28 goals during her final high school season.



GWENNIE PUENTE
5-3 • F • SO

Sophomore Gwennie Puente provided a spark off the bench in the early part of 2015, and transitioned into a starting position as the year went on, opening in 15 of 22 matches. Notched three goals last year, including the Big 12 Championship winning goal against Kansas in the conference tournament.



MEAGAN MCCULLOUGH
5-5 • D • SR

Senior Meagan McCullough was one of two Red Raider defenders to start in 21 of Tech's 23 matches in 2015. She was an integral part of the back-line that held opponents to just 18 goals in 2015, as well as 11 shutouts, which ranked second in the Big 12.



LAUREN WATSON
5-10 • GK • SR

Senior Lauren Watson started 22 matches in goal for the Red Raiders in 2015. She led the Big 12 in saves with 98, while also putting up the second-best goals against average in the league at 0.73. Her efforts in the conference tournament earned her Big 12 Championship Defensive Most Outstanding Player.

MATCH BREAKDOWN

NO. 19 TEXAS TECH

Record	0-0-0
Streak	---
Home Record	0-0-0
Away Record	0-0-0
Neutral Record	0-0-0
Ranking (NSCAA)	19
Last Match (EXH)	Def. Denver, 2-0
Head Coach	Tom Stone
Career Record	109-58-21 (10th)
Record at Tech	Same

New Mexico

Record	0-0-0
Streak	---
Home Record	0-0-0
Away Record	0-0-0
Neutral Record	0-0-0
Ranking (NSCAA)	None
Last Match (EXH)	Def. ENMU, 2-1
Head Coach	Heather Dyche
Career Record	10-8-2 (2nd)
Record at UNM	Same

Missouri State

Record	0-0-0
Streak	---
Home Record	0-0-0
Away Record	0-0-0
Neutral Record	0-0-0
Ranking (NSCAA)	None
Last Match	Lost at SLU, 4-0
Head Coach	Rob Brewer
Career Record	182-162-44 (21st)
Record at Minn.	Same

2016 QUICK FACTS

GENERAL INFORMATION

Location _____ Lubbock, Texas
 Founded _____ 1923
 Enrollment _____ 35,893
 Nickname _____ Red Raiders
 Colors _____ Scarlet & Black
 Mascot _____ Masked Rider / Raider Red
 Affiliation _____ NCAA Division I
 Conference _____ Big 12
 Chancellor _____ Robert Duncan
 President _____ Dr. Lawrence Schovanec
 Athletics Director _____ Kirby Hocutt
 Sr. Associate AD/SWA _____ Dr. Judi Henry
 Department Main Number _____ (806) 742-3355

HISTORY

Season of Soccer _____ 23rd
 First Season _____ 1994
 All-Time Record _____ 189-211-31
 NCAA Tournament Appearances _____ Four (2012-15)
 Best Conference Finish _____ 2nd (2013)

FACILITY INFORMATION

Name _____ John Walker Soccer Complex
 Opened _____ 2008
 Capacity _____ 2,000
 Largest Crowd _____ 2,288 (Oct. 15, 2011 vs. Kansas)
 Dimensions _____ 76 yds x 120 yds
 Surface _____ FieldTurf
 All-Time Record _____ 58-17-4

COACHING STAFF

Head Coach _____ Tom Stone
 Alma Mater _____ Duke '87
 Record at Tech _____ 109-58-21 (10th Season)
 Career Record _____ Same
 Best time to reach _____ Contact SID
 Associate Head Coach _____ Neil Payne
 Alma Mater _____ Coastal Carolina '95
 Assistant Coach _____ Gibbs Keeton
 Alma Mater _____ Texas Tech '06
 Director of Operations _____ Laura Gentolizo
 Office Number _____ (806) 742-3355

TEAM INFORMATION

2015 Record _____ 15-4-5
 Big 12 Record _____ 3-2-3
 Home Record _____ 7-2-1
 Away Record _____ 4-0-4
 Neutral Site Record _____ 4-2-0
 Postseason _____ NCAA Second Round
 Final Ranking _____ No. 21 (NSCAA)
 Letterwinners Returning/Lost _____ 17/6
 Starters Returning/Lost _____ 7/4
 Redshirts Returning _____ 4
 Newcomers _____ 7
 Top Returning Players _____ Lauren Watson,
 _____ Gwennie Puente, Brooke Denesik,
 _____ Carly Wickenheiser
 Top Newcomers _____ Jade King,
 _____ Jordan Harr, Demi Koulizakis

ATHLETICS COMMUNICATIONS

Assistant Director (Soccer) _____ Michael Minshew
 Office _____ (806) 834-8808
 Cell _____ (817) 707-0011
 Fax _____ (806) 742-1970
 Twitter _____ @mminshew
 E-mail _____ Michael.Minshew@ttu.edu
 Website _____ www.texastech.com
 Twitter _____ @TexasTechSoccer, @TechAthletics
 Mailing Address _____ 2526 6th St.
 _____ Lubbock, TX 79409



MEDIA INFORMATION



Michael Minshew
Assistant Director

Michael Minshew - Soccer Contact

Office _____ (806) 834-8808
 Cell _____ (817) 707-0011
 Email _____ Michael.Minshew@ttu.edu
 Twitter _____ @mminshew
 Website _____ www.texastech.com
 Twitter _____ @TexasTechSoccer, @TechAthletics
 Instagram _____ @TTUSoccer
 Facebook _____ facebook.com/TexasTechSoccer

The Texas Tech Athletics Communications office is here to serve the media throughout the 2015 Red Raider soccer season. Media members in need of assistance can contact Michael Minshew in the Athletics Communications office at (806) 742-2770.

MEDIA CREDENTIALS

Media members covering the Texas Tech soccer program at the John Walker Soccer Complex during the 2014 season must be issued a credential from the Texas Tech Athletics Communications office.

- All requests for both media and photo credentials must be made either in writing or via e-mail at least a day in advance to Michael Minshew, Assistant Director for Athletic Communications. (Fax: (806) 742-1970; e-mail: Mark.Jezek@ttu.edu)
- Requests are honored from sports editors of daily and weekly newspapers, editors of sports periodicals, and sports directors of radio and television stations who broadcast regularly scheduled daily sports reports and talk shows.
- Credentials can be picked up in the Athletics Communications office (south end of Jones AT&T Stadium) or at will call, which is located at the ticket booth outside the stadium's front gate.

PRESS BOX SERVICES

A complete NCAA box score and pertinent game facts will be distributed to members of the working media following the conclusion of the match. Game notes, statistics, lineups, and rosters are provided prior to kickoff. A pregame meal is also served in the press box around 45 minutes prior to kickoff.

HEAD COACH TOM STONE INTERVIEWS

Head coach Tom Stone can be reached best either immediately after practice or in the early afternoon. Stone's office is located in the south end of Jones AT&T Stadium. To arrange an interview, please contact Michael Minshew in the Athletics Communications office.

PLAYER INTERVIEWS

Student-athletes and coaches are available for interviews every day following the conclusion of practice. Student-athletes are also available following a brief cooling off period after each home match.

POSTGAME INTERVIEWS

Texas Tech student-athletes and head coach Tom Stone will be made available to the media near the home bench following a brief cooling off period. The Texas Tech locker room will remain closed.

WWW.TEXASTECH.COM

This is the official site of the Texas Tech Athletics Department. Texas Tech Soccer releases as well as a variety of athletics department information can be found on the web. Texas Tech also offers live video and audio (home matches only) streaming of all Red Raider matches.

INTO THE RANKINGS

The Red Raiders will open the season ranked No. 19 in the preseason National Soccer Coaches Association of America (NSCAA) poll, which the league released on Aug. 2. It marks 15 consecutive weeks Tech has appeared in the top 25 of the rankings. In 2015, the Red Raiders began the year at No. 15 and climbed as high as 13th in the poll. Tech climbed in the rankings for five-straight weeks in 2015, after the Red Raiders went on a 12-match unbeaten streak, the nation's longest at that point in the season.

ANOTHER YEAR, ANOTHER STRONG SCHEDULE

Along with a strong conference slate, the Red Raiders will also face four teams ranked in the preseason NSCAA rankings, two at home and two on the road. The next two weekends will provide ranked contests for the Red Raiders in their own backyard, as they'll take on No. 20 Arizona on Friday, Aug. 26, followed by No. 18 California the following Friday, Sep. 2. Two weeks later, Tech will travel to Los Angeles to play No. 25 Loyola Marymount on Friday, Sep. 16 in their final weekend before conference action begins. On Oct. 14, the Red Raiders will battle with No. 6 West Virginia in Morgantown, in a matchup that pits the top two preseason teams, as voted on by the Big 12 head coaches.

PRESEASON RECOGNITION

The Red Raiders were picked to finish second in the 2016 Big 12 standings, as part of the preseason poll that was voted on by the league coaches. It is the fourth consecutive season Tech has been projected to finish second in the conference, which had five of the nine teams ranked nationally, or receiving votes, throughout the season.

HONOR ROLL

Senior Goalkeeper Lauren Watson was named to the 2016 Preseason All-Big 12 Soccer team last week. Watson started in 22 matches in 2015 and led the Big 12 in saves last year with 98. She accounted for 10 clean-sheets and pieced together a 0.73 goals against average, both of which ranked second in the Big 12. Watson was also rated as the No. 7 player in the conference and No. 85 in the nation by TopDrawerSoccer.com.

ALL-TIME HISTORY

Friday's match will be the fourth-straight season the Red Raiders have scheduled the Lobos, picking up victories in three of those matches, while the 2014 contest was canceled. The all-time series between the two programs is tied at 4-4-1. Sunday's game will be the first time in school history the Red Raiders and Missouri State have met on a soccer field.

GETTIN' DEFENSIVE

Goalkeeper Lauren Watson makes up a quarter of the Red Raider senior trio, along with defenders Jade Dapaah & Meagan McCullough, and midfielder Maddy Crabtree. Watson led the Big 12 in 2015 in saves with 98, while also putting up the second-best goals against average in the league at 0.73. At the conference tournament, her efforts in net earned her Big 12 Championship Defensive Most Outstanding Player. In front of Watson are seven returning defenders who saw action in 2015. Senior Meagan McCullough leads the group and is joined by Cassie Boren and Brooke Denesik as three of the Red Raider defenders who started 18 or more matches last season. The stingy defense held opponents to just 18 goals and recorded 11 shutouts in 2015, which ranked second in the conference.

ATTACK ATTACK

The offense is younger than the defensive side of the ball, but packs a lot of firepower that's waiting to be unleashed. Forward Gwennie Puente and midfielder Jordan Duke are two sophomores on the offense poised for a big year. The duo combined for one of the biggest goals in program history in 2015, as Duke assisted on Puente's Big 12 Championship-winning goal against Kansas in the conference tournament. Freshmen Jade King and Jordie Harr are two freshmen who will have the opportunity to put up big numbers for Tech this season. King found the back of the net twice in the exhibition against Denver on her first two shots of the match, finishing with six overall.

2015 QUICK HITTER

The Red Raiders finished the 2015 season with a 14-4-5 overall record and captured the program's first Big 12 Championship. Tech also advanced to the second round of the NCAA Tournament for the fourth consecutive season. In January, two Red Raiders were drafted in the 2016 National Women's Soccer League (NWSL) College Draft, as Janine Beckie went eighth overall to the Houston Dash, followed by Alli Murphy to the Washington Spirit with the 20th pick. With the selections, Texas Tech became one of four college programs in the nation to have multiple picks in the first two rounds. Tech was the only Big 12 school to have a player drafted in the top 10 for the second-straight season and the only school in Texas in the last two years to have a player drafted in consecutive seasons. Beckie also represented Canada in the 2016 Olympic Games, tallying three goals, including the fastest goal ever scored in a women's Olympic soccer match, coming 21 seconds into their opening match against Australia.

BIG 12 STANDINGS

TEAM	BIG 12	OVERALL
TEXAS TECH	0-0-0	0-0-0
Baylor	0-0-0	0-0-0
Iowa State	0-0-0	0-0-0
Kansas	0-0-0	0-0-0
Oklahoma	0-0-0	0-0-0
Oklahoma State	0-0-0	0-0-0
TCU	0-0-0	0-0-0
Texas	0-0-0	0-0-0
West Virginia	0-0-0	0-0-0

BIG 12 SCHEDULE**FRIDAY, AUGUST 19**

Baylor at Detroit Mercy	3 p.m.
Minnesota vs. Kansas	5 p.m.
Iowa State at Florida	6 p.m.
Oklahoma State at Georgia	6 p.m.
TCU at Maryland	6 p.m.
West Virginia at Penn State	6:30 p.m.
Seattle at Texas	7 p.m.
South Carolina at Oklahoma	7 p.m.
New Mexico at Texas Tech	7 p.m.

SUNDAY, AUGUST 21

Buffalo at West Virginia	11 a.m.
Oklahoma State at Mercer	Noon
TCU at Navy	Noon
Baylor at Michigan State	1 p.m.
South Dakota State at Iowa State	2 p.m.
Loyola Marymount at Oklahoma	3 p.m.
Marquette at Kansas	7 p.m.
Missouri State at Texas Tech	7 p.m.

2016 PLAYER HONORS**LAUREN WATSON**

- Preseason All-Big 12
- No. 85 rated player in the Nation (Top Drawer)
- No. 7 rated player in the Big 12 (Top Drawer)

**TOM STONE**

Head Coach
10th Season
Duke '87

109-58-21 at Texas Tech



@TomStone9

THE STONE FILE

Hometown: Irving, Texas
High School: MacArthur
Education: Duke '97 (History)
Wife: Lindsey
Children: Leyton, Landry, Lily

CAREER HIGHLIGHTS

- Winningest soccer coach in Texas Tech history.
- Claimed first Big 12 title in school history in 2015.
- Only coach in school history to lead the Red Raiders to the NCAA Tournament, including four-straight second-round berths.
- Led the Red Raiders to their highest Big 12 finish in school history in 2013 (second place).
- Recorded most wins among Big 12 coaches the past four seasons (2012-15).
- Coached a pair of All-Americans in Janine Beckie and Jaelene Hinkle, the first players to ever receive the honor in Texas Tech history.
- Tutored 30 All-Big 12 selections during his tenure.
- Led Texas Tech back to the Big 12 Championship in only his first season, marking first time Tech had made the league tournament since 1999.
- Assistant Coach on 2008 U.S. U-20 National Team that won the FIFA World Cup.
- Former head coach of the Atlanta Beat in the WUSA (former professional league).
- Wrapped his career with the Atlanta Beat as the winningest coach in the league's existence.

COACHING EXPERIENCE

1991-00: Colorado Rush (Director of Coaching)
1996: University of Denver (Volunteer Assistant)
1997: Duke (Volunteer Assistant Coach)
2001-03: Atlanta Beat Head Coach (WUSA)
2004-06: TopHat Soccer Club (Technical Director)
2006: Clemson (Assistant Coach)
2007-Present: Texas Tech (Head Coach)

STONE YEAR-BY-YEAR

YEAR	SCHOOL	OVERALL
2007	Texas Tech	7-8-2
2008	Texas Tech	8-10-1
2009	Texas Tech	8-8-4
2010	Texas Tech	11-8-1
2011	Texas Tech	10-8-1
2012	Texas Tech	16-6-1
2013	Texas Tech	18-2-3
2014	Texas Tech	16-4-2
2015	Texas Tech	14-4-5
Record		109-58-21

THE STONE EFFECT AT TEXAS TECH

	BEFORE (2000-06)	AFTER (2007-14)
Overall Record	24-104-3	108-58-21
Winning Percentage	.195	.578
Conference Record	6-63-1	36-27-13
NCAA Appearances	0	4
Big 12 Champ. Appearances	0	9
All-Big 12 Selections	2	30
Player of the Week Recipients	3	28

RED RAIDERS IN THE 2015 BIG 12 / NCAA STATS

TEAM STATISTICS	NCAA	Big 12	INDIVIDUALS	NCAA	BIG 12
Won-Lost-Tied Percentage	T-35th	2nd	Janine Beckie		
Assists Per Game	169th	4th	Game Winning Goals	9th	2nd
Goals Against Average	41st	2nd	Shots		2nd
Points Per Game	157th	6th	Shots Per Game	10th	1st
Save Percentage	34th	1st	Points		T1st
Saves Per Game	104th	3rd	Goals	18th	1st
Scoring Offense	143rd	6th	Alli Murphy		
Shutout Percentage	43rd	2nd	Assists Per Game		7th
Total Assists	118th	4th	Total Assists		4th
Total Goals	91st	3rd	Lauren Watson		
Total Points	108th	5th	Shutouts		2nd
			Goals Against Avg.	38th	2nd
			Save Percentage	26th	1st
			Saves	51st	1st

**WALKER MAGIC**

Since Stone's arrival in Lubbock, the Red Raiders have amassed an incredible 62-20-3 record at the John Walker Soccer Complex. Texas Tech has won their home opener every year since 2006. During that stretch, Tech has outscored opponents 34-3 in home openers.

RED RAIDERS TOP BIG 12 IN WINS SINCE 2012

Winning has pretty much become second nature for the Red Raiders the past four seasons under Tom Stone. During that stretch, Texas Tech has recorded 63 victories and advanced to the second round of the NCAA Championship in each of the past four seasons. This is the winningest stretch for the Red Raiders in school history, as Tech won 16 matches in 2012 and then followed up with a school-record 18 victories in 2013. The Red Raiders then posted a 16 win season in 2014. That success has made Tech one of the most successful Big 12 programs the past four seasons.

TOTAL VICTORIES AMONG BIG 12 PROGRAMS (2012-PRESENT)

Team	Total Victories
TEXAS TECH	63
West Virginia	62
Baylor	51
Kansas	44
Texas	43
Oklahoma State	38
Iowa State	31
TCU	31
Oklahoma	30

FULL HOUSE FOR TEXAS TECH SOCCER

With an average attendance of 1,363 at each home match for the Red Raiders in 2015, Texas Tech once again ranked in the top-25 in the nation for attendance. The Red Raider faithful have placed Tech at No. 13 for accumulated attendance, which leads the Big 12.



RED RAIDERS IN THE TOP 25

DATE	NSCAA	TDS	SA
Preseason	19	-	-

MISCELLANEOUS RANKING RECORDS:

Consecutive weeks in Top-25..... 15
 Highest Ranking (NSCAA)No. 13 (Oct. 5)

NSCAA TOP 25

NO.	SCHOOL	2015 RECORD
1.	Florida State (18)	18-3-4
2.	Penn State (10)	22-3-2
3.	Duke (2)	14-6-5
4.	Virginia	19-1-3
5.	Stanford	19-2-2
6.	West Virginia	19-3-1
7.	Florida	19-4-1
8.	Texas A&M	17-7-2
9.	North Carolina	15-5-1
10.	Rutgers	18-4-4
11.	Southern California	14-6-2
12.	Auburn	16-6-1
13.	Notre Dame	14-5-1
14.	Clemson	15-4-2
15.	UConn	19-4-0
16.	BYU	16-3-2
17.	Virginia Tech	15-4-2
18.	California	13-6-3
19.	TEXAS TECH	14-4-5
20.	Arizona	14-6-2
21.	Santa Clara	14-6-2
22.	Ole Miss	14-5-4
23.	Ohio State	13-6-4
24.	South Carolina	12-5-3
25.	Loyola Marymount	15-6-1

ITALICS indicates 2016 opponents.



WEEKLY SCHEDULE

FRIDAY	SATURDAY	SUNDAY	MONDAY	TUESDAY	WEDNESDAY	THURSDAY
3	4	5	6	7	8	9
SEASON OPENER						
NEW MEXICO 7 PM		MISSOURI STATE 7 PM	OFF DAY	PRACTICE DAY	PRACTICE DAY	PRACTICE DAY
JOHN WALKER SOCCER COMPLEX		JOHN WALKER SOCCER COMPLEX				MEDIA AVAILABILITY 10 AM

2015 RESULTS

DATE	OPPONENT	RESULT	SCORE	OVERALL	CONF	ATT.	GOALS SCORED
Aug. 21	vs. USC	L	1-0	0-1-0	0-0-0	112	
Aug. 23	at New Mexico	W	1-0	1-1-0	0-0-0	1040	Janine Beckie (Hannah Devine)
Aug. 28	Georgia	W	2-1	2-1-0	0-0-0	1530	Cassie Conarty (Alli Murphy)
							Maddy Crabtree (Janine Beckie)
Sep. 4	UTSA	W	4-0	3-1-0	0-0-0	1418	Ashley Casey (Alli Murphy), Caity Heap (Carly Wickenhouser, Janine Beckie)
							Briana Rohmer (Caity Heap)
							Makenzie Kahan (Lauren Dabner)
Sep. 6	Minnesota	T	0-0	3-1-1	0-0-0	1358	-
Sep. 11	at Arizona	T	1-1	3-1-2	0-0-0	1068	Maddy Crabtree (Gwennie Puente)
Sep. 13	vs. No. 21 Arizona State	W	1-0	4-1-2	0-0-0	108	Caity Heap
Sep. 18	Florida Atlantic	W	2-1	5-1-2	0-0-0	1027	Caity heap (Alli Murphy), Janine Beckie (Caity Heap)
Sep. 20	USF	W	2-1	6-1-2	0-0-0	877	Alli Murphy (2)
Sep. 25	at Oklahoma	T	0-0	6-1-3	0-0-1	713	-
Sep. 27	at Cal State Northridge	W	2-1	7-1-3	0-0-1	201	Janine Beckie (Alli Murphy)
							Carly Wickenheiser (Janine Beckie)
Oct. 2	at Oklahoma State	T	2-2	7-1-4	0-0-2	889	Janine Beckie (twice)
Oct. 9	TCU	W	3-0	8-1-4	1-0-2	1578	Janine Beckie (twice)
							(Caity Heap and Hannah Devine)
Oct. 11	West Virginia	L	4-1	8-2-4	1-1-2	1102	Alli Murphy (Gwenie Puente)
Oct. 16	Texas	L	2-1	8-3-4	1-2-2	1750	Janine Beckie (Gwennie Puente)
Oct. 18	at Baylor	T	1-1	8-3-5	1-2-3	578	Janine Beckie
Oct. 23	Kansas	W	1-0	9-3-5	2-2-3	1170	Janine Beckie
Oct. 30	at Iowa State	W	2-0	10-3-5	3-2-3	512	Ashley Casey (Rebekah O'Brien)
							Gwennie Puente
Nov. 4	vs. Oklahoma	W	2-1	11-3-5	3-2-3	279	Gwennie Puente
							Caity Heap (Ashley Casey)
Nov. 6	vs. West Virginia	W	1-0	12-3-5	3-2-3	387	Janine Beckie (Caity Heap)
Nov. 8	vs. Kansas	W	1-0	13-3-5	3-2-3	802	Gwennie Puente (Jordan Duke)
Nov. 13	North Texas	W	1-0	14-3-5	3-2-3	1817	Janine Beckie
Nov. 20	vs. Auburn	L	3-2	14-4-5	3-2-3		Janine Beckie
							Janine Beckie (Rebekah O'Brien)

TEAM RECORD	W-L-T	ATTENDANCE	DATES	TOTAL	AVERAGE
Overall:	14-4-5	Total:	23	20,316	883
Conference:	3-2-3	Home:	10	13,627	1,363
Home:	7-2-1	Away:	7	5,001	714
Away:	3-0-4	Neutral:	6	1,688	281
Neutral:	4-2-0				
Overtime:	3-2-5				



2016 MATCH BY MATCH GOALS-ASSISTS-POINTS

OPPONENT	DATE	SCORE	W-L	0	00	1	3	4	5	6	8	9
				WATSON	CHRISTENSEN	MALDONADO	DENESIK	SCHMUTZ	HARR	FERNANDEZ	BOREN	BARTON
NEW MEXICO	Aug 19											
MISSOURI STATE	Aug 21											
OPPONENT	DATE	SCORE	WL	10	11	13	14	15	16	17	18	19
				KOULIZAKIS	KING	DABNER	MCCULLOUGH	JONES	DUKE	PAULETTE	PUENTE	PUENTE
NEW MEXICO	Aug 19											
MISSOURI STATE	Aug 21											
OPPONENT	DATE	SCORE	WL	20	21	22	23	24	27	28	29	32
				CONARTY	NORMAN	O'BRIEN	CRABTREE	BEGLEY	HEIBERGER	FANCHER	DAPAAH	MURPHY
NEW MEXICO	Aug 19											
MISSOURI STATE	Aug 21											
OPPONENT	DATE	SCORE	WL	33								
				WICKENHEISER								
NEW MEXICO	Aug 19											
MISSOURI STATE	Aug 21											

2015 Texas Tech Soccer
Texas Tech Combined Team Statistics (as of Jul 11, 2016)
All games

RECORD:	OVERALL	HOME	AWAY	NEUTRAL
ALL GAMES	14-4-5	7-2-1	3-0-4	4-2
CONFERENCE	3-2-3	2-2	1-0-3	0-0
NON-CONFERENCE	11-2-2	5-0-1	2-0-1	4-2

Date	Opponent	Score	Att.	#	Player	gp	g	a	pts	sh	sh%	sog	sog%	gw	pk-att
Aug 21	vs USC	L 0-1	112	12	Beckie, Janine	23	14	3	31	114	.123	51	.447	6	3-3
Aug 23	at New Mexico	W 1-0	1040	10	Heap, Caity	23	4	5	13	34	.118	10	.294	2	0-0
Aug 28	UGA	W 2-1	1530	8	Murphy, Alli	23	3	5	11	46	.065	21	.457	1	0-0
Sep. 4	UTSA	W 4-0	1418	19	Puente, Gwennie	22	3	1	7	17	.176	9	.529	1	0-0
Sep 06	MINNESOTA	To2 0-0	1358	33	Wickenheiser, Carly	23	2	1	5	18	.111	8	.444	1	0-0
Sep 11	at Arizona	To2 1-1	1068	26	Casey, Ashley	22	2	1	5	12	.167	5	.417	2	0-0
Sep 13	vs #22 ASU	W 1-0	108	23	Crabtree, Maddy	17	2	0	4	14	.143	7	.500	1	0-0
Sep 18	FAU	W 2-1	1027	20	Conarty, Cassie	21	1	1	3	6	.167	2	.333	0	0-0
Sep 20	USF	Wo2 2-1	877	9	Devine, Hannah	21	0	3	3	20	.000	8	.400	0	0-0
* Sep 25	at Oklahoma	To2 0-0	713	11	Rohmer, Briana	18	1	0	2	8	.125	5	.625	0	0-0
Sep 27	at CSUN	Wo2 2-1	201	17	Kahan, Makenzie	3	1	0	2	1	1.000	1	1.000	0	0-0
* Oct 02	at Oklahoma State	To2 2-2	889	22	O'Brien, Rebekah	23	0	2	2	7	.000	4	.571	0	0-0
* Oct 09	TCU	W 3-0	1578	16	Duke, Jordan	15	0	1	1	11	.000	6	.545	0	0-0
* Oct 11	#4 WVU	L 1-4	1102	13	Dabner, Lauren	9	0	1	1	3	.000	0	.000	0	0-0
* Oct 16	UT	Lo2 1-2	1750	14	McCullough, Meagan	23	0	0	0	7	.000	1	.143	0	0-0
* Oct 18	at Baylor	To2 1-1	578	4	Schmutz, Natalie	15	0	0	0	5	.000	2	.400	0	0-0
* Oct 23	KU	W 1-0	1170	29	Boren, Cassie	22	0	0	0	4	.000	2	.500	0	0-0
* Oct 30	at Iowa State	W 2-0	512	24	Begley, Margaret	17	0	0	0	1	.000	0	.000	0	0-0
Nov 04	vs Oklahoma	Wot 2-1	279	3	Denesik, Brooke	22	0	0	0	1	.000	1	1.000	0	0-0
Nov 06	vs #2 WVU	W 1-0	387	32	Murphy, Dani	2	0	0	0	0	.000	0	.000	0	0-0
Nov 08	vs KU	W 1-0	802	28	Fancher, Haleigh	1	0	0	0	0	.000	0	.000	0	0-0
Nov 13	NORTH TEXAS	W 1-0	1817	25	Summers, Kate	3	0	0	0	0	.000	0	.000	0	0-0
Nov 20	vs #19 Auburn	Lot 2-3	0	18	Puente, Gabbie	1	0	0	0	0	.000	0	.000	0	0-0
				15	Wright, Madeline	2	0	0	0	0	.000	0	.000	0	0-0
				7	Marmureanu, Alex	3	0	0	0	0	.000	0	.000	0	0-0
				6	Fernandez, Hannah	8	0	0	0	0	.000	0	.000	0	0-0
				5	Haughn, Tanner	1	0	0	0	0	.000	0	.000	0	0-0
				0	Watson, Lauren	22	0	0	0	0	.000	0	.000	0	0-0
				00	Christensen, Carissa	2	0	0	0	0	.000	0	.000	0	0-0
					Total	23	33	24	90	329	.100	143	.435	14	3-3
					Opponents	23	19	15	53	314	.061	122	.389	4	2-3
TEAM STATISTICS															
SHOT STATISTICS															
Goals-Shot attempts	33-329	19-314													
Goals scored per game	1.43	0.83													
Shot pct.	.100	.061													
Shots on goal-Attempts	143-329	122-314													
SOG pct.	.435	.389													
Shots/Game	14.3	13.7													
CORNER KICKS	109	104													
PENALTY KICKS	3-3	2-3													
OFFSIDES	40	21													
PENALTIES															
Fouls	206	290													
Yellow cards	23	29													
Red cards	1	2													
ATTENDANCE															
Total	13627	5001													
Dates/Avg Per Date	10/1363	7/714													
Neutral Site #/Avg	6/281														

#	Goalie	GP	Min.	GA	GAAvg	Saves	Pct	W-L-T	Sho
0	Watson, Lauren	22	2097:16	17	0.73	98	.852	14-3-5	10/1
00	Christensen, Carissa	2	141:59	2	1.27	4	.667	0-1-0	0/1
	Total	23	2239:15	19	0.76	103	.844	14-4-5	11
	Opponents	23	2239:15	33	1.33	110	.769	4-14-5	3

Goals by Period	1st	2nd	OT	OT2	Total
Texas Tech	17	13	1	2	33
Opponents	7	10	1	1	19

Shots by Period	1st	2nd	OT	OT2	Total
Texas Tech	153	143	18	15	329
Opponents	157	137	17	3	314

Saves by Period	1st	2nd	OT	OT2	Total
Texas Tech	52	43	8	0	103
Opponents	44	57	5	4	110

Corners by Period	1st	2nd	OT	OT2	Total
Texas Tech	37	57	7	8	109
Opponents	49	51	3	1	104

Fouls by Period	1st	2nd	OT	OT2	Total
Texas Tech	93	102	6	5	206
Opponents	124	140	15	11	290

2015 Texas Tech Soccer
Texas Tech High/Low Analysis (as of Jul 12, 2016)
All games

Texas Tech - INDIVIDUAL GAME HIGHS

POINTS	4	Beckie, Janine vs Auburn (Nov 20)
	4	Beckie, Janine vs TCU (Oct 09)
	4	Beckie, Janine at Oklahoma State (Oct 02)
	4	Murphy, Alli vs USF (Sep 20)
GOALS	2	Beckie, Janine vs Auburn (Nov 20)
	2	Beckie, Janine vs TCU (Oct 09)
	2	Beckie, Janine at Oklahoma State (Oct 02)
	2	Murphy, Alli vs USF (Sep 20)
ASSISTS	1	O'Brien, Rebekah vs Auburn (Nov 20)
	1	Heap, Caity vs North Texas (Nov 13)
	1	Duke, Jordan vs KU (Nov 08)
	1	Heap, Caity vs WVU (Nov 06)
	1	Casey, Ashley vs Oklahoma (Nov 04)
	1	O'Brien, Rebekah at Iowa State (Oct 30)
	1	Puente, Gwennie vs UT (Oct 16)
	1	Conarty, Cassie vs WVU (Oct 11)
	1	Devine, Hannah vs TCU (Oct 09)
	1	Murphy, Alli vs TCU (Oct 09)
	1	Heap, Caity vs TCU (Oct 09)
	1	Murphy, Alli at CSUN (Sep 27)
	1	Beckie, Janine at CSUN (Sep 27)
	1	Heap, Caity vs FAU (Sep 18)
	1	Murphy, Alli vs FAU (Sep 18)
	1	Devine, Hannah at Arizona (Sep 11)
	1	Heap, Caity vs UTSA (Sep. 4)
	1	Wickenheiser, Carly vs UTSA (Sep. 4)
	1	Murphy, Alli vs UTSA (Sep. 4)
	1	Beckie, Janine vs UTSA (Sep. 4)
	1	Dabner, Lauren vs UTSA (Sep. 4)
	1	Murphy, Alli vs UGA (Aug 28)
	1	Beckie, Janine vs UGA (Aug 28)
	1	Devine, Hannah at New Mexico (Aug 23)
SHOTS	11	Beckie, Janine at Oklahoma State (Oct 02)
	9	Beckie, Janine at Iowa State (Oct 30)
SHOTS ON GOAL	5	Beckie, Janine vs UT (Oct 16)
	5	Beckie, Janine at Oklahoma State (Oct 02)
SAVES	9	Watson, Lauren at Oklahoma State (Oct 02)
	9	Watson, Lauren vs USF (Sep 20)

NUMERICAL ROSTER

NO.	NAME	HT.	POS.	CLASS-EX.	HOMETOWN / H.S. / PREVIOUS SCHOOL
0	Lauren Watson	5-10	GK	Sr-3L	The Woodlands, Texas / The Woodlands
00	Carissa Christensen	5-8	GK	So-1L	Alta Loma, Calif. / Los Onos
3	Brooke Denesik	5-5	D	So-1L	Anthem, Ariz. / Boulder Creek
4	Natalie Schmutz	5-2	F	Jr-2L	Flower Mound, Texas / Marcus
5	Jordie Harr	5-2	MF	Fr-HS	Sachse, Texas / Sachse
6	Hannah Fernandez	5-4	D	So-1L	Alstynne, Texas / Alstynne
8	Cassie Boren	5-8	D	So-1L	Albuquerque, N.M. / La Cueva
9	Tatum Barton	5-6	F	Fr-HS	Lakewood, Colo. / Columbine
10	Demi Koulizakis	5-7	F	Fr-HS	Sydney, Australia / Endeavor Sport
11	Jade King	5-1	F	Fr-HS	Apple Valley, MN. / Eagan
13	Lauren Dabner	5-5	MF	So-1L	New Zealand / Coastal Spirit FC
14	Meagan McCullough	5-5	D	Sr-3L	Garland, Texas / Rowlett
15	Savanna Jones	5-6	MF	Fr-HS	Dallas, Texas / Highland Park
16	Jordan Duke	5-2	MF	So-1L	Amarillo, Texas / Amarillo
17	Caroline Paulette	5-7	D	Fr-HS	Lewisville, Texas / Hebron
18	Gabbie Puente	5-4	D	Fr-SQ	Fort Worth, Texas / Nolan Catholic
19	Gwennie Puente	5-3	F	So-1L	Fort Worth, Texas / Nolan Catholic
20	Cassie Conarty	5-11	D	Jr-2L	Allen, Texas / Lovejoy
21	Sarah Norman	5-7	D	Fr-HS	McKinney, Texas / McKinney Boyd
22	Rebekah O'Brien	5-6	D	Jr-2L	Spring, Texas / Home School
23	Maddy Crabtree	5-4	MF	Sr-3L	Greenville, Texas / Greenville
24	Margaret Begley	5-2	D	So-1L	Omaha, Neb. / Marian
27	Mary Heiberger	5-7	MF	Fr-SQ	Katy, Texas / Katy Taylor
28	Haleigh Fancher	5-7	F	Jr-2L	Columbia, Mo. / Rockbridge
29	Jade Dapaah	5-9	D	Jr-2L	Bedford, Texas / Oklahoma
32	Dani Murphy	5-4	MF	So-1L	Flower Mound, Texas / Marcus
33	Carly Wickenheiser	5-4	MF	So-1L	St. Louis, Mo. / St. Joseph's Academy

COACHING STAFF

Head Coach: Tom Stone (10th Season)**Associate Head Coach:** Neil Payne (2nd Season)**Assistant Coach/Recruiting Coordinator:** Gibbs Keeton (8th Season)**Director of Operations:** Laura Gentolizo (1st Season)

ROSTER BREAKDOWN

BY POSITION

Goalkeeper - 2

Christensen, Watson

Forwards - 6

Barton, Fancher, King, Koulizakis, Gw. Puente, Schmutz

Midfielders - 8

Crabtree, Dabner, Duke, Harr, Heiberger, Jones, Murphy, Wickenheiser

Defenders - 11

Begley, Boren, Conarty, Dapaah, Denesik, Fernandez, McCullough, Norman, O'Brien, Paulette, Ga. Puente,

BY CLASSIFICATION

Senior - 7

Crabtree, McCullough, Watson

Junior - 4

Conarty, Fancher, O'Brien, Schmutz

Sophomores - 10

Begley, Boren, Christensen, Dabner, Denesik, Duke, Fernandez, Murphy, Gw. Puente, Wickenheiser

Freshmen - 7

Barton, Harr, Jones, King, Koulizakis, Norman, Paulette, Ga. Puente (RS), Heiberger (RS)

BY HOME STATE

Arizona - 1

Denesik

Australia - 1

Koulizakis

California - 1

Christensen

Colorado - 1

Barton

Nebraska - 1

Begley

New Mexico - 1

Boren

New Zealand - 1

Dabner

Minnesota - 1

King

Missouri - 2

Fancher, Wickenheiser

Texas - 17

Conarty, Crabtree, Dapaah, Duke, Fernandez, Harr, Heiberger, Jones, McCullough, Murphy, Norman, O'Brien, Paulette, Ga. Puente, Gw. Puente, Schmutz, Watson

ALPHABETICAL ROSTER

NO.	NAME	POS.
9	Tatum Barton	F
24	Margaret Begley	D
8	Cassie Boren	D
00	Carissa Christensen	GK
20	Cassie Conarty	D
23	Maddy Crabtree	MF
13	Lauren Dabner	MF
29	Jade Dapaah	D
3	Brooke Denesik	D
16	Jordan Duke	MF
28	Haleigh Fancher	F
6	Hannah Fernandez	D
5	Jordie Harr	MF
27	Mary Heiberger	MF
15	Savanna Jones	MF
11	Jade King	F
10	Demi Koulizakis	F
14	Meagan McCullough	D
32	Dani Murphy	MF
21	Sarah Norman	D
22	Rebekah O'Brien	D
17	Caroline Paulette	D
18	Gabbie Puente	D
19	Gwennie Puente	F
4	Natalie Schmutz	F
0	Lauren Watson	GK
33	Carly Wickenheiser	MF



0 **Lauren Watson**
5-10 • GK • SR-3L
The Woodlands, Texas



00 **Carissa Christensen**
5-8 • GK • SO-1L
Alta Loma, Calif.



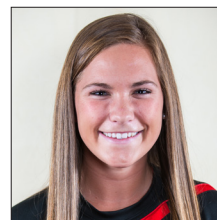
1 **Brittany Maldonado**
5-5 • GK • FR-HS
Georgetown, Texas



3 **Brooke Denesik**
5-5 • D/F • SO-1L
Anthem, Ariz.



4 **Natalie Schmutz**
5-2 • F • JR-2L
Flower Mound, Texas



5 **Jordie Harr**
5-2 • MF • FR-HS
Sachse, Texas



6 **Hannah Fernandez**
5-4 • D • SO-1L
Alstynne, Texas



8 **Cassie Boren**
5-8 • D • SO-1L
Bedford, Texas



9 **Tatum Barton**
5-6 • F • FR-HS
Lakewood, Colo.



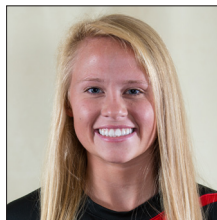
10 **Demi Koulikakis**
5-7 • MF • FR-HS
Sydney, Australia



11 **Jade King**
5-1 • F • FR-HS
Apple Valley, Minn.



13 **Lauren Dabner**
5-5 • MF • SO-1L
New Zealand



14 **Meagan McCullough**
5-5 • D • SR-3L
Garland, Texas



15 **Savanna Jones**
5-6 • MF • FR-HS
Dallas, Texas



16 **Jordan Duke**
5-2 • MF • SO-1L
Amarillo, Texas



17 **Caroline Paulette**
5-7 • D • FR-HS
Lewisville, Texas



18 **Gabbie Puente**
5-4 • D • FR-SQ
Fort Worth, Texas



19 **Gwennie Puente**
5-4 • F • SO-1L
Fort Worth, Texas



20 **Cassie Conarty**
5-11 • D • JR-2L
Allen, Texas



21 **Sarah Norman**
5-7 • D • FR-HS
McKinney, Texas



22 **Rebekah O'Brien**
5-6 • D • JR-2L
Spring, Texas



23 **Maddy Crabtree**
5-4 • MF • SR-3L
Greenville, Texas



24 **Margaret Begley**
5-2 • D • SO-1L
Omaha, Neb.



27 **Mary Heiberger**
5-7 • MF • FR-SQ
Katy, Texas



28 **Haleigh Fancher**
5-7 • F • JR-2L
Columbia, Mo.



29 **Jade Dapaah**
5-9 • D • JR-2L
Bedford, Texas



32 **Dani Murphy**
5-4 • MF • SO-1L
Flower Mound, Texas



33 **Carly Wickenheiser**
5-4 • MF • SO-1L
St. Louis, Mo.



HC **Tom Stone**
Head Coach
10th Season



AC **Neil Payne**
Associate Head Coach
Second Season



AC **Gibbs Keeton**
Assistant Coach
Eighth Season



OP **Laura Gentolizo**
Director of Operations
First Season