

# UTA LADY MAVERICK BASKETBALL

W. Basketball Contact: Michael Eldridge | michael.eldridge@uta.edu | @dfwsportsmike | C: (817) 201-6389



## 2016-17 SCHEDULE

### NOVEMBER (5-0)

13 UTSA %	W, 75-54
16 WKU	W, 71-68
20 Wichita State	W, 74-70
26 San Diego State ^	W, 64-58
27 Seton Hall ^	W, 86-61

### DECEMBER (2-2)

3 Stephen F. Austin	L, 65-60
7 Kansas State	L, 62-49
11 Eastern New Mexico	W, 65-48
18 Texas A&M-Commerce	W, 80-50
22 Texas Tech	2 p.m.
29 Appalachian State*	7 p.m.
31 Coastal Carolina*	5 p.m.

### JANUARY (0-0)

7 Texas State*	2 p.m.
12 South Alabama*	7:05 p.m.
14 Troy*	2 p.m.
19 Louisiana*	7 p.m.
21 ULM*	2 p.m.
26 Coastal Carolina*	6 p.m.
28 Appalachian State*	12 p.m.

### FEBRUARY (0-0)

4 Texas State*	2 p.m.
9 Little Rock* #	11:30 a.m.
11 Arkansas State*	2 p.m.
16 Georgia Southern*	6 p.m.
18 Georgia State*	11 a.m.
23 Troy*	7 p.m.
25 South Alabama*	2 p.m.

### MARCH (0-0)

2 ULM*	5:15 p.m.
4 Louisiana*	5 p.m.
7 SBC Championship 1st Round	TBA

% - 2016 Homecoming Week

^ - Seton Hall Thanksgiving Classic

# - AISD Day

\* Sun Belt Conference game

ALL TIMES CENTRAL

## REFERENCING UTA

The UTA Athletic Department kindly asks that members of the media and athletic institutions refer to the University as **UTA**. Using Texas-Arlington, UT-Arlington, or any other forms is incorrect.



GAME 10 | ROAD GAME 4 | DEC. 22, 2016 | 2 P.M. >> UNITED SUPERMARKETS ARENA >> LUBBOCK, TEXAS

## UTA LADY MAVERICKS

**Record:** 7-2 **SBC:** 0-0  
**Head Coach:** Krista Gerlich  
**Alma Mater:** Texas Tech (1993)  
**UTA Record:** 43-56 (4th season)  
**Overall Record:** 211-108



### Team Stats

	Stat	SBC Rank
Record:	7-2	1st
SBC Record:	0-0	
PPG:	69.3	3rd
Scoring Defense:	59.6	3rd
Scoring Margin:	+9.8	2nd
FG %:	41.2	2nd
3P %:	31.7	4th
FT %:	60.8	12th

### Category Leaders

Points/Game:	Rebekah VanDijk (16.7)
FG%:	Miranda LeJune (59.1)
3P%:	Miranda LeJune (53.3)
FT%	Allyson Te'o (80.0)
Rebounds/Game:	Rebekah VanDijk (8.3)
Assists/Game	Cierra Johnson (3.4)
Steals/Game:	Cierra Johnson (3.2)

## TEXAS TECH LADY RAIDERS



**Record:** 7-3 **Big 12:** 0-0  
**Head-to-Head:** TTU, 13-1  
**Last 10:** TTU, 10-0  
**Road:** TTU, 8-0  
**Streak:** TTU, W12

### Team Stats

	Stat	Big 12 Rank
Record:	7-3	T-7th
Conf. Record:	0-0	
PPG:	76.2	4th
Scoring Defense:	61.1	6th
Scoring Margin:	+15.1	6th
FG %:	47.1	3rd
3P %:	39.1	3rd
FT %:	64.5	10th

### Category Leaders

Points/Game:	Recee Caldwell (17.1)
FG%:	Grayson Bright (60.9)
3P%:	Recee Caldwell (46.6)
FT%	Recee Caldwell (90.0)
Rebounds/Game:	Jada Terry (6.8)
Assists/Game	Recee Caldwell (4.5)
Steals/Game:	Two tied (1.3)

## THE SHOOTAROUND

- UTA closes its nonconference schedule at Texas Tech on Thursday looking to match one of its best nonconference starts in program history at 8 wins (achieved in 2008-09, 2003-04, 2002-03) and 1 shy of the best nonconference win total at 9 (1983-84, 1982-83).
- UTA coach **Krista Gerlich (Kirkland)** makes her first trip to her Alma Mater as a head coach. The 4th-year coach played at Tech from 1989-1993 and won the 1993 National Championship as a Lady Raider. **Gerlich** was an assistant at Tech and helped the Lady Raiders reach the NCAA tournament twice. She has made one appearance in Lubbock since as an assistant at UTSA.
- **Gerlich's** No. 21 jersey is 1 of 3 that hangs from the United Supermarket Arena rafters. Her 220 3-pointers made is still 3rd in Lady Raider history, while her 41.7 percent from 3-point land is 4th. She is 13th in all-time scoring with 1,324.
- UTA's RPI is currently 55th. Texas Tech sits just ahead at 53rd.
- In the previous matchup vs. a Big 12 opponent this season, UTA trailed by just 5 at K-State before the Wildcats (now in the Top 25) opened the 4th with a 10-0 run, pulling away to a 62-49 win..
- The Lady Mavs are 1-13 all-time against the Lady Raiders, the lone win coming in 1975. The teams are meeting for the first time since 2011 with the last 4 meetings taking place in Lubbock.
- UTA is coming off back-to-back wins over Lone Star Conference opponents in which they averaged turning over the opponent 25.0 times. UTA is 9th in the nation in turnovers forced per game (23.11) helped along by **Cierra Johnson's** 3.2 steals per game, 18th in the nation.
- **Rebekah VanDijk**, a Nazareth, Texas native, achieved several milestones over the last 2 weeks, she jumped into the all-time UTA top-10 for rebounds, now 9th, with 650 in her career. She also moved up to 4th in career blocks and achieved her 900th-career point (now at 906). In the nation, **VanDijk** is 29th in offensive rebounds per game (4.0), 40th in field-goal percentage (56.5) and 48th in double-doubles (4).

## PROJECTED STARTING FIVE



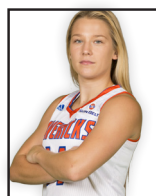
**0** cierra JOHNSON  
Guard // 5-9 // Junior

Points:	10.3
Rebounds:	6.2
Assists:	3.3
Steals:	3.2
16-17 Starts:	9
16-17 Played:	9



**2** lauren BILLIE  
Guard // 5-6 // Sophomore

Points:	3.3
Rebounds:	1.6
Assists:	1.1
Steals:	0.2
16-17 Starts:	6
16-17 Played:	9



**14** ericka MATTINGLY  
Guard // 5-8 // Freshman

Points:	4.6
Rebounds:	1.8
Assists:	2.2
Steals:	1.7
16-17 Starts:	8
16-17 Played:	9



**23** christina DEVERS  
Guard // 5-6 // Junior

Points:	12.6
Rebounds:	4.0
Assists:	2.1
Steals:	1.5
16-17 Starts:	8
16-17 Played:	9



**44** rebekah VANDIJK  
Center // 6-5 // Junior

Points:	16.7
Rebounds:	8.3
Assists:	0.7
Blocks:	1.6
16-17 Starts:	9
16-17 Played:	9



**UTA COACH KRISTA GERLICH //**

Krista Gerlich has guided a resurgence for the Lady Mavericks since being named head coach on April 11, 2013.

From her first season into the second, the Lady Mavs increased their win total by 14, the second largest turnaround in Division I between the 2013-14 and 2014-15 seasons. UTA continued the momentum into last year, finishing in a tie for fourth in the Sun Belt standings.

Prior to UTA, Gerlich was a standout coach at West Texas A&M, making 4 NCAA DII Tournaments and won 3 conference titles.

In her playing career, Gerlich was a national champion at Texas Tech in 1993 and a part of 2 Southwest Conference titles. She finished as the all-time leader in 3-pointers (220) and still ranks amongst the top of Texas Tech 3-point and assist leaders. She was inducted in to the SWC Hall of Fame in 2004.

★ **211** ★

CAREER WINS

★ **4** ★

NCAA DIVISION II TOURNAMENT APPEARANCES

(2007, 2008, 2009, 2010)

★ **3** ★

LSC CONFERENCE CHAMPIONSHIPS

(2008, 2009, 2010)

★ **2** ★

LSC SOUTH DIVISION COACH OF THE YEAR AWARDS

(2006-07, 2009-10)

**YEAR-BY-YEAR RECORD**

YEAR	RECORD	YEAR	RECORD
2006-07	28-5	2012-13	20-12
2007-08	26-5	2013-14	4-25
2008-09	28-6	2014-15	17-13
2009-10	30-4	2015-16	15-16
2010-11	17-11	2016-17	7-2
2011-12	19-10		

**SUN BELT STANDINGS //**

SCHOOL	CONFERENCE	CONF. PCT	OVERALL	OVERALL PCT	STREAK
UTA	0-0	0.000	7-2	0.778	W2
Troy	0-0	0.000	6-3	0.667	L1
Louisiana	0-0	0.000	5-3	0.625	W1
Little Rock	0-0	0.000	6-5	0.545	W1
South Alabama	0-0	0.000	5-5	0.500	L1
Appalachian State	0-0	0.000	4-5	0.444	L2
Coastal Carolina	0-0	0.000	4-5	0.444	W1
Georgia State	0-0	0.000	4-5	0.444	L2
Texas State	0-0	0.000	4-6	0.400	W1
Georgia Southern	0-0	0.000	3-7	0.300	L2
ULM	0-0	0.000	2-7	0.222	L4
Arkansas State	0-0	0.000	2-8	0.200	W1

**KNOWLEDGE NUGGETS //**■ **LOOKING AHEAD**

UTA opens Sun Belt Conference play on Dec. 29 as part of a two-game homestand. UTA takes on Appalachian State before playing Coastal Carolina on Dec. 31.

■ **2017 SIGNING CLASS**

UTA welcomed two future Lady Mavericks during the early signing period. Michaela Wright joins from Father Tolton Catholic HS in Columbia, Mo. Wright, a 6-foot-5 center, earned All-District honors and has accumulated 1,013 points (10.8/g) in 3 seasons. She is a stand-out volleyball player earning All-State honors.

Jennifer Parker joins from Rouse HS in Leander, Texas. Parker was a first-team All-District selection as a junior and was the team Defensive MVP as a sophomore and Team MVP in her junior season.

■ **SCHEDULE NOTES**

UTA's 29-game schedule includes 10 nonconference games and 16 different cities visited over the course of the campaign. The Lady Mavs face teams from C-USA, Big 12, Big East, Mountain West, Missouri Valley, Southland and Lone Star (DII) before the SBC schedule tips.

■ **PRESEASON EXPECTATIONS**

UTA was picked to finished 3rd in the Sun Belt Preseason Coaches' Poll and received 1 first-place vote. Troy was picked to repeat as SBC Champs, while Little Rock received the 2nd pick. UTA was picked 2nd in 2015-16.

■ **ABOUT UT ARLINGTON**

The University of Texas at Arlington is a Carnegie Research-1 "highest research activity" institution. With a projected global enrollment of close to 57,000 in AY 2016-17, UTA is the largest institution in The University of Texas System. Guided by its Strategic Plan Bold Solutions | Global Impact, UTA fosters interdisciplinary research within four broad themes: health and the human condition, sustainable urban communities, global environmental impact, and data-driven discovery. UTA was recently cited by U.S. News & World Report as having the second lowest average student debt among U.S. universities. U.S. News & World Report also ranks UTA fifth in the nation for undergraduate diversity. The University is a Hispanic-Serving Institution and is ranked as the top four-year college in Texas for veterans on Military Times' 2017 Best for Vets list.

■ **FOLLOWING THE LADY MAVERICKS**

UT Arlington home games are available with a live video stream through Mavs All-Access. Road games are available in an Audio-Only format, also on Mavs All-Access. Subscriptions start at \$9.99 per month.

**UTA RECORD WHEN**

Category	Overall	SBC
Overall	7-2	0-0
Home	4-1	0-0
Away	2-1	0-0
Neutral	1-0	0-0

vs. Big 12	0-1	--
vs. Big East	1-0	--
vs. Conference USA	2-0	--
vs. Missouri Valley	1-0	--
vs. Mountain West	1-0	--
vs. Southland	0-1	--
vs. Lone Star (DII)	2-0	--

Day Games	6-1	0-0
Night (6 pm or later)	1-1	0-0

November	5-0	0-0
December	2-2	0-0
January	0-0	0-0
February	0-0	0-0
March	0-0	0-0

Mondays	0-0	0-0
Tuesdays	0-0	0-0
Wednesdays	1-1	0-0
Thursdays	0-0	0-0
Fridays	0-0	0-0
Saturdays	1-1	0-0
Sundays	5-0	0-0

vs Ranked Teams	0-0	0-0
-----------------	-----	-----

UTA Leads at Half	6-0	0-0
Opp. Leads at Half	1-2	0-0
Tied at Half	0-0	0-0

UTA Leads after 3rd	6-0	0-0
Opp. Leads after 3rd	1-1	0-0
Tied after 3rd	0-1	0-0

UTA Shoots > 40%	6-1	0-0
UTA Shoots 35-39.9%	0-1	0-0
UTA Shoots < 34.9%	1-0	0-0
Opp. Shoots > 40%	3-1	0-0
Opp. Shoots 35-39.9%	4-1	0-0
Opp. Shoots < 34.9%	0-0	0-0

UTA Wins Rebound Battle	5-1	0-0
Opp. Wins Rebound Battle	2-1	0-0
Tied	0-0	0-0

UTA Wins 3-Point Battle	3-2	0-0
Opp. Wins 3-Point Battle	4-0	0-0
Tied	0-0	0-0

UTA Has More Steals	6-1	0-0
Opp. Has More Steals	1-1	0-0
Tied	0-0	0-0

UTA Has More Turnovers	0-2	0-0
Opp. Has More Turnovers	6-0	0-0
Tied	1-0	0-0

UTA Makes More FT	4-0	0-0
Opp. Makes More FT	3-2	0-0
Tied	0-0	0-0

Wearing white jerseys	2-1	0-0
Wearing blue jerseys	1-1	0-0
Wearing orange jerseys	4-0	0-0



## SEASON STORYLINES //

## ■ HISTORICAL START

UTA opened the season with its best start (5-0) since the 1977 season, when the team opened 7-0. The opening earned UTA the No. 16 ranking in the CollegeInsider.com Mid-Major Top-25 as well as its first-ever USA Today Coaches' Poll vote.

## ■ SUN BELT PLAYER OF THE WEEK

UTA opened the season by winning 3 of the first 5 SBC POTW honors given out.

Newcomer Christina Devers was named SBC POTW after averaging 18.5 ppg in games against WKU and Wichita State on Nov. 22. Devers was also named the College Sports Madness SBC POTW.

Rebekah VanDijk made it back-to-back awards on Nov. 29 after a week in which she averaged 24.0 ppg in the SHU Thanksgiving Classic, including a 34-point game in the final. VanDijk was also named the CSM National Mid-Major POTW for her success.

VanDijk earned her second on Dec. 13 as she averaged 15.0 points per game and 7.0 rebounds in games against K-State and Eastern New Mexico.

## ■ FAMILIAR FACE ON SDSU BENCH

San Diego State coach Stacie Terry was a UTA grad and played from 1994-98. Terry is one of 17 to be a member of the 1,000-point club. She was a graduate assistant during the 1999-00 season, the last time UTA started 3-0. UTA defeated SDSU 64-58 in the SHU Classic.

## ■ LET'S DO THIS AGAIN

5 of UTA's nonconference opponents were on the 2015-16 Lady Mavs' schedule. UTA went 2-3 against the foes last season, in the rematch, UTA completed the trek with a 3-2 record this time around, falling to SFA and K-State.

## ■ THANKSGIVING IN NYC

The Lady Mavericks spent their Thanksgiving weekend in New York City at the SHU Thanksgiving Classic. UTA had an off day on Friday and spent the time touring the city. Sites visited included Rucker Park, Central Park, Times Square,

and The 9/11 Memorial.

## ■ WAY TO DISH IT OUT

Through the first 5 games of the season, UTA has been near the top of the conference in assists. UTA's 22 at SHU were 2nd best in the SBC, while the individual performances of Miranda LeJune (9), Cierra Johnson (8) and Ericka Mattingly (8) were the top 3. LeJune's 9 is tied for 10th in UTA single-game history.

## ■ GERLICH RETURNS "HOME"

When UTA visits Texas Tech on Dec. 22, Gerlich will be making her first trip with the Lady Mavs as head coach to her Alma Mater. Gerlich won a national championship as a Red Raider in 1993. She was a two-time winner of the Southwest Conference championship and was inducted into the SWC Hall of Game.

## ■ VANDIJK'S RECORD PACE

UTA junior Rebekah VanDijk entered 2016-17 as 1 of 5 Lady Mavs in program history to have over 100 blocks in her career. The junior is on pace to become just the 2nd player in UTA history to have more than 1,000 points and rebounds.

## NATIONAL POLLS //

## AP Top 25

RK	TEAM	RECORD	PTS
1	Connecticut (33)	9-0	825
2	Notre Dame	10-1	768
3	Baylor	11-1	759
4	Maryland	11-0	740
5	Mississippi State	12-0	678
6	South Carolina	9-1	664
7	Florida State	10-1	629
8	Louisville	11-2	598
9	Washington	11-1	523
10	UCLA	8-2	508
11	Miami	9-1	459
12	Ohio State	9-3	441
13	West Virginia	11-0	435
14	Stanford	8-2	388
15	Colorado	10-0	313
16	Texas	5-4	261
17	Duke	10-1	252
18	Kentucky	8-3	210
19	Syracuse	8-3	201
20	Oklahoma	7-2	188
21	South Florida	8-0	180
21	Arizona State	8-2	180
23	Virginia Tech	11-0	163
24	<b>Kansas State</b>	<b>10-1</b>	<b>71</b>
25	Oregon State	7-1	69

Others receiving votes: DePaul 63, California 34, Florida 28, Northwestern 24, Oregon 18, Oklahoma State 16, USC 12, Texas A&M 6, UNLV 6, Tennessee 4, Auburn 3, Vanderbilt 3, Ole Miss 2, Gonzaga 2, Green Bay 1

## USA Today Coaches Poll

RK	TEAM	RECORD	PTS
1	Connecticut (31)	10-0	775
2	Notre Dame	10-1	733
3	Maryland	11-0	704
4	Baylor	11-1	692
5	Mississippi State	12-0	636
6	South Carolina	9-1	630
7	Florida State	11-1	592
8	Louisville	11-2	558
9	Washington	11-1	512
10	UCLA	8-2	473
11	Miami	10-1	452
12	West Virginia	11-0	415
13	Ohio State	9-4	388
14	Stanford	8-2	387
15	Oregon State	8-1	301
16	Syracuse	8-3	251
17	Texas	5-4	237
18	Duke	10-1	209
19	Arizona State	8-2	197
20	California	10-0	145
21	Oklahoma	8-2	141
22	DePaul	7-4	138
23	Virginia Tech	11-0	134
24	Kentucky	8-3	98
25	South Florida	8-1	68

Others receiving votes: Colorado 67, Oklahoma State 40, Michigan State 34, Texas A&M 11, Green Bay 9, Michigan 9, Northwestern 8, Oregon 7, Gonzaga 6, Florida 5, **Kansas State 4**, Tennessee 3, Utah 2, Temple 2, Penn State 1, Tulane 1

## MID-MAJOR POLL //

## CollegeInsider.com Mid-Major Top-25

RK	TEAM	RECORD	PTS	Previous	Conference
1.	Green Bay (27)	8-2	768	1	Horizon
2.	Gonzaga (3)	8-2	738	2	West Coast
3.	Buffalo (1)	8-0	706	5	Mid-American
4.	Drake	6-3	626	8	Missouri Valley
5.	Quinnipiac	8-2	612	6	Metro Atlantic
6.	Ohio	8-1	608	4	Mid-American
7.	James Madison	5-3	584	7	Colonial
8.	South Dakota State	8-3	562	3	Summit
9.	BYU	6-4	501	9	West Coast
10.	South Dakota	11-2	499	10	Summit
11.	San Diego	6-3	428	11	West Coast
12.	Mercer	9-2	424	13	Southern
13.	<b>Troy</b>	<b>6-3</b>	<b>357</b>	<b>11</b>	<b>Sun Belt</b>
14.	Drexel	6-2	352	18	Colonial
15.	Bucknell	7-3	327	15	Patriot
16.	Stetson	11-3	268	17	Atlantic Sun
17.	New Mexico State	7-4	264	16	Western Athletic
18.	Northern Colorado	8-3	216	14	Big Sky
19.	<b>UT Arlington</b>	<b>7-2</b>	<b>184</b>	<b>20</b>	<b>Sun Belt</b>
20.	Jacksonville	9-2	174	22	Atlantic Sun
21.	Toledo	8-2	139	21	Mid-American
22.	Central Michigan	8-3	117	24	Mid-American
23.	Northern Iowa	6-4	115	NR	Missouri Valley
24.	Milwaukee	8-3	81	23	Horizon
25.	Army	9-2	79	25	Patriot

\*2016-17 Opponents in Bold

**PLAYER TRENDS //****15+ POINT GAMES**

VanDijk (4) .....	34 (11/27)
.....	20 (12/03)
.....	16 (12/11)
.....	16 (12/18)
Devers (3) .....	22 (11/20)
.....	21 (11/13)
.....	15 (11/16)
Johnson (1) .....	16 (11/13)

**10+ REBOUND GAMES**

VanDijk (4) .....	12 (11/16)
.....	11 (11/27)
.....	11 (12/03)
.....	10 (11/20)

**5+ ASSIST GAMES**

LeJune (3) .....	9 (11/13)
.....	6 (12/03)
.....	5 (11/16)
Johnson (2) .....	8 (11/20)
.....	6 (12/07)
Mattingly (1) .....	8 (11/27)

**5+ STEAL GAMES**

Johnson (2) .....	7 (11/13)
.....	6 (12/07)
Mattingly (1) .....	6 (12/11)
Richards (1) .....	5 (12/11)

**DOUBLE-DOUBLES (P-R/A\*)**

VanDijk (4 / 29 in career) .....	14-12 (11/16)
.....	12-10 (11/20)
.....	34-11 (11/27)
.....	20-11 (12/03)

**GAME-BY-GAME STARTERS**

Opponent	PG	G	G	F/G	Center	Result
<b>N13 UTSA</b>	<b>Mattingly</b>	<b>Johnson</b>	<b>Billie</b>	<b>Devers</b>	<b>VanDijk</b>	<b>W, 75-54</b>
N16 WKU	Mattingly	Johnson	Billie	Devers	VanDijk	W, 71-68
<b>N20 Wichita State</b>	<b>Mattingly</b>	<b>Johnson</b>	<b>Billie</b>	<b>Devers</b>	<b>VanDijk</b>	<b>W, 74-70</b>
N26 San Diego State	LeJune	Johnson	Clark	Devers	VanDijk	W, 64-58
N27 Seton Hall	Mattingly	Johnson	Billie	Devers	VanDijk	W, 86-61
<b>D3 Stephen F. Austin</b>	<b>Mattingly</b>	<b>Johnson</b>	<b>Evans</b>	<b>Devers</b>	<b>VanDijk</b>	<b>L, 65-60</b>
D7 Kansas State	Mattingly	Johnson	Billie	Devers	VanDijk	L, 62-49
<b>D11 E, New Mexico</b>	<b>Mattingly</b>	<b>Johnson</b>	<b>Evans</b>	<b>Devers</b>	<b>VanDijk</b>	<b>W, 65-48</b>
<b>D18 TAMU-Commerce</b>	<b>Mattingly</b>	<b>Johnson</b>	<b>Evans</b>	<b>Richards</b>	<b>VanDijk</b>	<b>W, 80-50</b>
D22 Texas Tech						
<b>D29 Appalachian State*</b>						
<b>D31 Coastal Carolina*</b>						
J7 Texas State*						
J12 South Alabama*						
J14 Troy*						
<b>J19 Louisiana*</b>						
<b>J21 ULM*</b>						
J26 Coastal Carolina*						
J28 Appalachian State*						
<b>F4 Texas State*</b>						
<b>F9 Little Rock*</b>						
<b>F11 Arkansas State*</b>						
F16 Georgia Southern*						
F18 Georgia State*						
<b>F23 Troy*</b>						
<b>F25 South Alabama*</b>						
M2 ULM*						
M4 Louisiana*						

**Record by Lineup**

	PG	G	G	F/G	Center
5-1	Mattingly	Johnson	Billie	Devers	VanDijk
1-0	Mattingly	Johnson	Evans	Richards	VanDijk
1-0	LeJune	Johnson	Clark	Devers	VanDijk
0-1	Mattingly	Johnson	Evans	Devers	VanDijk

**MAVERICK RECORD WATCH****CAREER POINTS**

1. Terra Wallace (2003-07) .....	1,751
10. Meghan Nelson (2006-10) .....	1,195
<b>Rebekah VanDijk (2014-Pres) .....</b>	<b>906</b>
<b>Cierra Johnson (2014-Pres) .....</b>	<b>605</b>

**CAREER BLOCKS**

1. Linda Wright (1979-82) .....	242
2. Tanya Strong (1995-98) .....	166
3. Shalyn Martin (2007-11) .....	141
4. <b>Rebekah VanDijk (2014-Pres) .....</b>	<b>118</b>

**CAREER REBOUNDS**

1. Lori Cottingham (1976-79) .....	1,078
8. Ashley Bobb (2004-07) .....	709
10. <b>Rebekah VanDijk (2014-Pres) .....</b>	<b>650</b>

**CAREER STEALS**

1. Allison Gray (1980-84) .....	285
7. Stacie Terry (1994-98) .....	193
8. Shalyn Martin (2007-11) .....	188
9. <b>Cierra Johnson (2014-Pres) .....</b>	<b>183</b>

**CAREER ASSISTS**

10. Natasha Johnson (1978-82) .....	207
<b>Cierra Johnson (2014-Pres) .....</b>	<b>173</b>

**CAREER FG PERCENTAGE**

1. Tracy Burr (1985-88) .....	56.0
2. <b>Rekeah VanDijk (2014-Pres) .....</b>	<b>52.6</b>
3. Candice Champion (2005-09) .....	51.4

**CAREER FG MADE**

10. Meghan Neson (2006-10) .....	433
<b>Rekeah VanDijk (2014-Pres) .....</b>	<b>364</b>

# SINGLE-GAME RECORDS

## POINTS

1	Carolyn Smith	44	TWU (1978)
2	Terra Wallace	36	TAMUCC (2007)
	Natasha Johnson	36	NE La. (1995)
4	<b>Rebekah VanDijk</b>	<b>34</b>	<b>Seton Hall (2016)</b>
	Candice Champion	34	TAMUCC (2009)
	Desherra Nwaguma	34	Louisiana (2014)
6	<b>Rebekah VanDijk</b>	<b>33</b>	<b>Texas State (2016)</b>
	Meghan Nelson	33	SFA (2010)
	Camellia Bowen	33	Texas State (1989)
9	Meghan Nelson	32	Nicholls St. (2010)
	Briana Walker	32	ACU (2013)

## REBOUNDS

1	Lori Cottingham	24	n/a
	Lori Cottingham	24	n/a
	Tonya Johnson	24	Nevada (1988)
	Tonya Johnson	24	n/a
	Sheena Johnson	24	SHSU (2001)
6	Candice Champion	22	UCA (2009)
7	Tiffen Riles	21	McNeese (2008)
8	Tiffen Riles	20	UTSA (2007)
	Sheena Johnson	20	NWSU (2001)

FG Made ..... 18 by Carolyn Smith vs. Texas Wesleyan (1/15/78)  
 FG Percentage ..... 91.7 by Renee Wharekura (11-12) vs. Lamar (1/29/00)  
 FT Made ..... 13 by Jennifer Boniol (13-14) vs. A&M-Corpus Christi (1/10/00)

## TEAM SINGLE-GAME RECORDS

Most Points Scored ..... 103 vs. Sam Houston State (1/09/92)  
 Most Points Scored (Half) ..... 54 (3 Times) last vs. Sam Houston State (1/14/02)  
 Most Points Allowed ..... 106 vs. Louisiana Tech (3/10/77)  
 Fewest Points Scored ..... 20 at Baylor (11/13/15)  
 Fewest Points Scored (Half) ..... 6 (1st) at Baylor (11/13/15)  
 Fewest Points Scored in a Win ..... 40 vs. ULM (2/20/16)  
 Fewest Points Scored (Quarter) ..... 1 (2nd) at Baylor (11/13/15)  
 Fewest Points Allowed ..... 22 at Central Florida (12/17/05)  
 Fewest Points Allowed (Half) ..... 9 (2nd) vs. ULM (2/20/16)  
 Largest Winning Margin ..... 73 vs. Austin College (W, 102-29) (1/27/83)  
 Largest Losing Margin ..... 56 at Texas (L, 86-30) (11/29/78)  
 Highest Combined Score ..... 188 points (L, 103-85) at Baylor (2/25/77)  
 Lowest Combined Score ..... 70 points (W, 42-28), at TAMU-CC (12/13/14)  
 Lowest Combined Score (SBC) ..... 72 points (W, 40-32), vs. ULM (2/20/16)  
 Most Rebounds ..... 69 at Nevada-Reno (12/8/90)  
 Fewest Rebounds ..... 18 at Pittsburgh State (11/30/80)  
 Most FG Made ..... 50 vs. Austin College (1/27/83)  
 Fewest FG Made ..... 8 at Baylor (11/13/15)

## ASSISTS

1	Krystal Buchanan	14	Texas State (2004)
2	Julie Kajihio	13	SEL (1979)
	P. Smither-Wojciak	13	North Texas (1986)
	Krystal Buchanan	13	SHSU (2003)
5	Krystal Buchanan	12	McNeese State (2005)
	Krystal Buchanan	12	SEL (2004)
7	Melissa Nix	11	Tarleton (1991)
8	Krystal Buchanan	10	UTSA (2005)
	<b>Cierra Johnson</b>	<b>10</b>	<b>App St. (2016)</b>
10	<b>Miranda LeJune</b>	<b>9</b>	<b>UTSA (2016)</b>
	Krystal Buchanan	9	Nicholls St. (2004)
	Krystal Buchanan	9	Lamara (2005)
	Terra Wallace	9	North Dakota St. (2006)
	Terra Wallace	9	SHSU (2007)

## STEALS

1	Jeannine Curry	10	SEL (1985)
2	Monticee Williams	8	Texas So. (1997)
3	<b>Cierra Johnson</b>	<b>7</b>	<b>UTSA (2016)</b>
	<b>Cierra Johnson</b>	<b>7</b>	<b>NAU (2014)</b>
4	<b>Erica Mattingly</b>	<b>6</b>	<b>ENMU (2016)</b>
	<b>Cierra Johnson</b>	<b>6</b>	<b>K-State (2016)</b>
	<b>Cierra Johnson</b>	<b>6</b>	<b>USA (2016)</b>
	<b>Cierra Johnson</b>	<b>6</b>	<b>App St. (2016)</b>
	<b>Cierra Johnson</b>	<b>6</b>	<b>UTSA (2015)</b>
	Terra Wallace	6	McNeese St (2006)
	Terra Wallace	6	SFA (2004)
	Rola Ogunoye	6	Hawaii (2003)
	LaQuita Delasbour	6	NW La. (1997)
	Natasha Johnson	6	NE La. (1995)
	Natasha Johnson	6	n/a
	Melissa Nix	6	NW La. (1991)

NOTE: Records are as complete as possible beginning with the 1978-79 season. Full-season records and box scores are incomplete prior to that year.

3-Point FG Made ..... 8 by Kim (Cann) Pruitt (8-9) vs. Sam Houston State (1/21/93)  
 Blocked Shots ..... 13 by Shannon Spriggs vs. ULM (1/7/95)  
 Steals ..... 10 by Jeannine Curry vs. Southeastern Louisiana (1/5/85)

Most FG Attempted ..... 99 vs. Austin College (1/27/83)  
 Fewest FG Attempted ..... 37 at Texas Tech (11/15/98)  
 Most 3-Point FG Made ..... 13 vs. Sam Houston State (3/3/04)  
 Fewest 3-Point FG Made ..... 0 (27 Times) last vs. Houston Baptist (11/8/13)  
 Most 3-Point FG Attempted ..... 44 vs. Sam Houston State (3/3/04)  
 Fewest 3-Point FG Attempted ..... 1 (3 Times) last vs. Mississippi (11/24/89)  
 Most Free Throws Made ..... 36 vs. Sam Houston State (1/11/90)  
 Fewest Free Throws Made ..... 0 vs. ULM (1/4/93)  
 Most Free Throws Attempted ..... 51 vs. South Florida (12/3/93)  
 Fewest Free Throws Attempted ..... 3 (5 Times) last vs. Arkansas (11/25/01)  
 Most Assists ..... 30 vs. North Texas (11/28/78)  
 Fewest Assists ..... 0 (2 Times) last at ULM (1/19/89)  
 Most Turnovers ..... 44 at Houston (11/14/81)  
 Fewest Turnovers ..... 4 at McNeese State (2/28/89)  
 Most Blocks ..... 15 vs. ULM (1/7/95)  
 Fewest Blocks ..... 0 (93 Times) last vs. Little Rock (2/28/15)  
 Most Steals ..... 27 (2 Times) last vs. Eastern Illinois (12/4/92)  
 Fewest Steals ..... 0 at North Texas (11/12/79)

# SINGLE-SEASON RECORDS

Games Played ..... 37 (1981-82)  
 Victories ..... 24 (24-9 overall) (2006-07)  
 Fewest Victories ..... 3 (3-7 overall) (1972-73)  
 Losses ..... 25 (4-25 overall) (2013-14)  
 Fewest Losses ..... 7 (3-7 overall) (1972-73)  
 Home Victories ..... 11 (11-0 overall) (2004-05)  
 Road Victories ..... 14 (2 times) ('75-76 & '06-07)  
 Points Scored ..... 2,408 (2008-2009)  
 Fewest Points Scored ..... 1,519 (2000-01)  
 Points Allowed ..... 2,356 (1981-82)  
 Fewest Points Allowed ..... 1,495 (2005-06)  
 Scoring Average ..... 73.2 (1991-92)  
 Lowest Scoring Average ..... 55.3 (2011-12)  
 Scoring Average (opponent) ..... 77.7 (1988-89)  
 Lowest Scoring Average (opponent) ..... 51.6 (2005-06)  
 Field Goals Made ..... 986 (1981-82)  
 Field Goals Attempted ..... 2,405 (1981-82)  
 Field Goal Percentage ..... 453 (1979-80)  
 3-Point Field Goals Made ..... 193 (2003-04)  
 3-Point Field Goals Attempted ..... 625 (2003-04)  
 3-Point Field Goal Percentage ..... 360 (1991-92)

Free Throws Made ..... 543 (2008-2009)  
 Free Throws Attempted ..... 779 (1991-92)  
 Free Throw Percentage ..... 767 (1989-90)  
 Rebounds ..... 1,650 (1981-82)  
 Fewest Rebounds ..... 991 (1998-99)  
 Rebounding Average ..... 45.0 (1990-91)  
 Lowest Rebounding Average ..... 34.2 (1998-99)  
 Rebounds (opponent) ..... 1,561 (1980-81)  
 Fewest Rebounds (opponent) ..... 997 (1997-98)  
 Rebounding Average (opponent) ..... 39.9 (2011-12)  
 Lowest Rebounding Average (opponent) ..... 32.6 (2004-05)  
 Fouls ..... 689 (1981-82)  
 Disqualifications ..... 34 (1992-93)  
 Assists ..... 493 (1980-81)  
 Fewest Assists ..... 250 (1999-00)  
 Turnovers ..... 777 (1981-82)  
 Fewest Turnovers ..... 437 (2006-07)  
 Blocked Shots ..... 153 (1981-82)  
 Fewest Blocked Shots ..... 42 (1982-83)  
 Steals ..... 369 (1981-82)  
 Fewest Steals ..... 159 (2013-14)



## THE HIGHLIGHTS

### 2016-17

- Sun Belt Preseason 2nd Team
- Recorded 7 steals vs. UTSA to tie career high, tied for 4th most in UTA single-game history.

### Prior

- SBC All-Conference 3rd team in 2015-16.
- Played in 25 games (24 starts in 2015-16), averaged 10.2 points and 3.8 rebounds.
- Recorded 73 steals, tied for 7th in UTA single-season history.
- 2.92 steals per game were 13th in NCAA Division I.
- Had a career-high 10 assists against App State on Feb. 13, mark was tied for 8th in UTA single-game history
- In 2014-15, played in 30 games (28 starts).
- Had 81 steals for 4th in UTA single-season history. 2.7 steals per game were 27th in NCAA Division I.
- At LD Bell, was a First-Team All-District selection in senior year. District Defensive Player of the Year. McDonald's All-American Nominee.

# #0 CIERRA JOHNSON

## JUNIOR • GUARD • BEDFORD, TX (LD BELL HS)

## CAREER HIGHS

Points: 26 [t-3rd], at Troy -- 1/14/16  
 Rebounds: 10, Troy -- 1/31/15  
 Assists: 10 [1st], Appalachian State -- 2/13/16  
 Steals: 7 [t-1st], Texas-San Antonio -- 11/13/16; UTSA -- 11/13/16; Northern Arizona -- 11/26/14  
 Blocks: 3 [t-10th], at ULM -- 01/28/16  
 FG made: 9 [t-4th], at Troy -- 1/14/16  
 FG attempts: 17 [t-5th], at UTSA -- 12/21/15  
 3FG made: 5 [t-4th], at Troy -- 1/14/16  
 3FG attempts: 8 [t-6th], at Troy -- 1/14/16; Georgia State -- 12/30/15; at Georgia Southern -- 2/4/16  
 FT made: 7 [t-8th], Georgia State -- 1/29/15  
 FT attempts: 8 [t-10th], at South Alabama -- 1/16/16; Georgia State -- 1/29/15; Eastern New Mexico -- 12/11/16

## GAME-BY-GAME

Opponent	Date	gs	min	Total		3-Pointers		Free throws		Rebounds				pf	a	t/o	blk	stl	pts	avg	
				fg-fga	pct	3fg-fga	pct	ft-fa	pct	off	def	tot	avg								
UTSA	11/13/16	*	35	4-13	.308	2-4	.500	6-7	.857	2	6	8	8.0	2	2	2	0	7	16	16.0	
at WKU	11/16/16	*	30	6-12	.500	0-0	.000	2-3	.667	3	4	7	7.5	4	4	2	0	3	14	15.0	
WICHITA STATE	11/20/16	*	34	6-10	.600	0-1	.000	0-1	.000	3	3	6	7.0	3	8	2	0	3	12	14.0	
vs San Diego State	11/26/16	*	33	2-8	.250	0-1	.000	4-7	.571	4	5	9	7.5	4	3	4	0	3	8	12.5	
at Seton Hall	11/27/16	*	24	4-6	.667	1-3	.333	5-6	.833	2	5	7	7.4	2	2	1	0	3	14	12.8	
STEPHEN F. AUSTIN	12/3/16	*	26	2-5	.400	0-3	.000	1-2	.500	2	2	4	6.8	5	1	3	1	0	5	11.5	
at Kansas State	12/7/16	*	37	3-10	.300	1-3	.333	1-2	.500	1	1	2	6.1	2	6	4	0	6	8	11.0	
EASTERN NEW MEXICO	12/11/16	*	23	2-7	.286	0-2	.000	3-8	.375	1	4	5	6.0	3	2	1	0	2	7	10.5	
TEXAS A&M-COMMERCE	12/18/16	*	19	4-7	.571	0-0	.000	1-2	.500	6	2	8	6.2	4	3	4	0	2	9	10.3	
Totals			9	261	33-78	.423	4-17	.235	23-38	.605	24	32	56	6.2	29	31	23	1	29	93	10.3

Games played: 9  
 Minutes/game: 29.0  
 Points/game: 10.3  
 FG Pct: 42.3  
 3FG Pct: 23.5  
 FT Pct: 60.5

Rebounds/game: 6.2  
 Assists/game: 3.4  
 Turnovers/game: 2.6  
 Assist/turnover ratio: 1.3  
 Steals/game: 3.2  
 Blocks/game: 0.1

## CAREER STATS

Season	gp-gs	min/avg	Total		3-Point		F-Throws		Rebounds				pf	fo	ast	to	blk	stl	Scoring	
			fg-fga	pct	fg-fga	pct	ft-fa	pct	off	def	tot	avg							pts	avg
2014-15	30-28	791/26.4	94-215	.437	18-67	.269	52-88	.591	30	95	125	4.2	75	2	56	71	11	81	258	8.6
2015-16	25-24	711/28.4	90-230	.391	22-77	.286	52-66	.788	19	76	95	3.8	78	5	86	75	12	73	254	10.2
2016-17	9-9	261/29.0	33-78	.423	4-17	.235	23-38	.605	24	32	56	6.2	29	1	31	23	1	29	93	10.3
TOTAL	64-61	1763/27.5	217-523	.415	44-161	.273	127-192	.661	73	203	276	4.3	182	8	173	169	24	183	605	9.5

**THE HIGHLIGHTS****2016-17**

- Season-high 11 points in opener vs. UTSA. (3-6 from 3-point land)
- Dished 3 assists at K-State

**Prior**

- Played in 26 games as a freshman (4 starts)
- Shot 39.5 percent from beyond the arc
- Had a season-high 12 points against Little Rock
- Sparked OT win at Georgia Southern with 3-4 effort in 3-pointers, all in 5-min span of 3rd quarter
- Four-year letterwinner at East Central HS
- Averaged 13.3 ppg over HS career

# #2 LAUREN BILLIE

## SOPHOMORE • GUARD • TULSA, OKLA. (EAST CENTRAL HS)

**CAREER HIGHS**

Points: 12, at Little Rock -- 2/25/16  
 Rebounds: 4, Missouri Valley -- 11/28/15  
 Assists: 4, Texas State -- 3/1/2016  
 Steals: 3, at Little Rock -- 2/25/16; at Georgia Southern -- 2/4/16  
 FG made: 5, at Little Rock -- 2/25/16  
 FG attempts: 10, at Arkansas State -- 2/27/16  
 3FG made: 3, 4 times  
 3FG attempts: 6, at Arkansas State -- 2/27/16; Texas-San Antonio -- 11/13/16; UTSA -- 11/13/16  
 FT made: 3, Missouri Valley -- 11/28/15; at Arkansas State -- 2/27/16  
 FT attempts: 4, Missouri Valley -- 11/28/15

**GAME-BY-GAME**

Opponent	Date	gs	min	Total		3-Pointers		Free throws		Rebounds				pf	a	t/o	blk	stl	pts	avg	
				fg-fga	pct	3fg-fga	pct	ft-fa	pct	off	def	tot	avg								
UTSA	11/13/16	*	29	4-9	.444	3-6	.500	0-0	.000	1	1	2	2.0	4	1	1	0	0	11	11.0	
at WKU	11/16/16	*	7	0-2	.000	0-0	.000	0-0	.000	1	1	2	2.0	1	0	0	0	0	0	5.5	
WICHITA STATE	11/20/16	*	17	2-4	.500	0-2	.000	0-0	.000	0	0	0	1.3	1	0	0	0	0	4	5.0	
vs San Diego State	11/26/16		11	2-5	.400	1-4	.250	0-0	.000	0	1	1	1.3	3	1	0	0	0	5	5.0	
at Seton Hall	11/27/16	*	15	1-5	.200	0-3	.000	0-0	.000	2	0	2	1.4	3	2	1	0	0	2	4.4	
STEPHEN F. AUSTIN	12/3/16		23	2-5	.400	2-3	.667	0-0	.000	1	2	3	1.7	3	3	2	0	1	6	4.7	
at Kansas State	12/7/16	*	8	0-1	.000	0-1	.000	0-0	.000	0	0	0	1.4	3	0	3	0	0	0	4.0	
EASTERN NEW MEXICO	12/11/16		18	1-3	.333	0-2	.000	0-0	.000	0	2	2	1.5	1	2	0	0	0	2	3.8	
TEXAS A&M-COMMERCE	12/18/16		11	0-2	.000	0-2	.000	0-0	.000	0	2	2	1.6	4	1	1	0	1	0	3.3	
Totals			5	139	12-36	.333	6-23	.261	0-0	.000	5	9	14	1.6	23	10	8	0	2	30	3.3

Games played: 9  
 Minutes/game: 15.4  
 Points/game: 3.3  
 FG Pct: 33.3  
 3FG Pct: 26.1

Rebounds/game: 1.6  
 Assists/game: 1.1  
 Turnovers/game: 0.9  
 Assist/turnover ratio: 1.3  
 Steals/game: 0.2

**CAREER STATS**

			Total		3-Point		F-Throws		Rebounds											Scoring	
Season	gp-gs	min/avg	fg-fga	pct	fg-fga	pct	ft-fa	pct	off	def	tot	avg	pf	fo	ast	to	blk	stl	pts	avg	
2015-16	26-4	259/10.0	28-71	.394	17-43	.395	10-14	.714	15	14	29	1.1	31	0	21	26	0	9	83	3.2	
2016-17	9-5	139/15.4	12-36	.333	6-23	.261	0-0	.000	5	9	14	1.6	23	0	10	8	0	2	30	3.3	
TOTAL	35-9	398/11.4	40-107	.374	23-66	.348	10-14	.714	20	23	43	1.2	54	0	31	34	0	11	113	3.2	





## THE HIGHLIGHTS

### 2016-17

- Made debut against A&M-Commerce, scored 6 points on 2-2 shooting, added 2 FT's.
- Sat out the 2015-16 season after transferring from Seattle U, was eligible after semester.

### Prior

- Played in 30 games as a freshman, making 16 starts as a freshman for Seattle U
- Shot 33.3 percent from the field and 40.5 from 3-point range
- Was first freshman in Seattle U history to be named WAC Player of the Week.
- Named to WAC All-Newcomer team.
- Four-year letterwinner at Trimble Tech (Fort Worth).
- First-team All-District all four seasons
- Vype Magazine MVP Super Team (2013-14)
- Sec school record as freshman with 657
- Recorded career-high 45-point game during 2011-12 season.
- Was also a first-team all-district selection in volleyball

# #3 CRYSTAL ALLEN

## JUNIOR • GUARD • FORT WORTH, TEXAS (SEATTLE U)

## CAREER HIGHS

Points: 6, Texas A&M-Commerce -- 12/18/16  
 Rebounds: 1, Texas A&M-Commerce -- 12/18/16  
 FG made: 2, Texas A&M-Commerce -- 12/18/16  
 FG attempts: 2, Texas A&M-Commerce -- 12/18/16  
 FT made: 2, Texas A&M-Commerce -- 12/18/16  
 FT attempts: 2, Texas A&M-Commerce -- 12/18/16

## GAME-BY-GAME

Opponent	Date	gs	min	Total		3-Pointers		Free throws		Rebounds				pf	a	t/o	blk	stl	pts	avg
				fg-fga	pct	3fg-fga	pct	ft-fga	pct	off	def	tot	avg							
UTSA	11/13/16	dnp		-	-	-	-	-	-	-	-	-	-	-	-	-	-	-	-	-
at WKU	11/16/16	dnp		-	-	-	-	-	-	-	-	-	-	-	-	-	-	-	-	-
WICHITA STATE	11/20/16	dnp		-	-	-	-	-	-	-	-	-	-	-	-	-	-	-	-	-
vs San Diego State	11/26/16	dnp		-	-	-	-	-	-	-	-	-	-	-	-	-	-	-	-	-
at Seton Hall	11/27/16	dnp		-	-	-	-	-	-	-	-	-	-	-	-	-	-	-	-	-
STEPHEN F. AUSTIN	12/3/16	dnp		-	-	-	-	-	-	-	-	-	-	-	-	-	-	-	-	-
at Kansas State	12/7/16	dnp		-	-	-	-	-	-	-	-	-	-	-	-	-	-	-	-	-
EASTERN NEW MEXICO	12/11/16	dnp		-	-	-	-	-	-	-	-	-	-	-	-	-	-	-	-	-
TEXAS A&M-COMMERCE	12/18/16	13		2-2	1.000	0-0	.000	2-2	1.000	1	0	1	1.0	2	0	4	0	0	6	6.0
Totals		0	13	2-2	1.000	0-0	.000	2-2	1.000	1	0	1	1.0	2	0	4	0	0	6	6.0

Games played: 1  
 Minutes/game: 13.0  
 Points/game: 6.0  
 FG Pct: 100.0  
 FT Pct: 100.0

Rebounds/game: 1.0  
 Turnovers/game: 4.0

## CAREER STATS

			Total		3-Point		F-Throws		Rebounds										Scoring	
Season	gp-gs	min/avg	fg-fga	pct	fg-fga	pct	ft-fga	pct	off	def	tot	avg	pf	fo	ast	to	blk	stl	pts	avg
2016-17	1-0	13/13.0	2-2	1.000	0-0	.000	2-2	1.000	1	0	1	1.0	2	0	0	4	0	0	6	6.0
TOTAL	1-0	13/13.0	2-2	1.000	0-0	.000	2-2	1.000	1	0	1	1.0	2	0	0	4	0	0	6	6.0

**THE HIGHLIGHTS****2016-17**

- Scored season-high 11 points on 3-4 shooting at WKU (2-2 from 3-point land, both in 2nd half)
- Made 1st start of season vs. San Diego State in SHU Classic opening round

**Prior**

- Played in 27 games as a junior
- Had season-high 12 points against Appalachian State
- Had 3 double-digit scoring games in 2015-16
- Played at EOC-Enid
- Was First-team All-OCAC and All-Region II first team (2013-14)
- 2014 Region State in Tournament MVP
- Third Team All-American
- Averaged 16.8 points during sophomore season
- Went to Dale HS
- OGBCA All-State selection
- Member of Little Elm All-City Team.
- Mom played basketball at Murray State College

# #4 BRECK CLARK

SENIOR • GUARD • SHAWNEE, OK (EOC-ENID // DALE HS)

**CAREER HIGHS**

Points: 12, at Appalachian State -- 01/07/16  
 Rebounds: 5, Texas A&M-Commerce -- 12/18/16  
 Assists: 2, Georgia Southern -- 1/2/15; Georgia Southern -- 1/2/16; Missouri Valley -- 11/28/15  
 Steals: 3, at Kansas State -- 12/3/15  
 FG made: 4, at Appalachian State -- 01/07/16; Georgia Southern -- 1/2/15; Georgia Southern -- 1/2/16  
 FG attempts: 10, at Troy -- 1/14/16  
 3FG made: 3, at Appalachian State -- 01/07/16  
 3FG attempts: 6, at Troy -- 1/14/16  
 FT made: 6, Missouri Valley -- 11/28/15  
 FT attempts: 8 [1-10th], Missouri Valley -- 11/28/15

**GAME-BY-GAME**

Opponent	Date	gs	min	Total		3-Pointers		Free throws		Rebounds				pf	a	t/o	blk	stl	pts	avg
				fg-fga	pct	3fg-fga	pct	ft-fa	pct	off	def	tot	avg							
UTSA	11/13/16		5	1-2	.500	0-1	.000	0-0	.000	1	0	1	1.0	3	0	0	0	1	2	2.0
at WKU	11/16/16		14	3-4	.750	2-2	1.000	2-2	1.000	1	0	1	1.0	2	0	1	0	0	10	6.0
WICHITA STATE	11/20/16		3	0-1	.000	0-0	.000	0-2	.000	0	2	2	1.3	0	0	1	0	0	0	4.0
vs San Diego State	11/26/16	*	14	1-5	.200	0-2	.000	0-0	.000	0	1	1	1.3	1	0	3	0	0	2	3.5
at Seton Hall	11/27/16		15	1-2	.500	0-1	.000	0-0	.000	0	3	3	1.6	1	0	0	0	0	2	3.2
STEPHEN F. AUSTIN	12/3/16		8	0-1	.000	0-0	.000	0-0	.000	0	0	0	1.3	0	0	0	0	0	0	2.7
at Kansas State	12/7/16		6	1-4	.250	1-2	.500	0-0	.000	0	1	1	1.3	1	0	1	0	1	3	2.7
EASTERN NEW MEXICO	12/11/16		15	0-2	.000	0-0	.000	2-5	.400	1	2	3	1.5	1	0	0	0	0	2	2.6
TEXAS A&M-COMMERCE	12/18/16		16	1-3	.333	0-1	.000	1-2	.500	1	4	5	1.9	1	0	0	0	1	3	2.7
Totals		1	96	8-24	.333	3-9	.333	5-11	.455	4	13	17	1.9	10	0	6	0	3	24	2.7

Games played: 9  
 Minutes/game: 10.7  
 Points/game: 2.7  
 FG Pct: 33.3  
 3FG Pct: 33.3  
 FT Pct: 45.5

Rebounds/game: 1.9  
 Turnovers/game: 0.7  
 Steals/game: 0.3

**CAREER STATS**

			Total		3-Point		F-Throws		Rebounds											Scoring	
Season	gp-gs	min/avg	fg-fga	pct	fg-fga	pct	ft-fa	pct	off	def	tot	avg	pf	fo	ast	to	blk	stl	pts	avg	
2015-16	27-0	200/7.4	25-99	.253	8-36	.222	25-35	.714	8	19	27	1.0	14	0	7	19	0	6	83	3.1	
2016-17	9-1	96/10.7	8-24	.333	3-9	.333	5-11	.455	4	13	17	1.9	10	0	0	6	0	3	24	2.7	
TOTAL	36-1	296/8.2	33-123	.268	11-45	.244	30-46	.652	12	32	44	1.2	24	0	7	25	0	9	107	3.0	



## THE HIGHLIGHTS

### 2016-17

- Dished out 9 assists in season opener vs. UTSA, tied for 10th in UTA single-game history
- Had 5.0 assists per game between Sethon Hall and SFA

### Prior

- Played in 29 games as a sophomore.
- Averaged 1.3 points and 1.3 rebounds
- Had season-high 5 assists vs. Louisiana
- Played freshman season at Jan Jacinto College-North
- NJCAA Region XIV Co-Freshman of the Year
- SACS All-Conference
- Averaged 9.7 ppg and 8.1 assists
- Played at Pearland High School
- All-State and All-District during senior season after averaging 6.3 ppg and 6.9 assists.

# #5 MIRANDA LEJUNE

## JUNIOR • POINT GUARD • PEARLAND, TEXAS (SAN JACINTO COLLEGE)

## CAREER HIGHS

Points: 8, Eastern New Mexico -- 12/11/16  
 Rebounds: 5, Texas State -- 3/1/2016  
 Assists: 9 [t-2nd], Texas-San Antonio -- 11/13/16; UTSA -- 11/13/16  
 Steals: 2, 4 times  
 Blocks: 1, Louisiana -- 2/18/16  
 FG made: 3, Eastern New Mexico -- 12/11/16  
 FG attempts: 7, Missouri Valley -- 11/28/15  
 3FG made: 2, Wichita State -- 11/20/16; Eastern New Mexico -- 12/11/16  
 3FG attempts: 4, Louisiana -- 2/18/16; Texas-San Antonio -- 11/13/16; UTSA -- 11/13/16  
 FT made: 2, at Arkansas State -- 2/27/16; at WKU -- 11/16/16; Texas A&M-Commerce -- 12/18/16  
 FT attempts: 4, Stephen F. Austin -- 12/3/16

## GAME-BY-GAME

Opponent	Date	gs	min	Total		3-Pointers		Free throws		Rebounds				pf	a	t/o	blk	stl	pts	avg
				fg-fga	pct	3fg-fga	pct	ft-fa	pct	off	def	tot	avg							
UTSA	11/13/16	25	25	2-5	.400	1-4	.250	0-0	.000	0	2	2	2.0	0	9	0	0	1	5	5.0
at WKU	11/16/16	27	27	2-3	.667	1-1	1.000	2-2	1.000	0	1	1	1.5	2	5	4	0	0	7	6.0
WICHITA STATE	11/20/16	24	24	2-2	1.000	2-2	1.000	0-0	.000	0	1	1	1.3	0	3	0	0	0	6	6.0
vs San Diego State	11/26/16 *	20	20	0-0	.000	0-0	.000	0-0	.000	0	2	2	1.5	1	0	0	0	0	0	4.5
at Seton Hall	11/27/16	8	8	0-0	.000	0-0	.000	0-0	.000	0	1	1	1.4	3	2	4	0	0	0	3.6
STEPHEN F. AUSTIN	12/3/16	27	27	2-4	.500	1-3	.333	1-4	.250	1	2	3	1.7	3	6	6	0	1	6	4.0
at Kansas State	12/7/16	8	8	0-1	.000	0-1	.000	0-0	.000	0	0	0	1.4	0	0	2	0	0	0	3.4
EASTERN NEW MEXICO	12/11/16	19	19	3-4	.750	2-2	1.000	0-0	.000	0	3	3	1.6	0	0	0	0	0	8	4.0
TEXAS A&M-COMMERCE	12/18/16	16	16	2-3	.667	1-2	.500	2-2	1.000	2	2	4	1.9	2	3	1	0	1	7	4.3
Totals		1	174	13-22	.591	8-15	.533	5-8	.625	3	14	17	1.9	11	28	17	0	3	39	4.3

Games played: 9  
 Minutes/game: 19.3  
 Points/game: 4.3  
 FG Pct: 59.1  
 3FG Pct: 53.3  
 FT Pct: 62.5

Rebounds/game: 1.9  
 Assists/game: 3.1  
 Turnovers/game: 1.9  
 Assist/turnover ratio: 1.6  
 Steals/game: 0.3

## CAREER STATS

Season	gp-gs		min/avg		Total		3-Point		F-Throws		Rebounds				Scoring						
					fg-fga	pct	fg-fga	pct	ft-fga	pct	off	def	tot	avg	pf	fo	ast	to	blk	stl	pts
2015-16	29-0	346/11.9	14-51	.275	6-34	.176	4-7	.571	1	36	37	1.3	22	0	34	48	1	13	38	1.3	
2016-17	9-1	174/19.3	13-22	.591	8-15	.533	5-8	.625	3	14	17	1.9	11	0	28	17	0	3	39	4.3	
TOTAL	38-1	520/13.7	27-73	.370	14-49	.286	9-15	.600	4	50	54	1.4	33	0	62	65	1	16	77	2.0	



## THE HIGHLIGHTS

### 2016-17

- Picked up 5 points in 3 of 5 games between 11/16-12/3
- Back-to-back games with double-digit points vs. ENMU and A&M-C
- Made first start of UTA career on 12/18 vs. A&M-C

### Prior

- Played at Odessa JC
- Averaged 14.3 ppg in 28 games as a sophomore
- Averaged 44.7 percent from the field and 37.4 from 3-point range
- Team reached WJCAC Region V Conference Tournament
- Played freshman season at Salt Lake CC
- Averaged 13.1 points and 4.6 rebounds
- Went to Riverton HS
- Averaged 12 points throughout career
- 2014 Region Champion with 22-1 record
- 2014 District 5A First team and All-State, All-Star selection
- 2013 5A State Champion (22-3)
- Was 2013 5a Third -Team All-State and second team All-Region.

# #11 SHELBY RICHARDS

## JUNIOR • GUARD • SOUTH JORDAN, UTAH (ODESSA JC // SALT LAKE CC)

## CAREER HIGHS

Points: 12, Texas A&M-Commerce -- 12/18/16  
 Rebounds: 8, Eastern New Mexico -- 12/11/16  
 Assists: 3, Eastern New Mexico -- 12/11/16; Texas A&M-Commerce -- 12/18/16  
 Steals: 5, Eastern New Mexico -- 12/11/16  
 Blocks: 1, Stephen F. Austin -- 12/3/16  
 FG made: 4, Texas A&M-Commerce -- 12/18/16  
 FG attempts: 9, Eastern New Mexico -- 12/11/16  
 3FG made: 1, Texas A&M-Commerce -- 12/18/16; Stephen F. Austin -- 12/3/16  
 3FG attempts: 3, Texas-San Antonio -- 11/13/16; UTSA -- 11/13/16; at Seton Hall -- 11/27/16  
 FT made: 5, Eastern New Mexico -- 12/11/16  
 FT attempts: 9 [t-8th], Eastern New Mexico -- 12/11/16

## GAME-BY-GAME

Opponent	Date	gs	min	Total		3-Pointers		Free throws		Rebounds				pf	a	t/o	blk	stl	pts	avg
				fg-fga	pct	3fg-fga	pct	ft-fa	pct	off	def	tot	avg							
UTSA	11/13/16		10	0-4	.000	0-3	.000	0-0	.000	0	2	2	2.0	1	1	1	0	0	0	0.0
at WKU	11/16/16		21	2-3	.667	0-1	.000	1-2	.500	1	2	3	2.5	2	1	2	0	1	5	2.5
WICHITA STATE	11/20/16		16	1-4	.250	0-2	.000	0-0	.000	1	3	4	3.0	2	1	2	0	0	2	2.3
vs San Diego State	11/26/16		18	2-4	.500	0-1	.000	1-2	.500	2	0	2	2.8	1	2	1	0	1	5	3.0
at Seton Hall	11/27/16		18	2-7	.286	0-3	.000	0-0	.000	2	5	7	3.6	1	1	2	0	2	4	3.2
STEPHEN F. AUSTIN	12/3/16		14	2-3	.667	1-1	1.000	0-2	.000	0	6	6	4.0	2	0	3	1	0	5	3.5
at Kansas State	12/7/16		12	0-0	.000	0-0	.000	0-0	.000	1	0	1	3.6	0	1	2	0	1	0	3.0
EASTERN NEW MEXICO	12/11/16		26	3-9	.333	0-2	.000	5-9	.556	4	4	8	4.1	2	3	0	0	5	11	4.0
TEXAS A&M-COMMERCE	12/18/16	*	23	4-8	.500	1-1	1.000	3-5	.600	1	4	5	4.2	1	3	1	0	0	12	4.9
Totals			158	16-42	.381	2-14	.143	10-20	.500	12	26	38	4.2	12	13	14	1	10	44	4.9

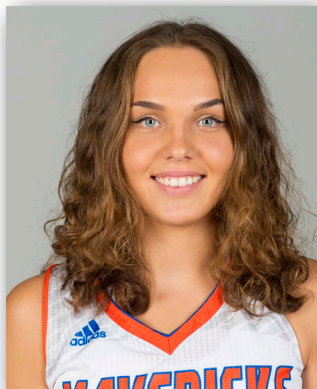
Games played: 9  
 Minutes/game: 17.6  
 Points/game: 4.9  
 FG Pct: 38.1  
 3FG Pct: 14.3  
 FT Pct: 50.0

Rebounds/game: 4.2  
 Assists/game: 1.4  
 Turnovers/game: 1.6  
 Assist/turnover ratio: 0.9  
 Steals/game: 1.1  
 Blocks/game: 0.1

## CAREER STATS

			Total		3-Point		F-Throws		Rebounds											Scoring	
Season	gp-gs	min/avg	fg-fga	pct	fg-fga	pct	ft-fa	pct	off	def	tot	avg	pf	fo	ast	to	blk	stl	pts	avg	
2016-17	9-1	158/17.6	16-42	.381	2-14	.143	10-20	.500	12	26	38	4.2	12	0	13	14	1	10	44	4.9	
TOTAL	9-1	158/17.6	16-42	.381	2-14	.143	10-20	.500	12	26	38	4.2	12	0	13	14	1	10	44	4.9	





## THE HIGHLIGHTS

### 2016-17

- Made first appearance vs. SDSU at SHU Thanksgiving Classic (scored her first point from free-throw line)

### Prior

- Played at Weatherford College
- Averaged 9.7 points and 8.8 rebounds in 26 games played as a sophomore
- NJCAA Region V honorable mention
- Academic All-American
- Member of 2014 U-20 Lithuania National Team

# #13 GRETA KAIRYTE

## JUNIOR • FORWARD • PALANGA, LITHUANIA (WEATHERFORD COLLEGE)

## CAREER HIGHS

Points: 1, vs San Diego State -- 11/26/16  
 Rebounds: 1, at Seton Hall -- 11/27/16  
 Steals: 1, at Seton Hall -- 11/27/16  
 FG attempts: 2, Eastern New Mexico -- 12/11/16  
 FT made: 1, vs San Diego State -- 11/26/16  
 FT attempts: 2, vs San Diego State -- 11/26/16

## GAME-BY-GAME

Opponent	Date	gs	min	Total		3-Pointers		Free throws		Rebounds				pf	a	t/o	blk	stl	pts	avg
				fg-fga	pct	3fg-fga	pct	ft-fa	pct	off	def	tot	avg							
UTSA	11/13/16		dnp	-	-	-	-	-	-	-	-	-	-	-	-	-	-	-	-	-
at WKU	11/16/16		dnp	-	-	-	-	-	-	-	-	-	-	-	-	-	-	-	-	-
WICHITA STATE	11/20/16		dnp	-	-	-	-	-	-	-	-	-	-	-	-	-	-	-	-	-
vs San Diego State	11/26/16	6		0-1	.000	0-0	.000	1-2	.500	0	0	0	0.0	1	0	2	0	0	1	1.0
at Seton Hall	11/27/16	4		0-0	.000	0-0	.000	0-0	.000	0	1	1	0.5	0	0	0	0	1	0	0.5
STEPHEN F. AUSTIN	12/3/16		dnp	-	-	-	-	-	-	-	-	-	-	-	-	-	-	-	-	-
at Kansas State	12/7/16		dnp	-	-	-	-	-	-	-	-	-	-	-	-	-	-	-	-	-
EASTERN NEW MEXICO	12/11/16	4		0-2	.000	0-0	.000	0-0	.000	0	0	0	0.3	3	0	0	0	0	0	0.3
TEXAS A&M-COMMERCE	12/18/16	5		0-1	.000	0-0	.000	0-0	.000	0	0	0	0.3	1	0	1	0	0	0	0.3
Totals		0	19	0-4	.000	0-0	.000	1-2	.500	0	1	1	0.3	5	0	3	0	1	1	0.3

Games played: 4  
 Minutes/game: 4.8  
 Points/game: 0.3  
 FG Pct: 0.0  
 FT Pct: 50.0

Rebounds/game: 0.3  
 Turnovers/game: 0.8  
 Steals/game: 0.3

## CAREER STATS

			Total		3-Point		F-Throws		Rebounds											Scoring	
Season	gp-gs	min/avg	fg-fga	pct	fg-fga	pct	ft-fa	pct	off	def	tot	avg	pf	fo	ast	to	blk	stl	pts	avg	
2016-17	4-0	19/4.8	0-4	.000	0-0	.000	1-2	.500	0	1	1	0.3	5	0	0	3	0	1	1	0.3	
TOTAL	4-0	19/4.8	0-4	.000	0-0	.000	1-2	.500	0	1	1	0.3	5	0	0	3	0	1	1	0.3	



THE HIGHLIGHTS

- 2016-17**
- Had season-high 9 points against San Diego State at SHU Thanksgiving Classic (4-4 field goal, 1-1 FT).
  - Has at least an assist in all games played
  - Recorded 6 steals vs. ENMU, tied 4th best in UTA history, only played outside of Cierra Johnson to have 6+ steals since 2006.

- Prior**
- Played at Wichita South HS
  - Had career record of 96-4, winning 4 consecutive state titles
  - Scored 9.5 points and averaged 5 assists and 4 steals
  - All-State selection all 4 seasons
  - Has 3 sisters and a brother

#14 ERICKA MATTINGLY  
FRESHMAN • POINT GUARD • WICHITA, KAN. ( WICHITA SOUTH HS)

CAREER HIGHS

Points: 9, vs San Diego State -- 11/26/16  
Rebounds: 5, at Seton Hall -- 11/27/16  
Assists: 8 [t-4th], at Seton Hall -- 11/27/16  
Steals: 6 [t-5th], Eastern New Mexico -- 12/11/16  
Blocks: 3 [t-10th], Texas A&M-Commerce -- 12/18/16  
FG made: 4, vs San Diego State -- 11/26/16  
FG attempts: 8, Wichita State -- 11/20/16  
3FG made: 2, Wichita State -- 11/20/16  
3FG attempts: 4, Wichita State -- 11/20/16  
FT made: 2, at Seton Hall -- 11/27/16; Stephen F. Austin -- 12/3/16  
FT attempts: 6, at Seton Hall -- 11/27/16

GAME-BY-GAME

Opponent	Date	gs	min	Total		3-Pointers		Free throws		Rebounds				pf	a	t/o	blk	stl	pts	avg	
				fg-fa	pct	3fg-fa	pct	ft-fa	pct	off	def	tot	avg								
UTSA	11/13/16	*	15	1-2	.500	1-2	.500	0-0	.000	1	2	3	3.0	2	1	4	0	1	3	3.0	
at WKU	11/16/16	*	13	0-1	.000	0-0	.000	0-0	.000	1	1	2	2.5	3	1	3	0	1	0	1.5	
WICHITA STATE	11/20/16	*	16	3-8	.375	2-4	.500	0-0	.000	1	0	1	2.0	2	2	1	0	0	8	3.7	
vs San Diego State	11/26/16		22	4-4	1.000	1-1	1.000	0-1	.000	1	0	1	1.8	4	1	1	0	1	9	5.0	
at Seton Hall	11/27/16	*	33	1-7	.143	0-3	.000	2-6	.333	1	4	5	2.4	3	8	5	0	3	4	4.8	
STEPHEN F. AUSTIN	12/3/16	*	19	1-1	1.000	0-0	.000	2-2	1.000	0	1	1	2.2	5	1	4	0	0	4	4.7	
at Kansas State	12/7/16	*	34	3-4	.750	0-1	.000	1-2	.500	0	1	1	2.0	1	3	6	0	2	7	5.0	
EASTERN NEW MEXICO	12/11/16	*	21	2-7	.286	0-3	.000	0-0	.000	0	0	0	1.8	2	1	2	0	6	4	4.9	
TEXAS A&M-COMMERCE	12/18/16	*	23	1-4	.250	0-1	.000	0-1	.000	0	2	2	1.8	1	2	3	3	2	2	4.6	
Totals			8	196	16-38	.421	4-15	.267	5-12	.417	5	11	16	1.8	23	20	29	3	16	41	4.6

Games played: 9  
Minutes/game: 21.8  
Points/game: 4.6  
FG Pct: 42.1  
3FG Pct: 26.7  
FT Pct: 41.7

Rebounds/game: 1.8  
Assists/game: 2.2  
Turnovers/game: 3.2  
Assist/turnover ratio: 0.7  
Steals/game: 1.8  
Blocks/game: 0.3

CAREER STATS

Season	gp-gs	min/avg	Total		3-Point		F-Throws		Rebounds											Scoring	
			fg-fga	pct	fg-fga	pct	ft-fa	pct	off	def	tot	avg	pf	fo	ast	to	blk	stl	pts	avg	
2016-17	9-8	196/21.8	16-38	.421	4-15	.267	5-12	.417	5	11	16	1.8	23	1	20	29	3	16	41	4.6	
TOTAL	9-8	196/21.8	16-38	.421	4-15	.267	5-12	.417	5	11	16	1.8	23	1	20	29	3	16	41	4.6	



## THE HIGHLIGHTS

### 2016-17

- Opened UTA career scoring 21+ points in first 2 games.
- Named SBC Player of the Week on Nov. 22 after averaging 18.5 points vs. WKU and Wichita State.
- Double-digit scoring in first 6 games at UTA

### Prior

- Played at Connors State
- Averaged 28.1 points and 7.8 rebounds in 2014-15
- Second in JCAA for scoring average and 7th for field-goal percentage (34.2).
- Garnered MVP and All-Conference Honors
- Married to Anthony Blakely, former track star at Arkansas
- Daughter named Ayden.

# #23 CHRISTINA DEVERS

## JUNIOR • GUARD • BIXBY, OKLA. (BIXBY HS)

## CAREER HIGHS

Points: 22 [t-8th], Wichita State -- 11/20/16  
 Rebounds: 8, Wichita State -- 11/20/16  
 Assists: 4, Stephen F. Austin -- 12/3/16  
 Steals: 3, at Kansas State -- 12/7/16  
 FG made: 7, Texas-San Antonio -- 11/13/16; UTSA -- 11/13/16  
 FG attempts: 18 [t-3rd], at WKU -- 11/16/16; at Kansas State -- 12/7/16  
 3FG made: 3, Texas-San Antonio -- 11/13/16; UTSA -- 11/13/16; Stephen F. Austin -- 12/3/16  
 3FG attempts: 8 [t-6th], at Seton Hall -- 11/27/16  
 FT made: 11 [t-1st], Wichita State -- 11/20/16  
 FT attempts: 14 [t-1st], Wichita State -- 11/20/16

## GAME-BY-GAME

Opponent	Date	gs	min	Total		3-Pointers		Free throws		Rebounds								pts	avg	
				fg-fga	pct	3fg-fga	pct	ft-fa	pct	off	def	tot	avg	pf	a	t/o	blk			stl
UTSA	11/13/16	*	28	7-15	.467	3-6	.500	4-4	1.000	3	0	3	3.0	2	1	6	0	2	21	21.0
at WKU	11/16/16	*	32	5-18	.278	1-4	.250	4-6	.667	1	4	5	4.0	3	3	3	0	2	15	18.0
WICHITA STATE	11/20/16	*	31	5-16	.313	1-3	.333	11-14	.786	3	5	8	5.3	4	2	3	0	0	22	19.3
vs San Diego State	11/26/16	*	34	4-16	.250	2-5	.400	4-6	.667	0	6	6	5.5	3	3	2	0	1	14	18.0
at Seton Hall	11/27/16	*	28	4-16	.250	2-8	.250	3-6	.500	1	1	2	4.8	2	3	3	0	2	13	17.0
STEPHEN F. AUSTIN	12/3/16	*	26	5-14	.357	3-7	.429	1-4	.250	2	2	4	4.7	4	4	4	0	2	14	16.5
at Kansas State	12/7/16	*	36	2-18	.111	0-4	.000	0-0	.000	1	1	2	4.3	3	1	3	0	3	4	14.7
EASTERN NEW MEXICO	12/11/16	*	16	1-5	.200	0-1	.000	0-0	.000	0	2	2	4.0	3	0	2	0	0	2	13.1
TEXAS A&M-COMMERCE	12/18/16		20	3-10	.300	2-4	.500	0-0	.000	2	2	4	4.0	2	2	3	0	2	8	12.6
Totals		8	251	36-128	.281	14-42	.333	27-40	.675	13	23	36	4.0	26	19	29	0	14	113	12.6

Games played: 9  
 Minutes/game: 27.9  
 Points/game: 12.6  
 FG Pct: 28.1  
 3FG Pct: 33.3  
 FT Pct: 67.5

Rebounds/game: 4.0  
 Assists/game: 2.1  
 Turnovers/game: 3.2  
 Assist/turnover ratio: 0.7  
 Steals/game: 1.6

## CAREER STATS

Season	gp-gs	min/avg	Total		3-Point		F-Throws		Rebounds											Scoring	
			fg-fga	pct	fg-fga	pct	ft-fa	pct	off	def	tot	avg	pf	fo	ast	to	blk	stl	pts	avg	
2016-17	9-8	251/27.9	36-128	.281	14-42	.333	27-40	.675	13	23	36	4.0	26	0	19	29	0	14	113	12.6	
TOTAL	9-8	251/27.9	36-128	.281	14-42	.333	27-40	.675	13	23	36	4.0	26	0	19	29	0	14	113	12.6	



## THE HIGHLIGHTS

### 2016-17

- Record season-high 13 points in games against Seton Hall and K-State. Was perfect 3-3 in 3-pointers vs. Wildcats and was 5-6 overall in the game.
- Had 4 assists and 4 steals vs. Seton Hall

### Prior

- Played at Broken Arrow HS
- Won consecutive Class 6A basketball titles
- Averaged 12.5 points as a senior
- Named OKPreps.com Basketball Player of the Week after scoring 60 points in 3-game span
- 2015-16 All-Metrow Team
- 2016 VYPE Top-100 player

# #24 AYSIA EVANS

## FRESHMAN • GUARD • TULSA, OKLA (BROKEN ARROW HS)

## CAREER HIGHS

Points: 13, at Seton Hall -- 11/27/16; at Kansas State -- 12/7/16  
 Rebounds: 5, Texas A&M-Commerce -- 12/18/16  
 Assists: 4, at Seton Hall -- 11/27/16; Texas A&M-Commerce -- 12/18/16  
 Steals: 4, at Seton Hall -- 11/27/16  
 Blocks: 1, Eastern New Mexico -- 12/11/16  
 FG made: 5, at Seton Hall -- 11/27/16; at Kansas State -- 12/7/16  
 FG attempts: 11, Texas A&M-Commerce -- 12/18/16  
 3FG made: 3, at Seton Hall -- 11/27/16; Texas A&M-Commerce -- 12/18/16; at Kansas State -- 12/7/16  
 3FG attempts: 9 [t-3rd], Texas A&M-Commerce -- 12/18/16  
 FT made: 3, Texas A&M-Commerce -- 12/18/16  
 FT attempts: 6, Texas A&M-Commerce -- 12/18/16

## GAME-BY-GAME

Opponent	Date	gs	min	Total		3-Pointers		Free throws		Rebounds				pf	a	t/o	blk	stl	pts	avg
				fg-fga	pct	3fg-fga	pct	ft-fa	pct	off	def	tot	avg							
UTSA	11/13/16		11	1-2	.500	1-1	1.000	0-0	.000	0	1	1	1.0	0	1	1	0	1	3	3.0
at WKU	11/16/16		16	2-5	.400	0-3	.000	0-0	.000	0	0	0	0.5	0	0	0	0	1	4	3.5
WICHITA STATE	11/20/16		19	3-9	.333	1-5	.200	1-1	1.000	0	0	0	0.3	3	1	1	0	1	8	5.0
vs San Diego State	11/26/16		8	2-3	.667	0-1	.000	1-2	.500	0	1	1	0.5	0	0	1	0	0	5	5.0
at Seton Hall	11/27/16		18	5-7	.714	3-5	.600	0-0	.000	0	2	2	0.8	3	4	5	0	4	13	6.6
STEPHEN F. AUSTIN	12/3/16	*	17	0-4	.000	0-2	.000	0-0	.000	0	1	1	0.8	4	0	2	0	1	0	5.5
at Kansas State	12/7/16		19	5-6	.833	3-3	1.000	0-0	.000	0	0	0	0.7	4	1	1	0	1	13	6.6
EASTERN NEW MEXICO	12/11/16	*	22	2-5	.400	1-3	.333	2-2	1.000	0	0	0	0.6	4	3	0	1	1	7	6.6
TEXAS A&M-COMMERCE	12/18/16	*	20	3-11	.273	3-9	.333	3-6	.500	0	5	5	1.1	3	4	3	0	1	12	7.2
Totals		3	150	23-52	.442	12-32	.375	7-11	.636	0	10	10	1.1	21	14	14	1	11	65	7.2

Games played: 9  
 Minutes/game: 16.7  
 Points/game: 7.2  
 FG Pct: 44.2  
 3FG Pct: 37.5  
 FT Pct: 63.6

Rebounds/game: 1.1  
 Assists/game: 1.6  
 Turnovers/game: 1.6  
 Assist/turnover ratio: 1.0  
 Steals/game: 1.2  
 Blocks/game: 0.1

## CAREER STATS

Season	gp-gs	min/avg	Total		3-Point		F-Throws		Rebounds				pf	fo	ast	to	blk	stl	Scoring	
			fg-fga	pct	fg-fga	pct	ft-fa	pct	off	def	tot	avg							pts	avg
2016-17	9-3	150/16.7	23-52	.442	12-32	.375	7-11	.636	0	10	10	1.1	21	0	14	14	1	11	65	7.2
TOTAL	9-3	150/16.7	23-52	.442	12-32	.375	7-11	.636	0	10	10	1.1	21	0	14	14	1	11	65	7.2





## THE HIGHLIGHTS

### 2016-17

- Drew 5 charges in win over San Diego State
- 4 points in back-to-back games vs. Wichita State and San Diego State
- Tied career-high with 5 rebounds vs. UTSA in season opener

### Prior

- Played in 31 games as a junior (1 start, SBC Championship)
- Played 20 games as sophomore
- Played 29 games as freshman
- Scored 3.7 ppg
- Played at Fossil Ridge HS
- All-District Academic Team
- First team All-District as junior and senior
- All-Region team as a senior

# #25 ALLYSON TE'O

## SENIOR • FORWARD • FORT WORTH, TEXAS (FOSSIL RIDGE HS)

## CAREER HIGHS

Points: 6, McNeese State -- 11/21/15; Seton Hall -- 11/24/15; Eastern New Mexico -- 12/11/16  
 Rebounds: 8, Texas A&M-Commerce -- 12/18/16  
 Assists: 1, 15 times  
 Steals: 2, Eastern New Mexico -- 12/11/16  
 Blocks: 3 [t-10th], Texas A&M-Commerce -- 12/18/16  
 FG made: 3, McNeese State -- 11/21/15  
 FG attempts: 6, at UTSA -- 12/21/15; Eastern New Mexico -- 12/11/16  
 3FG attempts: 1, at Texas State -- 02/09/16  
 FT made: 6, Eastern New Mexico -- 12/11/16  
 FT attempts: 6, Eastern New Mexico -- 12/11/16

## GAME-BY-GAME

Opponent	Date	gs	min	Total		3-Pointers		Free throws		Rebounds				pf	a	t/o	blk	stl	pts	avg
				fg-fga	pct	3fg-fga	pct	ft-fa	pct	off	def	tot	avg							
UTSA	11/13/16	22		2-2	1.000	0-0	.000	0-0	.000	3	2	5	5.0	0	0	1	0	0	4	4.0
at WKU	11/16/16	6		1-1	1.000	0-0	.000	0-0	.000	0	2	2	3.5	0	0	0	0	0	2	3.0
WICHITA STATE	11/20/16	20		0-0	.000	0-0	.000	0-0	.000	0	0	0	2.3	4	0	0	1	0	0	2.0
vs San Diego State	11/26/16	10		0-0	.000	0-0	.000	1-2	.500	0	0	0	1.8	4	0	2	0	0	1	1.8
at Seton Hall	11/27/16	8		0-0	.000	0-0	.000	0-0	.000	0	2	2	1.8	0	0	2	0	0	0	1.4
STEPHEN F. AUSTIN	12/3/16	5		0-0	.000	0-0	.000	0-0	.000	0	1	1	1.7	1	0	0	0	1	0	1.2
at Kansas State	12/7/16	1		0-0	.000	0-0	.000	0-0	.000	0	0	0	1.4	1	0	0	0	0	0	1.0
EASTERN NEW MEXICO	12/11/16	16		0-6	.000	0-0	.000	6-6	1.000	3	2	5	1.9	0	0	0	0	2	6	1.6
TEXAS A&M-COMMERCE	12/18/16	14		2-3	.667	0-0	.000	1-2	.500	1	7	8	2.6	1	0	0	3	0	5	2.0
Totals		0	102	5-12	.417	0-0	.000	8-10	.800	7	16	23	2.6	11	0	5	4	3	18	2.0

Games played: 9  
 Minutes/game: 11.3  
 Points/game: 2.0  
 FG Pct: 41.7  
 FT Pct: 80.0

Rebounds/game: 2.6  
 Turnovers/game: 0.6  
 Steals/game: 0.3  
 Blocks/game: 0.4

## CAREER STATS

Season	gp-gs	min/avg	Total		3-Point		F-Throws		Rebounds				pf	fo	ast	to	blk	stl	Scoring	
			fg-fga	pct	fg-fga	pct	ft-fa	pct	off	def	tot	avg							pts	avg
2013-14	29-7	610/21.0	41-107	.383	0-0	.000	25-48	.521	49	107	156	5.4	89	5	23	52	11	19	107	3.7
2014-15	20-0	102/5.1	5-20	.250	0-0	.000	2-4	.500	12	15	27	1.4	24	0	5	16	1	2	12	0.6
2015-16	31-1	256/8.3	14-43	.326	0-1	.000	14-19	.737	20	35	55	1.8	49	0	9	23	5	5	42	1.4
2016-17	9-0	102/11.3	5-12	.417	0-0	.000	8-10	.800	7	16	23	2.6	11	0	0	5	4	3	18	2.0
TOTAL	89-8	1070/12.0	65-182	.357	0-1	.000	49-81	.605	88	173	261	2.9	173	5	37	96	21	29	179	2.0



## THE HIGHLIGHTS

### 2016-17

- Sun Belt Preseason Player of the Year
- Scored career-high 34 points vs. Seton Hall in SHU Thanksgiving Classic. Mark was tied for 4th in single-game history
- Named College Sports Madness Mid-Major Player of the Week for effort, also SBC Player of the Week
- Double-double in 4 of first 6 games
- 2nd SBC POTW award on Dec. 13 after scoring 15.0 and earning 7.0 rebounds vs. K-State and ENMU

### Prior

- Sun Belt Freshman of the Year in 2014-15
- SBC First-Team all-conference (2014-15 and 2015-16)
- FullCourt.com mid-major freshman All-American
- Averaged 12.2 ppg and 8.9 rebounds during sophomore season
- Scored 33 points vs. Texas State, was tied for 6th in single-game history
- Was 1 of 2 players in SBC to average a double-double in 2014-15.
- Scored 13.0 ppg and 10.3 rebounds.
- 53.9 field-goal percentage was 21st in nation, first in SBC and 3rd in UTA single-season history
- 309 rebounds overall was 7th in single-season history

# #44 REBEKAH VANDIJK

## JUNIOR • CENTER • NAZARETH, TEXAS (NAZARETH HS)

## CAREER HIGHS

Points: 34 [1st], at Seton Hall -- 11/27/16

Rebounds: 16 [t-1st], at Texas State -- 02/12/15; at Wichita State -- 11-22-14

Assists: 4, Georgia Southern -- 1/2/15; Georgia Southern -- 1/2/16; at Texas A&M-Corpus Chri -- 12/13/14

Steals: 4, Stephen F. Austin -- 12/3/16

Blocks: 5 [t-2nd], at ULM -- 01/22/15

FG made: 14 [1st], at Seton Hall -- 11/27/16

FG attempts: 19 [2nd], at Seton Hall -- 11/27/16

FT made: 11 [t-1st], Texas State -- 3/1/2016

FT attempts: 14 [t-1st], Texas State -- 3/1/2016

## GAME-BY-GAME

Opponent	Date	gs	min	Total		3-Pointers		Free throws		Rebounds				pf	a	t/o	blk	stl	pts	avg	
				fg-fga	pct	3fg-fga	pct	ft-fa	pct	off	def	tot	avg								
UTSA	11/13/16	*	20	5-10	.500	0-0	.000	0-4	.000	3	3	6	6.0	4	1	0	2	0	10	10.0	
at WKU	11/16/16	*	34	7-14	.500	0-0	.000	0-1	.000	7	5	12	9.0	3	1	1	3	0	14	12.0	
WICHITA STATE	11/20/16	*	20	4-8	.500	0-0	.000	4-4	1.000	5	5	10	9.3	5	0	0	1	1	12	12.0	
vs San Diego State	11/26/16	*	24	7-10	.700	0-0	.000	0-0	.000	2	3	5	8.3	4	0	2	2	0	14	12.5	
at Seton Hall	11/27/16	*	29	14-19	.737	0-0	.000	6-10	.600	7	4	11	8.8	2	0	3	0	1	34	16.8	
STEPHEN F. AUSTIN	12/3/16	*	35	7-14	.500	0-0	.000	6-10	.600	5	6	11	9.2	3	3	0	3	4	20	17.3	
at Kansas State	12/7/16	*	39	6-9	.667	0-0	.000	2-3	.667	2	7	9	9.1	3	1	3	1	2	14	16.9	
EASTERN NEW MEXICO	12/11/16	*	20	5-15	.333	0-0	.000	6-7	.857	3	2	5	8.6	3	1	0	0	0	16	16.8	
TEXAS A&M-COMMERCE	12/18/16	*	20	6-9	.667	0-0	.000	4-6	.667	2	4	6	8.3	2	0	1	3	2	16	16.7	
Totals			9	241	61-108	.565	0-0	.000	28-45	.622	36	39	75	8.3	29	7	10	15	10	150	16.7

Games played: 9  
Minutes/game: 26.8  
Points/game: 16.7  
FG Pct: 56.5  
FT Pct: 62.2

Rebounds/game: 8.3  
Assists/game: 0.8  
Turnovers/game: 1.1  
Assist/turnover ratio: 0.7  
Steals/game: 1.1  
Blocks/game: 1.7

## CAREER STATS

Season	gp-gs	min/avg	Total		3-Point		F-Throws		Rebounds				Scoring							
			fg-fga	pct	fg-fga	pct	ft-fa	pct	off	def	tot	avg	pf	fo	ast	to	blk	stl	pts	avg
2014-15	30-30	883/29.4	166-308	.539	0-0	.000	57-95	.600	115	194	309	10.3	72	1	30	58	52	11	389	13.0
2015-16	30-30	874/29.1	137-274	.500	0-0	.000	93-126	.738	102	164	266	8.9	82	1	22	61	51	22	367	12.2
2016-17	9-9	241/26.8	61-108	.565	0-0	.000	28-45	.622	36	39	75	8.3	29	1	7	10	15	10	150	16.7
TOTAL	69-69	1998/29.0	364-690	.528	0-0	.000	178-266	.669	253	397	650	9.4	183	3	59	129	118	43	906	13.1

**2016-17 OVERALL STATS**

<b>RECORD:</b>	<b>OVERALL</b>	<b>HOME</b>	<b>AWAY</b>	<b>NEUTRAL</b>
ALL GAMES	7-2	4-1	2-1	1-0
CONFERENCE	0-0	0-0	0-0	0-0
NON-CONFERENCE	7-2	4-1	2-1	1-0

#	Player	gp-gs	min	avg	Total		3-Point		F-Throw		Rebounds				pf	dq	a	to	blk	stl	pts	avg
					fg-fga	fg%	3fg-fga	3fg%	ft-fa	ft%	off	def	tot	avg								
44	VanDijk,Rebekah	9-9	241	26.8	61-108	.565	0-0	.000	28-45	.622	36	39	75	8.3	29	1	7	10	15	10	150	16.7
23	Devers,Christina	9-8	251	27.9	36-128	.281	14-42	.333	27-40	.675	13	23	36	4.0	26	0	19	29	0	14	113	12.6
00	Johnson,Cierra	9-9	261	29.0	33-78	.423	4-17	.235	23-38	.605	24	32	56	6.2	29	1	31	23	1	29	93	10.3
24	Evans,Aysia	9-3	150	16.7	23-52	.442	12-32	.375	7-11	.636	0	10	10	1.1	21	0	14	14	1	11	65	7.2
03	Allen,Crystal	1-0	13	13.0	2-2	1.000	0-0	.000	2-2	1.000	1	0	1	1.0	2	0	0	4	0	0	6	6.0
11	Richards,Shelby	9-1	158	17.6	16-42	.381	2-14	.143	10-20	.500	12	26	38	4.2	12	0	13	14	1	10	44	4.9
14	Mattingly,Ericka	9-8	196	21.8	16-38	.421	4-15	.267	5-12	.417	5	11	16	1.8	23	1	20	29	3	16	41	4.6
05	LeJune,Miranda	9-1	174	19.3	13-22	.591	8-15	.533	5-8	.625	3	14	17	1.9	11	0	28	17	0	3	39	4.3
02	Billie,Lauren	9-5	139	15.4	12-36	.333	6-23	.261	0-0	.000	5	9	14	1.6	23	0	10	8	0	2	30	3.3
04	Clark,Breck	9-1	96	10.7	8-24	.333	3-9	.333	5-11	.455	4	13	17	1.9	10	0	0	6	0	3	24	2.7
25	Te'o,Allyson	9-0	102	11.3	5-12	.417	0-0	.000	8-10	.800	7	16	23	2.6	11	0	0	5	4	3	18	2.0
13	Kairyte,Greta	4-0	19	4.8	0-4	.000	0-0	.000	1-2	.500	0	1	1	0.3	5	0	0	3	0	1	1	0.3
Team											19	26	45					4				
Total.....		9	1800		225-546	.412	53-167	.317	121-199	.608	129	220	349	38.8	202	3	142	166	25	102	624	69.3
Opponents.....		9	1800		179-459	.390	42-138	.304	136-205	.663	93	228	321	35.7	189	-	90	208	35	81	536	59.6

<b>TEAM STATISTICS</b>	<b>UTA</b>	<b>OPP</b>	<b>Date</b>	<b>Opponent</b>	<b>Score</b>	<b>Att.</b>
SCORING	624	536	11/13/16	UTSA	w 75-54	592
Points per game	69.3	59.6	11/16/16	at WKU	w 71-68	1712
Scoring margin	+9.8	-	11/20/16	WICHITA STATE	w 74-70	525
FIELD GOALS-ATT	225-546	179-459	11/26/16	vs San Diego State	w 64-58	311
Field goal pct	.412	.390	11/27/16	at Seton Hall	w 86-61	672
3 POINT FG-ATT	53-167	42-138	12/3/16	STEPHEN F. AUSTIN	L 60-65	547
3-point FG pct	.317	.304	12/7/16	at Kansas State	L 49-62	4050
3-pt FG made per game	5.9	4.7	12/11/16	EASTERN NEW MEXICO	w 65-48	419
FREE THROWS-ATT	121-199	136-205	12/18/16	TEXAS A&M-COMMERCE	w 80-50	575
Free throw pct	.608	.663				
F-Throws made per game	13.4	15.1				
REBOUNDS	349	321				
Rebounds per game	38.8	35.7				
Rebounding margin	+3.1	-				
ASSISTS	142	90				
Assists per game	15.8	10.0				
TURNOVERS	166	208				
Turnovers per game	18.4	23.1				
Turnover margin	+4.7	-				
Assist/turnover ratio	0.9	0.4				
STEALS	102	81				
Steals per game	11.3	9.0				
BLOCKS	25	35				
Blocks per game	2.8	3.9				
ATTENDANCE	2658	6745				
Home games-Avg/Game	5-532	3-2145				
Neutral site-Avg/Game	-	1-311				

\* - Conference game

<b>Score by Periods</b>	<b>1st</b>	<b>2nd</b>	<b>3rd</b>	<b>4th</b>	<b>Totals</b>
UT Arlington	146	153	179	146	624
Opponents	133	118	146	139	536

**2016-17 TEAM GAME-BY-GAME****TEAM STATISTICS**

Opponent	Date	Score		Total		3-Pointers		Free throws		Rebounds				pf	a	t/o	blk	stl	pts	avg
				fg-fga	pct	3fg-fga	pct	ft-fta	pct	off	def	tot	avg							
UTSA	11/13/16	75-54	W	27-64	.422	11-27	.407	10-15	.667	15	21	36	36.0	18	17	16	2	13	75	75.0
at WKU	11/16/16	71-68	W	28-63	.444	4-11	.364	11-16	.688	18	22	40	38.0	20	15	17	3	8	71	73.0
WICHITA STATE	11/20/16	74-70	W	26-62	.419	6-19	.316	16-22	.727	14	22	36	37.3	24	17	10	2	5	74	73.3
vs San Diego State	11/26/16	64-58	W	24-56	.429	4-15	.267	12-22	.545	11	23	34	36.5	26	10	18	2	6	64	71.0
at Seton Hall	11/27/16	86-61	W	32-69	.464	6-26	.231	16-28	.571	16	31	47	38.6	20	22	26	0	16	86	74.0
STEPHEN F. AUSTIN	12/3/16	60-65	L	21-51	.412	7-19	.368	11-24	.458	13	26	39	38.7	30	18	24	5	10	60	71.7
at Kansas State	12/7/16	49-62	L	20-53	.377	5-15	.333	4-7	.571	11	15	26	36.9	18	13	27	1	16	49	68.4
EASTERN NEW MEXICO	12/11/16	65-48	W	19-65	.292	3-15	.200	24-37	.649	15	24	39	37.1	22	12	6	1	16	65	68.0
TEXAS A&M-COMMERCE	12/18/16	80-50	W	28-63	.444	7-20	.350	17-28	.607	16	36	52	38.8	24	18	22	9	12	80	69.3
UT Arlington		624		225-546	.412	53-167	.317	121-199	.608	129	220	349	38.8	202	142	166	25	102	624	69.3
Opponents		536		179-459	.390	42-138	.304	136-205	.663	93	228	321	35.7	189	90	208	35	81	536	59.6

Games played: 9  
Points/game: 69.3  
FG Pct: 41.2  
3FG Pct: 31.7  
FT Pct: 60.8

Rebounds/game: 38.8  
Assists/game: 15.8  
Turnovers/game: 18.4  
Assist/turnover ratio: 0.9  
Steals/game: 11.3  
Blocks/game: 2.8



**2016-17 LEADERS**

<b>Points</b>	<b>G</b>	<b>Pts</b>	<b>Pts/G</b>
VanDijk,Rebekah	9	150	16.7
Devers,Christina	9	113	12.6
Johnson,Cierra	9	93	10.3
Evans,Aysia	9	65	7.2
Richards,Shelby	9	44	4.9
Mattingly,Ericka	9	41	4.6
LeJune,Miranda	9	39	4.3
Billie,Lauren	9	30	3.3
Clark,Breck	9	24	2.7
Te'o,Allyson	9	18	2.0
Allen,Crystal	1	6	6.0
Kairyte,Greta	4	1	0.3

<b>FG Percentage</b>	<b>FG</b>	<b>Att</b>	<b>Pct</b>
Allen,Crystal	2	2	1.000
LeJune,Miranda	13	22	.591
VanDijk,Rebekah	61	108	.565
Evans,Aysia	23	52	.442
Johnson,Cierra	33	78	.423
Mattingly,Ericka	16	38	.421
Te'o,Allyson	5	12	.417
Richards,Shelby	16	42	.381
Billie,Lauren	12	36	.333
Clark,Breck	8	24	.333
Devers,Christina	36	128	.281
Kairyte,Greta	0	4	.000

<b>3-Point Percentage</b>	<b>3FG</b>	<b>Att</b>	<b>Pct</b>
LeJune,Miranda	8	15	.533
Evans,Aysia	12	32	.375
Devers,Christina	14	42	.333
Clark,Breck	3	9	.333
Mattingly,Ericka	4	15	.267
Billie,Lauren	6	23	.261
Johnson,Cierra	4	17	.235
Richards,Shelby	2	14	.143

<b>Free Throw Percent</b>	<b>FG</b>	<b>Att</b>	<b>Pct</b>
Allen,Crystal	2	2	1.000
Te'o,Allyson	8	10	.800
Devers,Christina	27	40	.675
Evans,Aysia	7	11	.636
LeJune,Miranda	5	8	.625
VanDijk,Rebekah	28	45	.622
Johnson,Cierra	23	38	.605
Kairyte,Greta	1	2	.500

<b>Scoring Average</b>	<b>G</b>	<b>Pts</b>	<b>Avg/G</b>
VanDijk,Rebekah	9	150	16.7
Devers,Christina	9	113	12.6
Johnson,Cierra	9	93	10.3
Evans,Aysia	9	65	7.2
Allen,Crystal	1	6	6.0
Richards,Shelby	9	44	4.9
Mattingly,Ericka	9	41	4.6
LeJune,Miranda	9	39	4.3
Billie,Lauren	9	30	3.3
Clark,Breck	9	24	2.7
Te'o,Allyson	9	18	2.0
Kairyte,Greta	4	1	0.3

<b>Field Goal Attempts</b>	<b>G</b>	<b>Att</b>	<b>Att/G</b>
Devers,Christina	9	128	14.2
VanDijk,Rebekah	9	108	12.0
Johnson,Cierra	9	78	8.7
Evans,Aysia	9	52	5.8
Richards,Shelby	9	42	4.7

<b>Field Goals Made</b>	<b>G</b>	<b>Made</b>	<b>Made/G</b>
VanDijk,Rebekah	9	61	6.8
Devers,Christina	9	36	4.0
Johnson,Cierra	9	33	3.7
Evans,Aysia	9	23	2.6
Mattingly,Ericka	9	16	1.8
Richards,Shelby	9	16	1.8

<b>3-Point FG Attempts</b>	<b>G</b>	<b>Att</b>	<b>Att/G</b>
Devers,Christina	9	42	4.7
Evans,Aysia	9	32	3.6
Billie,Lauren	9	23	2.6
Johnson,Cierra	9	17	1.9
Mattingly,Ericka	9	15	1.7
LeJune,Miranda	9	15	1.7

<b>3-Point FG Made</b>	<b>G</b>	<b>Made</b>	<b>Made/G</b>
Devers,Christina	9	14	1.6
Evans,Aysia	9	12	1.3
LeJune,Miranda	9	8	0.9
Billie,Lauren	9	6	0.7
Mattingly,Ericka	9	4	0.4
Johnson,Cierra	9	4	0.4

<b>Free Throw Attempts</b>	<b>G</b>	<b>Att</b>	<b>Att/G</b>
VanDijk,Rebekah	9	45	5.0
Devers,Christina	9	40	4.4
Johnson,Cierra	9	38	4.2
Richards,Shelby	9	20	2.2
Mattingly,Ericka	9	12	1.3

<b>Free Throws Made</b>	<b>G</b>	<b>Made</b>	<b>Made/G</b>
VanDijk,Rebekah	9	28	3.1

**2016-17 LEADERS CONT.**

<b>Rebounds</b>	<b>G</b>	<b>Reb</b>	<b>Reb/G</b>
VanDijk,Rebekah	9	75	8.3
Johnson,Cierra	9	56	6.2
Richards,Shelby	9	38	4.2
Devers,Christina	9	36	4.0
Te'o,Allyson	9	23	2.6

<b>Rebound Average</b>	<b>G</b>	<b>Reb</b>	<b>Avg/G</b>
VanDijk,Rebekah	9	75	8.3
Johnson,Cierra	9	56	6.2
Richards,Shelby	9	38	4.2
Devers,Christina	9	36	4.0
Te'o,Allyson	9	23	2.6

<b>Offensive Rebounds</b>	<b>G</b>	<b>No.</b>	<b>Avg/G</b>
VanDijk,Rebekah	9	36	4.0
Johnson,Cierra	9	24	2.7
Devers,Christina	9	13	1.4
Richards,Shelby	9	12	1.3
Te'o,Allyson	9	7	0.8

<b>Defensive Rebounds</b>	<b>G</b>	<b>No.</b>	<b>Avg/G</b>
VanDijk,Rebekah	9	39	4.3
Johnson,Cierra	9	32	3.6
Richards,Shelby	9	26	2.9
Devers,Christina	9	23	2.6
Te'o,Allyson	9	16	1.8

<b>Fouls</b>	<b>G</b>	<b>No.</b>	<b>Per/G</b>
Johnson,Cierra	9	29	3.2
VanDijk,Rebekah	9	29	3.2
Devers,Christina	9	26	2.9
Mattingly,Ericka	9	23	2.6
Billie,Lauren	9	23	2.6

<b>Foulouts</b>	<b>G</b>	<b>No.</b>
Mattingly,Ericka	9	1
Johnson,Cierra	9	1
VanDijk,Rebekah	9	1

<b>Assists</b>	<b>G</b>	<b>No.</b>	<b>Ast/G</b>
Johnson,Cierra	9	31	3.4
LeJune,Miranda	9	28	3.1
Mattingly,Ericka	9	20	2.2
Devers,Christina	9	19	2.1
Evans,Aysia	9	14	1.6

<b>Steals</b>	<b>G</b>	<b>No.</b>	<b>Stl/G</b>
Johnson,Cierra	9	29	3.2
Mattingly,Ericka	9	16	1.8
Devers,Christina	9	14	1.6
Evans,Aysia	9	11	1.2
VanDijk,Rebekah	9	10	1.1
Richards,Shelby	9	10	1.1

<b>Blocked Shots</b>	<b>G</b>	<b>No.</b>	<b>Blk/G</b>
VanDijk,Rebekah	9	15	1.7
Te'o,Allyson	9	4	0.4
Mattingly,Ericka	9	3	0.3
Richards,Shelby	9	1	0.1
Johnson,Cierra	9	1	0.1
Evans,Aysia	9	1	0.1

<b>Minutes</b>	<b>G</b>	<b>No.</b>	<b>Min/G</b>
Johnson,Cierra	9	261	29.0
Devers,Christina	9	251	27.9
VanDijk,Rebekah	9	241	26.8
Mattingly,Ericka	9	196	21.8
LeJune,Miranda	9	174	19.3

<b>Turnovers</b>	<b>G</b>	<b>No.</b>	<b>TO/G</b>
Mattingly,Ericka	9	29	3.2
Devers,Christina	9	29	3.2
Johnson,Cierra	9	23	2.6
LeJune,Miranda	9	17	1.9
Evans,Aysia	9	14	1.6
Richards,Shelby	9	14	1.6

**2016-17 INDIVIDUAL GAME HIGHS****UT Arlington - INDIVIDUAL GAME HIGHS**

Points	34		VanDijk,Rebekah at Seton Hall (11/27/16)
	22		Devers,Christina vs Wichita State (11/20/16)
	21		Devers,Christina vs UTSA (11/13/16)
	20		VanDijk,Rebekah vs Stephen F. Austin (12/3/16)
	16		VanDijk,Rebekah vs Texas A&M-Commerce (12/18/16)
	16		VanDijk,Rebekah vs Eastern New Mexico (12/11/16)
	16		Johnson,Cierra vs UTSA (11/13/16)
Field Goals Made	14		VanDijk,Rebekah at Seton Hall (11/27/16)
	7		VanDijk,Rebekah vs Stephen F. Austin (12/3/16)
	7		VanDijk,Rebekah vs San Diego State (11/26/16)
	7		VanDijk,Rebekah at WKU (11/16/16)
	7		Devers,Christina vs UTSA (11/13/16)
Field Goal Att.	19		VanDijk,Rebekah at Seton Hall (11/27/16)
	18		Devers,Christina at Kansas State (12/7/16)
	18		Devers,Christina at WKU (11/16/16)
FG Pct (min 5 made)	.833	(5-6)	Evans,Aysia at Kansas State (12/7/16)
	.737	(14-19)	VanDijk,Rebekah at Seton Hall (11/27/16)
3-Point FG Made	3		Evans,Aysia vs Texas A&M-Commerce (12/18/16)
	3		Evans,Aysia at Kansas State (12/7/16)
	3		Devers,Christina vs Stephen F. Austin (12/3/16)
	3		Evans,Aysia at Seton Hall (11/27/16)
	3		Billie,Lauren vs UTSA (11/13/16)
	3		Devers,Christina vs UTSA (11/13/16)
3-Point FG Att.	9		Evans,Aysia vs Texas A&M-Commerce (12/18/16)
	8		Devers,Christina at Seton Hall (11/27/16)
3-Pt FG Pct (min 2 made)	1.000	(3-3)	Evans,Aysia at Kansas State (12/7/16)
	1.000	(2-2)	LeJune,Miranda vs Eastern New Mexico (12/11/16)
	1.000	(2-2)	LeJune,Miranda vs Wichita State (11/20/16)
	1.000	(2-2)	Clark,Breck at WKU (11/16/16)
Free Throws Made	11		Devers,Christina vs Wichita State (11/20/16)
	6		VanDijk,Rebekah vs Eastern New Mexico (12/11/16)
	6		Te'o,Allyson vs Eastern New Mexico (12/11/16)
	6		VanDijk,Rebekah vs Stephen F. Austin (12/3/16)
	6		VanDijk,Rebekah at Seton Hall (11/27/16)
	6		Johnson,Cierra vs UTSA (11/13/16)
Free Throw Att.	14		Devers,Christina vs Wichita State (11/20/16)
	10		VanDijk,Rebekah vs Stephen F. Austin (12/3/16)
	10		VanDijk,Rebekah at Seton Hall (11/27/16)
FT Pct (min 3 made)	1.000	(6-6)	Te'o,Allyson vs Eastern New Mexico (12/11/16)
	1.000	(4-4)	VanDijk,Rebekah vs Wichita State (11/20/16)
	1.000	(4-4)	Devers,Christina vs UTSA (11/13/16)
Rebounds	12		VanDijk,Rebekah at WKU (11/16/16)
	11		VanDijk,Rebekah vs Stephen F. Austin (12/3/16)
	11		VanDijk,Rebekah at Seton Hall (11/27/16)
Assists	9		LeJune,Miranda vs UTSA (11/13/16)
	8		Mattingly,Ericka at Seton Hall (11/27/16)
	8		Johnson,Cierra vs Wichita State (11/20/16)
Steals	7		Johnson,Cierra vs UTSA (11/13/16)
	6		Mattingly,Ericka vs Eastern New Mexico (12/11/16)
	6		Johnson,Cierra at Kansas State (12/7/16)
Blocked Shots	3		Mattingly,Ericka vs Texas A&M-Commerce (12/18/16)
	3		Te'o Allyson vs Texas A&M-Commerce (12/18/16)

**2016-17 OPPONENT GAME HIGHS****Opponent - GAME HIGHS**

POINTS	70	WICHITA STATE (11/20/16)
	68	at WKU (11/16/16)
	65	STEPHEN F. AUSTIN (12/3/16)
	62	at Kansas State (12/7/16)
	61	at Seton Hall (11/27/16)
FIELD GOALS MADE	25	at WKU (11/16/16)
	23	at Kansas State (12/7/16)
	23	at Seton Hall (11/27/16)
FIELD GOAL ATTEMPTS	60	at Seton Hall (11/27/16)
	57	TEXAS A&M-COMMERCE (12/18/16)
FIELD GOAL PERCENTAGE	.478 (22-46)	WICHITA STATE (11/20/16)
	.469 (23-49)	at Kansas State (12/7/16)
3 PT FIELD GOALS MADE	7	WICHITA STATE (11/20/16)
	6	EASTERN NEW MEXICO (12/11/16)
3 PT FG ATTEMPTS	22	EASTERN NEW MEXICO (12/11/16)
	21	at Seton Hall (11/27/16)
3 PT FG PERCENTAGE	.444 (4-9)	TEXAS A&M-COMMERCE (12/18/16)
	.438 (7-16)	WICHITA STATE (11/20/16)
FREE THROWS MADE	25	STEPHEN F. AUSTIN (12/3/16)
	21	vs San Diego State (11/26/16)
FREE THROW ATTEMPTS	34	STEPHEN F. AUSTIN (12/3/16)
	27	vs San Diego State (11/26/16)
FREE THROW PERCENTAGE	.792 (19-24)	WICHITA STATE (11/20/16)
	.778 (21-27)	vs San Diego State (11/26/16)
REBOUNDS	49	EASTERN NEW MEXICO (12/11/16)
	38	STEPHEN F. AUSTIN (12/3/16)
ASSISTS	14	at Kansas State (12/7/16)
	12	WICHITA STATE (11/20/16)
	12	at WKU (11/16/16)
STEALS	13	STEPHEN F. AUSTIN (12/3/16)
	13	at Seton Hall (11/27/16)
BLOCKED SHOTS	7	EASTERN NEW MEXICO (12/11/16)
	7	at Kansas State (12/7/16)
	7	at Seton Hall (11/27/16)
TURNOVERS	31	at Seton Hall (11/27/16)
	27	EASTERN NEW MEXICO (12/11/16)
FOULS	26	at Seton Hall (11/27/16)
	25	EASTERN NEW MEXICO (12/11/16)
	25	vs San Diego State (11/26/16)



**MAVS IN THE NATIONAL RANKINGS** //

## UT Arlington - 2016-17 Women's Basketball Ranking Summary thru games 12/19/2016

Statistic	National Rank	Conference Rank	Value	National Leader	Value	Conference Leader	Value
Assist Turnover Ratio (344 ranked)	154	1	0.86	Baylor	1.74	UT Arlington	0.86
Assists (344 ranked)	158	1	142	Baylor	296	UT Arlington	142
Assists Per Game (344 ranked)	74	1	15.8	Baylor	24.7	UT Arlington	15.8
Blocked Shots (343 ranked)	250	8	25	Baylor	103	South Ala.	51
Blocked Shots Per Game (344 ranked)	227	7	2.8	Baylor	8.6	South Ala.	5.1
Defensive Rebounds per Game (30 ranked)				New Mexico	34	Troy	32
Fewest Fouls (344 ranked)	245	10	202	Penn	111	Ga. Southern	141
Fewest Turnovers (344 ranked)	151	6	166	Villanova	86	Louisiana	120
Field-Goal Percentage (344 ranked)	122	2	41.2	California	51.8	Troy	42.6
Field-Goal Percentage Defense (344 ranked)	172	5	39.0	West Virginia	28.3	Troy	36.1
Free Throw Attempts (344 ranked)	101	3	199	Wisconsin	309	Appalachian St.	249
Free Throws Made (344 ranked)	169	6	121	Missouri Ohio St.	210 210	Appalachian St.	160
Free-Throw Percentage (344 ranked)	314	12	60.8	Iowa St.	83.6	Troy	76.4
Offensive Rebounds per Game (30 ranked)				Jackson St.	20	Georgia St.	18
Personal Fouls Per Game (344 ranked)	337	11	22.4	Chattanooga	10.2	Ga. Southern	14.1
Rebound Margin (344 ranked)	124	2	3.1	Baylor	26.2	Troy	9.0
Rebounds (343 ranked)	279	9	349	Baylor	640	Troy	443
Rebounds Per Game (344 ranked)	185	6	38.78	Baylor	53.33	Troy	49.22
Scoring Defense (344 ranked)	96	3	59.6	Campbell	46.7	Little Rock	53.5
Scoring Margin (344 ranked)	93	2	9.8	Baylor	45.5	Troy	15.3
Scoring Offense (344 ranked)	112	3	69.3	Baylor	95.3	Troy	86.6
Steals (343 ranked)	78	1	102	Western Ill.	160	Coastal Caro. UT Arlington	102 102
Steals Per Game (344 ranked)	29	1	11.3	Colorado	14.8	Coastal Caro. UT Arlington	11.3 11.3
Three Pt FG Defense (344 ranked)	145	3	30.4	Arizona St.	21.5	South Ala.	28.7
Three-Point Field Goals Attempted (148 ranked)				Sacramento St.	437	Ga. Southern	225
Three-Point Field Goals Made (344 ranked)	221	4	53	Washington	137	Ga. Southern	74
Three-Point Field Goals Per Game (344 ranked)	172	4	5.9	Sacramento St.	12.0	Troy	7.6
Three-Point Field-Goal Percentage (344 ranked)	164	4	31.7	Providence	43.1	Arkansas St.	35.1
Turnover Margin (344 ranked)	47	2	4.67	Syracuse	10.55	Louisiana	6.75
Turnovers Forced (343 ranked)	9	1	23.11	Auburn	25.18	UT Arlington	23.11
Turnovers Per Game (344 ranked)	271	9	18.4	Villanova	9.6	Little Rock	14.9
Won-Lost Percentage (342 ranked)	63	1	77.8	10 teams tied	100.0	UT Arlington	77.8

# MAVS IN THE NATIONAL RANKINGS

Statistic	Player	National Rank	Conference Rank	Value	National Leader	Value	Conference Leader	Value
Assist Turnover Ratio (250 ranked)	Miranda LeJune Cierra Johnson	154 233	2 4	1.65 1.35	Laia Flores, South Fla.	4.47	Ced Gibson, Coastal Caro.	1.78
Assists (142 ranked)					Curtyce Knox, Texas A&M	93	Monique Townson, Little Rock	45
Assists Per Game (246 ranked)	Cierra Johnson	241	4	3.4	Curtyce Knox, Texas A&M	9.3	Ced Gibson, Coastal Caro.	4.6
Blocked Shots (142 ranked)	Rebekah VanDijk	121	5	15	Bego Faz Davalos, Fresno St.	46	Stephanie Ratliff, La.-Monroe	26
Blocked Shots Per Game (249 ranked)	Rebekah VanDijk	96	4	1.67	Bego Faz Davalos, Fresno St.	4.18	Stephanie Ratliff, La.-Monroe	2.60
Defensive Rebounds per Game (30 ranked)					Chantel Osahor, Washington	12		
Double Doubles (48 ranked)	Rebekah VanDijk	48	1	4	Bego Faz Davalos, Fresno St. Chantel Osahor, Washington	9 9	Stephanie Ratliff, La.-Monroe Rebekah VanDijk, UT Arlington	4 4
Field Goal Attempts (147 ranked)					Carlie Wagner, Minnesota	224	Joi Jones, Appalachian St.	154
Field Goals Made (136 ranked)	Rebekah VanDijk	136	2	61	Kelsey Plum, Washington	120	Joi Jones, Appalachian St.	63
Field-Goal Percentage (250 ranked)	Rebekah VanDijk	40	1	56.5	Ruthy Hebard, Oregon	81.5	Rebekah VanDijk, UT Arlington	56.5
Final Points (199 ranked)					Kelsey Plum, Washington	364	Joi Jones, Appalachian St.	160
Free Throw Attempts (135 ranked)					Larissa Lurkin, Kent St.	105	Madi Story, Appalachian St.	57
Free Throws Made (142 ranked)					Larissa Lurkin, Kent St.	84	Kaitlyn Pratt, Little Rock	45
Free-Throw Percentage (250 ranked)					Rishonda Napier, Southern Ill.	100.0	Gabriella Cortez, La.-Monroe	93.8
Minutes Played (149 ranked)					Tianna Tarter, ETSU	461:00	Monique Townson, Little Rock	419:00
Minutes Played Per Game (150 ranked)					Ty Petty, Middle Tenn.	39.56	Jaylyn Gordon, Louisiana	39.13
Offensive Rebounds per Game (29 ranked)	Rebekah VanDijk	29	3	4	Ashunae Durant, Hofstra	6	Rachael Gregory, Coastal Caro.	5
Points Per Game (249 ranked)	Rebekah VanDijk	96	2	16.7	Kelsey Plum, Washington	30.3	Jaylyn Gordon, Louisiana	19.5
Rebounds (148 ranked)					Chantel Osahor, Washington	156	Stephanie Ratliff, La.-Monroe	91
Rebounds Per Game (248 ranked)	Rebekah VanDijk	101	3	8.3	Chantel Osahor, Washington	14.2	Tiffany Holston, Georgia St.	9.3
Steals (140 ranked)	Cierra Johnson	36	1	29	Ashley Deary, Northwestern Chanette Hicks, Virginia Tech	52 52	Cierra Johnson, UT Arlington	29
Steals Per Game (248 ranked)	Cierra Johnson	18	1	3.22	Chanette Hicks, Virginia Tech	4.73	Cierra Johnson, UT Arlington	3.22
Three-Point Field Goals Attempted (148 ranked)					Maranne Johnson, Sacramento St.	124		
Three-Point Field Goals Made (128 ranked)					Taylor Thunstedt, North Dakota St.	48	Jaylyn Gordon, Louisiana	22
Three-Point Field Goals Per Game (250 ranked)					Kitija Laksa, South Fla.	4.44	Jaylyn Gordon, Louisiana	2.75
Three-Point Field-Goal Percentage (213 ranked)					Baileigh O'Dell, Lamar University	62.1	Brittany Fowler, Arkansas St.	46.5
Triple Doubles (3 ranked)					Sabrina Ionescu, Oregon Ally Lehman, Northern Ill.	2 2		

## BOX SCORES

Official Basketball Box Score -- Game Totals -- Final Statistics  
UTSA vs UT Arlington  
11/13/16 2:00 PM at Arlington, TX

## UTSA 54 • 0-2

#	Player	Total		3-Ptr		Rebounds			PF	TP	A TO Blk Stl				Min
		FG-FGA	FT-FTA	FG-FGA	FT-FTA	Off	Def	Tot			A	TO	Blk	Stl	
01	Kiejrowska, Kasia	3-9	0-3	1-2	2	8	10	0	7	0	4	0	2	34	
15	Toth, Timea	0-1	0-0	0-0	1	0	1	1	0	0	0	0	0	12	
21	Benson, Marie	2-4	0-0	2-4	3	1	4	2	6	0	0	0	2	16	
31	Heinemann, Carlisle	4-6	3-4	0-0	0	3	3	4	11	0	1	0	0	35	
32	Goodwin, Loryn	4-11	0-1	6-10	1	2	3	2	14	6	5	0	1	39	
40	Chidomere, Crystal	3-7	0-0	0-2	1	2	3	4	6	3	9	0	3	34	
20	Kekec, Kourtney	0-0	0-0	0-0	0	0	0	1	0	0	0	0	0	1	
23	Hawkins, Tija	0-2	0-0	0-0	0	1	1	0	0	0	0	0	0	4	
30	Smith, Tesha	5-10	0-0	0-0	4	5	9	2	10	0	5	0	3	23	
40	Marlow, Billie	0-1	0-0	0-0	0	0	0	0	0	0	0	0	0	2	
Team					0	3	3								
Totals		21-51	3-8	9-18	12	25	37	16	54	9	24	0	11	200	
1st - FG %:		5-17	29.4%	2nd: 5-12	41.7%	3rd: 7-10	70.0%	4th: 4-12	33.3%	Game: 21-51	41.2%	Deadball			
3FG %:		0-2	0.0%	3FG %:	2-7	28.6%	2-7	28.6%	0-3	0.0%	3-8	37.5%	Rebounds		
FT %:		0-2	0.0%	FT %:	4-8	50.0%	3-8	37.5%	2-2	100.0%	9-18	50.0%	6		

## UT Arlington 75 • 1-0

#	Player	Total		3-Ptr		Rebounds			PF	TP	A TO Blk Stl				Min
		FG-FGA	FT-FTA	FG-FGA	FT-FTA	Off	Def	Tot			A	TO	Blk	Stl	
44	VanDijk, Rebekah	5-10	0-0	0-4	3	3	6	4	10	1	0	2	0	20	
00	Johnson, Cierra	4-13	2-4	6-7	2	6	8	2	16	2	2	0	7	35	
02	Billie, Lauren	4-9	3-6	0-0	1	1	2	4	11	1	1	0	0	29	
14	Mattingly, Ericka	1-2	1-2	0-0	1	2	3	2	3	1	4	0	1	15	
23	Devers, Christina	7-15	3-6	4-4	3	0	3	2	21	1	6	0	2	28	
04	Clark, Breck	1-2	0-1	0-0	1	0	1	3	2	0	0	0	1	5	
05	LeJune, Miranda	2-5	1-4	0-0	0	2	2	0	5	9	0	0	1	25	
11	Richards, Shelby	0-4	0-3	0-0	0	2	2	1	0	1	1	0	0	10	
24	Evans, Aysia	1-2	1-1	0-0	0	1	1	0	3	1	1	0	1	11	
25	Te'o, Allyson	2-2	0-0	0-0	3	2	5	0	4	0	1	0	0	22	
Team					1	2	3								
Totals		27-64	11-27	10-15	15	21	36	18	75	17	16	2	13	200	
1st - FG %:		10-17	58.8%	2nd: 4-13	30.8%	3rd: 2-16	12.5%	4th: 11-18	61.1%	Game: 27-64	42.2%	Deadball			
3FG %:		1-4	25.0%	3FG %:	2-7	28.6%	2-7	28.6%	1-27	40.7%	10-15	66.7%	Rebounds		
FT %:		1-5	20.0%	FT %:	2-2	100.0%	5-6	83.3%	2-2	100.0%	10-15	66.7%	2		

Officials: Kelly Johnson, Troy Winders, Travis Jonesest  
Technical fouls: UTSA-None. UT Arlington-None.  
Attendance: 592

Score by periods	1st	2nd	3rd	4th	Total
UTSA	10	15	19	10	54
UT Arlington	22	12	11	30	75

Official Basketball Box Score -- Game Totals -- Final Statistics  
Wichita State vs UT Arlington  
11/20/16 5:00 PM at Arlington, TX

## Wichita State 70 • 1-2

#	Player	Total		3-Ptr		Rebounds			PF	TP	A TO Blk Stl				Min
		FG-FGA	FT-FTA	FG-FGA	FT-FTA	Off	Def	Tot			A	TO	Blk	Stl	
01	Thompson, Keke	2-4	0-0	2-3	0	3	3	4	6	4	4	1	2	33	
04	Lockhart, Diamond	4-8	2-5	3-4	0	1	1	2	13	3	1	0	2	33	
13	Williams, Kayla	3-5	1-1	1-2	1	4	5	3	8	0	2	1	0	25	
23	Mike, Taguandra	2-6	0-1	0-0	0	1	1	5	4	0	2	0	1	19	
35	Bessard, Rangie	4-11	2-5	6-6	1	4	5	5	16	1	4	2	2	32	
03	Stovall, Aundra	1-1	0-0	3-3	0	0	0	0	5	2	1	0	0	16	
05	Preston, Jelliah	1-1	1-1	0-0	0	0	0	0	3	1	0	0	0	3	
10	Lee, Tamara	3-8	1-3	4-6	0	4	4	3	11	1	1	0	0	22	
20	Martin, Brittany	2-2	0-0	0-0	0	3	3	1	4	0	0	0	0	12	
34	Lehne, Ellie	0-0	0-0	0-0	0	0	0	0	0	0	0	0	0	3	
40	Tompkins, Angiee	0-0	0-0	0-0	0	0	0	1	0	0	1	0	0	2	
Team					2	5	7								
Totals		22-46	7-16	19-24	4	25	29	24	70	12	16	4	7	200	
1st - FG %:		7-14	50.0%	2nd: 7-13	53.8%	3rd: 4-10	40.0%	4th: 4-9	44.4%	Game: 22-46	47.8%	Deadball			
3FG %:		2-5	40.0%	3FG %:	3-6	50.0%	1-3	33.3%	1-2	50.0%	7-16	43.8%	Rebounds		
FT %:		0-0	0.0%	FT %:	3-4	75.0%	9-10	90.0%	6-7	85.7%	19-24	79.2%	3		

## UT Arlington 74 • 3-0

#	Player	Total		3-Ptr		Rebounds			PF	TP	A TO Blk Stl				Min
		FG-FGA	FT-FTA	FG-FGA	FT-FTA	Off	Def	Tot			A	TO	Blk	Stl	
44	VanDijk, Rebekah	4-8	0-0	4-4	5	5	10	5	12	0	0	1	1	20	
00	Johnson, Cierra	6-10	0-1	0-1	3	3	6	3	12	8	2	0	3	34	
02	Billie, Lauren	2-4	0-2	0-0	0	0	0	1	4	0	0	0	0	17	
14	Mattingly, Ericka	3-8	2-4	0-0	1	0	1	2	8	2	1	0	0	16	
23	Devers, Christina	5-16	1-3	11-14	3	5	8	4	22	2	3	0	0	31	
04	Clark, Breck	0-1	0-0	0-2	0	2	2	0	0	0	1	0	0	3	
05	LeJune, Miranda	2-2	2-2	0-0	0	1	1	0	6	3	0	0	0	24	
11	Richards, Shelby	1-4	0-2	0-0	1	3	4	2	2	1	2	0	0	16	
24	Evans, Aysia	3-9	1-5	1-1	0	0	0	3	8	1	1	0	1	19	
25	Te'o, Allyson	0-0	0-0	0-0	0	0	0	4	0	0	0	1	0	20	
Team					1	3	4								
Totals		26-62	6-19	16-22	14	22	36	24	74	17	10	2	5	200	
1st - FG %:		7-20	35.0%	2nd: 7-17	41.2%	3rd: 8-12	66.7%	4th: 4-13	30.8%	Game: 26-62	41.9%	Deadball			
3FG %:		1-7	14.3%	3FG %:	3-7	42.9%	1-4	25.0%	6-19	31.6%	14-22	63.6%	Rebounds		
FT %:		3-5	60.0%	FT %:	5-7	71.4%	5-6	83.3%	3-4	75.0%	16-22	72.7%	3		

Officials: Doug Williams, Michael Boman, Laurie Porter  
Technical fouls: Wichita State-None. UT Arlington-None.  
Attendance: 525

Score by periods	1st	2nd	3rd	4th	Total
Wichita State	16	21	18	15	70
UT Arlington	18	20	22	14	74

Official Basketball Box Score -- Game Totals -- Final Statistics  
UT Arlington vs WKU  
11/16/16 5:30 p.m. at Bowling Green, Ky. (E.A. Diddle Arena)

## UT Arlington 71 • 2-0

#	Player	Total		3-Ptr		Rebounds			PF	TP	A TO Blk Stl				Min
		FG-FGA	FT-FTA	FG-FGA	FT-FTA	Off	Def	Tot			A	TO	Blk	Stl	
44	VanDijk, Rebekah	7-14	0-0	0-1	7	5	12	3	14	1	1	3	0	34	
00	Johnson, Cierra	6-12	0-0	2-3	3	4	7	4	14	4	2	0	3	30	
02	Billie, Lauren	0-2	0-0	0-0	1	1	2	1	0	0	0	0	0	7	
14	Mattingly, Ericka	0-1	0-0	0-0	1	1	2	3	0	1	3	0	1	13	
23	Devers, Christina	5-18	1-4	4-6	1	4	5	3	15	3	3	0	2	32	
04	Clark, Breck	3-4	2-2	2-2	1	0	1	2	10	0	1	0	0	14	
05	LeJune, Miranda	2-3	1-1	2-2	0	1	1	2	7	5	4	0	0	27	
11	Richards, Shelby	2-3	0-1	1-2	1	2	3	2	5	1	2	0	1	21	
24	Evans, Aysia	2-5	0-3	0-0	0	0	0	4	0	0	0	0	1	16	
25	Te'o, Allyson	1-1	0-0	0-0	0	2	2	0	2	0	0	0	0	6	
Team					3	2	5								
Totals		28-63	4-11	11-16	18	22	40	20	71	15	17	3	8	200	
1st - FG %:		6-19	31.6%	2nd: 7-14	50.0%	3rd: 6-15	40.0%	4th: 9-15	60.0%	Game: 28-63	44.4%	Deadball			
3FG %:		1-4	25.0%	3FG %:	0-2	0.0%	1-3	33.3%	2-2	100.0%	4-11	36.4%	Rebounds		
FT %:		2-4	50.0%	FT %:	4-6	66.7%	1-2	50.0%	4-4	100.0%	11-16	68.8%	3		

## WKU 68 • 1-1

#	Player	Total		3-Ptr		Rebounds			PF	TP	A TO Blk Stl				Min
---	--------	-------	--	-------	--	----------	--	--	----	----	--------------	--	--	--	-----

## BOX SCORES

Official Basketball Box Score -- Game Totals -- Final Statistics  
UT Arlington vs Seton Hall  
11/27/16 2:30 p.m. at South Orange, N.J. (Walsh Gymnasium)

## UT Arlington 86 • 5-0

		Total	3-Ptr		Rebounds										
#	Player	FG-FA	FG-O	FT-FTA	Off	Def	TP	TP%	A	TO	Blk	Stl	Min		
44	VanDijk, Rebekah	c	14-19	0-0	6-10	7	4	11	2	34	0	3	0	1	29
00	Johnson, Cierra	g	4-6	1-3	5-6	2	5	7	2	14	2	1	0	3	24
02	Billie, Lauren	g	1-5	0-3	0-0	2	0	2	3	2	2	1	0	0	15
14	Mattingly, Ericka	g	1-7	0-3	2-6	1	4	5	3	4	8	5	0	3	33
23	Devers, Christina	g	4-16	2-8	3-6	1	1	2	2	13	3	3	0	2	28
04	Clark, Breck	g	1-2	0-1	0-0	0	3	3	1	2	0	0	0	0	15
05	LeJune, Miranda	g	0-0	0-0	0-0	0	1	1	3	0	2	4	0	0	8
11	Richards, Shelby	g	2-7	0-3	0-0	2	5	7	1	4	1	2	0	2	18
13	Kairyte, Greta	g	0-0	0-0	0-0	0	1	1	0	0	0	0	0	1	4
24	Evans, Aysia	g	5-7	3-5	0-0	0	2	2	3	13	4	5	0	4	18
25	Te'o, Allyson	g	0-0	0-0	0-0	0	2	2	0	0	0	2	0	0	8
	Team					1	3	4							
Totals			32-69	6-26	16-28	16	31	47	20	86	22	26	0	16	200
1st - FG %:		6-17	35.3%	2nd - 10-17	58.8%	3rd - 11-21	52.4%	4th - 5-14	35.7%	Game - 32-69	46.4%	Deadball			
3FG %:		2-8	25.0%	1-5	20.0%	3-9	33.3%	0-4	0.0%	6-29	20.7%	Rebounds			
FT %:		4-6	66.7%	2-3	66.7%	8-15	53.3%	2-4	50.0%	16-28	57.1%				

## Seton Hall 61 • 4-2

		Total	3-Ptr		Rebounds										
#	Player	FG-FGA	FG-FGA	FT-FTA	Off	Def	Tot	PF	TP	A	TO	Blk	Stl	Min	
33	LUNDBERG, Claire	f	0-3	0-3	0	3	3	1	0	1	1	0	0	20	
31	JONES-PACK, Jayla	c	3-3	0-0	0-2	3	1	4	5	6	0	5	4	1	16
00	JACKSON, JaQuan	g	4-16	2-7	4-7	0	5	5	3	14	2	6	0	2	32
01	HILAIRE, Kaela	g	5-11	1-3	4-8	0	2	2	3	15	5	7	0	3	27
04	HEALY, Kaitly	g	0-1	0-0	0-0	0	1	1	1	0	1	3	0	1	19
10	FITZGERALD, Ali	g	0-1	0-0	0-0	1	0	1	0	0	0	0	0	0	3
15	WINTERS, Deja	g	4-12	1-5	2-2	0	2	2	2	11	0	4	0	1	23
20	SNIDER, Skylar	g	1-3	1-2	0-0	1	2	3	2	3	0	1	2	2	17
24	SAMUELS, Shadeen	g	1-3	0-1	0-2	1	3	4	5	2	0	2	0	3	16
28	MOLYNEAUX, Jordan	g	4-6	0-0	0-0	1	3	4	4	8	1	2	1	0	25
44	JEMMOT, Chanel	g	1-1	0-0	0-0	1	0	1	0	2	0	0	0	0	2
	Team					3	3	6							
Totals			23-60	5-21	10-21	11	25	36	26	61	10	31	7	13	200
1st - FG %:		5-13	38.5%	2nd - 4-14	28.6%	3rd - 10-19	52.6%	4th - 4-14	28.6%	Game - 23-60	38.3%	Deadball			
3FG %:		2-5	40.0%	2-9	22.2%	0-3	0.0%	1-4	25.0%	5-21	23.8%	Rebounds			
FT %:		2-4	50.0%	2-3	66.7%	5-7	71.4%	1-2	50.0%	10-21	47.6%				

Officials: Norma Jones, Dennis DeMayo, Tim Daley  
Technical fouls: UT Arlington-None. Seton Hall-TEAM.  
Attendance: 672  
SHU Thanksgiving Classic Championship  
Home bench technical at 7:54 in Q3

Score by periods	1st	2nd	3rd	4th	Total
UT Arlington	18	23	33	12	86
Seton Hall	14	12	25	10	61

Official Basketball Box Score -- Game Totals -- Final Statistics  
UT Arlington vs Kansas State  
12/7/16 7 p.m. at Bramlage Coliseum (Manhattan, Kan.)

## UT Arlington 49 • 5-2

		Total		3-Ptr		Rebounds									
#	Player		FG-FGA		FT-FTA	Off	Def	Tot	PF	TP	A	TO	Blk	Stl	Min
44	VanDijk,Rebekah	c	6-9	0-0	2-3	2	7	9	3	14	1	3	1	2	39
00	Johnson,Cierra	g	3-10	1-3	1-2	1	1	2	2	8	6	4	0	6	37
02	Billie,Lauren	g	0-1	0-1	0-0	0	0	0	3	0	0	3	0	0	8
14	Mattingly,Ericka	g	3-4	0-1	1-2	0	1	1	1	7	3	6	0	2	34
23	Devers,Christina	g	2-18	0-4	0-0	1	1	2	3	4	1	3	0	3	36
04	Clark,Breck		1-4	1-2	0-0	0	1	1	1	3	0	1	0	1	6
05	LeJune,Miranda		0-1	0-1	0-0	0	0	0	0	0	0	2	0	0	8
11	Richards,Shelby		0-0	0-0	0-0	1	0	1	0	0	1	2	0	1	12
24	Evans,Aysia		5-6	3-3	0-0	0	0	0	4	13	1	1	0	1	19
25	Te'o,Allyson		0-0	0-0	0-0	0	0	0	1	0	0	0	0	0	1
Team						6	4	10			2				
Totals			20-53	5-15	4-7	11	15	26	18	49	13	27	1	16	200
1st - FG %:		5-12	41.7%	2nd: 4-13	30.8%	3rd: 8-16	50.0%	4th: 3-12	25.0%	Game:	20-53	37.7%	Deadball		
3FG %:		0-2	0.0%	2-3	66.7%	2-5	40.0%	1-5	20.0%		5-15	33.3%	Rebounds		
FT %:		0-1	0.0%	1-2	50.0%	1-2	50.0%	2-2	100.0%		4-7	57.1%			

## Kansas State 62 • 9-0

#	Player		Total		3-Ptr		Rebounds				PF	TP	A	TO	Blk	Stl	Min
			FG-FGA	FT-FTA	FG-FGA	FT-FTA	Off	Def	Tot								
13	Willock, Eternati	f	4-5	0-0	1-1		2	3	1	9	1	1	1	3		25	
22	Lewis, Breanna	c	7-11	0-0	1-4		4	7	11	3	15	2	2	4	2	30	
10	Goth, Kayla	g	6-10	0-4	0-0		1	1	2	0	12	1	5	0	0	26	
21	Middlebrook, Karyla		1-6	0-2	2-2		0	2	2	1	4	3	3	0	0	22	
24	Wesemann, Kindred	g	2-6	2-5	4-4		0	1	1	0	10	2	4	0	2	28	
00	Sheble, Jessica		0-1	0-0	1-2		0	1	1	0	1	0	0	0	1	5	
01	Page, Kaylee		1-3	1-3	0-0		0	0	0	2	3	1	2	0	1	14	
03	Page, Lanie		0-0	0-0	0-0		0	0	0	0	0	0	0	0	0	2	
05	Brooks, Mercedes		0-1	0-0	0-0		0	0	0	0	0	0	2	0	0	4	
11	Williams, Peyton		1-2	0-0	0-0		1	2	3	1	2	1	2	2	0	16	
12	Thomson, Kelly		0-0	0-0	0-0		0	0	0	0	0	0	1	0	0	3	
50	Martin, Shaelyn		1-4	0-0	4-4		3	4	7	0	6	3	3	0	3	25	
	Team						1	2	3				1				
	Totals		23-49	3-14	13-17		11	22	33	8	62	14	26	7	12	200	
1st - FG %:			5-9	55.6%	2nd - 5-13	38.5%	3rd - 6-13	46.2%	4th - 7-14	50.0%	Game - 23-49		46.9%	Deadball			
3FG %:			1-3	33.3%	1-6	16.7%	1-2	50.0%	0-3	0.0%	3-14		21.4%	Rebounds			
FT %:			2-2	100.0%	2-2	100.0%	6-6	100.0%	3-4	75.0%	13-17		76.5%				

Officials: Lisa Mattingly, Melissa Barlow, Amy Bonner  
Technical fouls: UT Arlington-None. Kansas State-None.  
Attendance: 4050

Score by periods	1st	2nd	3rd	4th	Total
UT Arlington	10	11	19	9	49
Kansas State	13	13	19	17	62

Official Basketball Box Score -- Game Totals -- Final Statistics  
Stephen F. Austin vs UT Arlington  
12/3/16 2:00 PM at Arlington, TX

## Stephen F. Austin 65 • 5-2, 0-0 LSC

#	Player	Total			3-Ptr		Rebounds				PF	TP	A	TO	Blk	Stl	Min
		FG-FGA	FT-FTA	FT-FTA	Off	Def	Tot	PF									
02	Ross, Taylor	*	4-11	1-2	17-21	3	1	4	3	26	5	10	0	3	37		
04	Harris, Kennedy	*	2-9	0-2	1-3	2	6	8	1	5	2	3	0	2	29		
21	Parker, Stevi	*	2-4	0-0	0-0	0	3	3	3	4	0	3	0	1	27		
22	Jackson, Taylor	*	1-7	1-3	0-0	2	0	2	0	3	2	0	0	2	22		
55	Lewis, Adrienne	*	3-4	0-0	0-0	1	3	4	3	6	0	0	1	3	20		
00	Ready, Alysia	*	0-0	0-0	0-0	0	1	1	2	0	0	1	0	0	3		
03	Hayes, Chanell	*	1-5	0-3	3-4	1	2	3	1	5	0	1	0	1	18		
10	Branch, Brentney	*	3-5	2-4	0-0	0	1	1	4	8	1	1	0	1	17		
12	Fisker, Kia	*	1-4	0-0	2-2	1	1	2	2	4	0	1	0	0	9		
23	Harvey, Riley	*	1-2	0-0	2-4	1	2	3	3	4	0	1	0	0	18		
	Team					4	3	7				1					
	Totals		18-51	4-14	25-34	15	23	38	22	65	10	22	1	13	200		
1st - FG %: 7-14 50.0% 2nd - 1-12 8.3% 3rd - 4-12 33.3% 4th - 6-13 46.2% Game - 18-51 35.3% Deadball																	
3FG %: 1-2 50.0% 1-3 33.3% 2-7 28.6% 0-2 0.0% 4-14 28.6% 25-34 73.5% Rebounds																	
FT %: 4-7 57.1% 7-10 70.0% 3-4 75.0% 11-13 84.6% 25-34 73.5% 1																	



# BOX SCORES



Official Basketball Box Score - Game Totals - Final Statistics  
UT Arlington vs Seton Hall  
11/27/16 2:30 p.m. at South Orange, N.J. (Walsh Gymnasium)



## UT Arlington 86 - 5-0

#	Player		Total		3-Ptr		Rebounds			PF	TP	A	TO	Blk	Stl	Min
			FG-FGA	FG-FGA	FT-FTA	Off	Def	Tot								
44	VanDijk,Rebekah	c	14-19	0-0	6-10	7	4	11	2	34	0	3	0	1	29	
00	Johnson,Cierra	g	4-6	1-3	5-6	2	5	7	2	14	2	1	0	3	24	
02	Billie,Lauren	g	1-5	0-3	0-0	2	0	2	3	2	2	1	0	0	15	
14	Mattingly,Ericka	g	1-7	0-3	2-6	1	4	5	3	4	8	5	0	3	33	
23	Devers,Christina	g	4-16	2-8	3-6	1	1	2	2	13	3	3	0	2	28	
04	Clark,Breck		1-2	0-1	0-0	0	3	3	1	2	0	0	0	0	15	
05	LeJune,Miranda		0-0	0-0	0-0	0	1	1	3	0	2	4	0	0	8	
11	Richards,Shelby		2-7	0-3	0-0	2	5	7	1	4	1	2	0	2	18	
13	Kairyte,Greta		0-0	0-0	0-0	0	1	1	0	0	0	0	0	1	4	
24	Evans,Aysia		5-7	3-5	0-0	0	2	2	3	13	4	5	0	4	18	
25	Te'o,Allyson		0-0	0-0	0-0	0	2	2	0	0	0	2	0	0	8	
	Team					1	3	4								
Totals			32-69	6-26	16-28	16	31	47	20	86	22	26	0	16	200	
1st - FG %:			6-17	35.3%	2nd: 10-17	58.8%	3rd: 11-21	52.4%	4th: 5-14	35.7%	Game: 32-69	46.4%	Deadball			
3FG %:			2-8	25.0%	1-5	20.0%	3-9	33.3%	0-4	0.0%	6-26	23.1%	Rebounds			
FT %:			4-6	66.7%	2-3	66.7%	8-15	53.3%	2-4	50.0%	16-28	57.1%	8			

## Seton Hall 61 - 4-2

#	Player		Total			3-Ptr			Rebounds			PF	TP	A	TO	Blk	Stl	Min
			FG-FGA	FG-FGA	FT-FTA	FG-FGA	FG-FGA	FT-FTA	Off	Def	Tot							
30	LUNDBERG, Claire	f	0-3	0-3	0-0	0	3	3	1	0	1	1	0	0	20			
31	JONES-PACK, Jayla	c	3-3	0-0	0-2	3	1	4	5	6	0	5	4	1	16			
00	JACKSON, JaQuan	g	4-16	2-7	4-7	0	5	5	3	14	2	6	0	2	32			
01	HILAIRE, Kaela	g	5-11	1-3	4-8	0	2	2	3	15	5	7	0	3	27			
04	HEALY, Kaity	g	0-1	0-0	0-0	0	1	1	1	0	1	3	0	1	19			
10	FITZGERALD, Ali		0-1	0-0	0-0	1	0	1	0	0	0	0	0	0	3			
15	WINTERS, Deja		4-12	1-5	2-2	0	2	2	2	11	0	4	0	1	23			
20	SNIDER, Skyler		1-3	1-2	0-0	1	2	3	2	3	0	1	2	2	17			
24	SAMUELS, Shadeen		1-3	0-1	0-2	1	3	4	5	2	0	2	0	3	16			
25	MOLYNEAUX, Jordan		4-6	0-0	0-0	1	3	4	4	8	1	2	1	0	25			
44	JEMMOT, Chanel		1-1	0-0	0-0	1	0	1	0	2	0	0	0	0	2			
	Team					3	3	6										
Totals			23-60	5-21	10-21	11	25	36	26	61	10	31	7	13	200			
1st - FG %:			5-13	38.5%	2nd: 4-14	28.6%	3rd: 10-19	52.6%	4th: 4-14	28.6%	Game: 23-60	38.3%	Deadball					
3FG %:			2-5	40.0%	2-9	22.2%	0-3	0.0%	1-4	25.0%	5-21	23.8%	Rebounds					
FT %:			2-4	50.0%	2-8	25.0%	5-7	71.4%	1-2	50.0%	10-21	47.6%	6					

Officials: Norma Jones, Dennis DeMayo, Tim Daley  
Technical fouls: UT Arlington-None. Seton Hall-TEAM.  
Attendance: 672  
SHU Thanksgiving Classic Championship  
Home bench technical at 7:54 in Q3

Score by periods	1st	2nd	3rd	4th	Total
UT Arlington	18	23	33	12	86
Seton Hall	14	12	25	10	61

# UT ARLINGTON LADY MAVERICK BASKETBALL

#DecideToDance



**Cierra  
JOHNSON**  
Guard



**Lauren  
BILLIE**  
Guard



**Crystal  
ALLEN**  
Guard



**Breck  
CLARK**  
Guard



**Miranda  
LEJUNE**  
Point Guard



**Shelby  
RICHARDS**  
Guard



**Brooke  
ALEXANDER**  
Guard



**Greta  
KAIRYTE**  
Forward



**Ericka  
MATTINGLY**  
Point Guard



**Christina  
DEVERS**  
Guard



**Aysia  
EVANS**  
Guard



**Allyson  
TE'O**  
Forward



**Kelsey  
JOHNSON**  
Forward



**Rebekah  
VANDIJK**  
Center



**Krista  
GERLICH**  
Head Coach



**Kristin  
COLE**  
Associate Head Coach



**Ashley  
CRAWFORD**  
Assistant Coach



**Talby  
JUSTUS**  
Assistant Coach