



# TEXAS TECH

## 2016 VOLLEYBALL

8 NCAA TOURNAMENT APPEARANCES

826 PROGRAM WINS

41ST SEASON

31

TEXAS TECH (10-20, 0-15) at KANSAS STATE (12-12, 5-9)

Nov. 26 • 6 PM

Manhattan, Kansas • Ahearn Field House

### 2016 SCHEDULE/RESULTS

#### Texas Tech (10-20 • 0-15 Big 12)

H: 5-8 • A: 4-8 • N: 1-4

#### AUGUST

26	^	vs. Colorado	L, 2-3
27	^	vs. Long Beach State	L, 0-3
27	^	at Portland State	W, 3-1

#### SEPTEMBER

2	+	vs. South Dakota State	W, 3-0
2	+	at North Dakota State	W, 3-2
3	+	at North Dakota	W, 3-0
5		<b>UTEP</b>	<b>W, 3-0</b>
9	%	<b>ABILENE CHRISTIAN</b>	<b>W, 3-0</b>
9	%	<b>STEPHEN F. AUSTIN</b>	<b>W, 3-1</b>
10	%	<b>UT RIO GRANDE VALLEY</b>	<b>W, 3-0</b>
10	%	<b>ORAL ROBERTS</b>	<b>W, 3-1</b>
14		at Rice	W, 3-2
15	#	vs. Texas State	L, 0-3
16	#	vs. Wichita State	L, 0-3
16	#	at UTSA	L, 0-3
21	*	at TCU	L, 1-3
24	*	<b>WEST VIRGINIA</b>	<b>L, 0-3</b>
28	*	at Baylor	L, 0-3

#### OCTOBER

5	*	<b>KANSAS STATE</b>	<b>L, 0-3</b>
8	*	at No. 6 Kansas	L, 0-3
12	*	<b>OKLAHOMA</b>	<b>L, 0-3</b>
15	*	at Iowa State	L, 0-3
21	*	<b>No. 2 TEXAS</b>	<b>L, 2-3</b>
26	*	<b>No. 6 KANSAS</b>	<b>L, 0-3</b>
29	*	at West Virginia	L, 2-3

#### NOVEMBER

2	*	<b>BAYLOR</b>	<b>L, 1-3</b>
4	*	<b>IOWA STATE</b>	<b>L, 2-3</b>
12	*	at Oklahoma	L, 0-3
16	*	at Texas	L, 0-3
19	*	<b>TCU</b>	<b>L, 2-3</b>
26	*	at Kansas State	6 PM

\* - Conference Match

^ Portland State Tournament (Portland, Oregon)

+ North Dakota State Classic (Fargo, North Dakota)

% Texas Tech Tournament (Lubbock, Texas)

# UTSA Tournament (San Antonio, Texas)

### Match 31

### Texas Tech at Kansas State -- Manhattan, Kansas

#### TEXAS TECH RED RAIDERS (10-20, 0-15)

2015 Team Record: 14-16, 3-13 Big 12

Head Coach: Tony Graystone (Louisville '96)

Career Record: 450-180 (18th season)

Record at Texas Tech: 10-20, 0-15 (1st season)



#### KANSAS STATE WILDCATS (10-19, 0-14)

2015 Team Record: 17-12, 9-7 Big 12

Head Coach: Suzie Fritz (Florida Atlantic '94)

Career Record: 307-172 (15th season)

Record at Kansas State: Same (15th season)



### QUICK HITS

- Texas Tech is in its 41st season of volleyball, the first under head coach Tony Graystone.
- First-year head coach Tony Graystone is in search of his first Big 12 win in the scarlet and black.
- Saturday will be the final match for three Red Raiders: Seniors Lauren Douglass and Marguerite Grubb, as well as redshirt junior Victoria Hinneburg.
- Tech has won 10 sets throughout conference play, two more than its 2015 total.
- Tech has won at least one Big 12 contest every year since 2009.
- Texas Tech has held four of its last five opponents to hitting percentages of .229 or less.
- Tech fell to Kansas State, 3-0 (25-18, 25-19, 25-20) earlier this season in Lubbock.
- The Red Raiders' last defeated the Wildcats in 2013 at home to split the season series.
- Tech's starting unit of Grubb, Douglass, Sagers, Akiu, Redding, Keenan and either McDougald or Atwood has now started seven of the last eight matches.
- Texas Tech has used 16 different starting lineups this season.
- Six underclassmen have played major roles this season, including sophomores Tita Akiu, Katy Keenan and Sarah Redding along with freshmen Toni McDougald, Chandler Atwood and Maggie Sagers.
- Senior Lauren Douglass is set to finish second in career hitting percentage at Texas Tech (.339).
- Sophomore libero Reyn Akiu's dig total of 535 this season ranks second on the school's single-season digs list.
- Setter Margurite Grubb has posted back-to-back 1,000 assist seasons and is fifth in school history averaging 9.69 assists per set for her career.
- Senior Margurite Grubb notched her eighth double-double of the season and 19th of her career in Tech's last outing against TCU with 55 assists and 14 digs.
- A first-set rally against Texas that featured diving efforts from multiple players was selected as October's NCAA Volleyball Play of the Month and will be up for Play of the Year in December.

### TEXAS TECH STARTERS vs TCU (2016 STATS)



**MARGUERITE GRUBB**



**LAUREN DOUGLASS**



**MAGGIE SAGERS**



**REYN AKIU**



**SARAH REDDING**



**KATY KEENAN**



**AUDREY FRAGNIERE**

5-10 • SET • SO	6-2 • MB • SR	5-9 • DS • FR	5-2 • LIB • SO	6-1 • OH • SO	6-4 • MB • SO	5-9 • OH • JR
A/S 10.08	K/S 3.06	#DIG 173	#DIG 535	K/S 2.42	#KILL 172	K/S 1.72
D/S 2.31	HIT % .340	D/S 1.78	D/S 5.00	#KILL 126	HIT % .245	#KILL 31
#AST 1018	#BLK 112	#AST 13	#AST 84	HIT % .191	K/S 1.59	#BLK 5
#DIG 233	#KILL 334	#ACE 18	#ACE 18	#BLK 29	#BLK 64	HIT % .016

K/S designates kills per set • HIT % designates hitting percentage • D/S designates digs per set • B/S designates blocks per set • A/S designates assists per set.



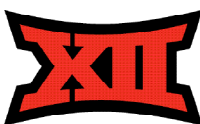
@TTUVball/@TechAthletics



TexasTechVolleyball/TexasTechAthletics



/TTUVball & /TTUAthletics



**2016 QUICK FACTS****GENERAL INFORMATION**

Location \_\_\_\_\_ Lubbock, Texas  
 Founded \_\_\_\_\_ 1923  
 Enrollment \_\_\_\_\_ 35,893  
 Nickname \_\_\_\_\_ Red Raiders  
 Colors \_\_\_\_\_ Scarlet & Black  
 Mascot \_\_\_\_\_ Masked Rider / Raider Red  
 Affiliation \_\_\_\_\_ NCAA Division I  
 Conference \_\_\_\_\_ Big 12  
 Chancellor \_\_\_\_\_ Robert Duncan  
 President \_\_\_\_\_ Dr. Lawrence Schovanec  
 Athletics Director \_\_\_\_\_ Kirby Hocutt  
 Sr. Associate AD/SWA \_\_\_\_\_ Dr. Judi Henry  
 Department Main Number \_\_\_\_\_ (806) 742-3355

**HISTORY**

Season of Volleyball \_\_\_\_\_ 41st  
 First Season \_\_\_\_\_ 1975  
 All-Time Record \_\_\_\_\_ 826-686-6 (.545)  
 NCAA Tournament Appearances \_\_\_\_\_ 8  
 \_\_\_\_\_ 1990, 1991, 1992, 1995, 1996, 1998, 2000, 2001

**FACILITY INFORMATION**

Name \_\_\_\_\_ United Supermarkets Arena  
 Opened \_\_\_\_\_ 1999  
 Capacity \_\_\_\_\_ 15,070

**COACHING STAFF**

Head Coach \_\_\_\_\_ Tony Graystone  
 Alma Mater \_\_\_\_\_ University of Louisville '96  
 Record at Tech \_\_\_\_\_ 10-20 (1st Season)  
 Career Record \_\_\_\_\_ 450-180 (18th Season)  
 Twitter \_\_\_\_\_ @TonyGraystone  
 Best time to reach \_\_\_\_\_ Contact SID  
 Assistant Coach \_\_\_\_\_ Morgan Thomas (1st Season)  
 Alma Mater \_\_\_\_\_ USC-Upstate '12  
 Assistant Coach \_\_\_\_\_ Brandy Huskey (1st Season)  
 Alma Mater \_\_\_\_\_ UTSA '13  
 Dir. of Operations \_\_\_\_\_ Alyce Peters (2nd Season)  
 Alma Mater \_\_\_\_\_ Texas State '09  
 Office Number \_\_\_\_\_ (806) 742-7545

**TEAM INFORMATION**

2015 Record \_\_\_\_\_ 14-16  
 Conference Record \_\_\_\_\_ 3-13  
 Home Record \_\_\_\_\_ 7-7  
 Away Record \_\_\_\_\_ 3-8  
 Neutral Site Record \_\_\_\_\_ 4-1  
 Postseason \_\_\_\_\_ None  
 Final Ranking \_\_\_\_\_ None  
 Letterwinners Returning/Lost \_\_\_\_\_ 12/4  
 Starters Returning/Lost \_\_\_\_\_ 4/2+Libero  
 Newcomers \_\_\_\_\_ 11  
 Top Returning Players \_\_\_\_\_ Lauren Douglass,  
 \_\_\_\_\_ Marguerite Grubb, Sarah Redding  
 Top Newcomers \_\_\_\_\_ Eighthmy Dobbins,  
 \_\_\_\_\_ Taylor Martinez, Hannah Henriksen

**ATHLETICS COMMUNICATIONS**

Senior Associate AD \_\_\_\_\_ Robert Giovannetti  
 E-mail \_\_\_\_\_ robert.giovannetti@ttu.edu  
 Assistant Director (Volleyball) \_\_\_\_\_ Ty Parker  
 Office \_\_\_\_\_ (806) 834-2769  
 Cell \_\_\_\_\_ (806) 928-8476  
 Fax \_\_\_\_\_ (806) 742-1970  
 E-mail \_\_\_\_\_ ty.a.parker@ttu.edu  
 Website \_\_\_\_\_ www.texastech.com  
 Twitter \_\_\_\_\_ @TTUVball, @TechAthletics  
 Mailing Address \_\_\_\_\_ 2526 6th St.  
 \_\_\_\_\_ Lubbock, TX 79409

**MEDIA INFORMATION**

The Texas Tech Athletics Communications office is here to serve the media throughout the 2016 Red Raider volleyball season. Media members in need of assistance can contact Ty Parker in the Athletics Communications office at (806) 928-8476.

**MEDIA CREDENTIALS**

Media members covering the Texas Tech volleyball program at the United Supermarkets Arena during the 2016 season must be issued a working credential from the Texas Tech Athletics Communications office.

- All requests for both media and photo credentials must be made either in writing or via e-mail at least a day in advance to Ty Parker, Assistant Director for Athletic Communications. (Office: (806) 834-2769; Fax: (806) 742-1970; e-mail: ty.a.parker@ttu.edu)
- Requests are honored from sports editors of daily and weekly newspapers, editors of sports periodicals, and sports directors of radio and television stations who broadcast regularly scheduled daily sports reports and talk shows.
- Credentials can be picked up in the Athletics Communications office (south end of Jones AT&T Stadium) or at will call, which is located at the United Supermarkets Arena ticket booth.

**GAMEDAY SERVICES**

A complete NCAA box score and pertinent game information will be distributed to members of the working media following the conclusion of the match. Game notes, statistics, and rosters are provided prior to first serve in the USA media room. A pregame meal is also served in the media room approximately 45 minutes prior to first serve.

**PHOTOGRAPHERS**

Photographers are permitted to shoot in approved areas at the United Supermarkets Arena. All photographers must be issued a working credential by the Athletics Communications office to gain access to the court level of the facility.

**RADIO BROADCASTS**

Media row at the United Spirit Arena is equipped with both ISDN and phone lines for radio crews wanting to broadcast Texas Tech matches. For information on the ISDN and phone lines, please contact Ty Parker in the Athletics Communications office.

**VIDEO HIGHLIGHTS/NEWS CONFERENCES**

Video from news conferences and games will be available to the media via FTP. Broadcast quality video footage (game highlights, post-practice interviews, post-game interviews, etc) are available at www.ttumedia.com. Please contact the athletics communications office for login instructions.

**LIVE TELEVISION**

Television stations are welcome to conduct live interviews from the United Spirit Arena as the facility can easily accommodate network game coverage. Live interviews will be conducted near the home tunnel on the north side of the court. Please notify Ty Parker at least 24 hours in advance for live television setup.

**PLAYER INTERVIEWS**

Players and coaches are available for interviews every day prior to the start of practice. Practice times vary from week to week, so media members wishing to attend should contact Ty Parker in the Athletics Communications office to get a weekly schedule.

**POSTGAME INTERVIEWS**

Texas Tech players and head coach Tony Graystone will be made available to the media on the court of the United Spirit Arena following a brief cooling off period. The Texas Tech locker room will remain closed.

**PLAYER TO WATCH: LAUREN DOUGLASS**

Senior Lauren Douglass has arguably been one of the most dominant players in Texas Tech history at the middle blocker position. The Flower Mound native set the school with a single-season hitting percentage of .377 last year, and is hitting .3439 for her career, the second best career clip in school history.



**FINAL FAREWELL**

Texas Tech will look to send its three upperclassmen departing from the program out on a high note. Seniors Lauren Douglass and Marguerite Grubb have inked their names throughout the Texas Tech record book, while redshirt junior Victoria Hinneburg has made significant contributions not only on the court, but in the classroom and locker room as well. Douglass is on pace to finish second on the school's career hitting percentage list after posting the school's top hitting percentage in a single season in her junior campaign. Grubb is currently fifth on the schools' career assist per set list and has back-to-back 1,000 assist seasons with 1018 this season.

**LEAVING A LEGACY**

Senior Lauren Douglass will go down as one of Texas Tech's all-time great hitters after setting the school record for single-season hitting percentage (.377) in her junior campaign and aiming for one of the top spots on the school's career hitting percentage list. The two-time All-Big 12 Second Team selection also posted a .773 clip in a match at Portland State this season, which ranks sixth all-time in a single match in Tech history. Meanwhile, senior Marguerite Grubb has back-to-back 1,000 assist seasons, ranks fifth in Tech history with a 9.69 career assist/set average and is currently eighth on the school's career assists list. Grubb also is a three-time Academic All-Big 12 selection, posting a 4.00 undergraduate GPA in accounting.

**LAST TIME OUT**

The Red Raiders dropped a tough five-set bout to TCU, 3-2 (26-28, 26-24, 25-23, 23-25, 15-10) in their regular season home finale. Tech led 10-8 in the final set before errors cost Tech its first Big 12 win of the season. Four Red Raiders posted double-digit kills, while five more posted double-digit digs. Senior Lauren Douglass posted a season-high 18 kills while sophomore Sarah Redding connected on 14 kills at a .609 clip. Senior setter Marguerite Grubb also went out on her home court in style with 55 assists and 14 digs, which game her 19 double-doubles for her career and back-to-back 1,000 assist seasons.

**THE WILDCATS**

Kansas State fell in its last outing at No. 7 Texas in four sets. The Wildcats are 5-2 at home in Big 12 play this season with its only two losses coming to Top 10 foes in Texas and Kansas. Senior Katie Brand leads the Big 12 in assists per set (11.34) while fellow senior Brooke Sassin is top 10 in the conference averaging 3.08 kills per set. As a team, the Wildcats have the third highest hitting percentage in the league (.241) behind Texas and Oklahoma.

**PRIOR MATCHUP**

Texas Tech battled to a 3-0 (25-18, 25-19, 25-20) loss against Kansas State at United Supermarkets Arena on Oct. 5 in just its fourth Big 12 contest of the season. Both sides had an equal number of blocks with four, but the Wildcats out-hit the Red Raiders .308 to .168 in the matchup. Tech led 3-0 in the first two sets, but couldn't sustain momentum throughout. Freshman Chandler Atwood, who has started five of the last eight matches for Tech, did not play in the first matchup, while senior Lauren Douglass led the Red Raiders with 10 kills and fellow senior Lauren Douglass recorded her third double-double of the season with 28 assists and 11 digs.

**INSIDE THE SERIES**

Texas Tech trails the all-time series with Kansas State, 10-35, dropping the matchup earlier in the season and five in a row overall. The Red Raiders' last win came in 2013 when Texas Tech earned a 3-1 home win. Texas Tech also earned a split against the Wildcats in 2012. The Red Raiders are 1-19 overall against the Wildcats in Manhattan. The series, which dates back to 1982, features four matches prior to the formation of the Big 12 with the two schools splitting the matchups, 2-2.

**ACADEMIC HONORS ROLLING IN**

Four Red Raiders were named to 2016 Big 12 All-Academic Teams with sophomore Katelyn Bryant one of five Big 12 student-athletes recognized with a 4.0 GPA. Joining her on the first team were seniors Lauren Douglass and Marguerite Grubb, while sophomore Katy Keenan made the second team. Additionally, Grubb was named to the 2016 CoSIDA Academic All-District Team, marking her third selection in four seasons. Along with holding down the eighth spot on the school's career assists list, the Houston, Texas, native finished her undergrad career with a perfect 4.0 GPA in accounting and currently sports a 3.86 GPA as she works towards her master's in accounting.

**RECORD BOOK TRACKER**

Senior Lauren Douglass has been one of the most dominant attackers in program history. A year after setting the school mark for hitting percentage in a single season (.376), Douglass is hitting .340 this year, and will finish second on the school's career hitting percentage list. Sophomore Reyn Akiu is second on the school's single-season digs list with 535 this season. Senior Marguerite Grubb has 2,522 assists for her career, good for eighth on Tech's all-time career assists list.

**INSIDE THE SERIES**

TEXAS TECH TRAILS, 6-8

Home: 4-3; Away: 2-5; Neutral: 0-0

9-21-16	L	1-3	Away
11-18-15	L	0-3	Away
10-10-15	L	0-3	Home
11-19-14	L	1-3	Away
9-24-14	W	3-1	Home
11-30-13	W	3-0	Home
10-12-13	W	3-2	Away
11-7-12	L	0-3	Home
9-26-12	L	0-3	Away
8-26-11	L	1-3	Away
9-12-08	L	2-3	Home
9-3-01	W	3-0	Home
9-5-00	W	3-0	Away

**AVCA RANKINGS (11/21)**

Rk.	School	Pts.	W-L	LV
1	Nebraska (64)	1600	26-1	1
2	Minnesota	1528	23-4	2
3	Wisconsin	1473	24-3	3
4	Kansas	1409	25-2	4
5	Texas	1266	21-4	7
6	North Carolina	1242	25-3	6
7	Washington	1164	24-4	8
8	UCLA	1104	23-5	9
9	Florida	1099	24-3	5
10	BYU	1012	26-3	10
11	San Diego	1001	24-4	11
12	Stanford	921	19-7	12
13	Hawai'i	816	22-5	14
14	Michigan State	795	23-7	13
15	Penn State	720	20-9	15
16	Florida State	560	22-5	17
17	Utah	545	20-9	16
18	Michigan	471	21-9	18
19	Oregon	429	19-8	19
20	Western Kentucky	394	30-2	20
21	Creighton	327	24-6	21
22	Missouri	274	23-5	25
23	Kentucky	249	22-6	23
24	Dayton	214	30-1	22
25	Washington State	40	20-10	NR

Receiving Votes: Ohio State 27; Southern California 20; Missouri State 18; Iowa State 14; Texas A&M 14; Boise State 11; Arizona 9; Duke 5; Illinois 5; Purdue 3; SMU 3

Three teams mentioned on only one ballot for a total of 18 combined points.

**WEEKLY SCHEDULE**

MONDAY	TUESDAY	WEDNESDAY	THURSDAY	FRIDAY	SATURDAY	SUNDAY
<b>21</b>	<b>22</b>	<b>23</b>	<b>24</b>	<b>25</b>	<b>26</b>	<b>27</b>
PRACTICE	PRACTICE MEDIA AVAILABILITY	PRACTICE	PRACTICE THANKSGIVING	TRAVEL TO MANHATTAN PRACTICE	<b>MATCHDAY</b>  <b>AT KSU</b>  <b>6 PM</b>  <b>Ahearn Field House</b>	OFF

**BIG 12 WEEKLY SCHEDULE****WEDNESDAY, NOVEMBER 23**

Iowa State 3, Baylor 2 \*

TCU 3, West Virginia 2 \*

**SATURDAY, NOVEMBER 26**

West Virginia at No. 5 Texas \*

Longhorn Network | 1 p.m.

No. 4 Kansas at Baylor \*

FSSW+ | 1 p.m.

Texas Tech at Kansas State \*

K-StateHD.tv | 6 p.m.

Oklahoma at Iowa State \*

Cyclones.tv | 8 p.m.

\* DENOTES BIG 12 CONFERENCE MATCHUP

ALL TIMES LISTED IN CENTRAL. AVCA RANKINGS NOTED.

**AMONG THE BIG 12'S BEST**

A trio of Red Raiders rank among the best in the Big 12 for their position. Senior Lauren Douglass is fourth in the conference with a .340 hitting percentage. Sophomore Tita Akiu leads the conference in total digs with 535 and is second in the conference with 5.00 digs per set. Likewise, senior setter Marguerite Grubb is one of just six Big 12 players averaging over 10.00 assists per game at 10.08.

**YOUTH MOVEMENT**

With seniors Lauren Douglass and Marguerite Grubb leading the way, a multitude of underclassmen have played pivotal roles on the team this season. Sophomores Tita Akiu and Katy Keenan have started every match this season when healthy, while fellow sophomore Sarah Redding and a trio of freshmen in Toni McDougald, Chandler Atwood and Maggie Sagers have been regulars in the starting lineup and rotation as well.

**FRESHMAN TRIO**

Stepping up to aid senior Lauren Douglass on the attack are a pair of freshman in Toni McDougald and Chandler Atwood. McDougald is second on the team with 187 kills while Atwood is fourth on the team with 164, respectively. Meanwhile, freshman Maggie Sagers has come on as one of the team's top defenders, starting each of the last 12 matches including two at Libero when Akiu missed time with a knee injury.

**COMING ON STRONG**

After missing much of the nonconference portion of the schedule recovering from injury, sophomore Sarah Redding has come on strong to provide even more balance to the Texas Tech offense. Redding has posted double-digit kills in five of the last eight matches, highlighted by a career-high 17 kills against No. 2 Texas.

**DOUBLE THREAT**

While sophomore libero Tita Akiu receives much of the praise defensively, senior Lauren Douglass has once again proven to be a force at the net. Along with her dominance on the attack, the veteran is averaging 1.03 blocks/set which is top 10 in the Big 12. Among the top 10 block leaders in the Big 12, Douglass's .340 hitting percentage is second best in the league.

**SET UP ARTIST**

In 2015, Marguerite Grubb put up 1,007 assists, becoming the first Red Raider to record 1,000+ assists in a single season since Emily Ruetter in 2013. This season, she has 1,018 assists for back-to-back 1,000 assist seasons. She cracked the school's all-time top 10 list in assists in the Red Raider's first match of 2016, compiling 52 assists against Colorado and is currently at 2,673 career assists, which ranks as the eighth-most in a career in school history. Additionally, Grubb has gotten it done defensively throughout her career, wracking up 19 career double-doubles via assists and digs.

**ON POINT**

Texas Tech hit .507 (42-6-71) in a sweep of Abilene Christian, marking the first time since the 1998 season the Red Raiders have hit over .500 in a single match. The .507 hitting percentage matched the fourth-highest hitting percentage in school history and is the highest offensive output in the Big 12 this season.

**IN THE RECORD BOOK**

Seniors Marguerite Grubb and Lauren Douglas didn't waste any time planting themselves in the Texas Tech record book this season. In the Red Raider's first match of 2016, Grubb compiled 52 assists to crack the school's all-time top 10 list in assists. She then compiled 25 assists at Iowa State to slide up to ninth and now sits at eighth with 2,558. Douglas made a mark of her own in a win against Portland State, powering her way to 17 kills with a .773 hitting percentage, a clip that ranks as her career-best and sixth all-time in a single match in the Texas Tech record books. She's currently on pace to finish with a .340 career hitting percentage, which would rank second in school history. Sophomore libero Reyn Akiu has recorded 535 digs this season which is second on the school's single-season individual digs list.

**YOUNG PASSERS**

Sophomores Reyn Akiu and Katelyn Bryant and freshman Maggie Sagers have stepped in at the libero/defensive specialist position, providing solid play in the back line. Akiu was consistently one of the Big 12's top performers prior to her injury and currently ranks second in the Big 12 with 5.00 digs/set. Bryant and Sagers have split time at the position, combining for 358 digs this season while another freshman, Kylie Rittmann has contributed 87 in five starts.

**BIG 12 CONFERENCE STANDINGS**

	BIG 12			OVERALL						Sets	Streak
	W	L	Pct.	W	L	Pct.	Home	Away	Neutral		
Kansas	13	1	.929	24	2	.923	11-0	8-2	5-0	74-23	W12
Texas	12	2	.857	20	4	.833	11-1	8-2	1-1	66-26	W1
Baylor	8	5	.615	20	9	.690	11-2	7-6	2-1	69-38	L1
Iowa State	8	5	.615	16	9	.640	8-4	6-5	2-0	59-35	W6
Kansas State	8	6	.571	19	8	.704	11-3	5-4	3-1	63-41	W2
Oklahoma	5	9	.357	14	13	.519	7-5	4-6	3-2	54-44	L1
TCU	5	9	.357	12	12	.500	9-4	2-8	1-0	45-51	W1
West Virginia	3	11	.214	12	16	.429	5-7	3-6	4-3	51-57	L4
Texas Tech	0	14	.000	10	19	.345	5-7	4-8	1-4	40-64	L17

## LAST MATCH

# Volleyball Box Score

## 2016 Texas Tech Volleyball

### TCU vs Texas Tech (Nov 19, 2016 at Lubbock, Texas)

##	TCU	S	Attack			Pct	Ast	Serve		RE	Dig	Block			BH	Pts
			K	E	TA			SA	SE			BS	BA	BE		
2	Smith, Ashley	5	9	5	42	.095	3	1	1	1	17	0	0	0	0	-
10	McGuire, Regan	5	8	1	16	.438	2	5	1	0	1	0	4	1	0	-
11	Konstantinidou, L.	5	0	0	0	.000	26	2	1	0	10	0	0	0	0	-
12	Martin, Ashleigh	5	12	7	32	.156	0	0	0	0	3	0	4	0	0	-
14	Mikals, Sarita	5	11	7	47	.085	1	2	0	0	24	0	3	0	0	-
19	Gower, Natalie	5	11	1	28	.357	0	0	0	0	1	0	4	1	0	-
1	Bergeson, Jillian	5	0	0	0	.000	2	1	3	2	25	0	0	0	1	-
6	Walsh, Anna	5	13	3	26	.385	0	0	0	0	2	0	1	0	1	-
8	Smith, Kaylee	5	0	0	0	.000	25	1	3	0	3	0	0	0	0	-
Totals		5	64	24	191	.209	59	12	9	3	86	0	16	2	2	-

## Team Attack By Set

TOTAL TEAM BLOCKS: 8.0

Set	K	E	TA	Pct
1	15	5	42	.238
2	20	5	54	.278
3	10	5	35	.143
4	15	6	44	.205
5	4	3	16	.062

## SET SCORES

TCU (3)  
Texas Tech (2)

**1 2 3 4 5 Team Records:**  
 26 26 25 23 15 13-12, 6-9  
 28 24 23 25 10 10-20, 0-15

##	Texas Tech	S	Attack			Pct	Ast	Serve		RE	Dig	Block			BH	Pts
			K	E	TA			SA	SE			BS	BA	BE		
4	Grubb, Marguerite	5	2	0	8	.250	55	0	2	0	14	0	1	1	1	-
5	Douglass, Lauren	5	18	6	41	.293	0	2	2	0	1	1	1	0	0	-
6	Redding, Sarah	5	14	0	23	.609	0	0	0	0	2	0	1	0	0	-
12	Keenan, Katy	5	6	6	18	.000	0	0	0	0	1	0	4	1	0	-
13	Fragniere, Audrey	5	13	12	48	.021	0	0	0	0	10	0	2	1	0	-
17	Sagers, Maggie	5	1	0	4	.250	0	1	2	1	10	0	0	0	0	-
2	Rittimann, Kylie	5	0	0	8	.000	2	0	2	1	17	0	0	0	0	-
7	Akiu, Reyn	5	2	0	4	.500	2	0	1	1	27	0	0	0	0	-
18	Atwood, Chandler	5	12	5	39	.179	2	0	0	2	1	0	1	0	0	-
26	Bryant, Katelyn	5	0	0	1	.000	0	0	0	2	9	0	0	0	0	-
Team										5						
Totals		5	68	29	194	.201	61	3	9	12	92	1	10	3	1	-

## Team Attack By Set

TOTAL TEAM BLOCKS: 6.0

Set	K	E	TA	Pct
1	20	7	43	.302
2	14	2	46	.261
3	14	7	41	.171
4	14	6	39	.205
5	6	7	25	-.040

Site: Lubbock, Texas (United Supermarkets)  
 Date: Nov 19, 2016 Attend: 577 Time: 2:30  
 Referees: Steve Owens, William Stanley



HEAD COACH

@TonyGraystone

# TONY GRAYSTONE

18th Season Overall • 1st Season at Texas Tech • University of Louisville '96

Entering his first season at Tech, Tony Graystone has a solid mixture of great newcomers and established veterans

Tony Graystone was named the head coach of Texas Tech volleyball on Thursday, Jan. 21, 2016. Graystone arrives at Texas Tech after serving seven seasons as the head volleyball coach at Texas A&M-Corpus Christi.

"Tony Graystone is a proven winner and a respectful leader and coach with tremendous ties to the state of Texas, specifically in West Texas," Texas Tech Director of Athletics Kirby Hocutt said. "We are so thrilled to welcome him, along with Lauren, Drew and Dylan to the Texas Tech Athletics family."

In seven seasons at Texas A&M-Corpus Christi, Graystone turned the Islanders into one of the premier volleyball programs in the Southland Conference. Last season, the Islanders put together their best season in program history, finishing 31-5 overall, with a spotless 16-0 conference mark. It was also the first NCAA Tournament berth for the Islanders, who faced Texas A&M in first round play. Their win total was the best in school history and was one win short of the winningest season by any Southland program.

Graystone's squads have recorded 20 or more wins in three of the last four seasons, finishing one victory shy of that mark in 2014. He improved his team's win total in each of his first four seasons on the Island, culminating with the 2013 season, which was a historic season for the Islanders. The team finished with a 20-12 record, including a then school-best 13-5

record in Southland Conference play. The Islanders also made history by advancing to the semifinals of the conference tournament for the first time.

"This is a very special day for me and my family," Graystone said. "Lubbock is definitely home for us and there's no place we'd rather be than at Texas Tech. I am looking forward to meeting the team and getting started on the court as soon as possible. We all know the challenges ahead of us to improve the program and take positive steps in the Big 12. But I know I'm starting with a group of talented, committed players and together we will make it happen."

In the last four years, Graystone has collected a 91-44 record, including a 52-16 record in Southland play. In 2015, the Islanders made their fourth consecutive appearance and fifth overall trip to the Southland Tournament. For the second-straight year, the Islanders advanced to the semifinals while finishing with a 19-16 record, including an 11-5 record in conference play.

The squad set a school record in 2012 with a 21-11 mark. The Islanders won 12 Southland matches and finished third in the conference, both first-time accomplishments for Texas A&M-Corpus Christi. Since Graystone took over the program, the Islanders have improved their national RPI by 235 spots, making them the most improved NCAA Division I team in the country over that time.

Prior to coming to the Island, Graystone spent 10 seasons as the head coach at West Texas A&M in Canyon, where he posted a 315-61 record and became the all-time winningest coach in program history. His .837 winning percentage was the third-

highest among active NCAA Division II head coaches and he reached 300 victories faster than any other coach in the division's history. He reached 100 wins in 106 matches making him the quickest coach at the time in any NCAA sport or division to reach the century mark in wins. He was named the Lone Star Conference Coach of the Year five times and the AVCA Southwest Region Coach of the Year on four occasions.

At West Texas A&M, he guided the Lady Buffs to five NCAA Regional appearances and eight Lone Star Conference crowns in 10 seasons. He mentored 16 All-Americans and one Division II National Player of the Year in 1999. His 2001 team was ranked No. 1 for seven weeks, while his 2002 team held the top spot for five weeks. In 2003, his team set an NCAA standard with 77 conference wins in a row.

Before becoming the head coach, Graystone was an assistant coach for the Lady Buffs and was part of a coaching staff that won the NCAA Division II Championship in 1997. He also served as the program director for the Amarillo Junior Olympic Volleyball Club. He began his career as a head coach at Waggoner and Ballard High Schools in Louisville, Kentucky.

Graystone earned an M.S. in exercise physiology from the University of Louisville in 1996 after graduating with a B.S. in Health Sciences with an emphasis in exercise science from Grand Valley State (Mich.) in 1992.

He and his wife Lauren, a native of Whitharral, Texas, have two sons, Drew and Dylan.



## 2016 MATCH-BY-MATCH RESULTS

Date	Opponent	Score	Match results	Overall	Conf	Time	Attend
Aug. 26, 2015	vs Colorado	L 2-3	25-20, 19-25, 26-24, 18-25, 8-15	0-1	0-0	2:05	125
Aug. 27, 2015	vs Long Beach State	L 0-3	16-25, 16-25, 23-25	0-2	0-0	1:13	128
Aug. 27, 2015	at Portland State	W 3-1	25-17, 25-21, 22-25, 25-17	1-2	0-0	1:43	288
Sept. 2, 2016	vs South Dakota State	W 3-0	25-18, 25-17, 25-21	2-2	0-0	1:07	48
Sept. 2, 2016	at North Dakota State	W 3-2	21-25, 25-27, 25-22, 25-12, 15-11	3-2	0-0	2:16	863
Sept. 3, 2016	at North Dakota	W 3-0	25-20, 25-18, 25-22	4-2	0-0	1:26	959
Sept. 5, 2016	UTEP	W 3-0	25-16, 25-15, 25-23	5-2	0-0	1:24	423
Sept. 9, 2016	ABILENE CHRISTIAN	W 3-0	25-9, 25-10, 25-16	6-2	0-0	1:08	519
Sept. 9, 2016	STEPHEN F. AUSTIN	W 3-1	21-25, 25-21, 25-15, 25-12	7-2	0-0	1:48	563
Sept. 10, 2016	TEXAS-RGV	W 3-0	25-23, 26-24, 25-21	8-2	0-0	1:20	266
Sept. 10, 2016	ORAL ROBERTS	W 3-1	25-19, 25-12, 20-25, 25-16	9-2	0-0	1:46	288
Sept. 14, 2016	at Rice	W 3-2	25-20, 17-25, 25-15, 23-25, 18-16	10-2	0-0	2:22	446
Sept. 15, 2016	vs Texas State	L 0-3	21-25, 17-25, 20-25	10-3	0-0	1:15	--
Sept. 16, 2016	vs Wichita State	L 0-3	21-25, 22-25, 20-25	10-4	0-0	1:19	--
Sept. 16, 2016	at UTSA	L 0-3	12-25, 22-25, 12-25	10-5	0-0	1:13	390
Sept. 21, 2016	at TCU	L 1-3	14-25, 25-22, 13-25, 14-25	10-6	0-1	1:52	1,611
Sept. 24, 2016	WEST VIRGINIA	L 0-3	19-25, 23-25, 20-25	10-7	0-2	1:30	349
Sept. 28, 2016	at Baylor	L 0-3	17-25, 24-26, 19-25	10-8	0-3	1:30	818
Oct. 5, 2016	KANSAS STATE	L 0-3	18-25, 19-25, 20-25	10-9	0-4	1:30	431
Oct. 8, 2016	at #6 Kansas	L 0-3	8-25, 18-25, 18-25	10-10	0-5	1:11	1302
Oct. 12, 2016	OKLAHOMA	L 0-3	26-28, 23-25, 17-25	10-11	0-6	1:27	479
Oct. 15, 2016	at Iowa State	L 0-3	13-25, 14-25, 15-25	10-12	0-7	1:06	3620
Oct. 21, 2016	#2 TEXAS	L 2-3	25-21, 18-25, 16-25, 28-26, 7-15	10-13	0-8	2:15	1223
Oct. 26, 2016	#6 KANSAS	L 0-3	15-25, 16-25, 20-25	10-14	0-9	1:13	321
Oct. 29, 2016	at West Virginia	L 2-3	25-21, 13-25, 25-21, 27-29, 16-18	10-15	0-10	2:30	547
Nov. 2, 2016	BAYLOR	L 1-3	19-25, 20-25, 25-21, 22-25	10-16	0-11	2:07	621
Nov. 4, 2016	IOWA STATE	L 2-3	25-19, 20-25, 17-25, 25-23, 12-15	10-17	0-12	2:18	470
Nov. 12, 2016	at Oklahoma	L 0-3	25-27, 18-25, 19-25	10-18	0-13	1:27	924
Nov 16	at #7 Texas	L 0-3	22-25, 14-25, 15-25	10-19	0-14	1:21	2551
Nov 19	TCU	L 2-3	28-26, 24-26, 23-25, 25-23, 10-15	10-20	0-15	2:30	577

\* Big 12 Conference match

ATTENDANCE	Dates	Total	Average
Total:	28	20760	741
Home:	13	6530	502
Away:	12	13929	1160

## 2016 INDIVIDUAL STATS

##	Name	ATTACK							SET				SERVE				
		SP	MP-MS	K	K/Set	E	TA	Pct	A	A/Set	TA	Pct	SA	SA/Set	SE	TA	Pct
5	Douglass, Lauren	109	30-30	334	3.06	88	723	.340	6	0.06	42	.143	22	0.20	33	305	.892
16	McDougald, Toni	86	25-15	187	2.17	89	598	.164	3	0.03	47	.064	1	0.01	8	62	.871
12	Keenan, Katy	108	30-30	172	1.59	71	412	.245	3	0.03	13	.231	0	0.00	0	10	1.000
18	Atwood, Chandler	76	24-12	164	2.16	77	476	.183	4	0.05	20	.200	0	0.00	2	19	.895
6	Redding, Sarah	52	16-15	126	2.42	61	340	.191	1	0.02	5	.200	0	0.00	1	3	.667
33	Henriksen, Hannah	55	24-0	99	1.80	44	321	.171	2	0.04	10	.200	0	0.00	0	4	1.000
11	Ybanez, Alyssa	35	14-10	80	2.29	55	252	.099	6	0.17	38	.158	5	0.14	12	100	.880
4	Grubb, Marguerite	101	29-28	57	0.56	21	196	.184	1018	10.08	2332	.437	7	0.07	29	269	.892
15	Ensch, Courtney	25	10-7	47	1.88	15	134	.239	0	0.00	4	.000	0	0.00	3	3	.000
13	Fragniere, Audrey	18	8-3	31	1.72	29	126	.016	0	0.00	11	.000	0	0.00	2	14	.857
17	Sagers, Maggie	97	27-14	8	0.08	9	56	-.018	13	0.13	125	.104	18	0.19	36	327	.890
1	Hinneburg, Victoria	16	12-0	6	0.38	3	20	.150	0	0.00	1	.000	0	0.00	0	1	1.000
7	Akiu, Reyn	107	30-1	5	0.05	3	33	.061	84	0.79	438	.192	18	0.17	17	488	.965
2	Rittimann, Kylie	74	24-5	5	0.07	4	45	.022	11	0.15	63	.175	8	0.11	17	199	.915
3	Cowan, Kyndal	21	11-2	3	0.14	4	13	-.077	55	2.62	201	.274	2	0.10	2	32	.938
9	Morgan, Ashley	34	11-0	2	0.06	3	21	-.048	2	0.06	28	.071	2	0.06	8	93	.914
26	Bryant, Katelyn	100	29-8	1	0.01	0	11	.091	17	0.17	102	.167	17	0.17	6	323	.981
10	Dobbins, Eighmy	9	5-0	0	0.00	1	4	-.250	2	0.22	5	.400	1	0.11	0	12	1.000
24	Martinez, Taylor	1	1-0	0	0.00	0	0	.000	0	0.00	0	.000	0	0.00	1	1	.000
8	Canales, Sophia	7	3-0	0	0.00	1	3	-.333	17	2.43	61	.279	0	0.00	1	12	.917
<b>TEXAS TECH.....</b>		<b>109</b>	<b>30-30</b>	<b>1327</b>	<b>12.17</b>	<b>578</b>	<b>3784</b>	<b>.198</b>	<b>1244</b>	<b>11.41</b>	<b>3546</b>	<b>.351</b>	<b>101</b>	<b>0.93</b>	<b>178</b>	<b>2277</b>	<b>.922</b>
<b>Opponents.....</b>		<b>109</b>	<b>30-30</b>	<b>1472</b>	<b>13.50</b>	<b>538</b>	<b>3843</b>	<b>.243</b>	<b>1385</b>	<b>12.71</b>	<b>3574</b>	<b>.388</b>	<b>138</b>	<b>1.27</b>	<b>233</b>	<b>2408</b>	<b>.903</b>

##	Name	S	RECEPT				DIG		BLOCKING						
			RE	TA	Pct	DIG	Dig/S	BS	BA	Total	Blk/S	BE	BHE	Points	Pts/Set
5	Douglass, Lauren	109	2	22	.909	55	0.50	21	91	112	1.03	7	1	422.5	3.88
16	McDougald, Toni	86	10	155	.935	59	0.69	5	20	25	0.29	6	0	203.0	2.36
12	Keenan, Katy	108	0	9	1.000	14	0.13	4	60	64	0.59	10	1	206.0	1.91
18	Atwood, Chandler	76	4	37	.892	40	0.53	4	30	34	0.45	4	0	183.0	2.41
6	Redding, Sarah	52	0	7	1.000	13	0.25	2	27	29	0.56	4	0	141.5	2.72
33	Henriksen, Hannah	55	4	31	.871	24	0.44	3	11	14	0.25	5	0	107.5	1.95
11	Ybanez, Alyssa	35	9	74	.878	60	1.71	1	12	13	0.37	2	0	92.0	2.63
4	Grubb, Marguerite	101	1	2	.500	233	2.31	6	37	43	0.43	6	18	88.5	0.88
15	Ensch, Courtney	25	0	1	1.000	7	0.28	1	13	14	0.56	0	0	54.5	2.18
13	Fragniere, Audrey	18	5	39	.872	16	0.89	1	4	5	0.28	1	0	34.0	1.89
17	Sagers, Maggie	97	25	437	.943	173	1.78	0	0	0	0.00	0	0	26.0	0.27
1	Hinneburg, Victoria	16	0	1	1.000	2	0.12	0	4	4	0.25	0	0	8.0	0.50
7	Akiu, Reyn	107	18	522	.966	535	5.00	0	0	0	0.00	0	1	23.0	0.21
2	Rittimann, Kylie	74	9	191	.953	88	1.19	0	0	0	0.00	0	1	13.0	0.18
3	Cowan, Kyndal	21	0	0	.000	16	0.76	0	0	0	0.00	2	11	5.0	0.24
9	Morgan, Ashley	34	8	121	.934	53	1.56	0	0	0	0.00	0	0	4.0	0.12
26	Bryant, Katelyn	100	22	268	.918	186	1.86	0	0	0	0.00	0	0	18.0	0.18
10	Dobbins, Eighmy	9	3	11	.727	9	1.00	0	0	0	0.00	0	0	1.0	0.11
24	Martinez, Taylor	1	0	0	.000	0	0.00	0	0	0	0.00	0	0	0.0	0.00
8	Canales, Sophia	7	0	0	.000	5	0.71	0	0	0	0.00	0	0	0.0	0.00
	TEAM		18												
	TEXAS TECH.....	109	138	2155	.936	1588	14.57	48	309	202.5	1.86	47	33	1630.5	14.96
	Opponents.....	109	101	2085	.952	1627	14.93	38	416	246.0	2.26	61	21	1856.0	17.03

## 2016 TEXAS TECH TEAM MATCH-BY-MATCH

Date	Opponent	SP	K	E	TA	Pct.	A	SA	SE	RE	DIG	BS	BA	BE	Total	BHE	Points
Aug. 26	COLORADO	5	63	26	147	.252	63	3	8	7	51	0	18	6	9.0	0	75.0
Aug. 27	vs Long Beach State	3	30	13	86	.198	29	5	3	5	26	1	12	5	7.0	0	42.0
Aug. 27	at Portland State	4	59	12	134	.351	52	5	6	7	55	2	24	2	14.0	0	78.0
Sept. 2	vs South Dakota State	3	41	16	110	.227	41	6	6	2	50	4	8	2	8.0	0	55.0
Sept. 2	at North Dakota State	5	68	22	177	.260	64	1	9	4	82	4	12	2	10.0	1	79.0
Sept. 3	at North Dakota	3	47	12	107	.327	43	5	4	2	52	3	2	0	4.0	0	56.0
Sept. 5	UTEP	3	43	13	117	.256	39	3	6	2	52	0	14	1	7.0	0	53.0
Sept. 9	ABILENE CHRISTIAN	3	42	6	71	.507	37	9	6	0	38	1	9	0	5.5	1	56.5
Sept. 9	STEPHEN F. AUSTIN	4	54	25	163	.178	50	6	9	5	85	3	18	0	12.0	0	72.0
Sept. 10	TEXAS-RGV	3	46	13	121	.273	42	5	4	1	52	2	10	0	7.0	0	58.0
Sept. 10	ORAL ROBERTS	4	46	13	110	.300	44	6	7	8	50	2	14	1	9.0	0	61.0
Sept. 14	at Rice	5	65	25	174	.230	57	6	2	5	70	6	12	5	12.0	3	83.0
Sept. 15	vs Texas State	3	36	21	110	.136	34	2	6	6	41	0	10	2	5.0	1	43.0
Sept. 16	vs Wichita State	3	38	17	129	.163	36	1	3	3	60	1	6	1	4.0	0	43.0
Sept. 16	at UTSA	3	22	19	83	.036	21	3	4	8	30	0	6	2	3.0	2	28.0
Sept. 21	at TCU	4	37	23	147	.095	31	2	5	5	65	2	8	3	6.0	2	45.0
Sept. 24	WEST VIRGINIA	3	33	15	88	.205	32	3	3	7	43	0	14	1	7.0	1	43.0
Sept. 28	at Baylor	3	33	19	108	.130	32	5	3	6	38	0	12	0	6.0	0	44.0
Oct. 5	KANSAS STATE	3	37	19	107	.168	37	1	4	5	39	2	4	1	4.0	0	42.0
Oct. 8	at Kansas	3	21	12	75	.120	20	2	4	10	32	0	2	1	1.0	5	24.0
Oct. 12	OKLAHOMA	3	44	19	123	.203	42	1	8	1	50	0	4	0	2.0	1	47.0
Oct. 15	at Iowa State	3	27	19	99	.081	27	1	7	3	39	2	0	1	2.0	2	30.0
Oct. 21	TEXAS	5	59	28	182	.170	54	4	6	4	74	1	8	2	5.0	2	68.0
Oct. 26	KANSAS	3	29	22	109	.064	29	0	3	3	45	1	4	0	3.0	0	32.0
Oct. 29	at West Virginia	5	58	33	161	.155	56	4	13	5	63	1	20	0	11.0	4	73.0
Nov 02	BAYLOR	4	53	19	163	.209	51	0	8	3	72	2	22	2	13.0	2	66.0
Nov 04	IOWA STATE	5	57	32	180	.139	52	6	9	4	59	3	12	1	9.0	2	72.0
Nov 12	at Oklahoma	3	39	18	105	.200	36	0	7	2	36	4	10	1	9.0	2	48.0
Nov 16	at Texas	3	32	18	104	.135	32	3	6	3	47	0	4	2	2.0	1	37.0
Nov 19	TCU	5	68	29	194	.201	61	3	9	12	92	1	10	3	6.0	1	77.0
<b>Texas Tech</b>		<b>109</b>	<b>1327</b>	<b>578</b>	<b>3784</b>	<b>.198</b>	<b>1244</b>	<b>101</b>	<b>178</b>	<b>138</b>	<b>1588</b>	<b>48</b>	<b>309</b>	<b>47</b>	<b>202.5</b>	<b>33</b>	<b>1630.5</b>
<b>Opponent</b>		<b>109</b>	<b>1472</b>	<b>538</b>	<b>3843</b>	<b>.243</b>	<b>1385</b>	<b>138</b>	<b>233</b>	<b>101</b>	<b>1627</b>	<b>38</b>	<b>416</b>	<b>61</b>	<b>246.0</b>	<b>21</b>	<b>1856.0</b>

## BY SET AVERAGES

Sets played: 109

Kills per set: 12.17

Assists per set: 11.41

Service aces per set: 0.93

Reception errors per set: 1.27

Digs per set: 14.57

Blocks per set: 1.86

Ball handling errors per set: 0.30

Reception errors per set: 1.27

Points per set: 14.96

## 2016 OPPONENT TEAM MATCH-BY-MATCH

Date	Opponent	SP	K	E	TA	Pct.	A	SA	SE	RE	DIG	BS	BA	BE	Total	BHE	Points
Aug 26	COLORADO	5	66	20	141	.326	60	7	10	3	42	1	22	8	12.0	0	85.0
Aug 27	vs Long Beach State	3	50	12	94	.404	46	5	6	5	36	1	6	2	4.0	0	59.0
Aug 27	at Portland State	4	54	28	144	.181	52	7	2	5	54	2	8	5	6.0	0	67.0
Sep 02	vs South Dakota State	3	32	21	109	.101	31	2	4	6	49	1	12	3	7.0	2	41.0
Sep 02	at North Dakota State	5	61	34	194	.139	60	4	6	1	75	4	6	4	7.0	0	72.0
Sep 03	at North Dakota	3	40	17	116	.198	37	2	6	5	43	1	8	1	5.0	0	47.0
Sep 05	UTEP	3	31	19	120	.100	29	2	6	3	49	1	8	0	5.0	0	38.0
Sep 09	ABILENE CHRISTIAN	3	22	16	79	.076	20	0	7	9	20	0	8	0	4.0	1	26.0
Sep 09	STEPHEN F. AUSTIN	4	33	27	153	.039	32	5	6	6	76	1	18	0	10.0	1	48.0
Sep 10	TEXAS-RGV	3	50	16	130	.262	47	1	7	5	57	0	10	1	5.0	0	56.0
Sep 10	ORAL ROBERTS	4	44	26	129	.140	41	8	16	6	49	1	12	3	7.0	0	59.0
Sep 14	at Rice	5	66	30	176	.205	64	5	5	6	70	5	12	8	11.0	2	82.0
Sep 15	vs Texas State	3	40	11	99	.293	37	6	6	2	46	1	18	2	10.0	3	56.0
Sep 16	vs Wichita State	3	49	14	129	.271	49	3	10	1	63	1	14	2	8.0	0	60.0
Sep 16	at UTSA	3	42	9	83	.398	39	8	11	3	39	1	18	1	10.0	0	60.0
Sep 21	at TCU	4	59	16	149	.289	52	5	8	2	77	1	16	1	9.0	1	73.0
Sep 24	WEST VIRGINIA	3	48	9	108	.361	44	7	12	3	35	0	20	3	10.0	3	65.0
Sep 28	at Baylor	3	48	19	112	.259	43	6	1	5	50	0	14	1	7.0	0	61.0
Oct 05	KANSAS STATE	3	46	13	107	.308	45	5	6	1	43	0	8	1	4.0	0	55.0
Oct 08	at Kansas	3	41	11	88	.341	38	10	10	2	37	0	10	1	5.0	0	56.0
Oct 12	OKLAHOMA	3	49	12	118	.314	46	1	7	1	48	0	14	0	7.0	1	57.0
Oct 15	at Iowa State	3	42	8	91	.374	41	3	5	1	49	4	8	3	8.0	1	53.0
Oct 21	TEXAS	5	70	18	175	.297	67	4	12	4	84	0	24	3	12.0	0	86.0
Oct 26	KANSAS	3	47	10	108	.343	44	3	10	0	48	4	10	2	9.0	1	59.0
Oct 29	at West Virginia	5	61	27	166	.205	58	5	14	4	59	2	32	2	18.0	2	84.0
Nov 02	BAYLOR	4	64	24	175	.229	62	3	7	0	75	0	10	0	5.0	0	72.0
Nov 04	IOWA STATE	5	59	28	155	.200	56	4	8	6	78	2	22	1	13.0	0	76.0
Nov 12	at Oklahoma	3	48	14	105	.324	47	2	6	0	42	3	16	0	11.0	1	61.0
Nov 16	at Texas	3	46	5	99	.414	39	3	10	3	48	1	16	1	9.0	0	58.0
Nov 19	TCU	5	64	24	191	.209	59	12	9	3	86	0	16	2	8.0	2	84.0
<b>Opponent totals</b>		<b>109</b>	<b>1472</b>	<b>538</b>	<b>3843</b>	<b>.243</b>	<b>1385</b>	<b>138</b>	<b>233</b>	<b>101</b>	<b>1627</b>	<b>38</b>	<b>416</b>	<b>61</b>	<b>246.0</b>	<b>21</b>	<b>1856.0</b>
<b>Texas Tech</b>		<b>109</b>	<b>1327</b>	<b>578</b>	<b>3784</b>	<b>.198</b>	<b>1244</b>	<b>101</b>	<b>178</b>	<b>138</b>	<b>1588</b>	<b>48</b>	<b>309</b>	<b>47</b>	<b>202.5</b>	<b>33</b>	<b>1630.5</b>

## BY SET AVERAGES

Sets played: 109

Kills per set: 13.50

Assists per set: 12.71

Service aces per set: 1.27

Reception errors per set: 0.93

Digs per set: 14.93

Blocks per set: 2.26

Ball handling errors per set: 0.19

Reception errors per set: 0.93

Points per set: 17.03

## 2016 MATCH-BY-MATCH LEADERS

Opponent	Kills	Hitting %	Digs	Blocks	Assists
vs. Colorado	Ybanez (13)	Keenan (.625)	Akiu (24)	Douglass (6)	Grubb (52)
vs. Long Beach State	Ybanez (10)	Ybanez (.400)	Bryant (8)	Douglass (6)	Grubb (27)
at Portland State	Douglass (17)	Douglass (.773)	Akiu, Bryant (14)	Douglass (8)	Grubb (43)
vs. S. Dakota State	McDougald (11)	Ensch (.500)	Akiu (15)	Grubb (4)	Grubb (35)
at N. Dakota State	Douglass (16)	Douglass (.406)	Akiu (23)	Douglass (5)	Grubb (57)
at North Dakota	Douglass (15)	Douglass (.462)	Akiu (18)	Keenan (2)	Grubb (33)
UTEP	Douglass (15)	Douglass (.577)	Akiu (16)	Douglass (5)	Grubb (29)
ABILENE CHRISTIAN	McDougald (10)	Keenan (.800)	Akiu (12)	McDougald (2)	Grubb (27)
STEPHEN F. AUSTIN	Douglass (17)	Atwood (.360)	Akiu (30)	Douglass (8)	Grubb (46)
UT RIO GRANDE VALLEY	McDougald, Douglass (11)	Douglass (.526)	Akiu (22)	Douglass (3)	Grubb (38)
ORAL ROBERTS	Douglass (16)	Atwood (.526)	Akiu, Bryant (16)	Douglass (5)	Grubb (37)
at Rice	Henriksen (19)	Douglass (.419)	Akiu (19)	Atwood, Douglass (5)	Grubb (51)
vs. Texas State	Douglass (9)	Ybanez (.429)	Akiu (14)	Douglass (3)	Grubb (27)
vs. Wichita State	Atwood (10)	Atwood (.320)	Akiu (22)	Douglass (3)	Grubb (30)
at UTSA	Atwood, Douglass (5)	Douglass (.455)	Akiu (13)	(Six with 1)	Cowan (17)
at TCU	Douglass (10)	Douglass (.450)	Akiu (24)	(Three with 1.5)	Canales (15)
WEST VIRGINIA	Douglass, McDougald, Keenan (7)	Atwood (.833)	Akiu (15)	Douglass (2)	Grubb (29)
at Baylor	Douglass (7)	Sagers (.333)	Akiu (11)	Douglass (2)	Grubb (27)
KANSAS STATE	Douglass (10)	Douglass (.368)	Akiu (12)	Keenan (2)	Grubb (28)
at Kansas	McDougald, Douglass (6)	McDougald (.455)	Akiu, Sagers (9)	Keenan, Grubb (1)	Cowan (9)
OKLAHOMA	Douglass (12)	Atwood (.429)	Sagers (19)	Douglass (2)	Grubb (36)
at Iowa State	Douglass (8)	Atwood (.700)	Grubb (12)	Douglass, Keenan (1)	Grubb (25)
NO. 2 TEXAS	Redding (17)	Douglass (.344)	Akiu (23)	Douglass (3)	Grubb (44)
NO. 6 KANSAS	Douglass (10)	Redding (.375)	Akiu (25)	Douglass (2)	Grubb (27)
at West Virginia	Douglass, McDougald, Redding (13)	McDougald (.286)	Akiu (27)	Douglass (8)	Assists (55)
BAYLOR	Douglass (15)	Douglass (.364)	Akiu (33)	Douglass (7)	Grubb (46)
IOWA STATE	Redding (16)	Keenan (.346)	Akiu (24)	Redding, Douglass (4)	Grubb (45)
at Oklahoma	Douglass (12)	Douglass (.273)	Akiu (15)	Douglass (6)	Grubb (31)
at No. 7 Texas	McDougald, Keenan (8)	Keenan (.375)	Akiu (15)	Keenan (2)	Grubb (29)
TCU	Douglass (18)	Redding (.609)	Akiu (27)	Keenan (4)	Grubb (55)

## 2016 DOUBLE-DOUBLES

MARGUERITE GRUBB (8)	ASSISTS	DIGS
TCU (11/19/16)	55	14
Baylor (11/2/16)	46	14
West Virginia (10/29/16)	55	12
No. 2 Texas (10/21/16)	44	12
Iowa State (10/15/16)	25	12
Kansas State (10/5/16)	28	11
Stephen F. Austin (9/9/16)	46	16
at North Dakota (9/3/16)	33	16
Career double-doubles: 19		

ALYSSA YBANEZ (1)	KILLS	DIGS
at Portland State (8/27/16)	17	10
Career double-doubles: 1		

## TEXAS TECH RECORD WHEN

Overall .....	10-20
At the United Supermarkets Arena .....	5-8
On the road .....	4-8
Neutral site .....	1-4
Big 12 Play .....	0-15
Non-Conference .....	10-5
At a tournament .....	8-5
On Television .....	0-7

Against ranked opponents .....	0-4
Top 5 opponents .....	0-2
Top 10 opponents .....	0-4

<b>Kills</b>	
Leading .....	8-1
Trailing .....	2-19
Tied .....	0-0

<b>Blocks</b>	
Leading .....	9-2
Trailing .....	1-17
Tied .....	0-1

<b>Digs</b>	
Leading .....	8-5
Trailing .....	1-16
Tied .....	1-0

<b>Attack Percentage</b>	
Leading .....	10-0
Trailing .....	0-20

<b>Service Aces</b>	
Leading .....	7-1
Trailing .....	3-15
Tied .....	0-4

<b>Hitting Percentage</b>	
Hitting .300 or better .....	4-0
Hitting .250 to .299 .....	3-1
Hitting .200 to .249 .....	2-5
Hitting .100 to .199 .....	1-10
Hitting below .100 .....	0-3

Opponents hitting above .300 .....	0-10
Opponents hitting .250 to .299 .....	1-5
Opponents hitting .200 to .249 .....	2-3
Opponents hitting .100 to .199 .....	6-0
Holding opponents below .100 .....	2-0

In three sets .....	5-13
In four sets .....	3-1
In five sets .....	2-5

## 2016 MATCH-BY-MATCH STARTING LINEUPS

<i>Opponent</i>	<i>DS</i>	<i>OH</i>	<i>OH</i>	<i>MB</i>	<i>SET</i>	<i>MB</i>	<i>LIB</i>
vs Colorado	Rittimann	Redding	Ybanez	Douglass	Grubb	Keenan	Akiu
vs Long Beach State	Rittimann	Redding	Ybanez	Douglass	Grubb	Keenan	Akiu
at Portland State	Rittimann	Ensch	Ybanez	Douglass	Grubb	Keenan	Akiu
vs South Dakota State	Sagers	Ensch	Ybanez	Douglass	Grubb	Keenan	Akiu
at North Dakota State	Rittimann	Ensch	Ybanez	Douglass	Grubb	Keenan	Akiu
at North Dakota	Bryant	Ensch	McDougald	Douglass	Grubb	Keenan	Akiu
UTEP	Bryant	Ensch	McDougald	Douglass	Grubb	Keenan	Akiu
Abilene Christian	Bryant	McDougald	Ybanez	Douglass	Grubb	Keenan	Akiu
Stephen F. Austin	Bryant	Ensch	Ybanez	Douglass	Grubb	Keenan	Akiu
UT Rio Grande Valley	Bryant	Ensch	McDougald	Douglass	Grubb	Keenan	Akiu
Oral Roberts	Bryant	Atwood	McDougald	Douglass	Grubb	Keenan	Akiu
at Rice	Bryant	Atwood	McDougald	Douglass	Grubb	Keenan	Akiu
vs. Texas State	Bryant	Atwood	McDougald	Douglass	Grubb	Keenan	Akiu
vs. Wichita State	Sagers	Atwood	Ybanez	Douglass	Grubb	Keenan	Akiu
at UTSA	Sagers	Atwood	McDougald	Douglass	Grubb	Keenan	Akiu
at TCU	Fragniere	Atwood	Ybanez	Douglass	Cowan	Keenan	Akiu
West Virginia	Redding	McDougald	Ybanez	Douglass	Grubb	Keenan	Akiu
at Baylor	Sagers	Atwood	McDougald	Douglass	Grubb	Keenan	Akiu
Kansas State	Sagers	Redding	McDougald	Douglass	Grubb	Keenan	Akiu
at No. 6 Kansas	Sagers	Redding	McDougald	Douglass	Cowan	Keenan	Akiu
Oklahoma	Rittimann	Redding	McDougald	Douglass	Grubb	Keenan	Sagers
at Iowa State	Akiu	Redding	Fragniere	Douglass	Grubb	Keenan	Sagers
No. 2 Texas	Sagers	Redding	Atwood	Douglass	Grubb	Keenan	Akiu
No. 6 Kansas	Sagers	Redding	Atwood	Douglass	Grubb	Keenan	Akiu
at West Virginia	Sagers	Redding	Atwood	Douglass	Grubb	Keenan	Akiu
Baylor	Sagers	Redding	Atwood	Douglass	Grubb	Keenan	Akiu
Iowa State	Sagers	Redding	Atwood	Douglass	Grubb	Keenan	Akiu
at Oklahoma	Sagers	Redding	McDougald	Douglass	Grubb	Keenan	Akiu
at No. 7 Texas	Sagers	Redding	McDougald	Douglass	Grubb	Keenan	Akiu
TCU	Sagers	Redding	Fragniere	Douglass	Grubb	Keenan	Akiu

**TEXAS TECH TEAM HIGHS****ATTACK PERCENT (K-E-TA)**

.507 (42-6-71) \_\_\_\_\_ Abilene Christian (Sep 9, 2016)  
 .351 (59-12-134) \_\_\_\_\_ at Portland State (Aug 27, 2016)  
 .327 (47-12-107) \_\_\_\_\_ at North Dakota (Sep 3, 2016)

**KILLS (K-E-TA)**

68 (68-29-194) 5s \_\_\_\_\_ TCU (Nov 19, 2016)  
 68 (68-22-177) 5s \_\_\_\_\_ at N. Dakota St. (Sep 2, 2016)  
 65 (65-25-174) 5s \_\_\_\_\_ at Rice (Sep 14, 2016)

**KILLS 3-SETS (K-E-TA)**

47 (47-12-107) \_\_\_\_\_ at North Dakota (Sep 3, 2016)  
 46 (46-13-121) \_\_\_\_\_ UTRGV (Sep 10, 2016)

**KILLS 4-SETS (K-E-TA)**

59 (59-12-134) \_\_\_\_\_ at Portland State (Aug 27, 2016)  
 54 (54-25-163) \_\_\_\_\_ Stephen F. Austin (Sep 9, 2016)

**KILLS 5-SETS (K-E-TA)**

68 (68-29-194) \_\_\_\_\_ TCU (Nov 19, 2016)  
 68 (68-22-177) \_\_\_\_\_ at N. Dakota State (Sep 2, 2016)  
 65 (65-25-174) \_\_\_\_\_ at Rice (Sep 14, 2016)

**TOTAL ATTEMPTS (K-E-TA)**

194 (68-29-194) 5s \_\_\_\_\_ TCU (Nov 19, 2016)  
 182 (59-28-182) 5s \_\_\_\_\_ Texas (Oct 21, 2016)  
 180 (57-32-180) 5s \_\_\_\_\_ Iowa State (Nov 4, 2016)

**TOTAL ATTEMPTS 3-SETS (K-E-TA)**

129 (38-17-129) \_\_\_\_\_ vs. Wichita State (Sep 16, 2016)  
 123 (44-19-123) \_\_\_\_\_ Oklahoma (Oct 12, 2016)  
 121 (46-13-121) \_\_\_\_\_ UTRGV (Sep 10, 2016)

**TOTAL ATTEMPTS 4-SETS (K-E-TA)**

163 (53-19-163) \_\_\_\_\_ Baylor (Nov 2, 2016)  
 163 (54-25-163) \_\_\_\_\_ Stephen F. Austin (Sep 9, 2016)

**TOTAL ATTEMPTS 5-SETS (K-E-TA)**

194 (68-29-194) \_\_\_\_\_ TCU (Nov 19, 2016)  
 182 (59-28-182) \_\_\_\_\_ Texas (Oct 21, 2016)  
 180 (57-32-180) \_\_\_\_\_ Iowa State (Nov 4, 2016)

**ASSISTS**

64 (5s) \_\_\_\_\_ at N. Dakota State (Sep 2, 2016)  
 63 (5s) \_\_\_\_\_ vs Colorado (Aug 26, 2016)  
 61 (5s) \_\_\_\_\_ TCU (Nov 19, 2016)

**ASSISTS 3-SETS**

43 \_\_\_\_\_ at North Dakota (Sep 3, 2016)  
 42 \_\_\_\_\_ Oklahoma (Oct 12, 2016)  
 42 \_\_\_\_\_ UTRGV (Sep 10, 2016)

**ASSISTS 4-SETS**

52 \_\_\_\_\_ at Portland State (Aug 27, 2016)  
 51 \_\_\_\_\_ Baylor (Nov. 2, 2016)

**ASSISTS 5-SETS**

64 \_\_\_\_\_ at N. Dakota State (Sep 2, 2016)  
 63 \_\_\_\_\_ vs Colorado (Aug 26, 2016)

**DIGS**

92 (5s) \_\_\_\_\_ TCU (Nov 19, 2016)  
 85 (4s) \_\_\_\_\_ Stephen F. Austin (Sep 9, 2016)  
 82 (5s) \_\_\_\_\_ at N. Dakota State (Sep 2, 2016)

**DIGS 3-SETS**

60 \_\_\_\_\_ vs. Wichita State (Sep 16, 2016)  
 52 \_\_\_\_\_ UTEP (Sep. 5, 2016)  
 52 \_\_\_\_\_ at North Dakota (Sep 3, 2016)

**DIGS 4-SETS**

85 \_\_\_\_\_ Stephen F. Austin (Sep 9, 2016)  
 72 \_\_\_\_\_ Baylor (Nov. 2, 2016)

**DIGS 5-SETS**

92 \_\_\_\_\_ TCU (Nov 19, 2016)  
 82 \_\_\_\_\_ at N. Dakota State (Sep 2, 2016)  
 74 \_\_\_\_\_ Texas (Oct. 21, 2016)

**ACES**

9 \_\_\_\_\_ Abilene Christian (Sep 9, 2016)  
 6 \_\_\_\_\_ Iowa State (Nov 4, 2016)  
 6 \_\_\_\_\_ at Rice (Sep 14, 2016)  
 6 \_\_\_\_\_ Oral Roberts (Sep 10, 2016)  
 6 \_\_\_\_\_ Stephen F. Austin (Sep 9, 2016)  
 6 \_\_\_\_\_ vs S. Dakota State (Sep 2, 2016)

**BLOCKS**

14.0 \_\_\_\_\_ at Portland State (Aug 27, 2016)  
 13.0 \_\_\_\_\_ Baylor (Nov. 2, 2016)

**OPPONENT MATCH HIGHS****ATTACK PERCENT (K-E-TA)**

.414 (46-5-99) \_\_\_\_\_ at Texas (Nov 16, 2016)

**KILLS (K-E-TA)**

70 (70-18-175) 5s \_\_\_\_\_ Texas (Oct 21, 2016)

**KILLS 3-SETS (K-E-TA)**

50 (50-12-94) \_\_\_\_\_ UTRGV (Sep 10, 2016)  
 50 (50-12-94) \_\_\_\_\_ vs LBSU (Aug 27, 2016)

**KILLS 4-SETS (K-E-TA)**

64 (64-24-175) \_\_\_\_\_ Baylor (Nov. 2, 2016)

**KILLS 5-SETS (K-E-TA)**

70 (70-18-175) \_\_\_\_\_ Texas (Oct 21, 2016)

**TOTAL ATTEMPTS (K-E-TA)**

194 (61-34-194) 5s \_\_\_\_\_ at N. Dakota State (Sep 2, 2016)

**TOTAL ATTEMPTS 3-SETS (K-E-TA)**

130 (50-16-130) \_\_\_\_\_ UTRGV (Sep 10, 2016)

**TOTAL ATTEMPTS 4-SETS (K-E-TA)**

175 (64-24-175) \_\_\_\_\_ Baylor (Nov. 2, 2016)

**TOTAL ATTEMPTS 5-SETS (K-E-TA)**

194 (61-34-194) \_\_\_\_\_ at N. Dakota State (Sep 2, 2016)

**OPPONENT TEAM HIGHS****ATTACK PERCENT (K-E-TA) minimum 12 kills**

.647 (12-1-17) \_\_\_\_\_ Grahovac, Peyton vs. LBSU (Aug 27, 2016)  
 .571 (16-0-28) \_\_\_\_\_ Payne, Kelsie vs. No. 6 Kansas (Oct 26, 2016)

**KILLS (K-E-TA)**

31 (31-7-64) 4s \_\_\_\_\_ Staiger, Katie vs. Baylor (Nov. 2, 2016)

**KILLS 3-SETS (K-E-TA)**

19 (19-7-43) \_\_\_\_\_ Staiger, Katie at Baylor (Sep 28, 2016)  
 19 (19-3-41) \_\_\_\_\_ Enneking, Alyssa vs. Oklahoma (Oct 12, 2016)

**KILLS 4-SETS (K-E-TA)**

31 (31-7-64) \_\_\_\_\_ Staiger, Katie vs. Baylor (Nov. 2, 2016)

**KILLS 5-SETS (K-E-TA)**

24 (24-5-52) \_\_\_\_\_ P Cerame, Paulina vs. Texas (Oct 21, 2016)

**TOTAL ATTEMPTS (K-E-TA)**

64 (31-7-64) 4s \_\_\_\_\_ Staiger, Katie vs. Baylor (Nov. 2, 2016)

**TOTAL ATTEMPTS 3-SETS (K-E-TA)**

44 (15-9-44) \_\_\_\_\_ Beaner, Ashley vs. S. Dakota St. (Sep 2, 2016)

**TOTAL ATTEMPTS 4-SETS (K-E-TA)**

64 (31-7-64) \_\_\_\_\_ Staiger, Katie vs. Baylor (Nov. 2, 2016)

**TOTAL ATTEMPTS 5-SETS (K-E-TA)**

57 (23-9-57) \_\_\_\_\_ Caffrey, Payton at West Virginia (Oct 29, 2016)

## 2016 INDIVIDUAL MATCH HIGHS

## ATTACK PERCENT (K-E-TA) minimum 12 kills

.773 (17- 0-22)	Douglass, Lauren at Portland State (Aug 27, 2016)
.625 (12- 2-16)	Keenan, Katy vs Colorado (Aug 26, 2016)
.577 (15- 0-26)	Douglass, Lauren vs UTEP (Sep 05, 2016)
.483 (16- 2-29)	Douglass, Lauren vs Oral Roberts (Sep 10, 2016)
.462 (15- 3-26)	Douglass, Lauren at North Dakota (Sep 03, 2016)

## KILLS (K-E-TA)

19 (19- 3-42) 5s	Henriksen, Hannah at Rice (Sep 14, 2016)
18 (18-6-41) 5s	Douglass, Lauren vs. TCU (Nov 19, 2016)
17 (17-6-40) 5s	Redding, Sarah vs Texas (Oct. 21, 2016)
17 (17- 5-35) 4s	Douglass, Lauren vs Stephen F. Austin (Sep 09, 2016)
17 (17- 4-31) 5s	Douglass, Lauren at Rice (Sep 14, 2016)
17 (17- 0-22) 4s	Douglass, Lauren at Portland State (Aug 27, 2016)

## KILLS 3-SETS (K-E-TA)

15 (15- 0-26)	Douglass, Lauren vs UTEP (Sep 05, 2016)
15 (15- 3-26)	Douglass, Lauren at North Dakota (Sep 03, 2016)
13 (13- 1-27)	McDougald, Toni at North Dakota (Sep 03, 2016)
12 (12- 6-22)	Douglass, Lauren at Oklahoma (Nov 12, 2016)
12 (12- 2-29)	Douglass, Lauren vs Oklahoma (Oct 12, 2016)

## KILLS 4-SETS (K-E-TA)

17 (17- 0-22)	Douglass, Lauren at Portland State (Aug 27, 2016)
17 (17- 5-35)	Douglass, Lauren vs Stephen F. Austin (Sep 09, 2016)
16 (16- 2-29)	Douglass, Lauren vs Oral Roberts (Sep 10, 2016)
15 (15-3-33)	Douglass, Lauren vs. Baylor (Nov. 2, 2016)
13 (13- 6-28)	Ybanez, Alyssa at Portland State (Aug 27, 2016)

## KILLS 5-SETS (K-E-TA)

19 (19- 3-42)	Henriksen, Hannah at Rice (Sep 14, 2016)
18 (18-6-41)	Douglass, Lauren vs. TCU (Nov 19, 2016)
17 (17-6-40)	Redding, Sarah vs Texas (Oct. 21, 2016)
17 (17- 4-31)	Douglass, Lauren at Rice (Sep 14, 2016)
16 (16- 8-43)	Redding, Sarah vs Iowa State (Nov 04, 2016)
16 (16- 3-32)	Douglass, Lauren at North Dakota State (Sep 02, 2016)

## TOTAL ATTEMPTS (K-E-TA)

43 (16- 8-43) 5s	Redding, Sarah vs Iowa State (Nov 04, 2016)
42 (13- 5-42) 5s	McDougald, Toni vs Texas (Oct 21, 2016)
42 (19- 3-42) 5s	Henriksen, Hannah at Rice (Sep 14, 2016)
41 (18-6-41) 5s	Douglass, Lauren vs. TCU (Nov 19, 2016)
40 (13- 6-40) 5s	Redding, Sarah at West Virginia (Oct 29, 2016)
40 (9- 8-40) 4s	McDougald, Toni vs Stephen F. Austin (Sep 09, 2016)
40 (17- 6-40) 5s	Redding, Sarah vs Texas (Oct 21, 2016)

## TOTAL ATTEMPTS 3-SETS (K-E-TA)

31 (11- 4-31)	McDougald, Toni vs Texas-RGV (Sep 10, 2016)
29 (10-4-29)	Douglass, Lauren vs. No. 6 Kansas (Oct. 26, 2016)
29 (12- 2-29)	Douglass, Lauren vs Oklahoma (Oct 12, 2016)
27 (13- 1-27)	McDougald, Toni at North Dakota (Sep 03, 2016)
26 (5- 4-26)	McDougald, Toni vs Wichita State (Sep 16, 2016)
26 (11- 2-26)	McDougald, Toni vs South Dakota State (Sep 02, 2016)

## TOTAL ATTEMPTS 4-SETS (K-E-TA)

40 (9- 8-40)	McDougald, Toni vs Stephen F. Austin (Sep 09, 2016)
37 (11- 2-37)	Henriksen, Hannah at Portland State (Aug 27, 2016)
36 (12- 5-36)	Atwood, Chandler vs Baylor (Nov 02, 2016)
35 (17- 5-35)	Douglass, Lauren vs Stephen F. Austin (Sep 09, 2016)
34 (11- 5-34)	Redding, Sarah vs Baylor (Nov 02, 2016)

## TOTAL ATTEMPTS 5-SETS (K-E-TA)

43 (16- 8-43)	Redding, Sarah vs Iowa State (Nov 04, 2016)
42 (13- 5-42)	McDougald, Toni vs Texas (Oct 21, 2016)
42 (19- 3-42)	Henriksen, Hannah at Rice (Sep 14, 2016)
41 (18-6-41)	Douglass, Lauren vs. TCU (Nov 19, 2016)
40 (13- 6-40)	Redding, Sarah at West Virginia (Oct 29, 2016)
40 (17- 6-40)	Redding, Sarah vs Texas (Oct 21, 2016)

## ASSISTS

57 (5s)	Grubb, Marguerite at North Dakota State (Sep 02, 2016)
55 (5s)	Grubb, Marguerite vs. TCU (Nov 19, 2016)
55 (5s)	Grubb, Marguerite at West Virginia (Oct 29, 2016)
52 (5s)	Grubb, Marguerite vs Colorado (Aug 26, 2016)
51 (5s)	Grubb, Marguerite at Rice (Sep 14, 2016)

## ASSISTS 3-SETS

38	Grubb, Marguerite vs Texas-RGV (Sep 10, 2016)
36	Grubb, Marguerite vs Oklahoma (Oct 12, 2016)
35	Grubb, Marguerite vs South Dakota State (Sep 02, 2016)
33	Grubb, Marguerite at North Dakota (Sep 03, 2016)
31	Grubb, Marguerite at Oklahoma (Nov 12, 2016)

## ASSISTS 4-SETS

46	Grubb, Marguerite vs Stephen F. Austin (Sep 09, 2016)
46	Grubb, Marguerite vs Baylor (Nov 02, 2016)
43	Grubb, Marguerite at Portland State (Aug 27, 2016)
37	Grubb, Marguerite vs Oral Roberts (Sep 10, 2016)
15	Canales, Sophia at TCU (Sep 21, 2016)

## ASSISTS 5-SETS

57	Grubb, Marguerite at North Dakota State (Sep 02, 2016)
55	Grubb, Marguerite vs. TCU (Nov 19, 2016)
55	Grubb, Marguerite at West Virginia (Oct 29, 2016)
52	Grubb, Marguerite vs Colorado (Aug 26, 2016)
51	Grubb, Marguerite at Rice (Sep 14, 2016)

## DIGS

33 (4s)	Akiu, Reyn vs Baylor (Nov 02, 2016)
30 (4s)	Akiu, Reyn vs Stephen F. Austin (Sep 09, 2016)
27 (5s)	Akiu, Reyn vs. TCU (Nov 19, 2016)
27 (5s)	Akiu, Reyn at West Virginia (Oct 29, 2016)
25 (3s)	Akiu, Reyn vs No. 6 Kansas (Oct. 26, 2016)

## DIGS 3-SETS

25	Akiu, Reyn vs No. 6 Kansas (Oct. 26, 2016)
22	Akiu, Reyn vs Wichita State (Sep 16, 2016)
22	Akiu, Reyn vs Texas-RGV (Sep 10, 2016)
19	Sagers, Maggie vs Oklahoma (Oct 12, 2016)
18	Akiu, Reyn at North Dakota (Sep 03, 2016)

## DIGS 4-SETS

33	Akiu, Reyn vs Baylor (Nov 02, 2016)
30	Akiu, Reyn vs Stephen F. Austin (Sep 09, 2016)
24	Akiu, Reyn at TCU (Sep 21, 2016)
16	Akiu, Reyn vs Oral Roberts (Sep 10, 2016)
16	Bryant, Katelyn vs Oral Roberts (Sep 10, 2016)
16	Grubb, Marguerite vs Stephen F. Austin (Sep 09, 2016)

## DIGS 5-SETS

27	Akiu, Reyn vs. TCU (Nov 19, 2016)
27	Akiu, Reyn at West Virginia (Oct 29, 2016)
24	Akiu, Reyn vs Iowa State (Nov 04, 2016)
24	Akiu, Reyn vs Colorado (Aug 26, 2016)
23	Akiu, Reyn vs Texas (Oct 21, 2016)
23	Akiu, Reyn at North Dakota State (Sep 02, 2016)

## ACES

4	Douglass, Lauren vs Iowa State (Nov 04, 2016)
4	Akiu, Reyn vs Long Beach State (Aug 27, 2016)
3	Sagers, Maggie at North Dakota (Sep 03, 2016)
3	Sagers, Maggie vs South Dakota State (Sep 02, 2016)
3	Akiu, Reyn vs Abilene Christian (Sep 09, 2016)

## BLOCKS (BS-BA)

10 (2-8)	Douglass, Lauren vs Stephen F. Austin (Sep 09, 2016)
8 (1-7)	Douglass, Lauren at Portland State (Aug 27, 2016)
8 (1-7)	Douglass, Lauren at West Virginia (Oct 29, 2016)
7 (1-6)	Douglass, Lauren vs Baylor (Nov 02, 2016)
7 (0-7)	Atwood, Chandler at West Virginia (Oct 29, 2016)
6 (2-4)	Douglass, Lauren at Oklahoma (Nov 12, 2016)
6 (1-5)	Douglass, Lauren vs Long Beach State (Aug 27, 2016)
6 (0-6)	Grubb, Marguerite at Portland State (Aug 27, 2016)
6 (0-6)	Douglass, Lauren vs Colorado (Aug 26, 2016)
6 (0-6)	Grubb, Marguerite at Portland State (Aug 27, 2016)

## THE LAST TIME TEXAS TECH...

Defeated an opponent in three sets.....	vs. UT Rio Grande Valley (Sept. 10, 2016)
Defeated a non-conference opponent in three sets.....	vs. UT Rio Grande Valley (Sept. 10, 2016)
Defeated a non-conference opponent in three sets at home.....	vs. UT Rio Grande Valley (Sept. 10, 2016)
Defeated a non-conference opponent in three sets on the road.....	at North Dakota (Sept. 3, 2016)
Defeated a non-conference opponent in three sets at neutral site.....	vs. South Dakota State (Sept. 2, 2016)
Defeated a Big 12 opponent in three sets.....	vs. West Virginia (Nov. 13, 2015)
Defeated a Big 12 opponent in three sets at home.....	vs. West Virginia (Nov. 13, 2015)
Defeated a Big 12 opponent in three sets on the road.....	at West Virginia (Oct. 14, 2015)
Defeated an opponent in four sets.....	vs. Oral Roberts (Sept. 10, 2016)
Defeated a non-conference opponent in four sets.....	vs. Oral Roberts (Sept. 10, 2016)
Defeated a non-conference opponent in four sets at home.....	vs. Oral Roberts (Sept. 10, 2016)
Defeated a non-conference opponent in four sets on the road.....	at Portland State (Aug. 27, 2016)
Defeated a non-conference opponent in four sets at neutral site.....	vs. George Washington (Sept. 12, 2015)
Defeated a Big 12 opponent in four sets.....	vs. TCU (Sept. 24, 2014)
Defeated a Big 12 opponent in four sets at home.....	vs. TCU (Sept. 24, 2014)
Defeated a Big 12 opponent in four sets on the road.....	at West Virginia (Oct. 13, 2012)
Defeated an opponent in five sets.....	at Rice (Sept. 14, 2016)
Defeated a non-conference opponent in five sets.....	at Rice (Sept. 14, 2016)
Defeated a non-conference opponent in five sets at home.....	vs. Weber State (Sept. 19, 2014)
Defeated a non-conference opponent in five sets on the road.....	at Rice (Sept. 14, 2016)
Defeated a non-conference opponent in five sets at neutral site.....	vs. Bucknell (Aug. 30, 2014)
Defeated a Big 12 opponent in five sets.....	vs. Oklahoma (Sept. 23, 2015)
Defeated a Big 12 opponent in five sets at home.....	vs. Oklahoma (Sept. 23, 2015)
Defeated a Big 12 opponent in five sets on the road.....	at Baylor (Oct. 1, 2014)
Lost to an opponent in three sets.....	at #7 Texas (Nov. 16, 2016)
Lost to a non-conference opponent in three sets.....	at UTSA (Sept. 16, 2016)
Lost to a non-conference opponent in three sets at home.....	vs. Washington State (Sept. 18, 2015)
Lost to a non-conference opponent in three sets on the road.....	at UTSA (Sept. 16, 2016)
Lost to a non-conference opponent in three sets at neutral site.....	vs. Wichita State (Sept. 16, 2016)
Lost to a Big 12 opponent in three sets.....	at #7 Texas (Nov. 16, 2016)
Lost to a Big 12 opponent in three sets at home.....	vs. #6 Kansas (Oct. 26, 2016)
Lost to a Big 12 opponent in three sets on the road.....	at #7 Texas (Nov. 16, 2016)
Lost to an opponent in four sets.....	vs. Baylor (Nov. 2, 2016)
Lost to a non-conference opponent in four sets.....	vs. Maryland (Sept. 11, 2015)
Lost to a non-conference opponent in four sets at home.....	vs. New Orleans (Sept. 13, 2008)
Lost to a non-conference opponent in four sets on the road.....	at Abilene Christian (Sept. 10, 2013)
Lost to a non-conference opponent in four sets at neutral site.....	vs. Maryland (Sept. 11, 2015)
Lost to a Big 12 opponent in four sets.....	vs. Baylor (Nov. 2, 2016)
Lost to a Big 12 opponent in four sets at home.....	vs. Baylor (Nov. 2, 2016)
Lost to a Big 12 opponent in four sets on the road.....	at TCU (Sept. 21, 2016)
Lost to an opponent in five sets.....	vs. TCU (Nov. 19, 2016)
Lost to a non-conference opponent in five sets.....	vs. Colorado (Aug. 26, 2016)
Lost to a non-conference opponent in five sets at home.....	vs. TCU (Sept. 12, 2008)
Lost to a non-conference opponent in five sets on the road.....	at Incarnate Word (Sept. 17, 2013)
Lost to a non-conference opponent in five sets at neutral site.....	vs. Colorado (Aug. 26, 2016)
Lost to a Big 12 opponent in five sets.....	vs. TCU (Nov. 19, 2016)
Lost to a Big 12 opponent in five sets at home.....	vs. TCU (Nov. 19, 2016)
Lost to a Big 12 opponent in five sets on the road.....	at West Virginia (Oct. 29, 2014)
Defeated a ranked opponent.....	vs. #20 Kansas State (Nov. 17, 2012)
Defeated a ranked opponent at home.....	vs. #20 Kansas State (Nov. 17, 2012)
Defeated a ranked opponent on the road.....	at #24 Kansas State, 3-2 (Nov. 20, 2004)
Defeated a ranked opponent at a neutral site.....	Never in Big 12 era
Lost to a ranked opponent.....	at #7 Texas (Nov. 16, 2016)
Lost to a ranked opponent at home.....	vs. #6 Kansas (Oct. 26, 2016)
Lost to a ranked opponent on the road.....	at #7 Texas (Nov. 16, 2016)
Lost to a ranked opponent at a neutral site.....	vs. #10 Illinois (Aug. 29, 2009)
Defeated an opponent after trailing 1-0.....	vs. Oklahoma (Sept. 23, 2015)
Defeated an opponent after trailing 2-0.....	at North Dakota State (Sept. 2, 2016)
Defeated an opponent after trailing 1-2.....	vs. Oklahoma (Sept. 23, 2015)
Lost to an opponent after leading 1-0.....	vs. TCU (Nov. 19, 2016)
Lost to an opponent after leading 2-0.....	at #22 Kansas State (Nov. 1, 2014)
Lost to an opponent after leading 2-1.....	at West Virginia (Oct. 29, 2016)
Had a 20-kill performance.....	20, Meghan Stacy, vs. Iowa State (Nov. 21, 2015)
Had a 30-kill performance.....	33, Kelly Johnson vs. Kansas State (Nov. 20, 2004)
Had a 30-dig performance.....	33, Reyn Akiu vs. Baylor (Nov. 2, 2016)
Had a 60-assist performance.....	61, Marguerite Grubb vs. Air Force (Sept. 20, 2014)
Had a player hit .500 or better (minimum 10 kills).....	.609, Sarah Redding vs. TCU (Nov. 19, 2016)
Had a player go for at least 20 kills and 10 digs.....	25 and 10, Jenna Allen, at #22 Kansas State (Nov. 1, 2014)
Had at least four players register double-digit kills.....	vs. TCU (Nov. 19, 2016)
Had at least five players register double-digit digs.....	vs. TCU (Nov. 19, 2016)
Hit .300 as a team.....	.300, vs. Oral Roberts (Sept. 10, 2016)
Held an opponent to .050 or worse.....	.039, vs. Stephen F. Austin (Sept. 9, 2016)

TOP 10 HOME VOLLEYBALL CROWDS				TOP 10 CROWDS AT THE UNITED SUPERMARKETS ARENA			
RANK	OPPONENT	DATE	ATTENDANCE	RANK	OPPONENT	DATE	ATTENDANCE
1.	Iowa State	Nov. 27, 2002	5,507*	1.	Iowa State	Nov. 27, 2002	5,507
2.	Georgia	Dec. 7, 1991	2,511	2.	Texas	Oct. 12, 2002	2,060
3.	Texas	Oct. 12, 2002	2,060*	3.	Nebraska	Oct. 14, 2000	1,731
4.	Baylor	Nov. 9, 1991	1,892	4.	Texas	Nov. 5, 2014	1,566
5.	Nebraska	Oct. 14, 2000	1,731*	5.	Nebraska	Sept. 15, 2007	1,468
6.	Texas	Oct. 24, 1992	1,712	6.	Texas	Nov. 8, 2011	1,413
7.	Texas	Nov. 5, 2014	1,566*	7.	Texas	Oct. 6, 2004	1,292
8.	Missouri	Sept. 27, 1996	1,535	8.	Northeastern	Sept. 11, 2010	1,262
9.	Texas	Sept. 29, 1991	1,528	9.	Missouri	Sept. 15, 2010	1,248
10.	Nebraska	Sept. 15, 2007	1,468*	10.	Texas	Oct. 21, 2016	1,223

\* - Denotes Matches Played At The United Supermarkets Arena



## 2016 NUMERICAL ROSTER

NO.	NAME	HT.	POS.	CLASS-EX.	HOMETOWN/LAST SCHOOL
1	Victoria Hinneburg	6-4	RS	r-Jr-2L	Leipzig, Germany (Sportgymnasium Dresden)
2	Kylie Rittimann	5-10	DS	Fr-HS	San Antonio, Texas (Johnson H.S.)
3	Kyndal Cowan	5-10	SET	So-TR	Midland, Texas (Midland H.S.)
4	Marguerite Grubb	5-11	SET	Sr-3L	Bellaire, Texas (Bellaire H.S.)
5	Lauren Douglass	6-2	MB	r-Sr-3L	Flower Mound, Texas (Ole Miss)
6	Sarah Redding	6-3	RS	So-1L	Friendswood, Texas (Friendswood H.S.)
7	Tita Akiu	5-7	LIB	So-1L	Honolulu, Hawaii (Kamehameha Schools)
10	Eighmy Dobbins	5-10	DS	Fr-HS	Argyle, Texas (Argyle H.S.)
11	Alyssa Ybanez	5-11	OH	Jr-2L	Rancho Cucamonga, Calif. (Rim of the World)
12	Katy Keenan	6-4	MB	So-1L	Argyle, Texas (Argyle H.S.)
13	Audrey Fragniere	5-9	OH	Jr-2L	Neuchatel, Switzerland/Lyce Jean Plaget
14	Ally Standard	6-4	MB	So-TR	San Angelo, Texas (Central H.S.)
16	Toni McDougald	5-11	OH	Fr-HS	Centennial, Colo. (Cherry Creek H.S.)
17	Maggie Sagers	5-9	DS/LIB	Fr-HS	Plano, Texas (Plano Senior H.S.)
18	Chandler Atwood	6-0	OH/RS	Fr-HS	Allen, Texas (Allen H.S.)
23	Michelle Irvin	6-1	OH	So-HS	Austin, Texas (Westlake H.S.)
24	Taylor Martinez	6-1	MB	Fr-HS	San Antonio, Texas (Winston Churchill H.S.)
26	Katelyn Bryant	5-4	DS	So-1L	McKinney, Texas (McKinney Boyd H.S.)
27	Taylor Haskins	6-0	OH	Jr-1L	Kennesaw, Ga. (Harrison H.S.)
33	Hannah Henriksen	6-3	OH	So-TR	Bakersfield, Calif. (Frontier H.S.)

## COACHING STAFF

**Head Coach:** Tony Graystone (1st Season)**Assistant Coach/Recruiting Coordinator:** Morgan Thomas (1st Season)**Assistant Coach:** Brandy Huskey (1st Season)**Director of Operations:** Alyce Peters (2nd Season)**Strength and Conditioning:** Katie Munger**Athletic Trainer:** Imelda Garcia

## 2016 ALPHABETICAL ROSTER

NO.	NAME	POS.
7	Tita Akiu	LIB
18	Chandler Atwood	OH
26	Katelyn Bryant	LIB
3	Kyndal Cowan	SET
10	Eighmy Dobbins	DS
5	Lauren Douglass	MB
13	Audrey Fragniere	OH
4	Marguerite Grubb	SET
27	Taylor Haskins	OH
33	Hannah Henriksen	OH
1	Victoria Hinneburg	RS
23	Michelle Irvin	OH
12	Katy Keenan	MB
24	Taylor Martinez	MB
16	Toni McDougald	OH
6	Sarah Redding	OH
2	Kylie Rittimann	DS
17	Maggie Sagers	DS
14	Ally Standard	MB
11	Alyssa Ybanez	OH

## ROSTER BREAKDOWN

## BY POSITION

Setter \_\_\_\_\_ 2  
 \_\_\_\_\_ Cowan, Grubb  
 Outside Hitter \_\_\_\_\_ 8  
 \_\_\_\_\_ Atwood, Fragniere, Haskins, Henriksen,  
 \_\_\_\_\_ Irvin, McDougald, Ybanez  
 Opposite/Right Side \_\_\_\_\_ 2  
 \_\_\_\_\_ Redding, Hinneburg  
 Middle Blocker \_\_\_\_\_ 4  
 \_\_\_\_\_ Douglass, Keenan, Martinez, Standard  
 Defensive Specialist/Libero \_\_\_\_\_ 5  
 \_\_\_\_\_ Akiu, Bryant, Dobbins,  
 \_\_\_\_\_ Rittimann, Sagers

## BY CLASSIFICATION

Seniors \_\_\_\_\_ 2  
 \_\_\_\_\_ Douglass, Grubb  
 Juniors \_\_\_\_\_ 4  
 \_\_\_\_\_ Fragniere, Henriksen  
 \_\_\_\_\_ Hinneburg, Ybanez  
 Sophomores \_\_\_\_\_ 8  
 \_\_\_\_\_ Akiu, Bryant, Cowan, Haskins,  
 \_\_\_\_\_ Irvin, Keenan, Redding, Standard  
 Freshmen \_\_\_\_\_ 6  
 \_\_\_\_\_ Atwood, Dobbins,  
 \_\_\_\_\_ Martinez, McDougald, Rittimann, Sagers

## BY HOME STATE/COUNTRY

California \_\_\_\_\_ 2  
 \_\_\_\_\_ Henriksen, Ybanez  
 Colorado \_\_\_\_\_ 1  
 \_\_\_\_\_ McDougald  
 Georgia \_\_\_\_\_ 1  
 \_\_\_\_\_ Haskins  
 Germany \_\_\_\_\_ 1  
 \_\_\_\_\_ Hinneburg  
 Hawaii \_\_\_\_\_ 1  
 \_\_\_\_\_ Akiu  
 Switzerland \_\_\_\_\_ 1  
 \_\_\_\_\_ Fragniere  
 Texas \_\_\_\_\_ 13  
 \_\_\_\_\_ Atwood, Bryant,, Cowan,  
 \_\_\_\_\_ Dobbins, Douglass, Grubb,  
 \_\_\_\_\_ Irvin, Keenan, Martinez,  
 \_\_\_\_\_ Redding, Rittimann, Sagers, Standard

## PRONUNCIATION GUIDE

Tita Akiu Tee-Tah  
 Ah-Q  
 Eighmy Dobbins Amy  
 Courtney Ensich Inch  
 Victoria Hinneburg Hinnen-borg  
 Audrey Fragniere Frog-knee-air



**1**  
**Victoria Hinneburg**  
6-4 • RS • JR-2L  
Leipzig, Germany



**2**  
**Kylie Rittmann**  
5-10 • DS • FR-HS  
San Antonio, Texas



**3**  
**Kyndal Cowan**  
5-10 • SET • SO-TR  
Midland, Texas



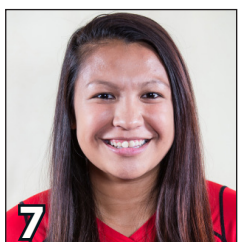
**4**  
**Marguerite Grubb**  
5-11 • SET • SR-3L  
Bellaire, Texas



**5**  
**Lauren Douglass**  
6-2 • MB • SR-3L  
Flower Mound, Texas



**6**  
**Sarah Redding**  
6-3 • RS • SO-1L  
Friendswood, Texas



**7**  
**Tita Akiu**  
5-7 • LIB • SO-1L  
Honolulu, Hawaii



**10**  
**Eighmy Dobbins**  
5-10 • DS • FR-HS  
Argyle, Texas



**11**  
**Alyssa Ybanez**  
5-11 • OH • JR-2L  
Rancho Cucamonga, Calif.



**12**  
**Katy Keenan**  
6-4 • MB • SO-1L  
Argyle, Texas



**13**  
**Audrey Fragniere**  
5-9 • OH • JR-2L  
Neuchatel, Switzerland



**14**  
**Ally Standard**  
6-4 • MB • SO-TR  
San Angelo, Texas



**16**  
**Toni McDougald**  
5-11 • OH • FR-HS  
Centennial, Colo.



**17**  
**Maggie Sagers**  
5-9 • DS/LIB • FR-HS  
Plano, Texas



**18**  
**Chandler Atwood**  
6-0 • OH/RS • FR-HS  
Allen, Texas



**23**  
**Michelle Irvin**  
6-1 • OH • SO-TR  
Austin, Texas



**24**  
**Taylor Martinez**  
6-1 • MB • FR-HS  
San Antonio, Texas



**26**  
**Katelyn Bryant**  
5-4 • DS • SO-1L  
McKinney, Texas



**27**  
**Taylor Haskins**  
6-0 • OH • JR-1L  
Kennesaw, Ga.



**33**  
**Hannah Henriksen**  
6-3 • OH • SO-TR  
Bakersfield, Calif.



**Tony Graystone**  
Head Coach  
1st Season



**Morgan Thomas**  
Asst. Coach/Recruiting  
1st Season



**Brandy Huskey**  
Assistant Coach  
1st Season



**Alyce Peters**  
Director of Operations  
2nd Season