



TEXAS TECH

2016-17 LADY RAIDER BASKETBALL

1993 NCAA CHAMPIONS | 20 NCAA TOURNAMENT APPEARANCES | 5 BIG 12 TITLES

Nov. 25-27 | Miami Thanksgiving Tournament

Lady Raider Basketball Contact: Jessika McKernan | (361) 549-6297 | jessika.mckernan@ttu.edu

GAME COVERAGE

RADIO

Texas Tech Sports Network
Mark Finkner (Play-by-Play)



SOCIAL MEDIA



@LadyRaiderWBB



@LadyRaiderWBB



Texas Tech Lady Raider Basketball

2016-17 SCHEDULE

TEXAS TECH (2-1; 0-0 BIG 12)

NOVEMBER • (2-1)	TV	Time
6 MIDWESTERN ST (EX.)		W, 121-56
13 NORTH DAKOTA	FSSW+	W, 90-80
17 at No. 24 Texas A&M	SEC+	L, 98-90
20 NEW MEXICO	FSSW	W, 69-58
25 vs. Fordham #		1 p.m.
27 vs. No. 21/22 Miami/Grambling St. #		11 a.m.
29 PRAIRIE VIEW A&M		6:30 p.m.

DECEMBER • (0-0)

3 at Arkansas \$		3 p.m.
7 HOUSTON		11 a.m.
14 CENTRAL ARKANSAS		5:30 p.m.
18 ALCORN STATE		3 p.m.
22 UT-ARLINGTON		2 p.m.
29 at Texas *	LHN	7 p.m.

JANUARY • (0-0)

1 OKLAHOMA STATE *		2 p.m.
4 IOWA STATE *	FSSW+	6 p.m.
7 at Kansas State *	ESPN3	7 p.m.
11 WEST VIRGINIA *	FSSW+	6:30 p.m.
14 at Oklahoma *		2 p.m.
21 TEXAS *		6 p.m.
25 at West Virginia *		6 p.m.
28 at Kansas *	FSN	11 a.m.

FEBRUARY • (0-0)

1 KANSAS STATE *	FSSW+	6:30 p.m.
4 BAYLOR *		2 p.m.
8 at TCU *	FSSW	7 p.m.
11 OKLAHOMA *	FSSW+	6:30 p.m.
15 at Iowa State *		7 p.m.
18 KANSAS *	FSSW+	2 p.m.
22 at Oklahoma State *	FS Oklahoma	7 p.m.
25 at Baylor *	FSSW	Noon
27 TCU *	FSN	7 p.m.

MARCH • (0-0)

3-6 Big 12 Championship	FCS/FSN/FS1	TBD
-------------------------	-------------	-----

All times are Central and subject to change

Miami Thanksgiving Tournament

\$ SEC/Big 12 Challenge

* Big 12

TEXAS TECH LADY RAIDERS (2-1) vs. FORDHAM RAMS (3-1)

Nov. 25 • 1 p.m. • Coral Gables, Fla. • Watsco Center • Texas Tech Sports Network

GAME 4



TEXAS TECH

Record: 2-1 Overall; 0-0 in Big 12
Rankings: AP: NR | Coaches: NR
Head Coach: Candi Whitaker
Career Record: 113-151 (8th Season)
Record at Texas Tech: 36-58 (4th Season)



FORDHAM

Record: 3-1 Overall; 0-0 in A10
Rankings: AP: NR | Coaches: NR
Head Coach: Stephanie Gaitley
Career Record: 565-335 (31st Season)
Record at Fordham: 101-65 (6th Season)

TEXAS TECH LADY RAIDERS (2-1) vs. GRAMBLING (1-3) / MIAMI (3-1)

Nov. 27 • 11 a.m. • Coral Gables, Fla. • Watsco Center • Texas Tech Sports Network

GAME 5



GRAMBLING STATE

Record: 1-3 Overall; 0-0 in SWAC
Rankings: AP: NR | Coaches: NR
Interim Head Coach: Freddie Murray
Career Record: 1-3 (1st Season)
Record at Grambling: 1-3 (1st Season)



MIAMI

Record: 3-1 Overall; 0-0 in ACC
Rankings: AP: 21 | Coaches: 22
Head Coach: Katie Meier
Career Record: 286-189 (16th Season)
Record at Miami: 210-144 (12th Season)

GAMEDAY STORYLINES

- Texas Tech travels to Coral Gables, Fla., for the Miami Thanksgiving Tournament. The Lady Raiders will face Fordham in the opening game on Friday at 1 p.m. Game two for the Lady Raiders will be against Grambling State or Miami on Sunday at 11 a.m.
- The Lady Raiders enter the tournament off a 69-58 win over New Mexico on Sunday.
- The Lady Raiders totaled 71 rebounds, breaking the school record for most rebounds in a game. The previous record was 66 total rebounds coming against SMU on Jan. 19, 1994. All nine Lady Raiders recorded a board in Sunday's 69-58 win.
- No. 21 Miami enters the tournament on a three-game win streak. The Hurricanes defeated St. John's, 62-50, in their last game.
- Fordham enters the matchup off a double OT win over Albany, 89-82. The Rams are now 3-1 coming into the tournament.
- Grambling State fell to TCU, 83-47. Two players scored in double figures against the Frogs. The Tigers enter the tournament 1-3 on the season.
- Freshman Arella Guirantes was named Big 12 Freshman of the Week for her performances against No. 24 Texas A&M and New Mexico. She averaged 19 points and is the Big 12's leading freshman scorer, averaging 16 points per game and shooting 53.1 percent from the field.
- Sophomore Reece Caldwell is the leading scorer in the league, averaging 26.0 points per game.
- Texas Tech scored 90 points in back-to-back games for the first time since the 2003-04 season when the Lady Raiders defeated San Diego, 95-47, on Dec. 30, 2003, and Pepperdine, 94-53, on Jan. 4, 2004.

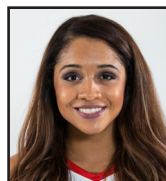
PROBABLE STARTERS



LARRYNN BROOKS

#5 - 5-6 - G - Jr.

PPG	6.0
APG	1.7
RPG	2.3
FG%	.412
3PT%	.500
FT%	.000



REECE CALDWELL

#4 - 5-8 - G - So.

PPG	26.0
APG	4.0
RPG	4.0
FG%	.500
3PT%	.483
FT%	.800



IVONNE COOKTAYLOR

#2 - 5-8 - G - Sr.

PPG	6.7
APG	1.0
RPG	5.3
FG%	.375
3PT%	.000
FT%	1.000



JADA TERRY

#12 - 6-4 - C - Jr.

PPG	16.3
APG	0.3
RPG	7.7
FG%	.561
3PT%	.000
FT%	.214



ARELLA GUIRANTES

#23 - 5-11 - G - Fr.

PPG	16.0
APG	1.0
RPG	7.0
FG%	.531
3PT%	.400
FT%	.857





GAME 4/5: MIAMI THANKSGIVING TOURNAMENT

STATISTICAL COMPARISON



TECH	CATEGORY	FORDHAM
83.0	Points Per Game	62.5
78.7	Opponent Points Per Game	59.8
45.5%	Field Goal Percentage	39.1%
39.3%	Opponent Field Goal Percentage	40.3%
42.3%	3-Pt. Field Goal Percentage	35.6%
25.0%	Opponent 3-Pt. Field Goal Percentage	22.6%
7.3	3-Pts. Per Game	6.5
5.3	Opponent 3-Pts. Per Game	3.0
60.0%	Free Throw Percentage	80.0%
7.0	Blocks Per Game	2.3
5.3	Steals Per Game	5.8
13.3	Assists Per Game	12.0
12.3	Turnovers Per Game	18.0
11.7	Turnovers Forced Per Game	17.3
-0.7	Turnover Margin	-0.7
1.1	Assist/Turnover Ratio	0.7

STATISTICAL COMPARISON



TECH	CATEGORY	GSU
83.0	Points Per Game	56.7
78.7	Opponent Points Per Game	67.3
45.5%	Field Goal Percentage	33.0%
39.3%	Opponent Field Goal Percentage	45.9%
42.3%	3-Pt. Field Goal Percentage	34.0%
25.0%	Opponent 3-Pt. Field Goal Percentage	21.3%
7.3	3-Pts. Per Game	5.7
5.3	Opponent 3-Pts. Per Game	3.3
60.0%	Free Throw Percentage	58.3%
7.0	Blocks Per Game	1.3
5.3	Steals Per Game	9.0
13.3	Assists Per Game	13.0
12.3	Turnovers Per Game	18.3
11.7	Turnovers Forced Per Game	21.3
-0.7	Turnover Margin	+3.0
1.1	Assist/Turnover Ratio	0.7

STATISTICAL COMPARISON



TECH	CATEGORY	MIAMI
83.0	Points Per Game	71.2
78.7	Opponent Points Per Game	57.8
45.5%	Field Goal Percentage	43.1%
39.3%	Opponent Field Goal Percentage	36.4%
42.3%	3-Pt. Field Goal Percentage	39.1%
25.0%	Opponent 3-Pt. Field Goal Percentage	27.1%
7.3	3-Pts. Per Game	8.5
5.3	Opponent 3-Pts. Per Game	4.8
60.0%	Free Throw Percentage	66.2%
7.0	Blocks Per Game	3.5
5.3	Steals Per Game	10.8
13.3	Assists Per Game	16.5
12.3	Turnovers Per Game	21.5
11.7	Turnovers Forced Per Game	19.0
-0.7	Turnover Margin	-2.5
1.1	Assist/Turnover Ratio	0.8

TEXAS TECH-FORDHAM SERIES

- Texas Tech will face Fordham for the second straight year. In the first series meeting, the Lady Raiders defeated Fordham, 62-48, during the South Point Shootout on Nov. 27, 2015.

TEXAS TECH-GRAMBLING STATE SERIES


- The Lady Raiders hold a 4-1 series lead over Grambling State. The last time the two programs met was on Dec. 18, 2015 when Texas Tech defeated the Tigers, 70-55, at the United Supermarkets Arena. The potential meeting would be the first neutral site game.

TEXAS TECH-MIAMI SERIES

- Texas Tech leads Miami, 2-0, in the all-time series. The two last met in Lubbock when the Lady Raiders defeated the Hurricanes, 109-49, on Dec. 6, 2004. The potential meeting would be the first under Head Coach Candi Whitaker and the second in Coral Gables, Fla.

LAST TIME OUT

- A record-breaking 71 rebounds led the Lady Raiders to a 69-58 win over New Mexico Sunday afternoon.
- Texas Tech (2-1) trailed New Mexico (2-1) at the half. But a 22-point fourth quarter by the Lady Raiders sealed the win. Texas Tech held the Lobos to just 24 points in the second half.
- Rebounding was a primary focus for the Lady Raiders as they totaled 71 rebounds, breaking the school record for most rebounds in a game. The previous record was 66 total rebounds coming against SMU on Jan. 19, 1994. All nine Lady Raiders recorded a board in Sunday's 69-58 win.
- Of the Lady Raiders 71 rebounds, 49 came on the defensive side of the ball. This feat broke another school record. The previous record was set at Oklahoma State on Feb. 22, 2003 when the Lady Raiders tallied 43 defensive rebounds.
- The Lady Raiders had 21 rebounds in the third quarter alone, marking the most in a quarter
- Freshman Arella Guirantes led the Lady Raiders with 21 points and 13 rebounds, marking her first double-double as a Lady Raider. She also had two blocks, three assists and a steal against the Lobos.
- Junior Jada Terry followed with her second double-double in as many games as she scored 16 points and recorded 10 rebounds. Senior Ivonne CookTaylor joined the board party with 10 rebounds of her own.



Official Basketball Box Score - Game Totals - Final Statistics

New Mexico vs Texas Tech

11/20/16 2:00 pm at United Supermarkets Arena

New Mexico 58 • 2-1

#	Player	Total	FG	FTA	FT	Rebounds	PF	TP	A	To	Bk	Su	Min
00	BEYRON, Cherise	1-19	1-8	2-4	2	5	7	2	5	4	1	0	1
15	VAN DER KEIJL, R.	3-7	0-1	0-0	2	7	9	1	6	1	1	0	2
22	BURLESON, Mykriel	9-20	3-9	1-4	2	5	7	2	22	2	0	0	1
24	BOVERO, Jayda	1-6	0-3	0-0	0	1	1	2	2	0	1	0	0
32	KELLER, Kianna	2-3	2-2	0-0	1	5	6	2	6	1	2	2	0
04	LAPEYROLERIE, Alex	1-13	1-9	0-0	0	3	3	2	3	2	0	0	1
25	BRYAN, Lanesha	0-1	0-1	0-0	0	1	1	1	0	1	0	0	0
42	NUNN, Jaisa	6-11	1-4	1-2	3	6	9	4	14	1	1	0	1
	Team				2	1	3						
Totals		23-80	8-37	4-10	12	34	46	16	58	12	6	2	6

1st FG %: 5-24 20.8%

2nd FG %: 4-22 18.2%

3rd FG %: 2-7 28.6%

4th FG %: 1-8 12.5%

Game: 23-80 28.8%

Deadball Rebounds: 2

FT %: 2-4 50.0%

2nd FT %: 2-7 28.6%

3rd FT %: 2-4 50.0%

4th FT %: 0-1 0.0%

Texas Tech 69 • 2-1

#	Player	Total	FG	FTA	FT	Rebounds	PF	TP	A	To	Bk	Su	Min
02	CookTaylor, Ivonne	3-14	0-0	0-0	4	6	10	2	6	0	0	0	0
04	Caldwell, Reece	5-19	2-8	0-0	0	8	8	1	12	0	4	0	0
05	Brooks, Larryn	2-8	1-3	0-0	1	3	4	0	5	2	2	0	0
12	Terry, Jada	8-15	0-0	0-2	6	4	10	0	16	0	1	1	1
23	Guirantes, Arella	8-14	1-3	4-5	3	10	13	1	21	3	3	2	1
10	Bright, Grayson	1-1	0-0	0-0	1	3	4	1	2	1	0	0	0
20	Brewer, Brittany	0-7	0-0	2-2	3	0	3	1	2	0	1	3	0
32	Olabode, Dayo	2-5	0-3	1-1	1	7	8	2	5	1	1	0	0
42	McKenzie, Ionna	0-0	0-0	0-0	0	2	2	1	0	0	0	0	0
	Team				3	6	9						
Totals		29-83	4-17	7-10	22	49	71	9	69	7	13	6	2

1st FG %: 7-19 36.8%

2nd FG %: 6-21 28.6%

3rd FG %: 7-23 30.4%

4th FG %: 4-20 20.0%

Game: 29-83 34.9%

Deadball Rebounds: 1

FT %: 0-4 0.0%

2nd FT %: 2-5 40.0%

3rd FT %: 0-1 0.0%

4th FT %: 2-5 40.0%

Officials: Roy Gulbeyan, Missy Brooks, Israel Sael

Technical fouls: New Mexico-None. Texas Tech-None.

Attendance: 3697

Score by periods	1st	2nd	3rd	4th	Total						
New Mexico	14	20	11	13	58						
Texas Tech	16	16	15	22	69						

Last FG - NM 4th-02:20, TTU 4th-00:52.

Largest lead - NM by 6 2nd-05:42, TTU by 11 4th-00:52.

NM led for 14:38. TTU led for 18:02. Game was tied for 07:20.

Score tied - 10 times.

Lead changed - 7 times.

BREAKING RECORDS

- The Lady Raiders' 71 boards against New Mexico (11/20) broke a 22-year-old school record for the most rebounds in a game. The previous record was 66 rebounds coming against SMU on Jan. 18, 1994.
- The Lady Raiders' 49 defensive rebounds also broke a 13-year-old record. The previous record was 43 defensive rebounds coming at Oklahoma State on Feb. 22, 2003.
- The Lady Raiders had 21 rebounds in the third period alone, marking the most in a quarter since the start of quarter play in 2015.
- In the season opener, the Lady Raiders scored 33 points in the first quarter, the most in a quarter since the NCAA moved to quarter play last season.
- The Lady Raiders recorded six 3-pointers in the first quarter against North Dakota, marking the most made in a quarter.

BUCKETS!!

- The Lady Raiders scored 90 points against the No. 24 Texas A&M, marking the most scored against the Aggies this season.
- Texas Tech scored 90 points in back-to-back games for the first time since the 2003-04 season when the Lady Raiders defeated San Diego, 95-47, on Dec. 30, 2003, and Pepperdine, 94-53, on Jan. 4, 2004.
- The Lady Raiders rank third in the Big 12 and 30th in the nation in scoring offense, averaging 83.0 points per game.

THIS WEEK IN LADY RAIDER BASKETBALL

23

WEDNESDAY

Practice 10am-12pm

Boys & Girls Club

24

THURSDAY

Leave for Miami

25

FRIDAY

Texas Tech vs. Fordham -
1 p.m. (CT)

26

SATURDAY

27

SUNDAY

Texas Tech vs. Grambling/
Miami- 11 a.m. (CT)



RECEE' CALDWELL

- Sophomore Reece' Caldwell led the Lady Raiders with 38 points against #24 Texas A&M, marking her second straight game with 20+ points.
- With the 38 points in Thursday night's game, she became the first Lady Raider to score 35+ points since Alesha Robertson scored 37 against Miami (12/6/04).
- Caldwell scored 11 points in the third quarter against Texas A&M to become the first Lady Raider to score 10+ points in a quarter since she last did it against North Dakota (11/13/16).
- She also became the first Lady Raider to make 15+ field goals since Jia Perkins made 17 against Creighton (12/4/02).
- Caldwell is the leading scorer in the Big 12, averaging 33.0 points per game. She also leads the league in 3-PTs made (12 - 6.0). Her 38 points vs. Texas A&M is the most by any player in the conference.

TOP NOTCH FRESHMEN

- The Lady Raiders also welcomed three freshmen to the 2016-17 squad. Guard Arella Guirantes and forward Brittany Brewer were ranked in the Top 50 in the 2016 class while guard Grayson Bright was in the Top 75. All three will make an immediate impact on the team this season.
- Guard Arella Guirantes scored a career-high 17 points against #24 Texas A&M. She hit a jumper at the buzzer to tie the game 83-83 at the end of regulation and force the Aggies into overtime.

CONFERENCE RANKINGS

Scoring Offense (83.0)	3rd
Three-point FG Pct (.423)	1st
Rebounding Offense (47.0)	4th
Blocked Shots (21 / 7.0)	4th
Defensive Rebounds (98 / 32.7)	3rd
Three-Point FG Made (22 / 7.3)	4th

RECEE' CALDWELL

Scoring (78 / 26.0)	1st
Assists (12 / 4.0)	T-5th
Three-point FGs Made (14 / 4.7)	1st
Minutes Played (109 / 36.3)	1st

JADA TERRY

Scoring (49 / 16.3)	8th
FG Pct (.561)	8th
Rebounding (23 / 7.7)	11th

ARELLA GUIRANTES

Scoring (48 / 16.0)	9th
	<i>*Top scoring freshman</i>
Rebounding (21 / 7.0)	13th
FT Pct (.857)	6th
Blocked Shots (6 / 2.0)	T-5th

LARRYN BROOKS

Three-point FG Pct (.500)	T-4th
---------------------------	-------

BRITTANY BREWER

Blocked Shots (9 / 3.0)	2nd
-------------------------	-----

NATIONAL RANKINGS

Three-point FG Per Game (42.3)	15th
Blocked Shots (21)	32nd
Blocked Shots Per Game (7.0)	15th
Scoring Offense (83.0)	30th
Defensive Rebounds Per Game (33)	26th
Rebounds Per Game (47.0)	37th
Fewest Turnovers (37)	29th
Turnovers Per Game (12.3)	25th

RECEE' CALDWELL

Three-Point FGs Per Game (4.67)	4th
Three-Point FGs Made (14)	5th
Three-point FG Attempted (29)	36th
FGs Made (30)	24th
FG Attempts (60)	39th
Points Per Game (26.0)	6th
Final Points (78)	32nd
Minutes Played Per Game (36.33)	41st

JADA TERRY

Double Doubles (2)	20th
--------------------	------

BRITTANY BREWER

Blocked Shots (9)	29th
Blocked Shots Per Game (3.0)	19th

ARELLA GUIRANTES

Blocked Shots (6)	87th
Blocked Shots Per Game (2.0)	71st

INSIDE THE SERIES



TEXAS TECH (2-1) vs. FORDHAM (2-1)

GP: 1; Home: 0-0; Away: 0-0; Neutral: 1-0.

SERIES HISTORY

Date	Loc.	W/L	TTU	FORDHAM
Nov. 27, 2015	N	W	62	48

INSIDE THE SERIES



TEXAS TECH (2-1) vs. GRAMBLING STATE (1-2)

GP: 5; Home: 4-1; Away: 0-0; Neutral: 0-0.

SERIES HISTORY

Date	Loc.	W/L	TTU	GSU
Dec. 18, 2015	H	W	70	55
Nov. 23, 2013	H	W	86	68
March 13, 1998	H	W	87	75
Nov. 25, 1996	H	W	82	44
Dec. 1, 1989	H	L	64	67

INSIDE THE SERIES



TEXAS TECH (2-1) vs. MIAMI (3-1)

GP: 2; Home: 1-0; Away: 1-0; Neutral: 0-0

SERIES HISTORY

Date	Loc.	W/L	TTU	MIAMI
Dec. 6, 2004	H	W	109	49
Dec. 30, 1992	A	W, OT	75	74



2016-17 LADY RAIDERS

NO.	NAME	HT.	POS.	CLASS-EX.	HOMETOWN (PREVIOUS SCHOOL)
00	Brielle Blaire	6-2	F	Jr.-2L	Salisbury, N.C. (Virginia Tech)
1	Erin Degrade	6-5	C	So.-TR	Waco, Texas (Louisville)
2	Ivonne CookTaylor	5-8	G	RS-Sr.-3L	San Francisco, Calif. (Terra Nova)
4	Recee' Caldwell	5-8	G	So.-TR	San Antonio, Texas (UCLA)
5	Larryn Brooks	5-6	G	Jr.-TR	Richmond, Ky. (Indiana)
10	Grayson Bright	5-11	G	Fr.-HS	Fort Worth, Texas (Fossil Ridge HS)
12	Jada Terry	6-4	C	Jr.-TR	Cedar Hill, Texas (Texas A&M)
20	Brittany Brewer	6-5	F	Fr.-HS	Abilene, Texas (Wylie HS)
23	Arella Guirantes	5-11	G	Fr.-HS	Bellport, N.Y. (Bellport HS)
30	Zuri Sanders	6-0	F	So.-1L	Evansville, Ind. (Evansville Central)
32	Dayo Olabode	6-2	F	Jr.-2L	Arlington, Texas (Mansfield Timberview)
42	Ionna McKenzie	6-2	C	Jr.-2L	Gotha, Fla. (Dr. Phillips H.S.)

COACHING STAFF

Candi Whitaker - Head Coach

Matt Corkery - Associate Head Coach

Brandi Poole - Assistant Coach

Ray Caldwell - Assistant Coach

Melissa Maines - Assistant Athletics Director of Operations

Brittney Martin - Graduate Assistant

Liz Donohoe - Graduate Assistant

Jenna Duffek - Assistant Athletic Trainer

Tyson Carter - Strength and Conditioning Coach

Meghan Bielich - Video Coordinator

Dayna McCutchin - Sports Dietitian

PRONUNCIATION GUIDE

BRIELLE Blaire _____ BREE-el

Erin **DEGRATE** _____ Da-great

IVONNE CookTaylor _____ EYE-von

REECE' Caldwell _____ RUH-say

LARRYN Brooks _____ LAIR-in

ARELLA GUIRANTES _____ uh-REL-uh guh-RAHN-tez

DAYO OLABODE _____ DYE-oh oh-la-boh-dee

IONNA McKenzie _____ eye-ON-uh

QUICK FACTS

GENERAL INFORMATION

Location Lubbock, Texas
 Founded..... 1923
 Enrollment35,893
 Nickname..... Red Raiders / Lady Raiders
 Colors Scarlet and Black
 Chancellor Robert Duncan
 President..... Dr. Lawrence Schovanec
 Athletics Director Kirby Hocutt
 Faculty Representative Brian Shannon
 SWA Dr. Judi Henry
 Conference Big 12 Conference
 Began Big 12 Competition 1996

WOMEN' BASKETBALL STAFF

Head Coach Candi Whitaker, 4th Season
 Alma Mater, Year Texas Tech, 2002
 Career Record 112-151 (8th Season)
 Record at Texas Tech 35-58 (4th Season)
 Associate Head Coach..... Matt Corkery, 4th Season
 Alma Mater, Year West Texas A&M, 1993
 Assistant Coach Brandi Poole, 3rd Season
 Alma Mater, Year Univ. of the South, 1997
 Assistant Coach Ray Caldwell, 2nd Season
 Alma Mater Northern Arizona

TEAM INFORMATION

2015-16 Record..... 13-18
 2015-16 Big 12 Record (Finish) 3-15 (9th)
 2015-16 Postseason..... N/A
 Letterwinners Returning/Lost..... 6/4
 Starters Returning/Lost..... 3/2
 Newcomers 6
 First Season of Lady Raider Basketball 1975
 Postseason Appearances 20

HOME VENUE INFORMATION

Name United Supermarkets Arena
 Year Opened..... 1999
 Capacity 15,098

COMMUNICATIONS

Senior Associate AD..... Robert Giovannetti
 Women's Basketball Contact Jessika McKernan
 Email..... jessika.mckernan@ttu.edu
 Office Phone..... (806) 834-0536
 Cell Phone..... (361) 549-6297
 Office Fax (806) 742-1970
 Homepage TexasTech.com
 Shipping Address 2526 6th St.
 Room 117
 Lubbock, Texas, 79409

2016-17 LADY RAIDERS TV ROSTER



00 BRIELLE
BLAIRE
6-2 • F • JR
Salisbury, N.C.



1 ERIN
DEGRATE
6-5 • C • SO
Waco, Texas



2 IVONNE
COOKTAYLOR
5-8 • G • RS-SR
San Francisco, Calif.



4 RECEE'
CALDWELL
5-8 • G • SO
San Antonio, Texas



5 LARRYN
BROOKS
5-6 • G • JR
Richmond, Ky.



10 GRAYSON
BRIGHT
5-11 • G • FR
Fort Worth, Texas



12 JADA
TERRY
6-4 • C • JR
Cedar Hill, Texas



20 BRITTANY
BREWER
6-5 • F • FR
Abilene, Texas



23 ARELLA
GUIRANTES
5-11 • G • FR
Bellport, N.Y.



30 ZURI
SANDERS
6-0 • F • SO
Evansville, Ind.



32 DAYO
OLABODE
6-2 • F • JR
Arlington, Texas



42 IONNA
MCKENZIE
6-2 • C • JR
Gotha, Fla.



HC CANDI
WHITAKER
4th Season
Canyon, Texas



AC MATT
CORKERY
4th Season
Whitharral, Texas



AC BRANDI
POOLE
3rd Season
Clarksville, Tenn.



AC RAY
CALDWELL
2nd Season
San Antonio, Texas



DO MELISSA
MAINES
4th Season
Lubbock, Texas



VC MEGHAN
BIELICH
2nd Season
Bethel Park, Pa.



GA BRITTANY
MARTIN
1st Season
Syracuse, Utah



GA LIZ
DONOHOE
1st Season
Edmond, Okla.



CANDI WHITAKER

TEXAS TECH HEAD COACH

@CWhitakerTTU

- Head coach Candi Whitaker enters her fourth season at the helm of the Lady Raider basketball program.
- Became the sixth women's basketball head coach at Tech on May 20, 2013.
- First former Lady Raider to become the women's basketball head coach.
- Won her first game as the women's basketball head coach on Nov. 10, 2013.
- Led the 2014-15 Lady Raiders to a nine-win increase overall from the 2013-14 season, and a five-win jump in conference play. Not only that, but six additional games were within reach in the final minute bringing even more confidence to the 2015-16 squad.
- Spent 2012-13 season as associate head coach at Oklahoma State under Jim Littell and helped the Cowgirls reach the Second Round of the NCAA Tournament.
- Became one of the youngest head coaches in women's basketball at 26 when she took over the program at UMKC in 2006 after two years as an assistant coach.
- Won 77 games at UMKC to become the second-winningest head coach in program history while leading the Roos to their first two postseason appearances in the 2010 WBI and 2012 WNIT.
- UMKC went 22-12 in Whitaker's last season at the helm and advanced to the Summitt League Tournament Championship for the first time since 2005.
- Had a 100 percent graduation rate from all players who completed their four-year eligibility at UMKC.
- As a player, Whitaker (then known as Candi White) helped lead Texas Tech to back-to-back Sweet 16 appearances in the NCAA Tournament from 2000-02.
- The Lady Raiders won 45 games over her two seasons as the point guard for legendary head coach Marsha Sharp and rose as high as No. 7 in the national polls.
- Started and played in all 64 games over two seasons while tallying 232 points and 249 assists with 87 steals.
- Graduated from Texas Tech in 2002 with a degree in Exercise Sports Science and earned her Masters degree in Sports Administration at Valparaiso in 2004.
- Married husband, Matt Whitaker, in April 2007. They have two sons, Westin and William.



THE WHITAKER FILE

Hometown: Canyon, Texas
Education: Texas Tech '02, Valparaiso '04
Degree: Exercise Sports Science, Sports Administration
Husband: Matt
Sons: Westin & William

CAREER HIGHLIGHTS

- Became sixth head women's basketball coach all-time at Texas Tech on May 20, 2013.
- First former Lady Raider to become the women's basketball head coach.
- Became one of the youngest head coaches in women's basketball at 26 when she took over the program at UMKC in 2006 after two years as an assistant coach.
- Engineered a nine-win turnaround overall and a five-win turnaround in Big 12 play in just her second season at Tech

COACHING EXPERIENCE

2002-04: Valparaiso (Assistant Coach)
 2004-06: UMKC (Assistant Coach)
 2006-12: UMKC (Head Coach)
 2012-13: Oklahoma State (Associate Head Coach)
 2013-Present: Texas Tech (Head Coach)

PLAYING EXPERIENCE

1998-2000: Seward County Community College
 2000-02: Texas Tech

"I think Candi Whitaker is a great fit for Texas Tech and Texas Tech is a great fit for her. Candi's basketball IQ and work ethic are incredible. She came out of one of the best high school programs in the country and was a great point guard at the collegiate level. She made moves early in her career that prepared her for this opportunity." - Hall of Fame Head Coach Marsha Sharp

Head Coach Candi Whitaker led the Lady Raiders to a nine-win increase overall and a five-win increase in Big 12 play during the 2014-15 season



BIG 12 BREAKDOWN

2016-17 STANDINGS

Team	Record	Pct	Home	Away	Neutral	Record	Pct	Home	Away	Neutral
Iowa State	0-0	.000	0-0	0-0	0-0	4-0	1.000	4-0	0-0	0-0
Oklahoma State	0-0	.000	0-0	0-0	0-0	4-0	1.000	3-0	1-0	0-0
TCU	0-0	.000	0-0	0-0	0-0	4-0	1.000	4-0	0-0	0-0
West Virginia	0-0	.000	0-0	0-0	0-0	4-0	1.000	3-0	0-0	1-0
Kansas State	0-0	.000	0-0	0-0	0-0	3-0	1.000	3-0	0-0	0-0
Oklahoma	0-0	.000	0-0	0-0	0-0	3-0	1.000	2-0	1-0	0-0
Baylor	0-0	.000	0-0	0-0	0-0	4-1	.800	4-0	0-1	0-0
Texas Tech	0-0	.000	0-0	0-0	0-0	2-1	.667	2-0	0-1	0-0
Kansas	0-0	.000	0-0	0-0	0-0	1-2	.333	0-2	1-0	0-0
Texas	0-0	.000	0-0	0-0	0-0	1-2	.333	1-0	0-2	0-0

2016-17 PRESEASON POLL

1.	Baylor (9)	81
2.	Texas (1)	73
3.	Oklahoma	61
4.	West Virginia	57
5.	Kansas State	50
6.	TCU	34
7.	Texas Tech	28
	Iowa State	28
9.	Oklahoma State	23
10.	Kansas	15

2016-17 PRESEASON TEAM

PRESEASON PLAYER OF THE YEAR

Nina Davis, Baylor, F

PRESEASON NEWCOMER OF THE YEAR

Kristina King, West Virginia, F

PRESEASON FRESHMAN OF THE YEAR

Lauren Cox, Baylor, F

PRESEASON ALL-BIG 12 TEAM

Nina Davis, Baylor, F
 Alexis Jones, Baylor, G
 Seanna Johnson, Iowa State, F
 Breanna Lewis, Kansas State, F
 Brooke McCarty, Texas, G

HONORABLE MENTION

Kalani Brown (Baylor), Peyton Little (Oklahoma), Vionise, Pierre-Louis (Oklahoma), Kaylee Jensen (Oklahoma State), Ariel Atkins (Texas), Tynice Martin (West Virginia) and Lanay Montgomery (West Virginia)

UPCOMING BIG 12 SCHEDULE

Thursday, November 24

K-State vs. North Carolina State, 12 p.m.
 West Virginia vs. Auburn, 6 p.m.

Friday, November 25

Baylor vs. Kent State, 10:00 a.m.
 Kansas State vs. LSU, 12:00 p.m.

Texas Tech vs. Fordham, 1:00 p.m.**Saturday, November 26**

TCU at Notre Dame, 12:00 p.m.
 Rice at Oklahoma State, 1:00 p.m.
 Kansas State vs. UTEP, 2:15 p.m.
 Baylor vs. DePaul/Western Kentucky

Sunday, November 27**Texas Tech vs. Miami/Grambling, 11:00 a.m.**

Arkansas State at Iowa State, 2:00 p.m.
 North Dakota at Kansas, 2:00 p.m.
 Colorado State at Oklahoma, 2:00 p.m.
 High Point at West Virginia, 3:00 p.m.
 Baylor vs. TBA

Tuesday November 29**Prairie View A&M at Texas Tech, 6:30 p.m.****Wednesday, November 30**

Butler at TCU, 12:00 p.m.
 Morehead State at West Virginia, 5:30 p.m.
 Kansas at Creighton, 7:00 p.m.

BIG 12 WEEKLY AWARDS

PLAYER OF THE WEEK

Nov. 14 Kalani Brown, Baylor; Kaylee Jensen, OSU

Nov. 21 Jadda Buckley, Iowa State

Nov. 28

Dec. 5

Dec. 12

Dec. 19

Dec. 26

Jan. 2

Jan. 9

Jan. 16

Jan. 23

Jan. 30

Feb. 6

Feb. 13

Feb. 20

Feb. 27

FRESHMAN OF THE WEEK

Nov. 14 Peyton Williams, Kansas State

Nov. 21 Arella Guirantes, Texas Tech

Nov. 28

Dec. 5

Dec. 12

Dec. 19

Dec. 26

Jan. 2

Jan. 9

Jan. 16

Jan. 23

Jan. 30

Feb. 6

Feb. 13

Feb. 20

Feb. 27



2016-17 RESULTS

RECORD:	OVERALL	HOME	AWAY	NEUTRAL
ALL GAMES	2-1	2-0	0-1	0-0
CONFERENCE	0-0	0-0	0-0	0-0
NON-CONFERENCE	2-1	2-0	0-1	0-0

Date	Opponent	Score	Att.	High Points	High Rebounds
11/13/16	UND	W 90-80	4232	(28)Caldwell, Reece	(6)Brewer, Brittany
11/17/16	at Texas A&M	90-98 Lot	3085	(38)Caldwell, Reece	(11)Terry, Jada
11/20/16	NEW MEXICO	W 69-58	3697	(21)Guirantes, Arella	(13)Guirantes, Arella

* - Conference game

Attendance Summary	Games	Attend	Avg/Game
Home	2	7929	3964
Away	1	3085	3085
Neutral	0	0	0
Total	3	11014	3671



2016-17 OVERALL STATS

#	Player	gp-gs	min	avg	Total		3-Point		F-Throw		Rebounds				pf	dq	a	to	blk	stl	pts	avg
					fg-fga	fg%	3fg-fga	3fg%	ft-fa	ft%	off	def	tot	avg								
02	CookTaylor, Ivonne	3-3	64	21.3	9-24	.375	0-0	.000	2-2	1.000	5	11	16	5.3	3	0	3	2	0	1	20	6.7
04	Caldwell, Reece	3-3	109	36.3	30-60	.500	14-29	.483	4-5	.800	0	12	12	4.0	4	0	12	6	0	1	78	26.0
05	Brooks, Larryn	3-1	73	24.3	7-17	.412	4-8	.500	0-0	.000	2	5	7	2.3	2	0	5	2	1	3	18	6.0
10	Bright, Grayson	3-0	26	8.7	2-3	.667	0-0	.000	0-0	.000	1	4	5	1.7	3	0	3	1	0	2	4	1.3
12	Terry, Jada	3-3	79	26.3	23-41	.561	0-0	.000	3-14	.214	12	11	23	7.7	9	1	1	6	3	4	49	16.3
20	Brewer, Brittany	3-0	61	20.3	4-14	.286	0-0	.000	3-6	.500	8	7	15	5.0	9	1	3	3	9	0	11	3.7
23	Guirantes, Arella	3-3	93	31.0	17-32	.531	2-5	.400	12-14	.857	3	18	21	7.0	8	1	3	9	6	1	48	16.0
24	Dean, Japreece	2-2	66	33.0	5-16	.313	2-5	.400	0-0	.000	2	2	4	2.0	3	0	7	5	0	4	12	6.0
32	Olabode, Dayo	3-0	37	12.3	2-12	.167	0-5	.000	1-1	1.000	2	13	15	5.0	7	0	1	2	0	0	5	1.7
42	McKenzie, Ionna	3-0	17	5.7	1-1	1.000	0-0	.000	2-3	.667	3	6	9	3.0	3	0	2	0	2	0	4	1.3
Team											5	9	14		1			1				
Total.....		3	625		100-220	.455	22-52	.423	27-45	.600	43	98	141	47.0	52	3	40	37	21	16	249	83.0
Opponents.....		3	625		88-224	.393	16-64	.250	44-63	.698	49	86	135	45.0	58	-	42	35	6	15	236	78.7

2015-16 BIG 12 STATS

#	Player	gp-gs	min	avg	Total		3-Point		F-Throw		Rebounds				pf	dq	a	to	blk	stl	pts	avg
					fg-fga	fg%	3fg-fga	3fg%	ft-fa	ft%	off	def	tot	avg								
02	CookTaylor, Ivonne	18-18	600	33.3	108-286	.378	7-26	.269	31-39	.795	28	63	91	5.1	30	0	12	54	3	21	254	14.1
24	Dean, Japreece	18-18	648	36.0	76-238	.319	19-74	.257	50-60	.833	16	40	56	3.1	34	1	56	63	2	26	221	12.3
25	Grant, Leashja	18-17	380	21.1	41-104	.394	0-1	.000	23-45	.511	48	61	109	6.1	64	5	13	32	12	13	105	5.8
11	Brooks, Rayven	18-14	476	26.4	32-132	.242	15-66	.227	22-29	.759	16	48	64	3.6	51	3	31	35	9	28	101	5.6
32	Olabode, Dayo	18-7	359	19.9	33-93	.355	15-50	.300	15-20	.750	16	33	49	2.7	43	1	11	27	4	3	96	5.3
04	Bowser, Ryann	16-5	366	22.9	32-86	.372	23-58	.397	4-8	.500	5	28	33	2.1	32	0	19	22	2	14	91	5.7
00	Blaire, Brielle	17-0	189	11.1	15-63	.238	3-11	.273	12-33	.364	18	33	51	3.0	26	0	2	16	10	6	45	2.6
30	Sanders, Zuri	18-3	217	12.1	18-40	.450	0-1	.000	7-16	.438	30	37	67	3.7	20	0	8	13	1	9	43	2.4
35	Roe, Jamie	18-8	239	13.3	3-19	.158	1-7	.143	3-8	.375	11	24	35	1.9	26	0	11	10	3	15	10	0.6
42	McKenzie, Ionna	15-0	145	9.7	3-9	.333	0-0	.000	2-8	.250	12	15	27	1.8	20	0	2	10	3	1	8	0.5
34	Parliament, Paige	3-0	7	2.3	0-0	.000	0-0	.000	0-0	.000	0	0	0	0.0	0	0	0	0	0	0	0	0.0
Team											25	21	46					8				
Total.....		18	3626		361-1070	.337	83-294	.282	169-266	.635	225	403	628	34.9	346	10	165	290	49	136	974	54.1
Opponents.....		18	3628		471-1051	.448	93-287	.324	233-323	.721	209	527	736	40.9	296	-	265	278	68	140	1268	70.4

Score by Periods	1st	2nd	3rd	4th	OT	Totals
Texas Tech	232	200	270	264	8	974
Opponents	336	266	335	326	5	1268



2016-17 TEAM GAME-BY-GAME

Opponent	Date	Score		Total		3-Pointers		Free throws		Rebounds				pf	a	t/o	blk	stl	pts	avg
				fg-fga	pct	3fg-fga	pct	ft-fta	pct	off	def	tot	avg							
UND	11/13/16	90-80	W	34-70	.486	8-17	.471	14-22	.636	11	25	36	36.0	21	17	11	7	11	90	90.0
at Texas A&M	11/17/16	90-98	Lot	37-67	.552	10-18	.556	6-13	.462	10	24	34	35.0	22	16	13	8	3	90	90.0
NEW MEXICO	11/20/16	69-58	W	29-83	.349	4-17	.235	7-10	.700	22	49	71	47.0	9	7	13	6	2	69	83.0
Texas Tech		249		100-220	.455	22-52	.423	27-45	.600	43	98	141	47.0	52	40	37	21	16	249	83.0
Opponents		236		88-224	.393	16-64	.250	44-63	.698	49	86	135	45.0	58	42	35	6	15	236	78.7

Games played: 3
Points/game: 83.0
FG Pct: 45.5
3FG Pct: 42.3
FT Pct: 60.0

Rebounds/game: 47.0
Assists/game: 13.3
Turnovers/game: 12.3
Assist/turnover ratio: 1.1
Steals/game: 5.3
Blocks/game: 7.0



2016-17 GAME-BY-GAME COMPARISON

2016-17 Lady Raider Basketball Texas Tech Team Game-by-Game Comparison (as of Nov 21, 2016) All games

Opponent	1st	2nd	Score	Mar	Total FG	FG Pct	3-Pointers	3FG Pct	Free Throws	FT Pct	Rebounds	Assist	T/Over	Block	Steal	Fouls	
UND	50/44	40/36	90-80	+10	34-70/29-66	.486/.439	8-17/3-13	.471/.231	14-22/19-25	.636/.760	36/44	(8)	17/10	11/21	7/2	11/4	21/25
Texas A&M	33/36	50/47	90-98	(8)	37-67/36-78	.552/.462	10-18/5-14	.556/.357	6-13/21-28	.462/.750	34/45	(11)	16/20	13/8	8/2	3/5	22/17
NEW MEXICO	32/34	37/24	69-58	+11	29-83/23-80	.349/.288	4-17/8-37	.235/.216	7-10/4-10	.700/.400	71/46	+25	7/12	13/6	6/2	2/6	9/16

Note: Game totals are displayed in the format TEAM/OPPONENT for each category



2016-17 GAME-BY-GAME LEADERS

Opponent	Date	Score	Points	Rebounds	Assists	Steals	Blocked shots
UND	11/13/16	90-80	28-Caldwell, Reece	6-Brewer, Brittany	7-Caldwell, Reece	3-Brooks, Larryn Dean, Japreece	4-Guirantes, Arella
at Texas A&M	11/17/16	90-98	38-Caldwell, Reece	11-Terry, Jada	5-Caldwell, Reece	2-Terry, Jada	5-Brewer, Brittany
NEW MEXICO	11/20/16	69-58	21-Guirantes, Arella	13-Guirantes, Arella	3-Guirantes, Arella	1-Guirantes, Arella Terry, Jada	3-Brewer, Brittany



2016-17 STARTING FIVE

DATE	OPPONENT	G	G	G	G/F	F/C	RECORD
Nov. 6	Midwestern State%	Recee' Caldwell	Japreece Dean	Ivonne CookTaylor	Arella Guirantes	Jada Terry	---
Nov. 13	North Dakota	Recee' Caldwell	Japreece Dean	Ivonne CookTaylor	Arella Guirantes	Jada Terry	1-0
Nov. 17	at Texas A&M	Recee' Caldwell	Japreece Dean	Ivonne CookTaylor	Arella Guirantes	Jada Terry	1-1
Nov. 20	New Mexico	Recee' Caldwell	Larryn Brooks	Ivonne CookTaylor	Arella Guirantes	Jada Terry	1-0
Nov. 25	vs. Fordham						
Nov. 27	vs. Miami/Grambling St.						
Nov. 29	Prairie View A&M						
Dec. 3	at Arkansas						
Dec. 7	Houston						
Dec. 14	Central Arkansas						
Dec. 18	Alcorn State						
Dec. 22	UT-Arlington						
Dec. 29	at Texas*						
Jan. 1	Oklahoma State*						
Jan. 4	Iowa State*						
Jan. 7	at Kansas State*						
Jan. 11	West Virginia*						
Jan. 14	at Oklahoma*						
Jan. 21	Texas*						
Jan. 25	at West Virginia*						
Jan. 28	at Kansas*						
Feb. 1	Kansas State*						
Feb. 4	Baylor*						
Feb. 8	at TCU*						
Feb. 11	Oklahoma*						
Feb. 15	at Iowa State*						
Feb. 18	Kansas*						
Feb. 22	at Oklahoma State*						
Feb. 25	at Baylor*						
Feb. 27	TCU*						



QUARTER SCHOOL RECORDS

SINGLE QUARTER

Points	33, 2x, last first quarter, at #24 Texas A&M (11/17/16)
Low Points	4, 2x, last first quarter vs. West Virginia (2/2/16)
Points Allowed	30, first quarter, at #19 Oklahoma (1/20/16)
Low Points Allowed	4, second quarter, vs. Grambling (12/18/15)
Rebounds	21, third quarter, vs. New Mexico (11/20/16)
Offensive Rebounds	9, second quarter, vs. Idaho State (11/24/15)
Assists	9, third quarter, vs. Iowa State (1/17/16)
Steals	8, third quarter, vs. SE Louisiana (11/21/15)
Turnovers	9, first quarter vs. SE Louisiana (11/21/15)
Blocks	5, second quarter, vs. West Virginia (2/2/16)
FGs Made	13, vs. North Dakota (11/13/16)
FGs Attempted	24, 3x, last vs. North Dakota (11/13/16)
FG Percentage	.786 (11-14), third quarter at #24 Texas A&M (11/17/16)
Low FG Percentage	.091 (1-11), second quarter, at Iowa State (2/17/16)
3-PT Made	6, first quarter, vs. North Dakota (11/13/16)
3-PT Attempted	11, fourth quarter, vs. Idaho (12/9/15)
3-PT Percentage	1.000 (2-2), third quarter at #24 Texas A&M (11/17/16)
FTs Made	10, fourth quarter, vs. Kansas (1/30/16)
FT Attempted	15, third quarter, vs. SE Louisiana (11/21/15)
FT Percentage	1.000 (6-6), fourth quarter, vs. Iowa State (1/17/16)

FIRST QUARTER

Points	33, 2x, last first quarter, at #24 Texas A&M (11/17/16)
Rebounds	19, vs. New Mexico (11/20/16)
Offensive Rebounds	9, vs. Abilene Christian (12/2/15)
Assists	7, 3x, last vs. North Dakota (11/13/16)
Steals	7, vs. Niagara (11/13/15)
Blocks	3, vs. New Mexico (11/20/16)

SECOND QUARTER

Points	29, vs. SE Louisiana (11/21/15)
Rebounds	16, vs. Niagara (11/13/15)
Offensive Rebounds	9, vs. Idaho State (11/24/15)
Assists	8, vs. Arkansas-Pine Bluff (12/20/15)
Steals	6, vs. #24 Oklahoma (3/1/16)
Blocks	5, vs. West Virginia (2/2/16)

THIRD QUARTER

Points	31, vs. SE Louisiana (11/21/15)
Rebounds	21, vs. New Mexico (11/20/16)
Offensive Rebounds	8, vs. New Mexico (11/20/16)
Assists	9, vs. Iowa State (1/17/16)
Steals	8, vs. SE Louisiana (11/21/15)
Blocks	4, vs. Iowa State (1/17/16)

FOURTH QUARTER

Points	26, vs. Iowa State (3/4/16)
Rebounds	19, vs. SE Louisiana (11/21/15)
Offensive Rebounds	7, vs. SE Louisiana (11/21/15)
Assists	6, vs. #24 Oklahoma (3/1/16)
Steals	3, 2x, last vs. Arkansas-Pine Bluff (12/20/15)
Blocks	4, vs. North Dakota (11/13/16)

INDIVIDUAL HIGHS - SEASON

PTS - 38, Reece' Caldwell at #24 Texas A&M (11/17/16)
REB - 13, Arella Guirantes vs. New Mexico (11/20/16)
OREB - 6, Jada Terry vs. New Mexico (11/20/16)
AST - 7, Reece' Caldwell vs. North Dakota (11/13/16)
STL - 3, Japreece Dean & Larryn Brooks vs. North Dakota (11/13/16)
TO - 5, Jada Terry at #24 Texas A&M (11/17/16)
BLK - 5, Brittany Brewer at #24 Texas A&M (11/17/16)
FGM - 15, Reece' Caldwell at #24 Texas A&M (11/17/16)
FGA - 22, Reece' Caldwell at #24 Texas A&M (11/17/16)
3PM - 7, Reece' Caldwell at #24 Texas A&M (11/17/16)
3PTA - 12, Reece' Caldwell at #24 Texas A&M (11/17/16)
FTM - 6, Arella Guirantes vs. North Dakota (11/13/16)
FTA - 7, Arella Guirantes vs. North Dakota (11/13/16)

OPPONENT HIGHS - SEASON

TEAM

PTS - 98, at #24 Texas A&M (11/17/16)
REB - 46, vs. New Mexico (11/20/16)
AST - 20, at #24 Texas A&M (11/17/16)
STL - 6, vs. New Mexico (11/20/16)
TO - 21, vs. North Dakota (11/13/16)
BLK - 2, vs. North Dakota (11/13/16)
FGM - 36, at #24 Texas A&M (11/17/16)
3PM - 8, vs. New Mexico (11/20/16)
FTM - 19, vs. North Dakota (11/13/16)

INDIVIDUAL

PTS - 32, Danni Williams, at #24 Texas A&M (11/17/16)
REB - 16, Anriel Howard, at #24 Texas A&M (11/17/16)
AST - 10, Curtyce Knox, at #24 Texas A&M (11/17/16)
STL - 3, Curtyce Knox, at #24 Texas A&M (11/17/16)
BLK - 2, Kianna Keller, vs. New Mexico (11/20/16)
FGM - 9, Leah Szabla, vs. North Dakota (11/13/16)



LAST TIME TEXAS TECH...

TEAM

Scored 80+ points	90, vs. North Dakota (11/13/16)
Scored 85+ points	90, vs. North Dakota (11/13/16)
Scored 90+ points	90, at #24 Texas A&M (11/17/16)
Scored 95+ points	113, vs. SE Louisiana (11/21/15)
Scored 100+ points	113, vs. SE Louisiana (11/21/15)
Scored < 50 points	40, vs. West Virginia (3/6/15)
Scored < 40 points	38, vs. Kansas State (1/31/15)

Allowed 80+ points	98, at #24 Texas A&M (11/17/16)
Allowed 85+ points	98, at #24 Texas A&M (11/17/16)
Allowed 90+ points	98, at #24 Texas A&M (11/17/16)
Allowed 95+ points	98, at #24 Texas A&M (11/17/16)
Allowed 100+ points	107, at Louisiana Tech (1/13/88)
Allowed < 50 points	45, vs. Niagara (11/13/15)
Allowed < 40 points	37, vs. TCU (1/4/15)

Scored 20+ in a QTR	22, vs. New Mexico (11/20/16)
Scored 25+ in a QTR	25, at #24 Texas A&M (11/17/16)
Scored 30+ in a QTR	33, vs. North Dakota (11/13/16)
Scored < 10 in a QTR	Never happened
Allowed 20+ in a QTR	20, vs. New Mexico (11/20/16)
Allowed 25+ in a QTR	25, at #24 Texas A&M (11/17/16)
Allowed < 10 in a QTR	8, vs. Fordham (11/27/15)
Allowed < 5 in a QTR	4, vs. Niagara (11/13/15)

Scored 40+ in a half	50, vs. North Dakota (11/13/16)
Scored 50+ in a half	50, vs. North Dakota (11/13/16)
Scored < 20 in a half	16, vs. West Virginia (3/6/15)
Allowed 40+ in a half	47, vs. Washington (11/28/15)
Allowed < 20 in a half	18, vs. Fordham (11/27/15)

Shot > 50% FGs	55.2, at #24 Texas A&M (11/17/16)
Shot < 30% FGs	26.4, vs. West Virginia (3/6/15)
Shot > 50% 3PT	55.6, at #24 Texas A&M (11/17/16)
Shot < 25% 3PT	23.5, vs. New Mexico (11/20/16)

Made 20+ FTs	27, vs. SE Louisiana (11/21/15)
Made 30+ FTs	36, vs. West Virginia (2/6/13)
Attempted 30+ FTs	30, vs. Idaho State (11/24/15)
Attempted 40+ FTs	42, vs. West Virginia (2/6/13)

Shot > 80% FTs	85.7, vs. West Virginia (3/6/15)
Shot > 90% FTs	90.0, vs. NC State (11/29/14)
Shot < 50% FTs	46.2, at #24 Texas A&M (11/17/16)

Had 45+ rebounds	71, vs. New Mexico (11/20/16)
Had 50+ rebounds	71, vs. New Mexico (11/20/16)
Had 60+ rebounds	71, vs. New Mexico (11/20/16)
Had 70+ rebound	71, vs. New Mexico (11/20/16)
Had 15+ off. reb.	22, vs. New Mexico (11/20/16)
Allowed 45+ reb.	46, vs. New Mexico (11/20/16)
Allowed 50+ reb.	50, vs. Oklahoma State (2/28/15)
Allowed 15+ off. reb.	22, at #24 Texas A&M (11/17/16)

Had 20+ assists	20, vs. Niagara (11/13/15)
Had 25+ assists	26, vs. Charleston Southern (11/26/10)

Had < 15 turnovers	13, vs. New Mexico (11/20/16)
Had < 10 turnovers	6, vs. Iowa State (2/11/15)
Had 20+ turnovers	22, vs. SE Louisiana (11/21/15)
Had 25+ turnovers	25, vs. Florida Atlantic (12/21/13)
Forced 20+ turnovers	21, vs. North Dakota (11/13/16)
Forced 25+ turnovers	27, vs. SE Louisiana (11/21/15)

Had 10+ steals	11, vs. North Dakota (11/13/16)
Had 15+ steals	17, vs. SE Louisiana (11/21/15)
Had 10+ blocks	13, at Oklahoma State (2/22/03)

INDIVIDUAL

Scored 25+ points	38, Reccee' Caldwell at #24 Texas A&M (11/17/16)
-------------------	---

Scored 30+ points	38, Reccee' Caldwell at #24 Texas A&M (11/17/16)
-------------------	---

Scored 35+ points	38, Reccee' Caldwell at #24 Texas A&M (11/17/16)
-------------------	---

Scored 40+ points	41, Jia Perkins vs. Creighton (12/4/02)
-------------------	--

Scored 45+ points	47, Alicia Thompson vs. Texas (2/5/97)
-------------------	---

Scored 50+ points	53, Sheryl Swoopes vs. Texas (3/13/93)
-------------------	---

Scored 10+ in a QTR	12, Reccee' Caldwell vs. New Mexico (11/20/16)
---------------------	---

Scored 15+ in a QTR	Never happened
---------------------	----------------

Scored 20+ in a half	21, Jia Perkins vs. Creighton (12/4/02)
----------------------	--

Shot > 75% FGs	83.8 (5-6), Ivonne CookTaylor vs. North Dakota (11/13/16)
----------------	--

Shot > 75% 3PT	100.0 (4-4), Rayven Brooks vs. SE Louisiana (11/21/15)
----------------	---

Made 10+ FGs	15, Reccee' Caldwell at #24 Texas A&M (11/17/16)
--------------	---

Made 15+ FGs	15, Reccee' Caldwell at #24 Texas A&M (11/17/16)
--------------	---

Made 10+ FTs	11, Amber Battle vs. Kansas State (1/14/14)
--------------	--

Had 15+ rebounds	15, Leashja Grant, vs. Niagara, 11/13/15
------------------	---

Had 20+ rebounds	27, Carolyn Thompson vs. Rice, 1/29/82
------------------	---

Had 25+ rebounds	27, Carolyn Thompson vs. Rice, 1/29/82
------------------	---

Had 10+ assists	11, Monique Smalls, vs. UT-Arlington, 11/27/11
-----------------	---

Had 15+ assists	17, Melinda Schmucker vs. Grambling St., 3/13/98
-----------------	---

Had 5+ steals	7, Ivonne CookTaylor, vs. SE Louisiana, 11/21/15
---------------	---

Had 7+ steals	7, Ivonne CookTaylor, vs. SE Louisiana, 11/21/15
---------------	---

Had 15+ steals	15, Carolyn Thompson, vs. West Texas State, 1/12/82
----------------	--

Had 7+ turnovers	7, Japreece Dean, vs. SE Louisiana, 11/21/15
------------------	---

Had 5+ blocks	6, Haley Schnieder vs. Kansas (2/1/14)
---------------	---

Had 10+ blocks	10, Crystal Boles vs. UTEP (1/4/96)
----------------	--

OPPONENT INDIVIDUAL

Scored 30+ points	32, Danni Williams at #24 Texas A&M (11/17/16)
-------------------	---

Scored 35+ points	40, Brittney Griner vs. Baylor (1/30/13)
-------------------	---

Scored 40+ points	40, Brittney Griner vs. Baylor (1/30/13)
-------------------	---

Had 15+ rebounds	16, Anriel Howard at #24 Texas A&M (11/17/16)
------------------	--

Had 20+ rebounds	22, Courtney Paris at Oklahoma (2/22/08)
------------------	---

Had 10+ assists	10, Curtyce Knox at #24 Texas A&M (11/17/16)
-----------------	---

Had 15+ assists	16, Teresa Witherspoon at Louisiana Tech (2/1/86)
-----------------	--

Had 5+ steals	5, Brynn Williamson at Iowa State (2/24/15)
---------------	--

Had 10+ steals	10, Nicole Purdue vs. TCU (3/9/94)
----------------	---------------------------------------

Had 5+ blocks	5, Asya Bussie vs. West Virginia (1/22/14)
---------------	---

Had 7+ blocks	7, Brittney Griner vs. Baylor (2/12/13)
---------------	--

Had 5+ turnovers	6, Taylin Underwood vs. SE Louisiana (11/21/15)
------------------	--

Had 8+ turnovers	8, Niya Johnson vs. 3/3 Baylor (2/18/15)
------------------	---

Made buzzer beater to win	Tiffany Bias vs. Oklahoma State (2/23/14)
---------------------------	--



NATIONAL POLLS

AP Top 25 Poll (Week 3 - Nov. 21)

#	School	Rec	Pts
1	Notre Dame (16)	4-0	804
2	Connecticut (16)	3-0	797
3	South Carolina (1)	2-0	755
4	Louisville	5-0	707
5	Baylor	3-1	704
6	Maryland	4-0	665
7	Mississippi State	4-0	614
8	Ohio State	3-1	591
9	UCLA	3-1	533
10	Florida State	3-1	502
11	Stanford	3-1	448
11	Syracuse	3-0	448
13	Oklahoma	3-0	389
14	Texas	1-2	376
15	Washington	3-1	348
16	Florida	3-0	300
17	Tennessee	3-1	257
18	DePaul	3-0	256
19	West Virginia	3-0	214
20	Kentucky	3-1	205
21	Miami	3-1	155
22	Oregon State	3-0	147
23	Arizona State	2-1	98
24	Michigan State	4-0	84
25	Gonzaga	3-0	62

Others receiving votes: Auburn 55, Missouri 52, Colorado 41, Indiana 27, **Texas A&M 26**, Marquette 18, South Dakota State 12, South Florida 8, Green Bay 7, NC State 7, Saint Louis 6, Western Kentucky 3, California 2, Boise State 1, Duke 1

USA Today Coaches Poll (Week 3 - Nov. 21)

#	School	Rec	Pts
1	Notre Dame (17)	4-0	776
2	Connecticut (13)	3-0	773
3	South Carolina (2)	3-0	741
4	Louisville	6-0	670
5	Maryland	4-0	666
6	Baylor	3-1	661
7	Mississippi State	4-0	601
8	Ohio State	3-1	558
9	Florida State	3-1	490
10	UCLA	3-1	475
11	Stanford	3-1	452
12	Oklahoma	3-0	392
13	Washington	3-1	379
14	Texas	1-2	353
15	Oregon State	3-0	315
16	Tennessee	3-1	275
17	DePaul	3-0	272
18	Syracuse	3-1	260
19	Michigan State	4-0	197
20	Florida	3-0	182
21	Arizona State	2-1	168
22	Miami	3-1	143
23	West Virginia	3-0	125
24	Kentucky	3-1	124
25	Texas A&M	3-0	83

Others receiving votes: Gonzaga 58, Michigan 36, South Dakota State 35, South Florida 33, Green Bay 20, NC State 19, California 13, Georgia Tech 9, Missouri 8, Duke 6, Penn State 6, Saint Louis 5, Auburn 5, **Oklahoma State 4**, Temple 3, Western Kentucky 3, Marquette 2, Indiana 2, Tulane 1, Virginia Tech 1

Bold - 2016-17 opponents

RECORD BREAKDOWN

	OVERALL	BIG 12
At Home	2-0	0-0
On Road	0-1	0-0
At Neutral Sites	0-0	0-0
Day Games	2-0	0-0
Night Games (6 pm)	0-1	0-0
Overtime Games	0-1	0-0
Decided by < 10	0-1	0-0
Decided by < 5	0-0	0-0
Games Following a Loss	1-0	0-0
Games Following a Win	0-1	0-0
TV Games	2-1	0-0
In November	2-1	0-0
In December	0-0	0-0
In January	0-0	0-0
In February	0-0	0-0
In March	0-0	0-0

SCORING

TTU Leads at Halftime	1-0	0-0
TTU Trails at Halftime	1-1	0-0
Tied at Halftime	0-0	0-0
TTU Scores < 50	0-0	0-0
TTU Scores 50-59	0-0	0-0
TTU Scores 60-69	1-0	0-0
TTU Scores 70-79	0-0	0-0
TTU Scores 80+	1-1	0-0
Opponent Scores < 50	0-0	0-0
Opponent Scores 50-59	1-0	0-0
Opponent Scores 60-69	0-0	0-0
Opponent Scores 70-79	0-0	0-0
Opponent Scores 80+	1-1	0-0

REBOUNDING

Out-Rebound Opponent	1-0	0-0
Equal Rebounds	0-0	0-0
Out-Rebounded	1-1	0-0
TTU Has 40+	1-0	0-0
TTU Has Fewer Than 40	1-1	0-0

FIELD GOALS

TTU Has Higher FG%	2-1	0-0
TTU Has Lower FG%	0-0	0-0
TTU Shoots > 40%	1-1	0-0
TTU Shoots < 40%	1-0	0-0
Opponent Shoots > 40%	1-1	0-0
Opponent Shoots < 40%	1-0	0-0

FREE THROWS

TTU Attempts More FTs	0-0	0-0
TTU Attempts Fewer FTs	1-1	0-0
Equal FT Attempts	1-0	0-0
TTU Makes More FTs	1-0	0-0
TTU Makes Fewer FTs	1-1	0-0
Equal Free Throw Makes	0-0	0-0
TTU Makes 15+ FTs	0-0	0-0
TTU Makes 20+ FTs	0-0	0-0
TTU Makes 25+ FTs	0-0	0-0

PERFORMANCE LIST

DOUBLE-DOUBLES	16-17	CAREER
Ivonne CookTaylor	0	3
Dayo Olabode	0	3
Zuri Sanders	0	3
Jada Terry	2	2
Arella Guirantes	1	1

30+ POINTS	16-17	CAREER
Recee' Caldwell	1	1

20+ POINTS	16-17	CAREER
Ivonne CookTaylor	0	9
Dayo Olabode	0	2
Recee' Caldwell	2	2
Jada Terry	1	1
Arella Guirantes	1	1

10+ POINTS	16-17	CAREER
Ivonne CookTaylor	2	38
Dayo Olabode	0	15
Zuri Sanders	0	3
Recee' Caldwell	3	3
Arella Guirantes	3	3
Jada Terry	2	2
Larryn Brooks	1	1

10+ REBOUNDS	16-17	CAREER
Dayo Olabode	0	5
Ivonne CookTaylor	1	5
Zuri Sanders	0	3
Jada Terry	2	2
Arella Guirantes	1	1

5+ ASSISTS	16-17	CAREER
Ivonne CookTaylor	0	1
Recee' Caldwell	2	2

LEADING SCORER	16-17	CAREER
Ivonne CookTaylor	0	22
Dayo Olabode	0	4
Recee' Caldwell	2	2
Arella Guirantes	1	1

LEADING REBOUNDER	16-17	CAREER
Ivonne CookTaylor	0	17
Dayo Olabode	0	13
Zuri Sanders	0	9
Brittany Brewer	1	1
Jada Terry	1	1
Arella Guirantes	1	1



IVONNE COOKTAYLOR

SENIOR

5-8 | GUARD

SAN FRANCISCO, CALIF.

TERRA NOVA HS

2

SENIOR SEASON: Scored 10 points in season opener vs. North Dakota (11/13)... tallied a season-high 10 rebounds vs. New Mexico (11/20).

PPG	RPG	FG%	MIN
6.7	5.3	37.5%	21.3

2016-17 GAME-BY-GAME

Date	Opponent	MIN	FG	3FG	FT	O-D-T	PF	A	TO	B	S	TP
N13	North Dakota	21	5-6	0-0	0-0	1-3-4	0	2	1	0	1	10
N17	at Texas A&M	21	1-4	0-0	2-2	0-2-2	1	1	1	0	0	4
N20	New Mexico	22	3-14	0-0	0-0	4-6-10	2	0	0	0	0	6
N25	vs. Fordham											
N27	TBA											
N29	Prairie View A&M											
D3	at Arkansas											
D7	Houston											
D14	Central Ark.											
D18	Alcorn St.											
D22	UT-Arlington											
D29	at Texas											
J1	Oklahoma St.											
J4	Iowa St.											
J7	at Kansas St.											
J11	West Virginia											
J14	Oklahoma											
J21	Texas											
J25	at West Virginia											
J28	at Kansas											
F1	Kansas St.											
F4	Baylor											
F8	at TCU											
F11	Oklahoma											
F15	at Iowa St.											
F18	Kansas											
F22	at Oklahoma St.											
F25	at Baylor											
F27	TCU											

COOKTAYLOR CAREER HIGHS

Points.....26, vs. Southeastern La. (11/12/15)
 Field Goals.....12, vs. Southeastern La. (11/12/15)
 Field Goal Attempts.....26, vs. Washington (11/28/15)
 3-Point Field Goals.....3, 3x, last coming vs. West Virginia (3/6/15)
 3-Point Field Goal Attempts.....7, vs. Iowa State (2/11/15)
 Free Throws Made.....8, at Oklahoma (1/20/16)
 Free Throw Attempts.....8, at Oklahoma (1/20/16)
 Rebounds.....12, vs. Iowa State (1/17/16)
 Assists.....5, vs. Southeastern La. (11/12/15)
 Blocked Shots.....1, 7 times
 Steals.....7, vs. Southeastern La. (11/12/15)
 Minutes Played.....41, vs. Iowa State (1/17/16)



REECE' CALDWELL

SOPHOMORE

5-8 | GUARD

SAN ANTONIO, TEXAS

UCLA

4

SOPHOMORE SEASON: led the team with 28 points, seven assists, two rebounds and a steal in first start as a Lady Raider (vs. North Dakota, 11/13)... became first Lady Raider to score 38 points since 2004... scored 12 points in the final 5:00 of the New Mexico game (11/20).

PPG	RPG	FG%	MIN
26.0	4.0	50.0%	36.3

2016-17 GAME-BY-GAME

Date	Opponent	MIN	FG	3FG	FT	O-D-T	PF	A	TO	B	S	TP
N13	North Dakota	35	10-19	5-9	3-4	0-2-2	2	7	1	0	1	28
N17	at Texas A&M	36	15-22	7-12	1-1	0-2-2	1	5	1	0	0	38
N20	New Mexico	38	5-19	2-8	0-0	0-8-8	1	0	4	0	0	12
N25	vs. Fordham											
N27	TBA											
N29	Prairie View A&M											
D3	at Arkansas											
D7	Houston											
D14	Central Ark.											
D18	Alcorn St.											
D22	UT-Arlington											
D29	at Texas											
J1	Oklahoma St.											
J4	Iowa St.											
J7	at Kansas St.											
J11	West Virginia											
J14	Oklahoma											
J21	Texas											
J25	at West Virginia											
J28	at Kansas											
F1	Kansas St.											
F4	Baylor											
F8	at TCU											
F11	Oklahoma											
F15	at Iowa St.											
F18	Kansas											
F22	at Oklahoma St.											
F25	at Baylor											
F27	TCU											

CALDWELL CAREER HIGHS

Points.....38, at #24 Texas A&M (11/17/16)
 Field Goals.....15, at #24 Texas A&M (11/17/16)
 Field Goal Attempts.....22, at #24 Texas A&M (11/17/16)
 3-Point Field Goals.....7, at #24 Texas A&M (11/17/16)
 3-Point Field Goal Attempts.....12, at #24 Texas A&M (11/17/16)
 Free Throws Made.....3, vs. North Dakota (11/13/16)
 Free Throw Attempts.....4, vs. North Dakota (11/13/16)
 Rebounds.....8, vs. New Mexico (11/20/16)
 Assists.....7, vs. North Dakota (11/13/16)
 Blocked Shots.....None
 Steals.....1, vs. North Dakota (11/13/16)
 Minutes Played.....38, vs. New Mexico (11/20/16)



LARRYN BROOKS

JUNIOR
5-6 | GUARD
RICHMOND, KY.
INDIANA

5

JUNIOR SEASON: recorded three steals and a career-high 10 points in first appearance as a Lady Raider (vs. North Dakota, 11/13)... recorded a career-high four rebounds vs. New Mexico (11/20)

PPG	RPG	FG%	MIN
6.0	2.3	41.2%	24.3

2016-17 GAME-BY-GAME

Date	Opponent	MIN	FG	3FG	FT	O-D-T	PF	A	TO	B	S	TP
N13	North Dakota	19	4-7	2-4	0-0	1-1-2	0	2	0	0	3	10
N17	at Texas A&M	23	1-2	1-1	0-0	0-1-1	2	1	0	1	0	3
N20	New Mexico	31	2-8	1-3	0-0	1-3-4	0	2	2	0	0	5
N25	vs. Fordham											
N27	TBA											
N29	Prairie View A&M											
D3	at Arkansas											
D7	Houston											
D14	Central Ark.											
D18	Alcorn St.											
D22	UT-Arlington											
D29	at Texas											
J1	Oklahoma St.											
J4	Iowa St.											
J7	at Kansas St.											
J11	West Virginia											
J14	Oklahoma											
J21	Texas											
J25	at West Virginia											
J28	at Kansas											
F1	Kansas St.											
F4	Baylor											
F8	at TCU											
F11	Oklahoma											
F15	at Iowa St.											
F18	Kansas											
F22	at Oklahoma St.											
F25	at Baylor											
F27	TCU											

BROOKS CAREER HIGHS

Points..... 10, vs. North Dakota (11/13/16)
Field Goals..... 4, vs. North Dakota (11/13/16)
Field Goal Attempts..... 8, vs. New Mexico (11/20/16)
3-Point Field Goals 2, vs. North Dakota (11/13/16)
3-Point Field Goal Attempts 4, vs. North Dakota (11/13/16)
Free Throws Made None
Free Throw Attempts None
Rebounds..... 4, vs. New Mexico (11/20/16)
Assists 2, 2x, last coming vs. New Mexico (11/20/16)
Blocked Shots..... None
Steals 3, vs. North Dakota (11/13/16)
Minutes Played 31, vs. New Mexico (11/20/16)



GRAYSON BRIGHT

FRESHMAN
5-11 | GUARD
FORT WORTH, TEXAS
FOSSIL RIDGE HS

10

FRESHMAN SEASON: Saw 11 minutes of playing time in the season opener vs. North Dakota (11/13)... Scored first two points and recorded two steals as a Lady Raider... tallied a career-high four rebounds vs. New Mexico (11/20)

PPG	RPG	FG%	MIN
1.3	1.7	66.7%	8.7

2016-17 GAME-BY-GAME

Date	Opponent	MIN	FG	3FG	FT	O-D-T	PF	A	TO	B	S	TP
N13	North Dakota	11	1-2	0-0	0-0	0-1-1	2	2	0	0	2	2
N17	at Texas A&M	6	0-0	0-0	0-0	0-0-0	0	0	1	0	0	0
N20	New Mexico	9	1-1	0-0	0-0	1-3-4	1	1	0	0	0	2
N25	vs. Fordham											
N27	TBA											
N29	Prairie View A&M											
D3	at Arkansas											
D7	Houston											
D14	Central Ark.											
D18	Alcorn St.											
D22	UT-Arlington											
D29	at Texas											
J1	Oklahoma St.											
J4	Iowa St.											
J7	at Kansas St.											
J11	West Virginia											
J14	Oklahoma											
J21	Texas											
J25	at West Virginia											
J28	at Kansas											
F1	Kansas St.											
F4	Baylor											
F8	at TCU											
F11	Oklahoma											
F15	at Iowa St.											
F18	Kansas											
F22	at Oklahoma St.											
F25	at Baylor											
F27	TCU											

BRIGHT CAREER HIGHS

Points..... 2, 2x, last coming vs. New Mexico (11/20/16)
Field Goals..... 1, 2x, last coming vs. New Mexico (11/20/16)
Field Goal Attempts..... 2, vs. North Dakota (11/13/16)
3-Point Field Goals None
3-Point Field Goal Attempts None
Free Throws Made None
Free Throw Attempts None
Rebounds..... 4, vs. New Mexico (11/20/16)
Assists 2, vs. North Dakota (11/13/16)
Blocked Shots..... None
Steals 2, vs. North Dakota (11/13/16)
Minutes Played 11, vs. North Dakota (11/13/16)



JADA TERRY
JUNIOR
6-4 | CENTER
CEDAR HILL, TEXAS
TEXAS A&M

12

JUNIOR SEASON: recorded her first double-double of the season with 24 points and 11 rebounds against #24 Texas A&M (11/17)... recorded her second double-double with 16 points, 10 rebounds vs. New Mexico (11/20).

PPG	RPG	FG%	MIN
16.3	7.7	56.1%	26.3

2016-17 GAME-BY-GAME

Date	Opponent	MIN	FG	3FG	FT	O-D-T	PF	A	TO	B	S	TP
N13	North Dakota	13	3-6	0-0	3-6	1-1-2	5	0	0	0	1	9
N17	at Texas A&M	39	12-20	0-0	0-6	5-6-11	4	1	5	2	2	24
N20	New Mexico	27	8-15	0-0	0-2	6-4-10	0	0	1	1	1	16
N25	vs. Fordham											
N27	TBA											
N29	Prairie View A&M											
D3	at Arkansas											
D7	Houston											
D14	Central Ark.											
D18	Alcorn St.											
D22	UT-Arlington											
D29	at Texas											
J1	Oklahoma St.											
J4	Iowa St.											
J7	at Kansas St.											
J11	West Virginia											
J14	Oklahoma											
J21	Texas											
J25	at West Virginia											
J28	at Kansas											
F1	Kansas St.											
F4	Baylor											
F8	at TCU											
F11	Oklahoma											
F15	at Iowa St.											
F18	Kansas											
F22	at Oklahoma St.											
F25	at Baylor											
F27	TCU											

TERRY CAREER HIGHS

Points..... 24, at #24 Texas A&M (11/17/16)
Field Goals..... 12, at #24 Texas A&M (11/17/16)
Field Goal Attempts..... 20, at #24 Texas A&M (11/17/16)
3-Point Field Goals None
3-Point Field Goal Attempts None
Free Throws Made 3, vs. North Dakota (11/13/16)
Free Throw Attempts 6, vs. North Dakota (11/13/16)
Rebounds..... 11, at #24 Texas A&M (11/17/16)
Assists 1, at #24 Texas A&M (11/17/16)
Blocked Shots..... 2, at #24 Texas A&M (11/17/16)
Steals 2, at #24 Texas A&M (11/17/16)
Minutes Played 27, vs. New Mexico (11/20/16)



BRITTANY BREWER
FRESHMAN
6-5 | FORWARD
ABILENE, TEXAS
WYLIE HS

20

FRESHMAN SEASON: Scored eight points, recorded six rebounds and a block in first game as a Lady Raider (vs. North Dakota, 11/13)

PPG	RPG	FG%	MIN
3.7	5.0	28.6%	20.3

2016-17 GAME-BY-GAME

Date	Opponent	MIN	FG	3FG	FT	O-D-T	PF	A	TO	B	S	TP
N13	North Dakota	15	4-6	0-0	0-2	3-3-6	5	0	1	1	0	8
N17	at Texas A&M	30	0-1	0-0	1-2	2-4-6	3	3	1	5	0	1
N20	New Mexico	16	0-7	0-0	2-2	3-0-3	1	0	1	3	0	2
N25	vs. Fordham											
N27	TBA											
N29	Prairie View A&M											
D3	at Arkansas											
D7	Houston											
D14	Central Ark.											
D18	Alcorn St.											
D22	UT-Arlington											
D29	at Texas											
J1	Oklahoma St.											
J4	Iowa St.											
J7	at Kansas St.											
J11	West Virginia											
J14	Oklahoma											
J21	Texas											
J25	at West Virginia											
J28	at Kansas											
F1	Kansas St.											
F4	Baylor											
F8	at TCU											
F11	Oklahoma											
F15	at Iowa St.											
F18	Kansas											
F22	at Oklahoma St.											
F25	at Baylor											
F27	TCU											

BREWER CAREER HIGHS

Points..... 8, vs. North Dakota (11/13/16)
Field Goals..... 4, vs. North Dakota (11/13/16)
Field Goal Attempts..... 7, vs. New Mexico (11/20/16)
3-Point Field Goals None
3-Point Field Goal Attempts None
Free Throws Made None
Free Throw Attempts 2, vs. North Dakota (11/13/16)
Rebounds..... 6, vs. North Dakota (11/13/16)
Assists 3, at #24 Texas A&M (11/17/16)
Blocked Shots..... 5, at #24 Texas A&M (11/17/16)
Steals None
Minutes Played 30, at #24 Texas A&M (11/17/16)



ARELLA GUIRANTES

FRESHMAN
5-11 | GUARD
BELLPORT, N.Y.
BELLPORT HS

23

FRESHMAN SEASON:

Scored 10 points, recorded five rebounds and four blocks in collegiate debut (vs. North Dakota, 11/13)... tied the score 83-83 with a buzzer beater to force OT with #24 Texas A&M... scored a career-high 21 points against New Mexico... Named Big 12 Freshman of the Week (11/21).

PPG	RPG	FG%	MIN
16.0	7.0	53.1%	31.0

2016-17 GAME-BY-GAME

Date	Opponent	MIN	FG	3FG	FT	O-D-T	PF	A	TO	B	S	TP
N13	North Dakota	30	2-9	0-0	6-7	0-5-5	2	0	3	4	0	10
N17	at Texas A&M	26	7-9	1-2	2-2	0-3-3	5	0	3	0	0	17
N20	New Mexico	37	8-14	1-3	4-5	3-10-13	1	3	3	2	1	21
N25	vs. Fordham											
N27	TBA											
N29	Prairie View A&M											
D3	at Arkansas											
D7	Houston											
D14	Central Ark.											
D18	Alcorn St.											
D22	UT-Arlington											
D29	at Texas											
J1	Oklahoma St.											
J4	Iowa St.											
J7	at Kansas St.											
J11	West Virginia											
J14	Oklahoma											
J21	Texas											
J25	at West Virginia											
J28	at Kansas											
F1	Kansas St.											
F4	Baylor											
F8	at TCU											
F11	Oklahoma											
F15	at Iowa St.											
F18	Kansas											
F22	at Oklahoma St.											
F25	at Baylor											
F27	TCU											

GUIRANTES CAREER HIGHS

Points	21, vs. New Mexico (11/20/16)
Field Goals	8, vs. New Mexico (11/20/16)
Field Goal Attempts	14, vs. New Mexico (11/20/16)
3-Point Field Goals	1, 2x, last coming vs. New Mexico (11/20/16)
3-Point Field Goal Attempts	3, vs. New Mexico (11/20/16)
Free Throws Made	6, vs. North Dakota (11/13/16)
Free Throw Attempts	7, vs. North Dakota (11/13/16)
Rebounds	13, vs. New Mexico (11/20/16)
Assists	3, vs. New Mexico (11/20/16)
Blocked Shots	4, vs. North Dakota (11/13/16)
Steals	1, vs. New Mexico (11/20/16)
Minutes Played	37, vs. New Mexico (11/20/16)



DAYO OLABODE

JUNIOR
6-2 | FORWARD
ARLINGTON, TEXAS
MANSFIELD TIMBERVIEW

32

JUNIOR SEASON: Scored a season-best five points against New Mexico (11/20)...

PPG	RPG	FG%	MIN
1.7	5.0	16.7%	12.3

2016-17 GAME-BY-GAME

Date	Opponent	MIN	FG	3FG	FT	O-D-T	PF	A	TO	B	S	TP
N13	North Dakota	14	0-3	0-0	0-0	1-4-5	3	0	1	0	0	0
N17	at Texas A&M	6	0-4	0-2	0-0	0-2-2	2	0	0	0	0	0
N20	New Mexico	17	2-5	0-3	1-1	1-7-8	2	1	1	0	0	5
N25	vs. Fordham											
N27	TBA											
N29	Prairie View A&M											
D3	at Arkansas											
D7	Houston											
D14	Central Ark.											
D18	Alcorn St.											
D22	UT-Arlington											
D29	at Texas											
J1	Oklahoma St.											
J4	Iowa St.											
J7	at Kansas St.											
J11	West Virginia											
J14	Oklahoma											
J21	Texas											
J25	at West Virginia											
J28	at Kansas											
F1	Kansas St.											
F4	Baylor											
F8	at TCU											
F11	Oklahoma											
F15	at Iowa St.											
F18	Kansas											
F22	at Oklahoma St.											
F25	at Baylor											
F27	TCU											

OLABODE CAREER HIGHS

Points	22, vs. Idaho State (11/24/15)
Field Goals	8, 2x, last coming vs. Fordham (11/27/15)
Field Goal Attempts	14, 2x, last coming vs. Fordham (11/27/15)
3-Point Field Goals	6, vs. Iowa State (3/4/15)
3-Point Field Goal Attempts	9, at Kansas State (2/21/16)
Free Throws Made	6, 2x, last coming vs. Idaho State (11/24/15)
Free Throw Attempts	8, vs. Southeastern La. (11/21/15)
Rebounds	11, at Oklahoma (1/24/15)
Assists	4, vs. Jacksonville State (11/14/14)
Blocked Shots	3, at Oklahoma (1/24/15)
Steals	2, 5 times
Minutes Played	37, at Texas (1/17/15)



IONNA MCKENZIE

JUNIOR
6-2 | CENTER
GOTHA, FLA.
DR. PHILLIPS HS

20

JUNIOR SEASON: Scored first four points of the season vs. North Dakota (11/13)

PPG	RPG	FG%	MIN
1.3	3.0	1.000%	5.7

2016-17 GAME-BY-GAME

Date	Opponent	MIN	FG	3FG	FT	O-D-T	PF	A	TO	B	S	TP
N13	North Dakota	11	1-1	0-0	2-3	3-2-5	1	0	1	2	0	4
N17	at Texas A&M	3	0-0	0-0	0-0	0-2-2	1	1	0	0	0	0
N20	New Mexico	3	0-0	0-0	0-0	0-2-2	1	0	0	0	0	0
N25	vs. Fordham											
N27	TBA											
N29	Prairie View A&M											
D3	at Arkansas											
D7	Houston											
D14	Central Ark.											
D18	Alcorn St.											
D22	UT-Arlington											
D29	at Texas											
J1	Oklahoma St.											
J4	Iowa St.											
J7	at Kansas St.											
J11	West Virginia											
J14	Oklahoma											
J21	Texas											
J25	at West Virginia											
J28	at Kansas											
F1	Kansas St.											
F4	Baylor											
F8	at TCU											
F11	Oklahoma											
F15	at Iowa St.											
F18	Kansas											
F22	at Oklahoma St.											
F25	at Baylor											
F27	TCU											

MCKENZIE CAREER HIGHS

Points.....6, vs. Purdue (11/28/14)
 Field Goals.....3, vs. Purdue (11/28/14)
 Field Goal Attempts.....3, 4 times
 3-Point Field Goals.....None
 3-Point Field Goal Attempts.....None
 Free Throws Made.....2, 6 times
 Free Throw Attempts.....4, vs. UTSA (12/20/14)
 Rebounds.....7, vs. Oklahoma (1/10/15)
 Assists.....1, 9 times
 Blocked Shots.....2, 2x, last coming vs. North Dakota (11/13/16)
 Steals.....3, vs. UTSA (12/20/14)
 Minutes Played.....25, 2x, last coming at Oklahoma (1/24/15)