



TEXAS TECH

2016 VOLLEYBALL

8 NCAA TOURNAMENT APPEARANCES

826 PROGRAM WINS

41ST SEASON

30

TEXAS TECH (10-19, 0-14) vs. TCU (12-12, 5-9)

Nov. 19 • 6 PM

Lubbock, Texas • United Supermarkets Arena

2016 SCHEDULE/RESULTS

Texas Tech (10-19 • 0-14 Big 12)

H: 5-7 • A: 4-8 • N: 1-4

AUGUST

26	^	vs. Colorado	L, 2-3
27	^	vs. Long Beach State	L, 0-3
27	^	at Portland State	W, 3-1

SEPTEMBER

2	+	vs. South Dakota State	W, 3-0
2	+	at North Dakota State	W, 3-2
3	+	at North Dakota	W, 3-0
5		UTEP	W, 3-0
9	%	ABILENE CHRISTIAN	W, 3-0
9	%	STEPHEN F. AUSTIN	W, 3-1
10	%	UT RIO GRANDE VALLEY	W, 3-0
10	%	ORAL ROBERTS	W, 3-1
14		at Rice	W, 3-2
15	#	vs. Texas State	L, 0-3
16	#	vs. Wichita State	L, 0-3
16	#	at UTSA	L, 0-3
21	*	at TCU	L, 1-3
24	*	WEST VIRGINIA	L, 0-3
28	*	at Baylor	L, 0-3

OCTOBER

5	*	KANSAS STATE	L, 0-3
8	*	at No. 6 Kansas	L, 0-3
12	*	OKLAHOMA	L, 0-3
15	*	at Iowa State	L, 0-3
21	*	No. 2 TEXAS	L, 2-3
26	*	No. 6 KANSAS	L, 0-3
29	*	at West Virginia	L, 2-3

NOVEMBER

2	*	BAYLOR	L, 1-3
4	*	IOWA STATE	L, 2-3
12	*	at Oklahoma	L, 0-3
16	*	at Texas	L, 0-3
19	*	TCU	6 PM
26	*	at Kansas State	TBA

DECEMBER

1-3		NCAA FIRST & SECOND ROUNDS	TBA
9-10		NCAA REGIONALS	TBA
15		NCAA SEMIFINALS	TBA
17		NCAA NATIONAL CHAMPIONSHIP	TBA

* - Conference Match

^ Portland State Tournament (Portland, Oregon)

North Dakota State Classic (Fargo, North Dakota)

% Texas Tech Tournament (Lubbock, Texas)

UTSA Tournament (San Antonio, Texas)



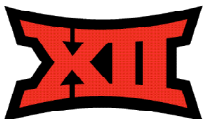
@TTUVball/@TechAthletics



TexasTechVolleyball/TexasTechAthletics



/TTUVball & /TTUAthletics



Match 30

Texas Tech vs TCU -- Lubbock, Texas

TCU HORNED FROGS (12-12, 5-9)

2015 Team Record: 19-10; 9-7 Big 12

Head Coach: Jill Kramer (TCU '00)

Career Record: 97-105 (7th season)

Record at TCU: 31-22 (2nd season)



TEXAS TECH RED RAIDERS (10-19, 0-14)

2015 Team Record: 14-16, 3-13 Big 12

Head Coach: Tony Graystone (Louisville '96)

Career Record: 450-179 (18th season)

Record at Texas Tech: 10-19, 0-14 (1st season)



QUICK HITS

- Texas Tech is in its 41st season of volleyball, the first under head coach Tony Graystone.
- First-year head coach Tony Graystone is in search of his first Big 12 win in the scarlet and black.
- Tech fell to TCU, 3-1 (25-14, 22-25, 25-13, 25-14) earlier this season in its Big 12 opener in Fort Worth.
- The Red Raiders' last defeated the Horned Frogs in 2014 at home to split the season series.
- Tech's eight set wins in conference play have already matched its 2015 total.
- Tech has not started 0-15 in the Big 12 since 2009, when the team went winless in conference play.
- Texas Tech has held three of its last four opponents to hitting percentages of .229 or less.
- A first-set rally against Texas that featured diving efforts from multiple players was selected as October's NCAA Volleyball Play of the Month and will be up for Play of the Year in December.
- Tech's starting unit of Grubb, Douglass, Sagers, Akiu, Redding, Keenan and either McDougald or Atwood has now started seven straight matches.
- Texas Tech has used 16 different starting lineups this season.
- Six underclassmen have played major roles this season, including sophomores Tita Akiu, Katy Keenan and Sarah Redding along with freshmen Toni McDougald, Chandler Atwood and Maggie Sagers.
- Senior Lauren Douglass is fourth in the conference with a hitting percentage of .343 and ninth in the conference with 1.06 blocks per set.
- Sophomore libero Reyn Akiu ranks second in the conference with 4.98 digs per set. Her dig total of 508 this season ranks fourth on the school's single-season digs list, just three away from the No. 2 spot.
- Setter Margurite Grubb is one of six Big 12 players averaging more than 10.00 assists per set and is eighth on the school's career assists list with 2,618, including 963 this season.
- Senior Margurite Grubb notched her seventh double-double of the season and 18th of her career in Tech's outing against Baylor with 46 assists and 14 digs.

TEXAS TECH STARTERS at #7 TEXAS (2016 STATS)



MARGUERITE GRUBB



LAUREN DOUGLASS



MAGGIE SAGERS



REYN AKIU



SARAH REDDING



KATY KEENAN



TONI MCDUGALD

	5-10 • SET • SO	6-2 • MB • SR	5-9 • DS • FR	5-2 • LIB • SO	6-1 • OH • SO	6-4 • MB • SO	5-11 • OH • FR
A/S	10.06	K/S 3.04	#DIG 163	#DIG 508	K/S 2.38	#KILL 166	K/S 2.17
D/S	2.28	HIT % .343	D/S 1.77	D/S 4.98	#KILL 112	HIT % .256	#KILL 187
#AST	963	#BLK 110	#AST 13	#AST 82	HIT % .161	K/S 1.61	#BLK 25
#DIG	219	#KILL 316	#ACE 17	#ACE 18	#BLK 28	#BLK 60	HIT % .164

K/S designates kills per set • HIT % designates hitting percentage • D/S designates digs per set • B/S designates blocks per set • A/S designates assists per set.

2016 QUICK FACTS

GENERAL INFORMATION

Location _____ Lubbock, Texas
 Founded _____ 1923
 Enrollment _____ 35,893
 Nickname _____ Red Raiders
 Colors _____ Scarlet & Black
 Mascot _____ Masked Rider / Raider Red
 Affiliation _____ NCAA Division I
 Conference _____ Big 12
 Chancellor _____ Robert Duncan
 President _____ Dr. Lawrence Schovanec
 Athletics Director _____ Kirby Hocutt
 Sr. Associate AD/SWA _____ Dr. Judi Henry
 Department Main Number _____ (806) 742-3355

HISTORY

Season of Volleyball _____ 41st
 First Season _____ 1975
 All-Time Record _____ 826-685-6 (.545)
 NCAA Tournament Appearances _____ 8
 _____ 1990, 1991, 1992, 1995, 1996, 1998, 2000, 2001

FACILITY INFORMATION

Name _____ United Supermarkets Arena
 Opened _____ 1999
 Capacity _____ 15,070

COACHING STAFF

Head Coach _____ Tony Graystone
 Alma Mater _____ University of Louisville '96
 Record at Tech _____ 10-19 (1st Season)
 Career Record _____ 450-179 (18th Season)
 Twitter _____ @TonyGraystone
 Best time to reach _____ Contact SID
 Assistant Coach _____ Morgan Thomas (1st Season)
 Alma Mater _____ USC-Upstate '12
 Assistant Coach _____ Brandy Huskey (1st Season)
 Alma Mater _____ UTSA '13
 Dir. of Operations _____ Alyce Peters (2nd Season)
 Alma Mater _____ Texas State '09
 Office Number _____ (806) 742-7545

TEAM INFORMATION

2015 Record _____ 14-16
 Conference Record _____ 3-13
 Home Record _____ 7-7
 Away Record _____ 3-8
 Neutral Site Record _____ 4-1
 Postseason _____ None
 Final Ranking _____ None
 Letterwinners Returning/Lost _____ 12/4
 Starters Returning/Lost _____ 4/2+Libero
 Newcomers _____ 11
 Top Returning Players _____ Lauren Douglass,
 _____ Marguerite Grubb, Sarah Redding
 Top Newcomers _____ Eighthmy Dobbins,
 _____ Taylor Martinez, Hannah Henriksen

ATHLETICS COMMUNICATIONS

Senior Associate AD _____ Robert Giovannetti
 E-mail _____ robert.giovannetti@ttu.edu
 Assistant Director (Volleyball) _____ Ty Parker
 Office _____ (806) 834-2769
 Cell _____ (806) 928-8476
 Fax _____ (806) 742-1970
 E-mail _____ ty.a.parker@ttu.edu
 Website _____ www.texastech.com
 Twitter _____ @TTUVball, @TechAthletics
 Mailing Address _____ 2526 6th St.
 _____ Lubbock, TX 79409

MEDIA INFORMATION

The Texas Tech Athletics Communications office is here to serve the media throughout the 2016 Red Raider volleyball season. Media members in need of assistance can contact Ty Parker in the Athletics Communications office at (806) 928-8476.

MEDIA CREDENTIALS

Media members covering the Texas Tech volleyball program at the United Supermarkets Arena during the 2016 season must be issued a working credential from the Texas Tech Athletics Communications office.

- All requests for both media and photo credentials must be made either in writing or via e-mail at least a day in advance to Ty Parker, Assistant Director for Athletic Communications. (Office: (806) 834-2769; Fax: (806) 742-1970; e-mail: ty.a.parker@ttu.edu)
- Requests are honored from sports editors of daily and weekly newspapers, editors of sports periodicals, and sports directors of radio and television stations who broadcast regularly scheduled daily sports reports and talk shows.
- Credentials can be picked up in the Athletics Communications office (south end of Jones AT&T Stadium) or at will call, which is located at the United Supermarkets Arena ticket booth.

GAMEDAY SERVICES

A complete NCAA box score and pertinent game information will be distributed to members of the working media following the conclusion of the match. Game notes, statistics, and rosters are provided prior to first serve in the USA media room. A pregame meal is also served in the media room approximately 45 minutes prior to first serve.

PHOTOGRAPHERS

Photographers are permitted to shoot in approved areas at the United Supermarkets Arena. All photographers must be issued a working credential by the Athletics Communications office to gain access to the court level of the facility.

RADIO BROADCASTS

Media row at the United Spirit Arena is equipped with both ISDN and phone lines for radio crews wanting to broadcast Texas Tech matches. For information on the ISDN and phone lines, please contact Ty Parker in the Athletics Communications office.

VIDEO HIGHLIGHTS/NEWS CONFERENCES

Video from news conferences and games will be available to the media via FTP. Broadcast quality video footage (game highlights, post-practice interviews, post-game interviews, etc) are available at www.ttumedia.com. Please contact the athletics communications office for login instructions.

LIVE TELEVISION

Television stations are welcome to conduct live interviews from the United Spirit Arena as the facility can easily accommodate network game coverage. Live interviews will be conducted near the home tunnel on the north side of the court. Please notify Ty Parker at least 24 hours in advance for live television setup.

PLAYER INTERVIEWS

Players and coaches are available for interviews every day prior to the start of practice. Practice times vary from week to week, so media members wishing to attend should contact Ty Parker in the Athletics Communications office to get a weekly schedule.

POSTGAME INTERVIEWS

Texas Tech players and head coach Tony Graystone will be made available to the media on the court of the United Spirit Arena following a brief cooling off period. The Texas Tech locker room will remain closed.

PLAYER TO WATCH: LAUREN DOUGLASS

Senior Lauren Douglass has arguably been one of the most dominant players in Texas Tech history at the middle blocker position. The Flower Mound native set the school with a single-season hitting percentage of .377 last year, and is hitting .340 for her career, the second best career clip in school history.



SENIOR NIGHT RECOGNITIONS

Five members of the Texas Tech volleyball program will be recognized on the court prior to the match on Saturday. Seniors Lauren Douglass and Marguerite Grubb will be honored along with junior Victoria Hinneburg, who is graduating and foregoing her remaining eligibility. Student manager Paige Lynne and student practice player Alec Sobocinski will also be recognized for their contributions to the program.

LEAVING A LEGACY

Senior Lauren Douglass will go down as one of Texas Tech's all-time great hitters after setting the school record for single-season hitting percentage (.377) in her junior campaign and aiming for one of the top spots on the school's career hitting percentage list. The two-time All-Big 12 Second Team selection also posted a .773 clip in a match at Portland State this season, which ranks sixth all-time in a single match in Tech history. Meanwhile, senior Marguerite Grubb is on her way to back-to-back 1,000 assist seasons, ranks fifth in Tech history with a 9.69 career assist/set average and is currently eighth on the school's career assists list. Grubb also is a three-time Academic All-Big 12 selection, posting a 4.00 undergraduate GPA in accounting.

LAST TIME OUT

The Red Raiders fell at No. 7 Texas, 0-3, on Wednesday in Austin. Tech held a 17-14 lead in the opening frame after, but the Longhorns adjusted their block and came back to tie the match at 22-22 and pull out a 25-22 win. From there, the Longhorn attack took over as Texas hit .559 in the second frame, .333 in the final set and .414 for the match, which marked the highest team hitting percentage in a Big 12 match this season. Sophomore Katy Keenan and freshman Toni McDougald collected eight kills each to lead the Red Raiders.

THE HORNED FROGS

After dropping seven in a row leading into November, TCU has rebounded with wins in two of its last three matches, including a five-set victory over Baylor Wednesday in Fort Worth. The Horned Frogs pride themselves on defense as they rank in the top half of the conference in blocks (2.41/set) and digs (15.50/set) in conference matches. Senior Natalie Gower leads the charge with 1.25 blocks/set, which ranks second in the Big 12, while hitting at a .368 clip offensively, also second in the Big 12.

PRIOR MATCHUP

Both teams have played 13 matches since last squaring off in the Big 12 opener for both sides, when TCU escaped with a 3-1 victory over the Red Raiders on Sept. 21 in Fort Worth. Tech, playing without senior setter Marguerite Grubb, dug itself an 0-1 hole before evening the score at 1-1 with a 25-22 second-set win. The Red Raiders, who ran a 6-2 for the first time in head coach Tony Graystone's 19 years due to the loss of Grubb, couldn't sustain any consistent offensive output as the Horned Frogs took a 25-14, 22-25, 25-13, 25-14 win.

INSIDE THE SERIES

The Red Raiders trail in the all-time series, 6-8, with TCU taking a 3-1 win earlier this season in Fort Worth and four of the last five overall. Texas Tech's last victory in the series was a five-set win in Lubbock in its Big 12 opener in 2014.

ACADEMIC HONORS ROLLING IN

Four Red Raiders were named to Big 12 All-Academic Teams last week with sophomore Katelyn Bryant one of five Big 12 student-athletes recognized with a 4.0 GPA. Joining her on the first team were seniors Lauren Douglass and Marguerite Grubb, while sophomore Katy Keenan made the second team. Additionally, Grubb was named to the CoSIDA Academic All-District Team, marking her third selection in four seasons. Along with holding down the eighth spot on the school's career assists list, the Houston, Texas, native finished her undergrad career with a perfect 4.0 GPA in accounting and currently sports a 3.86 GPA as she works towards her master's in accounting.

RECORD BOOK TRACKER

Senior Lauren Douglass has been one of the most dominant attackers in program history. A year after setting the school mark for hitting percentage in a single season (.376), Douglass is hitting .343 this year, and will likely finish second on the school's career hitting percentage list. Sophomore Reyn Akiu is currently fourth on the school's single-season digs list with 508 this season, just three away from second on the list. Senior Marguerite Grubb also made a move up the record books with 55 assists at West Virginia to give her 2,467 assists for her career, good for eighth on Tech's all-time career assists list.

AMONG THE BIG 12'S BEST

A trio of Red Raiders rank among the best in the Big 12 for their position. Senior Lauren Douglass is fourth in the conference with a .343 hitting percentage. Sophomore Tita Akiu leads the conference in total digs with 508 and is second in the conference with 4.98 digs per set. Likewise, senior setter Marguerite Grubb is one of just six Big 12 players averaging over 10.00 assists per game at 10.03.

INSIDE THE SERIES

TEXAS TECH TRAILS, 6-8

Home: 4-3; Away: 2-5; Neutral: 0-0

9-21-16	L	1-3	Away
11-18-15	L	0-3	Away
10-10-15	L	0-3	Home
11-19-14	L	1-3	Away
9-24-14	W	3-1	Home
11-30-13	W	3-0	Home
10-12-13	W	3-2	Away
11-7-12	L	0-3	Home
9-26-12	L	0-3	Away
8-26-11	L	1-3	Away
9-12-08	L	2-3	Home
9-3-01	W	3-0	Home
9-5-00	W	3-0	Away

AVCA RANKINGS (11/14)

Rk.	School	Pts.	W-L	LW
1	Nebraska (64)	1600	24-1	1
2	Minnesota	1527	21-4	2
3	Wisconsin	1468	22-3	3
4	Kansas	1410	23-2	4
5	Florida	1343	25-2	6
6	North Carolina	1193	23-3	8
7	Texas	1173	19-4	5
8	Washington	1074	22-4	11
9	UCLA	1039	21-5	13
10	BYU	992	24-3	12
11	San Diego	969	22-4	7
12	Stanford	921	17-7	9
13	Michigan State	826	23-5	15
14	Hawaii	812	20-5	14
15	Penn State	778	19-8	10
16	Utah	542	19-8	19
17	Florida State	530	20-5	18
18	Michigan	507	21-7	17
19	Oregon	497	18-7	16
20	Western Kentucky	378	27-2	20
21	Creighton	322	22-6	22
22	Dayton	222	28-1	23
23	Kentucky	216	20-6	24
24	Ohio State	110	17-11	NR
25	Missouri	96	21-5	21

Receiving Votes: Washington State 74; Texas A&M 37; Southern California 33; Arizona 25; Purdue 22; Iowa State 15; Missouri State 13; Duke 8

*Seven teams mentioned on only one ballot for a total of 25 combined points.

WEEKLY SCHEDULE

MONDAY	TUESDAY	WEDNESDAY	THURSDAY	FRIDAY	SATURDAY	SUNDAY
14 PRACTICE	15 TRAVEL TO AUSTIN PRACTICE	16 MATCHDAY AT #7 TEXAS 7 PM GREGORY GYM	17 PRACTICE	18 PRACTICE MEDIA AVAILABILITY	19 MATCHDAY TCU 6 PM USA *Senior Night*	20 OFF

BIG 12 WEEKLY SCHEDULE

WEDNESDAY, NOVEMBER 16

No. 4 Kansas 3, West Virginia 2 *

No. 7 Texas 3, Texas Tech 0 *

TCU 3, Baylor 2 *

Kansas State 3, Oklahoma 1 *

SATURDAY, NOVEMBER 19

Iowa State at No. 4 Kansas *

ESPN3 | 11 a.m.

TCU at Texas Tech *

TexasTech.tv | 6 p.m.

Baylor at Oklahoma *

SoonerSports.tv | 7 p.m.

Kansas State at No. 7 Texas *

Longhorn Network | 7 p.m.

* DENOTES BIG 12 CONFERENCE MATCHUP

ALL TIMES LISTED IN CENTRAL. AVCA RANKINGS NOTED.



YOUTH MOVEMENT

With seniors Lauren Douglass and Marguerite Grubb leading the way, a multitude of underclassmen have played pivotal roles on the team this season. Sophomores Tita Akiu and Katy Keenan have started every match this season when healthy, while fellow sophomore Sarah Redding and a trio of freshmen in Toni McDougald, Chandler Atwood and Maggie Sagers have been regulars in the starting lineup and rotation as well.

FRESHMAN TRIO

Stepping up to aid senior Lauren Douglass on the attack are a pair of freshman in Toni McDougald and Chandler Atwood. McDougald is second on the team with 187 kills while Atwood is fourth on the team with 152, respectively. Meanwhile, freshman Maggie Sagers has come on as one of the team's top defenders, starting each of the last 11 matches including two at Libero when Akiu missed time with a knee injury.

COMING ON STRONG

After missing much of the nonconference portion of the schedule recovering from injury, sophomore Sarah Redding has come on strong to provide even more balance to the Texas Tech offense. Redding has posted double-digit kills in four of the last seven matches, highlighted by a career-high 17 kills against No. 2 Texas.

DOUBLE THREAT

While sophomore libero Tita Akiu receives much of the praise defensively, senior Lauren Douglass has once again proven to be a force at the net. Along with her dominance on the attack, the veteran is averaging 1.06 blocks/set which is top 10 in the Big 12. Among the top 10 block leaders in the Big 12, Douglass's .343 hitting percentage is second best in the league.

SET UP ARTIST

In 2015, Marguerite Grubb put up 1,007 assists, becoming the first Red Raider to record 1,000+ assists in a single season since Emily Ruetter in 2013. She cracked the school's all-time top 10 list in assists in the Red Raider's first match of 2016, compiling 52 assists against Colorado. The senior has dished out 963 assists in 28 matches this season and ranks sixth in the conference with 10.03 assists/set. With 25 assists at Iowa State, she moved up to the ninth spot on the school's all-time assists list and is currently at 2,618, career assists, which ranks as the eighth-most in a career in school history.

ON POINT

Texas Tech hit .507 (42-6-71) in a sweep of Abilene Christian, marking the first time since the 1998 season the Red Raiders have hit over .500 in a single match. The .507 hitting percentage matched the fourth-highest hitting percentage in school history and is the highest offensive output in the Big 12 this season.

IN THE RECORD BOOK

Seniors Marguerite Grubb and Lauren Douglas didn't waste any time planting themselves in the Texas Tech record book this season. In the Red Raider's first match of 2016, Grubb compiled 52 assists to crack the school's all-time top 10 list in assists. She then compiled 25 assists at Iowa State to slide up to ninth and now sits at eighth with 2,558. Douglas made a mark of her own in a win against Portland State, powering her way to 17 kills with a .773 hitting percentage, a clip that ranks as her career-best and sixth all-time in a single match in the Texas Tech record books. She's currently on pace to finish with a .340 career hitting percentage, which would rank second in school history. Sophomore libero Reyn Akiu has recorded 508 digs this season which is fourth on the school's single-season individual digs list, just three away from No. 2 on the list.

YOUNG PASSERS

Sophomores Reyn Akiu and Katelyn Bryant and freshman Maggie Sagers have stepped in at the libero/defensive specialist position, providing solid play in the back line. Akiu was consistently one of the Big 12's top performers prior to her injury and currently ranks second in the Big 12 with 4.98 digs/set. Bryant and Sagers have split time at the position, combining for 339 digs this season while another freshman, Kylie Rittmann has contributed 71 in five starts.

ATTACK ATTACK

The Red Raiders racked up 1,308 kills during the 2015 season, with 931 of those kills back and ready to go for 2016. Tech returns four of their top five attackers from last year in Lauren Douglass (280), Sarah Redding (173), Katy Keenan (128) and Victoria Hinneburg (122). The Red Raiders tallied 15 more kills than their opponents last season, averaging 13.3 per set for an overall hitting percentage of .209. So far in 2016, Tech has tallied 1,259 kills while hitting at a .198 clip.

BIG 12 CONFERENCE STANDINGS

	BIG 12			OVERALL			Home	Away	Neutral	Sets	Streak
	W	L	Pct.	W	L	Pct.					
Kansas	13	1	.929	24	2	.923	11-0	8-2	5-0	74-23	W12
Texas	12	2	.857	20	4	.833	11-1	8-2	1-1	66-26	W1
Baylor	8	5	.615	20	9	.690	11-2	7-6	2-1	69-38	L1
Iowa State	8	5	.615	16	9	.640	8-4	6-5	2-0	59-35	W6
Kansas State	8	6	.571	19	8	.704	11-3	5-4	3-1	63-41	W2
Oklahoma	5	9	.357	14	13	.519	7-5	4-6	3-2	54-44	L1
TCU	5	9	.357	12	12	.500	9-4	2-8	1-0	45-51	W1
West Virginia	3	11	.214	12	16	.429	5-7	3-6	4-3	51-57	L4
Texas Tech	0	14	.000	10	19	.345	5-7	4-8	1-4	40-64	L17

LAST MATCH

Volleyball Box Score
2016 Texas Longhorns
Texas Tech vs #7 Texas (Nov 16, 2016 at Austin, Texas)

#	Texas Tech	S	Attack				Ast	Serve			Dig	Block			BH	Pts
			K	E	TA	Pct		SA	SE	RE		BS	BA	BE		
4	Grubb, Marguerite	3	1	0	5	.200	29	0	1	0	9	0	1	1	1	1.5
5	Douglass, Lauren	3	6	6	17	.000	0	1	2	0	1	0	0	0	0	7.0
6	Redding, Sarah	3	3	5	20	-.100	0	0	0	0	1	0	0	0	0	3.0
12	Keenan, Katy	3	8	2	16	.375	0	0	0	0	0	0	2	0	0	9.0
16	McDougald, Toni	3	8	2	25	.240	0	0	0	0	6	0	0	1	0	8.0
17	Sagers, Maggie	3	0	0	0	.000	0	0	1	1	7	0	0	0	0	0.0
2	Rittimann, Kylie	3	0	0	3	.000	1	0	0	1	4	0	0	0	0	0.0
7	Akiu, Reyn	3	0	0	1	.000	2	1	2	0	15	0	0	0	0	1.0
18	Atwood, Chandler	3	6	3	16	.188	0	0	0	0	1	0	1	0	0	6.5
26	Bryant, Katelyn	3	0	0	1	.000	0	1	0	0	3	0	0	0	0	1.0
	Team									1						
	Totals	3	32	18	104	.135	32	3	6	3	47	0	4	2	1	37.0

Team Attack By Set

TOTAL TEAM BLOCKS: 2.0

Set	K	E	TA	Pct	Sideout	Pct
1	17	5	44	.273	16-24	66%
2	8	4	35	.114	13-25	51%
3	7	9	25	-.080	9-24	37%
					38-73	52%

SET SCORES

Texas Tech (0)

Texas (3)

1 2 3

22 14 15

25 25 25

Team Records:

10-19, 0-14 Big 12

20-4, 12-2 Big 12

#	Texas	S	Attack				Ast	Serve			Dig	Block			BH	Pts
			K	E	TA	Pct		SA	SE	RE		BS	BA	BE		
1	White, Micaya	3	10	0	32	.312	0	0	1	1	9	0	3	0	0	11.5
2	Nwanebu, Ebony	3	15	1	25	.560	1	1	2	0	3	0	1	0	0	16.5
12	Johnson, Morgan	3	2	0	4	.500	0	0	2	0	3	1	4	1	0	5.0
13	Rounsaville, Autumn	3	0	0	0	.000	1	0	2	0	7	0	0	0	0	0.0
21	Collins, Chloe	3	1	0	3	.333	34	2	1	0	6	0	0	0	0	3.0
27	Bedart-Ghani, Yaazie	3	3	1	7	.286	0	0	0	0	2	0	2	0	0	4.0
7	Dalton, Nicole	3	0	0	0	.000	0	0	0	2	2	0	0	0	0	0.0
8	McCoy, Cat	3	0	0	0	.000	3	0	2	0	16	0	0	0	0	0.0
17	Baselovic, Mirta	1	0	0	0	.000	0	0	0	0	0	0	0	0	0	0.0
19	P Cerame, Paulina	3	14	3	27	.407	0	0	0	0	0	0	4	0	0	16.0
34	Agbaji, Orie	1	1	0	1	1.000	0	0	0	0	0	0	2	0	0	2.0
	Totals	3	46	5	99	.414	39	3	10	3	48	1	16	1	0	58.0

Team Attack By Set

TOTAL TEAM BLOCKS: 9.0

Set	K	E	TA	Pct	Sideout	Pct
1	17	2	44	.341	17-23	73%
2	19	0	34	.559	13-14	92%
3	10	3	21	.333	10-16	62%
					40-53	75%

Site: Austin, Texas (Gregory Gym)

Date: Nov 16, 2016 Attend: 2551 Time: 1:21

Referees: Michael Denardo, Steve Robb

	1	2	3	Total
Tie scores	16	1	2	19
Lead change	4	0	0	4



HEAD COACH

@TonyGraystone

TONY GRAYSTONE

18th Season Overall • 1st Season at Texas Tech • University of Louisville '96

Entering his first season at Tech, Tony Graystone has a solid mixture of great newcomers and established veterans

Tony Graystone was named the head coach of Texas Tech volleyball on Thursday, Jan. 21, 2016. Graystone arrives at Texas Tech after serving seven seasons as the head volleyball coach at Texas A&M-Corpus Christi.

"Tony Graystone is a proven winner and a respectful leader and coach with tremendous ties to the state of Texas, specifically in West Texas," Texas Tech Director of Athletics Kirby Hocutt said. "We are so thrilled to welcome him, along with Lauren, Drew and Dylan to the Texas Tech Athletics family."

In seven seasons at Texas A&M-Corpus Christi, Graystone turned the Islanders into one of the premier volleyball programs in the Southland Conference. Last season, the Islanders put together their best season in program history, finishing 31-5 overall, with a spotless 16-0 conference mark. It was also the first NCAA Tournament berth for the Islanders, who faced Texas A&M in first round play. Their win total was the best in school history and was one win short of the winningest season by any Southland program.

Graystone's squads have recorded 20 or more wins in three of the last four seasons, finishing one victory shy of that mark in 2014. He improved his team's win total in each of his first four seasons on the Island, culminating with the 2013 season, which was a historic season for the Islanders. The team finished with a 20-12 record, including a then school-best 13-5

record in Southland Conference play. The Islanders also made history by advancing to the semifinals of the conference tournament for the first time.

"This is a very special day for me and my family," Graystone said. "Lubbock is definitely home for us and there's no place we'd rather be than at Texas Tech. I am looking forward to meeting the team and getting started on the court as soon as possible. We all know the challenges ahead of us to improve the program and take positive steps in the Big 12. But I know I'm starting with a group of talented, committed players and together we will make it happen."

In the last four years, Graystone has collected a 91-44 record, including a 52-16 record in Southland play. In 2015, the Islanders made their fourth consecutive appearance and fifth overall trip to the Southland Tournament. For the second-straight year, the Islanders advanced to the semifinals while finishing with a 19-16 record, including an 11-5 record in conference play.

The squad set a school record in 2012 with a 21-11 mark. The Islanders won 12 Southland matches and finished third in the conference, both first-time accomplishments for Texas A&M-Corpus Christi. Since Graystone took over the program, the Islanders have improved their national RPI by 235 spots, making them the most improved NCAA Division I team in the country over that time.

Prior to coming to the Island, Graystone spent 10 seasons as the head coach at West Texas A&M in Canyon, where he posted a 315-61 record and became the all-time winningest coach in program history. His .837 winning percentage was the third-

highest among active NCAA Division II head coaches and he reached 300 victories faster than any other coach in the division's history. He reached 100 wins in 106 matches making him the quickest coach at the time in any NCAA sport or division to reach the century mark in wins. He was named the Lone Star Conference Coach of the Year five times and the AVCA Southwest Region Coach of the Year on four occasions.

At West Texas A&M, he guided the Lady Buffs to five NCAA Regional appearances and eight Lone Star Conference crowns in 10 seasons. He mentored 16 All-Americans and one Division II National Player of the Year in 1999. His 2001 team was ranked No. 1 for seven weeks, while his 2002 team held the top spot for five weeks. In 2003, his team set an NCAA standard with 77 conference wins in a row.

Before becoming the head coach, Graystone was an assistant coach for the Lady Buffs and was part of a coaching staff that won the NCAA Division II Championship in 1997. He also served as the program director for the Amarillo Junior Olympic Volleyball Club. He began his career as a head coach at Waggoner and Ballard High Schools in Louisville, Kentucky.

Graystone earned an M.S. in exercise physiology from the University of Louisville in 1996 after graduating with a B.S. in Health Sciences with an emphasis in exercise science from Grand Valley State (Mich.) in 1992.

He and his wife Lauren, a native of Whitharral, Texas, have two sons, Drew and Dylan.



2016 MATCH-BY-MATCH RESULTS

Date	Opponent	Score	Match results	Overall	Conf	Time	Attend
Aug. 26, 2015	vs Colorado	L 2-3	25-20, 19-25, 26-24, 18-25, 8-15	0-1	0-0	2:05	125
Aug. 27, 2015	vs Long Beach State	L 0-3	16-25, 16-25, 23-25	0-2	0-0	1:13	128
Aug. 27, 2015	at Portland State	W 3-1	25-17, 25-21, 22-25, 25-17	1-2	0-0	1:43	288
Sept. 2, 2016	vs South Dakota State	W 3-0	25-18, 25-17, 25-21	2-2	0-0	1:07	48
Sept. 2, 2016	at North Dakota State	W 3-2	21-25, 25-27, 25-22, 25-12, 15-11	3-2	0-0	2:16	863
Sept. 3, 2016	at North Dakota	W 3-0	25-20, 25-18, 25-22	4-2	0-0	1:26	959
Sept. 5, 2016	UTEP	W 3-0	25-16, 25-15, 25-23	5-2	0-0	1:24	423
Sept. 9, 2016	ABILENE CHRISTIAN	W 3-0	25-9, 25-10, 25-16	6-2	0-0	1:08	519
Sept. 9, 2016	STEPHEN F. AUSTIN	W 3-1	21-25, 25-21, 25-15, 25-12	7-2	0-0	1:48	563
Sept. 10, 2016	TEXAS-RGV	W 3-0	25-23, 26-24, 25-21	8-2	0-0	1:20	266
Sept. 10, 2016	ORAL ROBERTS	W 3-1	25-19, 25-12, 20-25, 25-16	9-2	0-0	1:46	288
Sept. 14, 2016	at Rice	W 3-2	25-20, 17-25, 25-15, 23-25, 18-16	10-2	0-0	2:22	446
Sept. 15, 2016	vs Texas State	L 0-3	21-25, 17-25, 20-25	10-3	0-0	1:15	--
Sept. 16, 2016	vs Wichita State	L 0-3	21-25, 22-25, 20-25	10-4	0-0	1:19	--
Sept. 16, 2016	at UTSA	L 0-3	12-25, 22-25, 12-25	10-5	0-0	1:13	390
Sept. 21, 2016	at TCU	L 1-3	14-25, 25-22, 13-25, 14-25	10-6	0-1	1:52	1,611
Sept. 24, 2016	WEST VIRGINIA	L 0-3	19-25, 23-25, 20-25	10-7	0-2	1:30	349
Sept. 28, 2016	at Baylor	L 0-3	17-25, 24-26, 19-25	10-8	0-3	1:30	818
Oct. 5, 2016	KANSAS STATE	L 0-3	18-25, 19-25, 20-25	10-9	0-4	1:30	431
Oct. 8, 2016	at #6 Kansas	L 0-3	8-25, 18-25, 18-25	10-10	0-5	1:11	1302
Oct. 12, 2016	OKLAHOMA	L 0-3	26-28, 23-25, 17-25	10-11	0-6	1:27	479
Oct. 15, 2016	at Iowa State	L 0-3	13-25, 14-25, 15-25	10-12	0-7	1:06	3620
Oct. 21, 2016	#2 TEXAS	L 2-3	25-21, 18-25, 16-25, 28-26, 7-15	10-13	0-8	2:15	1223
Oct. 26, 2016	#6 KANSAS	L 0-3	15-25, 16-25, 20-25	10-14	0-9	1:13	321
Oct. 29, 2016	at West Virginia	L 2-3	25-21, 13-25, 25-21, 27-29, 16-18	10-15	0-10	2:30	547
Nov. 2, 2016	BAYLOR	L 1-3	19-25, 20-25, 25-21, 22-25	10-16	0-11	2:07	621
Nov. 4, 2016	IOWA STATE	L 2-3	25-19, 20-25, 17-25, 25-23, 12-15	10-17	0-12	2:18	470
Nov. 12, 2016	at Oklahoma	L 0-3	25-27, 18-25, 19-25	10-18	0-13	1:27	924
Nov 16	at #7 Texas	L 0-3	22-25, 14-25, 15-25	10-19	0-14	1:21	2551

* Big 12 Conference match

ATTENDANCE	Dates	Total	Average
Total:	27	20183	748
Home:	12	5953	496
Away:	12	13929	1160
Neutral:	4	301	60

2016 INDIVIDUAL STATS

##	Name	ATTACK							SET				SERVE				
		SP	MP-MS	K	K/Set	E	TA	Pct	A	A/Set	TA	Pct	SA	SA/Set	SE	TA	Pct
5	Douglass, Lauren	104	29-29	316	3.04	82	682	.343	6	0.06	41	.146	20	0.19	31	285	.891
16	McDougald, Toni	86	25-15	187	2.17	89	598	.164	3	0.03	47	.064	1	0.01	8	62	.871
12	Keenan, Katy	103	29-29	166	1.61	65	394	.256	3	0.03	12	.250	0	0.00	0	10	1.000
18	Atwood, Chandler	71	23-12	152	2.14	72	437	.183	2	0.03	17	.118	0	0.00	2	16	.875
6	Redding, Sarah	47	15-14	112	2.38	61	317	.161	1	0.02	4	.250	0	0.00	1	3	.667
33	Henriksen, Hannah	55	24-0	99	1.80	44	321	.171	2	0.04	10	.200	0	0.00	0	4	1.000
11	Ybanez, Alyssa	35	14-10	80	2.29	55	252	.099	6	0.17	38	.158	5	0.14	12	100	.880
4	Grubb, Marguerite	96	28-27	55	0.57	21	188	.181	963	10.03	2174	.443	7	0.07	27	255	.894
15	Ensch, Courtney	25	10-7	47	1.88	15	134	.239	0	0.00	4	.000	0	0.00	3	3	.000
13	Fragniere, Audrey	13	7-2	18	1.38	17	78	.013	0	0.00	6	.000	0	0.00	2	9	.778
17	Sagers, Maggie	92	26-13	7	0.08	9	52	-.038	13	0.14	124	.105	17	0.18	34	313	.891
1	Hinneburg, Victoria	16	12-0	6	0.38	3	20	.150	0	0.00	1	.000	0	0.00	0	1	1.000
2	Rittimann, Kylie	69	23-5	5	0.07	4	37	.027	9	0.13	58	.155	8	0.12	15	179	.916
3	Cowan, Kyndal	21	11-2	3	0.14	4	13	-.077	55	2.62	201	.274	2	0.10	2	32	.938
7	Akiu, Reyn	102	29-1	3	0.03	3	29	.000	82	0.80	424	.193	18	0.18	16	465	.966
9	Morgan, Ashley	34	11-0	2	0.06	3	21	-.048	2	0.06	28	.071	2	0.06	8	93	.914
26	Bryant, Katelyn	95	28-8	1	0.01	0	10	.100	17	0.18	100	.170	17	0.18	6	311	.981
10	Dobbins, Eighmy	9	5-0	0	0.00	1	4	-.250	2	0.22	5	.400	1	0.11	0	12	1.000
24	Martinez, Taylor	1	1-0	0	0.00	0	0	.000	0	0.00	0	.000	0	0.00	1	1	.000
8	Canales, Sophia	7	3-0	0	0.00	1	3	-.333	17	2.43	61	.279	0	0.00	1	12	.917
TEXAS TECH.....		104	29-29	1259	12.11	549	3590	.198	1183	11.38	3355	.353	98	0.94	169	2166	.922
Opponents.....		104	29-29	1408	13.54	514	3652	.245	1326	12.75	3386	.392	126	1.21	224	2294	.902

##	Name	S	RECEPT			DIG		BLOCKING						Points	Pts/Set
			RE	TA	Pct	DIG	Dig/S	BS	BA	Total	Blk/S	BE	BHE		
5	Douglass, Lauren	104	2	21	.905	54	0.52	20	90	110	1.06	7	1	401.0	3.86
16	McDougald, Toni	86	10	155	.935	59	0.69	5	20	25	0.29	6	0	203.0	2.36
12	Keenan, Katy	103	0	9	1.000	13	0.13	4	56	60	0.58	9	1	198.0	1.92
18	Atwood, Chandler	71	2	33	.939	39	0.55	4	29	33	0.46	4	0	170.5	2.40
6	Redding, Sarah	47	0	7	1.000	11	0.23	2	26	28	0.60	4	0	127.0	2.70
33	Henriksen, Hannah	55	4	31	.871	24	0.44	3	11	14	0.25	5	0	107.5	1.95
11	Ybanez, Alyssa	35	9	74	.878	60	1.71	1	12	13	0.37	2	0	92.0	2.63
4	Grubb, Marguerite	96	1	2	.500	219	2.28	6	36	42	0.44	5	17	86.0	0.90
15	Ensch, Courtney	25	0	1	1.000	7	0.28	1	13	14	0.56	0	0	54.5	2.18
13	Fragniere, Audrey	13	5	38	.868	6	0.46	1	2	3	0.23	0	0	20.0	1.54
17	Sagers, Maggie	92	24	418	.943	163	1.77	0	0	0	0.00	0	0	24.0	0.26
1	Hinneburg, Victoria	16	0	1	1.000	2	0.12	0	4	4	0.25	0	0	8.0	0.50
2	Rittimann, Kylie	69	8	161	.950	71	1.03	0	0	0	0.00	0	1	13.0	0.19
7	Akiu, Reyn	102	17	495	.966	508	4.98	0	0	0	0.00	0	1	21.0	0.21
3	Cowan, Kyndal	21	0	0	.000	16	0.76	0	0	0	0.00	2	11	5.0	0.24
9	Morgan, Ashley	34	8	121	.934	53	1.56	0	0	0	0.00	0	0	4.0	0.12
26	Bryant, Katelyn	95	20	250	.920	177	1.86	0	0	0	0.00	0	0	18.0	0.19
10	Dobbins, Eighmy	9	3	11	.727	9	1.00	0	0	0	0.00	0	0	1.0	0.11
24	Martinez, Taylor	1	0	0	.000	0	0.00	0	0	0	0.00	0	0	0.0	0.00
8	Canales, Sophia	7	0	0	.000	5	0.71	0	0	0	0.00	0	0	0.0	0.00
TEAM			12												
TEXAS TECH.....		104	126	2050	.939	1496	14.38	47	299	196.5	1.89	44	32	1553.5	14.94
Opponents.....		104	98	1983	.951	1541	14.82	38	400	238.0	2.29	59	19	1772.0	17.04

2016 TEXAS TECH TEAM MATCH-BY-MATCH

Date	Opponent	SP	K	E	TA	Pct.	A	SA	SE	RE	DIG	BS	BA	BE	Total	BHE	Points
Aug. 26	COLORADO	5	63	26	147	.252	63	3	8	7	51	0	18	6	9.0	0	75.0
Aug. 27	vs Long Beach State	3	30	13	86	.198	29	5	3	5	26	1	12	5	7.0	0	42.0
Aug. 27	at Portland State	4	59	12	134	.351	52	5	6	7	55	2	24	2	14.0	0	78.0
Sept. 2	vs South Dakota State	3	41	16	110	.227	41	6	6	2	50	4	8	2	8.0	0	55.0
Sept. 2	at North Dakota State	5	68	22	177	.260	64	1	9	4	82	4	12	2	10.0	1	79.0
Sept. 3	at North Dakota	3	47	12	107	.327	43	5	4	2	52	3	2	0	4.0	0	56.0
Sept. 5	UTEP	3	43	13	117	.256	39	3	6	2	52	0	14	1	7.0	0	53.0
Sept. 9	ABILENE CHRISTIAN	3	42	6	71	.507	37	9	6	0	38	1	9	0	5.5	1	56.5
Sept. 9	STEPHEN F. AUSTIN	4	54	25	163	.178	50	6	9	5	85	3	18	0	12.0	0	72.0
Sept. 10	TEXAS-RGV	3	46	13	121	.273	42	5	4	1	52	2	10	0	7.0	0	58.0
Sept. 10	ORAL ROBERTS	4	46	13	110	.300	44	6	7	8	50	2	14	1	9.0	0	61.0
Sept. 14	at Rice	5	65	25	174	.230	57	6	2	5	70	6	12	5	12.0	3	83.0
Sept. 15	vs Texas State	3	36	21	110	.136	34	2	6	6	41	0	10	2	5.0	1	43.0
Sept. 16	vs Wichita State	3	38	17	129	.163	36	1	3	3	60	1	6	1	4.0	0	43.0
Sept. 16	at UTSA	3	22	19	83	.036	21	3	4	8	30	0	6	2	3.0	2	28.0
Sept. 21	at TCU	4	37	23	147	.095	31	2	5	5	65	2	8	3	6.0	2	45.0
Sept. 24	WEST VIRGINIA	3	33	15	88	.205	32	3	3	7	43	0	14	1	7.0	1	43.0
Sept. 28	at Baylor	3	33	19	108	.130	32	5	3	6	38	0	12	0	6.0	0	44.0
Oct. 5	KANSAS STATE	3	37	19	107	.168	37	1	4	5	39	2	4	1	4.0	0	42.0
Oct. 8	at Kansas	3	21	12	75	.120	20	2	4	10	32	0	2	1	1.0	5	24.0
Oct. 12	OKLAHOMA	3	44	19	123	.203	42	1	8	1	50	0	4	0	2.0	1	47.0
Oct 15	at Iowa State	3	27	19	99	.081	27	1	7	3	39	2	0	1	2.0	2	30.0
Oct 21	TEXAS	5	59	28	182	.170	54	4	6	4	74	1	8	2	5.0	2	68.0
Oct 26	KANSAS	3	29	22	109	.064	29	0	3	3	45	1	4	0	3.0	0	32.0
Oct 29	at West Virginia	5	58	33	161	.155	56	4	13	5	63	1	20	0	11.0	4	73.0
Nov 02	BAYLOR	4	53	19	163	.209	51	0	8	3	72	2	22	2	13.0	2	66.0
Nov 04	IOWA STATE	5	57	32	180	.139	52	6	9	4	59	3	12	1	9.0	2	72.0
Nov 12	at Oklahoma	3	39	18	105	.200	36	0	7	2	36	4	10	1	9.0	2	48.0
Nov 16	at Texas	3	32	18	104	.135	32	3	6	3	47	0	4	2	2.0	1	37.0
Texas Tech		104	1259	549	3590	.198	1183	98	169	126	1496	47	299	44	196.5	32	1553.5
Opponent		104	1408	514	3652	.245	1326	126	224	98	1541	38	400	59	238.0	19	1772.0

BY SET AVERAGES

Sets played: 104

Kills per set: 12.11

Assists per set: 11.38

Service aces per set: 0.94

Reception errors per set: 1.21

Digs per set: 14.38

Blocks per set: 1.89

Ball handling errors per set: 0.31

Reception errors per set: 1.21

Points per set: 14.94

2016 OPPONENT TEAM MATCH-BY-MATCH

Date	Opponent	SP	K	E	TA	Pct.	A	SA	SE	RE	DIG	BS	BA	BE	Total	BHE	Points
Aug 26	COLORADO	5	66	20	141	.326	60	7	10	3	42	1	22	8	12.0	0	85.0
Aug 27	vs Long Beach State	3	50	12	94	.404	46	5	6	5	36	1	6	2	4.0	0	59.0
Aug 27	at Portland State	4	54	28	144	.181	52	7	2	5	54	2	8	5	6.0	0	67.0
Sep 02	vs South Dakota State	3	32	21	109	.101	31	2	4	6	49	1	12	3	7.0	2	41.0
Sep 02	at North Dakota State	5	61	34	194	.139	60	4	6	1	75	4	6	4	7.0	0	72.0
Sep 03	at North Dakota	3	40	17	116	.198	37	2	6	5	43	1	8	1	5.0	0	47.0
Sep 05	UTEP	3	31	19	120	.100	29	2	6	3	49	1	8	0	5.0	0	38.0
Sep 09	ABILENE CHRISTIAN	3	22	16	79	.076	20	0	7	9	20	0	8	0	4.0	1	26.0
Sep 09	STEPHEN F. AUSTIN	4	33	27	153	.039	32	5	6	6	76	1	18	0	10.0	1	48.0
Sep 10	TEXAS-RGV	3	50	16	130	.262	47	1	7	5	57	0	10	1	5.0	0	56.0
Sep 10	ORAL ROBERTS	4	44	26	129	.140	41	8	16	6	49	1	12	3	7.0	0	59.0
Sep 14	at Rice	5	66	30	176	.205	64	5	5	6	70	5	12	8	11.0	2	82.0
Sep 15	vs Texas State	3	40	11	99	.293	37	6	6	2	46	1	18	2	10.0	3	56.0
Sep 16	vs Wichita State	3	49	14	129	.271	49	3	10	1	63	1	14	2	8.0	0	60.0
Sep 16	at UTSA	3	42	9	83	.398	39	8	11	3	39	1	18	1	10.0	0	60.0
Sep 21	at TCU	4	59	16	149	.289	52	5	8	2	77	1	16	1	9.0	1	73.0
Sep 24	WEST VIRGINIA	3	48	9	108	.361	44	7	12	3	35	0	20	3	10.0	3	65.0
Sep 28	at Baylor	3	48	19	112	.259	43	6	1	5	50	0	14	1	7.0	0	61.0
Oct 05	KANSAS STATE	3	46	13	107	.308	45	5	6	1	43	0	8	1	4.0	0	55.0
Oct 08	at Kansas	3	41	11	88	.341	38	10	10	2	37	0	10	1	5.0	0	56.0
Oct 12	OKLAHOMA	3	49	12	118	.314	46	1	7	1	48	0	14	0	7.0	1	57.0
Oct 15	at Iowa State	3	42	8	91	.374	41	3	5	1	49	4	8	3	8.0	1	53.0
Oct 21	TEXAS	5	70	18	175	.297	67	4	12	4	84	0	24	3	12.0	0	86.0
Oct 26	KANSAS	3	47	10	108	.343	44	3	10	0	48	4	10	2	9.0	1	59.0
Oct 29	at West Virginia	5	61	27	166	.205	58	5	14	4	59	2	32	2	18.0	2	84.0
Nov 02	BAYLOR	4	64	24	175	.229	62	3	7	0	75	0	10	0	5.0	0	72.0
Nov 04	IOWA STATE	5	59	28	155	.200	56	4	8	6	78	2	22	1	13.0	0	76.0
Nov 12	at Oklahoma	3	48	14	105	.324	47	2	6	0	42	3	16	0	11.0	1	61.0
Nov 16	at Texas	3	46	5	99	.414	39	3	10	3	48	1	16	1	9.0	0	58.0
Opponent totals		104	1408	514	3652	.245	1326	126	224	98	1541	38	400	59	238.0	19	1772.0
Texas Tech		104	1259	549	3590	.198	1183	98	169	126	1496	47	299	44	196.5	32	1553.5

BY SET AVERAGES

Sets played: 104

Kills per set: 13.54

Assists per set: 12.75

Service aces per set: 1.21

Reception errors per set: 0.94

Digs per set: 14.82

Blocks per set: 2.29

Ball handling errors per set: 0.18

Reception errors per set: 0.94

Points per set: 17.04

2016 MATCH-BY-MATCH LEADERS

Opponent	Kills	Hitting %	Digs	Blocks	Assists
vs. Colorado	Ybanez (13)	Keenan (.625)	Akiu (24)	Douglass (6)	Grubb (52)
vs. Long Beach State	Ybanez (10)	Ybanez (.400)	Bryant (8)	Douglass (6)	Grubb (27)
at Portland State	Douglass (17)	Douglass (.773)	Akiu, Bryant (14)	Douglass (8)	Grubb (43)
vs. S. Dakota State	McDougald (11)	Ensch (.500)	Akiu (15)	Grubb (4)	Grubb (35)
at N. Dakota State	Douglass (16)	Douglass (.406)	Akiu (23)	Douglass (5)	Grubb (57)
at North Dakota	Douglass (15)	Douglass (.462)	Akiu (18)	Keenan (2)	Grubb (33)
UTEP	Douglass (15)	Douglass (.577)	Akiu (16)	Douglass (5)	Grubb (29)
ABILENE CHRISTIAN	McDougald (10)	Keenan (.800)	Akiu (12)	McDougald (2)	Grubb (27)
STEPHEN F. AUSTIN	Douglass (17)	Atwood (.360)	Akiu (30)	Douglass (8)	Grubb (46)
UT RIO GRANDE VALLEY	McDougald, Douglass (11)	Douglass (.526)	Akiu (22)	Douglass (3)	Grubb (38)
ORAL ROBERTS	Douglass (16)	Atwood (.526)	Akiu, Bryant (16)	Douglass (5)	Grubb (37)
at Rice	Henriksen (19)	Douglass (.419)	Akiu (19)	Atwood, Douglass (5)	Grubb (51)
vs. Texas State	Douglass (9)	Ybanez (.429)	Akiu (14)	Douglass (3)	Grubb (27)
vs. Wichita State	Atwood (10)	Atwood (.320)	Akiu (22)	Douglass (3)	Grubb (30)
at UTSA	Atwood, Douglass (5)	Douglass (.455)	Akiu (13)	(Six with 1)	Cowan (17)
at TCU	Douglass (10)	Douglass (.450)	Akiu (24)	(Three with 1.5)	Canales (15)
WEST VIRGINIA	Douglass, McDougald, Keenan (7)	Atwood (.833)	Akiu (15)	Douglass (2)	Grubb (29)
at Baylor	Douglass (7)	Sagers (.333)	Akiu (11)	Douglass (2)	Grubb (27)
KANSAS STATE	Douglass (10)	Douglass (.368)	Akiu (12)	Keenan (2)	Grubb (28)
at Kansas	McDougald, Douglass (6)	McDougald (.455)	Akiu, Sagers (9)	Keenan, Grubb (1)	Cowan (9)
OKLAHOMA	Douglass (12)	Atwood (.429)	Sagers (19)	Douglass (2)	Grubb (36)
at Iowa State	Douglass (8)	Atwood (.700)	Grubb (12)	Douglass, Keenan (1)	Grubb (25)
NO. 2 TEXAS	Redding (17)	Douglass (.344)	Akiu (23)	Douglass (3)	Grubb (44)
NO. 6 KANSAS	Douglass (10)	Redding (.375)	Akiu (25)	Douglass (2)	Grubb (27)
at West Virginia	Douglass, McDougald, Redding (13)	McDougald (.286)	Akiu (27)	Douglass (8)	Assists (55)
BAYLOR	Douglass (15)	Douglass (.364)	Akiu (33)	Douglass (7)	Grubb (46)
IOWA STATE	Redding (16)	Keenan (.346)	Akiu (24)	Redding, Douglass (4)	Grubb (45)
at Oklahoma	Douglass (12)	Douglass (.273)	Akiu (15)	Douglass (6)	Grubb (31)
at No. 7 Texas	McDougald, Keenan (8)	Keenan (.375)	Akiu (15)	Keenan (2)	Grubb (29)

2016 DOUBLE-DOUBLES

MARGUERITE GRUBB (7)	ASSISTS	DIGS
Baylor (11/2/16)	46	14
West Virginia (10/29/16)	55	12
No. 2 Texas (10/21/16)	44	12
Iowa State (10/15/16)	25	12
Kansas State (10/5/16)	28	11
Stephen F. Austin (9/9/16)	46	16
at North Dakota (9/3/16)	33	16
Career double-doubles: 18		

ALYSSA YBANEZ (1)	KILLS	DIGS
at Portland State (8/27/16)	17	10
Career double-doubles: 1		

TEXAS TECH RECORD WHEN

Overall	10-19
At the United Supermarkets Arena	5-7
On the road	4-8
Neutral site	1-4
Big 12 Play	0-14
Non-Conference	10-5
At a tournament	8-5
On Television	0-7

Against ranked opponents	0-4
Top 5 opponents	0-2
Top 10 opponents	0-4

Kills	
Leading	8-0
Trailing	2-19
Tied	0-0

Blocks	
Leading	9-2
Trailing	1-16
Tied	0-1

Digs	
Leading	8-4
Trailing	1-15
Tied	1-0

Attack Percentage	
Leading	10-0
Trailing	0-19

Service Aces	
Leading	7-1
Trailing	3-14
Tied	0-4

Hitting Percentage	
Hitting .300 or better	4-0
Hitting .250 to .299	3-1
Hitting .200 to .249	2-4
Hitting .100 to .199	1-10
Hitting below .100	0-3

Opponents hitting above .300	0-10
Opponents hitting .250 to .299	1-5
Opponents hitting .200 to .249	2-2
Opponents hitting .100 to .199	6-0
Holding opponents below .100	2-0

In three sets	5-13
In four sets	3-1
In five sets	2-4

2016 MATCH-BY-MATCH STARTING LINEUPS

<i>Opponent</i>	<i>DS</i>	<i>OH</i>	<i>OH</i>	<i>MB</i>	<i>SET</i>	<i>MB</i>	<i>LIB</i>
vs Colorado	Rittimann	Redding	Ybanez	Douglass	Grubb	Keenan	Akiu
vs Long Beach State	Rittimann	Redding	Ybanez	Douglass	Grubb	Keenan	Akiu
at Portland State	Rittimann	Ensch	Ybanez	Douglass	Grubb	Keenan	Akiu
vs South Dakota State	Sagers	Ensch	Ybanez	Douglass	Grubb	Keenan	Akiu
at North Dakota State	Rittimann	Ensch	Ybanez	Douglass	Grubb	Keenan	Akiu
at North Dakota	Bryant	Ensch	McDougald	Douglass	Grubb	Keenan	Akiu
UTEP	Bryant	Ensch	McDougald	Douglass	Grubb	Keenan	Akiu
Abilene Christian	Bryant	McDougald	Ybanez	Douglass	Grubb	Keenan	Akiu
Stephen F. Austin	Bryant	Ensch	Ybanez	Douglass	Grubb	Keenan	Akiu
UT Rio Grande Valley	Bryant	Ensch	McDougald	Douglass	Grubb	Keenan	Akiu
Oral Roberts	Bryant	Atwood	McDougald	Douglass	Grubb	Keenan	Akiu
at Rice	Bryant	Atwood	McDougald	Douglass	Grubb	Keenan	Akiu
vs. Texas State	Bryant	Atwood	McDougald	Douglass	Grubb	Keenan	Akiu
vs. Wichita State	Sagers	Atwood	Ybanez	Douglass	Grubb	Keenan	Akiu
at UTSA	Sagers	Atwood	McDougald	Douglass	Grubb	Keenan	Akiu
at TCU	Fragniere	Atwood	Ybanez	Douglass	Cowan	Keenan	Akiu
West Virginia	Redding	McDougald	Ybanez	Douglass	Grubb	Keenan	Akiu
at Baylor	Sagers	Atwood	McDougald	Douglass	Grubb	Keenan	Akiu
Kansas State	Sagers	Redding	McDougald	Douglass	Grubb	Keenan	Akiu
at No. 6 Kansas	Sagers	Redding	McDougald	Douglass	Cowan	Keenan	Akiu
Oklahoma	Rittimann	Redding	McDougald	Douglass	Grubb	Keenan	Sagers
at Iowa State	Akiu	Redding	Fragniere	Douglass	Grubb	Keenan	Sagers
No. 2 Texas	Sagers	Redding	Atwood	Douglass	Grubb	Keenan	Akiu
No. 6 Kansas	Sagers	Redding	Atwood	Douglass	Grubb	Keenan	Akiu
at West Virginia	Sagers	Redding	Atwood	Douglass	Grubb	Keenan	Akiu
Baylor	Sagers	Redding	Atwood	Douglass	Grubb	Keenan	Akiu
Iowa State	Sagers	Redding	Atwood	Douglass	Grubb	Keenan	Akiu
at Oklahoma	Sagers	Redding	McDougald	Douglass	Grubb	Keenan	Akiu
at No. 7 Texas	Sagers	Redding	McDougald	Douglass	Grubb	Keenan	Akiu

TEXAS TECH TEAM HIGHS

ATTACK PERCENT (K-E-TA)

.507 (42-6-71) _____ Abilene Christian (Sep 9, 2016)
 .351 (59-12-134) _____ at Portland State (Aug 27, 2016)
 .327 (47-12-107) _____ at North Dakota (Sep 3, 2016)

KILLS (K-E-TA)

68 (68-22-177) 5s _____ at N. Dakota St. (Sep 2, 2016)
 65 (65-25-174) 5s _____ at Rice (Sep 14, 2016)
 63 (63-26-147) 5s _____ vs Colorado (Aug 26, 2016)

KILLS 3-SETS (K-E-TA)

47 (47-12-107) _____ at North Dakota (Sep 3, 2016)
 46 (46-13-121) _____ UTRGV (Sep 10, 2016)

KILLS 4-SETS (K-E-TA)

59 (59-12-134) _____ at Portland State (Aug 27, 2016)
 54 (54-25-163) _____ Stephen F. Austin (Sep 9, 2016)

KILLS 5-SETS (K-E-TA)

68 (68-22-177) _____ at N. Dakota State (Sep 2, 2016)
 65 (65-25-174) _____ at Rice (Sep 14, 2016)
 63 (63-26-147) _____ vs Colorado (Aug 26, 2016)

TOTAL ATTEMPTS (K-E-TA)

182 (59-28-182) 5s _____ Texas (Oct 21, 2016)
 180 (57-32-180) 5s _____ Iowa State (Nov 4, 2016)
 177 (68-22-177) 5s _____ at N. Dakota State (Sep 2, 2016)

TOTAL ATTEMPTS 3-SETS (K-E-TA)

129 (38-17-129) _____ vs. Wichita State (Sep 16, 2016)
 123 (44-19-123) _____ Oklahoma (Oct 12, 2016)
 121 (46-13-121) _____ UTRGV (Sep 10, 2016)

TOTAL ATTEMPTS 4-SETS (K-E-TA)

163 (53-19-163) _____ Baylor (Nov 2, 2016)
 163 (54-25-163) _____ Stephen F. Austin (Sep 9, 2016)

TOTAL ATTEMPTS 5-SETS (K-E-TA)

182 (59-28-182) _____ Texas (Oct 21, 2016)
 180 (57-32-180) _____ Iowa State (Nov 4, 2016)
 177 (68-22-177) _____ at N. Dakota State (Sep 2, 2016)

ASSISTS

64 (5s) _____ at N. Dakota State (Sep 2, 2016)
 63 (5s) _____ vs Colorado (Aug 26, 2016)
 54 (5s) _____ Texas (Oct 21, 2016)

ASSISTS 3-SETS

43 _____ at North Dakota (Sep 3, 2016)
 42 _____ Oklahoma (Oct 12, 2016)
 42 _____ UTRGV (Sep 10, 2016)

ASSISTS 4-SETS

52 _____ at Portland State (Aug 27, 2016)
 51 _____ Baylor (Nov. 2, 2016)

ASSISTS 5-SETS

64 _____ at N. Dakota State (Sep 2, 2016)
 63 _____ vs Colorado (Aug 26, 2016)

DIGS

85 (4s) _____ Stephen F. Austin (Sep 9, 2016)
 82 (5s) _____ at N. Dakota State (Sep 2, 2016)
 74 (5s) _____ Texas (Oct. 21, 2016)

DIGS 3-SETS

60 _____ vs. Wichita State (Sep 16, 2016)
 52 _____ UTEP (Sep. 5, 2016)
 52 _____ at North Dakota (Sep 3, 2016)

DIGS 4-SETS

85 _____ Stephen F. Austin (Sep 9, 2016)
 72 _____ Baylor (Nov. 2, 2016)

DIGS 5-SETS

82 _____ at N. Dakota State (Sep 2, 2016)
 74 _____ Texas (Oct. 21, 2016)

ACES

9 _____ Abilene Christian (Sep 9, 2016)
 6 _____ Iowa State (Nov 4, 2016)
 6 _____ at Rice (Sep 14, 2016)
 6 _____ Oral Roberts (Sep 10, 2016)
 6 _____ Stephen F. Austin (Sep 9, 2016)
 6 _____ vs S. Dakota State (Sep 2, 2016)

BLOCKS

14.0 _____ at Portland State (Aug 27, 2016)
 13.0 _____ Baylor (Nov. 2, 2016)

OPPONENT MATCH HIGHS

ATTACK PERCENT (K-E-TA)

.414 (46-5-99) _____ at Texas (Nov 16, 2016)

KILLS (K-E-TA)

70 (70-18-175) 5s _____ Texas (Oct 21, 2016)

KILLS 3-SETS (K-E-TA)

50 (50-12-94) _____ UTRGV (Sep 10, 2016)
 50 (50-12-94) _____ vs LBSU (Aug 27, 2016)

KILLS 4-SETS (K-E-TA)

64 (64-24-175) _____ Baylor (Nov. 2, 2016)

KILLS 5-SETS (K-E-TA)

70 (70-18-175) _____ Texas (Oct 21, 2016)

TOTAL ATTEMPTS (K-E-TA)

194 (61-34-194) 5s _____ at N. Dakota State (Sep 2, 2016)

TOTAL ATTEMPTS 3-SETS (K-E-TA)

130 (50-16-130) _____ UTRGV (Sep 10, 2016)

TOTAL ATTEMPTS 4-SETS (K-E-TA)

175 (64-24-175) _____ Baylor (Nov. 2, 2016)

TOTAL ATTEMPTS 5-SETS (K-E-TA)

194 (61-34-194) _____ at N. Dakota State (Sep 2, 2016)

OPPONENT TEAM HIGHS

ATTACK PERCENT (K-E-TA) minimum 12 kills

.647 (12-1-17) _____ Grahovac, Peyton vs. LBSU (Aug 27, 2016)
 .571 (16-0-28) _____ Payne, Kelsie vs. No. 6 Kansas (Oct 26, 2016)

KILLS (K-E-TA)

31 (31-7-64) 4s _____ Staiger, Katie vs. Baylor (Nov. 2, 2016)

KILLS 3-SETS (K-E-TA)

19 (19-7-43) _____ Staiger, Katie at Baylor (Sep 28, 2016)
 19 (19-3-41) _____ Enneking, Alyssa vs. Oklahoma (Oct 12, 2016)

KILLS 4-SETS (K-E-TA)

31 (31-7-64) _____ Staiger, Katie vs. Baylor (Nov. 2, 2016)

KILLS 5-SETS (K-E-TA)

24 (24-5-52) _____ P Cerame, Paulina vs. Texas (Oct 21, 2016)

TOTAL ATTEMPTS (K-E-TA)

64 (31-7-64) 4s _____ Staiger, Katie vs. Baylor (Nov. 2, 2016)

TOTAL ATTEMPTS 3-SETS (K-E-TA)

44 (15-9-44) _____ Beaner, Ashley vs. S. Dakota St. (Sep 2, 2016)

TOTAL ATTEMPTS 4-SETS (K-E-TA)

64 (31-7-64) _____ Staiger, Katie vs. Baylor (Nov. 2, 2016)

TOTAL ATTEMPTS 5-SETS (K-E-TA)

57 (23-9-57) _____ Caffrey, Payton at West Virginia (Oct 29, 2016)

2016 INDIVIDUAL MATCH HIGHS

ATTACK PERCENT (K-E-TA) minimum 12 kills

.773 (17- 0-22)	Douglass, Lauren at Portland State (Aug 27, 2016)
.625 (12- 2-16)	Keenan, Katy vs Colorado (Aug 26, 2016)
.577 (15- 0-26)	Douglass, Lauren vs UTEP (Sep 05, 2016)
.483 (16- 2-29)	Douglass, Lauren vs Oral Roberts (Sep 10, 2016)
.462 (15- 3-26)	Douglass, Lauren at North Dakota (Sep 03, 2016)

KILLS (K-E-TA)

19 (19- 3-42) 5s	Henriksen, Hannah at Rice (Sep 14, 2016)
17 (17-6-40) 5s	Redding, Sarah vs Texas (Oct. 21, 2016)
17 (17- 5-35) 4s	Douglass, Lauren vs Stephen F. Austin (Sep 09, 2016)
17 (17- 4-31) 5s	Douglass, Lauren at Rice (Sep 14, 2016)
17 (17- 0-22) 4s	Douglass, Lauren at Portland State (Aug 27, 2016)

KILLS 3-SETS (K-E-TA)

15 (15- 0-26)	Douglass, Lauren vs UTEP (Sep 05, 2016)
15 (15- 3-26)	Douglass, Lauren at North Dakota (Sep 03, 2016)
13 (13- 1-27)	McDougald, Toni at North Dakota (Sep 03, 2016)
12 (12- 6-22)	Douglass, Lauren at Oklahoma (Nov 12, 2016)
12 (12- 2-29)	Douglass, Lauren vs Oklahoma (Oct 12, 2016)

KILLS 4-SETS (K-E-TA)

17 (17- 0-22)	Douglass, Lauren at Portland State (Aug 27, 2016)
17 (17- 5-35)	Douglass, Lauren vs Stephen F. Austin (Sep 09, 2016)
16 (16- 2-29)	Douglass, Lauren vs Oral Roberts (Sep 10, 2016)
15 (15-3-33)	Douglass, Lauren vs. Baylor (Nov. 2, 2016)
13 (13- 6-28)	Ybanez, Alyssa at Portland State (Aug 27, 2016)

KILLS 5-SETS (K-E-TA)

19 (19- 3-42)	Henriksen, Hannah at Rice (Sep 14, 2016)
17 (17-6-40)	Redding, Sarah vs Texas (Oct. 21, 2016)
17 (17- 4-31)	Douglass, Lauren at Rice (Sep 14, 2016)
16 (16- 8-43)	Redding, Sarah vs Iowa State (Nov 04, 2016)
16 (16- 3-32)	Douglass, Lauren at North Dakota State (Sep 02, 2016)

TOTAL ATTEMPTS (K-E-TA)

43 (16- 8-43) 5s	Redding, Sarah vs Iowa State (Nov 04, 2016)
42 (13- 5-42) 5s	McDougald, Toni vs Texas (Oct 21, 2016)
42 (19- 3-42) 5s	Henriksen, Hannah at Rice (Sep 14, 2016)
40 (13- 6-40) 5s	Redding, Sarah at West Virginia (Oct 29, 2016)
40 (9- 8-40) 4s	McDougald, Toni vs Stephen F. Austin (Sep 09, 2016)
40 (17- 6-40) 5s	Redding, Sarah vs Texas (Oct 21, 2016)

TOTAL ATTEMPTS 3-SETS (K-E-TA)

31 (11- 4-31)	McDougald, Toni vs Texas-RGV (Sep 10, 2016)
29 (10-4-29)	Douglass, Lauren vs. No. 6 Kansas (Oct. 26, 2016)
29 (12- 2-29)	Douglass, Lauren vs Oklahoma (Oct 12, 2016)
27 (13- 1-27)	McDougald, Toni at North Dakota (Sep 03, 2016)
26 (5- 4-26)	McDougald, Toni vs Wichita State (Sep 16, 2016)
26 (11- 2-26)	McDougald, Toni vs South Dakota State (Sep 02, 2016)

TOTAL ATTEMPTS 4-SETS (K-E-TA)

40 (9- 8-40)	McDougald, Toni vs Stephen F. Austin (Sep 09, 2016)
37 (11- 2-37)	Henriksen, Hannah at Portland State (Aug 27, 2016)
36 (12- 5-36)	Atwood, Chandler vs Baylor (Nov 02, 2016)
35 (17- 5-35)	Douglass, Lauren vs Stephen F. Austin (Sep 09, 2016)
34 (11- 5-34)	Redding, Sarah vs Baylor (Nov 02, 2016)

TOTAL ATTEMPTS 5-SETS (K-E-TA)

43 (16- 8-43)	Redding, Sarah vs Iowa State (Nov 04, 2016)
42 (13- 5-42)	McDougald, Toni vs Texas (Oct 21, 2016)
42 (19- 3-42)	Henriksen, Hannah at Rice (Sep 14, 2016)
40 (13- 6-40)	Redding, Sarah at West Virginia (Oct 29, 2016)
40 (17- 6-40)	Redding, Sarah vs Texas (Oct 21, 2016)

ASSISTS

57 (5s)	Grubb, Marguerite at North Dakota State (Sep 02, 2016)
55 (5s)	Grubb, Marguerite at West Virginia (Oct 29, 2016)
52 (5s)	Grubb, Marguerite vs Colorado (Aug 26, 2016)
51 (5s)	Grubb, Marguerite at Rice (Sep 14, 2016)
46 (4s)	Grubb, Marguerite vs Stephen F. Austin (Sep 09, 2016)

ASSISTS 3-SETS

38	Grubb, Marguerite vs Texas-RGV (Sep 10, 2016)
36	Grubb, Marguerite vs Oklahoma (Oct 12, 2016)
35	Grubb, Marguerite vs South Dakota State (Sep 02, 2016)
33	Grubb, Marguerite at North Dakota (Sep 03, 2016)
31	Grubb, Marguerite at Oklahoma (Nov 12, 2016)

ASSISTS 4-SETS

46	Grubb, Marguerite vs Stephen F. Austin (Sep 09, 2016)
46	Grubb, Marguerite vs Baylor (Nov 02, 2016)
43	Grubb, Marguerite at Portland State (Aug 27, 2016)
37	Grubb, Marguerite vs Oral Roberts (Sep 10, 2016)
15	Canales, Sophia at TCU (Sep 21, 2016)

ASSISTS 5-SETS

57	Grubb, Marguerite at North Dakota State (Sep 02, 2016)
55	Grubb, Marguerite at West Virginia (Oct 29, 2016)
52	Grubb, Marguerite vs Colorado (Aug 26, 2016)
51	Grubb, Marguerite at Rice (Sep 14, 2016)
45	Grubb, Marguerite vs Iowa State (Nov 04, 2016)

DIGS

33 (4s)	Akiu, Reyn vs Baylor (Nov 02, 2016)
30 (4s)	Akiu, Reyn vs Stephen F. Austin (Sep 09, 2016)
27 (5s)	Akiu, Reyn at West Virginia (Oct 29, 2016)
25 (3s)	Akiu, Reyn vs No. 6 Kansas (Oct. 26, 2016)
24 (5s)	Akiu, Reyn vs Iowa State (Nov 04, 2016)
24 (4s)	Akiu, Reyn at TCU (Sep 21, 2016)
24 (5s)	Akiu, Reyn vs Colorado (Aug 26, 2016)

DIGS 3-SETS

25	Akiu, Reyn vs No. 6 Kansas (Oct. 26, 2016)
22	Akiu, Reyn vs Wichita State (Sep 16, 2016)
22	Akiu, Reyn vs Texas-RGV (Sep 10, 2016)
19	Sagers, Maggie vs Oklahoma (Oct 12, 2016)
18	Akiu, Reyn at North Dakota (Sep 03, 2016)

DIGS 4-SETS

33	Akiu, Reyn vs Baylor (Nov 02, 2016)
30	Akiu, Reyn vs Stephen F. Austin (Sep 09, 2016)
24	Akiu, Reyn at TCU (Sep 21, 2016)
16	Akiu, Reyn vs Oral Roberts (Sep 10, 2016)
16	Bryant, Katelyn vs Oral Roberts (Sep 10, 2016)
16	Grubb, Marguerite vs Stephen F. Austin (Sep 09, 2016)

DIGS 5-SETS

27	Akiu, Reyn at West Virginia (Oct 29, 2016)
24	Akiu, Reyn vs Iowa State (Nov 04, 2016)
24	Akiu, Reyn vs Colorado (Aug 26, 2016)
23	Akiu, Reyn vs Texas (Oct 21, 2016)
23	Akiu, Reyn at North Dakota State (Sep 02, 2016)

ACES

4	Douglass, Lauren vs Iowa State (Nov 04, 2016)
4	Akiu, Reyn vs Long Beach State (Aug 27, 2016)
3	Sagers, Maggie at North Dakota (Sep 03, 2016)
3	Sagers, Maggie vs South Dakota State (Sep 02, 2016)
3	Akiu, Reyn vs Abilene Christian (Sep 09, 2016)

BLOCKS (BS-BA)

10 (2-8)	Douglass, Lauren vs Stephen F. Austin (Sep 09, 2016)
8 (1-7)	Douglass, Lauren at Portland State (Aug 27, 2016)
8 (1-7)	Douglass, Lauren at West Virginia (Oct 29, 2016)
7 (1-6)	Douglass, Lauren vs Baylor (Nov 02, 2016)
7 (0-7)	Atwood, Chandler at West Virginia (Oct 29, 2016)
6 (2-4)	Douglass, Lauren at Oklahoma (Nov 12, 2016)
6 (1-5)	Douglass, Lauren vs Long Beach State (Aug 27, 2016)
6 (0-6)	Grubb, Marguerite at Portland State (Aug 27, 2016)
6 (0-6)	Douglass, Lauren vs Colorado (Aug 26, 2016)
6 (0-6)	Grubb, Marguerite at Portland State (Aug 27, 2016)

THE LAST TIME TEXAS TECH...

Defeated an opponent in three sets.....	vs. UT Rio Grande Valley (Sept. 10, 2016)
Defeated a non-conference opponent in three sets.....	vs. UT Rio Grande Valley (Sept. 10, 2016)
Defeated a non-conference opponent in three sets at home.....	vs. UT Rio Grande Valley (Sept. 10, 2016)
Defeated a non-conference opponent in three sets on the road.....	at North Dakota (Sept. 3, 2016)
Defeated a non-conference opponent in three sets at neutral site.....	vs. South Dakota State (Sept. 2, 2016)
Defeated a Big 12 opponent in three sets.....	vs. West Virginia (Nov. 13, 2015)
Defeated a Big 12 opponent in three sets at home.....	vs. West Virginia (Nov. 13, 2015)
Defeated a Big 12 opponent in three sets on the road.....	at West Virginia (Oct. 14, 2015)
Defeated an opponent in four sets.....	vs. Oral Roberts (Sept. 10, 2016)
Defeated a non-conference opponent in four sets.....	vs. Oral Roberts (Sept. 10, 2016)
Defeated a non-conference opponent in four sets at home.....	vs. Oral Roberts (Sept. 10, 2016)
Defeated a non-conference opponent in four sets on the road.....	at Portland State (Aug. 27, 2016)
Defeated a non-conference opponent in four sets at neutral site.....	vs. George Washington (Sept. 12, 2015)
Defeated a Big 12 opponent in four sets.....	vs. TCU (Sept. 24, 2014)
Defeated a Big 12 opponent in four sets at home.....	vs. TCU (Sept. 24, 2014)
Defeated a Big 12 opponent in four sets on the road.....	at West Virginia (Oct. 13, 2012)
Defeated an opponent in five sets.....	at Rice (Sept. 14, 2016)
Defeated a non-conference opponent in five sets.....	at Rice (Sept. 14, 2016)
Defeated a non-conference opponent in five sets at home.....	vs. Weber State (Sept. 19, 2014)
Defeated a non-conference opponent in five sets on the road.....	at Rice (Sept. 14, 2016)
Defeated a non-conference opponent in five sets at neutral site.....	vs. Bucknell (Aug. 30, 2014)
Defeated a Big 12 opponent in five sets.....	vs. Oklahoma (Sept. 23, 2015)
Defeated a Big 12 opponent in five sets at home.....	vs. Oklahoma (Sept. 23, 2015)
Defeated a Big 12 opponent in five sets on the road.....	at Baylor (Oct. 1, 2014)
Lost to an opponent in three sets.....	at #7 Texas (Nov. 16, 2016)
Lost to a non-conference opponent in three sets.....	at UTSA (Sept. 16, 2016)
Lost to a non-conference opponent in three sets at home.....	vs. Washington State (Sept. 18, 2015)
Lost to a non-conference opponent in three sets on the road.....	at UTSA (Sept. 16, 2016)
Lost to a non-conference opponent in three sets at neutral site.....	vs. Wichita State (Sept. 16, 2016)
Lost to a Big 12 opponent in three sets.....	at #7 Texas (Nov. 16, 2016)
Lost to a Big 12 opponent in three sets at home.....	vs. #6 Kansas (Oct. 26, 2016)
Lost to a Big 12 opponent in three sets on the road.....	at #7 Texas (Nov. 16, 2016)
Lost to an opponent in four sets.....	vs. Baylor (Nov. 2, 2016)
Lost to a non-conference opponent in four sets.....	vs. Maryland (Sept. 11, 2015)
Lost to a non-conference opponent in four sets at home.....	vs. New Orleans (Sept. 13, 2008)
Lost to a non-conference opponent in four sets on the road.....	at Abilene Christian (Sept. 10, 2013)
Lost to a non-conference opponent in four sets at neutral site.....	vs. Maryland (Sept. 11, 2015)
Lost to a Big 12 opponent in four sets.....	vs. Baylor (Nov. 2, 2016)
Lost to a Big 12 opponent in four sets at home.....	vs. Baylor (Nov. 2, 2016)
Lost to a Big 12 opponent in four sets on the road.....	at TCU (Sept. 21, 2016)
Lost to an opponent in five sets.....	vs. Iowa State (Nov. 4, 2016)
Lost to a non-conference opponent in five sets.....	vs. Colorado (Aug. 26, 2016)
Lost to a non-conference opponent in five sets at home.....	vs. TCU (Sept. 12, 2008)
Lost to a non-conference opponent in five sets on the road.....	at Incarnate Word (Sept. 17, 2013)
Lost to a non-conference opponent in five sets at neutral site.....	vs. Colorado (Aug. 26, 2016)
Lost to a Big 12 opponent in five sets.....	vs. Iowa State (Nov. 4, 2016)
Lost to a Big 12 opponent in five sets at home.....	vs. Iowa State (Nov. 4, 2016)
Lost to a Big 12 opponent in five sets on the road.....	at West Virginia (Oct. 29, 2014)
Defeated a ranked opponent.....	vs. #20 Kansas State (Nov. 17, 2012)
Defeated a ranked opponent at home.....	vs. #20 Kansas State (Nov. 17, 2012)
Defeated a ranked opponent on the road.....	at #24 Kansas State, 3-2 (Nov. 20, 2004)
Defeated a ranked opponent at a neutral site.....	Never in Big 12 era
Lost to a ranked opponent.....	at #7 Texas (Nov. 16, 2016)
Lost to a ranked opponent at home.....	vs. #6 Kansas (Oct. 26, 2016)
Lost to a ranked opponent on the road.....	at #7 Texas (Nov. 16, 2016)
Lost to a ranked opponent at a neutral site.....	vs. #10 Illinois (Aug. 29, 2009)
Defeated an opponent after trailing 1-0.....	vs. Oklahoma (Sept. 23, 2015)
Defeated an opponent after trailing 2-0.....	at North Dakota State (Sept. 2, 2016)
Defeated an opponent after trailing 1-2.....	vs. Oklahoma (Sept. 23, 2015)
Lost to an opponent after leading 1-0.....	vs. Iowa State (Nov. 4, 2016)
Lost to an opponent after leading 2-0.....	at #22 Kansas State (Nov. 1, 2014)
Lost to an opponent after leading 2-1.....	at West Virginia (Oct. 29, 2016)
Had a 20-kill performance.....	20, Meghan Stacy, vs. Iowa State (Nov. 21, 2015)
Had a 30-kill performance.....	33, Kelly Johnson vs. Kansas State (Nov. 20, 2004)
Had a 30-dig performance.....	33, Reyn Akiu vs. Baylor (Nov. 2, 2016)
Had a 60-assist performance.....	61, Marguerite Grubb vs. Air Force (Sept. 20, 2014)
Had a player hit .500 or better (minimum 10 kills).....	.577, Lauren Douglass vs. UTEP (Sep 5, 2016)
Had a player go for at least 20 kills and 10 digs.....	25 and 10, Jenna Allen, at #22 Kansas State (Nov. 1, 2014)
Had at least four players register double-digit kills.....	at West Virginia (Oct. 29, 2016)
Had at least four players register double-digit digs.....	vs. Houston (Aug. 29, 2015)
Hit .300 as a team.....	.300, vs Oral Roberts (Sep. 10, 2016)
Held an opponent to .050 or worse.....	.039, vs. Stephen F. Austin (Sept. 9, 2016)

TOP 10 HOME VOLLEYBALL CROWDS

RANK	OPPONENT	DATE	ATTENDANCE
1.	Iowa State	Nov. 27, 2002	5,507*
2.	Georgia	Dec. 7, 1991	2,511
3.	Texas	Oct. 12, 2002	2,060*
4.	Baylor	Nov. 9, 1991	1,892
5.	Nebraska	Oct. 14, 2000	1,731*
6.	Texas	Oct. 24, 1992	1,712
7.	Texas	Nov. 5, 2014	1,566*
8.	Missouri	Sept. 27, 1996	1,535
9.	Texas	Sept. 29, 1991	1,528
10.	Nebraska	Sept. 15, 2007	1,468*

TOP 10 CROWDS AT THE UNITED SUPERMARKETS ARENA

RANK	OPPONENT	DATE	ATTENDANCE
1.	Iowa State	Nov. 27, 2002	5,507
2.	Texas	Oct. 12, 2002	2,060
3.	Nebraska	Oct. 14, 2000	1,731
4.	Texas	Nov. 5, 2014	1,566
5.	Nebraska	Sept. 15, 2007	1,468
6.	Texas	Nov. 8, 2011	1,413
7.	Texas	Oct. 6, 2004	1,292
8.	Northeastern	Sept. 11, 2010	1,262
9.	Missouri	Sept. 15, 2010	1,248
10.	Texas	Oct. 21, 2016	1,223

* - Denotes Matches Played At The United Supermarkets Arena



2016 NUMERICAL ROSTER

NO.	NAME	HT.	POS.	CLASS-EX.	HOMETOWN/LAST SCHOOL
1	Victoria Hinneburg	6-4	RS	r-Jr-2L	Leipzig, Germany (Sportgymnasium Dresden)
2	Kylie Rittimann	5-10	DS	Fr-HS	San Antonio, Texas (Johnson H.S.)
3	Kyndal Cowan	5-10	SET	So-TR	Midland, Texas (Midland H.S.)
4	Marguerite Grubb	5-11	SET	Sr-3L	Bellaire, Texas (Bellaire H.S.)
5	Lauren Douglass	6-2	MB	r-Sr-3L	Flower Mound, Texas (Ole Miss)
6	Sarah Redding	6-3	RS	So-1L	Friendswood, Texas (Friendswood H.S.)
7	Tita Akiu	5-7	LIB	So-1L	Honolulu, Hawaii (Kamehameha Schools)
8	Sophia Canales	5-9	SET	Fr-HS	San Antonio, Texas (Alamo Heights H.S.)
10	Eighmy Dobbins	5-10	DS	Fr-HS	Argyle, Texas (Argyle H.S.)
11	Alyssa Ybanez	5-11	OH	Jr-2L	Rancho Cucamonga, Calif. (Rim of the World)
12	Katy Keenan	6-4	MB	So-1L	Argyle, Texas (Argyle H.S.)
13	Audrey Fragniere	5-9	OH	Jr-2L	Neuchatel, Switzerland/Lyce Jean Plaget
14	Ally Standard	6-4	MB	So-TR	San Angelo, Texas (Central H.S.)
16	Toni McDougald	5-11	OH	Fr-HS	Centennial, Colo. (Cherry Creek H.S.)
17	Maggie Sagers	5-9	DS/LIB	Fr-HS	Plano, Texas (Plano Senior H.S.)
18	Chandler Atwood	6-0	OH/RS	Fr-HS	Allen, Texas (Allen H.S.)
23	Michelle Irvin	6-1	OH	So-HS	Austin, Texas (Westlake H.S.)
24	Taylor Martinez	6-1	MB	Fr-HS	San Antonio, Texas (Winston Churchill H.S.)
26	Katelyn Bryant	5-4	DS	So-1L	McKinney, Texas (McKinney Boyd H.S.)
27	Taylor Haskins	6-0	OH	Jr-1L	Kennesaw, Ga. (Harrison H.S.)
33	Hannah Henriksen	6-3	OH	So-TR	Bakersfield, Calif. (Frontier H.S.)

COACHING STAFF

Head Coach: Tony Graystone (1st Season)

Assistant Coach/Recruiting Coordinator: Morgan Thomas (1st Season)

Assistant Coach: Brandy Huskey (1st Season)

Director of Operations: Alyce Peters (2nd Season)

Strength and Conditioning: Katie Munger

Athletic Trainer: Imelda Garcia

ROSTER BREAKDOWN

BY POSITION

Setter _____ 3
 _____ Canales, Cowan, Grubb
 Outside Hitter _____ 8
 _____ Atwood, Fragniere, Haskins, Henriksen,
 _____ Irvin, McDougald, Ybanez
 Opposite/Right Side _____ 2
 _____ Redding, Hinneburg
 Middle Blocker _____ 4
 _____ Douglass, Keenan, Martinez, Standard
 Defensive Specialist/Libero _____ 5
 _____ Akiu, Bryant, Dobbins,
 _____ Rittimann, Sagers

BY CLASSIFICATION

Seniors _____ 2
 _____ Douglass, Grubb
 Juniors _____ 4
 _____ Fragniere, Henriksen
 _____ Hinneburg, Ybanez
 Sophomores _____ 8
 _____ Akiu, Bryant, Cowan, Haskins,
 _____ Irvin, Keenan, Redding, Standard
 Freshmen _____ 7
 _____ Atwood, Canales, Dobbins,
 _____ Martinez, McDougald, Rittimann, Sagers

BY HOME STATE/COUNTRY

California _____ 2
 _____ Henriksen, Ybanez
 Colorado _____ 1
 _____ McDougald
 Georgia _____ 1
 _____ Haskins
 Germany _____ 1
 _____ Hinneburg
 Hawaii _____ 1
 _____ Akiu
 Switzerland _____ 1
 _____ Fragniere
 Texas _____ 14
 _____ Atwood, Bryant, Canales, Cowan,
 _____ Dobbins, Douglass, Grubb,
 _____ Irvin, Keenan, Martinez,
 _____ Redding, Rittimann, Sagers, Standard

2016 ALPHABETICAL ROSTER

NO.	NAME	POS.
7	Tita Akiu	LIB
18	Chandler Atwood	OH
26	Katelyn Bryant	LIB
8	Sophia Canales	SET
3	Kyndal Cowan	SET
10	Eighmy Dobbins	DS
5	Lauren Douglass	MB
13	Audrey Fragniere	OH
4	Marguerite Grubb	SET
27	Taylor Haskins	OH
33	Hannah Henriksen	OH
1	Victoria Hinneburg	RS
23	Michelle Irvin	OH
12	Katy Keenan	MB
24	Taylor Martinez	MB
16	Toni McDougald	OH
6	Sarah Redding	OH
2	Kylie Rittimann	DS
17	Maggie Sagers	DS
14	Ally Standard	MB
11	Alyssa Ybanez	OH

PRONUNCIATION GUIDE

Tita Akiu Tee-Tah
 Ah-Q
 Eighmy Dobbins Amy
 Courtney Ensich Inch
 Victoria Hinneburg Hinnen-borg
 Audrey Fragniere Frog-knee-air



1

Victoria Hinneburg
6-4 • RS • JR-2L
Leipzig, Germany



2

Kylie Rittmann
5-10 • DS • FR-HS
San Antonio, Texas



3

Kyndal Cowan
5-10 • SET • SO-TR
Midland, Texas



4

Marguerite Grubb
5-11 • SET • SR-3L
Bellaire, Texas



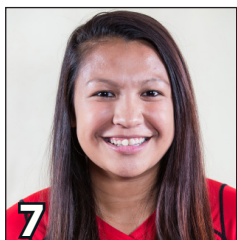
5

Lauren Douglass
6-2 • MB • SR-3L
Flower Mound, Texas



6

Sarah Redding
6-3 • RS • SO-1L
Friendswood, Texas



7

Tita Akiu
5-7 • LIB • SO-1L
Honolulu, Hawaii



8

Sophia Canales
5-9 • SET • FR-HS
San Antonio, Texas



10

Eighthmy Dobbins
5-10 • DS • FR-HS
Argyle, Texas



11

Alyssa Ybanez
5-11 • OH • JR-2L
Rancho Cucamonga, Calif.



12

Katy Keenan
6-4 • MB • SO-1L
Argyle, Texas



13

Audrey Fragniere
5-9 • OH • JR-2L
Neuchatel, Switzerland



14

Ally Standard
6-4 • MB • SO-TR
San Angelo, Texas



16

Toni McDougald
5-11 • OH • FR-HS
Centennial, Colo.



17

Maggie Sagers
5-9 • DS/LIB • FR-HS
Plano, Texas



18

Chandler Atwood
6-0 • OH/RS • FR-HS
Allen, Texas



23

Michelle Irvin
6-1 • OH • SO-TR
Austin, Texas



24

Taylor Martinez
6-1 • MB • FR-HS
San Antonio, Texas



26

Katelyn Bryant
5-4 • DS • SO-1L
McKinney, Texas



27

Taylor Haskins
6-0 • OH • JR-1L
Kennesaw, Ga.



33

Hannah Henriksen
6-3 • OH • SO-TR
Bakersfield, Calif.



Tony Graystone
Head Coach
1st Season



Morgan Thomas
Asst. Coach/Recruiting
1st Season



Brandy Huskey
Assistant Coach
1st Season



Alyce Peters
Director of Operations
2nd Season