



# TEXAS TECH

## 2016 VOLLEYBALL

8 NCAA TOURNAMENT APPEARANCES

826 PROGRAM WINS

41ST SEASON

25

TEXAS TECH (10-14, 0-9) at WEST VIRGINIA (11-12, 2-7)

Oct. 29 • 2:30 PM

Morgantown, W.Va. • WVU Coliseum • TexasTech.TV

### 2016 SCHEDULE/RESULTS

#### Texas Tech (10-14 • 0-9 Big 12)

H: 5-5 • A: 4-5 • N: 1-4

#### AUGUST

26	^	vs. Colorado	L, 2-3
27	^	vs. Long Beach State	L, 0-3
27	^	at Portland State	W, 3-1

#### SEPTEMBER

2	+	vs. South Dakota State	W, 3-0
2	+	at North Dakota State	W, 3-2
3	+	at North Dakota	W, 3-0
5		<b>UTEP</b>	<b>W, 3-0</b>
9	%	<b>ABILENE CHRISTIAN</b>	<b>W, 3-0</b>
9	%	<b>STEPHEN F. AUSTIN</b>	<b>W, 3-1</b>
10	%	<b>UT RIO GRANDE VALLEY</b>	<b>W, 3-0</b>
10	%	<b>ORAL ROBERTS</b>	<b>W, 3-1</b>
14		at Rice	W, 3-2
15	#	vs. Texas State	L, 0-3
16	#	vs. Wichita State	L, 0-3
16	#	at UTSA	L, 0-3
21	*	at TCU	L, 1-3
24	*	<b>WEST VIRGINIA</b>	<b>L, 0-3</b>
28	*	at Baylor	L, 0-3

#### OCTOBER

5	*	<b>KANSAS STATE</b>	<b>L, 0-3</b>
8	*	at No. 6 Kansas	L, 0-3
12	*	<b>OKLAHOMA</b>	<b>L, 0-3</b>
15	*	at Iowa State	L, 0-3
21	*	<b>No. 2 TEXAS</b>	<b>L, 2-3</b>
26	*	<b>No. 6 KANSAS</b>	<b>L, 0-3</b>
29	*	at West Virginia	2:30 PM

#### NOVEMBER

2	*	<b>BAYLOR</b>	<b>6 PM</b>
4	*	<b>IOWA STATE</b>	<b>5 PM</b>
12	*	at Oklahoma	TBA
16	*	at Texas	TBA
19	*	<b>TCU</b>	<b>6 PM</b>
26	*	at Kansas State	TBA

#### DECEMBER

1-3		<b>NCAA FIRST &amp; SECOND ROUNDS</b>	TBA
9-10		<b>NCAA REGIONALS</b>	TBA
15		<b>NCAA SEMIFINALS</b>	TBA
17		<b>NCAA NATIONAL CHAMPIONSHIP</b>	TBA

\* - Conference Match

^ Portland State Tournament (Portland, Oregon)

# North Dakota State Classic (Fargo, North Dakota)

% Texas Tech Tournament (Lubbock, Texas)

# UTSA Tournament (San Antonio, Texas)



@TTUVball/@TechAthletics



TexasTechVolleyball/TexasTechAthletics



/TTUVball & /TTUathletics



### Match 25

### TEXAS TECH at WEST VIRGINIA -- Morgantown, W.Va.

#### TEXAS TECH RED RAIDERS (10-14, 0-9)

2015 Team Record: 14-16, 3-13 Big 12

Head Coach: Tony Graystone (Louisville '96)

Career Record: 450-174 (18th season)

Record at Texas Tech: 10-14 (1st season)



#### WEST VIRGINIA MOUNTAINEERS (11-12, 2-7)

2015 Team Record: 14-16, 3-13 Big 12

Head Coach: Reed Sunahara (UCLA '89)

Career Record: 337-210 (18th season)

Record at West Virginia: 16-36 (2nd season)



### QUICK HITS

- The Red Raiders and Mountaineers will square off for the 12th time in series history.
- Texas Tech leads the overall series, 6-5, despite falling to the Mountaineers earlier this season at home.
- Texas Tech swept the series in 2015 including a 3-0 win in Morgantown, where the Red Raiders are 3-2.
- First-year head coach Tony Graystone is in search of his first Big 12 win in the scarlet and black.
- Texas Tech has dropped 12 in a row after rattling off a 10-match win streak.
- The Red Raiders' last road win was a five-set victory at Rice on Sept. 14. Tech has dropped five straight road contests since then.
- The Red Raiders have not started 0-10 in the Big 12 since 2009, when the team went winless in conference play.
- Texas Tech battled top 10 teams in its last two matches, taking No. 2 Texas to five sets and dropping a tough 0-3 bout to No. 6 Kansas.
- A first-set rally against Texas that featured diving efforts from multiple players was selected as this week's NCAA Volleyball Play of the Month.
- Texas Tech has used 16th different starting lineup this season. No starting unit has started more than three matches together this season.
- With several key players missing time this season, 14 different players have started for the Red Raiders at some point this season.
- Seniors Lauren Douglass and Marguerite Grubb have provided a veteran presence on a young team, starting every match this season when healthy.
- Underclassmen in the rotation include sophomores Tita Akiu, Katy Keenan and Sarah Redding along with freshmen Toni McDougald, Chandler Atwood and Maggie Sagers.
- Senior Lauren Douglass is third in the conference with a hitting percentage of .365.
- Sophomore libero Reyn Akiu ranks second in the conference with 4.80 digs per set.
- Setter Marguerite Grubb is averaging just shy of 10.0 kills per set at 9.96.
- Senior Marguerite Grubb notched her second straight double-double, fifth of the season and 16th of her career in Tech's outing against Texas with 44 assists and 12 digs.

### TEXAS TECH STARTERS vs #6 KANSAS (2016 STATS)



MARGUERITE GRUBB



LAUREN DOUGLASS



MAGGIE SAGERS



REYN AKIU



SARAH REDDING



KATY KEENAN



CHANDLER ATWOOD

	5-10 • SET • SO	6-2 • MB • SR	5-9 • DS • FR	5-2 • LIB • SO	6-1 • OH • SO	6-4 • MB • SO	6-0 • OH • FR
A/S	9.96	K/S 3.08	#DIG 136	#DIG 394	K/S 2.37	#KILL 130	K/S 2.19
D/S	2.26	HIT % .365	D/S 1.89	D/S 4.80	#KILL 64	HIT % .254	#KILL 106
#AST	757	#BLK 85	#AST 13	#AST 69	HIT % .172	K/S 1.57	#BLK 20
#DIG	172	#KILL 259	#ACE 17	#ACE 16	#BLK 15	#BLK 46	HIT % .219

K/S designates kills per set • HIT % designates hitting percentage • D/S designates digs per set • B/S designates blocks per set • A/S designates assists per set.

**2016 QUICK FACTS****GENERAL INFORMATION**

Location \_\_\_\_\_ Lubbock, Texas  
 Founded \_\_\_\_\_ 1923  
 Enrollment \_\_\_\_\_ 35,893  
 Nickname \_\_\_\_\_ Red Raiders  
 Colors \_\_\_\_\_ Scarlet & Black  
 Mascot \_\_\_\_\_ Masked Rider / Raider Red  
 Affiliation \_\_\_\_\_ NCAA Division I  
 Conference \_\_\_\_\_ Big 12  
 Chancellor \_\_\_\_\_ Robert Duncan  
 President \_\_\_\_\_ Dr. Lawrence Schovanec  
 Athletics Director \_\_\_\_\_ Kirby Hocutt  
 Sr. Associate AD/SWA \_\_\_\_\_ Dr. Judi Henry  
 Department Main Number \_\_\_\_\_ (806) 742-3355

**HISTORY**

Season of Volleyball \_\_\_\_\_ 41st  
 First Season \_\_\_\_\_ 1975  
 All-Time Record \_\_\_\_\_ 826-682-6 (.548)  
 NCAA Tournament Appearances \_\_\_\_\_ 8  
 \_\_\_\_\_ 1990, 1991, 1992, 1995, 1996, 1998, 2000, 2001

**FACILITY INFORMATION**

Name \_\_\_\_\_ United Supermarkets Arena  
 Opened \_\_\_\_\_ 1999  
 Capacity \_\_\_\_\_ 15,070

**COACHING STAFF**

Head Coach \_\_\_\_\_ Tony Graystone  
 Alma Mater \_\_\_\_\_ University of Louisville '96  
 Record at Tech \_\_\_\_\_ 10-14 (1st Season)  
 Career Record \_\_\_\_\_ 450-174 (18th Season)  
 Twitter \_\_\_\_\_ @TonyGraystone  
 Best time to reach \_\_\_\_\_ Contact SID  
 Assistant Coach \_\_\_\_\_ Morgan Thomas (1st Season)  
 Alma Mater \_\_\_\_\_ USC-Upstate '12  
 Assistant Coach \_\_\_\_\_ Brandy Huskey (1st Season)  
 Alma Mater \_\_\_\_\_ UTSA '13  
 Dir. of Operations \_\_\_\_\_ Alyce Peters (2nd Season)  
 Alma Mater \_\_\_\_\_ Texas State '09  
 Office Number \_\_\_\_\_ (806) 742-7545

**TEAM INFORMATION**

2015 Record \_\_\_\_\_ 14-16  
 Conference Record \_\_\_\_\_ 3-13  
 Home Record \_\_\_\_\_ 7-7  
 Away Record \_\_\_\_\_ 3-8  
 Neutral Site Record \_\_\_\_\_ 4-1  
 Postseason \_\_\_\_\_ None  
 Final Ranking \_\_\_\_\_ None  
 Letterwinners Returning/Lost \_\_\_\_\_ 12/4  
 Starters Returning/Lost \_\_\_\_\_ 4/2+Libero  
 Newcomers \_\_\_\_\_ 11  
 Top Returning Players \_\_\_\_\_ Lauren Douglass,  
 \_\_\_\_\_ Marguerite Grubb, Sarah Redding  
 Top Newcomers \_\_\_\_\_ Eighthmy Dobbins,  
 \_\_\_\_\_ Taylor Martinez, Hannah Henriksen

**ATHLETICS COMMUNICATIONS**

Senior Associate AD \_\_\_\_\_ Robert Giovannetti  
 E-mail \_\_\_\_\_ robert.giovannetti@ttu.edu  
 Assistant Director (Volleyball) \_\_\_\_\_ Ty Parker  
 Office \_\_\_\_\_ (806) 834-2769  
 Cell \_\_\_\_\_ (806) 928-8476  
 Fax \_\_\_\_\_ (806) 742-1970  
 E-mail \_\_\_\_\_ ty.a.parker@ttu.edu  
 Website \_\_\_\_\_ www.texastech.com  
 Twitter \_\_\_\_\_ @TTUVball, @TechAthletics  
 Mailing Address \_\_\_\_\_ 2526 6th St.  
 \_\_\_\_\_ Lubbock, TX 79409

**MEDIA INFORMATION**

The Texas Tech Athletics Communications office is here to serve the media throughout the 2016 Red Raider volleyball season. Media members in need of assistance can contact Ty Parker in the Athletics Communications office at (806) 928-8476.

**MEDIA CREDENTIALS**

Media members covering the Texas Tech volleyball program at the United Supermarkets Arena during the 2016 season must be issued a working credential from the Texas Tech Athletics Communications office.

- All requests for both media and photo credentials must be made either in writing or via e-mail at least a day in advance to Ty Parker, Assistant Director for Athletic Communications. (Office: (806) 834-2769; Fax: (806) 742-1970; e-mail: ty.a.parker@ttu.edu)
- Requests are honored from sports editors of daily and weekly newspapers, editors of sports periodicals, and sports directors of radio and television stations who broadcast regularly scheduled daily sports reports and talk shows.
- Credentials can be picked up in the Athletics Communications office (south end of Jones AT&T Stadium) or at will call, which is located at the United Supermarkets Arena ticket booth.

**GAMEDAY SERVICES**

A complete NCAA box score and pertinent game information will be distributed to members of the working media following the conclusion of the match. Game notes, statistics, and rosters are provided prior to first serve in the USA media room. A pregame meal is also served in the media room approximately 45 minutes prior to first serve.

**PHOTOGRAPHERS**

Photographers are permitted to shoot in approved areas at the United Supermarkets Arena. All photographers must be issued a working credential by the Athletics Communications office to gain access to the court level of the facility.

**RADIO BROADCASTS**

Media row at the United Spirit Arena is equipped with both ISDN and phone lines for radio crews wanting to broadcast Texas Tech matches. For information on the ISDN and phone lines, please contact Ty Parker in the Athletics Communications office.

**VIDEO HIGHLIGHTS/NEWS CONFERENCES**

Video from news conferences and games will be available to the media via FTP. Broadcast quality video footage (game highlights, post-practice interviews, post-game interviews, etc) are available at www.ttumedia.com. Please contact the athletics communications office for login instructions.

**LIVE TELEVISION**

Television stations are welcome to conduct live interviews from the United Spirit Arena as the facility can easily accommodate network game coverage. Live interviews will be conducted near the home tunnel on the north side of the court. Please notify Ty Parker at least 24 hours in advance for live television setup.

**PLAYER INTERVIEWS**

Players and coaches are available for interviews every day prior to the start of practice. Practice times vary from week to week, so media members wishing to attend should contact Ty Parker in the Athletics Communications office to get a weekly schedule.

**POSTGAME INTERVIEWS**

Texas Tech players and head coach Tony Graystone will be made available to the media on the court of the United Spirit Arena following a brief cooling off period. The Texas Tech locker room will remain closed.

**PLAYER TO WATCH: LAUREN DOUGLASS**

Senior Lauren Douglass has arguably been one of the most dominant players in Texas Tech history at the middle blocker position. The Flower Mound native set the school with a single-season hitting percentage of .377 last year, while also leading the team in kills and blocks. She is currently hitting .365 in 2016.



**COUNTRY ROADS**

West Virginia opened conference play 2-1 with wins over Texas Tech and TCU, but has currently lost three straight matches and six of its last seven with the lone win coming in a nonconference bout against Robert Morris. The Mountaineers, who were swept at No. 6 Kansas last Thursday and fell 2-3 at Kansas State Saturday, have had a full week to prepare for Saturday's contest with the Red Raiders. Junior Mia Swanegan leads the Big 12 in blocks per set and was named the Big 12 Defensive Player of the Week for the second time after leading the conference in blocks last weekend. Freshman Payton Caffrey, who recorded a match-high 14 kills against Tech in the last meeting, ranks second in the conference this season with 4.78 kills per set.

**INSIDE THE SERIES**

The Red Raiders lead the all-time series with West Virginia, 6-5. The Mountaineers scored a straight-set win at United Supermarkets Arena earlier this season after Tech recorded a pair of sweeps over the Mountaineers in 2015. The Red Raiders' 3-0 win in Morgantown last year snapped a four-match skid against West Virginia and gave the Red Raiders a 3-2 edge against the Mountaineers in Morgantown. Overall, Tech and West Virginia are knotted at four wins each since the Mountaineers joined the Big 12.

**LAST TIME OUT**

After a dramatic 3-2 home loss to No. 2 Texas, the Red Raiders hosted another top 10 team in No. 6 Kansas, suffering a tough 0-3 sweep. Tech's defense kept them around through the early portions of each set, even helping it jump out to a 4-1 lead in the third set. The Jayhawk attack, however, proved too much as Kansas out-hit the Red Raiders .343 to .064 en route to the 25-15, 25-16, 25-20 win. Jayhawks Kelsie Payne and Madison Rigdon combined for 33 kills on 58 attacks. Meanwhile, Tech senior Lauren Douglass compiled her 15th double-digit kill performance of the season with 10 and sophomore Sarah Redding added nine at a .375 clip, respectively. Sophomore libero Reyn Akiu tallied 25 digs in the loss.

**AMONG THE BIG 12'S BEST**

A trio of Red Raiders rank among the best in the Big 12 for their position. Senior Lauren Douglass is third in the conference with a .365 hitting percentage. Sophomore Tita Akiu led the conference in total digs before missing time with a knee injury, but remains second in the conference with 4.80 digs per set. Akiu has 394 digs for the year and is just 16 away from cracking the school's single-season digs individual digs top 10 list. Likewise, senior setter Marguerite Grubb is just shy of averaging double-digit assists per set at 9.96, which ranks sixth in the conference.

**YOUTH MOVEMENT**

Aside from seniors Lauren Douglass and Marguerite Grubb, a multitude of underclassmen have played pivotal roles on the team this season. Sophomores Tita Akiu and Katy Keenan have started every match this season when healthy, while fellow sophomore Sarah Redding and a trio of freshmen in Toni McDougald, Chandler Atwood and Maggie Sagers have been regulars in the starting lineup and rotation as well. In fact, of all possible starts this season, more than 60% of them have been made by freshman or sophomores.

**FRESHMAN TRIO**

Stepping up to aid senior Lauren Douglass on the attack are a pair of freshman in Chandler Atwood and Toni McDougald. Atwood is fourth on the team with a .219 hitting percentage while McDougald, who has started 13 of the last 18 matches, is connecting on a 2.26 kills per set, which is good for fourth on the team. Meanwhile, freshman Maggie Sagers has come on as one of the team's top defenders, starting each of the last seven matches including two at Libero when Akiu missed time with a knee injury.

**DOUBLE THREAT**

While sophomore libero Tita Akiu receives much of the praise defensively, senior Lauren Douglass has once again proven to be a force at the net. Along with her dominance on the attack, the veteran is averaging 1.01 blocks/set which is top 10 in the Big 12. Among the top 10 block leaders in the Big 12, Douglass's .365 hitting percentage is second best in the league.

**ON THE MEND**

The Red Raiders have been working several key pieces back into the rotation since the beginning of Big 12 play. Sophomore Sarah Redding has started six matches in a row after missing 14 matches with an injury. Junior Ashley Morgan also received time against Kansas State for just the third time this season after spending the majority of nonconference play recovering from injury. Morgan has since accumulated playing time in six straight matches leading into Saturday's tilt at West Virginia.

**INSIDE THE SERIES**

TEXAS TECH LEADS, 6-5

Home: 2-3; Away: 3-2; Neutral: 1-0

9-24-16	L	0-3	Home
11-13-15	W	3-0	Home
10-14-15	W	3-0	Away
11-15-14	L	0-3	Away
9-27-14	L	1-3	Home
11-2-13	L	2-3	Away
10-5-13	L	1-3	Home
10-27-12	W	3-1	Home
10-13-12	W	3-1	Away
9-22-95	W	3-1	Away
9-13-85	W	3-0	Neutral

**AVCA RANKINGS (10/24)**

Rk.	School	Pts.	W-L	LW
1	Nebraska (64)	1600	18-1	1
2	Texas	1507	16-2	2
3	Minnesota	1458	15-4	3
4	Wisconsin	1375	16-3	4
5	San Diego	1355	19-2	5
6	Kansas	1245	18-2	6
7	Washington	1226	18-2	7
8	North Carolina	1152	18-2	8
9	Florida	1119	19-2	10
10	Penn State	954	17-4	9
11	Florida State	867	16-3	12
12	UCLA	814	16-4	15
13	Michigan	797	18-4	T-16
14	Hawai'i	758	14-5	13
15	Michigan State	660	17-5	11
16	BYU	648	19-3	T-16
17	Stanford	637	12-6	14
18	Washington State	553	17-5	18
19	Ohio State	512	14-8	19
20	Oregon	415	14-5	23
21	Utah	264	15-6	20
22	Kentucky	168	17-5	21
23	Western Kentucky	141	22-2	NR
T-24	Illinois	124	14-7	22
T-24	Southern California	124	14-7	25

Receiving Votes: Missouri 108; Purdue 62; Dayton 58;  
Creighton 42; Colorado 28; Arizona 17; Kansas State 4

\*Four teams mentioned on only one ballot for a total of 15 combined points.

**WEEKLY SCHEDULE**

MONDAY	TUESDAY	WEDNESDAY	THURSDAY	FRIDAY	SATURDAY	SUNDAY
17 PRACTICE	18 PRACTICE  MEDIA AVAILABILITY 11:30 AM USA	19 GAMEDAY  VS KANSAS  6 PM  USA	20 PRACTICE	21 TRAVEL TO MORGANTOWN  PRACTICE	22 GAMEDAY  AT WEST VIRGINIA  2:30 PM CT  WVU COLISEUM	23 OFF

**BIG 12 WEEKLY SCHEDULE****WEDNESDAY, OCTOBER 20**

No. 6 Kansas 3, Texas Tech 0 \*

Iowa State 3, Kansas State 0 \*

No. 2 Texas 3, Oklahoma 0 \*

**SATURDAY, OCTOBER 22**

TCU at Oklahoma \*

5:00 pm

Texas Tech at West Virginia \*

2:30 pm

No. 2 Texas at No. 6 Kansas \*

ESPN3 | 6:30 pm

Baylor at Kansas State \*

FCS Central | 7:00 pm

\* DENOTES BIG 12 CONFERENCE MATCHUP

ALL TIMES LISTED IN CENTRAL. AVCA RANKINGS NOTED.

**SET UP ARTIST**

In 2015, Marguerite Grubb put up 1,007 assists, becoming the first Red Raider to record 1,000+ assists in a single season since Emily Ruetter in 2013. She cracked the school's all-time top 10 list in assists in the Red Raider's first match of 2016, compiling 52 assists against Colorado. The senior has dished out 757 assists in 23 matches this season and ranks sixth in the conference with 9.96 assists/set. With 25 assists at Iowa State, she moved up to the ninth spot on the school's all-time assists list and is currently at 2,412, career assists, which is just 29 away from the eighth position.

**DURING THE WIN STREAK**

Over the course of its 10-match win streak, Texas Tech earned five sweeps along the way, including three in the course of a week against North Dakota, UTEP and Abilene Christian. The Red Raiders held its opponents to a hitting percentage of below .200 in all but one match during the run, twice holding foes to under .100.

**ON POINT**

Texas Tech hit .507 (42-6-71) in a sweep of Abilene Christian, marking the first time since the 1998 season the Red Raiders have hit over .500 in a single match. The .507 hitting percentage matched the fourth-highest hitting percentage in school history and is the highest offensive output in the Big 12 this season.

**IN THE RECORD BOOK**

Seniors Marguerite Grubb and Lauren Douglas didn't waste any time planting themselves in the Texas Tech record book this season. In the Red Raider's first match of 2016, Grubb compiled 52 assists to crack the school's all-time top 10 list in assists. She then compiled 25 assists at Iowa State to slide up to ninth on the list with 2,341 and is just 100 away from the eighth position. Douglas made a mark of her own in a win against Portland State, powering her way to 17 kills with a .773 hitting percentage, a clip that ranks as her career-best and sixth all-time in a single match in the Texas Tech record books. Her .376 clip this season is nearly on pace with her record-breaking 2015 hitting percentage of .377. Sophomore libero Reyn Akiu has recorded 346 digs this season which is just 74 away from a top-10 mark on the school's single-season individual digs list.

**YOUNG PASSERS**

Sophomores Reyn Akiu and Katelyn Bryant and freshman Maggie Sagers have stepped in at the libero/defensive specialist position, providing solid play in the back line. Akiu was consistently one of the Big 12's top performers prior to her injury and currently ranks second in the Big 12 with 4.68 digs/set. Bryant and Sagers have split time at the position, combining for 273 digs this season while another freshman, Kylie Rittmann has contributed 56 in five starts.

**OUTSIDES & RIGHT SIDES**

A strong mix of veterans and newcomers complete the outside hitter/right side position for the Red Raiders. Juniors Victoria Hinneburg, Audrey Fragniere and Alyssa Ybanez make up the oldest group of returnees and have been known to pack quite a punch on the attack. The trio combined for 265 kills and 84 blocks in 2015. Ybanez was the star of the Red & Black scrimmage on Aug. 20, tallying 17 kills. Last season, they were flanked by Sarah Redding, who posted a strong freshman season with 173 kills, averaging 2.22 per set. Joining them are freshmen Chandler Atwood, Hannah Henriksen and Toni McDougald, while junior Courtney Ensich returns to the program after not playing last season.

**ATTACK ATTACK**

The Red Raiders racked up 1,308 kills during the 2015 season, with 931 of those kills back and ready to go for 2016. Tech returns four of their top five attackers from last year in Lauren Douglass (280), Sarah Redding (173), Katy Keenan (128) and Victoria Hinneburg (122). The Red Raiders tallied 15 more kills than their opponents last season, averaging 13.3 per set for an overall hitting percentage of .209.

**CONTINUING THE TREND**

In each of the last six years, a Red Raiders has cracked the top 10 in single-season digs at Texas Tech. In 2010, Tori Vaughn put up 409 digs, but was knocked out by Eric Ruegg in 2011 with 419 digs. The next three years were dominated by Rachel Brummitt, who set the school record in 2012 (510) and 2013 (604), then posted 510 digs in her 2014 senior season. Those three years also catapulted her to the Texas Tech career digs record with 1,624. Last year, Carlie Foust notched 491 digs, which ranked fourth on the list. Who continues that trend in 2016?

**BIG 12 CONFERENCE STANDINGS**

	BIG 12			OVERALL			Home	Away	Neutral	Sets	Streak
	W	L	Pct.	W	L	Pct.					
Texas	9	0	1.000	17	2	.895	9-1	7-0	1-1	53-19	W9
Kansas	8	1	.889	19	2	.905	9-0	5-2	5-0	59-15	W7
Baylor	6	2	.750	18	6	.750	10-2	6-3	2-1	60-28	W3
Kansas State	5	4	.556	16	6	.727	9-2	4-3	3-1	52-31	L1
Iowa State	4	5	.444	12	9	.571	6-4	4-5	2-0	47-30	W2
Oklahoma	3	6	.333	12	10	.545	5-3	4-5	3-2	45-35	L3
TCU	3	6	.333	10	9	.526	7-3	2-6	1-0	34-38	L5
West Virginia	2	7	.222	11	12	.478	4-5	3-4	4-3	44-43	L3
Texas Tech	0	9	.000	10	14	.417	5-5	4-5	1-4	35-49	L12



## LAST MATCH

## Volleyball Box Score

### #6 Kansas vs Texas Tech (Oct 26, 2016 at Lubbock, Texas)

#	Kansas	S	Attack				Pct	Ast	Serve			RE	Dig	Block			BH	Pts
			K	E	TA				SA	SE	BS			BA	BE			
8	Cheadle, Kayla	3	0	2	4	-.500	1	0	0	0	0	2	1	3	1	0	2.5	
4	Burse, Jada	3	4	2	15	.133	0	0	0	0	0	1	0	0	0	0	4.0	
6	Payne, Kelsie	3	16	0	28	.571	0	0	1	0	0	10	0	1	1	0	16.5	
10	Soucie, Tayler	3	6	1	18	.278	0	0	0	0	0	0	2	2	0	0	9.0	
11	Havili, Ainise	3	1	1	5	.000	39	0	3	0	0	4	1	0	0	1	2.0	
14	Rigdon, Madison	3	17	1	30	.533	1	3	1	0	0	4	0	3	0	0	21.5	
6	Wait, Cassie	3	0	0	0	.000	2	0	0	0	0	23	0	0	0	0	0.0	
12	Smith, Ashley	1	1	2	4	-.250	0	0	0	0	0	0	0	0	0	0	1.0	
18	Montero, Patricia	3	2	1	4	.250	1	0	3	0	0	3	0	1	0	0	2.5	
20	Barry, Addison	3	0	0	0	.000	0	0	2	0	0	1	0	0	0	0	0.0	
Totals		3	47	10	108	.343	44	3	10	0	0	48	4	10	2	1	59.0	

## Team Attack By Set

TOTAL TEAM BLOCKS: 9.0

Set	K	E	TA	Pct	Sidout	Pct
1	18	1	41	.415	13-15	86%
2	16	5	32	.344	16-17	94%
3	13	4	35	.257	15-20	75%
						44-52 84%

## SET SCORES

Kansas (3)

Texas Tech (0)

1 2 3 Team Records

25 25 25

19-2, 8-1

15 16 20

10-14, 0-9

#	Texas Tech	S	Attack				Pct	Ast	Serve			RE	Dig	Block			BH	Pts
			K	E	TA	SA			SE	BS	BA			BE				
4	Grubb, Marquerite	3	2	2	8	.000	27	0	1	0	5	0	1	0	0	2.5		
5	Douglass, Lauren	3	10	4	29	.207	0	0	1	0	4	1	1	0	0	11.5		
6	Redding, Sarah	3	9	3	16	.375	0	0	0	0	0	0	1	0	0	9.5		
12	Keenan, Katy	3	2	1	7	.143	0	0	0	0	0	0	1	0	0	2.5		
17	Sagers, Maqqie	3	0	1	5	-.200	0	0	0	1	2	0	0	0	0	0.0		
18	Atwood, Chandler	3	2	4	15	-.133	0	0	0	0	1	0	0	0	0	2.0		
7	Akio, Reyn	3	0	1	4	-.250	2	0	1	2	25	0	0	0	0	0.0		
9	Morgan, Ashley	3	1	1	4	.000	0	0	0	0	4	0	0	0	0	1.0		
16	McDougald, Toni	3	2	3	16	-.062	0	0	0	0	1	0	0	0	0	2.0		
26	Bryant, Katelyn	3	0	0	0	.000	0	0	0	0	3	0	0	0	0	0.0		
88	Henriksen, Hannah	1	1	2	5	-.200	0	0	0	0	0	0	0	0	0	1.0		
Totals		3	29	22	109	.064	29	0	3	3	45	1	4	0	0	32.0		

## Team Attack By Set

TOTAL TEAM BLOCKS: 3.0

Set	K	E	TA	Pct	Sidout	Pct
1	8	6	36	.056	13-25	51%
2	9	7	34	.059	15-24	62%
3	12	9	39	.077	15-25	60%
						43-74 58%

Site: Lubbock, Texas (United Supermarkets)

Date: Oct 26, 2016 Attend: 321 Time: 1:13

Referees: Wanda Roberts, Mark Noble

	1	2	3	Total
Tie scores	5	3	2	10
Lead change	1	0	1	2



HEAD COACH

@TonyGraystone

# TONY GRAYSTONE

18th Season Overall • 1st Season at Texas Tech • University of Louisville '96

Entering his first season at Tech, Tony Graystone has a solid mixture of great newcomers and established veterans

Tony Graystone was named the head coach of Texas Tech volleyball on Thursday, Jan. 21, 2016. Graystone arrives at Texas Tech after serving seven seasons as the head volleyball coach at Texas A&M-Corpus Christi.

"Tony Graystone is a proven winner and a respectful leader and coach with tremendous ties to the state of Texas, specifically in West Texas," Texas Tech Director of Athletics Kirby Hocutt said. "We are so thrilled to welcome him, along with Lauren, Drew and Dylan to the Texas Tech Athletics family."

In seven seasons at Texas A&M-Corpus Christi, Graystone turned the Islanders into one of the premier volleyball programs in the Southland Conference. Last season, the Islanders put together their best season in program history, finishing 31-5 overall, with a spotless 16-0 conference mark. It was also the first NCAA Tournament berth for the Islanders, who faced Texas A&M in first round play. Their win total was the best in school history and was one win short of the winningest season by any Southland program.

Graystone's squads have recorded 20 or more wins in three of the last four seasons, finishing one victory shy of that mark in 2014. He improved his team's win total in each of his first four seasons on the Island, culminating with the 2013 season, which was a historic season for the Islanders. The team finished with a 20-12 record, including a then school-best 13-5

record in Southland Conference play. The Islanders also made history by advancing to the semifinals of the conference tournament for the first time.

"This is a very special day for me and my family," Graystone said. "Lubbock is definitely home for us and there's no place we'd rather be than at Texas Tech. I am looking forward to meeting the team and getting started on the court as soon as possible. We all know the challenges ahead of us to improve the program and take positive steps in the Big 12. But I know I'm starting with a group of talented, committed players and together we will make it happen."

In the last four years, Graystone has collected a 91-44 record, including a 52-16 record in Southland play. In 2015, the Islanders made their fourth consecutive appearance and fifth overall trip to the Southland Tournament. For the second-straight year, the Islanders advanced to the semifinals while finishing with a 19-16 record, including an 11-5 record in conference play.

The squad set a school record in 2012 with a 21-11 mark. The Islanders won 12 Southland matches and finished third in the conference, both first-time accomplishments for Texas A&M-Corpus Christi. Since Graystone took over the program, the Islanders have improved their national RPI by 235 spots, making them the most improved NCAA Division I team in the country over that time.

Prior to coming to the Island, Graystone spent 10 seasons as the head coach at West Texas A&M in Canyon, where he posted a 315-61 record and became the all-time winningest coach in program history. His .837 winning percentage was the third-

highest among active NCAA Division II head coaches and he reached 300 victories faster than any other coach in the division's history. He reached 100 wins in 106 matches making him the quickest coach at the time in any NCAA sport or division to reach the century mark in wins. He was named the Lone Star Conference Coach of the Year five times and the AVCA Southwest Region Coach of the Year on four occasions.

At West Texas A&M, he guided the Lady Buffs to five NCAA Regional appearances and eight Lone Star Conference crowns in 10 seasons. He mentored 16 All-Americans and one Division II National Player of the Year in 1999. His 2001 team was ranked No. 1 for seven weeks, while his 2002 team held the top spot for five weeks. In 2003, his team set an NCAA standard with 77 conference wins in a row.

Before becoming the head coach, Graystone was an assistant coach for the Lady Buffs and was part of a coaching staff that won the NCAA Division II Championship in 1997. He also served as the program director for the Amarillo Junior Olympic Volleyball Club. He began his career as a head coach at Waggoner and Ballard High Schools in Louisville, Kentucky.

Graystone earned an M.S. in exercise physiology from the University of Louisville in 1996 after graduating with a B.S. in Health Sciences with an emphasis in exercise science from Grand Valley State (Mich.) in 1992.

He and his wife Lauren, a native of Whitharral, Texas, have two sons, Drew and Dylan.



## 2016 MATCH-BY-MATCH RESULTS

Date	Opponent	Score	Match results	Overall	Conf	Time	Attend
Aug. 26, 2015	vs Colorado	L 2-3	25-20, 19-25, 26-24, 18-25, 8-15	0-1	0-0	2:05	125
Aug. 27, 2015	vs Long Beach State	L 0-3	16-25, 16-25, 23-25	0-2	0-0	1:13	128
Aug. 27, 2015	at Portland State	W 3-1	25-17, 25-21, 22-25, 25-17	1-2	0-0	1:43	288
Sept. 2, 2016	vs South Dakota State	W 3-0	25-18, 25-17, 25-21	2-2	0-0	1:07	48
Sept. 2, 2016	at North Dakota State	W 3-2	21-25, 25-27, 25-22, 25-12, 15-11	3-2	0-0	2:16	863
Sept. 3, 2016	at North Dakota	W 3-0	25-20, 25-18, 25-22	4-2	0-0	1:26	959
Sept. 5, 2016	UTEP	W 3-0	25-16, 25-15, 25-23	5-2	0-0	1:24	423
Sept. 9, 2016	ABILENE CHRISTIAN	W 3-0	25-9, 25-10, 25-16	6-2	0-0	1:08	519
Sept. 9, 2016	STEPHEN F. AUSTIN	W 3-1	21-25, 25-21, 25-15, 25-12	7-2	0-0	1:48	563
Sept. 10, 2016	TEXAS-RGV	W 3-0	25-23, 26-24, 25-21	8-2	0-0	1:20	266
Sept. 10, 2016	ORAL ROBERTS	W 3-1	25-19, 25-12, 20-25, 25-16	9-2	0-0	1:46	288
Sept. 14, 2016	at Rice	W 3-2	25-20, 17-25, 25-15, 23-25, 18-16	10-2	0-0	2:22	446
Sept. 15, 2016	vs Texas State	L 0-3	21-25, 17-25, 20-25	10-3	0-0	1:15	--
Sept. 16, 2016	vs Wichita State	L 0-3	21-25, 22-25, 20-25	10-4	0-0	1:19	--
Sept. 16, 2016	at UTSA	L 0-3	12-25, 22-25, 12-25	10-5	0-0	1:13	390
Sept. 21, 2016	at TCU	L 1-3	14-25, 25-22, 13-25, 14-25	10-6	0-1	1:52	1,611
Sept. 24, 2016	WEST VIRGINIA	L 0-3	19-25, 23-25, 20-25	10-7	0-2	1:30	349
Sept. 28, 2016	at Baylor	L 0-3	17-25, 24-26, 19-25	10-8	0-3	1:30	818
Oct. 5, 2016	KANSAS STATE	L 0-3	18-25, 19-25, 20-25	10-9	0-4	1:30	431
Oct. 8, 2016	at #6 Kansas	L 0-3	8-25, 18-25, 18-25	10-10	0-5	1:11	1302
Oct. 12, 2016	OKLAHOMA	L 0-3	26-28, 23-25, 17-25	10-11	0-6	1:27	479
Oct. 15, 2016	at Iowa State	L 0-3	13-25, 14-25, 15-25	10-12	0-7	1:06	3620
Oct. 21, 2016	#2 TEXAS	L 2-3	25-21, 18-25, 16-25, 28-26, 7-15	10-13	0-8	2:15	1223
Oct. 26, 2016	#6 KANSAS	L 0-3	15-25, 16-25, 20-25	10-14	0-9	1:13	321

\* Big 12 Conference match

ATTENDANCE	Dates	Total	Average
Total:	23	14749	614
Home:	10	4862	486
Away:	9	9907	1100
Neutral:	4	301	60

## 2016 INDIVIDUAL STATS

##	Name	ATTACK							SET				SERVE				
		SP	MP-MS	K	K/Set	E	TA	Pct	A	A/Set	TA	Pct	SA	SA/Set	SE	TA	Pct
5	Douglass, Lauren	84	24-24	259	3.08	58	550	.365	5	0.06	36	.139	15	0.18	21	220	.905
16	McDougald, Toni	66	20-13	149	2.26	69	467	.171	1	0.02	39	.026	0	0.00	7	55	.873
12	Keenan, Katy	83	24-24	130	1.57	52	307	.254	3	0.04	10	.300	0	0.00	0	10	1.000
18	Atwood, Chandler	51	18-9	106	2.08	42	292	.219	2	0.04	13	.154	0	0.00	1	11	.909
33	Henriksen, Hannah	53	22-0	99	1.87	44	319	.172	2	0.04	10	.200	0	0.00	0	4	1.000
11	Ybanez, Alyssa	35	14-10	80	2.29	55	252	.099	6	0.17	38	.158	5	0.14	12	100	.880
6	Redding, Sarah	27	10-9	64	2.37	36	163	.172	0	0.00	2	.000	0	0.00	1	2	.500
15	Ensch, Courtney	25	10-7	47	1.88	15	134	.239	0	0.00	4	.000	0	0.00	3	3	.000
4	Grubb, Marguerite	76	23-22	47	0.62	17	159	.189	757	9.96	1656	.457	5	0.07	18	202	.911
13	Fragniere, Audrey	13	7-2	18	1.38	17	78	.013	0	0.00	6	.000	0	0.00	2	9	.778
1	Hinneburg, Victoria	16	12-0	6	0.38	3	20	.150	0	0.00	1	.000	0	0.00	0	1	1.000
2	Rittimann, Kylie	57	19-5	5	0.09	3	29	.069	7	0.12	46	.152	8	0.14	12	137	.912
3	Cowan, Kyndal	20	10-2	3	0.15	4	13	-.077	55	2.75	200	.275	2	0.10	2	32	.938
7	Akiu, Reyn	82	24-1	3	0.04	2	23	.043	69	0.84	333	.207	16	0.20	11	378	.971
17	Sagers, Maggie	72	21-8	2	0.03	8	42	-.143	13	0.18	98	.133	17	0.24	24	251	.904
26	Bryant, Katelyn	75	23-8	1	0.01	0	8	.125	15	0.20	82	.183	14	0.19	4	254	.984
9	Morgan, Ashley	24	8-0	1	0.04	2	14	-.071	2	0.08	14	.143	2	0.08	6	62	.903
8	Canales, Sophia	7	3-0	0	0.00	1	3	-.333	17	2.43	61	.279	0	0.00	1	12	.917
10	Dobbins, Eighmy	9	5-0	0	0.00	1	4	-.250	2	0.22	5	.400	1	0.11	0	12	1.000
24	Martinez, Taylor	1	1-0	0	0.00	0	0	.000	0	0.00	0	.000	0	0.00	1	1	.000
<b>TEXAS TECH.....</b>		<b>84</b>	<b>24-24</b>	<b>1020</b>	<b>12.14</b>	<b>429</b>	<b>2877</b>	<b>.205</b>	<b>956</b>	<b>11.38</b>	<b>2654</b>	<b>.360</b>	<b>85</b>	<b>1.01</b>	<b>126</b>	<b>1756</b>	<b>.928</b>
<b>Opponents.....</b>		<b>84</b>	<b>24-24</b>	<b>1130</b>	<b>13.45</b>	<b>416</b>	<b>2952</b>	<b>.242</b>	<b>1064</b>	<b>12.67</b>	<b>2723</b>	<b>.391</b>	<b>109</b>	<b>1.30</b>	<b>179</b>	<b>1830</b>	<b>.902</b>

##	Name	S	RECEPT			DIG		BLOCKING						Points	Pts/Set
			RE	TA	Pct	DIG	Dig/S	BS	BA	Total	Blk/S	BE	BHE		
5	Douglass, Lauren	84	2	15	.867	45	0.54	15	70	85	1.01	7	1	324.0	3.86
16	McDougald, Toni	66	9	126	.929	46	0.70	3	17	20	0.30	5	0	160.5	2.43
12	Keenan, Katy	83	0	8	1.000	10	0.12	4	42	46	0.55	7	0	155.0	1.87
18	Atwood, Chandler	51	0	12	1.000	33	0.65	4	16	20	0.39	3	0	118.0	2.31
33	Henriksen, Hannah	53	4	31	.871	24	0.45	3	11	14	0.26	5	0	107.5	2.03
11	Ybanez, Alyssa	35	9	74	.878	60	1.71	1	12	13	0.37	2	0	92.0	2.63
6	Redding, Sarah	27	0	6	1.000	4	0.15	0	15	15	0.56	3	0	71.5	2.65
15	Ensch, Courtney	25	0	1	1.000	7	0.28	1	13	14	0.56	0	0	54.5	2.18
4	Grubb, Marguerite	76	1	1	.000	172	2.26	5	29	34	0.45	4	10	71.5	0.94
13	Fragniere, Audrey	13	5	38	.868	6	0.46	1	2	3	0.23	0	0	20.0	1.54
1	Hinneburg, Victoria	16	0	1	1.000	2	0.12	0	4	4	0.25	0	0	8.0	0.50
2	Rittimann, Kylie	57	7	117	.940	56	0.98	0	0	0	0.00	0	0	13.0	0.23
3	Cowan, Kyndal	20	0	0	.000	16	0.80	0	0	0	0.00	2	10	5.0	0.25
7	Akiu, Reyn	82	16	387	.959	394	4.80	0	0	0	0.00	0	0	19.0	0.23
17	Sagers, Maggie	72	20	310	.935	136	1.89	0	0	0	0.00	0	0	19.0	0.26
26	Bryant, Katelyn	75	19	189	.899	153	2.04	0	0	0	0.00	0	0	15.0	0.20
9	Morgan, Ashley	24	4	86	.953	41	1.71	0	0	0	0.00	0	0	3.0	0.12
8	Canales, Sophia	7	0	0	.000	5	0.71	0	0	0	0.00	0	0	0.0	0.00
10	Dobbins, Eighmy	9	3	11	.727	9	1.00	0	0	0	0.00	0	0	1.0	0.11
24	Martinez, Taylor	1	0	0	.000	0	0.00	0	0	0	0.00	0	0	0.0	0.00
<b>TEAM</b>			10												
<b>TEXAS TECH.....</b>		<b>84</b>	<b>109</b>	<b>1631</b>	<b>.933</b>	<b>1219</b>	<b>14.51</b>	<b>37</b>	<b>231</b>	<b>152.5</b>	<b>1.82</b>	<b>38</b>	<b>21</b>	<b>1257.5</b>	<b>14.97</b>
<b>Opponents.....</b>		<b>84</b>	<b>85</b>	<b>1616</b>	<b>.947</b>	<b>1239</b>	<b>14.75</b>	<b>30</b>	<b>304</b>	<b>182.0</b>	<b>2.17</b>	<b>55</b>	<b>16</b>	<b>1421.0</b>	<b>16.92</b>



## 2016 TEXAS TECH TEAM MATCH-BY-MATCH

Date	Opponent	SP	K	E	TA	Pct.	A	SA	SE	RE	DIG	BS	BA	BE	Total	BHE	Points
Aug. 26	COLORADO	5	63	26	147	.252	63	3	8	7	51	0	18	6	9.0	0	75.0
Aug. 27	vs Long Beach State	3	30	13	86	.198	29	5	3	5	26	1	12	5	7.0	0	42.0
Aug. 27	at Portland State	4	59	12	134	.351	52	5	6	7	55	2	24	2	14.0	0	78.0
Sept. 2	vs South Dakota State	3	41	16	110	.227	41	6	6	2	50	4	8	2	8.0	0	55.0
Sept. 2	at North Dakota State	5	68	22	177	.260	64	1	9	4	82	4	12	2	10.0	1	79.0
Sept. 3	at North Dakota	3	47	12	107	.327	43	5	4	2	52	3	2	0	4.0	0	56.0
Sept. 5	UTEP	3	43	13	117	.256	39	3	6	2	52	0	14	1	7.0	0	53.0
Sept. 9	ABILENE CHRISTIAN	3	42	6	71	.507	37	9	6	0	38	1	9	0	5.5	1	56.5
Sept. 9	STEPHEN F. AUSTIN	4	54	25	163	.178	50	6	9	5	85	3	18	0	12.0	0	72.0
Sept. 10	TEXAS-RGV	3	46	13	121	.273	42	5	4	1	52	2	10	0	7.0	0	58.0
Sept. 10	ORAL ROBERTS	4	46	13	110	.300	44	6	7	8	50	2	14	1	9.0	0	61.0
Sept. 14	at Rice	5	65	25	174	.230	57	6	2	5	70	6	12	5	12.0	3	83.0
Sept. 15	vs Texas State	3	36	21	110	.136	34	2	6	6	41	0	10	2	5.0	1	43.0
Sept. 16	vs Wichita State	3	38	17	129	.163	36	1	3	3	60	1	6	1	4.0	0	43.0
Sept. 16	at UTSA	3	22	19	83	.036	21	3	4	8	30	0	6	2	3.0	2	28.0
Sept. 21	at TCU	4	37	23	147	.095	31	2	5	5	65	2	8	3	6.0	2	45.0
Sept. 24	WEST VIRGINIA	3	33	15	88	.205	32	3	3	7	43	0	14	1	7.0	1	43.0
Sept. 28	at Baylor	3	33	19	108	.130	32	5	3	6	38	0	12	0	6.0	0	44.0
Oct. 5	KANSAS STATE	3	37	19	107	.168	37	1	4	5	39	2	4	1	4.0	0	42.0
Oct. 8	at Kansas	3	21	12	75	.120	20	2	4	10	32	0	2	1	1.0	5	24.0
Oct. 12	OKLAHOMA	3	44	19	123	.203	42	1	8	1	50	0	4	0	2.0	1	47.0
Oct 15	at Iowa State	3	27	19	99	.081	27	1	7	3	39	2	0	1	2.0	2	30.0
Oct 21	TEXAS	5	59	28	182	.170	54	4	6	4	74	1	8	2	5.0	2	68.0
Oct 26	KANSAS	3	29	22	109	.064	29	0	3	3	45	1	4	0	3.0	0	32.0
<b>Texas Tech</b>		<b>84</b>	<b>1020</b>	<b>429</b>	<b>2877</b>	<b>.205</b>	<b>956</b>	<b>85</b>	<b>126</b>	<b>109</b>	<b>1219</b>	<b>37</b>	<b>231</b>	<b>38</b>	<b>152.5</b>	<b>21</b>	<b>1257.5</b>
<b>Opponent</b>		<b>84</b>	<b>1130</b>	<b>416</b>	<b>2952</b>	<b>.242</b>	<b>1064</b>	<b>109</b>	<b>179</b>	<b>85</b>	<b>1239</b>	<b>30</b>	<b>304</b>	<b>55</b>	<b>182.0</b>	<b>16</b>	<b>1421.0</b>

## BY SET AVERAGES

Sets played: 84

Kills per set: 12.14

Assists per set: 11.38

Service aces per set: 1.01

Reception errors per set: 1.30

Digs per set: 14.51

Blocks per set: 1.82

Ball handling errors per set: 0.25

Reception errors per set: 1.30

Points per set: 14.97

## 2016 OPPONENT TEAM MATCH-BY-MATCH

Date	Opponent	SP	K	E	TA	Pct.	A	SA	SE	RE	DIG	BS	BA	BE	Total	BHE	Points
Aug. 26	COLORADO	5	66	20	141	.326	60	7	10	3	42	1	22	8	12.0	0	85.0
Aug. 27	vs Long Beach State	3	50	12	94	.404	46	5	6	5	36	1	6	2	4.0	0	59.0
Aug. 27	at Portland State	4	54	28	144	.181	52	7	2	5	54	2	8	5	6.0	0	67.0
Sept. 2	vs South Dakota State	3	32	21	109	.101	31	2	4	6	49	1	12	3	7.0	2	41.0
Sept. 2	at North Dakota State	5	61	34	194	.139	60	4	6	1	75	4	6	4	7.0	0	72.0
Sept. 3	at North Dakota	3	40	17	116	.198	37	2	6	5	43	1	8	1	5.0	0	47.0
Sept. 5	UTEP	3	31	19	120	.100	29	2	6	3	49	1	8	0	5.0	0	38.0
Sept. 9	ABILENE CHRISTIAN	3	22	16	79	.076	20	0	7	9	20	0	8	0	4.0	1	26.0
Sept. 9	STEPHEN F. AUSTIN	4	33	27	153	.039	32	5	6	6	76	1	18	0	10.0	1	48.0
Sept. 10	TEXAS-RGV	3	50	16	130	.262	47	1	7	5	57	0	10	1	5.0	0	56.0
Sept. 10	ORAL ROBERTS	4	44	26	129	.140	41	8	16	6	49	1	12	3	7.0	0	59.0
Sept. 14	at Rice	5	66	30	176	.205	64	5	5	6	70	5	12	8	11.0	2	82.0
Sept. 15	vs Texas State	3	40	11	99	.293	37	6	6	2	46	1	18	2	10.0	3	56.0
Sept. 16	vs Wichita State	3	49	14	129	.271	49	3	10	1	63	1	14	2	8.0	0	60.0
Sept. 16	at UTSA	3	42	9	83	.398	39	8	11	3	39	1	18	1	10.0	0	60.0
Sept. 21	at TCU	4	59	16	149	.289	52	5	8	2	77	1	16	1	9.0	1	73.0
Sept. 24	WEST VIRGINIA	3	48	9	108	.361	44	7	12	3	35	0	20	3	10.0	3	65.0
Sept. 28	at Baylor	3	48	19	112	.259	43	6	1	5	50	0	14	1	7.0	0	61.0
Oct. 5	KANSAS STATE	3	46	13	107	.308	45	5	6	1	43	0	8	1	4.0	0	55.0
Oct. 8	at Kansas	3	41	11	88	.341	38	10	10	2	37	0	10	1	5.0	0	56.0
Oct. 12	OKLAHOMA	3	44	19	123	.203	42	1	8	1	50	0	4	0	2.0	1	47.0
Oct. 15	at Iowa State	3	42	8	91	.374	41	3	5	1	49	4	8	3	8.0	1	53.0
Oct. 21	TEXAS	5	70	18	175	.297	67	4	12	4	84	0	24	3	12.0	0	86.0
Oct. 26	KANSAS	3	47	10	108	.343	44	3	10	0	48	4	10	2	9.0	1	59.0
<b>Opponent totals</b>		<b>84</b>	<b>1130</b>	<b>416</b>	<b>2952</b>	<b>.242</b>	<b>1064</b>	<b>109</b>	<b>179</b>	<b>85</b>	<b>1239</b>	<b>30</b>	<b>304</b>	<b>55</b>	<b>182.0</b>	<b>16</b>	<b>1421.0</b>
<b>Texas Tech</b>		<b>84</b>	<b>1020</b>	<b>429</b>	<b>2877</b>	<b>.205</b>	<b>956</b>	<b>85</b>	<b>126</b>	<b>109</b>	<b>1219</b>	<b>37</b>	<b>231</b>	<b>38</b>	<b>152.5</b>	<b>21</b>	<b>1257.5</b>

## BY SET AVERAGES

Sets played: 84

Kills per set: 13.45

Assists per set: 12.67

Service aces per set: 1.30

Reception errors per set: 1.01

Digs per set: 14.75

Blocks per set: 2.17

Ball handling errors per set: 0.19

Reception errors per set: 1.01

Points per set: 16.92

**2016 MATCH-BY-MATCH LEADERS**

<i>Opponent</i>	<i>Kills</i>	<i>Hitting %</i>	<i>Digs</i>	<i>Blocks</i>	<i>Assists</i>
vs. Colorado	Ybanez (13)	Keenan (.625)	Akiu (24)	Douglass (6)	Grubb (52)
vs. Long Beach State	Ybanez (10)	Ybanez (.400)	Bryant (8)	Douglass (6)	Grubb (27)
at Portland State	Douglass (17)	Douglass (.773)	Akiu, Bryant (14)	Douglass (8)	Grubb (43)
vs. S. Dakota State	McDouglad (11)	Ensch (.500)	Akiu (15)	Grubb (4)	Grubb (35)
at N. Dakota State	Douglass (16)	Douglass (.406)	Akiu (23)	Douglass (5)	Grubb (57)
at North Dakota	Douglass (15)	Douglass (.462)	Akiu (18)	Keenan (2)	Grubb (33)
UTEP	Douglass (15)	Douglass (.577)	Akiu (16)	Douglass (5)	Grubb (29)
ABILENE CHRISTIAN	McDouglad (10)	Keenan (.800)	Akiu (12)	McDouglad (2)	Grubb (27)
STEPHEN F. AUSTIN	Douglass (17)	Atwood (.360)	Akiu (30)	Douglass (8)	Grubb (46)
UT RIO GRANDE VALLEY	McDouglad, Douglass (11)	Douglass (.526)	Akiu (22)	Douglass (3)	Grubb (38)
ORAL ROBERTS	Douglass (16)	Atwood (.526)	Akiu, Bryant (16)	Douglass (5)	Grubb (37)
at Rice	Henriksen (19)	Douglass (.419)	Akiu (19)	Atwood, Douglass (5)	Grubb (51)
vs. Texas State	Douglass (9)	Ybanez (.429)	Akiu (14)	Douglass (3)	Grubb (27)
vs. Wichita State	Atwood (10)	Atwood (.320)	Akiu (22)	Douglass (3)	Grubb (30)
at UTSA	Atwood, Douglass (5)	Douglass (.455)	Akiu (13)	(Six with 1)	Cowan (17)
at TCU	Douglass (10)	Douglass (.450)	Akiu (24)	(Three with 1.5)	Canales (15)
WEST VIRGINIA	(Three with 7)	Atwood (.833)	Akiu (15)	Douglass (2)	Grubb (29)
at Baylor	Douglass (7)	Sagers (.333)	Akiu (11)	Douglass (2)	Grubb (27)
KANSAS STATE	Douglass (10)	Douglass (.368)	Akiu (12)	Keenan (2)	Grubb (28)
at Kansas	McDouglad, Douglass (6)	McDouglad (.455)	Akiu, Sagers (9)	Keenan, Grubb (1)	Cowan (9)
OKLAHOMA	Douglass (12)	Atwood (.429)	Sagers (19)	Douglass (2)	Grubb (36)
at Iowa State	Douglass (8)	Atwood (.700)	Grubb (12)	Douglass, Keenan (1)	Grubb (25)
NO. 2 TEXAS	Redding (17)	Douglass (.344)	Akiu (23)	Douglass (3)	Grubb (44)
NO. 6 KANSAS	Douglass (10)	Redding (.375)	Akiu (25)	Douglass (2)	Grubb (27)

**2016 DOUBLE-DOUBLES**

<b>MARGUERITE GRUBB (5)</b>	<b>ASSISTS</b>	<b>DIGS</b>
No. 2 Texas (10/21/16)	44	12
Iowa State (10/15/16)	25	12
Kansas State (10/5/16)	28	11
Stephen F. Austin (9/9/16)	46	16
at North Dakota (9/3/16)	33	16
<i>Career double-doubles: 16</i>		

<b>ALYSSA YBANEZ (1)</b>	<b>KILLS</b>	<b>DIGS</b>
at Portland State (8/27/16)	17	10
<i>Career double-doubles: 1</i>		

**TEXAS TECH RECORD WHEN**

Overall .....	10-14
At the United Supermarkets Arena .....	5-5
On the road .....	4-5
Neutral site .....	1-4
Big 12 Play .....	0-9
Non-Conference .....	10-5
At a tournament .....	8-5
On Television .....	0-5

Against ranked opponents .....	0-3
Top 5 opponents .....	0-2
Top 10 opponents .....	0-3

<b>Kills</b>	
Leading .....	8-0
Trailing .....	2-14
Tied .....	0-0

<b>Blocks</b>	
Leading .....	9-1
Trailing .....	1-12
Tied .....	0-1

<b>Digs</b>	
Leading .....	8-3
Trailing .....	1-11
Tied .....	1-0

<b>Attack Percentage</b>	
Leading .....	10-0
Trailing .....	0-13

<b>Service Aces</b>	
Leading .....	7-0
Trailing .....	3-10
Tied .....	0-3

<b>Hitting Percentage</b>	
Hitting .300 or better .....	4-0
Hitting .250 to .299 .....	3-1
Hitting .200 to .249 .....	2-2
Hitting .100 to .199 .....	1-7
Hitting below .100 .....	0-3

Opponents hitting above .300 .....	0-8
Opponents hitting .250 to .299 .....	1-5
Opponents hitting .200 to .249 .....	1-0
Opponents hitting .100 to .199 .....	6-0
Holding opponents below .100 .....	2-0

In three sets .....	5-11
In four sets .....	3-0
In five sets .....	2-2

## 2016 MATCH-BY-MATCH STARTING LINEUPS

<i>Opponent</i>	<i>DS</i>	<i>OH</i>	<i>OH</i>	<i>MB</i>	<i>SET</i>	<i>MB</i>	<i>LIB</i>
vs Colorado	Rittimann	Redding	Ybanez	Douglass	Grubb	Keenan	Akiu
vs Long Beach State	Rittimann	Redding	Ybanez	Douglass	Grubb	Keenan	Akiu
at Portland State	Rittimann	Ensch	Ybanez	Douglass	Grubb	Keenan	Akiu
vs South Dakota State	Sagers	Ensch	Ybanez	Douglass	Grubb	Keenan	Akiu
at North Dakota State	Rittimann	Ensch	Ybanez	Douglass	Grubb	Keenan	Akiu
at North Dakota	Bryant	Ensch	McDougald	Douglass	Grubb	Keenan	Akiu
UTEP	Bryant	Ensch	McDougald	Douglass	Grubb	Keenan	Akiu
Abilene Christian	Bryant	McDougald	Ybanez	Douglass	Grubb	Keenan	Akiu
Stephen F. Austin	Bryant	Ensch	Ybanez	Douglass	Grubb	Keenan	Akiu
UT Rio Grande Valley	Bryant	Ensch	McDougald	Douglass	Grubb	Keenan	Akiu
Oral Roberts	Bryant	Atwood	McDougald	Douglass	Grubb	Keenan	Akiu
at Rice	Bryant	Atwood	McDougald	Douglass	Grubb	Keenan	Akiu
vs. Texas State	Bryant	Atwood	McDougald	Douglass	Grubb	Keenan	Akiu
vs. Wichita State	Sagers	Atwood	Ybanez	Douglass	Grubb	Keenan	Akiu
at UTSA	Sagers	Atwood	McDougald	Douglass	Grubb	Keenan	Akiu
at TCU	Fagniere	Atwood	Ybanez	Douglass	Cowan	Keenan	Akiu
West Virginia	Redding	McDougald	Ybanez	Douglass	Grubb	Keenan	Akiu
at Baylor	Sagers	Atwood	McDougald	Douglass	Grubb	Keenan	Akiu
Kansas State	Sagers	Redding	McDougald	Douglass	Grubb	Keenan	Akiu
at No. 6 Kansas	Sagers	Redding	McDougald	Douglass	Cowan	Keenan	Akiu
Oklahoma	Rittimann	Redding	McDougald	Douglass	Grubb	Keenan	Sagers
at Iowa State	Akiu	Redding	Fagniere	Douglass	Grubb	Keenan	Sagers
No. 2 Texas	Sagers	Redding	Atwood	Douglass	Grubb	Keenan	Akiu
No. 6 Kansas	Sagers	Redding	Atwood	Douglass	Grubb	Keenan	Akiu



**TEXAS TECH TEAM HIGHS****ATTACK PERCENT (K-E-TA)**

.507 (42-6-71) \_\_\_\_\_ Abilene Christian (Sep 9, 2016)  
 .351 (59-12-134) \_\_\_\_\_ at Portland State (Aug 27, 2016)  
 .327 (47-12-107) \_\_\_\_\_ at North Dakota (Sep 3, 2016)

**KILLS (K-E-TA)**

68 (68-22-177) 5s \_\_\_\_\_ at N. Dakota St. (Sep 2, 2016)  
 65 (65-25-174) 5s \_\_\_\_\_ at Rice (Sep 14, 2016)  
 63 (63-26-147) 5s \_\_\_\_\_ vs Colorado (Aug 26, 2016)

**KILLS 3-SETS (K-E-TA)**

47 (47-12-107) \_\_\_\_\_ at North Dakota (Sep 3, 2016)  
 46 (46-13-121) \_\_\_\_\_ UTRGV (Sep 10, 2016)

**KILLS 4-SETS (K-E-TA)**

59 (59-12-134) \_\_\_\_\_ at Portland State (Aug 27, 2016)  
 54 (54-25-163) \_\_\_\_\_ Stephen F. Austin (Sep 9, 2016)

**KILLS 5-SETS (K-E-TA)**

68 (68-22-177) \_\_\_\_\_ at N. Dakota State (Sep 2, 2016)  
 65 (65-25-174) \_\_\_\_\_ at Rice (Sep 14, 2016)  
 63 (63-26-147) \_\_\_\_\_ vs Colorado (Aug 26, 2016)

**TOTAL ATTEMPTS (K-E-TA)**

182 (59-28-182) 5s \_\_\_\_\_ Texas (Oct 21, 2016)  
 177 (68-22-177) 5s \_\_\_\_\_ at N. Dakota State (Sep 2, 2016)  
 174 (65-25-174) 5s \_\_\_\_\_ at Rice (Sep 14, 2016)

**TOTAL ATTEMPTS 3-SETS (K-E-TA)**

129 (38-17-129) \_\_\_\_\_ vs. Wichita State (Sep 16, 2016)  
 123 (44-19-123) \_\_\_\_\_ Oklahoma (Oct 12, 2016)  
 121 (46-13-121) \_\_\_\_\_ UTRGV (Sep 10, 2016)

**TOTAL ATTEMPTS 4-SETS (K-E-TA)**

163 (54-25-163) \_\_\_\_\_ Stephen F. Austin (Sep 9, 2016)  
 147 (37-23-147) \_\_\_\_\_ at TCU (Sep 21, 2016)

**TOTAL ATTEMPTS 5-SETS (K-E-TA)**

182 (59-28-182) \_\_\_\_\_ Texas (Oct 21, 2016)  
 177 (68-22-177) \_\_\_\_\_ at N. Dakota State (Sep 2, 2016)  
 174 (65-25-174) \_\_\_\_\_ at Rice (Sep 14, 2016)

**ASSISTS**

64 (5s) \_\_\_\_\_ at N. Dakota State (Sep 2, 2016)  
 63 (5s) \_\_\_\_\_ vs Colorado (Aug 26, 2016)  
 54 (5s) \_\_\_\_\_ Texas (Oct 21, 2016)

**ASSISTS 3-SETS**

43 \_\_\_\_\_ at North Dakota (Sep 3, 2016)  
 42 \_\_\_\_\_ Oklahoma (Oct 12, 2016)  
 42 \_\_\_\_\_ UTRGV (Sep 10, 2016)

**ASSISTS 4-SETS**

52 \_\_\_\_\_ at Portland State (Aug 27, 2016)  
 50 \_\_\_\_\_ Stephen F. Austin (Sep 9, 2016)

**ASSISTS 5-SETS**

64 \_\_\_\_\_ at N. Dakota State (Sep 2, 2016)  
 63 \_\_\_\_\_ vs Colorado (Aug 26, 2016)

**DIGS**

85 (4s) \_\_\_\_\_ Stephen F. Austin (Sep 9, 2016)  
 82 (5s) \_\_\_\_\_ at N. Dakota State (Sep 2, 2016)  
 74 (5s) \_\_\_\_\_ Texas (Oct. 21, 2016)

**DIGS 3-SETS**

60 \_\_\_\_\_ vs. Wichita State (Sep 16, 2016)  
 52 \_\_\_\_\_ UTEP (Sep. 5, 2016)  
 52 \_\_\_\_\_ at North Dakota (Sep 3, 2016)

**DIGS 4-SETS**

85 \_\_\_\_\_ Stephen F. Austin (Sep 9, 2016)  
 65 \_\_\_\_\_ at TCU (Sep 21, 2016)

**DIGS 5-SETS**

82 \_\_\_\_\_ at N. Dakota State (Sep 2, 2016)  
 74 \_\_\_\_\_ Texas (Oct. 21, 2016)

**ACES**

9 \_\_\_\_\_ Abilene Christian (Sep 9, 2016)  
 6 \_\_\_\_\_ at Rice (Sep 14, 2016)  
 6 \_\_\_\_\_ Oral Roberts (Sep 10, 2016)  
 6 \_\_\_\_\_ Stephen F. Austin (Sep 9, 2016)  
 6 \_\_\_\_\_ vs S. Dakota State (Sep 2, 2016)

**BLOCKS**

14.0 \_\_\_\_\_ at Portland State (Aug 27, 2016)  
 12.0 \_\_\_\_\_ at Rice (Sep 14, 2016)  
 12.0 \_\_\_\_\_ Stephen F. Austin (Sep 9, 2016)

**OPPONENT MATCH HIGHS****ATTACK PERCENT (K-E-TA)**

.404 (50-12-94) \_\_\_\_\_ vs LBSU (Aug 27, 2016)

**KILLS (K-E-TA)**

70 (70-18-175) 5s \_\_\_\_\_ Texas (Oct. 21, 2016)

**KILLS 3-SETS (K-E-TA)**

50 (50-12-94) \_\_\_\_\_ UTRGV (Sep 10, 2016)  
 50 (50-12-94) \_\_\_\_\_ vs LBSU (Aug 27, 2016)

**KILLS 4-SETS (K-E-TA)**

59 (59-16-149) \_\_\_\_\_ at TCU (Sep 21, 2016)

**KILLS 5-SETS (K-E-TA)**

70 (70-18-175) \_\_\_\_\_ Texas (Oct. 21, 2016)

**TOTAL ATTEMPTS (K-E-TA)**

194 (61-34-194) 5s \_\_\_\_\_ at N. Dakota State (Sep 2, 2016)

**TOTAL ATTEMPTS 3-SETS (K-E-TA)**

130 (50-16-130) \_\_\_\_\_ UTRGV (Sep 10, 2016)

**TOTAL ATTEMPTS 4-SETS (K-E-TA)**

153 (61-34-194) \_\_\_\_\_ at N. Dakota State (Sep 2, 2016)

**TOTAL ATTEMPTS 5-SETS (K-E-TA)**

194 (61-34-194) \_\_\_\_\_ at N. Dakota State (Sep 2, 2016)

**OPPONENT TEAM HIGHS****ATTACK PERCENT (K-E-TA) minimum 12 kills**

.647 (12-1-17) \_\_\_\_\_ Grahovac, Peyton vs. LBSU (Aug 27, 2016)  
 .571 (16-0-28) \_\_\_\_\_ Payne, Kelsie vs. No. 6 Kansas (Oct. 26, 2016)

**KILLS (K-E-TA)**

24 (24-5-52) 5s \_\_\_\_\_ P Cerame, Paulina vs. Texas (Oct. 21, 2016)

**KILLS 3-SETS (K-E-TA)**

19 (19-7-43) \_\_\_\_\_ Staiger, Katie at Baylor (Sep 28, 2016)  
 19 (19-3-41) \_\_\_\_\_ Enneking, Alyssa vs. Oklahoma (Oct 12, 2016)

**KILLS 4-SETS (K-E-TA)**

19 (19-9-47) \_\_\_\_\_ Milos, Laura vs. Oral Roberts (Sep 10, 2016)

**KILLS 5-SETS (K-E-TA)**

24 (24-5-52) \_\_\_\_\_ P Cerame, Paulina vs. Texas (Oct. 21, 2016)

**TOTAL ATTEMPTS (K-E-TA)**

55 (13-11-55) 5s \_\_\_\_\_ Steffen, Hadley vs. N. Dakota St. (Sep 2, 2016)

**TOTAL ATTEMPTS 3-SETS (K-E-TA)**

44 (15-9-44) \_\_\_\_\_ Beaner, Ashley vs. S. Dakota St. (Sep 2, 2016)

**TOTAL ATTEMPTS 4-SETS (K-E-TA)**

47 (19-9-47) \_\_\_\_\_ Milos, Laura vs. Oral Roberts (Sep 10, 2016)

**TOTAL ATTEMPTS 5-SETS (K-E-TA)**

55 (13-11-55) \_\_\_\_\_ Steffen, Hadley vs. N. Dakota St. (Sep 2, 2016)

## 2016 INDIVIDUAL MATCH HIGHS

**ATTACK PERCENT (K-E-TA) minimum 12 kills**

.773 (17- 0-22) \_\_\_\_\_ Douglass, Lauren at Portland State (Aug 27, 2016)  
 .625 (12- 2-16) \_\_\_\_\_ Keenan, Katy vs Colorado (Aug 26, 2016)  
 .577 (15- 0-26) \_\_\_\_\_ Douglass, Lauren vs UTEP (Sep 05, 2016)  
 .483 (16- 2-29) \_\_\_\_\_ Douglass, Lauren vs Oral Roberts (Sep 10, 2016)  
 .462 (15- 3-26) \_\_\_\_\_ Douglass, Lauren at North Dakota (Sep 03, 2016)

**KILLS (K-E-TA)**

19 (19- 3-42) 5s \_\_\_\_\_ Henriksen, Hannah at Rice (Sep 14, 2016)  
 17 (17-6-40) 5s \_\_\_\_\_ Redding, Sarah vs Texas (Oct. 21, 2016)  
 17 (17- 5-35) 4s \_\_\_\_\_ Douglass, Lauren vs Stephen F. Austin (Sep 09, 2016)  
 17 (17- 4-31) 5s \_\_\_\_\_ Douglass, Lauren at Rice (Sep 14, 2016)  
 17 (17- 0-22) 4s \_\_\_\_\_ Douglass, Lauren at Portland State (Aug 27, 2016)

**KILLS 3-SETS (K-E-TA)**

15 (15- 0-26) \_\_\_\_\_ Douglass, Lauren vs UTEP (Sep 05, 2016)  
 15 (15- 3-26) \_\_\_\_\_ Douglass, Lauren at North Dakota (Sep 03, 2016)  
 13 (13- 1-27) \_\_\_\_\_ McDougald, Toni at North Dakota (Sep 03, 2016)  
 12 (12- 2-29) \_\_\_\_\_ Douglass, Lauren vs Oklahoma (Oct 12, 2016)  
 11 (11- 1-19) \_\_\_\_\_ Douglass, Lauren vs Texas-RGV (Sep 10, 2016)

**KILLS 4-SETS (K-E-TA)**

17 (17- 0-22) \_\_\_\_\_ Douglass, Lauren at Portland State (Aug 27, 2016)  
 17 (17- 5-35) \_\_\_\_\_ Douglass, Lauren vs Stephen F. Austin (Sep 09, 2016)  
 16 (16- 2-29) \_\_\_\_\_ Douglass, Lauren vs Oral Roberts (Sep 10, 2016)  
 13 (13- 6-28) \_\_\_\_\_ Ybanez, Alyssa at Portland State (Aug 27, 2016)  
 11 (11- 1-19) \_\_\_\_\_ Atwood, Chandler vs Oral Roberts (Sep 10, 2016)

**KILLS 5-SETS (K-E-TA)**

19 (19- 3-42) \_\_\_\_\_ Henriksen, Hannah at Rice (Sep 14, 2016)  
 17 (17-6-40) \_\_\_\_\_ Redding, Sarah vs Texas (Oct. 21, 2016)  
 17 (17- 4-31) \_\_\_\_\_ Douglass, Lauren at Rice (Sep 14, 2016)  
 16 (16- 3-32) \_\_\_\_\_ Douglass, Lauren at North Dakota State (Sep 02, 2016)  
 15 (15- 5-37) \_\_\_\_\_ Enschede, Courtney at North Dakota State (Sep 02, 2016)

**TOTAL ATTEMPTS (K-E-TA)**

42 (13-5-42) 5s \_\_\_\_\_ McDougald, Toni vs Texas (Oct. 21, 2016)  
 42 (19- 3-42) 5s \_\_\_\_\_ Henriksen, Hannah at Rice (Sep 14, 2016)  
 40 (17-6-40) 5s \_\_\_\_\_ Redding, Sarah vs Texas (Oct. 21, 2016)  
 40 (9- 8-40) 4s \_\_\_\_\_ McDougald, Toni vs Stephen F. Austin (Sep 09, 2016)  
 39 (11- 3-39) 5s \_\_\_\_\_ McDougald, Toni at Rice (Sep 14, 2016)

**TOTAL ATTEMPTS 3-SETS (K-E-TA)**

31 (11- 4-31) \_\_\_\_\_ McDougald, Toni vs Texas-RGV (Sep 10, 2016)  
 29 (10-4-29) \_\_\_\_\_ Douglass, Lauren vs. No. 6 Kansas (Oct. 26, 2016)  
 29 (12- 2-29) \_\_\_\_\_ Douglass, Lauren vs Oklahoma (Oct 12, 2016)  
 27 (13- 1-27) \_\_\_\_\_ McDougald, Toni at North Dakota (Sep 03, 2016)  
 26 (5- 4-26) \_\_\_\_\_ McDougald, Toni vs Wichita State (Sep 16, 2016)  
 26 (11- 2-26) \_\_\_\_\_ McDougald, Toni vs South Dakota State (Sep 02, 2016)

**TOTAL ATTEMPTS 4-SETS (K-E-TA)**

40 (9- 8-40) \_\_\_\_\_ McDougald, Toni vs Stephen F. Austin (Sep 09, 2016)  
 37 (11- 2-37) \_\_\_\_\_ Henriksen, Hannah at Portland State (Aug 27, 2016)  
 35 (17- 5-35) \_\_\_\_\_ Douglass, Lauren vs Stephen F. Austin (Sep 09, 2016)  
 29 (16- 2-29) \_\_\_\_\_ Douglass, Lauren vs Oral Roberts (Sep 10, 2016)  
 28 (8-5-28) \_\_\_\_\_ Ybanez, Alyssa at TCU (Sep 21, 2016)  
 28 (6-6-28) \_\_\_\_\_ Fragniere, Audrey at TCU (Sep 21, 2016)  
 28 (13- 6-28) \_\_\_\_\_ Ybanez, Alyssa at Portland State (Aug 27, 2016)

**TOTAL ATTEMPTS 5-SETS (K-E-TA)**

42 (13-5-42) \_\_\_\_\_ McDougald, Toni vs Texas (Oct. 21, 2016)  
 42 (19- 3-42) \_\_\_\_\_ Henriksen, Hannah at Rice (Sep 14, 2016)  
 40 (17-6-40) \_\_\_\_\_ Redding, Sarah vs Texas (Oct. 21, 2016)  
 39 (11- 3-39) \_\_\_\_\_ McDougald, Toni at Rice (Sep 14, 2016)  
 38 (13- 9-38) \_\_\_\_\_ Ybanez, Alyssa vs Colorado (Aug 26, 2016)

**ASSISTS**

57 (5s) \_\_\_\_\_ Grubb, Marguerite at North Dakota State (Sep 02, 2016)  
 52 (5s) \_\_\_\_\_ Grubb, Marguerite vs Colorado (Aug 26, 2016)  
 51 (5s) \_\_\_\_\_ Grubb, Marguerite at Rice (Sep 14, 2016)  
 46 (4s) \_\_\_\_\_ Grubb, Marguerite vs Stephen F. Austin (Sep 09, 2016)  
 44 (5s) \_\_\_\_\_ Grubb, Marguerite vs. Texas (Oct. 21, 2016)

**ASSISTS 3-SETS**

38 \_\_\_\_\_ Grubb, Marguerite vs Texas-RGV (Sep 10, 2016)  
 36 \_\_\_\_\_ Grubb, Marguerite vs Oklahoma (Oct 12, 2016)  
 35 \_\_\_\_\_ Grubb, Marguerite vs South Dakota State (Sep 02, 2016)  
 33 \_\_\_\_\_ Grubb, Marguerite at North Dakota (Sep 03, 2016)  
 30 \_\_\_\_\_ Grubb, Marguerite vs Wichita State (Sep 16, 2016)

**ASSISTS 4-SETS**

46 \_\_\_\_\_ Grubb, Marguerite vs Stephen F. Austin (Sep 09, 2016)  
 43 \_\_\_\_\_ Grubb, Marguerite at Portland State (Aug 27, 2016)  
 37 \_\_\_\_\_ Grubb, Marguerite vs Oral Roberts (Sep 10, 2016)  
 15 \_\_\_\_\_ Canales, Sophia at TCU (Sep 21, 2016)  
 13 \_\_\_\_\_ Cowan, Kyndal at TCU (Sep 21, 2016)

**ASSISTS 5-SETS**

57 \_\_\_\_\_ Grubb, Marguerite at North Dakota State (Sep 02, 2016)  
 52 \_\_\_\_\_ Grubb, Marguerite vs Colorado (Aug 26, 2016)  
 51 \_\_\_\_\_ Grubb, Marguerite at Rice (Sep 14, 2016)  
 44 \_\_\_\_\_ Grubb, Marguerite vs Texas (Oct. 21, 2016)  
 5 \_\_\_\_\_ Akiu, Reyn vs Colorado (Aug 26, 2016)

**DIGS**

30 (4s) \_\_\_\_\_ Akiu, Reyn vs Stephen F. Austin (Sep 09, 2016)  
 25 (3s) \_\_\_\_\_ Akiu, Reyn vs No. 6 Kansas (Oct. 26, 2016)  
 24 (4s) \_\_\_\_\_ Akiu, Reyn at TCU (Sep 21, 2016)  
 24 (5s) \_\_\_\_\_ Akiu, Reyn vs Colorado (Aug 26, 2016)  
 23 (5s) \_\_\_\_\_ Akiu, Reyn vs Texas (Oct 21, 2016)  
 23 (5s) \_\_\_\_\_ Akiu, Reyn at North Dakota State (Sep 02, 2016)

**DIGS 3-SETS**

25 \_\_\_\_\_ Akiu, Reyn vs No. 6 Kansas (Oct. 26, 2016)  
 22 \_\_\_\_\_ Akiu, Reyn vs Wichita State (Sep 16, 2016)  
 22 \_\_\_\_\_ Akiu, Reyn vs Texas-RGV (Sep 10, 2016)  
 19 \_\_\_\_\_ Sagers, Maggie vs Oklahoma (Oct 12, 2016)  
 18 \_\_\_\_\_ Akiu, Reyn at North Dakota (Sep 03, 2016)

**DIGS 4-SETS**

30 \_\_\_\_\_ Akiu, Reyn vs Stephen F. Austin (Sep 09, 2016)  
 24 \_\_\_\_\_ Akiu, Reyn at TCU (Sep 21, 2016)  
 16 \_\_\_\_\_ Akiu, Reyn vs Oral Roberts (Sep 10, 2016)  
 16 \_\_\_\_\_ Bryant, Katelyn vs Oral Roberts (Sep 10, 2016)  
 16 \_\_\_\_\_ Grubb, Marguerite vs Stephen F. Austin (Sep 09, 2016)

**DIGS 5-SETS**

24 \_\_\_\_\_ Akiu, Reyn vs Colorado (Aug 26, 2016)  
 23 \_\_\_\_\_ Akiu, Reyn vs Texas (Oct 21, 2016)  
 23 \_\_\_\_\_ Akiu, Reyn at North Dakota State (Sep 02, 2016)  
 19 \_\_\_\_\_ Akiu, Reyn at Rice (Sep 14, 2016)  
 15 \_\_\_\_\_ Sagers, Maggie at North Dakota State (Sep 02, 2016)

**ACES**

4 \_\_\_\_\_ Akiu, Reyn vs Long Beach State (Aug 27, 2016)  
 3 \_\_\_\_\_ Sagers, Maggie at North Dakota (Sep 03, 2016)  
 3 \_\_\_\_\_ Sagers, Maggie vs South Dakota State (Sep 02, 2016)  
 3 \_\_\_\_\_ Akiu, Reyn vs Abilene Christian (Sep 09, 2016)

**BLOCKS (BS-BA)**

10 (2-8) \_\_\_\_\_ Douglass, Lauren vs Stephen F. Austin (Sep 09, 2016)  
 8 (1-7) \_\_\_\_\_ Douglass, Lauren at Portland State (Aug 27, 2016)  
 6 (1-5) \_\_\_\_\_ Douglass, Lauren vs Long Beach State (Aug 27, 2016)  
 6 (0-6) \_\_\_\_\_ Grubb, Marguerite at Portland State (Aug 27, 2016)  
 6 (0-6) \_\_\_\_\_ Douglass, Lauren vs Colorado (Aug 26, 2016)  
 6 (0-6) \_\_\_\_\_ Grubb, Marguerite at Portland State (Aug 27, 2016)

### THE LAST TIME TEXAS TECH...

Defeated an opponent in three sets.....	vs. UT Rio Grande Valley (Sept. 10, 2016)
Defeated a non-conference opponent in three sets.....	vs. UT Rio Grande Valley (Sept. 10, 2016)
Defeated a non-conference opponent in three sets at home.....	vs. UT Rio Grande Valley (Sept. 10, 2016)
Defeated a non-conference opponent in three sets on the road.....	at North Dakota (Sept. 3, 2016)
Defeated a non-conference opponent in three sets at neutral site.....	vs. South Dakota State (Sept. 2, 2016)
Defeated a Big 12 opponent in three sets.....	vs. West Virginia (Nov. 13, 2015)
Defeated a Big 12 opponent in three sets at home.....	vs. West Virginia (Nov. 13, 2015)
Defeated a Big 12 opponent in three sets on the road.....	at West Virginia (Oct. 14, 2015)
Defeated an opponent in four sets.....	vs. Oral Roberts (Sept. 10, 2016)
Defeated a non-conference opponent in four sets.....	vs. Oral Roberts (Sept. 10, 2016)
Defeated a non-conference opponent in four sets at home.....	vs. Oral Roberts (Sept. 10, 2016)
Defeated a non-conference opponent in four sets on the road.....	at Portland State (Aug. 27, 2016)
Defeated a non-conference opponent in four sets at neutral site.....	vs. George Washington (Sept. 12, 2015)
Defeated a Big 12 opponent in four sets.....	vs. TCU (Sept. 24, 2014)
Defeated a Big 12 opponent in four sets at home.....	vs. TCU (Sept. 24, 2014)
Defeated a Big 12 opponent in four sets on the road.....	at West Virginia (Oct. 13, 2012)
Defeated an opponent in five sets.....	at Rice (Sept. 14, 2016)
Defeated a non-conference opponent in five sets.....	at Rice (Sept. 14, 2016)
Defeated a non-conference opponent in five sets at home.....	vs. Weber State (Sept. 19, 2014)
Defeated a non-conference opponent in five sets on the road.....	at Rice (Sept. 14, 2016)
Defeated a non-conference opponent in five sets at neutral site.....	vs. Bucknell (Aug. 30, 2014)
Defeated a Big 12 opponent in five sets.....	vs. Oklahoma (Sept. 23, 2015)
Defeated a Big 12 opponent in five sets at home.....	vs. Oklahoma (Sept. 23, 2015)
Defeated a Big 12 opponent in five sets on the road.....	at Baylor (Oct. 1, 2014)
Lost to an opponent in three sets.....	vs. #6 Kansas (Oct. 26, 2016)
Lost to a non-conference opponent in three sets.....	at UTSA (Sept. 16, 2016)
Lost to a non-conference opponent in three sets at home.....	vs. Washington State (Sept. 18, 2015)
Lost to a non-conference opponent in three sets on the road.....	at UTSA (Sept. 16, 2016)
Lost to a non-conference opponent in three sets at neutral site.....	vs. Wichita State (Sept. 16, 2016)
Lost to a Big 12 opponent in three sets.....	vs. #6 Kansas (Oct. 26, 2016)
Lost to a Big 12 opponent in three sets at home.....	vs. #6 Kansas (Oct. 26, 2016)
Lost to a Big 12 opponent in three sets on the road.....	at Iowa State (Oct. 15, 2016)
Lost to an opponent in four sets.....	at TCU (Sept. 21, 2016)
Lost to a non-conference opponent in four sets.....	vs. Maryland (Sept. 11, 2015)
Lost to a non-conference opponent in four sets at home.....	vs. New Orleans (Sept. 13, 2008)
Lost to a non-conference opponent in four sets on the road.....	at Abilene Christian (Sept. 10, 2013)
Lost to a non-conference opponent in four sets at neutral site.....	vs. Maryland (Sept. 11, 2015)
Lost to a Big 12 opponent in four sets.....	at TCU (Sept. 21, 2016)
Lost to a Big 12 opponent in four sets at home.....	vs. Iowa State (Nov. 21, 2015)
Lost to a Big 12 opponent in four sets on the road.....	at TCU (Sept. 21, 2016)
Lost to an opponent in five sets.....	vs. #2 Texas (Oct. 21, 2016)
Lost to a non-conference opponent in five sets.....	vs. Colorado (Aug. 26, 2016)
Lost to a non-conference opponent in five sets at home.....	vs. TCU (Sept. 12, 2008)
Lost to a non-conference opponent in five sets on the road.....	at Incarnate Word (Sept. 17, 2013)
Lost to a non-conference opponent in five sets at neutral site.....	vs. Colorado (Aug. 26, 2016)
Lost to a Big 12 opponent in five sets.....	vs. #2 Texas (Oct. 21, 2016)
Lost to a Big 12 opponent in five sets at home.....	vs. #2 Texas (Oct. 21, 2016)
Lost to a Big 12 opponent in five sets on the road.....	at #22 Kansas State (Nov. 1, 2014)
Defeated a ranked opponent.....	vs. #20 Kansas State (Nov. 17, 2012)
Defeated a ranked opponent at home.....	vs. #20 Kansas State (Nov. 17, 2012)
Defeated a ranked opponent on the road.....	at #24 Kansas State, 3-2 (Nov. 20, 2004)
Defeated a ranked opponent at a neutral site.....	Never in Big 12 era
Lost to a ranked opponent.....	vs. #6 Kansas (Oct. 26, 2016)
Lost to a ranked opponent at home.....	vs. #6 Kansas (Oct. 26, 2016)
Lost to a ranked opponent on the road.....	at #6 Kansas (Oct. 8, 2016)
Lost to a ranked opponent at a neutral site.....	vs. #10 Illinois (Aug. 29, 2009)
Defeated an opponent after trailing 1-0.....	vs. Oklahoma (Sept. 23, 2015)
Defeated an opponent after trailing 2-0.....	at North Dakota State (Sept. 2, 2016)
Defeated an opponent after trailing 1-2.....	vs. Oklahoma (Sept. 23, 2015)
Lost to an opponent after leading 1-0.....	vs. #2 Texas (Oct. 21, 2016)
Lost to an opponent after leading 2-0.....	at #22 Kansas State (Nov. 1, 2014)
Lost to an opponent after leading 2-1.....	at Incarnate Word (Sept. 17, 2013)
Had a 20-kill performance.....	20, Meghan Stacy, vs. Iowa State (Nov. 21, 2015)
Had a 30-kill performance.....	33, Kelly Johnson vs. Kansas State (Nov. 20, 2004)
Had a 30-dig performance.....	30, Reyn Akiu vs. Stephen F. Austin (Sept. 10, 2016)
Had a 60-assist performance.....	61, Marguerite Grubb vs. Air Force (Sept. 20, 2014)
Had a player hit .500 or better (minimum 10 kills).....	.577, Lauren Douglass vs. UTEP (Sep 5, 2016)
Had a player go for at least 20 kills and 10 digs.....	25 and 10, Jenna Allen, at #22 Kansas State (Nov. 1, 2014)
Had at least four players register double-digit kills.....	at TCU (Nov. 19, 2014)
Had at least four players register double-digit digs.....	vs. Houston (Aug. 29, 2015)
Hit .300 as a team.....	.300, vs. Oral Roberts (Sept. 10, 2016)
Held an opponent to .050 or worse.....	.039, vs. Stephen F. Austin (Sept. 9, 2016)



TOP 10 HOME VOLLEYBALL CROWDS				TOP 10 CROWDS AT THE UNITED SUPERMARKETS ARENA			
RANK	OPPONENT	DATE	ATTENDANCE	RANK	OPPONENT	DATE	ATTENDANCE
1.	Iowa State	Nov. 27, 2002	5,507*	1.	Iowa State	Nov. 27, 2002	5,507
2.	Georgia	Dec. 7, 1991	2,511	2.	Texas	Oct. 12, 2002	2,060
3.	Texas	Oct. 12, 2002	2,060*	3.	Nebraska	Oct. 14, 2000	1,731
4.	Baylor	Nov. 9, 1991	1,892	4.	Texas	Nov. 5, 2014	1,566
5.	Nebraska	Oct. 14, 2000	1,731*	5.	Nebraska	Sept. 15, 2007	1,468
6.	Texas	Oct. 24, 1992	1,712	6.	Texas	Nov. 8, 2011	1,413
7.	Texas	Nov. 5, 2014	1,566*	7.	Texas	Oct. 6, 2004	1,292
8.	Missouri	Sept. 27, 1996	1,535	8.	Northeastern	Sept. 11, 2010	1,262
9.	Texas	Sept. 29, 1991	1,528	9.	Missouri	Sept. 15, 2010	1,248
10.	Nebraska	Sept. 15, 2007	1,468*	10.	Texas	Oct. 21, 2016	1,223

\* - Denotes Matches Played At The United Supermarkets Arena





## 2016 NUMERICAL ROSTER

NO.	NAME	HT.	POS.	CLASS-EX.	HOMETOWN/LAST SCHOOL
1	Victoria Hinneburg	6-4	RS	RSJr-2L	Leipzig, Germany (Sportgymnasium Dresden)
2	Kylie Rittimann	5-10	DS	Fr-HS	San Antonio, Texas (Johnson H.S.)
3	Kyndal Cowan	5-10	SET	So-TR	Midland, Texas (Midland H.S.)
4	Marguerite Grubb	5-11	SET	Sr-3L	Bellaire, Texas (Bellaire H.S.)
5	Lauren Douglass	6-2	MB	RSSr-3L	Flower Mound, Texas (Ole Miss)
6	Sarah Redding	6-3	OH	So-1L	Friendswood, Texas (Friendswood H.S.)
7	Tita Akiu	5-7	LIB	So-1L	Honolulu, Hawaii (Kamehameha Schools)
8	Sophia Canales	5-9	SET	Fr-HS	San Antonio, Texas (Alamo Heights H.S.)
9	Ashley Morgan	5-8	DS	Jr-2L	Plano, Texas (Prestonwood Christian)
10	Eighmy Dobbins	5-10	DS	Fr-HS	Argyle, Texas (Argyle H.S.)
11	Alyssa Ybanez	5-11	OH	Jr-2L	Rancho Cucamonga, Calif. (Rim of the World)
12	Katy Keenan	6-4	MB	So-1L	Argyle, Texas (Argyle H.S.)
13	Audrey Fragniere	5-9	OH	Jr-2L	Neuchatel, Switzerland/Lyce Jean Plaget
14	Ally Standard	6-4	MB	So-TR	San Angelo, Texas (Central H.S.)
15	Courtney Ensich	6-0	RS	Jr-2L	Southlake, Texas (Carroll H.S.)
16	Toni McDougald	5-11	OH	Fr-HS	Centennial, Colo. (Cherry Creek H.S.)
17	Maggie Sagers	5-9	DS	Fr-HS	Plano, Texas (Plano Senior H.S.)
18	Chandler Atwood	6-0	OH	Fr-HS	Allen, Texas (Allen H.S.)
23	Michelle Irvin	6-1	OH	So-HS	Austin, Texas (Westlake H.S.)
24	Taylor Martinez	6-1	MB	Fr-HS	San Antonio, Texas (Winston Churchill H.S.)
26	Katelyn Bryant	5-4	LIB	So-1L	McKinney, Texas (McKinney Boyd H.S.)
27	Taylor Haskins	6-0	OH	So-1L	Kennesaw, Ga. (Harrison H.S.)
33	Hannah Henriksen	6-3	OH	Jr-TR	Bakersfield, Calif. (Frontier H.S.)

## 2016 ALPHABETICAL ROSTER

NO.	NAME	POS.
7	Tita Akiu	LIB
18	Chandler Atwood	OH
26	Katelyn Bryant	LIB
8	Sophia Canales	SET
3	Kyndal Cowan	SET
10	Eighmy Dobbins	DS
5	Lauren Douglass	MB
15	Courtney Ensich	RS
13	Audrey Fragniere	OH
4	Marguerite Grubb	SET
27	Taylor Haskins	OH
33	Hannah Henriksen	OH
1	Victoria Hinneburg	RS
23	Michelle Irvin	OH
12	Katy Keenan	MB
24	Taylor Martinez	MB
16	Toni McDougald	OH
9	Ashley Morgan	DS
6	Sarah Redding	OH
2	Kylie Rittimann	DS
17	Maggie Sagers	DS
14	Ally Standard	MB
11	Alyssa Ybanez	OH

## COACHING STAFF

**Head Coach:** Tony Graystone (1st Season)

**Assistant Coach/Recruiting Coordinator:** Morgan Thomas (1st Season)

**Assistant Coach:** Brandy Huskey (1st Season)

**Director of Operations:** Alyce Peters (2nd Season)

## ROSTER BREAKDOWN

## BY POSITION

Setter	3
_____ Canales, Cowan, Grubb	
Outside Hitter	8
_____ Atwood, Fragniere, Haskins, Henriksen,	
_____ Irvin, McDougald, Redding, Ybanez	
Opposite/Right Side	2
_____ Ensich, Hinneburg	
Middle Blocker	4
_____ Douglass, Keenan, Martinez, Standard	
Defensive Specialist/Libero	6
_____ Akiu, Bryant, Dobbins,	
_____ Morgan, Rittimann, Sagers	

## BY CLASSIFICATION

Seniors	2
_____ Douglass, Grubb	
Juniors	6
_____ Ensich, Fragniere, Henriksen	
_____ Hinneburg, Morgan, Ybanez	
Sophomores	8
_____ Akiu, Bryant, Cowan, Haskins,	
_____ Irvin, Keenan, Redding, Standard	
Freshmen	7
_____ Atwood, Canales, Dobbins,	
_____ Martinez, McDougald, Rittimann, Sagers	

## BY HOME STATE/COUNTRY

California	2
_____ Henriksen, Ybanez	
Colorado	1
_____ McDougald	
Georgia	1
_____ Haskins	
Germany	1
_____ Hinneburg	
Hawaii	1
_____ Akiu	
Switzerland	1
_____ Fragniere	
Texas	16
_____ Atwood, Bryant, Canales, Cowan,	
_____ Dobbins, Douglass, Ensich, Grubb,	
_____ Irvin, Keenan, Martinez, Morgan,	
_____ Redding, Rittimann, Sagers, Standard	

## PRONUNCIATION GUIDE

Tita Akiu	Tee-Tah
	Ah-Q
Eighmy Dobbins	Amy
Courtney Ensich	Inch
Victoria Hinneburg	Hinnen-borg
Audrey Fragniere	Frog-knee-air



**1**  
Victoria Hinneburg  
6-4 • RS/MB • JR-2L  
Leipzig, Germany



**2**  
Kylie Rittmann  
5-10 • DS • FR-HS  
San Antonio, Texas



**3**  
Kyndal Cowan  
5-10 • SET • SO-TR  
Midland, Texas



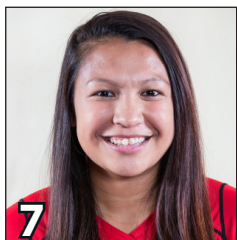
**4**  
Marguerite Grubb  
5-11 • SET • SR-3L  
Bellaire, Texas



**5**  
Lauren Douglass  
6-2 • RS • SR-3L  
Flower Mound, Texas



**6**  
Sarah Redding  
6-3 • OH • SO-1L  
Friendswood, Texas



**7**  
Tita Akiu  
5-7 • LIB • SO-1L  
Honolulu, Hawaii



**8**  
Sophia Canales  
5-9 • SET • FR-HS  
San Antonio, Texas



**9**  
Ashley Morgan  
5-8 • DS • JR/2L  
Plano, Texas



**10**  
Eighthmy Dobbins  
5-10 • DS • FR-HS  
Argyle, Texas



**11**  
Alyssa Ybanez  
5-11 • OH • JR-2L  
Rancho Cucamonga, Calif.



**12**  
Katy Keenan  
6-4 • MB • SO-1L  
Argyle, Texas



**13**  
Audrey Fragniere  
5-9 • OH • JR-2L  
Neuchatel, Switzerland



**14**  
Ally Standard  
6-4 • MB • SO-TR  
San Angelo, Texas



**15**  
Courtney Ensich  
6-0 • RS • JR-2L  
Southlake, Texas



**16**  
Toni McDougald  
5-11 • OH • FR-HS  
Centennial, Colo.



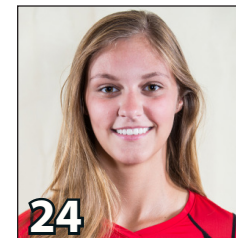
**17**  
Maggie Sagers  
5-9 • DS • FR-HS  
Plano, Texas



**18**  
Chandler Atwood  
6-0 • OH • FR-HS  
Allen, Texas



**23**  
Michelle Irvin  
6-1 • OH • SO-TR  
Austin, Texas



**24**  
Taylor Martinez  
6-1 • MB • FR-HS  
San Antonio, Texas



**26**  
Katelyn Bryant  
5-4 • LIB • SO-1L  
McKinney, Texas



**27**  
Taylor Haskins  
6-0 • OH • SO-1L  
Kennesaw, Ga.



**33**  
Hannah Henriksen  
6-3 • OH • JR-TR  
Bakersfield, Calif.



**Tony Graystone**  
Head Coach  
1st Season



**Morgan Thomas**  
Asst. Coach/Recruiting  
1st Season



**Brandy Huskey**  
Assistant Coach  
1st Season



**Alyce Peters**  
Director of Operations  
2nd Season