



TEXAS BASKETBALL

SCHEDULE AND RESULTS

DATE	DAY	UT	OPP	OPPONENT	TV	TIME/RESULT
SUN	N.05	2/6	1 (NAIA)	OKLAHOMA CITY [EXH.]	LHN	W, 99-36
SUN	N.12	2/6	NR/NR	STETSON	LHN	W, 95-59
WED	N.15	2/6	NR/NR	McNEESE STATE	LHN	W, 100-34
FRI	N.17	2/6	NR/NR	UTSA	LHN	W, 120-70
South Point Shootout [Las Vegas, Nev.]						
FRI	N.24	2/4	NR/NR	vs. LSU	LiveStream.com	W, 75-66
SAT	N.25	2/4	NR/RV	vs. Washington	LiveStream.com	W, 92-68
THU	N.30	2/4	NR/NR	LOUISIANA TECH	LHN	W, 88-54
BIG 12/SEC Challenge [Athens, Ga.]						
SUN	D.03	2/4	RV/RV	at Georgia	SEC Network	W, 81-53
SUN	D.10	2/4	11/13	at Tennessee	ESPN2	2:00 p.m.
WED	D.13			NORTHWESTERN STATE	LHN	7:00 p.m.
SUN	D.17			FLORIDA STATE	FS1	11:30 a.m.
THU	D.28			at Oklahoma *	FS Oklahoma	7:00 p.m.
SUN	D.31			WEST VIRGINIA *	FSN	3:30 p.m.
WED	J.03			OKLAHOMA STATE *	LHN	7:00 p.m.
SUN	J.07			at Kansas State *	ESPNU	1:00 p.m.
WED	J.10			at TCU *	FSSW +	8:00 p.m.
SAT	J.13			KANSAS *	LHN	1:00 p.m.
MON	J.15			UCONN	ESPN2	6:00 p.m.
SAT	J.20			at Texas Tech *	FSN	3:00 p.m.
THU	J.25			at Baylor *	ESPN	6:00 p.m.
SAT	J.27			IOWA STATE *	LHN	7:00 p.m.
WED	J.31			at Kansas *	ESPN3	7:00 p.m.
SAT	F.03			TCU *	LHN	11:00 a.m.
MON	F.05			at West Virginia *	FS1	6:00 p.m.
SAT	F.10			KANSAS STATE *	LHN	7:00 p.m.
WED	F.14			TEXAS TECH *	LHN	7:00 p.m.
SAT	F.17			at Oklahoma State *	FS Oklahoma	2:00 p.m.
MON	F.19			BAYLOR *	ESPN2	7:00 p.m.
SAT	F.24			at Iowa State *	FSN	5:00 p.m.
TUE	F.27			OKLAHOMA *	FS1	6:00 p.m.

March 2-5 - Big 12 Conference Tournament [Oklahoma City, Okla.]

* - Big 12 Conference game | All times Central.

Rankings: Associated Press Top 25 / USA Today Coaches Poll

NCAA PROGRAMS AT 1,000 ALL-TIME WINS

Tennessee	1,328
Louisiana Tech	1,095
UConn	1,089
James Madison	1,074
Texas	1,044
Stanford	1,041
Stephen F. Austin	1,036
Old Dominion	1,032

ALL-TIME NCAA TOURNAMENT APPEARANCES

Tennessee	36
Georgia	32
Stanford	31
Texas	30
UConn	29

MEDIA RELATIONS

UT Athletics Media Relations
P.O. Box 7399, Austin, TX 78713-7399
512-471-6039 • TexasSports.com

GAME 8 | TENNESSEE | DECEMBER 10, 2017



TEXAS^{2/4}
7-0, 0-0 Big 12

Head Coach: Karen Aston
at UT: 121-55 (.688), 6th season
Career: 222-118 (.653), 11th season



TENNESSEE^{11/13}
9-0, 0-0 SEC

Head Coach: Holly Warlick
at Tennessee: 137-46 (.749), 6th season
Career: Same



Date: December 10, 2017
Time: 2 p.m. CT
Location: Knoxville, Tenn.
Arena: Thompson-Boling Arena
Series: Tennessee leads 23-15



ESPN2
Play-by-Play: Beth Mowins
Analyst: Debbie Antonelli
Online: WatchESPN



105.3 FM
Play-by-Play: Craig Way
Analyst: Fran Harris
Online: TexasSports.com/audio

TALE OF THE TAPE

	Statistic	
7-0	Overall Record	9-0
0-0	Conference Record	0-0
93.0	Points Per Game	89.4
46.6	Rebounds Per Game	50.1
+15.4	Rebound Margin	+13.7
20.9	Assists Per Game	18.6
10.7	Steals Per Game	9.6
4.6	Blocks Per Game	5.2
15.1	Turnovers Per Game	16.1
+6.7	Turnover Margin	+1.2

GAME-DAY STORYLINES

- Two of the most storied programs in NCAA Division I women's basketball meet Sunday in one of the longest-running rivalries in women's college basketball. No. 2 Texas travels to Knoxville to face No. 11 Tennessee at 2 p.m. CT in Thompson-Boling Arena. The game will be televised nationally by ESPN2. They are two of the top-five winningest programs in the history of college basketball. The Lady Vols are the NCAA's all-time wins leader at 1,328 victories and the Longhorns rank fifth with 1,044 wins.
- **The Series:** Texas and Tennessee meet for the 39th time in the history of the two programs with the Lady Vols leading the all-time series 23-15. This is the 36th consecutive season that the two teams will face one another. Tennessee holds an 11-6 advantage when the game is played in Knoxville. Texas has won three consecutive.
- **National Leaders:** Texas is the national leader in both scoring offense and scoring margin through seven games this season. The Longhorns are averaging a nation-leading 93.0 points per game and defeating their opponents by +35.3 points per game. Texas also ranks eighth in the nation in assists per game at 20.9.
- **On The Boards:** Texas has won the battle of the boards in all seven games this season and, dating back to the start of the 2015-16 season, in 67 of 77 total games. The Longhorns rank fourth nationally in rebound margin at +15.4.
- **Against The Ranked:** Texas is 182-235 (.436) all-time against teams ranked in the Associated Press Top-25, including a 7-7 mark last season. The Longhorns are 21-31 against ranked foes under head coach Karen Aston.
- **Up Next:** Texas returns home to play home to Northwestern State on Wednesday. Tip-off in the Frank Erwin Center is slated for 7 p.m. CT and the game will be televised nationally by Longhorn Network.

**HEAD
COACH**

**KAREN
ASTON**



6TH SEASON AT TEXAS | 11TH SEASON OVERALL
14th Season at UT as an assistant or head coach

CAREER RECORD	OVERALL			CONFERENCE		
	W	L	%	W	L	%
School [seasons]						
Charlotte [4]	86	47	.647	38	18	.679
North Texas [1]	15	16	.484	7	9	.438
TEXAS [6th]	121	55	.688	55	35	.611
OVERALL [11th]	222	118	.653	100	62	.617

YEAR-BY-YEAR RECORD

	W-L	CONFERENCE		POSTSEASON
	W-L	FINISH		
CHARLOTTE				
2007-08	18-14	9-5	4th A-10	WNIT First Round
2008-09	23-9	11-3	2nd A-10	NCAA First Round
2009-10	18-14	9-5	4th A-10	WNIT 2nd Round
2010-11	27-10	9-5	3rd A-10	WNIT Final Four
NORTH TEXAS				
2011-12	15-16	7-9	3rd Sun Belt	-
TEXAS				
2012-13	12-18	5-13	t-8th Big 12	-
2013-14	22-12	11-7	t-3rd Big 12	NCAA 2nd Round
2014-15	24-11	9-9	t-3rd Big 12	NCAA Sweet 16
2015-16	31-5	15-3	2nd Big 12	NCAA Elite 8
2016-17	25-9	15-3	2nd Big 12	NCAA Sweet 16
2017-18	7-0			

CAREER MILESTONE WINS

#	TEAM	OPPONENT [DATE]	SCORE
1	Charlotte	Hampton [11-21-07]	72-47
50	Charlotte	George Washington [01-16-10]	52-42
100	North Texas	Louisiana-Lafayette [02-18-12]	78-40
150	TEXAS	OKLAHOMA [01-29-15]	84-81 2OT
200	TEXAS	TCU [01-07-17]	83-54

TROPHY CASE

- Big 12 Coach of the Year - 2017
Texas Head Coach
- NCAA Final Four - 2003
Texas Associate Head Coach
- Big 12 Tournament Champions - 2003
Texas Associate Head Coach
- Big 12 Regular Season Champions - 2003, 2004
Texas Associate Head Coach
- Atlantic 10 Tournament Champions - 2009
Charlotte Head Coach
- Set a school-record 27 wins in a season - 2010-11
Charlotte Head Coach
- Arkansas Girls Basketball Coach of the Year - 1993

NUMERICAL ROSTER

#	NAME	POS.	HT.	CLASS	HOMETOWN	HIGH SCHOOL
1	Sug Sutton	G	5-8	So.	St. Louis, Mo.	Parkway North
4	Destiny Littleton	G	5-9	Fr.	La Jolla, Calif.	The Bishop's School
5	Jordan Hosey	F	6-1	Jr.	Pearland, Texas	Manville
10	Lashann Higgs	G	5-9	Jr.	Round Rock, Texas	Cedar Ridge
11	Brooke McCarty	G	5-4	Sr.	League City, Texas	Clear Springs
12	Jada Underwood	G/F	6-0	So.	Mesquite, Texas	Horn
14	Olamide Aborowa	F	6-3	Jr.	Ondo, Nigeria	Neumann-Goretti [Pa.]
15	Chasity Patterson	G	5-5	Fr.	Houston, Texas	North Shore
23	Ariel Atkins	G	5-11	Sr.	Duncanville, Texas	Duncanville
30	Khaléann Caron-Goudreau	F	6-4	Jr.	Gatineau, Quebec	IMG Academy
31	Audrey-Ann Caron-Goudreau	F	6-4	Sr.	Gatineau, Quebec	IMG Academy
33	Rellah Boothe	F	6-3	Fr.	Ocala, Fla.	IMG Academy
40	Jatarie White	F/C	6-4	Jr.	Charlotte, N.C.	Providence Day

ALPHABETICAL ROSTER

#	NAME	POS.	HT.	CLASS	HOMETOWN	HIGH SCHOOL
14	Olamide Aborowa	F	6-3	Jr.	Ondo, Nigeria	Neumann-Goretti [Pa.]
23	Ariel Atkins	G	5-11	Sr.	Duncanville, Texas	Duncanville
33	Rellah Boothe	F	6-3	Fr.	Ocala, Fla.	IMG Academy
31	Audrey-Ann Caron-Goudreau	F	6-4	Sr.	Gatineau, Quebec	IMG Academy
30	Khaléann Caron-Goudreau	F	6-4	Jr.	Gatineau, Quebec	IMG Academy
10	Lashann Higgs	G	5-9	Jr.	Round Rock, Texas	Cedar Ridge
5	Jordan Hosey	F	6-1	Jr.	Pearland, Texas	Manville
4	Destiny Littleton	G	5-9	Fr.	La Jolla, Calif.	The Bishop's School
11	Brooke McCarty	G	5-4	Sr.	League City, Texas	Clear Springs
15	Chasity Patterson	G	5-5	Fr.	Houston, Texas	North Shore
1	Sug Sutton	G	5-8	So.	St. Louis, Mo.	Parkway North
12	Jada Underwood	G/F	6-0	So.	Mesquite, Texas	Horn
40	Jatarie White	F/C	6-4	Jr.	Charlotte, N.C.	Providence Day

COACHING STAFF

Head Coach: Karen Aston
6th Season as Head Coach at UT [Little Rock '87]
Associate Head Coach: Tina Thompson
3rd Season at UT [Southern California '97]
Assistant Coach: Jamie Carey
2nd Season at UT [Texas '04]
Assistant Coach: George Washington
6th Season at UT [Abilene Christian '00]
Sports Performance Coach: Zack Zillner
1st Season at UT [Kansas '11]

SUPPORT STAFF

Women's Athletics Director: Chris Plonsky
Senior Associate AD/Sport Administrator: Kathy Harston
Sr. Associate AD/Student-Athlete Services: Dr. LaToya Smith
Assistant AD/Basketball Operations: Angela Ortega
Associate Athletic Trainer: Heidi Wlezien
Special Assistant: Mark Recoulley
Video Coordinator: Jama Sharp
Coordinator of Community Engagement: Fran Harris
Administrative Assistant: Dennis Colwell

PRONUNCIATION GUIDE

Olamide Aborowa OH-lah-MUH-day ah-bore-oh-uh
Rellah Boothe RHEL-luh
Caron-Goudreau care-RON - good-drow
Khaléann Cally-Ann
Lashann Higgs luh-shawn
Sug Sutton sh-OOG
Jatarie White JUH-tar-EE
Heidi Wlezien LUH-zeen

QUICK FACTS

Season of Basketball	44th [1974-75]
All-Time Record [Pct.]	1,044-381 [.733]
NCAA Appearances [Record]	30 [40-29]
Conference regular season titles	12
Conference tournament titles	10

UNIVERSITY OF TEXAS

Location	Austin, Texas
Enrollment	51,334
President	Greg Fennes
Women's AD	Christine Plonsky
Founded	1883
Nickname/Mascot	Longhorns/Bevo XIV
Colors	Burnt Orange & White [Pantone 159]
Affiliation	NCAA Division I
Conference	Big 12
Home Arena	Frank C. Erwin Center
Capacity	16,540

TEXAS BASKETBALL MEDIA CALENDAR

Sunday - 10	Monday - 4	Tuesday - 5	Wednesday - 6	Thursday - 7	Friday - 8	Saturday - 9
Texas at Tennessee 2 p.m. CT ESPN2 Knoxville, Tenn.	OFF	Practice 4:30-7 p.m. CT Cooley Pavilion	Practice 1:30-5 p.m. CT Cooley Pavilion	OFF	Practice 1:30-5 p.m. CT Cooley Pavilion	Travel to Knoxville, Tenn.

SERIES HISTORY VS. TENNESSEE

- Long-time rivals Texas and Tennessee meet for the 39th time on Sunday on ESPN2. Tennessee leads the all-time series 23-15.
- This is the 36th consecutive season the Longhorns and Lady Vols will meet.
- Tennessee holds an 11-6 advantage when the game is played in Knoxville.
- The series first began with an 84-60 Texas loss on Dec. 8, 1978, at a neutral site in the Mid-America Invitational. After that, the Longhorns went on to win seven of the next eight contests before the Lady Vols won the next 13 games.
- Karen Aston is 3-2 against Tennessee in her nine-year head coaching career.
- Tennessee (1,328 wins) and Texas (1,044 wins) are two of the all-time winningest programs in NCAA history, combining for 2,372 victories all-time.

TEXAS-TENNESSEE CONNECTIONS

- **Kathy Harston**, Texas' Senior Associate Athletics Director for Sports Programs, served as Tennessee's Director of Basketball Operations from 2008-12. Prior to her stint in Knoxville, Harston worked for 18 years as an assistant coach at Texas from 1989-2007. During Harston's time on the bench in Austin alongside Hall of Fame coach **Jody Conradt**, the Longhorns made 14 NCAA Tournament appearances, including a trip to the Final Four in 2003 along with advancing to the "Elite Eight" in 1990 and the "Sweet 16" in both 2002 and 2004. Texas also claimed eight total conference championships, including five regular season titles and three postseason tournament crowns.
- Conradt and the late **Pat Summitt** are both Naismith Memorial Basketball Hall of Fame inductees and were the first two coaches to record 900 victories in Women's College Basketball.
- Conradt and Summitt attended each other's statue dedications at their respective institutions. Conradt's statue on the Erwin Center concourse was dedicated on 2012 and Summitt's statue near Thompson-Thompson-Boling Arena was dedicated on Nov. 22, 2013.
- Texas media relations assistant **Chandler Frumin** is a 2017 University of Tennessee graduate and a former Tennessee rowing student-athlete.

TEXAS IN THE LAST THREE-PLUS YEARS

- 87 WINS
- THREE NCAA SWEET 16 APPEARANCES
- ONE NCAA ELITE EIGHT APPEARANCE
- FOUR TOP-SIX RECRUITING CLASSES

LAST MEETING - 2016	1ST	2ND	3RD	4TH	FINAL
Tennessee	12	20	14	21	67
Texas	22	15	11	24	72

December 11, 2016 | Austin, Texas

Tennessee (4-4)

#	PLAYER	FG	A	3fg	A	FT	A	OR	DR	TR	PF	TP	A	TO	B	S	M	
31	Nared	f	10	20	2	6	0	0	4	1	5	5	22	0	2	2	38	
21	Russell	c	3	7	0	0	2	4	1	3	4	3	8	1	4	2	0	37
00	Reynolds	g	1	9	0	1	0	0	1	6	7	2	2	5	0	1	0	34
10	Jackson	g	3	6	2	5	0	0	3	2	5	5	8	0	0	0	0	32
11	DeShields	g	8	20	1	4	2	3	0	4	4	3	19	1	3	1	0	37
04	Nunn	f	1	1	0	0	0	0	1	0	1	1	2	0	1	1	0	6
33	Middleton	f	2	4	1	3	1	2	1	1	2	0	6	2	1	0	0	16
TEAM																		
Totals		28	67	6	19	5	9	15	17	32	19	67	9	12	7	2	200	

Texas (3-4)

#	PLAYER	FG	A	3fg	A	FT	A	OR	DR	TR	PF	TP	A	TO	B	S	M	
31	Caron-Goudreau, A.	f	1	1	0	0	0	0	1	0	1	2	2	0	1	0	0	5
40	Lang	c	5	9	0	0	2	2	3	5	8	1	12	2	0	6	1	40
01	Sutton	g	1	6	0	2	0	0	0	1	1	1	2	1	0	0	0	16
11	McCarty	g	4	10	2	4	3	4	0	4	4	2	13	4	1	0	0	37
20	Taylor	g	2	9	0	0	0	0	2	3	5	3	4	1	3	0	3	23
05	Hosey	f	2	0	0	0	0	1	0	1	0	2	0	0	1	0	11	
10	Higgs	f	5	10	1	1	1	2	2	2	4	0	12	1	3	0	1	26
12	Underwood	f	5	7	0	0	3	4	2	2	4	2	13	0	1	0	0	20
24	Holmes	f	4	8	0	1	4	5	1	7	8	3	12	2	4	0	0	22
TEAM																		
Totals		28	62	3	8	13	17	16	24	40	14	72	11	13	7	5	200	

Officials: Lisa Mattingly, Dee Kantner, Laura Morris
 Technical fouls: Tennessee-None. Texas-None.
 Attendance: 4386

Five Longhorns scored in the double-figures as No. 17/17 Texas Women's Basketball (3-4) held off Tennessee (4-4) inside the Erwin Center on Sunday afternoon, 72-67.

Junior Brooke McCarty posted 13 points, including two treys, along with four blocks and assists on the match. Freshman Jada Underwood joined her with 13 points of her own, good for her new career high.

Senior Kelsey Lang notched another impressive performance, just two shy of her third-straight double-double with 12 points and eight rebounds. Lang also tied her career-high with six blocks while adding two assists and one steal for the game in a career-high 40 minutes of play.

Freshman Joyner Holmes flirted with her first career double-double, registering 12 points and eight boards. Sophomore Lashann Higgs totaled 12 points, including a 5-of-10 effort from the field.

As a team, Texas shot 45.2 percent (28-of-62) from the floor while holding Tennessee to a 41.8 shooting percentage (28-of-67). Texas outrebounded the Lady Vols, 40-32, and has won the battle of the boards in all seven matches this season.

The Lady Vols were led by junior Jaime Nared with 22 points.

INJURY REPORT

- Junior forward **Khaleann Caron-Goudreau** has a stress injury to her right foot and is out indefinitely.

SERIES HISTORY

vs. Tennessee

Overall	15-23
Home	8-10
Away	6-11
Neutral	1-2
Under Karen Aston	3-2
Overtime Games	0-1
Longest Win Streak	W4, twice
Longest Losing Streak	L13
Largest Margin of Victory	+31 (12/11/84)
Largest Margin of Defeat	-41 (12/01/05)
Most Points Scored (combined)	182 (12/20/99)
Most Points Scored	97 (12/09/87)
Most Points Allowed	106 (12/20/99)

Last 10 Meetings with Tennessee

DATE	SITE	W/L	SCORE
11/18/07	A	L	67 - 92
12/14/08	H	W	73 - 59
12/06/09	A	L	58 - 78
12/12/10	H	L	92 - 77
12/04/11	A	L	57 - 73
12/16/12	H	L	75 - 94
12/08/13	A	L	61 - 75
11/30/14	H	W	72 - 59
11/29/15	A	W	64 - 53
12/11/16	H	W	72 - 67

vs. the SEC (146-72)

Alabama	2-0
Arkansas	22-3
Auburn	0-1
Florida	1-3
Georgia	3-5
Kentucky	2-0
LSU	5-4
Ole Miss	6-1
Mississippi State	2-2
Missouri	23-2
South Carolina	2-1
Tennessee	15-23
Texas A&M	62-23
Vanderbilt	1-4

2017-18 RECORD WHEN ...

Overall	7-0
Home	4-0
Away	1-0
Neutral	2-0
Decided by 3 points or fewer	0-0
Decided by 4-6 points	0-0
Decided by 7-9 points	1-0
Decided by 10-19 points	0-0
Decided by 20 points or more	6-0
Out-rebounding opponent	7-0
Out-rebounded by opponent	0-0
Equals opponent's rebounds	0-0
Scoring first	6-0
Opponent scores first	1-0
Leading at half	7-0
Trailing at half	0-0
Tied at half	0-0
Regulation	7-0
Overtime	0-0
Leading FG%	7-0
Trailing FG%	0-0
Equals opponent FG%	0-0
FG% .500 and higher	3-0
FG% .400 - .499	4-0
FG% .300 - .399	0-0
FG% .299 and lower	0-0
Opponent FG% .500 & over	0-0
Opponent FG% .400 - .499	3-0
Opponent FG% .300 - .399	3-0
Opponent FG% .299 and lower	1-0
Leading FT%	5-0
Trailing FT%	1-0
Equals opponent FT%	1-0
Scoring 100+ points	2-0
Scoring 90-99 points	2-0
Scoring 80-89 points	2-0
Scoring 70-79 points	1-0
Scoring 60-69 points	0-0
Scoring 50-59 points	0-0
Scoring fewer than 50 points	0-0
Opponent scores 90+ points	0-0
Opponent scores 80-89 points	0-0
Opponent scores 70-79 points	1-0
Opponent scores 60-69 points	2-0
Opponent scores 50-59 points	4-0
Opponent scores fewer than 50 points	0-0
Atlantic Coast Conference	0-0
Big 12 Conference	0-0
Big Ten Conference	0-0
Pac-12 Conference	1-0
Southeastern Conference	2-0
White uniform	5-0
Burnt Orange uniform	2-0
Gray uniform	0-0
Black uniform	0-0
Longhorn Network	4-0
ESPN	0-0
ESPN2	0-0
SEC Network	1-0
FOX Sports Network	0-0
FOX Sports 1 / 2	0-0
Regional telecasts	0-0
November	6-0
December	1-0
January	0-0
February	0-0
March	0-0

TEXAS PROBABLE STARTERS

NO	NAME	CL	POS	LAST OUTING
11	Brooke McCarty	Sr.	PG	12 pts, 3 rebs, 2 asts, 3 stls in 33 min at Georgia
10	Lashann Higgs	Jr.	G	12 pts, 6-6 FT, 5 asts, 4 rebs in 21 min at Georgia
23	Ariel Atkins	Sr.	G	17 pts, 9 rebs, 3-3 3FG, 2 asts, 2 blks in 30 min at Georgia
31	Audrey-Ann Caron-Goudreau	Sr.	F	6 pts, 5 rebs, 2 stls in 17 min at Georgia
40	Jatarie White	Jr.	C	13 pts, 6 rebs in 26 in at Georgia

QUICK HITS

- Texas women's basketball is in the midst of its 44th season of intercollegiate basketball.
- Texas is one of just eight programs in NCAA Division I women's basketball history to reach 1,000 all-time wins. Texas ranks fifth all-time in NCAA history with 1,044 all-time victories.
- The Longhorns have made 30 all-time NCAA Tournament appearances, which is fourth-most of any program in NCAA D-I Women's Basketball history.
- Texas head coach **Karen Aston** is 121-55 (.688) now in her sixth season at the helm of the Longhorns. She is the program's second-winningest coach in UT history behind Jody Conrardt's 783 victories on the Forty Acres.
- The 2016-17 Longhorns tied the school record for most Big 12 wins in a season at 15. The 2002-03 and 2015-16 squads also posted 15 Big 12 victories.
- Texas has advanced to three consecutive NCAA Sweet 16s for the first time since the 2002, 2003 and 2004 campaigns.
- Over the past two seasons, Texas has earned 14 wins against foes ranked in the Associated Press Top-25.
- Texas and Tennessee are two of 14 NCAA Division I women's basketball teams still undefeated.
- Through seven games this season, Texas leads the nation in both scoring offense (93.0 ppg) and scoring margin (+35.3). Texas has scored 90 or more points in four of their seven games this season.
- As a team, Texas ranks ninth in the nation in field-goal percentage with a 49.9 percent clip. The Longhorns are fourth nationally in rebound margin (+15.4) and fifth in the nation in assists per game (22.0).
- Senior guard **Brooke McCarty** has 196 career three-pointers made, which ranks fourth all-time in program history. McCarty needs four more treys to become just the fourth player in program history to make 200 or more shots from beyond the arc.
- McCarty ranks second in program history in three-point percentage at 40.8 percent (196-of-480) and is one of just four players in program history (**Jamie Carey**, **Kathleen Nash** and **Vicki Hall** are the others) to shoot better than 40 percent from beyond the arc for her career. Carey is the school's all-time three-point field goal percentage leader at 41.8 percent.
- Senior guard **Ariel Atkins** ranks fifth in program history in free-throw percentage with a 81.8 percent clip (207-of-253).
- Atkins leads the Big 12 in assist-to-turnover ratio at 3.3 with 30 assists and nine turnovers.
- Dating back to the start of the 2015-16 season, the Longhorns have won the rebound battle in 67 of 77 total games. Texas has held the edge on the boards in all seven games this season.

A WIN WOULD ...

- Improve Texas to 8-0 for the third time in the last four seasons.
- Give the Longhorns their 16th win in the all-time series with Tennessee, which the Lady Vols currently lead 23-15.
- Give Texas its fourth consecutive win in the series, which would tie the series record for most consecutive Texas victories.

ASTON SECOND-WINNINGEST AT UT

- Texas head coach **Karen Aston** is in the midst of her sixth season at the helm of the Longhorns program. During that time, she has taken Texas back to among the nation's elite programs.
- Aston earned her 200th career victory against TCU on Jan. 7, 2017. Her head coaching career also includes stops at Charlotte and North Texas.
- Aston is 121-55 (.688) in her sixth year at Texas.
- Last season, Aston became the school's second-winningest coach all-time.

TEXAS ALL-TIME VICTORIES BY COACHES

1. Jody Conrardt [1976-2007]	783
2. Karen Aston [2012-Present]	121
3. Gail Goestenkers [2007-12]	102
4. Rodney Page [1975-76]	38

DOUBLE-DOUBLES

Player	Career	Season
Aborowa	0	0
Atkins	1	0
Boothe	0	0
A. Caron-Goudreau	0	0
K. Caron-Goudreau	0	0
Higgs	1	0
Hosey	0	0
McCarty	0	0
Littleton	0	0
Patterson	0	0
Sutton	0	0
Underwood	0	0
White	0	0

TIMES FOULED OUT

Player	Career	Season
Aborowa	0	0
Atkins	8	0
Boothe	0	0
A. Caron-Goudreau	7	1
K. Caron-Goudreau	2	0
Higgs	1	0
Hosey	0	0
McCarty	0	0
Littleton	0	0
Patterson	0	0
Sutton	1	0
Underwood	0	0
White	0	0

TEXAS 1,000-POINT CLUB

Rank/Player	Points	Years
1. Annette Smith	2,523	1981-86
2. Linda Waggoner	2,256	1976-80
3. Clarissa Davis	2,008	1985-89
4. Cinietra Henderson	1,983	1989-93
5. Tiffany Jackson	1,917	2003-07
6. Vicki Hall	1,831	1988-93
7. Fran Harris	1,798	1982-86
8. Retha Swindell	1,795	1975-79
9. Chassidy Fussell	1,717	2010-14
10. Stacy Stephens	1,708	2000-04
Heather Schreiber	1,708	2001-05
12. Edwina Brown	1,705	1996-2000
13. Brittainey Raven	1,698	2006-10
14. Danielle Viglione	1,658	1993-97
15. Andrea Lloyd	1,596	1983-87
16. Beverly Williams	1,544	1984-88
17. Kim Basinger	1,518	1976-79
18. Kathleen Nash	1,517	2007-11
19. Yulonda Wimbish	1,485	1984-88
20. Nell Fortner	1,466	1977-81
21. Jackie Swaim	1,405	1978-81
22. Imani Boyette	1,361	2012-16
23. Ashleigh Fontenette	1,317	2008-12
24. Cathy Burns	1,310	1976-77
25. Angela Jackson	1,305	1994-98
26. Brooke McCarty	1,249	2014-Pres.
27. Susan Anderson	1,236	1986-90
28. Amie Smith	1,228	1993-97
29. Joy Williams	1,164	1979-83
30. NeKeshia Henderson	1,152	1991-95
31. Sherryl Hauglum	1,141	1980-84
32. Erica Routt	1,134	1992-96
33. Terri Mackey	1,123	1980-83
34. Nneka Enemkpal	1,116	2011-15
35. Johnna Pointer	1,099	1988-92
36. Kelsey Lang	1,086	2013-17
37. Nina Norman	1,079	2002-06
38. Cheryl Hartman	1,078	1978-83
39. Jamie Carey *	1,074	2002-05
40. Ariel Atkins	1,068	2014-Pres.
41. Yvonne Anderson	1,047	2008-12
42. Earnesia Williams	1,015	2006-10
43. Tracy Cook	1,004	1998-2002

* - Includes only points scored at Texas.

FAST STARTS

- Texas is off to a 7-0 start for the third time in the last four seasons. The Longhorns have recorded two of the best starts to a season in the last three years and remain undefeated through seven games.
- The Longhorns opened their 2014-15 season with 13 consecutive wins, then began the 2015-16 campaign with 16 victories in a row.
- The 1985-86 NCAA Champion Longhorns hold the school record for most consecutive wins, finishing the year with a perfect 34-0 tally.

SEASON-OPENING WIN STREAKS

1. 34 games [34-0]	1985-86
2. 30 games [33-4]	1979-80
3. 16 games [31-5]	2015-16
4. 13 games [24-11]	2014-15

TEN McDONALD'S ALL-AMERICANS

- Ten players on the current Texas roster are McDonald's High School All-Americans.
- Texas head coach **Karen Aston** has signed 11 McDonald's All-Americans, entering her sixth season as head coach on the Forty Acres.

CURRENT McDONALD'S ALL-AMERICANS

Ariel Atkins	2014
Brooke McCarty	2014
Jatarie White	2014
Lashann Higgs	2015
Jordan Hosey	2015
Joyner Holmes	2016
Alecia Sutton	2016
Rellah Boothe	2017
Destiny Littleton	2017
Chasity Patterson	2017

POLL APPEARANCES

- Texas is ranked No. 2 in this week's Associated Press poll.
- The Longhorns have made the second-most AP poll appearances all-time at 524.
- There have been 733 all-time official weeks in the 42-year history of the Associated Press poll. Tennessee has the most all-time AP poll appearances at 702.

Tennessee	702
Texas	524
Georgia	522

DEFEND THE DRUM

- The 2017-18 season marks the 40th anniversary of the Frank Erwin Center.
- Texas is 65-8 (.890) inside the Frank Erwin Center since the start of the 2013-14 season. The Longhorns are 36-4 (.900) at home over the past two-plus seasons, including a pair of NCAA Tournament wins in each of the past two seasons.
- Six of those eight losses at home since 2013-14 have come to opponents ranked in the AP top-six.
- Last season, Texas earned its 500th all-time victory within the Frank Erwin Center. Texas is 515-98 (.840) all-time at the Erwin Center.

CENTURY-MARK NOTES

- Texas has scored 100 or more points in two games this season, reaching 100 against McNeese State (Nov. 15) and 120 vs. UTSA (Nov. 17).
- The Longhorns are 68-0 all-time when scoring 100 or more points.
- Texas has scored 100 or more points in back-to-back games just five times in program history. The Longhorns have never scored 100 or more points in three consecutive games.
- Up until this season, the Longhorns had not reached the century mark since defeating Sam Houston State 109-48 on Dec. 15, 2013.
- The school record for most 100-point games in a season is seven, accomplished in 1983-84.

SCORING SPREE

- Texas ranks first in the nation this season in both scoring offense (93.0 points per game) and scoring margin (+35.3).
- The Longhorns have scored 90 or more points in four of their seven games this year, including reaching 100 points on a pair of occasions.
- Six of Texas' seven games this season have been decided by 20 or more points.

NCAA LEADERS - SCORING OFFENSE

1. TEXAS	93.0
2. Baylor	92.3
3. DePaul	92.0
4. Ohio State	90.7
5. Florida State	90.6

NCAA LEADERS - SCORING MARGIN

1. TEXAS	+35.3
2. Baylor	+33.3
3. Florida State	+30.8
4. Tennessee	+29.9
5. West Virginia	+29.1

PUPIL AND MENTOR

- Senior Texas guard **Brooke McCarty**, on Thursday against Louisiana Tech, surpassed current Texas assistant coach **Jamie Carey** for fourth-place all-time on the school's career three-pointers made list.
- Carey, who currently coaches the Texas guards and is responsible for the team's offensive schemes, made 193 career three-pointers from 2002-05. McCarty now has 196 three-pointers.
- McCarty is four three-pointers away from becoming just the fourth player in program history to make 200 or more treys. **Danielle Viglione**, **Kathleen Nash** and **Chassidy Fussell** are the others.
- McCarty also ranks second all-time behind Carey on the school's three-point field-goal percentage list. McCarty has made 40.8 percent of her career three-pointers, while Carey made a school-record 41.8 percent of her shots from beyond the arc.
- Just four players in program history (Carey, Nash and **Vicki Hall** are the others) have shot better than 40 percent from three-point range for their University of Texas playing careers.
- Carey is in her second season as an assistant coach at her alma mater.

UT ALL-TIME LEADERS - THREE-POINT FG PCT.

1. Jamie Carey (2002-05)	41.8
2. Brooke McCarty (2014-Present)	40.8
T3. Kathleen Nash (2007-11)	40.4
T3. Vicki Hall (1988-93)	40.4

UT ALL-TIME LEADERS - THREE-POINT FG MADE

1. Danielle Viglione (1993-97)	293
2. Kathleen Nash (2007-11)	237
3. Chassidy Fussell (2010-14)	220
4. Brooke McCarty (2014-Present)	196
5. Jamie Carey (2002-05)	193

FIRST-QUARTER NOTES

- Texas has been especially prolific offensively in the first quarter so far this season. The Longhorns are averaging 27.1 points per game in the first quarter through seven games this year.

LONGHORN HONORS

PRESEASON RANKINGS

Associated Press	No. 2
Athlon	No. 2
espnW	No. 2
USBWA	No. 2
Lindy's	No. 3
Sports Illustrated	No. 3
Street & Smith's	No. 6
USA Today Coaches	No. 6

BROOKE MCCARTY

- Preseason All-Big 12
- Street & Smith's First-Team Preseason All-American
- espnW's Top-25 Players
- Nancy Lieberman Award Preseason Watch List
- South Point Shootout All-Tournament Team
- Wade Trophy Watch List
- Naismith Trophy Watch List

ARIEL ATKINS

- Preseason All-Big 12
- Street & Smith's Third-Team Preseason All-American
- Cheryl Miller Award Preseason Watch List
- Naismith Trophy Watch List

JATARIE WHITE

- Preseason Big 12 Newcomer of the Year
- Katrina McClain Award Preseason Watch List
- South Point Shootout All-Tournament Team

CHASITY PATTERSON

- Preseason Big 12 Freshman of the Year

- The Longhorns scored a school-record 33 points in the first quarter in the season opener against Stetson, followed with 32 points against McNeese State and had 30 in the first quarter against UTSA.
- Texas has scored 20 or more points in the first quarter of all seven games this season.

TEXAS IN THE FIRST QUARTER THIS SEASON

vs. Stetson	33 (school record)
vs. McNeese State	32
vs. UTSA	30
vs. LSU	28
vs. Washington	20
vs. Louisiana Tech	25
at Georgia	22

TEXAS ALL-TIME QUARTER SUPERLATIVES

Most Points: 33 vs. Stetson [1st qtr.] (11-12-17)
 Fewest Points: 0 at Little Rock [3rd qtr.] (12-06-15)
 Most Points Allowed: 30 to Baylor [3rd qtr.] (02-29-16)
 Fewest Points Allowed: 1 to Northwestern State [2nd qtr.] (11-18-15)

THE IRON WOMAN

- Senior Texas guard **Brooke McCarty**, the 2017 Big 12 Conference Player of the Year, has played in all 112 games of her collegiate career and has started 91. Both numbers lead the team.
- McCarty has the opportunity to leave her mark on

the University of Texas record books by the time she completes her collegiate career in Austin.

- She has 1,249 career points and needs 51 more to become just the 26th player in program history to reach 1,300 career points. McCarty currently ranks 26th on the school's all-time career scoring list and needs 57 more points to surpass Angela Jackson (1,305) for 25th place all-time.
- McCarty ranks fourth in UT school history in career three-pointers made with 196.
- For McCarty's career, she is averaging 29.1 minutes per game, which ranks ninth in program history.
- McCarty currently ranks fourth in the Big 12 Conference in assist-to-turnover ratio at 2.5, fifth in steals per game at 2.3, sixth in both assists per game (5.0) and three-pointers per game (2.1), and 14th in points per game at 13.4.
- She has been named to the preseason watch list for the Nancy Lieberman Award, which recognizes the nation's top point guard, and is on the watch list for every major National Player of the Year award.

MCCARTY IN THE BIG 12 RANKINGS

4th	Assist-to-Turnover Ratio (2.5)
5th	Steals Per Game (2.3)
6th	Assists Per Game (5.0)
6th	Three-Pointers Per Game (2.1)
14th	Points Per Game (13.4)

TEXAS AVERAGE CAREER MINUTES PLAYED

1. 31.8	Tiffany Jackson (2003-07)
2. 31.4	Jamie Carey (2002-05)
3. 31.3	Kenya Larkin (2000-02)
4. 30.9	Vicki Hall (1988-93)
5. 30.8	Chassidy Fussell (2010-14)
6. 30.4	Andrea Lloyd (1983-87)
7. 29.8	Edwina Brown (1996-00)
8. 29.3	Amie Smith (1993-97)
9. 29.1	Brooke McCarty (2014-Present)
10. 28.9	Heather Schreiber (2001-05)

ATKINS FILLING UP THE STAT SHEET

- Senior Texas guard **Ariel Atkins** has had a distinguished career on the Forty Acres but has worked hard to ensure that her best season will be her final year at Texas.
- She has been filling up the stat sheet through seven games this season. Atkins is averaging 13.4 points per game, 4.3 assists per game, 2.6 steals per game and has a 3.3 assist-to-turnover ratio. She is shooting 65.5 percent from the field (36-of-55), 12-of-20 from beyond the arc and 10-of-13 from the free-throw line. She also is averaging 4.7 rebounds per game.
- This season, Atkins became the 43rd person in program history to reach 1,000 career points. She ranks 40th in school history with 1,068 career points. Atkins needs seven more points to surpass current assistant coach Jamie Carey for 39th on the all-time scoring list.
- Atkins led the Big 12 Conference in steals per game last season (all games combined) at 2.0.
- She has been named to the preseason watch list for the Cheryl Miller Award, which recognizes the nation's top "three" player.

ATKINS IN THE BIG 12 RANKINGS

1st	Assist-to-Turnover Ratio (3.3)
2nd	Three-Point Percentage (.600)
3rd	Steals (2.6)
3rd	Field-Goal Percentage (.655)
9th	Assists Per Game (4.3)
14th	Points Per Game (13.4)

USA BASKETBALL EXPERIENCE

- This summer, Texas sent six players to tryouts for USA Basketball teams. Of those six, a nation-leading four players participated on three USA Basketball teams.
- Freshman guard **Destiny Littleton** earned a gold medal as part of the USA U18 3x3 FIBA World Cup Team.
- Sophomores **Joyner Holmes** and **Alecia Sutton** were part of the silver medalist USA U19 FIBA World Cup Team.
- Senior **Ariel Atkins** helped the USA U23 Team win the inaugural Four Nations Tournament.

MOST PLAYERS ON USA BASKETBALL TEAMS - 2017

Texas	4
Ohio State	2
Tennessee	2
UConn	2
UCLA	2

* includes USA U18 3x3, U19 and U23 National Teams

2017-18 PRESEASON ALL-BIG 12 TEAM

Kalani Brown, Baylor
 Kaylee Jensen, Oklahoma State

Ariel Atkins, Texas

Brooke McCarty, Texas

Tynice Martin, West Virginia
 Preseason Player of the Year: Kalani Brown, BU
 Preseason Newcomer of the Year: Jatarie White, UT
 Preseason Freshman of the Year: Chasity Patterson, UT

BIG 12 PRESEASON HONORS

- Texas was well represented among the Big 12 Conference's preseason honorees, which were announced on October 11.
- Seniors **Ariel Atkins** and **Brooke McCarty**, both of whom were All-Big 12 Conference First Team honorees a year ago were named to the All-Big 12 Preseason Team.
- Freshman **Chasity Patterson** was recognized as the Big 12 Preseason Freshman of the Year, while **Jatarie White** was selected as the Big 12 Preseason Newcomer of the Year.

TINA THOMPSON NAMED ASSOCIATE HEAD COACH

- Third-year Texas women's basketball assistant **Tina Thompson** in September was promoted to associate head coach with the Longhorns.
- Thompson was the first overall pick in the inaugural WNBA Draft, is a two-time Olympic gold medalist and a four-time WNBA Champion.
- Thompson has helped return the Longhorns to among the nation's elite programs. During her time in Austin as a member of Aston's staff, the Longhorns have made back-to-back appearances in the NCAA Sweet 16, including an NCAA Elite Eight appearance in 2015-16.

ASSOCIATED PRESS POLL

Week 4 - December 4, 2017

RK	TEAM	RECORD	PTS
1	Connecticut (32)	7-0	800
2	TEXAS	7-0	749
3	Notre Dame	7-1	717
4	Louisville	8-0	710
5	South Carolina	8-1	660
6	Mississippi State	8-0	632
7	UCLA	7-1	622
8	Baylor	7-1	606
9	Oregon	7-1	506
10	West Virginia	7-0	482
11	Tennessee	8-0	461
12	Ohio State	8-2	447
13	Florida State	8-0	418
14	Duke	6-2	390
15	Maryland	7-2	353
16	South Florida	7-1	284
17	Missouri	7-1	247
18	Stanford	5-4	220
19	Oregon State	5-2	198
20	Kentucky	7-1	170
21	Texas A&M	6-2	168
22	Villanova	7-0	131
23	Green Bay	6-1	96
24	Michigan	5-2	93
25	California	5-2	90

Others receiving votes: Arizona State 41, New Mexico 26, Iowa 26, Marquette 13, Syracuse 12, Oklahoma State 8, DePaul 7, USC 7, Oklahoma 6, South Dakota State 4.

USA TODAY COACHES POLL

Week 4 - December 5, 2017

RK	TEAM	RECORD	PTS
1	Connecticut (32)	7-0	800
2	Notre Dame	7-1	721
3	Mississippi State	8-0	711
4	TEXAS	7-0	703
5	Louisville	8-0	697
6	South Carolina	8-1	658
7	UCLA	7-1	604
8	Baylor	7-1	580
9	Oregon	7-1	506
10	Florida State	8-0	487
11	West Virginia	7-0	466
12	Ohio State	8-2	439
13	Tennessee	8-0	427
14	Duke	6-2	342
14	Maryland	7-2	342
16	South Florida	7-1	323
17	Missouri	7-1	268
18	Stanford	5-4	265
19	Oregon State	5-2	224
20	Villanova	7-0	148
21	Michigan	6-2	128
22	Texas A&M	6-2	125
23	Kentucky	7-1	112
24	Syracuse	8-0	90
25	Green Bay	6-1	78

Others receiving votes: DePaul 35, Iowa 35, New Mexico 19, California 18, Georgia Tech 15, Marquette 8, USC 6, Virginia Tech 5, Ole Miss 4, Oklahoma State 3, Rice 3, South Dakota State 2, Troy 1, Arizona State 1, Chattanooga 1.

WEEK-BY-WEEK RANKINGS

WEEK	RECORD	AP	COACHES	NCAA RPI	NCAA SOS*
Pre.	0-0	2	6	-	-
N.13	1-0	2	6	-	-
N.20	3-0	2	T4	-	-
N.27	5-0	2	4	-	-
D.4	7-0	2	4	13	89
D.11					
D.18					
D.25					
J.1					
J.8					
J.15					
J.22					
J.29					
F.5					
F.12					
F.19					
F.26					
M.5					
M.12					
Final					

* SOS = Strength of schedule
() = first-place votes in parenthesis

TEXAS vs. AP TOP 25

2016-17	7-7 (.500)
Overall	182-235 (.436)
Home	88-70 (.557)
Away	42-119 (.261)
Neutral	51-47 (.520)
vs. Top 10 teams	79-136 (.367)
Karen Aston (at Texas)	21-31 (.404)

Note: Prior to the 1989-90 season, the national polls ranked only the Top 20 teams, not Top 25 as is the current practice.

NCAA/BIG 12 STAT RANKINGS

December 07, 2017

	NCAA	BIG 12	#
Assist Turnover Ratio	21	3	1.38
Assists Per Game	8	2	20.9
Blocked Shots	104	8	32
Field-Goal %	9	3	49.9
Field-Goal % D	80	5	37.0
Free-Throw %	254	9	65.4
Personal Fouls	254	10	19.1
Rebound Margin	4	2	15.4
Scoring Defense	47	3	57.7
Scoring Margin	1	1	35.3
Scoring Offense	1	1	93.0
Steals Per Game	48	3	10.7
Three Pt FG % D	152	4	30.5
Three-Point FGs	126	3	52
Three-Point FG %	34	2	38.8
Turnover Margin	22	2	+6.71
Turnovers	27	1	21.86
Won-Lost Percentage	1	1	100.0

BIG 12 CONFERENCE STANDINGS

December 07, 2017

STANDINGS TEAM	BIG 12		OVERALL	
	W-L	%	W-L	%
TEXAS	0-0	1.000	7-0	1.000
West Virginia	0-0	1.000	7-0	1.000
Baylor	0-0	1.000	8-1	.889
Kansas	0-0	1.000	7-1	.875
Kansas State	0-0	1.000	6-2	.750
Oklahoma State	0-0	1.000	6-2	.750
TCU	0-0	1.000	6-2	.750
Iowa State	0-0	1.000	3-5	.375
Oklahoma	0-0	1.000	3-5	.375
Texas Tech	0-0	1.000	3-5	.375

ALL-TIME FINISHES IN THE BIG 12

YEAR	PRESEASON POLL	FINISH	BIG 12 RECORD
2017-18	N/A		
2016-17	2 nd	2 nd	15-3
2015-16	2 nd	2 nd	15-3
2014-15	1 st	3 ^{rd-t}	9-9
2013-14	5 th	3 ^{rd-t}	11-7
2012-13	5 th	8 ^{th-t}	5-13
2011-12	3 rd	7 ^{th-t}	8-10
2010-11	4 th	7 th	7-9
2009-10	2 ^{nd-t}	4 ^{th-t}	10-6
2008-09	2 nd	6 th	8-8
2007-08	4 th	7 ^{th-t}	7-9
2006-07	3 rd	7 ^{th-t}	6-10
2005-06	2 nd	8 ^{th-t}	7-9
2004-05	1 st	2 nd	13-3
2003-04	1 st	1 ^{st-t}	14-2
2002-03	3 rd	1 st	15-1
2001-02	1 st	5 th	10-6
2000-01	2 nd	7 th	7-9
1999-00	4 th	4 th	9-7
1998-99	7 th	4 th	10-6
1997-98	2 nd	7 th	7-9
1996-97	n/a	2 ^{nd-t}	12-4

MEDIA GUIDELINES

- Interviews with any staff member or player must be scheduled through the UT Media Relations Office. To schedule, please contact Sean Cartell (sean.cartell@athletics.utexas.edu).
- Please do not contact a player or coach without arranging the interview through the UT Media Relations Office.
- We ask that you do not arrive unannounced at the basketball office, Erwin Center, Cooley Pavilion or dining hall to interview a player or coach without arranging it through the UT Media Relations Office. Media members must be escorted to interviews and to the basketball office by a member of the UT Media Relations Office.



WNBA DRAFT

All-time Longhorns selected in the WNBA Draft.

YEAR	PLAYER	ROUND [OVERALL PICK]	TEAM
1999	Edna Campbell	1st [10]	Phoenix Mercury
2000	Edwina Brown \$	1st [3]	Detroit Shock
2004	Stacy Stephens #	3rd [37]	Houston Comets
2005	Heather Schreiber	3rd [39]	Los Angeles Sparks
2005	Jamie Carey *	3rd [31]	Phoenix Mercury
2007	Tiffany Jackson	1st [5]	New York Liberty
2010	Brittainey Raven	3rd [33]	Atlanta Dream
2015	Nneka Enemkpali	3rd [26]	Seattle Storm
2016	Imani Boyette	1st [10]	Chicago Sky

\$ - 1st collegian taken in 2000 WNBA Draft

- later traded to Detroit Shock

* - later signed with Connecticut Sun

ADMINISTRATORS/COACHES IN THE PROS

Shell (Bollin) Dailey - San Antonio-WNBA [former interim Head Coach]

Nell Fortner - Indiana-WNBA [former Head Coach]

Clarissa Davis-Wrightsil - San Antonio-WNBA [former Chief Operations Officer, 2003-2006]

ALL-TIME PLAYERS IN THE PROS

WNBA 1996-present

17 Longhorns have played in the WNBA.

Imani Boyette - Chicago Sky [2016-17]; Atlanta Dream [2017-Present]

Edwina Brown - Detroit Shock [2000-02]; Phoenix Mercury [2003]; Houston Comets [2006]

Edna Campbell - Phoenix Mercury [1999]; Seattle Storm [2000]; Sacramento Monarchs [2001-04]; San Antonio Silver Stars [2005]

Jamie Carey - Connecticut Sun [2005-08]

Carla Cortijo - Atlanta Dream [2015-16]

Clarissa Davis - Phoenix Mercury [1999]

Tai Dillard - San Antonio Silver Stars [2003-05]

Vicki Hall - Cleveland Rockers [2000-01]; Indiana Fever [2001]; Los Angeles Sparks [2002]

Fran Harris - Houston Comets [1997]; Utah Starzz [1998]

NeKeshia Henderson - Houston Comets [1997, 2000-02]

Angela Jackson - Washington Mystics [1998]

Tiffany Jackson - New York Liberty [2007-10]; Tulsa Shock [2010-15]; Los Angeles Sparks [2017-Present]

Andrea Lloyd - Minnesota Lynx [1999-00]

Catarina Pollini - Houston Comets [1997]

Brittainey Raven - Atlanta Dream [2010]

Stacy Stephens - Detroit Shock [2004]

Danielle Viglione - Sacramento Monarchs [1997]

AMERICAN BASKETBALL LEAGUE (ABL) - 1996-98

Six Longhorns played in the ABL.

Edna Campbell - Colorado Xplosion [1997-98]

Clarissa Davis-Wrightsil - New England Blizzard [1996-97]; Long Beach StingRays [1997-98]; San Jose Lasers [1998]

Vicki Hall - Colorado Xplosion [1997-98]; Nashville Noise [1998]

NeKeshia Henderson - San Jose Lasers [1998]

Andrea Lloyd-Curry - Columbus Quest [1996-98]

Beverly Williams - Long Beach StingRays [1997-98]; Columbus Quest [1998]

WHEN WAS THE LAST TIME ...

TEAM

Texas Scored 80 Points: 81 at Georgia [81-53] (12-03-17)

Texas Scored 90 Points: 92 vs. Washington [92-68] (11-25-17)

Texas Scored 100 Points: 120 vs. UTSA [120-70] (11-17-17)

Opponent Scored Fewer Than 50 Points: 34 by McNeese State [100-34] (11-15-17)

Opponent Scored Fewer Than 40 Points: 34 by McNeese State [100-34] (11-15-17)

Texas Made 10 or More Three-Pointers: 11 vs. UTSA [10-of-23] (11-17-17)

Texas Did Not Make a Three-Pointer: 0 vs. West Virginia [0-of-0] (01-14-17)

Texas Did Not Make a Free Throw: 0 vs. Marquette [0-of-0] (03-19-11)

Texas Recorded 60 or More Rebounds: 61 vs. Kansas (01-04-17)

Texas Recorded 70 or More Rebounds: 71 vs. Texas Southern (12-13-80)

Texas Recorded 20 or More Assists: 25 vs. Louisiana Tech (11-30-17)

Texas Recorded 25 or More Assists: 25 vs. Louisiana Tech (11-30-17)

Texas Recorded 15 or More Steals: 15 vs. Louisiana Tech (11-30-17)

Texas Recorded 20 or More Steals: 20 vs. Boston University (11-21-10)

Texas Recorded 10 or More Blocks: 13 vs. Kansas (02-11-17)

Texas Recorded 5 or Fewer Turnovers: 5 vs. LSU (04-01-03)

Texas Recorded 30 or More Turnovers: 31 vs. Kansas (01-04-17)

Texas Recorded 35 or More Turnovers: 37 vs. Sacramento State (11-27-94)

INDIVIDUAL

A Texas Player Scored 40 or More Points: 48, Danielle Viglione vs. Houston (01-29-94)

A Texas Player Made Five or More Three-Pointers: 5, Brooke McCarty vs. Florida State [5-of-8] (02-13-17)

A Texas Player Made 10 or More Three-Pointers: 11, Danielle Viglione vs. Houston [11-of-26] (01-29-94)

A Texas Player Made 15 or More Free-Throws: 16, Edwina Brown vs. Texas Tech [16-of-19] (02-23-00)

A Texas Player Shot 100 Percent from the Free-Throw Line (min. 10 att.): Chassidy Fussell vs. Tennessee [10-of-10] (12-16-12)

A Texas Player Recorded 20 or More Rebounds: 21, Nneka Enemkpali vs. West Virginia (01-25-14)

A Texas Player Recorded 15 or More Assists: 15, Angie Jo Ogletree vs. Houston (01-29-94)

A Texas Player Recorded 10 or More Steals: 12, Kamie Ethridge vs. Pepperdine (02-24-84)

A Texas Player Recorded 10 or More Blocks: 10, Ashley Gayle vs. Cincinnati (12-28-10)

Two Texas Players Had Double-Doubles in the Same Game: Joyner Holmes [16 pts, 13 rebs] and Kelsey Lang [10 pts, 10 rebs] vs. UT Rio Grande Valley (12-15-16)

A Texas Player Recorded A Triple-Double: Ashleigh Fontenette vs. UT-Pan American [17 points, 10 rebounds, 10 assists] (12-08-10)

TEXAS IN OVERTIME

Overtime Games _____ 41 [23-18]

Last Overtime Game _____ 02-13-17 at Florida State [W, 92-88]

The University of Texas women's basketball program has inked one of the nation's top signing classes for the 2018-19 year, head coach Karen Aston announced. The Longhorns have secured a No. 3 recruiting class from ESPN.com and Prospects Nation.

This is the fourth consecutive top-six national class under Aston and her fifth consecutive class that is ranked among the nation's top-11, according to ESPN.com.

With the addition, the Longhorns will add depth both in the post and on the perimeter with four versatile players who have high-level experience and vast skill-sets.

Joanne Allen-Taylor (5-8, PG, Houston, Texas / Cypress Falls HS)

Allen-Taylor is one of the nation's top-15 point guards in the class of 2018 and ranked among the top-60 players nationally. She is the No. 56 overall player according to espnW Hoop Gurlz, No. 44 by Prospects Nation and No. 52 from the Blue Star Report.

Through three seasons at Cypress Falls High School in Houston, Allen-Taylor is averaging 19.0 points per game, 3.8 assists per game, 2.6 steals per game and 4.2 rebounds per game for her prep career.

Allen-Taylor is a three-time first-team All-District selection and has been named TABC and TGCA All-State in both 2015-16 and 2016-17. She also is a two-time TGCA All-Region selection the past two seasons. Allen-Taylor was named the VYPE Northwest Houston Basketball Player of the Year. An excellent student, Allen-Taylor also was named a first-team All-District Academic selection in each of the last two years.

As a junior in 2016-17, Allen-Taylor averaged 20.4 points per game 0.8 assists per game and 0.7 steals per game. She has played in 102 career games for Cypress Falls High School. In 2015-16, she was named to the McDonald's Invitational All-Tournament Team.

Charli Collier (6-5, F/C, Crosby, Texas / Barbers Hill HS)

Collier is the nation's top-ranked player according to Prospects Nation and the Blue Star Report, and the No. 2 player by espnW Hoop Gurlz.

Collier has played in and started 102 games for Barbers Hill High School, recording career totals of 2,274 points, 933 rebounds, 134 assists, 165 steals and 247 blocked shots. In her junior year of 2016-17, Collier was a third-team All-America selection by both Naismith and MaxPreps. She is a three-time selection to the TABC and TGCA Class 5A All-State Teams, and also is a three-time All-Region selection by the TABC.

Last season, Collier helped Barbers Hill to a 34-5 record, including an 18-0 record in District

21-5A, helping her team to the Texas Class 5A state semifinals. She averaged 23.8 points per game, 10.0 rebounds per game and 3.0 blocks per game. Collier was named to the 2017 UIL Class 5A State All-Tournament Team. She was a nominee for the Gatorade Player of the Year Award.

As a sophomore in 2015-16, Collier averaged 24.6 points per game, 9.8 rebounds per game and 2.3 blocks per game to help her team to a 27-8 record and an appearance in the Region 5A semifinals. She was named the 2016 UIL District 21-5A Offensive MVP and was an All-District selection.

As a freshman in 2014-15, Collier averaged 17.3 points per game, 7.3 rebounds per game and 1.7 blocks per game to help her team to a 28-4 record and a Region 5A semifinals.

Collier has extensive experience with USA Basketball, as she was a member of the 2016 USA Women's U17 World Championship Team that claimed the bronze medal in Zaragoza, Spain. She averaged 5.7 points per game and 3.6 rebounds per game in that seven-game span. She also participated in the 2017 USA U19 World Cup Team Trials and the 2015 USA U16 National Team Trials.

Sedona Prince (6-7, C, Liberty Hill, Texas / Liberty Hill HS)

Prince is the nation's 12th-ranked player according to espnW Hoop Gurlz and is ranked sixth nationally by both Blue Star Report and Prospects Nation. At 6-foot-7, Prince ties for the second-tallest player in University of Texas school history as Imani McGee-Stafford was 6-foot-7 and Ellen Bayer was 6-foot-8.

Through two seasons at Liberty Hill High School, Prince is averaging 15.5 points per game, 9.1 rebounds per game and 5.2 blocks per game. She also is averaging 2.24 assists per game and 1.6 steals per game. Prince is shooting 53 percent from the field, 33 percent from beyond the arc and 73.5 percent from the free-throw line for her high school career.

As a junior in 2016-17, Prince was named TABC and TGCA All-State and was also a TABC All-Region selection. She was named to the TGCA 2017 UIL Girls Basketball State All-Tournament Team and was the 2017 District 19 Class 4A MVP. She was also named to the All-Tournament Team of three regular season tournaments during the 2016-17 campaign.

As a sophomore in 2015-16, Prince averaged 16.4 points per game, 11.0 rebounds per game and 7.2 blocks per game. She was named the District Defensive MVP in 2016 and earned All-Region honors.

Prince has helped Liberty Hill to an 82-7 (.921) record, a 2017 appearance in the UIL Class 4A State Championship game and a third-place finish at the UIL State Championship in 2016.

As a freshman in 2014-15 at Faith Academy, Prince was named the Austin American-Statesman

Central Texas Newcomer of the Year, was a 2014-15 TAPPS First-Team All-State selection and also earned All-District and All-Region honors.

Prince has a vast amount of USA Basketball experience, helping the 2016 FIBA U17 World Championship team and the 2015 FIBA Americas U16 Championship team earn bronze medals. She also was a 2017 USA Women's U19 World Cup Team trials participant.

Audrey Warren (5-9, G/F, Fort Worth, Texas / Boswell HS)

Warren is regarded as one of the nation's top wing players in the class of 2018. She is the No. 80 overall player, as ranked by Prospects Nation. espnW Hoop Gurlz regards her as the No. 28 wing player in the class, while Prospects Nation has her as the No. 14 wing player.

Warren moved to Fort Worth from Springfield, Mo., in advance of her junior year of high school. In her first season at Boswell High School, Warren averaged 19.5 points per game and 5.6 rebounds per game. She set the school's single-season records for both assists (173) and steals (212).

Warren earned tournament MVP honors at three regular-season tournaments and was the unanimous District 6, Class 5A Most Valuable Player. She also earned All-Region and All-State honors. In a game against Flour Bluff last season, she charted a triple-double with 12 points, 10 rebounds and 10 steals.

She enters her senior year 413 points away from 2,000 for her prep career.

As a sophomore at Kickapoo High School in Springfield, Mo., in 2015-16, Warren helped her team to the Missouri State High School Activities Association State Championship, the first such title for the school since 2005. The team compiled a 29-3 overall record.

At Springfield Catholic High School as a freshman in 2014-15, Warren averaged 17.4 points per game, 7.3 rebounds per game, 2.3 steals per game, 1.6 assists per game and 0.6 blocks per game.

RECRUITING CLASS RANKINGS UNDER KAREN ASTON AT TEXAS

2017-18: #3 (Allen-Taylor, Collier, Prince, Warren)

2016-17: #3 (Boothe, Littleton, Patterson)

2015-16: #4 (Holmes, Sutton, Underwood)

2014-15: #6 (Aborowa, Higgs, Hosey)

2013-14: #11 (Akigbogun, Atkins, Foman, McCarty)

2012-13: #31 (Henderson, Jones, Lang, Taylor, Vander Zee)

2017-18 STATISTICS (ALL GAMES)

OVERALL RECORD: 7-0 (HOME: 4-0, AWAY: 1-0, NEUTRAL: 2-0) • BIG 12 RECORD: 0-0 (HOME: 0-0, AWAY: 0-0)

DATE	OPPONENT (TV)	W/L	SCORE	ATTEND	HIGH POINTS	HIGH REBOUNDS
Nov. 12	STETSON (LHN)	W	95-59	3,415	Higgs (18)	White (9)
Nov. 15	MCNEESE STATE (LHN)	W	100-34	7,651	Atkins (23)	Boothe (10)
Nov. 17	UTSA (LHN)	W	120-70	3,135	Underwood (19)	Underwood (9)
Nov. 24	vs. LSU ^	W	75-66	--	Atkins (17)	A. Caron-Goudreau (10)
Nov. 25	vs. Washington ^	W	92-68	--	White (24)	White (7)
Nov. 30	LOUISIANA TECH (LHN)	W	88-54	2,956	McCarty (15)	Boothe (9)
Dec. 03	at Georgia %	W	81-53	3,390	Atkins (17)	Atkins (9)

^ - South Point Shootout (Las Vegas, Nev.)

% - Big 12/SEC Challenge (Athens, Ga.)

#	PLAYER	GP	GS	MIN	AVG	FG	FGA	PCT	3FG	FGA	PCT	FT	FTA	PCT	OFF	DEF	TOT	AVG	PF	FO	A	TO	BLK	STL	PTS	AVG						
11	Brooke McCarty	7	7	183	26.1	35	69	.507	15	31	.484	9	10	.900	5	21	26	3.7	11	0	35	14	0	16	94	13.4						
23	Ariel Atkins	7	7	158	22.6	36	55	.655	12	20	.600	10	13	.769	7	26	33	4.7	14	0	30	9	8	18	94	13.4						
10	Lashann Higgs	7	7	127	18.1	29	49	.592	2	7	.286	23	30	.767	8	10	18	2.6	11	0	16	8	0	5	83	11.9						
40	Jatarie White	7	6	134	19.1	35	62	.565	0	0	.000	10	16	.625	19	18	37	5.3	18	0	2	15	1	5	80	11.4						
12	Jada Underwood	6	0	93	15.5	16	26	.615	4	7	.571	10	16	.625	11	7	18	3.0	11	0	8	7	1	5	46	7.7						
01	Sug Sutton	7	0	139	19.9	21	49	.429	8	17	.471	2	7	.286	4	15	19	2.7	11	0	20	13	3	7	52	7.4						
31	A. Caron-Goudreau	7	7	127	18.1	18	32	.563	4	8	.500	9	15	.600	18	23	41	5.9	12	1	3	8	5	10	49	7.0						
33	Rellah Boothe	5	0	60	12.0	12	35	.343	1	7	.143	3	5	.600	16	13	29	5.8	5	0	5	6	4	0	28	5.6						
05	Jordan Hosey	7	1	99	14.1	17	38	.447	1	6	.167	4	7	.571	7	16	23	3.3	12	0	3	10	3	3	39	5.6						
14	Olamide Aborowa	7	0	91	13.0	18	34	.529	0	0	.000	2	4	.500	12	11	23	3.3	7	0	1	3	1	0	38	5.4						
15	Chasity Patterson	6	0	61	10.2	12	26	.462	2	8	.250	4	8	.500	1	11	12	2.0	7	0	10	5	2	2	30	5.0						
04	Destiny Littleton	7	0	71	10.1	6	29	.207	3	18	.167	0	0	.000	2	6	8	1.1	6	0	7	3	1	4	15	2.1						
30	K. Caron-Goudreau	5	0	57	11.4	1	9	.111	0	5	.000	1	2	.500	2	9	11	2.2	9	0	6	3	3	0	3	0.6						
TEAM																16	12	28	4.0	0	2											
Total		7				256	513	.499	52	134	.388	87	133	.654	128	198	326	46.6	134	1	146	106	32	75	651	93.0						
Opponents		7				156	422	.370	36	118	.305	56	94	.596	77	141	218	31.1	143	0	70	153	14	40	404	57.7						

SCORE BY QUARTERS (AND OT)	1st	2nd	3rd	4th	OT	Total
TEXAS	190	162	161	138	-	651
OPPONENTS	79	97	108	120	-	404

TEAM GAME-BY-GAME STATISTICS

GAME	SCORE	FG-A	PCT.	3PT. FG-A	3PT. PCT.	FT-A	FT PCT.	OFF. REB.	DEF. REB.	TOT. REB.	PF	A	TO	B	S
TEXAS Stetson	95 59	40-83 22-48	.482 .458	6-24 5-17	.250 .294	9-16 10-21	.563 .476	24 3	27 22	51 25	21 20	13 6	13 22	3 0	10 4
TEXAS McNeese State	100 34	38-77 11-56	.494 .196	9-21 4-15	.429 .267	15-20 8-13	.750 .615	18 14	32 16	50 30	23 20	18 7	12 28	10 2	14 3
TEXAS UTSA	120 70	46-87 27-67	.529 .403	10-23 7-17	.435 .412	18-27 9-12	.667 .750	22 7	30 22	52 29	15 23	24 6	11 21	3 0	7 5
TEXAS LSU	75 66	30-57 28-60	.526 .467	5-12 1-3	.417 .333	10-16 9-15	.625 .600	14 15	20 18	34 33	23 23	20 15	23 21	3 2	9 8
TEXAS Washington	92 68	35-61 26-66	.574 .394	7-19 10-30	.368 .333	15-26 6-12	.577 .500	14 14	29 16	43 30	16 23	26 16	20 22	0 1	10 9
TEXAS Louisiana Tech	88 54	37-79 20-61	.468 .328	9-22 6-19	.409 .316	5-8 8-13	.625 .615	21 13	28 20	49 33	17 13	25 11	15 22	8 3	15 7
TEXAS Georgia	81 53	30-69 22-64	.435 .344	6-13 3-7	.462 .176	15-20 6-8	.750 .750	15 11	32 27	47 38	19 21	14 9	12 17	5 6	10 4

CAREER RECORDS AND ACTIVE CAREER LEADERS

SCORING (CAREER)

POINTS

1.	2523	Annette Smith [131 games]	1981-84,1985-86
2.	2256	Linda Waggoner [161 games]	1976-80
3.	2008	Clarissa Davis [101 games]	1985-89
4.	1983	Cinietra Henderson [123 games]	1989-93
5.	1917	Tiffany Jackson [123 games]	2003-07
6.	1831	Vicki Hall [117 games]	1988-93
7.	1798	Fran Harris [130 games]	1982-86
8.	1795	Retha Swindell [151 games]	1975-79
9.	1717	Chassidy Fussell [120 games]	2010-14
10.	1708	Heather Schreiber [133 games]	2001-05
	1708	Stacy Stephens [134 games]	2000-04

ACTIVE LEADER

1249	Brooke McCarty [112 games]	2014-Present
1068	Ariel Atkins [93 games]	2014-Present

FIELD GOALS (CAREER)

FIELD GOALS MADE

1.	1052	Annette Smith [131 games]	1981-84,85-86
2.	1047	Linda Waggoner [161 games]	1976-80
3.	793	Clarissa Davis [101 games]	1985-89
4.	780	Fran Harris [130 games]	1982-86
5.	779	Cinietra Henderson [123 games]	1989-93
6.	770	Retha Swindell [151 games]	1975-79
7.	718	Vicki Hall [117 games]	1988-93
8.	711	Tiffany Jackson [123 games]	2003-07
9.	675	Stacy Stephens [134 games]	2000-04
10.	664	Edwina Brown [116 games]	1996-00

ACTIVE LEADER

448	Brooke McCarty [112 games]	2014-Present
-----	----------------------------	--------------

FIELD GOALS ATTEMPTED

1.	2247	Linda Waggoner [161 games]	1976-80
2.	1904	Annette Smith [131 games]	1981-84,85-86
3.	1596	Retha Swindell [151 games]	1975-79
4.	1527	Tiffany Jackson [123 games]	2003-07
5.	1521	Vicki Hall [117 games]	1988-93
6.	1491	Chassidy Fussell [120 games]	2010-14
7.	1488	Fran Harris [130 games]	1982-86
8.	1445	Brittainey Raven [133 games]	2006-10
9.	1409	Nell Fortner [142 games]	1977-81
10.	1403	Danielle Viglione [105 games]	1993-97

ACTIVE LEADER

1010	Brooke McCarty [112 games]	2014-Present
------	----------------------------	--------------

3-POINT FIELD GOALS (CAREER)

3-POINT FIELD GOALS MADE

1.	293	Danielle Viglione [105 games]	1993-97
2.	237	Kathleen Nash [134 games]	2007-11
3.	220	Chassidy Fussell [120 games]	2010-14
4.	196	Brooke McCarty [112 games]	2014-Present
5.	193	Jamie Carey [96 games]	2002-05
6.	189	Heather Schreiber [133 games]	2001-05
7.	179	Kim Lummus [106 games]	1995-99
8.	152	Erika Arriaran [106 games]	2005-10
9.	124	Brittainey Raven [133 games]	2006-10
10.	122	Alisha Sare [99 games]	1999-03

ACTIVE LEADER

196	Brooke McCarty [112 games]	2014-Present
-----	----------------------------	--------------

3-POINT FIELD GOALS ATTEMPTED

1.	792	Danielle Viglione [105 games]	1993-97
2.	630	Chassidy Fussell [120 games]	2010-14
3.	587	Kathleen Nash [134 games]	2007-11
4.	569	Kim Lummus [106 games]	1995-99
5.	481	Heather Schreiber [133 games]	2001-05
6.	480	Brooke McCarty [112 games]	2014-Present
7.	462	Jamie Carey [96 games]	2002-05
8.	446	Erika Arriaran [106 games]	2005-10
9.	376	Brittainey Raven [133 games]	2006-10
	376	Alisha Sare [99 games]	1999-03

ACTIVE LEADER

480	Brooke McCarty [112 games]	2014-Present
-----	----------------------------	--------------

3-POINT FIELD GOAL PERCENTAGE (minimum 50 made)

1.	.418 [193-462]	Jamie Carey	2002-05
2.	.408 [196-480]	Brooke McCarty	2014-Present
3.	.404 [237-587]	Kathleen Nash	2007-11
	.404 [115-285]	Vicki Hall	1988-93
5.	.393 [189-481]	Heather Schreiber	2001-05
6.	.370 [293-792]	Danielle Viglione	1993-97
7.	.355 [83-234]	Yvonne Anderson	2008-12
8.	.353 [82-232]	NeKeshia Henderson	1991-95
9.	.349 [220-630]	Chassidy Fussell	2010-14
10.	.344 [99-288]	Ashleigh Fontenette	2008-12

ACTIVE LEADER

.408 [196-480]	Brooke McCarty	2014-Present
----------------	----------------	--------------

FREE THROWS (CAREER)

FREE THROWS MADE

1.	487	Tiffany Jackson [123 games]	2003-07
2.	425	Cinietra Henderson [123 games]	1989-93
3.	419	Annette Smith [131 games]	1981-84,85-86
4.	415	Clarissa Davis [101 games]	1985-89
5.	384	Brittainey Raven [133 games]	2006-10
6.	373	Edwina Brown [116 games]	1996-00
7.	358	Stacy Stephens [134 games]	2000-04
8.	346	Andrea Lloyd [127 games]	1983-87
9.	319	Heather Schreiber [133 games]	2001-05
10.	313	Chassidy Fussell [120 games]	2010-14

ACTIVE LEADER

207	Ariel Atkins [93 games]	2014-Present
-----	-------------------------	--------------

FREE THROWS ATTEMPTED

1.	700	Tiffany Jackson [123 games]	2003-07
2.	676	Annette Smith [131 games]	1981-84,85-86
3.	662	Cinietra Henderson [123 games]	1989-93
4.	608	Clarissa Davis [101 games]	1985-89
5.	556	Stacy Stephens [134 games]	2000-04
6.	523	Andrea Lloyd [127 games]	1983-87
7.	509	Brittainey Raven [133 games]	2006-10
8.	508	Edwina Brown [116 games]	1996-00
9.	474	Retha Swindell [151 games]	1975-79
10.	448	Fey Meeks [115 games]	1989-93

ACTIVE LEADER

253	Ariel Atkins [93 games]	2014-Present
-----	-------------------------	--------------

CAREER RECORDS AND ACTIVE CAREER LEADERS

FREE THROW PERCENTAGE (minimum 50 made)

1. .882 [97-110]	Erika Arriaran	2005-10
2. .848 [296-349]	Kathleen Nash	2007-11
3. .839 [141-168]	Kim Lummus	1995-99
4. .826 [313-379]	Chassidy Fussell	2010-14
5. .818 [319-390]	Heather Schreiber	2001-05
.818 [207-253]	Ariel Atkins	2014-Present
7. .812 [259-319]	Danielle Vigione	1993-97
8. .801 [173-216]	Jamie Carey	2002-05
9. .797 [98-123]	Jennifer Clark	1989-93
10. .795 [171-215]	Brady Sanders	2012-16

ACTIVE LEADER

.818 [207-253]	Ariel Atkins	2014-Present
-----------------------	---------------------	---------------------

REBOUNDING (CAREER)

REBOUNDS

1. 1759	Retha Swindell [151 games]	1975-79
2. 1223	Stacy Stephens [134 games]	2000-04
3. 1115	Andrea Lloyd [127 games]	1983-87
4. 1039	Tiffany Jackson [123 games]	2003-07
5. 1036	Imani Boyette [126 games]	2012-16
6. 983	Cinietra Henderson [123 games]	1989-93
7. 966	Annette Smith [131 games]	1981-84,85-86
8. 940	Amie Smith [118 games]	1993-97
9. 920	Kathleen Nash [134 games]	2007-11
10. 899	Nneka Enemkpalii [95 games]	2011-15

ACTIVE LEADER

363	Ariel Atkins [93 games]	2014-Present
338	Brooke McCarty [112 games]	2014-Present

ASSISTS (CAREER)

ASSISTS

1. 776	Kamie Ethridge	1982-86
2. 605	Terri Mackey	1980-83
3. 537	Amy Claborn	1987-91
4. 517	Edwina Brown	1996-00
5. 480	Carla Cortijo	2005-09
6. 454	Celina Rodrigo	2012-16
7. 450	NeKeshia Henderson	1991-95
8. 446	Beverly Williams	1984-88
9. 419	Nina Norman	2002-06
10. 409	Ashleigh Fontenette	2008-12

ACTIVE LEADER

298	Brooke McCarty [112 games]	2014-Present
------------	-----------------------------------	---------------------

BLOCKED SHOTS (CAREER)

BLOCKS

1. 372	Ashley Gayle	2008-12
2. 303	Imani Boyette	2012-16
3. 289	Ellen Bayer	1986-90
4. 250	Ashley Lindsey	2005-09
5. 221	Angela Jackson	1994-98
6. 190	Kelsey Lang	2013-17
7. 181	Tiffany Jackson	2003-07
8. 156	Joy Williams	1979-83
9. 129	Tracy Cook	1998-02
10. 121	Stacy Stephens	2000-04

ACTIVE LEADER

38	Joyner Holmes [34 games]	2016-Present
-----------	---------------------------------	---------------------

STEALS (CAREER)

STEALS

1. 346	Linda Waggoner	1976-80
2. 332	Andrea Lloyd	1983-87
3. 313	Tiffany Jackson	2003-07
4. 303	Esoleta Whaley	1980-84
5. 295	Annette Smith	1981-84,85-86
6. 291	Hattie Browning	1978-80
7. 281	Terri Mackey	1980-83
8. 278	Kamie Ethridge	1982-86
9. 257	Edwina Brown	1996-00
257	Beverly Williams	1984-88

ACTIVE LEADER

153	Ariel Atkins [93 games]	2014-Present
117	Brooke McCarty [112 games]	2014-Present

PARTICIPATION (CAREER)

GAMES PLAYED

1. 161	Linda Waggoner	1976-80
2. 151	Retha Swindell	1975-79
3. 144	Joy Williams	1979-83
4. 142	Nell Fortner	1977-81
5. 138	Kelsey Lang	2013-16
6. 135	Earnesia Williams	2005-10
7. 134	Celina Rodrigo	2012-16
134	Kathleen Nash	2007-11
134	Stacy Stephens	2000-04
10. 133	Brittainey Raven	2006-10
133	Heather Schreiber	2001-05

ACTIVE LEADER

112	Brooke McCarty	2014-Present
93	Ariel Atkins	2014-Present

GAMES STARTED

1. 154	Linda Waggoner [161 games]	1976-80
2. 134	Stacy Stephens [134 games]	2000-04
3. 133	Heather Schreiber [133 games]	2001-05
4. 131	Annette Smith [131 games]	1981-84,85-86
5. 125	Andrea Lloyd [127 games]	1983-87
6. 121	Cinietra Henderson [123 games]	1989-93
7. 117	Earnesia Williams [135 games]	2005-10
8. 114	Amie Smith [118 games]	1993-97
9. 112	Brittainey Raven [133 games]	2006-10
112	Chassidy Fussell [120 games]	2010-14
112	Vicki Hall [117 games]	1988-93

ACTIVE LEADERS

91	Brooke McCarty [112 games]	2014-Present
72	Ariel Atkins [93 games]	2014-Present

ACTIVE PLAYER CAREER STATS

OLAMIDE ABOROWA

YEAR	G-GS	MIN-AVG	FG-FGA	PCT	3FG-A	PCT	FT-FTA	PCT	OR-DR	R-AVG	PF-DQ	A	TO	BL	ST	PTS-AVG
2015-16	18-0	62-3.4	5-20	.250	0-0	.000	2-4	.500	4-12	16-0.9	2-0	0	4	3	0	12-0.7
2016-17	17-0	108-6.4	11-34	.324	0-0	.000	3-8	.375	13-15	28-1.6	14-0	2	9	6	1	25-1.5
2017-18	7-0	91-13.0	18-34	.529	0-0	.000	2-4	.500	12-11	23-3.3	7-0	1	3	1	0	38-5.4
TOTAL	42-0	261-6.2	34-88	.386	0-0	.000	7-16	.438	29-38	67-1.6	23-0	3	16	10	1	75-1.8

ARIEL ATKINS

YEAR	G-GS	MIN-AVG	FG-FGA	PCT	3FG-A	PCT	FT-FTA	PCT	OR-DR	R-AVG	PF-DQ	A	TO	BL	ST	PTS-AVG
2014-15	27-19	645-23.9	90-248	.363	17-59	.288	66-80	.825	37-55	92-3.4	71-1	35	60	7	34	263-9.7
2015-16	27-14	568-21.0	111-207	.536	21-59	.356	59-72	.819	44-61	105-3.9	73-2	34	38	7	37	302-11.2
2016-17	32-32	852-26.6	154-338	.456	29-77	.377	72-88	.818	64-69	133-4.2	95-5	51	46	10	64	409-12.8
2017-18	7-7	158-22.6	36-55	.655	12-20	.600	10-13	.769	7-26	33-4.7	14-0	30	9	8	18	94-13.4
TOTAL	93-72	2223-23.9	391-848	.461	79-215	.367	207-253	.818	152-211	363-3.9	253-8	150	153	32	153	1068-11.5

RELLAH BOOTHE

YEAR	G-GS	MIN-AVG	FG-FGA	PCT	3FG-A	PCT	FT-FTA	PCT	OR-DR	R-AVG	PF-DQ	A	TO	BL	ST	PTS-AVG
2017-18	5-0	60-12.0	12-35	.343	1-7	.143	3-5	.600	16-13	29-5.8	5-0	5	6	4	0	28-5.6
TOTAL	5-0	60-12.0	12-35	.343	1-7	.143	3-5	.600	16-13	29-5.8	5-0	5	6	4	0	28-5.6

AUDREY-ANN CARON-GOUDREAU

YEAR	G-GS	MIN-AVG	FG-FGA	PCT	3FG-A	PCT	FT-FTA	PCT	OR-DR	R-AVG	PF-DQ	A	TO	BL	ST	PTS-AVG
2014-15*	27-16	527-19.5	48-122	.393	3-16	.188	24-39	.615	28-84	112-4.1	72-2	21	63	28	14	123-4.6
2016-17	27-3	372-13.8	32-78	.410	3-12	.250	13-21	.619	48-38	86-3.2	60-4	13	26	22	7	80-3.0
2017-18	7-7	127-18.1	18-32	.563	4-8	.500	9-15	.600	18-23	41-5.9	12-1	3	8	5	10	49-7.0
TOTAL	34-10	499-14.7	50-110	.455	7-20	.350	22-36	.611	66-61	127-3.7	72-5	16	34	27	17	129-3.8
All*	61-26	1026-16.8	98-232	.422	10-36	.278	46-75	.613	94-145	239-3.9	144-7	37	97	55	31	252-4.1

KHALEANN CARON-GOUDREAU

YEAR	G-GS	MIN-AVG	FG-FGA	PCT	3FG-A	PCT	FT-FTA	PCT	OR-DR	R-AVG	PF-DQ	A	TO	BL	ST	PTS-AVG
2014-15*	3-0	54-18.0	6-22	.273	4-13	.308	5-8	.625	4-2	6-2.0	6-1	3	2	2	0	21-7.0
2016-17	15-0	158-10.5	13-29	.448	2-7	.286	6-10	.600	13-13	26-1.7	23-1	4	13	10	3	34-2.3
2017-18	5-0	57-11.4	1-9	.111	0-5	.000	1-2	.500	2-9	11-2.2	9-0	6	3	3	0	3-0.6
TOTAL	20-0	215-10.8	14-38	.368	2-12	.167	7-12	.583	15-22	37-1.9	32-1	10	16	13	3	37-1.9
All*	23-0	269-11.7	20-60	.333	6-25	.240	12-20	.600	19-24	43-1.9	38-2	13	18	15	3	58-2.5

LASHANN HIGGS

YEAR	G-GS	MIN-AVG	FG-FGA	PCT	3FG-A	PCT	FT-FTA	PCT	OR-DR	R-AVG	PF-DQ	A	TO	BL	ST	PTS-AVG
2015-16	34-1	450-13.2	101-244	.414	4-24	.167	38-71	.535	40-60	100-2.9	46-1	38	45	3	48	244-7.2
2016-17	34-2	589-17.3	116-240	.483	5-23	.217	34-65	.523	33-62	95-2.8	54-0	48	56	3	32	271-8.0
2017-18	7-7	127-18.1	29-49	.592	2-7	.286	23-30	.767	8-10	18-2.6	11-0	16	8	0	5	83-11.9
TOTAL	75-10	1166-15.5	246-533	.462	11-54	.204	95-166	.572	81-132	213-2.8	111-1	102	109	6	85	598-8.0

JORDAN HOSEY

YEAR	G-GS	MIN-AVG	FG-FGA	PCT	3FG-A	PCT	FT-FTA	PCT	OR-DR	R-AVG	PF-DQ	A	TO	BL	ST	PTS-AVG
2015-16	35-0	329-9.4	37-78	.474	1-5	.200	31-51	.608	28-41	69-2.0	35-0	3	32	7	6	106-3.0
2016-17	27-0	209-7.7	27-65	.415	0-3	.000	16-28	.571	17-26	43-1.6	20-0	2	19	3	7	70-2.6
2017-18	7-1	99-14.1	17-38	.447	1-6	.167	4-7	.571	7-16	23-3.3	12-0	3	10	3	3	39-5.6
TOTAL	69-1	637-9.2	81-181	.448	2-14	.143	51-86	.593	52-83	135-2.0	67-0	8	61	13	16	215-3.1

DESTINY LITTLETON

YEAR	G-GS	MIN-AVG	FG-FGA	PCT	3FG-A	PCT	FT-FTA	PCT	OR-DR	R-AVG	PF-DQ	A	TO	BL	ST	PTS-AVG
2017-18	7-0	71-10.1	6-29	.207	3-18	.167	0-0	.000	2-6	8-1.1	6-0	7	3	1	4	15-2.1
TOTAL	7-0	71-10.1	6-29	.207	3-18	.167	0-0	.000	2-6	8-1.1	6-0	7	3	1	4	15-2.1

BROOKE MCCARTY

YEAR	G-GS	MIN-AVG	FG-FGA	PCT	3FG-A	PCT	FT-FTA	PCT	OR-DR	R-AVG	PF-DQ	A	TO	BL	ST	PTS-AVG
2014-15	35-15	812-23.2	87-228	.382	37-108	.343	39-50	.780	12-78	90-2.6	78-0	52	52	6	32	250-7.1
2015-16	36-35	1119-31.1	152-332	.458	67-162	.414	53-74	.716	16-83	99-2.8	59-0	89	54	7	43	424-11.8
2016-17	34-34	1149-33.8	174-381	.457	77-179	.430	56-73	.767	9-114	123-3.6	45-0	122	56	2	26	481-14.1
2017-18	7-7	183-26.1	35-69	.507	15-31	.484	9-10	.900	5-21	26-3.7	11-0	35	14	0	16	94-13.4
TOTAL	112-91	3263-29.1	448-1010	.444	196-480	.408	157-207	.758	42-296	338-3.0	193-0	298	176	15	117	1249-11.2

ACTIVE PLAYER CAREER STATS

CHASITY PATTERSON

YEAR	G-GS	MIN-AVG	FG-FGA	PCT	3FG-A	PCT	FT-FTA	PCT	OR-DR	R-AVG	PF-DQ	A	TO	BL	ST	PTS-AVG
2017-18	6-0	61-10.2	12-26	.462	2-8	.250	4-8	.500	1-11	12-2.0	7-0	10	5	2	2	30-5.0
TOTAL	6-0	61-10.2	12-26	.462	2-8	.250	4-8	.500	1-11	12-2.0	7-0	10	5	2	2	30-5.0

SUG SUTTON

YEAR	G-GS	MIN-AVG	FG-FGA	PCT	3FG-A	PCT	FT-FTA	PCT	OR-DR	R-AVG	PF-DQ	A	TO	BL	ST	PTS-AVG
2016-17	34-1	461-13.6	51-147	.347	10-45	.222	18-28	.643	8-50	58-1.7	36-1	43	31	3	13	130-3.8
2017-18	7-0	139-19.9	21-49	.429	8-17	.471	2-7	.286	4-15	19-2.7	11-0	20	13	3	7	52-7.4
TOTAL	41-1	600-14.6	72-196	.367	18-62	.290	20-35	.571	12-65	77-1.9	47-1	63	44	6	20	182-4.4

JADA UNDERWOOD

YEAR	G-GS	MIN-AVG	FG-FGA	PCT	3FG-A	PCT	FT-FTA	PCT	OR-DR	R-AVG	PF-DQ	A	TO	BL	ST	PTS-AVG
2016-17	28-0	276-9.9	34-77	.442	2-4	.500	23-34	.676	28-23	51-1.8	38-0	9	28	10	3	93-3.3
2017-18	6-0	93-15.5	16-26	.615	4-7	.571	10-16	.625	11-7	18-3.0	11-0	8	7	1	5	46-7.7
TOTAL	34-0	369-10.9	50-103	.485	6-11	.545	33-50	.660	39-30	69-2.0	49-0	17	35	11	8	139-4.1

JATARIE WHITE

YEAR	G-GS	MIN-AVG	FG-FGA	PCT	3FG-A	PCT	FT-FTA	PCT	OR-DR	R-AVG	PF-DQ	A	TO	BL	ST	PTS-AVG
2014-15*	20-0	184-9.2	20-49	.408	0-0	.000	9-14	.643	16-28	44-2.2	44-0	7	14	5	7	49-2.5
2015-16*	32-0	406-12.7	30-88	.341	0-3	.000	32-52	.615	26-67	93-2.9	57-0	18	22	13	6	92-2.9
2017-18	7-6	134-19.1	35-62	.565	0-0	.000	10-16	.625	19-18	37-5.3	18-0	2	15	1	5	80-11.4
TOTAL	7-6	134-19.1	35-62	.565	0-0	.000	10-16	.625	19-18	37-5.3	18-0	2	15	1	5	80-11.4
All*	59-6	724-12.3	85-199	.427	0-3	.000	51-82	.622	61-113	174-2.9	119-0	27	51	19	18	221-3.7

* Includes statistics from another NCAA Division I institution.

CAREER HIGHS

1 | SUG SUTTON

Points _____ 11 vs. Stetson [11-12-17]
Rebounds _____ 8 at Texas Tech [01-21-17]
Assists _____ 5 vs. Louisiana Tech [11-30-17]
Steals _____ 2, three times, last at Georgia [12-03-17]
Blocks _____ 2 vs. UTRGV [12-15-16]
Field Goals _____ 4, four times, last vs. Washington [11-25-17]
3-Point Field Goals _____ 2, five times, last vs. Louisiana Tech [11-30-17]
Free Throws _____ 4 vs. Oklahoma State [01-10-17]
Minutes _____ 29 vs. Iowa State [02-24-17]

4 | DESTINY LITTLETON

Points _____ 8 vs. UTSA [11-17-17]
Rebounds _____ 4 vs. McNeese State [11-15-17]
Assists _____ 2, twice, last vs. vs. McNeese State [11-15-17]
Steals _____ 2 vs. UTSA [11-17-17]
Blocks _____ 1 vs. McNeese State [11-15-17]
Field Goals _____ 3 vs. UTSA [11-17-17]
3-Point Field Goals _____ 2 vs. UTSA [11-17-17]
Free Throws _____ 0
Minutes _____ 17 vs. McNeese State [11-15-17]

5 | JORDAN HOSEY

Points _____ 13 vs. Stetson [11-12-17]
Rebounds _____ 8, twice, last vs. Stetson [11-12-17]
Assists _____ 1, eight times, last vs. Washington [11-25-17]
Steals _____ 2, twice, last vs. LSU [11-24-17]
Blocks _____ 1, 12 times, last at Georgia [12-03-17]
Field Goals _____ 5 vs. Stetson [11-12-17]
3-Point Field Goals _____ 1, twice, last vs. Stetson [11-12-17]
Free Throws _____ 6, twice, last vs. Kansas [03-05-16]
Minutes _____ 20 vs. Louisiana Tech [11-30-17]

10 | LASHANN HIGGS

Points _____ 19 vs. UConn [03-28-16]
Rebounds _____ 10 vs. Hampton [11-25-15]
Assists _____ 8 vs. Sam Houston State [12-27-15]
Steals _____ 5 vs. New Orleans [12-20-16]
Blocks _____ 1, five times, last vs. Central Arkansas [03-17-17]
Field Goals _____ 9 vs. UConn [03-28-16]
3-Point Field Goals _____ 3 at Tennessee [11-29-15]
Free Throws _____ 6, three times, last at Georgia [12-03-17]
Minutes _____ 31 at Florida State [02-13-17]

11 | BROOKE MCCARTY

Points _____ 29 at Florida State [02-13-17]
Rebounds _____ 7, four times, last vs. UTSA [11-17-17]
Assists _____ 8, four times., last at Florida State [02-13-17]
Steals _____ 5 vs. Louisiana Tech [11-30-17]
Blocks _____ 2 vs. Rice [12-30-14]
Field Goals _____ 11 at Florida State [02-13-17]
3-Point Field Goals _____ 5, four times, last at Florida State [02-13-17]
Free Throws _____ 8, twice, last at Little Rock [12-06-15]
Minutes _____ 50 at Florida State [02-13-17]

12 | JADA UNDERWOOD

Points _____ 19 vs. UTSA [11-17-17]
Rebounds _____ 9 vs. UTSA [11-17-17]
Assists _____ 3 vs. New Orleans [12-20-16]
Steals _____ 2 vs. McNeese State [11-15-17]
Blocks _____ 2, three times, last vs. Kansas [02-11-17]
Field Goals _____ 6 vs. UTSA [11-17-17]
3-Point Field Goals _____ 2 vs. Northwestern State [11-23-16]
Free Throws _____ 6 vs. UTSA [11-17-17]
Minutes _____ 25 vs. UTRGV [12-15-16]

14 | OLAMIDE ABOROWA

Points _____ 11 vs. Louisiana Tech [11-30-17]
Rebounds _____ 7, twice, last vs. Louisiana Tech [11-30-17]
Assists _____ 1, three times, last vs. Northwestern State [11-18-16]
Steals _____ 1 at Texas Tech [01-21-17]
Blocks _____ 2, twice, last vs. Central Arkansas [03-17-17]
Field Goals _____ 5 vs. Louisiana Tech [11-30-17]
3-Point Field Goals _____ None
Free Throws _____ 2, twice, last vs. Central Arkansas [03-17-17]
Minutes _____ 21 vs. UTSA [11-17-17]

15 | CHASITY PATTERSON

Points _____ 13 vs. UTSA [11-17-17]
Rebounds _____ 4 vs. Stetson [11-12-17]
Assists _____ 4 vs. McNeese State [11-15-17]
Steals _____ 1, twice, last vs. Louisiana Tech [11-30-17]
Blocks _____ 1, twice, last vs. Louisiana Tech [11-30-17]
Field Goals _____ 5 vs. UTSA [11-17-17]
3-Point Field Goals _____ 1, twice, last vs. Louisiana Tech [11-30-17]
Free Throws _____ 2, twice, last vs. Washington [11-25-17]
Minutes _____ 15 vs. McNeese State [11-15-17]

23 | ARIEL ATKINS

Points _____ 26 at Oklahoma State [02-01-17]
Rebounds _____ 11 at Iowa State [02-06-16]
Assists _____ 7 vs. Louisiana Tech [11-30-17]
Steals _____ 5 vs. Southern [12-08-14]
Blocks _____ 3 vs. Louisiana Tech [11-30-17]
Field Goals _____ 11 at Oklahoma State [02-01-17]
3-Point Field Goals _____ 3, seven times, last at Georgia [12-03-17]
Free Throws _____ 8 at TCU [02-01-15]
Minutes _____ 40 vs. Oklahoma [01-29-15]

30 | KHALEANN CARON-GOUDREAU

Points _____ 11 vs. Texas A&M [01-02-15]
Rebounds _____ 5 at TCU [01-25-17]
Assists _____ 3, twice, last vs. UTSA [11-17-17]
Steals _____ 1, three times, last at West Virginia [01-14-17]
Blocks _____ 4 vs. UTSA [12-17-16]
Field Goals _____ 4 vs. Texas A&M [01-02-15]
3-Point Field Goals _____ 2, twice, last vs. Tennessee [01-05-15]
Free Throws _____ 4 vs. Tennessee [01-05-15]
Minutes _____ 24 vs. Tennessee [01-05-15]

31 | AUDREY-ANN CARON-GOUDREAU

Points _____ 21 vs. Minnesota [11-28-14]
 Rebounds _____ 14 vs. Minnesota [11-28-14]
 Assists _____ 3, three times, last vs. Washington [11-25-17]
 Steals _____ 5 vs. Washington [11-25-17]
 Blocks _____ 5, twice, last vs. Kansas [02-11-17]
 Field Goals _____ 7 vs. Minnesota [11-28-14]
 3-Point Field Goals _____ 2 vs. Louisiana Tech [11-30-17]
 Free Throws _____ 7 vs. Minnesota [11-28-14]
 Minutes _____ 35 vs. Minnesota [11-28-14]

33 | RELLAH BOOTHE

Points _____ 8 vs. Louisiana Tech [11-30-17]
 Rebounds _____ 10 vs. McNeese State [11-15-17]
 Assists _____ 4 vs. UTSA [11-17-17]
 Steals _____ 0
 Blocks _____ 3 vs. McNeese State [11-15-17]
 Field Goals _____ 3, three times, last vs. Louisiana Tech [11-30-17]
 3-Point Field Goals _____ 1 at Georgia [12-03-17]
 Free Throws _____ 2 vs. Louisiana Tech [11-30-17]
 Minutes _____ 18 vs. UTSA [11-17-17]

40 | JATARIE WHITE

Points _____ 24 vs. Washington [11-25-17]
 Rebounds _____ 9, twice, last vs. Stetson [11-12-17]
 Assists _____ 3 vs. Kansas State [03-20-16]
 Blocks _____ 4 vs. Winthrop [12-13-15]
 Steals _____ 2, twice, last vs. Louisiana Tech [11-30-17]
 Field Goals _____ 10 vs. Washington [11-25-17]
 3-Point Field Goals _____ None
 Free Throws _____ 5 vs. Missouri [01-10-16]
 Minutes _____ 26 at Georgia [12-03-17]

GAME RECAPS

GAME 1	1ST	2ND	3RD	4TH	FINAL
Stetson	15	18	12	14	59
Texas	33	24	23	15	95

November 12, 2017 | Austin, Texas

Stetson (0-1)

##	PLAYER	FG	A	3fg	A	FT	A	OR	DR	TR	PF	TP	A	TO	B	S	M
23	Vincent	f	0	2	0	0	0	0	3	3	3	0	1	0	0	1	18
24	Colclough	f	8	13	1	3	2	4	0	1	1	3	19	2	4	0	30
02	Beach	g	1	6	1	3	2	4	0	6	6	3	5	3	3	0	32
03	Wagner	g	2	8	2	6	2	2	0	4	4	3	8	0	5	0	37
30	Chambers	g	4	11	1	4	3	6	0	2	2	3	12	0	5	0	38
32	Tully		2	2	0	0	0	2	0	0	0	1	4	0	2	0	11
33	Pruitt		5	5	0	0	1	3	3	2	5	0	11	0	2	0	24
35	Lentz		0	1	0	1	0	0	0	2	2	4	0	0	1	0	10
TEAM																	
Totals		22	48	5	17	10	21	3	22	25	20	59	6	22	0	4	200

Texas (1-0)

##	PLAYER	FG	A	3fg	A	FT	A	OR	DR	TR	PF	TP	A	TO	B	S	M
31	Caron-Goudreau, A.	f	5	6	0	0	0	0	2	3	5	1	10	0	0	0	19
40	White	c	4	8	0	0	1	2	5	4	9	3	9	0	2	0	16
10	Higgs	g	7	9	0	1	4	5	1	1	2	1	18	0	0	0	18
11	McCarty	g	6	11	2	5	0	0	2	1	3	1	14	7	2	0	24
23	Atkins	g	4	6	1	1	0	1	2	2	4	1	9	6	0	1	22
01	Sutton		4	6	1	1	2	3	2	0	2	0	11	1	2	0	12
04	Littleton		1	8	0	6	0	0	1	2	3	1	2	2	1	0	12
05	Hosey		5	8	1	3	2	2	3	5	8	3	13	0	2	1	18
12	Underwood		1	3	1	1	0	0	0	0	0	2	3	2	1	0	14
14	Aborowa		2	5	0	0	0	1	2	1	3	1	4	0	0	0	13
15	Patterson		0	7	0	3	0	2	1	3	4	3	0	0	3	1	12
30	Caron-Goudreau, K.		0	3	0	2	0	0	0	3	3	2	0	1	0	0	14
33	Boothe		1	3	0	1	0	0	0	2	2	2	2	0	0	0	6
TEAM																	
Totals		40	83	6	24	9	16	24	27	51	21	95	19	13	3	10	200

Officials: Jesse Dickerson, Amy Bonner, Bill Larance

Technical fouls: Stetson - None; Texas - None

Attendance: 3,415

GAME 2	1ST	2ND	3RD	4TH	FINAL
McNeese State	8	6	14	6	34
Texas	32	26	24	18	100

November 15, 2017 | Austin, Texas

McNeese State (1-1)

##	PLAYER	FG	A	3fg	A	FT	A	OR	DR	TR	PF	TP	A	TO	B	S	M	
02	Jones	f	0	4	0	0	0	0	3	2	5	2	0	0	3	0	17	
05	Carswell	f	0	1	0	0	1	2	2	0	2	1	1	2	1	1	0	19
00	Hudnall	g	2	10	0	4	0	2	1	2	3	1	4	1	6	1	20	
01	Bolton	g	1	4	1	3	0	0	0	0	0	3	3	0	1	0	15	
03	Davis	g	0	5	0	1	0	0	1	2	3	4	0	2	6	0	19	
04	Sheppard		1	6	1	3	0	0	0	2	2	2	3	0	3	0	16	
13	Rivas		0	3	0	0	0	0	1	0	1	1	0	0	0	0	13	
15	Guidry		2	4	0	1	0	0	0	2	2	1	4	0	1	0	15	
20	Cooley		2	4	2	2	0	0	1	1	0	6	2	3	0	0	20	
21	Rogers		2	8	0	1	3	5	2	1	3	4	0	2	0	0	19	
30	Reed		1	3	0	0	0	0	1	2	3	1	2	0	0	0	12	
34	Riley		0	4	0	0	4	4	1	1	2	1	4	0	1	0	15	
TEAM																		
Totals		11	56	4	15	8	13	14	16	30	20	34	7	28	2	3	200	

Texas (2-0)

##	PLAYER	FG	A	3fg	A	FT	A	OR	DR	TR	PF	TP	A	TO	B	S	M	
31	Caron-Goudreau, A.	f	3	5	1	2	4	5	4	2	6	1	11	0	0	1	16	
40	White	c	2	5	0	0	1	2	1	1	2	3	5	0	1	1	17	
10	Higgs	g	3	5	1	2	2	0	2	2	2	2	9	0	3	0	15	
11	McCarty	g	3	6	1	3	2	2	1	2	3	2	9	6	2	0	18	
23	Atkins	g	8	10	3	3	4	4	3	4	7	1	23	2	1	1	19	
01	Sutton		2	7	1	1	0	1	0	0	0	2	5	1	0	0	17	
04	Littleton		1	7	1	4	0	0	1	3	4	3	3	2	0	1	17	
05	Hosey		4	5	0	0	0	2	1	1	2	0	8	1	1	0	10	
12	Underwood		4	6	1	3	2	2	2	4	2	11	2	2	1	2	16	
14	Aborowa		2	4	0	0	0	0	4	4	1	4	0	0	2	0	15	
15	Patterson		3	7	0	2	0	0	0	3	3	3	6	4	0	0	15	
30	Caron-Goudreau, K.		0	1	0	0	0	0	0	2	2	3	0	0	0	2	11	
33	Boothe		3	9	0	1	0	0	4	6	10	0	6	0	0	3	0	14
TEAM																		
Totals		38	77	9	21	15	20	18	32	50	23	100	18	12	10	14	200	

Officials: Brian Hall, Metta Roberts, Julie Krommenhoek

Technical fouls: McNeese State - None; Texas - None

Attendance: 7,651

GAME 3	1ST	2ND	3RD	4TH	FINAL
UTSA	12	15	25	18	70
Texas	30	29	29	32	120

November 17, 2017 | Austin, Texas

UTSA (1-3)

##	PLAYER	FG	A	3fg	A	FT	A	OR	DR	TR	PF	TP	A	TO	B	S	M
20	Kecek	f	0	4	0	3	0	0	1	1	2	2	0	0	4	0	28
21	Benson	f	6	13	1	1	2	3	2	5	7	3	15	0	0	0	25
23	Hawkins	f	0	2	0	0	0	0	1	1	2	3	0	0	1	0	23
04	Chidomere	g	8	12	0	3	5	0	4	4	4	4	19	1	6	0	21
10	Robinson	g	3	10	1	3	2	2	1	0	1	4	9	1	2	0	27
03	Dukes		3	8	2	2	2	2	0	1	1	2	10	2	1	0	15
13	Cousin		0	0	0	0	0	0	3	3	1	0	1	1	0	0	7
15	Toth		2	3	0	0	0	0	1	1	2	2	4	1	2	0	14
34	Donald		4	11	3	8	0	0	0	2	2	1	11	0	3	0	23
40	Marlow		1	4	0	0	0	0	1	1	2	1	2	0	0	0	17
TEAM																	
Totals		27	67	7	17	9	12	7	22	29	23	70	6	21	0	5	200

Texas (3-0)

##	PLAYER	FG	A	3fg	A	FT	A	OR	DR	TR	PF	TP	A	TO	B	S	M
31	Caron-Goudreau, A.	f	1	3	0	1	1	2	0	2	2	0	3	0	1	0	10
40	White	c	5	9	0	0	1	2	4	0	4	0	11	1	2	0	16
10	Higgs	g	2	5	0	0	4	4	1	2	3	2	8	3	0	0	11
11	McCarty	g	7	11	3	4	1	1	1	6	7	3	18	3	0	0	21
23	Atkins	g	6	7	1	1	0	0	1	3	4	4	13	3	2	0	16
01	Sutton		3	7	2	3	0	0	0	2	2	2	8	1	0	1	16
04	Littleton		3	6	2	4	0	0	0	0	0	0	8	1	2	0	15
05	Hosey		1	3	0	1	1	2	0	2	2	0	3	1	1	0	13
12	Underwood		6	9	1	2	6	9	6	3	9	1	19	1	2	0	21
14	Aborowa		4	9	0	0	1	1	4	3	7	1	9	1	0	0	16
15	Patterson		5	7</													

GAME RECAPS

GAME 4	1ST	2ND	3RD	4TH	FINAL
Texas	28	13	17	17	75
LSU	17	11	9	29	66

November 24, 2017 | Las Vegas, Nev.

Texas (4-0)

##	PLAYER	FG	A	3fg	A	FT	A	OR	DR	TR	PF	TP	A	TO	B	S	M
31	Caron-Goudreau, A.	f	4	7	0	0	0	7	3	10	3	8	0	2	1	0	29
40	White	c	6	9	0	0	2	3	2	3	5	3	14	0	4	0	24
10	Higgs	g	5	6	1	1	2	4	0	0	0	2	13	3	2	0	25
11	McCarty	g	4	10	2	2	1	1	0	2	2	2	11	6	3	0	33
23	Atkins	g	6	8	2	3	5	0	2	2	3	17	4	4	1	4	21
01	Sutton	2	8	0	5	0	1	0	4	4	3	4	4	5	0	0	24
04	Littleton	0	1	0	1	0	0	0	0	0	0	0	0	0	0	0	5
05	Hosey	1	4	0	0	0	1	1	2	1	2	0	0	0	0	2	11
12	Underwood	0	1	0	0	2	2	1	0	1	3	2	2	0	0	0	14
14	Aborowa	2	2	0	0	0	0	0	0	0	0	3	0	0	1	0	5
30	Caron-Goudreau, K.	0	1	0	0	0	0	0	0	0	3	0	1	2	0	0	9
TEAM																	
Totals		30	57	5	12	10	16	14	20	34	23	75	20	23	3	9	200

LSU (2-3)

##	PLAYER	FG	A	3fg	A	FT	A	OR	DR	TR	PF	TP	A	TO	B	S	M	
04	Farley	f	2	2	1	1	0	0	1	1	2	2	5	0	4	1	0	17
05	Mitchell	f	1	5	0	0	4	8	3	1	4	4	6	2	3	0	1	23
00	Jackson	g	11	23	0	2	1	1	2	5	7	2	23	5	4	0	1	39
03	Pointer	g	0	3	0	0	0	0	0	0	0	4	0	0	3	0	1	17
11	Louis	g	8	15	0	0	4	6	1	3	4	4	20	4	3	0	2	33
02	Norton	1	2	0	0	0	0	2	2	4	1	2	0	0	0	0	1	18
13	Richard-Harris	2	2	0	0	0	0	0	0	0	3	4	4	1	0	0	23	
24	Aifuwa	3	4	0	0	0	1	2	3	3	6	0	2	1	1	1	16	
30	Cherry	0	2	0	0	0	0	0	0	0	0	0	0	1	0	1	10	
44	Neubert	0	2	0	0	0	0	0	0	0	0	0	0	0	0	0	4	
TEAM																		
Totals		28	60	1	3	9	15	15	18	33	23	86	15	21	2	8	200	

Officials: Jody Cantrell, Rod Ledington, Kelly Johnson
 Technical fouls: Texas - None; LSU - None
 Attendance: 550

GAME 5	1ST	2ND	3RD	4TH	FINAL
Washington	9	20	18	29	68
Texas	20	21	27	24	92

November 25, 2017 | Las Vegas, Nev.

Washington (2-3)

##	PLAYER	FG	A	3fg	A	FT	A	OR	DR	TR	PF	TP	A	TO	B	S	M	
01	Johnson	f	3	12	2	7	1	2	3	2	5	2	9	1	7	0	1	25
02	Semebene	f	1	7	0	2	1	4	4	1	5	4	3	1	1	0	1	27
03	Henson	f	2	6	1	3	1	2	1	1	2	3	6	1	2	0	0	17
04	Megloza	g	6	11	0	2	0	1	0	0	0	2	12	0	0	0	12	
24	Moser	g	2	3	0	1	0	0	0	1	1	1	4	3	3	0	2	28
11	Collier	2	9	0	3	2	2	1	1	2	4	6	2	2	0	1	18	
22	Rooks	1	3	1	3	0	0	0	3	3	2	3	0	1	1	0	16	
35	Griggsby	4	7	2	4	0	0	0	0	0	0	10	5	3	0	2	24	
42	Wieburg	3	5	2	2	1	1	3	3	6	3	9	2	0	0	0	19	
44	Peterson	2	3	2	3	0	0	0	3	3	2	6	1	2	0	0	14	
TEAM																		
Totals		26	66	10	30	6	12	14	16	30	23	88	16	22	1	9	200	

Texas (5-0)

##	PLAYER	FG	A	3fg	A	FT	A	OR	DR	TR	PF	TP	A	TO	B	S	M	
31	Caron-Goudreau, A.	f	1	2	0	1	1	4	2	3	5	2	3	2	0	5	19	
40	White	c	10	12	0	0	4	5	4	3	7	2	24	1	4	0	25	
10	Higgs	g	3	8	0	1	4	7	2	2	4	2	10	1	2	0	14	
11	McCarty	g	5	12	3	8	2	2	1	5	6	2	15	6	2	0	31	
23	Atkins	g	3	6	1	2	0	0	1	3	4	3	7	6	1	0	1	26
01	Sutton	4	7	2	4	0	0	0	3	3	1	10	4	2	0	1	25	
04	Littleton	1	2	0	1	0	0	0	0	0	0	2	0	0	0	0	5	
05	Hosey	1	2	0	0	1	1	0	3	3	1	3	1	2	0	0	12	
12	Underwood	4	6	1	1	0	3	2	2	4	3	9	1	2	0	1	18	
14	Aborowa	0	0	0	0	0	0	0	0	0	0	0	0	1	0	0	7	
15	Patterson	2	3	0	1	2	2	0	2	2	0	6	2	0	0	0	11	
30	Caron-Goudreau, K.	1	1	0	0	1	2	1	2	3	0	3	1	1	0	0	7	
TEAM																		
Totals		35	61	7	19	15	26	14	29	43	16	92	26	20	0	10	200	

Officials: Doug Williams, Kylie Galloway, Marc Merritt
 Technical fouls: Washington - None; Texas - None
 Attendance: 550

GAME 6	1ST	2ND	3RD	4TH	FINAL
LA Tech	9	17	13	15	54
Texas	25	25	20	18	88

November 30, 2017 | Austin, Texas

Louisiana Tech (4-3)

##	PLAYER	FG	A	3fg	A	FT	A	OR	DR	TR	PF	TP	A	TO	B	S	M
23	Cleaver	f	1	3	0	0	0	0	0	0	0	1	2	0	2	0	15
34	Malone	f	3	6	0	0	1	4	1	4	5	2	7	0	1	0	19
04	Anthony	g	3	11	0	4	0	0	1	3	4	0	6	3	2	0	19
24	Stahly	g	5	11	3	7	0	0	0	2	2	0	13	0	1	0	26
30	Dixon	g	0	6	0	1	0	0	0	2	2	1	0	4	5	0	24
01	Guinto	1	6	1	4	2	2	0	2	2	2	5	3	5	2	2	19
02	Crone	0	0	0	0	0	0	0	0	0	0	0	0	0	0	0	5
12	McCutcheon	1	3	0	0	2	3	1	0	1	3	4	1	0	0	0	19
14	McLeod	2	5	1	2	0	0	1	2	3	2	5	0	2	0	3	14
15	Johnson	1	1	0	0	0	0	1	0	1	0	2	0	0	0	0	6
22	Delgado	3	5	1	1	3	4	2	2	4	1	10	0	3	1	0	19
32	Whitney	0	4	0	0	0	0	1	2	3	1	0	0	1	0	0	15
TEAM																	
Totals		20	61	6	19	8	13	13	20	33	13	54	11	22	3	7	200

Texas (6-0)

##	PLAYER	FG	A	3fg	A	FT	A	OR	DR	TR	PF	TP	A	TO	B	S	M	
05	Hosey	f	3	10	0	1	0	0	1	2	3	3	6	0	2	1	0	20
31	Caron-Goudreau, A.	f	3	5	2	2	0	0	2	6	8	0	8	0	1	2	1	17
10	Higgs	g	6	8	0	1	1	2	2	1	3	2	13	4	1	0	2	23
11	McCarty	g	6	10	3	5	0	0	0	2	2	0	15	5	2	0	5	23
23	Atkins	g	3	9	1	7	1	1	0	3	3	1	8	7	0	3	2	24
01	Sutton	4	7	2	2	0	0	1	4	5	2	10	5	3	1	1	22	
04	Littleton	0	5	0	2	0	0	0	1	1	2	0	1	0	0	0	1	14
14	Aborowa	5	10	0	0	1	2	5	2	7	1	11	0	0	0	0	20	
15	Patterson	2	2	1	1	0	0	0	1	1	1	5	2	2	1	1	10	
33	Boothe	3	9	0	1	2	3	8	1	9	1	8	1	4	0	0	17	
40	White	2	4	0	0	0	0	4	4	4	4	0	0	0	0	2	10	

GAME RECAPS

GAME 7	1ST	2ND	3RD	4TH	FINAL
Texas	22	24	21	14	81
Georgia	9	18	17	9	53

December 3, 2017 | Athens, Ga.

Texas (7-0)

#	PLAYER	FG	A	3fg	A	FT	A	OR	DR	TR	PF	TP	A	TO	B	S	M	
31	Caron-Goudreau, A.	f	1	4	1	2	3	4	1	4	5	5	6	0	2	1	2	17
40	White	c	6	15	0	0	1	2	3	3	6	3	13	0	2	0	1	26
10	Higgs	g	3	8	0	1	6	6	2	2	4	0	12	5	0	0	1	21
11	McCarty	g	4	9	1	4	3	4	0	3	3	1	12	2	3	0	3	33
23	Atkins	g	6	9	3	3	2	2	0	9	9	1	17	2	1	2	0	30
01	Sutton	g	2	7	0	1	0	2	1	2	3	1	4	4	1	1	2	23
04	Littleton		0	0	0	0	0	0	0	0	0	0	0	1	0	0	0	3
05	Hosey		2	6	0	1	0	0	1	2	3	4	4	0	2	1	1	15
12	Underwood		1	1	0	0	0	0	0	0	0	0	2	0	0	0	0	10
14	Aborowa		3	4	0	0	0	0	1	1	2	3	6	0	0	0	0	15
15	Patterson		0	0	0	0	0	0	0	1	1	0	0	0	0	0	0	2
33	Boothe		2	6	1	1	0	0	1	2	3	1	5	0	1	0	0	5
	TEAM								5	3	8							
	Totals		30	69	6	13	15	20	15	32	47	19	81	14	12	5	10	200

Georgia (7-1)

#	PLAYER	FG	A	3fg	A	FT	A	OR	DR	TR	PF	TP	A	TO	B	S	M	
04	Robinson	f	2	8	0	4	0	0	0	3	3	4	4	0	2	4	2	22
33	Engram	f	6	19	2	6	3	5	2	3	5	3	17	0	2	2	2	36
00	Cole	g	2	7	0	1	0	0	0	3	3	1	4	3	5	0	0	25
12	Clark	g	0	0	0	0	0	0	0	1	1	3	0	1	1	0	0	8
23	Morrison	g	3	7	0	1	1	1	2	8	10	3	7	1	1	0	0	29
02	Connally		3	8	1	3	2	2	0	0	0	1	9	2	3	0	0	26
03	Paul		2	6	0	1	0	0	3	2	5	3	4	0	2	0	0	18
11	Caldwell		4	7	0	1	0	0	0	2	2	1	8	1	0	0	0	23
24	Costa		0	1	0	0	0	0	0	1	1	0	0	1	1	0	0	9
44	Bates		0	0	0	0	0	0	0	0	0	0	0	0	0	0	0	3
51	Blanaru		0	1	0	0	0	0	1	0	1	2	0	0	0	0	0	2
	TEAM								3	4	7							
	Totals		22	64	3	7	6	8	11	27	38	21	53	9	17	6	4	201

Officials: Beverly Roberts, Eric Brewton, Metta Roberts

Technical fouls: Texas - None; Georgia - None

Attendance: 3,390

PLAYER BIO UPDATES



SUG SUTTON
5-8 | So. | G | St. Louis, Mo.



DESTINY LITTLETON
5-9 | Fr. | G | La Jolla, Calif.

CAREER STATS

YEAR	GP	GS	MIN/G	FG%	3FG%	FT%	REB	REB/G	AST/G	PTS	PTS/G
2016-17	34	1	13.6	.347	.222	.643	58	1.7	1.3	130	3.8
2017-18	7	0	19.9	.429	.471	.286	19	2.7	2.9	52	7.4
TOTAL	41	1	14.6	.367	.290	.571	77	1.9	1.5	182	4.4

2017-18 GAME-BY-GAME STATS

DATE	OPPONENT	MIN	FG	3FG	FT	REB	A	TO	BLK	STL	PTS
N.12	Stetson	12	4-6	1-1	2-3	2	1	2	0	1	11
N.15	McNeese State	17	2-7	1-1	0-1	0	1	0	0	2	5
N.17	UTSA	16	3-7	2-3	0-0	2	1	0	1	0	8
N.24	vs. LSU	24	2-8	0-5	0-1	4	4	5	0	0	4
N.25	vs. Washington	25	4-7	2-4	0-0	3	4	2	0	1	10
N.30	Louisiana Tech	22	4-7	2-2	0-0	5	5	3	1	1	10
D.03	at Georgia	23	2-7	0-1	0-2	3	4	1	1	2	4
D.10	at Tennessee										
D.13	Northwestern State										
D.17	Florida State										
D.28	at Oklahoma *										
D.31	West Virginia *										
J.03	Oklahoma State *										
J.07	at Kansas State *										
J.10	at TCU *										
J.13	Kansas *										
J.15	UConn										
J.20	at Texas Tech *										
J.25	at Baylor *										
J.27	Iowa State *										
J.31	at Kansas *										
F.03	TCU *										
F.05	at West Virginia *										
F.10	Kansas State *										
F.14	Texas Tech *										
F.17	at Oklahoma State *										
F.19	Baylor *										
F.24	at Iowa State *										
F.27	Oklahoma *										

CAREER/SEASON GAME HIGHS (DATE: MM/YY)

	CAREER	SEASON
POINTS	11 vs. Stetson (11/17)	11 vs. Stetson (11/17)
REBOUNDS	8 at Texas Tech (01/17)	4 vs. LSU (11/17)
ASSISTS	5 vs. LA Tech (11/17)	5 vs. LA Tech (11/17)
STEALS	2 3x., last vs. Georgia (12/17)	2 2x, last vs. Georgia (12/17)
BLOCKS	2 vs. UTRGV (12/16)	1 2x, last vs. Georgia (12/17)
FG	4 5x., last vs. LA Tech (11/17)	4 3x., last vs. LA Tech (11/17)
3FG	2 5x., last vs. LA Tech (11/17)	2 3x., last vs. LA Tech (11/17)
FT	4 vs. Oklahoma State (01/17)	2 vs. Stetson (11/17)
MINUTES	29 vs. Iowa State (02/17)	25 vs. Washington (11/17)

CAREER STATS

YEAR	GP	GS	MIN/G	FG%	3FG%	FT%	REB	REB/G	AST/G	PTS	PTS/G
2017-18	7	0	10.1	.207	.167	.000	8	1.3	1.0	15	2.1
TOTAL	7	0	10.1	.207	.167	.000	8	1.1	1.0	15	2.1

2017-18 GAME-BY-GAME STATS

DATE	OPPONENT	MIN	FG	3FG	FT	REB	A	TO	BLK	STL	PTS
N.12	Stetson	12	1-8	0-6	0-0	3	2	1	0	0	2
N.15	McNeese State	17	1-7	1-4	0-0	4	2	0	1	1	3
N.17	UTSA	15	3-6	2-4	0-0	0	1	2	0	2	8
N.24	vs. LSU	5	0-1	0-1	0-0	0	0	0	0	0	0
N.25	vs. Washington	5	1-2	0-1	0-0	0	0	0	0	0	2
N.30	Louisiana Tech	14	0-5	0-2	0-0	1	1	0	0	1	0
D.03	at Georgia	3	0-0	0-0	0-0	0	1	0	0	0	0
D.10	at Tennessee										
D.13	Northwestern State										
D.17	Florida State										
D.28	at Oklahoma *										
D.31	West Virginia *										
J.03	Oklahoma State *										
J.07	at Kansas State *										
J.10	at TCU *										
J.13	Kansas *										
J.15	UConn										
J.20	at Texas Tech *										
J.25	at Baylor *										
J.27	Iowa State *										
J.31	at Kansas *										
F.03	TCU *										
F.05	at West Virginia *										
F.10	Kansas State *										
F.14	Texas Tech *										
F.17	at Oklahoma State *										
F.19	Baylor *										
F.24	at Iowa State *										
F.27	Oklahoma *										

CAREER/SEASON GAME HIGHS (DATE: MM/YY)

	CAREER	SEASON
POINTS	8 vs. UTSA (11/17)	8 vs. UTSA (11/17)
REBOUNDS	4 vs. McNeese State (11/17)	4 vs. McNeese State (11/17)
ASSISTS	2 2x., last vs. McNeese St. (11/17)	2 2x., last vs. McNeese St. (11/17)
STEALS	2 vs. UTSA (11/17)	2 vs. UTSA (11/17)
BLOCKS	1 vs. McNeese State (11/17)	1 vs. McNeese State (11/17)
FG	3 vs. UTSA (11/17)	3 vs. UTSA (11/17)
3FG	2 vs. UTSA (11/17)	2 vs. UTSA (11/17)
FT	- -	- -
MINUTES	17 vs. McNeese State (11/17)	17 vs. McNeese State (11/17)

PLAYER BIO UPDATES



JORDAN HOSEY

6-1 | Jr. | F | Pearland, Texas



LASHANN HIGGS

5-9 | Jr. | G | Round Rock, Texas

CAREER STATS

YEAR	GP	GS	MIN/G	FG%	3FG%	FT%	REB	REB/G	BLK/G	PTS	PTS/G
2015-16	35	0	9.4	.474	.200	.608	69	2.0	0.2	106	3.0
2016-17	27	0	7.7	.415	.000	.571	43	1.6	0.1	70	2.6
2017-18	7	1	14.1	.447	.167	.571	23	3.3	0.4	39	5.6
TOTAL	69	1	9.2	.448	.143	.593	135	1.9	0.2	215	3.1

2017-18 GAME-BY-GAME STATS

DATE	OPPONENT	MIN	FG	3FG	FT	REB	A	TO	BLK	STL	PTS
N.12	Stetson	18	5-8	1-3	2-2	8	0	2	1	0	13
N.15	McNeese State	10	4-5	0-0	0-2	2	1	1	0	0	8
N.17	UTSA	13	1-3	0-1	1-2	2	1	1	0	0	3
N.24	vs. LSU	11	1-4	0-0	0-0	2	0	0	0	2	2
N.25	vs. Washington	12	1-2	0-0	1-1	3	1	2	0	0	3
N.30	Louisiana Tech	20	3-10	0-1	0-0	3	0	2	1	0	6
D.03	at Georgia	15	2-6	0-1	0-0	3	0	2	1	1	4
D.10	at Tennessee										
D.13	Northwestern State										
D.17	Florida State										
D.28	at Oklahoma *										
D.31	West Virginia *										
J.03	Oklahoma State *										
J.07	at Kansas State *										
J.10	at TCU *										
J.13	Kansas *										
J.15	UConn										
J.20	at Texas Tech *										
J.25	at Baylor *										
J.27	Iowa State *										
J.31	at Kansas *										
F.03	TCU *										
F.05	at West Virginia *										
F.10	Kansas State *										
F.14	Texas Tech *										
F.17	at Oklahoma State *										
F.19	Baylor *										
F.24	at Iowa State *										
F.27	Oklahoma *										

CAREER/SEASON GAME HIGHS (DATE: MM/YY)

	CAREER	SEASON
POINTS	13 vs. Stetson (11/17)	13 vs. Stetson (11/17)
REBOUNDS	8 2x., last vs. Stetson (11/17)	8 vs. Stetson (11/17)
ASSISTS	1 8x., last vs. Washington (11/17)	1 3x., last vs. Washington (11/17)
STEALS	2 2x., last vs. LSU (11/17)	2 vs. LSU (11/17)
BLOCKS	1 12x., last vs. Georgia (12/17)	1 2x., last vs. LA Tech (11/17)
FG	5 vs. Stetson (11/17)	5 vs. Stetson (11/17)
3FG	1 2x., last vs. Stetson (11/17)	1 vs. Stetson (11/17)
FT	6 2x., last vs. Kansas (03/16)	2 vs. Stetson (11/17)
MINUTES	20 vs. LA Tech (11/17)	20 vs. LA Tech (11/17)

CAREER STATS

YEAR	GP	GS	MIN/G	FG%	3FG%	FT%	REB	REB/G	AST/G	PTS	PTS/G
2015-16	34	1	13.2	.414	.167	.535	100	2.9	1.1	244	7.2
2016-17	34	2	17.3	.483	.217	.523	95	2.8	1.4	271	8.0
2017-18	7	7	18.1	.592	.286	.767	18	2.6	2.3	83	11.9
TOTAL	75	10	15.5	.462	.204	.572	213	2.8	1.4	598	8.0

2017-18 GAME-BY-GAME STATS

DATE	OPPONENT	MIN	FG	3FG	FT	REB	A	TO	BLK	STL	PTS
N.12	Stetson	18	7-9	0-1	4-5	2	0	0	0	0	18
N.15	McNeese State	15	3-5	1-2	2-2	2	0	3	0	0	9
N.17	UTSA	11	2-5	0-0	4-4	3	3	0	0	1	8
N.24	vs. LSU	25	5-6	1-1	2-4	0	3	2	0	1	13
N.25	vs. Washington	14	3-8	0-1	4-7	4	1	2	0	0	10
N.30	Louisiana Tech	23	6-8	0-1	1-2	3	4	1	0	2	13
D.03	at Georgia	21	3-8	0-1	6-6	4	5	0	0	1	12
D.10	at Tennessee										
D.13	Northwestern State										
D.17	Florida State										
D.28	at Oklahoma *										
D.31	West Virginia *										
J.03	Oklahoma State *										
J.07	at Kansas State *										
J.10	at TCU *										
J.13	Kansas *										
J.15	UConn										
J.20	at Texas Tech *										
J.25	at Baylor *										
J.27	Iowa State *										
J.31	at Kansas *										
F.03	TCU *										
F.05	at West Virginia *										
F.10	Kansas State *										
F.14	Texas Tech *										
F.17	at Oklahoma State *										
F.19	Baylor *										
F.24	at Iowa State *										
F.27	Oklahoma *										

CAREER/SEASON GAME HIGHS (DATE: MM/YY)

	CAREER	SEASON
POINTS	19 vs. UConn (03/16)	18 vs. Stetson (11/17)
REBOUNDS	10 vs. Hampton (11/15)	4 2x., last vs. Georgia (12/17)
ASSISTS	8 vs. SHSU (12/15)	5 vs. Georgia (12/17)
STEALS	5 vs. New Orleans (12/16)	2 vs. LA Tech (11/17)
BLOCKS	1 5x., last vs. UCA (03/17)	-
FG	9 vs. UConn (03/16)	7 vs. Stetson (11/17)
3FG	3 at Tennessee (11/15)	1 2x., last vs. LSU (11/17)
FT	6 3x., last vs. Georgia (12/17)	6 vs. Georgia (12/17)
MINUTES	31 at Florida State (02/17)	25 vs. LSU (11/17)

PLAYER BIO UPDATES



BROOKE MCCARTY

5-4 | Sr. | G | League City, Texas



JADA UNDERWOOD

6-0 | So. | G/F | Mesquite, Texas

CAREER STATS

YEAR	GP	GS	MIN/G	FG%	3FG%	FT%	REB	REB/G	AST/G	PTS	PTS/G
2014-15	35	15	23.2	.382	.343	.780	90	2.6	1.5	250	7.1
2015-16	36	35	31.1	.458	.414	.716	99	2.8	2.5	424	11.8
2016-17	34	34	33.8	.457	.430	.767	123	3.6	3.6	481	14.1
2017-18	7	7	26.1	.507	.484	.900	26	3.7	5.0	94	13.4
TOTAL	112	91	29.1	.444	.408	.758	338	3.0	2.7	1249	11.2

2017-18 GAME-BY-GAME STATS

DATE	OPPONENT	MIN	FG	3FG	FT	REB	A	TO	BLK	STL	PTS
N.12	Stetson	24	6-11	2-5	0-0	3	7	2	0	1	14
N.15	McNeese State	18	3-6	1-3	2-2	3	6	2	0	3	9
N.17	UTSA	21	7-11	3-4	1-1	7	3	0	0	1	18
N.24	vs. LSU	33	4-10	2-2	1-1	2	6	3	0	1	11
N.25	vs. Washington	31	5-12	3-8	2-2	6	6	2	0	2	15
N.30	Louisiana Tech	23	6-10	3-5	0-0	2	5	2	0	5	15
D.03	at Georgia	33	4-9	1-4	3-4	3	2	3	0	3	12
D.10	at Tennessee										
D.13	Northwestern State										
D.17	Florida State										
D.28	at Oklahoma *										
D.31	West Virginia *										
J.03	Oklahoma State *										
J.07	at Kansas State *										
J.10	at TCU *										
J.13	Kansas *										
J.15	UConn										
J.20	at Texas Tech *										
J.25	at Baylor *										
J.27	Iowa State *										
J.31	at Kansas *										
F.03	TCU *										
F.05	at West Virginia *										
F.10	Kansas State *										
F.14	Texas Tech *										
F.17	at Oklahoma State *										
F.19	Baylor *										
F.24	at Iowa State *										
F.27	Oklahoma *										

CAREER/SEASON GAME HIGHS (DATE: MM/YY)

	CAREER	SEASON
POINTS	29 at Florida State (02/17)	18 vs. UTSA (11/17)
REBOUNDS	7 4x., last vs. UTSA (11/17)	7 vs. UTSA (11/17)
ASSISTS	8 4x., last at Florida State (02/17)	7 vs. Stetson (11/17)
STEALS	5 vs. LA Tech (11/17)	5 vs. LA Tech (11/17)
BLOCKS	2 vs. Rice (12/14)	-
FG	11 at Florida State (02/17)	7 vs. UTSA (11/17)
3FG	5 4x., last at Florida State (02/17)	3 3x., last vs. LA Tech (11/17)
FT	8 2x., last at Little Rock (12/15)	3 vs. Georgia (12/17)
MINUTES	50 at Florida State (02/17)	33 2x, last vs. Georgia (12/17)

CAREER STATS

YEAR	GP	GS	MIN/G	FG%	3FG%	FT%	REB	REB/G	AST/G	PTS	PTS/G
2016-17	28	0	9.9	.442	.500	.676	51	1.8	0.3	93	3.3
2017-18	6	0	15.5	.615	.571	.625	18	3.0	1.3	46	7.7
TOTAL	34	0	10.9	.485	.545	.660	69	2.0	0.5	139	4.1

2017-18 GAME-BY-GAME STATS

DATE	OPPONENT	MIN	FG	3FG	FT	REB	A	TO	BLK	STL	PTS
N.12	Stetson	14	1-3	1-1	0-0	0	2	1	0	2	3
N.15	McNeese State	16	4-6	1-3	2-2	4	2	2	1	2	11
N.17	UTSA	21	6-9	1-2	6-9	9	1	2	0	0	19
N.24	vs. LSU	14	0-1	0-0	2-2	1	2	0	0	0	2
N.25	vs. Washington	18	4-6	1-1	0-3	4	1	2	0	1	9
N.30	Louisiana Tech	-	-	-	-	dnp	-	-	-	-	-
D.03	at Georgia	10	1-1	0-0	0-0	0	0	0	0	0	2
D.10	at Tennessee										
D.13	Northwestern State										
D.17	Florida State										
D.28	at Oklahoma *										
D.31	West Virginia *										
J.03	Oklahoma State *										
J.07	at Kansas State *										
J.10	at TCU *										
J.13	Kansas *										
J.15	UConn										
J.20	at Texas Tech *										
J.25	at Baylor *										
J.27	Iowa State *										
J.31	at Kansas *										
F.03	TCU *										
F.05	at West Virginia *										
F.10	Kansas State *										
F.14	Texas Tech *										
F.17	at Oklahoma State *										
F.19	Baylor *										
F.24	at Iowa State *										
F.27	Oklahoma *										

CAREER/SEASON GAME HIGHS (DATE: MM/YY)

	CAREER	SEASON
POINTS	19 vs. UTSA (11/17)	19 vs. UTSA (11/17)
REBOUNDS	9 vs. UTSA (11/17)	9 vs. UTSA (11/17)
ASSISTS	3 vs. New Orleans (12/20)	2 3x., last vs. LSU (11/17)
STEALS	2 vs. McNeese State (11/17)	2 vs. McNeese State (11/17)
BLOCKS	2 3x., last vs. Kansas (02/17)	1 vs. McNeese State (11/17)
FG	6 vs. UTSA (11/17)	6 vs. UTSA (11/17)
3FG	2 vs. Northwestern State (11/17)	1 4x., last vs. Washington (11/17)
FT	6 vs. UTSA (11/17)	6 vs. UTSA (11/17)
MINUTES	25 vs. UTRGV (12/16)	21 vs. UTSA (11/17)

PLAYER BIO UPDATES



OLAMIDE ABOROWA

6-3 | Jr. | F | Ondo, Nigeria



CHASITY PATTERSON

5-5 | Fr. | G | Houston, Texas

CAREER STATS

YEAR	GP	GS	MIN/G	FG%	3FG%	FT%	REB	REB/G	BLK/G	PTS	PTS/G
2015-16	18	0	3.4	.250	.000	.500	16	0.9	0.2	12	0.7
2016-17	17	0	6.4	.324	.000	.375	28	1.6	0.4	25	1.5
2017-18	7	0	13.0	.529	.000	.500	23	3.3	0.1	38	5.4
TOTAL	42	0	6.2	.386	.000	.438	67	1.6	0.2	75	1.8

2017-18 GAME-BY-GAME STATS

DATE	OPPONENT	MIN	FG	3FG	FT	REB	A	TO	BLK	STL	PTS
N.12	Stetson	13	2-5	0-0	0-1	3	0	0	0	0	4
N.15	McNeese State	15	2-4	0-0	0-0	4	0	2	0	0	4
N.17	UTSA	16	4-9	0-0	1-1	7	1	0	0	0	9
N.24	vs. LSU	5	2-2	0-0	0-0	0	0	0	1	0	4
N.25	vs. Washington	7	0-0	0-0	0-0	0	0	1	0	0	0
N.30	Louisiana Tech	20	5-10	0-0	1-2	7	0	0	0	0	11
D.03	at Georgia	15	3-4	0-0	0-0	2	0	0	0	0	6
D.10	at Tennessee										
D.13	Northwestern State										
D.17	Florida State										
D.28	at Oklahoma *										
D.31	West Virginia *										
J.03	Oklahoma State *										
J.07	at Kansas State *										
J.10	at TCU *										
J.13	Kansas *										
J.15	UConn										
J.20	at Texas Tech *										
J.25	at Baylor *										
J.27	Iowa State *										
J.31	at Kansas *										
F.03	TCU *										
F.05	at West Virginia *										
F.10	Kansas State *										
F.14	Texas Tech *										
F.17	at Oklahoma State *										
F.19	Baylor *										
F.24	at Iowa State *										
F.27	Oklahoma *										

CAREER/SEASON GAME HIGHS (DATE: MM/YY)

	CAREER	SEASON
POINTS	11 vs. LA Tech (11/17)	11 vs. LA Tech (11/17)
REBOUNDS	7 2x., last vs. LA Tech (11/17)	7 2x., last vs. LA Tech (11/17)
ASSISTS	1 3x., last vs. Northwestern St. (11/16)	1 vs. UTSA (11/17)
STEALS	1 at Texas Tech (01/17)	-
BLOCKS	2 2x., last vs. UCA (03/17)	1 vs. LSU (11/17)
FG	5 vs. LA Tech (11/17)	5 vs. LA Tech (11/17)
3FG	-	-
FT	2 2x., last vs. UCA (03/17)	1 2x., last vs. LA Tech (11/17)
MINUTES	21 vs. UTSA (11/17)	21 vs. UTSA (11/17)

CAREER STATS

YEAR	GP	GS	MIN/G	FG%	3FG%	FT%	REB	REB/G	AST/G	PTS	PTS/G
2017-18	6	0	10.2	.462	.250	.500	12	2.0	1.7	30	5.0
TOTAL	6	0	10.2	.462	.250	.500	12	2.0	1.7	30	5.0

2017-18 GAME-BY-GAME STATS

DATE	OPPONENT	MIN	FG	3FG	FT	REB	A	TO	BLK	STL	PTS
N.12	Stetson	12	0-7	0-3	0-2	4	0	3	1	1	0
N.15	McNeese State	15	3-7	0-2	0-0	3	4	0	0	0	6
N.17	UTSA	11	5-7	1-1	2-4	1	2	0	0	0	13
N.24	vs. LSU	-	-	-	-	dnp	-	-	-	-	-
N.25	vs. Washington	11	2-3	0-1	2-2	2	2	0	0	0	6
N.30	Louisiana Tech	10	2-2	1-1	0-0	1	2	2	1	1	5
D.03	at Georgia	2	0-0	0-0	0-0	1	0	0	0	0	0
D.10	at Tennessee										
D.13	Northwestern State										
D.17	Florida State										
D.28	at Oklahoma *										
D.31	West Virginia *										
J.03	Oklahoma State *										
J.07	at Kansas State *										
J.10	at TCU *										
J.13	Kansas *										
J.15	UConn										
J.20	at Texas Tech *										
J.25	at Baylor *										
J.27	Iowa State *										
J.31	at Kansas *										
F.03	TCU *										
F.05	at West Virginia *										
F.10	Kansas State *										
F.14	Texas Tech *										
F.17	at Oklahoma State *										
F.19	Baylor *										
F.24	at Iowa State *										
F.27	Oklahoma *										

CAREER/SEASON GAME HIGHS (DATE: MM/YY)

	CAREER	SEASON
POINTS	13 vs. UTSA (11/17)	13 vs. UTSA (11/17)
REBOUNDS	4 vs. Stetson (11/17)	4 vs. Stetson (11/17)
ASSISTS	4 vs. McNeese State (11/17)	4 vs. McNeese State (11/17)
STEALS	1 2x., last vs. LA Tech (11/17)	1 2x., last vs. LA Tech (11/17)
BLOCKS	1 2x., last vs. LA Tech (11/17)	1 2x., last vs. LA Tech (11/17)
FG	5 vs. UTSA (11/17)	5 vs. UTSA (11/17)
3FG	1 2x., last vs. LA Tech (11/17)	1 2x., last vs. LA Tech (11/17)
FT	2 2x., last vs. Washington (11/17)	2 2x., last vs. Washington (11/17)
MINUTES	15 vs. McNeese State (11/17)	15 vs. McNeese State (11/17)

PLAYER BIO UPDATES



ARIEL ATKINS

5-11 | Sr. | G | Duncanville, Texas



KHALEANN CARON-GOUDREAU

6-4 | Jr. | F | Gatineau, Quebec

CAREER STATS

YEAR	GP	GS	MIN/G	FG%	3FG%	FT%	REB	REB/G	STL/G	PTS	PTS/G
2014-15	27	19	23.9	.363	.288	.825	92	3.4	1.3	283	9.7
2015-16	27	14	21.0	.536	.356	.819	105	3.9	1.4	302	11.2
2016-17	32	32	26.6	.456	.377	.818	133	4.2	2.0	409	12.8
2017-18	7	7	22.6	.655	.600	.769	33	4.7	2.6	94	13.4
TOTAL	93	72	23.9	.461	.367	.818	363	3.9	1.6	1068	11.5

2017-18 GAME-BY-GAME STATS

DATE	OPPONENT	MIN	FG	3FG	FT	REB	A	TO	BLK	STL	PTS
N.12	Stetson	22	4-6	1-1	0-1	4	6	0	1	4	9
N.15	McNeese State	19	8-10	3-3	4-4	7	2	1	1	4	23
N.17	UTSA	16	6-7	1-1	0-0	4	3	2	0	3	13
N.24	vs. LSU	21	6-8	2-3	3-5	2	4	4	1	4	17
N.25	vs. Washington	26	3-6	1-2	0-0	4	6	1	0	1	7
N.30	Louisiana Tech	24	3-9	1-7	1-1	3	7	0	3	2	8
D.03	at Georgia	30	6-9	3-3	2-2	9	2	1	2	0	17
D.10	at Tennessee										
D.13	Northwestern State										
D.17	Florida State										
D.28	at Oklahoma *										
D.31	West Virginia *										
J.03	Oklahoma State *										
J.07	at Kansas State *										
J.10	at TCU *										
J.13	Kansas *										
J.15	UConn										
J.20	at Texas Tech *										
J.25	at Baylor *										
J.27	Iowa State *										
J.31	at Kansas *										
F.03	TCU *										
F.05	at West Virginia *										
F.10	Kansas State *										
F.14	Texas Tech *										
F.17	at Oklahoma State *										
F.19	Baylor *										
F.24	at Iowa State *										
F.27	Oklahoma *										

CAREER/SEASON GAME HIGHS (DATE: MM/YY)

	CAREER	SEASON
POINTS	26 at Oklahoma State (02/17)	23 vs. McNeese State (11/17)
REBOUNDS	11 at Iowa State (02/16)	9 vs. Georgia (12/17)
ASSISTS	7 vs. LA Tech (11/17)	7 vs. LA Tech (11/17)
STEALS	5 vs. Southern (12/14)	4 3x., last last vs. LSU (11/17)
BLOCKS	3 vs. LA Tech (11/17)	3 vs. LA Tech (11/17)
FG	11 at Oklahoma State (02/17)	8 vs. McNeese State (11/17)
3FG	3 6x., last vs. McNeese St. (11/17)	3 2x, last vs. Georgia (12/17)
FT	8 at TCU (02/15)	4 vs. McNeese State (11/17)
MINUTES	40 vs. Oklahoma (01/15)	30 vs. Georgia (12/17)

CAREER STATS

YEAR	GP	GS	MIN/G	FG%	3FG%	FT%	REB	REB/G	AST/G	PTS	PTS/G
2014-15	3	0	18.0	.273	.308	.625	6	2.0	1.0	21	7.0
2016-17	15	0	10.5	.448	.286	.600	26	1.7	0.3	34	2.3
2017-18	5	0	11.4	.111	.000	.500	11	2.2	1.2	3	0.6
TOTAL	23	0	11.7	.333	.240	.600	43	1.9	0.6	58	2.5

2017-18 GAME-BY-GAME STATS

DATE	OPPONENT	MIN	FG	3FG	FT	REB	A	TO	BLK	STL	PTS
N.12	Stetson	14	0-3	0-2	0-0	3	1	0	0	0	0
N.15	McNeese State	11	0-1	0-0	0-0	2	0	0	2	0	0
N.17	UTSA	16	0-3	0-3	0-0	3	3	0	1	0	0
N.24	vs. LSU	9	0-1	0-0	0-0	0	1	2	0	0	0
N.25	vs. Washington	7	1-1	0-0	1-2	3	1	1	0	0	3
N.30	Louisiana Tech	-	-	-	-	dnp	-	-	-	-	-
D.03	at Georgia	-	-	-	-	dnp	-	-	-	-	-
D.10	at Tennessee										
D.13	Northwestern State										
D.17	Florida State										
D.28	at Oklahoma *										
D.31	West Virginia *										
J.03	Oklahoma State *										
J.07	at Kansas State *										
J.10	at TCU *										
J.13	Kansas *										
J.15	UConn										
J.20	at Texas Tech *										
J.25	at Baylor *										
J.27	Iowa State *										
J.31	at Kansas *										
F.03	TCU *										
F.05	at West Virginia *										
F.10	Kansas State *										
F.14	Texas Tech *										
F.17	at Oklahoma State *										
F.19	Baylor *										
F.24	at Iowa State *										
F.27	Oklahoma *										

CAREER/SEASON GAME HIGHS (DATE: MM/YY)

	CAREER	SEASON
POINTS	11 vs. Texas A&M (01/15)	3 vs. Washington (11/17)
REBOUNDS	5 at TCU (01/17)	3 3x., last vs. Washington (11/17)
ASSISTS	3 2x., last vs. UTSA (11/17)	3 vs. UTSA (11/17)
STEALS	1 3x., last at West Virginia (01/17)	-
BLOCKS	4 vs. UTSA (12/16)	2 vs. McNeese State (11/17)
FG	4 vs. Texas A&M (01/15)	1 vs. Washington (11/17)
3FG	2 2x., last vs. Tennessee (01/15)	-
FT	4 vs. Tennessee (01/15)	1 vs. Washington (11/17)
MINUTES	24 vs. Tennessee (01/15)	16 vs. UTSA (11/17)

PLAYER BIO UPDATES



AUDREY-ANN CARON-GOUDREAU
6-4 | Sr. | F | Gatineau, Quebec



RELLAH BOOTHE
6-3 | Fr. | F | Ocala, Fla.

CAREER STATS

YEAR	GP	GS	MIN/G	FG%	3FG%	FT%	REB	REB/G	BLK/G	PTS	PTS/G
2014-15	27	16	19.5	.393	.188	.615	112	4.1	1.0	123	4.6
2016-17	27	3	13.8	.410	.250	.619	86	3.2	0.8	80	3.0
2017-18	7	7	18.1	.563	.500	.600	41	5.9	0.7	49	7.0
TOTAL	61	26	16.8	.422	.278	.613	239	3.9	0.9	252	4.1

2017-18 GAME-BY-GAME STATS

DATE	OPPONENT	MIN	FG	3FG	FT	REB	A	TO	BLK	STL	PTS
N.12	Stetson	19	5-6	0-0	0-0	5	0	0	0	1	10
N.15	McNeese State	16	3-5	1-2	4-5	6	0	0	1	1	11
N.17	UTSA	10	1-3	0-1	1-2	2	0	1	0	0	3
N.24	vs. LSU	29	4-7	0-0	0-0	10	0	2	1	0	8
N.25	vs. Washington	19	1-2	0-1	1-4	5	3	2	0	5	3
N.30	Louisiana Tech	17	3-5	2-2	0-0	8	0	1	2	1	8
D.03	at Georgia	17	1-4	1-2	3-4	5	0	2	1	2	6
D.10	at Tennessee										
D.13	Northwestern State										
D.17	Florida State										
D.28	at Oklahoma *										
D.31	West Virginia *										
J.03	Oklahoma State *										
J.07	at Kansas State *										
J.10	at TCU *										
J.13	Kansas *										
J.15	UConn										
J.20	at Texas Tech *										
J.25	at Baylor *										
J.27	Iowa State *										
J.31	at Kansas *										
F.03	TCU *										
F.05	at West Virginia *										
F.10	Kansas State *										
F.14	Texas Tech *										
F.17	at Oklahoma State *										
F.19	Baylor *										
F.24	at Iowa State *										
F.27	Oklahoma *										

CAREER/SEASON GAME HIGHS (DATE: MM/YY)

	CAREER	SEASON
POINTS	21 vs. Minnesota (11/14)	11 vs. McNeese State (11/17)
REBOUNDS	14 vs. Minnesota (11/14)	10 vs. LSU (11/17)
ASSISTS	3 3x., last vs. Washington (11/17)	3 vs. Washington (11/17)
STEALS	5 vs. Washington (11/17)	5 vs. Washington (11/17)
BLOCKS	5 2x., last vs. Kansas (02/17)	1 3x., last vs. Georgia (12/17)
FG	7 vs. Minnesota (11/14)	5 vs. Stetson (11/17)
3FG	2 vs. LA Tech (11/17)	2 vs. LA Tech (11/17)
FT	7 vs. Minnesota (11/14)	4 vs. McNeese State (11/17)
MINUTES	35 vs. Minnesota (11/14)	29 vs. LSU (11/17)

CAREER STATS

YEAR	GP	GS	MIN/G	FG%	3FG%	FT%	REB	REB/G	BLK/G	PTS	PTS/G
2017-18	5	0	12.0	.343	.143	.600	29	5.8	0.8	28	5.6
TOTAL	5	0	12.0	.343	.143	.600	29	5.8	0.8	28	5.6

2017-18 GAME-BY-GAME STATS

DATE	OPPONENT	MIN	FG	3FG	FT	REB	A	TO	BLK	STL	PTS
N.12	Stetson	6	1-3	0-1	0-0	2	0	0	0	0	2
N.15	McNeese State	14	3-9	0-1	0-0	10	0	0	3	0	6
N.17	UTSA	18	3-8	0-3	1-2	5	4	1	1	0	7
N.24	vs. LSU	-	-	-	-	dnp	-	-	-	-	-
N.25	vs. Washington	-	-	-	-	dnp	-	-	-	-	-
N.30	Louisiana Tech	17	3-9	0-1	2-3	9	1	4	0	0	8
D.03	at Georgia	5	2-6	1-1	0-0	3	0	1	0	0	5
D.10	at Tennessee										
D.13	Northwestern State										
D.17	Florida State										
D.28	at Oklahoma *										
D.31	West Virginia *										
J.03	Oklahoma State *										
J.07	at Kansas State *										
J.10	at TCU *										
J.13	Kansas *										
J.15	UConn										
J.20	at Texas Tech *										
J.25	at Baylor *										
J.27	Iowa State *										
J.31	at Kansas *										
F.03	TCU *										
F.05	at West Virginia *										
F.10	Kansas State *										
F.14	Texas Tech *										
F.17	at Oklahoma State *										
F.19	Baylor *										
F.24	at Iowa State *										
F.27	Oklahoma *										

CAREER/SEASON GAME HIGHS (DATE: MM/YY)

	CAREER	SEASON
POINTS	8 vs. LA Tech (11/17)	8 vs. LA Tech (11/17)
REBOUNDS	10 vs. McNeese State (11/17)	10 vs. McNeese State (11/17)
ASSISTS	4 vs. UTSA (11/17)	4 vs. UTSA (11/17)
STEALS	-	-
BLOCKS	3 vs. McNeese State (11/17)	3 vs. McNeese State (11/17)
FG	3 3x., last vs. LA Tech (11/17)	3 3x., last vs. LA Tech (11/17)
3FG	1 vs. Georgia (12/17)	1 vs. Georgia (12/17)
FT	2 vs. LA Tech (11/17)	2 vs. LA Tech (11/17)
MINUTES	18 vs. UTSA (11/17)	18 vs. UTSA (11/17)



JATARIE WHITE

6-4 | Jr. | F/C | Charlotte, N.C.

CAREER STATS

YEAR	GP	GS	MIN/G	FG%	3FG%	FT%	REB	REB/G	BLK/G	PTS	PTS/G
2014-15	20	0	9.2	.408	.000	.643	44	2.2	0.3	49	2.5
2015-16	32	0	12.7	.341	.000	.615	93	2.9	0.4	92	2.9
2017-18	7	6	19.1	.565	.000	.625	37	5.3	0.1	80	11.4
TOTAL	59	6	12.3	.427	.000	.622	174	2.9	0.3	221	3.7

2017-18 GAME-BY-GAME STATS

DATE	OPPONENT	MIN	FG	3FG	FT	REB	A	TO	BLK	STL	PTS
N.12	Stetson	16	4-8	0-0	1-2	9	0	2	0	0	9
N.15	McNeese State	17	2-5	0-0	1-2	2	0	1	1	1	5
N.17	UTSA	16	5-9	0-0	1-2	4	1	2	0	0	11
N.24	vs. LSU	24	6-9	0-0	2-3	5	0	4	0	1	14
N.25	vs. Washington	25	10-12	0-0	4-5	7	1	4	0	0	24
N.30	Louisiana Tech	10	2-4	0-0	0-0	4	0	0	0	2	4
D.03	at Georgia	26	6-15	0-0	1-2	6	0	2	0	1	13
D.10	at Tennessee										
D.13	Northwestern State										
D.17	Florida State										
D.28	at Oklahoma *										
D.31	West Virginia *										
J.03	Oklahoma State *										
J.07	at Kansas State *										
J.10	at TCU *										
J.13	Kansas *										
J.15	UConn										
J.20	at Texas Tech *										
J.25	at Baylor *										
J.27	Iowa State *										
J.31	at Kansas *										
F.03	TCU *										
F.05	at West Virginia *										
F.10	Kansas State *										
F.14	Texas Tech *										
F.17	at Oklahoma State *										
F.19	Baylor *										
F.24	at Iowa State *										
F.27	Oklahoma *										

CAREER/SEASON GAME HIGHS (DATE: MM/YY)

	CAREER	SEASON
POINTS	24 vs. Washington (11/17)	24 vs. Washington (11/17)
REBOUNDS	9 2x., last vs. Stetson (11/17)	9 vs. Stetson (11/17)
ASSISTS	3 vs. Kansas State (03/16)	1 2x., last vs. Washington (11/17)
STEALS	2 2x., last vs. LA Tech (11/17)	2 vs. LA Tech (11/17)
BLOCKS	4 vs. Winthrop (12/15)	1 vs. McNeese State (11/17)
FG	10 vs. Washington (11/17)	10 vs. Washington (11/17)
3FG	-	-
FT	5 vs. Missouri (10/16)	4 vs. Washington (11/17)
MINUTES	26 vs. Georgia (12/17)	26 vs. Georgia (12/17)

NCAA Statistics

Texas - 2017-18 Women's Basketball Ranking Summary thru games 12/06/2017

Statistic	National	Conference	Value	National Leader	Value	Conference	Value
	Rank	Rank				Leader	
Assist Turnover Ratio (345 ranked)	21	3	1.38	Baylor	1.88	Baylor	1.88
Assists (345 ranked)	38	3	146	Iowa	241	Baylor	212
Assists Per Game (344 ranked)	8	2	20.9	Iowa	24.1	Baylor	23.6
Blocked Shots (343 ranked)	104	8	32	William & Mary	73	Baylor	56
Blocked Shots Per Game (344 ranked)	70	7	4.6	Norfolk St.	8.9	Baylor	6.2
Defensive Rebounds per Game (30 ranked)				Tennessee	35	Baylor	34
Fewest Fouls (345 ranked)	118	5	134	Radford	66	Texas Tech	112
Fewest Turnovers (345 ranked)	51	3	106	Southern U.	55	Oklahoma St.	95
Field-Goal Percentage (345 ranked)	9	3	49.9	Oregon St.	53.4	Baylor	52.9
Field-Goal Percentage Defense (345 ranked)	80	5	37.0	Clemson	30.7	Kansas	32.0
Free Throw Attempts (344 ranked)	197	9	133	Tennessee	243	Baylor	193
Free Throws Made (344 ranked)	218	9	87	Western Ill.	168	Baylor	134
Free-Throw Percentage (345 ranked)	254	9	65.4	Northern Colo.	85.0	TCU	77.5
Offensive Rebounds per Game (30 ranked)	7	1	18	Jackson St.	24	Texas	18
Personal Fouls Per Game (345 ranked)	254	10	19.1	Iowa	11.3	Texas Tech	14.0
Rebound Margin (345 ranked)	4	2	15.4	Morehead St.	18.9	Baylor	16.3
Rebounds (345 ranked)	124	5	326	Ohio St.	485	Baylor	436
Rebounds Per Game (345 ranked)	10	2	46.57	Morehead St.	52.33	Baylor	48.44
Scoring Defense (345 ranked)	47	3	57.7	Green Bay	47.8	West Virginia	55.0
Scoring Margin (345 ranked)	1	1	35.3	Texas	35.3	Texas	35.3
Scoring Offense (345 ranked)	1	1	93.0	Texas	93.0	Texas	93.0
Steals (343 ranked)	90	4	75	Lamar University	159	Oklahoma St.	92
Steals Per Game (345 ranked)	48	3	10.7	Lamar University	17.7	Oklahoma St.	11.5
Three Pt FG Defense (345 ranked)	152	4	30.5	Gardner-Webb	19.8	Oklahoma St.	23.5
Three-Point Field Goals Attempted (148 ranked)				FGCU	340	Iowa St.	190
Three-Point Field Goals Made (345 ranked)	126	3	52	FGCU	127	Iowa St.	68
Three-Point Field Goals Per Game (345 ranked)	75	2	7.4	DePaul	13.6	Iowa St.	8.5
Three-Point Field-Goal Percentage (345 ranked)	34	2	38.8	Miami (OH)	46.1	Baylor	44.8
Turnover Margin (345 ranked)	22	2	6.71	Ohio	13.57	Oklahoma St.	7.75
Turnovers Forced (344 ranked)	27	1	21.86	Jackson St.	29.67	Texas	21.86
Turnovers Per Game (345 ranked)	115	7	15.1	Villanova	9.6	Oklahoma St.	11.9
Won-Lost Percentage (342 ranked)	1	1	100.0	14 teams tied	100.0	Texas West Virginia	100.0 100.0

Statistic	Player	National Conference			National Leader	Conference		
		Rank	Rank	Value		Value	Leader	Value
Assist Turnover Ratio (250 ranked)	Ariel Atkins	17	1	3.33	Morgan William, Mississippi St.	5.38	Ariel Atkins, Texas	3.33
	Brooke McCarty	55	4	2.50				
Assists (150 ranked)	Brooke McCarty	121	6	35	Tiana Mangakahia, Syracuse	103	Recee' Caldwell, Texas Tech	52
Assists Per Game (242 ranked)	Brooke McCarty	73	6	5.0	Tiana Mangakahia, Syracuse	11.4	Recee' Caldwell, Texas Tech	6.5
	Ariel Atkins	142	9	4.3				
Blocked Shots (120 ranked)					Abby Rendle, William & Mary	44	Lauren Cox, Baylor Jordan Moore, TCU	24 24
Blocked Shots Per Game (248 ranked)	Ariel Atkins	215	9	1.14	Abby Rendle, William & Mary	4.89	Lauren Cox, Baylor Jordan Moore, TCU	3.00 3.00
Defensive Rebounds per Game (29 ranked)					G'mrice Davis, Fordham	11	Lauren Cox, Baylor	8
Double Doubles (23 ranked)					Megan Gustafson, Iowa	9	Kalani Brown, Baylor Lauren Cox, Baylor	4 4
Field Goal Attempts (149 ranked)					Kelsey Mitchell, Ohio St.	200	Loryn Goodwin, Oklahoma St.	132
Field Goals Made (149 ranked)					Megan Gustafson, Iowa Kelsey Mitchell, Ohio St.	92 92	Kalani Brown, Baylor	85
Field-Goal Percentage (247 ranked)	Ariel Atkins	8	2	65.5	Kalani Brown, Baylor	77.3	Kalani Brown, Baylor	77.3
	Jatarie White	46	8	56.5				
	Brooke McCarty	103	13	50.7				
Final Points (195 ranked)					Kelsey Mitchell, Ohio St.	287	Kalani Brown, Baylor	207
Free Throw Attempts (140 ranked)					A'Ja Wilson, South Carolina	89	Loryn Goodwin, Oklahoma St.	56
Free Throws Made (136 ranked)					A'Ja Wilson, South Carolina	65	Bridget Carleton, Iowa St.	43
Free-Throw Percentage (243 ranked)	Lashann Higgs	218	9	76.7	4 players tied	100.0	Amy Okonkwo, TCU	92.3
Minutes Played (149 ranked)					Kelsey Mitchell, Ohio St.	394:00	Gabbi Ortiz, Oklahoma	303:00
Minutes Played Per Game (149 ranked)					Sydney Lamberty, Creighton	40.71	Gabbi Ortiz, Oklahoma	37.88
Offensive Rebounds per Game (29 ranked)					Tierra McGowan, Morehead St.	8		
Points Per Game (250 ranked)					Kelsey Mitchell, Ohio St.	26.1	Teana Muldrow, West Virginia	23.9
Rebounds (149 ranked)					Stephanie Mavunga, Ohio St.	131	Lauren Cox, Baylor	83
Rebounds Per Game (250 ranked)					G'mrice Davis, Fordham	14.3	Lauren Cox, Baylor	10.4
Steals (131 ranked)	Ariel Atkins	131	4	18	Chastadie Barrs, Lamar University	59	Loryn Goodwin, Oklahoma St.	36
Steals Per Game (232 ranked)	Ariel Atkins	84	3	2.57	Chastadie Barrs, Lamar University	6.56	Loryn Goodwin, Oklahoma St.	4.50
	Brooke McCarty	133	5	2.29				
Three-Point Field Goals Attempted (145 ranked)					Kelsey Mitchell, Ohio St.	114	Rachel Ranke, Kansas St.	62
Three-Point Field Goals Made (132 ranked)					Kelsey Mitchell, Ohio St.	47	Kylee Kopatich, Kansas	24
Three-Point Field Goals Per Game (225 ranked)	Brooke McCarty	196	6	2.14	Taylor Pierce, Idaho	4.86	Kylee Kopatich, Kansas	3.00
Three-Point Field-Goal Percentage (250 ranked)	Brooke McCarty	30	2	48.4	Grace Hales, Valparaiso	61.5	Emily Durr, Iowa St.	51.6
Triple Doubles (3 ranked)					Chastadie Barrs, Lamar University	3		

NCAA Statistics

Texas vs. Tennessee - 2017-18 Women's Basketball Ranking Summary thru games 12/06/2017

Statistic	Team	National Rank	Conference Rank	Value	National Leader	Value
Assist Turnover Ratio (345 ranked)	Texas	21	3	1.38	Baylor	1.88
	Tennessee	51	6	1.15		
Assists (345 ranked)	Tennessee	16	2	167	Iowa	241
	Texas	38	3	146		
Assists Per Game (344 ranked)	Texas	8	2	20.9	Iowa	24.1
	Tennessee	21	1	18.6		
Blocked Shots (343 ranked)	Tennessee	20	5	47	William & Mary	73
	Texas	104	8	32		
Blocked Shots Per Game (344 ranked)	Tennessee	36	6	5.2	Norfolk St.	8.9
	Texas	70	7	4.6		
Defensive Rebounds per Game (30 ranked)	Tennessee	1	1	35	Tennessee	35
Fewest Fouls (345 ranked)	Texas	118	5	134	Radford	66
	Tennessee	148	7	138		
Fewest Turnovers (345 ranked)	Texas	51	3	106	Southern U.	55
	Tennessee	256	13	145		
Field-Goal Percentage (345 ranked)	Tennessee	8	2	49.9	Oregon St.	53.4
	Texas	9	3	49.9		
Field-Goal Percentage Defense (345 ranked)	Tennessee	12	1	32.9	Clemson	30.7
	Texas	80	5	37.0		
Free Throw Attempts (344 ranked)	Tennessee	1	1	243	Tennessee	243
	Texas	197	9	133		
Free Throws Made (344 ranked)	Tennessee	2	1	167	Western Ill.	168
	Texas	218	9	87		
Free-Throw Percentage (345 ranked)	Tennessee	174	5	68.7	Northern Colo.	85.0
	Texas	254	9	65.4		
Offensive Rebounds per Game (30 ranked)	Texas	7	1	18	Jackson St.	24
Personal Fouls Per Game (345 ranked)	Tennessee	38	2	15.3	Iowa	11.3
	Texas	254	10	19.1		
Rebound Margin (345 ranked)	Texas	4	2	15.4	Morehead St.	18.9
	Tennessee	9	1	13.7		
Rebounds (345 ranked)	Tennessee	6	1	451	Ohio St.	485
	Texas	124	5	326		
Rebounds Per Game (345 ranked)	Tennessee	2	1	50.11	Morehead St.	52.33
	Texas	10	2	46.57		
Scoring Defense (345 ranked)	Texas	47	3	57.7	Green Bay	47.8
	Tennessee	79	9	59.6		
Scoring Margin (345 ranked)	Texas	1	1	35.3	Texas	35.3
	Tennessee	4	1	29.9		
Scoring Offense (345 ranked)	Texas	1	1	93.0	Texas	93.0
	Tennessee	7	1	89.4		
Steals (343 ranked)	Tennessee	48	3	86	Lamar University	159
	Texas	90	4	75		
Steals Per Game (345 ranked)	Texas	48	3	10.7	Lamar University	17.7
	Tennessee	88	6	9.6		
Three Pt FG Defense (345 ranked)	Tennessee	12	1	22.5	Gardner-Webb	19.8
	Texas	152		30.5		
Three-Point Field Goals Attempted (148 ranked)			4		FGCU	340
Three-Point Field Goals Made (345 ranked)	Texas	126	3	52	FGCU	127
	Tennessee	149	8	50		
Three-Point Field Goals Per Game (345 ranked)	Texas	75	2	7.4	DePaul	13.6
	Tennessee	210	8	5.6		
Three-Point Field-Goal Percentage (345 ranked)	Texas	34	2	38.8	Miami (OH)	46.1
	Tennessee	104	8	34.2		

Turnover Margin (345 ranked)	Texas Tennessee	22 150	2 10	6.71 1.22	Ohio	13.57
Turnovers Forced (344 ranked)	Texas Tennessee	27 148	1 6	21.86 17.33	Jackson St.	29.67
Turnovers Per Game (345 ranked)	Texas Tennessee	115 165	7 11	15.1 16.1	Villanova	9.6
Won-Lost Percentage (342 ranked)	Tennessee Texas	1 1	1 1	100.0 100.0	14 teams tied	100.0

Statistic	Player	National	Conference	Value	National Leader	Value
		Rank	Rank			
Assist Turnover Ratio (250 ranked)	Ariel Atkins, Texas	17	1	3.33	Morgan William, Mississippi St.	5.38
	Brooke McCarty, Texas	55	4	2.50		
	Evina Westbrook, Tennessee	139	11	1.81		
Assists (150 ranked)	Evina Westbrook, Tennessee	34	2	47	Tiana Mangakahia, Syracuse	103
	Anastasia Hayes, Tennessee	83	6	39		
	Brooke McCarty, Texas	121	6	35		
Assists Per Game (242 ranked)	Evina Westbrook, Tennessee	58	5	5.2	Tiana Mangakahia, Syracuse	11.4
	Brooke McCarty, Texas	73	6	5.0		
	Anastasia Hayes, Tennessee	140	8	4.3		
	Ariel Atkins, Texas	142	9	4.3		
Blocked Shots (120 ranked)	Mercedes Russell, Tennessee	120	9	11	Abby Rendle, William & Mary	44
Blocked Shots Per Game (248 ranked)	Mercedes Russell, Tennessee	192	11	1.22	Abby Rendle, William & Mary	4.89
	Ariel Atkins, Texas	215	9	1.14		
	Jaime Nared, Tennessee	248	16	1.11		
Defensive Rebounds per Game (29 ranked)					G'mrice Davis, Fordham	11
Double Doubles (23 ranked)	Rennia Davis, Tennessee	23	3	4	Megan Gustafson, Iowa	9
Field Goal Attempts (149 ranked)	Jaime Nared, Tennessee	86	8	119	Kelsey Mitchell, Ohio St.	200
Field Goals Made (149 ranked)	Mercedes Russell, Tennessee	17	2	66	Megan Gustafson, Iowa Kelsey Mitchell, Ohio St.	92
	Jaime Nared, Tennessee	85	9	53		92
	Rennia Davis, Tennessee	129	13	49		
Field-Goal Percentage (247 ranked)	Mercedes Russell, Tennessee	3	1	68.8	Kalani Brown, Baylor	77.3
	Ariel Atkins, Texas	8	2	65.5		
	Jatarie White, Texas	46	8	56.5		
	Rennia Davis, Tennessee	74	8	53.3		
	Brooke McCarty, Texas	103	13	50.7		
	Jaime Nared, Tennessee	233	18	44.5		
Final Points (195 ranked)	Mercedes Russell, Tennessee	67	5	157	Kelsey Mitchell, Ohio St.	287
	Jaime Nared, Tennessee	77	6	153		
Free Throw Attempts (140 ranked)	Anastasia Hayes, Tennessee	4	2	74	A'Ja Wilson, South Carolina	89
	Jaime Nared, Tennessee	91	7	45		
Free Throws Made (136 ranked)	Anastasia Hayes, Tennessee	7	2	54	A'Ja Wilson, South Carolina	65
	Jaime Nared, Tennessee	69	4	35		
Free-Throw Percentage (243 ranked)	Jaime Nared, Tennessee	195	10	77.8	4 players tied	100.0
	Lashann Higgs, Texas	218	9	76.7		
Minutes Played (149 ranked)					Kelsey Mitchell, Ohio St.	394:00
Minutes Played Per Game (149 ranked)					Sydney Lamberty, Creighton	40.71
Offensive Rebounds per Game (29 ranked)					Tierra McGowan, Morehead St.	8
Points Per Game (250 ranked)	Mercedes Russell, Tennessee	96	8	17.4	Kelsey Mitchell, Ohio St.	26.1
	Jaime Nared, Tennessee	116	9	17.0		
Rebounds (149 ranked)	Jaime Nared, Tennessee	51	5	80	Stephanie Mavunga, Ohio St.	131
	Rennia Davis, Tennessee	77	9	75		
	Mercedes Russell, Tennessee	82	10	74		
Rebounds Per Game (250 ranked)	Jaime Nared, Tennessee	89	7	8.9	G'mrice Davis, Fordham	14.3
	Rennia Davis, Tennessee	132	10	8.3		
	Mercedes Russell, Tennessee	148	11	8.2		
Steals (131 ranked)	Ariel Atkins, Texas	131	4	18	Chastadie Barrs, Lamar University	59
Steals Per Game (232 ranked)	Ariel Atkins, Texas	84	3	2.57	Chastadie Barrs, Lamar University	6.56
	Brooke McCarty, Texas	133	5	2.29		
Three-Point Field Goals Attempted (145 ranked)					Kelsey Mitchell, Ohio St.	114
Three-Point Field Goals Made (132 ranked)					Kelsey Mitchell, Ohio St.	47
Three-Point Field Goals Per Game (225 ranked)	Brooke McCarty, Texas	196	6	2.14	Taylor Pierce, Idaho	4.86
Three-Point Field-Goal Percentage (250 ranked)	Brooke McCarty, Texas	30	2	48.4	Grace Hales, Valparaiso	61.5
Triple Doubles (3 ranked)					Chastadie Barrs, Lamar University	3

THE STAT CREW SYSTEM
Texas Team Game-by-Game (as of Dec 03, 2017)
All games

TEAM STATISTICS

Opponent	Date	Score	W/L	---TOTAL---		--3-PTRS--		FT-FTA		Pct		----REBOUNDS----				PF	A	TO	Blk	Stl	Pts---Avg
				FG-FGA	Pct	3FG-FGA	Pct	Off	Def	Tot	Avg										
STETSON	11/12/17	95-59	W	40-83	.482	6-24	.250	9-16	.563	24	27	51	51.0	21	19	13	3	10	95	95.0	
MCNEESE STATE	11/15/17	100-34	W	38-77	.494	9-21	.429	15-20	.750	18	32	50	50.5	23	18	12	10	14	100	97.5	
UTSA	11/17/17	120-70	W	46-87	.529	10-23	.435	18-27	.667	22	30	52	51.0	15	24	11	3	7	120	105.0	
vs LSU	11/24/17	75-66	W	30-57	.526	5-12	.417	10-16	.625	14	20	34	46.8	23	20	23	3	9	75	97.5	
vs Washington	11/25/17	92-68	W	35-61	.574	7-19	.368	15-26	.577	14	29	43	46.0	16	26	20	0	10	92	96.4	
LOUISIANA TECH	11/30/17	88-54	W	37-79	.468	9-22	.409	5-8	.625	21	28	49	46.5	17	25	15	8	15	88	95.0	
at Georgia	12/03/17	81-53	W	30-69	.435	6-13	.462	15-20	.750	15	32	47	46.6	19	14	12	5	10	81	93.0	
Texas		651		256-513	.499	52-134	.388	87-133	.654	128	198	326	46.6	134	146	106	32	75	651	93.0	
Opponents		404		156-422	.370	36-118	.305	56-94	.596	77	141	218	31.1	143	70	153	14	40	404	57.7	

Games played: 7
Points/game: 93.0
FG Pct: 49.9
3FG Pct: 38.8
FT Pct: 65.4

Rebounds/game: 46.6
Assists/game: 20.9
Turnovers/game: 15.1
Assist/turnover ratio: 1.4
Steals/game: 10.7
Blocks/game: 4.6

THE STAT CREW SYSTEM
Texas Opponent Game-by-Game (as of Dec 03, 2017)
All games

OPPONENT STATISTICS

Opponent	Date	Score	W/L	---TOTAL---		--3-PTRS--		----REBOUNDS----		PF	A	TO	Blk	Stl	Pts---Avg					
				FG-FGA	Pct	3FG-FGA	Pct	FT-FTA	Pct							Off	Def	Tot	Avg	
STETSON	11/12/17	95-59	W	22-48	.458	5-17	.294	10-21	.476	3	22	25	25.0	20	6	22	0	4	59	59.0
MCNEESE STATE	11/15/17	100-34	W	11-56	.196	4-15	.267	8-13	.615	14	16	30	27.5	20	7	28	2	3	34	46.5
UTSA	11/17/17	120-70	W	27-67	.403	7-17	.412	9-12	.750	7	22	29	28.0	23	6	21	0	5	70	54.3
vs LSU	11/24/17	75-66	W	28-60	.467	1-3	.333	9-15	.600	15	18	33	29.3	23	15	21	2	8	66	57.2
vs Washington	11/25/17	92-68	W	26-66	.394	10-30	.333	6-12	.500	14	16	30	29.4	23	16	22	1	9	68	59.4
LOUISIANA TECH	11/30/17	88-54	W	20-61	.328	6-19	.316	8-13	.615	13	20	33	30.0	13	11	22	3	7	54	58.5
at Georgia	12/03/17	81-53	W	22-64	.344	3-17	.176	6-8	.750	11	27	38	31.1	21	9	17	6	4	53	57.7
Opponents		404		156-422	.370	36-118	.305	56-94	.596	77	141	218	31.1	143	70	153	14	40	404	57.7
Texas		651		256-513	.499	52-134	.388	87-133	.654	128	198	326	46.6	134	146	106	32	75	651	93.0

Games played: 7
Points/game: 57.7
FG Pct: 37.0
3FG Pct: 30.5
FT Pct: 59.6

Rebounds/game: 31.1
Assists/game: 10.0
Turnovers/game: 21.9
Assist/turnover ratio: 0.5
Steals/game: 5.7
Blocks/game: 2.0

THE STAT CREW SYSTEM
Texas Team Game-by-Game Comparison (as of Dec 03, 2017)
All games

Opponent	1st	2nd	Score	Mar	Total FG	FG Pct	3-Pointers	3FG Pct	Free Throws	FT Pct	Rebounds	Assist	TOver	Block	Steal	Fouls	
-----	--/--	--/--	---/---	---	-----/-----	-----/-----	-----/-----	-----/-----	-----/-----	-----/-----	-----/-----	-----/-----	-----/-----	---/---	---/---	---/---	
STETSON.....	57/33	38/26	95-59	+36	40-83/22-48	.482/.458	6-24/ 5-17	.250/.294	9-16/10-21	.563/.476	51/25	+26	19/6	13/22	3/0	10/4	21/20
MCNEESE STATE.....	58/14	42/20	100-34	+66	38-77/11-56	.494/.196	9-21/ 4-15	.429/.267	15-20/ 8-13	.750/.615	50/30	+20	18/7	12/28	10/2	14/3	23/20
UTSA.....	59/27	61/43	120-70	+50	46-87/27-67	.529/.403	10-23/ 7-17	.435/.412	18-27/ 9-12	.667/.750	52/29	+23	24/6	11/21	3/0	7/5	15/23
LSU.....	41/28	34/38	75-66	+9	30-57/28-60	.526/.467	5-12/ 1-3	.417/.333	10-16/ 9-15	.625/.600	34/33	+1	20/15	23/21	3/2	9/8	23/23
Washington.....	41/21	51/47	92-68	+24	35-61/26-66	.574/.394	7-19/10-30	.368/.333	15-26/ 6-12	.577/.500	43/30	+13	26/16	20/22	0/1	10/9	16/23
LOUISIANA TECH.....	50/26	38/28	88-54	+34	37-79/20-61	.468/.328	9-22/ 6-19	.409/.316	5-8 / 8-13	.625/.615	49/33	+16	25/11	15/22	8/3	15/7	17/13
Georgia.....	46/27	35/26	81-53	+28	30-69/22-64	.435/.344	6-13/ 3-17	.462/.176	15-20/ 6-8	.750/.750	47/38	+9	14/9	12/17	5/6	10/4	19/21

Note: Game totals are displayed in the format TEAM/OPPONENT for each category

THE STAT CREW SYSTEM
Texas Points-Rebounds-Assists (as of Dec 03, 2017)
All games

Opponent	Date	Score	WL	01	04	05	10	11	12	14	15	23
				SUTTON,AL	LITTLETON	HOSEY,JOR	HIGGS,LAS	MCCARTY,B	UNDERWOOD	ABOROWA,O	PATTERSON	ATKINS,AR
STETSON	11/12/17	95-59	W	11- 2- 1	2- 3- 2	13- 8- 0	18- 2- 0	14- 3- 7	3- 0- 2	4- 3- 0	0- 4- 0	9- 4- 6
MCNEESE STATE	11/15/17	100-34	W	5- 0- 1	3- 4- 2	8- 2- 1	9- 2- 0	9- 3- 6	11- 4- 2	4- 4- 0	6- 3- 4	23- 7- 2
UTSA	11/17/17	120-70	W	8- 2- 1	8- 0- 1	3- 2- 1	8- 3- 3	18- 7- 3	19- 9- 1	9- 7- 1	13- 1- 2	13- 4- 3
vs LSU	11/24/17	75-66	W	4- 4- 4	0- 0- 0	2- 2- 0	13- 0- 3	11- 2- 6	2- 1- 2	4- 0- 0	DNP	17- 2- 4
vs Washington	11/25/17	92-68	W	10- 3- 4	2- 0- 0	3- 3- 1	10- 4- 1	15- 6- 6	9- 4- 1	0- 0- 0	6- 2- 2	7- 4- 6
LOUISIANA TECH	11/30/17	88-54	W	10- 5- 5	0- 1- 1	6- 3- 0	13- 3- 4	15- 2- 5	DNP	11- 7- 0	5- 1- 2	8- 3- 7
at Georgia	12/03/17	81-53	W	4- 3- 4	0- 0- 1	4- 3- 0	12- 4- 5	12- 3- 2	2- 0- 0	6- 2- 0	0- 1- 0	17- 9- 2

Opponent	Date	Score	WL	30	31	33	40
				CARON-GOU	CARON-GOU	BOOTHE,RE	WHITE,JAT
STETSON	11/12/17	95-59	W	0- 3- 1	10- 5- 0	2- 2- 0	9- 9- 0
MCNEESE STATE	11/15/17	100-34	W	0- 2- 0	11- 6- 0	6-10- 0	5- 2- 0
UTSA	11/17/17	120-70	W	0- 3- 3	3- 2- 0	7- 5- 4	11- 4- 1
vs LSU	11/24/17	75-66	W	0- 0- 1	8-10- 0	DNP	14- 5- 0
vs Washington	11/25/17	92-68	W	3- 3- 1	3- 5- 3	DNP	24- 7- 1
LOUISIANA TECH	11/30/17	88-54	W	DNP	8- 8- 0	8- 9- 1	4- 4- 0
at Georgia	12/03/17	81-53	W	DNP	6- 5- 0	5- 3- 0	13- 6- 0

THE STAT CREW SYSTEM
Texas Individual Game-by-Game (as of Dec 03, 2017)
All games

#01 Sutton, Alecia

Opponent	Date	GS	Min	---TOTAL---		---3-PTS---		---FT-FTA---		----REBOUNDS----						Pts	Avg				
				FG-FGA	Pct	3FG-FGA	Pct	Pct	Off	Def	Tot	Avg	PF	FO	A			TO	Blk	Stl	
STETSON	11/12/17		12	4-6	.667	1-1	1.000	2-3	.667	2	0	2	2.0	0	0	1	2	0	1	11	11.0
MCNEESE STATE	11/15/17		17	2-7	.286	1-1	1.000	0-1	.000	0	0	0	1.0	2	0	1	0	0	2	5	8.0
UTSA	11/17/17		16	3-7	.429	2-3	.667	0-0	.000	0	2	2	1.3	2	0	1	0	1	0	8	8.0
vs LSU	11/24/17		24	2-8	.250	0-5	.000	0-1	.000	0	4	4	2.0	3	0	4	5	0	0	4	7.0
vs Washington	11/25/17		25	4-7	.571	2-4	.500	0-0	.000	0	3	3	2.2	1	0	4	2	0	1	10	7.6
LOUISIANA TECH	11/30/17		22	4-7	.571	2-2	1.000	0-0	.000	1	4	5	2.7	2	0	5	3	1	1	10	8.0
at Georgia	12/03/17		23	2-7	.286	0-1	.000	0-2	.000	1	2	3	2.7	1	0	4	1	1	2	4	7.4
Totals.....		0	139	21-49	.429	8-17	.471	2-7	.286	4	15	19	2.7	11	0	20	13	3	7	52	7.4

Games played: 7
Minutes/game: 19.9
Points/game: 7.4
FG Pct: 42.9
3FG Pct: 47.1
FT Pct: 28.6

Rebounds/game: 2.7
Assists/game: 2.9
Turnovers/game: 1.9
Assist/turnover ratio: 1.5
Steals/game: 1.0
Blocks/game: 0.4

#04 Littleton, Destiny

Opponent	Date	GS	Min	---TOTAL---		---3-PTS---		---FT-FTA---		----REBOUNDS----					PF	FO	A	TO	Blk	Stl	Pts	Avg
				FG-FGA	Pct	3FG-FGA	Pct	Pct	Off	Def	Tot	Avg										
STETSON	11/12/17		12	1-8	.125	0-6	.000	0-0	.000	1	2	3	3.0	1	0	2	1	0	0	2	2.0	
MCNEESE STATE	11/15/17		17	1-7	.143	1-4	.250	0-0	.000	1	3	4	3.5	3	0	2	0	1	1	3	2.5	
UTSA	11/17/17		15	3-6	.500	2-4	.500	0-0	.000	0	0	0	2.3	0	0	1	2	0	2	8	4.3	
vs LSU	11/24/17		5	0-1	.000	0-1	.000	0-0	.000	0	0	0	1.8	0	0	0	0	0	0	0	3.3	
vs Washington	11/25/17		5	1-2	.500	0-1	.000	0-0	.000	0	0	0	1.4	0	0	0	0	0	2	3.0		
LOUISIANA TECH	11/30/17		14	0-5	.000	0-2	.000	0-0	.000	0	1	1	1.3	2	0	1	0	0	1	0	2.5	
at Georgia	12/03/17		3	0-0	.000	0-0	.000	0-0	.000	0	0	0	1.1	0	0	1	0	0	0	0	2.1	
Totals.....		0	71	6-29	.207	3-18	.167	0-0	.000	2	6	8	1.1	6	0	7	3	1	4	15	2.1	

Games played: 7
 Minutes/game: 10.1
 Points/game: 2.1
 FG Pct: 20.7
 3FG Pct: 16.7

Rebounds/game: 1.1
 Assists/game: 1.0
 Turnovers/game: 0.4
 Assist/turnover ratio: 2.3
 Steals/game: 0.6
 Blocks/game: 0.1

#05 Hosey, Jordan

Opponent	Date	GS	Min	---TOTAL---		---3-PTS---		----REBOUNDS----								PF	FO	A	TO	Blk	Stl	Pts	Avg
				FG-FGA	Pct	3FG-FGA	Pct	FT-FTA	Pct	Off	Def	Tot	Avg										
STETSON	11/12/17		18	5-8	.625	1-3	.333	2-2	1.000	3	5	8	8.0	3	0	0	2	1	0	13	13.0		
MCKNEESE STATE	11/15/17		10	4-5	.800	0-0	.000	0-2	.000	1	1	2	5.0	0	0	1	1	0	0	8	10.5		
UTSA	11/17/17		13	1-3	.333	0-1	.000	1-2	.500	0	2	2	4.0	0	0	1	1	0	0	3	8.0		
vs LSU	11/24/17		11	1-4	.250	0-0	.000	0-0	.000	1	1	2	3.5	1	0	0	0	0	2	2	6.5		
vs Washington	11/25/17		12	1-2	.500	0-0	.000	1-1	1.000	0	3	3	3.4	1	0	1	2	0	0	3	5.8		
LOUISIANA TECH	11/30/17	*	20	3-10	.300	0-1	.000	0-0	.000	1	2	3	3.3	3	0	0	2	1	0	6	5.8		
at Georgia	12/03/17		15	2-6	.333	0-1	.000	0-0	.000	1	2	3	3.3	4	0	0	2	1	1	4	5.6		
Totals.....		1	99	17-38	.447	1-6	.167	4-7	.571	7	16	23	3.3	12	0	3	10	3	3	39	5.6		

Games played: 7
 Minutes/game: 14.1
 Points/game: 5.6
 FG Pct: 44.7
 3FG Pct: 16.7
 FT Pct: 57.1

Rebounds/game: 3.3
 Assists/game: 0.4
 Turnovers/game: 1.4
 Assist/turnover ratio: 0.3
 Steals/game: 0.4
 Blocks/game: 0.4

#10 Higgs, Lashann

Opponent	Date	GS	Min	---TOTAL---		---3-PTS---		----REBOUNDS----										Pts	Avg			
				FG-FGA	Pct	3FG-FGA	Pct	FT-FTA	Pct	Off	Def	Tot	Avg	PF	FO	A	TO			Blk	Stl	
STETSON	11/12/17	*	18	7-9	.778	0-1	.000	4-5	.800	1	1	2	2.0	1	0	0	0	0	0	0	18	18.0
MCNEESE STATE	11/15/17	*	15	3-5	.600	1-2	.500	2-2	1.000	0	2	2	2.0	2	0	0	3	0	0	9	13.5	
UTSA	11/17/17	*	11	2-5	.400	0-0	.000	4-4	1.000	1	2	3	2.3	2	0	3	0	0	1	8	11.7	
vs LSU	11/24/17	*	25	5-6	.833	1-1	1.000	2-4	.500	0	0	0	1.8	2	0	3	2	0	1	13	12.0	
vs Washington	11/25/17	*	14	3-8	.375	0-1	.000	4-7	.571	2	2	4	2.2	2	0	1	2	0	0	10	11.6	
LOUISIANA TECH	11/30/17	*	23	6-8	.750	0-1	.000	1-2	.500	2	1	3	2.3	2	0	4	1	0	2	13	11.8	
at Georgia	12/03/17	*	21	3-8	.375	0-1	.000	6-6	1.000	2	2	4	2.6	0	0	5	0	0	1	12	11.9	
Totals.....		7	127	29-49	.592	2-7	.286	23-30	.767	8	10	18	2.6	11	0	16	8	0	5	83	11.9	

Games played: 7
 Minutes/game: 18.1
 Points/game: 11.9
 FG Pct: 59.2
 3FG Pct: 28.6
 FT Pct: 76.7

Rebounds/game: 2.6
 Assists/game: 2.3
 Turnovers/game: 1.1
 Assist/turnover ratio: 2.0
 Steals/game: 0.7

#11 McCarty, Brooke

Opponent	Date	GS	Min	---TOTAL---		---3-PTS---		----REBOUNDS----								PF	FO	A	TO	Blk	Stl	Pts	Avg
				FG-FGA	Pct	3FG-FGA	Pct	FT-FTA	Pct	Off	Def	Tot	Avg										
STETSON	11/12/17	*	24	6-11	.545	2-5	.400	0-0	.000	2	1	3	3.0	1	0	7	2	0	1	14	14.0		
MCNEESE STATE	11/15/17	*	18	3-6	.500	1-3	.333	2-2	1.000	1	2	3	3.0	2	0	6	2	0	3	9	11.5		
UTSA	11/17/17	*	21	7-11	.636	3-4	.750	1-1	1.000	1	6	7	4.3	3	0	3	0	0	1	18	13.7		
vs LSU	11/24/17	*	33	4-10	.400	2-2	1.000	1-1	1.000	0	2	2	3.8	2	0	6	3	0	1	11	13.0		
vs Washington	11/25/17	*	31	5-12	.417	3-8	.375	2-2	1.000	1	5	6	4.2	2	0	6	2	0	2	15	13.4		
LOUISIANA TECH	11/30/17	*	23	6-10	.600	3-5	.600	0-0	.000	0	2	2	3.8	0	0	5	2	0	5	15	13.7		
at Georgia	12/03/17	*	33	4-9	.444	1-4	.250	3-4	.750	0	3	3	3.7	1	0	2	3	0	3	12	13.4		
Totals.....		7	183	35-69	.507	15-31	.484	9-10	.900	5	21	26	3.7	11	0	35	14	0	16	94	13.4		

Games played: 7
 Minutes/game: 26.1
 Points/game: 13.4
 FG Pct: 50.7
 3FG Pct: 48.4
 FT Pct: 90.0

Rebounds/game: 3.7
 Assists/game: 5.0
 Turnovers/game: 2.0
 Assist/turnover ratio: 2.5
 Steals/game: 2.3

#12 Underwood, Jada

Opponent	Date	GS	Min	---TOTAL---		---3-PTS---		FT-FTA		----REBOUNDS----						PF	FO	A	TO	Blk	Stl	Pts	Avg
				FG-FGA	Pct	3FG-FGA	Pct	Pct	Off	Def	Tot	Avg											
STETSON	11/12/17		14	1-3	.333	1-1	1.000	0-0	.000	0	0	0	0.0	2	0	2	1	0	2	3	3.0		
MCNEESE STATE	11/15/17		16	4-6	.667	1-3	.333	2-2	1.000	2	2	4	2.0	2	0	2	2	1	2	11	7.0		
UTSA	11/17/17		21	6-9	.667	1-2	.500	6-9	.667	6	3	9	4.3	1	0	1	2	0	0	19	11.0		
vs LSU	11/24/17		14	0-1	.000	0-0	.000	2-2	1.000	1	0	1	3.5	3	0	2	0	0	0	2	8.8		
vs Washington	11/25/17		18	4-6	.667	1-1	1.000	0-3	.000	2	2	4	3.6	3	0	1	2	0	1	9	8.8		
at Georgia	12/03/17		10	1-1	1.000	0-0	.000	0-0	.000	0	0	0	3.0	0	0	0	0	0	0	2	7.7		
Totals.....		0	93	16-26	.615	4-7	.571	10-16	.625	11	7	18	3.0	11	0	8	7	1	5	46	7.7		

Games played: 6
 Minutes/game: 15.5
 Points/game: 7.7
 FG Pct: 61.5
 3FG Pct: 57.1
 FT Pct: 62.5

Rebounds/game: 3.0
 Assists/game: 1.3
 Turnovers/game: 1.2
 Assist/turnover ratio: 1.1
 Steals/game: 0.8
 Blocks/game: 0.2

#14 Aborowa, Olamide

Opponent	Date	GS	Min	---TOTAL---		---3-PTS---		----REBOUNDS----										Pts	Avg			
				FG-FGA	Pct	3FG-FGA	Pct	FT-FTA	Pct	Off	Def	Tot	Avg	PF	FO	A	TO			Blk	Stl	
STETSON	11/12/17		13	2-5	.400	0-0	.000	0-1	.000	2	1	3	3.0	1	0	0	0	0	0	0	4	4.0
MCNEESE STATE	11/15/17		15	2-4	.500	0-0	.000	0-0	.000	0	4	4	3.5	1	0	0	2	0	0	0	4	4.0
UTSA	11/17/17		16	4-9	.444	0-0	.000	1-1	1.000	4	3	7	4.7	1	0	1	0	0	0	0	9	5.7
vs LSU	11/24/17		5	2-2	1.000	0-0	.000	0-0	.000	0	0	0	3.5	0	0	0	0	1	0	0	4	5.3
vs Washington	11/25/17		7	0-0	.000	0-0	.000	0-0	.000	0	0	0	2.8	0	0	0	1	0	0	0	0	4.2
LOUISIANA TECH	11/30/17		20	5-10	.500	0-0	.000	1-2	.500	5	2	7	3.5	1	0	0	0	0	0	0	11	5.3
at Georgia	12/03/17		15	3-4	.750	0-0	.000	0-0	.000	1	1	2	3.3	3	0	0	0	0	0	0	6	5.4
Totals.....		0	91	18-34	.529	0-0	.000	2-4	.500	12	11	23	3.3	7	0	1	3	1	0	38	5.4	

Games played: 7
 Minutes/game: 13.0
 Points/game: 5.4
 FG Pct: 52.9
 FT Pct: 50.0

Rebounds/game: 3.3
 Assists/game: 0.1
 Turnovers/game: 0.4
 Assist/turnover ratio: 0.3
 Blocks/game: 0.1

#15 Patterson, Chasity

Opponent	Date	GS	Min	---TOTAL---		---3-PTS---		----REBOUNDS----										Pts	Avg		
				FG-FGA	Pct	3FG-FGA	Pct	FT-FTA	Pct	Off	Def	Tot	Avg	PF	FO	A	TO			Blk	Stl
STETSON	11/12/17		12	0-7	.000	0-3	.000	0-2	.000	1	3	4	4.0	3	0	0	3	1	1	0	0.0
MCNEESE STATE	11/15/17		15	3-7	.429	0-2	.000	0-0	.000	0	3	3	3.5	3	0	4	0	0	0	6	3.0
UTSA	11/17/17		11	5-7	.714	1-1	1.000	2-4	.500	0	1	1	2.7	0	0	2	0	0	0	13	6.3
vs Washington	11/25/17		11	2-3	.667	0-1	.000	2-2	1.000	0	2	2	2.5	0	0	2	0	0	0	6	6.3
LOUISIANA TECH	11/30/17		10	2-2	1.000	1-1	1.000	0-0	.000	0	1	1	2.2	1	0	2	2	1	1	5	6.0
at Georgia	12/03/17		2	0-0	.000	0-0	.000	0-0	.000	0	1	1	2.0	0	0	0	0	0	0	0	5.0
Totals.....		0	61	12-26	.462	2-8	.250	4-8	.500	1	11	12	2.0	7	0	10	5	2	2	30	5.0

Games played: 6
 Minutes/game: 10.2
 Points/game: 5.0
 FG Pct: 46.2
 3FG Pct: 25.0
 FT Pct: 50.0

Rebounds/game: 2.0
 Assists/game: 1.7
 Turnovers/game: 0.8
 Assist/turnover ratio: 2.0
 Steals/game: 0.3
 Blocks/game: 0.3

#23 Atkins, Ariel

Opponent	Date	GS	Min	---TOTAL---		---3-PTS---		----REBOUNDS----													
				FG-FGA	Pct	3FG-FGA	Pct	FT-FTA	Pct	Off	Def	Tot	Avg	PF	FO	A	TO	Blk	Stl	Pts	Avg
STETSON	11/12/17	*	22	4-6	.667	1-1	1.000	0-1	.000	2	2	4	4.0	1	0	6	0	1	4	9	9.0
MCNEESE STATE	11/15/17	*	19	8-10	.800	3-3	1.000	4-4	1.000	3	4	7	5.5	1	0	2	1	1	4	23	16.0
UTSA	11/17/17	*	16	6-7	.857	1-1	1.000	0-0	.000	1	3	4	5.0	4	0	3	2	0	3	13	15.0
vs LSU	11/24/17	*	21	6-8	.750	2-3	.667	3-5	.600	0	2	2	4.3	3	0	4	4	1	4	17	15.5
vs Washington	11/25/17	*	26	3-6	.500	1-2	.500	0-0	.000	1	3	4	4.2	3	0	6	1	0	1	7	13.8
LOUISIANA TECH	11/30/17	*	24	3-9	.333	1-7	.143	1-1	1.000	0	3	3	4.0	1	0	7	0	3	2	8	12.8
at Georgia	12/03/17	*	30	6-9	.667	3-3	1.000	2-2	1.000	0	9	9	4.7	1	0	2	1	2	0	17	13.4
Totals.....		7	158	36-55	.655	12-20	.600	10-13	.769	7	26	33	4.7	14	0	30	9	8	18	94	13.4

Games played: 7
 Minutes/game: 22.6
 Points/game: 13.4
 FG Pct: 65.5
 3FG Pct: 60.0
 FT Pct: 76.9

Rebounds/game: 4.7
 Assists/game: 4.3
 Turnovers/game: 1.3
 Assist/turnover ratio: 3.3
 Steals/game: 2.6
 Blocks/game: 1.1

#30 Caron-Goudreau, K.

Opponent	Date	GS	Min	---TOTAL---		---3-PTS---		----REBOUNDS----													
				FG-FGA	Pct	3FG-FGA	Pct	FT-FTA	Pct	Off	Def	Tot	Avg	PF	FO	A	TO	Blk	Stl	Pts	Avg
STETSON	11/12/17		14	0-3	.000	0-2	.000	0-0	.000	0	3	3	3.0	2	0	1	0	0	0	0	0.0
MCNEESE STATE	11/15/17		11	0-1	.000	0-0	.000	0-0	.000	0	2	2	2.5	3	0	0	0	2	0	0	0.0
UTSA	11/17/17		16	0-3	.000	0-3	.000	0-0	.000	1	2	3	2.7	1	0	3	0	1	0	0	0.0
vs LSU	11/24/17		9	0-1	.000	0-0	.000	0-0	.000	0	0	0	2.0	3	0	1	2	0	0	0	0.0
vs Washington	11/25/17		7	1-1	1.000	0-0	.000	1-2	.500	1	2	3	2.2	0	0	1	1	0	0	3	0.6
Totals.....		0	57	1-9	.111	0-5	.000	1-2	.500	2	9	11	2.2	9	0	6	3	3	0	3	0.6

Games played: 5
 Minutes/game: 11.4
 Points/game: 0.6
 FG Pct: 11.1
 3FG Pct: 0.0
 FT Pct: 50.0

Rebounds/game: 2.2
 Assists/game: 1.2
 Turnovers/game: 0.6
 Assist/turnover ratio: 2.0
 Blocks/game: 0.6

#31 Caron-Goudreau, A.

Opponent	Date	GS	Min	---TOTAL---		---3-PTS---		---FT-FTA---		----REBOUNDS----					PF	FO	A	TO	Blk	Stl	Pts	Avg
				FG-FGA	Pct	3FG-FGA	Pct	Pct	Off	Def	Tot	Avg										
STETSON	11/12/17	*	19	5-6	.833	0-0	.000	0-0	.000	2	3	5	5.0	1	0	0	0	0	1	10	10.0	
MCKEAN STATE	11/15/17	*	16	3-5	.600	1-2	.500	4-5	.800	4	2	6	5.5	1	0	0	0	1	1	11	10.5	
UTSA	11/17/17	*	10	1-3	.333	0-1	.000	1-2	.500	0	2	2	4.3	0	0	0	1	0	0	3	8.0	
vs LSU	11/24/17	*	29	4-7	.571	0-0	.000	0-0	.000	7	3	10	5.8	3	0	0	2	1	0	8	8.0	
vs Washington	11/25/17	*	19	1-2	.500	0-1	.000	1-4	.250	2	3	5	5.6	2	0	3	2	0	5	3	7.0	
LOUISIANA TECH	11/30/17	*	17	3-5	.600	2-2	1.000	0-0	.000	2	6	8	6.0	0	0	0	1	2	1	8	7.2	
at Georgia	12/03/17	*	17	1-4	.250	1-2	.500	3-4	.750	1	4	5	5.9	5	1	0	2	1	2	6	7.0	
Totals.....		7	127	18-32	.563	4-8	.500	9-15	.600	18	23	41	5.9	12	1	3	8	5	10	49	7.0	

Games played: 7
 Minutes/game: 18.1
 Points/game: 7.0
 FG Pct: 56.3
 3FG Pct: 50.0
 FT Pct: 60.0

Rebounds/game: 5.9
 Assists/game: 0.4
 Turnovers/game: 1.1
 Assist/turnover ratio: 0.4
 Steals/game: 1.4
 Blocks/game: 0.7

#33 Boothe, Rellah

Opponent	Date	GS	Min	---TOTAL---		---3-PTS---		----REBOUNDS----													
				FG-FGA	Pct	3FG-FGA	Pct	FT-FTA	Pct	Off	Def	Tot	Avg	PF	FO	A	TO	Blk	Stl	Pts	Avg
STETSON	11/12/17		6	1-3	.333	0-1	.000	0-0	.000	0	2	2	2.0	2	0	0	0	0	0	2	2.0
MCKNEESE STATE	11/15/17		14	3-9	.333	0-1	.000	0-0	.000	4	6	10	6.0	0	0	0	0	3	0	6	4.0
UTSA	11/17/17		18	3-8	.375	0-3	.000	1-2	.500	3	2	5	5.7	1	0	4	1	1	0	7	5.0
LOUISIANA TECH	11/30/17		17	3-9	.333	0-1	.000	2-3	.667	8	1	9	6.5	1	0	1	4	0	0	8	5.8
at Georgia	12/03/17		5	2-6	.333	1-1	1.000	0-0	.000	1	2	3	5.8	1	0	0	1	0	0	5	5.6
Totals.....		0	60	12-35	.343	1-7	.143	3-5	.600	16	13	29	5.8	5	0	5	6	4	0	28	5.6

Games played: 5
 Minutes/game: 12.0
 Points/game: 5.6
 FG Pct: 34.3
 3FG Pct: 14.3
 FT Pct: 60.0

Rebounds/game: 5.8
 Assists/game: 1.0
 Turnovers/game: 1.2
 Assist/turnover ratio: 0.8
 Blocks/game: 0.8

#40 White, Jatarie

Opponent	Date	GS	Min	---TOTAL---		---3-PTS---		FT-FTA		----REBOUNDS----				PF	FO	A	TO	Blk	Stl	Pts	Avg
				FG-FGA	Pct	3FG-FGA	Pct	Pct	Off	Def	Tot	Avg									
STETSON	11/12/17	*	16	4-8	.500	0-0	.000	1-2	.500	5	4	9	9.0	3	0	0	2	0	0	9	9.0
MCKNEESE STATE	11/15/17	*	17	2-5	.400	0-0	.000	1-2	.500	1	1	2	5.5	3	0	0	1	1	1	5	7.0
UTSA	11/17/17	*	16	5-9	.556	0-0	.000	1-2	.500	4	0	4	5.0	0	0	1	2	0	0	11	8.3
vs LSU	11/24/17	*	24	6-9	.667	0-0	.000	2-3	.667	2	3	5	5.0	3	0	0	4	0	1	14	9.8
vs Washington	11/25/17	*	25	10-12	.833	0-0	.000	4-5	.800	4	3	7	5.4	2	0	1	4	0	0	24	12.6
LOUISIANA TECH	11/30/17		10	2-4	.500	0-0	.000	0-0	.000	0	4	4	5.2	4	0	0	0	0	2	4	11.2
at Georgia	12/03/17	*	26	6-15	.400	0-0	.000	1-2	.500	3	3	6	5.3	3	0	0	2	0	1	13	11.4
Totals.....		6	134	35-62	.565	0-0	.000	10-16	.625	19	18	37	5.3	18	0	2	15	1	5	80	11.4

Games played: 7
 Minutes/game: 19.1
 Points/game: 11.4
 FG Pct: 56.5
 FT Pct: 62.5

Rebounds/game: 5.3
 Assists/game: 0.3
 Turnovers/game: 2.1
 Assist/turnover ratio: 0.1
 Steals/game: 0.7
 Blocks/game: 0.1

THE STAT CREW SYSTEM
Texas Team High/Low Analysis (as of Dec 03, 2017)
All games

Texas - TEAM GAME HIGHS

POINTS.....	120	UTSA (11/17/17)
	100	MCNEESE STATE (11/15/17)
	95	STETSON (11/12/17)
	92	vs Washington (11/25/17)
	88	LOUISIANA TECH (11/30/17)
FIELD GOALS MADE.....	46	UTSA (11/17/17)
	40	STETSON (11/12/17)
FIELD GOAL ATTEMPTS.....	87	UTSA (11/17/17)
	83	STETSON (11/12/17)
FIELD GOAL PERCENTAGE.....	.574 (35-61)	vs Washington (11/25/17)
	.529 (46-87)	UTSA (11/17/17)
3 PT FIELD GOALS MADE.....	10	UTSA (11/17/17)
	9	LOUISIANA TECH (11/30/17)
	9	MCNEESE STATE (11/15/17)
3 PT FG ATTEMPTS.....	24	STETSON (11/12/17)
	23	UTSA (11/17/17)
3 PT FG PERCENTAGE.....	.462 (6-13)	at Georgia (12/03/17)
	.435 (10-23)	UTSA (11/17/17)
FREE THROWS MADE.....	18	UTSA (11/17/17)
	15	at Georgia (12/03/17)
	15	vs Washington (11/25/17)
	15	MCNEESE STATE (11/15/17)
FREE THROW ATTEMPTS.....	27	UTSA (11/17/17)
	26	vs Washington (11/25/17)
FREE THROW PERCENTAGE.....	.750 (15-20)	at Georgia (12/03/17)
	.750 (15-20)	MCNEESE STATE (11/15/17)
REBOUNDS.....	52	UTSA (11/17/17)
	51	STETSON (11/12/17)
ASSISTS.....	26	vs Washington (11/25/17)
	25	LOUISIANA TECH (11/30/17)
STEALS.....	15	LOUISIANA TECH (11/30/17)
	14	MCNEESE STATE (11/15/17)
BLOCKED SHOTS.....	10	MCNEESE STATE (11/15/17)
	8	LOUISIANA TECH (11/30/17)
TURNOVERS.....	23	vs LSU (11/24/17)
	20	vs Washington (11/25/17)
FOULS.....	23	vs LSU (11/24/17)
	23	MCNEESE STATE (11/15/17)

THE STAT CREW SYSTEM
Texas High/Low Analysis (as of Dec 03, 2017)
All games

Opponent - GAME HIGHS

POINTS.....	70	UTSA (11/17/17)
	68	vs Washington (11/25/17)
	66	vs LSU (11/24/17)
	59	STETSON (11/12/17)
	54	LOUISIANA TECH (11/30/17)
FIELD GOALS MADE.....	28	vs LSU (11/24/17)
	27	UTSA (11/17/17)
FIELD GOAL ATTEMPTS.....	67	UTSA (11/17/17)
	66	vs Washington (11/25/17)
FIELD GOAL PERCENTAGE.....	.467 (28-60)	vs LSU (11/24/17)
	.458 (22-48)	STETSON (11/12/17)
3 PT FIELD GOALS MADE.....	10	vs Washington (11/25/17)
	7	UTSA (11/17/17)
3 PT FG ATTEMPTS.....	30	vs Washington (11/25/17)
	19	LOUISIANA TECH (11/30/17)
3 PT FG PERCENTAGE.....	.412 (7-17)	UTSA (11/17/17)
	.333 (10-30)	vs Washington (11/25/17)
	.333 (1-3)	vs LSU (11/24/17)
FREE THROWS MADE.....	10	STETSON (11/12/17)
	9	vs LSU (11/24/17)
	9	UTSA (11/17/17)
FREE THROW ATTEMPTS.....	21	STETSON (11/12/17)
	15	vs LSU (11/24/17)
FREE THROW PERCENTAGE.....	.750 (9-12)	UTSA (11/17/17)
	.750 (6-8)	at Georgia (12/03/17)
REBOUNDS.....	38	at Georgia (12/03/17)
	33	LOUISIANA TECH (11/30/17)
	33	vs LSU (11/24/17)
ASSISTS.....	16	vs Washington (11/25/17)
	15	vs LSU (11/24/17)
STEALS.....	9	vs Washington (11/25/17)
	8	vs LSU (11/24/17)
BLOCKED SHOTS.....	6	at Georgia (12/03/17)
	3	LOUISIANA TECH (11/30/17)
TURNOVERS.....	28	MCNEESE STATE (11/15/17)
	22	LOUISIANA TECH (11/30/17)
	22	vs Washington (11/25/17)
	22	STETSON (11/12/17)
FOULS.....	23	vs Washington (11/25/17)
	23	vs LSU (11/24/17)
	23	UTSA (11/17/17)

THE STAT CREW SYSTEM
Texas High/Low Analysis (as of Dec 03, 2017)
All games

Texas - GAME LOWS

POINTS.....	75	vs LSU (11/24/17)
	81	at Georgia (12/03/17)
	88	LOUISIANA TECH (11/30/17)
	92	vs Washington (11/25/17)
	95	STETSON (11/12/17)
FIELD GOALS MADE.....	30	vs LSU (11/24/17)
	30	at Georgia (12/03/17)
FIELD GOAL ATTEMPTS.....	57	vs LSU (11/24/17)
	61	vs Washington (11/25/17)
FIELD GOAL PERCENTAGE.....	.435 (30-69)	at Georgia (12/03/17)
	.468 (37-79)	LOUISIANA TECH (11/30/17)
3 PT FIELD GOALS MADE.....	5	vs LSU (11/24/17)
	6	STETSON (11/12/17)
	6	at Georgia (12/03/17)
3 PT FG ATTEMPTS.....	12	vs LSU (11/24/17)
	13	at Georgia (12/03/17)
3 PT FG PERCENTAGE.....	.250 (6-24)	STETSON (11/12/17)
	.368 (7-19)	vs Washington (11/25/17)
FREE THROWS MADE.....	5	LOUISIANA TECH (11/30/17)
	9	STETSON (11/12/17)
FREE THROW ATTEMPTS.....	8	LOUISIANA TECH (11/30/17)
	16	STETSON (11/12/17)
	16	vs LSU (11/24/17)
FREE THROW PERCENTAGE.....	.563 (9-16)	STETSON (11/12/17)
	.577 (15-26)	vs Washington (11/25/17)
REBOUNDS.....	34	vs LSU (11/24/17)
	43	vs Washington (11/25/17)
ASSISTS.....	14	at Georgia (12/03/17)
	18	MCNEESE STATE (11/15/17)
STEALS.....	7	UTSA (11/17/17)
	9	vs LSU (11/24/17)
BLOCKED SHOTS.....	0	vs Washington (11/25/17)
	3	STETSON (11/12/17)
	3	UTSA (11/17/17)
	3	vs LSU (11/24/17)
TURNOVERS.....	11	UTSA (11/17/17)
	12	MCNEESE STATE (11/15/17)
	12	at Georgia (12/03/17)
FOULS.....	15	UTSA (11/17/17)
	16	vs Washington (11/25/17)

THE STAT CREW SYSTEM
Texas High/Low Analysis (as of Dec 03, 2017)
All games

Opponent - GAME LOWS

POINTS.....	34	MCNEESE STATE (11/15/17)
	53	at Georgia (12/03/17)
	54	LOUISIANA TECH (11/30/17)
	59	STETSON (11/12/17)
	66	vs LSU (11/24/17)
FIELD GOALS MADE.....	11	MCNEESE STATE (11/15/17)
	20	LOUISIANA TECH (11/30/17)
FIELD GOAL ATTEMPTS.....	48	STETSON (11/12/17)
	56	MCNEESE STATE (11/15/17)
FIELD GOAL PERCENTAGE.....	.196 (11-56)	MCNEESE STATE (11/15/17)
	.328 (20-61)	LOUISIANA TECH (11/30/17)
3 PT FIELD GOALS MADE.....	1	vs LSU (11/24/17)
	3	at Georgia (12/03/17)
3 PT FG ATTEMPTS.....	3	vs LSU (11/24/17)
	15	MCNEESE STATE (11/15/17)
3 PT FG PERCENTAGE.....	.176 (3-17)	at Georgia (12/03/17)
	.267 (4-15)	MCNEESE STATE (11/15/17)
FREE THROWS MADE.....	6	vs Washington (11/25/17)
	6	at Georgia (12/03/17)
FREE THROW ATTEMPTS.....	8	at Georgia (12/03/17)
	12	UTSA (11/17/17)
	12	vs Washington (11/25/17)
FREE THROW PERCENTAGE.....	.476 (10-21)	STETSON (11/12/17)
	.500 (6-12)	vs Washington (11/25/17)
REBOUNDS.....	25	STETSON (11/12/17)
	29	UTSA (11/17/17)
ASSISTS.....	6	STETSON (11/12/17)
	6	UTSA (11/17/17)
STEALS.....	3	MCNEESE STATE (11/15/17)
	4	STETSON (11/12/17)
	4	at Georgia (12/03/17)
BLOCKED SHOTS.....	0	STETSON (11/12/17)
	0	UTSA (11/17/17)
TURNOVERS.....	17	at Georgia (12/03/17)
	21	UTSA (11/17/17)
	21	vs LSU (11/24/17)
FOULS.....	13	LOUISIANA TECH (11/30/17)
	20	STETSON (11/12/17)
	20	MCNEESE STATE (11/15/17)

THE STAT CREW SYSTEM
Texas Player High/Low Analysis (as of Dec 03, 2017)
All games

Texas - INDIVIDUAL GAME HIGHS

Points.....	24	White, Jatarie vs Washington (11/25/17)
	23	Atkins, Ariel vs McNeese State (11/15/17)
	19	Underwood, Jada vs UTSA (11/17/17)
	18	McCarty, Brooke vs UTSA (11/17/17)
	18	Higgs, Lashann vs Stetson (11/12/17)
Field Goals Made.....	10	White, Jatarie vs Washington (11/25/17)
	8	Atkins, Ariel vs McNeese State (11/15/17)
Field Goal Att.....	15	White, Jatarie at Georgia (12/03/17)
	12	White, Jatarie vs Washington (11/25/17)
	12	McCarty, Brooke vs Washington (11/25/17)
FG Pct (min 5 made).....	.857 (6-7)	Atkins, Ariel vs UTSA (11/17/17)
	.833 (10-12)	White, Jatarie vs Washington (11/25/17)
	.833 (5-6)	Higgs, Lashann vs LSU (11/24/17)
	.833 (5-6)	Caron-Goudreau, A. vs Stetson (11/12/17)
3-Point FG Made.....	3	Atkins, Ariel at Georgia (12/03/17)
	3	McCarty, Brooke vs Louisiana Tech (11/30/17)
	3	McCarty, Brooke vs Washington (11/25/17)
	3	McCarty, Brooke vs UTSA (11/17/17)
	3	Atkins, Ariel vs McNeese State (11/15/17)
3-Point FG Att.....	8	McCarty, Brooke vs Washington (11/25/17)
	7	Atkins, Ariel vs Louisiana Tech (11/30/17)
3-Pt FG Pct (min 2 made).....	1.000 (3-3)	Atkins, Ariel at Georgia (12/03/17)
	1.000 (3-3)	Atkins, Ariel vs McNeese State (11/15/17)
	1.000 (2-2)	Caron-Goudreau, A. vs Louisiana Tech (11/30/17)
	1.000 (2-2)	Sutton, Alecia vs Louisiana Tech (11/30/17)
	1.000 (2-2)	McCarty, Brooke vs LSU (11/24/17)
Free Throws Made.....	6	Higgs, Lashann at Georgia (12/03/17)
	6	Underwood, Jada vs UTSA (11/17/17)
Free Throw Att.....	9	Underwood, Jada vs UTSA (11/17/17)
	7	Higgs, Lashann vs Washington (11/25/17)
FT Pct (min 3 made).....	1.000 (6-6)	Higgs, Lashann at Georgia (12/03/17)
	1.000 (4-4)	Higgs, Lashann vs UTSA (11/17/17)
	1.000 (4-4)	Atkins, Ariel vs McNeese State (11/15/17)
Rebounds.....	10	Caron-Goudreau, A. vs LSU (11/24/17)
	10	Boothe, Rellah vs McNeese State (11/15/17)
Assists.....	7	Atkins, Ariel vs Louisiana Tech (11/30/17)
	7	McCarty, Brooke vs Stetson (11/12/17)
Steals.....	5	McCarty, Brooke vs Louisiana Tech (11/30/17)
	5	Caron-Goudreau, A. vs Washington (11/25/17)
Blocked Shots.....	3	Atkins, Ariel vs Louisiana Tech (11/30/17)
	3	Boothe, Rellah vs McNeese State (11/15/17)
Turnovers.....	5	Sutton, Alecia vs LSU (11/24/17)
	4	Boothe, Rellah vs Louisiana Tech (11/30/17)
	4	White, Jatarie vs Washington (11/25/17)
	4	White, Jatarie vs LSU (11/24/17)
	4	Atkins, Ariel vs LSU (11/24/17)
Fouls.....	5	Caron-Goudreau, A. at Georgia (12/03/17)
	4	Hosey, Jordan at Georgia (12/03/17)
	4	White, Jatarie vs Louisiana Tech (11/30/17)
	4	Atkins, Ariel vs UTSA (11/17/17)
Minutes.....	33	McCarty, Brooke at Georgia (12/03/17)
	33	McCarty, Brooke vs LSU (11/24/17)
	31	McCarty, Brooke vs Washington (11/25/17)

30
29

Atkins, Ariel at Georgia (12/03/17)
Caron-Goudreau, A. vs LSU (11/24/17)

THE STAT CREW SYSTEM
Texas High/Low Analysis (as of Dec 03, 2017)
All games

OPPONENT INDIVIDUAL GAME HIGHS

Points.....	23	JACKSON, Chloe vs LSU (11/24/17)
	20	LOUIS, Raigyne vs LSU (11/24/17)
	19	Chidomere, Crystal vs UTSA (11/17/17)
	19	COLCLOUGH, Kennedy vs Stetson (11/12/17)
	17	ENGRAM, Mackenzie at Georgia (12/03/17)
Field Goals Made.....	11	JACKSON, Chloe vs LSU (11/24/17)
	8	LOUIS, Raigyne vs LSU (11/24/17)
	8	Chidomere, Crystal vs UTSA (11/17/17)
	8	COLCLOUGH, Kennedy vs Stetson (11/12/17)
Field Goal Att.....	23	JACKSON, Chloe vs LSU (11/24/17)
	19	ENGRAM, Mackenzie at Georgia (12/03/17)
FG Pct (min 5 made).....	1.000 (5-5)	PRUITT, Michelle vs Stetson (11/12/17)
	.667 (8-12)	Chidomere, Crystal vs UTSA (11/17/17)
3-Point FG Made.....	3	STAHLY, Taylor vs Louisiana Tech (11/30/17)
	3	Donald, Karrington vs UTSA (11/17/17)
3-Point FG Att.....	8	Donald, Karrington vs UTSA (11/17/17)
	7	STAHLY, Taylor vs Louisiana Tech (11/30/17)
	7	Hannah Johnson vs Washington (11/25/17)
3-Pt FG Pct (min 2 made).....	1.000 (2-2)	Mackenzie Wieburg vs Washington (11/25/17)
	1.000 (2-2)	Dukes, Alexis vs UTSA (11/17/17)
	1.000 (2-2)	Cooley, Haley vs McNeese State (11/15/17)
Free Throws Made.....	4	MITCHELL, Ayana vs LSU (11/24/17)
	4	LOUIS, Raigyne vs LSU (11/24/17)
	4	Riley, Shayln vs McNeese State (11/15/17)
Free Throw Att.....	8	MITCHELL, Ayana vs LSU (11/24/17)
	6	LOUIS, Raigyne vs LSU (11/24/17)
	6	CHAMBERS, Brittney vs Stetson (11/12/17)
FT Pct (min 3 made).....	1.000 (4-4)	Riley, Shayln vs McNeese State (11/15/17)
	.750 (3-4)	DELGADO, Maria vs Louisiana Tech (11/30/17)
Rebounds.....	10	MORRISON, Que at Georgia (12/03/17)
	7	JACKSON, Chloe vs LSU (11/24/17)
	7	Benson, Marie vs UTSA (11/17/17)
Assists.....	5	Alexis Griggsby vs Washington (11/25/17)
	5	JACKSON, Chloe vs LSU (11/24/17)
Steals.....	3	MCLEOD, Anna vs Louisiana Tech (11/30/17)
	2	ROBINSON, Caliya at Georgia (12/03/17)
	2	ENGRAM, Mackenzie at Georgia (12/03/17)
	2	GUINTO, Raizel vs Louisiana Tech (11/30/17)
	2	Missy Peterson vs Washington (11/25/17)
	2	Alexis Griggsby vs Washington (11/25/17)
	2	Jenna Moser vs Washington (11/25/17)
	2	LOUIS, Raigyne vs LSU (11/24/17)
	2	BEACH, McKenna vs Stetson (11/12/17)
Blocked Shots.....	4	ROBINSON, Caliya at Georgia (12/03/17)
	2	ENGRAM, Mackenzie at Georgia (12/03/17)
	2	GUINTO, Raizel vs Louisiana Tech (11/30/17)
Turnovers.....	7	Hannah Johnson vs Washington (11/25/17)
	6	Chidomere, Crystal vs UTSA (11/17/17)
	6	Hudnall, Keara vs McNeese State (11/15/17)
	6	Davis, Caitlin vs McNeese State (11/15/17)
Fouls.....	4	ROBINSON, Caliya at Georgia (12/03/17)
	4	Fapou Semebene vs Washington (11/25/17)
	4	Keirra Collier vs Washington (11/25/17)
	4	MITCHELL, Ayana vs LSU (11/24/17)
	4	LOUIS, Raigyne vs LSU (11/24/17)

4 POINTER, Khayla vs LSU (11/24/17)
4 Robinson, Tasharian vs UTSA (11/17/17)
4 Chidomere, Crystal vs UTSA (11/17/17)
4 Davis, Caitlin vs McNeese State (11/15/17)
4 LENTZ, Kendall vs Stetson (11/12/17)

Aborowa, Olamide

Year	GP-GS	Min/Avg	Total		3-Point		Rebounds			PF-FO	Ast	TO	Blk	Stl	Pts/Avg		
			FG-FGA	Pct	FG-FGA	Pct	FT-FTA	Pct	Off-Def							Tot	Avg
2015	18-0	62/3.4	5-20	.250	0-0	.000	2-4	.500	4-12	16	0.9	2-0	0	4	3	0	12/0.7
2016	17-0	108/6.4	11-34	.324	0-0	.000	3-8	.375	13-15	28	1.6	14-0	2	9	6	1	25/1.5
2017	7-0	91/13.0	18-34	.529	0-0	.000	2-4	.500	12-11	23	3.3	7-0	1	3	1	0	38/5.4
TOTAL	42-0	261/6.2	34-88	.386	0-0	.000	7-16	.438	29-38	67	1.6	23-0	3	16	10	1	75/1.8

Atkins, Ariel

Year	GP-GS	Min/Avg	Total		3-Point		Rebounds			PF-FO	Ast	TO	Blk	Stl	Pts/Avg		
			FG-FGA	Pct	FG-FGA	Pct	FT-FTA	Pct	Off-Def							Tot	Avg
2014	27-19	645/23.9	90-248	.363	17-59	.288	66-80	.825	37-55	92	3.4	71-1	35	60	7	34	263/9.7
2015	27-14	568/21.0	111-207	.536	21-59	.356	59-72	.819	44-61	105	3.9	73-2	34	38	7	37	302/11.2
2016	32-32	852/26.6	154-338	.456	29-77	.377	72-88	.818	64-69	133	4.2	95-5	51	46	10	64	409/12.8
2017	7-7	158/22.6	36-55	.655	12-20	.600	10-13	.769	7-26	33	4.7	14-0	30	9	8	18	94/13.4
TOTAL	93-72	2223/23.9	391-848	.461	79-215	.367	207-253	.818	152-211	363	3.9	253-8	150	153	32	153	1068/11.5

Boothe, Rellah

Year	GP-GS	Min/Avg	Total		3-Point		Rebounds			PF-FO	Ast	TO	Blk	Stl	Pts/Avg		
			FG-FGA	Pct	FG-FGA	Pct	FT-FTA	Pct	Off-Def							Tot	Avg
2017	5-0	60/12.0	12-35	.343	1-7	.143	3-5	.600	16-13	29	5.8	5-0	5	6	4	0	28/5.6
TOTAL	5-0	60/12.0	12-35	.343	1-7	.143	3-5	.600	16-13	29	5.8	5-0	5	6	4	0	28/5.6

Caron-Goudreau, A.

Year	GP-GS	Min/Avg	Total		3-Point		Rebounds			PF-FO	Ast	TO	Blk	Stl	Pts/Avg		
			FG-FGA	Pct	FG-FGA	Pct	FT-FTA	Pct	Off-Def							Tot	Avg
2014*	27-16	527/19.5	48-122	.393	3-16	.188	24-39	.615	28-84	112	4.1	72-2	21	63	28	14	123/4.6
2016	27-3	372/13.8	32-78	.410	3-12	.250	13-21	.619	48-38	86	3.2	60-4	13	26	22	7	80/3.0
2017	7-7	127/18.1	18-32	.563	4-8	.500	9-15	.600	18-23	41	5.9	12-1	3	8	5	10	49/7.0
TOTAL	34-10	499/14.7	50-110	.455	7-20	.350	22-36	.611	66-61	127	3.7	72-5	16	34	27	17	129/3.8
All*	61-26	1026/16.8	98-232	.422	10-36	.278	46-75	.613	94-145	239	3.9	144-7	37	97	55	31	252/4.1

* Statistics from prior team/school

Caron-Goudreau, K.

Year	GP-GS	Min/Avg	Total		3-Point		FT-FTA		Rebounds			PF-FO	Ast	TO	Blk	Stl	Pts/Avg
			FG-FGA	Pct	FG-FGA	Pct	Pct	Pct	Off-Def	Tot	Avg						
2014*	3-0	54/18.0	6-22	.273	4-13	.308	5-8	.625	4-2	6	2.0	6-1	3	2	2	0	21/7.0
2016	15-0	158/10.5	13-29	.448	2-7	.286	6-10	.600	13-13	26	1.7	23-1	4	13	10	3	34/2.3
2017	5-0	57/11.4	1-9	.111	0-5	.000	1-2	.500	2-9	11	2.2	9-0	6	3	3	0	3/0.6
TOTAL	20-0	215/10.8	14-38	.368	2-12	.167	7-12	.583	15-22	37	1.9	32-1	10	16	13	3	37/1.9
All*	23-0	269/11.7	20-60	.333	6-25	.240	12-20	.600	19-24	43	1.9	38-2	13	18	15	3	58/2.5

* Statistics from prior team/school

Higgs, Lashann

Year	GP-GS	Min/Avg	Total		3-Point		FT-FTA		Rebounds			PF-FO	Ast	TO	Blk	Stl	Pts/Avg
			FG-FGA	Pct	FG-FGA	Pct	Pct	Pct	Off-Def	Tot	Avg						
2015	34-1	450/13.2	101-244	.414	4-24	.167	38-71	.535	40-60	100	2.9	46-1	38	45	3	48	244/7.2
2016	34-2	589/17.3	116-240	.483	5-23	.217	34-65	.523	33-62	95	2.8	54-0	48	56	3	32	271/8.0
2017	7-7	127/18.1	29-49	.592	2-7	.286	23-30	.767	8-10	18	2.6	11-0	16	8	0	5	83/11.9
TOTAL	75-10	1166/15.5	246-533	.462	11-54	.204	95-166	.572	81-132	213	2.8	111-1	102	109	6	85	598/8.0

Hosey, Jordan

Year	GP-GS	Min/Avg	Total		3-Point		FT-FTA		Rebounds			PF-FO	Ast	TO	Blk	Stl	Pts/Avg
			FG-FGA	Pct	FG-FGA	Pct	Pct	Pct	Off-Def	Tot	Avg						
2015	35-0	329/9.4	37-78	.474	1-5	.200	31-51	.608	28-41	69	2.0	35-0	3	32	7	6	106/3.0
2016	27-0	209/7.7	27-65	.415	0-3	.000	16-28	.571	17-26	43	1.6	20-0	2	19	3	7	70/2.6
2017	7-1	99/14.1	17-38	.447	1-6	.167	4-7	.571	7-16	23	3.3	12-0	3	10	3	3	39/5.6
TOTAL	69-1	637/9.2	81-181	.448	2-14	.143	51-86	.593	52-83	135	2.0	67-0	8	61	13	16	215/3.1

Littleton, Destiny

Year	GP-GS	Min/Avg	Total		3-Point		FT-FTA		Rebounds			PF-FO	Ast	TO	Blk	Stl	Pts/Avg
			FG-FGA	Pct	FG-FGA	Pct	Pct	Pct	Off-Def	Tot	Avg						
2017	7-0	71/10.1	6-29	.207	3-18	.167	0-0	.000	2-6	8	1.1	6-0	7	3	1	4	15/2.1
TOTAL	7-0	71/10.1	6-29	.207	3-18	.167	0-0	.000	2-6	8	1.1	6-0	7	3	1	4	15/2.1

McCarty, Brooke

Year	GP-GS	Min/Avg	Total		3-Point		FT-FTA		Rebounds			PF-FO	Ast	TO	Blk	Stl	Pts/Avg
			FG-FGA	Pct	FG-FGA	Pct	Pct	Pct	Off-Def	Tot	Avg						
2014	35-15	812/23.2	87-228	.382	37-108	.343	39-50	.780	12-78	90	2.6	78-0	52	52	6	32	250/7.1
2015	36-35	1119/31.1	152-332	.458	67-162	.414	53-74	.716	16-83	99	2.8	59-0	89	54	7	43	424/11.8
2016	34-34	1149/33.8	174-381	.457	77-179	.430	56-73	.767	9-114	123	3.6	45-0	122	56	2	26	481/14.1
2017	7-7	183/26.1	35-69	.507	15-31	.484	9-10	.900	5-21	26	3.7	11-0	35	14	0	16	94/13.4
TOTAL	112-91	3263/29.1	448-1010	.444	196-480	.408	157-207	.758	42-296	338	3.0	193-0	298	176	15	117	1249/11.2

Patterson, Chasity

Year	GP-GS	Min/Avg	Total		3-Point		FT-FTA	Pct	Rebounds		PF-FO	Ast	TO	Blk	Stl	Pts/Avg	
			FG-FGA	Pct	FG-FGA	Pct			Off-Def	Tot							Avg
2017	6-0	61/10.2	12-26	.462	2-8	.250	4-8	.500	1-11	12	2.0	7-0	10	5	2	2	30/5.0
TOTAL	6-0	61/10.2	12-26	.462	2-8	.250	4-8	.500	1-11	12	2.0	7-0	10	5	2	2	30/5.0

Sutton, Alecia

Year	GP-GS	Min/Avg	Total		3-Point		FT-FTA	Pct	Rebounds		PF-FO	Ast	TO	Blk	Stl	Pts/Avg	
			FG-FGA	Pct	FG-FGA	Pct			Off-Def	Tot							Avg
2016	34-1	461/13.6	51-147	.347	10-45	.222	18-28	.643	8-50	58	1.7	36-1	43	31	3	13	130/3.8
2017	7-0	139/19.9	21-49	.429	8-17	.471	2-7	.286	4-15	19	2.7	11-0	20	13	3	7	52/7.4
TOTAL	41-1	600/14.6	72-196	.367	18-62	.290	20-35	.571	12-65	77	1.9	47-1	63	44	6	20	182/4.4

Underwood, Jada

Year	GP-GS	Min/Avg	Total		3-Point		FT-FTA	Pct	Rebounds		PF-FO	Ast	TO	Blk	Stl	Pts/Avg	
			FG-FGA	Pct	FG-FGA	Pct			Off-Def	Tot							Avg
2016	28-0	276/9.9	34-77	.442	2-4	.500	23-34	.676	28-23	51	1.8	38-0	9	28	10	3	93/3.3
2017	6-0	93/15.5	16-26	.615	4-7	.571	10-16	.625	11-7	18	3.0	11-0	8	7	1	5	46/7.7
TOTAL	34-0	369/10.9	50-103	.485	6-11	.545	33-50	.660	39-30	69	2.0	49-0	17	35	11	8	139/4.1

White, Jatarie

Year	GP-GS	Min/Avg	Total		3-Point		FT-FTA	Pct	Rebounds		PF-FO	Ast	TO	Blk	Stl	Pts/Avg	
			FG-FGA	Pct	FG-FGA	Pct			Off-Def	Tot							Avg
2014*	20-0	184/9.2	20-49	.408	0-0	.000	9-14	.643	16-28	44	2.2	44-0	7	14	5	7	49/2.5
2015*	32-0	406/12.7	30-88	.341	0-3	.000	32-52	.615	26-67	93	2.9	57-0	18	22	13	6	92/2.9
2017	7-6	134/19.1	35-62	.565	0-0	.000	10-16	.625	19-18	37	5.3	18-0	2	15	1	5	80/11.4
TOTAL	7-6	134/19.1	35-62	.565	0-0	.000	10-16	.625	19-18	37	5.3	18-0	2	15	1	5	80/11.4
All*	59-6	724/12.3	85-199	.427	0-3	.000	51-82	.622	61-113	174	2.9	119-0	27	51	19	18	221/3.7

* Statistics from prior team/school



2017-18 TV/RADIO LINEUP



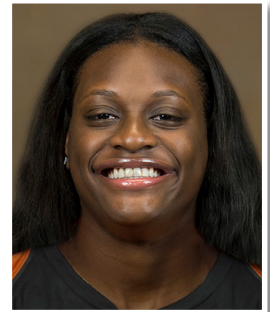
1 **SUG SUTTON**
5-8 So. G
St. Louis, Mo.

4 **DESTINY LITTLETON**
5-9 Fr. G
La Jolla, California

5 **JORDAN HOSEY**
6-1 Jr. F
Pearland, Texas

10 **LASHANN HIGGS**
5-9 Jr. G
Round Rock, Texas

11 **BROOKE MCCARTY**
5-4 Sr. G
League City, Texas



12 **JADA UNDERWOOD**
6-0 So. G/F
Mesquite, Texas

14 **OLAMIDE ABOROWA**
6-3 Jr. F
Ondo, Nigeria

15 **CHASITY PATTERSON**
5-5 Fr. G
Houston, Texas

23 **ARIEL ATKINS**
5-11 Sr. G
Duncanville, Texas

24 **JOYNER HOLMES**
6-3 So. F
Cedar Hill, Texas



30 **KHALÉANN CARON-GOUDREAU**
6-4 Jr. F
Gatineau, Quebec

31 **AUDREY-ANN CARON-GOUDREAU**
6-4 Sr. F
Gatineau, Quebec

33 **RELLAH BOOTHE**
6-3 Fr. F
Ocala, Florida

40 **JATARIE WHITE**
6-4 Jr. F/C
Charlotte, N.C.

PRONUNCIATION GUIDE

Olamide OH-lah-MUH-day
Aborowa ah-bore-oh-uh
Rellah Boothe RHEL-luh
Caron-Goudreau care-RON - good-drow

Khaléann Cally-ann
Lashann Higgs luh-shawn
Sug Sutton sh-OOG
Jatarie White JUH-tar-EE