



TEXAS BASKETBALL

SCHEDULE AND RESULTS

DATE	DAY	UT	OPP	OPPONENT	TV	TIME/RESULT
SUN	N.05	2/6	1 (NAIA)	OKLAHOMA CITY [EXH.]	LHN	W, 99-36
SUN	N.12	2/6	NR/NR	STETSON	LHN	1:00 p.m.
WED	N.15			MCNEESE STATE	LHN	11:00 a.m.
FRI	N.17			UTSA	LHN	7:00 p.m.
South Point Shootout [Las Vegas, Nev.]						
FRI	N.24			vs. LSU		5:30 p.m.
SAT	N.25			vs. Washington		3:15 p.m.
THU	N.30			LOUISIANA TECH	LHN	7:00 p.m.
BIG 12/SEC Challenge [Athens, Ga.]						
SUN	D.03			at Georgia	SEC Network	3:00 p.m.
SUN	D.10			at Tennessee	ESPN2	2:00 p.m.
WED	D.13			NORTHWESTERN STATE	LHN	7:00 p.m.
SUN	D.17			FLORIDA STATE	FS1	11:30 a.m.
THU	D.28			at Oklahoma *	FS Oklahoma	7:00 p.m.
SUN	D.31			WEST VIRGINIA *	FSN	3:30 p.m.
WED	J.03			OKLAHOMA STATE *	LHN	7:00 p.m.
SUN	J.07			at Kansas State *	ESPNU	1:00 p.m.
WED	J.10			at TCU *	FSSW +	8:00 p.m.
SAT	J.13			KANSAS *	LHN	1:00 p.m.
MON	J.15			UCONN	ESPN2	6:00 p.m.
SAT	J.20			at Texas Tech *	FSN	3:00 p.m.
THU	J.25			at Baylor *	ESPN	6:00 p.m.
SAT	J.27			IOWA STATE *	LHN	7:00 p.m.
WED	J.31			at Kansas *	ESPN3	7:00 p.m.
SAT	F.03			TCU *	LHN	11:00 a.m.
MON	F.05			at West Virginia *	FS1	6:00 p.m.
SAT	F.10			KANSAS STATE *	LHN	7:00 p.m.
WED	F.14			TEXAS TECH *	LHN	7:00 p.m.
SAT	F.17			at Oklahoma State *	FS Oklahoma	2:00 p.m.
MON	F.19			BAYLOR *	ESPN2	7:00 p.m.
SAT	F.24			at Iowa State *	FSN	5:00 p.m.
TUE	F.27			OKLAHOMA *	FS1	6:00 p.m.

March 2-5 - Big 12 Conference Tournament [Oklahoma City, Okla.]

* - Big 12 Conference game | All times Central.

Rankings: Associated Press Top 25 / USA Today Coaches Poll

NCAA PROGRAMS AT 1,000 ALL-TIME WINS

Tennessee	1,319
Louisiana Tech	1,091
UConn	1,082
James Madison	1,071
Texas	1,037
Stanford	1,036
Old Dominion	1,031
Stephen F. Austin	1,030

ALL-TIME NCAA TOURNAMENT APPEARANCES

Tennessee	36
Georgia	32
Stanford	31
Texas	30
UConn	29

MEDIA RELATIONS

UT Athletics Media Relations
P.O. Box 7399, Austin, TX 78713-7399
512-471-6039 • TexasSports.com

GAME 1 | STETSON | NOVEMBER 12, 2017



TEXAS ^{2/6}
0-0, 0-0 Big 12

Head Coach: Karen Aston
at UT: 114-55 (.675), 6th season
Career: 215-118 (.646), 11th season



STETSON
1-0, 0-0 Atlantic Sun

Head Coach: Lynn Bria
at Stetson: 178-114 (.608), 10th season
Career: 331-327 (.502), 23rd season



Date: Sunday, November 12, 2017
Time: 1 p.m. CT
Location: Austin, Texas
Arena: Erwin Center [16,540]
Series: First Meeting



Longhorn Network
Play-by-Play: Fran Harris
Analyst: Nell Fortner
Online: WatchESPN



105.3 FM
Play-by-Play: Craig Way
Analyst: Kathy Harston
Online: TexasSports.com/audio

TALE OF THE TAPE (BASED ON 2016-17 STATS)

	Statistic	
25-9	Overall Record	26-7
15-3	Conference Record	13-1
74.0	Points Per Game	70.2
43.1	Rebounds Per Game	37.2
+10.4	Rebound Margin	+4.1
14.0	Assists Per Game	14.1
7.2	Steals Per Game	7.3
5.8	Blocks Per Game	4.0
15.2	Turnovers Per Game	15.3
+1.1	Turnover Margin	+0.6

GAME-DAY STORYLINES

- The No. 2 University of Texas women's basketball team opens its 2017-18 regular season on Sunday when it plays host to Stetson at the Frank Erwin Center. Tip-off is slated for 1 p.m. CT and the game will be televised nationally on Longhorn Network.
- **The Series:** Texas and Stetson are meeting for the first time in the history of the two programs. The Longhorns also have never met a team in the current alignment of the Atlantic Sun Conference.
- **Season Openers and Home Openers:** Texas is 32-11 (.744) in season openers and 39-4 (.907) in home openers. Under head coach **Karen Aston**, the Longhorns are 4-1 in season openers and 5-0 in home openers. Texas has opened its season at home in 13 of the last 15 years.
- **2016-17 In Review:** The Longhorns are coming off a 25-9 record and a 15-3 Big 12 Conference tally in 2016-17. Texas made its third consecutive NCAA Sweet 16 appearance and posted 20 or more wins for the fourth consecutive year. The Longhorns strung together a 19-game win streak during the course of the season. Ariel Atkins and Brooke McCarty earned Honorable Mention All-America honors from the WBCA.
- **McCarty Big 12 Player of the Year:** Senior guard Brooke McCarty in 2017 became the school's first-ever Big 12 Conference Player of the Year. She led her team in scoring with 14.1 points per game and was the Big 12 Conference leader in three-point-field-goal percentage at .430 (77-of-179). Her 77 three-pointers made on the year were the second-most in a single season in school history.
- **Atkins Closing In On 1,000 Career Points:** Senior guard Ariel Atkins is 26 points away from becoming the 43rd player in program history to join the school's 1,000-point club.
- **Up Next:** Texas returns to action on Wednesday when it faces McNeese State in the annual 40 Acres Field Trip game. Tip-off is slated for 11 a.m. CT and the game will be nationally televised by Longhorn Network.

HEAD COACH

KAREN ASTON



6TH SEASON AT TEXAS | 11TH SEASON OVERALL
14th Season at UT as an assistant or head coach

CAREER RECORD	OVERALL			CONFERENCE		
	W	L	%	W	L	%
Charlotte [4]	86	47	.647	38	18	.679
North Texas [1]	15	16	.484	7	9	.438
TEXAS [6th]	114	55	.675	55	35	.611
OVERALL [11th]	215	118	.646	100	62	.617

YEAR-BY-YEAR RECORD

	CONFERENCE		POSTSEASON	
	W-L	FINISH		
CHARLOTTE				
2007-08	18-14	9-5	4th A-10	WNIT First Round
2008-09	23-9	11-3	2nd A-10	NCAA First Round
2009-10	18-14	9-5	4th A-10	WNIT 2nd Round
2010-11	27-10	9-5	3rd A-10	WNIT Final Four
NORTH TEXAS				
2011-12	15-16	7-9	3rd Sun Belt	-
TEXAS				
2012-13	12-18	5-13	t-8th Big 12	-
2013-14	22-12	11-7	t-3rd Big 12	NCAA 2nd Round
2014-15	24-11	9-9	t-3rd Big 12	NCAA Sweet 16
2015-16	31-5	15-3	2nd Big 12	NCAA Elite 8
2016-17	25-9	15-3	2nd Big 12	NCAA Sweet 16

CAREER MILESTONE WINS

#	TEAM	OPPONENT [DATE]	SCORE
1	Charlotte	Hampton [11-21-07]	72-47
50	Charlotte	George Washington [01-16-10]	52-42
100	North Texas	Louisiana-Lafayette [02-18-12]	78-40
150	TEXAS	OKLAHOMA [01-29-15]	84-81 2OT
200	TEXAS	TCU [01-07-17]	83-54

TROPHY CASE

- Big 12 Coach of the Year - 2017
Texas Head Coach
- NCAA Final Four - 2003
Texas Associate Head Coach
- Big 12 Tournament Champions - 2003
Texas Associate Head Coach
- Big 12 Regular Season Champions - 2003, 2004
Texas Associate Head Coach
- Atlantic 10 Tournament Champions - 2009
Charlotte Head Coach
- Set a school-record 27 wins in a season - 2010-11
Charlotte Head Coach
- Arkansas Girls Basketball Coach of the Year - 1993

NUMERICAL ROSTER

#	NAME	POS.	HT.	CLASS	HOMETOWN	HIGH SCHOOL
1	Sug Sutton	G	5-8	So.	St. Louis, Mo.	Parkway North
4	Destiny Littleton	G	5-9	Fr.	La Jolla, Calif.	The Bishop's School
5	Jordan Hosey	F	6-1	Jr.	Pearland, Texas	Manville
10	Lashann Higgs	G	5-9	Jr.	Round Rock, Texas	Cedar Ridge
11	Brooke McCarty	G	5-4	Sr.	League City, Texas	Clear Springs
12	Jada Underwood	G/F	6-0	So.	Mesquite, Texas	Horn
14	Olamide Aborowa	F	6-3	Jr.	Ondo, Nigeria	Neumann-Goretti [Pa.]
15	Chasity Patterson	G	5-5	Fr.	Houston, Texas	North Shore
23	Ariel Atkins	G	5-11	Sr.	Duncanville, Texas	Duncanville
30	Khaléann Caron-Goudreau	F	6-4	Jr.	Gatineau, Quebec	IMG Academy
31	Audrey-Ann Caron-Goudreau	F	6-4	Sr.	Gatineau, Quebec	IMG Academy
33	Rellah Boothe	F	6-3	Fr.	Ocala, Fla.	IMG Academy
40	Jatarie White	F/C	6-4	Jr.	Charlotte, N.C.	Providence Day

ALPHABETICAL ROSTER

#	NAME	POS.	HT.	CLASS	HOMETOWN	HIGH SCHOOL
14	Olamide Aborowa	F	6-3	Jr.	Ondo, Nigeria	Neumann-Goretti [Pa.]
23	Ariel Atkins	G	5-11	Sr.	Duncanville, Texas	Duncanville
33	Rellah Boothe	F	6-3	Fr.	Ocala, Fla.	IMG Academy
31	Audrey-Ann Caron-Goudreau	F	6-4	Sr.	Gatineau, Quebec	IMG Academy
30	Khaléann Caron-Goudreau	F	6-4	Jr.	Gatineau, Quebec	IMG Academy
10	Lashann Higgs	G	5-9	Jr.	Round Rock, Texas	Cedar Ridge
5	Jordan Hosey	F	6-1	Jr.	Pearland, Texas	Manville
4	Destiny Littleton	G	5-9	Fr.	La Jolla, Calif.	The Bishop's School
11	Brooke McCarty	G	5-4	Sr.	League City, Texas	Clear Springs
15	Chasity Patterson	G	5-5	Fr.	Houston, Texas	North Shore
1	Sug Sutton	G	5-8	So.	St. Louis, Mo.	Parkway North
12	Jada Underwood	G/F	6-0	So.	Mesquite, Texas	Horn
40	Jatarie White	F/C	6-4	Jr.	Charlotte, N.C.	Providence Day

COACHING STAFF

Head Coach: Karen Aston
Associate Head Coach: Tina Thompson
Assistant Coach: Jamie Carey
Assistant Coach: George Washington
Sports Performance Coach: Zack Zillner

6th Season as Head Coach at UT [Little Rock '87]
 3rd Season at UT [Southern California '97]
 2nd Season at UT [Texas '04]
 6th Season at UT [Abilene Christian '00]
 1st Season at UT [Kansas '11]

SUPPORT STAFF

Women's Athletics Director: Chris Plonsky
Senior Associate AD/Sport Administrator: Kathy Harston
Associate AD/Student-Athlete Services: Kat Hastings
Assistant AD/Basketball Operations: Angela Ortega
Associate Athletic Trainer: Heidi Wlezien
Special Assistant: Mark Recoulley
Video Coordinator: Jama Sharp
Coordinator of Community Engagement: Fran Harris
Administrative Assistant: Dennis Colwell

PRONUNCIATION GUIDE

Olamide Aborowa	OH-lah-MUH-day ah-bore-oh-uh
Rellah Boothe	RHEL-luh
Caron-Goudreau	care-RON - good-drow
Khaléann	Cally-Ann
Lashann Higgs	luh-shawn
Sug Sutton	sh-OOG
Jatarie White	JUH-tar-EE
Heidi Wlezien	LUH-zeen

TEXAS IN THE LAST THREE YEARS

- 80 WINS
- THREE NCAA SWEET 16 APPEARANCES
- ONE NCAA ELITE EIGHT APPEARANCE
- THREE TOP-SIX RECRUITING CLASSES

QUICK FACTS

Season of Basketball	44th [1974-75]
All-Time Record [Pct.]	1,037-381 [.731]
NCAA Appearances [Record]	30 [40-29]
Conference regular season titles	12
Conference tournament titles	10

UNIVERSITY OF TEXAS

Location	Austin, Texas
Enrollment	51,334
President	Greg Fennes
Women's AD	Christine Plonsky
Founded	1883
Nickname/Mascot	Longhorns/Bevo XIV
Colors	Burnt Orange & White [Pantone 159]
Affiliation	NCAA Division I
Conference	Big 12
Home Arena	Frank C. Erwin Center
Capacity	16,540

TEXAS BASKETBALL MEDIA CALENDAR

Sunday - 12	Monday - 13	Tuesday - 14	Wednesday - 15	Thursday - 16	Friday - 17	Saturday - 18
Texas vs. Stetson 1 p.m. CT LHN Frank Erwin Center	Practice 2-5 p.m. CT Cooley Pavilion	Practice 4:30 p.m. CT Cooley Pavilion	Texas vs. McNeese State 11 a.m. CT LHN Frank Erwin Center	Practice 5-7:30 p.m. CT Frank Erwin Center	Texas vs. UTSA 7 p.m. CT LHN Frank Erwin Center 2 p.m. - Shootaround	OFF

QUICK HITS

- Texas women's basketball is set to begin its 44th season of intercollegiate basketball.
- Texas is one of just eight programs in NCAA Division I women's basketball history to reach 1,000 all-time wins. Texas ranks fifth all-time in NCAA history with 1,037 all-time victories.
- The Longhorns have made 30 all-time NCAA Tournament appearances, which is fourth-most of any program in NCAA D-I Women's Basketball history.
- Texas head coach **Karen Aston** is 114-55 (.675) beginning her sixth season at the helm of the Longhorns. She is the program's second-winningest coach in UT history behind Jody Conradt's 783 victories on the Forty Acres.
- The 2016-17 Longhorns tied the school record for most Big 12 wins in a season at 15. The 2002-03 and 2015-16 squads also posted 15 Big 12 victories.
- Texas has advanced to three consecutive NCAA Sweet 16s for the first time since the 2002, 2003 and 2004 campaigns.
- Over the past two seasons, Texas has earned 14 wins against foes ranked in the Associated Press Top-25.
- Senior guard **Brooke McCarty** has 181 career three-pointers made, which ranks sixth in school history in that category. She needs to make nine more threes to surpass Heather Schreiber (189 from 2001-05) for fifth place all-time.
- McCarty ranks fourth in program history in three-point percentage at 40.3 percent (181-of-449) and is one of just four players in program history (Jamie Carey, Kat Nash and Vicki Hall are the others) to shoot better than 40 percent from beyond the arc for her career. Current UT assistant Jamie Carey is the school's all-time three-point field goal percentage leader at 41.8 percent.
- Senior guard **Ariel Atkins** is 26 points away from becoming the 43rd player in program history to join the school's 1,000-point club.
- Atkins ranks fifth in school history in career free-throw percentage at 82.1 percent (197-of-240) and is one of just five players in program annals to shoot better than 82 percent from the line for her career.
- Texas video coordinator **Jama Sharp** played basketball for Stetson from 2011-15. She finished her career as one of only two players in school history with more than 1,000 points, 400 assists and 250 steals.

TEXAS ALL-TIME VICTORIES BY COACHES

1. Jody Conradt [1976-2007]	783
2. Karen Aston [2012-Present]	114
3. Gail Goestenkers [2007-12]	102
4. Rodney Page [1975-76]	38

ASTON SECOND-WINNINGEST AT UT

- Texas head coach **Karen Aston** is beginning her sixth season at the helm of the Longhorns program. During that time, she has taken Texas back to among the nation's elite programs.
- Aston earned her 200th career victory against TCU on Jan. 7, 2017. Her head coaching career also includes stops at Charlotte and North Texas.
- Aston is 114-55 (.675) in her sixth year at Texas.
- Aston has led the Longhorns to four consecutive NCAA Tournament berths.
- Aston recently became the school's second-winningest coach all-time.

TEN McDONALD'S ALL-AMERICANS

- Ten players on the current Texas roster are McDonald's High School All-Americans.
- Texas head coach **Karen Aston** has signed 11 McDonald's All-Americans, entering her sixth season as head coach on the Forty Acres.

CURRENT MCDONALD'S ALL-AMERICANS

Ariel Atkins	2014
Brooke McCarty	2014
Jatarie White	2014
Lashann Higgs	2015
Jordan Hosey	2015
Joyner Holmes	2016
Alecia Sutton	2016
Rellah Boothe	2017
Destiny Littleton	2017
Chasity Patterson	2017

FAST STARTS

- Texas has recorded two of the best starts in program history over the last three seasons.
- The Longhorns opened their 2014-15 season with 13 consecutive wins, then began the 2015-16 campaign with 16 victories in a row.
- The 1985-86 NCAA Champion Longhorns hold the school record for most consecutive wins, finishing the year with a perfect 34-0 tally.

USA BASKETBALL EXPERIENCE

- This summer, Texas sent six players to tryouts for USA Basketball teams. Of those six, a nation-leading four players participated on three USA Basketball teams.
- Freshman guard **Destiny Littleton** earned a gold medal as part of the USA U18 3x3 FIBA World Cup Team.
- Sophomores **Joyner Holmes** and **Alecia Sutton** were part of the silver medalist USA U19 FIBA World Cup Team.
- Senior **Ariel Atkins** helped the USA U23 Team win the inaugural Four Nations Tournament.

TEXAS 1,000-POINT CLUB

Rank/Player	Points	Years
1. Annette Smith	2,523	1981-86
2. Linda Waggoner	2,256	1976-80
3. Clarissa Davis	2,008	1985-89
4. Cinietra Henderson	1,983	1989-93
5. Tiffany Jackson	1,917	2003-07
6. Vicki Hall	1,831	1988-93
7. Fran Harris	1,798	1982-86
8. Retha Swindell	1,795	1975-79
9. Chassidy Fussell	1,717	2010-14
10. Stacy Stephens	1,708	2000-04
Heather Schreiber	1,708	2001-05
12. Edwina Brown	1,705	1996-2000
13. Brittainey Raven	1,698	2006-10
14. Danielle Viglione	1,658	1993-97
15. Andrea Lloyd	1,596	1983-87
16. Beverly Williams	1,544	1984-88
17. Kim Basinger	1,518	1976-79
18. Kathleen Nash	1,517	2007-11
19. Yulonda Wimbish	1,485	1984-88
20. Nell Fortner	1,466	1977-81
21. Jackie Swaim	1,405	1978-81
22. Imani Boyette	1,361	2012-16
23. Ashleigh Fontenette	1,317	2008-12
24. Cathy Burns	1,310	1976-77
25. Angela Jackson	1,305	1994-98
26. Susan Anderson	1,236	1986-90
27. Amie Smith	1,228	1993-97
28. Joy Williams	1,164	1979-83
29. Brooke McCarty	1,155	2014-Pres.
30. NeKeshia Henderson	1,152	1991-95
31. Sherryl Hauglum	1,141	1980-84
32. Erica Routt	1,134	1992-96
33. Terri Mackey	1,123	1980-83
34. Nneka Enemkpali	1,116	2011-15
35. Johnna Pointer	1,099	1988-92
36. Kelsey Lang	1,086	2013-17
37. Nina Norman	1,079	2002-06
38. Cheryl Hartman	1,078	1978-83
39. Jamie Carey *	1,074	2002-05
40. Yvonne Anderson	1,047	2008-12
41. Earnesia Williams	1,015	2006-10
42. Tracy Cook	1,004	1998-2002
===		
-- Ariel Atkins	974	2014-Pres.

* - Includes only points scored at Texas.

2017-18 RECORD WHEN ...

Overall	0-0
Home	0-0
Away	0-0
Neutral	0-0
Decided by 3 points or fewer	0-0
Decided by 4-6 points	0-0
Decided by 7-9 points	0-0
Decided by 10-19 points	0-0
Decided by 20 points or more	0-0
Out-rebounding opponent	0-0
Out-rebounded by opponent	0-0
Equals opponent's rebounds	0-0
Scoring first	0-0
Opponent scores first	0-0
Leading at half	0-0
Trailing at half	0-0
Tied at half	0-0
Regulation	0-0
Overtime	0-0
Leading FG%	0-0
Trailing FG%	0-0
Equals opponent FG%	0-0
FG% .500 and higher	0-0
FG% .400 - .499	0-0
FG% .300 - .399	0-0
FG% .299 and lower	0-0
Opponent FG% .500 & over	0-0
Opponent FG% .400 - .499	0-0
Opponent FG% .300 - .399	0-0
Opponent FG% .299 and lower	0-0
Leading FT%	0-0
Trailing FT%	0-0
Equals opponent FT%	0-0
Scoring 90+ points	0-0
Scoring 80-89 points	0-0
Scoring 70-79 points	0-0
Scoring 60-69 points	0-0
Scoring 50-59 points	0-0
Scoring fewer than 50 points	0-0
Opponent scores 90+ points	0-0
Opponent scores 80-89 points	0-0
Opponent scores 70-79 points	0-0
Opponent scores 60-69 points	0-0
Opponent scores 50-59 points	0-0
Opponent scores fewer than 50 points	0-0
Atlantic Coast Conference	0-0
Big 12 Conference	0-0
Big Ten Conference	0-0
Pac-12 Conference	0-0
Southeastern Conference	0-0
White uniform	0-0
Burnt Orange uniform	0-0
Gray uniform	0-0
Black uniform	0-0
Longhorn Network	0-0
ESPN	0-0
ESPN2	0-0
FOX Sports Network	0-0
FOX Sports 1 / 2	0-0
Regional telecasts	0-0
November	0-0
December	0-0
January	0-0
February	0-0
March	0-0

MOST PLAYERS ON USA BASKETBALL TEAMS IN 2017

Texas	4
Ohio State	2
Tennessee	2
UConn	2
UCLA	2

* includes USA U18 3x3, U19 and U23 National Teams

BIG 12 PRESEASON HONORS

- Texas was well represented among the Big 12 Conference's preseason honorees, which were announced on October 11.
- Seniors **Ariel Atkins** and **Brooke McCarty**, both of whom were All-Big 12 Conference First Team honorees a year ago were named to the All-Big 12 Preseason Team.
- Freshman **Chasity Patterson** was recognized as the Big 12 Preseason Freshman of the Year, while **Jatarie White** was selected as the Big 12 Preseason Newcomer of the Year.

2017-18 PRESEASON ALL-BIG 12 TEAM

Kalani Brown, Baylor
Kaylee Jensen, Oklahoma State
Ariel Atkins, Texas
Brooke McCarty, Texas
Tynice Martin, West Virginia

Preseason Player of the Year: Kalani Brown, BU
Preseason Newcomer of the Year: Jatarie White, UT
Preseason Freshman of the Year: Chasity Patterson, UT

THE IRON WOMAN

- Senior Texas guard **Brooke McCarty**, the 2017 Big 12 Conference Player of the Year, has played in all 105 games of her collegiate career and has started 84. Both numbers lead the team.
- McCarty has the opportunity to leave her mark on the University of Texas record books by the time she completes her collegiate career in Austin.
- She has 1,155 career points in her UT career and needs 10 more to surpass Joy Williams (1,164) for 28th place on the school's all-time scoring list. With 845 more points, she would become just the 28th player in program history to score 1,200 or more points in her career.
- McCarty ranks sixth in UT school history in career three-pointers made with 181 and needs nine more to surpass Heather Schreiber (189) for fifth place all-time. Danielle Viglione is the school's all-time three-pointers made leader, recording 293 treys from 1993-97.
- McCarty has a career three-point field-goal percentage of .403 (181-of-449), which ranks fourth in school history. She is one of only four players in program history to shoot better than 40 percent from beyond the arc for her career, joining Jamie Carey (.418), Kat Nash (.404) and Vicki Hall (.404).
- She has been named to the preseason watch list for the Nancy Lieberman Award, which recognizes the nation's top point guard.

ATKINS READY FOR SENIOR SEASON

- Senior Texas guard **Ariel Atkins** has had a distinguished career on the Forty Acres but has

DOUBLE-DOUBLES

Player	Career	Season
Aborowa	0	0
Atkins	1	0
Boothe	0	0
A. Caron-Goudreau	0	0
K. Caron-Goudreau	0	0
Higgs	1	0
Hosey	0	0
McCarty	0	0
Littleton	0	0
Patterson	0	0
Sutton	0	0
Underwood	0	0
White	0	0

TIMES FOULED OUT

Player	Career	Season
Aborowa	0	0
Atkins	8	0
Boothe	0	0
A. Caron-Goudreau	6	0
K. Caron-Goudreau	2	0
Higgs	1	0
Hosey	0	0
McCarty	0	0
Littleton	0	0
Patterson	0	0
Sutton	1	0
Underwood	0	0
White	0	0

worked hard to ensure that her best season will be her final year at Texas.

- Atkins is 26 points away from becoming the 43rd player in program history to join the school's 1,000-point club.
- Atkins ranks fifth in school history in career free-throw percentage at 82.1 percent (197-of-240) and is one of just five players in program annals to shoot better than 82 percent from the line for her career.
- Atkins led the Big 12 Conference in steals per game last season (all games combined) at 2.0.
- Atkins ranks fifth in program history in career free-throw percentage at 82.1 percent (197-of-240). She is one of just five players in program history to shoot better than 82 percent from the charity stripe.
- She has been named to the preseason watch list for the Cheryl Miller Award, which recognizes the nation's top "three" player.

DEFEND THE DRUM

- The 2017-18 season marks the 40th anniversary of the Frank Erwin Center.
- Texas is 61-8 (.884) inside the Frank Erwin Center since the start of the 2013-14 season. The Longhorns are 32-4 (.889) at home over the past two seasons, including a pair of NCAA Tournament wins in each of the past two seasons.
- Six of those eight losses at home since 2013-14 have come to opponents ranked in the AP top-six.
- Last season, Texas earned its 500th all-time victory within the Frank Erwin Center. Texas is 511-98 (.839) all-time at the Erwin Center.

ASSOCIATED PRESS POLL

Preseason - November 2, 2017

RK	TEAM	RECORD	PTS
1	UConn	0-0	800
2	TEXAS	0-0	722
3	Baylor	0-0	709
4	South Carolina	0-0	674
5	Ohio State	0-0	635
6	Notre Dame	0-0	629
7	Mississippi State	0-0	619
8	UCLA	0-0	612
9	Louisville	0-0	546
10	Stanford	0-0	527
11	Oregon	0-0	485
12	Duke	0-0	435
13	West Virginia	0-0	359
14	Tennessee	0-0	344
15	Maryland	0-0	325
16	Missouri	0-0	315
17	Marquette	0-0	264
18	Florida State	0-0	234
19	Oregon State	0-0	201
20	California	0-0	169
20	Texas A&M	0-0	169
22	Oklahoma	0-0	143
23	South Florida	0-0	117
24	Michigan	0-0	113
25	DePaul	0-0	65

Others receiving votes: Kentucky, Arizona State, Virginia, Miami, LSU, North Carolina, Gonzaga, Florida, Quinnipiac, North Carolina State, Washington, Drake, Purdue, Michigan State, Georgia Tech, Kansas State, Syracuse, Alabama, Washington State, Indiana, Oklahoma State.

USA TODAY COACHES POLL

Preseason - October 26, 2017

RK	TEAM	RECORD	PTS
1	Connecticut	0-0	789
2	South Carolina	0-0	719
3	Baylor	0-0	687
4	Mississippi State	0-0	678
5	Notre Dame	0-0	648
6	TEXAS	0-0	608
7	UCLA	0-0	582
8	Ohio State	0-0	575
9	Stanford	0-0	548
10	Louisville	0-0	504
11	Oregon	0-0	479
12	Duke	0-0	442
13	Maryland	0-0	380
14	Florida State	0-0	334
15	West Virginia	0-0	272
16	Missouri	0-0	249
17	Oregon State	0-0	246
18	Tennessee	0-0	229
19	Marquette	0-0	218
20	DePaul	0-0	156
21	Oklahoma	0-0	151
22	South Florida	0-0	109
23	Michigan	0-0	100
24	Miami	0-0	80
T25	California	0-0	79
T25	Washington	0-0	79

Others receiving votes: Texas A&M; North Carolina State; Kentucky; Syracuse; Arizona State; Quinnipiac; Drake; Gonzaga; Virginia; Purdue; Kansas State; LSU; Florida Gulf Coast; Georgia Tech; Michigan State; South Dakota State; Nebraska; Temple; Dayton; Indiana; Middle Tennessee; UT-Arlington; Virginia Tech; Boise State; Elon; Villanova.

WEEK-BY-WEEK RANKINGS

WEEK	RECORD	AP	COACHES	NCAA RPI	NCAA SOS*
Pre.	0-0	2	6	-	-
N.13					
N.20					
N.27					
D.4					
D.11					
D.18					
D.25					
J.1					
J.8					
J.15					
J.22					
J.29					
F.5					
F.12					
F.19					
F.26					
M.5					
M.12					
Final					

* SOS = Strength of schedule

() = first-place votes in parenthesis

TEXAS vs. AP TOP 25

2016-17	7-7 (.500)
Overall	182-235 (.436)
Home	88-70 (.557)
Away	42-119 (.261)
Neutral	51-47 (.520)
vs. Top 10 teams	79-136 (.367)
Karen Aston (at Texas)	21-31 (.404)

Note: Prior to the 1989-90 season, the national polls ranked only the Top 20 teams, not Top 25 as is the current practice.

NCAA/BIG 12 STAT RANKINGS

Preseason

	NCAA	BIG 12	#
Assist Turnover Ratio			
Assists Per Game			
Blocked Shots			
Field-Goal %			
Field-Goal % D			
Free-Throw %			
Personal Fouls			
Rebound Margin			
Scoring Defense			
Scoring Margin			
Scoring Offense			
Steals Per Game			
Three Pt FG % D			
Three-Point FGs			
Three-Point FG %			
Turnover Margin			
Turnovers			
Won-Lost Percentage			

BIG 12 CONFERENCE STANDINGS

Preseason

STANDINGS	BIG 12		OVERALL	
TEAM	W-L	%	W-L	%
Baylor	0-0	.000	0-0	.000
Iowa State	0-0	.000	0-0	.000
Kansas	0-0	.000	0-0	.000
Kansas State	0-0	.000	0-0	.000
Oklahoma	0-0	.000	0-0	.000
Oklahoma State	0-0	.000	0-0	.000
TCU	0-0	.000	0-0	.000
TEXAS	0-0	.000	0-0	.000
Texas Tech	0-0	.000	0-0	.000
West Virginia	0-0	.000	0-0	.000

ALL-TIME FINISHES IN THE BIG 12

YEAR	PRESEASON POLL	FINISH	BIG 12 RECORD
2017-18	N/A		
2016-17	2 nd	2 nd	15-3
2015-16	2 nd	2 nd	15-3
2014-15	1 st	3 ^{rd-t}	9-9
2013-14	5 th	3 ^{rd-t}	11-7
2012-13	5 th	8 ^{th-t}	5-13
2011-12	3 rd	7 ^{th-t}	8-10
2010-11	4 th	7 th	7-9
2009-10	2 ^{nd-t}	4 ^{th-t}	10-6
2008-09	2 nd	6 th	8-8
2007-08	4 th	7 ^{th-t}	7-9
2006-07	3 rd	7 ^{th-t}	6-10
2005-06	2 nd	8 ^{th-t}	7-9
2004-05	1 st	2 nd	13-3
2003-04	1 st	1 ^{st-t}	14-2
2002-03	3 rd	1 st	15-1
2001-02	1 st	5 th	10-6
2000-01	2 nd	7 th	7-9
1999-00	4 th	4 th	9-7
1998-99	7 th	4 th	10-6
1997-98	2 nd	7 th	7-9
1996-97	n/a	2 ^{nd-t}	12-4

MEDIA GUIDELINES

- Interviews with any staff member or player must be scheduled through the UT Media Relations Office. To schedule, please contact Sean Cartell (sean.cartell@athletics.utexas.edu).
- Please do not contact a player or coach without arranging the interview through the UT Media Relations Office.
- We ask that you do not arrive unannounced at the basketball office, Erwin Center, Cooley Pavilion or dining hall to interview a player or coach without arranging it through the UT Media Relations Office. Media members must be escorted to interviews and to the basketball office by a member of the UT Media Relations Office.



WNBA DRAFT

All-time Longhorns selected in the WNBA Draft.

YEAR	PLAYER	ROUND [OVERALL PICK]	TEAM
1999	Edna Campbell	1st [10]	Phoenix Mercury
2000	Edwina Brown \$	1st [3]	Detroit Shock
2004	Stacy Stephens #	3rd [37]	Houston Comets
2005	Heather Schreiber	3rd [39]	Los Angeles Sparks
2005	Jamie Carey *	3rd [31]	Phoenix Mercury
2007	Tiffany Jackson	1st [5]	New York Liberty
2010	Brittainey Raven	3rd [33]	Atlanta Dream
2015	Nneka Enemkpali	3rd [26]	Seattle Storm
2016	Imani Boyette	1st [10]	Chicago Sky

\$ - 1st collegian taken in 2000 WNBA Draft

- later traded to Detroit Shock

* - later signed with Connecticut Sun

ADMINISTRATORS/COACHES IN THE PROS

Shell (Bollin) Dailey - San Antonio-WNBA [former interim Head Coach]

Nell Fortner - Indiana-WNBA [former Head Coach]

Clarissa Davis-Wrightsil - San Antonio-WNBA [former Chief Operations Officer, 2003-2006]

ALL-TIME PLAYERS IN THE PROS

WNBA 1996-present

17 Longhorns have played in the WNBA.

Imani Boyette - Chicago Sky [2016-17]; Atlanta Dream [2017-Present]

Edwina Brown - Detroit Shock [2000-02]; Phoenix Mercury [2003]; Houston Comets [2006]

Edna Campbell - Phoenix Mercury [1999]; Seattle Storm [2000]; Sacramento Monarchs [2001-04]; San Antonio Silver Stars [2005]

Jamie Carey - Connecticut Sun [2005-08]

Carla Cortijo - Atlanta Dream [2015-16]

Clarissa Davis - Phoenix Mercury [1999]

Tai Dillard - San Antonio Silver Stars [2003-05]

Vicki Hall - Cleveland Rockers [2000-01]; Indiana Fever [2001]; Los Angeles Sparks [2002]

Fran Harris - Houston Comets [1997]; Utah Starzz [1998]

NeKeshia Henderson - Houston Comets [1997, 2000-02]

Angela Jackson - Washington Mystics [1998]

Tiffany Jackson - New York Liberty [2007-10]; Tulsa Shock [2010-15]; Los Angeles Sparks [2017-Present]

Andrea Lloyd - Minnesota Lynx [1999-00]

Catarina Pollini - Houston Comets [1997]

Brittainey Raven - Atlanta Dream [2010]

Stacy Stephens - Detroit Shock [2004]

Danielle Viglione - Sacramento Monarchs [1997]

AMERICAN BASKETBALL LEAGUE (ABL) - 1996-98

Six Longhorns played in the ABL.

Edna Campbell - Colorado Xplosion [1997-98]

Clarissa Davis-Wrightsil - New England Blizzard [1996-97]; Long Beach StingRays [1997-98]; San Jose Lasers [1998]

Vicki Hall - Colorado Xplosion [1997-98]; Nashville Noise [1998]

Nekeshia Henderson - San Jose Lasers [1998]

Andrea Lloyd-Curry - Columbus Quest [1996-98]

Beverly Williams - Long Beach StingRays [1997-98]; Columbus Quest [1998]

WHEN WAS THE LAST TIME ...

TEAM

Texas Scored 80 Points: 92 vs. Florida State [92-88] (02-13-17)

Texas Scored 90 Points: 92 vs. Florida State [92-88] (02-13-17)

Texas Scored 100 Points: 109 vs. Sam Houston State [109-48] (12-15-13)

Opponent Scored Fewer Than 50 Points: 42 by Kansas [75-42]

(02-11-17)

Opponent Scored Fewer Than 40 Points: 35 by Oklahoma State [66-35]

(01-10-17)

Texas Made 10 or More Three-Pointers: 11 vs. Iowa State [11-of-22] (01-16-16)

Texas Did Not Make a Three-Pointer: 0 vs. West Virginia [0-of-0] (01-14-17)

Texas Did Not Make a Free Throw: 0 vs. Marquette [0-of-0] (03-19-11)

Texas Recorded 60 or More Rebounds: 61 vs. Kansas (01-04-17)

Texas Recorded 70 or More Rebounds: 71 vs. Texas Southern (12-13-80)

Texas Recorded 20 or More Assists: 22 vs. New Orleans (12-20-16)

Texas Recorded 25 or More Assists: 25 vs. Sam Houston State (12-27-15)

Texas Recorded 15 or More Steals: 15 vs. New Orleans (12-20-16)

Texas Recorded 20 or More Steals: 20 vs. Boston University (11-21-10)

Texas Recorded 10 or More Blocks: 13 vs. Kansas (02-11-17)

Texas Recorded 5 or Fewer Turnovers: 5 vs. LSU (04-01-03)

Texas Recorded 30 or More Turnovers: 31 vs. Kansas (01-04-17)

Texas Recorded 35 or More Turnovers: 37 vs. Sacramento State (11-27-94)

INDIVIDUAL

A Texas Player Scored 40 or More Points: 48, Danielle Viglione vs. Houston (01-29-94)

A Texas Player Made Five or More Three-Pointers: 5, Brooke McCarty vs. Florida State [5-of-8] (02-13-17)

A Texas Player Made 10 or More Three-Pointers: 11, Danielle Viglione vs. Houston [11-of-26] (01-29-94)

A Texas Player Made 15 or More Free-Throws: 16, Edwina Brown vs. Texas Tech [16-of-19] (02-23-00)

A Texas Player Shot 100 Percent from the Free-Throw Line (min. 10 att.): Chassidy Fussell vs. Tennessee [10-of-10] (12-16-12)

A Texas Player Recorded 20 or More Rebounds: 21, Nneka Enemkpali vs. West Virginia (01-25-14)

A Texas Player Recorded 15 or More Assists: 15, Angie Jo Ogletree vs. Houston (01-29-94)

A Texas Player Recorded 10 or More Steals: 12, Kamie Ethridge vs. Pepperdine (02-24-84)

A Texas Player Recorded 10 or More Blocks: 10, Ashley Gayle vs. Cincinnati (12-28-10)

Two Texas Players Had Double-Doubles in the Same Game: Joyner Holmes [16 pts, 13 rebs] and Kelsey Lang [10 pts, 10 rebs] vs. UT Rio Grande Valley (12-15-16)

A Texas Player Recorded A Triple-Double: Ashleigh Fontenette vs. UT-Pan American [17 points, 10 rebounds, 10 assists] (12-08-10)

TEXAS IN OVERTIME

Overtime Games _____ 41 [23-18]

Last Overtime Game _____ 02-13-17 at Florida State [W, 92-88]

The University of Texas women's basketball program has inked one of the nation's top signing classes for the 2018-19 year, head coach Karen Aston announced Wednesday. The Longhorns have secured a No. 2 recruiting class from ESPN.com and Prospects Nation.

It is the highest-rated recruiting class for the Longhorns since 2006, when Texas boasted the nation's No. 1 recruiting class. This is the fourth consecutive top-six national class under Aston and her fifth consecutive class that is ranked among the nation's top-11, according to ESPN.com.

With the addition, the Longhorns will add depth both in the post and on the perimeter with four versatile players who have high-level experience and vast skill-sets.

Joanne Allen-Taylor (5-8, PG, Houston, Texas / Cypress Falls HS)

Allen-Taylor is one of the nation's top-15 point guards in the class of 2018 and ranked among the top-60 players nationally. She is the No. 56 overall player according to ESPN Hoop Gurlz, No. 44 by Prospects Nation and No. 52 from the Blue Star Report.

Through three seasons at Cypress Falls High School in Houston, Allen-Taylor is averaging 19.0 points per game, 3.8 assists per game, 2.6 steals per game and 4.2 rebounds per game for her prep career.

Allen-Taylor is a three-time first-team All-District selection and has been named TABC and TGCA All-State in both 2015-16 and 2016-17. She also is a two-time TGCA All-Region selection the past two seasons. Allen-Taylor was named the VYPE Northwest Houston Basketball Player of the Year. An excellent student, Allen-Taylor also was named a first-team All-District Academic selection in each of the last two years.

As a junior in 2016-17, Allen-Taylor averaged 20.4 points per game 0.8 assists per game and 0.7 steals per game. She has played in 102 career games for Cypress Falls High School. In 2015-16, she was named to the McDonald's Invitational All-Tournament Team.

Charli Collier (6-5, F/C, Crosby, Texas / Barbers Hill HS)

Collier is the nation's top-ranked player according to Prospects Nation and the Blue Star Report, and the No. 2 player by ESPN Hoop Gurlz.

Collier has played in and started 102 games for Barbers Hill High School, recording career totals of 2,274 points, 933 rebounds, 134 assists, 165 steals and 247 blocked shots. In her junior year of 2016-17, Collier was a third-team All-America selection by both Naismith and MaxPreps. She is a three-time selection to the TABC and TGCA Class 5A All-State Teams, and also is a three-time All-Region selection by the TABC.

Last season, Collier helped Barbers Hill to a 34-5 record, including an 18-0 record in District 21-5A, helping her team to the Texas Class 5A state semifinals. She averaged 23.8 points per game, 10.0 rebounds per game and 3.0 blocks per game. Collier was named to the 2017 UIL Class 5A State All-Tournament Team. She was a nominee for the Gatorade Player of the Year Award.

As a sophomore in 2015-16, Collier averaged 24.6 points per game, 9.8 rebounds per game and 2.3 blocks per game to help her team to a 27-8 record and an appearance in the Region 5A semifinals. She was named the 2016 UIL District 21-5A Offensive MVP and was an All-District selection.

As a freshman in 2014-15, Collier averaged 17.3 points per game, 7.3 rebounds per game and 1.7 blocks per game to help her team to a 28-4 record and a Region 5A semifinals.

Collier has extensive experience with USA Basketball, as she was a member of the 2016 USA Women's U17 World Championship Team that claimed the bronze medal in Zaragoza, Spain. She averaged 5.7 points per game and 3.6 rebounds per game in that seven-game span. She also participated in the 2017 USA U19 World Cup Team Trials and the 2015 USA U16 National Team Trials.

Sedona Prince (6-7, C, Liberty Hill, Texas / Liberty Hill HS)

Prince is the nation's 12th-ranked player according to ESPN Hoop Gurlz and is ranked sixth nationally by both Blue Star Report and Prospects Nation. At 6-foot-7, Prince ties for the second-tallest player in University of Texas school history as Imani McGee-Stafford was 6-foot-7 and Ellen Bayer was 6-foot-8.

Through two seasons at Liberty Hill High School, Prince is averaging 15.5 points per game, 9.1 rebounds per game and 5.2 blocks per game. She also is averaging 2.24 assists per game and 1.6 steals per game. Prince is shooting 53 percent from the field, 33 percent from beyond the arc and 73.5 percent from the free-throw line for her high school career.

As a junior in 2016-17, Prince was named TABC and TGCA All-State and was also a TABC All-Region selection. She was named to the TGCA 2017 UIL Girls Basketball State All-Tournament Team and was the 2017 District 19 Class 4A MVP. She was also named to the All-Tournament Team of three regular season tournaments during the 2016-17 campaign.

As a sophomore in 2015-16, Prince averaged 16.4 points per game, 11.0 rebounds per game and 7.2 blocks per game. She was named the District Defensive MVP in 2016 and earned All-Region honors.

Prince has helped Liberty Hill to an 82-7 (.921) record, a 2017 appearance in the UIL Class 4A State Championship game and a third-place finish at the UIL State Championship in 2016.

As a freshman in 2014-15 at Faith Academy, Prince was named the Austin American-Statesman Central Texas Newcomer of the Year, was a 2014-15 TAPPS First-Team All-State selection and also earned All-District and All-Region honors.

Prince has a vast amount of USA Basketball experience, helping the 2016 FIBA U17 World Championship team and the 2015 FIBA Americas U16 Championship team earn bronze medals. She also was a 2017 USA Women's U19 World Cup Team trials participant.

Audrey Warren (5-9, G/F, Fort Worth, Texas / Boswell HS)

Warren is regarded as one of the nation's top wing players in the class of 2018. She is the No. 80 overall player, as ranked by Prospects Nation. ESPN Hoop Gurlz regards her as the No. 28 wing player in the class, while Prospects Nation has her as the No. 14 wing player.

Warren moved to Fort Worth from Springfield, Mo., in advance of her junior year of high school. In her first season at Boswell High School, Warren averaged 19.5 points per game and 5.6 rebounds per game. She set the school's single-season records for both assists (173) and steals (212).

Warren earned tournament MVP honors at three regular-season tournaments and was the unanimous District 6, Class 5A Most Valuable Player. She also earned All-Region and All-State honors. In a game against Flour Bluff last season, she charted a triple-double with 12 points, 10 rebounds and 10 steals.

She enters her senior year 413 points away from 2,000 for her prep career.

As a sophomore at Kickapoo High School in Springfield, Mo., in 2015-16, Warren helped her team to the Missouri State High School Activities Association State Championship, the first such title for the school since 2005. The team compiled a 29-3 overall record.

At Springfield Catholic High School as a freshman in 2014-15, Warren averaged 17.4 points per game, 7.3 rebounds per game, 2.3 steals per game, 1.6 assists per game and 0.6 blocks per game.

**RECRUITING CLASS RANKINGS
UNDER KAREN ASTON AT TEXAS**

2017-18: #2 (Allen-Taylor, Collier, Prince, Warren)

2016-17: #3 (Boothe, Littleton, Patterson)

2015-16: #4 (Holmes, Sutton, Underwood)

2014-15: #6 (Aborowa, Higgs, Hosey)

2013-14: #11 (Akigbogun, Atkins, Foman, McCarty)

2012-13: #31 (Henderson, Jones, Lang, Taylor, Vander Zee)

2016-17 STATISTICS (ALL GAMES)

OVERALL RECORD: 25-9 (HOME: 15-3, AWAY: 9-3, NEUTRAL: 1-3) • BIG 12 RECORD: 15-3 (HOME: 7-2, AWAY: 8-1)

DATE	OPPONENT (TV)	W/L	SCORE	ATTEND	HIGH POINTS	HIGH REBOUNDS
Nov. 14	at No. 11/10 Stanford (ESPN2)	L	59-71	2447	McCarty (20)	McCarty (5)
Nov. 16	HOUSTON BAPTIST (LHN)	W	98-46	6378	Holmes (22)	Holmes/Caron-Goudreau A. (9)
Nov. 20	at No. 10/9 Mississippi State (SEC Network)	L	68-79	7764	McCarty (19)	Three Players (8)
Nov. 23	NORTHWESTERN STATE (LHN)	W	86-39	2756	Higgs (14)	Three Players (5)
Dec. 01	NO. 3/3 SOUTH CAROLINA (ESPN2) %	L	67-76	3330	Lang (15)	Lang (12)
Dec. 04	vs. No. 2/2 UConn (ESPN) \$	L	54-72	9014	McCarty (15)	Lang (10)
Dec. 11	TENNESSEE (FS1)	W	72-67	4386	McCarty/Underwood (13)	Holmes/Lang (8)
Dec. 15	UT RIO GRANDE VALLEY (LHN)	W	85-61	2496	Holmes (16)	Holmes (13)
Dec. 17	UTSA (LHN)	W	76-43	2962	Foman (14)	Lang (13)
Dec. 20	NEW ORLEANS (LHN)	W	80-48	2567	Lang (23)	Holmes/Lang (10)
Dec. 29	TEXAS TECH (LHN) *	W	67-47	4093	McCarty (16)	Lang (13)
Jan. 01	at Iowa State (FSN) *	W	75-68	7915	Atkins (25)	Lang (12)
Jan. 04	at Kansas (ESPN3) *	W	66-54	1817	McCarty (15)	Holmes/Lang (9)
Jan. 07	TCU (LHN) *	W	83-54	3864	Holmes (18)	Lang (14)
Jan. 10	OKLAHOMA STATE (LHN) *	W	66-35	2624	McCarty (16)	Holmes (9)
Jan. 14	at No. 18/19 West Virginia *	W	73-63	4118	Atkins/Holmes (15)	Lang (8)
Jan. 17	NO. 20/20 OKLAHOMA (FS1) *	W	86-68	3259	Holmes (20)	Taylor (11)
Jan. 21	at Texas Tech *	W	77-57	5236	McCarty (14)	Holmes (15)
Jan. 25	at TCU (FSSW+) *	W	77-69	2230	Atkins (17)	Holmes (14)
Jan. 29	NO. 22/22 WEST VIRGINIA (FS1) *	W	69-54	4123	McCarty (15)	Lang (8)
Feb. 01	at Oklahoma State (FS Oklahoma) *	W	85-71	1846	Atkins (26)	Lang (12)
Feb. 04	KANSAS STATE (LHN) *	W	63-58	3781	Holmes (21)	Holmes/Lang (9)
Feb. 06	at No. 2/2 Baylor (FS1) *	W	85-79	7054	McCarty (22)	Holmes (10)
Feb. 11	KANSAS (LHN) *	W	75-42	3974	Holmes (15)	Holmes (13)
Feb. 13	at No. 5/4 Florida State (ESPN2)	W 2OT	92-88	3621	McCarty (29)	Holmes (14)
Feb. 18	at No. 19/19 Oklahoma (FSN) *	L	73-74	6038	McCarty (16)	Taylor (9)
Feb. 20	NO. 4/4 BAYLOR (ESPN2) *	L	67-70	7103	McCarty (16)	Holmes (12)
Feb. 24	IOWA STATE (LHN) *	L	66-70	4555	McCarty (12)	Lang (7)
Feb. 27	at No. 24/RV Kansas State (ESPN3) *	W	69-61	4541	Holmes (17)	Taylor (11)
Mar. 04	vs. Oklahoma State (FSN) ^	W	71-60	3852	McCarty (13)	Taylor (8)
Mar. 05	vs. West Virginia (FS1) ^	L	59-62	3475	McCarty (13)	Lang (8)
Mar. 17	CENTRAL ARKANSAS (ESPN2) !	W	78-50	2908	McCarty (15)	Holmes (9)
Mar. 19	NO. 17/17 NC STATE (ESPN2) !	W	84-80	3476	McCarty (23)	Holmes (9)
Mar. 24	vs No. 6/6 Stanford (ESPN) &	L	66-77	3163	Atkins (18)	Lang (12)

* - Big 12 Conference game

% - SEC/Big 12 Challenge (Austin, Texas)

\$ - Jimmy V Classic (Uncasville, Conn.)

^ - Phillips 66 Big 12 Championship (Oklahoma City, Okla.)

! - NCAA First and Second Rounds (Austin, Texas)

& - NCAA Regional (Lexington, Ky.)

##	PLAYER	GP	GS	MIN	AVG	FG	FGA	PCT	3FG	FGA	PCT	FT	FTA	PCT	OFF	DEF	TOT	AVG	PF	FO	A	TO	BLK	STL	PTS	AVG
11	Brooke McCarty	34	34	1149	33.8	174	381	.457	77	179	.430	56	73	.767	9	114	123	3.6	45	0	122	56	2	26	481	14.1
23	Ariel Atkins	32	32	852	26.6	154	338	.456	29	77	.377	72	88	.818	64	69	133	4.2	95	5	51	46	10	64	409	12.8
24	Joyner Holmes	34	32	900	26.5	168	385	.436	2	12	.167	73	107	.682	98	180	278	8.2	96	4	63	93	38	26	411	12.1
40	Kelsey Lang	34	32	917	27.0	139	264	.527	0	1	.000	31	49	.633	94	166	260	7.6	98	2	43	45	79	11	309	9.1
10	Lashann Higgs	34	2	589	17.3	116	240	.483	5	23	.217	34	65	.523	33	62	95	2.8	54	0	48	56	3	32	271	8.0
20	Brianna Taylor	34	33	714	21.0	66	143	.462	3	9	.333	29	47	.617	52	91	143	4.2	78	1	64	70	6	43	164	4.8
01	Sug Sutton	34	1	461	13.6	51	147	.347	10	45	.222	18	28	.643	8	50	58	1.7	36	1	43	31	3	13	130	3.8
12	Jada Underwood	28	0	276	9.9	34	77	.442	2	4	.500	23	34	.676	28	23	51	1.8	38	0	9	28	10	3	93	3.3
31	A. Caron-Goudreau	27	3	372	13.8	32	78	.410	3	12	.250	13	21	.619	48	38	86	3.2	60	4	13	26	22	7	80	3.0
22	Tasia Foman	14	1	145	10.4	17	52	.327	4	18	.222	2	3	.667	6	15	21	1.5	20	0	12	15	5	9	40	2.9
05	Jordan Hosey	27	0	209	7.7	27	65	.415	0	3	.000	16	28	.571	17	26	43	1.6	20	0	2	19	3	7	70	2.6
30	K. Caron-Goudreau	15	0	158	10.5	13	29	.448	2	7	.286	6	10	.600	13	13	26	1.7	23	1	4	13	10	3	34	2.3
14	Olamide Aborowa	17	0	108	6.4	11	34	.324	0	0	.000	3	8	.375	13	15	28	1.6	14	0	2	9	6	1	25	1.5
Team															59	62	121	3.6	0			10			0	
Total.....		34				1002	2233	.449	137	390	.351	376	561	.670	542	924	1466	43.1	677	18	476	517	197	245	2517	74.0
Opponents.....		34				729	1992	.366	174	546	.319	481	655	.734	388	724	1112	32.7	638	18	320	554	119	209	2113	62.1

SCORE BY QUARTERS (AND OT)	1st	2nd	3rd	4th	OT1	OT2	Total
TEXAS	680	542	671	603	9	12	2517
OPPONENTS	494	480	538	584	9	8	2113

2016-17 STATISTICS [CONFERENCE ONLY]

BIG 12 CONFERENCE RECORD: 15-3 (HOME: 7-2, AWAY: 8-1)

DATE	OPPONENT (TV)	W/L	SCORE	ATTEND	HIGH POINTS	HIGH REBOUNDS
Dec. 29	TEXAS TECH (LHN) *	W	67-47	4093	McCarty (16)	Lang (13)
Jan. 01	at Iowa State (FSN) *	W	75-68	7915	Atkins (25)	Lang (12)
Jan. 04	at Kansas (ESPN3) *	W	66-54	1817	McCarty (15)	Holmes/Lang (9)
Jan. 07	TCU (LHN) *	W	83-54	3864	Holmes (18)	Lang (14)
Jan. 10	OKLAHOMA STATE (LHN) *	W	66-35	2624	McCarty (16)	Holmes (9)
Jan. 14	at No. 18/19 West Virginia *	W	73-63	4118	Atkins/Holmes (15)	Lang (8)
Jan. 17	NO. 20/20 OKLAHOMA (FS1) *	W	86-68	3259	Holmes (20)	Taylor (11)
Jan. 21	at Texas Tech *	W	77-57	5236	McCarty (14)	Holmes (15)
Jan. 25	at TCU (FSSW+) *	W	77-69	2230	Atkins (17)	Holmes (14)
Jan. 29	NO. 22/22 WEST VIRGINIA (FS1) *	W	69-54	4123	McCarty (15)	Lang (8)
Feb. 01	at Oklahoma State (FS Oklahoma) *	W	85-71	1846	Atkins (26)	Lang (12)
Feb. 04	KANSAS STATE (LHN) *	W	63-58	3781	Holmes (21)	Holmes/Lang (9)
Feb. 06	at No. 2/2 Baylor (FS1) *	W	85-79	7054	McCarty (22)	Holmes (10)
Feb. 11	KANSAS (LHN) *	W	75-42	3974	Holmes (15)	Holmes (13)
Feb. 18	at No.19/19 Oklahoma (FSN) *	L	73-74	6038	McCarty (16)	Taylor (9)
Feb. 20	NO. 4/4 BAYLOR (ESPN2) *	L	67-70	7103	McCarty (16)	Holmes (12)
Feb. 24	IOWA STATE (LHN) *	L	66-70	4555	McCarty (12)	Lang (7)
Feb. 27	at No. 24/RV Kansas State (ESPN3) *	W	69-61	4541	Holmes (17)	Taylor (11)

* - Big 12 Conference game

#	PLAYER	GP	GS	MIN	AVG	FG	FGA	PCT	3FG	FGA	PCT	FT	FTA	PCT	OFF	DEF	TOT	AVG	PF	FO	A	TO	BLK	STL	PTS	AVG	
11	Brooke McCarty	18	18	613	34.1	91	202	.450	41	97	.423	26	35	.743	4	57	61	3.4	22	0	61	24	2	14	249	13.8	
23	Ariel Atkins	18	18	505	28.1	94	193	.487	17	42	.405	34	43	.791	43	33	76	4.2	54	2	26	23	5	37	239	13.3	
24	Joyner Holmes	18	18	498	27.7	97	218	.445	0	0	.000	44	58	.759	59	102	161	8.9	50	2	30	44	21	16	238	13.2	
10	Lashann Higgs	18	1	308	17.1	69	140	.493	3	15	.200	17	38	.447	19	35	54	3.0	28	0	26	26	1	19	158	8.8	
40	Kelsey Lang	18	18	504	28.0	69	146	.473	0	1	.000	17	26	.654	50	92	142	7.9	56	1	19	26	41	6	155	8.6	
20	Brianna Taylor	18	17	394	21.9	35	85	.412	0	1	.000	14	22	.636	24	54	78	4.3	37	0	40	38	4	22	84	4.7	
01	Sug Sutton	18	0	260	14.4	29	81	.358	5	24	.208	8	13	.615	6	33	39	2.2	22	1	28	21	0	8	71	3.9	
30	K. Caron-Goudreau	10	0	101	10.1	10	18	.556	1	3	.333	5	6	.833	10	6	16	1.6	14	1	3	6	4	1	26	2.6	
31	A. Caron-Goudreau	14	0	152	10.9	14	32	.438	1	4	.250	7	11	.636	22	15	37	2.6	26	2	4	11	10	3	36	2.6	
05	Jordan Hosey	12	0	71	5.9	8	21	.381	0	0	.000	11	16	.688	5	7	12	1.0	10	0	1	7	0	2	27	2.3	
12	Jada Underwood	16	0	121	7.6	11	34	.324	0	0	.000	6	13	.462	10	8	18	1.1	22	0	4	16	2	2	28	1.8	
14	Olamide Aborowa	8	0	40	5.0	4	14	.286	0	0	.000	0	2	.000	7	5	12	1.5	6	0	0	2	2	1	8	1.0	
22	Tasia Foman	5	0	33	6.6	1	14	.071	1	8	.125	0	0	.000	3	4	7	1.4	6	0	3	4	1	1	3	0.6	
TEAM														27		34	61	3.4			5						
Total		18				532		1198	.444	69	195	.354	189	283	.668	289	485	774	43.0	353	9	245	253	93	132	1322	73.4
Opponents		18				374		1040	.360	95	282	.337	251	344	.730	210	403	613	34.1	333	7	167	297	64	101	1094	60.8

SCORE BY QUARTERS (AND OT)	1st	2nd	3rd	4th	OT	Total
TEXAS	343	292	349	338	-	1322
OPPONENTS	264	230	284	316	-	1094

TEAM GAME-BY-GAME STATISTICS

GAME	SCORE	FG-A	PCT.	3PT. FG-A	3PT. PCT.	FT-A	FT PCT.	OFF. REB.	DEF. REB.	TOT. REB.	PF	A	TO	B	S
TEXAS	59	24-68	.353	5-15	.333	6-14	.429	20	18	38	22	9	17	2	9
Stanford	71	28-51	.549	4-11	.364	11-18	.611	7	25	32	18	18	20	7	7
TEXAS	98	35-76	.461	8-14	.571	20-29	.690	24	31	55	15	18	11	10	11
Houston Baptist	46	15-52	.288	6-20	.300	10-14	.714	7	19	26	24	11	25	3	1
TEXAS	68	27-56	.482	2-12	.167	12-16	.750	17	19	36	28	13	24	4	6
Mississippi State	79	27-57	.474	2-11	.182	23-28	.821	13	13	26	22	8	13	3	13
TEXAS	86	36-63	.571	5-15	.333	9-12	.750	14	25	39	13	22	9	4	9
Northwestern State	39	13-46	.283	7-26	.269	6-8	.750	6	14	20	14	7	23	2	3
TEXAS	67	28-68	.412	4-13	.308	7-14	.500	19	21	40	29	13	17	9	5
South Carolina	76	22-52	.423	2-10	.200	30-40	.750	11	26	37	18	5	13	6	10
TEXAS	54	22-51	.431	5-14	.357	5-7	.714	13	18	31	19	8	26	2	7
UConn	72	26-53	.491	8-16	.500	12-16	.750	9	15	24	12	20	12	4	9
TEXAS	72	28-62	.452	3-8	.375	13-17	.765	16	24	40	14	11	13	7	5
Tennessee	67	28-67	.418	6-19	.316	5-9	.556	15	17	32	19	9	12	7	2
TEXAS	85	33-62	.532	2-7	.286	17-28	.607	12	38	50	19	19	18	9	9
UTRGV	61	21-72	.292	10-31	.323	9-15	.600	15	20	35	23	11	17	3	9
TEXAS	76	30-76	.395	6-12	.500	10-14	.714	20	38	58	17	17	16	10	5
UTSA	43	15-64	.234	1-14	.071	12-18	.667	11	25	36	21	1	17	3	8
TEXAS	80	33-64	.516	4-16	.250	10-16	.625	12	32	44	18	22	18	7	15
New Orleans	48	17-56	.304	4-15	.267	10-14	.714	9	19	28	14	4	25	2	8
TEXAS	67	31-71	.437	2-11	.182	3-8	.375	20	29	49	11	8	12	3	8
Texas Tech	47	19-56	.339	7-17	.412	2-3	.667	7	21	28	15	4	18	5	5
TEXAS	75	29-61	.475	5-11	.455	12-16	.750	10	24	34	18	14	14	7	7
Iowa State	68	25-61	.410	6-22	.273	12-15	.800	12	24	36	19	16	17	1	7
TEXAS	66	25-64	.391	5-11	.455	11-15	.733	19	42	61	26	13	31	6	7
Kansas	54	19-72	.264	2-18	.111	14-20	.700	13	22	35	22	5	17	7	13
TEXAS	83	34-68	.500	3-10	.300	12-23	.522	21	28	49	18	15	18	6	12
TCU	54	17-57	.298	4-24	.167	16-21	.762	11	19	30	21	6	21	3	5
TEXAS	66	21-64	.328	6-12	.500	18-25	.720	14	36	50	19	11	10	7	6
Oklahoma State	35	11-59	.186	1-13	.077	12-23	.522	17	29	46	24	5	17	5	3
TEXAS	73	32-64	.500	0-10	.000	9-13	.692	14	14	28	17	9	11	2	11
West Virginia	63	23-51	.451	6-13	.462	11-15	.733	15	20	35	17	10	21	4	4
TEXAS	86	34-69	.493	5-12	.417	13-21	.619	16	29	45	17	17	16	3	6
Oklahoma	68	21-60	.350	8-23	.348	18-19	.947	11	22	33	22	10	16	5	7
TEXAS	77	32-75	.427	3-11	.273	10-15	.667	17	33	50	18	13	9	1	7
Texas Tech	57	21-60	.350	7-15	.467	8-17	.471	9	29	38	17	12	14	2	3
TEXAS	77	33-70	.471	6-20	.300	5-11	.455	17	24	41	23	17	15	10	5
TCU	69	20-60	.333	8-20	.400	21-25	.840	16	20	36	22	6	16	0	6
TEXAS	69	26-55	.473	4-6	.667	13-17	.765	12	23	35	21	15	18	5	8
West Virginia	54	18-46	.391	3-7	.429	15-21	.714	10	18	28	21	9	23	4	7
TEXAS	85	36-63	.571	7-12	.583	6-8	.750	12	22	34	26	20	12	4	5
Oklahoma State	71	22-48	.458	5-9	.556	22-28	.786	7	16	23	12	9	13	4	6
TEXAS	63	26-60	.433	3-6	.500	8-17	.471	13	24	37	17	14	15	7	9
Kansas State	58	22-56	.393	4-15	.267	10-14	.714	10	24	34	19	7	21	2	3
TEXAS	85	33-64	.516	3-10	.300	16-24	.667	12	26	38	16	11	10	6	6
Baylor	79	29-66	.439	8-12	.667	13-18	.722	14	23	37	19	21	13	8	2
TEXAS	75	32-69	.464	1-6	.167	10-16	.625	22	37	59	15	16	9	13	5
Kansas	42	13-61	.213	9-24	.375	7-12	.375	13	17	30	14	8	12	1	5
TEXAS	92	37-73	.507	5-13	.385	13-22	.591	15	32	47	27	17	21	7	5
Florida State	88	29-86	.337	6-18	.333	24-32	.750	27	18	45	22	11	14	0	7

TEAM GAME-BY-GAME STATISTICS

GAME	SCORE	FG-A	PCT.	3PT. FG-A	3PT. PCT.	FT-A	FT PCT.	OFF. REB.	DEF. REB.	TOT. REB.	PF	A	TO	B	S
TEXAS Oklahoma	73 74	27-68 27-55	.397 .491	6-11 5-13	.545 .385	13-16 15-18	.813 .833	19 8	21 24	40 32	18 18	17 11	15 14	3 4	7 5
TEXAS Baylor	67 70	25-71 23-54	.352 .426	6-16 0-1	.375 .000	11-14 24-33	.786 .727	17 17	18 26	35 43	27 19	11 10	10 19	2 5	8 4
TEXAS Iowa State	66 70	28-70 26-56	.400 .464	3-12 8-20	.250 .400	7-10 10-15	.700 .667	19 5	26 25	45 30	20 12	10 7	12 10	4 3	5 5
TEXAS Kansas State	69 61	28-72 18-62	.389 .290	1-8 4-16	.125 .250	12-14 21-27	.857 .778	15 15	29 24	44 39	26 19	14 11	16 15	4 1	10 11
TEXAS Oklahoma State	71 60	31-69 22-57	.449 .386	2-10 2-11	.200 .182	7-11 14-18	.636 .778	14 8	28 23	42 31	19 20	13 11	12 16	3 6	9 7
TEXAS West Virginia	59 62	19-56 21-59	.339 .356	4-12 9-21	.333 .429	17-22 11-12	.773 .917	12 9	29 26	41 35	17 19	6 12	13 12	6 6	7 6
TEXAS Central Arkansas	78 50	31-60 20-63	.517 .317	4-8 3-8	.500 .375	12-18 7-10	.667 .700	20 11	35 12	55 23	18 15	13 4	21 10	11 0	4 7
TEXAS N.C. State	84 80	30-66 26-58	.455 .448	5-13 2-11	.385 .182	19-23 26-29	.826 .897	15 7	26 21	41 28	25 27	11 4	19 14	8 0	3 7
TEXAS Stanford	66 77	25-65 25-59	.400 .424	4-13 7-22	.308 .318	10-15 20-30	.667 .667	10 13	25 28	35 41	24 17	19 17	9 14	5 3	4 4

CAREER RECORDS AND ACTIVE CAREER LEADERS

SCORING (CAREER)

POINTS

1.	2523	Annette Smith [131 games]	1981-84,1985-86
2.	2256	Linda Waggoner [161 games]	1976-80
3.	2008	Clarissa Davis [101 games]	1985-89
4.	1983	Cinietra Henderson [123 games]	1989-93
5.	1917	Tiffany Jackson [123 games]	2003-07
6.	1831	Vicki Hall [117 games]	1988-93
7.	1798	Fran Harris [130 games]	1982-86
8.	1795	Retha Swindell [151 games]	1975-79
9.	1717	Chassidy Fussell [120 games]	2010-14
10.	1708	Heather Schreiber [133 games]	2001-05
	1708	Stacy Stephens [134 games]	2000-04

ACTIVE LEADER

1155	Brooke McCarty [105 games]	2014-Present
974	Ariel Atkins [86 games]	2014-Present

FIELD GOALS (CAREER)

FIELD GOALS MADE

1.	1052	Annette Smith [131 games]	1981-84,85-86
2.	1047	Linda Waggoner [161 games]	1976-80
3.	793	Clarissa Davis [101 games]	1985-89
4.	780	Fran Harris [130 games]	1982-86
5.	779	Cinietra Henderson [123 games]	1989-93
6.	770	Retha Swindell [151 games]	1975-79
7.	718	Vicki Hall [117 games]	1988-93
8.	711	Tiffany Jackson [123 games]	2003-07
9.	675	Stacy Stephens [134 games]	2000-04
10.	664	Edwina Brown [116 games]	1996-00

ACTIVE LEADER

413	Brooke McCarty [105 games]	2014-Present
-----	----------------------------	--------------

FIELD GOALS ATTEMPTED

1.	2247	Linda Waggoner [161 games]	1976-80
2.	1904	Annette Smith [131 games]	1981-84,85-86
3.	1596	Retha Swindell [151 games]	1975-79
4.	1527	Tiffany Jackson [123 games]	2003-07
5.	1521	Vicki Hall [117 games]	1988-93
6.	1491	Chassidy Fussell [120 games]	2010-14
7.	1488	Fran Harris [130 games]	1982-86
8.	1445	Brittainey Raven [133 games]	2006-10
9.	1409	Nell Fortner [142 games]	1977-81
10.	1403	Danielle Viglione [105 games]	1993-97

ACTIVE LEADER

941	Brooke McCarty [105 games]	2014-Present
-----	----------------------------	--------------

3-POINT FIELD GOALS (CAREER)

3-POINT FIELD GOALS MADE

1.	293	Danielle Viglione [105 games]	1993-97
2.	237	Kathleen Nash [134 games]	2007-11
3.	220	Chassidy Fussell [120 games]	2010-14
4.	193	Jamie Carey [96 games]	2002-05
5.	189	Heather Schreiber [133 games]	2001-05
6.	181	Brooke McCarty [105 games]	2014-Present
7.	179	Kim Lummus [106 games]	1995-99
8.	152	Erika Arriaran [106 games]	2005-10
9.	124	Brittainey Raven [133 games]	2006-10
10.	122	Alisha Sare [99 games]	1999-03

ACTIVE LEADER

181	Brooke McCarty [105 games]	2014-Present
-----	----------------------------	--------------

3-POINT FIELD GOALS ATTEMPTED

1.	792	Danielle Viglione [105 games]	1993-97
2.	630	Chassidy Fussell [120 games]	2010-14
3.	587	Kathleen Nash [134 games]	2007-11
4.	569	Kim Lummus [106 games]	1995-99
5.	481	Heather Schreiber [133 games]	2001-05
6.	462	Jamie Carey [96 games]	2002-05
7.	449	Brooke McCarty [105 games]	2014-Present
8.	446	Erika Arriaran [106 games]	2005-10
9.	376	Brittainey Raven [133 games]	2006-10
	376	Alisha Sare [99 games]	1999-03

ACTIVE LEADER

449	Brooke McCarty [105 games]	2014-Present
-----	----------------------------	--------------

3-POINT FIELD GOAL PERCENTAGE (minimum 50 made)

1.	.418 [193-462]	Jamie Carey	2002-05
2.	.404 [237-587]	Kathleen Nash	2007-11
	.404 [115-285]	Vicki Hall	1988-93
4.	.403 [181-449]	Brooke McCarty	2014-Present
5.	.393 [189-481]	Heather Schreiber	2001-05
6.	.370 [293-792]	Danielle Viglione	1993-97
7.	.355 [83-234]	Yvonne Anderson	2008-12
8.	.353 [82-232]	NeKeshia Henderson	1991-95
9.	.349 [220-630]	Chassidy Fussell	2010-14
10.	.344 [99-288]	Ashleigh Fontenette	2008-12

ACTIVE LEADER

.403 [181-449]	Brooke McCarty	2014-Present
----------------	----------------	--------------

FREE THROWS (CAREER)

FREE THROWS MADE

1.	487	Tiffany Jackson [123 games]	2003-07
2.	425	Cinietra Henderson [123 games]	1989-93
3.	419	Annette Smith [131 games]	1981-84,85-86
4.	415	Clarissa Davis [101 games]	1985-89
5.	384	Brittainey Raven [133 games]	2006-10
6.	373	Edwina Brown [116 games]	1996-00
7.	358	Stacy Stephens [134 games]	2000-04
8.	346	Andrea Lloyd [127 games]	1983-87
9.	319	Heather Schreiber [133 games]	2001-05
10.	313	Chassidy Fussell [120 games]	2010-14

ACTIVE LEADER

197	Ariel Atkins [86 games]	2014-Present
-----	-------------------------	--------------

FREE THROWS ATTEMPTED

1.	700	Tiffany Jackson [123 games]	2003-07
2.	676	Annette Smith [131 games]	1981-84,85-86
3.	662	Cinietra Henderson [123 games]	1989-93
4.	608	Clarissa Davis [101 games]	1985-89
5.	556	Stacy Stephens [134 games]	2000-04
6.	523	Andrea Lloyd [127 games]	1983-87
7.	509	Brittainey Raven [133 games]	2006-10
8.	508	Edwina Brown [116 games]	1996-00
9.	474	Retha Swindell [151 games]	1975-79
10.	448	Fey Meeks [115 games]	1989-93

ACTIVE LEADER

240	Ariel Atkins [86 games]	2014-Present
-----	-------------------------	--------------

CAREER RECORDS AND ACTIVE CAREER LEADERS

FREE THROW PERCENTAGE (minimum 50 made)

1. .882 [97-110]	Erika Arriaran	2005-10
2. .848 [296-349]	Kathleen Nash	2007-11
3. .839 [141-168]	Kim Lummus	1995-99
4. .826 [313-379]	Chassidy Fussell	2010-14
5. .821 [197-240]	Ariel Atkins	2014-Present
6. .818 [319-390]	Heather Schreiber	2001-05
7. .812 [259-319]	Danielle Viglione	1993-97
8. .801 [173-216]	Jamie Carey	2002-05
9. .797 [98-123]	Jennifer Clark	1989-93
10. .795 [171-215]	Brady Sanders	2012-16

ACTIVE LEADER

.821 [197-240]	Ariel Atkins	2014-Present
-----------------------	---------------------	---------------------

REBOUNDING (CAREER)

REBOUNDS

1. 1759	Retha Swindell [151 games]	1975-79
2. 1223	Stacy Stephens [134 games]	2000-04
3. 1115	Andrea Lloyd [127 games]	1983-87
4. 1039	Tiffany Jackson [123 games]	2003-07
5. 1036	Imani Boyette [126 games]	2012-16
6. 983	Cinietra Henderson [123 games]	1989-93
7. 966	Annette Smith [131 games]	1981-84,85-86
8. 940	Amie Smith [118 games]	1993-97
9. 920	Kathleen Nash [134 games]	2007-11
10. 899	Nneka Enemkpali [95 games]	2011-15

ACTIVE LEADER

330	Ariel Atkins [86 games]	2014-Present
312	Brooke McCarty [105 games]	2014-Present

ASSISTS (CAREER)

ASSISTS

1. 776	Kamie Ethridge	1982-86
2. 605	Terri Mackey	1980-83
3. 537	Amy Claborn	1987-91
4. 517	Edwina Brown	1996-00
5. 480	Carla Cortijo	2005-09
6. 454	Celina Rodrigo	2012-16
7. 450	NeKeshia Henderson	1991-95
8. 446	Beverly Williams	1984-88
9. 419	Nina Norman	2002-06
10. 409	Ashleigh Fontenette	2008-12

ACTIVE LEADER

263	Brooke McCarty [105 games]	2014-Present
------------	-----------------------------------	---------------------

BLOCKED SHOTS (CAREER)

BLOCKS

1. 372	Ashley Gayle	2008-12
2. 303	Imani Boyette	2012-16
3. 289	Ellen Bayer	1986-90
4. 250	Ashley Lindsey	2005-09
5. 221	Angela Jackson	1994-98
6. 190	Kelsey Lang	2013-17
7. 181	Tiffany Jackson	2003-07
8. 156	Joy Williams	1979-83
9. 129	Tracy Cook	1998-02
10. 121	Stacy Stephens	2000-04

ACTIVE LEADER

38	Joyner Holmes [34 games]	2016-Present
-----------	---------------------------------	---------------------

STEALS (CAREER)

STEALS

1. 346	Linda Waggoner	1976-80
2. 332	Andrea Lloyd	1983-87
3. 313	Tiffany Jackson	2003-07
4. 303	Esoleta Whaley	1980-84
5. 295	Annette Smith	1981-84,85-86
6. 291	Hattie Browning	1978-80
7. 281	Terri Mackey	1980-83
8. 278	Kamie Ethridge	1982-86
9. 257	Edwina Brown	1996-00
257	Beverly Williams	1984-88

ACTIVE LEADER

135	Ariel Atkins [86 games]	2014-Present
101	Brooke McCarty [105 games]	2014-Present

PARTICIPATION (CAREER)

GAMES PLAYED

1. 161	Linda Waggoner	1976-80
2. 151	Retha Swindell	1975-79
3. 144	Joy Williams	1979-83
4. 142	Nell Fortner	1977-81
5. 138	Kelsey Lang	2013-16
6. 135	Earnesia Williams	2005-10
7. 134	Celina Rodrigo	2012-16
134	Kathleen Nash	2007-11
134	Stacy Stephens	2000-04
10. 133	Brittainy Raven	2006-10
133	Heather Schreiber	2001-05

ACTIVE LEADER

105	Brooke McCarty	2014-Present
------------	-----------------------	---------------------

GAMES STARTED

1. 154	Linda Waggoner [161 games]	1976-80
2. 134	Stacy Stephens [134 games]	2000-04
3. 133	Heather Schreiber [133 games]	2001-05
4. 131	Annette Smith [131 games]	1981-84,85-86
5. 125	Andrea Lloyd [127 games]	1983-87
6. 121	Cinietra Henderson [123 games]	1989-93
7. 117	Earnesia Williams [135 games]	2005-10
8. 114	Amie Smith [118 games]	1993-97
9. 112	Brittainy Raven [133 games]	2006-10
112	Chassidy Fussell [120 games]	2010-14
112	Vicki Hall [117 games]	1988-93

ACTIVE LEADERS

84	Brooke McCarty [105 games]	2014-Present
-----------	-----------------------------------	---------------------

ACTIVE PLAYER CAREER STATS

OLAMIDE ABOROWA

YEAR	G-GS	MIN-AVG	FG-FGA	PCT	3FG-A	PCT	FT-FTA	PCT	OR-DR	R-AVG	PF-DQ	A	TO	BL	ST	PTS-AVG
2015-16	18-0	62-3.4	5-20	.250	0-0	.000	2-4	.500	4-12	16-0.9	2-0	0	4	3	0	12-0.7
2016-17	17-0	108-6.4	11-34	.324	0-0	.000	3-8	.375	13-15	28-1.6	14-0	2	9	6	1	25-1.5
TOTAL	35-0	170-4.9	16-54	.296	0-0	.000	5-12	.417	17-27	44-1.3	16-0	2	13	9	1	37-1.1

ARIEL ATKINS

YEAR	G-GS	MIN-AVG	FG-FGA	PCT	3FG-A	PCT	FT-FTA	PCT	OR-DR	R-AVG	PF-DQ	A	TO	BL	ST	PTS-AVG
2014-15	27-19	645-23.9	90-248	.363	17-59	.288	66-80	.825	37-55	92-3.4	71-1	35	60	7	34	263-9.7
2015-16	27-14	568-21.0	111-207	.536	21-59	.356	59-72	.819	44-61	105-3.9	73-2	34	38	7	37	302-11.2
2016-17	32-32	852-26.6	154-338	.456	29-77	.377	72-88	.818	64-69	133-4.2	95-5	51	46	10	64	409-12.8
TOTAL	86-65	2065-24.0	355-793	.448	67-195	.344	197-240	.821	145-185	330-3.8	239-8	120	144	24	135	974-11.3

AUDREY-ANN CARON-GOUDREAU

YEAR	G-GS	MIN-AVG	FG-FGA	PCT	3FG-A	PCT	FT-FTA	PCT	OR-DR	R-AVG	PF-DQ	A	TO	BL	ST	PTS-AVG
2014-15*	27-16	527-19.5	48-122	.393	3-16	.188	24-39	.615	28-84	112-4.1	72-2	21	63	28	14	123-4.6
2016-17	27-3	372-13.8	32-78	.410	3-12	.250	13-21	.619	48-38	86-3.2	60-4	13	26	22	7	80-3.0
TOTAL	27-3	372-13.8	32-78	.410	3-12	.250	13-21	.619	48-38	86-3.2	60-4	13	26	22	7	80-3.0
All*	54-19	899-16.6	80-200	.400	6-28	.214	37-60	.617	76-122	198-3.7	132-6	34	89	50	21	203-3.8

KHALEANN CARON-GOUDREAU

YEAR	G-GS	MIN-AVG	FG-FGA	PCT	3FG-A	PCT	FT-FTA	PCT	OR-DR	R-AVG	PF-DQ	A	TO	BL	ST	PTS-AVG
2014-15*	3-0	54-18.0	6-22	.273	4-13	.308	5-8	.625	4-2	6-2.0	6-1	3	2	2	0	21-7.0
2016-17	15-0	158-10.5	13-29	.448	2-7	.286	6-10	.600	13-13	26-1.7	23-1	4	13	10	3	34-2.3
TOTAL	15-0	158-10.5	13-29	.448	2-7	.286	6-10	.600	13-13	26-1.7	23-1	4	13	10	3	34-2.3
All*	18-0	212-11.8	19-51	.373	6-20	.300	11-18	.611	17-15	32-1.8	29-2	7	15	12	3	55-3.1

LASHANN HIGGS

YEAR	G-GS	MIN-AVG	FG-FGA	PCT	3FG-A	PCT	FT-FTA	PCT	OR-DR	R-AVG	PF-DQ	A	TO	BL	ST	PTS-AVG
2015-16	34-1	450-13.2	101-244	.414	4-24	.167	38-71	.535	40-60	100-2.9	46-1	38	45	3	48	244-7.2
2016-17	34-2	589-17.3	116-240	.483	5-23	.217	34-65	.523	33-62	95-2.8	54-0	48	56	3	32	271-8.0
TOTAL	68-3	1039-15.3	217-484	.448	9-47	.191	72-136	.529	73-122	195-2.9	100-1	86	101	6	80	515-7.6

JORDAN HOSEY

YEAR	G-GS	MIN-AVG	FG-FGA	PCT	3FG-A	PCT	FT-FTA	PCT	OR-DR	R-AVG	PF-DQ	A	TO	BL	ST	PTS-AVG
2015-16	35-0	329-9.4	37-78	.474	1-5	.200	31-51	.608	28-41	69-2.0	35-0	3	32	7	6	106-3.0
2016-17	27-0	209-7.7	27-65	.415	0-3	.000	16-28	.571	17-26	43-1.6	20-0	2	19	3	7	70-2.6
TOTAL	62-0	538-8.7	64-143	.448	1-8	.125	47-79	.595	45-67	112-1.8	55-0	5	51	10	13	176-2.8

BROOKE MCCARTY

YEAR	G-GS	MIN-AVG	FG-FGA	PCT	3FG-A	PCT	FT-FTA	PCT	OR-DR	R-AVG	PF-DQ	A	TO	BL	ST	PTS-AVG
2014-15	35-15	812-23.2	87-228	.382	37-108	.343	39-50	.780	12-78	90-2.6	78-0	52	52	6	32	250-7.1
2015-16	36-35	1119-31.1	152-332	.458	67-162	.414	53-74	.716	16-83	99-2.8	59-0	89	54	7	43	424-11.8
2016-17	34-34	1149-33.8	174-381	.457	77-179	.430	56-73	.767	9-114	123-3.6	45-0	122	56	2	26	481-14.1
TOTAL	105-84	3080-29.3	413-941	.439	181-449	.403	148-197	.751	37-275	312-3.0	182-0	263	162	15	101	1155-11.0

SUG SUTTON

YEAR	G-GS	MIN-AVG	FG-FGA	PCT	3FG-A	PCT	FT-FTA	PCT	OR-DR	R-AVG	PF-DQ	A	TO	BL	ST	PTS-AVG
2016-17	34-1	461-13.6	51-147	.347	10-45	.222	18-28	.643	8-50	58-1.7	36-1	43	31	3	13	130-3.8
TOTAL	34-1	461-13.6	51-147	.347	10-45	.222	18-28	.643	8-50	58-1.7	36-1	43	31	3	13	130-3.8

JADA UNDERWOOD

YEAR	G-GS	MIN-AVG	FG-FGA	PCT	3FG-A	PCT	FT-FTA	PCT	OR-DR	R-AVG	PF-DQ	A	TO	BL	ST	PTS-AVG
2016-17	28-0	276-9.9	34-77	.442	2-4	.500	23-34	.676	28-23	51-1.8	38-0	9	28	10	3	93-3.3
TOTAL	28-0	276-9.9	34-77	.442	2-4	.500	23-34	.676	28-23	51-1.8	38-0	9	28	10	3	93-3.3

JATARIE WHITE

YEAR	G-GS	MIN-AVG	FG-FGA	PCT	3FG-A	PCT	FT-FTA	PCT	OR-DR	R-AVG	PF-DQ	A	TO	BL	ST	PTS-AVG
2014-15 *	20-0	184-9.2	20-49	.408	0-0	.000	9-14	.643	16-28	44-2.2	20-0	7	14	5	7	49-2.5
2015-16 *	32-0	406-12.7	30-88	.341	0-3	.000	32-52	.615	26-67	93-2.9	57-0	18	22	13	6	92-2.9
TOTAL *	52-0	590-11.3	50-137	.365	0-3	.000	41-66	.621	42-95	137-2.7	77-0	25	36	18	13	141-2.7

* Includes statistics from another NCAA Division I institution.

CAREER HIGHS

1 | SUG SUTTON

Points _____ 10, twice, last vs. NC State [03-19-17]
 Rebounds _____ 8 at Texas Tech [01-21-17]
 Assists _____ 4, twice, last vs. Kansas [02-11-17]
 Steals _____ 2 at Oklahoma State [02-01-17]
 Blocks _____ 2 vs. UTRGV [02-15-16]
 Field Goals _____ 4, twice, last vs. NC State [03-19-17]
 3-Point Field Goals _____ 2, twice, last vs. Stanford [03-24-17]
 Free Throws _____ 4 vs. Oklahoma State [01-10-17]
 Minutes _____ 29 vs. Iowa State [02-24-17]

5 | JORDAN HOSEY

Points _____ 12 at Oklahoma State [01-09-16]
 Rebounds _____ 8 vs. UTSA [11-14-15]
 Assists _____ 1, 5x., last vs. Central Arkansas [03-17-17]
 Steals _____ 2 vs. Houston Baptist [11-16-16]
 Blocks _____ 1, 9x., last vs. NC State [03-19-17]
 Field Goals _____ 4, 3x., last vs. Oklahoma State [03-04-17]
 3-Point Field Goals _____ 1 vs. Stanford [12-13-15]
 Free Throws _____ 6, 2x., last vs. Kansas [03-05-16]
 Minutes _____ 18 vs. Houston Baptist [11-16-16]

10 | LASHANN HIGGS

Points _____ 19 vs. UConn [03-28-16]
 Rebounds _____ 10 vs. Hampton [11-25-15]
 Assists _____ 8 vs. Sam Houston State [12-27-15]
 Steals _____ 5 vs. New Orleans [12-20-16]
 Blocks _____ 1, 5x., last vs. Central Arkansas [03-17-17]
 Field Goals _____ 9 vs. UConn [03-28-16]
 3-Point Field Goals _____ 3 at Tennessee [11-29-15]
 Free Throws _____ 6, twice, last vs. Alabama State [03-19-16]
 Minutes _____ 31 at Florida State [02-13-17]

11 | BROOKE MCCARTY

Points _____ 29 at Florida State [02-13-17]
 Rebounds _____ 7, 3x., last vs. West Virginia [03-05-17]
 Assists _____ 8, 4x., last at Florida State [02-13-17]
 Steals _____ 3, 6x., last at Baylor [02-29-16]
 Blocks _____ 2 vs. Rice [12-30-14]
 Field Goals _____ 11 at Florida State [02-13-17]
 3-Point Field Goals _____ 5, 4x., last at Florida State [02-13-17]
 Free Throws _____ 8, twice, last at Little Rock [12-06-15]
 Minutes _____ 50 at Florida State [02-13-17]

12 | JADA UNDERWOOD

Points _____ 13 vs. Tennessee [12-11-16]
 Rebounds _____ 7 vs. UTSA [12-17-16]
 Assists _____ 3 vs. New Orleans [12-20-16]
 Steals _____ 1, 3x., last vs. Oklahoma State [01-10-17]
 Blocks _____ 2, 3x., last vs. Kansas [02-11-17]
 Field Goals _____ 5 vs. Tennessee [12-11-16]
 3-Point Field Goals _____ 2 vs. Northwestern State [11-23-16]
 Free Throws _____ 5 vs. Houston Baptist [11-16-16]
 Minutes _____ 25 vs. UTRGV [12-15-16]

14 | OLAMIDE ABOROWA

Points _____ 4, 4x., last vs. Central Arkansas [03-17-17]
 Rebounds _____ 5 vs. Central Arkansas [03-17-17]
 Assists _____ 1, twice,, last vs. Northwestern State [11-18-16]
 Steals _____ 1 at Texas Tech [01-21-17]
 Blocks _____ 2, twice, last vs. Central Arkansas [03-17-17]
 Field Goals _____ 2, 4x., last vs. Central Arkansas [03-17-17]
 3-Point Field Goals _____ None
 Free Throws _____ 2, twice, last vs. Central Arkansas [03-17-17]
 Minutes _____ 13, twice, last vs. Central Arkansas [03-17-17]

23 | ARIEL ATKINS

Points _____ 26 at Oklahoma State [02-01-17]
 Rebounds _____ 11 at Iowa State [02-06-16]
 Assists _____ 5, twice, last vs. West Virginia [01-29-17]
 Steals _____ 5 vs. Southern [12-08-14]
 Blocks _____ 2, twice, last vs. UTSA [12-17-16]
 Field Goals _____ 11 at Oklahoma State [02-01-17]
 3-Point Field Goals _____ 3, 5x., last at Oklahoma State [02-01-17]
 Free Throws _____ 8 at TCU [02-01-15]
 Minutes _____ 40 vs. Oklahoma [01-29-15]

30 | KHALEANN CARON-GOUDREAU

Points _____ 11 vs. Texas A&M [01-02-15]
 Rebounds _____ 5 at TCU [01-25-17]
 Assists _____ 3 vs. Texas A&M [01-02-15]
 Steals _____ 1, 3x., last at West Virginia [01-14-17]
 Blocks _____ 4 vs. UTSA [12-17-16]
 Field Goals _____ 4 vs. Texas A&M [01-02-15]
 3-Point Field Goals _____ 2, twice, last vs. Tennessee [01-05-15]
 Free Throws _____ 4 vs. Tennessee [01-05-15]
 Minutes _____ 24 vs. Tennessee [01-05-15]

31 | AUDREY-ANN CARON-GOUDREAU

Points _____ 21 vs. Minnesota [11-28-14]
 Rebounds _____ 14 vs. Minnesota [11-28-14]
 Assists _____ 3, twice, last vs. Florida [02-19-15]
 Steals _____ 4 vs. Alabama-Huntsville [01-15-15]
 Blocks _____ 5, twice, last vs. Kansas [02-11-17]
 Field Goals _____ 7 vs. Minnesota [11-28-14]
 3-Point Field Goals _____ 1, 6x., last vs. West Virginia [01-29-17]
 Free Throws _____ 7 vs. Minnesota [11-28-14]
 Minutes _____ 35 vs. Minnesota [11-28-14]

40 | JATARIE WHITE

Points _____ 14 at East Carolina [12-20-2015]
 Rebounds _____ 9 vs. Winthrop [12-13-2015]
 FG _____ 5 vs. East Carolina [12-20-2015]
 3FG _____ None
 FT _____ 5 vs. Missouri [01-10-2016]
 Assists _____ 3 vs. Kansas State [03-20-2016]
 Blocks _____ 4 vs. Winthrop [12-13-2015]
 Steals _____ 2 vs. Syracuse [03-22-2015]
 Minutes _____ 22 vs. San Diego State [11-23-2014]

Official Basketball Box Score -- Game Totals -- Final Statistics
Oklahoma City University vs Texas
11/05/17 1:02 P.M. at Austin, TX (Frank Erwin Center)

Oklahoma City University 36

##	Player		Total	3-Ptr	FT-FTA	Rebounds			PF	TP	A	TO	Blk	Stl	Min
			FG-FGA	FG-FGA		Off	Def	Tot							
14	Taylor LaCour	f	3-12	0-0	2-2	6	3	9	5	8	0	6	1	0	32
25	NaShyla Hammons	f	2-7	1-4	0-0	1	6	7	4	5	1	8	0	2	40
40	Brooke Irwin	c	1-5	0-0	0-0	1	2	3	3	2	1	1	1	0	27
05	Daniela Galindo	g	4-15	2-7	2-2	0	5	5	2	12	1	9	1	2	35
23	Payton Taylor	g	1-8	0-3	0-2	1	3	4	0	2	0	1	2	0	24
03	Torie Shanbour		2-4	1-3	0-0	0	2	2	2	5	1	5	0	3	21
11	Stefanie Mitchell		0-3	0-2	0-0	0	0	0	0	0	0	0	0	0	4
21	Claire Gauer		0-0	0-0	0-0	0	0	0	0	0	0	0	0	0	2
24	Alexis Hill		1-1	0-0	0-0	2	0	2	4	2	1	4	0	0	15
Team						2	0	2				3			
Totals			14-55	4-19	4-6	13	21	34	20	36	5	37	5	7	200

1st - FG %: 5-18 27.8% 2nd: 4-14 28.6% 3rd: 1-8 12.5% 4th: 4-15 26.7% Game: 14-55 25.5% Deadball
 3FG %: 3-7 42.9% 0-2 0.0% 0-3 0.0% 1-7 14.3% 4-19 21.1% Rebounds
 FT %: 2-2 100.0% 2-4 50.0% 0-0 0.0% 0-0 0.0% 4-6 66.7% 2

Texas 99

##	Player		Total	3-Ptr	FT-FTA	Rebounds			PF	TP	A	TO	Blk	Stl	Min
			FG-FGA	FG-FGA		Off	Def	Tot							
31	Caron-Goudreau, A.	f	2-3	0-0	0-0	3	2	5	3	4	3	2	1	1	15
40	White, Jatarie	c	8-14	0-0	1-2	5	4	9	3	17	0	2	0	0	23
10	Higgs, Lashann	g	5-13	2-5	2-2	1	2	3	0	14	4	0	0	2	23
11	McCarty, Brooke	g	6-13	3-6	1-2	0	2	2	1	16	3	1	0	5	28
23	Atkins, Ariel	g	3-12	1-6	0-0	3	5	8	2	7	0	3	0	3	26
04	Littleton, Destiny		4-10	3-6	0-0	1	1	2	3	11	1	1	0	1	19
05	Hosey, Jordan		3-6	1-2	2-4	3	1	4	1	9	3	3	0	1	15
14	Aborowa, Olamide		4-6	0-0	1-2	4	2	6	1	9	0	1	3	0	13
30	Caron-Goudreau, K.		0-3	0-2	1-2	3	1	4	0	1	5	1	2	2	24
33	Boothe, Rellah		4-7	2-2	1-2	5	5	10	1	11	2	1	0	1	14
Team						1	3	4							
Totals			39-87	12-29	9-16	29	28	57	15	99	21	15	6	16	200

1st - FG %: 7-21 33.3% 2nd: 12-28 42.9% 3rd: 9-22 40.9% 4th: 11-16 68.8% Game: 39-87 44.8% Deadball
 3FG %: 5-9 55.6% 2-8 25.0% 2-7 28.6% 3-5 60.0% 12-29 41.4% Rebounds
 FT %: 2-2 100.0% 2-4 50.0% 3-6 50.0% 2-4 50.0% 9-16 56.3% 5

Officials: Scott Yarbrough, Chaney Muench, Marc Merritt
 Technical fouls: Oklahoma City University-None. Texas-None.
 Attendance: 1184

Score by periods	1st	2nd	3rd	4th	Total
Oklahoma City University	15	10	2	9	36
Texas	21	28	23	27	99

	In	Off	2nd	Fast	
Points	Paint	T/O	Chance	Break	Bench
OCU	16	7	11	2	7
UT	50	40	24	8	41

Last FG - OCU 4th-00:38, UT 4th-00:23.
 Largest lead - OCU None, UT by 64 4th-01:01.
 OCU led for 00:00. UT led for 39:01. Game was tied for 00:49.

Score tied - 0 times.
 Lead changed - 0 times.



TEXAS BASKETBALL



2017-18 TV/RADIO LINEUP



1 **ALECIA SUTTON**
5-8 So. G
St. Louis, Mo.



4 **DESTINY LITTLETON**
5-9 Fr. G
La Jolla, California



5 **JORDAN HOSEY**
6-1 Jr. F
Pearland, Texas



10 **LASHANN HIGGS**
5-9 Jr. G
Round Rock, Texas



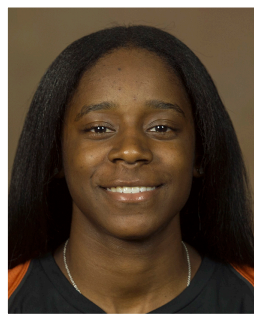
11 **BROOKE McCARTY**
5-4 Sr. G
League City, Texas



12 **JADA UNDERWOOD**
6-0 So. G/F
Mesquite, Texas



14 **OLAMIDE ABOROWA**
6-3 Jr. F
Ondo, Nigeria



15 **CHASITY PATTERSON**
5-5 Fr. G
Houston, Texas



23 **ARIEL ATKINS**
5-11 Sr. G
Duncanville, Texas



30 **KHALÉANN CARON-GOUDREAU**
6-4 Jr. F
Gatineau, Quebec



31 **AUDREY-ANN CARON-GOUDREAU**
6-4 Sr. F
Gatineau, Quebec



33 **RELLAH BOOTHE**
6-3 Fr. F
Ocala, Florida



40 **JATARIE WHITE**
6-4 Jr. F/C
Charlotte, N.C.

PRONUNCIATION GUIDE

Olamide OH-lah-MUH-day
Aborowa ah-bore-oh-uh
Rellah Boothe RHEL-luh
Caron-Goudreau care-RON - good-drow

Khaléann Cally-ann
Lashann Higgs luh-shawn
Alecia Sutton uh-LEE-SEE-uh
Jatarie White JUH-tar-EE