

S W O S U
Y E A R
M M X

U N B R E A K A B L E .



M E D I A G U I D E

We Pledge...



We have joined institutions across 22 conferences and independents in committing to safe, fun, and entertaining sporting experiences on Division II campuses. We have signed the pledge to create and continue family-friendly experiences for everyone.



DIVISION II GAME ENVIRONMENT PLEDGE

NCAA Division II presidents and chancellors affirm that athletics events should reflect the values of higher education and the mission of each institution. Division II emphasizes learning and development in a personal setting. As chancellors and presidents, we are concerned about the uncivil behavior exhibited at college athletics contests and thereby pledge to work together to make respectful, family-friendly events a standard of the Division II experience.

Learn more at www.diicommunity.org

CONTENTS

1 GENERAL INFORMATION

Contents	1
Quick Facts	1
Media Information	1
University	2-3
University President	3
City of Weatherford	4
Athletic Department	5

6 COACHING STAFF

Head Coach	6-7
Assistant Coaches	8-9

10 SEASON OUTLOOK

Season Outlook	10-11
Roster	12-13
Headliners	14-15
Player Biographs	15-20
Newcomers	21
Opponents	22-23

24 REVIEW AND RECORDS

Seson in Review	24-25
Statistics	26-27
All-Conference	28
All-American	29
Records	30-37
Facilities	38-39

MEDIA INFORMATION

The Southwestern Oklahoma State University athletics staff welcomes all media members to this season of Bulldog football. It is our intent that the following information will help you cover SWOSU throughout this season.

Media Credentials

Requests for working media credentials must be made through the SWOSU Sports Information Office. Requests should be submitted at least 24 hours in advance of the game to be covered.

Pre-Game Services

Complete team and individual statistics, scoring summaries, play-by-play and post-game quotes are provided the by the SWOSU Sports Information Office. A pre-game meal is available approximately 30 minutes prior to kickoff, with beverages available throughout the game. This service is provided as a courtesy to working media.

Internet/Courtesy Line

A limited number of telephone lines are available for filing and wireless internet access is also available in Milam Stadium Pressbox. As a service to visiting media and sports information directors, the SWOSU Sports Information Staff will either fax or e-mail an NCAA official box, play-by-play and game recap as requested.



JUSTIN TINDER

Sports Information Director

Justin Tinder joined the SWOSU athletic staff in 2004 and leadstheschool's publicity efforts for its 12 intercollegiate sports. Tinder has worked in sports information field for 21 years including stints at Northwestern Oklahoma, East Central, the Lone Star Conference and the Oklahoma City RedHawks Triple-A baseball team.



JOHN LIDDLE

Radio voice for SWOSU Bulldogs

John Liddle got his start in broadcasting while handling baseball, basketball and football games as a student at the University of North Texas on KNTU-FM and analysis during pre-game, half-time and post-game shows for UNT.

Liddle has previous work experience in the LSC where he was the voice of the Tarleton State Texans football and basketball teams during 2006.

QUICK FACTS

UNIVERSITY FACTS

Location	Weatherford, OK
Founded	1901
Enrollment	5,200
President	Randy Beutler
Athletic Director	Todd Thurman
Associate AD	Kelli Litsch
Assistant AD	Rouben Tourian
Nickname	Bulldogs
Colors	Navy Blue and White
Affiliation	NCAA Division II
Conference	Lone Star (North)
Stadium	Milam Stadium
Capacity	9,000
Athletic Dept. Phone	580-774-3068

MEDIA RELATIONS

Contact:	Justin Tinder
Office Phone	580-774-7162
Cell Phone	580-816-0131
SID Fax	580-774-7144
Press Box Phone	580-774-7001
E-Mail	justin.tinder@swosu.edu
Web Site:	www.swosu.edu/athletics
Mailing Address	SWOSU 100 Campus Drive Weatherford, OK 73096

COACHING STAFF

Head Coach	Dan Cocannouer
Alma Mater	SWOSU'78
SWOSU Record	1-10 (1 year)
Office Phone	580-774-7190
E-mail	dan.cocannouer@swosu.edu
Assistants:	Todd Helton, def. coord. Toby Trotter, defensive backs Dustin Hada, offensive line Anthony Randle, linebackers Bradley Reents, wide receivers

FOOTBALL INFO

2009 Overall Record	1-10
LSC North Record/Finish	1-4, 5th
Starters Returning	10 (6 offense, 4 defense)
Lettermen Returning:	29

FIELDS OF STUDY

GRADUATE MAJORS

Business Administration
Education
Music
Sciences

UNDERGRADUATE MAJORS

Accounting
Art
Athletic Training
Biological Sciences
Chemistry and Physics
Clinical Laboratory Science
Communication and Theatre
Computer Systems
Elementary-Secondary
Education
Elementary Programs
Entrepreneurship
Health Sciences
Industrial/Engineering Technology
Interdisciplinary Studies
Kinesiology
Language and Literature
Mathematics
Management and Marketing
Music
Nursing
Parks and Recreation
Pharmacy
Pre-Pharmacy
Psychology
Secondary Education
Social Sciences
Social Work



Southwestern Oklahoma State University at Weatherford is located 70 miles west of Oklahoma City. The university is authorized to offer curricular in arts and sciences, business, teacher education and health sciences. A branch campus at Sayre is authorized to provide Associate of Science and Associate of Applied Science degrees in both general and specialized areas of study, as well as career and technical education.

The University was established by an act of the Oklahoma Territorial Legislature in 1901 as the Southwestern Normal School, authorized to offer two years of training for public school teachers. The first classes met in 1903. Initially, four years of preparatory work for pre-college students were offered.

In 1920, the preparatory courses were eliminated and two additional years of college work in teacher training were added. The State Legislature approved a change of name to Southwestern State Teachers College. The first baccalaureate degrees were awarded in May 1921. Other changes in name and purposes occurred in 1939 when the institution was designated as Southwestern State College of Diversified Occupations and in 1941, when it became Southwestern Institute of Technology. During this two-year period, the college

added a school of pharmacy, degree work in the arts and sciences, and trade schools.

In 1949, the Oklahoma State Legislature changed the name of the institution to Southwestern State College, and in 1974, to Southwestern Oklahoma State University, without altering its purposes and objectives. On July 1, 1987, Sayre Junior College was merged with Southwestern Oklahoma State University as a branch campus designated Southwestern Oklahoma State University at Sayre.

Southwestern Oklahoma State University at Sayre was founded as Sayre Junior College in 1938 under legislative authorization which permitted public high schools to add a 13th and 14th year of study to their curricula. A total of 19 public schools took this step. In 1949, the college name was changed to Oklahoma Western Junior College; however, the original name was soon adopted again, and in May 1940 the first degrees were conferred. In 1956, Sayre Junior College moved from facilities occupied jointly with Sayre High School to its present location on old Highway 66. The merger with Southwestern Oklahoma State University marked the end of the Oklahoma community college system, since Sayre Junior College was the only such institution remaining of



SWOSU offers a scenic campus, a career-based learning environment and the opportunity to meet new friends from all parts of the country and the world.



the original nineteen.

The Sayre campus is located 60 miles west of the Weatherford campus on Interstate 40. It serves western Oklahoma and the Texas panhandle within a 60 mile radius of Sayre. It offers open admission to high school graduates as well as to students who do not hold a

high school diploma.

Southwestern Oklahoma State University offers five advanced degrees. The Master of Education degree was inaugurated in 1969. (The Master of Teaching Degree was offered during the period 1953-1969.) Graduate programs leading to the following degrees

have been added since 1969: Master of Business Administration, 1977; Master of Music, 1981; a professional doctorate, the Doctor of Pharmacy (PharmD), 1998; and a Master of Science in the School Psychology 2005.

Southwestern Oklahoma State University, the focus is you.



RANDY BEUTLER

University President

Southwestern Oklahoma State University graduate Randy Beutler of Elk City was named president of Southwestern Oklahoma State University on Feb. 1, 2010. Beutler, who previously served as vice president for public policy and leadership development at SWOSU, becomes the school's 17th president

Beutler, who heads up the successful President's Leadership Class program at SWOSU, was born and raised on a ranch north of Elk City. He graduated from Canute High School in 1979. Beutler earned a Bachelor of Arts in Education degree from SWOSU in 1983, graduating Cum Laude with a social science major/minor. He completed his Master of Education degree at SWOSU in 2003.

Beutler taught social science at Washita Heights Public Schools and Weatherford High School after graduating from SWOSU. He was named Weatherford Public Schools "Teacher of the Year" in both 1987 and 1990.

In 1992, Beutler decided to run for the District 60 seat in the Oklahoma House of Representatives. He was reelected three times without opposition and served until 2000. Beutler represented the counties of Roger Mills, Beckham, Greer and Harmon. He eventually became the Majority Whip of the House and was on the leadership team of both Speakers Glen Johnson and Loyd Benson.

In 2003, Beutler was appointed by Governor Brad Henry as his legislative liaison to the Oklahoma House of Representatives. In this capacity, he worked closely with all members of the Legislature. He was promoted to director of legislative relations, which elevated him to a senior staff member of Governor Henry's administration. In addition to his duties with Governor Henry, Beutler served as an adjunct professor of history at SWOSU.

When SWOSU President John Hays hired Beutler to work at the university in 2006, he assisted with external affairs, legislative matters, grant development and development of external funds.

Beutler serves on the Quartz Mountain Arts & Conference Center Board of Directors and Oklahoma Higher Education Chancellor Glen Johnson's Legislative Advisory Network. He is a member of the Weatherford Kiwanis Club and has been active in the Elk City Kiwanis Club. He has served on the Oklahoma Academy of State Goals Board of Directors and the Elk City Old Town Museum Board of Directors.



Weatherford Discover the Adventure!

A thriving business district lines historic US 66 with an unbelievable selection of restaurants, gifts, clothing, jewelry, furniture, antiques and specialty stores to serve residents and visitors.

The West side of Weatherford's stretch of Route 66 wind turbines create energy for homes and businesses and capture the visitors curiosity. While the East side invites visitors to explore man's fascination with flight at the Stafford Air Space Center.

***Weatherford
for the Weekend!***





Kelsi Bond
Women's Basketball



Dan Cocannouer
Football



Dr. Vicki Hatton
Faculty Athletics Rep.



Kelli Litsch
Associate Athletic Director



Tami Loy
Softball



Mark Lumpkin
Men's and Women's Golf



Kris Mahlock
Head Athletic Trainer



Josh Musick
Cross Country/Strength



Pam Nichols
Administrative Assistant



Bo Pagliasotti
Volleyball



Mark Persson
Women's Soccer



Chad Ramirez
Men's and Women's Rodeo



Charlie Schaeff
Men's Basketball



Scott Selby
Baseball



Rouben Tourian
Assistant Athletic Director



TODD THURMAN
Athletics Director

SWOSU called upon its own ultra-successful men's basketball coach to take an even larger responsibility as the school's new director

of athletics in August of 2008.

Thurman gained wide-spread popularity in the community with his exciting style of basketball where the Bulldogs quickly grew into a crowd favorite. Thurman's SWOSU teams qualified for the LSC Postseason Tournament all three years he coached, making the school's first-ever appearance in the league championship game in his final game as coach. He resigned his coaching duties in March of 2009 to concentrate on his duties as athletic director on a full-time basis.

Before coming to SWOSU, Thurman went 188-110 (.631) in 10 seasons which included seven at Wayland Baptist, an NAIA school in Plainview, Texas.

Thurman holds dual degrees in business administration and education from SNU. He also earned a master's degree from Central Oklahoma.

Thurman and his wife Lynne have two sons: Nick, and Alex.

PHONE DIRECTORY

Athletics Department	580-774-3068
Athletics Director Todd Thurman	580-774-3701
Associate AD Kelli Litsch	580-774-3227
Assistant AD Rouben Tourian	580-774-3155
ATHLETIC TRAINING	
Kris Mahlock	580-774-3072
FOOTBALL	
Head Coach Dan Cocannouer	580-774-7190
Assistant Coach Todd Helton	580-774-7034
Assistant Coach Toby Trotter	580-774-3702
Assistant Coach Dustin Hada	580-774-7118
BASEBALL	
Head Coach Scott Selby	580-772-2112
FACULTY ATHLETIC REPRESENTATIVE	
Dr. Vicki Hatton	580-774-3181
MEN'S AND WOMEN'S GOLF	
Head Coach Mark Lumpkin	580-774-7122
WOMEN'S SOCCER	
Head Coach Mark Persson	580-774-7047
MEN'S BASKETBALL	
Head Coach Charlie Schaeff	580-774-3701
WOMEN'S BASKETBALL	
Head Coach Kelsi Bond	580-774-3290
SOFTBALL	
Head Coach Tami Loy	580-774-3226
CROSS COUNTRY/STRENGTH CONDITIONING	
Head Coach Josh Musick	580-774-3212
VOLLEYBALL	
Head Coach Bo Pagliasotti	580-774-7089
RODEO	
Head Coach Chad Ramirez	580-744-3710



DAN COCANNOUER

Head Coach (2nd season)

One of the most prominent and winningest coaches in the Oklahoma high school ranks is attempting to re-create the same level of success at the collegiate level as the leader of the Southwestern Oklahoma State University football program.

Dan Cocannouer is back for his second season with the Bulldogs after previously spending eight years as an ultra-successful head coach at Edmond Santa Fe School.

Cocannouer, 53, compiled a 70-26 record (.729 winning percentage) at the Edmond school where he led the Wolves to the Class 6A finals in 2003 and semifinal appearances in 2001 and 2004.

All total, Cocannouer has coached

more than 31 years on the football field, including the last 25 as a head coach. He is widely respected in the coaching circles and is a past president of the Oklahoma Football Coaches Association. He had previously led high school programs at John Marshall, Chandler, Alva, Pauls Valley and Walters and was an assistant at a number of others.

Cocannouer played at SWOSU after earning all-state honors as a running back at Tuttle High School. He played four seasons under legendary coach Otis Delaporte where the Bulldogs won two conference titles in 1974 and 1977.

Cocannouer was a senior leader on a Bulldog team that won a school record 11 games and finished as the NAIA Na-

BORN: May 31, 1956

HIGH SCHOOL:

Tuttle (Okla.) High School, 1974

COLLEGE EDUCATION:

Southwestern Okla. State Univ.
B.S., HPE, 1978

Southwestern Okla. State Univ.
M.Ed. in Education, 1983

FAMILY:

Married to the former Jeri Lyn
(Burch) of Elk City.

Have two daughters, Janie and Josie

COLLEGE COACHING CAREER

2009: SWOSU, head coach

1978-79: SWOSU, graduate assistant,

HIGH SCHOOL COACHING CAREER

2001-08: Edmond Santa Fe High
School, head football

1999-00: John Marshall High School,
head football and golf

1997-99: Chandler High School,
head football and golf

1994-96: Alva High School,
head football and athletic director

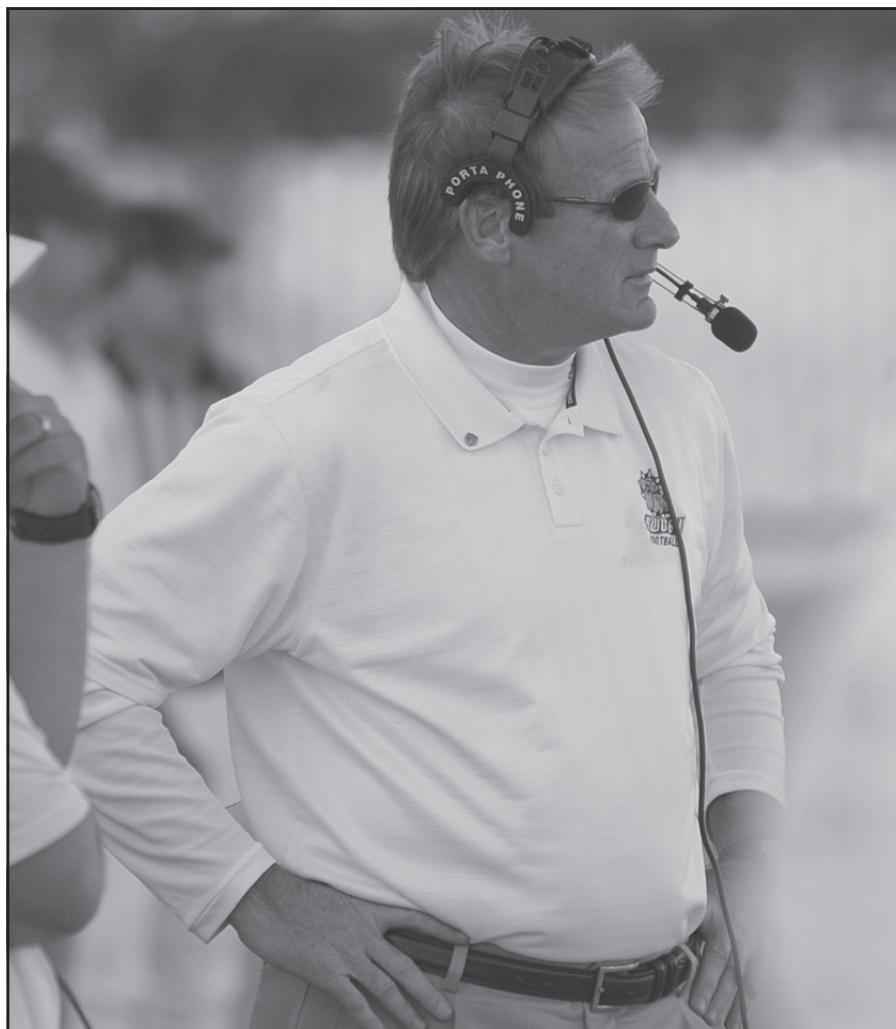
1992-94: Pauls Valley High School,
head football and athletic director

1991-92: Comanche High School
assistant football/off. coordinator

1984-90: Walters High School
head football, track, AD

1979-84: Altus High School/Junior High
assistant football and wrestling

1978: Watonga High School,
student assistant football





The Cocannouer family at their Weatherford home. Pictured from left are daughter Janie, wife Jeri Lynn, Coach Cocannouer, and daughter Josie.

tional Runner-up in 1977 playing in the Apple Bowl at the Seattle Kingdome.

He is the first SWOSU graduate to lead the Bulldog program since Joe Bailey Metcalf did the same from 1952-1957.

“This is a great opportunity for me, and I am both humbled and excited. It has always been a long-term goal of mine to become a college football coach at a program such as SWOSU,” Cocannouer said. “This is where I got my start more than 30 years ago, and it always has been a special place to me.”

Cocannouer, as always, is upbeat, positive and genuinely excited about the prospects of 2010 despite a 1-10 start in his first year with the Bulldogs. If anything last season’s final record has made him more determined than ever to put SWOSU football on a consistent, winning path.

“We feel like our team will be able to go on the field and have a chance at winning every game this season,” Cocannouer said. “Both the players and coaches know each other better now. There is not such a steep a learning curve as was the case last year.

“We played a lot of young guys last year who no doubt will be better football players with the extra seasoning,”

he said. “It’s not just the players; we will be better coaches too. People will see more balance from us offensively. That will be our focus. We will try to run and pass the ball more effectively which in turn will make us a better football team.”

Cocannouer’s success on the field has been recognized a number of times both by statewide newspapers and high school coaches associations. In 2006, he was named as the High School Coach of the Year by the National Football Foundation and College Hall of Fame.

He has also held positions of leadership at a number of advisory boards and organizations. He has served as president of the Oklahoma Football Coaches Association and president of the Oklahoma Coaches Association.

He received his bachelor’s degree in health and physical education from SWOSU in 1978 and earned his master’s degree in education in 1983 also from SWOSU. He later obtained a secondary administrative certificate from Northwestern Oklahoma State in 1996.

His wife, Jeri Lyn, is a counselor at Burcham Elementary School in Weatherford. The couple has two daughters, Janie and Josie who are both attending college at this time.

AWARDS RECEIVED

2007-08

Coaches Association/Oklahoma Secondary Schools Athletic Association Advisory Board

2006

National Football Foundation and College Hall of Fame -- High School Coach Award

2005

All Edmond Coach of the Year, Region 8 Football Coach of the Year

2004

All Edmond Coach of the Year

2003

Region 8 Coach of Year, OCA State Football Coach of the Year, Daily Oklahoman All-Big City Coach of the Year, All-Edmond Coach of the Year

2002

Coached Jim Thorpe All-Star Game

2001

Daily Oklahoman All Big City Coach of the Year, All-Edmond Coach of the Year, Oklahoma Coaches Association President

2000

Coached Jim Thorpe All-Star Game, Metro vs. Suburban OKC Area, Oklahoma Coaches Association Vice President

1999

All City (OKC) Coach of the Year, Oil Bowl Coach, OFBCA Winter Clinic Coordinator

1997-98

Conference Football Coach of Year

1995-97

Oklahoma Coaches Association Region I Board of Control Representative

1996

Coach Enid Shriner All-Star Football Game

1992-96

Oklahoma Football Coaches Association, past president, president, vice-president, secretary/treasurer, 1992-1996

1993

Coach KBLP All-Star Classic

1991

District 3A-4 Coach of the Year

1989

Founded, organized and coached 1st SW Oklahoma Senior Bowl -- Cameron University, Lawton.

1989

All-State Coach

1988

District A-4 Coach of the Year

1987-89

Director of SW Oklahoma Summer Passing League at Lawton

1985

Class 2A-3A All Area Coach of the Year,

1984

District 2A-4 Coach of Year



TODD HELTON

Defensive Coordinator (21st season)

Todd Helton has been the constant link between the Bulldogs past and present, spending his last 21 seasons on the SWOSU football coaching staff. He brings with him a wealth of knowledge and experience and has put together some of the league's top-rated defensive units for more than two decades.

Just two years ago, SWOSU was the statistical best of the 13 football playing schools in the Lone Star Conference, allowing fewer than 310 yards of total offense per game. It marked the first time as a NCAA Division II school that the Bulldogs topped the LSC defensive charts.

During 2008 linebacker Ruzell McCoy was honored as the school's first NCAA Division II All-American with his selection to the *Football Gazette* first-team All-American squad. McCoy was the third All-American that Helton has coached and joins John Wichert and Robbie Newberg who received similar honors in the NAIA years in the early 1990's.

A native of Perryton, Texas, Helton himself was an NAIA All-American for the Bulldogs in the late 1980's under longtime SWOSU coach Paul Sharp. His 197 career tackles and 15 sacks rank him among the school's all time leaders for lineman.

Helton earned his bachelor's and his master's degree from SWOSU. He was recently honored with induction into the Southwestern Oklahoma State University Athletics Hall of Fame on Feb. 6, 2010.

He has two daughters, Kennedie and Ireland Helton.



TOBY TROTTER

Secondary/Recruiting Coordinator (2nd year)

One of Dan Cocannouer's first steps at re-shaping the SWOSU football coaching staff came about when Toby Trotter was added as a full-time assistant coach.

Trotter, 32, returns for his second season as defensive secondary coach and coordinator the Bulldogs recruiting efforts.

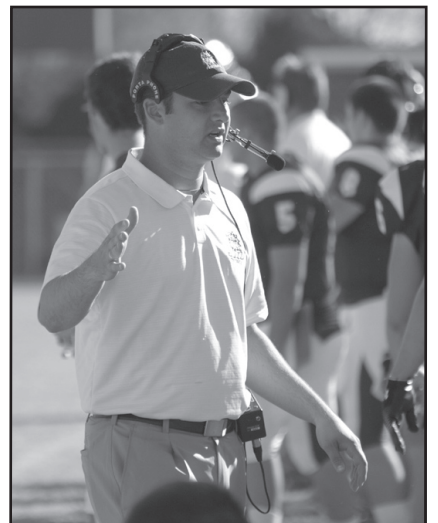
Trotter coached previously at Southern Nazarene University and Louisiana College where he served as an assistant on both sides of the football. At SNU, he served as defensive secondary coach and recruiting coordinator from 2001 to 2003. During that time, SNU's defenses annually finished among the NAIA 's top 15.

At Louisiana College, an NCAA Division III school, Trotter along with head coach Marty Secord helped put together the Wildcats first intercollegiate football team in 2000.

Trotter served as an area representative for the Fellowship of Christian Athletes while being stationed in the Dallas area. He was responsible for generating full budget needs through the development and cultivation of major donor gifts to the ministry.

He also served as a player representative for Sosnick Cobbe Sports Agency where he handled more than two dozen professional baseball clients. He assisted players in the signing of contracts that resulted in negotiated bonuses well over \$7 million. Among his clients were young stars Jay Bruce of the Cincinnati Reds, Cliff Pennington, with the Oakland A's and Jesse Chavez with the Pittsburgh Pirates.

Trotter, a graduate of Westmoore High School, obtained a bachelor's degree from Oklahoma Baptist University in 2000. He and his wife, Cari, have a son, Cade, and a daughter, Ainsley.





DUSTIN HADA

Offensive Line/Strength & Conditioning (2nd season)

Dustin Hada returns for his second season with the Bulldogs as the offensive line coach. He has taken over the additional responsibility as the team's primary strength and conditioning coach.

Hada had previously worked nine seasons as an assistant at Olivet Nazarene (Ill.) University.

Hada, 31, has enjoyed a lengthy connection with SWOSU Coach Dan Cocannouer extending back to Hada's playing days at Alva High School where he was an all-district selection for the Goldbugs in 1994 and 1995.

Hada played collegiately at Mid America Nazarene University, an NAIA school in Olathe, Kan. While at MANU, he was a three-year starter in the offensive line and was awarded the team's most inspirational player. The Pioneers made three consecutive post-season bowl appearances in 1997, 1998 and 1999.

Hada began his coaching career in 2000 at Olivet where he served as the defensive line coach and helped lead the team to a No. 13 ranking in the final NAIA poll. That year the Tigers qualified for the NAIA Playoffs for only the second time in school history. Hada eventually elevated to the position of defensive coordinator and remained in that position for the last six years.

Hada has a bachelor's degree in biology from Mid America Nazarene and later earned his master's degree in teaching from Olivet Nazarene in 2002.

He and his wife Dana, have a young daughter, Madelynn.



ANTHONY RANDLE

Linebackers (1st season)

Anthony Randle became SWOSU's newest graduate assistant on its football coaching staff and will be in charge of the linebacker position.

Randle was a member of back-to-back state championship teams at Weatherford High School under coach Woody Roof. He was an all-state defensive tackle and attend-

ing college at Northeastern A&M Junior before going on to star at Pittsburg State.

At Pittsburg, Randle was a two-time all-conference defensive end. He helped the Gorillas to a 12-1-1 record and a berth in the 1995 NCAA Division II national championship. He remained at the school where he served as a student assistant and coached defensive line, linebackers and secondary for the next three seasons.

Randle's continued his collegiate coaching at Southern Illinois where he was the defensive line coach and recruiting coordinator beginning in 2001. In his final year, he helped the Salukis to the 2003 Gateway Conference Championship and their first appearance in the NCAA I-AA playoffs in 20 years.

His coaching career continued in 2007 at Independence Community College in Kansas where he served as recruiting coordinator and defensive back coach.

Randle and his wife, Barbara, have five children; Kyrie (22), Shelley (20), A.J. (14), Nathan (13), Brevin (10).



BRADLEY REENTS

Receivers (2nd season)

Bradley Reents joined the Southwestern Oklahoma State University football coaching last season and will continue his responsibility with the team's receivers and other aspects of the passing game.

Reents is a native of Humphrey, Neb. where he was a multi-sport star for St. Francis High School. He played football, basketball and ran track. He was a member of state championship teams in both football and basketball at St. Francis.

Reents graduated from Central Oklahoma in 2000 with a bachelor's degree in science. He has been a teacher and a coach at both Yukon and Hobart Public Schools. His wife, Misty, is the middle school principal at Hobart. The couple have three children, two sons, Aaron (14) and Davis (5), and a daughter, Hannah (12).

SWOSU Readies for 2010 Season

Bulldogs add several new players, eye rapid improvement

This edition of Southwestern Oklahoma State University football will have a big reflection on the tireless recruiting efforts done by second-year coach **Dan Cocannouer** and his staff.

A total of 33 high school players were signed and the group, counting walk-ons and transfers, is expected to grow to 50 players before the Bulldogs begin camp this fall. Many of those new faces, despite their youth, will play an integral part on this year's squad.

"This group of players meets all the criteria that we were looking for when we started this process two years ago," Cocannouer said. "They're good character guys and players who really want to be here and work to make our program better."

SWOSU is coming off a 1-10 campaign in 2009 where the Bulldogs lost three of their final four games by a touchdown or less. SWOSU led unbeaten Lone Star Conference North division champion Texas A&M-Commerce into the fourth quarter before losing in the game's final minutes.

The Bulldogs return a number of starters from last year who all should benefit from a year's worth of maturity and experience. Each is expected to be pushed by the crop of newcomers something that did not always happen last year.

OFFENSE

For the first time in years, the Bulldogs will begin a football season without Steve Day as the starting quarterback. A four-year starter, Day passed for 7,482 yards, 692 completions and 46 touchdowns in his record-breaking career. Last fall sophomore **Houston Johnson** was the only player other than Day to take a snap from center. He is expected to battle redshirt freshman **Dustin Stenta** and transfers **Mike VanDeripe**



SWOSU will take the field in 2010 with an eager group ready to prove themselves against some of the toughest football teams in NCAA Division II.

and **Jace Johnson** along with incoming freshman **Josh Dorman** for the starting quarterback job.

In addition to a new signal caller, SWOSU will also feature a new running back as **Isaac Tucker** should take over the featured ball carrying role. Tucker led California's Citrus College in rushing each of the last two seasons and is expected to significantly improve a ground attack that averaged just under 43 yards a game a year ago.

SWOSU returns both of its slot backs in **Bruce Hatton** and **J.R. Hammond**. Hatton is an all-purpose threat that excels at running, catching and returning kicks. Hammond was the team's leading rusher despite missing the final four games of 2009 with injuries.

Newcastle sophomore **Ryan Corbin** is a star in the making at tight end. He caught 22 passes for 147 yards and showed some willingness to take on would-be tacklers down field. He proved

additional value by sharing duties at running back when injuries forced him into an additional role.

The offensive line has its three best players back from a year ago in the return of second-team all-conference guard **Stephen Speer** and returning starters **John Niutei** at the other guard and **Kane Bryen** at tackle. Big junior college transfer **Terrence Humes** is expected to take over at the remaining tackle spot and **David Prieto** moves up on the depth chart and will start at center.

DEFENSE

The SWOSU defense will be interesting to watch develop as a number of new faces have taken over starting roles. Entering fall camp, the situation goes something like this.

Senior **Tim Stephenson** is expected to again be back at a defensive tackle spot where he has been a starter for much of his career. He will be joined by



Jesse Wright (32) and Fred Leak (21) are expected to again be on a number of tackles for the Bulldogs in 2010.



Ryan Corbin should play a large role in SWOSU's success in 2010.

three newcomers that will be playing football at SWOSU for the first time.

Redshirt freshman **Cash Johnson** will be at one end while **Sean Gordon**, a transfer from Golden West College will be the other. In the middle will be **Henry Niutei**, a senior transfer from TCU who played in the Fiesta Bowl against Boise State. Niutei's younger brother, John, plays on the SWOSU offensive line.

Linebacker duties will be shared by returning all-conference pick **Fred Leak** and junior college transfer **Preston Nichols-Margain**. Leak finished last season with 96 tackles and has been one of the team's steadiest players since his arrival three years ago. Nichols-Margain was a two-year starter at Golden West, and is one of three GWC players on this Bulldog team.

SWOSU will most likely use a combination of five defensive backs to counter the emergence of the spread offensive attacks around the Lone Star Conference. Two players – **Shane Scott** and **Jesse Wright** – who were starters a year ago will be counted on again in 2010.

Scott was the team's top tackler last season with an even 100 while Wright won the starting job as a true freshman and finished the year with 66 stops.

Cornerback will feature two new faces with **Mario Long** and **Marvin Tribble** at those two spots. Long was a redshirt last season after transferring from Santa Rosa College. Tribble is a shut-down corner from Independence Community College who had a number of outstanding plays in the spring game.

The last line of defense will most likely be **Jonathan Darby** at strong safety and **Anthony Laws** at free safety. Darby a transfer from California's Grossmont College will make the Bulldogs better in the back while Laws learned the system last season as a redshirt after transferring, along with Long, from Santa Rosa.

Special teams will also be new since the graduation of punter and kicker Chad McIntosh. Sophomore **Colton Rainey** is the only kicker back from last year's team and will be given an opportunity to win the job. Punting remains, literally up in the air, as no clear favorite has emerged.

SCHEDULE

The Bulldogs open the 2010 season at home against Emporia State in a special Thursday night game on Aug. 26. After an open date, the Bulldogs will host West Texas A&M University on Sept. 11. Next are back-to-back road games at Midwestern State (Sept. 18) and East Central (Sept. 25) before returning home on Oct. 2 to play North division newcomer Eastern New Mexico.

A trip to Southeastern Oklahoma State will take place on Oct. 9 before returning for Homecoming festivities against Northeastern State on Oct. 16. The season continues at Texas A&M-Commerce on Oct. 23 before a return for two consecutive home dates against Texas A&M-Kingsville on Oct. 30 and rival Central Oklahoma on Nov. 6.

The final game is at NCAA playoff qualifier Abilene Christian on Nov. 13.

NUMERICAL ROSTER

NO	PLAYER	POS	HT	WT	CL	HOMETOWN (SCHOOL)
3	Bruce Hatton	RB	5-6	155	Jr.	Mesquite, TX
4	Shane Scott	DB	5-10	195	Sr.	Sacramento, CA (American River)
5	Dustin Stenta	QB	5-11	200	R/Fr.	Ft. Worth, TX (Keller Central)
7	Brad Morton	RB	5-9	190	R/Fr.	Edmond, OK (North)
8	Houston Johnson	QB	5-11	190	So.	Duncan, OK
9	J.R. Hammond	RB	5-10	175	Jr.	Edmond, OK (Baldwin Wallace)
10	Colton Rainey	K	6-1	185	So.	Lawton, OK (MacArthur)
12	Jaron Burgess	LB	6-4	230	Sr.	Norman, OK (North)
14	Cody Gragg	WR	6-1	180	Sr.	Waukomis, OK
18	D. C. Walker	RB	5-8	160	R/Fr.	Lawton, OK
19	Anthony Laws	DB	5-10	195	Jr.	Redlands, CA (Santa Rosa JC)
20	Marques Odom	DB	5-8	175	Sr.	Enid, OK
21	Fred Leak	LB	6-0	205	Sr.	Palestine, AR (Independence CC)
28	Caleb Queen	WR	6-0	175	R/Fr.	Grand Prairie, TX
30	Mario Long	DB	5-9	170	Jr.	Chula Vista, CA (Santa Rosa JC)
31	Barry Williams	DB	5-11	160	R/Fr.	Lawton, OK (MacArthur)
32	Jesse Wright	DB	6-3	200	So.	Aledo, TX
34	Chance Tapia	DB	6-3	200	R/Fr.	Lawton, OK
37	Karl Hodge	RB	5-11	170	R/Fr.	Dallas, TX (Life School)
38	Todd Nix	DS	6-1	215	Jr.	Bolivar, MO
42	Josh Zimmer	LB	6-0	210	So.	Washington, OK
44	Tim Stephenson	DE	6-2	255	Sr.	Arlington, TX
48	Larry Wilson	DE	5-11	225	So.	Mustang, OK
52	Colton Dickinson	OL	6-0	240	So.	Tulsa, OK (Union)
53	Chris Lyon	DE	6-3	240	So.	Colleyville, TX
57	David Prieto	OL	6-2	280	Sr.	Fullerton, CA (Mt. San Antonio)
58	Nick Walker	DL	6-2	255	Jr.	Altus, OK
64	Derek Shelton	OL	6-5	240	R/Fr.	Clarendon, TX
65	Stephen Speer	OL	6-1	285	Jr.	Arlington, TX (Arlington HS)
68	Andrew Brooks	OL	6-2	270	R/Fr.	Brazosport, TX
71	John Niutei	OL	6-4	350	Sr.	Eules, TX (Kilgore JC)
73	Chaz Mattocks	OL	6-5	285	R/Fr.	Newalla, OK
75	Kalum Balluch	OL	6-4	270	R/Fr.	Carrollton, TX (Creekview HS)
76	Kane Bryen	OL	6-5	315	So.	Thomas, OK
82	Ryan Hendrickson	WR	6-1	190	So.	Tuttle, OK
86	Timmy Winans	WR	6-0	180	So.	Kingfisher, OK
87	Ross Lane	TE	6-3	235	Jr.	Chandler, OK
89	Ryan Corbin	TE	6-4	230	So.	Newcastle, OK
94	David Barnes	LB	6-0	200	R/Fr.	Lawton, OK (Eisenhower)
96	Antuanya Debose	DL	6-2	220	R/Fr.	Okla. City, OK (Millwood HS)
97	Cash Johnson	DE	6-2	230	R/Fr.	Kingfisher, OK
98	Elisha Davis	DE	6-2	230	So.	Grapevine, TX

ALPHABETICAL

	Brad Avery	LB
	Adam Bailey	LB
75	Kalum Balluch	OL
94	David Barnes	LB
	Lorenzo Barnes	DL
	Dexter Braziel	RB
68	Andrew Brooks	OL
76	Kane Bryen	OL
12	Jaron Burgess	LB
	Mackenzie Cannon	OL
	Drew Carnahan	OL
	Wes Carter	DL
	Luke Chalfant	LB
	Bradley Chapman	OL
	Eric Charles	WR
	Anthony Chiofalo	LB
	Alex Cochran	WR
89	Ryan Corbin	TE
	Carlos Cuevas	OL
	Jonathan Darby	DB
	Bryce Davidson	OL
	Dakota Davis	WR
	Elisha Davis	DE
	Jordan Davis	WR
	Antuanya Debose	DL
52	Colton Dickinson	OL
	Josh Dorman	QB
	Mike Van Deripe	QB
	Brandon Elmore	WR
	Ryan Feller	LB
	Kimes Gilbert	DL
	Sean Gordon	DE
14	Cody Gragg	WR
9	J.R. Hammond	RB
3	Bruce Hatton	RB
	Mitch Hartshorne	LB
82	Ryan Hendrickson	WR
	Cory Hines	WR
37	Karl Hodge	RB
	Terrence Humes	OT
	Taylor Inman	K
	Cash Johnson	DE
8	Houston Johnson	QB
	Jace Johnson	QB
	Kenny Johnson	K
	Drake Keys	DB
87	Ross Lane	TE

NUMERICAL ROSTER

Brad Avery	LB	6-1	200	Fr.	Madill, OK
Lorenzo Barnes	DL	6-1	315	Fr.	Burkburnett, TX
Dexter Braziel	RB	6-0	200	Fr.	Fort Worth, TX (Haltom HS)
Mackenzie Cannon	OL	6-4	290	Fr.	Arlington, TX (Lamar HS)
Drew Carnahan	OL	6-3	270	Fr.	Southlake, TX (Carroll HS)
Wes Carter	DL	6-5	220	Fr.	Arlington, TX (Lamar HS)
Luke Chalfant	LB	6-0	220	Fr.	Hinton, OK
Bradley Chapman	OL	6-3	280	Fr.	Corinth, TX (Lake Dallas HS)
Eric Charles	WR	5-10	175	Jr.	Highland, CA
Anthony Chiofalo	LB	6-0	205	Fr.	Haslet, TX
Alex Cochran	WR	5-10	170	Fr.	Broken Arrow, OK
Carlos Cuevas	OL	6-3	290	Jr.	Plano, TX (Utah State)
Jonathan Darby	DB	6-0	200	Jr.	San Diego, CA (Grossmont CC)
Bryce Davidson	OL	6-4	260	Fr.	Waxahachie, TX
Dakota Davis	WR	6-5	185	Fr.	Broken Arrow, OK
Jordan Davis	WR	5-10	175	Fr.	Pantego, TX (Arlington HS)
Josh Dorman	QB	6-1	180	Fr.	N.Richland Hills, TX (Birdville)
Mike Van Deripe	QB	6-0	180	Jr.	Cypress, CA
Brandon Elmore	WR	5-11	180	So.	Blanchard, OK
Ryan Feller	LB	6-1	215	Fr.	Altus, OK
Kimes Gilbert	DL	6-1	225	Fr.	Okla. City, OK (Southmoore)
Sean Gordon	DE	6-2	225	Jr.	Laguna Hills, CA
Mitch Hartshorne	LB	5-11	220	Fr.	Allen, TX
Cory Hines	WR	6-0	185	Fr.	N. Richland Hills, TX (Birdville)
Terrence Humes	OT	6-5	320	Jr.	San Bernardino, CA
Taylor Inman	K	5-10	160	Fr.	Claremore, OK (Sequoyah HS)
Jace Johnson	QB	6-3	190	So.	Bethel, OK
Kenny Johnson	K	5-10	170	Fr.	Weatherford, OK
Drake Keys	DB	6-0	190	Fr.	Skiatook, OK
Paul Lopez	QB	6-3	210	Fr.	Palm Dester, CA (St. Paul HS)
Preston Margain	LB	5-11	205	Jr.	Fountain Valley, CA
Trevion Miller	RB	6-2	190	Fr.	Dallas, TX (Carter HS)
Chase Neumann	DL	6-0	280	Fr.	Dewey, OK
Cliff Nyagesiba	DB	5-10	190	Fr.	Arlington, TX (Lamar HS)
Gordon Perry	WR	5-10	175	So.	Weatherford, OK
Marcus Polanco	DB	6-0	175	Fr.	N. Richland Hills, TX
Kevin Roberts	WR	5-10	170	Fr.	Madill, OK
Kyler Skinner	WR	6-0	180	Fr.	Weatherford, OK
Taylor Soles	LB	6-0	205	Fr.	Littlefield, TX
Ryan Stringer	QB	5-11	180	Fr.	Clinton, OK
Marvin Tribble	CB	5-10	185	Jr.	Tamarac, FL
Isaac Tucker	RB	5-10	195	Jr.	Covina, CA
Bronze Withem	LB	5-11	225	Jr.	Laverne, CA

ALPHABETICAL

19	Anthony Laws	DB
21	Fred Leak	LB
30	Mario Long	DB
	Paul Lopez	QB
53	Chris Lyon	DE
	Preston Margain	LB
73	Chaz Mattocks	OL
	Trevion Miller	RB
7	Brad Morton	RB
71	John Niutei	OL
	Chase Neumann	DL
38	Todd Nix	DS
	Cliff Nyagesiba	DB
20	Marques Odom	DB
	Gordon Perry	WR
57	David Prieto	OL
	Marcus Polanco	DB
28	Caleb Queen	DB
10	Colton Rainey	K
	Kevin Roberts	WR
4	Shane Scott	DB
64	Derek Shelton	OL
	Kyler Skinner	WR
	Taylor Soles	LB
65	Stephen Speer	OL
	Ryan Stringer	QB
5	Dustin Stenta	QB
44	Tim Stephenson	DL
34	Chance Tapia	DB
	Marvin Tribble	CB
	Isaac Tucker	RB
18	D. C. Walker	RB
58	Nick Walker	DE
31	Barry Williams	DB
86	Timmy Winans	WR
48	Larry Wilson	LB
	Bronze Withem	LB
32	Jesse Wright	DB
42	Josh Zimmer	LB



RYAN CORBIN

TE, 6-4, 230, So., Newcastle, OK

One of team's most promising players returns after outstanding freshman campaign that saw him take over starting duties at tight end during the season's final four games...Finished the year with 22 catches for 147 yards... Best game was against rival Central Oklahoma when he caught five passes for 51 yards and carried the ball six times for 22 yards as a running back...Followed UCO game with a seven-catch, 41-yard receiving effort in 14-13 win against East Central...Had season's longest run of 41 yards in game against Oklahoma Panhandle State.

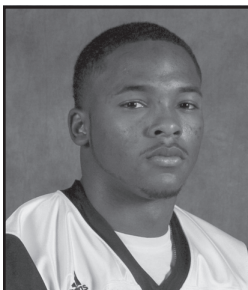
High School: Multi-sport star at Newcastle High School in both football and basketball...Caught 39 passes for 409 yards for the Racers as a senior..Selected to the 2009 Oklahoma All-State Basketball Game.

Personal: Born Feb. 14, 1991...Parents are Sandra and Robert Corbin...Has two brothers, Jeremy and Jason.



CORBIN'S CAREER NUMBERS

YEAR	GP	NO	RECEIVING				ATT	GAIN	RUSHING				
			YDS	AVG	TD	LN			LOSS	NET	AVG	TD	LN
2009	10	22	147	6.7	0	17	10	44	0	44	4.4	0	41



BRUCE HATTON

RB, 5-6, 155, Jr., Mesquite, TX

Big-play threat who should again be one of the offensive leaders for the Bulldogs...Led team last season with 1,008 all-purpose yards...Returned 21 kickoffs for a school record 501 yards in 2009....Caught a 33-yard touchdown pass against Central Oklahoma...Scored three touchdowns against Oklahoma Panhandle State.

As a freshman played in 11 games and finished with 268 all-purpose yards in 2008...Rushed for 32 yards, caught passes for 33 more and returned punts and kickoffs for another 203.

High School: Rushed for over 500 yards and caught passes for 180 more yards during his senior year at John Horn High School...Two-time first-team, all-district selection for Coach Don Payne...Participated in the 2004 Junior Olympics.

Personal: Born July 25, 1990...Parents are Debra and Bruce Hatton...Has an older sister, Alisha...Majoring in health science...Favorite athlete is Barry Sanders.



HATTON'S CAREER NUMBERS

YEAR	GP	ATT	GAIN	LOSS	NET	AVG	TD	LN	RECEIVING				
									NO.	YDS	AVG	TD	LN
2008	11	6	39	7	32	5.3	0	35	5	33	6.6	0	11
2009	11	36	129	22	107	3.0	3	36	43	332	7.7	2	38
TOTAL	22	42	168	29	139	3.3	3	36	48	365	7.6	2	38

YEAR	NO.	YDS	AVG	TD	LN	PUNT RETURNS				
						NO.	YDS	AVG	TD	LN
2008	12	90	7.5	0	21	9	68	7.6	0	23
2009	9	68	7.6	0	23	21	158	7.5	0	23
TOTAL	21	158	7.5	0	23	27	614	22.7	0	47

YEAR	NO.	YDS	AVG	TD	LN	KICKOFF RETURNS				
						NO.	YDS	AVG	TD	LN
2008	6	113	18.8	0	32	21	501	23.9	0	47
2009	21	501	23.9	0	47	27	614	22.7	0	47
TOTAL	27	614	22.7	0	47					



FRED LEAK

LB, 6-0, 205, Sr. Palestine, AR

First-team Lone Star Conference North Division selection in 2009.. Finished with 96 tackles and one interception...Had 10 or more tackles five times with his best efforts coming against Oklahoma Panhandle State and Central Oklahoma when he twice had 13.

As a sophomore...Finished third on the team with 64 tackles, including 6.5 tackles behind the line of scrimmage...Twice led the team in tackles with 13 against Tarleton State and 12 against Panhandle State.

High School/JC: Spent 2006 season at Independence Community College...Originally signed with the University of Arkansas-Monticello...Two-time, all-state selection at Palestine Wheatley High school played quarterback and linebacker...Had 79 tackles and 12 interceptions as a senior.

Personal: Born June 23, 1986...Parents are Fred and Schnell Leak...Has five brothers and sisters, Tamicka, Antonio, Phyllis, Shaquita and Deandra...Majoring in exercise science...Favorite athlete is Sean Taylor...Enjoys fishing.



FRED LEAK'S CAREER NUMBERS

YEAR	GP	SOLO	AST	TOTAL	LOSS	SACKS	INT	PBU	REC
2008	11	42	22	64	6.5-16	0-0	0	3	0
2009	11	57	39	96	5.5-18	1-5	1-3	3	0
TOTAL	22	99	61	160	12-34	1-5	1-3	3	0



SHANE SCOTT

DB, 5-10, 195, Sr., Sacramento, CA

Team's leading tackler last year with 100 stops in 11 games...Had 10 or more tackles five different times last season...Best game was a 15 tackle effort against Central Oklahoma...Had 14 stops in season finale against Texas A&M-Commerce...Limited to just two games in 2008 when he injured his shoulder...Received a medical hardship.

he injured his shoulder...Received a medical hardship.

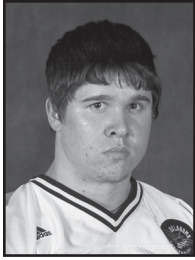
High School/JC: Had 64 tackles and eight interceptions at American River where he was named to the all-conference and all-state first teams...All-conference selection at Del Campo High School where he had 11 interceptions and 84 tackles... Also caught 42 passes for 993 yards and 16 touchdowns as a receiver.

Personal: Born April 6, 1987...Parent is Rick and Kim Scott...Majoring in exercise science...Hopes to own his own gym someday...Favorite athlete is Jerry Rice



SHANE SCOTT'S CAREER NUMBERS

YEAR	GP	SOLO	AST	TOTAL	LOSS	SACKS	INT	PBU	REC
2008	2	1	2	3	0-0	0	0	0	0
2009	11	61	39	100	2.5-12	0	0	3	0
TOTAL	13	62	41	103	2.5-12	0	0	3	0



**ADAM
BAILEY**

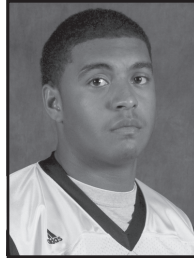
LB, 6-0, 225, So.
Brazosport, TX

Second-year line-backer who saw action in nine games... Finished with 12 tackles primarily on special

teams...Redshirt his first year at SWOSU.

High School: All-district first team selection at Brazosport High School.

Personal: Born Nov. 2, 1989...Parents are Tom and Susan Bailey...Has a younger brother, Kent...Enjoys playing the guitar.



**DAVID
BARNES**

LB, 6-0, 200, R/Fr.
Lawton, Okla.

Linebacker prospect who should help the Bulldogs in the future.

High School: Chosen to play in the

Southwest Senior Bowl after leading team in tackles at Lawton Eisenhower High School... Member of the National Honor Society.

Personal: Born Aug. 26, 1990...Parents are Geru-San and Blanca Martin...Has three brothers, Geru-San, Martin and Isayah.



**ANDREW
BROOKS**

OL, 6-2, 270, R/Fr.
Brazosport, TX

Second generation Bulldog whose father, Randy, played for SWOSU in the late 1970's.

High School: Two-year all-district selection...Captain at Brazosport High School.

Personal: Born June 7, 1990...Parents are Randy and Amy Brooks..



**KANE
BRYEN**

OL, 6-5, 315, So.
Thomas, Okla.

Returning starter at right tackle...Has good work habits in the weight room.

High School: Selected to the K101 Classic Bowl and was a *Weatherford Daily News* All-Area selection.

Personal: Born Jan. 2, 1990...Parents are Larry and Sandy Bryen...Has a younger brother, Cody, and a younger sister, Kylee.



**JARON
BURGESS**

LB, 6-4, 230, Sr.
Norman, OK

Two-year starter who has ranked among the team's top tacklers in each of the last two seasons...Has 150 tackles

and three fumble recoveries in that span... First-team LSC North Selection in 2008 when he had a career best 81 tackles in 11 starts... Began college career as a tight end.

High School: Played at Norman North.

Personal: Born Oct. 28, 1987...Parent is Jill Burgess...Majoring in education..



**LUKE
CHALFANT**

LB, 6-0, 220, R/Fr.
Hinton, OK

Joined team in Spring of 2010 after attending school in the Fall of 2009.

High School: Finished among Class 2A's top tacklers in 2008 with 126...Also rushed for 800 yards and 10 touchdowns...All-state baseball selection and was the salutatorian of his class.

Personal: Born May 21, 1990...Parents are Tim and Belinda Chalfant...Has an older sister, Sarah...Majoring in pre-pharmacy.



**ERIC
CHARLES**

WR, 5-10, 175, Jr.
Highland, CA

Led San Bernardino Community College team with 42 receptions for 372 yards and had 535 yards in 2008...

Named Mountain Conference Special teams Player-of-the-Week after totaling 173 all-purpose yards and scoring one touchdown.

High School: Graduate of San Geronio High School where he was a first-team, all-county selection...Caught 62 passes for 914 yards and 14 TDs as a senior.

Personal: Born Aug. 25, 1989...Parents are Jeanette and Freeman Charles...Has two brothers and a sister...Majoring in psychology...Favorite athlete is Kobe Bryant...Enjoys playing baseball.



**JONATHAN
DARBY**

DB, 6-0, 200, Jr.
San Diego, CA

Finished 2009 as the second-leading tackler for Grossmount with 57 stops with four interceptions and a fumble recovery...Team finished with an 8-3 record

and participated in the U.S. Bank Beach Bowl where they beat El Camino, 27-22.

High School: Graduate of West Hills High School in San Diego.

Personal: Received the Weatherford Community Scholarship...Maintains a 4.0 GPA in education.



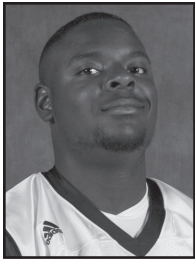
**ELISHA
DAVIS**

DE, 6-2, 230, So.
Grapevine, TX

Developing defensive line prospect who played in four games last season as a freshman.

High School: Played at Grapevine High School where he was a first-team, all-district selection.

Personal: Born Aug. 16, 1991...Parents are Trey and Julie Davis...Has an older sister, Eryn, and two brothers, Ethan and Esiah.



ANTUANYA DEBOSE

DL, 6-2, 220, R/Fr.
Oklahoma City, OK

Athletic freshman who will be tried at defensive end position in the initial stages of his college career.

High School: Played in the Jim Thorpe All-Star Football Game...Member of the 2006 Class 2A state championship team at Millwood High School...Played on the two-time defending Class 3A state basketball champion team...Graduated with a 3.8 GPA...Played for Coach Tony Henry

Personal: Born June 28, 1991...Parents are Angela and Santoi DeBose...Youngest of three children...Majoring in political science...Favorite athlete is Barry Sanders...Enjoys reading.



COLTON DICKINSON

6-0, 240, So.
Tulsa, OK (Union)

Offensive line prospect who will be given opportunity to win the deep snapper job.

High School: Played on Class 6A state championship team at Tulsa Union High School...Played for Coach Kirk Fredrich.

Personal: Born Oct. 15, 1990...Parents are Barry and Tanya Dickinson...Has a younger sister, Brylee...Majoring in health science.



CODY GRAGG

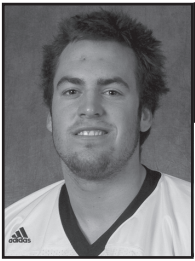
WR, 6-1, 180, Sr.
Waukomis, OK

Veteran athlete who has been an important part of the program for the last three years...

Switched to wide receiver after spending two years at quarterback...Caught 17 passes for 164 yards.

High School: All-star quarterback at Waukomis High School.

Personal: Born Oct. 21, 1987...Parents are Todd and Amy Gragg...Has a younger sister, Audrey...Majoring in technology.



SEAN GORDON

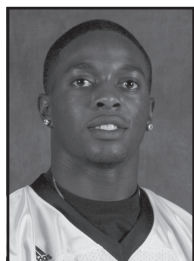
DE, 6-2, 225, Jr.
Laguna Hills, CA

Two-year starting defensive end at Golden West where he finished the year with 28 tackles and three and one-half sacks...

Squad won the last seven games of and finished as Rooster Bowl Champions

High School: Graduate of Laguna Hills High School where he was the team's most valuable player...Father, Scott, played in the NFL with the Houston Oilers.

Personal: Born: Sept. 2, 1989...Parents are Scott and Sara Gordon...Has two sisters, Heather and Paige.



J.R. HAMMOND

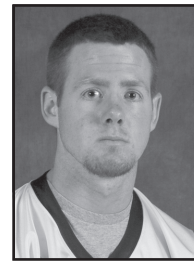
RB, 5-10, 175, Jr.
Edmond, OK

Team's leading rusher in 2009 with 150 yards on 52 carries...Rushed for season-best 98 yards, including a

38-yard TD run in opener against Emporia State.

High School: Rushed for over 1,000 yards during his senior season at Edmond Santa Fe under Dan Cocannouer.

Personal: Born Sept. 23, 1988 in Tacoma, Washington...Parents are Dominic and Lisa Hammond...Has a younger sister, Dominique...Majoring in management.



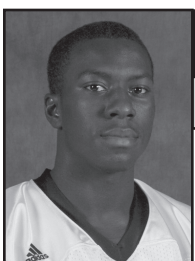
RYAN HENDRICKSON

LB, 6-4, 230, Sr.
Norman, OK

Played in six games and caught five passes for 55 yards as a true freshman.

High School: Selected to the *Oklahoman's* Little All-City Team...Class 3A all-star...Selected as the District 3A-1 Defensive Back-of-the-Year...Played for Coach Phillip Koons.

Personal: Born June 27, 1989...Parents are Steve and Sherry Hendrickson...Has two brothers, Stephen and Garrett...Favorite athlete is Wes Welker.



KARL HODGE

RB, 5-11, 170, R/Fr.
Dallas, TX

Freshman who has a chance to step in and take significant playing time at running back position.

High School: Voted as the team's most valuable player and school athlete-of-the-year at Life School of Oak Cliff...First-team, District 15-2A selection...Advanced to the regional finals in track.

Personal: Born Dec. 13, 1990...Parents are Lorna and John Williams and Karl Hodge, Sr...Has two sisters, Diamond and Mariah...Majoring in computer science...Favorite athlete is Reggie Bush.



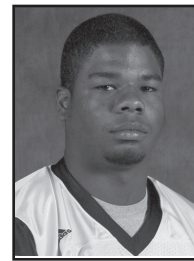
TERRENCE HUMES

OT, 6-5, 320, Jr.
San Bernardino, CA

Started 20 consecutive games for San Bernardino Valley College at right tackle.

High School: Graduate of San Bernardino High school where he was a two-time all league selection and selected as the team's lineman of the year in 2005.

Personal: Born May 6, 1988...Parent is Stephanie Smith...has one sister, Dawana...Majoring in athletic training...Favorite athlete is Orlando Pace.



CASH JOHNSON

DE, 6-2, 230, R/Fr.
Kingfisher, OK

Redshirt last fall who will get long look at earning playing time this season.

High School: Played in the Oklahoma All-State Football Game...Played for Coach Jeff Myers at Kingfisher High School...Two-time state wrestling champion.

Personal: Born May 7, 1990...Parents are Dee Star and Charles Johnson...Has two sisters, Raven and Trish, and an older brother, Will...Hopes to be a coach or a teacher after graduation.



HOUSTON JOHNSON

QB, 5-11, 190, So.
Duncan, OK

Run-pass threat at quarterback who will give the Bulldogs a number of options in the future.

High School: Threw for 917 yards and eight touchdowns and rushed for another 584 yards at Duncan High School...Chosen to the Oklahoma Coaches Association all-state team...Played in the All-State Football Game...Played for Coach Jim Holloway.

Personal: Born May 19, 1990...Parents are Jonelle and Jay Johnson...Majoring in business...Used to team rope as a high school rodeo star...Favorite athlete is LeBron James.



JACE JOHNSON

QB, 6-3, 190, So.
Bethel, OK

Transfer who spent his first year at East Central University.

High School: Threw for a state record eight touchdowns in a single game for Bethel High School...Selected as the District's Quarterback-of-the-Year and holder of eight school passing records...Member of the National Honor Society.

Personal: Born Oct. 20, 1989...Parents are Jerry and Melinda Johnson...Dad is coach of the Bethel Girls High School basketball team and has led the Wildcats to numerous state titles...Has an older sister, Menda...Majoring in kinesiology...Favorite athlete is Pete Maravich.



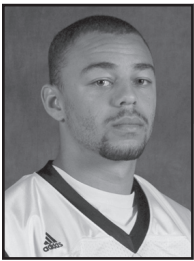
ROSS LANE

TE, 6-3, 235, Jr.
Chandler, OK

Made progress through hard work and determination in spring ball...Good hands for a receiver and physical enough to block down lineman.

High School: Member of the 2005 Class 2A state champion team at Chandler...All-state selection in 2006 as a senior.

Personal: Born Dec. 22, 1988...Parents are Neal and Carla Lane...Has two sisters, Katie and Allison, and a brother, Garrett...Majoring in pre-pharmacy...Once lived in Alaska as a youth...Favorite athlete is Jason Witten.



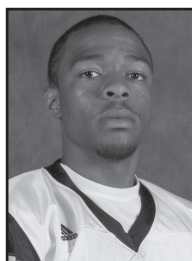
ANTHONY LAWS

DB, 5-10, 195, Jr.
Redlands, CA

Junior college transfer poised to see action in 2010 after playing two seasons at Santa Rosa Community College in California.

High School/JC: Starting defensive back at Santa Rosa where he finished the year with 25 tackles and five passes broken up...Graduate of Redlands High School.

Personal: Born Dec. 1, 1988...Parent is Sadra McGee...Has five brothers and sisters, Shawdrea, Tarreyl, A.J., Kendrick and Tommy...Majoring in psychology.



MARI LONG

DB, 5-9, 170, Jr.
Chula Vista, CA

Junior college transfer looking to earn playing time in defensive backfield.

High School/JC: Junior college teammate of Anthony Laws at Santa Rosa Community...Team finished 7-3 and won the Premiere Bank Bowl over rival Sierra College...Finished the year with 15 tackles.

Personal: Born Aug. 13, 1988...Parents are John and Cynthia Long...Has two older brothers and a sister...Majoring in communications...Wants to be a sports broadcaster.



CHRIS LYON

DE, 6-3, 240, So.
Colleyville, Okla.

Promising player who has bounced back from a knee injury that slowed early progress.

High School: All-state selection at Colleyville Heritage High School...District 5-5A first-team selection...Once played in Texas Stadium in front of an estimated crowd of 50,000.

Personal: Born March 5, 1990...Parent is Randy and Kathy Lyon...Has an older sister, Jenny...Majoring in marketing.



CHAZ MATTOCKS

OL, 6-5, 285, R/Fr.
Newalla, OK

Freshman offensive lineman who can play at a number of spots for the Bulldogs in the future.

High School: Valedictorian of Newalla High School...All-district selection and chosen to the *Oklahoman's* Little All-City Team.

Personal: Born June 12, 1991...Parents are Mike and Larenda Mattocks...Has an older sister, Kylie...Majoring in athletic training...Wants to become a fire fighter...Favorite athlete is Jim Thorpe.



PRESTON NICHOLS-MARGAIN

LB, 5-11, 205, Jr.
Fountain Valley, CA

Starting linebacker for Golden West Community College where he finished second on the

team with 53 tackles, five of which were for losses totaling 14 yards...One of three former GWC Rustlers on this year's SWOSU team.

High School: Graduate of Fountain Valley High School where he was a second-team, all-league selection...Listed on the Principal's Honor Roll four consecutive years.

Personal: Born Aug. 19, 1990...Parents are Angie and Tony Margain...Has a younger brother, Paige and a younger brother, Hunter...Majoring in physical therapy.



JOHN NIUTEI

OL, 6-4, 350, Sr.
Eules, TX

Senior returning starter who is expected to be among the team's leaders in the offensive line.

High School/JC: Played for J.J. Eckert at Kilgore Junior College where he was a two-year starter for the Rangers...Played at Eules Trinity High School and was a second-team, all-district selection

Personal: Born Aug. 2, 1989...Parents are Vini and Fehia Niutei...Has two brothers, Maafu and Henry...Majoring in pre-pharmacy...Favorite athlete is Troy Polamalu...Enjoys church activities.



TODD NIX

DS, 6-1, 215, Jr.
Bolivar, MO

Team's starting deep snapper in 2009...Expected to again hold down position as a junior.

High School: Attended Bolivar High School in Missouri...Graduated Summa Cum Laude of his senior class.

Personal: Born: May 26, 1989...Parents are Anny and Randy Klegin...Majoring in pre-pharmacy...Enjoys listening to music and sports...Favorite athlete is Derek Jeter.



MARQUES ODOM

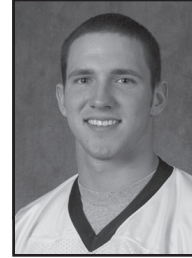
DB, 5-8, 175, Sr.
Enid, OK

Played in 10 games last season and had 22 tackles...As a sophomore, played in nine games and ended the

year with 13 tackles...Played in seven games and recorded one tackle as a freshman.

High School: Participated in track, basketball and football at Enid...All-district selection as a senior...Honorable mention all-state in football...Played for Coach Tom Cobble.

Personal: Born Jan 8, 1988...Parents are Yvonne and Lamar Odom...Majoring in parks and recreation...Favorite athlete is Brian Dawkins...Wants to be a coach after graduation.



GORDON PERRY

WR, 5-10, 175, So.
Weatherford, OK

Hometown product who returns to Weatherford after originally playing one semester of baseball at Redlands

Junior College.

High School: All-state football and baseball player...Caught 50 passes for 850 yards and eight touchdowns as a senior in 2008... Played for Coach Woody Roof...Class 4A all-state selection in baseball...Team participated in state tournament in 2007 and 2008.

Personal: Born Aug. 18, 1990...Parents are Billy and Stacy Runnels...Majoring in engineering technology...Enjoys fishing and hunting...Favorite athlete is Brett Favre.



DAVID PRIETO

OL, 6-2, 280, Sr.
Fullerton, CA

Will be given a long look at winning a spot along the offensive line once fall drills begin...

High School/JC:

Played at Mt. San Antonio College where he was named the team's offensive lineman-of-the-year in 2005...Two-time Orange County All-star at Fullerton High School.

Personal: Born May 8, 1986...Parents are Mario and Elizabeth Prieto...Has two brothers, Alex and Alan...Majoring in health sciences...Favorite athlete is Larry Allen...Wants to be a coach after graduation.



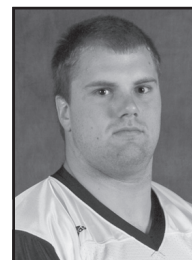
COLTON RAINEY

K, 6-1, 185, So.
Lawton, OK (MacArthur)

Sophomore who is expected to be among those battling for kicking chores.

High School: Made perfect on 64 extra point attempts and was six-of-10 on field goals at Lawton MacArthur High School...Coached by Ernie Manning...Kicked the winning field goal to allow Highlanders to claim Lawton City Championship.

Personal: Born March 5, 1990...Parents are Patty and Gary Rainey...Has two brothers, Logan and Tanner...Favorite athlete is Josh Hamilton.



STEPHEN SPEER

OL, 6-1, 285, Jr.
Arlington, TX

Second-team all-conference selection a year ago...Hard worker who should take over a leadership role along

the offensive line.

High School: Football and wrestling star at Arlington High School...Graduated in the top 10% of his class and received a number of academic scholarships.

Personal: Born Nov. 2, 1988...Parents are Frank and Elizabeth Speer...Majoring in accounting.



TIM STEPHENSON

DE, 6-2, 255, Sr.
Arlington, TX

Had best season yet with 31 tackles in 10 games last season...Recorded two sacks and four tackles for losses...

Played in 10 games and ended the year with 15 tackles as a sophomore...Ended his freshman year with eight tackles and one quarterback sack.

High School: All-district defensive lineman and linebacker at Arlington High.

Personal: Born Nov. 17, 1988...Parents are Charles and Lan Stephenson...Has two older brothers, Bobby and Greg, and an older sister, Jeannie.



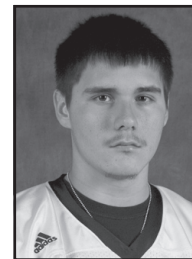
DUSTIN STENTA

QB, 5-11, 200, R/Fr.
Keller, TX

Multi-talented freshman who will add depth at quarterback position.

High School: Threw for more than 4,400 yards and 46 touchdowns in his two years as a starter at Keller Central High School...Played for Coach Bart Helsley.

Personal: Born: July 30, 1990...Parents are Christine and Paul Stenta...Has three sisters, Amy, Andrea and Alissa...Majoring in business management...Favorite athlete is LeBron James.



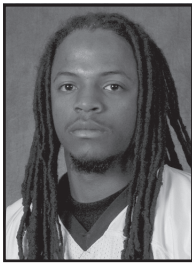
CHANCE TAPIA

DB, 6-3, 200, R/Fr.
Lawton, OK

Defensive back who is looking to contribute after spending last season as a redshirt.

High School: All-district selection at Lawton High School where he served as team captain for Coach Randy Breeze...Ended the season with 49 tackles and four interceptions...Listed on the school's academic honor roll.

Personal: Born March 6, 1991...Parents are Byron Tapia and Katie Domebo...Has one sister, Celeste...Majoring in criminal justice...Favorite athlete is Hines Ward.



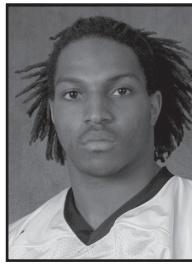
MARVIN TRIBBLE

DB, 5-10, 185, Jr.
Tamarac, FL

Played two years Independence Junior College...Finished two-year career with 60 tackles, five interceptions and 17 pass break ups...Led the Jayhawk Conference in kick return yards averaging 29.8 per return...Blocked two punts and five field goals.

High School: Played at Coral Springs Charter High School for Coach Otis Mounds... Played in a number all-star games following his senior year.

Personal: Born: Oct. 6, 1988...Parent is Joyce Evans...Has a brother, Marcus and a sister, Cizera...Majoring in engineering technology...Favorite athlete is Asantae Samuel.



ISAAC TUCKER

RB, 5-10, 195, Jr.
Covina, CA

Team's leading rusher as both a freshman and sophomore at Citrus College...Rushed for nearly 800 yards during his career, including back-to-back seasons with an identical 395 yards...Played in a California Junior College All-Star game.

High School: Graduate of West Covina High School where he was named the team's offensive MVP as a senior.

Personal: Born Feb. 17, 1990...Parents are Oliver and Angela Tucker...Has two brothers, Xavier and Charles and one sister, Summer...Favorite athlete is Eric Dickerson



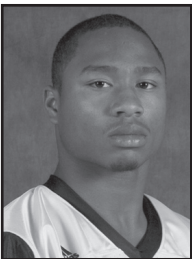
MIKE VAN DERIPE

QB, 6-0, 180, Jr.
Cypress, CA

All-time leading passer at Golden West College with over 5,000 career yards...Earned American Division Mountain Conference first-team quarterback selection when he completed 215-of-361 passes for 2,826 yards and 27 touchdowns.

High School: Graduate of Cypress College where he was a first team, all-conference selection and threw for over 2,000 yards and 22 touchdowns as a senior...Also rushed for 1,100 yards and scored 11 TDs.

Personal: Born: June 12, 1990...Parents are Mike and Debbie Van Deripe...Has one sister, Katie, and a brother, Rob.



D.C. WALKER

RB, 5-8, 160, R/Fr.
Lawton, OK (MacArthur)

Spent last season as a Redshirt.

Personal: Born Dec. 22, 1990...Parent is Michelle McGowen...

Majoring in criminal justice...Wants to be a defense lawyer after graduation...Favorite player is Maurice Jones Drew.



LARRY WILSON

DE, 5-11, 225, So.
Mustang, OK

Sophomore who will see time after solid freshman year in which he finished with 26 tackles in five games.

High School: Finished 2008 as Class 6A tackle leader with 165 at Mustang High School...Played for Coach Ty Prestidge.

Personal: Born Nov. 20, 1990...Parents are Christy and Craig Davis...Has two younger brothers, Zach and Chase, and a younger sister, Lauren...Majoring in pre-med...Favorite athlete is Zach Thomas...Enjoys fishing and working out.



TIMMY WINANS

WR, 6-0, 180, So.
Kingfisher, OK

Sophomore who will contend for playing time at any of the receiver spots.

High School: Selected to the K101 Classic Bowl after standout season at Kingfisher High School...Caught 29 passes for 607 yards and nine touchdowns in 2008...Totaled 730 yards as a junior

Personal: Born July 18, 1990...Parents are Mark and Pam Winans...Majoring in education.



BRONZE WITHEM

LB, 5-11, 225, Jr.
Laverne, CA

As a freshman had 90 tackles at Citrus College which earned him all-conference and ranked him third among freshman in the Southern California Football Association.

High School: Graduate of San Dimas High School where he led team with 130 tackles as a senior and earned all-area selection... Finished high school career with better than 350 tackles.

Personal: Born: Dec. 15, 1989...Parents are Tina and Eric Withem...Oldest of six children...Majoring in business.



JESSE WRIGHT

DB, 6-3, 200, So.
Aledo, TX

Earned starting role as a true freshman... Had 66 tackles, fourth best on the team.

High School: District 6-4A Defensive MVP at Aledo High School... Member of the Dallas Fort Worth Super Prep Team...Football team won the UIL Class 3A Division I Texas state championship...Graduated in the top 2% of his high school class.

Personal: Born Aug. 19, 1990...Parents are Greg and Sherry Wright...Has a younger sister, Katy...Majoring in pre-pharmacy



JOSH ZIMMER

LB, 6-0, 210, So.
Washington, OK

Versatile athlete who should make a large contribution to the program in future years.

High School: Was second-best rusher in Class 2A with 1,873 yards and 26 touchdowns...Ended his career with 3,992 yards and 63 touchdowns...Coached by Dennis McCreary... Once scored six touchdowns in a game.

Personal: Born March 23, 1990...Parents are Tim and Valenda Zimmer...Has two brothers, Ben and Seke, and a younger sister, Makayla...Favorite athlete is NFL great Walter Payton.

Josh Dorman	QB	6-1	180	Fr.	N. Richland Hills, TX	<i>District 6-4A MVP at Birdville HS. Threw for 3,898 yards and 49 TDs</i>
Paul Lopez	QB	6-3	210	Fr.	Palm Desert, CA	<i>Three-year starter at St. Paul H.S. Threw for 520 yards and two TD's in 2009</i>
Ryan Stringer	QB	5-11	180	Fr.	Clinton, OK	<i>Quarterback of 2007 Class 4A state championship team</i>
Alex Cochran	WR	5-10	170	Fr.	Broken Arrow, OK	<i>Team's top receiver. Caught 32 passes for 531 yards and 6 TDs</i>
Jordan Davis	WR	5-10	175	Fr.	Pantego, TX	<i>All-district 4-5A selection at Arlington High School</i>
Dakota Davis	WR	6-5	185	Fr.	Broken Arrow, OK	<i>Team advanced to Class 6A semifinals before losing to eventual champion</i>
Cory Hines	WR	6-0	185	Fr.	N. Richland Hills, CA	<i>Caught 75 passes for 1,085 yards and 12 TD's at Birdville HS</i>
Andrew Murga	WR	5-11	170	Fr.	Borger, TX	
Kevin Roberts	WR	5-10	170	Fr.	Madill, OK	<i>Caught 62 passes for 886 yards and 8 TDs...3rd leading receiver in Class 3A</i>
Jeremy Robinson	TE	6-4	225	Fr.	Hollis, OK	
Kyler Skinner	WR	6-0	180	Fr.	Weatherford, OK	<i>Caught 23 passes for 509 yards and 6 TDs..Team advanced to 4A semifinals</i>
Brad Smithey	WR	5-11	170	Fr.	Dallas, TX	
Dylan Walker	WR	6-1	180	Fr.	Yukon, OK	
Dexter Braziel	RB	6-0	200	Fr.	Fort Worth, TX	<i>Rushed for 948 yards on 186 carries and 13 TDs. Second-team District 3-5A</i>
Marshall Fraley	RB	5-10	195	Sr.	Bixby, OK	<i>Transfer from Olivet Nazarene...Rushed for over 1,000 yards in 2009.</i>
Trevion Miller	RB	6-2	190	Fr.	Dallas, TX	<i>Rushed for more than 500 yards as a junior. Older brother plays at San Diego St.</i>
Guss Skaggs	RB	5-9	180	Fr.	Beaver, OK	
L.J. Wyatt	RB	5-10	170	Fr.	Hobart, OK	
Taylor Inman	K	5-10	160	Fr.	Claremore, OK	<i>Honorable mention all-state selection by the Tulsa World</i>
Kenny Johnson	K	5-10	170	Fr.	Weatherford, OK	<i>Kicker on Weatherford's Class 4A semifinal team</i>
Carlos Cuevas	OL	6-3	290	Fr.	Plano, TX	<i>Played two seasons at Utah State...Made 5A all-district team at Plano HS</i>
Drew Carnahan	OL	6-3	270	Fr.	Southlake, TX	<i>Second-team, all-district selection for 6-5A team at Carroll High School</i>
Mackenzie Cannon	OL	6-4	290	Fr.	Arlington, TX	<i>Father, Mark, played for the Green Bay Packers in the 1980s.</i>
Bradley Chapman	OL	6-3	280	Fr.	Cornith, TX	<i>Considered one of the top football OL prospects in District 5-4A</i>
Ethan Cox	OL	6-0	260	Fr.	Cibolo, TX	
Bryce Davidson	OL	6-4	260	Fr.	Waxahachie, TX	<i>Team was bi-district champion and finished season with a 13-1 record</i>
Carlos Gutierrez	OL	6-2	250	Fr.	Forth Worth, TX	
Dylan Hall	OL	6-0	260	Fr.	Okla. City, OK	
Cameron Jordan	OL	6-2	265	Fr.	Arlington, TX	
Lorenzo Barnes	DL	6-1	315	Fr.	Burkburnett, TX	<i>Squatted state record 825 pounds at powerlifting meet at a 17-year old</i>
Seth Beard	DL	6-0	260	Fr.	Fox, OK	
Wes Carter	DL	6-5	220	Fr.	Arlington, TX	<i>All-district 5A-4 selection</i>
Ozzie Donato	DL	6-0	285	Jr.	Santa Barbara, CA	<i>Transfer from Santa Barbara Community College</i>
Kimes Gilbert	DL	6-1	225	Fr.	Oklahoma City, OK	<i>Helped lead Southmoore to a 11-2 record and a berth in the Class 6A semifinals</i>
Colton Harry	DL	6-0	240	Fr.	Weatherford, OK	
Victor Martin	DL	6-1	275	Jr.	Ft. Meade, FL	<i>Transfer from Independence Community College</i>
Henry Niutei	DL	6-5	315	Sr.	Euless, TX	<i>Transfer from TCU</i>
Chase Neumann	DL	6-0	280	Fr.	Dewey, OK	<i>Selected to the Oklahoma Coaches Association All-State team</i>
Ruben Pando	DL	5-10	225	Fr.	Woodward, OK	
Brad Avery	LB	6-1	200	Fr.	Madill, OK	<i>Had 120 tackles and 3 INTs. Named District 3A-2 Co-MVP.</i>
Rhett Blundell	LB	5-11	205	Fr.	Kingfisher, OK	
Anthony Chiofalo	LB	6-0	205	Fr.	Haslet, TX	<i>Team made playoffs as a senior</i>
Ryan Feller	LB	6-1	215	Fr.	Altus, OK	<i>Had more than 400 career tackles as a three-year starter at Altus HS</i>
Travis Garvey	LB	6-0	200	Fr.	Woodward, OK	
Mitch Hartshorne	LB	5-11	220	Fr.	Allen, TX	<i>First-team all-district 8-5A selection for Allen High School</i>
Garrett Howell	LB	5-11	190	Fr.	Weatherford, OK	
Taylor Soles	LB	6-0	205	Fr.	Littlefield, TX	<i>District 5-1A offensive MVP. Had 82 carries for 510 yards and 5 TDs</i>
Anthony Bryer	DB	5-10	170	Fr.	Buffalo, OK	
Drake Keys	DB	6-0	190	Fr.	Skiatook, OK	<i>Tulsa World honorable mention all-state selection at defensive back</i>
John Lewis	DB	6-0	190	Jr.	Highland, CA	<i>San Bernardino Valley College transfer</i>
Brandon Mikulenka	DB	6-1	170	Fr.	N. Richland Hills, TX	
D.J. Miller	DB	5-10	180	Jr.	Frisco, TX	<i>Transfer from Scottsdale Community College</i>
Cliff Nyagesiba	DB	5-10	190	Fr.	Arlington, TX	<i>Had over 100 tackles in each of his last two seasons at Arlington Lamar.</i>
Marcus Polanco	DB	6-0	175	Fr.	N. Richland Hills, TX	<i>Second-team, all-district 3-5A selection...Named to all-academic team</i>
Xavier Tucker	DB	6-2	200	Jr.	Covina, CA	<i>Citrus College transfer, brother of RB Isaac Tucker</i>

GAME 1 EMPORIA STATE



Aug. 26, 2010 -- 7 p.m.

GENERAL INFORMATION

Location Emporia, Kan.
Enrollment 6,528
Nickname Hornets
Colors Old Gold and Black
Field Jones Field
Conference Mid America Intercollegiate
President Dr. Michael Lane
Athletics Director Kent Webster
Sports Information Don Weast
Phone 620-341-5526

COACHING STAFF

Head Coach Garin Higin
Alma Mater (Year) Emporia State '92
Record at School 9-24 (3 years)
Overall Record 60-33 (7 years)

TEAM INFORMATION

Overall Record 2-9
Conference Record/Finish 1-8, 10th

SERIES RECORD

Overall Record ESU leads 2-0
Last Meeting ESU won 48-17 in 2009
Current Streak ESU won 2

GAME 2 WEST TEXAS A&M



Sept. 11, 2010 -- 6 p.m.

GENERAL INFORMATION

Location Canyon, Texas
Enrollment 7,300
Nickname Buffs
Colors Maroon and White
Field Kimbrough (20,000)
Conference Lone Star - South
President Dr. Patrick O'Brien
Athletics Director Michael McBroom
Sports Information Kent Johnson
Phone 806-651-4406

COACHING STAFF

Head Coach Don Carthel
Alma Mater (Year) Eastern N.M. (1974)
Record at School 51-12 (5 years)
Overall Record 95-44-1 (13 years)

TEAM INFORMATION

Overall Record 7-5
Conference Record/Finish 4-2 (T-1st, LSC-S)

SERIES RECORD

Overall Record SW leads 10-8-2
Last Meeting WTAMU won 41-15 in 2009
Current Streak WTAMU won 4 straight

GAME 3 at MIDWESTERN STATE



Sept. 18, 2010 -- 7 p.m.

GENERAL INFORMATION

Location Wichita Falls, TX
Enrollment 6,400
Nickname Mustangs
Colors Maroon and Gold
Field Memorial (14,300)
Conference Lone Star -- South
President Dr. Jesse W. Rogers
Athletics Director Charlie Carr
Sports Information Trey Reed
Phone 940-397-4818

COACHING STAFF

Head Coach Bill Maskill
Alma Mater (Year) Western Ky. '71
Record at School 61-27 (8 years)
Overall Record 74-35 (10 years)

TEAM INFORMATION

Overall Record 9-3
Conference Record/Finish 4-2 (T-1st, LSC-S)

SERIES RECORD

Overall Record MSU leads 12-6
Last Meeting MSU won 47-10 in 2007
Current Streak MSU won 8 straight

GAME 4

at EAST CENTRAL



Sept. 25, 2010 -- 7 p.m.

GENERAL INFORMATION

Location Ada, Okla.
Enrollment 4,600
Nickname Tigers
Colors Orange and Black
Field Norris (5,000)
Conference Lone Star - North
President Dr. John Hargrove
Athletics Director Brian DeAngelis
Sports Information Brian Johnson
Phone 580-559-5258

COACHING STAFF

Head Coach Tim McCarty
Alma Mater (Year) Fort Hays State '85
Record at School 9-22 (4 years)
Overall Record same

TEAM INFORMATION

Overall Record 0-11
Conference Record/Finish 0-5 (6th, LSC-N)

SERIES RECORD

Overall Record ECU leads 45-40-2
Last Meeting SWOSU won 14-13 in 2009
Current Streak SWOSU won 1 straight

GAME 5

EASTERN NEW MEXICO



Oct. 2, 2010 -- 2 p.m.

GENERAL INFORMATION

Location Portales, N.M.
Enrollment 4,135
Nickname Greyhounds
Colors Green and Silver
Field Greyhound (6,100)
Conference Lone Star -- South
President Dr. Steven Gamble
Athletics Director Jeff Geiser
Sports Information Adam Peterman
Phone 505-562-4309

COACHING STAFF

Head Coach Mike Ribaud
Alma Mater (Year) Arizona '88
Record at School 18-35 (5 years)
Overall Record Same

TEAM INFORMATION

Overall Record 3-8
Conference Record/Finish 0-6 (7th, LSC-S)

SERIES RECORD

Overall Record SW leads 26-18-2
Last Meeting ENMU won 45-7 in 2009
Current Streak ENMU won 4 straight

GAME 6

at SOUTHEASTERN OKLAHOMA



Oct. 9, 2010 -- 2:30 p.m.

GENERAL INFORMATION

Location Durant, Okla.
Enrollment 4,200
Nickname Savage Storm
Colors Blue and Gold
Field Laird Field (4,500)
Conference Lone Star - South
President Dr. Larry Minks
Athletics Director Keith Baxter
Sports Information Matt Thomas
Phone 580-745-2646

COACHING STAFF

Head Coach Ray Richards
Alma Mater (Year) Northern Michigan '81
Record at School 31-21 (5 years)
Overall Record 41-46 (10 years)

TEAM INFORMATION

Overall Record 7-4
Conference Record 4-1 (2nd, LSC-N)

SERIES RECORD

Overall Record SOSU leads 42-33-3
Last Meeting SOSU won 33-10 in 2009
Current Streak SOSU won 8 straight

GAME 7**NORTHEASTERN
STATE**

Oct. 16, 2010 -- 6 p.m.

**GENERAL INFORMATION**

Location Tahlequah, Okla.
 Enrollment 10,000
 Nickname RiverHawks
 Colors Green and White
 Field Gable Field (12,000)
 Conference Lone Star - North
 President Dr. Don Betz
 Athletics Director Jeff Konya
 Sports Information Scott Pettus
 Phone 918-456-5511 x 3930

COACHING STAFF

Head Coach Kenny Evans
 Alma Mater (Year) Northeastern St. (1982)
 Record at School 3-19 (2 years)
 Overall Record Same

TEAM INFORMATION

Overall Record 2-9
 Conference Record/Finish 2-3 (4th, LSC-N)

SERIES RECORD

Overall Record SW leads 39-37-3
 Last Meeting NSU won 13-6 in 2009
 Current Streak NSU won 1 straight

GAME 10**CENTRAL
OKLAHOMA**

Nov. 6, 2010 -- 2 p.m.

**GENERAL INFORMATION**

Location Edmond, Okla.
 Enrollment 15,500
 Nickname Bronchos
 Colors Bronze and Blue
 Field Wantland Stadium (10,000)
 Conference Lone Star - North
 President Dr. W. Roger Webb
 Athletics Director Joe Muller
 Sports Information Mike Kirk
 Phone 405-974-2142

COACHING STAFF

Head Coach Tracy Holland
 Alma Mater (Year) Northern Colorado '78
 Record at School 11-11 (2 years)
 Overall Record Same

TEAM INFORMATION

Overall Record 4-7
 Conference Record 3-2 (3rd, LSC-N)

SERIES RECORD

Overall Record UCO leads 59-24-3
 Last Meeting UCO won 41-23 in 2009
 Current Streak UCO won 3 straight

GAME 8**at TEXAS A&M
COMMERCE**

Oct. 23, 2010 -- 2 p.m.

**GENERAL INFORMATION**

Location Commerce, Texas
 Enrollment 8,546
 Nickname Lions
 Colors Blue and Gold
 Field Memorial Stadium (10,000)
 Conference Lone Star -- North
 President Dr. Daniel Jones
 Athletics Director Carlton Cooper
 Sports Information Danny Kambel
 Phone 903-886-5131

COACHING STAFF

Head Coach Guy Morris
 Alma Mater (Year) TCU '72
 Record at School 5-5 (1 year)
 Overall Record 32-62-7 (8 years)

TEAM INFORMATION

Overall Record 5-5
 Conference Record/Finish 5-0/1st LS-N

SERIES RECORD

Overall Record A&M-C leads 10-3
 Last Meeting A&M-C won 15-12 in 2009
 Current Streak A&M-C won 2 straight

GAME 11**at ABILENE
CHRISTIAN**

Nov. 13, 2010 -- 2 p.m.

**GENERAL INFORMATION**

Location Abilene, Texas
 Enrollment 4,800
 Nickname Wildcats
 Colors Purple and White
 Field Shotwell Stadium (15,000)
 Conference Lone Star - South
 President Dr. Royce Money
 Athletics Director Jared Mosley
 Sports Information Lance Fleming
 Phone 325-674-2693

COACHING STAFF

Head Coach Chris Thomsen
 Alma Mater (Year) Abilene Christian '93
 Record at School 42-17 (5 years)
 Overall Record Same

TEAM INFORMATION

Overall Record 9-4
 Conference Record 3-3 (5th, LSC-S)

SERIES RECORD

Overall Record ACU leads 9-1
 Last Meeting ACU won 50-14 in 2007
 Current Streak ACU won 8 straight

GAME 9**TEXAS A&M
KINGSVILLE**

Oct. 30, 2010 -- 2 p.m.

**GENERAL INFORMATION**

Location Kingsville, Texas
 Enrollment 6,800
 Nickname Javelinas
 Colors Blue and Gold
 Field Javelina Stadium (15,000)
 Conference Lone Star - South
 President Dr. Steven Tallant
 Athletics Director Ken Oliver
 Sports Information Shane Meling
 Phone 361-593-2870

COACHING STAFF

Head Coach Bo Atterberry
 Alma Mater (Year) Southeastern Okla.
 Record at School 19-15 (3 years)
 Overall Record Same

TEAM INFORMATION

Overall Record 9-3
 Conference Record 4-2 (T-1st, LSC-N)

SERIES RECORD

Overall Record SWOSU leads 3-1
 Last Meeting SWOSU won 7-3 in 2007
 Current Streak SWOSU won 2 straight

GAME 1

Emporia State 48
SWOSU 17

Aug. 27, 2009 - Emporia, KN

SCORE BY QUARTERS

	1	2	3	4	F
SWOSU	7	3	7	0	17
Emporia State	21	6	7	14	48

SCORING SUMMARY

ESU -- Page 9 run (Maxwell kick)
 ESU -- Page 5 run (Maxwell kick)
 SWOSU -- Johnathan Haggerty 27 pass from Steve Day (Chad McIntosh kick)
 ESU -- Richardson 22 pass from SloanEl (Maxwell kick)
 SWOSU -- McIntosh 22 FG
 ESU -- Smart 2 run (Maxwell kick)
 ESU -- Page 1 run (Maxwell kick)
 SWOSU -- J.R. Hammond 38 run (McIntosh Kick)
 ESU -- Hageman 3 pass from Rampy (Maxwell kick)
 ESU -- Abner 7 run (Maxwell kick)

TEAM STATISTICS

ESU		SWOSU
25	First Downs	15
58-399	Rushes/Yards	29-90
95	Passing Yards	131
11-19-1	Comp/Att/Int	15-32-2
0-0	Fumbles/Lost	3-2
5-32.6	Punts/Average	9-38.9
9-76	Penalties/Yards	10-106

GAME 2

Eastern New Mexico 45
SWOSU 7

Sept. 5, 2009 -- Weatherford, OK

SCORE BY QUARTERS

	1	2	3	4	F
Eastern New Mexico	14	17	7	7	45
SWOSU	7	0	0	0	7

SCORING SUMMARY

ENMU -- Troy Harris 6 run (Taylor Cannon kick)
 SWOSU -- Steve Day 22 run (Chad McIntosh kick)
 ENMU -- Jesse Poku 7 pass from J.J. Harp (Cannon kick)
 ENMU -- Poku 64 pass from Harp (Cannon kick)
 ENMU -- Cannon 27 FG
 ENMU -- J.T. Hompson 10 pass from Harp (Cannon kick)
 ENMU -- Harp 4 run (Cannon kick)
 ENMU -- Harris 7 pass from Wesley Wood (Cannon kick)

TEAM STATISTICS

ENMU		SWOSU
34	First Downs	11
32-124	Rushes/Yards	21-24
533	Passing Yards	156
73-44-1	Comp/Att/Int	23-45-4
3-1	Fumbles/Lost	0-0
8-70	Penalties/Yards	4-36
5-30.0	Punts/Average	9-37.4

GAME 3

SWOSU 10
Angelo State 55

Sept. 12, 2009 -- San Angelo, TX

SCORE BY QUARTERS

	1	2	3	4	F
SWOSU	0	3	0	7	10
Angelo State	15	20	14	6	55

SCORING SUMMARY

ASU -- Team Safety
 ASU -- Dwight Pete 12 run (kick failed)
 ASU -- V'Keon Lacey 21 pass from Josh Neiswander (Brad Holcomb kick)
 ASU -- Pecikonis 27 pass from Neiswander (Holcomb kick)
 ASU -- Lacey 4 pass from Neiswander (Holcomb kick)
 ASU -- Pete 6 pass from Neiswander (Holcomb kick)
 SWOSU - Chad McIntosh 35 FG
 ASU -- Pete 9 pass from Neiswander (Holcomb kick)
 ASU -- Pecikonis 66 pass from Neiswander (Holcomb kick)
 SWOSU - Joe Sawyer 13 pass from Steve Day (McIntosh kick)
 ASU -- Austen Benson 2 run (kick failed)

TEAM STATISTICS

SWOSU		ASU
15	First Downs	25
24-12	Rushes/Yards	31-169
221	Passing Yards	355
24-41-3	Comp/Att/Int	26-34-0
2-0	Fumbles/Lost	0-0
7-63	Penalties/Yards	10-91
7-39.4	Punts/Average	3-32.7

GAME 4

West Texas A&M 41
SWOSU 15

Sept. 19, 2009 -- Weatherford, OK

SCORE BY QUARTERS

	1	2	3	4	F
West Texas A&M	3	28	10	0	41
SWOSU	0	0	7	8	15

SCORING SUMMARY

WTAM -- James Chandler 20 FG
 WTAM -- Brittan Golden 80 pass from Taylor Harris (Chandler kick)
 WTAM -- Kelvin Thompson 2 run (Chandler kick)
 WTAM -- Thompson 17 run (Chandler kick)
 WTAM -- Thompson 4 run (Chandler kick)
 WTAM -- Chandler 33 FG
 SWOSU -- Daniel Barwick 5 run (Chad McIntosh kick)
 WTAM -- Tevin Mitchell 3 run (Chandler kick)
 SWOSU -- Dashon Carter-Mayes 4 run (Joe Sawyer pass from Cody Gragg)

TEAM STATISTICS

WTAM		SWOSU
25	First Downs	11
30-172	Rushes/Yards	25-17
375	Passing Yards	140
33-59-1	Comp/Att/Int	22-42-2
1-1	Fumbles/Lost	1-1
2-39.5	Punts/Average	8-38.1
15-142	Penalties/Yards	8-64

GAME 5

SWOSU 3
Tarleton State 66

Sept. 26, 2009 -- Stephenville, TX

SCORE BY QUARTERS

	1	2	3	4	F
SWOSU	0	3	0	0	3
Tarleton State	21	17	21	7	66

SCORING SUMMARY

TSU -- Roderick Smith 5 run (Garrett Lindholm kick)
 TSU -- Jahmeel Hobson 25 pass from Scott Grantham (Lindholm kick)
 TSU -- Evan Robertson 45 FG (Lindholm kick)
 SWOSU -- Chad McIntosh 22 FG
 TSU -- Lindholm 32 FG
 TSU -- Vance Ibewuike 32 interception return (Lindholm kick)
 TSU -- Robertson 13 pass from Grantham (Lindholm kick)
 TSU -- Robertson 2 run (Lindholm kick)
 TSU -- Bradley Bullitt 10 fumble recovery (Lindholm kick)
 TSU -- Washington 4 run (Arnold kick)
 TSU -- Matt Knicky 0 fumble return (Arnold kick)

TEAM STATISTICS

SWOSU		TSU
11	First Downs	19
37-59	Rushes/Yards	38-235
125	Passing Yards	218
15-36-3	Comp/Att/Int	13-23-0
3-2	Fumbles/Lost	0-0
5-47	Penalties/Yards	10-90
8-38.0	Punts/Average	6-42.0

GAME 6

Southeastern Okla. 33
SWOSU 10

Oct. 3, 2009 -- Weatherford, OK

SCORE BY QUARTERS

	1	2	3	4	F
Southeastern Okla.	7	10	2	14	33
SWOSU	3	0	0	7	10

SCORING SUMMARY

SWOSU -- Chad McIntosh 29 FG
 SWOSU -- Jerome Hewitt 94 kickoff return (Cole Jones kick)
 SOSU -- Daniel Nichols 48 pass from Justin Pitrucha (Jones kick)
 SOSU -- Jones 36 FG
 SOSU -- Noe Lopez safety
 SOSU -- Nic Boyd 12 run (Jones kick)
 SOSU -- Hewitt 63 punt return (Jones kick)
 SWOSU -- Johnathan Haggerty 14 pass from Steve Day (McIntosh kick)

TEAM STATISTICS

SOSU		SWOSU
16	First Downs	15
31-74	Rushes/Yards	28-0
180	Passing Yards	155
18-34-1	Comp/Att/Int	19-41-2
2-1	Fumbles/Lost	0-0
15-164	Penalties/Yards	2-30
8-35.6	Punts/Average	9-36.2

GAME 7

SWOSU 17
Northeastern State 16

Oct. 10, 2009 -- Tahlequah, OK

SCORE BY QUARTERS

	1	2	3	4	F
SWOSU	0	3	3	0	6
Northeastern State	6	7	0	0	13

SCORING SUMMARY

NSU -- Jared Homer 21 FG
 NSU -- Homer 41 FG
 NSU -- Ben Randle 2 pass from Kenny Davis (Homer kick)
 SWOSU -- Chad McIntosh 34 FG
 SWOSU -- McIntosh 40 FG

TEAM STATISTICS

SWOSU		NSU
15	First Downs	15
27-21	Rushes/Yards	54-167
167	Passing Yards	63
16-44-1	Comp/Att/Int	6-9-1
1-0	Fumbles/Lost	1-1
9-37.9	Punts/Average	6-50.0
7-82	Penalties/Yards	10-80

GAME 8

SWOSU 23
Central Oklahoma 41

Oct. 17, 2009 -- Edmond, OK

SCORE BY QUARTERS

	1	2	3	4	F
Central Oklahoma	7	7	7	20	41
SWOSU	14	0	0	9	23

SCORING SUMMARY

SWOSU -- Johnathan Haggerty 21 pass from Steve Day (Chad McIntosh kick)
 SWOSU -- Bruce Hatton 4 run (McIntosh kick)
 UCO -- Brandon Noohi 35 run (Chris Robbs kick)
 UCO -- Noohi 10 run (Robbs kick)
 UCO -- Daniel Morrell 10 pass from Noohi (Robbs kick)
 SWOSU -- McIntosh 27 FG
 UCO -- Noohi 5 run (Robbs kick)
 UCO -- Ryan Gallimore 23 pass from Noohi (kick failed)
 UCO -- Ben Birmingham 6 run (Robbs kick)
 SWOSU -- Bruce Hatton 33 pass from Day (McIntosh kick)

TEAM STATISTICS

SWOSU		UCO
23	First Downs	27
35-63	Rushes/Yards	43-304
255	Passing Yards	270
25-45-0	Comp/Att/Int	30-39-0
2-1	Fumbles/Lost	3-2
12-85	Penalties/Yards	8-110
9-36.0	Punts/Average	3-34.7

GAME 9

East Central 13
SWOSU 14

Oct. 24, 2009 -- Weatherford, OK

SCORE BY QUARTERS

	1	2	3	4	F
East Central	7	6	0	0	13
SWOSU	0	0	7	7	14

SCORING SUMMARY

ECU -- Marcus Johnson 17 run (Bryson Hall kick)
 ECU -- Anthony Recinos 1 pass from Josh Phillips (kick failed)
 SWOSU -- Johnathan Haggerty 38 pass from Steve Day (Chad McIntosh kick)
 SWOSU -- Haggerty 19 pass from Day (McIntosh kick)

TEAM STATISTICS

ECU		SWOSU
13	First Downs	18
28-87	Rushes/Yards	24-72
181	Passing Yards	266
19-31-1	Comp/Att/Int	34-55-1
4-2	Fumbles/Lost	2-2
9-95	Penalties/Yards	5-56
8-39.9	Punts/Average	4-40.8

GAME 9

Oklahoma Panhandle 28
SWOSU 24

Oct. 31, 2009 -- Weatherford, OK

SCORE BY QUARTERS

	1	2	3	4	F
Okla. Panhandle	14	0	7	7	28
SWOSU	7	10	7	0	24

SCORING SUMMARY

OPSU -- Darryl Brister 1 run (Brian Holman kick)
 OPSU -- Doug Williams 76 pass from Vincent Gay (Holman kick)
 SWOSU -- Bruce Hatton 1 run (Chad McIntosh kick)
 SWOSU -- Hatton 38 pass from Steve Day (McIntosh kick)
 SWOSU -- McIntosh 27 FG
 SWOSU -- Hatton 1 run (McIntosh kick)
 OPSU -- Brister 1 run (Holman kick)
 OPSU -- Brister 1 run (Holman kick)

TEAM STATISTICS

OPSU		SWOSU
22	First Downs	15
50-264	Rushes/Yards	22-68
227	Passing Yards	256
16-28-0	Comp/Att/Int	17-36-1
2-2	Fumbles/Lost	2-1
7-69	Penalties/Yards	6-44
6-32.8	Punts/Average	7-39.0

GAME 10

Texas A&M-Commerce 15
SWOSU 12

Nov. 7, 2009 -- Weatherford, OK

SCORE BY QUARTERS

	1	2	3	4	F
Texas A&M-Commerce	0	7	0	8	15
SWOSU	3	3	6	0	12

SCORING SUMMARY

SWOSU -- Chad McIntosh 23 FG
 SWOSU -- McIntosh 48 FG
 A&M-C -- Marcus Graham 1 run (Ahmed Abo Mahmood kick)
 SWOSU -- Haggerty 27 pass from Steve Day (pass failed)
 A&M-C -- Adam Farkes 1 run (Adam Jones pass from Farkes)

TEAM STATISTICS

A&M-C		SWOSU
17	First Downs	20
33-108	Rushes/Yards	28-46
206	Passing Yards	224
21-36-1	Comp/Att/Int	23-38-2
2-2	Fumbles/Lost	2-2
9-95	Penalties/Yards	9-53
8-40.4	Punts/Average	5-39.8



J.R. Hammond was SWOSU's top rusher in 2009 with 160 yards on 52 carries.

RUSHING

NAME	Att	Gain	Loss	Net	Avg	TD	LN	Avg/G
J.R. Hammond	52	166	16	160	2.9	1	38	21.4
Dashon Carter-Mayes	55	131	22	109	2.0	1	10	10.9
Bruce Hatton	36	129	22	107	3.0	3	36	9.7
Daniel Barwick	42	130	42	88	2.1	1	13	17.6
Ryan Corbin	10	44	0	44	4.4	0	41	4.4
Stephen Davis	7	18	4	14	2.0	0	9	7.0
Ross Lane	1	0	0	0	0.0	0	0	0.0
Chad McIntosh	1	0	12	-12	-12.0	0	0	-1.1
Steve Day	95	275	288	-13	-0.1	1	22	-1.2
TEAM	1	0	15	-15	-15.0	0	0	-7.5
Total	300	893	421	472	1.6	7	41	42.9
Opponents	428	2385	282	2103	4.9	28	50	191.2

PASSING

NAME	C	ATT	INT	PCT	YDS	TD	LN
Steve Day	232	449	21	51.7	2088	9	51
Houston Johnson	1	5	0	20.0	8	0	8
TEAM	0	1	0	0.0	0	0	0
TOTAL	233	455	21	51.2	2096	9	51
Opponents	237	35	7	61.6	2703	21	80

RECEIVING

NAME	G	No.	Yds	Avg	TD	LN	Avg/G
Johnathan Haggerty	11	54	748	13.8	6	51	68.0
Bruce Hatton	11	43	332	7.7	2	38	30.2
Joe Sawyer	11	36	343	9.5	1	45	31.2
J.R. Hammond	7	24	113	4.7	0	12	16.1
Ryan Corbin	10	22	147	6.7	0	17	14.7
Cody Gragg	11	17	164	9.6	0	17	14.9
Daniel Barwick	5	13	101	7.8	0	20	20.2
Dashon Carter-Mayes	10	10	49	4.9	0	11	4.9
Ryan Hendrickson	6	5	55	11.0	0	19	9.2
Samuel Burnett	3	3	30	10.0	0	18	10.0
Ross Lane	9	2	6	3.0	0	6	0.7
Stephen Davis	2	2	-3	-1.5	0	1	-1.5
Timmy Winans	7	1	6	6.0	0	6	0.9
Bryce Deemer	5	1	5	5.0	0	5	1.0
Total	11	233	2096	9.0	9	51	190.5
Opponents	1	237	2703	11.4	21	80	245.7

RESULTS

OVERALL RECORD (1-10, 1-4 LSC-North 5th)

DATE	OPPONENT	SCORE
Aug. 27	@ Emporia State	L 17-48
Sep. 5	Eastern New Mexico	L 7-45
Sep. 12	@ Angelo State	L 10-55
Sep. 19	West Texas A&M	L 15-41
Sep. 26	@ Tarleton State	L 3-66
Oct. 3	Southeastern Okla.	L 10-33
Oct. 10	@ Northeastern St.	L 6-13
Oct. 17	@ Central Okla.	L 23-41
Oct. 24	East Central	W 14-13
Oct. 31	Okla. Panhandle	L 24-28
Nov. 5	Texas A&M-Commerce	L 12-15

TEAM STATISTICS

	SW	OPP
FIRST DOWNS	169	238
Rushing	40	111
Passing	104	113
Penalty	25	14
RUSHING YARDAGE	472	2103
Yards gained rushing	893	2385
Yards lost rushing	421	282
Rushing attempts	300	428
Average Per Rush	1.6	4.9
Average Per Game	42.9	191.2
TDs Rushing	7	28
PASSING YARDAGE	2096	2703
Comp-Att	233-455	237-385
Interceptions by	21	7
Average Per Pass	4.6	7.0
Average Per Catch	9.0	11.4
Average Per Game	233.5	436.9
TDs Passing	9	21
TOTAL OFFENSE	2568	4806
Total Plays	755	813
Average Per Play	3.4	5.9
Average Per Game	233.5	436.9
TIME OF POSSESSION	28:51	31:09

SCORING

NAME	TD	FGs	KICK	RUSH	RCV	PASS	DXP	SAF	PTS
Chad McIntosh	0	10-13	13-14	0	0	0	0	0	43
Johnathan Haggerty	6	0-0	0-0	0	0	0	0	0	36
Bruce Hatton	5	0-0	0-0	0	0	0	0	0	30
Joe Sawyer	1	0-0	0-0	0	1	0	0	0	8
J.R. Hammond	1	0-0	0-0	0	0	0	0	0	6
Daniel Barwick	1	0-0	0-0	0	0	0	0	0	6
Dashon Carter-Mayes	1	0-0	0-0	0	0	0	0	0	6
Steve Day	1	0-0	0-0	0	0	0	0	0	6
Total	16	10-13	13-14	0	1	0	0	0	141
Opponents	54	7-10	47-53	0	1	0	0	2	398

DEFENSE

NAME	GP	Solo	Ast	Total	Loss	Sack	Int	PBU	Fum	FF	BK
Shane Scott	11	61	39	100	2.5-12	0	0	3	1-0	1	0
Fred Leak	11	57	39	96	5.5-18	1-5	1-3	3	0	1	0
Sam Nwafor	11	51	39	90	2.5-9	1-0	1-0	1	0	2	0
Jaron Burgess	11	35	34	69	7-33	2-20	1-0	2	3-16	0	0
Jesse Wright	11	39	27	66	0	0	0	4	1-13	0	0
Nick Walker	10	37	25	62	10.5-44	5-27	0	1	1-0	0	0
Iziah Perry	11	33	16	49	0.5-1	0	0	4	0	0	0
Jeff Lemon	10	27	11	38	3-27	0	3-64	3	1-0	0	0
Benny Johnson	11	23	13	36	4-20	4-16	0	0	0	1	0
Tim Stephenson	10	16	15	31	4-17	2-13	0	3	0	0	0
Larry Wilson	5	15	11	26	2-4	1-3	0	0	0	0	0
Ethan Davis	4	9	14	23	3-5	0	0	2	0	0	0
Marques Odom	10	16	6	22	0	0	0	0	0	0	0
Cory Summers	9	11	11	22	7-30	2-14	0	0	0	0	0
John Kaye	9	8	9	17	1-1	0	1-34	1	0	0	0
Talite Sika	10	9	8	17	6-20	2-7	0	0	0	0	0
Austin Major	7	12	4	16	1.5-3	0	0	0	0	0	0
Curry Read	9	7	8	15	0	0	0	0	0	0	0
Carlos Bates	10	14	1	15	0	0	0	1	0	0	0
Jake Sinkula	3	7	6	13	0	0	0	0	0	0	0
Adam Bailey	9	5	7	12	0	0	0	0	0	0	0
Ryan Corbin	10	6	1	7	0	0	0	0	0	0	0
Timmy Winans	7	5	2	7	0	0	0	0	1-0	0	0
Joe Sawyer	11	4	1	5	0	0	0	0	0	1	0
Cody Gragg	11	1	2	3	0	0	0	0	0	0	0
Jeremy Leatherwood	7	3	0	3	0	0	0	0	0	0	0
Colton Dickinson	7	0	2	2	0	0	0	0	0	0	0
Steve Day	11	2	0	2	0	0	0	0	0	0	0
J.R. Hammond	7	2	0	2	0	0	0	0	0	0	0
Josh Zimmer	4	2	0	2	0	0	0	0	0	0	0
Elisha Davis	4	2	0	2	1-1	0	0	0	0	0	0
Chad McIntosh	11	2	0	2	0	0	0	0	0	0	0
David Prieto	7	0	1	1	0	0	0	0	0	0	0
Todd Nix	5	1	0	1	0	0	0	0	0	0	0
Jake Olivarez	9	0	1	1	0	0	0	0	0	0	0
John Niutei	1	1	0	1	0	0	0	0	0	0	0
Cody Lavendar	11	1	0	1	0	0	0	0	0	0	0
Stephen Speer	11	1	0	1	0	0	0	0	0	0	0
Ross Lane	9	0	1	1	0	0	0	0	0	0	0
Total	11	529	356	885	61-245	15-105	7-101	28	10-29	8	0
Opponents	11	461	322	783	101-428	46-286	21-195	56	11-11	13	2



Safety Shane Scott led SWOSU in tackles last season with 100 total stops.



Linebacker Jaron Burgess was the team's leader in fumble recoveries with three.

INTERCEPTIONS

NAME	No	Yds	Avg	TD	Ln
Jeff Lemon	3	64	21.3	0	51
Jaron Burgess	1	0	0.0	0	0
Fred Leak	1	3	3.0	9	3
Sam Nwafor	1	0	0.0	0	0
John Kaye	1	34	34.0	0	34
Total	7	101	14.4	0	51
Opponents	21	195	9.3	1	51

KICK RETURNS

NAME	No	Yds	Avg	TD	Ln
Bruce Hatton	21	501	23.9	0	47
J.R. Hammond	16	277	17.3	0	30
Iziah Perry	4	51	12.8	0	16
Daniel Barwick	4	78	19.5	0	39
Paco Moore	4	77	19.2	0	31
Marques Odom	3	81	27.0	0	30
Ryan Corbin	3	27	9.0	0	16
John Kaye	2	30	15.0	0	17
Bryce Deemer	2	36	18.0	0	19
Sam Nwafor	1	5	5.0	0	5
Total	60	1163	19.4	0	47
Opponents	34	837	24.6	1	94

PUNT RETURNS

NAME	No	Yds	Avg	TD	Ln
Bruce Hatton	9	68	7.6	0	23
J.R. Hammond	3	-5	-1.7	0	3
John Kaye	1	0	0.0	0	0
Total	13	63	4.8	0	23
Opponents	39	344	8.8	1	63

LSC NORTH FIRST TEAM OFFENSE

Pos	Player	Team	Year	Hometown
QB	Brandon Noohi	Central Oklahoma	Sr.	Oklahoma City, Okla.
RB	Jason Palmer	Central Oklahoma	Sr.	Concord, Calif.
RB	Marcus Graham	Texas A&M-Commerce	Jr.	Round Rock, Texas
FB	John Stelly	Northeastern State	Fr.	Hardin, Texas
WR	Daniel Nichols	Southeastern Oklahoma	Sr.	Cooper, Texas
WR	Jonathan Haggerty	Southwestern Oklahoma	Sr.	Dallas, Texas
WR	Ryan Gallimore	Central Oklahoma	Sr.	Okmulgee, Okla.
WR	Zack Patteson	East Central	So.	Lucas, Texas
TE	Joe Sawyer	Southwestern Oklahoma	Sr.	Ogden, Utah
OG	Justin Nail	East Central	Sr.	Ada, Okla.
OG	David Sudderth	Texas A&M-Commerce	Jr.	Leonard, Texas
OT	Jerrod Anderson	Southeastern Oklahoma	Sr.	Allen, Texas
OT	R.J. Brisbon	Texas A&M-Commerce	Sr.	Wetumpka, Ala.
C	Luke Sapolu	Central Oklahoma	Sr.	Costa Mesa, Calif.
PK	Ahmed Abo-Mahmood	Texas A&M-Commerce	Fr.	Sherman, Texas
RS	Jerome Hewitt	Southeastern Oklahoma	Sr.	Gainesville, Texas



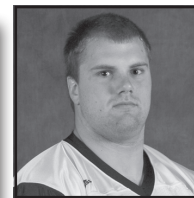
Jonathan Haggerty
Wide Receiver



Joe Sawyer
Tight End



Fred Leak
Linebacker



Stephen Speer
Offensive Line

LSC NORTH FIRST TEAM DEFENSE

DT	William Green	Texas A&M-Commerce	Sr.	Dallas, Texas
DT	TJ Raymond	Northeastern State	Sr.	Grand Prairie, Texas
DE	Freddie Harris	Central Oklahoma	Sr.	Carrollton, Texas
DE	Alex Moore	Southeastern Oklahoma	Jr.	Rowlett, Texas
ILB	Cory Whitfield	Texas A&M-Commerce	Jr.	Palestine, Texas
ILB	Terry Hardeman	Central Oklahoma	Sr.	Oklahoma City, Okla.
OLB	Tucker Cason	Central Oklahoma	So.	Oklahoma City, Okla.
OLB	Fred Leak	Southwestern Oklahoma	Jr.	Palestine, Ark.
CB	Alex Woodley	East Central	Jr.	Mesquite, Texas
CB	Israel Hughes	Texas A&M-Commerce	Jr.	Mobile, Ala.
S	Bernard Daniel	Southeastern Oklahoma	Sr.	Carrollton, Texas
S	Alex Contreras	Texas A&M-Commerce	Sr.	Lockhart, Texas
S	Giorgio Durham	Central Oklahoma	So.	Oklahoma City, Okla.
P	Joe Kok	Northeastern State	Sr.	Broken Arrow, Okla.
DS	Luke Sapolu	Central Oklahoma	Sr.	Costa Mesa, Calif.



Chad McIntosh
Punter

LSC NORTH SECOND TEAM OFFENSE

QB	Justin Pitrucha	Southeastern Oklahoma	Jr.	Carrollton, Texas
RB	Baylen Laury	Southeastern Oklahoma	Jr.	Forney, Texas
RB	Josh Johnson	Southeastern Oklahoma	So.	Ponca City, Okla.
WR	Daniel Morrell	Central Oklahoma	So.	Blanchard, Okla.
WR	Trey McVey	Northeastern State	So.	Muskogee, Okla.
WR	Ty Hull	Southeastern Oklahoma	Sr.	Tishomingo, Okla.
WR	Ben Randle	Northeastern State	Jr.	Plano, Texas
TE	Jerrod Temple	Southeastern Oklahoma	Sr.	Carrollton, Texas
OG	Stephen Speer	Southwestern Oklahoma	So.	Arlington, Texas
OG	Cody Hughes	Central Oklahoma	Fr.	Norman, Okla.
OT	Jonathan Ramos	East Central	Jr.	Los Angeles, Calif.
OT	Michael Yoder	Northeastern State	Fr.	Kingwood, Texas
C	Sean Tagliatalata	Southeastern Oklahoma	Jr.	Ponca City, Okla.
K	Jared Homer	Northeastern State	Sr.	Mustang, Okla.
RS	Alex Woodley	East Central	Jr.	Mesquite, Texas

LSC NORTH SECOND TEAM DEFENSE

DT	Jermelle Cudjo	Central Oklahoma	Sr.	Lawton, Okla.
DT	Billy Blackard	Northeastern State	Sr.	Claremore, Okla.
DT	Dexter Elliot	Southeastern Oklahoma	Jr.	Mt. Pleasant, Texas
DE	Lionel Gillespie	Southeastern Oklahoma	Jr.	Corsicana, Texas
DE	LaQuantum McDonald	Northeastern State	So.	Waco, Texas
ILB	Terrance Gaston	Northeastern State	Sr.	Ft. Gibson, Okla.
ILB	Noe Lopez	Southeastern Oklahoma	Sr.	Irving, Texas
OLB	Johnny Seals	Southeastern Oklahoma	Jr.	Tishomingo, Okla.
OLB	Don Dangerfield	Northeastern State	So.	Hugo, Okla.
S	Nick Dobler	Northeastern State	Jr.	Topeka, Kan.
S	Steven Harris	Southeastern Oklahoma	So.	Carrollton, Texas
S	Norris Wrenn	East Central	Fr.	Lawton, Okla.
P	Chad McIntosh	Southwestern Oklahoma	Sr.	Grand Prairie, Texas
DS	Jerrod Temple	Southeastern Oklahoma	Sr.	Carrollton, Texas

HONORABLE MENTION

QB	Adam Farkes, Texas A&M-Commerce
TE	Logan Cawyer, Northeastern State
TE	Reid Herchenbach, Texas A&M-Commerce
OT	Colton Ables, Northeastern State
C	Chad Roark, East Central
PK	Cole Jones, Southeastern Oklahoma
RS	Bruce Hatton, Southwestern Oklahoma
DT	Darnell Barnes, East Central
DT	Cory Summers, Southwestern Oklahoma
DE	Nick Walker, Southwestern Oklahoma
DE	Sam Moses, Central Oklahoma
LB	JP Oliver, East Central
LB	Jon Evans, Northeastern State
LB	Stephen DeGrate, Texas A&M-Commerce
LB	Airieus Ervin, East Central
LB	Tyler McGrew, East Central
P	Ryan Massengale, East Central
P	Will White, Southeastern Oklahoma

SPECIAL AWARDS

Offensive Lineman of the Year:

Luke Sapolu, Central Oklahoma

Offensive Back of the Year:

Jason Palmer, Central Oklahoma

Receiver of the Year:

Daniel Nichols, Southeastern Oklahoma

Freshman of the Year:

Michael Yoder, Northeastern State

Defensive Lineman of the Year:

William Green, Texas A&M-Commerce

Linebacker of the Year:

Cory Whitfield, Texas A&M-Commerce

Defensive Back of the Year:

Giorgio Durham, Central Oklahoma

Coach of the Year:

Guy Morriss, Texas A&M-Commerce

ALL AMERICANS



OT Truman Smith
1954



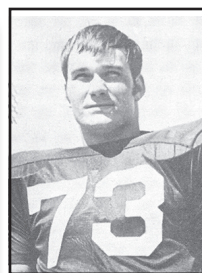
QB John Buck
1955, 1956



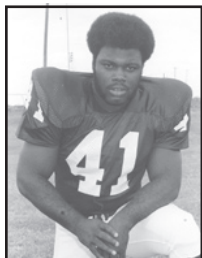
DL Jerry Craig
1965



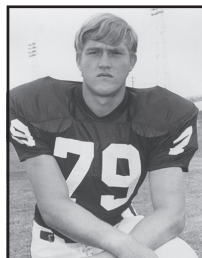
DT Dennis Skinner
1966



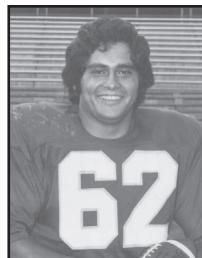
DL Charles Stevens
1968



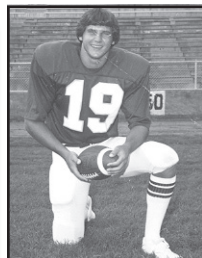
LB Joe Shegog
1972



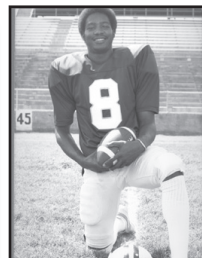
DL Tom Bergman
1974, 1975



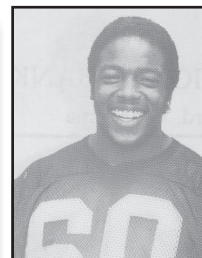
LB Louis Mendoza
1977



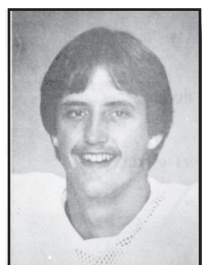
DB Glen Stallings
1977



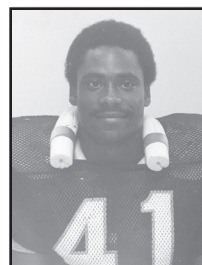
DB Alonzo McMillan
1979



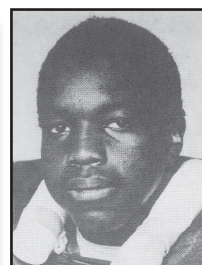
LB Gary Harper
1980



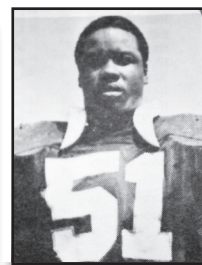
P Carl Birdsong
1989



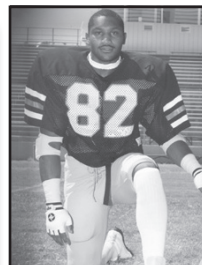
DB David Thompkins
1980



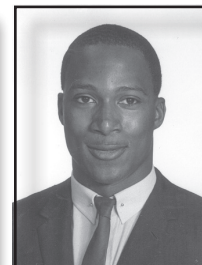
LB Ed Farmer
1981



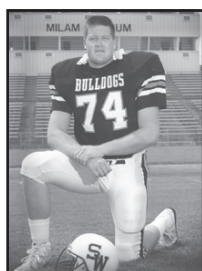
LB Richard Lockman
1982



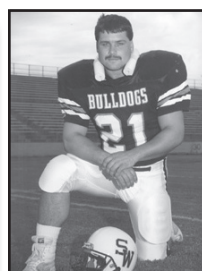
DL Randy Webster
1985



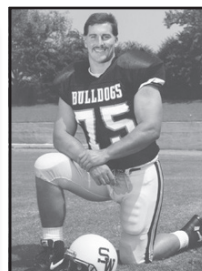
RB James Hicks
1986



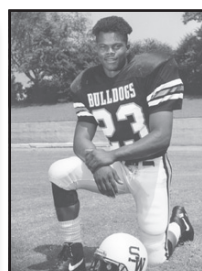
DL Todd Helton
1989



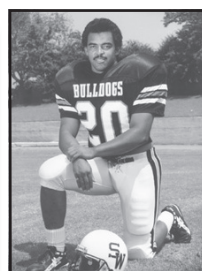
LB Mark Bay
1990



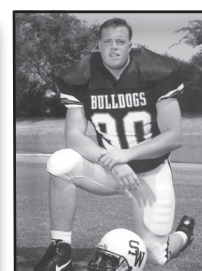
OL Damon Sartor
1992



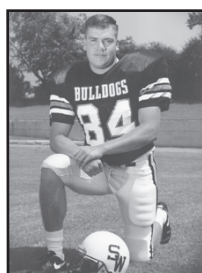
RB Eric Royal
1992



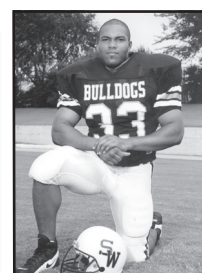
LB Stephen Buford
1992



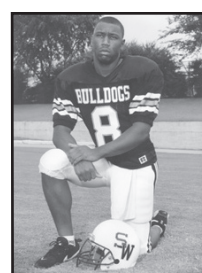
DL John Wichert
1992, 1993



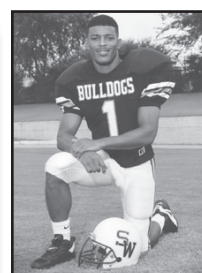
TE Junior Lowden
1992, 1993, 1995



LB Yohance Brown
1994, 1995, 1996



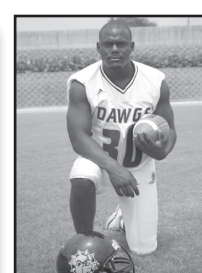
WR Reggie Jackson
1996



KR Willie Brown
1996



DL Robert Newberg
1996



LB Ruzell McCoy
2008

RUSHING

MOST YARDS GAINED

Longest TD Run: 83 by Farland Dindy vs. Eastern New Mexico, 1978

Game: 294 by Charles Hicks vs. ENMU, 1970

Season: 1,511 by Charles Hicks, 1971

Career: 4,233 by Charles Hicks, 1968-71

MOST CARRIES

Game: 44 by Eric Royal vs. SOSU, 1991

Season: 288 by James Hicks, 1986

Career: 766 by Charles Hicks, 1968-71

MOST TOUCHDOWNS

Game: 4, 7 times; most recent by Eric Royal vs. N.M. Highlands, 1991

Season: 17 by Eric Royal, 1991

Career: 37 by Eric Royal, 1989-92

PASSING

MOST YARDS GAINED

Longest Pass: 99 yards by Brad Woodard to Reggie Jackson vs. ECU, 1996

Game: 390 by Todd Ritz vs. Panhandle, 1995

Season: 2,561 by Steve Day, 2008

Career: 7,482 by Steve Day, 2005-2009

MOST COMPLETIONS

Game: 34 by Steve Day vs. ECU, 2009

Season: 232 by Steve Day, 2009

Career: 692 by Steve Day, 2005-2009

MOST ATTEMPTS

Game: 56 by Steve Day vs. ENMU, 2008

Season: 449 by Steve Day, 2009

Career: 1,334 by Steve Day, 2005-2009

BEST COMPLETION PERCENTAGE

Season: .667 by Mike Freeman, 1966

Career: .541 by John Buck, 1953-56

MOST TOUCHDOWN PASSES

Game: 5 by Todd Ritz vs. Panhandle, 1995

Season: 18, Steve Day, 2008

Career: 46, Steve Day, 2005-2009

TOTAL OFFENSE

MOST YARDS GAINED

Season: 2,561 by Steve Day, 2008

Career: 7,255 by Steve Day, 2005-2009

MOST PLAYS

Season: 544 by Steve Day, 2009

MOST TDs RESPONSIBLE FOR

Season: 20 by Reade Box, 2003

Career: 55 by Steve Price, 1980-83



Quarterback Steve Day finished his career with several different passing records.

RECEIVING

MOST RECEIVING YARDS

Game: 248 by Danny Howard vs. NSU, 2005

Season: 908 by Chase Pratt, 2003

Career: 2,726 by Johnathan Haggerty, 2006-09

MOST RECEPTIONS

Game: 12 by Danny Howard vs. NSU, 2005

Season: 54, Johnathan Haggerty, 2009

Career: 173 by Johnathan Haggerty, 2006-09

MOST TOUCHDOWN RECEPTIONS

Game: 3 by Johnathan Haggerty vs. NSU, 2007

Season: 10 by Chase Pratt, 2003

Career: 23 by Johnathan Haggerty, 2006-09

SPECIAL TEAMS

LONGEST RETURNS

Kickoff: 100 by Patrick Weaver vs. ECU, 2006

Punt: 91 by Dean Niles vs. Central St., 1948

LONGEST PUNT

Yards: 80 by Steve Price vs. TLU, 1981

MOST PUNTS

Season: 83 by Chad McIntosh, 2009

HIGHEST AVERAGE

Season: 45.6 by Carl Birdsong, 1979

Career: 44.5 by Carl Birdsong, 1979-80

PUNT RETURN YARDS

Season: 287 by Chase Pratt, 2002

Career: 608 by Chase Pratt, 2002-05

KICK RETURN YARDS

Season: 501 by Bruce Hatton, 2009

Career: 1,253 by Patrick Weaver, 2005-08



Johnathan Haggerty caught more passes for more yards than any previous player.

SCORING

MOST POINTS

Game: 26 by Roy Lee Cobb vs. ENMU, 1947

Season: 102 by Eric Royal, 1991

Career: 222 by Eric Royal, 1989-92

MOST EXTRA POINTS MADE

Game: 9 by Eugene Wilton vs. ENMU, 1969

Season: 32 by Eugene Wilton, 1969

Career: 114 by Eugene Wilton, 1968-71

MOST FIELD GOALS MADE

Game: 4 by Kyle Bengs vs. Ouachita, 1997

Season: 10 by Chad McIntosh, 2009;

Scott Poole, 2002; Eugene Wilton, '71

Career: 23 by Eugene Wilton, 1968-71

LONGEST FIELD GOAL MADE

Game: 56 by Paul Porter vs. NWOSU, 1990

DEFENSE

MOST INTERCEPTIONS

Game: 4 by Lee Brower vs. Sam Houston, 1968

Season: 11 by David Thompkins, 1980

Career: 16 by Lloyd Dismuke, 1974-76

MOST TACKLES (since 1979)

Season: 150 by Yohance Brown, 1996

Career: 501 by Yohance Brown, 1993-96

MOST TACKLES FOR LOSS (since 1979)

Season: 24 by Emmons Johnson, 2000

Career: 49.5 by Ruzell McCoy, 2005-08

MOST SACKS (since 1979)

Season: 15 by Anthony Cathey, 1991

Career: 41 by Anthony Cathey, 1990-93

INDIVIDUAL GAME

MOST RUSHING YARDS

294, Charles Hicks vs. Eastern N.M. 1970
255, Charles Hicks vs. Langston, 1971
253, James Hicks vs. East Texas, 1986
241, Charles Hicks vs. Cameron, 1971
240, Ron Williams vs. NW Okla. St., 1940

MOST RUSHING ATTEMPTS

44, Eric Royal vs. SE Okla. St., 1991
42, James Hicks vs. Mo. Southern, 1987
40, Eric Royal vs. NW Okla. St., 1992
38, James Hicks vs. East Texas, 1986
37, Sylvester Journey vs. Tarleton, 1983

MOST PASSING YARDS

390, Todd Ritz vs. Panhandle St., 1995
365, Josh Allen vs. SE Okla. St., 1999
326, Steve Day vs. SE Okla. State, 2008
320, Reade Box vs. Tarleton St., 2002
318, Brad Woodard vs. Harding, 1996

MOST PASSING ATTEMPTS

56, Steve Day vs. Eastern N.M., 2008
54, Steve Day vs. East Central, 2009
51, Steve Day vs. Northeast, 2008
50, Grant Pitt vs. SE Okla. St., 1993
49, Brad Woodard vs. Harding, 1996

MOST PASSING COMPLETIONS

34, Steve Day vs. East Central, 2009
27, Grant Pitt vs. SE Okla. State, 1993
27, Steve Day vs. Tarleton State, 2008
26, Steve Day vs. Southeastern, 2008
25, Steve Day vs. Northeastern, 2008

MOST TOUCHDOWN PASSES

5, Todd Ritz vs. Panhandle St., 1995
4, Todd Ritz vs. Langston, 1993
4, Grant Pitt vs. Langston, 1994
4, Josh Allen vs. West Texas A&M, 1999

MOST PASS RECEPTIONS

12, Danny Howard vs. Northeastern, 2005
11, Walter Oliver vs. Tarleton St., 2000
11, Johnathan Haggerty vs. A&MC, 2009
10, Three others tied with 10

MOST RECEIVING YARDS

248, Danny Howard vs. Northeastern, 2005
220, Shevron Glover vs. SE Okla. St., 1999
211, James Sadler vs. Central Okla., 2004
200, Nathan Robinson vs. Highlands, 1990
199, Derrick Bailey vs. SE Okla., 1996

LONGEST PUNTS

80, Steve Price vs. TX Lutheran, 1981
79, Sohn Seifried vs. SE Okla., 1989

LONGEST INTERCEPTION RETURN

92, Greg Franklin vs. East Central, 2006

INDIVIDUAL SEASON

MOST RUSHING YARDS

1,511, Charles Hicks, 1971
1,352, James Hicks, 1986
1,256, Charles Hicks, 1970
1,147, Eric Royal, 1992

MOST RUSHING ATTEMPTS

288, James Hicks, 1986
273, Charles Hicks, 1971
266, Eric Royal, 1992

MOST TOUCHDOWNS

17, Eric Royal, 1991
15, Eric Royal, 1992

MOST PASSING YARDS

2,561, Steve Day, 2008
2,325, Reade Box, 2003
2,088, Steve Day, 2009
2,035, Brad Woodard, 1996

MOST PASS COMPLETIONS

232, Steve Day, 2009
225, Steve Day, 2008
155, Reade Box, 2003
143, Todd Ritz, 1995

MOST PASS ATTEMPTS

449, Steve Day, 2009
448, Steve Day, 2008
305, Todd Ritz, 1995
294, Brad Woodard, 1996

MOST TOUCHDOWN PASSES

18, Steve Day, 2008
17, Todd Ritz, 1995
16, Mike Freeman, 1966
16, Reade Box, 2003

MOST PASS RECEPTIONS

54, Johnathan Haggerty, 2009
51, Kyle Wimberly, 2008
50, Danny Howard, 2006
46, Chade Pratt, 2003

MOST RECEIVING YARDS

908, Chase Pratt, 2003
887, Danny Howard, 2005
804, Johnathan Haggerty, 2006
782, Johnathan Haggerty, 2007

MOST TACKLES

150, Yohance Brown, 1996
149, Chris Norman, 1989
141, Mark Bay, 1990

MOST INTERCEPTIONS

11, David Thompkins, 1980
8, Jim Blake, 1980

INDIVIDUAL CAREER

MOST RUSHING YARDS

4,233, Charles Hicks, 1968-71
3,263, James Hicks, 1985-88
2,757, Eric Royal, 1989-92
2,316, Harold Stinson, 1946-49

MOST RUSHING ATTEMPTS

766, Charles Hicks, 1968-71
745, James Hicks, 1985-88
692, Mack Choate, 1953-56
667, Eric Royal, 1989-92

MOST RUSHING TOUCHDOWNS

37, Eric Royal, 1989-92
33, Charles Hicks, 1968-71
26, James Hicks, 1985-88

MOST PASSING YARDS

7,482, Steve Day, 2005-2009
4,642, Grant Pitt, 1991-94
4,224, Reade Box, 200-2003
3,604, Steve Price, 1980-83

MOST TOUCHDOWN PASSES

46, Steve Day, 2005-2009
31, Steve Price, 1980-83
30, Mike Freeman, 1964-67

MOST RECEPTIONS

173, Johnathan Haggerty, 2006-09
137, Chase Pratt, 2002-05
116, Danny Howard, 2002-05
96, Jack Rose, 1965-68

MOST RECEIVING YARDS

2,726 Johnathan Haggerty, 2006-09
2,199, Chase Pratt, 2002-205
1,959, Danny Howard, 2002-05
1,740, Derrick Bailey, 1986-89

MOST TACKLES (since 1979)

507, Yohance Brown, 1993-96
390, Chris Norman, 1986-89
341, John Wichert, 1990-93
325, A.J. Johnson, 1986-88

TACKLES FOR LOSS (since 1979)

49.5, Ruzell McCoy, 2005-08
46, Russell Radford, 1997-00
42, Emmons Johnson, 1997

MOST SACKS (since 1979)

41, Anthony Cathey, 1990-93
26, John Wichert, 1990-93
19, Russell Radford, 1997-00

MOST INTERCEPTIONS (since 1974)

16, Lloyd Dismuke, 1974-76
14, David Thompkins, 1979-82
13, Michael Walker, 1991-94

1905 (1-1)

Coach Lem Whitcomb	SW	OP
Central State	0	41
Kingfisher	3	0

1906 (0-1)

Coach Lem Whitcomb	SW	OP
Central State	0	12

1907 (0-3-1)

Coach Edward Hickox	SW	OP
Central State	0	6
Northwestern	4	41
Epworth	0	6
Kingfisher	0	0

1908 (No Games)**1909 (2-3-0)**

Coach Adolph Shultz	SW	OP
Central State	6	0
Oklahoma State	2	0
Northwestern	0	78
Kingfisher	2	29
Epworth	0	43

1910 (3-2-0)

Coach Moses Gaskell	SW	OP
Oklahoma State	0	32
Central State	10	0
Northwestern	0	33
Kingfisher	28	0
Thomas H.S	17	5

1911 (0-3-0)

Coach Moses Gaskell	SW	OP
Texas Christian	0	25
Texas Christian	0	24
Oklahoma State	16	61

1912 (1-2-0)

Coach Moses Gaskell	SW	OP
Kingfisher	6	7
Okla. Baptist	9	6
Okla. Methodist	7	21

1913 (0-0-1)

Coach Howard Cross	SW	OP
Texas Christian	0	0

1914 (0-2-0)

Coach Claude Reeds	SW	OP
Northwestern	0	33
Mangum	0	75

1915 (3-5-1)

Coach Claude Reeds	SW	OP
Tulsa	7	45
Central State	0	76
Oklahoma	0	55
Oklahoma Baptist	67	0
Kingfisher	14	14
Mountain View	51	0
East Central	9	14
Blackwell	0	26
Phillips	27	0

1916 (2-7-0)

Coach Sam Burton	SW	OP
Kingfisher	7	13
Central State	3	24
East Central	16	0
Oklahoma	6	140
Oklahoma State	0	117
Northwestern	7	13
Okla. Methodist	33	0
Phillips	0	54
Catholic	0	19

1917 (1-4-0)

Coach Sam Burton	SW	OP
Central State	6	66
Clarendon (TX)	0	32
Howard Payne (TX)	13	6
East Central	0	54
Phillips	2	34

1918 (0-4-0)

Coach John Lance	SW	OP
Austin	0	25
Central State	0	59
Phillips	0	109
Northeastern	0	101

1919 (4-4-0)

Coach John Lance	SW	OP
Phillips	0	74
Central State	0	19
Oklahoma State	0	37
East Central	16	2
Murray J.C	31	0
Kingfisher	7	0
Oklahoma Baptist	20	0
Tulsa	0	60

1920 (5-3-1, 1-3-0)

Coach John Lance	SW	OP
Oklahoma Baptist	9	6
West Texas State	0	0
Central State	0	34
Northwestern	7	27
Phillips	0	37
Catholic	63	0
Kingfisher	14	0
Northern Okla. J.C.	6	0
Chilocco	47	0

1921 (3-3-2, 1-3-1)

Coach John Lance	SW	OP
Oklahoma City	7	7
Oklahoma Baptist	13	0
Central State	14	21
Oklahoma State	0	53
Northwestern	14	14
Phillips	0	14
Northern Oklahoma	21	7
Kingfisher	14	0

1922 (5-4-0, 4-3-0, 6th)

Coach Carl Voyles	SW	OP
Central State	0	34
East Central	39	0

Northwestern	12	6
Oklahoma City	74	7
Phillips	12	34
Carver	81	0
Clarendon (TX)	19	20
Tulsa	14	21
Oklahoma Baptist	51	0

1923 (4-4-0, 3-3-0, T4th)

Coach Carl Voyles	SW	OP
Oklahoma Baptist	0	14
Central State	0	7
Southeastern	7	16
Phillips	12	0
Northwestern	20	0
East Central	7	0
Wayland Baptist	21	0
Clarendon (TX)	3	6

1924 (5-3-0, 3-2-0, 4th)

Coach Carl Voyles	SW	OP
Oklahoma Baptist	0	8
Central State	0	6
East Central	14	3
Oklahoma State	0	9
Phillips	13	0
Wichita Falls J.C. (TX)	54	0
Oklahoma City	48	2
Clarendon	27	6

1925 (5-4-1, 3-1-1, 3rd)

Coach Carl Voyles	SW	OP
Oklahoma City	6	0
Oklahoma Baptist	0	48
Central State	7	7
East Central	9	0
Oklahoma State	2	9
Texas A&M	6	3
Friends (KS)	0	6
Phillips	17	13
Hardin-Simmons (TX)	0	19
Clarendon (TX)	15	0

1926 (7-2-0, 5-0-0, 1st)

Coach Joe Milam	SW	OP
Oklahoma City	20	13
Oklahoma Baptist	9	3
Central State	6	3
Northwestern	13	0
Cordell Christian	28	0
Texas	7	31
Southwestern (KS)	0	6
Phillips	16	14
Clarendon (TX)	20	0

1927 (1-6-2, 1-5-1, 9th)

Coach Joe Milam	SW	OP
Oklahoma City	0	32
Oklahoma Baptist	6	9
West Texas State	6	6
Central State	13	16
East Central	6	6
Northwestern	9	0
Northeastern	10	15
Texas	0	43
Phillips	0	13

1928 (5-2-2, 2-2-2, T7th)

Coach Joe Milam	SW	OP
Oklahoma City	7	7
Oklahoma Baptist	0	39
West Texas State	26	0
Central State	0	32
East Central	0	0
Northwestern	6	0
Panhandle	13	13
Southeastern	6	0
Cameron	19	0

1929 (2-7-1, 1-4-0, 5th)

Coach Joe Milam	SW	OP
Abilene Christian	14	25
Central State	0	7
East Central	0	3
Northwestern	0	54
Northeastern	14	6
Panhandle	13	13
Southeastern	0	31
Eastern Oklahoma	32	0
Cordell Christian	13	14
Trinity (TX)	0	12

1930 (2-7-1, 0-4-1, 6th)

Coach Joe Milam	SW	OP
Abilene Christian	12	0
Central State	6	13
East Central	0	6
Northwestern	7	7
Northeastern	6	16
Southeastern	6	13
Cordell Christian	35	0
Emporia State	13	27
Pittsburg State	6	20

1931 (5-2-1, 2-2-1, 4th)

Coach Joe Milam	SW	OP
Oklahoma Baptist	10	7
Central State	0	27
East Central	9	7
Northwestern	7	7
Southeastern	0	12
Fort Sill	52	0
Northeastern	21	6
Panhandle	25	0

1932 (7-3-0, 4-1-0, T1st)

Coach Rankin Williams	SW	OP
Central State	0	13
East Central	3	0
Northwestern	20	0
Northeastern	10	0
Oklahoma State	3	33
Southeastern	13	0
Murray J.C	14	0
Panhandle	33	6
Oklahoma Baptist	0	20
Tarleton State	12	7

1933 (7-2-1, 4-0-0, 1st)

Coach Rankin Williams	SW	OP
West Texas State	27	6
Central State	14	6
East Central	20	0
Northwestern	28	0
Northeastern	21	3
Cordell Christian	64	0
Panhandle	3	0
Bacone J.C	6	13
Oklahoma Baptist	6	6
Murray J.C	2	12

1934 (7-2-1, 3-2-0, 2nd)

Coach Rankin Williams	SW	OP
West Texas State	10	0
East Central	0	7
Southwestern (KS)	18	6
North Texas State	7	7
Northwestern	7	6
Northeastern	14	13
Southeastern	25	6
Central State	7	20
Panhandle	14	0
Oklahoma City	12	0

1935 (3-5-1, 1-3-1, 5th)

Coach Rankin Williams	SW	OP
Pittsburg State	0	7
East Central	7	15
Panhandle	7	9
Northeastern	8	0
Central State	0	7
West Texas State	13	7
Southeastern	0	12
Northwestern	0	0
Southwestern (KS)	41	0

1936 (0-7-3, 0-4-2, 7th)

Coach Rankin Williams	SW	OP
McMurry (TX)	0	7
Daniel Baker (TX)	6	20
Southwestern (TX)	6	6
Panhandle...	0	7
Central State	6	21
Northwestern	0	14
East Central	0	9
Southeastern	6	7
Oklahoma Baptist	0	0
Northeastern	7	7

1937 (4-5-0, 3-3-0, T3rd)

Coach Rankin Williams	SW	OP
East Central	26	6
Northwestern	20	27
Central State	0	14
Fort Hays State	6	12
McMurry (TX)	12	42
Oklahoma Baptist	13	16
Northeastern	12	0
Northern Oklahoma	9	0
Southeastern	7	0

1938 (3-6-1, 2-4-0, 5th)

Coach Rankin Williams	SW	OP
Oklahoma Baptist	2	6
East Central	27	7
Central State	3	25
Northern Oklahoma	18	14
Northwestern	0	7
Southeastern	7	47
Northeastern	21	7
Cameron	0	39
West Texas State	14	19
Connors J.C	13	13

1939 (2-5-3, 2-3-1, 5th)

Coach Jake Spann	SW	OP
Northern Oklahoma	0	0
Oklahoma Baptist	0	26
East Central	6	27
Oklahoma City	0	0
Central State	0	6
Northwestern	39	0
Cameron	0	6
Eastern New Mexico	12	16
Southeastern	0	0
Northeastern	6	0

1940 (9-2-0, 4-2-0, 2nd)

Coach Jake Spann	SW	OP
Oklahoma Baptist	0	20
Northern Oklahoma	20	12
East Central	0	31
Oklahoma City	28	7
Northeastern	24	2
Central State	27	7
Northwestern	7	0
Regis (CO)	40	7
Southeastern	18	7
Eastern New Mexico	12	0
McMurry (TX)	7	0

1941 (9-2-0, 4-1-0, 2nd)

Coach Jake Spann	SW	OP
St. Mary's (TX)	0	13
Cameron	20	0
Emporia State	13	12
East Central	14	6
Oklahoma City	3	0
Northeastern	14	0
Central State	6	7
Northwestern	20	0
Sam Houston (TX)	19	6
Fort Hays sState	19	0
Southeastern	14	0

1942-45 (No Games)**1946 (5-3-1, 2-2-1, 3rd)**

Coach Jake Spann	SW	OP
Abilene Christian	0	28
Western Colorado	19	0
East Central	2	6
Southwestern (KS)	33	0
Northwestern	7	0
Central State	20	20
Northeastern	6	7
Southeastern	12	7
Eastern New Mexico	47	12

1947 (4-3-1, 2-2-1, 4th)

Coach Jake Spann	SW	OP
Eastern New Mexico	33	0
Cameron	7	20
Western Colorado	14	7
East Central	13	0
Northwestern	12	0
Central State	12	12
Northeastern	6	13
Southeastern	0	20

1948 (1-7-0, 1-3-0, 4th)

Coach Jake Spann	SW	OP
Midwestern (TX)	0	27
East Central	6	33
Southwestern (KS)	7	21
Central State	20	13
Northeastern	6	20
Southeastern	6	12
Western Colorado	6	12
Cameron	0	6

1949 (3-6-0, 1-4-0, 5th)

Coach Keith Ransport	SW	OP
Abilene Christian	6	34
Western Colorado	16	19
East Central	13	26
Central State	13	37
Northeastern	21	7
Southeastern	0	47
Bethany (KS)	28	13
Northwestern	14	22
Sterling (KS)	52	6

1950 (6-4-0, 4-1-0, T1st)

Coach Keith Ransport	SW	OP
Midwestern (TX)	6	40
Lamar Univ. (TX)	7	34
East Central	13	0
North Texas State	6	76
Central State	34	21
Northeastern.	46	12
Southeastern	13	14
New Mexico State	18	16
New Mexico Military	13	0
Northwestern	7	3

1951 (4-7-0, 3-2-0, T2nd)

Coach W.C. Whiteside	SW	OP
Emporia State	6	26
East Central	26	0
New Mexico Military	14	0
Northwestern	34	7
Austin College (TX)	7	28
Central State	32	26
Southeastern	6	33
Panhandle	7	13
Midwestern (TX)	8	77
Northeastern	0	65
Lamar Univ. (TX)	21	42

1952 (3-6-0, 2-3-0, T4th)

Coach Joe Metcalf	SW	OP
Bethel (KS)	53	12
Eastern New Mexico	6	14
East Central	7	19
Northwestern	21	14
Central State	32	28
Panhandle	0	7
Northeastern	7	27
East Texas State	0	65
Southeastern	6	7

1953 (4-6-0, 1-4-0 T5th)

Coach Joe Metcalf	SW	OP
Midwestern (TX)	24	32
Southwestern (KS)	20	13
Northwestern	26	0
Central State	28	33
Southeastern	6	7
Panhandle	0	7
Northwestern	26	19
East Central	12	13
Eastern New Mexico	19	0
Northeastern	6	7

1954 (7-2-0, 4-1-0, T1st)

Coach Joe Metcalf	SW	OP
Eastern New Mexico.	7	13
East Central	21	0
Southwestern (KS)	7	0
Northwestern	13	0
Central State	7	12
Northeastern	42	19
Southeastern	54	20
Panhandle	34	19
New Mexico State	20	14

1955 (6-3-0, 4-1-0, T1st)

Coach Joe Metcalf	SW	OP
Midwestern (TX)	20	32
East Central	30	0
Eastern New Mexico	6	0
Northwestern	15	0
Central State	14	7
Northeastern	7	13
Southeastern	59	13
Panhandle	47	26
Adams State (CO)	13	24

1956 (5-3-1, 3-1-1, 3rd)

Coach Joe Metcalf	SW	OP
Langston	40	20
McNeese State (LA)	7	24
East Central	40	6
Northwestern	31	6
Central State	19	7
Northeastern	6	9
Southeastern	6	6
Panhandle.	31	32
Eastern New Mexico	7	0

1957 (7-1-1, 4-1-0, 1st)

Coach Joe Metcalf	SW	OP
Langston	7	0
Colorado College	21	7
East Central	14	0
Northwestern	28	7
Central State	0	7
Northeastern	19	7
Southeastern	7	0
Panhandle.	21	7
Eastern New Mexico	14	14

1958 (2-6-1, 2-4-0, T5th)

Coach J.W. Cole	SW	OP
Colorado College	0	13
East Central	26	0
Northwestern	24	14
Central State	0	6
Northeastern	14	34
Southeastern	0	11
Panhandle	0	34
Eastern New Mexico	7	7
Langston	0	8

1959 (3-6-1, 3-3-0, 4th)

Coach J.W. Cole	SW	OP
Sam Houston (TX)	6	31
East Central	7	34
Northwestern	13	9
Central State	6	25
Northeastern	20	19
Southeastern	21	20
Panhandle	13	13
Eastern New Mexico	6	7
Langston	7	38
Texas-Arlington	7	28

1960 (1-9-0, 1-5-0, 6th)

Coach J. W. Cole	SW	OP
Sam Houston (TX)	0	28
East Central	21	33
Northwestern	6	33
Central State	6	26
Northeastern	27	26
Southeastern	13	14
Panhandle	7	14
Eastern New Mexico	0	27
Langston	7	46
Texas-Arlington	0	27

1961 (2-8-0, 2-5-0, 7th)

Coach J.W. Cole	SW	OP
Tarleton State	14	20
East Central	12	26
Northwestern	21	0
Central State	0	20
Northeastern	13	7
Southeastern	0	20
Panhandle	0	40
Eastern New Mexico	0	14
Langston	20	26

1962 (6-4-0, 5-2-0, 3rd)

Coach J.W. Cole	SW	OP
Tarleton State	20	13
Northwestern	26	0
Northeastern	20	0
Fort Hays State	6	14

Central State	6	20
Southeastern	25	20
Eastern New Mexico	0	20
East Central	13	19
Panhandle	28	7
Langston	7	0

1963 (3-7-0, 1-6-0, 8th)

Coach J.W. Cole	SW	OP
Central State	14	19
Tarleton State	14	7
East Central	0	28
Northwestern	7	20
Northeastern	0	7
Panhandle	7	13
Eastern New Mexico	6	14
Langston	17	7
Fort Hays State	19	14
Southeastern	13	20

1964 (5-4-1, 4-2-1, 3rd)

Coach Otis Delaporte	SW	OP
at Fort Hays State	19	27
East Central	7	35
at Northwestern	18	6
Central State	6	0
at Northeastern	0	14
Southeastern	13	13
Panhandle	34	0
at Eastern New Mexico	23	20
Langston	14	0
at Tarleton State	0	31
Texas-Arlington.	0	27

1965 (5-5-0, 3-4-0, T4th)

Coach Otis Delaporte	SW	OP
Ft. Hays State	6	7
at East Central	10	20
Northwestern.	14	0
at Central State	13	34
Northeastern	17	20
at Southeastern	26	14
at Panhandle	20	13
Eastern New Mexico	28	7
Langston	7	14
Tarleton State	43	7

1966 (7-3-0, 5-2-0, T2nd)

Coach: Otis Delaporte	SW	OP
at Fort Hays State	13	7
East Central	13	14
at Northwestern	7	14
Central State	21	14
at Northeastern	34	13
Southeastern	28	14
Panhandle	35	14
at Eastern New Mexico	21	6
at Langston	14	13
at Tarleton State	6	42

1967 (8-2-0, 5-2-0)

(4-6-0, 1-6-0 due to forfeits*)	SW	OP
Coach Otis Delaporte	SW	OP
Ft. Hays State	27	20
at East Central.	14	19
Northwestern	*17	0
at Central State	*13	6
Northeastern	42	6
at Southeastern	3	7

at Panhandle	*27	13
Eastern New Mexico	20	0
Langston	*45	7
Tarleton State	24	16

1968 (7-4-0, 6-1-0, 1st)

Coach Otis Delaporte	SW	OP
at Arkansas Tech	7	21
at Sam Houston (TX)	0	7
East Central	6	10
at Northwestern	31	0
Central State	31	7
at Northeastern	17	9
Southeastern	28	9
Panhandle	30	7
at Tarleton State	28	42
at Langston	21	13
at Eastern New Mexico	21	20

1969 (9-1-0, 6-1-0, T1st)

Coach Otis Delaporte	SW	OP
Sam Houston (TX)	31	0
at East Central	24	14
Northwestern	21	0
At Central State	6	7
Northeastern	22	15
at Southeastern	40	7
at Panhandle	28	7
Tarleton St. (TX)	52	7
Langston	56	0
Eastern New Mexico	66	0

1970 (7-2-1, 6-1-1, 1st)

Coach Otis Delaporte	SW	OP
at Panhandle	24	21
Northwest Louisiana	14	22
Southeastern	42	13
at Northeastern	7	7
at Eastern New Mexico	31	20
East Central	30	19
at Langston	28	13
Northwestern	7	13
at Cameron	14	13
Central State	17	16

1971 (8-2-0, 7-1-0, 1st)

Coach Otis Delaporte	SW	OP
Panhandle	31	7
at Northwest Louisiana	10	17
at Southeastern	40	0
Northeastern	31	14
Eastern New Mexico	45	28
at East Central	17	7
Langston	52	0
at Northwestern	0	21
Cameron	24	21
at Central State	10	7

1972 (8-3, 5-3-0, T3rd)

Coach Otis Delaporte	SW	OP
Northwest Louisiana	7	3
at Panhandle	28	0
Southeastern	21	7
at Northeastern	7	26
at Eastern New Mexico	6	0
East Central	0	2
at Langston	22	21
Northwestern	35	0

at Cameron	24	6
Central State	7	26
*Angelo State	28	6
*Shrine Bowl at Ardmore, Okla.		

1973 (3-7-0, 2-6-0, 8th)

Coach Otis Delaporte	SW	OP
at Northwest Louisiana.	7	23
Panhandle	14	0
at Southeastern	2	3
Northeastern	3	10
Eastern New Mexico	10	7
at East Central	0	41
Langston	0	17
at Northwestern	13	3
Cameron	7	11
at Central State	6	21

1974 (6-3-0, 4-1-0, 1st)

Coach Otis Delaporte	SW	OP
Sam Houston (TX)	37	14
at Panhandle	21	3
Southeastern	48	7
at Northeastern	14	13
at Eastern New Mexico	6	17
East Centra	28	6
Northwestern	28	14
at Cameron	14	31
Central State	0	14

1975 (5-5-0, 2-3-0, T3rd)

Coach Otis Delaporte	SW	OP
at Sam Houston (TX)	24	0
Panhandle	47	6
at Southeastern	14	39
Northeastern	21	14
Eastern New Mexico	48	18
at East Central	6	27
Langston	7	27
at Northwestern	19	14
Cameron	7	12
at Central State	14	16

1976 (4-7-0, 0-4-0, 5th)

Coach Otis Delaporte	SW	OP
Cameron	15	18
at Sam Houston (TX)	14	21
at Panhandle	14	0
Tarleton St. (TX)	10	0
at Northeastern	8	21
Eastern New Mexico	21	8
East Central	21	20
at Langston	10	24
Northwestern	3	10
Southeastern	28	48
Central State	17	15

1977 (11-1-0, 4-0-0, 1st)

Coach Otis Delaporte	SW	OP
Sam Houston (TX)	16	0
at Central State	14	13
Panhandle	48	12
at Tarleton St. (TX)	17	14
Northeastern	17	14
Eastern New Mexico	41	0
at East Central	37	14
Texas Lutheran	21	0
at Northwestern	34	0
Southeastern	52	8
*Nebraska-Kearney	21	7
**Abilene Christian	7	24
*NAIA Semifinal Playoff Game		
**NAIA Championship Game		

1978 (3-5-1, 1-2-1, T3rd)

Coach Bob Mazie	SW	OP
Sam Houston (TX)	0	12
Central State	13	16
at Panhandle	26	3
Northeastern	10	10
at Eastern N.M.	24	14
East Central	20	29
at Texas Lutheran	8	22
Northwestern	20	44
at Southeastern	29	24

1979 (7-2-0, 3-1-0, 2nd)

Coach Bob Mazie	SW	OP
at Sam Houston (TX)	33	29
at Central State	0	28
Panhandle	24	9
Northeastern	22	13
Eastern New Mexico	30	6
at East Central	14	28
Texas Lutheran	16	7
at Northwestern	27	0
Southeastern	35	20

1980 (7-4-0, 3-1-0, T1st)

Coach Bob Mazie	SW	OP
Bishop College	37	9
Central State	16	18
at Panhandle	7	10
Sam Houston (TX)	14	9
Henderson State (AR)	24	0
at Eastern N.M.	30	10
at Southeastern	14	13
at Northeastern	21	17
at Texas Lutheran	27	38
Northwestern	28	17
East Central	7	16

1981 (9-2-0, 4-0-0, T2nd)

(3-8-0, 2-2-0 due to forfeit*)		
Coach Bob Mazie	SW	OP
Bishop College	*9	0
Central State	6	13
Panhandle	*23	12
Sam Houston (TX)	*23	14

Henderson State (AR)	16	23
Eastern New Mexico.	*43	14
Southeastern	*26	20
Northeastern	*14	7
Texas Lutheran	26	20
Northwestern	25	7
East Central	48	28

1982 (7-3-0, 3-1-0, 2nd)

Coach Bob Mazie	SW	OP
Central State	13	7
Panhandle State	6	13
Sam Houston (TX)	17	19
Cameron	16	9
Eastern New Mexico	24	7
Southeastern	43	16
Northeastern	13	30
Texas Lutheran	34	8
Northwestern	37	7
East Central	53	14

1983 (3-6-0, 2-2-0, T2nd)

Coach Bob Mazie	SW	OP
Central State	17	45
Panhandle State	27	14
Sam Houston (TX)	15	52
Cameron	3	21
Eastern New Mexico	7	38
Southeastern	25	2
Northeastern	20	23
Northwestern	14	13
East Central	31	43

1984 (4-6-0, 1-3-0)

Coach: Bob Mazie	SW	OP
Eastern New Mexico	10	14
Missouri Southern	7	27
Sam Houston (TX)	6	44
Cameron	19	12
Univ. of Nuevo Leon.	27	0
Southeastern	22	14
Northeastern	8	26
Langston	31	20
Northwestern	0	12
East Central	38	41

1985 (5-3-1, 3-1-0, T1st)

Coach Bob Mazie	SW	OP
Eastern New Mexico.	25	14
Missouri Southern	34	7
Cameron	10	12
Howard Payne (TX)	7	7
East Central	20	7
Southeastern	24	17
Northeastern	20	17
Langston	14	30
Northwestern	10	16

1986 (4-6-0, 0-4-0, 5th)

Coach Paul Sharp	SW	OP
Missouri Southern	17	14
Central Arkansas	7	20
Cameron	22	43
Howard Payne (TX)	28	20
East Texas State	19	6
East Central	3	26
Southeastern	23	38

Northeastern	0	28
Langston	38	6
Northwestern	0	3

1987 (3-7-0, 0-4-0, 5th)

Coach Paul Sharp	SW	OP
Missouri Southern	9	7
Central Arkansas	0	13
Panhandle	19	6
East Texas State	14	26
Howard Payne (TX)	6	15
East Central	9	32
Southeastern	22	27
Northeastern	13	25
Langston	50	20
Northwestern	7	21

1988 (6-4-0, 2-2-0, T2nd)

Coach Paul Sharp	SW	OP
Ouachita Baptist (AR)	6	17
Western New Mexico	20	7
Panhandle	17	13
Arkansas Tech	6	0
Adams State (CO)	18	27
East Central	45	10
Southeastern	0	36
Northeastern	0	23
Langston	9	0
Northwestern	27	15

1989 (6-4-1, 2-2-0, T2nd)

Coach Paul Sharp	SW	OP
Adams State	27	20
Ouachita Baptist	9	13
Western New Mexico	5	0
Langston	23	14
Arkansas Tech	12	14
Panhandle State	31	10
Northwestern	14	39
East Central	*20	23
Southeastern	7	16
Northeastern	6	0
* ECU Forfeit		

1990 (5-5-0, 1-3-0, 4th)

Coach Paul Sharp	SW	OP
Arkansas Tech	10	21
Ouachita Baptist (AR)	*21	25
Central Arkansas	18	13
Langston	17	6
New Mexico Highlands	23	24
Panhandle	35	7
Northwestern	10	13
East Central	34	13
Southwestern	3	6
Northeastern	10	50
*OBU forfeit		

1991 (6-4-1, 3-2, 2nd)

Coach Paul Sharp	SW	OP
Arkansas Tech	*20	23
Ouachita Baptist (AR)	10	21
Central Arkansas	17	17
Panhandle	28	0
New Mexico Highlands	37	17

Langston	31	18
Northwestern	14	20
East Central	31	6
Southeastern	22	10
Northeastern	14	24
Mexico All Stars	28	35
*ATU Forfeit		

1992 (8-2-0, 4-1-0, T1st)

Coach Paul Sharp	SW	OP
West Texas State	37	0
Adams State (CO)	21	10
Midwestern (TX)	13	10
Tarleton St. (TX)	27	0
Langston	22	3
Northwestern	24	21
East Central	27	7
Southeastern	17	27
Northeastern	27	20
Central Arkansas	2	14
*NAIA Playoffs		

1993 (6-4-0, 2-3-0, T4th)

Coach Paul Sharp	SW	OP
Adams State (CO)	0	19
Midwestern St. (TX)	13	9
West Texas A&M	47	24
Tarleton St. (TX)	12	7
Arkansas Tech	46	22
Northwestern	10	0
East Central	21	28
Southeastern	9	20
Northeastern	19	7
Langston	41	44

1994 (2-7-0, 1-4-0, 5th)

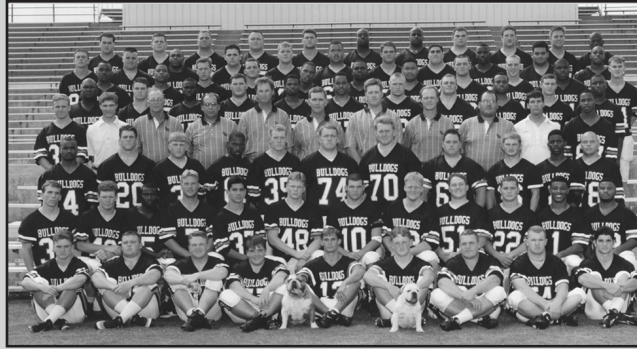
Coach Paul Sharp	SW	OP
Central Oklahoma	8	36
Midwestern St. (TX)	24	6
Harding (AR)	27	39
Arkansas Tech	20	24
Northwestern	31	0
East Central	10	16
Southeastern	16	31
Northeastern	0	21
Langston	28	31

1995 (5-5-0, 2-3-0, 4th)

Coach Paul Sharp	SW	OP
Central Oklahoma	5	20
Midwestern St. (TX)	35	25
West Texas A&M	21	38
Harding (AR)	18	0
Panhandle	55	20
Southeastern	20	36
East Central	27	12
Langston	26	6
Northeastern	10	17
Northwestern	7	30

1996 (9-3-0, 4-1-0, T1st)

Coach Paul Sharp	SW	OP
Central Oklahoma	14	23
at West Texas A&M	31	21
Midwestern State	31	15
Panhandle	29	10
at Harding	23	35
at Southeastern	19	13
East Central	19	15
at Langston	6	20
at Northeastern	7	3
Northwestern	16	10
*Northwestern	17	7
*Montana Tech	33	31
*NAIA Playoffs		

**2009 (1-10, 1-4, 5th LSC)**

Coach Dan Cocannouer	SW	OP
at Emporia State	14	48
Eastern New Mexico	7	45
at Angelo State	10	55
West Texas A&M	15	41
at Tarleton State	3	66
Southeastern Okla.	10	33
at Northeastern State	6	13
@ Central Oklahoma	23	41
East Central	14	13
Okla. Panhandle	24	28
Texas A&M-Commerce	12	15

1997 (5-5-0, 5-1-0 T1st)

Coach Paul Sharp	SW	OP
at Abilene Christian	17	25
West Texas A&M	7	34
at Eastern New Mexico	12	21
Texas A&M-Commerce	7	17
Ouachita Baptist	12	6
at Southeastern	21	11
Northeastern	6	7
at Central Oklahoma	33	17
East Central	20	14
at Harding	42	33

1998 (0-10-0, 0-9-0)

Coach Paul Sharp	SW	OP
Abilene Christian	13	31
West Texas A&M	0	42
Eastern New Mexico	6	34
Texas A&M-Commerce	12	52
Ouachita Baptist	17	34
Southeastern	7	27
Northeastern	10	30
Central Oklahoma	6	20
East Central	8	13
Harding	9	20

1999 (5-5-0, 4-5-0)

Coach Paul Sharp	SW	OP
Adams State	17	13
at Tarleton State	3	7
West Texas A&M	25	20
at Abilene Christian	18	28
Ouachita Baptist	14	3
at Southeastern	16	21
Northeastern	15	12
at Central Oklahoma	16	18
East Central	7	17
at Harding	31	22

2000 (6-4-0, 2-3-0, T4th LSC)

Coach Paul Sharp	SW	OP
at Adams State (CO)	16	9
at TAMU-Kingsville	16	13
Tarleton St. (TX)	22	27
TAMU-Commerce	24	14
Central Oklahoma	27	21
at East Central	6	13
Panhandle	65	0
at Southeastern	10	6
Northeastern	0	26
at Midwestern St. (TX)	7	40

2001 (4-6-0, 2-3-0, T4th LSC)

Coach Paul Sharp	SW	OP
A&M-Kingsville	0	24
at Tarleton State	20	21
at Bacone College	49	13
at TAMU-Commerce	21	27
at Central Oklahoma	37	36
East Central	9	28
at Panhandle	15	12
Southeastern	22	15
at Northeastern	14	6
Midwestern State	5	29

2002 (7-4-0, 3-2-0, T2nd)

Coach Paul Sharp	SW	OP
At West Texas A&M	39	21
Panhandle	15	0
Midwestern State	0	6
Angelo State	31	24
Central Oklahoma	24	21
At East Central	31	17
At Northwestern La.	0	38
At Southeastern.	13	36
Northeastern	13	10
At Tarleton State	30	33

2003 (5-6-0, 1-4-0, 6th LSC)

Coach Paul Sharp	SW	OP
West Texas A&M	30	14
Bacone College	35	6
Midwestern State	10	24
at Angelo State	24	28
at Central Oklahoma	17	20
East Central	8	15
at Southern Nazarene	32	6
Southeastern Oklahoma	14	47
at Northeastern State	38	48
Tarleton State	21	17
at Eastern New Mexico	17	14

2004 (1-9, 1-4, 5th LSC)

Coach Paul Sharp	SW	OP
at Panhandle State	7	21
Midwestern State	14	19
at Eastern New Mexico	0	39
West Texas A&M	6	23
at TXA&M-Commerce	0	26
Central Oklahoma	19	37
at EastCentral	14	31
at Southeastern	7	49
Northeastern State	21	16
at Tarleton State	12	46

2005 (1-10, 0-5, 6th, LSC)

Coach Ryan Held	SW	OP
Panhandle State	13	10
at Midwestern State	0	49
Eastern New Mexico	0	28
at West Texas A&M	14	41
Tarleton State	9	16
at Central Oklahoma	20	37
East Central	20	37
at Missouri Rolla	9	20
Southeastern	13	42
at Northeastern State	13	17
Texas A&M-Commerce	16	37

2006 (6-5-0, 3-2, T2nd LSC)

Coach Ryan Held	SW	OP
at TX A&M-Kingsville	23	17
Midwestern State	10	31
at Panhandle State	33	14
at Abilene Christian	0	31
Tarleton State	19	21
Missouri Rolla	31	29
at Southeastern	7	35
Northeastern	32	6
Central Oklahoma	25	22
at East Central	38	28
at TX A&M Commerce	7	13

2007 (6-5, 3-2, T1st LSC)

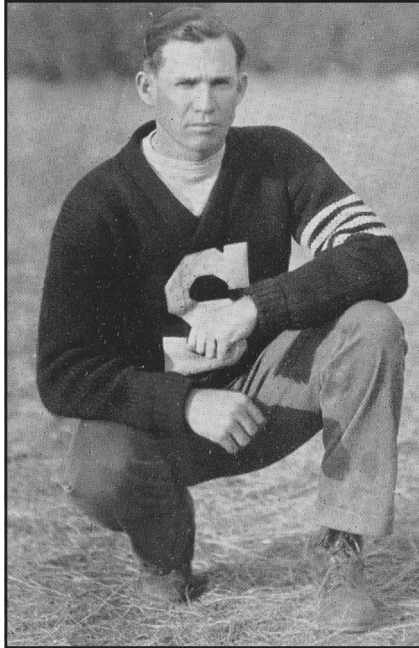
Coach Ryan Held	SW	OP
Northwestern	33	7
Texas A&M-Kingsville	7	3
at Midwestern State	10	47
at Panhandle State	38	8
Abilene Christian	14	50
at Tarleton State	19	43
Southeastern	24	40
at Northeastern	31	24
at Central Oklahoma	7	10
East Central	24	18
Texas A&M-Commerce	21	14

2008 (3-8, 1-4, 5th LSC)

Coach Ryan Held	SW	OP
at Northwestern	29	15
at Eastern New Mexico	24	37
Angelo State	2	24
@ West Texas A&M	20	42
Tarleton State	21	24
@ Southeastern	21	29
Northeastern State	17	16
Central Oklahoma	16	23
at East Central	21	42
Oklahoma Panhandle	42	7
at TX A&M-Commerce	3	21

SERIES RECORDS

Opponent	W-L
Abilene Christian	1-9
Adams St.	4-3
Angelo St.	2-2
Arkansas Tech	3-4
Bacone College	2-1
Cameron	7-11
Central Arkansas	1-3
Central Oklahoma	24-58-3
East Central	40-44-2
Eastern New Mexico	26-17
Emporia State	1-3
Ft. Hays State	4-4
Harding	3-3
Henderson State	1-1
Howard Payne	2-2
Lamar University	0-2
Langston	20-13
McNeese State	0-1
Midwestern State	6-12
Mo. Southern	3-1
Montana Tech	1-0
Nebraska-Kearney	1-0
New Mexico Highlands	1-0
New Mexico State	2-0
North Texas	0-1
Northeastern State	38-37-3
Northwestern Louisiana	1-4
Northwestern Okla.	47-27-4
Univ. of Oklahoma	0-2
Oklahoma Baptist	8-10-2
Oklahoma City	7-3-1
Oklahoma State	1-8
Ouachita Baptist	3-4
Panhandle State	38-16
Phillips University	5-8
Pittsburg State	0-2
Sam Houston State	4-9
Southeastern Okla.	33-41-3
Southwestern Kansas	5-2
Sterling College	1-0
Southern Nazarene	1-0
Tarleton State	10-14
Univ. of Texas	0-2
Texas-Arlington	0-3
Texas A&M	1-0
Texas A&M-Commerce	3-9
Texas A&M-Kingsville	3-1
Texas Christian	0-2-1
Texas Lutheran	4-2
Tulsa	0-3
West Texas A&M	10-7-2
Western State	2-2
Western New Mexico	2-0



Rankin Williams (1932-38)

Coached at SWOSU for 42 years, including six as a football coach where his teams went 31-30-7 during that time



Otis Delaporte (1964-77)

Won or shared four straight Oklahoma Collegiate Conference titles from 1968-71...1977 team finished 11-1 and as NAIA National Runner-up.



Paul Sharp (1986-2004)

Won more games (93) than any other coach in SWOSU history...Teams won or shared three OIC titles and the 1996 NAIA Division I National Title.

Coaching History Filled With Legends

In the program's 104-year history, Southwestern has had 21 different men lead the Bulldogs into the field of football competition. In that time the Bulldogs have accounted for 17 conference titles, participated in three bowl games, made three playoff appearances and won one national championship.

SWOSU's first-ever football coach was Lemley Whitcomb, who also handled duties as a professor in the school's physical education department. Whitcomb and his teams played sparingly but did collect the school's first-ever win against Kingfisher College in 1905.

It was more than 20 years later when SWOSU began to make its name on the gridiron under coach Joe Milam.

Led by star Jenks Simmons, the Bulldogs beat Central State for the first time in 13 years and completed an undefeated 5-0 conference season in 1926.

Milam, who also coached wrestling at the school, stayed with football until 1932 posting a 22-25-7 overall record.

Rankin Williams stepped in following Milam, and like his predecessor, had his best success early. His first two teams won seven games each year and

were conference champs in 1932 and 1933. Williams spent seven years as football coach and was 31-30-7 during that time. He would continue to coach baseball, basketball and track at SWOSU and did so until his retirement in 1964, a span of 42 years.

SWOSU would again enjoy considerable success with the arrival of Joe Metcalf who had previously coached at Hollis High School. Metcalf's teams won or shared conference titles in 1954, 1955 and 1957. Metcalf returned back to Hollis as superintendent but not before going 32-21-2 in five seasons.

The arrival of Otis Delaporte in 1964 sent signaled what would be a long and prosperous run for the Bulldogs. Delaporte had the Bulldogs back in the conference title picture soon, winning it all in 1968, 1969, 1970, 1971 and 1974.

The 1969 team went 9-1, losing by a 7-6 score to Central State. SWOSU's average margin of victory was 32 points that year as they beat their final three foes by scores of 52-7, 56-0 and 66-0.

Still a better team may come in 1977 when the Bulldogs completed a perfect 10-0 regular season.

SWOSU would later beat Nebraska Kearney in the playoffs only to lose to Abilene Christian in the Apple Bowl (NAIA Championship Game) in a game played in the Seattle Kingdome.

Delaporte stepped aside in 1977 after 13 years, posting a record of 89-53-2. At the time the win total was more than double of any previous coach.

Delaporte's mark stood for 25 years before Paul Sharp overtook him. Sharp passed Delaporte in 2003 and after 19 years as coach had totaled 93 wins before resigning in 2004. Sharp's teams won or shared three conference titles and his 1996 squad won the NAIA Division I Championship.

Ryan Held took over the Bulldogs in 2004 and led SWOSU to back-to-back winning seasons in 2005 and 2006 for the first time in over a decade. The 2006 team finished as co-champions of the LSC North Division, marking the first time since 1997 a Bulldog team finished atop the NCAA Division II conference.

SWOSU's newest coach came aboard in 2009 with the arrival of Dan Cocannouer who had 30+ years of success at the high school level.

Ex-Bulldog Leads Jets to AFC Title Game

Ryan played at SWOSU in 1981-82 seasons

In his first season as the head coach for the New York Jets, Rex Ryan led his team to a 9-7 regular season record, a wildcard berth in the playoffs and to the AFC Championship game against Indianapolis, falling just one game short of the Super Bowl

Ryan, 47, has had a lengthy and successful career as a coach at both the college and the professional ranks. Nicknamed "The Mad Scientist" by his players for his aggressive and unpredictable game plans, Ryan spent 10 seasons with the Baltimore Ravens most recently as defensive coordinator. His No. 2-ranked unit helped the Ravens reach the 2009 AFC championship game against Pittsburgh Steelers.

Rex, along with his twin brother, Rob, was recruited to SWOSU by former Bulldog football head coach Bob Mazie in 1981. The SWOSU coach had developed a friendship with their father, Buddy, through a number of years working alongside him at the Chicago Bears training camp.

Neither of the Ryan twins was heavily recruited after graduating from high school Both weighed just 180 pounds and stood 6-2 as defensive ends.

The move to Oklahoma was not as far-fetched as observers might first think, considering the twins were born in Ardmore, and their father grew up in Frederick. The family did have relatives within a few hours of Weatherford.

Both Rex and Rob quit playing football at SWOSU after the 1982 season. Together they transferred to Oklahoma State University before eventually returning to SWOSU and completing course work for their bachelor's degree in physical education in 1987.

Ryan's path after SWOSU was an extensive one first serving as a college coach at Morehead State, New Mexico Highlands and Oklahoma. His first NFL coaching stint was with the Arizona Cardinals under his father when he oversaw the defensive line in 1994 .



Former SWOSU Bulldog football player and 1987 graduate Rex Ryan, center, led the New York Jets to within one game of the 2010 Super Bowl in his first season as the team's head coach.

Haggerty Making Browns Notice in Training Camp

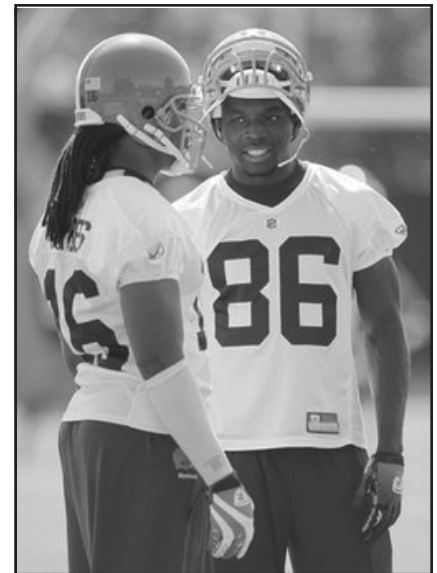
Former SWOSU wide receiver Johnathan Haggerty continues to open eyes and turn heads in his bid to make the Cleveland Browns NFL football team. Now Haggerty has caught the attention of the most important Brown of all, Head Coach Eric Mangini.

"He's another guy that has an outstanding work ethic, is bright, very bright, and he gets it. He gets what a great opportunity this is and everyday day he's going to come out and make a case for himself," Mangini told a Cleveland newspaper.

Haggerty, who wears number 86, and has been running with the second team offense and has been smoothly catching a lot of passes while dropping very few.

J Gatskie of the Bleacher Report expects Haggerty to make the team's final 53 man roster once the season begins.

"Now we get down to the numbers game. Where does he fit, on the active roster, or the practice squad," Gatskie said. "If this kid looks as good in pads as he does in shorts, the Browns are go-



Former SWOSU player Johnathan Haggerty (86) visits with Cleveland Browns all-star Joshua Cribbs during training camp earlier this summer.

ing to have a difficult decision to make. Placing him on the practice squad leaves him vulnerable to every other NFL team who may find a wideout with 4.44 speed and good hands too irresistible to pass up."

MILAM STADIUM

Milam Stadium, one of the largest football stadiums in the Lone Star Conference, has been the home of Southwestern Oklahoma State University football for more than 70 years

The facility, which seats 8,600 spectators, is located on the west end of campus at Seventh Street and Davis.

New for 2010 is an Astro Turf playing surface which was installed earlier this spring and gives the field a special customized look.

Thousands of outstanding student-athletes and hundreds of games have played at the historic stadium, including the 1996 NAIA National Championship game. SWOSU went on to win its first-ever national football championship beating Montana Tech, 33-31.

Despite its long and storied history, the stadium has continued to improve since the original construction in 1936. A new pressbox was added in 1985, followed by the completion of new lights and an eastside seating project in 1988.



Parking improvements, new rest rooms and concession stands dominated renovations during 1991.

In 1992, new bleachers were placed on the west side of the stadium creating the current seating capacity of 8,600. The also added a new sound system that same year.

In 2008, the Bank of Western Oklahoma sponsored the Bulldogs current scoreboard located behind the north endzone which is complete with a full color digital message board.

FOOTBALL LOCKER ROOM



SWOSU football program is fortunate to have the use of a first-class, state-of-the-art locker room for their game and practice-related needs.

Built in 1998 at a cost of approximately \$90,000 the facility was converted from existing classroom space in Rankin Williams Fieldhouse to that of a spacious air-conditioned meeting facility complete with 85 individual metal navy blue lockers.

The area stretches over 3,100 square feet and includes plentiful showers and restroom facilities along with multiple meeting rooms for specialized groups.

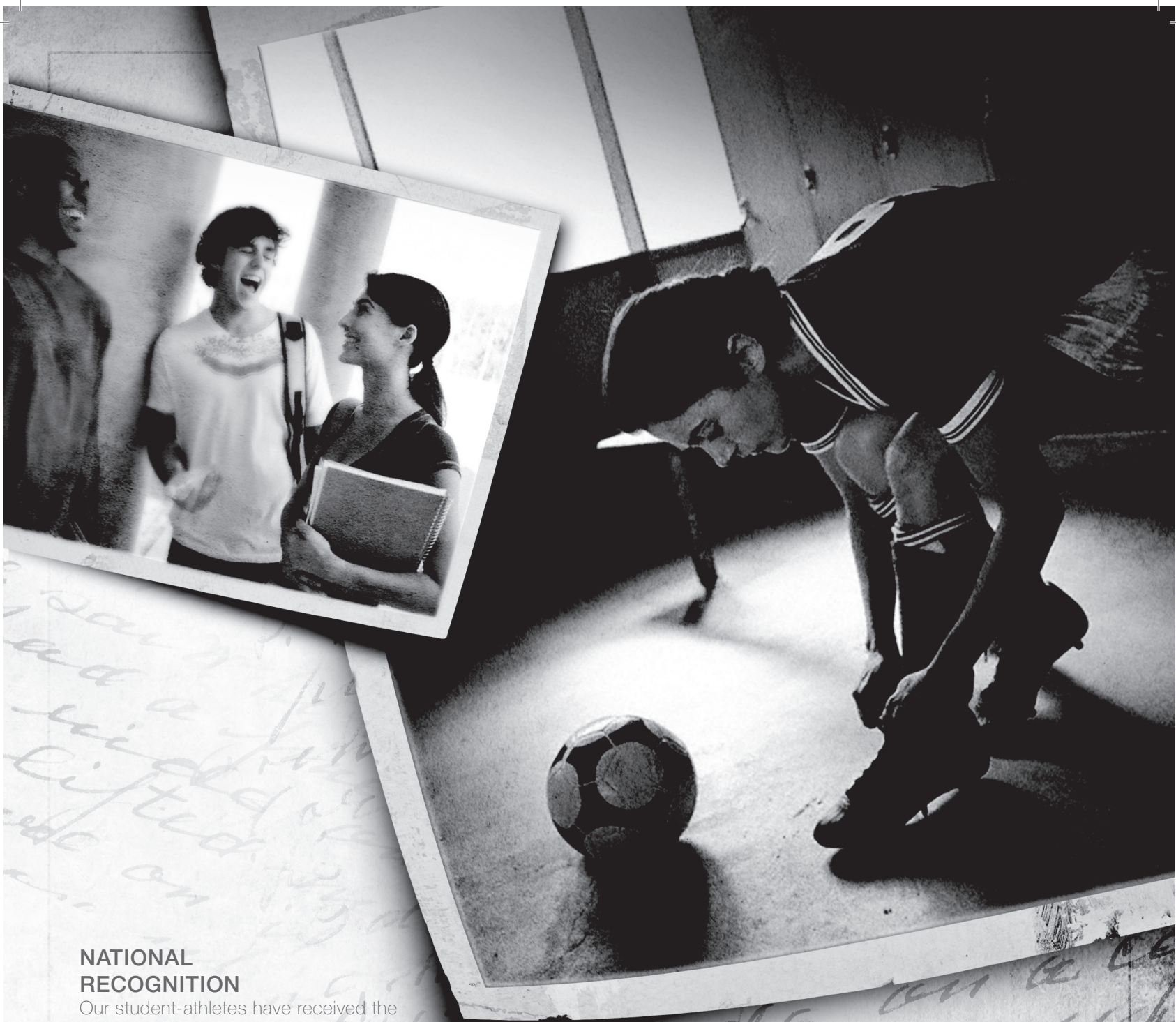
FITNESS CENTER



SWOSU's strength and conditioning program is extremely important to Bulldog student-athletes. It prepares them for competition, not only physically, but also mentally.

Housed in the SWOSU fitness center, the complex features nearly five tons of equipment spread over 30 workout stations within the 2,000 square foot air-conditioned facility.

The training regimen at SWOSU is a year-round process with closely monitored workouts that involve a great deal of individual instruction and attention. Student-athletes are taught the correct techniques to increase their ability to perform at their peak during eventual competition on the playing field or court.



**NATIONAL
RECOGNITION**

Our student-athletes have received the NCAA's highest individual honors including winning the Walter Byers Scholarship Award (the NCAA's top student-athlete) and the NCAA Woman of the Year Award.

**COMMUNITY
PARTNERSHIPS**

We have initiated national community partnerships with the Make-A-Wish Foundation and Habitat for Humanity.

**UNIQUE
FISCAL MODEL**

We offer a unique fiscal model for intercollegiate athletics that redefine the institutional value for sponsoring sports and offering athletics scholarships.



I chose
Division II

S W O S U Y E A R MMX

8/26	Emporia State (Fast Lane Kickoff Classic)	7 pm
9/11	West TX A&M (Parent's Day)	6 pm
9/18	at Midwestern State	7 pm
9/25	at East Central	7 pm
10/2	Eastern NM	2 pm
10/9	at Southeastern OK	2:30 pm
10/16	Northeastern State (Homecoming)	6 pm
10/23	at TX A&M-Commerce	2 pm
10/30	TX A&M-Kingsville	2 pm
11/6	Central Oklahoma	2 pm
11/13	at Abilene Christian	2 pm

