



# ST. CLOUD STATE HUSKIES

WOMEN'S HOCKEY - 2025-26 SERIES NOTES - Jan. 9-10, 2026

Two WCHA Semifinals | Once NCAA All-American | One Conference Player of the Year | Two Conference Goaltenders of the Year  
26 All-Conference Selections | 128 WCHA Scholar Athletes | 286 Academic All-Conference Honorees | 4 PWHL Draft Selections

GAME  
21

#15/14 HUSKIES (7-12-1, 3-10-1 WCHA)  
vs. #2 OHIO STATE (17-3-0, 11-3-0 WCHA)  
Friday, January 9  
6 p.m. CT  
Herb Brooks National Hockey Center (St. Cloud, Minn.)

GAME  
22

#15/14 HUSKIES (7-12-1, 3-10-1 WCHA)  
vs. #2 OHIO STATE (17-3-0, 11-3-0 WCHA)  
Saturday, January 10  
2 p.m. CT  
Herb Brooks National Hockey Center (St. Cloud, Minn.)

## 2025-26 SCHEDULE

DATE	OPPONENT	TV	TIME/RESULT
Sept. 19	LINDENWOOD (MO.)	B1G+	W, 5-0
Sept. 20	LINDENWOOD (MO.)	B1G+	W, 5-0
Sept. 26	#12/13 UConn	ESPN+	W, 2-1
Sept. 27	#12/13 UConn	ESPN+	L, 2-1
Oct. 10	#3 Minnesota*	B1G+	L, 4-1
Oct. 11	#3 MINNESOTA*	FOX9+/B1G+	L, 5-3
Oct. 17	(RV) ST. THOMAS*	B1G+	W, 4-3 OT
Oct. 18	(RV) ST. THOMAS*	B1G+	L, 4-3 OT
Oct. 24	#2 Ohio State*	B1G+	L, 5-1
Oct. 25	#2 Ohio State*	B1G+	L, 4-2
Oct. 31	#5 MINNESOTA DULUTH*	B1G+	L, 5-3
Nov. 1	#5 MINNESOTA DULUTH*	B1G+	L, 3-2
Nov. 14	#1 WISCONSIN*	B1G+	L, 5-1
Nov. 15	#1 WISCONSIN*	B1G+	T, 4-4 OT, 2-1 SOL
Nov. 21	Bemidji State*	B1G+	W, 4-0
Nov. 22	Bemidji State*	B1G+	L, 6-5 OT
Nov. 28	#12 Colgate (N.Y.)#	TBA	W, 3-2 OT
Nov. 29	#10 Clarkson (N.Y.)#	TBA	L, 2-0
Dec. 5	#12 Minnesota State*	B1G+	W, 4-0
Dec. 6	#12 Minnesota State*	B1G+	L, 3-2
Jan. 3	ST. THOMAS (EXHIBITION)	-	Completed
Jan. 9	#2 OHIO STATE*	B1G+	6 p.m.
Jan. 10	#2 OHIO STATE*	B1G+	2 p.m.
Jan. 16	Minnesota Duluth*	B1G+	6 p.m.
Jan. 17	Minnesota Duluth*	B1G+	3 p.m.
Jan. 23	MINNESOTA*	B1G+	6 p.m.
Jan. 24	Minnesota*	B1G+	2 p.m.
Jan. 30	St. Thomas*	B1G+	2 p.m.
Jan. 31	St. Thomas*	B1G+	2 p.m.
Feb. 6	MINNESOTA STATE*	B1G+	6 p.m.
Feb. 7	MINNESOTA STATE*	B1G+	2 p.m.
Feb. 13	BEMIDJI STATE*	B1G+	2 p.m.
Feb. 14	BEMIDJI STATE*	B1G+	1 p.m.
Feb. 20	Wisconsin*	B1G+	TBA
Feb. 21	Wisconsin*	B1G+	TBA
Feb. 27-March 1	WCHA Quarterfinals^	B1G+	TBD
March 5-7	WCHA Final Faceoff!	FOX9+/B1G+	TBD
March 12-15	NCAA Regional Tournament\$	TBD	TBD
March 20 - 22	NCAA Frozen Four%	TBD	TBD

**BOLD** - Home Game

\* - WCHA Game

# - D1 in DC, MedStar Capitals Iceplex in Washington, D.C.

^ - WCHA Quarterfinals, Higher Seed

! - WCHA Final Faceoff, Lee & Penny Anderson Arena in St. Paul, Minn.

\$ - NCAA Regional Tournament, Regional Host

% - NCAA Frozen Four, Pegula Ice Arena in University Park, Pa.

\* ALL TIMES CENTRAL // ALL DATES AND TIMES SUBJECT TO CHANGE

\* RANKINGS ARE USCHO/USA HOCKEY

## ST. CLOUD STATE ATHLETICS COMMUNICATIONS

JACOB SANDERS, ASSISTANT DIRECTOR

jacob.sanders@stcloudstate.edu

Halenbeck Hall 328, 720 4th Ave S, St. Cloud, MN 56301



## NO. 15/14 ST. CLOUD STATE HUSKIES

Head Coach: Mira Jalosuo  
Alma Mater: Minnesota, '13  
Career Record: 7 - 12 - 1 (1<sup>st</sup> season)  
SCSU Record: Same

## STATS BREAKDOWN (2025-26)

Goals/Game	2.75
Goals Allowed/Game	2.90
Power Play	15.3%
Penalty Kill	76.5%
Shots/Game	30.9
Shots Faced/Game	31.3
Penalty Minutes/Game	9:57
Faceoffs	44.3%

## 2025-26 TOP PERFORMERS

Goals	Sofianna Sundelin (8)
Assists	Grace Wolfe (10)
Points	Sofianna Sundelin (16)
Faceoffs Won	Sofianna Sundelin (180)
Plus/Minus	Sydney Lamb (+9)
Blocks	Grace Wolfe (31)
Goalie Wins	Emilia Kyrkkö (5)
GAA	Emilia Kyrkkö (1.83)
Save %	Emilia Kyrkkö (.942)

## SERIES HISTORY

SCSU trails Ohio State, 32 - 66 - 12  
In St. Cloud: 17 - 33 - 4  
In Columbus: 15 - 31 - 8  
At Neutral Sites: 0 - 2 - 0  
Last Meeting: Oct. 26, 2025 (4 - 2 OSU)  
First Meeting: Oct. 22, 1999 (3 - 2 SCSU)  
Last Five Meetings: 0 - 4 - 1  
Last 10 Meetings: 1 - 8 - 1

## DATE SITE RESULT

10-25-25	Columbus	L, 4-2
10-24-25	Columbus	L, 5-1
2-22-25	Columbus	L, 3-2
2-21-25	Columbus	L, 5-3
10-19-24	St. Cloud	T, 3-3 OT, SOW
10-18-24	St. Cloud	L, 5-1
1-27-24	St. Cloud	L, 3-2
1-26-24	St. Cloud	L, 4-2
12-2-23	Columbus	L, 6-2
12-1-23	Columbus	W, 2-1
1-21-23	St. Cloud	L, 3-2 OT
1-20-23	St. Cloud	L, 6-2
10-8-22	Columbus	L, 6-2
10-7-22	Columbus	L, 5-2
2-26-22	Columbus	L, 3-0
2-25-22	Columbus	L, 6-0
2-8-22	St. Cloud	L, 6-2
10-30-21	Columbus	L, 10-1
10-29-21	Columbus	L, 5-2
2-22-20	Columbus	L, 6-3



## NO. 2 OHIO STATE BUCKEYES

Head Coach: Nadine Muzerall  
Alma Mater: Minnesota, '01  
Career Record: 241 - 84 - 22 (10<sup>th</sup> season)  
OSU Record: Same

## STATS BREAKDOWN (2025-26)

Goals/Game	4.60
Goals Allowed/Game	1.85
Power Play	25.0%
Penalty Kill	85.7%
Shots/Game	43.9
Shots Faced/Game	20.5
Penalty Minutes/Game	14:42
Faceoffs	60.5%

## 2025-26 TOP PERFORMERS

Goals	Joy Dunne (18)
Assists	Hilda Svensson (23)
Points	Hilda Svensson (36)
Faceoffs Won	Jocelyn Amos (213)
Plus/Minus	Joy Dunne (+29)
Blocks	Sloane Matthews (16)
Goalie Wins	Hailey MacLeod (11)
GAA	Hailey MacLeod (1.75)
Save %	Hailey MacLeod (.911)

## BLIZZARD'S BULLETS

## FRESH ICE

No. 15/14 St. Cloud State Women's Hockey (7-12-1, 3-10-1 Western Collegiate Hockey Association) opens the second half of its 2025-26 schedule this weekend at home with a series against No. 2 Ohio State (17-3-0, 11-3-0 WCHA). Puck drops from the Herb Brooks National Hockey Center are set for 6 p.m. (Friday) and 2 p.m. (Saturday).

## FOLLOW THE HUSKIES

Both games will be broadcast on Big Ten Plus (note - a paid subscription is required) with audio coverage on 97.5 FM RadioX (Friday) and the KVSC Sports Stream (Saturday). Nick Maxson will have the call on B1G+, while KVSC talent Noah Grant (play-by-play), Eli Zniewski (color) will be on the audio broadcasts. Links to each coverage option can also be found on the St. Cloud State Women's Hockey game day central or schedule page.

## SERIES HISTORY

SCSU trails the all-time series against the Buckeyes, 32-66-12 including a 1-8-1 mark in the team's last 10 matchups. The Huskies are 17-33-4 all-time when playing Ohio State in St. Cloud. Earlier this season, SCSU went 0-2-0 in its series against the Buckeyes, falling 5-1 and 4-2 in Columbus.

## LET'S GO POLLING

The Huskies begin the new year ranked No. 15 in the U.S. College Hockey Online (USCHO) Poll and No. 14 in the USA Hockey Poll. St. Cloud State is one of six WCHA programs featured in the rankings, with one additional club receiving votes. Ohio State is No. 2 in both polls.

## HUSKIES AT MILANO CORTINA 2026

Eight with ties to SCSU Women's Hockey (four current players and four alumnae) have been named to their respective countries Olympic rosters ahead of Milano Cortina 2026, doubling the previous program record (from 2022) for the most current & former players at an Olympics. The 10-team tournament is set for Feb. 5-19 in Milan, Italy.

## FOLLOW THE HUSKIES



@SCSUHuskies\_WHK



@scsuhuskies\_whk



/SCSUWHKY



## QUICK FACTS

## UNIVERSITY INFORMATION

Location	St. Cloud, Minn.
Affiliation	NCAA Division I
Colors	Spirit Red and Black
Conference	WCHA
Mascot	Blizzard T. Husky
President	Larry Dietz (Interim)

## TEAM INFORMATION

2024-25 Overall Record	15-15-6
2024-25 WCHA Record/Finish	10-13-5, 5th
2024-25 WCHA Tournament Finish	QF, 0-2
2024-25 NCAA Tournament Finish	DNQ
2024-25 Final National Ranking	
	USCHO - 12
	USA Hockey - 12
Point Scorers Returning/Lost	9/10
Number of Total Newcomers	14
Facility	Herb Brooks National Hockey Center
Home Capacity	5,371

## COACHING STAFF

Head Coach	Mira Jalosuo
Career Overall Record	7-12-1
Career WCHA Record	3-10-1
Career Postseason Record	0-0
Best Overall Record	N/A
Associate Head Coach	Jinelle Siergiej
Assistant Coach	Noora Rätty
Assistant Coach	Emily Ach
Hockey/Video Operations	Drake Hunter
Strength Coach	Jake Franczek
Athletic Trainer	Rachel Nagel
Equipment Manager	Andy Rannells
SID/Communications	Jacob Sanders

## ROSTER BREAKDOWN

Total Athletes	28
Forwards	15
Defenders	9
Goaltenders	4
Graduate Students	2
Seniors/Fifth years	3
Juniors	6
Sophomores	5
Freshmen	12
Prep Recruits	11
Transfers	3

## PROGRAM HISTORY

Inagural Season	1998-99
All-Time Record	287-563-81 (.352)
Best Overall Record	18-15-5 (2007-08)
Best WCHA Record	12-10-2 (2000-01)
Best WCHA Tourn. Finish	SF (2006, 2008)
Best NCAA Tourn. Finish	N/A

## 2025-26 ST. CLOUD STATE HUSKIES WOMEN'S HOCKEY

No.	Name	Pos.	Ht.	S/C	Cl.	Hometown/Previous Team(s)
2	Sydney Bryant	D	5-8	R	R-So.	Traverse City, Mich. / Belle Tire (19U AAA)
3	Sidney Jackel	F	5-10	R	Jr.	Ann Arbor, Mich. / Pioneer HS / Lindenwood (NCAA)
4	Alice Sauriol	F	5-4	L	Jr.	Sherbrooke, Quebec / Stanstead College (CAHS)
6	Lily Erickson	F	5-5	R	Fr.	Roseau, Minn. / Roseau HS
7	Payton Remick	F	5-7	R	Fr.	Roseau, Minn. / Roseau HS
8	Grace Wolfe (C)	D	5-9	R	Gr.	Owatonna, Minn. / Owatonna HS
9	Svenja Voigt	F	5-5	L	Sr.	Cologne, Germany / Stanstead College (CAHS)
10	Aruba Skiston	D	5-5	L	Fr.	Bensenville, Ill. / Chicago Mission (19U AAA)
11	Laura Zimmermann (A)	F	5-4	L	R-Jr.	Ringgenberg, Switzerland / EV Bomo Thun (SWHL)
12	Raili Mustonen	F	5-6	L	Fr.	Kalajoki, Finland / Team Kuortane (Auroraliiga)
13	Reese Strauts	F	5-8	R	Fr.	Brandon, Wis. / Windy City Storm (19U AAA)
14	Maélie Pion	D	5-11	L	Fr.	Sherbrooke, Quebec / Stanstead College (CAHS)
15	Marie Moran	F	5-8	R	R-So.	Lakeville, Minn. / Apple Valley HS
16	Avery Farrell	F	5-4	R	Sr.	Rogers, Minn. / Rogers HS / Franklin Pierce (NCAA)
17	Julianne Labbé	F	5-8	L	Fr.	Wendake, Quebec / Cégep Limoilou Titans (QCHL)
18	Payton Holloway	F	5-8	L	Jr.	Tomah, Wis. / Shattuck St. Mary's / Minnesota Duluth (NCAA)
19	Myah Krueger	F	5-7	R	R-Fr.	Stillwater, Minn. / Stillwater HS
23	Hannah Arnold	D	5-8	R	Fr.	Winnipeg, Manitoba / St. Mary's Academy (CSSHL U18)
28	Sydney Lamb	D	5-7	R	Fr.	Lombard, Ill. / Windy City Storm (19U AAA)
29	Jojo Chobak (A)	G	5-8	L	Gr.	Chicago, Ill. / Chicago Young Americans (19U AAA) / Minnesota Duluth (NCAA)
31	Paige Hoogendam	G	5-8	L	R-So.	Ajax, Ontario / Toronto Junior Aeros (OWHL)
34	Sofianna Sundelin	F	5-7	L	Jr.	Ulvila, Finland / Team Kuortane (NSML)
40	Hannele Tarkiainen	D	5-7	L	Fr.	Pieksämäki, Finland / Team Kuortane (NSML)
41	Siiri Yrjölä	D	5-5	L	So.	Vantaa, Finland / HIFK (NSML)
42	Emilia Kyrkkö	G	5-7	L	So.	Nokia, Finland / Team Kuortane (NSML)
44	Maria Mikaelyan	F	5-8	L	Fr.	Moscow, Russia / North York Storm (OWHL U22 AA)
45	Regan Bulger (A)	D	5-6	L	R-Jr.	Yellowknife, Northwest Territories / Shattuck St. Mary's
56	Hali Lawrence	G	5-7	L	Sr.	Calgary, Alberta / Calgary Fire U18AAA / Post (NCAA)

## PRONUNCIATION GUIDE

3 - Sidney Jackel - jack-ull	16 - Avery Farrell - FAIR-ull	42 - Emilia Kyrkkö - kuh-ree-ko
4 - Alice Sauriol - SOAR-ee-ahl	17 - Julianne Labbé -	44 - Maria Mikaelyan -
7 - Payton Remick - remmick	JOO-lee-AN lah-BAY	muh-kay-lee-un
8 - Grace Wolfe - wolf	19 - Myah Krueger - MY-uh KROO-gur	45 - Regan Bulger -
9 - Svenja Voigt - SVEN-yuh VOLKED	28 - Sydney Lamb - lam	REE-ghen BULL-jer
10 - Aruba Skiston -	29 - Jojo Chobak - CHO-back	
uh-ROO-buh SKISS-tun	31 - Paige Hoogendam -	Mira Jalosuo -
11 - Laura Zimmermann - LOR-uh	WHO-ghen-dam	MEER-ah YAH-loh-SUE-oh
12 - Raili Mustonen -	34 - Sofianna Sundelin -	Jinelle Siergiej - jih-NEL SIR-gay
riley moo-stuh-nen	so-FEE-ah-nuh sun-DUH-lin	Emily Ach - awk (like dock)
13 - Reese Strauts - STROWTS	40 - Hannele Tarkiainen -	Noora Rätty - NORR-uh RAH-too
14 - Maélie Pion - MY-lee PEE-on	HAHN-neh-leh TARK-ee-aye-nen	Jake Franczek - FRAN-check
15 - Marie Moran - muh-REE mo-RAN	41 - Siiri Yrjölä - siri oo-rey-la	Rachel Nagel - NAY-gull

## ROSTER GEOGRAPHY

Europe (8)			Minnesota (6)		
Name	Pos.	Country	Name	Pos.	Hometown
Emilia Kyrkkö	G	Finland	Lily Erickson	F	Roseau
Maria Mikaelyan	F	Russia	Avery Farrell	F	Rogers
Raili Mustonen	F	Finland	Myah Krueger	F	Stillwater
Sofianna Sundelin	F	Finland	Marie Moran	F	Lakeville
Hannele Tarkiainen	D	Finland	Payton Remick	F	Roseau
Svenja Voigt	F	Germany	Grace Wolfe (C)	D	Owatonna
Siiri Yrjölä	D	Finland			
Laura Zimmermann (A)	F	Switzerland			
Canada (7)			Illinois (3)		
Name	Pos.	Province	Name	Pos.	Hometown
Hannah Arnold	D	Manitoba	Jojo Chobak (A)	G	Chicago
Regan Bulger (A)	D	Northwest Territories	Sydney Lamb	D	Lombard
Paige Hoogendam	G	Ontario	Aruba Skiston	D	Bensenville
Julianne Labbé	F	Quebec			
Hali Lawrence	G	Alberta			
Maélie Pion	D	Quebec			
Alice Sauriol	F	Quebec			
Michigan (2)			Wisconsin (2)		
Name	Pos.	Hometown	Name	Pos.	Hometown
Sydney Bryant	D	Traverse City	Payton Holloway	F	Tomah
Sidney Jackel	F	Ann Arbor	Reese Strauts	F	Brandon



## BLIZZARD'S BULLETS

## HUSKIES AT MILANO CORTINA 2026 CONT.

The largest contingent of Huskies – two current players and two alumnae, will be suiting up for Team Finland. Sophomore goaltender **Emilia Kyrkkö** (Nokia) and sophomore defender **Siiri Yrjölä** (Vantaa) will be joined by goaltender **Sanni Ahola** (Helsinki), who played for the Huskies from 2020-25 and former alternate captain, forward **Jenniina Nylund** (Pietarsaari) who wore the red and black from 2018-23. Nylund, the lone Finn with previous Olympic experience, won a Bronze Medal in Beijing in 2022 with Suomi.

Senior forward **Svenja Voigt** (Cologne) and former alternate captain, forward **Laura Kluge** (Berlin) who wore a Huskies sweater from 2017-21 have been named to Team Germany and will make their Olympic debuts in Milan.

Redshirt junior forward **Laura Zimmermann** (Ringgenberg) will play for Team Switzerland and former alternate captain forward **Klára Hymlárová** (Opava), who skated for the Huskies from 2019-24 was named to Team Czechia. Both skated in Beijing at the 2022 games.

## WCHA WEEKLY/MONTHLY HONORS

Freshman forward **Maria Mikaelyan** (Moscow, Russia) was named Western Collegiate Hockey Association (WCHA) Rookie of the Month, as announced by the league office on Dec. 31. Mikaelyan tallied four assists/points including her first career three-point game in the Huskies lone series of the month at then-No. 12 Minnesota State December 5-6. It is her first WCHA monthly award of the season, and she became just the fourth player in program history to win WCHA Rookie of the Month honors.

This season, Mikaelyan became the first Husky this season to earn multiple weekly honors from the conference after being named WCHA Rookie of the Week on Oct. 13 and Dec. 8. She also became the first Husky to win multiple Rookie of the Week honors since current Toronto Sceptres forward **Emma Gentry** '25 did so in the 2020-21 season and the first Husky to win multiple WCHA weekly awards since sophomore forward **Emilia Kyrkkö** (Nokia, Finland) earned three last season (2x Goaltender, 1x Rookie).

The Huskies have won all four conference weekly honors (forward, defender, goaltender and rookie) at least once for the fourth consecutive season. On Dec. 1, Kyrkkö was named WCHA Goaltender of the Week, while junior forward **Alice Sauriol** (Sherbrooke, Quebec) was named Forward of the Week on Oct. 20 and sophomore defender **Siiri Yrjölä** (Vantaa, Finland), was named Defender of the Week on Sept. 22.

## WCHA ROOKIE OF THE MONTH AWARD WINNERS

**Klára Hymlárová** (December 2019) // **Olivia Cvar** (January 2020)  
**Emilia Kyrkkö** (October 2024) // **Maria Mikaelyan** (December 2025)

## 2025-26 WCHA MONTHLY/WEEKLY HONORS

Rookie of the Month	Goaltender of the Week
• <b>Maria Mikaelyan</b> (1x, December)	• <b>Emilia Kyrkkö</b> (1x, Dec. 1)
Defender of the Week	Rookie of the Week
• <b>Siiri Yrjölä</b> (1x, Sept. 22)	• <b>Maria Mikaelyan</b> (2x, Oct. 13   Dec. 8)
Forward of the Week	
• <b>Alice Sauriol</b> (1x, Oct. 20)	

## LAST TIME OUT

Then-No. 13/14 SCSU split its games at No. 12 Minnesota State on Dec. 5-6 to close out the first semester. The Huskies shut out the Mavericks, 4-0 in the series opener, before falling 3-2 in the series finale.

## Notes from the games

## GAME 19 - 4-0 win @ #12 Minnesota State (12-5-25)

- SCSU improved to 55-43-14 all-time against Minnesota State and are 7-2-1 record in the 10 games against the Mavericks. The Huskies improved to 24-21-7 all time against MSU in Mankato.
- The Huskies moved to 3-5-0 in road games this season and 4-10-1 in games against teams ranked/receiving votes in either the U.S. College Hockey Online (USCHO) Poll or the USA Hockey Poll.
- The Huskies went 3-for-3 on the penalty kill and 0-for-5 on the power play. For the season, SCSU is 49-for-65 (75.4%) on the penalty kill and 7-for-56 on the power play (12.5%).
- The Huskies out-shot MSU 36-28 and won 51.7% of the faceoffs. The Mavericks outblocked the Huskies 7-6.
- Sophomore goaltender **Emilia Kyrkkö** (Nokia, Finland) recorded a 28 save shutout and was named the game's No. 1 star. She posted her third shutout of the season and the sixth of her career in her 25th career start. It was her fifth win of the season. Kyrkkö lowered her season goals against average to 1.70 and her career GAA to 1.90. She also improved her season save percentage to .946 and her career S% to .933.
- Sophomore forward **Maria Mikaelyan** (Moscow, Russia) provided assists on the final three SCSU goals, was the lone Husky with three or more points and skated to a +3 mark. She was named the game's No. 2 star. She recorded the first 3+ point/assist game of her career and skated to a career-best +3 mark. She now has five assists and 12 points this season.

## STANDINGS &amp; POLLS

## 2025-26 WESTERN COLLEGIATE HOCKEY ASSOCIATION STANDINGS

Team	WCHA Record	Points
No. 1 Wisconsin	12-1-1	37
No. 2 Ohio State	11-3-0	32
No. 3 Minnesota	10-4-0	30
No. 8 Minnesota Duluth	8-6-0	24
No. 12 Minnesota State	5-8-1	17
<b>No. 15/14 ST. CLOUD STATE</b>	<b>3-10-1</b>	<b>12</b>
(RV) St. Thomas	3-11-0	10
Bemidji State	2-11-1	6

## USCHO NATIONAL POLL

- WEEK FOURTEEN // JAN. 5, 2026 -

Rank	Team	Record	Pts	LR
1	Wisconsin (20)	18-1-1	300	1
2	Ohio State	17-3-0	279	2
3	Minnesota	16-4-0	261	3
4	Penn State	18-3-0	235	4
5	UConn	15-3-2	214	6
6	Northeastern	15-4-0	195	7
7	Quinnipiac	15-5-2	174	8
8	Minnesota Duluth	12-8-0	158	5
9	Princeton	13-4-0	142	9
10	Cornell	10-6-1	106	10
11	Clarkson	13-6-2	102	11
12	Minnesota State	11-8-1	87	12
13	Colgate	10-10-1	59	14
14	Yale	11-7-0	38	15
15	<b>ST. CLOUD STATE</b>	<b>7-12-1</b>	<b>36</b>	<b>13</b>

Others receiving votes: Holy Cross 7, Mercyhurst 5, Boston College 1, Brown 1

## USA HOCKEY NATIONAL POLL

- WEEK FOURTEEN // JAN. 6, 2026 -

Rank	Team	Record	Pts	LR
1	Wisconsin (19)	18-1-1	285	1
2	Ohio State	17-3-0	266	2
3	Minnesota	16-4-0	246	3
4	Penn State	18-3-0	224	4
5	UConn	15-3-2	199	7
6	Northeastern	15-4-0	186	6
7	Quinnipiac	15-5-2	166	8
8	Minnesota Duluth	12-8-0	161	5
9	Princeton	13-4-0	139	9
10	Cornell	10-6-1	102	10
11	Clarkson	13-6-2	99	11
12	Minnesota State	11-8-1	72	12
13	Yale	11-7-0	39	14
14	<b>ST. CLOUD STATE</b>	<b>7-12-1</b>	<b>37</b>	<b>13</b>
15	Colgate	10-10-1	35	RV

Others receiving votes: St. Thomas 9, Mercyhurst 6, Brown 3, Holy Cross 3, Boston University 2, New Hampshire 1

## ST. CLOUD STATE NATIONAL POLL HISTORY

Highest National Ranking: No. 7 (3x; Oct. 29, 2024 | Oct. 22, 2024 | Dec. 12, 2023)

Highest Final National Ranking: No. 11 (2023-24)

Highest Preseason Ranking: No. 11 (2024-25)

Top-Ranked Opponent Defeated: No. 1 (4x; at Ohio State, Dec. 1, 2023 | vs. Minnesota, Nov. 7, 2022 | vs. Wisconsin, Oct. 19, 2007 | vs. Wisconsin, Feb. 4, 2006)

## 2025-26 HUSKIES NATIONAL RANKINGS (USCHO | USA):

Preseason: 13   13	Week Thirteen: -   13
Week One: -   12	Week Fourteen: 15   14
Week Two: 11   11	
Week Three: 10   10	
Week Four: 10   10	
Week Five: 11   11	
Week Six: 10   11	
Week Seven: 10   11	
Week Eight: 10   12	
Week Nine: 10   10	
Week Ten: 14   14	
Week Eleven: 13   14	
Week Twelve: 13   13	





## BLIZZARD'S BULLETS

## LAST TIME OUT CONT.

- Senior forward **Svenja Voigt** (Cologne, Germany) was the only other Husky with multiple points, skated to a +2 mark and was named the game's No. 3 star. She tallied the first multi-point game of her career. Her assist was the 10th of her career and surpassed five points this season and 15 career points.
- Junior forward **Payton Holloway's** (Tomah, Wis.) goal was her 10th point of the season.
- Junior forward **Sofianna Sundelin's** (Ulvila, Finland) goal was her team-leading 15th point of the season and she went 11-and-4 (73.3%) on the faceoff dot. She also tied Mikaelyan for the team lead in goals this season.
- Senior forward **Avery Farrell** (Rogers, Minn) skated in her 125th career game.
- Redshirt junior **Laura Zimmermann's** (Ringgenberg, Switzerland) assist was her 10th point of the season and the 35th of her career.
- Redshirt sophomore defender **Sydney Bryant's** (Traverse City, Mich.) assist was her fifth point of the season and her career.
- Junior forward **Sidney Jackel** (Ann Arbor, Mich.) tallied her fifth assist of the season.
- Redshirt sophomore defender **Marie Moran** (Lakeville, Minn.) skated to a career-best +2 mark.

## GAME 20 - 3-2 loss @ #12 Minnesota State (12-6-25)

- SCSU moved to 55-44-14 all-time against Minnesota State and 6-3-1 in the 10 games against the Mavericks. The Huskies moved to 24-22-7 all time against MSU in Mankato.
- The Huskies moved to 3-6-0 in road games this season, 2-3-1 in overtime games and 4-11-1 in games against teams ranked/receiving votes in either the U.S. College Hockey Online (USCHO) Poll or the USA Hockey Poll.
- The Huskies went 3-for-3 on the penalty kill and 1-for-2 on the power play. For the season, SCSU is 52-for-68 (76.5%) on the penalty kill and 8-for-58 on the power play (13.8%).
- The Mavericks led the game in shots on goal (31-25), blocked shots (7-6) and won 59.6% of the faceoffs.
- Farrell scored the first SCSU goal, her first power play goal as a Husky and her second of the series.
- Sundelin's goal was the 20th of her career and second of her weekend. She led the team in blocks, with two and leads the team in goals and points this season, with eight and 16 respectively.
- Zimmermann tallied her fifth assist of the season.
- Mikaelyan posted one assist - her fourth of the weekend.
- Voigt contributed her fifth assist of the season.
- Moran was the lone Husky to skate to a positive mark (+1).
- Kyrkkö made 28 saves for the third consecutive game.

## THIS WEEK IN THE WCHA

Friday, Jan. 9

No. 1 Wisconsin at No. 8 Minnesota Duluth\* - 3 PM

Bemidji State at (RV) St. Thomas\* - 5 PM

No. 2 Ohio State at No. 15/14 St. Cloud State\* - 6 PM

No. 3 Minnesota at No. 12 Minnesota State\* - 6 PM - FOX9+

Saturday, Jan. 10

No. 2 Ohio State at No. 15/14 St. Cloud State\* - 2 PM

No. 1 Wisconsin at No. 8 Minnesota Duluth\* - 2 PM - FOX9+

Bemidji State at (RV) St. Thomas\* - 2 PM

No. 12 Minnesota State at No. 3 Minnesota\* - 7:30 PM - Big Ten Network

\* WCHA Game

\*\* Rankings are USCHO/USA Hockey

\*\*\* All times in CT

## NURSING STUDENT BY DAY, GOALTENDER BY NIGHT

Graduate goaltender **Jojo Chobak's** (Chicago, Ill.) journey as the first hockey player to make their way through St. Cloud State University's nursing program was recently featured on #OurSCSU.

## PWWHL HUSKIES

Last season, **Klára Hymálová** (2019-24) became the first former Husky to be drafted into the Professional Women's Hockey League (PWHL), the first to be named to an opening day roster and the first to play in a PWHL game. This season, Hymálová will be joined by SCSU alumnae **Sanni Ahola** (2020-25), **Emma Gentry** (2020-25), **Laura Kluge** (2017-21) and **Dayle Ross** (2021-25) on PWHL opening day rosters.

Hymálová is looking to win back-to-back Walter Cups with the Minnesota Frost, who as a franchise have won the first two league championships. Ahola was the 37th overall pick by the Ottawa Charge in the 2025 PWHL Draft in June becoming the program's first netminder to be drafted. Gentry became the highest draft pick in program history when she was selected in the second round with the 11th overall pick by the Toronto Sceptres. Kluge, who became the second former Husky to play in a PWHL game after joining the Sceptres late in the 2024-25 season signed with the Boston Fleet during the offseason. Ross became the program's first blueliner drafted when she was picked No. 25 overall by the New York Sirens.

## 2025-26 HUSKIES HONORS

## JOJO CHOBAK

- USA Hockey National Goaltending Camp (May 15-17, 2025)
- USA Hockey Women's National Festival (Aug. 3-9, 2025)
- U.S. Collegiate Select Team - Collegiate Select Series (Aug. 13-16 2025)

## EMILIA KYRKKÖ

- Team Finland - Women's Euro Hockey Tour (Aug. 28-30, 2025)
- WCHA Goaltender of the Week (Dec. 1, 2025)
- Team Finland - 2026 Winter Olympics // Milano Cortina 2026 (Feb. 5-19, 2026)

## MARIA MIKAELIAN

- WCHA Rookie of the Week (Oct. 13, 2025)
- WCHA Rookie of the Week (Dec. 8, 2025)
- WCHA Rookie of the Month (December 2025)

## ALICE SAURIOL

- WCHA Forward of the Week (Oct. 20, 2025)

## SOFIANNA SUNDELIN

- Team Finland - Women's Euro Hockey Tour (Aug. 28-30, 2025)

## SVENJA VOIGT

- Team Germany - Four Nations Women's Tournament (Aug. 28-30, 2025)
- Team Germany - Deutschland Cup (Nov. 5-8, 2025)
- Team Germany - 2026 Winter Olympics // Milano Cortina 2026 (Feb. 5-19, 2026)

## SIIRI YRJÖLÄ

- WCHA Defender of the Week (Sept. 22, 2025)
- Team Finland - Women's Euro Hockey Tour (Aug. 28-30, 2025)
- Team Finland - 2026 Winter Olympics // Milano Cortina 2026 (Feb. 5-19, 2026)

## LAURA ZIMMERMANN

- Team Switzerland - Women's Euro Hockey Tour (Aug. 28-30, 2025)
- Team Switzerland - 2026 Winter Olympics // Milano Cortina 2026 (Feb. 5-19, 2026)

## 2025-26 WCHA LEADERS

## HAT TRICKS

Rk.	Player	HT
1.	Abbey Murphy (UMN)	3
2.	Joy Dunne (OSU)	2
T3.	<b>SOFIANNA SUNDELIN (SCSU)</b>	1
T3.	Seven More Players	1

## SHORT HANDED GOALS

Rk.	Player	SHG
T1.	<b>GRACE WOLFE (SCSU)</b>	1
T1.	Nine More Players	1

## GOALS AGAINST AVERAGE

Rk.	Player	GAA
1.	Ava McNaughton (UW)	1.27
2.	Hailey MacLeod (OSU)	1.75
3.	Hannah Clark (UMN)	1.76
4.	<b>EMILIA KYRKKÖ (SCSU)</b>	1.83



## BLIZZARD'S BULLETS

## HUSKIES REPRESENTING THEIR COUNTRIES

Senior forward **Svenja Voigt** (Cologne, Germany) and alumna **Laura Kluge** '21 competed for their native Germany at the 2025 Deutschland Cup at the VR-Bank Landshut Arena in Landshut, Germany from Nov. 5-8, while alumnae **Klára Hymlová** '24 (Czechia) and **Sanni Ahola** '25 (Finland) each played in the 2025-26 Women's Euro Hockey Tour's Lidl Hockey Games in Ängelholm, Sweden, from Nov. 5-8.

## WCHA COMMISSIONER'S CORNER

Redshirt junior forward **Laura Zimmermann** (Ringgenberg, Switzerland) was featured on the most recent installment of the Western Collegiate Hockey Association (WCHA) Commissioner's Corner podcast series on Nov. 5. In the series, WCHA Commissioner Michelle McAteer sits down one-on-one with extraordinary student-athletes from across the league to discuss real-life topics, hockey, and everything in between. You can watch the video on the WCHA Hockey YouTube page.

## JOJO IS CHO-BA(C)K

Graduate student goaltender **Jojo Chobak** (Chicago, Ill.) is back for her final year of collegiate eligibility after a redshirt season in 2024-25. In her first start between the pipes since March 2, 2024 (567 days) on Sept. 20, she earned her 10th career shutout as a Husky to tie former teammate **Sanni Ahola** (2020-25) for the most career shutouts in program history.

This summer, Chobak was invited to the USA Hockey National Goaltender Camp and National Festival and was a U.S. Collegiate Select Team selection. In 2023-24, she went 7-11-1 over 17 starts and established new program records for single season save percentage (.939) and goals against average (1.64) while recording four shutouts. Chobak currently owns seven season top 10 marks and four career top 10 spots in the record book. In her four-year career, she owns a 28-29-3 record with a 2.25 GAA, a .922 SV% and 13 shutouts over 60 starts/70 appearances.

## NEW LEADER OF THE PACK

Former assistant coach, **Mira Jalosuo** (MEER-ah YAH-loh-SUE-oh) was named the seventh head coach of the St. Cloud State Women's Hockey team on June 27, 2025. She is just the second woman to lead the Huskies during the program's 27-year history, following in the footsteps of Kerry Brodt Wethington, who was the programs first head coach from 1998-99 to 2001-02.

Jalosuo picked up her first win as the Huskies bench boss in her first game, a 5-0 win over Lindenwood (Mo.) on September 19. She earned her first series sweep the next day after SCSU took down the Lions 5-0 for the second straight game. It was the first time in program history that a team posted back-to-back shutouts to open a season and the fourth season in a row that the Huskies opened their season with a series sweep. Additionally, she won her first WCHA game on Oct. 17 against (RV) St. Thomas.

A highly decorated member of Finland's National Team, the two-time Olympian and five-time World Championships Bronze medalist spent the last two seasons as an assistant coach with the Minnesota Frost (formerly PWHL Minnesota), helping the franchise win back-to-back PWHL Walter Cups in each of the first two seasons of the Professional Women's Hockey League (PWHL).

## ALL-FEMALE COACHING STAFF

For the first time in program history, the Huskies have an all-female coaching staff. SCSU is one of two programs in the WCHA and one of six programs in all of NCAA DI Women's Hockey with an all-female staff.

## O CAPTAINS! OUR CAPTAINS!

St. Cloud State named four captains ahead of the 2025-26 season on Friday. Graduate student defender **Grace Wolfe** (Owatonna, Minn.) will be the fifth Husky to wear the "C" as captain for two seasons, while redshirt junior defender **Regan Bulger** (Yellowknife, Northwest Territories), graduate student goaltender **Jojo Chobak** (Chicago, Ill.) and redshirt junior forward **Laura Zimmermann** (Ringgenberg, Switzerland) will be alternate captains and wear a letter for the first time in their career.

Wolfe, who served as a co-captain in 2024-25 and an alternate captain in 2023-24, becomes just the second Husky to wear a letter in three seasons after Katy Battis (C – 1999-2000, A – 2001-02, 2002-03).

## WCHA PRESEASON COACHES POLL

St. Cloud State Women's Hockey was selected to finish fifth in the 2025-26 Western Collegiate Hockey Association (WCHA) Preseason Coaches' Poll, the league office announced on Sept. 8. The Huskies are coming off their third fifth place conference finish in a row and tied for the second most conference points in program history a season ago.

SCSU received 24 points overall in the coaches' poll and were selected to finish behind Wisconsin (49 points, seven first-place votes), Minnesota (40 points, one first-place vote) Ohio State (40 points), and Minnesota Duluth (31 points). Rounding out the poll was St. Thomas (17 points), Minnesota State (16 points) and Bemidji State (seven points).

## 2025-26 WCHA LEADERS CONT.

## SAVE PERCENTAGE

Rk.	Player	SV%
T1.	<b>EMILIA KYRKKÖ (SCSU)</b>	.942
T1.	Ava McNaughton (UW)	.942

## SAVES/GAME

Rk.	Player	SV/G
1.	Ava Hills (BSU)	29.89
2.	Hailey Hansen (MSU)	28.53
3.	Ève Gascon (UMD)	28.35
4.	<b>EMILIA KYRKKÖ (SCSU)</b>	27.40

## SHUTOUTS

Rk.	Player	SHO
1.	Ava McNaughton (UW)	6
2.	Ève Gascon (UMD)	4
T3.	<b>EMILIA KYRKKÖ (SCSU)</b>	3
T3.	Hannah Clark (UMN)	3

## SHUTOUTS/GAME

Rk.	Player	SHO/G
1.	Ava McNaughton (UW)	0.32
2.	<b>EMILIA KYRKKÖ (SCSU)</b>	0.30

## BLOCKED SHOTS

Rk.	Player	BLK
1.	Katy Comstock (BSU)	37
2.	Haley Maxwell (UST)	33
3.	Kianna Roeske (MSU)	32
T4.	<b>GRACE WOLFE (SCSU)</b>	31
T4.	Three other players	31



# MIRA JALOSUO

## HUSKIES HEAD COACH



**Mira Jalosuo** (MEER-ah YAH-loh-SUE-oh) was named the head coach of St. Cloud State Women's Hockey, Director of Athletics **Holly Schreiner** announced on June 27, 2025. She enters her first season at the helm in 2025-26. The former assistant coach for the Huskies became the seventh head coach in program's 27-year history and the second woman to lead the Huskies after Kerry Brodt Wethington, the program's first head coach from 1998-99 to 2001-02.

A highly decorated member of Finland's National Team, the two-time Olympian and five-time World Championships Bronze medalist spent the 2023-24 and 2024-25 seasons as an assistant coach with the Minnesota Frost (formerly PWHL Minnesota), helping the franchise win each of the first two Professional Women's Hockey League (PWHL) Walter Cups.

Prior to becoming a coach for the Frost, Jalosuo spent a year as an assistant coach for the Huskies under former head coach Brian Idalski, during his first season in 2022-23. She primarily worked with the defenders, while directing the penalty kill and assisting with recruiting efforts.

In her lone season with the Huskies in 2022-23, Jalosuo helped recreate St. Cloud State as one of the best defensive teams in the country. SCSU led the NCAA and set a new program record with 576 blocked shots while holding opponents to 2.59 goals – their second-best mark in program history – and 32.24 shots per game – their best mark since 2015-16. St. Cloud State's goaltenders anchored the rejuvenated defense, recording the program's third-best team save percentage at .920 and second-best goals against average of 2.58. The Huskies posted a program-record six shutouts in 2022-23, punctuating their stingy defensive work.

St. Cloud State's young defensive corps flourished under Jalosuo's direction as sophomores Dayle Ross and Grace Wolfe each took monumental steps forward. Ross led the NCAA with a Huskies single-season record 104 blocks, Wolfe landed second in the country with 83 and true freshman Regan Bulger finished fourth nationally with 78 blocks. Wolfe increased her point total by 15 while Ross went from three points as a freshman to 15 as a sophomore, each seeing increased roles and productivity in the offensive zone. Senior assistant captain Taytum Geier established new career-highs in assists, points, plus-minus and blocks in her lone season under Jalosuo.

Jalosuo had been a steady presence on Finland's blue line until her retirement in 2018, skating for 12 years as a member of the Senior National Team. She appeared in the 2014 and 2018 Olympic Games – earning bronze at Pyeongchang in 2018 – and added five bronze medals at the International Ice Hockey Federation (IIHF) Women's World Championships (2008-09, 2011, 2015, 2017). The defender played in 193 games for Finland, scoring 11 goals and adding 22 assists for 33 points as an anchor on the blue line.

From 2019 to 2022, Jalosuo spent three seasons leading Stillwater Area High School girl's hockey as the program's head coach. Under her direction, the Ponies went 52-19-4 (.693) and boasted a strong penalty kill. Stillwater killed 89.3% of their chances on the PK, including 90 of 98 (91.8%) kills in 2019-20.

Prior to her time at Stillwater, Jalosuo had served as an assistant coach for Hamline University and Wayzata High School since 2015. She also coached with the Stillwater Area Hockey Association, leading the U12A team to a 42-6-2 record in 2018-19.

Jalosuo played professionally following her collegiate career from 2013-18, spending two seasons with SKIF Nizhny Novgorod in the Russian Women's Hockey League and earning the Russian Championship in 2014. She then spent time with Luleå HF in the SDHL before joining the Minnesota Whitecaps of the Premier Hockey Federation (PHF) in 2016-17 and 2017-18. Jalosuo also skated with Oulun Kärpät in the Naisten Liiga, the team she played with as a teenager prior to her time with the Gophers.

The Lieksa, Finland native played for the Minnesota Gophers from 2009-10 to 2012-13. She appeared in 153 career games for the Maroon and Gold, recording 57 career points with 19 goals and 38 assists. A Third Team All-WCHA honoree as a senior, Jalosuo was part of back-to-back national championship teams as a junior and senior. She was a three-time WCHA All-Academic honoree as well.

Raised in eastern Finland, Jalosuo began playing in the premier Finnish women's league with Oulun Kärpät at age 15 and was an All-Star in 2007 and 2008. She served as the team's captain in 2008-09 while still attending high school.



## 2025-26 OVERALL STATISTICS

## Game Records

Overall	Conference	Home	Away	Neutral
7 - 12 - 1	3 - 10 - 1	3 - 5 - 1	3 - 6 - 0	1 - 1 - 0

			Shots						Penalties				Goals										
#	Player	GP	G	A	PTS	SH	SH%	+/-	PEN-MIN	MIN	MAJ	OTH	PP	SH	FG	GW	GT	OT	HT	PN	UA	BLK	
34	Sundelin, Sofianna	20	8	8	16	46	.174	+1	3-6	3	0	0	2	0	2	1	0	1	1	0	1	13	
4	Sauriol, Alice	20	5	9	14	65	.077	-1	5-18	4	0	1	1	0	1	2	0	1	0	0	0	11	
44	Mikaelyan, Maria	19	7	6	13	62	.113	+3	8-16	8	0	0	3	0	1	1	1	0	0	0	0	8	
16	Farrell, Avery	19	4	9	13	36	.111	-2	6-12	6	0	0	1	0	0	0	0	0	0	0	0	9	
8	Wolfe, Grace	20	3	10	13	43	.070	+6	7-25	5	1	1	0	1	0	0	0	0	0	0	0	31	
11	Zimmermann, Laura	20	6	5	11	45	.133	-2	12-35	10	1	1	0	0	3	0	0	0	0	0	0	9	
18	Holloway, Payton	19	3	7	10	35	.086	+4	1-2	1	0	0	1	0	1	1	0	0	0	0	0	5	
41	Yrjölä, Siiri	20	1	7	8	25	.040	+7	2-4	2	0	0	0	0	0	0	0	0	0	0	0	22	
9	Voigt, Svenja	19	2	5	7	20	.100	0	2-4	2	0	0	0	0	0	0	0	0	0	0	0	4	
17	Labbé, Julianne	20	4	2	6	19	.211	+3	1-2	1	0	0	1	0	0	1	0	0	0	0	0	3	
7	Remick, Payton	20	3	3	6	24	.125	+5	4-8	4	0	0	0	0	1	1	0	0	0	0	0	5	
28	Lamb, Sydney	17	2	4	6	26	.077	+9	1-2	1	0	0	0	0	0	0	0	0	0	0	0	11	
14	Pion, Maélie	20	1	5	6	36	.028	+4	12-35	10	1	1	0	0	1	0	0	0	0	0	1	16	
3	Jackel, Sidney	19	1	5	6	35	.029	+4	2-4	2	0	0	0	0	0	0	0	0	0	0	0	4	
12	Mustonen, Raili	19	2	3	5	24	.083	-9	0-0	0	0	0	0	0	0	0	0	0	0	0	0	7	
2	Bryant, Sydney	20	1	4	5	23	.043	-7	5-10	5	0	0	0	0	0	0	0	0	0	1	0	9	
15	Moran, Marie	20	1	1	2	32	.031	-6	1-2	1	0	0	0	0	0	0	0	0	0	0	0	6	
13	Strauts, Reese	15	1	0	1	5	.200	+1	1-2	1	0	0	0	0	0	0	0	0	0	0	0	0	
19	Krueger, Myah	18	0	0	0	11	.000	-3	1-2	1	0	0	0	0	0	0	0	0	0	0	0	1	
45	Bulger, Regan	3	0	0	0	5	.000	+1	0-0	0	0	0	0	0	0	0	0	0	0	0	0	0	
10	Skiston, Aruba	7	0	0	0	1	.000	0	0-0	0	0	0	0	0	0	0	0	0	0	0	0	0	
29	Chobak, Jojo	11	0	0	0	0	.000	0	0-0	0	0	0	0	0	0	0	0	0	0	0	0	0	
6	Erickson, Lily	2	0	0	0	0	.000	0	0-0	0	0	0	0	0	0	0	0	0	0	0	0	0	
42	Kyrkkö, Emilia	10	0	0	0	0	.000	0	0-0	0	0	0	0	0	0	0	0	0	0	0	0	0	
31	Hoogendam, Paige	2	0	0	0	0	.000	0	0-0	0	0	0	0	0	0	0	0	0	0	0	0	0	
TM	TEAM	20	0	0	0	0	.000	0	5-10	0	0	0	0	0	0	0	0	0	0	0	0	0	
Totals		20	55	93	148	618	.089	+18	79-199	72	3	4	9	1	10	7	1	2	1	1	2	174	
Opponents		20	58	104	162	626	.093	-18	69-138	69	0	0	16	0	10	12	0	3	1	1	3	245	

#	Player	GP-GS	Goal Average			Saves		Record				Goals Allowed				
			MINUTES	GA	AVG	SAVES	PCT	W	L	T	SHO	PP	SH	EN	PEN	SOG
29	Chobak, Jojo	11-10	540:50	34	3.77	260	.884	2	7	0	1	10	0	1	1	0
42	Kyrkkö, Emilia	10-9	556:10	17	1.83	274	.942	5	3	1	3	4	0	0	0	2
31	Hoogendam, Paige	2-1	97:51	6	3.68	34	.850	0	2	0	0	2	0	0	0	0
TM	EMPTY NET	-	18:09	1	3.31	0	.000	0	0	0	0	0	0	0	0	0
<b>Totals</b>		<b>20</b>	<b>1213:00</b>	<b>58</b>	<b>2.87</b>	<b>568</b>	<b>.907</b>	<b>7</b>	<b>12</b>	<b>1</b>	<b>4</b>	<b>16</b>	<b>0</b>	<b>1</b>	<b>1</b>	<b>2</b>
<b>Opponents</b>		<b>20</b>	<b>1213:00</b>	<b>55</b>	<b>2.72</b>	<b>563</b>	<b>.911</b>	<b>12</b>	<b>7</b>	<b>1</b>	<b>1</b>	<b>9</b>	<b>1</b>	<b>0</b>	<b>1</b>	<b>1</b>



## 2025-26 WCHA STATISTICS

## Game Records

Overall	Conference	Home	Away	Neutral
3 - 10 - 1	3 - 10 - 1	1 - 5 - 1	2 - 5 - 0	0 - 0 - 0

			Shots						Penalties				Goals										
#	Player	GP	G	A	PTS	SH	SH%	+/-	PEN-MIN	MIN	MAJ	OTH	PP	SH	FG	GW	GT	OT	HT	PN	UA	BLK	
8	Wolfe, Grace	14	3	9	12	24	.125	+4	5-21	3	1	1	0	1	0	0	0	0	0	0	0	22	
44	Mikaelyan, Maria	13	5	6	11	37	.135	+1	8-16	8	0	0	2	0	0	0	1	0	0	0	0	8	
4	Sauriol, Alice	14	4	7	11	43	.093	-2	1-2	1	0	0	1	0	0	1	0	1	0	0	0	6	
16	Farrell, Avery	14	4	7	11	25	.160	-3	4-8	4	0	0	1	0	0	0	0	0	0	0	0	5	
34	Sundelin, Sofianna	14	4	6	10	27	.148	-4	3-6	3	0	0	0	0	1	0	0	0	0	0	0	10	
11	Zimmermann, Laura	14	6	3	9	32	.188	-3	9-29	7	1	1	0	0	3	0	0	0	0	0	0	3	
18	Holloway, Payton	13	2	4	6	20	.100	+2	1-2	1	0	0	1	0	1	1	0	0	0	0	0	5	
9	Voigt, Svenja	14	1	5	6	11	.091	-1	1-2	1	0	0	0	0	0	0	0	0	0	0	0	4	
7	Remick, Payton	14	3	2	5	19	.158	+5	3-6	3	0	0	0	0	1	1	0	0	0	0	0	3	
28	Lamb, Sydney	11	2	2	4	19	.105	+4	0-0	0	0	0	0	0	0	0	0	0	0	0	0	9	
14	Pion, Maélie	14	1	3	4	27	.037	0	10-31	8	1	1	0	0	1	0	0	0	0	0	1	12	
12	Mustonen, Raili	13	1	3	4	15	.067	-8	0-0	0	0	0	0	0	0	0	0	0	0	0	0	5	
3	Jackel, Sidney	13	0	4	4	21	.000	+1	1-2	1	0	0	0	0	0	0	0	0	0	0	0	4	
41	Yrjölä, Siiri	14	0	3	3	20	.000	+3	1-2	1	0	0	0	0	0	0	0	0	0	0	0	16	
2	Bryant, Sydney	14	0	3	3	12	.000	-10	4-8	4	0	0	0	0	0	0	0	0	0	0	0	7	
17	Labbé, Julianne	14	2	0	2	11	.182	-1	1-2	1	0	0	0	0	0	0	0	0	0	0	0	2	
13	Strauts, Reese	12	1	0	1	4	.250	+1	0-0	0	0	0	0	0	0	0	0	0	0	0	0	0	
15	Moran, Marie	14	0	1	1	25	.000	-7	1-2	1	0	0	0	0	0	0	0	0	0	0	0	4	
19	Krueger, Myah	13	0	0	0	8	.000	-3	1-2	1	0	0	0	0	0	0	0	0	0	0	0	1	
45	Bulger, Regan	2	0	0	0	3	.000	+1	0-0	0	0	0	0	0	0	0	0	0	0	0	0	0	
10	Skiston, Aruba	4	0	0	0	0	.000	0	0-0	0	0	0	0	0	0	0	0	0	0	0	0	0	
6	Erickson, Lily	1	0	0	0	0	.000	0	0-0	0	0	0	0	0	0	0	0	0	0	0	0	0	
42	Kyrkkö, Emilia	6	0	0	0	0	.000	0	0-0	0	0	0	0	0	0	0	0	0	0	0	0	0	
31	Hoogendam, Paige	2	0	0	0	0	.000	0	0-0	0	0	0	0	0	0	0	0	0	0	0	0	0	
29	Chobak, Jojo	9	0	0	0	0	.000	0	0-0	0	0	0	0	0	0	0	0	0	0	0	0	0	
TM	TEAM	14	0	0	0	0	.000	0	2-4	0	0	0	0	0	0	0	0	0	0	0	0	0	
Totals		14	39	68	107	403	.097	-20	56-145	50	3	3	5	1	7	3	1	1	0	0	1	126	
Opponents		14	51	91	142	458	.111	+20	47-94	47	0	0	12	0	7	10	0	3	1	1	3	144	

#	Player	GP-GS	Goal Average			Saves		Record				Goals Allowed				
			MINUTES	GA	AVG	SAVES	PCT	W	L	T	SHO	PP	SH	EN	PEN	SOG
42	Kyrkkö, Emilia	6-5	317:12	12	2.27	164	.932	2	2	1	2	2	0	0	0	2
31	Hoogendam, Paige	2-1	97:51	6	3.68	34	.850	0	2	0	0	2	0	0	0	0
29	Chobak, Jojo	9-8	422:36	32	4.54	209	.867	1	6	0	0	8	0	1	1	0
TM	EMPTY NET	-	13:41	1	4.38	0	.000	0	0	0	0	0	0	0	0	0
Totals		14	851:20	51	3.59	407	.889	3	10	1	2	12	0	1	1	2
Opponents		14	851:20	39	2.75	364	.903	10	3	1	0	5	1	0	0	1





## 2025-26 NONCONFERENCE STATISTICS

## Game Records

Overall	Conference	Home	Away	Neutral
4 - 2 - 0	0 - 0 - 0	2 - 0 - 0	1 - 1 - 0	1 - 1 - 0

#	Player	GP	Shots					+/-	Penalties				Goals									
			G	A	PTS	SH	SH%		PEN-MIN	MIN	MAJ	OTH	PP	SH	FG	GW	GT	OT	HT	PN	UA	BLK
34	Sundelin, Sofianna	6	4	2	6	19	.211	+5	0-0	0	0	0	2	0	1	1	0	1	1	0	1	3
41	Yrjölä, Siiri	6	1	4	5	5	.200	+4	1-2	1	0	0	0	0	0	0	0	0	0	0	0	6
17	Labbé, Julianne	6	2	2	4	8	.250	+4	0-0	0	0	0	1	0	0	1	0	0	0	0	0	1
18	Holloway, Payton	6	1	3	4	15	.067	+2	0-0	0	0	0	0	0	0	0	0	0	0	0	0	0
4	Sauriol, Alice	6	1	2	3	22	.045	+1	4-16	3	0	1	0	0	1	1	0	0	0	0	0	5
44	Mikaelyan, Maria	6	2	0	2	25	.080	+2	0-0	0	0	0	1	0	1	1	0	0	0	0	0	0
3	Jackel, Sidney	6	1	1	2	14	.071	+3	1-2	1	0	0	0	0	0	0	0	0	0	0	0	0
2	Bryant, Sydney	6	1	1	2	11	.091	+3	1-2	1	0	0	0	0	0	0	0	0	0	1	0	2
11	Zimmermann, Laura	6	0	2	2	13	.000	+1	3-6	3	0	0	0	0	0	0	0	0	0	0	0	6
16	Farrell, Avery	5	0	2	2	11	.000	+1	2-4	2	0	0	0	0	0	0	0	0	0	0	0	4
14	Pion, Maélie	6	0	2	2	9	.000	+4	2-4	2	0	0	0	0	0	0	0	0	0	0	0	4
28	Lamb, Sydney	6	0	2	2	7	.000	+5	1-2	1	0	0	0	0	0	0	0	0	0	0	0	2
9	Voigt, Svenja	5	1	0	1	9	.111	+1	1-2	1	0	0	0	0	0	0	0	0	0	0	0	0
12	Mustonen, Raili	6	1	0	1	9	.111	-1	0-0	0	0	0	0	0	0	0	0	0	0	0	0	2
15	Moran, Marie	6	1	0	1	7	.143	+1	0-0	0	0	0	0	0	0	0	0	0	0	0	0	2
8	Wolfe, Grace	6	0	1	1	19	.000	+2	2-4	2	0	0	0	0	0	0	0	0	0	0	0	9
7	Remick, Payton	6	0	1	1	5	.000	0	1-2	1	0	0	0	0	0	0	0	0	0	0	0	2
19	Krueger, Myah	5	0	0	0	3	.000	0	0-0	0	0	0	0	0	0	0	0	0	0	0	0	0
45	Bulger, Regan	1	0	0	0	2	.000	0	0-0	0	0	0	0	0	0	0	0	0	0	0	0	0
10	Skiston, Aruba	3	0	0	0	1	.000	0	0-0	0	0	0	0	0	0	0	0	0	0	0	0	0
13	Strauts, Reese	3	0	0	0	1	.000	0	1-2	1	0	0	0	0	0	0	0	0	0	0	0	0
6	Erickson, Lily	1	0	0	0	0	.000	0	0-0	0	0	0	0	0	0	0	0	0	0	0	0	0
42	Kyrkkö, Emilia	4	0	0	0	0	.000	0	0-0	0	0	0	0	0	0	0	0	0	0	0	0	0
29	Chobak, Jojo	2	0	0	0	0	.000	0	0-0	0	0	0	0	0	0	0	0	0	0	0	0	0
TM	TEAM	6	0	0	0	0	.000	0	3-6	0	0	0	0	0	0	0	0	0	0	0	0	0
<b>Totals</b>		<b>6</b>	<b>16</b>	<b>25</b>	<b>41</b>	<b>215</b>	<b>.074</b>	<b>+38</b>	<b>23-54</b>	<b>22</b>	<b>0</b>	<b>1</b>	<b>4</b>	<b>0</b>	<b>3</b>	<b>4</b>	<b>0</b>	<b>1</b>	<b>1</b>	<b>1</b>	<b>1</b>	<b>48</b>
<b>Opponents</b>		<b>6</b>	<b>7</b>	<b>13</b>	<b>20</b>	<b>168</b>	<b>.042</b>	<b>-38</b>	<b>22-44</b>	<b>22</b>	<b>0</b>	<b>0</b>	<b>4</b>	<b>0</b>	<b>3</b>	<b>2</b>	<b>0</b>	<b>0</b>	<b>0</b>	<b>0</b>	<b>0</b>	<b>101</b>

#	Player	GP-GS	Goal Average			Saves		Record				Goals Allowed				
			MINUTES	GA	AVG	SAVES	PCT	W	L	T	SHO	PP	SH	EN	PEN	SOG
42	Kyrkkö, Emilia	4-4	238:58	5	1.26	110	.957	3	1	0	1	2	0	0	0	0
29	Chobak, Jojo	2-2	118:14	2	1.01	51	.962	1	1	0	1	2	0	0	0	0
TM	EMPTY NET	-	04:28	0	0.00	0	.000	0	0	0	0	0	0	0	0	0
<b>Totals</b>		<b>6</b>	<b>361:40</b>	<b>7</b>	<b>1.16</b>	<b>161</b>	<b>.958</b>	<b>4</b>	<b>2</b>	<b>0</b>	<b>2</b>	<b>4</b>	<b>0</b>	<b>0</b>	<b>0</b>	<b>0</b>
<b>Opponents</b>		<b>6</b>	<b>361:40</b>	<b>16</b>	<b>2.65</b>	<b>199</b>	<b>.926</b>	<b>2</b>	<b>4</b>	<b>0</b>	<b>1</b>	<b>4</b>	<b>0</b>	<b>0</b>	<b>1</b>	<b>0</b>



## 2025-26 GAME RESULTS

## Team Results

	Date	Opponent		Score	Shots	Overall	Conf	Time	Att.	Goalie of record
	09/19/2025	Lindenwood	W	5-0	43/18	1-0-0	0-0-0	2:13	341	KYRKKÖ, Emilia
	09/20/2025	Lindenwood	W	5-0	41/22	2-0-0	0-0-0	2:16	284	CHOBAK, Jojo
	09/26/2025	at UConn	W	2-1	29/36	3-0-0	0-0-0	2:27	2223	KYRKKÖ, Emilia
	09/27/2025	at UConn	L	1-2	37/31	3-1-0	0-0-0	2:23	1251	CHOBAK, Jojo
*	10/10/2025	at Minnesota	L	1-4	20/33	3-2-0	0-1-0	2:25	1506	CHOBAK, Jojo
*	10/11/2025	Minnesota	L	3-5	26/48	3-3-0	0-2-0	2:36	523	CHOBAK, Jojo
*	10/17/2025	St. Thomas (MN)	Wot	4-3	44/16	4-3-0	1-2-0	2:49	434	CHOBAK, Jojo
*	10/18/2025	St. Thomas (MN)	Lot	3-4	31/21	4-4-0	1-3-0	2:37	342	HOOGEN DAM, Paige
*	10/24/2025	at Ohio St.	L	1-5	12/40	4-5-0	1-4-0	2:19	461	CHOBAK, Jojo
*	10/25/2025	at Ohio St.	L	2-4	15/44	4-6-0	1-5-0	2:30	566	CHOBAK, Jojo
*	10/31/2025	Minn. Duluth	L	3-5	34/26	4-7-0	1-6-0	2:29	227	HOOGEN DAM, Paige
*	11/01/2025	Minn. Duluth	L	2-3	34/35	4-8-0	1-7-0	2:31	287	CHOBAK, Jojo
*	11/14/2025	Wisconsin	L	1-5	19/37	4-9-0	1-8-0	2:27	273	CHOBAK, Jojo
*	11/15/2025	Wisconsin	Tot	4-4	38/56	4-9-1	1-8-1	3:05	943	KYRKKÖ, Emilia
*	11/21/2025	at Bemidji St.	W	4-0	26/21	5-9-1	2-8-1	2:31	312	KYRKKÖ, Emilia
*	11/22/2025	at Bemidji St.	Lot	5-6	43/22	5-10-1	2-9-1	2:42	412	KYRKKÖ, Emilia
	11/28/2025	vs Colgate	Wot	3-2	36/31	6-10-1	2-9-1	2:57	843	KYRKKÖ, Emilia
	11/29/2025	vs Clarkson	L	0-2	29/30	6-11-1	2-9-1	2:18	974	KYRKKÖ, Emilia
*	12/05/2025	at Minnesota St.	W	4-0	36/28	7-11-1	3-9-1	2:03	320	KYRKKÖ, Emilia
*	12/06/2025	at Minnesota St.	Lot	2-3	25/31	7-12-1	3-10-1	2:11	320	KYRKKÖ, Emilia

Team Record	W-L-T	Attendance	Dates	Total	Avg.
Overall:	7-12-1	Total:	20	12842	642
Conference:	3-10-1	Home:	9	3654	406
Home:	3-5-1	Away:	9	7371	819
Away:	3-6-0	Neutral:	2	1817	909
Neutral:	1-1-0				
Overtime:	2-3-1				



## 2025-26 GAME-BY-GAME

Date	Opponent	Score	G	A	PTS	SHOTS	SH%	+/-	PEN-MIN	PP	SH	EN	GW	GT	HAT	UA	BLK
09/19/2025	Lindenwood	5-0	5	10	15	43	.116	+15	4-8	2	0	0	1	0	0	0	4
09/20/2025	Lindenwood	5-0	5	9	14	41	.122	+25	1-2	0	0	0	1	0	0	0	4
09/26/2025	at UConn	2-1	2	3	5	29	.069	+5	3-6	0	0	0	1	0	0	0	13
09/27/2025	at UConn	1-2	1	0	1	37	.027	0	7-22	0	0	0	0	0	0	0	12
10/10/2025	at Minnesota	1-4	1	1	2	20	.050	-16	4-8	0	0	0	0	0	0	0	12
10/11/2025	Minnesota	3-5	3	5	8	26	.115	-10	5-10	1	0	0	0	0	0	0	3
10/17/2025	St. Thomas (MN)	4-3	4	8	12	44	.091	+4	1-2	1	0	0	1	0	0	0	8
10/18/2025	St. Thomas (MN)	3-4	3	6	9	31	.097	+6	4-8	0	0	0	0	0	0	0	8
10/24/2025	at Ohio St.	1-5	1	2	3	12	.083	-10	3-6	0	0	0	0	0	0	0	8
10/25/2025	at Ohio St.	2-4	2	2	4	15	.133	0	6-23	0	0	0	0	0	0	1	12
10/31/2025	Minn. Duluth	3-5	3	6	9	34	.088	-5	6-23	0	0	0	0	0	0	0	11
11/01/2025	Minn. Duluth	2-3	2	4	6	34	.059	-5	4-8	0	0	0	0	0	0	0	12
11/14/2025	Wisconsin	1-5	1	2	3	19	.053	-10	3-6	0	0	0	0	0	0	0	10
11/15/2025	Wisconsin	4-4	4	8	12	38	.105	-1	4-19	1	0	0	0	1	0	0	8
11/21/2025	at Bemidji St.	4-0	4	6	10	26	.154	+20	4-8	0	0	0	1	0	0	0	15
11/22/2025	at Bemidji St.	5-6	5	7	12	43	.116	-5	4-8	1	1	0	0	0	0	0	7
11/28/2025	vs Colgate	3-2	3	3	6	36	.083	-2	4-8	2	0	0	1	0	1	1	10
11/29/2025	vs Clarkson	0-2	0	0	0	29	.000	-5	4-8	0	0	0	0	0	0	0	5
12/05/2025	at Minnesota St.	4-0	4	7	11	36	.111	+20	3-6	0	0	0	1	0	0	0	6
12/06/2025	at Minnesota St.	2-3	2	4	6	25	.080	-8	5-10	1	0	0	0	0	0	0	6
<b>SCSU</b>			<b>55</b>	<b>93</b>	<b>148</b>	<b>618</b>	<b>.089</b>	<b>+18</b>	<b>79-199</b>	<b>9</b>	<b>1</b>	<b>0</b>	<b>7</b>	<b>1</b>	<b>1</b>	<b>2</b>	<b>174</b>
<b>Opponents</b>			<b>58</b>	<b>104</b>	<b>162</b>	<b>626</b>	<b>.093</b>	<b>-18</b>	<b>69-138</b>	<b>16</b>	<b>0</b>	<b>1</b>	<b>12</b>	<b>0</b>	<b>1</b>	<b>3</b>	<b>245</b>

## TEAM PER-GAME

Games played	Shots per game	Goals per game	Assists per game	Points per game
20	30.90	2.75	4.65	7.40



**2025-26 OPPONENT GAME-BY-GAME**

Date	Opponent	Score	G	A	PTS	SHOTS	SH%	+/-	PEN-MIN	PP	SH	EN	GW	GT	HAT	UA	BLK
09/19/2025	Lindenwood	5-0	0	0	0	18	.000	-15	2-4	0	0	0	0	0	0	0	27
09/20/2025	Lindenwood	5-0	0	0	0	22	.000	-25	2-4	0	0	0	0	0	0	0	7
09/26/2025	at UConn	2-1	1	2	3	36	.028	-5	3-6	0	0	0	0	0	0	0	12
09/27/2025	at UConn	1-2	2	4	6	31	.065	0	2-4	2	0	0	1	0	0	0	27
10/10/2025	at Minnesota	1-4	4	8	12	33	.121	+15	1-2	0	0	1	1	0	0	0	8
10/11/2025	Minnesota	3-5	5	9	14	48	.104	+10	7-14	1	0	0	1	0	0	0	9
10/17/2025	St. Thomas (MN)	4-3	3	4	7	16	.188	-3	3-6	1	0	0	0	0	0	1	14
10/18/2025	St. Thomas (MN)	3-4	4	8	12	21	.190	-6	4-8	2	0	0	1	0	0	0	12
10/24/2025	at Ohio St.	1-5	5	8	13	40	.125	+10	5-10	1	0	0	1	0	0	0	6
10/25/2025	at Ohio St.	2-4	4	8	12	44	.091	0	4-8	2	0	0	1	0	1	0	9
10/31/2025	Minn. Duluth	3-5	5	6	11	26	.192	+5	3-6	1	0	0	1	0	0	2	13
11/01/2025	Minn. Duluth	2-3	3	6	9	35	.086	+5	3-6	0	0	0	1	0	0	0	14
11/14/2025	Wisconsin	1-5	5	9	14	37	.135	+10	1-2	2	0	0	1	0	0	0	11
11/15/2025	Wisconsin	4-4	4	8	12	56	.071	+1	2-4	1	0	0	0	0	0	0	11
11/21/2025	at Bemidji St.	4-0	0	0	0	21	.000	-20	1-2	0	0	0	0	0	0	0	7
11/22/2025	at Bemidji St.	5-6	6	12	18	22	.273	+5	4-8	1	0	0	1	0	0	0	16
11/28/2025	vs Colgate	3-2	2	3	5	31	.065	+2	7-14	1	0	0	0	0	0	0	12
11/29/2025	vs Clarkson	0-2	2	4	6	30	.067	+5	6-12	1	0	0	1	0	0	0	16
12/05/2025	at Minnesota St.	4-0	0	0	0	28	.000	-20	5-10	0	0	0	0	0	0	0	7
12/06/2025	at Minnesota St.	2-3	3	5	8	31	.097	+8	4-8	0	0	0	1	0	0	0	7
<b>Opponents</b>			<b>58</b>	<b>104</b>	<b>162</b>	<b>626</b>	<b>.093</b>	<b>-18</b>	<b>69-138</b>	<b>16</b>	<b>0</b>	<b>1</b>	<b>12</b>	<b>0</b>	<b>1</b>	<b>3</b>	<b>245</b>
<b>SCSU</b>			<b>55</b>	<b>93</b>	<b>148</b>	<b>618</b>	<b>.089</b>	<b>+18</b>	<b>79-199</b>	<b>9</b>	<b>1</b>	<b>0</b>	<b>7</b>	<b>1</b>	<b>1</b>	<b>2</b>	<b>174</b>

**OPPONENT PER-GAME**

Games played	Shots per game	Goals per game	Assists per game	Points per game
20	31.30	2.90	5.20	8.10





**2025-26 CATEGORY LEADERS****Points**

#	Player	GP	G	A	PTS	SH
34	Sundelin, Sofianna	20	8	8	16	46
4	Sauriol, Alice	20	5	9	14	65
44	Mikaelyan, Maria	19	7	6	13	62
16	Farrell, Avery	19	4	9	13	36
8	Wolfe, Grace	20	3	10	13	43
11	Zimmermann, Laura	20	6	5	11	45
18	Holloway, Payton	19	3	7	10	35
41	Yrjölä, Siiri	20	1	7	8	25
9	Voigt, Svenja	19	2	5	7	20
17	Labbé, Julianne	20	4	2	6	19

**Assists**

#	Player	GP	G	A	PTS	SH
8	Wolfe, Grace	20	3	10	13	43
16	Farrell, Avery	19	4	9	13	36
4	Sauriol, Alice	20	5	9	14	65
34	Sundelin, Sofianna	20	8	8	16	46
18	Holloway, Payton	19	3	7	10	35
41	Yrjölä, Siiri	20	1	7	8	25
44	Mikaelyan, Maria	19	7	6	13	62
9	Voigt, Svenja	19	2	5	7	20
11	Zimmermann, Laura	20	6	5	11	45
3	Jackel, Sidney	19	1	5	6	35

**Goals**

#	Player	GP	G	A	PTS	SH
34	Sundelin, Sofianna	20	8	8	16	46
44	Mikaelyan, Maria	19	7	6	13	62
11	Zimmermann, Laura	20	6	5	11	45
4	Sauriol, Alice	20	5	9	14	65
16	Farrell, Avery	19	4	9	13	36
17	Labbé, Julianne	20	4	2	6	19
8	Wolfe, Grace	20	3	10	13	43
18	Holloway, Payton	19	3	7	10	35
7	Remick, Payton	20	3	3	6	24
9	Voigt, Svenja	19	2	5	7	20

**Shots**

#	Player	GP	G	A	PTS	SH	SH%
4	Sauriol, Alice	20	5	9	14	65	.077
44	Mikaelyan, Maria	19	7	6	13	62	.113
34	Sundelin, Sofianna	20	8	8	16	46	.174
11	Zimmermann, Laura	20	6	5	11	45	.133
8	Wolfe, Grace	20	3	10	13	43	.070
16	Farrell, Avery	19	4	9	13	36	.111
14	Pion, Maélie	20	1	5	6	36	.028
3	Jackel, Sidney	19	1	5	6	35	.029
18	Holloway, Payton	19	3	7	10	35	.086
15	Moran, Marie	20	1	1	2	32	.031

**Power-Play Goals**

#	Player	GP	PPG
44	Mikaelyan, Maria	19	3
34	Sundelin, Sofianna	20	2
16	Farrell, Avery	19	1
4	Sauriol, Alice	20	1
18	Holloway, Payton	19	1
17	Labbé, Julianne	20	1

**Shot Pct.**

#	Player	GP	G	A	PTS	SH	SH%
17	Labbé, Julianne	20	4	2	6	19	.211
13	Strauts, Reese	15	1	0	1	5	.200
34	Sundelin, Sofianna	20	8	8	16	46	.174
11	Zimmermann, Laura	20	6	5	11	45	.133
7	Remick, Payton	20	3	3	6	24	.125
44	Mikaelyan, Maria	19	7	6	13	62	.113
16	Farrell, Avery	19	4	9	13	36	.111
9	Voigt, Svenja	19	2	5	7	20	.100
18	Holloway, Payton	19	3	7	10	35	.086
12	Mustonen, Raili	19	2	3	5	24	.083



**2025-26 CATEGORY LEADERS CONT.****Short-Handed Goals**

#	Player	GP	SHG
8	Wolfe, Grace	20	1

**Penalties**

#	Player	GP	PEN	MIN
11	Zimmermann, Laura	20	12	35
14	Pion, Maélie	20	12	35
44	Mikaelyan, Maria	19	8	16
8	Wolfe, Grace	20	7	25
16	Farrell, Avery	19	6	12
2	Bryant, Sydney	20	5	10
4	Sauriol, Alice	20	5	18
7	Remick, Payton	20	4	8
34	Sundelin, Sofianna	20	3	6
9	Voigt, Svenja	19	2	4

**Game-Winning Goals**

#	Player	GP	GWG
4	Sauriol, Alice	20	2
34	Sundelin, Sofianna	20	1
18	Holloway, Payton	19	1
7	Remick, Payton	20	1
17	Labbé, Julianne	20	1
44	Mikaelyan, Maria	19	1

**Penalty Minutes**

#	Player	GP	PEN	MIN
11	Zimmermann, Laura	20	12	35
14	Pion, Maélie	20	12	35
8	Wolfe, Grace	20	7	25
4	Sauriol, Alice	20	5	18
44	Mikaelyan, Maria	19	8	16
16	Farrell, Avery	19	6	12
2	Bryant, Sydney	20	5	10
7	Remick, Payton	20	4	8
34	Sundelin, Sofianna	20	3	6
9	Voigt, Svenja	19	2	4

**Plus/Minus**

#	Player	GP	+/-
28	Lamb, Sydney	17	+9
41	Yrjölä, Siiri	20	+7
8	Wolfe, Grace	20	+6
7	Remick, Payton	20	+5
3	Jackel, Sidney	19	+4
18	Holloway, Payton	19	+4
14	Pion, Maélie	20	+4
17	Labbé, Julianne	20	+3
44	Mikaelyan, Maria	19	+3
45	Bulger, Regan	3	+1



**2025-26 GAME HIGHS****SCSU - GAME HIGHS**

<b>POINTS</b>	15	Lindenwood (09/19/2025)
<b>GOALS</b>	5	at Bemidji St. (11/22/2025)
	5	Lindenwood (09/20/2025)
	5	Lindenwood (09/19/2025)
<b>ASSISTS</b>	10	Lindenwood (09/19/2025)
<b>SHOTS ON GOAL</b>	44	St. Thomas (MN) (10/17/2025)
<b>SAVES</b>	52	Wisconsin (11/15/2025)
<b>PENALTIES</b>	7	at UConn (09/27/2025)
<b>PENALTY MINUTES</b>	23	Minn. Duluth (10/31/2025)
	23	at Ohio St. (10/25/2025)

**Opponent - GAME HIGHS**

<b>POINTS</b>	18	at Bemidji St. (11/22/2025)
<b>GOALS</b>	6	at Bemidji St. (11/22/2025)
<b>ASSISTS</b>	12	at Bemidji St. (11/22/2025)
<b>SHOTS ON GOAL</b>	56	Wisconsin (11/15/2025)
<b>SAVES</b>	40	St. Thomas (MN) (10/17/2025)
<b>PENALTIES</b>	7	vs Colgate (N) (11/28/2025)
	7	Minnesota (10/11/2025)
<b>PENALTY MINUTES</b>	14	vs Colgate (N) (11/28/2025)
	14	Minnesota (10/11/2025)



2025-26 SEASON + CAREER STATISTICS

Season

#	Player	GP	G	A	PTS	SH	SH%	+/-	PEN-MIN	PP	SH	FG	GW	GT	OT	HT	UA	BLK
2	Bryant, Sydney	20	1	4	5	23	.043	-7	5-10	0	0	0	0	0	0	0	0	9
3	Jackel, Sidney	19	1	5	6	35	.029	+4	2-4	0	0	0	0	0	0	0	0	4
4	Sauriol, Alice	20	5	9	14	65	.077	-1	5-18	1	0	1	2	0	1	0	0	11
6	Erickson, Lily	2	0	0	0	0	.000	0	0-0	0	0	0	0	0	0	0	0	0
7	Remick, Payton	20	3	3	6	24	.125	+5	4-8	0	0	1	1	0	0	0	0	5
8	Wolfe, Grace	20	3	10	13	43	.070	+6	7-25	0	1	0	0	0	0	0	0	31
9	Voigt, Svenja	19	2	5	7	20	.100	0	2-4	0	0	0	0	0	0	0	0	4
10	Skiston, Aruba	7	0	0	0	1	.000	0	0-0	0	0	0	0	0	0	0	0	0
11	Zimmermann, Laura	20	6	5	11	45	.133	-2	12-35	0	0	3	0	0	0	0	0	9
12	Mustonen, Raili	19	2	3	5	24	.083	-9	0-0	0	0	0	0	0	0	0	0	7
13	Strauts, Reese	15	1	0	1	5	.200	+1	1-2	0	0	0	0	0	0	0	0	0
14	Pion, Maélie	20	1	5	6	36	.028	+4	12-35	0	0	1	0	0	0	0	1	16
15	Moran, Marie	20	1	1	2	32	.031	-6	1-2	0	0	0	0	0	0	0	0	6
16	Farrell, Avery	19	4	9	13	36	.111	-2	6-12	1	0	0	0	0	0	0	0	9
17	Labbé, Julianne	20	4	2	6	19	.211	+3	1-2	1	0	0	1	0	0	0	0	3
18	Holloway, Payton	19	3	7	10	35	.086	+4	1-2	1	0	1	1	0	0	0	0	5
19	Krueger, Myah	18	0	0	0	11	.000	-3	1-2	0	0	0	0	0	0	0	0	1
28	Lamb, Sydney	17	2	4	6	26	.077	+9	1-2	0	0	0	0	0	0	0	0	11
29	Chobak, Jojo	11	0	0	0	0	.000	0	0-0	0	0	0	0	0	0	0	0	0
31	Hoogendam, Paige	2	0	0	0	0	.000	0	0-0	0	0	0	0	0	0	0	0	0
34	Sundelin, Sofianna	20	8	8	16	46	.174	+1	3-6	2	0	2	1	0	1	1	1	13
41	Yrjölä, Siiri	20	1	7	8	25	.040	+7	2-4	0	0	0	0	0	0	0	0	22
42	Kyrkkö, Emilia	10	0	0	0	0	.000	0	0-0	0	0	0	0	0	0	0	0	0
44	Mikaelyan, Maria	19	7	6	13	62	.113	+3	8-16	3	0	1	1	1	0	0	0	8
45	Bulger, Regan	3	0	0	0	5	.000	+1	0-0	0	0	0	0	0	0	0	0	0
Totals		20	55	93	148	618	.089	+18	79-199	9	1	10	7	1	2	1	2	174
Opponents		20	58	104	162	626	.093	-18	69-138	16	0	10	12	0	3	1	3	245

Career

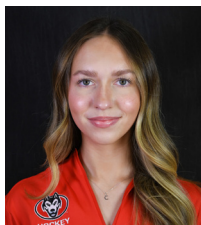
GP	G	A	PTS	SH	SH%	+/-	PEN-MIN	PP	SH	FG	GW	GT	OT	HT	UA	BLK	
38	1	4	5	30	.033	-9	6-12	0	0	0	0	0	0	0	0	0	14
83	10	17	27	182	.055	-28	13-26	1	0	0	1	0	0	0	0	2	20
92	18	33	51	203	.089	-2	15-38	3	1	5	5	0	1	0	0	2	40
2	0	0	0	0	.000	0	0-0	0	0	0	0	0	0	0	0	0	0
20	3	3	6	24	.125	+5	4-8	0	0	1	1	0	0	0	0	0	5
137	10	40	50	154	.065	-19	31-73	2	1	0	0	0	0	0	0	0	238
108	6	11	17	52	.115	+1	16-32	0	0	2	0	0	0	0	0	0	12
7	0	0	0	1	.000	0	0-0	0	0	0	0	0	0	0	0	0	0
89	17	19	36	185	.092	-5	22-55	3	0	4	1	1	0	0	0	0	33
19	2	3	5	24	.083	-9	0-0	0	0	0	0	0	0	0	0	0	7
15	1	0	1	5	.200	+1	1-2	0	0	0	0	0	0	0	0	0	0
20	1	5	6	36	.028	+4	12-35	0	0	1	0	0	0	0	0	1	16
56	3	3	6	57	.053	-6	4-19	0	0	0	1	0	0	0	0	0	11
126	29	35	64	228	.127	0	19-38	4	1	1	3	2	1	0	4	4	42
20	4	2	6	19	.211	+3	1-2	1	0	0	1	0	0	0	0	0	3
83	4	9	13	60	.067	+5	1-2	1	0	1	1	0	0	0	0	0	11
18	0	0	0	11	.000	-3	1-2	0	0	0	0	0	0	0	0	0	1
17	2	4	6	26	.077	+9	1-2	0	0	0	0	0	0	0	0	0	11
70	0	1	1	0	.000	0	0-0	0	0	0	0	0	0	0	0	0	0
2	0	0	0	0	.000	0	0-0	0	0	0	0	0	0	0	0	0	0
92	20	24	44	184	.109	-2	13-26	4	0	8	3	0	2	1	2	50	
52	3	10	13	41	.073	+10	5-10	2	0	0	0	0	0	0	0	0	28
28	0	0	0	0	.000	0	1-2	0	0	0	0	0	0	0	0	0	0
19	7	6	13	62	.113	+3	8-16	3	0	1	1	1	0	0	0	0	8
69	0	8	8	46	.000	-10	13-26	0	0	0	0	0	0	0	0	0	110

#	Player	GP-GS	MINUTES	GA	GAAVG	SAVES	PCT	W	L	T	SHO	PP	SH	EN
29	Chobak, Jojo	11-10	540:50	34	3.77	260	.884	2	7	0	1	10	0	1
31	Hoogendam, Paige	2-1	97:51	6	3.68	34	.850	0	2	0	0	2	0	0
42	Kyrkkö, Emilia	10-9	556:10	17	1.83	274	.942	5	3	1	3	4	0	0
Totals		20-0	1194:51	58	2.87	568	.907	7	12	1	4	16	0	1
Opponents		20-0	1209:43	55	2.72	563	.911	12	7	1	1	9	1	0





## RADIO/TELEVISION ROSTER



**2**  
**SYDNEY BRYANT**  
D | 5'8 | R-So. | R  
Traverse City, Mich.



**3**  
**SIDNEY JACKEL**  
F | 5'10 | Jr. | R  
Ann Arbor, Mich.



**4**  
**ALICE SAURIOL**  
F | 5'4 | Jr. | L  
Sherbrooke, Quebec



**6**  
**LILY ERICKSON**  
F | 5'5 | Fr. | R  
Roseau, Minn.



**7**  
**PAYTON REMICK**  
F | 5'7 | Fr. | R  
Roseau, Minn.



**8**  
**GRACE WOLFE (C)**  
D | 5'9 | Gr. | R  
Owatonna, Minn.



**9**  
**SVENJA VOIGT**  
F | 5'5 | Sr. | L  
Cologne, Germany



**10**  
**ARUBA SKISTON**  
D | 5'5 | Fr. | L  
Bensenville, Ill.



**11**  
**LAURA ZIMMERMANN (A)**  
F | 5'4 | R-Jr. | L  
Rinngenberg, Switzerland



**12**  
**RAILI MUSTONEN**  
F | 5'5 | Fr. | L  
Kalajoki, Finland



**13**  
**REESE STRAUTS**  
F | 5'8 | Fr. | R  
Brandon, Wis.



**14**  
**MAËLIE PION**  
D | 5'11 | Fr. | L  
Sherbrooke, Quebec



**15**  
**MARIE MORAN**  
F | 5'8 | R-So. | R  
Lakeville, Minn.



**16**  
**AVERY FARRELL**  
F | 5'4 | Sr. | R  
Rogers, Minn.



**17**  
**JULIAANE LABBÉ**  
F | 5'8 | Fr. | L  
Wendake, Quebec



**18**  
**PAYTON HOLLOWAY**  
F | 5'8 | Jr. | L  
Tomah, Wis.



**19**  
**MYAH KRUEGER**  
F | 5'7 | R-Fr. | R  
Stillwater, Minn.



**23**  
**HANNAH ARNOLD**  
D | 5'8 | Fr. | R  
Winnipeg, Manitoba



**28**  
**SYDNEY LAMB**  
D | 5'7 | Fr. | R  
Lombard, Ill.



**29**  
**JOJO CHOBAK (A)**  
G | 5'8 | Gr. | L  
Chicago, Ill.



**31**  
**PAIGE HOOGEN DAM**  
G | 5'8 | R-So. | L  
Ajax, Ontario



**34**  
**SOFIANNA SUNDELIN**  
F | 5'7 | Jr. | L  
Ulvila, Finland



**40**  
**HANNELE TARKAINEN**  
D | 5'7 | So. | L  
Pieksämäki, Finland



**41**  
**SIIRI YRJÖLÄ**  
D | 5'5 | So. | L  
Vantaa, Finland



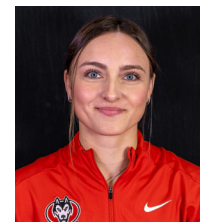
**42**  
**EMILIA KYRKKÖ**  
G | 5'7 | So. | L  
Nokia, Finland



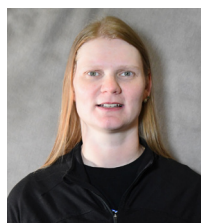
**44**  
**MARIA MIKAE LYAN**  
F | 5'8 | Fr. | L  
Moscow, Russia



**45**  
**REGAN BULGER (A)**  
D | 5'6 | R-Jr. | L  
Yellowknife, Northwest Territories



**56**  
**HALI LAWRENCE**  
G | 5'7 | Sr. | L  
Calgary, Alberta



**HEAD COACH**  
**MIRA JALOSUO**  
First Season  
Minnesota (2013)



**ASSOC. HC**  
**JINNELLE SIERGIEJ**  
12th Season  
Wisconsin (2008)



**ASST. COACH**  
**NOORA RÄTTY**  
Second Season  
Minnesota (2013)



**ASST. COACH**  
**EMILY ACH**  
Second Season  
Augsburg (2020)



**S&C COACH**  
**JAKE FRANCKEZ**  
Sixth Season  
Grand Valley State (2020)



**ATH. TRAINER**  
**RACHEL NAGEL**  
Fifth Season  
Wisconsin (2021)



**SID**  
**JACOB SANDERS**  
Second Season  
Central (Iowa) (2023)

