



# ST. CLOUD STATE HUSKIES

WOMEN'S HOCKEY - 2025-26 SERIES NOTES - Jan. 16-17, 2026

Two WCHA Semifinals | Once NCAA All-American | One Conference Player of the Year | Two Conference Goaltenders of the Year  
26 All-Conference Selections | 128 WCHA Scholar Athletes | 286 Academic All-Conference Honorees | 4 PWHL Draft Selections

GAME  
23

#15 HUSKIES (7-14-1, 3-12-1 WCHA)  
@ #8 MINNESOTA DULUTH (12-9-1, 8-7-1 WCHA)  
Friday, January 16  
6 p.m. CT  
AMSOIL Arena (Duluth, Minn.)

GAME  
24

#15 HUSKIES (7-14-1, 3-12-1 WCHA)  
@ #8 MINNESOTA DULUTH (12-9-1, 8-7-1 WCHA)  
Saturday, January 17  
3 p.m. CT  
AMSOIL Arena (Duluth, Minn.)

## 2025-26 SCHEDULE

| DATE            | OPPONENT                   | TV         | TIME/RESULT        |
|-----------------|----------------------------|------------|--------------------|
| Sept. 19        | LINDENWOOD (MO.)           | B1G+       | W, 5-0             |
| Sept. 20        | LINDENWOOD (MO.)           | B1G+       | W, 5-0             |
| Sept. 26        | #12/13 UConn               | ESPN+      | W, 2-1             |
| Sept. 27        | #12/13 UConn               | ESPN+      | L, 2-1             |
| Oct. 10         | #3 Minnesota*              | B1G+       | L, 4-1             |
| Oct. 11         | #3 MINNESOTA*              | FOX9+/B1G+ | L, 5-3             |
| Oct. 17         | (RV) ST. THOMAS*           | B1G+       | W, 4-3 OT          |
| Oct. 18         | (RV) ST. THOMAS*           | B1G+       | L, 4-3 OT          |
| Oct. 24         | #2 Ohio State*             | B1G+       | L, 5-1             |
| Oct. 25         | #2 Ohio State*             | B1G+       | L, 4-2             |
| Oct. 31         | #5 MINNESOTA DULUTH*       | B1G+       | L, 5-3             |
| Nov. 1          | #5 MINNESOTA DULUTH*       | B1G+       | L, 3-2             |
| Nov. 14         | #1 WISCONSIN*              | B1G+       | L, 5-1             |
| Nov. 15         | #1 WISCONSIN*              | B1G+       | T, 4-4 OT, 2-1 SOL |
| Nov. 21         | Bemidji State*             | B1G+       | W, 4-0             |
| Nov. 22         | Bemidji State*             | B1G+       | L, 6-5 OT          |
| Nov. 28         | #12 Colgate (N.Y.)#        | TBA        | W, 3-2 OT          |
| Nov. 29         | #10 Clarkson (N.Y.)#       | TBA        | L, 2-0             |
| Dec. 5          | #12 Minnesota State*       | B1G+       | W, 4-0             |
| Dec. 6          | #12 Minnesota State*       | B1G+       | L, 3-2             |
| Jan. 3          | ST. THOMAS (EXHIBITION)    | -          | Completed          |
| Jan. 9          | #2 OHIO STATE*             | B1G+       | L, 4-0             |
| Jan. 10         | #2 OHIO STATE*             | B1G+       | L, 5-1             |
| Jan. 16         | #8 Minnesota Duluth*       | B1G+       | 6 p.m.             |
| Jan. 17         | #8 Minnesota Duluth*       | B1G+       | 3 p.m.             |
| Jan. 23         | MINNESOTA*                 | B1G+       | 6 p.m.             |
| Jan. 24         | Minnesota*                 | B1G+       | 2 p.m.             |
| Jan. 30         | St. Thomas*                | B1G+       | 2 p.m.             |
| Jan. 31         | St. Thomas*                | B1G+       | 2 p.m.             |
| Feb. 6          | MINNESOTA STATE*           | B1G+       | 6 p.m.             |
| Feb. 7          | MINNESOTA STATE*           | B1G+       | 2 p.m.             |
| Feb. 13         | BEMIDJI STATE*             | B1G+       | 2 p.m.             |
| Feb. 14         | BEMIDJI STATE*             | B1G+       | 1 p.m.             |
| Feb. 20         | Wisconsin*                 | B1G+       | TBA                |
| Feb. 21         | Wisconsin*                 | B1G+       | TBA                |
| Feb. 27-March 1 | WCHA Quarterfinals^        | B1G+       | TBD                |
| March 5-7       | WCHA Final Faceoff!        | FOX9+/B1G+ | TBD                |
| March 12-15     | NCAA Regional Tournament\$ | TBD        | TBD                |
| March 20 - 22   | NCAA Frozen Four%          | TBD        | TBD                |

### BOLD - Home Game

\* - WCHA Game

# - D1 in DC, MedStar Capitals Iceplex in Washington, D.C.

^ - WCHA Quarterfinals, Higher Seed

! - WCHA Final Faceoff, Lee & Penny Anderson Arena in St. Paul, Minn.

\$ - NCAA Regional Tournament, Regional Host

% - NCAA Frozen Four, Pegula Ice Arena in University Park, Pa.

\* ALL TIMES CENTRAL // ALL DATES AND TIMES SUBJECT TO CHANGE

\* RANKINGS ARE USCHO/USA HOCKEY

## ST. CLOUD STATE ATHLETICS COMMUNICATIONS

JACOB SANDERS, ASSISTANT DIRECTOR

jacob.sanders@stcloudstate.edu

Halenbeck Hall 328, 720 4th Ave S, St. Cloud, MN 56301



### NO. 15 ST. CLOUD STATE HUSKIES

Head Coach: Mira Jalosuo

Alma Mater: Minnesota, '13

Career Record: 7 - 14 - 1 (1<sup>st</sup> season)

SCSU Record: Same

### STATS BREAKDOWN (2025-26)

|                      |       |
|----------------------|-------|
| Goals/Game           | 2.55  |
| Goals Allowed/Game   | 3.05  |
| Power Play           | 15.2% |
| Penalty Kill         | 76.4% |
| Shots/Game           | 30.2  |
| Shots Faced/Game     | 32.5  |
| Penalty Minutes/Game | 9:30  |
| Faceoffs             | 43.9% |

### 2025-26 TOP PERFORMERS

|              |                         |
|--------------|-------------------------|
| Goals        | Sofianna Sundelin (9)   |
| Assists      | Grace Wolfe (10)        |
| Points       | Sofianna Sundelin (17)  |
| Faceoffs Won | Sofianna Sundelin (201) |
| Plus/Minus   | Sydney Lamb (+8)        |
| Blocks       | Grace Wolfe (33)        |
| Goalie Wins  | Emilia Kyrkkö (5)       |
| GAA          | Emilia Kyrkkö (2.04)    |
| Save %       | Emilia Kyrkkö (.936)    |

### SERIES HISTORY

SCSU trails UMD, 15 - 94 - 12

In St. Cloud: 10 - 38 - 7

In Duluth: 5 - 56 - 5

At Neutral Sites: 0 - 0 - 0

Last Meeting: Nov. 1, 2025 (3 - 2 UMD)

First Meeting: Dec. 18, 1998 (1 - 0 UMD)

Last Five Meetings: 0 - 5 - 0

Last 10 Meetings: 0 - 9 - 1

### DATE SITE RESULT

|          |           |                |
|----------|-----------|----------------|
| 11-1-25  | St. Cloud | L, 3-2         |
| 10-31-25 | St. Cloud | L, 5-3         |
| 3-1-25   | Duluth    | L, 2-1         |
| 2-28-25  | Duluth    | L, 3-2         |
| 1-11-25  | Duluth    | L, 3-0         |
| 1-10-25  | Duluth    | L, 3-0         |
| 12-7-24  | St. Cloud | L, 3-1         |
| 12-6-24  | St. Cloud | T, 1-1 OT, SOL |
| 3-2-24   | Duluth    | L, 2-0         |
| 3-1-24   | Duluth    | L, 5-0         |
| 2-17-24  | Duluth    | T, 0-0 OT, SOW |
| 2-16-24  | Duluth    | L, 1-0         |
| 12-9-23  | St. Cloud | W, 5-1         |
| 12-8-23  | St. Cloud | L, 2-1 OT      |
| 2-25-23  | Duluth    | L, 5-1         |
| 2-24-23  | Duluth    | L, 1-0         |
| 2-11-23  | Duluth    | L, 2-0         |
| 2-10-23  | Duluth    | T, 1-1 OT, SOL |
| 11-12-22 | St. Cloud | L, 5-1         |
| 11-11-22 | St. Cloud | L, 2-0         |

### BLIZZARD'S BULLETS

### FRESH ICE

No. 15 St. Cloud State Women's Hockey (7-14-1, 3-12-1 Western Collegiate Hockey Association) travels to Duluth for its first road series of 2026 this weekend against No. 8 Minnesota Duluth (12-9-1, 8-7-1 WCHA). Puck drops from AMSOIL Arena are scheduled for 6 p.m. (Saturday) and 3 p.m. (Saturday).

### FOLLOW THE HUSKIES

Both games will be broadcast on Big Ten Plus (note - a paid subscription is required). Audio coverage will be provided on the KVSC Sports Stream with KVSC talent **Brian Moos** on the call. Live stats will be provided by Minnesota Duluth. Links to each coverage option can also be found on the St. Cloud State Women's Hockey game day central or schedule page.

### SERIES HISTORY

SCSU trails the all-time series against the Bulldogs, 15-94-12 including a 0-9-1 mark in the team's last 10 matchups. The Huskies are 5-56-5 all-time when playing UMD in Duluth. Earlier this season, SCSU went 0-2-0 in its series against Minnesota Duluth, falling 5-3 and 3-2 in St. Cloud.

### LET'S GO POLLING

The Huskies are ranked No. 15 in both the U.S. College Hockey Online (USCHO) Poll and the USA Hockey Poll. St. Cloud State is one of six WCHA programs featured in the rankings, with one additional club receiving votes. Ohio State is No. 8 in both polls.

### HCA GOALIE OF THE YEAR AWARD WATCH LIST

Sophomore goaltender Emilia Kyrkkö (Nokia, Finland) was named to the Hockey Commissioners Association (HCA) Goalie of the Year Award Watch List, as announced by the organization on January 14. The HCA National Women's Goalie of the Year Award was created in 2021 to recognize the top female goalie in NCAA Division I Hockey. It is the second consecutive season Kyrkkö has been named to the watch list.

## FOLLOW THE HUSKIES



@SCSUHuskies\_WHK



@scsuhuskies\_whk



/SCSUWHKY



## QUICK FACTS

## UNIVERSITY INFORMATION

|             |                       |
|-------------|-----------------------|
| Location    | St. Cloud, Minn.      |
| Affiliation | NCAA Division I       |
| Colors      | Spirit Red and Black  |
| Conference  | WCHA                  |
| Mascot      | Blizzard T. Husky     |
| President   | Larry Dietz (Interim) |

## TEAM INFORMATION

|                                |                                    |
|--------------------------------|------------------------------------|
| 2024-25 Overall Record         | 15-15-6                            |
| 2024-25 WCHA Record/Finish     | 10-13-5, 5th                       |
| 2024-25 WCHA Tournament Finish | QF, 0-2                            |
| 2024-25 NCAA Tournament Finish | DNQ                                |
| 2024-25 Final National Ranking |                                    |
|                                | USCHO - 12                         |
|                                | USA Hockey - 12                    |
| Point Scorers Returning/Lost   | 9/10                               |
| Number of Total Newcomers      | 14                                 |
| Facility                       | Herb Brooks National Hockey Center |
| Home Capacity                  | 5,371                              |

## COACHING STAFF

|                          |                  |
|--------------------------|------------------|
| Head Coach               | Mira Jalosuo     |
| Career Overall Record    | 7-14-1           |
| Career WCHA Record       | 3-12-1           |
| Career Postseason Record | 0-0              |
| Best Overall Record      | N/A              |
| Associate Head Coach     | Jinelle Siergiej |
| Assistant Coach          | Noora Rätty      |
| Assistant Coach          | Emily Ach        |
| Hockey/Video Operations  | Drake Hunter     |
| Strength Coach           | Jake Franczek    |
| Athletic Trainer         | Rachel Nagel     |
| Equipment Manager        | Andy Rannells    |
| SID/Communications       | Jacob Sanders    |

## ROSTER BREAKDOWN

|                     |    |
|---------------------|----|
| Total Athletes      | 28 |
| Forwards            | 15 |
| Defenders           | 9  |
| Goaltenders         | 4  |
| Graduate Students   | 2  |
| Seniors/Fifth years | 3  |
| Juniors             | 6  |
| Sophomores          | 5  |
| Freshmen            | 12 |
| Prep Recruits       | 11 |
| Transfers           | 3  |

## PROGRAM HISTORY

|                         |                   |
|-------------------------|-------------------|
| Inagural Season         | 1998-99           |
| All-Time Record         | 287-565-81 (.351) |
| Best Overall Record     | 18-15-5 (2007-08) |
| Best WCHA Record        | 12-10-2 (2000-01) |
| Best WCHA Tourn. Finish | SF (2006, 2008)   |
| Best NCAA Tourn. Finish | N/A               |

## 2025-26 ST. CLOUD STATE HUSKIES WOMEN'S HOCKEY

| No. | Name                 | Pos. | Ht.  | S/C | Cl.   | Hometown/Previous Team(s)   |
|-----|----------------------|------|------|-----|-------|---|
| 2   | Sydney Bryant        | D    | 5-8  | R   | R-So. | Traverse City, Mich. / Belle Tire (19U AAA)                                 |
| 3   | Sidney Jackel        | F    | 5-10 | R   | Jr.   | Ann Arbor, Mich. / Pioneer HS / Lindenwood (NCAA)                           |
| 4   | Alice Sauriol        | F    | 5-4  | L   | Jr.   | Sherbrooke, Quebec / Stanstead College (CAHS)                               |
| 6   | Lily Erickson        | F    | 5-5  | R   | Fr.   | Roseau, Minn. / Roseau HS   |
| 7   | Payton Remick        | F    | 5-7  | R   | Fr.   | Roseau, Minn. / Roseau HS   |
| 8   | Grace Wolfe (C)      | D    | 5-9  | R   | Gr.   | Owatonna, Minn. / Owatonna HS   |
| 9   | Svenja Voigt         | F    | 5-5  | L   | Sr.   | Cologne, Germany / Stanstead College (CAHS)                                 |
| 10  | Aruba Skiston        | D    | 5-5  | L   | Fr.   | Bensenville, Ill. / Chicago Mission (19U AAA)                               |
| 11  | Laura Zimmermann (A) | F    | 5-4  | L   | R-Jr. | Ringgenberg, Switzerland / EV Bomo Thun (SWHL)                              |
| 12  | Raili Mustonen       | F    | 5-6  | L   | Fr.   | Kalajoki, Finland / Team Kuortane (Auroraliiga)                             |
| 13  | Reese Strauts        | F    | 5-8  | R   | Fr.   | Brandon, Wis. / Windy City Storm (19U AAA)                                  |
| 14  | Maélie Pion          | D    | 5-11 | L   | Fr.   | Sherbrooke, Quebec / Stanstead College (CAHS)                               |
| 15  | Marie Moran          | F    | 5-8  | R   | R-So. | Lakeville, Minn. / Apple Valley HS  |
| 16  | Avery Farrell        | F    | 5-4  | R   | Sr.   | Rogers, Minn. / Rogers HS / Franklin Pierce (NCAA)                          |
| 17  | Julianne Labbé       | F    | 5-8  | L   | Fr.   | Wendake, Quebec / Cégep Limoilou Titans (QCHL)                              |
| 18  | Payton Holloway      | F    | 5-8  | L   | Jr.   | Tomah, Wis. / Shattuck St. Mary's / Minnesota Duluth (NCAA)                 |
| 19  | Myah Krueger         | F    | 5-7  | R   | R-Fr. | Stillwater, Minn. / Stillwater HS   |
| 23  | Hannah Arnold        | D    | 5-8  | R   | Fr.   | Winnipeg, Manitoba / St. Mary's Academy (CSSHL U18)                         |
| 28  | Sydney Lamb          | D    | 5-7  | R   | Fr.   | Lombard, Ill. / Windy City Storm (19U AAA)                                  |
| 29  | Jojo Chobak (A)      | G    | 5-8  | L   | Gr.   | Chicago, Ill. / Chicago Young Americans (19U AAA) / Minnesota Duluth (NCAA) |
| 31  | Paige Hoogendam      | G    | 5-8  | L   | R-So. | Ajax, Ontario / Toronto Junior Aeros (OWHL)                                 |
| 34  | Sofianna Sundelin    | F    | 5-7  | L   | Jr.   | Ulvila, Finland / Team Kuortane (NSML)                                      |
| 40  | Hannele Tarkiainen   | D    | 5-7  | L   | Fr.   | Pieksämäki, Finland / Team Kuortane (NSML)                                  |
| 41  | Siiri Yrjölä         | D    | 5-5  | L   | So.   | Vantaa, Finland / HIFK (NSML)   |
| 42  | Emilia Kyrkkö        | G    | 5-7  | L   | So.   | Nokia, Finland / Team Kuortane (NSML)                                       |
| 44  | Maria Mikaelyan      | F    | 5-8  | L   | Fr.   | Moscow, Russia / North York Storm (OWHL U22 AA)                             |
| 45  | Regan Bulger (A)     | D    | 5-6  | L   | R-Jr. | Yellowknife, Northwest Territories / Shattuck St. Mary's                    |
| 56  | Hali Lawrence        | G    | 5-7  | L   | Sr.   | Calgary, Alberta / Calgary Fire U18AAA / Post (NCAA)                        |

## PRONUNCIATION GUIDE

|                                    |                                    |                                    |
|------------------------------------|------------------------------------|------------------------------------|
| 3 - Sidney Jackel - jack-ull       | 16 - Avery Farrell - FAIR-ull      | 42 - Emilia Kyrkkö - kuh-ree-ko    |
| 4 - Alice Sauriol - SOAR-ee-ahl    | 17 - Julianne Labbé -              | 44 - Maria Mikaelyan -             |
| 7 - Payton Remick - remmick        | JOO-lee-AN lah-BAY                 | muh-kay-lee-un                     |
| 8 - Grace Wolfe - wolf             | 19 - Myah Krueger - MY-uh KROO-gur | 45 - Regan Bulger -                |
| 9 - Svenja Voigt - SVEN-yuh VOLKED | 28 - Sydney Lamb - lam             | REE-ghen BULL-jer                  |
| 10 - Aruba Skiston -               | 29 - Jojo Chobak - CHO-back        |                                    |
| uh-ROO-buh SKISS-tun               | 31 - Paige Hoogendam -             | Mira Jalosuo -                     |
| 11 - Laura Zimmermann - LOR-uh     | WHO-ghen-dam                       | MEER-ah YAH-loh-SUE-oh             |
| 12 - Raili Mustonen -              | 34 - Sofianna Sundelin -           | Jinelle Siergiej - jih-NEL SIR-gay |
| riley moo-stuh-nen                 | so-FEE-ah-nuh sun-DUH-lin          | Emily Ach - awk (like dock)        |
| 13 - Reese Strauts - STROWTS       | 40 - Hannele Tarkiainen -          | Noora Rätty - NORR-uh RAH-too      |
| 14 - Maélie Pion - MY-lee PEE-on   | HAHN-neh-leh TARK-ee-aye-nen       | Jake Franczek - FRAN-check         |
| 15 - Marie Moran - muh-REE mo-RAN  | 41 - Siiri Yrjölä - siri oo-rey-la | Rachel Nagel - NAY-gull            |

## ROSTER GEOGRAPHY

| Europe (8)           |      |                       | Minnesota (6)   |      |             |
|----------------------|------|-----------------------|-----------------|------|-------------|
| Name                 | Pos. | Country               | Name            | Pos. | Hometown    |
| Emilia Kyrkkö        | G    | Finland               | Lily Erickson   | F    | Roseau      |
| Maria Mikaelyan      | F    | Russia                | Avery Farrell   | F    | Rogers      |
| Raili Mustonen       | F    | Finland               | Myah Krueger    | F    | Stillwater  |
| Sofianna Sundelin    | F    | Finland               | Marie Moran     | F    | Lakeville   |
| Hannele Tarkiainen   | D    | Finland               | Payton Remick   | F    | Roseau      |
| Svenja Voigt         | F    | Germany               | Grace Wolfe (C) | D    | Owatonna    |
| Siiri Yrjölä         | D    | Finland               |                 |      |             |
| Laura Zimmermann (A) | F    | Switzerland           |                 |      |             |
| Canada (7)           |      |                       | Illinois (3)    |      |             |
| Name                 | Pos. | Province              | Name            | Pos. | Hometown    |
| Hannah Arnold        | D    | Manitoba              | Jojo Chobak (A) | G    | Chicago     |
| Regan Bulger (A)     | D    | Northwest Territories | Sydney Lamb     | D    | Lombard     |
| Paige Hoogendam      | G    | Ontario               | Aruba Skiston   | D    | Bensenville |
| Julianne Labbé       | F    | Quebec                |                 |      |             |
| Hali Lawrence        | G    | Alberta               |                 |      |             |
| Maélie Pion          | D    | Quebec                |                 |      |             |
| Alice Sauriol        | F    | Quebec                |                 |      |             |
| Michigan (2)         |      |                       | Wisconsin (2)   |      |             |
| Name                 | Pos. | Hometown              | Name            | Pos. | Hometown    |
| Sydney Bryant        | D    | Traverse City         | Payton Holloway | F    | Tomah       |
| Sidney Jackel        | F    | Ann Arbor             | Reese Strauts   | F    | Brandon     |



## BLIZZARD'S BULLETS

**HCA GOALIE OF THE YEAR AWARD WATCH LIST CONT.**

Kyrkkö is one of four Western Collegiate Hockey Association (WCHA) players on the 31-member watch list. The goalies to watch come from all five NCAA Division I conferences with 16 from the United States, ten from Canada, and five from Europe (two from Finland and Sweden and one from Denmark).

In her sophomore season, Kyrkkö has made 11 appearances/10 starts and owns a 5-4-1 record, 2.04 goals against average and .936 save percentage with three shutouts. She has been named WCHA Goaltender of the Week once this season (Dec. 1) and was recently named to Team Finland ahead for the 2026 Winter Olympic Games, Milano Cortina. Among all DI netminders she ranks No. 8 in shutouts, No. 11 in SV% and No. 15 in GAA this season.

**HUSKIES AT MILANO CORTINA 2026**

Eight with ties to SCSU Women's Hockey (four current players and four alumnae) have been named to their respective countries Olympic rosters ahead of Milano Cortina 2026, doubling the previous program record (from 2022) for the most current & former players at an Olympics. The 10-team tournament is set for Feb. 5-19 in Milan, Italy.

The largest contingent of Huskies – two current players and two alumnae, will be suiting up for Team Finland. Sophomore goaltender **Emilia Kyrkkö** (Nokia) and sophomore defender **Siiri Yrjölä** (Vantaa) will be joined by goaltender **Sanni Ahola** (Helsinki), who played for the Huskies from 2020-25 and former alternate captain, forward **Jenniina Nylund** (Pietarsaari) who wore the red and black from 2018-23. Nylund, the lone Finn with previous Olympic experience, won a Bronze Medal in Beijing in 2022 with Suomi.

Senior forward **Svenja Voigt** (Cologne) and former alternate captain, forward **Laura Kluge** (Berlin) who wore a Huskies sweater from 2017-21 have been named to Team Germany and will make their Olympic debuts in Milan.

Redshirt junior forward **Laura Zimmermann** (Ringgenberg) will play for Team Switzerland and former alternate captain forward **Klára Hymlárová** (Opava), who skated for the Huskies from 2019-24 was named to Team Czechia. Both skated in Beijing at the 2022 games.

**LAST TIME OUT**

Then-No. 15/14 SCSU dropped both games in its first series of 2026 on January 9-10, falling to No. 2 Ohio State 4-0 in the series opener and 5-1 in the finale.

**Notes from the games****GAME 21 - 4-0 loss vs. #2 Ohio State (1-9-26)**

- SCSU moved to 32-67-12 all-time against Ohio State and 1-8-1 in the 10 games against the Buckeyes. The Huskies moved to 17-34-4 all time against OSU in St. Cloud and 0-3-0 against Ohio State this season.
- The Huskies moved to 3-6-1 in home games this season and 4-12-1 in games against teams ranked/receiving votes in either the U.S. College Hockey Online (USCHO) Poll or the USA Hockey Poll.
- SCSU was shut out for the second time this season.
- The Huskies went 3-for-3 on the penalty kill and 0-for-6 on the power play. For the season, SCSU is 55-for-71 (77.5%) on the penalty kill and 9-for-65 on the power play (13.8%).
- The Buckeyes led the game in shots on goal (39-23) and won 56.6% of the faceoffs. SCSU out blocked Ohio State 13-3.
- Redshirt junior **Laura Zimmermann** (Ringgenberg, Switzerland) won nine faceoffs. She has 9+ faceoff wins in 10 games this season.
- Junior forward **Sofianna Sundelin** (Ulvila, Finland) won eight faceoffs. She has 8+ wins on the dot in 13 games this season.
- Redshirt junior defender **Regan Bulger** (Yellowknife, Northwest Territories), freshman forward **Julianne Labbé** (Wendake, Quebec), senior forward **Svenja Voigt** (Cologne, Germany) and graduate defender **Grace Wolfe** (Owatonna, Minn.), all blocked a team high two shots. This season Wolfe has eight games with 2+ blocks, and it was the first such game for Bulger, Labbé and Voigt.
- Sophomore goaltender **Emilia Kyrkkö** (Nokia, Finland) made 35 saves. It was her third game this season with 35+ saves.

**GAME 22 - 5-1 loss vs. #2 Ohio State (1-10-26)**

- SCSU moved to 32-68-12 all-time against Ohio State and 0-9-1 in the 10 games against the Buckeyes. The Huskies moved to 17-35-4 all time against OSU in St. Cloud and 0-4-0 against Ohio State this season.
- The Huskies moved to 3-7-1 in home games this season and 4-13-1 in games against teams ranked/receiving votes in either the U.S. College Hockey Online (USCHO) Poll or the USA Hockey Poll.
- SCSU was held to one goal or fewer for the seventh time this season.
- The Huskies went 0-for-1 on the penalty kill and 1-for-1 on the power play. For the season, SCSU is 55-for-72 (76.4%) on the penalty kill and 10-for-66 on the power play (15.2%).
- SCSU blocked 15+ shots for the second time this season.
- The Buckeyes led the game in shots on goal (49-23) and won 63.1% of the faceoffs. SCSU out blocked Ohio State 15-2.

## STANDINGS &amp; POLLS

**2025-26 WESTERN COLLEGIATE HOCKEY ASSOCIATION STANDINGS**

| Team                          | WCHA Record   | Points    |
|-------------------------------|---------------|-----------|
| No. 1 Wisconsin               | 13-1-2        | 41        |
| No. 2 Ohio State              | 13-3-0        | 38        |
| No. 3 Minnesota               | 12-4-0        | 36        |
| No. 8 Minnesota Duluth        | 8-7-1         | 26        |
| No. 14/13 Minnesota State     | 5-10-1        | 17        |
| (RV) St. Thomas               | 5-11-0        | 16        |
| <b>No. 15 ST. CLOUD STATE</b> | <b>3-12-1</b> | <b>12</b> |
| Bemidji State                 | 2-13-1        | 6         |

**USCHO NATIONAL POLL**

- WEEK FIFTEEN // JAN. 12, 2026 -

| Rank      | Team                   | Record        | Pts       | LR        |
|-----------|------------------------|---------------|-----------|-----------|
| 1         | Wisconsin (20)         | 19-1-2        | 300       | 1         |
| 2         | Ohio State             | 19-3-0        | 280       | 2         |
| 3         | Minnesota              | 18-4-0        | 260       | 3         |
| 4         | Penn State             | 19-4-0        | 228       | 4         |
| 5         | UConn                  | 17-3-2        | 216       | 5         |
| 6         | Quinnipiac             | 17-5-2        | 180       | 7         |
| 7         | Northeastern           | 16-5-0        | 171       | 6         |
| 8         | Minnesota Duluth       | 12-9-1        | 170       | 8         |
| 9         | Princeton              | 15-4-0        | 157       | 9         |
| 10        | Cornell                | 11-6-2        | 122       | 10        |
| 11        | Clarkson               | 13-7-3        | 75        | 11        |
| 12        | Colgate                | 12-10-1       | 74        | 13        |
| 13        | Yale                   | 14-7-0        | 66        | 14        |
| 14        | Minnesota State        | 11-10-1       | 62        | 12        |
| <b>15</b> | <b>ST. CLOUD STATE</b> | <b>7-14-1</b> | <b>21</b> | <b>15</b> |

Others receiving votes: Holy Cross 9, Mercyhurst 7, Brown 1, St. Thomas 1

**USA HOCKEY NATIONAL POLL**

- WEEK FIFTEEN // JAN. 13, 2026 -

| Rank      | Team                   | Record        | Pts       | LR        |
|-----------|------------------------|---------------|-----------|-----------|
| 1         | Wisconsin (19)         | 19-1-2        | 285       | 1         |
| 2         | Ohio State             | 19-3-0        | 266       | 2         |
| 3         | Minnesota              | 18-4-0        | 247       | 3         |
| 4         | Penn State             | 19-4-0        | 219       | 4         |
| 5         | UConn                  | 17-3-2        | 213       | 5         |
| 6         | Quinnipiac             | 17-5-2        | 175       | 7         |
| 7         | Northeastern           | 16-5-0        | 169       | 6         |
| 8         | Minnesota Duluth       | 12-9-1        | 156       | 8         |
| 9         | Princeton              | 15-4-0        | 149       | 9         |
| 10        | Cornell                | 11-6-2        | 105       | 10        |
| 11        | Yale                   | 14-7-0        | 75        | 13        |
| 12        | Clarkson               | 13-7-3        | 69        | 11        |
| 13        | Minnesota State        | 11-10-1       | 65        | 12        |
| 14        | Colgate                | 12-10-1       | 47        | 15        |
| <b>15</b> | <b>ST. CLOUD STATE</b> | <b>7-14-1</b> | <b>13</b> | <b>14</b> |

Others receiving votes: Holy Cross 11, Mercyhurst 8, St. Thomas 6, Brown 2

**ST. CLOUD STATE NATIONAL POLL HISTORY**

Highest National Ranking: No. 7 (3x; Oct. 29, 2024 | Oct. 22, 2024 | Dec. 12, 2023)

Highest Final National Ranking: No. 11 (2023-24)

Highest Preseason Ranking: No. 11 (2024-25)

Top-Ranked Opponent Defeated: No. 1 (4x; at Ohio State, Dec. 1, 2023 | vs. Minnesota, Nov. 7, 2022 | vs. Wisconsin, Oct. 19, 2007 | vs. Wisconsin, Feb. 4, 2006)

**2025-26 HUSKIES NATIONAL RANKINGS (USCHO | USA):**

|                      |                        |
|----------------------|------------------------|
| Preseason: 13   13   | Week Thirteen: -   13  |
| Week One: -   12     | Week Fourteen: 15   14 |
| Week Two: 11   11    | Week Fifteen: 15   15  |
| Week Three: 10   10  |                        |
| Week Four: 10   10   |                        |
| Week Five: 11   11   |                        |
| Week Six: 10   11    |                        |
| Week Seven: 10   11  |                        |
| Week Eight: 10   12  |                        |
| Week Nine: 10   10   |                        |
| Week Ten: 14   14    |                        |
| Week Eleven: 13   14 |                        |
| Week Twelve: 13   13 |                        |





## BLIZZARD'S BULLETS

## LAST TIME OUT CONT.

- Sundelin scored the lone SCSU goal of the weekend and won a team-high 13 faceoffs. Her goal was her ninth overall and third power play tally of the season and the 21st overall/fifth on the powerplay of her career. Sundelin extended her team lead in goals (nine) and points (18) and tied the team lead for power play goals (three). She won 13+ faceoffs for the fourth time this season.
- Junior forward **Payton Holloway** (Tomah, Wis.) and Labbé each tallied assists on Sundelin's goal. Holloway's assist was her eighth of the season, which is tied for fourth most on the team. Labbé's assist was her third of the season and her first point since Oct. 25 at Ohio State (12 games).
- Graduate goaltender **Jojo Chobak** (Chicago, Ill.) made 40 saves and posted a .917 save percentage. She made her first start since Nov. 22 at Bemidji State, and her 44 saves were a season high and just one shy of her career high.
- Redshirt sophomore defender **Sydney Bryant** (Traverse City, Mich.), freshman defender **Sydney Lamb** (Lombard, Ill.) and Zimmermann each blocked a game high three shots. It was Lamb and Zimmerman's second game this season with 2+ blocks and Bryant's first.

## THIS WEEK IN THE WCHA

Friday, Jan. 16

No. 1 Wisconsin at (RV) St. Thomas\* - 2 PM

No. 15 St. Cloud State at No. 8 Minnesota Duluth\* - 6 PM

No. 2 Ohio State at No. 14/13 Minnesota State\* - 6 PM

No. 3 Minnesota at Bemidji State\* - 7 PM

Saturday, Jan. 17

No. 1 Wisconsin at (RV) St. Thomas\* - 2 PM

No. 15 St. Cloud State at No. 8 Minnesota Duluth\* - 3 PM

No. 2 Ohio State at No. 14/13 Minnesota State\* - 3 PM

No. 3 Minnesota at Bemidji State\* - 3 PM

\* WCHA Game

\*\* Rankings are USCHO/USA Hockey

\*\*\* All times in CT

## WCHA WEEKLY/MONTHLY HONORS

Freshman forward **Maria Mikaelyan** (Moscow, Russia) was named Western Collegiate Hockey Association (WCHA) Rookie of the Month, as announced by the league office on Dec. 31. Mikaelyan tallied four assists/points including her first career three-point game in the Huskies lone series of the month at then-No. 12 Minnesota State December 5-6. It is her first WCHA monthly award of the season, and she became just the fourth player in program history to win WCHA Rookie of the Month honors.

This season, Mikaelyan became the first Husky this season to earn multiple weekly honors from the conference after being named WCHA Rookie of the Week on Oct. 13 and Dec. 8. She also became the first Husky to win multiple Rookie of the Week honors since current Toronto Sceptres forward **Emma Gentry** '25 did so in the 2020-21 season and the first Husky to win multiple WCHA weekly awards since sophomore forward **Emilia Kyrkkö** (Nokia, Finland) earned three last season (2x Goaltender, 1x Rookie).

The Huskies have won all four conference weekly honors (forward, defender, goaltender and rookie) at least once for the fourth consecutive season. On Dec. 1, Kyrkkö was named WCHA Goaltender of the Week, while junior forward **Alice Sauriol** (Sherbrooke, Quebec) was named Forward of the Week on Oct. 20 and sophomore defender **Siiri Yrjölä** (Vantaa, Finland), was named Defender of the Week on Sept. 22.

## WCHA ROOKIE OF THE MONTH AWARD WINNERS

Klára Hymálárová (December 2019) // Olivia Cvar (January 2020)

Emilia Kyrkkö (October 2024) // Maria Mikaelyan (December 2025)

## 2025-26 WCHA MONTHLY/WEEKLY HONORS

Rookie of the Month

• **Maria Mikaelyan** (1x, December)

Defender of the Week

• **Siiri Yrjölä** (1x, Sept. 22)

Forward of the Week

• **Alice Sauriol** (1x, Oct. 20)

Goaltender of the Week

• **Emilia Kyrkkö** (1x, Dec. 1)

Rookie of the Week

• **Maria Mikaelyan** (2x, Oct. 13 | Dec. 8)

## WCHA COMMISSIONER'S CORNER

Redshirt junior forward **Laura Zimmermann** (Ringgenberg, Switzerland) was featured on the most recent installment of the Western Collegiate Hockey Association (WCHA) Commissioner's Corner podcast series on Nov. 5. In the series, WCHA Commissioner Michelle McAteer sits down one-on-one with extraordinary student-athletes from across the league to discuss real-life topics, hockey, and everything in between. You can watch the video on the WCHA Hockey YouTube page.

## 2025-26 HUSKIES HONORS

## JOJO CHOBAK

- USA Hockey National Goaltending Camp (May 15-17, 2025)
- USA Hockey Women's National Festival (Aug. 3-9, 2025)
- U.S. Collegiate Select Team - Collegiate Select Series (Aug. 13-16 2025)

## EMILIA KYRKKÖ

- Team Finland - Women's Euro Hockey Tour (Aug. 28-30, 2025)
- WCHA Goaltender of the Week (Dec. 1, 2025)
- HCA Goalie of the Year Award Watch List (Jan. 14)
- Team Finland - 2026 Winter Olympics // Milano Cortina 2026 (Feb. 5-19, 2026)

## MARIA MIKAELYAN

- WCHA Rookie of the Week (Oct. 13, 2025)
- WCHA Rookie of the Week (Dec. 8, 2025)
- WCHA Rookie of the Month (December 2025)

## ALICE SAURIOL

- WCHA Forward of the Week (Oct. 20, 2025)

## SOFIANNA SUNDELIN

- Team Finland - Women's Euro Hockey Tour (Aug. 28-30, 2025)

## SVENJA VOIGT

- Team Germany - Four Nations Women's Tournament (Aug. 28-30, 2025)
- Team Germany - Deutschland Cup (Nov. 5-8, 2025)
- Team Germany - 2026 Winter Olympics // Milano Cortina 2026 (Feb. 5-19, 2026)

## SIIRI YRJÖLÄ

- WCHA Defender of the Week (Sept. 22, 2025)
- Team Finland - Women's Euro Hockey Tour (Aug. 28-30, 2025)
- Team Finland - 2026 Winter Olympics // Milano Cortina 2026 (Feb. 5-19, 2026)

## LAURA ZIMMERMANN

- Team Switzerland - Women's Euro Hockey Tour (Aug. 28-30, 2025)
- Team Switzerland - 2026 Winter Olympics // Milano Cortina 2026 (Feb. 5-19, 2026)

2025-26 WCHA LEADERS  
HAT TRICKS

| Rk. | Player                          | HT |
|-----|---------------------------------|----|
| 1.  | Abbey Murphy (UMN)              | 4  |
| 2.  | Joy Dunne (OSU)                 | 2  |
| T3. | <b>SOFIANNA SUNDELIN (SCSU)</b> | 1  |
| T3. | Seven More Players              | 1  |

## SHORT HANDED GOALS

| Rk. | Player                    | SHG |
|-----|---------------------------|-----|
| T1. | <b>GRACE WOLFE (SCSU)</b> | 1   |
| T1. | Nine More Players         | 1   |

## SAVE PERCENTAGE

| Rk. | Player                      | SV%  |
|-----|-----------------------------|------|
| 1.  | Ava McNaughton (UW)         | .943 |
| 2.  | <b>EMILIA KYRKKÖ (SCSU)</b> | .936 |



## BLIZZARD'S BULLETS

## NURSING STUDENT BY DAY, GOALTENDER BY NIGHT

Graduate goaltender **Jojo Chobak's** (Chicago, Ill.) journey as the first hockey player to make their way through St. Cloud State University's nursing program was recently featured on #OurSCSU.

## PWHL HUSKIES

Last season, **Klára Hymíárová** (2019-24) became the first former Husky to be drafted into the Professional Women's Hockey League (PWHL), the first to be named to an opening day roster and the first to play in a PWHL game. This season, Hymíárová will be joined by SCSU alumnae **Sanni Ahola** (2020-25), **Emma Gentry** (2020-25), **Laura Kluge** (2017-21) and **Dayle Ross** (2021-25) on PWHL opening day rosters.

Hymíárová is looking to win back-to-back Walter Cups with the Minnesota Frost, who as a franchise have won the first two league championships. Ahola was the 37th overall pick by the Ottawa Charge in the 2025 PWHL Draft in June becoming the program's first netminder to be drafted. Gentry became the highest draft pick in program history when she was selected in the second round with the 11th overall pick by the Toronto Sceptres. Kluge, who became the second former Husky to play in a PWHL game after joining the Sceptres late in the 2024-25 season signed with the Boston Fleet during the offseason. Ross became the program's first blueliner drafted when she was picked No. 25 overall by the New York Sirens.

## HUSKIES REPRESENTING THEIR COUNTRIES

Senior forward **Svenja Voigt** (Cologne, Germany) and alumna **Laura Kluge '21** competed for their native Germany at the 2025 Deutschland Cup at the VR-Bank Landshut Arena in Landshut, Germany from Nov. 5-8, while alumnae **Klára Hymíárová '24** (Czechia) and **Sanni Ahola '25** (Finland) each played in the 2025-26 Women's Euro Hockey Tour's Lidl Hockey Games in Ängelholm, Sweden, from Nov. 5-8.

## JOJO IS CHO-BA(C)K

Graduate student goaltender **Jojo Chobak** (Chicago, Ill.) is back for her final year of collegiate eligibility after a redshirt season in 2024-25. In her first start between the pipes in since March 2, 2024 (567 days) on Sept. 20, she earned her 10th career shutout as a Husky to tie former teammate **Sanni Ahola** (2020-25) for the most career shutouts in program history.

This summer, Chobak was invited to the USA Hockey National Goaltender Camp and National Festival and was a U.S. Collegiate Select Team selection. In 2023-24, she went 7-11-1 over 17 starts and established new program records for single season save percentage (.939) and goals against average (1.64) while recording four shutouts. Chobak currently owns seven season top 10 marks and four career top 10 spots in the record book. In her four-year career, she owns a 28-30-3 record with a 2.28 GAA, a .922 SV% and 13 shutouts over 61 starts/71 appearances.

## NEW LEADER OF THE PACK

Former assistant coach, **Mira Jalosuo** (MEER-ah YAH-loh-SUE-oh) was named the seventh head coach of the St. Cloud State Women's Hockey team on June 27, 2025. She is just the second woman to lead the Huskies during the program's 27-year history, following in the footsteps of Kerry Brodt Wethington, who was the programs first head coach from 1998-99 to 2001-02.

Jalosuo picked up her first win as the Huskies bench boss in her first game, a 5-0 win over Lindenwood (Mo.) on September 19. She earned her first series sweep the next day after SCSU took down the Lions 5-0 for the second straight game. It was the first time in program history that a team posted back-to-back shutouts to open a season and the fourth season in a row that the Huskies opened their season with a series sweep. Additionally, she won her first WCHA game on Oct. 17 against (RV) St. Thomas.

A highly decorated member of Finland's National Team, the two-time Olympian and five-time World Championships Bronze medalist spent the last two seasons as an assistant coach with the Minnesota Frost (formerly PWHL Minnesota), helping the franchise win back-to-back PWHL Walter Cups in each of the first two seasons of the Professional Women's Hockey League (PWHL).

## ALL-FEMALE COACHING STAFF

For the first time in program history, the Huskies have an all-female coaching staff. SCSU is one of two programs in the WCHA and one of six programs in all of NCAA DI Women's Hockey with an all-female staff.

## O CAPTAINS! OUR CAPTAINS!

St. Cloud State named four captains ahead of the 2025-26 season on Friday. Graduate student defender **Grace Wolfe** (Owatonna, Minn.) will be the fifth Husky to wear the "C" as captain for two seasons, while redshirt junior defender **Regan Bulger** (Yellowknife, Northwest Territories), graduate student goaltender **Jojo Chobak** (Chicago, Ill.) and redshirt junior forward **Laura Zimmermann** (Ringgenberg, Switzerland) will be alternate captains and wear a letter for the first time in their career.

Wolfe, who served as a co-captain in 2024-25 and an alternate captain in 2023-24, becomes just the second Husky to wear a letter in three seasons after Katy Battis (C - 1999-2000, A - 2001-02, 2002-03).

## 2025-26 WCHA LEADERS CONT.

## GOALS AGAINST AVERAGE

| Rk. | Player                      | GAA         |
|-----|-----------------------------|-------------|
| 1.  | Ava McNaughton (UW)         | 1.24        |
| 2.  | Hailey MacLeod (OSU)        | 1.61        |
| 3.  | Hannah Clark (UMN)          | 1.84        |
| 4.  | <b>EMILIA KYRKKÖ (SCSU)</b> | <b>2.04</b> |

## SAVES/GAME

| Rk. | Player                      | SV/G         |
|-----|-----------------------------|--------------|
| 1.  | Ava Hills (BSU)             | 29.89        |
| 2.  | Ève Gascon (UMD)            | 29.68        |
| 3.  | <b>EMILIA KYRKKÖ (SCSU)</b> | <b>28.09</b> |
| 4.  | Hailey Hansen (MSU)         | 27.84        |
| 5.  | <b>JOJO CHOBAK (SCSU)</b>   | <b>25.33</b> |

## SHUTOUTS

| Rk. | Player                      | SHO      |
|-----|-----------------------------|----------|
| 1.  | Ava McNaughton (UW)         | 6        |
| 2.  | Ève Gascon (UMD)            | 4        |
| T3. | <b>EMILIA KYRKKÖ (SCSU)</b> | <b>3</b> |
| T3. | Two More Players            | 3        |

## SHUTOUTS/GAME

| Rk. | Player                      | SHO/G       |
|-----|-----------------------------|-------------|
| 1.  | Ava McNaughton (UW)         | 0.29        |
| 2.  | <b>EMILIA KYRKKÖ (SCSU)</b> | <b>0.27</b> |



# MIRA JALOSUO

## HUSKIES HEAD COACH



**Mira Jalosuo** (MEER-ah YAH-loh-SUE-oh) was named the head coach of St. Cloud State Women's Hockey, Director of Athletics **Holly Schreiner** announced on June 27, 2025. She enters her first season at the helm in 2025-26. The former assistant coach for the Huskies became the seventh head coach in program's 27-year history and the second woman to lead the Huskies after Kerry Brodt Wethington, the program's first head coach from 1998-99 to 2001-02.

A highly decorated member of Finland's National Team, the two-time Olympian and five-time World Championships Bronze medalist spent the 2023-24 and 2024-25 seasons as an assistant coach with the Minnesota Frost (formerly PWHL Minnesota), helping the franchise win each of the first two Professional Women's Hockey League (PWHL) Walter Cups.

Prior to becoming a coach for the Frost, Jalosuo spent a year as an assistant coach for the Huskies under former head coach Brian Idalski, during his first season in 2022-23. She primarily worked with the defenders, while directing the penalty kill and assisting with recruiting efforts.

In her lone season with the Huskies in 2022-23, Jalosuo helped recreate St. Cloud State as one of the best defensive teams in the country. SCSU led the NCAA and set a new program record with 576 blocked shots while holding opponents to 2.59 goals – their second-best mark in program history – and 32.24 shots per game – their best mark since 2015-16. St. Cloud State's goaltenders anchored the rejuvenated defense, recording the program's third-best team save percentage at .920 and second-best goals against average of 2.58. The Huskies posted a program-record six shutouts in 2022-23, punctuating their stingy defensive work.

St. Cloud State's young defensive corps flourished under Jalosuo's direction as sophomores Dayle Ross and Grace Wolfe each took monumental steps forward. Ross led the NCAA with a Huskies single-season record 104 blocks, Wolfe landed second in the country with 83 and true freshman Regan Bulger finished fourth nationally with 78 blocks. Wolfe increased her point total by 15 while Ross went from three points as a freshman to 15 as a sophomore, each seeing increased roles and productivity in the offensive zone. Senior assistant captain Taytum Geier established new career-highs in assists, points, plus-minus and blocks in her lone season under Jalosuo.

Jalosuo had been a steady presence on Finland's blue line until her retirement in 2018, skating for 12 years as a member of the Senior National Team. She appeared in the 2014 and 2018 Olympic Games – earning bronze at Pyeongchang in 2018 – and added five bronze medals at the International Ice Hockey Federation (IIHF) Women's World Championships (2008-09, 2011, 2015, 2017). The defender played in 193 games for Finland, scoring 11 goals and adding 22 assists for 33 points as an anchor on the blue line.

From 2019 to 2022, Jalosuo spent three seasons leading Stillwater Area High School girl's hockey as the program's head coach. Under her direction, the Ponies went 52-19-4 (.693) and boasted a strong penalty kill. Stillwater killed 89.3% of their chances on the PK, including 90 of 98 (91.8%) kills in 2019-20.

Prior to her time at Stillwater, Jalosuo had served as an assistant coach for Hamline University and Wayzata High School since 2015. She also coached with the Stillwater Area Hockey Association, leading the U12A team to a 42-6-2 record in 2018-19.

Jalosuo played professionally following her collegiate career from 2013-18, spending two seasons with SKIF Nizhny Novgorod in the Russian Women's Hockey League and earning the Russian Championship in 2014. She then spent time with Luleå HF in the SDHL before joining the Minnesota Whitecaps of the Premier Hockey Federation (PHF) in 2016-17 and 2017-18. Jalosuo also skated with Oulun Kärpät in the Naisten Liiga, the team she played with as a teenager prior to her time with the Gophers.

The Lieksa, Finland native played for the Minnesota Gophers from 2009-10 to 2012-13. She appeared in 153 career games for the Maroon and Gold, recording 57 career points with 19 goals and 38 assists. A Third Team All-WCHA honoree as a senior, Jalosuo was part of back-to-back national championship teams as a junior and senior. She was a three-time WCHA All-Academic honoree as well.

Raised in eastern Finland, Jalosuo began playing in the premier Finnish women's league with Oulun Kärpät at age 15 and was an All-Star in 2007 and 2008. She served as the team's captain in 2008-09 while still attending high school.



## 2025-26 OVERALL STATISTICS

## Game Records

| Overall    | Conference | Home      | Away      | Neutral   |
|------------|------------|-----------|-----------|-----------|
| 7 - 14 - 1 | 3 - 12 - 1 | 3 - 7 - 1 | 3 - 6 - 0 | 1 - 1 - 0 |

|           |                    |    | Shots |     |     |     |      |     | Penalties |     |     |     | Goals |    |    |    |    |    |    |    |    |     |  |
|-----------|--------------------|----|-------|-----|-----|-----|------|-----|-----------|-----|-----|-----|-------|----|----|----|----|----|----|----|----|-----|--|
| #         | Player             | GP | G     | A   | PTS | SH  | SH%  | +/- | PEN-MIN   | MIN | MAJ | OTH | PP    | SH | FG | GW | GT | OT | HT | PN | UA | BLK |  |
| 34        | Sundelin, Sofianna | 22 | 9     | 8   | 17  | 48  | .188 | -3  | 3-6       | 3   | 0   | 0   | 3     | 0  | 3  | 1  | 0  | 1  | 1  | 0  | 1  | 14  |  |
| 4         | Sauriol, Alice     | 22 | 5     | 9   | 14  | 69  | .072 | -4  | 5-18      | 4   | 0   | 1   | 1     | 0  | 1  | 2  | 0  | 1  | 0  | 0  | 0  | 13  |  |
| 44        | Mikaelyan, Maria   | 21 | 7     | 6   | 13  | 67  | .104 | 0   | 9-18      | 9   | 0   | 0   | 3     | 0  | 1  | 1  | 1  | 0  | 0  | 0  | 0  | 8   |  |
| 16        | Farrell, Avery     | 21 | 4     | 9   | 13  | 38  | .105 | -4  | 6-12      | 6   | 0   | 0   | 1     | 0  | 0  | 0  | 0  | 0  | 0  | 0  | 0  | 9   |  |
| 8         | Wolfe, Grace       | 22 | 3     | 10  | 13  | 45  | .067 | +3  | 7-25      | 5   | 1   | 1   | 0     | 1  | 0  | 0  | 0  | 0  | 0  | 0  | 0  | 33  |  |
| 11        | Zimmermann, Laura  | 22 | 6     | 5   | 11  | 50  | .120 | -3  | 12-35     | 10  | 1   | 1   | 0     | 0  | 3  | 0  | 0  | 0  | 0  | 0  | 0  | 12  |  |
| 18        | Holloway, Payton   | 21 | 3     | 8   | 11  | 39  | .077 | +2  | 1-2       | 1   | 0   | 0   | 1     | 0  | 1  | 1  | 0  | 0  | 0  | 0  | 0  | 6   |  |
| 41        | Yrjölä, Siiri      | 22 | 1     | 7   | 8   | 26  | .038 | +5  | 2-4       | 2   | 0   | 0   | 0     | 0  | 0  | 0  | 0  | 0  | 0  | 0  | 0  | 24  |  |
| 17        | Labbé, Julianne    | 22 | 4     | 3   | 7   | 19  | .211 | +2  | 1-2       | 1   | 0   | 0   | 1     | 0  | 0  | 1  | 0  | 0  | 0  | 0  | 0  | 5   |  |
| 9         | Voigt, Svenja      | 21 | 2     | 5   | 7   | 20  | .100 | -2  | 2-4       | 2   | 0   | 0   | 0     | 0  | 0  | 0  | 0  | 0  | 0  | 0  | 0  | 7   |  |
| 7         | Remick, Payton     | 22 | 3     | 3   | 6   | 28  | .107 | +2  | 4-8       | 4   | 0   | 0   | 0     | 0  | 1  | 1  | 0  | 0  | 0  | 0  | 0  | 5   |  |
| 28        | Lamb, Sydney       | 19 | 2     | 4   | 6   | 27  | .074 | +8  | 1-2       | 1   | 0   | 0   | 0     | 0  | 0  | 0  | 0  | 0  | 0  | 0  | 0  | 14  |  |
| 14        | Pion, Maélie       | 22 | 1     | 5   | 6   | 40  | .025 | 0   | 12-35     | 10  | 1   | 1   | 0     | 0  | 1  | 0  | 0  | 0  | 0  | 0  | 1  | 18  |  |
| 3         | Jackel, Sidney     | 21 | 1     | 5   | 6   | 39  | .026 | +2  | 5-10      | 5   | 0   | 0   | 0     | 0  | 0  | 0  | 0  | 0  | 0  | 0  | 0  | 4   |  |
| 12        | Mustonen, Raili    | 21 | 2     | 3   | 5   | 24  | .083 | -10 | 0-0       | 0   | 0   | 0   | 0     | 0  | 0  | 0  | 0  | 0  | 0  | 0  | 0  | 7   |  |
| 2         | Bryant, Sydney     | 22 | 1     | 4   | 5   | 26  | .038 | -10 | 6-12      | 6   | 0   | 0   | 0     | 0  | 0  | 0  | 0  | 0  | 0  | 1  | 0  | 12  |  |
| 15        | Moran, Marie       | 22 | 1     | 1   | 2   | 36  | .028 | -7  | 1-2       | 1   | 0   | 0   | 0     | 0  | 0  | 0  | 0  | 0  | 0  | 0  | 0  | 7   |  |
| 13        | Strauts, Reese     | 15 | 1     | 0   | 1   | 5   | .200 | +1  | 1-2       | 1   | 0   | 0   | 0     | 0  | 0  | 0  | 0  | 0  | 0  | 0  | 0  | 0   |  |
| 19        | Krueger, Myah      | 20 | 0     | 0   | 0   | 12  | .000 | -4  | 1-2       | 1   | 0   | 0   | 0     | 0  | 0  | 0  | 0  | 0  | 0  | 0  | 0  | 1   |  |
| 45        | Bulger, Regan      | 5  | 0     | 0   | 0   | 5   | .000 | -1  | 0-0       | 0   | 0   | 0   | 0     | 0  | 0  | 0  | 0  | 0  | 0  | 0  | 0  | 3   |  |
| 10        | Skiston, Aruba     | 7  | 0     | 0   | 0   | 1   | .000 | 0   | 0-0       | 0   | 0   | 0   | 0     | 0  | 0  | 0  | 0  | 0  | 0  | 0  | 0  | 0   |  |
| 29        | Chobak, Jojo       | 12 | 0     | 0   | 0   | 0   | .000 | 0   | 0-0       | 0   | 0   | 0   | 0     | 0  | 0  | 0  | 0  | 0  | 0  | 0  | 0  | 0   |  |
| 6         | Erickson, Lily     | 2  | 0     | 0   | 0   | 0   | .000 | 0   | 0-0       | 0   | 0   | 0   | 0     | 0  | 0  | 0  | 0  | 0  | 0  | 0  | 0  | 0   |  |
| 42        | Kyrkkö, Emilia     | 11 | 0     | 0   | 0   | 0   | .000 | 0   | 0-0       | 0   | 0   | 0   | 0     | 0  | 0  | 0  | 0  | 0  | 0  | 0  | 0  | 0   |  |
| 31        | Hoogendam, Paige   | 2  | 0     | 0   | 0   | 0   | .000 | 0   | 0-0       | 0   | 0   | 0   | 0     | 0  | 0  | 0  | 0  | 0  | 0  | 0  | 0  | 0   |  |
| TM        | TEAM               | 22 | 0     | 0   | 0   | 0   | .000 | 0   | 5-10      | 0   | 0   | 0   | 0     | 0  | 0  | 0  | 0  | 0  | 0  | 0  | 0  | 0   |  |
| Totals    |                    | 22 | 56    | 95  | 151 | 664 | .084 | -23 | 84-209    | 77  | 3   | 4   | 10    | 1  | 11 | 7  | 1  | 2  | 1  | 1  | 2  | 202 |  |
| Opponents |                    | 22 | 67    | 116 | 183 | 714 | .094 | +22 | 77-154    | 77  | 0   | 0   | 17    | 0  | 11 | 14 | 0  | 3  | 1  | 1  | 5  | 250 |  |

| #                | Player           | GP-GS     | Goal Average   |           |             | Saves      |             | Record    |           |          |          | Goals Allowed |          |          |          |          |
|------------------|------------------|-----------|----------------|-----------|-------------|------------|-------------|-----------|-----------|----------|----------|---------------|----------|----------|----------|----------|
|                  |                  |           | MINUTES        | GA        | AVG         | SAVES      | PCT         | W         | L         | T        | SHO      | PP            | SH       | EN       | PEN      | SOG      |
| 29               | Chobak, Jojo     | 12-11     | 598:09         | 38        | 3.81        | 304        | .889        | 2         | 8         | 0        | 1        | 11            | 0        | 2        | 1        | 0        |
| 42               | Kyrkkö, Emilia   | 11-10     | 616:10         | 21        | 2.04        | 309        | .936        | 5         | 4         | 1        | 3        | 4             | 0        | 0        | 0        | 2        |
| 31               | Hoogendam, Paige | 2-1       | 97:51          | 6         | 3.68        | 34         | .850        | 0         | 2         | 0        | 0        | 2             | 0        | 0        | 0        | 0        |
| TM               | EMPTY NET        | -         | 20:50          | 2         | 5.76        | 0          | .000        | 0         | 0         | 0        | 0        | 0             | 0        | 0        | 0        | 0        |
| <b>Totals</b>    |                  | <b>22</b> | <b>1333:00</b> | <b>67</b> | <b>3.02</b> | <b>647</b> | <b>.906</b> | <b>7</b>  | <b>14</b> | <b>1</b> | <b>4</b> | <b>17</b>     | <b>0</b> | <b>2</b> | <b>1</b> | <b>2</b> |
| <b>Opponents</b> |                  | <b>22</b> | <b>1333:00</b> | <b>56</b> | <b>2.52</b> | <b>608</b> | <b>.916</b> | <b>14</b> | <b>7</b>  | <b>1</b> | <b>2</b> | <b>10</b>     | <b>1</b> | <b>0</b> | <b>1</b> | <b>1</b> |



## 2025-26 WCHA STATISTICS

## Game Records

| Overall    | Conference | Home      | Away      | Neutral   |
|------------|------------|-----------|-----------|-----------|
| 3 - 12 - 1 | 3 - 12 - 1 | 1 - 7 - 1 | 2 - 5 - 0 | 0 - 0 - 0 |

|           |                    |    | Shots |     |     |     |      |     | Penalties |     |     |     | Goals |    |    |    |    |    |    |    |    |     |  |
|-----------|--------------------|----|-------|-----|-----|-----|------|-----|-----------|-----|-----|-----|-------|----|----|----|----|----|----|----|----|-----|--|
| #         | Player             | GP | G     | A   | PTS | SH  | SH%  | +/- | PEN-MIN   | MIN | MAJ | OTH | PP    | SH | FG | GW | GT | OT | HT | PN | UA | BLK |  |
| 8         | Wolfe, Grace       | 16 | 3     | 9   | 12  | 26  | .115 | +1  | 5-21      | 3   | 1   | 1   | 0     | 1  | 0  | 0  | 0  | 0  | 0  | 0  | 0  | 24  |  |
| 44        | Mikaelyan, Maria   | 15 | 5     | 6   | 11  | 42  | .119 | -2  | 9-18      | 9   | 0   | 0   | 2     | 0  | 0  | 0  | 1  | 0  | 0  | 0  | 0  | 8   |  |
| 34        | Sundelin, Sofianna | 16 | 5     | 6   | 11  | 29  | .172 | -8  | 3-6       | 3   | 0   | 0   | 1     | 0  | 2  | 0  | 0  | 0  | 0  | 0  | 0  | 11  |  |
| 4         | Sauriol, Alice     | 16 | 4     | 7   | 11  | 47  | .085 | -5  | 1-2       | 1   | 0   | 0   | 1     | 0  | 0  | 1  | 0  | 1  | 0  | 0  | 0  | 8   |  |
| 16        | Farrell, Avery     | 16 | 4     | 7   | 11  | 27  | .148 | -5  | 4-8       | 4   | 0   | 0   | 1     | 0  | 0  | 0  | 0  | 0  | 0  | 0  | 0  | 5   |  |
| 11        | Zimmermann, Laura  | 16 | 6     | 3   | 9   | 37  | .162 | -4  | 9-29      | 7   | 1   | 1   | 0     | 0  | 3  | 0  | 0  | 0  | 0  | 0  | 0  | 6   |  |
| 18        | Holloway, Payton   | 15 | 2     | 5   | 7   | 24  | .083 | 0   | 1-2       | 1   | 0   | 0   | 1     | 0  | 1  | 1  | 0  | 0  | 0  | 0  | 0  | 6   |  |
| 9         | Voigt, Svenja      | 16 | 1     | 5   | 6   | 11  | .091 | -3  | 1-2       | 1   | 0   | 0   | 0     | 0  | 0  | 0  | 0  | 0  | 0  | 0  | 0  | 7   |  |
| 7         | Remick, Payton     | 16 | 3     | 2   | 5   | 23  | .130 | +2  | 3-6       | 3   | 0   | 0   | 0     | 0  | 1  | 1  | 0  | 0  | 0  | 0  | 0  | 3   |  |
| 28        | Lamb, Sydney       | 13 | 2     | 2   | 4   | 20  | .100 | +3  | 0-0       | 0   | 0   | 0   | 0     | 0  | 0  | 0  | 0  | 0  | 0  | 0  | 0  | 12  |  |
| 14        | Pion, Maélie       | 16 | 1     | 3   | 4   | 31  | .032 | -4  | 10-31     | 8   | 1   | 1   | 0     | 0  | 1  | 0  | 0  | 0  | 0  | 0  | 1  | 14  |  |
| 12        | Mustonen, Raili    | 15 | 1     | 3   | 4   | 15  | .067 | -9  | 0-0       | 0   | 0   | 0   | 0     | 0  | 0  | 0  | 0  | 0  | 0  | 0  | 0  | 5   |  |
| 3         | Jackel, Sidney     | 15 | 0     | 4   | 4   | 25  | .000 | -1  | 4-8       | 4   | 0   | 0   | 0     | 0  | 0  | 0  | 0  | 0  | 0  | 0  | 0  | 4   |  |
| 17        | Labbé, Julianne    | 16 | 2     | 1   | 3   | 11  | .182 | -2  | 1-2       | 1   | 0   | 0   | 0     | 0  | 0  | 0  | 0  | 0  | 0  | 0  | 0  | 4   |  |
| 41        | Yrjölä, Siiri      | 16 | 0     | 3   | 3   | 21  | .000 | +1  | 1-2       | 1   | 0   | 0   | 0     | 0  | 0  | 0  | 0  | 0  | 0  | 0  | 0  | 18  |  |
| 2         | Bryant, Sydney     | 16 | 0     | 3   | 3   | 15  | .000 | -13 | 5-10      | 5   | 0   | 0   | 0     | 0  | 0  | 0  | 0  | 0  | 0  | 0  | 0  | 10  |  |
| 13        | Strauts, Reese     | 12 | 1     | 0   | 1   | 4   | .250 | +1  | 0-0       | 0   | 0   | 0   | 0     | 0  | 0  | 0  | 0  | 0  | 0  | 0  | 0  | 0   |  |
| 15        | Moran, Marie       | 16 | 0     | 1   | 1   | 29  | .000 | -8  | 1-2       | 1   | 0   | 0   | 0     | 0  | 0  | 0  | 0  | 0  | 0  | 0  | 0  | 5   |  |
| 19        | Krueger, Myah      | 15 | 0     | 0   | 0   | 9   | .000 | -4  | 1-2       | 1   | 0   | 0   | 0     | 0  | 0  | 0  | 0  | 0  | 0  | 0  | 0  | 1   |  |
| 45        | Bulger, Regan      | 4  | 0     | 0   | 0   | 3   | .000 | -1  | 0-0       | 0   | 0   | 0   | 0     | 0  | 0  | 0  | 0  | 0  | 0  | 0  | 0  | 3   |  |
| 10        | Skiston, Aruba     | 4  | 0     | 0   | 0   | 0   | .000 | 0   | 0-0       | 0   | 0   | 0   | 0     | 0  | 0  | 0  | 0  | 0  | 0  | 0  | 0  | 0   |  |
| 6         | Erickson, Lily     | 1  | 0     | 0   | 0   | 0   | .000 | 0   | 0-0       | 0   | 0   | 0   | 0     | 0  | 0  | 0  | 0  | 0  | 0  | 0  | 0  | 0   |  |
| 42        | Kyrkkö, Emilia     | 7  | 0     | 0   | 0   | 0   | .000 | 0   | 0-0       | 0   | 0   | 0   | 0     | 0  | 0  | 0  | 0  | 0  | 0  | 0  | 0  | 0   |  |
| 31        | Hoogendam, Paige   | 2  | 0     | 0   | 0   | 0   | .000 | 0   | 0-0       | 0   | 0   | 0   | 0     | 0  | 0  | 0  | 0  | 0  | 0  | 0  | 0  | 0   |  |
| 29        | Chobak, Jojo       | 10 | 0     | 0   | 0   | 0   | .000 | 0   | 0-0       | 0   | 0   | 0   | 0     | 0  | 0  | 0  | 0  | 0  | 0  | 0  | 0  | 0   |  |
| TM        | TEAM               | 16 | 0     | 0   | 0   | 0   | .000 | 0   | 2-4       | 0   | 0   | 0   | 0     | 0  | 0  | 0  | 0  | 0  | 0  | 0  | 0  | 0   |  |
| Totals    |                    | 16 | 40    | 70  | 110 | 449 | .089 | -61 | 61-155    | 55  | 3   | 3   | 6     | 1  | 8  | 3  | 1  | 1  | 0  | 0  | 1  | 154 |  |
| Opponents |                    | 16 | 60    | 103 | 163 | 546 | .110 | +60 | 55-110    | 55  | 0   | 0   | 13    | 0  | 8  | 12 | 0  | 3  | 1  | 1  | 5  | 149 |  |

| #                | Player           | GP-GS     | Goal Average  |           |             | Saves      |             | Record    |           |          |          | Goals Allowed |          |          |          |          |
|------------------|------------------|-----------|---------------|-----------|-------------|------------|-------------|-----------|-----------|----------|----------|---------------|----------|----------|----------|----------|
|                  |                  |           | MINUTES       | GA        | AVG         | SAVES      | PCT         | W         | L         | T        | SHO      | PP            | SH       | EN       | PEN      | SOG      |
| 42               | Kyrkkö, Emilia   | 7-6       | 377:12        | 16        | 2.55        | 199        | .926        | 2         | 3         | 1        | 2        | 2             | 0        | 0        | 0        | 2        |
| 31               | Hoogendam, Paige | 2-1       | 97:51         | 6         | 3.68        | 34         | .850        | 0         | 2         | 0        | 0        | 2             | 0        | 0        | 0        | 0        |
| 29               | Chobak, Jojo     | 10-9      | 479:55        | 36        | 4.50        | 253        | .875        | 1         | 7         | 0        | 0        | 9             | 0        | 2        | 1        | 0        |
| TM               | EMPTY NET        | -         | 16:22         | 2         | 7.33        | 0          | .000        | 0         | 0         | 0        | 0        | 0             | 0        | 0        | 0        | 0        |
| <b>Totals</b>    |                  | <b>16</b> | <b>971:20</b> | <b>60</b> | <b>3.71</b> | <b>486</b> | <b>.890</b> | <b>3</b>  | <b>12</b> | <b>1</b> | <b>2</b> | <b>13</b>     | <b>0</b> | <b>2</b> | <b>1</b> | <b>2</b> |
| <b>Opponents</b> |                  | <b>16</b> | <b>971:20</b> | <b>40</b> | <b>2.47</b> | <b>409</b> | <b>.911</b> | <b>12</b> | <b>3</b>  | <b>1</b> | <b>1</b> | <b>6</b>      | <b>1</b> | <b>0</b> | <b>0</b> | <b>1</b> |





## 2025-26 NONCONFERENCE STATISTICS

## Game Records

| Overall   | Conference | Home      | Away      | Neutral   |
|-----------|------------|-----------|-----------|-----------|
| 4 - 2 - 0 | 0 - 0 - 0  | 2 - 0 - 0 | 1 - 1 - 0 | 1 - 1 - 0 |

| #                | Player             | GP       | Shots     |           |           |            |             | +/-        | Penalties    |           |          |          | Goals    |          |          |          |          |          |          |          |          |            |
|------------------|--------------------|----------|-----------|-----------|-----------|------------|-------------|------------|--------------|-----------|----------|----------|----------|----------|----------|----------|----------|----------|----------|----------|----------|------------|
|                  |                    |          | G         | A         | PTS       | SH         | SH%         |            | PEN-MIN      | MIN       | MAJ      | OTH      | PP       | SH       | FG       | GW       | GT       | OT       | HT       | PN       | UA       | BLK        |
| 34               | Sundelin, Sofianna | 6        | 4         | 2         | 6         | 19         | .211        | +5         | 0-0          | 0         | 0        | 0        | 2        | 0        | 1        | 1        | 0        | 1        | 1        | 0        | 1        | 3          |
| 41               | Yrjölä, Siiri      | 6        | 1         | 4         | 5         | 5          | .200        | +4         | 1-2          | 1         | 0        | 0        | 0        | 0        | 0        | 0        | 0        | 0        | 0        | 0        | 0        | 6          |
| 17               | Labbé, Julianne    | 6        | 2         | 2         | 4         | 8          | .250        | +4         | 0-0          | 0         | 0        | 0        | 1        | 0        | 0        | 1        | 0        | 0        | 0        | 0        | 0        | 1          |
| 18               | Holloway, Payton   | 6        | 1         | 3         | 4         | 15         | .067        | +2         | 0-0          | 0         | 0        | 0        | 0        | 0        | 0        | 0        | 0        | 0        | 0        | 0        | 0        | 0          |
| 4                | Sauriol, Alice     | 6        | 1         | 2         | 3         | 22         | .045        | +1         | 4-16         | 3         | 0        | 1        | 0        | 0        | 1        | 1        | 0        | 0        | 0        | 0        | 0        | 5          |
| 44               | Mikaelyan, Maria   | 6        | 2         | 0         | 2         | 25         | .080        | +2         | 0-0          | 0         | 0        | 0        | 1        | 0        | 1        | 1        | 0        | 0        | 0        | 0        | 0        | 0          |
| 3                | Jackel, Sidney     | 6        | 1         | 1         | 2         | 14         | .071        | +3         | 1-2          | 1         | 0        | 0        | 0        | 0        | 0        | 0        | 0        | 0        | 0        | 0        | 0        | 0          |
| 2                | Bryant, Sydney     | 6        | 1         | 1         | 2         | 11         | .091        | +3         | 1-2          | 1         | 0        | 0        | 0        | 0        | 0        | 0        | 0        | 0        | 0        | 1        | 0        | 2          |
| 11               | Zimmermann, Laura  | 6        | 0         | 2         | 2         | 13         | .000        | +1         | 3-6          | 3         | 0        | 0        | 0        | 0        | 0        | 0        | 0        | 0        | 0        | 0        | 0        | 6          |
| 16               | Farrell, Avery     | 5        | 0         | 2         | 2         | 11         | .000        | +1         | 2-4          | 2         | 0        | 0        | 0        | 0        | 0        | 0        | 0        | 0        | 0        | 0        | 0        | 4          |
| 14               | Pion, Maélie       | 6        | 0         | 2         | 2         | 9          | .000        | +4         | 2-4          | 2         | 0        | 0        | 0        | 0        | 0        | 0        | 0        | 0        | 0        | 0        | 0        | 4          |
| 28               | Lamb, Sydney       | 6        | 0         | 2         | 2         | 7          | .000        | +5         | 1-2          | 1         | 0        | 0        | 0        | 0        | 0        | 0        | 0        | 0        | 0        | 0        | 0        | 2          |
| 9                | Voigt, Svenja      | 5        | 1         | 0         | 1         | 9          | .111        | +1         | 1-2          | 1         | 0        | 0        | 0        | 0        | 0        | 0        | 0        | 0        | 0        | 0        | 0        | 0          |
| 12               | Mustonen, Raili    | 6        | 1         | 0         | 1         | 9          | .111        | -1         | 0-0          | 0         | 0        | 0        | 0        | 0        | 0        | 0        | 0        | 0        | 0        | 0        | 0        | 2          |
| 15               | Moran, Marie       | 6        | 1         | 0         | 1         | 7          | .143        | +1         | 0-0          | 0         | 0        | 0        | 0        | 0        | 0        | 0        | 0        | 0        | 0        | 0        | 0        | 2          |
| 8                | Wolfe, Grace       | 6        | 0         | 1         | 1         | 19         | .000        | +2         | 2-4          | 2         | 0        | 0        | 0        | 0        | 0        | 0        | 0        | 0        | 0        | 0        | 0        | 9          |
| 7                | Remick, Payton     | 6        | 0         | 1         | 1         | 5          | .000        | 0          | 1-2          | 1         | 0        | 0        | 0        | 0        | 0        | 0        | 0        | 0        | 0        | 0        | 0        | 2          |
| 19               | Krueger, Myah      | 5        | 0         | 0         | 0         | 3          | .000        | 0          | 0-0          | 0         | 0        | 0        | 0        | 0        | 0        | 0        | 0        | 0        | 0        | 0        | 0        | 0          |
| 45               | Bulger, Regan      | 1        | 0         | 0         | 0         | 2          | .000        | 0          | 0-0          | 0         | 0        | 0        | 0        | 0        | 0        | 0        | 0        | 0        | 0        | 0        | 0        | 0          |
| 10               | Skiston, Aruba     | 3        | 0         | 0         | 0         | 1          | .000        | 0          | 0-0          | 0         | 0        | 0        | 0        | 0        | 0        | 0        | 0        | 0        | 0        | 0        | 0        | 0          |
| 13               | Strauts, Reese     | 3        | 0         | 0         | 0         | 1          | .000        | 0          | 1-2          | 1         | 0        | 0        | 0        | 0        | 0        | 0        | 0        | 0        | 0        | 0        | 0        | 0          |
| 6                | Erickson, Lily     | 1        | 0         | 0         | 0         | 0          | .000        | 0          | 0-0          | 0         | 0        | 0        | 0        | 0        | 0        | 0        | 0        | 0        | 0        | 0        | 0        | 0          |
| 42               | Kyrkkö, Emilia     | 4        | 0         | 0         | 0         | 0          | .000        | 0          | 0-0          | 0         | 0        | 0        | 0        | 0        | 0        | 0        | 0        | 0        | 0        | 0        | 0        | 0          |
| 29               | Chobak, Jojo       | 2        | 0         | 0         | 0         | 0          | .000        | 0          | 0-0          | 0         | 0        | 0        | 0        | 0        | 0        | 0        | 0        | 0        | 0        | 0        | 0        | 0          |
| TM               | TEAM               | 6        | 0         | 0         | 0         | 0          | .000        | 0          | 3-6          | 0         | 0        | 0        | 0        | 0        | 0        | 0        | 0        | 0        | 0        | 0        | 0        | 0          |
| <b>Totals</b>    |                    | <b>6</b> | <b>16</b> | <b>25</b> | <b>41</b> | <b>215</b> | <b>.074</b> | <b>+38</b> | <b>23-54</b> | <b>22</b> | <b>0</b> | <b>1</b> | <b>4</b> | <b>0</b> | <b>3</b> | <b>4</b> | <b>0</b> | <b>1</b> | <b>1</b> | <b>1</b> | <b>1</b> | <b>48</b>  |
| <b>Opponents</b> |                    | <b>6</b> | <b>7</b>  | <b>13</b> | <b>20</b> | <b>168</b> | <b>.042</b> | <b>-38</b> | <b>22-44</b> | <b>22</b> | <b>0</b> | <b>0</b> | <b>4</b> | <b>0</b> | <b>3</b> | <b>2</b> | <b>0</b> | <b>0</b> | <b>0</b> | <b>0</b> | <b>0</b> | <b>101</b> |

| #                | Player         | GP-GS    | Goal Average  |           |             | Saves      |             | Record   |          |          |          | Goals Allowed |          |          |          |          |
|------------------|----------------|----------|---------------|-----------|-------------|------------|-------------|----------|----------|----------|----------|---------------|----------|----------|----------|----------|
|                  |                |          | MINUTES       | GA        | AVG         | SAVES      | PCT         | W        | L        | T        | SHO      | PP            | SH       | EN       | PEN      | SOG      |
| 42               | Kyrkkö, Emilia | 4-4      | 238:58        | 5         | 1.26        | 110        | .957        | 3        | 1        | 0        | 1        | 2             | 0        | 0        | 0        | 0        |
| 29               | Chobak, Jojo   | 2-2      | 118:14        | 2         | 1.01        | 51         | .962        | 1        | 1        | 0        | 1        | 2             | 0        | 0        | 0        | 0        |
| TM               | EMPTY NET      | -        | 04:28         | 0         | 0.00        | 0          | .000        | 0        | 0        | 0        | 0        | 0             | 0        | 0        | 0        | 0        |
| <b>Totals</b>    |                | <b>6</b> | <b>361:40</b> | <b>7</b>  | <b>1.16</b> | <b>161</b> | <b>.958</b> | <b>4</b> | <b>2</b> | <b>0</b> | <b>2</b> | <b>4</b>      | <b>0</b> | <b>0</b> | <b>0</b> | <b>0</b> |
| <b>Opponents</b> |                | <b>6</b> | <b>361:40</b> | <b>16</b> | <b>2.65</b> | <b>199</b> | <b>.926</b> | <b>2</b> | <b>4</b> | <b>0</b> | <b>1</b> | <b>4</b>      | <b>0</b> | <b>0</b> | <b>1</b> | <b>0</b> |



**2025-26 GAME RESULTS****Team Results**

|   | Date       | Opponent         |     | Score | Shots | Overall | Conf   | Time | Att. | Goalie of record  |
|---|------------|------------------|-----|-------|-------|---------|--------|------|------|-------------------|
|   | 09/19/2025 | Lindenwood       | W   | 5-0   | 43/18 | 1-0-0   | 0-0-0  | 2:13 | 341  | KYRKKÖ, Emilia    |
|   | 09/20/2025 | Lindenwood       | W   | 5-0   | 41/22 | 2-0-0   | 0-0-0  | 2:16 | 284  | CHOBAK, Jojo      |
|   | 09/26/2025 | at UConn         | W   | 2-1   | 29/36 | 3-0-0   | 0-0-0  | 2:27 | 2223 | KYRKKÖ, Emilia    |
|   | 09/27/2025 | at UConn         | L   | 1-2   | 37/31 | 3-1-0   | 0-0-0  | 2:23 | 1251 | CHOBAK, Jojo      |
| * | 10/10/2025 | at Minnesota     | L   | 1-4   | 20/33 | 3-2-0   | 0-1-0  | 2:25 | 1506 | CHOBAK, Jojo      |
| * | 10/11/2025 | Minnesota        | L   | 3-5   | 26/48 | 3-3-0   | 0-2-0  | 2:36 | 523  | CHOBAK, Jojo      |
| * | 10/17/2025 | St. Thomas (MN)  | Wot | 4-3   | 44/16 | 4-3-0   | 1-2-0  | 2:49 | 434  | CHOBAK, Jojo      |
| * | 10/18/2025 | St. Thomas (MN)  | Lot | 3-4   | 31/21 | 4-4-0   | 1-3-0  | 2:37 | 342  | HOOGEN DAM, Paige |
| * | 10/24/2025 | at Ohio St.      | L   | 1-5   | 12/40 | 4-5-0   | 1-4-0  | 2:19 | 461  | CHOBAK, Jojo      |
| * | 10/25/2025 | at Ohio St.      | L   | 2-4   | 15/44 | 4-6-0   | 1-5-0  | 2:30 | 566  | CHOBAK, Jojo      |
| * | 10/31/2025 | Minn. Duluth     | L   | 3-5   | 34/26 | 4-7-0   | 1-6-0  | 2:29 | 227  | HOOGEN DAM, Paige |
| * | 11/01/2025 | Minn. Duluth     | L   | 2-3   | 34/35 | 4-8-0   | 1-7-0  | 2:31 | 287  | CHOBAK, Jojo      |
| * | 11/14/2025 | Wisconsin        | L   | 1-5   | 19/37 | 4-9-0   | 1-8-0  | 2:27 | 273  | CHOBAK, Jojo      |
| * | 11/15/2025 | Wisconsin        | Tot | 4-4   | 38/56 | 4-9-1   | 1-8-1  | 3:05 | 943  | KYRKKÖ, Emilia    |
| * | 11/21/2025 | at Bemidji St.   | W   | 4-0   | 26/21 | 5-9-1   | 2-8-1  | 2:31 | 312  | KYRKKÖ, Emilia    |
| * | 11/22/2025 | at Bemidji St.   | Lot | 5-6   | 43/22 | 5-10-1  | 2-9-1  | 2:42 | 412  | KYRKKÖ, Emilia    |
|   | 11/28/2025 | vs Colgate       | Wot | 3-2   | 36/31 | 6-10-1  | 2-9-1  | 2:57 | 843  | KYRKKÖ, Emilia    |
|   | 11/29/2025 | vs Clarkson      | L   | 0-2   | 29/30 | 6-11-1  | 2-9-1  | 2:18 | 974  | KYRKKÖ, Emilia    |
| * | 12/05/2025 | at Minnesota St. | W   | 4-0   | 36/28 | 7-11-1  | 3-9-1  | 2:03 | 320  | KYRKKÖ, Emilia    |
| * | 12/06/2025 | at Minnesota St. | Lot | 2-3   | 25/31 | 7-12-1  | 3-10-1 | 2:11 | 320  | KYRKKÖ, Emilia    |
| * | 01/09/2026 | Ohio St.         | L   | 0-4   | 23/39 | 7-13-1  | 3-11-1 | 2:15 | 313  | KYRKKÖ, Emilia    |
| * | 01/10/2026 | Ohio St.         | L   | 1-5   | 23/49 | 7-14-1  | 3-12-1 | 2:25 | 273  | CHOBAK, Jojo      |

| Team Record | W-L-T  | Attendance | Dates | Total | Avg. |
|-------------|--------|------------|-------|-------|------|
| Overall:    | 7-14-1 | Total:     | 22    | 13428 | 610  |
| Conference: | 3-12-1 | Home:      | 11    | 4240  | 385  |
| Home:       | 3-7-1  | Away:      | 9     | 7371  | 819  |
| Away:       | 3-6-0  | Neutral:   | 2     | 1817  | 909  |
| Neutral:    | 1-1-0  |            |       |       |      |
| Overtime:   | 2-3-1  |            |       |       |      |



## 2025-26 GAME-BY-GAME

| Date             | Opponent         | Score | G         | A          | PTS        | SHOTS      | SH%         | +/-        | PEN-MIN       | PP        | SH       | EN       | GW        | GT       | HAT      | UA       | BLK        |
|------------------|------------------|-------|-----------|------------|------------|------------|-------------|------------|---------------|-----------|----------|----------|-----------|----------|----------|----------|------------|
| 09/19/2025       | Lindenwood       | 5-0   | 5         | 10         | 15         | 43         | .116        | +15        | 4-8           | 2         | 0        | 0        | 1         | 0        | 0        | 0        | 4          |
| 09/20/2025       | Lindenwood       | 5-0   | 5         | 9          | 14         | 41         | .122        | +25        | 1-2           | 0         | 0        | 0        | 1         | 0        | 0        | 0        | 4          |
| 09/26/2025       | at UConn         | 2-1   | 2         | 3          | 5          | 29         | .069        | +5         | 3-6           | 0         | 0        | 0        | 1         | 0        | 0        | 0        | 13         |
| 09/27/2025       | at UConn         | 1-2   | 1         | 0          | 1          | 37         | .027        | 0          | 7-22          | 0         | 0        | 0        | 0         | 0        | 0        | 0        | 12         |
| 10/10/2025       | at Minnesota     | 1-4   | 1         | 1          | 2          | 20         | .050        | -16        | 4-8           | 0         | 0        | 0        | 0         | 0        | 0        | 0        | 12         |
| 10/11/2025       | Minnesota        | 3-5   | 3         | 5          | 8          | 26         | .115        | -10        | 5-10          | 1         | 0        | 0        | 0         | 0        | 0        | 0        | 3          |
| 10/17/2025       | St. Thomas (MN)  | 4-3   | 4         | 8          | 12         | 44         | .091        | +4         | 1-2           | 1         | 0        | 0        | 1         | 0        | 0        | 0        | 8          |
| 10/18/2025       | St. Thomas (MN)  | 3-4   | 3         | 6          | 9          | 31         | .097        | +6         | 4-8           | 0         | 0        | 0        | 0         | 0        | 0        | 0        | 8          |
| 10/24/2025       | at Ohio St.      | 1-5   | 1         | 2          | 3          | 12         | .083        | -10        | 3-6           | 0         | 0        | 0        | 0         | 0        | 0        | 0        | 8          |
| 10/25/2025       | at Ohio St.      | 2-4   | 2         | 2          | 4          | 15         | .133        | 0          | 6-23          | 0         | 0        | 0        | 0         | 0        | 0        | 1        | 12         |
| 10/31/2025       | Minn. Duluth     | 3-5   | 3         | 6          | 9          | 34         | .088        | -5         | 6-23          | 0         | 0        | 0        | 0         | 0        | 0        | 0        | 11         |
| 11/01/2025       | Minn. Duluth     | 2-3   | 2         | 4          | 6          | 34         | .059        | -5         | 4-8           | 0         | 0        | 0        | 0         | 0        | 0        | 0        | 12         |
| 11/14/2025       | Wisconsin        | 1-5   | 1         | 2          | 3          | 19         | .053        | -10        | 3-6           | 0         | 0        | 0        | 0         | 0        | 0        | 0        | 10         |
| 11/15/2025       | Wisconsin        | 4-4   | 4         | 8          | 12         | 38         | .105        | -1         | 4-19          | 1         | 0        | 0        | 0         | 1        | 0        | 0        | 8          |
| 11/21/2025       | at Bemidji St.   | 4-0   | 4         | 6          | 10         | 26         | .154        | +20        | 4-8           | 0         | 0        | 0        | 1         | 0        | 0        | 0        | 15         |
| 11/22/2025       | at Bemidji St.   | 5-6   | 5         | 7          | 12         | 43         | .116        | -5         | 4-8           | 1         | 1        | 0        | 0         | 0        | 0        | 0        | 7          |
| 11/28/2025       | vs Colgate       | 3-2   | 3         | 3          | 6          | 36         | .083        | -2         | 4-8           | 2         | 0        | 0        | 1         | 0        | 1        | 1        | 10         |
| 11/29/2025       | vs Clarkson      | 0-2   | 0         | 0          | 0          | 29         | .000        | -5         | 4-8           | 0         | 0        | 0        | 0         | 0        | 0        | 0        | 5          |
| 12/05/2025       | at Minnesota St. | 4-0   | 4         | 7          | 11         | 36         | .111        | +20        | 3-6           | 0         | 0        | 0        | 1         | 0        | 0        | 0        | 6          |
| 12/06/2025       | at Minnesota St. | 2-3   | 2         | 4          | 6          | 25         | .080        | -8         | 5-10          | 1         | 0        | 0        | 0         | 0        | 0        | 0        | 6          |
| 01/09/2026       | Ohio St.         | 0-4   | 0         | 0          | 0          | 23         | .000        | -20        | 4-8           | 0         | 0        | 0        | 0         | 0        | 0        | 0        | 13         |
| 01/10/2026       | Ohio St.         | 1-5   | 1         | 2          | 3          | 23         | .043        | -21        | 1-2           | 1         | 0        | 0        | 0         | 0        | 0        | 0        | 15         |
| <b>SCSU</b>      |                  |       | <b>56</b> | <b>95</b>  | <b>151</b> | <b>664</b> | <b>.084</b> | <b>-23</b> | <b>84-209</b> | <b>10</b> | <b>1</b> | <b>0</b> | <b>7</b>  | <b>1</b> | <b>1</b> | <b>2</b> | <b>202</b> |
| <b>Opponents</b> |                  |       | <b>67</b> | <b>116</b> | <b>183</b> | <b>714</b> | <b>.094</b> | <b>+22</b> | <b>77-154</b> | <b>17</b> | <b>0</b> | <b>2</b> | <b>14</b> | <b>0</b> | <b>1</b> | <b>5</b> | <b>250</b> |

## TEAM PER-GAME

| Games played | Shots per game | Goals per game | Assists per game | Points per game |
|--------------|----------------|----------------|------------------|-----------------|
| 22           | 30.18          | 2.55           | 4.32             | 6.86            |



**2025-26 OPPONENT GAME-BY-GAME**

| Date             | Opponent         | Score | G         | A          | PTS        | SHOTS      | SH%         | +/-        | PEN-MIN       | PP        | SH       | EN       | GW        | GT       | HAT      | UA       | BLK        |
|------------------|------------------|-------|-----------|------------|------------|------------|-------------|------------|---------------|-----------|----------|----------|-----------|----------|----------|----------|------------|
| 09/19/2025       | Lindenwood       | 5-0   | 0         | 0          | 0          | 18         | .000        | -15        | 2-4           | 0         | 0        | 0        | 0         | 0        | 0        | 0        | 27         |
| 09/20/2025       | Lindenwood       | 5-0   | 0         | 0          | 0          | 22         | .000        | -25        | 2-4           | 0         | 0        | 0        | 0         | 0        | 0        | 0        | 7          |
| 09/26/2025       | at UConn         | 2-1   | 1         | 2          | 3          | 36         | .028        | -5         | 3-6           | 0         | 0        | 0        | 0         | 0        | 0        | 0        | 12         |
| 09/27/2025       | at UConn         | 1-2   | 2         | 4          | 6          | 31         | .065        | 0          | 2-4           | 2         | 0        | 0        | 1         | 0        | 0        | 0        | 27         |
| 10/10/2025       | at Minnesota     | 1-4   | 4         | 8          | 12         | 33         | .121        | +15        | 1-2           | 0         | 0        | 1        | 1         | 0        | 0        | 0        | 8          |
| 10/11/2025       | Minnesota        | 3-5   | 5         | 9          | 14         | 48         | .104        | +10        | 7-14          | 1         | 0        | 0        | 1         | 0        | 0        | 0        | 9          |
| 10/17/2025       | St. Thomas (MN)  | 4-3   | 3         | 4          | 7          | 16         | .188        | -3         | 3-6           | 1         | 0        | 0        | 0         | 0        | 0        | 1        | 14         |
| 10/18/2025       | St. Thomas (MN)  | 3-4   | 4         | 8          | 12         | 21         | .190        | -6         | 4-8           | 2         | 0        | 0        | 1         | 0        | 0        | 0        | 12         |
| 10/24/2025       | at Ohio St.      | 1-5   | 5         | 8          | 13         | 40         | .125        | +10        | 5-10          | 1         | 0        | 0        | 1         | 0        | 0        | 0        | 6          |
| 10/25/2025       | at Ohio St.      | 2-4   | 4         | 8          | 12         | 44         | .091        | 0          | 4-8           | 2         | 0        | 0        | 1         | 0        | 1        | 0        | 9          |
| 10/31/2025       | Minn. Duluth     | 3-5   | 5         | 6          | 11         | 26         | .192        | +5         | 3-6           | 1         | 0        | 0        | 1         | 0        | 0        | 2        | 13         |
| 11/01/2025       | Minn. Duluth     | 2-3   | 3         | 6          | 9          | 35         | .086        | +5         | 3-6           | 0         | 0        | 0        | 1         | 0        | 0        | 0        | 14         |
| 11/14/2025       | Wisconsin        | 1-5   | 5         | 9          | 14         | 37         | .135        | +10        | 1-2           | 2         | 0        | 0        | 1         | 0        | 0        | 0        | 11         |
| 11/15/2025       | Wisconsin        | 4-4   | 4         | 8          | 12         | 56         | .071        | +1         | 2-4           | 1         | 0        | 0        | 0         | 0        | 0        | 0        | 11         |
| 11/21/2025       | at Bemidji St.   | 4-0   | 0         | 0          | 0          | 21         | .000        | -20        | 1-2           | 0         | 0        | 0        | 0         | 0        | 0        | 0        | 7          |
| 11/22/2025       | at Bemidji St.   | 5-6   | 6         | 12         | 18         | 22         | .273        | +5         | 4-8           | 1         | 0        | 0        | 1         | 0        | 0        | 0        | 16         |
| 11/28/2025       | vs Colgate       | 3-2   | 2         | 3          | 5          | 31         | .065        | +2         | 7-14          | 1         | 0        | 0        | 0         | 0        | 0        | 0        | 12         |
| 11/29/2025       | vs Clarkson      | 0-2   | 2         | 4          | 6          | 30         | .067        | +5         | 6-12          | 1         | 0        | 0        | 1         | 0        | 0        | 0        | 16         |
| 12/05/2025       | at Minnesota St. | 4-0   | 0         | 0          | 0          | 28         | .000        | -20        | 5-10          | 0         | 0        | 0        | 0         | 0        | 0        | 0        | 7          |
| 12/06/2025       | at Minnesota St. | 2-3   | 3         | 5          | 8          | 31         | .097        | +8         | 4-8           | 0         | 0        | 0        | 1         | 0        | 0        | 0        | 7          |
| 01/09/2026       | Ohio St.         | 0-4   | 4         | 4          | 8          | 39         | .103        | +20        | 7-14          | 0         | 0        | 0        | 1         | 0        | 0        | 1        | 3          |
| 01/10/2026       | Ohio St.         | 1-5   | 5         | 8          | 13         | 49         | .102        | +20        | 1-2           | 1         | 0        | 1        | 1         | 0        | 0        | 1        | 2          |
| <b>Opponents</b> |                  |       | <b>67</b> | <b>116</b> | <b>183</b> | <b>714</b> | <b>.094</b> | <b>+22</b> | <b>77-154</b> | <b>17</b> | <b>0</b> | <b>2</b> | <b>14</b> | <b>0</b> | <b>1</b> | <b>5</b> | <b>250</b> |
| <b>SCSU</b>      |                  |       | <b>56</b> | <b>95</b>  | <b>151</b> | <b>664</b> | <b>.084</b> | <b>-23</b> | <b>84-209</b> | <b>10</b> | <b>1</b> | <b>0</b> | <b>7</b>  | <b>1</b> | <b>1</b> | <b>2</b> | <b>202</b> |

**OPPONENT PER-GAME**

| Games played | Shots per game | Goals per game | Assists per game | Points per game |
|--------------|----------------|----------------|------------------|-----------------|
| 22           | 32.45          | 3.05           | 5.27             | 8.32            |





**2025-26 CATEGORY LEADERS****Points**

| #  | Player             | GP | G | A  | PTS | SH |
|----|--------------------|----|---|----|-----|----|
| 34 | Sundelin, Sofianna | 22 | 9 | 8  | 17  | 48 |
| 4  | Sauriol, Alice     | 22 | 5 | 9  | 14  | 69 |
| 44 | Mikaelyan, Maria   | 21 | 7 | 6  | 13  | 67 |
| 16 | Farrell, Avery     | 21 | 4 | 9  | 13  | 38 |
| 8  | Wolfe, Grace       | 22 | 3 | 10 | 13  | 45 |
| 11 | Zimmermann, Laura  | 22 | 6 | 5  | 11  | 50 |
| 18 | Holloway, Payton   | 21 | 3 | 8  | 11  | 39 |
| 41 | Yrjölä, Siiri      | 22 | 1 | 7  | 8   | 26 |
| 17 | Labbé, Julianne    | 22 | 4 | 3  | 7   | 19 |
| 9  | Voigt, Svenja      | 21 | 2 | 5  | 7   | 20 |

**Assists**

| #  | Player             | GP | G | A  | PTS | SH |
|----|--------------------|----|---|----|-----|----|
| 8  | Wolfe, Grace       | 22 | 3 | 10 | 13  | 45 |
| 16 | Farrell, Avery     | 21 | 4 | 9  | 13  | 38 |
| 4  | Sauriol, Alice     | 22 | 5 | 9  | 14  | 69 |
| 34 | Sundelin, Sofianna | 22 | 9 | 8  | 17  | 48 |
| 18 | Holloway, Payton   | 21 | 3 | 8  | 11  | 39 |
| 41 | Yrjölä, Siiri      | 22 | 1 | 7  | 8   | 26 |
| 44 | Mikaelyan, Maria   | 21 | 7 | 6  | 13  | 67 |
| 9  | Voigt, Svenja      | 21 | 2 | 5  | 7   | 20 |
| 11 | Zimmermann, Laura  | 22 | 6 | 5  | 11  | 50 |
| 3  | Jackel, Sidney     | 21 | 1 | 5  | 6   | 39 |

**Goals**

| #  | Player             | GP | G | A  | PTS | SH |
|----|--------------------|----|---|----|-----|----|
| 34 | Sundelin, Sofianna | 22 | 9 | 8  | 17  | 48 |
| 44 | Mikaelyan, Maria   | 21 | 7 | 6  | 13  | 67 |
| 11 | Zimmermann, Laura  | 22 | 6 | 5  | 11  | 50 |
| 4  | Sauriol, Alice     | 22 | 5 | 9  | 14  | 69 |
| 16 | Farrell, Avery     | 21 | 4 | 9  | 13  | 38 |
| 17 | Labbé, Julianne    | 22 | 4 | 3  | 7   | 19 |
| 8  | Wolfe, Grace       | 22 | 3 | 10 | 13  | 45 |
| 18 | Holloway, Payton   | 21 | 3 | 8  | 11  | 39 |
| 7  | Remick, Payton     | 22 | 3 | 3  | 6   | 28 |
| 9  | Voigt, Svenja      | 21 | 2 | 5  | 7   | 20 |

**Shots**

| #  | Player             | GP | G | A  | PTS | SH | SH%  |
|----|--------------------|----|---|----|-----|----|------|
| 4  | Sauriol, Alice     | 22 | 5 | 9  | 14  | 69 | .072 |
| 44 | Mikaelyan, Maria   | 21 | 7 | 6  | 13  | 67 | .104 |
| 11 | Zimmermann, Laura  | 22 | 6 | 5  | 11  | 50 | .120 |
| 34 | Sundelin, Sofianna | 22 | 9 | 8  | 17  | 48 | .188 |
| 8  | Wolfe, Grace       | 22 | 3 | 10 | 13  | 45 | .067 |
| 14 | Pion, Maélie       | 22 | 1 | 5  | 6   | 40 | .025 |
| 3  | Jackel, Sidney     | 21 | 1 | 5  | 6   | 39 | .026 |
| 18 | Holloway, Payton   | 21 | 3 | 8  | 11  | 39 | .077 |
| 16 | Farrell, Avery     | 21 | 4 | 9  | 13  | 38 | .105 |
| 15 | Moran, Marie       | 22 | 1 | 1  | 2   | 36 | .028 |

**Power-Play Goals**

| #  | Player             | GP | PPG |
|----|--------------------|----|-----|
| 34 | Sundelin, Sofianna | 22 | 3   |
| 44 | Mikaelyan, Maria   | 21 | 3   |
| 16 | Farrell, Avery     | 21 | 1   |
| 4  | Sauriol, Alice     | 22 | 1   |
| 18 | Holloway, Payton   | 21 | 1   |
| 17 | Labbé, Julianne    | 22 | 1   |

**Shot Pct.**

| #  | Player             | GP | G | A | PTS | SH | SH%  |
|----|--------------------|----|---|---|-----|----|------|
| 17 | Labbé, Julianne    | 22 | 4 | 3 | 7   | 19 | .211 |
| 13 | Strauts, Reese     | 15 | 1 | 0 | 1   | 5  | .200 |
| 34 | Sundelin, Sofianna | 22 | 9 | 8 | 17  | 48 | .188 |
| 11 | Zimmermann, Laura  | 22 | 6 | 5 | 11  | 50 | .120 |
| 7  | Remick, Payton     | 22 | 3 | 3 | 6   | 28 | .107 |
| 16 | Farrell, Avery     | 21 | 4 | 9 | 13  | 38 | .105 |
| 44 | Mikaelyan, Maria   | 21 | 7 | 6 | 13  | 67 | .104 |
| 9  | Voigt, Svenja      | 21 | 2 | 5 | 7   | 20 | .100 |
| 12 | Mustonen, Raili    | 21 | 2 | 3 | 5   | 24 | .083 |
| 18 | Holloway, Payton   | 21 | 3 | 8 | 11  | 39 | .077 |



**2025-26 CATEGORY LEADERS CONT.****Short-Handed Goals**

| # | Player       | GP | SHG |
|---|--------------|----|-----|
| 8 | Wolfe, Grace | 22 | 1   |

**Penalties**

| #  | Player             | GP | PEN | MIN |
|----|--------------------|----|-----|-----|
| 11 | Zimmermann, Laura  | 22 | 12  | 35  |
| 14 | Pion, Maélie       | 22 | 12  | 35  |
| 44 | Mikaelyan, Maria   | 21 | 9   | 18  |
| 8  | Wolfe, Grace       | 22 | 7   | 25  |
| 16 | Farrell, Avery     | 21 | 6   | 12  |
| 2  | Bryant, Sydney     | 22 | 6   | 12  |
| 4  | Sauriol, Alice     | 22 | 5   | 18  |
| 3  | Jackel, Sidney     | 21 | 5   | 10  |
| 7  | Remick, Payton     | 22 | 4   | 8   |
| 34 | Sundelin, Sofianna | 22 | 3   | 6   |

**Game-Winning Goals**

| #  | Player             | GP | GWG |
|----|--------------------|----|-----|
| 4  | Sauriol, Alice     | 22 | 2   |
| 34 | Sundelin, Sofianna | 22 | 1   |
| 18 | Holloway, Payton   | 21 | 1   |
| 7  | Remick, Payton     | 22 | 1   |
| 17 | Labbé, Julianne    | 22 | 1   |
| 44 | Mikaelyan, Maria   | 21 | 1   |

**Penalty Minutes**

| #  | Player             | GP | PEN | MIN |
|----|--------------------|----|-----|-----|
| 11 | Zimmermann, Laura  | 22 | 12  | 35  |
| 14 | Pion, Maélie       | 22 | 12  | 35  |
| 8  | Wolfe, Grace       | 22 | 7   | 25  |
| 4  | Sauriol, Alice     | 22 | 5   | 18  |
| 44 | Mikaelyan, Maria   | 21 | 9   | 18  |
| 16 | Farrell, Avery     | 21 | 6   | 12  |
| 2  | Bryant, Sydney     | 22 | 6   | 12  |
| 3  | Jackel, Sidney     | 21 | 5   | 10  |
| 7  | Remick, Payton     | 22 | 4   | 8   |
| 34 | Sundelin, Sofianna | 22 | 3   | 6   |

**Plus/Minus**

| #  | Player           | GP | +/- |
|----|------------------|----|-----|
| 28 | Lamb, Sydney     | 19 | +8  |
| 41 | Yrjölä, Siiri    | 22 | +5  |
| 8  | Wolfe, Grace     | 22 | +3  |
| 3  | Jackel, Sidney   | 21 | +2  |
| 18 | Holloway, Payton | 21 | +2  |
| 7  | Remick, Payton   | 22 | +2  |
| 17 | Labbé, Julianne  | 22 | +2  |
| 13 | Strauts, Reese   | 15 | +1  |
| 45 | Bulger, Regan    | 5  | -1  |
| 9  | Voigt, Svenja    | 21 | -2  |



**2025-26 GAME HIGHS****SCSU - GAME HIGHS**

|                        |    |                              |
|------------------------|----|------------------------------|
| <b>POINTS</b>          | 15 | Lindenwood (09/19/2025)      |
| <b>GOALS</b>           | 5  | at Bemidji St. (11/22/2025)  |
|                        | 5  | Lindenwood (09/20/2025)      |
|                        | 5  | Lindenwood (09/19/2025)      |
| <b>ASSISTS</b>         | 10 | Lindenwood (09/19/2025)      |
| <b>SHOTS ON GOAL</b>   | 44 | St. Thomas (MN) (10/17/2025) |
| <b>SAVES</b>           | 52 | Wisconsin (11/15/2025)       |
| <b>PENALTIES</b>       | 7  | at UConn (09/27/2025)        |
| <b>PENALTY MINUTES</b> | 23 | Minn. Duluth (10/31/2025)    |
|                        | 23 | at Ohio St. (10/25/2025)     |

**Opponent - GAME HIGHS**

|                        |    |                              |
|------------------------|----|------------------------------|
| <b>POINTS</b>          | 18 | at Bemidji St. (11/22/2025)  |
| <b>GOALS</b>           | 6  | at Bemidji St. (11/22/2025)  |
| <b>ASSISTS</b>         | 12 | at Bemidji St. (11/22/2025)  |
| <b>SHOTS ON GOAL</b>   | 56 | Wisconsin (11/15/2025)       |
| <b>SAVES</b>           | 40 | St. Thomas (MN) (10/17/2025) |
| <b>PENALTIES</b>       | 7  | Ohio St. (01/09/2026)        |
|                        | 7  | vs Colgate (N) (11/28/2025)  |
|                        | 7  | Minnesota (10/11/2025)       |
| <b>PENALTY MINUTES</b> | 14 | Ohio St. (01/09/2026)        |
|                        | 14 | vs Colgate (N) (11/28/2025)  |
|                        | 14 | Minnesota (10/11/2025)       |



2025-26 SEASON + CAREER STATISTICS

Season

| #         | Player             | GP | G  | A   | PTS | SH  | SH%  | +/- | PEN-MIN | PP | SH | FG | GW | GT | OT | HT | UA | BLK |
|-----------|--------------------|----|----|-----|-----|-----|------|-----|---------|----|----|----|----|----|----|----|----|-----|
| 2         | Bryant, Sydney     | 22 | 1  | 4   | 5   | 26  | .038 | -10 | 6-12    | 0  | 0  | 0  | 0  | 0  | 0  | 0  | 0  | 12  |
| 3         | Jackel, Sidney     | 21 | 1  | 5   | 6   | 39  | .026 | +2  | 5-10    | 0  | 0  | 0  | 0  | 0  | 0  | 0  | 0  | 4   |
| 4         | Sauriol, Alice     | 22 | 5  | 9   | 14  | 69  | .072 | -4  | 5-18    | 1  | 0  | 1  | 2  | 0  | 1  | 0  | 0  | 13  |
| 6         | Erickson, Lily     | 2  | 0  | 0   | 0   | 0   | .000 | 0   | 0-0     | 0  | 0  | 0  | 0  | 0  | 0  | 0  | 0  | 0   |
| 7         | Remick, Payton     | 22 | 3  | 3   | 6   | 28  | .107 | +2  | 4-8     | 0  | 0  | 1  | 1  | 0  | 0  | 0  | 0  | 5   |
| 8         | Wolfe, Grace       | 22 | 3  | 10  | 13  | 45  | .067 | +3  | 7-25    | 0  | 1  | 0  | 0  | 0  | 0  | 0  | 0  | 33  |
| 9         | Voigt, Svenja      | 21 | 2  | 5   | 7   | 20  | .100 | -2  | 2-4     | 0  | 0  | 0  | 0  | 0  | 0  | 0  | 0  | 7   |
| 10        | Skiston, Aruba     | 7  | 0  | 0   | 0   | 1   | .000 | 0   | 0-0     | 0  | 0  | 0  | 0  | 0  | 0  | 0  | 0  | 0   |
| 11        | Zimmermann, Laura  | 22 | 6  | 5   | 11  | 50  | .120 | -3  | 12-35   | 0  | 0  | 3  | 0  | 0  | 0  | 0  | 0  | 12  |
| 12        | Mustonen, Raili    | 21 | 2  | 3   | 5   | 24  | .083 | -10 | 0-0     | 0  | 0  | 0  | 0  | 0  | 0  | 0  | 0  | 7   |
| 13        | Strauts, Reese     | 15 | 1  | 0   | 1   | 5   | .200 | +1  | 1-2     | 0  | 0  | 0  | 0  | 0  | 0  | 0  | 0  | 0   |
| 14        | Pion, Maélie       | 22 | 1  | 5   | 6   | 40  | .025 | 0   | 12-35   | 0  | 0  | 1  | 0  | 0  | 0  | 0  | 1  | 18  |
| 15        | Moran, Marie       | 22 | 1  | 1   | 2   | 36  | .028 | -7  | 1-2     | 0  | 0  | 0  | 0  | 0  | 0  | 0  | 0  | 7   |
| 16        | Farrell, Avery     | 21 | 4  | 9   | 13  | 38  | .105 | -4  | 6-12    | 1  | 0  | 0  | 0  | 0  | 0  | 0  | 0  | 9   |
| 17        | Labbé, Julianne    | 22 | 4  | 3   | 7   | 19  | .211 | +2  | 1-2     | 1  | 0  | 0  | 1  | 0  | 0  | 0  | 0  | 5   |
| 18        | Holloway, Payton   | 21 | 3  | 8   | 11  | 39  | .077 | +2  | 1-2     | 1  | 0  | 1  | 1  | 0  | 0  | 0  | 0  | 6   |
| 19        | Krueger, Myah      | 20 | 0  | 0   | 0   | 12  | .000 | -4  | 1-2     | 0  | 0  | 0  | 0  | 0  | 0  | 0  | 0  | 1   |
| 28        | Lamb, Sydney       | 19 | 2  | 4   | 6   | 27  | .074 | +8  | 1-2     | 0  | 0  | 0  | 0  | 0  | 0  | 0  | 0  | 14  |
| 29        | Chobak, Jojo       | 12 | 0  | 0   | 0   | 0   | .000 | 0   | 0-0     | 0  | 0  | 0  | 0  | 0  | 0  | 0  | 0  | 0   |
| 31        | Hoogendam, Paige   | 2  | 0  | 0   | 0   | 0   | .000 | 0   | 0-0     | 0  | 0  | 0  | 0  | 0  | 0  | 0  | 0  | 0   |
| 34        | Sundelin, Sofianna | 22 | 9  | 8   | 17  | 48  | .188 | -3  | 3-6     | 3  | 0  | 3  | 1  | 0  | 1  | 1  | 1  | 14  |
| 41        | Yrjölä, Siiri      | 22 | 1  | 7   | 8   | 26  | .038 | +5  | 2-4     | 0  | 0  | 0  | 0  | 0  | 0  | 0  | 0  | 24  |
| 42        | Kyrkkö, Emilia     | 11 | 0  | 0   | 0   | 0   | .000 | 0   | 0-0     | 0  | 0  | 0  | 0  | 0  | 0  | 0  | 0  | 0   |
| 44        | Mikaelyan, Maria   | 21 | 7  | 6   | 13  | 67  | .104 | 0   | 9-18    | 3  | 0  | 1  | 1  | 1  | 0  | 0  | 0  | 8   |
| 45        | Bulger, Regan      | 5  | 0  | 0   | 0   | 5   | .000 | -1  | 0-0     | 0  | 0  | 0  | 0  | 0  | 0  | 0  | 0  | 3   |
| Totals    |                    | 22 | 56 | 95  | 151 | 664 | .084 | -23 | 84-209  | 10 | 1  | 11 | 7  | 1  | 2  | 1  | 2  | 202 |
| Opponents |                    | 22 | 67 | 116 | 183 | 714 | .094 | +22 | 77-154  | 17 | 0  | 11 | 14 | 0  | 3  | 1  | 5  | 250 |

Career

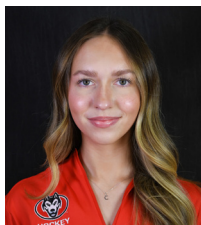
| GP  | G  | A  | PTS | SH  | SH%  | +/- | PEN-MIN | PP | SH | FG | GW | GT | OT | HT | UA | BLK |     |
|-----|----|----|-----|-----|------|-----|---------|----|----|----|----|----|----|----|----|-----|-----|
| 40  | 1  | 4  | 5   | 33  | .030 | -12 | 7-14    | 0  | 0  | 0  | 0  | 0  | 0  | 0  | 0  | 0   | 17  |
| 85  | 10 | 17 | 27  | 186 | .054 | -30 | 16-32   | 1  | 0  | 0  | 1  | 0  | 0  | 0  | 0  | 2   | 20  |
| 94  | 18 | 33 | 51  | 207 | .087 | -5  | 15-38   | 3  | 1  | 5  | 5  | 0  | 1  | 0  | 0  | 2   | 42  |
| 2   | 0  | 0  | 0   | 0   | .000 | 0   | 0-0     | 0  | 0  | 0  | 0  | 0  | 0  | 0  | 0  | 0   | 0   |
| 22  | 3  | 3  | 6   | 28  | .107 | +2  | 4-8     | 0  | 0  | 1  | 1  | 0  | 0  | 0  | 0  | 0   | 5   |
| 139 | 10 | 40 | 50  | 156 | .064 | -22 | 31-73   | 2  | 1  | 0  | 0  | 0  | 0  | 0  | 0  | 0   | 240 |
| 110 | 6  | 11 | 17  | 52  | .115 | -1  | 16-32   | 0  | 0  | 2  | 0  | 0  | 0  | 0  | 0  | 0   | 15  |
| 7   | 0  | 0  | 0   | 1   | .000 | 0   | 0-0     | 0  | 0  | 0  | 0  | 0  | 0  | 0  | 0  | 0   | 0   |
| 91  | 17 | 19 | 36  | 190 | .089 | -6  | 22-55   | 3  | 0  | 4  | 1  | 1  | 0  | 0  | 0  | 0   | 36  |
| 21  | 2  | 3  | 5   | 24  | .083 | -10 | 0-0     | 0  | 0  | 0  | 0  | 0  | 0  | 0  | 0  | 0   | 7   |
| 15  | 1  | 0  | 1   | 5   | .200 | +1  | 1-2     | 0  | 0  | 0  | 0  | 0  | 0  | 0  | 0  | 0   | 0   |
| 22  | 1  | 5  | 6   | 40  | .025 | 0   | 12-35   | 0  | 0  | 1  | 0  | 0  | 0  | 0  | 0  | 1   | 18  |
| 58  | 3  | 3  | 6   | 61  | .049 | -7  | 4-19    | 0  | 0  | 0  | 1  | 0  | 0  | 0  | 0  | 0   | 12  |
| 128 | 29 | 35 | 64  | 230 | .126 | -2  | 19-38   | 4  | 1  | 1  | 3  | 2  | 1  | 0  | 4  | 42  |     |
| 22  | 4  | 3  | 7   | 19  | .211 | +2  | 1-2     | 1  | 0  | 0  | 1  | 0  | 0  | 0  | 0  | 0   | 5   |
| 85  | 4  | 10 | 14  | 64  | .063 | +3  | 1-2     | 1  | 0  | 1  | 1  | 0  | 0  | 0  | 0  | 0   | 12  |
| 20  | 0  | 0  | 0   | 12  | .000 | -4  | 1-2     | 0  | 0  | 0  | 0  | 0  | 0  | 0  | 0  | 0   | 1   |
| 19  | 2  | 4  | 6   | 27  | .074 | +8  | 1-2     | 0  | 0  | 0  | 0  | 0  | 0  | 0  | 0  | 0   | 14  |
| 71  | 0  | 1  | 1   | 0   | .000 | 0   | 0-0     | 0  | 0  | 0  | 0  | 0  | 0  | 0  | 0  | 0   | 0   |
| 2   | 0  | 0  | 0   | 0   | .000 | 0   | 0-0     | 0  | 0  | 0  | 0  | 0  | 0  | 0  | 0  | 0   | 0   |
| 94  | 21 | 24 | 45  | 186 | .113 | -6  | 13-26   | 5  | 0  | 9  | 3  | 0  | 2  | 1  | 2  | 51  |     |
| 54  | 3  | 10 | 13  | 42  | .071 | +8  | 5-10    | 2  | 0  | 0  | 0  | 0  | 0  | 0  | 0  | 0   | 30  |
| 29  | 0  | 0  | 0   | 0   | .000 | 0   | 1-2     | 0  | 0  | 0  | 0  | 0  | 0  | 0  | 0  | 0   | 0   |
| 21  | 7  | 6  | 13  | 67  | .104 | 0   | 9-18    | 3  | 0  | 1  | 1  | 1  | 0  | 0  | 0  | 0   | 8   |
| 71  | 0  | 8  | 8   | 46  | .000 | -12 | 13-26   | 0  | 0  | 0  | 0  | 0  | 0  | 0  | 0  | 0   | 113 |

| #         | Player           | GP-GS | MINUTES | GA | GA AVG | SAVES | PCT  | W  | L  | T | SHO | PP | SH | EN |
|-----------|------------------|-------|---------|----|--------|-------|------|----|----|---|-----|----|----|----|
| 29        | Chobak, Jojo     | 12-11 | 598:09  | 38 | 3.81   | 304   | .889 | 2  | 8  | 0 | 1   | 11 | 0  | 2  |
| 31        | Hoogendam, Paige | 2-1   | 97:51   | 6  | 3.68   | 34    | .850 | 0  | 2  | 0 | 0   | 2  | 0  | 0  |
| 42        | Kyrkkö, Emilia   | 11-10 | 616:10  | 21 | 2.04   | 309   | .936 | 5  | 4  | 1 | 3   | 4  | 0  | 0  |
| Totals    |                  | 22-0  | 1312:10 | 67 | 3.02   | 647   | .906 | 7  | 14 | 1 | 4   | 17 | 0  | 2  |
| Opponents |                  | 22-0  | 1329:43 | 56 | 2.52   | 608   | .916 | 14 | 7  | 1 | 2   | 10 | 1  | 0  |





## RADIO/TELEVISION ROSTER



**2**  
**SYDNEY BRYANT**  
D | 5'8 | R-So. | R  
Traverse City, Mich.



**3**  
**SIDNEY JACKEL**  
F | 5'10 | Jr. | R  
Ann Arbor, Mich.



**4**  
**ALICE SAURIOL**  
F | 5'4 | Jr. | L  
Sherbrooke, Quebec



**6**  
**LILY ERICKSON**  
F | 5'5 | Fr. | R  
Roseau, Minn.



**7**  
**PAYTON REMICK**  
F | 5'7 | Fr. | R  
Roseau, Minn.



**8**  
**GRACE WOLFE (C)**  
D | 5'9 | Gr. | R  
Owatonna, Minn.



**9**  
**SVENJA VOIGT**  
F | 5'5 | Sr. | L  
Cologne, Germany



**10**  
**ARUBA SKISTON**  
D | 5'5 | Fr. | L  
Bensenville, Ill.



**11**  
**LAURA ZIMMERMANN (A)**  
F | 5'4 | R-Jr. | L  
Rinngenberg, Switzerland



**12**  
**RAILI MUSTONEN**  
F | 5'5 | Fr. | L  
Kalajoki, Finland



**13**  
**REESE STRAUTS**  
F | 5'8 | Fr. | R  
Brandon, Wis.



**14**  
**MAËLIE PION**  
D | 5'11 | Fr. | L  
Sherbrooke, Quebec



**15**  
**MARIE MORAN**  
F | 5'8 | R-So. | R  
Lakeville, Minn.



**16**  
**AVERY FARRELL**  
F | 5'4 | Sr. | R  
Rogers, Minn.



**17**  
**JULIAANE LABBÉ**  
F | 5'8 | Fr. | L  
Wendake, Quebec



**18**  
**PAYTON HOLLOWAY**  
F | 5'8 | Jr. | L  
Tomah, Wis.



**19**  
**MYAH KRUEGER**  
F | 5'7 | R-Fr. | R  
Stillwater, Minn.



**23**  
**HANNAH ARNOLD**  
D | 5'8 | Fr. | R  
Winnipeg, Manitoba



**28**  
**SYDNEY LAMB**  
D | 5'7 | Fr. | R  
Lombard, Ill.



**29**  
**JOJO CHOBAK (A)**  
G | 5'8 | Gr. | L  
Chicago, Ill.



**31**  
**PAIGE HOOGEN DAM**  
G | 5'8 | R-So. | L  
Ajax, Ontario



**34**  
**SOFIANNA SUNDELIN**  
F | 5'7 | Jr. | L  
Ulvila, Finland



**40**  
**HANNELE TARKAINEN**  
D | 5'7 | So. | L  
Pieksämäki, Finland



**41**  
**SIIRI YRJÖLÄ**  
D | 5'5 | So. | L  
Vantaa, Finland



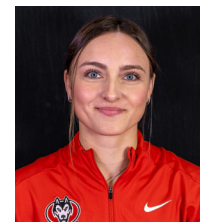
**42**  
**EMILIA KYRKKÖ**  
G | 5'7 | So. | L  
Nokia, Finland



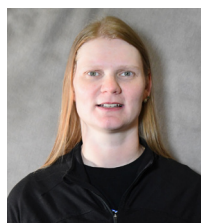
**44**  
**MARIA MIKAELYAN**  
F | 5'8 | Fr. | L  
Moscow, Russia



**45**  
**REGAN BULGER (A)**  
D | 5'6 | R-Jr. | L  
Yellowknife, Northwest Territories



**56**  
**HALI LAWRENCE**  
G | 5'7 | Sr. | L  
Calgary, Alberta



**HEAD COACH**  
**MIRA JALOSUO**  
First Season  
Minnesota (2013)



**ASSOC. HC**  
**JINNELLE SIERGIEJ**  
12th Season  
Wisconsin (2008)



**ASST. COACH**  
**NOORA RÄTTY**  
Second Season  
Minnesota (2013)



**ASST. COACH**  
**EMILY ACH**  
Second Season  
Augsburg (2020)



**S&C COACH**  
**JAKE FRANCKEZ**  
Sixth Season  
Grand Valley State (2020)



**ATH. TRAINER**  
**RACHEL NAGEL**  
Fifth Season  
Wisconsin (2021)



**SID**  
**JACOB SANDERS**  
Second Season  
Central (Iowa) (2023)

