



# ST. CLOUD STATE HUSKIES

WOMEN'S HOCKEY - 2024-25 SERIES NOTES - Feb. 7-8, 2025

Two WCHA Semifinals | Once NCAA All-American | One Conference Player of the Year | Two Conference Goaltenders of the Year  
24 All-Conference Selections | 117 WCHA Scholar Athletes | 266 Academic All-Conference Honorees | 24 Professional Contracts

GAME  
29

#11 HUSKIES (13-10-5, 8-10-4 WCHA)  
(RV) MINNESOTA STATE (11-16-1, 5-16-1 WCHA)  
Friday, Feb. 7  
3 p.m. CT  
Mayo Clinic HSEC (Mankato, Minn.)

GAME  
30

#11 HUSKIES (13-10-5, 8-10-4 WCHA)  
(RV) MINNESOTA STATE (11-16-1, 5-16-1 WCHA)  
Saturday, Feb. 8  
2 p.m. CT  
Mayo Clinic HSEC (Mankato, Minn.)

## 2024-25 SCHEDULE

DATE	OPPONENT	TV	TIME (CT)
Sept. 21	Lindenwood (Mo.)	FloHockey	W, 4-0
Sept. 22	Lindenwood (Mo.)	FloHockey	W, 6-2
Sept. 27	MANTIOBA (EXHIBITION)	B1G+	Completed
Oct. 4	#15/RV MERCYHURST (PA.)	B1G+	W, 2-1
Oct. 5	#15/RV MERCYHURST (PA.)	B1G+	W, 2-0
Oct. 11	Bemidji State *	B1G+	W, 1-0
Oct. 12	Bemidji State *	B1G+	W, 2-0
Oct. 18	#2 OHIO STATE *	B1G+	L, 5-1
Oct. 19	#2 OHIO STATE *	B1G+	T, 3-3 OT, SOW
Oct. 25	(RV) St. Thomas *	B1G+	T, 1-1 OT, SOL
Oct. 26	(RV) ST. THOMAS *	FOX9+/B1G+	W, 3-1
Nov. 1	#1 WISCONSIN *	B1G+	L, 6-0
Nov. 2	#1 WISCONSIN *	B1G+	L, 4-0
Nov. 15	(RV) MINNESOTA STATE *	B1G+	L, 4-1
Nov. 16	(RV) MINNESOTA STATE *	B1G+	W, 3-2 OT
Nov. 22	#3 MINNESOTA *	B1G+	L, 5-2
Nov. 23	#3 MINNESOTA *	B1G+	W, 3-1
Nov. 29	Union (N.Y.)	ESPN+	T, 2-2 OT, SOL
Nov. 30	Union (N.Y.)	ESPN+	W, 2-1
Dec. 6	#4 MINNESOTA DULUTH *	B1G+	T, 1-1 OT, SOL
Dec. 7	#4 MINNESOTA DULUTH *	B1G+	L, 3-1
Jan. 4	St. Thomas	-	Completed
Jan. 10	#4 Minnesota Duluth *	B1G+	L, 3-0
Jan. 11	#4 Minnesota Duluth *	B1G+	L, 3-0
Jan. 17	BEMIDJI STATE *	B1G+	W, 3-0
Jan. 18	BEMIDJI STATE *	B1G+	W, 3-2
Jan. 25	#1 Wisconsin *	B1G+	L, 5-2
Jan. 26	#1 Wisconsin *	B1G+	T, 2-2 OT, SOL
Jan. 31	(RV) ST. THOMAS *	B1G+	W, 5-2
Feb. 1	(RV) St. Thomas *	FOX9+/B1G+	L, 2-1 OT
Feb. 7	(RV) Minnesota State *	B1G+	3 pm
Feb. 8	(RV) Minnesota State *	B1G+	2 pm
Feb. 14	Minnesota *	B1G+	6 pm
Feb. 15	MINNESOTA *	B1G+	3 pm
Feb. 21	Ohio State *	B1G+	5 pm
Feb. 22	Ohio State *	B1G+	2 pm
Feb. 28 - Mar. 2	WCHA Quarterfinals ^	B1G+	TBD
Mar. 8 - 9	WCHA Final Faceoff !	FOX9+	TBD
Mar. 15 - 16	NCAA Regional Tournament \$	TBD	TBD
Mar. 22 - 23	NCAA Frozen Four %	TBD	TBD

### BOLD - Home Game

\* - WCHA Game

^ - WCHA Quarterfinals, Higher Seed

! - WCHA Final Faceoff, AMSOIL Arena in Duluth, Minn.

\$ - NCAA Regional Tournament, Regional Host

% - NCAA Frozen Four, Ridder Arena in Minneapolis, Minn.

\*ALL DATES AND TIMES SUBJECT TO CHANGE\*

## ST. CLOUD STATE ATHLETIC COMMUNICATIONS

JACOB SANDERS, ASSISTANT DIRECTOR

jacob.sanders@go.stcloudstate.edu

Halenbeck Hall 328, 720 4th Ave S, St. Cloud, MN 56301



## NO. 11 ST. CLOUD STATE HUSKIES

Head Coach: Brian Idalski  
Alma Mater: UW-Stevens Point, '95  
Career Record: 325 - 222 - 58 (18<sup>th</sup> season)  
SCSU Record: 48 - 45 - 8 (3<sup>rd</sup> season)

## STATS BREAKDOWN (2024-25)

Goals/Game	2.00
Goals Allowed/Game	2.18
Power Play	18.4%
Penalty Kill	82.1%
Shots/Game	27.8
Shots Faced/Game	25.8
Penalty Minutes/Game	7:26
Faceoffs	45.9%

## 2024-25 TOP PERFORMERS

Goals	Sofianna Sundelin (8)
Assists	Alice Sauriol (14)
Points	Alice Sauriol (18)
Faceoffs Won	Emma Gentry (259)
Plus/Minus	Dayle Ross (+7)
Blocks	Grace Wolfe (43)
Goalie Wins	Sanni Ahola (8)
GAA	Emilia Kyrkkö (1.90)
Save %	Emilia Kyrkkö (.927)

## SERIES HISTORY

SCSU leads Minnesota State, 53 - 43 - 13  
In St. Cloud: 31 - 21 - 5  
In Mankato: 22 - 21 - 6  
At Neutral Sites: 0 - 1 - 2  
Last Meeting: Nov. 16, 2024 (3 - 2 OT SCSU)  
First Meeting: Nov. 21, 1998 (5 - 0 MSU)  
Last Five Meetings: 3 - 2 - 0  
Last 10 Meetings: 6 - 4 - 0



## (RV) MINNESOTA STATE MAVERICKS

Head Coach: Shari Dickerman  
Alma Mater: Minnesota State, '04  
Career Record: 11 - 16 - 1 (1<sup>st</sup> season)  
MSU Record: Same

## STATS BREAKDOWN (2024-25)

Goals/Game	2.86
Goals Allowed/Game	2.93
Power Play	18.6%
Penalty Kill	76.2%
Shots/Game	27.1
Shots Faced/Game	29.5
Penalty Minutes/Game	5:08
Faceoffs	47.3%

## 2024-25 TOP PERFORMERS

Goals	Whitney Tuttle (13)
Assists	Mashuga and Nelson (16)
Points	Mashuga and Otremba (24)
Faceoffs Won	Sydney Langseth (227)
Plus/Minus	Whitney Tuttle (+10)
Blocks	Janessa Gazdik (44)
Goalie Wins	Hailey Hansen (77)
GAA	Jessie McPherson (2.62)
Save %	Jessie McPherson (.911)

## BLIZZARD'S BULLETS

### FRESH ICE

No. 11 St. Cloud State Women's Hockey (13-10-5, 8-10-4 Western Collegiate Hockey Association) travels to Mankato and the Mayo Clinic HSEC for a road series against (RV) Minnesota State (11-16-1, 5-16-1 WCHA) this weekend on Friday and Saturday. Puck drop on Friday is slated for 3 p.m., while Saturday's game is scheduled for 2 p.m.

### FOLLOW THE HUSKIES

Both games will be streamed on B1G+ (note - a paid subscription is required) with radio coverage on 97.5 FM RadioX. KVSC talent Brian Moos (play-by-play) and Sam Roering (color) will be on the call. Live stats will be provided by Minnesota State. Links to each coverage option are available on the SCSU Women's Hockey schedule page.

### SERIES HISTORY

SCSU leads the all-time series against Minnesota State, 53-43-13, including an 6-4-0 record in the team's last 10 matchups. The Huskies own a 22-21-6 record when playing MSU in Mankato. Earlier this season, SCSU went 1-1-0 against the Mavericks on Nov. 15-16 at the Herb Brooks National Hockey Center in St. Cloud, losing the first game 4-1 before winning the series finale, 3-2 in overtime.

The then-No. 8 SCSU penalty kill went a perfect 4-for-4 in the series, but the power play was held scoreless (0-for-3) and the Huskies won just 43.2% of the faceoffs over the two games. Junior forward **Avery Farrell** (Rogers, Minn.), senior defender **Dayle Ross** (Spirit River, Alberta) and sophomore forward **Alice Sauriol** (Sherbrooke, Quebec) each tallied two points for the Huskies. Farrell netted two goals, while Ross and Sauriol each tallied two assists.

### LET'S GO POLLING

The Huskies are ranked No. 11 in both the USCHO and USA Hockey/The Rink Live Polls. St. Cloud State is one of five WCHA programs featured in the rankings with two additional clubs receiving votes. Minnesota State enters the series receiving votes in the USA Hockey/The Rink Live Poll.

## FOLLOW THE HUSKIES



@SCSUHuskies\_WHK



@scsuhuskies\_whk



/SCSUWHKY



## QUICK FACTS

## UNIVERSITY INFORMATION

Location	St. Cloud, Minn.
Affiliation	NCAA Division I
Colors	Spirit Red and Black
Conference	WCHA
Mascot	Blizzard T. Husky
President	Larry Dietz (Interim)

## TEAM INFORMATION

2023-24 Overall Record	17-17-2
2023-24 WCHA Record/Finish	12-14-2, 5th
2023 WCHA Tournament Finish	QF, 0-2
2023 NCAA Tournament Finish	DNQ
2023 Final National Ranking	USCHO - 11 USA Hockey - 11
Point Scorers Returning/Lost	14/7
Letterwinners Returning/Lost	18/8
Number of Total Newcomers	6
Facility	Herb Brooks National Hockey Center
Home Capacity	5,371

## COACHING STAFF

Head Coach	Brian Idalski
Career Overall Record	325-222-58
St. Cloud State Overall Record	48-45-8
Career WCHA Record	156-164-40
Career Postseason Record	29-25
St. Cloud State Postseason Record	0-4
Best Overall Record	18-18-1 (2022-23)
Best WCHA Tourn. Finish	SF (2006, 2008)
Best NCAA Tourn. Finish	N/A
Associate Head Coach	Jinelle Siergiej
Assistant Coach	Noora Rätty
Assistant Coach	Emily Ach
Hockey Operations	Trent Hunter
Strength Coach	Jake Franzcek
Athletic Trainer	Rachel Nagel
Equipment Manager	Colin Jacobsen
SID	Jacob Sanders

## ROSTER BREAKDOWN

Total Athletes	26
Forwards	14
Defenders	9
Goaltenders	4
Graduate Students	0
Seniors/Fifth years	11
Juniors	3
Sophomores	9
Freshmen	3
Prep Recruits	18
Transfers	8

## PROGRAM HISTORY

Inagural Season	1998-99
All-Time Record	265-536-74 (.345)
Best Overall Record	18-15-5 (2007-08)
Best WCHA Record	12-10-2 (2000-01)
WCHA Semifinal Appearances (2)	2006, 2008

## 2024-25 ST. CLOUD STATE HUSKIES WOMEN'S HOCKEY

No.	Name	Pos.	Ht.	S/C	Cl.	Hometown/Previous Team
1	Sanni Ahola	G	5-7	L	5Y	Helsinki, Finland / HIFK (NSML)
2	Dayle Ross - C	D	5-6	R	Sr.	Spirit River, Alberta / St. Albert Slash (AFHL)
4	Alice Souriol	F	5-4	L	So.	Sherbrooke, Quebec / Stanstead College (CAHS)
5	Brieja Parent	F	5-4	L	5Y	Forest Lake, Minn. / St. Thomas (NCAA)
6	Taylor Larson - C	D	5-8	L	Sr.	Nisswa, Minn. / Bemidji State (NCAA)
8	Grace Wolfe - C	D	5-9	R	Sr.	Owatonna, Minn. / Owatonna HS
9	Svenja Voigt	F	5-5	L	Jr.	Cologne, Germany / Stanstead College (CAHS)
10	Abby Promersberger	F	5-6	R	Sr.	Fargo, N.D. / St. Thomas (NCAA)
11	Laura Zimmermann	F	5-4	L	R-So.	Ringgenberg, Switzerland / EV Bomo Thun (SWHL)
12	Ally Qualley	F	5-7	R	5Y	Brooklyn Park, Minn. / Merrimack (NCAA)
15	Marie Moran	F	5-8	R	So.	Lakeville, Minn. / Apple Valley HS
16	Avery Farrell	F	5-4	R	Jr.	Rogers, Minn. / Franklin Pierce (NCAA)
17	Ella Anick	D	5-6	R	Sr.	Hermantown, Minn. / Bemidji State (NCAA)
18	Greta Henderson	F	5-6	R	So.	Regina, Saskatchewan / Regina Rebels (SFU18AAAHL)
19	Myah Krueger	F	5-7	R	Fr.	Stillwater, Minn. / Stillwater HS
20	Emma Gentry - C	F	5-11	L	5Y	Alpena, Mich. / HoneyBaked (HPHL)
21	Avery Myers	F	5-7	R	5Y	Fargo, N.D. / New Hampshire (NCAA)
22	Grace Delmonico	F	5-3	L	So.	Eagan, Minn. / Gentry Academy
23	Sydney Bryant	D	5-8	R	So.	Traverse City, Mich. / Belle Tire (19U AAA)
27	Carmen Bray	D	5-8	L	So.	Nanaimo, British Columbia / Rink Hockey Academy Kelowna (CSSHL)
29	Jojo Chobak	G	5-8	L	5Y	Chicago, Ill. / Minnesota Duluth (NCAA)
31	Paige Hoogendam	G	5-8	L	So.	Ajax, Ontario / Toronto Junior Aeros (OWHL)
34	Sofianna Sundelin	F	5-7	L	So.	Ulvila, Finland / Team Kuortane (NSML)
41	Siiri Yrjölä	D	5-5	L	Fr.	Vantaa, Finland / HIFK (NSML)
42	Emilia Kyrkkö	G	5-7	L	Fr.	Nokia, Finland / Team Kuortane (NSML)
45	Regan Bulger	D	5-6	L	Jr.	Yellowknife, Northwest Territories / Shattuck St. Mary's

## PRONUNCIATION GUIDE

1 – saw-knee uh-hole-uh	17 – ella ANN-ick	brian eye-DOLL-ski
2 – dale ROSS	19 – MY-uh KROO-gur	jin-ELL SIR-gay
4 – al-iss SOR-ee-ohl	20 – emma JENN-tree	Emily ahck (like dock)
5 – BREE-uh PAIR-ent	22 – grace dell-MON-ick-oh	NORR-uh RAH-too
8 – grace wolf	29 – jojo CHO-back	jake FRAN-check
9 – ss-VEN-yuh VOKED (rhymes with poked)	31 – paige WHO-ghen-dam	rachel NAY-gull
10 – abby prom-ERS-burger	34 – SO-fee-ON-uh SUN-duh-lin	
11 – LOR-uh ZIM-er-man	41 – siri oo-rey-la	
12 – AL-ee KWALL-ee	42 – emilia kuh-ree-ko	
15 – ma-REE more-ANN	45 – REE-ghen BULL-jer	
16 – avery FAIR-ull		

## ROSTER GEOGRAPHY

Minnesota (9)			Europe (6)		
Name	Pos.	Hometown	Name	Pos.	Country
Ella Anick	D	Hermantown	Sanni Ahola	G	Finland
Grace Delmonico	F	Eagan	Emilia Kyrkkö	G	Finland
Avery Farrell	F	Rogers	Sofianna Sundelin	F	Finland
Myah Krueger	F	Stillwater	Svenja Voigt	F	Germany
Taylor Larson - C	D	Nisswa	Siiri Yrjölä	D	Finland
Marie Moran	F/D	Lakeville	Laura Zimmermann	F	Switzerland
Brieja Parent	F	Forest Lake			
Ally Qualley	F	Brooklyn Park			
Grace Wolfe - C	D	Owatonna			
Canada (6)			Michigan (2)		
Name	Pos.	Province	Name	Pos.	Hometown
Carmen Bray	D	British Columbia	Sydney Bryant	D	Traverse City
Regan Bulger	D	Northwest Territories	Emma Gentry - C	F	Alpena
Greta Henderson	F	Saskatchewan			
Paige Hoogendam	G	Ontario			
Dayle Ross - C	D	Alberta			
Alice Sauriol	F	Quebec			
North Dakota (2)			Illinois (1)		
Name	Pos.	Hometown	Name	Pos.	Hometown
Avery Myers	F	Fargo	Jojo Chobak	G	Chicago
Abby Promersberger	F	Fargo			



## BLIZZARD'S BULLETS

## LAST TIME OUT

Last weekend, the then-No. 11/10 Huskies went 1-1-0 against (RV) St. Thomas (8-18-2, 5-16-1 WCHA), winning 5-2 on Friday in St. Cloud and losing 2-1 in overtime in Mendota Heights on Saturday.

Sophomore forward **Sofianna Sundelin** (Ulvila, Finland) led the Huskies with a four-point weekend (three goals/one assist) and fifth year goaltender **Sanni Ahola** (Helsinki, Finland) broke the school record for goaltender wins on Friday.

On Saturday, the Huskies scored 5+ goals for the first time since their season-opening series at Lindenwood on September 22 and tied its season high of 14 points in a game. Their nine assists and +20 +/- marked new season highs.

## THIS WEEK IN THE WCHA

Friday, Feb. 7

No. 11 St. Cloud State at (RV) Minnesota State\* - 3 PM CT

(RV) St. Thomas at No. 2 Ohio State\* - 5 PM CT

No. 6 Minnesota Duluth at Bemidji State\* - 6 PM CT

Saturday, Feb. 8

(RV) St. Thomas at No. 2 Ohio State\* - NOON CT

No. 11 St. Cloud State at (RV) Minnesota State\* - 2 PM CT

No. 3 Minnesota at No. 1 Wisconsin\* - 2 PM CT

No. 6 Minnesota Duluth at Bemidji State\* - 3 PM CT

Saturday, Feb. 9

No. 3 Minnesota at No. 1 Wisconsin\* - NOON CT

\*WCHA Game

## SANNI TIME

Fifth year goaltender **Sanni Ahola** (Helsinki, Finland) earned her eighth win of the season and 35th of her career to become the all-time leader in goaltender wins, passing Laura Gieselman (1999-2003). Ahola also owns career ranks of No. 1 in shutouts (10), No. 3 in goals against average (2.61), No. 4 in save percentage (.917) and No. 5 in saves (2,220).

## RECORD BOOK WATCH

Fifth year forward **Emma Gentry** (Alpena, Mich.) joined the program's top-10 list for played games on Saturday (144) and needs to play in just two more games to crack the top-5. She is 35 shots away from becoming the programs all-time leader and five points away from joining that top-10 list.

Head coach **Brian Idalski** is two wins away from 50 during his SCSU tenure.

## WCHA WEEKLY HONORS

Sophomore forward **Sofianna Sundelin** (Ulvila, Finland) was the named Western Collegiate Hockey Association (WCHA) Forward of the Week, as announced by the league office on Feb. 3, following her four-point performance in St. Cloud State's home-and-home split against (RV) St. Thomas. It was her first weekly award of the season and the second of her career (Rookie of the Week - Sept. 25, 2023).

The sophomore forward tied for the lead in goals (three), points (four), goals/game (1.50) and points/game (2.00) and was sixth in both faceoff wins (22) and faceoff wins/game (11.00) among WCHA skaters. She posted one of five 3+ point performances and was one of three players to have a 2+ goal, three-point game. Sundelin recorded one of four 15+ faceoff win games in the WCHA.

In Friday's 5-2 home win over (RV) St. Thomas, she tallied three points (two goals and one assist). It was her first career three-point game and first career multi-goal game. She is just the second Husky to score two goals in a game this season. In Saturday's overtime loss to UST, Sundelin scored the Huskies lone goal and her third of the weekend while winning a team-high 15 faceoffs. With the goal, she took sole possession of the team lead for goals this season (eight).

St. Cloud State has won each of the WCHA weekly awards at least once this season and Sundelin is the second to be named Forward of the Week. Freshman goaltender **Emilia Kyrkkö** (Nokia, Finland) was named the Goaltender of the Week twice (Oct. 7 & Oct. 28) and the Rookie of the Week once (Oct. 21), while fifth year forward **Emma Gentry** (Alpena, Mich.) and senior defender **Ella Anick** (Hermantown, Minn.) were named the conference Forward and Defender of the Week respectively on Sept. 23 after SCSU's season-opening sweep of Lindenwood.

It was the second time Anick had been named WCHA Defender of the Week in her career, both coming while playing for SCSU. It was Gentry's third career time being named the WCHA Forward of the Week.

## STANDINGS &amp; POLLS

2024-25 WESTERN COLLEGIATE HOCKEY  
ASSOCIATION STANDINGS

Team	WCHA Record	Points
No. 1 Wisconsin	21-1-2	65
No. 3 Minnesota	16-5-1	48
No. 2 Ohio State	15-6-3	48
No. 6 Minnesota Duluth	10-10-2	36
<b>No. 11 ST. CLOUD STATE</b>	<b>8-10-4</b>	<b>29</b>
(RV) Minnesota State	5-16-1	20
(RV) St. Thomas	5-16-1	16
Bemidji State	3-19-0	8

## USCHO NATIONAL POLL

- FEBRUARY 3 -

Rank	Team	Record	Pts	LR
1	Wisconsin (20)	27-1-2	300	1
2	Ohio State	21-6-3	277	2
3	Minnesota	22-6-1	261	3
4	Cornell	17-4-4	230	5
5	Colgate	24-6-0	228	4
6	Minnesota Duluth	15-11-2	200	6
7	St. Lawrence	16-9-5	165	7
8	Penn State	25-4-1	164	8
9	Quinnipiac	18-8-4	137	10
10	Clarkson	19-10-1	121	9
<b>11</b>	<b>ST. CLOUD STATE</b>	<b>13-10-5</b>	<b>92</b>	<b>11</b>
12	Princeton	16-8-1	79	13
13	Northeastern	18-9-1	57	14
14	Boston University	18-8-1	30	RV
15	Boston College	17-10-1	28	12

Others receiving votes: Connecticut 24, Yale 5, Brown 1, Mercyhurst 1

USA HOCKEY/THE RINK LIVE  
NATIONAL POLL

- FEBRUARY 4 -

Rank	Team	Record	Pts	LR
1	Wisconsin (19)	27-1-2	285	1
2	Ohio State	21-6-3	264	2
3	Minnesota	22-6-1	249	3
4	Cornell	17-4-4	215	5
5	Colgate	24-6-0	212	4
6	Minnesota Duluth	15-11-2	196	6
7	St. Lawrence	16-9-5	157	7
8	Penn State	25-4-1	148	8
9	Quinnipiac	18-8-4	130	11
10	Clarkson	19-10-1	100	9
<b>11</b>	<b>ST. CLOUD STATE</b>	<b>13-10-5</b>	<b>95</b>	<b>10</b>
12	Northeastern	18-9-1	70	12
13	Princeton	16-8-1	68	14
14	Boston University	18-8-1	44	RV
15	Boston College	17-10-1	22	13

Others receiving votes: St. Thomas 7, Yale 2, Minnesota State 2, Mercyhurst 1

## ST. CLOUD STATE NATIONAL POLL HISTORY

Highest National Ranking: No. 7 (3x; Oct. 29, 2024 | Oct. 22, 2024 | Dec. 12, 2023)

Highest Final National Ranking: No. 11 (2023-24)

Highest Preseason Ranking: No. 11 (2024-25)

Top-Ranked Opponent Defeated: No. 1 (4x; at Ohio State, Dec. 1, 2023 | vs. Minnesota, Nov. 7, 2022 | vs. Wisconsin, Oct. 19, 2007 | vs. Wisconsin, Feb. 4, 2006)

## 2024-25 HUSKIES NATIONAL RANKINGS (USCHO | USA):

Preseason: 11   11	Week Twelve: 8   8
Week One: -   11	Week Thirteen: -   9
Week Two: 11   11	Week Fourteen: 10   9
Week Three: 11   11	Week Fifteen: 11   11
Week Four: 11   10	Week Sixteen: 11   11
Week Five: 8   7	Week Seventeen: 11   10
Week Six: 8   7	Week Eighteen: 11   11
Week Seven: 9   9	
Week Eight: 8   8	
Week Nine: 10   9	
Week Ten: 8   8	
Week Eleven: 8   9	





## BLIZZARD'S BULLETS

**HCA WOMEN'S GOALIE OF THE YEAR AWARD WATCH LIST**

Fifth year goaltender **Sanni Ahola** (Helsinki, Finland) and freshman goaltender **Emilia Kyrkkö** (Nokia, Finland) have been named to the Hockey Commissioners Association (HCA) Women's Goalie of the Year Award Watch List, as announced by the organization on Jan. 14. The HCA National Women's Goalie of the Year Award was created in 2021 to recognize the top female goalie in NCAA Division I Hockey. Ahola was also named to the watch list last season.

The duo are two of seven Western Collegiate Hockey Association (WCHA) players on the 33-member watch list. The goalies to watch come from all five NCAA Division I conferences with 17 from the United States, nine from Canada and seven from Europe (two from Finland, two from Sweden and one each from Austria, Denmark and Slovenia.)

**HUSKIES AT THE SIX NATIONS TOURNAMENT**

St. Cloud State Women's Hockey had six current players and one alumna compete for their respective country's national team at the 2024 Six Nations Tournament that took place from Dec. 11-15 in Tampere, Finland. The Six Nations Tournament was the third competition on the annual Women's Euro Hockey Tour (WEHT) and in addition to Switzerland, included Canada, Czechia, Finland, Sweden and the U.S.

Fifth year forward **Emma Gentry** (Alpena, Mich.) represented the Stars and Stripes of the United States on the U.S. Collegiate Women's Select Team while fifth year goaltender **Sanni Ahola** (Helsinki, Finland), freshman goaltender **Emilia Kyrkkö** (Nokia, Finland), sophomore forward **Sofianna Sundelin** (Ulvila, Finland) and freshman defender **Siiri Yrjölä** (Vantaa, Finland) were joined by 2023 SCSU alumna **Jenniina Nylund** (Pietarsaari, Finland) on the Finnish National Team and redshirt sophomore forward **Laura Zimmermann** (Ringgenberg, Switzerland) played for the Swiss National Team.

The six participating countries were split into two groups. Group A included the United States, Finland and Switzerland, while Group B featured Canada, Czechia and Sweden. The United States beat Finland 4-0 and Switzerland 6-2 to win the group while Finland beat the Swiss 4-0 to take second place in the group and advanced to the semifinals. Sundelin scored in the 4-0 shutout of Switzerland. Finland dropped its semifinal game to Canada, 3-0 and its third-place game to Sweden, 2-1. The U.S. took down Sweden 5-0 in the semifinals and Canada 5-3 in the championship.

**FIRST EVER HUSKY ON A PWWHL OPENING DAY ROSTER**

Former St. Cloud State Women's Hockey forward **Klára Hymlárová** (Opava, Czech Republic) made history for the program on Nov. 29 when she was named to the opening day roster for the Minnesota Frost of the Professional Women's Hockey League (PWHL) following the team's preseason minicamp. She became the first alumna to make an opening day roster for a PWHL team.

On June 10, Hymlárová was selected by then-PWHL Minnesota in the 3rd round (15th overall) of the league's draft, becoming the first Husky to be selected since the inauguration of the PWHL Draft in 2023.

The Frost won the first annual Walter Cup Championship in 2023-24 and return 16 members from that team. The final 10 players that make up the 26-player roster are PWHL rookies, including Hymlárová. The Frost opened their season with a 4-3 overtime loss against the New York Sirens on Sunday. Hymlárová skated to a +1 mark in her professional debut.

A two-time alternate captain, Hymlárová ended her five-year Huskies career in 2023-24 with 36 goals and 53 assists for 89 points over 142 collegiate games. She compiled four Western Collegiate Hockey Association (WCHA) weekly awards in her career including one Forward of the Week nod in 2023-24 after being named Most Outstanding Player at the 2023 Ice Breaker in which she led the Huskies to the title with a natural hat trick in the Championship Game, and three Rookie of the Week selections in 2019-20. She also earned WCHA Rookie of the Month honors in December 2019 and was named to the 2019-20 WCHA All-Rookie Team.

**HCA NATIONAL ROOKIE OF THE MONTH**

Freshman goaltender **Emilia Kyrkkö** (Nokia, Finland) was named the Hockey Commissioners Association (HCA) National Rookie of the Month, as announced by the organization on Nov. 1, following her impressive stretch in the net during the month of October.

**WCHA ROOKIE OF THE MONTH**

Freshman goaltender **Emilia Kyrkkö** (Nokia, Finland) was named Western Collegiate Hockey Association (WCHA) Rookie of the Month, by the league office on Oct. 30, following her impressive stretch between the pipes during the month of October.

Throughout October, she earned her first three WCHA weekly honors of the season and of her career. She was named Goaltender of the Week on Oct. 7 and Oct. 28 and was tabbed as the league's Rookie of the Week on Oct. 21.

## 2024-25 HUSKIES HONORS

**SANNI AHOLA**

- Finland National Team - Six Nations Tournament (Dec. 11-15)
- HCA Women's Goalie of the Year Award Watch List (Jan. 14)

**ELLA ANICK**

- WCHA Defender of the Week (Sept. 23)

**EMMA GENTRY**

- U.S. Collegiate Select Team - Collegiate Select Series (Aug. 14-17)
- WCHA Forward of the Week (Sept. 23)
- U.S. Collegiate Select Team - Six Nations Tournament (Dec. 11-15)

**EMILIA KYRKKÖ**

- WCHA Goaltender of the Week (Oct. 7)
- WCHA Rookie of the Week (Oct. 21)
- WCHA Goaltender of the Week (Oct. 28)
- WCHA Rookie of the Month (October)
- HCA National Rookie of the Month (October)
- Finland National Team - Six Nations Tournament (Dec. 11-15)
- HCA Women's Goalie of the Year Award Watch List (Jan. 14)

**SOFIANNA SUNDELIN**

- Finland National Team - Six Nations Tournament (Dec. 11-15)
- WCHA Forward of the Week (Feb. 3)

**SIIRI YRJÖLÄ**

- Finland National Team - Six Nations Tournament (Dec. 11-15)

**LAURA ZIMMERMANN**

- Switzerland National Team - Six Nations Tournament (Dec. 11-15)

2024-25 WCHA LEADERS  
SHORT-HANDED GOALS

Rk.	Player	SHG
1.	Olivia Mobley (UMD)	3
t2.	Laila Edwards (UW)	2
t2.	Jenna Buglioni (OSU)	2
t2.	Ella Huber (UMN)	2
t5.	<b>ALICE SAURIOL (SCSU)</b>	<b>1</b>
t5.	Five More Players	1

## GOALS AGAINST AVERAGE

Rk.	Player	GAA
1.	Ava McNaughton (UW)	1.16
2.	Hailey MacLeod (OSU)	1.69
3.	Ève Gascon (UMD)	1.86
4.	<b>EMILIA KYRKKÖ (SCSU)</b>	<b>1.90</b>
5.	Hannah Clark (UMN)	2.03
6.	Amanda Thiele (OSU)	2.07
7.	<b>SANNI AHOLA (SCSU)</b>	<b>2.08</b>



## BLIZZARD'S BULLETS

**WCHA ROOKIE OF THE MONTH CONT.**

The freshman netminder led the WCHA in goals against average (0.97) and save percentage (.962) during the month while posting an impressive undefeated record of 3-0-2. She began her career with two consecutive shutouts and only two of the five goals she conceded in the month were full strength goals.

Kyrkkö also ranked No. 2 in shutouts (2), No. 2 in shutouts/game (0.4), No. 3 in total saves (126), tied for No. 3 in goaltender wins (3) and No. 5 in saves/game (25.2) among all WCHA goaltenders during the month.

The Nokia, Finland native tallied a career high 45 saves in SCSU's tie/shootout win over No. 2 Ohio State. Her 45 saves were the most in a single game by a conference goaltender during the month.

**OH CAPTAINS, OUR CAPTAINS**

St. Cloud State Women's Hockey has named four captains entering the 2024-25 season. Graduate forward **Emma Gentry** (Alpena, Mich.) and senior defenders **Taylor Larson** (Nisswa, Minn.), **Dayle Ross** (Spirit River Alberta) and **Grace Wolfe** (Owatonna, Minn.) will each wear the "C" as the Huskies captains. Gentry, Ross and Wolfe each wore an "A" as alternate captains for the first time a season ago. It will be the first time any of the players have worn the "C" as a Husky.

**WCHA PRESEASON POLL**

St. Cloud State Women's Hockey was picked to finish fifth in the 2024-25 Western Collegiate Hockey Association (WCHA) Preseason Coaches' Poll, as announced by the league office on Monday. Additionally, fifth year goaltender **Sanni Ahola** (Helinski, Finland) received votes to be on the Preseason All-WCHA team. The Huskies are coming off a season in which they finished fifth in the league and established a new program record for conference points.

The Huskies continued to enjoy success on the ice in 2023-24 during their second season under Idalski, establishing a new school record with 40 conference points while nearly matching the program record for wins in a season for the second consecutive season. The Huskies finished fifth in the WCHA for the second consecutive season after finishing outside the top-five in every season since 2015-16. SCSU earned ranked wins over No. 1 Ohio State, No. 6 Minnesota Duluth and No. 10 Northeastern and return top goal scorer, fifth year forward **Emma Gentry** (Aplena, Mich.) along with the pair of elite fifth-year goaltenders, **Ahola** and **Jojo Chobak** (Chicago, Ill.).

**2024-25 WCHA Preseason Coaches Poll**

(Coaches could not vote for their own team. First-place votes are in parentheses)

Rank	Team (First Place Votes)	Points
1.	Wisconsin (5)	46
2.	Ohio State (2)	43
3.	Minnesota (1)	40
4.	Minnesota Duluth	31
5.	<b>ST. CLOUD STATE</b>	<b>25</b>
6.	St. Thomas	17
7.	Minnesota State	15
8.	Bemidji State	7

**GENTS REPRESENTS THE STARS AND STRIPES AT THE 2024 COLLEGIATE SELECT SERIES**

Fifth year forward **Emma Gentry** (Alpena, Mich.) helped lead the U.S. Collegiate Select Team to a 2-1 record in the three-game series against Canada in the 2024 Collegiate Select Series last August at the Canada Games Park in St. Catharines, Ontario.

She was the fifth active Husky to be named to the Collegiate Select Team\* – formerly known as the U22 Team – and the first to make the roster in back-to-back years since 2007. In 2023, goaltender **Jojo Chobak** (Chicago, Ill.) joined Gentry on Team USA. Prior to the duo in 2023, goaltender **Emma Polusny** was the last Husky to make the team in 2019. Defender **Brittni Kuyper** made back-to-back U22 squads in 2006 and 2007 while forward **Holly Roberts** joined Kuyper at the 2007 U22 Series.

**St. Cloud State Huskies at the U.S. Collegiate Select Series**

Year	Name	Pos.
2024	<b>EMMA GENTRY</b>	<b>F</b>
2023	<b>EMMA GENTRY</b>	<b>F</b>
2023	<b>JOJO CHOBAK</b>	<b>G</b>
2019	Emma Polusny	G
2007	Holly Roberts	F
2007	Brittni Kuyper	D
2006	Brittni Kuyper	D

## 2024-25 WCHA LEADERS CONT.

**SAVES/GAME**

Rk.	Player	SV/G
1.	Kaitlin Groess (BSU)	30.12
2.	Ève Gascon (UMD)	30.05
2.	Dani Strom (UST)	29.17
4.	Hailey Hansen (MSU)	26.42
5.	<b>EMILIA KYRKKÖ (SCSU)</b>	<b>23.43</b>
6.	<b>SANNI AHOLA (SCSU)</b>	<b>22.27</b>

**SAVE PERCENTAGE**

Rk.	Player	SV%
1.	Ava McNaughton (UW)	.949
2.	Ève Gascon (UMD)	.942
3.	<b>EMILIA KYRKKÖ (SCSU)</b>	<b>.927</b>
4.	<b>SANNI AHOLA (SCSU)</b>	<b>.918</b>

**SHUTOUTS**

Rk.	Player	SHO
1.	Ava McNaughton (UW)	7
2.	Ève Gascon (UMD)	4
t3.	<b>EMILIA KYRKKÖ (SCSU)</b>	<b>3</b>
t3.	Hailey MacLeod (OSU)	3
t5.	<b>SANNI AHOLA (SCSU)</b>	<b>2</b>
t5.	Two More Players	2

**SHUTOUTS/GAME**

Rk.	Player	SHO/G
1.	Hailey MacLeod (OSU)	0.27
2.	Ava McNaughton (UW)	0.24
3.	<b>EMILIA KYRKKÖ (SCSU)</b>	<b>0.21</b>
4.	Ève Gascon (UMD)	0.18
5.	<b>SANNI AHOLA (SCSU)</b>	<b>0.13</b>



# BRIAN IDALSKI

## HUSKIES HEAD COACH



### *Idalski at a Glance*

#### **Education**

- University of Wisconsin-Stevens Point  
*B.S. in Health Promotion and Wellness*

#### **A Pillar of Collegiate Women's Hockey**

- In his third season as St. Cloud State's head coach and 18<sup>th</sup> overall following 10 seasons at North Dakota and five at UW-Stevens Point

#### **Coaching Accomplishments**

- Named St. Cloud State's head coach on May 19, 2022
- 2022-23 USCHO National Coach of the Year and Co-WCHA Coach of the Year
- Career record of 322-220-57 (.585) across 17 seasons as a head coach
- Three time Conference Coach of the Year
- Has guided his teams to five NCAA Tournament appearances, an NCAA Tournament Final, four conference tournament championships, seven conference tournament finals and three regular season conference championships
- Established a program record with 36 conference points and tied the program win record with 18 in his first season behind the Huskies' bench
- Has recruited and coached 10 Olympians, 35 National Team members from nine different countries, nine All-Americans, a Patty Kazmaier Finalist, four Patty Kazmaier Top 10 Finalists, two NCAA Great Eight Award winners, five WCHA Outstanding Student-Athletes of the Year, one Conference Player of the Year and 42 All-Conference selections
- 12 student-athletes have earned Academic All-American honors, 73 have earned WCHA Scholar Athlete recognition and 140 have been named to the WCHA All-Academic team under his supervision
- Served as the head coach for China at the 2022 Winter Olympics in Beijing
- Owens a 25-18 career record in conference tournament play and is 29-23 (.558) overall in the postseason
- Brought St. Cloud State back to the National Polls for the first time since 2009 and closed the season ranked for the first time in program history, landing in 10 of the final 11 polls

Head coach Brian Idalski enters his third season at the helm of St. Cloud State Women's Hockey in 2024-25. The 2022-23 USCHO National Coach of the Year and WCHA Coach of the Year owns a career collegiate coaching record of 312-212-53 (.587) across 17 seasons as a head coach. A legendary figure in the history of women's collegiate hockey, Idalski has earned three conference Coach of the Year honors while guiding his teams to five NCAA Tournament appearances, an NCAA Tournament Final berth, four conference tournament championships, seven conference tournament finals and three regular-season conference championships.

Idalski has recruited and coached 10 Olympians, 35 National Team members from nine different countries, nine All-Americans, a Patty Kazmaier Finalist, four Patty Kazmaier Top 10 Finalists, two NCAA Great Eight Award winners, five WCHA Outstanding Student-Athletes of the Year, one Conference Player of the Year, one Conference Rookie of the Year and 42 All-Conference selections.

In addition to setting a standard for excellence on the ice, Idalski's programs have enjoyed incredible success in the classroom. Under his supervision 12 student-athletes have been named Academic All-Americans, 73 have earned WCHA Scholar Athlete recognition and a whopping 140 have been named to the WCHA All-Academic team.

Across his 17 seasons as a head coach, Idalski owns a conference record of 205-163-41 with a career points percentage of 56.2%. He earned three NCHA Regular Season Championships with UW-Stevens Point and has orchestrated top-half conference finishes in seven of his 11 seasons in the rugged WCHA.

Idalski-led programs have experienced incredible success in the postseason, going 25-18 at the conference tournament and 4-5 in NCAA Tournament play for a combined 29-23 (.558) playoff record. Leading UW-Stevens Point to the 2004 NCAA DIII Tournament Final in his first trip to the "Big Dance," Idalski has guided his teams to five NCAA Tournament appearances including a Third Place finish in 2006. He captured four NCHA Tournament Championships in five seasons prior to joining North Dakota, then won seven WCHA Quarterfinal series and made two WCHA Championship appearances during his 10 years in Grand Forks.

In his first season as head coach of Huskies Women's Hockey, Idalski was named the USCHO National Coach of the Year and Co-WCHA Coach of the Year following his program's historic turnaround and rise to national prominence.

Under Idalski's guidance the Huskies tied a program record with 18 wins, going 18-18-1 with an 11-16-1 mark in WCHA play – establishing a new program record with 36 conference points to finish fifth, standing as the Huskies' best conference finish since 2015-16 and marking just the second time the program has earned a top-five conference finish in the last 13 years. The club's 18 wins were the most since SCSU won 18 games in 2007-08 while their 11 conference wins stand as the third-most in program history, one shy of their total from the past three seasons combined and most since 2009-10. St. Cloud State doubled their win total from a season ago and added a 42.9% points percentage, their best mark since 2009-10 – establishing a program record for the three-point era.



Idalski led St. Cloud State back into national prominence as the Huskies entered both the USCHO and USA Today National Polls in the first week of December, placing the team in the National rankings for the first time since 2009 and 2008 respectively. After debuting at No. 14 in both polls, SCSU proceeded to remain ranked in 10 of the next 11 weeks to close the year, closing the season ranked for the first time in program history at No. 12 by the USCHO and No. 13 by USA Today. Prior to 2022-







Cloud State's goaltenders anchored the rejuvenated defense, recording the program's third-best team save percentage at .920 and second-best goals against average of 2.58. The Huskies posted a program-record six shutouts in 2022-23, punctuating their stingy defensive work.

In the offensive zone, St. Cloud State scored 87 goals – eclipsing 66 for the first time since 2009-10 and standing as the program's most since that same season. The Huskies netted 64 even-strength goals, good for second-most all-time, on a 10.43% shooting percentage that becomes the program's third best mark and highest since 2000-01. For the first time since 2009-10, four Huskies recorded 20-point seasons while two defenders provided double-digit scoring seasons for the first time since 2017-18.

Special teams took a major step forward under Idalski as the Huskies power play delivered a 20.41% campaign while the penalty kill improved from a 77.27% mark a season ago to 85.50% in 2022-23. Both marks stand fourth-best in program history while the club's 20 power play goals were the most since 2009-10.

Nine Huskies set or matched career-high point totals in 2022-23 while Dayle Ross set a program record with 104 blocks, Jenniina Nylund tied the program's record with five game-winning goals and Jojo Chobak broke the single-season mark with five shutouts. Klára Hymliárová scored 17 goals – eighth-most in Huskies history – and closed the regular season as the NCAA's power play goal leader with eight. Sophomore defenders Dayle Ross and Grace Wolfe took massive steps forward under Idalski's guidance, providing 15 and 18 points respectively while ranking No. 1 and No. 3 all-time in single-season blocks with 104 and 83 respectively. The SCSU goaltending duo of Sanni Ahola and Jojo Chobak thrived in a tandem, each recording save percentages of .923 with GAA marks of 2.50 and 2.46 to help anchor the turnaround.

Brian Idalski was named the sixth head coach in the history of St. Cloud State Women's Hockey on May 19, 2022.

Idalski was chosen to serve as the Head Women's Hockey Coach for China's National Team at the 2022 Beijing Winter Olympics. His team earned two wins in pool play and operated as the top penalty kill in the Olympics at 90.0% with nine kills on 10 chances. Under his guidance, goaltender Jiaying Zhou posted the tournament's best save percentage at .955 with 85 stops on 89 shots.

Prior to joining St. Cloud State, Idalski spent three seasons as the head coach of the Shenzhen KRS Vanke Rays in the Zhenskaya Hockey League. He guided the Rays to a 77-17 record, two regular season championships and the 2020 ZhHL Cup – becoming the first non-Russian team to win the league's championship. Idalski was named ZhHL Coach of the Year in 2020 and 2022 along with being selected to coach in the 2019-20 ZhHL All-Star Game.

Idalski spent the 2018-19 season as the Director of Hockey Activities at Culver Academy in Culver, Indiana, leading the program to its first USAH Tier-I Nationals appearance.

No stranger to the WCHA, Idalski spent 10 seasons as the head coach of North Dakota Women's Hockey – building the program into a perennial national power with a rich tradition of success. Idalski produced a 169-154-39 (.521) record in Grand Forks with a 124-124-32 mark in conference play, reaching 50 points four times in addition two NCAA Tournament appearances, two WCHA Tournament Finals and seven WCHA Quarterfinal Series wins. North Dakota finished .500 or better in each of their final seven seasons, going 144-89-25 (.607) overall with a 104-69-23 (59.0% points percentage) across that span.

Idalski recruited and coached six All-Americans, five WCHA Outstanding Student-Athletes of the Year, one WCHA Rookie of the Year and 25 All-WCHA selections during his tenure at North Dakota. Jocelyne and Monique Lamoureux, Michelle Karvinen and Shelby Amsley-Benzie earned All-American honors under Idalski's direction while Karvinen was named WCHA Rookie of the Year in 2011-12. Amsley-Benzie developed into one of the greatest goaltenders in collegiate hockey during

23, SCSU had only appeared in the USA Today rankings five times while appearing in just six USCHO polls – last season, the Huskies were ranked 12 and 11 times respectively.

For the first time in 13 years, the Huskies defeated or earned a point from all seven conference opponents – taking down then-No. 1 Minnesota, shutting out then-No. 8 and eventual NCAA Champion Wisconsin in front of a packed Kohl Center and taking both then-No. 1 Ohio State and then-No. 7 Minnesota Duluth to overtime. In defeating 2022-23 National Champion Wisconsin during the regular season, the Huskies recorded a win over the eventual NCAA champion for the first time since 2009-10 (Minnesota Duluth) and marked just the fifth occurrence (2005-06, Wisconsin; 2001-02, Minnesota Duluth & 2000-01, Minnesota Duluth) in the program's history.

Huskies Hockey established a new culture of high-compete 200-foot hockey under Idalski, beginning in the defensive zone. SCSU led the NCAA and set a new program record with 576 blocked shots while holding opponents to 2.59 goals – their second-best mark ever – and 32.24 shots per game – their best mark since 2015-16. St.



her four years with Idalski, earning All-American honors in addition to being named a Patty Kazmaier Top 10 Finalist. Idalski and his staff's successful recruitment of the Lamoureux sisters was instrumental in the program's rapid turnaround as Jocelyne and Monique both earned two All-American nods while the former led the WCHA in scoring as a junior.

North Dakota enjoyed five 20-win seasons under Idalski, finishing below .500 just three times in his tenure with seven winning campaigns. His club earned a reputation for accountability on and off the ice, opportunistic offense and a rugged defense – recording 51 shutouts in his tenure while allowing less than 25 shots on goal per game in four of their final five seasons. All-WCHA forwards Michelle Karvinen, Josefine Jakobsen, Amy Menke and Becca Kohler flourished alongside the All-Americans Jocelyne and Monique Lamoureux. On the defensive end, Idalski helped develop Halli Krzyzaniak into a three-time All-WCHA selection and two-year captain before she became the program's first-ever NWHL draft pick – taken in the fifth round of the 2016 Draft, one spot ahead of Menke.

In addition to his time on the bench in Grand Forks, Idalski served as the Vice President of the American Women's Hockey Coaches Association and as the Governor of the American Hockey Coaches Association.

Idalski spent the 2006-07 season as an assistant coach on the St. Cloud State bench under first-year head coach Jeff Giesen – a season in which the Huskies went 12-18-7, one of only 11 campaigns with double-digit wins in the program's 25-year history. He led the defenders, coordinated advance scouting and oversaw the Huskies' recruiting efforts. His recruiting class was headlined by legendary SCSU goaltender Ashley Nixon, who graduated second all-time in saves, fourth in save percentage and fifth in goals against.



Earning his first head coaching role in 2001-02 with UW-Stevens Point Women's Hockey, Idalski quickly established himself as a rising star by going 108-21-11 (.881) in five seasons leading the Pointers. He was named NCHA Coach of the Year in 2002 and 2005 while being named a Finalist for the AHCA National Coach of the Year award four times, guiding UW-Stevens Point to four NCHA Tournament Championships and three NCHA Regular Season Championships. The Pointers made three NCAA Tournament appearances under Idalski, appearing in the 2004 NCAA DIII National Championship game and taking Third at the 2006 NCAA DIII Tournament. Idalski oversaw four 20-win seasons at Stevens Point and went 58-9-6 for a 83.6% points percentage in conference play, guiding his club to the NCHA's first-ever undefeated regular season in 2004-05. Three Pointers earned All-American honors under Idalski and 17 added All-NCHA accolades.

First joining the collegiate coaching ranks as an assistant with UW-Stevens Point Men's Hockey in 2000-01, Idalski broke into the coaching world in 1999-00 as an assistant on the Columbus Cottonmouths' bench in the Central Hockey League.

Idalski enjoyed a long playing career as a defenseman, spending two seasons with Columbus in the CHL and two with the Madison Monsters in the United Hockey League. The gritty blueliner helped Columbus earn the 1998 CHL Regular Season and Postseason Championships as a rookie. He played his collegiate hockey at UW-Stevens Point, appearing in 97 games and leading the Pointers to a pair of NCAA Tournament Finals including the program's 1993 NCAA DIII National Championship.

A native of Warren, Michigan, Brian and his wife Nicole have four sons – Beau, Jason, David and Mitchel.

SEASON	TEAM	RECORD	W%	CONFERENCE	CONF. RECORD	OTW-OTL	POINTS	PTS%	CONF. FINISH	POSTSEASON
2001-02	UW-Stevens Point	26-1-0	.963	NCHA	15-1-0	2-0	30	93.8%	1st of 5	Won NCHA Championship
2002-03	UW-Stevens Point	20-5-2	.778	NCHA	12-3-1	2-1	25	78.1%	2nd of 5	Lost NCHA Championship
2003-04	UW-Stevens Point	19-7-4	.700	NCHA	11-4-1	2-0	23	71.9%	T-2nd of 5	Won NCHA Championship, lost NCAA Championship
2004-05	UW-Stevens Point	22-3-1	.865	NCHA	9-0-1	1-0	19	95.0%	1st of 5	Won NCHA Championship, lost NCAA First Round
2005-06	UW-Stevens Point	21-5-4	.767	NCHA	11-1-3	0-0	25	83.3%	1st of 5	Won NCHA Championship, won NCAA Third Place Game
2007-08	North Dakota	4-24-6	.206	WCHA	4-20-4	0-1	12	21.4%	7th of 8	Lost WCHA Quarterfinals
2008-09	North Dakota	13-19-4	.417	WCHA	9-16-3	3-1	21	35.6%	T-5th of 8	Lost WCHA Quarterfinals
2009-10	North Dakota	8-22-4	.294	WCHA	7-19-2	1-3	16	27.6%	8th of 8	Lost WCHA Quarterfinals
2010-11	North Dakota	20-13-3	.597	WCHA	16-10-2	3-0	50	59.5%	4th of 8	Lost WCHA Semifinal
2011-12	North Dakota	22-12-3	.635	WCHA	16-9-3	1-1	53	63.1%	3rd of 8	Lost WCHA Semifinal, lost NCAA First Round
2012-13	North Dakota	26-12-1	.679	WCHA	18-9-1	2-1	55	65.5%	T-2nd of 8	Lost WCHA Championship, lost NCAA First Round
2013-14	North Dakota	20-12-4	.611	WCHA	14-10-4	1-0	48	57.1%	3rd of 8	Lost WCHA Championship
2014-15	North Dakota	22-12-3	.635	WCHA	16-9-3	1-1	53	63.1%	3rd of 8	Lost WCHA Semifinal
2015-16	North Dakota	18-12-5	.586	WCHA	13-10-5	1-1	47	56.0%	4th of 8	Lost WCHA Semifinal
2016-17	North Dakota	16-16-6	.500	WCHA	11-12-5	1-1	41	48.8%	4th of 8	Lost WCHA Semifinal
2022-23	St. Cloud State	18-18-1	.500	WCHA	11-16-1	0-3	36	42.9%	5th of 8	Lost WCHA Quarterfinals
2023-24	St. Cloud State	17-17-2	.500	WCHA	12-14-2	0-2-2	38	50.0%	5th of 8	Lost WCHA Quarterfinals
CAREER - 17 SEASONS		312-212-53	.587	-	205-163-41	21-16-2	592	56.2%	-	-





## ASSOCIATE HEAD COACH JINELLE SIERGIEJ



*Siergiej at a Glance*

### Education

- University of Wisconsin  
*B.S. in Rural Sociology*

### 10 Years at St. Cloud State

- In her 10th season with the Huskies and fifth as the associate head coach

### Career Accomplishments

- Has recruited and coached five Olympians, 16 National Team members across eight countries, two Conference Players of the Year and 11 All-Conference selections
- 59 student-athletes have earned WCHA Scholar Athlete status alongside 141 Academic All-Conference recipients under Siergiej
- 2010 Olympic Silver Medalist and 2007 World Championships Silver Medalist
- Graduated as Wisconsin's career leader in goals, game-winning goals and power play goals

all-time leader in goals, game-winning goals and power play goals. Across her four-year career the legendary forward produced 89 goals and 67 assists for 156 collegiate points, posting three 20-goal seasons and eclipsing 40 points twice with 50 in her junior season.

The owner of the Crazy Eights Hockey Camp since 2006, Siergiej has invested much of her career in the growth of the women's game at the youth level – directing Husky Pups at St. Cloud State while creating opportunities for girls across central Minnesota to get involved in hockey.

Jinelle and her husband Mike Siergiej have two sons – Colden and Rory.

Jinelle Siergiej enters her 11th season with St. Cloud State Women's Hockey in 2024-25, her sixth campaign as the program's associate head coach. Working primarily with the forwards, directing the power play and leading recruiting efforts, the 2010 Olympic Silver Medalist has guided eight Huskies to All-WCHA honors including five All-Rookie Team selections. 15 Huskies have delivered 20-point seasons under Siergiej's tutelage while 14 have posted double-digit goal campaigns.

Across her 11-year collegiate coaching career, Siergiej has recruited and coached five Olympians, 16 National Team members spanning eight countries, one Conference Goaltender of the Year, one Conference Rookie of the Year and 11 All-Conference selections. In addition to her work on the ice, Siergiej's academic supervision has helped 59 student-athletes earn WCHA Scholar Athlete recognition alongside 141 Academic All-Conference recipients.

Siergiej has recruited and coached four Olympic forwards in Jenniina Nylund (Finland, Beijing 2022), Klára Hymlárová (Czech Republic, Beijing 2022), Laura Zimmerman (Switzerland, Beijing 2022) and Sofianna Sundelin (Finland, Beijing 2022) during her Huskies tenure.

17 Huskies have signed professional contracts during Siergiej's tenure while Kayla Friesen (2020, Connecticut Whale) and Hannah Bates (2021, Connecticut Whale) were selected in the NWHL and PHF Drafts respectively.

Since joining the program as an assistant coach in 2014-15, Siergiej has been instrumental in the development of St. Cloud State's forwards. Molly Illikainen (17-15-32) gave the Huskies their first 30-point season since 2009-10 in Siergiej's second season with the program. Laura Kluge (7-17-24) and Klara Hymlarova (8-18-26) impressed as rookies in 2017-18 and 2019-20 respectively while Julia Tylke climbed to sixth all-time in goals at the conclusion of her SCSU career under Siergiej's watch.

Four of the program's top-eight single-season power play percentages have been recorded under Siergiej's direction including a pair of 20-plus percentage campaigns, 21.35% in 2015-16 and 20.41% in 2022-23. Klára Hymlárová closed the 2022-23 regular season as the NCAA's leader in power play goals while the Huskies reached 20 power play goals for the first time since the 2009-10 season.

Siergiej began her collegiate coaching career as an assistant coach at Robert Morris in 2013-14, helping RMU go 24-8-3 and finish second in the CHA with a 13-5-2 conference record. Freshman goaltender Jessica Dodds earned CHA Rookie of the Year honors while Rebecca Vint, Brittany Howard and Anneline Lauziere joined her on the All-College Hockey America team.

Entering the coaching ranks in 2010-11 as the head coach of Arrowhead High School in Hartland, Wisconsin, Siergiej spent three seasons with the program before moving to the collegiate level.

Siergiej represented the United States at the 2010 Winter Olympics in Vancouver and helped United States Women's Hockey earn Silver. She also won Silver at the IIHF World Championships with Team USA in 2007 and skated at the Four Nations tournament with Team USA in 2006, 2007, 2009 and 2010.

Her name synonymous with the success of Wisconsin Badgers Women's Hockey in the late 2000's, Jinelle (Zaugg) Siergiej played four years with the Badgers from 2004-05 to 2007-08. She gained All-WCHA honors in 2006, 2007 and 2008 and was selected to the WCHA All-Rookie team in 2005. At Wisconsin, Siergiej was part of two national title teams in 2006 and 2007 and left the campus as UW's



## 2024-25 OVERALL STATISTICS

## Game Records

Overall	Conference	Home	Away	Neutral
13 - 10 - 5	8 - 10 - 4	8 - 5 - 2	5 - 5 - 3	0 - 0 - 0

			Shots						Penalties				Goals										
#	Player	GP	G	A	PTS	SH	SH%	+/-	PEN-MIN	MIN	MAJ	OTH	PP	SH	FG	GW	GT	OT	HT	PN	UA	BLK	
4	Sauriol, Alice	28	4	14	18	70	.057	-4	3-6	3	0	0	1	1	3	2	0	0	0	0	1	11	
34	Sundelin, Sofianna	28	8	8	16	66	.121	+1	5-10	5	0	0	1	0	3	2	0	1	0	0	0	10	
20	Gentry, Emma	28	7	5	12	113	.062	-1	8-27	6	1	1	1	0	2	2	0	0	0	0	0	13	
2	Ross, Dayle	28	2	9	11	84	.024	+7	9-18	9	0	0	1	0	1	1	1	0	0	0	0	34	
11	Zimmermann, Laura	28	5	5	10	51	.098	-3	8-16	8	0	0	1	0	0	1	1	0	0	0	0	9	
16	Farrell, Avery	28	5	4	9	39	.128	-6	4-8	4	0	0	0	0	0	0	1	0	0	0	1	7	
18	Henderson, Greta	28	3	6	9	43	.070	-5	6-12	6	0	0	1	0	0	1	0	0	0	0	2	7	
6	Larson, Taylor	26	2	7	9	27	.074	-9	2-4	2	0	0	1	0	1	0	0	0	0	0	0	16	
10	Promersberger, Abby	26	4	4	8	40	.100	-1	6-12	6	0	0	1	0	2	0	0	0	0	0	1	10	
5	Parent, Brieja	28	4	4	8	35	.114	-5	7-17	6	1	0	2	0	1	3	0	0	0	0	0	10	
8	Wolfe, Grace	28	2	6	8	34	.059	-9	5-10	5	0	0	2	0	0	0	0	0	0	0	0	43	
27	Bray, Carmen	28	1	5	6	24	.042	-1	2-4	2	0	0	0	0	0	0	0	0	0	0	0	10	
12	Qualley, Ally	26	3	2	5	39	.077	-6	3-9	2	1	0	1	0	1	0	1	0	0	0	0	12	
17	Anick, Ella	28	2	2	4	45	.044	-2	5-10	5	0	0	1	0	0	0	0	0	0	0	0	18	
45	Bulger, Regan	21	0	4	4	15	.000	+2	4-8	4	0	0	0	0	0	0	0	0	0	0	0	22	
9	Voigt, Svenja	26	0	3	3	10	.000	0	1-2	1	0	0	0	0	0	0	0	0	0	0	0	4	
41	Yrjölä, Siiri	24	2	0	2	10	.200	+2	2-4	2	0	0	2	0	0	0	0	0	0	0	0	4	
21	Myers, Avery	28	1	1	2	8	.125	+2	4-8	4	0	0	0	0	0	1	0	0	0	0	1	3	
15	Moran, Marie	28	1	0	1	17	.059	+1	3-17	1	1	1	0	0	0	0	0	0	0	0	1	1	
23	Bryant, Sydney	14	0	0	0	6	.000	-2	1-2	1	0	0	0	0	0	0	0	0	0	0	0	5	
22	Delmonico, Grace	4	0	0	0	2	.000	0	0-0	0	0	0	0	0	0	0	0	0	0	0	0	0	
1	Ahola, Sanni	15	0	0	0	0	.000	0	0-0	0	0	0	0	0	0	0	0	0	0	0	0	0	
42	Kyrkkö, Emilia	14	0	0	0	0	.000	0	0-0	0	0	0	0	0	0	0	0	0	0	0	0	0	
TM	TEAM	28	0	0	0	0	.000	0	2-4	0	0	0	0	0	0	0	0	0	0	0	0	0	
Totals		28	56	89	145	778	.072	-39	90-208	84	4	2	16	1	14	13	4	1	0	0	7	249	
Opponents		28	61	103	164	723	.084	+30	100-214	97	2	1	14	3	14	10	1	1	1	0	3	302	

# Player	GP-GS	Goal Average			Saves		Record				Goals Allowed				
		MINUTES	GA	AVG	SAVES	PCT	W	L	T	SHO	PP	SH	EN	PEN	SOG
1 Ahola, Sanni	15-15	865:28	30	2.08	334	.918	8	5	2	2	6	2	2	0	3
42 Kyrkkö, Emilia	14-13	823:00	26	1.90	328	.927	5	5	3	3	7	0	3	0	4
TM EMPTY NET	-	17:32	5	17.11	0	.000	0	0	0	0	1	1	0	0	0
<b>Totals</b>	<b>28</b>	<b>1706:00</b>	<b>61</b>	<b>2.15</b>	<b>662</b>	<b>.916</b>	<b>13</b>	<b>10</b>	<b>5</b>	<b>5</b>	<b>14</b>	<b>3</b>	<b>5</b>	<b>0</b>	<b>7</b>
<b>Opponents</b>	<b>28</b>	<b>1706:00</b>	<b>56</b>	<b>1.97</b>	<b>722</b>	<b>.928</b>	<b>10</b>	<b>13</b>	<b>5</b>	<b>4</b>	<b>16</b>	<b>1</b>	<b>1</b>	<b>0</b>	<b>4</b>



## 2024-25 WCHA STATISTICS

## Game Records

Overall	Conference	Home	Away	Neutral
8 - 10 - 4	8 - 10 - 4	6 - 5 - 2	2 - 5 - 2	0 - 0 - 0

			Shots						Penalties					Goals										
#	Player	GP	G	A	PTS	SH	SH%	+/-	PEN-MIN	MIN	MAJ	OTH	PP	SH	FG	GW	GT	OT	HT	PN	UA	BLK		
4	Sauriol, Alice	22	4	11	15	55	.073	-7	3-6	3	0	0	1	1	3	2	0	0	0	0	1	9		
34	Sundelin, Sofianna	22	6	6	12	48	.125	-2	5-10	5	0	0	1	0	1	2	0	1	0	0	0	9		
2	Ross, Dayle	22	1	8	9	65	.015	+1	9-18	9	0	0	1	0	0	0	1	0	0	0	0	30		
16	Farrell, Avery	22	5	2	7	26	.192	-7	3-6	3	0	0	0	0	0	0	1	0	0	0	1	6		
11	Zimmermann, Laura	22	4	3	7	39	.103	-5	5-10	5	0	0	1	0	0	1	1	0	0	0	0	9		
20	Gentry, Emma	22	3	4	7	79	.038	-6	6-23	4	1	1	0	0	1	1	0	0	0	0	0	11		
5	Parent, Brieja	22	3	3	6	25	.120	-5	4-11	3	1	0	1	0	0	2	0	0	0	0	0	7		
8	Wolfe, Grace	22	2	4	6	29	.069	-7	4-8	4	0	0	2	0	0	0	0	0	0	0	0	31		
18	Henderson, Greta	22	1	4	5	28	.036	-7	5-10	5	0	0	0	0	0	0	0	0	0	0	1	6		
6	Larson, Taylor	20	1	4	5	18	.056	-12	2-4	2	0	0	0	0	1	0	0	0	0	0	0	15		
10	Promersberger, Abby	20	4	0	4	28	.143	-3	3-6	3	0	0	1	0	2	0	0	0	0	0	1	9		
45	Bulger, Regan	15	0	4	4	10	.000	+2	1-2	1	0	0	0	0	0	0	0	0	0	0	0	15		
12	Qualley, Ally	20	2	1	3	29	.069	-6	2-7	1	1	0	1	0	1	0	0	0	0	0	0	12		
27	Bray, Carmen	22	0	3	3	16	.000	-5	1-2	1	0	0	0	0	0	0	0	0	0	0	0	8		
41	Yrjölä, Siiri	19	2	0	2	9	.222	+1	2-4	2	0	0	2	0	0	0	0	0	0	0	0	3		
9	Voigt, Svenja	20	0	2	2	6	.000	-1	0-0	0	0	0	0	0	0	0	0	0	0	0	0	4		
17	Anick, Ella	22	0	0	0	30	.000	-7	4-8	4	0	0	0	0	0	0	0	0	0	0	0	12		
15	Moran, Marie	22	0	0	0	13	.000	-1	3-17	1	1	1	0	0	0	0	0	0	0	0	0	1		
21	Myers, Avery	22	0	0	0	6	.000	0	4-8	4	0	0	0	0	0	0	0	0	0	0	0	1		
23	Bryant, Sydney	13	0	0	0	5	.000	-2	0-0	0	0	0	0	0	0	0	0	0	0	0	0	4		
22	Delmonico, Grace	4	0	0	0	2	.000	0	0-0	0	0	0	0	0	0	0	0	0	0	0	0	0		
1	Ahola, Sanni	10	0	0	0	0	.000	0	0-0	0	0	0	0	0	0	0	0	0	0	0	0	0		
42	Kyrkkö, Emilia	13	0	0	0	0	.000	0	0-0	0	0	0	0	0	0	0	0	0	0	0	0	0		
TM	TEAM	22	0	0	0	0	.000	0	2-4	0	0	0	0	0	0	0	0	0	0	0	0	0		
Totals		22	38	59	97	566	.067	-79	68-164	62	4	2	11	1	9	8	3	1	0	0	4	202		
Opponents		22	55	92	147	618	.089	+70	80-174	77	2	1	13	3	13	10	1	1	1	0	3	234		

#	Player	GP-GS	Goal Average			Saves		Record				Goals Allowed				
			MINUTES	GA	AVG	SAVES	PCT	W	L	T	SHO	PP	SH	EN	PEN	SOG
1	Ahola, Sanni	10-10	561:13	24	2.57	256	.914	4	5	1	1	5	2	2	0	1
42	Kyrkkö, Emilia	13-12	763:00	26	2.04	307	.922	4	5	3	2	7	0	3	0	4
TM	EMPTY NET	-	16:47	5	17.87	0	.000	0	0	0	0	1	1	0	0	0
Totals		22	1341:00	55	2.46	563	.911	8	10	4	3	13	3	5	0	5
Opponents		22	1341:00	38	1.70	528	.933	10	8	4	4	11	1	1	0	3





## 2024-25 NONCONFERENCE STATISTICS

## Game Records

Overall	Conference	Home	Away	Neutral
5 - 0 - 1	0 - 0 - 0	2 - 0 - 0	3 - 0 - 1	0 - 0 - 0

			Shots						Penalties				Goals										
#	Player	GP	G	A	PTS	SH	SH%	+/-	PEN-MIN	MIN	MAJ	OTH	PP	SH	FG	GW	GT	OT	HT	PN	UA	BLK	
20	Gentry, Emma	6	4	1	5	34	.118	+5	2-4	2	0	0	1	0	1	1	0	0	0	0	0	2	
34	Sundelin, Sofianna	6	2	2	4	18	.111	+3	0-0	0	0	0	0	0	2	0	0	0	0	0	0	1	
17	Anick, Ella	6	2	2	4	15	.133	+5	1-2	1	0	0	1	0	0	0	0	0	0	0	0	6	
18	Henderson, Greta	6	2	2	4	15	.133	+2	1-2	1	0	0	1	0	0	1	0	0	0	0	1	1	
6	Larson, Taylor	6	1	3	4	9	.111	+3	0-0	0	0	0	1	0	0	0	0	0	0	0	0	1	
10	Promersberger, Abby	6	0	4	4	12	.000	+2	3-6	3	0	0	0	0	0	0	0	0	0	0	0	1	
11	Zimmermann, Laura	6	1	2	3	12	.083	+2	3-6	3	0	0	0	0	0	0	0	0	0	0	0	0	
27	Bray, Carmen	6	1	2	3	8	.125	+4	1-2	1	0	0	0	0	0	0	0	0	0	0	0	2	
4	Sauriol, Alice	6	0	3	3	15	.000	+3	0-0	0	0	0	0	0	0	0	0	0	0	0	0	2	
2	Ross, Dayle	6	1	1	2	19	.053	+6	0-0	0	0	0	0	0	1	1	0	0	0	0	0	4	
5	Parent, Brieja	6	1	1	2	10	.100	0	3-6	3	0	0	1	0	1	1	0	0	0	0	0	3	
12	Qualley, Ally	6	1	1	2	10	.100	0	1-2	1	0	0	0	0	0	0	1	0	0	0	0	0	
21	Myers, Avery	6	1	1	2	2	.500	+2	0-0	0	0	0	0	0	0	1	0	0	0	0	1	2	
16	Farrell, Avery	6	0	2	2	13	.000	+1	1-2	1	0	0	0	0	0	0	0	0	0	0	0	1	
8	Wolfe, Grace	6	0	2	2	5	.000	-2	1-2	1	0	0	0	0	0	0	0	0	0	0	0	12	
15	Moran, Marie	6	1	0	1	4	.250	+2	0-0	0	0	0	0	0	0	0	0	0	0	0	1	0	
9	Voigt, Svenja	6	0	1	1	4	.000	+1	1-2	1	0	0	0	0	0	0	0	0	0	0	0	0	
45	Bulger, Regan	6	0	0	0	5	.000	0	3-6	3	0	0	0	0	0	0	0	0	0	0	0	7	
23	Bryant, Sydney	1	0	0	0	1	.000	0	1-2	1	0	0	0	0	0	0	0	0	0	0	0	1	
41	Yrjölä, Siiri	5	0	0	0	1	.000	+1	0-0	0	0	0	0	0	0	0	0	0	0	0	0	1	
1	Ahola, Sanni	5	0	0	0	0	.000	0	0-0	0	0	0	0	0	0	0	0	0	0	0	0	0	
42	Kyrkkö, Emilia	1	0	0	0	0	.000	0	0-0	0	0	0	0	0	0	0	0	0	0	0	0	0	
TM	TEAM	6	0	0	0	0	.000	0	0-0	0	0	0	0	0	0	0	0	0	0	0	0	0	
Totals		6	18	30	48	212	.085	+40	22-44	22	0	0	5	0	5	5	1	0	0	0	3	47	
Opponents		6	6	11	17	105	.057	-40	20-40	20	0	0	1	0	1	0	0	0	0	0	0	68	

			Goal Average			Saves		Record				Goals Allowed				
#	Player	GP-GS	MINUTES	GA	AVG	SAVES	PCT	W	L	T	SHO	PP	SH	EN	PEN	SOG
1	Ahola, Sanni	5-5	304:15	6	1.18	78	.929	4	0	1	1	1	0	0	0	2
42	Kyrkkö, Emilia	1-1	60:00	0	0.00	21	1.000	1	0	0	1	0	0	0	0	0
TM	EMPTY NET	-	00:45	0	0.00	0	.000	0	0	0	0	0	0	0	0	0
<b>Totals</b>		<b>6</b>	<b>365:00</b>	<b>6</b>	<b>0.99</b>	<b>99</b>	<b>.943</b>	<b>5</b>	<b>0</b>	<b>1</b>	<b>2</b>	<b>1</b>	<b>0</b>	<b>0</b>	<b>0</b>	<b>2</b>
<b>Opponents</b>		<b>6</b>	<b>365:00</b>	<b>18</b>	<b>2.96</b>	<b>194</b>	<b>.915</b>	<b>0</b>	<b>5</b>	<b>1</b>	<b>0</b>	<b>5</b>	<b>0</b>	<b>0</b>	<b>0</b>	<b>1</b>



## 2024-25 GAME RESULTS

## Team Results

	Date	Opponent		Score	Shots	Overall	Conf	Time	Att.	Goalie of record
	09/21/2024	at Lindenwood	W	4-0	41/18	1-0-0	0-0-0	2:21	212	AHOLA, Sanni
	09/22/2024	at Lindenwood	W	6-2	35/22	2-0-0	0-0-0	2:28	206	AHOLA, Sanni
	10/04/2024	Mercyhurst	W	2-1	27/22	3-0-0	0-0-0	2:17	356	AHOLA, Sanni
	10/05/2024	Mercyhurst	W	2-0	38/21	4-0-0	0-0-0	2:08	385	KYRKKÖ, Emilia
*	10/11/2024	at Bemidji St.	W	1-0	24/13	5-0-0	1-0-0	2:25	384	AHOLA, Sanni
*	10/12/2024	at Bemidji St.	W	2-0	26/18	6-0-0	2-0-0	0:44	321	KYRKKÖ, Emilia
*	10/18/2024	Ohio St.	L	1-5	10/47	6-1-0	2-1-0	2:23	417	AHOLA, Sanni
*	10/19/2024	Ohio St.	Tot	3-3	19/48	6-1-1	2-1-1	2:54	441	KYRKKÖ, Emilia
*	10/25/2024	at St. Thomas (MN)	Tot	1-1	27/29	6-1-2	2-1-2	2:25	306	KYRKKÖ, Emilia
*	10/26/2024	St. Thomas (MN)	W	3-1	36/15	7-1-2	3-1-2	2:32	347	KYRKKÖ, Emilia
*	11/01/2024	Wisconsin	L	0-6	27/27	7-2-2	3-2-2	2:24	311	AHOLA, Sanni
*	11/02/2024	Wisconsin	L	0-4	29/34	7-3-2	3-3-2	2:30	325	KYRKKÖ, Emilia
*	11/15/2024	Minnesota St.	L	1-4	30/33	7-4-2	3-4-2	2:19	352	KYRKKÖ, Emilia
*	11/16/2024	Minnesota St.	Wot	3-2	30/19	8-4-2	4-4-2	2:26	808	KYRKKÖ, Emilia
*	11/22/2024	at Minnesota	L	2-5	27/34	8-5-2	4-5-2	2:29	3165	KYRKKÖ, Emilia
*	11/23/2024	Minnesota	W	3-1	28/39	9-5-2	5-5-2	2:35	479	AHOLA, Sanni
	11/29/2024	at Union (NY)	Tot	2-2	33/13	9-5-3	5-5-2	2:39	213	AHOLA, Sanni
	11/30/2024	at Union (NY)	W	2-1	38/9	10-5-3	5-5-2	2:25	236	AHOLA, Sanni
*	12/06/2024	Minn. Duluth	Tot	1-1	23/35	10-5-4	5-5-3	2:27	211	AHOLA, Sanni
*	12/07/2024	Minn. Duluth	L	1-3	28/29	10-6-4	5-6-3	2:08	233	AHOLA, Sanni
*	01/10/2025	at Minn. Duluth	L	0-3	24/34	10-7-4	5-7-3	2:37	1573	KYRKKÖ, Emilia
*	01/11/2025	at Minn. Duluth	L	0-3	24/32	10-8-4	5-8-3	2:24	2015	AHOLA, Sanni
*	01/17/2025	Bemidji St.	W	3-0	31/17	11-8-4	6-8-3	2:10	257	KYRKKÖ, Emilia
*	01/18/2025	Bemidji St.	W	3-2	21/11	12-8-4	7-8-3	2:27	517	AHOLA, Sanni
*	01/25/2025	at Wisconsin	L	2-5	16/49	12-9-4	7-9-3	2:36	2273	AHOLA, Sanni
*	01/26/2025	at Wisconsin	Tot	2-2	20/32	12-9-5	7-9-4	2:39	2273	KYRKKÖ, Emilia
*	01/31/2025	St. Thomas (MN)	W	5-2	33/15	13-9-5	8-9-4	2:34	342	AHOLA, Sanni
*	02/01/2025	at St. Thomas (MN)	Lot	1-2	33/8	13-10-5	8-10-4	2:34	361	KYRKKÖ, Emilia

Team Record	W-L-T
Overall:	13-10-5
Conference:	8-10-4
Home:	8-5-2
Away:	5-5-3
Neutral:	0-0-0
Overtime:	1-1-5

Attendance	Dates	Total	Avg.
Total:	28	19319	690
Home:	15	5781	385
Away:	13	13538	1041
Neutral:	0	0	0



## 2024-25 GAME-BY-GAME

Date	Opponent	Score	G	A	PTS	SHOTS	SH%	+/-	PEN-MIN	PP	SH	EN	GW	GT	HAT	UA	BLK
09/21/2024	at Lindenwood	4-0	4	8	12	41	.098	+5	5-10	3	0	0	1	0	0	0	7
09/22/2024	at Lindenwood	6-2	6	8	14	35	.171	+15	7-14	1	0	0	1	0	0	2	6
10/04/2024	Mercyhurst	2-1	2	4	6	27	.074	+5	2-4	0	0	0	1	0	0	0	6
10/05/2024	Mercyhurst	2-0	2	4	6	38	.053	+5	3-6	1	0	0	1	0	0	0	12
10/11/2024	at Bemidji St.	1-0	1	0	1	24	.042	+4	3-6	0	1	0	1	0	0	1	8
10/12/2024	at Bemidji St.	2-0	2	3	5	26	.077	+10	0-0	0	0	1	1	0	0	0	10
10/18/2024	Ohio St.	1-5	1	2	3	10	.100	-20	5-13	1	0	0	0	0	0	0	17
10/19/2024	Ohio St.	3-3	3	4	7	19	.158	0	8-27	2	0	0	0	1	0	1	8
10/25/2024	at St. Thomas (MN)	1-1	1	0	1	27	.037	0	2-4	0	0	0	0	1	0	1	13
10/26/2024	St. Thomas (MN)	3-1	3	4	7	36	.083	+15	5-21	0	0	0	1	0	0	1	7
11/01/2024	Wisconsin	0-6	0	0	0	27	.000	-30	2-4	0	0	0	0	0	0	0	7
11/02/2024	Wisconsin	0-4	0	0	0	29	.000	-16	2-4	0	0	0	0	0	0	0	9
11/15/2024	Minnesota St.	1-4	1	2	3	30	.033	-15	3-6	0	0	0	0	0	0	0	8
11/16/2024	Minnesota St.	3-2	3	6	9	30	.100	+4	1-2	0	0	0	1	0	0	0	7
11/22/2024	at Minnesota	2-5	2	4	6	27	.074	-21	3-6	2	0	0	0	0	0	0	12
11/23/2024	Minnesota	3-1	3	4	7	28	.107	+10	3-9	0	0	0	1	0	0	0	14
11/29/2024	at Union (NY)	2-2	2	4	6	33	.061	0	0-0	0	0	0	0	1	0	0	7
11/30/2024	at Union (NY)	2-1	2	2	4	38	.053	+10	5-10	0	0	0	1	0	0	1	9
12/06/2024	Minn. Duluth	1-1	1	1	2	23	.043	0	1-2	0	0	0	0	0	0	0	10
12/07/2024	Minn. Duluth	1-3	1	1	2	28	.036	-5	5-10	0	0	0	0	0	0	0	13
01/10/2025	at Minn. Duluth	0-3	0	0	0	24	.000	-16	2-4	0	0	0	0	0	0	0	7
01/11/2025	at Minn. Duluth	0-3	0	0	0	24	.000	-10	4-8	0	0	0	0	0	0	0	6
01/17/2025	Bemidji St.	3-0	3	5	8	31	.097	+5	4-8	2	0	0	1	0	0	0	5
01/18/2025	Bemidji St.	3-2	3	6	9	21	.143	-5	2-4	2	0	0	1	0	0	0	5
01/25/2025	at Wisconsin	2-5	2	4	6	16	.125	-16	3-6	1	0	0	0	0	0	0	12
01/26/2025	at Wisconsin	2-2	2	3	5	20	.100	+10	4-8	0	0	0	0	1	0	0	10
01/31/2025	St. Thomas (MN)	5-2	5	9	14	33	.152	+20	4-8	1	0	0	1	0	0	0	5
02/01/2025	at St. Thomas (MN)	1-2	1	1	2	33	.030	-3	2-4	0	0	0	0	0	0	0	9
<b>SCSU</b>			<b>56</b>	<b>89</b>	<b>145</b>	<b>778</b>	<b>.072</b>	<b>-39</b>	<b>90-208</b>	<b>16</b>	<b>1</b>	<b>1</b>	<b>13</b>	<b>4</b>	<b>0</b>	<b>7</b>	<b>249</b>
<b>Opponents</b>			<b>61</b>	<b>103</b>	<b>164</b>	<b>723</b>	<b>.084</b>	<b>+30</b>	<b>100-214</b>	<b>14</b>	<b>3</b>	<b>5</b>	<b>10</b>	<b>1</b>	<b>1</b>	<b>3</b>	<b>302</b>

## TEAM PER-GAME

Games played	Shots per game	Goals per game	Assists per game	Points per game
28	27.79	2.00	3.18	5.18





## 2024-25 OPPONENT GAME-BY-GAME

Date	Opponent	Score	G	A	PTS	SHOTS	SH%	+/-	PEN-MIN	PP	SH	EN	GW	GT	HAT	UA	BLK
09/21/2024	at Lindenwood	4-0	0	0	0	18	.000	-5	5-10	0	0	0	0	0	0	0	10
09/22/2024	at Lindenwood	6-2	2	4	6	22	.091	-15	4-8	0	0	0	0	0	0	0	11
10/04/2024	Mercyhurst	2-1	1	2	3	22	.045	-5	2-4	0	0	0	0	0	0	0	7
10/05/2024	Mercyhurst	2-0	0	0	0	21	.000	-5	2-4	0	0	0	0	0	0	0	11
10/11/2024	at Bemidji St.	1-0	0	0	0	13	.000	-5	2-4	0	0	0	0	0	0	0	19
10/12/2024	at Bemidji St.	2-0	0	0	0	18	.000	-11	1-2	0	0	0	0	0	0	0	14
10/18/2024	Ohio St.	1-5	5	9	14	47	.106	+19	3-6	1	1	0	1	0	0	0	2
10/19/2024	Ohio St.	3-3	3	5	8	48	.063	0	9-29	2	0	0	0	0	0	0	5
10/25/2024	at St. Thomas (MN)	1-1	1	1	2	29	.034	0	4-8	0	0	0	0	0	0	0	16
10/26/2024	St. Thomas (MN)	3-1	1	2	3	15	.067	-15	3-6	1	0	0	0	0	0	0	14
11/01/2024	Wisconsin	0-6	6	10	16	27	.222	+30	5-10	0	0	0	1	0	0	1	10
11/02/2024	Wisconsin	0-4	4	8	12	34	.118	+15	5-13	1	0	1	1	0	0	0	9
11/15/2024	Minnesota St.	1-4	4	7	11	33	.121	+15	2-4	0	0	0	1	0	0	0	12
11/16/2024	Minnesota St.	3-2	2	3	5	19	.105	-4	1-2	0	0	0	0	0	0	0	12
11/22/2024	at Minnesota	2-5	5	8	13	34	.147	+20	5-10	1	0	1	1	0	1	0	12
11/23/2024	Minnesota	3-1	1	2	3	39	.026	-10	2-4	0	0	0	0	0	0	0	5
11/29/2024	at Union (NY)	2-2	2	3	5	13	.154	0	3-6	0	0	0	0	0	0	0	15
11/30/2024	at Union (NY)	2-1	1	2	3	9	.111	-10	4-8	1	0	0	0	0	0	0	14
12/06/2024	Minn. Duluth	1-1	1	2	3	35	.029	0	3-6	0	0	0	0	1	0	0	9
12/07/2024	Minn. Duluth	1-3	3	3	6	29	.103	+4	5-10	1	1	1	1	0	0	1	5
01/10/2025	at Minn. Duluth	0-3	3	5	8	34	.088	+15	4-8	0	0	1	1	0	0	0	5
01/11/2025	at Minn. Duluth	0-3	3	5	8	32	.094	+10	5-10	1	0	0	1	0	0	0	12
01/17/2025	Bemidji St.	3-0	0	0	0	17	.000	-5	4-8	0	0	0	0	0	0	0	12
01/18/2025	Bemidji St.	3-2	2	3	5	11	.182	+5	4-8	0	0	0	0	0	0	0	11
01/25/2025	at Wisconsin	2-5	5	8	13	49	.102	+14	5-10	1	1	1	1	0	0	1	7
01/26/2025	at Wisconsin	2-2	2	4	6	32	.063	-10	3-6	2	0	0	0	0	0	0	14
01/31/2025	St. Thomas (MN)	5-2	2	4	6	15	.133	-20	2-4	2	0	0	0	0	0	0	12
02/01/2025	at St. Thomas (MN)	1-2	2	3	5	8	.250	+3	3-6	0	0	0	1	0	0	0	17
<b>Opponents</b>			<b>61</b>	<b>103</b>	<b>164</b>	<b>723</b>	<b>.084</b>	<b>+30</b>	<b>100-214</b>	<b>14</b>	<b>3</b>	<b>5</b>	<b>10</b>	<b>1</b>	<b>1</b>	<b>3</b>	<b>302</b>
<b>SCSU</b>			<b>56</b>	<b>89</b>	<b>145</b>	<b>778</b>	<b>.072</b>	<b>-39</b>	<b>90-208</b>	<b>16</b>	<b>1</b>	<b>1</b>	<b>13</b>	<b>4</b>	<b>0</b>	<b>7</b>	<b>249</b>

## OPPONENT PER-GAME

Games played	Shots per game	Goals per game	Assists per game	Points per game
28	25.82	2.18	3.68	5.86



**2024-25 GAME HIGHS****SCSU - GAME HIGHS**

<b>POINTS</b>	14	St. Thomas (MN) (01/31/2025)
	14	at Lindenwood (09/22/2024)
<b>GOALS</b>	6	at Lindenwood (09/22/2024)
<b>ASSISTS</b>	9	St. Thomas (MN) (01/31/2025)
<b>SHOTS ON GOAL</b>	41	at Lindenwood (09/21/2024)
<b>SAVES</b>	45	Ohio St. (10/19/2024)
<b>PENALTIES</b>	8	Ohio St. (10/19/2024)
<b>PENALTY MINUTES</b>	27	Ohio St. (10/19/2024)

**Opponent - GAME HIGHS**

<b>POINTS</b>	16	Wisconsin (11/01/2024)
<b>GOALS</b>	6	Wisconsin (11/01/2024)
<b>ASSISTS</b>	10	Wisconsin (11/01/2024)
<b>SHOTS ON GOAL</b>	49	at Wisconsin (01/25/2025)
<b>SAVES</b>	37	at Lindenwood (09/21/2024)
<b>PENALTIES</b>	9	Ohio St. (10/19/2024)
<b>PENALTY MINUTES</b>	29	Ohio St. (10/19/2024)



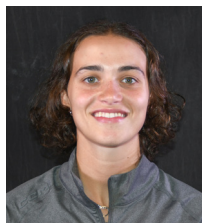
## RADIO/TELEVISION ROSTER



**1**  
**SANNI AHOLA**  
G | 5'7 | 5Y  
Helsinki, Finland



**2**  
**DAYLE ROSS - C**  
D | 5'6 | Sr.  
Spirit River, Alberta



**4**  
**ALICE SAURIOL**  
F | 5'4 | So.  
Sherbrooke, Quebec



**5**  
**BRIEJA PARENT**  
F | 5'4 | 5Y  
Forest Lake, Minn.



**6**  
**TAYLOR LARSON - C**  
D | 5'8 | Sr.  
Nisswa, Minn.



**8**  
**GRACE WOLFE - C**  
D | 5'9 | Sr.  
Owatonna, Minn.



**9**  
**SVENJA VOIGT**  
F | 5'5 | Jr.  
Cologne, Germany



**10**  
**ABBY PROMERSBERGER**  
F | 5'6 | Sr.  
Fargo, N.D.



**11**  
**LAURA ZIMMERMANN**  
F | 5'4 | R-So.  
Rinngenberg, Switzerland



**12**  
**ALLY QUALLEY**  
F | 5'7 | 5Y  
Brooklyn Park, Minn.



**15**  
**MARIE MORAN**  
F/D | 5'8 | So.  
Lakeville, Minn.



**16**  
**AVERY FARRELL**  
F | 5'4 | Jr.  
Rogers, Minn.



**17**  
**ELLA ANICK**  
D | 5'6 | Sr.  
Hermantown, Minn.



**18**  
**GRETA HENDERSON**  
F | 5'6 | So.  
Regina, Saskatchewan



**19**  
**MYAH KRUEGER**  
F | 5'7 | Fr.  
Stillwater, Minn.



**20**  
**EMMA GENTRY - C**  
F | 5'11 | 5Y.  
Alpena, Mich.



**21**  
**AVERY MYERS**  
F | 5'7 | 5Y  
Fargo, N.D.



**22**  
**GRACE DELMONICO**  
F | 5'3 | So.  
Eagan, Minn.



**23**  
**SYDNEY BRYANT**  
D | 5'8 | So.  
Traverse City, Mich.



**27**  
**CARMEN BRAY**  
D | 5'8 | So.  
Nanaimo, British Columbia



**29**  
**JOJO CHOBAK**  
G | 5'8 | 5Y  
Chicago, Ill.



**31**  
**PAIGE HOOGENDAM**  
G | 5'8 | So.  
Ajax, Ontario



**34**  
**SOFIANNA SUNDELIN**  
F | 5'7 | So.  
Ulvila, Finland



**41**  
**SIIRI YRJÖLÄ**  
G | 5'8 | Fr.  
Ajax, Ontario



**42**  
**EMILIA KYRKKÖ**  
G | 5'7 | Fr.  
Nokia, Finland



**45**  
**REGAN BULGER**  
D | 5'6 | Jr.  
Yellowknife, Northwest Territories



**HEAD COACH**  
**BRIAN IDALSKI**  
Third Season  
UW-Stevens Point (1995)



**ASSOC. HC**  
**JINNELLE SIERGIEJ**  
11th Season  
Wisconsin (2008)



**ASST. COACH**  
**NOORA RÄTTY**  
First Season  
Minnesota (2013)



**ASST. COACH**  
**EMILY ACH**  
First Season  
Augsburg (2020)



**HOCKEY OPS**  
**TRENT HUNTER**  
First Season



**S&C COACH**  
**JAKE FRANCKEZ**  
Fifth Season  
Grand Valley State (2020)



**ATH. TRAINER**  
**RACHEL NAGEL**  
Fourth Season  
Wisconsin (2021)



**EQ. MANAGER**  
**COLIN JACOBSEN**  
Second Season  
Minnesota (2022)



**SID**  
**JACOB SANDERS**  
First Season  
Central (Iowa) (2023)

