



ST. CLOUD STATE HUSKIES

WOMEN'S HOCKEY - 2024-25 SERIES NOTES - OCT. 11-12, 2024

Two WCHA Semifinals | Once NCAA All-American | One Conference Player of the Year | Two Conference Goaltenders of the Year
24 All-Conference Selections | 117 WCHA Scholar Athletes | 266 Academic All-Conference Honorees | 24 Professional Contracts

GAME 5
#11 HUSKIES (4-0-0, 0-0-0 WCHA)
BEMIDJI STATE (0-4-0, 0-0-0 WCHA)
Friday, Oct. 11
6 p.m. CT
Sanford Center

GAME 6
#11 HUSKIES (4-0-0, 0-0-0 WCHA)
BEMIDJI STATE (0-4-0, 0-0-0 WCHA)
Saturday, Oct. 12
2 p.m. CT
Sanford Center



NO. 11 ST. CLOUD STATE HUSKIES
Head Coach: Brian Idalski
Alma Mater: UW-Stevens Point, '95
Career Record: 316 - 212 - 53 (18th season)
SCSU Record: 39 - 35 - 3 (3rd season)

SERIES HISTORY

SCSU leads Bemidji State, 52 - 51 - 10
In St. Cloud: 27 - 24 - 6
In Bemidji: 24 - 26 - 4
At Neutral Sites: 1 - 1 - 0
Last Meeting: Feb. 24, 2024 (6 - 2 SCSU)
First Meeting: Jan. 22, 1999 (4 - 1 SCSU)
Last Five Meetings: 5 - 0 - 0
Last 10 Meetings: 9 - 1 - 0



BEMIDJI STATE BEAVERS
Head Coach: Amber Fryklund
Alma Mater: Bemidji State, '03
Career Record: 0-4-0 (1st season)
BSU Record: Same

2024-25 SCHEDULE

DATE	OPPONENT	TV	TIME (CT)
Sept. 21	Lindenwood	FloHockey	W, 4-0
Sept. 22	Lindenwood	FloHockey	W, 6-2
Sept. 27	MANTIOBA (Exhibition)	B1G+	-
Oct. 4	No. 15/RV MERCYHURST	B1G+	W, 2-1
Oct. 5	No. 15/RV MERCYHURST	B1G+	W, 2-0
Oct. 11	Bemidji State *	B1G+	6 pm
Oct. 12	Bemidji State *	B1G+	2 pm
Oct. 18	OHIO STATE *	B1G+	6 pm
Oct. 19	OHIO STATE *	B1G+	1 pm
Oct. 25	St. Thomas *	B1G+	6 pm
Oct. 26	ST. THOMAS *	FOX9+	11:30 am
Nov. 1	WISCONSIN *	B1G+	3 pm
Nov. 2	WISCONSIN *	B1G+	1 pm
Nov. 15	MINNESOTA STATE *	B1G+	6 pm
Nov. 16	MINNESOTA STATE *	B1G+	3 pm
Nov. 22	Minnesota *	B1G+	6 pm
Nov. 23	MINNESOTA *	B1G+	3 pm
Nov. 29	Union	ESPN+	5 pm
Nov. 30	Union	ESPN+	2 pm
Dec. 6	MINNESOTA DULUTH *	B1G+	3 pm
Dec. 7	MINNESOTA DULUTH *	B1G+	1 pm
Jan. 10	Minnesota Duluth *	B1G+	3 pm
Jan. 11	Minnesota Duluth *	B1G+	2 pm
Jan. 17	BEMIDJI STATE *	B1G+	3 pm
Jan. 18	BEMIDJI STATE *	B1G+	1 pm
Jan. 25	WISCONSIN *	B1G+	TBD
Jan. 26	WISCONSIN *	B1G+	TBD
Jan. 31	ST. THOMAS *	B1G+	3 pm
Feb. 1	St. Thomas *	B1G+	2 pm
Feb. 7	Minnesota State *	B1G+	3 pm
Feb. 8	Minnesota State *	B1G+	2 pm
Feb. 14	Minnesota *	B1G+	6 pm
Feb. 15	MINNESOTA *	B1G+	3 pm
Feb. 21	Ohio State *	B1G+	5 pm
Feb. 22	Ohio State *	B1G+	2 pm
Feb. 28 - Mar. 2	WCHA Quarterfinals ^	B1G+	TBD
Mar. 8 - 9	WCHA Final Faceoff !	FOX9+	TBD
Mar. 15 - 16	NCAA Regional Tournament \$	TBD	TBD
Mar. 22 - 23	NCAA Frozen Four %	TBD	TBD

BOLD - Home Game

- * - WCHA Game
- ^ - WCHA Quarterfinals, Higher Seed
- ! - WCHA Final Faceoff, AMSOIL Arena in Duluth, Minn.
- \$ - NCAA Regional Tournament, Regional Host
- % - NCAA Frozen Four, Ridder Arena in Minneapolis, Minn.

ALL DATES AND TIMES SUBJECT TO CHANGE

STATS BREAKDOWN (2024-25)

Goals/Game	3.5
Goals Allowed/Game	0.8
Power Play	45.5%
Penalty Kill	100.0%
Shots/Game	35.3
Shots Faced/Game	20.8
Penalty Minutes/Game	8:30
Faceoffs	54.3%

2024-25 TOP PERFORMERS

Goals	Emma Gentry (4)
Assists	Abby Promersberger (3)
Points	Emma Gentry (5)
Faceoffs Won	Brieja Parent (42)
Plus/Minus	Dayle Ross (+6)
Blocks	Grace Wolfe (9)
Goalie Wins	Sanni Ahola (2)
GAA	Emilia Kyrkkö (0.00)
Save %	Emilia Kyrkkö (1.000)

DATE SITE RESULT

2-24-23	Bemidji, Minn.	W, 6-2
2-23-23	Bemidji, Minn.	W, 5-1
10-14-23	St. Cloud, Minn.	W, 3-0
10-13-23	St. Cloud, Minn.	W, 5-2
1-28-23	St. Cloud, Minn.	W, 2-1
1-27-23	St. Cloud, Minn.	W, 2-0
11-5-22	Bemidji, Minn.	W, 3-1
11-4-22	Bemidji, Minn.	W, 2-0
1-22-22	Bemidji, Minn.	L, 2-1
1-21-22	Bemidji, Minn.	W, 2-1
12-4-21	St. Cloud, Minn.	L, 2-1 OT
12-3-21	St. Cloud, Minn.	L, 4-3
2-27-21	Bemidji, Minn.	W, 4-1
2-26-21	Bemidji, Minn.	W, 3-2 OT
1-16-21	St. Cloud, Minn.	T, 2-2 OT
1-15-21	St. Cloud, Minn.	W, 3-1
12-11-20	Bemidji, Minn.	L, 3-2 OT
12-10-20	Bemidji, Minn.	W, 3-2 OT
2-15-20	St. Cloud, Minn.	W, 1-0
2-14-20	St. Cloud, Minn.	L, 3-0

STATS BREAKDOWN (2024-25)

Goals/Game	1.3
Goals Allowed/Game	4.3
Power Play	7.7%
Penalty Kill	85.7%
Shots/Game	25.3
Shots Faced/Game	34.5
Penalty Minutes/Game	7:00
Faceoffs	41.7%

2024-25 TOP PERFORMERS

Goals	Isa Goettl (2)
Assists	Morgan Smith (2)
Points	Four Players (4)
Faceoffs Won	Genevieve Hendrickson (33)
Plus/Minus	Six Players (-1)
Blocks	Riley Reeves (14)
Goalie Wins	N/A (-)
GAA	Kaitlin Groess (2.52)
Save %	Kaitlin Groess (.932)

BLIZZARD'S BULLETS

FRESH ICE

No. 11 St. Cloud State Women's Hockey (4-0-0, 0-0-0 WCHA) opens its 2024-25 Western Collegiate Hockey Association schedule this weekend on the road against Bemidji State (1-3-0, 0-0-0 WCHA) on Friday and Saturday at the Sanford Center in Bemidji. Puck drop is scheduled for 6 p.m. CT on Friday with a 2 p.m. CT start on Saturday.

FOLLOW THE HUSKIES

The games will be broadcast on Big Ten Plus (note - a paid subscription is required) with live stats provided by Bemidji State. Links to each coverage option are available on the SCSU Women's Hockey schedule page.

SERIES HISTORY

SCSU is 52-51-10 all-time against Bemidji State. Last season, the Huskies beat BSU in all four games. SCSU is also 5-0-0 and 9-1-0 in its last five and 10 games against the Beavers respectively.

LET'S GO POLLING

The Huskies were ranked No. 11 in the country by both the USCHO and USA Hockey/The Rink Live national polls for the fourth consecutive week on Oct. 7/8. St. Cloud State is one of five WCHA programs featured in the rankings with one additional club receiving votes.

LAST TIME OUT

The No. 11 Huskies (4-0-0, 0-0-0 WCHA) continued its perfect start to the 2024-25 season with a sweep of Mercyhurst (1-3-0, 0-0-0 AHA), 2-1 and 2-0 to extend the program record for most wins to start a season (four).

Sophomore defender Carmen Bray (Nanaimo, British Columbia) and sophomore forward Greta Henderson (Regina, Saskatchewan) tied for the SCSU lead in points (two), while 10 Huskies put their names in the scoresheet with at least one point.

FOLLOW THE HUSKIES



@SCSUHuskies_WHK



@scsuhuskies_whk



/SCSUWHKY



ST. CLOUD STATE ATHLETIC COMMUNICATIONS

JACOB SANDERS, ASSISTANT DIRECTOR

jacob.sanders@go.stcloudstate.edu

Halenbeck Hall 328, 720 4th Ave S, St. Cloud, MN 56301

QUICK FACTS

UNIVERSITY INFORMATION

Location	St. Cloud, Minn.
Affiliation	NCAA Division I
Colors	Spirit Red and Black
Conference	WCHA
Mascot	Blizzard T. Husky
President	Larry Dietz (Interim)

TEAM INFORMATION

2023-24 Overall Record	17-17-2
2023-24 WCHA Record/Finish	12-14-2, 5th
2023 WCHA Tournament Finish	QF, 0-2
2023 NCAA Tournament Finish	DNQ
2023 Final National Ranking	USCHO - 11 USA Hockey - 11
Point Scorers Returning/Lost	14/7
Letterwinners Returning/Lost	18/8
Number of Total Newcomers	6
Facility	Herb Brooks National Hockey Center
Home Capacity	5,371

COACHING STAFF

Head Coach	Brian Idalski
Career Overall Record	316-212-53
St. Cloud State Overall Record	39-35-3
Career WCHA Record	147-154-35
Career Postseason Record	29-25
St. Cloud State Postseason Record	0-4
Best Overall Record	18-18-1 (2022-23)
Best WCHA Tourn. Finish	SF (2006, 2008)
Best NCAA Tourn. Finish	N/A
Associate Head Coach	Jinelle Siergiej
Assistant Coach	Noora Rätty
Assistant Coach	Emily Ach
Hockey Operations	Trent Hunter
Strength Coach	Jake Franzcek
Athletic Trainer	Rachel Nagel
Equipment Manager	Colin Jacobsen
SID	Jacob Sanders

ROSTER BREAKDOWN

Total Athletes	26
Forwards	13
Defenders	9
Forwards/Defenders	1
Goaltenders	4
Graduate Students	0
Seniors/Fifth years	11
Juniors	3
Sophomores	9
Freshmen	3
Prep Recruits	18
Transfers	8

PROGRAM HISTORY

Inagural Season	1998-99
All-Time Record	265-536-74 (.345)
Best Overall Record	18-15-5 (2007-08)
Best WCHA Record	12-10-2 (2000-01)
WCHA Semifinal Appearances (2)	2006, 2008

2024-25 ST. CLOUD STATE HUSKIES WOMEN'S HOCKEY

No.	Name	Pos.	Ht.	S/C	Cl.	Hometown/Previous Team
1	Sanni Ahola	G	5-7	L	5Y	Helsinki, Finland / HIFK (NSML)
2	Dayle Ross - C	D	5-6	R	Sr.	Spirit River, Alberta / St. Albert Slash (AFHL)
4	Alice Souriol	F	5-4	L	So.	Sherbrooke, Quebec / Stanstead College (CAHS)
5	Brieja Parent	F	5-4	L	5Y	Forest Lake, Minn. / St. Thomas (NCAA)
6	Taylor Larson - C	D	5-8	L	Sr.	Nisswa, Minn. / Bemidji State (NCAA)
8	Grace Wolfe - C	D	5-9	R	Sr.	Owatonna, Minn. / Owatonna HS
9	Svenja Voigt	F	5-5	L	Jr.	Cologne, Germany / Stanstead College (CAHS)
10	Abby Promersberger	F	5-6	R	Sr.	Fargo, N.D. / St. Thomas (NCAA)
11	Laura Zimmermann	F	5-4	L	R-So.	Ringgenberg, Switzerland / EV Bomo Thun (SWHL)
12	Ally Qualley	F	5-7	R	5Y	Brooklyn Park, Minn. / Merrimack (NCAA)
15	Marie Moran	F/D	5-8	R	So.	Lakeville, Minn. / Apple Valley HS
16	Avery Farrell	F	5-4	R	Jr.	Rogers, Minn. / Franklin Pierce (NCAA)
17	Ella Anick	D	5-6	R	Sr.	Hermantown, Minn. / Bemidji State (NCAA)
18	Greta Henderson	F	5-6	R	So.	Regina, Saskatchewan / Regina Rebels (SFU18AAAHL)
19	Myah Krueger	F	5-7	R	Fr.	Stillwater, Minn. / Stillwater HS
20	Emma Gentry - C	F	5-11	L	5Y	Alpena, Mich. / HoneyBaked (HPhL)
21	Avery Myers	F	5-7	R	5Y	Fargo, N.D. / New Hampshire (NCAA)
22	Grace Delmonico	F	5-3	L	So.	Eagan, Minn. / Gentry Academy
23	Sydney Bryant	D	5-8	R	So.	Traverse City, Mich. / Belle Tire (19U AAA)
27	Carmen Bray	D	5-8	L	So.	Nanaimo, British Columbia / Rink Hockey Academy Kelowna (CSSHL)
29	Jojo Chobak	G	5-8	L	5Y	Chicago, Ill. / Minnesota Duluth (NCAA)
31	Paige Hoogendam	G	5-8	L	So.	Ajax, Ontario / Toronto Junior Aeros (OWHL)
34	Sofianna Sundelin	F	5-7	L	So.	Ulvila, Finland / Team Kuortane (NSML)
41	Siiri Yrjölä	D	5-5	L	Fr.	Vantaa, Finland / HIFK (NSML)
42	Emilia Kyrkkö	G	5-7	L	Fr.	Nokia, Finland / Team Kuortane (NSML)
45	Regan Bulger	D	5-6	L	Jr.	Yellowknife, Northwest Territories / Shattuck St. Mary's

PRONUNCIATION GUIDE

1 - saw-knee uh-hole-uh	17 - ella ANN-ick	brian eye-DOLL-ski
2 - dale ROSS	19 - MY-uh KROO-gur	jin-ELL SIR-gay
4 - ah-iss SO-ree-ohl	20 - emma JENN-tree	Emily ahck (like dock)
5 - BREE-uh parent	22 - grace dell-MON-ick-oh	NORR-uh RAH-too
8 - grace wolf	29 - jojo CHO-back	jake FRAN-check
9 - ss-VEN-yuh VOKED (rhymes with poked)	31 - paige WHO-ghen-dam	rachel NAY-gull
10 - abby prom-ers-BURGER	34 - sophie-ANN-uh SUN-duh-lin	colin JACOB-sen
11 - LOR-uh ZIM-er-man	41 - siri oo-rey-la	
12 - AL-ee KWALL-ee	42 - emilia kuh-ree-ko	
15 - ma-REE more-ANN	45 - REE-ghen BULL-jer	
16 - avery FAIR-ell		

ROSTER GEOGRAPHY

Minnesota (9)			Europe (6)		
Name	Pos.	Hometown	Name	Pos.	Country
Ella Anick	D	Hermantown	Sanni Ahola	G	Finland
Grace Delmonico	F	Eagan	Emilia Kyrkkö	G	Finland
Avery Farrell	F	Rogers	Sofianna Sundelin	F	Finland
Myah Krueger	F	Stillwater	Svenja Voigt	F	Germany
Taylor Larson - C	D	Nisswa	Siiri Yrjölä	D	Finland
Marie Moran	F/D	Lakeville	Laura Zimmermann	F	Switzerland
Brieja Parent	F	Forest Lake			
Ally Qualley	F	Brooklyn Park			
Grace Wolfe - C	D	Owatonna			
Canada (6)			Michigan (2)		
Name	Pos.	Province	Name	Pos.	Hometown
Carmen Bray	D	British Columbia	Sydney Bryant	D	Traverse City
Regan Bulger	D	Northwest Territories	Emma Gentry - C	F	Alpena
Greta Henderson	F	Saskatchewan			
Paige Hoogendam	G	Ontario			
Dayle Ross - C	D	Alberta			
Alice Souriol	F	Quebec			
			North Dakota (2)		
Name	Pos.	Hometown	Name	Pos.	Hometown
Avery Myers	F	Fargo	Abby Promersberger	F	Fargo
			Illinois (1)		
Name	Pos.	Hometown			
Jojo Chobak	G	Chicago			



BLIZZARD'S BULLETS

Fifth year forward **Emma Gentry** (Alpena, Mich) scored her first game-winning goal of the season in the Huskies 2-1 victory. It was the 50th of her career (13th game winner) and the 75th point of her career.

Fifth year goaltender **Sanni Ahola** (Helsinki, Finland) earned her third win of the season in the first game of the series, while freshman **Emilia Kyrkkö** (Nokia, Finland) posted a shutout win in her first collegiate start/appearance. Each netminter made 21 saves in their respective start.

SCSU's penalty kill went 2-for-2 over the weekend, continuing its perfect start to the season (15-for-15), while the powerplay went 1-for-1 to improve to 5-for-11 (45.5%) on the season.

WCHA WEEKLY HONORS

Freshman goaltender **Emilia Kyrkkö** (Nokia, Finland) was named Western Collegiate Hockey Association (WCHA) Goaltender of the Week, on Oct. 7, following her standout performance in the series clinching shutout of No. 15/RV Mercyhurst. It was the first weekly award of her career.

Kyrkkö earned a shutout win in her collegiate debut as SCSU defeated No. 15/RV Mercyhurst, 2-0 to complete the series sweep. The freshman saved all 21 shots she faced in the victory to help lead the Huskies to their best start in program history at 4-0.

Senior defender **Ella Anick** (Hermantown, Minn.) and fifth year forward **Emma Gentry** (Alpena, Mich.) earned Western Collegiate Hockey Association (WCHA) weekly honors on Sept. 23, following their performances in the Huskies season-opening sweep of Lindenwood. Anick was named the conferences Defender of the Week, while Gentry was tabbed the Forward of the Week.

Anick tallied two assists for two points, three blocked shots and skated to a +4 over that weekend. She led the WCHA in +/- (+4), was tied for the lead in assists (2) and points among defenders (2), was tied for third in points among all players (2) and was tied for fourth in blocked shots (3).

The Hermantown, Minnesota native posted one of seven multi-point performances in the conference and was one of two players with two assists in a game. Anick recorded her eighth career multi-point game and fifth as a Husky. In her 100th collegiate game on Saturday, she tallied two assists in the Huskies season-opener. On Sunday, she led the Huskies in blocks (two) and skated to a career/game-high +4. This is the second time she has been named WCHA Defender of the Week in her career, both coming while playing for SCSU.

Gentry recorded three goals (one PP) and one assist for four points, 18 shots on goal, 22 faceoff wins and skated to a +3 in the first two games. She led the WCHA in goals (3), points (4), shots on goal (18), power play goals (1 - tie). Additionally, Gentry was also tied for second in +/- (+3) and fourth in faceoff wins (22). The fifth year forward was one of only two players in the WCHA with a two goal, one assist performance.

In the second game, Gentry led the game with nine shots on goal and 12 faceoff wins, while scoring the only even strength goal of the game. On Sunday, she posted her first multi-goal and multi-point game of the season and led the game with nine shots on goal and was second in faceoff wins (10). The Alpena, Michigan product won 56.4% of her draws over the weekend. This was the third time she has been named the WCHA Forward of the Week in her career.

THIS WEEK IN THE WCHA

All eight Western Collegiate Hockey Association teams are set to take on conference opponents as Minnesota, Minnesota State, St. Cloud State, St. Thomas and Wisconsin all play their first WCHA games of the season. (No. 3/4 Minnesota Duluth at No. 1 Wisconsin | (RV) Minnesota State at St. Thomas | No. 2 Minnesota at No. 4/5 Ohio State | No. 11 St. Cloud State at Bemidji State)

OH CAPTAINS, OUR CAPTAINS

St. Cloud State Women's Hockey has named four captains entering the 2024-25 season. Graduate forward **Emma Gentry** (Alpena, Mich.) and senior defenders **Taylor Larson** (Nisswa, Minn.), **Dayle Ross** (Spirit River Alberta) and **Grace Wolfe** (Owatonna, Minn.) will each wear the "C" as the Huskies captains. Gentry, Ross and Wolfe each wore an "A" as alternate captains for the first time a season ago. It will be the first time any of the players have worn the "C" as a Husky.

Gentry embarks on her fifth season with the Huskies in 2024-25 after being selected to the U.S. Collegiate Select Team in August for the second consecutive year, helping the United States beat Canada in a three-game series, 2-1. She enjoyed a strong senior season with St. Cloud State last year, skating in 31 games while scoring a team-leading 12 goals and providing six assists for 18 points. The center won 264 draws and put 139 shots on goal, leading the team in both categories. She also led the team with five game-winning goals, recorded the third most points and was fourth in plus-minus (+6). Gentry led all skaters who took at least 45 faceoffs in faceoff percentage (53.4%). She was selected to the All-WCHA Third Team for her efforts. Across 116 games during her four years at SCSU, Gentry has scored 46 goals with 24 assists for 70 points. She is a three-time member of the WCHA All-Academic team.

STANDINGS & POLLS

2024-25 WESTERN COLLEGIATE HOCKEY ASSOCIATION STANDINGS

Team	WCHA Record	Points
No. 3/4 Minnesota Duluth	2-0-0	6
No. 4/5 Ohio State	2-2-0	6
No. 1 Wisconsin	0-0-0	0
No. 2 Minnesota	0-0-0	0
No. 11 ST. CLOUD STATE	0-0-0	0
(RV) Minnesota State	0-0-0	0
St. Thomas	0-0-0	0
Bemidji State	0-2-0	0

USCHO NATIONAL POLL

- OCTOBER 7 -

Rank	Team	Record	Pts	LR
1	Wisconsin (19)	4-0-0	299	1
2	Minnesota (1)	4-0-0	278	2
3	Minnesota Duluth	3-1-0	248	3
4	Ohio State	4-2-0	234	4
5	Clarkson	4-0-0	233	5
6	Cornell	0-0-0	187	6
7	Colgate	2-2-0	185	7
8	St. Lawrence	1-2-0	154	8
9	Connecticut	1-3-0	124	9
10	Quinnipiac	3-1-0	120	10
11	ST. CLOUD STATE	4-0-0	107	11
12	Penn State	2-2-0	84	12
13	Northeastern	2-2-0	76	13
14	Princeton	0-0-0	33	14
15	Mercyhurst	1-3-0	20	15

Others receiving votes: Yale 10, Boston College 3, Minnesota State 3, Boston University 2

USA HOCKEY/THE RINK LIVE NATIONAL POLL

- OCTOBER 8 -

Rank	Team	Record	Pts	LR
1	Wisconsin (18)	4-0-0	284	1
2	Minnesota	4-0-0	258	2
3	Clarkson	4-0-0	232	3
4	Minnesota Duluth (1)	3-1-0	230	4
5	Ohio State	4-2-0	220	5
6	Colgate	2-2-0	181	7
7	Cornell	0-0-0	174	6
8	St. Lawrence	1-2-0	143	8
9	Quinnipiac	3-1-0	111	t-9
10	Connecticut	1-3-0	109	t-9
11	ST. CLOUD STATE	4-0-0	103	11
t-12	Penn State	2-2-0	80	12
t-12	Northeastern	2-2-0	80	13
14	Princeton	0-0-0	38	14
15	Mercyhurst	1-3-0	14	RV

Others receiving votes: Yale 10, Minnesota State 7, Boston College 2, Robert Morris 2, Boston University 1, Holy Cross 1

ST. CLOUD STATE NATIONAL POLL HISTORY

Highest National Ranking: No. 7 (Dec. 12, 2023)
 Highest Final National Ranking: No. 11 (2023-24)
 Highest Preseason Ranking: No. 11 (2024-25)
 Top-Ranked Opponent Defeated: No. 1 (4x; at Ohio State, Dec. 1, 2023 | vs. Minnesota, Nov. 7, 2022 | vs. Wisconsin, Oct. 19, 2007 | vs. Wisconsin, Feb. 4, 2006)

2024-25 HUSKIES NATIONAL RANKINGS (USCHO/USA):

Preseason: 11 | 11
 Week One: 11 | 11
 Week Two: 11 | 11
 Week Three: 11 | 11



BLIZZARD'S BULLETS

Larson begins her second season with SCSU after spending two seasons at Bemidji State. She was second in assists (six), second in points (eight) and fourth in goals (two) among the Huskies defenders. She blocked 57 shots last season and has blocked a total of 155 in her collegiate career. Larson is a three-time AHCA/Krampade All-American Scholar, a two-time WCHA Scholar Athlete, a two-time member of the WCHA All-Academic team and a CSC Academic All-District® honoree.

Ross, a fourth-year defender, has skated in 106 games and has blocked 233 shots with five goals and 20 assists for 25 points in her first three seasons with SCSU. Last season, Ross led all Huskies defenders with 73 shots on goal and was second with three goals. She was named a member of the WCHA All-Academic team in 2023-24.

Wolfe begins year four with the Huskies after being limited to just 11 games in 2023-24 due to injury. In limited action, Wolfe was second on the team in plus-minus (+8). Among blueliners, she tied for the lead in goals (three), was tied for second in assists (four) and was tied for third in points (seven). Through three seasons, Wolfe has skated in 81 games with a 5-23-28 line and 156 career blocked shots. She is a two-time member of the WCHA All-Academic team and a WCHA Scholar Athlete.

WCHA PRESEASON POLL

St. Cloud State Women's Hockey was picked to finish fifth in the 2024-25 Western Collegiate Hockey Association (WCHA) Preseason Coaches' Poll, as announced by the league office on Monday. Additionally, fifth year goaltender **Sanni Ahola** (Helinski, Finland) received votes to be on the Preseason All-WCHA team. The Huskies are coming off a season in which they finished fifth in the league and established a new program record for conference points.

SCSU received 25 points overall in the coaches' poll and were selected to finish behind Wisconsin (46, five first-place votes), Ohio State (43, two first-place votes), Minnesota (40, one first-place votes) and Minnesota Duluth (31). Rounding out the poll was St. Thomas (17), Minnesota State (15) and Bemidji State (seven).

The Huskies continued to enjoy success on the ice in 2023-24 during their second season under Idalski, establishing a new school record with 40 conference points while nearly matching the program record for wins in a season for the second consecutive season. The Huskies finished fifth in the WCHA for the second consecutive season after finishing outside the top-five in every season since 2015-16. SCSU earned ranked wins over No. 1 Ohio State, No. 6 Minnesota Duluth and No. 10 Northeastern and return top goal scorer, fifth year forward Emma Gentry (Aplena, Mich.) along with the pair of elite fifth-year goaltenders, Ahola and Jojo Chobak (Chicago, Ill.).

2024-25 WCHA Preseason Coaches Poll

(Coaches could not vote for their own team. First-place votes are in parentheses)

Rank	Team (First Place Votes)	Points
1.	Wisconsin (5)	46
2.	Ohio State (2)	43
3.	Minnesota (1)	40
4.	Minnesota Duluth	31
5.	ST. CLOUD STATE	25
6.	St. Thomas	17
7.	Minnesota State	15
8.	Bemidji State	7

GENTS REPRESENTS THE STARS AND STRIPES AGAIN

Fifth year forward Emma Gentry helped lead the U.S. Collegiate Select Team to a 2-1 record in the three-game series against Canada in the 2024 Collegiate Select Series last August at the Canada Games Park in St. Catharines, Ontario.

She was the fifth active Husky to be named to the Collegiate Select Team* – formerly known as the U22 Team – and the first to make the roster in back-to-back years since 2007. In 2023, goaltender **Jojo Chobak** (Chicago, Ill.) joined Gentry on Team USA. Prior to the duo in 2023, goaltender Emma Polusny was the last Husky to make the team in 2019. Defender **Brittini Kuyper** made back-to-back U22 squads in 2006 and 2007 while forward **Holly Roberts** joined Kuyper at the 2007 U22 Series.

St. Cloud State Huskies at the U.S. Collegiate Select Series

Year	Name	Pos.
2024	EMMA GENTRY	F
2023	EMMA GENTRY	F
2023	JOJO CHOBAK	G
2019	Emma Polusny	G
2007	Holly Roberts	F
2007	Brittini Kuyper	D
2006	Brittini Kuyper	D

2024-25 HUSKIES HONORS

ELLA ANICK

WCHA Defender of the Week (Sept. 23)

EMMA GENTRY

U.S. Collegiate Select Team
WCHA Forward of the Week (Sept. 23)

EMILIA KYRKKÖ

WCHA Goaltender of the Week (Oct. 7)

2024-25 WCHA LEADERS

GOALS

Rk.	Player	G
T-1.	Abbey Murphy (UMN)	5
T-1.	Casey O'Brien (UW)	5
T-1.	Lacey Eden (UW)	5
T-4.	EMMA GENTRY (SCSU)	4
T-4.	Three Players	4

FACEOFF WINS

Rk.	Player	FWO
1.	Jocelyn Amos (OSU)	77
2.	Jenna Buglioni (OSU)	69
3.	Casey O'Brien (UW)	61
4.	Caitlin Kraemer (UMD)	49
5.	BRIEJA PARENT (SCSU)	42
6.	EMMA GENTRY (SCSU)	40

BLOCKED SHOTS

Rk.	Player	BLK
1.	Riley Reeves (BSU)	14
T-2.	Jenna Buglioni (OSU)	10
T-2.	Kendra Fortin (BSU)	10
T-4.	GRACE WOLFE (SCSU)	9
T-4.	Three Players	9

GOALS AGAINST AVERAGE

Rk.	Player	GAA
1.	Ava McNaughton (UW)	0.60
T-2.	SANNI AHOLA (SCSU)	1.00
T-2.	Three Players	1.00

SHUTOUTS

Rk.	Player	SO
T-1.	SANNI AHOLA (SCSU)	1
T-1.	EMILIA KYRKKÖ (SCSU)	1
T-1.	Five Players	1



BRIAN IDALSKI

HUSKIES HEAD COACH



Idalski at a Glance

Education

- University of Wisconsin-Stevens Point
B.S. in Health Promotion and Wellness

A Pillar of Collegiate Women's Hockey

- In his third season as St. Cloud State's head coach and 18th overall following 10 seasons at North Dakota and five at UW-Stevens Point

Coaching Accomplishments

- Named St. Cloud State's head coach on May 19, 2022
- 2022-23 USCHO National Coach of the Year and Co-WCHA Coach of the Year
- Career record of 312-212-53 (.587) across 17 seasons as a head coach
- Three time Conference Coach of the Year
- Has guided his teams to five NCAA Tournament appearances, an NCAA Tournament Final, four conference tournament championships, seven conference tournament finals and three regular season conference championships
- Established a program record with 36 conference points and tied the program win record with 18 in his first season behind the Huskies' bench
- Has recruited and coached 10 Olympians, 35 National Team members from nine different countries, nine All-Americans, a Patty Kazmaier Finalist, four Patty Kazmaier Top 10 Finalists, two NCAA Great Eight Award winners, five WCHA Outstanding Student-Athletes of the Year, one Conference Player of the Year and 42 All-Conference selections
- 12 student-athletes have earned Academic All-American honors, 73 have earned WCHA Scholar Athlete recognition and 140 have been named to the WCHA All-Academic team under his supervision
- Served as the head coach for China at the 2022 Winter Olympics in Beijing
- Owens a 25-18 career record in conference tournament play and is 29-23 (.558) overall in the postseason
- Brought St. Cloud State back to the National Polls for the first time since 2009 and closed the season ranked for the first time in program history, landing in 10 of the final 11 polls

Head coach Brian Idalski enters his third season at the helm of St. Cloud State Women's Hockey in 2024-25. The 2022-23 USCHO National Coach of the Year and WCHA Coach of the Year owns a career collegiate coaching record of 312-212-53 (.587) across 17 seasons as a head coach. A legendary figure in the history of women's collegiate hockey, Idalski has earned three conference Coach of the Year honors while guiding his teams to five NCAA Tournament appearances, an NCAA Tournament Final berth, four conference tournament championships, seven conference tournament finals and three regular-season conference championships.

Idalski has recruited and coached 10 Olympians, 35 National Team members from nine different countries, nine All-Americans, a Patty Kazmaier Finalist, four Patty Kazmaier Top 10 Finalists, two NCAA Great Eight Award winners, five WCHA Outstanding Student-Athletes of the Year, one Conference Player of the Year, one Conference Rookie of the Year and 42 All-Conference selections.

In addition to setting a standard for excellence on the ice, Idalski's programs have enjoyed incredible success in the classroom. Under his supervision 12 student-athletes have been named Academic All-Americans, 73 have earned WCHA Scholar Athlete recognition and a whopping 140 have been named to the WCHA All-Academic team.

Across his 17 seasons as a head coach, Idalski owns a conference record of 205-163-41 with a career points percentage of 56.2%. He earned three NCHA Regular Season Championships with UW-Stevens Point and has orchestrated top-half conference finishes in seven of his 11 seasons in the rugged WCHA.

Idalski-led programs have experienced incredible success in the postseason, going 25-18 at the conference tournament and 4-5 in NCAA Tournament play for a combined 29-23 (.558) playoff record. Leading UW-Stevens Point to the 2004 NCAA DIII Tournament Final in his first trip to the "Big Dance," Idalski has guided his teams to five NCAA Tournament appearances including a Third Place finish in 2006. He captured four NCHA Tournament Championships in five seasons prior to joining North Dakota, then won seven WCHA Quarterfinal series and made two WCHA Championship appearances during his 10 years in Grand Forks.

In his first season as head coach of Huskies Women's Hockey, Idalski was named the USCHO National Coach of the Year and Co-WCHA Coach of the Year following his program's historic turnaround and rise to national prominence.

Under Idalski's guidance the Huskies tied a program record with 18 wins, going 18-18-1 with an 11-16-1 mark in WCHA play - establishing a new program record with 36 conference points to finish fifth, standing as the Huskies' best conference finish since 2015-16 and marking just the second time the program has earned a top-five conference finish in the last 13 years. The club's 18 wins were the most since SCSU won 18 games in 2007-08 while their 11 conference wins stand as the third-most in program history, one shy of their total from the past three seasons combined and most since 2009-10. St. Cloud State doubled their win total from a season ago and added a 42.9% points percentage, their best mark since 2009-10 - establishing a program record for the three-point era.



Idalski led St. Cloud State back into national prominence as the Huskies entered both the USCHO and USA Today National Polls in the first week of December, placing the team in the National rankings for the first time since 2009 and 2008 respectively. After debuting at No. 14 in both polls, SCSU proceeded to remain ranked in 10 of the next 11 weeks to close the year, closing the season ranked for the first time in program history at No. 12 by the USCHO and No. 13 by USA Today. Prior to 2022-





23, SCSU had only appeared in the USA Today rankings five times while appearing in just six USCHO polls – last season, the Huskies were ranked 12 and 11 times respectively.

For the first time in 13 years, the Huskies defeated or earned a point from all seven conference opponents – taking down then-No. 1 Minnesota, shutting out then-No. 8 and eventual NCAA Champion Wisconsin in front of a packed Kohl Center and taking both then-No. 1 Ohio State and then-No. 7 Minnesota Duluth to overtime. In defeating 2022-23 National Champion Wisconsin during the regular season, the Huskies recorded a win over the eventual NCAA champion for the first time since 2009-10 (Minnesota Duluth) and marked just the fifth occurrence (2005-06, Wisconsin; 2001-02, Minnesota Duluth & 2000-01, Minnesota Duluth) in the program's history.

Huskies Hockey established a new culture of high-compete 200-foot hockey under Idalski, beginning in the defensive zone. SCSU led the NCAA and set a new program record with 576 blocked shots while holding opponents to 2.59 goals – their second-best mark ever – and 32.24 shots per game – their best mark since 2015-16. St.

Cloud State's goaltenders anchored the rejuvenated defense, recording the program's third-best team save percentage at .920 and second-best goals against average of 2.58. The Huskies posted a program-record six shutouts in 2022-23, punctuating their stingy defensive work.

In the offensive zone, St. Cloud State scored 87 goals – eclipsing 66 for the first time since 2009-10 and standing as the program's most since that same season. The Huskies netted 64 even-strength goals, good for second-most all-time, on a 10.43% shooting percentage that becomes the program's third best mark and highest since 2000-01. For the first time since 2009-10, four Huskies recorded 20-point seasons while two defenders provided double-digit scoring seasons for the first time since 2017-18.

Special teams took a major step forward under Idalski as the Huskies power play delivered a 20.41% campaign while the penalty kill improved from a 77.27% mark a season ago to 85.50% in 2022-23. Both marks stand fourth-best in program history while the club's 20 power play goals were the most since 2009-10.

Nine Huskies set or matched career-high point totals in 2022-23 while Dayle Ross set a program record with 104 blocks, Jenniina Nylund tied the program's record with five game-winning goals and Jojo Chobak broke the single-season mark with five shutouts. Klára Hymliárová scored 17 goals – eighth-most in Huskies history – and closed the regular season as the NCAA's power play goal leader with eight. Sophomore defenders Dayle Ross and Grace Wolfe took massive steps forward under Idalski's guidance, providing 15 and 18 points respectively while ranking No. 1 and No. 3 all-time in single-season blocks with 104 and 83 respectively. The SCSU goaltending duo of Sanni Ahola and Jojo Chobak thrived in a tandem, each recording save percentages of .923 with GAA marks of 2.50 and 2.46 to help anchor the turnaround.

Brian Idalski was named the sixth head coach in the history of St. Cloud State Women's Hockey on May 19, 2022.

Idalski was chosen to serve as the Head Women's Hockey Coach for China's National Team at the 2022 Beijing Winter Olympics. His team earned two wins in pool play and operated as the top penalty kill in the Olympics at 90.0% with nine kills on 10 chances. Under his guidance, goaltender Jiaying Zhou posted the tournament's best save percentage at .955 with 85 stops on 89 shots.

Prior to joining St. Cloud State, Idalski spent three seasons as the head coach of the Shenzhen KRS Vanke Rays in the Zhenskaya Hockey League. He guided the Rays to a 77-17 record, two regular season championships and the 2020 ZhHL Cup – becoming the first non-Russian team to win the league's championship. Idalski was named ZhHL Coach of the Year in 2020 and 2022 along with being selected to coach in the 2019-20 ZhHL All-Star Game.

Idalski spent the 2018-19 season as the Director of Hockey Activities at Culver Academy in Culver, Indiana, leading the program to its first USAH Tier-I Nationals appearance.

No stranger to the WCHA, Idalski spent 10 seasons as the head coach of North Dakota Women's Hockey – building the program into a perennial national power with a rich tradition of success. Idalski produced a 169-154-39 (.521) record in Grand Forks with a 124-124-32 mark in conference play, reaching 50 points four times in addition two NCAA Tournament appearances, two WCHA Tournament Finals and seven WCHA Quarterfinal Series wins. North Dakota finished .500 or better in each of their final seven seasons, going 144-89-25 (.607) overall with a 104-69-23 (59.0% points percentage) across that span.

Idalski recruited and coached six All-Americans, five WCHA Outstanding Student-Athletes of the Year, one WCHA Rookie of the Year and 25 All-WCHA selections during his tenure at North Dakota. Jocelyne and Monique Lamoureux, Michelle Karvinen and Shelby Amsley-Benzie earned All-American honors under Idalski's direction while Karvinen was named WCHA Rookie of the Year in 2011-12. Amsley-Benzie developed into one of the greatest goaltenders in collegiate hockey during



her four years with Idalski, earning All-American honors in addition to being named a Patty Kazmaier Top 10 Finalist. Idalski and his staff's successful recruitment of the Lamoureux sisters was instrumental in the program's rapid turnaround as Jocelyne and Monique both earned two All-American nods while the former led the WCHA in scoring as a junior.

North Dakota enjoyed five 20-win seasons under Idalski, finishing below .500 just three times in his tenure with seven winning campaigns. His club earned a reputation for accountability on and off the ice, opportunistic offense and a rugged defense – recording 51 shutouts in his tenure while allowing less than 25 shots on goal per game in four of their final five seasons. All-WCHA forwards Michelle Karvinen, Josefine Jakobsen, Amy Menke and Becca Kohler flourished alongside the All-Americans Jocelyne and Monique Lamoureux. On the defensive end, Idalski helped develop Halli Krzyzaniak into a three-time All-WCHA selection and two-year captain before she became the program's first-ever NWHL draft pick – taken in the fifth round of the 2016 Draft, one spot ahead of Menke.

In addition to his time on the bench in Grand Forks, Idalski served as the Vice President of the American Women's Hockey Coaches Association and as the Governor of the American Hockey Coaches Association.

Idalski spent the 2006-07 season as an assistant coach on the St. Cloud State bench under first-year head coach Jeff Giesen – a season in which the Huskies went 12-18-7, one of only 11 campaigns with double-digit wins in the program's 25-year history. He led the defenders, coordinated advance scouting and oversaw the Huskies' recruiting efforts. His recruiting class was headlined by legendary SCSU goaltender Ashley Nixon, who graduated second all-time in saves, fourth in save percentage and fifth in goals against.



Earning his first head coaching role in 2001-02 with UW-Stevens Point Women's Hockey, Idalski quickly established himself as a rising star by going 108-21-11 (.881) in five seasons leading the Pointers. He was named NCHA Coach of the Year in 2002 and 2005 while being named a Finalist for the AHCA National Coach of the Year award four times, guiding UW-Stevens Point to four NCHA Tournament Championships and three NCHA Regular Season Championships. The Pointers made three NCAA Tournament appearances under Idalski, appearing in the 2004 NCAA DIII National Championship game and taking Third at the 2006 NCAA DIII Tournament. Idalski oversaw four 20-win seasons at Stevens Point and went 58-9-6 for a 83.6% points percentage in conference play, guiding his club to the NCHA's first-ever undefeated regular season in 2004-05. Three Pointers earned All-American honors under Idalski and 17 added All-NCHA accolades.

First joining the collegiate coaching ranks as an assistant with UW-Stevens Point Men's Hockey in 2000-01, Idalski broke into the coaching world in 1999-00 as an assistant on the Columbus Cottonmouths' bench in the Central Hockey League.

Idalski enjoyed a long playing career as a defenseman, spending two seasons with Columbus in the CHL and two with the Madison Monsters in the United Hockey League. The gritty blueliner helped Columbus earn the 1998 CHL Regular Season and Postseason Championships as a rookie. He played his collegiate hockey at UW-Stevens Point, appearing in 97 games and leading the Pointers to a pair of NCAA Tournament Finals including the program's 1993 NCAA DIII National Championship.

A native of Warren, Michigan, Brian and his wife Nicole have four sons – Beau, Jason, David and Mitchel.

SEASON	TEAM	RECORD	W%	CONFERENCE	CONF. RECORD	OTW-OTL	POINTS	PTS%	CONF. FINISH	POSTSEASON
2001-02	UW-Stevens Point	26-1-0	.963	NCHA	15-1-0	2-0	30	93.8%	1st of 5	Won NCHA Championship
2002-03	UW-Stevens Point	20-5-2	.778	NCHA	12-3-1	2-1	25	78.1%	2nd of 5	Lost NCHA Championship
2003-04	UW-Stevens Point	19-7-4	.700	NCHA	11-4-1	2-0	23	71.9%	T-2nd of 5	Won NCHA Championship, lost NCAA Championship
2004-05	UW-Stevens Point	22-3-1	.865	NCHA	9-0-1	1-0	19	95.0%	1st of 5	Won NCHA Championship, lost NCAA First Round
2005-06	UW-Stevens Point	21-5-4	.767	NCHA	11-1-3	0-0	25	83.3%	1st of 5	Won NCHA Championship, won NCAA Third Place Game
2007-08	North Dakota	4-24-6	.206	WCHA	4-20-4	0-1	12	21.4%	7th of 8	Lost WCHA Quarterfinals
2008-09	North Dakota	13-19-4	.417	WCHA	9-16-3	3-1	21	35.6%	T-5th of 8	Lost WCHA Quarterfinals
2009-10	North Dakota	8-22-4	.294	WCHA	7-19-2	1-3	16	27.6%	8th of 8	Lost WCHA Quarterfinals
2010-11	North Dakota	20-13-3	.597	WCHA	16-10-2	3-0	50	59.5%	4th of 8	Lost WCHA Semifinal
2011-12	North Dakota	22-12-3	.635	WCHA	16-9-3	1-1	53	63.1%	3rd of 8	Lost WCHA Semifinal, lost NCAA First Round
2012-13	North Dakota	26-12-1	.679	WCHA	18-9-1	2-1	55	65.5%	T-2nd of 8	Lost WCHA Championship, lost NCAA First Round
2013-14	North Dakota	20-12-4	.611	WCHA	14-10-4	1-0	48	57.1%	3rd of 8	Lost WCHA Championship
2014-15	North Dakota	22-12-3	.635	WCHA	16-9-3	1-1	53	63.1%	3rd of 8	Lost WCHA Semifinal
2015-16	North Dakota	18-12-5	.586	WCHA	13-10-5	1-1	47	56.0%	4th of 8	Lost WCHA Semifinal
2016-17	North Dakota	16-16-6	.500	WCHA	11-12-5	1-1	41	48.8%	4th of 8	Lost WCHA Semifinal
2022-23	St. Cloud State	18-18-1	.500	WCHA	11-16-1	0-3	36	42.9%	5th of 8	Lost WCHA Quarterfinals
2023-24	St. Cloud State	17-17-2	.500	WCHA	12-14-2	0-2-2	38	50.0%	5th of 8	Lost WCHA Quarterfinals
CAREER - 17 SEASONS		312-212-53	.587	-	205-163-41	21-16-2	592	56.2%	-	-



ASSOCIATE HEAD COACH JINELLE SIERGIEJ



Siergiej at a Glance

Education

- University of Wisconsin
B.S. in Rural Sociology

10 Years at St. Cloud State

- In her 10th season with the Huskies and fifth as the associate head coach

Career Accomplishments

- Has recruited and coached five Olympians, 16 National Team members across eight countries, two Conference Players of the Year and 11 All-Conference selections
- 59 student-athletes have earned WCHA Scholar Athlete status alongside 141 Academic All-Conference recipients under Siergiej
- 2010 Olympic Silver Medalist and 2007 World Championships Silver Medalist
- Graduated as Wisconsin's career leader in goals, game-winning goals and power play goals

all-time leader in goals, game-winning goals and power play goals. Across her four-year career the legendary forward produced 89 goals and 67 assists for 156 collegiate points, posting three 20-goal seasons and eclipsing 40 points twice with 50 in her junior season.

The owner of the Crazy Eights Hockey Camp since 2006, Siergiej has invested much of her career in the growth of the women's game at the youth level – directing Husky Pups at St. Cloud State while creating opportunities for girls across central Minnesota to get involved in hockey.

Jinnelle and her husband Mike Siergiej have two sons – Colden and Rory.

Jinnelle Siergiej enters her 11th season with St. Cloud State Women's Hockey in 2024-25, her sixth campaign as the program's associate head coach. Working primarily with the forwards, directing the power play and leading recruiting efforts, the 2010 Olympic Silver Medalist has guided eight Huskies to All-WCHA honors including five All-Rookie Team selections. 15 Huskies have delivered 20-point seasons under Siergiej's tutelage while 14 have posted double-digit goal campaigns.

Across her 11-year collegiate coaching career, Siergiej has recruited and coached five Olympians, 16 National Team members spanning eight countries, one Conference Goaltender of the Year, one Conference Rookie of the Year and 11 All-Conference selections. In addition to her work on the ice, Siergiej's academic supervision has helped 59 student-athletes earn WCHA Scholar Athlete recognition alongside 141 Academic All-Conference recipients.

Siergiej has recruited and coached four Olympic forwards in Jenniina Nylund (Finland, Beijing 2022), Klára Hymlárová (Czech Republic, Beijing 2022), Laura Zimmerman (Switzerland, Beijing 2022) and Sofianna Sundelin (Finland, Beijing 2022) during her Huskies tenure.

17 Huskies have signed professional contracts during Siergiej's tenure while Kayla Friesen (2020, Connecticut Whale) and Hannah Bates (2021, Connecticut Whale) were selected in the NWHL and PHF Drafts respectively.

Since joining the program as an assistant coach in 2014-15, Siergiej has been instrumental in the development of St. Cloud State's forwards. Molly Illikainen (17-15-32) gave the Huskies their first 30-point season since 2009-10 in Siergiej's second season with the program. Laura Kluge (7-17-24) and Klara Hymlarova (8-18-26) impressed as rookies in 2017-18 and 2019-20 respectively while Julia Tylke climbed to sixth all-time in goals at the conclusion of her SCSU career under Siergiej's watch.

Four of the program's top-eight single-season power play percentages have been recorded under Siergiej's direction including a pair of 20-plus percentage campaigns, 21.35% in 2015-16 and 20.41% in 2022-23. Klára Hymlárová closed the 2022-23 regular season as the NCAA's leader in power play goals while the Huskies reached 20 power play goals for the first time since the 2009-10 season.

Siergiej began her collegiate coaching career as an assistant coach at Robert Morris in 2013-14, helping RMU go 24-8-3 and finish second in the CHA with a 13-5-2 conference record. Freshman goaltender Jessica Dodds earned CHA Rookie of the Year honors while Rebecca Vint, Brittany Howard and Anneline Lauziere joined her on the All-College Hockey America team.

Entering the coaching ranks in 2010-11 as the head coach of Arrowhead High School in Hartland, Wisconsin, Siergiej spent three seasons with the program before moving to the collegiate level.

Siergiej represented the United States at the 2010 Winter Olympics in Vancouver and helped United States Women's Hockey earn Silver. She also won Silver at the IIHF World Championships with Team USA in 2007 and skated at the Four Nations tournament with Team USA in 2006, 2007, 2009 and 2010.

Her name synonymous with the success of Wisconsin Badgers Women's Hockey in the late 2000's, Jinnelle (Zaugg) Siergiej played four years with the Badgers from 2004-05 to 2007-08. She gained All-WCHA honors in 2006, 2007 and 2008 and was selected to the WCHA All-Rookie team in 2005. At Wisconsin, Siergiej was part of two national title teams in 2006 and 2007 and left the campus as UW's



DIRECTOR OF HOCKEY OPERATIONS TRENT HUNTER



Trent Hunter enters his first season as the Director of Hockey Operations and Video Coordinator for St. Cloud State Women's Hockey in 2024-25.

STRENGTH & CONDITIONING COACH JAKE FRANECZEK



Jake Franczek enters his fifth season as the strength and conditioning coach of Huskies Hockey in 2024-25. He has been a Certified Strength and Conditioning Specialist through the NSCA since 2020.

Franczek has been instrumental in the implementation of modern strength & conditioning practices throughout the Men's and Women's Hockey programs, serving a key role in player development. 17 Huskies student-athletes have gone on to sign professional contracts during Franczek's tenure.

Prior to his time at SCSU, Franczek served as a strength and conditioning intern at the University of Minnesota working with Gophers Men's and Women's Hockey. While completing the internship he also worked as an Assistant Strength and Conditioning Coach at Cretin-Derham Hall and Velocity Training Center. His career has also taken him to stops as an assistant at the Detroit Red Wings development and pre-season camps.

Franczek earned his undergraduate degree in Exercise Science from Grand Valley State and completed his master's degree in Sports Management at St. Cloud State in 2022.

ATHLETIC TRAINER RACHEL NAGEL



Rachel Nagel enters her fourth season with St. Cloud State Women's Hockey in 2024-25. Serving as the program's athletic trainer since the 2021-22 season, Nagel has helped elevate the program's treatment and recovery processes while providing support to each student-athlete.

Nagel began her stint with the Huskies as a graduate assistant and was added in a full time capacity over this past summer. She earned her undergraduate degree from the University of Wisconsin in 2021 and completed her master's degree at St. Cloud State.

EQUIPMENT MANAGER COLIN JACOBSEN



Colin Jacobsen enters his second season as St. Cloud State Women's Hockey's equipment manager in 2024-25. Overseeing the equipment department and coordinating travel with the Huskies, Jacobsen provides over half a decade of experience to the Huskies staff.

Joining the Huskies following a stint with the Omaha Lancers in the USHL, Jacobsen spent the summer of 2023 working with U.S.A. Hockey at the 15U Development camp. He began his equipment career at Minnesota during his undergraduate studies, serving as the direct assistant to the Gophers' head equipment manager with the Men's Hockey program. Earning a Big Ten Regular Season Championship and advancing to the Men's Frozen Four in 2022, Jacobsen oversaw the student staff at Minnesota across the men's program. Jacobsen also assisted the Philadelphia Flyers' equipment staff at their 2022 development camp.

Jacobsen earned his B.S. in Agriculture and Food Business Management at Minnesota in 2022.



2024-25 OVERALL STATISTICS

Game Records

Overall	Conference	Home	Away	Neutral
4 - 0 - 0	0 - 0 - 0	2 - 0 - 0	2 - 0 - 0	0 - 0 - 0

#	Player	GP	Shots					+/-	Penalties				Goals										
			G	A	PTS	SH	SH%		PEN-MIN	MIN	MAJ	OTH	PP	SH	FG	GW	GT	OT	HT	PN	UA	BLK	
20	Gentry, Emma	4	4	1	5	22	.182	+4	1-2	1	0	0	1	0	1	1	0	0	0	0	0	0	1
18	Henderson, Greta	4	2	2	4	12	.167	+2	1-2	1	0	0	1	0	0	1	0	0	0	0	0	1	1
34	Sundelin, Sofianna	4	1	2	3	14	.071	+3	0-0	0	0	0	0	0	1	0	0	0	0	0	0	1	
17	Anick, Ella	4	1	2	3	10	.100	+4	0-0	0	0	0	1	0	0	0	0	0	0	0	0	5	
11	Zimmermann, Laura	4	1	2	3	10	.100	+2	3-6	3	0	0	0	0	0	0	0	0	0	0	0	0	
27	Bray, Carmen	4	1	2	3	5	.200	+5	0-0	0	0	0	0	0	0	0	0	0	0	0	0	2	
6	Larson, Taylor	4	1	2	3	3	.333	+2	0-0	0	0	0	1	0	0	0	0	0	0	0	0	1	
10	Promersberger, Abby	4	0	3	3	9	.000	+2	2-4	2	0	0	0	0	0	0	0	0	0	0	0	1	
2	Ross, Dayle	4	1	1	2	10	.100	+6	0-0	0	0	0	0	0	1	1	0	0	0	0	0	2	
5	Parent, Brieja	4	1	1	2	7	.143	0	3-6	3	0	0	1	0	1	1	0	0	0	0	0	2	
4	Sauriol, Alice	4	0	2	2	10	.000	+3	0-0	0	0	0	0	0	0	0	0	0	0	0	0	1	
15	Moran, Marie	4	1	0	1	1	1.000	0	0-0	0	0	0	0	0	0	0	0	0	0	0	1	0	
12	Qualley, Ally	4	0	1	1	9	.000	0	1-2	1	0	0	0	0	0	0	0	0	0	0	0	0	
8	Wolfe, Grace	4	0	1	1	4	.000	-3	1-2	1	0	0	0	0	0	0	0	0	0	0	0	9	
9	Voigt, Svenja	4	0	1	1	3	.000	0	1-2	1	0	0	0	0	0	0	0	0	0	0	0	0	
21	Myers, Avery	3	0	1	1	0	.000	+1	0-0	0	0	0	0	0	0	0	0	0	0	0	0	1	
16	Farrell, Avery	4	0	0	0	9	.000	0	1-2	1	0	0	0	0	0	0	0	0	0	0	0	0	
45	Bulger, Regan	4	0	0	0	3	.000	-2	3-6	3	0	0	0	0	0	0	0	0	0	0	0	3	
1	Ahola, Sanni	3	0	0	0	0	.000	0	0-0	0	0	0	0	0	0	0	0	0	0	0	0	0	
41	Yrjölä, Siiri	4	0	0	0	0	.000	+1	0-0	0	0	0	0	0	0	0	0	0	0	0	0	1	
42	Kyrkkö, Emilia	1	0	0	0	0	.000	0	0-0	0	0	0	0	0	0	0	0	0	0	0	0	0	
TM	TEAM	4	0	0	0	0	.000	0	0-0	0	0	0	0	0	0	0	0	0	0	0	0	0	
Totals		4	14	24	38	141	.099	+30	17-34	17	0	0	5	0	4	4	0	0	0	0	2	31	
Opponents		4	3	6	9	83	.036	-30	13-26	13	0	0	0	0	0	0	0	0	0	0	0	39	

#	Player	GP-GS	Goal Average			Saves		Record				Goals Allowed				
			MINUTES	GA	AVG	SAVES	PCT	W	L	T	SHO	PP	SH	EN	PEN	SOG
1	Ahola, Sanni	3-3	179:22	3	1.00	59	.952	3	0	0	1	0	0	0	0	0
42	Kyrkkö, Emilia	1-1	60:00	0	0.00	21	1.000	1	0	0	1	0	0	0	0	0
TM	EMPTY NET	-	00:38	0	0.00	0	.000	0	0	0	0	0	0	0	0	0
Totals		4	240:00	3	0.75	80	.964	4	0	0	2	0	0	0	0	0
Opponents		4	240:00	14	3.50	127	.901	0	4	0	0	5	0	0	0	0



2024-25 WCHA STATISTICS

Game Records

Overall	Conference	Home	Away	Neutral
0 - 0 - 0	0 - 0 - 0	0 - 0 - 0	0 - 0 - 0	0 - 0 - 0

# Player	GP	Shots							Penalties				Goals									
		G	A	PTS	SH	SH%	+/-	PEN-MIN	MIN	MAJ	OTH	PP	SH	FG	GW	GT	OT	HT	PN	UA	BLK	
TM TEAM	0	0	0	0	0	.000	0	0-0	0	0	0	0	0	0	0	0	0	0	0	0	0	0
Totals	0	0	0	0	0	.000	0	0-0	0	0	0	0	0	0	0	0	0	0	0	0	0	0
Opponents	0	0	0	0	0	.000	0	0-0	0	0	0	0	0	0	0	0	0	0	0	0	0	0

# Player	GP-GS	Goal Average			Saves		Record				Goals Allowed				
		MINUTES	GA	AVG	SAVES	PCT	W	L	T	SHO	PP	SH	EN	PEN	SOG
TM EMPTY NET	-	00:00	0	0.00	0	.000	0	0	0	0	0	0	0	0	0
Totals	0	00:00	0	0.00	0	.000	0	0	0	0	0	0	0	0	0
Opponents	0	00:00	0	0.00	0	.000	0	0	0	0	0	0	0	0	0

Faceoffs

# Player	GP	W	L	PCT.
----------	----	---	---	------

Power Play Scoring

# Player	GP	G	A	PTS	SHOTS	PCT.
----------	----	---	---	-----	-------	------

Short Handed Scoring

# Player	GP	G	A	PTS	SHOTS	PCT.
----------	----	---	---	-----	-------	------



2024-25 NONCONFERENCE STATISTICS

Game Records

Overall	Conference	Home	Away	Neutral
4 - 0 - 0	0 - 0 - 0	2 - 0 - 0	2 - 0 - 0	0 - 0 - 0

#	Player	GP	Shots					+/-	Penalties				Goals										
			G	A	PTS	SH	SH%		PEN-MIN	MIN	MAJ	OTH	PP	SH	FG	GW	GT	OT	HT	PN	UA	BLK	
20	Gentry, Emma	4	4	1	5	22	.182	+4	1-2	1	0	0	1	0	1	1	0	0	0	0	0	0	1
18	Henderson, Greta	4	2	2	4	12	.167	+2	1-2	1	0	0	1	0	0	1	0	0	0	0	0	1	1
34	Sundelin, Sofianna	4	1	2	3	14	.071	+3	0-0	0	0	0	0	0	1	0	0	0	0	0	0	1	
17	Anick, Ella	4	1	2	3	10	.100	+4	0-0	0	0	0	1	0	0	0	0	0	0	0	0	5	
11	Zimmermann, Laura	4	1	2	3	10	.100	+2	3-6	3	0	0	0	0	0	0	0	0	0	0	0	0	
27	Bray, Carmen	4	1	2	3	5	.200	+5	0-0	0	0	0	0	0	0	0	0	0	0	0	0	2	
6	Larson, Taylor	4	1	2	3	3	.333	+2	0-0	0	0	0	1	0	0	0	0	0	0	0	0	1	
10	Promersberger, Abby	4	0	3	3	9	.000	+2	2-4	2	0	0	0	0	0	0	0	0	0	0	0	1	
2	Ross, Dayle	4	1	1	2	10	.100	+6	0-0	0	0	0	0	0	1	1	0	0	0	0	0	2	
5	Parent, Brieja	4	1	1	2	7	.143	0	3-6	3	0	0	1	0	1	1	0	0	0	0	0	2	
4	Sauriol, Alice	4	0	2	2	10	.000	+3	0-0	0	0	0	0	0	0	0	0	0	0	0	0	1	
15	Moran, Marie	4	1	0	1	1	1.000	0	0-0	0	0	0	0	0	0	0	0	0	0	0	1	0	
12	Qualley, Ally	4	0	1	1	9	.000	0	1-2	1	0	0	0	0	0	0	0	0	0	0	0	0	
8	Wolfe, Grace	4	0	1	1	4	.000	-3	1-2	1	0	0	0	0	0	0	0	0	0	0	0	9	
9	Voigt, Svenja	4	0	1	1	3	.000	0	1-2	1	0	0	0	0	0	0	0	0	0	0	0	0	
21	Myers, Avery	3	0	1	1	0	.000	+1	0-0	0	0	0	0	0	0	0	0	0	0	0	0	1	
16	Farrell, Avery	4	0	0	0	9	.000	0	1-2	1	0	0	0	0	0	0	0	0	0	0	0	0	
45	Bulger, Regan	4	0	0	0	3	.000	-2	3-6	3	0	0	0	0	0	0	0	0	0	0	0	3	
1	Ahola, Sanni	3	0	0	0	0	.000	0	0-0	0	0	0	0	0	0	0	0	0	0	0	0	0	
41	Yrjölä, Siiri	4	0	0	0	0	.000	+1	0-0	0	0	0	0	0	0	0	0	0	0	0	0	1	
42	Kyrkkö, Emilia	1	0	0	0	0	.000	0	0-0	0	0	0	0	0	0	0	0	0	0	0	0	0	
TM	TEAM	4	0	0	0	0	.000	0	0-0	0	0	0	0	0	0	0	0	0	0	0	0	0	
Totals		4	14	24	38	141	.099	+30	17-34	17	0	0	5	0	4	4	0	0	0	0	2	31	
Opponents		4	3	6	9	83	.036	-30	13-26	13	0	0	0	0	0	0	0	0	0	0	0	39	

#	Player	GP-GS	Goal Average			Saves		Record				Goals Allowed				
			MINUTES	GA	AVG	SAVES	PCT	W	L	T	SHO	PP	SH	EN	PEN	SOG
1	Ahola, Sanni	3-3	179:22	3	1.00	59	.952	3	0	0	1	0	0	0	0	0
42	Kyrkkö, Emilia	1-1	60:00	0	0.00	21	1.000	1	0	0	1	0	0	0	0	0
TM	EMPTY NET	-	00:38	0	0.00	0	.000	0	0	0	0	0	0	0	0	0
Totals		4	240:00	3	0.75	80	.964	4	0	0	2	0	0	0	0	0
Opponents		4	240:00	14	3.50	127	.901	0	4	0	0	5	0	0	0	0



2024-25 GAME RESULTS**Team Results**

Date	Opponent		Score	Shots	Overall	Conf	Time	Att.	Goalie of record
09/21/2024	at Lindenwood	W	4-0	41/18	1-0-0	0-0-0	2:21	212	AHOLA, Sanni
09/22/2024	at Lindenwood	W	6-2	35/22	2-0-0	0-0-0	2:28	206	AHOLA, Sanni
10/04/2024	Mercyhurst	W	2-1	27/22	3-0-0	0-0-0	2:17	0	AHOLA, Sanni
10/05/2024	Mercyhurst	W	2-0	38/21	4-0-0	0-0-0	2:08	0	KYRKKÖ, Emilia

Team Record	W-L-T	Attendance	Dates	Total	Avg.
Overall:	4-0-0	Total:	4	418	105
Conference:	0-0-0	Home:	2	0	0
Home:	2-0-0	Away:	2	418	209
Away:	2-0-0	Neutral:	0	0	0
Neutral:	0-0-0				
Overtime:	0-0-0				



2024-25 GAME-BY-GAME

Date	Opponent	Score	G	A	PTS	SHOTS	SH%	+/-	PEN-MIN	PP	SH	EN	GW	GT	HAT	UA	BLK
09/21/2024	at Lindenwood	4-0	4	8	12	41	.098	+5	5-10	3	0	0	1	0	0	0	7
09/22/2024	at Lindenwood	6-2	6	8	14	35	.171	+15	7-14	1	0	0	1	0	0	2	6
10/04/2024	Mercyhurst	2-1	2	4	6	27	.074	+5	2-4	0	0	0	1	0	0	0	6
10/05/2024	Mercyhurst	2-0	2	4	6	38	.053	+5	3-6	1	0	0	1	0	0	0	12
SCSU			14	24	38	141	.099	+30	17-34	5	0	0	4	0	0	2	31
Opponents			3	6	9	83	.036	-30	13-26	0	0	0	0	0	0	0	39

TEAM PER-GAME

Games played	Shots per game	Goals per game	Assists per game	Points per game
4	35.25	3.50	6.00	9.50

Date	Opponent	Score	MINUTES	GA	GA AVG	SAVES	SAVES%	W	L	T	PP	SH	EN	PN	SO
09/21/2024	at Lindenwood	4-0	60:00	0	0.00	18	1.000	1	0	0	0	0	0	0	0
09/22/2024	at Lindenwood	6-2	60:00	2	1.00	20	.950	1	0	0	0	0	0	0	0
10/04/2024	Mercyhurst	2-1	60:00	1	1.00	21	.952	1	0	0	0	0	0	0	0
10/05/2024	Mercyhurst	2-0	60:00	0	0.75	21	.964	1	0	0	0	0	0	0	0
SCSU			240:00	3	0.75	80	.964	4	0	0	0	0	0	0	0
Opponents			240:00	14	3.50	127	.901	0	4	0	5	0	0	0	0



2024-25 OPPONENT GAME-BY-GAME

Date	Opponent	Score	G	A	PTS	SHOTS	SH%	+/-	PEN-MIN	PP	SH	EN	GW	GT	HAT	UA	BLK
09/21/2024	at Lindenwood	4-0	0	0	0	18	.000	-5	5-10	0	0	0	0	0	0	0	10
09/22/2024	at Lindenwood	6-2	2	4	6	22	.091	-15	4-8	0	0	0	0	0	0	0	11
10/04/2024	Mercyhurst	2-1	1	2	3	22	.045	-5	2-4	0	0	0	0	0	0	0	7
10/05/2024	Mercyhurst	2-0	0	0	0	21	.000	-5	2-4	0	0	0	0	0	0	0	11
Opponents			3	6	9	83	.036	-30	13-26	0	0	0	0	0	0	0	39
SCSU			14	24	38	141	.099	+30	17-34	5	0	0	4	0	0	2	31

OPPONENT PER-GAME

Games played	Shots per game	Goals per game	Assists per game	Points per game
4	20.75	0.75	1.50	2.25

Date	Opponent	Score	MINUTES	GA	GA AVG	SAVES	SAVES%	W	L	T	PP	SH	EN	PN	SO
09/21/2024	at Lindenwood	4-0	60:00	4	4.00	37	.902	0	1	0	3	0	0	0	0
09/22/2024	at Lindenwood	6-2	60:00	6	5.00	29	.868	0	1	0	1	0	0	0	0
10/04/2024	Mercyhurst	2-1	60:00	2	4.00	25	.883	0	1	0	0	0	0	0	0
10/05/2024	Mercyhurst	2-0	60:00	2	3.50	36	.901	0	1	0	1	0	0	0	0
Opponents			240:00	14	3.50	127	.901	0	4	0	5	0	0	0	0
SCSU			240:00	3	0.75	80	.964	4	0	0	0	0	0	0	0



2024-25 GAME HIGHS**SCSU - GAME HIGHS**

POINTS	14	at Lindenwood (09/22/2024)
GOALS	6	at Lindenwood (09/22/2024)
ASSISTS	8	at Lindenwood (09/22/2024)
	8	at Lindenwood (09/21/2024)
SHOTS ON GOAL	41	at Lindenwood (09/21/2024)
SAVES	21	Mercyhurst (10/05/2024)
	21	Mercyhurst (10/04/2024)
PENALTIES	7	at Lindenwood (09/22/2024)
PENALTY MINUTES	14	at Lindenwood (09/22/2024)

Opponent - GAME HIGHS

POINTS	6	at Lindenwood (09/22/2024)
GOALS	2	at Lindenwood (09/22/2024)
ASSISTS	4	at Lindenwood (09/22/2024)
SHOTS ON GOAL	22	Mercyhurst (10/04/2024)
	22	at Lindenwood (09/22/2024)
SAVES	37	at Lindenwood (09/21/2024)
PENALTIES	5	at Lindenwood (09/21/2024)
PENALTY MINUTES	10	at Lindenwood (09/21/2024)



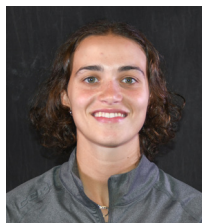
RADIO/TELEVISION ROSTER



1
SANNI AHOLA
G | 5'7 | 5Y
Helsinki, Finland



2
DAYLE ROSS - C
D | 5'6 | Sr.
Spirit River, Alberta



4
ALICE SAURIOL
F | 5'4 | So.
Sherbrooke, Quebec



5
BRIEJA PARENT
F | 5'4 | 5Y
Forest Lake, Minn.



6
TAYLOR LARSON - C
D | 5'8 | Sr.
Nisswa, Minn.



8
GRACE WOLFE - C
D | 5'9 | Sr.
Owatonna, Minn.



9
SVENJA VOIGT
F | 5'5 | Jr.
Cologne, Germany



10
ABBY PROMERSBERGER
F | 5'6 | Sr.
Fargo, N.D.



11
LAURA ZIMMERMANN
F | 5'4 | R-So.
Rinngenberg, Switzerland



12
ALLY QUALLEY
F | 5'7 | 5y
Brooklyn Park, Minn.



15
MARIE MORAN
F/D | 5'8 | So.
Lakeville, Minn.



16
AVERY FARRELL
F | 5'4 | Jr.
Rogers, Minn.



17
ELLA ANICK
D | 5'6 | Sr.
Hermantown, Minn.



18
GRETA HENDERSON
F | 5'6 | So.
Regina, Saskatchewan



19
MYAH KRUEGER
F | 5'7 | Fr.
Stillwater, Minn.



20
EMMA GENTRY - C
F | 5'11 | 5Y.
Alpena, Mich.



21
AVERY MYERS
F | 5'7 | 5Y
Fargo, N.D.



22
GRACE DELMONICO
F | 5'3 | So.
Eagan, Minn.



23
SYDNEY BRYANT
D | 5'8 | So.
Traverse City, Mich.



27
CARMEN BRAY
D | 5'8 | So.
Nanaimo, British Columbia



29
JOJO CHOBAK
G | 5'8 | 5Y
Chicago, Ill.



31
PAIGE HOOGENDAM
G | 5'8 | So.
Ajax, Ontario



34
SOFIANNA SUNDELIN
F | 5'7 | So.
Ulvila, Finland



41
SIIRI YRJOLA
G | 5'8 | Fr.
Ajax, Ontario



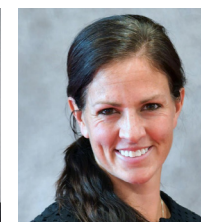
42
EMILIA KYRKKO
G | 5'7 | Fr.
Nokia, Finland



45
REGAN BULGER
D | 5'6 | Jr.
Yellowknife, Northwest Territories



HEAD COACH
BRIAN IDALSKI
Third Season
UW-Stevens Point (1995)



ASSOC. HC
JINNELLE SIERGIEJ
11th Season
Wisconsin (2008)



ASST. COACH
NOORA RÄTTY
First Season
Minnesota (2013)



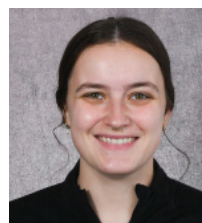
ASST. COACH
EMILY ACH
First Season
Augsburg (2020)



HOCKEY OPS
TRENT HUNTER
First Season



S&C COACH
JAKE FRANCKZEK
Fifth Season
Grand Valley State (2020)



ATH. TRAINER
RACHEL NAGEL
Fourth Season
Wisconsin (2021)



EQ. MANAGER
COLIN JACOBSEN
Second Season
Minnesota (2022)



SID
JACOB SANDERS
First Season
Central (Iowa) (2023)

