



St. Cloud State University

HUSKY ATHLETICS

Athletic Media Relations - Women's Hockey Release

Contact: Ryan Evans Phone: 952-594-1362 Email: rmevans@stcloudstate.com

2016-17 St. Cloud State Women's Hockey News

RELEASE DATE: Sept. 29, 2016



2016-17 SCHEDULE/RESULTS

Record: 0-2-0, 0-2-0 WCHA

Date	Opponent	Result
SEPT. 23	WISCONSIN*	L, 0-6
SEPT. 24	WISCONSIN*	L, 2-4
SEPT. 30	MERRIMACK #	6:07 p.m.
OCT. 1	MERRIMACK	3:07 p.m.
OCT. 7	NORTH DAKOTA*	6:07 p.m.
OCT. 8	NORTH DAKOTA*	3:07 p.m.
Oct. 21	at Minnesota State*	7:07 p.m.
Oct. 22	at Minnesota State*	3:07 p.m.
Oct. 27	at Minnesota*	7:07 p.m.
Oct. 28	at Minnesota*	7:07 p.m.
NOV. 11	OHIO STATE*	3:07 p.m.
NOV. 12	OHIO STATE*	1:07 p.m.
Nov. 18	at Bemidji State*	3:07 p.m.
Nov. 19	at Bemidji State*	3:07 p.m.

WINDJAMMER CLASSIC (Burlington, Vt.)

Nov. 25	vs. Vermont	4 p.m.
Nov. 26	vs. TBD	TBA

DEC. 2	MINNESOTA-DULUTH*	7:07 p.m.
DEC. 3	MINNESOTA-DULUTH*	3:07 p.m.
Dec. 10	at North Dakota*	2 p.m.
Dec. 11	at North Dakota*	2 p.m.
JAN. 6	COLGATE UNIVERSITY	7:07 p.m.
JAN. 7	COLGATE UNIVERSITY	3:07 p.m.
Jan. 13	at Wisconsin*	TBA
Jan. 14	at Wisconsin*	TBA
JAN. 20	MINNESOTA STATE*	3:07 p.m.
JAN. 21	MINNESOTA STATE*	3:07 p.m.
JAN. 27	MINNESOTA*	7:07 p.m.
JAN. 28	MINNESOTA*	3:07 p.m.
Feb. 3	at Ohio State*	TBA
Feb. 4	at Ohio State*	TBA
FEB. 10	BEMIDJI STATE*	3:07 p.m.
FEB. 11	BEMIDJI STATE**	3:07 p.m.
Feb. 17	at Minnesota-Duluth*	7:07 p.m.
Feb. 18	at Minnesota-Duluth*	4:07 p.m.

WCHA FIRST ROUND PLAYOFFS

Feb. 24-26 vs. TBD

Mar. 4-5 WCHA Final Faceoff (Minneapolis)

Mar. 10-12 NCAA Regionals (Site: TBA)

Mar. 17-19 NCAA Frozen Four (St. Charles, Mo.)

Home games listed in CAPS.
All times are Central.

* WCHA Game
Alumni Day
% Senior Day

All game times are subject to change

TWITTER: #SCSUWHK

Official Account: @SCSUHUSKIES_WHK

ST. CLOUD STATE (0-0-0, 0-0-0 WCHA) VS. MERRIMACK (0-0-0, 0-0-0 Hockey East)

Friday, Sept. 30 & Saturday, Oct. 1, 2016 • Herb Brooks National Hockey Center

Location: St. Cloud, Minn.

Site: Herb Brooks National Hockey Center

Capacity: 5,159

Ice Surface: 200' x 100'

TV: None

Video Stream: scsuhuskies.com/live

Radio: None

Audio Stream: KVSC.com

All-time Series: SCSU leads, 2-0-0

First meeting in St. Cloud



ST. CLOUD STATE Huskies

Ranking (USCHO.com): NR

Record: 0-2-0, 0-2-0 WCHA

Head Coach: Eric Rud

Record (Years): 21-46-5 (2)



MERRIMACK Warriors

Ranking (USCHO.com): No. 1

'15-16 Record: 5-26-3, 3-18-3 HE

Head Coach: Erin Hamlen

Record (Years): 6-36-3 (3)

Last Meeting (Oct. 2-3, 2015): In the Warriors' inaugural series as a NCAA Div. I team, St. Cloud State swept Merrimack at Lawler Rink in North Andover, Mass., winning 6-4 and 6-2. Nine different players scored goals for the Huskies, including a hat trick from senior forward Lexi Slattery in the opener that rallied SCSU to a come-from-behind win. Freshman goaltender Taylor Crosby earned her first career win in the finale, stopping 21 of 23 shots on goal.

KEY NOTES TO CONSIDER:

- **SCOUTING THE WARRIORS:** Merrimack enters its second season at the NCAA Div. I ranks in 2016-17. The Warriors won five games last season, including three in Hockey East play. They were picked to finish ninth in the conference this season in the preseason coaches poll. Merrimack returns all of its players from last year's inaugural roster, including sophomore forward Paige Voight—a Hockey East All-Rookie Team selection. The St. Michael, Minn., native led the Warriors with 11 goals and 19 points in 2015-16. She had one goal and three points in the two games against the Huskies.
- The 12 goals SCSU scored against Merrimack last season was its most in a two-game set during the 2015-16 campaign.
- Junior defenseman Brittney Anderson (0+4) and senior defenseman Christa Moody (1+3) each led the Huskies with four points against the Warriors. Anderson's three points in the series opener tied for the most for an SCSU player in a single game last season.
- **LAST TIME OUT:** St. Cloud State opened the season against No. 1 Wisconsin, Sept. 23-24, at home. The Huskies were swept by their WCHA rival, 6-0 and 4-2. SCSU gave the Badgers all they could handle in the finale, though, and led, 2-1, midway through the period. Its hopes for an upset were dashed by a late UW rally sparked by a power play goal that tied the game at two. Wisconsin would add another and an empty net goal to seal the win. Sophomore forwards Hannah Potrykus and Julia Tylke scored St. Cloud State's two goals in the closely-contested loss, while sophomore goaltender Taylor Crosby put her name in the program record books with a 52-save performance—tied for the sixth most in Huskies history. In total, six different Huskies registered a point last weekend against the Badgers.
- **CROSBY'S CREASE:** Crosby got her second career start last Saturday against the Badgers and turned away 52 shots in the loss (.945 SV%)—tied for the sixth highest single-game save total in St. Cloud State history.
- **TYLKE TIME:** Sophomore forward, and 2015-16 All-WCHA Rookie Team honoree, Julia Tylke is St. Cloud State's top returning scorer, having registered nine goals and 24 points a season ago—the most for an SCSU rookie since the 2006-07 season, when Holly Roberts and Caitlin Hogan scored 35 (18+17) and 29 (12+17) points, respectively.



CROSBY

After tallying a goal last Saturday against the Badgers, Tylke now has two goals and five points in her last six games. (cont.)

St. Cloud State Women's Hockey 2016-17 Roster

#	FULL NAME	YR.	POS.	HT.	SH/C	HOMETOWN
1	Janine Alder	FR	G	5-5	L	Zurich, Switzerland
2	Julia Tylke	SO	F	5-5	R	Delafield, Wisconsin
4	Dana Rasmussen	SO	F	5-2	R	Kasson, Minnesota
5	Janna Haeg	FR	F	5-6	L	Lakeville, Minnesota
7	Brittney Anderson	JR	D	5-6	R	Hudson, Wisconsin
8	Brooke Kudirka	FR	F	5-11	L	Omaha, Nebraska
9	Lauren Hespeneide*	SR	F	5-0	L	Shakopee, Minnesota
10	Emma Turbyville	JR	D	5-10	R	Chicago, Illinois
11	Caroline Markström	SR	D	5-8	L	Kovland, Sweden
13	Katie Detert	FR	F	5-6	R	Rhineland, Wisconsin
15	Rachel Herzog	FR	D	5-7	R	Oakdale, Minnesota
16	Kelsey Saelens	SR	F	5-7	L	Winnipeg, Manitoba
17	Jenna Redford*	R-SR	D	5-6	L	Soldotna, Alaska
18	Ivy Dynek	SO	F	5-8	L	Northfield, Illinois
19	Payge Pena	SR	F	5-7	R	Maple Ridge, British Columbia
20	Suvi Ollikainen	SO	F	5-3	L	Klaukkala, Finland
21	Christa Moody*	JR	D	5-9	R	Battle Creek, Michigan
22	Kayla Friesen	FR	F	5-7	L	Winnipeg, Manitoba
23	Hannah Potrykus	SO	F	5-6	R	Brighton, Michigan
24	Alexandra Makaric	SR	D	5-11	L	Windsor, Ontario
25	Jordan Stewart	SO	F	5-5	L	Machesney Park, Illinois
27	Alyssa Erickson	JR	F	5-8	L	Mission, British Columbia
29	Taylor Crosby	SO	G	5-6	L	Cole Harbour, Nova Scotia
34	Madeleine Dahl	SR	G	5-7	R	Edina, Minnesota

* 2016-17 Captain

2016-17 Coaching Staff

Eric Rud	Head Women's Hockey Coach
Steve Macdonald	Assistant Women's Hockey Coach
Jinelle Siergieij	Assistant Women's Hockey Coach
Bryan Braun	Student Equipment Manager
Emily Fanno	Graduate Assistant Athletic Trainer
Matthew Chapman	Coordinator of Hockey & Video Operations
Jeremiah Minkel	Hockey Equipment Manager
Nicole Kreider	Women's Hockey Assistant Video Coordinator
Ryan Evans	Athletic Media Relations Assistant (SID)

2016-17 By Class

Seniors.....	8
Juniors.....	3
Sophomores.....	7
Freshman.....	6

2016-17 Pronunciations

Detert.....	Dee-tert
Dynek.....	Dye-nick
Hespeneide.....	Hesp-in-hide
Pena.....	Pen-ya
Makaric.....	Mak-rick
Ollikainen.....	Ole-ah-kay-nen
Tylke.....	Till-key
Potrykus.....	Pa-tree-kiss
Saelens.....	Say-lens
Tylke.....	Till-key



Information

To get full information about the 2016-17 SCSU Women's Hockey season, and to purchase tickets, please visit:

www.scsuhuskies.com

For information about the WCHA, please check out the league website at

www.wcha.com

(Game Notes cont.)

- **WELCOME TO ST. CLOUD:** Five players made their SCSU debut against the Badgers, including senior goaltender Madeleine Dahl. Dahl, who started her career at Union College, made her first start in more than two and a half years in Friday's season opener after battling back from injury. She stopped 28 shots in the loss.
- **WCHA PRESEASON COACHES POLL:** After finishing fifth in the WCHA with a 9-15-4 record and 34 points last season, the conference coaches picked St. Cloud State to finish sixth in the league this season.
- **REACHING NEW HEIGHTS:** In his second season behind the bench, head coach Erid Rud led SCSU to 13 wins in 2015-16, which was the program's highest total since winning 15 games in 2009-10.
- **ON THE WAY UP:** Seven St. Cloud State players achieved career-high point totals in 2015-16, including six who set new career marks for goals scored.
- **HOW MAY I ASSIST YOU?:** Junior defenseman Brittney Anderson led all Huskies, and set a new career high, with 16 assists last season. Her 20 total points were the most for an SCSU rear guard since Danielle Hirsch also scored 20 (2+18) in the 2008-09 season.
- **BLUE LINE BARRIER:** The Huskies return six of their seven defensemen from last season's group that ranked sixth in the WCHA in scoring defense (3.29 G/GM). SCSU ranked sixth in league play as well, allowing 3.14 goals against per contest.
- **SEARCHING FOR SCORING:** St. Cloud State lost nearly 40 percent of its goal scoring to graduation, including Molly Illikainen, who led the team with 17 goals a season ago.
- **BATTLE BETWEEN THE PIPES:** Three goaltenders are vying to replace Katie Fitzgerald in the Huskies' crease: Senior Madeleine Dahl, sophomore Taylor Crosby and freshman Janine Alder.

Fitzgerald started 34 of 35 games for SCSU last season. Of the goalies on this year's roster, Dahl has the most career starts (13). Prior to last Friday, Dahl's last career start came in 2013-14 with Union College.

- **HUSKY PUPPIES:** SCSU welcomes seven newcomers this season: Goaltender Janine Alder; forwards Janna Haeg, Brooke Kudirka, Katie Detert, Kayla Friesen and Dana Rasmussen; and defenseman Rachel Herzog.

Headlining the list are Alder and Friesen. Alder, a native of Switzerland, won a bronze medal with the Swiss national team at the 2014 Winter Olympics in Sochi, Russia.

Friesen played for Team Canada at the 2016 IIHF U-18 Women's World Championships and scored one goal and two points in five games to help the Canadians to a silver medal finish.





Eric Rud

Head Coach • Third Season
Colorado College '97

This season marks Eric Rud's third at the helm of the St. Cloud State women's hockey team.

Rud became the fourth coach in SCSU women's hockey history in 2014-15. Under Rud's tutelage, SCSU's Molly Illikainen and Julia Tylke both gained All-WCHA accolades in 2015-16.

Before leading the Husky women, Rud was an assistant coach for the St. Cloud State (2005-10) and Colorado College (2011-14) men's hockey teams. He was also the head coach and general manager of the USHL's Green Bay Gamblers for the 2010-11 season.

A graduate of Colorado College, Rud was a two-time team captain and two-time WCHA Defensive Player of the Year for the Tigers during his collegiate playing career. He played professional hockey from 1997 to 2002, and served as

a player assistant coach with the Florida Everblades in 1999-00 and with the Idaho Steelheads from 2000-02.

He joined the coaching ranks as an assistant with the USHL's Cedar Rapids Roughriders from 2002-04 and was an assistant coach at Colorado College in 2004-05.

Rud joined Bob Motzko's staff at St. Cloud State in 2005. At SCSU, Rud recruited several Husky standouts including Ryan Lasch, Andreas Nodl, Garrett Roe, Drew LeBlanc, Nick Jensen and Nic Dowd. In Rud's time at St. Cloud State, the Huskies advanced to the NCAA tournament three times and played in the NCAA West Regional title game in 2010.

He has worked extensively with the USA Hockey program throughout his career and served as the head coach of the 2008 USA U-17 boys team in the Slovakia Four Nations Cup and the 2009 USA U-18 boys team at the Czech Republic Ivan Hlinka Cup.

A native of Inver Grove Heights, Minn., Rud prepped at Simley High School. Rud and his wife Amy reside in St. Cloud and have three children: Sam, Gabbie and Max.

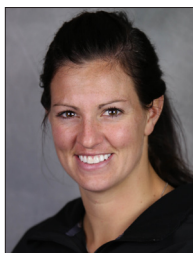
Eric Rud's Record at SCSU:

Year	Overall	Conference	Postseason
2016-17	0-2-0	0-2-0	-
2015-16	13-18-4	9-15-4 WCHA/5th	0-2
2014-15	8-28-1	5-22-1 WCHA/7th	0-2
Overall	21-48-5	14-39-5	0-4

St. Cloud State Assistant Coaches



Steve
Macdonald
Thrd Season



Jinelle
Siergiej
Thrd Season



2016-17 WCHA Standings (Sept. 30, 2016)

	GP	Record	Pts	GF-GA
1. Wisconsin	2	2-0-0	6	10-2
2. Bemidji State	0	0-0-0	0	0-0
Minnesota	0	0-0-0	0	0-0
Minn. Duluth	0	0-0-0	0	0-0
Minn. State	0	0-0-0	0	0-0
North Dakota	0	0-0-0	0	0-0
Ohio State	0	0-0-0	0	0-0
St. Cloud State	2	0-2-0	0	2-10

USCHO.com Div. I Women's Poll (Sept. 19, 2016)

	Record	Pts	Previous
1. Wisconsin (10)	37-4-1	143	3
2. Minnesota (3)	35-4-1	135	1
3. Boston College (2)	41-1-0	121	2
4. Quinnipiac	31-3-5	93	5
5. Clarkson	30-5-5	82	4
6. North Dakota	18-12-5	60	9
7. Princeton	22-9-2	44	7
8. Colgate	22-9-7	43	8
9. Northeastern	28-9-1	40	6
10. Boston Univ.	23-14-2	24	NR

RV: Bemidji State (15), Minn. Duluth (9), Cornell (5), Harvard (5), Mercyhurst (5), Syracuse (1)

2016-16 USA Today/USA Hockey Magazine Div. I Women's Poll (Sept. 27, 2016)

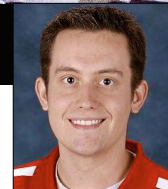
	Record	Pts	Previous
1. Wisconsin (15)	37-4-1	186	3
2. Minnesota (3)	35-4-1	172	1
3. Boston College	41-1-0	152	2
4. Quinnipiac	31-3-5	128	5
5. Clarkson	30-5-5	113	4
6. North Dakota	18-12-5	84	10
7. Princeton	22-9-2	62	7
8. Colgate	22-9-7	52	8
9. Northeastern	28-9-1	35	6
10. Boston Univ.	23-14-2	32	NR

RV: Minn. Duluth (10), Bemidji State (8), Cornell (6), Mercyhurst (4), Syracuse (1)





HUSKIES INSIDER



By Ryan Evans  @SCSUHUSKIES_WHK



Tylke tapped for breakout season

Sophomore forward expected to be one of the Huskies go-to goal-scorers

When the sun came up on the 2016-17 season, the St. Cloud State women's hockey team (0-2-0, 0-2-0 WCHA) found that nearly 40 percent of its goal scoring had left overnight.

The Huskies scored 63 goals last year and face the unenviable task of replacing 25 of them. No loss hurts more than Molly Illikainen, who lit the lamp a team-leading 17 times in her senior season.

Head coach Eric Rud hopes each player—from the seasoned seniors to the incoming freshman—will chip in to help fill that void. But one player in particular stands out for her ability to spark the Husky offense.

Sophomore forward Julia Tylke is the team's top returning scorer, having netted nine goals and 24 points in her rookie season. She earned All-WCHA Rookie Team honors and Rud believes

Tylke is capable of stepping into Illikainen's go-to role.

The Delafield, Wis., native is quiet, but dedicated to her craft. She is a student of the sport and routinely attends her team's optional skills sessions. That commitment has her primed to take her game to the next level.

"She has even another step to her game right now," Rud said of Tylke. "She gained muscle and had a great summer."

"There is no reason she can't step into a premier role in this league."

When Rud and his staff recruited Tylke, they knew they were getting an athletic player with good hands and an uncanny ability to use them to create offense. But until she arrived on campus, they didn't fully appreciate all she brings to the ice.

"I don't think any of us knew just how explosive she is," Rud said. "She pulls away from players and has the hands and the ability to beat people one-on-one in all areas of the ice."

"Her elusiveness and hand skills are truly elite."

Tylke showed her game-breaking ability in St. Cloud State's season-opening series against No. 1 Wisconsin. Her power play goal in the waning seconds of the second period of the series finale gave the Huskies a 2-1 lead and fueled the team's hopes for an upset.

"My head was racing I was so excited," Tylke said.

As she continues to grow into a premier playmaker, there will likely be many more of those moments for Tylke and St. Cloud State before her Husky career ends.



2016-17 St. Cloud State Women's Hockey Roster & Coaching Staff



Janine
Adler



Julia
Tylke



Dana
Rasmussen



Janna
Haeg



Brittney
Anderson



Brooke
Kudirka



Lauren
Hespenheide



Emma
Turbyville



Caroline
Markstrom



Katie
Detert



Rachel
Herzog



Kelsey
Saelens



Jenna
Redford



Ivy
Dynek



Payge
Pena



Suvi
Ollikainen



Christa
Moody



Kayla
Friesen



Hannah
Potrykus



Alex
Makaric



Jordan
Stewart



Alyssa
Erickson



Taylor
Crosby



Madeleine
Dahl



Asst. Coach
Jinelle Siergi



Head Coach
Eric Rud



Asst. Coach
Steve Macdonald