



ST. CLOUD STATE HUSKIES

WOMEN'S HOCKEY

Contact: Ryan Evans — Phone: 952-594-136 — Email: rmevans@stcloudstate.com

2016-17 St. Cloud State Women's Hockey News

RELEASE DATE: Dec. 1, 2016



2016-17 SCHEDULE/RESULTS

Record: 5-10-1, 4-7-1-1 WCHA

Date	Opponent	Result
SEPT. 23	#1 WISCONSIN*	L, 0-6
SEPT. 24	#1 WISCONSIN*	L, 2-4
SEPT. 30	MERRIMACK #	W, 4-2
OCT. 1	MERRIMACK	L, 1-4
OCT. 7	#7 NORTH DAKOTA*	L, 0-1
OCT. 8	#7 NORTH DAKOTA*	W, 3-2
Oct. 21	at Minnesota State*	T, 2-2
Oct. 22	at Minnesota State*	W, 2-0
Oct. 27	at #2 Minnesota*	L, 2-5
Oct. 28	at #2 Minnesota*	L, 0-3
NOV. 11	OHIO STATE*	L, 0-3
NOV. 12	OHIO STATE*	W, 4-1
Nov. 18	at Bemidji State*	L, 2-6
Nov. 19	at Bemidji State*	W, 3-0

WINDJAMMER CLASSIC (Burlington, Vt.)

Nov. 25	vs. Vermont	L, 1-5
Nov. 26	vs. Robert Morris	L, 3-5

DEC. 2	#4 MINN. DULUTH*	7:07 p.m.
DEC. 3	#4 MINN. DULUTH*	3:07 p.m.
Dec. 10	at North Dakota*	2:07 p.m.
Dec. 11	at North Dakota*	2:07 p.m.
JAN. 6	COLGATE UNIVERSITY	7:07 p.m.
JAN. 7	COLGATE UNIVERSITY	3:07 p.m.
Jan. 13	at Wisconsin*	7:00 p.m.
Jan. 14	at Wisconsin*	4:00 p.m.
JAN. 20	MINNESOTA STATE*	3:07 p.m.
JAN. 21	MINNESOTA STATE*	3:07 p.m.
JAN. 27	MINNESOTA*	7:07 p.m.
JAN. 28	MINNESOTA*	3:07 p.m.
Feb. 3	at Ohio State*	5:07 p.m.
Feb. 4	at Ohio State*	2:07 p.m.
FEB. 10	BEMIDJI STATE*	3:07 p.m.
FEB. 11	BEMIDJI STATE*%	3:07 p.m.
Feb. 17	at Minnesota-Duluth*	7:07 p.m.
Feb. 18	at Minnesota-Duluth*	4:07 p.m.

POSTSEASON

Feb. 24	WCHA First Round +	TBA
Feb. 25	WCHA First Round +	TBA
Feb. 26	WCHA First Round +	TBA
March 4	WCHA Final Face-Off \$	TBA
March 5	WCHA Final Face-Off \$	TBA
March 10	NCAA Quarterfinals +	TBA
March 17	NCAA Frozen Four ^	TBA
March 19	NCAA Frozen Four ^	TBA

Home games listed in CAPS. All times are Central.

* - WCHA Game
- Alumni Day
% - Senior Day
+ - Campus Locations
\$ - Ridder Arena, Minneapolis
^ - St. Charles, Mo.

Rankings are based on the USCHO.com poll at the time of the game.

All game times are subject to change

TWITTER: #SCSUWHK

Official Account: @SCSUHUSKIES_WHK

ST. CLOUD STATE [5-10-1, 4-7-1-1 WCHA] vs. **No. 4 MINN. DULUTH** [10-3-3, 7-3-2 WCHA]

Friday, Dec. 2 & Saturday, Dec. 3, 201

Herb Brooks National Hockey Center

Location: St. Cloud, Minn.

Site: Herb Brooks National Hockey Center

Capacity: 5,159

Ice Surface: 200' x 100'

TV: None

Video Stream: scsuhuskies.com/live

Radio: None

Audio Stream: KVSC.org

All-time Series: UMD leads, 58-11-5



ST. CLOUD STATE Huskies

Ranking (USCHO.com): NR

Record: 5-8-1, 4-7-1-1 WCHA

Head Coach: Eric Rud

Record (Years): 26-56-6 (3)



MINN. DULUTH Bulldogs

Ranking (USCHO.com): No. 4

Record: 10-3-3, 7-3-2 WCHA

Head Coach: Maura Crowell

Record (Years): 25-24-4 (2)

Last Meeting (Feb. 19-20, 2016): St. Cloud State and Minnesota Duluth split a two-game set at the Herb Brooks National Hockey Center to close out the 2015-16 regular season. The Huskies prevailed, 3-2, in the opener, before the Bulldogs paid them back with a 3-2 defeat in the finale. Then-freshman forward Julia Tylke led all SCSU players with three points (1+2) in the series. Five different Huskies scored a goal and 10 recorded a point to power the offense, including Lexi Slattery, who netted the game-winning goal in the Husky win, which snapped a nine-game winless drought against UMD.

KEY NOTES TO CONSIDER:

- SCOUTING THE BULLDOGS:** Minnesota Duluth comes in winners of two straight and is unbeaten in nine of its last 10 games (7-1-2). Its only blemish in that time was a 4-1 loss to No. 1 Wisconsin on November 19. UMD's only three losses this season came to the current No. 1 and No. 2 teams in the country, the Badgers and Minnesota. The Bulldogs are ranked No. 4 for good reason, boasting the No. 11 offense in women's college hockey (3.19 G/GM) and the No. 8 defense (1.81 GA/G). Their power play has been lethal as well, converting on 20 percent of its chances, which is fourth-best nationwide.

UMD is led by senior forwards Lara Stalder (8+15) and Ashleigh Brykaliuk (9+11), who rank fourth and fifth in the WCHA and ninth and 15th in the country with 23 and 20 points, respectively, on the season.

- ALL-TIME SERIES:** St. Cloud State is 11-58-5, all-time, against Minnesota Duluth. The Huskies were 1-2-1 against the Bulldogs last season, including a 3-2 win at home on February 19, 2016. Then-freshman forward Julia Tylke assisted on the eventual game-winning goal and led all SCSU players with two points (0+2) in the victory

- Tylke led all Huskies with four points (2+2) in four games against UMD last season. The Delafield, Wis., native was named WCHA Rookie of the Week for games played Feb. 15-21, 2016, after notching three points (1+2) against the Bulldogs at home.

- LAST TIME OUT:** In its most recent outings, St. Cloud State fell to Vermont, 5-1, and Robert Morris, 5-3, at the Windjammer Classic in Burlington, Vt. Tylke and freshman forward Kayla Friesen tied for the team lead with three points apiece on the weekend. Senior forward Lauren Hespeneide scored her first goal of the season against RMU, a power play marker that snapped SCSU's 0-for-17 stretch with the man advantage that dated back to its October 22 game at Minnesota State.

- FINDING SECONDARY SCORING:** St. Cloud State has found varied sources of offense in its last five games. Its last 13 goals have been scored by nine different players and three Huskies—Hespeneide, freshman forward Janna Haeg, sophomore forward Ivy Dynek and senior defenseman Caroline Markstrom—have chipped in their first goals of the season during that span. In addition, 14 different players have notched at least one point.

- SWISS SENSATION:** Freshman goaltender Janine Alder has started 10-straight games and has shown poise beyond her years. In 13 total appearances, the Zurich, Switzerland native boasts a 2.36 goals-against average and .926 save percentage, both of which rank second among rookie net



TYLKE

St. Cloud State Women's Hockey 2016-17 Roster

#	FULL NAME	YR.	POS.	HT.	SH/C	HOMETOWN
1	Janine Alder	FR	G	5-5	L	Zurich, Switzerland
2	Julia Tylke	SO	F	5-5	R	Delafield, Wisconsin
4	Dana Rasmussen	RFR	F	5-2	R	Kasson, Minnesota
5	Janna Haeg	FR	F	5-6	L	Lakeville, Minnesota
7	Brittney Anderson	JR	D	5-6	R	Hudson, Wisconsin
8	Brooke Kudirka	FR	F	5-11	L	Omaha, Nebraska
9	Lauren Hespenheide*	SR	F	5-0	L	Shakopee, Minnesota
10	Emma Turbyville	JR	D	5-10	R	Chicago, Illinois
11	Caroline Markström	SR	D	5-8	L	Kovland, Sweden
13	Katie Detert	FR	F	5-6	R	Rhineland, Wisconsin
15	Rachel Herzog	FR	D	5-7	R	Oakdale, Minnesota
16	Kelsey Saelens	SR	F	5-7	L	Winnipeg, Manitoba
17	Jenna Redford*	RSR	D	5-6	L	Soldotna, Alaska
18	Ivy Dynek	SO	F	5-8	L	Northfield, Illinois
19	Payge Pena	SR	F	5-7	R	Maple Ridge, British Columbia
20	Suvi Ollikainen	SO	F	5-3	L	Klaukkala, Finland
21	Christa Moody*	JR	D	5-9	R	Battle Creek, Michigan
22	Kayla Friesen	FR	F	5-7	L	Winnipeg, Manitoba
23	Hannah Potrykus	SO	F	5-6	R	Brighton, Michigan
25	Jordan Stewart	SO	F	5-5	L	Machesney Park, Illinois
27	Alyssa Erickson	JR	F	5-8	L	Mission, British Columbia
29	Taylor Crosby	SO	G	5-6	L	Cole Harbour, Nova Scotia
34	Madeleine Dahl	SR	G	5-7	R	Edina, Minnesota

* 2016-17 Captain

2016-17 Coaches and Staff

Eric Rud	Head Women's Hockey Coach
Steve Macdonald	Assistant Women's Hockey Coach
Jinelle Siegiej	Assistant Women's Hockey Coach
Matthew Chapman	Coordinator of Hockey and Video Operations
Ryan Evans	Athletic Media Relations (SID)
Emily Fanno	Graduate Assistant Athletic Trainer
Blake Franti	Women's Hockey Equipment Manager
Jeremiah Minkel	Hockey Equipment Manager
Jocelyn Monge	Women's Hockey Operations and Video Coordinator

2016-17 By Class

Seniors.....	6
Juniors.....	4
Sophomores.....	6
Freshman.....	7

2016-17 Pronunciations

Detert.....	Dee-tert
Dynek.....	Dye-nick
Hespenheide.....	Hesp-in-hide
Pena.....	Pen-ya
Ollikainen.....	Ole-ah-kay-nen
Tylke.....	Till-key
Potrykus.....	Pa-tree-kiss
Saelens.....	Say-lens
Tylke.....	Till-key



Information

To get full information about the 2016-17 SCSU Women's Hockey season, and to purchase tickets, please visit:

www.scsuhuskies.com

For information about the WCHA,
please check out the league website at

www.wcha.com

minders nationwide. Alder has two shutouts this season and is the first goalie in St. Cloud State history to post multiple shutouts in her freshman season. She also has six 30-plus save outings.

- **SILKY TYLKE:** With three points (1+2) at the Windjammer Classic, Tylke extended her team leads to eight goals and 12 points on the year. The Delafield, Wis., native is among the top 27 goal scorers in the country and is tied for sixth among WCHA players in goal scoring. Tylke, a 2015-16 All-WCHA Rookie Team honoree, is St. Cloud State's top returning scorer, having registered nine goals and 24 points a season ago—the most for an SCSU rookie since the 2006-07 season, when Holly Roberts and Caitlin Hogan scored 35 (18+17) and 29 (12+17) points, respectively.
- **FANTASTIC FRESHMEN:** 19 Huskies have registered a point this season, including five freshman. After her three-point weekend at the Windjammer Classic, Friesen ranks second on the team with seven points (4+3), which paces the rookie class. The Winnipeg, Manitoba native led all Huskies with five points (2+3) in the month of November.
- **EXCEPTIONAL ERICKSON:** Junior forward Alyssa Erickson has four goals and six points in SCSU's last 11 games, including the game-winning tally in the 2-0 win at Minnesota State on Oct. 22. The Mission, B.C., native is tied for third on the team with six points.
- **OH CAPTAIN, MY CAPTAIN:** Hespenheide has six points (1+5) in 16 games this season, which is tied for third on the team, and scored her first goal of the season in SCSU's last outing vs. Robert Morris. The Huskies' captain had a career day against Merrimack on Sept. 29, tallying a career-high three assists, and has already surpassed her single season career high in assists (four).
- **HOCKEY DAY MINNESOTA:** The WCHA and Fox Sports North announced on Oct. 13 that St. Cloud State and Minnesota State's game on January 21 will be featured on Hockey Day Minnesota. The game will be broadcast live on Fox Sports North Plus from the Herb Brooks National Hockey Center beginning at 3 p.m. This is the first time in Hockey Day Minnesota's 10-year history that an NCAA women's game will be broadcast as part of the festivities.



2016-17 WCHA Standings (Dec. 1, 2016)

	GP	Record	Pts	GF-GA
1. Minnesota	14	11-1-2	37	48-19
2. Wisconsin	12	10-1-1	32	43-11
3. Minn. Duluth	12	7-3-2	24	37-22
4. North Dakota	12	5-4-3	19	29-23
5. St. Cloud State	12	4-7-1	14	20-33
6. Ohio State	12	3-8-1	10	17-30
Bemidji State	14	3-10-1	10	21-43
8. Minnesota State	12	1-10-1	4	11-45

2016-17 St. Cloud State WCHA Players of the Week

Oct. 25 (at Minnesota State)	G Janine Alder (Rookie)
Oct. 11 (vs. No. 7 North Dakota)	G Janine Alder (Rookie)





St. Cloud State – Minn. Duluth Comparison (Per game averages)

SCSU		UMD
29 (1.81)	Goals For	51 (3.19)
49 (3.06)	Goals Against	29 (1.81)
-20 (-1.25)	Goal Differential	+22 (+1.38)
8.0% (4/50)	Power Play	20.0% (12/60)
80.4% (41/51)	Penalty Kill	77.4% (41/53)

Eric Rud

Head Coach • Third Season
Colorado College '97

This season marks Eric Rud's third at the helm of the St. Cloud State women's hockey team.

Rud became the fourth coach in SCSU women's hockey history in 2014-15. Under Rud's tutelage, SCSU's Molly Illikainen and Julia Tylke both gained All-WCHA accolades in 2015-16.

Before leading the Husky women, Rud was an assistant coach for the St. Cloud State (2005-10) and Colorado College (2011-14) men's hockey teams. He was also the head coach and general manager of the USHL's Green Bay Gamblers for the 2010-11 season.

A graduate of Colorado College, Rud was a two-time team captain and two-time WCHA Defensive Player of the Year for the Tigers during his collegiate playing career. He played professional hockey from 1997 to 2002, and served as

a player assistant coach with the Florida Everblades in 1999-00 and with the Idaho Steelheads from 2000-02.

He joined the coaching ranks as an assistant with the USHL's Cedar Rapids Roughriders from 2002-04 and was an assistant coach at Colorado College in 2004-05.

Rud joined Bob Motzko's staff at St. Cloud State in 2005. At SCSU, Rud recruited several Husky standouts including Ryan Lasch, Andreas Nodl, Garrett Roe, Drew LeBlanc, Nick Jensen and Nic Dowd. In Rud's time at St. Cloud State, the Huskies advanced to the NCAA tournament three times and played in the NCAA West Regional title game in 2010.

He has worked extensively with the USA Hockey program throughout his career and served as the head coach of the 2008 USA U-17 boys team in the Slovakia Four Nations Cup and the 2009 USA U-18 boys team at the Czech Republic Ivan Hlinka Cup.

A native of Inver Grove Heights, Minn., Rud prepped at Simley High School. Rud and his wife Amy reside in St. Cloud and have three children: Sam, Gabbie and Max.

Eric Rud's Record at SCSU:

Year	Overall	Conference	Postseason
2016-17	5-10-1	4-7-1 WCHA	-
2015-16	13-18-4	9-15-4 WCHA/5th	0-2
2014-15	8-28-1	5-22-1 WCHA/7th	0-2
Overall	26-56-6	18-44-6	0-4

St. Cloud State's Record When:

vs. WCHA opponents: 4-7-1-1	SCSU has 40+ shots: 0-0-0
vs. HE opponents: 1-2-0	SCSU has 50+ shots: 0-0-0
vs. CHA opponents: 0-1-0	
vs ranked opponents: 1-5-0	SCSU makes 10+ saves: 0-1-0
vs. unranked opponents: 4-5-1	SCSU makes 20+ saves: 2-4-1
At home: 3-5-0	SCSU makes 30+ saves: 3-3-0
On the road: 2-3-1	SCSU makes 40+ saves: 0-0-0
Neutral ice: 0-2-0	SCSU makes 50+ saves: 0-2-0
SCSU scores first: 5-3-1	One goal game: 1-1-0
Opponent scores first: 0-7-0	Two goal game: 2-2-0
SCSU leads after one: 4-0-0	Three goal game: 2-4-0
SCSU trails after one: 1-4-0	Four goal game: 0-2-0
Tied after one: 0-6-1	Five+ goal game: 0-1-0
SCSU leads after two: 4-2-0	SCSU out-shoots: 2-1-1
SCSU trails after two: 0-8-0	Opponent out-shoots: 3-9-0
Tied after two: 1-0-1	Shots are even: 0-0-0
In overtime: 0-0	SCSU scores a PPG: 2-2-0
In shootouts: 1-0	Opponent scores a PPG: 2-6-0
SCSU scores 0 goals: 0-4-0	On Thursday: 0-1-0
SCSU scores 1 goal: 0-2-0	On Friday: 1-6-1
SCSU scores 2 goals: 1-3-1	On Saturday: 4-3-0
SCSU scores 3 goals: 2-1-0	To open a series: 1-5-1
SCSU scores 4+ goals: 2-0-0	To close a series: 4-3-0
SCSU allows 0 goals: 2-0-0	Following a win: 1-4-1
SCSU allows 1 goal: 1-1-0	Following a loss: 3-5-0
SCSU allows 2 goals: 2-0-1	Following a tie: 1-0-0
SCSU allows 3 goals: 0-2-0	In September: 1-2-0
SCSU allows 4+ goals: 0-7-0	In October: 2-4-1
SCSU has >20 shots: 2-6-0	In November: 2-4-0
SCSU has: 20+ shots: 2-4-0	In December: 0-0-0
SCSU has 30+ shots: 1-0-1	In January: 0-0-0
	In February: 0-0-0
	In March: 0-0-0

USCHO.com Div. I Women's Poll (Nov. 28, 2016)

	Record	Pts	Previous
1. Wisconsin (13)	14-1-1	148	1
2. Minnesota	13-1-2	130	2
3. St. Lawrence (2)	15-0-1	123	3
4. Minnesota Duluth	10-3-3	107	4
5. Clarkson	13-3-2	82	5
6. Boston College	10-3-3	80	6
7. Colgate	14-2-1	51	9
8. Quinnipiac	11-4-3	42	8
9. North Dakota	7-5-4	26	7
10. Northeastern	10-4-3	16	10

RV: Robert Morris (15), Boston University (5)

St. Cloud State Assistant Coaches



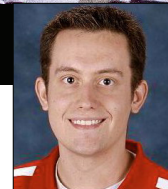
Steve
Macdonald
Thrd Season



Jinelle
Siergiej
Thrd Season



HUSKIES INSIDER



By Ryan Evans  @SCSUHUSKIES_WHK



Huskies embrace tough competition

St. Cloud State to play its fourth ranked opponent of the season this weekend

Each season in the WCHA is an unforgiving gauntlet of some of the top teams in women's college hockey. Just ask the St. Cloud State women's hockey team (5-10-1, 4-7-1-1 WCHA), which plays its fourth nationally ranked opponent of the season this weekend—No. 4 Minnesota Duluth.

But the Huskies do not back down from the challenge of competing in the nation's toughest conference. In fact, they view it as an invaluable opportunity.

"That's why you want to play in the WCHA—to play against the best," head coach Eric Rud said. "There is nothing better, as a team, than having that competition on a nightly basis."

Playing against the best players in the world every weekend is a

vital tool for player development and the Huskies are seeing the results not just at the individual level, but for the program Rud and his staff are building as a whole.

"If you do not push yourself to the highest level, you are going to get embarrassed," Rud said. "If you're not doing something right, you have to fix it pretty fast."

"But our program is beyond that. We want to compete with the best, beat them and catch them in the standings."

Six of SCSU's first 16 games of the season have been against ranked opponent and are 1-5-0 in such games—with a 3-2 win over then-No. 6/7 North Dakota on October 8 at the Herb Brooks National Hockey Center. The Huskies will have another shot

for such a win against the fourth-ranked Bulldogs.

St. Cloud State arguably outplayed its results at last weekend's Windjammer Classic and Rud believes his team has a "certain level of confidence" heading into the series against its in-state rival.

UMD plays a wide-open, high-entertainment value brand of hockey and utilizes an aggressive forecheck—led by a pair of the top scorers in the country in senior forwards Lara Stalder and Ashleigh Brykaliuk—in front of an experienced defensive core.

Minnesota Duluth is the next test for the Huskies and they are not backing down from it.

"They are as high-flying as anyone," Rud said. "We are excited for the challenge."



2016-17 St. Cloud State University Women's Hockey Roster

No.	Name	Pos	S/C	Cl.	Ht.	Hometown
1	Janine Adler	G	L	Fr.	5-5	Zurich, Switzerland
2	Julia Tylke	F	R	So.	5-5	Delafield, Wis.
4	Dana Rasmussen	F	R	So.	5-2	Kasson, Minn.
5	Janna Haeg	F	L	Fr.	5-6	Lakeville, Minn.
7	Brittney Anderson	D	R	Jr.	5-6	Hudson, Wis.
8	Brooke Kudirka	F	L	Fr.	5-11	Omaha, Neb.
9	Lauren Hespeneide (C)	F	L	Sr.	5-10	Shakopee, Minn.
10	Emma Turbyville	D	R	Jr.	5-10	Chicago, Ill.
11	Caroline Markstrom	D	L	Sr.	5-8	Kovland, Sweden
13	Katie Detert	F	R	Fr.	5-6	Rhineland, Wisc.
15	Rachel Herzog	D	R	Fr.	5-7	Oakdale, Minn.
16	Kelsey Saelens	F	L	Sr.	5-7	Winnipeg, Manitoba
17	Jenna Redford (A)	D	L	R-Sr.	5-6	Soldotna, Alaska
18	Ivy Dynek	F	L	So.	5-8	Northfield, Ill.
19	Payge Pena	F	R	Sr.	5-7	Maple Ridge, British Columbia
20	Suvi Ollikainen	F	L	So.	5-3	Klaukkala, Finland
21	Christa Moody (A)	D	R	Sr.	5-9	Battle Creek, Mich.
22	Kayla Friesen	F	L	Fr.	5-7	Winnipeg, Manitoba
23	Hannah Potrykus	F	R	So.	5-6	Brighton, Mich.
24	Alex Makaric	D	L	Sr.	5-11	Windsor, Ontario
25	Jordan Stewart	F	L	So.	5-5	Machesney Park, Ill.
27	Alyssa Erickson	F	L	Jr.	5-8	Mission, British Columbia
29	Taylor Crosby	G	L	So.	5-6	Cole Harbour, Nova Scotia
34	Madeleine Dahl	G	L	Sr.	5-7	Edina, Minn.

Head Coach: Eric Rud (Third Season)

Assistant Coaches: Steve Macdonald and Jinelle Siergiej

Athletic Trainer: Emily Fanno

AMR Women's Hockey Contact: Ryan Evans

Coordinator of Hockey & Video Ops: Matt Chapman

Equipment Manager: Jeremiah Minkel

Student Equipment Manager: Blake Frantti

Video Coordinator: Jocelyn Monge

Strength and Conditioning Coach: Travis Zins

BY CLASS

Seniors.....	8
Juniors.....	3
Sophomores.....	6
Freshmen.....	7

2016-17 PRONUNCIATIONS

Saelens.....	Say-lens
Hespeneide.....	Hesp-in-hide
Makaric.....	Mack-rick
Pena.....	Pen-ya
Ollikainen.....	Ole-a-kay-nin
Tylke.....	Till-Key
Potrykus.....	Pa-tree-kiss



St. Cloud State Hockey
St. Cloud State Combined Team Statistics (as of Dec 01, 2016)
All games

Date	Opponent		Score	Att.
* Sep 23	#1 WISCONSIN	L	0-6	221
* Sep 24	#1 WISCONSIN	L	2-4	305
Sep 29	MERRIMACK	W	4-2	341
Oct 01	MERRIMACK	L	1-4	392
* Oct 07	#7 NORTH DAKOTA	L	0-1	455
* Oct 08	#7 NORTH DAKOTA	W	3-2	358
* Oct 21	at Minnesota State	To2	2-2	150
* Oct 22	at Minnesota State	W	2-0	200
* Oct 27	at #2 Minnesota	L	2-5	1286
* Oct 28	at #2 Minnesota	L	0-3	1396
* Nov 11	OHIO STATE	L	0-3	209
* Nov 12	OHIO STATE	W	4-1	311
* Nov 18	at Bemidji State	L	2-6	311
* Nov 19	at Bemidji State	W	3-0	342
Nov 25	at Vermont	L	1-5	286
Nov 26	vs Robert Morris	L	3-5	0

TEAM STATISTICS **SCSU** **OPP**

SHOT STATISTICS

Goals-Shot attempts	29-317	49-538
Shot pct.	.091	.091
Goals/Game	1.8	3.1
Shots/Game	19.8	33.6

POWER PLAYS

Goals-Power Plays	4-50	10-50
Conversion Percent	.080	.200
Shot Attempts	45	90
Shot Percent	.089	.111

GOAL BREAKDOWN

Power Play	4	10
Short-handed	0	3
Empty net	1	6
Penalty	0	0
Unassisted	5	3
Overtime	0	0
Shootout	0	0
Delayed Penalty	0	0

PENALTIES

Number	55	52
Minutes	121	107
Penalties/Game	3.4	3.2
Pen minutes/Game	7.6	6.7

SHOOTOUTS (Made-Att)	2-8	1-8
----------------------	-----	-----

Record:	Overall	Home	Away	Neutral
ALL GAMES	5-10-1	3-5-0	2-4-1	0-1-0
CONFERENCE	4-7-1	2-4-0	2-3-1	0-0-0
NON-CONFERENCE	1-3-0	1-1-0	0-1-0	0-1-0

##	Player	gp	g	a	pts	sh	sh%	pen-min	pp	sh
2	Julia Tylke	16	8	4	12	45	.178	4-8	2	0
22	Kayla Friesen	16	4	3	7	32	.125	8-16	0	0
27	Alyssa Erickson	16	4	2	6	27	.148	4-8	0	0
9	Lauren Hespenheide	16	1	5	6	30	.033	2-4	1	0
23	Hannah Potrykus	14	3	2	5	29	.103	3-6	0	0
19	Payge Pena	16	2	3	5	16	.125	2-4	0	0
18	Ivy Dynek	15	2	2	4	11	.182	1-2	0	0
7	Brittney Anderson	12	1	3	4	20	.050	4-8	1	0
5	Janna Haeg	15	1	2	3	10	.100	1-2	0	0
16	Kelsey Saelens	16	1	2	3	21	.048	1-2	0	0
21	Christa Moody	16	0	3	3	15	.000	3-6	0	0
17	Jenna Redford	16	0	3	3	9	.000	1-2	0	0
11	Caroline Markstrom	16	1	1	2	6	.167	6-23	0	0
25	Jordan Stewart	14	1	1	2	5	.200	1-2	0	0
15	Rachel Herzog	16	0	2	2	2	.000	4-8	0	0
8	Brooke Kudirka	16	0	2	2	19	.000	2-4	0	0
20	Suvi Ollikainen	16	0	2	2	4	.000	2-4	0	0
1	Janine Alder	13	0	1	1	0	.000	0-0	0	0
10	Emma Turbyville	16	0	1	1	15	.000	5-10	0	0
13	Katie Detert	9	0	0	0	1	.000	0-0	0	0
TM	TEAM	9	0	0	0	0	.000	1-2	0	0
Total		16	29	44	73	317	.091	55-121	4	0
Opponents		16	49	74	123	538	.091	52-107	10	3

##	Goalie	gp	min	ga	gaavg	saves	save%	w-l-t
1	Janine Alder	13	737:46	29	2.36	362	.926	5-7-1
29	Taylor Crosby	3	139:37	7	3.01	83	.922	0-2-0
34	Madeleine Dahl	2	80:00	7	5.25	44	.863	0-1-0
TM	EMPTY NET	9	7:37	6	-	0	.000	0-0-0
Total		16	965:00	49	3.05	489	.909	5-10-1
Opponents		16	965:00	29	1.80	288	.909	10-5-1

Attendance Summary **SCSU** **Opponent**

Total	2592	3971
Dates/Avg Per Date	8/324	7/567
Neutral Site #/Avg	1/0	

Goals by Period

	1st	2nd	3rd	Total
St. Cloud State	8	11	10	29
Opponents	10	16	23	49

Saves by Period

	1st	2nd	3rd	Total
St. Cloud State	175	179	133	489
Opponents	98	103	86	288

St. Cloud State Hockey
St. Cloud State Category Leaders (as of Dec 01, 2016)
All games

## Points	GP	G	A	Pts	Sh
2 Julia Tylke	16	8	4	12	45
22 Kayla Friesen	16	4	3	7	32
27 Alyssa Erickson	16	4	2	6	27
9 Lauren Hespenheide	16	1	5	6	30
23 Hannah Potrykus	14	3	2	5	29
19 Payge Pena	16	2	3	5	16
18 Ivy Dynek	15	2	2	4	11
7 Brittney Anderson	12	1	3	4	20
5 Janna Haeg	15	1	2	3	10
16 Kelsey Saelens	16	1	2	3	21

## Goals	GP	G	A	Pts	Sh
2 Julia Tylke	16	8	4	12	45
22 Kayla Friesen	16	4	3	7	32
27 Alyssa Erickson	16	4	2	6	27
23 Hannah Potrykus	14	3	2	5	29
19 Payge Pena	16	2	3	5	16
18 Ivy Dynek	15	2	2	4	11
9 Lauren Hespenheide	16	1	5	6	30
7 Brittney Anderson	12	1	3	4	20
5 Janna Haeg	15	1	2	3	10
16 Kelsey Saelens	16	1	2	3	21

## Power-Play Goals	GP	PPG
2 Julia Tylke	16	2

## Short-Handed Goals	GP	SHG
------------------------------	-----------	------------

## Game-Winning Goals	GP	GWG
23 Hannah Potrykus	14	1
11 Caroline Markstrom	16	1
27 Alyssa Erickson	16	1
25 Jordan Stewart	14	1
16 Kelsey Saelens	16	1

## Plus/Minus	GP	+/-
----------------------	-----------	------------

## Assists	GP	G	A	Pts	Sh
9 Lauren Hespenheide	16	1	5	6	30
2 Julia Tylke	16	8	4	12	45
22 Kayla Friesen	16	4	3	7	32
19 Payge Pena	16	2	3	5	16
7 Brittney Anderson	12	1	3	4	20
21 Christa Moody	16	0	3	3	15
17 Jenna Redford	16	0	3	3	9
27 Alyssa Erickson	16	4	2	6	27
23 Hannah Potrykus	14	3	2	5	29
18 Ivy Dynek	15	2	2	4	11

## Shots	GP	G	A	Pts	Sh	Sh%
2 Julia Tylke	16	8	4	12	45	.178
22 Kayla Friesen	16	4	3	7	32	.125
9 Lauren Hespenheide	16	1	5	6	30	.033
23 Hannah Potrykus	14	3	2	5	29	.103
27 Alyssa Erickson	16	4	2	6	27	.148
16 Kelsey Saelens	16	1	2	3	21	.048
7 Brittney Anderson	12	1	3	4	20	.050
8 Brooke Kudirka	16	0	2	2	19	.000
19 Payge Pena	16	2	3	5	16	.125
21 Christa Moody	16	0	3	3	15	.000

## Shot Pct.	GP	G	A	Pts	Sh	Sh%
25 Jordan Stewart	14	1	1	2	5	.200
18 Ivy Dynek	15	2	2	4	11	.182
2 Julia Tylke	16	8	4	12	45	.178
11 Caroline Markstrom	16	1	1	2	6	.167
27 Alyssa Erickson	16	4	2	6	27	.148
22 Kayla Friesen	16	4	3	7	32	.125
19 Payge Pena	16	2	3	5	16	.125
23 Hannah Potrykus	14	3	2	5	29	.103
5 Janna Haeg	15	1	2	3	10	.100
7 Brittney Anderson	12	1	3	4	20	.050

## Penalties	GP	Pen	Min
22 Kayla Friesen	16	8	16
11 Caroline Markstrom	16	6	23
10 Emma Turbyville	16	5	10
27 Alyssa Erickson	16	4	8
15 Rachel Herzog	16	4	8
7 Brittney Anderson	12	4	8
2 Julia Tylke	16	4	8
23 Hannah Potrykus	14	3	6
21 Christa Moody	16	3	6
19 Payge Pena	16	2	4

## Penalty Minutes	GP	Pen	Min
11 Caroline Markstrom	16	6	23
22 Kayla Friesen	16	8	16
10 Emma Turbyville	16	5	10
2 Julia Tylke	16	4	8
7 Brittney Anderson	12	4	8
15 Rachel Herzog	16	4	8
27 Alyssa Erickson	16	4	8
23 Hannah Potrykus	14	3	6
21 Christa Moody	16	3	6



2016-17 St. Cloud State Women's Hockey Roster & Coaching Staff



Janine
Adler



Julia
Tylke



Dana
Rasmussen



Janna
Haeg



Brittney
Anderson



Brooke
Kudirka



Lauren
Hespenheide



Emma
Turbyville



Caroline
Markstrom



Katie
Detert



Rachel
Herzog



Kelsey
Saelens



Jenna
Redford



Ivy
Dynek



Payge
Pena



Suvi
Ollikainen



Christa
Moody



Kayla
Friesen



Hannah
Potrykus



Jordan
Stewart



Alyssa
Erickson



Taylor
Crosby



Madeleine
Dahl



Asst. Coach
Jinelle Siergiej



Head Coach
Eric Rud



Asst. Coach
Steve Macdonald