



# ST. CLOUD STATE HUSKIES

## WOMEN'S HOCKEY

Contact: Ryan Evans — Phone: 952-594-136 — Email: rmevans@stcloudstate.com

2016-17 St. Cloud State Women's Hockey News  
RELEASE DATE: Nov. 9, 2016



### 2016-17 SCHEDULE/RESULTS

Record: 3-6-1, 2-5-1-1 WCHA

Date	Opponent	Result
SEPT. 23	#1 WISCONSIN*	L, 0-6
SEPT. 24	#1 WISCONSIN*	L, 2-4
SEPT. 30	MERRIMACK #	W, 4-2
OCT. 1	MERRIMACK	L, 1-4
OCT. 7	#7 NORTH DAKOTA*	L, 0-1
OCT. 8	#7 NORTH DAKOTA*	W, 3-2
Oct. 21	at Minnesota State*	T, 2-2
Oct. 22	at Minnesota State*	W, 2-0
Oct. 27	at #2 Minnesota*	L, 2-5
Oct. 28	at #2 Minnesota*	L, 0-3
NOV. 11	OHIO STATE*	3:07 p.m.
NOV. 12	OHIO STATE*	1:07 p.m.
Nov. 18	at Bemidji State*	3:07 p.m.
Nov. 19	at Bemidji State*	3:07 p.m.

#### WINDJAMMER CLASSIC (Burlington, Vt.)

Nov. 25	vs. Vermont	4 p.m.
Nov. 26	vs. TBD	TBA

DEC. 2	MINNESOTA-DULUTH*	7:07 p.m.
DEC. 3	MINNESOTA-DULUTH*	3:07 p.m.
Dec. 10	at North Dakota*	2 p.m.
Dec. 11	at North Dakota*	2 p.m.
JAN. 6	COLGATE UNIVERSITY	7:07 p.m.
JAN. 7	COLGATE UNIVERSITY	3:07 p.m.
Jan. 13	at Wisconsin*	TBA
Jan. 14	at Wisconsin*	TBA
JAN. 20	MINNESOTA STATE*	3:07 p.m.
JAN. 21	MINNESOTA STATE*	3:07 p.m.
JAN. 27	MINNESOTA*	7:07 p.m.
JAN. 28	MINNESOTA*	3:07 p.m.
Feb. 3	at Ohio State*	TBA
Feb. 4	at Ohio State*	TBA
FEB. 10	BEMIDJI STATE*	3:07 p.m.
FEB. 11	BEMIDJI STATE*%	3:07 p.m.
Feb. 17	at Minnesota-Duluth*	7:07 p.m.
Feb. 18	at Minnesota-Duluth*	4:07 p.m.

#### POSTSEASON

Feb. 24	WCHA First Round +	TBA
Feb. 25	WCHA First Round +	TBA
Feb. 26	WCHA First Round +	TBA
March 4	WCHA Final Face-Off \$	TBA
March 5	WCHA Final Face-Off \$	TBA
March 10	NCAA Quarterfinals +	TBA
March 17	NCAA Frozen Four ^	TBA
March 19	NCAA Frozen Four ^	TBA

Home games listed in CAPS. All times are Central.

\* - WCHA Game  
# - Alumni Day  
% - Senior Day  
+ - Campus Locations  
\$ - Ridder Arena, Minneapolis  
^ - St. Charles, Mo.

Rankings are based on the USCHO.com poll at the time of the game.

All game times are subject to change

**TWITTER: #SCSUWHK**

• Official Account: @SCSUHUSKIES\_WHK

**ST. CLOUD STATE** [3-6-1, 2-4-1-1 WCHA] vs. **OHIO STATE** [5-6-1, 1-6-1-0 WCHA]  
Friday, Nov. 11 & Saturday, Nov. 12, 2016 • Herb Brooks National Hockey Center

**Location:** St. Cloud, Minn.

**Site:** Herb Brooks National Hockey Center

**Capacity:** 5,159

**Ice Surface:** 200' x 100'

**TV:** None

**Video Stream:** scsuhuskies.com/live

**Radio:** None

**Audio Stream:** KVSC.org

**All-time Series:** OSU leads, 38-29-8



#### ST. CLOUD STATE Huskies

Ranking (USCHO.com): NR  
Record: 3-6-1, 2-5-1-1 WCHA  
Head Coach: Eric Rud  
Record (Years): 24-52-6 (3)



#### OHIO STATE Buckeyes

Ranking (USCHO.com): NR  
Record: 5-6-1, 1-6-1 WCHA  
Head Coach: Nadine Muzerall  
Record (Years): 5-6-1 (1)

**Last Meeting (Jan. 15-16, 2016):** St. Cloud State swept Ohio State with a pair of one-goal, 2-1 and 2-1, wins in Columbus, Ohio. Huskies goaltender Katie Fitzgerald got the win on both games and stopped 60 of 62 (96.8 percent) of the shots she faced in the series. SCSU scored first in both contests only for OSU to tie it, but hen-freshman forward Julia Tylke scored both game-winners en route to being named WCHA Rookie of the Week after a three-point (2+1) weekend. Current sophomore forward Hannah Potrykus also scored in the series.

### KEY NOTES TO CONSIDER:

- **SCOUTING THE BUCKEYES:** Ohio State snapped a five-game losing streak last weekend with a non-conference sweep of Lindenwood. OSU has lost six of its first eight WCHA games and ranks in the middle of the conference pack in both scoring offense (1.92 G/GM) and defense (2.00 GA/GM). Redshirt sophomore goaltender Cassidy Sauve has been the team's stalwart. Her .950 save percentage ranks second both in the WCHA and nationally. Sophomore Maddy Field leads OSU with five goals and eight points, while junior forward Lauren Spring paces it with six assists.  
  
Ohio State finished the 2015-16 campaign with a 10-25-1 mark, including 6-21-1 in league play to earn the No. 7 seed for the WCHA playoffs. The Buckeyes were swept by Minnesota, 5-2 and 5-0, in the first round.
- **ALL-TIME SERIES:** St. Cloud State trails the all-time series against the Buckeyes, 29-38-8, but has won the last four meetings between the WCHA rivals. The Huskies swept the season series in 2015-16, winning three one-goal games—3-2, 2-1 and 2—in addition to a 4-1 victory.
- Sophomore forward Julia Tylke led all SCSU players with seven points (3+4) in four games against OSU last season. In total, 10 different players recorded a point or more, including seven multi-point efforts, against the Buckeyes in 2015-16. Tylke's linemate, junior forward Alyssa Erickson, notched four points (2+2).
- **LAST TIME OUT:** St. Cloud State was swept by No. 2 Minnesota, 5-2 and 3-0, at Ridder Arena in Minneapolis, October 27-28. Freshman forward Kayla Friesen and senior forward Payge Pena scored on Friday and freshman goaltender Janine Alder made 69 saves in the series—including a career-high 36 in Saturday's loss.
- **SWISS SENSATION:** Through seven games this season, Alder has shown poise beyond her years. The Zurich, Switzerland native boasts a .939 save percentage and 1.94 goals-against average, marks which both rank in the top five in the WCHA and are second among rookie net minders nationwide. She is 3-3-1 on the season, has been the goalie of record for each of the Huskies' wins and has posted four 30-plus save performances.
- **SILKY TYLKE:** Sophomore forward Julia Tylke leads the Huskies with six goals and eight points. The Delafield, Wis., native is tied for 21st, nationally, and tied for fifth among WCHA players in goal scoring. The two-games against the Gophers were the first time this season Tylke was kept off the scoresheet in a series.

Tylke, a 2015-16 All-WCHA Rookie Team honoree, is St. Cloud State's top returning scorer, having registered nine goals and 24 points a season ago—the most for an SCSU rookie since the 2006-07 season, when Holly Roberts and Caitlin Hogan scored 35 (18+17) (**cont.**)

## St. Cloud State Women's Hockey 2016-17 Roster

#	FULL NAME	YR.	POS.	HT.	SH/C	HOMETOWN
1	Janine Alder	FR	G	5-5	L	Zurich, Switzerland
2	Julia Tylke	SO	F	5-5	R	Delafield, Wisconsin
4	Dana Rasmussen	R-FR	F	5-2	R	Kasson, Minnesota
5	Janna Haeg	FR	F	5-6	L	Lakeville, Minnesota
7	Brittney Anderson	JR	D	5-6	R	Hudson, Wisconsin
8	Brooke Kudirka	FR	F	5-11	L	Omaha, Nebraska
9	Lauren Hespenheide*	SR	F	5-0	L	Shakopee, Minnesota
10	Emma Turbyville	JR	D	5-10	R	Chicago, Illinois
11	Caroline Markström	SR	D	5-8	L	Kovland, Sweden
13	Katie Detert	FR	F	5-6	R	Rhineland, Wisconsin
15	Rachel Herzog	FR	D	5-7	R	Oakdale, Minnesota
16	Kelsey Saelens	SR	F	5-7	L	Winnipeg, Manitoba
17	Jenna Redford*	R-SR	D	5-6	L	Soldotna, Alaska
18	Ivy Dynek	SO	F	5-8	L	Northfield, Illinois
19	Payge Pena	SR	F	5-7	R	Maple Ridge, British Columbia
20	Suvi Ollikainen	SO	F	5-3	L	Klaukkala, Finland
21	Christa Moody*	JR	D	5-9	R	Battle Creek, Michigan
22	Kayla Friesen	FR	F	5-7	L	Winnipeg, Manitoba
23	Hannah Potrykus	SO	F	5-6	R	Brighton, Michigan
24	Alexandra Makaric	SR	D	5-11	L	Windsor, Ontario
25	Jordan Stewart	SO	F	5-5	L	Machesney Park, Illinois
27	Alyssa Erickson	JR	F	5-8	L	Mission, British Columbia
29	Taylor Crosby	SO	G	5-6	L	Cole Harbour, Nova Scotia
34	Madeleine Dahl	SR	G	5-7	R	Edina, Minnesota

\* 2016-17 Captain

## 2016-17 Coaches and Staff

Eric Rud	Head Women's Hockey Coach
Steve Macdonald	Assistant Women's Hockey Coach
Jinelle Siergieij	Assistant Women's Hockey Coach
Blake Franti	Women's Hockey Equipment Manager
Emily Fanno	Graduate Assistant Athletic Trainer
Matthew Chapman	Coordinator of Hockey and Video Operations
Jeremiah Minkel	Hockey Equipment Manager
Jocelyn Monge	Women's Hockey Operations and Video Coordinator
Ryan Evans	Graduate Assistant, Athletic Media Relations (SID)

## 2016-17 By Class

Seniors.....	8
Juniors.....	3
Sophomores.....	7
Freshman.....	6

## 2016-17 Pronunciations

Detert.....	Dee-tert
Dynek.....	Dye-nick
Hespenheide.....	Hesp-in-hide
Pena.....	Pen-ya
Makaric.....	Mak-rick
Ollikainen.....	Ole-ah-kay-nen
Tylke.....	Till-key
Potrykus.....	Pa-tree-kiss
Saelens.....	Say-lens
Tylke.....	Till-key



## Information

To get full information about the 2016-17 SCSU Women's Hockey season, and to purchase tickets, please visit:

**[www.scsuhuskies.com](http://www.scsuhuskies.com)**

For information about the WCHA, please check out the league website at

**[www.wcha.com](http://www.wcha.com)**

## (Key Notes to Consider, cont.)

and 29 (12+17) points, respectively.

- **FANTASTIC FRESHMEN:** 18 Huskies have registered a point this season, including five freshman. Friesen leads all first year players with two points (2+0). The Winnipeg, Manitoba native has two goals in SCSU's last four games, which leads the team during that span. Pena also has two goals in that time.



**FRIESEN**

- **EXCEPTIONAL ERICKSON:** Junior forward Alyssa Erickson has two goals and four points in SCSU's last six games, including the game-winning tally in the 2-0 win at Minnesota State on Oct. 22. The Mission, B.C., native is tied for second on the team with four points.
- **OH CAPTAIN, MY CAPTAIN:** Senior forward Lauren Hespenheide has four points (0+4) in eight games this season, which is tied for second on the team. The Huskies' captain had a career day against Merrimack on Sept. 29, tallying three assists and has already equaled her career high in assists (four).
- **HOCKEY DAY MINNESOTA:** The WCHA and Fox Sports North announced on Oct. 13 that St. Cloud State and Minnesota State's game on January 21 will be featured on Hockey Day Minnesota. The game will be broadcast live on Fox Sports North Plus from the Herb Brooks National Hockey Center beginning at 3 p.m. This is the first time in Hockey Day Minnesota's 10-year history that an NCAA women's game will be broadcast as part of the festivities.

## PRESEASON NOTES:

- **WCHA PRESEASON COACHES POLL:** After finishing fifth in the WCHA with a 9-15-4 record and 34 points last season, the conference coaches picked St. Cloud State to finish sixth in the league this season.
- **REACHING NEW HEIGHTS:** In his second season behind the bench, head coach Eric Rud led SCSU to 13 wins in 2015-16, which was the program's highest total since winning 15 games in 2009-10.
- **ON THE WAY UP:** Seven St. Cloud State players achieved career-high point totals in 2015-16, including six who set new career marks for goals scored.
- **HOW MAY I ASSIST YOU?:** Junior defenseman Brittney Anderson led all Huskies, and set a new career high, with 16 assists last season. Her 20 total points were the most for an SCSU rear guard since Danielle Hirsch also scored 20 (2+18) in the 2008-09 season.

Anderson has one goal and one assist through eight games this season.

- **BLUE LINE BARRIER:** The Huskies return six of their seven defensemen from last season's group that ranked sixth in the WCHA in scoring defense (3.29 GA/GM). SCSU ranked sixth in league play as well, allowing 3.14 goals against per contest.
- **SEARCHING FOR SCORING:** St. Cloud State lost nearly 40 percent of its goal scoring to graduation, including Molly Illikainen, who led the team with 17 goals a season ago.
- **BATTLE BETWEEN THE PIPES:** Three goaltenders are vying to replace Katie Fitzgerald in the Huskies' crease: Senior Madeleine Dahl, sophomore Taylor Crosby and freshman Janine Alder. Fitzgerald started 34 of 35 games for SCSU last season. Of the goalies on this year's roster, Dahl has the most career starts (13). Prior to last Friday, Dahl's last career start came in 2013-14 with Union College.
- **HUSKY PUPPIES:** SCSU welcomes seven newcomers this season: Goaltender Janine Alder; forwards Janna Haeg, Brooke Kudirka, Katie Detert, Kayla Friesen and Dana Rasmussen; and defenseman Rachel Herzog.



## Eric Rud

Head Coach • Third Season  
Colorado College '97

This season marks Eric Rud's third at the helm of the St. Cloud State women's hockey team.

Rud became the fourth coach in SCSU women's hockey history in 2014-15. Under Rud's tutelage, SCSU's Molly Illikainen and Julia Tylke both gained All-WCHA accolades in 2015-16.

Before leading the Husky women, Rud was an assistant coach for the St. Cloud State (2005-10) and Colorado College (2011-14) men's hockey teams. He was also the head coach and general manager of the USHL's Green Bay Gamblers for the 2010-11 season.

A graduate of Colorado College, Rud was a two-time team captain and two-time WCHA Defensive Player of the Year for the Tigers during his collegiate playing career. He played professional hockey from 1997 to 2002, and served as

a player assistant coach with the Florida Everblades in 1999-00 and with the Idaho Steelheads from 2000-02.

He joined the coaching ranks as an assistant with the USHL's Cedar Rapids Roughriders from 2002-04 and was an assistant coach at Colorado College in 2004-05.

Rud joined Bob Motzko's staff at St. Cloud State in 2005. At SCSU, Rud recruited several Husky standouts including Ryan Lasch, Andreas Nodl, Garrett Roe, Drew LeBlanc, Nick Jensen and Nic Dowd. In Rud's time at St. Cloud State, the Huskies advanced to the NCAA tournament three times and played in the NCAA West Regional title game in 2010.

He has worked extensively with the USA Hockey program throughout his career and served as the head coach of the 2008 USA U-17 boys team in the Slovakia Four Nations Cup and the 2009 USA U-18 boys team at the Czech Republic Ivan Hlinka Cup.

A native of Inver Grove Heights, Minn., Rud prepped at Simley High School. Rud and his wife Amy reside in St. Cloud and have three children: Sam, Gabbie and Max.

### Eric Rud's Record at SCSU:

Year	Overall	Conference	Postseason
2016-17	3-6-1	2-5-1	-
2015-16	13-18-4	9-15-4 WCHA/5th	0-2
2014-15	8-28-1	5-22-1 WCHA/7th	0-2
<b>Overall</b>	<b>24-52-6</b>	<b>16-42-6</b>	<b>0-4</b>

### St. Cloud State Assistant Coaches



Steve  
Macdonald  
Thrd Season



Jinelle  
Siergie  
Thrd Season



### 2016-17 WCHA Standings (Nov. 9, 2016)

	GP	Record	Pts	GF-GA
1. Wisconsin	10	9-0-1-1	29	38-6
2. Minnesota	10	9-1-0-0	27	36-14
3. Minn. Duluth	8	5-2-1-1	17	28-14
4. North Dakota	8	5-3-0-0	15	22-15
<b>5. St. Cloud State</b>	<b>8</b>	<b>2-5-1-1</b>	<b>8</b>	<b>11-23</b>
6. Bemidji State	10	2-7-1-0	7	14-30
<b>7. Ohio State</b>	<b>8</b>	<b>1-6-1-0</b>	<b>4</b>	<b>10-23</b>
8. Minnesota State	10	0-9-1-0	1	8-42

### USCHO.com Div. I Women's Poll (Nov. 8, 2016)

	Record	Pts	Previous
1. Wisconsin (15)	11-0-1	150	1
2. Minnesota	11-1-0	135	2
3. Minnesota Duluth	6-2-2	118	3
4. St. Lawrence	9-0-1	92	7
5. Colgate	10-0-1	83	6
6. Boston College	7-3-2	73	4
7. Clarkson	8-3-1	70	8
8. Quinnipiac	7-4-1	47	5
9. North Dakota	6-3-1	35	9
10. Princeton	3-2-1	9	10

RV: Northeastern (5), Robert Morris (4), Bemidji State (2), Boston University (1), Cornell (1)

### 2016-17 USA Today/USA Hockey Magazine Div. I Women's Poll (Nov. 8, 2016)

	Record	Pts	Previous
1. Wisconsin (19)	11-0-1	190	1
2. Minnesota	11-1-0	171	2
3. Minnesota Duluth	6-2-2	144	3
4. St. Lawrence	9-0-1	125	T6
5. Colgate	10-0-1	107	T6
6. Clarkson	8-3-1	93	8
7. Boston College	7-3-2	85	4
8. Quinnipiac	7-4-1	56	5
9. North Dakota	6-3-1	43	9
10. Robert Morris	7-1-4	12	NR

RV: Northeastern (8), Princeton (8), Bemidji State (1), Boston University (1), Cornell (1)

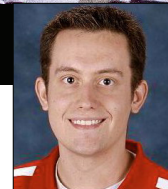
### St. Cloud State – Ohio State Comparison (Per game averages)

SCSU		OSU
16 (1.60)	<b>Goals For</b>	23 (1.92)
29 (2.90)	<b>Goals Against</b>	24 (2.00)
-13 (-1.30)	<b>Goal Differential</b>	-1 (-0.08)
8.6% (3/35)	<b>Power Play</b>	7.7% (3/39)
80.6% (29/36)	<b>Penalty Kill</b>	88.6% (39/44)





# HUSKIES INSIDER



By Ryan Evans  @SCSUHUSKIES\_WHK



## Huskies seeking offensive chemistry

St. Cloud State experimenting with different line combinations to spark offense

**S**t. Cloud State women's hockey head coach Eric Rud wants to play an offensive brand of hockey. He believes being aggressive with the puck and using the forecheck to smother opponents is the optimal style of play for sustaining long-term success.

"It's not fun to coach a team that sits back and just hangs in there," Rud said. "It's not fun to play that way, it's not fun to practice that way and it is not how I am wired as a coach."

It's just not a process that happens overnight.

With 16 goals in 10 games this season, the Huskies are still searching for the right mix up front. After losing nearly 40 percent of its scoring to graduation, SCSU knew finding offensive chemistry would be a year-long focus.

The coaching staff has

experimented with a number of different line combinations in order to give players opportunities in different situations and see where they flourish. When constructing lines, Rud starts by pairing two players who have shown chemistry and adds a third with the ability to enhance that.

Individual skill development is a major focus in practice each week as Rud seeks to maximize the talent he has on his roster—and the results are beginning to manifest.

"We work a lot on our offensive game," he said. "We've shown that the way we practice and the way we do things on a daily basis has improved all of our players and will continue to do so."

One player that has emerged recently is freshman forward Kayla Friesen. The rookie from Winnipeg,

Manitoba has two goals in the Huskies' last four games—including one against the No. 2-ranked Gophers—which leads the team during that span.

"She took a step against Minnesota and is starting to look more comfortable all the time," Rud said of Friesen.

Eighteen different players have notched a point or more this season for SCSU, including five freshmen. It will take contributions from the entire lineup for the Huskies to replace last season's departed production.

"That's the way we are always going to be at St. Cloud State," Rud said. "We're always going to be a team-driven engine if we are going to have success."

"We can have a lot of success with different people contributing every night and that's how we are building our program."



# 2016-17 St. Cloud State University Women's Hockey Roster

No.	Name	Pos	S/C	Cl.	Ht.	Hometown
1	Janine Adler	G	L	Fr.	5-5	Zurich, Switzerland
2	Julia Tylke	F	R	So.	5-5	Delafield, Wis.
4	Dana Rasmussen	F	R	So.	5-2	Kasson, Minn.
5	Janna Haeg	F	L	Fr.	5-6	Lakeville, Minn.
7	Brittney Anderson	D	R	Jr.	5-6	Hudson, Wis.
8	Brooke Kudirka	F	L	Fr.	5-11	Omaha, Neb.
9	Lauren Hespenheide (C)	F	L	Sr.	5-10	Shakopee, Minn.
10	Emma Turbyville	D	R	Jr.	5-10	Chicago, Ill.
11	Caroline Markstrom	D	L	Sr.	5-8	Kovland, Sweden
13	Katie Detert	F	R	Fr.	5-6	Rhineland, Wisc.
15	Rachel Herzog	D	R	Fr.	5-7	Oakdale, Minn.
16	Kelsey Saelens	F	L	Sr.	5-7	Winnipeg, Manitoba
17	Jenna Redford (A)	D	L	R-Sr.	5-6	Soldotna, Alaska
18	Ivy Dynek	F	L	So.	5-8	Northfield, Ill.
19	Payge Pena	F	R	Sr.	5-7	Maple Ridge, British Columbia
20	Suvi Ollikainen	F	L	So.	5-3	Klaukkala, Finland
21	Christa Moody (A)	D	R	Sr.	5-9	Battle Creek, Mich.
22	Kayla Friesen	F	L	Fr.	5-7	Winnipeg, Manitoba
23	Hannah Potrykus	F	R	So.	5-6	Brighton, Mich.
24	Alex Makaric	D	L	Sr.	5-11	Windsor, Ontario
25	Jordan Stewart	F	L	So.	5-5	Machesney Park, Ill.
27	Alyssa Erickson	F	L	Jr.	5-8	Mission, British Columbia
29	Taylor Crosby	G	L	So.	5-6	Cole Harbour, Nova Scotia
34	Madeleine Dahl	G	L	Sr.	5-7	Edina, Minn.

**Head Coach:** Eric Rud (Third Season)

**Assistant Coaches:** Steve Macdonald and Jinelle Siergiej

**Athletic Trainer:** Emily Fanno

**AMR Women's Hockey Contact:** Ryan Evans

**Coordinator of Hockey & Video Ops:** Matt Chapman

**Equipment Manager:** Jeremiah Minkel

**Student Equipment Manager:** Blake Frantti

**Video Coordinator:** Jocelyn Monge

**Strength and Conditioning Coach:** Travis Zins

## BY CLASS

Seniors.....	8
Juniors.....	3
Sophomores.....	6
Freshmen.....	7

## 2016-17 PRONUNCIATIONS

Saelens.....	Say-lens
Hespenheide.....	Hesp-in-hide
Makaric.....	Mack-rick
Pena.....	Pen-ya
Ollikainen.....	Ole-a-kay-nin
Tylke.....	Till-Key
Potrykus.....	Pa-tree-kiss



**St. Cloud State Hockey**  
**St. Cloud State Combined Team Statistics (as of Nov 03, 2016)**  
**All games**

Date	Opponent		Score	Att.
* Sep 23	#1 WISCONSIN	L	0-6	221
* Sep 24	#1 WISCONSIN	L	2-4	305
Sep 29	MERRIMACK	W	4-2	341
Oct 01	MERRIMACK	L	1-4	392
* Oct 07	#7 NORTH DAKOTA	L	0-1	455
* Oct 08	#7 NORTH DAKOTA	W	3-2	358
* Oct 21	at Minnesota State	To2	2-2	150
* Oct 22	at Minnesota State	W	2-0	200
* Oct 27	at #2 Minnesota	L	2-5	1286
* Oct 28	at #2 Minnesota	L	0-3	1396

TEAM STATISTICS	SCSU	OPP
<b>SHOT STATISTICS</b>		
Goals-Shot attempts	16-200	29-341
Shot pct.	.080	.085
Goals/Game	1.6	2.9
Shots/Game	20.0	34.1
<b>POWER PLAYS</b>		
Goals-Power Plays	3-35	7-36
Conversion Percent	.086	.194
Shot Attempts	37	68
Shot Percent	.081	.103
<b>GOAL BREAKDOWN</b>		
Power Play	3	7
Short-handed	0	2
Empty net	0	3
Penalty	0	0
Unassisted	3	1
Overtime	0	0
Shootout	0	0
Delayed Penalty	0	0
<b>PENALTIES</b>		
Number	39	37
Minutes	78	77
Penalties/Game	3.9	3.7
Pen minutes/Game	7.8	7.7
SHOOTOUTS (Made-Att)	2-8	1-8

Record:	Overall	Home	Away	Neutral
ALL GAMES	3-6-1	2-4-0	1-2-1	0-0-0
CONFERENCE	2-5-1	1-3-0	1-2-1	0-0-0
NON-CONFERENCE	1-1-0	1-1-0	0-0-0	0-0-0

##	Player	gp	g	a	pts	sh	sh%	pen-min	pp	sh
2	Julia Tylke	10	6	2	8	26	.231	3-6	2	0
27	Alyssa Erickson	10	2	2	4	17	.118	3-6	0	0
9	Lauren Hespenheide	10	0	4	4	20	.000	1-2	0	0
19	Payge Pena	10	2	1	3	6	.333	1-2	0	0
16	Kelsey Saelens	10	1	2	3	18	.056	1-2	0	0
22	Kayla Friesen	10	2	0	2	18	.111	6-12	0	0
7	Brittney Anderson	8	1	1	2	14	.071	2-4	1	0
23	Hannah Potrykus	10	1	1	2	21	.048	2-4	0	0
8	Brooke Kudirka	10	0	2	2	14	.000	2-4	0	0
20	Suvi Ollikainen	10	0	2	2	4	.000	2-4	0	0
17	Jenna Redford	10	0	2	2	3	.000	1-2	0	0
25	Jordan Stewart	9	1	0	1	4	.250	1-2	0	0
1	Janine Alder	7	0	1	1	0	.000	0-0	0	0
18	Ivy Dynek	9	0	1	1	3	.000	0-0	0	0
5	Janna Haeg	10	0	1	1	8	.000	1-2	0	0
15	Rachel Herzog	10	0	1	1	2	.000	4-8	0	0
21	Christa Moody	10	0	1	1	9	.000	3-6	0	0
10	Emma Turbyville	10	0	1	1	8	.000	2-4	0	0
13	Katie Detert	4	0	0	0	1	.000	0-0	0	0
11	Caroline Markstrom	10	0	0	0	4	.000	3-6	0	0
TM	TEAM	6	0	0	0	0	.000	1-2	0	0
Total		10	16	25	41	200	.080	39-78	3	0
Opponents		10	29	44	73	341	.085	37-77	7	2

##	Goalie	gp	min	ga	gaavg	saves	save%	w-l-t
1	Janine Alder	7	401:02	13	1.94	201	.939	3-3-1
29	Taylor Crosby	3	139:37	7	3.01	83	.922	0-2-0
34	Madeleine Dahl	1	60:00	6	6.00	28	.824	0-1-0
TM	EMPTY NET	6	4:21	3	-	0	.000	0-0-0
Total		10	605:00	29	2.88	312	.915	3-6-1
Opponents		10	605:00	16	1.59	184	.920	6-3-1

Attendance Summary	SCSU	Opponent
Total	2072	3032
Dates/Avg Per Date	6/345	4/758
Neutral Site #/Avg	0/0	

Goals by Period	1st	2nd	3rd	Total
St. Cloud State	5	6	5	16
Opponents	7	8	14	29

Saves by Period	1st	2nd	3rd	Total
St. Cloud State	111	113	86	312
Opponents	56	70	57	184

**St. Cloud State Hockey**  
**St. Cloud State Category Leaders (as of Nov 03, 2016)**  
**All games**

<b>## Points</b>	<b>GP</b>	<b>G</b>	<b>A</b>	<b>Pts</b>	<b>Sh</b>
2 Julia Tylke	10	6	2	8	26
27 Alyssa Erickson	10	2	2	4	17
9 Lauren Hespenheide	10	0	4	4	20
19 Payge Pena	10	2	1	3	6
16 Kelsey Saelens	10	1	2	3	18
22 Kayla Friesen	10	2	0	2	18
7 Brittney Anderson	8	1	1	2	14
23 Hannah Potrykus	10	1	1	2	21
8 Brooke Kudirka	10	0	2	2	14
20 Suvi Ollikainen	10	0	2	2	4

<b>## Goals</b>	<b>GP</b>	<b>G</b>	<b>A</b>	<b>Pts</b>	<b>Sh</b>
2 Julia Tylke	10	6	2	8	26
27 Alyssa Erickson	10	2	2	4	17
19 Payge Pena	10	2	1	3	6
22 Kayla Friesen	10	2	0	2	18
16 Kelsey Saelens	10	1	2	3	18
7 Brittney Anderson	8	1	1	2	14
23 Hannah Potrykus	10	1	1	2	21
25 Jordan Stewart	9	1	0	1	4

<b>## Power-Play Goals</b>	<b>GP</b>	<b>PPG</b>
2 Julia Tylke	10	2

<b>## Short-Handed Goals</b>	<b>GP</b>	<b>SHG</b>
------------------------------	-----------	------------

<b>## Game-Winning Goals</b>	<b>GP</b>	<b>GWG</b>
27 Alyssa Erickson	10	1
16 Kelsey Saelens	10	1
25 Jordan Stewart	9	1

<b>## Plus/Minus</b>	<b>GP</b>	<b>+/-</b>
8 Brooke Kudirka	10	+2
9 Lauren Hespenheide	10	+1

<b>## Assists</b>	<b>GP</b>	<b>G</b>	<b>A</b>	<b>Pts</b>	<b>Sh</b>
9 Lauren Hespenheide	10	0	4	4	20
2 Julia Tylke	10	6	2	8	26
27 Alyssa Erickson	10	2	2	4	17
16 Kelsey Saelens	10	1	2	3	18
8 Brooke Kudirka	10	0	2	2	14
20 Suvi Ollikainen	10	0	2	2	4
17 Jenna Redford	10	0	2	2	3
19 Payge Pena	10	2	1	3	6
7 Brittney Anderson	8	1	1	2	14
23 Hannah Potrykus	10	1	1	2	21

<b>## Shots</b>	<b>GP</b>	<b>G</b>	<b>A</b>	<b>Pts</b>	<b>Sh</b>	<b>Sh%</b>
2 Julia Tylke	10	6	2	8	26	.231
23 Hannah Potrykus	10	1	1	2	21	.048
9 Lauren Hespenheide	10	0	4	4	20	.000
16 Kelsey Saelens	10	1	2	3	18	.056
22 Kayla Friesen	10	2	0	2	18	.111
27 Alyssa Erickson	10	2	2	4	17	.118
7 Brittney Anderson	8	1	1	2	14	.071
8 Brooke Kudirka	10	0	2	2	14	.000
21 Christa Moody	10	0	1	1	9	.000
5 Janna Haeg	10	0	1	1	8	.000

<b>## Shot Pct.</b>	<b>GP</b>	<b>G</b>	<b>A</b>	<b>Pts</b>	<b>Sh</b>	<b>Sh%</b>
19 Payge Pena	10	2	1	3	6	.333
25 Jordan Stewart	9	1	0	1	4	.250
2 Julia Tylke	10	6	2	8	26	.231
27 Alyssa Erickson	10	2	2	4	17	.118
22 Kayla Friesen	10	2	0	2	18	.111
7 Brittney Anderson	8	1	1	2	14	.071
16 Kelsey Saelens	10	1	2	3	18	.056
23 Hannah Potrykus	10	1	1	2	21	.048
21 Christa Moody	10	0	1	1	9	.000
5 Janna Haeg	10	0	1	1	8	.000

<b>## Penalties</b>	<b>GP</b>	<b>Pen</b>	<b>Min</b>
22 Kayla Friesen	10	6	12
15 Rachel Herzog	10	4	8
21 Christa Moody	10	3	6
11 Caroline Markstrom	10	3	6
27 Alyssa Erickson	10	3	6
2 Julia Tylke	10	3	6
10 Emma Turbyville	10	2	4
23 Hannah Potrykus	10	2	4
8 Brooke Kudirka	10	2	4
7 Brittney Anderson	8	2	4

<b>## Penalty Minutes</b>	<b>GP</b>	<b>Pen</b>	<b>Min</b>
22 Kayla Friesen	10	6	12
15 Rachel Herzog	10	4	8
27 Alyssa Erickson	10	3	6
2 Julia Tylke	10	3	6
11 Caroline Markstrom	10	3	6
21 Christa Moody	10	3	6
20 Suvi Ollikainen	10	2	4
7 Brittney Anderson	8	2	4
8 Brooke Kudirka	10	2	4
23 Hannah Potrykus	10	2	4





# 2016-17 St. Cloud State Women's Hockey Roster & Coaching Staff



Janine  
Adler



Julia  
Tylke



Dana  
Rasmussen



Janna  
Haeg



Brittney  
Anderson



Brooke  
Kudirka



Lauren  
Hespenheide



Emma  
Turbyville



Caroline  
Markstrom



Katie  
Detert



Rachel  
Herzog



Kelsey  
Saelens



Jenna  
Redford



Ivy  
Dynek



Payge  
Pena



Suvi  
Ollikainen



Christa  
Moody



Kayla  
Friesen



Hannah  
Potrykus



Jordan  
Stewart



Alyssa  
Erickson



Taylor  
Crosby



Madeleine  
Dahl



Asst. Coach  
Jinelle Siergiej



Head Coach  
Eric Rud



Asst. Coach  
Steve Macdonald