



ST. CLOUD STATE HUSKIES

WOMEN'S HOCKEY

Contact: Ryan Evans — Phone: 952-594-136 — Email: rmevans@stcloudstate.com

2016-17 St. Cloud State Women's Hockey News

RELEASE DATE: Nov. 23, 2016



2016-17 SCHEDULE/RESULTS

Record: 5-8-1, 4-7-1-1 WCHA

Date	Opponent	Result
SEPT. 23	#1 WISCONSIN*	L, 0-6
SEPT. 24	#1 WISCONSIN*	L, 2-4
SEPT. 30	MERRIMACK #	W, 4-2
OCT. 1	MERRIMACK	L, 1-4
OCT. 7	#7 NORTH DAKOTA*	L, 0-1
OCT. 8	#7 NORTH DAKOTA*	W, 3-2
Oct. 21	at Minnesota State*	T, 2-2
Oct. 22	at Minnesota State*	W, 2-0
Oct. 27	at #2 Minnesota*	L, 2-5
Oct. 28	at #2 Minnesota*	L, 0-3
NOV. 11	OHIO STATE*	L, 0-3
NOV. 12	OHIO STATE*	W, 4-1
Nov. 18	at Bemidji State*	L, 2-6
Nov. 19	at Bemidji State*	W, 3-0

WINDJAMMER CLASSIC (Burlington, Vt.)

Nov. 25	vs. Vermont	3 p.m.
Nov. 26	vs. Clarkson or RMU	3 or 6 p.m.

DEC. 2	MINNESOTA-DULUTH*	7:07 p.m.
DEC. 3	MINNESOTA-DULUTH*	3:07 p.m.
Dec. 10	at North Dakota*	2 p.m.
Dec. 11	at North Dakota*	2 p.m.
JAN. 6	COLGATE UNIVERSITY	7:07 p.m.
JAN. 7	COLGATE UNIVERSITY	3:07 p.m.
Jan. 13	at Wisconsin*	TBA
Jan. 14	at Wisconsin*	TBA
JAN. 20	MINNESOTA STATE*	3:07 p.m.
JAN. 21	MINNESOTA STATE*	3:07 p.m.
JAN. 27	MINNESOTA*	7:07 p.m.
JAN. 28	MINNESOTA*	3:07 p.m.
Feb. 3	at Ohio State*	TBA
Feb. 4	at Ohio State*	TBA
FEB. 10	BEMIDJI STATE*	3:07 p.m.
FEB. 11	BEMIDJI STATE*%	3:07 p.m.
Feb. 17	at Minnesota-Duluth*	7:07 p.m.
Feb. 18	at Minnesota-Duluth*	4:07 p.m.

POSTSEASON

Feb. 24	WCHA First Round +	TBA
Feb. 25	WCHA First Round +	TBA
Feb. 26	WCHA First Round +	TBA
March 4	WCHA Final Face-Off \$	TBA
March 5	WCHA Final Face-Off \$	TBA
March 10	NCAA Quarterfinals +	TBA
March 17	NCAA Frozen Four ^	TBA
March 19	NCAA Frozen Four ^	TBA

Home games listed in CAPS. All times are Central.

* - WCHA Game
- Alumni Day
% - Senior Day
+ - Campus Locations
\$ - Ridder Arena, Minneapolis
^ - St. Charles, Mo.

Rankings are based on the USCHO.com poll at the time of the game.

All game times are subject to change

TWITTER: #SCSUWHK

• Official Account: @SCSUHUSKIES_WHK

ST. CLOUD STATE [5-8-1, 4-7-1-1 WCHA] at WINDJAMMER CLASSIC

Friday, Nov. 25 & Saturday, Nov. 26, 2016

Gutterson Fieldhouse (Burlington, Vt.)

Location: Burlington, Vt.

Site: Gutterson Fieldhouse

Capacity: 4,035

Ice Surface: 200' x 90'

TV: None

Video Stream: CatamounTV.com

Radio: None

Audio Stream: None

All-time Series: SCSU leads VT, 4-0-0;

SCSU leads RMU, 2-1-3



VERMONT Catamounts

Ranking (USCHO.com): NR
Record: 3-5-4, 2-2-3 Hockey East
Head Coach: Jim Plumer
Record (Years): 53-84-17 (5)



ST. CLOUD STATE Huskies

Ranking (USCHO.com): NR
Record: 5-8-1, 4-7-1-1 WCHA
Head Coach: Eric Rud
Record (Years): 26-54-6 (3)



CLARKSON Golden Knights

Ranking (USCHO.com): No. 5
Record: 12-3-1, 8-0-0 ECAC
Head Coach: Matt Desrosiers
Record (Years): 66-19-9 (3)



ROBERT MORRIS Colonials

Ranking (USCHO.com): RV
Record: 9-1-4, 5-0-1 CHA
Head Coach: Paul Colontino
Record (Years): 95-68-24 (6)

KEY NOTES TO CONSIDER:

- **WINDJAMMER CLASSIC:** The St. Cloud State women's hockey team heads east for the Thanksgiving weekend Windjammer Classic in Burlington, Vt. The Huskies will open the tournament against host Vermont on Friday, November 25 at 3 p.m. (CT) and, depending on that result, will face either Robert Morris or Clarkson in the consolation or championship game on Saturday, November, 26 at 3 or 6 p.m.
- **ALL-TIME SERIES:** Friday's game will be the fifth meeting, all-time, between St. Cloud State and Vermont and the first since the 2007-08 season. The Huskies swept the Catamounts, 4-1 and 5-1, in St. Cloud, Jan. 18-19, 2008, and lead the all-time series, 4-0-0. SCSU also leads the all-time series, 2-1-3, against Robert Morris. The last time the Huskies and Colonials matched up was a two-game set Oct. 28-29, 2011. The teams tied, 2-2, in the opener before RMU prevailed, 3-1, in the finale. St. Cloud State has not yet played Clarkson in its history.
- **LAST TIME OUT:** The Huskies split with in-state rival Bemidji State on the road, Nov. 18-19. Despite freshman forward Janna Haeg and sophomore forward Ivy Dynek each scoring their first career goals, the Beavers prevailed, 6-2, in the opener before SCSU bounced back with a 3-0 win to cap the series and salvage the split. Sophomore forward Hannah Potrykus scored twice in the finale to power the Huskies in front of freshman goaltender Janine Alder, who turned away all 31 shots she faced for her second shutout of the season.
- **FINDING SECONDARY SCORING:** St. Cloud State has found varied sources of offense over its current 2-1-0 stretch. Its last nine goals have been scored by seven different players and three Huskies—Haeg, Dynek and senior defenseman Caroline Markstrom—have chipped in their first goals of the season over that span. In addition, 13 different players have notched at least one point.
- **SWISS SENSATION:** Through nine starts this season, Alder has shown poise beyond her years. The Zurich, Switzerland native boasts a .937 save percentage and 2.03 goals-against average, the former of which leads all rookie goaltenders nationwide and ranks fifth in the WCHA. She is 5-5-1 on the season, has been the goalie of record for each of the Huskies' wins and has posted six 30-plus save performances—including her second shutout of the season, a 31-save shutout against the Beavers on Nov. 19.
- **SILKY TYLKE:** While she was held point-less at Bemidji State, sophomore forward Julia Tylke leads the Huskies with seven goals and nine points. The Delafield, Wis., native is among the top 27 goal scorers in the country and is tied for sixth among WCHA players in goal scoring.



Tylke, a 2015-16 All-WCHA Rookie Team honoree, is St. Cloud State's top returning scorer, having

St. Cloud State Women's Hockey 2016-17 Roster

#	FULL NAME	YR.	POS.	HT.	SH/C	HOMETOWN
1	Janine Alder	FR	G	5-5	L	Zurich, Switzerland
2	Julia Tylke	SO	F	5-5	R	Delafield, Wisconsin
4	Dana Rasmussen	R-FR	F	5-2	R	Kasson, Minnesota
5	Janna Haeg	FR	F	5-6	L	Lakeville, Minnesota
7	Brittney Anderson	JR	D	5-6	R	Hudson, Wisconsin
8	Brooke Kudirka	FR	F	5-11	L	Omaha, Nebraska
9	Lauren Hespeneide*	SR	F	5-0	L	Shakopee, Minnesota
10	Emma Turbyville	JR	D	5-10	R	Chicago, Illinois
11	Caroline Markström	SR	D	5-8	L	Kovland, Sweden
13	Katie Detert	FR	F	5-6	R	Rhineland, Wisconsin
15	Rachel Herzog	FR	D	5-7	R	Oakdale, Minnesota
16	Kelsey Saelens	SR	F	5-7	L	Winnipeg, Manitoba
17	Jenna Redford*	R-SR	D	5-6	L	Soldotna, Alaska
18	Ivy Dynek	SO	F	5-8	L	Northfield, Illinois
19	Payge Pena	SR	F	5-7	R	Maple Ridge, British Columbia
20	Suvi Ollikainen	SO	F	5-3	L	Klaukkala, Finland
21	Christa Moody*	JR	D	5-9	R	Battle Creek, Michigan
22	Kayla Friesen	FR	F	5-7	L	Winnipeg, Manitoba
23	Hannah Potrykus	SO	F	5-6	R	Brighton, Michigan
24	Alexandra Makaric	SR	D	5-11	L	Windsor, Ontario
25	Jordan Stewart	SO	F	5-5	L	Machesney Park, Illinois
27	Alyssa Erickson	JR	F	5-8	L	Mission, British Columbia
29	Taylor Crosby	SO	G	5-6	L	Cole Harbour, Nova Scotia
34	Madeleine Dahl	SR	G	5-7	R	Edina, Minnesota

* 2016-17 Captain

2016-17 Coaches and Staff

Eric Rud	Head Women's Hockey Coach
Steve Macdonald	Assistant Women's Hockey Coach
Jinelle Siergieij	Assistant Women's Hockey Coach
Blake Franti	Women's Hockey Equipment Manager
Emily Fanno	Graduate Assistant Athletic Trainer
Matthew Chapman	Coordinator of Hockey and Video Operations
Jeremiah Minkel	Hockey Equipment Manager
Jocelyn Monge	Women's Hockey Operations and Video Coordinator
Ryan Evans	Graduate Assistant, Athletic Media Relations (SID)

2016-17 By Class

Seniors.....	8
Juniors.....	3
Sophomores.....	7
Freshman.....	6

2016-17 Pronunciations

Detert.....	Dee-tert
Dynek.....	Dye-nick
Hespeneide.....	Hesp-in-hide
Pena.....	Pen-ya
Makaric.....	Mak-rick
Ollikainen.....	Ole-ah-kay-nen
Tylke.....	Till-key
Potrykus.....	Pa-tree-kiss
Saelens.....	Say-lens
Tylke.....	Till-key



Information

To get full information about the 2016-17 SCSU Women's Hockey season, and to purchase tickets, please visit:

www.scsuhuskies.com

For information about the WCHA, please check out the league website at

www.wcha.com

registered nine goals and 24 points a season ago—the most for an SCSU rookie since the 2006-07 season, when Holly Roberts and Caitlin Hogan scored 35 (18+17) and 29 (12+17) points, respectively.

- **FANTASTIC FRESHMEN:** 19 Huskies have registered a point this season, including five freshman. Freshman forward Kayla Friesen leads all first year players with four points (3+1). Against BSU, Haeg recorded her first career multi-point weekend, scoring her first Husky goal on Friday and assisting on the eventual game-winning goal. The Lakeville, Minn., native has one goal and three points on the year.



HAEG

- **EXCEPTIONAL ERICKSON:** Junior forward Alyssa Erickson has three goals and five points in SCSU's last nine games, including the game-winning tally in the 2-0 win at Minnesota State on Oct. 22. The Mission, B.C., native is tied for second on the team with five points.
 - **OH CAPTAIN, MY CAPTAIN:** Senior forward Lauren Hespeneide has five points (0+5) in 14 games this season, which is tied for second on the team. The Huskies' captain had a career day against Merrimack on Sept. 29, tallying three assists and has already surpassed her single season career high in assists (five).
 - **HOCKEY DAY MINNESOTA:** The WCHA and Fox Sports North announced on Oct. 13 that St. Cloud State and Minnesota State's game on January 21 will be featured on Hockey Day Minnesota. The game will be broadcast live on Fox Sports North Plus from the Herb Brooks National Hockey Center beginning at 3 p.m. This is the first time in Hockey Day Minnesota's 10-year history that an NCAA women's game will be broadcast as part of the festivities.
- ### PRESEASON NOTES:
- **WCHA PRESEASON COACHES POLL:** After finishing fifth in the WCHA with a 9-15-4 record and 34 points last season, the conference coaches picked St. Cloud State to finish sixth in the league this season.
 - **REACHING NEW HEIGHTS:** In his second season behind the bench, head coach Eric Rud led SCSU to 13 wins in 2015-16, which was the program's highest total since winning 15 games in 2009-10.
 - **ON THE WAY UP:** Seven St. Cloud State players achieved career-high point totals in 2015-16, including six who set new career marks for goals scored.
 - **HOW MAY I ASSIST YOU?:** Junior defenseman Brittney Anderson led all Huskies, and set a new career high, with 16 assists last season. Her 20 total points were the most for an SCSU rear guard since Danielle Hirsch also scored 20 (2+18) in the 2008-09 season. Anderson has one goal and three assists in 10 games this season.
 - **BLUE LINE BARRIER:** The Huskies return six of their seven defensemen from last season's group that ranked sixth in the WCHA in scoring defense (3.29 GA/GM). SCSU ranked sixth in league play as well, allowing 3.14 goals against per contest.
 - **SEARCHING FOR SCORING:** St. Cloud State lost nearly 40 percent of its goal scoring to graduation, including Molly Illikainen, who led the team with 17 goals a season ago.
 - **BATTLE BETWEEN THE PIPES:** Three goaltenders are vying to replace Katie Fitzgerald in the Huskies' crease: Senior Madeleine Dahl, sophomore Taylor Crosby and freshman Janine Alder. Fitzgerald started 34 of 35 games for SCSU last season. Of the goalies on this year's roster, Dahl has the most career starts (13). Prior to last Friday, Dahl's last career start came in 2013-14 with Union College.
 - **HUSKY PUPPIES:** SCSU welcomes seven newcomers this season: Goaltender Janine Alder; forwards Janna Haeg, Brooke Kudirka, Katie Detert, Kayla Friesen and Dana Rasmussen; and defenseman Rachel Herzog.



Eric Rud

Head Coach • Third Season
Colorado College '97

This season marks Eric Rud's third at the helm of the St. Cloud State women's hockey team.

Rud became the fourth coach in SCSU women's hockey history in 2014-15. Under Rud's tutelage, SCSU's Molly Illikainen and Julia Tylke both gained All-WCHA accolades in 2015-16.

Before leading the Husky women, Rud was an assistant coach for the St. Cloud State (2005-10) and Colorado College (2011-14) men's hockey teams. He was also the head coach and general manager of the USHL's Green Bay Gamblers for the 2010-11 season.

A graduate of Colorado College, Rud was a two-time team captain and two-time WCHA Defensive Player of the Year for the Tigers during his collegiate playing career. He played professional hockey from 1997 to 2002, and served as

a player assistant coach with the Florida Everblades in 1999-00 and with the Idaho Steelheads from 2000-02.

He joined the coaching ranks as an assistant with the USHL's Cedar Rapids Roughriders from 2002-04 and was an assistant coach at Colorado College in 2004-05.

Rud joined Bob Motzko's staff at St. Cloud State in 2005. At SCSU, Rud recruited several Husky standouts including Ryan Lasch, Andreas Nodl, Garrett Roe, Drew LeBlanc, Nick Jensen and Nic Dowd. In Rud's time at St. Cloud State, the Huskies advanced to the NCAA tournament three times and played in the NCAA West Regional title game in 2010.

He has worked extensively with the USA Hockey program throughout his career and served as the head coach of the 2008 USA U-17 boys team in the Slovakia Four Nations Cup and the 2009 USA U-18 boys team at the Czech Republic Ivan Hlinka Cup.

A native of Inver Grove Heights, Minn., Rud prepped at Simley High School. Rud and his wife Amy reside in St. Cloud and have three children: Sam, Gabbie and Max.

Eric Rud's Record at SCSU:

Year	Overall	Conference	Postseason
2016-17	5-8-1	4-7-1	-
2015-16	13-18-4	9-15-4 WCHA/5th	0-2
2014-15	8-28-1	5-22-1 WCHA/7th	0-2
Overall	26-54-6	18-44-6	0-4

St. Cloud State Assistant Coaches



Steve
Macdonald
Thrd Season



Jinelle
Siergiej
Thrd Season



2016-17 WCHA Standings (Nov. 23, 2016)

	GP	Record	Pts	GF-GA
1. Wisconsin	12	10-1-1-1	32	43-11
2. Minnesota	12	9-1-2-2	31	40-18
3. Minn. Duluth	12	7-3-2-1	24	37-22
4. North Dakota	12	5-4-3-1	19	29-23
5. St. Cloud State	12	4-7-1-1	14	20-33
6. Bemidji State	12	3-8-1-0	10	20-35
Ohio State	12	3-8-1-0	10	17-30
8. Minnesota State	12	1-10-1-0	4	11-45

USCHO.com Div. I Women's Poll (Nov. 21, 2016)

	Record	Pts	Previous
1. Wisconsin (13)	12-1-1	148	1
2. Minnesota	11-1-2	130	2
3. St. Lawrence (2)	13-0-1	115	4
4. Minnesota Duluth	8-3-3	114	3
5. Clarkson	12-3-1	80	7
6. Boston College	9-3-3	72	6
7. North Dakota	6-4-4	55	9
8. Quinnipiac	10-4-2	45	8
9. Colgate	12-2-1	43	5
10. Northeastern	10-3-3	16	10

RV: Princeton (4), Robert Morris (3)

2016-17 USA Today/USA Hockey Magazine Div. I Women's Poll (Nov. 22, 2016)

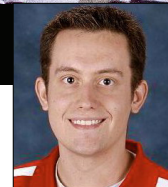
	Record	Pts	Previous
1. Wisconsin (18)	12-1-1	189	1
2. Minnesota	11-1-2	163	2
t3. St. Lawrence (1)	13-0-1	146	4
t3. Minnesota Duluth	8-3-3	146	3
5. Clarkson	12-3-1	109	6
6. Boston College	9-3-3	87	7
7. North Dakota	6-4-4	64	9
8. Colgate	12-2-1	58	5
9. Quinnipiac	10-4-2	51	8
10. Northeastern	10-3-3	24	10

RV: Robert Morris (7), Princeton (1),





HUSKIES INSIDER



By Ryan Evans  @SCSUHUSKIES_WHK



Huskies thankful for secondary scoring

St. Cloud State's last nine goals have been scored by seven different players

Tasked with replacing a significant chunk of its offense this season, the St. Cloud State women's hockey team has gone to work to find new avenues to the back of the net—efforts that are beginning to manifest themselves.

Head coach Eric Rud dedicates the majority of the team's practice time figuring out how to "score one more goal a weekend" and has been working to improve the Huskies' in-zone offense, rush offense and improving overall individual skill.

With nine goals in the last three games—SCSU's best three-game goal scoring stretch this season—that work is now paying dividends.

"A lot of the things that we are trying to accomplish are now showing up a little bit (in games)," Rud said.

"The trick now is to keep that going and continue to get other people on the scoring sheet."

"That is how we are going to have to replace our goal totals from last year."

St. Cloud State's current 2-1-0 stretch has been built on the back of its secondary scoring. Seven different players have scored its last nine goals and 13 different Huskies have recorded a point in that span, which is a testament to the players' determined work ethic.

"We have kids here at all different time working on their shot, staying after practice and looking for extra work," Rud said. "Those are the things that matter when you're trying to get better and trying to become a goal scorer."

"To see the hard work that our

players are putting in on a daily basis paying off for them has been very encouraging."

Once such player is sophomore forward Ivy Dynek. After playing her first nine games on the fourth unit, the Northfield, Ill., native has featured on either the second or third line in three of the Huskies' last four and has made the most of the opportunity. Dynek has three points in her last three games and scored her first two career goals last weekend at Bemidji State.

"It is great for her confidence as a player and great for our team," Rud said of Dynek. "She works very hard on her game and it is nice to see that paying off."

"When you get goal-scoring from another source, it helps you breathe a little bit on the weekend."



2016-17 St. Cloud State University Women's Hockey Roster

No.	Name	Pos	S/C	Cl.	Ht.	Hometown
1	Janine Adler	G	L	Fr.	5-5	Zurich, Switzerland
2	Julia Tylke	F	R	So.	5-5	Delafield, Wis.
4	Dana Rasmussen	F	R	So.	5-2	Kasson, Minn.
5	Janna Haeg	F	L	Fr.	5-6	Lakeville, Minn.
7	Brittney Anderson	D	R	Jr.	5-6	Hudson, Wis.
8	Brooke Kudirka	F	L	Fr.	5-11	Omaha, Neb.
9	Lauren Hespenheide (C)	F	L	Sr.	5-10	Shakopee, Minn.
10	Emma Turbyville	D	R	Jr.	5-10	Chicago, Ill.
11	Caroline Markstrom	D	L	Sr.	5-8	Kovland, Sweden
13	Katie Detert	F	R	Fr.	5-6	Rhineland, Wisc.
15	Rachel Herzog	D	R	Fr.	5-7	Oakdale, Minn.
16	Kelsey Saelens	F	L	Sr.	5-7	Winnipeg, Manitoba
17	Jenna Redford (A)	D	L	R-Sr.	5-6	Soldotna, Alaska
18	Ivy Dynek	F	L	So.	5-8	Northfield, Ill.
19	Payge Pena	F	R	Sr.	5-7	Maple Ridge, British Colombia
20	Suvi Ollikainen	F	L	So.	5-3	Klaukkala, Finland
21	Christa Moody (A)	D	R	Sr.	5-9	Battle Creek, Mich.
22	Kayla Friesen	F	L	Fr.	5-7	Winnipeg, Manitoba
23	Hannah Potrykus	F	R	So.	5-6	Brighton, Mich.
24	Alex Makaric	D	L	Sr.	5-11	Windsor, Ontario
25	Jordan Stewart	F	L	So.	5-5	Machesney Park, Ill.
27	Alyssa Erickson	F	L	Jr.	5-8	Mission, British Colombia
29	Taylor Crosby	G	L	So.	5-6	Cole Harbour, Nova Scotia
34	Madeleine Dahl	G	L	Sr.	5-7	Edina, Minn.

Head Coach: Eric Rud (Third Season)

Assistant Coaches: Steve Macdonald and Jinelle Siergiej

Athletic Trainer: Emily Fanno

AMR Women's Hockey Contact: Ryan Evans

Coordinator of Hockey & Video Ops: Matt Chapman

Equipment Manager: Jeremiah Minkel

Student Equipment Manager: Blake Frantti

Video Coordinator: Jocelyn Monge

Strength and Conditioning Coach: Travis Zins

BY CLASS

Seniors.....	8
Juniors.....	3
Sophomores.....	6
Freshmen.....	7

2016-17 PRONUNCIATIONS

Saelens.....	Say-lens
Hespenheide.....	Hesp-in-hide
Makaric.....	Mack-rick
Pena.....	Pen-ya
Ollikainen.....	Ole-a-kay-nin
Tylke.....	Till-Key
Potrykus.....	Pa-tree-kiss



St. Cloud State Hockey
St. Cloud State Combined Team Statistics (as of Nov 18, 2016)
All games

Date	Opponent		Score	Att.
* Sep 23	#1 WISCONSIN	L	0-6	221
* Sep 24	#1 WISCONSIN	L	2-4	305
Sep 29	MERRIMACK	W	4-2	341
Oct 01	MERRIMACK	L	1-4	392
* Oct 07	#7 NORTH DAKOTA	L	0-1	455
* Oct 08	#7 NORTH DAKOTA	W	3-2	358
* Oct 21	at Minnesota State	To2	2-2	150
* Oct 22	at Minnesota State	W	2-0	200
* Oct 27	at #2 Minnesota	L	2-5	1286
* Oct 28	at #2 Minnesota	L	0-3	1396
* Nov 11	OHIO STATE	L	0-3	209
* Nov 12	OHIO STATE	W	4-1	311
* Nov 18	at Bemidji State	L	2-6	311
* Nov 19	at Bemidji State	W	3-0	342

TEAM STATISTICS

SCSU

OPP

SHOT STATISTICS

Goals-Shot attempts	25-280	39-479
Shot pct.	.089	.081
Goals/Game	1.8	2.8
Shots/Game	20.0	34.2

POWER PLAYS

Goals-Power Plays	3-41	8-42
Conversion Percent	.073	.190
Shot Attempts	40	78
Shot Percent	.075	.103

GOAL BREAKDOWN

Power Play	3	8
Short-handed	0	2
Empty net	1	4
Penalty	0	0
Unassisted	5	1
Overtime	0	0
Shootout	0	0
Delayed Penalty	0	0

PENALTIES

Number	46	43
Minutes	103	89
Penalties/Game	3.3	3.1
Pen minutes/Game	7.4	6.4

SHOOTOUTS (Made-Att)	2-8	1-8
----------------------	-----	-----

Record:	Overall	Home	Away	Neutral
ALL GAMES	5-8-1	3-5-0	2-3-1	0-0-0
CONFERENCE	4-7-1	2-4-0	2-3-1	0-0-0
NON-CONFERENCE	1-1-0	1-1-0	0-0-0	0-0-0

##	Player	gp	g	a	pts	sh	sh%	pen-min	pp	sh
2	Julia Tylke	14	7	2	9	37	.189	3-6	2	0
27	Alyssa Erickson	14	3	2	5	23	.130	3-6	0	0
23	Hannah Potrykus	14	3	2	5	29	.103	3-6	0	0
19	Payge Pena	14	2	3	5	13	.154	2-4	0	0
9	Lauren Hespenheide	14	0	5	5	27	.000	2-4	0	0
22	Kayla Friesen	14	3	1	4	26	.115	6-12	0	0
18	Ivy Dynek	13	2	2	4	11	.182	0-0	0	0
7	Brittney Anderson	10	1	3	4	16	.062	2-4	1	0
5	Janna Haeg	14	1	2	3	10	.100	1-2	0	0
16	Kelsey Saelens	14	1	2	3	21	.048	1-2	0	0
11	Caroline Markstrom	14	1	1	2	5	.200	5-21	0	0
25	Jordan Stewart	12	1	1	2	5	.200	1-2	0	0
15	Rachel Herzog	14	0	2	2	2	.000	4-8	0	0
8	Brooke Kudirka	14	0	2	2	19	.000	2-4	0	0
21	Christa Moody	14	0	2	2	12	.000	3-6	0	0
20	Suvi Ollikainen	14	0	2	2	4	.000	2-4	0	0
17	Jenna Redford	14	0	2	2	7	.000	1-2	0	0
1	Janine Alder	11	0	1	1	0	.000	0-0	0	0
10	Emma Turbyville	14	0	1	1	12	.000	4-8	0	0
13	Katie Detert	7	0	0	0	1	.000	0-0	0	0
TM	TEAM	7	0	0	0	0	.000	1-2	0	0
Total		14	25	38	63	280	.089	46-103	3	0
Opponents		14	39	63	102	479	.081	43-89	8	2

##	Goalie	gp	min	ga	gaavg	saves	save%	w-l-t
1	Janine Alder	11	620:22	21	2.03	313	.937	5-5-1
29	Taylor Crosby	3	139:37	7	3.01	83	.922	0-2-0
34	Madeleine Dahl	2	80:00	7	5.25	44	.863	0-1-0
TM	EMPTY NET	7	5:01	4	-	0	.000	0-0-0
Total		14	845:00	39	2.77	440	.919	5-8-1
Opponents		14	845:00	25	1.78	255	.911	8-5-1

Attendance Summary

SCSU

Opponent

Total	2592	3685
Dates/Avg Per Date	8/324	6/614
Neutral Site #/Avg	0/0	

Goals by Period

	1st	2nd	3rd	Total
St. Cloud State	8	9	8	25
Opponents	10	12	17	39

Saves by Period

	1st	2nd	3rd	Total
St. Cloud State	161	157	120	440
Opponents	79	96	79	255

St. Cloud State Hockey
St. Cloud State Category Leaders (as of Nov 18, 2016)
All games

## Points	GP	G	A	Pts	Sh
2 Julia Tylke	14	7	2	9	37
27 Alyssa Erickson	14	3	2	5	23
23 Hannah Potrykus	14	3	2	5	29
19 Payge Pena	14	2	3	5	13
9 Lauren Hespenheide	14	0	5	5	27
22 Kayla Friesen	14	3	1	4	26
18 Ivy Dynek	13	2	2	4	11
7 Brittney Anderson	10	1	3	4	16
5 Janna Haeg	14	1	2	3	10
16 Kelsey Saelens	14	1	2	3	21

## Goals	GP	G	A	Pts	Sh
2 Julia Tylke	14	7	2	9	37
27 Alyssa Erickson	14	3	2	5	23
23 Hannah Potrykus	14	3	2	5	29
22 Kayla Friesen	14	3	1	4	26
19 Payge Pena	14	2	3	5	13
18 Ivy Dynek	13	2	2	4	11
7 Brittney Anderson	10	1	3	4	16
5 Janna Haeg	14	1	2	3	10
16 Kelsey Saelens	14	1	2	3	21
11 Caroline Markstrom	14	1	1	2	5

## Power-Play Goals	GP	PPG
2 Julia Tylke	14	2

## Short-Handed Goals	GP	SHG
------------------------------	-----------	------------

## Game-Winning Goals	GP	GWG
25 Jordan Stewart	12	1
27 Alyssa Erickson	14	1
11 Caroline Markstrom	14	1
16 Kelsey Saelens	14	1
23 Hannah Potrykus	14	1

## Plus/Minus	GP	+/-
8 Brooke Kudirka	14	+2
7 Brittney Anderson	10	+1

## Assists	GP	G	A	Pts	Sh
9 Lauren Hespenheide	14	0	5	5	27
19 Payge Pena	14	2	3	5	13
7 Brittney Anderson	10	1	3	4	16
2 Julia Tylke	14	7	2	9	37
27 Alyssa Erickson	14	3	2	5	23
23 Hannah Potrykus	14	3	2	5	29
18 Ivy Dynek	13	2	2	4	11
5 Janna Haeg	14	1	2	3	10
16 Kelsey Saelens	14	1	2	3	21
15 Rachel Herzog	14	0	2	2	2

## Shots	GP	G	A	Pts	Sh	Sh%
2 Julia Tylke	14	7	2	9	37	.189
23 Hannah Potrykus	14	3	2	5	29	.103
9 Lauren Hespenheide	14	0	5	5	27	.000
22 Kayla Friesen	14	3	1	4	26	.115
27 Alyssa Erickson	14	3	2	5	23	.130
16 Kelsey Saelens	14	1	2	3	21	.048
8 Brooke Kudirka	14	0	2	2	19	.000
7 Brittney Anderson	10	1	3	4	16	.062
19 Payge Pena	14	2	3	5	13	.154
21 Christa Moody	14	0	2	2	12	.000

## Shot Pct.	GP	G	A	Pts	Sh	Sh%
25 Jordan Stewart	12	1	1	2	5	.200
11 Caroline Markstrom	14	1	1	2	5	.200
2 Julia Tylke	14	7	2	9	37	.189
18 Ivy Dynek	13	2	2	4	11	.182
19 Payge Pena	14	2	3	5	13	.154
27 Alyssa Erickson	14	3	2	5	23	.130
22 Kayla Friesen	14	3	1	4	26	.115
23 Hannah Potrykus	14	3	2	5	29	.103
5 Janna Haeg	14	1	2	3	10	.100
7 Brittney Anderson	10	1	3	4	16	.062

## Penalties	GP	Pen	Min
22 Kayla Friesen	14	6	12
11 Caroline Markstrom	14	5	21
10 Emma Turbyville	14	4	8
15 Rachel Herzog	14	4	8
23 Hannah Potrykus	14	3	6
27 Alyssa Erickson	14	3	6
2 Julia Tylke	14	3	6
21 Christa Moody	14	3	6
9 Lauren Hespenheide	14	2	4
7 Brittney Anderson	10	2	4

## Penalty Minutes	GP	Pen	Min
11 Caroline Markstrom	14	5	21
22 Kayla Friesen	14	6	12
15 Rachel Herzog	14	4	8
10 Emma Turbyville	14	4	8
21 Christa Moody	14	3	6
2 Julia Tylke	14	3	6
27 Alyssa Erickson	14	3	6
23 Hannah Potrykus	14	3	6
20 Suvi Ollikainen	14	2	4
19 Payge Pena	14	2	4



2016-17 St. Cloud State Women's Hockey Roster & Coaching Staff



1

Janine
Adler



2

Julia
Tylke



4

Dana
Rasmussen



5

Janna
Haeg



7

Brittney
Anderson



8

Brooke
Kudirka



9

Lauren
Hespenheide



10

Emma
Turbyville



11

Caroline
Markstrom



13

Katie
Detert



15

Rachel
Herzog



16

Kelsey
Saelens



17

Jenna
Redford



18

Ivy
Dynek



19

Payge
Pena



20

Suvi
Ollikainen



21

Christa
Moody



22

Kayla
Friesen



23

Hannah
Potrykus



25

Jordan
Stewart



27

Alyssa
Erickson



29

Taylor
Crosby



34

Madeleine
Dahl



Asst. Coach
Jinelle Siergiej



Head Coach
Eric Rud



Asst. Coach
Steve Macdonald