



# ST. CLOUD STATE HUSKIES

## WOMEN'S HOCKEY

Contact: Ryan Evans — Phone: 952-594-136 — Email: rmevans@stcloudstate.com

2016-17 St. Cloud State Women's Hockey News

RELEASE DATE: Nov. 17, 2016



### 2016-17 SCHEDULE/RESULTS

Record: 4-7-1, 3-6-1-1 WCHA

Date	Opponent	Result
SEPT. 23	#1 WISCONSIN*	L, 0-6
SEPT. 24	#1 WISCONSIN*	L, 2-4
SEPT. 30	MERRIMACK #	W, 4-2
OCT. 1	MERRIMACK	L, 1-4
OCT. 7	#7 NORTH DAKOTA*	L, 0-1
OCT. 8	#7 NORTH DAKOTA*	W, 3-2
Oct. 21	at Minnesota State*	T, 2-2
Oct. 22	at Minnesota State*	W, 2-0
Oct. 27	at #2 Minnesota*	L, 2-5
Oct. 28	at #2 Minnesota*	L, 0-3
NOV. 11	OHIO STATE*	L, 0-3
NOV. 12	OHIO STATE*	W, 4-1
Nov. 18	at Bemidji State*	3:07 p.m.
Nov. 19	at Bemidji State*	3:07 p.m.

#### WINDJAMMER CLASSIC (Burlington, Vt.)

Nov. 25	vs. Vermont	4 p.m.
Nov. 26	vs. TBD	TBA

DEC. 2	MINNESOTA-DULUTH*	7:07 p.m.
DEC. 3	MINNESOTA-DULUTH*	3:07 p.m.
Dec. 10	at North Dakota*	2 p.m.
Dec. 11	at North Dakota*	2 p.m.
JAN. 6	COLGATE UNIVERSITY	7:07 p.m.
JAN. 7	COLGATE UNIVERSITY	3:07 p.m.
Jan. 13	at Wisconsin*	TBA
Jan. 14	at Wisconsin*	TBA
JAN. 20	MINNESOTA STATE*	3:07 p.m.
JAN. 21	MINNESOTA STATE*	3:07 p.m.
JAN. 27	MINNESOTA*	7:07 p.m.
JAN. 28	MINNESOTA*	3:07 p.m.
Feb. 3	at Ohio State*	TBA
Feb. 4	at Ohio State*	TBA
FEB. 10	BEMIDJI STATE*	3:07 p.m.
FEB. 11	BEMIDJI STATE*%	3:07 p.m.
Feb. 17	at Minnesota-Duluth*	7:07 p.m.
Feb. 18	at Minnesota-Duluth*	4:07 p.m.

#### POSTSEASON

Feb. 24	WCHA First Round +	TBA
Feb. 25	WCHA First Round +	TBA
Feb. 26	WCHA First Round +	TBA
March 4	WCHA Final Face-Off \$	TBA
March 5	WCHA Final Face-Off \$	TBA
March 10	NCAA Quarterfinals +	TBA
March 17	NCAA Frozen Four ^	TBA
March 19	NCAA Frozen Four ^	TBA

Home games listed in CAPS. All times are Central.

\* - WCHA Game  
# - Alumni Day  
% - Senior Day  
+ - Campus Locations  
\$ - Ridder Arena, Minneapolis  
^ - St. Charles, Mo.

Rankings are based on the USCHO.com poll at the time of the game.

All game times are subject to change

**TWITTER:** #SCSUWHK

• Official Account: @SCSUHUSKIES\_WHK

### ST. CLOUD STATE [4-7-1, 3-6-1-1 WCHA] at BEMIDJI STATE [4-7-1, 2-7-1-0 WCHA]

Friday, Nov. 18 & Saturday, Nov. 19, 2016

Sanford Center (Bemidji, Minn.)

**Location:** Bemidji, Minn.

**Site:** Sanford Center

**Capacity:** 4,700

**Ice Surface:** 200' x 85'

**TV:** None

**Video Stream:** scsuhuskies.com/live

**Radio:** KPMI 1300 AM The Legends

**Audio Stream:** beaverradionetwork.com

**All-time Series:** BSU leads, 35-32-9



#### BEMIDJI STATE Beavers

Ranking (USCHO.com): RV

Record: 4-7-1, 2-7-1-0 WCHA

Head Coach: Jim Scanlan

Record (Years): 47-35-5 (3)



#### ST. CLOUD STATE Huskies

Ranking (USCHO.com): NR

Record: 4-7-1, 3-6-1-1 WCHA

Head Coach: Eric Rud

Record (Years): 25-53-6 (3)

**Last Meeting (Feb. 5-6, 2016):** Bemidji State took five of six points from the two-game set against the Huskies with a 3-3 tie and a 1-0 shootout win before beating SCSU, 4-1, in the series finale at the Herb Brooks National Hockey Center. After falling behind, 2-0, in the opener, St. Cloud State struck twice on the power play on goals from Brittney Anderson and Molly Illikainen before Alyssa Erickson tied it at three in the third period to force OT. Kelsey Saelens was the lone Husky goal-scorer in the defeat that closed out the series.

### KEY NOTES TO CONSIDER:

- **SCOUTING THE BEAVERS:** Bemidji State comes into this weekend winless (0-5-1) in its last six WCHA contests and has been shutout in three of those games. The highlight of the Beavers' season was a 2-0 win over No. Minnesota on October 8 in Bemidji. Sophomore forward Emily Bergland leads the team with four goals and nine points on the season and is tied for the team lead with five assists. Senior goaltender Brittni Mowat has started 10 of BSU's 12 games on the year and has a 3-6-1 record with a 2.30 goals-against average and .922 save percentage.
- **ALL-TIME SERIES:** The Huskies trail the all-time series between the two schools, 32-35-9 (.480). SCSU was 0-3-1 against the Beavers last season, including 0-2-0 in Bemidji. St. Cloud State's last win in the series was a 3-0 decision on Dec. 13, 2014 in St. Cloud. Its last win in Bemidji was a 3-1 triumph on Jan. 10, 2014.
- Molly Illikainen led SCSU with four points (2+2) in four games against BSU last season. Among current players, both senior forward Kelsey Saelens (1+1) and junior defender Brittney Anderson (1+1) each notched two points for the Huskies in the season series.
- This weekend starts a stretch of four straight and six of the next eight games away from home for St. Cloud State. The Huskies are 1-2-1 away from home this season.
- **LAST TIME OUT:** St. Cloud State split with Ohio State at home, Nov. 11-12. The Huskies fell, 3-0, on Friday before bouncing back with a 4-1 win in the series finale. Four different players scored in Saturday's game and nine notched at least one point. Leading the way was freshman forward Kayla Friesen, who opened the scoring and helped set up senior defenseman Caroline Markstrom's eventual game-winner. Junior forward Alyssa Erickson and sophomore forward Julia Tylke also scored for the Huskies and freshman goaltender Janine Alder made 23 saves for her fourth win of the season.
- **SWISS SENSATION:** Through nine starts this season, Alder has shown poise beyond her years. The Zurich, Switzerland native boasts a .939 save percentage and 1.84 goals-against average, which leads all rookie goaltenders nationwide and rank fourth and fourth and fifth, respectively, in the WCHA. She is 4-4-1 on the season, has been the goalie of record for each of the Huskies' wins and has posted four 30-plus save performances.
- **SILKY TYLKE:** Sophomore forward Julia Tylke leads the Huskies with seven goals and nine points. The Delafield, Wis., native is among the top 22 goal scorers in the country and is tied for fifth among WCHA players in goal scoring.

Tylke, a 2015-16 All-WCHA Rookie Team honoree, is St. Cloud State's top returning scorer, having registered nine goals and 24 points a season ago—the most for an SCSU rookie since the

## St. Cloud State Women's Hockey 2016-17 Roster

#	FULL NAME	YR.	POS.	HT.	SH/C	HOMETOWN
1	Janine Alder	FR	G	5-5	L	Zurich, Switzerland
2	Julia Tylke	SO	F	5-5	R	Delafield, Wisconsin
4	Dana Rasmussen	R-FR	F	5-2	R	Kasson, Minnesota
5	Janna Haeg	FR	F	5-6	L	Lakeville, Minnesota
7	Brittney Anderson	JR	D	5-6	R	Hudson, Wisconsin
8	Brooke Kudirka	FR	F	5-11	L	Omaha, Nebraska
9	Lauren Hespeneheide*	SR	F	5-0	L	Shakopee, Minnesota
10	Emma Turbyville	JR	D	5-10	R	Chicago, Illinois
11	Caroline Markström	SR	D	5-8	L	Kovland, Sweden
13	Katie Detert	FR	F	5-6	R	Rhineland, Wisconsin
15	Rachel Herzog	FR	D	5-7	R	Oakdale, Minnesota
16	Kelsey Saelens	SR	F	5-7	L	Winnipeg, Manitoba
17	Jenna Redford*	R-SR	D	5-6	L	Soldotna, Alaska
18	Ivy Dynek	SO	F	5-8	L	Northfield, Illinois
19	Payge Pena	SR	F	5-7	R	Maple Ridge, British Columbia
20	Suvi Ollikainen	SO	F	5-3	L	Klaukkala, Finland
21	Christa Moody*	JR	D	5-9	R	Battle Creek, Michigan
22	Kayla Friesen	FR	F	5-7	L	Winnipeg, Manitoba
23	Hannah Potrykus	SO	F	5-6	R	Brighton, Michigan
24	Alexandra Makaric	SR	D	5-11	L	Windsor, Ontario
25	Jordan Stewart	SO	F	5-5	L	Machesney Park, Illinois
27	Alyssa Erickson	JR	F	5-8	L	Mission, British Columbia
29	Taylor Crosby	SO	G	5-6	L	Cole Harbour, Nova Scotia
34	Madeleine Dahl	SR	G	5-7	R	Edina, Minnesota

\* 2016-17 Captain

## 2016-17 Coaches and Staff

Eric Rud	Head Women's Hockey Coach
Steve Macdonald	Assistant Women's Hockey Coach
Jinelle Siergieij	Assistant Women's Hockey Coach
Blake Franti	Women's Hockey Equipment Manager
Emily Fanno	Graduate Assistant Athletic Trainer
Matthew Chapman	Coordinator of Hockey and Video Operations
Jeremiah Minkel	Hockey Equipment Manager
Jocelyn Monge	Women's Hockey Operations and Video Coordinator
Ryan Evans	Graduate Assistant, Athletic Media Relations (SID)

## 2016-17 By Class

Seniors.....	8
Juniors.....	3
Sophomores.....	7
Freshman.....	6

## 2016-17 Pronunciations

Detert.....	Dee-tert
Dynek.....	Dye-nick
Hespeneheide.....	Hesp-in-hide
Pena.....	Pen-ya
Makaric.....	Mak-rick
Ollikainen.....	Ole-ah-kay-nen
Tylke.....	Till-key
Potrykus.....	Pa-tree-kiss
Saelens.....	Say-lens
Tylke.....	Till-key



## Information

To get full information about the 2016-17 SCSU Women's Hockey season, and to purchase tickets, please visit:

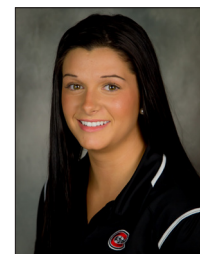
**[www.scsuhuskies.com](http://www.scsuhuskies.com)**

For information about the WCHA,  
please check out the league website at

**[www.wcha.com](http://www.wcha.com)**

2006-07 season, when Holly Roberts and Caitlin Hogan scored 35 (18+17) and 29 (12+17) points, respectively.

- FANTASTIC FRESHMEN:** 19 Huskies have registered a point this season, including five freshman. Friesen leads all first year players with four points (3+1). The Winnipeg, Manitoba native has three goals in SCSU's last six games, which leads the team during that span. She is also tied for the team lead with four points in that stretch with senior forward, and linemate, Payge Pena.
- EXCEPTIONAL ERICKSON:** Junior forward Alyssa Erickson has three goals and five points in SCSU's last seven games, including the game-winning tally in the 2-0 win at Minnesota State on Oct. 22. The Mission, B.C., native is tied for second on the team with five points.
- OH CAPTAIN, MY CAPTAIN:** Senior forward Lauren Hespeneheide has five points (0+5) in 12 games this season, which is tied for second on the team. The Huskies' captain had a career day against Merrimack on Sept. 29, tallying three assists and has already surpassed her single season career high in assists (five).
- HOCKEY DAY MINNESOTA:** The WCHA and Fox Sports North announced on Oct. 13 that St. Cloud State and Minnesota State's game on January 21 will be featured on Hockey Day Minnesota. The game will be broadcast live on Fox Sports North Plus from the Herb Brooks National Hockey Center beginning at 3 p.m. This is the first time in Hockey Day Minnesota's 10-year history that an NCAA women's game will be broadcast as part of the festivities.



**ERICKSON**

## PRESEASON NOTES:

- WCHA PRESEASON COACHES POLL:** After finishing fifth in the WCHA with a 9-15-4 record and 34 points last season, the conference coaches picked St. Cloud State to finish sixth in the league this season.
- REACHING NEW HEIGHTS:** In his second season behind the bench, head coach Eric Rud led SCSU to 13 wins in 2015-16, which was the program's highest total since winning 15 games in 2009-10.
- ON THE WAY UP:** Seven St. Cloud State players achieved career-high point totals in 2015-16, including six who set new career marks for goals scored.
- HOW MAY I ASSIST YOU?:** Junior defenseman Brittney Anderson led all Huskies, and set a new career high, with 16 assists last season. Her 20 total points were the most for an SCSU rear guard since Danielle Hirsch also scored 20 (2+18) in the 2008-09 season. Anderson has one goal and one assist through eight games this season.
- BLUE LINE BARRIER:** The Huskies return six of their seven defensemen from last season's group that ranked sixth in the WCHA in scoring defense (3.29 GA/GM). SCSU ranked sixth in league play as well, allowing 3.14 goals against per contest.
- SEARCHING FOR SCORING:** St. Cloud State lost nearly 40 percent of its goal scoring to graduation, including Molly Illikainen, who led the team with 17 goals a season ago.
- BATTLE BETWEEN THE PIPES:** Three goaltenders are vying to replace Katie Fitzgerald in the Huskies' crease: Senior Madeleine Dahl, sophomore Taylor Crosby and freshman Janine Alder. Fitzgerald started 34 of 35 games for SCSU last season. Of the goalies on this year's roster, Dahl has the most career starts (13). Prior to last Friday, Dahl's last career start came in 2013-14 with Union College.
- HUSKY PUPPIES:** SCSU welcomes seven newcomers this season: Goaltender Janine Alder; forwards Janna Haeg, Brooke Kudirka, Katie Detert, Kayla Friesen and Dana Rasmussen; and defenseman Rachel Herzog.



## Eric Rud

Head Coach • Third Season  
Colorado College '97

This season marks Eric Rud's third at the helm of the St. Cloud State women's hockey team.

Rud became the fourth coach in SCSU women's hockey history in 2014-15. Under Rud's tutelage, SCSU's Molly Illikainen and Julia Tylke both gained All-WCHA accolades in 2015-16.

Before leading the Husky women, Rud was an assistant coach for the St. Cloud State (2005-10) and Colorado College (2011-14) men's hockey teams. He was also the head coach and general manager of the USHL's Green Bay Gamblers for the 2010-11 season.

A graduate of Colorado College, Rud was a two-time team captain and two-time WCHA Defensive Player of the Year for the Tigers during his collegiate playing career. He played professional hockey from 1997 to 2002, and served as

a player assistant coach with the Florida Everblades in 1999-00 and with the Idaho Steelheads from 2000-02.

He joined the coaching ranks as an assistant with the USHL's Cedar Rapids Roughriders from 2002-04 and was an assistant coach at Colorado College in 2004-05.

Rud joined Bob Motzko's staff at St. Cloud State in 2005. At SCSU, Rud recruited several Husky standouts including Ryan Lasch, Andreas Nodl, Garrett Roe, Drew LeBlanc, Nick Jensen and Nic Dowd. In Rud's time at St. Cloud State, the Huskies advanced to the NCAA tournament three times and played in the NCAA West Regional title game in 2010.

He has worked extensively with the USA Hockey program throughout his career and served as the head coach of the 2008 USA U-17 boys team in the Slovakia Four Nations Cup and the 2009 USA U-18 boys team at the Czech Republic Ivan Hlinka Cup.

A native of Inver Grove Heights, Minn., Rud prepped at Simley High School. Rud and his wife Amy reside in St. Cloud and have three children: Sam, Gabbie and Max.

### Eric Rud's Record at SCSU:

Year	Overall	Conference	Postseason
2016-17	4-7-1	3-6-1	-
2015-16	13-18-4	9-15-4 WCHA/5th	0-2
2014-15	8-28-1	5-22-1 WCHA/7th	0-2
<b>Overall</b>	<b>25-53-6</b>	<b>17-43-6</b>	<b>0-4</b>

### St. Cloud State Assistant Coaches



Steve  
Macdonald  
Thrd Season



Jinelle  
Siergiej  
Thrd Season



### 2016-17 WCHA Standings (Nov. 17, 2016)

	GP	Record	Pts	GF-GA
1. Wisconsin	10	9-0-1-1	29	38-6
2. Minnesota	10	9-1-0-0	27	36-14
3. Minn. Duluth	10	6-2-2-1	21	32-17
4. North Dakota	10	5-4-1-1	17	25-19
<b>5. St. Cloud State</b>	<b>10</b>	<b>3-6-1-1</b>	<b>11</b>	<b>15-27</b>
<b>6. Bemidji State</b>	<b>10</b>	<b>2-7-1-0</b>	<b>7</b>	<b>14-30</b>
Ohio State	10	2-7-1-0	7	14-27
8. Minnesota State	10	0-9-1-0	1	8-42

### USCHO.com Div. I Women's Poll (Nov. 14, 2016)

	Record	Pts	Previous
1. Wisconsin (15)	11-0-1	150	1
2. Minnesota	11-1-0	134	2
3. Minnesota-Duluth	7-2-3	113	3
4. St. Lawrence	11-0-1	107	4
5. Colgate	12-0-1	85	5
6. Boston College	9-3-2	74	6
7. Clarkson	10-3-1	71	7
8. Quinnipiac	9-4-1	39	8
9. North Dakota	6-4-2	32	9
10. Northeastern	10-3-1	12	NR

RV: Robert Morris (5), Princeton (2), Bemidji State (1)

### 2016-17 USA Today/USA Hockey Magazine Div. I Women's Poll (Nov. 15, 2016)

	Record	Pts	Previous
1. Wisconsin (19)	11-0-1	190	1
2. Minnesota	11-1-0	171	2
3. Minnesota Duluth	7-2-3	139	3
4. St. Lawrence	11-0-1	132	4
5. Colgate	12-0-1	112	5
6. Clarkson	10-3-1	92	6
7. Boston College	9-3-2	90	7
8. Quinnipiac	9-4-1	47	8
9. North Dakota	6-4-2	40	9
10. Northeastern	10-3-1	21	NR

RV: Robert Morris (10), Princeton (1)

### St. Cloud State – Bemidji State Comparison (Per game averages)

SCSU		BSU
20 (1.67)	<b>Goals For</b>	19 (1.58)
33 (2.75)	<b>Goals Against</b>	31 (2.58)
-13 (-1.08)	<b>Goal Differential</b>	-12 (-1.00)
7.9% (3/38)	<b>Power Play</b>	9.3% (5/54)
82.1% (32/39)	<b>Penalty Kill</b>	92.3% (36/39)



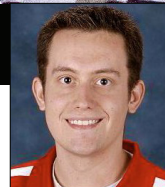


# HUSKIES INSIDER

By Ryan Evans



@SCSUHUSKIES\_WHK



## Friesen adjusting well to college game

Rookie forward leads the Huskies with three goals, four points in last six games

**F**reshman year is the starting point of a daunting journey up a steep learning curve for college hockey players. Once your thrown into the sport's fire, it's a continuous learning and adjustment process and some settle in faster than others.

For St. Cloud State women's hockey rookie forward Kayla Friesen, the growth has been apparent over the last month. She leads the Huskies with three goals and four points in their last six contests and recorded her first career multi-point game last Saturday win over Ohio State.

"Coming in, I was nervous and didn't have the confidence," Friesen said. "But my teammates have helped me settle down and I hope it continues to improve."

Friesen's progression this season has been "steady" according to head

coach Eric Rud.

"You can see she is more comfortable every week," he said, "which has helped her start to produce more offense."

The Winnipeg, Manitoba native started the year on the wing to help acclimate her to the pace of the college game, but was quickly moved to her natural position at center, where she is thriving. She has been trusted to play significant minutes against opponents' top lines, which include some of the best players in the world, and her play has also warranted increased time on the power play.

The Huskies have faith in Friesen in any situation, which is uncommon for a freshman and a testament to her strong hockey sense and awareness on the ice.

"She naturally moves to the right spot, whether it's offensively or

defensively," Rud said.

The former Team Canada U-18 player sparked SCSU to its 4-1 win against the Buckeyes last weekend, opening the scoring and helping to set up senior defender Caroline Markstrom's eventual game-winning goal. Friesen and Rud both expect more offensive performances like that as she continues to acclimate her game to the NCAA level.

"Creating offense is what the team wants from me and what I need to step up and do more often," Friesen said.

Rud said he envisions Friesen become an all-around force and playmaker for the Huskies.

"That's the player she wants to be and the player we want her to become," Rud said. "There is nothing we have seen so far that says she can't be that player."



# 2016-17 St. Cloud State University Women's Hockey Roster

No.	Name	Pos	S/C	Cl.	Ht.	Hometown
1	Janine Adler	G	L	Fr.	5-5	Zurich, Switzerland
2	Julia Tylke	F	R	So.	5-5	Delafield, Wis.
4	Dana Rasmussen	F	R	So.	5-2	Kasson, Minn.
5	Janna Haeg	F	L	Fr.	5-6	Lakeville, Minn.
7	Brittney Anderson	D	R	Jr.	5-6	Hudson, Wis.
8	Brooke Kudirka	F	L	Fr.	5-11	Omaha, Neb.
9	Lauren Hespenheide (C)	F	L	Sr.	5-10	Shakopee, Minn.
10	Emma Turbyville	D	R	Jr.	5-10	Chicago, Ill.
11	Caroline Markstrom	D	L	Sr.	5-8	Kovland, Sweden
13	Katie Detert	F	R	Fr.	5-6	Rhineland, Wisc.
15	Rachel Herzog	D	R	Fr.	5-7	Oakdale, Minn.
16	Kelsey Saelens	F	L	Sr.	5-7	Winnipeg, Manitoba
17	Jenna Redford (A)	D	L	R-Sr.	5-6	Soldotna, Alaska
18	Ivy Dynek	F	L	So.	5-8	Northfield, Ill.
19	Payge Pena	F	R	Sr.	5-7	Maple Ridge, British Columbia
20	Suvi Ollikainen	F	L	So.	5-3	Klaukkala, Finland
21	Christa Moody (A)	D	R	Sr.	5-9	Battle Creek, Mich.
22	Kayla Friesen	F	L	Fr.	5-7	Winnipeg, Manitoba
23	Hannah Potrykus	F	R	So.	5-6	Brighton, Mich.
24	Alex Makaric	D	L	Sr.	5-11	Windsor, Ontario
25	Jordan Stewart	F	L	So.	5-5	Machesney Park, Ill.
27	Alyssa Erickson	F	L	Jr.	5-8	Mission, British Columbia
29	Taylor Crosby	G	L	So.	5-6	Cole Harbour, Nova Scotia
34	Madeleine Dahl	G	L	Sr.	5-7	Edina, Minn.

**Head Coach:** Eric Rud (Third Season)

**Assistant Coaches:** Steve Macdonald and Jinelle Siergiej

**Athletic Trainer:** Emily Fanno

**AMR Women's Hockey Contact:** Ryan Evans

**Coordinator of Hockey & Video Ops:** Matt Chapman

**Equipment Manager:** Jeremiah Minkel

**Student Equipment Manager:** Blake Frantti

**Video Coordinator:** Jocelyn Monge

**Strength and Conditioning Coach:** Travis Zins

## BY CLASS

Seniors.....	8
Juniors.....	3
Sophomores.....	6
Freshmen.....	7

## 2016-17 PRONUNCIATIONS

Saelens.....	Say-lens
Hespenheide.....	Hesp-in-hide
Makaric.....	Mack-rick
Pena.....	Pen-ya
Ollikainen.....	Ole-a-kay-nin
Tylke.....	Till-Key
Potrykus.....	Pa-tree-kiss



**St. Cloud State Hockey**  
**St. Cloud State Combined Team Statistics (as of Nov 12, 2016)**  
**All games**

Date	Opponent		Score	Att.
* Sep 23	#1 WISCONSIN	L	0-6	221
* Sep 24	#1 WISCONSIN	L	2-4	305
Sep 29	MERRIMACK	W	4-2	341
Oct 01	MERRIMACK	L	1-4	392
* Oct 07	#7 NORTH DAKOTA	L	0-1	455
* Oct 08	#7 NORTH DAKOTA	W	3-2	358
* Oct 21	at Minnesota State	To2	2-2	150
* Oct 22	at Minnesota State	W	2-0	200
* Oct 27	at #2 Minnesota	L	2-5	1286
* Oct 28	at #2 Minnesota	L	0-3	1396
* Nov 11	OHIO STATE	L	0-3	209
* Nov 12	OHIO STATE	W	4-1	311

**TEAM STATISTICS**

**SCSU**

**OPP**

**SHOT STATISTICS**

Goals-Shot attempts	20-248	33-391
Shot pct.	.081	.084
Goals/Game	1.7	2.8
Shots/Game	20.7	32.6

**POWER PLAYS**

Goals-Power Plays	3-38	7-39
Conversion Percent	.079	.179
Shot Attempts	39	74
Shot Percent	.077	.095

**GOAL BREAKDOWN**

Power Play	3	7
Short-handed	0	2
Empty net	1	4
Penalty	0	0
Unassisted	3	1
Overtime	0	0
Shootout	0	0
Delayed Penalty	0	0

**PENALTIES**

Number	43	40
Minutes	97	83
Penalties/Game	3.6	3.3
Pen minutes/Game	8.1	6.9
SHOOTOUTS (Made-Att)	2-8	1-8

Record:	Overall	Home	Away	Neutral
ALL GAMES	4-7-1	3-5-0	1-2-1	0-0-0
CONFERENCE	3-6-1	2-4-0	1-2-1	0-0-0
NON-CONFERENCE	1-1-0	1-1-0	0-0-0	0-0-0

##	Player	gp	g	a	pts	sh	sh%	pen-min	pp	sh
2	Julia Tylke	12	7	2	9	33	.212	3-6	2	0
27	Alyssa Erickson	12	3	2	5	22	.136	3-6	0	0
19	Payge Pena	12	2	3	5	11	.182	2-4	0	0
9	Lauren Hespenheide	12	0	5	5	26	.000	1-2	0	0
22	Kayla Friesen	12	3	1	4	24	.125	6-12	0	0
23	Hannah Potrykus	12	1	2	3	24	.042	3-6	0	0
16	Kelsey Saelens	12	1	2	3	21	.048	1-2	0	0
7	Brittney Anderson	8	1	1	2	14	.071	2-4	1	0
18	Ivy Dynek	11	0	2	2	7	.000	0-0	0	0
15	Rachel Herzog	12	0	2	2	2	.000	4-8	0	0
8	Brooke Kudirka	12	0	2	2	16	.000	2-4	0	0
20	Suvi Ollikainen	12	0	2	2	4	.000	2-4	0	0
12	Jenna Redford	12	0	2	2	5	.000	1-2	0	0
11	Caroline Markstrom	12	1	0	1	5	.200	5-21	0	0
25	Jordan Stewart	11	1	0	1	4	.250	1-2	0	0
1	Janine Alder	9	0	1	1	0	.000	0-0	0	0
5	Janna Haeg	12	0	1	1	9	.000	1-2	0	0
21	Christa Moody	12	0	1	1	10	.000	3-6	0	0
10	Emma Turbyville	12	0	1	1	10	.000	2-4	0	0
13	Katie Detert	6	0	0	0	1	.000	0-0	0	0
TM	TEAM	7	0	0	0	0	.000	1-2	0	0
Total		12	20	32	52	248	.081	43-97	3	0
Opponents		12	33	51	84	391	.084	40-83	7	2

##	Goalie	gp	min	ga	gaavg	saves	save%	w-l-t
1	Janine Alder	9	520:22	16	1.84	247	.939	4-4-1
29	Taylor Crosby	3	139:37	7	3.01	83	.922	0-2-0
34	Madeleine Dahl	1	60:00	6	6.00	28	.824	0-1-0
TM	EMPTY NET	7	5:01	4	-	0	.000	0-0-0
Total		12	725:00	33	2.73	358	.916	4-7-1
Opponents		12	725:00	20	1.66	228	.919	7-4-1

**Attendance Summary**

**SCSU**

**Opponent**

Total	2592	3032
Dates/Avg Per Date	8/324	4/758
Neutral Site #/Avg	0/0	

**Goals by Period**

	1st	2nd	3rd	Total
St. Cloud State	6	7	7	20
Opponents	7	10	16	33

**Saves by Period**

	1st	2nd	3rd	Total
St. Cloud State	128	131	97	358
Opponents	67	89	71	228

**St. Cloud State Hockey**  
**St. Cloud State Category Leaders (as of Nov 12, 2016)**  
**All games**

<b>## Points</b>	<b>GP</b>	<b>G</b>	<b>A</b>	<b>Pts</b>	<b>Sh</b>
2 Julia Tylke	12	7	2	9	33
27 Alyssa Erickson	12	3	2	5	22
19 Payge Pena	12	2	3	5	11
9 Lauren Hespenheide	12	0	5	5	26
22 Kayla Friesen	12	3	1	4	24
23 Hannah Potrykus	12	1	2	3	24
16 Kelsey Saelens	12	1	2	3	21
7 Brittney Anderson	8	1	1	2	14
18 Ivy Dynek	11	0	2	2	7
15 Rachel Herzog	12	0	2	2	2

<b>## Goals</b>	<b>GP</b>	<b>G</b>	<b>A</b>	<b>Pts</b>	<b>Sh</b>
2 Julia Tylke	12	7	2	9	33
27 Alyssa Erickson	12	3	2	5	22
22 Kayla Friesen	12	3	1	4	24
19 Payge Pena	12	2	3	5	11
23 Hannah Potrykus	12	1	2	3	24
16 Kelsey Saelens	12	1	2	3	21
7 Brittney Anderson	8	1	1	2	14
11 Caroline Markstrom	12	1	0	1	5
25 Jordan Stewart	11	1	0	1	4

<b>## Power-Play Goals</b>	<b>GP</b>	<b>PPG</b>
2 Julia Tylke	12	2

<b>## Short-Handed Goals</b>	<b>GP</b>	<b>SHG</b>
------------------------------	-----------	------------

<b>## Game-Winning Goals</b>	<b>GP</b>	<b>GWG</b>
11 Caroline Markstrom	12	1
27 Alyssa Erickson	12	1
16 Kelsey Saelens	12	1
25 Jordan Stewart	11	1

<b>## Plus/Minus</b>	<b>GP</b>	<b>+/-</b>
8 Brooke Kudirka	12	+2
9 Lauren Hespenheide	12	+1

<b>## Assists</b>	<b>GP</b>	<b>G</b>	<b>A</b>	<b>Pts</b>	<b>Sh</b>
9 Lauren Hespenheide	12	0	5	5	26
19 Payge Pena	12	2	3	5	11
2 Julia Tylke	12	7	2	9	33
27 Alyssa Erickson	12	3	2	5	22
23 Hannah Potrykus	12	1	2	3	24
16 Kelsey Saelens	12	1	2	3	21
18 Ivy Dynek	11	0	2	2	7
15 Rachel Herzog	12	0	2	2	2
8 Brooke Kudirka	12	0	2	2	16
20 Suvi Ollikainen	12	0	2	2	4

<b>## Shots</b>	<b>GP</b>	<b>G</b>	<b>A</b>	<b>Pts</b>	<b>Sh</b>	<b>Sh%</b>
2 Julia Tylke	12	7	2	9	33	.212
9 Lauren Hespenheide	12	0	5	5	26	.000
22 Kayla Friesen	12	3	1	4	24	.125
23 Hannah Potrykus	12	1	2	3	24	.042
27 Alyssa Erickson	12	3	2	5	22	.136
16 Kelsey Saelens	12	1	2	3	21	.048
8 Brooke Kudirka	12	0	2	2	16	.000
7 Brittney Anderson	8	1	1	2	14	.071
19 Payge Pena	12	2	3	5	11	.182
21 Christa Moody	12	0	1	1	10	.000

<b>## Shot Pct.</b>	<b>GP</b>	<b>G</b>	<b>A</b>	<b>Pts</b>	<b>Sh</b>	<b>Sh%</b>
25 Jordan Stewart	11	1	0	1	4	.250
2 Julia Tylke	12	7	2	9	33	.212
11 Caroline Markstrom	12	1	0	1	5	.200
19 Payge Pena	12	2	3	5	11	.182
27 Alyssa Erickson	12	3	2	5	22	.136
22 Kayla Friesen	12	3	1	4	24	.125
7 Brittney Anderson	8	1	1	2	14	.071
16 Kelsey Saelens	12	1	2	3	21	.048
23 Hannah Potrykus	12	1	2	3	24	.042
13 Katie Detert	6	0	0	0	1	.000

<b>## Penalties</b>	<b>GP</b>	<b>Pen</b>	<b>Min</b>
22 Kayla Friesen	12	6	12
11 Caroline Markstrom	12	5	21
15 Rachel Herzog	12	4	8
23 Hannah Potrykus	12	3	6
21 Christa Moody	12	3	6
2 Julia Tylke	12	3	6
27 Alyssa Erickson	12	3	6
19 Payge Pena	12	2	4
8 Brooke Kudirka	12	2	4
7 Brittney Anderson	8	2	4

<b>## Penalty Minutes</b>	<b>GP</b>	<b>Pen</b>	<b>Min</b>
11 Caroline Markstrom	12	5	21
22 Kayla Friesen	12	6	12
15 Rachel Herzog	12	4	8
23 Hannah Potrykus	12	3	6
21 Christa Moody	12	3	6
2 Julia Tylke	12	3	6
27 Alyssa Erickson	12	3	6
20 Suvi Ollikainen	12	2	4
7 Brittney Anderson	8	2	4
8 Brooke Kudirka	12	2	4





# 2016-17 St. Cloud State Women's Hockey Roster & Coaching Staff



Janine  
Adler



Julia  
Tylke



Dana  
Rasmussen



Janna  
Haeg



Brittney  
Anderson



Brooke  
Kudirka



Lauren  
Hespenheide



Emma  
Turbyville



Caroline  
Markstrom



Katie  
Detert



Rachel  
Herzog



Kelsey  
Saelens



Jenna  
Redford



Ivy  
Dynek



Payge  
Pena



Suvi  
Ollikainen



Christa  
Moody



Kayla  
Friesen



Hannah  
Potrykus



Jordan  
Stewart



Alyssa  
Erickson



Taylor  
Crosby



Madeleine  
Dahl



Asst. Coach  
Jinelle Siergiej



Head Coach  
Eric Rud



Asst. Coach  
Steve Macdonald