



# St. Cloud State Huskies

## WOMEN'S HOCKEY

Contact: Ryan Evans — Phone: 952-594-136 — Email: rmevans@stcloudstate.com

2016-17 St. Cloud State Women's Hockey News

RELEASE DATE: Oct. 5, 2016



### 2016-17 SCHEDULE/RESULTS

Record: 1-3-0, 0-2-0 WCHA

Date	Opponent	Result
SEPT. 23	#1 WISCONSIN*	L, 0-6
SEPT. 24	#1 WISCONSIN*	L, 2-4
SEPT. 30	MERRIMACK #	W, 4-2
OCT. 1	MERRIMACK	L, 1-4
OCT. 7	#7 NORTH DAKOTA*	6:07 p.m.
OCT. 8	#7 NORTH DAKOTA*	3:07 p.m.
Oct. 21	at Minnesota State*	7:07 p.m.
Oct. 22	at Minnesota State*	3:07 p.m.
Oct. 27	at Minnesota*	7:07 p.m.
Oct. 28	at Minnesota*	7:07 p.m.
NOV. 11	OHIO STATE*	3:07 p.m.
NOV. 12	OHIO STATE*	1:07 p.m.
Nov. 18	at Bemidji State*	3:07 p.m.
Nov. 19	at Bemidji State*	3:07 p.m.

#### WINDJAMMER CLASSIC (Burlington, Vt.)

Nov. 25	vs. Vermont	4 p.m.
Nov. 26	vs. TBD	TBA

DEC. 2	MINNESOTA-DULUTH*	7:07 p.m.
DEC. 3	MINNESOTA-DULUTH*	3:07 p.m.
Dec. 10	at North Dakota*	2 p.m.
Dec. 11	at North Dakota*	2 p.m.
JAN. 6	COLGATE UNIVERSITY	7:07 p.m.
JAN. 7	COLGATE UNIVERSITY	3:07 p.m.
Jan. 13	at Wisconsin*	TBA
Jan. 14	at Wisconsin*	TBA
JAN. 20	MINNESOTA STATE*	3:07 p.m.
JAN. 21	MINNESOTA STATE*	3:07 p.m.
JAN. 27	MINNESOTA*	7:07 p.m.
JAN. 28	MINNESOTA*	3:07 p.m.
Feb. 3	at Ohio State*	TBA
Feb. 4	at Ohio State*	TBA
FEB. 10	BEMIDJI STATE*	3:07 p.m.
FEB. 11	BEMIDJI STATE*%	3:07 p.m.
Feb. 17	at Minnesota-Duluth*	7:07 p.m.
Feb. 18	at Minnesota-Duluth*	4:07 p.m.

#### POSTSEASON

Feb. 24	WCHA First Round +	TBA
Feb. 25	WCHA First Round +	TBA
Feb. 26	WCHA First Round +	TBA
March 4	WCHA Final Face-Off \$	TBA
March 5	WCHA Final Face-Off \$	TBA
March 10	NCAA Quarterfinals +	TBA
March 17	NCAA Frozen Four ^	TBA
March 19	NCAA Frozen Four ^	TBA

Home games listed in CAPS. All times are Central.

\* - WCHA Game  
# - Alumni Day  
% - Senior Day  
+ - Campus Locations  
\$ - Ridder Arena, Minneapolis  
^ - St. Charles, Mo.

Rankings are based on the USCHO.com poll at the time of the game.

All game times are subject to change

**TWITTER:** #SCSUWHK

• Official Account: @SCSUHUSKIES\_WHK

### ST. CLOUD STATE (1-3-0, 0-2-0 WCHA) VS. No. 6/7 NORTH DAKOTA (1-0-1, 0-0-0 WCHA)

Friday, Oct. 7 & Saturday, Oct. 8, 2016

• Herb Brooks National Hockey Center

**Location:** St. Cloud, Minn.

**Site:** Herb Brooks National Hockey Center

**Capacity:** 5,159

**Ice Surface:** 200' x 100'

**TV:** None

**Video Stream:** scsuhuskies.com/live

**Radio:** None

**Audio Stream:** KVSC.com

**All-time Series:** UND leads, 32-20-6

**In St. Cloud:** UND leads, 14-11-3



#### ST. CLOUD STATE Huskies

Ranking (USCHO.com): NR

Record: 1-3-0, 0-2-0 WCHA

Head Coach: Eric Rud

Record (Years): 22-49-5 (2)



#### NORTH DAKOTA Fighting Hawks

Ranking (USCHO.com): No. 7

'15-16 Record: 5-26-3, 3-18-3 HE

Head Coach: Brian Idalski

Record (Years): 154-140-34 (10)

**Last Meeting (Feb. 26-27, 2016):** St. Cloud State travelled to Grand Forks, N.D. for a WCHA First Round Playoffs match-up and was swept by North Dakota, falling 6-1 on back-to-back nights. Defenseman Brittney Anderson and forward Vanessa Spataro scored the only two goals on the weekend for the Huskies, who were out-shot, 63-39, in the series. The top line of Meghan Dufault, Becca Kohler and Amy Menke scored nine of UND's 12 goals in the series.

### KEY NOTES TO CONSIDER:

- **SCOUTING THE FIGHTING HAWKS:** North Dakota opened its season with a non-conference win and tie against Hockey East's Mercyhurst. Four different players scored for the Fighting Hawks and senior defenseman Gracen Hirschy led all players with three points (1+2) in the series. UND's special teams played a big factor, with a combined percentage of 63 percent (17-for-27)—including two power play goals in its 3-1 win in the opener. Freshman forward Ryleigh Houston scored the eventual game-winner last Friday and was named the WCHA's Rookie of the Week (Sept. 30-Oct. 1).

North Dakota went 18-12-5 last season, including 13-10-5 in WCHA play to finish fourth with 46 points. UND advanced to its sixth straight Final Face-Off, but fell to Minnesota, 2-0, in the semifinals. The Fighting Hawks were unbeaten in five of six games (1-4-1) last year against St. Cloud State, including the playoffs. Junior defender Brittney Anderson led the Huskies with four points (1+3) in the six games against North Dakota.

- This weekend will be St. Cloud State's third and fourth games already this season against a top 10-ranked opponent. The Huskies were swept, 6-0 and 4-2, by No. 1 Wisconsin in their season-opening series, Sept. 23-24.

- **LAST TIME OUT:** The Huskies earned a split against second-year Div. I program Merrimack at the Herb Brooks National Hockey Center. Backed by two goals from sophomore forward Julia Tylke, St. Cloud State won its first game of the season, 4-2, over the Warriors in the opener, but penalties doomed the Huskies in the finale as MC salvaged the split in a 4-1 decision. Tylke was the star of the weekend, with three goals in the series.

- **STREAKS ARE MADE TO BE BROKEN:** St. Cloud State is seeking to snap a 12-game (0-11-1) winless streak at home against North Dakota that dates back to the 2010-11 season. The last Huskies win at home against UND came on Oct. 31, 2009, 3-2.

- **SILKY TYLKE:** Sophomore forward Julia Tylke has accounted for four of the seven goals SCSU has scored this season. The Delafield, Wis., native has four goals in her last three games, including a two-score effort in the Huskies' 4-2 win over Merrimack on Sept. 30. Dating back to last season, Tylke has five goals and eight points in her last eight games.

Tylke, a 2015-16 All-WCHA Rookie Team honoree, is St. Cloud State's top returning scorer, having registered nine goals and 24 points a season ago—the most for an SCSU rookie since the 2006-07 season, when Holly Roberts and Caitlin Hogan scored 35 (18+17) and 29 (12+17) points, respectively. (cont.)



TYLKE

## St. Cloud State Women's Hockey 2016-17 Roster

#	FULL NAME	YR.	POS.	HT.	SH/C	HOMETOWN
1	Janine Alder	FR	G	5-5	L	Zurich, Switzerland
2	Julia Tylke	SO	F	5-5	R	Delafield, Wisconsin
4	Dana Rasmussen	R-FR	F	5-2	R	Kasson, Minnesota
5	Janna Haeg	FR	F	5-6	L	Lakeville, Minnesota
7	Brittney Anderson	JR	D	5-6	R	Hudson, Wisconsin
8	Brooke Kudirka	FR	F	5-11	L	Omaha, Nebraska
9	Lauren Hespenheide*	SR	F	5-0	L	Shakopee, Minnesota
10	Emma Turbyville	JR	D	5-10	R	Chicago, Illinois
11	Caroline Markström	SR	D	5-8	L	Kovland, Sweden
13	Katie Detert	FR	F	5-6	R	Rhineland, Wisconsin
15	Rachel Herzog	FR	D	5-7	R	Oakdale, Minnesota
16	Kelsey Saelens	SR	F	5-7	L	Winnipeg, Manitoba
17	Jenna Redford*	R-SR	D	5-6	L	Soldotna, Alaska
18	Ivy Dynek	SO	F	5-8	L	Northfield, Illinois
19	Payge Pena	SR	F	5-7	R	Maple Ridge, British Columbia
20	Suvi Ollikainen	SO	F	5-3	L	Klaukkala, Finland
21	Christa Moody*	JR	D	5-9	R	Battle Creek, Michigan
22	Kayla Friesen	FR	F	5-7	L	Winnipeg, Manitoba
23	Hannah Potrykus	SO	F	5-6	R	Brighton, Michigan
24	Alexandra Makaric	SR	D	5-11	L	Windsor, Ontario
25	Jordan Stewart	SO	F	5-5	L	Machesney Park, Illinois
27	Alyssa Erickson	JR	F	5-8	L	Mission, British Columbia
29	Taylor Crosby	SO	G	5-6	L	Cole Harbour, Nova Scotia
34	Madeleine Dahl	SR	G	5-7	R	Edina, Minnesota

\* 2016-17 Captain

## 2016-17 Coaches and Staff

Eric Rud	Head Women's Hockey Coach
Steve Macdonald	Assistant Women's Hockey Coach
Jinelle Siergieij	Assistant Women's Hockey Coach
Blake Franti	Women's Hockey Equipment Manager
Emily Fanno	Graduate Assistant Athletic Trainer
Matthew Chapman	Coordinator of Hockey and Video Operations
Jeremiah Minkel	Hockey Equipment Manager
Jocelyn Monge	Women's Hockey Operations and Video Coordinator
Ryan Evans	Graduate Assistant, Athletic Media Relations (SID)

## 2016-17 By Class

Seniors.....	8
Juniors.....	3
Sophomores.....	7
Freshman.....	6

## 2016-17 Pronunciations

Detert.....	Dee-tert
Dynek.....	Dye-nick
Hespenheide.....	Hesp-in-hide
Pena.....	Pen-ya
Makaric.....	Mak-rick
Ollikainen.....	Ole-ah-kay-nen
Tylke.....	Till-key
Potrykus.....	Pa-tree-kiss
Saelens.....	Say-lens
Tylke.....	Till-key



## Information

To get full information about the 2016-17 SCSU Women's Hockey season, and to purchase tickets, please visit:

**[www.scsuhuskies.com](http://www.scsuhuskies.com)**

For information about the WCHA, please check out the league website at

**[www.wcha.com](http://www.wcha.com)**

## (Key Notes to Consider cont).

- **SERIES OF FIRSTS:** Five players scored their first point in a Husky uniform last Friday against Merrimack: Freshman forwards Brooke Kudirka and Janna Haeg, rookie defender Rachel Herzog and freshman goaltender Janine Alder each tallied an assist and sophomore forward Jordan Stewart scored her first career goal, which proved to be the game-winner. Alder also recorded her first career win in goal, stopping 24 shots.
- **OH CAPTAIN, MY CAPTAIN:** Senior forward Lauren Hespenheide has averaged a point-per-game through four games this season. The Huskies' captain had a career day against Merrimack on Sept. 29, tallying three assists and has already equaled her career high in assists (four).
- **CROSBY'S CREASE:** Sophomore goaltender Taylor Crosby has started two of SCSU's four games this season and boasts a .932 save percentage. Her 52-save outing against Wisconsin on Sept. 24 tied for the sixth-highest single game total in Huskies history

## PRESEASON NOTES:

- **WCHA PRESEASON COACHES POLL:** After finishing fifth in the WCHA with a 9-15-4 record and 34 points last season, the conference coaches picked St. Cloud State to finish sixth in the league this season.
- **REACHING NEW HEIGHTS:** In his second season behind the bench, head coach Eric Rud led SCSU to 13 wins in 2015-16, which was the program's highest total since winning 15 games in 2009-10.
- **ON THE WAY UP:** Seven St. Cloud State players achieved career-high point totals in 2015-16, including six who set new career marks for goals scored.
- **HOW MAY I ASSIST YOU?:** Junior defenseman Brittney Anderson led all Huskies, and set a new career high, with 16 assists last season. Her 20 total points were the most for an SCSU rear guard since Danielle Hirsch also scored 20 (2+18) in the 2008-09 season.

Anderson has one goal and one assist through four games this season.

- **BLUE LINE BARRIER:** The Huskies return six of their seven defensemen from last season's group that ranked sixth in the WCHA in scoring defense (3.29 G/GM). SCSU ranked sixth in league play as well, allowing 3.14 goals against per contest.
- **SEARCHING FOR SCORING:** St. Cloud State lost nearly 40 percent of its goal scoring to graduation, including Molly Illikainen, who led the team with 17 goals a season ago.
- **BATTLE BETWEEN THE PIPES:** Three goaltenders are vying to replace Katie Fitzgerald in the Huskies' crease: Senior Madeleine Dahl, sophomore Taylor Crosby and freshman Janine Alder.

Fitzgerald started 34 of 35 games for SCSU last season. Of the goalies on this year's roster, Dahl has the most career starts (13). Prior to last Friday, Dahl's last career start came in 2013-14 with Union College.

- **HUSKY PUPPIES:** SCSU welcomes seven newcomers this season: Goaltender Janine Alder; forwards Janna Haeg, Brooke Kudirka, Katie Detert, Kayla Friesen and Dana Rasmussen; and defenseman Rachel Herzog.





## Eric Rud

Head Coach • Third Season  
Colorado College '97

This season marks Eric Rud's third at the helm of the St. Cloud State women's hockey team.

Rud became the fourth coach in SCSU women's hockey history in 2014-15. Under Rud's tutelage, SCSU's Molly Illikainen and Julia Tylke both gained All-WCHA accolades in 2015-16.

Before leading the Husky women, Rud was an assistant coach for the St. Cloud State (2005-10) and Colorado College (2011-14) men's hockey teams. He was also the head coach and general manager of the USHL's Green Bay Gamblers for the 2010-11 season.

A graduate of Colorado College, Rud was a two-time team captain and two-time WCHA Defensive Player of the Year for the Tigers during his collegiate playing career. He played professional hockey from 1997 to 2002, and served as

a player assistant coach with the Florida Everblades in 1999-00 and with the Idaho Steelheads from 2000-02.

He joined the coaching ranks as an assistant with the USHL's Cedar Rapids Roughriders from 2002-04 and was an assistant coach at Colorado College in 2004-05.

Rud joined Bob Motzko's staff at St. Cloud State in 2005. At SCSU, Rud recruited several Husky standouts including Ryan Lasch, Andreas Nodl, Garrett Roe, Drew LeBlanc, Nick Jensen and Nic Dowd. In Rud's time at St. Cloud State, the Huskies advanced to the NCAA tournament three times and played in the NCAA West Regional title game in 2010.

He has worked extensively with the USA Hockey program throughout his career and served as the head coach of the 2008 USA U-17 boys team in the Slovakia Four Nations Cup and the 2009 USA U-18 boys team at the Czech Republic Ivan Hlinka Cup.

A native of Inver Grove Heights, Minn., Rud prepped at Simley High School. Rud and his wife Amy reside in St. Cloud and have three children: Sam, Gabbie and Max.

### Eric Rud's Record at SCSU:

Year	Overall	Conference	Postseason
2016-17	1-3-0	0-2-0	-
2015-16	13-18-4	9-15-4 WCHA/5th	0-2
2014-15	8-28-1	5-22-1 WCHA/7th	0-2
<b>Overall</b>	<b>22-49-5</b>	<b>14-39-5</b>	<b>0-4</b>

### St. Cloud State Assistant Coaches



Steve  
Macdonald  
Thrd Season



Jinelle  
Siergiej  
Thrd Season



### 2016-17 WCHA Standings (Oct. 3, 2016)

	GP	Record	Pts	GF-GA
1. Wisconsin	2	2-0-0	6	10-2
2. Bemidji State	0	0-0-0	0	0-0
Minnesota	0	0-0-0	0	0-0
Minn. Duluth	0	0-0-0	0	0-0
Minn. State	0	0-0-0	0	0-0
<b>North Dakota</b>	<b>0</b>	<b>0-0-0</b>	<b>0</b>	<b>0-0</b>
Ohio State	0	0-0-0	0	0-0
<b>St. Cloud State</b>	<b>2</b>	<b>0-2-0</b>	<b>0</b>	<b>2-10</b>

### USCHO.com Div. I Women's Poll (Oct. 3, 2016)

	Record	Pts	Previous
1. Wisconsin (14)	2-0-0	149	1
2. Minnesota (1)	2-0-0	136	2
3. Quinnipiac	2-0-0	114	4
4. Clarkson	2-0-0	94	5
5. Boston College	0-1-1	62	3
6. Minnesota-Duluth	1-0-1	61	NR
<b>7. North Dakota</b>	<b>1-0-1</b>	<b>53</b>	<b>6</b>
8. Colgate	2-0-0	52	8
9. Boston University	1-0-0	36	10
10. Princeton	0-0-0	33	NR

RV: Bemidji State (15), St. Lawrence (12), Cornell (5), Mercyhurst (2), Northeastern (1)

### 2016-17 USA Today/USA Hockey Magazine Div. I Women's Poll (Oct. 4, 2016)

	Record	Pts	Previous
1. Wisconsin (17)	2-0-0	188	1
2. Minnesota (2)	2-0-0	173	2
3. Quinnipiac	2-0-0	144	4
4. Clarkson	2-0-0	127	5
5. Boston College	0-1-1	98	3
<b>6. North Dakota</b>	<b>1-0-1</b>	<b>73</b>	<b>6</b>
7. Colgate	2-0-0	71	8
8. Minnesota-Duluth	1-0-1	67	NR
9. Princeton	0-0-0	52	7
10. Boston University	1-0-0	23	10

RV: Bemidji State (12), St. Lawrence (11), Cornell (5), Mercyhurst (1)

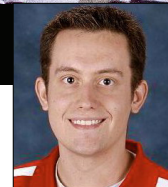
### St. Cloud State-North Dakota Comparison (Per game averages)

SCSU		UND
7 (1.75)	<b>Goals For</b>	4 (2.00)
16 (4.00)	<b>Goals Against</b>	2 (1.00)
-9 (-2.25)	<b>Goal Differential</b>	+2 (+1.00)
16.7%	<b>Power Play</b>	25.0%
61.5%	<b>Penalty Kill</b>	93.3%





# HUSKIES INSIDER



By Ryan Evans  @SCSUHUSKIES\_WHK



## Huskies playing with renewed belief

After last season, St. Cloud State has confidence it can compete with anyone

**L**ast season, as the St. Cloud State women's hockey team bussed to Grand Forks, N.D., for its WCHA First Round Playoff series, head coach Eric Rud saw a noticeable change in his team's demeanor.

In previous years, that same trip felt like a drive towards the end of the season, but this time that defeated attitude was nowhere to be found.

"The girls felt like they were on a mission to win," Rud said. "We felt like we could compete with anyone and we had not felt that before."

While it didn't get the result it wanted, that shift in St. Cloud State's mindset will have a much longer lasting impact on the program.

The Huskies' newfound confidence was born from a seven-game unbeaten streak from mid-November to early-December and manifested

as a 13-win season—the program's highest total since the 2009-10 season. Building a winning tradition takes baby steps, but Rud said last year was a huge jump in the right direction for SCSU.

"The attitudes, and where we are as a program, mentally, are very strong," he said. "We see signs every day that we are moving down the right path."

"The excitement of our players to come to the rink every day and show up on the weekends is certainly there."

The eight Huskies seniors—led by captains Lauren Hespenheide, Christa Moody and Jenna Redford—were all on board as St. Cloud State righted its ship a year ago. Now, they are leading the way to ensure that culture change takes root.

"Our seniors carry themselves well," Rud said. "They do a great job, day in and day out, of leading the program."

The example set by the seniors is especially important for SCSU's seven freshmen. That group is coming into a team that now expects to win games, which has not always necessarily been the case.

"They don't know any different. All they know is how our seniors act," Rud said of his rookie class. "They are showing they are jumping on board with the senior leadership."

This season's freshmen will bestow that expectation down on the classes that come after them and so on. As St. Cloud State's winning mindset and confidence grows each year, the Huskies will continue to blossom on the ice.

**St. Cloud State Hockey**  
**St. Cloud State Combined Team Statistics (as of Oct 05, 2016)**  
**All games**

Date	Opponent		Score	Att.
* Sep 23	#1 WISCONSIN	L	0-6	221
* Sep 24	#1 WISCONSIN	L	2-4	305
Sep 29	MERRIMACK	W	4-2	341
Oct 01	MERRIMACK	L	1-4	392

TEAM STATISTICS	SCSU	OPP
SHOT STATISTICS		
Goals-Shot attempts	7-88	16-137
Shot pct.	.080	.117
Goals/Game	1.8	4.0
Shots/Game	22.0	34.2
POWER PLAYS		
Goals-Power Plays	2-12	5-13
Conversion Percent	.167	.385
Shot Attempts	12	21
Shot Percent	.167	.238
GOAL BREAKDOWN		
Power Play	2	5
Short-handed	0	0
Empty net	0	3
Penalty	0	0
Unassisted	1	1
Overtime	0	0
Shootout	0	0
Delayed Penalty	0	0
PENALTIES		
Number	13	12
Minutes	26	24
Penalties/Game	3.2	3.0
Pen minutes/Game	6.5	6.0
SHOOTOUTS (Made-Att)	0-0	0-0

Record:	Overall	Home	Away	Neutral
ALL GAMES	1-3-0	1-3-0	0-0-0	0-0-0
CONFERENCE	0-2-0	0-2-0	0-0-0	0-0-0
NON-CONFERENCE	1-1-0	1-1-0	0-0-0	0-0-0

##	Player	gp	g	a	pts	sh	sh%	pen-min	pp	sh
2	Julia Tylke	4	4	0	4	12	.333	0-0	1	0
9	Lauren Hespenheide	4	0	4	4	9	.000	1-2	0	0
7	Brittney Anderson	4	1	1	2	9	.111	2-4	1	0
23	Hannah Potrykus	4	1	0	1	14	.071	2-4	0	0
25	Jordan Stewart	4	1	0	1	2	.500	1-2	0	0
1	Janine Alder	1	0	1	1	0	.000	0-0	0	0
5	Janna Haeg	4	0	1	1	1	.000	0-0	0	0
15	Rachel Herzog	4	0	1	1	1	.000	1-2	0	0
8	Brooke Kudirka	4	0	1	1	6	.000	0-0	0	0
21	Christa Moody	4	0	1	1	3	.000	0-0	0	0
19	Payge Pena	4	0	1	1	2	.000	1-2	0	0
18	Kelsey Saelens	4	0	1	1	4	.000	0-0	0	0
13	Katie Detert	1	0	0	0	1	.000	0-0	0	0
33	Ivy Dynek	3	0	0	0	0	.000	0-0	0	0
27	Alyssa Erickson	4	0	0	0	5	.000	1-2	0	0
22	Kayla Friesen	4	0	0	0	8	.000	1-2	0	0
11	Caroline Markstrom	4	0	0	0	2	.000	0-0	0	0
20	Suvi Ollikainen	4	0	0	0	2	.000	1-2	0	0
17	Jenna Redford	4	0	0	0	3	.000	1-2	0	0
10	Emma Turbyville	4	0	0	0	4	.000	0-0	0	0
TM	TEAM	2	0	0	0	0	.000	1-2	0	0
	Total	4	7	12	19	88	.080	13-26	2	0
	Opponents	4	16	22	38	137	.117	12-24	5	0

##	Goalie	gp	min	ga	gaavg	saves	save%	w-l-t
1	Janine Alder	1	60:00	2	2.00	24	.923	1-0-0
29	Taylor Crosby	2	116:45	5	2.57	69	.932	0-2-0
34	Madeleine Dahl	1	60:00	6	6.00	28	.824	0-1-0
TM	EMPTY NET	2	3:15	3	-	0	.000	0-0-0
	Total	4	240:00	16	4.00	121	.883	1-3-0
	Opponents	4	240:00	7	1.75	81	.920	3-1-0

Attendance Summary	SCSU	Opponent
Total	1259	0
Dates/Avg Per Date	4/315	0/0
Neutral Site #/Avg	0/0	

Goals by Period	1st	2nd	3rd	Total
St. Cloud State	2	4	1	7
Opponents	3	5	8	16

Saves by Period	1st	2nd	3rd	Total
St. Cloud State	50	40	31	121
Opponents	27	30	24	81

**St. Cloud State Hockey**  
**St. Cloud State Category Leaders (as of Oct 05, 2016)**  
**All games**

<b>## Points</b>	<b>GP</b>	<b>G</b>	<b>A</b>	<b>Pts</b>	<b>Sh</b>
2 Julia Tylke	4	4	0	4	12
9 Lauren Hespenheide	4	0	4	4	9
7 Brittney Anderson	4	1	1	2	9
23 Hannah Potrykus	4	1	0	1	14
25 Jordan Stewart	4	1	0	1	2
1 Janine Alder	1	0	1	1	0
5 Janna Haeg	4	0	1	1	1
15 Rachel Herzog	4	0	1	1	1
8 Brooke Kudirka	4	0	1	1	6
21 Christa Moody	4	0	1	1	3

<b>## Goals</b>	<b>GP</b>	<b>G</b>	<b>A</b>	<b>Pts</b>	<b>Sh</b>
2 Julia Tylke	4	4	0	4	12
7 Brittney Anderson	4	1	1	2	9
23 Hannah Potrykus	4	1	0	1	14
25 Jordan Stewart	4	1	0	1	2

<b>## Power-Play Goals</b>	<b>GP</b>	<b>PPG</b>
7 Brittney Anderson	4	1
2 Julia Tylke	4	1

<b>## Short-Handed Goals</b>	<b>GP</b>	<b>SHG</b>
------------------------------	-----------	------------

<b>## Game-Winning Goals</b>	<b>GP</b>	<b>GWG</b>
25 Jordan Stewart	4	1

<b>## Plus/Minus</b>	<b>GP</b>	<b>+/-</b>
2 Julia Tylke	4	+1
9 Lauren Hespenheide	4	+1
8 Brooke Kudirka	4	+1

<b>## Assists</b>	<b>GP</b>	<b>G</b>	<b>A</b>	<b>Pts</b>	<b>Sh</b>
9 Lauren Hespenheide	4	0	4	4	9
7 Brittney Anderson	4	1	1	2	9
1 Janine Alder	1	0	1	1	0
5 Janna Haeg	4	0	1	1	1
15 Rachel Herzog	4	0	1	1	1
8 Brooke Kudirka	4	0	1	1	6
21 Christa Moody	4	0	1	1	3
19 Payge Pena	4	0	1	1	2
18 Kelsey Saelens	4	0	1	1	4

<b>## Shots</b>	<b>GP</b>	<b>G</b>	<b>A</b>	<b>Pts</b>	<b>Sh</b>	<b>Sh%</b>
23 Hannah Potrykus	4	1	0	1	14	.071
2 Julia Tylke	4	4	0	4	12	.333
9 Lauren Hespenheide	4	0	4	4	9	.000
7 Brittney Anderson	4	1	1	2	9	.111
22 Kayla Friesen	4	0	0	0	8	.000
8 Brooke Kudirka	4	0	1	1	6	.000
27 Alyssa Erickson	4	0	0	0	5	.000
18 Kelsey Saelens	4	0	1	1	4	.000
10 Emma Turbyville	4	0	0	0	4	.000
21 Christa Moody	4	0	1	1	3	.000

<b>## Shot Pct.</b>	<b>GP</b>	<b>G</b>	<b>A</b>	<b>Pts</b>	<b>Sh</b>	<b>Sh%</b>
25 Jordan Stewart	4	1	0	1	2	.500
2 Julia Tylke	4	4	0	4	12	.333
7 Brittney Anderson	4	1	1	2	9	.111
23 Hannah Potrykus	4	1	0	1	14	.071
27 Alyssa Erickson	4	0	0	0	5	.000
18 Kelsey Saelens	4	0	1	1	4	.000
10 Emma Turbyville	4	0	0	0	4	.000
21 Christa Moody	4	0	1	1	3	.000
17 Jenna Redford	4	0	0	0	3	.000
11 Caroline Markstrom	4	0	0	0	2	.000

<b>## Penalties</b>	<b>GP</b>	<b>Pen</b>	<b>Min</b>
7 Brittney Anderson	4	2	4
23 Hannah Potrykus	4	2	4
27 Alyssa Erickson	4	1	2
22 Kayla Friesen	4	1	2
TM TEAM	2	1	2
15 Rachel Herzog	4	1	2
17 Jenna Redford	4	1	2
19 Payge Pena	4	1	2
20 Suvi Ollikainen	4	1	2
9 Lauren Hespenheide	4	1	2

<b>## Penalty Minutes</b>	<b>GP</b>	<b>Pen</b>	<b>Min</b>
7 Brittney Anderson	4	2	4
23 Hannah Potrykus	4	2	4
9 Lauren Hespenheide	4	1	2
20 Suvi Ollikainen	4	1	2
19 Payge Pena	4	1	2
25 Jordan Stewart	4	1	2
15 Rachel Herzog	4	1	2
TM TEAM	2	1	2
22 Kayla Friesen	4	1	2
27 Alyssa Erickson	4	1	2





# 2016-17 St. Cloud State Women's Hockey Roster & Coaching Staff



Janine  
Adler



Julia  
Tylke



Dana  
Rasmussen



Janna  
Haeg



Brittney  
Anderson



Brooke  
Kudirka



Lauren  
Hespenheide



Emma  
Turbyville



Caroline  
Markstrom



Katie  
Detert



Rachel  
Herzog



Kelsey  
Saelens



Jenna  
Redford



Ivy  
Dynek



Payge  
Pena



Suvi  
Ollikainen



Christa  
Moody



Kayla  
Friesen



Hannah  
Potrykus



Alex  
Makaric



Jordan  
Stewart



Alyssa  
Erickson



Taylor  
Crosby



Madeleine  
Dahl



Asst. Coach  
Jinelle Siergi



Head Coach  
Eric Rud



Asst. Coach  
Steve Macdonald