



ST. CLOUD STATE HUSKIES

WOMEN'S HOCKEY

Contact: Ryan Evans — Phone: 952-594-136 — Email: rmevans@stcloudstate.com

2016-17 St. Cloud State Women's Hockey News

RELEASE DATE: Oct. 26, 2016



2016-17 SCHEDULE/RESULTS

Record: 3-4-1, 2-3-1-1 WCHA

Date	Opponent	Result
SEPT. 23	#1 WISCONSIN*	L, 0-6
SEPT. 24	#1 WISCONSIN*	L, 2-4
SEPT. 30	MERRIMACK #	W, 4-2
OCT. 1	MERRIMACK	L, 1-4
OCT. 7	#7 NORTH DAKOTA*	L, 0-1
OCT. 8	#7 NORTH DAKOTA*	W, 3-2
Oct. 21	at Minnesota State*	T, 2-2
Oct. 22	at Minnesota State*	W, 2-0
Oct. 27	at #2 Minnesota*	7:07 p.m.
Oct. 28	at #2 Minnesota*	7:07 p.m.
NOV. 11	OHIO STATE*	3:07 p.m.
NOV. 12	OHIO STATE*	1:07 p.m.
Nov. 18	at Bemidji State*	3:07 p.m.
Nov. 19	at Bemidji State*	3:07 p.m.

WINDJAMMER CLASSIC (Burlington, Vt.)

Nov. 25	vs. Vermont	4 p.m.
Nov. 26	vs. TBD	TBA

DEC. 2	MINNESOTA-DULUTH*	7:07 p.m.
DEC. 3	MINNESOTA-DULUTH*	3:07 p.m.
Dec. 10	at North Dakota*	2 p.m.
Dec. 11	at North Dakota*	2 p.m.
JAN. 6	COLGATE UNIVERSITY	7:07 p.m.
JAN. 7	COLGATE UNIVERSITY	3:07 p.m.
Jan. 13	at Wisconsin*	TBA
Jan. 14	at Wisconsin*	TBA
JAN. 20	MINNESOTA STATE*	3:07 p.m.
JAN. 21	MINNESOTA STATE*	3:07 p.m.
JAN. 27	MINNESOTA*	7:07 p.m.
JAN. 28	MINNESOTA*	3:07 p.m.
Feb. 3	at Ohio State*	TBA
Feb. 4	at Ohio State*	TBA
FEB. 10	BEMIDJI STATE*	3:07 p.m.
FEB. 11	BEMIDJI STATE*%	3:07 p.m.
Feb. 17	at Minnesota-Duluth*	7:07 p.m.
Feb. 18	at Minnesota-Duluth*	4:07 p.m.

POSTSEASON

Feb. 24	WCHA First Round +	TBA
Feb. 25	WCHA First Round +	TBA
Feb. 26	WCHA First Round +	TBA
March 4	WCHA Final Face-Off \$	TBA
March 5	WCHA Final Face-Off \$	TBA
March 10	NCAA Quarterfinals +	TBA
March 17	NCAA Frozen Four ^	TBA
March 19	NCAA Frozen Four ^	TBA

Home games listed in CAPS. All times are Central.

* - WCHA Game
- Alumni Day
% - Senior Day
+ - Campus Locations
\$ - Ridder Arena, Minneapolis
^ - St. Charles, Mo.

Rankings are based on the USCHO.com poll at the time of the game.

All game times are subject to change

TWITTER: #SCSUWHK

• Official Account: @SCSUHUSKIES_WHK

ST. CLOUD STATE [3-4-1, 2-3-1-1 WCHA] at **No. 2 MINNESOTA** [7-1-0, 5-1-0 WCHA]

Thursday, Oct. 27 & Friday, Oct. 28, 2016

Ridder Arena

Location: Minneapolis

Site: Ridder Arena

Capacity: 3,400

Ice Surface: 200' x 85'

TV: None

Video Stream: BTN2Go (\$)

Radio: None

Audio Stream:

gophersports.com/collegesportslive

All-time Series: UM leads, 72-3-2



MINNESOTA Golden Gophers

Ranking (USCHO.com): No. 2

Record: 7-1-0, 5-1-0 WCHA

Head Coach: Brad Frost

Record (Years): 300-46-22 (10)



ST. CLOUD STATE Huskies

Ranking (USCHO.com): NR

Record: 2-4-0, 1-3-0 WCHA

Head Coach: Eric Rud

Record (Years): 24-40-6 (3)

Last Meeting (Jan. 22-23, 2016): St. Cloud State was swept by Minnesota, losing 7-0 and 4-2 in a two-game set at the Herb Brooks National Hockey Center. Gophers Hannah Brandt (1+4), Dani Cameranesi (2+3), Kelly Pannek (1+4) and Sarah Potomak (2+3) each tallied five points for Minnesota in the series. Among current Huskies, sophomore forwards Hannah Potrykus (0+1) and Suvi Ollikainen (1+0) and senior forward Lauren Hespenheide each collected a point. SCSU goaltender Katie Fitzgerald took the loss both nights.

KEY NOTES TO CONSIDER:

- **SCOUTING THE GOPHERS:** No. 2-ranked Minnesota, the defending NCAA Div. I national champions, has won four straight and seven of eight games this season. The Gophers boast one of the nation's top scorers in sophomore forward Sarah Potomak, who paces the country with eight goals and is tied for sixth with 12 points. The Aldergrove, B.C., native has scored Minnesota's last four game-winning goals and leads the NCAA with five this season.

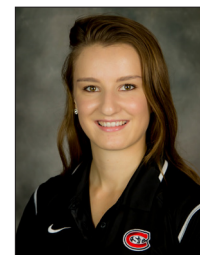
The Gophers have surrendered the first goal of the game in their last six contests, but have come back to win five of those, including the last four. Minnesota's last four wins have come by just one goal. The Gophers were 35-4-1 last season and made their fifth-straight national title game appearance. They defeated Boston College, 3-1, for their second consecutive championship.

- **ALL-TIME SERIES:** St. Cloud State is 72-3-2 all-time against Minnesota. The Huskies are in the midst of a 30-game losing streak to their in-state rival that dates back to the 2009-10 season. SCSU's last win over the Gophers came on Feb. 13, 2010—a 6-3 triumph.
- The Huskies were 0-5-0 against Minnesota last season and were out-scored, 36-2. Senior forward Lauren Hespenheide and sophomore forward Hannah Potrykus each scored a goal for SCSU.
- This series is the second-straight on the road for St. Cloud State, which will play six of its next eight games away from home. It is also the Huskies' fifth and sixth games against a nationally ranked opponent. SCSU is 1-3-0 in such situations this season.
- **LAST TIME OUT:** In its first road series of the season, St. Cloud State took five of six possible points from Minnesota State in Mankato. The opener resulted in a 2-2 tie, but senior forward Kelsey Saelens scored in the eighth round of the shootout to win SCSU an extra point in the standings. In the finale, junior forward Alyssa Erickson and sophomore forward Julia Tylke scored in a 71-second span in the first period and freshman goaltender Janine Alder recorded a 30-save shutout—the first of her career—in a 2-0 Huskies win.

St. Cloud State is unbeaten (2-0-1) in its last three games.

- **SWISS SENSATION:** Through five games this season, Alder has shown poise beyond her years. The Zurich, Switzerland native boasts a .964 save percentage and 1.07 goals-against average, marks which rank third and sixth, respectively, nationally, and first and second in the WCHA. She is 3-1-1 on the season and has been the goalie of record for each of the Huskies' wins.

For her efforts, Alder was named the WCHA's Rookie of the Week for the second time in three weeks. **(cont.)**



ALDER

St. Cloud State Women's Hockey 2016-17 Roster

#	FULL NAME	YR.	POS.	HT.	SH/C	HOMETOWN
1	Janine Alder	FR	G	5-5	L	Zurich, Switzerland
2	Julia Tylke	SO	F	5-5	R	Delafield, Wisconsin
4	Dana Rasmussen	R-FR	F	5-2	R	Kasson, Minnesota
5	Janna Haeg	FR	F	5-6	L	Lakeville, Minnesota
7	Brittney Anderson	JR	D	5-6	R	Hudson, Wisconsin
8	Brooke Kudirka	FR	F	5-11	L	Omaha, Nebraska
9	Lauren Hespenheide*	SR	F	5-0	L	Shakopee, Minnesota
10	Emma Turbyville	JR	D	5-10	R	Chicago, Illinois
11	Caroline Markström	SR	D	5-8	L	Kovland, Sweden
13	Katie Detert	FR	F	5-6	R	Rhineland, Wisconsin
15	Rachel Herzog	FR	D	5-7	R	Oakdale, Minnesota
16	Kelsey Saelens	SR	F	5-7	L	Winnipeg, Manitoba
17	Jenna Redford*	R-SR	D	5-6	L	Soldotna, Alaska
18	Ivy Dynek	SO	F	5-8	L	Northfield, Illinois
19	Payge Pena	SR	F	5-7	R	Maple Ridge, British Columbia
20	Suvi Ollikainen	SO	F	5-3	L	Klaukkala, Finland
21	Christa Moody*	JR	D	5-9	R	Battle Creek, Michigan
22	Kayla Friesen	FR	F	5-7	L	Winnipeg, Manitoba
23	Hannah Potrykus	SO	F	5-6	R	Brighton, Michigan
24	Alexandra Makaric	SR	D	5-11	L	Windsor, Ontario
25	Jordan Stewart	SO	F	5-5	L	Machesney Park, Illinois
27	Alyssa Erickson	JR	F	5-8	L	Mission, British Columbia
29	Taylor Crosby	SO	G	5-6	L	Cole Harbour, Nova Scotia
34	Madeleine Dahl	SR	G	5-7	R	Edina, Minnesota

* 2016-17 Captain

2016-17 Coaches and Staff

Eric Rud	Head Women's Hockey Coach
Steve Macdonald	Assistant Women's Hockey Coach
Jinelle Siergieij	Assistant Women's Hockey Coach
Blake Franti	Women's Hockey Equipment Manager
Emily Fanno	Graduate Assistant Athletic Trainer
Matthew Chapman	Coordinator of Hockey and Video Operations
Jeremiah Minkel	Hockey Equipment Manager
Jocelyn Monge	Women's Hockey Operations and Video Coordinator
Ryan Evans	Graduate Assistant, Athletic Media Relations (SID)

2016-17 By Class

Seniors.....	8
Juniors.....	3
Sophomores.....	7
Freshman.....	6

2016-17 Pronunciations

Detert.....	Dee-tert
Dynek.....	Dye-nick
Hespenheide.....	Hesp-in-hide
Pena.....	Pen-ya
Makaric.....	Mak-rick
Ollikainen.....	Ole-ah-kay-nen
Tylke.....	Till-key
Potrykus.....	Pa-tree-kiss
Saelens.....	Say-lens
Tylke.....	Till-key



Information

To get full information about the 2016-17 SCSU Women's Hockey season, and to purchase tickets, please visit:

www.scsuhuskies.com

For information about the WCHA,
please check out the league website at

www.wcha.com

(Key Notes to Consider cont).

She was also honored Oct. 7-8 after stopping 51 of 52 shots (.982 SV%) in two games against North Dakota.

- SILKY TYLKE:** Sophomore forward Julia Tylke leads the Huskies with six goals and eight points. The Delafield, Wis., native is tied for sixth, nationally, and tied for third among WCHA players in goal scoring.

Tylke, a 2015-16 All-WCHA Rookie Team honoree, is St. Cloud State's top returning scorer, having registered nine goals and 24 points a season ago—the most for an SCSU rookie since the 2006-07 season, when Holly Roberts and Caitlin Hogan scored 35 (18+17) and 29 (12+17) points, respectively.

- EXCEPTIONAL ERICKSON:** Junior forward Alyssa Erickson has two goals and four points in SCSU's last three games, including the game-winning tally in last Saturday's 2-0 win at Minnesota State. The Mission, B.C., native is tied for second on the team with four points.

- OH CAPTAIN, MY CAPTAIN:** Senior forward Lauren Hespenheide has four points (0+4) in eight games this season, which is tied for second on the team. The Huskies' captain had a career day against Merrimack on Sept. 29, tallying three assists and has already equaled her career high in assists (four).

- HOCKEY DAY MINNESOTA:** The WCHA and Fox Sports North announced on Oct. 13 that St. Cloud State and Minnesota State's game on January 21 will be featured on Hockey Day Minnesota. The game will be broadcast live on Fox Sports North Plus from the Herb Brooks National Hockey Center beginning at 3 p.m. This is the first time in Hockey Day Minnesota's 10-year history that an NCAA women's game will be broadcast as part of the festivities.

PRESEASON NOTES:

- WCHA PRESEASON COACHES POLL:** After finishing fifth in the WCHA with a 9-15-4 record and 34 points last season, the conference coaches picked St. Cloud State to finish sixth in the league this season.
- REACHING NEW HEIGHTS:** In his second season behind the bench, head coach Eric Rud led SCSU to 13 wins in 2015-16, which was the program's highest total since winning 15 games in 2009-10.
- ON THE WAY UP:** Seven St. Cloud State players achieved career-high point totals in 2015-16, including six who set new career marks for goals scored.
- HOW MAY I ASSIST YOU?:** Junior defenseman Brittney Anderson led all Huskies, and set a new career high, with 16 assists last season. Her 20 total points were the most for an SCSU rear guard since Danielle Hirsch also scored 20 (2+18) in the 2008-09 season.

Anderson has one goal and one assist through eight games this season.

- BLUE LINE BARRIER:** The Huskies return six of their seven defensemen from last season's group that ranked sixth in the WCHA in scoring defense (3.29 G/GM). SCSU ranked sixth in league play as well, allowing 3.14 goals against per contest.
- SEARCHING FOR SCORING:** St. Cloud State lost nearly 40 percent of its goal scoring to graduation, including Molly Illikainen, who led the team with 17 goals a season ago.
- BATTLE BETWEEN THE PIPES:** Three goaltenders are vying to replace Katie Fitzgerald in the Huskies' crease: Senior Madeleine Dahl, sophomore Taylor Crosby and freshman Janine Alder. Fitzgerald started 34 of 35 games for SCSU last season. Of the goalies on this year's roster, Dahl has the most career starts (13). Prior to last Friday, Dahl's last career start came in 2013-14 with Union College.
- HUSKY PUPPIES:** SCSU welcomes seven newcomers this season: Goaltender Janine Alder; forwards Janna Haeg, Brooke Kudirka, Katie Detert, Kayla Friesen and Dana Rasmussen; and defenseman Rachel Herzog.



Eric Rud

Head Coach • Third Season
Colorado College '97

This season marks Eric Rud's third at the helm of the St. Cloud State women's hockey team.

Rud became the fourth coach in SCSU women's hockey history in 2014-15. Under Rud's tutelage, SCSU's Molly Illikainen and Julia Tylke both gained All-WCHA accolades in 2015-16.

Before leading the Husky women, Rud was an assistant coach for the St. Cloud State (2005-10) and Colorado College (2011-14) men's hockey teams. He was also the head coach and general manager of the USHL's Green Bay Gamblers for the 2010-11 season.

A graduate of Colorado College, Rud was a two-time team captain and two-time WCHA Defensive Player of the Year for the Tigers during his collegiate playing career. He played professional hockey from 1997 to 2002, and served as

a player assistant coach with the Florida Everblades in 1999-00 and with the Idaho Steelheads from 2000-02.

He joined the coaching ranks as an assistant with the USHL's Cedar Rapids Roughriders from 2002-04 and was an assistant coach at Colorado College in 2004-05.

Rud joined Bob Motzko's staff at St. Cloud State in 2005. At SCSU, Rud recruited several Husky standouts including Ryan Lasch, Andreas Nodl, Garrett Roe, Drew LeBlanc, Nick Jensen and Nic Dowd. In Rud's time at St. Cloud State, the Huskies advanced to the NCAA tournament three times and played in the NCAA West Regional title game in 2010.

He has worked extensively with the USA Hockey program throughout his career and served as the head coach of the 2008 USA U-17 boys team in the Slovakia Four Nations Cup and the 2009 USA U-18 boys team at the Czech Republic Ivan Hlinka Cup.

A native of Inver Grove Heights, Minn., Rud prepped at Simley High School. Rud and his wife Amy reside in St. Cloud and have three children: Sam, Gabbie and Max.

Eric Rud's Record at SCSU:

Year	Overall	Conference	Postseason
2016-17	3-4-1	2-3-1	-
2015-16	13-18-4	9-15-4 WCHA/5th	0-2
2014-15	8-28-1	5-22-1 WCHA/7th	0-2
Overall	24-50-6	16-40-6	0-4

St. Cloud State Assistant Coaches



Steve
Macdonald
Thrd Season



Jinelle
Siergiej
Thrd Season



2016-17 WCHA Standings (Oct. 27, 2016)

	GP	Record	Pts	GF-GA
1. Wisconsin	6	5-0-1-1	17	21-5
2. Minnesota	6	5-1-0-0	15	15-11
3. Minn. Duluth	6	3-2-1-1	11	19-12
4. North Dakota	6	3-3-0-0	9	15-13
5. St. Cloud State	6	2-3-1-1	8	9-15
6. Bemidji State	6	2-3-1-0	7	12-12
7. Ohio State	6	1-4-1-0	4	8-14
8. Minnesota State	6	0-5-1-0	1	6-23

USCHO.com Div. I Women's Poll (Oct. 24, 2016)

	Record	Pts	Previous
1. Wisconsin (15)	7-0-1	150	1
2. Minnesota	7-1-0	135	2
3. Minnesota-Duluth	4-2-2	109	4
4. Boston College	4-2-2	91	6
5. Quinnipiac	5-2-1	78	3
6. Colgate	5-0-1	73	5
7. St. Lawrence	5-0-1	72	7
8. Clarkson	4-3-1	42	8
9. Princeton	2-0-0	31	NR
10. Bemidji State	4-3-1	23	10

RV: North Dakota (15), Northeastern (4), Cornell (1), Ohio State (1)

2016-17 USA Today/USA Hockey Magazine Div. I Women's Poll (Oct. 25, 2016)

	Record	Pts	Previous
1. Wisconsin (19)	7-0-1	190	1
2. Minnesota	7-1-0	171	2
3. Minnesota Duluth	4-2-2	139	4
4. Quinnipiac	5-2-1	114	3
5. Boston College	4-2-2	108	7
6. St. Lawrence	5-0-1	93	6
7. Colgate	5-0-1	89	5
8. Clarkson	4-3-1	55	8
9. Princeton	2-0-0	38	NR
10. Bemidji State	4-3-1	27	9

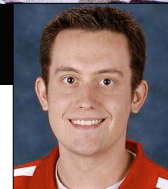
RV: North Dakota (12), Northeastern (4), Ohio State (4), Cornell (1)

St. Cloud State – Minnesota Comparison (Per game averages)

SCSU		UM
14 (1.75)	Goals For	24 (3.00)
21 (2.62)	Goals Against	13 (1.62)
-7 (-0.88)	Goal Differential	+11 (+1.38)
9.7% (3/31)	Power Play	22.7% (5/22)
80.6% (25/31)	Penalty Kill	88.0% (22/25)



HUSKIES INSIDER



By Ryan Evans  @SCSUHUSKIES_WHK



Alder has been a revelation in goal

The Switzerland native has made a seamless transition to the women's game

One of the biggest—if not the biggest—questions facing the St. Cloud State women's hockey team coming into the season was who would take the reins in goal. With the start she has enjoyed, freshman Janine Alder has played like the answer.

Alder has shown poise beyond her 21 years to start her career. She boasts a .964 save percentage and a 1.07 goals-against average in five games, marks that both rank among the top six in the country and top two in the WCHA, and has been the goalie of record for each of SCSU's three wins.

The Zurich, Switzerland native has made a quick transition to the women's game after playing her entire career with men's teams in Europe. She has made it look easy so far, but making that switch, especially for goaltenders, is

anything but for many players.

"I was used to the speed and physicality of men's hockey and have had to adjust to women's hockey, which is a much more tactical game," Alder said. "I had to adjust to taking shots a little bit softer. For a goalie, it is a totally different sport and pace of play."

Alder is not your typical freshman. She is a few years older than her and has already experienced the sport's highest level—winning a bronze medal with Switzerland at the 2014 Olympics in Sochi, Russia. Still, head coach Eric Rud said after she arrived in St. Cloud this summer, it took Alder a few weeks to get comfortable. Now that she is, the Huskies are reaping the rewards.

"The last couple of games have shown she has made that adjustment pretty well," Rud said.

It was Alder's "outstanding" footwork that caught Rud's eye during the recruiting process and it is part of the reason he believes she has acclimated to the women's game so quickly.

"Her fundamentals are so good," Rud said. "That is the number one reason we recruited her and believed she could be a good player at this level."

"She is really precise, very quick and is a tremendous skater."

Alder's maturity has kept the big moments from becoming overwhelming. She will be put to the test in the WCHA, but has shown she is up to the task.

"Women's hockey here is the best I have ever seen," Alder said. "Players here are so competitive and work so hard. It is so close to the men's hockey that I am used to."



2016-17 St. Cloud State University Women's Hockey Roster

No.	Name	Pos	S/C	Cl.	Ht.	Hometown
1	Janine Adler	G	L	Fr.	5-5	Zurich, Switzerland
2	Julia Tylke	F	R	So.	5-5	Delafield, Wis.
4	Dana Rasmussen	F	R	So.	5-2	Kasson, Minn.
5	Janna Haeg	F	L	Fr.	5-6	Lakeville, Minn.
7	Brittney Anderson	D	R	Jr.	5-6	Hudson, Wis.
8	Brooke Kudirka	F	L	Fr.	5-11	Omaha, Neb.
9	Lauren Hespenheide (C)	F	L	Sr.	5-10	Shakopee, Minn.
10	Emma Turbyville	D	R	Jr.	5-10	Chicago, Ill.
11	Caroline Markstrom	D	L	Sr.	5-8	Kovland, Sweden
13	Katie Detert	F	R	Fr.	5-6	Rhineland, Wisc.
15	Rachel Herzog	D	R	Fr.	5-7	Oakdale, Minn.
16	Kelsey Saelens	F	L	Sr.	5-7	Winnipeg, Manitoba
17	Jenna Redford (A)	D	L	R-Sr.	5-6	Soldotna, Alaska
18	Ivy Dynek	F	L	So.	5-8	Northfield, Ill.
19	Payge Pena	F	R	Sr.	5-7	Maple Ridge, British Columbia
20	Suvi Ollikainen	F	L	So.	5-3	Klaukkala, Finland
21	Christa Moody (A)	D	R	Sr.	5-9	Battle Creek, Mich.
22	Kayla Friesen	F	L	Fr.	5-7	Winnipeg, Manitoba
23	Hannah Potrykus	F	R	So.	5-6	Brighton, Mich.
24	Alex Makaric	D	L	Sr.	5-11	Windsor, Ontario
25	Jordan Stewart	F	L	So.	5-5	Machesney Park, Ill.
27	Alyssa Erickson	F	L	Jr.	5-8	Mission, British Columbia
29	Taylor Crosby	G	L	So.	5-6	Cole Harbour, Nova Scotia
34	Madeleine Dahl	G	L	Sr.	5-7	Edina, Minn.

Head Coach: Eric Rud (Third Season)

Assistant Coaches: Steve Macdonald and Jinelle Siergiej

Athletic Trainer: Emily Fanno

AMR Women's Hockey Contact: Ryan Evans

Coordinator of Hockey & Video Ops: Matt Chapman

Equipment Manager: Jeremiah Minkel

Student Equipment Manager: Blake Frantti

Video Coordinator: Jocelyn Monge

Strength and Conditioning Coach: Travis Zins

BY CLASS

Seniors.....	8
Juniors.....	3
Sophomores.....	6
Freshmen.....	7

2016-17 PRONUNCIATIONS

Saelens.....	Say-lens
Hespenheide.....	Hesp-in-hide
Makaric.....	Mack-rick
Pena.....	Pen-ya
Ollikainen.....	Ole-a-kay-nin
Tylke.....	Till-Key
Potrykus.....	Pa-tree-kiss



St. Cloud State Hockey
St. Cloud State Combined Team Statistics (as of Oct 26, 2016)
All games

Date	Opponent		Score	Att.
* Sep 23	#1 WISCONSIN	L	0-6	221
* Sep 24	#1 WISCONSIN	L	2-4	305
Sep 29	MERRIMACK	W	4-2	341
Oct 01	MERRIMACK	L	1-4	392
* Oct 07	#7 NORTH DAKOTA	L	0-1	455
* Oct 08	#7 NORTH DAKOTA	W	3-2	358
* Oct 21	at Minnesota State	To2	2-2	150
* Oct 22	at Minnesota State	W	2-0	200

TEAM STATISTICS	SCSU	OPP
SHOT STATISTICS		
Goals-Shot attempts	14-179	21-264
Shot pct.	.078	.080
Goals/Game	1.8	2.6
Shots/Game	22.4	33.0
POWER PLAYS		
Goals-Power Plays	3-31	6-31
Conversion Percent	.097	.194
Shot Attempts	36	61
Shot Percent	.083	.098
GOAL BREAKDOWN		
Power Play	3	6
Short-handed	0	1
Empty net	0	3
Penalty	0	0
Unassisted	2	1
Overtime	0	0
Shootout	0	0
Delayed Penalty	0	0
PENALTIES		
Number	34	33
Minutes	68	69
Penalties/Game	4.2	4.1
Pen minutes/Game	8.5	8.6
SHOOTOUTS (Made-Att)	2-8	1-8

Record:	Overall	Home	Away	Neutral
ALL GAMES	3-4-1	2-4-0	1-0-1	0-0-0
CONFERENCE	2-3-1	1-3-0	1-0-1	0-0-0
NON-CONFERENCE	1-1-0	1-1-0	0-0-0	0-0-0

##	Player	gp	g	a	pts	sh	sh%	pen-min	pp	sh
2	Julia Tylke	8	6	2	8	22	.273	1-2	2	0
27	Alyssa Erickson	8	2	2	4	15	.133	2-4	0	0
9	Lauren Hespenheide	8	0	4	4	17	.000	1-2	0	0
7	Brittney Anderson	8	1	1	2	14	.071	2-4	1	0
19	Payge Pena	8	1	1	2	5	.200	1-2	0	0
16	Kelsey Saelens	8	1	1	2	16	.062	1-2	0	0
8	Brooke Kudirka	8	0	2	2	12	.000	1-2	0	0
20	Suvi Ollikainen	8	0	2	2	3	.000	2-4	0	0
17	Jenna Redford	8	0	2	2	3	.000	1-2	0	0
22	Kayla Friesen	8	1	0	1	16	.062	6-12	0	0
23	Hannah Potrykus	8	1	0	1	21	.048	2-4	0	0
25	Jordan Stewart	7	1	0	1	4	.250	1-2	0	0
1	Janine Alder	5	0	1	1	0	.000	0-0	0	0
18	Ivy Dynek	7	0	1	1	1	.000	0-0	0	0
5	Janna Haeg	8	0	1	1	7	.000	1-2	0	0
15	Rachel Herzog	8	0	1	1	2	.000	3-6	0	0
21	Christa Moody	8	0	1	1	9	.000	3-6	0	0
10	Emma Turbyville	8	0	1	1	7	.000	2-4	0	0
13	Katie Detert	2	0	0	0	1	.000	0-0	0	0
11	Caroline Markstrom	8	0	0	0	4	.000	3-6	0	0
TM	TEAM	5	0	0	0	0	.000	1-2	0	0
Total		8	14	23	37	179	.078	34-68	3	0
Opponents		8	21	31	52	264	.080	33-69	6	1

##	Goalie	gp	min	ga	gaavg	saves	save%	w-l-t
1	Janine Alder	5	281:10	5	1.07	132	.964	3-1-1
29	Taylor Crosby	3	139:37	7	3.01	83	.922	0-2-0
34	Madeleine Dahl	1	60:00	6	6.00	28	.824	0-1-0
TM	EMPTY NET	5	4:13	3	-	0	.000	0-0-0
Total		8	485:00	21	2.60	243	.920	3-4-1
Opponents		8	485:00	14	1.73	165	.922	4-3-1

Attendance Summary	SCSU	Opponent
Total	2072	350
Dates/Avg Per Date	6/345	2/175
Neutral Site #/Avg	0/0	

Goals by Period	1st	2nd	3rd	Total
St. Cloud State	5	6	3	14
Opponents	5	7	9	21

Saves by Period	1st	2nd	3rd	Total
St. Cloud State	90	87	64	243
Opponents	52	64	48	165

St. Cloud State Hockey
St. Cloud State Category Leaders (as of Oct 26, 2016)
All games

## Points	GP	G	A	Pts	Sh
2 Julia Tylke	8	6	2	8	22
27 Alyssa Erickson	8	2	2	4	15
9 Lauren Hespenheide	8	0	4	4	17
7 Brittney Anderson	8	1	1	2	14
19 Payge Pena	8	1	1	2	5
16 Kelsey Saelens	8	1	1	2	16
8 Brooke Kudirka	8	0	2	2	12
20 Suvi Ollikainen	8	0	2	2	3
17 Jenna Redford	8	0	2	2	3
22 Kayla Friesen	8	1	0	1	16

## Goals	GP	G	A	Pts	Sh
2 Julia Tylke	8	6	2	8	22
27 Alyssa Erickson	8	2	2	4	15
7 Brittney Anderson	8	1	1	2	14
19 Payge Pena	8	1	1	2	5
16 Kelsey Saelens	8	1	1	2	16
22 Kayla Friesen	8	1	0	1	16
23 Hannah Potrykus	8	1	0	1	21
25 Jordan Stewart	7	1	0	1	4

## Power-Play Goals	GP	PPG
2 Julia Tylke	8	2

## Short-Handed Goals	GP	SHG
------------------------------	-----------	------------

## Game-Winning Goals	GP	GWG
27 Alyssa Erickson	8	1
16 Kelsey Saelens	8	1
25 Jordan Stewart	7	1

## Plus/Minus	GP	+/-
2 Julia Tylke	8	+3
8 Brooke Kudirka	8	+2
9 Lauren Hespenheide	8	+1

## Assists	GP	G	A	Pts	Sh
9 Lauren Hespenheide	8	0	4	4	17
2 Julia Tylke	8	6	2	8	22
27 Alyssa Erickson	8	2	2	4	15
8 Brooke Kudirka	8	0	2	2	12
20 Suvi Ollikainen	8	0	2	2	3
17 Jenna Redford	8	0	2	2	3
7 Brittney Anderson	8	1	1	2	14
19 Payge Pena	8	1	1	2	5
16 Kelsey Saelens	8	1	1	2	16
1 Janine Alder	5	0	1	1	0

## Shots	GP	G	A	Pts	Sh	Sh%
2 Julia Tylke	8	6	2	8	22	.273
23 Hannah Potrykus	8	1	0	1	21	.048
9 Lauren Hespenheide	8	0	4	4	17	.000
16 Kelsey Saelens	8	1	1	2	16	.062
22 Kayla Friesen	8	1	0	1	16	.062
27 Alyssa Erickson	8	2	2	4	15	.133
7 Brittney Anderson	8	1	1	2	14	.071
8 Brooke Kudirka	8	0	2	2	12	.000
21 Christa Moody	8	0	1	1	9	.000
5 Janna Haeg	8	0	1	1	7	.000

## Shot Pct.	GP	G	A	Pts	Sh	Sh%
2 Julia Tylke	8	6	2	8	22	.273
25 Jordan Stewart	7	1	0	1	4	.250
19 Payge Pena	8	1	1	2	5	.200
27 Alyssa Erickson	8	2	2	4	15	.133
7 Brittney Anderson	8	1	1	2	14	.071
22 Kayla Friesen	8	1	0	1	16	.062
16 Kelsey Saelens	8	1	1	2	16	.062
23 Hannah Potrykus	8	1	0	1	21	.048
9 Lauren Hespenheide	8	0	4	4	17	.000
20 Suvi Ollikainen	8	0	2	2	3	.000

## Penalties	GP	Pen	Min
22 Kayla Friesen	8	6	12
21 Christa Moody	8	3	6
15 Rachel Herzog	8	3	6
11 Caroline Markstrom	8	3	6
20 Suvi Ollikainen	8	2	4
10 Emma Turbyville	8	2	4
27 Alyssa Erickson	8	2	4
23 Hannah Potrykus	8	2	4
7 Brittney Anderson	8	2	4
TM TEAM	5	1	2

## Penalty Minutes	GP	Pen	Min
22 Kayla Friesen	8	6	12
15 Rachel Herzog	8	3	6
11 Caroline Markstrom	8	3	6
21 Christa Moody	8	3	6
20 Suvi Ollikainen	8	2	4
10 Emma Turbyville	8	2	4
27 Alyssa Erickson	8	2	4
23 Hannah Potrykus	8	2	4
7 Brittney Anderson	8	2	4
2 Julia Tylke	8	1	2



2016-17 St. Cloud State Women's Hockey Roster & Coaching Staff



Janine
Adler



Julia
Tylke



Dana
Rasmussen



Janna
Haeg



Brittney
Anderson



Brooke
Kudirka



Lauren
Hespenheide



Emma
Turbyville



Caroline
Markstrom



Katie
Detert



Rachel
Herzog



Kelsey
Saelens



Jenna
Redford



Ivy
Dynek



Payge
Pena



Suvi
Ollikainen



Christa
Moody



Kayla
Friesen



Hannah
Potrykus



Alex
Makaric



Jordan
Stewart



Alyssa
Erickson



Taylor
Crosby



Madeleine
Dahl



Asst. Coach
Jinelle Siergi



Head Coach
Eric Rud



Asst. Coach
Steve Macdonald