



ST. CLOUD STATE HUSKIES

WOMEN'S HOCKEY

Contact: Ryan Evans — Phone: 952-594-136 — Email: rmevans@stcloudstate.com

2016-17 St. Cloud State Women's Hockey News
RELEASE DATE: Oct. 19, 2016



2016-17 SCHEDULE/RESULTS

Record: 2-4-0, 1-3-0 WCHA

Date	Opponent	Result
SEPT. 23	#1 WISCONSIN*	L, 0-6
SEPT. 24	#1 WISCONSIN*	L, 2-4
SEPT. 30	MERRIMACK #	W, 4-2
OCT. 1	MERRIMACK	L, 1-4
OCT. 7	#7 NORTH DAKOTA*	L, 0-1
OCT. 8	#7 NORTH DAKOTA*	W, 3-2
Oct. 21	at Minnesota State*	7:07 p.m.
Oct. 22	at Minnesota State*	3:07 p.m.
Oct. 27	at Minnesota*	7:07 p.m.
Oct. 28	at Minnesota*	7:07 p.m.
NOV. 11	OHIO STATE*	3:07 p.m.
NOV. 12	OHIO STATE*	1:07 p.m.
Nov. 18	at Bemidji State*	3:07 p.m.
Nov. 19	at Bemidji State*	3:07 p.m.

WINDJAMMER CLASSIC (Burlington, Vt.)

Nov. 25	vs. Vermont	4 p.m.
Nov. 26	vs. TBD	TBA

DEC. 2	MINNESOTA-DULUTH*	7:07 p.m.
DEC. 3	MINNESOTA-DULUTH*	3:07 p.m.
Dec. 10	at North Dakota*	2 p.m.
Dec. 11	at North Dakota*	2 p.m.
JAN. 6	COLGATE UNIVERSITY	7:07 p.m.
JAN. 7	COLGATE UNIVERSITY	3:07 p.m.
Jan. 13	at Wisconsin*	TBA
Jan. 14	at Wisconsin*	TBA
JAN. 20	MINNESOTA STATE*	3:07 p.m.
JAN. 21	MINNESOTA STATE*	3:07 p.m.
JAN. 27	MINNESOTA*	7:07 p.m.
JAN. 28	MINNESOTA*	3:07 p.m.
Feb. 3	at Ohio State*	TBA
Feb. 4	at Ohio State*	TBA
FEB. 10	BEMIDJI STATE*	3:07 p.m.
FEB. 11	BEMIDJI STATE*%	3:07 p.m.
Feb. 17	at Minnesota-Duluth*	7:07 p.m.
Feb. 18	at Minnesota-Duluth*	4:07 p.m.

POSTSEASON

Feb. 24	WCHA First Round +	TBA
Feb. 25	WCHA First Round +	TBA
Feb. 26	WCHA First Round +	TBA
March 4	WCHA Final Face-Off \$	TBA
March 5	WCHA Final Face-Off \$	TBA
March 10	NCAA Quarterfinals +	TBA
March 17	NCAA Frozen Four ^	TBA
March 19	NCAA Frozen Four ^	TBA

Home games listed in CAPS. All times are Central.

* - WCHA Game
- Alumni Day
% - Senior Day
+ - Campus Locations
\$ - Ridder Arena, Minneapolis
^ - St. Charles, Mo.

Rankings are based on the USCHO.com poll at the time of the game.

All game times are subject to change

TWITTER: #SCSUWHK

• Official Account: @SCSUHUSKIES_WHK

ST. CLOUD STATE (2-4-0, 1-3-0 WCHA) at **MINNESOTA STATE** (2-4-0, 0-4-0 WCHA)
Friday, Oct. 21 & Saturday, Oct. 22, 2016

Verizon Wireless Center

Location: Mankato, Minn.

Site: Verizon Wireless Center

Capacity: 5,280

Ice Surface: 200' x 90'

TV: None

Video Stream: scsuhuskies.com/live

Radio: None

Audio Stream: None

All-time Series: SCSU leads, 34-30-9

In Mankato: xxx



MINNESOTA STATE Mavericks
Ranking (USCHO.com): NR
Record: 2-4-0, 0-4-0 WCHA
Head Coach: John Harrington
Record (Years): 5-33-4 (2)



ST. CLOUD STATE Huskies
Ranking (USCHO.com): NR
Record: 2-4-0, 1-3-0 WCHA
Head Coach: Eric Rud
Record (Years): 23-40-5 (2)

Last Meeting (Jan. 8-9, 2016): St. Cloud State took five of a possible six points against the Mavericks in Mankato, beating MSU, 4-3, in overtime before closing out the series with a 1-1 tie. The Huskies prevailed in the shootout, 2-1, to earn the extra point in the WCHA standings. Forward Molly Illikainen scored the OT-winner in the series opener. Five different SCSU players scored in the series, including returning forwards Alyssa Erickson and Hannah Potrykus.

KEY NOTES TO CONSIDER:

- **SCOUTING THE MAVERICKS:** After winning its first two games of the season against RIT, Minnesota State has lost its last four games—all against WCHA foes. The Mavericks have been out-scored, 19-4, through their first two weekends of WCHA play. Minnesota State was swept, 6-0 and 4-3, at North Dakota in its most recent outings. Sophomore defender Megan Hinze scored twice in the series. Junior blue liner Anna Keys leads the team with three points (0+3) in six games.

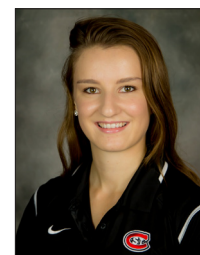
In 2015-16, Minnesota State's first under head coach John Harrington, it finished with a 3-29-4 record and a 0-25-3 mark in WCHA play. The Mavericks were swept by No. 1-seeded Wisconsin in the first round of the WCHA playoffs. St. Cloud State was unbeaten (3-0-1) against MSU last season, taking 11 of a possible 12 points.

- St. Cloud State is 34-30-9 (.527) all-time against Minnesota State—its best mark against a WCHA rival. SCSU is unbeaten in seven of its last eight games against the Mavericks (5-1-2).
- Sophomore forward Julia Tylke has six points (3+3) in four career games against Minnesota State—which led all Huskies against MSU last season.
- After playing its first six games within the friendly confines of the Herb Brooks National Hockey Center, SCSU will be on the road for its next four games and six of its next eight contests starting with this weekend in Mankato.
- **LAST TIME OUT:** St. Cloud State is returning from a bye week. In their last series, the Huskies split with No. 6/7 North Dakota at home. SCSU fell, 1-0, on a short-handed goal in the opener before coming back to beat the Fighting Hawks, 3-2, in the finale. Senior forward Kelsey Saelens scored the game-winning goal in the third period to complete the comeback. Freshman goaltender Janine Alder earned the win after coming in off the bench early in the second period and stopping all 21 shots she faced.

The win over UND was the Huskies' first since beating then-No. 9 North Dakota, 1-0, on Feb. 12, 2016 in Grand Forks, N.D.

- **SWISS SENSATION:** Through three games this season, freshman goaltender Janine Alder has shown poise beyond her years. The Zurich, Switzerland native boasts a .962 save percentage and 1.15 goals-against average through three games played, the former of which ranks second, nationally.

Alder was named the WCHA's Rookie of the Week for Oct. 7-8 after stopping 51 of 52 shots (.982 SV%) in two games against North Dakota.
(cont.)



ALDER

St. Cloud State Women's Hockey 2016-17 Roster

#	FULL NAME	YR.	POS.	HT.	SH/C	HOMETOWN
1	Janine Alder	FR	G	5-5	L	Zurich, Switzerland
2	Julia Tylke	SO	F	5-5	R	Delafield, Wisconsin
4	Dana Rasmussen	R-FR	F	5-2	R	Kasson, Minnesota
5	Janna Haeg	FR	F	5-6	L	Lakeville, Minnesota
7	Brittney Anderson	JR	D	5-6	R	Hudson, Wisconsin
8	Brooke Kudirka	FR	F	5-11	L	Omaha, Nebraska
9	Lauren Hespeneheide*	SR	F	5-0	L	Shakopee, Minnesota
10	Emma Turbyville	JR	D	5-10	R	Chicago, Illinois
11	Caroline Markström	SR	D	5-8	L	Kovland, Sweden
13	Katie Detert	FR	F	5-6	R	Rhineland, Wisconsin
15	Rachel Herzog	FR	D	5-7	R	Oakdale, Minnesota
16	Kelsey Saelens	SR	F	5-7	L	Winnipeg, Manitoba
17	Jenna Redford*	R-SR	D	5-6	L	Soldotna, Alaska
18	Ivy Dynek	SO	F	5-8	L	Northfield, Illinois
19	Payge Pena	SR	F	5-7	R	Maple Ridge, British Columbia
20	Suvi Ollikainen	SO	F	5-3	L	Klaukkala, Finland
21	Christa Moody*	JR	D	5-9	R	Battle Creek, Michigan
22	Kayla Friesen	FR	F	5-7	L	Winnipeg, Manitoba
23	Hannah Potrykus	SO	F	5-6	R	Brighton, Michigan
24	Alexandra Makaric	SR	D	5-11	L	Windsor, Ontario
25	Jordan Stewart	SO	F	5-5	L	Machesney Park, Illinois
27	Alyssa Erickson	JR	F	5-8	L	Mission, British Columbia
29	Taylor Crosby	SO	G	5-6	L	Cole Harbour, Nova Scotia
34	Madeleine Dahl	SR	G	5-7	R	Edina, Minnesota

* 2016-17 Captain

2016-17 Coaches and Staff

Eric Rud	Head Women's Hockey Coach
Steve Macdonald	Assistant Women's Hockey Coach
Jinelle Siergieij	Assistant Women's Hockey Coach
Blake Franti	Women's Hockey Equipment Manager
Emily Fanno	Graduate Assistant Athletic Trainer
Matthew Chapman	Coordinator of Hockey and Video Operations
Jeremiah Minkel	Hockey Equipment Manager
Jocelyn Monge	Women's Hockey Operations and Video Coordinator
Ryan Evans	Graduate Assistant, Athletic Media Relations (SID)

2016-17 By Class

Seniors.....	8
Juniors.....	3
Sophomores.....	7
Freshman.....	6

2016-17 Pronunciations

Detert.....	Dee-tert
Dynek.....	Dye-nick
Hespeneheide.....	Hesp-in-hide
Pena.....	Pen-ya
Makaric.....	Mak-rick
Ollikainen.....	Ole-ah-kay-nen
Tylke.....	Till-key
Potrykus.....	Pa-tree-kiss
Saelens.....	Say-lens
Tylke.....	Till-key



Information

To get full information about the 2016-17 SCSU Women's Hockey season, and to purchase tickets, please visit:

www.scsuhuskies.com

For information about the WCHA,
please check out the league website at

www.wcha.com

(Key Notes to Consider cont).

- SILKY TYLKE:** Sophomore forward Julia Tylke has accounted for five of SCSU's 10 goals this season. The Delafield, Wis., native has five goals in her last five games and is tied for sixth, nationally, and tied for second among WCHA players in goal scoring.

Tylke, a 2015-16 All-WCHA Rookie Team honoree, is St. Cloud State's top returning scorer, having registered nine goals and 24 points a season ago—the most for an SCSU rookie since the 2006-07 season, when Holly Roberts and Caitlin Hogan scored 35 (18+17) and 29 (12+17) points, respectively.

- HOCKEY DAY MINNESOTA:** The WCHA and Fox Sports North announced on Oct. 13 that St. Cloud State and Minnesota State's game on January 21 will be featured on Hockey Day Minnesota. The game will be broadcast live on Fox Sports North Plus from the Herb Brooks National Hockey Center beginning at 3 p.m. This is the first time in Hockey Day Minnesota's 10-year history that an NCAA women's game will be broadcast as part of the festivities.

The league also announced its first-ever extended women's hockey television package in partnership with FSN. The Huskies will have a league-high six of its 2016-17 contests broadcast live on the network.

- OH CAPTAIN, MY CAPTAIN:** Senior forward Lauren Hespeneheide has four points (0+4) in six games this season. The Huskies' captain had a career day against Merrimack on Sept. 29, tallying three assists and has already equaled her career high in assists (four).

PRESEASON NOTES:

- WCHA PRESEASON COACHES POLL:** After finishing fifth in the WCHA with a 9-15-4 record and 34 points last season, the conference coaches picked St. Cloud State to finish sixth in the league this season.
- REACHING NEW HEIGHTS:** In his second season behind the bench, head coach Eric Rud led SCSU to 13 wins in 2015-16, which was the program's highest total since winning 15 games in 2009-10.
- ON THE WAY UP:** Seven St. Cloud State players achieved career-high point totals in 2015-16, including six who set new career marks for goals scored.
- HOW MAY I ASSIST YOU?:** Junior defenseman Brittney Anderson led all Huskies, and set a new career high, with 16 assists last season. Her 20 total points were the most for an SCSU rear guard since Danielle Hirsch also scored 20 (2+18) in the 2008-09 season.

Anderson has one goal and one assist through six games this season.

- BLUE LINE BARRIER:** The Huskies return six of their seven defensemen from last season's group that ranked sixth in the WCHA in scoring defense (3.29 G/GM). SCSU ranked sixth in league play as well, allowing 3.14 goals against per contest.
- SEARCHING FOR SCORING:** St. Cloud State lost nearly 40 percent of its goal scoring to graduation, including Molly Illikainen, who led the team with 17 goals a season ago.
- BATTLE BETWEEN THE PIPES:** Three goaltenders are vying to replace Katie Fitzgerald in the Huskies' crease: Senior Madeleine Dahl, sophomore Taylor Crosby and freshman Janine Alder.

Fitzgerald started 34 of 35 games for SCSU last season. Of the goalies on this year's roster, Dahl has the most career starts (13). Prior to last Friday, Dahl's last career start came in 2013-14 with Union College.

- HUSKY PUPPIES:** SCSU welcomes seven newcomers this season: Goaltender Janine Alder; forwards Janna Haeg, Brooke Kudirka, Katie Detert, Kayla Friesen and Dana Rasmussen; and defenseman Rachel Herzog.



Eric Rud

Head Coach • Third Season
Colorado College '97

This season marks Eric Rud's third at the helm of the St. Cloud State women's hockey team.

Rud became the fourth coach in SCSU women's hockey history in 2014-15. Under Rud's tutelage, SCSU's Molly Illikainen and Julia Tylke both gained All-WCHA accolades in 2015-16.

Before leading the Husky women, Rud was an assistant coach for the St. Cloud State (2005-10) and Colorado College (2011-14) men's hockey teams. He was also the head coach and general manager of the USHL's Green Bay Gamblers for the 2010-11 season.

A graduate of Colorado College, Rud was a two-time team captain and two-time WCHA Defensive Player of the Year for the Tigers during his collegiate playing career. He played professional hockey from 1997 to 2002, and served as

a player assistant coach with the Florida Everblades in 1999-00 and with the Idaho Steelheads from 2000-02.

He joined the coaching ranks as an assistant with the USHL's Cedar Rapids Roughriders from 2002-04 and was an assistant coach at Colorado College in 2004-05.

Rud joined Bob Motzko's staff at St. Cloud State in 2005. At SCSU, Rud recruited several Husky standouts including Ryan Lasch, Andreas Nodl, Garrett Roe, Drew LeBlanc, Nick Jensen and Nic Dowd. In Rud's time at St. Cloud State, the Huskies advanced to the NCAA tournament three times and played in the NCAA West Regional title game in 2010.

He has worked extensively with the USA Hockey program throughout his career and served as the head coach of the 2008 USA U-17 boys team in the Slovakia Four Nations Cup and the 2009 USA U-18 boys team at the Czech Republic Ivan Hlinka Cup.

A native of Inver Grove Heights, Minn., Rud prepped at Simley High School. Rud and his wife Amy reside in St. Cloud and have three children: Sam, Gabbie and Max.

Eric Rud's Record at SCSU:

Year	Overall	Conference	Postseason
2016-17	2-4-0	1-3-0	-
2015-16	13-18-4	9-15-4 WCHA/5th	0-2
2014-15	8-28-1	5-22-1 WCHA/7th	0-2
Overall	23-50-5	15-40-5	0-4

St. Cloud State Assistant Coaches



Steve
Macdonald
Thrd Season



Jinelle
Siergiej
Thrd Season



2016-17 WCHA Standings (Oct. 17, 2016)

	GP	Record	Pts	GF-GA
1. Wisconsin	4	3-0-1	11	14-3
2. Minnesota	4	3-1-0	9	10-8
North Dakota	4	3-1-0	9	13-6
4. Bemidji State	4	2-2-0	6	8-7
Minn. Duluth	4	2-2-0	6	14-8
6. Ohio State	4	1-2-1	4	5-9
7. St. Cloud State	4	1-3-0	3	5-13
8. Minnesota State	4	0-4-0	0	4-19

USCHO.com Div. I Women's Poll (Oct. 17, 2016)

	Record	Pts	Previous
1. Wisconsin (15)	5-0-1	150	1
2. Minnesota	5-1-0	133	3
3. Quinnipiac	5-1-0	115	2
4. Minnesota Duluth	3-2-1	93	4
5. Colgate	4-0-0	80	6
6. Boston College	3-2-1	62	5
7. St. Lawrence	3-0-1	56	9
8. Clarkson	2-3-1	46	7
9. North Dakota	4-1-1	31	10
10. Bemidji State	4-2-0	30	8

RV: Princeton (14), Boston University (8), Robert Morris (4), Ohio State (2), Mercyhurst (1)

2016-17 USA Today/USA Hockey Magazine Div. I Womemn's Poll (Oct. 18, 2016)

	Record	Pts	Previous
1. Wisconsin (19)	5-0-1	190	1
2. Minnesota	5-1-0	170	2
3. Quinnipiac	5-1-0	143	3
4. Minnesota Duluth	3-2-1	112	4
5. Colgate	4-0-0	104	6
6. St. Lawrence	3-0-1	79	9
7. Boston College	3-2-1	70	5
8. Clarkson	2-3-1	59	7
9. Bemidji State	4-2-0	39	8
10. North Dakota	4-1-1	36	10

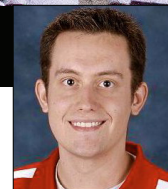
RV: Princeton (17), Robert Morris (11), Boston University (8), Ohio State (5), Mercyhurst (2)

St. Cloud State – Minnesota State Comparison (Per game averages)

SCSU		MSU
10 (1.67)	Goals For	8 (1.33)
19 (3.17)	Goals Against	21 (3.50)
-9 (-1.50)	Goal Differential	-13 (-2.17)
9.5% (2/21)	Power Play	14.3% (2/14)
71.4% (15/21)	Penalty Kill	80% (12/15)



HUSKIES INSIDER



By Ryan Evans  @SCSUHUSKIES_WHK



Huskies helping to grow the game

St. Cloud State spent its bye week working with youth players in Central Minnesota

For a rapidly growing sport like girls' hockey, providing young players with positive role models to look up to is imperative for keeping them involved in the sport, which is a responsibility the St. Cloud State women's team gladly embraces.

During their bye week, the Huskies participated in the the sixth annual International Ice Hockey Federation (IIHF) World Girls' Ice Hockey Weekend, Oct. 8-9, which celebrates the strides girls' hockey has made both in participation and player development. It also offers new families an opportunity to try hockey in a fun and safe environment.

"They were loving it," senior defenseman Caroline Markstrom said. "They would try to get the puck and be falling over as we were dangling around them."

"It's a big deal for them, but it is also fun for us."

SCSU players skated alongside new players in the Sartell and River Lakes youth associations—the impact of which was not lost on them.

"We're role models for them," redshirt freshman forward Dana Rasmussen said. "By being involved, we're setting a great example."

"They were having a great time," she added. "There is nothing better than seeing a little kid smile."

Girls' hockey is one of the fastest growing sports in the world and Markstrom said opportunities to get to know youth players in the community, and be on the ice with them, are imperative to its continued development.

"They need to see where we are to keep their motivation up and want

to reach the same point," Markstrom said. "I hope they keep playing hockey and keep wanting to get to where we are right now."

Assistant coach Jinelle Siergiej leads St. Cloud State's community initiatives and said getting involved with the IIHF's girls weekend was a no-brainer.

"I wanted to get our hands into the community more this year," she said. "It's important for our girls to see the impact they can have for youth hockey players."

Twenty four communities in Minnesota and over 40 countries took part in the IIHF's girls' weekend. The memories it created, especially in Central Minnesota, will hopefully inspire the sport's next generation of super stars to take the first steps of their careers.

St. Cloud State Hockey
St. Cloud State Combined Team Statistics (as of Oct 19, 2016)
All games

Date	Opponent		Score	Att.
* Sep 23	#1 WISCONSIN	L	0-6	221
* Sep 24	#1 WISCONSIN	L	2-4	305
Sep 29	MERRIMACK	W	4-2	341
Oct 01	MERRIMACK	L	1-4	392
* Oct 07	#7 NORTH DAKOTA	L	0-1	455
* Oct 08	#7 NORTH DAKOTA	W	3-2	358

TEAM STATISTICS	SCSU	OPP
-----------------	------	-----

SHOT STATISTICS

Goals-Shot attempts	10-127	19-206
Shot pct.	.079	.092
Goals/Game	1.7	3.2
Shots/Game	21.2	34.3

POWER PLAYS

Goals-Power Plays	2-21	6-21
Conversion Percent	.095	.286
Shot Attempts	26	46
Shot Percent	.077	.130

GOAL BREAKDOWN

Power Play	2	6
Short-handed	0	1
Empty net	0	3
Penalty	0	0
Unassisted	1	1
Overtime	0	0
Shootout	0	0
Delayed Penalty	0	0

PENALTIES

Number	21	21
Minutes	42	42
Penalties/Game	3.5	3.5
Pen minutes/Game	7.0	7.0
SHOOTOUTS (Made-Att)	0-0	0-0

Record:	Overall	Home	Away	Neutral
ALL GAMES	2-4-0	2-4-0	0-0-0	0-0-0
CONFERENCE	1-3-0	1-3-0	0-0-0	0-0-0
NON-CONFERENCE	1-1-0	1-1-0	0-0-0	0-0-0

##	Player	gp	g	a	pts	sh	sh%	pen-min	pp	sh
2	Julia Tylke	6	5	1	6	19	.263	0-0	1	0
9	Lauren Hespenheide	6	0	4	4	13	.000	1-2	0	0
7	Brittney Anderson	6	1	1	2	12	.083	2-4	1	0
27	Alyssa Erickson	6	1	1	2	9	.111	2-4	0	0
18	Kelsey Saelens	6	1	1	2	10	.100	1-2	0	0
8	Brooke Kudirka	6	0	2	2	9	.000	0-0	0	0
23	Hannah Potrykus	6	1	0	1	17	.059	2-4	0	0
25	Jordan Stewart	6	1	0	1	2	.500	1-2	0	0
1	Janine Alder	3	0	1	1	0	.000	0-0	0	0
33	Ivy Dynek	5	0	1	1	0	.000	0-0	0	0
5	Janna Haeg	6	0	1	1	4	.000	0-0	0	0
15	Rachel Herzog	6	0	1	1	2	.000	2-4	0	0
21	Christa Moody	6	0	1	1	5	.000	1-2	0	0
20	Suvi Ollikainen	6	0	1	1	2	.000	1-2	0	0
19	Payge Pena	6	0	1	1	3	.000	1-2	0	0
17	Jenna Redford	6	0	1	1	3	.000	1-2	0	0
13	Katie Detert	1	0	0	0	1	.000	0-0	0	0
22	Kayla Friesen	6	0	0	0	9	.000	4-8	0	0
11	Caroline Markstrom	6	0	0	0	2	.000	1-2	0	0
10	Emma Turbyville	6	0	0	0	5	.000	0-0	0	0
TM	TEAM	4	0	0	0	0	.000	1-2	0	0
	Total	6	10	18	28	127	.079	21-42	2	0
	Opponents	6	19	28	47	206	.092	21-42	6	1

##	Goalie	gp	min	ga	gaavg	saves	save%	w-l-t
1	Janine Alder	3	156:16	3	1.15	76	.962	2-1-0
29	Taylor Crosby	3	139:37	7	3.01	83	.922	0-2-0
34	Madeleine Dahl	1	60:00	6	6.00	28	.824	0-1-0
TM	EMPTY NET	4	4:07	3	-	0	.000	0-0-0
	Total	6	360:00	19	3.17	187	.908	2-4-0
	Opponents	6	360:00	10	1.67	117	.921	4-2-0

Attendance Summary	SCSU	Opponent
Total	2072	0
Dates/Avg Per Date	6/345	0/0
Neutral Site #/Avg	0/0	

Goals by Period	1st	2nd	3rd	Total
St. Cloud State	3	5	2	10
Opponents	5	6	8	19

Saves by Period	1st	2nd	3rd	Total
St. Cloud State	71	67	49	187
Opponents	36	43	38	117

St. Cloud State Hockey
St. Cloud State Category Leaders (as of Oct 19, 2016)
All games

## Points	GP	G	A	Pts	Sh
2 Julia Tylke	6	5	1	6	19
9 Lauren Hespenheide	6	0	4	4	13
7 Brittney Anderson	6	1	1	2	12
27 Alyssa Erickson	6	1	1	2	9
18 Kelsey Saelens	6	1	1	2	10
8 Brooke Kudirka	6	0	2	2	9
23 Hannah Potrykus	6	1	0	1	17
25 Jordan Stewart	6	1	0	1	2
1 Janine Alder	3	0	1	1	0
33 Ivy Dynek	5	0	1	1	0

## Goals	GP	G	A	Pts	Sh
2 Julia Tylke	6	5	1	6	19
7 Brittney Anderson	6	1	1	2	12
27 Alyssa Erickson	6	1	1	2	9
18 Kelsey Saelens	6	1	1	2	10
23 Hannah Potrykus	6	1	0	1	17
25 Jordan Stewart	6	1	0	1	2

## Power-Play Goals	GP	PPG
7 Brittney Anderson	6	1
2 Julia Tylke	6	1

## Short-Handed Goals	GP	SHG
------------------------------	-----------	------------

## Game-Winning Goals	GP	GWG
25 Jordan Stewart	6	1
18 Kelsey Saelens	6	1

## Plus/Minus	GP	+/-
2 Julia Tylke	6	+2
8 Brooke Kudirka	6	+2
33 Ivy Dynek	5	+1

## Assists	GP	G	A	Pts	Sh
9 Lauren Hespenheide	6	0	4	4	13
8 Brooke Kudirka	6	0	2	2	9
2 Julia Tylke	6	5	1	6	19
7 Brittney Anderson	6	1	1	2	12
27 Alyssa Erickson	6	1	1	2	9
18 Kelsey Saelens	6	1	1	2	10
1 Janine Alder	3	0	1	1	0
33 Ivy Dynek	5	0	1	1	0
5 Janna Haeg	6	0	1	1	4
15 Rachel Herzog	6	0	1	1	2

## Shots	GP	G	A	Pts	Sh	Sh%
2 Julia Tylke	6	5	1	6	19	.263
23 Hannah Potrykus	6	1	0	1	17	.059
9 Lauren Hespenheide	6	0	4	4	13	.000
7 Brittney Anderson	6	1	1	2	12	.083
18 Kelsey Saelens	6	1	1	2	10	.100
27 Alyssa Erickson	6	1	1	2	9	.111
8 Brooke Kudirka	6	0	2	2	9	.000
22 Kayla Friesen	6	0	0	0	9	.000
21 Christa Moody	6	0	1	1	5	.000
10 Emma Turbyville	6	0	0	0	5	.000

## Shot Pct.	GP	G	A	Pts	Sh	Sh%
25 Jordan Stewart	6	1	0	1	2	.500
2 Julia Tylke	6	5	1	6	19	.263
27 Alyssa Erickson	6	1	1	2	9	.111
18 Kelsey Saelens	6	1	1	2	10	.100
7 Brittney Anderson	6	1	1	2	12	.083
23 Hannah Potrykus	6	1	0	1	17	.059
5 Janna Haeg	6	0	1	1	4	.000
17 Jenna Redford	6	0	1	1	3	.000
15 Rachel Herzog	6	0	1	1	2	.000
20 Suvi Ollikainen	6	0	1	1	2	.000

## Penalties	GP	Pen	Min
22 Kayla Friesen	6	4	8
27 Alyssa Erickson	6	2	4
23 Hannah Potrykus	6	2	4
7 Brittney Anderson	6	2	4
15 Rachel Herzog	6	2	4
11 Caroline Markstrom	6	1	2
19 Payge Pena	6	1	2
21 Christa Moody	6	1	2
TM TEAM	4	1	2
20 Suvi Ollikainen	6	1	2

## Penalty Minutes	GP	Pen	Min
22 Kayla Friesen	6	4	8
7 Brittney Anderson	6	2	4
23 Hannah Potrykus	6	2	4
27 Alyssa Erickson	6	2	4
15 Rachel Herzog	6	2	4
20 Suvi Ollikainen	6	1	2
17 Jenna Redford	6	1	2
9 Lauren Hespenheide	6	1	2
25 Jordan Stewart	6	1	2
TM TEAM	4	1	2



2016-17 St. Cloud State Women's Hockey Roster & Coaching Staff



Janine
Adler



Julia
Tylke



Dana
Rasmussen



Janna
Haeg



Brittney
Anderson



Brooke
Kudirka



Lauren
Hespenheide



Emma
Turbyville



Caroline
Markstrom



Katie
Detert



Rachel
Herzog



Kelsey
Saelens



Jenna
Redford



Ivy
Dynek



Payge
Pena



Suvi
Ollikainen



Christa
Moody



Kayla
Friesen



Hannah
Potrykus



Alex
Makaric



Jordan
Stewart



Alyssa
Erickson



Taylor
Crosby



Madeleine
Dahl



Asst. Coach
Jinelle Siergi



Head Coach
Eric Rud



Asst. Coach
Steve Macdonald