



# OKLAHOMA BASKETBALL

3 FINAL FOURS ♦ 4 BIG 12 TOURNAMENT CHAMPIONSHIPS ♦ 6 BIG 12 REGULAR SEASON CHAMPIONSHIPS ♦ 19 NCAA TOURNAMENTS SINCE 2000

## 2020-21 SCHEDULE/RESULTS

<b>N25</b>	<b>HOUSTON</b>	<b>L, 97-85</b>
N28	Gonzaga*	Canceled
N29	South Carolina*	Canceled
N30	South Dakota*	Canceled
D6	at Georgia\$	L, 93-80
D10	at Kansas*	L, 74-64
<b>D13</b>	<b>TEXAS STATE</b>	<b>W, 52-40</b>
<b>D15</b>	<b>OKLAHOMA STATE*</b>	<b>L, 66-53</b>
<b>D20</b>	<b>SOUTH DAKOTA</b>	<b>W, 80-73</b>
<b>D29</b>	<b>ARKANSAS-PINE BLUFF</b>	<b>W, 107-64</b>
<b>J2</b>	<b>KANSAS STATE*</b>	<b>Postponed</b>
<b>J3</b>	<b>WEST VIRGINIA*</b>	<b>L, 90-72</b>
J6	at Texas Tech*	W, 75-74
<b>J9</b>	<b>TCU*</b>	<b>Postponed</b>
J12	at Texas*	Postponed
J19	at #24/24 Iowa State*	L, 64-63
J23	at #9/9 Baylor*	L, 84-61
<b>J27</b>	<b>KANSAS*</b>	<b>W, 84-81</b>
J31	at Kansas State*	W, 80-78
<b>F3</b>	<b>TEXAS*</b>	<b>L, 69-58</b>
F6	at Oklahoma State*	L, 91-64
<b>F9</b>	<b>IOWA STATE*</b>	<b>W, 67-61</b>
F13	at #19/21 West Virginia*	W, 72-71
<b>F17</b>	<b>TEXAS TECH*</b>	<b>Postponed</b>
<b>F21</b>	<b>#7/8 BAYLOR*</b>	<b>L, 77-66</b>
F24	at TCU*	6:30 P.M. ESPN+
F27	at Texas*	TBD LHN
<b>M4</b>	<b>TCU*</b>	<b>5 P.M. FSOK</b>
<b>M7</b>	<b>KANSAS STATE*</b>	<b>3 P.M. FSOK</b>

All times Central and subject to change  
Home games in **BOLD**

^ Bad Boy Boy Mowers Crossover Classic (Sioux Falls, S.D.)  
\$ SEC/Big 12 Challenge (Athens, Ga.)  
\* Big 12 Conference game

## TV: BIG 12 NOW ON ESPN+

**Play-by-Play** .....Ron Thulin  
**Analyst** .....Mike Peterson

## RADIO: SOONER RADIO NETWORK

**Play-by-Play** ..... Brian Brinkley  
**Radio** .....KOKC 1520 AM (OKC)  
..... KREF 99.3 FM/1400 AM (Norman)  
**Online** .....Tuneln.com

## COMMUNICATIONS

**WBB Contact** .....Ann Marcelli  
**Email** .....annmarcelli@ou.edu  
**Cell** .....(505) 999-7593  
**Office:** .....(405) 325-8231

<b>GAME #19</b>	<b>OKLAHOMA (8-10, 5-8 Big 12) at TCU (8-11, 3-11 Big 12)</b>
	Wednesday, Feb. 24, 2021 ■ Fort Worth, Texas ■ Schollmaier Arena ■ Big 12 Now on ESPN+
	<b>SOONERS</b> Head Coach: Sherri Cole Record at OU: 509-292 (25th year) Career Record: Same
	<b>HORNED FROGS</b> Head Coach: Raegan Pebley Record at TCU: 125-89 (Seventh year) Career Record: 281-264 (18th year)

## GAMEDAY STORYLINES

- ▶ The Sooners head to Fort Worth for a midweek meeting with the Horned Frogs. Wednesday's contest will mark the first meeting between the teams this season as the first contest, originally scheduled for Jan. 9, was postponed due to COVID-19 protocol and contact tracing.
- ▶ OU will look to bounce back after a loss to Baylor in its last contest (Feb. 21). The Sooners shot 58% in the first half and 44.6% for the game against a Lady Bears squad that entered the contest leading the nation in field goal percentage defense. OU kept the game close and even led in the first three quarters before Baylor pulled away in the final period.
- ▶ **Madi Williams** (21.7 PPG) has had a series of monster games for the Sooners down the stretch in Big 12 play. Williams has led the team in the three main categories of points, rebounds and assists in two of the last three games and led the team in both points over the last five. The junior has scored 20 points or more in each of the last four games, including back-to-back 25+ performances against Oklahoma State (29) and Iowa State (27).
- ▶ With 77 dimes on the year, **Nevaeh Tot** moved into fifth place on OU's Freshman Assists list, passing her teammate **Tatum Veitenheimer's** mark of 76 in 2018. Tot is currently averaging 4.3 APG to rank fifth among Big 12 players, second among league freshmen and eighth among all freshmen nationally.
- ▶ Wednesday will serve as a homecoming for Fort Worth native **Madi Williams**, who prepped at Trinity Valley School. Additionally, **Nevaeh Tot** is from McKinney, Texas, in the DFW area, and **Tatum Veitenheimer** grew up in Windthorst, Texas, just an hour and a half north of Fort Worth.

## PROJECTED OKLAHOMA STARTERS

<b>1</b>	<b>NEVAEH TOT • G</b> 5-3 • Fr. • McKinney, Texas John Paul II High School		<b>NOTES:</b> Has started 15 games this season ... Moved into fifth place on OU's freshman assists list ... Double-double with 12 pts, 11 reb against UAPB (12/29) ... Stuffed the stat sheet against South Dakota with 9 points, six rebounds and seven assists (12/20) ... 12 points, five assists and 3 steals against Texas State (12/13)... Stuffed the stat sheet with 10 points, seven rebounds and seven assists at KU.							
	<table border="1"><thead><tr><th>PTS</th><th>REB</th><th>FG%</th><th>MIN</th></tr></thead><tbody><tr><td>6.9</td><td>3.0</td><td>38.6</td><td>31.4</td></tr></tbody></table>	PTS	REB	FG%	MIN	6.9	3.0	38.6	31.4	
PTS	REB	FG%	MIN							
6.9	3.0	38.6	31.4							
<b>12</b>	<b>GABBY GREGORY • G</b> 6-0 • So. • Tulsa, Okla. Holland Hall Prep		<b>NOTES:</b> 15.7 PPG ... 12th in scoring among Big 12 players this season ... Has scored in double-figures in 16 of 18 games this season ... Three games with 20 points or more ... Drained a career-high six 3-pointers against Kansas (1/27) ... Season-best 23 points against UAPB (12/29) ... 15 pts, six reb and two assists against South Dakota (12/20) ... 16 pts, 9 reb against Texas State (12/13) ... 22 pts, 5 reb at KU (12/10).							
	<table border="1"><thead><tr><th>PTS</th><th>REB</th><th>FG%</th><th>MIN</th></tr></thead><tbody><tr><td>15.7</td><td>4.4</td><td>39.4</td><td>37.2</td></tr></tbody></table>	PTS	REB	FG%	MIN	15.7	4.4	39.4	37.2	
PTS	REB	FG%	MIN							
15.7	4.4	39.4	37.2							
<b>32</b>	<b>TATUM VEITENHEIMER • G</b> 6-0 • Jr. • Windthorst, Texas Windthorst High School		<b>NOTES:</b> Nine starts this season ... Averaging 4.0 points and 3.1 rebounds per game ... Seven steals at WVU (2/13) ... Hit three 3-pointers against Kansas to match her career high (1/27) ... Scored a season-high six points and had three steals at Iowa State (1/19) ... 5 rebounds against Houston (11/25).							
	<table border="1"><thead><tr><th>PTS</th><th>REB</th><th>FG%</th><th>MIN</th></tr></thead><tbody><tr><td>4.0</td><td>3.1</td><td>40.8</td><td>26.1</td></tr></tbody></table>	PTS	REB	FG%	MIN	4.0	3.1	40.8	26.1	
PTS	REB	FG%	MIN							
4.0	3.1	40.8	26.1							
<b>25</b>	<b>MADI WILLIAMS • G/F</b> 6-0 • Jr. • Fort Worth, Texas Trinity Valley School		<b>NOTES:</b> Dawn Staley Award late season watchlist ... Big 12 Player of the Week for 1/6 and 2/15 ... Second in the Big 12 in scoring and tied 18th nationally ... Has led the team in points over the last four games ... On a streak of four straight games with 20 points or more ... OU single-game scoring record of 45 points on 17-for-30 shooting against WVU (1/3) ... Scored in double figures in the last 35 games of her career.							
	<table border="1"><thead><tr><th>PTS</th><th>REB</th><th>FG%</th><th>MIN</th></tr></thead><tbody><tr><td>21.7</td><td>4.9</td><td>49.6</td><td>34.2</td></tr></tbody></table>	PTS	REB	FG%	MIN	21.7	4.9	49.6	34.2	
PTS	REB	FG%	MIN							
21.7	4.9	49.6	34.2							
<b>30</b>	<b>TAYLOR ROBERTSON • G</b> 5-7 • Jr. • McPherson, Kan. McPherson High School		<b>NOTES:</b> 14th in the Big 12 in scoring ... Has not missed a FT this season, going 35-for-35 ... 20 points and five 3-pointers at WVU (2/13) ... 8 treys at Iowa State (1/19) ... Season-high 27 pts on 8-for-11 shooting against South Dakota (12/20) ... 4-for-8 from deep against OSU (12/15) ... NCAA active career leader in 3FG% at .440 (303-for-689) and 3PG (3.88) and third in made 3-pointers (303).							
	<table border="1"><thead><tr><th>PTS</th><th>REB</th><th>FG%</th><th>MIN</th></tr></thead><tbody><tr><td>15.1</td><td>3.1</td><td>44.1</td><td>37.6</td></tr></tbody></table>	PTS	REB	FG%	MIN	15.1	3.1	44.1	37.6	
PTS	REB	FG%	MIN							
15.1	3.1	44.1	37.6							

WEDNESDAY'S OPPONENT:  
TCU



Games .....	57
Series Record .....	Baylor leads 31-26
At Norman.....	13-12
At Waco .....	14-10
At Neutral Site.....	5-1
Last Win.....	87-53 in Norman (2/25/15)
Last Home Win .....	68-64 (2/25/15)
Last Road Win.....	56-51 (1/28/09)
Last Loss.....	84-61 in Waco (1/23/21)
Last Home Loss .....	77-56 (1/4/20)
Last Road Loss.....	84-61 (1/23/21)
Current Streak.....	Baylor won 10

LAST 10 MEETINGS  
VS. TCU

Date	Location	Result	Score
2/6/16	Norman	W	77-64
1/1/17	Norman	W	87-72
2/25/17	Fort Worth	W	73-64
1/4/18	Norman	W	84-71
1/27/18	Fort Worth	L	58-62
3/3/18	Oklahoma City	L	90-79
1/22/19	Fort Worth	L	86-71
3/2/19	Norman	L	76-63
1/19/20	Norman	L	82-63
3/4/20	Fort Worth	L	96-71

UP NEXT:  
TEXAS TECH

Date and Time.....March 1 at 6:30 p.m. CT  
 Site .....



LAST 10 MEETINGS  
VS. TEXAS TECH

Date	Location	Result	Score
3/1/16	Lubbock	W	70-60
1/14/17	Norman	W	66-45
1/10/18	Lubbock	W	64-56
2/24/18	Norman	W	79-61
1/2/19	Norman	W	66-61
3/5/19	Lubbock	L	88-82
3/8/19	Oklahoma City	L	104-84
1/22/20	Lubbock	L	89-84 (OT)
3/7/20	Norman	L	106-94
1/6/21	Lubbock	W	75-74



WEDNESDAY'S GAME BASICS

- ▶ Wednesday's game will tip at 6:30 p.m. CT inside Schollmaier Arena.
- ▶ The game will be available on Big 12 Now on ESPN+ with **Ron Thulin** on play-by-play and **Mike Peterson** as the analyst. The contest will air on the Sooner Radio Network (KOKC 1520 AM in Oklahoma City; KREF 99.3 FM/1400 AM in Norman; TuneIn Radio App) with **Brian Brinkley** calling the action.

MADI "MONSTER GAME" WILLIAMS

- ▶ **Madi Williams** (21.7 PPG) has had a series of monster games for the Sooners down the stretch in Big 12 play. Williams has led the team in the three main categories of points, rebounds and assists in two of OU's last three games and led the team in points over the last five.
- ▶ The junior has scored 20 points or more in each of the last four games, including back-to-back 25+ points games against Oklahoma State (29) and Iowa State (27) in addition to 21 at West Virginia.
- ▶ Williams has made 10 field goals or more in three of OU's last four games. In the Sooners' five games during the month of February, the junior has made at least eight field goals in each contest.

▶ Her 49.6% (130-for-262) field goal percentage places her fifth among Big 12 players and first among the league's guards; the four players ahead of Williams on the list are forwards and centers.

300 3S FOR T-ROB

- ▶ **Taylor "T-Rob" Robertson** hit the 300th 3-pointer of her career at West Virginia (Feb. 13) in a way only Robertson could: falling backwards as the shot clock expired in circus fashion.
- ▶ With 303 total made 3s headed into Wednesday's game, Robertson ranks third on the NCAA active career made 3s list. She is the nation's active career leader in 3-point field goals per game (3.99) and 3-point field goal percentage with a 440 (303-for-689) clip.
- ▶ Robertson has moved into fifth place on the Big 12's career 3-pointers list. She owns the OU and Big 12 single-season records for made 3s (131, set in 2019-20) is chasing the program career record of 376 set by **Aaryn Ellenberg**.
- ▶ The junior has hit 67 total treys this season, including a season-best eight at Iowa State on Jan. 19. Robertson was just one trey shy of tying the OU single-game record she holds, but set the Hilton Coliseum record for most 3-pointers by an opposing player. She scored seven of those in the first half alone. Robertson's eight at Iowa State were good for the most in a single game by a Big 12 player this season and tied for the fifth-most in a Division I women's basketball in 2020-21.

ROBERTSON NETS BIG 12 CONSECUTIVE FREE THROW RECORD

- ▶ **Taylor Robertson** broke the Big 12 record for most consecutive made free throws as she nailed her 45th straight at West Virginia (Feb. 13). Robertson is 35-for-35 this season and her streak dates back to Feb. 22, 2020.
- ▶ Robertson passed Kate Fagan of Colorado (Dec. 8, 2002 to March 22, 2003) and Iowa State's Jadda Buckley (Feb. 20, 2016 to Dec. 4, 2017), who both hit 44 consecutively.
- ▶ Despite netting every free throw she has attempted this season, Robertson does not rank in the Big 12 or NCAA's top free throw shooters because she averages fewer than minimum required 2.5 FT per game.

TOT HOTDISH

- ▶ With 77 dimes this season, freshman **Nevaeh Tot** has moved into fifth place on OU's Freshman Assists list, passing her teammate Tatum Veitenheimer's mark of 76 in 2018.
- ▶ Tot is averaging 4.3 assists per game to rank fifth among Big 12 players, first among Big 12 freshman and eighth among all freshmen nationally.
- ▶ Her 11 dimes against UAPB (Dec. 29) tied for the second most by a Big 12 player in a single game in 2020-21 and the fifth-most in a Division I women's basketball game this season.
- ▶ Tot's 12 point, 11 assist performance against UAPB also marked the first time a Sooner had recorded a double-double with points and assists since **Morgan Hook** in 2013. Tot also became the 14th player in program history to have a 10 or more assists in a game and her performance was the 51st game in which a player logged 10 or more dimes.

STATS COMPARISON

2020-21



CATEGORY

Overall Record	8-9	8-11
Points Per Game	71.6	67.9
Opp. Points Per Game	74.7	71.6
Rebounds Per Game	32.8	37.2
Rebounding Margin	-5.4	-1.9
Field Goal Pct.	44.6	40.2
Opp. Field Goal Pct.	44.5	41.2
3-Point Pct.	38.0	32.3
Opp. 3-Point Pct.	30.6	31.6
Free Throw Pct.	73.3	72.0
Assists Per Game	13.2	15.2
Turnovers Per Game	15.2	15.2
Blocked Shots Per Game	1.7	3.4
Steals Per Game	7.2	6.8

FRESHMAN ASSISTS LEADERS

OU FRESHMAN SEASON RECORD LIST

Name	Assists	Season
1. Stacey Dales	150	1998-99
2. Danielle Robinson	130	2007-08
3. Gabbi Ortiz	117	2014-15
4. Dionnah Jackson	104	2001-02
5. <b>Nevaeh Tot</b>	77	2020-21
7. Tatum Veitenheimer	76	2018-19
8. Etta Maytubby	75	1992-93
9. LaNeisha Caufield	72	1998-99
10. Jenna Plumley	69	2006-07
Sharee Mitchum	69	1991-92

**2020-21 BIG 12 STANDINGS**  
AS OF FEB. 23

Team	Big 12			Overall		
	W	L	Pct.	W	L	Pct.
Baylor	121	1	.923	17	2	.895
West Virginia	11	3	.786	17	3	.850
Oklahoma State	13	4	.765	17	6	.739
Texas	9	5	.643	15	6	.714
Iowa State	10	6	.625	14	9	.609
<b>Oklahoma</b>	<b>5</b>	<b>8</b>	<b>.385</b>	<b>8</b>	<b>10</b>	<b>.444</b>
Texas Tech	5	11	.313	10	12	.455
TCU	3	11	.214	8	11	.421
Kansas	3	11	.214	7	13	.350
Kansas State	1	12	.077	6	14	.300



**OKLAHOMA QUICK FACTS**

- Official Name:** University of Oklahoma
- Location:** Norman, Okla.
- Founded:** 1890
- Enrollment:** 30,903
- Nickname:** Sooners
- Colors:** Crimson and Cream
- Interim President:** Joseph Harroz Jr.
- Athletics Director:** Joe Castiglione
- Arena:** Lloyd Noble Center (11,562)
- First Year of Basketball:** 1974-75
- NCAA Tournament Appearances:** 21
- WNIT Appearances:** 3
- All-Time Record:** 832-582 (.593)
- Regular Season Conference Championships:** 6 (2000, 2001, 2002, 2006, 2007, 2009)
- Conference Tournament Championships:** 4 (2003, 2004, 2006, 2007)
- Head Coach:** Sherri Coale (Okla. Christian '87)
- Career Record:** 509-292 (25th year)
- Oklahoma Record:** Same
- NCAA Appearances:** 19
- WNIT Appearances:** 1
- Assistant Coaches:**  
Colton Coale (Oklahoma, '15)  
Courtney Paris (Oklahoma '09)  
Jackie Stiles (Missouri State '01)
- Video Coordinator:** Ethan Burton
- Graduate Assistant:** Amanda Thompson
- Equipment Manager:** Cade Scott
- Athletics Trainer:** Brittani Merrick
- Official Website:** SoonerSports.com

**SHOOTERS SHOOT**

- ▶ OU ranks third in field goal percentage in the Big 12, clocking in at 44.6% (457-for-1025) this season.
- ▶ The Sooners are first in the league and 10th nationally in 3FG%, shooting 37.9% (150-for-396) from deep. With an average 8.3 3s per game, OU is second in the Big 12 and 37th nationally.
- ▶ Oklahoma is the only team in the Big 12 with three players averaging 15.0 PPG or more. **Madi Williams** is second with 21.7 PPG; **Gabby Gregory** is 12th at 15.7 PPG; and **Taylor Robertson** ranks 14th with an average 14.9 PPG.
- ▶ Williams' 21.7 PPG are also good for 18th nationally.

**RAINING 3S**

- ▶ OU is shooting 37.9% (150-for-396) from beyond the arc this season to lead the Big 12. The team is 15th nationally and ninth among Power Five schools.
- ▶ OU is averaging 8.3 treys per game to rank second among Big 12 teams and 35th in Division I basketball.
- ▶ Junior **Taylor Robertson** is fourth nationally with 3.7 3s per game. She is shooting 42.9% (67-for-156) from deep this season.
- ▶ **Gabby Gregory** sank a career-high six 3-pointers and Robertson poured in five against Kansas. The game marked the sixth time in program history and the first time since OU's 2010 meeting with Arkansas Pine Bluff that two players hit at least five treys in a game.

**WILLIAMS NAMED TO DAWN STALEY AWARD WATCHLIST**

- ▶ **Madi Williams** has been named to the Dawn Staley Award late season watchlist, the Phoenix Club of Philadelphia announced Friday. The award is given to the most outstanding collegiate guard in the country; a player who exemplifies the skills that Staley possessed during her career (ball handling, scoring, her ability to distribute the basketball and her will to win).
- ▶ Williams is one of 16 players on the watchlist. The Sooners' leading scorer, Williams accounts for 21.7 points per game to rank fourth in the Big 12. Her 49.6% (130-for-262) field goal percentage places her sixth among Big 12 players, first among the league's guards and 14th among all guards nationally.
- ▶ The Phoenix Club of Philadelphia will name four finalists in mid-March, and the winner will be announced on NCAA Women's Final Four weekend.

**#25 GOES FOR 45**

- ▶ **Madi Williams** dropped 45 point against West Virginia on Jan. 3 in Norman to capture the OU single-game scoring record and score the most points in a DI women's basketball game this season.
- ▶ Williams passed OU's all-time leading scorer and current assistant coach **Courtney Paris** on the all-time single-game scoring list. Paris' held the previous record of 43 which she set in 2006.
- ▶ Williams' performance was wildly efficient. The junior shot 17-for-30 (.567) from the floor, 3-for-7 (.429) from deep and 8-for-9 (.889) from the charity stripe.
- ▶ Williams nearly doubled her previous career high of 26 points as she accounted for 62.5% of Oklahoma's scoring on the contest.
- ▶ At the time, Williams' 45 points against WVU were good for the most in a game by a Division I women's basketball player this season, as were her 17 field goals.

**SINGLE-GAME SCORING RECORDS**

Name	Points	Opp., Date
1. <b>Madi Williams</b>	<b>45</b>	<b>WVU, Jan. 3, 2021</b>
2. Courtney Paris	43	New Mexico, Dec. 30, 2006
3. Courtney Paris	41	Oklahoma St., Feb. 4, 2007
4. Phylesha Whaley	40	Arkansas, March 14, 1999
5. Phylesha Whaley	38	Texas, Jan. 17, 1998

**OKLAHOMA NUMERICAL ROSTER**

No.	Name	Position	Height	Class	Hometown (Last School)
1	Nevaeh Tot	G	5-3	Fr.	McKinney, Texas (John Paul II)
3	Mandy Simpson	F	6-1	Sr.	Boise, Idaho (Boise)
12	Gabby Gregory	G	5-9	So.	Tulsa, Okla. (Holland Hall Prep)
15	Heavenly Greer	F	6-3	Fr.	Phoenix, Ariz. [Ganesha (Calif.)]
22	Ana Llanusa	G	6-0	Sr.	Choctaw, Okla. (Choctaw)
24	Skylar Vann	G	5-10	Fr.	Edmond, Okla. (Deer Creek)
25	Madi Williams	G/F	6-0	Jr.	Fort Worth, Texas (Trinity Valley Prep)
30	Taylor Robertson	G	5-7	Jr.	McPherson, Kan. (McPherson)
32	Tatum Veitenheimer	G	5-8	Jr.	Windthorst, Texas (Windthorst)
34	Liz Scott	F	6-2	So.	Tomball, Texas (Klein Oak)

## THE 2020-21 SOONERS

### Starters Returning: 4

Gabby Gregory, Taylor Robertson, Mandy Simpson, Madi Williams

### Letterwinners Returning: 7

Gabby Gregory, Ana Llanusa, Taylor Robertson, Liz Scott, Mandy Simpson, Tatum Veitenheimer, Madi Williams

### Newcomers: 3

Heavenly Greer, Nevaeh Tot, Skylar Vann

### By Class

#### Seniors: 2

Ana Llanusa, Mandy Simpson

#### Juniors: 3

Taylor Robertson, Tatum Veitenheimer, Madi Williams

#### Sophomores: 2

Gabby Gregory, Liz Scott

#### Freshmen: 3

Heavenly Greer, Nevaeh Tot, Skylar Vann

### By State/Country:

**Arizona:** Heavenly Greer (Phoenix)

**Idaho:** Mandy Simpson (Boise)

**Kansas:** Taylor Robertson (McPherson)

**Oklahoma:** Gabby Gregory (Tulsa), Ana Llanusa (Choctaw), Skylar Vann (Edmond)

**Texas:** Liz Scott (Tomball), Nevaeh Tot (McKinney), Madi Williams (Fort Worth), Tatum Veitenheimer (Windthorst)

## 25 YEARS OF SC

► Oklahoma head coach **Sherri Coale** is in her 25th season at the helm for the Sooners.

► Coale is 509-292 in her tenure at OU and has led the program to 19 NCAA tournament appearances; nine Sweet 16s; three Final Fours; and 10 Big 12 titles.

► Coale has mentored 13 All-Americans; six Big 12 Players of the Year; seven Big 12 Freshmen of the Year; 68 All-Big 12 Team selections; and 16 WNBA draft selections, including 2018 WNBA champion **Courtney Paris** (Seattle Storm) and 2020 WNBA runner up **Danielle Robinson** (Las Vegas Aces).

► Coale's players have excelled in the classroom, with 66 players to 131 Academic All-Big 12 honors; 16 CoSIDA Academic All-District Team members; and five CoSIDA Academic All-America Team Members.

► Coale was inducted into the Women's College Basketball Hall of Fame in 2016 and is a member of the Oklahoma Sports Hall of Fame's 2020 class.

## AND-1

► OU is one of just five programs nationally to have three players on its roster who have scored 1,000 points or more in their career. Those three players are **Madi Williams**, who reached the milestone this season, and **Ana Llanusa** and **Taylor Robertson**, who did so in 2019-20.

► Two Oklahoma freshmen come from basketball legacies. **Nevaeh Tot** is the daughter of former WNBA player Helen Darling, who played for the Cleveland Rockers, Minnesota Lynx, Charlotte Sting and the San Antonio Silver Stars during her 10-year professional career. **Skylar Vann** is the daughter of OU men's basketball alum Bryatt Vann.

► In addition to Tot's WNBA connection, the Sooners have three former WNBA players on their staff in assistant coaches **Jackie Stiles** and **Courtney Paris** and graduate assistant **Amanda Thompson**. Stiles was selected fourth by in the Portland Fire in the 2001 WNBA Draft and was named the league's rookie of the year for the 2001 season; Paris was the seventh overall pick in the 2009 WNBA Draft and twice led the WNBA in rebounding (2014 and 2015) and won the 2018 WNBA title as a member of the Seattle Storm; and Thompson was selected by the Tulsa Shock in the second round of the 2010 WNBA Draft.

## COALE'S ACCOLADES

- Oklahoma Sports Hall of Fame, Class of 2020
- Kay Yow Cancer Fund Impact Award, 2019
- Women's Basketball Hall of Fame, Class of 2016
- Four-time Big 12 Coach of the Year
- Kay Yow Cancer Fund Board of Directors
- USA Basketball World University Games (Head Coach), 2013
- WBCA District V Coach of the Year, 2009
- WBCA District V Coach of the Year, 2006
- Norman High School Hall of Fame inductee, 2002
- Naismith Coach of the Year, finalist, 2002
- Naismith Coach of the Year, finalist, 2001
- WBCA District V Coach of the Year, 2001
- AP Coach of the Year Runner-Up, 2000
- WBCA District V Coach of the Year, 2000

► 16 Oklahoma players have been drafted by WNBA teams with six of those first-round selections. Additionally, 17 Sooners have played professionally in international leagues, representing OU in 27 countries on six continents.

► OU joins UConn as the only teams in the country with two Women's Basketball Hall of Fame coaches on its staff. Head coach **Sherri Coale** and assistant coach **Jackie Stiles** were both inducted into the Hall of Fame in 2016.

► Oklahoma standout **Stacey Dales** will be inducted into the Oklahoma Sports Hall of Fame as part of the 2021 class. One of the most decorated basketball players in OU and Big 12 Conference history, Dales led the Sooners to three conference titles and their first NCAA Women's Final Four appearance in 2002, and was a member of the Canadian Olympic team in 2002. She will join her coach, Sherri Coale, in the Oklahoma Sports Hall of Fame.

## UP NEXT

► OU heads to Texas on Saturday. The game will tip at 1 p.m. CT on Longhorn Network.



# 1 NEVAEH TOT

5-3, FRESHMAN, GUARD  
MCKINNEY, TEXAS  
(JOHN PAUL II HIGH SCHOOL)

PTS	REB	APG	MIN
6.9	3.0	4.3	31.4

## TOT GAME BY GAME IN 2020-21

Date	Opponent	MIN	FG	3FG	FT	O-D-T	PF	A	TO	B	S	TP
N25	HOUSTON	21	0-2	0-1	4-6	0-3-3	3	2	3	0	0	4
D6	Georgia	31	4-9	2-2	4-5	0-1-1	1	6	3	0	1	14
D12	Kansas*	40	3-8	1-4	3-4	3-4-7	3	3	1	0	0	10
D13	TEXAS STATE*	40	3-9	1-3	1-2	0-0-0	2	5	7	0	3	12
D15	OKLAHOMA STATE*	40	1-12	0-2	1-2	1-2-3	1	4	4	0	2	3
D20	SOUTH DAKOTA*	36	2-6	0-2	5-6	1-5-6	2	7	3	0	1	9
D29	UAPB*	27	5-8	2-3	0-0	0-1-1	4	11	4	0	1	12
J3	WVU*	31	1-5	0-1	1-2	0-3-3	1	1	6	0	1	3
J6	Texas Tech*	28	2-6	0-1	0-0	0-0-0	3	5	2	0	1	4
J19	Iowa State	9	1-4	0-1	0-0	0-1-1	0	1	1	0	1	2
J23	Baylor*	26	0-2	0-1	0-0	0-1-1	1	1	2	0	0	0
J27	KANSAS*	40	4-7	0-2	3-4	1-0-1	4	7	3	0	2	11
J31	Kansas State*	33	2-4	1-1	0-0	1-2-3	3	3	1	0	0	5
F3	TEXAS*	34	2-6	0-0	0-1	2-1-3	0	2	3	0	1	4
F6	Oklahoma State*	36	2-5	1-1	0-0	0-4-4	1	7	1	0	3	5
F9	IOWA STATE*	37	5-10	3-6	1-2	0-6-6	0	2	0	0	1	14
F13	West Virginia*	36	3-6	1-2	0-0	2-5-7	1	2	5	0	4	7
F21	BAYLOR*	32	2-5	2-3	0-0	0-4-4	2	4	2	0	2	6

\* Starter

## TOT'S CAREER HIGHS

Points	14 (twice)
Field Goals	5 vs. Iowa State (2/10/21)
Field Goal Attempts	10 vs. Iowa State (2/10/21)
3-Point Field Goals	3 vs. Iowa State (2/10/21)
3-Point Field Goal Attempts	6 vs. Iowa State (2/10/21)
Free Throws Made	4 (twice)
Free Throw Attempts	6 vs. Houston (11/25/2020)
Rebounds	7 (twice)
Assists	11 vs. UAPB (12/29/20)
Blocked Shots	
Steals	3 vs. Texas State (12/13/20)
Minutes Played	40 (four times)



# 3 MANDY SIMPSON

6-0, SENIOR, FORWARD  
BOISE, IDAHO  
(BOISE HIGH SCHOOL)

PTS	REB	APG	MIN
3.2	5.2	2.1	18.6

## SIMPSON GAME BY GAME IN 2020-21

Date	Opponent	MIN	FG	3FG	FT	O-D-T	PF	A	TO	B	S	TP
N25	HOUSTON*	28	3-6	0-0	5-7	1-12-13	4	3	6	0	0	11
D6	Georgia*	20	2-4	0-0	2-4	2-8-10	4	3	6	0	0	6
D12	Kansas											
D13	TEXAS STATE											
D15	OKLAHOMA STATE	11	0-0	0-0	1-4	0-4-4	4	2	1	0	1	1
D20	SOUTH DAKOTA	9	1-3	0-0	0-0	0-0-0	4	1	0	0	0	2
D29	UAPB	15	2-4	0-0	0-1	4-7-11	5	2	1	1	2	4
J3	WVU	32	0-1	0-0	0-0	2-2-4	4	3	1	0	0	0
J6	Texas Tech	31	3-4	0-0	4-4	1-7-8	4	4	3	0	2	10
J19	Iowa State*	38	1-6	0-0	0-0	1-12-13	5	4	2	0	1	2
J23	Baylor*	36	2-3	0-0	1-2	0-5-5	2	4	3	0	3	5
J27	KANSAS											
J31	Kansas State											
F3	TEXAS	12	2-2	0-0	0-0	1-1-2	3	1	0	0	0	4
F6	Oklahoma State	18	0-1	0-0	0-0	1-2-3	3	1	3	0	0	0
F9	IOWA STATE	5	0-0	0-0	0-0	0-0-0	0	0	0	0	0	0
F13	West Virginia	5	0-0	0-0	0-0	0-0-0	0	0	0	0	0	0
F21	BAYLOR*	3	0-0	0-0	0-0	0-0-0	1	1	0	0	0	0

\* Starter

## SIMPSON'S CAREER HIGHS

Points	19 at Texas Tech (1/22/20)
Field Goals	7 (twice)
Field Goal Attempts	12 at Texas (1/9/19)
3-Point Field Goals	
3-Point Field Goal Attempts	
Free Throws Made	5 at Texas Tech (1/22/20)
Free Throw Attempts	6 (twice)
Rebounds	16 at Texas Tech (3/5/19)
Assists	12 at Kansas (2/2/20)
Blocked Shots	2 (three times)
Steals	4 at Texas Tech (3/5/19)
Minutes Played	45 at Texas Tech (1/22/20)



# 12 GABBY GREGORY

6-0, SOPHOMORE, GUARD  
TULSA, OKLA.  
(HOLLAND HALL PREP)

PTS	REB	FG%	MIN
15.7	4.4	39.4	37.2

## GREGORY GAME BY GAME IN 2020-21

Date	Opponent	MIN	FG	3FG	FT	O-D-T	PF	A	TO	B	S	TP
N25	HOUSTON*	38	5-12	0-3	8-8	2-2-4	1	6	5	0	1	18
D6	Georgia*	34	5-11	1-2	2-6	1-1-2	3	2	3	0	1	13
D10	Kansas*	40	7-15	4-9	4-4	2-3-5	2	1	4	1	0	22
D13	TEXAS STATE*	37	4-7	0-1	8-8	4-5-9	4	1	5	0	0	16
D15	OKLAHOMA STATE*	40	4-11	1-3	5-6	0-1-1	1	0	5	0	0	14
D20	SOUTH DAKOTA*	40	3-10	3-6	6-8	2-4-6	2	1	4	0	1	15
D29	UAPB*	33	8-12	4-6	3-3	0-5-5	3	1	4	1	1	23
J3	WVU*	40	5-13	2-6	1-1	2-3-5	2	4	2	0	1	13
J6	Texas Tech*	40	5-15	2-7	4-6	1-3-4	2	1	1	0	0	16
J19	Iowa State*	40	5-15	0-2	2-2	3-3-6	2	1	2	0	0	12
J23	Baylor*	34	1-9	0-6	6-6	2-1-3	2	0	1	0	0	8
J27	KANSAS*	40	9-15	6-10	3-4	2-6-8	4	5	1	0	1	27
J31	Kansas State*	39	5-15	4-10	5-6	1-4-5	1	2	0	1	0	19
F3	TEXAS*	40	3-12	2-9	3-5	1-0-1	4	2	2	0	2	11
F6	Oklahoma State*	26	2-7	2-3	3-4	0-3-3	0	0	1	0	0	9
F9	IOWA STATE*	35	5-11	1-3	4-4	3-4-7	3	0	2	0	0	15
F13	West Virginia*	35	5-11	1-5	1-2	1-2-3	2	2	4	0	0	12
F21	Baylor*	38	5-17	2-9	7-10	1-2-3	3	1	6	0	0	19

\* Starter

## GREGORY'S CAREER HIGHS

Points.....30 at Baylor (2/22/20)  
 Field Goals.....10 at Baylor (2/22/20)  
 Field Goal Attempts.....21 at Kansas State (1/25/20)  
 3-Point Field Goals.....6 vs. Kansas (1/27/21)  
 3-Point Field Goal Attempts.....11 at Kansas State (1/25/20)  
 Free Throws Made.....8 (twice)  
 Free Throw Attempts.....8 (three times)  
 Rebounds.....10 at Kansas (2/2/20)  
 Assists.....6 vs. Houston (11/25/20)  
 Blocked Shots.....2 (twice)  
 Steals.....3 at Iowa State (2/8/20)  
 Minutes Played.....40 (eight times)



# 15 HEAVENLY GREER

6-3, FORWARD, FRESHMAN  
PHOENIX, ARIZ.  
[GANESHA (CALIF.) HIGH SCHOOL]

PTS	REB	FG%	MIN
2.4	3.1	50.0	8.3

## GREER GAME BY GAME IN 2020-21

Date	Opponent	MIN	FG	3FG	FT	O-D-T	PF	A	TO	B	S	TP
N25	HOUSTON	8	1-4	0-0	1-2	1-4-5	1	0	0	0	0	3
D6	Georgia	11	2-4	0-0	0-0	0-3-3	5	0	1	1	0	4
D10	Kansas	14	2-4	0-0	0-0	0-2-2	3	0	4	0	0	4
D13	TEXAS STATE	16	1-3	0-0	1-2	1-9-10	3	0	2	1	0	3
D15	OKLAHOMA STATE	7	0-1	0-0	0-0	0-2-2	4	0	1	0	0	0
D20	SOUTH DAKOTA	6	0-0	0-0	0-0	0-2-2	2	0	0	0	0	0
D29	UAPB	9	2-2	0-0	0-0	2-2-4	1	0	3	0	1	4
J3	WVU	2	1-1	0-0	0-0	0-0-0	2	0	0	0	0	2
J6	Texas Tech	1	1-1	0-0	0-0	0-0-0	1	0	0	0	0	2
J19	Iowa State											DID NOT PLAY
J23	Baylor	4	0-1	0-0	0-0	0-0-0	1	0	0	0	0	0
J27	KANSAS											DID NOT PLAY
J31	Kansas State											DID NOT PLAY
F3	TEXAS											DID NOT PLAY
F6	Oklahoma State											DID NOT PLAY
F9	IOWA STATE											DID NOT PLAY
F13	West Virginia											DID NOT PLAY
F21	BAYLOR											DID NOT PLAY

NOTE: Will miss the remainder of the season due to academic ineligibility.

## GREER'S CAREER HIGHS

Points.....4 (three times)  
 Field Goals.....2 (three times)  
 Field Goal Attempts.....4 (three times)  
 3-Point Field Goals.....  
 3-Point Field Goal Attempts.....  
 Free Throws Made.....1 (twice)  
 Free Throw Attempts.....2 (twice)  
 Rebounds.....10 vs. Texas State (12/13/20)  
 Assists.....  
 Blocked Shots.....1 (twice)  
 Steals.....1 vs. UAPB (12/29/20)  
 Minutes Played.....16 vs. Texas State (12/13/20)



# 24 SKYLAR VANN

5-10, FRESHMAN, GUARD  
EDMOND, OKLA.  
(DEER CREEK HIGH SCHOOL)

PTS	REB	FG%	MIN
6.5	4.7	45.9	19.0



# 25 MADI WILLIAMS

6-0, JUNIOR, FORWARD/GUARD  
FORT WORTH, TEXAS  
(TRINITY VALLEY HIGH SCHOOL)

PTS	REB	FG%	MIN
21.7	4.9	49.6	34.2

## VANN GAME BY GAME IN 2020-21

Date	Opponent	MIN	FG	3FG	FT	O-D-T	PF	A	TO	B	S	TP
N25	HOUSTON		DID NOT PLAY									
D6	Georgia	13	3-3	2-2	0-0	1-4-5	0	0	0	0	1	8
D10	Kansas*	30	4-9	0-5	0-0	2-4-6	5	0	0	1	0	8
D12	TEXAS STATE*	40	4-7	3-4	0-2	1-6-7	1	1	0	3	1	11
D15	OKLAHOMA STATE*	40	5-13	1-5	0-0	6-3-9	3	0	4	1	1	11
D20	SOUTH DAKOTA*	14	1-2	0-0	0-0	0-0-0	0	0	0	0	0	2
D29	UAPB	26	6-17	2-8	0-0	5-5-10	2	1	1	1	2	14
J3	WVU*	18	1-3	0-2	1-2	1-2-3	1	0	0	1	0	3
J6	Texas Tech*	20	2-7	2-4	1-2	2-3-5	3	0	1	0	0	7
J19	Iowa State	17	2-5	0-2	0-2	4-3-7	2	0	1	1	2	4
J23	Baylor	2	0-0	0-0	0-0	0-0-0	0	0	0	0	0	0
J27	KANSAS	8	1-6	0-5	2-2	1-3-4	1	0	0	0	0	4
J31	Kansas State	13	3-6	1-3	0-0	1-3-4	2	0	0	0	1	7
F3	TEXAS	1	0-0	0-0	0-0	0-0-0	0	0	0	0	0	0
F6	Oklahoma State	14	3-5	0-1	0-0	3-1-4	0	0	1	1	0	6
F9	IOWA STATE	15	3-5	0-0	1-1	1-4-5	4	0	2	0	0	7
F13	West Virginia	26	3-6	2-4	2-2	1-7-8	1	0	0	0	0	10
F21	BAYLOR	27	4-4	1-1	0-0	3-0-3	5	2	1	0	1	9

\* Starter

## VANN'S CAREER HIGHS

Points	14 vs. UAPB (12/29/20)
Field Goals	6 vs. UAPB (12/29/20)
Field Goal Attempts	17 vs. UAPB (12/29/20)
3-Point Field Goals	3 vs. Texas State (12/13/20)
3-Point Field Goal Attempts	5 at Kansas (12/10/20)
Free Throws Made	
Free Throw Attempts	2 vs. Texas State (12/13/20)
Rebounds	10 vs. UAPB (12/29/20)
Assists	1 (twice)
Blocked Shots	3 vs. Texas State (12/13/20)
Steals	2 vs. UAPB (12/29/20)
Minutes Played	40 (twice)

## WILLIAMS GAME BY GAME IN 2020-21

Date	Opponent	MIN	FG	3FG	FT	O-D-T	PF	A	TO	B	S	TP
N25	HOUSTON*	37	9-21	0-3	7-8	0-3-3	3	1	4	1	0	25
D6	Georgia*	28	7-15	1-2	3-5	1-5-6	5	3	4	0	3	18
D10	Kansas		DID NOT PLAY									
D13	TEXAS STATE		DID NOT PLAY									
D15	OKLAHOMA STATE		DID NOT PLAY									
D20	SOUTH DAKOTA	31	9-14	0-0	1-2	0-4-4	3	3	3	0	1	19
D29	UAPB*	26	7-11	0-0	5-9	2-2-4	4	1	1	0	3	19
J3	WVU*	40	17-30	3-7	8-9	0-4-4	2	2	2	0	1	45
J6	Texas Tech*	21	4-12	0-2	4-6	0-2-2	5	3	2	0	1	12
J19	Iowa State*	27	4-14	0-1	3-3	0-0-0	5	0	6	2	1	11
J23	Baylor*	38	11-21	0-2	7-7	1-1-2	1	3	6	0	2	29
J27	KANSAS*	34	5-10	1-1	3-4	1-5-6	3	4	3	0	1	14
J31	Kansas State*	40	7-18	0-1	4-5	1-5-6	0	7	0	2	5	18
F3	TEXAS*	38	8-14	0-1	1-3	1-4-5	1	2	5	1	3	17
F6	Oklahoma State*	37	10-22	1-1	8-13	1-8-9	3	1	5	1	2	29
F9	IOWA STATE*	35	13-21	1-1	0-3	3-10-13	4	4	2	0	2	27
F13	West Virginia*	38	9-18	1-2	2-2	0-8-8	3	8	8	1	2	21
F21	BAYLOR*	40	10-20	0-1	1-3	0-2-2	2	2	4	1	2	21

\* Starter

## WILLIAMS' CAREER HIGHS

Points	45 vs. WVU (1/3/21)
Field Goals	17 vs. WVU (1/3/21)
Field Goal Attempts	30 vs. WVU (1/3/21)
3-Point Field Goals	3 (twice)
3-Point Field Goal Attempts	7 vs. WVU (1/3/21)
Free Throws Made	9 vs. UAB (11/8/19)
Free Throw Attempts	10 (twice)
Rebounds	16 (twice)
Assists	8 at West Virginia (2/13/21)
Blocked Shots	3 vs. Western Kentucky (11/9/18)
Steals	5 at Kansas State (1/31/21)
Minutes Played	43 at Kansas (2/2/20)



# 30 TAYLOR ROBERTSON

5-7, JUNIOR, GUARD  
MCPHERSON, KAN.  
(MCPHERSON HIGH SCHOOL)

PTS	FG%	3FG%	MIN
14.9	44.1	42.9	37.7

## ROBERTSON GAME BY GAME IN 2020-21

Date	Opponent	MIN	FG	3FG	FT	O-D-T	PF	A	TO	B	S	TP
N25	HOUSTON*	38	3-10	3-8	4-4	1-4-5	4	0	2	0	1	13
D6	Georgia*	33	2-4	2-3	0-0	0-1-1	2	1	2	0	1	6
D10	Kansas*	40	3-9	2-7	2-2	0-5-5	3	2	3	0	0	10
D12	TEXAS STATE*	40	2-10	2-8	0-0	0-4-4	1	1	0	0	0	6
D15	OKLAHOMA STATE*	40	7-13	4-8	0-0	2-2-4	2	1	1	1	2	18
D20	SOUTH DAKOTA*	38	8-11	4-7	7-7	0-2-2	4	2	1	1	1	27
D29	UAPB*	32	8-17	7-15	0-0	0-4-4	0	3	0	2	0	23
J3	WVU*	26	1-4	1-4	0-0	2-2-4	4	0	2	0	2	3
J6	Texas Tech*	40	7-10	7-10	3-3	0-2-2	0	1	1	0	0	24
J19	Iowa State*	40	8-15	8-15	2-2	0-6-6	2	2	2	1	0	26
J23	Baylor*	40	6-12	5-11	2-2	0-2-2	3	0	1	0	0	19
J27	KANSAS*	40	6-8	5-7	2-2	0-2-2	3	1	2	0	1	19
J31	Kansas State*	40	4-11	2-7	6-6	0-4-4	3	2	0	0	1	16
F3	TEXAS*	39	5-12	4-11	0-0	0-3-3	2	1	1	0	0	14
F6	at Oklahoma State*	33	3-9	3-9	0-0	0-0-0	3	0	0	0	0	9
F9	IOWA STATE*	40	1-14	0-9	2-2	1-3-4	0	2	1	0	2	4
F13	West Virginia*	40	5-10	5-10	5-5	0-1-1	2	3	2	0	1	20
F21	BAYLOR*	40	4-9	3-7	0-0	0-0-0	4	1	3	0	1	11

\* Starter

## ROBERTSON'S CAREER HIGHS

Points	31 (twice)
Field Goals	10 (twice)
Field Goal Attempts	24 at Texas Tech (1/22/20)
3-Point Field Goals	9 at Wichita State (11/30/19)
3-Point Field Goal Attempts	19 Texas Tech (1/22/20)
Free Throws Made	12 at Kansas (2/2/20)
Free Throw Attempts	12 at Kansas (2/2/20)
Rebounds	7 (three times)
Assists	5 (twice)
Blocked Shots	2 vs. UAPB (12/29/20)
Steals	5 at Texas (1/9/19)
Minutes Played	45 at Kansas (2/2/20)



# 32 TATUM VEITENHEIMER

5-8, JUNIOR, GUARD  
WINDTHORST, TEXAS  
(WINDTHORST HIGH SCHOOL)

PTS	REB	FG%	MIN
4.3	3.1	41.7	26.5

## VEITENHEIMER GAME BY GAME IN 2020-21

Date	Opponent	MIN	FG	3FG	FT	O-D-T	PF	A	TO	B	S	TP
N25	HOUSTON*	23	1-2	0-0	2-2	1-4-5	2	1	0	0	1	4
D6	Georgia*	16	1-3	0-2	1-2	1-3-4	4	1	4	0	0	3
D10	Kansas											DID NOT PLAY
D13	TEXAS STATE											DID NOT PLAY
D15	OKLAHOMA STATE											DID NOT PLAY
D20	SOUTH DAKOTA											DID NOT PLAY
D29	UAPB	14	0-2	0-0	0-0	1-3-4	1	3	2	0	0	0
J3	WVU	11	1-1	0-0	1-2	2-1-3	1	0	0	0	1	3
J6	Texas Tech	19	0-0	0-0	0-0	0-0-0	0	0	0	0	1	0
J19	Iowa State	29	2-5	2-4	0-0	2-1-3	3	2	1	0	3	6
J23	Baylor	21	0-2	0-2	0-0	1-0-1	1	1	0	0	0	0
J27	KANSAS*	37	3-6	3-6	0-0	1-3-4	1	3	5	0	0	9
J31	Kansas State*	36	6-8	3-5	0-0	0-3-3	4	3	3	0	5	15
F3	TEXAS*	36	3-4	2-2	0-0	1-3-4	4	2	4	0	4	8
F6	at Oklahoma State*38	2-9	2-7	0-0	2-2-4	0	0	2	0	2	0	6
F9	IOWA STATE*	34	0-4	0-4	0-0	0-2-2	2	2	0	0	0	0
F13	West Virginia*	33	1-2	0-1	0-0	0-3-3	2	3	2	0	7	2
F21	BAYLOR	20	0-1	0-1	0-0	1-3-4	1	2	1	0	2	0

\* Starter

## VEITENHEIMER'S CAREER HIGHS

Points	16 vs. Drake (12/17/19)
Field Goals	6 at Kansas State (1/31/21)
Field Goal Attempts	12 at Iowa State (1/19/19)
3-Point Field Goals	3 (four times)
3-Point Field Goal Attempts	5 (twice)
Free Throws Made	4 vs. Kansas State (2/10/19)
Free Throw Attempts	4 (four times)
Rebounds	8 (twice)
Assists	8 at Wichita State (11/30/19)
Blocked Shots	1 vs. Texas Tech (1/2/19)
Steals	7 vs. Kansas (2/26/20)
Minutes Played	40 at Texas Tech (1/22/20)



# 34 LIZ SCOTT

6-2, SOPHOMORE, FORWARD  
TOMBALL, TEXAS  
(KLEIN OAK HIGH SCHOOL)

PTS	REB	FG%	MIN
7.0	5.4	56.1	20.7

## SCOTT GAME BY GAME IN 2020-21

Date	Opponent	MIN	FG	3FG	FT	O-D-T	PF	A	TO	B	S	TP
N25	HOUSTON	7	3-3	0-0	1-2	2-2-4	5	0	1	0	0	7
D6	Georgia	12	3-4	0-0	2-2	0-0-0	5	0	0	0	1	8
D10	Kansas*	36	5-12	0-0	0-4	1-9-10	4	1	3	0	1	10
D13	TEXAS STATE*	27	2-5	0-0	0-0	0-4-4	4	3	2	0	3	4
D15	OKLAHOMA STATE*	22	3-5	0-0	0-0	1-7-8	5	2	3	1	1	6
D20	SOUTH DAKOTA*	24	3-7	0-0	0-4	1-6-7	4	0	3	0	2	6
D29	UAPB*	17	4-5	0-0	0-0	1-4-5	3	1	1	0	4	8
J3	WVU											DID NOT PLAY
J6	Texas Tech											DID NOT PLAY
J19	Iowa State											DID NOT PLAY
J23	Baylor											DID NOT PLAY
J27	KANSAS											DID NOT PLAY
J31	Kansas State											DID NOT PLAY
F3	TEXAS											DID NOT PLAY
F6	at Oklahoma State											DID NOT PLAY
F9	IOWA STATE											DID NOT PLAY
F13	West Virginia											DID NOT PLAY
F21	BAYLOR											DID NOT PLAY

\* Starter

NOTE: Will miss the remainder of the season due to injury.

## SCOTT'S CAREER HIGHS

Points	11 vs. Texas (1/28/20)
Field Goals	5 at Kansas (12/10/20)
Field Goal Attempts	12 at Kansas (12/10/20)
3-Point Field Goals	
3-Point Field Goal Attempts	
Free Throws Made	3 vs. Texas (1/28/20)
Free Throw Attempts	7 vs. Texas (1/28/20)
Rebounds	10 at Kansas (12/10/20)
Assists	3 (twice)
Blocked Shots	2 vs. Kansas State (2/16/20)
Steals	4 vs. UAPB (12/29/20)
Minutes Played	36 at Kansas (12/10/20)

**THE COALE FILE**

Years Coached:	25th
Alma Mater:	Oklahoma Christian, '87
Career Record:	509-292 (.637)
Record at OU:	Same
Big 12 Record:	249-165 (.603)
NCAA Tournament Record:	31-19 (.620)
NCAA Tournament Appearances:	19
Big 12 Regular Championships:	6
Big 12 Tournament Championships:	4
Husband:	Dane
Daughter:	Chandler
Son:	Colton
Hometown:	Healdton, Okla.

**COACHING HONORS**

2000	AP Coach of the Year Runner-Up
2000	Big 12 Coach of the Year
2000	WBCA District V Coach of the Year
2001	Big 12 Coach of the Year
2001	WBCA District V Coach of the Year
2001	Naismith Coach of the Year Finalist
2002	Naismith Coach of the Year Finalist
2006	Big 12 Coach of the Year
2006	WBCA District V Coach of the Year
2009	Big 12 Coach of the Year
2009	WBCA District V Coach of the Year
2013	USA Basketball World Univ. Games Head Coach
2016	Women's Basketball Hall of Fame Inductee

**COACHING TREE**

Lee Adudell	Assistant Coach, Rice
Britney Brown	Assistant Coach, TCU
Fred Castro	Head Coach, Eastern Michigan
Adam Call	Assistant Coach, Eastern Michigan
Dionnah Jackson	Assistant Coach, Texas
Lindy LaRoque	Head Coach, UNLV
Abi Olajuwon	Assistant Coach, TCU
Roman Owen	Assistant Coach, UNLV
Coquese Washington	Assistant Coach, Notre Dame

**OU BEFORE AND SINCE COALE'S ARRIVAL**

	BEFORE (1974-96)	SINCE (1997-Present)
Overall Record	324-149	509-292
Conference Record	93-101	249-165
vs. Ranked Opponents	NA	92-144
Weeks in AP Top 25	22	260
Final Fours	0	3
Sweet 16s	1	9
Conference Titles	1	6
Postseason Conference Titles	0	4
NCAA Tournaments	2	19
Postseason Appearances	4	20
AP National Player of the Year	0	1
All-America Honors	0	13
Conference Player of the Year	1	6
All-Conference Selections	19	64
Academic All-Conference	9	63
Academic All-Americans	2	4
Years in Final AP Top 25	3	17
Years in Final AP Top 10	0	5
Years in Final AP Top 5	0	2



# SHERRI COALE

25TH SEASON ♦ CAREER RECORD: 509-292 (.637) ♦ 3 FINAL FOURS  
 ♦ 10 BIG 12 TITLES ♦ 19 NCAA TOURNAMENT APPEARANCES SINCE 2000  
 ♦ 9 SWEET 16 APPEARANCES ♦ OU'S ALL-TIME WINS LEADER  
 FOUR-TIME BIG 12 COACH OF THE YEAR  
 2016 WOMEN'S BASKETBALL HALL OF FAME INDUCTEE

**WINNING LEGACY**

- ▶ The winningest coach in Oklahoma history at 509-291 (.641)
- ▶ One of eight active coaches to take their current program to three or more Final Fours.
- ▶ Inducted into the Women's Basketball Hall of Fame in 2016
- ▶ Has led the Sooners to 19 NCAA Tournament appearances in 20 years, three Final Fours and nine Sweet 16 appearances since 2000
- ▶ Has won 20 or more games in a season 15 times during her tenure
- ▶ Led OU to program-best 20-game winning streak and 32 victories in 2009 and guided the Sooners to the 2002 national championship game and its highest-ever AP ranking (No. 2)
- ▶ Mentored four players CoSIDA Academic All-America honors and six players to 13 All-American selections
- ▶ Coached 14 WNBA Draft Picks, including six first-round selections
- ▶ Guided 64 players to All-Big 12 honors and 66 to a total of 131 Academic All-Big 12 honors

**OU'S CAREER WINS LEADERS**

NAME	RECORD	PCT.	YEARS
1. Sherri Coale	509-292	.637	1997-
2. Maura McHugh	142-70	.670	1981-87
3. Burl Plunkett	52-36	.591	1994-96
4. Doyle Parrack	30-32	.484	1979-80
5. Gary Hudson	39-45	.464	1991-93

**BIG 12 COACH OF THE YEAR HONORS**

NAME	SCHOOL	HONORS
Kim Mulkey	Baylor	7
<b>Sherri Coale</b>	<b>Oklahoma</b>	<b>4</b>
Jody Conradt	Texas	2
Deb Patterson	Kansas State	2
Marsha Sharp	Texas Tech	2

**IN THE BIG 12**

- ▶ Has coached OU to six Big 12 regular season championships, the second-most regular season crowns in the conference (2000, 2001, 2002, 2006, 2007, 2009)
- ▶ Won four Big 12 postseason titles during her time at OU (2002, 2004, 2006, 2007)
- ▶ Has coached six Big 12 Player of the Year and seven Big 12 Freshman of the year winners
- ▶ In 2006, led the Sooners to an 16-0 mark in Big 12 play, becoming the first program in league history to finish its conference slate undefeated

**COALE'S YEAR-BY-YEAR HEAD COACHING RECORD**

YEAR	SCHOOL	OVERALL	CONFERENCE	BIG 12 FINISH	POSTSEASON
1996-97	Oklahoma	5-22	1-15	12th	---
1997-98	Oklahoma	8-19	4-12	9th	---
1999-00	Oklahoma	15-14	8-8	t-5th	WNIT Second Round
1999-00	Oklahoma	25-8	13-3	1st	NCAA Sweet 16
2000-01	Oklahoma	28-6	15-1	1st	NCAA Sweet 16
2001-02	Oklahoma	32-4	14-2	1st	NCAA Runner-Up
2002-03	Oklahoma	19-13	9-7	t-5th	NCAA First Round
2003-04	Oklahoma	24-9	9-7	6th	NCAA Second Round
2004-05	Oklahoma	17-13	8-8	t-6th	NCAA First Round
2005-06	Oklahoma	31-5	16-0	1st	NCAA Sweet 16
2006-07	Oklahoma	28-5	13-3	t-1st	NCAA Sweet 16
2007-08	Oklahoma	22-9	11-5	t-3rd	NCAA Second Round
2008-09	Oklahoma	32-5	15-1	1st	NCAA Final Four
2009-10	Oklahoma	27-11	11-5	t-2nd	NCAA Final Four
2010-11	Oklahoma	23-12	10-6	t-3rd	NCAA Sweet 16
2011-12	Oklahoma	21-13	11-7	t-2nd	NCAA Second Round
2012-13	Oklahoma	24-11	11-7	t-2nd	NCAA Sweet 16
2013-14	Oklahoma	18-15	9-9	t-5th	NCAA First Round
2014-15	Oklahoma	21-12	13-5	2nd	NCAA Second Round
2015-16	Oklahoma	22-11	11-7	t-4th	NCAA Second Round
2016-17	Oklahoma	23-10	13-5	3rd	NCAA Second Round
2017-18	Oklahoma	16-15	11-7	t-3rd	NCAA First Round
2018-19	Oklahoma	8-22	4-14	t-8th	---
2019-20	Oklahoma	12-18	5-13	--	--
2020-21	Oklahoma	8-10	5-8	--	--
<b>Totals</b>	<b>25th Year</b>	<b>509-292</b>	<b>249-165</b>		<b>NCAA Tournament Record: 31-19</b>



# LLOYD NOBLE CENTER

## HOME COURT ADVANTAGE

- ▶ The Lloyd Noble Center on the campus of the University of Oklahoma in Norman features excellent seating and some of the best college basketball in the nation. Since its opening in 1975, nearly four million fans have come through the LNC doors in anticipation of a Sooner victory.
- ▶ A \$171 million expansion and renovation project in 2001 added key improvements. A 70,000-square-foot addition to the south side of the facility included two new full-sized practice courts: one for men's basketball and one for women's. The project also enhanced the Lloyd Noble Center for the wide variety of public events it hosts, including graduations, concerts and large meetings.
- ▶ Both OU basketball programs also boast new offices, film rooms, training rooms, locker rooms, spa/sauna rooms and a full-sized weight room in the addition. Improvements included an expanded LNC parking lot, renovated arena ceiling and a modernization of the electrical systems. At a cost of more than \$3 million, a state-of-the-art four-sided center-hung LED video display, corner-hung display boards and a revamped sound system made their debut during the 2007-08 season.
- ▶ In 2015, the OU Board of Regents approved a \$7 million new strength facility for both the men's and women's basketball programs. The facility will be named the Griffin Family Performance Center, in honor of OU men's basketball's great Blake Griffin. The facility opened in the summer of 2018.

## LLOYD NOBLE CENTER QUICK FACTS

First Game:	Jan. 31, 1976
Result:	OU 44, East Central Oklahoma 38
OU's Lloyd Noble Center Record:	413-152 (.736)
Capacity:	11,562
Record Crowd:	12,906 (2/21/09 vs. Baylor)
Non-Conf. Record Crowd:	11,865 (2/15/10 vs. UConn)

## OU'S LNC BESTS

### INDIVIDUAL

Points:	45, Madi Williams, WVU, 2020
Field Goals:	17, Madi Williams, WVU, 2020
3-Point Field Goals	9, Carin Stites, UTSA, 1991
Free Throws	15, Tami Rogers, Sam Houston State, 1989
Rebounds:	25, Cathy Bassett vs. Central Missouri St., 1991
Assists	19, Sharee Mitchum, Oral Roberts, 1991
Steals	11, Jacquetta Hurley, Missouri, 1983
Blocks	11, LaNae Jones, Southern, 1993

### TEAM

Points	121, twice
Field Goals	56, UT Rio Grande Valley, 1988
3-Point Field Goals	16, Oklahoma State, 2010
Free Throws	35, Texas A&M, 2001
Rebounds	75, Cameron, 1982
Assists	30, Oklahoma State, 1986
Steals	28, Missouri, 1995
Blocks	15, Texas, 2007

## LLOYD NOBLE CENTER'S TOP 15 CROWDS

NO.	ATTENDANCE/GAME	DATE	RESULT
1.	12,906 vs. Baylor	Feb. 21, 2009	W, 66-58
2.	12,387 vs. Oklahoma State	March 7, 2010	W, 95-62
3.	12,205 vs. Oklahoma State	Feb. 23, 2008	W, 81-71
4.	12,202 vs. Texas	March 2, 2008	L, 65-50
5.	12,193 vs. Oklahoma State	Feb. 28, 2009	W, 73-64
6.	12,168 vs. Texas A&M	Feb. 12, 2008	W, 68-56
7.	12,112 vs. Baylor	Feb. 12, 2006	W, 81-77 (OT)
8.	12,090 vs. Oklahoma State	Feb. 4, 2007	W, 78-63
9.	12,080 vs. Tennessee	Dec. 21, 2003	L, 71-55
10.	12,003 vs. Nebraska	Feb. 26, 2006	W, 73-45
11.	11,865 vs. Connecticut	Feb. 15, 2010	L, 76-70
12.	11,859 vs. Baylor,	Jan. 20, 2008	L, 84-73
13.	11,689 vs. Texas A&M	Feb. 18, 2006	W, 73-54
14.	11,573 vs. Missouri	Jan. 31, 2009	W, 78-56
15.	11,510 vs. Missouri	Feb. 25, 2007	W, 72-57
	11,510 vs. Baylor	Feb. 28, 2007	W, 88-61

# 2020-21 OVERALL STATISTICS (8-10)



## 2020-21 Oklahoma Women's Basketball Combined Team Statistics All games

### Game Records

Record	Overall	Home	Away	Neutral
ALL GAMES	8-10	5-5	3-5	0-0
CONFERENCE	5-8	2-4	3-4	0-0
NON-CONFERENCE	3-2	3-1	0-1	0-0

### Score by Periods

Team	1st	2nd	3rd	4th	OT	TOT
Oklahoma	330	333	299	321	0	1283
Opponents	325	322	366	334	0	1347

### Team Box Score

No.	Player	Total					3-Point		F-Throw		Rebounds				Other				PTS	AVG		
		GP-GS	MIN	AVG	FG-FGA	FG%	3FG-FGA	3FG%	FT-FTA	FT%	OFF	DEF	TOT	AVG	PF	DQ	A	TO			BLK	STL
25	WILLIAMS, Madi	15-14	513:09	34.2	130-262	.496	8-25	.320	57-82	.695	11	63	74	4.9	44	3	45	55	9	29	325	21.7
12	GREGORY, Gabby	18-18	669:47	37.2	86-218	.394	35-100	.350	75-93	.806	28	52	80	4.4	41	0	30	52	3	8	282	15.7
30	ROBERTSON, Taylor	18-18	679:19	37.7	83-188	.441	67-156	.429	35-35	1.000	6	47	53	2.9	42	0	23	24	5	13	268	14.9
34	SCOTT, Liz	7-5	144:38	20.7	23-41	.561	0-0	.000	3-12	.250	6	32	38	5.4	30	3	7	13	1	12	49	7.0
1	TOT, Nevaeh	18-15	564:33	31.4	44-114	.386	14-35	.400	23-34	.676	11	43	54	3.0	32	0	77	51	0	24	125	6.9
24	VANN, Skylar	17-6	322:55	19.0	45-98	.459	14-46	.304	7-13	.538	32	48	80	4.7	30	3	4	11	9	9	111	6.5
32	VEITENHEIMER, Tatum	14-9	365:05	26.1	20-49	.408	12-34	.353	4-6	.667	13	31	44	3.1	26	0	23	24	0	26	56	4.0
03	SIMPSON, Mandy	14-5	261:04	18.6	16-34	.471	0-0	.000	13-22	.591	13	60	73	5.2	43	2	29	26	1	9	45	3.2
15	GREER, Heavenly	10-0	78:32	7.9	10-21	.476	0-0	.000	2-4	.500	4	24	28	2.8	23	1	0	11	2	1	22	2.2
Team											26	27	53				10					
<b>Total</b>		<b>18</b>	<b>3599</b>		<b>457-1025</b>	<b>.446</b>	<b>150-396</b>	<b>.379</b>	<b>219-301</b>	<b>.728</b>	<b>150</b>	<b>427</b>	<b>577</b>	<b>32.1</b>	<b>311</b>	<b>12</b>	<b>238</b>	<b>277</b>	<b>30</b>	<b>131</b>	<b>1283</b>	<b>71.3</b>
<b>Opponents</b>		<b>18</b>	<b>3600</b>		<b>508-1127</b>	<b>.451</b>	<b>113-371</b>	<b>.305</b>	<b>218-309</b>	<b>.706</b>	<b>236</b>	<b>452</b>	<b>688</b>	<b>38.2</b>	<b>320</b>	<b>12</b>	<b>271</b>	<b>265</b>	<b>67</b>	<b>138</b>	<b>1347</b>	<b>74.8</b>

### Team Statistics

	OU	OPP
<b>Scoring</b>	<b>1283</b>	<b>1347</b>
Points per game	71.3	74.8
Scoring margin	-3.6	-
<b>Field goals-att</b>	<b>457-1025</b>	<b>508-1127</b>
Field goal pct	.446	.451
<b>3 point fg-att</b>	<b>150-396</b>	<b>113-371</b>
3-point FG pct	.379	.305
3-pt FG made per game	8.3	6.3
<b>Free throws-att</b>	<b>219-301</b>	<b>218-309</b>
Free throw pct	.728	.706
F-Throws made per game	12.2	12.1
<b>Rebounds</b>	<b>577</b>	<b>688</b>
Rebounds per game	32.1	38.2
Rebounding margin	-6.2	-
<b>Assists</b>	<b>238</b>	<b>271</b>
Assists per game	13.2	15.1
<b>Turnovers</b>	<b>277</b>	<b>265</b>
Turnovers per game	15.4	14.7
Turnover margin	-0.7	-
Assist/turnover ratio	0.9	1.0
<b>Steals</b>	<b>131</b>	<b>138</b>
Steals per game	7.3	7.7
<b>Blocks</b>	<b>30</b>	<b>67</b>
Blocks per game	1.7	3.7
<b>Winning streak</b>	<b>0</b>	<b>-</b>
Home win streak	0	-
<b>Attendance</b>	<b>6468</b>	<b>10459</b>
Home games-Avg/Game	10-647	8-1307
Neutral site-Avg/Game	-	0-0

### Team Results

Date	Opponent		Score	Att.
11/25/2020	Houston	L	85-97	657
12/06/2020	at Georgia	L	80-93	595
12/10/2020	at Kansas	L	64-74	331
12/13/2020	Texas St.	W	52-40	597
12/15/2020	Oklahoma St.	L	53-66	676
12/20/2020	South Dakota	W	80-73	608
12/29/2020	Ark.-Pine Bluff	W	107-64	583
01/03/2021	West Virginia	L	72-90	417
01/06/2021	at Texas Tech	W	75-74	2493
01/19/2021	at Iowa St.	L	63-64	695
01/23/2021	at Baylor	L	61-84	2274
01/27/2021	Kansas	W	84-81	678
01/31/2021	at Kansas St.	W	80-78	740
02/03/2021	Texas	L	58-69	717
02/06/2021	at Oklahoma St.	L	64-91	2219
02/09/2021	Iowa St.	W	67-61	678
02/13/2021	at West Virginia	W	72-71	1112
02/21/2021	Baylor	L	66-77	857

# 2020-21 CONF. ONLY STATISTICS (5-8)



## 2020-21 Oklahoma Women's Basketball Combined Team Statistics In Conference games

Page 1/1  
as of Feb 21, 2021

### Game Records

Record	Overall	Home	Away	Neutral
ALL GAMES	5-8	2-4	3-4	0-0
CONFERENCE	5-8	2-4	3-4	0-0
NON-CONFERENCE	0-0	0-0	0-0	0-0

### Score by Periods

Team	1st	2nd	3rd	4th	OT	TOT
Oklahoma	219	235	200	225	0	879
Opponents	224	255	266	235	0	980

### Team Box Score

No.	Player				Total		3-Point		F-Throw		Rebounds											
		GP-GS	MIN	AVG	FG-FGA	FG%	3FG-FGA	3FG%	FT-FTA	FT%	OFF	DEF	TOT	AVG	PF	DQ	A	TO	BLK	STL	PTS	AVG
25	WILLIAMS, Madi	11-11	387:41	35.2	98-201	.488	7-20	.350	41-58	.707	8	49	57	5.2	29	2	36	43	8	22	244	22.2
12	GREGORY, Gabby	13-13	486:46	37.4	61-166	.367	27-82	.329	48-60	.800	19	35	54	4.2	28	0	19	31	2	4	197	15.2
30	ROBERTSON, Taylor	13-13	497:48	38.3	60-136	.441	49-115	.426	24-24	1.000	5	32	37	2.8	31	0	16	19	2	10	193	14.8
34	SCOTT, Liz	2-2	57:50	28.9	8-17	.471	0-0	.000	0-4	.000	2	16	18	9.0	9	1	3	6	1	2	16	8.0
24	VANN, Skylar	13-4	230:18	17.7	31-69	.449	7-32	.219	7-11	.636	25	33	58	4.5	27	3	2	10	5	5	76	5.8
1	TOT, Nevaeh	13-12	409:47	31.5	28-80	.350	9-25	.360	9-15	.600	10	33	43	3.3	20	0	46	31	0	18	74	5.7
32	VEITENHEIMER, Tatum	11-7	312:21	28.4	18-42	.429	12-32	.375	1-2	.500	10	21	31	2.8	19	0	18	18	0	25	49	4.5
03	SIMPSON, Mandy	10-3	188:41	18.9	8-17	.471	0-0	.000	6-10	.600	6	33	39	3.9	26	1	20	13	0	7	22	2.2
15	GREER, Heavenly	5-0	28:49	5.8	4-8	.500	0-0	.000	0-0	.000	0	4	4	0.8	11	0	0	5	0	0	8	1.6
Team											11	18	29					9				
<b>Total</b>		<b>13</b>	<b>2600</b>		<b>316-736</b>	<b>.429</b>	<b>111-306</b>	<b>.363</b>	<b>136-184</b>	<b>.739</b>	<b>96</b>	<b>274</b>	<b>370</b>	<b>28.5</b>	<b>200</b>	<b>7</b>	<b>160</b>	<b>185</b>	<b>18</b>	<b>93</b>	<b>879</b>	<b>67.6</b>
<b>Opponents</b>		<b>13</b>	<b>2600</b>		<b>380-786</b>	<b>.483</b>	<b>83-255</b>	<b>.325</b>	<b>137-193</b>	<b>.710</b>	<b>157</b>	<b>343</b>	<b>500</b>	<b>38.5</b>	<b>211</b>	<b>6</b>	<b>211</b>	<b>191</b>	<b>49</b>	<b>89</b>	<b>980</b>	<b>75.4</b>

### Team Statistics

	OU	OPP
<b>Scoring</b>	<b>879</b>	<b>980</b>
Points per game	67.6	75.4
Scoring margin	-7.8	-
<b>Field goals-att</b>	<b>316-736</b>	<b>380-786</b>
Field goal pct	.429	.483
<b>3 point fg-att</b>	<b>111-306</b>	<b>83-255</b>
3-point FG pct	.363	.325
3-pt FG made per game	8.5	6.4
<b>Free throws-att</b>	<b>136-184</b>	<b>137-193</b>
Free throw pct	.739	.710
F-Throws made per game	10.5	10.5
<b>Rebounds</b>	<b>370</b>	<b>500</b>
Rebounds per game	28.5	38.5
Rebounding margin	-10.0	-
<b>Assists</b>	<b>160</b>	<b>211</b>
Assists per game	12.3	16.2
<b>Turnovers</b>	<b>185</b>	<b>191</b>
Turnovers per game	14.2	14.7
Turnover margin	+0.5	-
Assist/turnover ratio	0.9	1.1
<b>Steals</b>	<b>93</b>	<b>89</b>
Steals per game	7.2	6.8
<b>Blocks</b>	<b>18</b>	<b>49</b>
Blocks per game	1.4	3.8
<b>Winning streak</b>	<b>0</b>	<b>-</b>
Home win streak	0	-
<b>Attendance</b>	<b>4023</b>	<b>9864</b>
Home games-Avg/Game	6-671	7-1409
Neutral site-Avg/Game	-	0-0

### Team Results

Date	Opponent		Score	Att.
12/10/2020	at Kansas	L	64-74	331
12/15/2020	Oklahoma St.	L	53-66	676
01/03/2021	West Virginia	L	72-90	417
01/06/2021	at Texas Tech	W	75-74	2493
01/19/2021	at Iowa St.	L	63-64	695
01/23/2021	at Baylor	L	61-84	2274
01/27/2021	Kansas	W	84-81	678
01/31/2021	at Kansas St.	W	80-78	740
02/03/2021	Texas	L	58-69	717
02/06/2021	at Oklahoma St.	L	64-91	2219
02/09/2021	Iowa St.	W	67-61	678
02/13/2021	at West Virginia	W	72-71	1112
02/21/2021	Baylor	L	66-77	857

# 2020-21 TEAM GAME-BY-GAME (8-10)



## 2020-21 Oklahoma Women's Basketball Team Game-by-Game All games

Opponent	Date	Score	Total		3-Pointers		Free throws		Rebounds				PF	A	TO	BLK	STL	PTS	AVG
			FG-FGA	PCT	3FG-FGA	PCT	FT-FTA	PCT	OFF	DEF	TOT	AVG							
Houston	11/25/2020	85-97 L	25-60	.417	3-15	.200	32-39	.821	12	38	50	50.0	23	13	21	1	3	85	85.0
at Georgia	12/06/2020	80-93 L	29-57	.509	8-13	.615	14-24	.583	8	26	34	42.0	29	17	23	1	8	80	82.5
at Kansas	12/10/2020	64-74 L	24-57	.421	7-25	.280	9-14	.643	10	28	38	40.7	20	11	16	2	1	64	76.3
Texas St.	12/13/2020	52-40 W	18-41	.439	6-15	.400	10-14	.714	7	28	35	39.3	15	11	17	4	7	52	70.3
Oklahoma St.	12/15/2020	53-66 L	20-55	.364	6-18	.333	7-12	.583	12	23	35	38.4	20	9	20	3	7	53	66.8
South Dakota	12/20/2020	80-73 W	27-53	.509	7-15	.467	19-27	.704	9	25	34	37.7	21	14	14	1	6	80	69.0
Ark.-Pine Bluff	12/29/2020	107-64 W	42-78	.538	15-32	.469	8-13	.615	18	36	54	40.0	23	23	17	5	14	107	74.4
West Virginia	01/03/2021	72-90 L	27-58	.466	6-20	.300	12-16	.750	11	19	30	38.8	17	10	13	1	6	72	74.1
at Texas Tech	01/06/2021	75-74 W	24-55	.436	11-24	.458	16-21	.762	4	20	24	37.1	18	14	10	0	5	75	74.2
at Iowa St.	01/19/2021	63-64 L	23-64	.359	10-25	.400	7-9	.778	11	28	39	37.3	19	10	15	4	8	63	73.1
at Baylor	01/23/2021	61-84 L	20-50	.400	5-22	.227	16-17	.941	4	10	14	35.2	11	9	13	0	5	61	72.0
Kansas	01/27/2021	84-81 W	28-52	.538	15-31	.484	13-16	.813	8	19	27	34.5	16	20	17	0	5	84	73.0
at Kansas St.	01/31/2021	80-78 W	27-63	.429	11-27	.407	15-17	.882	4	23	27	33.9	13	17	5	3	12	80	73.5
Texas	02/03/2021	58-69 L	23-50	.460	8-23	.348	4-9	.444	6	13	19	32.9	14	10	16	1	10	58	72.4
at Oklahoma St.	02/06/2021	64-91 L	22-58	.379	9-22	.409	11-17	.647	8	22	30	32.7	10	9	13	2	7	64	71.9
Iowa St.	02/09/2021	67-61 W	27-65	.415	5-23	.217	8-12	.667	8	30	38	33.0	13	10	7	0	5	67	71.6
at West Virginia	02/13/2021	72-71 W	26-53	.491	10-24	.417	10-11	.909	4	26	30	32.8	11	18	22	1	14	72	71.6
Baylor	02/21/2021	66-77 L	25-56	.446	8-22	.364	8-13	.615	6	13	19	32.1	18	13	18	1	8	66	71.3
<b>Total</b>		<b>1283</b>	<b>457-1025</b>	<b>.446</b>	<b>150-396</b>	<b>.379</b>	<b>219-301</b>	<b>.728</b>	<b>150</b>	<b>427</b>	<b>577</b>	<b>32.1</b>	<b>311</b>	<b>238</b>	<b>277</b>	<b>30</b>	<b>131</b>	<b>1283</b>	<b>71.3</b>
Opponents		1347	508-1127	.451	113-371	.305	218-309	.706	236	452	688	38.2	320	271	265	67	138	1347	74.8

# 2020-21 OPPONENT GAME-BY-GAME (8-10)



## 2020-21 Oklahoma Women's Basketball Opponents Game-by-Game All games

Opponent	Date	Score	Total		3-Pointers		Free throws		Rebounds				PF	A	TO	BLK	STL	PTS	AVG
			FG-FGA	PCT	3FG-FGA	PCT	FT-FTA	PCT	OFF	DEF	TOT	AVG							
Houston	11/25/2020	85-97 L	34-78	.436	10-32	.313	19-28	.679	13	28	41	41.0	29	17	12	3	12	97	97.0
at Georgia	12/06/2020	80-93 L	29-71	.408	6-15	.400	29-39	.744	21	22	43	42.0	21	17	15	7	13	93	95.0
at Kansas	12/10/2020	64-74 L	26-65	.400	5-17	.294	17-24	.708	15	24	39	41.0	17	9	8	5	8	74	88.0
Texas St.	12/13/2020	52-40 W	17-63	.270	2-21	.095	4-7	.571	20	17	37	40.0	19	6	13	2	9	40	76.0
Oklahoma St.	12/15/2020	53-66 L	25-55	.455	5-15	.333	11-17	.647	8	26	34	38.8	15	16	16	7	8	66	74.0
South Dakota	12/20/2020	80-73 W	26-58	.448	7-22	.318	14-21	.667	10	22	32	37.7	24	11	15	3	8	73	73.8
Ark.-Pine Bluff	12/29/2020	107-64 W	22-71	.310	5-26	.192	15-21	.714	15	20	35	37.3	16	9	19	3	7	64	72.4
West Virginia	01/03/2021	72-90 L	35-64	.547	10-28	.357	10-13	.769	13	21	34	36.9	19	16	12	2	6	90	74.6
at Texas Tech	01/06/2021	75-74 W	31-59	.525	4-17	.235	8-12	.667	8	29	37	36.9	19	18	17	5	6	74	74.6
at Iowa St.	01/19/2021	63-64 L	25-62	.403	6-15	.400	8-13	.615	12	31	43	37.5	14	7	17	6	5	64	73.5
at Baylor	01/23/2021	61-84 L	36-61	.590	1-6	.167	11-13	.846	14	26	40	37.7	17	25	14	2	6	84	74.5
Kansas	01/27/2021	84-81 W	30-64	.469	7-26	.269	14-19	.737	18	19	37	37.7	20	11	13	0	8	81	75.0
at Kansas St.	01/31/2021	80-78 W	27-54	.500	9-22	.409	15-20	.750	8	33	41	37.9	15	24	15	4	3	78	75.2
Texas	02/03/2021	58-69 L	28-59	.475	3-11	.273	10-12	.833	18	24	42	38.2	14	11	15	1	9	69	74.8
at Oklahoma St.	02/06/2021	64-91 L	35-67	.522	13-26	.500	8-12	.667	13	31	44	38.6	15	24	13	8	9	91	75.9
Iowa St.	02/09/2021	67-61 W	24-63	.381	9-35	.257	4-10	.400	11	32	43	38.9	14	14	8	3	4	61	74.9
at West Virginia	02/13/2021	72-71 W	27-59	.458	8-25	.320	9-12	.750	7	21	28	38.2	14	22	20	2	11	71	74.7
Baylor	02/21/2021	66-77 L	31-54	.574	3-12	.250	12-16	.750	12	26	38	38.2	18	14	23	4	6	77	74.8
<b>Total</b>		<b>1347</b>	<b>508-1127</b>	<b>.451</b>	<b>113-371</b>	<b>.305</b>	<b>218-309</b>	<b>.706</b>	<b>236</b>	<b>452</b>	<b>688</b>	<b>38.2</b>	<b>320</b>	<b>271</b>	<b>265</b>	<b>67</b>	<b>138</b>	<b>1347</b>	<b>74.8</b>
Oklahoma		1283	457-1025	.446	150-396	.379	219-301	.728	150	427	577	32.1	311	238	277	30	131	1283	71.3

# 2020-21 RESULTS

Date	Opponent	Score	W/L	Attend.	Points Leader	Rebounds Leader	Assists Leader
11/25	HOUSTON	97-85	L	657	Williams .....25	Simpson.....13	Gregory.....6
12/6	Georgia	93-80	L	595	Williams ..... 21	Simpson..... 10	Tot .....6
12/10	Kansas*	74-64	L	331	Gregory.....22	Scott..... 10	Tot ..... 7
12/13	TEXAS STATE	52-40	W	597	Gregory..... 16	Greer..... 10	Tot .....5
12/15	OKLAHOMA STATE*	66-53	L	676	Robertson ..... 18	Vann.....9	Tot .....4
12/20	SOUTH DAKOTA	80-73	W	608	Robertson .....27	Scott..... 7	Tot ..... 7
12/29	UAPB	107-64	W	583	Gregory/Robertson....23	Simpson..... 11	Tot .....11
1/3	WEST VIRGINIA*	90-72	L	417	Williams ..... 45	Gregory.....5	Gregory.....4
1/6	Texas Tech*	75-74	W	2493	Robertson ..... 24	Simpson.....8	Tot .....5
1/19	Iowa State (24)*	64-63	L	695	Robertson ..... 26	Simpson.....13	Simpson.....4
1/23	Baylor (9)*	84-61	L	2,274	Williams ..... 29	Simpson.....5	Simpson.....4
1/27	KANSAS*	84-81	W	678	Gregory.....27	Gregory.....8	Tot ..... 7
1/31	Kansas State*	80-78	W	740	Gregory.....19	Williams.....6	Williams .....7
2/3	TEXAS*	69-58	L	717	Williams .....17	Williams.....5	Four players.....2
2/6	Oklahoma State*	91-64	L	2,219	Williams ..... 29	Williams.....9	Tot ..... 7
2/9	IOWA STATE*	67-61	W	678	Williams .....27	Williams.....13	Williams .....4
2/13	West Virginia (19)*	72-71	W	1,112	Williams ..... 21	Williams.....8	Williams .....8
2/21	BAYLOR (7)*	77-66	L	857	Williams ..... 21	Tot/Veitenheimer.....4	Tot .....4

Home games in CAPS

Associated Press rankings in parentheses

Record Summary	Overall	Home	Away	Neutral
All Games	8-10	5-5	3-5	-
Big 12 Games	5-8	2-4	3-4	-
Non-Conference Games	3-2	3-2	-	-

# 2020-21 POINTS-REBOUNDS-ASSISTS

Date	Opponent	1 TOT	3 SIMPSON	12 GREGORY	15 GREER	24 VANN	25 WILLIAMS	30 ROBERTSON	32 VEITENHEIMER	34 SCOTT
11/25	HOUSTON	4-3-2	11-13-3	18-4-6	3-5-0	DNP	25-3-1	13-5-0	4-5-1	7-4-0
12/6	Georgia	14-1-6	6-10-3	13-2-2	4-3-0	8-5-0	18-6-3	6-1-1	3-4-1	8-0-0
12/10	Kansas*	10-7-7	DNP	22-5-1	4-2-0	8-6-0	DNP	10-5-2	DNP	10-10-1
12/13	TEXAS STATE	12-7-5	DNP	16-9-1	3-10-0	11-7-1	DNP	6-4-1	DNP	4-4-3
12/15	OKLAHOMA STATE*	3-3-4	1-4-2	14-1-0	0-2-0	11-9-0	DNP	18-4-1	DNP	6-8-2
12/20	SOUTH DAKOTA	9-6-7	2-0-1	15-6-1	0-2-0	2-0-0	19-4-3	27-2-2	DNP	6-7-0
12/29	UAPB	12-1-11	4-11-2	23-5-1	4-4-0	14-10-1	19-4-1	23-4-3	0-4-3	8-5-1
1/4	WEST VIRGINIA*	3-3-1	0-4-3	13-5-4	2-0-0	3-3-0	45-4-2	3-4-0	3-3-0	DNP
1/6	Texas Tech*	4-0-5	10-8-4	16-4-1	2-0-0	7-5-0	12-2-3	24-2-1	0-0-0	DNP
1/19	Iowa State (24)*	2-1-1	2-13-4	12-6-1	DNP	4-7-0	11-0-0	26-6-2	6-3-2	DNP
1/23	Baylor (9)*	0-1-1	5-5-4	8-3-0	0-0-0	0-0-0	29-2-3	19-2-0	0-1-1	DNP
1/29	KANSAS*	11-1-7	DNP	27-8-5	DNP	4-4-0	14-6-4	19-2-1	9-4-3	DNP
1/31	Kansas State*	5-3-3	DNP	19-5-2	DNP	7-4-0	18-6-7	16-4-2	15-3-3	DNP
2/3	TEXAS*	4-3-2	4-2-1	11-1-2	DNP	0-0-0	17-5-2	14-3-1	8-4-2	DNP
2/6	Oklahoma State*	5-4-7	0-3-1	9-3-0	DNP	6-4-0	29-9-1	9-4-0	6-4-0	DNP
2/9	IOWA STATE*	14-6-2	0-0-0	15-7-0	DNP	7-5-0	27-13-4	4-4-2	0-2-2	DNP
2/13	West Virginia (19)*	7-7-2	0-0-0	12-3-2	DNP	10-8-0	21-8-8	20-1-3	2-3-3	DNP
2/21	BAYLOR (7)*	6-4-4	0-0-1	19-3-1	DNP	9-3-2	21-2-2	11-0-1	0-4-2	DNP

Home games in CAPS

# 2020-21 OU INDIVIDUAL HIGHS



## 2020-21 Oklahoma Women's Basketball Player Highs Analysis All games

Page 1/3  
as of Feb 21, 2021

### Oklahoma - Individual Game Highs

<b>POINTS</b>	45		Madi Williams vs West Virginia (01/03/2021)
	29		Madi Williams at Oklahoma St. (02/06/2021)
	29		Madi Williams at Baylor (01/23/2021)
	27		Madi Williams vs Iowa St. (02/09/2021)
	27		Gabby Gregory vs Kansas (01/27/2021)
	27		Taylor Robertson vs South Dakota (12/20/2020)
<b>FIELD GOALS MADE</b>	17		Madi Williams vs West Virginia (01/03/2021)
	13		Madi Williams vs Iowa St. (02/09/2021)
<b>FIELD GOAL ATTEMPTS</b>	30		Madi Williams vs West Virginia (01/03/2021)
	22		Madi Williams at Oklahoma St. (02/06/2021)
<b>FIELD GOAL PERCENTAGE (min 5 made)</b>	.750	(6-8)	Tatum Veitenheimer at Kansas St. (01/31/2021)
	.750	(6-8)	Taylor Robertson vs Kansas (01/27/2021)
<b>3 PT FG MADE</b>	8		Taylor Robertson at Iowa St. (01/19/2021)
	7		Taylor Robertson at Texas Tech (01/06/2021)
	7		Taylor Robertson vs Ark.-Pine Bluff (12/29/2020)
<b>3 PT FG ATTEMPTS</b>	15		Taylor Robertson at Iowa St. (01/19/2021)
	15		Taylor Robertson vs Ark.-Pine Bluff (12/29/2020)
<b>3 PT FG PERCENTAGE (min 2 made)</b>	1.000	(2-2)	Tatum Veitenheimer vs Texas (02/03/2021)
	1.000	(2-2)	Nevaeh Tot at Georgia (12/06/2020)
	1.000	(2-2)	Skylar Vann at Georgia (12/06/2020)
<b>FREE THROWS MADE</b>	8		Madi Williams at Oklahoma St. (02/06/2021)
	8		Madi Williams vs West Virginia (01/03/2021)
	8		Gabby Gregory vs Texas St. (12/13/2020)
	8		Gabby Gregory vs Houston (11/25/2020)
<b>FREE THROW ATTEMPTS</b>	13		Madi Williams at Oklahoma St. (02/06/2021)
	10		Gabby Gregory vs Baylor (02/21/2021)
<b>FREE THROW PERCENTAGE (min 3 made)</b>	1.000	(8-8)	Gabby Gregory vs Texas St. (12/13/2020)
	1.000	(8-8)	Gabby Gregory vs Houston (11/25/2020)
	1.000	(7-7)	Madi Williams at Baylor (01/23/2021)
	1.000	(7-7)	Taylor Robertson vs South Dakota (12/20/2020)
	1.000	(6-6)	Taylor Robertson at Kansas St. (01/31/2021)
	1.000	(6-6)	Gabby Gregory at Baylor (01/23/2021)
	1.000	(5-5)	Taylor Robertson at West Virginia (02/13/2021)
	1.000	(4-4)	Gabby Gregory vs Iowa St. (02/09/2021)
	1.000	(4-4)	Mandy Simpson at Texas Tech (01/06/2021)
	1.000	(4-4)	Gabby Gregory at Kansas (12/10/2020)
	1.000	(4-4)	Taylor Robertson vs Houston (11/25/2020)
	1.000	(3-3)	Madi Williams at Iowa St. (01/19/2021)
	1.000	(3-3)	Taylor Robertson at Texas Tech (01/06/2021)
	1.000	(3-3)	Gabby Gregory vs Ark.-Pine Bluff (12/29/2020)
<b>REBOUNDS</b>	13		Madi Williams vs Iowa St. (02/09/2021)
	13		Mandy Simpson at Iowa St. (01/19/2021)
	13		Mandy Simpson vs Houston (11/25/2020)
<b>ASSISTS</b>	11		Nevaeh Tot vs Ark.-Pine Bluff (12/29/2020)
	8		Madi Williams at West Virginia (02/13/2021)
<b>STEALS</b>	7		Tatum Veitenheimer at West Virginia (02/13/2021)
	5		Madi Williams at Kansas St. (01/31/2021)
	5		Tatum Veitenheimer at Kansas St. (01/31/2021)
<b>BLOCKED SHOTS</b>	3		Skylar Vann vs Texas St. (12/13/2020)
	2		Madi Williams at Kansas St. (01/31/2021)
	2		Madi Williams at Iowa St. (01/19/2021)
	2		Taylor Robertson vs Ark.-Pine Bluff (12/29/2020)
<b>TURNOVERS</b>	8		Madi Williams at West Virginia (02/13/2021)
	7		Nevaeh Tot vs Texas St. (12/13/2020)

# 2020-21 OPPONENT INDIVIDUAL HIGHS



## 2020-21 Oklahoma Women's Basketball Player Highs Analysis All games

Page 3/3  
as of Feb 21, 2021

### Opponent - Individual Game Highs

<b>POINTS</b>	37		Ayoka Lee at Kansas St. (01/31/2021)
	32		Charli Collier vs Texas (02/03/2021)
	32		Ashley Joens at Iowa St. (01/19/2021)
	29		Gabby Connally at Georgia (12/06/2020)
	26		Natasha Mack at Oklahoma St. (02/06/2021)
	26		Kysre Gondrezick vs West Virginia (01/03/2021)
<b>FIELD GOALS MADE</b>	15		Ayoka Lee at Kansas St. (01/31/2021)
	14		Charli Collier vs Texas (02/03/2021)
<b>FIELD GOAL ATTEMPTS</b>	25		Ashley Joens at Iowa St. (01/19/2021)
	23		Ayoka Lee at Kansas St. (01/31/2021)
<b>FIELD GOAL PERCENTAGE (min 5 made)</b>	1.000	(5-5)	Brooklyn Mitchell vs Kansas (01/27/2021)
	.857	(6-7)	Kari Niblack vs West Virginia (01/03/2021)
<b>3 PT FG MADE</b>	6		Ja'Mee Asberry at Oklahoma St. (02/06/2021)
	5		Kysre Gondrezick vs West Virginia (01/03/2021)
	5		Britney Onyeje vs Houston (11/25/2020)
<b>3 PT FG ATTEMPTS</b>	14		Kysre Gondrezick vs West Virginia (01/03/2021)
	13		Britney Onyeje vs Houston (11/25/2020)
<b>3 PT FG PERCENTAGE (min 2 made)</b>	1.000	(2-2)	Jasmine Carson at West Virginia (02/13/2021)
	1.000	(2-2)	Brooklyn Mitchell vs Kansas (01/27/2021)
	1.000	(2-2)	Lexi Donarski at Iowa St. (01/19/2021)
<b>FREE THROWS MADE</b>	8		Gabby Connally at Georgia (12/06/2020)
	8		Julia Blackshell-Fair vs Houston (11/25/2020)
<b>FREE THROW ATTEMPTS</b>	11		Julia Blackshell-Fair vs Houston (11/25/2020)
	10		Ayoka Lee at Kansas St. (01/31/2021)
<b>FREE THROW PERCENTAGE (min 3 made)</b>	1.000	(8-8)	Gabby Connally at Georgia (12/06/2020)
	1.000	(7-7)	Jenna Staiti at Georgia (12/06/2020)
	1.000	(6-6)	Kirsten Deans at West Virginia (02/13/2021)
	1.000	(4-4)	Kyra Lambert vs Texas (02/03/2021)
	1.000	(4-4)	Charli Collier vs Texas (02/03/2021)
	1.000	(3-3)	DiDi Richards at Baylor (01/23/2021)
	1.000	(3-3)	Kysre Gondrezick vs West Virginia (01/03/2021)
	1.000	(3-3)	Khadijah Brown vs Ark.-Pine Bluff (12/29/2020)
<b>REBOUNDS</b>	18		Natasha Mack at Oklahoma St. (02/06/2021)
	18		Ayoka Lee at Kansas St. (01/31/2021)
<b>ASSISTS</b>	12		DiDi Richards at Baylor (01/23/2021)
	8		Kysre Gondrezick at West Virginia (02/13/2021)
<b>STEALS</b>	8		Kysre Gondrezick at West Virginia (02/13/2021)
	5		Dymond Gladney vs Houston (11/25/2020)
<b>BLOCKED SHOTS</b>	5		Natasha Mack at Oklahoma St. (02/06/2021)
	4		Natasha Mack vs Oklahoma St. (12/15/2020)
	4		Jenna Staiti at Georgia (12/06/2020)
<b>TURNOVERS</b>	6		DiDi Richards vs Baylor (02/21/2021)
	6		Esmery Martinez at West Virginia (02/13/2021)
	6		Emily Ryan at Iowa St. (01/19/2021)

# 2020-21 TEAM GAME HIGHS



## 2020-21 Oklahoma Women's Basketball Team High/Low Analysis All games

Page 1/4  
as of Feb 21, 2021

### Oklahoma - Game Highs

<b>POINTS</b>	107		Ark.-Pine Bluff (12/29/2020)
	85		Houston (11/25/2020)
	84		Kansas (01/27/2021)
	80		at Kansas St. (01/31/2021)
	80		South Dakota (12/20/2020)
	80		at Georgia (12/06/2020)
<b>FIELD GOALS MADE</b>	42		Ark.-Pine Bluff (12/29/2020)
	29		at Georgia (12/06/2020)
<b>FIELD GOAL ATTEMPTS</b>	78		Ark.-Pine Bluff (12/29/2020)
	65		Iowa St. (02/09/2021)
<b>FIELD GOAL PERCENTAGE</b>	.538	(42-78)	Ark.-Pine Bluff (12/29/2020)
	.538	(28-52)	Kansas (01/27/2021)
<b>3 PT FG MADE</b>	15		Kansas (01/27/2021)
	15		Ark.-Pine Bluff (12/29/2020)
<b>3 PT FG ATTEMPTS</b>	32		Ark.-Pine Bluff (12/29/2020)
	31		Kansas (01/27/2021)
<b>3 PT FG PERCENTAGE</b>	.615	(8-13)	at Georgia (12/06/2020)
	.484	(15-31)	Kansas (01/27/2021)
<b>FREE THROWS MADE</b>	32		Houston (11/25/2020)
	19		South Dakota (12/20/2020)
<b>FREE THROW ATTEMPTS</b>	39		Houston (11/25/2020)
	27		South Dakota (12/20/2020)
<b>FREE THROW PERCENTAGE</b>	.941	(16-17)	at Baylor (01/23/2021)
	.909	(10-11)	at West Virginia (02/13/2021)
<b>REBOUNDS</b>	54		Ark.-Pine Bluff (12/29/2020)
	50		Houston (11/25/2020)
<b>ASSISTS</b>	23		Ark.-Pine Bluff (12/29/2020)
	20		Kansas (01/27/2021)
<b>STEALS</b>	14		at West Virginia (02/13/2021)
	14		Ark.-Pine Bluff (12/29/2020)
<b>BLOCKED SHOTS</b>	5		Ark.-Pine Bluff (12/29/2020)
	4		at Iowa St. (01/19/2021)
	4		Texas St. (12/13/2020)
<b>TURNOVERS</b>	23		at Georgia (12/06/2020)
	22		at West Virginia (02/13/2021)
<b>FOULS</b>	29		at Georgia (12/06/2020)
	23		Ark.-Pine Bluff (12/29/2020)
	23		Houston (11/25/2020)

# 2020-21 OPPONENT GAME HIGHS



## 2020-21 Oklahoma Women's Basketball Team High/Low Analysis All games

Page 2/4  
as of Feb 21, 2021

### Opponent - Game Highs

<b>POINTS</b>	97		Houston (11/25/2020)
	93		at Georgia (12/06/2020)
	91		at Oklahoma St. (02/06/2021)
	90		West Virginia (01/03/2021)
	84		at Baylor (01/23/2021)
<b>FIELD GOALS MADE</b>	36		at Baylor (01/23/2021)
	35		at Oklahoma St. (02/06/2021)
	35		West Virginia (01/03/2021)
<b>FIELD GOAL ATTEMPTS</b>	78		Houston (11/25/2020)
	71		Ark.-Pine Bluff (12/29/2020)
	71		at Georgia (12/06/2020)
<b>FIELD GOAL PERCENTAGE</b>	.590	(36-61)	at Baylor (01/23/2021)
	.574	(31-54)	Baylor (02/21/2021)
<b>3 PT FG MADE</b>	13		at Oklahoma St. (02/06/2021)
	10		West Virginia (01/03/2021)
	10		Houston (11/25/2020)
<b>3 PT FG ATTEMPTS</b>	35		Iowa St. (02/09/2021)
	32		Houston (11/25/2020)
<b>3 PT FG PERCENTAGE</b>	.500	(13-26)	at Oklahoma St. (02/06/2021)
	.409	(9-22)	at Kansas St. (01/31/2021)
<b>FREE THROWS MADE</b>	29		at Georgia (12/06/2020)
	19		Houston (11/25/2020)
<b>FREE THROW ATTEMPTS</b>	39		at Georgia (12/06/2020)
	28		Houston (11/25/2020)
<b>FREE THROW PERCENTAGE</b>	.846	(11-13)	at Baylor (01/23/2021)
	.833	(10-12)	Texas (02/03/2021)
<b>REBOUNDS</b>	44		at Oklahoma St. (02/06/2021)
	43		Iowa St. (02/09/2021)
	43		at Iowa St. (01/19/2021)
	43		at Georgia (12/06/2020)
<b>ASSISTS</b>	25		at Baylor (01/23/2021)
	24		at Oklahoma St. (02/06/2021)
	24		at Kansas St. (01/31/2021)
<b>STEALS</b>	13		at Georgia (12/06/2020)
	12		Houston (11/25/2020)
<b>BLOCKED SHOTS</b>	8		at Oklahoma St. (02/06/2021)
	7		Oklahoma St. (12/15/2020)
	7		at Georgia (12/06/2020)
<b>TURNOVERS</b>	23		Baylor (02/21/2021)
	20		at West Virginia (02/13/2021)
<b>FOULS</b>	29		Houston (11/25/2020)
	24		South Dakota (12/20/2020)

# 2020-21 OU GAME LOWS



## 2020-21 Oklahoma Women's Basketball Team High/Low Analysis All games

Page 1/4  
as of Feb 21, 2021

### Oklahoma - Game Highs

<b>POINTS</b>	107		Ark.-Pine Bluff (12/29/2020)
	85		Houston (11/25/2020)
	84		Kansas (01/27/2021)
	80		at Kansas St. (01/31/2021)
	80		South Dakota (12/20/2020)
	80		at Georgia (12/06/2020)
<b>FIELD GOALS MADE</b>	42		Ark.-Pine Bluff (12/29/2020)
	29		at Georgia (12/06/2020)
<b>FIELD GOAL ATTEMPTS</b>	78		Ark.-Pine Bluff (12/29/2020)
	65		Iowa St. (02/09/2021)
<b>FIELD GOAL PERCENTAGE</b>	.538	(42-78)	Ark.-Pine Bluff (12/29/2020)
	.538	(28-52)	Kansas (01/27/2021)
<b>3 PT FG MADE</b>	15		Kansas (01/27/2021)
	15		Ark.-Pine Bluff (12/29/2020)
<b>3 PT FG ATTEMPTS</b>	32		Ark.-Pine Bluff (12/29/2020)
	31		Kansas (01/27/2021)
<b>3 PT FG PERCENTAGE</b>	.615	(8-13)	at Georgia (12/06/2020)
	.484	(15-31)	Kansas (01/27/2021)
<b>FREE THROWS MADE</b>	32		Houston (11/25/2020)
	19		South Dakota (12/20/2020)
<b>FREE THROW ATTEMPTS</b>	39		Houston (11/25/2020)
	27		South Dakota (12/20/2020)
<b>FREE THROW PERCENTAGE</b>	.941	(16-17)	at Baylor (01/23/2021)
	.909	(10-11)	at West Virginia (02/13/2021)
<b>REBOUNDS</b>	54		Ark.-Pine Bluff (12/29/2020)
	50		Houston (11/25/2020)
<b>ASSISTS</b>	23		Ark.-Pine Bluff (12/29/2020)
	20		Kansas (01/27/2021)
<b>STEALS</b>	14		at West Virginia (02/13/2021)
	14		Ark.-Pine Bluff (12/29/2020)
<b>BLOCKED SHOTS</b>	5		Ark.-Pine Bluff (12/29/2020)
	4		at Iowa St. (01/19/2021)
	4		Texas St. (12/13/2020)
<b>TURNOVERS</b>	23		at Georgia (12/06/2020)
	22		at West Virginia (02/13/2021)
<b>FOULS</b>	29		at Georgia (12/06/2020)
	23		Ark.-Pine Bluff (12/29/2020)
	23		Houston (11/25/2020)

# 2020-21 OPPONENT GAME LOWS



## 2020-21 Oklahoma Women's Basketball Team High/Low Analysis All games

Page 4/4  
as of Feb 21, 2021

### Opponent - Game Lows

<b>POINTS</b>	40		Texas St. (12/13/2020)
	61		Iowa St. (02/09/2021)
	64		at Iowa St. (01/19/2021)
	64		Ark.-Pine Bluff (12/29/2020)
	66		Oklahoma St. (12/15/2020)
<b>FIELD GOALS MADE</b>	17		Texas St. (12/13/2020)
	22		Ark.-Pine Bluff (12/29/2020)
<b>FIELD GOAL ATTEMPTS</b>	54		Baylor (02/21/2021)
	54		at Kansas St. (01/31/2021)
<b>FIELD GOAL PERCENTAGE</b>	.270	(17-63)	Texas St. (12/13/2020)
	.310	(22-71)	Ark.-Pine Bluff (12/29/2020)
<b>3 PT FG MADE</b>	1		at Baylor (01/23/2021)
	2		Texas St. (12/13/2020)
<b>3 PT FG ATTEMPTS</b>	6		at Baylor (01/23/2021)
	11		Texas (02/03/2021)
<b>3 PT FG PERCENTAGE</b>	.095	(2-21)	Texas St. (12/13/2020)
	.167	(1-6)	at Baylor (01/23/2021)
<b>FREE THROWS MADE</b>	4		Iowa St. (02/09/2021)
	4		Texas St. (12/13/2020)
<b>FREE THROW ATTEMPTS</b>	7		Texas St. (12/13/2020)
	10		Iowa St. (02/09/2021)
<b>FREE THROW PERCENTAGE</b>	.400	(4-10)	Iowa St. (02/09/2021)
	.571	(4-7)	Texas St. (12/13/2020)
<b>REBOUNDS</b>	28		at West Virginia (02/13/2021)
	32		South Dakota (12/20/2020)
<b>ASSISTS</b>	6		Texas St. (12/13/2020)
	7		at Iowa St. (01/19/2021)
<b>STEALS</b>	3		at Kansas St. (01/31/2021)
	4		Iowa St. (02/09/2021)
<b>BLOCKED SHOTS</b>	0		Kansas (01/27/2021)
	1		Texas (02/03/2021)
<b>TURNOVERS</b>	8		Iowa St. (02/09/2021)
	8		at Kansas (12/10/2020)
<b>FOULS</b>	14		at West Virginia (02/13/2021)
	14		Iowa St. (02/09/2021)
	14		Texas (02/03/2021)
	14		at Iowa St. (01/19/2021)

# THE LAST TIME ...

## LAST TIME AN OKLAHOMA TEAM...

Scored 100 points:	Oklahoma 107, UAPB 64 in Norman, Okla. (Dec. 29, 2020)
Scored 100 points in a Big 12 game:	Never
Scored 100 points:	Oklahoma 107, UAPB 64 in Norman, Okla. (Dec. 29, 2020)
Scored 100 points and lost:	DePaul 111, Oklahoma 108 (OT) in Chicago, Ill. (Nov. 13, 2017)
Scored 110 points:	Oklahoma 111, Quinnipiac 84 in Stanford, Calif. (Mar. 21, 2015)
Scored 115 points:	Oklahoma 117, Sacramento State 55 in Norman, Okla. (Nov. 13, 2011)
Scored at least 60 points in a half:	61 (first half) vs. UAPB in Norman, Okla. (Dec. 29, 2020)
Scored at least 50 points in a half:	51 (second half) at Texas Tech in Lubbock, Texas (March 5, 2019)
Had 35+ rebound margin:	35 - Oklahoma 63, Northwestern State 28 in Norman, Okla. (Nov. 15, 2018)
Had 25+ rebound margin:	28 - Oklahoma 60, New Mexico 32 in Norman, Okla. (Dec. 16, 2017)
Had 20+ rebound margin:	20 - Oklahoma 55, Oklahoma State 35 in Norman, Okla. (Feb. 25, 2019)
Attempted 35 free throws:	39 vs. Houston in Norman, Okla. (Nov. 25, 2020)
Attempted 40 free throws:	41 at Iowa State in Ames, Iowa (Jan. 19, 2019)
Attempted 5 free throws or less:	4 at Nebraska in Lincoln, Neb. (Jan. 10, 2009)
Made 30 free throws:	32 vs. Houston in Norman, Okla. (Nov. 25, 2020)
Had 25 assists:	27 vs. New Mexico in Norman, Okla. (Dec. 16, 2017)
Had 25 turnovers:	25 at Kansas in Lawrence, Kan. (Feb. 2, 2020)
Had 25+ steals:	27 vs. Portland State in Las Vegas, Nev. (Dec. 21, 2016)
Had 20-24 steals:	21 vs. Arkansas-Pine Bluff in Norman, Okla. (Dec. 29, 2010)
Had 15-19 steals:	15 at Texas Tech in Lubbock, Texas (Jan. 10, 2018)
Had 10-14 blocks:	10 vs. West Virginia in Norman, Okla. (Feb. 3, 2018)
Had 15+ blocks:	15 vs. Texas in Oklahoma City, Okla. (Mar. 7, 2007)
Played an overtime game:	Kansas State 87, OU 85 (OT) in Norman, Okla. (Feb. 16, 2020)
Won an overtime game:	OU 94, Kansas 82 (OT) in Lawrence, Kan. (Feb. 2, 2020)
Lost an overtime game:	Kansas State 87, OU 85 (OT) in Norman, Okla. (Feb. 16, 2020)
Played a double overtime game:	Oklahoma 90, West Virginia 87 (2OT) in Norman, Okla. (Feb. 7, 2017)
Played three or more overtimes:	Never
Shot 60% for a game:	60.0% (33-of-55) vs. Iowa State in Norman, Okla. (Feb. 27, 2016)
Shot less than 30% for a game:	27.1% (19-for-70) vs. UConn in Uncasville, Conn. (Dec. 22, 2019)
Shot 90% from the free throw line (min 10 attempts):	90.9% (10-for-11) at West Virginia in Morgantown, W.Va. (Feb. 13, 2021)
Shot 50% from 3-point line:	61.5% (8-for-13) at Georgia in Athens, Ga. (Dec. 6, 2020)
Shot 20-30% in a half:	28.5% (6-for-21) vs. Texas State in Norman, Okla. (Dec. 13, 2020)
Shot less than 20% in a half:	17.8% (5-of-28) at Baylor in Waco, Texas (Feb. 16, 2019)
Made at least 10 3-point field goals:	10-of-23 vs. Texas Tech in Norman, Okla. (March 7, 2020)
Made 15 3-point field goals:	15-of-31 vs. Kansas in Norman, Okla. (Jan. 27, 2021)
Failed to make a 3-point field goal:	0-of-17 at West Virginia in Morgantown, W. Va. (Feb. 17, 2016)
Had at least 70 rebounds:	75 vs. Cameron, (Nov. 30, 1982)
Had at least 60 rebounds:	63 vs. Northwestern State in Norman, Okla. (Nov. 15, 2018)
Had at least 50 rebounds:	54 vs. UAPB in Norman, Okla. (Dec. 29, 2020)
Scored less than 10 points in a quarter:	8 (third quarter), at Oklahoma State in Stillwater, Okla. (Feb. 6, 2021)
Scored less than 20 points in a 1st half:	16 points (first half) at Baylor in Waco, Texas (Feb. 16, 2019)
Scored less than 20 points in a 2nd half:	12 points at Texas in Austin, Texas (Feb. 26, 2005)
Scored 41-50 in a game:	42 points at Oklahoma State in Stillwater, Okla. (Jan. 16, 2016)
Scored less than 40 points in a game:	36 points vs. Texas at Austin, Texas (Feb. 26, 2005)

## LAST TIME AN OKLAHOMA PLAYER...

Scored 30 points:	30, Gabby Gregory at Baylor in Waco, Texas (Feb. 22, 2020)
Scored 35 points:	35, Ana Llanusa at Iowa State in Ames, Iowa (Jan. 19, 2019)
Scored 40 points:	45, Madi Williams vs. West Virginia in Norman, Okla. (Jan. 3, 2021)
Attempted 25 field goals:	30, Madi Williams vs. West Virginia in Norman, Okla. (Jan. 3, 2021)
Had 5 blocks:	6, Vionise Pierre-Louis vs. Texas Tech in Norman, Okla (Feb. 24, 2018)
Had 10 blocks:	10, Courtney Paris vs. Texas Tech in Lubbock, Texas (March 1, 2006)
Had 5 steals:	Tatum Veitenheimer (7) at West Virginia in Morgantown, W.Va. (Feb. 13, 2021)
Had 10 steals:	10, Maddie Manning vs. Portland State in Las Vegas, Nev. (Dec. 21, 2016)
Had 10 assists:	11, Nevaeh Tot vs. UAPB in Norman, Okla. (Dec. 29, 2020)
Had 15 assists:	16, Dionnah Jackson vs. Texas A&M in College Station, Texas (Jan. 22, 2005)
Had 15 rebounds:	15, Mandy Simpson vs. Oklahoma State in Norman, Okla. (Feb. 11, 2020)
Had 20 rebounds:	20, Vionise Pierre-Louis vs. Oklahoma State in Norman, Okla. (Jan. 20, 2018)
Made 10 field goals:	10, Madi Williams vs. Baylor in Norman, Okla. (Feb. 21, 2021)
Made 15 field goals:	17, Madi Williams vs. West Virginia in Norman, Okla. (Jan. 3, 2021)
Made at least 5 three-point field goals:	5, Taylor Robertson at West Virginia in Morgantown, W.Va. (Feb. 13, 2021)
Recorded a double-double:	Madi Williams (27 pts/13 reb) vs. Iowa State (Feb. 9, 2021)
Two players recorded a double-double:	Skylar Vann (14 pts/10 reb) and Nevaeh Tot (12 pts/11 assists) vs. UAPB in Norman, Okla. (Dec. 29, 2020)
Recorded a double-double with points and assists:	Nevaeh Tot (12 points/11 assists) vs. UAPB in Norman, Okla. (Dec. 29, 2020)
Recorded a double-double with points and steals:	Maddie Manning (17 points/10 steals) vs. Portland State in Las Vegas, Nev. (Dec. 21, 2016)
Recorded a double-double with rebounds and assists:	Mandy Simpson (10 reb/12 assists) at Kansas in Lawrence, Kan. (Feb. 2, 2020)
Recorded a triple-double:	Courtney Paris (18 pts, 13 rebs, 10 blocks) vs. Texas Tech in Lubbock, Texas (Mar. 1, 2006)
Recorded consecutive double-doubles:	Madi Williams (14 pts/13 reb) vs. Prairie View A&M in Norman, Okla. (Nov. 8, 2019) Madi Williams (24 pts/13 reb) vs. UAB in Norman, Okla. (Nov. 10, 2019)
Recorded three consecutive double-doubles:	Madi Williams (10 pts/11 reb) vs. Texas Tech in Norman, Okla. (Jan. 2, 2019) Madi Williams (20 pts/10 reb) at SMU in Dallas, Texas (Dec. 22, 2018) and (12 pts/11 reb) vs. UConn in Norman, Okla. (Dec. 19, 2018)
Had a double-double at halftime:	Kaylon Williams (10 pts/10 rebs in the first half) vs. UTSA in Norman, Okla. (Dec. 13, 2015)
Five players scored in double figures:	Gabby Gregory (23), Taylor Robertson (23), Madi Williams (19), Skylar Vann (14), Nevaeh Tot (12) vs. UAPB in Norman, Okla. (Dec. 29, 2020)

## GAME 19: OKLAHOMA AT TCU

Six players scored in double figures: ..... Ana Llanusa (18), Gabbi Ortiz (17), Shaina Pellington (17), Vionise Pierre-Louis (13), Maddie Manning (11) and LaNesia Williams (10) vs. Kansas in Norman, Okla. (Jan. 24, 2018)

Seven players scored in double figures: ..... Nicole Griffin (14), Aaryn Ellenberg (28), Morgan Hook (12), Jelena Cerina (11), DaShawn Harden (15), Sharane Campbell (11), Whitney Hand (18) vs. Sacramento State in Norman, Okla. (Nov. 13, 2011)

Eight players scored in double figures: ..... Ashley Paris (12), Amanda Thompson (12), Courtney Paris (14), Nyeshia Stevenson (12), Jenny Vining (18), Abi Olajuwon (12), Carlee Roethlisberger (10) and Rose Hammond (12) vs. Central Arkansas in Norman, Okla. (Dec. 20, 2007)

No players scored in double figures: ..... Never

**Only one player scored in double figures:** ..... **Madi Williams (29) at Oklahoma State in Stillwater, Okla. (Feb. 6, 2021)**

**Two players scored 20 points:** ..... **Madi Williams (21) and Taylor Robertson (20) at West Virginia in Morgantown, W.Va. (Feb. 13, 2021)**

Scored 20 points and had 20 rebounds: ..... Courtney Paris (23 pts/20 rebs) vs. Texas Tech in Lubbock, Texas (Feb. 17, 2009)

Three players scored 20 points: ..... Vionise Pierre-Louis (25), Shaina Pellington (23) and Maddie Manning (20) at DePaul in Chicago, Ill. (Nov. 13, 2017)

**Two players had 10 rebounds:** ..... **Mandy Simpson (11) and Skylar Vann (10) vs. UAPB in Norman, Okla. (Dec. 29, 2020)**

Three players had 10 rebounds: ..... Courtney Paris (12), Ashley Paris (11) and Amanda Thompson (11) vs. North Carolina (Nov. 23, 2008)

**Played every minute:** ..... **Taylor Robertson (40) at West Virginia in Morgantown, W.Va. (Feb. 13, 2021)**

Played more than 40 minutes: ..... Taylor Robertson (45 minutes) vs. Kansas State in Norman, Okla. (Feb. 16, 2020)

Played 50 minutes: ..... Peyton Little (50 min.) vs. West Virginia in Norman, Okla. (Feb. 7, 2017)

**Back-to-back 25 points game:** ..... **Madi Williams, 29 pts vs. Oklahoma State in Stillwater, Okla. (Feb. 4, 2021) and 27 pts vs. vs. Iowa State (Feb. 9, 2021)**

## LAST TIME AN OKLAHOMA OPPONENT...

Shot 30% or less in a game (Big 12): ..... West Virginia, 23.7% at West Virginia in Morgantown, W.Va. (Jan. 15, 2020)

**Shot 30% or less in a game (Non-conference):** ..... **Texas State, 27.0% (17-for-63) in Norman, Okla. (Dec. 13, 2020)**

Shot 60% in a game: ..... Baylor, 62.0% (44-for-71) in Waco, Texas (Feb. 22, 2020)

Did not make a field goal in a quarter: ..... Kansas (first quarter) in Lawrence, Kan. (Feb. 10, 2018)

**Scored less than 10 points in a quarter:** ..... **5 (fourth quarter), West Virginia in Morgantown, W.Va. (Feb. 13, 2021)**

Scored less than 10 points in all four quarters: ..... Never

Scored less than 20 points in a 1st half: ..... **19, Texas State in Norman, Okla. (Dec. 13, 2020)**

Scored less than 20 points in a 2nd half: ..... 16, Southern Illinois in Norman, Okla. (Nov. 13, 2016)

**Had a 20+ rebound margin:** ..... **23, Texas in Norman, Okla. (Feb. 3, 2021)**

**Had a 25+ rebound margin:** ..... **26, Baylor (40-14) in Waco, Texas (Jan. 23, 2021)**

Had 15 steals: ..... 15, Baylor in Waco, Texas (Feb. 22, 2020)

Had 40+ turnovers: ..... 42, Portland State, in Las Vegas, Nev. (Dec. 21, 2016)

Had 35-39 turnovers: ..... 37, North Texas in Denton, Texas (Dec. 7, 2014)

Had 30-34 turnovers: ..... 33, California in Las Vegas, Nev. (Dec. 20, 2016)

Had 25-29 turnovers: ..... 26, Sam Houston State in Norman, Okla. (Dec. 15, 2019)

Had 50 rebounds: ..... 54, Kansas State in Norman, Okla. (Feb. 16, 2020)

**Had 25 assists:** ..... **25, Baylor in Waco, Texas (Jan. 23, 2021)**

Scored 41-50 points in a game: ..... 29, TCU in Fort Worth, Texas (March 4, 2020)

**Scored 31-40 points in a game:** ..... **40, Texas State in Norman, Okla. (Dec. 13, 2020)**

Scored 25 points or less: ..... 25, NC Central in Norman, Okla. (Jan. 4, 2009)

Scored 30 points or less: ..... 25, NC Central in Norman, Okla. (Jan. 4, 2009)

**Made 10 three-point field goals:** ..... **13, Oklahoma State in Stillwater, Okla. (Feb. 6, 2021)**

Failed to make a 3-point field goal: ..... UC-Riverside (0-of-11) in Norman, Okla. (Dec. 20, 2012)

Had 10 blocks: ..... 11, UConn in Uncasville, Conn. (Dec. 22, 2019)

Did not attempt a free throw: ..... Kansas State in Norman, Okla. (Jan. 14, 2009)

Made 30 free throws: ..... 32, TCU in Oklahoma City, Okla. (March 3, 2018)

**Attempted 35+ free throws:** ..... **39, Georgia in Athens, Ga. (Dec. 6, 2020)**

Scored 100 points: ..... 106, Texas Tech in Norman, Okla. (March 7, 2020)

Scored 110 points: ..... 111, DePaul in Seattle in Chicago, Ill. (Nov. 13, 2017)

Scored 100 points at Oklahoma: ..... 106, Texas Tech in Norman, Okla. (March 7, 2020)

Scored 100 points and lost: ..... Never

## LAST TIME AN OPPOSING PLAYER...

**Recorded a double-double:** ..... **Ashley Joens (20 pts/10 reb), Iowa State in Norma, Okla. (Feb. 9, 2021)**

Two players recorded a double-double: ..... Brittany Brewer (18 pts/12 reb) and Chislyn Carr (23 pts/11 asst), Texas Tech in Norman, Okla. (March 7, 2020)

Recorded a double-double with points and assists: ..... Chislyn Carr (23 pts/11 asst), Texas Tech in Norman, Okla. (March 7, 2020)

**Had 5 blocks:** ..... **5, Natasha Mack, Oklahoma State in Stillwater, Okla. (Feb. 6, 2021)**

**Had 5 steals:** ..... **8, Kysre Gondrezick, West Virginia in Morgantown, W.Va. (Feb. 13, 2021)**

Had 10 assists: ..... 11, Chislyn Carr, Texas Tech in Norman, Okla. (March 7, 2020)

Had 15 assists: ..... 16, Aisia Robertson, New Mexico in Albuquerque, N.M. (Nov. 28, 2018)

Had 20 rebounds: ..... 20, Ayoka Lee, Kansas State in Manhattan, Kan. (Jan. 25, 2020)

**Had 15 rebounds:** ..... **18, Natasha Mack, Oklahoma State in Stillwater, Okla. (Feb. 6, 2021)**

Had 10 blocks: ..... 10, Brittney Griner, Baylor in Kansas City, Mo. (Mar. 12, 2010)

Scored 30 points (non-conference): ..... 32, Kristin Anigwe, California in Las Vegas, Nev. (Dec. 20, 2016)

**Scored 30 points (Big 12):** ..... **32, Charli Collier, Texas in Norman, Okla. (Feb. 3, 2021)**

Scored 35 or more points (non-conference): ..... 39, Ahlise Hurst, New Mexico in Albuquerque, N.M. (Nov. 28, 2018)

**Scored 35 points or more (Big 12):** ..... **37, Ayoka Lee, Kansas State in Manhattan, Kan. (Jan. 31, 2021)**

**Attempted 25 field goals:** ..... **25, Ashley Joens, Iowa State in Ames Iowa (Jan. 19, 2021)**

**Made 15 field goals:** ..... **15, Ayoka Lee, Kansas State in Manhattan, Kan. (Jan. 31, 2021)**

Scored 20 points and had 20 rebounds: ..... Ayoka Lee (23 pts/20 reb), Kansas State in Manhattan, Kan. (Jan. 25, 2020)

**Two players scored 20 points:** ..... **Natasha Mack (26) and Ja'Mee Asberry (22), Oklahoma State in Stillwater, Okla. (Feb. 6, 2021)**

Three players scored 20 points: ..... Andrayah Adams (29), Chislyn Carr (23) and Lexi Gordon (22), Texas Tech in Norman, Okla. (March 7, 2020)

**Five players scored in double figures:** ..... **Natasha Mack (26), Ja'Mee Asberry (22), Lauren Fields (13), Neferatalli Notoa (10), Taylen Collins (10), Oklahoma State in Stillwater, Okla. (Feb. 6, 2021)**

Six players scored in double figures: ..... Amarah Coleman (23), Ashton Millender (21), Mart'e Gray (18), Kelly Campbell (16), Chante Stonewall (16), Tanita Allen (10) vs. DePaul, in Chicago, Ill. (Nov. 13, 2017)

Committed 10+ turnovers: ..... 10, Tanaeya Boclair, Utah in Freeport, Bahamas (Nov. 26, 2015)

Recorded a triple-double: ..... Alexis Jones (24 pts, 12 rebs, 10 assists) in Waco, Texas (Jan. 29, 2017)

# BOX SCORES

## GAME 1: HOUSTON 97, OKLAHOMA 85

11/25/20 | Norman, Okla. | Lloyd Noble Center | Att.: 657

Houston (1-0,0-0 AAC) vs- Oklahoma (0-1,0-0 Big 12)  
11/25/20 at Lloyd Noble Center, Norman, OK

Date: 11/25/20  
Time: 12:00 PM  
Attendance: 657  
Site: Lloyd Noble Center, Norman, OK  
Referee: Blanca Burns, Nick Marshall, Bill Laranca

Score By Period	1	2	3	4	Total
Houston	26	20	27	24	97
Oklahoma	25	19	17	24	85

### Houston 97

#	Player	GS	MIN	FG	3PT	FT	ORB-DRB	REB	PF	A	TO	BLK	STL	PTS
10	Onyeje, Britney	*	27	9-19	5-13	0-0	1-3	4	3	3	0	2	23	
23	Blackwell-Fair, Julia	*	33	4-12	0-0	8-11	3-6	9	3	4	0	1	16	
05	Gladney, Dymond	*	34	6-12	0-3	1-2	1-1	2	0	7	4	0	13	
01	Patterson, Bria	*	21	2-5	1-3	2-2	0-4	4	2	2	1	0	7	
30	Hill, Tatyana	*	11	3-3	0-0	0-0	3-4	7	5	0	0	0	6	
14	Blair, Laila	*	11	4-8	1-5	4-5	0-2	2	3	0	1	0	13	
25	Burrell, Ca'Leah	*	12	2-3	2-3	2-2	0-1	1	1	0	1	0	2	
00	Sidney, Eniya	*	10	3-6	1-3	0-0	0-0	0	2	1	0	0	7	
21	White, Daphne	*	17	1-5	0-0	1-2	2-3	5	5	0	1	2	3	
02	Crump, Miya	*	8	0-3	0-2	1-2	0-2	2	1	0	1	0	1	
44	Lewis, Jazmaïne	*	12	0-2	0-0	1-2	1-0	1	4	0	0	0	0	
04	Purvis, Tae'lor	*	2	0-0	0-0	0-0	0-0	0	0	0	0	0	0	
24	Jones, Maya	*	2	0-0	0-0	0-0	0-0	0	0	0	0	0	0	
TM	TEAM			0-0	0-0	2-2	4	0	0	0	0	0	0	
<b>Totals</b>			<b>200</b>	<b>34-78</b>	<b>10-32</b>	<b>19-28</b>	<b>13-28</b>	<b>41</b>	<b>29</b>	<b>17</b>	<b>12</b>	<b>3</b>	<b>12</b>	<b>97</b>

Team Summary	FG	3PT	FT
1st Quarter	10-19 52.63%		2-10 20.00%
2nd Quarter	6-19 31.58%		1-7 14.29%
3rd Quarter	10-20 50.00%		4-7 57.14%
4th Quarter	8-20 40.00%		3-8 37.50%
<b>Total</b>	<b>34-78 43.6%</b>	<b>10-32 31.3%</b>	<b>19-28 67.9%</b>

Technical Fouls: none    Second Chance Points: 9    Scores Tied: 9 times(s)    Points in the Paint: 40    Fast Break Points: 25  
Lead Changed: 2 times(s)    Points off Turnovers: 23    Bench Points: 32    Largest Lead: 0

### Oklahoma 85

#	Player	GS	MIN	FG	3PT	FT	ORB-DRB	REB	PF	A	TO	BLK	STL	PTS
25	Williams, Madi	*	37	9-21	0-3	7-8	0-3	3	3	1	4	1	0	25
12	Gregory, Gabby	*	39	5-12	0-0	8-8	2-4	4	1	6	5	0	1	18
30	Robertson, Taylor	*	38	3-10	3-8	4-4	1-4	5	4	0	2	0	1	13
03	Simpson, Mandy	*	28	3-6	0-0	5-7	1-12	13	4	3	6	0	0	11
32	Veltenheimer, Tatum	*	23	1-2	0-0	2-2	1-4	5	2	1	0	0	1	4
34	Scott, Liz	*	8	3-3	0-0	1-2	2-2	4	5	0	1	0	0	7
01	Tot, Nevaeh	*	20	0-2	0-1	4-6	0-3	3	3	2	3	0	0	4
15	Greer, Heavenly	*	7	1-4	0-0	1-2	1-4	5	1	0	0	0	0	3
TM	TEAM			0-0	0-0	0-0	4-4	8	0	0	0	0	0	0
<b>Totals</b>			<b>200</b>	<b>25-60</b>	<b>3-15</b>	<b>32-39</b>	<b>12-38</b>	<b>50</b>	<b>23</b>	<b>13</b>	<b>21</b>	<b>1</b>	<b>3</b>	<b>85</b>

Team Summary	FG	3PT	FT
1st Quarter	9-15 60.00%		1-4 25.00%
2nd Quarter	4-16 25.00%		0-2 0.00%
3rd Quarter	8-18 44.44%		1-6 16.67%
4th Quarter	4-11 36.36%		1-3 33.33%
<b>Total</b>	<b>25-60 41.7%</b>	<b>3-15 20.0%</b>	<b>32-39 82.1%</b>

Technical Fouls: none    Second Chance Points: 11    Scores Tied: 9 times(s)    Points in the Paint: 36    Fast Break Points: 13  
Lead Changed: 2 times(s)    Points off Turnovers: 14    Bench Points: 14    Largest Lead: 0

## GAME 3: KANSAS 74, OKLAHOMA 64

12/10/20 | Lawrence, Kan. | Allen Field House | Att.: 331



Official Basketball Box Score - Final  
Oklahoma at Kansas  
12/10/20 Allen Fieldhouse, Lawrence  
2020-21 Women's Basketball

Game Time: 7:00 PM  
Game Duration: 1:58  
Attendance: 331

### Oklahoma - 64

NO. Name	Min	FG	3P	FT	Rebounds	Fouls	TP	AS	TO	ST	Blocks	BS	BA	+/-
34 Liz Scott	F 35:58	5-12	0-0	0-4	1 9	10	4	5	10	1	3	1	0	1 5
1 Nevaeh Tot	G 40:00	3-8	1-4	3-4	3 4	7	3	4	10	7	1	0	0	1 -10
12 Gabby Gregory	G 40:00	7-15	4-9	4-4	2 3	5	2	22	11	4	0	1	1	-10
24 Skylar Vann	G 29:37	4-9	0-5	0-0	2 4	6	5	0	8	0	0	0	1	-5
30 Taylor Robertson	G 40:00	3-9	2-7	2-2	0 5	3	10	2	3	0	0	0	0	-10
15 Heavenly Greer	G 14:25	2-4	0-0	0-0	0 2	3	0	4	0	4	0	0	0	-5
Team					2 1	3	0		1					
<b>Totals</b>		<b>24-57</b>	<b>7-25</b>	<b>9-14</b>	<b>10</b>	<b>28</b>	<b>20</b>	<b>17</b>	<b>64</b>	<b>11</b>	<b>16</b>	<b>1</b>	<b>2</b>	<b>10</b>

Shooting By Period	1st	2nd	3rd	4th	TOT
FG%	41.0	60.0%			
3PT%	3.0	0.0%			
FT%	3.6	50.0%			
2nd FG%	6-13	46.2%			
3PT%	1-6	16.7%			
FT%	0-0	0%			
3rd FG%	7-16	43.8%			
3PT%	1-5	20.0%			
FT%	4-6	66.7%			
4th FG%	7-18	38.9%			
3PT%	2-9	22.2%			
FT%	2-2	100%			
GM FG%	24-57	42.1%			
3PT%	7-25	28.0%			
FT%	9-14	64.3%			

### Kansas - 74

NO. Name	Min	FG	3P	FT	Rebounds	Fouls	TP	AS	TO	ST	Blocks	BS	BA	+/-
1 Tina Stephens	F 35:26	6-11	0-0	0-0	6 8	3	7	18	0	1	1	0	1	5
11 Ioanna Chatzileonti	F 27:21	1-4	0-0	0-0	1 5	6	1	2	2	3	1	2	1	-3
5 Anyia Thomas	G 28:46	5-10	1-3	0-6	1 2	3	2	14	1	1	4	1	0	9
13 Holly Karsgjerter	G 31:53	7-14	3-6	0-0	2 4	6	3	11	17	2	0	0	0	4
15 Zakayah Franklin	G 29:04	3-10	0-1	2-2	1 3	1	3	8	2	0	0	0	0	3
4 Mia Vukusic	03:02	0-1	0-1	0-0	1 0	0	0	0	0	0	0	0	0	0
20 Julie Brousseau	16:39	1-8	1-5	0-0	0 0	1	0	3	0	1	0	0	0	7
21 Brooklyn Mitchell	11:31	2-4	0-1	5-6	0 1	1	3	9	2	0	0	0	0	11
35 Bailey Helgren	15:26	1-3	0-0	1-2	4 3	7	3	2	3	0	0	0	2	11
10 Emma Merriweather	01:12	0-0	0-0	0-0	0 0	0	0	0	0	0	0	0	0	3
Team					2 2	4	0		0					
<b>Totals</b>		<b>26-65</b>	<b>5-17</b>	<b>17-24</b>	<b>15</b>	<b>24</b>	<b>38</b>	<b>17</b>	<b>20</b>	<b>74</b>	<b>9</b>	<b>8</b>	<b>5</b>	<b>2</b>

Shooting By Period	1st	2nd	3rd	4th	TOT
FG%	61.8	33.3%			
3PT%	2-8	25.0%			
FT%	0-1	0%			
2nd FG%	4-17	23.5%			
3PT%	0-4	0.0%			
FT%	4-5	80%			
3rd FG%	8-14	57.1%			
3PT%	0-0	0.0%			
FT%	7-12	58.3%			
4th FG%	8-16	50.0%			
3PT%	3-5	60.0%			
FT%	6-6	100%			
GM FG%	26-65	40.0%			
3PT%	5-17	29.4%			
FT%	17-24	70.8%			

Biggest lead	Oklahoma	Kansas	Points from Turnovers	Oklahoma	Kansas	Period by Period Scoring
6 (2nd 5:21)	10 (4th 0:07)	4	22	38		1st 2nd 3rd 4th TOT
Best Scoring Run	8 (2nd 5:21)	7 (2nd 1:46)	Paint	22	38	Oklahoma 14 13 19 18 64
Lead Changes	10	Second Chance	6	18		
Times Tied	14	Fast Breaks	2	12		Kansas 14 12 23 25 74
Time with Lead	15:41	Bench	4	15		

## GAME 2: GEORGIA 93, OKLAHOMA 80

12/6/20 | Athens, Ga. | Stegeman Coliseum | Att.: 595



Official Basketball Box Score - Final  
Oklahoma at Georgia  
12/06/20 Stegeman Coliseum, Athens  
2020-21 Women's Basketball

Game Time: 12:00 PM  
Game Duration: 2:06  
Attendance: 595

### Oklahoma - 80

NO. Name	Min	FG	3P	FT	Rebounds	Fouls	TP	AS	TO	ST	Blocks	BS	BA	+/-
3 Mandy Simpson	F 20:24	2-4	0-0	2-4	2 8	10	4	2	6	3	6	0	0	1 2
12 Gabby Gregory	G 34:04	5-11	1-2	2-6	1 1	2	3	7	13	2	3	1	0	1 -13
25 Madi Williams	G 28:17	7-15	1-2	3-5	1 5	6	5	4	18	4	4	3	0	3 -6
30 Taylor Robertson	G 32:31	2-4	2-3	0-0	0 1	1	2	2	6	1	2	1	0	0 -5
32 Tatum Veltenheimer	G 16:13	1-3	0-2	1-2	1 3	4	4	1	3	1	4	0	0	0 -15
34 Liz Scott	G 11:49	3-4	0-0	2-2	0 0	0	5	1	8	0	0	1	0	0 6
1 Nevaeh Tot	G 30:33	4-9	2-2	4-5	0 1	1	1	3	14	6	3	1	0	1 -2
15 Heavenly Greer	G 10:48	2-4	0-0	0-0	0 3	3	0	4	0	0	1	0	1	-15
24 Skylar Vann	G 13:01	3-3	2-2	0-0	1 4	5	0	1	8	0	0	1	0	0 -17

# GAME 19: OKLAHOMA AT TCU

## BOX SCORES

### GAME 5: OKLAHOMA STATE 66, OKLAHOMA 53

12/15/20 | Norman, Okla. | Lloyd Noble Center | Att.: 657

NCAA		Official Basketball Box Score - Final										Game Time: 7:00 PM							
NCAA		Oklahoma St. at Oklahoma										Game Duration: 1:52							
NCAA		12/15/20 Lloyd Noble Center, Norman										Attendance: 676							
NCAA		2020-21 Women's Basketball										Officials: Gina Cross, Beverly Roberts, Scott Yarbrough							
<b>Oklahoma St. - 66</b>												<b>Record: 4-1 (2-0)</b>							
NO. Name	Min	FG	3P	FT	Rebounds	Fouls	TP	AS	TO	ST	Blocks	+/-	Shooting By Period						
4 Natasha Mack	F 30:58	7-14	0-0	2-2	5	7	2	4	16	2	1	1	4	0	11	1 <sup>st</sup> FG%	4-11	36.4%	
14 Taylor Collins	F 38:22	5-8	0-0	2-3	3	5	8	2	4	12	3	3	2	2	0	16	3 <sup>rd</sup> FG%	2-3	66.7%
35 Brittany Reeves	F 14:07	0-1	0-0	0-0	1	1	1	1	1	0	2	0	0	0	4	FT%	5-7	71.4%	
15 Lexy Keys	G 23:01	2-4	1-2	0-0	2	2	5	0	5	3	2	3	1	1	15	2 <sup>nd</sup> FG%	6-17	35.3%	
21 Ja'Mee Asberry	G 37:42	7-14	3-6	2-2	0	2	2	5	19	5	3	1	0	0	16	3 <sup>rd</sup> FG%	2-6	33.3%	
23 Lauren Fields	29:45	2-10	1-6	3-4	0	6	6	0	3	8	2	0	0	0	9	FT%	0-0	0%	
11 Bigna Sarr	01:26	0-0	0-0	1-2	0	0	0	1	1	0	1	0	0	0	2	4 <sup>th</sup> FG%	9-17	52.9%	
3 Micah Dennis	15:36	2-3	0-1	1-4	1	3	4	1	2	5	1	2	0	0	0	FT%	1-6	16.7%	
2 Nefertali Notoa	01:40	0-1	0-0	0-0	1	1	1	0	0	0	0	0	0	0	1	GM FG%	2-2	100%	
25 Abbie Winchester	04:44	0-0	0-0	0-0	0	0	0	1	0	0	1	0	0	0	3	3 <sup>rd</sup> FT%	1-10	60.0%	
1 Kassidy De Lapp	02:39	0-0	0-0	0-0	0	0	0	0	0	0	1	0	0	0	1	4 <sup>th</sup> FT%	4-8	50%	
Team					1	2	3				0	1				GM FG%	25-55	45.5%	
Totals		25-55	5-15	11-17	8	26	34	15	20	66	16	8	7	3	13	3 <sup>rd</sup> FT%	5-15	33.3%	
												FT%		11-17	64.7%	Technical Fouls: NONE			
												Dead Ball Rebounds: 4.1							

NCAA		Official Basketball Box Score - Final										Game Time: 7:00 PM							
NCAA		Oklahoma - 53										Game Duration: 1:53							
NCAA		12/15/20 Lloyd Noble Center, Norman										Attendance: 583							
NCAA		2020-21 Women's Basketball										Officials: Beverly Roberts, Gina Cross, Blanca Burns							
<b>Oklahoma - 53</b>												<b>Record: 14 (9-2)</b>							
NO. Name	Min	FG	3P	FT	Rebounds	Fouls	TP	AS	TO	ST	Blocks	+/-	Shooting By Period						
34 Liz Scott	F 21:52	3-5	0-0	0-0	1	7	8	5	1	6	2	3	1	1	2	1-1	3-13	23.1%	
1 Nevaeh Tot	G 40:00	1-12	0-2	1-2	1	2	3	1	1	3	4	4	2	0	1	1-13	3 <sup>rd</sup> FT%	1-2	50%
12 Gabby Gregory	G 40:00	4-11	1-3	5-6	0	1	1	1	4	14	0	5	0	0	1	2 <sup>nd</sup> FG%	5-10	50%	
24 Skylar Vann	G 40:00	5-13	1-5	0-0	6	3	9	3	2	11	0	4	1	1	1	3 <sup>rd</sup> FT%	1-4	25%	
30 Taylor Robertson	G 40:00	7-13	4-8	0-0	2	2	4	2	5	18	1	1	2	1	2	4 <sup>th</sup> FG%	3-14	21.4%	
15 Heavenly Greer	07:22	0-1	0-0	0-0	0	2	4	0	0	0	1	0	0	0	1	FT%	0-2	0%	
3 Mandy Simpson	10:46	0-0	0-0	1-4	0	4	4	2	1	2	1	1	0	0	1	GM FG%	20-55	36.4%	
Team					2	2	4			0	1					3 <sup>rd</sup> FT%	6-18	50%	
Totals		20-55	6-18	7-12	12	23	35	20	15	53	9	20	7	3	7	1-13	4 <sup>th</sup> FT%	1-2	50%
												FT%		7-12	58.3%	Technical Fouls: NONE			
												Dead Ball Rebounds: 1.1							

OSU		OU		Points from Turnovers		OSU		OU		Period by Period Scoring					
OSU		OU		OSU		OU		OSU		OU		OSU		OU	
Biggest lead	24 (4 <sup>th</sup> 7:39)	0 (1 <sup>st</sup> 10:00)	Points from Turnovers	21	18	1st	2nd	3rd	4th	TOT	1st	2nd	3rd	4th	TOT
Best Scoring Run	12 (3 <sup>rd</sup> 4:30)	14 (4 <sup>th</sup> 4:01)	Paint	28	20	OSU	15	14	21	16	66	66	66	66	66
Lead Changes	0	0	Second Chance	4	11	OSU	15	14	21	16	66	66	66	66	66
Times Tied	0	0	Fast Breaks	12	5	OSU	8	12	10	23	53	53	53	53	53
Time with Lead	37:50	00:00	Bench	14	1	OSU	8	12	10	23	53	53	53	53	53

Game Notes: Actual Attendance: 351

### GAME 6: OKLAHOMA 80, SOUTH DAKOTA 73

12/20/20 | Norman, Okla. | Lloyd Noble Center | Att.: 608

NCAA		Official Basketball Box Score - Final										Game Time: 2:00 PM							
NCAA		South Dakota at Oklahoma										Game Duration: 2:07							
NCAA		12/20/20 Lloyd Noble Center, Norman										Attendance: 608							
NCAA		2020-21 Women's Basketball										Officials: Mark Zentz, Chaney Munch, Bill Larence							
<b>South Dakota - 73</b>												<b>Record: 3-3</b>							
NO. Name	Min	FG	3P	FT	Rebounds	Fouls	TP	AS	TO	ST	Blocks	+/-	Shooting By Period						
34 Hannah Sjerven	C 22:32	6-9	0-0	3-5	2	5	7	5	9	15	1	3	0	3	0	7	1 <sup>st</sup> FG%	5-15	33.3%
2 Liv Krongable	G 23:59	3-7	0-2	2-3	1	2	3	5	1	8	3	2	1	0	0	4	3 <sup>rd</sup> FT%	1-6	16.7%
22 Chloe Lamb	G 37:46	7-20	4-10	5-6	2	3	5	5	4	23	1	2	2	0	0	-8	3 <sup>rd</sup> FT%	2-4	50%
32 Kyah Watson	G 15:50	0-0	0-0	2-2	0	2	2	2	2	1	1	0	0	0	0	-10	2 <sup>nd</sup> FG%	3-10	30.0%
42 Maddie Kruik	G 37:41	2-6	0-1	2-5	2	3	5	3	3	6	4	2	2	0	1	-3	3 <sup>rd</sup> FT%	1-3	33.3%
23 Natalie Mazurek	08:35	1-2	0-1	0-0	1	2	3	1	1	2	0	2	0	0	0	-14	FT%	6-8	75%
10 Morgan Hansen	34:05	7-12	3-7	0-0	2	2	4	1	1	17	1	1	2	0	0	2	1 <sup>st</sup> FG%	10-15	66.7%
30 Jeniah Ugoltsky	05:24	0-0	0-0	0-0	1	1	1	0	0	0	0	1	1	0	0	0	3 <sup>rd</sup> FT%	3-8	37.5%
41 Alexi Hempte	09:05	0-1	0-1	0-0	0	1	1	0	0	0	0	0	0	0	0	-5	FT%	1-3	33.3%
1 Claudia Kuznet	04:26	0-1	0-0	0-0	0	0	0	0	0	0	0	0	0	0	0	-3	2 <sup>nd</sup> FG%	6-18	44.4%
3 Macy Gunbert	00:37	0-0	0-0	0-0	0	0	0	0	0	0	0	0	0	0	0	2	3 <sup>rd</sup> FT%	2-5	40.0%
Team					0	1	2			0	0	1					FT%	5-6	83.3%
Totals		26-58	7-22	14-21	10	22	32	24	21	73	11	15	8	3	1	-7	GM FG%	26-58	44.8%
												3 <sup>rd</sup> FT%		7-22	31.8%	Technical Fouls: NONE			
												FT%		14-21	66.7%	Dead Ball Rebounds: 4.0			

NCAA		Official Basketball Box Score - Final										Game Time: 7:00 PM							
NCAA		Oklahoma - 80										Game Duration: 1:53							
NCAA		12/20/20 Lloyd Noble Center, Norman										Attendance: 583							
NCAA		2020-21 Women's Basketball										Officials: Beverly Roberts, Gina Cross, Blanca Burns							
<b>Oklahoma - 80</b>												<b>Record: 2-4</b>							
NO. Name	Min	FG	3P	FT	Rebounds	Fouls	TP	AS	TO	ST	Blocks	+/-	Shooting By Period						
34 Liz Scott	F 23:58	3-7	0-0	0-4	1	6	7	4	6	6	6	3	2	0	0	10	1 <sup>st</sup> FG%	7-12	58.3%
1 Nevaeh Tot	G 36:33	2-6	0-2	5-6	1	5	6	2	5	9	7	3	1	0	0	2	3 <sup>rd</sup> FT%	3-3	100%
12 Gabby Gregory	G 40:00	3-10	3-6	6-8	2	4	6	2	5	15	1	4	1	0	1	7	FT%	2-5	40%
24 Skylar Vann	G 40:06	1-2	0-0	0-0	0	0	0	0	0	0	0	0	0	0	0	0	2 <sup>nd</sup> FG%	7-11	63.6%
30 Taylor Robertson	G 38:00	8-11	4-7	7-7	0	2	2	4	5	27	2	1	1	1	0	6	3 <sup>rd</sup> FT%	1-3	33.3%
3 Mandy Simpson	09:27	1-3	0-0	0-0	0	0	0	0	0	4	2	1	0	0	2	-4	FT%	7-9	77.8%
25 Madi Williams	31:21	9-14	0-0	1-2	0	4	4	3	1	19	3	3	1	0	0	13	1 <sup>st</sup> FG%	6-17	35.3%
15 Heavenly Greer	05:36	0-0	0-0	0-0	0	0	0	0	0	0	0	0	0	0	1	0	3 <sup>rd</sup> FT%	2-5	40.0%
Team					5	2	7			0	0						FT%	0-0	0%
Totals		27-53	7-15	19-27	9	25	34	21	24	80	14	16	6	1	3	7	GM FG%	27-53	50.9%
												3 <sup>rd</sup> FT%		7-15	46.7%	Technical Fouls: NONE			
												FT%		19-27	70.4%	Dead Ball Rebounds: 3.0			

USD		OU		Points from Turnovers		USD		OU		Period by Period Scoring					
USD		OU		USD		OU		USD		OU		USD		OU	
Biggest lead	2 (1 <sup>st</sup> 6:44)	17 (2 <sup>nd</sup> 1:01)	Points from Turnovers	12	16	1st	2nd	3rd	4th	TOT	1st	2nd	3rd	4th	TOT
Best Scoring Run	8 (3 <sup>rd</sup> 4:10)	7 (1 <sup>st</sup> 4:06)	Paint	34	34	USD	13	13	24	23	73	73	73	73	73
Lead Changes	0	0	Second Chance	6	9	USD	13	13	24	23	73	73	73	73	73
Times Tied	0	0	Fast Breaks	14	6	USD	13	13	24	23	73	73	73	73	73
Time with Lead	02:27	35:43	Bench	19	21	USD	19	22	14	25	80	80	80	80	80

Game Notes: Estimated Attendance: 398

### GAME 7: OKLAHOMA 107, UAPB 64

12/29/20 | Norman, Okla. | Lloyd Noble Center | Att.: 583

NCAA		Official Basketball Box Score - Final										Game Time: 7:00 PM	
NCAA		Ark-Pine Bluff at Oklahoma										Game Duration: 1:53	
NCAA		12/29/20 Lloyd Noble Center, Norman										Attendance: 583	
NCAA		2020-21 Women's Basketball										Officials: Beverly Roberts, Gina Cross, Blanca Burns	
<b>Ark-Pine Bluff - 64</b>												<b>Record: 1-5</b>	
NO. Name													



# GAME 19: OKLAHOMA AT TCU

# BOX SCORES

**GAME 13: OKLAHOMA 80, KANSAS STATE 78**  
1/31/21 | Manhattan, Kan. | Bramlage Coliseum | Att.: 740



Official Basketball Box Score - Final  
**Oklahoma at Kansas St.**  
01/31/21 Bramlage Coliseum, Manhattan, Kansas  
2020-21 Women's Basketball

Game Time: 1:00 PM  
Game Duration: 1:52  
Attendance: 740

Officials: Jesse Dickerson, Metta Christensen, Julie Krommenhoek

Oklahoma - 80

Record: 6-7 (3-5)

NO. Name	Min	FG		3P		FT		Rebounds		Fouls		TP	AS	TO	ST	Blocks		+/-	
		M/A	M/A	M/A	M/A	OR	DR	FF	FD	OR	DR					BS	BA		
1 Naveah Tot	G 32:46	2-4	1-1	0-0	1-2	3-3	1-1	5-3	1-0	2-0	2-0	0	0	0	0	0	0	0	2
12 Gabby Gregory	G 35:52	5-15	4-10	5-6	1-4	5-11	5-19	2-0	0	1	1	0	0	1	1	0	0	0	9
25 Madi Williams	G 40:00	7-19	0-1	4-5	1-5	6-0	5-18	7-0	5	2	1	2	2	1	2	0	0	0	7
30 Taylor Robertson	G 40:00	4-11	2-7	6-6	0-4	4-3	16-2	0	0	1	0	0	0	0	0	0	0	0	7
32 Tatum Veltienheimer	G 35:40	6-8	3-5	0-0	0-3	3-4	1-15	3-3	5	0	0	0	0	0	0	0	0	0	7
24 Skylar Vann	G 12:40	3-6	1-3	0-0	1-3	4-2	0-7	0	0	1	0	0	0	0	0	0	0	0	1
<b>Team</b>																			
<b>Totals</b>		27-63	11-27	15-17	4-23	27-13	15-80	17-5	12-3	4-2	2	0	0	0	0	0	0	0	0

Technical Fouls: NONE

Shooting By Period	
1 <sup>st</sup> FG%	7-14 50.0%
3PT%	4-7 57.1%
FT%	2-4 50%
2 <sup>nd</sup> FG%	10-18 55.6%
3PT%	4-10 40.0%
FT%	0-0 0%
3 <sup>rd</sup> FG%	5-15 33.3%
3PT%	1-5 20.0%
FT%	8-8 100%
4 <sup>th</sup> FG%	5-16 31.3%
3PT%	2-5 40.0%
FT%	5-5 100%
GM FG%	27-63 42.9%
3PT%	11-27 40.7%
FT%	15-17 88.2%

Dead Ball Rebounds: 0

Kansas St. - 78

Record: 5-9 (0-7)

NO. Name	Min	FG		3P		FT		Rebounds		Fouls		TP	AS	TO	ST	Blocks		+/-	
		M/A	M/A	M/A	M/A	OR	DR	FF	FD	OR	DR					BS	BA		
13 Laura Macke	F 27:28	1-2	0-0	1-2	0-1	1-2	3-3	3-1	1-1	1-0	0-16	0	0	0	0	0	0	0	-1
50 Ayoka Lee	C 38:35	15-23	0-0	7-10	6-12	18-4	6-37	0-1	0	2	1-1	0	0	0	0	0	0	0	-1
4 Sydney Goodson	G 28:08	1-5	1-4	2-2	0-1	1-1	3-5	3-5	0	0	1-1	0	0	0	0	0	0	0	1
24 Emilee Ebert	G 25:25	0-1	0-0	2-2	0-4	4-1	1-2	5-3	1	1	0-0	0	0	0	0	0	0	0	0
43 Christiana Carr	G 37:12	5-14	4-11	3-4	0-3	3-2	2-17	3-3	0	0	1-1	0	0	0	0	0	0	0	-2
2 Cymone Goodrich	10:59	0-0	0-0	0-0	0-0	0-0	0-0	0-0	0	0	0-0	0	0	0	0	0	0	0	3
12 Rachel Franke	25:02	5-9	4-7	0-0	0-4	2-0	14-4	2-0	0	0	0-4	0	0	0	0	0	0	0	4
23 Jada Moore	07:11	0-0	0-0	0-0	0-4	4-1	0-0	0-0	0	0	0-0	0	0	0	0	0	0	0	1
<b>Team</b>																			
<b>Totals</b>		27-54	9-22	15-20	8-33	41-15	13-78	24-15	3-4	3-2	2	0	0	0	0	0	0	0	0

Technical Fouls: NONE

Shooting By Period	
1 <sup>st</sup> FG%	6-12 50.0%
3PT%	2-6 33.3%
FT%	0-0 0%
2 <sup>nd</sup> FG%	7-12 58.3%
3PT%	3-6 50.0%
FT%	5-9 55.6%
3 <sup>rd</sup> FG%	8-16 50.0%
3PT%	2-5 40.0%
FT%	1-2 50%
4 <sup>th</sup> FG%	6-14 42.9%
3PT%	2-5 40.0%
FT%	9-9 100%
GM FG%	27-54 50.0%
3PT%	9-22 40.9%
FT%	15-20 75.0%

Dead Ball Rebounds: 1

OU	KState	Points from Turnovers	OU	KState	Period by Period Scoring				
					1st	2nd	3rd	4th	TOT
Biggest lead	14 (3 <sup>rd</sup> 1:46)	2 (1 <sup>st</sup> 9:13)	17	7	20	24	19	17	80
Best Scoring Run	9 (1 <sup>st</sup> 7:24)	11 (4 <sup>th</sup> 0:22)	22	34					
Lead Changes	3								
Times Tied	1								
Time with Lead	38:23	00:29							

**GAME 14: TEXAS 69, OKLAHOMA 58**  
2/3/21 | Norman | Lloyd Noble Center | Att.: 717



Official Basketball Box Score - Final  
**Texas at Oklahoma**  
02/03/21 Lloyd Noble Center, Norman  
2020-21 Women's Basketball

Game Time: 7:00 PM  
Game Duration: 1:54  
Attendance: 717

Officials: Lisa Jones, Bryan Entinire

Texas - 69

Record: 13-4 (7-3)

NO. Name	Min	FG		3P		FT		Rebounds		Fouls		TP	AS	TO	ST	Blocks		+/-	
		M/A	M/A	M/A	M/A	OR	DR	FF	FD	OR	DR					BS	BA		
35 Charli Collier	C 40:00	14-18	0-0	4-4	5-10	15-4	6-32	0-2	0	1	0-11	0	0	0	0	0	0	0	11
0 Celeste Taylor	G 34:08	5-16	0-1	2-4	2-3	5-5	2-4	12-1	0	1	0-1	0	0	0	0	0	0	0	9
3 Kaisma Ortiz	G 22:55	1-4	1-4	0-0	0-2	2-0	0-0	3-4	3	1	0-0	0	0	0	0	0	0	0	6
11 Joanne Allen-Taylor	G 33:27	2-7	1-3	0-0	1-2	3-5	1-5	3-5	2	0	1-12	0	0	0	0	0	0	0	12
15 Kyra Lambert	G 32:51	1-4	1-3	4-4	1-3	4-4	1-2	7-1	1	1	4-0	0	0	0	0	0	0	0	12
31 Audrey Warren	28:04	5-9	0-0	0-0	3-2	5-1	1-10	2-2	1	0	0-7	0	0	0	0	0	0	0	7
10 Shay Holle	01:26	0-1	0-0	0-0	0-0	0-0	0-0	0-0	0	0	0-0	0	0	0	0	0	0	0	-1
25 Ashley Chevalier	07:09	0-0	0-0	0-0	1-1	2-1	0-0	0-0	0	0	0-0	0	0	0	0	0	0	0	-1
<b>Team</b>																			
<b>Totals</b>		28-59	3-11	10-12	18-24	42-14	14-69	11-15	9-1	1-11	0	0	0	0	0	0	0	0	0

Technical Fouls: NONE

Shooting By Period	
1 <sup>st</sup> FG%	11-15 73.3%
3PT%	2-3 66.7%
FT%	2-2 100%
2 <sup>nd</sup> FG%	6-17 35.3%
3PT%	1-3 33.3%
FT%	0-0 0%
3 <sup>rd</sup> FG%	7-14 50.0%
3PT%	0-3 0.0%
FT%	0-0 0%
4 <sup>th</sup> FG%	4-13 30.8%
3PT%	0-2 0.0%
FT%	8-10 80%
GM FG%	28-59 47.5%
3PT%	3-11 27.3%
FT%	10-12 83.3%

Dead Ball Rebounds: 2

Oklahoma - 58

Record: 6-8 (3-6)

NO. Name	Min	FG		3P		FT		Rebounds		Fouls		TP	AS	TO	ST	Blocks		+/-	
		M/A	M/A	M/A	M/A	OR	DR	FF	FD	OR	DR					BS	BA		
1 Naveah Tot	G 34:08	2-6	0-0	0-1	2-7	3-0	2-4	2-3	1	0	0-8	0	0	0	0	0	0	0	-8
12 Gabby Gregory	G 40:00	3-12	2-9	3-5	1-0	1-4	4-11	2-2	2	0	0-11	0	0	0	0	0	0	0	-11
25 Madi Williams	G 37:35	8-14	0-1	1-3	1-4	5-1	4-17	2-5	3	1-12	0	0	0	0	0	0	0	0	-12
30 Taylor Robertson	G 39:08	5-12	4-11	0-0	0-3	3-2	2-14	1-1	0	0-0	-8	0	0	0	0	0	0	0	-8
32 Tatum Veltienheimer	G 35:52	3-4	2-2	0-0	1-3	4-4	2-8	2-4	4	0-0	-7	0	0	0	0	0	0	0	-7
3 Mandy Simpson	12:25	2-2	0-0	0-0	1-1	2-3	2-0	4-1	0	0-0	-6	0	0	0	0	0	0	0	-6
24 Skylar Vann	00:52	0-0	0-0	0-0	0-0	0-0	0-0	0-0	0	0-0	-3	0	0	0	0	0	0	0	-3
<b>Team</b>																			
<b>Totals</b>		23-50	8-23	4-9	6-13	19-14	14-58	10-16	10-1	1-11	0	0	0	0	0	0	0	0	0

Technical Fouls: NONE

Shooting By Period	
1 <sup>st</sup> FG%	7-13 53.8%
3PT%	3-6 50.0%
FT%	0-0 0%
2 <sup>nd</sup> FG%	7-15 46.7%
3PT%	3-7 42.9%
FT%	1-1 100%
3 <sup>rd</sup> FG%	6-9 66.7%
3PT%	1-2 50.0%
FT%	1-4 25%
4 <sup>th</sup> FG%	3-13 23.1%
3PT%	1-8 12.5%
FT%	2-4 50%
GM FG%	23-50 46.0%
3PT%	8-23 34.8%
FT%	4-9 44.4%

Dead Ball Rebounds: 2

OU	OU	Points from Turnovers	OU	OU	Period by Period Scoring				
					1st	2nd	3rd	4th	TOT
Biggest lead	12 (4 <sup>th</sup> 0:18)	1 (3 <sup>rd</sup> 8:00)	19	16	48	26			
Best Scoring Run	8 (1 <sup>st</sup> 7:51)	10 (3 <sup>rd</sup> 8:00)	18	9					
Lead Changes	2								
Times Tied	1								
Time with Lead	38:15	00:40							

Game Notes: Estimated Attendance: 493

**GAME 15: OKLAHOMA STATE 91, OKLAHOMA 64**  
2/6/21 | Stillwater, Okla. | Gallagher-Iba Arena | Att.: 2,219



Official Basketball Box Score - Final  
**Oklahoma at Oklahoma St.**  
02/06/21 Gallagher-Iba Arena, Stillwater  
2020-21 Women's Basketball

Game Time: 7:00 PM  
Game Duration: 1:58  
Attendance: 2,21

# BOX SCORES

## GAME 17: OKLAHOMA 72, #19/21 WEST VIRGINIA 71 2/13/21 | Morgantown, W.Va. | WVU Coliseum | Att.: 1,112



Official Basketball Box Score - Final  
**Oklahoma at West Virginia**  
02/13/21 WVU Coliseum, Morgantown, W.Va.  
Oklahoma at West Virginia

Game Time: 7:00 PM  
Game Duration: 1:43  
Attendance: 1,112

Officials: Mark Zentz, Meta Christensen, Brian Hall

Oklahoma - 72													Record: 10-9 (5-7)												
NO.	Name	Min	FG	3P	FT	Rebounds	Fouls	TP	AS	TO	ST	Blocks	+/-	Shooting By Period											
			M/A	M/A	M/A	OR	DR	PF	FD			BS	BA		1st	2nd	3rd	4th	OT	TOT	FG%	3P%	FT%		
1	Nevaeah Tot	G 25:40	3-6	1-2	0-0	2	5	7	1	1	7	2	5	4	0	1	8					1st	FG%	5-12	41.7%
12	Gabby Gregory	G 38:14	5-11	1-5	1-2	1	2	3	2	2	12	2	4	0	0	0	6					2nd	FG%	9-19	47.4%
25	Madi Williams	G 38:04	9-18	1-2	2-2	0	8	8	3	4	21	8	8	2	1	1	1					3rd	FG%	6-13	46.2%
30	Taylor Robertson	G 40:00	5-10	5-10	5-5	0	1	1	2	3	20	3	2	1	0	0	1					4th	FG%	6-9	66.7%
32	Tatum Veltentheimer	G 33:05	1-2	0-1	0-0	0	3	3	2	2	2	3	2	7	0	0	8					FT%	3-4	75%	
24	Skiylar Vann	26:01	3-6	2-4	2-2	1	7	8	1	2	10	0	0	0	0	0	13					GM FG%	26-53	49.1%	
3	Mandy Simpson	01:56	0-0	0-0	0-0	0	0	0	0	0	0	0	0	0	0	0	0					3PT%	10-24	41.7%	
<b>Team</b>						0	0	0	0	0	0	1										FT%	10-11	90.9%	
<b>Totals</b>		26:53	10-24	10-11	4	26	30	11	14	72	18	22	14	1	2	1						GM FG%	26-53	49.1%	
													Technical Fouls: NONE												

West Virginia - 71													Record: 16-3 (10-3)												
NO.	Name	Min	FG	3P	FT	Rebounds	Fouls	TP	AS	TO	ST	Blocks	+/-	Shooting By Period											
			M/A	M/A	M/A	OR	DR	PF	FD			BS	BA		1st	2nd	3rd	4th	OT	TOT	FG%	3P%	FT%		
12	Esmery Martinez	F 25:49	3-7	0-1	0-0	2	7	9	4	0	6	0	6	1	1	0	-7					1st	FG%	6-17	35.3%
14	Kari Niblack	F 21:41	2-5	0-0	3-4	2	2	4	4	3	7	0	1	1	1	0	9					2nd	FG%	9-14	64.3%
2	Kysre Gondrezick	G 40:00	8-20	3-11	0-1	0	2	2	2	2	19	8	4	8	0	0	-1					3rd	FG%	10-15	66.7%
3	Kirsten Deans	G 40:00	7-13	2-5	6-6	2	3	5	2	5	22	6	5	0	0	0	-1					4th	FG%	10-15	66.7%
30	Madsen Smith	G 35:31	2-9	1-6	0-0	0	3	3	1	0	5	6	3	1	0	1	7					FT%	2-5	40.0%	
22	Blessing Ejiofor	21:17	1-1	0-0	0-0	1	2	3	1	0	2	0	1	0	0	0	-9					GM FG%	27-59	45.8%	
5	Jasmine Carson	15:42	4-4	2-2	0-1	0	2	2	0	1	10	2	0	0	0	0	-3					3PT%	8-25	32.0%	
<b>Team</b>						0	0	0	0	0	0	0										FT%	9-12	75.0%	
<b>Totals</b>		27:59	8-25	9-12	7	21	28	14	11	71	22	20	11	2	1	-1						GM FG%	27-59	45.8%	
													Technical Fouls: NONE												

	OKL	WVU	Points from		Period by Period Scoring						
			Turnovers	Paint	1st	2nd	3rd	4th	TOT		
Biggest lead	6 (4 <sup>th</sup> 2:22)	13 (2 <sup>nd</sup> 6:55)	22	30	34						
Best Scoring Run	18 (4 <sup>th</sup> 2:22)	8 (1 <sup>st</sup> 0:00)	7	3		OKL	13	23	21	15	72
Lead Changes	6		11	12		WVU	20	20	26	5	71
Times Tied	4										
Time with Lead	11:18	25:35									

## GAME 18: #7/8 BAYLOR 77, OKLAHOMA 66 2/21/21 | Norman | Lloyd Noble Center | Att.: 857



Official Basketball Box Score - Final  
**Baylor at Oklahoma**  
02/21/21 Lloyd Noble Center, Norman  
2020-21 Women's Basketball

Game Time: 1:00 PM  
Game Duration: 1:56  
Attendance: 857

Officials: Chaney Muench, Jule Krommenhoek, Missy Brooks

Baylor - 77													Record: 17-2 (12-1)												
NO.	Name	Min	FG	3P	FT	Rebounds	Fouls	TP	AS	TO	ST	Blocks	+/-	Shooting By Period											
			M/A	M/A	M/A	OR	DR	PF	FD			BS	BA		1st	2nd	3rd	4th	OT	TOT	FG%	3P%	FT%		
1	Nalysa Smith	F 23:59	7-9	0-0	2-2	2	3	5	3	1	16	1	2	1	0	0	8					1st	FG%	8-13	61.5%
25	Queen Eggo	C 19:27	1-3	0-0	2-2	3	3	6	4	1	4	1	1	0	3	0	3					2nd	FG%	2-4	50.0%
2	Didi Richards	G 34:31	5-6	0-0	1-2	1	5	6	5	3	11	5	6	0	0	0	13					3rd	FG%	9-16	56.3%
3	Trinity Oliver	G 28:09	3-5	0-0	2-3	3	2	5	2	2	8	2	3	2	0	0	13					4th	FG%	8-15	53.3%
12	Moon Ursin	G 40:00	7-15	2-6	1-2	1	3	4	1	5	17	4	3	2	0	1	11					FT%	1-1	100%	
21	Dijonai Carrington	G 30:11	7-13	1-6	4-5	0	1	1	2	6	19	1	2	0	1	0	10					GM FG%	31-54	57.4%	
51	Caitlin Bickle	13:30	0-1	0-0	0-0	1	2	3	0	0	0	0	0	0	0	0	-4					3PT%	3-12	25.0%	
20	Hannah Gusters	04:44	0-0	0-0	0-0	0	0	0	0	0	0	0	0	0	0	0	3					FT%	12-16	75.0%	
11	Jordyn Oliver	01:28	0-1	0-0	0-0	0	0	0	0	0	0	0	0	0	0	0	-5					GM FG%	31-54	57.4%	
24	Sarah Andrews	04:01	1-1	0-0	0-0	0	2	2	0	0	2	0	1	1	0	0	3					3PT%	3-12	25.0%	
<b>Team</b>						1	5	6	0	0	0	3	1	0	0	3						FT%	12-16	75.0%	
<b>Totals</b>		31:54	3-12	12-16	12	26	38	18	18	77	14	23	6	4	1	11						GM FG%	31-54	57.4%	
													Technical Fouls: NONE												

Oklahoma - 66													Record: 8-10 (5-8)												
NO.	Name	Min	FG	3P	FT	Rebounds	Fouls	TP	AS	TO	ST	Blocks	+/-	Shooting By Period											
			M/A	M/A	M/A	OR	DR	PF	FD			BS	BA		1st	2nd	3rd	4th	OT	TOT	FG%	3P%	FT%		
3	Mandy Simpson	F 03:07	0-0	0-0	0-0	0	0	0	1	1	0	1	0	0	0	0	1					1st	FG%	9-16	56.3%
1	Nevaeah Tot	G 31:31	2-5	2-3	0-0	0	4	4	2	1	6	4	2	2	0	1	-4					2nd	FG%	0-0	0%
12	Gabby Gregory	G 37:42	5-17	2-9	7-10	1	2	3	9	19	1	6	0	0	2	-9						3rd	FG%	10-15	66.7%
25	Madi Williams	G 40:00	10-20	0-1	1-3	0	2	2	2	1	21	2	4	2	1	0	-11					4th	FG%	4-13	30.8%
30	Taylor Robertson	G 40:00	4-9	3-7	0-0	0	0	0	0	4	5	11	1	3	1	0	-11					FT%	1-5	20.0%	
32	Tatum Veltentheimer	20:15	0-1	0-1	0-0	1	3	4	1	1	0	2	1	2	0	0	-16					GM FG%	25-56	44.6%	
24	Skiylar Vann	27:25	4-4	1-1	0-0	3	0	3	5	0	5	2	1	1	0	0	-5					3PT%	8-22	36.4%	
<b>Team</b>						1	2	3	0	0	0	1										FT%	8-13	61.5%	
<b>Totals</b>		25:56	8-22	9-13	6	13	19	18	18	66	13	18	8	1	4	-11						GM FG%	25-56	44.6%	
													Technical Fouls: NONE												

	BU	OU	Points from		Period by Period Scoring						
			Turnovers	Paint	1st	2nd	3rd	4th	TOT		
Biggest lead	14 (4 <sup>th</sup> 1:53)	8 (2 <sup>nd</sup> 2:20)	22	42	26						
Best Scoring Run	11 (2 <sup>nd</sup> 8:57)	10 (2 <sup>nd</sup> 5:39)	7	12	7	BU	22	20	19	16	77
Lead Changes	6		11	12		OU	18	24	11	13	66
Times Tied	8										
Time with Lead	27:08	07:13									

Game Notes: Estimated Attendance 637

# ROSTERS

## NUMERICAL

No.	Name	Pos.	Cl.	Ht.	Hometown (Last School)
1	Nevaeh Tot	G	Fr.	5-3	McKinney, Texas (John Paul II)
3	Mandy Simpson	F	Sr.	6-1	Boise, Idaho (Boise)
12	Gabby Gregory	G	So.	6-0	Tulsa, Okla. (Holland Hall Prep)
15	Heavenly Greer	F	Fr.	6-3	Phoenix, Ariz. [Ganesha (Calif.)]
22	Ana Llanusa	G	Sr.	6-0	Choctaw, Okla. (Choctaw)
24	Skylar Vann	G	Fr.	5-10	Edmond, Okla. (Deer Creek)
25	Madi Williams	G/F	Jr.	6-0	Fort Worth, Texas (Trinity Valley Prep)
30	Taylor Robertson	G	Jr.	5-7	McPherson, Kan. (McPherson)
32	Tatum Veitenheimer	G	Jr.	5-8	Windthorst, Texas (Windthorst)
34	Liz Scott	F	So.	6-2	Tomball, Texas (Klein Oak)

## ALPHABETICAL

No.	Name	Pos.	Cl.	Ht.	Hometown (Last School)
15	Heavenly Greer	F	Fr.	6-3	Phoenix, Ariz. [Ganesha (Calif.)]
12	Gabby Gregory	G	So.	6-0	Tulsa, Okla. (Holland Hall Prep)
22	Ana Llanusa	G	Sr.	6-0	Choctaw, Okla. (Choctaw)
30	Taylor Robertson	G	Jr.	5-7	McPherson, Kan. (McPherson)
34	Liz Scott	F	So.	6-2	Tomball, Texas (Klein Oak)
3	Mandy Simpson	F	Sr.	6-1	Boise, Idaho (Boise)
1	Nevaeh Tot	G	Fr.	5-3	McKinney, Texas (John Paul II)
24	Skylar Vann	G	Fr.	5-10	Edmond, Okla. (Deer Creek)
32	Tatum Veitenheimer	G	Jr.	5-8	Windthorst, Texas (Windthorst)
25	Madi Williams	G/F	Jr.	6-0	Fort Worth, Texas (Trinity Valley Prep)

## STAFF

**Head Coach:** Sherri Coale (Oklahoma Christian '87)

### Assistant Coaches:

Colton Coale (Oklahoma, '15)  
Courtney Paris (Oklahoma, '09)  
Jackie Stiles (Missouri State '02)

### Graduate Assistant:

Amanda Thompson

### Equipment Manager:

Cade Scott

### Video Coordinator:

Ethan Burton

### Athletics Trainer:

Brittani Merrick

## PRONUNCIATION GUIDE

Ana **Llanusa** - yuh-NEW-suh

**Nevaeh** Tot - nuh-VAY-uh

Tatum **Veitenheimer** -VY-ten-HI-mer

# PHOTO ROSTER



**1 NEVAEH TOT**  
5-3, Fr., Guard  
McKinney, Texas



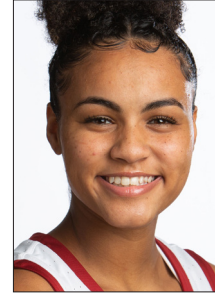
**3 MANDY SIMPSON**  
6-1, Sr., Forward  
Boise, Idaho



**12 GABBY GREGORY**  
6-0, So., Guard  
Tulsa, Okla.



**15 HEAVENLY GREER**  
6-3, Fr., Forward  
Phoenix, Ariz.



**22 ANA LLANUSA**  
6-0, Sr., Guard  
Choctaw, Okla.



**24 SKYLAR VANN**  
5-10, Fr., Guard  
Edmond, Okla.



**25 MADI WILLIAMS**  
6-0, Jr., Guard/Forward  
Fort Worth, Texas



**30 TAYLOR ROBERTSON**  
5-7, Jr., Guard  
McPherson, Kan.



**32 TATUM VEITENHEIMER**  
5-8, Jr., Guard  
Windthorst, Texas



**34 LIZ SCOTT**  
6-2, So., Forward  
Tomball, Texas



**SHERRI COALE**  
Head Coach  
25th Year at Oklahoma



**COLTON COALE**  
Assistant Coach  
3rd Year at Oklahoma



**COURTNEY PARIS**  
Assistant Coach  
1st Year at Oklahoma



**JACKIE STILES**  
Assistant Coach  
2nd Year at Oklahoma