

# SMU

## WOMEN'S BASKETBALL 2016-17 GAME NOTES



### 2016-17 Schedule/Results

Date	Opponent	Time (CT)/Result
NOV. 11	TEXAS STATE (PonyUp TV)	W, 64-56
NOV. 16	at Kansas (Jayhawk TV/ESPN3)	W, 75-63
NOV. 20	at TCU (FrogVision)	L, 76-67
NOV. 22	PRAIRIE VIEW A&M (PonyUp TV)	W, 61-54
<b>OMNI HOTEL CLASSIC - BOULDER, COLO.</b>		
NOV. 25	vs. Boston College	W, 72-64
NOV. 26	at RV/- Colorado	L, 67-50
NOV. 30	NORTH TEXAS (PonyUp TV)	7 P.M.
DEC. 3	at New Mexico	3 P.M.
DEC. 5	25/25 TEXAS A&M (PonyUp TV)	7 P.M.
<b>WOMEN OF TROY CLASSIC - LOS ANGELES, CALIF.</b>		
DEC. 16	vs. 6/7 Mississippi State	10 P.M.
DEC. 18	vs. USC/Grambling	1/3 P.M.
DEC. 19	TEXAS SOUTHERN (PonyUp TV)	4 P.M.
DEC. 21	SEATTLE (PonyUp TV)	1 P.M.
DEC. 31	CINCINNATI* (American Digital)	1 P.M.
JAN. 7	at East Carolina (American Digital)	4 P.M.
JAN. 11	-/RV TULANE* (PonyUp TV)	7 P.M.
JAN. 14	2/2 CONNECTICUT* (SNY/ESPN3)	2 P.M.
JAN. 17	at Cincinnati* (American Digital)	6 P.M.
JAN. 21	at Houston* (American Digital)	2 P.M.
JAN. 25	RV/RV USF* (PonyUp TV)	7 P.M.
JAN. 28	at Tulsa* (ESPN3)	7 P.M.
JAN. 31	MEMPHIS* (American Digital)	7 P.M.
FEB. 4	UCF* (American Digital)	2 P.M.
FEB. 11	at No. 3/1 Connecticut* (SNY/ESPN3)	1 P.M.
FEB. 15	at -/RV Temple*	6 P.M.
FEB. 18	TULSA* (PonyUp TV)	2 P.M.
FEB. 22	at Memphis*	7 P.M.
FEB. 25	at UCF*	1 P.M.
FEB. 27	HOUSTON* (American Digital)	7 P.M.
MAR. 3-6	The American Championship	Uncasville, Conn.

Home games in BOLD ALL CAPS; \*- American game  
All dates and times (CT) subject to change.

### PROBABLE STARTERS

#	PLAYER	POS	HT	CL
0	Kiara Perry	G	5-10	JR
3	McKenzie Adams	G	5-9	JR
10	Alicia Froling	F	6-3	JR
12	Morgan Bolton	G	5-6	SR
13	Klara Bradshaw	F	6-6	JR

\* - Based on last game

## GAME 7

SMU MUSTANGS (4-2) VS. NORTH TEXAS (2-3)  
MOODY COLISEUM • DALLAS, TEXAS • WED., NOV. 30 • 7 P.M.

Radio: KAAM 770 AM  
Video: PonyUp TV (Online Only)

### STORYLINES

The SMU women's basketball team hosts North Texas Wednesday at 7 p.m. The home game is one of two in Moody Coliseum during a three-game stretch before a 10-day break for final exams. SMU is 4-2 overall, losing at Colorado, ranked No. 21 in the latest top-25 poll, the last time out. The game will be streamed online on PonyUp TV, and can be heard on KAAM 770 AM in the Dallas area.

### ABOUT SMU

SMU is 4-2 this season, winning both of its home games. Alicia Froling is one of two American Athletic Conference players averaging a double-double, scoring 17.0 points per game with a league-best 11.5 rebounds per game. Froling is second in the nation with five double-doubles this season. SMU has three players scoring at least 10 points per game, and the Mustangs are out-rebounding opponents 44.8-37.5, ranking 38th in the NCAA in rebounds per game. McKenzie Adams is averaging 13.3 points per game, reaching double figures in each of the last five games.

### SCOUTING NORTH TEXAS

North Texas is 2-3, winning back-to-back games after starting 0-3. Terriell Bradley leads the team with 11.2 points per game, and is one of six players averaging at least seven points per game. The Mean Green are getting outscored by opponents, 65.4-59.6. Opponents are also out rebounding North Texas, 40.8-32.6, and out-shooting from the field, 41.1 percent to 38.2 percent.

### SERIES HISTORY

SMU is 30-17 all-time against North Texas, winning 19 of 24 matchups at home. The Mustangs have won three of the last four games in the series, falling 60-57 in Denton last season. The two teams first met on March, 2, 1977 in Waco, with North Texas winning 56-54. North Texas won the first four games before SMU got its first win in 1979 in Denton. SMU has won eight of the last 10 games in the series, and the Mustangs have won 14 straight at home, dating back to Jan. 13, 1992.

### SERIES HISTORY

SMU vs. North Texas (30-17)  
Home: 19-5 Away: 11-11 Neutral: 0-1

11/22/11	North Texas (Denton, Texas)	L, 50-46
11/15/12	North Texas (Moody Coliseum)	W, 67-63
12/21/13	North Texas (Denton, Texas)	W, 84-79 (OT)
12/3/14	North Texas (Moody Coliseum)	W, 62-55
12/1/15	North Texas (Denton, Texas)	L, 60-57

### STAT COMPARISON

SMU		Boston College
3-1	Record	1-3
NR	Ranking (AP/USA Coaches)	NR
66.8	Points Per Game	60.8
62.2	Points Allowed Per Game	61.8
45.8	Rebounds Per Game	33.2
37.5	Rebounds Allowed Per Game	33.8
.386	Field Goal Percentage	.417
.369	Field Goal Percentage Defense	.422
.663	Free Throw Percentage	.677
.254	3-Point Field Goal Percentage	.329
.427	3-Point Field Goal Defense	.318
17.3	Turnovers Per Game	18.8
7.0	Steals Per Game	8.5
7.3	Blocks Per Game	3.0

### LAST TIME OUT

The SMU women's basketball team fell at Colorado, 67-50, in the championship game of the Omni Hotel Classic Saturday in Boulder, Colo. The Mustangs are now 4-2 overall, while the Buffaloes remain unbeaten at 6-0 on the season. Froling was named to the Omni Hotel Classic All-Tournament team. The junior averaged 17.2 points and eight rebounds in the tournament.

### UP NEXT

The Mustangs play at New Mexico Saturday at 2 p.m. CT/1 p.m. MT. The Lobos are 2-3, and play at New Mexico State Wednesday before hosting SMU. Richelle van der Keijl leads the team with 16.2 points and 12.4 rebounds per game, and is one of four players averaging 11 points or more. The Lobos are out-scoring opponents 71.2-65.2, shooting 37.6 percent from the field.

### SERIES HISTORY

SMU is 2-3 all-time against New Mexico, losing both games played in The Pit. The two teams first met as members of the Western Athletic Conference in 1997, with both teams winning at home. SMU won a WAC Tournament game, 53-45, on March 5, 1999, the last time the two teams played as members of the same conference. New Mexico hosted a WNIT game on March 17, 2010, beating SMU 66-51. The Lobos played SMU in Moody Coliseum on Dec. 5, 2015, winning 63-58.

### LOOKING AHEAD

SMU returns home for two of its next three games before a 10-day break for final exams. The stretch starts in Moody Coliseum on Nov. 20 against North Texas at 7 p.m. The Mustangs play at New Mexico on Dec. 3 before a home game against [RV/25] Texas A&M on Dec. 5.

### UP NEXT IN SMU BASKETBALL



**NORTH TEXAS**  
NOV. 30 • 7 P.M.  
MOODY COLISEUM  
DALLAS  
TV: PONYUP TV  
(ONLINE ONLY)

**AT NEW MEXICO**  
DEC. 3 • 2 P.M. CT/1 P.M. MT  
THE PIT  
ALBUQUERQUE, N.M.  
TV: MOUNTAIN WEST NETWORK  
(ONLINE ONLY)

**NO. 25 TEXAS A&M**  
DEC. 5 • 7 P.M.  
MOODY COLISEUM  
DALLAS  
TV: PONYUP TV  
(ONLINE ONLY)

**SMUMUSTANGS.COM**



## QUICK FACTS

### GENERAL INFORMATION

Location	Dallas, Texas
Founded	1911
President	R. Gerald Turner
Director of Athletics	Rick Hart
Senior Woman Administrator	Monique Holland
University Athletic Representative	Paul Rogers
Enrollment	10,981
School Nickname	Mustangs
Mascot	Peruna (a Shetland Pony)
Colors	Red (PMS 186) and Blue (PMS 286)

### MUSTANG COACHING STAFF

Head Coach	Travis Mays (Texas, '90)
School Record	4-2 (1st season)
Career Record	Same
American Athletic Conference Record	0-0
Assistant Coaches	Mike Brandt (Sterling College, '86) 1st Season Edwina Brown (Texas, '00) 1st Season Amie Smith Bradley (Texas, '97) 1st Season
Director of Operations	Shawna Lavender (SMU, '97) 5th Season
Women's Basketball Office Phone	(214) 768-4040
Athletic Trainer	Kelli Swing

### MUSTANG BASKETBALL FACTS

2015-16 Record	13-18
2015-16 Final NCAA ranking	N/A
Conference	American Athletic
2015-16 Conference Record/Place	7-11/7th
Starters Returning/Lost	4-1
SMU All-Time Record (1976-Present)	615-562
American Athletic Conference Record	18-36
Home Arena	Moody Coliseum
Capacity	7,000
Letterwinners Returning/Lost	8/2
Twitter	@smubasketballw
Facebook	/SMUBasketballW
YouTube	SMUMustangsAthletics

### MUSTANG PUBLIC RELATIONS

Basketball Contact	Travis Chamblee   214-931-1714   tchamblee@smu.edu
Secondary Contacts	Shannon Malone   214-768-1054 Will Jones   214-768-4849

Assoc. Athletic Director	Brad Sutton   214-768-1651
Director of Public Relations	Herman Hudson   214-768-1304
Address	P.O. Box 0315 Dallas, TX 75205-0315 Telephone: 214- 768-2883



## MEDIA INFORMATION

All interviews must be coordinated through the SMU Public Relations staff. Interviews for home games will be available after games via request.

For requests please contact Travis Chamblee at (214) 768-3735 (office) or (214) 931-1714 (cell).

## 2016-17 MUSTANGS NUMERICAL ROSTER

NO	PLAYER	HT.	POS	CL.	HOMETOWN (LAST SCHOOL)
0	Kiara Perry	5-10	Guard	JR-2L	Duncanville, Texas (Duncanville)
1	Devri Owens	5-8	Guard	JR-GT	Plano, Texas (Utah)
3	McKenzie Adams	5-9	Guard	JR-1L	Frisco, Texas (Arkansas)
4	Mikayla Reese	5-8	Guard	JR-2L	Colorado Springs, Colo. (Sand Creek)
5	Aurmani DeGar	5-8	Guard	JR-2L	Grand Prairie, Texas (Mansfield Timberview)
10	Alicia Froling	6-3	Forward	JR-2L	Queensland, Australia (Australia Institute of Sport)
11	Kiran Lakhian	6-0	Guard	SR-GT	Plano, Texas (Stanford)
12	Morgan Bolton	5-6	Guard	SR-2L	Duncanville, Texas (UALR)
13	Klara Bradshaw	6-6	Center	JR-SQ	Emory, Texas (TCU)
15	Stephanie Collins	6-5	Forward	JR-2L	Melbourne, Australia (Australia Institute of Sport)
20	Dai'ja Thomas	6-2	Forward	SO-1L	Dallas, Texas (Skyline)
22	Tiara Davenport	6-0	Guard	JR-TR	Dallas, Texas (Louisiana Tech)
24	Kamray Mickens	5-8	Guard	SR-1L	Westlake, Texas (Trinity Valley CC)
25	Amaura Brandt	5-8	Guard	SR-GT	Aiken, S.C. (Limestone College)

### COACHES

Travis Mays	Head Coach
Mike Brandt	Associate Head Coach
Edwina Brown	Assistant Coach
Amie Smith Bradley	Assistant Coach
Shawna Lavender	Director of Basketball Operations
Erica White	Director of Player Development
Adam Sorensen	Video Coordinator
Yolanda Berryhill	Strength and Conditioning Coach
Akil Simpson	Graduate Assistant
Kelli Swing	Athletic Trainer

### PRONUNCIATIONS

Edwina Brown	ed-WEE-nuh
Aurmani DeGar	AR-mah-nee
Alicia Froling	Ah-LEE-sha FROH-leeng
Kiara Perry	KEE-air-uh
Dai'ja Thomas	DAY-juh
Kamray Mickens	KAM-ray
Kiran Lakhian	KEER-in LAH-key-in
Amaura Brandt	AM-er-uh
Devri Owens	DEV-ree

### UNDER NEW LEADERSHIP

For the first time since 1991, SMU has a new head coach on the sidelines. Travis Mays was announced as the fourth head coach in program history on April 7, 2016, after the retirement of Rhonda Rompola, who spent 25 seasons as the head coach of the Mustangs. Mays worked for three Hall of Fame coaches during 12 seasons as a collegiate assistant, helping guide teams to eight NCAA Tournament appearances with a trip to the Final Four with LSU in 2008. A 1990 second-round NBA draft pick out of Texas, Mays' staff includes fellow Longhorns Edwina Brown and Amie Smith Bradley, and associate head coach Mike Brandt, who spent 14 seasons as the head coach at USC Aiken.

### ALL-CONFERENCE HONORS

McKenzie Adams was named American Athletic Conference Newcomer of the Year after leading the Mustangs in scoring with 13.4 points per game during the 2015-16 season. She scored a season-high 24 points against Kansas, and reached double figures in 25 of 31 games, including 17 conference games. Alicia Froling was named to the All-American Athletic Conference Third Team, finishing the year as one of three conference players to average a double-double with 12.3 points and 10.6 rebounds per game. She set a school record with 22 rebounds at Cincinnati, and also scored a career-high 33 points against the Bearcats. Froling was also named to the All-American Athletic Conference Preseason Team.

### THE AMERICAN PRESEASON RANKINGS

SMU was picked to finish fifth in the conference by the league's coaches, behind four-time defending national champion Connecticut, Temple, USF and Tulane, respectively. SMU returns two all-conference honorees among nine returning letterwinners.

### ANNUAL BLOCK PARTY

As a freshman, Alicia Froling recorded 54 blocks, surpassing Sarah Davis' mark of 53 blocks during the 2005-06 season. After breaking a record that stood for nine seasons, the Australian's name stayed at the top of the list for only one year. Fellow Australian and sophomore Stephanie Collins posted 73 blocks in her first full season. Collins enters the 2016-17 campaign with 98 career blocks, while Froling has 99 after blocking three shots at Kansas. The duo would become the first pair of teammates of the same class to each record 100 blocks in program history. The last player to eclipse the century mark was Janielle Dodds who finished with 109 blocks from 2004-08. Sarah Davis holds the school record with 180 blocks from 2003-06.

### SMU CAREER BLOCKS

1.	Sarah Davis (2003-06)	180
2.	Karlin Kennedy (1996-00)	139
T-3.	Katie Remke (1997-01)	109
T-3.	Janielle Dodds (2004-08)	109
5.	Alicia Froling (2015-Present)	100
6.	Stephanie Collins (2015-Present)	98
7.	Christine Elliott (2008-12)	95

### SMU SINGLE-SEASON BLOCKS

1.	184	2015-16
2.	160	2014-15
3.	142	2005-06
4.	129	2002-03
5.	120	2004-05

### INDIVIDUAL SEASON BLOCK LIST

1.	Stephanie Collins (2015-16)	73
2.	Alicia Froling (2014-15)	54
3.	Sarah Davis (2005-06)	53
4.	Karlin Kennedy (1997-98)	47
5.	Sarah Davis (2003-04)	45



### INTERNATIONAL EXPERIENCE

Alicia Froling represented Australia at the 2015 FIBA U19 Women's World Championships in Russia, winning a Bronze medal with the team, her second career medal at the World Championships with Australia. A native of Queensland, Australia, Froling averaged 8.1 points per game, reaching double-figures twice, including a tournament-high 19 points during group play. She also averaged 6.9 rebounds, and shot just under 70 percent from the free throw line. Stephanie Collins also represented Australia at the 2012 World University Games.

### ALICIA FROLING

Alicia Froling has recorded double-doubles in five of the first six games, ranking second in the NCAA behind Washington's Chantel Osahor, who has six in seven games. She scored a season-high 24 points with six rebounds against Boston College, and is averaging a team-high 17.0 points and a league-high 11.5 rebounds per game. Froling was one of three players in The American to average a double-double last season, scoring 12.3 points with 10.6 rebounds. She scored a career-high 33 points against Cincinnati, becoming the 14th player in SMU history to score 30 points in a game. A Mustang has scored at least 30 points 25 times. She also set an SMU single-game record with 22 rebounds against the Bearcats, the third highest in conference history (24 by UCF's Brittini Montgomery twice). Froling has 24 double-doubles in her career.

### SMU SINGLE-SEASON REBOUNDS

1.	Alicia Froling (2015-16)	311
2.	Shasta Smothers-Johnson (1984-85)	310
T-3.	Rhonda Rompola (1981-82)	278
T-3.	Kim Nowak (1979-80)	278
5.	Karlin Kennedy (1999-00)	267

### SMU SINGLE SEASON DOUBLE-DOUBLES

1.	Shasta Smothers-Johnson (1984-85)	15
2.	Alicia Froling (2015-16)	14
3.	Rhonda Rompola (1981-82)	13
4.	Janielle Dodds (2005-06)	12

### SMU CAREER DOUBLE-DOUBLES

1.	Shasta Smothers-Johnson (1983-87)	38
2.	Janielle Dodds (2005-08)	38
3.	Karlin Kennedy (1997-00)	26
4.	Kim Brungart (1992-96)	25
5.	Alicia Froling (2015-Present)	24

### McKENZIE ADAMS

McKenzie Adams has scored in double figures in each of the last five games, including a season-high 21 points at TCU. She is second on the team with 13.3 points per game, and has 12 assists, third on the team. Adams led the team and ranked 12th in The American, scoring 13.4 points per game last season, earning conference Newcomer of the Year accolades. She scored a season-high 24 points against Kansas last season, and reached double figures 25 times, including 11 straight games.

### KIARA PERRY

Kiara Perry is averaging 10.2 points per game, shooting 43.1 percent from the field, and averages 8.0 rebounds per game. She has two double-doubles this season, scoring a career-high 19 points with 10 rebounds against Prairie View A&M, and scored 17 points with a career-high 14 rebounds at Kansas.

### STEPHANIE COLLINS

Stephanie Collins was second in The American and 36th in the NCAA with 73 blocks, breaking the SMU single-season record Alicia Froling set with 54 blocks as a freshman in 2014-15. Collins posted 25 blocks in 20 games as a freshman, and with 98 total, is fifth in a career at SMU. She was third on the team in scoring, averaging 8.5 points per game with 5.9 rebounds, second on the team. Collins shot 47.9 percent from the floor, ninth in the league, and scored at least 10 points 17 times.

### MORGAN BOLTON

Morgan Bolton was second on the team with 62 assists and averaged 5.7 points per game as the starting point guard in 2015-16. She banked in a three as time expired in regulation against East Carolina, helping the Mustangs to an overtime victory. The junior scored at least 10 points seven times, including a career-high 15 points against then-No. 20 USF in the conference tournament. Bolton has a team-high 18 assists this season, and is averaging 5.5 points per game.

### DAI'JA THOMAS

Dai'ja Thomas averaged 5.0 points with 4.1 rebounds per game as a freshman, averaging 16.4 minutes per game. She scored 12 points three times, against Northwestern State, at Temple and against UCF in the conference tournament. Thomas scored 11 points with 10 rebounds against Texas State for the first double-double of her career, and is averaging 8.8 points and 6.3 rebounds.

### VOLUME SCORING

In five of the first six games, SMU has had at least three players in double figures scoring. At TCU, the only game only two Mustangs reached double digits, it was McKenzie Adams scoring 21 points and Alicia Froling finishing with 20. Six different players have scored at least 10 points in a game this season, and SMU has three players averaging double figures, led by Froling who has four double-doubles in four games this season.

### DOUBLE-DOUBLES

In four of the first six games, multiple Mustangs finished with a double-double. Alicia Froling posted four straight double-doubles to start the season, and has five in six games, ranking second in the NCAA. Dai'ja Thomas got the first double-double of her career with 11 points and a career-high 10 rebounds against Texas State. Kiara Perry posted new career highs in both points (17) and rebounds (14) at Kansas for her third career double-double, and fished with a career-high 19 points and 10 rebounds against Prairie View A&M. McKenzie Adams recorded her first double-double of the season with 11 points and 10 rebounds at Colorado.

### REBOUND THE BASKETBALL

SMU ranks 38th in the NCAA and second in the conference with 44.8 rebounds per game. The Mustangs are out-rebounding opponents by 7.3 rebounds per game, ranking 54th in the nation. Alicia Froling leads the team and is 17th in the country with a conference-high 11.5 rebounds per game. Kiara Perry is eighth in the league with 8.0 rebounds per game.

### ASSOCIATED PRESS POLL

RANK	SCHOOL (1ST PLACE VOTES)	RECORD
1	NOTRE DAME (16)	6-0
2	CONNECTICUT (14)	4-0
3	SOUTH CAROLINA (3)	5-0
4	BAYLOR	7-1
5	MARYLAND	6-0
6	MISSISSIPPI STATE	7-0
7	LOUISVILLE	6-1
8	FLORIDA STATE	6-1
9	OHIO STATE	5-2
10	UCLA	5-1
11	STANFORD	6-1
12	OKLAHOMA	5-0
13	WASHINGTON	6-1
14	TEXAS	2-2
15	DEPAUL	5-1
16	WEST VIRGINIA	7-0
17	KENTUCKY	5-1
18	MIAMI	5-1
19	FLORIDA	4-1
20	SYRACUSE	4-3
21	COLORADO	6-0
22	TENNESSEE	3-2
23	AUBURN	6-1
24	OREGON STATE	3-1
25	TEXAS A&M	5-0

**Others receiving votes:** South Florida 51, Oregon 49, Arizona State 45, Michigan State 36, Virginia Tech 33, Georgia Tech 30, Marquette 26, Michigan 22, California 20, Northwestern 18, Green Bay 10, Oklahoma State 7, South Dakota State 7, Gonzaga 7, Kansas State 6, Missouri 6, Duke 5, Boise State 5

### SMU'S RECORD WHEN ...

November	4-2
December	0-0
January	0-0
February	0-0
March	0-0
Sundays	0-1
Mondays	0-0
Tuesdays	1-0
Wednesdays	1-0
Thursdays	0-0
Fridays	2-0
Saturdays	0-1
Overtime	0-0
On Television	0-0
Leading at the half	3-1
Trailing at the half	0-2
Tied at the half	0-0
Out-shooting the opposition	3-1
Out-shot by the opposition	1-1
Shooting the same	0-0
Shooting 50% or higher	0-0
Shooting 45-49.9%	1-1
Shooting 40-44.9%	1-0
Shooting 35-39.9%	1-0
Shooting 34.9% or lower	1-1
Opposition shoots 50% or higher	0-0
Opposition shoots 45-49.9%	0-0
Opposition shoots 40-44.9%	1-1
Opposition shoots 35-39.9%	2-1
Opposition shoots 34.9% or lower	1-0
Out-rebounding the opposition	4-2
Out-rebounded by the opposition	0-0
Rebounds are equal	0-0
Committing more turnovers	2-2
Committing fewer turnovers	1-0
Turnovers are equal	1-0
Scoring 80 or more points	0-0
Scoring 70-79 points	2-0
Scoring 60-69 points	2-1
Scoring 59 points or fewer	0-1
Allowing 80 or more points	0-0
Allowing 70-79 points	0-1
Allowing 60-69 points	2-1
Allowing 59 points or fewer	2-0
vs. Top-25 Opponents	0-0



# TRAVIS MAYS

**HEAD COACH  
TEXAS, '90  
1ST SEASON**

Travis Mays was named the Head Women's Basketball Coach at SMU on April 7, 2016. Mays arrived on the Hilltop after 14 years as an assistant coach, where he served under three Hall of Fame coaches, and 11 years playing professionally.

Mays came to SMU following four seasons as Associate Head Coach at Texas, where he made his mark on the program as a dynamic guard from 1986-90, and where he served a previous three-year stint as an assistant coach for the women's basketball program from 2004-07. He returned to UT in 2012 as Associate Head Coach. His duties at Texas included recruiting, preparing opponent scouting reports, instructing guards on the court and public speaking at various community service and campus events.

Following his playing days, Mays began his coaching career with a two-year stint in the WNBA with the San Antonio Silver Stars (2002-04) and then returned to his alma mater as an assistant to Hall of Fame coach Jody Conradt from 2004-07, where he proved himself as a gifted floor coach and recruiter. Mays moved on to LSU and worked on Hall of Fame coach Van Chancellor's staff from 2007-11. At both UT and LSU, Mays helped ink nationally-acclaimed recruits, and all seven of the recruiting classes Mays assisted in assembling were ranked among the nation's top 25, including five top-five efforts - No. 1 (2005), No. 3 (2008), No. 3 (2016), No. 4 (2014) and No. 5 (2015).

After his time in Baton Rouge, Mays was an assistant coach at the University of Georgia for Hall of Fame coach Andy Landers. The Lady Bulldogs finished the 2011-12 season at 22-9 and advanced to the NCAA Tournament's first round.

A 2002 inductee into UT's Men's Athletics Hall of Fame, Mays is still No. 2 among the Longhorns' career scoring leaders with 2,279 points and was the first player to earn back-to-back Southwest Conference Player of the Year honors in 1989 and 1990. As a senior, Mays was a second-team Associated Press All-American. He averaged 24.1 points per game and led Texas to the "Elite Eight" round of the NCAA Tournament. Included in that NCAA run was a 44-point outburst against Georgia in the first round that still ranks 14th-most all time in "March Madness" history. His 23 free throws made and 27 attempts at the line versus the Bulldogs remain NCAA Tournament records. In 2016, he was inducted into the Southwest Conference Hall of Fame in conjunction with the Texas Sports Hall of Fame.

Mays was drafted by Sacramento with the No. 14 overall pick in the first round of the 1990 NBA Draft, and he was a second-team All-Rookie selection after averaging 14.3 points per game. Mays then played two seasons with the Atlanta Hawks, before rupturing two tendons in his right foot. He recovered and enjoyed a successful eight-season career overseas in Greece, Israel, Turkey and Italy.

A native of Ocala, Fla., he received his bachelor's degree in psychology from Texas in 1990. Mays and his wife, Mirella, have two children -- a daughter, Cherrell, and son, Trevor.



## WHAT THEY'RE SAYING ABOUT TRAVIS MAYS

### GENO AURIEMMA, HALL OF FAME COACH

"Travis has done a great job helping to elevate programs everywhere he has been, and there is no doubt he will do the same thing at SMU."

### VAN CHANCELLOR, HALL OF FAME COACH

"I think as a former player at Texas, Travis has name recognition and the ability to recruit that will make him a tremendous hire at SMU. Sometimes during a hire, the Athletic Director is trying to hit a home run, and I think SMU has hit a grand slam. Travis will do a great job and be very successful at SMU."

### JODY CONRADT, HALL OF FAME COACH

"Travis was outstanding as a player, very good and passionate about the game. I knew him as a player, and seeing him on the staff of a WNBA team gave me the comfort to hire him at Texas. It told me he had an appreciation for women's basketball and a future in the field. He was a great hire at Texas, eager to learn, and he turned the passion he had as a player into a passion for teaching the game. He was a wonderful assistant with the ability to establish relationships and connects with players very well. He has a great opportunity at a prominent institution in an excellent location, and I'm excited to watch what he does at SMU. I know he will be successful."



## SMU PONY PROMISE

The Mission of SMU Athletics is to "prepare students for life." To that end, SMU is reinforcing its long-standing commitment to student-athlete development, well-being and experience with the Pony Promise. The Pony Promise consists of several initiatives that provide for an outstanding student-athlete experience from enrollment through graduation.

### 1. Student-Athlete Academic Services

Recognizing that varsity athletes commit to representing the University, and thus face the unique challenge of balancing academic and athletic objectives, SMU's Student-Athlete Academic Services team is tasked with providing mentoring and core skills support; help them respond effectively to specific academic challenges; better articulate their educational goals; and succeed in their undergraduate pursuits.

Student-athletes work through either the Altshuler Learning Enhancement Center (A-LEC) or the Center For The Academic Development of Student-Athletes (ADSA) for support.

The mission of the A-LEC is to help student-athletes respond effectively to specific academic challenges, articulate and achieve educational goals, and successfully complete the undergraduate curriculum. Specialists help student-athletes build success from the beginning, through both developmental and accelerated programs designed to maximize learning potential, personal adjustment, and academic performance.

ADSA staff provides services such as academic counseling, mentoring, tutoring and reading/writing assistance. ADSA has six Academic Counselors, three Reading/Writing Specialists, an Administrative Assistant and two interns. Additionally, ADSA works in collaboration with the A-LEC to provide disability services and other various programs.

### 2. Full Cost of Attendance

SMU provides scholarships up to the full cost-of-attendance for all student-athletes. Each school's financial-aid office, not its athletics department, uses a federal formula to set the cost-of-attendance figure for the school year. Using those guidelines, SMU's Financial Aid Office has set the figure at \$2,676 annually for full-scholarship student-athletes. That figure represents the gap between last year's full scholarship amount and full cost of attendance at SMU. Students may qualify for additional support based upon individual needs. For example, students with significant demonstrated need are eligible for a Pell grant in the amount of \$5,775 per academic year.

These figures do not include or take into account other distributions that SMU student-athletes may receive, such as off-campus stipends, which are provided to upperclassmen who, as the term would indicate, live off-campus after two years of on-campus residency. Those stipends are currently valued at \$15,650 per academic year (fall and spring semesters).

### 3. Student-Athlete Development & Welfare

#### Strength & Conditioning

Vic & Gladie Jo Salvino Strength & Conditioning Centers are located in the Paul B. Loyd, Jr. All-Sports Center and the Crum Basketball Center. Both of the state-of-the-art training facilities include functional drill space and Olympic platforms and weights. The Salvino Strength & Conditioning Centers also include aerobic equipment, weight stations and free weights.

#### Equipment & Apparel

SMU is a proud partner of Nike, who provides SMU gear and apparel. The SMU equipment staff handles all of the ordering and inventory of athletic gear for the SMU Athletic Department and its teams, custom fitting all Mustang student-athletes with all needed equipment.

#### Sports Medicine

The SMU Sports Medicine Program is housed in the Lindsay & Bobbie Embrey Sports Medicine Complex inside the Loyd All-Sports Center, and offers the outstanding services of leading sports medicine and health care professionals. The SMU Sports Medicine staff works with physicians to design rehabilitation programs for injured student-athletes to minimize the loss of fitness during recuperative time.

#### Mental Health & Sports Psychology

While intercollegiate athletics has a large focus on the physical demands for the student-athlete, SMU Athletics also understands the importance of providing resources to address the emotional and mental demands associated with being a student-athlete. Because of this, we have developed a two-tiered mental health program. One tier has a focus on the emotional and mental well-being of a student-athlete, while the other tier focuses on finding ways to address mental aspects of sport performance.

#### Tier 1: Mental Health and Well-Being

Mental Health Resources for Student-Athletes are designed to provide counseling services to meet the student-athletes' needs for achieving emotional well-being necessary for success in college. The life of a student-athlete often comes with pressures, high expectations, and many obligations that can potentially feel stressful or overwhelming. Counseling provides a confidential, supportive, and accepting environment to address issues that may be interfering with a student-athlete's ability to enjoy a fully satisfying life or reach his/her full potential.

#### Tier 2: Sport Psychology/Peak Performance

There have been a wide variety of written materials about the physical component of the game, yet the emotional and mental side often makes the difference in performance and outcome. One thing the student-athlete has complete control over is his/her thoughts, emotions, and behaviors that make up the main components of the mental skills process. Being keyed into these three areas will influence one's competitive edge. SMU Athletics strives for each student-athlete to take charge of his/her process of the game.

## Concussion Protocol

The SMU Sports Medicine Department has established a detailed protocol to manage the risks and concerns of concussions for SMU student-athletes. This management plan follows the guidelines and recommendations set forth by the NATA, NCAA, American Athletic Conference, United Educators and the practicing physicians involved in SMU Athletics. This policy is a living document that is reviewed annually by SMU Risk Management and team physicians. The purpose of this plan is to ensure that standards of care are being met and that overall healthcare and specifically the management of concussions is done in a manner that protects and treats the student-athlete with the highest regard to safety.

The concussion management plan is broken into three major components. The first component is education of concussions. The second is based upon the management and treatment of concussions. The third is the student-athlete's return to activity.

The SMU Concussion Policy has a management plan to help guide student-athletes safely through a return-to-play protocol, as well as a return-to-learn plan. Awareness and communication are key components to the management of our policy, and because of this, we involve key individuals ranging from administrators, coaches, academic advisors, neurologist, psychologist, team physicians and athletic trainers. Our policy also allows us to work within the University and the academic community in a manner in which accommodations can be made to help support the student academically through the recovery phase.

Mike Morton, SMU's Director of Sports Medicine, was hired this year by the NFL to serve as an injury spotter for games held at AT&T Stadium. To obtain this position, Morton completed an NFL training program to review and understand protocols in place to help identify NFL players that may be demonstrating symptoms associated with head and neck injuries.

#### Sports Dietician

The goal of a sports nutrition program is to ensure student-athletes are well nourished, optimally refueled after exercise to speed up complete recovery and prepared for overall lifelong health. By providing team talks, one-on-one meal plan counseling, grocery store tours, cooking classes and education at the on-campus fueling stations, the sports dietician engages with student-athletes on a daily basis. Other responsibilities include managing the ordering and inventory of the fueling stations, identifying optimal products to stock the fueling stations, developing relationships with vendors to support SMU student-athletes and creating custom educational materials.

#### Supplemental Meals & Snacks

SMU student-athletes have access to supplemental meals in conjunction with participation in athletic activities.

SMU Athletics has partnered with SMU Dining Services to provide SMU student-athletes with the best in nutritional and dining options. SMU student-athletes are able to access the Arnold Dining Commons to receive supplemental meals and snacks.

SMU student-athletes can also fuel up at the fueling stations located in the Salvino Strength & Conditioning Centers, where pre- and post-workout nutrition is available for student-athletes along with snacks for between classes.

#### 4. Life Skills Programming

SMU is committed to the holistic development of our student-athletes. Life Skills programming cultivates skills that prepare student-athletes for the ultimate competitive challenge - Life.

Our S.T.A.N.G.S. (Student-Athletes Together Achieving the Necessary Goals for Success) program is based on:

#### Personal Development

SMU supports the development of a well-balanced lifestyle for student-athletes, encouraging emotional well-being, personal growth and decision-making skills.

#### Community Service

SMU facilitates community outreach opportunities for student-athletes, providing them with an appreciation for the value of service and a chance to show their gratitude to the DFW communities that support them.

#### Career Development

SMU places a priority on preparing students for life after college. Our program helps give student-athletes a career direction and provides networking opportunities.

#### Financial Literacy

SMU equips student-athletes with the tools needed to efficiently and effectively manage their resources and build a positive credit history, working to ensure that student-athletes will be prepared to handle post-graduate financial responsibilities.

#### 5. The Student-Athlete Advisory Council

The Student-Athlete Advisory Committee (SAAC) is a partnership of the student-athletes representing all 17 sports at SMU. SAAC provides insight on the student-athlete experience. The SAAC also offers input on the rules, regulations and policies that affect student-athletes' lives on NCAA member institution campuses.

#### 6. Facility Enhancements

Providing championship-caliber facilities gives our student-athletes the best possible environment for success.

SMU opened a renovated and expanded Moody Coliseum and the new Miller Event Center in 2014. In 2015, SMU opened the new SMU Tennis Complex, completed Phase II of the DAC golf practice facility and updated the Salvino Strength and Conditioning Center and the football offices and meeting rooms. SMU is in the process of building other facilities, including a new home for golf and a track and field throws area, while a new aquatic center is close to breaking ground. An athletics facilities master plan is being developed to identify and address future investments in the student-athlete and fan experiences.



## THE LAST TIME...

### THE LAST TIME A MUSTANG...

#### SCORING

Scored 40+ points:	Shawn Ford, 42, vs. TCU (1/25/97)
Scored 30-40 points:	Alicia Froling, 33, at Cincinnati (1/27/16)
Scored 20-29 points:	McKenzie Adams, 21, and Alicia Froling, 20, at TCU (11/20/16)
Scored 20+ points in consecutive games:	Keena Mays (25 at UCF, 2/11/14; 34 vs. Houston, 2/15/14; 24 at Memphis, 2/22/14)
Scored 20+ points in three consecutive games:	Keena Mays, 25, 34, 24 (at UCF, vs. Houston, at Memphis 2/11/14-2/22/14)
Scored 20+ in four consecutive games:	N/A
Scored 20+ in five consecutive games:	N/A
Two players scored 20+ points:	M. Adams, 21, and A. Froling, 20, at TCU (11/20/16)
Three players scored 20+ points:	N/A
Five or more players scored in double figures:	K. Mays, 16; K. Perry, 12; A. Simpson, 11; K. Baker, 11; M. Singleton, 10 (vs. Rutgers - 2/08/14)
All participating players (min. 8) scored:	8 at North Texas (12/21/13)
All participating players scored in two consecutive games:	12 vs. Memphis (2/14/08), 11 at UAB (2/17/08)

#### REBOUNDING

Had 25 rebounds:	N/A
Had 20+ rebounds:	Alicia Froling, 22, at Cincinnati (1/27/16)
Had 15+ rebounds:	Alicia Froling, 15, vs. Texas State (11/11/16)
Had 10+ rebounds:	Alicia Froling, 16 vs. Prairie View A&M (11/22/16)
Had 10+ rebounds in consecutive games:	Alicia Froling (4 games, 2nd time in career) 15 vs. Texas State (11/11/16); 10 at Kansas (11/11/16); 12 at TCU (11/20/16); 16 vs. Prairie View A&M (11/22/16)
Had 10+ rebounds in three consecutive games:	Alicia Froling (14 vs. UCF, - 2/06/16; 12 vs. East Carolina - 2/09/16; 15 at Tulane - 2/14/16)
Had 10+ rebounds in four consecutive games:	Alicia Froling (11/11/16-11/22/16)
Had 10+ rebounds in five consecutive games:	N/A
Two players had 10+ rebounds:	Kiara Perry, 10, & Alicia Froling, 16, vs. Prairie View A&M (11/22/16) (3 times this season)
Three players had 10+ rebounds:	Brame (13), Hives-McCray (11), A. Froling (10) vs. Florida A&M (11/29/14)
All participating players (min. 8) rebounded:	8 at TCU (11/20/16)

#### THREE-POINT SHOOTING

Had five three-point field goals:	Keena Mays, 5, vs. Texas Southern (3/20/14)
Had 10+ three-point attempts:	McKenzie Adams, 10, vs. East Carolina (2/09/16)

#### ASSISTS

Had 10 assists:	Brittany Gilliam, 11, vs. UTEP (1/15/10)
Had consecutive games with 5+ assists:	Keena Mays (8 vs. Cincinnati - 2/1/14; 5 vs. Temple - 2/1/14)
Had five consecutive games with 5+ assists:	Brittany Gilliam, 9 games (11/13-12/19/09)
Had consecutive games with 10+ assists:	Suzanne McAnally (11 vs. Texas Tech 2/8/92, 11 vs. Texas A&M 2/12/92)

#### BLOCKS

Had five blocks:	Stephanie Collins, 7, vs. Tulsa (2/17/16)
Had five consecutive games with a blocked shot:	Stephanie Collins - 9 games (1/23/16-2/20/16)

#### DOUBLE-DOUBLES

Had 10+ double-doubles in a season:	Alicia Froling, 14 (2015-16)
Recorded a double-double:	Alicia Froling (11 pts, 10 rebs) at Colorado (11/26/16) McKenzie Adams (11 pts, 10 rebs) at Colorado (11/26/16)
Two players had a double-double:	at Colorado (11/26/16) Alicia Froling (11 pts, 10 rebs) and McKenzie Adams (11 pts, 10 rebs)
Three players had a double-double:	vs. Florida A&M (11/29/14) Hives-McCray (18 pts, 11 rebs), A. Froling (14 pts, 10 rebs), Brame (11 pts, 13 rebs)
Recorded back-to-back double-doubles:	Alicia Froling (15 pts, 15 rebs) vs. Texas State (11/11/16); (16 pts, 10 rebs) at Kansas (11/11/16); (20 pts, 12 rebs) at TCU (11/20/16); (16 pts, 16 rebs) vs. Prairie View A&M (11/22/16)
Had three or more consecutive double-doubles:	Alicia Froling (15 pts, 15 rebs) vs. Texas State (11/11/16); (16 pts, 10 rebs) at Kansas (11/11/16); (20 pts, 12 rebs) at TCU (11/20/16); (16 pts, 16 rebs) vs. Prairie View A&M (11/22/16)
Had four or more consecutive double-doubles:	Alicia Froling (15 pts, 15 rebs) vs. Texas State (11/11/16); (16 pts, 10 rebs) at Kansas (11/11/16); (20 pts, 12 rebs) at TCU (11/20/16); (16 pts, 16 rebs) vs. Prairie View A&M (11/22/16)
Recorded a triple-double:	N/A
Consecutive games with multiple double-doubles:	Two 11/11/16 - Alicia Froling (15 pts, 15 rebs) & Dai'ja Thomas (11 pts, 10 rebs) vs. Texas State 11/16/16 - Kiara Perry (17 pts, 14 rebs) & Alicia Froling (16 pts, 10 rebs) at Kansas

### THE LAST TIME SMU...

#### SCORING

Scored 100 points (home):	104-69 vs. Sam Houston State (11/19/99)
Scored 100 points (road):	127-125 (4 OT) at TCU (1/25/97)
Scored 100 points in an American Athletic Conference game:	N/A

#### OVERTIME

Won an overtime game:	74-67 (OT) vs. East Carolina (2/09/16)
Won a conference overtime game:	74-67 (OT) vs. East Carolina (2/09/16)(The American)
Lost a conference overtime game:	N/A

#### TOURNAMENTS

Won a tournament:	SMU Thanksgiving Classic (11/27-11/28/15)
Won a post-season tournament game:	SMU 84, Texas Southern 72, WNIT (3/20/14)
Won a conference tournament:	Conference USA, 2008
Played in a non-conference post-season tournament:	WNIT, 2014, at Minnesota, Second Round
Played in the NCAA tournament:	2008

#### MISCELLANEOUS

Won 10 consecutive games:	2012-13
Won 5 consecutive games:	2013-14
Won 20 games in a season:	2012-13
Opened the season with a win:	2016-17
Defeated a ranked opponent:	3/9/2008 vs. No. 18 UTEP (W, 73-57)
Faced a ranked opponent:	2/24/16 at No. 1 Connecticut (L, 88-41)



**0**

**KIARA PERRY**

G • 5-10 • JR-2L  
Duncanville, Texas



**1**

**DEVRI OWENS**

G • 5-8 • JR-GT  
Plano, Texas



**3**

**McKENZIE ADAMS**

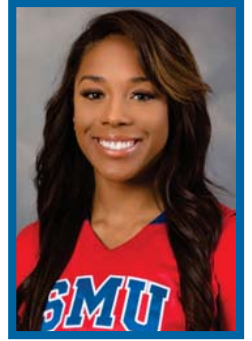
G • 5-9 • JR-1L  
Frisco, Texas



**4**

**MIKAYLA REESE**

G • 5-8 • JR-2L  
Colorado Springs, Colo.



**5**

**AURMANI DEGAR**

G • 5-8 • JR-2L  
Grand Prairie, Texas



**10**

**ALICIA FROLING**

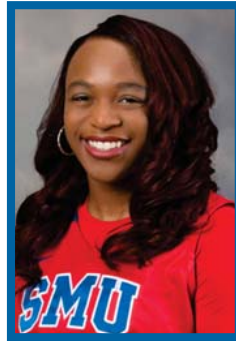
F • 6-3 • JR-2L  
Queensland, Australia



**11**

**KIRAN LAKHIAN**

G • 6-0 • SR-GT  
Plano, Texas



**12**

**MORGAN BOLTON**

G • 5-6 • SR-2L  
Duncanville, Texas



**13**

**KLARA BRADSHAW**

C • 6-6 • JR-SQ  
Emory, Texas



**15**

**STEPHANIE COLLINS**

F • 6-5 • JR-2L  
Melbourne, Australia



**20**

**DAI'JA THOMAS**

F • 6-2 • SO-1L  
Dallas, Texas



**22**

**TIARA DAVENPORT**

G • 6-0 • JR-TR  
Dallas, Texas



**24**

**KAMRAY MICKENS**

G • 5-8 • SR-1L  
Westlake, Texas



**25**

**AMAURA BRANT**

G • 5-8 • SR-GT  
Aiken, S.C.



**TRAVIS MAYS**

Head Coach  
1st season at SMU


**THE LAST TIME ■ SMU AT NORTH TEXAS ■ DEC. 1, 2015 ■ THE SUPER PIT ■ DENTON, TEXAS**
**Official Basketball Box Score -- Game Totals -- Final Statistics**
**SMU vs North Texas**
**12/01/15 7:00 PM at Denton, TX (The Super Pit)**
**SMU 57 • 3-3**

##	Player	f	Total			3-Ptr			Rebounds			PF	TP	A	TO	Blk	Stl	Min
			FG-FGA	FG-FGA	FT-FTA	FG-FGA	FG-FGA	FT-FTA	Off	Def	Tot							
10	FROLING, Alicia	f	2-8	0-1	1-2	2	2	4	2	5	0	2	0	0	0	0	30	
15	COLLINS, Stephanie	f	5-11	0-0	0-0	3	6	9	3	10	2	5	5	0	0	33		
02	ADAMS, McKenzie	g	7-17	2-6	0-0	0	4	4	1	16	1	1	0	1	38			
12	BOLTON, Morgan	g	2-6	2-3	4-4	0	7	7	3	10	2	2	0	4	33			
33	GIBSON, Ashley	g	5-10	2-4	2-2	2	1	3	2	14	2	4	0	1	31			
04	REESE, Mikayla		0-1	0-1	0-0	0	0	0	1	0	0	1	0	0	5			
05	DEGAR, Aurmani		0-0	0-0	0-0	0	0	0	0	0	0	0	0	1	3			
20	THOMAS, Dai'ja		1-3	0-0	0-0	1	3	4	1	2	0	2	0	0	16			
24	MICKENS, Kamray		0-1	0-1	0-0	1	0	1	0	0	2	1	0	1	11			
Team						0	4	4				1						
Totals			22-57	6-16	7-8	9	27	36	13	57	9	19	5	8	200			

FG % 1st Half: 8-25 32.0% 2nd half: 14-32 43.8% Game: 22-57 38.6%  
 3FG % 1st Half: 2-7 28.6% 2nd half: 4-9 44.4% Game: 6-16 37.5%  
 FT % 1st Half: 4-4 100.0 2nd half: 3-4 75.0% Game: 7-8 87.5%

Deadball  
Rebounds  
1

**North Texas 60 • 2-3**

##	Player	f	Total			3-Ptr			Rebounds			PF	TP	A	TO	Blk	Stl	Min
			FG-FGA	FG-FGA	FT-FTA	FG-FGA	FG-FGA	FT-FTA	Off	Def	Tot							
23	TAC, Acheil	f	1-2	0-0	0-0	0	1	1	4	2	1	3	0	0	17			
24	FRIERSON, Bria	c	4-6	0-0	2-2	2	3	5	2	10	0	1	1	0	34			
03	CRINER, Kelsey	g	7-14	3-6	0-0	2	6	8	2	17	2	8	0	0	33			
14	ADAMS, Candice	g	5-10	2-5	0-0	0	2	2	2	12	3	1	0	0	38			
20	ELLISON, Terra	g	3-13	1-2	2-2	3	4	7	1	9	1	2	0	1	39			
02	JONES, Teadra		2-7	0-2	2-4	3	2	5	3	6	0	0	0	2	20			
10	WILLIAMS, Kasiney		0-3	0-1	2-2	0	2	2	0	2	1	1	0	0	14			
30	MABODU, Tosin		1-4	0-0	0-0	1	2	3	1	2	0	0	1	0	5			
Team						0	4	4										
Totals			23-59	6-16	8-10	11	26	37	15	60	8	16	2	3	200			

FG % 1st Half: 12-30 40.0% 2nd half: 11-29 37.9% Game: 23-59 39.0%  
 3FG % 1st Half: 4-8 50.0% 2nd half: 2-8 25.0% Game: 6-16 37.5%  
 FT % 1st Half: 2-4 50.0% 2nd half: 6-6 100.0% Game: 8-10 80.0%

Deadball  
Rebounds  
0

Officials: R:Lisa Mattingly, U1:Bob Trammell, U2:Brian Hall

Technical fouls: SMU-None. North Texas-None.

Attendance: 819

Score by periods	1st	2nd	3rd	4th	Total
SMU	11	11	14	21	<b>57</b>
North Texas	18	12	17	13	<b>60</b>

	In	Off	2nd	Fast	
Points	Paint	T/O	Chance	Break	Bench
SMU	28	15	11	12	2
NT	22	15	5	5	10

Last FG - SMU 4th-00:01, NT 4th-01:50.

Largest lead - SMU by 2 1st-08:45, NT by 14 3rd-01:32.

SMU led for 01:25. NT led for 34:58. Game was tied for 03:37.

Score tied - 3 times.

Lead changed - 5 times.



**Official Basketball Box Score -- Game Totals -- Final Statistics**  
**Texas State vs SMU**  
**11/11/16 11:30 am at Dallas, Texas (Moody Coliseum)**

**Texas State 56 • 0-1**

#	Player	Total			3-Ptr			Rebounds			PF	TP	A	TO	Blk	Stl	Min
		FG-FGA	FG-FGA	FT-FTA	FG-FGA	FG-FGA	FT-FTA	Off	Def	Tot							
15	May, Ericka	f	5-7	0-1	0-0	0	11	11	1	10	0	3	0	1	32		
22	Pitts, Ti'Aira	f	1-4	0-0	0-0	0	2	2	4	2	2	0	1	0	22		
00	Leavitt, Toshua	g	4-9	4-9	0-0	0	2	2	4	12	5	4	0	1	33		
14	Bostad, McKinley	g	3-8	3-5	2-2	0	4	4	0	11	3	3	0	1	30		
32	Walla, Kaitlin	g	2-9	0-6	0-0	0	3	3	4	4	2	1	0	1	28		
12	Lurry, Kiani	g	4-13	0-3	0-0	0	2	2	3	8	0	1	0	2	19		
13	Emanuel, Zandra	g	0-0	0-0	0-0	0	0	0	0	0	0	0	0	0	1		
23	Deer, Taeler	g	2-3	0-0	2-2	1	0	1	0	6	1	6	0	2	13		
24	Holle, Brooke	g	0-0	0-0	0-0	0	0	0	0	0	0	0	0	0	4		
20	Apari, Whitney	g	1-5	0-0	1-2	0	3	3	4	2	1	0	0	0	16		
55	Calloway, De'Jonae	g	0-0	0-0	0-0	0	0	0	0	0	1	0	0	0	2		
Team						2	4	6									
Totals			22-58	7-24	5-6	3	31	34	24	56	15	20	1	8	200		

1st - FG %:	3-12	25.0%	2nd:	4-15	26.7%	3rd:	7-13	53.8%	4th:	8-18	44.4%	Game:	22-58	37.9%	Deadball	
3FG %:	2-5	40.0%		0-7	0.0%		2-4	50.0%		3-8	37.5%		7-24	29.2%	Rebounds	2
FT %:	1-2	50.0%		4-4	100.0%		0-0	0.0%		0-0	0.0%		5-6	83.3%		

**SMU 64 • 1-0**

#	Player	Total			3-Ptr			Rebounds			PF	TP	A	TO	Blk	Stl	Min
		FG-FGA	FG-FGA	FT-FTA	FG-FGA	FG-FGA	FT-FTA	Off	Def	Tot							
10	FRÖLING, Alicia	f	4-10	0-0	7-10	7	8	15	3	15	2	1	0	0	23		
13	BRADSHAW, Klara	c	2-4	0-0	4-4	3	6	9	1	8	0	0	1	0	20		
00	PERRY, Kiara	g	3-14	0-4	1-2	2	4	6	2	7	2	2	0	3	30		
03	ADAMS, McKenzie	g	1-8	1-4	3-4	0	0	0	2	6	1	4	0	2	26		
12	BOLTON, Morgan	g	0-8	0-6	0-0	0	1	1	0	0	1	4	0	1	23		
04	REESE, Mikayla	g	4-7	3-5	0-0	1	3	4	1	11	1	3	0	1	18		
15	COLLINS, Stephanie	g	0-1	0-0	0-0	1	0	1	0	0	0	0	0	0	4		
20	THOMAS, Dai'ja	g	4-8	0-0	3-4	4	6	10	1	11	3	4	3	1	31		
24	MICKENS, Kamray	g	0-3	0-0	3-6	0	2	2	3	2	2	0	4	17			
25	BRANDT, Amaura	g	1-2	1-2	0-0	0	0	0	1	3	0	0	0	0	8		
Team						1	2	3									
Totals			19-65	5-21	21-30	19	32	51	13	64	13	20	4	12	200		

1st - FG %:	5-20	25.0%	2nd:	2-13	15.4%	3rd:	5-15	33.3%	4th:	7-17	41.2%	Game:	19-65	29.2%	Deadball	
3FG %:	0-5	0.0%		1-7	14.3%		1-4	25.0%		5-21	23.8%		21-30	70.0%	Rebounds	5
FT %:	4-5	80.0%		6-8	75.0%		6-11	54.5%		5-6	83.3%					

Officials: Isaac D. Johnson, Shannon Feck, Kelly Murray  
 Technical fouls: Texas State-None. SMU-None.  
 Attendance: 2617

Score by periods	1st	2nd	3rd	4th	Total
Texas State	9	12	16	19	56
SMU	14	11	17	22	64

Last FG - TXST 4th-00:24, SMU 4th-00:34.  
 Largest lead - TXST by 1 3rd-07:29, SMU by 8 4th-09:54.  
 TXST led for 01:01. SMU led for 38:01. Game was tied for 00:52.

Points	In	Off	2nd	Fast	Bench
Texas State	20	16	4	6	17
SMU	26	11	18	2	28

Score tied - 3 times.  
 Lead changed - 4 times.

**Official Basketball Box Score -- Game Totals -- Final Statistics**  
**SMU vs Kansas**  
**11/16/16 7:05 p.m. at Allen Fieldhouse**

**SMU 75 • 2-0**

#	Player	Total			3-Ptr			Rebounds			PF	TP	A	TO	Blk	Stl	Min
		FG-FGA	FG-FGA	FT-FTA	FG-FGA	FG-FGA	FT-FTA	Off	Def	Tot							
10	FRÖLING, Alicia	f	5-12	0-2	6-8	2	8	10	4	16	4	3	3	2	36		
20	THOMAS, Dai'ja	f	3-4	0-0	0-0	3	2	5	4	6	0	0	2	1	17		
00	PERRY, Kiara	g	7-13	0-1	3-5	5	9	14	3	17	2	3	1	2	34		
03	ADAMS, McKenzie	g	4-12	3-6	4-6	2	7	9	2	15	2	2	1	1	32		
12	BOLTON, Morgan	g	3-5	2-2	5-6	0	2	2	3	13	4	5	0	1	28		
04	REESE, Mikayla	g	0-1	0-1	0-0	0	0	0	2	2	0	0	0	0	13		
13	BRADSHAW, Klara	g	3-8	0-0	3-3	1	3	4	2	6	0	1	3	0	26		
15	COLLINS, Stephanie	g	0-0	0-0	0-0	0	1	1	0	0	0	0	0	0	10		
24	MICKENS, Kamray	g	1-4	0-0	0-0	0	0	0	3	2	1	2	0	0	12		
25	BRANDT, Amaura	g	0-1	0-1	0-0	0	0	0	0	0	0	0	0	0	2		
Team						2	3	5									
Totals			26-60	5-13	18-28	15	37	52	23	75	14	19	10	8	200		

1st - FG %:	10-16	62.5%	2nd:	5-12	41.7%	3rd:	8-16	50.0%	4th:	3-16	18.8%	Game:	26-60	43.3%	Deadball	
3FG %:	1-3	33.3%		2-4	50.0%		1-2	50.0%		1-4	25.0%		5-13	38.5%	Rebounds	4
FT %:	4-5	80.0%		4-8	50.0%		7-8	87.5%		3-7	42.9%		18-28	64.3%		

**Kansas 63 • 0-2**

#	Player	Total			3-Ptr			Rebounds			PF	TP	A	TO	Blk	Stl	Min
		FG-FGA	FG-FGA	FT-FTA	FG-FGA	FG-FGA	FT-FTA	Off	Def	Tot							
25	ManningAllen, Caelynn	f	0-3	0-0	1-2	0	2	2	4	1	1	1	1	0	14		
02	Calvert, McKenzie	g	5-17	2-6	5-8	1	2	3	17	0	3	1	0	0	24		
03	Washington, Jessica	g	4-14	2-7	3-5	3	2	5	1	13	3	5	0	1	31		
22	Cheadle, Chayla	g	1-3	0-0	1-2	3	1	4	3	3	0	0	0	1	17		
33	Kopatch, Kylee	g	2-6	2-2	1-1	0	1	1	2	7	0	1	1	0	26		
00	Umeri, Sydney	g	0-3	0-0	0-0	1	0	1	3	0	2	1	0	0	22		
01	Lott, Chelsea	g	2-3	0-0	1-2	2	1	3	2	5	0	0	1	1	8		
04	Brown, Jada	g	0-1	0-1	0-0	0	0	0	2	0	0	0	0	0	13		
12	O'Neal, Timeka	g	2-5	2-4	0-0	0	1	1	0	6	0	1	0	0	11		
15	Robertson, Aisia	g	4-12	1-4	2-3	3	6	9	4	11	2	1	0	2	23		
20	Christopher, Jayde	g	0-1	0-0	0-2	0	3	3	0	0	1	3	0	2	11		
Team						4	6	10									
Totals			20-68	9-24	14-25	17	25	42	24	63	9	16	4	7	200		

1st - FG %:	3-19	15.8%	2nd:	6-20	30.0%	3rd:	4-15	26.7%	4th:	7-14	50.0%	Game:	20-68	29.4%	Deadball	
3FG %:	1-4	25.0%		1-7	14.3%		2-5	40.0%		5-8	62.5%		9-24	37.5%	Rebounds	5
FT %:	4-7	57.1%		5-6	83.3%		2-5	40.0%		3-7	42.9%		14-25	56.0%		

Officials: Tina Napier, Michael Price, Brian Hall  
 Technical fouls: SMU-None. Kansas-None.  
 Attendance: 1714

Score by periods	1st	2nd	3rd	4th	Total
SMU	25	16	24	10	75
Kansas	11	18	12	22	63

Last FG - SMU 4th-05:36, KU 4th-02:16.  
 Largest lead - SMU by 25 3rd-05:30, KU None.  
 SMU led for 39:23. KU led for 00:00. Game was tied for 00:37.

Points	In	Off	2nd	Fast	Bench
SMU	14	12	8	8	22
KU	14	12	8	8	22

Score tied - 0 times.  
 Lead changed - 0 times.

**Official Basketball Box Score -- Game Totals -- Final Statistics**  
**SMU vs TCU**  
**11/20/16 2:00 p.m. at Fort Worth, Texas (Schollmaier Arena)**

**SMU 67 • 2-1**

#	Player	Total			3-Ptr			Rebounds			PF	TP	A	TO	Blk	Stl	Min
		FG-FGA	FG-FGA	FT-FTA	FG-FGA	FG-FGA	FT-FTA	Off	Def	Tot							
10	FRÖLING, Alicia	f	8-12	0-0	4-5	3	9	12	2	20	2	5	1	0	32		
20	THOMAS, Dai'ja	f	4-7	0-0	0-0	1	2	3	2	8	0	0	4	0	19		
00	PERRY, Kiara	g	3-9	1-2	0-0	3	4	7	4	2	1	0	0	0	35		
03	ADAMS, McKenzie	g	8-13	2-4	3-5	1	6	7	2	21	2	2	0	0	34		
12	BOLTON, Morgan	g	0-5	0-3	0-0	0	3	3	0	6	3	0	0	0	24		

**THE STAT CREW SYSTEM**  
**SMU Combined Team Statistics (as of Nov 29, 2016)**  
**All games**

<b>RECORD:</b>	<b>OVERALL</b>	<b>HOME</b>	<b>AWAY</b>	<b>NEUTRAL</b>
ALL GAMES	4-2	2-0	1-2	1-0
CONFERENCE	0-0	0-0	0-0	0-0
NON-CONFERENCE	4-2	2-0	1-2	1-0

##	Player	gp-gs	min	avg	Total		3-Point		F-Throw		Rebounds				pf	dq	a	to	blk	stl	pts	avg		
					fg-fga	fg%	3fg-fga	3fg%	ft-fta	ft%	off	def	tot	avg										
10	FROLING, Alicia	6-6	193	32.2	35-69	.507	0-5	.000	32-47	.681	19	50	69	11.5	17	0	15	19	7	3	102	17.0		
03	ADAMS, McKenzie	6-6	193	32.2	25-66	.379	8-22	.364	22-37	.595	8	26	34	5.7	10	0	12	16	3	6	80	13.3		
00	PERRY, Kiara	6-6	195	32.5	25-58	.431	1-9	.111	10-20	.500	20	28	48	8.0	14	0	17	16	7	12	61	10.2		
20	THOMAS, Dal'ja	4-2	92	23.0	16-27	.593	0-0	.000	3-4	.750	12	13	25	6.3	9	0	3	8	12	3	35	8.8		
12	BOLTON, Morgan	6-6	155	25.8	8-36	.222	6-21	.286	11-12	.917	1	12	13	2.2	10	0	18	26	0	6	33	5.5		
13	BRADSHAW, Klara	6-3	140	23.3	9-30	.300	0-0	.000	10-17	.588	10	20	30	5.0	8	0	2	3	11	0	28	4.7		
04	REESE, Mikayla	6-0	107	17.8	9-30	.300	6-21	.286	0-0	.000	1	13	14	2.3	7	0	8	13	0	2	24	4.0		
24	MICKENS, Kamray	6-1	80	13.3	4-18	.222	0-0	.000	7-10	.700	0	6	6	1.0	10	0	4	9	0	6	15	2.5		
25	BRANDT, Amaura	4-0	22	5.5	2-6	.333	2-6	.333	0-0	.000	1	1	2	0.5	1	0	1	1	0	0	6	1.5		
15	COLLINS, Stephanie	4-0	21	5.3	2-5	.400	0-0	.000	1-2	.500	1	4	5	1.3	4	0	1	5	0	1	5	1.3		
05	DEGAR, Aurmani	2-0	2	1.0	0-0	.000	0-0	.000	0-0	.000	0	0	0	0.0	1	0	0	1	0	0	0	0.0		
Team											10	13	23											
Total.....		6	1200		135-345	.391	23-84	.274	96-149	.644	83	186	269	44.8	91	0	81	120	40	39	389	64.8		
Opponents.....		6	1200		143-389	.368	48-122	.393	46-74	.622	71	154	225	37.5	137	-	90	97	21	60	380	63.3		

<b>TEAM STATISTICS</b>	<b>SMU</b>	<b>OPP</b>	<b>Date</b>	<b>Opponent</b>	<b>Score</b>	<b>Att.</b>
SCORING	389	380	11/11/16	TEXAS STATE	w 64-56	2617
Points per game	64.8	63.3	11/16/16	at Kansas	w 75-63	1714
Scoring margin	+1.5	-	11/20/16	at TCU	L 67-76	1841
FIELD GOALS-ATT	135-345	143-389	11/22/16	PRAIRIE VIEW A&M	w 61-54	6852
Field goal pct	.391	.368	! 11/25/16	vs Boston College	w 72-64	1483
3 POINT FG-ATT	23-84	48-122	! 11/26/16	at Colorado	L 50-67	1495
3-point FG pct	.274	.393	* - Conference game			
3-pt FG made per game	3.8	8.0				
FREE THROWS-ATT	96-149	46-74				
Free throw pct	.644	.622				
F-Throws made per game	16.0	7.7				
REBOUNDS	269	225				
Rebounds per game	44.8	37.5				
Rebounding margin	+7.3	-				
ASSISTS	81	90				
Assists per game	13.5	15.0				
TURNOVERS	120	97				
Turnovers per game	20.0	16.2				
Turnover margin	-3.8	-				
Assist/turnover ratio	0.7	0.9				
STEALS	39	60				
Steals per game	6.5	10.0				
BLOCKS	40	21				
Blocks per game	6.7	3.5				
ATTENDANCE	9469	6533				
Home games-Avg/Game	2-4734	3-1683				
Neutral site-Avg/Game	-	1-1483				

<b>Score by Periods</b>	<b>1st</b>	<b>2nd</b>	<b>3rd</b>	<b>4th</b>	<b>Totals</b>
SMU	106	69	105	109	389
Opponents	97	93	80	110	380

**THE STAT CREW SYSTEM**  
**SMU Season Schedule/Results & Leaders (as of Nov 29, 2016)**  
**All games**

<b>RECORD:</b>	<b>OVERALL</b>	<b>HOME</b>	<b>AWAY</b>	<b>NEUTRAL</b>
ALL GAMES	4-2	2-0	1-2	1-0
CONFERENCE	0-0	0-0	0-0	0-0
NON-CONFERENCE	4-2	2-0	1-2	1-0

<b>Date</b>	<b>Opponent</b>	<b>Score</b>	<b>Att.</b>	<b>High Points</b>	<b>High Rebounds</b>
11/11/16	TEXAS STATE	W 64-56	2617	(15)FROLING, Alicia	(15)FROLING, Alicia
11/16/16	at Kansas	W 75-63	1714	(17)PERRY, Kiara	(14)PERRY, Kiara
11/20/16	at TCU	67-76 L	1841	(21)ADAMS, McKenzie	(12)FROLING, Alicia
11/22/16	PRAIRIE VIEW A&M	W 61-54	6852	(19)PERRY, Kiara	(16)FROLING, Alicia
11/25/16	!vs Boston College	W 72-64	1483	(24)FROLING, Alicia	(7)BRADSHAW, Klara
					(7)PERRY, Kiara
11/26/16	!at Colorado	50-67 L	1495	(11)FROLING, Alicia	(10)FROLING, Alicia
				(11)ADAMS, McKenzie	(10)ADAMS, McKenzie

\* - Conference game

<b>Attendance Summary</b>	<b>Games</b>	<b>Attend</b>	<b>Avg/Game</b>
Home	2	9469	4734
Away	3	5050	1683
Neutral	1	1483	1483
Total	6	16002	2667

**THE STAT CREW SYSTEM**  
**SMU Overall Team Statistics (as of Nov 29, 2016)**  
**All games**

<b>TEAM STATISTICS</b>	<b>SMU</b>	<b>OPP</b>
<b>SCORING</b>	389	380
Points per game	64.8	63.3
Scoring margin	+1.5	-
<b>FIELD GOALS-ATT</b>	135-345	143-389
Field goal pct	.391	.368
<b>3 POINT FG-ATT</b>	23-84	48-122
3-point FG pct	.274	.393
3-pt FG made per game	3.8	8.0
<b>FREE THROWS-ATT</b>	96-149	46-74
Free throw pct	.644	.622
F-Throws made per game	16.0	7.7
<b>REBOUNDS</b>	269	225
Rebounds per game	44.8	37.5
Rebounding margin	+7.3	-
<b>ASSISTS</b>	81	90
Assists per game	13.5	15.0
<b>TURNOVERS</b>	120	97
Turnovers per game	20.0	16.2
Turnover margin	-3.8	-
Assist/turnover ratio	0.7	0.9
<b>STEALS</b>	39	60
Steals per game	6.5	10.0
<b>BLOCKS</b>	40	21
Blocks per game	6.7	3.5
<b>WINNING STREAK</b>	0	-
Home win streak	2	-
<b>ATTENDANCE</b>	9469	6533
Home games-Avg/Game	2-4734	3-1683
Neutral site-Avg/Game	-	1-1483

<b>Score by Periods</b>	<b>1st</b>	<b>2nd</b>	<b>3rd</b>	<b>4th</b>	<b>Totals</b>
SMU	106	69	105	109	389
Opponents	97	93	80	110	380

**THE STAT CREW SYSTEM**  
**SMU Category Leaders (as of Nov 29, 2016)**  
**All games**

<b>Points</b>	<b>G</b>	<b>Pts</b>	<b>Pts/G</b>
FROLING, Alicia	6	102	17.0
ADAMS, McKenzie	6	80	13.3
PERRY, Kiara	6	61	10.2
THOMAS, Dai'ja	4	35	8.8
BOLTON, Morgan	6	33	5.5
BRADSHAW, Klara	6	28	4.7
REESE, Mikayla	6	24	4.0
MICKENS, Kamray	6	15	2.5
BRANDT, Amaura	4	6	1.5
COLLINS, Stephanie	4	5	1.3

<b>Scoring Average</b>	<b>G</b>	<b>Pts</b>	<b>Avg/G</b>
FROLING, Alicia	6	102	17.0
ADAMS, McKenzie	6	80	13.3
PERRY, Kiara	6	61	10.2
THOMAS, Dai'ja	4	35	8.8
BOLTON, Morgan	6	33	5.5
BRADSHAW, Klara	6	28	4.7
REESE, Mikayla	6	24	4.0
MICKENS, Kamray	6	15	2.5
BRANDT, Amaura	4	6	1.5
COLLINS, Stephanie	4	5	1.3
DEGAR, Aurmani	2	0	0.0

<b>FG Percentage</b>	<b>FG</b>	<b>Att</b>	<b>Pct</b>
THOMAS, Dai'ja	16	27	.593
FROLING, Alicia	35	69	.507
PERRY, Kiara	25	58	.431
COLLINS, Stephanie	2	5	.400
ADAMS, McKenzie	25	66	.379
BRANDT, Amaura	2	6	.333
BRADSHAW, Klara	9	30	.300
REESE, Mikayla	9	30	.300
BOLTON, Morgan	8	36	.222
MICKENS, Kamray	4	18	.222

<b>Field Goal Attempts</b>	<b>G</b>	<b>Att</b>	<b>Att/G</b>
FROLING, Alicia	6	69	11.5
ADAMS, McKenzie	6	66	11.0
PERRY, Kiara	6	58	9.7
BOLTON, Morgan	6	36	6.0
REESE, Mikayla	6	30	5.0
BRADSHAW, Klara	6	30	5.0

<b>Field Goals Made</b>	<b>G</b>	<b>Made</b>	<b>Made/G</b>
FROLING, Alicia	6	35	5.8
ADAMS, McKenzie	6	25	4.2
PERRY, Kiara	6	25	4.2
THOMAS, Dai'ja	4	16	4.0
BRADSHAW, Klara	6	9	1.5
REESE, Mikayla	6	9	1.5

<b>3-Point Percentage</b>	<b>3FG</b>	<b>Att</b>	<b>Pct</b>
ADAMS, McKenzie	8	22	.364
BRANDT, Amaura	2	6	.333
BOLTON, Morgan	6	21	.286
REESE, Mikayla	6	21	.286
PERRY, Kiara	1	9	.111
FROLING, Alicia	0	5	.000

<b>3-Point FG Attempts</b>	<b>G</b>	<b>Att</b>	<b>Att/G</b>
ADAMS, McKenzie	6	22	3.7
REESE, Mikayla	6	21	3.5
BOLTON, Morgan	6	21	3.5
PERRY, Kiara	6	9	1.5
BRANDT, Amaura	4	6	1.5

<b>3-Point FG Made</b>	<b>G</b>	<b>Made</b>	<b>Made/G</b>
ADAMS, McKenzie	6	8	1.3
REESE, Mikayla	6	6	1.0
BOLTON, Morgan	6	6	1.0
BRANDT, Amaura	4	2	0.5
PERRY, Kiara	6	1	0.2

<b>Free Throw Percent</b>	<b>FG</b>	<b>Att</b>	<b>Pct</b>
BOLTON, Morgan	11	12	.917
THOMAS, Dai'ja	3	4	.750
MICKENS, Kamray	7	10	.700
FROLING, Alicia	32	47	.681
ADAMS, McKenzie	22	37	.595
BRADSHAW, Klara	10	17	.588
PERRY, Kiara	10	20	.500
COLLINS, Stephanie	1	2	.500

<b>Free Throw Attempts</b>	<b>G</b>	<b>Att</b>	<b>Att/G</b>
FROLING, Alicia	6	47	7.8
ADAMS, McKenzie	6	37	6.2
PERRY, Kiara	6	20	3.3
BRADSHAW, Klara	6	17	2.8
BOLTON, Morgan	6	12	2.0

<b>Free Throws Made</b>	<b>G</b>	<b>Made</b>	<b>Made/G</b>
FROLING, Alicia	6	32	5.3
ADAMS, McKenzie	6	22	3.7
BOLTON, Morgan	6	11	1.8
PERRY, Kiara	6	10	1.7
BRADSHAW, Klara	6	10	1.7

**THE STAT CREW SYSTEM**  
**SMU Category Leaders (as of Nov 29, 2016)**  
**All games**

<u>Rebounds</u>	<u>G</u>	<u>Reb</u>	<u>Reb/G</u>
FROLING, Alicia	6	69	11.5
PERRY, Kiara	6	48	8.0
ADAMS, McKenzie	6	34	5.7
BRADSHAW, Klara	6	30	5.0
THOMAS, Dai'ja	4	25	6.3

<u>Rebound Average</u>	<u>G</u>	<u>Reb</u>	<u>Avg/G</u>
FROLING, Alicia	6	69	11.5
PERRY, Kiara	6	48	8.0
THOMAS, Dai'ja	4	25	6.3
ADAMS, McKenzie	6	34	5.7
BRADSHAW, Klara	6	30	5.0

<u>Offensive Rebounds</u>	<u>G</u>	<u>No.</u>	<u>Avg/G</u>
PERRY, Kiara	6	20	3.3
FROLING, Alicia	6	19	3.2
THOMAS, Dai'ja	4	12	3.0
BRADSHAW, Klara	6	10	1.7
ADAMS, McKenzie	6	8	1.3

<u>Defensive Rebounds</u>	<u>G</u>	<u>No.</u>	<u>Avg/G</u>
FROLING, Alicia	6	50	8.3
PERRY, Kiara	6	28	4.7
ADAMS, McKenzie	6	26	4.3
BRADSHAW, Klara	6	20	3.3
THOMAS, Dai'ja	4	13	3.3
REESE, Mikayla	6	13	2.2

<u>Fouls</u>	<u>G</u>	<u>No.</u>	<u>Per/G</u>
FROLING, Alicia	6	17	2.8
PERRY, Kiara	6	14	2.3
MICKENS, Kamray	6	10	1.7
BOLTON, Morgan	6	10	1.7
ADAMS, McKenzie	6	10	1.7

<u>Foulsouts</u>	<u>G</u>	<u>No.</u>
------------------	----------	------------

<u>Assists</u>	<u>G</u>	<u>No.</u>	<u>Ast/G</u>
BOLTON, Morgan	6	18	3.0
PERRY, Kiara	6	17	2.8
FROLING, Alicia	6	15	2.5
ADAMS, McKenzie	6	12	2.0
REESE, Mikayla	6	8	1.3

<u>Steals</u>	<u>G</u>	<u>No.</u>	<u>Stl/G</u>
PERRY, Kiara	6	12	2.0
BOLTON, Morgan	6	6	1.0
ADAMS, McKenzie	6	6	1.0
MICKENS, Kamray	6	6	1.0
FROLING, Alicia	6	3	0.5
THOMAS, Dai'ja	4	3	0.8

<u>Blocked Shots</u>	<u>G</u>	<u>No.</u>	<u>Blk/G</u>
THOMAS, Dai'ja	4	12	3.0
BRADSHAW, Klara	6	11	1.8
PERRY, Kiara	6	7	1.2
FROLING, Alicia	6	7	1.2
ADAMS, McKenzie	6	3	0.5

<u>Minutes</u>	<u>G</u>	<u>No.</u>	<u>Min/G</u>
PERRY, Kiara	6	195	32.5
FROLING, Alicia	6	193	32.2
ADAMS, McKenzie	6	193	32.2
BOLTON, Morgan	6	155	25.8
BRADSHAW, Klara	6	140	23.3

<u>Turnovers</u>	<u>G</u>	<u>No.</u>	<u>TO/G</u>
BOLTON, Morgan	6	26	4.3
FROLING, Alicia	6	19	3.2
ADAMS, McKenzie	6	16	2.7
PERRY, Kiara	6	16	2.7
REESE, Mikayla	6	13	2.2

**THE STAT CREW SYSTEM**  
**SMU Overall/Conference Statistics (as of Nov 29, 2016)**  
**All games**

SUMMARY	Overall Statistics										Conference Statistics										
	gp-gs	min/g	fg%	3fg%	ft%	r/g	a/g	stl	blk	pts/g	gp-gs	min/g	fg%	3fg%	ft%	r/g	a/g	stl	blk	pts/g	
FROLING, Alicia	6-6	32.2	.507	.000	.681	11.5	2.5	3	7	17.0											
ADAMS, McKenzie	6-6	32.2	.379	.364	.595	5.7	2.0	6	3	13.3											
PERRY, Kiara	6-6	32.5	.431	.111	.500	8.0	2.8	12	7	10.2											
THOMAS, Dai'ja	4-2	23.0	.593	.000	.750	6.3	0.8	3	12	8.8											
BOLTON, Morgan	6-6	25.8	.222	.286	.917	2.2	3.0	6	0	5.5											
BRADSHAW, Klara	6-3	23.3	.300	.000	.588	5.0	0.3	0	11	4.7											
REESE, Mikayla	6-0	17.8	.300	.286	.000	2.3	1.3	2	0	4.0											
MICKENS, Kamray	6-1	13.3	.222	.000	.700	1.0	0.7	6	0	2.5											
BRANDT, Amaura	4-0	5.5	.333	.333	.000	0.5	0.3	0	0	1.5											
COLLINS, Stephanie	4-0	5.3	.400	.000	.500	1.3	0.3	1	0	1.3											
DEGAR, Aurmani	2-0	1.0	.000	.000	.000	0.0	0.0	0	0	0.0											
Totals	6		.391	.274	.644	44.8	13.5	39	40	64.8	0		.000	.000	.000	0.0	0.0	0	0	0.0	0.0
Opponent	6		.368	.393	.622	37.5	15.0	60	21	63.3	0		.000	.000	.000	0.0	0.0	0	0	0.0	0.0

SCORING	Overall Statistics								Conference Statistics							
	fg-fga	fg%	3fg-fga	3fg%	ft-fta	ft%	pts	pts/g	fg-fga	fg%	3fg-fga	3fg%	ft-fta	ft%	pts	pts/g
FROLING, Alicia	35-69	.507	0-5	.000	32-47	.681	102	17.0								
ADAMS, McKenzie	25-66	.379	8-22	.364	22-37	.595	80	13.3								
PERRY, Kiara	25-58	.431	1-9	.111	10-20	.500	61	10.2								
THOMAS, Dai'ja	16-27	.593	0-0	.000	3-4	.750	35	8.8								
BOLTON, Morgan	8-36	.222	6-21	.286	11-12	.917	33	5.5								
BRADSHAW, Klara	9-30	.300	0-0	.000	10-17	.588	28	4.7								
REESE, Mikayla	9-30	.300	6-21	.286	0-0	.000	24	4.0								
MICKENS, Kamray	4-18	.222	0-0	.000	7-10	.700	15	2.5								
BRANDT, Amaura	2-6	.333	2-6	.333	0-0	.000	6	1.5								
COLLINS, Stephanie	2-5	.400	0-0	.000	1-2	.500	5	1.3								
DEGAR, Aurmani	0-0	.000	0-0	.000	0-0	.000	0	0.0								
Totals	135-345	.391	23-84	.274	96-149	.644	389	64.8	0-0	.000	0-0	.000	0-0	.000	0	0.0
Opponent	143-389	.368	48-122	.393	46-74	.622	380	63.3	0-0	.000	0-0	.000	0-0	.000	0	0.0

TOTALS	Overall Statistics										Conference Statistics										
	o-reb	d-reb	total	pf	fo	a	to	a/to	hi	pts	o-reb	d-reb	total	pf	fo	a	to	a/to	hi	pts	
FROLING, Alicia	19	50	69	17	0	15	19	0.8	24												
ADAMS, McKenzie	8	26	34	10	0	12	16	0.8	21												
PERRY, Kiara	20	28	48	14	0	17	16	1.1	19												
THOMAS, Dai'ja	12	13	25	9	0	3	8	0.4	11												
BOLTON, Morgan	1	12	13	10	0	18	26	0.7	13												
BRADSHAW, Klara	10	20	30	8	0	2	3	0.7	8												
REESE, Mikayla	1	13	14	7	0	8	13	0.6	11												
MICKENS, Kamray	0	6	6	10	0	4	9	0.4	6												
BRANDT, Amaura	1	1	2	1	0	1	1	1.0	3												
COLLINS, Stephanie	1	4	5	4	0	1	5	0.2	3												
DEGAR, Aurmani	0	0	0	1	0	0	1	0.0	0												
Totals	83	186	269	91	0	81	120	0.7	75	0	0	0	0	0	0	0	0	0.0	0	0	0
Opponent	71	154	225	137	-	90	97	0.9	76	0	0	0	0	-	0	0	0	0.0	0	0	0

THE STAT CREW SYSTEM  
SMU Team Game-by-Game (as of Nov 29, 2016)  
All games

TEAM STATISTICS

Opponent	Date	Score		Total		3-Pointers		Free throws		Rebounds				pf	a	t/o	blk	stl	pts	avg
				fg-fga	pct	3fg-fga	pct	ft-fta	pct	off	def	tot	avg							
TEXAS STATE	11/11/16	64-56	W	19-65	.292	5-21	.238	21-30	.700	19	32	51	51.0	13	13	20	4	12	64	64.0
at Kansas	11/16/16	75-63	W	26-60	.433	5-13	.385	18-28	.643	15	37	52	51.5	23	14	19	10	8	75	69.5
at TCU	11/20/16	67-76	L	26-57	.456	4-13	.308	11-16	.688	8	31	39	47.3	14	17	18	8	2	67	68.7
PRAIRIE VIEW A&M	11/22/16	61-54	W	22-59	.373	2-16	.125	15-24	.625	13	28	41	45.8	10	15	12	7	6	61	66.8
vs Boston College	11/25/16	72-64	W	25-51	.490	5-10	.500	17-25	.680	8	29	37	44.0	16	14	20	5	4	72	67.8
at Colorado	11/26/16	50-67	L	17-53	.321	2-11	.182	14-26	.538	20	29	49	44.8	15	8	31	6	7	50	64.8
SMU		389		135-345	.391	23-84	.274	96-149	.644	83	186	269	44.8	91	81	120	40	39	389	64.8
Opponents		380		143-389	.368	48-122	.393	46-74	.622	71	154	225	37.5	137	90	97	21	60	380	63.3

Games played: 6  
Points/game: 64.8  
FG Pct: 39.1  
3FG Pct: 27.4  
FT Pct: 64.4

Rebounds/game: 44.8  
Assists/game: 13.5  
Turnovers/game: 20.0  
Assist/turnover ratio: 0.7  
Steals/game: 6.5  
Blocks/game: 6.7

THE STAT CREW SYSTEM  
SMU Opponent Game-by-Game (as of Nov 29, 2016)  
All games

OPPONENT STATISTICS

Opponent	Date	Score		Total		3-Pointers		Free throws		Rebounds				pf	a	t/o	blk	stl	pts	avg
				fg-fga	pct	3fg-fga	pct	ft-fta	pct	off	def	tot	avg							
TEXAS STATE	11/11/16	64-56	W	22-58	.379	7-24	.292	5-6	.833	3	31	34	34.0	24	15	20	1	8	56	56.0
at Kansas	11/16/16	75-63	W	20-68	.294	9-24	.375	14-26	.538	17	25	42	38.0	24	9	16	4	7	63	59.5
at TCU	11/20/16	67-76	L	29-71	.408	15-25	.600	3-5	.600	11	25	36	37.3	20	22	11	4	7	76	65.0
PRAIRIE VIEW A&M	11/22/16	61-54	W	22-55	.400	4-9	.444	6-9	.667	7	31	38	37.5	19	12	17	3	8	54	62.2
vs Boston College	11/25/16	72-64	W	24-66	.364	6-20	.300	10-15	.667	16	20	36	37.2	26	15	17	4	11	64	62.6
at Colorado	11/26/16	50-67	L	26-71	.366	7-20	.350	8-13	.615	17	22	39	37.5	24	17	16	5	19	67	63.3
Opponents		380		143-389	.368	48-122	.393	46-74	.622	71	154	225	37.5	137	90	97	21	60	380	63.3
SMU		389		135-345	.391	23-84	.274	96-149	.644	83	186	269	44.8	91	81	120	40	39	389	64.8

Games played: 6  
Points/game: 63.3  
FG Pct: 36.8  
3FG Pct: 39.3  
FT Pct: 62.2

Rebounds/game: 37.5  
Assists/game: 15.0  
Turnovers/game: 16.2  
Assist/turnover ratio: 0.9  
Steals/game: 10.0  
Blocks/game: 3.5

**THE STAT CREW SYSTEM**  
**SMU Points-Rebounds-Assists (as of Nov 29, 2016)**  
**All games**

Opponent	Date	Score		00	03	04	05	10	12	13
				PERRY,KIAR	ADAMS,MCKE	REESE,MIKA	DEGAR,AURM	FROLING,AL	BOLTON,MOR	BRADSHAW,K
TEXAS STATE	11/11/16	64-56	w	7-6-2	6-0-1	11-4-1	DNP	15-15-2	0-1-1	8-9-0
at Kansas	11/16/16	75-63	w	17-14-2	15-9-2	0-2-0	DNP	16-10-4	13-2-4	6-4-0
at TCU	11/20/16	67-76	L	7-7-4	21-7-2	3-2-2	DNP	20-12-2	0-3-6	2-3-1
PRAIRIE VIEW A&M	11/22/16	61-54	w	19-10-3	10-4-2	2-2-3	DNP	16-16-1	5-3-6	4-3-0
vs Boston College	11/25/16	72-64	w	7-7-4	17-4-4	3-0-1	0-0-0	24-6-2	10-3-1	6-7-1
at Colorado	11/26/16	50-67	L	4-4-2	11-10-1	5-4-1	0-0-0	11-10-4	5-1-0	2-4-0

Opponent	Date	Score		15	20	24	25
				COLLINS,ST	THOMAS,DAI	MICKENS,KA	BRANDT,AMA
TEXAS STATE	11/11/16	64-56	w	0-1-1	11-10-3	3-2-2	3-0-0
at Kansas	11/16/16	75-63	w	0-1-0	6-5-0	2-0-1	0-0-1
at TCU	11/20/16	67-76	L	DNP	8-3-0	6-1-0	DNP
PRAIRIE VIEW A&M	11/22/16	61-54	w	3-1-0	DNP	2-1-0	0-0-0
vs Boston College	11/25/16	72-64	w	2-2-0	DNP	0-1-1	3-2-0
at Colorado	11/26/16	50-67	L	DNP	10-7-0	2-1-0	DNP

**THE STAT CREW SYSTEM**  
**SMU Game-by-Game Highs (as of Nov 29, 2016)**  
**All games**

<b>Opponent</b>	<b>Date</b>	<b>Score</b>	<b>Points</b>	<b>Rebounds</b>	<b>Assists</b>	<b>Steals</b>	<b>Blocked shots</b>
TEXAS STATE	11/11/16	64-56	15-FROLING, Alicia	15-FROLING, Alicia	3-THOMAS, Dai'ja	4-MICKENS, Kamray	3-THOMAS, Dai'ja
at Kansas	11/16/16	75-63	17-PERRY, Kiara	14-PERRY, Kiara	4-FROLING, Alicia BOLTON, Morgan	2-PERRY, Kiara FROLING, Alicia	3-BRADSHAW, Klara FROLING, Alicia
at TCU	11/20/16	67-76	21-ADAMS, McKenzie	12-FROLING, Alicia	6-BOLTON, Morgan	2-MICKENS, Kamray	4-THOMAS, Dai'ja
PRAIRIE VIEW A&M	11/22/16	61-54	19-PERRY, Kiara	16-FROLING, Alicia	6-BOLTON, Morgan	3-PERRY, Kiara	3-FROLING, Alicia
vs Boston College	11/25/16	72-64	24-FROLING, Alicia	7-PERRY, Kiara BRADSHAW, Klara	4-ADAMS, McKenzie PERRY, Kiara	2-BOLTON, Morgan	4-BRADSHAW, Klara
at Colorado	11/26/16	50-67	11-ADAMS, McKenzie FROLING, Alicia	10-ADAMS, McKenzie FROLING, Alicia	4-FROLING, Alicia	3-PERRY, Kiara	3-THOMAS, Dai'ja

**THE STAT CREW SYSTEM**  
**SMU Team High/Low Analysis (as of Nov 29, 2016)**  
**All games**

**SMU - TEAM GAME HIGHS**

POINTS	75		at Kansas (11/16/16)
	72		vs Boston College (11/25/16)
	67		at TCU (11/20/16)
	64		TEXAS STATE (11/11/16)
	61		PRAIRIE VIEW A&M (11/22/16)
FIELD GOALS MADE	26		at TCU (11/20/16)
	26		at Kansas (11/16/16)
FIELD GOAL ATTEMPTS	65		TEXAS STATE (11/11/16)
	60		at Kansas (11/16/16)
FIELD GOAL PERCENTAGE	.490	(25-51)	vs Boston College (11/25/16)
	.456	(26-57)	at TCU (11/20/16)
3 PT FIELD GOALS MADE	5		vs Boston College (11/25/16)
	5		at Kansas (11/16/16)
	5		TEXAS STATE (11/11/16)
3 PT FG ATTEMPTS	21		TEXAS STATE (11/11/16)
	16		PRAIRIE VIEW A&M (11/22/16)
3 PT FG PERCENTAGE	.500	(5-10)	vs Boston College (11/25/16)
	.385	(5-13)	at Kansas (11/16/16)
FREE THROWS MADE	21		TEXAS STATE (11/11/16)
	18		at Kansas (11/16/16)
FREE THROW ATTEMPTS	30		TEXAS STATE (11/11/16)
	28		at Kansas (11/16/16)
FREE THROW PERCENTAGE	.700	(21-30)	TEXAS STATE (11/11/16)
	.688	(11-16)	at TCU (11/20/16)
REBOUNDS	52		at Kansas (11/16/16)
	51		TEXAS STATE (11/11/16)
ASSISTS	17		at TCU (11/20/16)
	15		PRAIRIE VIEW A&M (11/22/16)
STEALS	12		TEXAS STATE (11/11/16)
	8		at Kansas (11/16/16)
BLOCKED SHOTS	10		at Kansas (11/16/16)
	8		at TCU (11/20/16)
TURNOVERS	31		at Colorado (11/26/16)
	20		vs Boston College (11/25/16)
	20		TEXAS STATE (11/11/16)
FOULS	23		at Kansas (11/16/16)
	16		vs Boston College (11/25/16)

**THE STAT CREW SYSTEM**  
**SMU High/Low Analysis (as of Nov 29, 2016)**  
**All games**

**Opponent - GAME HIGHS**

POINTS	76		at TCU (11/20/16)
	67		at Colorado (11/26/16)
	64		vs Boston College (11/25/16)
	63		at Kansas (11/16/16)
FIELD GOALS MADE	56		TEXAS STATE (11/11/16)
	29		at TCU (11/20/16)
FIELD GOAL ATTEMPTS	26		at Colorado (11/26/16)
	71		at Colorado (11/26/16)
FIELD GOAL PERCENTAGE	71		at TCU (11/20/16)
	.408	(29-71)	at TCU (11/20/16)
3 PT FIELD GOALS MADE	.400	(22-55)	PRAIRIE VIEW A&M (11/22/16)
	15		at TCU (11/20/16)
3 PT FG ATTEMPTS	9		at Kansas (11/16/16)
	25		at TCU (11/20/16)
	24		at Kansas (11/16/16)
3 PT FG PERCENTAGE	24		TEXAS STATE (11/11/16)
	.600	(15-25)	at TCU (11/20/16)
FREE THROWS MADE	.444	(4-9)	PRAIRIE VIEW A&M (11/22/16)
	14		at Kansas (11/16/16)
FREE THROW ATTEMPTS	10		vs Boston College (11/25/16)
	26		at Kansas (11/16/16)
FREE THROW PERCENTAGE	15		vs Boston College (11/25/16)
	.833	(5-6)	TEXAS STATE (11/11/16)
	.667	(10-15)	vs Boston College (11/25/16)
REBOUNDS	.667	(6-9)	PRAIRIE VIEW A&M (11/22/16)
	42		at Kansas (11/16/16)
	39		at Colorado (11/26/16)
ASSISTS	22		at TCU (11/20/16)
	17		at Colorado (11/26/16)
STEALS	19		at Colorado (11/26/16)
	11		vs Boston College (11/25/16)
BLOCKED SHOTS	5		at Colorado (11/26/16)
	4		vs Boston College (11/25/16)
	4		at TCU (11/20/16)
	4		at Kansas (11/16/16)
TURNOVERS	20		TEXAS STATE (11/11/16)
	17		vs Boston College (11/25/16)
	17		PRAIRIE VIEW A&M (11/22/16)
FOULS	26		vs Boston College (11/25/16)
	24		at Colorado (11/26/16)
	24		at Kansas (11/16/16)
	24		TEXAS STATE (11/11/16)

**THE STAT CREW SYSTEM**  
**SMU High/Low Analysis (as of Nov 29, 2016)**  
**All games**

**SMU - GAME LOWS**

POINTS	50		at Colorado (11/26/16)
	61		PRAIRIE VIEW A&M (11/22/16)
	64		TEXAS STATE (11/11/16)
	67		at TCU (11/20/16)
	72		vs Boston College (11/25/16)
FIELD GOALS MADE	17		at Colorado (11/26/16)
	19		TEXAS STATE (11/11/16)
FIELD GOAL ATTEMPTS	51		vs Boston College (11/25/16)
	53		at Colorado (11/26/16)
FIELD GOAL PERCENTAGE	.292	(19-65)	TEXAS STATE (11/11/16)
	.321	(17-53)	at Colorado (11/26/16)
3 PT FIELD GOALS MADE	2		PRAIRIE VIEW A&M (11/22/16)
	2		at Colorado (11/26/16)
3 PT FG ATTEMPTS	10		vs Boston College (11/25/16)
	11		at Colorado (11/26/16)
3 PT FG PERCENTAGE	.125	(2-16)	PRAIRIE VIEW A&M (11/22/16)
	.182	(2-11)	at Colorado (11/26/16)
FREE THROWS MADE	11		at TCU (11/20/16)
	14		at Colorado (11/26/16)
FREE THROW ATTEMPTS	16		at TCU (11/20/16)
	24		PRAIRIE VIEW A&M (11/22/16)
FREE THROW PERCENTAGE	.538	(14-26)	at Colorado (11/26/16)
	.625	(15-24)	PRAIRIE VIEW A&M (11/22/16)
REBOUNDS	37		vs Boston College (11/25/16)
	39		at TCU (11/20/16)
ASSISTS	8		at Colorado (11/26/16)
	13		TEXAS STATE (11/11/16)
STEALS	2		at TCU (11/20/16)
	4		vs Boston College (11/25/16)
BLOCKED SHOTS	4		TEXAS STATE (11/11/16)
	5		vs Boston College (11/25/16)
TURNOVERS	12		PRAIRIE VIEW A&M (11/22/16)
	18		at TCU (11/20/16)
FOULS	10		PRAIRIE VIEW A&M (11/22/16)
	13		TEXAS STATE (11/11/16)

**THE STAT CREW SYSTEM**  
**SMU High/Low Analysis (as of Nov 29, 2016)**  
**All games**

**Opponent - GAME LOWS**

POINTS	54		PRAIRIE VIEW A&M (11/22/16)
	56		TEXAS STATE (11/11/16)
	63		at Kansas (11/16/16)
	64		vs Boston College (11/25/16)
	67		at Colorado (11/26/16)
	20		at Kansas (11/16/16)
FIELD GOALS MADE	22		TEXAS STATE (11/11/16)
	22		PRAIRIE VIEW A&M (11/22/16)
	55		PRAIRIE VIEW A&M (11/22/16)
FIELD GOAL ATTEMPTS	58		TEXAS STATE (11/11/16)
FIELD GOAL PERCENTAGE	.294	(20-68)	at Kansas (11/16/16)
	.364	(24-66)	vs Boston College (11/25/16)
3 PT FIELD GOALS MADE	4		PRAIRIE VIEW A&M (11/22/16)
	6		vs Boston College (11/25/16)
	9		PRAIRIE VIEW A&M (11/22/16)
3 PT FG ATTEMPTS	20		vs Boston College (11/25/16)
	20		at Colorado (11/26/16)
	.292	(7-24)	TEXAS STATE (11/11/16)
3 PT FG PERCENTAGE	.300	(6-20)	vs Boston College (11/25/16)
FREE THROWS MADE	3		at TCU (11/20/16)
	5		TEXAS STATE (11/11/16)
	5		at TCU (11/20/16)
FREE THROW ATTEMPTS	6		TEXAS STATE (11/11/16)
FREE THROW PERCENTAGE	.538	(14-26)	at Kansas (11/16/16)
	.600	(3-5)	at TCU (11/20/16)
REBOUNDS	34		TEXAS STATE (11/11/16)
	36		at TCU (11/20/16)
	36		vs Boston College (11/25/16)
ASSISTS	9		at Kansas (11/16/16)
	12		PRAIRIE VIEW A&M (11/22/16)
	7		at Kansas (11/16/16)
STEALS	7		at TCU (11/20/16)
BLOCKED SHOTS	1		TEXAS STATE (11/11/16)
	3		PRAIRIE VIEW A&M (11/22/16)
TURNOVERS	11		at TCU (11/20/16)
	16		at Kansas (11/16/16)
	16		at Colorado (11/26/16)
FOULS	19		PRAIRIE VIEW A&M (11/22/16)
	20		at TCU (11/20/16)

**THE STAT CREW SYSTEM**  
**SMU Player High/Low Analysis (as of Nov 29, 2016)**  
**All games**

**SMU - INDIVIDUAL GAME HIGHS**

Points	24		FROLING, Alicia vs Boston College (11/25/16)
	21		ADAMS, McKenzie at TCU (11/20/16)
	20		FROLING, Alicia at TCU (11/20/16)
	19		PERRY, Kiara vs Prairie View A&M (11/22/16)
	17		ADAMS, McKenzie vs Boston College (11/25/16)
	17		PERRY, Kiara at Kansas (11/16/16)
Field Goals Made	9		FROLING, Alicia vs Boston College (11/25/16)
	8		PERRY, Kiara vs Prairie View A&M (11/22/16)
	8		FROLING, Alicia at TCU (11/20/16)
	8		ADAMS, McKenzie at TCU (11/20/16)
Field Goal Att.	15		FROLING, Alicia vs Boston College (11/25/16)
	15		FROLING, Alicia vs Prairie View A&M (11/22/16)
FG Pct (min 5 made)	.667	(8-12)	PERRY, Kiara vs Prairie View A&M (11/22/16)
	.667	(8-12)	FROLING, Alicia at TCU (11/20/16)
3-Point FG Made	3		ADAMS, McKenzie at Kansas (11/16/16)
	3		REESE, Mikayla vs Texas State (11/11/16)
3-Point FG Att.	6		ADAMS, McKenzie at Kansas (11/16/16)
	6		BOLTON, Morgan vs Texas State (11/11/16)
3-Pt FG Pct (min 2 made)	1.000	(2-2)	BOLTON, Morgan vs Boston College (11/25/16)
	1.000	(2-2)	BOLTON, Morgan at Kansas (11/16/16)
Free Throws Made	7		FROLING, Alicia at Colorado (11/26/16)
	7		FROLING, Alicia vs Texas State (11/11/16)
Free Throw Att.	12		FROLING, Alicia at Colorado (11/26/16)
	10		FROLING, Alicia vs Texas State (11/11/16)
FT Pct (min 3 made)	1.000	(4-4)	BOLTON, Morgan vs Boston College (11/25/16)
	1.000	(4-4)	MICKENS, Kamray at TCU (11/20/16)
	1.000	(4-4)	BRADSHAW, Klara vs Texas State (11/11/16)
Rebounds	16		FROLING, Alicia vs Prairie View A&M (11/22/16)
	15		FROLING, Alicia vs Texas State (11/11/16)
Assists	6		BOLTON, Morgan vs Prairie View A&M (11/22/16)
	6		BOLTON, Morgan at TCU (11/20/16)
Steals	4		MICKENS, Kamray vs Texas State (11/11/16)
	3		PERRY, Kiara at Colorado (11/26/16)
	3		PERRY, Kiara vs Prairie View A&M (11/22/16)
	3		PERRY, Kiara vs Texas State (11/11/16)
Blocked Shots	4		BRADSHAW, Klara vs Boston College (11/25/16)
	4		THOMAS, Dai'ja at TCU (11/20/16)
Turnovers	7		BOLTON, Morgan vs Boston College (11/25/16)
	6		FROLING, Alicia at Colorado (11/26/16)
Fouls	4		FROLING, Alicia at Colorado (11/26/16)
	4		PERRY, Kiara at TCU (11/20/16)
	4		FROLING, Alicia at Kansas (11/16/16)
	4		THOMAS, Dai'ja at Kansas (11/16/16)
Minutes	37		ADAMS, McKenzie at Colorado (11/26/16)
	36		FROLING, Alicia at Kansas (11/16/16)
	35		FROLING, Alicia vs Prairie View A&M (11/22/16)
	35		PERRY, Kiara at TCU (11/20/16)
	34		FROLING, Alicia vs Boston College (11/25/16)
	34		PERRY, Kiara vs Boston College (11/25/16)
	34		PERRY, Kiara vs Prairie View A&M (11/22/16)
	34		ADAMS, McKenzie at TCU (11/20/16)
	34		PERRY, Kiara at Kansas (11/16/16)

**THE STAT CREW SYSTEM**  
**SMU Opponent High/Low Analysis (as of Nov 29, 2016)**  
**All games**

**OPPONENT INDIVIDUAL GAME HIGHS**

Points	26		Smith, Haley at Colorado (11/26/16)
	21		Hughes, Kelly vs Boston College (11/25/16)
	20		Alix, AJ at TCU (11/20/16)
	17		Calvert, McKenzie at Kansas (11/16/16)
	15		Alexus Parker vs Prairie View A&M (11/22/16)
Field Goals Made	10		Smith, Haley at Colorado (11/26/16)
	7		Hughes, Kelly vs Boston College (11/25/16)
	7		Alexus Parker vs Prairie View A&M (11/22/16)
	7		Alix, AJ at TCU (11/20/16)
Field Goal Att.	22		Fasoula, Mariella vs Boston College (11/25/16)
	18		Calvert, McKenzie at Kansas (11/16/16)
FG Pct (min 5 made)	.714	(5-7)	May, Ericka vs Texas State (11/11/16)
	.667	(6-9)	Moore, Jordan at TCU (11/20/16)
3-Point FG Made	5		Smith, Haley at Colorado (11/26/16)
	5		Hughes, Kelly vs Boston College (11/25/16)
	5		Alix, AJ at TCU (11/20/16)
3-Point FG Att.	14		Hughes, Kelly vs Boston College (11/25/16)
	9		Leavitt, Toshua vs Texas State (11/11/16)
3-Pt FG Pct (min 2 made)	1.000	(2-2)	Ray, Kianna at TCU (11/20/16)
	1.000	(2-2)	Kopatich, Kylee at Kansas (11/16/16)
Free Throws Made	5		Calvert, McKenzie at Kansas (11/16/16)
	4		Tori Carter vs Prairie View A&M (11/22/16)
Free Throw Att.	8		Calvert, McKenzie at Kansas (11/16/16)
	5		Tori Carter vs Prairie View A&M (11/22/16)
	5		Washington, Jessica at Kansas (11/16/16)
FT Pct (min 3 made)	.800	(4-5)	Tori Carter vs Prairie View A&M (11/22/16)
	.625	(5-8)	Calvert, McKenzie at Kansas (11/16/16)
Rebounds	11		La'Sha Haynes vs Prairie View A&M (11/22/16)
	11		Moore, Jordan at TCU (11/20/16)
	11		May, Ericka vs Texas State (11/11/16)
Assists	7		Leonard, Kennedy at Colorado (11/26/16)
	7		Butts, Jada at TCU (11/20/16)
Steals	4		Leonard, Kennedy at Colorado (11/26/16)
	4		Jeronia Allen vs Prairie View A&M (11/22/16)
Blocked Shots	4		Smith, Haley at Colorado (11/26/16)
	2		Fasoula, Mariella vs Boston College (11/25/16)
	2		Kendra Hicks vs Prairie View A&M (11/22/16)
	2		Ray, Kianna at TCU (11/20/16)
Turnovers	6		Deer, Taeler vs Texas State (11/11/16)
	5		Washington, Jessica at Kansas (11/16/16)
Fouls	5		Correal, Zoe at Colorado (11/26/16)
	5		Burich, Monica at Colorado (11/26/16)
	5		Pineau, Georgia vs Boston College (11/25/16)
	5		Kendra Hicks vs Prairie View A&M (11/22/16)