



SAINT LOUIS UNIVERSITY

Volleyball

2023 MEDIA GUIDE





Saint Louis University qualified for the NCAA Tournament for the first time in program history in 2006 after defeating Dayton 3-1 in the Atlantic 10 Championship title match. The Billikens traveled to West Lafayette, Ind., to face host Purdue in the first round. Despite three hard-fought sets, SLU fell to the No. 23 Boilermakers 3-0.

The Bills, who again defeated Dayton to earn the A-10's automatic bid, fared much better the second time around in 2008. SLU rode the nation's second-longest winning streak, 21 matches, into its first-round tilt against Alabama A&M in Lexington, Ky. The Billikens, seeded 13th overall in the tournament, easily defeated the Bulldogs 3-0 for their first NCAA Tournament victory. The win set up a bout with No. 19 Michigan. SLU led two sets to one before the Wolverines rallied to capture the final two sets to advance to the Seattle Regional.

In 2009, for the first time in program history, SLU earned an at-large bid to the NCAA Tournament. The Billikens may have secured their invitation with a win over NCAA Tournament-bound Middle Tennessee State just one day prior to the announcement of the tournament field. The Bills were sent to Ames, Iowa, to take on Wichita State in the first round. Saint Louis dropped a pair of tight sets before winning set three. However, the Shockers rallied to win the fourth set, ending SLU's season and the illustrious careers of its five seniors.



NCAA TOURNAMENT HISTORY

Year/Round	Date	Location	Result
2006 / First Round	Nov. 29	West Lafayette, Ind.	Saint Louis falls to #23 Purdue 21-30, 20-30, 30-32
2008 / First Round	Dec. 4	Lexington, Ky.	#21 Saint Louis def. Alabama A&M 25-10, 25-15, 25-11
2008 / Second Round	Dec. 5	Lexington, Ky.	#21 Saint Louis falls to #19 Michigan 25-22, 19-25, 25-23, 20-25, 12-15
2009 / First Round	Dec. 4	Ames, Iowa	#22 Saint Louis falls to Wichita State 20-25, 21-25, 25-18, 16-25



INDIVIDUAL RECORDS

Hitting pct.

(min. 15 attempts)

1.	.577	Bridget Fonke vs. Alabama A&M	12/4/08
2.	.500	Sutton Lasater at Purdue	11/29/06
3.	.350	Sammi McCloud at Purdue	11/29/06
4.	.346	Alyssa Deno vs. Wichita State	12/4/09
5.	.280	Megan Boken vs. Alabama A&M	12/4/08

Kills

1.	26	Bridget Fonke vs. Michigan	12/5/08
2.	18	Sammi McCloud vs. Michigan	12/5/08
3.	16	Bridget Fonke vs. Alabama A&M	12/4/08
4.	15	Bridget Fonke vs. Wichita State	12/4/09
5.	12	Megan Boken vs. Michigan	12/5/08
	12	Alyssa Deno vs. Wichita State	12/4/09
	12	Casey Chernin vs. Wichita State	12/4/09

Attempts

1.	71	Bridget Fonke vs. Michigan	12/5/08
2.	61	Sammi McCloud vs. Michigan	12/5/08
3.	45	Bridget Fonke vs. Wichita State	12/4/09
4.	41	Megan Boken vs. Michigan	12/5/08
5.	37	Casey Chernin vs. Wichita State	12/4/09
	37	Tatyana Menshikova at Purdue	11/29/06

Assists

1.	53	Whitney Roth vs. Michigan	12/5/08
2.	45	Whitney Roth vs. Wichita State	12/4/09
3.	34	Whitney Roth at Purdue	11/29/06
4.	29	Whitney Roth vs. Alabama A&M	12/4/08
5.	8	Sammi McCloud vs. Alabama A&M	12/4/08

Service Aces

1.	5	Sammi McCloud vs. Michigan	12/5/08
2.	3	Megan Boken vs. Alabama A&M	12/4/08
	3	Whitney Roth vs. Michigan	12/5/08
4.	2	Sammi McCloud at Purdue	11/29/06
	2	Sammi McCloud vs. Alabama A&M	12/4/08
	2	Whitney Behrens vs. Alabama A&M	12/4/08

Digs

1.	25	Bridget Fonke vs. Michigan	12/5/08
2.	18	Whitney Behrens vs. Wichita State	12/4/09
	18	Megan Boken vs. Michigan	12/5/08
4.	17	Whitney Behrens vs. Michigan	12/5/08
5.	16	Sammi McCloud vs. Michigan	12/5/08

Block Solos

1.	2	Bridget Fonke vs. Wichita State	12/4/09
	2	Sutton Lasater at Purdue	11/29/06
2.	1	Megan Boken vs. Wichita State	12/4/09

Block Assists

1.	4	Sammi McCloud vs. Michigan	12/5/08
	4	Lauren Christman vs. Michigan	12/5/08
3.	3	Sally Warning vs. Michigan	12/5/08
	3	Sutton Lasater at Purdue	11/29/06
	3	Sammi McCloud at Purdue	11/29/06
	3	Lauren Christman at Purdue	11/29/06

Total Blocks

1.	5	Sutton Lasater at Purdue	11/29/06
2.	4	Sammi McCloud vs. Michigan	12/5/08
	4	Lauren Christman vs. Michigan	12/5/08
4.	3	Bridget Fonke vs. Wichita State	12/4/09
	3	Sally Warning vs. Michigan	12/5/08
	3	Sammi McCloud at Purdue	11/29/06
	3	Lauren Christman at Purdue	11/29/06

TEAM RECORDS

Hitting pct.

1.	.347	vs. Alabama A&M	12/4/08
2.	.180	vs. Wichita State	12/4/09
3.	.179	vs. Michigan	12/5/08
4.	.154	at Purdue	11/29/06

Kills

1.	63	vs. Michigan	12/5/08
2.	56	vs. Wichita State	12/4/09
3.	46	vs. Alabama A&M	12/4/08
4.	41	at Purdue	11/29/06

Attempts

1.	201	vs. Michigan	12/5/08
2.	172	vs. Wichita State	12/4/09
3.	130	at Purdue	11/29/06
4.	95	vs. Alabama A&M	12/4/08

Assists

1.	59	vs. Michigan	12/5/08
2.	50	vs. Wichita State	12/4/09
3.	43	vs. Alabama A&M	12/4/08
4.	40	at Purdue	11/29/06

Service Aces

1.	12	vs. Michigan	12/5/08
2.	9	vs. Alabama A&M	12/4/08
3.	4	at Purdue	11/29/06
4.	3	vs. Wichita State	12/4/09

Digs

1.	89	vs. Michigan	12/5/08
2.	72	vs. Wichita State	12/4/09
3.	45	vs. Alabama A&M	12/4/08
4.	42	at Purdue	11/29/06

Block Solos

1.	3	vs. Wichita State	12/4/09
2.	2	at Purdue	11/29/06

Block Assists

1.	15	vs. Michigan	12/5/08
2.	12	at Purdue	11/29/06
3.	6	vs. Wichita State	12/4/09
	6	vs. Alabama A&M	12/4/08

Total Blocks

1.	8.0	at Purdue	11/29/06
2.	7.5	vs. Michigan	12/5/08
3.	6.0	vs. Wichita State	12/4/09
4.	3.0	vs. Alabama A&M	12/4/08



NCAA TOURNAMENT OPPONENT HIGHS

Category

Hitting Percentage*	.280 by Purdue, 11/29/06
Kills	69 by Michigan, 12/5/08
Attempts	192 by Michigan, 12/5/08
Assists	61 by Michigan, 12/5/08
Service Aces	5 by Michigan, 12/5/08
Digs	100 by Michigan, 12/5/08
Block Solos	3 by Michigan, 12/5/08
Block Assists	24 by Wichita State, 12/4/09
Total Blocks	13.0 by Wichita State, 12/4/09
12/4/09	

* Min. 15 attempts for Individual High

Individual

.606, Beth Karpiak (Michigan), 12/5/08
20, Beth Karpiak (Michigan), 12/5/08
42, Juliana Paz (Michigan), 12/5/08
54, Lexi Zimmerman (Michigan), 12/5/08
2, Kerry Hance (Michigan), 12/5/08
24, Kerry Hance (Michigan), 12/5/08
2, Karlee Bruck (Michigan), 12/5/08
9, Sarah McGee (Wichita State), 12/4/09
10, Sarah McGee (Wichita State),





WHITNEY BEHRENS (2006-09)

Libero • St. Louis, Mo.

2008 American Volleyball Coaches Association AllAmerica honorable mention selection ... program's career digs leader ... received 2008 National Strength & Conditioning (NSCA) All-American Athlete of the Year honors ... three-time ESPN The Magazine Academic All-District designee ... two-time A-10 All-Championship squad and Academic All-Conference honoree ... 2009 A-10 honorable mention pick ... 2006 A-10 All-Rookie pick ... three-year team captain ... four-year starting libero.



CAREER STATS

YEAR	SP-MP	K	K/S	E	TA	PCT	A	SA	DIG	D/S	BS	BA	TB	B/S
2006	117-31	3	0.03	4	9	-.111	39	10	535	4.57	0	0	0	0.00
2007	109-30	3	0.03	2	14	.071	45	22	425	3.90	0	0	0	0.00
2008	115-33	3	0.03	1	10	.200	51	24	384	3.34	0	0	0	0.00
2009	104-31	1	0.01	1	9	.000	29	28	341	3.28	0	0	0	0.00
Totals	445-125	10	0.02	8	42	.048	164	84	1685	3.79	0	0	0	0.00

SAMMI McCLOUD (2006-09)

Right-Side Hitter • Columbia, Ill.

First player in program history to earn a spot on one of the American Volleyball Coaches Association All-America teams when she was named to the third team in 2008 ... also received Volleyball Magazine All-America honorable mention plaudits in 2008 ... captured AVCA All-America honorable mention laurels in 2009 ... AVCA National Player of the Week Sept. 8, 2008 ... two-time Atlantic 10 Conference Player of the Year (2008 and 2009) ... Most Outstanding Player of the 2006 A-10 Championship ... two-time CVU.com Stellar Spiker and AVCA All-Region first-team selection ... 2006 AVCA Northeast Region Freshman of the Year and A-10 Rookie of the Year ... three-time first-team All-Conference pick ... four-time A-10 All-Championship selection ... seven-time A-10 Player of the Week and three-time A-10 Rookie of the Week.



CAREER STATS

YEAR	SP-MP	K	K/S	E	TA	PCT	A	SA	DIG	D/S	BS	BA	TB	B/S
2006	117-31	342	2.92	147	911	.214	93	36	331	2.83	4	87	91	0.78
2007	91-25	337	3.70	115	940	.236	26	16	227	2.49	4	42	46	0.51
2008	119-34	421	3.54	106	1014	.311	61	37	336	2.82	5	71	76	0.64
2009	99-30	318	3.21	109	792	.264	47	30	249	2.52	9	46	55	0.56
Totals	426-120	1418	3.33	477	3657	.257	227	119	1143	2.68	22	246	268	0.63



BRIDGET FONKE (2006-09)

Outside Hitter • St. Louis, Mo.

Two-time American Volleyball Coaches Association All-America honorable mention pick ... received 2009 National Strength & Conditioning (NSCA) All-American Athlete of the Year honors ... Most Outstanding Player of the 2008 A-10 Championship ... two-time AVCA All-Region first team pick, A-10 first-team selection and A-10 AllChampionship honoree ... 2009 CVU.com (Collegiate Volleyball Update) Stellar Spiker honorable mention ... named to the A-10 second team in 2007 ... five-time A-10 Player of the Week ... missed most of her freshman season due to injury.



CAREER STATS

YEAR	SP-MP	K	K/S	E	TA	PCT	A	SA	DIG	D/S	BS	BA	TB	B/S
2006	17-10	24	1.41	15	71	.127	0	1	6	0.35	1	5	6	0.35
2007	109-30	459	4.21	152	1072	.286	10	62	141	1.29	9	43	52	0.48
2008	119-34	424	3.56	156	1106	.242	16	47	319	2.68	19	34	53	0.45
2009	107-32	367	3.43	103	957	.276	8	45	262	2.45	20	18	38	0.36
Totals	352-106	1274	3.62	426	3206	.265	34	155	728	2.07	49	100	149	0.42

WHITNEY ROTH (2006-09)

Setter • Louisville, Ky.

Earned American Volleyball Coaches Association All-America honorable mention nods in 2008 and 2009 ... Atlantic 10 Conference Setter of the Year an unprecedented three times ... co-recipient of 2009-10 SLU Outstanding Senior Female Student-Athlete of the Year award ... 2008 CVU.com Stellar Spiker honorable mention ... three-time AVCA All-Region selection, A-10 first-team pick and A-10 AllChampionship squad honoree ... two-time Academic All-Conference honoree ... 2006 All-Rookie team and A-10 honorable mention pick ... three-time A-10 Rookie of the Week and two-time Player of the Week program's career assists leader ... started 114 straight matches before missing the only contest of her career in 2009 due to illness.



CAREER STATS

YEAR	SP-MP	K	K/S	E	TA	PCT	A	SA	DIG	D/S	BS	BA	TB	B/S
2006	117-31	87	0.74	27	192	.312	1528	24	221	1.89	2	39	41	0.35
2007	109-30	72	0.66	20	171	.304	1444	27	245	2.25	3	53	56	0.51
2008	119-34	81	0.68	25	214	.262	1322	19	250	2.10	1	42	43	0.36
2009	104-31	82	0.79	20	185	.335	1169	17	284	2.73	0	27	27	0.26
Totals	449-126	322	0.72	92	762	.302	5463	87	1000	2.23	6	161	167	0.37

AIDA ANTANAVICIUTE



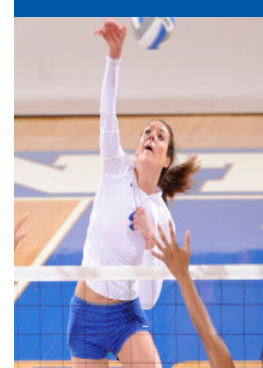
2004 AVCA HONRABLE MENTION

WHITNEY BEHRENS



2008 AVCA HONRABLE MENTION

BRIDGET FONKE



2008 & 2009 AVCA HONRABLE MENTION

SAMMI McCLOUD



2008 AVCA THIRD TEAM, 2008 VOLLEYBALL MAGAZINE HONRABLE MENTION, 2009 AVCA HONRABLE MENTION

TATYANA MENSHIKOVA



2006 AVCA HONRABLE MENTION

WHITNEY ROTH



2008 AVCA HONRABLE MENTION 2009 AVCA HONRABLE MENTION



AIDA ANTANAVICIUTE (2004-05)

Middle Blocker • Siauliai, Lithuania

First player in program history to achieve All-America status ... garnered American Volleyball Coaches Association honorable mention plaudits in 2004 ... named to the 2004 AVCA All-Region first team ... captured CVU.com (Collegiate Volleyball Update) National Player of the Week accolades Oct. 11, 2004, after posting a school-record 45 kills at Tulane ... her 45 kills, which were also a C-USA record, tied the record for the most kills in NCAA history since the start of rally-scoring format ... ranked second nationally with 6.24 kills per game ... 2004 Conference USA first-team pick ... program's all-time leader with five 20-20 matches ... led 2004 club in kills, attempts and hitting percentage ... set SLU's single-match standards for attempts (112) at Tulane Oct. 8, 2004 ... holds the junior-class records for kills and attempts ... first person in any sport to be named C-USA Player of the Week four times in a season ... paced 2005 squad with .244 hitting percentage despite being plagued by injuries during her senior season.



CAREER STATS

YEAR	SP-MP	K	K/S	E	TA	PCT	A	SA	DIG	D/S	BS	BA	TB	B/S
2004	109-29	680	6.24	238	1529	.289	26	20	305	2.80	9	68	77	0.71
2005	61-17	187	3.07	81	434	.244	29	15	163	2.67	2	27	29	0.48
Totals	170-46	867	5.10	319	1963	.279	55	35	468	2.75	11	95	106	0.62

TATYANA MENSHIKOVA (2005-06)

Outside Hitter • Ivanovo, Russia

Led the Atlantic 10 Conference in kills per game each season ... awarded American Volleyball Coaches Association honorable mention accolades in 2006 ... as a senior, led SLU to its first NCAA Tournament appearance, A-10 Championship crown and A-10 regular-season title ... two-time AVCA All-Region selection and A-10 first-team pick ... named A-10 Player of the Week Nov. 13, 2006 ... led the 2005 club with 575 kills and 1,440 attempts ... finished 14th nationally in kills per game in 2005.



CAREER STATS

YEAR	SP-MP	K	K/S	E	TA	PCT	A	SA	DIG	D/S	BS	BA	TB	B/S
2005	114-30	575	5.04	239	1440	.233	12	22	164	1.44	14	66	80	0.70
2006	79-22	358	4.53	131	876	.259	5	0	45	0.57	4	42	46	0.58
Totals	193-52	933	4.83	370	2316	.243	17	22	209	1.08	18	108	126	0.65

ARLENE LAMPE (1982-85)

Middle Blocker • Germantown, Ill. • Inducted 1994

Two-sport star Arlene Lampe was one of the volleyball program's first players to surpass 1,000 kills in her career.

With the 6-foot-4 middle blocker's help, the Bills posted consecutive 20-win seasons in 1982 and 1983 for just the second time in program history. After recording a school record 636 kills and 250 blocks in 1983, she was named to the North Star Conference first team.

In basketball, Lampe holds the Billikens' career records for rebounds, rebounding average, field-goal percentage and blocked shots. She is also the only player in SLU women's basketball history to tally at least 1,000 points and 1,000 rebounds in her career. As a senior, Lampe picked up CoSIDA Academic All-America second-team plaudits.



CAREER STATS

YEAR	SP-MP	K	K/S	E	TA	PCT	A	SA	DIG	D/S	BS	BA	TB	B/S
1982		Statistics Unavailable												
1983	167-0	636	3.81	133	1301	.387	0	69	328	1.96	173	77	250	1.50
1984		Statistics Unavailable												
1985		Statistics Unavailable												
Total	Complete Career Statistics Unavailable													

STEPHANIE FEULNER (1994-95)

Middle Blocker • Orlando, Fla. • Inducted 2005

Stephanie Feulner, a North Florida transfer, was named to the 1994 All-Great Midwest first team after leading the league with a .301 hitting percentage and 1.214 blocks per game during her first season as a Billiken. In 1995, the left-handed 6-foot-2 middle blocker led SLU to the postseason for the first time in school history with a 23-7 overall record, and she was selected first-team All-Conference USA and was on the C-USA All-Tournament team. She was also named American Volleyball Coaches Association Division I National Player of the Week for the period ending Oct. 9, 1995. During that week, her hitting percentage was .500, with 69 kills, 20 blocks and 13 digs in three wins. She was chosen as Saint Louis University's Female Student-Athlete of the Year in 1995. During her two-year Billiken career, Feulner accumulated 1,130 kills and 229 digs in 77 matches.



CAREER STATS

YEAR	SP-MP	K	K/S	E	TA	PCT	A	SA	DIG	D/S	BS	BA	TB	B/S
1994	148-38	491	3.32	127	1221	.298	18	6	124	0.84	41	135	176	1.19
1995	142-39	639	4.50	199	1447	.304	16	25	105	0.74	49	142	191	1.35
Totals	290-77	1130	3.90	326	2668	.301	34	31	229	0.79	90	277	367	1.27





COLLEEN HUNTER (1999-2002)

Middle Blocker • St. Louis, Mo. • Inducted 2009

Hunter is one of the top players in SLU volleyball history. A four-year starter for Marilyn Nolen, Hunter is SLU's alltime leader in kills (2,230) and ranks second all time in Conference USA history. The only player in C-USA history with at least 2,000 kills, 1,000 digs and 500 blocks, Hunter also ranks second in the Billiken program in total blocks (530). She earned four straight All-Conference USA honors, including three first-team plaudits, and was a three-time All-District pick. In her final three seasons, she led the Billikens in kills, hitting percentage, service aces and blocks. In addition, the C-USA All-Decade Team member was the first player in Conference USA to have 500 kills in two different seasons. Hunter earned a share of SLU's Senior Female Student-Athlete of the Year award in 2003.



CAREER STATS

YEAR	SP-MP	K	K/S	E	TA	PCT	A	SA	DIG	D/S	BS	BA	TB	B/S
1999	128-33	396	3.09	147	908	.274	47	5	133	1.04	7	100	107	0.84
2000	124-31	654	5.27	225	1436	.299	26	41	318	2.56	36	108	144	1.16
2001	107-27	547	5.11	190	1266	.282	34	29	310	2.90	25	91	116	1.08
2002	119-31	633	5.32	209	1336	.317	42	42	318	2.67	30	133	163	1.37
Totals	478-122	2230	4.67	771	4946	.295	149	117	1079	2.26	98	432	530	1.11

LAURA RISLEY (1996-99)

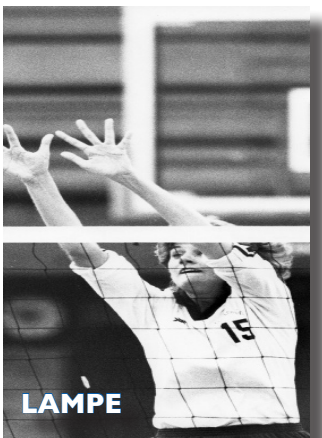
Middle Blocker • Marissa, Ill. • Inducted 2009

A member of SLU's 1,000-kills club, Risley ranks among the volleyball program's all-time statistical leaders. Her kill total of 1,636 ranks third all time, and she is fourth in school history with 503 total blocks. She enjoyed perhaps her best season her senior year, when she recorded 632 kills en route to being tabbed Conference USA's co-Player of the Year. In 1998, she was a first-team All-Conference selection and earned three conference Player of the Week awards, the first SLU female athlete to do so.



CAREER STATS

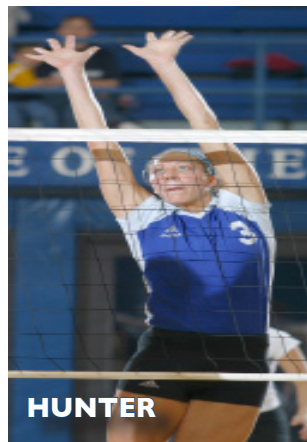
YEAR	SP-MP	K	K/S	E	TA	PCT	A	SA	DIG	D/S	BS	BA	TB	B/S
1996	117-35	233	1.99	92	686	.206	7	16	125	1.07	12	116	128	1.09
1997	109-29	372	3.41	98	908	.302	17	32	202	1.85	25	78	103	0.94
1998	91-25	399	4.38	102	927	.320	11	37	251	2.76	13	76	89	0.98
1999	128-33	632	4.94	157	1508	.315	20	28	334	2.61	29	154	183	1.43
Totals	445-122	1636	3.68	449	4029	.295	55	113	912	2.05	79	424	503	1.13



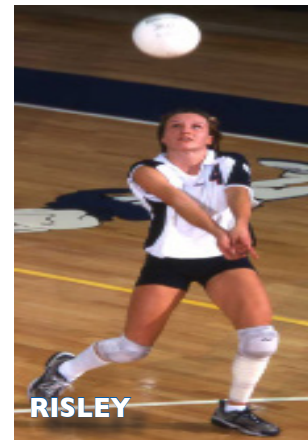
LAMPE



FEULNER



HUNTER



RISLEY





CVU.COM NATIONAL COACH OF THE YEAR

2008 Anne Kordes

AVCA ALL-AMERICA

2016 Danielle Rygelski (HM)
2009 Bridget Fonke (HM), Sammi McCloud (HM), Whitney Roth (HM)
2008 Whitney Behrens (HM), Bridget Fonke (HM), Sammi McCloud (3rd) Whitney Roth (HM)
2006 Tatyana Menshikova (HM)
2004 Aida Antanaviciute (HM)

UNDER ARMOUR VOLLEYBALL MAGAZINE ALL-AMERICA

2016 Danielle Rygelski (3rd)
2008 Sammi McCloud (HM)

CVU.COM STELLAR SPIKER

2009 Bridget Fonke (HM), Sammi McCloud (HM)
2008 Sammi McCloud (2nd), Whitney Roth (HM)

AVCA NATIONAL PLAYER OF THE WEEK

2015	Danielle Rygelski	Sept. 29
2008	Sammi McCloud	Sept. 8
2000	Colleen Hunter	Oct. 16
1995	Stephanie Feulner	Oct. 9

CVU.COM NATIONAL PLAYER OF THE WEEK

2004 Aida Antanaviciute Oct. 11

AVCA NORTHEAST REGION COACH OF THE YEAR

2008 Anne Kordes



AVCA NORTHEAST REGION FRESHMAN OF THE YEAR

2006 Sammi McCloud

AVCA ALL-REGION

2021 Jillian Mattingly
2016 Danielle Rygelski
2015 Danielle Rygelski
2009 Bridget Fonke, Sammi McCloud, Whitney Roth
2008 Whitney Behrens, Bridget Fonke, Sammi McCloud, Whitney Roth, Sally Warning
2007 Sutton Lasater, Whitney Roth
2006 Tatyana Menshikova
2005 Tatyana Menshikova
2004 Aida Antanaviciute
2002 Colleen Hunter
2001 Colleen Hunter
2000 Colleen Hunter
1999 Laura Risley
1998 Ksenya Korshunova, Laura Risley, Lelia Roberts
1997 Julie Tretten

CONFERENCE CHAMPIONSHIP MOST OUTSTANDING PLAYER

2008 Bridget Fonke
2006 Sammi McCloud

CONFERENCE TOURNAMENT ALL-CHAMPIONSHIP TEAM

2019 Sien Gallop, Maya Taylor
2018 Maya Taylor
2016 Mackenzie Long, Taylor Paulson, Danielle Rygelski
2015 Danielle Rygelski
2014 Danielle Rygelski
2010 Andrea Beaty
2009 Megan Boken, Bridget Fonke, Sammi McCloud
2008 Whitney Behrens, Bridget Fonke, Sammi McCloud, Whitney Roth
2007 Sammi McCloud, Whitney Roth
2006 Whitney Behrens, Sammi McCloud, Whitney Roth
1997 Julie Tretten
1996 Suzanne Oren
1995 Stephanie Feulner

CONFERENCE COACH OF THE YEAR

2009 Anne Kordes
2008 Anne Kordes
2006 Anne Kordes
1998 Marilyn Nolen
1988 Janet Baier-Howes

CONFERENCE PLAYER OF THE YEAR

2016 Danielle Rygelski
2009 Sammi McCloud*
2008 Sammi McCloud
1999 Laura Risley*

CONFERENCE SETTER OF THE YEAR

2009 Whitney Roth
2008 Whitney Roth
2007 Whitney Roth
1998 Lelia Roberts

CONFERENCE ROOKIE OF THE YEAR

2021 Kate Aupperle
2017 Maya Taylor
2014 Neny Okoro
2013 Danielle Rygelski
2010 Andrea Beaty
2006 Sammi McCloud

C-USA ALL-DECADE TEAM

Colleen Hunter (1999-2002)





ALL-CONFERENCE FIRST TEAM

2021 Jillian Mattingly, Maya Taylor
 2020-21 Maya Taylor
 2019 Sien Gallop
 2018 Maya Taylor
 2017 Sien Gallop
 2016 Danielle Rygelski
 2015 Danielle Rygelski, Megan Gilbert
 2013 Danielle Rygelski, Megan Gilbert
 2011 Andrea Beaty
 2009 Bridget Fonke, Sammi McCloud, Whitney Roth
 2008 Bridget Fonke, Sammi McCloud, Whitney Roth, Sally Warning
 2007 Sutton Lasater, Sammi McCloud, Whitney Roth
 2006 Angela Powers, Tatyana Menshikova
 2005 Tatyana Menshikova
 2004 Aida Antanaviciute
 2002 Colleen Hunter
 2001 Colleen Hunter
 2000 Colleen Hunter
 1999 Laura Risley
 1998 Ksenya Korshunova, Laura Risley
 1997 Julie Tretten
 1995 Stephanie Feulner
 1994 Stephanie Feulner
 1990 Janet Darpel
 1989 Janet Darpel, Karan Rengers
 1988 Karan Rengers
 1987 Janet Darpel
 1983 Jackie Bickhaus, Arlene Lampe

ALL-CONFERENCE THIRD TEAM

1999 Colleen Hunter
 1996 Becky Oliver

ALL-CONFERENCE HONORABLE MENTION

2010 Andrea Beaty
 2009 Whitney Behrens
 2006 Sammi McCloud
 Whitney Roth
 1995 Becky Oliver

ALL-ROOKIE TEAM

2022 Irmak Gokcen
 2021 Kate Aupperle
 2020-21 Jillian Mattingly
 2018 Giovanna Charles
 2017 Kennedy Cordia, Maya Taylor
 2014 Nenye Okoro, Lauren Leverenz
 2013 Mallory Dillon, Danielle Rygelski
 2012 Megan Gilbert
 2010 Andrea Beaty
 2006 Whitney Behrens, Sammi McCloud, Whitney Roth
 2005 Lauren Christman
 2004 Sutton Lasater
 2000 Shannan Swiney
 1999 Colleen Hunter
 1996 Laura Risley
 1995 Kristin Shircliff
 1992 Lyndi Fuller, Julie VonFeldt

ALL-CONFERENCE SECOND TEAM

2022 Jillian Mattingly
 2021 Kate Aupperle, Delaney Rice
 2020-21 Kennedy Cordia, Jillian Mattingly
 2019 Kennedy Cordia, Maya Taylor
 2017 Lauren Leverenz
 2014 Danielle Rygelski, Neny Okoro
 Megan Gilbert
 2013 Meredith Boe, Mallory Dillon
 2011 Alyssa Deno
 2010 Alyssa Deno
 2009 Megan Boken
 2007 Bridget Fonke
 1998 Lelia Roberts
 1996 Julie Tretten
 1995 Julie Tretten
 1993 Kim Ouwenga
 1992 Lyndi Fuller
 1991 Jen Myers
 1990 Irene Haugh
 Sandy Kittel
 Kim Moorleghen
 1988 Janet Darpel
 1987 Kim Moorleghen
 1986 Dawn Sheperd



CONFERENCE PLAYER OF THE WEEK

2022	Emily Henken	Sept. 12
	Emily Henken	Sept. 19
	Irmak Gokcen	Oct. 31
	Jillian Mattingly	Nov. 7
	Jillian Mattingly	Nov. 14
2021	Maya Taylor	Sept. 27
	Maya Taylor	Oct. 4
	Maya Taylor	Oct. 25
2020-21	Kennedy Cordia	Feb. 22
2019	Maya Taylor	Sept. 3
	Maya Taylor	Sept. 16
	Kennedy Cordia	Oct. 14
	Kennedy Cordia	Oct. 28
2018	Maya Taylor	Oct. 1
2017	Sien Gallop	Oct. 30
	Lauren Leverenz	Oct. 2
2016	Danielle Rygelski	Nov. 14
	Danielle Rygelski	Nov. 7
	Danielle Rygelski	Oct. 24
	Danielle Rygelski	Oct. 17
	Danielle Rygelski	Oct. 9
	Danielle Rygelski	Sept. 26
	Danielle Rygelski	Sept. 19
2015	Megan Gilbert	Oct. 12
	Danielle Rygelski	Oct. 5
	Danielle Rygelski	Sept. 28
	Danielle Rygelski	Sept. 14
2014	Meredith Boe	Sept. 8
2013	Meredith Boe	Nov. 11
	Megan Gilbert	Sept. 16
2011	Grace Bonoma	Nov. 14
	Carly Marcum	Oct. 31
	Andrea Beaty	Oct. 6
	Carly Schumacher	Sept. 26
2010	Ashley Gaillot	Nov. 9
	Alyssa Deno	Oct. 17
2009	Sammi McCloud	Nov. 2
	Whitney Roth	Oct. 19
	Bridget Fonke	Oct. 12
	Sammi McCloud	Sept. 28
	Bridget Fonke	Sept. 8
2008	Sammi McCloud	Nov. 17
	Sammi McCloud	Nov. 10
	Bridget Fonke	Oct. 27
	Sammi McCloud	Oct. 13
	Sally Warning	Sept. 29
	Whitney Roth	Sept. 22
	Sammi McCloud	Sept. 8
2007	Sutton Lasater	Nov. 5
	Sammi McCloud	Oct. 29
	Sutton Lasater	Oct. 1
	Bridget Fonke	Sept. 4
	Bridget Fonke	Aug. 27
2006	Tatyana Menshikova	Nov. 13
2004	Aida Antanaviciute	Oct. 25
	Aida Antanaviciute	Oct. 11
	Aida Antanaviciute	Sept. 27
	Aida Antanaviciute	Sept. 7
2002	Colleen Hunter	Oct. 28
	Colleen Hunter	Oct. 14
2001	Colleen Hunter	Oct. 22
	Colleen Hunter	Oct. 15
2000	Colleen Hunter	Oct. 16
	Colleen Hunter	Sept. 5
1999	Laura Risley	Sept. 13
1998	Laura Risley	Oct. 19
	Laura Risley	Oct. 5
	Laura Risley	Sept. 21

1997	Julie Tretten	Sept. 29
1996	Laura Risley	Nov. 18
	Becky Oliver	Oct. 21
	Julie Tretten	Oct. 7
1995	Stephanie Feulner	Oct. 9
	Stephanie Feulner	Oct. 2

CONFERENCE ROOKIE OF THE WEEK

2022	Kayla Richardson	Sept. 19
	Irmak Gokcen	Nov. 14
2021	Kate Aupperle	Oct. 4
	Kate Aupperle	Oct. 25
2018	Giovanna Charles	Oct. 15
	Cayce Chaykowsky	Oct. 1
2017	Maya Taylor	Nov. 6
	Maya Taylor	Oct. 16
	Maya Taylor	Sept. 11
2014	Lauren Leverenz	Nov. 3
	Nenye Okoro	Oct. 20
	Nenye Okoro	Oct. 13
	Nenye Okoro	Sept. 22
	Lauren Leverenz	Sept. 8
	Nenye Okoro	Sept. 2
2013	Mallory Dillon	Nov. 18
	Mallory Dillon	Nov. 11
	Danielle Rygelski	Oct. 7
	Danielle Rygelski	Sept. 30
	Mallory Dillon	Sept. 9
2012	Megan Gilbert	Oct. 29
2010	Hannah Kvitle	Nov. 7
	Andrea Beaty	Oct. 31
	Andrea Beaty	Oct. 24
	Hannah Kvitle	Oct. 17
	Megan Boken	Aug. 31
2006	Whitney Roth	Nov. 13
	Sammi McCloud	Oct. 30
	Whitney Roth	Oct. 23
	Sammi McCloud	Oct. 2
	Sammi McCloud	Sept. 18
	Whitney Roth	Sept. 11

CONFERENCE DEFENSIVE PLAYER OF THE WEEK

2022	Jillian Mattingly	Oct. 17
2021	Carlie Rodgers	Nov. 1
2019	Cayce Chaykowsky	Nov. 11
2016	Mackenzie Long	Oct. 17
	Mackenzie Long	Sept. 26
2013	Megan Gilbert	Sept. 16
2011	Grace Bonoma	Nov. 14
	Carly Marcum	Oct. 31
	Carly Schumacher	Sept. 26
2010	Ashley Gaillot	Nov. 9
	Megan Boken	Aug. 31

* Earned Co-Player of the Year honors
Atlantic 10 Conference 2005-present
Conference USA 1995-2004
Great Midwest Conference 1991-94
Midwestern Collegiate Conference 1986-90
North Star Conference 1983-85





KILLS

(1,000-Plus)

1.	2230	Colleen Hunter	1999-02
2.	2000	Danielle Rygelski	2013-16
3.	1844	Maya Taylor	2017-21
4.	1780	Julie Tretten	1994-97
5.	1636	Laura Risley	1996-99
6.	1464	Janet Darpel	1987-90
7.	1418	Sammi McCloud	2006-09
8.	1351	Irene Haugh	1987-90
9.	1313	Kim Moorleghen	1987-90
10.	1274	Bridget Fonke	2006-09
11.	1193	Sutton Lasater	2004-07
12.	1130	Stephanie Feulner	1994-95
13.	1095	Megan Gilbert	2012-15
14.	1041	Angela Powers	2003-06
15.	1015	Alyssa Deno	2008-11

KILLS PER SET

(min. 100 sets / 3.00 kps)

1.	5.10	Aida Antanaviciute	2004-05
2.	4.83	Tatyana Menshikova	2005-06
3.	4.67	Colleen Hunter	1999-02
4.	4.45	Danielle Rygelski	2013-16
5.	3.90	Stephanie Feulner	1994-95
6.	3.88	Mallory Dillon	2013
7.	3.80	Maya Taylor	2017-21
8.	3.80	Arlene Lampe	1983
9.	3.68	Laura Risley	1996-99
10.	3.62	Bridget Fonke	2006-09
11.	3.33	Sammi McCloud	2006-09
12.	3.24	Christine Tretten	1994
13.	3.22	Ksenya Korshunova	1997-98
14.	3.20	Angela Powers	2003-06
15.	3.20	Julie Tretten	1994-97
16.	3.14	Janet Darpel	1987-90
17.	3.08	Andrea Beaty S	2010-11
18.	3.04	Nenye Okoro	2014
19.	3.00	Suzanne Oren	1995-96
	3.00	Kim Ouwenga	1991-93

ATTACK ATTEMPTS

1.	5024	Maya Taylor	2017-21
2.	4999	Danielle Rygelski	2013-16
3.	4946	Colleen Hunter	1999-02
4.	4230	Julie Tretten	1994-97
5.	4047	Kim Moorleghen	1987-90
6.	4029	Laura Risley	1996-99
7.	3885	Irene Haugh	1987-90
8.	3657	Sammi McCloud	2006-09
9.	3628	Janet Darpel	1987-90
10.	3228	Alyssa Deno	2008-11
11.	3206	Bridget Fonke	2006-09
12.	2879	Angela Powers	2003-06
13.	2855	Brooke Minniear	1999-02
	2855	Megan Boken	2007-10
15.	2712	Sutton Lasater	2004-07
16.	2711	Julie Royer	1988-91
17.	2688	Jessica Moss	1997-00
18.	2668	Stephanie Feulner	1994-95

ATTACK PCT.

(min. 1,000 attempts / .260 pct.)

1.	.387	Arlene Lampe	1983
2.	.311	Karan Rengers	1988-89
3.	.308	Ksenya Korshunova	1997-98
4.	.301	Stephanie Feulner	1994-95
5.	.296	Taylor Paulson	2013-16
	.296	Megan Gilbert	2012-15
7.	.295	Colleen Hunter	1999-02
	.295	Laura Risley	1996-99
9.	.285	Sally Warning	2006-09
10.	.279	Aida Antanaviciute	2004-05
11.	.265	Bridget Fonke	2006-09
12.	.263	Alexis Cooley	2003-04
		Lauren Mershon	2016-19
13.	.262	Janet Darpel	1987-90
14.	.260	Julie VonFeldt	1992-93
	.260	Jackie Bickhaus	1983

ASSISTS

(1,000-Plus)

1.	5463	Whitney Roth	2006-09
2.	3714	Meredith Boe	2012-15
3.	3284	Shelly Metzler	1987-89,91
4.	3281	Kennedy Cordia	2017-21
5.	2916	Sandy Kittel	1987-90
6.	2348	Lauren Boissevain	2002-05
7.	2319	Becky Oliver	1995-96
8.	2212	Erin McClanahan	2003-05
9.	2089	Peggy McCarthy	1994-96
10.	1999	Beth Middendorf	1999-02
11.	1964	Cassie Clarke	2011-12
12.	1919	Christy Czuppon	1991-93
13.	1794	Shannan Swiney	2000-01
14.	1756	Beth Martin	1997-01
15.	1696	Lelia Roberts	1997-98
16.	1557	Kate Aupperle	2021-present
17.	1351	Amy Scheller	1997-98
18.	1284	Hannah Kvitle	2010
19.	1096	Camilla Rivas	2015-17

ASSISTS PER SET

(min. 100 sets / 6.00 aps)

1.	12.17	Whitney Roth	2006-09
2.	10.52	Hannah Kvitle	2010
3.	10.18	Meredith Boe	2012-15
4.	9.92	Lelia Roberts	1997-98
5.	9.86	Shannan Swiney	2000-01
6.	9.22	Cassie Clarke	2011-12
7.	9.04	Kennedy Cordia	2017-21
8.	8.31	Becky Oliver	1995-96
9.	8.10	Christy Czuppon	1991-93
10.	7.25	Erin McClanahan	2003-05
11.	6.90	Shelly Metzler	1987-89,91
12.	6.62	Beth Middendorf	1999-02
13.	6.60	Beth Martin	1997-01
14.	6.44	Camilla Rivas	2015-18
15.	6.14	Peggy McCarthy	1994-96

SERVICE ACES

(100-Plus)

1.	216	Kim Moorleghen	1987-90
2.	190	Danielle Rygelski	2013-16
3.	155	Bridget Fonke	2006-09
4.	146	Irene Haugh	1987-90
5.	144	Julie Royer	1988-91
6.	143	Sandy Kittel	1987-90
7.	130	Mackenzie Long	2014-17
8.	128	Julie Tretten	1994-97
9.	123	Sien Gallop	2017-19
10.	122	Shelly Metzler	1987-89,91
11.	119	Sammi McCloud	2006-09
12.	117	Colleen Hunter	1999-02
13.	113	Kennedy Cordia	2017-21
	113	Laura Risley	1996-99
15.	107	Carlie Rodgers	2020-present
	107	Karen Black	1991-94
17.	106	Maya Taylor	2017-21
18.	105	Janet Darpel	1987-90
19.	104	Janice Barton	1983
20.	102	Megan Boken	2007-10

SERVICE ACES PER SET

(min. 100 sets)

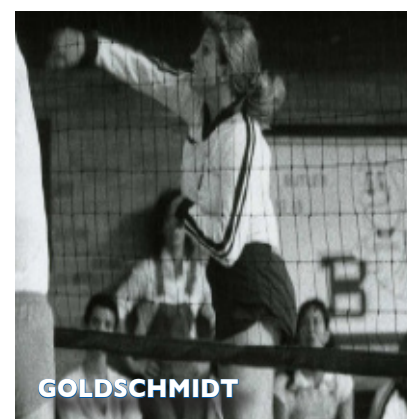
1.	0.59	Janice Barton	1983
2.	0.54	Pauline Lloyd	1983
3.	0.53	Christine Tretten	1994
4.	0.49	Kristin Shircliff	1995
5.	0.44	Bridget Fonke	2006-09
6.	0.42	Danielle Rygelski	2013-16
	0.42	Jackie Bickhaus	1983
	0.42	Kim Moorleghen	1987-89
9.	0.41	Arlene Lampe	1983
	0.41	Katherine Demmas	1983
11.	0.40	Sien Gallop	2017-19



BLACK



ROTH



GOLDSCHMIDT





DIGS

(1,000-Plus)

1. 1685	Whitney Behrens	2006-09
2. 1474	Irene Haugh	1987-90
3. 1456	Kim Moorlegghen	1987-90
4. 1441	Mackenzie Long	2014-17
5. 1324	Jessica Sippy	1995-98
6. 1263	Carlie Rodgers	2020-present
7. 1212	Megan Boken	2007-10
8. 1211	Jessica Moss	1997-00
9. 1143	Sammi McCloud	2006-09
10. 1147	Grace Bonoma	2010-12
11. 1115	Julie Tretten	1994-97
12. 1098	Sandy Kittel	1987-90
13. 1079	Colleen Hunter	1999-02
14. 1075	Julie Royer	1988-91
15. 1062	Anna Church	2012-14
16. 1053	Danielle Rygelski	2013-16
17. 1050	Jessica Kmita	2001-04
18. 1036	Brooke Minniear	1999-02
19. 1000	Whitney Roth	2006-09

DIGS PER SET

(min. 100 sets)

1. 3.79	Whitney Behrens	2006-09
2. 3.66	Grace Bonoma	2010-12
3. 3.39	Jackie Bickhaus	1983
4. 3.30	Cayce Chaykowski	2018-21
3.30	Anna Church	2012-14
6. 3.19	Sue Goldschmidt	1983
7. 3.11	Mackenzie Long	2014-16
8. 3.09	Suzanne Oren	1995-96
9. 3.03	Erin McClanahan	2003-05
10. 3.02	Lyndi Fuller	1992-93
11. 2.95	Lelia Roberts	1997-98

BLOCK SOLOS

(50-Plus)

1. 205	Janet Darpel	1987-90
2. 173	Arlene Lampe	1983
3. 126	Julie Tretten	1994-97
4. 108	Jackie Bickhaus	1983
5. 98	Colleen Hunter	1999-02
6. 90	Stephanie Feulner	1994-95
7. 80	Sutton Lasater	2004-07
8. 79	Laura Risley	1996-99
9. 72	Irene Haugh	1987-90
10. 66	Ember Knobloch	1999-02
11. 60	Jen Myers	1988-91
12. 57	Julie Royer	1988-91
13. 50	Alexis Cooley	2003-04

BLOCK ASSISTS

(200-Plus)

1. 479	Julie Tretten	1994-97
2. 447	Sutton Lasater	2004-07
3. 432	Colleen Hunter	1999-02
4. 424	Laura Risley	1996-99
5. 381	Lauren Christman	2005-08
6. 324	Megan Gilbert	2012-15
7. 302	Taylor Paulson	2013-16
8. 292	Janet Darpel	1987-90
9. 284	Ember Knobloch	1999-02
10. 279	Carly Marcum	2009-12
11. 277	Stephanie Feulner	1994-95
12. 250	Sara Daniels	2018-21
13. 246	Sammi McCloud	2006-09
14. 242	Lauren Leverenz	2014-17
15. 223	Becky Oliver	1995-96
16. 220	Jillian Mattingly	2020-present
17. 217	Sally Warning	2006-09
18. 215	Lauren Mershon	2016-19
19. 210	Cristal Leonard	1998-01



TOTAL BLOCKS

(250-Plus)

1. 605	Julie Tretten	1994-97
2. 530	Colleen Hunter	1999-02
3. 527	Sutton Lasater	2004-07
4. 503	Laura Risley	1996-99
5. 497	Janet Darpel	1987-90
6. 418	Lauren Christman	2005-08
7. 367	Stephanie Feulner	1994-95
8. 350	Ember Knobloch	1999-02
9. 338	Megan Gilbert	2012-15
10. 326	Taylor Paulson	2013-16
11. 315	Carly Marcum	2009-12
12. 291	Sara Daniels	2018-21
13. 268	Sammi McCloud	2006-09
14. 259	Lauren Leverenz	2014-17
15. 257	Jillian Mattingly	2020-present
16. 250	Arlene Lampe	1983

BLOCKS PER SET

(min. 100 sets / 1.00 bps)

1. 1.50	Arlene Lampe	1983
2. 1.27	Stephanie Feulner	1994-95
3. 1.21	Alexis Cooley	2003-04
4. 1.16	Sutton Lasater	2004-07
5. 1.13	Laura Risley	1996-99
6. 1.11	Colleen Hunter	1999-02
7. 1.09	Julie Tretten	1994-97
8. 1.07	Christine Tretten	1994
1.07	Janet Darpel	1987-90
10. 1.04	Jackie Bickhaus	1983

POINTS

(1,000.0-Plus)

1. 2661.0	Colleen Hunter	1999-02
2. 2302.0	Danielle Rygelski	2013-16
3. 2273.5	Julie Tretten	1994-97
4. 2040.0	Laura Risley	1996-99
5. 2023.0	Maya Taylor	2017-21
6. 1920.0	Janet Darpel	1987-90
7. 1682.0	Sammi McCloud	2006-09
8. 1637.5	Irene Haugh	1987-90
9. 1585.5	Kim Moorlegghen	1987-90
10. 1528.5	Sutton Lasater	2004-07
11. 1528.0	Bridget Fonke	2006-09
12. 1389.5	Stephanie Feulner	1994-95
13. 1297.0	Megan Gilbert	2012-15
14. 1265.5	Julie Royer	1988-91
15. 1187.0	Alyssa Deno	2008-11
16. 1148.0	Angela Powers	2003-06
17. 1143.5	Megan Boken	2007-10
18. 1127.5	Lauren Christman	2005-08
19. 1092.0	Cristal Leonard	1998-01
20. 1074.0	Ember Knobloch	1999-02
21. 1045.0	Lauren Leverenz	2014-17

22. 1027.0	Tatyana Menshikova	2005-06
------------	--------------------	---------

POINTS PER SET

(4.00-Plus)

1. 5.65	Aida Antanaviciute	2004-05
2. 5.57	Colleen Hunter	1999-02
3. 5.49	Arlene Lampe	1983
4. 5.32	Tatyana Menshikova	2005-06
5. 4.79	Stephanie Feulner	1994-95
6. 4.58	Laura Risley	1996-99
7. 4.42	Christine Tretten	1994
8. 4.34	Bridget Fonke	2006-09
9. 4.31	Mallory Dillon	2013
10. 4.20	Maya Taylor	2017-pres.
11. 4.18	Danielle Rygelski	2013-14
12. 4.12	Janet Darpel	1987-90
13. 4.08	Julie Tretten	1994-97

SETS PLAYED

(450-Plus)

1. 557	Julie Tretten	1994-97
2. 520	Irene Haugh	1987-90
3. 517	Kim Moorlegghen	1987-90
4. 511	Sandy Kittel	1987-90
5. 491	Julie Royer	1988-91
6. 486	Jessica Sippy	1995-98
7. 481	Maya Taylor	2017-21
8. 478	Colleen Hunter	1999-02
9. 476	Shelly Metzler	1987-89-91
10. 472	Brooke Minniear	1999-02
11. 466	Janet Darpel	1987-90
12. 463	Mackenzie Long	2014-17
13. 455	Sutton Lasater	2004-07

MATCHES PLAYED

(120-Plus)

1. 149	Julie Tretten	1994-97
2. 138	Jessica Sippy	1995-98
3. 133	Karen Black	1991-94
4. 128	Maya Taylor	2017-21
5. 127	Megan Boken	2007-10
6. 126	Whitney Roth	2006-09
7. 125	Whitney Behrens	2006-09
8. 123	Mackenzie Long	2014-17
9. 122	Brooke Minniear	1999-02
122	Colleen Hunter	1999-02
122	Jessica Moss	1997-00
122	Laura Risley	1996-99
122	Sutton Lasater	2004-07
14. 121	Danielle Rygelski	2013-16
15. 120	Sammi McCloud	2006-09





KILLS

(450-Plus)

1. 715	Danielle Rygelski	2016
2. 680	Aida Antanaviciute	2004
3. 654	Colleen Hunter	2000
4. 639	Stephanie Feulner	1995
5. 636	Arlene Lampe	1983
6. 633	Colleen Hunter	2002
7. 632	Laura Risley	1999
8. 575	Tatyana Menshikova	2005
9. 547	Colleen Hunter	2001
10. 545	Julie Tretten	1997
11. 503	Suzanne Oren	1996
12. 492	Danielle Rygelski	2015
13. 491	Stephanie Feulner	1994
14. 479	Christine Tretten	1994
15. 475	Julie Tretten	1995
16. 459	Bridget Fonke	2007
17. 455	Jackie Bickhaus	1983
18. 453	Maya Taylor	2021

KILLS PER SET

(min. 5 sets / 4.00 kps)

1. 6.24	Aida Antanaviciute	2004
2. 6.01	Danielle Rygelski	2016
3. 5.32	Colleen Hunter	2002
4. 5.27	Colleen Hunter	2000
5. 5.11	Colleen Hunter	2001
6. 5.04	Tatyana Menshikova	2005
7. 4.94	Laura Risley	1999
8. 4.53	Tatyana Menshikova	2006
9. 4.50	Stephanie Feulner	1995
10. 4.38	Laura Risley	1998
11. 4.24	Danielle Rygelski	2015
12. 4.21	Bridget Fonke	2007
13. 4.16	Julie Tretten	1997
14. 4.11	Maya Taylor	2018

ATTACK ATTEMPTS

(1200-plus)

1. 1620	Danielle Rygelski	2016
2. 1529	Aida Antanaviciute	2004
3. 1508	Laura Risley	1999
4. 1447	Stephanie Feulner	1995
5. 1440	Tatyana Menshikova	2005
6. 1436	Colleen Hunter	2000
7. 1336	Colleen Hunter	2002
8. 1322	Maya Taylor	2021
9. 1303	Alyssa Deno	2011
10. 1301	Christine Tretten	1994
1301	Arlene Lampe	1983
12. 1296	Alyssa Deno	2010
13. 1277	Julie Tretten	1997
13. 1266	Colleen Hunter	2001
15. 1237	Jackie Bickhaus	1983
16. 1226	Danielle Rygelski	2015
17. 1221	Stephanie Feulner	1994
18. 1204	Katherine Demmas	1983

ATTACK PCT.

(min. 500 attempts)

1. .389	Jillian Mattingly	2021
2. .387	Arlene Lampe	1983
3. .364	Ksenya Korshunova	1998
4. .363	Jillian Mattingly	2022
5. .354	Taylor Paulson	2015
6. .347	Sutton Lasater	2007
7. .343	Megan Gilbert	2013
8. .342	Lauren Leverenz	2017
9. .341	Irene Haugh	1988
10. .335	Sally Warning	2008
11. .320	Laura Risley	1998
12. .317	Colleen Hunter	2002
13. .315	Laura Risley	1999
14. .312	Karan Rengers	1988
15. .311	Sammie McCloud	2008

ASSISTS

(1,000-Plus)

1. 1528	Whitney Roth	2006
2. 1444	Whitney Roth	2007
3. 1423	Lelia Roberts	1998
4. 1368	Peggy McCarthy	1994
5. 1340	Lauren Boissevain	2005
6. 1322	Whitney Roth	2008
7. 1308	Meredith Boe	2014
8. 1291	Amy Scheller	1997
9. 1290	Becky Oliver	1995
10. 1284	Sandy Kittel	1990
1284	Hannah Kvitile	2010
12. 1234	Meredith Boe	2015
13. 1226	Beth Martin	1999
14. 1169	Whitney Roth	2009
15. 1152	Erin McClanahan	2003
16. 1116	Meredith Boe	2013
17. 1098	Beth Middendorf	2002
18. 1089	Shannan Swiney	2001
19. 1081	Kennedy Cordia	2019
20. 1029	Becky Oliver	1996
21. 1005	Shelly Metzler	1991

ASSISTS PER SET

(min. 50 sets / 10.00 aps)

1. 14.23	Lelia Roberts	1998
2. 13.25	Whitney Roth	2007
3. 13.06	Whitney Roth	2006
4. 11.77	Erin McClanahan	2004
5. 11.75	Lauren Boissevain	2005
6. 11.24	Whitney Roth	2009
7. 11.11	Whitney Roth	2008
8. 10.99	Meredith Boe	2014
9. 10.97	Sandy Kittel	1990
10. 10.95	Beth Marti	1999
11. 10.78	Shannan Swiney	2001
12. 10.52	Hannah Kvitile	2010
13. 10.50	Amy Scheller	1997
14. 10.29	Erin McClanahan	2003
15. 10.28	Meredith Boe	2015
16. 10.05	Meredith Boe	2013

SERVICE ACES

(50-Plus)

1. 104	Janice Barton	1983
2. 78	Christine Tretten	1994
3. 74	Jackie Bickhaus	1983
4. 73	Sandy Kittel	1987
73	Pauline Lloyd	1983
6. 72	Kim Moorleghen	1988
7. 70	Katherine Demmas	1983
8. 69	Kristin Shircliff	1995
69	Arlene Lampe	1983
10. 67	Sien Gallop	2017
11. 65	Danielle Rygelski	2016
12. 63	Carlie Rodgers	2022
13. 62	Bridget Fonke	2007
14. 59	Danielle Rygelski	2015
15. 53	Kennedy Cordia	2019
53	Irene Haugh	1990
17. 52	Becky Oliver	1996
18. 50	Kim Moorleghen	1990

SERVICE ACES PER SET

(min. 50 sets)

1. 0.67	Sien Gallop	2017
2. 0.62	Sandy Kittel	1987
3. 0.59	Janice Barton	1983
4. 0.57	Bridget Fonke	2007
5. 0.55	Danielle Rygelski	2016
6. 0.54	Pauline Lloyd	1983
7. 0.53	Christine Tretten	1994
8. 0.52	Carlie Rodgers	2022
9. 0.51	Danielle Rygelski	2015
10. 0.47	Kennedy Cordia	2019
11. 0.49	Kim Moorleghen	1988
0.49	Kristin Shircliff	1995
13. 0.46	Irmak Gokcen	2022
14. 0.45	Irene Haugh	1990
15. 0.43	Kim Moorleghen	1990

DIGS

(400-Plus)

1. 597	Carlie Rodgers	2022
2. 596	Jackie Bickhaus	1983
3. 548	Sue Goldschmidt	1983
4. 535	Whitney Behrens	2006
5. 520	Carlie Rodgers	2021
6. 501	Grace Bonoma	2012
7. 493	Katherine Demmas	1983
8. 490	Janice Barton	1983
9. 483	Suzanne Oren	1996
10. 481	Jessica Sippy	1997
11. 475	Irene Haugh	1989
12. 465	Anna Church	2014
13. 457	Kim Moorleghen	1988
14. 456	Jessica Sippy	1998
15. 449	Irene Haugh	1988
16. 442	Erin McClanahan	2005
17. 438	Jessica Moss	1999
18. 431	Cayce Chaykowsky	2018
19. 425	Whitney Behrens	2007
20. 423	Mackenzie Long	2016
21. 419	Cayce Chaykowsky	2019
22. 411	Megan Boken	2010

DIGS PER SET

(min. 50 sets / 3.00 dps)

1. 4.93	Carlie Rodgers	2022
2. 4.60	Grace Bonoma	2012
3. 4.57	Whitney Behrens	2006
4. 4.54	Cayce Chaykowsky	2018
5. 4.52	Carlie Rodgers	2021
6. 4.43	Jessica Sippy	1998
7. 4.04	Anna Church	2014
8. 3.90	Whitney Behrens	2007
9. 3.88	Erin McClanahan	2005
10. 3.81	Cayce Chaykowsky	2019
11. 3.68	Mackenzie Long	2017
12. 3.67	Jessica Sippy	1997
13. 3.61	Grace Bonoma	2010
14. 3.55	Mackenzie Long	2016
15. 3.52	Lelia Roberts	1998
16. 3.45	Suzanne Oren	1996
3.45	Jessica Moss	1999
18. 3.39	Jackie Bickhaus	1983
19. 3.37	Megan Boken	2010
20. 3.35	Irene Haugh	1989
21. 3.34	Whitney Behrens	2008
22. 3.28	Mackenzie Long	2015
3.28	Whitney Behrens	2009





HAUGH



JESSICA KMITA

BLOCK SOLOS

(30-Plus)

1. 173	Arlene Lampe	1983
2. 109	Janet Darpel	1987
3. 108	Jackie Bickhaus	1983
4. 56	Irene Haugh	1987
5. 55	Janet Darpel	1989
6. 49	Stephanie Feulner	1995
7. 47	Julie Tretten	1996
8. 41	Janet Darpel	1990
41	Stephanie Feulner	1994
10. 39	Sue Goldschmidt	1983
11. 36	Colleen Hunter	2000
12. 35	Alexis Cooley	2003
13. 34	Christine Tretten	1994
14. 33	Julie Tretten	1997
15. 30	Colleen Hunter	2002

BLOCK ASSISTS

(100-Plus)

1. 163	Julie Tretten	1996
2. 154	Laura Risley	1999
3. 143	Janet Darpel	1989
4. 142	Stephanie Feulner	1995
5. 135	Stephanie Feulner	1994
6. 133	Becky Oliver	1996
133	Colleen Hunter	2002
8. 125	Christine Tretten	1994
125	Lauren Christman	2007
10. 123	Sutton Lasater	2006
11. 122	Julie Tretten	1997
12. 121	Lauren Christman	2006
13. 116	Laura Risley	1996
14. 113	Sutton Lasater	2005
15. 108	Carly Marcum	2011
108	Colleen Hunter	2000
108	Sutton Lasater	2007
18. 105	Carly Marcum	2012
19. 103	Sutton Lasater	2004
103	Alexis Cooley	2004
103	Julie Tretten	1995
22. 102	Karan Rengers	1989
23. 101	Taylor Paulson	2014
101	Ksenya Korshunova	1997
25. 100	Colleen Hunter	1999
100	Andrea Beaty	2010

TOTAL BLOCKS

(150-Plus)

1. 250	Arlene Lampe	1983
2. 210	Julie Tretten	1996
3. 198	Janet Darpel	1989
4. 191	Stephanie Feulner	1995
5. 187	Janet Darpel	1987
6. 183	Jackie Bickhaus	1983
183	Laura Risley	1999
8. 176	Stephanie Feulner	1994
9. 163	Colleen Hunter	2002
10. 159	Christine Tretten	1994
11. 155	Julie Tretten	1997
12. 150	Becky Oliver	1996

BLOCKS PER SET

(min. 5 sets / 1.10 bps)

1. 1.60	Janet Darpel	1987
2. 1.53	Julie Tretten	1996
3. 1.52	Janet Darpel	1989
4. 1.50	Arlene Lampe	1983
5. 1.43	Laura Risley	1999
6. 1.39	Alexis Cooley	2004
7. 1.37	Colleen Hunter	2002
8. 1.35	Stephanie Feulner	1995
9. 1.26	Janet Darpel	1990
10. 1.24	Lauren Christman	2007
11. 1.22	Sutton Lasater	2006
12. 1.21	Sutton Lasater	2005
13. 1.19	Sutton Lasater	2007
14. 1.19	Stephanie Feulner	1994
15. 1.18	Julie Tretten	1997
16. 1.16	Colleen Hunter	2000
17. 1.12	Lauren Christman	2006
18. 1.10	Carly Marcum	2011

POINTS

(500.0-Plus)

1. 916.5	Arlene Lampe	1983
2. 808.0	Danielle Rygelski	2016
3. 785.0	Colleen Hunter	2000
4. 784.0	Stephanie Feulner	1995
5. 771.5	Colleen Hunter	2002
6. 766.0	Laura Risley	1999
7. 743.0	Aida Antanaviciute	2004
8. 679.0	Julie Tretten	1997
9. 674.5	Jackie Bickhaus	1983
10. 653.5	Christine Tretten	1994
11. 646.5	Colleen Hunter	2001
12. 644.0	Tatyana Menshikova	2005
13. 605.5	Stephanie Feulner	1994
14. 590.0	Danielle Rygelski	2015
15. 586.5	Julie Tretten	1995
16. 575.0	Suzanne Oren	1996
17. 566.5	Janet Darpel	1989
18. 555.5	Julie Tretten	1996
19. 551.5	Bridget Fonke	2007
20. 550.0	Janet Darpel	1987
21. 507.0	Bridget Fonke	2008
22. 504.0	Maya Taylor	2021

POINTS PER SET

(5.00-Plus)

1. 6.82	Aida Antanaviciute	2004
2. 6.79	Danielle Rygelski	2016
3. 6.48	Colleen Hunter	2002
4. 6.33	Colleen Hunter	2000
5. 6.04	Colleen Hunter	2001
6. 5.98	Laura Risley	1999
7. 5.65	Tatyana Menshikova	2005
8. 5.52	Stephanie Feulner	1995
9. 5.49	Arlene Lampe	1983
10. 5.35	Laura Risley	1998
11. 5.18	Julie Tretten	1997
12. 5.09	Danielle Rygelski	2015
13. 5.06	Bridget Fonke	2007

SETS PLAYED

1. 176	Jackie Bickhaus	1983
2. 175	Janice Barton	1983
3. 172	Sue Goldschmidt	1983
172	Katherine Demmas	1983
5. 167	Arlene Lampe	1983
6. 148	Peggy McCarthy	1994
148	Christine Tretten	1994
148	Stephanie Feulner	1994
9. 147	Julie Tretten	1994
147	Tracey Johnson	1994

MATCHES PLAYED

1. 42	Karan Rengers	1989
42	Angie Ernst	1989
42	Irene Haugh	1989
42	Kim Moorleghen	1989
42	Julie Royer	1989
42	Sandy Kittel	1989
7. 41	Shelly Metzler	1989
41	Janet Darpel	1989
9. 39	Kristin Shircliff	1995
39	Jessica Sippy	1995
39	Laurie Jansen	1995
39	Peggy McCarthy	1995
39	Becky Oliver	1995
39	Stephanie Feulner	1995
39	Suzanne Oren	1995
39	Tracey Johnson	1995
39	Julie Tretten	1995





KILLS

1. 2204	(.233)	1989
2. 2088	(.223)	1995
3. 2066	(.225)	1999
4. 1995	(.254)	1983
5. 1993	(.205)	1997

KILLS PER SET

1. 16.83	(104 sets)	1998
2. 16.46	(117 sets)	2006
3. 16.29	(109 sets)	2007
4. 16.14	(128 sets)	1999
5. 15.61	(114 sets)	2005

ATTACK ATTEMPTS

1. 5736	1989
2. 5552	1987
3. 5480	1999
4. 5380	1997
5. 5369	1983

ATTACK PCT.

1. .263	2008
2. .261	2009
3. .255	2007
4. .254	1983
5. .251	2015

ASSISTS

1. 1890	(128 sets)	1999
2. 1833	(142 sets)	1995
3. 1787	(131 sets)	1997
4. 1784	(117 sets)	2006
5. 1752	(143 sets)	1989

ASSISTS PER SET

1. 15.25	(117 sets)	2006
2. 15.03	(109 sets)	2007
3. 14.85	(104 sets)	1998
4. 14.77	(128 sets)	1999
5. 14.40	(114 sets)	2005

SERVICE ACES

1. 456	(176 sets)	1983
2. 305	(142 sets)	1995
3. 273	(143 sets)	1989
4. 250	(123 sets)	2022
5. 246	(148 sets)	1994

SERVICE ACES PER SET

1. 2.59	(176 sets)	1983
2. 2.15	(142 sets)	1995

3. 2.03	(123 sets)	2022
4. 2.02	(112 sets)	1991
5. 1.94	(117 sets)	1987

DIGS

1. 2405	(143 sets)	1989
2. 2319	(148 sets)	1994
3. 2238	(128 sets)	1999
4. 2188	(146 sets)	1988
5. 2064	(122 sets)	2010

DIGS PER SET

1. 18.85	(104 sets)	1998
2. 17.48	(128 sets)	1999
3. 17.08	(109 sets)	2012
4. 16.92	(122 sets)	2010
3. 16.84	(112 sets)	2003

BLOCK SOLOS

1. 392	(176 sets)	1983
2. 230	(117 sets)	1987
3. 150	(143 sets)	1989
4. 123	(148 sets)	1994
5. 116	(117 sets)	1990

BLOCK ASSISTS

1. 646	(141 sets)	1996
2. 561	(143 sets)	1989
3. 530	(128 sets)	1999
4. 525	(148 sets)	1994
5. 503	(117 sets)	2006

TOTAL BLOCKS

1. 537.5	(176 sets)	1983
2. 430.5	(143 sets)	1989
3. 427.0	(141 sets)	1996

4. 385.5	(148 sets)	1994
5. 366.5	(117 sets)	1987

BLOCKS PER SET

1. 3.13	(117 sets)	1987
2. 3.05	(176 sets)	1983
3. 3.03	(141 sets)	1996
4. 3.01	(143 sets)	1989
5. 2.72	(128 sets)	1999

SETS PLAYED

1. 176	1983
2. 148	1994
3. 146	1988
4. 143	1989
5. 142	1995

MATCHES PLAYED

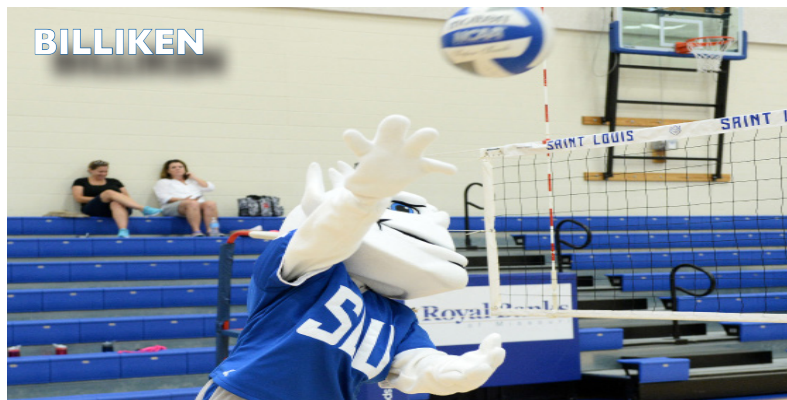
1. 42	1989
2. 39	1995
3. 38	1994
4. 37	1996
5. 35	1997



RYGELSKI



TAYLOR



BILLIKEN



LEVERENZ





TEAM SEASON STATS

Season	SP-MP	K	K/S	E	TA	Pct	A	A/S	SA	SA/S	DIG	D/S	BS	BA	TB	B/S	Points	Pts/S
1983	176-48	1995	11.34	630	5369	.254	0	0.00	456	2.59	292	1.66	392	291	683	3.88	2988.5	16.98
1984 Complete Stats Unavailable																		
1985 Complete Stats Unavailable																		
1986 Complete Stats Unavailable																		
1987	117-32	1537	13.14	684	5552	.154	1335	11.41	227	1.94	1268	10.84	230	273	503	4.30	2130.5	18.21
1988	146-41	1875	12.84	716	4733	.245	1318	9.03	230	1.58	2188	14.99	0	0	0	0.00	2105.0	14.42
1989	143-42	2204	15.41	866	5736	.233	1752	12.25	273	1.91	2405	16.82	150	561	711	4.97	2907.5	20.33
1990	117-32	1684	14.39	771	4713	.194	1444	12.34	217	1.85	1760	15.04	116	242	358	3.06	2138.0	18.27
1991	112-31	1395	12.46	717	3867	.175	1115	9.96	226	2.02	1185	10.58	78	168	246	2.20	1783.0	15.92
1992	108-32	1305	12.08	700	3670	.165	1039	9.62	170	1.57	1692	15.67	56	218	274	2.54	1640.0	15.19
1993	114-32	1418	12.44	603	4086	.199	1176	10.32	161	1.41	1866	16.37	63	215	278	2.44	1749.5	15.34
1994	148-38	1884	12.73	773	5274	.211	1595	10.78	246	1.66	2319	15.67	123	525	648	4.38	2515.5	16.99
1995	142-39	2088	14.70	915	5271	.223	1833	12.91	305	2.15	1991	14.02	106	487	593	4.18	2742.5	19.31
1996	141-37	1983	14.06	906	5229	.206	1700	12.06	228	1.62	2004	14.21	104	646	750	5.32	2638.0	18.71
1997	131-35	1993	15.21	892	5380	.205	1787	13.64	210	1.60	2036	15.54	94	459	553	4.22	2526.5	19.28
1998	104-28	1750	16.83	645	4604	.240	1544	14.85	148	1.42	1960	18.85	69	329	398	3.83	2131.5	20.49
1999	128-33	2066	16.14	831	5480	.225	1890	14.77	176	1.38	2238	17.48	83	530	613	4.79	2590.0	20.23
2000	124-31	1794	14.47	861	5126	.182	1573	12.69	176	1.42	1993	16.07	92	395	487	3.93	2259.5	18.22
2001	107-27	1505	14.07	655	4205	.202	1375	12.85	159	1.49	1624	15.18	68	380	448	4.19	1922.0	17.96
2002	119-31	1677	14.09	731	4577	.207	1519	12.76	179	1.50	1799	15.12	77	456	533	4.48	2161.0	18.16
2003	112-31	1577	14.08	761	4696	.174	1409	12.58	146	1.30	1886	16.84	80	358	438	3.91	1982.0	17.70
2004	123-32	1909	15.52	811	4852	.226	1738	14.13	166	1.35	1780	14.47	63	488	551	4.48	2382.0	19.37
2005	114-30	1779	15.61	748	4514	.228	1642	14.40	197	1.73	1646	14.44	56	424	480	4.21	2244.0	19.68
2006	117-31	1926	16.46	776	4815	.239	1784	15.25	144	1.23	1787	15.27	45	503	548	4.68	2366.5	20.22
2007	109-30	1776	16.29	662	4364	.255	1638	15.03	204	1.87	1648	15.12	51	475	526	4.83	2268.5	20.81
2008	119-34	1665	13.99	560	4207	.263	1526	12.82	183	1.54	1739	14.61	65	332	397	3.34	2079.0	17.47
2009	107-32	1502	14.04	499	3842	.261	1362	12.73	162	1.51	1627	15.21	57	239	296	2.77	1840.5	17.20
2010	122-32	1625	13.32	679	4720	.200	1535	12.58	158	1.30	2064	16.92	60	355	415	1.95	2020.5	16.56
2011	105-28	1283	12.20	640	3817	.168	1185	11.20	153	1.46	1551	14.77	33	430	248	2.36	1684.0	16.04
2012	109-30	1344	12.30	689	4200	.156	1254	11.50	116	1.06	1862	17.08	22	343	193.5	1.78	1653.5	15.17
2013	111-30	1483	13.36	642	3752	.224	1385	12.48	152	1.37	1497	13.49	15	366	198.0	1.78	1833.0	16.51
2014	119-31	1627	13.7	638	4130	.239	1509	12.70	194	1.60	1759	14.8	24	410	229.0	1.90	2050.0	17.22
2015	120-32	1563	13.02	596	3856	.251	1445	12.04	185	1.54	1589	13.24	34	461	264.5	2.20	2012.5	16.77
2016	119-32	1534	12.89	680	3891	.219	1431	12.03	183	1.54	1431	12.03	23	368	207.0	1.74	1924.0	16.17
2017	105-28	1377	13.11	643	3534	.208	1289	12.28	170	1.62	1358	12.93	20	284	162.0	1.54	1709.0	16.28
2018	98-28	1187	12.11	555	3364	.188	1108	11.31	131	1.34	1462	14.92	29	250	154.0	1.57	1472.0	15.02
2019	112-29	1435	12.81	592	3897	.216	1347	12.03	184	1.64	1760	15.71	51	315	208.5	1.86	1827.5	16.31
2020-21	66-18	800	12.12	385	2238	.185	748	11.33	125	1.89	960	14.55	32	142	103.0	1.56	1028.0	15.58
2021	115-30	1533	13.33	636	4097	.219	1427	12.41	201	1.75	1816	15.79	49	395	246.5	2.14	1980.5	17.22
2022	123-31	1525	12.40	682	4194	.201	1428	11.61	250	2.03	1755	14.27	37	375	224.5	1.83	1999.5	16.26





INDIVIDUAL MATCH RECORDS

Hitting pct.

1. .800	Erin McClanahan vs. UT Martin	9/3/03
2. .786	Julie Tretten vs. Creighton	10/18/95
	.786 Lauren Leverenz at Davidson	10/31/14
4. .778	Megan Gilbert at George Mason	10/4/13
5. .750	Cassie Clarke vs. Delaware	9/15/12

Kills

1. 45	Aida Antanaviciute at Tulane	10/08/04
2. 39	Aida Antanaviciute at Indiana State	9/1/04
3. 38	Colleen Hunter vs. Eastern Illinois	10/10/00
4. 37	Julie Tretten vs. Louisville	11/21/97
5. 36	Aida Antanaviciute at Memphis	10/1/04

Attempts

1. 112	Aida Antanaviciute at Tulane	10/08/04
2. 85	Danielle Rygelski at Dayton	11/20/16
3. 82	Aida Antanaviciute vs. Illinois State	9/28/04
4. 81	Julie Tretten vs. Louisville	11/21/97
81	Aida Antanaviciute at Missouri State	10/18/04

Assists

1. 84	Beth Middendorf at Eastern Illinois	9/21/99
2. 77	Lelia Roberts vs. Cincinnati	10/9/98
3. 75	Beth Martin vs. South Florida	10/11/99
4. 74	Lelia Roberts vs. Clemson	9/5/98
74	Becky Oliver vs. Western Illinois	9/14/96

Digs

1. 42	Jessica Sippy at Cincinnati	10/9/98
2. 39	Jackie Bickhaus at Butler	11/11/83
3. 38	Sandy Kittel vs. DePaul	10/10/87
4. 37	Jenny Way at Cincinnati	10/9/98
5. 34	Carlie Rodgers at George Washington	10/7/22

Service aces

1. 10	Sandy Kittel vs. Illinois-Chicago	9/7/88
2. 8	Juliana Phillips at Duquesne	3/5/21
8	Arlene Lampe at Notre Dame	11/18/83
3. 7	Kim Moorleghen at UMSL	9/9/90
7	Sutton Lasater vs. DePaul	10/29/04
7	Christine Tretten vs. Jacksonville	9/17/94
7	Pauline Lloyd at DePaul	10/21/83
7	Danielle Rygelski at Duquesne	11/6/16
7	Kennedy Cordia vs. George Mason	10/25/19

Block solos

1. 12	Janet Darpel vs. Indiana State	9/15/87
2. 9	Janet Darpel vs. Xavier	10/23/87
9	Julie Tretten vs. Cincinnati	11/16/96
4. 8	Alexis Cooley at Charlotte	11/7/03
8	Karan Rengers vs. UMSL	9/3/88
8	Arlene Lampe vs. ICC	9/18/83
8	Arlene Lampe at Dayton	10/29/83

Block assists

1. 17	Christine Tretten vs. Wright State	9/9/94
2. 14	Stephanie Feulner vs. DePaul	11/10/95
3. 13	Alexis Cooley at Tulane	10/08/04
4. 12	Laura Risley vs. Cincinnati	11/16/96
5. 11	Colleen Hunter vs. Bradley	9/4/02
11	Lauren Christman vs. Mid-Tennessee	9/17/05
11	Jessica Knitta at Tulane	10/08/04

Total blocks

1. 18	Christine Tretten vs. Wright State	9/9/94
2. 16	Stephanie Feulner vs. DePaul	11/10/95
3. 15	Janet Darpel vs. Indiana State	9/15/87
4. 14	Colleen Hunter vs. Bradley	9/4/02
5. 13	Four tied, Most Recently, Sutton Lasater at Rhode Island	11/13/05

TEAM MATCH RECORDS

Hitting pct.

1. .603	vs. Southern Louisiana	10/29/89
2. .552	vs. Northeastern Illinois	10/5/90
3. .532	vs. Louisiana-Monroe	8/24/07
4. .500	vs. Davidson	2/21/21
5. .476	at Rhode Island	9/25/09

Kills

1. 104	at Eastern Illinois	9/21/99
2. 92	vs. Evansville	11/2/91
92	vs. Northern Iowa	9/25/07
4. 91	vs. Cincinnati	11/16/96
5. 89	vs. Bradley	10/10/90

Attempts

1. 309	vs. Loyola Chicago	10/17/87
2. 305	vs. Evansville	11/7/87
3. 266	at Cincinnati	10/9/98
266	at Eastern Illinois	9/21/99
5. 257	vs. Southern Miss	11/15/03

Assists

1. 95	at Eastern Illinois	9/21/99
2. 84	vs. Southern Miss	11/15/03
3. 82	vs. Cincinnati	10/9/98
4. 81	vs. Northern Iowa	9/25/07
81	vs. South Florida	10/1/99
81	vs. New Orleans	10/27/89

Digs

1. 162	at Cincinnati	10/9/98
2. 127	at Butler	11/11/83
3. 126	at Notre Dame	9/8/90
4. 125	vs. SEMO	11/5/83
5. 120	vs. Southern Miss	11/15/03

Service aces

1. 20	at Evansville	11/19/83
2. 19	vs. Illinois-Chicago	9/7/80
3. 18	vs. Evansville	11/2/91
18	at DePaul	10/21/83
5. 17	vs. Dayton	10/21/83
17	at SEMO	8/27/05

Block solos

1. 21	at UMSL	10/5/83
2. 18	vs. Indiana State	9/15/87
3. 16	vs. Xavier	10/23/87
4. 15	vs. Washington (Mo.)	9/3/88
5. 14	vs. Illinois-Chicago	9/7/88
14	vs. Dayton	10/29/83

Block assists

1. 40	vs. Cincinnati	10/19/01
2. 38	at Cincinnati	10/9/98
38	vs. Bradley	9/4/02
4. 36	vs. DePaul	11/10/95
5. 35	vs. Northern Colorado	9/17/21

Total blocks

1. 26.5	vs. Cincinnati	11/16/96
2. 26.0	vs. Bradley	9/4/02
26.0	vs. Murray State	10/8/94
26.0	at UMSL	10/5/83
5. 22.5	vs. Indiana State	9/15/87

MISCELLANEOUS RECORDS

Wins: 31, four times, 1988, 1983, 1980, 1975
 Losses: 32, 1986
 Winning pct.: .885, 1982 (23-3)
 Consecutive wins: 21, Sept. 26-Dec. 4, 2008
 Consecutive losses: 31, 1986



TRIPLE-DOUBLES

Date	Player	Opponent	Stats
10/23/12	Cassie Clarke	Eastern Illinois	11K, 43A, 14D
10/25/06	Sammi McCloud	SEMO	11K, 10A, 10D
11/20/04	Lauren Boissevain	South Florida	11K, 35A, 16D
9/30/03	Erin McClanahan	UT Martin	12K, 40A, 13D
10/12/02	Colleen Hunter	Houston	30K, 15D, 10B
9/4/02	Colleen Hunter	Bradley	19K, 24D, 14B
10/19/01	Colleen Hunter	Cincinnati	25K, 12D, 10B
10/6/00	Colleen Hunter	DePaul	16K, 12D, 10B
10/1/99	Laura Risley	South Florida	22K, 16D, 10B
9/4/99	Laura Risley	Missouri State	17K, 17D, 11B
9/4/98	Amy Scheller	Eastern Illinois	13K, 13A, 17D
11/21/96	Laura Risley	Cincinnati	13K, 12D, 12B
11/3/96	Becky Oliver	Charlotte	12K, 30A, 16D
11/1/96	Becky Oliver	Houston	10K, 20A, 12D
10/20/96	Becky Oliver	Southern Miss	14K, 28A, 10D
10/18/96	Becky Oliver	Tulane	12K, 25A, 13D
10/18/96	Laura Risley	Tulane	17K, 11D, 10B
9/13/96	Julie Tretten	Illinois-Chicago	19K, 16A, 11D
10/22/95	Becky Oliver	Tulane	13K, 55A, 10D
9/1/95	Becky Oliver	Austin Peay	12K, 35A, 11D
9/9/94	Christine Tretten	Wright State	21K, 11D, 18B
11/17/90	Janet Darpel	Notre Dame	19K, 14D, 12B





FRESHMEN KILLS

Table with 3 columns: Rank, Name, Year. Lists top 5 freshmen kills.

KILLS PER SET

Table with 3 columns: Rank, Name, Year. Lists top 5 kills per set.

TOTAL ATTEMPTS

Table with 3 columns: Rank, Name, Year. Lists top 5 total attempts.

ATTACK PCT.

Table with 3 columns: Rank, Name, Year. Lists top 5 attack percentages.

ASSISTS

Table with 3 columns: Rank, Name, Year. Lists top 5 assists.

ASSISTS PER SET

Table with 3 columns: Rank, Name, Year. Lists top 5 assists per set.

SERVICE ACES

Table with 3 columns: Rank, Name, Year. Lists top 5 service aces.

SERVICE ACES PER SET

Table with 3 columns: Rank, Name, Year. Lists top 5 service aces per set.

DIGS

Table with 3 columns: Rank, Name, Year. Lists top 5 digs.

DIGS PER SET

Table with 3 columns: Rank, Name, Year. Lists top 5 digs per set.

BLOCK SOLOS

Table with 3 columns: Rank, Name, Year. Lists top 5 block solos.

BLOCK ASSISTS

Table with 3 columns: Rank, Name, Year. Lists top 5 block assists.

TOTAL BLOCKS

Table with 3 columns: Rank, Name, Year. Lists top 5 total blocks.

BLOCKS PER SET

Table with 3 columns: Rank, Name, Year. Lists top 5 blocks per set.

POINTS

Table with 3 columns: Rank, Name, Year. Lists top 5 points.

POINTS PER SET

Table with 3 columns: Rank, Name, Year. Lists top 5 points per set.

SETS PLAYED

Table with 3 columns: Rank, Name, Year. Lists top 5 sets played.

MATCHES PLAYED

Table with 3 columns: Rank, Name, Year. Lists top 5 matches played.

SOPHOMORES KILLS

Table with 3 columns: Rank, Name, Year. Lists top 5 sophomore kills.

KILLS PER SET

Table with 3 columns: Rank, Name, Year. Lists top 5 kills per set.

ATTEMPTS

Table with 3 columns: Rank, Name, Year. Lists top 5 attempts.

ATTACK PCT.

Table with 3 columns: Rank, Name, Year. Lists top 5 attack percentages.

ASSISTS

Table with 3 columns: Rank, Name, Year. Lists top 5 assists.

ASSISTS PER SET

Table with 3 columns: Rank, Name, Year. Lists top 5 assists per set.

SERVICE ACES

Table with 3 columns: Rank, Name, Year. Lists top 5 service aces.

SERVICE ACES PER SET

Table with 3 columns: Rank, Name, Year. Lists top 5 service aces per set.

DIGS

Table with 3 columns: Rank, Name, Year. Lists top 5 digs.

DIGS PER SET

Table with 3 columns: Rank, Name, Year. Lists top 5 digs per set.

BLOCK SOLOS

Table with 3 columns: Rank, Name, Year. Lists top 5 block solos.

BLOCK ASSISTS

Table with 3 columns: Rank, Name, Year. Lists top 5 block assists.

TOTAL BLOCKS

Table with 3 columns: Rank, Name, Year. Lists top 5 total blocks.

BLOCKS PER SET

Table with 3 columns: Rank, Name, Year. Lists top 5 blocks per set.

POINTS

Table with 3 columns: Rank, Name, Year. Lists top 5 points.

POINTS PER SET

Table with 3 columns: Rank, Name, Year. Lists top 5 points per set.

SETS PLAYED

Table with 3 columns: Rank, Name, Year. Lists top 5 sets played.

MATCHES PLAYED

Table with 3 columns: Rank, Name, Year. Lists top 5 matches played.





JUNIORS

KILLS

1. 680	Aida Antanaviciute	2004
2. 575	Tatyana Menshikova	2005
3. 547	Colleen Hunter	2001
4. 492	Danielle Rygelski	2015
5. 491	Stephanie Feulner	1994

DIGS PER SET

1. 4.93	Carlie Rodgers	2022
2. 4.04	Anna Church	2005
3. 3.67	Jessica Sippy	2001
4. 3.55	Mackenzie Long	2015
5. 3.45	Jessica Moss	1994

KILLS PER SET

1. 6.24	Aida Antanaviciute	2004
2. 5.11	Colleen Hunter	2001
3. 5.04	Tatyana Menshikova	2005
4. 4.38	Laura Risley	1998
5. 4.24	Danielle Rygelski	2015

BLOCK SOLOS

1. 55	Janet Darpel	1989
2. 47	Julie Tretten	1996
3. 41	Stephanie Feulner	1994
4. 39	Sue Goldschmidt	1983
5. 35	Alexis Cooley	2003

TOTAL ATTEMPTS

1. 1529	Aida Antanaviciute	2004
2. 1440	Tatyana Menshikova	2005
3. 1296	Alyssa Deno	2010
4. 1266	Colleen Hunter	2001
5. 1226	Danielle Rygelski	2015

BLOCK ASSISTS

1. 163	Julie Tretten	1996
2. 143	Janet Darpel	1989
3. 135	Stephanie Feulner	1994
4. 125	Lauren Christman	2007
5. 123	Sutton Lasater	2006

ATTACK PCT.

(min. 200 attempts)

1. .363	Jillian Mattingly	2022
2. .354	Taylor Paulson	2015
3. .335	Sally WWarning	2008
4. .320	Laura Risley	1998
5. .312	Karan Rengers	1988

TOTAL BLOCKS

1. 210	Julie Tretten	1996
2. 198	Janet Darpel	1989
3. 176	Stephanie Feulner	1994
4. 142	Sutton Lasater	2006
5. 135	Lauren Christman	2007

ASSISTS

1. 1322	Whitney Roth	2008
2. 1308	Meredith Boe	2014
3. 1291	Amy Scheller	1997
4. 1290	Becky Oliver	1995
5. 1081	Kennedy Cordia	2019

BLOCKS PER SET

1. 1.53	Julie Tretten	1996
2. 1.52	Janet Darpel	1989
3. 1.24	Lauren Christman	2007
4. 1.22	Sutton Lasater	2006
5. 1.19	Stephanie Feulner	1994

ASSISTS PER SET

1. 11.77	Erin McClanahan	2004
2. 11.11	Whitney Roth	2008
3. 10.99	Meredith Boe	2014
4. 10.50	Amy Scheller	1997
5. 9.65	Kennedy Cordia	2019

POINTS

1. 743.0	Aida Antanaviciute	2004
2. 646.5	Colleen Hunter	2001
3. 644.0	Tatyana Menshikova	2005
4. 605.5	Stephanie Feulner	1994
5. 590.0	Danielle Rygelski	2015

SERVICE ACES

1. 70	Katherine Demmas	1983
2. 63	Carlie Rodgers	2022
3. 59	Danielle Rygelski	2015
4. 53	Kennedy Cordia	2019
5. 47	Bridget Fonke	2008
47	Kim Moorleghen	1989

POINTS PER SET

1. 6.82	Aida Antanaviciute	2004
2. 6.04	Colleen Hunter	2001
3. 5.65	Tatyana Menshikova	2005
4. 5.35	Laura Risley	1998
5. 5.09	Danielle Rygelski	2015

SERVICE ACES PER SET

1. 0.52	Carlie Rodgers	2022
2. 0.51	Danielle Rygelski	2015
3. 0.47	Kennedy Cordia	2019
4. 0.41	Katherine Demmas	1983
0.41	Laura Risley	1998

SETS PLAYED

1. 172	Katherine Demmas	1983
172	Sue Goldschmidt	1983
3. 148	Stephanie Feulner	1994
4. 146	Karan Rengers	1988
5. 142	Irene Haugh	1989
142	Suzanne Oren	1995

DIGS

1. 597	Carlie Rodgers	2022
2. 548	Sue Goldschmidt	1983
3. 501	Grace Bonoma	2012
4. 493	Katherine Demmas	1983
5. 481	Jessica Sippy	1997

MATCHES PLAYED

1. 42	Irene Haugh	1989
42	Kim Moorleghen	1989
42	Sandy Kittel	1989
41	Shelly Metzler	1989
41	Janet Darpel	1989

SENIORS

KILLS

1. 715	Danielle Rygelski	2016
2. 639	Stephanie Feulner	1995
3. 633	Colleen Hunter	2002
4. 632	Laura Risley	1999
5. 545	Julie Tretten	1997

DIGS PER SET

1. 4.43	Jessica Sippy	1998
2. 3.88	Erin McClanahan	2005
3. 3.68	Mackenzie Long	2017
3. 3.52	Lelia Roberts	1998
4. 3.45	Suzanne Oren	1996

KILLS PER SET

1. 6.01	Danielle Rygelski	2016
2. 5.32	Colleen Hunter	2002
3. 4.94	Laura Risley	1999
4. 4.53	Tatyana Menshikova	2006
5. 4.50	Stephanie Feulner	1995

BLOCK SOLOS

1. 108	Jackie Bickhaus	1983
2. 49	Stephanie Feulner	1995
3. 41	Janet Darpel	1990
4. 34	Christine Tretten	1994
5. 33	Julie Tretten	1997

TOTAL ATTEMPTS

1. 1620	Danielle Rygelski	2016
2. 1508	Laura Risley	1999
3. 1447	Stephanie Feulner	1995
4. 1336	Colleen Hunter	2002
5. 1322	Maya Taylor	2021

BLOCK ASSISTS

1. 154	Laura Risley	1999
2. 142	Stephanie feulner	1995
3. 133	Colleen Hunter	2002
133	Becky Oliver	1996
5. 125	Christine Tretten	1994

ATTACK PCT.

(min. 200 attempts)

1. .364	Ksenya Korshunova	1998
2. .348	Megan Gilbert	2015
3. .347	Sutton Lasater	2007
4. .342	Lauren Leverenz	2017
5. .335	Laruen Mershon	2019

TOTAL BLOCKS

1. 191	Stephanie Feulner	1995
2. 183	Jackie Bickhaus	1983
183	Laura Risley	1999
4. 163	Colleen Hunter	2002
5. 159	Christine Tretten	1994

ASSISTS

1. 1423	Lelia Roberts	1998
2. 1340	Lauren Boissevain	2005
3. 1284	Sandy Kittel	1990
4. 1234	Meredith Boe	2015
5. 1169	Whitney Roth	2009

BLOCKS PER SET

1. 1.43	Laura Risley	1999
2. 1.39	Alexis Cooley	2004
3. 1.37	Colleen Hunter	2002
4. 1.35	Stephanie Feulner	1995
5. 1.26	Janet Darpel	1990

ASSISTS PER SET

1. 14.23	Lelia Roberts	1998
2. 11.75	Lauren Boissevain	2005
3. 11.24	Whitney Roth	2009
4. 10.97	Sandy Kittel	1990
5. 10.28	Meredith Boe	2015

POINTS

1. 808.0	Danielle Rygelski	2016
2. 784.0	Stephanie Feulner	1995
3. 771.5	Colleen Hunter	2002
4. 766.0	Laura Risley	1999
5. 679.0	Julie Tretten	1997

SERVICE ACES

1. 78	Christine Tretten	1994
2. 74	Jackie Bickhaus	1983
3. 65	Danielle Rygelski	2016
4. 53	Irene Haugh	1990
5. 52	Becky Oliver	1996

POINTS PER SET

1. 6.79	Danielle Rygelski	2016
2. 6.48	Colleen Hunter	2002
3. 5.98	Laura Risley	1999
4. 5.52	Stephanie Feulner	1995
5. 5.18	Julie Tretten	1997

SERVICE ACES PER SET

1. 0.55	Danielle Rygelski	2016
2. 0.53	Christine Tretten	1994
3. 0.45	Irene Haugh	1990
4. 0.43	Kim Moorleghen	1990
5. 0.42	Bridget Fonke	2009
0.42	Jackie Bickhaus	1983

SETS PLAYED

1. 176	Jackie Bickhaus	1983
2. 148	Christine Tretten	1994
3. 142	Stephanie Feulner	1995
142	Nannette Figueroa	1994
5. 140	Suzanne Oren	1996
140	Karan Rengers	1989

DIGS

1. 596	Jackie Bickhaus	1983
2. 483	Suzanne Oren	1996
3. 456	Jessica Sippy	1998
4. 442	Erin McClanahan	2005
5. 411	Megan Boken	2010

MATCHES PLAYED

1. 42	Angie Ernst	1989
42	Karan Rengers	1989
3. 39	Stephanie Feulner	1995
4. 38	Nannette Figueroa	1994
38	Christine Tretten	1994
38	Karen Black	1994





KILLS

Table listing kills from 1990 to 2022, including names like Jillian Mattingly, Maya Taylor, and Danielle Rygelski with their respective kill counts.

Table listing kills from 1990 to 1999, including names like Kim Moorleghen, Karan Rengers, and Kim Moorleghen with their respective kill counts.

Table listing kills from 1990 to 1999, including names like Kim Moorleghen, Karan Rengers, and Kim Moorleghen with their respective kill counts.

Table listing kills from 1990 to 1999, including names like Kim Moorleghen, Karan Rengers, and Kim Moorleghen with their respective kill counts.

Table listing kills from 1990 to 1999, including names like Becky Oliver, Peggy McCarthy, and Christy Czuppon with their respective kill counts.

SERVICE ACES

Table listing service aces from 1990 to 2000, including names like Carlie Rodgers, Jillian Mattingly, and Emily Henken with their respective counts.

DIGS

Table listing digs from 2000 to 2022, including names like Carlie Rodgers, Carlie Rodgers, and Emily Imo with their respective counts.

Table listing kills from 2000 to 1987, including names like Jessica Moss, Jessica Sippy, and Sara Daniels with their respective kill counts.

TOTAL BLOCKS

Table listing total blocks from 2000 to 1987, including names like Jillian Mattingly, Sara Daniels, and Lauren Leverenz with their respective block counts.

*Complete statistics prior to 1987 unavailable





A	Antanaviciute, Aida Apted, Dani Arnold, Cathy Athanasiadou, Eva Aupperle, Kate	2004-05 1998-2001 1976 2020-21 2021-pres.	F	Fagen, Nora Fazackerly, Fiona Feulner, Stephanie Figuroa, Nannette Filippova, Ioulia Fitz, CeCe Fleming, Katie Fonke, Bridget Franklin, Teryl Fuller, Lyndi Fuller, Shea Fussner, Mary	1989-92 1994 1994-95 1994 1996-98 2020-pres. 2008 2006-09 1986 1992-93 2019-20 1985	L	Lampe, Arlene Larkin, Stacy Lasater, Sutton Lee, Suzanne Leonard, Cristal Leverenz, Lauren Liebman, Laura Lloyd, Pauline Loftus, Monica Long, Mackenzie Lotarski, Amie Lottes, Linda Louis, Jenny Lynn, Abby	1982-85 2004-05 2004-07 1978-79 1998-2001 2014-17 1976 1983 2015-18 2014-17 1993-94 1977-78 1976 2021-pres.	R	Rengers, Karan Reschak, Cheryl Rice, Delaney Rice, Misty Richardson, Kayla Risley, Laura Rivas, Camila Roberts, Lelia Rodgers, Carlie Rohr, Melanie Rosburg, Margaret Roth, Whitney Royer, Julie Rudolph, Cordi Rygelski, Danielle	1988-89 1990 2020-pres. 1996 2022-pres. 1996-99 2015-18 1997-98 2020-pres. 2003-04 2017-21 2006-09 1988-91 1984 2013-16															
B	Backus, Jenny Baker, Kathleen Barber, Linda Barton, Janice Basler, Trish Baumet, Lauren Beaty, Andrea Beaty, Julie Beck, Julie Behrens, Whitney Behrle, Glenda Bernart, Erin Betz, Betty Bickhaus, Jackie Bickhaus, Jennifer Black, Karen Blaha, Lydia Boe, Meredith Boissevain, Lauren Boken, Megan Bolt, Andrea Bonoma, Grace Brandlein, Diane Brickley, Gina Bright, Katelyn Briskey, Mary Bruner, Patti Buford, Terri	2015-18 1975 1983-86 1982-83 1985-86 2011-14 2010-11 1987 1984 2006-09 1976-77 1995-96 1975 1982-83 1982 1991-94 2009 2012-15 2002-05 2007-10 2009-12 2010-12 1976-78 1992 2016 1976-78 1987-88, 90 1975	G	Gagen, Ashley Gaillot, Ashley Galbraith, Emily Gallo, Sien Gandall, Josie Gartner, Jeannie Gauvain, Linda Gilbert, Megan Gokcen, Irmak Goodman, Morgan Goldschmidt, Emma Goldschmidt, Sue Goralski, Denise Gray, Lynne Groh, Elyse	2013-16 2008-11 2007 2017-19 2014-16 1975 1976-78 2012-15 2022-pres. 2016 2010-11 1983-84 1978-79 1984 2006-07	M	Margaret Mahlke Malm, Julie Marcum, Carly Marquart, Shannon Marquart, Sharon Martin, Beth Mateyka, Mary Jo Mattingly, Jillian McBride, Laura McCarthy, Peggy McClanahan, Erin McClarren, Cherie McCloud, Sammi McElroy, Joan Medendorp, Sara Menshikova, Tatyana Merchant, Alyson Mershon, Lauren Metzler, Shelly Middendorf, Beth Minnear, Brooke Moeder, Margaret Moorleghe, Kim Moss, Jessica Musso, Laura Myers, Jen	2019-2022 2000-02 2009-12 1991, 93 1991-93 1997, 99-01 1984-85 2020-pres. 1978-79 1994-96 2003-05 1984-85 2006-09 1976 2000-02 2005-06 2000-03 2016-19 1987-89, 91 1999-2002 1999-2002 1975-76 1987-90 1997-2000 1992-93 1988-91	S	Salsman, Debbie Sanders, Bridget Scheller, Amy Schumacher, Carly Schutte, Mary Schwab, Vicki Sheperd, Dawn Shircliff, Kristin Shortal, Maureen Sikora, Michelle Simonis, Karen Simpson, Katie Sippy, Jessica Smith, Gail Sniffen, Nicole Sonderman, Colleen Sorich, Megan Swiney, Shannan Syljebek, Sue	1976 1986-87 1997-98 2010-12 1977 1989-91 1985-86 1995 2003-06 1985 1985 1994 1995-98 1992 2012-15 1982, 84-86 2002-05 2000-01 1992															
C	Capra, Meghan Carr, Robbie Carrroll, Ann Carron, Janet Charles, Giovanna Chaykowsky, Cayce Chernin, Casey Christman, Lauren Church, Anna Clark, Marlene Clarke, Cassie Clooney, Maria Comparato, Emma Cooke, Chris Cooley, Alexis Cordia, Kennedy Czuppon, Christy	1985 1990 1983-84 1977 2018-21 2018-21 2008-09 2005-08 2012-14 1977 2011-12 1982 2020-21 1975 2003-04 2017-21 1991-93	H	Haak, Katia Hardwick, Jody Haugh, Irene Heaghtney, Joan Heitz, Valerie Henken, Emily Hill, Mak Hoerber, Ann Hoffman, Cathy Hunter, Ashley Hunter, Colleen	2015-18 2005 1987-90 1977-78 1985-86 2020-pres. 2021-pres. 1979 1976 2002-03 1999-2002	I	Imo, Carol Imo, Emily Ivanovsky, Lisa	1987 2018-21 1986	J	Jakobowski, Terri Jansen, Laurie Jendryk, Jessica Johnson, Tracey Jordan, Sara Jordan, Stephanie	1979 1995-96 2013 1994-96 1992-93 1983	K	Karges, Amelia Kieffer, Vivian King, Chrissy Kittel, Sandy Klosterman, Erin Kmita, Jessica Kmita, Kayla Knobeloch, Ember Knouse, Sarah Korshunova, Ksenya Kramp, Alison Kvitle, Hannah	2008-11 2022-pres. 2004-07 1987-90 2011-12 2001-04 2001-04 1999-02 2010 1997-98 1977-79 2010	N	Nakatsuka, Erin Nelson, Bronwen Niemiec, Aleksandra Nolan, Kathy	2012-14 2002 2011-12 1976	O	Oh, Maddie Okoro, Nenyne Oliver, Becky Oren, Suzanne Ouwenga, Kim	2014-17 2014-17 1995-96 1995-96 1991-93	P	Pacheco, Patti Paulson, Taylor Phillips, Juliana Polk, Addy Poorbaugh, Jessica Power, Megan Powers, Angela Propps, Melissa	1994-97 2013-16 2017-21 2022-pres. 2003-06 2007 2003-06 1998	T	Taylor, Maya Thiele, Barb Tipton, Rebecca Toebben, Kelsey Tretten, Christine Tretten, Julie Tziarli, Dimitra	2017-21 1984-85 2013-14 2010 1994 1994-97 2022-pres.
D	Dalum, Amy Daniels, Sara Darpel, Janet Day, Emily DeGreeff, Monica Demmas, Kathryn Deno, Alyssa Dinkelacker, Lindsey Dillon, Mallory Doeren, Sara	1986-87 2018-21 1987-90 2017-21 1992 1982-84 2008-11 2012 2013 1992	V	Varble, Rachelle Vernier, Nicki VonFeldt, Julie	1990 1988-90 1992-93	W	Walsh, Isabelle Warning, Sally Way, Jenny Welti, Lily Werges, Missy Whittico, Joi Whitton, Liz Winschell, Kathleen Wright, Amie Ylagan, Christina	2014-17 2014-17 1995-96 1995-96 1991-93 1994-97 2013-16 2017-21 2022-pres. 2003-06 2007 2003-06 1998	2018-2020 2006-09 1997-98 2019-2022 1999-2002 1978-79 1993 1977-79 1987 1979, 82																	
E	Ehresman, Rose Ejele, Maryann Entzeroth, Sarah Erikson, Lorel Ernst, Angie	1997 2013-16 2006-07 1979, 82 1989	Y																							

*If you have information on Saint Louis volleyball letterwinners, please contact Billiken Media Relations.



PAVILION RECORDS**CATEGORY**

Kills
 Attack Attempts
 Attack Percentage*
 Assists
 Service Aces
 9/3/21
 Digs
 Block Solos
 Block Assists
 Total Blocks
 *Min. 15 attempts

CATEGORY

Kills
 Attack Attempts
 Attack Percentage
 Assists
 Service Aces
 Digs
 Block Solos
 Block Assists
 Total Blocks

ARENA RECORDS**CATEGORY**

Kills
 Attack Attempts
 Attack Percentage*
 Assists
 Service Aces
 Digs
 Block Solos
 Block Assists
 Total Blocks
 *Min. 15 attempts

CATEGORY

Kills
 Attack Attempts
 Attack Percentage
 Assists
 Service Aces
 Digs
 Block Solos
 Block Assists
 Total Blocks

INDIVIDUAL

31, Danielle Rygelski (SLU) vs George Mason, 9/23/16
 74, Brooke Watts (Murray State) vs. Saint Louis, 9/4/21
 .706, Alyssa Deno (SLU) vs. Marshall, 9/18/10
 65, Meredith Boe (SLU) vs. UNI, 9/13/13
 6, Danielle Rygelski (SLU) vs Davidson, 11/18/16 & Carlie Rodgers vs. Arkansas State,
 32, Mackenzie Long (SLU) vs. Duquesne, 11/14/14
 3, four players
 10, Jillian Mattingly (SLU) vs. Davidson, 10/14/22
 12, Randi Ewing (Fordham) vs. Saint Louis, 10/28/11

TEAM

80 by SLU vs. UNI, 9/13/13
 199 by SLU vs. Dayton, 9/24/10
 .500 by SLU vs. Davidson, 2/21/21
 75 by SLU vs. UNI, 9/13/13
 15 by SLU vs. Dayton, 2/13/21, by SLU vs. St. Thomas, 9/3/22, by Iowa State, 9/17/22
 94 by SLU vs. Dayton, 9/24/10
 5 by Fordham vs. George Washington, 11/21/08
 20 by Middle Tennessee State vs. SLU, 11/28/09
 20 by Temple vs. Xavier, 11/21/08
 17.0 by Davidson vs. SLU, 10/5/14

INDIVIDUAL

23, Annie Drews (Purdue) vs. SLU, 9/5/15
 23, Krystal Rivers (Alabama) vs. Memphis, 8/30/14
 64, Alyssa Deno (SLU) vs. Iowa, 9/4/10
 .833, Foluke Akinradewo (Stanford) vs. William & Mary, 9/5/08
 58, Mallory Warrington (Arkansas State) vs. Cal Poly, 9/3/16
 7, Miika Dickson (Cal Poly) vs. SLU, 9/3/16
 29, Anna Church (SLU) vs. Memphis, 8/29/14
 3, Foluke Akinradewo (Stanford) vs. Illinois, 9/6/08
 8, Abby Nelson (Illinois) vs. SLU, 9/5/08
 9, Leah Lawrence (Alabama) vs. SEMO, 8/29/14

TEAM

72 by Arkansas State vs. Cal Poly, 9/3/16
 186 by Arkansas State vs. Cal Poly, 9/3/16
 .526 by WKU vs. SLU, 9/3/16
 67 by Arkansas State vs. Cal Poly, 9/3/16
 13, by SLU vs. Wake Forest, 9/4/10
 13, by Cal Poly vs. SLU, 9/3/16
 86, by Auburn vs. Nebraska, 8/31/13
 5 by SLU vs. William & Mary, 9/6/08
 5 by Stanford vs. Illinois, 9/6/08
 26 by Illinois vs. SLU, 9/5/08
 26 by Alabama vs. Miami (Ohio), 8/29/09
 15 by Alabama vs. Miami (Ohio), 8/29/09
 15 by UNI vs. SLU, 8/29/14

The Billikens have hosted several big-name programs, such as top-ranked and reigning national champion Penn State in 2009, No. 19 Illinois in 2008, No. 19 Dayton in 2010, No. 10 Nebraska in 2013, #12 BYU in 2015 and #24 Purdue in 2015.

A NIGHT TO REMEMBER

It didn't take long for the Saint Louis volleyball team to christen Chaifetz Arena as the Billikens posted the program's biggest win in their first tournament in the Arena/Pavilion complex. SLU upset No. 3 Stanford 27-25, 20-25, 25-22, 25-22 in front of a then-record crowd of 2,152 on Sept. 6, 2008. It was just the second time in program history that the Bills had defeated a ranked opponent. Sammi McCloud, who turned in a match-high 19 kills vs. the Cardinal, was named AVCA Division I National Player of the Week and Atlantic 10 Conference Player of the Week following her dominating performance.



10/15 DePaul W	9/28 vs. Texas A&M-Com. L	4-15, 4-15, 6-15	15-8
10/18 SW Illinois College W	9/28 vs. Kansas L	5-15, 15-7, 6-15, 3-15	9/29 Missouri L
10/21 at DePaul W	10/4 at Dayton W	16-14, 16-14, 6-15, 15-12	10/2 at Indiana State W
10/21 at Dayton W	10/5 at Xavier L	3-15, 15-12, 7-15, 5-15	15-9
10/22 at Lewis L	10/10 Valparaiso W	15-12, 9-15, 15-9, 15-13	10/3 vs. Valparaiso W
10/22 at Xavier L	10/11 Evansville L	17-15, 15-11, 2-15, 9-15, 6-15	10/8 at McKendree W
10/26 Notre Dame W	10-15, 15-10, 15-9, 9-15, 15-12	10/10 DePaul L	15-13, 11-15, 6-15, 2-15
10/27 Missouri State L	10-15, 6-15, 7-15	10/10 Loyola Chicago L	8-15, 3-15, 15-12, 7-15
10/29 at Evansville L	10-15, 11-15, 12-15	10/19 Notre Dame L	12-15, 10-15, 7-15
10/29 at Dayton W	10-15, 12-15, 15-4, 15-12, 15-10	10/24 at Bradley L	4-15, 15-10, 0-15, 11-15
11/4 at Jefferson College W	10/26 Truman State W	15-11, 13-15, 15-6	10/17 at Loyola Chicago L
11/5 SEMO L	10/26 Murray State W	12-15, 15-8, 15-5	15-10
11/8 at Indiana State W	15-5, 15-4	10/29 at Indiana State L	4-15, 3-15, 9-15
11/8 at Austin Peay W	9-15, 15-10, 15-7	11/1 at Butler L	6-15, 15-8, 4-15, 14-16
11/9 UMSL W	11/2 vs. Akron W	15-12, 15-10, 15-9	10/24 Evansville W
11/11 at Butler W	9-15, 15-7, 15-10, 13-15, 15-8	11/2 vs. W. Kentucky W	15-10, 15-8, 15-12
11/12 at Valparaiso W	11/6 UMSL W	12-15, 15-5, 15-10, 5-15, 16-14	11/7 Quincy W
11/12 at Xavier W	15-19, 15-11, 15-10	11/7 SEMO L	15-10, 8-15, 15-10, 5-15, 14-16

North Star Conference Tournament in St. Louis, Mo.

North Star Conference Tournament in St. Louis, Mo.

MCC Tourney in Indianapolis, Ind.

11/18 Notre Dame W	15-3, 15-5, 8-15, 10-15, 15-3	11/15 Xavier W	15-12, 15-13, 15-13	11/13 at Butler L	7-15, 12-15, 9-15
11/19 Evansville W	15-9, 15-11, 12-15, 12-15, 15-4	11/15 Butler L	9-15, 5-15, 5-15	11/14 vs. Loyola Chicago L	11-15, 15-9, 12-15, 2-15
11/19 Loyola Chicago L	10-15, 7-15, 15-9, 3-15	Results Incomplete			

1986

1988

Head Coach: Janet Baier-Howes | Record: 1-32

Head Coach: Janet Baier-Howes | Record: 31-10

1984

MIDWESTERN COLLEGIATE CONFERENCE CHAMPIONS

Head Coach: Suzanna Tillotson Record: 8-24	9/5 Missouri Baptist L	15-2, 3-15, 5-15	vs. UMSL L	12-15, 15-6, 15-10, 13-15, 13-15
Memphis State Invitational in Memphis, Tenn.	9/6 Maryville W	15-1, 15-6		
9/ Mississippi State L	9/6 Wash U. L	15-4, 6-15, 13-15	9/3 at Wash U. L	9-15, 15-10, 15-13, 9-15, 4-15
9/ Eastern Illinois L	9/10 UMSL L	7-15, 15-11, 3-15	Illinois-Chicago W	13-15, 1-15, 15-12, 17-15, 15-12
9/ Montevallo L	9/10 Southern Illinois L	9-15, 1-15, 2-15		
9/ Florida L	9/13 SEMO L	5-15, 5-15		
9/12 at Eastern Illinois L	9/13 Arkansas State L	10-15, 3-15, 15-17		
9/15 at Arkansas State W	9/14 Tulsa L	14-16, 8-15	DePaul Invitational in Chicago, Ill.	
9/20 Kansas State L	9/14 SEMO L	4-15, 8-15	vs. Rosary W	15-5, 15-7, 15-10
9/25 Missouri State L	9/14 Toledo L	7-15, 2-15, 4-15	at DePaul W	15-10, 15-13, 15-9
Bradley Invitational in Peoria, Ill.	9/19 at Bradley L	9-15, 2-15, 2-15	vs. Dayton W	5-13, 15-7, 15-10
9/ Bradley L	9/19 vs. Kansas L	4-15, 8-15, 4-15	vs. Bradley W	8-15, 15-8, 15-8, 15-12
9/ Illinois-Chicago L	9/20 vs. Butler L	4-15, 5-15, 7-15	vs. Butler L	11-15, 15-12, 7-15, 16-14, 13-15
9/ Indiana State L	9/20 vs. Notre Dame L	1-15, 2-15, 6-15	at Missouri W	14-16, 15-6, 15-13, 15-8
10/4 Central Missouri L	9/26 at Indiana L	10-15, 5-15, 7-15	Louisville Invitational in Louisville, Ky.	
10/5 at Notre Dame L	9/26 vs. Western Illinois L	7-15, 10-15, 1-15	at Louisville W	15-9, 15-11, 15-3
10/7 at Valparaiso W	9/27 vs. Northern Illinois L	4-15, 2-15, 0-15	vs. UAB W	15-0, 15-4, 14-16, 13-15, 15-9
10/10 Western Illinois L	9/27 vs. NE Illinois L	12-15, 15-11, 8-15		
10/13 at Evansville L	10/2 at Eastern Illinois L	1-15, 6-15, 5-15	Billiken Invitational in St. Louis, Mo.	
10/13 Western Kentucky W	10/7 Louisville L	7-15, 20-18, 8-15	Murray State W	15-7, 15-6, 15-6
10/16 McKendree W	10/7 at Southern Illinois L	0-15, 9-15, 2-15	9/23 Marquette W	15-4, 15-7, 13-15, 15-2
10/19 Xavier L	10/10 McKendree L	8-15, 2-15, 14-16	9/24 Arkansas State W	15-12, 15-8, 10-15, 17-15
10/20 Dayton L	10/10 Loyola Chicago L	6-15, 3-15, 4-15	9/24 Wichita State W	7-15, 15-8, 15-11, 9-15, 15-10
10/21 Kansas W	10/18 Oral Roberts L	2-15, 11-15, 0-15	at Southern Illinois L	5-15, 7-15, 7-15
10/23 at Southern Illinois L	10/25 vs. Evansville L	4-15, 15-3, 15-11, 5-15, 6-15	Indiana State Invitational in Terre Haute, Ind.	
10/25 Wichita State L	11/5 at SEMO L	1-15, 5-15, 9-15	vs. DePaul L	11-15, 10-15, 15-4, 7-15
10/27 Butler L	11/6 at SIU Edwardsville L	0-15, 9-15, 2-15	9/30 vs. Franklin W	15-11, 15-9, 15-6
10/27 Iowa State L	11/7 Missouri L	6-15, 4-15, 0-15	9/30 at Indiana State W	15-12, 15-11, 15-8
11/2 at Loyola Chicago L	11/7 Jefferson L	7-15, 4-15, 10-15	10/4 at Eastern Illinois L	15-13, 12-15, 9-15, 16-14, 15-12
11/3 at DePaul L	11/14 vs. Loyola Chicago L	1-15, 3-15		
11/6 at UMSL L	11/14 vs. Xavier L	9-15, 6-15	10/6 Miami (Ohio) W	15-13, 15-13, 15-13
11/7 at SEMO W	11/15 Head Coach: Janet Baier-Howes Record: 20-12		10/11 at SEMO L	15-11, 7-15, 9-15, 5-15
11/7 Murray State W	9/4 vs. Maryville W	15-2, 15-2	10/11 vs. Arkansas State L	12-15, 10-15, 15-7, 12-15
11/12 Bradley W	9/4 at UMSL L	15-3, 9-15, 11-15	10/14 vs. Xavier W	15-11, 13-15, 15-10, 15-6
11/ Notre Dame L	9/4 vs. Harris-Stowe St. W	15-6, 15-6	10/15 at Dayton W	15-4, 15-9, 15-11
	9/4 vs. Maryville W	15-6, 15-6	10/19 Evansville W	15-8, 16-14, 15-17, 17-15
	9/5 at UMSL L	13-15, 13-15	10/21 vs. Loyola Chicago W	15-7, 15-12, 18-16
	9/5 vs. Wash U. W	15-10, 13-15, 15-13	vs. Butler L	14-16, 9-15, 17-15, 11-15
Head Coach: Suzanna Tillotson Record: 8-22	9/10 at Western Illinois L	9-15, 7-15, 11-1	10/28 SLU Invitational in St. Louis, Mo.	
9/13 Arkansas State L	9/12 Tulsa W	15-11, 15-12, 15-11	10/28 Tulsa W	15-12, 17-15, 15-11
9/13 Eastern Illinois L	9/12 SEMO W	15-5, 16-14, 14-16, 15-3	10/29 Wright State W	15-6, 15-12, 6-15, 13-15, 16-14
9/14 Tulsa L	9/15 Indiana State L	7-15, 15-12, 12-15, 15-12, 2-15	11/3 S EMO W	13-15, 15-11, 15-1, 12-15, 15-11
9/14 Quincy L	9/17 Central Missouri L	5-15, 5-15, 2-15		
9/17 Minnesota L	9/22 at Quincy L	15-4, 15-7, 10-15, 11-15, 7-15	Memphis Invitational in Memphis, Tenn.	
9/19 Kansas State L	9/ at Tulsa L	1-15, 13-15, 6-15	vs. Western Illinois W	15-12, 5-15, 15-17, 15-5, 15-6
Golden Hurricane Tournament in Tulsa, Okla.	9/ UMKC W	15-3, 15-6, 15-11	11/4 vs. W. Kentucky W	15-10, 15-9, 15-10
9/27 vs. Wichita State L	9/ Oral Roberts W	15-6, 15-13, 15-10	vs. Tulsa W	15-6, 15-8, 20-18
9/27 at Tulsa L	9/ UTEP W	13-15, 15-9, 15-8, 14-16, 11/5	vs. La.-Monroe W	11-15, 15-13, 15-4, 15-10



11/12	at Tulsa	L	13-15, 13-15, 4-15
11/13	vs. UALR	L	4-15, 10-15, 8-15
11/13	at Oral Roberts	L	7-15, 15-10, 4-15, 8-15
Great Midwest Tournament in Birmingham, Ala.			
11/19	vs. DePaul	L	5-15, 10-15, 6-15

1994

Head Coach: Marilyn Nolen | Record: 19-19
Bradley Invitational in Peoria, Ill.

9/2	vs. UW-Milwaukee	W	6-15, 15-9, 16-14, 10-15, 15-12
9/2	vs. Indiana State	W	7-15, 15-4, 13-15, 16-14, 10-15, 15-11
9/3	vs. Missouri	L	13-15, 7-15, 11-15
9/3	at Bradley	L	11-15, 11-15, 10-15
9/6	SEMO	W	15-4, 15-12, 8-15, 15-8
7-UP/Billiken Invitational in St. Louis, Mo.			
9/9	Texas-Pan Am.	W	14-16, 13-15, 15-7, 15-6, 15-8
9/9	Samford	W	15-2, 15-9, 15-5
9/9	Wright St.	W	15-11, 15-6, 13-15, 12-15, 15-13
9/10	Loyola Chicago	L	12-15, 15-5, 1-15, 8-15
9/13	Eastern Illinois	L	11-15, 15-12, 15-10, 1-15, 13-15
9/16	at Florida Internat'l	W	15-7, 15-7, 15-12
9/17	vs. Jacksonville	W	16-14, 15-8, 14-16, 15-1
9/17	at Florida Atlantic	W	15-8, 15-5, 15-3
9/21	Indiana State	L	15-11, 14-16, 12-15, 10-15
9/23	at Missouri	L	15-13, 3-15, 10-15, 12-15
9/25	Missouri	W	15-4, 15-8, 15-13
9/30	at UAB	L	16-14, 16-14, 1-15, 12-15, 15-17

10/1	at Memphis	L	11-15, 13-15, 15-17
10/7	Dayton	W	15-7, 7-15, 15-13, 15-12
10/8	Cincinnati	L	7-15, 15-5, 15-9, 9-15, 12-15
10/8	Murray State	L	15-12, 7-15, 15-6, 8-15, 9-15
10/14	at DePaul	L	10-15, 7-15, 5-15
10/15	at Marquette	W	15-9, 6-15, 15-10, 15-8
10/16	at UW-Green Bay	W	16-18, 15-12, 15-5, 15-9
10/20	Memphis	L	15-13, 5-15, 9-15, 15-10, 9-15
10/21	UAB	W	17-15, 15-10, 12-15, 15-9
10/22	Southern Illinois	L	5-15, 9-15, 15-9, 3-15
10/28	DePaul	W	15-9, 15-8, 15-13
10/29	Marquette	L	16-14, 9-15, 11-15, 18-16, 7-15
10/29	Oral Roberts	L	5-15, 7-15, 12-15
11/1	at Evansville	W	15-12, 15-8, 15-6
11/4	at Dayton	L	10-15, 14-16, 13-15
11/5	at Cincinnati	L	12-15, 13-15, 9-15

Southeast Missouri Tournament in Cape Girardeau, Mo.

11/11	vs. UALR	W	9-15, 15-12, 13-15, 15-7, 15-13
11/12	at SEMO	W	15-13, 15-12, 17-15
11/12	vs. Eastern Illinois	L	11-15, 10-15, 6-15

Great Midwest Tournament in Dayton, Ohio

11/18	vs. UAB	W	15-8, 14-16, 9-15, 15-9, 15-11
11/19	vs. Memphis	L	4-15, 10-15, 12-15

1995

Head Coach: Marilyn Nolen | Record: 29-10
Crimson Tide Classic in Tuscaloosa, Ala.

9/1	at Alabama	L	6-15, 15-3, 13-15, 13-15
9/1	vs. Austin Peay	W	15-8, 14-16, 12-15, 15-10, 15-6
9/2	vs. Miami (Ohio)	L	11-15, 6-15, 15-6, 8-15
9/2	vs. Stephen F. Austin	W	15-11, 15-12, 8-15, 11-15, 15-10
9/5	at Murray State	W	15-12, 15-9, 15-3
7-UP/Billiken Invitational in St. Louis, Mo.			
9/8	UMKC	W	15-13, 15-3, 15-10
9/8	SEMO	W	15-13, 13-15, 15-9, 16-14
9/9	UW-Green Bay	W	15-4, 15-2, 15-5
9/9	Valparaiso	W	16-14, 15-7, 6-15, 11-15, 15-11
9/12	at UAB	W	16-14, 15-10, 15-8
BSU/Holiday Inn Classic in Boise, Idaho			
9/15	vs. Portland	L	13-15, 8-15, 0-15

9/15	at Boise State	L	9-15, 13-15, 5-15
9/16	vs. Mississippi State	W	15-11, 15-11, 15-10
9/16	vs. Tennessee	W	15-10, 16-14, 6-15, 15-8
9/19	at UT Martin	W	15-8, 15-6, 7-15, 15-4
9/22	Louisville	L	9-15, 10-15, 9-15
Match played at St. Charles West High School			
9/24	vs. Missouri	W	15-10, 15-13, 15-13
9/26	at Western Illinois	W	15-1, 12-15, 15-7, 15-6
9/29	Cincinnati	W	15-13, 15-12, 15-6
10/3	at Eastern Illinois	W	9-15, 15-4, 15-6, 15-1
10/6	at DePaul	W	15-8, 15-10, 15-6
10/7	at Marquette	W	15-9, 17-15, 15-12
10/10	Evansville	W	15-13, 17-15, 15-10
10/13	South Florida	L	12-15, 4-15, 15-13, 15-13, 15-17
10/18	Creighton	W	15-3, 15-4, 15-1
10/20	at Southern Miss	W	15-9, 15-8, 15-3
10/22	at Tulane	W	11-15, 15-8, 15-12, 15-11
10/25	Southern Illinois	W	15-7, 8-15, 8-15, 11-15
11/1	Memphis	W	15-10, 15-9, 14-16, 15-11
11/3	at Charlotte	W	15-3, 15-11, 15-12
11/8	at SEMO	L	6-15, 6-15, 7-15
11/10	DePaul	W	15-6, 15-11, 15-9
11/11	Marquette	W	12-15, 15-9, 15-12, 15-12

Conference USA Tournament in Louisville, Ky.

11/17	vs. Memphis	W	15-0, 8-15, 15-12, 15-11
11/18	vs. South Florida	L	6-15, 10-15, 15-7, 10-15
National Invitation Tournament in Kansas City, Mo.			
12/1	vs. Stephen F. Austin	W	15-10, 15-6, 15-3
12/1	vs. Wisconsin	L	11-15, 5-15, 4-15
12/2	vs. Fresno State	W	12-15, 15-11, 15-5, 5-15, 15-11
12/2	vs. Pittsburgh	W	15-11, 15-8, 11-15, 2-15, 15-13

1996

Head Coach: Marilyn Nolen | Record: 24-13
First Serve Festival in Omaha, Neb.

8/30	at Creighton	W	15-8, 15-8, 10-15, 15-13
8/30	vs. Drake	L	5-15, 9-15, 1-15
8/31	vs. UW-Green Bay	W	15-9, 15-4, 15-5
8/31	vs. Murray State	L	15-8, 13-15, 7-15, 13-15
Matches played at Farmington (Mo.) High School			
9/3	vs. UT Martin	W	13-15, 8-15, 15-12, 15-5, 15-9
9/3	vs. UMKC	W	15-8, 15-5, 15-5
7-UP/Billiken Invitational in St. Louis, Mo.			
9/6	Butler	L	11-15, 9-15, 4-15
9/6	Kansas	L	10-15, 10-15, 15-13, 15-7, 12-15
9/7	SEMO	W	10-15, 15-5, 12-15, 15-12, 15-8
9/7	Alabama	W	4-15, 15-5, 15-0, 15-9
Westerwind Classic in Macomb, Ill.			
9/13	vs. Illinois-Chicago	L	15-6, 8-15, 10-15, 15-7, 13-15
9/14	vs. Central Michigan	L	16-14, 13-15, 9-15, 14-16
9/14	at Western Illinois	W	12-15, 16-14, 13-15, 15-5, 15-13

Boatmen's Bank/Lady Indian Classic in State University, Ark.

9/20	vs. Nicholls State	W	15-10, 15-13, 12-15, 15-4
9/20	vs. NW State	W	15-2, 15-8, 15-10
9/21	at Arkansas State	L	7-15, 7-15, 10-15
9/24	Southern Illinois	W	15-13, 15-8, 16-14
9/27	UNLV	W	15-10, 15-10, 15-6
9/29	at Cincinnati	L	2-15, 15-13, 1-15, 11-15
10/1	Eastern Illinois	W	13-15, 17-15, 15-7, 15-3
10/4	Marquette	W	15-8, 15-4, 15-11
10/6	DePaul	W	15-4, 15-8, 15-3
10/11	at UAB	W	5-15, 15-8, 15-9, 15-5
10/13	at South Florida	L	5-15, 13-15, 6-15
10/18	Tulane	W	10-15, 15-13, 14-16, 15-8, 15-12
10/20	Southern Miss	W	0-15, 15-11, 13-15, 15-8, 15-12
10/27	at Louisville	L	5-15, 7-15, 8-15
11/1	Houston	L	9-15, 17-15, 7-15, 12-15
11/3	Charlotte	W	15-3, 7-15, 15-12, 15-12
11/5	at Memphis	W	15-9, 15-9, 15-8
11/8	at Marquette	L	6-15, 15-3, 15-8, 11-15, 12-15
11/9	at DePaul	W	15-6, 15-7, 15-5

11/16	Cincinnati	W	15-11, 11-15, 12-15, 15-8, 15-13
-------	------------	---	----------------------------------

Conference USA Tournament in Louisville, Ky.

11/21	vs. Memphis	W	15-13, 15-9, 15-13
11/22	vs. Cincinnati	W	13-15, 15-11, 15-12, 13-15, 15-4
11/23	vs. #23 S. Florida	L	8-15, 12-15, 11-15

1997

Head Coach: Marilyn Nolen | Record: 18-17
Missouri State Bear Challenge in Springfield, Mo.

8/29	vs. SEMO	L	2-15, 11-15, 15-8, 12-15
8/29	at Missouri State	L	13-15, 10-15, 5-15
8/30	vs. Western Illinois	W	15-8, 15-5, 15-10
8/30	vs. Butler	L	4-15, 2-15, 0-15
9/3	Murray State	L	10-15, 15-13, 15-9, 8-15, 12-15
Clemson Big Orange Bash in Clemson, S.C.			
9/5	vs. Drexel	W	15-9, 15-9, 15-8
9/6	vs. William & Mary	W	15-6, 11-15, 5-15, 15-10, 15-9
9/6	at Clemson	L	7-15, 14-16, 14-16
9/9	at Eastern Illinois	W	15-13, 13-15, 15-9, 8-15, 15-13

7-UP/Billiken Invitational in St. Louis, Mo.

9/12	East Tennessee St.	W	15-6, 15-3, 15-2
9/12	Arkansas State	W	15-9, 15-10, 8-15, 15-3
9/13	SEMO	L	9-15, 10-15, 14-16
9/13	G. Washington	W	18-16, 15-10, 15-7
9/18	Charlotte	W	14-16, 15-8, 15-9, 15-9
9/20	Middle Tennessee	L	15-10, 6-15, 7-15, 15-7, 15-17
9/20	Western Illinois	W	15-7, 15-6, 15-12
9/23	at UMKC	W	15-13, 15-9, 11-15, 16-14
9/26	Memphis	W	15-4, 15-7, 15-11
9/28	UAB	W	15-12, 15-5, 15-9
10/3	Marquette	W	15-4, 13-15, 11-15, 15-12, 15-10
10/5	DePaul	L	8-15, 6-15, 15-7, 16-14, 13-15

10/10	at Cincinnati	L	11-15, 15-9, 15-10, 10-15, 11-15
10/12	at #16 Louisville	L	8-15, 14-16, 3-15
10/17	at Southern Miss	L	12-15, 10-15, 8-15
10/19	at Tulane	W	15-12, 15-11, 12-15, 15-10
10/24	at Houston	W	15-13, 5-15, 3-15, 15-12, 19-17
10/26	#23 South Florida	L	1-15, 8-15, 12-15
10/31	at DePaul	W	15-6, 15-13, 7-15, 15-4
11/2	at Marquette	L	8-15, 9-15, 13-15
11/7	at Charlotte	L	12-15, 8-15, 15-17
11/14	#17 Louisville	L	6-15, 5-15, 13-15
11/16	Cincinnati	L	4-15, 9-15, 15-4, 7-15

Conference USA Tournament in Houston, Texas

11/20	vs. Charlotte	W	15-11, 13-15, 15-0, 15-11
11/21	vs. Louisville	W	6-15, 15-6, 10-15, 15-13, 15-4
11/22	at Houston	L	4-15, 7-15, 10-15

1998

Head Coach: Marilyn Nolen | Record: 21-7
7-UP/Billiken Invitational in St. Louis, Mo.

9/1	at SEMO	L	11-15, 14-16, 15-11, 11-15
9/4	Eastern Illinois	W	5-15, 10-15, 15-12, 15-8, 15-13
9/5	Georgia Southern	W	15-9, 16-14, 15-3
9/5	Clemson	W	0-15, 8-15, 15-12, 15-12, 18-16
Westerwinds Invitational in Macomb, Ill.			
9/11	vs. W. Kentucky	W	15-8, 15-9, 11-15, 10-15, 15-11
9/11	vs. Illinois-Chicago	W	15-10, 15-6, 15-6
9/12	at Western Illinois	W	15-5, 15-12, 15-11
9/12	vs. UW-Green Bay	W	15-0, 8-15, 15-5, 15-1
9/16	at Charlotte	W	15-12, 15-10, 15-13
Jayhawk Classic in Lawrence, Kan.			
9/18	vs. E. Michigan	W	15-7, 8-15, 15-10, 17-15
9/19	vs. San Francisco	W	15-7, 15-3, 15-5
9/19	at Kansas	W	8-15, 17-15, 15-13, 15-5
9/25	at Memphis	W	7-15, 15-13, 15-1, 8-15, 15-10
9/26	at UAB	W	13-15, 15-2, 15-6, 15-7



10/2	DePaul		W	15-6, 15-11, 15-9	Georgia Outback Steakhouse Invitational in Athens, Ga.					15-12
10/4	Marquette	W		10-15, 15-4, 11-15, 15-11, 9/15	at Charlotte	L		12-15, 9-15, 16-14, 15-5,	Loyola Marymount Invitational in Los Angeles, Calif.	
								10-15 9/6	vs. Colorado	L 18-30, 26-30, 23-30
10/9	at Cincinnati	L		15-17, 15-5, 11-15, 15-6, 9/16	vs. Furman	W		15-4, 16-14, 15-10 9/7	at Loyola Mmt.	L 30-27, 30-21, 20-30, 22-30,
								10-15, 15-6, 12-15, 12-15 8-15		
10/10	at #16 Louisville	L		7-15, 9-15, 12-15 9/22	at Georgia	L		12-15, 13-15, 15-10, 12-15 9/7	vs. Notre Dame	L 25-30, 13-30, 19-30
10/16	Southern Miss	W		15-11, 15-7, 15-11 9/23	at Cincinnati	L		5-15, 15-7, 12-15, 15-6, 15-	Country Inn and Suites Tournament in DeKalb, Ill.	
10/18	Tulane	W		15-9, 15-12, 15-6				13 9/13	vs. Mississippi State	W 30-26, 16-30, 30-19, 30-23
10/23	Houston	W		15-9, 15-9, 15-11 9/29	South Florida	L		7-15, 15-12, 10-15, 5-15 9/14	vs. UW-Green Bay	W 30-24, 20-30, 30-24, 30-17
10/25	at South Florida	L		7-15, 11-15, 10-15 10/2	Houston	L		11-15, 10-15, 10-15 9/14	at Northern Illinois	L 22-30, 25-30, 30-24, 30-27,
10/30	Charlotte	W		15-6, 15-9, 15-12 10/6	DePaul	L		7-15, 15-8, 12-15, 6-15		7-15
11/6	at Marquette	W		15-9, 15-4, 15-13 10/8	Marquette	W		15-8, 15-4, 15-8 9/17	at SEMO	W 30-25, 31-33, 30-19, 32-34,
11/7	at DePaul	W		15-13, 15-7, 11-15, 15-6 10/10	Eastern Illinois	W		11-15, 12-15, 15-11, 17-15,		15-11
11/13	#23 Louisville	L		8-15, 16-14, 9-15, 2-15				15-8	Dr. Mary Jo Wynn Invitational in Springfield, Mo.	
11/15	Cincinnati	L		4-15, 15-6, 5-15, 13-15	at Southern Miss	W		9-15, 15-13, 15-11, 15-12 9/20	vs. UMKC	W 30-24, 30-26, 25-30, 21-30,
					at Tulane	L		15-13, 13-15, 9-15, 15-4,		15-10
								9-15 9/21	vs. Wichita State	W 30-20, 30-24, 30-25
								4-15, 7-15, 15-7, 10-15 9/21	at Missouri State	L 28-30, 30-26, 21-30, 16-30
								15-5, 16-14, 15-3 9/25	Loyola Chicago	L 28-30, 22-30, 24-30
								15-6, 15-7, 15-5 9/29	at Tulane	W 30-23, 30-23, 21-30, 21-30,
								10-15, 7-15, 11-15		15-12
								15-12, 18-20, 5-15, 11-15 10/2	Eastern Illinois	W 30-17, 30-25, 30-27
								11-15, 8-15, 15-12, 12-15 10/4	at Memphis	W 30-28, 30-28, 30-27
								5-15, 5-15, 10-15 10/11	TCU	W 30-23, 35-33, 30-26
								16-14, 7-15, 13-15, 15-11, 10/12	Houston	W 30-32, 30-23, 27-30, 30-27,
								15-11		15-12
								14-16, 15-0, 15-4, 12-15, 10/19	at South Florida	L 25-30, 30-27, 24-30, 24-30
								10-15 10/22	at UAB	L 20-30, 27-30, 26-30
								10/25	Marquette	W 30-27, 19-30, 30-26, 31-29
								15-12, 15-8, 5-15, 14-16, 10/26	DePaul	W 16-30, 30-24, 30-27, 31-29
								15-10 11/1	at Louisville	W 19-30, 34-32, 30-24, 30-24
								10-15, 14-16, 15-10, 9-15 11/2	at Cincinnati	L 16-30, 26-30, 24-30
								11/8	East Carolina	W 30-13, 30-21, 30-26
								11/9	Charlotte	W 28-30, 30-24, 30-24, 30-28
								11/15	at Southern Miss	W 20-30, 30-27, 12-30, 30-26,
										15-10
								9-15 8/31	vs. Austin Peay	L 28-30, 30-22, 27-30, 27-30
								9/1	vs. Delaware	W 30-20, 30-23, 30-25 11/23
								9/1	at Butler	L 30-23, 23-30, 25-30, 30-28, 11/24
								11-15		
								30-21, 30-22, 30-23		
										2003
										Head Coach: Marilyn Nolen Record: 9-22
								15-30, 11-30, 18-30	Billiken Invitational in St. Louis, Mo.	
								13-30, 15-30, 30-27, 11-30 8/29	Purdue	L 30-24, 18-30, 25-30, 18-30
								27-30, 24-30, 26-30 8/30	UW-Milwaukee	L 20-30, 18-30, 25-30
								30-25, 22-30, 30-18, 33-31 8/30	William & Mary	W 30-26, 30-26, 30-22
								28-30, 29-31, 30-25, 26-30 9/2	at Eastern Illinois	W 30-24, 30-22, 30-28
								30-17, 28-30, 26-30, 30-27, 15-13 9/5	Dr. Mary Jo Wynn Invitational in Springfield, Mo.	
								13-30, 23-30, 18-30 9/5	vs. North Texas	L 30-25, 25-30, 28-30, 17-30
								19-30, 30-28, 26-30, 26-30 9/6	at Missouri State	L 17-30, 21-30, 29-31
								30-28, 19-30, 30-20, 30-26 9/6	vs. Arkansas	L 25-30, 21-30, 19-30
								30-26, 18-30, 27-30, 30-25, 9/9	vs. BYU	L 32-30, 23-30, 18-30, 22-30
								15-8	Western Illinois	W 30-26, 30-24, 30-23
										Cougar Mania Tournament in Pullman, Wash.
								27-30, 30-22, 33-31, 31-33, 9/12	at Washington State	W 30-26, 29-31, 30-19, 30-24
								15-8 9/13	vs. #22 Loyola Mmt.	L 13-30, 27-30, 30-32
								30-27, 24-30, 28-30, 30-27, 9/13	vs. New Mexico	W 30-27, 30-21, 24-30, 30-28
								12-15	IU Credit Union Invitational in Bloomington, Ind.	
								18-30, 30-26, 30-21, 19-30, 9/19	at Indiana	L 21-30, 27-30, 30-32
								15-11 9/20	vs. W. Kentucky	L 30-27, 23-30, 27-30, 13-30
								16-30, 30-27, 30-21, 30-27 9/20	vs. Austin Peay	W 30-24, 21-30, 30-24, 30-22
								30-27, 30-27, 20-30, 30-28 9/23	at Bradley	W 30-28, 28-30, 29-31
								30-19, 18-30, 26-30, 31-33 9/30	UT Martin	W 30-23, 30-24, 30-22
								15-30, 27-30, 23-30 10/3	Memphis	L 22-30, 25-30, 25-30
								30-18, 34-32, 25-30, 23-30, 10/10	at Houston	L 30-23, 24-30, 21-30, 23-30
								15-9 10/11	at TCU	L 25-30, 30-21, 28-30, 28-30
								24-30, 30-32, 26-30 10/17	South Florida	L 19-30, 28-30, 18-30
								19-30, 28-30, 30-26, 21-30 10/18	UAB	L 27-30, 27-30, 18-30
								30-25, 27-30, 30-27, 30-21 10/24	at DePaul	W 30-23, 26-30, 24-30, 30-26,
										15-12
								30-22, 30-26, 30-25 10/25	at Marquette	L 13-30, 20-30, 30-25, 26-30
								22-30, 30-27, 24-30, 23-30 10/31	Cincinnati	L 28-30, 18-30, 29-31
									#24 Louisville	L 21-30, 24-30, 34-32, 21-30
									at Charlotte	L 30-28, 17-30, 21-30, 28-30
									at East Carolina	W 30-22, 25-30, 32-30, 30-16
									Tulane	L 30-23, 22-30, 13-30, 30-20,
										9-15
								30-21, 30-24, 30-15		
								30-21, 30-21, 30-22 11/15	Southern Miss	L 28-30, 30-22, 35-33, 27-30,
								30-24, 28-30, 16-30, 30-20,		12-15
								15-11	Conference USA Tournament in New Orleans, La.	
									at Tulane	L 28-30, 18-30, 12-30



2004		10/21	Fordham	W	27-30, 30-23, 30-23, 24-30,
Head Coach: Anne Kordes Record: 15-17		10/23	Rhode Island	W	30-19, 30-26, 28-30, 30-15
9/1	at Indiana State	10/29	IPFW	W	24-30, 34-32, 30-25, 30-24
Indiana Tournament in Bloomington, Ind.		11/2	at #5 Notre Dame	L	13-30, 23-30, 23-30
9/3	vs. Oregon State	11/4	Dayton	L	24-30, 30-23, 28-30, 27-30
9/4	at Indiana	11/6	Xavier	L	30-32, 30-24, 17-30, 24-30
9/4	vs. Murray State	11/10	Duquesne	W	33-31, 30-24, 30-24
UW-Milwaukee Tournament in Milwaukee, Wis.		11/13	at Rhode Island	L	30-26, 24-30, 30-25, 27-30,
9/10	at UW-Milwaukee				15-8
9/11	vs. Col. of Charleston				Head Coach: Anne Kordes Record: 23-7
9/11	vs. IUPUI				Mizuno Tiger Classic in Baton Rouge, La.
9/14	at Butler				W 30-12, 30-13, 30-14
Billiken Invitational in St. Louis, Mo.					W 30-22, 30-23, 30-19
9/17	North Texas				L 26-30, 30-21, 27-30, 30-22,
9/17	Valparaiso				7-15
9/18	Valparaiso				Radisson Hotel Invitational in Peoria, Ill.
9/18	North Texas				W 30-22, 30-23, 30-21
Fairfield Tournament in Fairfield, Conn.					W 29-31, 19-30, 30-24, 30-26,
9/24	vs. Temple				15-11
9/25	at Fairfield				W 30-23, 30-16, 30-18
9/25	vs. New Hampshire				L 24-30, 28-30, 25-30
9/28	Illinois State				15-11
10/1	at Memphis				W 30-23, 30-16, 30-18
10/8	at Tulane				L 24-30, 28-30, 25-30
10/9	at Southern Miss				W 30-23, 30-16, 30-18
10/15	Charlotte				L 24-30, 28-30, 25-30
10/16	East Carolina				W 30-23, 30-16, 30-18
10/18	at Missouri State				L 24-30, 28-30, 25-30
10/23	at #21 Louisville				W 30-23, 30-16, 30-18
10/24	at Cincinnati				L 24-30, 28-30, 25-30
10/29	DePaul				W 30-23, 30-16, 30-18
10/30	Marquette				L 24-30, 28-30, 25-30
11/5	at South Florida				W 30-23, 30-16, 30-18
11/6	at UAB				L 24-30, 28-30, 25-30
11/11	Houston				W 30-23, 30-16, 30-18
11/13	TCU				L 24-30, 28-30, 25-30
Conference USA Tournament in Louisville, Ky.					W 30-23, 30-16, 30-18
11/20	vs. South Florida				L 24-30, 28-30, 25-30
11/21	vs. Cincinnati				W 30-23, 30-16, 30-18

2005		10/21	Fordham	W	27-30, 30-23, 30-23, 24-30,
Head Coach: Anne Kordes Record: 14-16		10/23	Rhode Island	W	30-19, 30-26, 28-30, 30-15
Dr. Mary Jo Winn Tournament in Springfield, Mo.		10/29	IPFW	W	24-30, 34-32, 30-25, 30-24
8/27	vs. SEMO	11/2	at #5 Notre Dame	L	13-30, 23-30, 23-30
8/27	vs. Kansas State	11/4	Dayton	L	24-30, 30-23, 28-30, 27-30
8/28	vs. UALR	11/6	Xavier	L	30-32, 30-24, 17-30, 24-30
Pacific Nike Tournament in Stockton, Calif.		11/10	Duquesne	W	33-31, 30-24, 30-24
9/2	vs. Purdue	11/13	at Rhode Island	L	30-26, 24-30, 30-25, 27-30,
9/3	at Pacific				15-8
9/3	vs. Bradley				Head Coach: Anne Kordes Record: 29-5
9/6	at Kansas				15-8 ATLANTIC 10 CONFERENCE CHAMPIONS
Valparaiso Popcorn Classic in Valparaiso, Ind.					15-8 ATLANTIC 10 TOURNAMENT CHAMPIONS
9/9	at Valparaiso				NCAA TOURNAMENT SECOND ROUND
9/10	vs. E. Michigan				Best Western Miami Invitational in Oxford, Ohio
9/10	vs. Drake				W 25-20, 25-21, 24-26, 25-22
Billiken Invitational in St. Louis, Mo.					W 25-18, 25-12, 25-23
9/16	Oakland				W 25-22, 25-16, 25-21
9/17	Middle Tennessee				W 30-23, 30-25, 30-25
9/17	Washington State				W 30-26, 30-27, 27-30, 30-19
9/23	at Temple				W 31-29, 25-30, 30-27, 30-27
9/25	at La Salle				W 21-30, 30-16, 30-23, 30-16
9/27	Illinois State				L 29-31, 30-21, 30-28, 28-30,
9/29	at Duquesne				6-15
10/7	at G. Washington				W 30-24, 31-29, 30-28
10/9	at Charlotte				W 30-19, 30-20, 30-21
10/11	at Arkansas				W 30-24, 30-28, 31-29
10/14	at Xavier				W 27-30, 30-22, 30-24, 30-27
10/15	at Dayton				W 30-21, 30-15, 30-28

10/21	Fordham	W	27-30, 30-23, 30-23, 24-30,
10/23	Rhode Island	W	30-19, 30-26, 28-30, 30-15
10/29	IPFW	W	24-30, 34-32, 30-25, 30-24
11/2	at #5 Notre Dame	L	13-30, 23-30, 23-30
11/4	Dayton	L	24-30, 30-23, 28-30, 27-30
11/6	Xavier	L	30-32, 30-24, 17-30, 24-30
11/10	Duquesne	W	33-31, 30-24, 30-24
11/13	at Rhode Island	L	30-26, 24-30, 30-25, 27-30,
2006			
Head Coach: Anne Kordes Record: 22-9			
ATLANTIC 10 CONFERENCE CO-CHAMPIONS			
ATLANTIC 10 TOURNAMENT CHAMPIONS			
NCAA TOURNAMENT FIRST ROUND			
Comfort Inn and Suites Invitational in DeKalb, Ill.			
8/25	vs. Western Illinois	W	30-22, 30-25, 30-28
8/26	at Northern Illinois	W	15-30, 30-28, 30-24, 30-25
8/26	vs. E. Kentucky	W	30-18, 30-21, 30-22
Billiken Invitational in St. Louis, Mo.			
9/1	#22 Minnesota	L	34-32, 24-30, 18-30, 27-30
9/2	Texas A&M	L	30-26, 28-30, 25-30, 18-30
9/2	LSU	L	17-30, 29-31, 30-28, 18-30
Blue Raider Bash in Murfreesboro, Tenn.			
9/8	vs. Illinois-Chicago	W	30-25, 30-27, 19-30, 30-23
9/9	vs. Creighton	L	30-27, 25-30, 17-30, 30-27,
9/9	at Middle Tennessee	W	30-27, 20-30, 30-23, 30-22, 9-15
Loyola Invitational in Chicago, Ill.			
9/15	vs. Jacksonville St.	L	30-24, 28-30, 33-35, 32-30,
9/16	vs. Oakland	W	30-13, 30-17, 30-22
9/16	at Loyola Chicago	W	30-25, 30-28, 30-27
9/22	La Salle	W	30-20, 30-20, 30-20
9/23	Temple	W	21-30, 30-16, 30-23, 30-16
9/26	at Illinois State	L	29-31, 30-21, 30-28, 28-30,
9/29	Charlotte	W	30-24, 31-29, 30-28
10/1	George Washington	W	30-19, 30-20, 30-21
10/6	at Rhode Island	W	30-24, 30-28, 31-29
10/8	at Fordham	W	27-30, 30-22, 30-24, 30-27
10/14	Duquesne	W	30-21, 30-15, 30-28
10/20	Dayton	L	30-22, 34-36, 24-30, 23-30
10/22	Xavier	W	25-30, 30-26, 30-26, 30-21
10/25	SEMO	W	30-21, 30-19, 30-28
11/2	at Duquesne	L	30-24, 29-31, 29-31, 23-30
11/5	Rhode Island	W	30-13, 26-30, 30-18, 27-30,
11/10	at Xavier	W	30-25, 30-32, 30-20, 30-23
11/11	at Dayton	W	25-30, 30-23, 30-28, 18-30,

2007	Head Coach: Anne Kordes Record: 23-7
Mizuno Tiger Classic in Baton Rouge, La.	W 30-12, 30-13, 30-14
vs. La-Monroe	W 24-30, 30-23, 30-19
vs. New Orleans	W 30-22, 30-23, 30-19
at #23 LSU	L 26-30, 30-21, 27-30, 30-22,
	7-15
Radisson Hotel Invitational in Peoria, Ill.	W 30-22, 30-23, 30-21
at Bradley	W 29-31, 19-30, 30-24, 30-26,
vs. Montana	15-11
vs. Western Illinois	W 30-23, 30-16, 30-18
at Illinois State	L 24-30, 28-30, 25-30
Santo Bento Volleyball Invitational in St. Louis, Mo.	W 25-30, 30-25, 30-18, 30-28
SEMO	W 30-17, 30-27, 30-23
IUPUI	W 30-25, 30-20, 28-30, 37-35
Connecticut	W 30-28, 30-21, 30-27
Wildcat Classic in Evanston, Ill.	W 30-17, 30-14, 30-25
vs. W. Michigan	L 26-30, 15-30, 30-28, 20-30
vs. Drake	L 29-31, 30-28, 30-28, 28-30,
at Northwestern	12-15
at #18 Dayton	L 25-30, 29-31, 26-30
at Xavier	L 30-26, 27-30, 26-30, 30-27,
Northern Iowa	15-12
Rhode Island	W 30-17, 30-17, 30-22
Fordham	W 30-21, 26-30, 30-24, 30-24
at La Salle	W 30-19, 30-15, 30-24
at Temple	W 25-30, 30-24, 30-17, 21-30,
	18-16
at Charlotte	W 30-24, 30-24, 30-20
at G. Washington	W 30-17, 30-18, 30-18
Xavier	W 30-20, 30-28, 30-24
#17 Dayton	L 20-30, 27-30, 30-24, 25-30
Duquesne	W 30-11, 30-16, 30-18
at Rhode Island	W 30-22, 30-27, 30-22
at Pittsburgh	W 30-16, 30-28, 24-30, 30-26
at Duquesne	W 30-20, 30-26, 29-31, 30-26
Atlantic 10 Championship in Charlotte, N.C.	W 30-21, 30-23, 30-20
vs. G. Washington	W 30-21, 30-23, 30-20
vs. Xavier	L 30-24, 34-32, 26-30, 23-30,
	7-15

2008		
Head Coach: Anne Kordes Record: 29-5		
ATLANTIC 10 CONFERENCE CHAMPIONS		
15-8 ATLANTIC 10 TOURNAMENT CHAMPIONS		
NCAA TOURNAMENT SECOND ROUND		
Best Western Miami Invitational in Oxford, Ohio		
8/29	at Miami (Ohio)	W 25-20, 25-21, 24-26, 25-22
8/30	at Miami (Ohio)	W 25-18, 25-12, 25-23
8/30	vs. Stephen F. Austin	W 25-22, 25-16, 25-21
Billiken Invitational in St. Louis, Mo.		
9/5	#19 Illinois	L 25-21, 20-25, 18-25, 18-25
9/6	William & Mary	W 17-25, 25-20, 25-18, 25-23
9/6	#3 Stanford	W 27-25, 20-25, 25-22, 25-22
Utah Classic in Salt Lake City, Utah		
9/12	vs. #15 Purdue	L 14-25, 25-23, 21-25, 22-25
9/13	at Utah	L 21-25, 23-25, 30-32
9/13	vs. Utah State	W 25-12, 22-25, 25-17, 26-24
Penn State Classic in University Park, Pa.		
9/19	vs. New Hampshire	W 25-18, 25-23, 23-25, 25-16
9/20	vs. Yale	W 25-19, 25-15, 25-19
9/20	at #1 Penn State	L 17-25, 12-25, 15-25
9/26	Charlotte	W 22-25, 25-23, 25-21, 25-13
9/28	George Washington	W 25-22, 25-13, 25-17
9/30	at Northern Iowa	W 25-14, 25-19, 25-19
10/3	La Salle	W 25-8, 25-9, 25-12



The 2006 squad was the first team in program history to earn an NCAA Tournament bid. The Billikens achieved the feat by capturing their first Atlantic 10 Championship crown. SLU also won its first A-10 regular-season title in 2006.



Year	Matchup	Result	Score	Year	Matchup	Result	Score
10/5	Temple	W	25-18, 25-15, 22-25, 25-19	11-15			2012
10/10	at Rhode Island	W	25-21, 23-25, 26-24, 25-20	Dr. Mary Jo Wynn Invitational in Springfield, Mo.		Head Coach: Kent Miller Record: 10-20	
10/11	at Fordham	W	21-25, 25-20, 28-30, 29-27, 9/10	at Missouri State	L	25-23, 22-25, 22-25, 23-25	Husker Classic in Lincoln, Neb.
			15-8 9/11	vs. Oklahoma	L	22-25, 20-25, 28-26, 23-25	8/24 vs. #4 Nebraska
10/15	at SEMO	W	25-19, 25-16, 25-19	9/11 vs. Utah	W	25-19, 25-18, 25-21	8/25 vs. Notre Dame
10/16	Duquesne	W	25-13, 25-13, 25-16	Billiken Invitational in St. Louis, Mo.		8/27	8/27 Santa Clara
10/24	Dayton	W	25-17, 25-18, 25-17	9/17 Lipscomb	W	25-19, 16-25, 25-18, 27-25	Active Ankle Challenge in St. Louis, Mo.
10/26	Xavier	W	25-19, 25-13, 25-16	9/18 Marshall	W	25-23, 25-15, 25-15	8/31 Valparaiso
10/29	SIU Edwardsville	W	25-12, 27-25, 25-20	9/18 Western Kentucky	L	23-25, 23-25, 19-25	9/1 Southern Illinois
11/6	at Duquesne	W	25-18, 25-10, 25-13	9/24 #19 Dayton	L	17-25, 21-25, 25-20, 28-26, 9/1	9/1 South Alabama
11/9	Rhode Island	W	25-22, 25-15, 25-10				W Bradley
11/15	at Dayton	W	19-25, 30-28, 25-21, 25-18	9/26 Xavier	W	25-21, 17-25, 25-17, 25-20	Marcia E. Hamilton Classic in St. Louis, Mo.
11/16	at Xavier	W	25-15, 25-20, 25-18	10/1 at Charlotte	W	25-13, 25-21, 21-25, 26-24	9/7 Evansville
	Atlantic 10 Championship in St. Louis, Mo.			10/3 at G.Washington	L	24-26, 21-25, 25-23, 18-25	9/8 SEMO
11/22	Xavier	W	25-16, 25-17, 25-14	10/9 Illinois-Chicago	W	25-20, 19-25, 25-20, 25-15	9/8 South Florida
11/23	Dayton	W	25-15, 27-25, 25-19	10/12 at SEMO	W	25-16, 25-20, 20-25, 25-20	Wildcat Classic in Evanston, Ill.
	Middle Tennessee State Tournament in Murfreesboro, Tenn.			10/15 Rhode Island	W	22-25, 25-17, 28-26, 25-19	9/14 Western Michigan
11/28	vs. Connecticut	W	25-15, 25-16, 25-18	10/17 Fordham	W	25-18, 25-15, 25-18	9/14 Northwestern
11/29	at Middle Tennessee	W	17-25, 25-18, 17-25, 25-23, 15-9	10/22 at Temple	W	25-17, 26-24, 25-21	9/15 Delaware
	NCAA Tournament First & Second Rounds in Lexington, Ky.			10/23 at La Salle	W	25-14, 25-23, 25-11	
12/4	vs. Alabama A&M	W	25-10, 25-15, 25-11	10/26 at Duquesne	W	25-10, 27-25, 25-23	9/21 at Xavier
12/5	vs. #19 Michigan	L	25-22, 19-25, 25-23, 20-25, 12-15	10/29 La Salle	W	25-13, 25-21, 25-17	9/22 at #22 Dayton
				10/31 at Xavier	L	22-25, 15-25, 27-29	9/28 Duquesne
				11/5 Duquesne	W	25-23, 25-21, 23-25, 26-24	
				11/7 at Fordham	W	25-20, 25-15, 26-28, 25-17	9/29 George Washington
				11/12 George Washington	W	23-25, 25-13, 15-25, 25-14,	
						15-13 10/2	Western Illinois
				11/14 at #17 Dayton	L	18-25, 17-25, 20-25	10/6 Butler
						10/12	at VCU
						10/12	at Charlotte
						10/19	#19 Dayton
						10/20	Xavier
						10/23	at Eastern Illinois
						10/26	at Rhode Island
							12-15
							10/27 at Fordham
						11/2	Temple
							13-15
							11/3 La Salle
						11/10	at Butler
						11/21	at #20 Kansas
							16-25, 16-25, 12-25
							2013
							Head Coach: Kent Miller Record: 13-17
						8/30	Auburn
						8/31	ULM
						8/31	#10 Nebraska
							Comfort Inn Invitational in Morehead, Ky.
						9/6	vs. Morehead St.
						9/7	vs. Montana St.
						9/7	vs. IUPUI
						9/10	at Southern Illinois
						9/13	vs. Northern Iowa
							14-16
							Billiken Challenge in St. Louis, Mo.
						15-13 9/13	Miami (Ohio)
							15-17
						9/14	Youngstown State.
						9/14	Bradley
							Razorback Invitational in Fayetteville, Ark.
						9/21	vs. Kansas State
						9/21	at Arkansas
						9/26	at Duquesne
						9-15 9/29	at Dayton
							15-12
						11/6	at Charlotte
						11/11	Xavier
						11/13	Dayton
							Atlantic 10 Championship in Cincinnati, Ohio
						11/18	vs. Rhode Island
							18-25, 15-8 10/16
						11/19	vs. Xavier
						11/27	at Ball State
							19-25, 22-25, 18-25
						10/19	at VCU
						10/22	at Indiana State
							15-17
						10/25	La Salle
						11/1	at Rhode Island
							12-15
						11/2	at Fordham
						11/8	Rhode Island
						11/9	VCU
							25-18, 25-20, 26-24

SLU entered the American Volleyball Coaches Association Top 25 poll Oct. 20, 2008, and was ranked in 23 straight polls. The 2009 squad was the first team in program history to maintain a top-25 ranking for an entire season.



11/15	George Washington	L	19-25, 17-25, 22-25	10/9	at George Washington	W	25-16,25-15,24-26,25-27,15-13	9/15	DePaul	L	25-19, 13-25, 19-25, 27-29
11/17	George Mason	W	25-23, 25-12, 26-28, 25-17	10/10	at George Mason	W	25-15,25-16,25-19	9/16	UALR	W	25-21, 20-25, 25-21, 25-23
Atlantic 10 Championship in Washington, D.C.											
11/22	vs. Dayton	L	15-25, 25-20, 15-25, 25-27	10/16	VCU	L	23-25,23-25,25-22,25-23,14-16	9/22	Louisiana Tech	W	23-25, 25-12, 25-20, 25-17
2014											
Head Coach: Kent Miller Record: 21-10											
Marcia E. Hamilton Classic in St. Louis, Mo.											
8/29	Memphis	L	25-22, 25-27, 21-25, 13-25	10/18	Davidson	W	23-25,25-14,25-13,25-21	9/29	Dayton	L	24-26, 18-25, 15-25
8/29	UNI	L	26-24, 19-25, 25-18, 18-25	10/24	at Dayton	W	22-25,25-16,21-25,15-25	10/1	La Salle	W	25-23, 25-21, 25-15
2014											
Head Coach: Kent Miller Record: 21-10											
Marcia E. Hamilton Classic in St. Louis, Mo.											
8/30	SEMO	W	25-20, 28-26, 25-22	10/30	at Fordham	W	25-22,25-13,25-23	10/6	Duquesne	W	23-25, 25-18, 21-25, 25-17, 17-15
8/30	Alabama	L	23-25, 20-25, 19-25	10/31	at Rhode Island	L	26-24,15-25,25-22,18-25,8-15	10/7	at Rhode Island	W	23-25, 25-19, 25-18, 25-20
Leatherneck Invitational in Macomb, Ill.											
9/5	UTEP	W	25-22, 25-21, 25-21	11/6	George Mason	W	25-17,18-25,25-19,25-13	10/13	at Dayton	L	31-29, 15-25, 17-25, 19-25
9/6	Eastern Illinois	W	24-26, 25-20, 25-18, 25-22	11/8	George Washington	W	25-21,28-26,25-20	10/20	George Washington	W	25-21, 25-23, 25-16
9/6	Western Illinois	W	25-20, 25-16, 25-15	11/14	Dayton	L	22-25,25-19,23-25,17-25	10/22	George Mason	W	25-19, 25-21, 25-18
9/9	at Missouri	W	27-25, 23-25, 25-22, 19-25	11/21	vs. Rhode Island	W	25-10,25-18,25-17	10/27	at VCU	L	19-25, 22-25, 20-25
2016											
Head Coach: Kent Miller Record: 18-14											
Michigan Challenge in Ann Arbor, Mich.											
9/12	Omaha	W	25-18, 25-19, 31-29	8/26	Michigan	L	19-25, 13-25, 14-25	11/13	Fordham	W	21-25, 25-14, 25-16, 25-17
9/13	Canisius	W	18-25, 25-19, 25-12, 25-19	8/27	Northern Iowa	L	20-25, 14-25, 17-25	11/5	Rhode Island	W	28-26, 15-25, 25-13, 25-21
9/13	Air Force	W	25-20, 21-25, 25-21, 25-20	8/27	Miami (Ohio)	L	17-25, 21-25, 25-23, 28-26, 11-15	11/10	George Mason	W	25-23, 25-10, 26-24
Active Ankle Challenge in West Lafayette, Ind.											
9/19	#11 Purdue	W	25-20, 13-25, 26-24, 21-25, 15-13	8/31	at Illinois State	W	25-18, 25-22, 25-23	11/11	George Washington	W	26-24, 27-25, 25-15
Marcia E. Hamilton Classic in St. Louis, Mo.											
9/19	Notre Dame	L	21-25, 25-21, 24-26, 21-25	9/2	Arkansas State	L	22-25, 25-15, 15-25, 23-25	11/17	George Washington	L	23-25, 25-14, 16-25, 25-21, 13-15
9/20	Morehead State	W	25-15, 25-16, 25-9	9/3	#19 WKU	L	11-25, 13-25, 13-25	2018			
9/26	at La Salle	W	25-11, 25-17, 25-15	9/3	Cal Poly	L	25-22, 11-25, 23-25, 12-25	Head Coach: Kent Miller Record: 8-20			
9/28	at Duquesne	W	23-25, 25-11, 25-13, 22-25, 15-5	9/9	Marquette	L	17-25, 23-25, 16-25	Miami Best Western Sycamore Inn Invitational in Oxford, Ohio			
Bluegrass Battle in Lexington, Ky.											
10/3	VCU	L	12-25, 20-25, 26-24, 28-30	9/9	Virginia	W	25-19, 23-25, 21-25, 25-18, 15-12	8/25	Cincinnati	L	10-25, 22-25, 20-25
10/5	Davidson	L	25-21, 25-9, 20-25, 23-25, 16-18	9/10	Kentucky	L	21-25, 13-25, 19-25	8/25	UC Santa Barbara	L	20-25, 16-25, 19-25
2015											
Head Coach: Kent Miller Record: 22-10											
Redhawk Invitational in Cape Girardeau, Mo.											
8/28	UMKC	L	25-17,22-25,21-25,25-21,13-15	9/16	Murray State	L	24-26, 19-25, 25-20, 25-13, 10-15	9/8	Indiana State	L	19-25, 25-20, 25-21, 19-25, 9-15
8/28	at SEMO	W	20-25,25-19,25-19,25-22	9/17	Omaha	W	25-22, 25-14, 25-16	9/7	Central Michigan	W	25-17, 25-23, 25-13
8/29	Arkansas State	L	10-25, 22-25, 26-28	9/17	Illinois	L	22-25, 14-25, 21-25	9/8	Green Bay	L	17-25, 22-25, 20-25
8/31	North Dakota State	L	25-22, 23-25, 23-25, 22-25	9/17	at Western Illinois	W	25-19, 25-14, 20-25, 31-29	9/8	Indiana State	L	19-25, 25-20, 25-21, 19-25, 9-15
Marcia E. Hamilton Classic in St. Louis, Mo.											
9/4	#12 BYU	L	17-25, 11-25, 14-25	9/17	George Mason	W	25-19, 25-23, 31-29	9/15	Murray State	L	20-25, 25-23, 18-25, 16-25
9/5	Ark. Pine Bluff	W	25-16,25-12,25-11	9/17	George Washington	W	25-23, 29-27, 25-17	9/15	UNLV	L	22-25, 14-25, 16-25
9/5	#24 Purdue	L	23-25, 18-25, 25-23, 22-25	10/28	Dayton	L	18-25, 20-25, 22-25	9/21	at George Washington	L	21-25, 22-25, 20-25
9/8	Western Illinois	W	25-20,25-17,25-17	10/28	at Fordham	W	25-23, 24-26, 25-7, 25-19	9/22	at George Mason	L	17-25, 25-19, 20-25, 25-23, 9-15
Crimson-White Tournament in Tuscaloosa, Ala.											
9/11	vs. Virginia	W	22-25, 14-25, 25-19, 25-18, 15-9	11/11	at Davidson	W	25-16, 29-27, 25-14	9/28	VCU	L	21-25, 16-25, 22-25
2017											
Head Coach: Kent Miller Record: 13-15											
BYU Invitational in Provo, Utah											
9/11	at Alabama	W	19-25,24-26,25-20,25-21,17-15	8/25	at Brigham Young	L	12-25, 24-26, 20-25	10/26	Davidson	W	25-23, 25-21, 17-25, 25-13
9/12	vs. Troy	W	25-10,25-19,25-16	8/26	vs. Ohio State	L	16-25, 25-23, 17-25, 13-25	10/28	La Salle	L	11-25, 26-28, 27-25, 21-25
Billiken Invitational in St. Louis, Mo.											
9/18	Ark. Pine Bluff	W	25-10,25-10,25-15	8/26	vs. UTRGV	L	21-25, 26-28, 25-20, 16-25	11/2	at Duquesne	L	20-25, 25-22, 23-25, 20-25
9/18	North Dakota	W	21-25,25-18,25-19,25-12	9/1	Marcia E. Hamilton Classic in St. Louis, Mo.			11/9	Rhode Island	W	25-18, 25-20, 25-17
9/19	UT Martin	W	25-22, 28-26, 25-15	9/2	Illinois State	L	23-25, 19-25, 17-25	11/11	Fordham	W	26-28, 25-14, 25-20, 22-25, 15-9
9/19	USC Upstate	W	25-18,25-20,25-21	9/2	Irvine	L	19-25, 15-25, 25-19, 24-26	11/16	at Dayton	L	12-25, 16-25, 18-25
9/23	Missouri	W	25-16,25-22,25-19	9/2	Kennesaw State	L	21-25, 24-26, 20-25	10/26	at Davidson	W	25-15, 25-16, 25-17
9/25	at La Salle	W	23-25,25-21,25-12,25-19	9/8	Holiday Inn - University Plaza Invitational in Bowling Green, Ky.			10/26	VCU	L	26-24, 19-25, 17-25, 13-25
9/27	at Duquesne	W	20-25,25-18,25-18,25-21	9/8	vs. Pittsburgh	L	16-25, 23-25, 18-25	11/2	Dayton	L	25-22, 22-25, 20-25, 17-25
10/2	Rhode Island	W	21-25,21-25,26-24,25-22,17-15	9/8	vs. ETSU	L	26-24, 28-26, 19-25, 24-26, 11-15	11/9	Duquesne	W	25-17, 25-15, 25-19
10/4	Fordham	W	25-20,25-15,25-10	9/8	at Western Kentucky	L	18-25, 20-25, 20-25	11/16	La Salle	W	25-21, 25-20, 25-20
				9/12	at Western Illinois	W	25-27, 25-16, 25-19, 25-16	11/17	George Mason	W	26-24, 25-23, 25-22
								11/17	VCU	L	22-25, 15-25, 24-26

The Billikens rattled off a 15-game win streak in 2015, the longest such streak since the 2008 squad won 23 in a row.



2019

Head Coach: Kent Miller | Record: 17-12

Marica E. Hamilton Classic in St. Louis, Mo.

8/30	Middle Tennessee	W	25-22, 25-17, 21-25, 25-22
8/31	Southern Illinois	W	25-16, 21-25, 36-34, 25-18
8/31	Portland State	W	25-15, 25-21, 22-25, 25-21

Drake Invitational in Des Moines, Iowa

9/6	vs. Milwaukee	L	24-26, 25-16, 22-25, 18-25
9/7	vs. Eastern Washington	W	25-20, 25-19, 26-28, 25-20
9/7	at Drake	L	25-19, 22-25, 21-25, 23-25

Billiken Invitational in St. Louis, Mo.

9/13	Troy	W	21-25, 25-19, 25-23, 25-18
9/14	Marshall	L	21-25, 20-25, 21-25
9/14	UT Martin	W	27-25, 25-18, 25-17
9/17	SEMO	L	23-25, 25-18, 16-25, 25-23 12-15

Marquette Invitational in Milwaukee, Wis.

9/20	vs. Northern Iowa	L	23-25, 16-25, 22-25
9/21	at Marquette	L	13-25, 23-25, 19-25
9/21	vs. Green Bay	L	18-25, 17-25, 19-25
9/27	Dayton	L	18-25, 19-25, 24-26
10/4	Fordham	W	25-20, 25-22, 28-30, 24-26 15-11

10/6	Rhode Island	W	25-18, 25-17, 25-22
10/11	at George Washington	W	25-19, 25-19, 25-20
10/12	at George Mason	W	25-18, 25-17, 25-15
10/18	at Rhode Island	W	25-23, 25-23, 24-26, 22-25 15-12

10/19	at Fordham	W	23-25, 25-16, 25-19, 25-22
10/25	George Mason	W	23-25, 25-22, 26-24, 19-25 16-14

10/27	George Washington	W	25-17, 25-23, 25-23
11/01	at Dayton	L	25-17, 16-25, 19-25, 18-25
11/08	at Duquesne	W	25-17, 25-21, 25-23
11/10	at La Salle	L	14-25, 23-25, 25-19, 25-14 12-15

11/15	VCU	L	25-17, 25-22, 15-25, 10-25, 9-15
11/17	Davidson	W	23-25, 25-18, 22-25, 25-20 15-11

11/22	vs. Davidson	W	25-15, 25-16, 25-16
11/23	vs. Dayton	L	27-25, 23-25, 17-25, 26-24 17-19

2020-21

Head Coach: Kent Miller | Record: 8-10

1/31	at Western Kentucky	L	17-25, 24-26, 12-25
1/31	vs. Evansville	L	25-21, 23-25, 25-11, 22-25, 12-15

2/5	at VCU	L	22-25, 21-25, 25-18, 17-25
2/9	Butler	W	25-17, 25-23, 25-23
2/13	Dayton	W	25-16, 25-23, 24-26, 23-25, 15-11

2/13	Dayton	L	17-25, 16-25, 16-25
2/20	Davidson	W	25-14, 25-12, 25-16
2/20	Davidson	W	25-21, 25-15, 18-25, 25-20
2/21	Davidson	W	25-13, 25-20, 25-22
2/25	at Marquette	L	25-27, 25-22, 20-25, 18-25
2/26	vs. Iowa State	L	16-25, 16-25, 21-25
2/28	Duquesne	W	25-22, 26-24, 25-13
3/5	at Duquesne	W	24-26, 25-19, 25-15, 25-19
3/14	at Kansas State	L	19-25, 18-25, 22-25
3/19	VCU	L	22-25, 22-25, 23-25
3/20	VCU	W	24-26, 25-19, 22-25, 25-17, 15-13
3/26	at Dayton	L	20-25, 14-25, 11-25
3/27	at Dayton	L	11-25, 31-29, 25-19, 14-25, 9-15

2021

Head Coach: Kent Miller | Record: 18-12

Mizzou Invitational in Columbia, Mo.

8/27	at Missouri	W	25-20, 25-19, 25-23
8/27	vs. Creighton	L	15-25, 20-25, 16-25
8/28	vs. Kansas City	L	16-25, 25-20, 25-21, 22-25, 10-15

Billiken Invitational in St. Louis, Mo.

9/3	Arkansas State	L	25-27, 13-25, 25-21, 16-25
9/4	Ark.-Pine Bluff	W	25-20, 24-26, 25-17, 25-18
9/4	Murray State	W	31-29, 25-17, 21-25, 25-20
9/7	at Southern Illinois	W	25-17, 27-25, 25-19

Mary Jo Wynn Invitational in Springfield, Mo.

9/10	vs. Tulane	L	25-17, 23-25, 18-25, 18-25
9/11	vs. Louisiana-Monroe	W	25-21, 25-18, 25-18
9/12	at Missouri State	L	20-25, 18-25, 21-25

CEFCU Bradley Invitational in Peoria, Ill.

9/17	vs. Northern Colorado	L	25-14, 19-25, 25-15, 21-25 11-15
------	-----------------------	---	-------------------------------------

9/17	vs. North Dakota	W	25-10, 25-22, 25-21
9/18	at Bradley	W	25-21, 23-25, 25-19, 19-25 15-13

9/24	at Davidson	W	28-26, 16-25, 25-11, 25-15
9/26	at VCU	W	25-18, 25-16, 20-25, 20-25 15-13

10/1	Rhode Island	W	22-25, 25-18, 25-20, 26-24
10/2	Fordham	W	25-15, 25-20, 25-15
10/8	at Duquesne	W	25-23, 25-13, 25-14
10/10	at Dayton	L	15-25, 25-22, 21-25, 19-25

10/15	VCU	L	23-25, 11-25, 20-25
10/16	Davidson	L	25-22, 17-25, 25-27, 11-25
10/22	at George Washington	W	25-20, 25-21, 25-16
10/24	at George Mason	W	25-13, 25-16, 19-25, 25-15
10/29	George Mason	W	25-16, 25-21, 25-20
10/30	George Washington	W	25-20, 25-19, 25-16
11/5	at Fordham	W	25-20, 17-25, 25-21, 24-26 15-11

11/7	at Rhode Island	L	20-25, 25-21, 23-25, 14-25
11/12	Dayton	L	23-25, 18-25, 26-24, 14-25
11/13	Duquesne	W	22-25, 25-12, 23-25, 25-19 16-14

11/7	at Rhode Island	L	20-25, 25-21, 23-25, 14-25
11/12	Dayton	L	23-25, 18-25, 26-24, 14-25
11/13	Duquesne	W	22-25, 25-12, 23-25, 25-19 16-14

A-10 Championship in Pittsburgh, Pa.

11/19	vs. Fordham	L	25-14, 22-25, 22-25, 25-17 10-15
-------	-------------	---	-------------------------------------

2022

Head Coach: Kent Miller | Record: 18-13

Arkansas State Invitational in State University, Ark.

8/26	vs. Little Rock	W	25-23, 25-23, 25-14
8/26	at Arkansas State	W	28-26, 12-25, 20-25, 25-21, 15-11

8/27	vs. Mississippi Vally State	W	25-13, 25-9, 25-8
------	-----------------------------	---	-------------------

Billiken Invitational in St. Louis, Mo.

9/2	Youngstown State	W	25-17, 25-13, 25-19
9/3	St. Thomas	L	25-17, 21-25, 24-26, 25-13, 11-15
9/3	Central Michigan	L	16-25, 18-25, 19-25

DePaul Invitational in Chicago, Ill.

9/9	vs. Eastern Michigan	W	20-25, 25-22, 25-18, 24-26, 15-12
-----	----------------------	---	--------------------------------------

9/10	vs. Virginia Tech	W	20-25, 25-20, 25-9, 25-21
9/11	at DePaul	L	26-28, 25-23, 23-25, 16-25

Billiken Classic in St. Louis, Mo.

9/16	Missouri State	W	25-21, 25-22, 10-25, 25-11
9/17	Kansas City	W	25-23, 25-14, 22-25, 23-25, 17-15

9/17	Iowa State	L	25-13, 39-37, 14-25, 14-25, 7-15
------	------------	---	-------------------------------------

9/23	at Rhode Island	W	27-25, 20-25, 20-25, 25-23, 15-9
------	-----------------	---	-------------------------------------

9/24	at Rhode Island	W	20-25, 25-17, 13-25, 25-17, 15-9
------	-----------------	---	-------------------------------------

9/30	George Mason	W	25-17, 25-18, 25-10
10/1	George Mason	W	25-17, 25-23, 25-12
10/4	Loyola Chicago	L	23-25, 25-21, 15-25, 11-25
10/7	at George Washington	L	25-16, 25-14, 22-25, 10-25, 12-15

10/8	at George Washington	L	23-25, 21-25, 25-17, 23-25
10/14	Davidson	W	15-25, 25-20, 25-17, 25-12
10/15	Davidson	L	18-25, 19-25, 17-25
10/21	at VCU	L	25-20, 21-25, 22-25, 25-23, 10-15

10/22	at VCU	L	21-25, 26-28, 22-25
10/25	at Loyola Chicago	L	19-25, 25-22, 20-25, 17-25
10/28	Dayton	W	25-16, 25-21, 21-25, 25-23
10/29	Dayton	W	16-25, 28-26, 25-18, 25-22
11/4	at Fordham	W	25-16, 20-25, 25-22, 25-22
11/5	at Fordham	W	25-18, 25-16, 26-24
11/11	Duquesne	W	25-18, 25-21, 25-18
11/12	Duquesne	L	17-25, 26-28, 25-22, 24-26
11/18	George Washington	L	19-25, 25-23, 25-27, 17-25





BILLIKENS VS. RANKED FOES (4-36)

Date	SLU	Ranking	Opponent	Location	Result
2/25/21	--	#24	Marquette	Marquette, Wis.	L, 3-0
1/31/21	--	#24	Western Kentucky	Bowling Green, Ky.	L, 3-0
9/21/19	--	#8	Marquette	Milwaukee, Wis.	L, 3-0
8/25/17	--	#21	Ohio State	Provo, Utah	L, 3-1
8/25/17	--	#10	Brigham Young	Provo, Utah	L, 3-0
9/3/16	--	#19	Western Kentucky	St. Louis, Mo.	L, 3-0
9/5/15	--	#24	Purdue	St. Louis, Mo.	L, 3-1
9/4/15	--	#12	BYU	St. Louis, Mo.	L, 3-0
9/19/14	--	#11	Purdue	West Lafayette	W, 3-2
8/31/13	--	#10	Nebraska	St. Louis, Mo.	L, 3-0
11/21/12	--	#20	Kansas	Lawrence, Kan.	L, 3-0
10/19/12	--	#18	Dayton	Dayton, Ohio	L, 3-0
9/22/12	--	#22	Dayton	Dayton, Ohio	L, 3-0
8/24/12	--	#4	Nebraska	Lincoln, Neb.	L, 3-0
9/10/11	--	#15	Northern	Cedar Falls, Iowa	L, 3-0
9/9/11	--	#6	Minnesota	Cedar Falls, Iowa	L, 3-0
11/14/10	--	#17	Dayton	Dayton, Ohio	L, 0-3
9/24/10	--	#19	Dayton	Chaifetz Arena	L, 2-3
9/12/09	16	#14	Illinois	Champaign, Ill.	L, 3-1
9/6/09	19	#2	Texas	Honolulu, Hawai'i	L, 3-0
9/5/09	19	#10	California	Honolulu, Hawai'i	W, 3-0
9/3/09	19	#4	Hawai'i	Honolulu, Hawai'i	L, 3-1
8/29/09	20	#1	Penn State	Chaifetz Arena	L, 3-0
12/5/08	21	#19	Michigan	Lexington, Ky.	L, 3-2
9/20/08	--	#1	Penn State	University Park, Pa.	L, 3-0
9/12/08	--	#15	Purdue	Salt Lake City, Utah	L, 3-1
9/6/08	--	#3	Stanford	Chaifetz Arena	W, 3-1
9/5/08	--	#19	Illinois	Chaifetz Arena	L, 3-1
10/28/07	--	#17	Dayton	West Pine Gym	L, 3-1
9/21/07	--	#18	Dayton	Dayton, Ohio	L, 3-2
8/25/07	--	#23	LSU	Baton Rouge, La.	L, 3-2
11/30/06	--	#23	Purdue West	Lafayette, Ind.	L, 3-0
9/1/06	--	#22	Minnesota	West Pine Gym	L, 3-1
11/2/05	--	#5	Notre Dame	South Bend, Ind.	L, 3-0
10/23/04	--	#21	Louisville	Louisville, Ky.	L, 3-0
11/1/03	--	#24	Louisville	West Pine Gym	L, 3-1
9/13/03	--	#22	LMU	Pullman, Wash.	L, 3-0
10/24/01	--	#20	Notre Dame	West Pine Gym	W, 3-1
9/8/01	--	#3	Wisconsin	Madison, Wis.	L, 3-1
11/7/00	--	#21	Notre Dame	South Bend, Ind.	L, 3-0
11/26/99	--	#24	Arkansas	Houston, Texas	L, 3-0
11/13/98	--	#23	Louisville	West Pine Gym	L, 3-1
10/10/98	--	#16	Louisville	Louisville, Ky.	L, 3-0
11/23/96	--	#23	South Florida	Louisville, Ky.	L, 3-0
10/27/96	--	#17	Louisville	Louisville, Ky.	L, 3-0





SERIES HISTORY

Opponent	Record	Last Meeting	Last SLU Win	Opponent	Record	Last Meeting	Last SLU Win
Air Force	1-0	9/13/14	9/13/14	Illinois-Chicago	4-3	10/9/10	10/9/10
Akron	1-0	11/2/85	11/2/85	Illinois State	3-6	9/1/17	8/31/16
Alabama	4-2	9/11/15	9/11/15	Illinois Wesleyan	1-0	10/9/82	10/9/82
Alabama A&M	1-0	12/4/08	12/4/08	Indiana	2-3	9/4/04	9/4/04
American	1-0	11/13/92	11/13/92	Indiana State	10-9	2/26/21	10/14/14
Arizona State	0-1	9/8/00	--	Iowa	1-2	8/27/11	8/27/11
Arkansas	1-4	9/21/13	10/11/05	Iowa State	2-3	9/17/22	10/81
Arkansas State	7-11	8/26/22	8/26/22	IPFW	1-1	8/28/10	10/29/05
Auburn	0-1	8/30/13	--	IUPUI	2-2	9/7/13	9/8/07
Austin Peay	12-2	9/13/16	9/13/16	Jacksonville	1-0	9/17/94	9/17/94
Ball State	0-2	11/26/11	--	Jacksonville State	0-1	9/15/06	--
Baylor	1-1	11/14/92	9/80	Jefferson College	5-1	11/7/86	11/4/83
Boise State	0-1	9/15/95	--	Johnson County CC	1-0	1979	1979
Boston College	1-0	9/4/93	9/4/93	Kenesaw State	0-1	9/2/17	--
Bradley	12-10	9/18/21	9/18/21	Kansas	3-9	11/21/12	9/19/98
Butler	7-15	2/9/21	2/9/21	Kansas State	0-8	3/14/21	--
BYU	0-3	8/25/17	--	Kentucky	1-0	10/25/75	10/25/75
California	1-0	9/5/09	9/5/09	Lamar	0-2	9/25/93	--
Cal Poly	0-1	9/3/17	--	La Salle	18-2	11/10/19	11/11/18
Canisius	1-0	9/13/14	9/13/14	Lewis	0-1	10/22/83	--
Central Michigan	1-3	9/3/22	9/7/18	Lindenwood	1-0	10/14/75	10/14/75
Central Missouri	2-9	9/17/87	9/30/83	Lipscomb	1-0	9/17/10	9/17/10
College of Charleston	0-1	9/11/04	--	Louisiana-Monroe	5-0	9/11/21	9/11/21
Charlotte	20-7	10/14/12	10/14/12	Louisiana Tech	2-0	9/16/17	9/16/17
Chicago State	1-0	10/31/93	10/31/93	Louisville	7-14	10/23/04	11/1/02
Cincinnati	5-25	8/25/18	10/24/04	Loyola Chicago	6-13	10/25/22	9/16/06
Clemson	1-1	9/5/98	9/5/98	Loyola Marymount	0-2	9/13/03	--
Colorado	0-1	9/6/02	--	LSU	0-3	8/25/07	--
Colorado State	0-1	9/6/91	--	Marquette	20-16	2/25/21	8/26/11
Connecticut	2-0	11/28/08	11/28/08	Marshall	2-1	9/14/19	9/18/10
Creighton	3-3	8/27/21	11/10/09	Maryville	4-0	9/4/87	9/4/87
Davidson	14-4	10/15/22	10/14/22	McKendree	5-2	10/8/87	10/8/87
Dayton	19-40	10/29/22	10/29/22	Memphis	13-13	8/29/14	9/28/01
Delaware	1-1	9/15/12	9/1/01	Meramec	5-2	9/29/83	9/29/83
DePaul	16-18	9/10/22	10/29/04	Miami (Ohio)	5-4	8/24/18	9/16/11
Drake	2-3	9/7/19	9/14/07	Michigan	0-2	8/26/16	--
Drexel	1-0	9/5/97	9/5/97	Middle Tennessee State	5-4	8/30/19	8/30/19
Duquesne	25-7	11/12/22	11/11/22	Millikin	1-0	9/16/83	9/16/83
East Carolina	4-0	10/16/04	10/16/04	Milwaukee	0-1	9/6/19	--
East Tennessee State	1-1	9/9/17	9/12/97	Minnesota	0-3	9/9/11	--
Eastern Illinois	14-10	9/6/14	9/6/14	Mississippi	1-3	9/22/89	9/30/83
Eastern Kentucky	2-0	8/26/06	8/26/06	Mississippi State	2-1	9/13/02	9/13/02
Eastern Michigan	2-1	9/9/22	9/9/22	Mississippi Valley State	1-0	8/27/22	8/27/22
Eastern Washington	1-0	9/7/19	9/7/19	Missouri	11-15	8/27/21	8/27/21
Emporia State	1-0	1980	1980	Missouri Baptist	2-1	9/5/86	10/2/82
Eureka	1-0	9/25/76	9/25/76	Missouri S&T	1-0	1977	1977
Evansville	17-6	1/31/21	9/7/12	Missouri State	3-21	9/16/22	9/16/22
Fairfield	1-0	9/25/04	9/25/04	Montana	1-0	9/1/07	9/1/07
Florida	0-1	1984	--	Montana State	1-0	9/7/13	9/7/13
Florida Atlantic	1-0	9/17/94	9/17/94	Montevallo	0-1	1984	--
Florida International	1-0	9/16/94	9/16/94	Morehead St.	2-0	9/20/14	9/20/14
Florida State	1-0	1980	1980	Murray State	8-8	9/4/21	9/4/21
Florissant Valley	6-3	9/21/82	9/21/82	Nebraska	0-3	8/31/13	--
Fontbonne	0-1	10/21/75	--	New Hampshire	2-0	9/19/08	9/19/08
Fordham	26-2	11/5/22	11/5/22	New Mexico	1-0	9/13/03	9/13/03
Forest Park CC	1-0	9/25/81	9/25/81	New Orleans	1-1	8/25/07	8/25/07
Franklin	2-0	9/30/88	9/30/88	Nicholls State	3-0	9/20/96	9/20/96
Fresno State	1-0	12/2/95	12/2/95	North Carolina	0-1	9/17/11	--
Furman	1-0	9/16/00	9/16/00	North Dakota	2-0	9/17/21	9/17/21
George Mason	15-1	10/1/22	10/1/22	North Dakota State	0-1	8/31/15	--
George Washington	19-11	11/18/22	10/30/21	North Texas	2-1	9/18/04	9/18/04
Georgia	0-1	9/16/00	--	Northeastern Illinois	3-2	8/27/16	10/4/92
Georgia Southern	1-0	9/5/98	9/5/98	Northern Colorado	0-1	9/17/21	--
Georgia State	1-0	10/6/91	10/6/91	Northern Illinois	1-4	8/26/06	8/26/06
Green Bay	0-2	9/21/19	--	Northern Iowa	2-7	9/20/19	9/30/08
Harris-Stowe State	2-0	9/4/87	9/4/87	Northwest Mo. State	2-0	11/5/76	11/5/76
Hawai'i	0-1	9/3/09	--	Northwestern	0-2	9/14/12	--
Houston	4-7	11/11/04	11/11/04	Northwestern State	1-0	9/20/96	9/20/96
Illinois	0-3	9/17/16	--	Notre Dame	4-10	9/19/14	10/24/01
Illinois Central	3-0	10/8/83	10/8/83	Oakland	2-0	9/16/06	9/16/06





SERIES HISTORY

Opponent	Record	Last Meeting	Last SLU Win
Ohio State	0-1	8/25/17	--
Oklahoma	0-1	9/11/10	9/11/10
Omaha	4-0	9/17/16	9/17/16
Oral Roberts	1-3	10/29/94	9/87
Oregon State	1-0	9/3/04	9/3/04
Pacific	0-1	9/3/05	--
Penn State	0-2	8/29/09	--
Pittsburgh	2-1	9/8/17	11/9/07
Portland	0-1	9/15/95	--
Portland State	1-0	8/31/19	8/31/19
Prairie View A&M	1-0	9/25/93	9/25/93
Principia	3-0	10/1/83	10/1/83
Providence	1-0	8/30/02	8/30/02
Purdue	2-6	9/5/15	9/19/14
Quincy	6-2	9/2/89	9/2/89
Rhode Island	25-6	9/24/22	9/24/22
Rockhurst	1-0	1979	1979
Rosary	1-0	9/9/88	9/9/88
Sacramento State	0-1	9/9/00	--
Saint Mary's (Calif.)	0-1	9/4/93	--
Samford	1-0	9/9/94	9/9/94
San Francisco	1-0	9/19/98	9/19/98
Santa Clara	0-1	8/25/12	--
SEMO	23-16	9/17/19	8/28/15
SIU Edwardsville	2-1	9/18/09	9/18/09
South Alabama	1-0	9/1/12	9/1/12
South Florida	2-14	9/8/12	11/20/04
Southern	1-0	10/29/89	10/29/89
Southern Illinois	5-9	9/7/21	9/7/21
Southern Indiana	1-0	11/7/87	11/7/87
Southern Miss	8-2	10/9/04	10/9/04
Southwest Baptist	2-1	1977	10/77
St. Francis (Ill.)	1-0	9/10/93	9/10/93
St. Thomas	0-1	9/3/22	--
Stanford	1-0	9/6/08	9/6/08
Stephen F. Austin	5-0	8/30/08	8/30/08
Stevens College	1-0	1976	1976
SWIC	1-0	10/18/83	10/18/83
TCU	2-3	11/13/04	10/11/02
Temple	10-2	11/2/12	10/30/11
Tennessee	2-0	9/16/95	9/16/95
Tennessee State	1-0	9/14/91	9/14/91
Texas A&M	0-1	9/2/06	--
Texas A&M-Commerce	0-1	9/28/85	--
Texas Lutheran	0-1	1980	--
Texas-Pan American	3-0	9/10/99	9/10/99
Texas-San Antonio	0-1	9/24/93	--
Texas State	1-0	9/8/00	9/8/00
Opponent	Record	Last Meeting	Last SLU Win
Texas	0-1	9/6/09	--
Three Rivers CC	1-0	9/18/76	9/18/76
Toledo	1-2	9/19/09	9/19/09
Troy	2-0	9/13/19	9/13/19
Truman State	7-1	10/26/85	10/26/85
Tulane	8-5	9/10/21	9/29/02
Tulsa	9-6	9/17/11	8/28/10
UAB	12-8	11/6/04	11/6/04
UALR	7-1	8/26/22	8/26/22
UAPB	3-0	9/4/21	9/4/21
UC Davis	1-0	9/19/09	9/19/09
UC Irvine	0-1	9/2/17	--
UC Santa Barbara	0-1	8/25/18	--
UMKC	13-4	9/17/22	9/17/22
UMSL	8-16	9/9/90	9/9/90
UNLV	1-1	9/15/18	9/27/96
USC Upstate	1-0	9/19/15	9/19/15
Utah	1-1	9/11/10	9/11/10
Utah State	1-0	9/13/08	9/13/08
UTEP	5-1	9/5/14	9/5/14
UT Martin	7-0	9/14/19	9/14/19

Opponent	Record	Last Meeting	Last SLU Win
UTRGV	0-1	8/26/17	--
Valparaiso	8-4	8/31/12	8/31/12
VCU	5-15	10/22/22	9/26/21
Virginia	3-0	9/9/16	9/9/16
Virginia Tech	2-0	9/10/22	9/10/22
Wake Forest	1-0	9/4/10	9/4/10
Washington University	5-3	9/2/91	9/1/90
Washington State	1-1	9/17/05	9/12/03
Western Illinois	16-9	9/12/17	9/12/17
Western Kentucky	5-6	1/31/21	9/11/98
Western Michigan	2-1	9/14/12	9/14/07
Wichita State	3-9	12/4/09	11/9/89
William & Mary	3-0	9/6/08	9/6/08
William Woods	3-0	1980	1980
Wisconsin	0-3	9/8/01	--
Wisconsin-Green Bay	8-0	9/14/02	9/14/02
Wisconsin-Milwaukee	3-3	8/27/10	9/2/94
Wright State	2-1	9/9/94	9/9/94
Xavier	19-16	10/20/12	9/26/10
Yale	1-0	9/20/08	9/20/08
Youngstown State	1-1	9/2/22	9/2/22





SEASON-BY-SEASON COACHING

Year	Head Coach	Ovr. Record	Pct.	Conf. Record	Pct.	Finish	Postseason
2022	Kent Miller	18-13	.581	10-8	.557	5th	
2021	Kent Miller	18-12	.688	11-5	.688	3rd	--
2020-21	Kent Miller	8-10	.444	6-4	.600	6th	--
2019	Kent Miller	17-12	.586	10-4	.714	3rd	--
2018	Kent Miller	8-20	.286	6-8	.429	6th	--
2017	Kent Miller	13-15	.464	10-4	.714	3rd	--
2016	Kent Miller	18-14	.563	11-3	.786	3rd	--
2015	Kent Miller	22-10	.688	10-4	.714	3rd	--
2014	Kent Miller	21-10	.677	9-5	.643	3rd	--
2013	Kent Miller	13-17	.433	9-5	.643	4th	--
2012	Kent Miller	10-20	.333	4-10	.286	10th	--
2011	Kent Miller	15-13	.536	10-5	.667	3rd	--
2010	Anne Kordes	19-13	.594	11-4	.733	3rd	--
2009	Anne Kordes	24-8	.750	14-1	.933	T-1st	NCAA First Round
2008	Anne Kordes	29-5	.853	13-0	1.000	1st West	NCAA Second Round
2007	Anne Kordes	23-7	.767	10-3	.769	3rd West	--
2006	Anne Kordes	22-9	.710	11-2	.846	T-1st West	NCAA First Round
2005	Anne Kordes	14-16	.467	6-7	.462	3rd West	--
2004	Anne Kordes	15-17	.469	6-7	.462	T-6th	--
2003	Marilyn Nolen	9-22	.290	2-11	.154	12th	--
2002	Marilyn Nolen	21-10	.667	10-3	.769	4th	--
2001	Marilyn Nolen	13-14	.481	8-8	.500	7th	--
2000	Marilyn Nolen	13-18	.419	6-10	.375	T-5th American	--
1999	Marilyn Nolen	23-10	.697	9-7	.563	T-4th American	--
1998	Marilyn Nolen	21-7	.750	11-5	.688	3rd American	--
1997	Marilyn Nolen	18-17	.514	7-9	.438	3rd American	--
1996	Marilyn Nolen	24-13	.649	9-5	.643	2nd Blue	--
1995	Marilyn Nolen	29-10	.744	10-2	.833	1st Blue	NIT Participant
1994	Marilyn Nolen	19-19	.500	4-8	.333	T-4th	--
1993	Sue Kelly	10-22	.313	1-11	.083	--	--
1992	Sue Kelly	10-22	.313	2-8	.200	--	--
1991	Sue Kelly	12-19	.387	0-5	.000	6th	--
1990	Katie Weismiller	22-10	.688	5-2	.714	3rd	--
1989	Katie Weismiller	28-14	.667	5-1	.833	1st	--
1988	Janet Baier-Howes	31-10	.756	5-2	.714	1st	--
1987	Janet Baier-Howes	20-12	.625	3-1	.750	3rd	--
1986	Janet Baier-Howes	1-32	.030	--	--	--	--
1985	Suzanna Tillotson	8-22	.267	--	--	--	--
1984	Suzanna Tillotson	8-24	.250	--	--	--	--
1983	Suzanna Tillotson	31-17	.646	--	--	--	--
1982	Suzanna Tillotson	23-3	.885	7-1	.875	--	--
1981	Dan Liszewski	18-29	.383	--	--	--	--
1980	Kathleen Kingston	31-10	.756	5-1	.833	--	--
1979	Kathleen Kingston	18-21	.462	--	--	--	--
1978	Margaret Reich	18-14	.563	--	--	--	--
1977	Margaret Reich	14-20	.412	--	--	--	--
1976	Margaret Reich	20-11	.645	--	--	--	--
1975	Margaret Reich	31-9	.775	--	--	--	--
Totals	Ten Coaches	799-637	.556	Conference Information Incomplete		3 NCAA appearances	

COACHING RECORDS

Coach	Seasons	Years	W	L	Pct.
Kent Miller	2011-pres.	12	181	166	.521
Anne Kordes	2004-2010	7	146	75	.661
Marilyn Nolen	1994-2003	10	190	140	.576
Sue Kelly	1991-93	3	32	63	.337
Katie Weismiller	1989-90	2	50	24	.676
Janet Baier-Howes	1986-88	3	52	54	.491
Suzanna Tillotson	1982-85	4	70	66	.515
Dan Liszewski	1981	1	18	29	.383
Kathleen Kingston	1979-80	2	49	31	.613
Margaret Reich	1975-78	4	83	54	.606
Ten Coaches	1975-pres.	40	768	610	.557

SLU'S CONFERENCE MEMBERSHIP

Conference	Years	Record	Pct.
Atlantic 10 Conference	2005-present	177-95	.651
Conference USA	1995-2004	78-67	.538
Great Midwest Conference	1991-94	7-32	.179
Midwestern Collegiate Conference	1986-90	--	--
North Star Conference	--	--	--
Complete conference information prior to 1991 unavailables			



