



SAINT LOUIS BILLIKENS GAME NOTES

SLU (18-8, 9-4) at Davidson (21-4, 11-2)
Saturday, Feb. 19, 2022
Davidson, N.C. (Belk Arena // 5,295)

TV



Chick Hernandez
Dan Bonner

RADIO



Bob Ramsey
Earl Austin Jr.

SLU Record	18-8
A-10	9-4
Home	12-4
Away	4-3
Neutral	2-0
Nonconference	9-4

October

Tue. 26	Rockhurst (exh.)	W, 84-42
Sun. 31	Lindenwood (exh.)	W, 89-66

November

Tue. 9	Central Arkansas	W, 96-61
Wed. 10	Harris-Stowe	W, 127-54
Fri. 12	Eastern Illinois	W, 86-44
Tue. 16	at #11 Memphis	L, 74-90
Sat. 20	Mercer^	W, 75-58
Tue. 23	vs. Illinois State^	W, 82-76
Wed. 24	vs. Stephen F. Austin^	W, 79-68
Tue. 30	at Boise State	W, 86-82 (OT)

December

Sat. 4	UAB	L, 72-77
Tue. 7	Belmont	L, 59-64
Sat. 11	Boston College	W, 79-68
Sat. 18	#13 Auburn	L, 70-74
Wed. 22	vs. Drake~	Canceled

January

Sun. 2	Richmond*	W, 76-69
Sat. 8	Iona	W, 68-67
Tue. 11	at Dayton*	L, 63-68
Sat. 15	Fordham*	W, 63-45
Thu. 20	at UMass*	L, 85-91
Sun. 23	UMass*	W, 90-59
Wed. 26	George Washington*	W, 80-67
Sat. 29	at Duquesne*	W, 77-53

February

Wed. 2	at George Mason*	W, 92-90 (2OT)
Sat. 5	Dayton*	W, 72-61
Tue. 8	at La Salle*	W, 75-57
Fri. 11	St. Bonaventure*	L, 61-68
Mon. 14	at St. Bona*	L, 79-83
Wed. 16	La Salle*	W, 90-64
Sat. 19	at Davidson* (CBSSN)	2:30pm
Tue. 22	Saint Joseph's* (BSMW)	7pm
Fri. 25	at Richmond* (ESPN2)	6pm

March

Wed. 2	at Rhode Island* (ESPN+)	6pm
Sat. 5	VCU* (ESPN2)	3pm

^ Cancun Challenge | ~ Las Vegas, Nev. | * A-10 game

"THE JOURNEY IS THE REWARD"



Saint Louis Billikens

Head Coach: Travis Ford (Kentucky, 1994)
 Ford's record at SLU: 107-73 (6th year)
 Ford's career record: 443-339 (25th year)



Davidson Wildcats

Head Coach: Bob McKillop (Hofstra, 1972)
 McKillop's record at DAV: 628-380 (33rd year)
 McKillop's career record: 628-380 (33rd year)

NOTABLES

- Saint Louis takes on the first-place Davidson Wildcats Saturday afternoon in a showdown at Belk Arena.
- The Billikens shot 64.3 percent from the field in their win against La Salle on Wednesday night, SLU's best shooting mark ever in an A-10 game. Additionally, the Bills shot 62.5 percent from 3-point range, the best shooting performance in an A-10 game since they hit 66.7 percent from the arc in the 2016-17 season.
- Davidson leads the all-time series 6-2. SLU's last win in the series was a victory in the 2019 A-10 Men's Basketball Championship semifinals. SLU ended up winning the conference tourney that year. The Bills have never won at Belk Arena (0-3).
- **Yuri Collins** leads the NCAA in total assists (217) and assists per game (8.3). He is on pace to shatter the single-season school record of 235 assists, held by Jim Roder (1986-87).
- Collins' 55 steals are 14th in the NCAA (second to Jacob Gilyard in the A-10) and is ninth all-time in a single season at SLU.
- SLU is the only team in the NCAA to feature two players with 500+ career assists – **DeAndre Jones** (520) and **Yuri Collins** (504).
- **Fred Thatch Jr.** is coming off a career-high 21 points in the win against La Salle. He was 8-11 from the field and 2-2 from 3.
- **Francis Okoro** leads the A-10 in field goal percentage (.637) in conference games only. Okoro leads the Billikens with 7.4 rpg and is third on the team with 10.3 ppg.
- **Jordan Nesbitt** is coming off consecutive double-digit scoring games with 18 at St. Bonaventure and 16 against La Salle. He is 8-12 (.667) from 3-point range in the two games.
- **Gibson Jimerson**, SLU's leading scorer at 16.6 ppg, was named to the CoSIDA Academic All-District Team on Thursday. He now becomes eligible for Academic All-America honors.

ROTATION

LAST GAME STARTERS

No.	Name	Pos.	Ht	Wt	Yr.-Exp.	Hometown	GP-GS	PPG	RPG	MPG
1	Yuri Collins	G	6-0	185	So.-2L	St. Louis, Mo.	26-26	11.2	4.1	32.7
5	Francis Okoro	F	6-9	235	Jr.-2L	Imo, Nigeria	26-14	10.3	7.4	22.4
15	Jordan Nesbitt	G	6-6	200	Fr.-1L	St. Louis, Mo.	26-25	9.5	4.5	26.3
20	Fred Thatch Jr.	G	6-3	215	R-So.-3L	Sikeston, Mo.	25-10	8.6	5.2	23.6
24	Gibson Jimerson	G	6-5	200	R-Fr.-2L	Richmond, Va.	26-26	16.6	2.3	33.3

RESERVES

2	Markhi Strickland	G/F	6-5	210	Fr.-1L	Miami, Fla.	12-1	2.6	0.8	5.2
11	Rashad Williams	G	6-2	185	Jr.-3L	Detroit, Mich.	16-0	2.4	0.5	8.8
12	Marten Linssen	F	6-8	240	Jr.-3L	Dusseldorf, Germany	22-12	8.1	3.8	15.5
13	Andre Lorentsson	F	6-8	215	Fr.-1L	Gothenburg, Sweden	7-0	1.7	0.7	5.9
22	Terrence Hargrove Jr.	F	6-4	215	So.-2L	East St. Louis, Ill.	26-16	7.4	4.6	23.3
23	Lassina Traore	F	6-9	215	Fr.-1st yr	Abidjan, Ivory Coast	18-0	2.6	2.9	8.1
30	Brandon Courtney	G	6-3	200	Jr.-3L	Trenton, Ill.	5-0	1.6	0.7	3.2
55	DeAndre Jones	G	5-11	160	Sr.-4L	Boise, Idaho	25-0	3.8	1.6	14.0

BY THE NUMBERS

SLU		DAV
18-8.....	Record	21-4
9-4.....	A-10 Record	11-2
W1.....	Streak.....	W1
3-2.....	Last 5	4-1
7-3.....	Last 10	8-2
51.....	KenPom (thru 2/16).....	67
56.....	NCAA Net (thru 2/16).....	60
79.1.....	Scoring Offense.....	76.2
67.6.....	Scoring Defense.....	67.4
+11.5.....	Scoring Margin	+8.9
.466.....	FG Percentage486
.415.....	Opponent FG Percentage.....	.426
.373.....	3FG Percentage383
.309.....	Opponent 3FG Percentage344
7.0.....	3FG Made Per Game	8.8
.773.....	FT Percentage.....	.774
15.6.....	FTs Made Per Game	13.3
39.5.....	Rebounds Per Game	33.8
+7.4.....	Rebounding Margin	+3.0
15.3.....	Assists Per Game	14.8
13.1.....	Turnovers Per Game.....	10.1
+0.1.....	Turnover Margin	+1.1
7.0.....	Steals Per Game.....	5.0
3.4.....	Blocks Per Game	2.5

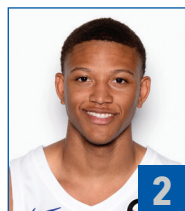
SERIES HISTORY

Overall	Davidson leads 6-2
at Davidson	Davidson leads 3-0
at SLU	Davidson leads 2-1
at Chaifetz Arena	Davidson leads 2-1
Neutral Court	Series tied 1-1
In A-10 Games	Davidson leads 1-5
Streak	Davidson, won 1
Last 5	Davidson leads 4-1
Last 10	N/A
Last Meeting	L, 59-71 (1/22/20-a)
Last SLU Win	.67-44 (3/16/19-n)
First Meeting	L, 54-89 (1/10/15-a)

2021-22 Saint Louis Billikens



**Yuri
Collins**



**Markhi
Strickland**



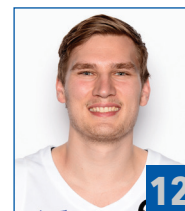
**Javonte
Perkins**



**Francis
Okoro**



**Rashad
Williams**



**Marten
Linssen**



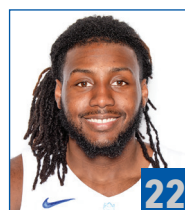
**Andre
Lorentsson**



**Jordan
Nesbitt**



**Fred
Thatch Jr.**



**Terrence
Hargrove Jr.**



**Lassina
Traore**



**Gibson
Jimerson**



**Brandon
Courtney**



**DeAndre
Jones**

NUMERICAL ROSTER

NO.	NAME	POS.	HT.	WT.	YR.-EXP	HOMETOWN (PREVIOUS SCHOOLS)
1	Yuri Collins	G	6-0	185	So.-2L	St. Louis, Mo. (St. Mary's)
2	Markhi Strickland	G/F	6-5	210	Fr.-1L	Miami, Fla. (Victory Rock Prep)
3	Javonte Perkins	G/F	6-6	215	Sr.-2L	St. Louis, Mo. (Miller Career Academy/SWIC)
5	Francis Okoro	F	6-9	235	Jr.-2L	Imo, Nigeria (Normal West/Oregon)
11	Rashad Williams	G	6-2	185	Jr.-3L	Detroit, Mich. (Wayne Mem./Oakland/Cleveland State)
12	Marten Linssen	F	6-8	240	Jr.-3L	Dusseldorf, Germany (Schloss-Gymnasium Benrath/ UNC Wilmington/Valparaiso)
13	Andre Lorentsson	F	6-8	215	Fr.-1L	Gothenburg, Sweden (RIG Mark Kinna)
15	Jordan Nesbitt	G	6-6	200	Fr.-1L	St. Louis, Mo. (St. Louis Christian Academy/Memphis)
20	Fred Thatch Jr.	G	6-3	215	R-So.-3L	Sikeston, Mo. (Sikeston)
22	Terrence Hargrove Jr.	F	6-4	215	So.-2L	East St. Louis, Ill. (East St. Louis)
23	Lassina Traore	F	6-9	215	Fr.-1st yr.	Abidjan, Ivory Coast (Victory Rock Prep)
24	Gibson Jimerson	G	6-5	200	R-Fr.-2L	Richmond, Va. (Montverde Academy)
30	Brandon Courtney	G	6-3	200	Jr.-2L	Trenton, Ill. (Wesclin)
55	DeAndre Jones	G	5-11	160	Sr.-4L	Boise, Idaho (Borah/Central Arkansas)

ALPHABETICAL

1	Yuri Collins
30	Brandon Courtney
22	Terrence Hargrove Jr.
24	Gibson Jimerson
55	DeAndre Jones
12	Marten Linssen
13	Andre Lorentsson
15	Jordan Nesbitt
5	Francis Okoro
3	Javonte Perkins
2	Markhi Strickland
20	Fred Thatch Jr.
23	Lassina Traore
11	Rashad Williams

SAINT LOUIS STAFF

Name	Position // Year at SLU	Alma Mater // Year
Travis Ford	Head Coach // 6th	Kentucky // 1994
Corey Tate	Assoc. Head Coach // 6th	Missouri // 1997
Ray Giacoletti	Assistant Coach // 2nd as asst. coach	Minot State // 1985
Phil Forte	Assistant Coach // 1st as asst. coach	Oklahoma State // 2017
Michael Wilson	Director of Operations // 6th	TCU // 2015
Christian Nunez	Director of Player Development // 3rd	Farmingdale State // 2013
Brad Lewis	Video & Analytics Coordinator // 1st	Oklahoma State // 2018
Thomas Dziagwa	Graduate Student Manager // 1st	Oklahoma State // 2020
Davell Roby	Graduate Student Manager // 1st	Saint Louis // 2018

NOTE

SLU elected to **NOT** advance athletic eligibility this season, as the 2020-21 season did not count against a player's eligibility. The "YR." listed on the roster helps represent eligibility remaining (including this year).
Fr.=four years remaining; So.=three years remaining; Jr.=two years remaining; Sr.=final year of eligibility.

PRONUNCIATIONS

#2 Markhi Strickland - **Mark-eye**
#12 Marten Linssen - **Martin LINN-sin**
#15 Jordan Nesbitt - **Nezz-bit**
#23 Lassina Traore - **Luh-see-nah Tray-ore-ee**
Ray Giacoletti - **Jack-ah-lett-e**
Phil Forte - **Four-tay**

Scan the QR
code for an audio
pronunciation guide



Audio: bit.ly/3oa3W2c

BILLIKENS, WILDCATS SET FOR SHOWDOWN AT BELK ARENA

► Saint Louis heads to Davidson, North Carolina, to face the first-place Davidson Wildcats Saturday afternoon at Belk Arena.

FOLLOWING THE ACTION

- Saturday's game will be nationally televised on CBS Sports Network, with **Chick Hernandez** and **Dan Bonner** calling the action.
- The radio broadcast will air on KMOX 1120 AM. Billiken Hall of Famers and longtime SLU men's basketball radio partners **Bob Ramsey** and **Earl Austin Jr.** are on the call, as usual. Ramsey is in his 36th season calling Billiken hoops, while Austin is in his 31st year.

A WIN WOULD...

- ...push the Billikens' record to 19-8 overall and 10-4 in A-10 play.
- ...be the first for the Billikens at Belk Arena.
- ...mark SLU's fourth win on the road in A-10 play, the most since the 2013-14 season.

A-10 RACE

- The Billikens enter the weekend in fourth place in the Atlantic 10 Conference standings.
- SLU is vying for a top-four finish in the conference standings at the end of the year, which would result in a double-bye in the A-10 Men's Basketball Championship.
- Davidson is in first-place in the conference standings with an 11-2 record.

LAST TIME OUT

- **Fred Thatch Jr.** scored a career- and game-high 21 points, and Saint Louis led the entire way en route to a 90-64 victory over La Salle Wednesday night at Chaifetz Arena.
- Thatch's 8-of-11 shooting effort included 2-of-2 from 3-point range, totals that helped SLU register season highs of 64.3 percent (36-of-56) overall and 62.5 percent (10-of-16) from 3-point range.
- **Jordan Nesbitt** (6-of-10 overall, 3-of-5 from the arc) tallied all 16 of his points in the first half to help drive the Billikens to a 19-point edge at the break. **Terrence Hargrove Jr.** (5-of-8, 2-of-3 from deep) finished with 13 points, while **Gibson Jimerson** (5-of-9, 2-of-4) chipped in 12.
- The Billikens out-rebounded the Explorers 40-21, led by Thatch's game-high seven boards and six apiece from **Francis Okoro** and **Marten Linssen**. **Yuri Collins** collected a game-high six assists, including the 500th of his career, and **DeAndre Jones** had four helpers.

JIMERSON UP FOR ACADEMIC ALL-AMERICAN

- **Gibson Jimerson**, who maintains a GPA above 3.9 as a third-year international business major, was named to the CoSIDA Academic All-District Team on Feb. 17. He is now eligible for the NCAA Division I Academic All-America Team, which is voted upon by members of CoSIDA and announced on March 14.
- He is vying to become the 7th Academic All-American in school history: John Kilo (1967), Rich Niemann (1968), Ted Mimitz (1986), Scott Highmark (1994 & 1995), Kevin Lisch (2009) and Brian Conklin (2012).

COLLINS REWRITING SLU ASSISTS RECORDS

- Point guard **Yuri Collins** is the NCAA leader in total assists (217) and assists per game (8.3).
- Collins is the new Billikens' career assist leader, with 504 career helpers and counting. He surpassed the previous record of 436, which was held by **Josh Fisher** (2004-08).
- Collins' 217 assists are second in a single season in school history. He is on pace to shatter the Billikens' single-season assists record of 235, held by **Jim Roder** in 1986-87. Earlier this year, Collins broke Roder's single-game record with 19 assists vs. BC.
- Collins' career 6.63 assists average is second among all active NCAA Division I players and is a school record.
- In addition to his assists totals, Collins is putting up strong numbers defensively. He is 14th in the NCAA in steals (55) and 28th nationally in steals per game (2.12).
- Senior transfer **DeAndre Jones**, Central Arkansas' all-time assists leader, has 520 career assists. With Collins at 504 career assists, SLU is the only team in the NCAA with two players with 500+ career assists. Louisville is close to joining the Billikens on that list.

SINGLE-SEASON ASSISTS - SLU TOP 5		
1.	Jim Roder (1986-87)	235
2.	Yuri Collins (2021-22)	217
3.	Charles Newberry (1989-90)	193
4.	Yuri Collins (2019-20)	171
5.	Jordair Jett (2013-14)	164
CAREER ASSISTS - SLU TOP 5		
1.	Yuri Collins (2019-p)	504
2.	Josh Fisher (2000-04)	436
3.	Charles Newberry (1987-90)	424
4.	Jordair Jett (2010-14)	422
5.	Kwamain Mitchell (2008-13)	420
--	DeAndre Jones (2017-p)	520*
*majority of stats accumulated elsewhere; listed for comparison purposes only		

SLU'S RECORD WHEN...

	2021-22	FORD ERA
at Home (all games)	12-4	76-24
at Home (A-10)	6-1	36-13
at Home (nonconference)	6-3	41-11
on Road (all games)	4-4	20-38
on Road (A-10)	3-3	16-29
on Road (nonconference)	1-1	4-8
Neutral Site (all games)	2-0	11-11
Leading at halftime	17-3	81-19
Trailing at halftime	1-5	19-54
Tied at halftime	0-0	7-0
Overtime (all games)	2-0	5-2
Overtime (A-10 game)	1-0	4-2
Double overtime	1-0	2-0
Games decided by 3 pts/less	2-0	15-10
Games decided by 4-10 pts	4-7	38-32
Games decided by 11-19 pts	6-1	34-15
Games decided by 20+ pts	6-0	20-16
Winning opening tip	12-4	62-29
Losing opening tip	6-4	44-45
SLU scores 49 points or less	0-0	1-5
SLU scores 50-59 points	0-1	2-28
SLU scores 60-69 points	2-2	32-25
SLU scores 70-79 points	7-4	43-11
SLU scores 80-89 points	4-1	23-4
SLU scores 90-99 points	4-0	4-0
SLU scores 100+ points	1-0	2-0
Better shooting % than opp.	14-2	81-13
Opp. shoots better	3-6	25-60
Shooting the same	1-0	1-0
SLU shoots 50%+	6-2	30-4
SLU shoots 40-49%	11-4	54-34
SLU shoots below 40%	1-2	23-35
Opp. shoots 50%+	0-4	5-21
Opp. shoots 40-49%	8-4	43-44
Opp. shoots below 40%	10-0	60-7
SLU makes more 3s	8-3	46-19
Opp. makes more 3s	7-4	48-47
3s are equal	2-2	12-8
SLU outrebounds opp.	14-4	85-44
Opp. outrebounds SLU	4-4	19-28
Tied in rebounds	0-0	2-1
SLU commits less turnovers	10-2	60-21
SLU commits more turnovers	7-6	37-48
Turnovers are equal	1-0	10-4
SLU records 10+ steals	4-1	19-6
SLU records 15+ assists	10-2	59-14
Playing in November	7-1	25-10
Playing in December	1-3	22-17
Playing in January	5-3	21-20
Playing in February	4-2	25-19
Playing in March	0-0	14-8
Playing on Monday	0-1	3-2
Playing on Tuesday	4-3	13-14
Playing on Wednesday	5-0	27-18
Playing on Thursday	0-1	5-4
Playing on Friday	1-1	7-9
Playing on Saturday	6-2	39-21
Playing on Sunday	2-0	13-5
Playing before 5pm	7-0	35-19
Playing at night	11-8	72-54
Wearing white uniforms	12-3	64-22
Wearing blue uniforms	1-1	14-23
Wearing gray uniforms	2-2	11-7
Wearing black uniforms	3-2	17-21

2021-22 SLU QUICK FACTS

General Information

School Name	Saint Louis University
City/ZIP	St. Louis, MO 63103
Founded	1818
Enrollment	12,883
Nickname	Billikens
Colors	Blue and White
NCAA Affiliation	NCAA Division I
Conference	Atlantic 10 Conference
President	Dr. Fred Pestello
Director of Athletics	Chris May
Faculty Athletics Representative	Dr. Michael Ross
Facility	Chaifetz Arena (10,600)
Athletic Dept. Phone	(314) 977-3177
Ticket Office Phone	(314) 977-4SLU

2021-22 Staff

Head Coach	Travis Ford
Alma Mater, Year	Kentucky, 1994
Record at School	107-73 (6th year)
Career Record	443-339 (25th year)
Associate Head Coach	Corey Tate
Alma Mater, Year	Missouri, 1997
Season at SLU	Sixth
Assistant Coach	Ray Giacoletti
Alma Mater, Year	Minot State, 1985
Season at SLU	Third (second as asst. coach)
Assistant Coach	Phil Forte
Alma Mater, Year	Oklahoma State, 2017
Season at SLU	Third (first as asst. coach)
Director of Basketball Operations	Michael Wilson
Alma Mater, Year	TCU, 2015
Season at SLU	Sixth (third as DOBO)
Director of Player Development	Christian Nunez
Alma Mater, Year	Farmingdale State, 2013
Season at SLU	Third (second as DOPD)
Scouting & Analytics Coordinator	Brad Lewis
Alma Mater, Year	Oklahoma State, 2018
Season at SLU	First
Graduate Student Managers	Davell Roby, Thomas Dziagwa

2020-21 Season at a Glance

Overall Record Last Year	14-7
Home	12-1
Away	1-4
Neutral	1-2
Conference Record (Finish)	6-4 (4th)
Conference Tournament	1-1 (Semifinals)
Postseason	0-1 (NIT)

2021-22 Outlook

Players Returning/Lost	10/5
Starters Returning/Lost	3/2
Newcomers	4

Billiken Media Relations

Assistant AD (MBB Contact)	Brian Kunderman
Email	brian.kunderman@slu.edu
Office	314-977-3346
Cell (texts preferred)	314-808-4868
Website	SLUBillikens.com

JIMERSON AMONG A-10 SCORING LEADERS

► Guard **Gibson Jimerson** ranks among the league's top five scoring leaders, turning in 16.6 ppg in all games and 17.2 ppg in conference games only.

► Jimerson turned in a career-high 31 points in the Billikens' win against UMass Jan. 23. He is the fifth Billiken to score 30 or more in Chaifetz Arena history.

► Jimerson is a career 41.1 percent shooter from 3-point range, which currently ranks fifth in school history.

► He has gone to the line 94 times in 26 games this season. Before this year, he went the line just **19 times total** in 31 games over two seasons. Jimerson ranks third in the A-10 in free-throw percentage (.851).

► Jimerson needs to make four more free throws to become eligible for SLU's career free-throw percentage record. He is on track to rank in the top three with his career 85-percent mark (96-113) from the stripe. SLU's career record holder is **Darryl "Pee Wee" Lenard**, who shot 85.9 percent (110-128) from the line from 1983-86.

► While this is Jimerson's third season with the Billikens, he is technically a freshman eligibility wise. He received a medical hardship waiver his first season (2019-20) after injuring his foot after playing in 10 games, the maximum amount of games allowed for him to play in and still receive the waiver. Last season did not count against a players' eligibility due to the pandemic.

OKORO EFFICIENT FROM THE FIELD

► **Francis Okoro** is leading the Atlantic 10 in field-goal percentage in conference games only, as he is shooting 63.7 percent from the floor in the Billikens' 13 conference games.

► In all games, Okoro is at a .598 field-goal percentage, which would rank fifth in a single season in school history.

► Okoro is also leading the Billikens in rebounding (7.4 rpg), helping to fill the void left by departing seniors **Jordan Goodwin** (fourth at SLU in career rebounds) and **Hasahn French** (fifth at SLU in career rebounds).

FORD REACHES 100 SLU WINS

► The Billikens' win against Fordham Jan. 15 was the 100th of head coach **Travis Ford's** SLU career.

► He is just the fifth head coach in SLU history to reach 100 wins at the school and the first since the legendary **Charlie Spoonhour**.

► Ford also reached 100 wins while at Oklahoma State, posted 155 victories in eight seasons with the Cowboys.

MASTER FRED

► **Fred Thatch Jr.** is playing his best basketball of the season as of late. He has had two double-doubles in his last four games, and he is coming off a career-high 21 points in the Billikens' win against La Salle.

► Thatch is averaging 8.6 ppg and 5.2 rpg this season.

► The Billikens' recent six-game winning streak coincided with when Thatch was inserted into the starting lineup prior to the UMass home game.

► While this is Thatch's fourth year with the Bills, he is technically a sophomore eligibility wise. He received a medical hardship waiver after playing in just six games in his second year (2019-20), and last season did not count against a players' eligibility due to the pandemic.

► Thatch has already earned an undergraduate degree from the Chaifetz School of Business while maintaining a GPA above 3.4. He is enrolled in the University's prestigious MBA program.

COLLINS NAMED A-10 PLAYER OF THE WEEK

► **Yuri Collins** was named the Atlantic 10 Conference's co-Player of the Week Feb. 7. It was the second time this season he earned the nod.

► In SLU's two wins that week (George Mason and Dayton), Collins averaged 25.5 ppg, 9.5 apg and 6.5 rpg. He shot 50 percent from both the floor and 3-point range, and was 16-of-17 from the charity stripe.

► The Billiken faithful are already proclaiming the Feb. 2 win against George Mason the "Yuri Collins Game." In addition to the scoring (career-high 35), assists (13) and last-second heroics, Collins turned in his first "quadruple nickel" while adding five rebounds and five steals. It was Collins' fourth straight double-double.

SLU Career 3-Point FG Pct.

1.	Roland Gray (1986-89)	.457
2.	H Waldman (1994-95)	.420
3.	Marcus Bartley (2014-16)	.415
4.	Erwin Claggett (1992-95)	.412
5.	Gibson Jimerson (2019-p)	.411

Minimum 100 attempts

SLU Career Free-Throw Pct.

1.	Darryl Lenard (1983-86)	.859
2.	Luther Burden (1982-85)	.850
3.	Luke Meyer (2004-08)	.832
4.	Carlos Martinez (1969-72)	.823
5.	Harry Rogers (1970-73)	.822
--	Gibson Jimerson (2019-p)	.850

Minimum 100 made

SLU CAREER WINS - HEAD COACH

1.	Eddie Hickey (1947-58)	212
2.	Rich Grawer (1983-92)	159
3.	Charlie Spoonhour (1992-99)	122
4.	John Benington (1958-65)	118
5.	Travis Ford (2016-p)	106
6.	Rick Majerus (2007-12)	95

BILLIKENS IMPRESSIVE FROM THE FOUL LINE

- Saint Louis has been impressive from the free-throw line, as it leads the A-10 in FTs made and FTs attempted, and the Bills are second in the league in free throw percentage.
- SLU has hit 80 percent or better in 12 games this season.
- The Billikens ranked No. 350 out of 350 schools in free-throw percentage in 2019-20 (.580, 419-723).

BILLIKENS IN THE A-10

- Saint Louis is in its 17th year playing in the Atlantic 10 Conference.
- The Billikens have an all-time record of 147-127 in A-10 tilts.
- Saint Louis has won two Atlantic 10 Conference regular-season crowns (2013 and 2014) and two A-10 tournament titles (2013 and 2019).

HOME SWEET CHAIFETZ

- Saint Louis is in its 14th season playing inside the 10,600-seat Chaifetz Arena.
- SLU has an all-time record of 179-64 at Chaifetz Arena, which includes an 12-4 mark this year.
- Chaifetz Arena is named after SLU alumnus **Dr. Richard A. Chaifetz**. Dr. Chaifetz is a world-renowned entrepreneur and business leader, who in 1984 founded ComPsych Corporation, which today is the world's largest provider of employee assistance programs, behavioral health and wellness services.

BILLIKENS WIN CANCUN CHALLENGE

- Saint Louis topped Illinois State and Stephen F. Austin at the Hard Rock Hotel Riviera Maya in November to claim the 2021 Cancun Challenge title.
- **Gibson Jimerson** scored 19 points in both games in Mexico to capture the tourney's Most Valuable Player honors. **Marten Linssen** joined Jimerson on the All-Tournament team.
- It was SLU's first MTE win since the 2011-12 Billiken team won the 76 Classic in Anaheim, California.
- Following the wins in Mexico, the Billikens headed to Boise and defeated Boise State for their school-record seventh win in the month of November.

PERKINS LOST FOR SEASON WITH ACL TEAR

- **Javonte Perkins** suffered a torn ACL in his left knee in the first half of the Billikens' exhibition game against Rockhurst on Oct. 26. He will miss the rest of the season.
- Perkins was taking advantage of an extra year of eligibility in 2021-22, awarded to all student-athletes as a result of the COVID-19 pandemic. Last season, he earned second-team All-Conference honors after leading the Billikens in scoring with 17.1 ppg. He shot .456 from the field, .376 from 3-point range and an A-10-leading .866 from the free-throw line.
- In 2019-20, Perkins was voted the Atlantic 10 Conference's Sixth Man of the Year after leading SLU with 18.2 ppg in A-10 play, a school record. His 15.9 career scoring average ranks 10th in school history.

REMEMBERING FORD STUEN

- The Billikens remember and honor assistant coach **Ford Stuen**, who passed away May 11, 2021, at the age of 29. Stuen, the nephew of head coach **Travis Ford**, played at Oklahoma State for his uncle and served on the Billikens' staff the last five years.
- The Billikens wear a patch on their jersey with the "FS" script. That is how Ford would sign his name on the many hand-written notes and letters that he would send to family, friends, and coaching colleagues.
- The program has taken up one of Ford's favorite quotes for this season: **The Journey is the Reward**
- On opening night, Nov. 9, 2021, a banner was unveiled honoring **Ford Stuen** that will forever hang in the Chaifetz Arena rafters.



HISTORY LESSON

- The Billikens won the 1948 National Invitation Tournament. That team was led by **Ed Macauley**, who went on to an NBA Hall of Fame career. Easy Ed's No. 50 is retired by SLU.
- The AP poll was first released the next season, and SLU was the first-ever No. 1 in the inaugural poll in 1949.
- **Anthony Bonner** (1986-90) is the Billikens' school-record holder in points (1,972) and rebounds (1,424).
- SLU owns two regular-season A-10 titles (2013 and 2014), and it won the A-10 Tournament in 2013 and 2019 at Barclays Center in Brooklyn, N.Y.
- The Billikens have made 10 NCAA Tournament appearances, the last coming in 2019. SLU made three straight NCAA Tournaments from 2012-14, winning its opening game in all three.

A-10 STANDINGS

	A-10	OVERALL	STR.
Davidson	11-2 0.846	21-4 0.840	W1
VCU	10-3 0.769	17-7 0.708	W4
Dayton	10-3 0.769	18-8 0.692	W3
Saint Louis	9-4 0.692	18-8 0.692	W1
St. Bonaventure	8-4 0.667	16-7 0.696	W4
Richmond	8-5 0.615	17-9 0.654	W1
George Mason	6-5 0.545	13-11 0.542	W1
George Washington	6-6 0.500	10-14 0.417	W1
Rhode Island	4-8 0.333	13-11 0.542	L1
Fordham	4-8 0.333	11-13 0.458	L1
UMass	4-8 0.333	11-13 0.458	L1
Saint Joseph's	4-9 0.308	10-14 0.417	L3
La Salle	2-11 0.154	7-16 0.304	L3
Duquesne	1-11 0.083	6-18 0.250	L11

A-10 UPCOMING GAMES

Friday, February 18
Richmond at VCU

Saturday, February 19
La Salle at Massachusetts
Dayton at Saint Joseph's
Saint Louis at Davidson
Duquesne at St. Bonaventure
Rhode Island at George Washington

Sunday, February 20
George Mason at Fordham

Tuesday, February 22
Richmond at George Washington
Rhode Island at St. Bonaventure
Saint Joseph's at Saint Louis

A-10 MEN'S BASKETBALL CHAMPIONSHIP

The 2022 Men's Basketball Championship, will be played at Capital One Arena in Washington, D.C., for the second time in league history. Home to the Washington Wizards and 2018 Stanley Cup champion Washington Capitals, the arena is centrally located within the A-10 footprint. Washington, D.C., is 300 miles or less from eight A-10 institutions (over half the league).



2021-22 INDIVIDUAL GAME HIGHS

Points

SLU: 35, Yuri Collins vs. George Mason

OPP: 32, Josh Oduro, George Mason

FGs Made

SLU: 11, several times

OPP: 11, several times

FGs Attempted

SLU: 24, Yuri Collins vs. George Mason

OPP: 22, Josh Oduro, George Mason

3FGs Made

SLU: 7, Gibson Jimerson vs. UMass

OPP: 5, DeVon Cooper, George Mason

3FGs Attempted

SLU: 13, Gibson Jimerson vs. Boston College

OPP: 11, DeVon Cooper, George Mason

FTs Made

SLU: 10, Yuri Collins vs. George Mason

OPP: 12, Tyler Burton, Richmond

FTs Attempted

SLU: 12, Marten Linssen vs. SFA

OPP: 14, Tyler Burton, Richmond

Rebounds

SLU: 14, Francis Okoro, Iona

OPP: 17, Davonte Gaines, George Mason

Assists

SLU: 19, Yuri Collins vs. Boston College

OPP: 8, twice

Blocks

SLU: 4, twice

OPP: 6, twice

Steals

SLU: 5, Yuri Collins, twice

OPP: 4, three times

SLU TEAM HIGHS/LOWS

Points

High: 127 vs. Harris-Stowe

Low: 59 vs. Belmont

FGs Made

High: 50 vs. Harris-Stowe

Low: 20 vs. Iona

3FGs Made

High: 14 vs. Harris-Stowe

Low: 3, three times

FTs Made

High: 30 at Boise State

Low: 7 vs. St. Bonaventure

Rebounds

High: 55 vs. UMass

Low: 27 vs. UAB

Assists

High: 29 vs. Harris-Stowe

Low: 7 vs. Iona

Blocks

High: 7 vs. Harris-Stowe

Low: 0, twice

Steals

High: 14 vs. Harris-Stowe

Low: 1 at Dayton

GAME-BY-GAME STARTING LINEUP

GAME

Central Arkansas	Collins	Jimerson	Nesbitt	Hargrove	Linssen
Harris-Stowe	Collins	Jimerson	Nesbitt	Hargrove	Linssen
Eastern Illinois	Collins	Jimerson	Nesbitt	Hargrove	Linssen
at Memphis	Collins	Jimerson	Nesbitt	Hargrove	Linssen
Mercer	Collins	Jimerson	Nesbitt	Hargrove	Linssen
vs. Illinois State	Collins	Jimerson	Nesbitt	Hargrove	Linssen
vs. Stephen F. Austin	Collins	Jimerson	Nesbitt	Hargrove	Linssen
at Boise State	Collins	Jimerson	Nesbitt	Hargrove	Linssen
UAB	Collins	Jimerson	Nesbitt	Hargrove	Linssen
Belmont	Collins	Jimerson	Nesbitt	Hargrove	Linssen
Boston College	Collins	Jimerson	Nesbitt	Hargrove	Linssen
Auburn	Collins	Jimerson	Nesbitt	Hargrove	Linssen
Richmond	Collins	Jimerson	Thatch	Strickland	Okoro
Iona	Collins	Jimerson	Nesbitt	Hargrove	Okoro
at Dayton	Collins	Jimerson	Nesbitt	Hargrove	Okoro
Fordham	Collins	Jimerson	Nesbitt	Hargrove	Okoro
at Massachusetts	Collins	Jimerson	Nesbitt	Hargrove	Okoro
Massachusetts	Collins	Jimerson	Thatch	Nesbitt	Okoro
George Washington	Collins	Jimerson	Thatch	Nesbitt	Okoro
at Duquesne	Collins	Jimerson	Thatch	Nesbitt	Okoro
at George Mason	Collins	Jimerson	Thatch	Nesbitt	Okoro
Dayton	Collins	Jimerson	Thatch	Nesbitt	Okoro
at La Salle	Collins	Jimerson	Thatch	Nesbitt	Okoro
St. Bonaventure	Collins	Jimerson	Thatch	Nesbitt	Okoro
at St. Bonaventure	Collins	Jimerson	Thatch	Nesbitt	Okoro
La Salle	Collins	Jimerson	Thatch	Nesbitt	Okoro

MISCELLANEOUS PLAYER STATS

STAT	17-18	18-19	19-20	20-21	21-22	CAREER
Triple-Doubles						
DeAndre Jones	1	-	-	-	-	1
Double-Doubles						
Yuri Collins	-	-	-	-	7	7
Francis Okoro	-	-	2	-	4	6
Marten Linssen	-	-	2	-	-	2
Terrence Hargrove Jr.	-	-	-	-	2	2
Fred Thatch Jr.	-	-	-	-	2	2
DeAndre Jones	1	-	-	-	-	1
Jordan Nesbitt	-	-	-	-	1	1
Double-Digit Points						
DeAndre Jones	8	19	14	6	2	49
Rashad Williams	-	18	14	16	-	48
Javonte Perkins	-	-	22	20	-	42
Gibson Jimerson	-	-	5	7	22	34
Marten Linssen	-	-	17	2	8	27
Yuri Collins	-	-	2	3	16	21
Francis Okoro	-	2	3	-	14	19
Fred Thatch Jr.	-	3	2	4	10	19
Terrence Hargrove Jr.	-	-	6	3	6	15
Jordan Nesbitt	-	-	-	-	12	12
Lassina Traore	-	-	-	-	1	1
Double-Digit Rebounds						
Francis Okoro	-	2	2	-	5	9
DeAndre Jones	1	-	-	-	1	2
Terrence Hargrove Jr.	-	-	-	-	2	2
Marten Linssen	-	-	2	-	-	2
Yuri Collins	-	-	-	-	1	1
Jordan Nesbitt	-	-	-	-	1	1
Fred Thatch Jr.	-	-	-	-	1	1
Led SLU in scoring (includes ties)						
Javonte Perkins	-	-	12	13	-	25
Gibson Jimerson	-	-	2	1	13	16
Terrence Hargrove Jr.	-	-	1	1	2	4
Fred Thatch Jr.	-	-	-	-	3	3
Yuri Collins	-	-	-	-	3	3
Jordan Nesbitt	-	-	-	-	2	2
/Marten Linssen	-	-	-	-	2	2
Francis Okoro	-	-	-	-	2	2
DeAndre Jones	-	-	-	-	1	1

SPECIALTY STATS

	Points in Paint	Points Off TO	2nd Chance	Fast Break	Bench	SLU's Largest Lead	SLU's Largest Deficit	Times Tied	Lead Changes	Margins Half	Margins Final
Central Arkansas	50/30	27/14	20/10	16/5	35/24	35 (2nd, 0:31)	6 (1st, 13:30)	4	8	+11	+35
Harris-Stowe	68/12	42/0	27/10	21/0	64/18	75 (2nd, 3:45)	None	2	0	+42	+73
Eastern Illinois	40/14	19/12	18/3	23/6	30/19	46 (2nd, 10:12)	2 (1st, 17:26)	1	1	+34	+42
at Memphis	36/42	27/19	12/10	16/28	15/42	3 (1st, 18:41)	24 (2nd, 14:02)	3	3	-15	-16
Mercer	40/24	10/14	14/11	27/10	27/10	17 (2nd, 0:59)	9 (1st, 13:06)	3	4	+3	+17
vs. Illinois State	34/36	19/18	5/9	17/12	19/18	11 (1st, 9:20)	2 (2nd, 10:09)	3	4	+1	+6
vs. Stephen F. Austin	24/42	18/23	9/3	13/20	18/26	13 (1st, 1:31)	3 (1st, 14:12)	3	6	+12	+11
at Boise State	32/38	12/15	4/15	14/14	31/12	4 (1st, 2:04)	11 (1st, 16:54)	17	12	+4	+4
UAB	28/32	17/18	6/17	7/9	41/27	10 (1st, 0:31)	9 (2nd, 4:18)	4	11	+7	-5
Belmont	30/40	10/14	14/6	5/2	6/14	15 (1st, 12:33)	5 (2nd, 2:08)	3	3	+6	-5
Boston College	34/26	12/15	6/6	12/11	22/14	23 (2nd, 13:11)	2 (1st, 19:24)	1	1	+17	+11
Auburn	40/32	11/15	11/12	11/7	12/26	13 (2nd, 9:13)	8 (1st, 1:00)	8	5	-8	-4
Richmond	36/32	13/6	10/13	13/10	20/8	8 (2nd, 19:04)	3 (1st, 18:01)	0	3	+5	+7
Iona	30/24	15/20	20/14	19/4	9/19	4 (1st, 15:10)	11 (1st, 5:18)	11	11	-1	+1
at Dayton	24/22	10/17	2/11	16/22	10/18	5 (1st, 10:21)	16 (2nd, 4:20)	2	3	-10	-5
Fordham	32/18	9/12	5/8	11/7	9/8	18 (2nd, 0:35)	6 (1st, 16:47)	2	4	+6	+18
at Massachusetts	44/36	13/14	13/12	17/11	29/33	7 (1st, 12:31)	8 (2nd, 0:06)	15	26	+1	-6
Massachusetts	46/14	12/8	25/13	14/4	25/24	34 (2nd, 8:15)	3 (1st, 16:59)	1	1	+9	+31
George Washington	50/26	19/9	15/5	20/13	12/11	21 (2nd, 12:48)	None	0	0	+13	+13
at Duquesne	42/22	24/3	9/10	15/6	19/19	28 (2nd, 4:27)	1 (1st, 10:39)	2	2	+13	+24
at George Mason	36/44	21/11	11/17	12/13	16/2	14 (2nd, 11:31)	7 (1st, 14:57)	6	4	+5	+2
Dayton	26/26	13/8	10/12	5/10	23/15	17 (2nd, 3:58)	3 (1st, 19:05)	1	1	+9	+11
at La Salle	46/22	14/8	9/9	4/3	13/8	18 (2nd, 1:20)	3 (1st, 19:35)	1	1	+14	+18
St. Bonaventure	30/36	6/16	8/8	4/16	15/4	11 (1st, 10:17)	9 (2nd, 8:38)	1	2	-4	-7
at St. Bonaventure	30/58	1/22	8/13	5/20	9/4	2 (1st, 18:49)	16 (1st, 0:19)	3	2	-16	-4
La Salle	42/26	12/14	9/8	16/3	30/19	29 (2nd, 10:57)	None	0	0	+19	+26

Stats listed as SLU/Opponent



TRAVIS FORD

Head Coach

Kentucky, 1994

Record at SLU: 107-73 (6th year)

Overall Record: 443-339 (25th year)

In six years as Saint Louis University's head men's basketball coach, Travis Ford has reinvigorated the program and reestablished its place on the national stage.

The 2021-22 season is Ford's sixth year at SLU and his 25th season overall as a head coach. He has a 107-73 record at SLU and a 443-339 record overall.

Hired in March 2016, Ford inherited a program that won 11 games in each of the two years prior. He proceeded to improve the Billikens' win total over the next four seasons. Saint Louis captured the 2019 Atlantic 10 Conference Championship and went to the NCAA Tournament. Over the last four seasons (this year included), Ford has guided the Billikens to a 78-35 record, an NCAA appearance, and an NIT appearance. The 2019-20 Billikens were poised for another postseason bid before the season was canceled due to the COVID-19 pandemic.

In 2020-21, the Billikens were ranked in the AP Top 25 for four straight weeks. After a lengthy COVID-19 shutdown, the Billikens were firmly on the bubble for the NCAA Tournament before ultimately earning a No. 1 seed for the postseason NIT.

Ford guided Saint Louis to a magical year in 2018-19. SLU was picked to win the league, but the Billikens went through a tough stretch of losing five of six games at one point in the conference season. As the No. 6 seed in the 2019 A-10 Championship at Barclays Center in Brooklyn, the Billikens registered four wins in four days to capture the A-10 title and the league's automatic bid into the NCAA Tournament (Ford's seventh NCAA appearance as a head coach). It was a wild ride for the Billikens at the A-10 Championship, as they either trailed or was tied at halftime in all four of the games. Photos, videos and GIFs of Ford jumping onto the SLU dogpile after its victory in the title game against St. Bonaventure will live on in Billiken history for years to come.

In addition to his six years at SLU, Ford has had head-coaching stints at Oklahoma State (eight years, 2008-16), Massachusetts (three years, 2005-08), Eastern Kentucky (five years, 2000-05) and Campbellsville University (three years, 1997-2000). Ford has led his team to the NCAA Tournament seven times. He has coached six players who have gone on to play in the NBA and six who have been named a conference player of the year.

Ford played the majority of his collegiate career at the University of Kentucky, helping the Wildcats to NCAA Tournament appearances in each of his three seasons (1992, 1993, 1994). He was a junior on the 1993 Wildcat team that advanced to the NCAA Final Four. Ford transferred to Kentucky after one season (1989-90) at the University of Missouri.

Ford is a native of Madisonville, Kentucky. He and his wife, Heather, have three children: Brooks, Kyleigh and Shane. Ford earned a bachelor's degree in communications at the University of Kentucky in 1994.

TRAVIS FORD'S CAREER BREAKDOWN

Year	School	Overall	Conference	Postseason
1997-98	Campbellsville	7-26 (.212)	N/A	
1998-99	Campbellsville	28-3 (.903)	10-2	
1999-00	Campbellsville	23-11 (.676)	8-4	NAIA Tournament
Total	Three seasons	58-40 (.592)	18-6 (.750)	
2000-01	Eastern Kentucky	7-19 (.269)	1-15 (.063)	
2001-02	Eastern Kentucky	7-20 (.259)	3-13 (.188)	
2002-03	Eastern Kentucky	11-17 (.393)	5-11 (.313)	
2003-04	Eastern Kentucky	14-15 (.483)	8-8 (.500)	
2004-05	Eastern Kentucky	22-9 (.710)	11-5 (.688)	NCAA First Round
Total	Five seasons	61-80 (.432)	28-52 (.350)	
2005-06	Massachusetts	13-15 (.464)	8-8 (.500)	
2006-07	Massachusetts	24-9 (.727)	13-3 (.813)	NIT 2nd Round
2007-08	Massachusetts	25-11 (.694)	10-6 (.625)	NIT Runner-Up
Total	Three seasons	62-35 (.639)	31-17 (.646)	
2008-09	Oklahoma State	23-12 (.657)	9-7 (.563)	NCAA Second Round
2009-10	Oklahoma State	22-11 (.667)	9-7 (.563)	NCAA First Round
2010-11	Oklahoma State	20-14 (.588)	6-10 (.375)	NIT 2nd Round
2011-12	Oklahoma State	15-18 (.455)	7-11 (.389)	
2012-13	Oklahoma State	24-9 (.727)	13-5 (.722)	NCAA First Round
2013-14	Oklahoma State	21-13 (.618)	8-10 (.444)	NCAA First Round
2014-15	Oklahoma State	18-14 (.563)	8-10 (.444)	NCAA First Round
2015-16	Oklahoma State	12-20 (.375)	3-15 (.167)	
Total	Eight seasons	155-111 (.585)	63-80 (.441)	
2016-17	Saint Louis	12-21 (.364)	6-12 (.333)	
2017-18	Saint Louis	17-16 (.515)	9-9 (.500)	
2018-19	Saint Louis	23-13 (.639)	10-8 (.556)	NCAA First Round
2019-20	Saint Louis	23-8 (.742)	12-6 (.667)	Postseason canceled
2020-21	Saint Louis	14-7 (.667)	6-4 (.600)	NIT First Round
2021-22	Saint Louis	18-8 (.692)	9-4 (.692)	
Total	Six seasons	107-73 (.594)	52-43 (.547)	
CAREER	25 Seasons	443-339 (.566)	190-196 (.492)	
As a Player				
1989-90	Missouri	29-8 (.784)	12-2 (.857)	NCAA First Round
1991-92	Kentucky	29-7 (.806)	12-4 (.750)	NCAA Elite Eight
1992-93	Kentucky	30-4 (.882)	13-3 (.813)	NCAA Final Four (semifinal)
1993-94	Kentucky	27-7 (.794)	12-4 (.750)	NCAA Second Round
Total		115-26 (.816)	49-13 (.790)	





SEASON/CAREER HIGHS

POINTS

SEASON: 35 at George Mason, 2/2/22
CAREER: 35 at George Mason, 2/2/22

REBOUNDS

SEASON: 12 vs. Auburn, 12/18/21
CAREER: 12 vs. Auburn, 12/18/21

ASSISTS

SEASON: 19 vs. Boston College, 12/11/21
CAREER: 19 vs. Boston College, 12/11/21

STEALS

SEASON: 5, twice
CAREER: 5, twice

BLOCKS

SEASON: 2 at La Salle, 2/8/22
CAREER: 2 at La Salle, 2/8/22

FIELD GOALS MADE

SEASON: 11 at George Mason, 2/2/22
CAREER: 11 at George Mason, 2/2/22

FIELD GOAL ATTEMPTS

SEASON: 24 at George Mason, 2/2/22
CAREER: 24 at George Mason, 2/2/22

3-PT. FIELD GOALS MADE

SEASON: 3, twice
CAREER: 3, twice

3-PT. FIELD GOALS ATT

SEASON: 7 at George Mason, 2/2/22
CAREER: 7 at George Mason, 2/2/22

FREE THROWS MADE

SEASON: 10 at George Mason, 2/2/22
CAREER: 10 at George Mason, 2/2/22

FREE THROWS ATTEMPTED

SEASON: 10 at George Mason, 2/2/22
CAREER: 10 at George Mason, 2/2/22

MINUTES PLAYED

SEASON: 47 at George Mason, 2/2/22
CAREER: 47 at George Mason, 2/2/22

1 • YURI COLLINS

Sophomore • G • 6-0 • 185 • St. Louis, Mo. • St. Mary's | MAJOR: Sports Business



CURRENT SEASON | 2021-22

- Leads the NCAA in assists and is 14th in steals.
- Two-time A-10 Player of the Week.
- Had his 500th career assist in the home win over La Salle.
- Had a career-high 35 points at George Mason and scored the game-winning shot at the double overtime buzzer.
- Scored 24 points in the win over Richmond.
- Set the school record with 19 assists vs. BC while also making all five of his shots from the field en route to 14 points, giving him his second double-double of the year.
- Flirted with a triple-double against Auburn, scoring 13 points, posting 12 rebounds (career-high) and eight assists.

2020-21 • Sophomore

- Appeared in all 19 games and made 17 starts.
- Led A-10 and was 10th in NCAA with 6.1 assists per game.
- His 2.83 assist-to-turnover ratio was 19th nationally.
- Finished with 116 assists.
- Averaged 5.1 points and 2.8 rebounds.
- Twice scored a career-high 17 points in wins over NC State and in the A-10 quarterfinals against UMass.
- Dished out a season-high 11 assists against Dayton and had a 10-assist outing versus Indiana State.
- Scored a then career-high 12 points and finished an assist shy of a double-double with nine helpers against UCA.

2019-20 • Freshman

- Appeared in all 31 games and made 27 starts.
- Atlantic 10 Conference All-Rookie team pick.

- Broke the SLU freshman record with 171 assists, third in a single-season in SLU history across all classes.
- Led all freshmen in the NCAA with 5.5 assists per game.
- Third in the A-10 in total assists and fourth in the league in assists per game.
- Eighth in the A-10 and second on the Billikens with 46 steals.
- His 46 steals were 3rd among freshman in a single season.
- Dished out a season-high 12 assists vs. VCU.
- Posted season scoring highs in back-to-back games at Saint Joseph's (10 points) and at La Salle (11 points).
- Pulled down a career-high eight rebounds and dished out seven assists in the win at Richmond.

PRIOR TO SLU

- Noted as one of the top point guards to ever play in the St. Louis area in the prep scene out of St. Mary's HS.
- Helped St. Mary's to its first-ever state semifinal appearance and a Missouri Class 4 state runner-up finish.
- Averaged 22.6 ppg, 5.4 rpg, 7.0 apg and 2.9 spg for the Dragons as a senior.
- He averaged 30.0 ppg and 7.5 rpg during St. Mary's postseason run.
- St. Mary's all-time leader in assists and steals.
- First-team All-Metro and Archdiocesan Athletics Association, Large division co-Player of the Year.
- First-team Fab-Five All-Star by the St. Louis American.
- Ran with Bradley Beal Elite, where he was fourth in the Nike EYBL in assists.

2021-22 Game-by-Game Stats

Opponent	Date	GS	MIN	Total		3-Pointers		Free throws		Rebounds				PF	A	TO	BLK	STL	PTS	AVG	
				FG-FGA	PCT	3FG-3FGA	PCT	FT-FTA	PCT	OFF	DEF	TOT	AVG								
Central Ark.	11/09/2021	*	24:06	5-9	.556	1-2	.500	3-4	.750	0	3	3	3.0	0	12	2	0	4	14	14.0	
Harris-Stowe	11/10/2021	*	15:06	2-3	.667	0-0	.000	0-0	.000	0	2	2	2.5	3	10	0	1	3	4	9.0	
Eastern Ill.	11/12/2021	*	23:33	3-6	.500	1-2	.500	4-4	1.000	0	3	3	2.7	1	6	1	0	1	11	9.7	
at Memphis	11/16/2021	*	29:12	3-13	.231	0-3	.000	3-3	1.000	0	1	1	2.3	2	7	6	0	5	9	9.5	
Mercer	11/20/2021	*	32:37	3-11	.273	1-1	1.000	1-2	.500	0	1	1	2.0	3	7	4	0	1	8	9.2	
vs Illinois St.	11/23/2021	*	37:38	3-9	.333	1-5	.200	0-0	.000	1	3	4	2.3	1	8	8	1	3	7	8.8	
vs SFA	11/24/2021	*	35:50	2-7	.286	0-0	.000	7-8	.875	1	2	3	2.4	2	4	6	0	1	11	9.1	
at Boise St.	11/30/2021	*	29:09	5-13	.385	0-0	.000	5-6	.833	0	3	3	2.5	3	1	3	0	1	15	9.9	
UAB	12/04/2021	*	29:10	1-4	.250	0-2	.000	2-2	1.000	0	0	0	2.2	4	7	4	0	1	4	9.2	
Belmont	12/07/2021	*	36:44	5-13	.385	0-2	.000	1-3	.333	0	5	5	2.5	1	6	6	0	2	11	9.4	
Boston College	12/11/2021	*	37:45	5-5	1.000	1-1	1.000	3-5	.600	0	4	4	2.6	1	19	2	0	2	14	9.8	
Auburn	12/18/2021	*	38:23	6-11	.545	1-2	.500	0-2	.000	1	11	12	3.4	5	8	6	0	3	13	10.1	
Richmond	01/02/2022	*	36:36	10-17	.588	3-5	.600	1-3	.333	0	6	6	3.6	2	8	6	0	2	24	11.2	
Iona	01/08/2022	*	37:10	1-7	.143	1-1	1.000	8-8	1.000	1	7	8	3.9	3	3	3	0	0	11	11.1	
at Dayton	01/11/2022	*	32:44	1-5	.200	0-1	.000	2-2	1.000	0	1	1	3.7	5	9	7	0	0	4	10.7	
Fordham	01/15/2022	*	36:45	3-9	.333	1-1	1.000	4-6	.667	0	4	4	3.8	1	9	5	0	4	11	10.7	
at Massachusetts	01/20/2022	*	32:54	1-3	.333	0-2	.000	0-0	.000	0	6	6	3.9	4	9	3	0	0	2	10.2	
Massachusetts	01/23/2022	*	29:52	4-11	.364	1-6	.167	1-1	1.000	1	4	5	3.9	1	12	1	0	3	10	10.2	
George Washington	01/26/2022	*	31:41	5-5	1.000	0-0	.000	1-1	1.000	0	5	5	4.0	3	12	2	0	2	11	10.2	
at Duquesne	01/29/2022	*	34:25	4-8	.500	1-2	.500	2-2	1.000	0	7	7	4.2	1	10	5	0	4	11	10.3	
at George Mason	02/02/2022	*	47:01	11-24	.458	3-7	.429	10-10	1.000	0	5	5	4.2	3	13	3	0	5	35	11.4	
Dayton	02/05/2022	*	36:56	4-6	.667	2-3	.667	6-7	.857	1	7	8	4.4	2	6	6	1	2	16	11.6	
at La Salle	02/08/2022	*	36:59	4-11	.364	0-0	.000	0-0	.000	0	5	5	4.4	2	8	2	2	3	8	11.5	
St. Bonaventure	02/11/2022	*	40:00	8-15	.533	1-2	.500	1-1	1.000	0	4	4	4.4	3	7	8	0	2	18	11.8	
at St. Bonaventure	02/14/2022	*	25:28	2-2	1.000	0-0	.000	0-0	.000	0	0	0	4.2	5	10	6	0	0	4	11.4	
La Salle	02/16/2022	*	22:49	2-3	.667	0-1	.000	1-2	.500	0	1	1	4.1	1	6	1	0	1	5	11.2	
Totals			26	850:33	103-230	.448	19-51	.373	66-82	.805	6	100	106	4.1	62	217	106	5	55	291	11.2

Collins' Career Stats				Field Goals		3-Point		F-Throws		Rebounds				Scoring						
SEASON	TEAM	GP-GS	MIN/AVG	FG-FGA	FG%	3FG-3FGA	3FG%	FT-FTA	FT%	OFF	DEF	TOT	AVG	PF-FO	A	TO	BLK	STL	PTS	AVG
2019-20	SLU	31-27	972/31.3	56-150	.373	11-30	.367	44-78	.564	12	76	88	2.8	79-3	171	99	0	46	167	5.4
2020-21	SLU	19-17	539/28.4	35-87	.402	7-29	.241	20-30	.667	6	47	53	2.8	37-1	116	41	2	23	97	5.1
2021-22	SLU	26-26	851/32.7	103-230	.448	19-51	.373	66-82	.805	6	100	106	4.1	62-3	217	106	5	55	291	11.2
TOTAL		76-70	2361/31.1	194-467	.415	37-110	.336	130-190	.684	24	223	247	3.3	178-7	504	246	7	124	555	7.3


SEASON/CAREER HIGHS
POINTS

SEASON: 7, twice
CAREER: 7, twice

REBOUNDS

SEASON: 3 vs. La Salle, 2/16/22
CAREER: 4 vs. SIUE, 11/25/20

ASSISTS

SEASON: 1, twice
CAREER: 2 vs. UCA, 12/8/20

STEALS

SEASON: 2 vs. Central Ark., 11/9/21
CAREER: 4 vs. UAPB, 12/5/20

BLOCKS

SEASON:
CAREER: 1 vs. LSU, 11/28/20

FIELD GOALS MADE

SEASON: 3, three times
CAREER: 3, four times

FIELD GOAL ATTEMPTS

SEASON: 6 vs. Harris-Stowe, 11/10/21
CAREER: 6, twice

3-PT. FIELD GOALS MADE

SEASON:
CAREER:

3-PT. FIELD GOALS ATTEMPTED

SEASON: 1 vs. Eastern Illinois, 11/12/21
CAREER: 1 vs. Eastern Illinois, 11/12/21

FREE THROWS MADE

SEASON: 2 vs. UMass, 1/23/22
CAREER: 2 vs. UMass, 1/23/22

FREE THROWS ATTEMPTED

SEASON: 4 vs. UMass, 1/23/22
CAREER: 4 vs. UMass, 1/23/22

MINUTES PLAYED

SEASON: 18 vs. Harris-Stowe, 11/10/21
CAREER: 18 vs. Harris-Stowe, 11/10/21

2 • MARKHI STRICKLAND



Freshman • G/F • 6-5 • 210 • Miami, Fla. • Victory Rock Prep | MAJOR: Entrepreneurship

CURRENT SEASON | 2021-22

- Hit all three of his shots from the field en route to six points in the home win against La Salle.
- Had a highlight-reel dunk at Duquesne.
- Hit a pair of free throws against UMass.
- Turned in two minutes of action in the Billikens' last game, a win over Iona.
- Made his first-career start in the Richmond game and converted a big 3-point play in the second half.
- Recorded a career-high seven points in the Billikens' first two games against Central Arkansas and Harris-Stowe.

2020-21 • Freshman

- Appeared in seven games and averaged 2.6 points.
- Played 15 minutes in his debut against SIUE and scored

three points with four rebounds.

- Hit both of his shots from the field en route to five points and also posted four steals in the win over Arkansas-Pine Bluff.
- Went 3-3 from the field for six points in the La Salle win.
- Scored on an emphatic putback dunk in the win at Fordham.

PREVIOUS

- Attended prep school at Victory Rock Prep in Bradenton, Fla.
- Graduated from IMG Academy in Bradenton.
- Played on the Nike EYBL circuit with E1T1.
- Father, Mark, played eight years in the NBA.

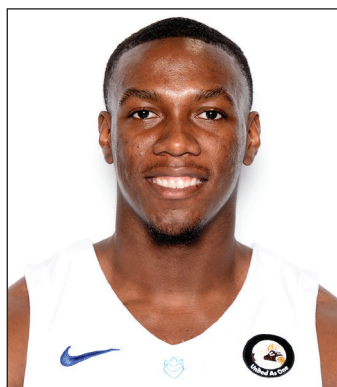
2021-22 Game-by-Game Stats

Opponent	Date	GS	MIN	Total		3-Pointers		Free throws		Rebounds				PF	A	TO	BLK	STL	PTS	AVG
				FG-FGA	PCT	3FG-3FGA	PCT	FT-FTA	PCT	OFF	DEF	TOT	AVG							
Central Ark.	11/09/2021		10:16	3-4	.750	0-0	.000	1-2	.500	0	0	0	0.0	1	0	0	0	2	7	7.0
Harris-Stowe	11/10/2021		18:00	3-6	.500	0-0	.000	1-1	1.000	0	2	2	1.0	0	1	0	0	1	7	7.0
Eastern Ill.	11/12/2021		07:03	1-3	.333	0-1	.000	0-1	.000	0	0	0	0.7	1	0	0	0	0	2	5.3
at Memphis	11/16/2021		03:21	1-1	1.000	0-0	.000	0-0	.000	1	0	1	0.8	2	0	0	0	0	2	4.5
Mercer	11/20/2021		00:02	0-0	.000	0-0	.000	0-0	.000	0	0	0	0.6	0	0	0	0	0	0	3.6
Richmond	01/02/2022	*	03:40	1-3	.333	0-0	.000	1-1	1.000	1	0	1	0.7	2	0	0	0	0	3	3.5
Iona	01/08/2022		02:04	0-2	.000	0-0	.000	0-0	.000	0	0	0	0.6	0	0	0	0	0	0	3.0
at Dayton	01/11/2022		00:39	0-0	.000	0-0	.000	0-0	.000	0	0	0	0.5	0	0	1	0	0	0	2.6
Fordham	01/15/2022		03:48	0-0	.000	0-0	.000	0-0	.000	0	0	0	0.4	0	0	2	0	0	0	2.3
Massachusetts	01/23/2022		05:15	0-2	.000	0-0	.000	2-4	.500	1	1	2	0.6	0	0	0	0	1	2	2.3
at Duquesne	01/29/2022		03:38	1-3	.333	0-0	.000	0-0	.000	0	0	0	0.5	1	0	1	0	0	2	2.3
La Salle	02/16/2022		04:35	3-3	1.000	0-0	.000	0-0	.000	1	2	3	0.8	1	1	0	0	1	6	2.6
Totals		1	62:21	13-27	.481	0-1	.000	5-9	.556	4	5	9	0.8	8	2	4	0	5	31	2.6

Player Averages

Games Played	Minutes/game	Points/game	FG Pct	3FG Pct	FT Pct	Rebounds/game	Assists/game	Turnovers/game	Assist/Turnover ratio	Steals/game	Blocks/game
12	5.2	2.6	48.1	0.0	55.6	0.8	0.2	0.3	0.5	0.4	0.0

Strickland's Career Stats				Field Goals		3-Point		F-Throws		Rebounds				Scoring						
SEASON	TEAM	GP-GS	MIN/AVG	FG-FGA	FG%	3FG-3FGA	3FG%	FT-FTA	FT%	OFF	DEF	TOT	AVG	PF-FO	A	TO	BLK	STL	PTS	AVG
2020-21	SLU	7-0	51/7.3	7-14	.500	0-0	.000	4-8	.500	3	7	10	1.4	6-0	2	2	1	7	18	2.6
2021-22	SLU	12-1	62/5.2	13-27	.481	0-1	.000	5-9	.556	4	5	9	0.8	8-0	2	4	0	5	31	2.6
TOTAL		19-1	114/6.0	20-41	.488	0-1	.000	9-17	.529	7	12	19	1.0	14-0	4	6	1	12	49	2.6


SEASON/CAREER HIGHS
POINTS

SEASON:
CAREER: 33 at Saint Joseph's, 2/1/20

REBOUNDS

SEASON:
CAREER: 9 at Boston College, 11/27/19

ASSISTS

SEASON:
CAREER: 5 vs. LSU, 11/28/20

STEALS

SEASON:
CAREER: 3 at La Salle, 2/3/21

BLOCKS

SEASON:
CAREER: 2, twice

FIELD GOALS MADE

SEASON:
CAREER: 10 vs. LSU, 11/28/20

FIELD GOAL ATTEMPTS

SEASON:
CAREER: 19, twice

3-PT. FIELD GOALS MADE

SEASON:
CAREER: 5 at Davidson, 1/22/20

3-PT. FIELD GOALS ATTEMPTED

SEASON:
CAREER: 10 vs. St. Bonaventure, 2/6/21

FREE THROWS MADE

SEASON:
CAREER: 13 at Saint Joseph's, 2/1/20

FREE THROWS ATTEMPTED

SEASON:
CAREER: 14, twice

MINUTES PLAYED

SEASON:
CAREER: 39 at VCU, 2/23/21

3 • JAVONTE PERKINS

Senior • G/F • 6-6 • 195 • St. Louis, Mo. • SWIC | MAJOR: Sociology


CURRENT SEASON | 2021-22

- Suffered a torn ACL in the Billikens' exhibition opener on Oct. 26 against Rockhurst and will miss the rest of the season.
- Preseason first-team All-Conference.

2020-21 • Senior

- Started all 21 games and led the Billikens in scoring (17.1 ppg).
- Second-team All-Conference selection.
- Through two seasons as a Billiken, ranks 10th in school history with a 15.9 career scoring average.
- Shot .456 from the field, .376 from 3-point range and an A-10-leading .866 from the free-throw line.
- His .866 mark from the charity stripe was sixth in a single season in school history and fourth among seniors in a single season.
- Averaged 18.3 ppg in the Billikens' 13 home games, a Chaifetz Arena record.
- Hit 50 percent of his shots from 3-point range (29-58) at home, a Chaifetz Arena record.
- Named A-10 Player of the Week Nov. 30.
- Scored in double figures in all but one game and scored 20 points or more seven times.
- Dropped a season-high 32 points, one point off of his career high, in the win against LSU.
- Scored 20 points in the win over NC State.
- Turned in 21 points in the win at home against St. Bonaventure.
- Was 8-of-10 from the field and 3-of-4 from distance en route to 19 points in the home victory vs. La Salle.
- Pumped in 25 points in the A-10 quarterfinal round victory against UMass.
- Had 21 points in the NIT game versus Mississippi State.
- Pulled down a season-high seven rebounds in consecutive games against Dayton, VCU and Richmond.

2019-20 • Junior

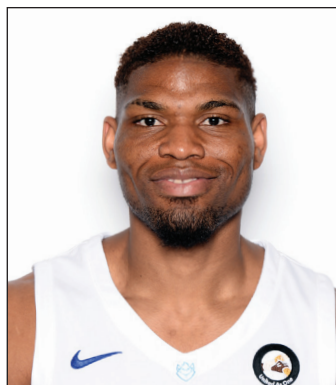
- Third-team All-Conference selection (Atlantic 10).
- Voted A-10 Sixth Man of the Year.
- Two-time A-10 Player of the Week (Feb. 3, 2020 and Feb. 24, 2020).

- Led the Billikens with 18.2 ppg in A-10 play, a school record.
- Scored in double figures in all but two A-10 games.
- Had seven 20+ scoring games in league play.
- Fifth in the A-10 in scoring in league games.
- Fourth in the A-10 with 119 free throws made.
- Led the team in scoring in a team-high 12 games.
- His 465 points were the 10th most by a junior in school history.
- During A-10 play, shot 49.3 percent from the field, 41.2 percent from 3-point range and 77.9 percent from the stripe.
- Scored 33 points at Saint Joseph's, the most ever by a Billiken in an A-10 road game.
- Became the first Billiken in 20 years to registered back-to-back 25-point scoring outputs when he did so against Dayton and Davidson.
- Scored 25 points in the home win against VCU.
- Turned in 25 points in the road victory at George Mason.

Prior to SLU

- Played two seasons at Southwestern Illinois College (SWIC) in Belleville.
- SWIC's all-time leading scorer.
- Finished third in scoring in the NJCAA as a sophomore with 26.4 ppg.
- Shot 53.7 percent from the field and 36 percent from the arc last season for the Blue Storm.
- Brought down nearly 8.0 rebounds per game and distributed close to 3.0 assists per game in 2018-19.
- As a freshman, averaged 20.0 ppg while shooting 60.5 percent from the field, 42.6 percent from 3-point range and 81.4 percent from the line.
- Prepped at Miller Career Academy in St. Louis.
- As a senior in 2016-17, Perkins led the Phoenix with 20.8 ppg and 15.6 rpg.
- He also led the team in scoring as a junior (15.7 ppg) and sophomore (13.0 ppg).

Perkins' Career Stats				Field Goals		3-Point		F-Throws		Rebounds								Scoring		
SEASON	TEAM	GP-GS	MIN/AVG	FG-FGA	FG%	3FG-3FGA	3FG%	FT-FTA	FT%	OFF	DEF	TOT	AVG	PF-FO	A	TO	BLK	STL	PTS	AVG
2019-20	SLU	31-1	849/27.4	153-345	.443	40-114	.351	119-155	.768	35	72	107	3.5	83-1	22	36	9	24	465	15.0
2020-21	SLU	21-21	639/30.4	132-284	.465	38-101	.376	58-67	.866	15	66	81	3.9	50-1	38	30	11	15	360	17.1
TOTAL		52-22	1488/28.6	285-629	.453	78-215	.363	177-222	.797	50	138	188	3.6	133-2	60	66	20	39	825	15.9



SEASON/CAREER HIGHS

POINTS

SEASON: 22 vs. GW, 1/26/22
CAREER: 22 vs. GW, 1/26/22

REBOUNDS

SEASON: 14 vs. Iona, 1/8/22
CAREER: 17 vs. Montana, 12/18/19

ASSISTS

SEASON: 1, eight times
CAREER: 1, 21 times

STEALS

SEASON: 3 vs. Richmond, 1/2/22
CAREER: 3 vs. Richmond, 1/2/22

BLOCKS

SEASON: 4 vs. Iona, 1/8/22
CAREER: 6 vs. Utah, 3/14/19

FIELD GOALS MADE

SEASON: 9 vs. GW, 1/26/22
CAREER: 9 vs. GW, 1/26/22

FIELD GOAL ATTEMPTS

SEASON: 14 vs. GW, 1/26/22
CAREER: 14 vs. GW, 1/26/22

3-PT. FIELD GOALS MADE

SEASON:
CAREER:

3-PT. FIELD GOALS ATTEMPTED

SEASON:
CAREER:

FREE THROWS MADE

SEASON: 7 vs. Eastern Illinois, 11/12/21
CAREER: 7 vs. Eastern Illinois, 11/12/21

FREE THROWS ATTEMPTED

SEASON: 8, twice
CAREER: 8, twice

MINUTES PLAYED

SEASON: 30 vs. Richmond, 1/2/22
CAREER: 30 vs. Richmond, 1/2/22

5 • FRANCIS OKORO

Junior • F • 6-9 • 235 • Imo, Nigeria | Oregon | MAJOR: Environmental Studies



CURRENT SEASON | 2021-22

- Scored a team-high 19 points (17 in the second half) in the win at La Salle.
- Scored a career-high 22 points and grabbed 11 boards in the win against George Washington.
- Posted a double-double of 11 points and 10 boards in the win over Fordham.
- Posted season highs of 14 rebounds and four blocked shots against Iona. Also had 13 points against the Gaels to record his second double-double of the season.
- Finished with 17 points on 7-of-8 shooting from the field against Boston College.
- Had his first double-double as a Billiken with 11 points and 12 rebounds against Eastern Illinois.
- Finished 8-of-9 from the field for 18 points against Harris-Stowe.

2019-20 • Sophomore (at Oregon)

- Appeared in 29 contests (18 starts) and averaged 3.3 ppg and 4.2 rpg.
- Shot 53.7 percent from the field (26-of-67).
- Had a career-high 17 rebounds and tied a then-career high with 12 points in the Ducks' win against Montana.
- That was his first game back after traveling to Nigeria for the memorial service for his father, Francis, who passed away in December.
- Registered a double-double of 10 points and 10 rebounds against Fresno State.

2018-19 • Freshman (at Oregon)

- Appeared in 37 games his freshman season (22 starts), averaging 3.1 ppg and 3.2 rpg.
- His insertion into the starting lineup in February helped spark a 10-game winning streak.
- Tied a Pac-12 Tournament record with a career-high six blocked shots against Utah.
- Turned in nine points and 10 rebounds against Washington.
- Registered a season-high 10 points against Portland State and matched it later in the year against Arizona.

PREVIOUS

- Was raised in Imo, Nigeria, and came to the United States prior to high school to live with family in Normal, Illinois.
- Played for Bradley Beal Elite in the Nike EYBL with Billiken teammates Yuri Collins, Terrence Hargrove and Fred Thatch.
- Consensus four-star recruit and was listed as the No. 24 recruit in ESPN's top 60 in 2019 before reclassifying for 2018.
- Touted as the eight-best center in the nation by ESPN coming out of high school.
- Awarded a scout grade of 96 by 247sports.com.
- For BBE in 2017, averaged 8.7 ppg and 9.0 rpg while also blocking 39 shots in 21 games.
- Earned All-State honors as senior at Normal West High School after averaging 15.7 ppg and 12.4 rpg.

2021-22 Game-by-Game Stats

Opponent	Date	GS	MIN	Total		3-Pointers		Free throws		Rebounds				PF	A	TO	BLK	STL	PTS	AVG
				FG-FGA	PCT	3FG-3FGA	PCT	FT-FTA	PCT	OFF	DEF	TOT	AVG							
Central Ark.	11/09/2021		17:12	1-5	.200	0-0	.000	2-4	.500	2	5	7	7.0	2	1	0	1	0	4	4.0
Harris-Stowe	11/10/2021		14:18	8-9	.889	0-0	.000	2-2	1.000	4	4	8	7.5	4	0	1	1	1	18	11.0
Eastern Ill.	11/12/2021		18:11	2-4	.500	0-0	.000	7-8	.875	6	6	12	9.0	4	1	1	1	1	11	11.0
at Memphis	11/16/2021		22:22	1-6	.167	0-0	.000	5-6	.833	9	4	13	10.0	3	0	1	3	2	7	10.0
Mercer	11/20/2021		21:26	1-2	.500	0-0	.000	5-6	.833	1	4	5	9.0	3	0	1	3	1	7	9.4
vs Illinois St.	11/23/2021		21:45	2-3	.667	0-0	.000	2-5	.400	4	5	9	9.0	1	0	0	0	1	6	8.8
vs SFA	11/24/2021		16:09	0-3	.000	0-0	.000	0-0	.000	1	1	2	8.0	5	0	1	3	0	0	7.6
at Boise St.	11/30/2021		28:14	3-7	.429	0-0	.000	2-2	1.000	1	3	4	7.5	4	1	1	0	0	8	7.6
UAB	12/04/2021		21:39	3-5	.600	0-0	.000	6-8	.750	2	3	5	7.2	1	1	0	1	0	12	8.1
Belmont	12/07/2021		05:08	1-3	.333	0-0	.000	0-0	.000	2	0	2	6.7	2	0	1	0	1	2	7.5
Boston College	12/11/2021		28:28	7-8	.875	0-0	.000	3-3	1.000	1	5	6	6.6	4	0	2	3	1	17	8.4
Auburn	12/18/2021		26:48	5-9	.556	0-0	.000	2-6	.333	6	2	8	6.8	2	0	0	1	0	12	8.7
Richmond	01/02/2022	*	29:54	4-7	.571	0-0	.000	1-1	1.000	1	7	8	6.8	2	1	0	1	3	9	8.7
Iona	01/08/2022	*	28:50	5-8	.625	0-0	.000	3-4	.750	5	9	14	7.4	4	0	3	4	0	13	9.0
at Dayton	01/11/2022	*	36:03	3-8	.375	0-0	.000	1-1	1.000	3	5	8	7.4	1	0	1	3	0	7	8.9
Fordham	01/15/2022	*	23:25	5-9	.556	0-0	.000	1-1	1.000	0	10	10	7.6	3	0	2	0	0	11	9.0
at Massachusetts	01/20/2022	*	20:42	7-11	.636	0-0	.000	2-2	1.000	2	5	7	7.5	5	0	1	0	0	16	9.4
Massachusetts	01/23/2022	*	13:47	0-1	.000	0-0	.000	1-2	.500	2	4	6	7.4	2	0	1	1	0	1	8.9
George Washington	01/26/2022	*	23:52	9-14	.643	0-0	.000	4-4	1.000	4	7	11	7.6	2	1	2	0	1	22	9.6
at Duquesne	01/29/2022	*	18:22	7-9	.778	0-0	.000	0-0	.000	2	6	8	7.7	4	0	1	1	2	14	9.9
at George Mason	02/02/2022	*	24:12	6-8	.750	0-0	.000	2-2	1.000	4	5	9	7.7	5	1	0	1	1	14	10.0
Dayton	02/05/2022	*	21:12	2-3	.667	0-0	.000	1-2	.500	2	5	7	7.7	3	1	0	2	0	5	9.8
at La Salle	02/08/2022	*	25:50	9-11	.818	0-0	.000	1-1	1.000	1	6	7	7.7	4	0	0	2	0	19	10.2
St. Bonaventure	02/11/2022	*	24:54	6-10	.600	0-0	.000	2-3	.667	1	3	4	7.5	1	0	3	1	1	14	10.4
at St. Bonaventure	02/14/2022	*	27:24	5-8	.625	0-0	.000	4-4	1.000	2	5	7	7.5	2	0	3	0	0	14	10.5
La Salle	02/16/2022	*	22:04	2-3	.667	0-0	.000	2-3	.667	1	5	6	7.4	2	0	1	0	1	6	10.3
Totals		14	582:11	104-174	.598	0-0	.000	61-80	.763	69	124	193	7.4	75	8	27	33	17	269	10.3

Okoro's Career Stats				Field Goals		3-Point		F-Throws		Rebounds				Scoring						
SEASON	TEAM	GP-GS	MIN/AVG	FG-FGA	FG%	3FG-3FGA	3FG%	FT-FTA	FT%	OFF	DEF	TOT	AVG	PF-FO	A	TO	BLK	STL	PTS	AVG
2018-19	Oregon	37-22	500/13.5	45-96	.469	0-0	.000	23-49	.469	49	70	119	3.2	65-1	6	26	20	7	113	3.1
2019-20	Oregon	29-18	496/17.1	36-67	.537	0-0	.000	24-51	.471	50	71	121	4.2	68-3	7	19	22	9	96	3.3
2021-22	SLU	26-14	582/22.4	104-174	.598	0-0	.000	61-80	.763	69	124	193	7.4	75-3	8	27	33	17	269	10.3
TOTAL FOR SLU		26-14	582/22.4	104-174	.598	0-0	.000	61-80	.763	69	124	193	7.4	75-3	8	27	33	17	269	10.3
TOTAL		92-54	1578/17.2	185-337	.549	0-0	.000	108-180	.600	168	265	433	4.7	208-7	21	72	75	33	478	5.2



11 • RASHAD WILLIAMS



Junior • G • 6-2 • 185 • Detroit, Mich. | Oakland | MAJOR: Communication

SEASON/CAREER HIGHS

POINTS

SEASON: 9 vs. Harris-Stowe, 11/10/21
CAREER: 37 vs. Detroit Mercy, 1/31/20

REBOUNDS

SEASON: 2 vs. Harris-Stowe, 11/10/21
CAREER: 9 at Green Bay, 3/5/20

ASSISTS

SEASON: 6 vs. Harris-Stowe, 11/10/21
CAREER: 6 vs. Harris-Stowe, 11/10/21

STEALS

SEASON: 1 at George Mason, 2/2/22
CAREER: 4, twice

BLOCKS

SEASON:
CAREER: 1 at Oakland, 2/2/19

FIELD GOALS MADE

SEASON: 3 vs. Harris-Stowe, 11/10/21
CAREER: 12 at Michigan State, 12/13/20

FIELD GOAL ATTEMPTS

SEASON: 8 vs. Harris-Stowe, 11/10/21
CAREER: 28 at Michigan State, 12/13/20

3-PT. FIELD GOALS MADE

SEASON: 3 vs. Harris-Stowe, 11/10/21
CAREER: 10 at Oklahoma State, 12/5/20

3-PT. FIELD GOALS ATTEMPTED

SEASON: 7 vs. Harris-Stowe, 11/10/21
CAREER: 20 at Oklahoma State, 12/5/20

FREE THROWS MADE

SEASON: 2 vs. GW, 1/26/22
CAREER: 14 at Detroit Mercy, 1/31/20

FREE THROWS ATTEMPTED

SEASON: 2 vs. GW, 1/26/22
CAREER: 15 at Detroit Mercy, 1/31/20

MINUTES PLAYED

SEASON: 23 vs. Harris-Stowe, 11/10/21
CAREER: 49 vs. Green Bay, 2/23/20

CURRENT SEASON | 2021-22

- Has hit a 3-pointer in three straight games.
- Knocked down a pair of treys in the win at Duquesne.
- Hit a big 3-pointer in the second half at UMass.
- Drained two 3-pointers against Central Arkansas and three against Harris-Stowe.

2020-21 • Junior (at Oakland)

- Appeared in 28 games and made 25 starts.
- Averaged 13.6 ppg.
- Scored in double-figures 16 times and had eight games with 20 or more points.
- Led the nation with 277 3-point attempts.
- His 94 made 3-pointers was fifth in the country.
- Two-time Horizon League Player of the Week (Dec. 7 and Dec. 14).
- Drained 10 3-pointers en route to 32 points at Oklahoma State.
- Recorded 36 points at Michigan State.

2019-20 • Sophomore (at Oakland)

- Appeared in 15 games after being named eligible by the NCAA in the second semester.
- Averaged 19.5 ppg in the limited season, scoring in double figures in all but one game.
- Drained a team-high 61 3-pointers.
- Scored a career-high 37 points against Detroit Mercy and drew Horizon League Player of the Year honors.
- Had 34 points after making 11 of 19 shots at NKU.

2018-19 • Freshman (at Cleveland State)

- Named to the Horizon League All-Freshman team.
- Played in 31 games with nine starts.
- Turned in 10.8 ppg and shot better than 40 percent from 3-point range.
- Led the Horizon League in 3-point field goal percentage (.408).
- Drained 91 3-pointers to set a Cleveland State freshman record.
- Scored in double-figures on 18 occasions.
- Turned in a season-high 25 points, thanks in part to seven 3s, at Illinois State.

Previous

- Michigan Mr. Basketball candidate at Wayne Memorial High School.
- Averaged 23.7 points and 6.7 assists his senior year, shooting better than 50 percent (77-153) from 3-point range.
- Honorable-mention All-State and Detroit Free Press All-West first team pick.
- Led team to its first district title in 21 years and was first player to earn AP All-State honors in 20 years.
- Helped Wayne Memorial to a 35-12 record in his two years.
- Played his freshman and sophomore seasons at Romulus High School.

2021-22 Game-by-Game Stats

Opponent	Date	GS	MIN	Total FG-FGA	PCT	3FG-3FGA	PCT	FT-FTA	PCT	Rebounds OFF DEF TOT AVG	PF	A	TO	BLK	STL	PTS	AVG
Central Ark.	11/09/2021		13:16	2-4	.500	2-4	.500	0-0	.000	0 1 1 1.0	1	0	0	0	0	6	6.0
Harris-Stowe	11/10/2021		23:01	3-8	.375	3-7	.429	0-0	.000	1 1 2 1.5	2	6	1	0	0	9	7.5
Eastern Ill.	11/12/2021		16:53	0-1	.000	0-1	.000	0-0	.000	0 0 0 1.0	1	2	2	0	0	0	5.0
at Memphis	11/16/2021		06:37	0-1	.000	0-1	.000	0-0	.000	0 0 0 0.8	0	0	0	0	0	0	3.8
vs Illinois St.	11/23/2021		02:28	0-1	.000	0-1	.000	0-0	.000	0 1 1 0.8	0	0	0	0	0	0	3.0
at Boise St.	11/30/2021		05:59	1-2	.500	1-2	.500	0-0	.000	0 0 0 0.7	1	0	2	0	0	3	3.0
Richmond	01/02/2022		02:58	0-2	.000	0-2	.000	0-0	.000	0 0 0 0.6	0	0	1	0	0	0	2.6
Fordham	01/15/2022		03:12	0-1	.000	0-1	.000	0-0	.000	0 0 0 0.5	0	0	0	0	0	0	2.3
at Massachusetts	01/20/2022		05:54	1-4	.250	1-4	.250	0-0	.000	0 0 0 0.4	0	0	0	0	0	3	2.3
Massachusetts	01/23/2022		10:51	1-7	.143	1-6	.167	0-0	.000	0 1 1 0.5	0	0	0	0	0	3	2.4
George Washington	01/26/2022		09:09	0-5	.000	0-4	.000	2-2	1.000	0 0 0 0.5	1	1	0	0	0	2	2.4
at Duquesne	01/29/2022		12:42	2-6	.333	2-5	.400	0-0	.000	0 0 0 0.4	2	0	1	0	0	6	2.7
at George Mason	02/02/2022		10:02	1-4	.250	1-3	.333	0-0	.000	1 1 2 0.5	0	0	0	0	1	3	2.7
Dayton	02/05/2022		02:56	1-3	.333	1-3	.333	0-0	.000	0 0 0 0.5	0	0	0	0	0	3	2.7
St. Bonaventure	02/11/2022		04:38	0-1	.000	0-1	.000	0-0	.000	0 0 0 0.5	1	0	0	0	0	0	2.5
La Salle	02/16/2022		10:41	0-0	.000	0-0	.000	0-0	.000	0 1 1 0.5	0	2	1	0	0	0	2.4
Totals		0	141:17	12-50	.240	12-45	.267	2-2	1.000	2 6 8 0.5	9	11	8	0	1	38	2.4

Player Averages

Games Played	Minutes/game	Points/game	FG Pct	3FG Pct	FT Pct	Rebounds/game	Assists/game	Turnovers/game	Assist/Turnover ratio	Steals/game	Blocks/game
16	8.8	2.4	24.0	26.7	100.0	0.5	0.7	0.5	1.4	0.1	0.0

Williams' Career Stats				Field Goals		3-Point		F-Throws		Rebounds										Scoring	
SEASON	TEAM	GP-GS	MIN/AVG	FG-FGA	FG%	3FG-3FGA	3FG%	FT-FTA	FT%	OFF	DEF	TOT	AVG	PF-FO	A	TO	BLK	STL	PTS	AVG	
2018-19	CSU	31-9	728/23.5	111-274	.405	91-223	.408	23-30	.767	3	54	57	1.8	48-0	23	39	1	18	336	10.8	
2019-20	Oak	15-15	574/38.3	86-251	.343	61-189	.323	59-69	.855	1	45	46	3.1	36-1	27	40	0	10	292	19.5	
2020-21	Oak	28-25	797/28.5	125-362	.345	94-277	.339	37-47	.787	3	40	43	1.5	36-1	25	42	0	22	381	13.6	
2021-22	SLU	16-0	141/8.8	12-50	.240	12-45	.267	2-2	1.000	2	6	8	0.5	9-0	11	8	0	1	38	2.4	
TOTAL FOR SLU		16-0	141/8.8	12-50	.240	12-45	.267	2-2	1.000	2	6	8	0.5	9-0	11	8	0	1	38	2.4	
TOTAL		90-49	2241/24.9	334-937	.356	258-734	.351	121-148	.818	9	145	154	1.7	129-2	86	129	1	51	1047	11.6	



SEASON/CAREER HIGHS

POINTS

SEASON: 19 vs. SFA, 11/24/21
CAREER: 20 vs. Northeastern, 2/13/20

REBOUNDS

SEASON: 8 vs. SFA, 11/24/21
CAREER: 13 vs. Charleston, 2/22/20

ASSISTS

SEASON: 2, three times
CAREER: 3 vs. La Salle, 2/18/21

STEALS

SEASON: 3 vs. Eastern Illinois, 11/12/21
CAREER: 3, twice

BLOCKS

SEASON: 4 vs. UAB, 12/4/21
CAREER: 4 vs. UAB, 12/4/21

FIELD GOALS MADE

SEASON: 5, twice
CAREER: 9, twice

FIELD GOAL ATTEMPTS

SEASON: 8, three times
CAREER: 13 vs. JMU, 2019-20

3-PT. FIELD GOALS MADE

SEASON:
CAREER:

3-PT. FIELD GOALS ATTEMPTED

SEASON: 1 vs. Harris-Stowe, 11/10/21
CAREER: 1 vs. Harris-Stowe, 11/10/21

FREE THROWS MADE

SEASON: 9 vs. SFA, 11/24/21
CAREER: 9 vs. SFA, 11/24/21

FREE THROWS ATTEMPTED

SEASON: 12 vs. SFA, 11/24/21
CAREER: 12 vs. SFA, 11/24/21

MINUTES PLAYED

SEASON: 27 vs. SFA, 11/24/21
CAREER: 35 vs. Drexel, 2019-20

12 • MARTEN LINSSEN

Junior • F • 6-8 • 240 • Dusseldorf, Germany | UNC Wilmington | MBA Candidate



CURRENT SEASON | 2021-22

- Pulled down six rebounds in the home win vs. La Salle.
- Was 3-of-3 from the field to help account for his 10 points in the home game vs. St. Bonaventure.
- Hit all five of his shots from the field en route to a team-high 17 points against Dayton.
- Had nine points and seven rebounds against Belmont.
- Turned in 11 points and set a career high with four blocked shots against UAB.
- Scored a season-high 19 points in the Cancun Challenge title game against SFA & named to All-Tournament team honors.
- Was 4-of-4 from the field en route to eight points against Central Arkansas.

2020-21 • Junior

- Named to the Atlantic 10 Commissioner's Honor Roll.
- Appeared in all 21 games and averaged 5.5ppg and 2.1rpg.
- Shot 64.6 percent (42-65) from the field and 80 percent (32-40) from the free-throw line.
- Started the first two games of the season for Hasahn French who was recovering from an injury.
- Turned in a season-high 11 points in the season-opening win against SIUE.
- Pumped in 10 points on 5-of-6 shooting vs. Indiana State.
- Went 4-of-4 from the field in victories over St. Bonaventure and Richmond.
- Dished out a career-best three assists in the win vs. La Salle.

2019-20 • Sophomore (at UNC Wilmington)

- Appeared in 32 games (29 starts) for the Seahawks.
- Averaged 10.5 ppg and 4.6 rpg.
- Second in the Colonial Athletic Association (CAA) in field goal percentage (.596).
- Scored in double-figures in 17 games and turned in two double-doubles.
- Had a career-high 20 points at Northeastern.
- Turned in 16 points and 13 rebounds against Charleston.
- Averaged 14.6 ppg over the last seven games of the season.

2018-19

- Sat out season per NCAA transfer regulations.

2017-18 • Freshman (at Valparaiso)

- Played in 22 games for the Crusaders.
- Averaged 2.0 ppg and 2.0 rpg.
- Had a season-high 12 points (5-of-5 shooting from the field) and season-best seven boards in a win over Kent State.

PREVIOUS

- Played on Germany's U18 team at the 206 European Championships.
- Member of Bayer Giants Leverkusen.
- Selected to 2017 NBBL All-Star team after averaging 12.8 ppg and 8.9 rpg.

2021-22 Game-by-Game Stats

Opponent	Date	GS	MIN	Total		3-Pointers		Free throws		Rebounds				PF	A	TO	BLK	STL	PTS	AVG	
				FG-FGA	PCT	3FG-3FGA	PCT	FT-FTA	PCT	OFF	DEF	TOT	AVG								
Central Ark.	11/09/2021	*	12:47	4-4	1.000	0-0	.000	0-0	.000	0	1	1	1.0	2	0	1	0	1	8	8.0	
Harris-Stowe	11/10/2021	*	15:46	4-6	.667	0-1	.000	4-4	1.000	1	2	3	2.0	0	2	0	1	2	12	10.0	
Eastern Ill.	11/12/2021	*	15:17	5-8	.625	0-0	.000	5-6	.833	2	2	4	2.7	3	1	2	1	3	15	11.7	
at Memphis	11/16/2021	*	15:49	4-8	.500	0-0	.000	3-4	.750	4	2	6	3.5	5	0	1	1	0	11	11.5	
Mercer	11/20/2021	*	18:18	3-6	.500	0-0	.000	3-4	.750	3	2	5	3.8	2	1	1	1	1	9	11.0	
vs Illinois St.	11/23/2021	*	17:28	3-5	.600	0-0	.000	4-4	1.000	2	3	5	4.0	3	1	0	0	0	10	10.8	
vs SFA	11/24/2021	*	27:26	5-8	.625	0-0	.000	9-12	.750	2	6	8	4.6	3	1	1	2	1	19	12.0	
at Boise St.	11/30/2021	*	16:46	1-4	.250	0-0	.000	5-6	.833	2	3	5	4.6	5	0	2	1	0	7	11.4	
UAB	12/04/2021	*	18:21	4-6	.667	0-0	.000	3-4	.750	0	2	2	4.3	2	2	1	4	0	11	11.3	
Belmont	12/07/2021	*	25:44	4-7	.571	0-0	.000	1-2	.500	1	6	7	4.6	4	2	1	1	1	9	11.1	
Boston College	12/11/2021	*	11:32	1-1	1.000	0-0	.000	2-2	1.000	2	1	3	4.5	4	0	2	0	0	4	10.5	
Auburn	12/18/2021	*	13:12	2-7	.286	0-0	.000	2-2	1.000	2	1	3	4.3	1	0	0	0	0	6	10.1	
at Massachusetts	01/20/2022		09:00	1-1	1.000	0-0	.000	0-0	.000	1	1	2	4.2	2	1	1	0	0	2	9.5	
Massachusetts	01/23/2022		15:46	2-6	.333	0-0	.000	4-4	1.000	2	2	4	4.1	1	0	1	1	0	8	9.4	
George Washington	01/26/2022		16:40	1-3	.333	0-0	.000	2-2	1.000	3	2	5	4.2	2	1	0	0	0	4	9.0	
at Duquesne	01/29/2022		09:48	1-4	.250	0-0	.000	1-2	.500	3	1	4	4.2	4	0	0	0	0	3	8.6	
at George Mason	02/02/2022		11:44	1-2	.500	0-0	.000	3-4	.750	0	3	3	4.1	5	0	0	0	0	5	8.4	
Dayton	02/05/2022		18:48	5-5	1.000	0-0	.000	7-8	.875	0	2	2	4.0	2	1	0	1	0	17	8.9	
at La Salle	02/08/2022		08:55	0-2	.000	0-0	.000	1-2	.500	0	2	2	3.9	3	1	2	0	0	1	8.5	
St. Bonaventure	02/11/2022		15:06	3-3	1.000	0-0	.000	4-6	.667	0	3	3	3.9	2	0	0	0	0	10	8.6	
at St. Bonaventure	02/14/2022		12:36	1-1	1.000	0-0	.000	2-2	1.000	0	1	1	3.7	2	1	2	0	0	4	8.3	
La Salle	02/16/2022		14:05	2-3	.667	0-0	.000	0-0	.000	0	6	6	3.8	3	1	1	0	1	4	8.1	
Totals			12	340:55	57-100	.570	0-1	.000	65-80	.813	30	54	84	3.8	60	16	19	14	10	179	8.1

Linssen's Career Stats				Field Goals		3-Point		F-Throws		Rebounds				Scoring	
SEASON	TEAM	GP-GS	MIN/AVG	FG-FGA	FG%	3FG-3FGA	3FG%	FT-FTA	FT%	OFF	DEF	TOT	AVG	PF-FO	A
2017-18	VALPO	22-0	163/7.4	13-30	.433	0-0	.000	19-33	.576	15	29	44	2.0	39-2	6
2019-20	UNCW	32-29	660/20.6	136-228	.596	0-0	.000	65-93	.699	56	90	146	4.6	86-4	13
2020-21	SLU	21-2	247/11.8	42-65	.646	0-0	.000	32-40	.800	23	21	44	2.1	50-2	8
2021-22	SLU	22-12	341/15.5	57-100	.570	0-1	.000	65-80	.813	30	54	84	3.8	60-3	16
TOTAL FOR SLU		43-14	588/13.7	99-165	.600	0-1	.000	97-120	.808	53	75	128	3.0	110-5	24
TOTAL		97-43	1411/14.5	248-423	.586	0-1	.000	181-246	.736	124	194	318	3.3	235-11	43


SEASON/CAREER HIGHS
POINTS

SEASON: 5 vs. Harris-Stowe, 11/10/21
CAREER: 5 vs. Harris-Stowe, 11/10/21

REBOUNDS

SEASON: 2, twice
CAREER: 2, twice

ASSISTS

SEASON: 2 vs. Harris-Stowe, 11/10/21
CAREER: 2 vs. Harris-Stowe, 11/10/21

STEALS

SEASON: 1 vs. Harris-Stowe, 11/10/21
CAREER: 1, twice

BLOCKS

SEASON:
CAREER:

FIELD GOALS MADE

SEASON: 2 vs. Harris-Stowe, 11/10/21
CAREER: 2 vs. Harris-Stowe, 11/10/21

FIELD GOAL ATTEMPTS

SEASON: 2 vs. Harris-Stowe, 11/10/21
CAREER: 2, twice

3-PT. FIELD GOALS MADE

SEASON: 1, twice
CAREER: 1, twice

3-PT. FIELD GOALS ATTEMPTED

SEASON: 1, twice
CAREER: 2 vs. SIUE, 11/25/20

FREE THROWS MADE

SEASON:
CAREER: 2 vs. SIUE, 11/25/20

FREE THROWS ATTEMPTED

SEASON:
CAREER: 2 vs. SIUE, 11/25/20

MINUTES PLAYED

SEASON: 17 vs. Harris-Stowe, 11/10/21
CAREER: 17 vs. Harris-Stowe, 11/10/21

13 • ANDRE LORENTSSON

Freshman • F • 6-8 • 215 • Gothenburg, Sweden • Rig Mark Kinna | MAJOR: Deciding


CURRENT SEASON | 2021-22

- Had a dunk late in the home win against La Salle.
- Hit a 3-pointer in the win over Eastern Illinois.
- Recorded his first collegiate field goals in the Harris-Stowe game, finishing with a career-best five points.

2020-21 • Freshman

- Named to the Atlantic 10 Commissioner's Honor Roll.
- Appeared in four games for the Billikens.
- Hit a pair of free throws for his first collegiate points in the season opener against SIUE.
- Also appeared in wins against Arkansas-Pine Bluff, Fordham and La Salle.

PREVIOUS

- Competed in the National Prep School Invitational in Rhode Island in January with RIG Mark Kinna and posted a 2-1 record.
- Averaged 20 ppg in the NPSI, with a large portion of his scoring coming from beyond the arc.
- Averaged 17.7 ppg on 55 percent shooting from the field, including a 45 percent (44-97) mark from 3-point range last season.
- Averaged more than 6.0 rebounds per game while dishing out better than 3.0 assists per game.
- Also shot 85 percent from the free-throw line.
- Played for Sweden in the U16 European Championship (2017) and the U18 European Championship (2018).

2021-22 Game-by-Game Stats

Opponent	Date	GS	MIN	Total		3-Pointers		Free throws		Rebounds				PF				PTS	
				FG-FGA	PCT	3FG-3FGA	PCT	FT-FTA	PCT	OFF	DEF	TOT	AVG	A	TO	BLK	STL	PTS	AVG
Central Ark.	11/09/2021		10:16	0-0	.000	0-0	.000	0-0	.000	0	0	0	0.0	0	1	1	0	0	0.0
Harris-Stowe	11/10/2021		16:44	2-2	1.000	1-1	1.000	0-0	.000	0	1	1	0.5	2	2	1	0	1	2.5
Eastern Ill.	11/12/2021		05:05	1-1	1.000	1-1	1.000	0-0	.000	0	2	2	1.0	1	0	0	0	3	2.7
at Memphis	11/16/2021		01:43	0-0	.000	0-0	.000	0-0	.000	0	0	0	0.8	0	0	0	0	0	2.0
Massachusetts	01/23/2022		02:22	0-0	.000	0-0	.000	0-0	.000	0	0	0	0.6	0	1	0	0	0	1.6
George Washington	01/26/2022		02:01	1-1	1.000	0-0	.000	0-0	.000	0	2	2	0.8	0	0	0	0	2	1.7
La Salle	02/16/2022		03:05	1-1	1.000	0-0	.000	0-0	.000	0	0	0	0.7	0	0	1	0	2	1.7
Totals		0	41:16	5-5	1.000	2-2	1.000	0-0	.000	0	5	5	0.7	3	4	3	0	1	12

Player Averages

Games Played	Minutes/game	Points/game	FG Pct	3FG Pct	FT Pct	Rebounds/game	Assists/game	Turnovers/game	Assist/Turnover ratio	Steals/game	Blocks/game
7	5.9	1.7	100.0	100.0	0.0	0.7	0.6	0.4	1.3	0.1	0.0

Lorentsson's Career Stats				Field Goals		3-Point		F-Throws		Rebounds									Scoring	
SEASON	TEAM	GP-GS	MIN/AVG	FG-FGA	FG%	3FG-3FGA	3FG%	FT-FTA	FT%	OFF	DEF	TOT	AVG	PF-FO	A	TO	BLK	STL	PTS	AVG
2020-21	SLU	4-0	19/4.8	0-4	.000	0-4	.000	2-2	1.000	0	3	3	0.8	3-0	0	0	0	1	2	0.5
2021-22	SLU	7-0	41/5.9	5-5	1.000	2-2	1.000	0-0	.000	0	5	5	0.7	3-0	4	3	0	1	12	1.7
TOTAL		11-0	61/5.5	5-9	.556	2-6	.333	2-2	1.000	0	8	8	0.7	6-0	4	3	0	2	14	1.3



SEASON/CAREER HIGHS

POINTS

SEASON: 19 vs. Harris-Stowe, 11/10/21
CAREER: 19 vs. Harris-Stowe, 11/10/21

REBOUNDS

SEASON: 12 vs. UMass, 1/23/22
CAREER: 12 vs. UMass, 1/23/22

ASSISTS

SEASON: 3, twice
CAREER: 3, twice

STEALS

SEASON: 3 vs. GW, 1/26/22
CAREER: 3 vs. GW, 1/26/22

BLOCKS

SEASON: 2 at George Mason, 2/2/22
CAREER: 2 at George Mason, 2/2/22

FIELD GOALS MADE

SEASON: 7, twice
CAREER: 7, twice

FIELD GOAL ATTEMPTS

SEASON: 14 at Memphis, 11/16/21
CAREER: 14 at Memphis, 11/16/21

3-PT. FIELD GOALS MADE

SEASON: 5, twice
CAREER: 5, twice

3-PT. FIELD GOALS ATTEMPTED

SEASON: 8 vs. Harris-Stowe, 11/10/21
CAREER: 8 vs. Harris-Stowe, 11/10/21

FREE THROWS MADE

SEASON: 8 vs. Iona, 1/8/22
CAREER: 8 vs. Iona, 1/8/22

FREE THROWS ATTEMPTED

SEASON: 8, twice
CAREER: 8, twice

MINUTES PLAYED

SEASON: 37 vs. Auburn, 12/18/21
CAREER: 37 vs. Auburn, 12/18/21

15 • JORDAN NESBITT

Freshman • G • 6-6 • 200 • St. Louis, Mo. • SLCA • Memphis | MAJOR: Deciding



CURRENT SEASON | 2021-22

- Went for 16 points and set the two with three early 3-pointers in the home win against La Salle.
- Led Billikens with 18 points at St. Bonaventure, which included a 5-7 performance from 3-point range.
- Had 14 points, including 10 in the second half, in the win at George Mason.
- Recorded a career-high three steals against GW.
- Had the first double-double of his career with 17 points and 12 boards against UMass.
- Played a career-high 34 minutes against Iona and led the Billikens with 15 points, which included a trey and an 8-8 performance from the free-throw line.
- Was 4-of-7 from the field en route to 12 points against Richmond.
- Had 11 points against Auburn, including a clutch game-tying 3-pointer with less than a minute to go.
- Turned in 11 points in the win against Boston College, which included three treys.
- Led the Billikens with eight rebounds at Boise State.
- Went 9-of-14 from the field in SLU's two games in Cancun.
- Pumped in 19 points and grabbed nine boards against Harris-Stowe.
- Made his Billiken debut against Central Arkansas and went for 15 points and six rebounds.

2020-21 • Freshman (at Memphis)

- Enrolled at Memphis early and joined the team for the spring 2021 semester.
- Played in three games for the Tigers for a total of 12 minutes.
- Hit a 3-pointer against South Florida for his first collegiate points.
- Brought down a pair of rebounds against Central Florida in his collegiate debut.

Previous

- Prepped at St. Louis Christian Academy.
- Prior to enrolling at Memphis, was averaging 16.6 points, 8.7 rebounds and 4.2 assists his senior year at SLCA.
- Averaged a double-double of 25 points and 19 rebounds as a junior for SLCA.
- Four-star prospect and rated No. 48 overall by 247Sports.com.
- Sports Illustrated All-America candidate heading into senior year at SLCA.
- Ran with Bradley Beal Elite on the AAU circuit.

2021-22 Game-by-Game Stats

Opponent	Date	GS	MIN	Total		3-Pointers		Free throws		Rebounds				PF	A	TO	BLK	STL	PTS	AVG	
				FG-FGA	PCT	3FG-3FGA	PCT	FT-FTA	PCT	OFF	DEF	TOT	AVG								
Central Ark.	11/09/2021	*	22:17	6-11	.545	0-3	.000	3-4	.750	2	4	6	6.0	2	0	1	1	0	15	15.0	
Harris-Stowe	11/10/2021	*	17:51	7-11	.636	5-8	.625	0-0	.000	4	5	9	7.5	2	2	0	1	1	19	17.0	
Eastern Ill.	11/12/2021	*	15:55	3-8	.375	0-2	.000	0-1	.000	0	5	5	6.7	2	1	0	0	0	6	13.3	
at Memphis	11/16/2021	*	28:39	3-14	.214	2-6	.333	5-8	.625	1	3	4	6.0	3	3	0	1	2	13	13.3	
Mercer	11/20/2021	*	15:03	0-0	.000	0-0	.000	1-2	.500	0	2	2	5.2	2	2	1	0	0	1	10.8	
vs Illinois St.	11/23/2021	*	23:19	5-7	.714	2-4	.500	2-2	1.000	0	1	1	4.5	4	1	1	0	2	14	11.3	
vs SFA	11/24/2021	*	28:58	4-7	.571	1-2	.500	0-0	.000	0	4	4	4.4	4	1	0	0	0	9	11.0	
at Boise St.	11/30/2021	*	31:39	1-8	.125	1-4	.250	3-4	.750	1	7	8	4.9	1	1	0	1	1	6	10.4	
UAB	12/04/2021	*	22:31	2-8	.250	0-2	.000	0-0	.000	2	3	5	4.9	0	1	0	0	2	4	9.7	
Belmont	12/07/2021	*	27:49	2-4	.500	0-1	.000	3-6	.500	3	2	5	4.9	3	2	1	1	2	7	9.4	
Boston College	12/11/2021	*	26:31	4-9	.444	3-6	.500	0-0	.000	0	2	2	4.6	5	0	3	0	2	11	9.5	
Auburn	12/18/2021	*	37:11	3-13	.231	1-6	.167	4-6	.667	2	4	6	4.8	2	1	3	1	2	11	9.7	
Richmond	01/02/2022	*	24:51	4-7	.571	1-3	.333	3-4	.750	1	2	3	4.6	3	1	0	0	2	12	9.8	
Iona	01/08/2022	*	34:26	3-11	.273	1-3	.333	8-8	1.000	4	1	5	4.6	5	1	2	0	0	15	10.2	
at Dayton	01/11/2022	*	29:52	2-7	.286	1-3	.333	0-2	.000	0	3	3	4.5	4	1	2	0	0	5	9.9	
Fordham	01/15/2022	*	20:40	2-4	.500	1-2	.500	0-0	.000	0	3	3	4.4	3	1	2	0	0	5	9.6	
at Massachusetts	01/20/2022	*	24:57	2-4	.500	2-3	.667	2-2	1.000	2	2	4	4.4	3	0	0	0	0	8	9.5	
Massachusetts	01/23/2022	*	20:22	7-10	.700	0-2	.000	3-5	.600	4	8	12	4.8	4	2	0	1	0	17	9.9	
George Washington	01/26/2022	*	23:21	1-5	.200	0-0	.000	3-4	.750	1	1	2	4.7	0	3	0	0	3	5	9.6	
at Duquesne	01/29/2022	*	24:28	3-7	.429	0-2	.000	1-1	1.000	2	1	3	4.6	1	1	0	1	0	7	9.5	
at George Mason	02/02/2022	*	42:16	4-9	.444	2-6	.333	4-5	.800	1	4	5	4.6	4	1	6	2	2	14	9.7	
Dayton	02/05/2022	*	24:58	1-6	.167	0-2	.000	0-0	.000	1	3	4	4.6	2	0	1	0	1	2	9.4	
at La Salle	02/08/2022	*	34:25	2-5	.400	0-2	.000	4-5	.800	1	3	4	4.6	3	1	0	0	0	8	9.3	
St. Bonaventure	02/11/2022	*	23:46	0-4	.000	0-2	.000	0-0	.000	2	5	7	4.7	2	1	3	1	0	0	8.9	
at St. Bonaventure	02/14/2022	*	34:47	6-11	.545	5-7	.714	1-2	.500	0	1	1	4.5	1	2	2	0	1	18	9.3	
La Salle	02/16/2022	*	23:11	6-10	.600	3-5	.600	1-1	1.000	2	1	3	4.5	4	2	3	0	0	16	9.5	
Totals			25	684:04	83-200	.415	31-86	.360	51-72	.708	36	80	116	4.5	69	32	31	11	23	248	9.5

Nesbitt's Career Stats				Field Goals		3-Point		F-Throws		Rebounds				Scoring						
SEASON	TEAM	GP-GS	MIN/AVG	FG-FGA	FG%	3FG-3FGA	3FG%	FT-FTA	FT%	OFF	DEF	TOT	AVG	PF-FO	A	TO	BLK	STL	PTS	AVG
2020-21	Mem	3-0	12/3.9	1-4	.250	1-3	.333	0-0	.000	0	3	3	1.0	2-0	1	3	0	0	3	1.0
2021-22	SLU	26-25	684/26.3	83-200	.415	31-86	.360	51-72	.708	36	80	116	4.5	69-2	32	31	11	23	248	9.5
TOTAL FOR SLU		26-25	684/26.3	83-200	.415	31-86	.360	51-72	.708	36	80	116	4.5	69-2	32	31	11	23	248	9.5
TOTAL		29-25	696/24.0	84-204	.412	32-89	.360	51-72	.708	36	83	119	4.1	71-2	33	34	11	23	251	8.7



SEASON/CAREER HIGHS

POINTS

SEASON: 21 vs. La Salle, 2/16/22

CAREER: 21 vs. La Salle, 2/16/22

REBOUNDS

SEASON: 13 at St. Bonaventure, 2/14/22

CAREER: 13 at St. Bonaventure, 2/14/22

ASSISTS

SEASON: 4 at St. Bonaventure, 2/14/22

CAREER: 4, twice

STEALS

SEASON: 3, twice

CAREER: 5 vs. Duquesne, 3/6/19

BLOCKS

SEASON: 3 vs. GW, 1/26/22

CAREER: 3 vs. GW, 1/26/22

FIELD GOALS MADE

SEASON: 8, twice

CAREER: 8, twice

FIELD GOAL ATTEMPTS

SEASON: 11 vs. La Salle, 2/16/22

CAREER: 11, twice

3-PT. FIELD GOALS MADE

SEASON: 2, twice

CAREER: 4 vs. Oregon State, 12/9/18

3-PT. FIELD GOALS ATTEMPTED

SEASON: 4 vs. SFA, 11/24/21

CAREER: 5 vs. Oregon State, 12/9/18

FREE THROWS MADE

SEASON: 6 at St. Bonaventure, 2/14/22

CAREER: 6 at St. Bonaventure, 2/14/22

FREE THROWS ATTEMPTED

SEASON: 6, three times

CAREER: 8 at Fordham, 1/15/19

MINUTES PLAYED

SEASON: 36 at St. Bonaventure, 2/14/22

CAREER: 37 vs. Oregon State, 12/9/18

20 • FRED THATCH JR.



RS Sophomore • G • 6-3 • 215 • Sikeston, Mo. • Sikeston HS | MAJOR: MBA Candidate

CURRENT SEASON | 2021-22

- Scored a career-high 21 points on 8-of-11 shooting in the home win vs. La Salle.
- Had a career-high 13 rebounds and added 17 points for a double-double against St. Bonaventure.
- Turned in his first-career double-double with 14 points and 10 rebounds at La Salle.
- Matched his career high with 20 points against UMass on 8-of-14 shooting from the floor.
- Had nine points against Iona, including the game-winning putback in the final seconds.
- Made his first six shots of the game against Mercer and nished with 20 points (8-9 shooting).

2020-21 • Sophomore

- Named to the Atlantic 10 Commissioner's Honor Roll.
- Already earned an undergraduate degree in Sports Business.
- Turned in 5.4 ppg and 3.7 rpg and was 3rd with 17 steals.
- Averaged 6.9 ppg in A-10 games only, fourth on the squad.
- Shot 42.5% from the field and 82.4% from the line.
- Scored a season-high 13 points in the regular-season finale win against UMass.
- Turned in 12 points in both games against La Salle.
- Had 11 points and a season-high eight rebounds in the game at Minnesota.

2019-20 • Sophomore (earned medical hardship waiver)

- Named to the Atlantic 10 Commissioner's Honor Roll.

- Made 6 appearances & received a medical hardship waiver.
- Had season-high 11 points against Eastern Washington and FGCU.

2018-19 • Freshman

- Named to the Atlantic 10 Commissioner's Honor Roll.
- Appeared in all 36 games, making two starts.
- His 36 games played tied a school record for games played by a freshman.
- Posted 28 steals on the season, including a career-high five in the win against Duquesne.
- Turned in 16 points on 5-of-7 shooting from the field and 4-of-5 from the arch in the win against Oregon State.
- Had seven points, including an emphatic dunk off of a steal, in the win over Butler.
- Scored 12 points in A-10 wins against Dayton and George Washington.

Prior to SLU

- Helped Sikeston High School to the state tournament his senior year.
- Named the Missouri Basketball Coaches Association Player of the Year after averaging more than 25.0 ppg as a senior.
- Became the first Sikeston player in history to record more than 2,000 points, and he is also the school's all-time leader in rebounds, steals and assists.
- Played AAU for the St. Louis Eagles.

2021-22 Game-by-Game Stats

Opponent	Date	GS	MIN	Total		3-Pointers		Free throws		Rebounds				PF	A	TO	BLK	STL	PTS	AVG	
				FG-FGA	PCT	3FG-3FGA	PCT	FT-FTA	PCT	OFF	DEF	TOT	AVG								
Central Ark.	11/09/2021		14:24	2-3	.667	0-1	.000	2-3	.667	1	2	3	3.0	2	2	1	0	2	6	6.0	
Harris-Stowe	11/10/2021		05:56	0-2	.000	0-1	.000	0-0	.000	0	0	0	1.5	1	0	1	0	1	0	3.0	
Eastern Ill.	11/12/2021		19:35	2-6	.333	0-1	.000	0-0	.000	2	7	9	4.0	1	3	1	0	1	4	3.3	
at Memphis	11/16/2021		14:50	0-1	.000	0-0	.000	1-4	.250	1	3	4	4.0	2	0	3	0	1	1	2.8	
Mercer	11/20/2021		28:46	8-9	.889	0-1	.000	4-6	.667	5	3	8	4.8	2	0	2	1	3	20	6.2	
vs Illinois St.	11/23/2021		18:28	3-6	.500	0-0	.000	1-3	.333	2	3	5	4.8	3	0	1	0	1	7	6.3	
vs SFA	11/24/2021		20:30	3-7	.429	1-4	.250	1-2	.500	1	3	4	4.7	2	2	0	0	2	8	6.6	
at Boise St.	11/30/2021		30:02	4-6	.667	0-1	.000	4-4	1.000	0	5	5	4.8	2	2	0	0	1	12	7.3	
UAB	12/04/2021		31:24	4-6	.667	1-2	.500	3-4	.750	0	4	4	4.7	2	1	2	0	1	12	7.8	
Belmont	12/07/2021		15:28	0-1	.000	0-0	.000	0-0	.000	0	5	5	4.7	1	1	0	0	1	0	7.0	
Boston College	12/11/2021		19:57	2-3	.667	1-1	1.000	0-0	.000	1	5	6	4.8	2	0	1	0	0	5	6.8	
Auburn	12/18/2021		08:29	0-1	.000	0-0	.000	0-0	.000	0	0	0	4.4	1	1	2	0	0	0	6.3	
Richmond	01/02/2022	*	20:28	1-2	.500	0-0	.000	1-2	.500	1	1	2	4.2	4	1	0	2	0	3	6.0	
Iona	01/08/2022		21:52	4-9	.444	0-1	.000	1-1	1.000	4	3	7	4.4	4	1	2	0	3	9	6.2	
at Dayton	01/11/2022		25:38	3-10	.300	1-2	.500	3-3	1.000	2	3	5	4.5	3	1	0	1	0	10	6.5	
at Massachusetts	01/20/2022		26:50	8-14	.571	0-2	.000	4-4	1.000	1	4	5	4.5	4	4	3	0	2	20	7.3	
Massachusetts	01/23/2022	*	25:49	3-6	.500	0-0	.000	0-0	.000	2	5	7	4.6	4	0	1	0	1	6	7.2	
George Washington	01/26/2022	*	29:01	1-4	.250	0-0	.000	0-0	.000	2	3	5	4.7	2	0	2	3	1	2	6.9	
at Duquesne	01/29/2022	*	26:37	6-9	.667	1-2	.500	1-2	.500	3	0	3	4.6	2	2	1	1	1	14	7.3	
at George Mason	02/02/2022	*	31:59	2-7	.286	1-2	.500	0-0	.000	0	2	2	4.5	3	0	1	0	2	5	7.2	
Dayton	02/05/2022	*	29:34	4-9	.444	0-2	.000	4-4	1.000	2	3	5	4.5	2	3	1	0	1	12	7.4	
at La Salle	02/08/2022	*	28:58	5-9	.556	0-0	.000	4-6	.667	4	6	10	4.7	1	2	1	1	1	14	7.7	
St. Bonaventure	02/11/2022	*	29:43	3-9	.333	2-3	.667	0-0	.000	2	5	7	4.8	5	0	3	0	2	8	7.7	
at St. Bonaventure	02/14/2022	*	36:12	5-10	.500	1-2	.500	6-6	1.000	1	12	13	5.2	4	4	1	0	1	17	8.1	
La Salle	02/16/2022	*	28:25	8-11	.727	2-2	1.000	3-4	.750	3	4	7	5.2	2	2	3	0	1	21	8.6	
Totals			10	588:54	81-160	.506	11-30	.367	43-58	.741	40	91	131	5.2	61	32	33	9	30	216	8.6

Thatch's Career Stats				Field Goals		3-Point		F-Throws		Rebounds				Scoring						
SEASON	TEAM	GP-GS	MIN/AVG	FG-FGA	FG%	3FG-3FGA	3FG%	FT-FTA	FT%	OFF	DEF	TOT	AVG	PF-FO	A	TO	BLK	STL	PTS	AVG
2018-19	SLU	36-2	700/19.4	51-142	.359	18-67	.269	33-54	.611	42	54	96	2.7	85-3	30	29	12	28	153	4.3
2019-20	SLU	6-4	94/15.6	9-27	.333	2-12	.167	9-13	.692	4	17	21	3.5	10-0	2	4	1	4	29	4.8
2020-21	SLU	20-3	340/17.0	37-87	.425	5-16	.313	28-34	.824	36	38	74	3.7	42-1	20	11	3	17	107	5.4
2021-22	SLU	25-10	589/23.6	81-160	.506	11-30	.367	43-58	.741	40	91	131	5.2	61-1	32	33	9	30	216	8.6
TOTAL		87-19	1722/19.8	178-416	.428	36-125	.288	113-159	.711	122	200	322	3.7	198-5	84	77	25	79	505	5.8



22 • TERRENCE HARGROVE JR.



Soph. • G/F • 6-4 • 215 • East St. Louis, Ill. • East St. Louis | MAJOR: Communication

SEASON/CAREER HIGHS

POINTS

SEASON: 20 at Memphis, 11/16/21
CAREER: 27 vs. Maryville, 12/17/19

REBOUNDS

SEASON: 11, twice
CAREER: 11, twice

ASSISTS

SEASON: 2 vs. Illinois State, 11/23/21
CAREER: 2, twice

STEALS

SEASON: 3 vs. Auburn, 12/18/21
CAREER: 3 vs. Auburn, 12/18/21

BLOCKS

SEASON: 3 vs. Harris-Stowe, 11/10/21
CAREER: 3, twice

FIELD GOALS MADE

SEASON: 9 at Memphis, 11/16/21
CAREER: 9, twice

FIELD GOAL ATTEMPTS

SEASON: 23 at Memphis, 11/16/21
CAREER: 23 at Memphis, 11/16/21

3-PT. FIELD GOALS MADE

SEASON: 4 at Dayton, 1/11/22
CAREER: 4 at Dayton, 1/11/22

3-PT. FIELD GOALS ATTEMPTED

SEASON: 6 vs. UMass, 1/23/22
CAREER: 6, twice

FREE THROWS MADE

SEASON: 2, twice
CAREER: 9 vs. Maryville, 12/17/19

FREE THROWS ATTEMPTED

SEASON: 4 vs. UMass, 1/23/22
CAREER: 12 vs. Maryville, 12/17/19

MINUTES PLAYED

SEASON: 36 at Memphis, 11/16/21
CAREER: 36 at Memphis, 11/16/21

CURRENT SEASON | 2021-22

- Scored 13 points in the home win vs. La Salle on 5-8 shooting.
- Knocked in a pair of treys at La Salle.
- Had 14 points at Dayton, which included a 4-of-5 performance from the 3-point range.
- Turned in a team-high 17 points to go along with seven rebounds against Auburn.
- Had 13 points on 6-of-7 shooting against SFA.
- Scored 15 points and snagged 11 rebounds against Mercer for his second straight double-double.
- Notched his first-career double-double with 20 points and 11 boards at Memphis.

2020-21 • Sophomore

- Appeared in 19 games and averaged 4.2 ppg.
- Shot 42.6 percent from the field and 42.4 percent from 3-point range.
- Recorded a season-high 11 points in the season opening win over SIUE.
- Went 4-for-4 from the field (2-of-2 from 3) en route to 10 point in the regular-season finale win against UMass.
- Led the Billikens with eight points at Dayton.
- Hit two treys en route to 10 points and played a season-high 20 minutes in the NIT game against Mississippi State.

2019-20 • Freshman

- Appeared in 25 games.
- Shot a team-best 51.6 percent from the field, with a large portion of his FGs being dunks.

tion of his FGs being dunks.

- Registered career highs of 27 points and seven rebounds against Maryville.
- Second on the Billikens with 11 blocked shots.
- Scored in double figures in six games.
- Scored in double figures in three-straight wins late in the conference season (VCU, Saint Joseph's, at Rhode Island).
- Led SLU with four points in overtime at La Salle and finished with seven points for the game.
- Turned in 10 points on 4-of-5 shooting against Kansas State.
- Registered 11 points and brought down five rebounds at Duquesne.

Prior to SLU

- Prepped at East St. Louis High School in East St. Louis, Illinois.
- Widely referred to as one of the most electrifying prep players in the metro area.
- Led East St. Louis to its first-ever state championship.
- Averaged 18.5 ppg, 9.0 rpg and better than 3.0 bpg for the Flyers.
- Scored 32 points and added 10 rebounds in the Flyers' comeback win in the state championship game.
- Illinois Class 3A All-State first team selection.
- First-team All-Metro and first-team Fab-Five All-Star by the St. Louis American.
- As a junior at East St. Louis, he averaged 18.2 ppg and 9.5 rpg, shot 46 percent from the field and led the team with 61 blocks.
- Played for Bradley Beal Elite.

2021-22 Game-by-Game Stats

Opponent	Date	GS	MIN	Total		3-Pointers		Free throws		Rebounds			PF	A	TO	BLK	STL	PTS	AVG		
				FG-FGA	PCT	3FG-3FGA	PCT	FT-FTA	PCT	OFF	DEF	TOT								AVG	
Central Ark.	11/09/2021	*	19:11	3-6	.500	1-2	.500	0-0	.000	0	3	3	3.0	2	0	1	0	7	7.0		
Harris-Stowe	11/10/2021	*	16:58	3-6	.500	0-0	.000	1-2	.500	3	3	6	4.5	0	1	0	3	1	7	7.0	
Eastern Ill.	11/12/2021	*	21:04	3-5	.600	0-0	.000	0-0	.000	1	3	4	4.3	0	0	1	0	0	6	6.7	
at Memphis	11/16/2021	*	35:42	9-23	.391	1-4	.250	1-3	.333	5	6	11	6.0	3	1	0	1	1	20	10.0	
Mercer	11/20/2021	*	36:27	6-9	.667	3-4	.750	0-0	.000	2	9	11	7.0	1	0	2	1	1	15	11.0	
vs Illinois St.	11/23/2021	*	30:25	6-7	.857	1-1	1.000	0-0	.000	0	3	3	6.3	2	2	7	0	0	13	11.3	
vs SFA	11/24/2021	*	22:06	1-6	.167	1-3	.333	0-0	.000	2	3	5	6.1	3	1	1	0	0	3	10.1	
at Boise St.	11/30/2021	*	17:44	2-3	.667	1-1	1.000	1-2	.500	0	2	2	5.6	2	0	0	0	0	6	9.6	
UAB	12/04/2021	*	20:10	1-3	.333	1-2	.500	1-2	.500	0	6	6	5.7	0	0	0	0	0	4	9.0	
Belmont	12/07/2021	*	27:40	2-8	.250	1-4	.250	0-0	.000	1	4	5	5.6	1	0	2	0	0	5	8.6	
Boston College	12/11/2021	*	29:05	4-10	.400	1-5	.200	0-0	.000	0	2	2	5.3	2	0	2	1	0	9	8.6	
Auburn	12/18/2021	*	34:49	7-13	.538	1-5	.200	2-2	1.000	3	4	7	5.4	2	0	1	1	3	17	9.3	
Richmond	01/02/2022		28:47	1-9	.111	0-4	.000	0-0	.000	2	3	5	5.4	2	1	0	0	0	2	8.8	
Iona	01/08/2022	*	24:46	2-8	.250	1-5	.200	2-2	1.000	2	5	7	5.5	0	1	4	1	1	7	8.6	
at Dayton	01/11/2022	*	27:58	5-7	.714	4-5	.800	0-0	.000	2	3	5	5.5	2	1	2	1	1	14	9.0	
Fordham	01/15/2022	*	28:01	4-10	.400	0-0	.000	0-0	.000	2	1	3	5.3	2	1	0	0	0	8	8.9	
at Massachusetts	01/20/2022	*	18:55	2-4	.500	2-3	.667	1-2	.500	1	1	2	5.1	2	2	2	0	1	7	8.8	
Massachusetts	01/23/2022		18:04	3-9	.333	0-6	.000	0-4	.000	3	3	6	5.2	0	1	0	0	0	6	8.7	
George Washington	01/26/2022		15:11	0-5	.000	0-3	.000	0-0	.000	0	0	0	4.9	1	0	0	0	0	0	8.2	
at Duquesne	01/29/2022		16:10	1-6	.167	0-1	.000	0-0	.000	1	2	3	4.8	0	0	0	1	1	2	7.9	
at George Mason	02/02/2022		27:21	2-6	.333	1-2	.500	0-1	.000	2	2	4	4.8	1	1	0	1	0	5	7.8	
Dayton	02/05/2022		14:51	1-2	.500	1-1	1.000	0-0	.000	0	4	4	4.7	2	1	2	1	0	3	7.5	
at La Salle	02/08/2022		16:37	3-5	.600	2-3	.667	0-0	.000	1	4	5	4.7	2	0	3	0	0	8	7.6	
St. Bonaventure	02/11/2022		23:52	2-5	.400	1-4	.250	0-0	.000	1	4	5	4.8	0	1	1	0	0	5	7.5	
at St. Bonaventure	02/14/2022		12:17	0-3	.000	0-3	.000	0-0	.000	0	1	1	4.6	0	1	0	0	0	0	7.2	
La Salle	02/16/2022		22:55	5-8	.625	2-3	.667	1-2	.500	0	4	4	4.6	1	2	3	0	0	13	7.4	
Totals			16	607:05	78-186	.419	26-74	.351	10-22	.455	34	85	119	4.6	33	18	34	12	11	192	7.4

Hargrove's Career Stats				Field Goals		3-Point		F-Throws		Rebounds									Scoring	
SEASON	TEAM	GP-GS	MIN/AVG	FG-FGA	FG%	3FG-3FGA	3FG%	FT-FTA	FT%	OFF	DEF	TOT	AVG	PF-FO	A	TO	BLK	STL	PTS	AVG
2019-20	SLU	25-0	315/12.6	51-98	.520	4-15	.267	28-42	.667	18	38	56	2.2	28-0	9	11	11	5	134	5.4
2020-21	SLU	19-0	193/10.2	29-68	.426	14-33	.424	7-9	.778	13	17	30	1.6	22-0	7	12	2	5	79	4.2
2021-22	SLU	26-16	607/23.3	78-186	.419	26-74	.351	10-22	.455	34	85	119	4.6	33-0	18	34	12	11	192	7.4
TOTAL		70-16	1116/15.9	158-352	.449	44-122	.361	45-73	.616	65	140	205	2.9	83-0	34	57	25	21	405	5.8


SEASON/CAREER HIGHS
POINTS

SEASON: 14 vs. Harris-Stowe, 11/10/21
CAREER: 14 vs. Harris-Stowe, 11/10/21

REBOUNDS

SEASON: 9 vs. Fordham, 1/15/22
CAREER: 9 vs. Fordham, 1/15/22

ASSISTS

SEASON: 2 at Duquesne, 1/29/22
CAREER: 2 at Duquesne, 1/29/22

STEALS

SEASON: 1, twice
CAREER: 1, twice

BLOCKS

SEASON: 1, twice
CAREER: 1, twice

FIELD GOALS MADE

SEASON: 6 vs. Harris-Stowe, 11/10/21
CAREER: 6 vs. Harris-Stowe, 11/10/21

FIELD GOAL ATTEMPTS

SEASON: 8 vs. Harris-Stowe, 11/10/21
CAREER: 8 vs. Harris-Stowe, 11/10/21

3-PT. FIELD GOALS MADE

SEASON:
CAREER:

3-PT. FIELD GOALS ATTEMPTED

SEASON:
CAREER:

FREE THROWS MADE

SEASON: 2, three times
CAREER: 2, three times

FREE THROWS ATTEMPTED

SEASON: 3 vs. Harris-Stowe, 11/10/21
CAREER: 3 vs. Harris-Stowe, 11/10/21

MINUTES PLAYED

SEASON: 17 vs. Harris-Stowe, 11/10/21
CAREER: 17 vs. Harris-Stowe, 11/10/21

23 • LASSINA TRAORE



Freshman • F • 6-9 • 215 • Abidjan, Ivory Coast • Victory Rock Prep | MAJOR: Deciding

CURRENT SEASON | 2021-22

- Contributed valuable minutes late in the first half at La Salle.
- Pulled down five boards at Duquesne and dished out a career-high two assists.
- Went 2-of-3 from the field against George Washington.
- Turned in a career-high nine rebounds in the win against Fordham.
- Scored four points and was solid defensively in nine minutes of action against Belmont.
- Had a productive 10 minutes against Central Arkansas with four points and seven rebounds in his debut.
- Followed that up with a 14-point, 7-rebound performance in the win over Harris-Stowe.

Previous

- Comes to SLU from Victory Rock Prep in Bradenton, Florida, the same prep school attended by Billiken Markhi Strickland.
- Also played briefly at the Dynasty Sports Institute in Quebec City, Quebec, prior to the COVID-19 pandemic.
- Was to participate in the 2018 FIBA U18 African Championships, but Ivory Coast had to pull out of the tournament before play began.

2021-22 Game-by-Game Stats

Opponent	Date	GS	MIN	Total		3-Pointers		Free throws		Rebounds				PF	A	TO	BLK	STL	PTS	AVG
				FG-FGA	PCT	3FG-3FGA	PCT	FT-FTA	PCT	OFF	DEF	TOT	AVG							
Central Ark.	11/09/2021		10:01	2-2	1.000	0-0	.000	0-1	.000	3	4	7	7.0	2	0	2	0	1	4	4.0
Harris-Stowe	11/10/2021		16:44	6-8	.750	0-0	.000	2-3	.667	3	4	7	7.0	3	1	0	0	0	14	9.0
Eastern Ill.	11/12/2021		11:34	4-6	.667	0-0	.000	0-0	.000	3	3	6	6.7	2	0	1	0	1	8	8.7
at Memphis	11/16/2021		01:49	0-0	.000	0-0	.000	0-0	.000	0	1	1	5.3	1	0	0	0	0	0	6.5
vs SFA	11/24/2021		00:47	0-0	.000	0-0	.000	0-0	.000	0	0	0	4.2	0	0	1	0	0	0	5.2
Belmont	12/07/2021		09:08	1-2	.500	0-0	.000	2-2	1.000	0	1	1	3.7	0	0	2	1	0	4	5.0
Auburn	12/18/2021		01:08	0-0	.000	0-0	.000	0-0	.000	0	0	0	3.1	0	0	1	0	0	0	4.3
Richmond	01/02/2022		10:06	2-3	.667	0-0	.000	2-2	1.000	1	3	4	3.3	2	0	1	0	0	6	4.5
Iona	01/08/2022		11:10	0-0	.000	0-0	.000	0-0	.000	1	0	1	3.0	2	0	1	1	0	0	4.0
at Dayton	01/11/2022		03:57	0-0	.000	0-0	.000	0-0	.000	0	1	1	2.8	0	0	0	0	0	0	3.6
Fordham	01/15/2022		16:35	0-1	.000	0-0	.000	0-0	.000	3	6	9	3.4	4	1	4	0	0	0	3.3
at Massachusetts	01/20/2022		10:18	0-1	.000	0-0	.000	0-0	.000	0	1	1	3.2	3	0	1	0	0	0	3.0
Massachusetts	01/23/2022		10:27	2-4	.500	0-0	.000	0-0	.000	4	2	6	3.4	2	0	1	0	1	4	3.1
George Washington	01/26/2022		02:50	2-3	.667	0-0	.000	0-0	.000	0	1	1	3.2	1	0	1	0	0	4	3.1
at Duquesne	01/29/2022		11:50	0-1	.000	0-0	.000	0-0	.000	1	4	5	3.3	0	2	2	0	1	0	2.9
at George Mason	02/02/2022		07:51	0-0	.000	0-0	.000	0-0	.000	0	1	1	3.2	3	0	0	0	0	0	2.8
at La Salle	02/08/2022		05:15	1-1	1.000	0-0	.000	0-0	.000	1	0	1	3.1	1	0	0	0	0	2	2.7
La Salle	02/16/2022		03:51	0-1	.000	0-0	.000	0-0	.000	0	1	1	2.9	0	1	0	1	0	0	2.6
Totals			0 145:21	20-33	.606	0-0	.000	6-8	.750	20	33	53	2.9	26	5	18	3	4	46	2.6

Player Averages

Games Played	Minutes/game	Points/game	FG Pct	3FG Pct	FT Pct	Rebounds/game	Assists/game	Turnovers/game	Assist/Turnover ratio	Steals/game	Blocks/game
18	8.1	2.6	60.6	0.0	75.0	2.9	0.3	1.0	0.3	0.2	0.2

Traore's Career Stats				Field Goals		3-Point		F-Throws		Rebounds				Scoring						
SEASON	TEAM	GP-GS	MIN/AVG	FG-FGA	FG%	3FG-3FGA	3FG%	FT-FTA	FT%	OFF	DEF	TOT	AVG	PF-FO	A	TO	BLK	STL	PTS	AVG
2021-22	SLU	18-0	145/8.1	20-33	.606	0-0	.000	6-8	.750	20	33	53	2.9	26-0	5	18	3	4	46	2.6
TOTAL		18-0	145/8.1	20-33	.606	0-0	.000	6-8	.750	20	33	53	2.9	26-0	5	18	3	4	46	2.6



SEASON/CAREER HIGHS

POINTS

SEASON: 31 vs. UMass, 1/23/22
CAREER: 31 vs. UMass, 1/23/22

REBOUNDS

SEASON: 8 at La Salle, 2/8/22
CAREER: 8 at La Salle, 2/8/22

ASSISTS

SEASON: 3 at Boise State, 11/30/21
CAREER: 3, three times

STEALS

SEASON: 3, twice
CAREER: 3, twice

BLOCKS

SEASON: 1 vs. Richmond, 1/2/22
CAREER: 1, three times

FIELD GOALS MADE

SEASON: 11 vs. GW, 1/26/22
CAREER: 11 vs. GW, 1/26/22

FIELD GOAL ATTEMPTS

SEASON: 20 vs. GW, 1/26/22
CAREER: 20 vs. GW, 1/26/22

3-PT. FIELD GOALS MADE

SEASON: 7 vs. UMass, 1/23/22
CAREER: 7 vs. UMass, 1/23/22

3-PT. FIELD GOALS ATTEMPTED

SEASON: 13 vs. Boston College, 12/11/21
CAREER: 13 vs. Boston College, 12/11/21

FREE THROWS MADE

SEASON: 8, twice
CAREER: 8, twice

FREE THROWS ATTEMPTED

SEASON: 8, three times
CAREER: 8, three times

MINUTES PLAYED

SEASON: 41 at Boise State, 11/30/21
CAREER: 41 at Boise State, 11/30/21

24 • GIBSON JIMERSON

RS Freshman • G • 6-5 • 200 • Richmond, Va. • Montverde | MAJOR: Intl. Business



CURRENT SEASON | 2021-22

- Candidate for Academic All-American.
- Scored 17 points at St. Bonaventure (6-9 shooting).
- Pulled down a career-high eight rebounds at La Salle.
- Went for 28 points with six treys in the win against GW.
- Turned in a career-high 31 points vs. UMass and tied the Chaifetz Arena record with seven 3-pointers.
- Scored 23 points at UMass and at Dayton.
- Had 21 points against Belmont, matching his season high.
- Matched a season high with 21 points at Boise State.
- Named MVP of the Cancun Challenge after leading the Billikens in scoring during the tourney.

2020-21 • RS Freshman

- Atlantic 10 Conference All-Academic team selection.
- Appeared in all 21 games and made 16 starts.
- Averaged 7.8 points per game.
- Shot 43.3 percent from the field and 39.4 percent from 3.
- His 37 3-point field goals made tied for ninth in a single season in SLU history for freshmen.
- His 3-point field goal percentage (.394, 37-94) ranked sixth among freshmen in a single season in school history.
- Scored a season-high 21 points on 8-of-16 shooting in the win over Central Arkansas.
- Pumped in 16 points, thanks in part to four 3s, in the win against LSU.

2019-20 • Freshman

- Had his season cut short by a foot injury suffered in practice on Dec. 16, 2019, and received a hardship waiver to get the year of eligibility back.
- Two-time A-10 Rookie of the Week.
- Averaged 10.8 ppg.
- Shot 42.9 percent from 3-point range, the second-best mark by a freshman in school history.
- Registered five double-digit scoring games.
- Scored a career-high 25 points (10-16 shooting from the field; 5-10 from 3-point range) in the win against High Point.
- Had 22 points – thanks in part to six 3-pointers – in the win against Tulane when the Billikens broke the school record for most treys in a game.

Prior to SLU

- Played at Montverde Academy in Florida his senior year.
- Led the Montverde Academy Center for Basketball Development (CBD) team in scoring and shooting percentage.
- Playing for Boo Williams on the AAU circuit, he was one of the top shooters in the EYBL, connecting on 48.8 percent (60-123) from the field and 46 percent (40-87) from the arc.
- He also ranked fourth on the circuit in offensive efficiency.
- Also prepped at St. Christopher's and Benedictine in Richmond, Virginia, before transferring to Montverde.
- Was among the leading scorers in the Richmond area as a junior, tallying 26.0 ppg at St. Christopher's.

2021-22 Game-by-Game Stats

Opponent	Date	GS	MIN	Total		3-Pointers		Free throws		Rebounds				PF	A	TO	BLK	STL	PTS	AVG	
				FG-FGA	PCT	3FG-3FGA	PCT	FT-FTA	PCT	OFF	DEF	TOT	AVG								
Central Ark.	11/09/2021	*	25:23	6-16	.375	3-7	.429	2-2	1.000	1	1	2	2.0	0	0	1	0	1	17	17.0	
Harris-Stowe	11/10/2021	*	16:59	8-11	.727	3-4	.750	2-2	1.000	1	0	1	1.5	0	0	1	0	0	21	19.0	
Eastern Ill.	11/12/2021	*	24:14	7-14	.500	1-7	.143	3-4	.750	1	0	1	1.3	0	0	0	0	0	18	18.7	
at Memphis	11/16/2021	*	22:18	1-3	.333	1-2	.500	3-4	.750	0	0	0	1.0	1	0	1	0	0	6	15.5	
Mercer	11/20/2021	*	34:46	5-12	.417	1-4	.250	4-6	.667	0	1	1	1.0	0	0	2	0	0	15	15.4	
vs Illinois St.	11/23/2021	*	32:15	4-12	.333	3-6	.500	8-8	1.000	0	3	3	1.3	3	0	0	0	0	19	16.0	
vs SFA	11/24/2021	*	29:15	5-10	.500	2-5	.400	7-8	.875	0	3	3	1.6	0	1	5	0	0	19	16.4	
at Boise St.	11/30/2021	*	40:41	6-8	.750	1-2	.500	8-8	1.000	0	5	5	2.0	5	3	3	0	0	21	17.0	
UAB	12/04/2021	*	30:50	3-8	.375	1-4	.250	1-2	.500	0	2	2	2.0	2	0	3	0	3	8	16.0	
Belmont	12/07/2021	*	37:59	8-17	.471	3-5	.600	2-2	1.000	2	0	2	2.0	0	1	1	0	0	21	16.5	
Boston College	12/11/2021	*	37:58	6-18	.333	5-13	.385	2-2	1.000	0	1	1	1.9	0	1	1	0	0	19	16.7	
Auburn	12/18/2021	*	36:13	2-6	.333	1-4	.250	6-6	1.000	0	2	2	1.9	1	2	0	0	0	11	16.3	
Richmond	01/02/2022	*	34:40	5-14	.357	1-4	.250	6-7	.857	0	1	1	1.8	0	0	1	1	2	17	16.3	
Iona	01/08/2022	*	34:51	5-13	.385	0-4	.000	3-3	1.000	0	1	1	1.8	2	1	1	0	3	13	16.1	
at Dayton	01/11/2022	*	36:58	8-14	.571	3-4	.750	4-4	1.000	0	2	2	1.8	2	1	0	0	0	23	16.5	
Fordham	01/15/2022	*	39:46	7-13	.538	2-3	.667	3-4	.750	2	0	2	1.8	1	0	1	0	0	19	16.7	
at Massachusetts	01/20/2022	*	37:45	7-16	.438	2-5	.400	7-8	.875	1	2	3	1.9	1	3	0	0	0	23	17.1	
Massachusetts	01/23/2022	*	34:45	11-17	.647	7-10	.700	2-3	.667	0	1	1	1.8	1	0	2	0	2	31	17.8	
George Washington	01/26/2022	*	30:51	11-20	.550	6-11	.545	0-0	.000	3	1	4	1.9	1	0	1	0	0	28	18.4	
at Duquesne	01/29/2022	*	30:02	5-14	.357	2-8	.250	0-0	.000	0	3	3	2.0	1	2	1	0	0	12	18.1	
at George Mason	02/02/2022	*	39:19	3-14	.214	2-7	.286	0-0	.000	1	2	3	2.0	4	0	2	0	1	8	17.6	
Dayton	02/05/2022	*	38:33	5-12	.417	4-6	.667	0-0	.000	0	2	2	2.0	3	0	0	0	0	14	17.4	
at La Salle	02/08/2022	*	35:37	4-14	.286	1-4	.250	4-6	.667	2	6	8	2.3	0	2	0	0	0	13	17.2	
St. Bonaventure	02/11/2022	*	38:01	2-10	.200	2-9	.222	0-2	.000	0	3	3	2.3	2	0	0	0	0	6	16.8	
at St. Bonaventure	02/14/2022	*	37:43	6-9	.667	2-5	.400	3-3	1.000	0	3	3	2.4	2	2	1	0	0	17	16.8	
La Salle	02/16/2022	*	27:08	5-9	.556	2-4	.500	0-0	.000	0	2	2	2.3	0	1	0	0	0	12	16.6	
Totals			26	864:50	145-324	.448	61-147	.415	80-94	.851	14	47	61	2.3	32	20	28	1	12	431	16.6

Jimerson's Career Stats				Field Goals		3-Point		F-Throws		Rebounds									Scoring	
SEASON	TEAM	GP-GS	MIN/AVG	FG-FGA	FG%	3FG-3FGA	3FG%	FT-FTA	FT%	OFF	DEF	TOT	AVG	PF-FO	A	TO	BLK	STL	PTS	AVG
2019-20	SLU	10-0	248/24.8	39-83	.470	24-56	.429	6-7	.857	2	13	15	1.5	13-0	4	9	1	4	108	10.8
2020-21	SLU	21-16	452/21.5	58-134	.433	37-94	.394	10-12	.833	6	23	29	1.4	16-0	20	15	1	7	163	7.8
2021-22	SLU	26-26	865/33.3	145-324	.448	61-147	.415	80-94	.851	14	47	61	2.3	32-1	20	28	1	12	431	16.6
TOTAL		57-42	1565/27.5	242-541	.447	122-297	.411	96-113	.850	22	83	105	1.8	61-1	44	52	3	23	702	12.3


SEASON/CAREER HIGHS
POINTS

SEASON: 6 vs. Harris-Stowe, 11/10/21
CAREER: 6 vs. Harris-Stowe, 11/10/21

REBOUNDS

SEASON: 2 vs. UMass, 1/23/22
CAREER: 2 vs. UMass, 1/23/22

ASSISTS

SEASON: 1 vs. Eastern Illinois, 11/12/21
CAREER: 1 vs. Eastern Illinois, 11/12/21

STEALS

SEASON:
CAREER: 1 vs. E. Wash., 11/13/19

BLOCKS

SEASON:
CAREER:

FIELD GOALS MADE

SEASON: 2 vs. Harris-Stowe, 11/10/21
CAREER: 2 vs. Harris-Stowe, 11/10/21

FIELD GOAL ATTEMPTS

SEASON: 4 vs. Harris-Stowe, 11/10/21
CAREER: 4 vs. Harris-Stowe, 11/10/21

3-PT. FIELD GOALS MADE

SEASON: 2 vs. Harris-Stowe, 11/10/21
CAREER: 2 vs. Harris-Stowe, 11/10/21

3-PT. FIELD GOALS ATTEMPTED

SEASON: 3 vs. Harris-Stowe, 11/10/21
CAREER: 3 vs. Harris-Stowe, 11/10/21

FREE THROWS MADE

SEASON:
CAREER:

FREE THROWS ATTEMPTED

SEASON:
CAREER:

MINUTES PLAYED

SEASON: 7 vs. Harris-Stowe, 11/10/21
CAREER: 7 vs. Harris-Stowe, 11/10/21

30 • BRANDON COURTNEY

Junior • G • 6-3 • 180 • Trenton, Ill. • Wesclin | MAJOR: Entrepreneurship & Sports Bus.


CURRENT SEASON | 2021-22

- Grabbed an offensive board and converted the putback in the win against UMass.
- Knocked in a pair of treys in a career-high seven minutes against Harris-Stowe.
- Played three minutes against Central Arkansas.

2020-21 • Junior

- Named to the Atlantic 10 Commissioner's Honor Roll.
- Appeared in three games – vs. SIUE, vs. Arkansas-Pine Bluff, at Fordham.
- Collected a rebound against UAPB.

2019-20 • Sophomore

- Named to the Atlantic 10 Commissioner's Honor Roll.
- Drilled a 3-pointer in the win against Eastern Washington.
- Also grabbed a rebound and registered an assist against the Eagles.
- Played one minute in the regular-season finale against St. Bonaventure and grabbed a rebound.

2018-19 • Freshman

- Named to the Atlantic 10 Commissioner's Honor Roll.
- Made his collegiate debut in the Billikens' win against Appalachian State.

PRIOR TO SLU

- All-Conference guard at Wesclin High School.
- Averaged 10.4 ppg as a senior and 11.1 ppg his junior season.
- Helped team to back-to-back regional championships.
- Scored 34 points and was 8-of-9 from 3-point range in the regional championship his junior year.

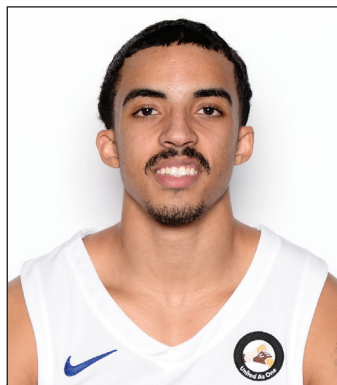
2021-22 Game-by-Game Stats

Opponent	Date	GS	MIN	Total		3-Pointers		Free throws		Rebounds				PF	A	TO	BLK	STL	PTS	AVG
				FG-FGA	PCT	3FG-3FGA	PCT	FT-FTA	PCT	OFF	DEF	TOT	AVG							
Central Ark.	11/09/2021		03:05	0-2	.000	0-0	.000	0-0	.000	0	1	1	1.0	0	0	0	0	0	0	0.0
Harris-Stowe	11/10/2021		07:02	2-4	.500	2-3	.667	0-0	.000	0	0	0	0.5	1	0	0	0	0	6	3.0
Eastern Ill.	11/12/2021		01:49	0-1	.000	0-0	.000	0-0	.000	0	0	0	0.3	0	1	0	0	0	0	2.0
Massachusetts	01/23/2022		02:39	1-1	1.000	0-0	.000	0-0	.000	1	1	2	0.8	1	0	0	0	0	2	2.0
La Salle	02/16/2022		01:16	0-0	.000	0-0	.000	0-0	.000	0	1	1	0.8	0	0	0	0	0	0	1.6
Totals		0	15:51	3-8	.375	2-3	.667	0-0	.000	1	3	4	0.8	2	1	0	0	0	8	1.6

Player Averages

Games Played	Minutes/game	Points/game	FG Pct	3FG Pct	FT Pct	Rebounds/game	Assists/game	Turnovers/game	Assist/Turnover ratio	Steals/game	Blocks/game
5	3.2	1.6	37.5	66.7	0.0	0.8	0.2	0.0	1.0	0.0	0.0

Courtney's Career Stats				Field Goals		3-Point		F-Throws		Rebounds				Scoring						
SEASON	TEAM	GP-GS	MIN/AVG	FG-FGA	FG%	3FG-3FGA	3FG%	FT-FTA	FT%	OFF	DEF	TOT	AVG	PF-FO	A	TO	BLK	STL	PTS	AVG
2018-19	SLU	1-0	2/2.3	0-1	.000	0-0	.000	0-0	.000	0	0	0	0.0	0-0	0	0	0	0	0	0.0
2019-20	SLU	2-0	3/1.3	1-2	.500	1-1	1.000	0-0	.000	0	2	2	1.0	1-0	0	1	0	1	3	1.5
2020-21	SLU	3-0	7/2.2	0-0	.000	0-0	.000	0-0	.000	0	1	1	0.3	0-0	0	0	0	0	0	0.0
2021-22	SLU	5-0	16/3.2	3-8	.375	2-3	.667	0-0	.000	1	3	4	0.8	2-0	1	0	0	0	8	1.6
TOTAL		11-0	27/2.5	4-11	.364	3-4	.750	0-0	.000	1	6	7	0.6	3-0	1	1	0	1	11	1.0



55 • DEANDRE JONES



Senior • G • 5-11 • 160 • Boise, Idaho • UCA | MAJOR: Master's Candidate (SPS)

SEASON/CAREER HIGHS

POINTS

SEASON: 17 vs. UAB, 12/4/21
CAREER: 33 vs. Sam Houston St, 1/11/20

REBOUNDS

SEASON: 10 vs. Fordham, 1/15/22
CAREER: 11 at Lamar, 1/6/18

ASSISTS

SEASON: 4, twice
CAREER: 11, four times

STEALS

SEASON: 3 vs. Harris-Stowe, 11/10/21
CAREER: 6, twice

BLOCKS

SEASON:
CAREER: 2, Southeastern La., 12/31/17

FIELD GOALS MADE

SEASON: 6 vs. UAB, 12/4/21
CAREER: 9, twice

FIELD GOAL ATTEMPTS

SEASON: 9 vs. UAB, 12/4/21
CAREER: 18 at SFA, 1/30/19

3-PT. FIELD GOALS MADE

SEASON: 5 vs. UAB, 12/4/21
CAREER: 6, five times

3-PT. FIELD GOALS ATTEMPTED

SEASON: 7 vs. UAB, 12/4/21
CAREER: 11, twice

FREE THROWS MADE

SEASON: 5 vs. SFA, 11/24/21
CAREER: 13 vs. Sam Houston St, 1/11/20

FREE THROWS ATTEMPTED

SEASON: 5 vs. SFA, 11/24/21
CAREER: 16 vs. Sam Houston St, 1/11/20

MINUTES PLAYED

SEASON: 26 vs. UAB, 12/4/21
CAREER: 45 at McNeese St., 2/20/19

CURRENT SEASON | 2021-22

- Scored 5 points and tied season high w/ 4 assists vs. La Salle.
- Had a season-high 10 rebounds, scored nine points and posted three assists in the win against Fordham.
- Poured in a season-high 17 points against UAB, thanks in part to a 5-of-7 performance from the arc.
- Played 25 minutes in his homecoming at Boise State and totaled eight points.
- Hit a pair of treys and scored eight points in the win against his former team, Central Arkansas.

2020-21 • Senior (at Central Arkansas)

- Started the first 10 games for the Bears before missing the remainder of the season due to injury.
- Averaged 10.5 ppg.
- Was shooting a sizzling 52.5 percent (21-40) from 3-point range at the time of his injury.
- Scored 10 points with a season-high eight assists against the Billikens on Dec. 8.
- Had a season-high 23 points at Little Rock.
- Reached 1,000 points for his career.

2019-20 • Junior (at Central Arkansas)

- Appeared in 22 games with 19 starts.
- Averaged 12.9 points and 6.0 assists.

- Broke the Bears' career assists record as a junior.
- Ranked third in the Southland Conference with 131 assists despite missing nine games due to injury.
- Scored in double-figures in 14 of 22 games.

2018-19 • Sophomore (at Central Arkansas)

- Started all 33 games for the Bears.
- Averaged 12.5 ppg and was second in the Southland Conference with 162 assists (4.9 per game).
- Registered 29 point against Stephen F. Austin.
- Scored better than 20 points on six occasions and scored in double-figures 19 times.

2017-18 • Freshman (at Central Arkansas)

- Played in all 35 games and made 19 starts.
- Averaged 6.1 points and 4.5 assists per game.
- Recorded a triple-double with 13 points, 11 rebounds and 11 assists against Lamar.

Previous

- Played a season at Link Year Prep in Branson, Mo., after starting at Borah High School in Boise, Idaho.
- First-team All-State and All-Conference at Borah after averaging 16 points, 7.6 assists, 5.0 rebounds and 3.0 steals.
- Led the state of Idaho in assists and steals as a senior.

2021-22 Game-by-Game Stats

Opponent	Date	GS	MIN	Total		3-Pointers		Free throws		Rebounds				PF	A	TO	BLK	STL	PTS	AVG
				FG-FGA	PCT	3FG-3FGA	PCT	FT-FTA	PCT	OFF	DEF	TOT	AVG							
Central Ark.	11/09/2021		17:46	3-6	.500	2-3	.667	0-0	.000	2	2	4	4.0	1	1	1	0	0	8	8.0
Harris-Stowe	11/10/2021		15:35	2-2	1.000	0-0	.000	1-2	.500	0	1	1	2.5	1	4	0	0	3	5	6.5
Eastern Ill.	11/12/2021		19:47	1-2	.500	0-0	.000	0-0	.000	0	0	0	1.7	1	0	0	0	1	2	5.0
at Memphis	11/16/2021		17:38	2-7	.286	1-6	.167	0-0	.000	1	0	1	1.5	1	1	2	0	0	5	5.0
Mercer	11/20/2021		12:35	0-2	.000	0-1	.000	0-0	.000	0	0	0	1.2	2	3	0	0	0	0	4.0
vs Illinois St.	11/23/2021		16:14	1-4	.250	1-4	.250	3-3	1.000	0	2	2	1.3	3	1	0	0	1	6	4.3
vs SFA	11/24/2021		18:59	2-5	.400	1-2	.500	5-5	1.000	2	1	3	1.6	1	2	0	0	1	10	5.1
at Boise St.	11/30/2021		24:45	2-3	.667	2-3	.667	2-2	1.000	1	0	1	1.5	2	2	0	0	1	8	5.5
UAB	12/04/2021		25:55	6-9	.667	5-7	.714	0-0	.000	0	0	0	1.3	1	1	0	0	1	17	6.8
Belmont	12/07/2021		14:20	0-3	.000	0-2	.000	0-0	.000	0	3	3	1.5	0	0	0	0	0	0	6.1
Boston College	12/11/2021		08:44	0-1	.000	0-1	.000	0-0	.000	2	0	2	1.5	1	0	1	0	0	0	5.5
Auburn	12/18/2021		03:47	0-0	.000	0-0	.000	0-0	.000	0	1	1	1.5	0	0	1	0	0	0	5.1
Richmond	01/02/2022		08:00	0-2	.000	0-1	.000	0-0	.000	1	1	2	1.5	0	0	0	0	0	0	4.7
Iona	01/08/2022		04:51	0-0	.000	0-0	.000	0-0	.000	0	0	0	1.4	0	0	1	0	0	0	4.4
at Dayton	01/11/2022		06:11	0-1	.000	0-1	.000	0-0	.000	0	0	0	1.3	3	1	1	0	0	0	4.1
Fordham	01/15/2022		27:48	3-6	.500	1-3	.333	2-2	1.000	3	7	10	1.9	4	3	2	0	1	9	4.4
at Massachusetts	01/20/2022		12:45	1-1	1.000	0-0	.000	2-2	1.000	0	1	1	1.8	2	0	0	0	0	4	4.4
Massachusetts	01/23/2022		10:01	0-0	.000	0-0	.000	0-0	.000	0	0	0	1.7	1	3	0	0	0	0	4.1
George Washington	01/26/2022		15:23	0-3	.000	0-1	.000	0-0	.000	0	2	2	1.7	1	1	0	0	1	0	3.9
at Duquesne	01/29/2022		11:58	2-5	.400	2-4	.500	0-0	.000	0	2	2	1.8	2	1	0	0	1	6	4.0
at George Mason	02/02/2022		08:15	1-3	.333	1-3	.333	0-0	.000	0	0	0	1.7	2	2	0	0	0	3	4.0
Dayton	02/05/2022		12:12	0-1	.000	0-1	.000	0-0	.000	0	0	0	1.6	4	1	1	0	0	0	3.8
at La Salle	02/08/2022		07:24	0-3	.000	0-2	.000	2-2	1.000	1	0	1	1.6	0	0	0	0	1	2	3.7
at St. Bonaventure	02/14/2022		13:33	2-4	.500	1-2	.500	0-0	.000	0	2	2	1.6	3	0	2	0	1	5	3.8
La Salle	02/16/2022		15:55	2-4	.500	1-1	1.000	0-0	.000	0	2	2	1.6	2	4	1	0	0	5	3.8
Totals			0 350:21	30-77	.390	18-48	.375	17-18	.944	13	27	40	1.6	38	31	13	0	13	95	3.8

Jones' Career Stats				Field Goals		3-Point		F-Throws		Rebounds				Scoring						
SEASON	TEAM	GP-GS	MIN/AVG	FG-FGA	FG%	3FG-3FGA	3FG%	FT-FTA	FT%	OFF	DEF	TOT	AVG	PF-FO	A	TO	BLK	STL	PTS	AVG
2017-18	UCA	35-19	981/28.0	67-156	.429	36-94	.383	42-50	.840	18	114	132	3.8	89-2	159	79	6	59	212	6.1
2018-19	UCA	33-33	1123/34.0	119-286	.416	56-149	.376	117-143	.818	21	107	128	3.9	85-1	162	102	6	66	411	12.5
2019-20	UCA	22-19	655/29.8	83-215	.386	35-100	.350	83-101	.822	13	72	85	3.9	50-3	131	78	0	22	284	12.9
2020-21	UCA	10-10	261/26.1	31-73	.425	21-40	.525	22-25	.880	1	29	30	3.0	23-2	37	40	1	14	105	10.5
2021-22	SLU	25-0	350/14.0	30-77	.390	18-48	.375	17-18	.944	13	27	40	1.6	38-0	31	13	0	13	95	3.8
TOTAL FOR SLU		25-0	350/14.0	30-77	.390	18-48	.375	17-18	.944	13	27	40	1.6	38-0	31	13	0	13	95	3.8
TOTAL		125-81	3370/27.0	330-807	.409	166-431	.385	281-337	.834	66	349	415	3.3	285-8	520	312	13	174	1107	8.9



2021-22 Saint Louis Men's Basketball Combined Team Statistics All games

Page 1/1
as of Feb 17, 2022

Game Records

Record	Overall	Home	Away	Neutral
ALL GAMES	18-8	12-4	4-4	2-0
CONFERENCE	9-4	6-1	3-3	0-0
NON-CONFERENCE	9-4	6-3	1-1	2-0

Score by Periods

Team	1st	2nd	OT	TOT
Saint Louis	993	1034	29	2056
Opponents	816	919	23	1758

Team Box Score

No.	Player				Total		3-Point		F-Throw		Rebounds													
		GP-GS	MIN	AVG	FG-FGA	FG%	3FG-3FGA	3FG%	FT-FTA	FT%	OFF	DEF	TOT	AVG	PF	DQ	A	TO	BLK	STL	PTS	AVG		
24	JIMERSON, Gibson	26-26	864:50	33.3	145-324	.448	61-147	.415	80-94	.851	14	47	61	2.3	32	1	20	28	1	12	431	16.6		
1	COLLINS, Yuri	26-26	850:33	32.7	103-230	.448	19-51	.373	66-82	.805	6	100	106	4.1	62	3	217	106	5	55	291	11.2		
5	OKORO, Francis	26-14	582:11	22.4	104-174	.598	0-0	.000	61-80	.763	69	124	193	7.4	75	3	8	27	33	17	269	10.3		
15	NESBITT, Jordan	26-25	684:04	26.3	83-200	.415	31-86	.360	51-72	.708	36	80	116	4.5	69	2	32	31	11	23	248	9.5		
20	THATCH JR., Fred	25-10	588:54	23.6	81-160	.506	11-30	.367	43-58	.741	40	91	131	5.2	61	1	32	33	9	30	216	8.6		
12	LINSSEN, Marten	22-12	340:55	15.5	57-100	.570	0-1	.000	65-80	.813	30	54	84	3.8	60	3	16	19	14	10	179	8.1		
22	HARGROVE JR., Terrence	26-16	607:05	23.3	78-186	.419	26-74	.351	10-22	.455	34	85	119	4.6	33	0	18	34	12	11	192	7.4		
55	JONES, DeAndre	25-0	350:21	14.0	30-77	.390	18-48	.375	17-18	.944	13	27	40	1.6	38	0	31	13	0	13	95	3.8		
2	STRICKLAND, Markhi	12-1	62:21	5.2	13-27	.481	0-1	.000	5-9	.556	4	5	9	0.8	8	0	2	4	0	5	31	2.6		
23	TRAORE, Lassina	18-0	145:21	8.1	20-33	.606	0-0	.000	6-8	.750	20	33	53	2.9	26	0	5	18	3	4	46	2.6		
11	WILLIAMS, Rashad	16-0	141:17	8.8	12-50	.240	12-45	.267	2-2	1.000	2	6	8	0.5	9	0	11	8	0	1	38	2.4		
13	LORENTSSON, Andre	7-0	41:16	5.9	5-5	1.000	2-2	1.000	0-0	.000	0	5	5	0.7	3	0	4	3	0	1	12	1.7		
30	COURTNEY, Brandon	5-0	15:51	3.2	3-8	.375	2-3	.667	0-0	.000	1	3	4	0.8	2	0	1	0	0	0	8	1.6		
Team											55	42	97				17							
Total		26	5275		734-1574	.466	182-488	.373	406-525	.773	324	702	1026	39.5	478	13	397	341	88	182	2056	79.1		
Opponents		26	5275		625-1506	.415	160-518	.309	348-513	.678	266	567	833	32.0	452	8	293	344	123	182	1758	67.6		

Team Statistics

	SLU	OPP
Scoring	2056	1758
Points per game	79.1	67.6
Scoring margin	+11.5	-
Field goals-att	734-1574	625-1506
Field goal pct	.466	.415
3 point fg-att	182-488	160-518
3-point FG pct	.373	.309
3-pt FG made per game	7.0	6.2
Free throws-att	406-525	348-513
Free throw pct	.773	.678
F-Throws made per game	15.6	13.4
Rebounds	1026	833
Rebounds per game	39.5	32.0
Rebounding margin	+7.4	-
Assists	397	293
Assists per game	15.3	11.3
Turnovers	341	344
Turnovers per game	13.1	13.2
Turnover margin	+0.1	-
Assist/turnover ratio	1.2	0.9
Steals	182	182
Steals per game	7.0	7.0
Blocks	88	123
Blocks per game	3.4	4.7
Winning streak	1	-
Home win streak	1	-
Attendance	87734	44763
Home games-Avg/Game	16-5483	8-5595
Neutral site-Avg/Game	-	2-282

Team Results

Date	Opponent		Score	Att.
11/09/2021	Central Ark.	W	96-61	4805
11/10/2021	Harris-Stowe	W	127-54	3574
11/12/2021	Eastern Ill.	W	86-44	5433
11/16/2021	at Memphis	L	74-90	13302
11/20/2021	Mercer	W	75-58	4725
11/23/2021	vs Illinois St.	W	82-76	103
11/24/2021	vs SFA	W	79-68	461
11/30/2021	at Boise St.	Wot	86-82	6765
12/04/2021	UAB	L	72-77	5743
12/07/2021	Belmont	L	59-64	4521
12/11/2021	Boston College	W	79-68	6123
12/18/2021	Auburn	L	70-74	8012
01/02/2022	Richmond	W	76-69	4825
01/08/2022	Iona	W	68-67	4107
01/11/2022	at Dayton	L	63-68	13407
01/15/2022	Fordham	W	63-45	4486
01/20/2022	at Massachusetts	L	85-91	1665
01/23/2022	Massachusetts	W	90-59	5136
01/26/2022	George Washington	W	80-67	4238
01/29/2022	at Duquesne	W	77-53	2421
02/02/2022	at George Mason	Wot2	92-90	2664
02/05/2022	Dayton	W	72-61	9411
02/08/2022	at La Salle	W	75-57	1121
02/11/2022	St. Bonaventure	L	61-68	7924
02/14/2022	at St. Bonaventure	L	79-83	3418
02/16/2022	La Salle	W	90-64	4671



2021-22 Saint Louis Men's Basketball Combined Team Statistics In Conference games

Page 1/1
as of Feb 17, 2022

Game Records

Record	Overall	Home	Away	Neutral
ALL GAMES	9-4	6-1	3-3	0-0
CONFERENCE	9-4	6-1	3-3	0-0
NON-CONFERENCE	0-0	0-0	0-0	0-0

Score by Periods

Team	1st	2nd	OT	TOT
Saint Louis	470	517	16	1003
Opponents	406	455	14	875

Team Box Score

No.	Player				Total		3-Point		F-Throw		Rebounds													
		GP-GS	MIN	AVG	FG-FGA	FG%	3FG-3FGA	3FG%	FT-FTA	FT%	OFF	DEF	TOT	AVG	PF	DQ	A	TO	BLK	STL	PTS	AVG		
24	JIMERSON, Gibson	13-13	461:08	35.5	79-176	.449	36-80	.450	29-37	.784	9	28	37	2.8	18	0	11	9	1	5	223	17.2		
1	COLLINS, Yuri	13-13	444:10	34.2	59-119	.496	12-30	.400	29-35	.829	2	55	57	4.4	33	2	119	55	3	28	159	12.2		
5	OKORO, Francis	13-13	311:41	24.0	65-102	.637	0-0	.000	22-26	.846	25	73	98	7.5	36	2	4	15	12	9	152	11.7		
20	THATCH JR., Fred	12-10	339:14	28.3	49-100	.490	8-17	.471	26-31	.839	23	48	71	5.9	36	1	19	17	8	13	132	11.0		
15	NESBITT, Jordan	13-12	351:54	27.1	40-89	.449	15-39	.385	22-31	.710	17	37	54	4.2	34	0	16	19	5	9	117	9.0		
12	LINSSEN, Marten	10-0	132:28	13.2	17-30	.567	0-0	.000	24-30	.800	9	23	32	3.2	26	1	6	7	2	1	58	5.8		
22	HARGROVE JR., Terrence	13-3	270:59	20.8	29-79	.367	13-38	.342	2-9	.222	15	32	47	3.6	15	0	12	13	4	3	73	5.6		
55	JONES, DeAndre	12-0	149:25	12.5	11-33	.333	6-19	.316	6-6	1.000	5	17	22	1.8	24	0	16	7	0	5	34	2.8		
2	STRICKLAND, Markhi	6-1	21:35	3.6	5-11	.455	0-0	.000	3-5	.600	3	3	6	1.0	4	0	1	4	0	2	13	2.2		
11	WILLIAMS, Rashad	10-0	73:03	7.3	6-33	.182	6-29	.207	2-2	1.000	1	3	4	0.4	4	0	3	3	0	1	20	2.0		
23	TRAORE, Lassina	10-0	82:60	8.3	7-15	.467	0-0	.000	2-2	1.000	10	20	30	3.0	16	0	4	10	1	2	16	1.6		
13	LORENTSSON, Andre	3-0	07:28	2.5	2-2	1.000	0-0	.000	0-0	.000	0	2	2	0.7	0	0	1	1	0	0	4	1.3		
30	COURTNEY, Brandon	2-0	03:55	2.0	1-1	1.000	0-0	.000	0-0	.000	1	2	3	1.5	1	0	0	0	0	0	2	1.0		
Team											27	20	47					5						
Total		13	2650		370-790	.468	96-252	.381	167-214	.780	147	363	510	39.2	247	6	212	165	36	78	1003	77.2		
Opponents		13	2650		310-759	.408	80-254	.315	175-257	.681	128	292	420	32.3	199	1	143	148	53	80	875	67.3		

Team Statistics

	SLU	OPP
Scoring	1003	875
Points per game	77.2	67.3
Scoring margin	+9.8	-
Field goals-att	370-790	310-759
Field goal pct	.468	.408
3 point fg-att	96-252	80-254
3-point FG pct	.381	.315
3-pt FG made per game	7.4	6.2
Free throws-att	167-214	175-257
Free throw pct	.780	.681
F-Throws made per game	12.8	13.5
Rebounds	510	420
Rebounds per game	39.2	32.3
Rebounding margin	+6.9	-
Assists	212	143
Assists per game	16.3	11.0
Turnovers	165	148
Turnovers per game	12.7	11.4
Turnover margin	-1.3	-
Assist/turnover ratio	1.3	1.0
Steals	78	80
Steals per game	6.0	6.2
Blocks	36	53
Blocks per game	2.8	4.1
Winning streak	1	-
Home win streak	1	-
Attendance	40691	24696
Home games-Avg/Game	7-5813	6-4116
Neutral site-Avg/Game	-	0-0

Team Results

Date	Opponent		Score	Att.
01/02/2022	Richmond	W	76-69	4825
01/11/2022	at Dayton	L	63-68	13407
01/15/2022	Fordham	W	63-45	4486
01/20/2022	at Massachusetts	L	85-91	1665
01/23/2022	Massachusetts	W	90-59	5136
01/26/2022	George Washington	W	80-67	4238
01/29/2022	at Duquesne	W	77-53	2421
02/02/2022	at George Mason	Wot2	92-90	2664
02/05/2022	Dayton	W	72-61	9411
02/08/2022	at La Salle	W	75-57	1121
02/11/2022	St. Bonaventure	L	61-68	7924
02/14/2022	at St. Bonaventure	L	79-83	3418
02/16/2022	La Salle	W	90-64	4671


**2021-22 Saint Louis Men's Basketball
Season Schedule/Results & Leaders
All games**

Page 1/1
as of Feb 17, 2022

Game Records

Record	Overall	Home	Away	Neutral
ALL GAMES	18-8	12-4	4-4	2-0
CONFERENCE	9-4	6-1	3-3	0-0
NON-CONFERENCE	9-4	6-3	1-1	2-0

Team Results

Date	Opponent		Score	Att.	High Points	High Rebounds
11/09/2021	Central Ark.	W	96-61	4805	(17) JIMERSON, Gibson	(7) OKORO, Francis (7) TRAORE, Lassina
11/10/2021	Harris-Stowe	W	127-54	3574	(21) JIMERSON, Gibson	(9) NESBITT, Jordan
11/12/2021	Eastern Ill.	W	86-44	5433	(18) JIMERSON, Gibson	(12) OKORO, Francis
11/16/2021	at Memphis	L	74-90	13302	(20) HARGROVE JR., Terrence	(13) OKORO, Francis
11/20/2021	Mercer	W	75-58	4725	(20) THATCH JR., Fred	(11) HARGROVE JR., Terrence
11/23/2021	vs Illinois St.	W	82-76	103	(19) JIMERSON, Gibson	(9) OKORO, Francis
11/24/2021	vs SFA	W	79-68	461	(19) LINSSEN, Marten (19) JIMERSON, Gibson	(8) LINSSEN, Marten
11/30/2021	at Boise St.	Wot	86-82	6765	(21) JIMERSON, Gibson	(8) NESBITT, Jordan
12/04/2021	UAB	L	72-77	5743	(17) JONES, DeAndre	(6) HARGROVE JR., Terrence
12/07/2021	Belmont	L	59-64	4521	(21) JIMERSON, Gibson	(7) LINSSEN, Marten
12/11/2021	Boston College	W	79-68	6123	(19) JIMERSON, Gibson	(6) OKORO, Francis (6) THATCH JR., Fred
12/18/2021	Auburn	L	70-74	8012	(17) HARGROVE JR., Terrence	(12) COLLINS, Yuri
01/02/2022	Richmond	W	76-69	4825	(24) COLLINS, Yuri	(8) OKORO, Francis
01/08/2022	Iona	W	68-67	4107	(15) NESBITT, Jordan	(14) OKORO, Francis
01/11/2022	at Dayton	L	63-68	13407	(23) JIMERSON, Gibson	(8) OKORO, Francis
01/15/2022	Fordham	W	63-45	4486	(19) JIMERSON, Gibson	(10) JONES, DeAndre (10) OKORO, Francis
01/20/2022	at Massachusetts	L	85-91	1665	(23) JIMERSON, Gibson	(7) OKORO, Francis
01/23/2022	Massachusetts	W	90-59	5136	(31) JIMERSON, Gibson	(12) NESBITT, Jordan
01/26/2022	George Washington	W	80-67	4238	(28) JIMERSON, Gibson	(11) OKORO, Francis
01/29/2022	at Duquesne	W	77-53	2421	(14) OKORO, Francis (14) THATCH JR., Fred	(8) OKORO, Francis
02/02/2022	at George Mason	Wot2	92-90	2664	(35) COLLINS, Yuri	(9) OKORO, Francis
02/05/2022	Dayton	W	72-61	9411	(17) LINSSEN, Marten	(8) COLLINS, Yuri
02/08/2022	at La Salle	W	75-57	1121	(19) OKORO, Francis	(10) THATCH JR., Fred
02/11/2022	St. Bonaventure	L	61-68	7924	(18) COLLINS, Yuri	(7) THATCH JR., Fred (7) NESBITT, Jordan
02/14/2022	at St. Bonaventure	L	79-83	3418	(18) NESBITT, Jordan	(13) THATCH JR., Fred
02/16/2022	La Salle	W	90-64	4671	(21) THATCH JR., Fred	(7) THATCH JR., Fred

Attendance Summary

	Games	Attend	Avg/Game
Home	16	87734	5483
Away	8	44763	5595
Neutral	2	564	282
Total	26	133061	5118





**2021-22 Saint Louis Men's Basketball
Team Game-by-Game
All games**

Page 1/1
as of Feb 17, 2022

				Total		3-Pointers		Free throws		Rebounds											
Opponent	Date	Score		FG-FGA	PCT	3FG-3FGA	PCT	FT-FTA	PCT	OFF	DEF	TOT	AVG	PF	A	TO	BLK	STL	PTS	AVG	
Central Ark.	11/09/2021	96-61	W	37-72	.514	9-22	.409	13-20	.650	16	28	44	44.0	15	17	12	2	12	96	96.0	
Harris-Stowe	11/10/2021	127-54	W	50-78	.641	14-25	.560	13-16	.813	18	28	46	45.0	19	29	5	7	14	127	111.5	
Eastern Ill.	11/12/2021	86-44	W	32-65	.492	3-15	.200	19-24	.792	16	33	49	46.3	17	15	9	2	8	86	103.0	
at Memphis	11/16/2021	74-90	L	24-77	.312	5-22	.227	21-32	.656	23	21	44	45.8	23	12	14	6	11	74	95.8	
Mercer	11/20/2021	75-58	W	26-51	.510	5-11	.455	18-26	.692	11	24	35	43.6	15	13	14	6	7	75	91.6	
vs Illinois St.	11/23/2021	82-76	W	27-54	.500	8-21	.381	20-25	.800	10	25	35	42.2	20	13	18	1	8	82	90.0	
vs SFA	11/24/2021	79-68	W	22-53	.415	6-16	.375	29-35	.829	13	23	36	41.3	20	12	16	5	5	79	88.4	
at Boise St.	11/30/2021	86-82	Wot	25-54	.463	6-13	.462	30-34	.882	6	29	35	40.5	25	10	12	2	4	86	88.1	
UAB	12/04/2021	72-77	L	24-49	.490	8-19	.421	16-22	.727	5	22	27	39.0	12	13	11	5	8	72	86.3	
Belmont	12/07/2021	59-64	L	23-58	.397	4-14	.286	9-15	.600	13	27	40	39.1	12	12	14	3	7	59	83.6	
Boston College	12/11/2021	79-68	W	29-55	.527	11-27	.407	10-12	.833	6	25	31	38.4	19	20	15	4	5	79	83.2	
Auburn	12/18/2021	70-74	L	25-60	.417	4-17	.235	16-24	.667	19	27	46	39.0	14	12	17	3	8	70	82.1	
Richmond	01/02/2022	76-69	W	28-66	.424	5-19	.263	15-20	.750	11	29	40	39.1	17	12	9	4	9	76	81.6	
Iona	01/08/2022	68-67	W	20-58	.345	3-14	.214	25-26	.962	21	27	48	39.7	20	7	19	6	7	68	80.6	
at Dayton	01/11/2022	63-68	L	22-52	.423	9-16	.563	10-12	.833	9	19	28	38.9	20	14	15	5	1	63	79.5	
Fordham	01/15/2022	63-45	W	24-53	.453	5-10	.500	10-13	.769	13	35	48	39.5	18	15	20	0	5	63	78.4	
at Massachusetts	01/20/2022	85-91	L	30-59	.508	7-19	.368	18-20	.900	8	23	31	39.0	26	19	11	0	3	85	78.8	
Massachusetts	01/23/2022	90-59	W	34-74	.459	9-30	.300	13-23	.565	22	33	55	39.9	17	19	8	3	8	90	79.4	
George Washington	01/26/2022	80-67	W	31-68	.456	6-19	.316	12-13	.923	14	25	39	39.8	14	19	8	3	8	80	79.5	
at Duquesne	01/29/2022	77-53	W	32-72	.444	8-24	.333	5-7	.714	15	28	43	40.0	18	18	12	4	10	77	79.4	
at George Mason	02/02/2022	92-90	Wot2	31-77	.403	11-30	.367	19-22	.864	12	28	40	40.0	30	18	12	4	12	92	80.0	
Dayton	02/05/2022	72-61	W	23-47	.489	8-18	.444	18-21	.857	7	27	34	39.7	20	13	11	5	4	72	79.6	
at La Salle	02/08/2022	75-57	W	28-61	.459	3-11	.273	16-22	.727	11	32	43	39.9	16	14	8	5	5	75	79.4	
St. Bonaventure	02/11/2022	61-68	L	24-57	.421	6-21	.286	7-12	.583	11	28	39	39.8	16	9	18	2	5	61	78.6	
at St. Bonaventure	02/14/2022	79-83	L	27-48	.563	9-19	.474	16-17	.941	5	25	30	39.4	19	20	17	0	3	79	78.6	
La Salle	02/16/2022	90-64	W	36-56	.643	10-16	.625	8-12	.667	9	31	40	39.5	16	22	16	1	5	90	79.1	
Total		2056		734-1574	.466	182-488	.373	406-525	.773	324	702	1026	39.5	478	397	341	88	182	2056	79.1	
Opponents		1758		625-1506	.415	160-518	.309	348-513	.678	266	567	833	32.0	452	293	344	123	182	1758	67.6	



**2021-22 Saint Louis Men's Basketball
Opponents Game-by-Game
All games**

Page 1/1
as of Feb 17, 2022

				Total		3-Pointers		Free throws		Rebounds											
Opponent	Date	Score		FG-FGA	PCT	3FG-3FGA	PCT	FT-FTA	PCT	OFF	DEF	TOT	AVG	PF	A	TO	BLK	STL	PTS	AVG	
Central Ark.	11/09/2021	96-61	W	23-57	.404	7-19	.368	8-13	.615	8	22	30	30.0	17	11	22	6	6	61	61.0	
Harris-Stowe	11/10/2021	127-54	W	16-51	.314	5-16	.313	17-22	.773	11	11	22	26.0	13	5	21	3	3	54	57.5	
Eastern Ill.	11/12/2021	86-44	W	13-50	.260	5-18	.278	13-17	.765	5	20	25	25.7	18	4	18	4	6	44	53.0	
at Memphis	11/16/2021	74-90	L	31-57	.544	8-17	.471	20-33	.606	13	35	48	31.3	26	15	24	14	6	90	62.3	
Mercer	11/20/2021	75-58	W	20-55	.364	6-26	.231	12-15	.800	11	19	30	31.0	22	10	14	1	9	58	61.4	
vs Illinois St.	11/23/2021	82-76	W	26-54	.481	8-22	.364	16-22	.727	9	18	27	30.3	23	12	16	3	8	76	63.8	
vs SFA	11/24/2021	79-68	W	23-52	.442	2-12	.167	20-27	.741	8	20	28	30.0	24	10	15	7	9	68	64.4	
at Boise St.	11/30/2021	86-82	Wot	31-67	.463	8-25	.320	12-26	.462	14	26	40	31.3	22	11	10	7	4	82	66.6	
UAB	12/04/2021	72-77	L	31-64	.484	9-23	.391	6-11	.545	15	23	38	32.0	18	16	13	3	9	77	67.8	
Belmont	12/07/2021	59-64	L	26-59	.441	6-24	.250	6-9	.667	8	24	32	32.0	12	16	12	5	13	64	67.4	
Boston College	12/11/2021	79-68	W	25-59	.424	3-17	.176	15-20	.750	11	21	32	32.0	17	14	11	2	10	68	67.5	
Auburn	12/18/2021	70-74	L	28-60	.467	9-23	.391	9-15	.600	8	19	27	31.6	20	16	11	6	8	74	68.0	
Richmond	01/02/2022	76-69	W	24-65	.369	6-20	.300	15-20	.750	14	32	46	32.7	16	15	11	2	7	69	68.1	
Iona	01/08/2022	68-67	W	22-62	.355	4-22	.182	19-26	.731	17	17	34	32.8	21	10	9	9	11	67	68.0	
at Dayton	01/11/2022	63-68	L	22-50	.440	7-16	.438	17-26	.654	12	22	34	32.9	13	10	12	5	8	68	68.0	
Fordham	01/15/2022	63-45	W	16-56	.286	5-20	.250	8-16	.500	8	18	26	32.4	19	8	10	0	9	45	66.6	
at Massachusetts	01/20/2022	85-91	L	29-56	.518	7-20	.350	26-33	.788	8	22	30	32.3	19	11	9	1	4	91	68.0	
Massachusetts	01/23/2022	90-59	W	18-62	.290	9-33	.273	14-17	.824	13	22	35	32.4	16	8	13	3	2	59	67.5	
George Washington	01/26/2022	80-67	W	23-52	.442	7-16	.438	14-18	.778	6	24	30	32.3	11	11	14	3	4	67	67.5	
at Duquesne	01/29/2022	77-53	W	19-54	.352	5-17	.294	10-16	.625	10	27	37	32.6	11	7	20	9	7	53	66.8	
at George Mason	02/02/2022	92-90	Wot2	31-68	.456	9-21	.429	19-28	.679	13	35	48	33.3	19	11	17	5	4	90	67.9	
Dayton	02/05/2022	72-61	W	22-53	.415	5-13	.385	12-23	.522	10	18	28	33.0	18	9	8	5	7	61	67.5	
at La Salle	02/08/2022	75-57	W	21-59	.356	6-21	.286	9-16	.563	9	22	31	33.0	15	13	11	5	2	57	67.1	
St. Bonaventure	02/11/2022	61-68	L	29-58	.500	3-13	.231	7-12	.583	5	25	30	32.8	14	11	7	8	12	68	67.1	
at St. Bonaventure	02/14/2022	79-83	L	35-65	.538	4-18	.222	9-16	.563	10	14	24	32.5	13	19	5	3	6	83	67.8	
La Salle	02/16/2022	90-64	W	21-61	.344	7-26	.269	15-16	.938	10	11	21	32.0	15	10	11	4	8	64	67.6	
Total		1758		625-1506	.415	160-518	.309	348-513	.678	266	567	833	32.0	452	293	344	123	182	1758	67.6	
Saint Louis		2056		734-1574	.466	182-488	.373	406-525	.773	324	702	1026	39.5	478	397	341	88	182	2056	79.1	

LAST GAME BOX SCORE



Official Basketball Box Score - Final

La Salle at Saint Louis

02/16/22 Chaifetz Arena, St. Louis

2021-22 Men's Basketball

Game Time: 7:00 PM

Game Duration: 1:51

Attendance: 4,671

Officials: Matt Potter, Tony Henderson, Tommy Morrissey

La Salle - 64
Record: 7-16 (2-11)

NO.	Name	Min	FG M-A	3P M-A	FT M-A	Rebounds OR DR TOT	Fouls PF FD	TP	AS	TO	ST	Blocks BS BA	+/-
14	Mamadou Doucoure	F 10:04	1-1	0-0	0-0	1 0 1	1 0	2	0	0	0	0 0	-5
21	Clifton Moore	F 27:22	7-12	1-1	5-5	2 3 5	3 4	20	1	2	0	4 0	-19
2	Jhamir Brickus	G 22:12	0-4	0-4	0-0	0 2 2	2 0	0	2	1	0	0 0	-14
5	Jack Clark	G 31:28	7-16	2-7	2-2	3 1 4	0 1	18	1	2	2	0 0	-20
10	Josh Nickelberry	G 28:57	1-10	1-7	2-2	0 1 1	3 3	5	2	1	0	0 0	-24
3	Anwar Gill	19:19	2-4	1-2	2-3	0 0 0	2 2	7	2	1	2	0 0	-15
24	Christian Ray	24:47	1-4	0-1	0-0	2 2 4	0 1	2	1	1	0	0 1	-21
55	Khalil Brantley	22:17	1-5	1-3	4-4	0 0 0	1 5	7	1	2	4	0 0	-14
23	Matt McFarlane	09:43	1-4	1-1	0-0	1 0 1	3 0	3	0	1	0	0 0	2
13	Daeshon Shepherd	02:35	0-0	0-0	0-0	0 0 0	0 0	0	0	0	0	0 0	1
12	Kyle Thompson	01:16	0-1	0-0	0-0	0 0 0	0 0	0	0	0	0	0 0	-1
Team						1 2 3		0		0			
Totals			21-61	7-26	15-16	10 11 21	15 16	64	10	11	8	4 1	-26

Shooting By Period			
1 st	FG%	11-29	37.9%
	3PT%	4-14	28.6%
	FT%	6-6	100%
2 nd	FG%	10-32	31.3%
	3PT%	3-12	25.0%
	FT%	9-10	90%
GM	FG%	21-61	34.4%
	3PT%	7-26	26.9%
	FT%	15-16	93.8%

Dead Ball Rebounds: 0, 0

Technical Fouls: NONE

Saint Louis - 90
Record: 18-8 (9-4)

NO.	Name	Min	FG M-A	3P M-A	FT M-A	Rebounds OR DR TOT	Fouls PF FD	TP	AS	TO	ST	Blocks BS BA	+/-
5	Francis Okoro	F 22:04	2-3	0-0	2-3	1 5 6	2 5	6	0	1	1	0 0	24
1	Yuri Collins	G 22:49	2-3	0-1	1-2	0 1 1	1 3	5	6	1	1	0 0	18
15	Jordan Nesbitt	G 23:11	6-10	3-5	1-1	2 1 3	4 2	16	2	3	0	0 0	4
20	Fred Thatch Jr.	G 28:25	8-11	2-2	3-4	3 4 7	2 2	21	2	3	1	0 2	28
24	Gibson Jimerson	G 27:08	5-9	2-4	0-0	0 2 2	0 0	12	1	0	0	0 0	30
12	Marten Linssen	14:05	2-3	0-0	0-0	0 6 6	3 0	4	1	1	1	0 0	2
22	Terrence Hargrove Jr.	22:55	5-8	2-3	1-2	0 4 4	1 1	13	2	3	0	0 1	16
55	DeAndre Jones	15:55	2-4	1-1	0-0	0 2 2	2 0	5	4	1	0	0 1	7
11	Rashad Williams	10:41	0-0	0-0	0-0	0 1 1	0 0	0	2	1	0	0 0	-3
2	Markhi Strickland	04:35	3-3	0-0	0-0	1 2 3	1 1	6	1	0	1	0 0	4
23	Lassina Traore	03:51	0-1	0-0	0-0	0 1 1	0 1	0	1	0	0	1 0	0
13	Andre Lorentsson	03:05	1-1	0-0	0-0	0 0 0	0 0	2	0	1	0	0 0	-1
30	Brandon Courtney	01:16	0-0	0-0	0-0	0 1 1	0 0	0	0	0	0	0 0	1
Team						2 1 3		0		1			
Totals			36-56	10-16	8-12	9 31 40	16 15	90	22	16	5	1 4	26

Shooting By Period			
1 st	FG%	19-31	61.3%
	3PT%	6-10	60.0%
	FT%	7-10	70%
2 nd	FG%	17-25	68.0%
	3PT%	4-6	66.7%
	FT%	1-2	50%
GM	FG%	36-56	64.3%
	3PT%	10-16	62.5%
	FT%	8-12	66.7%

Dead Ball Rebounds: 4, 0

Technical Fouls: NONE

	LAS	SLU
Biggest lead	0 (1 st 20:00)	29 (2 nd 10:57)
Best Scoring Run	6 (2 nd 5:46)	9 (1 st 10:50)
Lead Changes	0	
Times Tied	0	
Time with Lead	00:00	39:35

	LAS	SLU
Points from		
Turnovers	14	12
Paint	26	42
Second Chance	8	9
Fast Breaks	3	16
Bench	19	30

Period by Period Scoring			
	1st	2nd	TOT
LAS	32	32	64
SLU	51	39	90