



SAINT LOUIS BILLIKENS GAME NOTES

Saint Louis (8-4, 0-0) vs. Richmond (9-5, 0-1)
Sunday, Jan. 2, 2022
St. Louis, Mo. (Chaifetz Arena // 10,600)

Chick Hernandez
Michael O'Donnell

Bob Ramsey
Earl Austin Jr.

SLU Record	8-4
A-10	0-0
Home	5-3
Away	1-1
Neutral	2-0
Nonconference	8-4

October

Tue. 26	Rockhurst (exh.)	W, 84-42
Sun. 31	Lindenwood (exh.)	W, 89-66

November

Tue. 9	Central Arkansas	W, 96-61
Wed. 10	Harris-Stowe	W, 127-54
Fri. 12	Eastern Illinois	W, 86-44
Tue. 16	at #11 Memphis	L, 74-90
Sat. 20	Mercer^	W, 75-58
Tue. 23	vs. Illinois State^	W, 82-76
Wed. 24	vs. Stephen F. Austin^	W, 79-68
Tue. 30	at Boise State	W, 86-82 (OT)

December

Sat. 4	UAB	L, 72-77
Tue. 7	Belmont	L, 59-64
Sat. 11	Boston College	W, 79-68
Sat. 18	#13 Auburn (CBSSN)	L, 70-74
Wed. 22	vs. Drake~ (Flo Hoops)	Canceled
Thu. 30	at UMass* (BSMW)	Postponed

January

Sun. 2	Richmond* (CBSSN)	1pm
Wed. 5	La Salle* (BSMW)	6pm
Sat. 8	at St. Bona (CBSSN)	3pm
Tue. 11	at Dayton* (CBSSN)	6pm
Sat. 15	Fordham* (USA Network)	1:30pm
Sun. 23	UMass* (USA Network)	1:30pm
Wed. 26	GW* (BSMW)	7pm
Sat. 29	at Duquesne* (ESPN+)	1pm

February

Wed. 2	at George Mason* (BSMW)	6pm
Sat. 5	Dayton* (ESPN2/U)	1pm
Tue. 8	at La Salle* (ESPN+)	6pm
Fri. 11	St. Bona* (ESPN2)	8pm
Sat. 19	at Davidson* (CBSSN)	2:30pm
Tue. 22	Saint Joseph's* (BSMW)	7pm
Fri. 25	at Richmond* (ESPN2)	6pm

March

Wed. 2	at Rhode Island* (ESPN+)	6pm
Sat. 5	VCU* (ESPN2)	3pm

^ Cancun Challenge | ~ Las Vegas, Nev. | * A-10 game

"THE JOURNEY IS THE REWARD"



Saint Louis Billikens

Head Coach: Travis Ford (Kentucky, 1994)
 Ford's record at SLU: 97-69 (6th year)
 Ford's career record: 433-335 (25th year)



Richmond Spiders

Head Coach: Chris Mooney (Princeton, 1998)
 Mooney's record at Richmond: 297-236 (17th year)
 Mooney's career record: 339-275 (20th year)

NOTABLES

- Saint Louis returns to action on Sunday after having its last two games either canceled or postponed due to COVID-19. The Billikens went 14 days without a game, last taking the court Saturday, Dec. 18, against Auburn.
- SLU fell 74-70 to #13 Auburn in its outing on Dec. 18. The Billikens trailed by eight at halftime, but came out of halftime on a 9-0 run to grab the lead. SLU led by as many as 13 with nine minutes to go, but Auburn rallied for the win.
- **Terrence Hargrove Jr.** led the Billikens with 17 points against Auburn. **Yuri Collins** flirted with a triple-double, finishing two assists shy after collecting a career-high 12 rebounds and adding 13 points against the Tigers.
- Through games of Thursday, Dec. 30, the Billikens lead the A-10 and are 18th in the nation in scoring offense with 82.1 ppg. SLU's +14.1 scoring margin leads the A-10 and is 37th nationally.
- SLU leads the A-10 in both free throws made (214) and attempted (285). The Bills rank in the top 15 in the NCAA in those categories as well.
- SLU has gone with the same starting five in all 12 games.
- **Yuri Collins** leads the NCAA in assists per game (7.9) and total assists (95). He dished out a school-record 19 assists earlier this year against Boston College, the most in the NCAA this season.
- Collins is second in the A-10 and 21st in the NCAA with 27 steals.
- **Gibson Jimerson** leads the Billikens in scoring with 16.3 ppg, eighth in the Atlantic 10 Conference.
- **Marten Linssen** scores in double figures with 10.1 ppg.
- **Francis Okoro** is the Billikens' top rebounder at 6.8 rpg. His 3.3 offensive rebounds per game is second in the A-10.

ROTATION

LAST GAME STARTERS

No.	Name	Pos.	Ht	Wt	Yr.-Exp.	Hometown	GP-GS	PPG	RPG	MPG
1	Yuri Collins	G	6-0	185	So.-2L	St. Louis, Mo.	12-12	10.1	3.4	30.8
12	Marten Linssen	F	6-8	240	Jr.-3L	Dusseldorf, Germany	12-12	10.1	4.3	17.4
15	Jordan Nesbitt	G	6-6	200	Fr.-1L	St. Louis, Mo.	12-12	9.7	4.8	24.8
22	Terrence Hargrove Jr.	F	6-4	215	So.-2L	East St. Louis, Ill.	12-12	9.3	5.4	25.9
24	Gibson Jimerson	G	6-5	200	R-Fr.-2L	Richmond, Va.	12-12	16.3	1.9	30.7

RESERVES

2	Markhi Strickland	G/F	6-5	210	Fr.-1L	Miami, Fla.	5-0	3.6	0.6	7.7
5	Francis Okoro	F	6-9	235	Jr.-2L	Imo, Nigeria	12-0	8.7	6.8	20.1
11	Rashad Williams	G	6-2	185	Jr.-3L	Detroit, Mich.	6-0	3.0	0.7	11.4
13	Andre Lorentsson	F	6-8	215	Fr.-1L	Gothenburg, Sweden	4-0	2.0	0.8	8.5
20	Fred Thatch Jr.	G	6-3	215	R-So.-3L	Sikeston, Mo.	12-0	6.3	4.4	19.0
23	Lassina Traore	F	6-9	215	Fr.-1st yr	Abidjan, Ivory Coast	7-0	4.3	3.1	7.3
30	Brandon Courtney	G	6-3	200	Jr.-3L	Trenton, Ill.	3-0	2.0	0.3	4.0
55	DeAndre Jones	G	5-11	160	Sr.-4L	Boise, Idaho	12-0	5.1	1.5	16.3

BY THE NUMBERS

SLU		RICH
8-4	Record	9-5
0-0	Conference Record	0-1
L1	Streak	L1
78	KenPom (thru 12/30)	92
72	NCAA Net (thru 12/30)	105
82.1	Scoring Offense	73.7
68.0	Scoring Defense	70.4
+14.1	Scoring Margin	+3.4
.474	FG Percentage	.453
.428	Opponent FG Percentage	.446
.374	3FG Percentage	.350
.314	Opponent 3FG Percentage	.343
6.9	3FG Made Per Game	9.3
.751	FT Percentage	.682
17.8	FTs Made Per Game	10.9
39.0	Rebounds Per Game	32.3
+7.4	Rebounding Margin	-4.7
14.8	Assists Per Game	16.6
13.1	Turnovers Per Game	9.6
+2.5	Turnover Margin	+3.4
8.1	Steals Per Game	8.0
3.8	Blocks Per Game	2.4

SERIES HISTORY

Overall: SLU leads 12-8
 at SLU: SLU leads 6-3
 at Chaifetz Arena: SLU leads 5-3
 at Richmond: Tied 5-5
 Neutral Court: SLU leads 1-0
 Streak: SLU, won 3 straight and 5 of last 6
 Last Meeting: W, 72-67 (2/26/01 at SLU)
 First Meeting: L, 54-65 (1/18/06 at UR)

FOLLOW THE BILLIKENS

Instagram: saintlouismbb
 Twitter: @SaintLouisMBB
 Facebook: SaintLouisMBB
 Website: www.SLUBillikens.com

2021-22 Saint Louis Billikens



Yuri Collins



Markhi Strickland



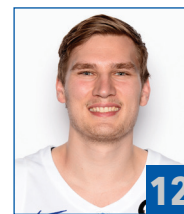
Javonte Perkins



Francis Okoro



Rashad Williams



Marten Linssen



Andre Lorentsson



Jordan Nesbitt



Fred Thatch Jr.



Terrence Hargrove Jr.



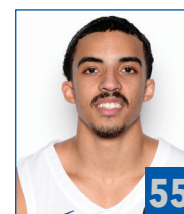
Lassina Traore



Gibson Jimerson



Brandon Courtney



DeAndre Jones

NUMERICAL ROSTER

NO.	NAME	POS.	HT.	WT.	YR.-EXP	HOMETOWN (PREVIOUS SCHOOLS)
1	Yuri Collins	G	6-0	185	So.-2L	St. Louis, Mo. (St. Mary's)
2	Markhi Strickland	G/F	6-5	210	Fr.-1L	Miami, Fla. (Victory Rock Prep)
3	Javonte Perkins	G/F	6-6	215	Sr.-2L	St. Louis, Mo. (Miller Career Academy/SWIC)
5	Francis Okoro	F	6-9	235	Jr.-2L	Imo, Nigeria (Normal West/Oregon)
11	Rashad Williams	G	6-2	185	Jr.-3L	Detroit, Mich. (Wayne Mem./Oakland/Cleveland State)
12	Marten Linssen	F	6-8	240	Jr.-3L	Dusseldorf, Germany (Schloss-Gymnasium Benrath/UNC Wilmington/Valparaiso)
13	Andre Lorentsson	F	6-8	215	Fr.-1L	Gothenburg, Sweden (RIG Mark Kinna)
15	Jordan Nesbitt	G	6-6	200	Fr.-1L	St. Louis, Mo. (St. Louis Christian Academy/Memphis)
20	Fred Thatch Jr.	G	6-3	215	R-So.-3L	Sikeston, Mo. (Sikeston)
22	Terrence Hargrove Jr.	F	6-4	215	So.-2L	East St. Louis, Ill. (East St. Louis)
23	Lassina Traore	F	6-9	215	Fr.-1st yr.	Abidjan, Ivory Coast (Victory Rock Prep)
24	Gibson Jimerson	G	6-5	200	R-Fr.-2L	Richmond, Va. (Montverde Academy)
30	Brandon Courtney	G	6-3	200	Jr.-2L	Trenton, Ill. (Wesclin)
55	DeAndre Jones	G	5-11	160	Sr.-4L	Boise, Idaho (Borah/Central Arkansas)

ALPHABETICAL

- 1 Yuri Collins
- 30 Brandon Courtney
- 22 Terrence Hargrove Jr.
- 24 Gibson Jimerson
- 55 DeAndre Jones
- 12 Marten Linssen
- 13 Andre Lorentsson
- 15 Jordan Nesbitt
- 5 Francis Okoro
- 3 Javonte Perkins
- 2 Markhi Strickland
- 20 Fred Thatch Jr.
- 23 Lassina Traore
- 11 Rashad Williams

SAINT LOUIS STAFF

Name	Position // Year at SLU	Alma Mater // Year
Travis Ford	Head Coach // 6th	Kentucky // 1994
Corey Tate	Assoc. Head Coach // 6th	Missouri // 1997
Ray Giaccolletti	Assistant Coach // 2nd as asst. coach	Minot State // 1985
Phil Forte	Assistant Coach // 1st as asst. coach	Oklahoma State // 2017
Michael Wilson	Director of Operations // 6th	TCU // 2015
Christian Nunez	Director of Player Development // 3rd	Farmingdale State // 2013
Brad Lewis	Video & Analytics Coordinator // 1st	Oklahoma State // 2018
Thomas Dziagwa	Graduate Student Manager // 1st	Oklahoma State // 2020
Davell Roby	Graduate Student Manager // 1st	Saint Louis // 2018

NOTE

SLU elected to **NOT** advance athletic eligibility this season, as the 2020-21 season did not count against a player's eligibility. The "YR." listed on the roster helps represent eligibility remaining (including this year). Fr.=four years remaining; So.=three years remaining; Jr.=two years remaining; Sr.=final year of eligibility.

PRONUNCIATIONS

#2 Markhi Strickland – Mark-eye
 #12 Marten Linssen – Martin LINN-sin
 #15 Jordan Nesbitt – Nezz-bit
 #23 Lassina Traore – Luh-see-nah Tray-ore-ee
 Ray Giaccolletti – Jack-ah-lett-e
 Phil Forte – Four-tay

Scan the QR code for an audio pronunciation guide



Audio: bit.ly/3oa3W2c

BILLIKENS BEGIN A-10 PLAY

- A new year and a new season begins Sunday for the Billikens as they play their first game of 2022 and their Atlantic 10 opener.
- SLU had its opener against UMass on Thursday, Dec. 30, postponed due to COVID-19 protocols. The rescheduled date for that game has not yet been announced.

FOLLOWING THE ACTION

- Sunday's game will be televised on CBS Sports Network and the CBS Sports App. **Chick Hernandez** and **Michael O'Donnell** are on the call.
- The radio broadcast will air on KFTK 97.1 FM, as there is a programming conflict on the home for the Billikens, KMOX 1120 AM. Billiken Hall of Famers and longtime SLU men's basketball radio partners **Bob Ramsey** and **Earl Austin Jr.** will call the action for every Billikens men's basketball game. Ramsey is in his 36th season calling Billiken hoops, while Austin is in his 31st year.

A WIN WOULD...

- ...push the Billikens' record to 9-4 overall.
- ...be the Bills' first victory in an A-10 opener in three years.
- ...be the fourth in a row in the series against Richmond.
- ...be the 98th of **Travis Ford's** SLU career. He is inching closer to becoming the fifth coach in SLU men's basketball history to reach 100 wins.

COLLINS DIRECTS THE OFFENSE

- Point guard **Yuri Collins** leads the nation in assists per game (7.9) and total assists (95). He is neck-and-neck with Kentucky's Sahvir Wheeler in both categories.

CAREER ASSISTS - SLU TOP 10

1. Josh Fisher (2001-04)	436
2. Charles Newberry (1987-90)	424
3. Jordair Jett (2010-14)	422
4. Kwamain Mitchell (2008-13)	420
5. Jordan Goodwin (2017-21)	404
6. LaTodd Johnson (1980-83)	400
7. Yuri Collins (2019-p)	382
8. Darryl Lenard (1983-85)	370
9. Jim Roder (1985-87)	353
10. Jamall Walker (1996-99)	350
11. Erwin Claggett (1992-95)	347
-- DeAndre Jones (2017-p)	504*

*majority of stats accumulated elsewhere; listed for comparison purposes only

- Collins' career 6.16 assists average ranks fifth in the NCAA among all active NCAA Division I players.
- Against Boston College, Collins dished out a school-record 19 assists. It is the most in the NCAA this season across all levels (Division I, II, III).
- Collins registered his third career double-double against Auburn and flirted with a triple-double, posted 13 points, 12 rebounds and eight assists.
- He has moved up to seventh on the Billikens' all-time assists list. If Collins continues at this pace, he should break SLU's all-time assists record at some point in late January/early February.
- Senior transfer **DeAndre Jones**, Central Arkansas' all-time assists leader, has 504 career assists. That would put Jones at No. 1 on SLU's all-time assists chart. He ranks No. 18 among all active NCAA Division I players in career assists.

JIMERSON LEADS THE TEAM IN SCORING

- Guard **Gibson Jimerson** leads the Billikens and is eighth in the Atlantic 10 Conference with 16.3 ppg. He has led the Bills in scoring in eight games this season.
- Jimerson is a career 40.7 percent shooter from 3-point range, putting him sixth in school history.
- Jimerson began diversifying his game last season with more drives to the basket and that has paid off this year. He has gone to the line 54 times already in 12 games. Before this year, he went the line just 19 times total in 31 games over two seasons.
- Jimerson doesn't yet meet the minimum of 100 makes to be eligible for SLU's free-throw percentage record, but he is on track to rank No. 1. He is a career 87.7 percent shooter from the stripe. SLU's career record holder is **Darryl "Pee Wee" Lenard**, who shot 85.9 percent (110-128) from the stripe from 1983-86.
- Jimerson drained 42.9 percent of his shots from 3-point range in 2019-20, the second-best mark by a freshman in school history and the eighth-best mark among all classes in school history.

OKORO LEADS IN REBOUNDING

- One of the major questions leading into this year is who would pick up the rebounding left by graduating seniors **Jordan Goodwin** (fourth at SLU in career rebounds) and **Hasahn French** (fifth at SLU in career rebounds).
- **Francis Okoro** is one of the players filling the rebounding void, leading the Bills with 6.8 rpg.
- Okoro has been especially impressive on the offensive glass, as he ranks 24th in the NCAA in offensive

SLU's RECORD WHEN...

	2021-22	FORD ERA
at Home (all games)	5-3	69-23
at Home (nonconference)	5-3	40-11
at Home (A-10)	0-0	30-12
on Road (all games)	1-1	17-35
on Road (nonconference)	1-1	4-8
on Road (A-10)	0-0	13-26
Neutral Site (all games)	2-0	11-11
Leading at halftime	8-2	72-18
Trailing at halftime	0-2	18-51
Tied at halftime	0-0	7-0
Overtime (all games)	1-0	4-2
Overtime (A-10 game)	0-0	3-2
Double overtime	0-0	1-0
Games decided by 3 pts/less	0-0	13-10
Games decided by 4-10 pts	3-3	37-28
Games decided by 11-19 pts	2-1	30-15
Games decided by 20+ pts	3-0	17-16
Winning opening tip	6-1	56-26
Losing opening tip	1-4	40-44
SLU scores 49 points or less	0-0	1-5
SLU scores 50-59 points	0-1	2-28
SLU scores 60-69 points	0-0	30-23
SLU scores 70-79 points	3-3	39-10
SLU scores 80-89 points	3-0	22-3
SLU scores 90-99 points	1-0	1-0
SLU scores 100+ points	1-0	2-0
Better shooting % than opp.	6-1	73-12
Opp. shoots better	1-3	23-57
Shooting the same	1-0	1-0
SLU shoots 50%+	5-0	29-2
SLU shoots 40-49%	3-2	46-32
SLU shoots below 40%	0-2	22-35
Opp. shoots 50%+	0-1	5-18
Opp. shoots 40-49%	5-3	40-43
Opp. shoots below 40%	3-0	53-7
SLU makes more 3s	4-0	42-16
Opp. makes more 3s	3-4	44-47
3s are equal	1-0	11-6
SLU outrebounds opp.	6-1	77-41
Opp. outrebounds SLU	2-3	17-27
Tied in rebounds	0-0	2-1
SLU commits less turnovers	3-2	53-21
SLU commits more turnovers	4-2	34-44
Turnovers are equal	1-0	10-4
SLU records 10+ steals	2-1	17-6
SLU records 15+ assists	4-0	53-12
Playing in November	7-1	25-10
Playing in December	1-3	22-17
Playing in January	0-0	16-17
Playing in February	0-0	21-17
Playing in March	0-0	14-8
Playing on Monday	0-0	3-1
Playing on Tuesday	3-2	12-13
Playing on Wednesday	2-0	24-18
Playing on Thursday	0-0	5-3
Playing on Friday	1-0	7-8
Playing on Saturday	2-2	35-21
Playing on Sunday	0-0	11-5
Playing before 5pm	2-0	30-19
Playing at night	6-4	67-50
Wearing white uniforms	6-2	58-21
Wearing blue uniforms	1-0	14-22
Wearing gray uniforms	1-1	10-6
Wearing black uniforms	0-1	14-20

2021-22 SLU QUICK FACTS

General Information

School Name	Saint Louis University
City/ZIP	St. Louis, MO 63103
Founded	1818
Enrollment	12,883
Nickname	Billikens
Colors	Blue and White
NCAA Affiliation	NCAA Division I
Conference	Atlantic 10 Conference
President	Dr. Fred Pestello
Director of Athletics	Chris May
Faculty Athletics Representative	Dr. Michael Ross
Facility	Chaifetz Arena (10,600)
Athletic Dept. Phone	(314) 977-3177
Ticket Office Phone	(314) 977-4SLU

2021-22 Staff

Head Coach	Travis Ford
Alma Mater, Year	Kentucky, 1994
Record at School	97-69 (6th year)
Career Record	433-335 (25th year)
Associate Head Coach	Corey Tate
Alma Mater, Year	Missouri, 1997
Season at SLU	Sixth
Assistant Coach	Ray Giacoletti
Alma Mater, Year	Minot State, 1985
Season at SLU	Third (second as asst. coach)
Assistant Coach	Phil Forte
Alma Mater, Year	Oklahoma State, 2017
Season at SLU	Third (first as asst. coach)
Director of Basketball Operations	Michael Wilson
Alma Mater, Year	TCU, 2015
Season at SLU	Sixth (third as DOBO)
Director of Player Development	Christian Nunez
Alma Mater, Year	Farmingdale State, 2013
Season at SLU	Third (second as DOPD)
Scouting & Analytics Coordinator	Brad Lewis
Alma Mater, Year	Oklahoma State, 2018
Season at SLU	First
Graduate Student Managers	Davell Roby, Thomas Dziagwa

2020-21 Season at a Glance

Overall Record Last Year	14-7
Home	12-1
Away	1-4
Neutral	1-2
Conference Record (Finish)	6-4 (4th)
Conference Tournament	1-1 (Semifinals)
Postseason	0-1 (NIT)

2021-22 Outlook

Players Returning/Lost	10/5
Starters Returning/Lost	3/2
Newcomers	4

Billiken Media Relations

Assistant AD (MBB Contact)	Brian Kunderman
Email	brian.kunderman@slu.edu
Office	314-977-3346
Cell (texts preferred)	314-808-4868
Website	SLUBillikens.com

rebounds per game (3.3). He recorded nine offensive boards in the Memphis game alone.

► It has primarily been a team effort on the glass, though. Seven different players have led the Bills in rebounding in a game this year (including ties).

► As a team, the Billikens' +7.4 rebound margin is tops in the A-10 and 37th nationally. SLU leads the league and ranks 32nd in the nation with 13 offensive rebounds a game.

LINSSEN EFFICIENT FROM THE FIELD

► **Marten Linssen** is one of three Billikens averaging in double figures with 10.1 ppg.

► He is one of SLU's most efficient shooters, hitting 57.1 percent from the field (40-70).

► Linssen has shot 50 percent or better in all but two games this season. He was 4-4 from the field in the season opener against Central Arkansas.

NESBITT STARTING IN FIRST SEASON WITH BILLIKENS

► Prized local recruit **Jordan Nesbitt** has started all 12 games for the Billikens. He is averaging 9.7 points and 4.8 rebounds.

► Nesbitt had a career scoring high of 19 points against Harris-Stowe, where he shot 7-11 from the field and 5-8 from the 3-point line. He also corralled nine rebounds against the Hornets.

► A four-star recruit out of high school, Nesbitt graduated early from St. Louis Christian Academy and enrolled last spring at Memphis. He played in three games for the Tigers before opting to transfer home over the summer.

BILLIKENS IMPRESSIVE FROM THE FOUL LINE

► Saint Louis has been impressive from the free-throw line, connecting on 75.1 percent from the charity stripe.

► Overall, the Billikens are 10th NCAA in free throws made (214) and 15th in free throws attempted (285).

► SLU has hit 80 percent or better in five games this season.

► The Billikens ranked No. 350 out of 350 schools in free-throw percentage in 2019-20 (.580, 419-723).

BILLIKENS WIN CANCUN CHALLENGE

► Saint Louis topped Illinois State and Stephen F. Austin at the Hard Rock Hotel Riviera Maya in November to claim the 2021 Cancun Challenge title.

► **Gibson Jimerson** scored 19 points in both games in Mexico to capture the tourney's Most Valuable Player honors. **Marten Linssen** joined Jimerson on the All-Tournament team.

► It was SLU's first MTE win since the 2011-12 Billiken team won the 76 Classic in Anaheim, California.

► Following the wins in Mexico, the Billikens headed to Boise and defeated Boise State for their school-record seventh win in the month of November.

HITTING THE CENTURY MARK

► Saint Louis' improved offense was on display in the Bills' 127-54 win over Harris-Stowe earlier this year at Chaifetz Arena.

► The 127 points scored by the Billikens were the second-most in school history. Additionally, the Billikens set school records for largest victory margin (73 points), points in a half (73, first half) and field goals in a half (27, first half). They tied the Saint Louis record for field goals in a game (50).

► SLU has now scored 100 or more points in a game twice in the last two seasons. Prior to last year, it had not been done at SLU since the 1994-95 season.

HOME SWEET CHAIFETZ

► Saint Louis is in its 14th season playing inside the 10,600-seat Chaifetz Arena.

► SLU has an all-time record of 172-63 at Chaifetz Arena.

► Chaifetz Arena is named after SLU alumnus **Dr. Richard A. Chaifetz**. Dr. Chaifetz is a world-renowned entrepreneur and business leader, who in 1984 founded ComPsych Corporation, which today is the world's largest provider of employee assistance programs, behavioral health and wellness services.

CAREER 3-POINT STATS - SLU TOP 5

3FG Made

1. Erwin Claggett (1992-95)	295
2. Kevin Lisch (2005-09)	259
3. Scott Highmark (1992-95)	230
4. Virgel Cobbin (1996-99)	217
5. Kwamain Mitchell (2008-13)	200
-- Rashad Williams (2018-p)	252*

3FG Attempts

1. Erwin Claggett (1992-95)	716
2. Kevin Lisch (2005-09)	656
3. Scott Highmark (1992-95)	608
4. Cody Ellis (2009-13)	580
5. Kwamain Mitchell (2008-13)	567
-- Rashad Williams (2018-p)	705*

3FG Pct.

1. Roland Gray (1986-89)	.457
2. H Waldman (1994-95)	.420
3. Marcus Bartley (2014-16)	.415
4. Erwin Claggett (1992-95)	.412
5. Justin Love (1998-00)	.406
6. Gibson Jimerson (2019-21)	.404

**majority of stats accumulated elsewhere;
listed for comparison purposes only*

BILLIKENS IN THE A-10

- Saint Louis is in its 17th year playing in the Atlantic 10 Conference.
- The Billikens have an all-time record of 139-123 in A-10 tilts.
- Saint Louis has won two Atlantic 10 Conference regular-season crowns (2013 and 2014) and two A-10 tournament titles (2013 and 2019).

PERKINS LOST FOR SEASON WITH ACL TEAR

- **Javonte Perkins** suffered a torn ACL in his left knee in the first half of the Billikens' exhibition game against Rockhurst on Oct. 26. He will miss the rest of the season.
- Perkins was taking advantage of an extra year of eligibility in 2021-22, awarded to all student-athletes as a result of the COVID-19 pandemic. Last season, he earned second-team All-Conference honors after leading the Billikens in scoring with 17.1 ppg. He shot .456 from the field, .376 from 3-point range and an A-10-leading .866 from the free-throw line.
- In 2019-20, Perkins was voted the Atlantic 10 Conference's Sixth Man of the Year after leading SLU with 18.2 ppg in A-10 play, a school record. His 15.9 career scoring average ranks 10th in school history.

REMEMBERING FORD STUEN

- The Billikens remember and honor assistant coach **Ford Stuen**, who passed away May 11, 2021, at the age of 29. Stuen, the nephew of head coach **Travis Ford**, played at Oklahoma State for his uncle and served on the Billikens' staff the last five years.
- The Billikens wear a patch on their jersey with the "FS" script. That is how Ford would sign his name on the many hand-written notes and letters that he would send to family, friends, and coaching colleagues.
- The men's basketball program has taken up one of Ford's favorite quotes for this season: "The Journey is the Reward."
- On opening night, Nov. 9, 2021, a banner was unveiled honoring **Ford Stuen** that will forever hang in the Chaifetz Arena rafters.

HISTORY LESSON

- The Billikens won the 1948 National Invitation Tournament. That team was led by **Ed Macauley**, who went on to an NBA Hall of Fame career. Easy Ed's No. 50 is retired by SLU.
- The AP poll was first released the next season, and SLU was the first-ever No. 1 in the inaugural poll on January 17, 1949.
- **Anthony Bonner** (1986-90) is the Billikens' school-record holder in points (1,972) and rebounds (1,424). In 208-19, Bonner was in Brooklyn for the Billikens' run to the title and cut down a piece of the net.
- SLU owns two regular-season A-10 titles (2013 and 2014), and it won the A-10 Tournament in 2013 and 2019 at Barclays Center in Brooklyn, N.Y.
- The Billikens have made 10 NCAA Tournament appearances, the last coming in 2019. SLU made three straight NCAA Tournaments from 2012-14, winning its opening game in all three.

A-10 STANDINGS

	A-10		OVERALL		STR.
Fordham	1-0	1.000	8-5	0.615	W1
Saint Joseph's	1-0	1.000	7-5	0.583	W1
Davidson	0-0	0.000	8-2	0.800	W7
Rhode Island	0-0	0.000	8-3	0.727	W2
St. Bonaventure	0-0	0.000	8-3	0.727	L2
Saint Louis	0-0	0.000	8-4	0.667	L1
Richmond	0-1	0.000	9-5	0.643	L1
VCU	0-0	0.000	7-4	0.636	W4
Dayton	0-0	0.000	8-5	0.615	W1
George Mason	0-0	0.000	7-5	0.583	W3
UMass	0-0	0.000	7-5	0.583	W1
La Salle	0-1	0.000	5-6	0.455	L2
Duquesne	0-0	0.000	5-7	0.417	W2
George Washington	0-0	0.000	4-8	0.333	W2

A-10 UPCOMING GAMES

Saturday, January 1
George Mason at Kansas

Sunday, January 2
St. Bonaventure at Dayton
Massachusetts at Fordham
Richmond at Saint Louis
La Salle at Rhode Island

Wednesday January 5
La Salle at Saint Louis
George Washington at Duquesne
Massachusetts at Richmond
Davidson at Saint Joseph's
VCU at Dayton
Fordham at St. Bonaventure
Rhode Island at George Mason

Saturday, January 8
Dayton at George Washington
VCU at La Salle
Rhode Island at Davidson
Duquesne at Massachusetts
Richmond at Fordham
Saint Joseph's at George Mason
Saint Louis at St. Bonaventure

A-10 PRESEASON POLL

1. St. Bonaventure (28).....	392
2. Richmond	359
3. Saint Louis.....	325
4. VCU	288
5. Dayton	274
6. Davidson.....	260
7. Rhode Island.....	231
8. George Mason	158
9. Massachusetts	147
10. Saint Joseph's.....	144
11. Duquesne	129
12. La Salle	105
13. George Washington	96
14. Fordham	32

Number in parenthesis indicates first-place votes

2021-22 INDIVIDUAL GAME HIGHS

Points

SLU: 21, Gibson Jimerson, three times

OPP: 27, Abu Kigab, Boise State

FGs Made

SLU: 9, Terrence Hargrove Jr. vs. Memphis

OPP: 11, Abu Kigab, Boise State

FGs Attempted

SLU: 23, Terrence Hargrove Jr. vs. Memphis

OPP: 17, twice

3FGs Made

SLU: 5, three times

OPP: 4, twice

3FGs Attempted

SLU: 13, Gibson Jimerson vs. Boston College

OPP: 10, Jordan Walker, UAB

FTs Made

SLU: 9, Marten Linssen vs. SFA

OPP: 8, DeMarr Langford, Boston College

FTs Attempted

SLU: 12, Marten Linssen vs. SFA

OPP: 11, twice

Rebounds

SLU: 13, Francis Okoro, Memphis

OPP: 11, Trey Jemison, UAB

Assists

SLU: 19, Yuri Collins vs. Boston College

OPP: 8, Wendell Green Jr., Auburn

Blocks

SLU: 4, Marten Linssen vs. UAB

OPP: 6, Jalen Duren, Memphis

Steals

SLU: 5, Yuri Collins vs. Memphis

OPP: 4, Ben Sheppard, Belmont

SLU TEAM HIGHS/LOWS

Points

High: 127 vs. Harris-Stowe

Low: 59 vs. Belmont

FGs Made

High: 50 vs. Harris-Stowe

Low: 22 vs. Stephen F. Austin

3FGs Made

High: 14 vs. Harris-Stowe

Low: 3 vs. Eastern Illinois

FTs Made

High: 30 at Boise State

Low: 9 vs. Belmont

Rebounds

High: 49 vs. Eastern Illinois

Low: 27 vs. UAB

Assists

High: 29 vs. Harris-Stowe

Low: 10 at Boise State

Blocks

High: 7 vs. Harris-Stowe

Low: 1 vs. Illinois State

Steals

High: 14 vs. Harris-Stowe

Low: 4 at Boise State

GAME-BY-GAME STARTING LINEUP

GAME

Central Arkansas	Collins	Jimerson	Nesbitt	Hargrove	Linssen
Harris-Stowe	Collins	Jimerson	Nesbitt	Hargrove	Linssen
Eastern Illinois	Collins	Jimerson	Nesbitt	Hargrove	Linssen
at Memphis	Collins	Jimerson	Nesbitt	Hargrove	Linssen
Mercer	Collins	Jimerson	Nesbitt	Hargrove	Linssen
vs. Illinois State	Collins	Jimerson	Nesbitt	Hargrove	Linssen
vs. Stephen F. Austin	Collins	Jimerson	Nesbitt	Hargrove	Linssen
at Boise State	Collins	Jimerson	Nesbitt	Hargrove	Linssen
UAB	Collins	Jimerson	Nesbitt	Hargrove	Linssen
Belmont	Collins	Jimerson	Nesbitt	Hargrove	Linssen
Boston College	Collins	Jimerson	Nesbitt	Hargrove	Linssen
Auburn	Collins	Jimerson	Nesbitt	Hargrove	Linssen
Richmond					
La Salle					
at St. Bonaventure					
at Dayton					
Fordham					
Massachusetts					
George Washington					
at Duquesne					
at George Mason					
Dayton					
at La Salle					
St. Bonaventure					
at Davidson					
Saint Joseph's					
at Richmond					
at Rhode Island					
VCU					

MISCELLANEOUS PLAYER STATS

STAT	17-18	18-19	19-20	20-21	21-22	CAREER
Triple-Doubles						
DeAndre Jones	1	-	-	-	-	1
Double-Doubles						
Francis Okoro	-	-	2	-	1	3
Yuri Collins	-	-	-	-	3	3
Marten Linssen	-	-	2	-	-	2
Terrence Hargrove Jr.	-	-	-	-	2	2
DeAndre Jones	1	-	-	-	-	1
Double-Digit Points						
DeAndre Jones	8	19	14	6	2	49
Rashad Williams	-	18	14	16	-	48
Javonte Perkins	-	-	22	20	-	42
Marten Linssen	-	-	17	2	6	25
Gibson Jimerson	-	-	5	7	10	22
Terrence Hargrove Jr.	-	-	6	3	4	13
Fred Thatch Jr.	-	3	2	4	3	12
Yuri Collins	-	-	2	3	7	12
Francis Okoro	-	2	3	-	5	10
Jordan Nesbitt	-	-	-	-	6	6
Lassina Traore	-	-	-	-	1	1
Double-Digit Rebounds						
Francis Okoro	-	2	2	-	3	7
Terrence Hargrove Jr.	-	-	-	-	2	2
Marten Linssen	-	-	2	-	-	2
Yuri Collins	-	-	-	-	1	1
DeAndre Jones	1	-	-	-	-	1
Led SLU in scoring (includes ties)						
Javonte Perkins	-	-	12	13	-	25
Gibson Jimerson	-	-	2	1	7	10
Terrence Hargrove Jr.	-	-	1	1	2	4
Fred Thatch Jr.	-	-	-	-	1	1
Marten Linssen	-	-	-	-	1	1
DeAndre Jones	-	-	-	-	1	1

SPECIALTY STATS

	Points in Paint	Points Off TO	2nd Chance	Fast Break	Bench	SLU's Largest Lead	SLU's Largest Deficit	Times Tied	Lead Changes	Margins Half	Margins Final
Central Arkansas	50/30	27/14	20/10	16/5	35/24	35 (2nd, 0:31)	6 (1st, 13:30)	4	8	+11	+35
Harris-Stowe	68/12	42/0	27/10	21/0	64/18	75 (2nd, 3:45)	None	2	0	+42	+73
Eastern Illinois	40/14	19/12	18/3	23/6	30/19	46 (2nd, 10:12)	2 (1st, 17:26)	1	1	+34	+42
Memphis	36/42	27/19	12/10	16/28	15/42	3 (1st, 18:41)	24 (2nd, 14:02)	3	3	-15	-16
Mercer	40/24	10/14	14/11	27/10	27/10	17 (2nd, 0:59)	9 (1st, 13:06)	3	4	+3	+17
Illinois State	34/36	19/18	5/9	17/12	19/18	11 (1st, 9:20)	2 (2nd, 10:09)	3	4	+1	+6
Stephen F. Austin	24/42	18/23	9/3	13/20	18/26	13 (1st, 1:31)	3 (1st, 14:12)	3	6	+12	+11
Boise State	32/38	12/15	4/15	14/14	31/12	4 (1st, 2:04)	11 (1st, 16:54)	17	12	+4	+4
UAB	28/32	17/18	6/17	7/9	41/27	10 (1st, 0:31)	9 (2nd, 4:18)	4	11	+7	-5
Belmont	30/40	10/14	14/6	5/2	6/14	15 (1st, 12:33)	5 (2nd, 2:08)	3	3	+6	-5
Boston College	34/26	12/15	6/6	12/11	22/14	23 (2nd, 13:11)	2 (1st, 19:24)	1	1	+17	+11
Auburn	40/32	11/15	11/12	11/7	12/26	13 (2nd, 9:13)	8 (1st, 1:00)	8	5	-8	-4

Stats listed as SLU/Opponent



TRAVIS FORD

Head Coach

Kentucky, 1994

Record at SLU: 97-69 (6th year)

Overall Record: 433-335 (25th year)

In six years as Saint Louis University's head men's basketball coach, Travis Ford has reinvigorated the program and reestablished its place on the national stage.

The 2021-22 season is Ford's sixth year at SLU and his 25th season overall as a head coach. He has a 97-69 record at SLU and a 433-335 record overall.

Hired in March 2016, Ford inherited a program that won 11 games in each of the two years prior. He proceeded to improve the Billikens' win total over the next four seasons. Saint Louis captured the 2019 Atlantic 10 Conference Championship and went to the NCAA Tournament. Over the last four seasons (this year included), Ford has guided the Billikens to a 67-32 record, an NCAA appearance, and an NIT appearance. The 2019-20 Billikens were poised for another postseason bid before the season was canceled due to the COVID-19 pandemic.

In 2020-21, the Billikens were ranked in the AP Top 25 for four straight weeks. After a lengthy COVID-19 shutdown, the Billikens were firmly on the bubble for the NCAA Tournament before ultimately earning a No. 1 seed for the postseason NIT.

Ford guided Saint Louis to a magical year in 2018-19. SLU was picked to win the league, but the Billikens went through a tough stretch of losing five of six games at one point in the conference season. As the No. 6 seed in the 2019 A-10 Championship at Barclays Center in Brooklyn, the Billikens registered four wins in four days to capture the A-10 title and the league's automatic bid into the NCAA Tournament (Ford's seventh NCAA appearance as a head coach). It was a wild ride for the Billikens at the A-10 Championship, as they either trailed or was tied at halftime in all four of the games. Photos, videos and GIFs of Ford jumping onto the SLU dogpile after its victory in the title game against St. Bonaventure will live on in Billiken history for years to come.

In addition to his six years at SLU, Ford has had head-coaching stints at Oklahoma State (eight years, 2008-16), Massachusetts (three years, 2005-08), Eastern Kentucky (five years, 2000-05) and Campbellsville University (three years, 1997-2000). Ford has led his team to the NCAA Tournament seven times. He has coached six players who have gone on to play in the NBA and six who have been named a conference player of the year.

Ford played the majority of his collegiate career at the University of Kentucky, helping the Wildcats to NCAA Tournament appearances in each of his three seasons (1992, 1993, 1994). He was a junior on the 1993 Wildcat team that advanced to the NCAA Final Four. Ford transferred to Kentucky after one season (1989-90) at the University of Missouri.

Ford is a native of Madisonville, Kentucky. He and his wife, Heather, have three children: Brooks, Kyleigh and Shane. Ford earned a bachelor's degree in communications at the University of Kentucky in 1994.

TRAVIS FORD'S CAREER BREAKDOWN

Year	School	Overall	Conference	Postseason
1997-98	Campbellsville	7-26 (.212)	N/A	
1998-99	Campbellsville	28-3 (.903)	10-2	
1999-00	Campbellsville	23-11 (.676)	8-4	NAIA Tournament
Total	Three seasons	58-40 (.592)	18-6 (.750)	
2000-01	Eastern Kentucky	7-19 (.269)	1-15 (.063)	
2001-02	Eastern Kentucky	7-20 (.259)	3-13 (.188)	
2002-03	Eastern Kentucky	11-17 (.393)	5-11 (.313)	
2003-04	Eastern Kentucky	14-15 (.483)	8-8 (.500)	
2004-05	Eastern Kentucky	22-9 (.710)	11-5 (.688)	NCAA First Round
Total	Five seasons	61-80 (.432)	28-52 (.350)	
2005-06	Massachusetts	13-15 (.464)	8-8 (.500)	
2006-07	Massachusetts	24-9 (.727)	13-3 (.813)	NIT 2nd Round
2007-08	Massachusetts	25-11 (.694)	10-6 (.625)	NIT Runner-Up
Total	Three seasons	62-35 (.639)	31-17 (.646)	
2008-09	Oklahoma State	23-12 (.657)	9-7 (.563)	NCAA Second Round
2009-10	Oklahoma State	22-11 (.667)	9-7 (.563)	NCAA First Round
2010-11	Oklahoma State	20-14 (.588)	6-10 (.375)	NIT 2nd Round
2011-12	Oklahoma State	15-18 (.455)	7-11 (.389)	
2012-13	Oklahoma State	24-9 (.727)	13-5 (.722)	NCAA First Round
2013-14	Oklahoma State	21-13 (.618)	8-10 (.444)	NCAA First Round
2014-15	Oklahoma State	18-14 (.563)	8-10 (.444)	NCAA First Round
2015-16	Oklahoma State	12-20 (.375)	3-15 (.167)	
Total	Eight seasons	155-111 (.585)	63-80 (.441)	
2016-17	Saint Louis	12-21 (.364)	6-12 (.333)	
2017-18	Saint Louis	17-16 (.515)	9-9 (.500)	
2018-19	Saint Louis	23-13 (.639)	10-8 (.556)	NCAA First Round
2019-20	Saint Louis	23-8 (.742)	12-6 (.667)	Postseason canceled
2020-21	Saint Louis	14-7 (.667)	6-4 (.600)	NIT First Round
2021-22	Saint Louis	8-4 (.667)		
Total	Six seasons	97-69 (.584)	43-39 (.524)	
CAREER	25 Seasons	433-335 (.564)	183-194 (.486)	
As a Player				
1989-90	Missouri	29-8 (.784)	12-2 (.857)	NCAA First Round
1991-92	Kentucky	29-7 (.806)	12-4 (.750)	NCAA Elite Eight
1992-93	Kentucky	30-4 (.882)	13-3 (.813)	NCAA Final Four (semifinal)
1993-94	Kentucky	27-7 (.794)	12-4 (.750)	NCAA Second Round
Total		115-26 (.816)	49-13 (.790)	





SEASON/CAREER HIGHS

POINTS

SEASON: 15 at Boise State, 11/30/21
CAREER: 17, twice

REBOUNDS

SEASON: 12 vs. Auburn, 12/18/21
CAREER: 12 vs. Auburn, 12/18/21

ASSISTS

SEASON: 19 vs. Boston College, 12/11/21
CAREER: 19 vs. Boston College, 12/11/21

STEALS

SEASON: 5 at Memphis, 11/16/21
CAREER: 5 at Memphis, 11/16/21

BLOCKS

SEASON: 1, twice
CAREER: 1, four times

FIELD GOALS MADE

SEASON: 6 vs. Auburn, 12/18/21
CAREER: 6, twice

FIELD GOAL ATTEMPTS

SEASON: 13, three times
CAREER: 13, three times

3-PT. FIELD GOALS MADE

SEASON: 1, six times
CAREER: 2, five times

3-PT. FIELD GOALS ATT

SEASON: 5 vs. Illinois State, 11/23/21
CAREER: 5, twice

FREE THROWS MADE

SEASON: 7 vs. SFA, 11/24/21
CAREER: 7 vs. SFA, 11/24/21

FREE THROWS ATTEMPTED

SEASON: 8 vs. SFA, 11/24/21
CAREER: 8 vs. SFA, 11/24/21

MINUTES PLAYED

SEASON: 38 vs. Auburn, 12/18/21
CAREER: 42 vs. UMass, 1/5/20

1 • YURI COLLINS

Sophomore • G • 6-0 • 185 • St. Louis, Mo. • St. Mary's | MAJOR: Sports Business



CURRENT SEASON | 2021-22

- Flirted with a triple-double against Auburn, scoring 13 points, posting 12 rebounds (career-high) and eight assists.
- Set the school record with 19 assists vs. BC while also making all five of his shots from the field en route to 14 points, giving him his second double-double of the year.
- Matched his season high with 15 points against Boise State, with all points coming in the 2nd half and overtime.
- Scored in double figures with 11 points against SFA.
- Went for 10 assists against Harris-Stowe, the first time in his career he posted double digit assists in back-to-back games.
- Tied his career highs of 12 assists and four steals against Central Arkansas.

2020-21 • Sophomore

- Appeared in all 19 games and made 17 starts.
- Led the Atlantic 10 and was 10th in the NCAA with 6.1 assists per game.
- His 2.83 assist-to-turnover ratio was second in the league and 19th nationally.
- Finished with 116 assists, the fifth-most among sophomores in school history.
- Averaged 5.1 points and 2.8 rebounds.
- Finished second on the squad with 23 steals.
- Twice scored a career-high 17 points in wins over NC State and in the A-10 quarterfinals against UMass.
- Dished out a season-high 11 assists against Dayton and had a 10-assist outing versus Indiana State.
- Scored a then career-high 12 points and finished an assist shy of a double-double with nine helpers against Central Arkansas.

2019-20 • Freshman

- Named to the Atlantic 10 Commissioner's Honor Roll.
- Appeared in all 31 games and made 27 starts.

- Atlantic 10 Conference All-Rookie team pick.
- Broke the SLU freshman record with 171 assists on the season.
- His 171 assists ranked third in a single-season in school history.
- Led all freshmen in the NCAA with 5.5 assists per game.
- Third in the A-10 in total assists and fourth in the league in assists per game.
- Eighth in the A-10 and second on the Billikens with 46 steals.
- His 46 steals are third among freshman in a single season in school history.
- Dished out a career-high 12 assists in the home victory over VCU.
- Posted season scoring highs in back-to-back games at Saint Joseph's (10 points) and at La Salle (11 points).
- Pulled down a career-high eight rebounds and dished out seven assists in the win at Richmond.

PRIOR TO SLU

- Prepped at St. Mary's High School in St. Louis.
- Noted as one of the top point guards to ever play in the St. Louis area in the prep scene.
- Helped St. Mary's to its first-ever state semifinal appearance and a Missouri Class 4 state runner-up finish.
- Averaged 22.6 ppg, 5.4 rpg, 7.0 apg and 2.9 spg for the Dragons as a senior.
- He averaged 30.0 ppg and 7.5 rpg during St. Mary's postseason run.
- St. Mary's all-time leader in assists and steals.
- First-team All-Metro and Archdiocesan Athletics Association, Large division co-Player of the Year.
- First-team Fab-Five All-Star by the St. Louis American.
- Ran with Bradley Beal Elite last summer, where he was fourth in the Nike EYBL in assists.

2021-22 Game-by-Game Stats

Opponent	Date	GS	MIN	Total		3-Pointers		Free throws		Rebounds				PF	A	TO	BLK	STL	PTS	AVG
				FG-FGA	PCT	3FG-3FGA	PCT	FT-FTA	PCT	OFF	DEF	TOT	AVG							
Central Ark.	11/09/2021	*	24:06	5-9	.556	1-2	.500	3-4	.750	0	3	3	3.0	0	12	2	0	4	14	14.0
Harris-Stowe	11/10/2021	*	15:06	2-3	.667	0-0	.000	0-0	.000	0	2	2	2.5	3	10	0	1	3	4	9.0
Eastern Ill.	11/12/2021	*	23:33	3-6	.500	1-2	.500	4-4	1.000	0	3	3	2.7	1	6	1	0	1	11	9.7
at Memphis	11/16/2021	*	29:12	3-13	.231	0-3	.000	3-3	1.000	0	1	1	2.3	2	7	6	0	5	9	9.5
Mercer	11/20/2021	*	32:37	3-11	.273	1-1	1.000	1-2	.500	0	1	1	2.0	3	7	4	0	1	8	9.2
vs Illinois St.	11/23/2021	*	37:38	3-9	.333	1-5	.200	0-0	.000	1	3	4	2.3	1	8	8	1	3	7	8.8
vs SFA	11/24/2021	*	35:50	2-7	.286	0-0	.000	7-8	.875	1	2	3	2.4	2	4	6	0	1	11	9.1
at Boise St.	11/30/2021	*	29:09	5-13	.385	0-0	.000	5-6	.833	0	3	3	2.5	3	1	3	0	1	15	9.9
UAB	12/04/2021	*	29:10	1-4	.250	0-2	.000	2-2	1.000	0	0	0	2.2	4	7	4	0	1	4	9.2
Belmont	12/07/2021	*	36:44	5-13	.385	0-2	.000	1-3	.333	0	5	5	2.5	1	6	6	0	2	11	9.4
Boston College	12/11/2021	*	37:45	5-5	1.000	1-1	1.000	3-5	.600	0	4	4	2.6	1	19	2	0	2	14	9.8
Auburn	12/18/2021	*	38:23	6-11	.545	1-2	.500	0-2	.000	1	11	12	3.4	5	8	6	0	3	13	10.1
Totals			12 369:13	43-104	.413	6-20	.300	29-39	.744	3	38	41	3.4	26	95	48	2	27	121	10.1

Collins' Career Stats				Field Goals		3-Point		F-Throws		Rebounds				Scoring						
SEASON	TEAM	GP-GS	MIN/AVG	FG-FGA	FG%	3FG-3FGA	3FG%	FT-FTA	FT%	OFF	DEF	TOT	AVG	PF-FO	A	TO	BLK	STL	PTS	AVG
2019-20	SLU	31-27	972/31.3	56-150	.373	11-30	.367	44-78	.564	12	76	88	2.8	79-3	171	99	0	46	167	5.4
2020-21	SLU	19-17	539/28.4	35-87	.402	7-29	.241	20-30	.667	6	47	53	2.8	37-1	116	41	2	23	97	5.1
2021-22	SLU	12-12	369/30.8	43-104	.413	6-20	.300	29-39	.744	3	38	41	3.4	26-1	95	48	2	27	121	10.1
TOTAL		62-56	1880/30.3	134-341	.393	24-79	.304	93-147	.633	21	161	182	2.9	142-5	382	188	4	96	385	6.2



SEASON/CAREER HIGHS

POINTS

SEASON: 7, twice
CAREER: 7, twice

REBOUNDS

SEASON: 2 vs. Harris-Stowe, 11/10/21
CAREER: 4 vs. SIUE, 11/25/20

ASSISTS

SEASON: 1 vs. Harris-Stowe, 11/10/21
CAREER: 2 vs. UCA, 12/8/20

STEALS

SEASON: 2 vs. Central Ark., 11/9/21
CAREER: 4 vs. UAPB, 12/5/20

BLOCKS

SEASON:
CAREER: 1 vs. LSU, 11/28/20

FIELD GOALS MADE

SEASON: 3, twice
CAREER: 3, three times

FIELD GOAL ATTEMPTS

SEASON: 6 vs. Harris-Stowe, 11/10/21
CAREER: 6, twice

3-PT. FIELD GOALS MADE

SEASON:
CAREER:

3-PT. FIELD GOALS ATTEMPTED

SEASON: 1 vs. Eastern Illinois, 11/12/21
CAREER: 1 vs. Eastern Illinois, 11/12/21

FREE THROWS MADE

SEASON: 1, twice
CAREER: 1, six times

FREE THROWS ATTEMPTED

SEASON: 2 vs. Central Ark., 11/9/21
CAREER: 2, five times

MINUTES PLAYED

SEASON: 18 vs. Harris-Stowe, 11/10/21
CAREER: 18 vs. Harris-Stowe, 11/10/21

2 • MARKHI STRICKLAND



Freshman • G/F • 6-5 • 210 • Miami, Fla. • Victory Rock Prep | MAJOR: Entrepreneurship

CURRENT SEASON | 2021-22

• Recorded a career-high seven points in the Billikens' first two games against Central Arkansas and Harris-Stowe.

2020-21 • Freshman

• Appeared in seven games and averaged 2.6 points.
• Played 15 minutes in his debut against SIUE and scored three points with four rebounds.
• Hit both of his shots from the field en route to five points and also posted four steals in the win over Arkansas-Pine Bluff.

• Went 3-3 from the field for six points in the La Salle win.
• Scored on an emphatic putback dunk in the win at Fordham.

PREVIOUS

• Attended prep school at Victory Rock Prep in Bradenton, Fla.
• Graduated from IMG Academy in Bradenton.
• Played on the Nike EYBL circuit with E1T1.
• Father, Mark, played eight years in the NBA.

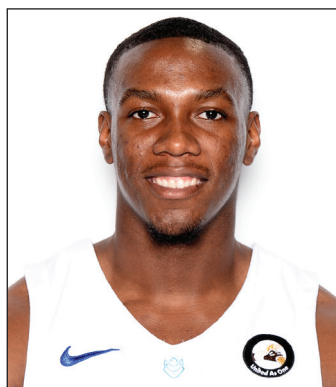
2021-22 Game-by-Game Stats

Opponent	Date	GS	MIN	Total		3-Pointers		Free throws		Rebounds											
				FG-FGA	PCT	3FG-3FGA	PCT	FT-FTA	PCT	OFF	DEF	TOT	AVG	PF	A	TO	BLK	STL	PTS	AVG	
Central Ark.	11/09/2021		10:16	3-4	.750	0-0	.000	1-2	.500	0	0	0	0.0	1	0	0	0	2	7	7.0	
Harris-Stowe	11/10/2021		18:00	3-6	.500	0-0	.000	1-1	1.000	0	2	2	1.0	0	1	0	0	1	7	7.0	
Eastern Ill.	11/12/2021		07:03	1-3	.333	0-1	.000	0-1	.000	0	0	0	0.7	1	0	0	0	0	2	5.3	
at Memphis	11/16/2021		03:21	1-1	1.000	0-0	.000	0-0	.000	1	0	1	0.8	2	0	0	0	0	2	4.5	
Mercer	11/20/2021		00:02	0-0	.000	0-0	.000	0-0	.000	0	0	0	0.6	0	0	0	0	0	0	3.6	
Totals			0 38:42	8-14	.571	0-1	.000	2-4	.500	1	2	3	0.6	4	1	0	0	3	18	3.6	

Player Averages

Games Played	Minutes/game	Points/game	FG Pct	3FG Pct	FT Pct	Rebounds/game	Assists/game	Turnovers/game	Assist/Turnover ratio	Steals/game	Blocks/game
5	7.7	3.6	57.1	0.0	50.0	0.6	0.2	0.0	1.0	0.6	0.0

Strickland's Career Stats				Field Goals		3-Point		F-Throws		Rebounds										Scoring	
SEASON	TEAM	GP-GS	MIN/AVG	FG-FGA	FG%	3FG-3FGA	3FG%	FT-FTA	FT%	OFF	DEF	TOT	AVG	PF-FO	A	TO	BLK	STL	PTS	AVG	
2020-21	SLU	7-0	51/7.3	7-14	.500	0-0	.000	4-8	.500	3	7	10	1.4	6-0	2	2	1	7	18	2.6	
2021-22	SLU	5-0	39/7.7	8-14	.571	0-1	.000	2-4	.500	1	2	3	0.6	4-0	1	0	0	3	18	3.6	
TOTAL		12-0	90/7.5	15-28	.536	0-1	.000	6-12	.500	4	9	13	1.1	10-0	3	2	1	10	36	3.0	



SEASON/CAREER HIGHS

POINTS

SEASON:
CAREER: 33 at Saint Joseph's, 2/1/20

REBOUNDS

SEASON:
CAREER: 9 at Boston College, 11/27/19

ASSISTS

SEASON:
CAREER: 5 vs. LSU, 11/28/20

STEALS

SEASON:
CAREER: 3 at La Salle, 2/3/21

BLOCKS

SEASON:
CAREER: 2, twice

FIELD GOALS MADE

SEASON:
CAREER: 10 vs. LSU, 11/28/20

FIELD GOAL ATTEMPTS

SEASON:
CAREER: 19, twice

3-PT. FIELD GOALS MADE

SEASON:
CAREER: 5 at Davidson, 1/22/20

3-PT. FIELD GOALS ATTEMPTED

SEASON:
CAREER: 10 vs. St. Bonaventure, 2/6/21

FREE THROWS MADE

SEASON:
CAREER: 13 at Saint Joseph's, 2/1/20

FREE THROWS ATTEMPTED

SEASON:
CAREER: 14, twice

MINUTES PLAYED

SEASON:
CAREER: 39 at VCU, 2/23/21

3 • JAVONTE PERKINS

Senior • G/F • 6-6 • 195 • St. Louis, Mo. • SWIC | MAJOR: Sociology



CURRENT SEASON | 2021-22

- Suffered a torn ACL in the Billikens' exhibition game on Oct. 26 against Rockhurst and will miss the rest of the season.
- Preseason first-team All-Conference.

2020-21 • Senior

- Started all 21 games and led the Billikens in scoring (17.1 ppg).
- Second-team All-Conference selection.
- Through two seasons as a Billiken, ranks 10th in school history with a 15.9 career scoring average.
- Shot .456 from the field, .376 from 3-point range and an A-10-leading .866 from the free-throw line.
- His .866 mark from the charity stripe was sixth in a single season in school history and fourth among seniors in a single season.
- Averaged 18.3 ppg in the Billikens' 13 home games, a Chaifetz Arena record.
- Hit 50 percent of his shots from 3-point range (29-58) at home, a Chaifetz Arena record.
- Named A-10 Player of the Week Nov. 30.
- Scored in double figures in all but one game and scored 20 points or more seven times.
- Dropped a season-high 32 points, one point off of his career high, in the win against LSU.
- Scored 20 points in the win over NC State.
- Turned in 21 points in the win at home against St. Bonaventure.
- Was 8-of-10 from the field and 3-of-4 from distance en route to 19 points in the home victory vs. La Salle.
- Pumped in 25 points in the A-10 quarterfinal round victory against UMass.
- Had 21 points in the NIT game versus Mississippi State.
- Pulled down a season-high seven rebounds in consecutive games against Dayton, VCU and Richmond.

2019-20 • Junior

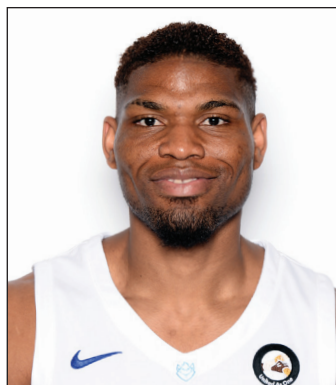
- Third-team All-Conference selection (Atlantic 10).
- Voted A-10 Sixth Man of the Year.
- Two-time A-10 Player of the Week (Feb. 3, 2020 and Feb. 24, 2020).

- Led the Billikens with 18.2 ppg in A-10 play, a school record.
- Scored in double figures in all but two A-10 games.
- Had seven 20+ scoring games in league play.
- Fifth in the A-10 in scoring in league games.
- Fourth in the A-10 with 119 free throws made.
- Led the team in scoring in a team-high 12 games.
- His 465 points were the 10th most by a junior in school history.
- During A-10 play, shot 49.3 percent from the field, 41.2 percent from 3-point range and 77.9 percent from the stripe.
- Scored 33 points at Saint Joseph's, the most ever by a Billiken in an A-10 road game.
- Became the first Billiken in 20 years to registered back-to-back 25-point scoring outputs when he did so against Dayton and Davidson.
- Scored 25 points in the home win against VCU.
- Turned in 25 points in the road victory at George Mason.

Prior to SLU

- Played two seasons at Southwestern Illinois College (SWIC) in Belleville.
- SWIC's all-time leading scorer.
- Finished third in scoring in the NJCAA as a sophomore with 26.4 ppg.
- Shot 53.7 percent from the field and 36 percent from the arc last season for the Blue Storm.
- Brought down nearly 8.0 rebounds per game and distributed close to 3.0 assists per game in 2018-19.
- As a freshman, averaged 20.0 ppg while shooting 60.5 percent from the field, 42.6 percent from 3-point range and 81.4 percent from the line.
- Prepped at Miller Career Academy in St. Louis.
- As a senior in 2016-17, Perkins led the Phoenix with 20.8 ppg and 15.6 rpg.
- He also led the team in scoring as a junior (15.7 ppg) and sophomore (13.0 ppg).

Perkins' Career Stats				Field Goals		3-Point		F-Throws		Rebounds										Scoring	
SEASON	TEAM	GP-GS	MIN/AVG	FG-FGA	FG%	3FG-3FGA	3FG%	FT-FTA	FT%	OFF	DEF	TOT	AVG	PF-FO	A	TO	BLK	STL	PTS	AVG	
2019-20	SLU	31-1	849/27.4	153-345	.443	40-114	.351	119-155	.768	35	72	107	3.5	83-1	22	36	9	24	465	15.0	
2020-21	SLU	21-21	639/30.4	132-284	.465	38-101	.376	58-67	.866	15	66	81	3.9	50-1	38	30	11	15	360	17.1	
TOTAL		52-22	1488/28.6	285-629	.453	78-215	.363	177-222	.797	50	138	188	3.6	133-2	60	66	20	39	825	15.9	



SEASON/CAREER HIGHS

POINTS

SEASON: 18 vs. Harris-Stowe, 11/10/21
CAREER: 18 vs. Harris-Stowe, 11/10/21

REBOUNDS

SEASON: 13 at Memphis, 11/16/21
CAREER: 17 vs. Montana, 12/18/19

ASSISTS

SEASON: 1, twice
CAREER: 1, 15 times

STEALS

SEASON: 2 at Memphis, 11/16/21
CAREER: 2, three times

BLOCKS

SEASON: 3, four times
CAREER: 6 vs. Utah, 3/14/19

FIELD GOALS MADE

SEASON: 8 vs. Harris-Stowe, 11/10/21
CAREER: 8 vs. Harris-Stowe, 11/10/21

FIELD GOAL ATTEMPTS

SEASON: 9, twice
CAREER: 9, three times

3-PT. FIELD GOALS MADE

SEASON:
CAREER:

3-PT. FIELD GOALS ATTEMPTED

SEASON:
CAREER:

FREE THROWS MADE

SEASON: 7 vs. Eastern Illinois, 11/12/21
CAREER: 7 vs. Eastern Illinois, 11/12/21

FREE THROWS ATTEMPTED

SEASON: 8, twice
CAREER: 8, twice

MINUTES PLAYED

SEASON: 28, twice
CAREER: 28, three times

5 • FRANCIS OKORO

Junior • F • 6-9 • 235 • Imo, Nigeria | Oregon | MAJOR: Environmental Studies



CURRENT SEASON | 2021-22

- Leads SLU in rebounding.
- Turned in 12 points and eight rebounds against Auburn.
- Finished with 17 points on 7-of-8 shooting from the field against Boston College.
- Has 12 points, the second-most in his SLU career, against UAB.
- Pulled down a season-high 13 rebounds at Memphis.
- Had his first double-double as a Billiken with 11 points and 12 rebounds against Eastern Illinois.
- Finished 8-of-9 from the field for 18 points against Harris-Stowe.
- Tied for the team lead with seven rebounds against Central Arkansas.

2019-20 • Sophomore (at Oregon)

- Appeared in 29 contests (18 starts) and averaged 3.3 ppg and 4.2 rpg.
- Shot 53.7 percent from the field, connecting on 26-of-67 shots.
- Had a career-high 17 rebounds and tied a career high with 12 points in the Ducks' win against Montana.
- That was his first game back after traveling to Nigeria for the memorial service for his father, Francis, who passed away in December.
- Registered a double-double of 10 points and 10 rebounds against Fresno State.

2018-19 • Freshman (at Oregon)

- Appeared in 37 games his freshman season (22 starts), averaging 3.1 ppg and 3.2 rpg.
- His insertion into the starting lineup in February helped spark a 10-game winning streak.
- Tied a Pac-12 Tournament record with a career-high six blocked shots against Utah.
- Turned in nine points and 10 rebounds against Washington.
- Registered a season-high 10 points against Portland State and matched it later in the year against Arizona.

PREVIOUS

- Was raised in Imo, Nigeria, and came to the United States prior to high school to live with family in Normal, Illinois.
- Played for Bradley Beal Elite in the Nike EYBL with Billiken teammates Yuri Collins, Terrence Hargrove Jr. and Fred Thatch Jr.
- Consensus four-star recruit and was listed as the No. 24 recruit in ESPN's top 60 in 2019 before reclassifying for 2018.
- Touted as the eight-best center in the nation by ESPN coming out of high school.
- Awarded a scout grade of 96 by 247sports.com.
- For BBE in 2017, averaged 8.7 ppg and 9.0 rpg while also blocking 39 shots in 21 games.
- Earned All-State honors as senior at Normal West High School after averaging 15.7 ppg and 12.4 rpg.

2021-22 Game-by-Game Stats

Opponent	Date	GS	MIN	Total		3-Pointers		Free throws		Rebounds				PF	A	TO	BLK	STL	PTS	AVG
				FG-FGA	PCT	3FG-3FGA	PCT	FT-FTA	PCT	OFF	DEF	TOT	AVG							
Central Ark.	11/09/2021		17:12	1-5	.200	0-0	.000	2-4	.500	2	5	7	7.0	2	1	0	1	0	4	4.0
Harris-Stowe	11/10/2021		14:18	8-9	.889	0-0	.000	2-2	1.000	4	4	8	7.5	4	0	1	1	1	18	11.0
Eastern Ill.	11/12/2021		18:11	2-4	.500	0-0	.000	7-8	.875	6	6	12	9.0	4	1	1	1	1	11	11.0
at Memphis	11/16/2021		22:22	1-6	.167	0-0	.000	5-6	.833	9	4	13	10.0	3	0	1	3	2	7	10.0
Mercer	11/20/2021		21:26	1-2	.500	0-0	.000	5-6	.833	1	4	5	9.0	3	0	1	3	1	7	9.4
vs Illinois St.	11/23/2021		21:45	2-3	.667	0-0	.000	2-5	.400	4	5	9	9.0	1	0	0	0	1	6	8.8
vs SFA	11/24/2021		16:09	0-3	.000	0-0	.000	0-0	.000	1	1	2	8.0	5	0	1	3	0	0	7.6
at Boise St.	11/30/2021		28:14	3-7	.429	0-0	.000	2-2	1.000	1	3	4	7.5	4	1	1	0	0	8	7.6
UAB	12/04/2021		21:39	3-5	.600	0-0	.000	6-8	.750	2	3	5	7.2	1	1	0	1	0	12	8.1
Belmont	12/07/2021		05:08	1-3	.333	0-0	.000	0-0	.000	2	0	2	6.7	2	0	1	0	1	2	7.5
Boston College	12/11/2021		28:28	7-8	.875	0-0	.000	3-3	1.000	1	5	6	6.6	4	0	2	3	1	17	8.4
Auburn	12/18/2021		26:48	5-9	.556	0-0	.000	2-6	.333	6	2	8	6.8	2	0	0	1	0	12	8.7
Totals		0	241:40	34-64	.531	0-0	.000	36-50	.720	39	42	81	6.8	35	4	9	17	8	104	8.7

Player Averages

Games Played	Minutes/game	Points/game	FG Pct	3FG Pct	FT Pct	Rebounds/game	Assists/game	Turnovers/game	Assist/Turnover ratio	Steals/game	Blocks/game
12	20.1	8.7	53.1	0.0	72.0	6.8	0.3	0.8	0.4	0.7	1.4

Okoro's Career Stats				Field Goals		3-Point		F-Throws		Rebounds				Scoring						
SEASON	TEAM	GP-GS	MIN/AVG	FG-FGA	FG%	3FG-3FGA	3FG%	FT-FTA	FT%	OFF	DEF	TOT	AVG	PF-FO	A	TO	BLK	STL	PTS	AVG
2018-19	Oregon	37-22	500/13.5	45-96	.469	0-0	.000	23-49	.469	49	70	119	3.2	65-1	6	26	20	7	113	3.1
2019-20	Oregon	29-18	496/17.1	36-67	.537	0-0	.000	24-51	.471	50	71	121	4.2	68-3	7	19	22	9	96	3.3
2021-22	SLU	12-0	242/20.1	34-64	.531	0-0	.000	36-50	.720	39	42	81	6.8	35-1	4	9	17	8	104	8.7
TOTAL FOR SLU		12-0	242/20.1	34-64	.531	0-0	.000	36-50	.720	39	42	81	6.8	35-1	4	9	17	8	104	8.7
TOTAL		78-40	1237/15.9	115-227	.507	0-0	.000	83-150	.553	138	183	321	4.1	168-5	17	54	59	24	313	4.0



SEASON/CAREER HIGHS

POINTS

SEASON: 9 vs. Harris-Stowe, 11/10/21
CAREER: 37 vs. Detroit Mercy, 1/31/20

REBOUNDS

SEASON: 2 vs. Harris-Stowe, 11/10/21
CAREER: 9 at Green Bay, 3/5/20

ASSISTS

SEASON: 6 vs. Harris-Stowe, 11/10/21
CAREER: 6 vs. Harris-Stowe, 11/10/21

STEALS

SEASON:
CAREER: 4, twice

BLOCKS

SEASON:
CAREER: 1 at Oakland, 2/2/19

FIELD GOALS MADE

SEASON: 3 vs. Harris-Stowe, 11/10/21
CAREER: 12 at Michigan State, 12/13/20

FIELD GOAL ATTEMPTS

SEASON: 8 vs. Harris-Stowe, 11/10/21
CAREER: 28 at Michigan State, 12/13/20

3-PT. FIELD GOALS MADE

SEASON: 3 vs. Harris-Stowe, 11/10/21
CAREER: 10 at Oklahoma State, 12/5/20

3-PT. FIELD GOALS ATTEMPTED

SEASON: 7 vs. Harris-Stowe, 11/10/21
CAREER: 20 at Oklahoma State, 12/5/20

FREE THROWS MADE

SEASON:
CAREER: 14 at Detroit Mercy, 1/31/20

FREE THROWS ATTEMPTED

SEASON:
CAREER: 15 at Detroit Mercy, 1/31/20

MINUTES PLAYED

SEASON: 23 vs. Harris-Stowe, 11/10/21
CAREER: 49 vs. Green Bay, 2/23/20

11 • RASHAD WILLIAMS



Junior • G • 6-2 • 185 • Detroit, Mich. | Oakland | MAJOR: Communication

CURRENT SEASON | 2021-22

• Drained two 3-pointers against Central Arkansas and three against Harris-Stowe.

2020-21 • Junior (at Oakland)

- Appeared in 28 games and made 25 starts.
- Averaged 13.6 ppg.
- Scored in double-figures 16 times and had eight games with 20 or more points.
- Led the nation with 277 3-point attempts.
- His 94 made 3-pointers was fifth in the country.
- Two-time Horizon League Player of the Week (Dec. 7 and Dec. 14).
- Drained 10 3-pointers en route to 32 points at Oklahoma State.
- Recorded 36 points at Michigan State.

2019-20 • Sophomore (at Oakland)

- Appeared in 15 games after being named eligible by the NCAA in the second semester.
- Averaged 19.5 ppg in the limited season, scoring in double figures in all but one game.
- Drained a team-high 61 3-pointers.
- Scored a career-high 37 points against Detroit Mercy and drew Horizon League Player of the Year honors.
- Had 34 points after making 11 of 19 shots at Northern Kentucky.

2018-19 • Freshman (at Cleveland State)

- Named to the Horizon League All-Freshman team.
- Played in 31 games with nine starts.
- Turned in 10.8 ppg and shot better than 40 percent from 3-point range.
- Led the Horizon League in 3-point field goal percentage (.408).
- Drained 91 3-pointers to set a Cleveland State freshman record.
- Scored in double-figures on 18 occasions.
- Turned in a season-high 25 points, thanks in part to seven 3s, at Illinois State.

Previous

- Michigan Mr. Basketball candidate at Wayne Memorial High School.
- Averaged 23.7 points and 6.7 assists his senior year, shooting better than 50 percent (77-153) from 3-point range.
- Honorable-mention All-State and Detroit Free Press All-West first team pick.
- Led team to its first district title in 21 years and was first player to earn AP All-State honors in 20 years.
- Helped Wayne Memorial to a 35-12 record in his two years.
- Played his freshman and sophomore seasons at Romulus High School.

2021-22 Game-by-Game Stats

Opponent	Date	GS	MIN	Total		3-Pointers		Free throws		Rebounds				PF				PTS	AVG
				FG-FGA	PCT	3FG-3FGA	PCT	FT-FTA	PCT	OFF	DEF	TOT	AVG	A	TO	BLK	STL		
Central Ark.	11/09/2021		13:16	2-4	.500	2-4	.500	0-0	.000	0	1	1	1.0	1	0	0	0	6	6.0
Harris-Stowe	11/10/2021		23:01	3-8	.375	3-7	.429	0-0	.000	1	1	2	1.5	2	6	1	0	9	7.5
Eastern Ill.	11/12/2021		16:53	0-1	.000	0-1	.000	0-0	.000	0	0	0	1.0	1	2	2	0	0	0
at Memphis	11/16/2021		06:37	0-1	.000	0-1	.000	0-0	.000	0	0	0	0.8	0	0	0	0	0	3.8
vs Illinois St.	11/23/2021		02:28	0-1	.000	0-1	.000	0-0	.000	0	1	1	0.8	0	0	0	0	0	3.0
at Boise St.	11/30/2021		05:59	1-2	.500	1-2	.500	0-0	.000	0	0	0	0.7	1	0	2	0	0	3
Totals		0	68:14	6-17	.353	6-16	.375	0-0	.000	1	3	4	0.7	5	8	5	0	0	18

Player Averages

Games Played	Minutes/game	Points/game	FG Pct	3FG Pct	FT Pct	Rebounds/game	Assists/game	Turnovers/game	Assist/Turnover ratio	Steals/game	Blocks/game
6	11.4	3.0	35.3	37.5	0.0	0.7	1.3	0.8	1.6	0.0	0.0

Williams' Career Stats				Field Goals		3-Point		F-Throws		Rebounds									Scoring	
SEASON	TEAM	GP-GS	MIN/AVG	FG-FGA	FG%	3FG-3FGA	3FG%	FT-FTA	FT%	OFF	DEF	TOT	AVG	PF-FO	A	TO	BLK	STL	PTS	AVG
2018-19	CSU	31-9	728/23.5	111-274	.405	91-223	.408	23-30	.767	3	54	57	1.8	48-0	23	39	1	18	336	10.8
2019-20	Oak	15-15	574/38.3	86-251	.343	61-189	.323	59-69	.855	1	45	46	3.1	36-1	27	40	0	10	292	19.5
2020-21	Oak	28-25	797/28.5	125-362	.345	94-277	.339	37-47	.787	3	40	43	1.5	36-1	25	42	0	22	381	13.6
2021-22	SLU	6-0	68/11.4	6-17	.353	6-16	.375	0-0	.000	1	3	4	0.7	5-0	8	5	0	0	18	3.0
TOTAL FOR SLU		6-0	68/11.4	6-17	.353	6-16	.375	0-0	.000	1	3	4	0.7	5-0	8	5	0	0	18	3.0
TOTAL		80-49	2168/27.1	328-904	.363	252-705	.357	119-146	.815	8	142	150	1.9	125-2	83	126	1	50	1027	12.8



SEASON/CAREER HIGHS

POINTS

SEASON: 19 vs. SFA, 11/24/21
CAREER: 20 vs. Northeastern, 2/13/20

REBOUNDS

SEASON: 8 vs. SFA, 11/24/21
CAREER: 13 vs. Charleston, 2/22/20

ASSISTS

SEASON: 2, three times
CAREER: 3 vs. La Salle, 2/18/21

STEALS

SEASON: 3 vs. Eastern Illinois, 11/12/21
CAREER: 3, twice

BLOCKS

SEASON: 4 vs. UAB, 12/4/21
CAREER: 4 vs. UAB, 12/4/21

FIELD GOALS MADE

SEASON: 5, twice
CAREER: 9, twice

FIELD GOAL ATTEMPTS

SEASON: 8, three times
CAREER: 13 vs. JMU, 2019-20

3-PT. FIELD GOALS MADE

SEASON:
CAREER:

3-PT. FIELD GOALS ATTEMPTED

SEASON: 1 vs. Harris-Stowe, 11/10/21
CAREER: 1 vs. Harris-Stowe, 11/10/21

FREE THROWS MADE

SEASON: 9 vs. SFA, 11/24/21
CAREER: 9 vs. SFA, 11/24/21

FREE THROWS ATTEMPTED

SEASON: 12 vs. SFA, 11/24/21
CAREER: 12 vs. SFA, 11/24/21

MINUTES PLAYED

SEASON: 27 vs. SFA, 11/24/21
CAREER: 35 vs. Drexel, 2019-20

12 • MARTEN LINSSEN

Junior • F • 6-8 • 240 • Dusseldorf, Germany | UNC Wilmington | MBA Candidate



CURRENT SEASON | 2021-22

- Had nine points and seven rebounds against Belmont.
- Turned in 11 points and set a career high with four blocked shots against UAB.
- Scored a season-high 19 points in the Cancun Challenge title game against SFA en route to All-Tournament team honors.
- Was 4-of-4 from the field en route to eight points against Central Arkansas.

2020-21 • Junior

- Named to the Atlantic 10 Commissioner's Honor Roll.
- Appeared in all 21 games and averaged 5.5 points and 2.1 rebounds.
- Shot 64.6 percent (42-65) from the field and 80 percent (32-40) from the free-throw line.
- Started the first two games of the season for Hasahn French who was recovering from an injury.
- Turned in a season-high 11 points in the season-opening win against SIUE.
- Pumped in 10 points on 5-of-6 shooting versus Indiana State.
- Went 4-of-4 from the field in victories over St. Bonaventure and Richmond.
- Dished out a career-best three assists in the win over La Salle.

2019-20 • Sophomore (at UNC Wilmington)

- Appeared in 32 games (29 starts) for the Seahawks.
- Averaged 10.5 ppg and 4.6 rpg.
- Second in the Colonial Athletic Association (CAA) in field goal percentage (.596).
- Scored in double-figures in 17 games and turned in two double-doubles.
- Had a career-high 20 points at Northeastern.
- Turned in 16 points and a career-high 13 rebounds against Charleston.
- Averaged 14.6 ppg over the last seven games of the season.

2018-19

- Sat out season per NCAA transfer regulations.

2017-18 • Freshman (at Valparaiso)

- Played in 22 games for the Crusaders.
- Averaged 2.0 ppg and 2.0 rpg.
- Had a season-high 12 points (5-of-5 shooting from the field) and season-best seven boards in a win over Kent State.

PREVIOUS

- Played on Germany's U18 team at the 206 European Championships.
- Member of Bayer Giants Leverkusen.
- Selected to 2017 NBBL All-Star team after averaging 12.8 ppg and 8.9 rpg.

2021-22 Game-by-Game Stats

Opponent	Date	GS	MIN	Total		3-Pointers		Free throws		Rebounds				PF	A	TO	BLK	STL	PTS	AVG	
				FG-FGA	PCT	3FG-3FGA	PCT	FT-FTA	PCT	OFF	DEF	TOT	AVG								
Central Ark.	11/09/2021	*	12:47	4-4	1.000	0-0	.000	0-0	.000	0	1	1	1.0	2	0	1	0	1	8	8.0	
Harris-Stowe	11/10/2021	*	15:46	4-6	.667	0-1	.000	4-4	1.000	1	2	3	2.0	0	2	0	1	2	12	10.0	
Eastern Ill.	11/12/2021	*	15:17	5-8	.625	0-0	.000	5-6	.833	2	2	4	2.7	3	1	2	1	3	15	11.7	
at Memphis	11/16/2021	*	15:49	4-8	.500	0-0	.000	3-4	.750	4	2	6	3.5	5	0	1	1	0	11	11.5	
Mercer	11/20/2021	*	18:18	3-6	.500	0-0	.000	3-4	.750	3	2	5	3.8	2	1	1	1	1	9	11.0	
vs Illinois St.	11/23/2021	*	17:28	3-5	.600	0-0	.000	4-4	1.000	2	3	5	4.0	3	1	0	0	0	10	10.8	
vs SFA	11/24/2021	*	27:26	5-8	.625	0-0	.000	9-12	.750	2	6	8	4.6	3	1	1	2	1	19	12.0	
at Boise St.	11/30/2021	*	16:46	1-4	.250	0-0	.000	5-6	.833	2	3	5	4.6	5	0	2	1	0	7	11.4	
UAB	12/04/2021	*	18:21	4-6	.667	0-0	.000	3-4	.750	0	2	2	4.3	2	2	1	4	0	11	11.3	
Belmont	12/07/2021	*	25:44	4-7	.571	0-0	.000	1-2	.500	1	6	7	4.6	4	2	1	1	1	9	11.1	
Boston College	12/11/2021	*	11:32	1-1	1.000	0-0	.000	2-2	1.000	2	1	3	4.5	4	0	2	0	0	4	10.5	
Auburn	12/18/2021	*	13:12	2-7	.286	0-0	.000	2-2	1.000	2	1	3	4.3	1	0	0	0	0	6	10.1	
Totals			12	208:26	40-70	.571	0-1	.000	41-50	.820	21	31	52	4.3	34	10	12	12	9	121	10.1

Player Averages

Games Played	Minutes/game	Points/game	FG Pct	3FG Pct	FT Pct	Rebounds/game	Assists/game	Turnovers/game	Assist/Turnover ratio	Steals/game	Blocks/game
12	17.4	10.1	57.1	0.0	82.0	4.3	0.8	1.0	0.8	0.8	1.0

Linssen's Career Stats				Field Goals		3-Point		F-Throws		Rebounds										Scoring	
SEASON	TEAM	GP-GS	MIN/AVG	FG-FGA	FG%	3FG-3FGA	3FG%	FT-FTA	FT%	OFF	DEF	TOT	AVG	PF-FO	A	TO	BLK	STL	PTS	AVG	
2017-18	VALPO	22-0	163/7.4	13-30	.433	0-0	.000	19-33	.576	15	29	44	2.0	39-2	6	15	7	12	45	2.0	
2019-20	UNCW	32-29	660/20.6	136-228	.596	0-0	.000	65-93	.699	56	90	146	4.6	86-4	13	30	23	17	337	10.5	
2020-21	SLU	21-2	247/11.8	42-65	.646	0-0	.000	32-40	.800	23	21	44	2.1	50-2	8	20	10	5	116	5.5	
2021-22	SLU	12-12	208/17.4	40-70	.571	0-1	.000	41-50	.820	21	31	52	4.3	34-2	10	12	12	9	121	10.1	
TOTAL FOR SLU		33-14	455/13.8	82-135	.607	0-1	.000	73-90	.811	44	52	96	2.9	84-4	18	32	22	14	237	7.2	
TOTAL		87-43	1278/14.7	231-393	.588	0-1	.000	157-216	.727	115	171	286	3.3	209-10	37	77	52	43	619	7.1	


SEASON/CAREER HIGHS
POINTS

SEASON: 5 vs. Harris-Stowe, 11/10/21
CAREER: 5 vs. Harris-Stowe, 11/10/21

REBOUNDS

SEASON: 2 vs. Eastern Illinois, 11/10/21
CAREER: 2 vs. Eastern Illinois, 11/10/21

ASSISTS

SEASON: 2 vs. Harris-Stowe, 11/10/21
CAREER: 2 vs. Harris-Stowe, 11/10/21

STEALS

SEASON: 1 vs. Harris-Stowe, 11/10/21
CAREER: 1, twice

BLOCKS

SEASON:
CAREER:

FIELD GOALS MADE

SEASON: 2 vs. Harris-Stowe, 11/10/21
CAREER: 2 vs. Harris-Stowe, 11/10/21

FIELD GOAL ATTEMPTS

SEASON: 2 vs. Harris-Stowe, 11/10/21
CAREER: 2, twice

3-PT. FIELD GOALS MADE

SEASON: 1, twice
CAREER: 1, twice

3-PT. FIELD GOALS ATTEMPTED

SEASON: 1, twice
CAREER: 2 vs. SIUE, 11/25/20

FREE THROWS MADE

SEASON:
CAREER: 2 vs. SIUE, 11/25/20

FREE THROWS ATTEMPTED

SEASON:
CAREER: 2 vs. SIUE, 11/25/20

MINUTES PLAYED

SEASON: 17 vs. Harris-Stowe, 11/10/21
CAREER: 17 vs. Harris-Stowe, 11/10/21

13 • ANDRE LORENTSSON



Freshman • F • 6-8 • 215 • Gothenburg, Sweden • Rig Mark Kinna | MAJOR: Deciding

CURRENT SEASON | 2021-22

- Hit a 3-pointer in the win over Eastern Illinois.
- Recorded his first collegiate field goals in the Harris-Stowe game, finishing with a career-best five points.

2020-21 • Freshman

- Named to the Atlantic 10 Commissioner's Honor Roll.
- Appeared in four games for the Billikens.
- Hit a pair of free throws for his first collegiate points in the season opener against SIUE.
- Also appeared in wins against Arkansas-Pine Bluff, Fordham and La Salle.

PREVIOUS

- Competed in the National Prep School Invitational in Rhode

Island in January with RIG Mark Kinna and posted a 2-1 record.

- Averaged 20 ppg in the NPSI, with a large portion of his scoring coming from beyond the arc.
- Averaged 17.7 ppg on 55 percent shooting from the field, including a 45 percent (44-97) mark from 3-point range last season.
- Averaged more than 6.0 rebounds per game while dishing out better than 3.0 assists per game.
- Also shot 85 percent from the free-throw line.
- Played for Sweden in the U16 European Championship (2017) and the U18 European Championship (2018).

2021-22 Game-by-Game Stats

Opponent	Date	GS	MIN	Total		3-Pointers		Free throws		Rebounds				PF	A	TO	BLK	STL	PTS	AVG
				FG-FGA	PCT	3FG-3FGA	PCT	FT-FTA	PCT	OFF	DEF	TOT	AVG							
Central Ark.	11/09/2021		10:16	0-0	.000	0-0	.000	0-0	.000	0	0	0	0.0	0	1	1	0	0	0	0.0
Harris-Stowe	11/10/2021		16:44	2-2	1.000	1-1	1.000	0-0	.000	0	1	1	0.5	2	2	1	0	1	5	2.5
Eastern Ill.	11/12/2021		05:05	1-1	1.000	1-1	1.000	0-0	.000	0	2	2	1.0	1	0	0	0	0	3	2.7
at Memphis	11/16/2021		01:43	0-0	.000	0-0	.000	0-0	.000	0	0	0	0.8	0	0	0	0	0	0	2.0
Totals		0	33:48	3-3	1.000	2-2	1.000	0-0	.000	0	3	3	0.8	3	3	2	0	1	8	2.0

Player Averages

Games Played	Minutes/game	Points/game	FG Pct	3FG Pct	FT Pct	Rebounds/game	Assists/game	Turnovers/game	Assist/Turnover ratio	Steals/game	Blocks/game
4	8.5	2.0	100.0	100.0	0.0	0.8	0.8	0.5	1.5	0.3	0.0

Lorentsson's Career Stats				Field Goals		3-Point		F-Throws		Rebounds				Scoring						
SEASON	TEAM	GP-GS	MIN/AVG	FG-FGA	FG%	3FG-3FGA	3FG%	FT-FTA	FT%	OFF	DEF	TOT	AVG	PF-FO	A	TO	BLK	STL	PTS	AVG
2020-21	SLU	4-0	19/4.8	0-4	.000	0-4	.000	2-2	1.000	0	3	3	0.8	3-0	0	0	0	1	2	0.5
2021-22	SLU	4-0	34/8.5	3-3	1.000	2-2	1.000	0-0	.000	0	3	3	0.8	3-0	3	2	0	1	8	2.0
TOTAL		8-0	53/6.6	3-7	.429	2-6	.333	2-2	1.000	0	6	6	0.8	6-0	3	2	0	2	10	1.3



SEASON/CAREER HIGHS

POINTS

SEASON: 19 vs. Harris-Stowe, 11/10/21
CAREER: 19 vs. Harris-Stowe, 11/10/21

REBOUNDS

SEASON: 9 vs. Harris-Stowe, 11/10/21
CAREER: 9 vs. Harris-Stowe, 11/10/21

ASSISTS

SEASON: 3 at Memphis, 11/16/21
CAREER: 3 at Memphis, 11/16/21

STEALS

SEASON: 2, six times
CAREER: 2, six times

BLOCKS

SEASON: 1, three times
CAREER: 1, three times

FIELD GOALS MADE

SEASON: 7 vs. Harris-Stowe, 11/10/21
CAREER: 7 vs. Harris-Stowe, 11/10/21

FIELD GOAL ATTEMPTS

SEASON: 14 at Memphis, 11/16/21
CAREER: 14 at Memphis, 11/16/21

3-PT. FIELD GOALS MADE

SEASON: 5 vs. Harris-Stowe, 11/10/21
CAREER: 5 vs. Harris-Stowe, 11/10/21

3-PT. FIELD GOALS ATTEMPTED

SEASON: 8 vs. Harris-Stowe, 11/10/21
CAREER: 8 vs. Harris-Stowe, 11/10/21

FREE THROWS MADE

SEASON: 5 at Memphis, 11/16/21
CAREER: 5 at Memphis, 11/16/21

FREE THROWS ATTEMPTED

SEASON: 8 at Memphis, 11/16/21
CAREER: 8 at Memphis, 11/16/21

MINUTES PLAYED

SEASON: 29 at Memphis, 11/16/21
CAREER: 29 at Memphis, 11/16/21

15 • JORDAN NESBITT

Freshman • G • 6-6 • 200 • St. Louis, Mo. • SLCA • Memphis | MAJOR: Deciding



CURRENT SEASON | 2021-22

- Had 11 points against Auburn, including a clutch game-tying 3-pointer with less than a minute to go.
- Turned in 11 points in the win against Boston College, which included three treys.
- Led the Billikens with eight rebounds at Boise State.
- Went 9-of-14 from the field in SLU's two games in Cancun.
- Pumped in 19 points and grabbed nine boards against Harris-Stowe.
- Made his Billiken debut against Central Arkansas and went for 15 points and six rebounds.

2020-21 • Freshman (at Memphis)

- Enrolled at Memphis early and joined the team for the spring 2021 semester.
- Played in three games for the Tigers for a total of 12 minutes.

- Hit a 3-pointer against South Florida for his first collegiate points.
- Brought down a pair of rebounds against Central Florida in his collegiate debut.

Previous

- Prepped at St. Louis Christian Academy.
- Prior to enrolling at Memphis, was averaging 16.6 points, 8.7 rebounds and 4.2 assists his senior year at SLCA.
- Averaged a double-double of 25 points and 19 rebounds as a junior for SLCA.
- Four-star prospect and rated No. 48 overall by 247Sports.com.
- Sports Illustrated All-America candidate heading into senior year at SLCA.
- Ran with Bradley Beal Elite on the AAU circuit.

2021-22 Game-by-Game Stats

Opponent	Date	GS	MIN	Total		3-Pointers		Free throws		Rebounds				PF	A	TO	BLK	STL	PTS	AVG	
				FG-FGA	PCT	3FG-3FGA	PCT	FT-FTA	PCT	OFF	DEF	TOT	AVG								
Central Ark.	11/09/2021	*	22:17	6-11	.545	0-3	.000	3-4	.750	2	4	6	6.0	2	0	1	1	0	15	15.0	
Harris-Stowe	11/10/2021	*	17:51	7-11	.636	5-8	.625	0-0	.000	4	5	9	7.5	2	2	0	1	1	19	17.0	
Eastern Ill.	11/12/2021	*	15:55	3-8	.375	0-2	.000	0-1	.000	0	5	5	6.7	2	1	0	0	0	6	13.3	
at Memphis	11/16/2021	*	28:39	3-14	.214	2-6	.333	5-8	.625	1	3	4	6.0	3	3	0	1	2	13	13.3	
Mercer	11/20/2021	*	15:03	0-0	.000	0-0	.000	1-2	.500	0	2	2	5.2	2	2	1	0	0	1	10.8	
vs Illinois St.	11/23/2021	*	23:19	5-7	.714	2-4	.500	2-2	1.000	0	1	1	4.5	4	1	1	0	2	14	11.3	
vs SFA	11/24/2021	*	28:58	4-7	.571	1-2	.500	0-0	.000	0	4	4	4.4	4	1	0	0	0	9	11.0	
at Boise St.	11/30/2021	*	31:39	1-8	.125	1-4	.250	3-4	.750	1	7	8	4.9	1	1	0	1	1	6	10.4	
UAB	12/04/2021	*	22:31	2-8	.250	0-2	.000	0-0	.000	2	3	5	4.9	0	1	0	0	2	4	9.7	
Belmont	12/07/2021	*	27:49	2-4	.500	0-1	.000	3-6	.500	3	2	5	4.9	3	2	1	1	2	7	9.4	
Boston College	12/11/2021	*	26:31	4-9	.444	3-6	.500	0-0	.000	0	2	2	4.6	5	0	3	0	2	11	9.5	
Auburn	12/18/2021	*	37:11	3-13	.231	1-6	.167	4-6	.667	2	4	6	4.8	2	1	3	1	2	11	9.7	
Totals			12	297:44	40-100	.400	15-44	.341	21-33	.636	15	42	57	4.8	30	15	10	6	14	116	9.7

Player Averages

Games Played	Minutes/game	Points/game	FG Pct	3FG Pct	FT Pct	Rebounds/game	Assists/game	Turnovers/game	Assist/Turnover ratio	Steals/game	Blocks/game
12	24.8	9.7	40.0	34.1	63.6	4.8	1.3	0.8	1.5	1.2	0.5

Nesbitt's Career Stats				Field Goals		3-Point		F-Throws		Rebounds				Scoring						
SEASON	TEAM	GP-GS	MIN/AVG	FG-FGA	FG%	3FG-3FGA	3FG%	FT-FTA	FT%	OFF	DEF	TOT	AVG	PF-FO	A	TO	BLK	STL	PTS	AVG
2020-21	Mem	3-0	12/3.9	1-4	.250	1-3	.333	0-0	.000	0	3	3	1.0	2-0	1	3	0	0	3	1.0
2021-22	SLU	12-12	298/24.8	40-100	.400	15-44	.341	21-33	.636	15	42	57	4.8	30-1	15	10	6	14	116	9.7
TOTAL FOR SLU		12-12	298/24.8	40-100	.400	15-44	.341	21-33	.636	15	42	57	4.8	30-1	15	10	6	14	116	9.7
TOTAL		15-12	310/20.6	41-104	.394	16-47	.340	21-33	.636	15	45	60	4.0	32-1	16	13	6	14	119	7.9



SEASON/CAREER HIGHS

POINTS

SEASON: 20 vs. Mercer, 11/20/21
CAREER: 20 vs. Mercer, 11/20/21

REBOUNDS

SEASON: 9 vs. Eastern Illinois, 11/12/21
CAREER: 9, twice

ASSISTS

SEASON: 3 vs. Eastern Illinois, 11/12/21
CAREER: 4 at La Salle, 2/3/21

STEALS

SEASON: 3 vs. Mercer, 11/20/21
CAREER: 5 vs. Duquesne, 3/6/19

BLOCKS

SEASON: 1 vs. Mercer, 11/20/21
CAREER: 2, three times

FIELD GOALS MADE

SEASON: 8 vs. Mercer, 11/20/21
CAREER: 8 vs. Mercer, 11/20/21

FIELD GOAL ATTEMPTS

SEASON: 9 vs. Mercer, 11/20/21
CAREER: 11 at Minnesota, 12/20/20

3-PT. FIELD GOALS MADE

SEASON: 1, twice
CAREER: 4 vs. Oregon State, 12/9/18

3-PT. FIELD GOALS ATTEMPTED

SEASON: 4 vs. SFA, 11/24/21
CAREER: 5 vs. Oregon State, 12/9/18

FREE THROWS MADE

SEASON: 4 vs. Mercer, 11/20/21
CAREER: 7 at Fordham, 1/15/19

FREE THROWS ATTEMPTED

SEASON: 6 vs. Mercer, 11/20/21
CAREER: 8 at Fordham, 1/15/19

MINUTES PLAYED

SEASON: 31 vs. UAB, 12/4/21
CAREER: 37 vs. Oregon State, 12/9/18

20 • FRED THATCH JR.



RS Sophomore • G • 6-3 • 215 • Sikeston, Mo. • Sikeston HS | MAJOR: MBA Candidate

CURRENT SEASON | 2021-22

- Scored 12 points against UAB.
- Had 12 points and was big defensively in the win against Boise State.
- Had a career scoring high against Mercer, making his first six shots of the game and finishing with 20 points on 8-9 shooting.
- Tied a career high with nine rebounds against EIU.
- Had six points and two steals against Central Arkansas.

2020-21 • Sophomore

- Named to the Atlantic 10 Commissioner's Honor Roll.
- Earned an undergraduate degree in Sports Business from SLU.
- Appeared 20 games with three starts.
- Turned in 5.4 ppg and 3.7 rpg.
- Third on the Billikens with 17 steals.
- Averaged 6.9 ppg in A-10 games only, fourth on the squad.
- Shot 42.5% from the field and 82.4% from the line.
- Scored a season-high 13 points in the regular-season finale win against UMass.
- Turned in 12 points in both games against La Salle.
- Had 11 points and a season-high eight rebounds in the game at Minnesota.

2019-20 • Sophomore (earned medical hardship waiver)

- Named to the Atlantic 10 Commissioner's Honor Roll.
- Appeared in just six games and received a medical hardship waiver.
- Scored 11 points in the season opener against Florida Gulf Coast.

- Had 11 points and tied a career high with seven rebounds against Eastern Washington.

2018-19 • Freshman

- Named to the Atlantic 10 Commissioner's Honor Roll.
- Appeared in all 36 games, making two starts.
- His 36 games played tied a school record for games played by a freshman.
- Averaged 4.3 ppg and was especially strong on the defensive end.
- Posted 28 steals on the season, including a career-high five in the win against Duquesne.
- In addition to his five steals against Duquesne, also scored eight points and brought down a career-high seven rebounds.
- Turned in 16 points on 5-of-7 shooting from the field and 4-of-5 from the arch in the win against Oregon State.
- Had seven points, including an emphatic dunk off of a steal, in the win over Butler.
- Scored 12 points in A-10 wins against Dayton and George Washington.

Prior to SLU

- Consensus three-star recruit.
- Helped Sikeston High School to the state tournament his senior year.
- Named the Missouri Basketball Coaches Association Player of the Year after averaging more than 25.0 ppg as a senior.
- Became the first Sikeston player in history to record more than 2,000 points, and he is also the school's all-time leader in rebounds, steals and assists.
- Played AAU for the St. Louis Eagles.

2021-22 Game-by-Game Stats

Opponent	Date	GS	MIN	Total		3-Pointers		Free throws		Rebounds				PF	A	TO	BLK	STL	PTS	AVG
				FG-FGA	PCT	3FG-3FGA	PCT	FT-FTA	PCT	OFF	DEF	TOT	AVG							
Central Ark.	11/09/2021		14:24	2-3	.667	0-1	.000	2-3	.667	1	2	3	3.0	2	2	1	0	2	6	6.0
Harris-Stowe	11/10/2021		05:56	0-2	.000	0-1	.000	0-0	.000	0	0	0	1.5	1	0	1	0	1	0	3.0
Eastern Ill.	11/12/2021		19:35	2-6	.333	0-1	.000	0-0	.000	2	7	9	4.0	1	3	1	0	1	4	3.3
at Memphis	11/16/2021		14:50	0-1	.000	0-0	.000	1-4	.250	1	3	4	4.0	2	0	3	0	1	1	2.8
Mercer	11/20/2021		28:46	8-9	.889	0-1	.000	4-6	.667	5	3	8	4.8	2	0	2	1	3	20	6.2
vs Illinois St.	11/23/2021		18:28	3-6	.500	0-0	.000	1-3	.333	2	3	5	4.8	3	0	1	0	1	7	6.3
vs SFA	11/24/2021		20:30	3-7	.429	1-4	.250	1-2	.500	1	3	4	4.7	2	2	0	0	2	8	6.6
at Boise St.	11/30/2021		30:02	4-6	.667	0-1	.000	4-4	1.000	0	5	5	4.8	2	2	0	0	1	12	7.3
UAB	12/04/2021		31:24	4-6	.667	1-2	.500	3-4	.750	0	4	4	4.7	2	1	2	0	1	12	7.8
Belmont	12/07/2021		15:28	0-1	.000	0-0	.000	0-0	.000	0	5	5	4.7	1	1	0	0	1	0	7.0
Boston College	12/11/2021		19:57	2-3	.667	1-1	1.000	0-0	.000	1	5	6	4.8	2	0	1	0	0	5	6.8
Auburn	12/18/2021		08:29	0-1	.000	0-0	.000	0-0	.000	0	0	0	4.4	1	1	2	0	0	0	6.3
Totals		0	227:48	28-51	.549	3-12	.250	16-26	.615	13	40	53	4.4	21	12	14	1	14	75	6.3

Player Averages

Games Played	Minutes/game	Points/game	FG Pct	3FG Pct	FT Pct	Rebounds/game	Assists/game	Turnovers/game	Assist/Turnover ratio	Steals/game	Blocks/game
12	19.0	6.3	54.9	25.0	61.5	4.4	1.0	1.2	0.9	1.2	0.1

Thatch's Career Stats				Field Goals		3-Point		F-Throws		Rebounds				Scoring						
SEASON	TEAM	GP-GS	MIN/AVG	FG-FGA	FG%	3FG-3FGA	3FG%	FT-FTA	FT%	OFF	DEF	TOT	AVG	PF-FO	A	TO	BLK	STL	PTS	AVG
2018-19	SLU	36-2	700/19.4	51-142	.359	18-67	.269	33-54	.611	42	54	96	2.7	85-3	30	29	12	28	153	4.3
2019-20	SLU	6-4	94/15.6	9-27	.333	2-12	.167	9-13	.692	4	17	21	3.5	10-0	2	4	1	4	29	4.8
2020-21	SLU	20-3	340/17.0	37-87	.425	5-16	.313	28-34	.824	36	38	74	3.7	42-1	20	11	3	17	107	5.4
2021-22	SLU	12-0	228/19.0	28-51	.549	3-12	.250	16-26	.615	13	40	53	4.4	21-0	12	14	1	14	75	6.3
TOTAL		74-9	1361/18.4	125-307	.407	28-107	.262	86-127	.677	95	149	244	3.3	158-4	64	58	17	63	364	4.9



SEASON/CAREER HIGHS

POINTS

SEASON: 20 at Memphis, 11/16/21
CAREER: 27 vs. Maryville, 12/17/19

REBOUNDS

SEASON: 11, twice
CAREER: 11, twice

ASSISTS

SEASON: 2 vs. Illinois State, 11/23/21
CAREER: 2 vs. Dayton, 1/17/20

STEALS

SEASON: 3 vs. Auburn, 12/18/21
CAREER: 3 vs. Auburn, 12/18/21

BLOCKS

SEASON: 3 vs. Harris-Stowe, 11/10/21
CAREER: 3, twice

FIELD GOALS MADE

SEASON: 9 at Memphis, 11/16/21
CAREER: 9, twice

FIELD GOAL ATTEMPTS

SEASON: 23 at Memphis, 11/16/21
CAREER: 23 at Memphis, 11/16/21

3-PT. FIELD GOALS MADE

SEASON: 3 vs. Mercer, 11/20/21
CAREER: 3 vs. Mercer, 11/20/21

3-PT. FIELD GOALS ATTEMPTED

SEASON: 5, twice
CAREER: 6 at Dayton, 2/19/21

FREE THROWS MADE

SEASON: 2 vs. Auburn, 12/18/21
CAREER: 9 vs. Maryville, 12/17/19

FREE THROWS ATTEMPTED

SEASON: 3 at Memphis, 11/16/21
CAREER: 12 vs. Maryville, 12/17/19

MINUTES PLAYED

SEASON: 36 at Memphis, 11/16/21
CAREER: 36 at Memphis, 11/16/21

22 • TERRENCE HARGROVE JR.

Soph. • G/F • 6-4 • 215 • East St. Louis, Ill. • East St. Louis | MAJOR: Communication



CURRENT SEASON | 2021-22

- Turned in a team-high 17 points to go along with seven rebounds against Auburn.
- Led the Billikens with six boards against UAB.
- Had 13 points on 6-of-7 shooting against SFA.
- Scored 15 points and snagged 11 rebounds against Mercer for his second straight double-double.
- Notched his first-career double-double with 20 points and 11 boards at Memphis.
- Tied a career-high with three blocked shots against Harris-Stowe.
- Had seven points against both Central Arkansas and Harris-Stowe.

2020-21 • Sophomore

- Appeared in 19 games and averaged 4.2 ppg.
- Shot 42.6 percent from the field and 42.4 percent from 3-point range.
- Recorded a season-high 11 points in the season opening win over SIUE.
- Went 4-for-4 from the field (2-of-2 from 3-point range) en route to 10 point in the regular-season finale win against UMass.
- Led the Billikens with eight points at Dayton.
- Hit two treys en route to 10 points and played a season-high 20 minutes in the NIT game against Mississippi State.

2019-20 • Freshman

- Appeared in 25 games, including all but one conference game.

- Shot a team-best 51.6 percent from the field, with a large portion of his FGs being dunks.
- Registered career highs of 27 points and seven rebounds against Maryville.
- Second on the Billikens with 11 blocked shots.
- Scored in double figures in six games.
- Scored in double figures in three-straight wins late in the conference season (VCU, Saint Joseph's, at Rhode Island).
- Led SLU with four points in overtime at La Salle and finished with seven points for the game.
- Turned in 10 points on 4-of-5 shooting against Kansas State.
- Registered 11 points and brought down five rebounds at Duquesne.

Prior to SLU

- Prepped at East St. Louis High School in East St. Louis, Illinois.
- Widely referred to as one of the most electrifying prep players in the metro area.
- Led East St. Louis to its first-ever state championship.
- Averaged 18.5 ppg, 9.0 rpg and better than 3.0 bpg for the Flyers.
- Scored 32 points and added 10 rebounds in the Flyers' comeback win in the state championship game.
- Illinois Class 3A All-State first team selection.
- First-team All-Metro and first-team Fab-Five All-Star by the St. Louis American.
- As a junior at East St. Louis, he averaged 18.2 ppg and 9.5 rpg, shot 46 percent from the field and led the team with 61 blocks.
- Played for Bradley Beal Elite.

2021-22 Game-by-Game Stats

Opponent	Date	GS	MIN	Total		3-Pointers		Free throws		Rebounds				PF	A	TO	BLK	STL	PTS	AVG
				FG-FGA	PCT	3FG-3FGA	PCT	FT-FTA	PCT	OFF	DEF	TOT	AVG							
Central Ark.	11/09/2021	*	19:11	3-6	.500	1-2	.500	0-0	.000	0	3	3	3.0	2	0	1	0	1	7	7.0
Harris-Stowe	11/10/2021	*	16:58	3-6	.500	0-0	.000	1-2	.500	3	3	6	4.5	0	1	0	3	1	7	7.0
Eastern Ill.	11/12/2021	*	21:04	3-5	.600	0-0	.000	0-0	.000	1	3	4	4.3	0	0	1	0	0	6	6.7
at Memphis	11/16/2021	*	35:42	9-23	.391	1-4	.250	1-3	.333	5	6	11	6.0	3	1	0	1	1	20	10.0
Mercer	11/20/2021	*	36:27	6-9	.667	3-4	.750	0-0	.000	2	9	11	7.0	1	0	2	1	1	15	11.0
vs Illinois St.	11/23/2021	*	30:25	6-7	.857	1-1	1.000	0-0	.000	0	3	3	6.3	2	2	7	0	0	13	11.3
vs SFA	11/24/2021	*	22:06	1-6	.167	1-3	.333	0-0	.000	2	3	5	6.1	3	1	1	0	0	3	10.1
at Boise St.	11/30/2021	*	17:44	2-3	.667	1-1	1.000	1-2	.500	0	2	2	5.6	2	0	0	0	0	6	9.6
UAB	12/04/2021	*	20:10	1-3	.333	1-2	.500	1-2	.500	0	6	6	5.7	0	0	0	0	0	4	9.0
Belmont	12/07/2021	*	27:40	2-8	.250	1-4	.250	0-0	.000	1	4	5	5.6	1	0	2	0	0	5	8.6
Boston College	12/11/2021	*	29:05	4-10	.400	1-5	.200	0-0	.000	0	2	2	5.3	2	0	2	1	0	9	8.6
Auburn	12/18/2021	*	34:49	7-13	.538	1-5	.200	2-2	1.000	3	4	7	5.4	2	0	1	1	3	17	9.3
Totals			12	311:20	47-99	.475	12-31	.387	6-11	.545	17	48	65	5.4	18	5	17	7	112	9.3

Player Averages

Games Played	Minutes/game	Points/game	FG Pct	3FG Pct	FT Pct	Rebounds/game	Assists/game	Turnovers/game	Assist/Turnover ratio	Steals/game	Blocks/game
12	25.9	9.3	47.5	38.7	54.5	5.4	0.4	1.4	0.3	0.6	0.6

Hargrove's Career Stats				Field Goals		3-Point		F-Throws		Rebounds				Scoring						
SEASON	TEAM	GP-GS	MIN/AVG	FG-FGA	FG%	3FG-3FGA	3FG%	FT-FTA	FT%	OFF	DEF	TOT	AVG	PF-FO	A	TO	BLK	STL	PTS	AVG
2019-20	SLU	25-0	315/12.6	51-98	.520	4-15	.267	28-42	.667	18	38	56	2.2	28-0	9	11	11	5	134	5.4
2020-21	SLU	19-0	193/10.2	29-68	.426	14-33	.424	7-9	.778	13	17	30	1.6	22-0	7	12	2	5	79	4.2
2021-22	SLU	12-12	311/25.9	47-99	.475	12-31	.387	6-11	.545	17	48	65	5.4	18-0	5	17	7	7	112	9.3
TOTAL		56-12	820/14.6	127-265	.479	30-79	.380	41-62	.661	48	103	151	2.7	68-0	21	40	20	17	325	5.8



SEASON/CAREER HIGHS

POINTS

SEASON: 14 vs. Harris-Stowe, 11/10/21
CAREER: 14 vs. Harris-Stowe, 11/10/21

REBOUNDS

SEASON: 7, twice
CAREER: 7, twice

ASSISTS

SEASON: 1 vs. Harris-Stowe, 11/10/21
CAREER: 1 vs. Harris-Stowe, 11/10/21

STEALS

SEASON: 1, twice
CAREER: 1, twice

BLOCKS

SEASON:
CAREER:

FIELD GOALS MADE

SEASON: 6 vs. Harris-Stowe, 11/10/21
CAREER: 6 vs. Harris-Stowe, 11/10/21

FIELD GOAL ATTEMPTS

SEASON: 8 vs. Harris-Stowe, 11/10/21
CAREER: 8 vs. Harris-Stowe, 11/10/21

3-PT. FIELD GOALS MADE

SEASON:
CAREER:

3-PT. FIELD GOALS ATTEMPTED

SEASON:
CAREER:

FREE THROWS MADE

SEASON: 2 vs. Harris-Stowe, 11/10/21
CAREER: 2 vs. Harris-Stowe, 11/10/21

FREE THROWS ATTEMPTED

SEASON: 3 vs. Harris-Stowe, 11/10/21
CAREER: 3 vs. Harris-Stowe, 11/10/21

MINUTES PLAYED

SEASON: 17 vs. Harris-Stowe, 11/10/21
CAREER: 17 vs. Harris-Stowe, 11/10/21

23 • LASSINA TRAORE



Freshman • F • 6-9 • 215 • Abidjan, Ivory Coast • Victory Rock Prep | MAJOR: Deciding

CURRENT SEASON | 2021-22

- Scored four points and was solid defensively in nine minutes of action against Belmont.
- Had a productive 10 minutes against Central Arkansas with four points and seven rebounds in his debut.
- Followed that up with a 14-point, 7-rebound performance in the win over Harris-Stowe.

Previous

- Comes to SLU from Victory Rock Prep in Bradenton, Florida, the same prep school attended by Billiken Markhi Strickland.
- Also played briefly at the Dynasty Sports Institute in Quebec City, Quebec, prior to the COVID-19 pandemic.
- Was to participate in the 2018 FIBA U18 African Championships, but Ivory Coast had to pull out of the tournament before play began.

2021-22 Game-by-Game Stats

Opponent	Date	GS	MIN	Total		3-Pointers		Free throws		Rebounds				PF	A	TO	BLK	STL	PTS	AVG
				FG-FGA	PCT	3FG-3FGA	PCT	FT-FTA	PCT	OFF	DEF	TOT	AVG							
Central Ark.	11/09/2021		10:01	2-2	1.000	0-0	.000	0-1	.000	3	4	7	7.0	2	0	2	0	1	4	4.0
Harris-Stowe	11/10/2021		16:44	6-8	.750	0-0	.000	2-3	.667	3	4	7	7.0	3	1	0	0	0	14	9.0
Eastern Ill.	11/12/2021		11:34	4-6	.667	0-0	.000	0-0	.000	3	3	6	6.7	2	0	1	0	1	8	8.7
at Memphis	11/16/2021		01:49	0-0	.000	0-0	.000	0-0	.000	0	1	1	5.3	1	0	0	0	0	0	6.5
vs SFA	11/24/2021		00:47	0-0	.000	0-0	.000	0-0	.000	0	0	0	4.2	0	0	1	0	0	0	5.2
Belmont	12/07/2021		09:08	1-2	.500	0-0	.000	2-2	1.000	0	1	1	3.7	0	0	2	1	0	4	5.0
Auburn	12/18/2021		01:08	0-0	.000	0-0	.000	0-0	.000	0	0	0	3.1	0	0	1	0	0	0	4.3
Totals		0	51:11	13-18	.722	0-0	.000	4-6	.667	9	13	22	3.1	8	1	7	1	2	30	4.3

Player Averages

Games Played	Minutes/game	Points/game	FG Pct	3FG Pct	FT Pct	Rebounds/game	Assists/game	Turnovers/game	Assist/Turnover ratio	Steals/game	Blocks/game
7	7.3	4.3	72.2	0.0	66.7	3.1	0.1	1.0	0.1	0.3	0.1

Traore's Career Stats				Field Goals		3-Point		F-Throws		Rebounds				Scoring						
SEASON	TEAM	GP-GS	MIN/AVG	FG-FGA	FG%	3FG-3FGA	3FG%	FT-FTA	FT%	OFF	DEF	TOT	AVG	PF-FO	A	TO	BLK	STL	PTS	AVG
2021-22	SLU	7-0	51/7.3	13-18	.722	0-0	.000	4-6	.667	9	13	22	3.1	8-0	1	7	1	2	30	4.3
TOTAL		7-0	51/7.3	13-18	.722	0-0	.000	4-6	.667	9	13	22	3.1	8-0	1	7	1	2	30	4.3



24 • GIBSON JIMERSON



RS Freshman • G • 6-5 • 200 • Richmond, Va. • Montverde | MAJOR: Intl. Business

SEASON/CAREER HIGHS

POINTS

SEASON: 21, three times
CAREER: 25 vs. High Point, 11/20/19

REBOUNDS

SEASON: 5 at Boise State, 11/30/21
CAREER: 7 at Fordham, 2/13/21

ASSISTS

SEASON: 3 at Boise State, 11/30/21
CAREER: 3, three times

STEALS

SEASON: 3 vs. UAB, 12/4/21
CAREER: 3 vs. UAB, 12/4/21

BLOCKS

SEASON:
CAREER: 1, twice

FIELD GOALS MADE

SEASON: 8, twice
CAREER: 10 vs. High Point, 11/20/19

FIELD GOAL ATTEMPTS

SEASON: 18 vs. Boston College, 12/11/21
CAREER: 18 vs. Boston College, 12/11/21

3-PT. FIELD GOALS MADE

SEASON: 5 vs. Boston College, 12/11/21
CAREER: 6 vs. Tulane, 12/8/19

3-PT. FIELD GOALS ATTEMPTED

SEASON: 13 vs. Boston College, 12/11/21
CAREER: 13 vs. Boston College, 12/11/21

FREE THROWS MADE

SEASON: 8, twice
CAREER: 8, twice

FREE THROWS ATTEMPTED

SEASON: 8, three times
CAREER: 8, three times

MINUTES PLAYED

SEASON: 41 at Boise State, 11/30/21
CAREER: 41 at Boise State, 11/30/21

CURRENT SEASON | 2021-22

- Had 21 points against Belmont, matching his season high.
- Set a career high with three steals against UAB.
- Matched a season high with 21 points at Boise State.
- Named MVP of the Cancun Challenge after leading the Billikens in scoring during the tourney.
- Turned in a season-high 21 points against Harris-Stowe.

2020-21 • RS Freshman

- Atlantic 10 Conference All-Academic team selection.
- Named to the Atlantic 10 Commissioner's Honor Roll.
- Appeared in all 21 games and made 16 starts.
- Through two seasons, ranks fifth in SLU history in career 3-point field-goal percentage (.407, 61-150).
- Averaged 7.8 points per game.
- Shot 43.3 percent from the field and 39.4 percent from the 3-point line.
- His 37 3-point field goals made tied for ninth in a single season in SLU history for freshmen.
- His 3-point field goal percentage (.394, 37-94) ranked sixth among freshmen in a single season in school history.
- Scored a season-high 21 points on 8-of-16 shooting in the win over Central Arkansas.
- Pumped in 16 points, thanks in part to four 3s, in the win against LSU.
- Scored 13 points in the win over Rhode Island.
- Dropped 14 points, thanks in part to four treys, and corralled a career-high seven rebounds in the win at Fordham.
- Hit three 3-pointers in the A-10 semifinal matchup against St. Bonaventure.

2019-20 • Freshman

- Named to the Atlantic 10 Commissioner's Honor Roll.
- Had his season cut short by a foot injury suffered in practice on Dec. 16, 2019, and received a hardship waiver to get the year of eligibility back.
- Claimed back-to-back A-10 Rookie of the Week honors Dec. 2 and Dec. 9.
- Averaged 10.8 ppg.
- Shot 42.9 percent from 3-point range, the second-best mark by a freshman in school history.
- Registered five double-digit scoring games.
- Scored a career-high 25 points (10-of-16 shooting from the field; 5-of-10 from 3-point range) in the win against High Point.
- Had 22 points – thanks in part to six 3-pointers – in the win against Tulane when the Billikens broke the school record for most treys in a game.

Prior to SLU

- Played at Montverde Academy in Florida his senior year.
- Led the Montverde Academy Center for Basketball Development (CBD) team in scoring and shooting percentage.
- Playing for Boo Williams on the AAU circuit, he was one of the top shooters in the EYBL, connecting on 48.8 percent (60-123) from the field and 46 percent (40-87) from the arc.
- He also ranked fourth on the circuit in offensive efficiency.
- Also prepped at St. Christopher's and Benedictine in Richmond, Virginia, before transferring to Montverde.
- Was among the leading scorers in the Richmond area as a junior, tallying 26.0 ppg at St. Christopher's.

2021-22 Game-by-Game Stats

Opponent	Date	GS	MIN	Total		3-Pointers		Free throws		Rebounds				PF	A	TO	BLK	STL	PTS	AVG	
				FG-FGA	PCT	3FG-3FGA	PCT	FT-FTA	PCT	OFF	DEF	TOT	AVG								
Central Ark.	11/09/2021	*	25:23	6-16	.375	3-7	.429	2-2	1.000	1	1	2	2.0	0	0	1	0	1	17	17.0	
Harris-Stowe	11/10/2021	*	16:59	8-11	.727	3-4	.750	2-2	1.000	1	0	1	1.5	0	0	1	0	21	19.0		
Eastern Ill.	11/12/2021	*	24:14	7-14	.500	1-7	.143	3-4	.750	1	0	1	1.3	0	0	0	0	18	18.7		
at Memphis	11/16/2021	*	22:18	1-3	.333	1-2	.500	3-4	.750	0	0	0	1.0	1	0	1	0	6	15.5		
Mercer	11/20/2021	*	34:46	5-12	.417	1-4	.250	4-6	.667	0	1	1	1.0	0	0	2	0	15	15.4		
vs Illinois St.	11/23/2021	*	32:15	4-12	.333	3-6	.500	8-8	1.000	0	3	3	1.3	3	0	0	0	19	16.0		
vs SFA	11/24/2021	*	29:15	5-10	.500	2-5	.400	7-8	.875	0	3	3	1.6	0	1	5	0	19	16.4		
at Boise St.	11/30/2021	*	40:41	6-8	.750	1-2	.500	8-8	1.000	0	5	5	2.0	5	3	3	0	21	17.0		
UAB	12/04/2021	*	30:50	3-8	.375	1-4	.250	1-2	.500	0	2	2	2.0	2	0	3	0	3	8	16.0	
Belmont	12/07/2021	*	37:59	8-17	.471	3-5	.600	2-2	1.000	2	0	2	2.0	0	1	1	0	21	16.5		
Boston College	12/11/2021	*	37:58	6-18	.333	5-13	.385	2-2	1.000	0	1	1	1.9	0	1	1	0	19	16.7		
Auburn	12/18/2021	*	36:13	2-6	.333	1-4	.250	6-6	1.000	0	2	2	1.9	1	2	0	0	11	16.3		
Totals			12	368:51	61-135	.452	25-63	.397	48-54	.889	5	18	23	1.9	12	8	18	0	4	195	16.3

Player Averages

Games Played	Minutes/game	Points/game	FG Pct	3FG Pct	FT Pct	Rebounds/game	Assists/game	Turnovers/game	Assist/Turnover ratio	Steals/game	Blocks/game
12	30.7	16.3	45.2	39.7	88.9	1.9	0.7	1.5	0.4	0.3	0.0

Jimerson's Career Stats				Field Goals		3-Point		F-Throws		Rebounds									Scoring	
SEASON	TEAM	GP-GS	MIN/AVG	FG-FGA	FG%	3FG-3FGA	3FG%	FT-FTA	FT%	OFF	DEF	TOT	AVG	PF-FO	A	TO	BLK	STL	PTS	AVG
2019-20	SLU	10-0	248/24.8	39-83	.470	24-56	.429	6-7	.857	2	13	15	1.5	13-0	4	9	1	4	108	10.8
2020-21	SLU	21-16	452/21.5	58-134	.433	37-94	.394	10-12	.833	6	23	29	1.4	16-0	20	15	1	7	163	7.8
2021-22	SLU	12-12	369/30.7	61-135	.452	25-63	.397	48-54	.889	5	18	23	1.9	12-1	8	18	0	4	195	16.3
TOTAL		43-28	1069/24.9	158-352	.449	86-213	.404	64-73	.877	13	54	67	1.6	41-1	32	42	2	15	466	10.8


SEASON/CAREER HIGHS
POINTS

SEASON: 6 vs. Harris-Stowe, 11/10/21
CAREER: 6 vs. Harris-Stowe, 11/10/21

REBOUNDS

SEASON: 1 vs. Central Arkansas, 11/9/21
CAREER: 1, three times

ASSISTS

SEASON: 1 vs. Eastern Illinois, 11/12/21
CAREER: 1 vs. Eastern Illinois, 11/12/21

STEALS

SEASON:
CAREER: 1 vs. E. Wash., 11/13/19

BLOCKS

SEASON:
CAREER:

FIELD GOALS MADE

SEASON: 2 vs. Harris-Stowe, 11/10/21
CAREER: 2 vs. Harris-Stowe, 11/10/21

FIELD GOAL ATTEMPTS

SEASON: 4 vs. Harris-Stowe, 11/10/21
CAREER: 4 vs. Harris-Stowe, 11/10/21

3-PT. FIELD GOALS MADE

SEASON: 2 vs. Harris-Stowe, 11/10/21
CAREER: 2 vs. Harris-Stowe, 11/10/21

3-PT. FIELD GOALS ATTEMPTED

SEASON: 3 vs. Harris-Stowe, 11/10/21
CAREER: 3 vs. Harris-Stowe, 11/10/21

FREE THROWS MADE

SEASON:
CAREER:

FREE THROWS ATTEMPTED

SEASON:
CAREER:

MINUTES PLAYED

SEASON: 7 vs. Harris-Stowe, 11/10/21
CAREER: 7 vs. Harris-Stowe, 11/10/21

30 • BRANDON COURTNEY



Junior • G • 6-3 • 180 • Trenton, Ill. • Wesclin | MAJOR: Entrepreneurship & Sports Bus.

CURRENT SEASON | 2021-22

- Knocked in a pair of treys in a career-high seven minutes against Harris-Stowe.
- Played three minutes against Central Arkansas.

2020-21 • Junior

- Named to the Atlantic 10 Commissioner's Honor Roll.
- Appeared in three games – vs. SIUE, vs. Arkansas-Pine Bluff, at Fordham.
- Collected a rebound against UAPB.

2019-20 • Sophomore

- Named to the Atlantic 10 Commissioner's Honor Roll.
- Drilled a 3-pointer in the win against Eastern Washington.
- Also grabbed a rebound and registered an assist against the Eagles.
- Played one minute in the regular-season finale against St. Bonaventure and grabbed a rebound.

2018-19 • Freshman

- Named to the Atlantic 10 Commissioner's Honor Roll.
- Made his collegiate debut in the Billikens' win against Appalachian State.

PRIOR TO SLU

- All-Conference guard at Wesclin High School.
- Averaged 10.4 ppg as a senior and 11.1 ppg his junior season.
- Helped team to back-to-back regional championships.
- Scored 34 points and was 8-of-9 from 3-point range in the regional championship his junior year.

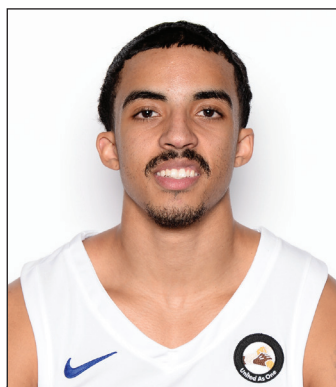
2021-22 Game-by-Game Stats

Opponent	Date	GS	MIN	Total		3-Pointers		Free throws		Rebounds				PF				PTS	
				FG-FGA	PCT	3FG-3FGA	PCT	FT-FTA	PCT	OFF	DEF	TOT	AVG	A	TO	BLK	STL	PTS	AVG
Central Ark.	11/09/2021		03:05	0-2	.000	0-0	.000	0-0	.000	0	1	1	1.0	0	0	0	0	0	0.0
Harris-Stowe	11/10/2021		07:02	2-4	.500	2-3	.667	0-0	.000	0	0	0	0.5	1	0	0	0	6	3.0
Eastern Ill.	11/12/2021		01:49	0-1	.000	0-0	.000	0-0	.000	0	0	0	0.3	0	1	0	0	0	2.0
Totals		0	11:56	2-7	.286	2-3	.667	0-0	.000	0	1	1	0.3	1	1	0	0	6	2.0

Player Averages

Games Played	Minutes/game	Points/game	FG Pct	3FG Pct	FT Pct	Rebounds/game	Assists/game	Turnovers/game	Assist/Turnover ratio	Steals/game	Blocks/game
3	4.0	2.0	28.6	66.7	0.0	0.3	0.3	0.0	1.0	0.0	0.0

Courtney's Career Stats				Field Goals		3-Point		F-Throws		Rebounds									Scoring	
SEASON	TEAM	GP-GS	MIN/AVG	FG-FGA	FG%	3FG-3FGA	3FG%	FT-FTA	FT%	OFF	DEF	TOT	AVG	PF-FO	A	TO	BLK	STL	PTS	AVG
2018-19	SLU	1-0	2/2.3	0-1	.000	0-0	.000	0-0	.000	0	0	0	0.0	0-0	0	0	0	0	0	0.0
2019-20	SLU	2-0	3/1.3	1-2	.500	1-1	1.000	0-0	.000	0	2	2	1.0	1-0	0	1	0	1	3	1.5
2020-21	SLU	3-0	7/2.2	0-0	.000	0-0	.000	0-0	.000	0	1	1	0.3	0-0	0	0	0	0	0	0.0
2021-22	SLU	3-0	12/4.0	2-7	.286	2-3	.667	0-0	.000	0	1	1	0.3	1-0	1	0	0	0	6	2.0
TOTAL		9-0	23/2.6	3-10	.300	3-4	.750	0-0	.000	0	4	4	0.4	2-0	1	1	0	1	9	1.0



SEASON/CAREER HIGHS

POINTS

SEASON: 17 vs. UAB, 12/4/21
CAREER: 33 vs. Sam Houston St, 1/11/20

REBOUNDS

SEASON: 4 vs. Central Arkansas, 11/9/21
CAREER: 11 at Lamar, 1/6/18

ASSISTS

SEASON: 4 vs. Harris-Stowe, 11/10/21
CAREER: 11, four times

STEALS

SEASON: 3 vs. Harris-Stowe, 11/10/21
CAREER: 6, twice

BLOCKS

SEASON:
CAREER: 2, Southeastern La., 12/31/17

FIELD GOALS MADE

SEASON: 6 vs. UAB, 12/4/21
CAREER: 9, twice

FIELD GOAL ATTEMPTS

SEASON: 9 vs. UAB, 12/4/21
CAREER: 18 at SFA, 1/30/19

3-PT. FIELD GOALS MADE

SEASON: 5 vs. UAB, 12/4/21
CAREER: 6, five times

3-PT. FIELD GOALS ATTEMPTED

SEASON: 7 vs. UAB, 12/4/21
CAREER: 11, twice

FREE THROWS MADE

SEASON: 5 vs. SFA, 11/24/21
CAREER: 13 vs. Sam Houston St, 1/11/20

FREE THROWS ATTEMPTED

SEASON: 5 vs. SFA, 11/24/21
CAREER: 16 vs. Sam Houston St, 1/11/20

MINUTES PLAYED

SEASON: 26 vs. UAB, 12/4/21
CAREER: 45 at McNeese St., 2/20/19

55 • DEANDRE JONES



Senior • G • 5-11 • 160 • Boise, Idaho • UCA | MAJOR: Master's Candidate (SPS)

CURRENT SEASON | 2021-22

- Poured in a season-high 17 points against UAB, thanks in part to a 5-of-7 performance from the arc.
- Played 25 minutes in his homecoming at Boise State and totaled eight points.
- Had an impressive showing against SFA, scoring a season-high 10 points and recording two assists, including the 500th assist of his career.
- Hit a pair of treys and scored eight points in the win against his former team, Central Arkansas.

2020-21 • Senior (at Central Arkansas)

- Started the first 10 games for the Bears before missing the remainder of the season due to injury.
- Averaged 10.5 ppg.
- Was shooting a sizzling 52.5 percent (21-40) from 3-point range at the time of his injury.
- Scored 10 points with a season-high eight assists against the Billikens on Dec. 8.
- Had a season-high 23 points at Little Rock.
- Reached 1,000 points for his career.

2019-20 • Junior (at Central Arkansas)

- Appeared in 22 games with 19 starts.
- Averaged 12.9 points and 6.0 assists.

- Broke the Bears' career assists record as a junior.
- Ranked third in the Southland Conference with 131 assists despite missing nine games due to injury.
- Scored in double-figures in 14 of 22 games.

2018-19 • Sophomore (at Central Arkansas)

- Started all 33 games for the Bears.
- Averaged 12.5 ppg and was second in the Southland Conference with 162 assists (4.9 per game).
- Registered 29 point against Stephen F. Austin.
- Scored better than 20 points on six occasions and scored in double-figures 19 times.

2017-18 • Freshman (at Central Arkansas)

- Played in all 35 games and made 19 starts.
- Averaged 6.1 points and 4.5 assists per game.
- Recorded a triple-double with 13 points, 11 rebounds and 11 assists against Lamar.

Previous

- Played a season at Link Year Prep in Branson, Mo., after starting at Borah High School in Boise, Idaho.
- First-team All-State and All-Conference at Borah after averaging 16 points, 7.6 assists, 5.0 rebounds and 3.0 steals per game.
- Led the state of Idaho in assists and steals as a senior.

2021-22 Game-by-Game Stats

Opponent	Date	GS	MIN	Total		3-Pointers		Free throws		Rebounds				PF	A	TO	BLK	STL	PTS	AVG
				FG-FGA	PCT	3FG-3FGA	PCT	FT-FTA	PCT	OFF	DEF	TOT	AVG							
Central Ark.	11/09/2021		17:46	3-6	.500	2-3	.667	0-0	.000	2	2	4	4.0	1	1	1	0	0	8	8.0
Harris-Stowe	11/10/2021		15:35	2-2	1.000	0-0	.000	1-2	.500	0	1	1	2.5	1	4	0	0	3	5	6.5
Eastern Ill.	11/12/2021		19:47	1-2	.500	0-0	.000	0-0	.000	0	0	0	1.7	1	0	0	0	1	2	5.0
at Memphis	11/16/2021		17:38	2-7	.286	1-6	.167	0-0	.000	1	0	1	1.5	1	1	2	0	0	5	5.0
Mercer	11/20/2021		12:35	0-2	.000	0-1	.000	0-0	.000	0	0	0	1.2	2	3	0	0	0	0	4.0
vs Illinois St.	11/23/2021		16:14	1-4	.250	1-4	.250	3-3	1.000	0	2	2	1.3	3	1	0	0	1	6	4.3
vs SFA	11/24/2021		18:59	2-5	.400	1-2	.500	5-5	1.000	2	1	3	1.6	1	2	0	0	1	10	5.1
at Boise St.	11/30/2021		24:45	2-3	.667	2-3	.667	2-2	1.000	1	0	1	1.5	2	2	0	0	1	8	5.5
UAB	12/04/2021		25:55	6-9	.667	5-7	.714	0-0	.000	0	0	0	1.3	1	1	0	0	1	17	6.8
Belmont	12/07/2021		14:20	0-3	.000	0-2	.000	0-0	.000	0	3	3	1.5	0	0	0	0	0	0	6.1
Boston College	12/11/2021		08:44	0-1	.000	0-1	.000	0-0	.000	2	0	2	1.5	1	0	1	0	0	0	5.5
Auburn	12/18/2021		03:47	0-0	.000	0-0	.000	0-0	.000	0	1	1	1.5	0	0	1	0	0	0	5.1
Totals		0	196:06	19-44	.432	12-29	.414	11-12	.917	8	10	18	1.5	14	15	5	0	8	61	5.1

Player Averages

Games Played	Minutes/game	Points/game	FG Pct	3FG Pct	FT Pct	Rebounds/game	Assists/game	Turnovers/game	Assist/Turnover ratio	Steals/game	Blocks/game
12	16.3	5.1	43.2	41.4	91.7	1.5	1.3	0.4	3.0	0.7	0.0

Jones' Career Stats				Field Goals		3-Point		F-Throws		Rebounds										Scoring	
SEASON	TEAM	GP-GS	MIN/AVG	FG-FGA	FG%	3FG-3FGA	3FG%	FT-FTA	FT%	OFF	DEF	TOT	AVG	PF-FO	A	TO	BLK	STL	PTS	AVG	
2017-18	UCA	35-19	981/28.0	67-156	.429	36-94	.383	42-50	.840	18	114	132	3.8	89-2	159	79	6	59	212	6.1	
2018-19	UCA	33-33	1123/34.0	119-286	.416	56-149	.376	117-143	.818	21	107	128	3.9	85-1	162	102	6	66	411	12.5	
2019-20	UCA	22-19	655/29.8	83-215	.386	35-100	.350	83-101	.822	13	72	85	3.9	50-3	131	78	0	22	284	12.9	
2020-21	UCA	10-10	261/26.1	31-73	.425	21-40	.525	22-25	.880	1	29	30	3.0	23-2	37	40	1	14	105	10.5	
2021-22	SLU	12-0	196/16.3	19-44	.432	12-29	.414	11-12	.917	8	10	18	1.5	14-0	15	5	0	8	61	5.1	
TOTAL FOR SLU		12-0	196/16.3	19-44	.432	12-29	.414	11-12	.917	8	10	18	1.5	14-0	15	5	0	8	61	5.1	
TOTAL		112-81	3216/28.7	319-774	.412	160-412	.388	275-331	.831	61	332	393	3.5	261-8	504	304	13	169	1073	9.6	



2021-22 Saint Louis Men's Basketball Combined Team Statistics All games

Page 1/1
as of Dec 20, 2021

Game Records

Record	Overall	Home	Away	Neutral
ALL GAMES	8-4	5-3	1-1	2-0
CONFERENCE	0-0	0-0	0-0	0-0
NON-CONFERENCE	8-4	5-3	1-1	2-0

Score by Periods

Team	1st	2nd	OT	TOT
Saint Louis	493	479	13	985
Opponents	379	428	9	816

Team Box Score

No.	Player				Total		3-Point		F-Throw		Rebounds											
		GP-GS	MIN	AVG	FG-FGA	FG%	3FG-3FGA	3FG%	FT-FTA	FT%	OFF	DEF	TOT	AVG	PF	DQ	A	TO	BLK	STL	PTS	AVG
24	JIMERSON, Gibson	12-12	368:51	30.7	61-135	.452	25-63	.397	48-54	.889	5	18	23	1.9	12	1	8	18	0	4	195	16.3
1	COLLINS, Yuri	12-12	369:13	30.8	43-104	.413	6-20	.300	29-39	.744	3	38	41	3.4	26	1	95	48	2	27	121	10.1
12	LINSEN, Marten	12-12	208:26	17.4	40-70	.571	0-1	.000	41-50	.820	21	31	52	4.3	34	2	10	12	12	9	121	10.1
15	NESBITT, Jordan	12-12	297:44	24.8	40-100	.400	15-44	.341	21-33	.636	15	42	57	4.8	30	1	15	10	6	14	116	9.7
22	HARGROVE JR., Terrence	12-12	311:20	25.9	47-99	.475	12-31	.387	6-11	.545	17	48	65	5.4	18	0	5	17	7	7	112	9.3
5	OKORO, Francis	12-0	241:40	20.1	34-64	.531	0-0	.000	36-50	.720	39	42	81	6.8	35	1	4	9	17	8	104	8.7
20	THATCH JR., Fred	12-0	227:48	19.0	28-51	.549	3-12	.250	16-26	.615	13	40	53	4.4	21	0	12	14	1	14	75	6.3
55	JONES, DeAndre	12-0	196:06	16.3	19-44	.432	12-29	.414	11-12	.917	8	10	18	1.5	14	0	15	5	0	8	61	5.1
23	TRAORE, Lassina	7-0	51:11	7.3	13-18	.722	0-0	.000	4-6	.667	9	13	22	3.1	8	0	1	7	1	2	30	4.3
2	STRICKLAND, Markhi	5-0	38:42	7.7	8-14	.571	0-1	.000	2-4	.500	1	2	3	0.6	4	0	1	0	0	3	18	3.6
11	WILLIAMS, Rashad	6-0	68:14	11.4	6-17	.353	6-16	.375	0-0	.000	1	3	4	0.7	5	0	8	5	0	0	18	3.0
13	LORENTSSON, Andre	4-0	33:48	8.5	3-3	1.000	2-2	1.000	0-0	.000	0	3	3	0.8	3	0	3	2	0	1	8	2.0
30	COURTNEY, Brandon	3-0	11:56	4.0	2-7	.286	2-3	.667	0-0	.000	0	1	1	0.3	1	0	1	0	0	0	6	2.0
Team											24	21	45					10				
Total		12	2425		344-726	.474	83-222	.374	214-285	.751	156	312	468	39.0	211	6	178	157	46	97	985	82.1
Opponents		12	2425		293-685	.428	76-242	.314	154-230	.670	121	258	379	31.6	232	6	140	187	61	91	816	68.0

Team Statistics

	SLU	OPP
Scoring	985	816
Points per game	82.1	68.0
Scoring margin	+14.1	-
Field goals-att	344-726	293-685
Field goal pct	.474	.428
3 point fg-att	83-222	76-242
3-point FG pct	.374	.314
3-pt FG made per game	6.9	6.3
Free throws-att	214-285	154-230
Free throw pct	.751	.670
F-Throws made per game	17.8	12.8
Rebounds	468	379
Rebounds per game	39.0	31.6
Rebounding margin	+7.4	-
Assists	178	140
Assists per game	14.8	11.7
Turnovers	157	187
Turnovers per game	13.1	15.6
Turnover margin	+2.5	-
Assist/turnover ratio	1.1	0.7
Steals	97	91
Steals per game	8.1	7.6
Blocks	46	61
Blocks per game	3.8	5.1
Winning streak	0	-
Home win streak	0	-
Attendance	42936	20067
Home games-Avg/Game	8-5367	2-10034
Neutral site-Avg/Game	-	2-282

Team Results

Date	Opponent		Score	Att.
11/09/2021	Central Ark.	W	96-61	4805
11/10/2021	Harris-Stowe	W	127-54	3574
11/12/2021	Eastern Ill.	W	86-44	5433
11/16/2021	at Memphis	L	74-90	13302
11/20/2021	Mercer	W	75-58	4725
11/23/2021	vs Illinois St.	W	82-76	103
11/24/2021	vs SFA	W	79-68	461
11/30/2021	at Boise St.	Wot	86-82	6765
12/04/2021	UAB	L	72-77	5743
12/07/2021	Belmont	L	59-64	4521
12/11/2021	Boston College	W	79-68	6123
12/18/2021	Auburn	L	70-74	8012



2021-22 Saint Louis Men's Basketball Season Schedule/Results & Leaders All games

Page 1/1
as of Dec 20, 2021

Game Records

Record	Overall	Home	Away	Neutral
ALL GAMES	8-4	5-3	1-1	2-0
CONFERENCE	0-0	0-0	0-0	0-0
NON-CONFERENCE	8-4	5-3	1-1	2-0

Team Results

Date	Opponent		Score	Att.	High Points	High Rebounds
11/09/2021	Central Ark.	W	96-61	4805	(17) JIMERSON, Gibson	(7) OKORO, Francis (7) TRAORE, Lassina
11/10/2021	Harris-Stowe	W	127-54	3574	(21) JIMERSON, Gibson	(9) NESBITT, Jordan
11/12/2021	Eastern Ill.	W	86-44	5433	(18) JIMERSON, Gibson	(12) OKORO, Francis
11/16/2021	at Memphis	L	74-90	13302	(20) HARGROVE JR., Terrence	(13) OKORO, Francis
11/20/2021	Mercer	W	75-58	4725	(20) THATCH JR., Fred	(11) HARGROVE JR., Terrence
11/23/2021	vs Illinois St.	W	82-76	103	(19) JIMERSON, Gibson	(9) OKORO, Francis
11/24/2021	vs SFA	W	79-68	461	(19) LINSSEN, Marten (19) JIMERSON, Gibson	(8) LINSSEN, Marten
11/30/2021	at Boise St.	Wot	86-82	6765	(21) JIMERSON, Gibson	(8) NESBITT, Jordan
12/04/2021	UAB	L	72-77	5743	(17) JONES, DeAndre	(6) HARGROVE JR., Terrence
12/07/2021	Belmont	L	59-64	4521	(21) JIMERSON, Gibson	(7) LINSSEN, Marten
12/11/2021	Boston College	W	79-68	6123	(19) JIMERSON, Gibson	(6) OKORO, Francis (6) THATCH JR., Fred
12/18/2021	Auburn	L	70-74	8012	(17) HARGROVE JR., Terrence	(12) COLLINS, Yuri

Attendance Summary

	Games	Attend	Avg/Game
Home	8	42936	5367
Away	2	20067	10034
Neutral	2	564	282
Total	12	63567	5297



2021-22 Saint Louis Men's Basketball Team Game-by-Game All games

Page 1/1
as of Dec 20, 2021

				Total		3-Pointers		Free throws		Rebounds										
Opponent	Date	Score		FG-FGA	PCT	3FG-3FGA	PCT	FT-FTA	PCT	OFF	DEF	TOT	AVG	PF	A	TO	BLK	STL	PTS	AVG
Central Ark.	11/09/2021	96-61	W	37-72	.514	9-22	.409	13-20	.650	16	28	44	44.0	15	17	12	2	12	96	96.0
Harris-Stowe	11/10/2021	127-54	W	50-78	.641	14-25	.560	13-16	.813	18	28	46	45.0	19	29	5	7	14	127	111.5
Eastern Ill.	11/12/2021	86-44	W	32-65	.492	3-15	.200	19-24	.792	16	33	49	46.3	17	15	9	2	8	86	103.0
at Memphis	11/16/2021	74-90	L	24-77	.312	5-22	.227	21-32	.656	23	21	44	45.8	23	12	14	6	11	74	95.8
Mercer	11/20/2021	75-58	W	26-51	.510	5-11	.455	18-26	.692	11	24	35	43.6	15	13	14	6	7	75	91.6
vs Illinois St.	11/23/2021	82-76	W	27-54	.500	8-21	.381	20-25	.800	10	25	35	42.2	20	13	18	1	8	82	90.0
vs SFA	11/24/2021	79-68	W	22-53	.415	6-16	.375	29-35	.829	13	23	36	41.3	20	12	16	5	5	79	88.4
at Boise St.	11/30/2021	86-82	Wot	25-54	.463	6-13	.462	30-34	.882	6	29	35	40.5	25	10	12	2	4	86	88.1
UAB	12/04/2021	72-77	L	24-49	.490	8-19	.421	16-22	.727	5	22	27	39.0	12	13	11	5	8	72	86.3
Belmont	12/07/2021	59-64	L	23-58	.397	4-14	.286	9-15	.600	13	27	40	39.1	12	12	14	3	7	59	83.6
Boston College	12/11/2021	79-68	W	29-55	.527	11-27	.407	10-12	.833	6	25	31	38.4	19	20	15	4	5	79	83.2
Auburn	12/18/2021	70-74	L	25-60	.417	4-17	.235	16-24	.667	19	27	46	39.0	14	12	17	3	8	70	82.1
Total		985		344-726	.474	83-222	.374	214-285	.751	156	312	468	39.0	211	178	157	46	97	985	82.1
Opponents		816		293-685	.428	76-242	.314	154-230	.670	121	258	379	31.6	232	140	187	61	91	816	68.0

Saint Louis Averages

Games Played	Points/game	FG Pct	3FG Pct	FT Pct	Rebounds/game	Assists/game	Turnovers/game	Assist/Turnover ratio	Steals/game	Blocks/game
12	82.1	47.4	37.4	75.1	39.0	14.8	13.1	1.1	8.1	3.8



2021-22 Saint Louis Men's Basketball Opponents Game-by-Game All games

Page 1/1
as of Dec 20, 2021

				Total		3-Pointers		Free throws		Rebounds											
Opponent	Date	Score		FG-FGA	PCT	3FG-3FGA	PCT	FT-FTA	PCT	OFF	DEF	TOT	AVG	PF	A	TO	BLK	STL	PTS	AVG	
Central Ark.	11/09/2021	96-61	W	23-57	.404	7-19	.368	8-13	.615	8	22	30	30.0	17	11	22	6	6	61	61.0	
Harris-Stowe	11/10/2021	127-54	W	16-51	.314	5-16	.313	17-22	.773	11	11	22	26.0	13	5	21	3	3	54	57.5	
Eastern Ill.	11/12/2021	86-44	W	13-50	.260	5-18	.278	13-17	.765	5	20	25	25.7	18	4	18	4	6	44	53.0	
at Memphis	11/16/2021	74-90	L	31-57	.544	8-17	.471	20-33	.606	13	35	48	31.3	26	15	24	14	6	90	62.3	
Mercer	11/20/2021	75-58	W	20-55	.364	6-26	.231	12-15	.800	11	19	30	31.0	22	10	14	1	9	58	61.4	
vs Illinois St.	11/23/2021	82-76	W	26-54	.481	8-22	.364	16-22	.727	9	18	27	30.3	23	12	16	3	8	76	63.8	
vs SFA	11/24/2021	79-68	W	23-52	.442	2-12	.167	20-27	.741	8	20	28	30.0	24	10	15	7	9	68	64.4	
at Boise St.	11/30/2021	86-82	Wot	31-67	.463	8-25	.320	12-26	.462	14	26	40	31.3	22	11	10	7	4	82	66.6	
UAB	12/04/2021	72-77	L	31-64	.484	9-23	.391	6-11	.545	15	23	38	32.0	18	16	13	3	9	77	67.8	
Belmont	12/07/2021	59-64	L	26-59	.441	6-24	.250	6-9	.667	8	24	32	32.0	12	16	12	5	13	64	67.4	
Boston College	12/11/2021	79-68	W	25-59	.424	3-17	.176	15-20	.750	11	21	32	32.0	17	14	11	2	10	68	67.5	
Auburn	12/18/2021	70-74	L	28-60	.467	9-23	.391	9-15	.600	8	19	27	31.6	20	16	11	6	8	74	68.0	
Total		816		293-685	.428	76-242	.314	154-230	.670	121	258	379	31.6	232	140	187	61	91	816	68.0	
Saint Louis		985		344-726	.474	83-222	.374	214-285	.751	156	312	468	39.0	211	178	157	46	97	985	82.1	

Opponents Averages

Games Played	Points/game	FG Pct	3FG Pct	FT Pct	Rebounds/game	Assists/game	Turnovers/game	Assist/Turnover ratio	Steals/game	Blocks/game
12	68.0	42.8	31.4	67.0	31.6	11.7	15.6	0.7	7.6	5.1

LAST GAME BOX SCORE



Official Basketball Box Score - Final
Auburn at Saint Louis
 12/18/21 Chaifetz Arena, St. Louis
 2021-22 Men's Basketball

Game Time: 8:00 PM
 Game Duration: 2:02
 Attendance: 8,012

Officials: Ron Groover, Joe Lindsay, Jeb Hartness

Auburn - 74

Record: 10-1

NO.	Name	Min	FG M-A	3P M-A	FT M-A	Rebounds OR DR TOT	Fouls PF FD	TP	AS	TO	ST	Blocks BS BA	+/-
10	Jabari Smith	F 28:59	5-11	3-5	0-0	0 4 4	2 1	13	0	2	2	0 1	6
13	Walker Kessler	F 30:20	8-12	0-2	3-4	1 8 9	3 2	19	1	2	1	4 0	3
0	K.D. Johnson	G 28:49	3-10	1-4	4-8	0 0 0	1 4	11	3	3	2	0 0	9
12	Zep Jasper	G 19:57	2-4	1-3	0-0	1 0 1	2 2	5	1	0	0	0 1	-13
35	Devan Cambridge	G 20:17	0-2	0-1	0-0	1 1 2	3 0	0	1	2	1	0 0	-20
1	Wendell Green Jr.	27:21	5-12	3-6	2-2	0 0 0	0 3	15	8	2	1	0 1	17
2	Jaylin Williams	11:01	2-5	0-1	0-0	0 1 1	1 0	4	0	0	0	0 0	-2
44	Dylan Cardwell	09:41	1-2	0-0	0-0	1 2 3	2 1	2	1	0	0	2 0	1
5	Chris Moore	07:24	0-0	0-0	0-0	0 0 0	2 0	0	1	0	1	0 0	1
24	Lior Berman	16:11	2-2	1-1	0-1	1 0 1	4 1	5	0	0	0	0 0	18
Team						3 3 6		0		0			
Totals			28-60	9-23	9-15	8 19 27	21 14	74	16	11	8	6 3	4

Shooting By Period			
1 st FG%	15-32	46.9%	
3PT%	4-13	30.8%	
FT%	1-2	50%	
2 nd FG%	13-28	46.4%	
3PT%	5-10	50.0%	
FT%	8-13	61.5%	
GM FG%	28-60	46.7%	
3PT%	9-23	39.1%	
FT%	9-15	60.0%	

Dead Ball Rebounds: 3, 0

Technical Fouls: Coach 2nd 9:34

Saint Louis - 70

Record: 8-4

NO.	Name	Min	FG M-A	3P M-A	FT M-A	Rebounds OR DR TOT	Fouls PF FD	TP	AS	TO	ST	Blocks BS BA	+/-
12	Marten Linssen	F 13:12	2-7	0-0	2-2	2 1 3	1 1	6	0	0	0	0 0	7
22	Terrence Hargrove Jr.	F 34:49	7-13	1-5	2-2	3 4 7	2 2	17	0	1	3	1 1	-4
1	Yuri Collins	G 38:23	6-11	1-2	0-2	1 11 12	5 4	13	8	6	3	0 1	1
15	Jordan Nesbitt	G 37:11	3-13	1-6	4-6	2 4 6	2 4	11	1	3	2	1 1	1
24	Gibson Jimerson	G 36:13	2-6	1-4	6-6	0 2 2	1 3	11	2	0	0	0 0	-4
5	Francis Okoro	26:48	5-9	0-0	2-6	6 2 8	2 6	12	0	0	0	1 2	-11
20	Fred Thatch Jr.	08:29	0-1	0-0	0-0	0 0 0	1 0	0	1	2	0	0 1	-8
55	DeAndre Jones	03:47	0-0	0-0	0-0	0 1 1	0 0	0	0	1	0	0 0	-1
23	Lassina Traore	01:08	0-0	0-0	0-0	0 0 0	0 0	0	0	1	0	0 0	-1
Team						5 2 7		0		3			
Totals			25-60	4-17	16-24	19 27 46	14 20	70	12	17	8	3 6	-4

Shooting By Period			
1 st FG%	12-34	35.3%	
3PT%	0-7	0.0%	
FT%	3-4	75%	
2 nd FG%	13-26	50.0%	
3PT%	4-10	40.0%	
FT%	13-20	65%	
GM FG%	25-60	41.7%	
3PT%	4-17	23.5%	
FT%	16-24	66.7%	

Dead Ball Rebounds: 5, 0

Technical Fouls: NONE

	AUB	SLU
Biggest lead	8 (1 st 1:00)	13 (2 nd 9:13)
Best Scoring Run	7 (1 st 1:00)	9 (2 nd 16:38)
Lead Changes	5	
Times Tied	8	
Time with Lead	16:18	18:09

Points from	AUB	SLU
Turnovers	15	11
Paint	32	40
Second Chance	12	11
Fast Breaks	7	11
Bench	26	12

Period by Period Scoring			
	1st	2nd	TOT
AUB	35	39	74
SLU	27	43	70