



# SAINT JOSEPH'S BASKETBALL

## 2017-18 GAME NOTES

Game  
17

### SAINT JOSEPH'S HAWKS (8-8, 3-1 A-10) at UMASS MINUTEWOMEN (8-8, 0-3 A-10)

January 13, 2018 • 2:00 p.m.  
Mullins Center • Amherst, Mass.

#### 2017-18 SCHEDULE/RESULTS

Overall: 8-8 A-10: 3-1 H: 4-3 A: 4-4 N: 0-1

#### NOVEMBER

		EST
Sun. 12	at Niagara	W, 93-69
Wed. 15	at Bucknell	W, 77-53
Sun. 19	at James Madison	W, 73-66
Sat. 25	EASTERN ILLINOIS %	W, 80-62
Sun. 26	SAINT PETER'S%	W, 87-58
Wed. 29	at Temple #	L, 69-66

#### DECEMBER

Sun. 3	at Villanova #	L, 79-44
Tues. 5	at Towson	L, 90-66
Mon. 11	PENN #	L, 57-50
Sun. 17	DREXEL	L, 65-58
Wed. 20	vs. Princeton ^	L, 63-54
Thur. 21	at Florida ^	L, 71-51
Sun. 31	VCU *	W, 79-41

#### JANUARY

Wed. 3	at St. Bonaventure *	W, 70-64
Sun. 7	DAYTON *	L, 65-59
Wed. 10	RICHMOND * (NBCSN)	W, 81-72
Sat. 13	at Massachusetts *	2:00 p.m.
Sun. 21	at Saint Louis *	2:00 p.m.
Wed. 24	DUQUESNE *	7:00 p.m.
Sun. 28	at La Salle **	1:00 p.m.
Wed. 31	at VCU *	6:00 p.m.

#### FEBRUARY

Sun. 4	GEORGE MASON * (CBSSN)	4:00 p.m.
Wed. 7	RHODE ISLAND *	7:00 p.m.
Sat. 10	at Duquesne *	2:30 p.m.
Wed. 14	at Davidson *	7:00 p.m.
Sat. 17	LA SALLE *	1:00 p.m.
Tue. 20	GEORGE WASHINGTON *	7:00 p.m.
Sat. 24	at Fordham *	2:00 p.m.
Tue. 27	A-10 Championship – First Round	TBD

#### MARCH

Fri., 2-	Atlantic 10 Championship	
Sun., 4	(Richmond Coliseum, Richmond, Va.)	

Home games in CAPS at Hagan Arena

^ Hawk Classic

% Gator Holiday Classic (Gainesville, Fla.)

\* Atlantic 10 game

# Big 5 game

Contact: Jack Jumper (jjumper@sju.edu)

O: 610-660-3389 C: 610-636-3701

Press Row (Hagan Arena): 610-660-2599

#### FOLLOW THE HAWKS

Twitter @SJUHawks\_WBB  
Instagram @SJUHawks\_WBB  
Facebook SJUHawksWBB

#### GAME STORIES...

- Saint Joseph's begins a two-game road swing starting Saturday at Massachusetts.
- The Hawks are coming off an 81-72 victory over Richmond on Wednesday in which they improved to 3-1 in the Atlantic 10 and 8-8 overall (boxscore and recap on page 14).
- Senior guard/forward **Chelsea Woods** became the 26th Hawk to reach 1,000 career points on Wednesday. She enters the weekend with 1,005 career points, and can jump up to 24th place with five points.
- Woods is coming off her fourth-straight double-double and is averaging 16.5 points and 10.8 rebounds per game in A-10 matchups.
- SJU head coach **Cindy Griffin** became just the fourth Atlantic 10 coach to reach 150 conference wins as the Hawks' win over the Spiders lifted her record in conference games to 150-96.
- Junior guard/forward **Sarah Veilleux** matched her career-high with 25 points against Richmond.
- Wednesday's game was the first of two televised games this season for the Hawks, and coincided with SJU's annual Education Day event for area school children.
- Saturday's matchup with Massachusetts is the 59th meeting between the two programs, with the Hawks holding a 48-10 edge in the all-time series.
- For SJU, the 58 contests versus the Minutewomen are the fourth-most versus any opponent in program history, trailing only George Washington (59), Rhode Island (61) and Temple (80).

#### HAWKS' LINEUP

PROBABLE STARTERS	PPG	RPG	APG	MPG	Notes
G- #12 Alyssa Monaghan	10.5	4.3	3.9	33.9	Had 7 points and 6 assists versus Richmond
G/F- #30 Sarah Veilleux	14.7	4.3	1.9	32.3	Tied career-high with 25 points against Richmond
G/F- #32 Chelsea Woods	13.9	8.1	2.5	27.8	Coming off fourth straight double-double
F- #33 Adashia Franklyn	9.8	8.1	1.0	28.3	Posted 13 points and 11 boards versus Richmond
F- #34 Amanda Fioravanti	9.3	5.4	2.4	25.7	Finished with 9 points against Richmond

#### OFF THE BENCH

F- #1 Whisper Fisher	1.2	0.9	0.4	6.0	Tallied 2 points against Florida
G- #2 Lula Roig	2.0	1.2	0.9	7.7	Added a point versus Richmond
G- #3 Nailah Delinois	--	--	--	--	Doubtful: DNP last 16 games
G- #4 Kristalyn Baisden	3.9	0.9	0.9	19.7	Played 10 minutes versus Richmond
G- #11 Avery Marz	2.2	0.9	0.5	6.9	Played a minute versus Richmond
G- #13 Mary Sheehan	2.6	1.1	0.2	10.9	Doubtful: Shoulder
G- #20 Katie Jekot	--	--	--	--	Out: Knee
G- #31 Jaryn Garner	0.9	2.5	0.8	12.8	Scored 4 points versus Richmond
F- #35 Michala Clay	2.0	0.5	0.3	5.7	Added 2 points against Richmond
F- #40 Candace Belvedere	0.8	0.8	0.4	5.1	Had 2 boards and an assist against VCU

## ROSTER

NO.	NAME	CL	POS	HT	HOMETOWN	HIGH SCHOOL/LAST COLLEGE
1	Whisper Fisher	R-So.	F	6-2	Owings Mills, Md.	Owings Mills/Loyola Chicago
2	Lula Roig	Fr.	G	5-9	Barcelona, Spain	IES Costa I Llobera
3	Nailah Delinois	R-Fr.	G	5-9	Sunrise, Fla.	Northeast
4	Kristalyn Baisden	Jr.	G	5-10	East Hartford, Conn.	Berkshire School (Mass.)
11	Avery Marz	Sr.	G	5-7	Sinking Spring, Pa.	Wilson West Lawn
12	Alyssa Monaghan	Jr.	G	5-5	Drexel Hill, Pa.	Bonner-Prendergast
13	Mary Sheehan	Fr.	G	5-10	Drexel Hill, Pa.	Cardinal O'Hara
20	Katie Jekot	Fr.	G	5-9	Enola, Pa.	Cumberland Valley
30	Sarah Veilleux	Jr.	G/F	6-0	Hebron, Conn.	RHAM
31	Jaryn Garner	Gr.	G	5-7	Sewell, N.J.	Germantown Academy (Pa.)/Virginia
32	Chelsea Woods	Sr.	G/F	6-0	Philadelphia, Pa.	Freire Charter
33	Adashia Franklyn	Sr.	F	6-1	West Chester, Pa.	West Chester Bayard Rustin
34	Amanda Fioravanti	Gr.	F	6-1	Frederick, Md.	Our Lady of Good Counsel/Virginia
35	Michala Clay	Jr.	F	6-0	Baltimore, Md.	Roland Park Country School
40	Candace Belvedere	Sr.	F	6-2	Merrick, N.Y.	Kellenberg Memorial

**Head Coach:** Cindy Griffin (Saint Joseph's '91) – 17th Season

**Associate Head Coach:** Susan Moran (Saint Joseph's '02) – 15th Season

**Assistant Coaches:** Stephanie McCaffrey (Saint Joseph's '04) – 11th Season,  
John Hampton (Mansfield '08) – 3rd Season

**Director of Basketball Operations:** Katie Kuester (Saint Joseph's '12) – 3rd Season

**Video Coordinator:** Jamie O'Hare (Lafayette '16) – 1st Season

**Athletic Trainer:** Neil Hoffman

**Captain:** Amanda Fioravanti, Adashia Franklyn, Avery Marz

## PRONUNCIATION GUIDE

(Kristalyn) BAISDEN	.....BAYS-den
(Candace) BELVEDERE	.....BELL-vuh-deer
NAILAH DELINOIS	.....NY-luh del-in-WAHH
(Amanda) FIORAVANTI	.....FEE-or-uh-VAHN-tay
ADASHIA (Franklyn)	.....uh-DAY-shuh
(Katie) JEKOT	.....JAY-kot
(Alyssa) MONAGHAN	.....mon-UH-han
LULA ROIG	.....LOU-luh ROY-j
(Sarah) VEILLEUX	.....vuh-LOU



**Champions - 1997, 1999, 2013**

## QUICK FACTS

Location	.....Philadelphia, Pa.	19131
Founded	.....	1851
Enrollment	.....	4,850 (full-time undergrads)
Denomination	.....Roman Catholic (Jesuit)	
Nickname	.....Hawks	
Colors	.....Crimson and Gray	
Athletic Affiliation	.....NCAA Division I	
Conference	.....Atlantic 10	
Home Arena	.....Michael J. Hagan '85 Arena	
Capacity	.....	4,200
President	.....Mark C. Reed, Ed.D.	
Vice President for Athletics/Athletic Director	.....Don DiJulia	

2016-17 Record	.....	17-15
2016-17 A-10 Record (Place)	.....	13-4 (3rd)
Letterwinners Returning/Lost	.....	12/3
Starters Returning/Lost	.....	4/1

Head Coach (alma mater)	.....Cindy Griffin (Saint Joseph's '91, '93)
Coach's Overall Record/Year	.....346-254, 20th season
Record at School/Year	.....298-221, 17th season
Associate Head Coach	.....Susan Moran (Saint Joseph's '02) - 15th Season
Assistant Coaches	.....Stephanie McCaffrey (Saint Joseph's '04) - 11th season
	.....John Hampton (Mansfield '08) - 3rd season
Director of Program Administration	.....Katie Kuester - 3rd season
Video Coordinator	.....Jamie O'Hare - 1st Season
Athletic Trainer	.....Neil Hoffman

Assoc. Dir. of Athletic Communications (WBB Contact)	.....Jack Jumper
Office Phone	.....610-660-3389
Cell Phone	.....610-636-3701
Athletic Communications Fax	.....610-660-1724
Email	.....jjumper@sju.edu

Basketball Office	.....610-660-1706
Basketball Fax	.....610-660-1762
Press Row - Hagan Arena	.....610-660-2599
Athletics Website	.....www.sjuhawks.com

## THE HAWK

One of the most famous mascots in college sports, the Saint Joseph's Hawk is in its 62nd year in 2017-18.

The Hawk is best known for staying in constant motion by flapping its wings throughout every basketball game and representing the Saint Joseph's motto, "The Hawk Will Never Die".

The idea for the Hawk as a mascot was originated by Jim Brennan during the 1954-55 season. Brennan, an ex-Marine and SJU cheerleader, at first wanted to secure an actual hawk, but later switched to the costume idea. The student government raised the 120 dollars needed to buy the initial costume, which Brennan donned for three years. He made his debut as the Hawk on January 4, 1956, a 69-56 win over La Salle at the Palestra. The Hawk has not missed a men's basketball game since that first season.

In addition to the constant flapping, the Hawk is also recognized by its "flying" in figure eights around the court during timeouts. The constant motion, coupled with the scrappy play of the University's athletic teams, helped to spawn the school's familiar slogan "The Hawk Will Never Die!" A few years ago, ESPN used a "flap-o-meter" on the national telecast of a Saint Joseph's game to estimate that the Hawk flaps its wings 3,500 times during a regulation game.

**Domenic Godshall** is the 17th student to serve as the Hawk mascot for the women's team and in his second season. He is a junior accounting and sports marketing major from Lancaster, Pa.



## SAINT JOSEPH'S

The corporate title of "Saint" Joseph's University, which has been in place since Saint Joseph's was granted university status by the Commonwealth of Pennsylvania in 1979, is the public title of the institution for all aspects of its operations.

**Official reference:** Saint Joseph's University  
Saint Joseph's

**Acceptable in headlines or informal references:**

Saint Joseph's  
SJU  
St. Joe's

**UNACCEPTABLE:** St. Joseph's

## STATISTICAL COMPARISON

	SJU	UMass
Overall Record	8-8	8-8
Conference Record	3-1	0-3
Home Record	4-3	5-3
Away Record	4-4	2-5
Neutral Record	0-1	1-0
Points per Game	68.0	70.8
Opp. Points/Game	65.2	61.6
Scoring margin	+2.8	+9.2
Field Goal Pct.	.435	.425
Opp. Field Goal Pct.	.395	.376
3-Pt. FG Made/Game	5.1	6.8
3-Pt. FG Pct.	.363	.375
Opp. 3-Pt. FG Pct.	.327	.325
Free Throws Made/Game	10.6	10.9
Free Throw Pct.	.637	.707
Rebounds/Game	39.6	40.6
Opp. Rebounds/Game	32.7	34.1
Rebounding Margin	+6.9	+6.4
Assists/Game	14.8	15.0
Turnovers/Game	14.5	15.4
Opp. Turnovers/Game	12.0	17.3
Turnover Margin	-2.5	+1.9
Assist/Turnover Ratio	1.0	1.0
Blocks/Game	3.2	2.7
Steals/Game	5.4	8.9

## SERIES HISTORY

### Saint Joseph's vs. Massachusetts

**Series Record:** SJU leads 48-10

**SJU Streak:** W-2

**First Meeting:** 12/22/77, SJU, 88-68

**Last Meeting:** 1/7/17, SJU, 81-50

**Last SJU Win:** 1/7/17, 81-50

**Last Massachusetts Win:** 1/10/15, 65-47

**Coach Griffin vs. Massachusetts:** 13-4

### Previous 10 Versus Massachusetts

1/7/17, Saint Joseph's, 81-50  
 1/6/16, Saint Joseph's, 62-58  
 1/10/15, Massachusetts, 47-65  
 2/27/14, Saint Joseph's, 85-51  
 2/27/13, Saint Joseph's, 87-50  
 1/7/12, Saint Joseph's, 86-58  
 1/22/11, Saint Joseph's, 72-68  
 2/25/10, Massachusetts, 62-75  
 2/25/09, Saint Joseph's, 77-63  
 2/3/08, Saint Joseph's, 72-66

### Notes

- Saint Joseph's is 21-6 all-time at Massachusetts.
- The Hawks have won three straight at the Mullins Center.
- SJU shot 52.5 percent from the field, including 63.2 percent from behind the arc (12-19) in last year's 81-50 win over Massachusetts.
- The 48 wins over Massachusetts are the second most by the Hawks over any opponent. SJU has 54 wins versus Rhode Island.

### MARZ NAMED SUMMITT MOST COURAGEOUS

Saint Joseph's senior guard **Avery Marz** has been selected as the U.S. Basketball Writers Association's 2018 Pat Summitt Most Courageous Award recipient. Marz will be presented with her award at the NCAA Women's Final Four in Columbus, Ohio, as part of the organization's annual press conference March 30 in Nationwide Arena several hours in front of the national semifinals.

### 100 REJECTIONS AND COUNTING

Senior **Adashia Franklyn** became the fifth Hawk in program history to reach 100 career blocks with a rejection versus Princeton. Overall, Franklyn currently ranks fifth all-time with 104 blocks.

### WOODS AMONG REBOUNDING ELITE

Senior **Chelsea Woods** has moved into the top-10 for career rebounds as she enters Saturday eighth all-time in SJU history with 679 career boards. Next on the list is Trish Brown '85 at 769 rebounds.

### MONAGHAN NEARING TOP-10

Junior **Alyssa Monaghan** is nearing the career top-10 for three-pointers made and attempted. She enters Saturday having hit 129 of 376 field goals from behind the arc, and is six makes behind Megan Compain '97 in 10th at 135 and three shy of Kathleen Fitzpatrick in attempts at 379.

### CHARITY STRIPE CONSISTENCY

Junior **Sarah Veilleux** has proven to be one of the most accurate free throw shooters in program history as she enters Wednesday second all-time at .885 percent (77-of-87), trailing only Erin Shields '14 record of .905.

### FRANKLYN ADDING TO LEGACY

While cleaning up on the defensive end with rejections, senior **Adashia Franklyn** has also climbed among the SJU elite in field goal percentage and rebounding. Currently shooting .514 from the field for her career (311-of-605), she ranks sixth all-time in field goal efficiency, while her 619 rebounds are 13th all-time.

### VEILLEUX CONNECTING FROM DEEP

Junior **Sarah Veilleux** enters Saturday with a career .391 shooting percentage from three-point range. Hitting 86-of-220 from behind the arc, Veilleux currently ranks third all-time in three-point accuracy.

### DEAN OF ATLANTIC 10 COACHES

Now in her 17th season as Saint Joseph's head coach, **Cindy Griffin** is the dean of A-10 coaches. She's the Hawks' leader in wins with a 298-221 record, and has a 150-96 record in A-10 play.

### MONAGHAN EARNS ALL-TOURNAMENT NOD

Saint Joseph's junior guard **Alyssa Monaghan** was named to the Gator Holiday Classic All-Tournament Team after averaging 10 points, three rebounds and three assists over two games.

### A LONG DECEMBER

Over the first five games, SJU averaged 82 ppg, shot 52.2 percent overall and 56.7 percent from behind the arc. From there though, it was a cold streak for SJU as it lost seven straight, including all six in December. During the streak, the Hawks have been held 55.6 ppg, 38 percent from the floor and 21.6 percent from three-point range.

### 50 AND 22

Saint Joseph's shot 50 percent from the floor (22-of-44) versus Drexel, but the Hawks fell, 65-58, due in part to a season-high 22 turnovers.

### SJU FALLS FROM UNBEATENS

Saint Joseph's fell from the ranks of the undefeated with its loss at Temple. The Hawks were one of the last 27 undefeated teams nationally.

### ALMOST UNDEFEATED NOVEMBER

Saint Joseph's almost capped an undefeated November, but fell to 5-1 with a loss at Temple on November 29. The Hawks had previously gone unblemished nine times in November, but only four of those times featured multiple games. Saint Joseph's best record in November came in 2005-06 as it went a perfect 4-0.

### HAWK CLASSIC CHAMPS

Saint Joseph's captured the 24th Annual Hawk Classic with wins over Eastern Illinois (80-62) and Saint Peter's (87-58). This year marks the 11th Hawk Classic title for SJU as it had previously captured the tournament crown in 1993, 1997, 1999, 2000, 2001, 2007, 2009, 2010, 2012, and 2015.

### FIRST TIMERS

The 2017-18 schedule has featured a pair of new opponents for the Hawks this season in Niagara and Eastern Illinois. Saint Joseph's has taken a 1-0 lead both of the all-time series behind a 93-69 win at the Purple Eagles and an 80-62 win over the Panthers in the opening game of the 24th Annual Hawk Classic.

### BIG 5 AND SJU

The Hawks are currently 109-45 all-time record in Big 5 matchups and have captured or shared 17 titles. This season, SJU is 0-3 in its three matchups.



**MONAGHAN MATCHES MARK**

Junior guard **Alyssa Monaghan** opened the season matching a 20-year record going 7-of-7 from behind the arc at Niagara for a perfect 1.000 field goal percentage. Finishing 8-for-8 overall on the day, Monaghan matched Megan Compain's record of 7-of-7 from three-point range set versus Rhode Island on January 25, 1997.

**VEILLEUX EARNS NATIONAL WEEKLY HONOR**

Leading Saint Joseph's to the 24th Annual Hawk Classic title and capturing tournament MVP honors, junior guard/forward **Sarah Veilleux** was recognized for her performances last week as she was named National Jesuit Women's Basketball Player of the Week by Jesuit Basketball Spotlight officials. Averaging 19.0 points, 4.0 rebounds, 3.0 steals and 2.5 assists per game.

**BACK TO BACK TO BACK ROAD TRIPS**

Saint Joseph's three-straight road games marks the first time since 1974-75 that they have opened a season with three road contests.

**MARZ MAKES AN IMPACT**

SJU's season opener at Niagara was a special one for senior **Avery Marz**. After missing the previous three years recovering from a stroke she suffered on move-in day her freshman season, Marz appeared in her first college game versus the Purple Eagles and finished with three points and two rebounds. She posted a career-high eight points against Saint Peter's, going 3-for-3 from the field and 1-of-1 from the foul line and matched the eight points at Towson.

**HAWK DEBUTS**

Three Hawks made debuts against Niagara. Freshmen **Lula Roig** and **Mary Sheehan** scored their first collegiate points - one and four respectively - while redshirt sophomore **Whisper Fisher** finished with two points in her first game as a Hawk after she sat out last year after transferring from Loyola Chicago.

**HAWKS VERSUS RANKED OPPONENTS**

Saint Joseph's is 33-124 all-time versus ranked opponents, with the last contests coming at #25/24 Villanova. The Hawks have lost seven straight to ranked opponents, including a 79-44 defeat to the Wildcats this year.

**FORMER HAWK MCGRAW INDUCTED**

Former Saint Joseph's women's basketball great Muffet McGraw '77 was inducted into the Naismith Memorial Basketball Hall of Fame's Class of 2017 on September 8. Additionally, she received Saint Joseph's University's Alumni Professional Achievement Award on November 2.

**ONE MORE FOR FIORAVANTI AND GARNER**

Graduate students **Amanda Fioravanti** and **Jaryn Garner** are back for one more season in a Saint Joseph's uniform. Fioravanti, who transferred from Virginia to SJU midway through her freshman season, was granted another season to play this past summer. She originally sat out the second half of the 2013-14 season and the entire 2014-15 season. Garner, who likewise played at Virginia, played her first season with SJU in 2016-17 and was recently given a final season to play by the NCAA.

**WOODS A FIRST TEAM PRESEASON PICK**

senior guard/forward **Chelsea Woods** was selected to the Atlantic 10 Preseason All-Conference First Team. Woods led the Hawks in scoring (14.0 ppg) and steals (38), and ranked second on the team in rebounding (7.1 rpg) and fourth in assists (69) a season ago. and was named 2017 A-10 Sixth Woman of the Year and selected to the A-10 All-Conference Second Team.

**FRANKLYN EARNS PRESEASON HONORS**

Senior forward **Adashia Franklyn** was named to the Atlantic 10 Preseason All-Conference Second Team and All-Defensive Team. An Atlantic 10 All-Conference Third Team selection in 2016-17, she led the Hawks in rebounding (7.9 rpg) and blocked shots (40) and ranked second in scoring (12.3 ppg) as she surpassed her previous highs of 4.3 rebounds per game, 32 blocked shots and 4.3 points per game.

**THREE CAPTAINS FOR 2017-18**

Graduate student **Amanda Fioravanti** and seniors **Adashia Franklyn** and **Avery Marz** are serving as captains this season for Saint Joseph's. Franklyn is a captain for the second straight year, while it is the first year for Fioravanti and Marz.

**HAWKS ADD TO ATTENDANCE RECORD**

Teaming with the SJU men for a doubleheader on December 17, the Hawks posted their eighth-highest attendance with 3,551 fans cheering on SJU at Hagan Arena versus Drexel.

**HOME SWEET HOME**

This marks the ninth season of Michael J. Hagan '85 Arena. The arena was dedicated in October 2009 after a two-year expansion and renovation of Alumni Memorial Fieldhouse, which was the home of the Hawks since their Division I start in 1973-74. Saint Joseph's owns an 89-38 record in the seven seasons of Hagan Arena, but a 430-162 overall record in 44 years of Hagan Arena/ Alumni Memorial Fieldhouse. SJU went 10-6 on its home court last season.

**CRADLE OF COACHES**

The Saint Joseph's coaching connection is an impressive one. Among current Division I head coaches, nine have served as assistant coaches on Hawk Hill. Below is the list of the former assistants and their years at Saint Joseph's:

Name	Current Team	Years at SJU
Geno Auremma	Connecticut	1978-79
Pat Coyle	Saint Peter's	1989-92
Chris Day	Vermont	2006-12
Stephanie Gaitley	Fordham	1983-85
Cindy Griffin	Saint Joseph's	1992-93
Joe Logan	Loyola Maryland	2001-05
Muffet McGraw	Notre Dame	1980-82
Lynn Milligan	Rider	2002-07
Jada Pierce	Niagara	2012-15

**TRIO EARN HAWK CLASSIC HONORS**

Junior guard/forward **Sarah Veilleux** was named Hawk Classic MVP after averaging 19.0 points, 4.0 rebounds and 3.0 steals per game in wins over Saint Peter's and Eastern Illinois. Senior guard/forward **Chelsea Woods** and senior forward **Adashia Franklyn** were named to the Hawk Classic All-Tournament Team.

**LOOKING AHEAD**

The Hawks remain on the road as they head to Saint Louis for a 2 p.m. contests on January 21.

**ON THE AIR**

**TV/VIDEO:** Saint Joseph's fans will be able to watch 28 women's basketball games this season either on television or online. The Hawks will have two games televised nationally on NBC Sports Network and CBS Sports Network.

**VIDEO STREAMING:** This season, live video broadcasts of many SJU games can be viewed through the Atlantic 10 Digital Network (SJUHawks.com). A subscription is necessary, but nonconference games will be offered for free.

**INTERNET:** Information for Saint Joseph's basketball is found at SJU's athletics website, **www.SJUHawks.com** with statistics, updated game notes, and live in-game statistics for all Hawk home games, and selected road games. Through Hawks All-Access, fans can follow every home game through audio streaming as well as video streaming for non-televised games. All road games are covered with audio streaming while video streaming also available for most. Video features on the team will also be available on the site.



## CINDY GRIFFIN

### Head Coach

### 17th Season

The all-time leader in wins at Saint Joseph's, **Cindy Griffin** is in her 17th season as head coach of the Hawks. A 1991 and 1993 graduate of SJU, Griffin (nee Anderson) has compiled an overall record of 346-254 in 20 seasons as a head coach, and a 298-221 record over 17 years at Hawk Hill that has included 10 postseason appearances.

The eighth coach in NCAA Division I history to lead her alma mater to the NCAA Tournament as a player and a coach, Griffin's squads have posted six 20-win seasons and six victories over nationally-ranked teams, while her players have been honored as Atlantic 10 All-Conference performers 19 times and 15 have gone on to play professionally.

Behind a resilient team, the 2016-17 Hawks battled back from a slow start to become one of the top teams in the Atlantic 10. Finishing third in the conference standings, the Hawks advanced to the semifinals of the A-10 Championship and earned the program's 10th Postseason WNIT berth. Individually, Chelsea Woods was named an A-10 All-Conference honoree and was selected to the All-Big 5 Second Team. Joining Woods on the All-Big 5 Second Team, Adashia Franklyn also garnered Big 5 Most Improved Player accolades, while Sarah Veilleux was recognized as the Big 5 Scholar Athlete.

Behind a pair of 1,000-point scorers in seniors Sarah Fairbanks and Ciara Andrews in 2015-16, Saint Joseph's finished tied for sixth in the A-10 behind a strong finish to the regular season. Finishing among the attendance leaders in the conference, the Hawks added to their mantle as they claimed the Hawk Classic title. Additionally, Fairbanks was named the Big 5's Scholar-Athlete, while sophomore Chelsea Woods was selected the Big 5's Most Improved Player.

Backed by First Team All-Big 5 selection Natasha Cloud, the Hawks earned a share of the Big 5 title in 2014-15. Cloud, who garnered A-10 All-Conference First Team and All-Defensive Team accolades, also became just the third SJU player to be selected in the WNBA Draft as she was picked by the Washington Mystics in the second round in 2015.

Following up their A-10 Championship the season prior, the 2013-14 Hawks continued to prove themselves as one of the top programs nationally as they earned an at-large bid to the NCAA Tournament and advanced to the Second Round for just the seventh time in team history. Led by Erin Shields and Cloud, Saint Joseph's earned its fifth straight postseason bid and claimed its first outright Philadelphia Big 5 title since 2000-01.

Under Griffin's leadership, Saint Joseph's posted one of its most memorable seasons in team history in 2012-13 as the Hawks claimed the Atlantic 10 Championship for just the third time and earned the automatic NCAA Tournament bid. Led by a senior class that had advanced to the post-season every year, the Hawks finished with a 23-9 record that included wins over #5 Maryland and #11 Dayton.

In addition to the team's success, a trio of Hawks were singled out for their performances, led by NCAA Woman of the Year nominee Chatilla van Grinsven. With Griffin's guidance, van Grinsven turned in one of the more dominant seasons in recent SJU history, becoming just the fifth player in SJU history to average a double-double for the year en route to being named to the A-10 All-Conference First Team and as the Big 5 Player of the Year. The duo of backcourt mates Shields and Cloud helped propel SJU to new heights, with Shields garnering A-10 and Big 5 Most Improved Player honors and I-AAA distinction, while Cloud was named the Most Outstanding Player of the 2013 A-10 Championship.

Led by a veteran-laden team in 2011-12, the Hawks earned their third-straight WNIT berth and posted their most wins (22) since the 2003-04 season. Moving into second place in career victories at her alma mater, Griffin picked up her 200th win as the Hawks topped Boston University in the opening game of the WNIT on March 15, 2012. Leading the Hawks to a 15-4 mark at home, she helped Saint Joseph's become one of the more efficient teams in the nation, ranking fourth in fewest turnovers per game (12.5), 26th in three-point percentage (.348) and 39th in field goal percentage (.423).

Individually, senior Michelle Baker and Kelly Cavallo had breakout years, both garnering All-Big 5 honors. Behind Griffin's teaching, Baker went on to be named to the A-10 All-Conference Second Team and capped her career as SJU's then all-time leader in games played (127) while ranking in the top 20 for scoring and field goals made. After seeing limited time as a freshman, Cavallo developed into one of the top post players in the A-10, leading SJU and finishing in the top five of the conference in rebounding, blocked shots and field goal percentage. With Griffin's aid, Cavallo finished her career second all-time in blocks and 11th in rebounding at SJU. Returning just one starter for the 2010-11 season, the Hawks quickly jelled under Griffin's guid-

## GRIFFIN YEAR-BY-YEAR

YEAR	OVERALL		A-10		POSTSEASON
	W	L	W	L	
1998-99	17	6	13	5	
1999-00	12	17	8	10	
2000-01	19	10	12	6	
2001-02	24	8	12	4	WNIT
2002-03	19	11	13	3	WNIT
2003-04	22	11	12	4	WNIT
2004-05	7	23	4	12	
2005-06	20	11	10	6	WNIT
2006-07	19	14	8	6	WNIT
2007-08	17	14	8	6	
2008-09	13	17	5	9	
2009-10	17	15	9	5	WNIT
2010-11	20	12	8	6	WNIT
2011-12	22	11	9	5	WNIT
2012-13	23	9	11	3	NCAA *
2013-14	23	10	10	6	NCAA
2014-15	13	17	8	8	
2015-16	14	15	8	8	
2016-17	17	15	12	4	WNIT
2017-18	8	8	3	1	
<b>Totals</b>	<b>346</b>	<b>254</b>	<b>183</b>	<b>117</b>	<b>2 NCAA, 9 WNIT</b>

**Record at Saint Joseph's:** 298-221

\* Atlantic 10 Champion

## THE GRIFFIN FILE

**Career Record:** 346-254 (20 years)

**Record at SJU:** 298-221 (17 years)

**Atlantic 10 Record:** 150-96

**Postseason Record:** 7-11 (overall); 1-2 (NCAA Tournament)

**Hometown:** Maple Glen, Pa.

**Education:** Saint Joseph's, 1991,  
Saint Joseph's MBA, 1993

**Playing Career:** Saint Joseph's, 1987-92

**Head Coaching Experience:**

Saint Joseph's, 2001- present

Loyola Maryland, 1998-01

**Family:** Husband, Curtis; children - Kaylie, Hannah and Curtis, Jr

### Accomplishments:

- 2003 Atlantic 10 Coach of the Year
- 2013 Big 5 Coach of the Year
- 2013 Atlantic 10 Titles
- Three Philadelphia Big 5 Titles (2009, 2014, 2015)
- 18 Atlantic 10 All-Conference Honorees
- 32 All-Big 5 Honorees
- Eight Academic All-District Honorees
- 15 Players Turned Professional
- 1998 SJU Women's Basketball Hall of Fame Inductee
- 1997 Bishop McDevitt Hall of Fame Inductee
- 2002 Philadelphia Catholic League Alumni Achievement Award

ance as they went on to win 20 games, earned the program's 700th victory, and advanced to the second round of the WNIT. Led by All-Big 5 honorees Baker and Katie Kuester, Saint Joseph's had its most efficient offensive showing since 2002-03, as the Hawks finished 60th in the nation in field goal percentage (42.1).

Additionally, several Hawks were honored for outstanding seasons in 2010-11, headlined by sophomore Ashley Prim becoming the first SJU player to be named Atlantic 10 Sixth Player of the Year. Baker became just the second Hawk to be named to the A-10 All-Defensive Team, while freshman Erin Shields became the sixth player Griffin has coached to A-10 All-Rookie Team honors.

Earning a postseason berth for the first time in two years, the Hawks surpassed predictions in 2009-10 as they finished tied for fourth in the Atlantic 10 after being picked to finish ninth. After opening the season with a 3-7 mark, Griffin saw her team begin to click at the end of the non-conference schedule as SJU claimed the 19th Annual Hawk Classic title and worked its way to .500 by the second week of the Atlantic 10 slate. Posting a 9-5 mark against conference opponents, Griffin hit two milestones during A-10 play, earning her 150th win at Saint Joseph's in a victory against Dayton and earning her 200th coaching win against George Washington. The Hawks would go on to earn the program's seventh WNIT bid, and play the first postseason game at Hagan Arena.

In 2008-09, Griffin undertook arguably her toughest season to date as Saint Joseph's played every contest away from Hawk Hill for the first time in program history. And in typical SJU fashion, Griffin got her team to respond as Saint Joseph's went on to post an 8-5 record at home venues and earn its first Big 5 title since 2000-01. Individually five Hawks posted career bests in scoring, with Brittany Ford and Mariame Djouara both earning All-Big 5 Second Team honors.

Relying heavily on underclassmen in 2007-08, Griffin guided her Hawks to another winning season, including crowns at the Brown Basketball Classic and the Hilton Philadelphia Hawk Classic. Among the wins, Saint Joseph's posted its biggest win over a non-conference ranked opponent since the 1984-85, topping #15 Auburn for the Hawk Classic title.

Despite losing several experienced players prior to the 2006-07 season, Griffin had her team peaking at the right time. Playing Griffin's style of hard-nosed defense and persistent offense, the Hawks advanced to the Atlantic 10 Championship game, including the program's first win over a top 10 opponent (#8 George Washington) since 1992 along the way. Saint Joseph's capped the season with its fifth WNIT appearance in six years and tied the SJU record for games played in a season with 33.

Fueled by a collection of newcomers and a developed core of upperclassmen, Griffin led the Hawks back to national prominence in 2005-06. The Crimson and Gray engineered the nation's best turnaround (13 games) and received votes in the national polls for the first time since 2003-04. The Hawks advanced to the semifinals of the A-10 Championship and earned a berth in the WNIT.

With the loss of four 1,000-point scorers, the 2004-05 Hawks showed their true colors down the stretch, earning a hard-fought victory over La Salle in the opening round of the Atlantic 10 Championship and coming within 10 points of 16th-ranked, and eventual A-10 Champion, Temple. Led by six seniors, the 2004 team went 22-11 and advanced to the WNIT Elite Eight. Saint Joseph's finished second in the A-10 East and dropped a heartbreaker in the Atlantic 10 Championship to Temple. Four Hawk seniors reached the 1,000-point plateau, marking just the eighth time in NCAA history that a quartet of players had reached the milestone in the same season. Erin Brady, Irina Krasnoshiok, Stephanie (Graff) McCaffrey and Amra Mehmedic went on to sign professional contracts.

Following a memorable first year at the helm of her alma mater, Griffin upped the ante in her second season by capturing 2003 Atlantic 10 Coach of the Year honors after guiding the Hawks to a 19-11 record. The team sprinted to the conference's Eastern Division title and earned a berth in the WNIT for the second straight season, despite the departure of SJU's all-time leading scorer and a non-conference schedule that ranked fourth nationally.

Griffin helped to reinvigorate the SJU program in her first season, leading the squad to a 24-8 record and the second round of the WNIT. She capitalized on the team's tradition of scrappy play and rugged defense, while releasing the reins and allowing the team to play a more up-tempo style on the offensive end of the floor. The Hawks finished the year among the national leaders in nine different categories and paced the nation in free throw percentage for the second straight year.

Following her playing career, Griffin spent the 1992-93 season as a graduate assistant at her alma mater. She then accepted an assistant's spot at Vanderbilt University from 1993-95 under former Saint Joseph's head coach Jim Foster. Foster recruited Griffin to SJU and coached her during her playing career on Hawk Hill.

In her two years as an assistant at Vanderbilt, the Commodores finished 53-15 overall, won the 1995 SEC championship and reached the NCAA Sweet 16 both seasons. In addition to coaching responsibilities, she was the co-director of the Vanderbilt Basketball Camp and the director of the Black & Gold Club.

Griffin left Vanderbilt after the 1995 season to become an assistant coach at Loyola Maryland. She spent three seasons as an assistant under Patty Coyle before being promoted to associate head coach in 1998. Griffin was promoted to the position of head women's basketball coach at Loyola Maryland midway through the 1998-99 season. She was the seventh-youngest head coach in Division I at the time. Griffin – who was named head coach five games into the season as Coyle left for an assistant coach position with the WNBA's New York Liberty – kept the Greyhounds' momentum going as Loyola Maryland won a team-record 21 games that year. Overall she compiled a record of 48-33 during her tenure at the Baltimore school, guiding the squad to the Metro Atlantic Athletic Conference semifinals all three years.

One of the top playmakers in Saint Joseph's history, Griffin starred for the Hawks from 1987-88 through 1991-92 (missing the 1988-89 season due to injury). A three-time team captain, Griffin finished her career with 662 points, 278 rebounds, 510 assists and 197 steals. She currently ranks fourth on SJU's all-time assist list.

As a junior in 1990-91, she played in 1,178 out of a possible 1,200 minutes to set the school record for minutes played in a single season. The Hawks made three NCAA Tournament appearances and posted three straight 20-win seasons during her playing career. A two-time Second Team All-Big 5 choice, as well as a Third Team All-Atlantic 10 pick as a senior, she was inducted into the Saint Joseph's Women's Basketball Hall of Fame in 1998.

A native of Maple Glen, Pa., Griffin played her high school basketball for Bishop McDevitt, winning two Philadelphia Catholic League titles. A 1987 graduate of McDevitt, she was inducted into its Athletic Hall of Fame in 1997, and in 2002, received the Philadelphia Catholic League's alumni achievement award. She earned a bachelor's degree in accounting from Saint Joseph's in 1991 and completed her M.B.A. from SJU in 1993. She resides in Conshohocken, Pa., with her husband, Curtis, and children, Kaylie, Hannah and Curtis, Jr.

# 2017-18 SAINT JOSEPH'S BASKETBALL • 7

## Game 1 • November 12, 2017 • Gallagher Center Saint Joseph's - 93, Niagara - 69

Shooting 61.4 percent from the floor, including 75 percent from three-point range, Saint Joseph's opened the 2017-18 season with a 93-69 victory at Niagara at the Gallagher Center.

**Alyssa Monaghan** led four Hawks in double figures with a career-best 23 points and matched a program record for three-point proficiency as she finished 7-of-7 from behind the arc and 8-8 overall from the field.

Behind 11 points from Monaghan, SJU took control from the tip as it ran out to a 14-6 lead.

Down 19-12 after the first quarter, Niagara used a 7-3 run to start the second period and rally to within three, 22-19.

That would be as close as the Purple Eagles would get on the day though as the Hawks answered with a 14-0 run to open a 36-19 lead on a layup by Amanda Fioravanti.

Taking a 49-32 advantage into the second half, Saint Joseph's went on to outscore Niagara 44-37 in the second half to set a new program record for points in a season opener with 93.

For the game, the Hawks went 35-of-57 from the field, 15-of-20 from behind the arc and finished with a 38-23 edge in rebounding.

### Saint Joseph's 93 • 1-0

#	Player	Total		3-Ptr		Rebounds		PF	TP	A	TO	Blk	Stl	Min
		FG-FGA	FG-FGA	FT-FTA	Off Def Tot	Off Def Tot	PF							
04	BAISDEN, Kristalyn	* 7-8	5-6	0-0	0 0 0	3 19	2 2 0	0	0	28				
12	MONAGHAN, Alyssa	* 8-8	7-7	0-0	0 1 1	1 23	5 3 0	0	0	28				
30	VEILLEUX, Sarah	* 6-7	2-3	0-0	2 4 6	1 14	5 0 0	1	29					
33	FRANKLYN, Adashia	* 5-10	0-0	4-8	5 10 15	3 14	2 3 0	0	25					
34	FIORAVANTI, Amanda	* 3-7	0-0	2-3	0 3 3	4 8	4 3 2	0	24					
01	FISHER, Whisper	1-2	0-0	0-0	1 1 2	2 2	2 0 1	0	11					
02	ROIG, Lula	0-1	0-0	1-4	0 2 2	1 4	1 1 0	0	13					
11	MARZ, Avery	1-3	1-3	0-0	0 2 2	1 3	0 1 0	0	12					
13	SHEEHAN, Mary	2-5	0-1	0-0	3 1 4	1 4	1 0 0	0	10					
32	WOODS, Chelsea	1-2	0-0	1-2	0 2 2	5 3	0 1 0	1	10					
35	CLAY, Michala	0-1	0-0	0-0	0 0 0	2 0	1 0 0	0	5					
40	BELVEDERE, Candace	1-3	0-0	0-0	0 0 0	1 2	1 0 0	0	5					
Team					0 1 1									
Totals		35-57	15-20	8-17	11 27 38	28 93	26 15 3	2	200					
1st - FG %:		7-13 53.8%	2nd: 12-15 80.0%	3rd: 8-12 66.7%	4th: 8-17 47.1%	Game: 35-57 61.4%	15-20 75.0%	Deadball						
3FG %:		4-6 66.7%	6-6 100.0%	2-3 66.7%	3-5 60.0%	15-20 75.0%	8-17 47.1%	Rebounds						
FT %:		1-4 25.0%	0-0 0.0%	6-11 54.5%	1-2 50.0%	8-17 47.1%		6						

### Niagara 69 • 0-2

#	Player	Total		3-Ptr		Rebounds		PF	TP	A	TO	Blk	Stl	Min
		FG-FGA	FG-FGA	FT-FTA	Off Def Tot	Off Def Tot	PF							
10	Jamie Sherburne	* 2-7	0-3	2-2	0 1 1	1 6	2 2 0	1	29					
11	Kharysma Bryant	* 1-3	0-0	0-0	1 1 2	1 2	0 1 0	0	17					
21	Maggie McIntyre	* 1-1	0-0	2-2	0 1 1	0 4	2 0 0	1	22					
22	Victoria Rampado	* 4-14	0-2	5-6	2 1 3	3 13	1 1 0	2	31					
44	Kaylee Stroemple	* 6-14	1-1	4-5	1 3 4	3 17	1 1 0	2	29					
04	Jai Moore	2-5	0-0	6-6	0 0 0	3 10	0 0 0	0	13					
05	Claire Wanzer	0-2	0-2	0-0	0 0 0	1 0	0 0 0	0	10					
12	Emerald Ekipiteta	0-0	0-0	3-4	2 0 2	1 3	0 1 0	0	9					
15	Adila Gathers	0-0	0-0	0-0	0 1 1	3 0	0 1 0	0	6					
24	Morgan Baughman	0-2	0-2	1-2	0 0 0	0 1	0 0 0	0	5					
32	Diona Johnson	3-6	2-4	4-4	0 1 1	2 12	0 2 0	0	21					
33	Dagny Davidsdottir	0-0	0-0	1-2	0 3 3	2 1	0 0 1	0	8					
Team					3 2 5									
Totals		19-54	3-14	28-33	9 14 23	20 69	6 9 1	6	200					
1st - FG %:		5-16 31.3%	2nd: 6-16 37.5%	3rd: 4-13 30.8%	4th: 4-9 44.4%	Game: 19-54 35.2%	3-14 21.4%	Deadball						
3FG %:		0-2 0.0%	2-5 40.0%	0-2 0.0%	1-5 20.0%	3-14 21.4%		Rebounds						
FT %:		2-2 100.0%	6-7 85.7%	7-9 77.8%	13-15 86.7%	20-33 60.6%		4						

Officials: Jeffrey Smith, Teresa Stuck, Natasha Camy  
Technical fouls: Saint Joseph's-None. Niagara-None.  
Attendance: 463

Score by periods	1st	2nd	3rd	4th	Total
Saint Joseph's	19	30	24	20	93
Niagara	12	20	15	22	69

## Game 2 • November 15, 2017 • Sojka Pavilion Saint Joseph's - 77, Bucknell - 53

Behind a strong second half performance, Saint Joseph's snapped Bucknell's 29-game home win streak with a 77-53 victory.

Led by 10 of **Chelsea Woods'** game-high 21 points, the Hawks outscored the Bison 43-23 in the second half after leading by four at halftime.

Ahead 34-30 at intermission, Saint Joseph's held Bucknell to just 25 percent shooting (4-of-16) in the third quarter and used a 15-9 scoring advantage to open a 49-39 advantage.

Up by 10, the Hawks' lead would shrink to no less than eight as they closed out the game going 11-of-17 from the field (64.7 percent) in the fourth quarter to improve to 2-0 on the season.

For the game, SJU shot 47.7 percent from the floor (31-of-65), hit 4-of-8 from three-point range and shot 68.8 percent from the foul line (11-of-16).

### Saint Joseph's 77 • 2-0

#	Player	Total		3-Ptr		Rebounds		PF	TP	A	TO	Blk	Stl	Min
		FG-FGA	FG-FGA	FT-FTA	Off Def Tot	Off Def Tot	PF							
33	FRANKLYN, Adashia	f 5-10	0-0	2-2	4 3 7	3 12	1 3 0	1	23					
34	FIORAVANTI, Amanda	f 6-17	0-0	1-4	1 7 8	4 13	3 2 2	1	23					
12	MONAGHAN, Alyssa	g 4-5	2-3	0-0	1 7 8	2 10	6 1 0	2	31					
30	VEILLEUX, Sarah	g 4-8	2-3	0-0	1 4 5	1 10	3 0 1	0	33					
32	WOODS, Chelsea	g 7-15	0-0	7-8	0 9 9	3 21	1 2 0	1	33					
01	FISHER, Whisper	3-3	0-0	0-0	0 1 1	3 6	2 1 1	0	15					
02	ROIG, Lula	0-2	0-0	0-0	0 0 0	0 0	2 0 0	0	11					
04	BAISDEN, Kristalyn	0-3	0-2	1-2	0 1 1	2 1	2 1 0	3	26					
11	MARZ, Avery	0-0	0-0	0-0	0 0 0	0 0	0 0 0	0	2					
13	SHEEHAN, Mary	0-0	0-0	0-0	0 0 0	0 0	0 0 0	0	1					
35	CLAY, Michala	1-1	0-0	0-0	0 0 0	0 0	0 0 0	0	1					
40	BELVEDERE, Candace	1-1	0-0	0-0	0 0 0	1 2	0 0 0	0	1					
Team					2 1 3									
Totals		31-65	4-8	11-16	9 33 42	19 77	20 11 4	8	200					
1st - FG %:		6-18 33.3%	2nd: 8-16 50.0%	3rd: 6-14 42.9%	4th: 11-17 64.7%	Game: 31-65 47.7%	4-8 50.0%	Deadball						
3FG %:		0-1 0.0%	1-3 33.3%	1-1 100.0%	2-3 66.7%	11-16 68.8%		Rebounds						
FT %:		2-4 50.0%	2-4 50.0%	2-4 50.0%	4-4 100.0%			4,2						

### Bucknell 53 • 2-1

#	Player	Total		3-Ptr		Rebounds		PF	TP	A	TO	Blk	Stl	Min
		FG-FGA	FG-FGA	FT-FTA	Off Def Tot	Off Def Tot	PF							
32	Romaine, Catherine	f 2-9	0-0	1-4	3 4 7	2 5	3 5 1	1	31					
50	Slagov, Kaitlyn	f 4-11	1-5	2-2	1 8 9	2 11	1 2 0	0	32					
02	English, Kyi	g 2-7	0-1	2-2	1 3 4	0 6	2 6 0	0	32					
20	Walker, Kate	g 6-15	4-6	0-0	0 1 1	2 16	0 2 0	0	29					
25	Kapp, Abby	g 1-7	0-4	2-2	1 0 1	3 4	0 1 0	0	21					
04	Hayes, Gia	0-2	0-0	0-0	0 1 1	1 0	1 0 0	0	13					
13	Dumiak, Rachel	1-2	0-1	0-0	0 0 0	0 0	0 0 0	0	4					
22	Mikkelsen, Maegan	1-2	0-0	1-1	3 4 7	2 3	0 1 0	0	13					
24	Ceppi, Autumn	0-1	0-0	2-2	0 1 1	0 2	0 0 1	0	4					
40	Mack, Ellie	2-6	0-2	0-0	0 0 0	1 4	2 1 0	0	21					
Team					1 2 3									
Totals		19-62	5-19	10-13	10 24 34	13 53	9 18 2	1	200					
1st - FG %:		5-15 33.3%	2nd: 5-13 38.5%	3rd: 4-16 25.0%	4th: 5-18 27.8%	Game: 19-62 30.6%	5-19 26.3%	Deadball						
3FG %:		1-4 25.0%	3-5 60.0%	0-3 0.0%	1-7 14.3%	10-13 76.9%		Rebounds						
FT %:		2-3 66.7%	4-4 100.0%	1-3 33.3%	3-3 100.0%			1,2						

Officials: Michael Henderson, Donald Cumiskey, Hilary Harwell  
Technical fouls: Saint Joseph's-None. Bucknell-None.  
Attendance: 704

Score by periods	1st	2nd	3rd	4th	Total
Saint Joseph's	15	19	15	28	77
Bucknell	13	17	9	14	53

1st FG - SJU 4th-00:18, BUCKNELL 4th-00:01.  
Largest lead - SJU by 27 4th-00:18, BUCKNELL by 1 1st-09:11.  
SJU led for 37:01, BUCKNELL led for 02:39. Game was tied for 00:20.

Points	In	Off	2nd	Fast	Bench
SJU	36	18	12	4	11
BUCKNE	28	5	4	0	11

Score tied - 3 times.  
Lead changed - 8 times.



# 2017-18 SAINT JOSEPH'S BASKETBALL • 8

## Game 3 • November 19, 2017 • Convocation Center Saint Joseph's - 73, James Madison - 66

Saint Joseph's improved to 3-0 to start the season for the first time since 2010-11 as the Hawks topped James Madison.

James Madison opened the game scoring on its first two possessions, but the Hawks quickly battled back. Down 4-0, Saint Joseph's used a 13-2 run to open a seven-point advantage on a layup by **Amanda Fioravanti** at 4:44.

The Dukes strung together a 9-2 run of their own to tie the game at 15, but a pair of free throws by **Kristalyn Baisden** and a layup by **Adashia Franklyn** pushed SJU back ahead, 19-15.

Up four to start the second half, Saint Joseph's saw its lead erased just over three minutes in as a three-pointer by Hailee Barron gave JMU a 44-43 advantage.

Fighting back to a 48-48 tie, the Hawks closed the third quarter on a 7-2 run to take a 55-50 lead.

A three-pointer by Kamiah Smalls brought the Dukes to within three, 57-54, with 8:36 to play, but that would be as close as Saint Joseph's would allow James Madison to get as **Chelsea Woods** capped a quick 5-0 run to push her team ahead 62-54.

The Hawks pushed their lead to as many as 12 in the final minutes as they improved to 2-3 all-time versus James Madison.

## Game 4 • November 25, 2017 • Hagan Arena Saint Joseph's - 80, Eastern Illinois - 62

Saint Joseph's downed Eastern Illinois, 80-62, to advance to the title game of the 24th Annual Hawk Classic.

Opening the home portion of its schedule, SJU pulled ahead of the Panthers toward the end of the first quarter after a tight opening six minutes. Woods converted a three-point play with 2:40 to go in the period to cap a 10-2 run and give the Hawks a 19-11 advantage.

Up 46-28 to start the third quarter, Saint Joseph's saw its lead to four less than four minutes into the period. Hitting 5-of-9 from the field, including three three-pointers, Eastern Illinois cut its deficit to 46-42 on a jumper by Jennifer Nehls at 6:02.

Sparked by a **Chelsea Woods** layup off a turnover, the Hawks countered with a 10-0 run that pushed their lead to 56-42 on a pair of Woods free throws at 2:18.

Saint Joseph's allowed Eastern Illinois to get no closer than nine points in the fourth quarter as the it picked up its fourth win of the season and advanced to the title game of the Hawk Classic for the 23rd time.

### Saint Joseph's 73 • 3-0

#	Player		Total		3-Ptr		Rebounds			PF	TP					Min	
			FG	FGA	FG	FGA	FT	FTA	Off			Def	Tot	A	To		Blk
33	FRANKLYN, Adashia	f	4-8	0-0	0-0	0-2	2	0	2	2	8	3	1	0	0	30	
34	FIORAVANTI, Amanda	f	4-8	0-0	0-0	0-0	1	3	4	2	8	4	5	1	0	31	
12	MONAGHAN, Alyssa	g	2-8	1-5	0-0	0-0	0	7	7	1	5	7	0	0	1	36	
30	VEILLEUX, Sarah	g	9-11	5-6	2-3	0-0	5	5	4	25	1	2	1	0	0	36	
32	WOODS, Chelsea	g	7-16	0-0	0-0	9-12	1	5	6	3	23	2	2	0	2	34	
01	FISHER, Whisper	g	0-0	0-0	0-0	0-0	1	0	1	1	0	0	1	0	1	4	
02	ROIG, Lula	g	1-1	0-0	0-0	0-0	0	0	0	2	2	0	2	0	1	4	
04	BAISDEN, Kristalyn	g	0-1	0-0	0-0	2-4	1	2	3	3	2	0	0	0	0	25	
Team							3	3	6			1					
Totals				27-53		13-21	9	25	34	18	73	17	14	2	5	200	
1st - FG %:			6-16	37.5%	2nd: 9-12	75.0%	3rd: 7-16	43.8%	4th: 5-9	55.6%	Game: 27-53	50.9%	Deadball				
3FG %:			2-5	40.0%	2-2	100.0%	1-2	50.0%	1-2	50.0%	6-11	54.5%	Rebounds				
FT %:			5-10	50.0%	0-0	0.0%	1-1	100.0%	7-10	70.0%	13-21	61.9%	5,2				

### JMU 66 • 1-3

#	Player		Total			Rebounds			PF	TP	A TO Blk Stl				Min	
			FG-FGA	3-Ptr	FT-FTA	Off	Def	Tot			PF	TP	A	TO		Blk
04	Butler, Tasia	f	3-5	0-0	1-1	3	5	8	1	7	1	2	0	2	23	
42	Merritt, Devon	f	4-6	0-0	1-1	1	1	2	3	9	0	2	1	2	23	
03	Smalls, Kamiah	g	8-21	1-3	5-5	3	6	9	4	22	3	3	0	2	35	
14	Barron, Hailee	g	2-6	1-4	0-0	1	2	3	2	5	0	3	0	0	37	
15	Barrier, Lexie	g	2-15	0-4	3-6	2	1	3	3	7	2	1	0	0	26	
01	Harris, Tori	g	0-0	0-0	0-0	0	0	0	3	0	0	0	0	0	3	
05	Bellerand, Breyenne	g	0-0	0-0	0-0	0	1	1	0	0	0	0	0	0	4	
10	Young, Aneah	g	1-4	0-0	0-0	1	0	1	2	2	0	0	0	0	14	
31	CooperWilliams,Kayla	g	2-6	0-0	3-5	5	2	7	3	7	0	0	0	0	25	
33	Koshuta, Kelly	g	3-5	0-0	1-1	0	1	1	1	7	0	1	0	0	10	
Team						3	1	4								
Totals			25-68		2-11	14-19	19	20	39	22	66	6	12	1	6	200
1st - FG %:			7-17	41.2%	2nd: 8-18	44.4%	3rd: 5-13	38.5%	4th: 5-20	25.0%	Game: 25-68	36.8%	Rebounds			
3FG %:			0-1	0.0%	0-1	0.0%	1-2	50.0%	1-7	14.3%	2-11	18.2%	Deadballs			
FT %:			4-4	100.0%	4-6	66.7%	5-8	62.5%	14-19	73.7%	14-19	73.7%	2			

Officials: Kevin Sparrock, Shawn Goode, Angel Stanton  
Technical fouls: Saint Joseph's-None, JMU-None.  
Attendance: 1850

Score by periods	1st	2nd	3rd	4th	Total
Saint Joseph's	19	20	16	18	73
JMU	15	20	15	16	66

Last FG - SJU 4th-02:20, JMU 4th-00:19.  
Largest lead - SJU by 12 4th-01:13, JMU by 4 1st-08:41.  
SJU led for 33:50, JMU led for 03:26, Game was tied for 02:39.

Score tied - 3 times.  
Lead changed - 3 times.

### Eastern Illinois 62 • 1-3

#	Player		Total		3-Ptr		Rebounds			PF	TP					Min
			FG-FGA	FG-FGA	FT-FTA	Off	Def	Total	A			TO	Blk	Stl		
14	McRAE, Grace	f	4-8	0-1	1-1	0	2	2	2	9	0	3	0	1	26	
32	NEHLS, Jennifer	f	6-15	0-2	1-1	2	4	6	3	13	1	6	1	2	26	
05	LENNOX, Grace	g	1-9	0-0	2-2	0	2	2	0	4	4	2	0	2	33	
12	TELLEZ, Carmen	g	2-3	2-3	0-0	0	0	0	3	6	1	1	0	1	23	
20	BERRY, Danielle	g	3-5	2-3	0-0	0	1	1	4	8	1	0	0	0	25	
11	PACE, Karle	g	2-4	1-2	0-0	0	0	0	0	5	1	0	0	0	7	
15	STEELE, Taylor	g	1-5	1-1	0-0	2	0	2	3	3	1	0	0	1	22	
21	STULL, Halle	g	2-2	2-2	2-2	0	2	2	2	8	0	3	0	0	17	
22	MAROV, Lana	g	0-1	0-1	0-0	0	0	0	2	0	0	0	0	0	5	
31	SMITH, Jalisha	g	2-9	0-0	2-4	4	2	6	2	6	0	1	0	1	16	
Team						2	2	4								
Totals			23-61		8-15	8-10	10	15	25	21	62	9	16	1	8	200
1st - FG %:			5-13	38.5%	2nd: 6-16	37.5%	3rd: 7-17	41.2%	4th: 5-15	33.3%	Game: 23-61				37.7%	Deadball
3FG %:			1-2	50.0%	1-4	25.0%	4-5	80.0%	2-4	50.0%	8-15				53.3%	Rebounds
FT %:			2-2	100.0%	2-3	66.7%	1-1	100.0%	3-4	75.0%	8-10				80.0%	

### Saint Joseph's 80 • 4-0

#	Player	Total		3-Ptr		Rebounds			PF	TP	A TO Blk Stl				Min	
		FG-FGA	FG-FGA	FT-FTA	Off	Def	Tot	PF			TP	A	TO	Blk		Stl
32	WOODS, Chelsea	f	8-15	0-0	4-5	5	6	11	1	20	5	3	0	2	34	
33	FRANKLYN, Adashia	f	6-9	0-0	3-6	6	3	9	0	15	0	3	1	0	32	
34	FIORAVANTI, Amanda	f	2-6	0-0	2-5	2	3	5	6	2	3	0	0	0	13	
12	MONAGHAN, Alyssa	g	3-7	0-1	0-0	0	4	4	0	6	3	3	0	4	32	
30	VEILLEUX, Sarah	g	9-13	2-5	2-2	0	2	2	2	22	3	1	1	4	31	
01	FISHER, Whisper	g	0-2	0-0	0-0	1	0	1	0	0	0	0	0	1	5	
02	ROIG, Lula	g	1-1	0-0	3-5	0	0	0	1	5	0	2	0	0	9	
11	MARZ, Avery	g	0-1	0-0	0-0	0	1	1	1	0	1	1	0	1	8	
13	SHEEHAN, Mary	g	1-3	0-0	0-0	1	0	1	2	2	0	0	1	0	5	
31	GARNER, Jaryn	g	1-1	0-0	0-0	0	2	2	0	2	0	0	1	0	19	
35	CLAY, Michala	g	1-2	0-0	0-0	1	1	2	2	2	1	2	0	1	10	
40	BELEVDERE, Candace	g	0-0	0-0	0-0	0	1	1	0	0	1	0	0	0	2	
Team						1	2	3				1				
Totals			32-60		2-6	14-23	17	25	42	14	80	16	19	4	13	200
1st - FG %:		9-19	47.4%	2nd: 10-14	71.4%	3rd: 4-11	36.4%	4th: 9-16	56.3%	Game: 32-60	53.3%	Deadball				
3FG %:		1-1	100.0%	1-2	50.0%	0-2	0.0%	0-1	0.0%	2-6	33.3%	Rebounds				
FT %:		2-5	40.0%	4-6	66.7%	4-5	80.0%	4-7	57.1%	14-23	60.9%	5,2				

Officials: Ben Smith, Heather Browne, Ryan Nunes  
Technical fouls: Eastern Illinois-None, Saint Joseph's-None.  
Attendance: 877

Score by periods	1st	2nd	3rd	4th	Total
Eastern Illinois	13	15	19	15	62
Saint Joseph's	21	25	12	22	80

Last FG - EU 4th-01:01, SJU 4th-00:43.  
Largest lead - EU None, SJU by 21 4th-05:14.  
EU led for 00:00, SJU led for 39:25, Game was tied for 00:34.

Points	In	Off	2nd	Fast	Bench
EU	24	19	13	5	22
SJU	50	17	15	18	11

Score tied - 1 time.  
Lead changed - 0 times.



## 2017-18 SAINT JOSEPH'S BASKETBALL • 9

### Game 5 • November 26, 2017 • Hagan Arena Saint Joseph's - 87, Saint Peter's - 58

Saint Joseph's improved to 3-0 to start the season for the first time since 2010-11 as the Hawks topped James Madison.

Backed by a balanced offensive attack that saw five Hawks finish in double figures, Saint Joseph's downed Saint Peter's, 87-58, to win the 24th Annual Hawk Classic.

Behind 16 points and six rebounds from Hawk Classic MVP **Sarah Veilleux**, Saint Joseph's captured its 11th Hawk Classic title in program history.

Playing just its second home game of the year, Saint Joseph's led wire to wire as it held the Peacocks at a distance for most of the game.

Opening a double-digit lead midway through the first quarter, the Hawks saw their advantage slowly chipped away as Saint Peter's came within three, 30-27, on a three-pointer by Brianna Tarabocchia at 6:16 of the second quarter.

After trading baskets, Saint Joseph's closed out the period on a 19-3 run as a pair of Veilleux free throws pushed her team ahead 51-32 at the break.

Saint Peter's would get no closer than 17 points in the second half as the Hawks moved to 5-0 for the first time since the 2005-06 season.

#### Saint Peter's 58 • 3-3

#	Player	Total		3-Ptr		Rebounds			PF	TP	A	TO	Bk	Stl	Min
		FG-FGA	FT-FTA	FG-FGA	FT-FTA	Off	Def	Total							
24	Martin, Da'jah	1	1-4	0-0	0-0	1	3	4	3	2	1	2	0	0	17
42	Bethwa, Savannah	1	2-4	1-1	0-2	2	6	8	3	5	1	0	0	1	24
16	Lochner, Sammy	3	1-6	0-3	1-1	0	0	0	0	3	0	3	0	1	20
3	Hughes, Talan	3	1-6	0-0	1-2	0	1	1	3	3	2	1	1	2	17
23	Veilleux, Sarah	3	5-6	3-3	0-0	0	1	1	1	13	0	1	1	1	27
00	Spencer, Breana	1	1-1	0-0	0-0	1	0	1	0	2	0	0	0	0	4
01	Magazine, Davyon	1	3-8	2-6	0-0	0	0	0	1	8	1	2	0	1	16
02	Maguire, Anna	1	1-5	0-1	0-0	0	1	1	1	2	1	0	0	1	8
03	Featherston, Precious	1	2-2	0-0	0-0	1	0	1	1	4	0	1	1	0	7
11	Dalozzo, Haley	1	0-0	0-0	0-0	0	4	4	1	0	1	4	0	2	9
20	Pero, Zoe	1	0-4	0-1	0-0	1	0	1	2	0	4	0	0	1	13
21	Moe, Samantha	1	0-1	0-0	0-0	0	0	0	1	0	0	1	0	0	6
25	Tarabocchia, Brianna	1	3-5	2-4	4-5	0	3	3	0	12	2	1	0	1	19
33	Howell, Ashlee	1	1-6	0-0	2-2	2	0	2	0	4	0	1	0	0	13
Team						0	0	0							
Totals			21-58	8-19	8-12	8	19	27	17	58	13	18	3	11	200

FG % 1st Ha	57%	2nd	50%	3rd	40%	4th	50%	Avg	25.0%	FG %	38.0%
3FG % 1st Ha	4%	2nd	0%	3rd	0%	4th	0%	Avg	0.0%	3FG %	10.0%
FT % 1st Ha	20%	2nd	100%	3rd	40%	4th	100%	Avg	50.0%	FT %	66.7%

#### Saint Joseph's 87 • 5-0

#	Player	Total		3-Ptr		Rebounds			PF	TP	A	TO	Bk	Stl	Min
		FG-FGA	FT-FTA	FG-FGA	FT-FTA	Off	Def	Total							
32	WOODS, Chelsea	1	4-12	0-0	4-4	3	5	8	1	12	4	1	0	1	24
33	FRANKLYN, Adashia	1	5-7	0-0	0-0	5	0	5	3	10	1	2	0	0	19
34	HOHAVANTII, Amanda	1	4-8	0-0	2-5	3	5	8	1	10	1	3	1	0	27
12	MONAGHAN, Alyssa	3	7-13	4-9	0-0	0	2	2	1	18	5	0	1	2	26
30	VEILLEUX, Sarah	3	5-9	1-2	5-5	1	5	6	0	16	2	1	0	2	28
01	FISHER, Whisper	1	1-3	0-0	0-0	1	2	3	0	2	0	1	0	1	11
02	ROIG, Lulu	1	1-2	0-0	3-8	3	2	5	0	5	1	3	0	3	14
64	BAIRDEN, Kristalyn	1	1-3	1-3	0-0	0	1	1	0	3	1	1	0	1	15
11	MARZ, Avery	1	3-3	1-1	1-1	0	1	1	0	8	1	1	0	0	8
13	SHEEHAN, Mary	1	0-1	0-0	0-0	0	0	0	1	0	0	0	0	0	5
31	GAHNER, Jaryn	1	0-2	0-0	0-0	0	2	2	0	0	0	0	0	0	6
35	CLAY, M'chala	1	0-0	0-0	1-2	0	0	0	2	1	0	1	0	1	10
40	BLVDLER, Candace	1	1-1	0-0	0-0	0	0	0	0	2	0	0	0	0	7
Team						1	4	5							
Totals			32-66	7-15	16-25	17	29	46	11	87	16	14	2	11	200

FG % 1st Ha	50%	2nd	40%	3rd	40%	4th	50%	Avg	25.0%	FG %	38.0%
3FG % 1st Ha	0%	2nd	0%	3rd	0%	4th	0%	Avg	0.0%	3FG %	10.0%
FT % 1st Ha	0%	2nd	100%	3rd	40%	4th	100%	Avg	50.0%	FT %	66.7%

Officials: Bryan Esterline, Jaryn Harwell, Michael DeCouto  
Technical fouls: Saint Peter's-None, Saint Joseph's-None  
Attendance: 732

Score by periods	1st	2nd	3rd	4th	Total
Saint Peter's	18	14	11	15	58
Saint Joseph's	24	27	16	20	87

Points	1st	2nd	3rd	4th	Total
SHW	18	14	11	15	58
SJH	24	27	16	20	87

Last FG - SHW 4th-01:42, SJH 4th-00:47  
Largest lead - SHW None, SJH by 29 1st-00:47  
SHW led for 30:00, SJH led for 30:33, Game was tied for 20:20

Score tied - 0 times  
Lead changed - 0 times

### Game 6 • November 29, 2017 • McGonigle Hall Arena Temple - 69, Saint Joseph's - 66

Saint Joseph's had its five-game unbeaten streak snapped as Temple held off the Hawks for a 69-66 victory at McGonigle Hall.

In typical Big 5 fashion, the contest came down to the final moments as Saint Joseph's rallied from down six with six minutes to play to take a 66-65 lead on a layup by **Chelsea Woods** with 19.5 seconds to play.

Out of their last timeout, the Owls answered back as Tanaya Atkinson's driving layup made it 67-66 at with 16.3 seconds to go.

Temple would cause a SJU turnover and get the ball back with 10 seconds remaining. Off an in-bounds play, Deja Reynolds drew a foul after she was tied up in the corner, but was ruled to have been held after a discussion by the referees.

Reynolds connected on both free throws, and a game-tying three pointer by the Hawks at the buzzer was off the mark.

#### Saint Joseph's 66 • 5-1

#	Player	Total		3-Ptr		Rebounds			PF	TP	A	TO	Bk	Stl	Min
		FG-FGA	FT-FTA	FG-FGA	FT-FTA	Off	Def	Total							
33	FRANKLYN, Adashia	1	5-14	0-0	2-9	4	4	8	3	12	1	1	1	0	36
34	HOHAVANTII, Amanda	1	7-13	0-0	8-11	3	6	9	3	22	3	2	2	0	38
12	MONAGHAN, Alyssa	3	2-8	1-4	3-4	0	5	5	4	8	1	3	0	1	38
30	VEILLEUX, Sarah	3	5-8	0-2	2-2	1	1	2	4	12	3	1	0	1	34
32	WOODS, Chelsea	3	2-7	0-0	4-4	3	8	11	4	8	1	2	0	0	27
01	FISHER, Whisper	3	0-0	0-0	0-0	0	0	0	0	0	0	0	0	0	1
02	ROIG, Lulu	1	1-2	0-0	0-1	0	0	0	0	2	0	0	0	1	2
64	BAIRDEN, Kristalyn	1	1-5	0-4	0-0	0	0	0	2	2	0	2	0	2	15
31	GARNER, Jaryn	1	0-2	0-0	0-0	0	1	1	1	0	0	0	1	0	9
Team						1	3	4							
Totals			23-59	1-10	19-31	12	28	40	21	66	9	11	4	5	200

FG % 1st Ha	11.3%	35.5%	2nd ha	12.28	42.9%	Game	23.59	39.0%	Deja Reynolds
3FG % 1st Ha	0.0%	0.0%	2nd ha	1.6	16.7%	Game	1.10	10.0%	Rebounds
FT % 1st Ha	8.3%	72.7%	2nd ha	11.20	55.0%	Game	19.31	61.3%	5

#### Temple 69 • 5-2

#	Player	Total		3-Ptr		Rebounds			PF	TP	A	TO	Bk	Stl	Min
		FG-FGA	FT-FTA	FG-FGA	FT-FTA	Off	Def	Total							
25	DAVIS, Mia	1	6-12	0-0	3-4	8	5	13	4	15	1	2	0	1	29
02	PERRY, Breanna	3	1-4	0-1	0-0	1	0	1	4	2	2	2	0	0	15
12	MAYO, Emari	3	1-11	0-3	2-2	0	4	4	3	4	2	0	0	0	38
21	BERGER, Khadijah	3	0-3	0-2	0-0	1	0	1	1	0	0	0	0	0	15
22	ATKINSON, Tanaya	3	8-20	0-1	8-12	2	11	13	4	24	1	3	0	0	37
03	OLIVER, Desiree	3	3-9	0-1	1-1	0	4	4	2	7	1	2	0	1	18
04	JONES, Mykia	1	1-1	1-1	0-0	0	0	0	0	3	1	1	0	1	5
11	ATKINSON, Shanner	1	0-1	0-0	0-0	1	1	2	2	0	0	0	0	1	11
23	HEYNOLDS, Deja	1	4-5	1-1	3-5	1	3	4	2	12	2	4	1	1	26
24	TAYLOR, Shantay	1	0-0	0-0	2-2	1	1	2	1	2	0	1	0	0	6
Team						4	2	6							
Totals			24-66	2-10	19-26	19	31	50	23	69	10	15	2	4	200

FG % 1st Ha	12.36	37.1%	2nd ha	11.31	35.5%	Game	24.66	36.4%	Deja Reynolds
3FG % 1st Ha	0.5	0.0%	2nd ha	2.5	40.0%	Game	2.10	20.0%	Rebounds
FT % 1st Ha	4.7	57.1%	2nd ha	15.9	78.9%	Game	19.26	73.1%	2

Score by periods	1st	2nd	3rd	4th	Total
Saint Joseph's	16	14	18	18	66
Temple	9	21	20	19	69

# 2017-18 SAINT JOSEPH'S BASKETBALL • 10

## Game 7 • December 3, 2017 • Jake Nevin Field House #25/24 Villanova - 79, Saint Joseph's - 44

Saint Joseph's was held to just 29.6 percent shooting as the Hawks fell at #25/24 Villanova, 79-44.

Leading from the tip, the Wildcats jumped out to a 20-6 lead after the first quarter and never looked back. Shooting 55.4 percent from the field (31-of-56) on the day, Villanova pushed its lead to 39-14 by halftime and allowed Saint Joseph's to get no closer than that over the final 20 minutes.

## Game 8 • December 5, 2017 • SECU Arena Towson - 90, Saint Joseph's - 66

The Hawks got a team-high 19 points from **Sarah Veilleux**, but dropped their third straight to fall to 5-3 on the season with a 90-66 lost at Towson.

After a back-and-forth opening eight minutes, the Tigers (3-4) began to pull away from the Hawks. Up 17-13, Towson strung together a 15-4 run into the second quarter to take a 32-17 advantage on a jumper by Etalyia Vogt at 7:35.

A three-pointer by **Kristalyn Baisden** brought Saint Joseph's to within 12, 34-22, but the Tigers closed out the period on a 10-6 run to push their lead to 44-28 by halftime.

In the third quarter, the Hawks twice battled back to cut their deficit to 12. However, Towson responded each time and allowed SJU to get no closer than 15 points in the final period.

### Saint Joseph's 44 • 5-2, 0-2 Big 5

#	Player	Total		3-Ptr		Rebounds				PF	TP	A	TO	Bk	Stl	Min
		FG-FGA	FG-FGA	FT-FTA	Off	Def	Total									
32	WOODS, Chelsea	1	3-9	0-0	3-3	4	2	6	2	9	2	2	0	0	0	26
33	FRANKLYN, Adashia	1	4-8	0-0	2-2	2	2	4	2	10	0	2	2	0	0	26
34	FRANKLYN, Amanda	1	3-9	0-0	2-2	1	1	2	2	8	2	3	0	0	0	21
12	MONAGHAN, Alyssa	3	1-7	0-5	2-3	0	2	2	0	4	1	2	0	0	0	33
30	VEILLEUX, Sarah	3	3-5	0-0	0-0	0	2	2	3	6	1	1	0	1	0	29
01	FISHER, Whisper	0	0-0	0-0	0-0	1	0	1	0	0	0	0	0	0	0	1
02	ROIG, Lila	0	1-4	0-0	3-5	0	3	3	1	5	3	1	0	0	0	14
04	BAIDEN, Kristalyn	0	0-0	0-0	0-0	0	0	0	1	0	1	0	0	0	0	12
11	MARZ, Avery	0	0-0	0-0	0-0	1	1	0	0	0	0	1	0	0	0	5
13	SHFFHAN, Mary	0	0-5	0-0	0-0	1	1	2	0	0	0	0	0	0	0	7
31	GARNER, Jaryn	0	0-5	0-0	0-0	1	1	2	0	1	1	0	0	0	0	18
35	CLAY, Michala	0	1-2	0-0	0-0	1	0	1	0	2	0	1	0	0	0	6
40	BELVEDERE, Candace	0	0-0	0-0	0-0	0	0	0	0	0	0	0	0	0	0	2
Team			16-54		0-5		12-15		3	0	3					200
Totals			16-54		0-5		12-15		3	0	3					200
FG % 1st Ha		6-25	24.0%	2nd ha	10-29	34.5%	Game	16-54	29.6%	Deaths		Rebounds				
3FG % 1st Ha		0-3	0.0%	2nd ha	0-2	0.0%	Game	0-5	0.0%							
FT % 1st Ha		2-2	100.0%	2nd ha	10-13	76.9%	Game	12-15	80.0%							

### Villanova 79 • 7-0, 1-0 Big 5

#	Player	Total		3-Ptr		Rebounds				PF	TP	A	TO	Bk	Stl	Min			
		FG-FGA	FG-FGA	FT-FTA	Off	Def	Total												
21	TUCKER, Jannah	1	5-10	3-7	0-0	1	2	3	1	13	4	0	1	0	0	30			
12	QUINN, Megan	0	1-2	0-0	0-0	0	4	4	4	2	3	0	0	0	2	21			
02	LOUIN, Alex	0	2-4	0-1	4-4	0	2	2	2	8	1	1	0	1	0	28			
25	JFKOT, Kelly	3	11-17	2-6	3-3	1	4	5	0	27	6	1	2	1	0	31			
31	HAHN, Adanna	3	0-1	0-0	0-0	0	4	4	2	0	3	0	0	0	0	29			
00	ONKEN, Cameron	0	0-1	0-0	0-0	2	1	3	0	0	0	2	0	0	0	6			
01	HLRLIHY, Bridget	0	2-6	0-1	1-1	1	1	2	0	5	0	2	0	0	0	10			
03	LANGE, Grace	0	0-0	0-0	0-0	0	1	1	0	0	0	0	0	0	0	1			
10	JAMES, Raven	0	1-2	0-0	0-0	0	0	0	2	2	0	0	0	0	0	4			
14	HERLIHY, Branna	0	0-0	0-0	0-0	0	2	2	0	0	0	0	0	0	0	6			
30	GEDAKA, Mary	0	7-10	0-0	2-3	3	2	5	2	16	0	2	3	1	0	19			
45	STANT, Grace	0	2-3	2-3	0-0	0	0	0	1	6	1	1	0	0	0	15			
Team							2	2	4										
Totals			31-56		7-19		10-11		10	25	35	14	79	18	11	6	200		
FG % 1st Ha		17-27	63.0%	2nd ha	14-29	48.3%	Game	31-56	55.4%	Deaths								Rebounds	
3FG % 1st Ha		3-8	37.5%	2nd ha	4-11	36.4%	Game	7-19	36.8%										
FT % 1st Ha		2-2	100.0%	2nd ha	8-9	88.9%	Game	10-11	90.9%										

Officials: Kathy Lynch, Shannon Fleck, Gora dino Smith  
Technical fouls: Saint Joseph's None Villanova None  
Attendance: 1519

Score by periods	1st	2nd	3rd	4th	Total
Saint Joseph's	6	8	17	13	44
Villanova	20	19	22	18	79

### Saint Joseph's 66 • 5-3

#	Player		Total		3-Ptr		Rebounds				PF	TP	A	TO	Bk	Stl	Min		
			FG-FGA	FG-FGA	FT-FTA	Off	Def	Total	TP										
33	FRANKLYN, Adashia	1	3-7	0-0	1-4	3	4	7	3	7	1	2	1	0	0	0	26		
34	FIOHAVANTI, Amanda	1	1-9	0-0	0-0	1	1	2	5	2	4	2	1	1	0	0	28		
04	BAIDEN, Kristalyn	3	1-4	1-3	0-0	1	0	1	5	3	1	2	0	0	0	0	22		
12	MONAGHAN, Alyssa	3	4-14	3-8	0-0	2	4	6	1	11	3	1	1	2	0	0	37		
30	VEILLEUX, Sarah	3	7-12	2-4	3-3	1	4	5	4	19	1	1	0	0	0	0	38		
01	FISHER, Whisper	0	0-0	0-0	0-0	0	0	0	1	0	0	0	0	0	0	0	5		
02	ROIG, Lila	0	1-3	0-0	0-0	1	1	2	1	2	0	1	0	0	0	0	8		
11	MARZ, Avery	0	2-4	0-1	4-4	0	0	0	0	8	0	1	0	0	0	0	9		
31	GARNER, Jaryn	0	0-2	0-0	0-0	0	0	0	2	0	0	0	0	0	0	0	3		
32	WOODS, Chelsea	0	5-14	0-0	4-4	7	2	9	1	14	1	2	1	0	0	0	21		
35	CLAY, Michala	0	0-0	0-0	0-0	0	1	1	0	0	0	0	0	0	0	0	3		
Team						4	0	4											
Totals			24-69		6-16		12-15		20	17	37	24	66	11	13	4	200		
FG % 1st Ha		11-33	33.3%	2nd ha	13-35	36.1%	Game	24-69	34.8%									Deaths	Rebounds
3FG % 1st Ha		4-9	44.4%	2nd ha	2-7	28.6%	Game	6-16	37.5%										
FT % 1st Ha		2-2	100.0%	2nd ha	10-13	76.9%	Game	12-15	80.0%										

### Towson University 90 • 3-4

#	Player		Total			3-Ptr			Rebounds				PF	TP	A	TO	Bk	Stl	Min
			FG-FGA	FG-FGA	FT-FTA	Off	Def	Total											
01	Mayo, Nukiya	1	4-12	0-1	5-5	4	7	11	2	13	0	0	4	0	0	0	33		
22	Cuevas, Mary	1	6-11	0-0	6-7	2	6	8	1	18	1	1	6	0	0	0	32		
00	Durjan, Danielle	3	3-8	2-4	0-0	1	2	3	1	8	0	0	1	3	0	0	35		
08	Davis, Kayla	3	1-2	0-1	0-0	0	1	1	1	2	0	0	0	0	0	0	15		
10	Bankston, Haine	3	8-15	0-1	11-12	2	2	4	3	27	1	2	1	0	0	0	35		
04	Holmes, Jalyrin	3	3-4	1-1	0-0	1	1	2	4	7	0	0	0	0	0	0	10		
13	Vogl, Etalyia	3	5-9	0-1	1-2	1	2	3	2	11	4	3	0	0	0	0	25		
25	Lee, Maia	1	1-1	0-0	0-0	0	2	2	1	2	0	1	0	0	0	0	8		
33	Thomas, Daijha	1	1-1	0-0	0-0	0	1	1	1	2	0	1	0	0	0	0	7		
Team							3	0	3										
Totals				32-63		3-9		23-26		14	24	38	16	90	6	8	12	200	
FG % 1st Ha			20-35	57.1%	2nd ha	12-28	42.9%	Game	32-63	50.8%	Deaths								
3FG % 1st Ha			2-5	40.0%	2nd ha	1-4	25.0%	Game	3-9	33.3%	Rebounds								
FT % 1st Ha			2-3	66.7%	2nd ha	21-23	91.3%	Game	23-26	88.5%	31								

Officials: Susan Blauch, Timothy Greene, Kristi Mosley  
Technical fouls: Saint Joseph's None Towson University None  
Attendance: 269

Score by periods	1st	2nd	3rd	4th	Total
Saint Joseph's	15	13	23	15	66
Towson University	24	20	20	26	90

# 2017-18 SAINT JOSEPH'S BASKETBALL • 11

## Game 9 • December 11, 2017 • Hagan Arena Penn - 57, Saint Joseph's - 50

A fourth quarter rally came up short for Saint Joseph's as Big 5 rival Penn held off the Hawks for a 57-50 victory.

Fighting back from an 11-point deficit to start the final period, Saint Joseph's closed to within a possession midway through the quarter. Behind a 9-0 run, the Hawks cut the Quaker's edge to 45-43 on a putback layup by **Adashia Franklyn** with 6:09 to play.

Penn responded to SJU's run with a 7-0 streak of its own as a layup by Michelle Nwokedi extended her team's lead to 52-43, with 2:03 left in the game.

The Hawks would get no closer than six from there as they dropped their first home game of the season.

In the first half, Saint Joseph's jumped out to an early 9-6 lead as a three-pointer by **Avery Marz** gave the Hawks a three-point cushion.

A 9-0 run by the Quakers that extended into the second quarter pushed the visitors ahead 15-9, and they'd keep Saint Joseph's at a distance until the final period as Penn pushed its lead to as many as 12 points.

## Game 10 • December 17, 2017 • Hagan Arena Drexel - 65, Saint Joseph's - 58

Saint Joseph's got a combined 32 points from **Chelsea Woods** and **Alyssa Monaghan**, but fell to city rival Drexel, 65-58.

Looking to snap a four-game losing streak, the Hawks jumped out to an early 17-8 lead backed by six of Monaghan's 16 points.

The Dragons chipped away at the SJU advantage and took its first lead, 28-26, on a pair of free throws by Aubree Brown with 1:58 to go in the second quarter.

Drexel's lead would grow to five in the third quarter, while Saint Joseph's battled back to make it a two-point game, 47-45, with 7:21 to play in the fourth on a layup by **Sarah Veilleux**.

Unfortunately for the Hawks, they'd get no closer as they turned the ball over six times and went 4-of-12 from the field over the final seven minutes, while the Dragons closed the game going 12-of-14 from the foul line.

### Penn 57 • 3-4, 1-1 Big 5

#	Player		Total		3-Ptr		Rebounds				PF	TP	A	TO	Bk	Stl	Min
			FG	FGA	FG-FGA	FT-FTA	Off	Def	Tot								
45	NWOKEDI, Michelle	f	6-10	1-1	1-2	0	4	4	2	14	3	1	2	4	3	37	
31	PARKER, Leah	c	6-11	0-0	3-4	2	6	8	2	15	2	3	4	2	30		
10	ROSS, Anna	g	2-5	1-2	0-0	0	1	1	2	5	5	0	0	0	38		
16	WHITLATCH, Lauren	g	1-6	0-4	0-0	0	2	2	3	2	1	1	0	0	21		
25	RUSSELL, Ashley	g	3-5	1-1	1-2	1	5	6	2	8	0	2	0	0	27		
02	KINUM, Kate	g	2-6	0-1	0-0	0	0	0	0	4	2	1	0	0	13		
11	GRASFLA, Kendall	f	0-1	0-0	0-0	0	0	0	0	0	1	1	0	0	5		
14	BRZOZOWSKI, Beth	f	0-2	0-1	4-6	0	0	0	2	4	0	0	0	1	15		
50	AGHAYERE, Princess	f	2-5	1-2	0-0	2	2	4	3	5	0	2	0	0	14		
Team						2	2	4									
Totals			22-51	4-12	9-14	7	22	29	16	57	14	11	6	7	200		
FG % 1st Ha			12-27	44.4%	2nd ha	10-24	41.7%	Game	22-51	43.1%	Deadball						
3FG % 1st Ha			1-4	25.0%	2nd ha	3-8	37.5%	Game	4-12	33.3%	Rebounds						2
FT % 1st Ha			4-6	66.7%	2nd ha	5-8	62.5%	Game	9-14	64.3%							

### Saint Joseph's 50 • 5-4, 0-3 Big 5

#	Player		Total		3-Ptr		Rebounds							PF	TP	A	TO	Bk	Stl	Min
			FG	FGA	FG	FGA	FT	FTA	Off	Def	Tot	LP								
30	VEILLEUX, Sarah	f	6-16	1-6	3-4	2	2	4	1	16	0	0	0	2	37					
33	FRANKLYN, Adashia	f	6-9	0-0	0-0	6	7	13	3	12	1	3	0	0	37					
34	FIORAVANTI, Amanda	f	2-14	0-0	0-0	1	4	5	4	4	3	7	1	0	33					
11	MARZ, Avery	g	1-2	1-1	0-0	0	2	2	0	3	1	0	0	0	13					
12	MONAGHAN, Alyssa	g	1-8	1-5	0-0	0	2	2	1	3	1	0	0	1	31					
02	HOIG, Lula	g	1-2	0-0	0-0	0	1	1	0	2	3	1	0	2	9					
04	BAISDEN, Kristalyn	g	0-0	0-0	0-0	0	1	1	0	0	2	1	0	0	10					
31	GARNER, Jaryn	g	1-2	0-0	2-2	4	3	7	4	4	0	1	0	0	20					
35	CLAY, Michala	g	3-4	0-0	0-0	0	0	0	0	6	0	1	0	0	7					
40	BELVEDERE, Candace	g	0-1	0-0	0-0	0	0	0	0	0	0	0	1	0	3					
Team						2	2	4		3										
Totals			21-58	3-13	5-6	15	24	39	13	50	11	17	2	5	200					
FG % 1st Ha			9-29	31.0%	2nd ha	12-29	41.4%	Game	21-58	36.2%	Deadball		Rebounds		1					
3FG % 1st Ha			1-6	16.7%	2nd ha	2-7	28.6%	Game	3-13	23.1%										
FT % 1st Ha			2-2	100.0%	2nd ha	3-4	75.0%	Game	5-6	83.3%										

Officials: Joseph Vaszily, Kathleen Lynch, Jeffrey Smith  
Technical Fouls: Penn:None Saint Joseph's:None  
Attendance: 913

Score by periods	1st	2nd	3rd	4th	Total
Penn	12	17	16	12	57
Saint Joseph's	9	12	13	16	50

### Drexel 65 • 7-4

#	Player		Total		3-Ptr		Rebounds										PF	TP	A	TO	Bk	Stl	Min
			FG	FGA	FG	FGA	FT	FTA	Off	Def	Total	Total	Total	Total	Total	Total							
12	GREENBERG, Bailey	f	7-10	1-2	4-6	2	4	6	3	19	2	2	0	5	35								
25	LIDGL, Kelsi	f	1-6	0-3	3-4	0	8	8	3	5	2	3	0	5	36								
11	BROWN, Aubree	g	4-12	1-3	8-8	1	2	3	3	17	2	5	0	2	32								
14	WOODS, Sara	g	0-3	0-0	0-0	2	1	3	3	0	2	0	1	0	31								
20	NIHILL, Hannah	g	0-3	0-0	0-0	1	1	2	0	0	1	1	0	1	10								
21	MARECIC, Megan	g	6-12	1-5	7-8	1	1	2	2	20	1	1	0	0	30								
34	KRACIKOVA, Tereza	g	0-0	0-0	0-0	1	0	1	2	0	0	0	0	0	12								
50	LEHARILLU, Ana	g	2-6	0-0	0-0	0	0	0	1	4	0	0	0	1	14								
Team						2	2	4		1													
Totals			20-52	3-13	22-26	10	19	29	17	65	10	13	1	14	200								
FG % 1st Ha			12-29	41.4%	2nd ha	8-23	34.8%	Game	20-52	38.5%	Deadball		Rebounds		2								
3FG % 1st Ha			1-6	16.7%	2nd ha	2-7	28.6%	Game	3-13	23.1%													
FT % 1st Ha			6-8	75.0%	2nd ha	16-18	88.9%	Game	22-26	84.6%													

### Saint Joseph's 58 • 5-5

#	Player		Total		3-Ptr		Rebounds				PF	TP	A	TO	Bk	Stl	Min
			FG	FGA	FT	FTA	Off	Def	Tot								
32	WOODS, Chelsea	f	6-8	0-0	4-6	2	1	3	5	16	2	4	4	2	32		
33	FRANKLYN, Adashia	f	3-4	0-0	1-2	0	2	2	3	7	0	1	0	0	26		
11	MARZ, Avery	g	0-1	0-1	0-0	0	2	2	0	0	1	0	0	1	9		
12	MONAGHAN, Alyssa	g	7-15	2-8	0-0	1	4	5	3	16	4	3	0	1	32		
30	VEILLEUX, Sarah	g	3-8	1-4	4-4	0	5	5	4	11	2	1	0	1	36		
02	HOIG, Lula	g	0-0	0-0	0-2	0	1	1	1	0	0	2	0	0	8		
04	BAISDEN, Kristalyn	g	1-3	1-3	0-0	0	0	0	4	3	0	1	0	0	15		
31	GAHNER, Jaryn	g	0-2	0-0	0-0	1	4	5	2	0	3	6	0	2	23		
34	FIORAVANTI, Amanda	g	2-3	0-1	1-2	0	1	1	1	5	1	4	1	0	19		
Team						0	4	4									
Totals			22-44	4-17	10-16	4	24	28	23	58	13	22	5	7	200		
FG %, 1st Ha			12-20	60.0%	2nd ha	10-24	41.7%	Game	22-44	50.0%	Deadball						
3FG %, 1st Ha			0-3	0.0%	2nd ha	4-14	28.6%	Game	4-17	23.5%	Rebounds						
FT %, 1st Ha			6-10	60.0%	2nd ha	4-6	66.7%	Game	10-16	62.5%	3						

Officials: Isaac Johnson, Shannon Ferk, Ben Smith  
Technical Fouls: Drexel:None Saint Joseph's:None  
Attendance: 3551

Score by periods	1st	2nd	3rd	4th	Total
Drexel	14	17	14	20	65
Saint Joseph's	18	12	12	16	58

# 2017-18 SAINT JOSEPH'S BASKETBALL • 12

## Game 11 • December 20, 2017 • Exactech Arena Princeton - 63, Saint Joseph's - 53

A second-half rally came up short as Saint Joseph's fell to Princeton, 63-54, in the semifinals of the Gator Holiday Classic.

Down by as many as 13 in the third quarter, the Hawks battled back to make it a two-point game in the final minute of the period. Falling behind 37-24, Saint Joseph's used a 16-5 run to make it 42-40 on a pair of free throws by **Chelsea Woods** with 28 seconds left in the third.

However, Princeton ended the third on a **Carlie Littlefield** layup that sparked a 10-0 run by the Tigers as they opened a 52-40 lead with 7:18 to play.

Saint Joseph's **Mary Sheehan** capped a 9-0 run to bring her team to within 52-49 with 5:14 to play, but that would be as close as the Hawks would come.

In a back-and-forth first half, the Hawks took a 20-19 lead with 5:45 left in the second quarter on a layup by **Amanda Fioravanti**.

From there though, SJU's offense went cold as it shot 0-of-9 from the field for the remainder of the period, while the Tigers scored eight-straight points to take a 27-20 lead into halftime.

Princeton carried the momentum into the second half as it scored the first six points of the third quarter to open a 13-point lead, before the Hawks battled back to make it a one possession game in the final moments of the quarter.

### Saint Joseph's 54 • 5-6

#	Player	Total		3-Ptr		Rebounds		PF	TP	A TO Bk Stl				Min
		FG-FGA	FG-FGA	FT-FTA	Off Def Tot	PF	TP							
33	FRANKLYN, Adashia	f	1-5	0-0	0-0	2 2 4	1	2	1	1	1	0	0	18
34	FIORAVANTI, Amanda	f	8-13	0-0	1-3	0 7 7	4	17	1	5	1	1	34	
12	MONAGHAN, Alyssa	g	3-9	1-5	2-2	1 5 6	1	9	4	2	0	0	40	
30	VEILLEUX, Sarah	g	5-8	2-4	0-0	1 5 6	2	12	0	1	0	1	33	
32	WOODS, Chelsea	g	3-9	0-0	3-5	2 6 8	3	9	2	3	0	1	36	
01	FISHER, Whisper	g	0-1	0-0	0-0	0 0 0	0	0	0	0	0	0	4	
04	BAIDEN, Kristalyn	g	0-3	0-3	0-0	0 0 0	0	0	1	1	0	0	16	
11	MARZ, Avery	g	0-0	0-0	0-0	0 0 0	0	0	0	0	0	0	3	
13	SHEEHAN, Mary	g	2-3	1-2	0-0	0 2 2	2	5	0	0	1	0	16	
Team						2 0 2				1				
Totals			22-51	4-14	6-10	8 27 35	13	54	9	14	3	3	200	
1st - FG %:		6-11	54.5%	2nd: 3-15	20.0%	3rd: 7-12	58.3%	4th: 6-13	46.2%	Game: 22-51	43.1%	Deadball		
3FG %:		1-2	50.0%	0-5	0.0%	1-2	50.0%	2-5	40.0%	4-14	28.6%	Rebounds		
FT %:		1-2	50.0%	0-0	0.0%	3-8	62.5%	0-0	0.0%	6-10	60.0%	1		

### Princeton 63 • 8-3

#	Player	Total		3-Ptr		Rebounds		PF	TP	A TO Bk Stl				Min
		FG-FGA	FG-FGA	FT-FTA	Off Def Tot	PF	TP							
20	Jordan, Sydney	f	1-4	0-0	1-2	0 4 4	2	3	1	0	0	0	25	
31	Alarie, Bella	f	8-13	0-1	5-6	2 7 9	3	21	0	2	1	1	36	
45	Robinson, Leslie	f	4-7	0-0	2-2	1 4 5	2	10	3	3	0	1	34	
02	Littlefield, Carlie	g	4-8	1-2	2-3	0 0 0	2	11	0	2	0	0	30	
32	Weledji, Tia	g	3-11	0-3	0-0	0 2 2	0	6	2	1	0	0	33	
01	Meyers, Abby	g	0-1	0-0	0-0	0 0 0	1	0	0	0	0	0	2	
24	Holland, Kenya	g	2-3	2-3	0-0	0 3 3	1	6	0	1	0	1	24	
25	Rush, Gabrielle	g	2-6	2-4	0-0	0 2 2	2	6	0	0	0	0	16	
Team						2 2 4								
Totals			24-53	5-13	10-13	5 24 29	13	63	6	9	1	3	200	
1st - FG %:		6-14	42.9%	2nd: 5-14	35.7%	3rd: 7-13	53.8%	4th: 6-12	50.0%	Game: 24-53	45.3%	Deadball		
3FG %:		1-3	33.3%	3-5	60.0%	1-3	33.3%	0-2	0.0%	5-13	38.5%	Rebounds		
FT %:		1-2	50.0%	0-0	0.0%	2-3	66.7%	7-8	87.5%	10-13	76.9%	0		

Officials: Amy Bonner, Marc Merritt, Felicia Ginter  
Technical fouls: Saint Joseph's-None. Princeton-None.  
Attendance: 1054

Score by periods	1st	2nd	3rd	4th	Total
Saint Joseph's	14	6	20	14	54
Princeton	14	13	17	19	63

Last FG - SJU 4th-00:15, PRIN 4th-01:26.  
Largest lead - SJU by 4 1st-04:19, PRIN by 13 3rd-08:19.  
SJU led for 05:56, PRIN led for 29:34. Game was tied for 04:30.

Score tied - 3 times.  
Lead changed - 9 times.

## Game 12 • December 21, 2017 • Exactech Arena Florida - 71, Saint Joseph's - 51

**Alyssa Monaghan** and **Adashia Franklyn** combined for 21 points, but Saint Joseph's fell at Florida, 71-51.

In the first half, Florida jumped out to 13-4 edge, but a 7-2 run by the Hawks made it 15-11 after 10 minutes.

The Gators pushed its lead to 10 to start the second quarter on back-to-back three-pointers and built it to as many as 12 points. Taking advantage of its height, Florida turned 10 offensive rebounds into 15 second chance points in the first half as it took a 32-23 lead into halftime.

Opening the second half with momentum, the Hawks cut into their deficit to 34-29 on a layup by Franklyn with 7:47 to play in the third.

However the Gators answered back to build a 49-33 lead as a layup by **Haley Lorenzen** capped a 15-4 run.

Saint Joseph's would get no closer than 12 from there as it wrapped up non-conference play with a 5-7 record.

### Saint Joseph's 51 • 5-7

#	Player	Total		3-Ptr		Rebounds		PF	TP	A TO Bk Stl				Min
		FG-FGA	FG-FGA	FT-FTA	Off Def Tot	PF	TP							
33	FRANKLYN, Adashia	f	5-9	0-0	0-0	5 5 10	0	10	1	0	1	2	29	
34	FIORAVANTI, Amanda	f	2-7	0-0	0-0	1 3 4	4	4	0	2	0	1	13	
12	MONAGHAN, Alyssa	g	5-14	1-5	0-0	0 0 0	0	11	2	1	0	0	31	
30	VEILLEUX, Sarah	g	0-7	0-3	0-0	0 3 3	2	0	0	0	0	0	27	
32	WOODS, Chelsea	g	3-7	0-0	2-2	1 5 6	2	8	2	2	0	2	22	
01	FISHER, Whisper	g	1-1	0-0	0-0	0 0 0	1	2	0	0	0	0	3	
02	ROIG, Lula	g	1-1	0-0	1-4	0 1 1	0	3	0	0	0	0	10	
04	BAIDEN, Kristalyn	g	1-2	0-1	0-2	0 0 0	1	2	0	2	0	0	22	
11	MARZ, Avery	g	0-0	0-0	2-2	0 1 1	1	2	1	3	0	0	6	
13	SHEEHAN, Mary	g	2-6	0-3	0-0	0 0 0	1	4	0	0	0	0	16	
35	CLAY, Michala	g	2-3	0-0	1-2	0 0 0	0	5	0	0	0	0	6	
40	BELVEDERE, Candace	g	0-3	0-1	0-0	2 1 3	3	0	0	1	0	1	15	
Team						0 5 5				1				
Totals			22-60	1-13	6-12	9 24 33	15	51	6	12	1	6	200	
1st - FG %:		5-15	33.3%	2nd: 6-15	40.0%	3rd: 8-18	44.4%	4th: 3-12	25.0%	Game: 22-60	36.7%	Deadball		
3FG %:		1-6	16.7%	0-2	0.0%	0-2	0.0%	0-3	0.0%	1-13	7.7%	Rebounds		
FT %:		0-2	0.0%	0-2	0.0%	0-0	0.0%	6-8	75.0%	6-12	50.0%	4		

### Florida 71 • 7-5

#	Player	Total		3-Ptr		Rebounds		PF	TP	A TO Bk Stl				Min
		FG-FGA	FG-FGA	FT-FTA	Off Def Tot	PF	TP							
12	Hersler, Paulina	f	7-10	3-5	2-2	3 5 8	1	19	1	0	2	1	30	
44	Lorenzen, Haley	f	6-14	0-1	0-0	3 7 10	2	12	1	1	0	1	24	
00	Washington, Delicia	g	7-8	0-0	0-1	2 5 7	2	14	1	1	0	0	20	
03	Nakkasoglu, Funda	g	3-10	2-7	2-2	0 0 0	0	10	2	3	0	1	33	
11	Anderson, Dyandria	g	3-9	2-6	3-4	1 6 7	1	11	4	3	0	0	36	
01	Johnson, Tamera	g	0-3	0-0	0-0	0 1 1	3	0	0	0	0	1	11	
05	Portakal, Elif	g	0-3	0-1	2-2	0 2 2	2	2	4	1	0	0	20	
23	Thomas, Jalaysha	g	0-1	0-0	0-0	1 0 1	0	0	1	0	0	0	4	
24	Hayes, Mikayla	g	1-5	0-1	1-2	2 3 5	2	3	1	2	0	0	20	
55	Stephanie Brower	g	0-0	0-0	0-0	0 0 0	1	0	0	0	0	0	2	
Team						2 2 4								
Totals			27-63	7-21	10-13	14 31 45	14	71	15	11	2	4	200	
1st - FG %:		7-19	36.8%	2nd: 6-15	40.0%	3rd: 7-16	43.8%	4th: 7-13	53.8%	Game: 27-63	42.9%	Deadball		
3FG %:		1-7	14.3%	2-5	40.0%	3-6	50.0%	1-3	33.3%	7-21	33.3%	Rebounds		
FT %:		0-0	0.0%	3-4	75.0%	2-2	100.0%	5-7	71.4%	10-13	76.9%	1		

Officials: Dee Kantner, Eric J Brewton, Greg Small  
Technical fouls: Saint Joseph's-None. Florida-None.  
Attendance: 1008

Score by periods	1st	2nd	3rd	4th	Total
Saint Joseph's	11	12	16	12	51
Florida	15	17	19	20	71

Last FG - SJU 4th-00:24, UF 4th-02:22.  
Largest lead - SJU by 2 1st-09:41, UF by 24 4th-02:22.  
SJU led for 00:27, UF led for 37:44. Game was tied for 01:49.

Score tied - 1 time.  
Lead changed - 1 time.



## 2017-18 SAINT JOSEPH'S BASKETBALL • 13

### Game 13 • December 31, 2017 • Hagan Arena Saint Joseph's - 79, VCU - 41

Outscoring VCU 47-18 in the second half, Saint Joseph's pined Atlantic 10 play with a convincing 79-41 win over the Rams.

Led by **Sarah Veilleux's** game-high 20 points, the Hawks improved to 6-7 on the year and opened conference play with a win for the 29th time in program history.

After a back-and-forth opening quarter, Saint Joseph's began to pull away from VCU in the second period. Ahead 14-12, the Hawks put together an 11-2 run as a pair of free throws by **Chelsea Woods** made it 25-14 with 5:21 to go in the period.

Up 13 early in the third, Saint Joseph's saw its advantage cut to six, 36-30, on a free throw by Danielle Hammond at the 4:43 mark.

The Hawks would allow the Rams to get no closer from there as SJU responded with a 31-4 run that pushed its lead to 67-34 on a three-pointer by **Alyssa Monaghan** with 5:55 to go in the fourth. Saint Joseph's finished the second half going 18-of-32 from the floor (.563 percent) and 8-of-13 from behind the arc (.615 percent) as it moved to 29-6 all-time in A-10 openers.

#### VCU 41 • 3-10, 0-1 A-10

#	Player	Total	3-Ptr	Rebounds	PF	TP	A	T	Bk	Stl	Min				
		FG-FGA	FG-FGA	FT-FTA	Off	Def	Tot								
23	SKINNER, Sandra	f	0-5	0-0	0-0	1	2	3	1	0	0	1	0	2	20
01	ROBINSON, Taya	g	3-9	0-0	0-0	0	4	4	1	6	1	2	0	0	17
20	MADDOX, Jailyn	g	0-5	0-3	1-2	1	0	1	1	1	2	0	0	0	28
24	REED, Tera	g	4-11	1-2	3-4	1	4	5	3	12	0	3	0	1	25
32	GIBSON, Bria	g	2-3	0-0	1-2	0	1	1	3	5	0	2	0	0	25
21	SPARKS, Delphynia	g	2-7	1-4	0-0	0	1	1	0	5	0	0	0	0	11
22	ARCHIE, Sydney	g	1-5	0-0	0-0	1	4	5	2	2	0	1	0	2	23
30	HAMMOND, Danielle	g	0-0	0-0	1-4	0	0	0	3	1	0	0	0	0	13
34	WILLIAMS, Nyra	g	2-6	1-3	0-0	0	1	1	1	5	1	1	0	1	28
42	JOHNSON, Nyia	g	1-5	0-2	2-4	0	0	0	0	4	0	0	0	0	10
Team					2	0	2								
Totals			15-56	3-14	8-16	6	17	23	15	41	4	10	0	6	200
1st - FG %:		3-14	21.4%	2nd: 4-11	36.4%	3rd: 4-13	30.8%	4th: 4-18	22.2%	Game: 15-56	26.8%	Deacball			
3FG %:		1-3	33.3%	1-2	50.0%	0-3	0.0%	1-6	16.7%	3-14	21.4%	Rebounds			
FT %:		3-4	75.0%	4-6	66.7%	1-2	50.0%	0-4	0.0%	8-16	50.0%	6			

#### Saint Joseph's 79 • 6-7, 1-0 A-10

#	Player	Total	3-Ptr	Rebounds	PF	TP	A	T	Bk	Stl	Min				
		FG-FGA	FG-FGA	FT-FTA	Off	Def	Tot								
32	WOODS, Chelsea	f	6-10	0-0	5-5	2	8	10	4	17	2	0	1	0	26
33	FRANKLYN, Adashia	f	4-8	0-0	0-0	5	8	13	2	8	1	4	0	0	25
34	FIORAVANTI, Amanda	f	5-8	0-0	0-3	1	6	7	2	10	2	1	1	1	30
12	MONAGHAN, Alyssa	g	6-13	4-9	1-1	0	3	3	1	17	8	1	0	2	36
30	VEILLEUX, Sarah	g	7-13	6-8	0-0	1	2	3	3	20	5	3	1	1	26
02	ROIG, Lula	g	0-0	0-0	0-0	0	1	1	0	0	0	0	0	0	3
04	BAISDEN, Kristalyn	g	0-3	0-3	0-0	2	1	3	2	0	3	3	0	0	24
13	SHEEHAN, Mary	g	2-4	1-2	0-0	0	0	0	2	5	0	1	0	0	8
31	GARNER, Jaryn	g	0-0	0-0	0-2	0	1	1	0	0	0	2	0	0	10
35	CLAY, Michala	g	1-2	0-0	0-0	0	1	1	1	2	1	0	0	0	6
40	BELVEDERE, Candace	g	0-0	0-0	0-0	0	2	2	0	0	1	0	0	0	6
Team					2	2	4								
Totals			31-61	11-22	6-11	13	35	48	17	79	23	15	3	4	200
1st - FG %:		6-15	40.0%	2nd: 7-14	50.0%	3rd: 8-18	44.4%	4th: 10-14	71.4%	Game: 31-61	50.8%	Deacball			
3FG %:		1-2	50.0%	2-7	28.6%	3-7	42.9%	5-8	62.5%	11-22	50.0%	Rebounds			
FT %:		1-1	100.0%	2-2	100.0%	1-6	16.7%	2-2	100.0%	6-11	54.5%	5,2			

Officials: Michael DeCouto, Nic Cappel, Ashley Moyer-Gleich  
Technical fouls: VCU-None, Saint Joseph's-None.  
Attendance: 711

Score by periods	1st	2nd	3rd	4th	Total
VCU	10	13	9	9	41
Saint Joseph's	14	18	20	27	79

Last FG - VCU 4th-00:53, SJU 4th-01:01.  
Largest lead - VCU by 2 1st-09:13, SJU by 40 4th-01:01.  
VCU led for 01:42, SJU led for 36:19. Game was tied for 01:40.

Score tied - 2 times.  
Lead changed - 1 time.

### Game 14 • January 3, 2018 • Reilly Center Saint Joseph's - 70, St. Bonaventure - 64

Saint Joseph's earned a gutsy 70-64 victory at St. Bonaventure.

Falling behind 60-57 with less than three minutes to play after leading by as many as 18, the Hawks composed themselves and battled back. Sparked by back-to-back layups by **Kristalyn Baisden**, the Hawks regained the lead, 61-60, at the 1:40 mark.

Following a free throw by **Chelsea Woods** and a defensive stop, Baisden struck again, this time with a dagger three-pointer from the wing to give her team a 65-60 lead with 35 seconds to play. Saint Joseph's allowed the Bonnies to get no closer as the Hawks improved to 7-7 overall and 2-0 in the Atlantic 10.

In the first half, the Hawks jumped out to a 36-19 lead at the half thanks to staunch defense that held St. Bonaventure to just 17.9 percent shooting (5-of-28).

Building a 40-22 lead early in the third quarter, Saint Joseph's saw its advantage completely erased by the end of the period. Down 40-22, St. Bonaventure (5-10, 0-2 A-10) went on a 25-8 run over a seven minute span to take a 49-48 lead on Mariah Ruff's fifth three-pointer of the quarter.

The Hawks would enter the fourth tied at 50 before fighting back in the final minutes to earn the win.

#### Saint Joseph's 70 • 7-7, 2-0 A-10

#	Player		Total		3-Ptr		Rebounds			PF	TP	A	T	Bk	Stl	Min
			FG-FGA	FG-FGA	FT-FTA	Off	Def	Tot								
32	WOODS, Chelsea	f	5-17	0-0	4-6	5	6	11	4	14	3	3	1	1	28	
33	FRANKLYN, Adashia	f	3-7	0-0	0-3	6	3	9	3	6	0	3	0	1	29	
34	FIORAVANTI, Amanda	c	7-8	0-0	2-3	5	8	13	3	16	2	2	1	0	27	
04	BAIDSEN, Kristalyn	g	6-14	3-10	0-0	3	0	3	1	15	1	1	0	1	35	
12	MONAGHAN, Alyssa	g	3-18	3-14	4-6	1	7	8	1	13	2	1	0	2	37	
13	SHEEHAN, Mary	g	2-6	1-3	1-2	1	0	1	2	6	1	0	2	1	31	
31	GARNER, Jaryn	g	0-1	0-0	0-0	1	1	2	1	0	1	1	0	0	8	
35	CLAY, Michala	g	0-0	0-0	0-0	0	1	1	1	0	0	1	0	0	5	
Team						2	2	4								
Totals			26-71	7-27	11-20	24	28	52	16	70	10	12	4	6	200	
1st - FG %:			7-20	35.0%	2nd: 7-16	43.8%	3rd: 6-18	33.3%	4th: 6-17	35.3%	Game: 26-71	36.6%	Deacball			
3FG %:			2-6	33.3%	2-4	50.0%	2-9	22.2%	1-8	12.5%	7-27	25.9%	Rebounds			
FT %:			1-2	50.0%	3-6	50.0%	0-0	0.0%	7-12	58.3%	11-20	55.0%				

#### St. Bonaventure 64 • 5-10, 0-2 A-10

		Total			3-Ptr		Rebounds										
#	Player	FG	FTA	FG	FTA	FT	FTA	Off	Def	Tot	PF	TP	A	To	Bk	Stl	Min
15	CALABRESE, Emily	f	4-9	0-0	0-0	2	4	6	4	8	0	2	0	2	0	0	37
23	HARVEY, Arielle	f	1-6	0-2	3-4	1	1	2	4	5	1	1	2	0	1	36	
02	RUFF, Mariah	g	11-22	8-15	1-2	1	5	6	4	31	0	3	0	1	36		
03	MIGLIORE, Danielle	g	3-12	2-8	2-2	2	6	8	1	10	2	4	0	1	39		
04	TERRY, Jalisha	g	3-8	0-0	4-4	1	3	4	3	10	4	2	0	0	36		
32	COUNCIL, Rhianna	g	0-3	0-2	0-0	1	2	3	0	0	0	0	0	0	0	16	
Team						2	3	5									
Totals			22-60	10-27	10-12	10	24	34	16	64	7	12	2	2	2	200	
1st - FG %:		2-13	15.4%	2nd: 3-15	20.0%	3rd: 12-16	75.0%	4th: 5-16	31.3%	Game: 22-60	36.7%	Deacball					
3FG %:		1-5	20.0%	1-6	16.7%	6-7	85.7%	2-9	22.2%	10-27	37.0%	Rebounds					
FT %:		7-8	87.5%	0-0	0.0%	1-2	50.0%	2-2	100.0%	10-12	83.3%	2					

Officials: Kathleen Lynch, Pualani Spurlock, Kevin Pehtel  
Technical fouls: Saint Joseph's-None, St. Bonaventure-None.  
Attendance: 743

Score by periods	1st	2nd	3rd	4th	Total
Saint Joseph's	17	19	14	20	70
St. Bonaventure	12	7	31	14	64

Last FG - SJU 4th-00:36, SBWU 4th-00:04.  
Largest lead - SJU by 18 3rd-05:26, SBWU by 3 4th-02:29.  
SJU led for 33:58, SBWU led for 03:50. Game was tied for 01:51.

Score tied - 2 times.  
Lead changed - 7 times.

# 2017-18 SAINT JOSEPH'S BASKETBALL • 14

## Game 15 • January 7, 2018 • Hagan Arena Dayton - 65, Saint Joseph's - 59

Saint Joseph's dropped a hard-fought 65-59 contest to Dayton as the Flyers used a 9-3 run over the final three minutes to pull away for the win.

With the game tied at 56 all, Dayton's Jenna Burdette struck for six of her game-high 20 points in a 90-second span to give the Flyers a 62-56 edge on a jumpshot with 1:26 to play.

The Hawks answered as a three-pointer by **Kristalyn Baisden** made it 62-59 with 1:05 to go.

Switching back to defense, Saint Joseph's was able to the Flyers to miss. However, the Hawks couldn't control the rebound, as Dayton regained possession and pulled away for good with a pair of Burdette free throws with 25 seconds remaining.

In a back-and-forth contest that had 12 lead changes and eight ties, Saint Joseph's opened up a 49-44 lead early in the fourth quarter on a Baisden three-pointer.

Dayton answered back with six points to take a 50-49 advantage and the lead would change hands twice more before a jumper by SJU's **Chelsea Woods** tied the game at 56-56 with 3:06 to play.

## Game 16 • January 10, 2018 • Hagan Arena Saint Joseph's - 81, Richmond - 72

Saint Joseph's **Chelsea Woods** became the 26th player in women's basketball history to reach 1,000 career points as the Hawks topped Richmond, 81-72.

After a fast-paced first quarter that had four lead changes and five ties, Saint Joseph's held a 25-19 edge as it scored the final seven points of the period.

Leading 29-24, the Hawks began to pull away from Richmond midway through the second as they used a 7-0 spurt to open a 36-24 advantage on a layup by **Jaryn Garner** with 6:05 to play in the period.

Saint Joseph's pushed its lead to as many as 17 in the second quarter, but the Spiders battled back to make it 54-47 in favor of SJU on a jumper by Alex Parson with 1:08 to go in the third quarter.

Sparked by a layup by **Sarah Veilleux**, the Hawks went on a 12-0 run to open a 66-47 gap with 8:28 left in the game. Woods capped the run as she reached the 1,000-point milestone for her career on a fast-break layup off a feed from **Alyssa Monaghan**.

Slowly chipping away at Saint Joseph's lead, Richmond would get no closer than the final score.

### Dayton 65 • 10-4, 3-0 A-10

		Total	3 Ptr	Rebounds										
Player		FG-FGA	FT-FTA	Off. Def. Tot.	PF	TP	A	TO	Bk	Stl	Min			
11 HARRIS, Alex	6	3-8	0-0	0-0	3	1	4	3	6	1	3	4	1	36
14 BURDETTE, Jenna	7	9-18	0-1	2-2	1	3	4	2	23	5	0	0	0	37
24 CANNATELLI, Lauren	2	2-8	0-3	1-1	0	2	2	0	5	0	3	0	1	35
34 LAYFIELD, JaVonna	2	5-9	2-2	2-2	1	8	9	3	14	0	2	0	5	39
42 SCARFE, Jayla	7	4-10	0-3	4-6	0	2	2	1	12	1	2	2	0	35
02 WILLIAMS, Jordan	1	3-7	2-3	0-0	0	2	2	4	8	1	1	0	0	16
15 PHILLIPS, Taera	1	0-0	0-0	0-0	0	1	1	0	0	0	0	0	0	2
Team														
Totals		26-60	4-12	9-11	7	27	34	13	65	8	11	6	7	203

### Saint Joseph's 59 • 7-8, 2-1 A-10

		Total	3 Ptr	Rebounds										
Player		FG-FGA	FT-FTA	Off. Def. Tot.	PF	TP	A	TO	Bk	Stl	Min			
32 WOODS, Chelsea	1	7-17	0-0	1-1	5	6	11	3	15	5	5	0	1	33
30 FRANKLYN, Adashia	1	4-12	0-0	2-4	4	6	10	2	10	0	0	2	1	39
10 FIORAVANTI, Amanda	1	3-9	0-0	0-0	1	3	4	1	6	3	4	3	0	25
12 MONAGHAN, Alyssa	2	2-8	1-4	2-2	0	5	5	2	7	5	3	0	0	38
20 VEILLEUX, Sarah	7	4-12	2-7	2-2	2	2	4	4	12	1	3	0	1	34
04 ROIG, Iula	1	0-0	0-0	0-0	0	1	1	0	0	0	0	0	0	2
02 BAISDEN, Kristalyn	1	3-6	3-6	0-0	1	0	1	2	9	0	0	0	0	23
01 GARNER, Jaryn	1	0-1	0-0	0-0	1	1	2	0	0	0	1	0	1	9
Team														
Totals		23-65	6-17	7-9	14	27	41	14	59	14	16	5	4	200

Officials: Ange Stanton, John Caputo, Krista Mackey  
Technical Fouls: Dayton:None Saint Joseph's:None  
Attendance: 747

Score by periods	1st	2nd	3rd	4th	Total
Dayton	16	13	13	23	65
Saint Joseph's	19	10	17	13	59

LAST FG - DAYTON: 4th qtr 0:16 SJU 4th qtr 0:16  
Largest lead - DAYTON by 6 4th qtr 0:16 SJU by 9 2nd qtr 0:31  
DAYTON led for 07:23 SJU led for 24:47 Game tied for 07:27

Score tied - 12 times  
Lead changed - 8 times

### Richmond 72 • 7-10, 2-2 A-10

		Total	3 Ptr	Rebounds										
Player		FG-FGA	FT-FTA	Off. Def. Tot.	PF	TP	A	TO	Bk	Stl	Min			
11 WIKI, Karleigh	1	2-2	0-0	0-0	0	1	1	0	4	0	0	1	0	6
33 DUGGAN, Amy	1	1-4	1-3	0-0	0	3	3	1	3	1	2	0	0	13
03 HATCHEL, Dee	2	4-5	0-0	1-2	1	2	3	2	9	0	3	0	0	28
11 PARSON, Micaela	2	5-18	1-3	10-11	1	2	3	3	21	2	1	0	0	36
10 PARSON, Alex	2	6-11	3-4	3-3	0	1	1	1	18	1	0	0	0	27
01 HINDS-CLARKE, Jaide	1	2-7	0-0	0-0	1	2	3	4	4	0	0	1	2	17
05 WISLMAN, Hagan	1	0-0	0-0	0-0	0	0	0	0	0	0	0	0	0	2
14 HUDALLA, Alicia	1	3-5	1-2	0-0	3	0	3	3	7	2	0	1	1	28
22 IRLUI-SDA, E Autumn	1	0-2	0-1	0-0	1	0	1	0	0	1	0	0	0	5
23 CUNRY, Tonysha	1	1-8	0-1	0-0	2	1	3	3	2	1	1	0	1	23
30 FEE, Kaitlyn	1	2-6	0-3	0-0	0	1	1	0	4	0	1	0	0	15
Team														
Totals		26-68	6-17	14-16	12	17	29	17	72	8	8	3	4	200

### Saint Joseph's 81 • 8-8, 3-1 A-10

		Total	3 Ptr	Rebounds										
Player		FG-FGA	FT-FTA	Off. Def. Tot.	PF	TP	A	TO	Bk	Stl	Min			
33 FRANKLYN, Adashia	1	5-11	0-0	3-6	7	4	11	1	13	3	3	1	0	32
10 FIORAVANTI, Amanda	1	4-8	0-0	1-2	1	3	4	2	9	3	2	0	0	25
12 MONAGHAN, Alyssa	2	2-7	1-2	2-2	1	4	5	2	7	6	0	0	1	36
20 VEILLEUX, Sarah	2	10-15	4-8	1-1	1	5	6	1	25	2	3	0	0	34
32 WOODS, Chelsea	7	8-18	0-0	4-5	6	5	11	3	20	6	3	0	0	31
04 ROIG, Iula	1	0-1	0-0	1-2	0	0	0	0	1	0	0	0	0	1
02 BAISDEN, Kristalyn	1	0-3	0-1	0-0	0	0	0	2	0	0	0	0	0	10
11 MARZ, Avery	1	0-0	0-0	0-0	0	0	0	0	0	0	0	0	0	1
10 SHIFFHAN, Mary	1	0-2	0-1	0-0	0	1	2	0	0	0	0	0	0	10
01 GARNER, Jaryn	1	1-2	0-0	2-2	1	3	4	1	4	4	0	0	2	16
35 CLAY, Michala	1	1-1	0-0	0-0	0	0	0	0	2	1	0	0	0	4
Team														
Totals		31-68	5-12	14-20	20	29	49	14	61	25	13	1	3	200

Officials: Joanne Aldrich, John Galen, Maggie Tieman  
Technical Fouls: Richmond:None Saint Joseph's:None  
Attendance: 581

Score by periods	1st	2nd	3rd	4th	Total
Richmond	19	13	15	25	72
Saint Joseph's	25	22	11	23	81

LAST FG - RICHMOND: 4th qtr 0:11 SJU 4th qtr 0:16  
Largest lead - RICHMOND by 3 1st qtr 0:57 SJU by 19 4th qtr 0:28  
RICHMOND led for 23:02 SJU led for 34:11 Game tied for 07:04

Score tied - 5 times  
Lead changed - 8 times

## SEASON HIGHS

## #1 WHISPER FISHER

PTS: 6, at Bucknell, 11/15/17  
 FGM: 3, at Bucknell, 11/15/17  
 FGA: 3, at Bucknell, 11/15/17  
 3FGM: --  
 3FGA: --  
 FTM: --  
 FTA: --  
 OFF REB: 1, 2x, last at James Madison, 11/19/17  
 DEF REB: 1, 2x, last at Bucknell, 11/15/17  
 TOTAL REB: 2, at Niagara, 11/12/17  
 AST: 2, 2x, last at Bucknell, 11/15/17  
 BLK: 1, 3x, last at Villanova, 12/3/17  
 STL: 1, 3x, last vs. Saint Peter's, 11/26/17  
 MIN: 15, at Bucknell, 11/15/17

## #2 LULA ROIG

PTS: 5, 2x, last at Villanova, 12/3/17  
 FGM: 1, 7x, last vs. Florida, 12/21/17  
 FGA: 3, 2x, last at Towson, 12/5/17  
 3FGM: --  
 3FGA: --  
 FTM: 3, 3x, last at Villanova, 12/3/17  
 FTA: 8, vs. Saint Peter's, 11/26/17  
 OFF REB: 3, vs. Saint Peter's, 11/26/17  
 DEF REB: 3, at Villanova, 12/3/17  
 TOTAL REB: 5, vs. Saint Peter's, 11/26/17  
 AST: 4, at Niagara, 11/12/17  
 BLK: --  
 STL: 3, vs. Saint Peter's, 11/26/17  
 MIN: 14, 2x, last at Villanova, 12/3/17

## #3 NAILAH DELINOIS

PTS: --  
 FGM: --  
 FGA: --  
 3FGM: --  
 3FGA: --  
 FTM: --  
 FTA: --  
 OFF REB: --  
 DEF REB: --  
 TOTAL REB: --  
 AST: --  
 BLK: --  
 STL: --  
 MIN: --

## #4 KRISTALYN BAISDEN

PTS: 19, at Niagara, 11/12/17  
 FGM: 7, at Niagara, 11/12/17  
 FGA: 14, at St. Bonaventure, 1/3/18  
 3FGM: 5, at Niagara, 11/12/17  
 3FGA: 6, at Niagara, 11/12/17  
 FTM: 2, at James Madison, 11/19/17  
 FTA: 4, at James Madison, 11/19/17  
 OFF REB: 3, at St. Bonaventure, 1/3/18  
 DEF REB: 2, at James Madison, 11/19/17  
 TOTAL REB: 3, 3x, last at St. Bonaventure, 1/3/18  
 AST: 3, vs. VCU, 12/31/17  
 BLK: --  
 STL: 3, at Bucknell, 11/15/17  
 MIN: 35, at St. Bonaventure, 1/3/18

## #11 AVERY MARZ

PTS: 8, 2x, last at Towson, 12/5/17  
 FGM: 3, vs. Saint Peter's, 11/26/17  
 FGA: 4, at Towson, 12/5/17  
 3FGM: 1, 2x, last vs. Saint Peter's, 11/26/17  
 3FGA: 3, at Niagara, 11/12/17  
 FTM: 4, at Towson, 12/5/17  
 FTA: 4, at Towson, 12/5/17  
 OFF REB: --  
 DEF REB: 2, 3x, last vs. Drexel, 12/17/17  
 TOTAL REB: 2, 3x, last vs. Drexel, 12/17/17  
 AST: 1, 5x, last vs. Florida, 12/21/17  
 BLK: --  
 STL: 1, 3x, last vs. Drexel, 12/17/17  
 MIN: 13, vs. Penn, 12/11/17

## #12 ALYSSA MONAGHAN

PTS: 23, at Niagara, 11/12/17  
 FGM: 8, at Niagara, 11/12/17  
 FGA: 18, at St. Bonaventure, 1/3/18  
 3FGM: 7, at Niagara, 11/12/17  
 3FGA: 14, at St. Bonaventure, 1/3/18  
 FTM: 24, at St. Bonaventure, 1/3/18  
 FTA: 6, at St. Bonaventure, 1/3/18  
 OFF REB: 2, at Towson, 12/5/17  
 DEF REB: 7, 3x, last at St. Bonaventure, 1/3/18  
 TOTAL REB: 8, 2x, last at St. Bonaventure, 1/3/18  
 AST: 8, vs. VCU, 12/31/17  
 BLK: 1, 2x, last at Towson, 12/5/17  
 STL: 4, vs. Eastern Illinois, 11/25/17  
 MIN: 40, vs. Princeton, 12/20/17

## #13 MARY SHEEHAN

PTS: 6, at St. Bonaventure, 1/3/18  
 FGM: 2, 5x, last at St. Bonaventure, 1/3/18  
 FGA: 6, 2x, last at St. Bonaventure, 1/3/18  
 3FGM: 1, 3x, last at St. Bonaventure, 1/3/18  
 3FGA: 3, 2x, last at St. Bonaventure, 1/3/18  
 FTM: 1, at St. Bonaventure, 1/3/18  
 FTA: 2, at St. Bonaventure, 1/3/18  
 OFF REB: 3, at Niagara, 11/12/17  
 DEF REB: 2, vs. Princeton, 12/20/17  
 TOTAL REB: 4, at Niagara, 11/12/17  
 AST: 1, 2x, last at St. Bonaventure, 1/3/18  
 BLK: 2, at St. Bonaventure, 1/3/18  
 STL: 1, at St. Bonaventure, 1/3/18  
 MIN: 31, at St. Bonaventure, 1/3/18

## #20 KATIE JEKOT

PTS: --  
 FGM: --  
 FGA: --  
 3FGM: --  
 3FGA: --  
 FTM: --  
 FTA: --  
 OFF REB: --  
 DEF REB: --  
 TOTAL REB: --  
 AST: --  
 BLK: --  
 STL: --  
 MIN: --

## #30 SARAH VEILLEUX

PTS: 25, 2x, last vs. Richmond, 1/10/18  
 FGM: 10, vs. Richmond, 1/10/18  
 FGA: 16, vs. Penn, 12/11/17  
 3FGM: 5, at James Madison, 11/19/17  
 3FGA: 8, vs. Richmond, 1/10/18  
 FTM: 5, vs. Saint Peter's 11/26/17  
 FTA: 5, vs. Saint Peter's 11/26/17  
 OFF REB: 2, 3x, last vs. Dayton, 1/7/18  
 DEF REB: 5, 4x, last vs. Richmond, 1/10/18  
 TOTAL REB: 6, 3x, last vs. Richmond, 1/10/18  
 AST: 5, at Niagara, 11/12/17  
 BLK: 1, 3x, last vs. Eastern Illinois, 11/25/17  
 STL: 3, vs. Eastern Illinois, 11/25/17  
 MIN: 38, at Towson, 12/5/17

## #31 JARYN GARNER

PTS: 4, 2x, last vs. Richmond, 1/10/18  
 FGM: 1, 3x, last vs. Richmond, 1/10/18  
 FGA: 2, 4x, last vs. Richmond, 1/10/18  
 3FGM: --  
 3FGA: --  
 FTM: 2, 2x, last vs. Richmond, 1/10/18  
 FTA: 2, 3x, last vs. Richmond, 1/10/18  
 OFF REB: 4, vs. Penn, 12/11/17  
 DEF REB: 4, vs. Richmond, 1/10/18  
 TOTAL REB: 7, vs. Penn, 12/11/17  
 AST: 4, vs. Richmond, 1/10/18  
 BLK: 1, 2x, last at Temple, 11/29/17  
 STL: 2, 2x, last vs. Richmond, 1/10/18  
 MIN: 23, vs. Drexel, 12/17/17

## #32 CHELSEA WOODS

PTS: 23, at James Madison, 11/19/17  
 FGM: 8, 2x, last vs. Richmond, 1/10/18  
 FGA: 18, vs. Richmond, 1/10/18  
 3FGM: --  
 3FGA: --  
 FTM: 9, at James Madison, 11/19/17  
 FTA: 12, at James Madison, 11/19/17  
 OFF REB: 7, at Towson, 12/5/17  
 DEF REB: 9, at Bucknell, 11/15/17  
 TOTAL REB: 11, 4x, last vs. Richmond, 1/10/18  
 AST: 6, vs. Richmond, 1/10/18  
 BLK: 4, vs. Drexel, 12/17/17  
 STL: 2, 4x, last vs. Florida, 12/21/17  
 MIN: 36, vs. Princeton, 12/20/17

## #33 ADASHIA FRANKLYN

PTS: 15, vs. Eastern Illinois, 11/25/17  
 FGM: 6, 2x, last vs. Penn, 12/11/17  
 FGA: 14, at Temple, 11/29/17  
 3FGM: --  
 3FGA: --  
 FTM: 4, at Niagara, 11/12/17  
 FTA: 9, at Temple, 11/29/17  
 OFF REB: 7, vs. Richmond, 1/10/18  
 DEF REB: 10, at Niagara, 11/12/17  
 TOTAL REB: 15, at Niagara, 11/12/17  
 AST: 3, 2x, last s. Richmond, 1/10/18  
 BLK: 2, 2x, last vs. Dayton, 1/7/18  
 STL: 2, vs. Florida, 12/21/17  
 MIN: 39, vs. Dayton, 1/7/18

## #34 AMANDA FIORAVANTI

PTS: 22, at Temple, 11/29/17  
 FGM: 8, vs. Princeton, 12/20/17  
 FGA: 17, at Bucknell, 11/15/17  
 3FGM: --  
 3FGA: --  
 FTM: 8, at Temple, 11/29/17  
 FTA: 11, at Temple, 11/29/17  
 OFF REB: 5, at St. Bonaventure, 1/3/18  
 DEF REB: 8, at St. Bonaventure, 1/3/18  
 TOTAL REB: 13, at St. Bonaventure, 1/3/18  
 AST: 4, 3x, last at Towson, 12/5/17  
 BLK: 3, vs. Dayton, 1/7/18  
 STL: 1, 4x, last vs. VCU, 12/31/17  
 MIN: 38, at Temple, 11/29/17

## #35 MICHALA CLAY

PTS: 6, vs. Penn, 12/11/17  
 FGM: 3, vs. Penn, 12/11/17  
 FGA: 4, vs. Penn, 12/11/17  
 3FGM: --  
 3FGA: --  
 FTM: 1, 2x, last vs. Florida, 12/21/17  
 FTA: 2, 2x, last vs. Florida, 12/21/17  
 OFF REB: 1, vs. Eastern Illinois, 11/25/17  
 DEF REB: -1, vs. Eastern Illinois, 11/25/17  
 TOTAL REB: 2, vs. Eastern Illinois, 11/25/17  
 AST: 1, 3x, last vs. Richmond, 1/10/18  
 BLK: --  
 STL: 1, 2x, last vs. Saint Peter's 11/26/17  
 MIN: 10, 2x, last vs. Saint Peter's 11/26/17

## #40 CANDACE BELVEDERE

PTS: 2, 3x, last vs. Saint Peter's 11/26/17  
 FGM: 1, 3x, last vs. Saint Peter's 11/26/17  
 FGA: 3, 2x, last vs. Florida, 12/21/17  
 3FGM: --  
 3FGA: 1, vs. Florida, 12/21/17  
 FTM: --  
 FTA: --  
 OFF REB: 2, vs. Florida, 12/21/17  
 DEF REB: 2, vs. VCU, 12/31/17  
 TOTAL REB: 3, vs. Florida, 12/21/17  
 AST: 1, 3x, last vs. VCU, 12/31/17  
 BLK: 1, vs. Penn, 12/11/17  
 STL: 1, vs. Florida, 12/21/17  
 MIN: 15, vs. Florida, 12/21/17

## CAREER HIGHS

## #1 WHISPER FISHER

PTS: 6, at Bucknell, 11/15/17  
 FGM: 3, at Bucknell, 11/15/17  
 FGA: 3, at Bucknell, 11/15/17  
 3FGM: --  
 3FGA: --  
 FTM: 3, vs. Drake, 1/31/16  
 FTA: 4, vs. Drake, 1/31/16  
 OFF REB: 2, vs. Western Michigan, 12/2/15  
 DEF REB: 4, vs. Western Michigan, 12/2/15  
 TOTAL REB: 6, vs. Western Michigan, 12/2/15  
 AST: 2, 2, last at Bucknell, 11/15/17  
 BLK: 4, vs. Western Michigan, 12/2/15  
 STL: 1, 24x, last vs. Saint Peter's, 11/26/17  
 MIN: 15, at Bucknell, 11/15/17

## #2 LULA ROIG

PTS: 5, 2x, last at Villanova, 12/3/17  
 FGM: 1, 6x, last vs. Penn, 12/11/17  
 FGA: 3, 2x, last at Towson, 12/5/17  
 3FGM: --  
 3FGA: --  
 FTM: 3, 3x, last at Villanova, 12/3/17  
 FTA: 8, vs. Saint Peter's, 11/26/17  
 OFF REB: 3, vs. Saint Peter's, 11/26/17  
 DEF REB: 3, at Villanova, 12/3/17  
 TOTAL REB: 5, vs. Saint Peter's, 11/26/17  
 AST: 4, at Niagara, 11/12/17  
 BLK: --  
 STL: 3, vs. Saint Peter's, 11/26/17  
 MIN: 14, 2x, last at Villanova, 12/3/17

## #3 NAILAH DELINOIS

PTS: --  
 FGM: --  
 FGA: --  
 3FGM: --  
 3FGA: --  
 FTM: --  
 FTA: --  
 OFF REB: --  
 DEF REB: --  
 TOTAL REB: --  
 AST: --  
 BLK: --  
 STL: --  
 MIN: --

## #4 KRISTALYN BAISDEN

PTS: 19, at Niagara, 11/12/17  
 FGM: 7, at Niagara, 11/12/17  
 FGA: 14, 2x, last at St. Bonaventure, 1/3/18  
 3FGM: 6, vs. Massachusetts, 1/7/17  
 3FGA: 10, at St. Bonaventure, 1/3/18  
 FTM: 6, vs. St. Bonaventure, 1/29/17  
 FTA: 6, vs. St. Bonaventure, 1/29/17  
 OFF REB: 3, at St. Bonaventure, 1/3/18  
 DEF REB: 3, at Richmond, 12/31/16  
 TOTAL REB: 4, at Richmond, 12/31/16  
 AST: 4, 2x, last at VCU, 2/15/17  
 BLK: 1, 3x, last vs. George Mason, 2/21/17  
 STL: 3, at Bucknell, 11/15/17  
 MIN: 37, at Richmond, 12/31/16

## #11 AVERY MARZ

PTS: 8, 2x, last at Towson, 12/5/17  
 FGM: 3, vs. Saint Peter's, 11/26/17  
 FGA: 4, at Towson, 12/5/17  
 3FGM: 1, 2x, last vs. Saint Peter's, 11/26/17  
 3FGA: 3, at Niagara, 11/12/17  
 FTM: 4, at Towson, 12/5/17  
 FTA: 4, at Towson, 12/5/17  
 OFF REB: --  
 DEF REB: 2, 3x, last vs. Drexel, 12/17/17  
 TOTAL REB: 3, 2x, last vs. Drexel, 12/17/17  
 AST: 1, 4x, last vs. Drexel, 12/17/17  
 BLK: --  
 STL: 1, 3x, last vs. Drexel, 12/17/17  
 MIN: 13, vs. Penn, 12/11/17

## #12 ALYSSA MONAGHAN

PTS: 23, at Niagara, 11/12/17  
 FGM: 8, at Niagara, 11/12/17  
 FGA: 23, at Richmond, 12/31/16  
 3FGM: 7, at Niagara, 11/12/17  
 3FGA: 14, at St. Bonaventure, 1/3/18  
 FTM: 4, 2x, last at St. Bonaventure, 1/3/18  
 FTA: 6, at St. Bonaventure, 1/3/18  
 OFF REB: 2, at Towson, 12/5/17  
 DEF REB: 7, 4x, last at St. Bonaventure, 1/3/18  
 TOTAL REB: 8, 2x, last at St. Bonaventure, 1/3/18  
 AST: 8, vs. VCU, 12/31/17  
 BLK: 1, 3x, last at Towson, 12/5/17  
 STL: 4, vs. Eastern Illinois, 11/25/17  
 MIN: 40, 2x, last vs. Princeton, 12/20/17

## #13 MARY SHEEHAN

PTS: 6, at St. Bonaventure, 1/3/18  
 FGM: 2, 5x, last at St. Bonaventure, 1/3/18  
 FGA: 6, 2x, last at St. Bonaventure, 1/3/18  
 3FGM: 1, 3x, last at St. Bonaventure, 1/3/18  
 3FGA: 3, 2x, last at St. Bonaventure, 1/3/18  
 FTM: 1, at St. Bonaventure, 1/3/18  
 FTA: 2, at St. Bonaventure, 1/3/18  
 OFF REB: 3, at Niagara, 11/12/17  
 DEF REB: 2, vs. Princeton, 12/20/17  
 TOTAL REB: 4, at Niagara, 11/12/17  
 AST: 1, 2x, last at St. Bonaventure, 1/3/18  
 BLK: 2, at St. Bonaventure, 1/3/18  
 STL: 1, at St. Bonaventure, 1/3/18  
 MIN: 31, at St. Bonaventure, 1/3/18

## #20 KATIE JEKOT

PTS: --  
 FGM: --  
 FGA: --  
 3FGM: --  
 3FGA: --  
 FTM: --  
 FTA: --  
 OFF REB: --  
 DEF REB: --  
 TOTAL REB: --  
 AST: --  
 BLK: --  
 STL: --  
 MIN: --

## #30 SARAH VEILLEUX

PTS: 25, 2x, last vs. Richmond, 1/10/18  
 FGM: 9, 2x, last vs. Eastern Illinois, 11/25/17  
 FGA: 16, vs. Penn, 12/11/17  
 3FGM: 5, 2x, last at James Madison, 11/19/17  
 3FGA: 9, vs. NJIT, 12/13/16  
 FTM: 5, vs. Saint Peter's, 11/26/17  
 FTA: 5, vs. Saint Peter's, 11/26/17  
 OFF REB: 3, 3x, last vs. Virginia, 3/17/17  
 DEF REB: 9, vs. La Salle, 3/3/17  
 TOTAL REB: 11, at VCU, 2/15/17  
 AST: 5, at Niagara, 11/12/17  
 BLK: 3, at New Mexico, 11/26/16  
 STL: 4, vs. Eastern Illinois, 11/25/17  
 MIN: 40, at Central Michigan, 12/9/16

## #31 JARYN GARNER

PTS: 11, vs. BYU, 11/25/16  
 FGM: 4, vs. BYU, 11/25/16  
 FGA: 9, vs. Bucknell, 11/13/16  
 3FGM: 1, 2x, last at Penn, 11/22/16  
 3FGA: 2, vs. Bucknell, 11/13/16  
 FTM: 3, 3x, last vs. BYU, 11/25/16  
 FTA: 6, vs. BYU, 11/25/16  
 OFF REB: 4, 2x, last vs. Penn, 12/11/17  
 DEF REB: 5, vs. George Mason, 2/21/17  
 TOTAL REB: 7, 2x, last vs. Penn, 12/11/17  
 AST: 6, vs. Rhode Island, 2/25/17  
 BLK: 1, 5x, last at Temple, 11/29/17  
 STL: 3, 2x, last vs. Duquesne, 3/4/17  
 MIN: 35, vs. George Mason, 2/21/17

## #32 CHELSEA WOODS

PTS: 24, at New Mexico, 11/26/16  
 FGM: 9, 3x, last vs. Hofstra, 12/22/16  
 FGA: 19, at Iona, 11/16/16  
 3FGM: --  
 3FGA: 2, vs. Bucknell, 11/13/16  
 FTM: 9, 4x, last at James Madison, 11/19/17  
 FTA: 12, at James Madison, 11/19/17  
 OFF REB: 9, vs. Massachusetts, 1/10/15  
 DEF REB: 9, 7x, last at Bucknell, 11/15/17  
 TOTAL REB: 17, vs. Rhode Island, 3/3/16  
 AST: 6, vs. Richmond, 1/10/18  
 BLK: 4, vs. Drexel, 12/17/17  
 STL: 6, vs. Bucknell, 11/13/16  
 MIN: 34, 2x, last vs. Eastern Illinois, 11/25/17

## #33 ADASHIA FRANKLYN

PTS: 23, 2x, last vs. Rhode Island, 2/25/17  
 FGM: 9, vs. James Madison, 12/28/16  
 FGA: 17, at Richmond, 12/31/16  
 3FGM: --  
 3FGA: 1, at Rhode Island, 2/11/15  
 FTM: 11, vs. Rhode Island, 2/25/17  
 FTA: 13, vs. Rhode Island, 2/25/17  
 OFF REB: 12, at Richmond, 12/31/16  
 DEF REB: 13, at Richmond, 12/31/16  
 TOTAL REB: 25, at Richmond, 12/31/16  
 AST: 4, vs. James Madison, 12/28/16  
 BLK: 4, 3x, last vs. Fordham, 1/18/17  
 STL: 3, 2x, last at Iona, 11/16/16  
 MIN: 42, at Dayton, 1/21/17

## #34 AMANDA FIORAVANTI

PTS: 22, at Temple, 11/29/17  
 FGM: 8, 4x, last vs. Princeton, 12/20/17  
 FGA: 17, at Bucknell, 11/15/17  
 3FGM: --  
 3FGA: --  
 FTM: 8, at Temple, 11/29/17  
 FTA: 11, at Temple, 11/29/17  
 OFF REB: 6, 2x, last vs. Duquesne, 3/4/17  
 DEF REB: 10, vs. Penn, 12/8/15  
 TOTAL REB: 13, at St. Bonaventure, 1/3/18  
 AST: 6, vs. Massachusetts, 1/7/17  
 BLK: 5, vs. George Mason, 2/21/17  
 STL: 5, at Rhode Island, 1/25/17  
 MIN: 38, at Temple, 11/29/17

## #35 MICHALA CLAY

PTS: 8, vs. NJIT, 12/13/16  
 FGM: 3, vs. Penn, 12/11/17  
 FGA: 6, vs. Temple, 11/11/16  
 3FGM: --  
 3FGA: --  
 FTM: 4, vs. NJIT, 12/13/16  
 FTA: 4, vs. NJIT, 12/13/16  
 OFF REB: 2, at Lehigh, 12/2/15  
 DEF REB: 4, vs. Seton Hall, 11/21/15  
 TOTAL REB: 4, 2x, last at Lehigh, 12/2/15  
 AST: 2, 2x, last vs. Massachusetts, 1/7/17  
 BLK: 1, vs. Davidson, 2/18/17  
 STL: 2, at Richmond, 12/31/16  
 MIN: 15, vs. Temple, 11/11/16

## #40 CANDACE BELVEDERE

PTS: 2, 3x, last vs. Saint Peter's 11/26/17  
 FGM: 1, 3x, last vs. Saint Peter's 11/26/17  
 FGA: 3, 2x, last vs. Florida, 12/21/17  
 3FGM: --  
 3FGA: 1, vs. Florida, 12/21/17  
 FTM: --  
 FTA: --  
 OFF REB: 2, vs. Florida, 12/21/17  
 DEF REB: 2, vs. VCU, 12/31/17  
 TOTAL REB: 3, vs. Florida, 12/21/17  
 AST: 1, 3x, last vs. VCU, 12/31/17  
 BLK: 1, vs. Penn, 12/11/17  
 STL: 1, 2x, last vs. Florida, 12/21/17  
 MIN: 15, vs. Florida, 12/21/17



## GAME-BY-GAME RESULTS

DATE	OPPONENT	SCORE	W/L	ATT	HIGH POINTS	HIGH REBOUNDS	HIGH ASSISTS	HIGH STEALS
Nov. 12	at Niagara	93-69	W	463	Monaghan.....23	Franklyn .....9	Monaghan/ .....5 Veilleux	Veilleux/ .....1 Woods
Nov. 15	at Bucknell	77-53	W	704	Woods.....21	Woods .....9	Monaghan .....6	Baisden .....3
Nov. 19	at James Madison	73-66	W	1,850	Veilleux .....25	Monaghan .....7	Monaghan .....7	Woods .....2
Nov. 25	^ Eastern Illinois	80-62	W	877	Veilleux .....22	Woods .....11	Woods .....5	Monaghan/ .....4 Veilleux
Nov. 26	^ Saint Peter's	87-58	W	732				
Nov. 29	at Temple	66-69	L	1,028	Fioravanti.....22	Woods .....11	Fioravanti/ .....3 Veilleux	Baisden .....2
Dec. 3	# at #25/24 Villanova	44-79	L	1,519	Franklyn .....10	Woods .....6	Roig .....3	Veilleux .....1
Dec. 5	at Towson	66-90	L	209	Veilleux .....19	Woods .....9	Fioravanti .....4	Monaghan .....2
Dec. 11	# Penn	50-57	L	913	Veilleux .....16	Franklyn .....13	Fioravanti/Roig...3	Veilleux/Roig.....2
Dec. 17	Drexel	58-65	L	3,551	Monaghan/ .....16 Woods	Three tied at .....5	Monaghan .....4	Garner/Woods .....2
Dec. 20	% vs. Princeton	54-63	L	1,054	Fioravanti.....17	Woods .....8	Monaghan .....4	Three tied at .....1
Dec. 21	% at Florida	51-71	L	1,008	Monaghan.....11	Franklyn .....10	Monaghan/ .....2 Woods	Franklyn/Woods .....2
Dec. 31	* VCU	79-41	W	711	Veilleux .....20	Franklyn .....13	Monaghan .....8	Monaghan .....2
Jan. 3	* at St. Bonaventure	70-64	W	743	Fioravanti.....16	Fioravanti .....13	Woods .....3	Monaghan .....2
Jan. 7	* Dayton	59-65	L	747	Woods.....15	Woods .....11	Monaghan/ .....5 Woods	Four tied at .....1
Jan. 10	* Richmond	81-72	W	681	Veilleux .....25	Franklyn/Woods .11	Monaghan/ .....6 Woods	Garner .....2
Jan. 13	* at Massachusetts							
Jan. 21	* at Saint Louis							
Jan. 24	* Duquesne							
Jan. 28	*# at La Salle							
Jan. 31	* at VCU							
Feb. 4	* George Mason							
Feb. 7	* Rhode Island							
Feb. 10	* at Duquesne							
Feb. 14	* at Davidson							
Feb. 17	* La Salle							
Feb. 20	* George Washington							
Feb. 24	* at Fordham							

# - Big 5 Game; \* - Atlantic 10 Game; ^ - Hawk Classic; % - Gator Classic

GAMES AS HIGH SCORER: Veilleux - 6, Monaghan - 4, Fioravanti - 3, Woods - 3, Franklyn - 1

GAMES AS HIGH REBOUNDER: Woods - 9, Franklyn - 5, Fioravanti - 2, Monaghan - 2, Garner - 1, Veilleux - 1

GAMES SCORING DOUBLE FIGURES: Veilleux - 13, Franklyn - 10, Woods - 10, Monaghan - 9, Fioravanti - 6, Baisden - 2

GAMES REBOUNTING DOUBLE FIGURES: Franklyn - 6, Woods - 6, Fioravanti - 1

GAMES SCORING 20 OR MORE POINTS: Veilleux - 4, Woods - 4, Fioravanti - 1, Monaghan - 1,

GAMES POSTING A DOUBLE-DOUBLE: Franklyn - 5, Woods - 5, Fioravanti - 1

## HAWKS BY THE NUMBERS

## SJU's Record in Games....

Decided by 5 points or less	0-1
Decided by 6-10 points	3-4
Decided by 11 points or more	5-3
Played during the day	6-5
Played at night	2-2
Televised	1-0
Home	4-3
Away	4-4
Neutral	0-1
In Overtime	0-0
In November	5-1
In December	1-6
In January	2-1
In white uniforms	4-3
In crimson uniforms	3-5
When winning the opening tip-off	7-3

## SJU's Record When Scoring....

Less than 60 points	0-6
60-69 points	0-2
70-79 points	4-0
80-89 points	3-0
90-99 points	1-0

## SJU's Record When Allowing....

Less than 60 points	2-1
60-69 points	4-4
70-79 points	2-2
80-89 points	0-0
90-100 points	0-1

## SJU's Record When....

Leading at the half	8-0
Trailing at the half	0-6
Tied at the half	0-2

## SJU's Record When Shooting...

40% or better	7-2
Less than 40%	1-5
Less than 30%	0-1
Better than opponent	7-2
Worse than opponent	1-6

## SJU's Record When...

Outrebounding opponent	7-2
Outrebounded by opponent	1-5
Equal rebounds as opponent	0-0
Committing fewer TOs than opponent	2-1
Committing more TOs than opponent	5-7
Equal TOs as opponent	1-0
Committing 14 or fewer TOs	5-5
Committing 15 or more TOs	3-3
Three players score double figures	2-4
Four players score double figures	4-0
Five players score double figures	2-0

## MISCELLANEOUS STATS

Largest winning margin:	38, vs. VCU
Largest lead in a game:	40, vs. VCU
Largest margin of defeat:	35, at Villanova
Largest deficit in a game:	37, at Villanova
Largest deficit overcome to win:	4, at James Madison

## Team Superlatives

CATEGORY	SAINT JOSEPH'S HIGH	SAINT JOSEPH'S LOW	OPPONENT'S HIGH	OPPONENTS' LOW
Total Points	93, at Niagara, 11/12/17	44, at Villanova, 12/3/17	90, by Towson, 12/5/17	41, by VCU, 12/31/17
1st Quarter Points	25, vs. Richmond, 1/10/18	6, at Villanova, 12/3/17	24, by Towson, 12/5/17	9, by Temple, 11/29/17
2nd Quarter Points	30, at Niagara, 11/12/17	6, vs. Princeton, 12/20/17	21, by Temple, 11/29/17	7, by St. Bonaventure, 1/3/18
3rd Quarter Points	24, at Niagara, 11/12/17	11, vs. Richmond, 1/10/18	31, by St. Bonaventure, 1/3/18	9, 2x, last by VCU, 12/31/17
4th Quarter Points	28, at Bucknell, 11/15/17	12, at Florida, 12/21/17	26, by Towson, 12/5/17	9, by VCU, 12/31/17
Field Goals	35, at Niagara, 11/12/17	16, at Villanova, 12/3/17	32, by Towson, 12/5/17	15, by VCU, 12/31/17
Field Goal Att.	71, at St. Bonaventure, 1/3/18	44, vs. Drexel, 12/17/17	68, 2x, last by Richmond, 1/10/18	51, by Penn, 12/11/17
Field Goal Pct.	.614, at Niagara, 11/12/17	.296, at Villanova, 12/3/17	.554, by Villanova, 12/3/17	.268, by VCU, 12/31/17
3 Point FG	15, at Niagara, 11/12/17	0, at Villanova, 12/3/17	10, by St. Bonaventure, 1/3/18	2, 2x, last by Temple, 11/29/17
3 Point Att.	27, at St. Bonaventure, 1/3/18	5, at Villanova, 12/3/17	27, by St. Bonaventure, 1/3/18	9, by Towson, 12/5/17
3 Point Pct.	.750, at Niagara, 11/12/17	.000, at Niagara, 12/3/17	.533, by Eastern Illinois, 11/25/17	.182, by James Madison, 11/19/17
Free Throws	19, at Temple, 11/29/17	5, vs. Penn, 12/11/17	28, by Niagara, 11/12/17	8, 3x, last by VCU, 12/31/17
Free Throw Att.	31, at Temple, 11/29/17	6, vs. Penn, 12/11/17	33, by Niagara, 11/12/17	10, by Eastern Illinois, 11/25/17
Free Throw Pct.	.833, vs. Penn, 12/11/17	.471, at Niagara, 11/12/17	.909, by Villanova, 12/3/17	.500, by VCU, 12/31/17
Offensive Rebs.	24, at St. Bonaventure, 1/3/18	4, vs. Drexel, 12/17/17	19, 2x, last by Temple, 11/29/17	5, by Princeton, 12/20/17
Defensive Rebs.	35, vs. VCU, 12/31/17	15, at Villanova, 12/3/17	31, 2x, last by Florida, 12/21/17	14, by Niagara, 11/12/17
Total Rebs.	52, at St. Bonaventure, 1/3/18	28, vs. Drexel, 12/17/17	50, by Temple, 11/29/17	23, 2x, last by VCU, 12/31/17
Personal Fouls	28, at Niagara, 11/12/17	11, vs. Saint Peter's, 11/26/17	23, by Temple, 11/29/17	13, 2x, last by Princeton, 12/20/17
Assists	26, at Niagara, 11/12/17	9, at Temple, 11/29/17	18, by Villanova, 12/3/17	4, by VCU, 12/31/17
Turnovers	22, vs. Drexel, 12/17/17	11, at Bucknell, 11/15/17	18, 2x, last by Saint Peter's, 11/25/17	8, 2x, last by Richmond, 1/10/18
Blocked Shots	5, vs. Drexel, 12/17/17	1, 2x, last vs. Richmond, 1/10/18	12, by Towson, 12/5/17	0, by VCU, 12/31/17
Steals	13, vs. Eastern Illinois, 11/25/17	1, at Villanova, 12/3/17	14, by Drexel, 12/17/17	1, by Bucknell, 11/15/17

## Individual Superlatives

CATEGORY	SAINT JOSEPH'S MOST	OPPONENT'S MOST
Points	25, 2x, last by Sarah Veilleux vs. Richmond, 1/10/18	31, by Mariah Ruff of St. Bonaventure, 1/3/18
Field Goals	10, by Sarah Veilleux vs. Richmond, 1/10/18	11, 2x, last by Mariah Ruff of St. Bonaventure, 1/3/18
Field Goal Att.	18, 2x, last by Chelsea Woods vs. Richmond, 1/10/18	22, by Mariah Ruff of St. Bonaventure, 1/3/18
Field Goal Pct. *	1.000 (8-of-8), by Alyssa Monaghan at Niagara, 11/12/17	.833 (5-of-6), by Alyssa Velles of Saint Peter's, 11/26/17
3 Point FG	7, by Alyssa Monaghan at Niagara, 11/12/17	8, by Mariah Ruff of St. Bonaventure, 1/3/18
3 Point Att.	14, by Alyssa Monaghan at St. Bonaventure, 1/3/18	15, by Mariah Ruff of St. Bonaventure, 1/3/18
3 Point Pct. #	1.000 (7-of-7), by Alyssa Monaghan at Niagara, 11/12/17	1.000 (3-of-3), by Alyssa Velles of Saint Peter's, 11/26/17
Free Throws	9, by Chelsea Woods at James Madison, 11/19/17	11, by Raine Bankston of Towson, 12/5/17
Free Throw Att.	12, by Chelsea Woods at James Madison, 11/19/17	12, 2x, last by Raine Bankston of Towson, 12/5/17
Free Throw Pct. *	1.000 (5-of-5), by Sarah Veilleux vs. Saint Peter's, 11/26/17	1.000 (8-of-8), by Aubree Brown of Drexel, 12/17/17
Offensive Rebs.	7, 2x, last by Adashia Franklyn vs. Richmond, 1/10/18	8, by Mia Davis of Temple, 11/29/17
Defensive Rebs.	10, by Adashia Franklyn at Niagara, 11/12/17	11, by Tanaya Atkinson of Temple, 11/29/17
Total Rebs.	15, by Adashia Franklyn at Niagara, 11/12/17	13, by Tanaya Atkinson and Mia Davis of Temple, 11/29/17
Assists	8, by Alyssa Monaghagn vs. VCU, 12/31/17	6, by Kelly Jekot of Villanova, 12/3/17
Turnovers	5, by Amanda Fioravanti at James Madison, 11/19/17	6, 2x, last by Jennifer Nehls of Eastern Illinois, 11/25/17
Blocked Shots	4, by Chelsea Woods vs. Drexel, 12/17/17	6, by Mary Cuevas of Towson, 12/5/17
Steals	4, by Alyssa Monaghan, Sarah Veilleux vs. Eastern Illinois, 11/25/17	5, 2x, last by Kelsi Lidge and Bailey Greenberg of Drexel, 12/17/17
Minutes	40, by Alyssa Monaghan vs. Princeton, 12/21/17	39, 2x, last by JaVonna Layfield of Dayton, 1/7/18

\* - Minimum of five attempts; # - Minimum of three attempts

## OVERALL STATISTICS

RECORD:	OVERALL	HOME	AWAY	NEUTRAL
ALL GAMES	8-8	4-3	4-4	0-1
CONFERENCE	3-1	2-1	1-0	0-0
NON-CONFERENCE	5-7	2-2	3-4	0-1

#	Player	gp-gs	min	avg	Total		3-Point		F-Throw		Rebounds								a	to	blk	stl	pts	avg					
					fg-fga	fg%	3fg-fga	3fg%	ft-fa	ft%	off	def	tot	avg	pf	dq													
30	VEILLEUX, Sarah	15-15	485	32.3	83-152	.546	30-65	.462	24-26	.923	13	51	64	4.3	36	0	29	18	4	15	220	14.7							
32	WOODS, Chelsea	15-13	417	27.8	75-176	.426	0-0	.000	59-72	.819	46	76	122	8.1	44	2	38	35	7	14	209	13.9							
12	MONAGHAN, Alyssa	16-16	542	33.9	60-162	.370	32-94	.340	16-20	.800	7	62	69	4.3	21	0	63	24	2	19	168	10.5							
33	FRANKLYN, Adashia	16-16	452	28.3	68-138	.493	0-0	.000	20-48	.417	66	63	129	8.1	34	0	16	32	10	5	156	9.8							
34	FIORAVANTI, Amanda	16-15	411	25.7	63-147	.429	0-2	.000	22-43	.512	22	64	86	5.4	47	2	38	50	17	5	148	9.3							
04	BAISDEN, Kristalyn	15-3	295	19.7	21-58	.362	14-45	.311	3-8	.375	8	6	14	0.9	28	1	14	17	0	7	59	3.9							
13	SHEEHAN, Mary	10-0	109	10.9	11-35	.314	3-12	.250	1-2	.500	6	5	11	1.1	13	0	2	1	5	1	26	2.6							
11	MARZ, Avery	11-2	76	6.9	7-14	.500	3-7	.429	7-7	1.000	0	10	10	0.9	3	0	5	8	0	3	24	2.2							
02	ROIG, Lula	14-0	108	7.7	8-20	.400	0-0	.000	12-31	.387	4	13	17	1.2	10	0	13	13	0	7	28	2.0							
35	CLAY, Michala	11-0	63	5.7	10-18	.556	0-0	.000	2-4	.500	2	4	6	0.5	9	0	3	7	0	2	22	2.0							
01	FISHER, Whisper	10-0	60	6.0	6-12	.500	0-0	.000	0-0	.000	5	4	9	0.9	8	0	4	3	3	3	12	1.2							
31	GARNER, Jaryn	11-0	141	12.8	3-20	.150	0-0	.000	4-6	.667	9	19	28	2.5	15	0	9	12	2	5	10	0.9							
40	BELVEDERE, Candac	8-0	41	5.1	3-9	.333	0-1	.000	0-0	.000	2	4	6	0.8	5	0	3	1	1	1	6	0.8							
Team											26	36	62											11					
Total.....		16	3200		418-961	.435	82-226	.363	170-267	.637	216	417	633	39.6	273	5	237	232	51	87	1088	68.0							
Opponents.....		16	3200		376-951	.395	80-245	.327	212-271	.782	170	353	523	32.7	267	0	149	192	49	96	1044	65.2							

TEAM STATISTICS	SJU	OPP	Date	Opponent	Score	Att.
SCORING	1088	1044	11/12/17	at Niagara	w 93-69	463
Points per game	68.0	65.2	11/15/17	at Bucknell	w 77-53	704
Scoring margin	+2.8	-	11/17/17	at JMU	w 73-66	1850
FIELD GOALS-ATT	418-961	376-951	11/25/17	EASTERN ILLINOIS	w 80-62	877
Field goal pct	.435	.395	11/26/17	SAINT PETER'S	w 87-58	732
3 POINT FG-ATT	82-226	80-245	11/29/17	at Temple	L 66-69	1028
3-point FG pct	.363	.327	12/3/17	at Villanova	L 44-79	1519
3-pt FG made per game	5.1	5.0	12/05/17	at Towson University	L 66-90	209
FREE THROWS-ATT	170-267	212-271	12/11/17	PENN	L 50-57	913
Free throw pct	.637	.782	12/17/17	DREXEL	L 58-65	3551
F-Throws made per game	10.6	13.3	12/20/17	vs Princeton	L 54-63	1054
REBOUNDS	633	523	3 12/21/17	at Florida	L 51-71	1008
Rebounds per game	39.6	32.7	• 12/31/17	VCU	w 79-41	711
Rebounding margin	+6.9	-	• 1/3/18	at St. Bonaventure	w 70-64	743
ASSISTS	237	149	• 1/7/18	DAYTON	L 59-65	747
Assists per game	14.8	9.3	• 1/10/18	RICHMOND	w 81-72	681
TURNOVERS	232	192	* - Conference game			
Turnovers per game	14.5	12.0				
Turnover margin	-2.5	-				
Assist/turnover ratio	1.0	0.8				
STEALS	87	96				
Steals per game	5.4	6.0				
BLOCKS	51	49				
Blocks per game	3.2	3.1				
ATTENDANCE	8212	8578				
Home games-Avg/Game	7-1173	8-940				
Neutral site-Avg/Game	-	1-1054				

Score by Periods	1st	2nd	3rd	4th	Totals
Saint Joseph's	262	267	264	295	1088
Opponents	236	256	265	287	1044

## ATLANTIC 10 STATISTICS

RECORD:	OVERALL	HOME	AWAY	NEUTRAL
ALL GAMES	3-1	2-1	1-0	0-0
CONFERENCE	3-1	2-1	1-0	0-0
NON-CONFERENCE	0-0	0-0	0-0	0-0

#	Player	gp-gs	min	avg	Total		3-Point		F-Throw		Rebounds								a	to	blk	stl	pts	avg
					fg-fga	fg%	3fg-fga	3fg%	ft-fa	ft%	off	def	tot	avg	pf	dq								
30	VEILLEUX, Sarah	3-3	94	31.3	21-40	.525	12-23	.522	3-3	1.000	4	9	13	4.3	8	0	8	9	1	2	57	19.0		
32	WOODS, Chelsea	4-4	118	29.5	26-62	.419	0-0	.000	14-17	.824	18	25	43	10.8	14	0	16	11	2	2	66	16.5		
12	MONAGHAN, Alyssa	4-4	147	36.8	13-46	.283	9-29	.310	9-11	.818	2	19	21	5.3	6	0	21	5	0	5	44	11.0		
34	FIORAVANTI, Amanda	4-4	107	26.8	19-33	.576	0-0	.000	3-8	.375	8	20	28	7.0	8	0	10	9	5	1	41	10.3		
33	FRANKLYN, Adashia	4-4	125	31.3	16-38	.421	0-0	.000	5-13	.385	22	21	43	10.8	8	0	4	10	3	2	37	9.3		
04	BAISDEN, Kristalyn	4-1	89	22.3	9-26	.346	6-20	.300	0-0	.000	6	1	7	1.8	7	0	4	4	0	1	24	6.0		
13	SHEEHAN, Mary	3-0	49	16.3	4-12	.333	2-6	.333	1-2	.500	1	1	2	0.7	6	0	1	1	2	1	11	3.7		
35	CLAY, Michala	3-0	15	5.0	2-3	.667	0-0	.000	0-0	.000	0	2	2	0.7	2	0	2	1	0	0	4	1.3		
31	GARNER, Jaryn	4-0	43	10.8	1-4	.250	0-0	.000	2-4	.500	3	6	9	2.3	2	0	5	4	0	3	4	1.0		
02	ROIG, Lula	3-0	6	2.0	0-1	.000	0-0	.000	1-2	.500	0	2	2	0.7	0	0	0	0	0	0	1	0.3		
11	MARZ, Avery	1-0	1	1.0	0-0	.000	0-0	.000	0-0	.000	0	0	0	0.0	0	0	0	0	0	0	0	0.0		
40	BELVEDERE, Candac	1-0	6	6.0	0-0	.000	0-0	.000	0-0	.000	0	2	2	2.0	0	0	1	0	0	0	0	0.0		
Team											7	11	18				2							
Total.....		4	800		111-265	.419	29-78	.372	38-60	.633	71	119	190	47.5	61	0	72	56	13	17	289	72.2		
Opponents.....		4	800		89-244	.365	23-70	.329	41-55	.745	35	85	120	30.0	61	0	27	41	11	19	242	60.5		

TEAM STATISTICS	SJU	OPP	Date	Opponent	Score	Att.
SCORING	289	242	• 12/31/17	VCU	W 79-41	711
Points per game	72.2	60.5	• 1/3/18	at St. Bonaventure	W 70-64	743
Scoring margin	+11.8	-	• 1/7/18	DAYTON	L 59-65	747
FIELD GOALS-ATT	111-265	89-244	• 1/10/18	RICHMOND	W 81-72	681
Field goal pct	.419	.365	* - Conference game			
3 POINT FG-ATT	29-78	23-70				
3-point FG pct	.372	.329				
3-pt FG made per game	7.3	5.8				
FREE THROWS-ATT	38-60	41-55				
Free throw pct	.633	.745				
F-Throws made per game	9.5	10.3				
REBOUNDS	190	120				
Rebounds per game	47.5	30.0				
Rebounding margin	+17.5	-				
ASSISTS	72	27				
Assists per game	18.0	6.8				
TURNOVERS	56	41				
Turnovers per game	14.0	10.3				
Turnover margin	-3.7	-				
Assist/turnover ratio	1.3	0.7				
STEALS	17	19				
Steals per game	4.3	4.8				
BLOCKS	13	11				
Blocks per game	3.3	2.8				
ATTENDANCE	2139	743				
Home games-Avg/Game	3-713	1-743				
Neutral site-Avg/Game	-	0-0				

Score by Periods	1st	2nd	3rd	4th	Totals
Saint Joseph's	75	69	62	83	289
Opponents	57	46	68	71	242



TELEVISION AND RADIO ROSTER



**#1 - Whisper Fisher**  
R-So. • Forward • 6-2



**#2 - Lula Roig**  
Fr. • Guard • 5-9



**#3 - Nailah Delinois**  
R-Fr. • Guard • 5-9



**#4 - Kristalyn Baisden**  
Jr. • Guard • 5-10



**#11 - Avery Marz**  
Jr. • Guard • 5-7



**#12 - Alyssa Monaghan**  
Jr. • Guard • 5-5



**#13 - Mary Sheehan**  
Fr. • Guard • 5-1



**#20 - Katie Jekot**  
Fr. • Guard • 5-9



**#30 - Sarah Veilleux**  
Jr. • Guard/Forward • 6-0



**#31 - Jaryn Garner**  
Grad. • Guard • 5-7



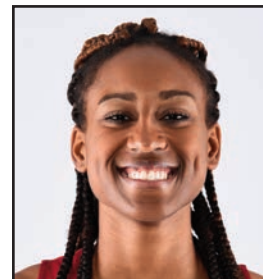
**#32 - Chelsea Woods**  
Sr. • Guard/Forward • 6-0



**#33 - Adashia Franklyn**  
Sr. • Forward • 6-1



**#34 - Amanda Fioravanti**  
Grad. • Forward • 6-1



**#35 - Michala Clay**  
Jr. • Forward • 6-0



**#40 - Candace Belvedere**  
Sr. • Forward • 6-2



**Cindy Griffin**  
Head Coach



**Susan Moran**  
Associate Head Coach



**Stephanie McCaffrey**  
Assistant Coach



**John Hampton**  
Assistant Coach