

**2014-15 SCHEDULE/RESULTS**

Overall: 2-4; Atlantic 10: 0-0; Big 1-0

**NOVEMBER**

Fri. 14	at No. 24/RV Rutgers	L, 52-76
<b>Tues. 18</b>	<b>TEMPLE #</b>	<b>W, 78-74 OT</b>
Sat. 22	at Liberty	L, 75-76 OT
Tues. 25	at Drexel	L, 76-63
Sat. 29	vs. St. Francis Brooklyn	W, 64-42
Sun. 30	at Seton Hall	L, 60-77

**DECEMBER**

<b>Thurs. 4</b>	<b>LEHIGH</b>	<b>L, 71-73</b>
<b>Sun. 7</b>	<b>VILLANOVA #</b>	<b>2:00 p.m.</b>
Tues. 9	at Penn #	5:30 p.m.
Sun. 21	at Notre Dame	1:00 p.m.
<b>Sun. 28</b>	<b>QUINNIAC</b>	<b>2:00 p.m.</b>
<b>Mon. 29</b>	<b>CSUN or FLORIDA GULF COAST</b>	<b>TBD</b>

**JANUARY**

<b>Sat. 3</b>	<b>VCU *</b>	<b>7:00 p.m.</b>
<b>Wed. 7</b>	at George Washington *	7:00 p.m.
<b>Sat. 10</b>	<b>MASSACHUSETTS *</b>	<b>2:00 p.m.</b>
Thurs. 15	at Fordham * (CBSSN)	7:00 p.m.
Sun. 18	at Duquesne * (CBSSN)	4:00 p.m.
<b>Sat. 24</b>	<b>ST. BONAVENTURE *</b>	<b>2:00 p.m.</b>
Wed. 28	at Saint Louis *	12:30 p.m.
Sat. 31	at Davidson *	2:00 p.m.

**FEBRUARY**

<b>Wed. 4</b>	<b>LA SALLE *#</b>	<b>7:00 p.m.</b>
<b>Sun. 8</b>	<b>FORDHAM *</b>	<b>2:00 p.m.</b>
Wed. 11	at Rhode Island *	7:00 p.m.
Sun. 15	at Dayton * (CBSSN)	Noon
<b>Wed. 18</b>	<b>GEORGE MASON *</b>	<b>7:00 p.m.</b>
<b>Sat. 21</b>	<b>RICHMOND *</b>	<b>2:00 p.m.</b>
<b>Wed. 25</b>	<b>DUQUESNE *</b>	<b>7:00 p.m.</b>

**MARCH**

Sun. 1	at La Salle *	1:00 p.m.
W-Sn. 4-8	Atlantic 10 Championship +	

Home games in **BOLD CAPS** at Hagan Arena;  
 All game times are EST and subject to change  
 \* Atlantic 10 Conference Game  
 # - Philadelphia Big 5 Game  
 + at The Richmond Coliseum (Richmond, Va.)

Contact: Jack Jumper • Cell Phone: 610-660-3389 • Email: jjumper@sju.edu

### SAINT JOSEPH'S UNIVERSITY HAWKS (2-5, 1-0 Big 5)

VS.

### VILLANOVA UNIVERSITY WILDCATS (2-5, 0-0 BIG 5)

Game #8 • December 7, 2014

Hagan Arena • Philadelphia, Pa. • 2:00 p.m.

#### GAME DAY AT A GLANCE

<b>Arena</b>	Hagan Arena (4,200)
<b>Live Stream</b>	Atlantic 10 Network
<b>Live Audio</b>	SJSN - Steve Wanczyk, Renie Shields
<b>Series Record</b>	Saint Joseph's Leads 26-14
<b>Next Game</b>	Tuesday, December 9 at Penn, 5:30 p.m.

#### GAME STORIES . . .

- Saint Joseph's looks to snap its two game losing skid Sunday when it hosts Big 5 rival Villanova.
- The Hawks are coming off a 73-71 last-second loss to Lehigh on Thursday.
- Saint Joseph's had three players with career-high scoring performances versus the Mountain Hawks, led by graduate student **Ashley Robinson's** 20 points.
- Freshman **Chelsea Woods** had a season-best 12 points, while sophomore **Mackenzie Rule** tallied a career-high three points.
- Sunday's matchup with the Wildcats is the 41st meeting between the two teams.
- Saint Joseph's holds a 26-14 series edge and won last year's matchup, 63-60, at the Pavilion. Boxscore and recap on page two of the SJU Game Notes.
- The Hawks have posted a 15-4 record at home versus Villanova, but lost the previous game, 55-51, on December 8, 2012.
- Saint Joseph's is holding a toy collection at Sunday's game in which fans who bring a new unwrapped toy will receive free admission to the game.
- The toys will be donated by the Lowry Love Foundation to brighten the holidays for local families.
- The Lowry Love Foundation was founded by former SJU star **Ayahna Cornish-Lowry '07** and her husband, former Villanova standout Kyle Lowry, and is committed to improving the lives of underprivileged and disadvantaged people in Philadelphia and

#### HAWKS AT A GLANCE

**PROBABLE STARTERS**

No.	Pos.	Player	Yr.	Ht.	PPG	RPG	APG	MPG	Notes
3	G	Ciara Andrews	Jr	5-9	15.6	3.4	2.6	32.1	Scored 13 points and handed out 3 assists versus Lehigh
4	G	Natasha Cloud	Sr.	6-0	11.1	7.0	6.0	34.6	Grabbed 10 rebounds and had 8 assists against Lehigh
13	F	Ashley Robinson	Gr.	6-2	9.6	5.9	1.1	28.1	Had a game-high 20 points and added 6 rebounds versus Lehigh
15	G	Kathleen Fitzpatrick	So.	5-9	8.6	2.9	1.4	30.1	Scored 3 points versus Lehigh
41	F	Sarah Fairbanks	Jr.	6-1	11.6	5.9	1.0	33.6	Finished with 10 points and 7 boards against Lehigh

**THE BENCH**

2	G	Mackenzie Rule	So.	5-6	0.6	1.0	0.6	9.0	Added 3 points, 3 boards and an assist versus Lehigh
21	G	Avery Marz	Fr.	5-7	12.6	--	--	--	Out - Sitting out 2014-15 season for medical reasons
22	F	Jessica Pongonis	So.	6-1	1.0	1.0	0.3	10.7	Scored 4 points and had an assist at Seton Hall
23	G	Jordan Strode	R-So.	5-8	2.5	0.8	0.5	10.3	Played a minute against Lehigh
30	G/F	Sarah Veilleux	Fr.	6-0	2.8	1.3	0.0	8.5	Doubtful - Ankle
32	G/F	Chelsea Woods	Fr.	6-0	3.0	1.8	0.0	9.0	Tallied 12 points and 4 rebounds versus Lehigh
33	F	Adashia Franklyn	Fr.	6-1	2.1	3.9	0.1	11.6	Had 2 points and 3 rebounds against Lehigh
34	F	Amanda Fioravanti	So.	6-1	1.5	1.1	0.3	4.0	Out - Must sit out fall semester per NCAA transfer rules
40	F	Candace Belvedere	Fr.	6-2	12.1	9.6	1.5	--	Doubtful - Left leg



SAINT JOSEPH'S' ROSTER

Table with columns: No., Name, Yr., Pos., Ht., Hometown, High School/Last School. Lists 41 players including Mackenzie Rule, Ciara Andrews, and Sarah Veilleux.

Head Coach: Cindy Griffin (Saint Joseph's '91, '93) - 14th year
Associate Head Coach: Susan Moran (Saint Joseph's '02) - 12th year
Assistant Coaches: Stephanie McCaffrey (Saint Joseph's '04) - 8th year, Jada Pierce (West Chester '97) - 3rd year
Director of Basketball Operations: Katie Gardler (Saint Joseph's '92) - 5th year
Graduate Assistant: Chris Koclanes (Old Dominion '10) - 2nd year

PRONUNCIATION GUIDE

CIARA Andrews . . . . .SEE-are-uh
Jessica PONGONIS . . . . .pon-GO-niss
ADASHIA Franklyn . . . . .uh-DAY-zhuh
Sarah VEILLEUX . . . . .vuh-LOU
Amanda FIORAVANTI . . . . .
. . . . .fee-OR-uh-vahn-tee



SERIES HISTORY
Saint Joseph's vs. Villanova

All-Time Series: SJU leads 26-14
Last Meeting: 12/7/13, SJU, 63-60
Last SJU Win: 12/7/13, 63-60
Last VU Win: 12/8/12, 55-51
Current SJU Streak: W-1



STATISTICAL COMPARISON

Table comparing Saint Joseph's and Villanova across various statistics like Overall Record, Points Per Game, Rebounds Per Game, etc.

PREVIOUS 10 GAMES VS. VILLANOVA

Table with columns: Date, Score, Site. Lists 10 previous games including 12/7/13 W, 63-60 Away and 12/8/12 L, 51-55 Home.

LAST MEETING BOXSCORE & RECAP

December 7, 2013 • The Pavilion
Saint Joseph's - 63, Villanova - 60

Saint Joseph's put its Big 5 title hopes squarely in its own hands as the Hawks topped Villanova, 63-60, at The Pavilion. Ahead 61-60 in the final minutes, Saint Joseph's would boost its lead to 63-60 on an athletic jumper in the lane by Natasha Cloud at 1:08 as she avoided an outstretched arm of a defender in midair. The Hawks' defense would cause Villanova to miss its final shot at the buzzer as SJU prevailed.

Boxscore table for Saint Joseph's with columns: Min., FG-A, 3PT, FT-A, OR, DR, TR, F, A, TO, B, S, Pts. Lists player stats for Gotfrida, Berger, Fairbanks, Shields, Cloud, Robinson, Andrews, Pongonis, and Team Totals.

Boxscore table for Villanova with columns: Min., FG-A, 3PT, FT-A, OR, DR, TR, F, A, TO, B, S, Pts. Lists player stats for Burford, Edwards, Leer, Burton, Kane, Holeman, Coyer, Coyer, Quinn, Wilkes, and Team Totals.

Halftime: Tied, 28-28 Deadball Rebounds: Villanova, 3-2
Attendance: 1,040 Officials: DeMayo, Ridilla, Vaszily
FG %: Saint Joseph's - 48.2%, Villanova - 43.9%
3-PT FG %: Saint Joseph's - 44.4%, Villanova - 31.6%
FT %: Saint Joseph's - 62.5%, Villanova - 66.7%



## MARZ TO MISS 2014-15 SEASON

Saint Joseph's freshman **Avery Marz** will sit out the 2014-15 basketball season for medical reasons. A highly-touted guard from Wilson West Lawn High School, Marz suffered a stroke this past August. Working at home with physical therapists to regain full motion in her left arm and leg, she has taken a medical leave for the fall semester, but has been present for numerous team outings and practices. Marz will return to campus and begin taking classes in January. A four-year letterwinner at Wilson West Lawn, Marz led her team to four-straight District 3 AAAA titles and Berks County championships. Averaging 12.6 points per game as a senior, she was named an All-American Honorable Mention by the *Sporting News* and the Berks County Player of the Year as she helped her team to a #23 national ranking by the *Sporting News*.

## INJURY REPORT

Freshman **Avery Marz** is out for Sunday's game, while classmates **Candace Belvedere** (left leg) and **Sarah Veilleux** (ankle) are doubtful.

## FIORAVANTI OUT FIRST SEMESTER PER NCAA RULES

Saint Joseph's sophomore forward **Amanda Fioravanti** will sit out the fall semester of the 2014-15 season per NCAA transfer rules. Named the 2012-13 Gatorade Player of the Year for Maryland, Fioravanti came to SJU last January after playing at Virginia the first semester. While with the Cavaliers, Fioravanti averaged 1.5 points and 1.1 rebounds per game over eight games.

## TRIO OF HAWKS SERVING AS CAPTAINS IN 2014-15

Graduate student **Ashley Robinson**, senior **Natasha Cloud** and junior **Sarah Fairbanks** are serving as team captains this season. Robinson and Cloud are serving as a team captains for the second straight year, while Fairbanks is a captain for the first time this season.

## HAWK HILL ADVANTAGE

Saint Joseph's has always had a reputation of playing well at home. Over 41 seasons, the Hawks have boasted a 391-139 mark at Hawk Hill, including a 59-22 record at Hagan Arena.

## HAWKS ON THE AIR

The Saint Joseph's Sports Network (SJSN) marks its 25th year of operation in 2014-15, as the first broadcasts of men's and women's basketball games took place in the fall of 1990. The first women's game aired on WCZN-AM on November 23rd as the Hawks hosted Oregon. The 1990-91 season also marked the first in school history in which every SJU men's game aired on Philadelphia-area commercial radio.

Since its beginnings in 1990, SJSN's coverage of Hawk athletics has grown and included Saint Joseph's women's basketball television show *Courtside*, Phil Martelli's *HawkTalk* radio program and the nationally-renowned *HawkTalk* television show, which ran for 15 years.

Hawk fans everywhere will be able to hear the broadcast of every game through audio streaming at the Hawks' official athletics site, [www.SJUHawks.com](http://www.SJUHawks.com), which is provided free of charge. Fans can also take those broadcasts on-the-go, with the SJUHawks app for mobile devices.



## HAWKS LOOK FOR SIXTH STRAIGHT POSTSEASON BID

SJU is coming off its fifth consecutive postseason appearance, earning an at-large bid to the NCAA Tournament and advancing to the second round. SJU, which earned Postseason WNIT bids from 2009-10 to 2011-12 and NCAA Tournament bids the last two years, is currently tied for its second-longest postseason appearance streak. The Hawks previously made four straight appearances from 1975-79 and 1996-2000. Saint Joseph's longest consecutive postseason appearance streak is six seasons, from 1984-85 to 1989-90.

## OFFENSIVE PUNCH LOST TO GRADUATION

With the departures of seniors **Erin Shields**, **Ilze Gotfrida** and **Kelsey Berger** to graduation, the Hawks lost a big portion of their offensive punch. Last season, the trio accounted for 41 percent of the team's scoring as they scored 966 points of the team's 2,358. Additionally, they were a major part of SJU's perimeter threat, totaling 124 of the team's 166 three-point field goals (74.7 percent).

## MORE TURNOVER(S)

Saint Joseph's was one of the top teams in controlling the basketball last season as the Hawks ranked seventh nationally at 12.2 turnovers per game. This season though SJU has not had the same success as it is averaging 15.3 turnovers per game.

## HAWKS TO FACE TOUGH COMPETITION IN 2014-15

As is the standard for Saint Joseph's scheduling, facing strong opponents is the norm and 2014-15 is no different. This season, the Hawks will play 14 games against opponents that made a postseason tournament last year.

## ANDREWS SOLID START

Junior guard **Ciara Andrews** came into her own as a sophomore, averaging 9.2 points per game and starting 17 contests a season ago. She has brought that momentum into this season as the potent offensive weapon is averaging a team-best 15.6 points per game to go with a career-high 3.4 rebounds and 2.5 assists per game.

## CLOUD RETURNS AS TOP DISTRIBUTOR

**Natasha Cloud** capped her junior year second nationally in assists per game at 7.6. She enters her senior season as the nation's leading distributor though as last year's leader, Jamierra Faulkner of Southern Miss graduated.

## SJU 13TH IN HAYS' PRESEASON MID-MAJOR POLL

ESPN writer Graham Hays picked the Hawks 13th nationally in his Preseason Mid-Major Poll. Saint Joseph's was one of four Atlantic 10 teams mentioned in the poll, joining Dayton (first), George Washington (third) and St. Bonaventure (15th).

## ROBINSON RETURNS FOR FINAL SEASON

Graduate student **Ashley Robinson** is making the most of her sixth season at SJU. Missing the first two seasons (2009-11) due to leg injury, the 6-foot-2 forward has continually improved every season. A two-year starter, Robinson averaged a career-best 6.2 points and 5.4 rebounds per game over 25 contests last year, but has already surpassed them with a 9.6 points per game and 5.9 rebounds per game average this season.

## HAWKS EXCEL IN NONCONFERENCE PLAY

Saint Joseph's has posted a winning record in nonconference play the past four seasons, including a 11-2 mark last year. The Hawks posted a combined 40-17 record the last four seasons, but have gone 2-5 to start 2014-15.



2014-15 Atlantic 10 Standings

Saint Joseph's was picked to finish third in the Atlantic 10 race, according to a poll of the Atlantic 10's head coaches. The following is the current standings (with preseason predictions in parenthesis). Standings as of 12/5/14.

Table with 3 columns: Team, Overall, A-10. Rows include Davidson (12), Dayton (1), Duquesne (7), Fordham (5), George Mason (11), George Washington (2), La Salle (8), Massachusetts (14), Rhode Island (13), Richmond (6), St. Bonaventure (4), Saint Joseph's (3), Saint Louis (9), and VCU (10).

CLOUD NAMED ONE OF 10 MID-MAJOR PLAYERS TO WATCH

Senior guard Natasha Cloud, who was named to the Nancy Lieberman Watch List as one of the top point guards in the nation a year ago, is already gaining national attention this year as she was named the fifth best mid-major player by ESPN's Graham Hays. Per Hays, "No returning player averaged more assists per game a season ago than Cloud, but the 6-foot senior who began her career at Maryland isn't just about distributing. With her size and ability to get in the paint to both rebound and finish (nearly a quarter of her points last season came at the free throw line), she's the same kind of triple-double threat on a nightly basis as Iowa's Sam Logic. And even though Cloud had 107 more assists as a junior than as a sophomore, she accumulated only 12 additional turnovers. For all of that, she might be most valuable -- or at least equally valuable -- on the other end of the court, where she was the A-10 defensive player of the year."

CLOUD NAMED TO A-10 PRESEASON TEAMS

Senior guard Natasha Cloud was recognized by the Atlantic 10 as one of the top players in the conference as she was named to the Preseason All-Conference First Team and All-Defensive Team. Cloud is coming off an impressive junior season in which she helped SJU the Second Round of the NCAA Tournament. Named to the Nancy Lieberman Award Watch List for the top point guard in the country, Cloud set the Hawks' single-season record for assists in 2013-14 with 243 and is eighth all-time with 395. Named the A-10 Defensive Player of the Year and selected to the All-Conference Second Team, she posted also career-high 11.5 points per game and led the team in steals (64) and minutes per game (35.0).

FAIRBANKS NAMED TO A-10 PRESEASON THIRD TEAM

Junior forward Sarah Fairbanks earned Atlantic 10 honors to start the year as she was named to the Preseason All-Conference Third Team. Posting one of the best break-through seasons in the A-10 last year, Fairbanks proved to be the Hawks' most reliable post player. After tallying just 49 points as a freshman, Fairbanks finished last year with 419 points, good for 12.7 points per game. Appearing in all 33 games, and making 26 starts, Fairbanks topped SJU in blocked shots (38) and field goal percentage (.503) and finished second in rebounding at 5.9 per game.

FITZPATRICK MAKING MOST OF OPPORTUNITY

Serving as a reserve her freshman season, sophomore guard Kathleen Fitzpatrick has thrived this year. Tallying just 39 points as a rookie (2.1 ppg), Fitzpatrick has already surpassed that as she has tallied 60 points over the first six games, good for a 8.6 points per game average.

STRODE RETURNS TO LINEUP

After missing 61 straight games dating back to the 2012-13 season due to injury, redshirt sophomore guard Jordan Strode has been a bright spot for the Hawks this year. Appearing in five games, including a start at Rutgers, Strode is averaging 2.5 points and 0.8 rebounds per game.

NEW YEAR, NEW RULE

Joining the Hawks as a walk-on last season, guard Mackenzie Rule appeared in four games, tallying two rebounds and an assist in 10 minutes of time. With the new year, Rule's role has expanded as the sophomore has already appeared in five games, tallying five rebounds, three assists, three points and averaging 9.0 minutes per game.

UP NEXT

The Hawks continue Big 5 play as they travel to Penn on Tuesday. Game time is set for 5:30 p.m. at the Plaestra.

2014-15 SAINT JOSEPH'S QUICKFACTS

- Location . . . . . Philadelphia, Pa. 19131
Founded . . . . . 1851
Enrollment . . . . . 4,670 (full-time undergrad)
Denomination . . . . . Roman Catholic (Jesuit)
Nickname . . . . . Hawks
Colors . . . . . Crimson and Gray
Athletic Affiliation . . . . . NCAA Division I
Conference . . . . . Atlantic 10
Home Arena (Capacity) . . . . . Michael J. Hagan '85 Arena (4,200)
President . . . . . C. Kevin Gillespie, S.J. '72
Associate Vice President/Athletic Director . . . . . Don DiJulia
2013-14 Regular Season Record . . . . . 23-10
2013-14 Atlantic 10 Conference Record (Place) . . . . . 10-6 (5th)
2013-14 Philadelphia Big 5 Record (Place) . . . . . 4-0 (1st)
Letterwinners Returning/Lost . . . . . 8/5
Starters Returning/Lost . . . . . 4/1
Captains . . . . . Natasha Cloud, Sarah Fairbanks, Ashley Robinson
Head Coach (alma mater) . . . . . Cindy Griffin (Saint Joseph's '91, '93)
Overall Record/Years . . . . . 296-204/17th season
Record at Saint Joseph's/Years . . . . . 248-171/14th season
Associate Head Coach . . . . . Susan Moran (Saint Joseph's '02, '07) - 12th season
Assistant Coaches . . . . . Stephanie McCaffrey (Saint Joseph's '04) - 8th season
. . . . . Jada Pierce (West Chester '97) - 3rd season
Director of Basketball Operations . . . . . Katie Gardler
Graduate Assistant: . . . . . Chris Koclanes
Women's Administrative Assistant . . . . . Kathy MacDonald
Women's Basketball Athletic Trainer . . . . . Salvatore Capone
Women's Basketball Contact . . . . . Jack Jumper
Athletic Department . . . . . (610) 660-1707
Basketball Office . . . . . (610) 660-1710
Athletic Communications . . . . . (610) 660-3389
Press Row . . . . . (610) 660-2599
Athletics Website . . . . . www.sjuhawks.com



## MEDIA INFORMATION

### MEDIA CREDENTIALS

Credentials for media covering Saint Joseph's at Hagan Arena in 2014-15 should be made at least 24 hours in advance by contacting Jack Jumper.

Priority is given to daily newspapers, radio/TV stations and other media who cover Saint Joseph's and its opponents on a regular basis. Internet sites and agencies that will be considered for credentials include those of national cable networks or established publications. Internet sites representing local or regional media outlets will be provided credentials on a space-available basis. Websites that sponsor "message boards" or "chat rooms" where people are able to post anonymous information are ineligible for consideration of credentials. Credentials will only be issued to those 18 years of age and older.

### PHOTO CREDENTIALS

All photographers attending Saint Joseph's home basketball games must be credentialed. Requests for credentials should be made in at least 24 hours in advance to Jack Jumper. Due to space demands, access to freelance photographers is limited.

### SCOUT CREDENTIALS

Credentials for WNBA scouts must be requested in advance of the game by contacting Jack Jumper.

### RADIO POLICY

Radio stations designated as the primary visiting outlet can have access to phone lines at a cost of \$100 per line per game. (\$200 for ISDN), unless a reciprocal usage agreement exists. Visiting radio stations wishing to broadcast the game should contact Jack Jumper at (610) 660-3389 or by email (jjumper@sju.edu) to arrange phone lines.

### INTERVIEWS

All requests for interviews with Cindy Griffin and the Saint Joseph's student-athletes must be arranged through Jack Jumper. Advance notice of at least 24 hours is preferred, but every attempt will be made to accommodate all requests. Players will not be available for interviews on game day, except for post-game interviews.

### PRESS ROW

Only accredited members of the media and accredited scouts will be issued credentials to cover Saint Joseph's basketball, and only those with passes will be permitted to sit in press seating. Members of the media are reminded that press row is a working area and cheering for either team will not be tolerated.

### MEDIA SERVICES

Saint Joseph's and opponent's game notes, statistics, Atlantic 10 Conference notes and game programs will be available to working members of the media. Halftime statistics will be available in the media room at Hagan Arena and will also be distributed on press row. Final statistics will be distributed in the media room following completion of the game. Fax service is available at both locations.

Complete Saint Joseph's game notes will be available 24 hours prior to the game on SJUHawks.com.

### MEDIA PARKING

Media parking is available at the ROTC Lot on 54th Street behind Hagan Arena. Media members desiring to be on the parking list must contact Marie Wozniak at least 24 hours in advance of the game.

### POST-GAME

Saint Joseph's head coach Cindy Griffin will be available in the interview room following a post-game cooling off period. The Saint Joseph's locker room is not open to the media.

## THE HAWK



One of the most famous mascots in college sports, the Saint Joseph's Hawk has flapped its wings for 58 seasons.

The Hawk is best known for staying in constant motion by flapping its wings throughout every basketball game and representing the Saint Joseph's motto, "The Hawk Will Never Die."

Jim Brennan originated the idea for a hawk as mascot during the 1954-55 season. Brennan, an ex-Marine and SJU cheerleader, at first wanted to secure an actual hawk, but later switched to the costume idea. The student government

raised the 120 dollars needed to buy the initial costume, which Brennan donned for three years. He made his debut as the Hawk on January 4, 1956, a 69-56 win over La Salle at the Palestra. Since then, and including this season, a total of 31 SJU students have donned the costume. The Hawk has not missed a men's basketball game since that first season in 1955-56. The Hawk, who was present at most women's basketball games, became a mainstay in 1989. Since then, 12 SJU students have donned the costume, with **Aleena Yobbi** serving as the Hawk for his first year in 2014-15.

In addition to the constant flapping, the Hawk is also recognized by its "flying" in figure eights around the court during timeouts. Years ago, ESPN used a "flap-o-meter" on the national telecast of a Saint Joseph's game to estimate that the Hawk flaps its wings 3,500 times during a regulation game.

The most decorated mascot in the country, The Hawk has garnered numerous accolades in its 57-year history. In 2013-14, NCAA.com named The Hawk as "College Basketball's Best Tradition". The Sporting News, Sports Illustrated, Sports Illustrated for Kids, Street & Smith's Basketball Yearbook and ESPN College Basketball magazine have selected it as the nation's top mascot. Eastern Basketball tabbed The Hawk as the Atlantic 10 Conference's best mascot, while The Hawk won a "Best of Philly" award from Philadelphia Magazine in 2003-04. The Hawk was selected as a 2008 nominee for the Mascot Hall of Fame.

Saint Joseph's athletic teams have been recognized with the nickname "Hawks" since 1929. At that time, the school's yearbook editor, Charlie Dunn, initiated a contest among the student body for a symbol. More than 100 submissions were narrowed to two, with "Hawks" winning out over "Grenadiers" (World War I soldiers who specialized in tossing grenades) by a slim margin in the final vote.

John Gallagher '31, a catcher on the Saint Joseph's baseball team, submitted the winning suggestion. He won a sweater with a special Saint Joseph's monogram for selecting the winning name. According to the Student Annual, the nickname was appropriate because it typified "the fighting spirit of our crimson and gray athletes and it is suggestive of the aerial attack which has made our football team famous." Ironically, football was discontinued at Saint Joseph's following the 1939 season.

But it has been the connection with the storied tradition of the Saint Joseph's men's and women's basketball programs that has given The Hawk mascot its prominence on the national level, making it one of the most recognized mascots in college athletics.



# Cindy Griffin - Head Coach

## Saint Joseph's '91, MBA '93 - 14th Season

After leading Saint Joseph's to five straight postseason appearances, including the Second Round of the NCAA Tournament in 2013-14, **Cindy Griffin** enters her 14th year as Saint Joseph's head coach. A 1991 and 1993 graduate of SJU, Griffin (nee Anderson) has compiled an overall record of 296-204 in 17 seasons as a head coach, and a 248-171 record over 14 years at Hawk Hill.

Only the eighth coach in NCAA Division I history to lead her alma mater to the NCAA Tournament as a player and a coach, Griffin's squads have posted six 20-win seasons, six victories over nationally-ranked teams, and have advanced to the postseason 10 times, while her players have been honored as Atlantic 10 All-Conference performers 15 times.

Following up their A-10 Championship the season prior, the 2013-14 Hawks continued to prove themselves as one of the top programs nationally as they earned an at-large bid to the NCAA Tournament and advanced to the Second Round for just the seventh time in team history. Led by Erin Shields and Natasha Cloud, Saint Joseph's earned its fifth straight post-season bid and claimed its first outright Philadelphia Big 5 title since 2000-01.

Under Griffin's leadership, Saint Joseph's posted one of its most memorable seasons in team history in 2012-13 as the Hawks claimed the Atlantic 10 Championship for just the third time and earned the automatic NCAA Tournament bid. Led by a senior class that had advanced to the postseason every year, the Hawks finished with a 23-9 record that included wins over #5 Maryland and #11 Dayton.

In addition to the team's success, a trio of Hawks were singled out for their performances, led by NCAA Woman of the Year nominee Chatilla van Grinsven. With Griffin's guidance, van Grinsven turned in one of the more dominant seasons in recent SJU history, becoming just the fifth player in SJU history to average a double-double for the year en route to being named to the A-10 All-Conference First Team and the Big 5 Player of the Year. The duo of backcourt mates Shields and Cloud helped propel SJU to new heights, with Shields garnering A-10 and Big 5 Most Improved Player honors and I-AAA distinction, while Cloud was named the Most Outstanding Player of the 2013 A-10 Championship.

Backed by a veteran-laden team in 2011-12, the Hawks earned their third-straight WNIT berth and posted their most wins (22) since the 2003-04 season. Moving into second place in career victories at her alma mater, Griffin picked up her 200th win as the Hawks topped Boston University in the opening game of the WNIT on March 15, 2012. Leading the Hawks to a 15-4 mark at home, she helped Saint Joseph's become one of the more efficient teams in the nation, ranking fourth in fewest turnovers per game (12.5), 26th in three-point percentage (.348) and 39th in field goal percentage (.423).

Individually, senior Michelle Baker and Kelly Cavallo had breakout years, both garnering All-Big 5 honors. Behind Griffin's teaching, Baker went on to be named to the A-10 All-Conference Second Team and capped her career as SJU's then all-time leader in games played (127) while ranking in the top 20 for scoring and field goals made. After seeing limited time as a freshman, Cavallo developed into one of the top post players in the A-10, leading SJU and finishing in the top five of the conference in rebounding, blocked shots and field goal percentage. With Griffin's aid, Cavallo finished her career second all-time in blocks and 11th in rebounding at SJU.

Returning just one starter for the 2010-11 season, the Hawks quickly jelled under Griffin's guidance as they went on to win 20 games, earned the program's 700th victory, and advanced to the second round of the WNIT. Backed by All-Big 5 honorees Baker and Katie Kuester, Saint Joseph's had its most efficient offensive showing since 2002-03, as the Hawks finished 60th in the nation in field goal percentage (42.1).

Additionally, several Hawks were honored for outstanding seasons in 2010-11, headlined by sophomore Ashley Prim becoming the first SJU player to be named Atlantic 10 Sixth Player of the Year. Baker became just the second Hawk to be named to the A-10 All-Defensive Team, while freshman Erin Shields became the sixth player Griffin has coached to A-10 All-Rookie Team honors.

Earning a postseason berth for the first time in two years, the Hawks surpassed predictions in 2009-10 as they finished tied for fourth in the Atlantic 10 after being picked to finish ninth. After opening the season with a 3-7 mark, Griffin saw her team begin to click at the end of the non-conference schedule as SJU claimed the 19th Annual Hawk Classic title and worked its way to .500 by the second week of the Atlantic 10 slate.

Posting a 9-5 mark against conference opponents, Griffin hit two milestones during A-10 play, earning her 150th win at Saint Joseph's in a victory against Dayton and earning her 200th coaching win against George Washington. The Hawks would go on to earn the program's seventh WNIT bid, and play the first post-season game at Hagan Arena.

In 2008-09, Griffin undertook arguably her toughest season to date as Saint Joseph's played every contest away from Hawk Hill for the first time in program history. And in typical SJU fashion, Griffin got her team to respond as Saint Joseph's went on to post an 8-5 record at home venues and earn its first Big 5 title since 2000-01. Individually five Hawks posted career bests in scoring, with Brittany Ford and Mariame Djouara both earning All-Big 5 Second Team honors.

Relying heavily on underclassmen in 2007-08, Griffin guided her Hawks to another winning season, including crowns at the Brown Basketball Classic and the Hilton Philadelphia Hawk Classic. Among the wins, Saint Joseph's posted its biggest win over a non-conference ranked opponent since the 1984-85, topping #15 Auburn for the Hawk Classic title.

Despite losing several experienced players prior to the 2006-07 season, Griffin had her team peaking at the right time. Playing Griffin's style of hard-nosed defense and persistent offense, the Hawks advanced to the Atlantic 10 Championship game, including the program's first win over a top 10 opponent (#8 George Washington) since 1992 along the way. Saint Joseph's capped the season with its fifth WNIT appearance in six years and tied the SJU record for games played in a season with 33.

Fueled by a collection of newcomers and a developed core of upperclassmen, Griffin led the Hawks back to national prominence in 2005-06. The Crimson and Gray engineered the nation's best turnaround (13 games) and received votes in the national polls for the first time since 2003-04. The Hawks advanced to the

### Coach Griffin At A Glance

<b>Career Record:</b>	296-204
<b>Record at SJU:</b>	248-171
<b>Atlantic 10 Record:</b>	119-75
<b>Postseason Record:</b>	7-10

<b>Hometown:</b>	Maple Glen, Pa.
<b>Education:</b>	Saint Joseph's '91, Saint Joseph's MBA '93
<b>Playing Experience:</b>	Saint Joseph's 1987-92
<b>Coaching Experience:</b>	Saint Joseph's 2001-Present Loyola (Md.) 1998-01



## 2014-15 SAINT JOSEPH'S BASKETBALL NOTES - PAGE 7

semifinals of the A-10 Championship and earned a berth in the WNIT.

With the loss of four 1,000-point scorers, the 2004-05 Hawks showed their true colors down the stretch, earning a hard-fought victory over La Salle in the opening round of the Atlantic 10 Championship and coming within 10 points of 16th-ranked, and eventual A-10 Champion, Temple.

Led by six seniors, the 2004 team went 22-11 and advanced to the WNIT Elite Eight. Saint Joseph's finished second in the A-10 East and dropped a heartbreaker in the Atlantic 10 Championship to Temple. Four Hawk seniors reached the 1,000-point plateau, marking just the eighth time in NCAA history that a quartet of players had reached the milestone in the same season. Erin Brady, Irina Krasnoshiok, Stephanie (Graff) McCaffrey and Amra Mehmedic went on to sign professional contracts.

Following a memorable first year at the helm of her alma mater, Griffin upped the ante in her second season by capturing 2003 Atlantic 10 Coach of the Year honors after guiding the Hawks to a 19-11 record. The team sprinted to the conference's Eastern Division title and earned a berth in the WNIT for the second straight season, despite the departure of SJU's all-time leading scorer and a non-conference schedule that ranked fourth nationally.

Griffin helped to reinvigorate the SJU program in her first season, leading the squad to a 24-8 record and the second round of the WNIT. She capitalized on the team's tradition of scrappy play and rugged defense, while releasing the reins and allowing the team to play a more up-tempo style on the offensive end of the floor. The Hawks finished the year among the national leaders in nine different categories and paced the nation in free throw percentage for the second straight year.

Following her playing career, Griffin spent the 1992-93 season as a graduate assistant at her alma mater. She then accepted an assistant's spot at Vanderbilt University from 1993-95 under former Saint Joseph's head coach Jim Foster. Foster recruited Griffin to SJU and coached her during her playing career on Hawk Hill.

In her two years as an assistant at Vanderbilt, the Commodores finished 53-15 overall, won the 1995 SEC championship and reached the NCAA Sweet 16 both seasons. In addition to coaching responsibilities, she was the co-director of the Vanderbilt Basketball Camp and the director of the Black & Gold Club.

Griffin left Vanderbilt after the 1995 season to become an assistant coach at Loyola College (Md.). She spent three seasons as an assistant under Patty Coyle before being promoted to associate head coach in 1998. Griffin was promoted to the position of head women's basketball coach at Loyola midway through the 1998-99 season. She was the seventh-youngest head coach in Division I at the time. Griffin – who was named head coach five games into the season as Coyle left for an assistant coach position with the WNBA's New York Liberty – kept the Greyhounds' momentum going as Loyola won a team-record 21 games that year. Overall she compiled a record of 48-33 during her tenure at the Baltimore school, guiding the squad to the Metro Atlantic Athletic Conference semifinals all three seasons.

One of the top playmakers in Saint Joseph's history, Griffin starred for the Hawks from 1987-88 through 1991-92 (missing the 1988-89 season due to injury). A three-time team captain, Griffin finished her career with 662 points, 278 rebounds, 510 assists and 197 steals. She currently ranks fourth on SJU's all-time assist list.

As a junior in 1990-91, she played in 1,178 out of a possible 1,200 minutes to set the school record for minutes played in a single season. The Hawks made three NCAA Tournament appearances and posted three straight 20-win seasons during her playing career. A two-time Second Team All-Big 5 choice, as well as a Third Team All-Atlantic 10 pick as a senior, she was inducted into the Saint Joseph's Women's Basketball Hall of Fame in 1998.

A native of Maple Glen, Pa., Griffin played her high school basketball for Bishop McDevitt, winning two Philadelphia Catholic League titles. A 1987 graduate of McDevitt, she was inducted into its Athletic Hall of Fame in 1997, and in 2002, received the Philadelphia Catholic League's alumni achievement award. She earned a bachelor's degree in accounting from Saint Joseph's in 1991 and completed her M.B.A. from SJU in 1993. She resides in Conshohocken, Pa., with her husband Curtis and children, Kaylie, Hannah and Curtis Jr.

### Griffin's Year-By-Year Record

Year	School	Overall Record	Conference Record	Postseason
1998-99	Loyola College	17-6	13-5	MAAC Semifinals
1999-00	Loyola College	12-17	8-10	MAAC Semifinals
2000-01	Loyola College	19-10	12-6	MAAC Semifinals
2001-02	Saint Joseph's University	24-8	12-4	WNIT/A-10 Finals
2002-03	Saint Joseph's University	19-11	13-3	WNIT
2003-04	Saint Joseph's University	22-11	12-4	WNIT/A-10 Finals
2004-05	Saint Joseph's University	7-23	4-12	
2005-06	Saint Joseph's University	20-11	10-6	WNIT/A-10 Semifinals
2006-07	Saint Joseph's University	19-14	8-6	WNIT/A-10 Finals
2007-08	Saint Joseph's University	17-14	8-6	
2008-09	Saint Joseph's University	13-17	5-9	
2009-10	Saint Joseph's University	17-15	9-5	WNIT
2010-11	Saint Joseph's University	20-12	8-6	WNIT
2011-12	Saint Joseph's University	22-11	9-5	WNIT
2012-13	Saint Joseph's University	23-9	11-3	NCAA/A-10 Champions
2013-14	Saint Joseph's University	23-10	10-6	NCAA
2014-15	Saint Joseph's University	2-5	0-0	
<b>1998-Present</b>	<b>17 Seasons</b>	<b>295-203</b>	<b>152-96</b>	<b>10 Appearances</b>
<b>Head Coaching Record at Saint Joseph's: 248-171 (.593) – 14 Seasons</b>				
<b>Career Head Coaching Record: 296-204 (.593) – 17 Seasons</b>				





Natasha Cloud #4

Senior • Guard • 6-0
Broomall, Pa.
Cardinal O'Hara / Maryland

Overall Stats: 11.1 ppg, 7.0 rpg, 6.0 apg

- Preseason Atlantic 10 All-Conference First Team
• Preseason Atlantic 10 All-Defensive Team
• Seton Hall Thanksgiving Tournament All-Tournament Team
• Big 5 Player of the Week (11/24)
• Seventh all-time incareer assists at SJU (419)

2014-15:

- Scored a career-high 29 points and added five rebounds, three assists, two steals and a blocked shot at Liberty
• Tallied 16 points, eight rebounds and seven assist in win over St. Francis Brooklyn
• Scored nine points and had seven rebounds and three assists versus Temple
• Handed out 10 assists and added six rebounds at Rutgers
• Scored eight points and had five rebounds and three assists at Seton Hall
• Posted a game-high 10 rebounds and eight assists and scored seven points versus Lehigh

Table with 3 columns: Stat, Season Highs, Career Highs. Includes rows for Points, Field Goals, Assists, etc.

2014-15 Game-by-Game

Table with 14 columns: Opponent, Min, FG-A, 3PT-A, FT-A, OR, DR, TR, F, A, TO, B, S, Pts. Lists games against Rutgers, Temple, Liberty, Drexel, St. Francis, Seton Hall, and Lehigh.

- - Denotes game started



Sarah Fairbanks #41

Junior • Forward • 6-1
Elizabethtown, Pa.
Elizabethtown

Overall Stats: 11.6 ppg, 5.9 rpg, 1.0 apg

- Preseason Atlantic 10 All-Conference Third Team

2014-15:

- Scored a career-high 23 points and had 13 rebounds in win over Temple
• Added 16 points and six rebounds at Rutgers
• Tallied 10 points and seven rebounds versus Lehigh
• Finished with 10 points, four blocked shots and four rebounds in win over St. Francis Brooklyn
• Tallied eight points and six rebounds at Seton Hall
• Added four points and four rebounds against Drexel

Table with 3 columns: Stat, Season Highs, Career Highs. Includes rows for Points, Field Goals, Assists, etc.

2014-15 Game-by-Game

Table with 14 columns: Opponent, Min, FG-A, 3PT-A, FT-A, OR, DR, TR, F, A, TO, B, S, Pts. Lists games against Rutgers, Temple, Liberty, Drexel, St. Francis, Seton Hall, and Lehigh.

- - Denotes game started



**Kathleen Fitzpatrick #15**

Sophomore • Guard • 5-9  
Drexel Hill, Pa.  
Academy of Notre Dame de Namur

Overall Stats: 8.6 ppg, 2.9 rpg, 1.4 apg



**Adashia Franklyn #33**

Freshman • Forward • 6-1  
West Chester, Pa.  
West Chester Bayard Rustin

Overall Stats: 2.1 ppg, 3.9 rpg, 0.1 apg

**2014-15:**

- Had a career-high 18 points and added five rebounds at Drexel
- Scored 14 points and six rebounds and blocked two shots in win over Temple
- Scored nine points and had three rebounds at Rutgers
- Tallied eight points in win over St. Francis Brooklyn
- Scored seven points and had two rebounds at Seton Hall
- Finished with four steals, four rebounds and a point at Liberty
- Added three points and an assist against Lehigh

	<b>Season Highs</b>	<b>Career Highs</b>
<b>Points:</b>	18, at Drexel, 11/25/14	Same
<b>Field Goals:</b>	6, at Drexel, 11/25/14	6, 2x
<b>Field Goals Att:</b>	11, at Drexel, 11/25/14	Same
<b>3-Pt Field Goals:</b>	6, at Drexel, 11/25/14	Same
<b>3-Pt Field Goals Att:</b>	10, at Drexel, 11/25/14	Same
<b>Free Throws:</b>	4, vs. Temple, 11/18/14	Same
<b>Free Throws Att:</b>	4, vs. Temple, 11/18/14	Same
<b>Offensive Rebounds:</b>	1, 2x, last at Seton Hall, 11/30/14	2, vs. Mt. St. Mary's, 11/8/13
<b>Defensive Rebounds:</b>	6, vs. Temple, 11/18/14	Same
<b>Total Rebounds:</b>	6, vs. Temple, 11/18/14	Same
<b>Assists:</b>	3, last vs. St. Francis Brooklyn, 11/29/14	3, 3x
<b>Blocks:</b>	2, vs. Temple, 11/18/14	Same
<b>Steals:</b>	4, at Liberty, 11/22/14	Same
<b>Minutes:</b>	41, vs. Temple, 11/18/14	Same

**2014-15:**

- Had a season-high seven points, 11 rebounds and four blocks against St. Francis Brooklyn
- Added two points, three rebounds and a blocked shot against Lehigh
- Scored three points and had six rebounds and two steals at Liberty
- Added three points, two rebounds and an assist at Drexel
- Had two rebounds and a blocked shot in collegiate debut at Rutgers
- Added a rebound in win over Temple
- Grabbed two rebounds and had a block and a steal at Seton Hall

	<b>Season Highs</b>
<b>Points:</b>	7, vs. St. Francis Brooklyn, 11/29/14
<b>Field Goals:</b>	3, vs. St. Francis Brooklyn, 11/29/14
<b>Field Goals Att:</b>	8, vs. St. Francis Brooklyn, 11/29/14
<b>3-Pt Field Goals:</b>	Yet To Come
<b>3-Pt Field Goals Att:</b>	Yet To Come
<b>Free Throws:</b>	1, 3x, last, vs. St. Francis Brooklyn, 11/29/14
<b>Free Throws Att:</b>	4, at Drexel, 11/25/14
<b>Offensive Rebounds:</b>	4, vs. St. Francis Brooklyn, 11/29/14
<b>Defensive Rebounds:</b>	7, vs. St. Francis Brooklyn, 11/29/14
<b>Total Rebounds:</b>	11, vs. St. Francis Brooklyn, 11/29/14
<b>Assists:</b>	1, at Drexel, 11/25/14
<b>Blocks:</b>	4, vs. St. Francis Brooklyn, 11/29/14
<b>Steals:</b>	2, at Liberty, 11/22/14
<b>Minutes:</b>	17, vs. St. Francis Brooklyn, 11/29/14

**2014-15 Game-by-Game**

Opponent	Min	FG-A	3PT-A	FT-A	OR	DR	TR	F	A	TO	B	S	Pts
Rutgers *	28	3-8	3-7	0-0	1	2	3	2	1	5	0	0	9
Temple *	41	4-10	2-7	4-4	0	6	6	1	3	1	2	0	14
Liberty *	34	0-5	0-5	1-2	0	4	4	4	0	1	0	4	1
Drexel *	31	6-11	6-10	0-0	0	5	5	3	1	2	0	1	18
St. Francis *	31	3-8	2-5	0-0	0	0	0	1	3	1	0	1	8
Seton Hall *	32	2-8	1-4	2-2	1	1	2	5	1	4	0	0	7
Lehigh *	14	1-4	1-3	0-0	0	0	0	0	1	2	0	0	3

\* - Denotes game started

**2014-15 Game-by-Game**

Opponent	Min	FG-A	3PT-A	FT-A	OR	DR	TR	F	A	TO	B	S	Pts
Rutgers	10	0-3	0-0	0-2	1	1	2	0	0	1	1	0	0
Temple	1	0-0	0-0	0-0	0	1	1	0	0	0	0	0	0
Liberty	15	1-2	0-0	1-2	0	6	6	4	0	2	1	2	3
Drexel	14	1-2	0-0	1-4	2	0	2	1	1	1	0	0	3
St. Francis	17	3-8	0-0	1-2	4	7	11	4	0	1	4	0	7
Seton Hall	13	0-0	0-0	0-0	0	2	2	1	0	1	1	1	0
Lehigh	11	1-3	0-0	0-0	1	2	3	0	0	1	1	0	2



## Jessica Pongonis #22

**Sophomore • Forward • 6-1  
Fishers, Ind.  
Hamilton Southeastern**

**Overall Stats: 1.0 ppg, 1.0 rpg, 0.3 apg**

**2014-15:**

- Had a season-high four points at Seton Hall
- Scored two points and had two rebounds at Liberty
- Grabbed two rebounds at Rutgers
- Added a pair of rebounds in win over Temple

	<b>Season Highs</b>	<b>Career Highs</b>
<b>Points:</b>	4, at Seton Hall, 11/30/14	10, vs. Mt. St. Mary's, 11/8/13
<b>Field Goals:</b>	2, at Seton Hall, 11/30/14	3, vs. Mt. St. Mary's, 11/8/13
<b>Field Goals Att:</b>	3, 2x, last at Seton Hall, 11/30/14	5, vs. Mt. St. Mary's, 11/8/13
<b>3-Pt Field Goals:</b>	Yet To Come	1, vs. Hofstra, 12/10/13
<b>3-Pt Field Goals Att:</b>	1, at Rutgers, 11/14/14	2, vs. Mt. St. Mary's, 11/8/13
<b>Free Throws:</b>	Yet To Come	5, vs. Drexel, 11/20/13
<b>Free Throws Att:</b>	Yet To Come	6, 2x, last vs. Drexel, 11/20/13
<b>Offensive Rebounds:</b>	2, 2x, last vs. Temple, 11/18/14	3, vs. Dayton, 1/26/14
<b>Defensive Rebounds:</b>	1, at Liberty, 11/22/14	4, at Quinnipiac, 12/1/13
<b>Total Rebounds:</b>	2, 3x, last, at Liberty, 11/22/14	4, 3x, last vs. Dayton, 1/26/14
<b>Assists:</b>	1, 2x, last at Seton Hall, 11/30/14	2, vs. Liberty, 11/23/13
<b>Blocks:</b>	Yet To Come	1, 6x, last vs. Saint Louis, 1/29/14
<b>Steals:</b>	Yet To Come	3, vs. Liberty, 11/23/13
<b>Minutes:</b>	17, at Liberty, 11/22/14	20, vs. Mt. St. Mary's, 11/8/13



## Ashley Robinson #13

**Graduate Student • Forward • 6-2  
Warrington, Pa.  
Archbishop Wood**

**Overall Stats: 9.6 ppg, 5.9 rpg, 1.1 apg**

**2014-15:**

- Tallied a career-high 20 points and posted six rebounds and two assists against Lehigh
- Scored 16 points and had four rebounds at Drexel
- Added nine rebounds and seven points at Seton Hall
- Tallied 11 points, four rebounds and two blocked shots in win over Temple
- Had eight points and eight rebounds against St. Francis Brooklyn
- Recorded five points, five rebounds and three assists at Liberty
- Grabbed five rebounds at Rutgers

	<b>Season Highs</b>	<b>Career Highs</b>
<b>Points:</b>	20, vs. Lehigh, 12/4/14	Same
<b>Field Goals:</b>	7, vs. Lehigh, 12/4/14	7, 3x
<b>Field Goals Att:</b>	12, at Drexel, 11/25/14	13, vs. La Salle, 2/12/14
<b>3-Pt Field Goals:</b>	Yet To Come	Same
<b>3-Pt Field Goals Att:</b>	Yet To Come	Same
<b>Free Throws:</b>	7, vs. Temple, 11/18/14	10, at Princeton, 11/11/11
<b>Free Throws Att:</b>	10, vs. Temple, 11/18/14	10, 3x
<b>Offensive Rebounds:</b>	7, vs. St. Francis Brooklyn, 11/29/14	Same
<b>Defensive Rebounds:</b>	5, at Seton Hall, 11/30/14	9, 2x, last at George Mason, 2/15/14
<b>Total Rebounds:</b>	9, at Seton Hall, 11/30/14	11, 2x, last at George Mason, 2/15/14
<b>Assists:</b>	3, at Liberty, 11/22/14	3, 2x
<b>Blocks:</b>	2, vs. Temple, 11/18/14	4, vs. Penn, 1/17/14
<b>Steals:</b>	3, at Liberty, 11/22/14	Same
<b>Minutes:</b>	37, vs. Lehigh, 12/4/14	41, vs. Temple, 2/17/13

### 2014-15 Game-by-Game

Opponent	Min	FG-A	3PT-A	FT-A	OR	DR	TR	F	A	TO	B	S	Pts
Rutgers *	12	0-2	0-1	0-0	2	0	2	2	0	1	0	0	0
Temple	12	0-2	0-0	0-0	2	0	2	1	0	1	0	0	0
Liberty	17	1-3	0-0	0-0	1	1	2	3	0	0	0	0	2
Drexel	4	0-1	0-0	0-0	0	0	0	0	0	0	0	0	0
St. Francis	7	0-2	0-0	0-0	0	0	0	0	1	0	0	0	0
Seton Hall	12	2-3	0-0	0-0	0	0	0	1	1	2	0	0	4
Lehigh							DNP						

• - Denotes game started

### 2014-15 Game-by-Game

Opponent	Min	FG-A	3PT-A	FT-A	OR	DR	TR	F	A	TO	B	S	Pts
Rutgers	20	0-5	0-0	0-1	4	1	5	2	0	2	0	0	0
Temple *	36	2-6	0-0	7-10	0	4	4	4	0	1	2	0	11
Liberty *	23	1-2	0-0	3-4	3	2	5	5	3	1	0	3	5
Drexel *	30	6-12	0-0	4-5	3	1	4	3	0	3	1	0	16
St. Francis *	29	4-8	0-0	0-0	7	1	8	3	2	2	1	0	8
Seton Hall *	22	1-2	0-0	5-8	4	5	9	1	1	0	0	0	7
Lehigh *	37	7-10	0-0	6-8	3	3	6	4	2	2	1	0	20

• - Denotes game started



**Mackenzie Rule #2**

Sophomore • Guard • 5-6  
West Chester, Pa.  
Cardinal O'Hara

Overall Stats: 0.6 ppg, 1.0 rpg, 0.6 apg

**2014-15:**

- Finished with three points, three rebounds, an assist and a steal in a career-high 16 minutes versus Lehigh
- Played 15 minutes at Drexel and added a rebound and assist
- Handed out an assist in win over St. Francis Brooklyn
- Played four minute versus Seton Hall
- Added an offensive rebound at Rutgers

	Season Highs	Career Highs
Points:	3, vs. Lehigh, 12/4/14	Same
Field Goals:	1, vs. Lehigh, 12/4/14	Same
Field Goals Att:	3, at Drexel, 11/25/14	Same
3-Pt Field Goals:	Yet To Come	Same
3-Pt Field Goals Att:	2, at Drexel, 11/25/14	2, 2x
Free Throws:	1, vs. Lehigh, 12/4/14	Same
Free Throws Att:	2, vs. Lehigh, 12/4/14	Same
Offensive Rebounds:	1, 2x, last vs. Lehigh, 12/4/14	Same
Defensive Rebounds:	2, vs. Lehigh, 12/4/14	Same
Total Rebounds:	3, vs. Lehigh, 12/4/14	Same
Assists:	1, 3x, last vs. Lehigh, 12/4/14	1, 4x
Blocks:	Yet To Come	Same
Steals:	1, vs. Lehigh, 12/4/14	1, 2x
Minutes:	16, vs. Lehigh, 12/4/14	Same



**Jordan Strode #23**

Redshirt Sophomore • Guard • 5-8  
Charlotte, N.C.  
Hickory Ridge

Overall Stats: 2.5 ppg, 0.8 rpg, 0.5 apg

**2014-15:**

- Scored five points and had two rebounds and a blocked shot at Rutgers
- Scored five points and had two assists, a block and a rebound at Drexel
- Added two points at Liberty
- Finished with two points against St. Francis Brooklyn
- Grabbed two rebounds and had an assist and a point in win over Temple

	Season Highs	Career Highs
Points:	5, 2x, last at Drexel, 11/25/14	Same
Field Goals:	1, 4x, last vs. St. Francis, 11/29/14	Same
Field Goals Att:	5, at Rutgers, 11/14/14	Same
3-Pt Field Goals:	1, at Drexel, 11/25/14	Same
3-Pt Field Goals Att:	1, 2x, last at Drexel, 11/25/14	Same
Free Throws:	3, at Rutgers, 11/14/14	3, 2x
Free Throws Att:	4, at Rutgers, 11/14/14	4, 2x
Offensive Rebounds:	1, at Rutgers, 11/14/14	2, vs. Syracuse, 11/20/12
Defensive Rebounds:	2, vs. Temple, 11/18/14	Same
Total Rebounds:	2, 4x, last at Drexel, 11/25/14	3, vs. Syracuse, 11/20/12
Assists:	2, at Drexel, 11/25/14	Same
Blocks:	1, 2x, last at Drexel, 11/25/14	Same
Steals:	1, at Liberty, 11/22/14	Same
Minutes:	20, at Drexel, 11/25/14	Same

**2014-15 Game-by-Game**

Opponent	Min	FG-A	3PT-A	FT-A	OR	DR	TR	F	A	TO	B	S	Pts
Rutgers	1	0-0	0-0	0-0	1	0	1	0	0	1	0	0	0
Temple					DNP								
Liberty					DNP								
Drexel	15	0-3	0-2	0-0	0	1	1	1	1	0	0	0	0
St. Francis	9	0-1	0-0	0-0	0	0	0	1	1	0	0	0	0
Seton Hall	4	0-0	0-0	0-0	0	0	0	2	0	0	0	0	0
Lehigh	16	1-2	0-1	1-2	1	2	3	2	1	0	0	1	3

**2014-15 Game-by-Game**

Opponent	Min	FG-A	3PT-A	FT-A	OR	DR	TR	F	A	TO	B	S	Pts
Rutgers*	16	1-5	0-0	3-4	1	1	2	2	0	0	1	0	5
Temple	12	0-2	0-1	1-2	0	2	2	1	1	2	0	0	1
Liberty	5	1-4	0-0	0-0	0	0	0	2	0	0	0	1	2
Drexel	20	1-2	1-1	2-2	0	1	1	2	2	2	1	0	5
St. Francis	8	1-1	0-0	0-0	0	0	0	2	0	1	0	0	2
Seton Hall					DNP								
Lehigh	1	0-0	0-0	0-0	0	0	0	0	0	0	1	0	0

\* - Denotes game started



**Sarah Veilleux #30**

Freshman • Guard/Forward • 6-0  
Hebron, Conn.  
RHAM

Overall Stats: 2.8 ppg, 1.3 rpg, 0.0 apg

**2014-15:**

- Scored a season-high six point in win over Temple
- Added five points and four rebounds at Drexel
- Made collegiate debut at Rutgers
- Added a rebound at Liberty

**Season Highs**

Points: 6, vs. Temple, 11/18/14  
 Field Goals: 2, vs. Temple, 11/18/14  
 Field Goals Att: 5, at Drexel, 11/25/14  
 3-Pt Field Goals: 2, vs. Temple, 11/18/14  
 3-Pt Field Goals Att: 4, at Drexel, 11/25/14  
 Free Throws: 2, at Drexel, 11/25/14  
 Free Throws Att: 2, at Drexel, 11/25/14  
 Offensive Rebounds: 1, at Drexel, 11/25/14  
 Defensive Rebounds: 3, at Drexel, 11/25/14  
 Total Rebounds: 4, at Drexel, 11/25/14  
 Assists: Yet To Come  
 Blocks: Yet To Come  
 Steals: Yet To Come  
 Minutes: 13, vs. Temple, 11/18/14



**Chelsea Woods #32**

Freshman • Guard/Forward • 6-0  
Philadelphia, Pa.  
Freire Charter

Overall Stats: 3.0 ppg, 1.8 rpg, 0.0 apg

**2014-15:**

- Scored a season-high 12 points and added four rebounds and a steal versus Lehigh
- Added four points and a rebound at Seton Hall
- Tallied two points and had five rebounds against St. Francis Brooklyn
- Grabbed a rebound in collegiate debut at Rutgers
- Played four minutes at Drexel
- Earned playing time at Liberty

**Season Highs**

Points: 12, vs. Lehigh, 12/4/14  
 Field Goals: 4, vs. Lehigh, 12/4/14  
 Field Goals Att: 11, vs. Lehigh, 12/4/14  
 3-Pt Field Goals: Yet To Come  
 3-Pt Field Goals Att: 1, at Rutgers, 11/14/14  
 Free Throws: 4, vs. Lehigh, 12/4/14  
 Free Throws Att: 4, vs. Lehigh, 12/4/14  
 Offensive Rebounds: 3, vs. Lehigh, 12/4/14  
 Defensive Rebounds: 4, vs. St. Francis Brooklyn, 11/29/14  
 Total Rebounds: 5, vs. St. Francis Brooklyn, 11/29/14  
 Assists: Yet To Come  
 Blocks: Yet To Come  
 Steals: 1, vs. Lehigh, 12/4/14  
 Minutes: 21, vs. Lehigh, 12/4/14

**2014-15 Game-by-Game**

Opponent	Min	FG-A	3PT-A	FT-A	OR	DR	TR	F	A	TO	B	S	Pts
Rutgers	3	0-0	0-0	0-0	0	0	0	0	0	0	0	0	0
Temple	13	2-2	2-2	0-0	0	0	0	0	0	0	0	0	6
Liberty	12	0-3	0-2	0-0	0	1	1	1	0	0	0	0	0
Drexel	6	1-5	1-4	2-2	1	3	4	0	0	0	0	0	5
St. Francis													DNP
Seton Hall													DNP
Lehigh													DNP

**2014-15 Game-by-Game**

Opponent	Min	FG-A	3PT-A	FT-A	OR	DR	TR	F	A	TO	B	S	Pts
Rutgers	3	0-2	0-1	0-0	0	1	1	2	0	0	0	0	0
Temple													DNP
Liberty	1	0-0	0-0	0-0	0	0	0	0	0	0	0	0	0
Drexel	4	0-0	0-0	0-0	0	0	0	2	0	0	0	0	0
St. Francis	14	1-2	0-0	0-0	1	4	5	1	0	1	0	0	2
Seton Hall	11	2-4	0-0	0-0	1	0	1	2	0	1	0	0	4
Lehigh	21	4-11	0-0	4-4	3	1	4	0	0	1	0	1	12



# 2014-15 SAINT JOSEPH'S BASKETBALL NOTES - PAGE 14

## Game 1 • November 14, 2014 • Rutgers Athletic Center #24/RV Rutgers - 76, Saint Joseph's - 52

Shooting just 31 percent from the field, Saint Joseph's dropped its season opening game at #24 Rutgers, 76-52.

Down just 30-24 at the half, Saint Joseph's came out aggressive in the second half as a jumper by **Sarah Fairbanks** and a free throw by Andrews made it a three-point game just over a minute in.

Unfortunately for the Hawks, Rutgers answered back with a 12-2 run to open a 42-29 edge on a layup with 14:34 to go.

Saint Joseph's would cut the deficit back to 10, 42-32, on a free throw by **Natasha Cloud**, but it would get no closer as the Scarlet Knights outscored them 34-20 from there and 46-28 for the half.

In the first half, both teams battled for momentum in the opening minutes as it featured four lead changes and four tied scores. With the game knotted at 16-16, the Scarlet Knights opened an eight point lead over a four minute span.

Saint Joseph's	Min.	FG-A	3PT	FT-A	OR	DR	TR	F	A	TO	B	S	Pts.
Pongonis, f	12	0-2	0-1	0-0	2	0	2	2	0	1	0	0	0
Fairbanks, f	37	7-13	0-0	2-2	3	3	6	5	0	4	1	0	16
Cloud, g	37	1-6	0-3	1-2	1	5	6	3	10	5	0	1	0
Fitzpatrick, g	28	3-8	3-7	0-0	1	2	3	2	1	5	0	0	9
Strode, g	16	1-5	0-0	3-4	1	1	2	2	0	0	1	0	5
Rule	1	0-0	0-0	0-0	1	0	1	0	0	1	0	0	0
Andrews	33	6-14	1-2	6-11	2	4	6	2	1	2	0	0	19
Robinson	20	0-5	0-0	0-1	4	1	5	2	0	2	0	0	0
Veilleux	3	0-0	0-0	0-0	0	0	0	0	0	0	0	0	0
Woods	3	0-2	0-1	0-0	0	1	1	2	0	0	0	0	0
Franklyn	10	0-3	0-0	0-2	1	1	2	0	0	1	1	0	0
Team					3	2	5						
<b>Totals</b>	<b>200</b>	<b>18-58</b>	<b>4-14</b>	<b>12-22</b>	<b>19</b>	<b>20</b>	<b>39</b>	<b>20</b>	<b>12</b>	<b>21</b>	<b>3</b>	<b>1</b>	<b>52</b>

Rutgers	Min.	FG-A	3PT	FT-A	OR	DR	TR	F	A	TO	B	S	Pts.
Copper, f	29	6-15	0-0	2-2	0	2	2	2	1	2	0	2	14
Laney, f	36	5-13	0-1	0-2	4	9	13	3	1	2	0	3	10
Hollivay, c	20	3-5	0-0	1-4	3	3	6	2	0	0	5	0	7
Scaife, g	32	9-13	0-0	5-6	1	1	2	1	3	2	1	1	23
Canty, g	33	6-10	0-1	4-4	0	5	5	2	8	3	2	1	16
Parsons	3	0-0	0-0	0-0	0	0	0	0	1	0	0	0	0
Parker	3	0-0	0-0	2-2	0	1	1	1	0	0	0	0	2
Hernandez	5	0-2	0-2	0-0	0	0	0	1	0	0	0	0	0
Davis	19	1-4	1-2	0-0	2	0	2	3	1	0	0	1	3
Evans	8	0-0	0-0	0-0	0	0	0	1	0	1	0	0	0
Alfano	1	0-0	0-0	0-0	0	0	0	0	0	0	0	1	0
Butts	11	0-2	0-0	1-2	3	4	7	2	0	1	1	1	1
Team					2	1	3						
<b>Totals</b>	<b>200</b>	<b>30-64</b>	<b>1-6</b>	<b>15-22</b>	<b>15</b>	<b>26</b>	<b>41</b>	<b>18</b>	<b>15</b>	<b>11</b>	<b>9</b>	<b>10</b>	<b>76</b>

**Halftime:** Rutgers, 30-24  
**Attendance:** 1805  
**FG %:** Saint Joseph's: 31.0%  
**3-PT FG %:** Saint Joseph's: 28.6%  
**FT %:** Saint Joseph's: 54.5%

**Deadball Rebounds:** Saint Joseph's 7-4  
**Officials:** Mattingly, Enterline, Gregory  
Rutgers: 46.9%  
Rutgers: 16.7%  
Rutgers: 68.2%

## Game 2 • November 18, 2014 • Hagan Arena Saint Joseph's - 78, Temple - 74 (OT)

In typical Big 5 fashion, Saint Joseph's and Temple battled to the final moments with the Hawks holding on for a 78-74 win in overtime.

After both teams exchanged a pair of baskets to start overtime, Saint Joseph's opened a 71-68 lead as **Sarah Fairbanks** converted a three-point play off a pass from **Natasha Cloud**.

Temple would push back, making it a 75-74 contest on a driving layup with 20 seconds to go.

**Kathleen Fitzpatrick** was fouled on the inbound pass and calmly sank both free throws to extend SJU's lead back to three, 77-74.

The Owls would go for the tie in the next possession, but the attempt was off the mark and **Jordan Strode** got the rebound and sealed the game with a free throw in the final moments.

Temple	Min.	FG-A	3PT	FT-A	OR	DR	TR	F	A	TO	B	S	Pts.
Martin, c	45	4-6	0-0	2-2	2	12	14	3	0	2	2	0	10
Covile, g	21	1-7	0-2	2-2	0	2	2	5	1	1	0	1	4
Fitzgerald, g	37	7-23	1-4	3-4	2	2	4	4	4	0	0	3	18
Atkinson, g	39	7-13	2-4	1-2	6	5	11	5	0	3	1	0	17
Williams, g	39	1-5	0-1	1-2	0	1	1	1	2	4	0	2	3
Butts	34	8-21	2-8	4-5	2	3	5	4	5	2	0	0	22
Traore	7	0-0	0-0	0-2	1	2	3	2	0	3	0	0	0
Berger	3	0-0	0-0	0-0	0	0	0	0	0	0	0	0	0
Team					4	3	7						
<b>Totals</b>	<b>225</b>	<b>28-75</b>	<b>5-19</b>	<b>13-19</b>	<b>17</b>	<b>30</b>	<b>47</b>	<b>24</b>	<b>12</b>	<b>15</b>	<b>3</b>	<b>6</b>	<b>74</b>

Saint Joseph's	Min.	FG-A	3PT	FT-A	OR	DR	TR	F	A	TO	B	S	Pts.
Robinson, f	36	2-6	0-0	7-10	0	4	4	4	0	1	2	0	11
Fairbanks, f	41	7-19	0-0	9-9	5	8	13	2	2	3	1	0	23
Andrews, g	42	7-16	0-1	0-1	0	2	2	5	4	4	0	0	14
Cloud, g	27	2-4	1-2	4-4	0	7	7	4	3	2	1	1	9
Fitzpatrick, g	41	4-10	2-7	4-4	0	6	6	1	3	1	2	0	14
Pongonis	12	0-2	0-0	0-0	2	0	2	1	0	1	0	0	0
Strode	12	0-2	0-1	1-2	0	2	2	1	1	2	0	0	1
Veilleux	13	2-2	2-2	0-0	0	0	0	0	0	0	0	0	6
Franklyn	1	0-0	0-0	0-0	0	1	1	0	0	0	0	0	0
Team					3	1	4						
<b>Totals</b>	<b>225</b>	<b>24-61</b>	<b>5-13</b>	<b>25-30</b>	<b>10</b>	<b>31</b>	<b>41</b>	<b>18</b>	<b>13</b>	<b>14</b>	<b>6</b>	<b>1</b>	<b>78</b>

**Halftime:** Saint Joseph's, 34-33  
**Attendance:** 1805  
**FG %:** Saint Joseph's: 39.3%  
**3-PT FG %:** Saint Joseph's: 38.5%  
**FT %:** Saint Joseph's: 83.3%

**Deadball Rebounds:** Temple, 4-3  
**Officials:** Suffren, Farlow, Thompson  
Temple: 37.3%  
Temple: 26.3%  
Temple: 68.4%



# 2014-15 SAINT JOSEPH'S BASKETBALL NOTES - PAGE 15

## Game 3 • November 29, 2014 • Vines Center Liberty - 76, Saint Joseph's - 75 OT

For the second straight game, Saint Joseph's went into overtime. Unfortunately the result wasn't the same as it was versus Temple as the Hawks fell, 76-75, at Liberty.

With the game tied a 75-75, Liberty's Karly Buer hit the second of two free throws to put her team ahead, 76-75. Off the inbound, **Ciara Andrews** got a clean look at midcourt, only to have her shot hit the rim and bounce off as the buzzer sounded.

Sparked by **Natasha Cloud's** career-high 29 points, the Hawks fought back from a six point halftime deficit to go ahead 62-5-9 on her three-pointer with 5:19 to play.

The Flames (2-1) fought back to regain the lead, 65-63 with under a minute to go, but Andrews' layup at 1:22 tied the game.

After misses at both ends, Saint Joseph's got a late turnover, and after a timeout, Cloud's jumper in the lane was off the mark as regulation expired.

In the overtime frame, Liberty had the ball up 73-71 when **Adashia Franklyn** came up with a big defensive stand, blocking a shot and grabbing the rebound, leading to a Cloud layup that tied the game at 73-73 with 52 seconds to play.

Following a pair layup by Liberty, Cloud again made a big play, hitting a jumper in the lane with 18 seconds to go to tie the game.

Saint Joseph's would get a break as Buer missed the front end of two free throws with 2.9 seconds to go, but it wasn't enough as Liberty got the next free throw for the win.

Saint Joseph's	Min.	FG-A	3PT	FT-A	OR	DR	TR	F	A	TO	B	S	Pts.
Robinson, f	23	1-2	0-0	3-4	3	2	5	5	3	1	0	3	5
Fairbanks, f	35	4-9	0-0	2-2	0	1	1	4	1	3	1	1	10
Andrews, g	41	10-20	1-2	2-2	0	3	3	3	4	1	0	2	23
Cloud, g	42	10-16	3-4	6-8	1	4	5	1	3	2	1	2	29
Fitzpatrick, g	34	0-5	0-5	1-2	0	4	4	4	0	1	0	4	1
Pongonis	17	1-3	0-0	0-0	1	1	2	3	0	0	0	0	2
Strode	5	1-4	0-0	0-0	0	0	0	2	0	0	0	1	2
Veilleux	12	0-3	0-2	0-0	0	1	1	1	0	0	0	0	0
Woods	1	0-0	0-0	0-0	0	0	0	0	0	0	0	0	0
Franklyn	15	1-2	0-0	1-2	0	6	6	4	0	2	1	2	3
Team					2	3	5						
<b>Totals</b>	<b>225</b>	<b>28-64</b>	<b>4-13</b>	<b>15-20</b>	<b>7</b>	<b>25</b>	<b>32</b>	<b>27</b>	<b>11</b>	<b>10</b>	<b>3</b>	<b>15</b>	<b>75</b>

Liberty	Min.	FG-A	3PT	FT-A	OR	DR	TR	F	A	TO	B	S	Pts.
Brown, f	14	1-2	1-1	2-2	0	1	1	3	1	3	0	1	5
Rininger, f	33	2-8	0-0	2-2	3	7	10	0	0	2	0	1	6
Adams, c	14	1-3	0-0	1-2	2	1	3	2	1	0	2	0	3
Ellis, g	37	5-13	2-6	2-2	1	4	5	3	4	8	0	0	14
Frazier, g	31	1-8	1-4	1-2	1	2	3	3	6	3	0	1	4
Leatherwood	6	0-0	0-0	0-0	1	0	1	2	0	0	0	0	0
Rollins	4	0-1	0-0	0-0	1	0	1	0	0	1	0	0	0
Fisher-Davis	14	1-7	1-5	0-0	1	2	3	0	0	0	0	0	3
Buer	30	5-13	1-3	4-5	0	3	3	2	2	0	0	0	15
Gardner	23	4-5	0-0	5-8	2	3	5	4	1	0	0	1	13
Kearney	19	5-6	0-0	3-4	2	3	5	3	0	3	0	1	13
Team					6	6	12						
<b>Totals</b>	<b>225</b>	<b>25-66</b>	<b>6-19</b>	<b>20-27</b>	<b>20</b>	<b>32</b>	<b>52</b>	<b>22</b>	<b>15</b>	<b>20</b>	<b>2</b>	<b>5</b>	<b>76</b>

**Halftime:** Liberty, 37-31  
**Attendance:** 438  
**FG %:** Saint Joseph's: 43.8%  
**3-PT FG %:** Saint Joseph's: 30.8%  
**FT %:** Saint Joseph's: 75.0%

**Deadball Rebounds:** Liberty 3-2  
**Officials:** Preato, Outlaw, Michel  
Liberty: 37.9%  
Liberty: 31.6%  
Liberty: 74.1%

## Game 4 • November 25, 2014 • Daskalakis Center Drexel - 76, Saint Joseph's - 63

Backed by a 71.4 percent shooting first half, Drexel downed Saint Joseph's, 76-63.

After a back-and-forth opening 10 minutes, the Dragons pulled away from the Hawks thanks to their hot shooting. Up 21-19, Drexel connected on 10 of its next 12 shots to open a 45-27 advantage on a jumper by Rachel Pearson at 1:22.

**Kathleen Fitzpatrick** connected on one of her six three pointer to bring the Hawks within 45-30, but Drexel scored four of the next six points to take a 49-32 lead into halftime.

From the field, Drexel hit 20-of-28 from the floor in the first half, including 5-of-9 from three-point range in the stanza, while Saint Joseph's, which hit 11-of-22 from the floor in the half, failed to take care of the ball though as the Dragins scored 16 points off 10 SJU turnovers.

The Hawks (1-3) came out as the aggressor to start the second half, getting a jumper from **Ciara Andrews** and a three-point play by **Ashley Robinson** as they cut the deficit to 12, 49-37, less than two minutes in.

Unfortunately that would be as close as Saint Joseph's would get as it.

Saint Joseph's	Min.	FG-A	3PT	FT-A	OR	DR	TR	F	A	TO	B	S	Pts.
Robinson, f	30	6-12	0-0	4-5	3	1	4	3	0	3	1	0	16
Fairbanks, f	28	2-5	0-0	0-0	1	3	4	1	1	2	0	0	4
Andrews, g	16	3-7	0-0	0-0	1	1	2	1	0	1	0	0	6
Cloud, g	32	2-7	0-1	2-2	1	7	8	3	8	6	1	0	6
Fitzpatrick, g	31	6-11	6-10	0-0	0	5	5	3	1	2	0	1	18
Rule	15	0-3	0-2	0-0	0	1	1	1	1	0	0	0	0
Pongonis	4	0-1	0-0	0-0	0	0	0	0	0	0	0	0	0
Strode	20	1-2	1-1	2-2	0	1	1	2	2	2	1	0	5
Veilleux	6	1-5	1-4	2-2	1	3	4	0	0	0	0	0	5
Woods	4	0-0	0-0	0-0	0	0	0	2	0	0	0	0	0
Franklyn	14	1-2	0-0	1-4	2	0	2	1	1	1	0	0	3
Team					1	2	3						
<b>Totals</b>	<b>200</b>	<b>22-55</b>	<b>8-18</b>	<b>11-15</b>	<b>10</b>	<b>24</b>	<b>34</b>	<b>17</b>	<b>14</b>	<b>17</b>	<b>3</b>	<b>1</b>	<b>63</b>

Drexel	Min.	FG-A	3PT	FT-A	OR	DR	TR	F	A	TO	B	S	Pts.
Creighton, g	36	3-8	3-5	1-3	3	7	10	2	7	1	0	2	10
Pearson, f	36	2-9	1-5	3-4	1	5	6	2	6	0	0	0	8
Curran, g	39	11-15	1-2	2-3	0	4	4	4	3	1	0	0	25
Thompson, f	10	1-3	0-0	2-2	0	1	1	3	1	0	0	0	4
Schluth, f	21	4-6	0-0	1-1	1	2	3	3	0	1	1	0	9
Alexander	13	1-3	0-0	1-2	0	1	1	0	1	1	1	0	3
Smith	20	4-7	2-3	3-4	0	2	2	1	2	3	0	1	13
Lidge	26	2-6	0-2	0-0	2	1	3	3	2	0	0	0	4
Team					1	1	2						
<b>Totals</b>	<b>200</b>	<b>28-57</b>	<b>7-17</b>	<b>13-19</b>	<b>8</b>	<b>24</b>	<b>32</b>	<b>17</b>	<b>20</b>	<b>6</b>	<b>2</b>	<b>5</b>	<b>76</b>

**Halftime:** Drexel, 49-32  
**Attendance:** 607  
**FG %:** Saint Joseph's: 40.0%  
**3-PT FG %:** Saint Joseph's: 44.4%  
**FT %:** Saint Joseph's: 73.3%  
**Deadball Rebounds:** Tied, 3-3  
**Officials:** Lewis, Humphrey, DePaul  
Drexel: 49.1%  
Drexel: 41.2%  
Drexel: 68.4%



# 2014-15 SAINT JOSEPH'S BASKETBALL NOTES - PAGE 16

## Game 6 • November 29, 2014 • Walsh Gymnasium Saint Joseph's - 64, St. Francis Brooklyn - 42

Outscoring St. Francis Brooklyn 31-14 in the second half, Saint Joseph's downed the Terriers, 64-42, in the semifinals of the Seton Hall Thanksgiving Tournament.

With the victory, Saint Joseph's head coach **Cindy Griffin** tied the all-time record for wins at Hawk Hill, 248, that was set by Women's Basketball Hall of Famer Jim Foster (1978-91).

Up by just five at the half, the Hawks came out of halftime with strong performances at both ends. Scoring in three of its first four possessions, Saint Joseph's quickly pushed its lead to 11, 39-28, on layup by **Sarah Fairbanks** at 17:59.

The Hawks had their lead trimmed to nine twice from there, but that was as close as the Terriers would get as the SJU's defense held them to just 5-of-25 from the floor for the stanza.

After a slow start to the game, Saint Joseph's pulled ahead by eight over St. Francis Brooklyn as a three-pointer by **Natasha Cloud** gave her team a 29-21 lead with 4:13 to go in the half.

The Terriers bounced back with a 7-0 run to cut SJU's lead to one, but a layup by Fairbanks and a jumper by Cloud gave the Hawks a 33-28 lead going into halftime.

Saint Joseph's	Min.	FG-A	3PT	FT-A	OR	DR	TR	F	A	TO	B	S	Pts.
Robinson, f	29	4-8	0-0	0-0	7	1	8	3	2	2	1	0	8
Fairbanks, f	27	5-10	0-0	0-0	1	3	4	2	1	2	4	1	10
Andrews, g	25	3-10	0-1	5-6	0	5	5	2	3	3	0	0	11
Cloud, g	33	7-9	2-3	0-0	1	7	8	0	7	3	0	1	16
Fitzpatrick, g	31	3-8	2-5	0-0	0	0	0	1	3	1	0	1	8
Rule	9	0-1	0-0	0-0	0	0	0	1	1	0	0	0	0
Pongonis	7	0-2	0-0	0-0	0	0	0	0	1	0	0	0	0
Strode	8	1-1	0-0	0-0	0	0	0	2	0	1	0	0	2
Woods	14	1-2	0-0	0-0	1	4	5	1	0	1	0	0	2
Franklyn	17	3-8	0-0	1-2	4	7	11	4	0	1	4	0	7
Team					2	3	5						
<b>Totals</b>	<b>200</b>	<b>27-59</b>	<b>4-9</b>	<b>6-8</b>	<b>16</b>	<b>30</b>	<b>46</b>	<b>16</b>	<b>18</b>	<b>15</b>	<b>9</b>	<b>3</b>	<b>64</b>

St. Francis	Min.	FG-A	3PT	FT-A	OR	DR	TR	F	A	TO	B	S	Pts.
Benedetti, f	22	2-6	1-5	0-0	1	1	2	1	0	3	1	0	5
Veney, f	29	2-12	0-1	2-2	1	5	6	3	1	3	0	1	6
Fechko, g	34	3-10	0-5	0-0	2	4	6	2	0	2	0	1	6
Fox, g	31	2-5	1-2	0-0	0	1	1	2	5	1	0	2	5
Simpson, g	28	4-6	1-2	3-4	0	2	2	0	1	0	0	2	12
Arthur	7	0-3	0-1	2-2	0	2	2	0	0	0	0	0	2
Delaney	18	1-5	1-4	0-0	0	0	0	0	0	1	0	0	3
Pund	11	0-2	0-1	0-0	0	0	0	1	1	0	0	0	0
Iozzia	9	0-1	0-1	0-0	0	0	0	0	0	0	0	0	0
Derda	11	1-2	0-0	1-2	0	0	0	1	1	1	0	0	3
Team					4	2	6						
<b>Totals</b>	<b>200</b>	<b>15-52</b>	<b>4-22</b>	<b>8-10</b>	<b>8</b>	<b>17</b>	<b>25</b>	<b>10</b>	<b>9</b>	<b>11</b>	<b>1</b>	<b>6</b>	<b>42</b>

**Halftime:** Saint Joseph's, 33-28  
**Attendance:** 607  
**FG %:** Saint Joseph's: 40.0%  
**3-PT FG %:** Saint Joseph's: 44.4%  
**FT %:** Saint Joseph's: 73.3%

**Deadball Rebounds:** Tied, 1-1  
**Officials:** Titus, Browne, Goode  
St. Francis Brooklyn: 49.1%  
St. Francis Brooklyn: 41.2%  
St. Francis Brooklyn: 68.4%

## Game 6 • November 30, 2014 • Walsh Gymnasium Seton Hall - 77, Saint Joseph's - 60

Saint Joseph's got a team-high 22 points from **Ciara Andrews**, but it wasn't enough as the Hawks fell to Seton Hall, 77-60, in the title game of the Seton Hall Thanksgiving Tournament.

With the game tied at 10 early, the Hawks built up a 10-point lead thanks to a 14-4 run. Andrews gave the Hawks their biggest lead of the game on a three-pointer at 12:14.

The host Pirates answered back though. After trading baskets, Seton Hall went on a 17-4 run over a five minute span that saw a three-point play by Ka-Deirdre Simmons give her team a 33-30 a edge with 6:11 to go in the half.

Saint Joseph's would retake the lead, 35-33, on another Andrews three-pointer, but the Pirates used a 16-4 run to span both halves to take a 49-39 lead on a Janee Johnson layup at 18:53.

Down 62-52, the Hawks clawed back to make it a five point game, 62-57, on a pair of Andrews free throws with 8:09 to go.

Unfortunately that was as close as SJU would get as the Pirates used a 9-0 run to pull away.

Saint Joseph's	Min.	FG-A	3PT	FT-A	OR	DR	TR	F	A	TO	B	S	Pts.
Robinson, f	22	1-2	0-0	5-8	4	5	9	1	1	0	0	0	7
Fairbanks, f	34	4-9	0-0	0-0	2	4	6	1	0	1	0	1	8
Andrews, g	40	8-24	2-5	4-4	2	3	5	4	3	4	0	1	22
Cloud, g	32	3-4	0-1	2-2	1	4	5	4	3	8	0	0	8
Fitzpatrick, g	32	2-8	1-4	2-2	1	1	2	5	1	4	0	0	7
Rule	4	0-0	0-0	0-0	0	0	0	2	0	0	0	0	0
Pongonis	12	2-3	0-0	0-0	0	0	0	1	1	2	0	0	4
Woods	11	2-4	0-0	0-0	1	0	1	2	0	1	0	0	4
Franklyn	13	0-0	0-0	0-0	0	2	2	1	0	1	1	1	0
Team					3	1	4						
<b>Totals</b>	<b>200</b>	<b>22-54</b>	<b>3-10</b>	<b>13-16</b>	<b>14</b>	<b>20</b>	<b>34</b>	<b>19</b>	<b>9</b>	<b>21</b>	<b>1</b>	<b>3</b>	<b>60</b>

Seton Hall	Min.	FG-A	3PT	FT-A	OR	DR	TR	F	A	TO	B	S	Pts.
Ali, f	23	2-7	0-1	0-0	3	3	6	2	0	0	1	0	4
Johnson, f	30	5-10	1-4	0-0	3	7	10	4	0	2	0	3	11
Simmons, D., g	34	8-24	1-7	8-9	5	3	8	4	4	6	0	6	25
Richardson-Smith	39	4-13	3-9	5-5	3	3	6	2	1	3	0	5	16
Simmons, K., g	32	7-9	0-1	3-3	3	1	4	4	4	2	0	1	17
Ekedigwe	8	0-2	0-0	0-1	4	1	5	2	0	1	0	0	0
Mosley	4	0-3	0-3	0-0	0	0	0	2	0	1	0	0	0
Egan	10	2-3	0-0	0-0	2	0	2	1	0	0	0	0	4
Inman	8	0-1	0-1	0-1	0	1	1	1	1	0	0	0	0
Lundbrg	3	0-1	0-1	0-0	1	0	1	0	0	0	0	0	0
Gordon	9	0-0	0-0	0-0	1	0	1	2	0	0	0	0	0
Team					1	0	1						
<b>Totals</b>	<b>200</b>	<b>28-73</b>	<b>5-27</b>	<b>16-19</b>	<b>26</b>	<b>19</b>	<b>45</b>	<b>24</b>	<b>10</b>	<b>15</b>	<b>1</b>	<b>15</b>	<b>77</b>

**Halftime:** Seton Hall, 42-37  
**Attendance:** 607

**Deadball Rebounds:** Saint Joseph's, 3-1  
**Officials:** Lewis, Vera, Preato

**Technical Foul:** Janee Johnson, Seton Hall  
**FG %:** Saint Joseph's: 40.0% Seton Hall: 49.1%  
**3-PT FG %:** Saint Joseph's: 44.4% Seton Hall: 41.2%  
**FT %:** Saint Joseph's: 73.3% Seton Hall: 68.4%



## 2014-15 SAINT JOSEPH'S BASKETBALL NOTES - PAGE 17

### Game 7 • December 4, 2014 • Hagan Arena Lehigh - 73, Saint Joseph's - 71

Saint Joseph's dropped a heart breaker as a basket by Lehigh with 4.4 seconds to go lifted the visiting Mountain Hawks to a 73-71 win.

Trailing by 13 with seven minutes to play, the Hawks mounted a furious comeback to tie the game late. Sparked by a combined 12 points from **Chelsea Woods** and **Ashley Robinson**, Saint Joseph's went on a 17-4 run that saw it erase a 67-54 hole and tie it at 71-71 on a driving layup by Natasha Cloud with 13.6 seconds remaining.

Off a timeout, Quinci Mann got through traffic to sneak in a layup with 4.4 seconds to go to give Lehigh the 73-71.

Following a Saint Joseph's timeout, **Ciara Andrews** drove the length of the court and floated a shot off from the left wing that failed to connect as the buzzer sounded.

Lehigh	Min.	FG-A	3PT	FT-A	OR	DR	TR	F	A	TO	B	S	Pts.
Sharlow, f	23	3-3	1-1	0-0	0	1	1	2	1	1	0	0	7
Kinek, f	25	5-8	1-1	0-0	2	4	6	4	3	3	1	2	11
Mann, g	30	5-7	0-0	4-4	0	5	5	2	2	2	0	0	14
O'Reilly, g	33	6-13	0-2	1-3	1	0	1	2	0	2	0	0	13
Affini, g	14	2-5	0-2	0-0	0	0	0	2	2	0	0	0	4
Jordan	5	2-3	2-3	0-0	0	1	1	0	2	0	0	0	6
McCloskey	14	1-2	0-0	0-0	0	2	2	1	1	1	0	0	2
Martins	29	3-7	2-3	0-0	0	7	7	4	1	6	0	0	8
Williams	22	4-7	0-1	0-0	1	1	2	1	3	2	0	0	8
Burton	5	0-0	0-0	0-0	0	2	2	3	0	2	0	0	0
Team					2	5	7						
<b>Totals</b>	<b>200</b>	<b>31-55</b>	<b>6-13</b>	<b>5-7</b>	<b>6</b>	<b>28</b>	<b>34</b>	<b>21</b>	<b>15</b>	<b>19</b>	<b>1</b>	<b>2</b>	<b>73</b>

Saint Joseph's	Min.	FG-A	3PT	FT-A	OR	DR	TR	F	A	TO	B	S	Pts.
Robinson, f	37	7-10	0-0	6-8	3	3	6	4	2	2	1	0	20
Fairbanks, f	33	4-14	0-0	2-2	5	2	7	2	2	1	0	1	10
Andrews, g	28	4-15	0-1	6-6	1	0	1	2	3	1	0	2	14
Cloud, g	39	3-10	0-3	1-2	1	9	10	3	8	0	0	1	7
Fitzpatrick, g	14	1-4	1-3	0-0	0	0	0	0	1	2	0	0	3
Rule	16	1-2	0-1	1-2	1	2	3	2	1	0	0	1	3
Strode	1	0-0	0-0	0-0	0	0	0	0	0	1	0	0	0
Woods	21	4-11	0-0	4-4	3	1	4	0	0	1	0	1	12
Franklyn	11	1-3	0-0	0-0	1	2	3	0	0	1	1	0	2
Team					1	0	1						
<b>Totals</b>	<b>200</b>	<b>25-69</b>	<b>1-8</b>	<b>20-24</b>	<b>16</b>	<b>19</b>	<b>35</b>	<b>13</b>	<b>17</b>	<b>9</b>	<b>2</b>	<b>6</b>	<b>71</b>

**Halftime:** Lehigh, 34-33

**Attendance:** 612

**FG %:** Saint Joseph's: 36.2%

**3-PT FG %:** Saint Joseph's: 12.5%

**FT %:** Saint Joseph's: 83.3%

**Deadball Rebounds:** Saint Joseph's, 4-1

**Officials:** Demayo, Smith, Camarota

Lehigh: 56.4%

Lehigh: 46.2%

Lehigh: 71.4%



### Team Superlatives

CATEGORY	SAINT JOSEPH'S HIGH	SAINT JOSEPH'S LOW	OPPONENT'S HIGH	OPPONENTS' LOW
Total Points	78, vs. Temple, 11/18/14	52, at Rutgers, 11/14/14	77, by Seton Hall, 11/30/14	42, by St. Francis Brooklyn, 11/29/14
1st Half Points	37, at Seton Hall, 11/30/14	24, at Rutgers, 11/14/14	49, by Drexel, 11/25/14	28, by St. Francis Brooklyn, 11/29/14
2nd Half Points	36, vs. Lehigh, 12/4/14	23, at Seton Hall, 11/30/14	46, by Rutgers, 11/14/14	14, by St. Francis Brooklyn, 11/29/14
Overtime Points	14, vs. Temple, 11/18/14	10, at Liberty, 11/22/14	11, by Liberty, 11/22/14	10, by Temple, 11/18/14
Field Goals	28, at Liberty, 11/22/14	18, at Rutgers, 11/14/14	31, by Lehigh, 12/4/14	15, by St. Francis Brooklyn, 11/29/14
Field Goal Att.	69, vs. Lehigh, 12/4/14	54, at Seton Hall, 11/30/14	75, by Temple, 11/18/14	52, by St. Francis Brooklyn, 11/29/14
Field Goal Pct.	.458, vs. St. Francis Brooklyn, 11/29/14	.310, at Rutgers, 11/14/14	.564, by Lehigh, 12/4/14	.288, by St. Francis Brooklyn, 11/29/14
3 Point FG	8, at Drexel, 11/25/14	1, vs. Lehigh, 12/4/14	7, by Drexel, 11/25/14	1, by Rutgers, 11/14/14
3 Point Att.	18, at Drexel, 11/25/14	8, vs. Lehigh, 12/4/14	27, by Seton Hall, 11/30/14	6, by Rutgers, 11/14/14
3 Point Pct.	.444, 2x, last vs. St. Francis Brooklyn, 11/29/14	.125, vs. Lehigh, 12/4/14	.462, by Lehigh, 12/4/14	.167, by Rutgers, 11/14/14
Free Throws	25, vs. Temple, 11/18/14	6, vs. St. Francis Brooklyn, 11/29/14	20, by Liberty, 11/22/14	5, by Lehigh, 12/4/14
Free Throw Att.	30, vs. Temple, 11/18/14	8, vs. St. Francis Brooklyn, 11/29/14	27, by Liberty, 11/22/14	7, by Lehigh, 12/4/14
Free Throw Pct.	.833, 2x, last vs. Lehigh, 12/4/14	.545, at Rutgers, 11/14/14	.842, by Seton Hall, 11/30/14	.682, by Rutgers, 11/14/14
Offensive Rebs.	19, at Rutgers, 11/14/14	7, at Liberty, 11/22/14	26, by Seton Hall, 11/30/14	6, by Lehigh, 12/4/14
Defensive Rebs.	31, vs. Temple, 11/18/14	19, vs. Lehigh, 12/4/14	32, by Liberty, 11/22/14	17, by St. Francis Brooklyn, 11/29/14
Total Rebs.	.46, vs. St. Francis Brooklyn, 11/29/14	32, at Liberty, 11/22/14	52, by Liberty, 11/22/14	25, by St. Francis Brooklyn, 11/29/14
Personal Fouls	27, at Liberty, 11/22/14	13, vs. Lehigh, 12/4/14	24, 2x, last by Seton Hall, 11/30/14	10, by St. Francis Brooklyn, 11/29/14
Assists	18, vs. St. Francis Brooklyn, 11/29/14	9, at Seton Hall, 11/30/14	20, by Drexel, 11/25/14	9, by St. Francis Brooklyn, 11/29/14
Turnovers	21, 2x, last vs. St. Francis Brooklyn, 11/29/14	9, vs. Lehigh, 12/4/14	20, by Liberty, 11/22/14	6, by Drexel, 11/25/14
Blocked Shots	9, vs. St. Francis Brooklyn, 11/29/14	1, at Seton Hall, 11/30/14	9, by Rutgers, 11/14/14	1, 3x, last by Lehigh, 12/4/14
Steals	15, at Liberty, 11/22/14	1, 3x, last at Drexel, 11/25/14	15, by Seton Hall, 11/30/14	2, by Lehigh, 12/4/14

### Individual Superlatives

CATEGORY	SAINT JOSEPH'S MOST	OPPONENT'S MOST
Points	29, by Natasha Cloud at Liberty, 11/22/14	25, 2x last 6, by Daisha Simmons of Seton Hall, 11/30/14
Field Goals	10, 2x, last by Andrews and Cloud at Liberty, 11/22/14	11, by Sarah Curran of Drexel, 11/25/14
Field Goal Att.	24, by Ciara Andrews at Seton Hall, 11/30/14	24, by Daisha Simmons of Seton Hall, 11/30/14
Field Goal Pct. *	.778 (7-9), by Natasha Cloud vs. St. Francis Brooklyn, 11/29/14	.778 (7-9), by Ka-Deidre Simmons of Seton Hall, 11/30/14
3 Point FG	6, by Kathleen Fitzpatrick at Drexel, 11/25/14	3, 2x, last by Tabatha Richardson-Smith of Seton Hall, 11/30/14
3 Point Att.	10, by Kathleen Fitzpatrick at Drexel, 11/25/14	9, by Tabatha Richardson-Smith of Seton Hall, 11/30/14
3 Point Pct. #	.750 (3-4) by Natasha Cloud at Liberty, 11/22/14	.600 (3-5), by Meghan Creighton of Drexel, 11/25/14
Free Throws	9, by Sarah Fairbanks vs. Temple, 11/18/14	8, by Daisha Simmons of Seton Hall, 11/30/14
Free Throw Att.	11, by Ciara Andrews vs. Rutgers, 11/14/14	9, by Daisha Simmons of Seton Hall, 11/30/14
Free Throw Pct. *	1.000 (9-9), by Sarah Fairbanks vs. Temple, 11/18/14	.889 (8-9), by Daisha Simmons of Seton Hall, 11/30/14
Offensive Rebs.	5, by Sarah Fairbanks vs. Temple, 11/18/14	6, by Tanya Atkinson of Temple, 11/18/14
Defensive Rebs.	9, by Natasha Cloud vs. Lehigh, 12/4/14	12, by Safiya Martin of Temple, 11/18/14
Total Rebs.	13, by Sarah Fairbanks vs. Temple, 11/18/14	14, by Safiya Martin of Temple, 11/18/14
Assists	10, by Natasha Cloud vs. Rutgers, 11/14/14	8, by Briyona Canty of Rutgers, 11/14/14
Turnovers	8, by Natasha Cloud at Seton Hall, 11/30/14	8, by Sadalia Ellis of Liberty, 11/22/14
Blocked Shots	4, 2x, last by Fairbanks and Franklyn vs. St. Francis Brooklyn, 11/29/14	5, by Rachel Hollivay of Rutgers, 11/14/14
Steals	4, by Kathleen Fitzpatrick at Liberty, 11/22/14	6, by Daisha Simmons of Seton Hall, 11/30/14
Minutes	42, 2x, last by Natasha Cloud at Liberty, 11/22/14	45, by Safiya Martin of Temple, 11/18/14

\* - Minimum of five attempts; # - Minimum of three attempts





**GAME-BY-GAME RESULTS**

DATE	OPPONENT	SCORE	W/L	ATT	HIGH POINTS	HIGH REBOUNDS	HIGH ASSISTS	HIGH STEALS
Nov. 14	at #24/RV Rutgers	.52-76	L	1,805	Andrews . . . .19	Three tied at . . . .6	Cloud . . . . .10	Cloud . . . . .1
Nov. 18 #	Temple	.78-74	W OT	1,351	Fairbanks . . . .23	Fairbanks . . . .13	Andrews . . . .4	Cloud . . . . .1
Nov. 22	at Liberty	.75-76	L OT	438	Cloud . . . . .29	Franklyn . . . . .6	Andrews . . . .4	Fitzpatrick . . . .4
Nov. 25	at Drexel	.63-76	L	607	Fitzpatrick . . .18	Cloud . . . . .8	Cloud . . . . .8	Fitzpatrick . . . .1
Nov. 29	vs. Saint Francis	.64-42	W	362	Cloud . . . . .16	Franklyn . . . .11	Cloud . . . . .7	Three tied at . . . .1
Nov. 30	at Seton Hall	.60-77	L	502	Andrews . . . .22	Robinson . . . . .9	Andrews, Cloud .3	Three tied at . . . .1
Dec. 4	Lehigh	.71-73	L	612	Robinson . . . .20	Cloud . . . . .10	Cloud . . . . .8	Andrews . . . . .2
Dec. 7 #	Villanova							
Dec. 9 #	at Penn							
Dec. 21	at Notre Dame							
Dec. 28	Quinnipiac							
Dec. 29	TBD							
Jan. 3 *	VCU							
Jan. 7 *	at George Washington							
Jan. 10 *	Massachusetts							
Jan. 15 *	at Fordham							
Jan. 18 *	at Duquesne							
Jan. 24 *	St. Bonaventure							
Jan. 28 *	at Saint Louis							
Jan. 31 *	at Davidson							
Feb. 4 #*	La Salle							
Feb. 8 *	Fordham							
Feb. 11 *	at Rhode Island							
Feb. 15 *	at Dayton							
Feb. 18 *	George Mason							
Feb. 21 *	Richmond							
Feb. 25 *	Duquesne							
Mar. 1 *	at La Salle							

\* – Atlantic 10 game; # – Big 5 game;

**GAMES AS HIGH SCORER:** Andrews - 2; Cloud - 2; Fairbanks - 2; Fitzpatrick - 1; Robinson - 1

**GAMES AS HIGH REBOUNDER:** Cloud - 3; Fairbanks -2; Franklyn - 2; Andrews - 1; Robinson - 1

**GAMES SCORING DOUBLE FIGURES:** Andrews - 6; Fairbanks - 5; Robinson - 3; Cloud - 2; Fitzpatrick - 2; Woods - 1

**GAMES REBOUNDING DOUBLE FIGURES:** Cloud - 1; Fairbanks - 1; Franklyn - 1

**GAMES SCORING 20 OR MORE POINTS:** Andrews - 2; Cloud - 1; Fairbanks - 1; Robinson - 1

**GAMES POSTING A DOUBLE-DOUBLE:** Fairbanks - 1

**HAWKS BY THE NUMBERS**

1-1	at home	2-2	when committing 15 or fewer turnovers
0-3	on the road	0-3	when committing more than 15 turnovers
1-0	at a neutral site	2-5	when forcing more than 15 opponent turnovers
2-4	in November	1-0	when forcing 15 or fewer turnovers
0-1	in December	0-0	when scoring 50 or fewer points
0-0	in January	0-1	when scoring 50-59 points
0-0	in February	1-2	when scoring 60-69 points
0-0	in March	1-2	when scoring 70-79 points
2-0	when leading at halftime	0-0	When scoring 80 points or higher
0-5	when trailing at halftime		
0-0	when tied at halftime		
1-2	when outrebounding the opponent		
1-3	when outrebounded		
1-3	when shooting 40% or higher		
1-2	when shooting under 40%		
1-3	when opponent shoots 40% or higher		
1-2	when opponent shoots under 40%		
1-1	when making more free throws than the opponent		

**MISCELLANEOUS STATS**

Largest Winning Margin 22, vs. St. Francis Brooklyn, 11/29/14  
 Largest Lead in a Game 22, vs. St. Francis Brooklyn, 11/29/14

**MARGIN OF VICTORY**

1 to 9 points: 1  
 10-19 points: 0  
 20 or more points: 1



## 2014-15 SAINT JOSEPH'S BASKETBALL NOTES - PAGE 20

### Saint Joseph's Combined Team Statistics (as of Dec 04, 2014) All games

<b>RECORD:</b>	<b>OVERALL</b>	<b>HOME</b>	<b>AWAY</b>	<b>NEUTRAL</b>
ALL GAMES	2-5	1-1	0-4	1-0
CONFERENCE	0-0	0-0	0-0	0-0
NON-CONFERENCE	2-5	1-1	0-4	1-0

##	Player	gp-gs	min	avg	Total		3-Point		F-Throw		Rebounds				pf	dq	a	to	blk	stl	pts	avg
					fg-fga	fg%	3fg-fga	3fg%	ft-fga	ft%	off	def	tot	avg								
03	ANDREWS, Ciara	7-6	225	32.1	41-106	.387	4-12	.333	23-30	.767	6	18	24	3.4	17	1	18	16	0	5	109	15.6
41	FAIRBANKS, Sarah	7-7	235	33.6	33-79	.418	0-0	.000	15-15	1.000	17	24	41	5.9	17	1	7	16	7	4	81	11.6
04	CLOUD, Natasha	7-7	242	34.6	28-56	.500	6-17	.353	16-20	.800	6	43	49	7.0	18	0	42	26	3	6	78	11.1
13	ROBINSON, Ashley	7-6	197	28.1	21-45	.467	0-0	.000	25-36	.694	24	17	41	5.9	22	1	8	11	5	3	67	9.6
15	FITZPATRICK, Kathlee	7-7	211	30.1	19-54	.352	15-41	.366	7-8	.875	2	18	20	2.9	16	1	10	16	2	6	60	8.6
32	WOODS, Chelsea	6-0	54	9.0	7-19	.368	0-1	.000	4-4	1.000	5	6	11	1.8	7	0	0	3	0	1	18	3.0
30	VEILLEUX, Sarah	4-0	34	8.5	3-10	.300	3-8	.375	2-2	1.000	1	4	5	1.3	1	0	0	0	0	0	11	2.8
23	STRODE, Jordan	6-1	62	10.3	4-14	.286	1-2	.500	6-8	.750	1	4	5	0.8	9	0	3	6	2	1	15	2.5
33	FRANKLYN, Adashia	7-0	81	11.6	6-18	.333	0-0	.000	3-10	.300	8	19	27	3.9	10	0	1	7	8	3	15	2.1
22	PONGONIS, Jessica	6-1	64	10.7	3-13	.231	0-1	.000	0-0	.000	5	1	6	1.0	7	0	2	4	0	0	6	1.0
02	RULE, Mackenzie	5-0	45	9.0	1-6	.167	0-3	.000	1-2	.500	2	3	5	1.0	6	0	3	1	0	1	3	0.6
Team											15	12	27				1					
Total.....		7	1450		166-420	.395	29-85	.341	102-135	.756	92	169	261	37.3	130	4	94	107	27	30	463	66.1
Opponents.....		7	1451		185-442	.419	34-123	.276	90-123	.732	100	176	276	39.4	136	-	96	97	19	49	494	70.6

<b>TEAM STATISTICS</b>	<b>SJU</b>	<b>OPP</b>	<b>Date</b>	<b>Opponent</b>	<b>Score</b>	<b>Att.</b>
SCORING	463	494	11/14/14	at Rutgers	L 52-76	1805
Points per game	66.1	70.6	11/18/14	TEMPLE	Wot 78-74	1351
Scoring margin	-4.4	-	11-22-14	at Liberty	Lot 75-76	438
FIELD GOALS-ATT	166-420	185-442	11/25/14	at DREXEL	L 63-76	607
Field goal pct	.395	.419	11/29/14	vs St. Francis	W 64-42	362
3 POINT FG-ATT	29-85	34-123	11/30/14	at Seton Hall	L 60-77	502
3-point FG pct	.341	.276	12/4/14	LEHIGH	L 71-73	612
3-pt FG made per game	4.1	4.9	* - Conference game			
FREE THROWS-ATT	102-135	90-123				
Free throw pct	.756	.732				
F-Throws made per game	14.6	12.9				
REBOUNDS	261	276				
Rebounds per game	37.3	39.4				
Rebounding margin	-2.1	-				
ASSISTS	94	96				
Assists per game	13.4	13.7				
TURNOVERS	107	97				
Turnovers per game	15.3	13.9				
Turnover margin	-1.4	-				
Assist/turnover ratio	0.9	1.0				
STEALS	30	49				
Steals per game	4.3	7.0				
BLOCKS	27	19				
Blocks per game	3.9	2.7				
ATTENDANCE	1963	3714				
Home games-Avg/Game	2-982	4-838				
Neutral site-Avg/Game	-	1-362				

<b>Score by Periods</b>	<b>1st</b>	<b>2nd</b>	<b>OT</b>	<b>Totals</b>
Saint Joseph's	226	213	24	463
Opponents	260	213	21	494



# 2014-15 SAINT JOSEPH'S BASKETBALL NOTES - PAGE 21



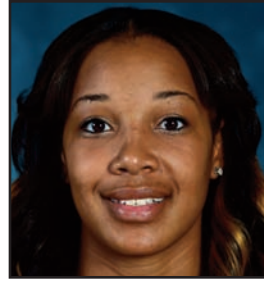
**#2 - Mackenzie Rule**  
So. • Guard • 5-6



**#3 - Ciara Andrews**  
Jr.. • Guard • 5-9



**#4 - Natasha Cloud**  
Sr. • Guard • 6-0



**#13 - Ashley Robinson**  
Gr. • Forward • 6-2



**#15 - Kathleen Fitzpatrick**  
So. • Guard • 5-9



**#21 - Avery Marz**  
Fr. • Guard • 5-7



**#22 - Jessica Pongonis**  
So. • Forward • 6-1



**#23 - Jordan Strode**  
R-So. • Guard • 5-8



**#30 - Sarah Veilleux**  
Fr. • Guard/Forward • 6-0



**#32 - Chelsea Woods**  
Fr. • Guard/Forward • 6-0



**#33 - Adashia Franklyn**  
Fr. • Forward • 6-1



**#34 - Amanda Fioravanti**  
So. • Forward • 6-1



**#40 - Candace Belvedere**  
Fr. • Forward • 6-2



**#41 - Sarah Fairbanks**  
Jr. • Forward • 6-1



**Cindy Griffin**  
Head Coach



**Susan Moran**  
Associate Head Coach



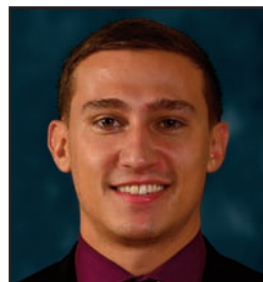
**Stephanie McCaffrey**  
Assistant Coach



**Jada Pierce**  
Assistant Coach



**Katie Gardler**  
Director of Basketball Operations



**Chris Koclanes**  
Video Coordinator