

2014-15 SCHEDULE/RESULTS

Overall: 1-1; Atlantic 10: 0-0; Big 1-0

NOVEMBER

Fri. 14 at No. 24/RV Rutgers L, 52-76
Tues. 18 TEMPLE # W, 78-74 OT
 Sat. 22 at Liberty 2:00 p.m.
 Tues. 25 at Drexel 7:00 p.m.
 Sat. 29 vs. Saint Francis Noon
 Sun. 30 vs. Saint Peter's or Seton Hall TBD

DECEMBER

Thurs. 4 LEHIGH 7:00 p.m.
Sun. 7 VILLANOVA # 2:00 p.m.
 Tues. 9 at Penn # 5:30 p.m.
 Sun. 21 at Notre Dame 1:00 p.m.
Sun. 28 QUINNIAC 2:00 p.m.
Mon. 29 CSUN or FLORIDA GULF COAST TBD

JANUARY

Sat. 3 VCU * 7:00 p.m.
 Wed. 7 at George Washington * 7:00 p.m.
Sat. 10 MASSACHUSETTS * 2:00 p.m.
 Thurs. 15 at Fordham * (CBSSN) 7:00 p.m.
 Sun. 18 at Duquesne * (CBSSN) 4:00 p.m.
Sat. 24 ST. BONAVENTURE * 2:00 p.m.
 Wed. 28 at Saint Louis * 12:30 p.m.
 Sat. 31 at Davidson * 2:00 p.m.

FEBRUARY

Wed. 4 LA SALLE *# 7:00 p.m.
Sun. 8 FORDHAM * 2:00 p.m.
 Wed. 11 at Rhode Island * 7:00 p.m.
 Sun. 15 at Dayton * (CBSSN) Noon
Wed. 18 GEORGE MASON * 7:00 p.m.
Sat. 21 RICHMOND * 2:00 p.m.
Wed. 25 DUQUESNE * 7:00 p.m.

MARCH

Sun. 1 at La Salle * 1:00 p.m.
 W.-Sn. 4-8 Atlantic 10 Championship +

Home games in **BOLD CAPS** at Hagan Arena;
 All game times are EST and subject to change
 * Atlantic 10 Conference Game
 # - Philadelphia Big 5 Game
 + at The Richmond Coliseum (Richmond, Va.)

Contact: Jack Jumper • Cell Phone: 610-660-3389 • Email: jjumper@sju.edu

SAINT JOSEPH'S UNIVERSITY HAWKS (1-1)

at

LIBERTY UNIVERSITY FLAMES (1-1)

Game #3 • November 22, 2014
Vine Center • Lynchburg, Va. • 2:00 p.m.

GAME DAY AT A GLANCE

Arena Vines Center (8,085)
Live Audio SJSN - Jack Jumper
Live Streaming Liberty Flames Sports Network
Series Record Saint Joseph's Leads 1-0
Next Game Tuesday, November 25 at Drexel, 7:00 p.m.

GAME STORIES . . .

- Saint Joseph's begins a four-game road swing starting Saturday at Liberty.
- The Hawks are coming off a 78-74 overtime win against Big 5 rival Temple on Tuesday.
- Junior forward **Sarah Fairbanks** had a career game versus the Owls as she set new personal bests for points in a game (23) and rebounds (13).
- Sophomore guard **Kathleen Fitzpatrick** tallied 14 points against Temple, matching her career-high of 14 that she set last year against Liberty.
- As a team, Saint Joseph's bounced back from a poor free throw shooting performance at Rutgers (12-of-22) as the Hawks hit 25-of-30 from the foul line versus Temple, including 6-of-7 in the extra frame.
- With Tuesday's win, SJU head coach **Cindy Griffin** (247-167) moved to within one victory of Jim Foster's program record of 248.
- Saint Joseph's improved to 37-5 in home openers with its win over Temple on Tuesday.
- Saturday's matchup with Liberty is just the second meeting between the Hawks and the Flames.
- Saint Joseph's won last year's inaugural matchup, 77-65, on November 23 at Hagan Arena. Full boxscore and recap on page 2 of the SJU Game Notes.
- Saint Joseph's is 2-0 all-time versus Big South teams having topped Liberty last year and previously beating Radford, 87-69, at the Duke Classic on November 30, 1996.

HAWKS AT A GLANCE

PROBABLE STARTERS

No.	Pos.	Player	Yr.	Ht.	PPG	RPG	APG	MPG	Notes
3	G	Ciara Andrews	Jr	5-9	16.5	4.0	2.5	37.5	Added 14 points and team-high 4 assists versus Temple
4	G	Natasha Cloud	Sr.	6-0	6.0	6.5	6.5	32.0	Had 9 points and 7 rebounds against Temple
13	F	Ashley Robinson	Gr.	6-2	5.5	4.5	0.0	28.0	Finished with 11 points and 2 blocked shots against Temple
15	G	Kathleen Fitzpatrick	So.	5-9	11.5	4.5	2.0	34.5	Matched career-high with 14 points against Temple
41	F	Sarah Fairbanks	Jr.	6-1	19.5	9.5	1.0	39.0	Poured in a career-best 23 points versus Temple

THE BENCH

2	G	Mackenzie Rule	So.	5-6	0.0	1.0	0.0	1.0	Grabbed a rebound versus Rutgers
21	G	Avery Marz	Fr.	5-7	12.6	--	--	--	Out - Sitting out 2014-15 season for medical reasons
22	F	Jessica Pongonis	So.	6-1	0.0	2.0	0.0	12.0	Added 2 rebounds versus Temple
23	G	Jordan Strode	R-So.	5-8	3.0	2.0	0.5	14.0	Finished with a point and two rebounds against Temple
30	G/F	Sarah Veilleux	Fr.	6-0	3.0	0.0	0.0	8.0	Went 2-for-2 from three-point range versus Temple
32	G/F	Chelsea Woods	Fr.	6-0	0.0	1.0	0.0	3.0	Added a rebound at Rutgers
33	F	Adashia Franklyn	Fr.	6-1	0.0	1.5	0.0	5.5	Grabbed a rebound against Temple
34	F	Amanda Fioravanti	So.	6-1	1.5	1.1	0.3	4.0	Out - Must sit out fall semester per NCAA transfer rules
40	F	Candace Belvedere	Fr.	6-2	12.1	9.6	1.5	--	Doubtful - Left leg



2014-15 SAINT JOSEPH'S BASKETBALL NOTES - PAGE 2

SAINT JOSEPH'S' ROSTER

No.	Name	Yr.	Pos.	Ht.	Hometown	High School/Last School
2	Mackenzie Rule	So.	G	5-6	West Chester, Pa.	Cardinal O'Hara
3	Ciara Andrews	Jr.	G	5-9	Glenside, Pa.	Cheltenham
4	Natasha Cloud	Sr.	G	6-0	Broomall, Pa.	Cardinal O'Hara/Maryland
13	Ashley Robinson	Gr.	F	6-2	Warrington, Pa.	Archbishop Wood
15	Kathleen Fitzpatrick	So.	G	5-9	Drexel Hill, Pa.	Academy of Notre Dame de Namur
21	Avery Marz	Fr.	G	5-7	Sinking Springs, Pa.	Wilson West Lawn
22	Jessica Pongonis	So.	F	6-1	Fishers, Ind.	Hamilton Southeaster
23	Jordan Strode	R-So.	G	5-8	Charlotte, N.C.	Hickory Ridge
30	Sarah Veilleux	Fr.	G/F	6-0	Hebron, Conn.	RHAM
32	Chelsea Woods	Fr.	G/F	6-0	Philadelphia, Pa.	Freire Charter
33	Adashia Franklyn	Fr.	F	6-1	West Chester, Pa.	West Chester Bayard Rustin
34	Amanda Fioravanti	So.	F	6-1	Frederick, Md.	Our Lady of Good Counsel
40	Candace Belvedere	Fr.	F	6-2	Merrick, N.Y.	Kellenberg Memorial
41	Sarah Fairbanks	Jr.	F	6-1	Elizabethtown, Pa.	Elizabethtown Area

Head Coach: Cindy Griffin (Saint Joseph's '91, '93) - 14th year
Associate Head Coach: Susan Moran (Saint Joseph's '02) - 12th year
Assistant Coaches: Stephanie McCaffrey (Saint Joseph's '04) - 8th year,
 Jada Pierce (West Chester '97) - 3rd year
Director of Basketball Operations: Katie Gardler (Saint Joseph's '92) - 5th year
Graduate Assistant: Chris Koclanes (Old Dominion '10) - 2nd year

PRONUNCIATION GUIDE

CIARA AndrewsSEE-are-uh
Jessica PONGONISpon-GO-niss
ADASHIA Franklynuh-DAY-zhuh
Sarah VEILLEUXvuh-LOU
Amanda FIORAVANTI
fee-OR-uh-vahn-tee



SERIES HISTORY Saint Joseph's vs. Liberty

All-Time Series: SJU Leads 1-0
Last Meeting: 11/23/13, SJU, 77-65
Last SJU Win: 11/23/13, 77-65
Last Liberty Win: --
Current SJU Streak: W-1



STATISTICAL COMPARISON

	Saint Joseph's	Liberty
Overall Record	1-1	1-1
Conference Record	0-0	0-0
Home Record	1-0	1-1
Away Record	0-1	0-0
Neutral Record	0-0	0-0
Points Per Game	65.0	73.0
Opponent Points Per Game	75.0	66.0
Scoring Differential	-10.0	+7.0
Field Goal Percentage	.353	.442
Opponent Field Goal Percentage	.417	.367
3-Pt. Field Goals Made Per Game	4.5	4.5
3-Pt. Field Goal Percentage	.333	.273
Opponent 3-Pt. Field Goal Percentage	.240	.389
Free Throws Made Per Game	18.5	15.5
Free Throw Percentage	.712	.689
Rebounds Per Game	40.0	46.0
Opponent Rebounds Per Game	44.0	37.0
Rebounding Differential	-4.0	+9.0
Assists Per Game	12.5	16.5
Turnovers Per Game	17.5	20.0
Opponent Turnovers Per Game	13.0	14.5
Turnover Margin	-4.5	-5.5
Assist/Turnover Ratio	0.7	0.8
Steals Per Game	1.0	6.0
Blocks Per Game	4.5	4.0

PREVIOUS GAME VS. LIBERTY

Date **Score** **Site** **Rank**
 11/23/13 W, 77-65 Home

LAST MEETING BOXSCORE & RECAP

November 23, 2013 • Hagan Arena
Saint Joseph's - 77, Liberty - 65

Backed by a 26-7 run midway through the second half, Saint Joseph's topped Liberty, 77-65. Up 48-44 with 12:31 to play, Saint Joseph's asserted itself on both ends of the court over the next eight minutes as it took control of the game. The Hawks hit eight of its next 12 shots, and 4-of-4 from the foul line, to go up 73-51 at 4:12. Saint Joseph's defense forced five turnovers and held Liberty to 0-for-8 from the floor during its run, conceding all seven points at the charity stripe.

Liberty	Min.	FG-A	3PT	FT-A	OR	DR	TR	F	A	TO	B	S	Pts.
Kearney, f	26	1-5	0-0	6-6	1	1	2	2	0	2	0	1	8
Rinninger, f	27	7-11	0-0	1-1	7	7	14	1	1	1	1	1	15
Sanders, g	13	2-11	1-6	0-0	2	2	4	2	0	2	0	1	5
Ellis, g	18	0-5	0-4	1-2	1	2	3	4	1	5	0	1	1
Frazier, g	27	4-10	1-4	1-1	1	2	3	2	1	3	0	3	10
Miller	14	0-2	0-2	0-0	2	1	3	3	3	2	0	0	0
Fisher-Davis	4	0-1	0-1	0-0	0	0	0	0	0	0	0	0	0
Brown	24	0-4	0-2	2-2	1	1	2	3	1	3	0	0	2
Hanson	20	4-8	0-0	0-0	1	2	3	2	1	3	0	0	8
Adams	27	2-6	0-0	12-16	5	4	9	3	1	2	0	1	16
Team						7	2	9		1			
Totals	200	20-63	2-19	23-28	28	24	52	22	9	24	1	8	65

Saint Joseph's	Min.	FG-A	3PT	FT-A	OR	DR	TR	F	A	TO	B	S	Pts.
Gotfrida, f	22	3-6	0-0	0-0	0	1	1	3	1	0	0	0	6
Berger, f	12	0-2	0-2	0-0	3	2	5	4	1	1	0	2	0
Fairbanks, f	37	6-12	0-0	8-11	2	3	5	1	1	3	1	2	20
Shields, g	30	4-10	3-8	8-8	1	2	3	1	3	4	0	2	19
Cloud, g	32	3-7	0-1	1-3	2	5	7	4	8	2	1	2	7
de Jonge	6	0-1	0-1	0-0	0	0	0	1	0	0	0	0	0
Fitzpatrick	18	6-8	2-3	0-0	0	0	0	3	1	2	1	1	14
Gomez	3	0-2	0-0	0-0	0	0	0	1	1	0	1	0	0
Andrews	24	3-6	1-1	2-2	0	1	1	3	1	0	0	1	9
Pongonis	16	0-1	0-0	2-2	0	0	0	2	2	1	0	3	2
Team						0	2	2					
Totals	200	25-55	6-16	21-26	8	16	24	23	19	13	4	13	77

Halftime: Saint Joseph's, 35-32 **Deadball Rebounds:** Liberty, 4-3
Attendance: 1,123 **Officials:** Sparrock, McDow, Cummiskey
FG %: Saint Joseph's - 45.5%, Liberty - 31.7%
3-PT FG %: Saint Joseph's - 37.5%, Liberty - 10.5%
FT %: Saint Joseph's - 80.8%, Liberty - 82.1%



GRIFFIN SECOND ALL-TIME IN WINS AT HAWK HILL

Now in her 14th season at her alma mater, **Cindy Griffin** is second all-time in team history in victories at Saint Joseph's. Over her tenure seasons on Hawk Hill, Griffin has posted a 247-167 mark. Having led SJU to a record 10 postseason appearances during her tenure she trails only Women's Basketball Hall of Famer Jim Foster (248) in career wins.

MARZ TO MISS 2014-15 SEASON

Saint Joseph's freshman **Avery Marz** will sit out the 2014-15 basketball season for medical reasons. A highly-touted guard from Wilson West Lawn High School, Marz suffered a stroke this past August. Working at home with physical therapists to regain full motion in her left arm and leg, she has taken a medical leave for the fall semester, but has been present for numerous team outings and practices. Marz will return to campus and begin taking classes in January. A four-year letterwinner at Wilson West Lawn, Marz led her team to four-straight District 3 AAAA titles and Berks County championships. Averaging 12.6 points per game as a senior, she was named an All-American Honorable Mention by the *Sporting News* and the Berks County Player of the Year as she helped her team to a #23 national ranking by the *Sporting News*.

INJURY REPORT

Freshman **Avery Marz** is out for Saturday's game, while classmate **Candace Belvedere** is doubtful with a left leg injury.

FIORAVANTI OUT FIRST SEMESTER PER NCAA RULES

Saint Joseph's sophomore forward **Amanda Fioravanti** will sit out the fall semester of the 2014-15 season per NCAA transfer rules. Named the 2012-13 Gatorade Player of the Year for Maryland, Fioravanti came to SJU last January after playing at Virginia the first semester. While with the Cavaliers, Fioravanti averaged 1.5 points and 1.1 rebounds per game over eight games.

TRIO OF HAWKS SERVING AS CAPTAINS IN 2014-15

Graduate student **Ashley Robinson**, senior **Natasha Cloud** and junior **Sarah Fairbanks** are serving as team captains this season. Robinson and Cloud are serving as a team captains for the second straight year, while Fairbanks is a captain for the first time this season.

HAWKS ON THE AIR

The Saint Joseph's Sports Network (SJSN) marks its 25th year of operation in 2014-15, as the first broadcasts of men's and women's basketball games took place in the fall of 1990. The first women's game aired on WCZN-AM on November 23rd as the Hawks hosted Oregon. The 1990-91 season also marked the first in school history in which every SJU men's game aired on Philadelphia-area commercial radio.

Since its beginnings in 1990, SJSN's coverage of Hawk athletics has grown and included Saint Joseph's women's basketball television show *Courtside*, Phil Martelli's *HawkTalk* radio program and the nationally-renowned *HawkTalk* television show, which ran for 15 years.

Hawk fans everywhere will be able to hear the broadcast of every game through audio streaming at the Hawks' official athletics site, www.SJUHawks.com, which is provided free of charge. Fans can also take those broadcasts on-the-go, with the SJUHawks app for mobile devices.



HAWKS LOOK FOR SIXTH STRAIGHT POSTSEASON BID

SJU is coming off its fifth consecutive postseason appearance, earning an at-large bid to the NCAA Tournament and advancing to the second round. SJU, which earned Postseason WNIT bids from 2009-10 to 2011-12 and NCAA Tournament bids the last two years, is currently tied for its second-longest postseason appearance streak. The Hawks previously made four straight appearances from 1975-79 and 1996-2000. Saint Joseph's longest consecutive postseason appearance streak is six seasons, from 1984-85 to 1989-90.

CLOUD RETURNS AS TOP DISTRIBUTOR

Natasha Cloud capped her junior year second nationally in assists per game at 7.6. She enters her senior season as the nation's leading distributor though as last year's leader, Jamierra Faulkner of Southern Miss graduated.

HAWKS PICKED THIRD IN ATLANTIC 10 PRESEASON POLL

Returning four starters and eight letterwinners overall from last year's squad that went 23-10 and advanced to the Second Round of the NCAA Tournament, Saint Joseph's was picked to finish third after garnering 156 points in the Atlantic 10 Preseason Poll. Receiving all 14 first place votes, Dayton was picked first with 196 points. George Washington was next with 173 points, followed by the Hawks, St. Bonaventure (153) fourth, Fordham (143) fifth, Richmond (104) sixth, Duquesne (103) seventh and La Salle (97) in eighth. Saint Louis was picked ninth with 90 points, followed by VCU (87), George Mason (54), A-10 newcomer Davidson (42), Rhode Island (39) and Massachusetts (24), respectively.

SJU 13TH IN HAYS' PRESEASON MID-MAJOR POLL

ESPN writer Graham Hays picked the Hawks 13th nationally in his Preseason Mid-Major Poll. Saint Joseph's was one of four Atlantic 10 teams mentioned in the poll, joining Dayton (first), George Washington (third) and St. Bonaventure (15th).

OFFENSIVE PUNCH LOST TO GRADUATION

With the departures of seniors **Erin Shields**, **Ilze Gotfrida** and **Kelsey Berger** to graduation last May, the Hawks lost a big portion of their offensive punch. Last season, the trio accounted for 41 percent of the team's scoring as they tallied a combined 966 points out of the team's 2,358. Additionally, the seniors were a major part of SJU's perimeter threat, totaling 124 of the team's 166 three-point field goals (74.7 percent).

HAWKS EXCEL IN NONCONFERENCE PLAY

Saint Joseph's has posted a winning record in nonconference play the past four seasons, including a 11-2 mark last year. Over the last four years, the Hawks have posted a combined 40-15 record.

SAINT JOSEPH'S VERSUS RANKED OPPONENTS

Friday marks the 153rd time Saint Joseph's has faced a nationally ranked opponent as the Hawks travel to #24/RV Rutgers. Saint Joseph's enters the game with a 33-119 record versus ranked opponents. The Hawks have lost three straight games to ranked opponents, including a 91-52 loss at #1 Connecticut in the Second Round of the NCAA Tournament last year. Full results versus ranked opponents are available on pages 133-134 of the Saint Joseph's University Media Guide.

HAWK HILL ADVANTAGE

Saint Joseph's has always had a reputation of playing well at home. Over 41 seasons, the Hawks have boasted a 391-138 mark at Hawk Hill, including a 59-21 record at Hagan Arena.



CLOUD NAMED ONE OF 10 MID-MAJOR PLAYERS TO WATCH

Senior guard **Natasha Cloud**, who was named to the Nancy Lieberman Watch List as one of the top point guards in the nation a year ago, is already gaining national attention this year as she was named the fifth best mid-major player by ESPN's Graham Hays. Per Hays, "No returning player averaged more assists per game a season ago than Cloud, but the 6-foot senior who began her career at Maryland isn't just about distributing. With her size and ability to get in the paint to both rebound and finish (nearly a quarter of her points last season came at the free throw line), she's the same kind of triple-double threat on a nightly basis as Iowa's Sam Logic. And even though Cloud had 107 more assists as a junior than as a sophomore, she accumulated only 12 additional turnovers. For all of that, she might be most valuable -- or at least equally valuable -- on the other end of the court, where she was the A-10 defensive player of the year."

HAWKS TO FACE TOUGH COMPETITION IN 2014-15

As is the standard for Saint Joseph's scheduling, facing strong opponents is the norm and 2014-15 is no different. This season, the Hawks will play 14 games against opponents that made a postseason tournament last year.

CLOUD NAMED TO A-10 PRESEASON TEAMS

Senior guard **Natasha Cloud** was recognized by the Atlantic 10 as one of the top players in the conference as she was named to the Preseason All-Conference First Team and All-Defensive Team. Cloud is coming off an impressive junior season in which she helped SJU the Second Round of the NCAA Tournament. Named to the Nancy Lieberman Award Watch List for the top point guard in the country, Cloud set the Hawks' single-season record for assists in 2013-14 with 243 and is eighth all-time with 395. Named the A-10 Defensive Player of the Year and selected to the All-Conference Second Team, she posted also career-high 11.5 points per game and led the team in steals (64) and minutes per game (35.0).

FAIRBANKS NAMED TO A-10 PRESEASON THIRD TEAM

Junior forward **Sarah Fairbanks** earned Atlantic 10 honors to start the year as she was named to the Preseason All-Conference Third Team. Posting one of the best break-through seasons in the A-10 last year, Fairbanks proved to be the Hawks' most reliable post player. After tallying just 49 points as a freshman, Fairbanks finished last year with 419 points, good for 12.7 points per game. Appearing in all 33 games, and making 26 starts, Fairbanks topped SJU in blocked shots (38) and field goal percentage (.503) and finished second in rebounding at 5.9 per game.

ROBINSON RETURNS FOR FINAL SEASON

Graduate student **Ashley Robinson** is now in her sixth season at SJU. Missing the first two seasons (2009-11) due to leg injury, the 6-foot-2 forward has continually improved every season. A two-year starter, Robinson averaged a career-best 6.2 points and 5.4 rebounds per game over 25 contests last year.

ANDREWS AND FAIRBANKS CAREER YEARS

Serving as key reserves as rookies, **Ciara Andrews** and **Sarah Fairbanks** burst onto the scene in 2013-14 as the pair both set career highs in several categories, while locking down starting spots. Averaging 21.1 minutes per game, Andrews averaged 9.2 points per game last season, up from 1.5 ppg as a freshman. Proving to be one of the most reliable post players in the Atlantic 10, Fairbanks tallied 12.7 points and 5.9 rebounds per game after averaging just 1.8 ppg and 2.2 rpg as a rookie.

ODDS AND ENDS

- Redshirt sophomore guard **Jordan Strode** had five points at Rutgers as she returned to the court after missing 61 straight games dating back to the 2012-13 season due to injury.
- Freshmen **Sarah Veilleux** (34.1 ppg) and **Chelsea Woods** (32.6) ranked sixth and 11th, respectively, in the nation in scoring as high school seniors last year.

WHY S-A-I-N-T JOSEPHS UNIVERSITY?

The corporate title of "Saint" Joseph's University, which has been in place since Saint Joseph's was granted university status by the Commonwealth of Pennsylvania in 1979, is now the "public" title of the institution for all aspects of its operations. Previously, the abbreviation of "St." Joseph's University was permitted in a number of alumni and athletic contexts. According to the most recent edition of the Higher Education Directory, there are at least nine recognized "St. Joseph's" among the nation's colleges and universities. Only one of them-Saint Joseph's University, Philadelphia-is a university-level, Master's I, NCAA Division I institution. A complete spelling of S-A-I-N-T Joseph's University in all contexts will help eliminate any confusion among higher education and other public constituencies.

UP NEXT

The Hawks remain on the road as they travel to city rival Drexel on Tuesday. Game time is set for 7 p.m. at the Daskalakis Center.

2014-15 SAINT JOSEPH'S QUICKFACTS

Location	Philadelphia, Pa. 19131
Founded	1851
Enrollment	4,670 (full-time undergrad)
Denomination	Roman Catholic (Jesuit)
Nickname	Hawks
Colors	Crimson and Gray
Athletic Affiliation	NCAA Division I
Conference	Atlantic 10
Home Arena (Capacity)	Michael J. Hagan '85 Arena (4,200)
President	C. Kevin Gillespie, S.J. '72
Associate Vice President/Athletic Director	Don DiJulia
2013-14 Regular Season Record	23-10
2013-14 Atlantic 10 Conference Record (Place)	10-6 (5th)
2013-14 Philadelphia Big 5 Record (Place)	4-0 (1st)
Letterwinners Returning/Lost	8/5
Starters Returning/Lost	4/1
Captains	Natasha Cloud, Sarah Fairbanks, Ashley Robinson
Head Coach (alma mater)	Cindy Griffin (Saint Joseph's '91, '93)
Overall Record/Years	295-200/17th season
Record at Saint Joseph's/Years	247-167/14th season
Associate Head Coach	Susan Moran (Saint Joseph's '02, '07) - 12th season
Assistant Coaches	Stephanie McCaffrey (Saint Joseph's '04) - 8th season Jada Pierce (West Chester '97) - 3rd season
Director of Basketball Operations	Katie Gardler
Graduate Assistant:	Chris Koclanes
Women's Administrative Assistant	Kathy MacDonald
Women's Basketball Athletic Trainer	Salvatore Capone
Women's Basketball Contact	Jack Jumper
Athletic Department	(610) 660-1707
Basketball Office	(610) 660-1710
Athletic Communications	(610) 660-3389
Press Row	(610) 660-2599
Athletics Website	www.sjuhawks.com



MEDIA INFORMATION

MEDIA CREDENTIALS

Credentials for media covering Saint Joseph's at Hagan Arena in 2014-15 should be made at least 24 hours in advance by contacting Jack Jumper.

Priority is given to daily newspapers, radio/TV stations and other media who cover Saint Joseph's and its opponents on a regular basis. Internet sites and agencies that will be considered for credentials include those of national cable networks or established publications. Internet sites representing local or regional media outlets will be provided credentials on a space-available basis. Websites that sponsor "message boards" or "chat rooms" where people are able to post anonymous information are ineligible for consideration of credentials. Credentials will only be issued to those 18 years of age and older.

PHOTO CREDENTIALS

All photographers attending Saint Joseph's home basketball games must be credentialed. Requests for credentials should be made in at least 24 hours in advance to Jack Jumper. Due to space demands, access to freelance photographers is limited.

SCOUT CREDENTIALS

Credentials for WNBA scouts must be requested in advance of the game by contacting Jack Jumper.

RADIO POLICY

Radio stations designated as the primary visiting outlet can have access to phone lines at a cost of \$100 per line per game. (\$200 for ISDN), unless a reciprocal usage agreement exists. Visiting radio stations wishing to broadcast the game should contact Jack Jumper at (610) 660-3389 or by email (jjumper@sju.edu) to arrange phone lines.

INTERVIEWS

All requests for interviews with Cindy Griffin and the Saint Joseph's student-athletes must be arranged through Jack Jumper. Advance notice of at least 24 hours is preferred, but every attempt will be made to accommodate all requests. Players will not be available for interviews on game day, except for post-game interviews.

PRESS ROW

Only accredited members of the media and accredited scouts will be issued credentials to cover Saint Joseph's basketball, and only those with passes will be permitted to sit in press seating. Members of the media are reminded that press row is a working area and cheering for either team will not be tolerated.

MEDIA SERVICES

Saint Joseph's and opponent's game notes, statistics, Atlantic 10 Conference notes and game programs will be available to working members of the media. Halftime statistics will be available in the media room at Hagan Arena and will also be distributed on press row. Final statistics will be distributed in the media room following completion of the game. Fax service is available at both locations.

Complete Saint Joseph's game notes will be available 24 hours prior to the game on SJUHawks.com.

MEDIA PARKING

Media parking is available at the ROTC Lot on 54th Street behind Hagan Arena. Media members desiring to be on the parking list must contact Marie Wozniak at least 24 hours in advance of the game.

POST-GAME

Saint Joseph's head coach Cindy Griffin will be available in the interview room following a post-game cooling off period. The Saint Joseph's locker room is not open to the media.

THE HAWK



One of the most famous mascots in college sports, the Saint Joseph's Hawk has flapped its wings for 58 seasons.

The Hawk is best known for staying in constant motion by flapping its wings throughout every basketball game and representing the Saint Joseph's motto, "The Hawk Will Never Die."

Jim Brennan originated the idea for a hawk as mascot during the 1954-55 season. Brennan, an ex-Marine and SJU cheerleader, at first wanted to secure an actual hawk, but later switched to the costume idea. The student government

raised the 120 dollars needed to buy the initial costume, which Brennan donned for three years. He made his debut as the Hawk on January 4, 1956, a 69-56 win over La Salle at the Palestra. Since then, and including this season, a total of 31 SJU students have donned the costume. The Hawk has not missed a men's basketball game since that first season in 1955-56. The Hawk, who was present at most women's basketball games, became a mainstay in 1989. Since then, 12 SJU students have donned the costume, with **Aleena Yobbi** serving as the Hawk for his first year in 2014-15.

In addition to the constant flapping, the Hawk is also recognized by its "flying" in figure eights around the court during timeouts. Years ago, ESPN used a "flap-o-meter" on the national telecast of a Saint Joseph's game to estimate that the Hawk flaps its wings 3,500 times during a regulation game.

The most decorated mascot in the country, The Hawk has garnered numerous accolades in its 57-year history. In 2013-14, NCAA.com named The Hawk as "College Basketball's Best Tradition". The Sporting News, Sports Illustrated, Sports Illustrated for Kids, Street & Smith's Basketball Yearbook and ESPN College Basketball magazine have selected it as the nation's top mascot. Eastern Basketball tabbed The Hawk as the Atlantic 10 Conference's best mascot, while The Hawk won a "Best of Philly" award from Philadelphia Magazine in 2003-04. The Hawk was selected as a 2008 nominee for the Mascot Hall of Fame.

Saint Joseph's athletic teams have been recognized with the nickname "Hawks" since 1929. At that time, the school's yearbook editor, Charlie Dunn, initiated a contest among the student body for a symbol. More than 100 submissions were narrowed to two, with "Hawks" winning out over "Grenadiers" (World War I soldiers who specialized in tossing grenades) by a slim margin in the final vote.

John Gallagher '31, a catcher on the Saint Joseph's baseball team, submitted the winning suggestion. He won a sweater with a special Saint Joseph's monogram for selecting the winning name. According to the Student Annual, the nickname was appropriate because it typified "the fighting spirit of our crimson and gray athletes and it is suggestive of the aerial attack which has made our football team famous." Ironically, football was discontinued at Saint Joseph's following the 1939 season.

But it has been the connection with the storied tradition of the Saint Joseph's men's and women's basketball programs that has given The Hawk mascot its prominence on the national level, making it one of the most recognized mascots in college athletics.



Cindy Griffin - Head Coach

Saint Joseph's '91, MBA '93 - 14th Season

After leading Saint Joseph's to five straight postseason appearances, including the Second Round of the NCAA Tournament in 2013-14, **Cindy Griffin** enters her 14th year as Saint Joseph's head coach. A 1991 and 1993 graduate of SJU, Griffin (nee Anderson) has compiled an overall record of 295-200 in 17 seasons as a head coach, and a 247-167 record over 14 years at Hawk Hill.

Only the eighth coach in NCAA Division I history to lead her alma mater to the NCAA Tournament as a player and a coach, Griffin's squads have posted six 20-win seasons, six victories over nationally-ranked teams, and have advanced to the postseason 10 times, while her players have been honored as Atlantic 10 All-Conference performers 15 times.

Following up their A-10 Championship the season prior, the 2013-14 Hawks continued to prove themselves as one of the top programs nationally as they earned an at-large bid to the NCAA Tournament and advanced to the Second Round for just the seventh time in team history. Led by Erin Shields and Natasha Cloud, Saint Joseph's earned its fifth straight post-season bid and claimed its first outright Philadelphia Big 5 title since 2000-01.

Under Griffin's leadership, Saint Joseph's posted one of its most memorable seasons in team history in 2012-13 as the Hawks claimed the Atlantic 10 Championship for just the third time and earned the automatic NCAA Tournament bid. Led by a senior class that had advanced to the postseason every year, the Hawks finished with a 23-9 record that included wins over #5 Maryland and #11 Dayton.

In addition to the team's success, a trio of Hawks were singled out for their performances, led by NCAA Woman of the Year nominee Chatilla van Grinsven. With Griffin's guidance, van Grinsven turned in one of the more dominant seasons in recent SJU history, becoming just the fifth player in SJU history to average a double-double for the year en route to being named to the A-10 All-Conference First Team and the Big 5 Player of the Year. The duo of backcourt mates Shields and Cloud helped propel SJU to new heights, with Shields garnering A-10 and Big 5 Most Improved Player honors and I-AAA distinction, while Cloud was named the Most Outstanding Player of the 2013 A-10 Championship.

Backed by a veteran-laden team in 2011-12, the Hawks earned their third-straight WNIT berth and posted their most wins (22) since the 2003-04 season. Moving into second place in career victories at her alma mater, Griffin picked up her 200th win as the Hawks topped Boston University in the opening game of the WNIT on March 15, 2012. Leading the Hawks to a 15-4 mark at home, she helped Saint Joseph's become one of the more efficient teams in the nation, ranking fourth in fewest turnovers per game (12.5), 26th in three-point percentage (.348) and 39th in field goal percentage (.423).

Individually, senior Michelle Baker and Kelly Cavallo had breakout years, both garnering All-Big 5 honors. Behind Griffin's teaching, Baker went on to be named to the A-10 All-Conference Second Team and capped her career as SJU's then all-time leader in games played (127) while ranking in the top 20 for scoring and field goals made. After seeing limited time as a freshman, Cavallo developed into one of the top post players in the A-10, leading SJU and finishing in the top five of the conference in rebounding, blocked shots and field goal percentage. With Griffin's aid, Cavallo finished her career second all-time in blocks and 11th in rebounding at SJU.

Returning just one starter for the 2010-11 season, the Hawks quickly jelled under Griffin's guidance as they went on to win 20 games, earned the program's 700th victory, and advanced to the second round of the WNIT. Backed by All-Big 5 honorees Baker and Katie Kuester, Saint Joseph's had its most efficient offensive showing since 2002-03, as the Hawks finished 60th in the nation in field goal percentage (42.1).

Additionally, several Hawks were honored for outstanding seasons in 2010-11, headlined by sophomore Ashley Prim becoming the first SJU player to be named Atlantic 10 Sixth Player of the Year. Baker became just the second Hawk to be named to the A-10 All-Defensive Team, while freshman Erin Shields became the sixth player Griffin has coached to A-10 All-Rookie Team honors.

Earning a postseason berth for the first time in two years, the Hawks surpassed predictions in 2009-10 as they finished tied for fourth in the Atlantic 10 after being picked to finish ninth. After opening the season with a 3-7 mark, Griffin saw her team begin to click at the end of the non-conference schedule as SJU claimed the 19th Annual Hawk Classic title and worked its way to .500 by the second week of the Atlantic 10 slate.

Posting a 9-5 mark against conference opponents, Griffin hit two milestones during A-10 play, earning her 150th win at Saint Joseph's in a victory against Dayton and earning her 200th coaching win against George Washington. The Hawks would go on to earn the program's seventh WNIT bid, and play the first post-season game at Hagan Arena.

In 2008-09, Griffin undertook arguably her toughest season to date as Saint Joseph's played every contest away from Hawk Hill for the first time in program history. And in typical SJU fashion, Griffin got her team to respond as Saint Joseph's went on to post an 8-5 record at home venues and earn its first Big 5 title since 2000-01. Individually five Hawks posted career bests in scoring, with Brittany Ford and Mariame Djouara both earning All-Big 5 Second Team honors.

Relying heavily on underclassmen in 2007-08, Griffin guided her Hawks to another winning season, including crowns at the Brown Basketball Classic and the Hilton Philadelphia Hawk Classic. Among the wins, Saint Joseph's posted its biggest win over a non-conference ranked opponent since the 1984-85, topping #15 Auburn for the Hawk Classic title.

Despite losing several experienced players prior to the 2006-07 season, Griffin had her team peaking at the right time. Playing Griffin's style of hard-nosed defense and persistent offense, the Hawks advanced to the Atlantic 10 Championship game, including the program's first win over a top 10 opponent (#8 George Washington) since 1992 along the way. Saint Joseph's capped the season with its fifth WNIT appearance in six years and tied the SJU record for games played in a season with 33.

Fueled by a collection of newcomers and a developed core of upperclassmen, Griffin led the Hawks back to national prominence in 2005-06. The Crimson and Gray engineered the nation's best turnaround (13 games) and received votes in the national polls for the first time since 2003-04. The Hawks advanced to the

Coach Griffin
At A Glance

Career Record: 295-200
Record at SJU: 247-167
Atlantic 10 Record: 119-75
Postseason Record: 7-10

Hometown: Maple Glen, Pa.
Education: Saint Joseph's '91,
 Saint Joseph's MBA '93
Playing Experience:
 Saint Joseph's 1987-92
Coaching Experience:
 Saint Joseph's 2001-Present
 Loyola (Md.) 1998-01



2014-15 SAINT JOSEPH'S BASKETBALL NOTES - PAGE 7

semifinals of the A-10 Championship and earned a berth in the WNIT.

With the loss of four 1,000-point scorers, the 2004-05 Hawks showed their true colors down the stretch, earning a hard-fought victory over La Salle in the opening round of the Atlantic 10 Championship and coming within 10 points of 16th-ranked, and eventual A-10 Champion, Temple.

Led by six seniors, the 2004 team went 22-11 and advanced to the WNIT Elite Eight. Saint Joseph's finished second in the A-10 East and dropped a heartbreaker in the Atlantic 10 Championship to Temple. Four Hawk seniors reached the 1,000-point plateau, marking just the eighth time in NCAA history that a quartet of players had reached the milestone in the same season. Erin Brady, Irina Krasnoshiok, Stephanie (Graff) McCaffrey and Amra Mehmedic went on to sign professional contracts.

Following a memorable first year at the helm of her alma mater, Griffin upped the ante in her second season by capturing 2003 Atlantic 10 Coach of the Year honors after guiding the Hawks to a 19-11 record. The team sprinted to the conference's Eastern Division title and earned a berth in the WNIT for the second straight season, despite the departure of SJU's all-time leading scorer and a non-conference schedule that ranked fourth nationally.

Griffin helped to reinvigorate the SJU program in her first season, leading the squad to a 24-8 record and the second round of the WNIT. She capitalized on the team's tradition of scrappy play and rugged defense, while releasing the reins and allowing the team to play a more up-tempo style on the offensive end of the floor. The Hawks finished the year among the national leaders in nine different categories and paced the nation in free throw percentage for the second straight year.

Following her playing career, Griffin spent the 1992-93 season as a graduate assistant at her alma mater. She then accepted an assistant's spot at Vanderbilt University from 1993-95 under former Saint Joseph's head coach Jim Foster. Foster recruited Griffin to SJU and coached her during her playing career on Hawk Hill.

In her two years as an assistant at Vanderbilt, the Commodores finished 53-15 overall, won the 1995 SEC championship and reached the NCAA Sweet 16 both seasons. In addition to coaching responsibilities, she was the co-director of the Vanderbilt Basketball Camp and the director of the Black & Gold Club.

Griffin left Vanderbilt after the 1995 season to become an assistant coach at Loyola College (Md.). She spent three seasons as an assistant under Patty Coyle before being promoted to associate head coach in 1998. Griffin was promoted to the position of head women's basketball coach at Loyola midway through the 1998-99 season. She was the seventh-youngest head coach in Division I at the time. Griffin – who was named head coach five games into the season as Coyle left for an assistant coach position with the WNBA's New York Liberty – kept the Greyhounds' momentum going as Loyola won a team-record 21 games that year. Overall she compiled a record of 48-33 during her tenure at the Baltimore school, guiding the squad to the Metro Atlantic Athletic Conference semifinals all three seasons.

One of the top playmakers in Saint Joseph's history, Griffin starred for the Hawks from 1987-88 through 1991-92 (missing the 1988-89 season due to injury). A three-time team captain, Griffin finished her career with 662 points, 278 rebounds, 510 assists and 197 steals. She currently ranks fourth on SJU's all-time assist list.

As a junior in 1990-91, she played in 1,178 out of a possible 1,200 minutes to set the school record for minutes played in a single season. The Hawks made three NCAA Tournament appearances and posted three straight 20-win seasons during her playing career. A two-time Second Team All-Big 5 choice, as well as a Third Team All-Atlantic 10 pick as a senior, she was inducted into the Saint Joseph's Women's Basketball Hall of Fame in 1998.

A native of Maple Glen, Pa., Griffin played her high school basketball for Bishop McDevitt, winning two Philadelphia Catholic League titles. A 1987 graduate of McDevitt, she was inducted into its Athletic Hall of Fame in 1997, and in 2002, received the Philadelphia Catholic League's alumni achievement award. She earned a bachelor's degree in accounting from Saint Joseph's in 1991 and completed her M.B.A. from SJU in 1993. She resides in Conshohocken, Pa., with her husband Curtis and children, Kaylie, Hannah and Curtis Jr.

Griffin's Year-By-Year Record

Year	School	Overall Record	Conference Record	Postseason
1998-99	Loyola College	17-6	13-5	MAAC Semifinals
1999-00	Loyola College	12-17	8-10	MAAC Semifinals
2000-01	Loyola College	19-10	12-6	MAAC Semifinals
2001-02	Saint Joseph's University	24-8	12-4	WNIT/A-10 Finals
2002-03	Saint Joseph's University	19-11	13-3	WNIT
2003-04	Saint Joseph's University	22-11	12-4	WNIT/A-10 Finals
2004-05	Saint Joseph's University	7-23	4-12	
2005-06	Saint Joseph's University	20-11	10-6	WNIT/A-10 Semifinals
2006-07	Saint Joseph's University	19-14	8-6	WNIT/A-10 Finals
2007-08	Saint Joseph's University	17-14	8-6	
2008-09	Saint Joseph's University	13-17	5-9	
2009-10	Saint Joseph's University	17-15	9-5	WNIT
2010-11	Saint Joseph's University	20-12	8-6	WNIT
2011-12	Saint Joseph's University	22-11	9-5	WNIT
2012-13	Saint Joseph's University	23-9	11-3	NCAA/A-10 Champions
2013-14	Saint Joseph's University	23-10	10-6	NCAA
2014-15	Saint Joseph's University	1-1	0-0	
1998-12	17 Seasons	295-200	152-96	10 Appearances
Head Coaching Record at Saint Joseph's: 247-167 (.596) – 14 Seasons				
Career Head Coaching Record: 295-200 (.595) – 17 Seasons				



Team Superlatives

CATEGORY	SAINT JOSEPH'S HIGH	SAINT JOSEPH'S LOW	OPPONENT'S HIGH	OPPONENTS' LOW
Total Points	78, vs. Temple, 11/18/14	52, at Rutgers, 11/14/14	76, by Rutgers, 11/14/14	74, by Temple, 11/18/14
1st Half Points	34, vs. Temple, 11/18/14	24, at Rutgers, 11/14/14	33, by Temple, 11/18/14	30, by Rutgers, 11/14/14
2nd Half Points	30, vs. Temple, 11/18/14	28, at Rutgers, 11/14/14	46, by Rutgers, 11/14/14	46, by Rutgers, 11/14/14
Overtime Points	14, vs. Temple, 11/18/14	14, vs. Temple, 11/18/14	10, by Temple, 11/18/14	10, by Temple, 11/18/14
Field Goals	24, vs. Temple, 11/18/14	18, at Rutgers, 11/14/14	30, by Rutgers, 11/14/14	28, by Temple, 11/18/14
Field Goal Att.	61, vs. Temple, 11/18/14	58, at Rutgers, 11/14/14	75, by Temple, 11/18/14	64, by Rutgers, 11/14/14
Field Goal Pct.	.393, vs. Temple, 11/18/14	.310, at Rutgers, 11/14/14	.469, by Rutgers, 11/14/14	.373, by Temple, 11/18/14
3 Point FG	5, vs. Temple, 11/18/14	4, at Rutgers, 11/14/14	5, by Temple, 11/18/14	1, by Rutgers, 11/14/14
3 Point Att.	14, at Rutgers, 11/14/14	14, at Rutgers, 11/14/14	19, by Temple, 11/18/14	6, by Rutgers, 11/14/14
3 Point Pct.	.385, vs. Temple, 11/18/14	.286, at Rutgers, 11/14/14	.263, by Temple, 11/18/14	.167, by Rutgers, 11/14/14
Free Throws	25, vs. Temple, 11/18/14	12, at Rutgers, 11/14/14	15, by Rutgers, 11/14/14	13, by Temple, 11/18/14
Free Throw Att.	30, vs. Temple, 11/18/14	22, at Rutgers, 11/14/14	22, by Rutgers, 11/14/14	19, by Temple, 11/18/14
Free Throw Pct.	.833, vs. Temple, 11/18/14	.545, at Rutgers, 11/14/14	.684, by Temple, 11/18/14	.682, by Rutgers, 11/14/14
Offensive Rebs.	19, at Rutgers, 11/14/14	19, at Rutgers, 11/14/14	17, by Temple, 11/18/14	15, by Rutgers, 11/14/14
Defensive Rebs.	31, vs. Temple, 11/18/14	20, at Rutgers, 11/14/14	30, by Temple, 11/18/14	26, by Rutgers, 11/14/14
Total Rebs.	41, vs. Temple, 11/18/14	39, at Rutgers, 11/14/14	47, by Temple, 11/18/14	41, by Rutgers, 11/14/14
Personal Fouls	20, at Rutgers, 11/14/14	18, vs. Temple, 11/18/14	24, by Temple, 11/18/14	18, by Rutgers, 11/14/14
Assists	13, vs. Temple, 11/18/14	12, at Rutgers, 11/14/14	15, by Rutgers, 11/14/14	12, by Temple, 11/18/14
Turnovers	21, at Rutgers, 11/14/14	14, vs. Temple, 11/18/14	15, by Temple, 11/18/14	11, by Rutgers, 11/14/14
Blocked Shots	6, vs. Temple, 11/18/14	3, at Rutgers, 11/14/14	9, by Rutgers, 11/14/14	3, by Temple, 11/18/14
Steals	1, 2x, last vs. Temple, 11/18/14	1, 2x, last vs. Temple, 11/18/14	10, by Rutgers, 11/14/14	6, by Temple, 11/18/14

Individual Superlatives

CATEGORY	SAINT JOSEPH'S MOST	OPPONENT'S MOST
Points	23, by Sarah Fairbanks vs. Temple, 11/18/14	23, by Tyler Scaife of Rutgers, 11/14/14
Field Goals	7, 3x, last by Andrews and Fairbanks vs. Temple, 11/18/14	9, by Tyler Scaife of Rutgers, 11/14/14
Field Goal Att.	19, by Sarah Fairbanks vs. Temple, 11/18/14	23, by Feyonda Fitzgerald of Temple, 11/18/14
Field Goal Pct. *	.538 (7-13), by Sarah Fairbanks vs. Rutgers, 11/14/14	.692 (9-13) by Tyler Scaife of Rutgers, 11/14/14
3 Point FG	3, by Kathleen Fitzpatrick vs. Rutgers, 11/14/14	2, 2x last by Atkinson and Butts of Temple, 11/18/14
3 Point Att.	7, 2x, last by Kathleen Fitzpatrick vs. Temple, 11/18/14	8, by Alliya Butts of Temple, 11/18/14
3 Point Pct. #	.429 (3-7) by Kathleen Fitzpatrick vs. Rutgers, 11/14/14	.500 (2-4), by Tanya Atkinson of Temple, 11/18/14
Free Throws	9, by Sarah Fairbanks vs. Temple, 11/18/14	5, by Tyler Scaife of Rutgers, 11/14/14
Free Throw Att.	11, by Ciara Andrews vs. Rutgers, 11/14/14	6, by Tyler Scaife of Rutgers, 11/14/14
Free Throw Pct. #	1.000 (9-9), by Sarah Fairbanks vs. Temple, 11/18/14	.833 (5-6), by Tyler Scaife of Rutgers, 11/14/14
Offensive Rebs.	5, by Sarah Fairbanks vs. Temple, 11/18/14	6, by Tanya Atkinson of Temple, 11/18/14
Defensive Rebs.	8, by Sarah Fairbanks vs. Temple, 11/18/14	12, by Safiya Martin of Temple, 11/18/14
Total Rebs.	13, by Sarah Fairbanks vs. Temple, 11/18/14	14, by Safiya Martin of Temple, 11/18/14
Assists	10, by Natasha Cloud vs. Rutgers, 11/14/14	8, by Briyona Canty of Rutgers, 11/14/14
Turnovers	5, 2x, last by Cloud and Fitzpatrick vs. Rutgers, 11/14/14	4, by Tyonna Williams of Temple, 11/18/14
Blocked Shots	2, 2x, last by Fitzpatrick and Robinson vs. Temple, 11/18/14	5, by Rachel Hollivay of Rutgers, 11/14/14
Steals	1, 2x, last by Natasha Cloud vs. Temple, 11/18/14	3, 2x, last by Feyonda Fitzgerald of Temple, 11/18/14
Minutes	42, by Ciara Andrews vs. Temple, 11/18/14	45, by Safiya Martin of Temple, 11/18/14

* - Minimum of five attempts; # - Minimum of three attempts





GAME-BY-GAME RESULTS

Table with columns: DATE, OPPONENT, SCORE, W/L, ATT, HIGH POINTS, HIGH REBOUNDS, HIGH ASSISTS, HIGH STEALS. Rows include games from Nov. 14 to Mar. 1.

* – Atlantic 10 game; # – Big 5 game;

- GAMES AS HIGH SCORER: Andrews - 1; Fairbanks - 1
GAMES AS HIGH REBOUNDER: Fairbanks - 2; Andrews - 1; Cloud - 1
GAMES SCORING DOUBLE FIGURES: Andrews - 2; Fairbanks - 2; Fitzpatrick - 1; Robinson - 1
GAMES REBOUNDING DOUBLE FIGURES: Fairbanks - 1
GAMES SCORING 20 OR MORE POINTS: Fairbanks - 1
GAMES POSTING A DOUBLE-DOUBLE: Fairbanks - 1





2014-15 SAINT JOSEPH'S BASKETBALL NOTES - PAGE 10

Game 1 • November 14, 2014 • Rutgers Athletic Center #24/RV Rutgers - 76, Saint Joseph's - 52

Shooting just 31 percent from the field, Saint Joseph's dropped its season opening game at #24 Rutgers, 76-52.

Down just 30-24 at the half, Saint Joseph's came out aggressive in the second half as a jumper by **Sarah Fairbanks** and a free throw by Andrews made it a three-point game just over a minute in.

Unfortunately for the Hawks, Rutgers answered back with a 12-2 run to open a 42-29 edge on a layup with 14:34 to go.

Saint Joseph's would cut the deficit back to 10, 42-32, on a free throw by **Natasha Cloud**, but it would get no closer as the Scarlet Knights outscored them 34-20 from there and 46-28 for the half.

In the first half, both teams battled for momentum in the opening minutes as it featured four lead changes and four tied scores. With the game knotted at 16-16, the Scarlet Knights opened an eight point lead over a four minute span.

Saint Joseph's	Min.	FG-A	3PT	FT-A	OR	DR	TR	F	A	TO	B	S	Pts.
Pongonis, f	12	0-2	0-1	0-0	2	0	2	2	0	1	0	0	0
Fairbanks, f	37	7-13	0-0	2-2	3	3	6	5	0	4	1	0	16
Cloud, g	37	1-6	0-3	1-2	1	5	6	3	10	5	0	1	0
Fitzpatrick, g	28	3-8	3-7	0-0	1	2	3	2	1	5	0	0	9
Strode, g	16	1-5	0-0	3-4	1	1	2	2	0	0	1	0	5
Rule	1	0-0	0-0	0-0	1	0	1	0	0	1	0	0	0
Andrews	33	6-14	1-2	6-11	2	4	6	2	1	2	0	0	19
Robinson	20	0-5	0-0	0-1	4	1	5	2	0	2	0	0	0
Veilleux	3	0-0	0-0	0-0	0	0	0	0	0	0	0	0	0
Woods	3	0-2	0-1	0-0	0	1	1	2	0	0	0	0	0
Franklyn	10	0-3	0-0	0-2	1	1	2	0	0	1	1	0	0
Team					3	2	5						
Totals	200	18-58	4-14	12-22	19	20	39	20	12	21	3	1	52

Rutgers	Min.	FG-A	3PT	FT-A	OR	DR	TR	F	A	TO	B	S	Pts.
Copper, f	29	6-15	0-0	2-2	0	2	2	2	1	2	0	2	14
Laney, f	36	5-13	0-1	0-2	4	9	13	3	1	2	0	3	10
Hollivay, c	20	3-5	0-0	1-4	3	3	6	2	0	0	5	0	7
Scaife, g	32	9-13	0-0	5-6	1	1	2	1	3	2	1	1	23
Canty, g	33	6-10	0-1	4-4	0	5	5	2	8	3	2	1	16
Parsons	3	0-0	0-0	0-0	0	0	0	0	1	0	0	0	0
Parker	3	0-0	0-0	2-2	0	1	1	1	0	0	0	0	2
Hernandez	5	0-2	0-2	0-0	0	0	0	1	0	0	0	0	0
Davis	19	1-4	1-2	0-0	2	0	2	3	1	0	0	1	3
Evans	8	0-0	0-0	0-0	0	0	0	1	0	1	0	0	0
Alfano	1	0-0	0-0	0-0	0	0	0	0	0	0	0	1	0
Butts	11	0-2	0-0	1-2	3	4	7	2	0	1	1	1	1
Team					2	1	3						
Totals	200	30-64	1-6	15-22	15	26	41	18	15	11	9	10	76

Halftime: Rutgers, 30-24
Attendance: 1805
FG %: Saint Joseph's: 31.0%
3-PT FG %: Saint Joseph's: 28.6%
FT %: Saint Joseph's: 54.5%

Deadball Rebounds: Saint Joseph's 7-4
Officials: Mattingly, Enterline, Gregory
Rutgers: 46.9%
Rutgers: 16.7%
Rutgers: 68.2%

Game 2 • November 18, 2014 • Hagan Arena Saint Joseph's - 78, Temple - 74 (OT)

In typical Big 5 fashion, Saint Joseph's and Temple battled to the final moments with the Hawks holding on for a 78-74 win in overtime.

After both teams exchanged a pair of baskets to start overtime, Saint Joseph's opened a 71-68 lead as **Sarah Fairbanks** converted a three-point play off a pass from **Natasha Cloud**.

Temple would push back, making it a 75-74 contest on a driving layup with 20 seconds to go.

Kathleen Fitzpatrick was fouled on the inbound pass and calmly sank both free throws to extend SJU's lead back to three, 77-74.

The Owls would go for the tie in the next possession, but the attempt was off the mark and **Jordan Strode** got the rebound and sealed the game with a free throw in the final moments.

Temple	Min.	FG-A	3PT	FT-A	OR	DR	TR	F	A	TO	B	S	Pts.
Martin, c	45	4-6	0-0	2-2	2	12	14	3	0	2	2	0	10
Covile, g	21	1-7	0-2	2-2	0	2	2	5	1	1	0	1	4
Fitzgerald, g	37	7-23	1-4	3-4	2	2	4	4	4	0	0	3	18
Atkinson, g	39	7-13	2-4	1-2	6	5	11	5	0	3	1	0	17
Williams, g	39	1-5	0-1	1-2	0	1	1	1	2	4	0	2	3
Butts	34	8-21	2-8	4-5	2	3	5	4	5	2	0	0	22
Traore	7	0-0	0-0	0-2	1	2	3	2	0	3	0	0	0
Berger	3	0-0	0-0	0-0	0	0	0	0	0	0	0	0	0
Team					4	3	7						
Totals	225	28-75	5-19	13-19	17	30	47	24	12	15	3	6	74

Saint Joseph's	Min.	FG-A	3PT	FT-A	OR	DR	TR	F	A	TO	B	S	Pts.
Robinson, f	36	2-6	0-0	7-10	0	4	4	4	0	1	2	0	11
Fairbanks, f	41	7-19	0-0	9-9	5	8	13	2	2	3	1	0	23
Andrews, g	42	7-16	0-1	0-1	0	2	2	5	4	4	0	0	14
Cloud, g	27	2-4	1-2	4-4	0	7	7	4	3	2	1	1	9
Fitzpatrick, g	41	4-10	2-7	4-4	0	6	6	1	3	1	2	0	14
Pongonis	12	0-2	0-0	0-0	2	0	2	1	0	1	0	0	0
Strode	12	0-2	0-1	1-2	0	2	2	1	1	2	0	0	1
Veilleux	13	2-2	2-2	0-0	0	0	0	0	0	0	0	0	6
Franklyn	1	0-0	0-0	0-0	0	1	1	0	0	0	0	0	0
Team					3	1	4						
Totals	225	24-61	5-13	25-30	10	31	41	18	13	14	6	1	78

Halftime: Saint Joseph's, 34-33
Attendance: 1805
FG %: Saint Joseph's: 39.3%
3-PT FG %: Saint Joseph's: 38.5%
FT %: Saint Joseph's: 83.3%

Deadball Rebounds: Temple, 4-3
Officials: Suffren, Farlow, Thompson
Temple: 37.3%
Temple: 26.3%
Temple: 68.4%



2014-15 SAINT JOSEPH'S BASKETBALL NOTES - PAGE 11

Saint Joseph's Combined Team Statistics (as of Nov 19, 2014) All games

RECORD:	OVERALL	HOME	AWAY	NEUTRAL
ALL GAMES	1-1	1-0	0-1	0-0
CONFERENCE	0-0	0-0	0-0	0-0
NON-CONFERENCE	1-1	1-0	0-1	0-0

##	Player	gp-gs	min	avg	Total		3-Point		F-Throw		Rebounds				pf	dq	a	to	blk	stl	pts	avg
					fg-fga	fg%	3fg-fga	3fg%	ft-fa	ft%	off	def	tot	avg								
41	FAIRBANKS, Sarah	2-2	78	39.0	14-32	.438	0-0	.000	11-11	1.000	8	11	19	9.5	7	1	2	7	2	0	39	19.5
03	ANDREWS, Ciara	2-1	75	37.5	13-30	.433	1-3	.333	6-12	.500	2	6	8	4.0	7	1	5	6	0	0	33	16.5
15	FITZPATRICK, Kathlee	2-2	69	34.5	7-18	.389	5-14	.357	4-4	1.000	1	8	9	4.5	3	0	4	6	2	0	23	11.5
04	CLOUD, Natasha	2-2	64	32.0	3-10	.300	1-5	.200	5-6	.833	1	12	13	6.5	7	0	13	7	1	2	12	6.0
13	ROBINSON, Ashley	2-1	56	28.0	2-11	.182	0-0	.000	7-11	.636	4	5	9	4.5	6	0	0	3	2	0	11	5.5
23	STRODE, Jordan	2-1	28	14.0	1-7	.143	0-1	.000	4-6	.667	1	3	4	2.0	3	0	1	2	1	0	6	3.0
30	VEILLEUX, Sarah	2-0	16	8.0	2-2	1.000	2-2	1.000	0-0	.000	0	0	0	0.0	0	0	0	0	0	0	6	3.0
33	FRANKLYN, Adashia	2-0	11	5.5	0-3	.000	0-0	.000	0-2	.000	1	2	3	1.5	0	0	0	1	1	0	0	0.0
32	WOODS, Chelsea	1-0	3	3.0	0-2	.000	0-1	.000	0-0	.000	0	1	1	1.0	2	0	0	0	0	0	0	0.0
22	PONGONIS, Jessica	2-1	24	12.0	0-4	.000	0-1	.000	0-0	.000	4	0	4	2.0	3	0	0	2	0	0	0	0.0
02	RULE, Mackenzie	1-0	1	1.0	0-0	.000	0-0	.000	0-0	.000	1	0	1	1.0	0	0	0	1	0	0	0	0.0
Team											6	3	9									
Total.....		2	425		42-119	.353	9-27	.333	37-52	.712	29	51	80	40.0	38	2	25	35	9	2	130	65.0
Opponents.....		2	425		58-139	.417	6-25	.240	28-41	.683	32	56	88	44.0	42	-	27	26	12	16	150	75.0

TEAM STATISTICS	SJU	OPP	Date	Opponent	Score	Att.
SCORING	130	150	11/14/14	at Rutgers	L 52-76	1805
Points per game	65.0	75.0	11/18/14	TEMPLE	Wot 78-74	1351
Scoring margin	-10.0	-	* - Conference game			
FIELD GOALS-ATT	42-119	58-139				
Field goal pct	.353	.417				
3 POINT FG-ATT	9-27	6-25				
3-point FG pct	.333	.240				
3-pt FG made per game	4.5	3.0				
FREE THROWS-ATT	37-52	28-41				
Free throw pct	.712	.683				
F-Throws made per game	18.5	14.0				
REBOUNDS	80	88				
Rebounds per game	40.0	44.0				
Rebounding margin	-4.0	-				
ASSISTS	25	27				
Assists per game	12.5	13.5				
TURNOVERS	35	26				
Turnovers per game	17.5	13.0				
Turnover margin	-4.5	-				
Assist/turnover ratio	0.7	1.0				
STEALS	2	16				
Steals per game	1.0	8.0				
BLOCKS	9	12				
Blocks per game	4.5	6.0				
ATTENDANCE	1351	1805				
Home games-Avg/Game	1-1351	1-1805				
Neutral site-Avg/Game	-	0-0				

Score by Periods	1st	2nd	OT	Totals
Saint Joseph's	58	58	14	130
Opponents	63	77	10	150



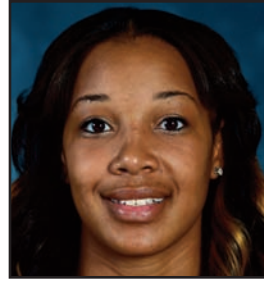
#2 - Mackenzie Rule
So. • Guard • 5-6



#3 - Ciara Andrews
Jr.. • Guard • 5-9



#4 - Natasha Cloud
Sr. • Guard • 6-0



#13 - Ashley Robinson
Gr. • Forward • 6-2



#15 - Kathleen Fitzpatrick
So. • Guard • 5-9



#21 - Avery Marz
Fr. • Guard • 5-7



#22 - Jessica Pongonis
So. • Forward • 6-1



#23 - Jordan Strode
R-So. • Guard • 5-8



#30 - Sarah Veilleux
Fr. • Guard/Forward • 6-0



#32 - Chelsea Woods
Fr. • Guard/Forward • 6-0



#33 - Adashia Franklyn
Fr. • Forward • 6-1



#34 - Amanda Fioravanti
So. • Forward • 6-1



#40 - Candace Belvedere
Fr. • Forward • 6-2



#41 - Sarah Fairbanks
Jr. • Forward • 6-1



Cindy Griffin
Head Coach



Susan Moran
Associate Head Coach



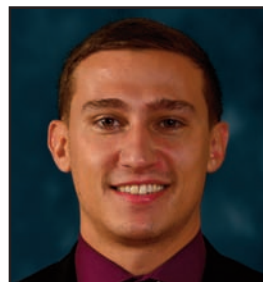
Stephanie McCaffrey
Assistant Coach



Jada Pierce
Assistant Coach



Katie Gardler
Director of Basketball Operations



Chris Koclanes
Video Coordinator