

**2014-15 SCHEDULE/RESULTS**

Overall: 0-1; Atlantic 10: 0-0; Big 0-0

**NOVEMBER**

Fri. 14	at No. 24/RV Rutgers	L, 52-76
<b>Tues. 18</b>	<b>TEMPLE #</b>	<b>7:00 p.m.</b>
Sat. 22	at Liberty	2:00 p.m.
Tues. 25	at Drexel	7:00 p.m.
Sat. 29	vs. Saint Francis	Noon
Sun. 30	vs. Saint Peter's or Seton Hall	TBD

**DECEMBER**

<b>Thurs. 4</b>	<b>LEHIGH</b>	<b>7:00 p.m.</b>
<b>Sun. 7</b>	<b>VILLANOVA #</b>	<b>2:00 p.m.</b>
Tues. 9	at Penn #	5:30 p.m.
Sun. 21	at Notre Dame	1:00 p.m.
<b>Sun. 28</b>	<b>QUINNIAC</b>	<b>2:00 p.m.</b>
<b>Mon. 29</b>	<b>CSUN or FLORIDA GULF COAST</b>	<b>TBD</b>

**JANUARY**

<b>Sat. 3</b>	<b>VCU *</b>	<b>7:00 p.m.</b>
Wed. 7	at George Washington *	7:00 p.m.
<b>Sat. 10</b>	<b>MASSACHUSETTS *</b>	<b>2:00 p.m.</b>
Thurs. 15	at Fordham * (CBSSN)	7:00 p.m.
Sun. 18	at Duquesne * (CBSSN)	4:00 p.m.
<b>Sat. 24</b>	<b>ST. BONAVENTURE *</b>	<b>2:00 p.m.</b>
Wed. 28	at Saint Louis *	12:30 p.m.
Sat. 31	at Davidson *	2:00 p.m.

**FEBRUARY**

<b>Wed. 4</b>	<b>LA SALLE #*</b>	<b>7:00 p.m.</b>
<b>Sun. 8</b>	<b>FORDHAM *</b>	<b>2:00 p.m.</b>
Wed. 11	at Rhode Island *	7:00 p.m.
Sun. 15	at Dayton * (CBSSN)	Noon
<b>Wed. 18</b>	<b>GEORGE MASON *</b>	<b>7:00 p.m.</b>
<b>Sat. 21</b>	<b>RICHMOND *</b>	<b>2:00 p.m.</b>
<b>Wed. 25</b>	<b>DUQUESNE *</b>	<b>7:00 p.m.</b>

**MARCH**

Sun. 1	at La Salle *	1:00 p.m.
W-Sn. 4-8	Atlantic 10 Championship +	

Home games in **BOLD CAPS** at Hagan Arena;  
 All game times are EST and subject to change  
 \* Atlantic 10 Conference Game  
 # - Philadelphia Big 5 Game  
 + at The Richmond Coliseum (Richmond, Va.)

Contact: Jack Jumper • Cell Phone: 610-660-3389 • Email: jjumper@sju.edu

### SAINT JOSEPH'S UNIVERSITY HAWKS (0-1, 0-0 Big 5)

VS.

### TEMPLE UNIVERSITY OWLS (1-0, 1-0 BIG 5)

Game #2 • November 18, 2014

Hagan Arena • Philadelphia, Pa. • 7:00 p.m.

#### GAME DAY AT A GLANCE

<b>Arena</b>	Hagan Arena (4,200)
<b>Live Audio</b>	SJSN - Steve Wanczyk, Renie Shields
<b>Live Streaming</b>	Atlantic 10 Network
<b>Series Record</b>	Saint Joseph's Leads 42-34
<b>Next Game</b>	Saturday, November 22 at Liberty, 2:00 p.m.

#### GAME STORIES . . .

- SJU opens the home portion of its schedule on Tuesday when it hosts Big 5 rival Temple.
- The Hawks are coming off a 76-52 loss at #24/RV Rutgers on Friday.
- Saint Joseph's is now 28-14 all-time in season opening games.
- The Hawks are 36-5 in home openers, with those losses coming in 1973-74, 1982-83, 1983-84, 2002-03 and 2012-13.
- Tuesday's game is the 77th meeting between Saint Joseph's and Temple.
- The Hawks have won two straight versus the Owls and hold a 42-34 edge in the series.
- Tuesday is the first Philadelphia Big 5 matchup of the season for the Hawks.
- Saint Joseph's won the 2013-14 Big 5 title, going 4-0 in the City Series.
- The Hawks have won seven straight Big 5 games and are 102-36 all-time with 16 titles
- Saint Joseph's grabbed 19 offensive rebounds Friday at Rutgers. That was the highest mark since the Hawks grabbed 20 against Vanderbilt on November 24, 2009.
- Junior guard **Ciara Andrews'** 11 free throw attempts on Friday were the most by a Hawk since the Chatilla van Grinsven attempted 11 at George Washington on January 17, 2013.
- Senior guard **Natasha Cloud** picked up where she left off last season, assisting on 10 of SJU's 18 field goals at Rutgers.
- Freshman forward **Adashia Franklyn**, who had two rebounds and a blocked shot at Rutgers, is the daughter of Temple Hall of Famer Marilyn Stephens-Franklyn.

#### HAWKS AT A GLANCE

**PROBABLE STARTERS**

No.	Pos.	Player	Yr.	Ht.	PPG	RPG	APG	MPG	Notes
4	G	Natasha Cloud	Sr.	6-0	3.0	6.0	10.0	37.0	Finished with a game-high 10 assists at Rutgers
15	G	Kathleen Fitzpatrick	So.	5-9	9.0	3.0	1.0	28.0	Matched career-high 3 three-point FGs at Rutgers
22	F	Jessica Pongonis	So.	6-1	0.0	2.0	0.0	12.0	Added 2 boards in second career start
23	G	Jordan Strode	R-So.	5-8	5.0	2.0	0.0	16.0	Tallied 5 points in first action since 2012-13
41	F	Sarah Fairbanks	Jr.	6-1	16.0	6.0	0.0	37.0	Went 7-13 from the field and had 2 FTs at Rutgers

**THE BENCH**

2	G	Mackenzie Rule	So.	5-6	0.0	1.0	0.0	1.0	Grabbed a rebound versus Rutgers
3	G	Ciara Andrews	Jr.	5-9	19.0	6.0	1.0	33.0	Had a team-best 19 points at Rutgers
13	F	Ashley Robinson	Gr.	6-2	0.0	5.0	0.0	20.0	Grabbed 5 rebounds versus Rutgers
21	G	Avery Marz	Fr.	5-7	12.6	--	--	--	Out - Sitting out 2014-15 season for medical reasons
30	G/F	Sarah Veilleux	Fr.	6-0	0.0	0.0	0.0	3.0	Played 3 minutes in collegiate debut
32	G/F	Chelsea Woods	Fr.	6-0	0.0	1.0	0.0	3.0	Added a rebound at Rutgers
33	F	Adashia Franklyn	Fr.	6-1	0.0	2.0	0.0	10.0	Had 2 boards and a blocked shot at Rutgers
34	F	Amanda Fioravanti	So.	6-1	1.5	1.1	0.3	4.0	Out - Must sit out fall semester per NCAA transfer rules
40	F	Candace Belvedere	Fr.	6-2	12.1	9.6	1.5	--	Doubtful - Left leg



# 2014-15 SAINT JOSEPH'S BASKETBALL NOTES - PAGE 2

## SAINT JOSEPH'S' ROSTER

No.	Name	Yr.	Pos.	Ht.	Hometown	High School/Last School
2	Mackenzie Rule	So.	G	5-6	West Chester, Pa.	Cardinal O'Hara
3	Ciara Andrews	Jr.	G	5-9	Glenside, Pa.	Cheltenham
4	Natasha Cloud	Sr.	G	6-0	Broomall, Pa.	Cardinal O'Hara/Maryland
13	Ashley Robinson	Gr.	F	6-2	Warrington, Pa.	Archbishop Wood
15	Kathleen Fitzpatrick	So.	G	5-9	Drexel Hill, Pa.	Academy of Notre Dame de Namur
21	Avery Marz	Fr.	G	5-7	Sinking Springs, Pa.	Wilson West Lawn
22	Jessica Pongonis	So.	F	6-1	Fishers, Ind.	Hamilton Southeaster
23	Jordan Strode	R-So.	G	5-8	Charlotte, N.C.	Hickory Ridge
30	Sarah Veilleux	Fr.	G/F	6-0	Hebron, Conn.	RHAM
32	Chelsea Woods	Fr.	G/F	6-0	Philadelphia, Pa.	Freire Charter
33	Adashia Franklyn	Fr.	F	6-1	West Chester, Pa.	West Chester Bayard Rustin
34	Amanda Fioravanti	So.	F	6-1	Frederick, Md.	Our Lady of Good Counsel
40	Candace Belvedere	Fr.	F	6-2	Merrick, N.Y.	Kellenberg Memorial
41	Sarah Fairbanks	Jr.	F	6-1	Elizabethtown, Pa.	Elizabethtown Area

**Head Coach:** Cindy Griffin (Saint Joseph's '91, '93) - 14th year  
**Associate Head Coach:** Susan Moran (Saint Joseph's '02) - 12th year  
**Assistant Coaches:** Stephanie McCaffrey (Saint Joseph's '04) - 8th year,  
 Jada Pierce (West Chester '97) - 3rd year  
**Director of Basketball Operations:** Katie Gardler (Saint Joseph's '92) - 5th year  
**Graduate Assistant:** Chris Koclanes (Old Dominion '10) - 2nd year

## PRONUNCIATION GUIDE

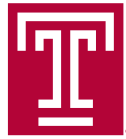
**CIARA Andrews** . . . . .SEE-are-uh  
**Jessica PONGONIS** . . . . .pon-GO-niss  
**ADASHIA Franklyn** . . . . .uh-DAY-zhuh  
**Sarah VEILLEUX** . . . . .vuh-LOU  
**Amanda FIORAVANTI** . . . . .  
 . . . . .fee-OR-uh-vahn-tee



## SERIES HISTORY

### Saint Joseph's vs. Temple

**All-Time Series:** SJU Leads 42-34  
**Last Meeting:** 12/4/13, SJU, 73-53  
**Last SJU Win:** 12/4/13, 73-53  
**Last TU Win:** 2/22/12, 75-65  
**Current SJU Streak:** W-2



## STATISTICAL COMPARISON

	Saint Joseph's	Temple
Overall Record	0-1	1-0
Conference Record	0-0	0-0
Home Record	0-0	1-0
Away Record	0-1	0-0
Neutral Record	0-0	0-0
Points Per Game	52.0	75.0
Opponent Points Per Game	76.0	72.0
Scoring Differential	-24.0	+3.0
Field Goal Percentage	.310	.373
Opponent Field Goal Percentage	.469	.388
3-Pt. Field Goals Made Per Game	4.0	9.0
3-Pt. Field Goal Percentage	.286	.375
Opponent 3-Pt. Field Goal Percentage	.167	.438
Free Throws Made Per Game	12.0	16.0
Free Throw Percentage	.545	.762
Rebounds Per Game	39.0	46.0
Opponent Rebounds Per Game	41.0	42.0
Rebounding Differential	-2.0	+4.0
Assists Per Game	12.0	13.0
Turnovers Per Game	21.0	17.0
Opponent Turnovers Per Game	11.0	14.0
Turnover Margin	-10.0	-3.0
Assist/Turnover Ratio	0.7	0.8
Steals Per Game	1.0	5.0
Blocks Per Game	3.0	6.0

## PREVIOUS 10 GAMES VS. TEMPLE

Date	Score	Site	Rank	Date	Score	Site	Rank
12/4/13	W, 73-53	Away		2/2/10	L, 56-58	Home	
2/17/13	W, 49-41 OT	Home		1/16/10	L, 55-58 OT	Away	
2/22/12	L, 65-75	Away		2/15/09	L, 48-60	Away	
2/1/12	L, 70-80	Home		1/11/09	L, 53-58	Home	
2/23/11	L, 49-52	Home		<i>Full year-by-year results on page 130 of the SJU Media Guide.</i>			
1/19/11	L, 43-53	Away					

## LAST MEETING BOXSCORE & RECAP

December 4, 2013 • McGonigle Hall  
 Saint Joseph's - 73, Temple - 53

Led by a career-high 21 points and 13 assists by **Natasha Cloud**, Saint Joseph's topped Big 5 rival Temple, 73-53. Leading by six midway through the second half Saint Joseph's pulled away from the Owls for good as it used a 13-1 run over a three-minute span to make it a 66-48 contest.

Saint Joseph's	Min.	FG-A	3PT	FT-A	OR	DR	TR	F	A	TO	B	S	Pts.
Gotfrida, f	29	4-9	2-2	2-2	2	5	7	3	2	4	0	0	12
Berger, f	28	3-8	0-0	2-2	0	0	0	2	0	0	1	0	8
Fairbanks, f	33	3-7	0-0	3-4	2	7	9	4	1	2	2	0	9
Shields, g	34	3-8	3-6	2-2	0	1	1	1	1	4	0	2	11
Cloud, g	38	5-10	2-3	9-10	0	6	6	1	13	4	1	1	21
de Jonge	9	0-0	0-0	0-0	1	1	2	3	1	0	1	1	0
Fitzpatrick	2	0-0	0-0	0-0	0	0	0	0	0	1	0	0	0
Gomez	3	0-0	0-0	0-0	0	0	0	0	0	1	0	0	0
Andrews	16	4-9	0-1	2-3	1	1	2	3	1	0	1	0	10
Pongonis	8	1-1	0-0	0-0	0	2	2	1	0	0	0	0	2
Team					2	4	6						
<b>Totals</b>	<b>200</b>	<b>23-52</b>	<b>7-12</b>	<b>20-23</b>	<b>8</b>	<b>27</b>	<b>35</b>	<b>18</b>	<b>19</b>	<b>16</b>	<b>6</b>	<b>4</b>	<b>73</b>

Temple	Min.	FG-A	3PT	FT-A	OR	DR	TR	F	A	TO	B	S	Pts.
Thames, f	29	8-12	0-0	3-4	3	2	5	5	0	2	1	0	19
Covile, g	15	1-2	0-1	2-2	3	3	6	2	1	5	0	3	4
Fitzgerald, g	33	4-17	1-6	3-6	1	3	4	2	2	3	0	1	12
Shipp, g	32	2-11	0-0	2-3	3	6	9	3	1	5	2	1	6
Williams, g	38	1-7	0-4	2-2	1	3	4	4	4	0	0	1	4
Jackson	10	0-2	0-0	0-2	3	2	5	1	0	1	0	0	0
Roxas	10	2-3	1-2	0-0	0	3	3	0	0	0	0	0	5
Merritt	24	0-6	0-1	1-2	3	0	3	3	3	2	0	2	1
Martin	9	0-0	0-0	2-4	1	0	1	1	0	1	1	0	2
Team					2	2	4						
<b>Totals</b>	<b>200</b>	<b>18-60</b>	<b>2-14</b>	<b>15-25</b>	<b>20</b>	<b>24</b>	<b>44</b>	<b>21</b>	<b>11</b>	<b>19</b>	<b>4</b>	<b>8</b>	<b>53</b>

**Halftime:** Saint Joseph's, 42-31      **Deadball Rebounds:** Temple, 4-1  
**Attendance:** 1,040      **Officials:** DeMayo, Feck, Preato  
**FG %:** Saint Joseph's - 44.2%, Temple - 30.0%  
**3-PT FG %:** Saint Joseph's - 58.3%, Temple - 14.3%  
**FT %:** Saint Joseph's - 87.0%, Temple - 60.0%



## MARZ TO MISS 2014-15 SEASON

Saint Joseph's freshman **Avery Marz** will sit out the 2014-15 basketball season for medical reasons. A highly-touted guard from Wilson West Lawn High School, Marz suffered a stroke this past August. Working at home with physical therapists to regain full motion in her left arm and leg, she has taken a medical leave for the fall semester, but has been present for numerous team outings and practices. Marz will return to campus and begin taking classes in January. A four-year letterwinner at Wilson West Lawn, Marz led her team to four-straight District 3 AAAA titles and Berks County championships. Averaging 12.6 points per game as a senior, she was named an All-American Honorable Mention by the *Sporting News* and the Berks County Player of the Year as she helped her team to a #23 national ranking by the *Sporting News*.

## INJURY REPORT

Freshman **Avery Marz** is out for Tuesday's game, while classmate **Candace Belvedere** is doubtful with a left leg injury.

## FIORAVANTI OUT FIRST SEMESTER PER NCAA RULES

Saint Joseph's sophomore forward **Amanda Fioravanti** will sit out the fall semester of the 2014-15 season per NCAA transfer rules. Named the 2012-13 Gatorade Player of the Year for Maryland, Fioravanti came to SJU last January after playing at Virginia the first semester. While with the Cavaliers, Fioravanti averaged 1.5 points and 1.1 rebounds per game over eight games.

## TRIO OF HAWKS SERVING AS CAPTAINS IN 2014-15

Graduate student **Ashley Robinson**, senior **Natasha Cloud** and junior **Sarah Fairbanks** are serving as team captains this season. Robinson and Cloud are serving as a team captains for the second straight year, while Fairbanks is a captain for the first time this season.

## GRIFFIN SECOND ALL-TIME IN WINS AT HAWK HILL

Now in her 14th season at her alma mater, **Cindy Griffin** is second all-time in team history in victories at Saint Joseph's. Over her tenure seasons on Hawk Hill, Griffin has posted a 246-167 mark. Having led SJU to a record 10 postseason appearances during her tenure she trails only Women's Basketball Hall of Famer Jim Foster (248) in career wins.

## HAWKS LOOK FOR SIXTH STRAIGHT POSTSEASON BID

SJU is coming off its fifth consecutive postseason appearance, earning an at-large bid to the NCAA Tournament and advancing to the second round. SJU, which earned Postseason WNIT bids from 2009-10 to 2011-12 and NCAA Tournament bids the last two years, is currently tied for its second-longest postseason appearance streak. The Hawks previously made four straight appearances from 1975-79 and 1996-2000. Saint Joseph's longest consecutive postseason appearance streak is six seasons, from 1984-85 to 1989-90.

## CLOUD RETURNS AS TOP DISTRIBUTOR

**Natasha Cloud** capped her junior year second nationally in assists per game at 7.6. She enters her senior season as the nation's leading distributor though as last year's leader, Jamierra Faulkner of Southern Miss graduated.

## HAWKS PICKED THIRD IN ATLANTIC 10 PRESEASON POLL

Returning four starters and eight letterwinners overall from last year's squad that went 23-10 and advanced to the Second Round of the NCAA Tournament, Saint Joseph's was picked to finish third after garnering 156 points in the Atlantic 10 Preseason Poll. Receiving all 14 first place votes, Dayton was picked first with 196 points. George Washington was next with 173 points, followed by the Hawks, St. Bonaventure (153) fourth, Fordham (143) fifth, Richmond (104) sixth, Duquesne (103) seventh and La Salle (97) in eighth. Saint Louis was picked ninth with 90 points, followed by VCU (87), George Mason (54), A-10 newcomer Davidson (42), Rhode Island (39) and Massachusetts (24), respectively.

## SJU 13TH IN HAYS' PRESEASON MID-MAJOR POLL

ESPN writer Graham Hays picked the Hawks 13th nationally in his Preseason Mid-Major Poll. Saint Joseph's was one of four Atlantic 10 teams mentioned in the poll, joining Dayton (first), George Washington (third) and St. Bonaventure (15th).

## OFFENSIVE PUNCH LOST TO GRADUATION

With the departures of seniors **Erin Shields**, **Ilze Gotfrida** and **Kelsey Berger** to graduation last May, the Hawks lost a big portion of their offensive punch. Last season, the trio accounted for 41 percent of the team's scoring as they tallied a combined 966 points out of the team's 2,358. Additionally, the seniors were a major part of SJU's perimeter threat, totaling 124 of the team's 166 three-point field goals (74.7 percent).

## HAWKS EXCEL IN NONCONFERENCE PLAY

Saint Joseph's has posted a winning record in nonconference play the past four seasons, including a 11-2 mark last year. Over the last four years, the Hawks have posted a combined 40-15 record.

## SAINT JOSEPH'S VERSUS RANKED OPPONENTS

Friday marks the 153rd time Saint Joseph's has faced a nationally ranked opponent as the Hawks travel to #24/RV Rutgers. Saint Joseph's enters the game with a 33-119 record versus ranked opponents. The Hawks have lost three straight games to ranked opponents, including a 91-52 loss at #1 Connecticut in the Second Round of the NCAA Tournament last year. Full results versus ranked opponents are available on pages 133-134 of the Saint Joseph's University Media Guide.

## HAWK HILL ADVANTAGE

Saint Joseph's has always had a reputation of playing well at home. Over 41 seasons, the Hawks have boasted a 390-138 mark at Hawk Hill, including a 58-21 record at Hagan Arena.

## HAWKS ON THE AIR

The Saint Joseph's Sports Network (SJSN) marks its 25th year of operation in 2014-15, as the first broadcasts of men's and women's basketball games took place in the fall of 1990. The first women's game aired on WCZN-AM on November 23rd as the Hawks hosted Oregon. The 1990-91 season also marked the first in school history in which every SJU men's game aired on Philadelphia-area commercial radio.

Since its beginnings in 1990, SJSN's coverage of Hawk athletics has grown and included Saint Joseph's women's basketball television show *Courtside*, Phil Martelli's *HawkTalk* radio program and the nationally-renowned *HawkTalk* television show, which ran for 15 years.

Hawk fans everywhere will be able to hear the broadcast of every game through audio streaming at the Hawks' official athletics site, [www.SJUHawks.com](http://www.SJUHawks.com), which is provided free of charge. Fans can also take those broadcasts on-the-go, with the SJUHawks app for mobile devices.





CLOUD NAMED ONE OF 10 MID-MAJOR PLAYERS TO WATCH

Senior guard **Natasha Cloud**, who was named to the Nancy Lieberman Watch List as one of the top point guards in the nation a year ago, is already gaining national attention this year as she was named the fifth best mid-major player by ESPN's Graham Hays. Per Hays, "No returning player averaged more assists per game a season ago than Cloud, but the 6-foot senior who began her career at Maryland isn't just about distributing. With her size and ability to get in the paint to both rebound and finish (nearly a quarter of her points last season came at the free throw line), she's the same kind of triple-double threat on a nightly basis as Iowa's Sam Logic. And even though Cloud had 107 more assists as a junior than as a sophomore, she accumulated only 12 additional turnovers. For all of that, she might be most valuable -- or at least equally valuable -- on the other end of the court, where she was the A-10 defensive player of the year."

HAWKS TO FACE TOUGH COMPETITION IN 2014-15

As is the standard for Saint Joseph's scheduling, facing strong opponents is the norm and 2014-15 is no different. This season, the Hawks will play 14 games against opponents that made a postseason tournament last year.

CLOUD NAMED TO A-10 PRESEASON TEAMS

Senior guard **Natasha Cloud** was recognized by the Atlantic 10 as one of the top players in the conference as she was named to the Preseason All-Conference First Team and All-Defensive Team. Cloud is coming off an impressive junior season in which she helped SJU the Second Round of the NCAA Tournament. Named to the Nancy Lieberman Award Watch List for the top point guard in the country, Cloud set the Hawks' single-season record for assists in 2013-14 with 243 and is eighth all-time with 395. Named the A-10 Defensive Player of the Year and selected to the All-Conference Second Team, she posted also career-high 11.5 points per game and led the team in steals (64) and minutes per game (35.0).

FAIRBANKS NAMED TO A-10 PRESEASON THIRD TEAM

Junior forward **Sarah Fairbanks** earned Atlantic 10 honors to start the year as she was named to the Preseason All-Conference Third Team. Posting one of the best break-through seasons in the A-10 last year, Fairbanks proved to be the Hawks' most reliable post player. After tallying just 49 points as a freshman, Fairbanks finished last year with 419 points, good for 12.7 points per game. Appearing in all 33 games, and making 26 starts, Fairbanks topped SJU in blocked shots (38) and field goal percentage (.503) and finished second in rebounding at 5.9 per game.

ROBINSON RETURNS FOR FINAL SEASON

Graduate student **Ashley Robinson** is now in her sixth season at SJU. Missing the first two seasons (2009-11) due to leg injury, the 6-foot-2 forward has continually improved every season. A two-year starter, Robinson averaged a career-best 6.2 points and 5.4 rebounds per game over 25 contests last year.

ANDREWS AND FAIRBANKS CAREER YEARS

Serving as key reserves as rookies, **Ciara Andrews** and **Sarah Fairbanks** burst onto the scene in 2013-14 as the pair both set career highs in several categories, while locking down starting spots. Averaging 21.1 minutes per game, Andrews averaged 9.2 points per game last season, up from 1.5 ppg as a freshman. Proving to be one of the most reliable post players in the Atlantic 10, Fairbanks tallied 12.7 points and 5.9 rebounds per game after averaging just 1.8 ppg and 2.2 rpg as a rookie.

ODDS AND ENDS

- Redshirt sophomore guard **Jordan Strode** had five points at Rutgers as she returned to the court after missing 61 straight games dating back to the 2012-13 season due to injury.
- Freshmen **Sarah Veilleux** (34.1 ppg) and **Chelsea Woods** (32.6) ranked sixth and 11th, respectively, in the nation in scoring as high school seniors last year.

WHY S-A-I-N-T JOSEPHS UNIVERSITY?

The corporate title of "Saint" Joseph's University, which has been in place since Saint Joseph's was granted university status by the Commonwealth of Pennsylvania in 1979, is now the "public" title of the institution for all aspects of its operations. Previously, the abbreviation of "St." Joseph's University was permitted in a number of alumni and athletic contexts. According to the most recent edition of the Higher Education Directory, there are at least nine recognized "St. Joseph's" among the nation's colleges and universities. Only one of them-Saint Joseph's University, Philadelphia-is a university-level, Master's I, NCAA Division I institution. A complete spelling of S-A-I-N-T Joseph's University in all contexts will help eliminate any confusion among higher education and other public constituencies.

UP NEXT

The Hawks begin a four-game road trip starting Saturday at liberty at 2 p.m.

2014-15 SAINT JOSEPH'S QUICKFACTS

<b>Location</b> .....	Philadelphia, Pa. 19131
<b>Founded</b> .....	1851
<b>Enrollment</b> .....	4,670 (full-time undergrads)
<b>Denomination</b> .....	Roman Catholic (Jesus)
<b>Nickname</b> .....	Hawks
<b>Colors</b> .....	Crimson and Gray
<b>Athletic Affiliation</b> .....	NCAA Division I
<b>Conference</b> .....	Atlantic 10
<b>Home Arena (Capacity)</b> . . . . .	Michael J. Hagan '85 Arena (4,200)
<b>President</b> .....	C. Kevin Gillespie, S.J. '72
<b>Associate Vice President/Athletic Director</b> .....	Don DiJulia
<b>2013-14 Regular Season Record</b> .....	.23-10
<b>2013-14 Atlantic 10 Conference Record (Place)</b> .....	.10-6 (5th)
<b>2013-14 Philadelphia Big 5 Record (Place)</b> .....	.4-0 (1st)
<b>Letterwinners Returning/Lost</b> .....	.8/5
<b>Starters Returning/Lost</b> .....	.4/1
<b>Captains</b> . . . . .	Natasha Cloud, Sarah Fairbanks, Ashley Robinson
<b>Head Coach (alma mater)</b> . . . . .	Cindy Griffin (Saint Joseph's '91, '93)
<b>Overall Record/Years</b> .....	.294-200/17th season
<b>Record at Saint Joseph's/Years</b> .....	.246-167/14th season
<b>Associate Head Coach</b> .....	..... Susan Moran (Saint Joseph's '02, '07) - 12th season
<b>Assistant Coaches</b> .....	..... Stephanie McCaffrey (Saint Joseph's '04) - 8th season
.....	..... Jada Pierce (West Chester '97) - 3rd season
<b>Director of Basketball Operations</b> .....	.....Katie Gardler
<b>Graduate Assistant:</b> .....	.....Chris Koclanes
<b>Women's Administrative Assistant</b> .....	.....Kathy MacDonald
<b>Women's Basketball Athletic Trainer</b> .....	.....Salvatore Capone
<b>Women's Basketball Contact</b> .....	.....Jack Jumper
<b>Athletic Department</b> .....	(610) 660-1707
<b>Basketball Office</b> .....	(610) 660-1710
<b>Athletic Communications</b> .....	(610) 660-3389
<b>Press Row</b> .....	(610) 660-2599
<b>Athletics Website</b> .....	www.sjuhawks.com



### MEDIA INFORMATION

#### MEDIA CREDENTIALS

Credentials for media covering Saint Joseph's at Hagan Arena in 2014-15 should be made at least 24 hours in advance by contacting Jack Jumper.

Priority is given to daily newspapers, radio/TV stations and other media who cover Saint Joseph's and its opponents on a regular basis. Internet sites and agencies that will be considered for credentials include those of national cable networks or established publications. Internet sites representing local or regional media outlets will be provided credentials on a space-available basis. Websites that sponsor "message boards" or "chat rooms" where people are able to post anonymous information are ineligible for consideration of credentials. Credentials will only be issued to those 18 years of age and older.

#### PHOTO CREDENTIALS

All photographers attending Saint Joseph's home basketball games must be credentialed. Requests for credentials should be made in at least 24 hours in advance to Jack Jumper. Due to space demands, access to freelance photographers is limited.

#### SCOUT CREDENTIALS

Credentials for WNBA scouts must be requested in advance of the game by contacting Jack Jumper.

#### RADIO POLICY

Radio stations designated as the primary visiting outlet can have access to phone lines at a cost of \$100 per line per game. (\$200 for ISDN), unless a reciprocal usage agreement exists. Visiting radio stations wishing to broadcast the game should contact Jack Jumper at (610) 660-3389 or by email (jjumper@sju.edu) to arrange phone lines.

#### INTERVIEWS

All requests for interviews with Cindy Griffin and the Saint Joseph's student-athletes must be arranged through Jack Jumper. Advance notice of at least 24 hours is preferred, but every attempt will be made to accommodate all requests. Players will not be available for interviews on game day, except for post-game interviews.

#### PRESS ROW

Only accredited members of the media and accredited scouts will be issued credentials to cover Saint Joseph's basketball, and only those with passes will be permitted to sit in press seating. Members of the media are reminded that press row is a working area and cheering for either team will not be tolerated.

#### MEDIA SERVICES

Saint Joseph's and opponent's game notes, statistics, Atlantic 10 Conference notes and game programs will be available to working members of the media. Halftime statistics will be available in the media room at Hagan Arena and will also be distributed on press row. Final statistics will be distributed in the media room following completion of the game. Fax service is available at both locations.

Complete Saint Joseph's game notes will be available 24 hours prior to the game on [SJUHawks.com](http://SJUHawks.com).

#### MEDIA PARKING

Media parking is available at the ROTC Lot on 54th Street behind Hagan Arena. Media members desiring to be on the parking list must contact Marie Wozniak at least 24 hours in advance of the game.

#### POST-GAME

Saint Joseph's head coach Cindy Griffin will be available in the interview room following a post-game cooling off period. The Saint Joseph's locker room is not open to the media.

### THE HAWK



One of the most famous mascots in college sports, the Saint Joseph's Hawk has flapped its wings for 58 seasons.

The Hawk is best known for staying in constant motion by flapping its wings throughout every basketball game and representing the Saint Joseph's motto, "The Hawk Will Never Die."

Jim Brennan originated the idea for a hawk as mascot during the 1954-55 season. Brennan, an ex-Marine and SJU cheerleader, at first wanted to secure an actual hawk, but later switched to the costume idea. The student government

raised the 120 dollars needed to buy the initial costume, which Brennan donned for three years. He made his debut as the Hawk on January 4, 1956, a 69-56 win over La Salle at the Palestra. Since then, and including this season, a total of 31 SJU students have donned the costume. The Hawk has not missed a men's basketball game since that first season in 1955-56. The Hawk, who was present at most women's basketball games, became a mainstay in 1989. Since then, 12 SJU students have donned the costume, with **Aleena Yobbi** serving as the Hawk for his first year in 2014-15.

In addition to the constant flapping, the Hawk is also recognized by its "flying" in figure eights around the court during timeouts. Years ago, ESPN used a "flap-o-meter" on the national telecast of a Saint Joseph's game to estimate that the Hawk flaps its wings 3,500 times during a regulation game.

The most decorated mascot in the country, The Hawk has garnered numerous accolades in its 57-year history. In 2013-14, NCAA.com named The Hawk as "College Basketball's Best Tradition". The Sporting News, Sports Illustrated, Sports Illustrated for Kids, Street & Smith's Basketball Yearbook and ESPN College Basketball magazine have selected it as the nation's top mascot. Eastern Basketball tabbed The Hawk as the Atlantic 10 Conference's best mascot, while The Hawk won a "Best of Philly" award from Philadelphia Magazine in 2003-04. The Hawk was selected as a 2008 nominee for the Mascot Hall of Fame.

Saint Joseph's athletic teams have been recognized with the nickname "Hawks" since 1929. At that time, the school's yearbook editor, Charlie Dunn, initiated a contest among the student body for a symbol. More than 100 submissions were narrowed to two, with "Hawks" winning out over "Grenadiers" (World War I soldiers who specialized in tossing grenades) by a slim margin in the final vote.

John Gallagher '31, a catcher on the Saint Joseph's baseball team, submitted the winning suggestion. He won a sweater with a special Saint Joseph's monogram for selecting the winning name. According to the Student Annual, the nickname was appropriate because it typified "the fighting spirit of our crimson and gray athletes and it is suggestive of the aerial attack which has made our football team famous." Ironically, football was discontinued at Saint Joseph's following the 1939 season.

But it has been the connection with the storied tradition of the Saint Joseph's men's and women's basketball programs that has given The Hawk mascot its prominence on the national level, making it one of the most recognized mascots in college athletics.



# Cindy Griffin - Head Coach

## Saint Joseph's '91, MBA '93 - 14th Season

After leading Saint Joseph's to five straight postseason appearances, including the Second Round of the NCAA Tournament in 2013-14, **Cindy Griffin** enters her 14th year as Saint Joseph's head coach. A 1991 and 1993 graduate of SJU, Griffin (nee Anderson) has compiled an overall record of 294-200 in 17 seasons as a head coach, and a 246-167 record over 14 years at Hawk Hill.

Only the eighth coach in NCAA Division I history to lead her alma mater to the NCAA Tournament as a player and a coach, Griffin's squads have posted six 20-win seasons, six victories over nationally-ranked teams, and have advanced to the postseason 10 times, while her players have been honored as Atlantic 10 All-Conference performers 15 times.

Following up their A-10 Championship the season prior, the 2013-14 Hawks continued to prove themselves as one of the top programs nationally as they earned an at-large bid to the NCAA Tournament and advanced to the Second Round for just the seventh time in team history. Led by Erin Shields and Natasha Cloud, Saint Joseph's earned its fifth straight post-season bid and claimed its first outright Philadelphia Big 5 title since 2000-01.

Under Griffin's leadership, Saint Joseph's posted one of its most memorable seasons in team history in 2012-13 as the Hawks claimed the Atlantic 10 Championship for just the third time and earned the automatic NCAA Tournament bid. Led by a senior class that had advanced to the postseason every year, the Hawks finished with a 23-9 record that included wins over #5 Maryland and #11 Dayton.

In addition to the team's success, a trio of Hawks were singled out for their performances, led by NCAA Woman of the Year nominee Chatilla van Grinsven. With Griffin's guidance, van Grinsven turned in one of the more dominant seasons in recent SJU history, becoming just the fifth player in SJU history to average a double-double for the year en route to being named to the A-10 All-Conference First Team and the Big 5 Player of the Year. The duo of backcourt mates Shields and Cloud helped propel SJU to new heights, with Shields garnering A-10 and Big 5 Most Improved Player honors and I-AAA distinction, while Cloud was named the Most Outstanding Player of the 2013 A-10 Championship.

Backed by a veteran-laden team in 2011-12, the Hawks earned their third-straight WNIT berth and posted their most wins (22) since the 2003-04 season. Moving into second place in career victories at her alma mater, Griffin picked up her 200th win as the Hawks topped Boston University in the opening game of the WNIT on March 15, 2012. Leading the Hawks to a 15-4 mark at home, she helped Saint Joseph's become one of the more efficient teams in the nation, ranking fourth in fewest turnovers per game (12.5), 26th in three-point percentage (.348) and 39th in field goal percentage (.423).

Individually, senior Michelle Baker and Kelly Cavallo had breakout years, both garnering All-Big 5 honors. Behind Griffin's teaching, Baker went on to be named to the A-10 All-Conference Second Team and capped her career as SJU's then all-time leader in games played (127) while ranking in the top 20 for scoring and field goals made. After seeing limited time as a freshman, Cavallo developed into one of the top post players in the A-10, leading SJU and finishing in the top five of the conference in rebounding, blocked shots and field goal percentage. With Griffin's aid, Cavallo finished her career second all-time in blocks and 11th in rebounding at SJU.

Returning just one starter for the 2010-11 season, the Hawks quickly jelled under Griffin's guidance as they went on to win 20 games, earned the program's 700th victory, and advanced to the second round of the WNIT. Backed by All-Big 5 honorees Baker and Katie Kuester, Saint Joseph's had its most efficient offensive showing since 2002-03, as the Hawks finished 60th in the nation in field goal percentage (42.1).

Additionally, several Hawks were honored for outstanding seasons in 2010-11, headlined by sophomore Ashley Prim becoming the first SJU player to be named Atlantic 10 Sixth Player of the Year. Baker became just the second Hawk to be named to the A-10 All-Defensive Team, while freshman Erin Shields became the sixth player Griffin has coached to A-10 All-Rookie Team honors.

Earning a postseason berth for the first time in two years, the Hawks surpassed predictions in 2009-10 as they finished tied for fourth in the Atlantic 10 after being picked to finish ninth. After opening the season with a 3-7 mark, Griffin saw her team begin to click at the end of the non-conference schedule as SJU claimed the 19th Annual Hawk Classic title and worked its way to .500 by the second week of the Atlantic 10 slate.

Posting a 9-5 mark against conference opponents, Griffin hit two milestones during A-10 play, earning her 150th win at Saint Joseph's in a victory against Dayton and earning her 200th coaching win against George Washington. The Hawks would go on to earn the program's seventh WNIT bid, and play the first post-season game at Hagan Arena.

In 2008-09, Griffin undertook arguably her toughest season to date as Saint Joseph's played every contest away from Hawk Hill for the first time in program history. And in typical SJU fashion, Griffin got her team to respond as Saint Joseph's went on to post an 8-5 record at home venues and earn its first Big 5 title since 2000-01. Individually five Hawks posted career bests in scoring, with Brittany Ford and Mariame Djouara both earning All-Big 5 Second Team honors.

Relying heavily on underclassmen in 2007-08, Griffin guided her Hawks to another winning season, including crowns at the Brown Basketball Classic and the Hilton Philadelphia Hawk Classic. Among the wins, Saint Joseph's posted its biggest win over a non-conference ranked opponent since the 1984-85, topping #15 Auburn for the Hawk Classic title.

Despite losing several experienced players prior to the 2006-07 season, Griffin had her team peaking at the right time. Playing Griffin's style of hard-nosed defense and persistent offense, the Hawks advanced to the Atlantic 10 Championship game, including the program's first win over a top 10 opponent (#8 George Washington) since 1992 along the way. Saint Joseph's capped the season with its fifth WNIT appearance in six years and tied the SJU record for games played in a season with 33.

Fueled by a collection of newcomers and a developed core of upperclassmen, Griffin led the Hawks back to national prominence in 2005-06. The Crimson and Gray engineered the nation's best turnaround (13 games) and received votes in the national polls for the first time since 2003-04. The Hawks advanced to the

### Coch Griffin At A Glance

**Career Record:** 294-200  
**Record at SJU:** 246-167  
**Atlantic 10 Record:** 119-75  
**Postseason Record:** 7-10

**Hometown:** Maple Glen, Pa.  
**Education:** Saint Joseph's '91,  
Saint Joseph's MBA '93  
**Playing Experience:**  
Saint Joseph's 1987-92  
**Coaching Experience:**  
Saint Joseph's 2001-Present  
Loyola (Md.) 1998-01



## 2014-15 SAINT JOSEPH'S BASKETBALL NOTES - PAGE 7

semifinals of the A-10 Championship and earned a berth in the WNIT.

With the loss of four 1,000-point scorers, the 2004-05 Hawks showed their true colors down the stretch, earning a hard-fought victory over La Salle in the opening round of the Atlantic 10 Championship and coming within 10 points of 16th-ranked, and eventual A-10 Champion, Temple.

Led by six seniors, the 2004 team went 22-11 and advanced to the WNIT Elite Eight. Saint Joseph's finished second in the A-10 East and dropped a heartbreaker in the Atlantic 10 Championship to Temple. Four Hawk seniors reached the 1,000-point plateau, marking just the eighth time in NCAA history that a quartet of players had reached the milestone in the same season. Erin Brady, Irina Krasnoshiok, Stephanie (Graff) McCaffrey and Amra Mehmedic went on to sign professional contracts.

Following a memorable first year at the helm of her alma mater, Griffin upped the ante in her second season by capturing 2003 Atlantic 10 Coach of the Year honors after guiding the Hawks to a 19-11 record. The team sprinted to the conference's Eastern Division title and earned a berth in the WNIT for the second straight season, despite the departure of SJU's all-time leading scorer and a non-conference schedule that ranked fourth nationally.

Griffin helped to reinvigorate the SJU program in her first season, leading the squad to a 24-8 record and the second round of the WNIT. She capitalized on the team's tradition of scrappy play and rugged defense, while releasing the reins and allowing the team to play a more up-tempo style on the offensive end of the floor. The Hawks finished the year among the national leaders in nine different categories and paced the nation in free throw percentage for the second straight year.

Following her playing career, Griffin spent the 1992-93 season as a graduate assistant at her alma mater. She then accepted an assistant's spot at Vanderbilt University from 1993-95 under former Saint Joseph's head coach Jim Foster. Foster recruited Griffin to SJU and coached her during her playing career on Hawk Hill.

In her two years as an assistant at Vanderbilt, the Commodores finished 53-15 overall, won the 1995 SEC championship and reached the NCAA Sweet 16 both seasons. In addition to coaching responsibilities, she was the co-director of the Vanderbilt Basketball Camp and the director of the Black & Gold Club.

Griffin left Vanderbilt after the 1995 season to become an assistant coach at Loyola College (Md.). She spent three seasons as an assistant under Patty Coyle before being promoted to associate head coach in 1998. Griffin was promoted to the position of head women's basketball coach at Loyola midway through the 1998-99 season. She was the seventh-youngest head coach in Division I at the time. Griffin – who was named head coach five games into the season as Coyle left for an assistant coach position with the WNBA's New York Liberty – kept the Greyhounds' momentum going as Loyola won a team-record 21 games that year. Overall she compiled a record of 48-33 during her tenure at the Baltimore school, guiding the squad to the Metro Atlantic Athletic Conference semifinals all three seasons.

One of the top playmakers in Saint Joseph's history, Griffin starred for the Hawks from 1987-88 through 1991-92 (missing the 1988-89 season due to injury). A three-time team captain, Griffin finished her career with 662 points, 278 rebounds, 510 assists and 197 steals. She currently ranks fourth on SJU's all-time assist list.

As a junior in 1990-91, she played in 1,178 out of a possible 1,200 minutes to set the school record for minutes played in a single season. The Hawks made three NCAA Tournament appearances and posted three straight 20-win seasons during her playing career. A two-time Second Team All-Big 5 choice, as well as a Third Team All-Atlantic 10 pick as a senior, she was inducted into the Saint Joseph's Women's Basketball Hall of Fame in 1998.

A native of Maple Glen, Pa., Griffin played her high school basketball for Bishop McDevitt, winning two Philadelphia Catholic League titles. A 1987 graduate of McDevitt, she was inducted into its Athletic Hall of Fame in 1997, and in 2002, received the Philadelphia Catholic League's alumni achievement award. She earned a bachelor's degree in accounting from Saint Joseph's in 1991 and completed her M.B.A. from SJU in 1993. She resides in Conshohocken, Pa., with her husband Curtis and children, Kaylie, Hannah and Curtis Jr.

### Griffin's Year-By-Year Record

Year	School	Overall Record	Conference Record	Postseason
1998-99	Loyola College	17-6	13-5	MAAC Semifinals
1999-00	Loyola College	12-17	8-10	MAAC Semifinals
2000-01	Loyola College	19-10	12-6	MAAC Semifinals
2001-02	Saint Joseph's University	24-8	12-4	WNIT/A-10 Finals
2002-03	Saint Joseph's University	19-11	13-3	WNIT
2003-04	Saint Joseph's University	22-11	12-4	WNIT/A-10 Finals
2004-05	Saint Joseph's University	7-23	4-12	
2005-06	Saint Joseph's University	20-11	10-6	WNIT/A-10 Semifinals
2006-07	Saint Joseph's University	19-14	8-6	WNIT/A-10 Finals
2007-08	Saint Joseph's University	17-14	8-6	
2008-09	Saint Joseph's University	13-17	5-9	
2009-10	Saint Joseph's University	17-15	9-5	WNIT
2010-11	Saint Joseph's University	20-12	8-6	WNIT
2011-12	Saint Joseph's University	22-11	9-5	WNIT
2012-13	Saint Joseph's University	23-9	11-3	NCAA/A-10 Champions
2013-14	Saint Joseph's University	23-10	10-6	NCAA
2014-15	Saint Joseph's University	0-1	0-0	
<b>1998-12</b>	<b>17 Seasons</b>	<b>294-200</b>	<b>152-96</b>	<b>10 Appearances</b>
<b>Head Coaching Record at Saint Joseph's: 246-167 (.596) – 14 Seasons</b>				
<b>Career Head Coaching Record: 294-200 (.595) – 17 Seasons</b>				



### Team Superlatives

CATEGORY	SAINT JOSEPH'S MOST	SAINT JOSEPH'S LEAST	OPPONENT'S MOST	OPPONENTS' LEAST
Total Points	52, 52, at Rutgers, 11/14/14	52, at Rutgers, 11/14/14	76, by Rutgers, 11/14/14	76, by Rutgers, 11/14/14
1st Half Points	24, at Rutgers, 11/14/14	24, at Rutgers, 11/14/14	30, by Rutgers, 11/14/14	30, by Rutgers, 11/14/14
2nd Half Points	28, at Rutgers, 11/14/14	28, at Rutgers, 11/14/14	46, by Rutgers, 11/14/14	46, by Rutgers, 11/14/14
Field Goals	18, at Rutgers, 11/14/14	18, at Rutgers, 11/14/14	30, by Rutgers, 11/14/14	30, by Rutgers, 11/14/14
Field Goal Att.	58, at Rutgers, 11/14/14	58, at Rutgers, 11/14/14	64, by Rutgers, 11/14/14	64, by Rutgers, 11/14/14
Field Goal Pct.	.310, at Rutgers, 11/14/14	.310, at Rutgers, 11/14/14	.469, by Rutgers, 11/14/14	.469, by Rutgers, 11/14/14
3 Point FG	4, at Rutgers, 11/14/14	4, at Rutgers, 11/14/14	1, by Rutgers, 11/14/14	1, by Rutgers, 11/14/14
3 Point Att.	14, at Rutgers, 11/14/14	14, at Rutgers, 11/14/14	6, by Rutgers, 11/14/14	6, by Rutgers, 11/14/14
3 Point Pct.	.286, at Rutgers, 11/14/14	.286, at Rutgers, 11/14/14	.167, by Rutgers, 11/14/14	.167, by Rutgers, 11/14/14
Free Throws	12, at Rutgers, 11/14/14	12, at Rutgers, 11/14/14	15, by Rutgers, 11/14/14	15, by Rutgers, 11/14/14
Free Throw Att.	22, at Rutgers, 11/14/14	22, at Rutgers, 11/14/14	22, by Rutgers, 11/14/14	22, by Rutgers, 11/14/14
Free Throw Pct.	.545, at Rutgers, 11/14/14	.545, at Rutgers, 11/14/14	.682, by Rutgers, 11/14/14	.682, by Rutgers, 11/14/14
Offensive Rebs.	19, at Rutgers, 11/14/14	19, at Rutgers, 11/14/14	15, by Rutgers, 11/14/14	15, by Rutgers, 11/14/14
Defensive Rebs.	20, at Rutgers, 11/14/14	20, at Rutgers, 11/14/14	26, by Rutgers, 11/14/14	26, by Rutgers, 11/14/14
Total Rebs.	39, at Rutgers, 11/14/14	39, at Rutgers, 11/14/14	41, by Rutgers, 11/14/14	41, by Rutgers, 11/14/14
Personal Fouls	20, at Rutgers, 11/14/14	20, at Rutgers, 11/14/14	18, by Rutgers, 11/14/14	18, by Rutgers, 11/14/14
Assists	12, at Rutgers, 11/14/14	12, at Rutgers, 11/14/14	15, by Rutgers, 11/14/14	15, by Rutgers, 11/14/14
Turnovers	21, at Rutgers, 11/14/14	21, at Rutgers, 11/14/14	11, by Rutgers, 11/14/14	11, by Rutgers, 11/14/14
Blocked Shots	3, at Rutgers, 11/14/14	3, at Rutgers, 11/14/14	9, by Rutgers, 11/14/14	9, by Rutgers, 11/14/14
Steals	1, at Rutgers, 11/14/14	1, at Rutgers, 11/14/14	10, by Rutgers, 11/14/14	10, by Rutgers, 11/14/14

### Individual Superlatives

CATEGORY	SAINT JOSEPH'S MOST	OPPONENT'S MOST
Points	19, by Ciara Andrews vs. Rutgers, 11/14/14	23, by Tyler Scaife of Rutgers, 11/14/14
Field Goals	7, by Sarah Fairbanks vs. Rutgers, 11/14/14	9, by Tyler Scaife of Rutgers, 11/14/14
Field Goal Att.	14, by Ciara Andrews vs. Rutgers, 11/14/14	15, by Kahleah Copper of Rutgers, 11/14/14
Field Goal Pct. *	.538 (7-13), by Sarah Fairbanks vs. Rutgers, 11/14/14	.692 (9-13) by Tyler Scaife of Rutgers, 11/14/14
3 Point FG	3, by Kathleen Fitzpatrick vs. Rutgers, 11/14/14	1, by Syessence Davis of Rutgers, 11/14/14
3 Point Att.	7, by Kathleen Fitzpatrick vs. Rutgers, 11/14/14	2, 2x, last by Davis and Hernandez of Rutgers, 11/14/14
3 Point Pct. #	.429 (3-7) by Kathleen Fitzpatrick vs. Rutgers, 11/14/14	.500 (1-2), by Syessence Davis of Rutgers, 11/14/14
Free Throws	6, by Ciara Andrews vs. Rutgers, 11/14/14	5, by Tyler Scaife of Rutgers, 11/14/14
Free Throw Att.	11, by Ciara Andrews vs. Rutgers, 11/14/14	6, by Tyler Scaife of Rutgers, 11/14/14
Free Throw Pct. #	.545 (6-11), by Ciara Andrews vs. Rutgers, 11/14/14	.833 (5-6), by Tyler Scaife of Rutgers, 11/14/14
Offensive Rebs.	4, by Ashley Robinson vs. Rutgers, 11/14/14	4, by Betnijah Laney of Rutgers, 11/14/14
Defensive Rebs.	5, by Natasha Cloud vs. Rutgers, 11/14/14	9, by Betnijah Laney of Rutgers, 11/14/14
Total Rebs.	6, 3x, last by Andrews, Cloud and Fairbanks vs. Rutgers, 11/14/14	13, by Betnijah Laney of Rutgers, 11/14/14
Assists	10, by Natasha Cloud vs. Rutgers, 11/14/14	8, by Briyona Canty of Rutgers, 11/14/14
Turnovers	5, 2x, last by Cloud and Fitzpatrick vs. Rutgers, 11/14/14	3, by Briyona Canty of Rutgers, 11/14/14
Blocked Shots	1, 3x, last by Fairbanks, Franklyn and Strode vs. Rutgers, 11/14/14	5, by Rachel Hollivay of Rutgers, 11/14/14
Steals	1, by Natasha Cloud vs. Rutgers, 11/14/14	3, by Betnijah Laney of Rutgers, 11/14/14
Minutes	37, 2x, last by Cloud and Fairbanks vs. Rutgers, 11/14/14	33, by Tyler Scaife of Rutgers, 11/14/14

\* - Minimum of five attempts; # - Minimum of three attempts





GAME-BY-GAME RESULTS

DATE	OPPONENT	SCORE	W/L	ATT	HIGH POINTS	HIGH REBOUNDS	HIGH ASSISTS	HIGH STEALS
Nov. 14	at #24/RV Rutgers	.52-76	L	1,805	Andrews . . . .19	Three tied at . . . .6	Cloud . . . . .10	Cloud . . . . .1
Nov. 18 #	Temple							
Nov. 22	at Liberty							
Nov. 25	at Drexel							
Nov. 29	vs. Saint Francis							
Nov. 30	vs. TBD							
Dec. 4	Lehigh							
Dec. 7 #	Villanova							
Dec. 9 #	at Penn							
Dec. 21	at Notre Dame							
Dec. 28	Quinnipiac							
Dec. 29	TBD							
Jan. 3 *	VCU							
Jan. 7 *	at George Washington							
Jan. 10 *	Massachusetts							
Jan. 15 *	at Fordham							
Jan. 18 *	at Duquesne							
Jan. 24 *	St. Bonaventure							
Jan. 28 *	at Saint Louis							
Jan. 31 *	at Davidson							
Feb. 4 #*	La Salle							
Feb. 8 *	Fordham							
Feb. 11 *	at Rhode Island							
Feb. 15 *	at Dayton							
Feb. 18 *	George Mason							
Feb. 21 *	Richmond							
Feb. 25 *	Duquesne							
Mar. 1 *	at La Salle							

\* – Atlantic 10 game; # – Big 5 game;

GAMES AS HIGH SCORER: Andrews - 1

GAMES AS HIGH REBOUNDER: Andrews - 1; Cloud - 1; Fairbanks - 1

GAMES SCORING DOUBLE FIGURES: Andrews - 1; Fairbanks - 1

GAMES REBOUNDING DOUBLE FIGURES:

GAMES SCORING 20 OR MORE POINTS:

GAMES POSTING A DOUBLE-DOUBLE:





# 2014-15 SAINT JOSEPH'S BASKETBALL NOTES - PAGE 10

Official Basketball Box Score -- Game Totals -- Final Statistics  
St. Joseph's vs Rutgers  
11/14/14 7:00 p.m. at The RAC - Piscataway, N.J.

St. Joseph's 52 • 0-1

#	Player		Total		3-Ptr	Rebounds			PF	TP	A	TO	Blk	Stl	Min
			FG-FGA	FG-FGA	FT-FTA	Off	Def	Tot							
22	PONGONIS, Jessica	f	0-2	0-1	0-0	2	0	2	2	0	0	1	0	0	12
41	FAIRBANKS, Sarah	f	7-13	0-0	2-2	3	3	6	5	16	0	4	1	0	37
04	CLOUD, Natasha	g	1-6	0-3	1-2	1	5	6	3	3	10	5	0	1	37
15	FITZPATRICK, Kathlee	g	3-8	3-7	0-0	1	2	3	2	9	1	5	0	0	28
23	STRODE, Jordan	g	1-5	0-0	3-4	1	1	2	2	5	0	0	1	0	16
02	RULE, Mackenzie		0-0	0-0	0-0	1	0	1	0	0	0	1	0	0	1
03	ANDREWS, Ciara		6-14	1-2	6-11	2	4	6	2	19	1	2	0	0	33
13	ROBINSON, Ashley		0-5	0-0	0-1	4	1	5	2	0	0	2	0	0	20
30	VEILLEUX, Sarah		0-0	0-0	0-0	0	0	0	0	0	0	0	0	0	3
32	WOODS, Chelsea		0-2	0-1	0-0	0	1	1	2	0	0	0	0	0	3
33	FRANKLYN, Adashia		0-3	0-0	0-2	1	1	2	0	0	0	1	1	0	10
Team						3	2	5							
Totals			18-58	4-14	12-22	19	20	39	20	52	12	21	3	1	200

FG % 1st Hal f: 9-31 29.0% 2nd hal f: 9-27 33.3% Game: 18-58 31.0%  
 3FG % 1st Hal f: 3-8 37.5% 2nd hal f: 1-6 16.7% Game: 4-14 28.6%  
 FT % 1st Hal f: 3-5 60.0% 2nd hal f: 9-17 52.9% Game: 12-22 54.5%

Deadball  
Rebounds  
5, 2

Rutgers 76 • 1-0

#	Player		Total		3-Ptr	Rebounds			PF	TP	A	TO	Blk	Stl	Min
			FG-FGA	FG-FGA	FT-FTA	Off	Def	Tot							
02	Copper, Kahliah	f	6-15	0-0	2-2	0	2	2	2	14	1	2	0	2	29
44	Laney, Betnijah	f	5-13	0-1	0-2	4	9	13	3	10	1	2	0	3	36
01	Hollivay, Rachel	c	3-5	0-0	1-4	3	3	6	2	7	0	0	5	0	20
03	Scalfe, Tyler	g	9-13	0-0	5-6	1	1	2	1	23	3	2	1	1	32
04	Canty, Briyona	g	6-10	0-1	4-4	0	5	5	2	16	8	3	2	1	33
05	Parsons, Natalie		0-0	0-0	0-0	0	0	0	0	0	1	0	0	0	3
10	Parker, Shrita		0-0	0-0	2-2	0	1	1	1	2	0	0	0	0	3
13	Hernandez, Cynthia		0-2	0-2	0-0	0	0	0	1	0	0	0	0	0	5
15	Davis, Syessence		1-4	1-2	0-0	2	0	2	3	3	1	0	0	1	19
20	Evans, Christa		0-0	0-0	0-0	0	0	0	1	0	0	1	0	0	8
33	Alfano, Alexis		0-0	0-0	0-0	0	0	0	0	0	0	0	0	1	1
43	Butts, Ariel		0-2	0-0	1-2	3	4	7	2	1	0	1	1	1	11
Team						2	1	3							
Totals			30-64	1-6	15-22	15	26	41	18	76	15	11	9	10	200

FG % 1st Hal f: 12-35 34.3% 2nd hal f: 18-29 62.1% Game: 30-64 46.9%  
 3FG % 1st Hal f: 0-3 0.0% 2nd hal f: 1-3 33.3% Game: 1-6 16.7%  
 FT % 1st Hal f: 6-8 75.0% 2nd hal f: 9-14 64.3% Game: 15-22 68.2%

Deadball  
Rebounds  
4

Officials: Lisa Mattingly, Bryan Enterline, An-Jamilah Gregory  
 Technical fouls: St. Joseph's-None. Rutgers-None.  
 Attendance: 1805

Score by periods	1st	2nd	Total
St. Joseph's	24	28	52
Rutgers	30	46	76

	In	Off	2nd	Fast	
Poi nts	Pai nt	T/O	Chance	Break	Bench
SJU	16	7	14	2	19
RU	34	24	13	24	6



# 2014-15 SAINT JOSEPH'S BASKETBALL NOTES - PAGE 11



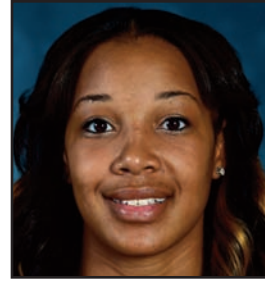
**#2 - Mackenzie Rule**  
So. • Guard • 5-6



**#3 - Ciara Andrews**  
Jr.. • Guard • 5-9



**#4 - Natasha Cloud**  
Sr. • Guard • 6-0



**#13 - Ashley Robinson**  
Gr. • Forward • 6-2



**#15 - Kathleen Fitzpatrick**  
So. • Guard • 5-9



**#21 - Avery Marz**  
Fr. • Guard • 5-7



**#22 - Jessica Pongonis**  
So. • Forward • 6-1



**#23 - Jordan Strode**  
R-So. • Guard • 5-8



**#30 - Sarah Veilleux**  
Fr. • Guard/Forward • 6-0



**#32 - Chelsea Woods**  
Fr. • Guard/Forward • 6-0



**#33 - Adashia Franklyn**  
Fr. • Forward • 6-1



**#34 - Amanda Fioravanti**  
So. • Forward • 6-1



**#40 - Candace Belvedere**  
Fr. • Forward • 6-2



**#41 - Sarah Fairbanks**  
Jr. • Forward • 6-1



**Cindy Griffin**  
Head Coach



**Susan Moran**  
Associate Head Coach



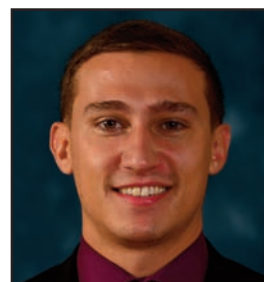
**Stephanie McCaffrey**  
Assistant Coach



**Jada Pierce**  
Assistant Coach



**Katie Gardler**  
Director of Basketball Operations



**Chris Koclanes**  
Video Coordinator