

2014-15 SCHEDULE/RESULTS

Overall: 0-0; Atlantic 10: 0-0; Big 0-0

NOVEMBER

Fri. 14	at Rutgers	7:00 p.m.
Tues. 18	TEMPLE #	7:00 p.m.
Sat. 22	at Liberty	2:00 p.m.
Tues. 25	at Drexel	7:00 p.m.
Sat. 29	vs. Saint Francis	Noon
Sun. 30	vs. Saint Peter's or Seton Hall	TBD

DECEMBER

Thurs. 4	LEHIGH	7:00 p.m.
Sun. 7	VILLANOVA #	2:00 p.m.
Tues. 9	at Penn #	5:30 p.m.
Sun. 21	at Notre Dame	1:00 p.m.
Sun. 28	QUINNIAC	2:00 p.m.
Mon. 29	CSUN or FLORIDA GULF COAST	TBD

JANUARY

Sat. 3	VCU *	7:00 p.m.
Wed. 7	at George Washington *	7:00 p.m.
Sat. 10	MASSACHUSETTS *	2:00 p.m.
Thurs. 15	at Fordham * (CBSSN)	7:00 p.m.
Sun. 18	at Duquesne * (CBSSN)	4:00 p.m.
Sat. 24	ST. BONAVENTURE *	2:00 p.m.
Wed. 28	at Saint Louis *	12:30 p.m.
Sat. 31	at Davidson *	2:00 p.m.

FEBRUARY

Wed. 4	LA SALLE #*	7:00 p.m.
Sun. 8	FORDHAM *	2:00 p.m.
Wed. 11	at Rhode Island *	7:00 p.m.
Sun. 15	at Dayton * (CBSSN)	Noon
Wed. 18	GEORGE MASON *	7:00 p.m.
Sat. 21	RICHMOND *	2:00 p.m.
Wed. 25	DUQUESNE *	7:00 p.m.

MARCH

Sun. 1	at La Salle *	1:00 p.m.
W-Sn. 4-8	Atlantic 10 Championship +	

Home games in **BOLD CAPS** at Hagan Arena;
 All game times are EST and subject to change
 * Atlantic 10 Conference Game
 # - Philadelphia Big 5 Game
 + at The Richmond Coliseum (Richmond, Va.)

Contact: Jack Jumper • Cell Phone: 610-660-3389 • Email: jjumper@sju.edu

SAINT JOSEPH'S UNIVERSITY HAWKS (0-0)

at

#24/RV RUTGERS UNIVERSITY SCARLET KNIGHTS (0-0)

Game #1 • November 14, 2014

Rutgers Athletic Center • Piscataway, N.J. • 7:00 p.m.

GAME DAY AT A GLANCE

Arena	Rutgers Athletic Center (8,000)
Live Audio	SJSN - Jack Jumper, Renie Shields
Live Streaming	Big Ten Network - Lou Brogno, Julianne Viani
Series Record	Rutgers Leads 28-15
Next Game	Tuesday, November 18 vs. Temple, 7:00 p.m.

GAME STORIES . . .

- Saint Joseph's opens the 2014-15 season at #24/RV Rutgers on Friday.
- The Hawks return eight letterwinners, including four starters, from last year's team that went 23-10 and advanced to the Second Round of NCAA Tournament.
- Entering their 42nd season of NCAA Division I competition, the Hawks have posted a 28-13 all-time record in season opening games.
- SJU is 8-5 all-time in season opening games that were on the road.
- Friday's game is the 44th meeting between the Hawks and Scarlet Knights.
- Rutgers holds a 28-15 edge in the all-time series and has won the last two contests.
- In its last meeting, Saint Joseph's fell at # 5/3 Rutgers, 86-59, in the season opening game of 2008-09. Boxscore and recap on page 2.
- The Hawks versus the Scarlet Knights at the Rutgers Athletic Center.
- Friday marks the eighth time the Hawks have opened the season versus a nationally ranked opponents. In the previous seven meetings, SJU has gone 1-6. Below is a list of the Hawks' results in those games.

11/14/08 - L, 59-86 at #5/3 Rutgers	12/1/89 - L, 57-76 vs. #10/6 Iowa
11/21/99 - W, 73/61 at # RV/25 Virginia	11/25/88 - L, 69-75 vs. #34/ Texas
11/16/98 - L, 63-108 at #1/1 Tennessee	11/29/85 - L, 66-96 vs. #7/7 USC
11/25/95 - L, 54-75 at #4/2 Tennessee	

HAWKS AT A GLANCE

PROBABLE STARTERS

No.	Pos.	Player	Yr.	Ht.	PPG	RPG	APG	MPG	Notes
3	G	Ciara Andrews	Jr	5-9	9.2	2.5	1.1	21.1	Returning leader in free throw percentage (.833)
4	G	Natasha Cloud	Sr.	6-0	11.5	6.6	7.6	35.0	Named to the A-10 Preseason All-Conference First Team
13	F	Ashley Robinson	Gr.	6-2	6.2	5.4	0.7	22.8	Averaged a career-best in scoring and rebounding in 2013-14
23	G	Jordan Strode	R-So.	5-8	--	--	--	--	Sat out 2013-14 season with a leg injury
41	F	Sarah Fairbanks	Jr.	6-1	12.7	5.9	0.8	27.2	Preseason A-10 All-Conference Third Team selection

THE BENCH

2	G	Mackenzie Rule	So.	5-6	0.0	0.5	0.3	2.5	Appeared in four games as a freshman
15	G	Kathleen Fitzpatrick	So.	5-9	2.1	0.4	0.4	4.9	Returning leader in three-point field goal percentage (.469)
21	G	Avery Marz	Fr.	5-7	12.6	--	--	--	Out - Sitting out 2014-15 season for medical reasons
22	F	Jessica Pongonis	So.	6-1	1.8	1.5	0.4	8.6	Led all freshman last year in points (44)
30	G/F	Sarah Veilleux	Fr.	6-0	34.1	9.8	--	--	2014 <i>Parade</i> All-American and McDonald's All-American nominee
32	G/F	Chelsea Woods	Fr.	6-0	32.6	13.9	--	--	Freire Charter's all-time leading scorer (2,031 points)
33	F	Adashia Franklyn	Fr.	6-1	15.0	13.0	--	--	Named to 2014 Sports Writer of Pennsylvania All-State Team
34	F	Amanda Fioravanti	So.	6-1	1.5	1.1	0.3	4.0	Out - Must sit out fall semester per NCAA transfer rules
40	F	Candace Belvedere	Fr.	6-2	12.1	9.6	1.5	--	Doubtful - Left leg



2014-15 SAINT JOSEPH'S BASKETBALL NOTES - PAGE 2

SAINT JOSEPH'S' ROSTER

No.	Name	Yr.	Pos.	Ht.	Hometown	High School/Last School
2	Mackenzie Rule	So.	G	5-6	West Chester, Pa.	Cardinal O'Hara
3	Ciara Andrews	Jr.	G	5-9	Glenside, Pa.	Cheltenham
4	Natasha Cloud	Sr.	G	6-0	Broomall, Pa.	Cardinal O'Hara/Maryland
13	Ashley Robinson	Gr.	F	6-2	Warrington, Pa.	Archbishop Wood
15	Kathleen Fitzpatrick	So.	G	5-9	Drexel Hill, Pa.	Academy of Notre Dame de Namur
21	Avery Marz	Fr.	G	5-7	Sinking Springs, Pa.	Wilson West Lawn
22	Jessica Pongonis	So.	F	6-1	Fishers, Ind.	Hamilton Southeaster
23	Jordan Strode	R-So.	G	5-8	Charlotte, N.C.	Hickory Ridge
30	Sarah Veilleux	Fr.	G/F	6-0	Hebron, Conn.	RHAM
32	Chelsea Woods	Fr.	G/F	6-0	Philadelphia, Pa.	Freire Charter
33	Adashia Franklyn	Fr.	F	6-1	West Chester, Pa.	West Chester Bayard Rustin
34	Amanda Fioravanti	So.	F	6-1	Frederick, Md.	Our Lady of Good Counsel
40	Candace Belvedere	Fr.	F	6-2	Merrick, N.Y.	Kellenberg Memorial
41	Sarah Fairbanks	Jr.	F	6-1	Elizabethtown, Pa.	Elizabethtown Area

Head Coach: Cindy Griffin (Saint Joseph's '91, '93) - 14th year
Associate Head Coach: Susan Moran (Saint Joseph's '02) - 12th year
Assistant Coaches: Stephanie McCaffrey (Saint Joseph's '04) - 8th year,
 Jada Pierce (West Chester '97) - 3rd year
Director of Basketball Operations: Katie Gardler (Saint Joseph's '92) - 5th year
Graduate Assistant: Chris Koclanes (Old Dominion '10) - 2nd year

PRONUNCIATION GUIDE

CIARA AndrewsSEE-air-uh
Jessica PONGONISpon-GO-niss
ADASHIA Franklynuh-DAY-zhuh
Sarah VEILLEUXvuh-LOU
Amanda FIORAVANTI
fee-OR-uh-vahn-tee



SERIES HISTORY

Saint Joseph's vs. Rutgers

All-Time Series: RU Leads 28-15
Last Meeting: 11/14/08, RU, 86-59
Last SJU Win: 11/18/01, 64-58
Last Rutgers Win: 11/14/08, 86-59
Current SJU Streak: L-2



STATISTICAL COMPARISON

	Saint Joseph's	Rutgers
Overall Record	23-10	28-9
Conference Record	10-6	12-6
Home Record	10-3	15-3
Away Record	11-6	11-4
Neutral Record	2-1	2-2
Points Per Game	71.5	66.2
Opponent Points Per Game	64.4	58.6
Scoring Differential	+7.0	+7.6
Field Goal Percentage	.433	.442
Opponent Field Goal Percentage	.383	.356
3-Pt. Field Goals Made Per Game	5.0	1.2
3-Pt. Field Goal Percentage	.353	.280
Opponent 3-Pt. Field Goal Percentage	.301	.297
Free Throws Made Per Game	14.0	12.3
Free Throw Percentage	.801	.666
Rebounds Per Game	37.2	40.2
Opponent Rebounds Per Game	39.0	38.1
Rebounding Differential	-1.8	+2.1
Assists Per Game	16.3	14.8
Turnovers Per Game	12.2	15.6
Opponent Turnovers Per Game	14.5	17.5
Turnover Margin	+2.3	+1.9
Assist/Turnover Ratio	1.3	0.9
Steals Per Game	5.9	9.2
Blocks Per Game	3.1	5.8

PREVIOUS 10 GAMES VS. RUTGERS

Date	Score	Site	Rank	Date	Score	Site	Rank
11/14/08	L, 59-86	Away	5/3	12/15/96	W, 61-44	Away	
11/28/07	L, 50-56	Home	5/7	2/26/95	L, 61-68	Home	
11/18/01	W, 64-58	Home	--/23	1/25/95	W, 65-62	Away	
12/21/00	L, 38-80	Away	7/7	2/26/94	W, 78-71	Home	25/23
3/19/00	L, 39-59	Away	8/8	Full year-by-year results on page 2			
12/21/97	W, 67-54	Home		129 of the SJU Media Guide.			

LAST MEETING BOXSCORE & RECAP

Game 1: November 14 • Louis Brown Athletic Center

No. 5/3 Rutgers - 86, Saint Joseph's - 59

Saint Joseph's found out quickly where it stands as the Hawks opened the 2008-09 season at No. 5/3 Rutgers. Despite hanging with the nationally-ranked Scarlet Knights for the majority of the second half, a cold first half hindered the Hawks' upset bid as they fell 86-49. Saint Joseph's got a team-high 15 points from Jenna Loschiavo, but the Hawks were never able to claw back from a 20-point halftime deficit.

SJU	MIN	FG-A	3PT	FT-A	OR	DR	TR	F	A	TO	BL	S	PTS
Ford, f	19	1-2	0-0	2-2	1	3	4	5	2	3	1	1	4
Logue, f	34	5-11	0-3	1-2	3	4	7	0	2	2	1	0	11
McDade, g	26	1-4	1-2	2-2	0	3	3	3	7	3	0	0	5
Djouara, g	10	1-2	1-1	0-0	0	0	0	1	0	3	0	1	3
Loschiavo, g	31	4-9	4-9	3-4	1	0	1	3	0	4	0	0	15
Bryant	18	1-5	0-1	0-0	1	4	5	1	0	0	0	0	2
Kuester	15	1-3	1-3	2-2	0	0	0	0	3	3	1	0	5
Baker	11	3-6	1-2	2-2	0	0	0	0	0	0	0	1	9
Cavallo	5	0-0	0-0	0-0	0	1	1	0	0	0	0	1	0
Gillespie	27	2-5	0-2	1-2	2	1	3	2	1	3	0	1	5
Acker	4	0-0	0-0	0-0	0	1	1	2	0	3	0	0	0
Team					1	0	1						
Totals	200	19-47	8-23	13-16	9	17	26	17	15	24	3	5	59

RUTGERS	MIN	FG-A	3PT	FT-A	OR	DR	TR	F	A	TO	BL	S	PTS
Zurich, f	27	3-6	0-1	0-0	2	2	4	2	2	0	1	1	6
McCurdy, f	9	1-5	0-0	0-0	3	1	4	0	1	0	0	1	2
Vaughn, c	30	5-11	0-0	1-1	3	3	6	4	0	3	4	0	11
Prince, g	33	8-17	1-3	9-10	1	4	5	0	4	2	1	7	26
Ray, g	22	3-6	2-4	1-1	0	2	2	4	0	0	0	1	9
Rushdan	23	2-6	1-2	0-1	0	3	3	3	2	2	0	1	5
Speed	13	1-3	0-0	0-0	1	1	2	1	1	2	0	1	2
Pope	10	5-9	0-0	1	3	5	8	1	1	3	1	4	10
Dixon	11	3-3	0-0	1-2	0	0	0	1	0	0	0	1	7
Lee	10	0-0	0-0	0-0	0	0	0	0	0	0	0	0	0
Junaid	12	4-6	0-0	0-0	5	0	5	1	0	2	0	0	8
Team					3	0	3						
Totals	200	35-72	4-10	12-16	21	21	42	17	11	14	7	17	86

HALFTIME: Rutgers, 44-24 **DEADBALL REBOUNDS:** 3-1, Saint Joseph's
ATTENDANCE: 2,445 **OFFICIALS:** Denise Brooks-Clauser, Janice Aliberti, Michele St. Pierre
TECHNICAL FOUL: Brooklyn Pope - Rutgers
FG %: SJU - 40.4%, RU - 48.6%
3-PT FG %: SJU - 34.8%, RU - 40.0%
FT %: SJU - 81.3%, RU - 75.0%



MARZ TO MISS 2014-15 SEASON

Saint Joseph's freshman **Avery Marz** will sit out the 2014-15 basketball season for medical reasons. A highly-touted guard from Wilson West Lawn High School, Marz suffered a stroke this past August. Working at home with physical therapists to regain full motion in her left arm and leg, she has taken a medical leave for the fall semester, but has been present for numerous team outings and practices. Marz will return to campus and begin taking classes in January. A four-year letterwinner at Wilson West Lawn, Marz led her team to four-straight District 3 AAAA titles and Berks County championships. Averaging 12.6 points per game as a senior, she was named an All-American Honorable Mention by the *Sporting News* and the Berks County Player of the Year as she helped her team to a #23 national ranking by the *Sporting News*.

INJURY REPORT

Freshman **Avery Marz** is out for Friday's game, while classmate **Candace Belvedere** is doubtful with a left leg injury.

FIORAVANTI OUT FIRST SEMESTER PER NCAA RULES

Saint Joseph's sophomore forward **Amanda Fioravanti** will sit out the fall semester of the 2014-15 season per NCAA transfer rules. Named the 2012-13 Gatorade Player of the Year for Maryland, Fioravanti came to SJU last January after playing at Virginia the first semester. While with the Cavaliers, Fioravanti averaged 1.5 points and 1.1 rebounds per game over eight games.

TRIO OF HAWKS SERVING AS CAPTAINS IN 2014-15

Graduate student **Ashley Robinson**, senior **Natasha Cloud** and junior **Sarah Fairbanks** are serving as team captains this season. Robinson and Cloud are serving as a team captains for the second straight year, while Fairbanks is a captain for the first time this season.

GRIFFIN SECOND ALL-TIME IN WINS AT HAWK HILL

Entering her 14th season at her alma mater, **Cindy Griffin** is second all-time in team history in victories at Saint Joseph's. Over her first 13 seasons on Hawk Hill, Griffin has posted a 246-166 mark. Having led SJU to a record 10 postseason appearances during her tenure she trails only Women's Basketball Hall of Famer Jim Foster (248) in career wins.

HAWKS ON THE AIR

The Saint Joseph's Sports Network (SJSN) marks its 25th year of operation in 2014-15, as the first broadcasts of men's and women's basketball games took place in the fall of 1990. The first women's game aired on WCZN-AM on November 23rd as the Hawks hosted Oregon. The 1990-91 season also marked the first in school history in which every SJU men's game aired on Philadelphia-area commercial radio.

Since its beginnings in 1990, SJSN's coverage of Hawk athletics has grown and included Saint Joseph's women's basketball television show *Courtside*, Phil Martelli's *HawkTalk* radio program and the nationally-renowned *HawkTalk* television show, which ran for 15 years.

Hawk fans everywhere will be able to hear the broadcast of every game through audio streaming at the Hawks' official athletics site, www.SJUHawks.com, which is provided free of charge. Fans can also take those broadcasts on-the-go, with the SJUHawks app for mobile devices.



HAWKS LOOK FOR SIXTH STRAIGHT POSTSEASON BID

SJU is coming off its fifth consecutive postseason appearance, earning an at-large bid to the NCAA Tournament and advancing to the second round. SJU, which earned Postseason WNIT bids from 2009-10 to 2011-12 and NCAA Tournament bids the last two years, is currently tied for its second-longest postseason appearance streak. The Hawks previously made four straight appearances from 1975-79 and 1996-2000. Saint Joseph's longest consecutive postseason appearance streak is six seasons, from 1984-85 to 1989-90.

CLOUD RETURNS AS TOP DISTRIBUTOR

Natasha Cloud capped her junior year second nationally in assists per game at 7.6. She enters her senior season as the nation's leading distributor though as last year's leader, Jamierra Faulkner of Southern Miss graduated.

HAWKS PICKED THIRD IN ATLANTIC 10 PRESEASON POLL

Returning four starters and eight letterwinners overall from last year's squad that went 23-10 and advanced to the Second Round of the NCAA Tournament, Saint Joseph's was picked to finish third after garnering 156 points in the Atlantic 10 Preseason Poll. Receiving all 14 first place votes, Dayton was picked first with 196 points. George Washington was next with 173 points, followed by the Hawks, St. Bonaventure (153) fourth, Fordham (143) fifth, Richmond (104) sixth, Duquesne (103) seventh and La Salle (97) in eighth. Saint Louis was picked ninth with 90 points, followed by VCU (87), George Mason (54), A-10 newcomer Davidson (42), Rhode Island (39) and Massachusetts (24), respectively.

SJU 13TH IN HAYS' PRESEASON MID-MAJOR POLL

ESPN writer Graham Hays picked the Hawks 13th nationally in his Preseason Mid-Major Poll. Saint Joseph's was one of four Atlantic 10 teams mentioned in the poll, joining Dayton (first), George Washington (third) and St. Bonaventure (15th).

OFFENSIVE PUNCH LOST TO GRADUATION

With the departures of seniors **Erin Shields**, **Ilze Gotfrida** and **Kelsey Berger** to graduation last May, the Hawks lost a big portion of their offensive punch. Last season, the trio accounted for 41 percent of the team's scoring as they tallied a combined 966 points out of the team's 2,358. Additionally, the seniors were a major part of SJU's perimeter threat, totaling 124 of the team's 166 three-point field goals (74.7 percent).

HAWKS EXCEL IN NONCONFERENCE PLAY

Saint Joseph's has posted a winning record in nonconference play the past four seasons, including a 11-2 mark last year. Over the last four years, the Hawks have posted a combined 40-15 record.

SAINT JOSEPH'S VERSUS RANKED OPPONENTS

Friday marks the 153rd time Saint Joseph's has faced a nationally ranked opponent as the Hawks travel to #24/RV Rutgers. Saint Joseph's enters the game with a 33-119 record versus ranked opponents. The Hawks have lost three straight games to ranked opponents, including a 91-52 loss at #1 Connecticut in the Second Round of the NCAA Tournament last year. Full results versus ranked opponents are available on pages 133-134 of the Saint Joseph's University Media Guide.

HAWK HILL ADVANTAGE

Saint Joseph's has always had a reputation of playing well at home. Over 41 seasons, the Hawks have boasted a 390-138 mark at Hawk Hill, including a 58-21 record at Hagan Arena.



CLOUD NAMED ONE OF 10 MID-MAJOR PLAYERS TO WATCH

Senior guard **Natasha Cloud**, who was named to the Nancy Lieberman Watch List as one of the top point guards in the nation a year ago, is already gaining national attention this year as she was named the fifth best mid-major player by ESPN's Graham Hays. Per Hays, "No returning player averaged more assists per game a season ago than Cloud, but the 6-foot senior who began her career at Maryland isn't just about distributing. With her size and ability to get in the paint to both rebound and finish (nearly a quarter of her points last season came at the free throw line), she's the same kind of triple-double threat on a nightly basis as Iowa's Sam Logic. And even though Cloud had 107 more assists as a junior than as a sophomore, she accumulated only 12 additional turnovers. For all of that, she might be most valuable -- or at least equally valuable -- on the other end of the court, where she was the A-10 defensive player of the year."

HAWKS TO FACE TOUGH COMPETITION IN 2014-15

As is the standard for Saint Joseph's scheduling, facing strong opponents is the norm and 2014-15 is no different. This season, the Hawks will play 14 games against opponents that made a postseason tournament last year.

CLOUD NAMED TO A-10 PRESEASON TEAMS

Senior guard **Natasha Cloud** was recognized by the Atlantic 10 as one of the top players in the conference as she was named to the Preseason All-Conference First Team and All-Defensive Team. Cloud is coming off an impressive junior season in which she helped SJU the Second Round of the NCAA Tournament. Named to the Nancy Lieberman Award Watch List for the top point guard in the country, Cloud set the Hawks' single-season record for assists in 2013-14 with 243 and enters her senior season tied for eighth all-time with 385. Named the A-10 Defensive Player of the Year and selected to the All-Conference Second Team, she posted also career-high 11.5 points per game and led the team in steals (64) and minutes per game (35.0).

FAIRBANKS NAMED TO A-10 PRESEASON THIRD TEAM

Junior forward **Sarah Fairbanks** earned Atlantic 10 honors to start the year as she was named to the Preseason All-Conference Third Team. Posting one of the best break-through seasons in the A-10 last year, Fairbanks proved to be the Hawks' most reliable post player. After tallying just 49 points as a freshman, Fairbanks finished last year with 419 points, good for 12.7 points per game. Appearing in all 33 games, and making 26 starts, Fairbanks topped SJU in blocked shots (38) and field goal percentage (.503) and finished second in rebounding at 5.9 per game.

ROBINSON RETURNS FOR FINAL SEASON

Graduate student **Ashley Robinson** begins her sixth season at SJU on Friday. Missing the first two seasons (2009-11) due to leg injury, the 6-foot-2 forward has continually improved every season. A two-year starter, Robinson averaged a career-best 6.2 points and 5.4 rebounds per game over 25 contests last year.

ANDREWS AND FAIRBANKS CAREER YEARS

Serving as key reserves as rookies, **Ciara Andrews** and **Sarah Fairbanks** burst onto the scene in 2013-14 as the pair both set career highs in several categories, while locking down starting spots. Averaging 21.1 minutes per game, Andrews averaged 9.2 points per game last season, up from 1.5 ppg as a freshman. Proving to be one of the most reliable post players in the Atlantic 10, Fairbanks tallied 12.7 points and 5.9 rebounds per game after averaging just 1.8 ppg and 2.2 rpg as a rookie.

ODDS AND ENDS

- Redshirt sophomore guard **Jordan Strode** returns to the court after missing 61 straight games dating back to the 2012-13 season due to injury.
- Freshman forward **Adashia Franklyn** is the daughter of former All-American and Temple Hall of Famer Marilyn Stephens-Franklyn.
- Freshmen **Sarah Veilleux** (34.1 ppg) and **Chelsea Woods** (32.6) ranked sixth and 11th, respectively, in the nation in scoring as high school seniors last year.

WHY S-A-I-N-T JOSEPHS UNIVERSITY?

The corporate title of "Saint" Joseph's University, which has been in place since Saint Joseph's was granted university status by the Commonwealth of Pennsylvania in 1979, is now the "public" title of the institution for all aspects of its operations. Previously, the abbreviation of "St." Joseph's University was permitted in a number of alumni and athletic contexts. According to the most recent edition of the Higher Education Directory, there are at least nine recognized "St. Joseph's" among the nation's colleges and universities. Only one of them-Saint Joseph's University, Philadelphia-is a university-level, Master's I, NCAA Division I institution. A complete spelling of S-A-I-N-T Joseph's University in all contexts will help eliminate any confusion among higher education and other public constituencies.

UP NEXT

The Hawks open the home portion of their 2014-15 schedule when they host Big 5 Rival Temple next Tuesday at 7 p.m.

2014-15 SAINT JOSEPH'S QUICKFACTS

Location	Philadelphia, Pa. 19131
Founded	1851
Enrollment	4,670 (full-time undergrads)
Denomination	Roman Catholic (Jesuit)
Nickname	Hawks
Colors	Crimson and Gray
Athletic Affiliation	NCAA Division I
Conference	Atlantic 10
Home Arena (Capacity)	Michael J. Hagan '85 Arena (4,200)
President	C. Kevin Gillespie, S.J. '72
Associate Vice President/Athletic Director	Don DiJulia
2013-14 Regular Season Record23-10
2013-14 Atlantic 10 Conference Record (Place)10-6 (5th)
2013-14 Philadelphia Big 5 Record (Place)4-0 (1st)
Letterwinners Returning/Lost	8/5
Starters Returning/Lost	4/1
Captains	Natasha Cloud, Sarah Fairbanks, Ashley Robinson
Head Coach (alma mater) ..	Cindy Griffin (Saint Joseph's '91, '93)
Overall Record/Years294-199/17th season
Record at Saint Joseph's/Years246-166/14th season
Associate Head CoachSusan Moran (Saint Joseph's '02, '07) - 12th season
Assistant CoachesStephanie McCaffrey (Saint Joseph's '04) - 8th season
.....Jada Pierce (West Chester '97) - 3rd season
Director of Basketball OperationsKatie Gardler
Graduate Assistant:Chris Koclanes
Women's Administrative AssistantKathy MacDonald
Women's Basketball Athletic TrainerSalvatore Capone
Women's Basketball ContactJack Jumper
Athletic Department	(610) 660-1707
Basketball Office	(610) 660-1710
Athletic Communications	(610) 660-3389
Press Row	(610) 660-2599
Athletics Website	www.sjuhawks.com



MEDIA INFORMATION

MEDIA CREDENTIALS

Credentials for media covering Saint Joseph's at Hagan Arena in 2014-15 should be made at least 24 hours in advance by contacting Jack Jumper.

Priority is given to daily newspapers, radio/TV stations and other media who cover Saint Joseph's and its opponents on a regular basis. Internet sites and agencies that will be considered for credentials include those of national cable networks or established publications. Internet sites representing local or regional media outlets will be provided credentials on a space-available basis. Websites that sponsor "message boards" or "chat rooms" where people are able to post anonymous information are ineligible for consideration of credentials. Credentials will only be issued to those 18 years of age and older.

PHOTO CREDENTIALS

All photographers attending Saint Joseph's home basketball games must be credentialed. Requests for credentials should be made in at least 24 hours in advance to Jack Jumper. Due to space demands, access to freelance photographers is limited.

SCOUT CREDENTIALS

Credentials for WNBA scouts must be requested in advance of the game by contacting Jack Jumper.

RADIO POLICY

Radio stations designated as the primary visiting outlet can have access to phone lines at a cost of \$100 per line per game. (\$200 for ISDN), unless a reciprocal usage agreement exists. Visiting radio stations wishing to broadcast the game should contact Jack Jumper at (610) 660-3389 or by email (jjumper@sju.edu) to arrange phone lines.

INTERVIEWS

All requests for interviews with Cindy Griffin and the Saint Joseph's student-athletes must be arranged through Jack Jumper. Advance notice of at least 24 hours is preferred, but every attempt will be made to accommodate all requests. Players will not be available for interviews on game day, except for post-game interviews.

PRESS ROW

Only accredited members of the media and accredited scouts will be issued credentials to cover Saint Joseph's basketball, and only those with passes will be permitted to sit in press seating. Members of the media are reminded that press row is a working area and cheering for either team will not be tolerated.

MEDIA SERVICES

Saint Joseph's and opponent's game notes, statistics, Atlantic 10 Conference notes and game programs will be available to working members of the media. Halftime statistics will be available in the media room at Hagan Arena and will also be distributed on press row. Final statistics will be distributed in the media room following completion of the game. Fax service is available at both locations.

Complete Saint Joseph's game notes will be available 24 hours prior to the game on SJUHawks.com.

MEDIA PARKING

Media parking is available at the ROTC Lot on 54th Street behind Hagan Arena. Media members desiring to be on the parking list must contact Marie Wozniak at least 24 hours in advance of the game.

POST-GAME

Saint Joseph's head coach Cindy Griffin will be available in the interview room following a post-game cooling off period. The Saint Joseph's locker room is not open to the media.

THE HAWK



One of the most famous mascots in college sports, the Saint Joseph's Hawk has flapped its wings for 58 seasons.

The Hawk is best known for staying in constant motion by flapping its wings throughout every basketball game and representing the Saint Joseph's motto, "The Hawk Will Never Die."

Jim Brennan originated the idea for a hawk as mascot during the 1954-55 season. Brennan, an ex-Marine and SJU cheerleader, at first wanted to secure an actual hawk, but later switched to the costume idea. The student government

raised the 120 dollars needed to buy the initial costume, which Brennan donned for three years. He made his debut as the Hawk on January 4, 1956, a 69-56 win over La Salle at the Palestra. Since then, and including this season, a total of 31 SJU students have donned the costume. The Hawk has not missed a men's basketball game since that first season in 1955-56. The Hawk, who was present at most women's basketball games, became a mainstay in 1989. Since then, 12 SJU students have donned the costume, with **Aleena Yobbi** serving as the Hawk for his first year in 2014-15.

In addition to the constant flapping, the Hawk is also recognized by its "flying" in figure eights around the court during timeouts. Years ago, ESPN used a "flap-o-meter" on the national telecast of a Saint Joseph's game to estimate that the Hawk flaps its wings 3,500 times during a regulation game.

The most decorated mascot in the country, The Hawk has garnered numerous accolades in its 57-year history. In 2013-14, NCAA.com named The Hawk as "College Basketball's Best Tradition". The Sporting News, Sports Illustrated, Sports Illustrated for Kids, Street & Smith's Basketball Yearbook and ESPN College Basketball magazine have selected it as the nation's top mascot. Eastern Basketball tabbed The Hawk as the Atlantic 10 Conference's best mascot, while The Hawk won a "Best of Philly" award from Philadelphia Magazine in 2003-04. The Hawk was selected as a 2008 nominee for the Mascot Hall of Fame.

Saint Joseph's athletic teams have been recognized with the nickname "Hawks" since 1929. At that time, the school's yearbook editor, Charlie Dunn, initiated a contest among the student body for a symbol. More than 100 submissions were narrowed to two, with "Hawks" winning out over "Grenadiers" (World War I soldiers who specialized in tossing grenades) by a slim margin in the final vote.

John Gallagher '31, a catcher on the Saint Joseph's baseball team, submitted the winning suggestion. He won a sweater with a special Saint Joseph's monogram for selecting the winning name. According to the Student Annual, the nickname was appropriate because it typified "the fighting spirit of our crimson and gray athletes and it is suggestive of the aerial attack which has made our football team famous." Ironically, football was discontinued at Saint Joseph's following the 1939 season.

But it has been the connection with the storied tradition of the Saint Joseph's men's and women's basketball programs that has given The Hawk mascot its prominence on the national level, making it one of the most recognized mascots in college athletics.



Cindy Griffin - Head Coach

Saint Joseph's '91, MBA '93 - 14th Season

After leading Saint Joseph's to five straight postseason appearances, including the Second Round of the NCAA Tournament in 2013-14, **Cindy Griffin** enters her 14th year as Saint Joseph's head coach. A 1991 and 1993 graduate of SJU, Griffin (nee Anderson) has compiled an overall record of 294-199 in 16 seasons as a head coach, and a 246-166 record over 13 years at Hawk Hill.

Only the eighth coach in NCAA Division I history to lead her alma mater to the NCAA Tournament as a player and a coach, Griffin's squads have posted six 20-win seasons, six victories over nationally-ranked teams, and have advanced to the postseason 10 times, while her players have been honored as Atlantic 10 All-Conference performers 15 times.

Following up their A-10 Championship the season prior, the 2013-14 Hawks continued to prove themselves as one of the top programs nationally as they earned an at-large bid to the NCAA Tournament and advanced to the Second Round for just the seventh time in team history. Led by Erin Shields and Natasha Cloud, Saint Joseph's earned its fifth straight post-season bid and claimed its first outright Philadelphia Big 5 title since 2000-01.

Under Griffin's leadership, Saint Joseph's posted one of its most memorable seasons in team history in 2012-13 as the Hawks claimed the Atlantic 10 Championship for just the third time and earned the automatic NCAA Tournament bid. Led by a senior class that had advanced to the postseason every year, the Hawks finished with a 23-9 record that included wins over #5 Maryland and #11 Dayton.

In addition to the team's success, a trio of Hawks were singled out for their performances, led by NCAA Woman of the Year nominee Chatilla van Grinsven. With Griffin's guidance, van Grinsven turned in one of the more dominant seasons in recent SJU history, becoming just the fifth player in SJU history to average a double-double for the year en route to being named to the A-10 All-Conference First Team and the Big 5 Player of the Year. The duo of backcourt mates Shields and Cloud helped propel SJU to new heights, with Shields garnering A-10 and Big 5 Most Improved Player honors and I-AAA distinction, while Cloud was named the Most Outstanding Player of the 2013 A-10 Championship.

Backed by a veteran-laden team in 2011-12, the Hawks earned their third-straight WNIT berth and posted their most wins (22) since the 2003-04 season. Moving into second place in career victories at her alma mater, Griffin picked up her 200th win as the Hawks topped Boston University in the opening game of the WNIT on March 15, 2012. Leading the Hawks to a 15-4 mark at home, she helped Saint Joseph's become one of the more efficient teams in the nation, ranking fourth in fewest turnovers per game (12.5), 26th in three-point percentage (.348) and 39th in field goal percentage (.423).

Individually, senior Michelle Baker and Kelly Cavallo had breakout years, both garnering All-Big 5 honors. Behind Griffin's teaching, Baker went on to be named to the A-10 All-Conference Second Team and capped her career as SJU's then all-time leader in games played (127) while ranking in the top 20 for scoring and field goals made. After seeing limited time as a freshman, Cavallo developed into one of the top post players in the A-10, leading SJU and finishing in the top five of the conference in rebounding, blocked shots and field goal percentage. With Griffin's aid, Cavallo finished her career second all-time in blocks and 11th in rebounding at SJU.

Returning just one starter for the 2010-11 season, the Hawks quickly jelled under Griffin's guidance as they went on to win 20 games, earned the program's 700th victory, and advanced to the second round of the WNIT. Backed by All-Big 5 honorees Baker and Katie Kuester, Saint Joseph's had its most efficient offensive showing since 2002-03, as the Hawks finished 60th in the nation in field goal percentage (42.1).

Additionally, several Hawks were honored for outstanding seasons in 2010-11, headlined by sophomore Ashley Prim becoming the first SJU player to be named Atlantic 10 Sixth Player of the Year. Baker became just the second Hawk to be named to the A-10 All-Defensive Team, while freshman Erin Shields became the sixth player Griffin has coached to A-10 All-Rookie Team honors.

Earning a postseason berth for the first time in two years, the Hawks surpassed predictions in 2009-10 as they finished tied for fourth in the Atlantic 10 after being picked to finish ninth. After opening the season with a 3-7 mark, Griffin saw her team begin to click at the end of the non-conference schedule as SJU claimed the 19th Annual Hawk Classic title and worked its way to .500 by the second week of the Atlantic 10 slate.

Posting a 9-5 mark against conference opponents, Griffin hit two milestones during A-10 play, earning her 150th win at Saint Joseph's in a victory against Dayton and earning her 200th coaching win against George Washington. The Hawks would go on to earn the program's seventh WNIT bid, and play the first post-season game at Hagan Arena.

In 2008-09, Griffin undertook arguably her toughest season to date as Saint Joseph's played every contest away from Hawk Hill for the first time in program history. And in typical SJU fashion, Griffin got her team to respond as Saint Joseph's went on to post an 8-5 record at home venues and earn its first Big 5 title since 2000-01. Individually five Hawks posted career bests in scoring, with Brittany Ford and Mariame Djouara both earning All-Big 5 Second Team honors.

Relying heavily on underclassmen in 2007-08, Griffin guided her Hawks to another winning season, including crowns at the Brown Basketball Classic and the Hilton Philadelphia Hawk Classic. Among the wins, Saint Joseph's posted its biggest win over a non-conference ranked opponent since the 1984-85, topping #15 Auburn for the Hawk Classic title.

Despite losing several experienced players prior to the 2006-07 season, Griffin had her team peaking at the right time. Playing Griffin's style of hard-nosed defense and persistent offense, the Hawks advanced to the Atlantic 10 Championship game, including the program's first win over a top 10 opponent (#8 George Washington) since 1992 along the way. Saint Joseph's capped the season with its fifth WNIT appearance in six years and tied the SJU record for games played in a season with 33.

Fueled by a collection of newcomers and a developed core of upperclassmen, Griffin led the Hawks back to national prominence in 2005-06. The Crimson and Gray engineered the nation's best turnaround (13 games) and received votes in the national polls for the first time since 2003-04. The Hawks advanced to the

Coach Griffin
At A Glance

Career Record: 294-199
Record at SJU: 246-166
Atlantic 10 Record: 119-75
Postseason Record: 7-10

Hometown: Maple Glen, Pa.
Education: Saint Joseph's '91,
 Saint Joseph's MBA '93
Playing Experience:
 Saint Joseph's 1987-92
Coaching Experience:
 Saint Joseph's 2001-Present
 Loyola (Md.) 1998-01



2014-15 SAINT JOSEPH'S BASKETBALL NOTES - PAGE 7

semifinals of the A-10 Championship and earned a berth in the WNIT.

With the loss of four 1,000-point scorers, the 2004-05 Hawks showed their true colors down the stretch, earning a hard-fought victory over La Salle in the opening round of the Atlantic 10 Championship and coming within 10 points of 16th-ranked, and eventual A-10 Champion, Temple.

Led by six seniors, the 2004 team went 22-11 and advanced to the WNIT Elite Eight. Saint Joseph's finished second in the A-10 East and dropped a heartbreaker in the Atlantic 10 Championship to Temple. Four Hawk seniors reached the 1,000-point plateau, marking just the eighth time in NCAA history that a quartet of players had reached the milestone in the same season. Erin Brady, Irina Krasnoshiok, Stephanie (Graff) McCaffrey and Amra Mehmedic went on to sign professional contracts.

Following a memorable first year at the helm of her alma mater, Griffin upped the ante in her second season by capturing 2003 Atlantic 10 Coach of the Year honors after guiding the Hawks to a 19-11 record. The team sprinted to the conference's Eastern Division title and earned a berth in the WNIT for the second straight season, despite the departure of SJU's all-time leading scorer and a non-conference schedule that ranked fourth nationally.

Griffin helped to reinvigorate the SJU program in her first season, leading the squad to a 24-8 record and the second round of the WNIT. She capitalized on the team's tradition of scrappy play and rugged defense, while releasing the reins and allowing the team to play a more up-tempo style on the offensive end of the floor. The Hawks finished the year among the national leaders in nine different categories and paced the nation in free throw percentage for the second straight year.

Following her playing career, Griffin spent the 1992-93 season as a graduate assistant at her alma mater. She then accepted an assistant's spot at Vanderbilt University from 1993-95 under former Saint Joseph's head coach Jim Foster. Foster recruited Griffin to SJU and coached her during her playing career on Hawk Hill.

In her two years as an assistant at Vanderbilt, the Commodores finished 53-15 overall, won the 1995 SEC championship and reached the NCAA Sweet 16 both seasons. In addition to coaching responsibilities, she was the co-director of the Vanderbilt Basketball Camp and the director of the Black & Gold Club.

Griffin left Vanderbilt after the 1995 season to become an assistant coach at Loyola College (Md.). She spent three seasons as an assistant under Patty Coyle before being promoted to associate head coach in 1998. Griffin was promoted to the position of head women's basketball coach at Loyola midway through the 1998-99 season. She was the seventh-youngest head coach in Division I at the time. Griffin – who was named head coach five games into the season as Coyle left for an assistant coach position with the WNBA's New York Liberty – kept the Greyhounds' momentum going as Loyola won a team-record 21 games that year. Overall she compiled a record of 48-33 during her tenure at the Baltimore school, guiding the squad to the Metro Atlantic Athletic Conference semifinals all three seasons.

One of the top playmakers in Saint Joseph's history, Griffin starred for the Hawks from 1987-88 through 1991-92 (missing the 1988-89 season due to injury). A three-time team captain, Griffin finished her career with 662 points, 278 rebounds, 510 assists and 197 steals. She currently ranks fourth on SJU's all-time assist list.

As a junior in 1990-91, she played in 1,178 out of a possible 1,200 minutes to set the school record for minutes played in a single season. The Hawks made three NCAA Tournament appearances and posted three straight 20-win seasons during her playing career. A two-time Second Team All-Big 5 choice, as well as a Third Team All-Atlantic 10 pick as a senior, she was inducted into the Saint Joseph's Women's Basketball Hall of Fame in 1998.

A native of Maple Glen, Pa., Griffin played her high school basketball for Bishop McDevitt, winning two Philadelphia Catholic League titles. A 1987 graduate of McDevitt, she was inducted into its Athletic Hall of Fame in 1997, and in 2002, received the Philadelphia Catholic League's alumni achievement award. She earned a bachelor's degree in accounting from Saint Joseph's in 1991 and completed her M.B.A. from SJU in 1993. She resides in Conshohocken, Pa., with her husband Curtis and children, Kaylie, Hannah and Curtis Jr.

Griffin's Year-By-Year Record

Year	School	Overall Record	Conference Record	Postseason
1998-99	Loyola College	17-6	13-5	MAAC Semifinals
1999-00	Loyola College	12-17	8-10	MAAC Semifinals
2000-01	Loyola College	19-10	12-6	MAAC Semifinals
2001-02	Saint Joseph's University	24-8	12-4	WNIT/A-10 Finals
2002-03	Saint Joseph's University	19-11	13-3	WNIT
2003-04	Saint Joseph's University	22-11	12-4	WNIT/A-10 Finals
2004-05	Saint Joseph's University	7-23	4-12	
2005-06	Saint Joseph's University	20-11	10-6	WNIT/A-10 Semifinals
2006-07	Saint Joseph's University	19-14	8-6	WNIT/A-10 Finals
2007-08	Saint Joseph's University	17-14	8-6	
2008-09	Saint Joseph's University	13-17	5-9	
2009-10	Saint Joseph's University	17-15	9-5	WNIT
2010-11	Saint Joseph's University	20-12	8-6	WNIT
2011-12	Saint Joseph's University	22-11	9-5	WNIT
2012-13	Saint Joseph's University	23-9	11-3	NCAA/A-10 Champions
2013-14	Saint Joseph's University	23-10	10-6	NCAA
1998-12	15 Seasons	294-199	152-96	10 Appearances
Head Coaching Record at Saint Joseph's: 246-166 (.597) – 13 Seasons				
Career Head Coaching Record: 294-199 (.596) – 16 Seasons				



2013-14 Team Superlatives

CATEGORY	SAINT JOSEPH'S MOST	SAINT JOSEPH'S LEAST	OPPONENT'S MOST	OPPONENTS' LEAST
Total Points	89, at George Mason, 2/15/14	52, at Connecticut, 3/25/14	91, by Connecticut, 3/25/14	35, by Rhode Island, 1/8/14
1st Half Points	43, 2x, last at Massachusetts, 2/27/14	23, 2x, last vs. Penn, 1/17/14	50, by Connecticut, 3/25/14	15, by Rhode Island, 1/8/14
2nd Half Points	53, at Quinnipiac, 12/1/13	21, vs. Fordham, 3/2/14	46, at Dayton, 2/23/14	18, by VCU, 2/1/14
Overtime Points	16, vs. George Washington, 3/7/14	12, at Wichita State, 11/15/13	19, by George Washington, 3/7/14	4, by Wichita State, 11/15/13
Field Goals	39, at Quinnipiac, 12/1/13	19, vs. Saint Louis, 1/29/14	35, by Connecticut, 3/25/14	14, by Rhode Island, 1/8/14
Field Goal Att.	73, at Massachusetts, 2/27/14	48, vs. Drexel, 11/20/13	72, by VCU, 2/1/14	47, by Florida Gulf Coast, 12/29/13
Field Goal Pct.	.591, at Quinnipiac, 12/1/13	.317, vs. Penn, 1/17/14	.556, by Connecticut, 3/25/14	.255, by Rhode Island, 1/8/14
3 Point FG	10, at Syracuse, 12/21/13	2, 4x, last vs. Duquesne, 2/18/14	10, by Connecticut, 3/25/14	1, by Massachusetts, 2/27/14
3 Point Att.	25, at LSU, 11/10/13	6, vs. Duquesne, 2/18/14	22, by Hofstra, 12/10/13	7, by Richmond, 1/2/14
3 Point Pct.	.583, at Temple, 12/4/13	.154, vs. George Washington, 1/5/14	.583, by George Washington, 1/5/14	.067, by at Massachusetts, 2/27/14
Free Throws	27, vs. George Mason, 3/6/14	1, 2x, last vs. Fordham, 3/2/14	24, by Wichita State, 11/15/13	3, by Rhode Island, 1/8/14
Free Throw Att.	34, at Wichita State, 11/15/13	1, vs. Fordham, 3/2/14	41, by Wichita State, 11/15/13	6, 2x, last by Rhode Island, 1/8/14
Free Throw Pct.	1.000, 2x, last at Connecticut, 3/25/14	.500, 2x, last at Richmond, 1/2/14	1.000, by Syracuse, 12/21/13	.462, 2x, last by La Salle, 2/12/14
Offensive Rebs.	18, at Massachusetts, 2/27/14	4, at Quinnipiac, 12/1/13	28, by Liberty, 11/23/13	5, by Florida Gulf Coast, 12/29/13
Defensive Rebs.	38, at VCU, 1/12/14	11, at Connecticut, 3/25/14	39, at Dayton, 2/23/14	14, by Mount St. Mary's, 11/8/13
Total Rebs.	53, at Massachusetts, 2/27/14	23, at Connecticut, 3/25/14	56, by Syracuse, 12/21/13	25, 2x, last by Rhode Island, 1/8/14
Personal Fouls	29, at Wichita State, 11/15/13	11, 2x, last vs. Rhode Island, 1/8/14	26, by Wichita State, 11/15/13	10, by Fordham, 3/2/14
Assists	27, at Quinnipiac, 12/1/13	10, 3x, last at George Washington, 1/22/14	19, 2x, last by Connecticut, 3/25/14	5, by Florida Gulf Coast, 12/29/13
Turnovers	23, at VCU, 1/12/14	6, 2x, last at Connecticut, 3/25/14	24, by Liberty, 11/23/13	7, 3x, last by George Mason, 2/15/14
Blocked Shots	6, 6x, last vs. Saint Louis, 1/29/14	0, vs. Duquesne, 2/18/14	8, 2x, last by Penn, 1/17/14	0, by Saint Louis, 1/29/14
Steals	14, at Syracuse, 12/21/13	1, at Quinnipiac, 12/1/13	17, by VCU, 1/12/14	1, by Princeton, 11/26/13

2013-14 Individual Superlatives

CATEGORY	SAINT JOSEPH'S MOST	OPPONENT'S MOST
Points	29, by Erin Shields at George Mason, 2/15/13	30, by Jonquel Jones of George Washington, 3/7/14
Field Goals	10, by Ilze Gotfrida at Quinnipiac, 12/1/13	11, by Jonquel Jones of George Washington, 3/7/14
Field Goal Att.	19, by Erin Shields vs. George Washington, 3/7/14	22, by Jonquel Jones of George Washington, 3/7/14
Field Goal Pct. *	1.000 (7-7), by Ashley Robinson vs. George Washington, 1/5/14	.778 (7-9), by Amber Deane of Dayton, 2/23/14
3 Point FG	7, 3x, last by Erin Shields at George Mason, 2/15/13	6, by Chelsea Bowker of St. Bonaventure, 2/5/13
3 Point Att.	13, by Erin Shields vs. VCU, 2/1/14	10, 2x, last by Brianna Butler of Syracuse, 12/21/13
3 Point Pct. #	.750 (3-4), by Erin Shields at George Washington, 1/22/14	1.000 (3-3), by Olivia Healy of Richmond, 1/2/14
Free Throws	9, 4x, last by Ashley Robinson vs. George Mason, 3/6/14	12, by Katelyn Adams of Liberty, 11/23/13
Free Throw Att.	10, 4x, last by Ashley Robinson vs. George Mason, 3/6/14	16, by Katelyn Adams of Liberty, 11/23/13
Free Throw Pct. #	1.000 (9-9), by Ciara Andrews vs. Rhode Island, 1/8/14	1.000 (8-8), 3x, last by Andrea Hoover of Dayton, 2/23/14
Offensive Rebs.	5, 3x, last by Ashley Robinson vs. Georgia, 3/23/14	9, by Caira Washington of George Washington, 1/22/14
Defensive Rebs.	11, 2x, last by Natasha Cloud at Massachusetts, 2/27/14	13, by Hannah Little of St. Bonaventure, 2/5/13
Total Rebs.	13, by Ilze Gotfrida at VCU, 1/12/14	18, by Hannah Little of St. Bonaventure, 2/5/13
Assists	13, 4x, last by Natasha Cloud at Massachusetts, 2/27/14	10, 2x, last by Kaleena Mosqueda-Lewis of Connecticut, 3/25/14
Turnovers	9, by Natasha Cloud at VCU, 1/12/14	7, 4x, last by Erin Rooney of Fordham, 3/2/14
Blocked Shots	4, by Ashley Robinson vs. Penn, 1/17/14	5, 2x, last by Breanna Stewart of Connecticut, 3/25/14
Steals	7, by Erin Shields at Syracuse, 12/21/13	5, by DaShawn Harden of LSU, 11/10/13
Minutes	43, by Natasha Cloud vs. George Washington, 3/7/14	44, by Jonquel Jones of George Washington, 3/7/14

* - Minimum of five attempts; # - Minimum of three attempts





2013-14 GAME-BY-GAME RESULTS

ATE	OPPONENT	SCORE	W/L	ATT	HIGH POINTS	HIGH REBOUNDS	HIGH ASSISTS	HIGH STEALS
Nov. 8 ^	Mount St. Mary's . . .	85-57	W	1,523	Fairbanks . . .17	Berger/Fairbanks .5	Cloud5	Andrews/Fairbanks .2
Nov. 10 ^	LSU	64-80	L	2,623	Shields23	Fairbanks9	Cloud6	Cloud4
Nov. 15 ^	Wichita State	81-73	W-OT	1,970	Fairbanks . . .18	Cloud11	Cloud9	Andrews3
Nov. 20	Drexel	70-52	W	1,251	Fairbanks . . .21	Three tied at6	Shields4	Cloud2
Nov. 23	Liberty	77-65	W	1,123	Fairbanks . . .20	Cloud7	Cloud8	Pongonis3
Nov. 26	Princeton	74-65	W	1,672	Shields18	Cloud/Gotfrida . .7	Cloud7	Cloud3
Dec 1	Quinnipiac	84-69	W	539	Gotfrida20	Fairbanks/Gotfrida .9	Cloud13	Andrews1
Dec. 4 #	Temple	73-53	W	1,040	Cloud21	Fairbanks9	Cloud13	Shields2
Dec. 7 #	Villanova	63-60	W	1,237	Shields15	Cloud7	Cloud8	Cloud2
Dec. 10	Hofstra	73-60	W	567	Shields20	Cloud11	Cloud8	Shields2
Dec. 21	Syracuse	62-64	L	346	Shields21	Fairbanks/Gotfrida .8	Cloud13	Shields7
Dec. 29	Florida Gulf Coast . .76-64	W	1,946	Shields17	Fairbanks10	Cloud9	Cloud2	Cloud2
Jan. 2 *	Richmond	85-80	W	402	Fairbanks . . .19	Gotfrida10	Cloud9	Four tied at1
Jan. 5 *	George Washington .67-74	L	1,051	Andrews18	Robinson10	Shields9	Cloud2	Cloud2
Jan. 8 *	Rhode Island72-35	W	2,451	Andrews13	Gotfrida10	Shields6	Andrews3	Andrews3
Jan. 12 *	VCU	69-73	L	762	Fairbanks . . .14	Gotfrida13	Cloud5	Cloud3
Jan. 17 #	Penn	60-52	W	1,037	Shields15	Gotfrida13	Cloud6	Cloud4
Jan. 19 *#	La Salle	64-52	W	1,012	Fairbanks . . .16	Cloud9	Cloud9	Andrews/Shields . . .1
Jan. 22 *	George Washington .75-69	W	207	Shields21	Fairbanks/Gotfrida .8	Cloud9	Andrews2	Andrews2
Jan. 26 *	Dayton	75-63	W	1,243	Cloud21	Cloud8	Cloud8	Cloud2
Jan. 29 *	Saint Louis65-69	L	551	Three tied at .15	Cloud/Fairbanks .11	Cloud6	Cloud2	Cloud2
Feb. 1 *	VCU	70-51	W	1,143	Shields27	Cloud9	Cloud/Shields . .5	Cloud3
Feb. 5 *	St. Bonaventure . .67-73	L	571	Cloud22	Cloud9	Shields6	Cloud2	Cloud2
Feb. 12 *	La Salle	76-63	W	1,111	Shields22	Robinson8	Cloud7	Cloud2
Feb. 15 *	George Mason89-75	W	730	Shields29	Robinson11	Cloud12	Four tied at1	Four tied at1
Feb. 18 *	Duquesne61-59	W	515	Andrews21	Cloud7	Cloud9	Three tied at2	Three tied at2
Feb. 23 *	Dayton	56-82	L	3,111	Andrews15	Fairbanks9	Andrews/Cloud .4	Andrews3
Feb. 27 *	Massachusetts . . .85-51	W	256	Berger14	Cloud12	Cloud13	Cloud4	Cloud4
Mar. 2 *	Fordham	53-58	L	2,861	Andrews17	Robinson6	Cloud8	Cloud4
Mar. 6 **	George Mason89-55	W	457	Berger15	Cloud9	Shields6	Cloud2	Cloud2
Mar. 7 **	George Washington .79-82	L-OT	469	Fairbanks . . .19	Cloud7	Cloud8	Cloud3	Cloud3
Mar. 23 +	Georgia	67-57	W	5,018	Shields18	Robinson10	Cloud4	Berger/Cloud2
Mar. 25 +	Connecticut52-91	L	4,245	Fairbanks . . .12	Fairbanks5	Cloud6	Andrews2	Andrews2
					Shields12	Robinson5		

^ – Preseason WNIT game; * – Atlantic 10 game; # – Big 5 game; ** - Atlantic 10 Championship; + - NCAA Tournament

- GAMES AS HIGH SCORER:** Shields - 14, Fairbanks - 10, Andrews - 5, Cloud - 4, Berger - 2, Gotfrida - 1
- GAMES AS HIGH REBOUNDER:** Cloud - 14, Fairbanks - 12, Gotfrida - 9, Robinson - 6, Berger - 1
- GAMES SCORING DOUBLE FIGURES:** Shields - 28, Fairbanks - 25, Cloud - 19, Andrews - 17, Gotfrida - 11, Berger - 7, Robinson - 7, Fitzpatrick - 1, Pongonis - 1
- GAMES REBOUNDING DOUBLE FIGURES:** Cloud - 4, Gotfrida - 4, Robinson - 4, Fairbanks - 2
- GAMES SCORING 20 OR MORE POINTS:** Shields - 7, Cloud - 3, Fairbanks - 2, Andrews - 1, Gotfrida - 1
- GAMES POSTING A DOUBLE-DOUBLE:** Cloud - 6, Robinson - 3, Fairbanks - 2, Gotfrida - 2





2014-15 SAINT JOSEPH'S BASKETBALL NOTES - PAGE 10



Saint Joseph's Combined Team Statistics (as of
All games



RECORD:	OVERALL	HOME	AWAY	NEUTRAL
ALL GAMES	23-10	10-3	12-6	1-1
CONFERENCE	10-6	5-3	5-3	0-0
NON-CONFERENCE	13-4	5-0	7-3	1-1

##	Player	gp-gs	min	Total		3-Point		F-Throw		Rebounds		pf	dq	a	to	blk	stl	
				avg	fg-fga	fg%	3fg-fga	3fg%	ft-f	ft-f%	def							tot
03	SHI ELDS, Erin	33-32	1137	34.5	161-386	.417	41-177	.232	96-239	.402	74-78	.949	11	98	109	3.3	52	
41	FAIRBANKS, Sari	33-2	89'	27.1	64-32	.200	0-2	.000	91-111	.819	61-121	.504	2	28	56	3.8	17	
04	CLOUD, Natasha	32-32	1119	35.0	130-332	.392	9-22	.409	17-62	.274	91-127	.717	30	181	211	6.6	82	
21	ANDREWS, Ciara	33-1	69'	21.0	106-251	.422	11-35	.314	80-96	.833	67-83	.807	2	37	34	3.3	30	
01	GOTFRIDA, Ilze	33-23	802	24.3	119-256	.465	7-19	.368	7-19	.368	31-37	.838	51	111	162	4.9	86	
13	ROBINSON, Ashley	25-1	57'	22.5	58-111	.523	0-0	.000	39-50	.780	41-53	.774	2	17	42	2.3	15	
34	BERGER, Kelsey	33-17	768	23.3	73-186	.392	21-64	.328	31-34	.912	31-34	.912	30	50	80	2.4	68	
15	FITZPATRICK, Kira	19-C	94'	4.9	15-32	.469	7-18	.389	2-2	1.000	3-5	.600	1	6	4	1.1	3	
22	PONGONIS, Jessica	24-0	207	8.6	15-37	.405	1-6	.167	1-6	.167	13-21	.619	11	25	36	1.5	3	
11	DE JONGE, Lisai	28-C	23'	8.2	14-34	.412	3-9	.333	5-7	.714	4-5	.800	7	8	6	7	3	
20	GOMEZ, Geena	24-1	114	4.8	10-34	.294	3-14	.214	5-7	.714	5-7	.714	1	10	11	0.5	17	
02	RULE, Mackenzie	4-0	10'	2.5	0-3	.000	0-2	.000	0-0	.000	2-2	1.000	1	1	1	0	0	
Team										80	74	154			6			
Total		33	665		865-1972	.446	166-477	.348	462-577	.801	367-463	.790	11	53	40	10	19	235
Opponents		33	6650		756-1972	.383	151-502	.301	463-679	.682	455	833	1288	109	102	52	64	4

TEAM STATISTICS	SJU	OPP	Date	Opponent	Score	Att.		
SCORING	2358	2126	11/08/13	MOUNT ST. MARY'S	W 85-57	1523		
Points per game	71.5	64.4	11/10/13	at LSU	L 64-80	2623		
Scoring margin	+7.0	-	11/15/13	at Wi chi ta State	Wot 81-73	1970		
FIELD GOALS-ATT	865-1997	756-1972	11/20/13	DREXEL	W 70-52	1251		
Field goal pct	.433	.383	11/23/13	LI BERTY	W 77-65	1123		
3 POINT FG-ATT	166-470	151-502	11/26/13	at Princeton	W 74-65	0		
3-point FG pct	.353	.301	12/01/13	at Qui nni pi ac	W 84-69	539		
3-pt FG made per game	5.0	4.6	12/04/13	at Temple	W 73-53	1040		
FREE THROWS-ATT	462-577	463-679	12/07/13	at Vi llanova	W 63-60	1237		
Free throw pct	.801	.682	12/10/13	HOFSTRA	W 73-60	567		
F-Throws made per game	14.0	14.0	12/21/13	at Syracuse	L 62-64	346		
REBOUNDS	1226	1288	12/29/13	at FLORI DA GULF COAST	W 76-64	1946		
Rebounds per game	37.2	39.0	* 1-2-14	at RI CHMOND	W 85-80	402		
Reboundi ng margi n	-1.9	-	* 1/5/14	GEORGE WASHI NGTON	L 67-74	1051		
ASSISTS	537	403	* 1/8/14	RHODE ISLAND	W 72-35	2451		
Assists per game	16.3	12.2	* 01/12/14	at VCU	L 69-73	762		
TURNOVERS	401	479	1/17/14	PENN	W 60-52	1037		
Turnovers per game	12.2	14.5	* 1/19/14	at La Salle	W 64-52	1012		
Turnover margin	+2.4	-	* 01/22/14	at George Washi ngton	W 75-69	207		
Assist/turnover ratio	1.3	0.8	* 1/26/14	DAYTON	W 75-63	1243		
STEALS	195	196	* 1/29/14	SAI NT LOUIS	L 65-69	551		
Steals per game	5.9	5.9	* 2/1/14	VCU	W 70-51	1143		
BLOCKS	103	104	* 02/05/14	at St. Bonaventure	L 67-73	571		
Bl ocks per game	3.1	3.2	* 2/12/14	LA SALLE	W 76-63	1111		
ATTENDANCE	16427	21923	* 02/15/14	at George Mason	W 89-75	730		
Home games-Avg/Game	13-1264	18-1166	* 2/18/14	DUQUESNE	W 61-59	515		
Neutral site-Avg/Game	-	2-463	* 2/23/14	at Dayton	L 56-82	3111		
			* 02/27/14	at Massachusetts	W 85-51	256		
			* 3/2/14	FORDHAM	L 53-58	2861		
Score by Periods	1st	2nd	OT	Totals				
Saint Joseph's	1092	1238	28	2358				
Opponents	1038	1065	23	2126				
					3/6/2014	vs George Mason	W 89-55	457
					3/7/14	vs George Washi ngton	L ot 79-82	469
					3/23/14	at Georgi a	W 67-57	0
					5 3/25/14	at UConn	L 52-91	4245



2014-15 SAINT JOSEPH'S BASKETBALL NOTES - PAGE 11



Saint Joseph's Combined Team Statistics (as of 2/27/14)
Atlantic Conference games



RECORD:	OVERALL	HOME	AWAY	NEUTRAL
ALL GAMES	10-6	5-3	5-3	0-0
CONFERENCE	10-6	5-3	5-3	0-0
NON-CONFERENCE	0-0	0-0	0-0	0-0

##	Player	gp-gs	min	Total		3-Point		F-Throw		Rebounds			pf	dq	a	to	blk	stl
				fg	fga	fg%	3fg	3fga	3fg%	ft	fta	ft%						
03	SHIELDS, Erin	16-15	550	34.4	75-198	.379	9	40-114	.351	37	40	9.2	5	3	55	58	3.6	31
04	CLOUD, Natasha	15-1	53	35.6	64-161	.404	11	28	.41	8	10	7.4	1	11	47	6	3	18
41	FAIRBANKS, Sarah	16-10	384	24.0	68-140	.486	6	0-0	.000	42	49	8.5	7	24	58	82	5.1	4
21	ANDREWS, Ciara	16-1	36	22.5	54-133	.406	7	21	.48	5	6	8.3	1	1	17	1	1	16
01	GOTFRIDA, Ilze	16-10	383	23.9	58-133	.436	1	9	.11	1	12-13	9.2	3	28	60	88	5.5	37
13	ROBINSON, Ashli	16-1	37	23.4	42-82	.512	0	0-0	.000	20	28	7.2	6	8	5	4	2	1
34	BERGER, Kelsey	16-5	336	21.0	36-83	.434	3	12-29	.41	4	11-12	9.1	7	13	20	33	2.1	29
15	FITZPATRICK, Ki	7-0	30	4.3	6-11	.545	3	6	.500	0	0	4	0	0	1	0	0	1
20	GOMEZ, Geena	11-1	60	5.5	5-16	.313	2	8	.25	5	0	3-4	7.5	0	5	5	0.5	9
11	DE JONGE, Li sai	14-0	11	7.9	6-19	.316	0	3	.000	1	1	1	0	3	1	1	4	1
22	PONGONIS, Jessica	11-0	69	6.3	5-11	.455	0	1	.000	0	0	0-3	0.0	0	5	10	1.4	11
02	RULE, Mackenzie	2-0	5	2.5	0-1	.000	0	0-0	.000	0	0	0	0	0	1	0	0	0
Team										45	39	84			1			
Total		16	320		419-995	.427	76	211	.325	26	18	43	62	38	30	5	27	18
Opponents		16	3200		368-964	.382	70	225	.311	221	326	6	7	8	214	424	638	39.9

TEAM STATISTICS	SJU	OPP	Date	Opponent	Score	Att.
SCORING	1129	1027	* 1-2-14	at RICHMOND	W 85-80	402
Points per game	70.6	64.2	* 1/5/14	GEORGE WASHINGTON	L 67-74	1051
Scoring margin	+6.4	-	* 1/8/14	RHODE ISLAND	W 72-35	2451
FIELD GOALS-ATT	419-996	368-964	* 01/12/14	at VCU	L 69-73	762
Field goal pct	.421	.382	* 1/19/14	at La Salle	W 64-52	1012
3 POINT FG-ATT	76-219	70-225	* 01/22/14	at George Washington	W 75-69	207
3-point FG pct	.347	.311	* 1/26/14	DAYTON	W 75-63	1243
3-pt FG made per game	4.8	4.4	* 1/29/14	SAINT LOUIS	L 65-69	551
FREE THROWS-ATT	215-268	221-326	* 2/1/14	VCU	W 70-51	1143
Free throw pct	.802	.678	* 02/05/14	at St. Bonaventure	L 67-73	571
F-Throws made per game	13.4	13.8	* 2/12/14	LA SALLE	W 76-63	1111
REBOUNDS	622	638	* 02/15/14	at George Mason	W 89-75	730
Rebounds per game	38.9	39.9	* 2/18/14	DUQUESNE	W 61-59	515
Rebounding margin	-1.0	-	* 2/23/14	at Dayton	L 56-82	3111
ASSISTS	271	196	* 02/27/14	at Massachusetts	W 85-51	256
Assists per game	16.9	12.3	* 3/2/14	FORDHAM	L 53-58	2861
TURNOVERS	188	225	* - Conference game			
Turnovers per game	11.8	14.1				
Turnover margin	+2.3	-				
Assist/turnover ratio	1.4	0.9				
STEALS	85	91				
Steals per game	5.3	5.7				
BLOCKS	47	47				
Blocks per game	2.9	2.9				
ATTENDANCE	10926	7051				
Home games-Avg/Game	8-1366	8-881				
Neutral site-Avg/Game	-	0-0				

Score by Periods	1st	2nd	Totals
Saint Joseph's	529	600	1129
Opponents	492	535	1027



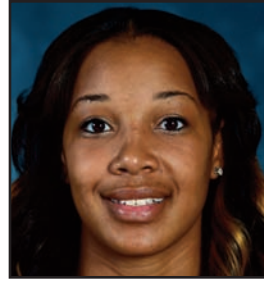
#2 - Mackenzie Rule
So. • Guard • 5-6



#3 - Ciara Andrews
Jr. • Guard • 5-9



#4 - Natasha Cloud
Sr. • Guard • 6-0



#13 - Ashley Robinson
Gr. • Forward • 6-2



#15 - Kathleen Fitzpatrick
So. • Guard • 5-9



#21 - Avery Marz
Fr. • Guard • 5-7



#22 - Jessica Pongonis
So. • Forward • 6-1



#23 - Jordan Strode
R-So. • Guard • 5-8



#30 - Sarah Veilleux
Fr. • Guard/Forward • 6-0



#32 - Chelsea Woods
Fr. • Guard/Forward • 6-0



#33 - Adashia Franklyn
Fr. • Forward • 6-1



#34 - Amanda Fioravanti
So. • Forward • 6-1



#40 - Candace Belvedere
Fr. • Forward • 6-2



#41 - Sarah Fairbanks
Jr. • Forward • 6-1



Cindy Griffin
Head Coach



Susan Moran
Associate Head Coach



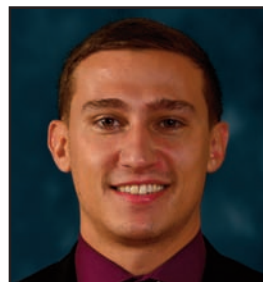
Stephanie McCaffrey
Assistant Coach



Jada Pierce
Assistant Coach



Katie Gardler
Director of Basketball Operations



Chris Koclanes
Video Coordinator