

2013-14 SCHEDULE/RESULTS

Overall: 1-1; Atlantic 10: 0-0; Big 0-0

NOVEMBER

Fri. 8	MOUNT ST. MARY'S - WNIT	W, 85-57
Sun. 10	at LSU - WNIT	L, 80-64
Fri. 15	at Wichita State - WNIT	8:00
Wed. 20	DREXEL	7:00
Sat. 23	LIBERTY	2:00
Tues. 26	at Princeton	5:30

DECEMBER

Sun. 1	at Quinnipiac	2:00
Wed. 4	at Temple #	5:30
Sat. 7	at Villanova #	2:00
Tues. 10	HOFSTRA	7:00
Sat. 21	at Syracuse	1:00
Sun. 29	at Florida Gulf Coast	6:00

JANUARY

Thurs. 2	at Richmond *	7:00
Sun. 5	GEORGE WASHINGTON (NBCSN)*	1:00
Wed. 8	RHODE ISLAND *	11:30 a.m.
Sun. 12	at VCU (CBSSN) *	5:00
Fri. 17	PENN #	7:00
Sun. 19	at La Salle (CBSSN) #*	5:00
Wed. 22	at George Washington *	11:00 a.m.
Sun. 26	DAYTON (NBCSN) *	6:00
Wed. 29	SAINT LOUIS *	7:00

FEBRUARY

Sat. 1	VCU *	2:00
Wed. 5	at St. Bonaventure *	7:00
Wed. 12	LA SALLE *	7:00
Sat. 15	at George Mason *	1:00
Tues. 18	DUQUESNE (CBSSN) *	9:00
Sun. 23	at Dayton (ESPNU) *	1:00
Thurs. 27	at Massachusetts *	7:00

MARCH

Sun. 2	FORDHAM *	2:00
W-Sn. 5-9	Atlantic 10 Championship +	

Home games in **BOLD CAPS** at Hagan Arena;
 All game times are EST and subject to change
 * Atlantic 10 Conference Game
 # - Philadelphia Big 5 Game
 + at The Richmond Coliseum (Richmond, Va.)

Contact: Jack Jumper • Phone: 610-660-3389 • Email: jjumper@sju.edu

SAINT JOSEPH'S UNIVERSITY HAWKS (1-1)

AT

WICHITA STATE UNIVERSITY SHOCKERS (1-1)

Game #3 • November 15, 2013

Preseason WNIT

Charles Koch Arena • Wichita, Kansas • 8:00 p.m. ET

GAME DAY AT A GLANCE

Arena	Charles Koch Arena (10,467)
Audio Streaming	SJSN - Jack Jumper (Play By Play)
Series Record	First Meeting
Next Game	Wednesday, November 20, vs. Drexel, 7 p.m.

GAME STORIES . . .

- Saint Joseph's caps play in the Preseason WNIT this Friday at Wichita State.
- The Hawks are coming off a 80-64 loss at #15/17 LSU on Sunday.
- Senior guard **Erin Shields** had a game-high 23 points, and matched her career-high with seven three-point field goals against the Tigers.
- Friday's matchup with the Shockers is the first meeting between Saint Joseph's and Wichita State.
- Wichita State will be just the third Missouri Valley Conference team Saint Joseph's has faced. The Hawks are currently 2-0 all-time against The Valley, topping Loyola of Chicago (W, 92-53, 1/15/94) and Northern Iowa (W, 68-64, 12/3/95).
- SJU's 28-point victory over Mount St. Mary's was the third-largest point differential in a season-opening win for the Hawks. Saint Joseph's topped Lehigh 91-34 (57 points) to start the 1977-78 season and again bested the Mountain Hawks with a 79-37 (42 points) win to begin 1986-87.
- The Hawks are making their second appearance in the Preseason WNIT. SJU previously competed in the 2004 Preseason WNIT, topping Boston University 51-49 at home in the opening game before falling at #10/9 Ohio State, 76-29.
- SJU is now 334-116 all-time versus ranked opponents following Sunday's loss (pages 133-134 of SJU media guide).

HAWKS AT A GLANCE

PROBABLE STARTERS

No.	Pos.	Player	Yr.	Ht.	PPG	RPG	APG	MPG	Notes
3	G	Erin Shields	Sr.	5-6	19.0	1.0	1.0	33.5	Scored a game-high 23 points against LSU
4	G	Natasha Cloud	Jr.	6-0	9.0	4.0	5.5	33.0	Handed out 4 assists and had 4 steals and 9 points at LSU
1	F	Ilze Gotfrida	Sr.	6-0	4.0	2.0	1.0	22.5	Added 4 points and 2 rebounds against LSU
34	F	Kelsey Berger	Sr.	5-11	9.5	4.5	1.0	32.0	Scored 7 points and had 4 rebounds at LSU
41	F	Sarah Fairbanks	So.	6-1	14.0	7.0	1.5	31.5	Had team-high 9 rebounds and added 11 points at LSU

THE BENCH

2	G	Mackenzie Rule	Fr.	5-6	5.3	1.3	---	---	Four-year All-Catholic selection
11	F	Lisanne de Jonge	Fr.	5-11	1.5	3.0	0.0	9.0	Grabbed 2 rebounds at LSU
13	F	Ashley Robinson	R-Jr.	6-2	5.2	4.1	0.6	19.3	Doubtful - Arm
15	G	Kathleen Fitzpatrick	Fr.	5-9	0.0	1.0	1.0	3.5	Played 1 minute at LSU
20	G	Geena Gomez	Fr.	5-8	2.5	0.0	0.0	4.5	Played 1 minute at LSU
21	G	Ciara Andrews	So.	5-9	9.0	3.0	1.5	13.5	Added 8 points and 2 rebounds at LSU
22	F	Jessica Pongonis	Fr.	6-1	6.0	3.5	0.5	17.0	Scored 2 points and had 4 boards at LSU
23	G	Jordan Strode	So.	5-8	3.0	3.0	0.0	10.0	Out - Knee



SAINT JOSEPH'S' ROSTER

Table with 6 columns: No., Name, Yr., Pos., Ht., Hometown, High School/Last School. Lists 15 players including Ilze Gotfrida, Mackenzie Rule, Erin Shields, etc.

Head Coach: Cindy Griffin (Saint Joseph's '91, '93) - 13th year
Associate Head Coach: Susan Moran (Saint Joseph's '02) - 11th year
Assistant Coaches: Stephanie McCaffrey (Saint Joseph's '04) - 7th year, Jada Pierce (West Chester '97) - 2nd year
Director of Basketball Operations: Katie Gardler (Saint Joseph's '92) - 4th year
Graduate Assistant: Chris Koclanes (Old Dominion '10) - 1st year

PRONUNCIATION GUIDE

ILZE GOTFRIDA ..ILL-zuh got-FREE-duh
CIARA AndrewsSEE-air-uh
Kelsey BERGERBurger
Jessica PONGONISpon-GO-niss
LISANNE DE JONGE
.....LEEZ-ann dee YON-guh



SERIES HISTORY

Saint Joseph's vs. Wichita State

All-Time Series: First Meeting
Last Meeting: First Meeting
Last SJU Win: First Meeting
Last WSU Win: First Meeting
Current SJU Streak: ---



STATISTICAL COMPARISON

Table comparing Saint Joseph's and Wichita State statistics: Overall Record, Conference Record, Home/Away/Neutral Record, Points Per Game, Field Goal Percentage, etc.





THE FAST BREAK

Friday's contests is the final matchup of the Preseason WNIT for the Hawks. SJU is 2-2 all-time in Preseason WNIT games all-time going into Friday. The Hawks' last trip to the state of Kansas came at the 2005 Kansas Satet Wildcat Classic. The Hawks went on to win the tournament behind MVP Ayahna Cornish.

INJURY REPORT

Redshirt junior Ashley Robinson (arm) is doubtful for Friday's game, while sophomore Jordan Strode (knee) is doubtful.

TRIO OF HAWKS TO SERVE AS CAPTAINS IN 2013-14

Senior Erin Shields, redshirt junior Ashley Robinson and junior Natasha Cloud will serve as team captains this season. Shields is serving as a team captain for the second straight year, while Robinson and Cloud are captains for the first time this season.

HAWK HILL ADVANTAGE

Saint Joseph's has always had a reputation of playing well at home. Over 41 seasons, the Hawks have boasted a 381-135 mark at Hawk Hill, including a 49-18 record at Hagan Arena. Last year, SJU went just 4-3 at home against nonconference opponents, but finished with a 12-4 home record overall.

CLOUD EARNS ATLANTIC 10 PRESEASON HONORS

Junior guard Natasha Cloud was selected to the Atlantic 10 Preseason All-Conference Second Team and Preseason All-Defensive Team. Sitting out the 2011-12 season after transferring from Maryland, Cloud made an immediate impact last year for the Hawks as she posted career-highs in scoring (9.2 ppg), rebounding (4.6 rpg) and assists (4.4 apg). An A-10 All-Defensive Team honoree a season ago, she also led the Hawks with 57 steals and added 17 blocks. Tallying 15 points and adding six rebounds, six assists and two steals in the A-10 Championship game against Fordham, Cloud was named Most Outstanding Player of the 2013 A-10 Championship in leading SJU to the conference title.

HAWKS ON THE AIR

The Saint Joseph's Sports Network (SJSN) celebrates its 24th anniversary in 2013-14, as the first broadcasts of men's and women's basketball games took place in the Fall of 1990. The first women's game aired on WCZN-AM on November 23rd as the Hawks hosted Oregon. The 1990-91 season also marked the first in school history in which every SJU men's game aired on Philadelphia-area commercial radio.



Since 1990, SJSN's coverage of Hawk athletics has grown and currently includes live coverage of all Hawk men's and women's basketball games and previously produced Phil Martelli's HawkTalk radio program, the nationally-renowned HawkTalk television show and Courtside, the Saint Joseph's women's basketball television show.

In 2013-14, all of SJU's women's games can be heard via audio streaming on the internet at the Hawks' official athletics site, www.sjuhawks.com, free of charge through. Video streaming of non-televised games is also available on the site as part of the Hawks All-Access package.

2013-14 Atlantic 10 Predictions

Saint Joseph's was picked to finish second in the Atlantic 10 race, according to a poll of the Atlantic 10's head coaches. The Hawks, who won the 2013 A-10 title and earned the conference's automatic NCAA bid, received one of the 13 first place vote. Dayton was picked to finish first. The following is the predicted finish (with last year's postseason in parentheses).

Table with 3 columns: Team, Overall, Conference. Lists 13 teams and their predicted records.

* - competed in the CAA in 2012-13

SHIELDS NAMED A-10 TO PRESEASON SECOND TEAM

The Hawks returning leader in scoring (11.4 ppg) and three-point-er (73), senior guard Erin Shields was selected to the Atlantic 10 Preseason All-Conference Second Team. The reigning A-10 Most Improved Player and All-Conference Third Team selection averaged a career-best 32.6 minutes per game as a junior.

HAWKS LOOKING FOR FIFTH STRAIGHT POSTSEASON BID

Saint Joseph's is coming off its fourth consecutive postseason appearance, earning the Atlantic 10's automatic bid for the NCAA Tournament last season. Saint Joseph's, which earned Postseason WNIT bids from 2009-10 to 2011-12, is currently tied for its second-longest postseason appearance streak. The Hawks previously made four straight appearances from 1975-79 and 1996-2000. Saint Joseph's longest consecutive postseason appearance streak is six seasons, from 1984-85 to 1989-90.

SHIELDS EYES CAREER GAMES PLAYED RECORD

Playing in 99 straight games in the Crimson and Gray, senior Erin Shields is on track to challenge the career games played record of 127, set by Michelle Baker (2008-12) and Ashley Prim (2009-13).

HAWKS EXCEL IN NONCONFERENCE PLAY

Saint Joseph's has posted a winning record in nonconference play the past three seasons. The Hawks, who went 9-5 in nonconference games last year, have posted a combined 29-13 record during the nonconference portion of its schedule the last three years.

GOTFRIDA AMONGST SJU'S MOST EFFICIENT SCORERS

Senior forward Ilze Gotfrida begins her senior season as one of the more efficient scorers in Saint Joseph's history. A career 48.9 percent shooter from the floor (181-of-370), she is currently on pace to finish tied for ninth all-time in efficiency as SJU players must attempt 500 field goals to make the record book in this category.

SHIELDS AMONG SJU ALL-TIME LEADERS





Junior Erin Shields enters the 2013-14 season as one of the top three-point shooters in Saint Joseph's history. The Hawks returning leader in three pointers (73), she is currently seventh all-time in three-pointer made (170), eighth in attempts (460) and sixth in three-point percentage (.370). Additionally, shields is the all-time leader in free throw percentage, converting 88.1 percent (119-of-135) for her career

GRIFFIN SECOND ALL-TIME IN WINS AT HAWK HILL

Now in her 13th season at her alma mater, Cindy Griffin is second all-time in team history in victories, posting a 224-157 mark to date. Griffin, who has led SJU to a record nine postseason appearances, trails only Women's Basketball Hall of Famer Jim Foster (248) in career wins.

NEW-LOOK HAWKS

The 2013-14 season features five new faces as the Hawks welcome freshmen Lisanne de Jonge, Kathleen Fitzpatrick, Geena Gomez, Jessica Pongonis and Mackenzie Rule to the squad. Saint Joseph's lost seniors Ashley Prim, Shelby Smith, Chatilla van Grinsven and Mireia Vila to graduation last May.

FOREIGN-BORN HAWKS

Saint Joseph's enters the season with two foreign-born players, making it the fifth straight year the Hawks have had multiple players from outside the United States. Freshman forward Lisanne de Jonge is the 15th foreign-born student-athlete to play for Saint Joseph's, joining senior Ilze Gotfrida. Below is a list of SJU's all-time roster of foreign-born players.

Table with 3 columns: Years, Player, Country. Lists players from 1986-89 to 2013-Present, including Lisanne de Jonge and Ilze Gotfrida.

FOUR MORE HAWKS IN THE PROS

THE HAWK



The Saint Joseph's Hawk mascot has been flapping its wings for more than a half a century.

One of the most famous mascots in college sports, The Hawk is best known for staying in constant motion by flapping its wings throughout every basketball game and representing the Saint Joseph's motto, "The Hawk Will Never Die."

Saint Joseph's athletic teams have been recognized with the nickname "Hawks" since 1929. At that time, the school's yearbook editor initiated a contest among the student body for a symbol.

More than 100 submissions were narrowed, with "Hawks" winning out over "Grenadiers" by a slim margin. The name was appropriate because it typified "the fighting spirit of our crimson and gray athletes and it is suggestive of the aerial attack which has made our football team famous."

Football, ironically, was discontinued at SJU following the 1939 season. The idea for The Hawk as a mascot was originated by Jim Brennan during the 1954-55 season. Brennan, an ex-Marine and SJU cheerleader, at first wanted to secure an actual hawk, but later switched to the costume idea.

The Hawk mascot has garnered numerous accolades in its 57-year history. It has been selected as the nation's top mascot by The Sporting News, Sports Illustrated, Sports Illustrated for Kids, Street & Smith's Basketball Yearbook and ESPN College Basketball magazine and was a nominee for the 2008 Mascot Hall of Fame.

MEDIA INFORMATION

MEDIA CREDENTIALS

Credentials for media covering Saint Joseph's at Hagan Arena in 2013-14 should be made at least 24 hours in advance by contacting Jack Jumper at (610) 660-3389, by fax at (610) 660-1724, or by email (jjumper@sju.edu).

PHOTO CREDENTIALS

All photographers attending Saint Joseph's home basketball games must be credentialed. Requests for credentials should be made in at least 24 hours in advance to Jack Jumper. Due to space demands, access to freelance photographers is limited.

RADIO POLICY

Radio stations designated as the primary visiting outlet can have access to phone lines at a cost of \$100 per line per game. (\$200 for ISDN), unless a reciprocal usage agreement exists. Visiting radio stations wishing to broadcast the game should contact Jack Jumper at (610) 660-3389 or by email (jjumper@sju.edu) to arrange phone lines.

PRESS ROW

Only accredited members of the media and accredited scouts will be issued credentials to cover Saint Joseph's basketball, and only those with passes will be permitted to sit in press seating. Members of the media are reminded that press row is a working area and cheering for either team will not be tolerated.

MEDIA SERVICES

Saint Joseph's and opponent's game notes, statistics, Atlantic 10 Conference notes and statistics and game programs will be available to working members of the media. Halftime statistics will be available in the media room and will also be distributed on press row. Final statistics will be distributed in the media room following completion of the game. Fax service is available. Complete Saint Joseph's game notes will be available the day before the game on the website, www.sjuhawks.com.

POST-GAME

SJU head coach Cindy Griffin and select student-athletes will be available in the interview room following a post-game cooling off period. Neither lockerroom will be open to the media.





Saint Joseph's senior class was a remarkable one, joining only five other classes to make a postseason bid each year. On top of that, and leading the Hawks to the Atlantic 10 title for the first time since 1999, all four seniors - Ashley Prim, Shelby Smith, Chatilla van Grinsven and Mireia Vila - all have gone on to play professionally. Prim is currently playing in Puerto Rico, while Smith is competing in Ireland. van Grinsven, who earned a training camp invite from the WNBA's Connecticut Sun, is playing for Bourges Basket in France, while Vila is competing in her home country of Spain.

WHY S-A-I-N-T JOSEPHS UNIVERSITY?

The corporate title of "Saint" Joseph's University, which has been in place since Saint Joseph's was granted university status by the Commonwealth of Pennsylvania in 1979, is now the "public" title of the institution for all aspects of its operations. Previously, the abbreviation of "St." Joseph's University was permitted in a number of alumni and athletic contexts. According to the most recent edition of the Higher Education Directory, there are at least nine recognized "St. Joseph's" among the nation's colleges and universities. Only one of them-Saint Joseph's University, Philadelphia-is a university-level, Master's I, NCAA Division I institution. A complete spelling of S-A-I-N-T Joseph's University in all contexts will help eliminate any confusion among higher education and other public constituencies.

SJU TO APPEAR ON LEAGUE-BEST SIX TELEVISED GAME

Saint Joseph's will benefit from the Atlantic 10's new eight-year partnerships with ESPN, CBS Sports Network and NBC Sports Network as the Hawks are slated for a league-high six national television appearances in 2013-14. Saint Joseph's games versus George Washington (Jan. 5) and Dayton (Jan. 26) will be broadcast on NBCSN, with games against VCU (Jan. 12), La Salle (Jan. 19) and Duquesne (Feb. 18) airing on the CBS Sports Network. Additionally, the Hawks' game at Dayton (Feb. 23) will be televised by ESPNU. The first year of the A-10's eight-year media television partnership will feature 32 nationally-televised games; and the semifinals and final of the women's basketball championship. The semifinals will air on the CBS Sports Network, with the championship final being televised on the ESPN networks for the 17th straight year.

UP NEXT

Saint Joseph's returns home to host city-rival Drexel on Wednesday, November 20 at Hagan Arena. Game time is set for 7 p.m.

LEADING BLOCKERS





Cindy Griffin - Head Coach

Saint Joseph's '91, MBA '93 - 13th Season

Leading Saint Joseph's to its third Atlantic 10 championship in team history in 2012-13, **Cindy Griffin** enters her 13th year as Saint Joseph's head coach. A 1991 and 1993 graduate of SJU, Griffin (nee Anderson) has compiled an overall record of 272-190 in 16 seasons as a head coach, and a 224-157 record over 13 years at Hawk Hill.

Only the eighth coach in NCAA Division I history to lead her alma mater to the NCAA Tournament as a player and a coach, Griffin's squads have posted five 20-win seasons, six victories over nationally-ranked teams and advanced to the postseason nine times, while her players have been honored as Atlantic 10 All-Conference performers 13 times.

Under Griffin's leadership, Saint Joseph's posted one of its most memorable seasons in team history in 2012-13 as the Hawks claimed the Atlantic 10 Championship for just the third time and earned the automatic bid in the NCAA Tournament. Led by a senior class that advanced to the postseason every year, the Hawks finished with a 23-9 record that included wins over #5 Maryland and #11 Dayton.

Coch Griffin At A Glance

Career Record: 272-190
Record at SJU: 224-157
Atlantic 10 Record: 109-69
Postseason Record: 6-9

Hometown: Maple Glen, Pa.
Education: Saint Joseph's '91,
Saint Joseph's MBA '93
Playing Experience:
Saint Joseph's 1987-92
Coaching Experience:
Saint Joseph's 2001-Present
Loyola (Md.) 1998-01

In addition to the team's success, a trio of Hawks were singled out for their performances, led by NCAA Woman of the Year nominee Chatilla van Grinsven. With Griffin's guidance, van Grinsven turned in one of the more dominant seasons in recent SJU history, becoming just the fifth player in SJU history to average a double-double for the year en route to being named to the A-10 All-Conference First Team and the Big 5 Player of the Year. The duo of back-court mates Erin Shields and Natasha Cloud helped propel SJU to new heights, with Shields garnering A-10 and Big 5 Most Improved Player honors and I-AAA distinction, while Cloud was named the Most Outstanding Player of the 2013 A-10 Championship.

Backed by a veteran-laden team in 2011-12, the Hawks earned their third-straight WNIT berth and posted their most wins (22) since the 2003-04 season. Moving into second place in career victories at her alma mater, Griffin picked up her 200th win as the Hawks topped Boston University in the opening game of the WNIT on March 15, 2012. Leading the Hawks to a 15-4 mark at home, she helped Saint Joseph's become one of the more efficient teams in the nation, ranking fourth in fewest turnovers per game (12.5), 26th in three-point percentage (.348) and 39th in field goal percentage (.423).

Individually, senior Michelle Baker and Kelly Cavallo had breakout years, both garnering All-Big 5 honors. Behind Griffin's teaching, Baker went on to be named to the A-10 All-Conference Second Team and capped her career as SJU's all-time leader in games played (127) and ranking in the top 20 for scoring and field goals made. After seeing limited time as a freshman, Cavallo developed into one of the top post players in the A-10, leading SJU and finishing in the top five of the conference in rebounding, blocked shots and field goal percentage. With Griffin's aid, Cavallo finished her four-year career second all-time in blocks and 11th in rebounding at SJU.

Returning just one starter for the 2010-11 season, the Hawks quickly jelled under Griffin's guidance as they went on to win 20 games, earned the program's 700th victory, and advanced to the second round of the WNIT. Backed by All-Big 5 honorees Baker and Katie Kuester, Saint Joseph's had its most efficient offensive showing since 2002-03, as the Hawks finished 60th in the nation in field goal percentage (42.1).

Additionally, several Hawks were honored for outstanding seasons in 2010-11, headlined by sophomore Ashley Prim becoming the first SJU player to be named Atlantic 10 Sixth Player of the Year. Baker became just the second Hawk to be named to the A-10 All-Defensive Team, while freshman Erin Shields became the sixth player Griffin has coached to A-10 All-Rookie Team honors.

Earning a postseason berth for the first time in two years, the Hawks surpassed predictions in 2009-10 as they finished tied for fourth in the Atlantic 10 after being picked to finish ninth. After opening the season with a 3-7 mark, Griffin saw her team begin to click at the end of the non-conference schedule as SJU claimed the 19th Annual Hawk Classic title and worked its way to .500 by the second week of the Atlantic 10 slate.

Posting a 9-5 mark against conference opponents, Griffin hit two milestones during A-10 play, earning her 150th win at Saint Joseph's in a victory against Dayton and earning her 200th coaching win against George Washington. The Hawks would go on to earn the program's seventh WNIT bid, and play the first postseason game at Hagan Arena.

In 2008-09, Griffin undertook arguably her toughest season to date as Saint Joseph's played every contest away from Hawk Hill for the first time in program history. And in typical SJU fashion, Griffin got her team to respond as Saint Joseph's went on to post an 8-5 record at home venues and earn its first Big 5 title since 2000-01. Individually five Hawks posted career-bests in scoring, with Brittany Ford and Mariame Djouara both earning All-Big 5 Second Team honors.

Relying heavily on underclassmen in 2007-08, Griffin guided her Hawks to another winning season, including crowns at the Brown Basketball Classic and the Hilton Philadelphia Hawk Classic. Among the wins, Saint Joseph's posted its biggest win over a non-conference ranked opponent since the 1984-85, topping #15 Auburn for the Hawk Classic title.

Despite losing several experienced players prior to the 2006-07 season, Griffin had her team peaking at the right time. Playing Griffin's style of hard-nosed defense and persistent offense, the Hawks advanced to the Atlantic 10 Championship game, including the program's first win over a top 10 opponent (#8 George Washington) since 1992 along the way. Saint Joseph's capped the season with its fifth WNIT appearance in six years and tied the SJU record for games played in a season with 33.

Fueled by a collection of newcomers and a developed core of upperclassmen, Griffin led the Hawks back to national prominence in 2005-06. The Crimson



2013-14 SAINT JOSEPH'S BASKETBALL NOTES - PAGE 7

and Gray engineered the nation's best turnaround (13 games) and received votes in the national polls for the first time since 2003-04. The Hawks advanced to the semifinals of the A-10 Championship and earned a berth in the WNIT.

With the loss of four 1,000-point scorers, the 2004-05 Hawks showed their true colors down the stretch, earning a hard-fought victory over La Salle in the opening round of the Atlantic 10 Championship and coming within 10 points of 16th-ranked, and eventual A-10 Champion, Temple.

Led by six seniors, the 2004 team went 22-11 and advanced to the WNIT Elite Eight. Saint Joseph's finished second in the A-10 East and dropped a heartbreaker in the Atlantic 10 Championship to Temple. Four Hawk seniors reached the 1,000-point plateau, marking just the eighth time in NCAA history that a quartet of players had reached the milestone in the same season. Erin Brady, Irina Krasnoshiok, Stephanie (Graff) McCaffrey and Amra Mehmedic went on to sign professional contracts.

Following a memorable first year at the helm of her alma mater, Griffin upped the ante in her second season by capturing 2003 Atlantic 10 Coach of the Year honors after guiding the Hawks to a 19-11 record. The team sprinted to the conference's Eastern Division title and earned a berth in the WNIT for the second straight season, despite the departure of SJU's all-time leading scorer and a non-conference schedule that ranked fourth nationally.

Griffin helped to reinvigorate the SJU program in her first season, leading the squad to a 24-8 record and the second round of the WNIT. She capitalized on the team's tradition of scrappy play and rugged defense, while releasing the reins and allowing the team to play a more up-tempo style on the offensive end of the floor. The Hawks finished the year among the national leaders in nine different categories and paced the nation in free throw percentage for the second straight year.

Following her playing career, Griffin spent the 1992-93 season as a graduate assistant at her alma mater. She then accepted an assistant's spot at Vanderbilt University from 1993-95 under former Saint Joseph's head coach Jim Foster. Foster recruited Griffin to SJU and coached her during her playing career on Hawk Hill.

In her two years as an assistant at Vanderbilt, the Commodores finished 53-15 overall, won the 1995 SEC championship and reached the NCAA Sweet 16 both seasons. In addition to coaching responsibilities, she was the co-director of the Vanderbilt Basketball Camp and the director of the Black & Gold Club.

Griffin left Vanderbilt after the 1995 season to become an assistant coach at Loyola College (Md.). She spent three seasons as an assistant under Patty Coyle before being promoted to associate head coach in 1998. Griffin was promoted to the position of head women's basketball coach at Loyola midway through the 1998-99 season. She was the seventh-youngest head coach in Division I at the time. Griffin – who was named head coach five games into the season as Coyle left for an assistant coach position with the WNBA's New York Liberty – kept the Greyhounds' momentum going as Loyola won a team-record 21 games that year. Overall she compiled a record of 48-33 during her tenure at the Baltimore school, guiding the squad to the Metro Atlantic Athletic Conference semifinals all three seasons.

One of the top playmakers in Saint Joseph's history, Griffin starred for the Hawks from 1987-88 through 1991-92 (missing the 1988-89 season due to injury). A three-time team captain, Griffin finished her career with 662 points, 278 rebounds, 510 assists and 197 steals. She currently ranks fourth on SJU's all-time assist list.

As a junior in 1990-91, she played in 1,178 out of a possible 1,200 minutes to set the school record for minutes played in a single season. The Hawks made three NCAA Tournament appearances and posted three straight 20-win seasons during her playing career. A two-time Second Team All-Big 5 choice, as well as a Third Team All-Atlantic 10 pick as a senior, she was inducted into the Saint Joseph's Women's Basketball Hall of Fame in 1998.

A native of Maple Glen, Pa., Griffin played her high school basketball for Bishop McDevitt, winning two Philadelphia Catholic League titles. A 1987 graduate of McDevitt, she was inducted into its Athletic Hall of Fame in 1997, and in 2002, received the Philadelphia Catholic League's alumni achievement award. She earned a bachelor's degree in accounting from Saint Joseph's in 1991 and completed her M.B.A. from SJU in 1993. She resides in Conshohocken, Pa., with her husband Curtis and children, Kaylie (10), Hannah (8) and Curtis Jr. (5).

Griffin's Year-By-Year Record

Year	School	Overall Record	Conference Record	Postseason
1998-99	Loyola College	17-6	13-5	MAAC Semifinals
1999-00	Loyola College	12-17	8-10	MAAC Semifinals
2000-01	Loyola College	19-10	12-6	MAAC Semifinals
2001-02	Saint Joseph's University	24-8	12-4	WNIT/A-10 Finals
2002-03	Saint Joseph's University	19-11	13-3	WNIT
2003-04	Saint Joseph's University	22-11	12-4	WNIT/A-10 Finals
2004-05	Saint Joseph's University	7-23	4-12	
2005-06	Saint Joseph's University	20-11	10-6	WNIT/A-10 Semifinals
2006-07	Saint Joseph's University	19-14	8-6	WNIT/A-10 Finals
2007-08	Saint Joseph's University	17-14	8-6	
2008-09	Saint Joseph's University	13-17	5-9	
2009-10	Saint Joseph's University	17-15	9-5	WNIT
2010-11	Saint Joseph's University	20-12	8-6	WNIT
2011-12	Saint Joseph's University	22-11	9-5	WNIT
2012-13	Saint Joseph's University	23-9	11-3	NCAA/A-10 Champions
2013-14	Saint Joseph's University	1-1	0-0	
1998-12	16 Seasons	272-190	142-90	9 Appearances

Head Coaching Record at Saint Joseph's: 224-157 (.588) – 13 Seasons

Career Head Coaching Record: 272-190 (.589) – 16 Seasons





Ciara Andrews

Sophomore • Guard • 5-9
Glenside, Pa.
Cheltenham

Overall Stats: 9.0 ppg, 3.0 rpg, 1.5 apg



2013-14:

- Scored a career-high 10 points in opening win over Mount St. Mary's
- Added eight points and two rebounds at LSU

	Season Highs	Career Highs
Points:	10, vs. Mount St. Mary's, 11/8/13	Same
Field Goals:	2, at LSU, 11/10/13	3, vs. Massachusetts, 2/27/13
Field Goals Att:	6, at LSU, 11/10/13	Same
3-Pt Field Goals:	Yet To Come	Same
3-Pt Field Goals Att:	1, at LSU, 11/10/13	1, 2x
Free Throws:	8, vs. Mount St. Mary's, 11/8/13	Same
Free Throws Att:	8, vs. Mount St. Mary's, 11/8/13	Same
Offensive Rebounds:	Yet To Come	1, 2x
Defensive Rebounds:	4, vs. Mount St. Mary's, 11/8/13	Same
Total Rebounds:	4, vs. Mount St. Mary's, 11/8/13	Same
Assists:	2, vs. Mount St. Mary's, 11/8/13	Same
Blocks:	Yet To Come	Same
Steals:	2, vs. Mount St. Mary's, 11/8/13	2, 2x
Minutes:	14, vs. Mount St. Mary's, 11/8/13	Same

2013-14 Game-by-Game

Opponent	Min	FG-A	3PT-A	FT-A	OR	DR	TR	F	A	TO	B	S	Pts
Mount St. Mary's	14	1-4	0-0	8-8	0	4	4	2	2	1	0	2	10
LSU	13	2-6	0-1	4-4	0	2	2	2	1	1	0	1	8



Kelsey Berger

Senior • Forward • 5-11
Mentor, Ohio
Mentor / Air Force

Overall Stats: 9.5 ppg, 4.5 rpg, 1.0 apg



2013-14:

- Started both games this season
- Matched her SJU career-high with 12 points, including career-best eight free throws against Mount St. Mary's
- Tallied seven points and had four rebounds at LSU

	Season Highs	Career Highs
Points:	12, vs. Mount St. Mary's, 11/8/13	23, vs. Colorado State, 1/9/10
Field Goals:	3, at LSU, 11/10/13	9, vs. Colorado State, 1/9/10
Field Goals Att:	9, at LSU, 11/10/13	16, 2x, last at Portland, 11/20/10
3-Pt Field Goals:	1, at LSU, 11/10/13	5, 3x, last at Denver, 12/8/10
3-Pt Field Goals Att:	6, at LSU, 11/10/13	7, at Denver, 12/8/10
Free Throws:	8, vs. Mount St. Mary's, 11/8/13	Same
Free Throws Att:	8, vs. Mount St. Mary's, 11/8/13	Same
Offensive Rebounds:	3, vs. Mount St. Mary's, 11/8/13	5, at Portland, 11/20/10
Defensive Rebounds:	3, at LSU, 11/10/13	5, 2x, last at Denver, 12/8/10
Total Rebounds:	5, vs. Mount St. Mary's, 11/8/13	9, vs. Western State, 1/9/10
Assists:	2, at LSU, 11/10/13	3, 6x, last at UCLA, 12/31/12
Blocks:	1, at LSU, 11/10/13	2, vs. Adams State, 11/17/09
Steals:	1, at LSU, 11/10/13	4, at Texas A&M-CC, 11/13/09
Minutes:	34, vs. Mount St. Mary's, 11/8/13	38, vs. UNLV, 1/26/10

2013-14 Game-by-Game

Opponent	Min	FG-A	3PT-A	FT-A	OR	DR	TR	F	A	TO	B	S	Pts
Mount St. Mary's *34	2-7	0-1	8-8	3	2	5	3	0	1	0	0	0	12
LSU *	30	3-9	1-6	0-0	1	3	4	5	2	0	1	1	7

* - Denotes Game Started



Natasha Cloud

Junior • Guard • 6-0
Broomall, Pa.
Cardinal O'Hara / Maryland

Overall Stats: 9.2 ppg, 4.6 rpg, 4.4 apg



- 2013-14 A-10 Preseason All-Conference Second Team
- 2013-14 Preseason A-10 All-Defensive Team
- 2013 A-10 Championship Most Outstanding Player

- 2013 A-10 All-Championship Team
- 2012-13 Atlantic 10 All-Defensive Team

2013-14:

- Started both games this season
- Had nine points, five assists and four rebounds versus Mount St. Mary's
- Added nine points, six assists and four rebounds at #15/17 LSU

Points:	Season Highs	Career Highs
9, 2x, last at LSU, 11/10/13	19, at Penn, 1/5/13	19, at Penn, 1/5/13
Field Goals:	4, vs. Mount St. Mary's, 11/8/13	7, at Dayton, 3/3/13
Field Goals Att:	10, at LSU, 11/10/13	18, vs. Temple, 2/17/13
3-Pt Field Goals:	1, 2x, last at LSU, 11/10/13	2, vs. Savannah State, 12/21/12
3-Pt Field Goals Att:	5, at LSU, 11/10/13	Same
Free Throws:	2, at LSU, 11/10/13	7, at Penn, 1/5/13
Free Throws Att:	4, at LSU, 11/10/13	8, 2x
Offensive Rebounds:	2, vs. Mount St. Mary's, 11/8/13	4, 2x
Defensive Rebounds:	4, at LSU, 11/10/13	9, vs. Duquesne, 3/9/13
Total Rebounds:	4, 2x, last, at LSU, 11/10/13	10, vs. Duquesne, 3/9/13
Assists:	6, at LSU, 11/10/13	9, vs. Massachusetts, 2/27/13
Blocks:	1, vs. Mount St. Mary's, 11/8/13	2, 3x
Steals:	4, at LSU, 11/10/13	6, at George Washington, 1/17/13
Minutes:	39, at LSU, 11/10/13	45, at Fordham, 2/24/13

2013-14 Game-by-Game

Opponent	Min	FG-A	3PT-A	FT-A	OR	DR	TR	F	A	TO	B	S	Pts
Mount St. Mary's *	27	4-5	1-1	0-1	2	2	4	3	5	5	1	1	9
LSU *	39	3-10	1-5	2-4	0	4	4	3	6	4	0	4	9

* - Denotes Game Started



Lisanne de Jonge

Freshman • Forward • 5-11-1
Nijmegen, Netherlands
Luzac College

Overall Stats: 1.5 ppg, 3.0 rpg, 0.0 apg



2013-14:

- Scored three points and had four rebounds in collegiate debut against Mount St. Mary's
- Grabbed two rebounds against #15/17 LSU

Points:	Season Highs
3, vs. Mount St. Mary's, 11/8/13	3, vs. Mount St. Mary's, 11/8/13
Field Goals:	1, vs. Mount St. Mary's, 11/8/13
Field Goals Att:	2, vs. Mount St. Mary's, 11/8/13
3-Pt Field Goals:	1, vs. Mount St. Mary's, 11/8/13
3-Pt Field Goals Att:	1, vs. Mount St. Mary's, 11/8/13
Free Throws:	Yet To Come
Free Throws Att:	Yet To Come
Offensive Rebounds:	1, 2x, last at LSU, 11/10/13
Defensive Rebounds:	3, vs. Mount St. Mary's, 11/8/13
Total Rebounds:	4, vs. Mount St. Mary's, 11/8/13
Assists:	Yet To Come
Blocks:	1, vs. Mount St. Mary's, 11/8/13
Steals:	Yet To Come
Minutes:	17, vs. Mount St. Mary's, 11/8/13

2013-14 Game-by-Game

Opponent	Min	FG-A	3PT-A	FT-A	OR	DR	TR	F	A	TO	B	S	Pts
Mount St. Mary's	17	1-2	1-1	0-0	1	3	4	2	0	0	1	0	3
LSU	1	0-0	0-0	0-0	1	1	2	0	0	1	0	0	0





Sarah Fairbanks
Sophomore • Forward • 6-1
Elizabethtown, Pa.
Elizabethtown

Overall Stats: 14.0 ppg, 7.0 rpg, 1.5 apg



2013-14:

- Started both games this season
- Scored a career-high 17 pointd and added five rebounds, two blocked shots, two assists and two steals versus Mount St. Mary's
- Added 11 points and career-high nine rebounds at #15/17 LSU

	Season Highs	Career Highs
Points:	17, vs. Mount St. Mary's, 11/8/13	Same
Field Goals:	7, vs. Mount St. Mary's, 11/8/13	Same
Field Goals Att:	12, vs. Mount St. Mary's, 11/8/13	Same
3-Pt Field Goals:	Yet To Come	Same
3-Pt Field Goals Att:	2, vs. Mount St. Mary's, 11/8/13	Same
Free Throws:	3, vs. Mount St. Mary's, 11/8/13	Same
Free Throws Att:	4, vs. Mount St. Mary's, 11/8/13	Same
Offensive Rebounds:	3, 2x, last at LSU, 11/10/13	4, vs. UMBC, 12/29/12
Defensive Rebounds:	6, at LSU, 11/10/13	7, vs. La Salle, 2/20/13
Total Rebounds:	9, at LSU, 11/10/13	Same
Assists:	2, vs. Mount St. Mary's, 11/8/13	Same
Blocks:	2, vs. Mount St. Mary's, 11/8/13	3, vs. Lafayette, 12/5/12
Steals:	2, 2x, last at LSU, 11/10/13	1, 2x
Minutes:	33, at LSU, 11/10/13	Same

2013-14 Game-by-Game

Opponent	Min	FG-A	3PT-A	FT-A	OR	DR	TR	F	A	TO	B	S	Pts
Mount St. Mary's	*30	7-12	0-2	3-4	3	2	5	3	2	2	2	2	17
LSU *	33	5-10	0-0	1-2	3	6	9	3	1	2	0	2	11

* - Denotes Game Started



Kathleen Fitzpatrick
Freshman • Guard • 5-9
Drexel Hill, Pa.
Academy of Notre Dame de Namur

Overall Stats: 0.0 ppg, 1.0 rpg, 1.0 apg



2013-14:

- Grabbed two rebounds and had two assists in collegiate debut versus Mount St. Mary's
- Played one minute against #15/17 LSU

	Season Highs
Points:	Yet To Come
Field Goals:	Yet To Come
Field Goals Att:	1, vs. Mount St. Mary's, 11/8/13
3-Pt Field Goals:	Yet To Come
3-Pt Field Goals Att:	Yet To Come
Free Throws:	Yet To Come
Free Throws Att:	Yet To Come
Offensive Rebounds:	2, vs. Mount St. Mary's, 11/8/13
Defensive Rebounds:	Yet To Come
Total Rebounds:	2, vs. Mount St. Mary's, 11/8/13
Assists:	2, vs. Mount St. Mary's, 11/8/13
Blocks:	Yet To Come
Steals:	Yet To Come
Minutes:	6, vs. Mount St. Mary's, 11/8/13

2013-14 Game-by-Game

Opponent	Min	FG-A	3PT-A	FT-A	OR	DR	TR	F	A	TO	B	S	Pts
Mount St. Mary's	6	0-1	0-0	0-0	2	0	2	2	2	0	0	0	0
LSU	1	0-0	0-0	0-0	0	0	0	0	0	0	0	0	0





Geena Gomez

Freshman • Guard • 5-8
Huntington Beach, Calif.
Edison

Overall Stats: 2.5 ppg, 0.0 rpg, 0.0 apg



2013-14:

- Scored five points in collegiate debut versus Mount St. Mary's
- Played a minute at #15/17 LSU

Points:	5, vs. Mount St. Mary's, 11/8/13
Field Goals:	2, vs. Mount St. Mary's, 11/8/13
Field Goals Att:	4, vs. Mount St. Mary's, 11/8/13
3-Pt Field Goals:	Yet To Come
3-Pt Field Goals Att:	1, 2x, last vs. LSU, 11/10/13
Free Throws:	1, vs. Mount St. Mary's, 11/8/13
Free Throws Att:	2, vs. Mount St. Mary's, 11/8/13
Offensive Rebounds:	Yet To Come
Defensive Rebounds:	Yet To Come
Total Rebounds:	Yet To Come
Assists:	Yet To Come
Blocks:	Yet To Come
Steals:	Yet To Come
Minutes:	8, vs. Mount St. Mary's, 11/8/13

Season Highs

Points:	5, vs. Mount St. Mary's, 11/8/13
Field Goals:	2, vs. Mount St. Mary's, 11/8/13
Field Goals Att:	4, vs. Mount St. Mary's, 11/8/13
3-Pt Field Goals:	Yet To Come
3-Pt Field Goals Att:	1, 2x, last vs. LSU, 11/10/13
Free Throws:	1, vs. Mount St. Mary's, 11/8/13
Free Throws Att:	2, vs. Mount St. Mary's, 11/8/13
Offensive Rebounds:	Yet To Come
Defensive Rebounds:	Yet To Come
Total Rebounds:	Yet To Come
Assists:	Yet To Come
Blocks:	Yet To Come
Steals:	Yet To Come
Minutes:	8, vs. Mount St. Mary's, 11/8/13

2013-14 Game-by-Game

Opponent	Min	FG-A	3PT-A	FT-A	OR	DR	TR	F	A	TO	B	S	Pts
Mount St. Mary's	8	2-4	0-1	1-2	0	0	0	1	0	0	0	0	5
LSU	1	0-1	0-1	0-0	0	0	0	0	0	0	0	0	0



Ilze Gotfrida

Senior • Forward • 6-0
Dobele, Latvia
Rigas Secondary School No. 49

Overall Stats: 4.0 ppg, 2.0 rpg, 1.0 apg



2013-14:

- Started both games this season
- Scored four points and had two rebounds and two assists versus Mount St. Mary's
- Added four points and two rebounds at #15/17 LSU

Points:	4, 2x, last at LSU, 11/10/13	Career Highs	21, vs. St. Bonaventure, 1/26/13
Field Goals:	2, vs. Mount St. Mary's, 11/8/13		10, vs. St. Bonaventure, 1/26/13
Field Goals Att:	7, at LSU, 11/10/13		13, vs. St. Bonaventure, 1/26/13
3-Pt Field Goals:	Yet To Come		1, 4x
3-Pt Field Goals Att:	Yet To Come		3, at Hofstra, 11/25/12
Free Throws:	2, at LSU, 11/10/13		4, 3x
Free Throws Att:	4, at LSU, 11/10/13		5, 2x
Offensive Rebounds:	1, at LSU, 11/10/13		5, vs. St. Bonaventure, 1/26/13
Defensive Rebounds:	2, vs. Mount St. Mary's, 11/8/13		8, at Saint Louis, 1/20/13
Total Rebounds:	2, 2x, last at LSU, 11/10/13		9, at Saint Louis, 1/20/13
Assists:	2, vs. Mount St. Mary's, 11/8/13		3, 3x
Blocks:	Yet To Come		1, 3x
Steals:	1, at LSU, 11/10/13		3, 2x
Minutes:	29, at LSU, 11/10/13		39, vs. Maryland, 11/17/12

2013-14 Game-by-Game

Opponent	Min	FG-A	3PT-A	FT-A	OR	DR	TR	F	A	TO	B	S	Pts
Mount St. Mary's	*16	2-4	0-0	0-0	0	2	2	3	2	2	0	0	4
LSU *	29	1-7	0-0	2-4	1	1	2	4	0	1	0	1	4

* - Denotes Game Started



Jessica Pongonis

Freshman • Forward • 6-1
Fishers, Ind.
Hamilton Southeastern

Overall Stats: 6.0 ppg, 3.5 rpg, 0.5 apg



2013-14:

- Scored 10 points and had three rebounds in collegiate debut against Mount St. Mary's
- Tallied two points and had four rebounds versus #15/17 LSU

Season Highs

Points: 10, vs. Mount St. Mary's, 11/8/13
Field Goals: 3, vs. Mount St. Mary's, 11/8/13
Field Goals Att: 5, vs. Mount St. Mary's, 11/8/13
3-Pt Field Goals: Yet To Come
3-Pt Field Goals Att: 2, vs. Mount St. Mary's, 11/8/13
Free Throws: 4, vs. Mount St. Mary's, 11/8/13
Free Throws Att: 6, vs. Mount St. Mary's, 11/8/13
Offensive Rebounds: 1, at LSU, 11/10/13
Defensive Rebounds: 3, 2x, last, at LSU, 11/10/13
Total Rebounds: 4, at LSU, 11/10/13
Assists: 1, vs. Mount St. Mary's, 11/8/13
Blocks: 1, 2x, last at LSU, 11/10/13
Steals: 1, at LSU, 11/10/13
Minutes: 20, vs. Mount St. Mary's, 11/8/13

2013-14 Game-by-Game

Opponent	Min	FG-A	3PT-A	FT-A	OR	DR	TR	F	A	TO	B	S	Pts
Mount St. Mary's	20	3-5	0-2	4-6	0	3	3	2	1	1	1	0	10
LSU	14	1-3	0-0	0-0	1	3	4	1	0	0	1	1	2



Ashley Robinson

Redshirt-Junior • Forward • 6-2
Warrington, Pa.
Archbishop Wood

Overall Stats: 0.0 ppg, 0.0 rpg, 0.0 apg



2013-14:

- Missed the opening two games of the season due to an arm injury

Season Highs

Points: Yet To Come
Field Goals: Yet To Come
Field Goals Att: Yet To Come
3-Pt Field Goals: Yet To Come
3-Pt Field Goals Att: Yet To Come
Free Throws: Yet To Come
Free Throws Att: Yet To Come
Offensive Rebounds: Yet To Come
Defensive Rebounds: Yet To Come
Total Rebounds: Yet To Come
Assists: Yet To Come
Blocks: Yet To Come
Steals: Yet To Come
Minutes: Yet To Come

Career Highs

18, at Princeton, 11/11/11
 5, vs. Dartmouth, 11/18/11
 9, at Dayton, 3/3/13
 Same
 Same
 10, at Princeton, 11/11/11
 10, at Princeton, 11/11/11
 6, at UCLA, 12/31/12
 9, vs. St. Bonaventure, 3/4/12
 10, 2x
 3, 2x
 3, 2x
 2, 5x
 41, vs. Temple, 2/17/13

2013-14 Game-by-Game

Opponent	Min	FG-A	3PT-A	FT-A	OR	DR	TR	F	A	TO	B	S	Pts
Mount St. Mary's													Did Not Play - Injury
LSU													Did Not Play - Injury



Mackenzie Rule

Freshman • Guard • 5-6
West Chester, Pa.
Cardinal O'Hara

Overall Stats: 0.0 ppg, 0.0 rpg, 0.0 apg



2013-14:

- Yet to play this season

	Season Highs
Points:	Yet To Come
Field Goals:	Yet To Come
Field Goals Att:	Yet To Come
3-Pt Field Goals:	Yet To Come
3-Pt Field Goals Att:	Yet To Come
Free Throws:	Yet To Come
Free Throws Att:	Yet To Come
Offensive Rebounds:	Yet To Come
Defensive Rebounds:	Yet To Come
Total Rebounds:	Yet To Come
Assists:	Yet To Come
Blocks:	Yet To Come
Steals:	Yet To Come
Minutes:	Yet To Come

2013-14 Game-by-Game

Opponent	Min	FG-A	3PT-A	FT-A	OR	DR	TR	F	A	TO	B	S	Pts
Mount St. Mary's													
LSU													

Did Not Play
Did Not Play



Erin Shields

Senior • Guard • 5-6
Drexel Hill, Pa.
Archbishop Carroll

Overall Stats: 19.0 ppg, 1.0 rpg, 1.0 apg



- 2013-14 Preseason A-10 All-Conference Second Team
- 2012-13 Atlantic 10 Most Improved Player
- 2012-13 Atlantic 10 All-Conference Third Team
- 7th All-time in career three-pointers (170)

2013-14:

- Started both games this season
- Matched career-high with seven three-pointers and finished with 23 points at #15/17 LSU
- Scored 15 points and had two assists in win over Mount St. Mary's

	Season Highs	Career Highs
Points:	23, at LSU, 11/10/13	28, at Dayton, 3/3/13
Field Goals:	8, at LSU, 11/10/13	9, 2x
Field Goals Att:	16, at LSU, 11/10/13	19, at Dayton, 3/3/13
3-Pt Field Goals:	7, at LSU, 11/10/13	7, 2x
3-Pt Field Goals Att:	12, at LSU, 11/10/13	12, 3x
Free Throws:	2, vs. Mount St. Mary's, 11/8/13	6, 2x
Free Throws Att:	2, vs. Mount St. Mary's, 11/8/13	6, 3x
Offensive Rebounds:	Yet To Come	2, 2x
Defensive Rebounds:	1, 2x, last, at LSU, 11/10/13	6, at Dayton, 1/29/11
Total Rebounds:	1, 2x, last, at LSU, 11/10/13	7, at Dayton, 1/29/11
Assists:	2, vs. Mount St. Mary's, 11/8/13	9, vs. UMBC, 12/29/12
Blocks:	1, vs. Mount St. Mary's, 11/8/13	2, vs. Temple, 2/17/13
Steals:	1, 2x, last, at LSU, 11/10/13	3, 3x
Minutes:	39, at LSU, 11/10/13	44, vs. Temple, 2/17/13

2013-14 Game-by-Game

Opponent	Min	FG-A	3PT-A	FT-A	OR	DR	TR	F	A	TO	B	S	Pts
Mount St. Mary's	*28	5-9	3-6	2-2	0	1	1	1	2	0	1	1	15
LSU *	39	8-16	7-12	0-0	0	1	1	2	0	3	0	1	23

* - Denotes Game Started





2013-14 SAINT JOSEPH'S BASKETBALL NOTES - PAGE 14

Game 1 • November 8, 2013 • Hagan Arena Saint Joseph's - 85, Mount St. Mary's - 57

The reigning Atlantic 10 champion Saint Joseph's Hawks received their rings and raised a championship banner to the rafters, then picked up where last season left off as SJU downed Mount St. Mary's, 85-57, in the First Round of the Preseason WNIT.

Backed by a career-high 17 points from **Sarah Fairbanks** and 15 points from **Erin Shields**, Saint Joseph's took control from the start as it ran out to a 17-1 lead. The Hawks hit 6-of-8 from the field and 3-of-4 from the foul line, while holding the Mountaineers to 0-of-5 from the floor and caused four turnovers.

Shooting 55.6 percent (15-of-27) in the opening half, Saint Joseph's would allow Mount St. Mary's to get no closer in the half than 12 points, while expanding their lead to as many as 27 before taking a 51-28 lead into halftime.

The Hawks continued to hold Mount St. Mary's at a distance in the second half opening their lead to as many as 30 as they outscored the Mountaineers 34-29 in the final period for the 85-57 victory

Mount St. Mary's	Min.	FG-A	3PT	FT-A	OR	DR	TR	F	A	TO	B	S	Pts.
Grossett, f	20	1-5	1-3	1-2	1	2	3	3	1	2	0	0	4
Kaufman, f	30	4-8	2-5	3-4	1	2	3	2	0	1	0	0	13
Christie, g	34	0-5	0-3	0-0	2	0	2	3	1	2	0	0	0
Henderson, g	28	8-15	2-6	3-4	0	1	1	3	2	3	0	0	21
Brewer, g	16	0-2	0-1	0-0	0	1	1	0	0	1	0	2	0
Belanger-Finn	6	0-2	0-1	2-3	0	1	1	0	0	0	0	0	2
Leftwich	1	0-0	0-0	0-0	0	0	0	1	0	0	0	0	0
Powell	4	0-0	0-0	0-0	1	2	3	0	0	1	0	0	0
Chickey	25	3-6	0-0	4-4	2	3	5	4	0	3	0	0	10
Carney	11	0-2	0-1	1-2	1	0	1	5	0	1	0	0	1
Mathews	15	2-3	0-0	0-1	0	1	1	1	2	0	2	2	4
Eisenhard	10	0-2	0-0	2-4	2	0	2	2	1	0	0	0	2
Team					1	1	2			3			
Totals	200	18-50	5-20	16-24	11	14	25	24	7	17	2	4	57

Saint Joseph's	Min.	FG-A	3PT	FT-A	OR	DR	TR	F	A	TO	B	S	Pts.
Gotfrida, f	16	2-4	0-0	0-0	0	2	2	3	2	2	0	0	4
Berger, f	34	2-7	0-1	8-8	3	2	5	3	0	1	0	0	12
Fairbanks, f	30	7-12	0-2	3-4	3	2	5	3	2	2	2	2	17
Shields, g	28	5-9	3-6	2-2	0	1	1	1	2	0	1	1	15
Cloud, g	27	4-5	1-1	0-1	2	2	4	3	5	5	1	1	9
de Jonge	17	1-2	1-1	0-0	1	3	4	2	0	0	1	0	3
Fitzpatrick	6	0-1	0-0	0-0	2	0	2	2	2	0	0	0	0
Gomez	8	2-4	0-1	1-2	0	0	0	1	0	0	0	0	5
Andrews	14	1-4	0-0	8-8	0	4	4	2	2	1	0	2	10
Pongonis	20	3-5	0-2	4-6	0	3	3	2	1	1	1	0	10
Team					3	6	9						
Totals	200	27-53	5-14	26-31	14	25	39	22	16	12	6	6	85

Halftime: Saint Joseph's, 51-28 **Deadball Rebounds:** Mount St. Mary's, 4-3
Attendance: 1,523 **Officials:** DePaul, Sparrock, Peterkinn
FG %: Saint Joseph's - 50.9%, Mount St. Mary's - 36.0%
3-PT FG %: Saint Joseph's - 35.7%, Mount St. Mary's - 25.0%
FT %: Saint Joseph's - 83.9%, Mount St. Mary's - 66.7%

Game 2 • November 10, 2013 • Maravich Center #15/17 LSU - 80, Saint Joseph's - 64

A 17-5 run to close the first half was the difference as Saint Joseph's fell at #15 LSU, 80-64, in the Quarterfinals of the Preseason WNIT.

Falling behind 10 early, Saint Joseph's fought back to within a possession, 23-20, on a layup by **Sarah Fairbanks** at 5:35.

From there though, the Tiger opened up their lead to 15 points by halftime, using a 17-5 run to end the first period and take a 40-25 edge into the second stanza.

Saint Joseph's scored the first basket of the second half, but LSU answered with a 9-0 run to open its biggest lead, 49-27, on a Danielle Ballard layup at 17:51.

Despite the deficit, the Hawks continued to fight and chipped away at the Tigers' advantage. Behind a 17-6 run, Saint Joseph's cut LSU's lead to single digits as a **Erin Shields'** three-pointer made it a 55-46 game with 12:59 to play.

The Hawks would continue to hang around, trailing 64-54 with under seven minutes to play, but they'd get no closer as LSU held them at a distance over the final minutes.

Saint Joseph's	Min.	FG-A	3PT	FT-A	OR	DR	TR	F	A	TO	B	S	Pts.
Gotfrida, f	29	1-7	0-0	2-4	1	1	2	4	0	1	0	1	4
Berger, f	30	3-9	1-6	0-0	1	3	4	5	2	0	1	1	7
Fairbanks, f	33	5-10	0-0	1-2	3	6	9	3	1	2	0	2	11
Shields, g	39	8-16	7-12	0-0	0	1	1	2	0	3	0	1	23
Cloud, g	39	3-10	1-5	2-4	0	4	4	3	6	4	0	4	9
de Jonge	1	0-0	0-0	0-0	1	1	2	0	0	1	0	0	0
Fitzpatrick	1	0-0	0-0	0-0	0	0	0	0	0	0	0	0	0
Gomez	1	0-1	0-1	0-0	0	0	0	0	0	0	0	0	0
Andrews	13	2-6	0-1	4-4	0	2	2	2	1	1	0	1	8
Pongonis	14	1-3	0-0	0-0	1	3	4	1	0	0	1	1	2
Team					1	1	2						
Totals	200	23-62	9-25	9-14	8	22	30	20	10	12	2	11	64

LSU	Min.	FG-A	3PT	FT-A	OR	DR	TR	F	A	TO	B	S	Pts.
Boykin, f	14	1-5	0-0	0-0	3	0	3	0	0	0	0	0	2
Plaisance, f	25	6-14	1-3	2-2	3	4	7	1	2	2	1	0	15
Moncrief, g	19	4-8	0-0	1-2	2	4	6	2	0	2	0	0	9
Harden, g	36	5-15	3-10	6-7	1	4	5	1	2	2	0	5	19
Ballard, g	30	6-11	0-0	0-0	4	5	9	3	7	4	0	2	12
Pedersen	16	2-2	0-0	2-2	0	3	3	2	1	1	0	0	6
Kenney	17	0-2	0-2	0-1	0	5	5	1	2	1	0	0	0
Rhodes	7	1-1	0-0	1-1	1	1	2	1	0	1	0	1	3
Hill	21	1-1	0-0	3-4	0	0	0	5	1	0	0	1	5
McKinney	15	4-6	0-0	1-3	3	1	4	1	1	1	1	0	9
Team					0	6	6						
Totals	200	22-59	2-12	14-22	18	29	47	18	13	15	1	4	60

Halftime: LSU, 33-27 **Deadball Rebounds:** Saint Joseph's, 3-2
Attendance: 2,623 **Officials:** Koch, Marsh, Gallien
FG %: Saint Joseph's - 37.1%, LSU - 46.2%
3-PT FG %: Saint Joseph's - 36.0%, LSU - 26.7%
FT %: Saint Joseph's - 64.3%, LSU - 72.7%





Team Superlatives

Table with 5 columns: CATEGORY, SAINT JOSEPH'S MOST, SAINT JOSEPH'S LEAST, OPPONENT'S MOST, OPPONENTS' LEAST. Rows include Total Points, Field Goals, 3 Point FG, Free Throws, etc.

Individual Superlatives

Table with 3 columns: CATEGORY, SAINT JOSEPH'S MOST, OPPONENT'S MOST. Rows include Points, Field Goals, 3 Point FG, Free Throws, etc.

* - Minimum of five attempts; # - Minimum of three attempts





GAME-BY-GAME STATISTICAL LEADERS

DATE	OPPONENT	SCORE	W/L	ATT	HIGH POINTS	HIGH REBOUNDS	HIGH ASSISTS	HIGH STEALS
Nov. 8 ^	Mount St. Mary's	.85-57	W	1,523	Fairbanks . . .17	Berger/Fairbanks .5	Cloud5	Andrews/Fairbanks . .2
Nov. 10 ^	LSU	.64-80	L	2,623	Shields23	Fairbanks9	Cloud6	Cloud4
Nov. 15 ^	Wichita State							
Nov . 20	Drexel							
Nov . 23	Liberty							
Nov . 26	Princeton							
Dec 1	Quinnipiac							
Dec. 4 #	Temple							
Dec. 7 #	Villanova							
Dec. 10	Hofstra							
Dec. 21	Syracuse							
Dec. 29	Florida Gulf Coast							
Jan. 2 *	Richmond							
Jan. 5 *	George Washington							
Jan. 8 *	Rhode Island							
Jan. 12 *	VCU							
Jan. 17 #	Penn							
Jan. 19*#	La Salle							
Jan. 22 *	George Washington							
Jan. 26 *	Dayton							
Jan. 29 *	Saint Louis							
Feb. 1 *	VCU							
Feb. 5 *	St. Bonaventure							
Feb. 12 *	La Salle							
Feb. 15 *	George Mason							
Feb. 18 *	Duquesne							
Feb. 23 *	Dayton							
Feb. 27 *	Massachusetts							
Mar. 2 *	Fordham							

^ – Preseason WNIT game; * – Atlantic 10 game; # – Big 5 game; ** - Atlantic 10 Championship

GAMES AS HIGH SCORER: Fairbanks - 1, Shields - 1

GAMES AS HIGH REBOUNDER: Fairbanks - 2, Berger - 1

GAMES SCORING DOUBLE FIGURES: Fairbanks - 2, Shields - 2, Andrews - 1, Berger - 1, Pongonis - 1

GAMES REBOUNDING DOUBLE FIGURES:

GAMES SCORING 20 OR MORE POINTS: Shields - 1

GAMES POSTING A DOUBLE-DOUBLE:

HAWKS BY THE NUMBERS

1-0	at home	1-1	when committing 15 or fewer turnovers
0-1	on the road	0-0	when committing more than 15 turnovers
0-0	at a neutral site	1-0	when forcing more than 15 opponent turnovers
1-1	in November	0-1	when forcing 15 or fewer turnovers
0-0	in December	0-0	when scoring 50 or fewer points
0-0	in January	0-0	when scoring 50-59 points
0-0	in February	0-1	when scoring 60-69 points
0-0	in March	0-0	when scoring 70-79 points
1-0	when leading at halftime	1-0	When scoring 80 points or higher
0-1	when trailing at halftime		
0-0	when tied at halftime		

MISCELLANEOUS STATS

Largest Winning Margin	28, vs. Mount St. Mary's 11/8/13
Largest Lead in a Game	30, vs. Mount St. Mary's 11/8/13

MARGIN OF VICTORY

1 to 9 points:	0
10-19 points:	0
20 or more points:	1





Saint Joseph's Combined Team Statistics (as of Nov 12, 2013)
All games



RECORD:	OVERALL	HOME	AWAY	NEUTRAL
ALL GAMES	1-1	1-0	0-1	0-0
CONFERENCE	0-0	0-0	0-0	0-0
NON-CONFERENCE	1-1	1-0	0-1	0-0

#	Player	gp-gs	min	avg	Total		3-Point		F-Throw		Rebounds		pf	dq	a	to	blk	stl	pts	avg			
					fg-fga	fg%	3fg-fga	3fg%	ft-fa	ft%	off	def									tot	avg	
03	SHIELDS, Erin	2-2	67	33.5	13-25	.520	10-18	.556	2-2	1.000	0	2	2	1.0	3	0	2	3	1	2	38	19.0	
41	FAIRBANKS, Sarah	2-2	63	31.5	12-22	.545	0-2	.000	4-6	.667	6	8	14	7.0	6	0	3	4	2	4	28	14.0	
34	BERGER, Kelsey	2-2	64	32.0	5-16	.313	1-7	.143	8-8	1.000	4	5	9	4.5	8	1	2	1	1	1	19	9.5	
04	CLOUD, Natasha	2-2	66	33.0	7-15	.467	2-6	.333	2-5	.400	2	6	8	4.0	6	0	11	9	1	5	18	9.0	
21	ANDREWS, Ciara	2-0	27	13.5	3-10	.300	0-1	.000	12-12	1.000	0	6	6	3.0	4	0	3	2	0	3	18	9.0	
22	PONGONIS, Jessica	2-0	34	17.0	4-8	.500	0-2	.000	4-6	.667	1	6	7	3.5	3	0	1	1	2	1	12	6.0	
01	GOTFRIDA, Ilze	2-2	45	22.5	3-11	.273	0-0	.000	2-4	.500	1	3	4	2.0	7	0	2	3	0	1	8	4.0	
20	GOMEZ, Geena	2-0	9	4.5	2-5	.400	0-2	.000	1-2	.500	0	0	0	0.0	1	0	0	0	0	0	5	2.5	
11	DE JONGE, Lisanne	2-0	18	9.0	1-2	.500	1-1	1.000	0-0	.000	2	4	6	3.0	2	0	0	1	1	0	3	1.5	
15	FITZPATRICK, Kathlee	2-0	7	3.5	0-1	.000	0-0	.000	0-0	.000	2	0	2	1.0	2	0	2	0	0	0	0	0.0	
Team											4	7	11										
Total.....		2	400		50-115	.435	14-39	.359	35-45	.778	22	47	69	34.5	42	1	26	24	8	17	149	74.5	
Opponents.....		2	400		48-115	.417	9-35	.257	32-46	.696	28	47	75	37.5	41	-	23	31	4	13	137	68.5	

TEAM STATISTICS	SJU	OPP	Date	Opponent	Score	Att.
SCORING	149	137	11/08/13	MOUNT ST. MARY'S	w 85-57	1523
Points per game	74.5	68.5	11/10/13	at LSU	L 64-80	2623
Scoring margin	+6.0	-	* - Conference game			
FIELD GOALS-ATT	50-115	48-115				
Field goal pct	.435	.417				
3 POINT FG-ATT	14-39	9-35				
3-point FG pct	.359	.257				
3-pt FG made per game	7.0	4.5				
FREE THROWS-ATT	35-45	32-46				
Free throw pct	.778	.696				
F-Throws made per game	17.5	16.0				
REBOUNDS	69	75				
Rebounds per game	34.5	37.5				
Rebounding margin	-3.0	-				
ASSISTS	26	23				
Assists per game	13.0	11.5				
TURNOVERS	24	31				
Turnovers per game	12.0	15.5				
Turnover margin	+3.5	-				
Assist/turnover ratio	1.1	0.7				
STEALS	17	13				
Steals per game	8.5	6.5				
BLOCKS	8	4				
Blocks per game	4.0	2.0				
ATTENDANCE	1523	2623				
Home games-Avg/Game	1-1523	1-2623				
Neutral site-Avg/Game	-	0-0				

Score by Periods	1st	2nd	Totals
Saint Joseph's	76	73	149
Opponents	68	69	137





1 - Ilze Gotfrida
Sr. • Forward • 6-0



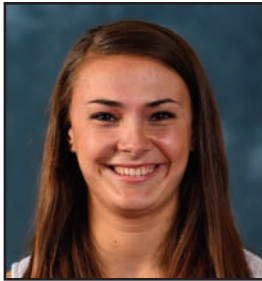
#2 - Mackenzie Rule
Fr. • Guard • 5-6



#3 - Erin Shields
Sr. • Guard • 5-6



#4 - Natasha Cloud
Jr. • Guard • 6-0



11 - Lisanne de Jonge
Fr. • Guard • 5-11



#13 - Ashley Robinson
R-Jr. • Forward • 6-2



15 - Kathleen Fitzpatrick
Fr. • Guard • 5-9



20 - Geena Gomez
Fr. • Guard • 5-8



#21 - Ciara Andrews
So. • Guard • 5-9



#22 - Jessica Pongonis
Fr. • Forward • 6-1



#23 - Jordan Strode
So. • Guard • 5-8



#34 - Kelsey Berger
Sr. • Guard • 5-11



#41 - Sarah Fairbanks
So. • Forward • 6-1



Cindy Griffin
Head Coach



Susan Moran
Associate Head Coach



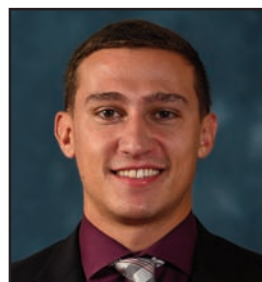
Stephanie McCaffrey
Assistant Coach



Jada Pierce
Assistant Coach



Katie Gardler
Dir. of Basketball Operations



Chris Koclanes
Video Coordinator

