

# 2016-17 SOUTHERN ILLINOIS WOMEN'S BASKETBALL

Contact: Will Becque | Office: (618) 453-5470 | Cell: (618) 559-2624 | Email: william.becque@siu.edu

## Alabama Birmingham at Southern Illinois

Dec. 3 • SIU Arena • Carbondale, Ill.



3-3, 0-0 Missouri Valley



3-2, 0-0 Conference USA

Head Coach ..... Cindy Stein  
Record at SIU/year ..... 45-54/4  
Overall Record/year ..... 327-260/20

Head Coach ..... Randy Norton  
Record at UAB/year ..... 52-46/4  
Overall Record/year ..... 52-46/4

### 2016-17 MVC STANDINGS

Team	MVC		Overall		Home	Away	Neutral	Last10	Streak
	Record	Pct	Record	Pct					
Drake	0-0	.000	3-2	.600	2-0	1-2	0-0	3-2	W 2
Northern Iowa	0-0	.000	4-3	.571	1-1	1-2	2-0	4-3	L 1
<b>Southern Illinois</b>	<b>0-0</b>	<b>.000</b>	<b>3-3</b>	<b>.500</b>	<b>2-0</b>	<b>1-3</b>	<b>0-0</b>	<b>3-3</b>	<b>L 1</b>
Illinois State	0-0	.000	3-3	.500	2-1	1-2	0-0	3-3	W 1
Indiana State	0-0	.000	3-4	.429	1-1	2-3	0-0	3-4	L 1
Bradley	0-0	.000	2-4	.333	2-2	0-2	0-0	2-4	L 1
Missouri State	0-0	.000	2-4	.333	0-1	2-2	0-1	2-4	L 1
Wichita State	0-0	.000	2-4	.333	1-1	0-1	1-2	2-4	W 1
Evansville	0-0	.000	1-5	.167	0-3	1-2	0-0	1-5	W 1
Loyola	0-0	.000	0-6	.000	0-2	0-2	0-2	0-6	L 6

### SOUTHERN ILLINOIS NOTES

#### Series History

This marks just the second time that the Salukis and the Blazers have met on the hardwood, with the last meeting coming at the Long Island Classic in Brooklyn, N.Y. during the 2003-04 season. Alabama-Birmingham won the only previous meeting, an 85-72 win.

#### Last Time

SIU 72, UAB 85

The Salukis trailed by ten at the half, 43-33 and couldn't overcome 26 turnovers in an 85-72 loss to the Blazers. Southern had three score in double-figures, led by 16 points from Tiffany Crutcher.

#### Scouting the Blazers

The Blazers come into Saturday's matchup having won two in a row, tallying wins over High Point and Mississippi State Valley. Freshman Miyah Barnes has already collected a pair of Conference USA Freshman of the Week honors, as she has the highest scoring average

(12.0) amongst Conference USA freshmen. Sophomore guard Deanna Kuzmanic returns following a freshman campaign in which she earned a spot on the All-C-USA Freshman team after sinking 74 three-pointers last season, the sixth-most in a single season in UAB history. UAB head coach Randy Norton is no stranger to the SIU Arena, as he spent seven seasons as an assistant coach at Illinois State. UAB was picked to finish ninth out of 14 in the 2016 Conference USA Preseason Poll.

#### SIU versus Conference USA

SIU plays its first Conference USA opponent of the season in UAB. The Salukis are 8-19 all-time against Conference USA foes, including a 66-53 loss to Louisiana Tech in the Sweet 16 of the 1987 NCAA Tournament. Southern holds a 3-5 record at home against current C-USA members. The Salukis last win over a Conference USA member came at the SIU Arena on Dec. 15, 1996, a 91-72 win over Middle Tennessee State.

### 2016-17 SCHEDULE

Date	Opponent	Time
Oct. 27	William Woods (Ex.)	W, 78-58
Nov. 4	MacMurray (Ex.)	W, 114-24
Nov. 13	at Oklahoma	L, 48-80
Nov. 17	Murray State	W, 70-63
Nov. 20	at Purdue	W, 64-61
Nov. 23	at SIUE	L, 59-60
Nov. 26	Brescia	W, 104-35
Nov. 29	at UT Martin	L, 68-76
Dec. 3	UAB	1 PM
Dec. 9	SEMO	12 PM
Dec. 11	Memphis	2 PM
UMKC Tournament		
Dec. 19	UMKC	3 PM
Dec. 20	South Dakota	1 PM
Dec. 30	Loyola	6 PM
Jan. 1	Indiana State	1 PM
Jan. 6	at Northern Iowa	7 PM
Jan. 8	at Drake	6 PM
Jan. 13	Wichita State	6 PM
Jan. 15	Missouri State	2 PM
Jan. 22	at Evansville	1 PM
Jan. 27	at Bradley	7 PM
Jan. 29	at Illinois State	2 PM
Feb. 3	Drake	6 PM
Feb. 5	Northern Iowa	2 PM
Feb. 10	at Missouri State	7 PM
Feb. 12	at Wichita State	2 PM
Feb. 17	Evansville	6 PM
Feb. 24	Illinois State	6 PM
Feb. 26	Bradley	2 PM
Mar. 2	at Indiana State	6 PM
Mar. 4	at Loyola	1 PM
MVC Tournament		
Mar. 10	Quarterfinals	TBA
Mar. 11	Semifinals	TBA
Mar. 12	Championship	2 PM

Home games in **Bold**

All dates and times CT and subject to change.

#### SALUKI MEDIA SERVICES

Mail Code 6620  
Room 118, Lingle Hall - SIU Arena  
Carbondale, IL 62901  
Phone: 618/453.7236  
Fax: 618/453.2648  
Tickets: 618/453.2000  
SIUSalukis.com

# 2016-17 SOUTHERN ILLINOIS WOMEN'S BASKETBALL

## ROSTER

#	Name	Pos.	Ht.	Cl.	Hometown/Last School
3	Olivia Bowling	G	5-9	SO	New Haven, Ky./Elizabethtown
10	Brittney Patrick	G	5-6	FR	Bolingbrook, Ill./Bolingbrook
13	Rishonda Napier	PG	5-5	RS SR	Burbank, Calif./Bellarmine-Jefferson
15	Caitlyn Claussen	G/F	6-0	FR	Manhattan, Kan./Wamego
22	Tiqianey Hawkins	G/F	5-10	RS FR	East Chicago, Ind./East Chicago Central
23	Kristen Nelson	G	5-9	FR	Farmington Hills, Mich./Harrison
24	Kim Nebo	F	6-1	SR	Katy, Texas/Cypress Lakes
31	Lauren Hartman	F/C	6-3	FR	Tremont, Ill./Tremont
32	Kylie Giebelhausen	G	6-1	JR	East Peoria, Ill./East Peoria
34	Nicole Martin	F	6-1	FR	Jefferson City, Mo./Jefferson City
35	Celina VanHyfte	F/C	6-0	JR	Annawan, Ill./Annawan
40	Carlie Corrigan	G/F	5-11	SR	Plainfield, Ill./Plainfield North
42	Ashley Hummel	F/C	6-1	SO	Hilliard, Ohio/Hilliard Bradley HS

### Coaches:

Cindy Stein - Head Coach (4th year)

Christelle N'Garsanet - Associate Head Coach (4th year)

Kat Martin - Assistant Coach/Recruiting Coordinator (4th year)

Nicole Collier - Assistant Coach (1st year)

Julie Beck - Director of Operations (4th year)

Adesuwa Ebomwonyi - Video Coordinator (2nd year)

## SOUTHERN ILLINOIS NOTES

### SERIES HISTORY (UAB LEADS SERIES 1-0)

Date	Location	Result
11-29-03	Brooklyn, N.Y.	L, 72-85
%Long Island Classic		

### Preseason Poll

SIU was picked to finish fourth in the MVC, marking the first time in 18 years (1996-97, 1997-98) that SIU has been picked in the top-half of the annual poll in back-to-back seasons.

### Something Has To Give

The Blazers come into Saturday's contest seventh in the nation in three-point field goal percentage, currently shooting at a 42.2% clip from beyond the arc. The Salukis, on the other hand, are ranked fourth in the nation in opponent's three-point field goal percentage, holding opponents to just 19.6% from three.

### Speaking of Defending the Perimeter

The Salukis are currently ranked 1st in the conference, and 4th in the nation, in opponent's three-point field goal percentage. SIU, which held Brescia University to just 2-of-

21 shooting from beyond the arc on Nov. 26, is holding opponents to just 19.6% (12-of-78) shooting from beyond the arc.

### Slight of Hand

SIU's 13 steals in the win over Brescia on Nov. 26 marks the first time Southern has cracked double-digits in steals since March 7, 2015 against Illinois State. The 13 steals were the most in a game during the Cindy Stein era, and the most since Southern nabbed 13 steals in a 52-41 loss to Evansville on Feb. 9, 2013.

### Dishing Out Helpers

The Salukis dished out 29 assists on 37 field goals in the win over Brescia, tied for the second-most assists in a single game in program history. Eight different Salukis recorded an assist in the win, and Southern turned the ball over just six times. SIU ranks second in the conference, and 26th in the nation, in assist-to-turnover ratio (1.31). SIU's 102 total assists this season are the most in the Valley.

### Back-to-Back 20+ Assist games

Southern recorded 20+ assists in back-to-back contests this year, finishing with 20 in the loss to SIUE and coming back with 29 in the win over Brescia on Nov. 26. You have to go all the way back to the 2000-01 season to find the last time that SIU recorded 20+ assists in multiple games during the same season, and all the way back to the 1998-99 season when current Director of Basketball Operations Julie Beck was Southern's head coach to find the last time SIU accomplished the feat in back-to-back games. SIU recorded 21 assists vs. Murray State on Nov. 20, 1998, and followed with 20 assists at Memphis on Nov. 23, 1998.

### Dropping Dimes Part Two

Of the 53 times in which the Salukis have tallied 20 or more assists in a single game since 1989, this marks just the eighth time that Southern has dished out 20-plus assists in back-to-back games. Southern's longest streak of 20-plus assist games is three-straight, which it has done twice, last doing so during the 1993-94 season.

## SOUTHERN ILLINOIS NOTES

## Finding the Opener Shooter

Of the eight occurrences in which SIU has tallied 20 or more assists in back-to-back games, the 49 combined assists against SIUE and Brescia are the second-most. The 1990 squad recorded 58 assists in back-to-back contests, as Southern handed out a school record 30 assists against Western Illinois on Jan. 8, 1990 and followed with 28 against Northern Iowa on Jan. 11, 1990.

Most Threes through 6 games in school history  
The Salukis have made 45 three-pointers thus far this season- the most through six games in program history. Southern's previous best of 37 was set during the 2011-12 season.

## Finding the Open Looks

SIU is averaging 7.5 three-pointers per game in the early goings of the 2016-17 season, well above the school record of 6.667 threes per game set a year ago. SIU's attempts per game are also up, with Southern shooting 23.5 three-pointers per contest through six games, or two three-point attempts more per game than the 2011-12 season, when the Salukis averaged a school record 21.5 three-point attempts per game.

## Power 5 Conference win

The Salukis picked up a 64-61 win at Purdue, a win that snapped several long streaks. The win at Purdue marked SIU's first win in West Lafayette, Ind. since 1980, and the Salukis first win over a Big Ten school since 1993. 1993 also marked the last time SIU beat a school from a Power 5 conference, as Southern defeated Arizona State, 73-57 on Dec. 20, 1993.

## Napier making the freebies

Rishonda Napier is a perfect 14-for-14 from the charity stripe this season, and is one of seven players in NCAA DI who have yet to miss a free throw. However, Napier doesn't yet qualify in the national rankings for free-throw percentage, as her 2.3 free throws per game average is slightly below the 2.5 free throws per game average needed for inclusion.

## Giebelhausen leads MVC from three

Kylie Giebelhausen currently leads the Missouri Valley Conference in a plethora of three-point statistics. She's first in three-pointers made (18), three-pointers made per game (3.0) and fourth in three-point field goal percentage (41.9%), with her 3.0 threes per game the 38th best average in the nation.

## Shooting for a high percentage

One of the big storylines in the early going of the 2016-17 season has been the emergence of Kim Nebo, who has scored in double figures in four of Southern's six games this season. She's currently leading the Valley in field goal percentage, shooting at a 59.6% (34-of-57) clip. It also marks the 30th-best field goal percentage in NCAA DI.

## Corrigan Making Early Impact

Charlie Corrigan has started all six games for the Salukis this season, and has as many starts in 2016-17 as she did during the entire 2015-16 campaign. She set a new career-high by playing 38 minutes in the loss at UT Martin, and for the second time this season, tied her career-best by making four three-pointers.

## Giebelhausen joins exclusive group

Kylie Giebelhausen is just five points away from 600 for her career, and when she scores those five points, will become the 42nd Saluki with at least 600 career points. The East Peoria, Ill. native will also become just the third Saluki to tally at least 600 points/250 rebounds/100 assists/80 blocks/50 steals in a career.

## Logging Big Minutes

Giebelhausen also eclipsed the 2,000-minute mark for her career earlier this season, becoming the 38th Saluki to do so.

## Second Career Start

Tiajaney Hawkins made her second-straight start in place of freshman Lauren Hartman, and scored six points, dished out three assists and grabbed four offensive rebounds in 19 minutes against UT Martin on Nov. 29.

## First Collegiate Swat

Olivia Bowling recorded the first block of her collegiate career against the UT Martin Skyhawks, doing so in 20 minutes of play off

the bench. She was one minute off of tying her career-best of 21 set in the 102-69 win over Morehead State on Dec. 12, 2015.

## Next One is 300

Rishonda Napier's next rebound will be the 300th of her career. She will become just the fifth Saluki with over 1,000 career points/300 rebounds/300 assists, joining former teammate Cartaesha Macklin as well as former Saluki standouts Angie Rougeau (1989-93), Kasia McClendon (1993-97), and Molly McDowell (1999-03).

## 4 points to pass Plab

Napier also needs four points to surpass D.D. Plab (1980-84) for seventh on SIU's all-time scoring list. The preseason All-MVC selection has scored 1,378 points in 101 games during her Saluki career.

## In Good Hands with Corrigan

Charlie Corrigan dished out a career-high five assists in the win over Brescia on Nov. 26, upping her assists-to-turnover ratio to 3.75. Not only does that lead the Valley, but it is also the 14th-best ratio in the nation.

## Block Party

Kylie Giebelhausen recorded the 85th block of her career in the win over Brescia- moving her past Mary Berghuis for 4th on SIU's all-time blocks list.

## Career Scoring Record

SIU's career scoring record may once again be in jeopardy. Cartaesha Macklin broke the school record last season, and Rishonda Napier may pass her during the 2016-17 season. Napier is in eighth on SIU's career scoring list, needing 402 points in her final season wearing the maroon and white to pass her former teammate for tops on the all-time list.

1617OVERALLSTATS

RECORD:	OVERALL	HOME	AWAY	NEUTRAL
All Games	3-3	2-0	1-3	0-0
Conference	0-0	0-0	0-0	0-0
Non-conference	3-3	2-0	1-3	0-0

## Player	gp-gs	min	avg	Total		3-Point		F-Throw		Rebounds				pf	dq	a	to	blk	stl	pts	avg
				fg-fga	fg%	3fg-fga	3fg%	ft-fa	ft%	off	def	tot	avg								
32 Kylie Giebelhausen	6-6	186	31.0	31-80	.388	18-43	.419	5-7	.714	7	18	25	4.2	13	1	18	9	8	8	85	14.2
24 Kim Nebo	6-6	148	24.7	34-57	.596	0-0	.000	10-17	.588	22	19	41	6.8	16	0	3	15	2	4	78	13.0
40 Carlie Corrigan	6-6	168	28.0	20-54	.370	13-33	.394	3-4	.750	4	9	13	2.2	5	0	17	6	2	1	56	9.3
13 Rishonda Napier	6-6	179	29.8	17-79	.215	7-36	.194	14-14	1.000	5	13	18	3.0	12	0	26	14	1	6	55	9.2
22 Tiajaney Hawkins	6-2	84	14.0	15-30	.500	2-3	.667	5-10	.500	18	8	26	4.3	13	0	8	1	0	5	37	6.2
34 Nicole Martin	6-0	77	12.8	11-30	.367	0-0	.000	3-5	.600	8	17	25	4.2	6	0	1	4	2	4	25	4.2
23 Kristen Nelson	6-0	55	9.2	5-10	.500	1-3	.333	6-6	1.000	3	6	9	1.5	8	0	10	4	0	3	17	2.8
31 Lauren Hartman	4-4	108	27.0	6-23	.261	1-9	.111	3-6	.500	12	35	47	11.8	11	1	3	2	4	4	16	4.0
03 Olivia Bowling	6-0	93	15.5	4-15	.267	3-10	.300	4-6	.667	0	10	10	1.7	6	0	7	12	1	3	15	2.5
10 Brittney Patrick	5-0	46	9.2	4-11	.364	0-3	.000	4-7	.571	1	10	11	2.2	6	0	6	4	0	3	12	2.4
42 Ashley Hummel	6-0	24	4.0	4-7	.571	0-0	.000	3-6	.500	2	7	9	1.5	2	0	1	0	1	2	11	1.8
15 Caitlyn Claussen	4-0	32	8.0	1-6	.167	0-1	.000	4-4	1.000	3	4	7	1.8	3	0	2	4	0	2	6	1.5
TM TEAM										15	10	25					3				
Southern Illinois	6	1200		152-402	.378	45-141	.319	64-92	.696	100	166	266	44.3	101	2	102	78	21	45	413	68.8
Opponents	6	1200		135-367	.368	19-97	.196	86-118	.729	84	158	242	40.3	97	1	63	83	22	44	375	62.5

Team Statistics	SIU	OPP
SCORING	413	375
Points per game	68.8	62.5
Scoring margin	+6.3	-
FIELD GOALS-ATT	152-402	135-367
Field goal pct	.378	.368
3 POINT FG-ATT	45-141	19-97
3-point FG pct	.319	.196
3-pt FG made per game	7.5	3.2
FREE THROW-ATT	64-92	86-118
Free throw pct	.696	.729
F-Throws made per game	10.7	14.3
REBOUNDS	266	242
Rebounds per game	44.3	40.3
Rebounding margin	+4.0	-
ASSISTS	102	63
Assists per game	17.0	10.5
TURNOVERS	78	83
Turnovers per game	13.0	13.8
Turnover margin	+0.8	-
Assist/turnover ratio	1.3	0.8
STEALS	45	44
Steals per game	7.5	7.3
BLOCKS	21	22
Blocks per game	3.5	3.7
Attendance	974	11383
Home game-Avg/Game	2-487	4-2846
Neutral site-Avg/game		0-0

Date	Opponent	Score	Att.
11/13/16	at Oklahoma	L 48-80	3223
11/17/16	MURRAY STATE	W 70-63	474
11/20/16	at Purdue	W 64-61	5679
11/23/16	at SIUE	L 59-60	834
11/26/16	BRESCIA	W 104-35	500
11/29/16	at UT Martin	L 68-76	1647

\* Conference game

Score by periods	1st	2nd	3rd	4th	Total
Opponents	94	82	109	90	375
Southern Illinois	106	103	105	99	413



# 2016-17 SOUTHERN ILLINOIS WOMEN'S BASKETBALL

## 1516 OVERALL STATS

RECORD:	OVERALL	HOME	AWAY	NEUTRAL
All Games	20-13	10-5	9-7	1-1
Conference	12-6	6-3	6-3	0-0
Non-conference	8-7	4-2	3-4	1-1

## Player	gp-gs	min	avg	Total		3-Point		F-Throw		Rebounds				pf	dq	a	to	blk	stl	pts	avg
				fg-fga	fg%	3fg-fga	3fg%	ft-fa	ft%	off	def	tot	avg								
13 Rishonda Napier	33-33	1125	34.1	179-473	.378	85-232	.366	67-83	.807	13	77	90	2.7	42	0	116	94	10	30	510	15.5
10 Cartaesha Macklin	33-32	1077	32.6	159-354	.449	32-92	.348	105-116	.905	80	93	173	5.2	88	4	118	72	9	44	455	13.8
00 Dyana Pierre	28-27	820	29.3	141-300	.470	0-1	.000	63-121	.521	125	188	313	11.2	83	1	31	61	43	32	345	12.3
32 Kylie Giebelhausen	33-33	1079	32.7	109-288	.378	60-176	.341	24-30	.800	37	114	151	4.6	57	1	77	53	47	39	302	9.2
40 Carlie Corrigan	33-6	538	16.3	61-189	.323	30-96	.313	8-13	.615	18	52	70	2.1	32	0	29	23	1	10	160	4.8
24 Kim Nebo	33-24	644	19.5	67-139	.482	0-0	.000	24-57	.421	75	99	174	5.3	58	1	18	39	7	15	158	4.8
35 Celina VanHyfte	33-4	624	18.9	60-148	.405	2-11	.182	29-53	.547	61	86	147	4.5	70	1	20	45	7	14	151	4.6
33 Azia Washington	30-6	292	9.7	42-112	.375	5-23	.217	14-18	.778	32	60	92	3.1	28	0	6	22	4	6	103	3.4
03 Olivia Bowling	29-0	171	5.9	14-29	.483	4-13	.308	7-8	.875	3	17	20	0.7	18	0	17	17	0	6	39	1.3
02 Blair Stephenson	32-0	215	6.7	7-35	.200	2-19	.105	15-19	.789	10	12	22	0.7	8	0	11	17	0	3	31	1.0
22 Tiajaney Hawkins	5-0	34	6.8	6-11	.545	0-0	.000	3-9	.333	2	3	5	1.0	3	0	3	2	0	0	15	3.0
42 Ashley Hummel	10-0	56	5.6	6-16	.375	0-0	.000	3-7	.429	3	9	12	1.2	13	0	0	3	2	0	15	1.5
TM TEAM										62	61	123					12				
Southern Illinois	33	6675		851-2094	.406	220-663	.332	362-534	.678	521	871	1392	42.2	500	8	446	460	130	199	2284	69.2
Opponents	33	6675		842-2083	.404	166-520	.319	342-499	.685	451	794	1245	37.7	511	5	403	441	94	254	2192	66.4

Team Statistics	SIU	OPP	Date	Opponent	Score	Att.
SCORING	2284	2192	@ 11/13/15	at #22 DePaul	L 61-105	2753
Points per game	69.2	66.4	11/20/15	SIENA	W 73-54	305
Scoring margin	+2.8	-	11/21/15	TENNESSEE STATE	Wot 79-70	231
FIELD GOALS-ATT	851-2094	842-2083	11/25/15	UT MARTIN	L 63-70	516
Field goal pct	.406	.404	11/29/15	at Memphis	L 58-61	472
3 POINT FG-ATT	220-663	166-520	12/02/15	at Murray State	W 70-57	190
3-point FG pct	.332	.319	12/04/15	SIUE	W 71-57	1578
3-pt FG made per game	6.7	5.0	12/08/15	at Illinois	L 64-78	1317
FREE THROW-ATT	362-534	342-499	12/12/15	MOREHEAD STATE	W 102-69	800
Free throw pct	.678	.685	12/19/15	at Mercer	W 55-52	446
F-Throws made per game	11.0	10.4	12/22/15	at Southeast Missouri State	W 87-72	830
REBOUNDS	1392	1245	12/28/15	MARSHALL	L 55-61	400
Rebounds per game	42.2	37.7	* 01/01/16	at Drake University	W 77-67	2024
Rebounding margin	+4.5	-	* 01/03/16	at Northern Iowa	W 65-60	1282
ASSISTS	446	403	* 01/08/16	BRADLEY	W 75-49	732
Assists per game	13.5	12.2	* 01/10/16	LOYOLA CHICAGO	Lot 68-69	619
TURNOVERS	460	441	* 01/16/16	EVANSVILLE	W 74-56	729
Turnovers per game	13.9	13.4	* 01/22/16	at Wichita State	L 48-57	1783
Turnover margin	-0.6	-	* 01/24/16	at Missouri State	L 77-82	3183
Assist/turnover ratio	1.0	0.9	* 01/29/16	INDIANA STATE	W 76-64	619
STEALS	199	254	* 01/31/16	ILLINOIS STATE	W 76-71	789
Steals per game	6.0	7.7	* 02/05/16	at Loyola Chicago	L 59-83	437
BLOCKS	130	94	* 02/07/16	at Bradley	W 65-51	676
Blocks per game	3.9	2.8	* 02/14/16	at Evansville	W 66-63	456
Attendance	9921	19010	* 02/19/16	MISSOURI STATE	W 69-61	754
Home game-Avg/Game	15-661	16-1188	* 02/21/16	WICHITA STATE	W 80-66	616
Neutral site-Avg/game		2-0	* 02/25/16	at Illinois State	W 68-55	572
			* 02/28/16	at Indiana State	W 62-58	1895
			* 03/03/16	NORTHERN IOWA	L 64-73	594
			* 03/05/16	DRAKE UNIVERSITY	L 64-71	639
			03/11/16	vs Loyola Chicago	W 73-64	
			03/12/16	vs Northern Iowa	L 43-67	
			03/17/16	at Western Illinois	Lot 97-99	694

\* Conference game

Score by periods	1st	2nd	3rd	4th	OT	Total
Opponents	526	510	557	568	31	2192
Southern Illinois	540	513	614	580	37	2284

# 2016-17 SOUTHERN ILLINOIS WOMEN'S BASKETBALL

## 1516MVCSTATS

RECORD:	OVERALL	HOME	AWAY	NEUTRAL
All Games	12-6	6-3	6-3	0-0
Conference	12-6	6-3	6-3	0-0
Non-conference	0-0	0-0	0-0	0-0

## Player	gp-gs	min	avg	Total		3-Point		F-Throw		Rebounds				pf	dq	a	to	blk	stl	pts	avg
				fg-fga	fg%	3fg-fga	3fg%	ft-fa	ft%	off	def	tot	avg								
13 Rishonda Napier	18-18	613	34.1	97-273	.355	42-130	.323	32-40	.800	8	40	48	2.7	22	0	67	43	6	20	268	14.9
10 Cartaesha Macklin	18-18	599	33.3	91-201	.453	18-51	.353	58-66	.879	42	44	86	4.8	44	2	63	43	1	22	258	14.3
32 Kylie Giebelhausen	18-18	574	31.9	63-152	.414	38-97	.392	13-18	.722	16	52	68	3.8	35	1	38	26	27	22	177	9.8
00 Dyana Pierre	14-13	404	28.9	71-144	.493	0-1	.000	24-48	.500	66	97	163	11.6	40	0	14	30	12	16	166	11.9
24 Kim Nebo	18-16	426	23.7	41-86	.477	0-0	.000	14-32	.438	44	62	106	5.9	41	1	11	28	5	10	96	5.3
35 Celina VanHyfte	18-0	360	20.0	34-83	.410	0-4	.000	17-24	.708	35	42	77	4.3	45	1	11	25	2	11	85	4.7
40 Carlie Corrigan	18-2	249	13.8	30-91	.330	19-53	.358	4-8	.500	7	26	33	1.8	11	0	13	8	0	4	83	4.6
33 Azia Washington	16-5	164	10.3	26-64	.406	3-9	.333	6-10	.600	22	31	53	3.3	15	0	2	11	3	4	61	3.8
03 Olivia Bowling	18-0	102	5.7	7-16	.438	2-8	.250	5-6	.833	0	12	12	0.7	10	0	9	11	0	3	21	1.2
02 Blair Stephenson	18-0	110	6.1	3-19	.158	1-11	.091	5-8	.625	6	7	13	0.7	5	0	8	8	0	0	12	0.7
42 Ashley Hummel	5-0	24	4.8	3-8	.375	0-0	.000	0-0	.000	3	1	4	0.8	5	0	0	1	0	0	6	1.2
Team										36	42	78					7				
Southern Illinois	18	3625		466-1137	.410	123-364	.338	178-260	.685	285	456	741	41.2	273	5	236	241	56	112	1233	68.5
Opponents	18	3625		447-1099	.407	91-281	.324	171-254	.673	241	423	664	36.9	271	3	209	245	50	129	1156	64.2

## 1516NONCONFERENCESTATS

RECORD:	OVERALL	HOME	AWAY	NEUTRAL
All Games	8-7	4-2	3-4	1-1
Conference	0-0	0-0	0-0	0-0
Non-conference	8-7	4-2	3-4	1-1

## Player	gp-gs	min	avg	Total		3-Point		F-Throw		Rebounds				pf	dq	a	to	blk	stl	pts	avg
				fg-fga	fg%	3fg-fga	3fg%	ft-fa	ft%	off	def	tot	avg								
13 Rishonda Napier	15-15	512	34.1	82-200	.410	43-102	.422	35-43	.814	5	37	42	2.8	20	0	49	51	4	10	242	16.1
10 Cartaesha Macklin	15-14	478	31.9	68-153	.444	14-41	.341	47-50	.940	38	49	87	5.8	44	2	55	29	8	22	197	13.1
00 Dyana Pierre	14-14	416	29.7	70-156	.449	0-0	.000	39-73	.534	59	91	150	10.7	43	1	17	31	31	16	179	12.8
32 Kylie Giebelhausen	15-15	505	33.7	46-136	.338	22-79	.278	11-12	.917	21	62	83	5.5	22	0	39	27	20	17	125	8.3
40 Carlie Corrigan	15-4	289	19.3	31-98	.316	11-43	.256	4-5	.800	11	26	37	2.5	21	0	16	15	1	6	77	5.1
35 Celina VanHyfte	15-4	264	17.6	26-65	.400	2-7	.286	12-29	.414	26	44	70	4.7	25	0	9	20	5	3	66	4.4
24 Kim Nebo	15-8	218	14.5	26-53	.491	0-0	.000	10-25	.400	31	37	68	4.5	17	0	7	11	2	5	62	4.1
33 Azia Washington	14-1	128	9.1	16-48	.333	2-14	.143	8-8	1.000	10	29	39	2.8	13	0	4	11	1	2	42	3.0
02 Blair Stephenson	14-0	105	7.5	4-16	.250	1-8	.125	10-11	.909	4	5	9	0.6	3	0	3	9	0	3	19	1.4
03 Olivia Bowling	11-0	69	6.3	7-13	.538	2-5	.400	2-2	1.000	3	5	8	0.7	8	0	8	6	0	3	18	1.6
22 Tiajaney Hawkins	5-0	34	6.8	6-11	.545	0-0	.000	3-9	.333	2	3	5	1.0	3	0	3	2	0	0	15	3.0
42 Ashley Hummel	5-0	32	6.4	3-8	.375	0-0	.000	3-7	.429	0	8	8	1.6	8	0	0	2	2	0	9	1.8
Team										26	19	45					5				
Southern Illinois	15	3050		385-957	.402	97-299	.324	184-274	.672	236	415	651	43.4	227	3	210	219	74	87	1051	70.1
Opponents	15	3050		395-984	.401	75-239	.314	171-245	.698	210	371	581	38.7	240	2	194	196	44	125	1036	69.1

Score by Period	1st	2nd	3rd	4th	OT	Total
Opponents	250	251	245	270	20	1036
Southern Illinois	244	243	283	254	27	1051

## 1617HOMESTATS

RECORD:	OVERALL	HOME	AWAY	NEUTRAL
All Games	2-0	2-0	0-0	0-0
Conference	0-0	0-0	0-0	0-0
Non-conference	2-0	2-0	0-0	0-0

## Player	gp-gs	min	avg	Total		3-Point		F-Throw		Rebounds				pf	dq	a	to	blk	stl	pts	avg
				fg-fga	fg%	3fg-fga	3fg%	ft-fa	ft%	off	def	tot	avg								
32 Kylie Giebelhausen	2-2	51	25.5	10-22	.455	6-11	.545	2-4	.500	1	6	7	3.5	0	0	5	3	3	3	28	14.0
24 Kim Nebo	2-2	41	20.5	9-17	.529	0-0	.000	5-6	.833	9	6	15	7.5	2	0	0	4	1	0	23	11.5
22 Tiajaney Hawkins	2-1	39	19.5	9-17	.529	1-1	1.000	2-3	.667	8	4	12	6.0	7	0	5	0	0	3	21	10.5
34 Nicole Martin	2-0	34	17.0	8-18	.444	0-0	.000	3-5	.600	6	11	17	8.5	2	0	0	2	2	1	19	9.5
13 Rishonda Napier	2-2	51	25.5	5-20	.250	4-12	.333	2-2	1.000	2	5	7	3.5	4	0	8	2	0	3	16	8.0
40 Carlie Corrigan	2-2	39	19.5	5-15	.333	3-9	.333	1-2	.500	2	1	3	1.5	1	0	9	0	1	1	14	7.0
23 Kristen Nelson	2-0	27	13.5	4-6	.667	1-2	.500	4-4	1.000	1	2	3	1.5	4	0	5	0	0	3	13	6.5
03 Olivia Bowling	2-0	29	14.5	3-6	.500	2-4	.500	3-4	.750	0	3	3	1.5	1	0	2	3	0	2	11	5.5
42 Ashley Hummel	2-0	14	7.0	4-6	.667	0-0	.000	2-4	.500	2	5	7	3.5	0	0	0	0	1	1	10	5.0
10 Brittney Patrick	2-0	24	12.0	2-5	.400	0-0	.000	4-5	.800	1	4	5	2.5	1	0	5	2	0	0	8	4.0
15 Caitlyn Claussen	2-0	24	12.0	1-6	.167	0-1	.000	4-4	1.000	3	4	7	3.5	2	0	2	2	0	2	6	3.0
31 Lauren Hartman	1-1	27	27.0	2-6	.333	1-2	.500	0-0	.000	3	9	12	12.0	3	0	1	0	0	2	5	5.0
Team										3	3	6					1				
Southern Illinois	2	400		62-144	.431	18-42	.429	32-43	.744	41	63	104	52.0	27	0	42	19	8	21	174	87.0
Opponents	2	400		35-118	.297	8-44	.182	20-28	.714	24	47	71	35.5	37	1	14	35	2	10	98	49.0

Score by Period	1st	2nd	3rd	4th	Total
Opponents	26	25	27	20	98
Southern Illinois	39	39	50	46	174

## 1617AWAYSTATS

RECORD:	OVERALL	HOME	AWAY	NEUTRAL
All Games	1-3	0-0	1-3	0-0
Conference	0-0	0-0	0-0	0-0
Non-conference	1-3	0-0	1-3	0-0

## Player	gp-gs	min	avg	Total		3-Point		F-Throw		Rebounds				pf	dq	a	to	blk	stl	pts	avg
				fg-fga	fg%	3fg-fga	3fg%	ft-fa	ft%	off	def	tot	avg								
32 Kylie Giebelhausen	4-4	135	33.8	21-58	.362	12-32	.375	3-3	1.000	6	12	18	4.5	13	1	13	6	5	5	57	14.3
24 Kim Nebo	4-4	107	26.8	25-40	.625	0-0	.000	5-11	.455	13	13	26	6.5	14	0	3	11	1	4	55	13.8
40 Carlie Corrigan	4-4	129	32.3	15-39	.385	10-24	.417	2-2	1.000	2	8	10	2.5	4	0	8	6	1	0	42	10.5
13 Rishonda Napier	4-4	128	32.0	12-59	.203	3-24	.125	12-12	1.000	3	8	11	2.8	8	0	18	12	1	3	39	9.8
22 Tiajaney Hawkins	4-1	45	11.3	6-13	.462	1-2	.500	3-7	.429	10	4	14	3.5	6	0	3	1	0	2	16	4.0
31 Lauren Hartman	3-3	81	27.0	4-17	.235	0-7	.000	3-6	.500	9	26	35	11.7	8	1	2	2	4	2	11	3.7
34 Nicole Martin	4-0	43	10.8	3-12	.250	0-0	.000	0-0	.000	2	6	8	2.0	4	0	1	2	0	3	6	1.5
03 Olivia Bowling	4-0	64	16.0	1-9	.111	1-6	.167	1-2	.500	0	7	7	1.8	5	0	5	9	1	1	4	1.0
10 Brittney Patrick	3-0	22	7.3	2-6	.333	0-3	.000	0-2	.000	0	6	6	2.0	5	0	1	2	0	3	4	1.3
23 Kristen Nelson	4-0	28	7.0	1-4	.250	0-1	.000	2-2	1.000	2	4	6	1.5	4	0	5	4	0	0	4	1.0
42 Ashley Hummel	4-0	10	2.5	0-1	.000	0-0	.000	1-2	.500	0	2	2	0.5	2	0	1	0	0	1	1	0.3
15 Caitlyn Claussen	2-0	8	4.0	0-0	.000	0-0	.000	0-0	.000	0	0	0	0.0	1	0	0	2	0	0	0	0.0
Team										12	7	19					2				
Southern Illinois	4	800		90-258	.349	27-99	.273	32-49	.653	59	103	162	40.5	74	2	60	59	13	24	239	59.8
Opponents	4	800		100-249	.402	11-53	.208	66-90	.733	60	111	171	42.8	60	0	49	48	20	34	277	69.3

Score by Period	1st	2nd	3rd	4th	Total
Opponents	68	57	82	70	277
Southern Illinois	67	64	55	53	239

## 2016-17 SIU GAME-BY-GAME

### Saluki Women's Basketball Southern Illinois Game by Game Comparison All Games

Opponent	1st	2nd	Score	Mar	Total FG	FG Pct	3-Pointers	3FG Pct	Free Throws	FT Pct	Rebounds	Assist	T/Over	Block	Steal	Fouls
Oklahoma	32/38	16/42	48-80	(-32)	19-75/28-64	.253/.438	5-30/1-16	.167/.063	5-12/23-28	.417/.821	46/49 (-3)	8/9	18/13	1/9	5/11	18/16
MURRAY STATE	33/33	37/30	70-63	+7	25-69/25-68	.362/.368	7-20/6-23	.350/.261	13-18/7-9	.722/.778	50/41 +9	13/10	13/12	5/2	8/8	14/19
Purdue	38/26	26/35	64-61	+3	23-60/22-65	.383/.338	6-18/1-9	.333/.111	12-15/16-20	.800/.800	42/39 +3	15/12	16/9	6/7	5/9	18/17
SIUE	23/26	36/34	59-60	(-1)	21-56/20-62	.375/.323	9-23/2-9	.391/.222	8-13/18-25	.615/.720	37/47 (-10)	20/10	11/13	2/1	8/5	18/15
BRESCIA	45/18	59/17	104-35	+69	37-75/10-50	.493/.200	11-22/2-21	.500/.095	19-25/13-19	.760/.684	54/30 +24	29/4	6/23	3/0	13/2	13/18
UT Martin	38/35	30/41	68-76	(-8)	27-67/30-58	.403/.517	7-28/7-19	.250/.368	7-9/9-17	.778/.529	37/36 +1	17/18	14/13	4/3	6/9	20/13

Note: Game totals are displayed in the format TEAM/OPPONENT for each category



# 2016-17 SOUTHERN ILLINOIS WOMEN'S BASKETBALL

## 2016-17 SIU GAME-BY-GAME HIGHS

Opponent	Date	Score	Points	Rebounds	Assists	Steals	Blocked Shots
at Oklahoma	11/13/16	48-80	(14)Rishonda Napier	(7)Kylie Giebelhausen (7)Lauren Hartman	(2)Carlie Corrigan (2)Kylie Giebelhausen	(1)Ashley Hummel (1)Kylie Giebelhausen (1)Kim Nebo (1)Brittney Patrick (1)Nicole Martin	(1)Kylie Giebelhausen
MURRAY STATE	11/17/16	70-63	(22)Kylie Giebelhausen	(12)Lauren Hartman	(6)Rishonda Napier	(2)Kylie Giebelhausen (2)Lauren Hartman (2)Rishonda Napier	(2)Kylie Giebelhausen (2)Nicole Martin
at Purdue	11/20/16	64-61	(18)Carlie Corrigan	(16)Lauren Hartman	(8)Rishonda Napier	(2)Kim Nebo (2)Kylie Giebelhausen	(3)Lauren Hartman
at SIUE	11/23/16	59-60	(19)Kim Nebo	(12)Lauren Hartman	(6)Rishonda Napier	(2)Tiajaney Hawkins (2)Kylie Giebelhausen	(1)Kylie Giebelhausen (1)Lauren Hartman
BRESCIA	11/26/16	104-35	(17)Nicole Martin	(12)Nicole Martin	(5)Tiajaney Hawkins (5)Carlie Corrigan (5)Kristen Nelson	(3)Tiajaney Hawkins (3)Kristen Nelson	(1)Kim Nebo (1)Kylie Giebelhausen (1)Ashley Hummel
at UT Martin	11/29/16	68-76	(19)Kim Nebo	(8)Kim Nebo	(4)Kylie Giebelhausen (4)Rishonda Napier	(2)Nicole Martin (2)Rishonda Napier	(1)Kylie Giebelhausen (1)Carlie Corrigan (1)Kim Nebo (1)Olivia Bowling

GAME ONE

Southern Illinois vs. Oklahoma  
11/13/2016 12:30 p.m. at Norman, Okla. (Lloyd Noble Center)

Southern Illinois 48 (0-1)														
#	Player	Total		3-Ptr		Rebounds			PF	TP	A	TO	Bk	Stl
		FG-FGA	FT-FTA	FG-FGA	FT-FTA	Off	Def	Tot						
24	Kim Nebo	F 3-5	0-0	0-0	2	2	4	4	6	0	3	0	1	14
31	Lauren Hartman	F 1-5	0-3	3-4	3	4	7	1	5	0	0	0	0	23
13	Rishonda Napier	G 6-22	2-10	0-0	2	2	4	4	14	0	4	0	0	29
32	Kylie Giebelhausen	G 5-18	2-8	0-0	4	3	7	1	12	2	1	1	1	33
40	Carlie Corrigan	G 1-9	0-4	0-0	1	1	2	1	2	2	2	0	0	28
03	Olivia Bowling	0-4	0-3	1-2	0	3	3	0	1	1	3	0	0	20
10	Brittney Patrick	0-1	0-0	0-2	0	0	0	1	0	0	1	0	1	7
15	Caitlyn Claussen	0-0	0-0	0-0	0	0	0	1	0	0	0	0	0	7
22	Tiajaney Hawkins	3-6	1-2	1-4	3	2	5	0	8	0	1	0	0	10
23	Kristen Nelson	0-1	0-0	0-0	1	2	3	2	0	1	2	0	0	13
34	Nicole Martin	0-0	0-0	0-0	0	3	3	1	0	1	1	0	1	10
42	Ashley Hummel	0-1	0-0	0-0	0	1	1	2	0	1	0	0	1	6
TEAM					7	0	7							
Totals		19-75	5-30	5-12	23	23	46	18	48	8	18	1	5	200
FG % 1st Half: 14-47		29.8%	2nd Half: 5-28	17.9%	Game: 19-75		25.3%	Deadball						
3FG % 1st Half: 3-21		14.3%	2nd Half: 2-9	22.2%	Game: 5-30		16.7%	Rebounds						
FT % 1st Half: 1-2		50.0%	2nd Half: 4-10	40.0%	Game: 5-12		41.7%	Totals						
Oklahoma 80 (1-0)														
#	Player	Total		3-Ptr		Rebounds			PF	TP	A	TO	Bk	Stl
		FG-FGA	FT-FTA	FG-FGA	FT-FTA	Off	Def	Tot						
00	Vionise Pierre-Louis	C 6-8	0-0	6-6	3	3	6	3	18	0	2	2	2	16
10	Peyton Little	C 1-5	0-3	2-3	3	2	5	1	4	1	1	1	1	22
21	Gabbi Ortiz	G 2-7	0-2	2-2	4	3	7	1	6	1	1	0	1	21
23	Maddie Manning	G 1-5	0-3	2-2	0	2	2	3	4	1	0	0	1	15
25	Gloia Carter	G 5-11	0-2	6-7	1	7	8	3	16	2	0	1	1	23
01	LaNesia Williams	2-4	0-1	0-0	1	1	2	1	4	0	4	0	2	14
02	Tona Edwards	3-7	0-0	1-3	1	1	2	0	7	1	1	0	2	15
03	Derica Wyatt	2-6	1-5	0-0	0	0	0	0	5	0	0	0	0	15
12	Gleyssa Penzo	1-2	0-0	0-0	0	4	4	0	2	3	1	1	0	12
22	Shaya Kellings	1-1	0-0	0-0	0	0	0	0	2	0	0	0	0	6
24	Ijeoma Odimegwe	2-2	0-0	0-2	0	2	2	0	4	0	0	1	0	5
30	McKenna Treece	0-0	0-0	0-0	1	5	6	1	0	0	1	0	0	14
32	Nancy Mulkey	1-3	0-0	0-0	0	1	1	1	2	0	0	3	0	10
33	Chelsea Dungee	1-3	0-0	4-4	0	1	1	0	6	0	2	0	1	12
TEAM					1	2	3							
Totals		28-64	1-16	23-28	15	34	49	16	80	9	13	9	11	200
FG % 1st Half: 13-35		37.1%	2nd Half: 15-29	51.7%	Game: 28-64		43.8%	Deadball						
3FG % 1st Half: 0-9		0.0%	2nd Half: 1-7	14.3%	Game: 1-16		6.3%	Rebounds						
FT % 1st Half: 12-15		80.0%	2nd Half: 11-13	84.6%	Game: 23-28		82.1%	Totals						

Officials: Brian Garland, Chaney Muench, Nick Marshall  
Technical Fouls: Southern Illinois-None, Oklahoma-None.  
Norman, Okla. (Lloyd Noble Center) Attendance: 3223  
Est. Attendance: 2438

Score by Period	1st	2nd	3rd	4th	Total
Southern Illinois	14	18	2	14	48
Oklahoma	17	21	23	19	80

Last FG - SIU 4th-00:37,OU 4th-00:47.  
Largest lead - SIU by 1 2nd-08:47, OU by 39 4th-02:36  
SIU led for 00:58. OU led for 38:22. Game was tied for 00:35.

Points	In	Off	2nd	Fast
SIU	0	9	16	0
OU	0	16	17	32

Score Tied - 1 times  
Lead Changed - 4 times

GAME TWO

Murray State vs. Southern Illinois  
11/17/2016 6:00 p.m. at Carbondale, IL

Murray State 63 (2-1)														
#	Player	Total		3-Ptr		Rebounds			PF	TP	A	TO	Bk	Stl
		FG-FGA	FT-FTA	FG-FGA	FT-FTA	Off	Def	Tot						
20	Ke'Shuan James	F 8-15	0-0	4-5	3	6	9	3	20	2	3	0	2	31
30	Kyra Gullede	F 3-7	0-0	0-0	7	4	11	5	6	2	1	2	0	29
34	Abria Gullede	F 1-12	1-8	0-0	0	3	3	3	3	3	1	0	0	30
05	Jasmine Borders	G 6-13	4-7	0-0	0	3	3	2	16	1	2	0	3	38
23	LeAsia Wright	G 4-14	1-6	2-2	3	4	7	4	11	2	2	0	2	34
04	Taylor Reese	1-2	0-0	0-0	1	2	3	1	2	0	2	0	0	7
13	Bria Bethae	1-4	0-2	1-2	1	1	2	1	3	0	1	0	1	19
25	Mary Jones	1-1	0-0	0-0	0	2	2	0	2	0	0	0	0	12
TEAM					2	1	1							
Totals		25-68	6-23	7-9	15	26	41	19	63	10	12	2	8	200
FG % 1st Half: 14-35		40.0%	2nd Half: 11-33	33.3%	Game: 25-68		36.8%	Deadball						
3FG % 1st Half: 3-11		27.3%	2nd Half: 3-12	25.0%	Game: 6-23		26.1%	Rebounds						
FT % 1st Half: 2-3		66.7%	2nd Half: 5-6	83.3%	Game: 7-9		77.8%	Totals						
Southern Illinois 70 (1-1)														
#	Player	Total		3-Ptr		Rebounds			PF	TP	A	TO	Bk	Stl
		FG-FGA	FT-FTA	FG-FGA	FT-FTA	Off	Def	Tot						
24	Kim Nebo	F 6-12	0-0	5-6	7	4	11	2	17	0	3	0	0	30
40	Carlie Corrigan	F 1-8	0-3	0-0	2	1	3	1	2	4	0	1	1	23
31	Lauren Hartman	C 2-6	1-2	0-0	3	9	12	3	5	1	0	0	2	27
13	Rishonda Napier	G 1-14	1-7	2-2	2	2	4	1	5	6	2	0	2	38
32	Kylie Giebelhausen	G 8-15	4-7	2-4	1	5	6	0	22	1	2	2	2	37
03	Olivia Bowling	2-3	1-1	3-4	0	2	2	1	8	0	3	0	1	15
10	Brittney Patrick	0-0	0-0	0-0	0	0	0	0	0	1	1	0	0	4
15	Caitlyn Claussen	0-0	0-0	0-0	0	0	0	0	1	0	0	0	0	1
22	Tiajaney Hawkins	4-7	0-0	1-1	3	1	4	4	9	0	0	0	0	10
23	Kristen Nelson	0-0	0-0	0-0	0	0	0	0	1	0	0	0	0	4
34	Nicole Martin	1-4	0-0	0-1	1	4	5	0	2	0	2	2	0	10
42	Ashley Hummel	0-0	0-0	0-0	0	0	0	0	0	0	0	0	0	1
TEAM					2	1	3							
Totals		25-69	7-20	13-18	21	29	50	14	70	13	13	5	8	200
FG % 1st Half: 13-34		38.2%	2nd Half: 12-35	34.3%	Game: 25-69		36.2%	Deadball						
3FG % 1st Half: 4-8		50.0%	2nd Half: 3-12	25.0%	Game: 7-20		35.0%	Rebounds						
FT % 1st Half: 3-4		75.0%	2nd Half: 10-14	71.4%	Game: 13-18		72.2%	Totals						

Officials:  
Technical Fouls: Murray State-None, Southern Illinois-None.  
Carbondale, IL Attendance: 474

Score by Period	1st	2nd	3rd	4th	Total
Murray State	17	18	19	11	63
Southern Illinois	16	17	21	16	70

Last FG - MUR 4th-02:28,SIU 4th-03:32.  
Largest lead - MUR by 9 3rd-08:33, SIU by 8 4th-00:38

MUR led for 19:08. SIU led for 15:48. Game was tied for 05:04.

Points	In	Off	2nd	Fast
MUR	28	15	17	12
SIU	32	10	26	19

Score Tied - 5 times  
Lead Changed - 14 times

GAME THREE

Southern Illinois vs. Purdue  
11/20/2016 2:00 p.m. at Mackey Arena - West Lafayette, IN

Southern Illinois 64 (2-1)														
#	Player	Total FG-FGA	3-Ptr FG-FGA	FT-FTA	Off	Def	Tot	PF	TP	A	TO	Bk	Stl	Min
24	Kim Nebo	F 5-11	0-0	1-4	2	5	7	2	11	2	3	0	2	35
31	Lauren Hartman	C 2-5	0-2	0-0	3	13	16	5	4	1	0	3	1	31
13	Rishonda Napier	G 1-15	0-4	6-6	1	3	4	2	8	6	1	0	0	32
32	Kylie Giebelhausen	G 5-11	2-6	3-3	1	2	3	15	2	2	2	2	39	
40	Carlie Corrigan	G 7-11	4-6	0-0	0	1	1	1	18	0	2	0	0	35
03	Olivia Bowling	0-1	0-0	0-0	0	1	1	2	0	1	1	0	0	10
22	Tianajay Hawkins	1-3	0-0	0-0	2	1	3	2	2	0	0	0	0	7
23	Kristen Nelson	1-1	0-0	2-2	0	0	1	0	4	1	0	0	0	5
34	Nicole Martin	1-2	0-0	0-0	0	1	1	2	0	0	0	0	0	4
42	Ashley Hummel	0-0	0-0	0-0	0	0	0	0	0	0	0	0	0	2
TEAM					4	2	6				2			
Totals		23-60	6-18	12-15	13	29	42	18	64	15	16	6	5	200
FG % 1st Half: 15-33		45.5%	2nd Half: 8-27	29.6%	Game: 23-60				38.3%				Deadball	
3FG % 1st Half: 4-10		40.0%	2nd Half: 2-8	25.0%	Game: 6-18				33.3%				Rebounds	
FT % 1st Half: 4-7		57.1%	2nd Half: 8-8	100.0%	Game: 12-15				80.0%				3,1	

Purdue 61 (1-3)														
#	Player	Total FG-FGA	3-Ptr FG-FGA	FT-FTA	Off	Def	Tot	PF	TP	A	TO	Bk	Stl	Min
13	Bridget Perry	F 5-10	0-1	0-0	1	5	6	2	10	2	2	3	2	30
20	Dominique McBrayde	F 0-10	0-0	0-0	5	3	8	3	0	2	1	0	1	29
01	Ashley Morrisseyette	G 10-19	1-3	7-8	3	4	7	3	28	4	2	1	4	39
10	Tiara Murphy	F 1-4	0-0	0-0	0	1	1	2	0	0	0	0	0	9
10	Andreana Keys	G 2-7	0-1	4-4	1	3	4	8	1	4	0	0	0	25
11	Dominique Oden	2-8	0-3	2-2	2	3	5	0	6	2	0	0	0	31
12	Nora Kiesler	1-2	0-0	0-0	1	0	1	0	2	0	0	0	0	6
32	Ae'Rianna Harris	0-2	0-0	1-2	2	2	4	4	1	0	0	2	0	14
40	Lamina Cooper	1-3	0-0	2-4	0	0	0	0	4	1	0	1	2	17
TEAM					1	2	3							
Totals		22-65	1-9	16-20	16	23	39	16	61	12	9	7	9	200
FG % 1st Half: 11-38		28.9%	2nd Half: 11-27	40.7%	Game: 22-65				33.8%				Deadball	
3FG % 1st Half: 1-5		20.0%	2nd Half: 0-4	0.0%	Game: 1-9				11.1%				Rebounds	
FT % 1st Half: 3-4		75.0%	2nd Half: 13-16	81.3%	Game: 16-20				80.0%				1,1	

## GAME FIVE

Brescia vs. Southern Illinois  
11/26/2016 2:00 p.m. at Carbondale, IL

Brescia 35 (1-8)

Prescia 35 (1-4)															
##	Player	Total	3-Ptr			Rebounds			PF	TP	A	TO	Blk	Stl	Min
		FG	FGA	FG	FGA	FT	FTA	Off	Def	Tot					
05	Kelsey Kirkpatrick	*	0-6	0-4	0-0	0	2	2	1	0	0	4	0	1	36
11	Alexis Hodges	*	1-5	0-2	0-0	0	4	4	1	2	1	0	0	0	21
12	Aaliyah Rodgers	*	1-5	0-0	1-2	1	3	4	4	3	1	3	0	0	19
24	Catherine Dunn	*	5-12	1-4	7-8	2	3	5	3	18	1	3	0	0	36
33	Shebli Samsil	*	1-11	1-10	3-3	1	1	2	3	6	0	1	0	0	30
14	Katie Cheek		0-2	0-0	1-2	0	0	0	2	1	0	2	0	0	17
21	Alicia Salazar		1-6	0-1	0-0	0	1	1	2	2	0	6	0	0	21
23	Jayde Robinson		1-3	0-0	1-4	2	4	6	2	3	1	2	0	1	20
TEAM								3	3	6					
Totals			10-50	2-21	13-19	9	21	30	18	35	4	23	0	2	200
FG % 1st Half: 6-27		22.2%	2nd Half: 4-23		17.4%	Game: 10-50		20.0%		Deadball					
3FG % 1st Half: 1-10		10.0%	2nd Half: 1-11		9.1%	Game: 2-21		9.5%		Rebounds					
FT % 1st Half: 5-5		100.0%	2nd Half: 8-14		57.1%	Game: 13-19		68.4%							

Southern Illinois 104 (3-2)

Southern Illinois 104 (3-2)		Total	3-Ptr	Rebounds											
##	Player	FG-FGA	FG-FGA	FT-FTA	Off	Def	Tot	PF	TP	A	TO	Blk	Stl	Min	
22	Tiajaney Hawkins	F	5-10	1-1	1-2	5	3	8	3	12	5	0	0	3	29
24	Kim Nebo	F	3-5	0-0	0-0	2	2	4	0	6	0	1	1	0	11
40	Carlie Corrigan	F	4-7	3-6	1-2	0	0	0	0	12	5	0	0	0	16
13	Rishonda Napier	G	4-6	3-5	0-0	0	3	3	3	11	2	0	0	1	13
32	Kylie Giebelhausen	G	2-7	2-4	0-0	0	1	1	0	6	4	1	1	1	14
03	Olivia Bowling		1-3	1-3	0-0	0	1	1	0	3	2	0	0	1	14
10	Brittney Patrick		2-5	0-0	4-5	1	4	5	1	8	4	1	0	0	20
15	Caitlyn Claussen		1-6	0-1	4-4	3	4	7	1	6	2	2	0	2	23
23	Kristen Nelson		4-6	1-2	4-4	1	2	3	3	13	5	0	0	3	23
34	Nicole Martin		7-14	0-0	3-4	5	7	12	2	17	0	0	0	1	24
42	Ashley Hummel		4-6	0-0	2-4	2	5	7	0	10	0	0	1	1	13
TEAM						1	2	3			1				
Totals			37-75	11-22	19-25	20	34	54	13	104	29	6	3	13	200
FG % 1st Half: 17-38		44.7%	2nd Half: 20-37		54.1%	Game: 37-75		49.3%							
3FG % 1st Half: 6-16		37.5%	2nd Half: 5-6		83.3%	Game: 11-22		50.0%							Deadball
FT % 1st Half: 5-8		62.5%	2nd Half: 14-17		82.4%	Game: 19-25		76.0%							Rebounds

Officials: Gina Cross, Natalie Sago, Josh Hall  
Technical Fouls: Brescia-None. Southern Illinois-None.  
SIU Arena, Carbondale, IL Attendance: 500

Score by Period	1st	2nd	3rd	4th	Total
Brescia	9	9	8	9	35
Southern Illinois	23	22	29	30	104

Last FG - BRE 4th-08:55, SIU 4th-00:37.

Largest lead - BRE by 1 1st-05:25, SIU by 69 4th-00:37

BRE led for 00:22. SIU led for 39:31. Game was tied for 00:07.

Points	In	Off	2nd	Fast	Bench
BRE	Paint	T/O	Chance	Break	
SIU	12	0	7	0	6
	44	31	15	8	57

Score Tied - 0 times  
Lead Changed - 2 times

## GAME SIX

Southern Illinois vs. UT Martin  
11/29/2016 5:30 p.m. at Elam Center - Martin, Tenn.

Southern Illinois 68 (3-3)

Southern Illinois 68 (3-3)			Total		3-Ptr		Rebounds			PF		TP		A	TO	Blk	Stl	Min
#	Player		FG	FGA	FG	FGA	FT	FTA	Off	Def	Total							
13	Rishonda Napier	*	4-15	0-5	2-2	0	2	2	0	10	4	1	0	2	35			
22	Tiajaney Hawkins	*	2-2	0-0	2-3	4	0	4	3	6	3	0	0	0	19			
24	Kim Nebo	*	8-12	0-0	3-4	6	2	8	4	19	1	3	1	1	31			
32	Kylie Giebelhausen	*	5-15	3-10	0-0	1	4	5	4	13	4	2	1	0	24			
40	Carlie Corrigan	*	5-12	4-10	0-0	1	4	5	1	14	2	2	1	0	38			
03	Olivia Bowling		0-2	0-2	0-0	0	2	2	1	0	2	4	1	0	20			
10	Brittney Patrick		2-3	0-1	0-0	0	3	3	4	4	0	0	0	1	8			
15	Caitlyn Claussen		0-0	0-0	0-0	0	0	0	0	0	0	2	0	0	1			
23	Kristen Nelson		0-1	0-0	0-0	1	0	1	1	0	1	0	0	0	5			
34	Nicole Martin		1-5	0-0	0-0	1	2	3	2	2	0	0	0	2	18			
42	Ashley Hummel		0-0	0-0	0-0	0	1	1	0	0	0	0	0	0	1			
TEAM						1	2	3										
Totals				27-67	7-28	7-9	15	22	37	20	68	17	14	4	6	200		
FG % 1st Half: 15-30			50.0%	2nd Half: 12-37			32.4%	Game: 27-67			40.3%	Deadball						
3FG % 1st Half: 3-12			25.0%	2nd Half: 4-16			25.0%	Game: 7-28			25.0%	Rebounds						
FT % 1st Half: 5-7			71.4%	2nd Half: 2-2			100.0%	Game: 7-9			77.8%	0.4						

UT Martin 76 (2-5)

UT Martin 76 (2-5)		Total	3-Ptr	Rebounds			PF	TP	A	TO	Blk	Stl	Min	
#	Player	FG-FGA	FG-FGA	FT-FTA	Off	Def	Total							
04	Emanye ROBERTSON *	3-5	0-0	3-6	1	5	6	2	9	6	4	1	2	40
10	Janeika MASON *	2-5	0-0	0-0	2	5	7	0	4	1	2	1	0	18
14	Ansley EUBANK *	0-4	0-0	0-0	2	3	5	3	0	1	0	0	1	23
22	Ashton FELDHAUS *	5-10	2-5	2-2	1	3	4	2	14	9	1	0	2	36
33	Myah TAYLOR *	10-18	4-8	1-4	1	2	3	0	25	0	1	0	1	30
03	Kendall SPRAY	2-6	1-5	0-1	0	1	1	1	5	0	0	0	1	19
13	Lindsay CHRISSE	0-0	0-0	0-0	0	0	0	0	0	0	0	0	0	2
23	Breanna BOGGS	8-9	0-0	1-2	1	6	7	3	17	1	5	1	2	25
32	Teddy VINCENT	0-0	0-0	0-0	0	0	0	0	0	0	0	0	0	0+
44	Shy COPNEY	0-1	0-1	2-2	0	1	1	2	2	0	0	0	0	7
TEAM					2	0	2							
Totals		30-58	7-19	9-17	10	26	36	13	76	18	13	3	9	200
FG % 1st Half: 15-35		42.9%	2nd Half: 15-23		65.2%	Game: 30-58		51.7%						
3FG % 1st Half: 3-11		27.3%	2nd Half: 4-8		50.0%	Game: 7-19		36.8%					Deadball	
FT % 1st Half: 2-5		40.0%	2nd Half: 7-12		58.3%	Game: 9-17		52.9%					Rebounds	

Officials: Rob Fessler, Trey Miles, Timothy Hackett  
Technical Fouls: Southern Illinois-None. UT Martin-None.  
Elam Center - Martin, Tenn. Attendance: 1647

Score by Period	1st	2nd	3rd	4th	Total
Southern Illinois	19	19	17	13	68
UT Martin	23	12	22	19	76

Last FG - SIU 4th-01:00, UTM 4th-03:11.

Largest lead - SIU by 5 1st-07:05, UTM by 10 1st-01:57

SIU led for 07:29. UTM led for 27:45. Game was tied for 04:14.

Points	In	Off	2nd	Fast	Bench
SIU	Paint	T/O	Chance	Break	
UTM	0	13	8	0	6
	0	16	10	0	24

Score Tied - 7 times  
Lead Changed - 8 times

## 1617 TEAM LEADERS

Points	G	Pts	Pts/G
Kylie Giebelhausen	6	85	14.2
Kim Nebo	6	78	13.0
Carlie Corrigan	6	56	9.3
Rishonda Napier	6	55	9.2
Tiajaney Hawkins	6	37	6.2
Nicole Martin	6	25	4.2
Kristen Nelson	6	17	2.8

FG Percentage	FG	Att	Pct
Kim Nebo	34	57	.596
Ashley Hummel	4	7	.571
Kristen Nelson	5	10	.500
Tiajaney Hawkins	15	30	.500
Kylie Giebelhausen	31	80	.388
Carlie Corrigan	20	54	.370
Nicole Martin	11	30	.367

3-Point Percentage	3FG	Att	Pct
Tiajaney Hawkins	2	3	.667
Kylie Giebelhausen	18	43	.419
Carlie Corrigan	13	33	.394
Kristen Nelson	1	3	.333
Olivia Bowling	3	10	.300
Rishonda Napier	7	36	.194
Lauren Hartman	1	9	.111

Free Throw Percentage	FG	Att	Pct
Rishonda Napier	14	14	1.000
Caitlyn Claussen	4	4	1.000
Kristen Nelson	6	6	1.000
Carlie Corrigan	3	4	.750
Kylie Giebelhausen	5	7	.714
Olivia Bowling	4	6	.667
Nicole Martin	3	5	.600

Free Throw Attempts	G	Att	Att/G
Kim Nebo	6	17	2.8
Rishonda Napier	6	14	2.3
Tiajaney Hawkins	6	10	1.7
Kylie Giebelhausen	6	7	1.2
Brittney Patrick	5	7	1.4
Kristen Nelson	6	6	1.0
Olivia Bowling	6	6	1.0

Rebounds Average	G	Reb	Avg/G
Lauren Hartman	4	47	11.8
Kim Nebo	6	41	6.8
Tiajaney Hawkins	6	26	4.3
Kylie Giebelhausen	6	25	4.2
Nicole Martin	6	25	4.2
Rishonda Napier	6	18	3.0
Carlie Corrigan	6	13	2.2

Scoring Average	G	Pts	Avg/G
Kylie Giebelhausen	6	85	14.2
Kim Nebo	6	78	13.0
Carlie Corrigan	6	56	9.3
Rishonda Napier	6	55	9.2
Tiajaney Hawkins	6	37	6.2
Nicole Martin	6	25	4.2
Lauren Hartman	4	16	4.0

Field Goal Attempts	G	Att	Att/G
Kylie Giebelhausen	6	80	13.3
Rishonda Napier	6	79	13.2
Kim Nebo	6	57	9.5
Carlie Corrigan	6	54	9.0
Tiajaney Hawkins	6	30	5.0
Nicole Martin	6	30	5.0
Lauren Hartman	4	23	5.8

Field Goals Made	G	Made	Made/G
Kim Nebo	6	34	5.7
Kylie Giebelhausen	6	31	5.2
Carlie Corrigan	6	20	3.3
Rishonda Napier	6	17	2.8
Tiajaney Hawkins	6	15	2.5
Nicole Martin	6	11	1.8
Lauren Hartman	4	6	1.5

3-Point FG Attempts	G	Att	Att/G
Kylie Giebelhausen	6	43	7.2
Rishonda Napier	6	36	6.0
Carlie Corrigan	6	33	5.5
Olivia Bowling	6	10	1.7
Lauren Hartman	4	9	2.3
Brittney Patrick	5	3	0.6
Tiajaney Hawkins	6	3	0.5

3-Point FG Made	G	Made	Made/G
Kylie Giebelhausen	6	18	3.0
Carlie Corrigan	6	13	2.2
Rishonda Napier	6	7	1.2
Olivia Bowling	6	3	0.5
Tiajaney Hawkins	6	2	0.3

Rebounds	G	Reb	Reb/G
Lauren Hartman	4	47	11.8
Kim Nebo	6	41	6.8
Tiajaney Hawkins	6	26	4.3
Kylie Giebelhausen	6	25	4.2
Nicole Martin	6	25	4.2
Rishonda Napier	6	18	3.0
Carlie Corrigan	6	13	2.2



## 1617 TEAM LEADERS

<b>Fouls</b>	<b>G</b>	<b>NO.</b>	<b>Per/G</b>
Kim Nebo	6	16	2.7
Kylie Giebelhausen	6	13	2.2
Tiajaney Hawkins	6	13	2.2
Rishonda Napier	6	12	2.0
Lauren Hartman	4	11	2.8
Kristen Nelson	6	8	1.3

<b>Foulsouts</b>	<b>G</b>	<b>NO.</b>
Kylie Giebelhausen	6	1
Lauren Hartman	4	1

<b>Blocked Shots</b>	<b>G</b>	<b>NO.</b>	<b>Blk/G</b>
Kylie Giebelhausen	6	8	1.3
Lauren Hartman	4	4	1.0
Kim Nebo	6	2	0.3
Nicole Martin	6	2	0.3
Carlie Corrigan	6	2	0.3

<b>Minutes</b>	<b>G</b>	<b>NO.</b>	<b>Min/G</b>
Kylie Giebelhausen	6	186	31.0
Rishonda Napier	6	179	29.8
Carlie Corrigan	6	168	28.0
Kim Nebo	6	148	24.7
Lauren Hartman	4	108	27.0
Olivia Bowling	6	93	15.5
Tiajaney Hawkins	6	84	14.0

<b>Offensive Rebounds</b>	<b>G</b>	<b>NO.</b>	<b>Avg/G</b>
Kim Nebo	6	22	3.7
Tiajaney Hawkins	6	18	3.0
Lauren Hartman	4	12	3.0
Nicole Martin	6	8	1.3
Kylie Giebelhausen	6	7	1.2
Rishonda Napier	6	5	0.8
Carlie Corrigan	6	4	0.7

<b>Defensive Rebounds</b>	<b>G</b>	<b>NO.</b>	<b>Avg/G</b>
Lauren Hartman	4	35	8.8
Kim Nebo	6	19	3.2
Kylie Giebelhausen	6	18	3.0
Nicole Martin	6	17	2.8
Rishonda Napier	6	13	2.2
Brittney Patrick	5	10	2.0
Olivia Bowling	6	10	1.7

<b>Assists</b>	<b>G</b>	<b>NO.</b>	<b>Ast/G</b>
Rishonda Napier	6	26	4.3
Kylie Giebelhausen	6	18	3.0
Carlie Corrigan	6	17	2.8
Kristen Nelson	6	10	1.7
Tiajaney Hawkins	6	8	1.3
Olivia Bowling	6	7	1.2
Brittney Patrick	5	6	1.2

<b>Steals</b>	<b>G</b>	<b>NO.</b>	<b>Stl/G</b>
Kylie Giebelhausen	6	8	1.3
Rishonda Napier	6	6	1.0
Tiajaney Hawkins	6	5	0.8
Nicole Martin	6	4	0.7
Lauren Hartman	4	4	1.0
Kim Nebo	6	4	0.7
Kristen Nelson	6	3	0.5

<b>Turnovers</b>	<b>G</b>	<b>NO.</b>	<b>To/G</b>
Kim Nebo	6	15	2.5
Rishonda Napier	6	14	2.3
Olivia Bowling	6	12	2.0
Kylie Giebelhausen	6	9	1.5
Carlie Corrigan	6	6	1.0
Caitlyn Claussen	4	4	1.0
Nicole Martin	6	4	0.7



## #3 OLIVIA BOWLING

5-9 • SO. • GUARD  
NEW HAVEN, KY. | ELIZABETHTOWN HS

### CAREER HIGHS

Points	11	vs. Morehead State (12/12/15)
Rebounds	5	vs. Morehead State (12/12/15)
Off. Rebounds	2	vs. Morehead State (12/12/15)
Def. Rebounds	3	2x, last at Oklahoma (11/13/16)
Assists	3	vs. Morehead State (12/12/15)
Steals	2	vs. Morehead State (12/12/15)
Blocked Shots	1	at UT Martin (11/29/16)
Field Goals Made	4	vs. Morehead State (12/12/15)
FGs Attempted	7	vs. Morehead State (12/12/15)
3-Pointers Made	1	7x, last vs. Brescia (11/26/16)
3-Pointers Attempted	3	2x, last vs. Oklahoma (11/13/16)
FTs Made	3	vs. Murray State (11/17/16)
FTs Attempted	4	vs. Murray State (11/17/16)
Minutes Played	21	vs. Morehead State (12/12/15)

### 2015-16

Appeared in 29 games during her freshman campaign...Averaged 1.3 points in 5.9 minutes off the bench...Scored a career high 11 points on 4-of-7 shooting in SIU's win over Morehead State (12/12)...Established eight other career-bests in the win over Morehead State, including minutes played (21), rebounds (5), offensive rebounds (2), defensive rebounds (3), assists (3) and steals (2)...Scored in 9 of SIU's 33 games this season.

### High School

Played her high school hoops at Elizabethtown High School in New Haven, Ky., which Maxpreps.com ranked No. 21 nationally...Went 32-3 as a senior, earning the No. 2 ranking in the state of Kentucky...During her four year career, went 113-22 as a Lady Panther...Advanced to state final as a senior...Averaged 5.2 points, 3.8 assists, 3.0 rebounds and 1.7 steals per game as a senior.

### Personal

Born May 10, 1997, in Elizabethtown, Ky., to Patrick and Tracy Bowling...Has two siblings, one sister and one brother...Her father is a carpenter and her mother is an occupational therapist...Majoring in sports management.

### CAREER STATS

Season	GP-GS	Min/Avg	Total		3-Ptr		F-Throws		Rebounds				PF	FO	A	TO	Blk	Stl	Pts	Avg
			FG-FGA	Pct	FG-FGA	Pct	FT-FTA	Pct	Off	Def	Tot	Avg								
2015-16	29-0	171/5.9	14-29	.483	4-13	.308	7-8	.875	3	17	20	0.7	18	0	17	17	0	6	39	1.3
2016-17	6-0	93/15.5	4-15	.267	3-10	.300	4-6	.667	0	10	10	1.7	6	0	7	12	1	3	15	2.5
Total	35-0	264/7.5	18-44	.409	7-23	.304	11-14	.786	3	27	30	0.9	24	0	24	29	1	9	54	1.5





## #10 RISHONDA NAPIER

5-5 • RS SR. • POINT GUARD  
BURBANK, CALIF. | BELLARMINE-JEFFERSON

### CAREER HIGHS

Points	33	at Western Illinois (3/17/16)
Rebounds	10	vs. Wright State (11/8/13)
Offensive Rebounds	4	vs. Wright State (11/8/13)
Defensive Rebounds	8	vs. Florida Atlantic (11/24/12)
Assists	9	2x, last vs. Indiana State (1/29/16)
Steals	6	at Indiana State (2/15/15)
Blocked Shots	2	vs. Siena (11/20/15)
Field Goals Made	13	at Western Illinois (3/17/16)
Field Goals Attempted	24	at Western Illinois (3/17/16)
3-Pointers Made	7	at Western Illinois (3/17/16)
3-Pointers Attempted	14	at Western Illinois (3/17/16)
Free Throws Made	11	at Illinois State (1/4/15)
Free Throws Attempted	13	at Illinois State (1/4/15)
Minutes Played	44	at Western Illinois (3/17/16)

#### 2015-16

##### First-Team All-MVC

##### MVC Scholar-Athlete First-Team

First-Team All-MVC Selection for the second-straight season...Played and started all 33 games, leading the Salukis in scoring with a 15.5 points per game average, the sixth-highest average in the MVC...Scored 30 points in win over Wichita State, one of just four in the MVC to eclipse the 30-point mark this season...Scored 33 points in WBI First round game against Western Illinois, tied for the sixth-most in a single game in program history...Tied a school-record with a career-high seven three-pointers in the loss to WIU...Made 85 3-pointers on the season, the second-most in a single-season in program history...Became the first player in program history to hit six three-pointers in back-to-back games...510 points during the 2015-16 season are the fifth-most in school-history...Currently 8th on SIU's all-time scoring list with 1,323 points...One of only two Salukis to surpass the 200 three-pointers in a career plateau...Needs 30 three-pointers to become SIU's all-time leader...One of 10 Salukis to have recorded at least 1,000 points, 200 rebounds, 200 assists and 100 steals...One of only three Salukis to have made 6-plus three-pointers in five or more games in a career...Ended the season 10th on SIU's all-time assists list with 291.

#### 2014-15

##### First-Team All-MVC

##### Second-Team MVC Scholar-Athlete

First-Team All-MVC...Along with fellow first-teamer Dyana Pierre, the duo were SIU's first multiple first-team honorees since 1995-96 (Nikki Gilmore and Kasia McClelland)...Second-Team MVC Scholar-Athlete, becoming SIU's first to earn higher than Honorable Mention since Erica Smith in 2008-09...Only the second Saluki in women's basketball history to earn First-Team distinction and Scholar-Athlete honors in the same season (the last being Kelly Firth in 1992-93)...Started and played in 27 games (33.9 minutes per)...Missed three games due to a dislocated shoulder suffered at home vs. Evansville on Jan. 18...Led SIU in scoring with 438 points (16.2/game)...Scored in double-digits in 23 of her 27 games played, including her first 15 games to start the year...Scored 20 or more points in 10 of her 27 games...Shot .382 from the field (149-of-390)...Led SIU with 60 three-pointers (.366), the 9th-most in a single-season in SIU history...Led SIU and the MVC with an .870 clip from the free throw line (80-of-92), the 18th-best in the NCAA in 2014-15...That .870 free throw percentage is also the second-best in SIU single-season history...Scored a career-high 30 points in SIU's upset win over Drake at SIU Arena on Feb. 6.

#### 2013-14

Played in five games, starting four ... Averaged 7.2 points and 3.6 rebounds and 2.0 assists ... Redshirted.

#### 2012-13

##### MVC All-Freshman Team

Saw action in 30 games, making 26 starts • ranked second on the team in minutes (958) for an average of 31.9 per game • ranked second on the team with an average of 11.3 points per game • scored 339 points for the season, which ranks seventh in SIU history among freshmen • scored a season-high 23 points against Wichita State (Jan. 25) • named MVC Freshman of the Week Jan. 28 • scored in double figures in 18 games with four games of 20 points or more • led SIU with 57 3-pointers made, which ranks ninth in SIU history for a single season • attempted 166 3-pointers, which ranks ninth in SIU history for a single season • made six 3-pointers against Wichita State, which is tied for fifth in SIU history for a single game • led SIU with a .800 free throw percentage • ranked second on the team with 75 assists and 37 steals.

#### At Bellarmine-Jefferson High School

Averaged 20.4 points, 3.2 rebounds, 2.8 assists and 1.6 steals per game as a senior • earned First-Team All-State honors three times during high school career • named a McDonald's All-American nominee following senior season • helped Bell-Jeff to a California Division V State Championship during freshman season.

#### Personal

Full name is Rishonda Janell Napier • major is economics • daughter of Richard and Clara Napier • has six siblings • born Feb. 1, 1994.

### CAREER STATS

Season	GP-GS	Min/Avg	FG-FGA	Pct	FG-FGA	Pct	FT-FTA	Pct	Off	Def	Tot	Avg	PF	FO	A	TO	Blk	Stl	Pts	Avg
2012-13	30-26	958/31.9	123-348	.353	57-166	.343	36-45	.800	13	66	79	2.6	38	0	75	80	5	37	339	11.3
2013-14	5-4	159/31.8	16-53	.302	4-19	.211	0-1	.000	6	12	18	3.6	4	0	10	10	2	2	36	7.2
2014-15	27-27	915/33.9	149-390	.382	60-164	.366	80-92	.870	14	80	94	3.5	29	0	90	70	3	36	438	16.2
2015-16	33-33	1125/34.1	179-473	.378	85-232	.366	67-83	.807	13	77	90	2.7	42	0	116	94	10	30	510	15.5
2016-17	6-6	179/29.8	17-79	.215	7-36	.194	14-14	1.000	5	13	18	3.0	12	0	26	14	1	6	55	9.2
Total	101-96	3336/33.0	484-1343	.360	213-617	.345	197-235	.838	51	248	299	3.0	125	0	317	268	21	111	1378	13.6





## #22 TIAJANEY HAWKINS

5-10 • RS FR. • GUARD/FORWARD  
EAST CHICAGO, IND. | EAST CHICAGO CENTRAL

### CAREER HIGHS

Points	12	vs. Brescia (11/26/16)
Rebounds	8	vs. Brescia (11/26/16)
Off. Rebounds	5	vs. Brescia (11/26/16)
Def. Rebounds	3	vs. Brescia (11/26/16)
Assists	5	vs. Brescia (11/26/16)
Steals	3	vs. Brescia (11/26/16)
Blocked Shots	-	
Field Goals Made	5	vs. Brescia (11/26/16)
FGs Attempted	10	vs. Brescia (11/26/16)
3-Pointers Made	1	2x, last vs. Brescia (11/26/16)
3-Pointers Attempted	2	vs. Oklahoma (11/13/16)
FTs Made	2	2x, last at UT Martin (11/29/16)
FTs Attempted	4	vs. Oklahoma (11/13/16)
Minutes Played	29	vs. Brescia (11/26/16)

### 2015-16

Played in five games before medically redshirting...Averaged 3.0 points and 1.0 rebounds in 6.8 minutes off the bench...Scored a career-high six points on 3-of-6 shooting against UT-Martin (11/25) ... Scored in four of five games...Dished out a career high two assists against UT-Martin (11/25).

### High School

ESPN named her a three-star recruit and ranked her the 22nd best prep guard for the 2015 class...Averaged a double-double during her senior season with 18 points per game and 11.8 rebounds per game...Rebound total was second highest in the state of Indiana...Three-time All-State selection...Indiana All-Star selection.

### Personal

Major is Criminology & Criminal Justice...Born April 22, 1997.

### CAREER STATS

Season	GP-GS	Min/Avg	FG-FGA	Pct	FG-FGA	Pct	FT-FTA	Pct	Off	Def	Tot	Avg	PF	FO	A	TO	Blk	Stl	Pts	Avg
2015-16	5-0	34/6.8	6-11	.545	0-0	.000	3-9	.333	2	3	5	1.0	3	0	3	2	0	0	15	3.0
2016-17	6-2	84/14.0	15-30	.500	2-3	.667	5-10	.500	18	8	26	4.3	13	0	8	1	0	5	37	6.2
Total	11-2	118/10.7	21-41	.512	2-3	.667	8-19	.421	20	11	31	2.8	16	0	11	3	0	5	52	4.7





## #24 KIM NEBO

6-1 • SR. • FORWARD  
KATY, TEXAS | CYPRESS LAKES

### CAREER HIGHS

Points	19	2x, last at UT Martin (11/29/16)
Rebounds	15	2x, last at Bradley (2/7/16)
Offensive Rebounds	7	vs. Murray State (11/17/16)
Defensive Rebounds	9	2x, last at Bradley (2/7/16)
Assists	3	at Drake (1/1/16)
Steals	2	3x, last at Purdue (11/20/16)
Blocked Shots	2	vs. Toledo (12/20/14)
Field Goals Made	9	at SIUE (11/23/16)
Field Goals Attempted	12	2x, last at UT Martin (11/29/16)
3-Pointers Made	-	-
3-Pointers Attempted	-	-
Free Throws Made	4	2x, last vs. Siena (11/20/15)
Free Throws Attempted	8	vs. Siena (11/20/15)
Minutes Played	35	at Purdue (11/20/16)

#### 2015-16

##### MVC Scholar-Athlete First-Team

##### MVC Scholar-Athlete of the Week (Jan. 5)

Appeared in all 33 games for SIU, including 24 starts...Averaged 4.8 points and 5.3 rebounds in 19.5 minutes per game...Scored in double-figures six times this season after having done so only once in her previous two seasons combined...Named MVC Scholar-Athlete of the Week after recording a career-high 15 rebounds in SIU's win over Drake...Scored a career-high 14 points and added 12 rebounds for her first career double-double in SIU's win over Bradley (1/8)...Recorded a career-high 15 rebounds in Southern's victory over Drake (1/1) and tied that mark with 15 boards in SIU's win over Bradley (2/7)...Nebo's two 15 rebound games are tied for the 10th most in a career in SIU history...Scored 10 points and grabbed 10 rebounds in a career-best 34 minutes for her second double-double of the season in SIU's win over Evansville (2/14)...Dished out a career-high three assists against Drake (1/1)...Became the 65th Saluki to score at least 200 career points and grab 200 rebounds.

#### 2014-15

Played in 20 games for SIU (4.9 minutes per game)...Scored 24 points (1.2/game) and recorded 35 rebounds (1.8/game)...Set a career-high for rebounds (six) vs. No. 14 Oregon State...Also set career highs in offensive rebounds (3, vs. Toledo, Dec. 20), assists (1, vs. Murray State, Dec. 14), steals (1, vs. Murray State, Dec. 14) and blocks (2, vs. Toledo, Dec. 20).

#### 2013-14

Played in 27 games ... Totaled 50 points (1.9 per game) and grabbed 53 rebounds (2.0 per game) ... Also dished two assists, blocked six shots, and grabbed four steals ... Hit game-clinching free throws in double-overtime win vs. Bradley ... Shot 41 percent from the field (18-44).

#### At Cypress Lakes High School

Scored 1,292 points and pulled down 1,004 rebounds over her four-year varsity career • holds the school career scoring record • averaged 19.0 points and 12.3 rebounds per game as a senior • named District MVP following senior season • Earned First-Team All-District twice and Honorable Mention All-District following sophomore season • also named Academic All-District following senior season.

#### Personal

Full name is Kimberly Noyelum Nebo • major is Biological Sciences • daughter of Shady and Stella Nebo • has three siblings • born Dec. 4, 1994 in Houston, Texas.

### CAREER STATS

Season	GP-GS	Min/Avg	Total		3-Ptr		F-Throws		Rebounds				PF	FO	A	TO	Blk	Stl	Pts	Avg
			FG-FGA	Pct	FG-FGA	Pct	FT-FTA	Pct	Off	Def	Tot	Avg								
2013-14	27-0	226/8.4	18-44	.409	0-0	.000	14-23	.609	17	36	53	2.0	40	1	2	24	6	4	50	1.9
2014-15	20-0	131/6.6	11-28	.393	0-0	.000	2-2	1.000	12	23	35	1.8	10	0	1	9	4	2	24	1.2
2015-16	33-24	644/19.5	67-139	.482	0-0	.000	24-57	.421	75	99	174	5.3	58	1	18	39	7	15	158	4.8
2016-17	6-6	148/24.7	34-57	.596	0-0	.000	10-17	.588	22	19	41	6.8	16	0	3	15	2	4	78	13.0
Total	86-30	1149/13.4	130-268	.485	0-0	.000	50-99	.505	126	177	303	3.5	124	2	24	87	19	25	310	3.6





## #32 KYLIE GIEBELHAUSEN

6-1 • JR. • GUARD  
EAST PEORIA, ILL. | EAST PEORIA

### CAREER HIGHS

Points	22	vs. Murray State (11/17/16)
Rebounds	11	at Western Illinois (3/17/16)
Offensive Rebounds	4	3x, last vs. Oklahoma (11/13/16)
Defensive Rebounds	9	at Western Illinois (3/17/16)
Assists	6	vs. Bradley (2/1/15)
Steals	4	vs. Illinois State (1/31/16)
Blocked Shots	5	2x, last vs. SEMO (11/28/14)
Field Goals Made	8	vs. Murray State (11/17/16)
FGs Attempted	18	vs. Oklahoma (11/13/16)
3-Pointers Made	5	4x, last at SIUE (11/23/16)
3-Pointers Attempted	9	vs. Evansville (1/16/16)
Free Throws Made	5	vs. Bradley (2/1/15)
Free Throws Attempted	6	at Austin Peay (12/13/14)
Minutes Played	40	vs. Illinois State (1/31/16)

#### 2015-16

##### MVC Scholar-Athlete Honorable Mention

Started, and played, in all 33 games this season, finishing first on the team in blocks, second in steals and three-pointers, third in assists and fourth in points...Had her best game of the season in SIU's home win over Missouri State (2/19), tying a career-high with 18 points on 6-of-10 shooting...Tallied her first career double-double against Western Illinois (3/17), scoring 12 points and grabbing 11 rebounds...Became 49th Saluki to tally 100 career assists...Became 42nd Saluki to total 300 career points, 150 boards and 100 assists...Is one of 54 Salukis all-time to score at least 500 career points...Recorded three steals in back-to-back home wins over Indiana State (1/29) and Illinois State (1/31), becoming first Saluki to do that since 2010...One of just eight Salukis all-time to tally at least 400 points, 200 rebounds, 100 assists and 50 blocks...One of just five Salukis all-time to record at least 500 points, 250 rebounds, 100 assists, 75 blocks, and 50 steals.

#### 2014-15

##### MVC All-Freshman Team

Played in all 30 games for SIU, starting the last 28 games of the season as the 3-guard...Averaged 6.9 points, 3.4 rebounds, 2.2 assists and 1.0 blocks in 27.7 minutes per game...Was second on the team in three-pointers with a clip of 47-of-140 (.336)...Shot .348 overall...Made 69 baskets all year, 47 of which were three-pointers...Her 47 threes ranked 11th in the MVC, her .336 average 14th...In conference play, sank 34 threes (8th-best in MVC play), for a .378 percentage (6th-best)...Recorded 30 blocks (1.0/game), the seventh-best in the MVC...Scored in double-digits nine times, during which SIU was 5-4...Scored a career-high 18 against the nation's top defense at Wichita State on Jan. 25, sinking 7-of-10 from the field and 4-of-7 from three...Posted multiple three-pointers in 14 games out of 30...Sank four threes in a game four times, and five threes twice...Recorded five blocks in consecutive games against Memphis and SEMO at home, which both rank as the eighth-best single-game total in SIU history...Team honors included Most Improved and the Saluki Swag Award, given based on work ethic, toughness, trust and integrity.

#### High School

2014 honorable mention All-State selection by the Associated Press ... Two-time first-team All-Conference honoree (2013, 14) ... First-team All-Area selection by the Peoria Journal Star in 2013-14 ... Led her team in scoring, rebounding, blocks assists and steals in both 2013 and 2014 ... Averaged 18 points and nine rebounds as a senior in 2013-14 ... MVP of the 2014 Manual Holiday Tournament ... Third-team All-Area selection by the Peoria Journal Star in 2013 ... 2012 second-team All-Conference honoree ... Also played tennis, qualifying for the state tournament in 2013.

#### Personal

Pronounced GABE-el-HOW-sen ... Daughter of Lori and Jeff Giebelhausen ... Born Aug. 18, 1996 ... Majoring in exercise science ... Niece of Drake men's basketball head coach Ray Giaconetti.

### CAREER STATS

Season	GP-GS	Min/Avg	Total		3-Ptr		F-Throws		Rebounds				PF	FO	A	TO	Blk	Stl	Pts	Avg
			FG-FGA	Pct	FG-FGA	Pct	FT-FTA	Pct	Off	Def	Tot	Avg								
2014-15	30-28	830/27.7	69-198	.348	47-140	.336	23-30	.767	20	82	102	3.4	53	1	65	56	30	21	208	6.9
2015-16	33-33	1079/32.7	109-288	.378	60-176	.341	24-30	.800	37	114	151	4.6	57	1	77	53	47	39	302	9.2
2016-17	6-6	186/31.0	31-80	.388	18-43	.419	5-7	.714	7	18	25	4.2	13	1	18	9	8	8	85	14.2
Total	69-67	2095/30.4	209-566	.369	125-359	.348	52-67	.776	64	214	278	4.0	123	3	160	118	85	68	595	8.6





## #35 CELINA VANHYFTE

6-0 • JR. • FORWARD/CENTER  
ANNAWAN, ILL. | ANNAWAN

### CAREER HIGHS

Points	13	2x, last at Evansville (2/14/16)
Rebounds	9	4x, last at Bradley (2/7/16)
Offensive Rebounds	6	at Bradley (2/7/16)
Defensive Rebounds	7	at Murray State (12/2/15)
Assists	4	at Mercer (12/19/15)
Steals	2	3x, last at Illinois State (2/25/16)
Blocked Shots	2	3x, last vs. Loyola (1/10/16)
Field Goals Made	6	2x, last at Evansville (2/14/16)
Field Goals Attempted	12	2x, last at Evansville (2/14/16)
3-Pointers Made	2	vs. Marshall (12/28/15)
3-Pointers Attempted	2	2x, last vs. Marshall (12/28/15)
Free Throws Made	3	vs. SIUE (12/4/15)
Free Throws Attempted	6	vs. SIUE (12/4/15)
Minutes Played	31	at Bradley (2/7/16)

#### 2015-16

Played in all 33 games this season, including four starts...Scored in double figures on four occasions... Narrowly missed her first career double-double playing in front of her home crowd, as she tied career-highs for both points (13) and rebounds (9) in SIU's win at Bradley (2/7)...Tied her career-high the next game, scoring 13 points on 6-of-12 shooting in SIU's win over Evansville (2/14)...Grabbed five or more rebounds in 13 contests...Made the first two three-pointers of her career against Marshall (12/28)...Set a career-high with four assists in the win over Mercer (12/19)...Played 15 or more minutes in 28 of SIU's 33 games.

#### 2014-15

Played in 23 games (8.0 minutes per)...Scored 39 points (1.7/game), 28 rebounds (1.2/game) and seven blocks...Scored a career-high eight points in the regular season finale vs. Illinois State, in which she also played a career-high 25 minutes.

#### High School

Four-time All-State selection by the Associated Press ... Three-time All-State selection by Illinois Basketball Services ... Three-time first-team All-State selection by the Chicago Sun-Times ... Four-time State Farm Classic All-Tournament team selection ... Three-time All-Western Illinois Player of the Year selection by the Quad City Dispatch ... All-time leading scorer in Annawan High School history and only player in school history to be named three-time All-State ... Posted 2,493 career points and 1,169 career rebounds for career averages of 20.3 points and 10.1 rebounds ... Led Annawan to its first team state championship in school history in 2013-14 ... Eighth in IHSA history in career field goals (968) and 10th in career free throws (557) ... One of six Division I student-athletes in Annawan High School history ... Also earned first-team All-State honors in softball ... Two former DI student-athletes from Annawan High School, Lisa and Lynette Robinson, are members of the Illinois High School Basketball Hall of Fame and former teammates of SIU head coach Cindy Stein at the University of Illinois.

#### Personal

Full given name is Celina Kay VanHyfte ... Pronounced sell-EE-na van-HEFF-tee ... Daughter of Valerie and Teddy VanHyfte ... Born June 14, 1995, in Winston Salem, N.C. ... Mother, Valerie, is in both the Bradley and Illinois High School Basketball Halls of Fame ... Father, Ted, remains the only male athlete in Annawan HS history to compete at the Division I level, playing football at Wake Forest ... Majoring in recreation.

### CAREER STATS

Season	GP-GS	Min/Avg	Total		3-Ptr		F.Throws		Rebounds				PF	FO	A	TO	Blk	Stl	Pts	Avg
			FG-FGA	Pct	FG-FGA	Pct	FT-FTA	Pct	Off	Def	Tot	Avg								
2014-15	23-0	182/7.9	17-46	.370	0-0	.000	5-10	.500	10	18	28	1.2	22	0	3	15	7	4	39	1.7
2015-16	33-4	624/18.9	60-148	.405	2-11	.182	29-53	.547	61	86	147	4.5	70	1	20	45	7	14	151	4.6
2016-17	0-0	0/0.0	0-0	.000	0-0	.000	0-0	.000	0	0	0	0.0	0	0	0	0	0	0	0	0.0
Total	56-4	806/14.4	77-194	.397	2-11	.182	34-63	.540	71	104	175	3.1	92	1	23	60	14	18	190	3.4





## #40 CARLIE CORRIGAN

5-11 • SR. • GUARD/FORWARD  
PLAINFIELD, ILL. | PLAINFIELD NORTH

### CAREER HIGHS

Points	18	at Purdue (11/20/16)
Rebounds	7	at Drake (1/10/14)
Off. Rebounds	3	vs. Tennessee State (11/21/15)
Def. Rebounds	6	at Drake (1/10/14)
Assists	5	vs. Brescia (11/26/16)
Steals	2 3x, last vs. Missouri State (2/20/15)	
Blocked Shots	1	3x, last at UT Martin (11/29/16)
Field Goals Made	7	at Purdue (11/20/16)
FGs Attempted	12	2x, last at UT Martin (11/29/16)
3-Pointers Made	4	at Purdue (11/20/16)
3-Pointers Attempted	8	vs. Evansville (1/16/16)
FTs Made	6	vs. Oregon State (12/19/14)
FTs Attempted	6	vs. Oregon State (12/19/14)
Minutes Played	38	at UT Martin (11/29/16)

#### 2015-16

Played in all 33 games for SIU, including six starts...Averaged 16.3 minutes and 4.8 points per game...92nd Saluki to tally at least 200 career points, 100 career rebounds...Became the 84th Saluki to notch at least 250 career points, 100 rebounds and 50 assists...Is the 60th player in SIU history to appear in at least 85 games during her career...Scored in double figures four times this season, having done so once in her previous two seasons combined...Scored a career-high 12 points on 5-of-7 shooting from the field in SIU's 76-64 win over Indiana State (1/29)...Scored 11 points on 5-of-6 shooting against UT-Martin (11/25)...Dished out a career-best four assists against Loyola (2/5)...Made a career-high three three-pointers in SIU's 66-63 win over Evansville (1/16).

#### 2014-15

Saluki Swag Award co-winner, which is given out based on work ethic, toughness, trust and integrity... Played in 25 of 30 games, starting in one in SIU's season-opener upset at UT-Martin...Averaged 1.8 points in 5.9 minutes per game...Scored a career-high 11 points vs. No. 14 Oregon State in New Orleans on Dec. 19...During that game, Corrigan hit six free throws in a row following Oregon State technical fouls and ejections to finish as one of four Salukis in double-digits.

#### 2013-14

Played in all 30 games, starting two ... Scored 72 points (2.4 per game) and grabbed 45 rebounds (1.5 per game) ... Posted a season-high nine points at Indiana State, which led the team ... Grabbed a season-high seven rebounds in her first career start at Drake ... Averaged 11.8 minutes per game ... Also dished 14 assists and grabbed seven steals.

#### At Plainfield North High School

Earned three varsity letters with the Tigers...Holds school record for points in a game, season and career... Named All-Conference, All-Area and Honorable Mention All-State following junior and senior seasons... Averaged 19 points and nine rebounds as a senior after averaging 18 points and eight rebounds as a junior... Scored a district record of 43 points in a game and grabbed a school-record 16 rebounds in a game.

#### Personal

Full name is Carlie Caren Corrigan...Majoring in sport administration...Daughter of Kurt and Caren Corrigan...Has two brothers...Born May 14, 1995 in Aurora, Ill.

### CAREER STATS

Season	GP-GS	Min/Avg	Total		3-Ptr		F-Throws		Rebounds										Pts	Avg
			FG-FGA	Pct	FG-FGA	Pct	FT-FTA	Pct	Off	Def	Tot	Avg	PF	FO	A	TO	Blk	Stl		
2013-14	30-2	383/12.8	25-110	.227	8-42	.190	15-25	.600	16	35	51	1.7	35	0	14	25	0	8	73	2.4
2014-15	25-1	148/5.9	15-48	.313	6-25	.240	8-10	.800	7	11	18	0.7	10	0	12	10	0	3	44	1.8
2015-16	33-6	538/16.3	61-189	.323	30-96	.313	8-13	.615	18	52	70	2.1	32	0	29	23	1	10	160	4.8
2016-17	6-6	168/28.0	20-54	.370	13-33	.394	3-4	.750	4	9	13	2.2	5	0	17	6	2	1	56	9.3
Total	94-15	1237/13.2	121-401	.302	57-196	.291	34-52	.654	45	107	152	1.6	82	0	72	64	3	22	333	3.5





## #42 ASHLEY HUMMEL

6-2 • SO. • FORWARD/CENTER  
HILLIARD, OHIO | HILLIARD BRADLEY

### CAREER HIGHS

Points	10	vs. Brescia (11/26/16)
Rebounds	7	vs. Brescia (11/26/16)
Off. Rebounds	2	2x, last vs. Brescia (11/26/16)
Def. Rebounds	5	2x, last vs. Brescia (11/26/16)
Assists	1	vs. Oklahoma (11/13/16)
Steals	1	2x, last vs. Brescia (11/26/16)
Blocked Shots	1	3x, last vs. Brescia (11/26/16)
Field Goals Made	4	vs. Brescia (11/26/16)
FGs Attempted	6	vs. Brescia (11/26/16)
3-Pointers Made	-	
3-Pointers Attempted	-	
FTs Made	2	vs. Brescia (11/26/16)
FTs Attempted	4	vs. Brescia (11/26/16)
Minutes Played	13	vs. Brescia (11/26/16)

### 2015-16

Played in 10 games...Averaged 1.5 points and 1.2 rebounds in 5.6 minutes off the bench...Scored in six of the 10 games in which she played in...Scored four points on 2-of-4 attempts in her first collegiate game against DePaul (11/5)...Grabbed a career-high five rebounds in SIU's win over Morehead State...Played a career-best 11 minutes against Loyola (2/5), scoring four points and grabbing three rebounds.

### High School

In her junior season averaged 11 points and 7 rebounds per game...Earned All-Ohio Capital Conference honors as a junior...In her junior year she helped Hilliard Bradley to the district finals...During her senior season the Jaguars won the Ohio Capital Conference and were regional finalists.

### Personal

Born June 2, 1997, in Columbus, Ohio, to Jonathan and Lauri Hummel...Jonathan is a construction manager and Lauri is a hospice social worker...Has two siblings, one brother and one sister...Majoring in history.

### CAREER STATS

Season	GP-GS	Min/Avg	Total		3-Ptr		F-Throws		Rebounds				PF	FO	A	TO	Blk	Stl	Pts	Avg
			FG-FGA	Pct	FG-FGA	Pct	FT-FTA	Pct	Off	Def	Tot	Avg								
2015-16	10-0	56/5.6	6-16	.375	0-0	.000	3-7	.429	3	9	12	1.2	13	0	0	3	2	0	15	1.5
2016-17	6-0	24/4.0	4-7	.571	0-0	.000	3-6	.500	2	7	9	1.5	2	0	1	0	1	2	11	1.8
Total	16-0	80/5.0	10-23	.435	0-0	.000	6-13	.462	5	16	21	1.3	15	0	1	3	3	2	26	1.6



10

5-6 • FRESHMAN

**BRITTNEY PATRICK**

BOLINGBROOK, ILL.  
BOLINGBROOK H.S.

G

## High School

2015-16 Associated Press All-State honorable mention team...2014-15 Illinois All-State Special Mention...Bolingbrook's Female Athlete of the Year in 2016... Two-time All-Conference and All-Area selections...Led Bolingbrook High School to back-to-back Class 4A Lemont Regional Championships after arriving from DeKalb following her sophomore season....As a senior, led her team in scoring, assists, and steals.

## Personal

Daughter of William and Juletta Patrick... Has two sisters, Courtney and Johnna... Intends to major in pre-physical therapy.

## CAREER HIGHS

Points	8	vs. Brescia (11/26/16)
Rebounds	5	vs. Brescia (11/26/16)
Offensive Rebounds	1	vs. Brescia (11/26/16)
Defensive Rebounds	4	vs. Brescia (11/26/16)
Assists	4	vs. Brescia (11/26/16)
Steals	1	3x, last at UT Martin (11/29/16)
Blocked Shots	-	-
Field Goals Made	2	2x, last at UT Martin (11/29/16)
Field Goals Attempted	5	vs. Brescia (11/26/16)
3-Pointers Made	-	-
3-Pointers Attempted	2	at SIUE (11/23/16)
Free Throws Made	4	vs. Brescia (11/26/16)
Free Throws Attempted	5	vs. Brescia (11/26/16)
Minutes Played	20	vs. Brescia (11/26/16)

Season	GP-GS	Min/Avg	Total		3-Ptr		F-Throws		Rebounds				PF	FO	A	TO	Blk	Stl	Pts	Avg
			FG-FGA	Pct	FG-FGA	Pct	FT-FTA	Pct	Off	Def	Tot	Avg								
2016-17	5-0	46/9.2	4-11	.364	0-3	.000	4-7	.571	1	10	11	2.2	6	0	6	4	0	3	12	2.4
Total	5-0	46/9.2	4-11	.364	0-3	.000	4-7	.571	1	10	11	2.2	6	0	6	4	0	3	12	2.4



15

6-0 • FRESHMAN

**CAITLYN CLAUSSEN**

MANHATTAN, KAN.  
WAMEGO H.S.

G/F

## High School

2015-16 Kansas Basketball Coaches Association 4A Div. 1 Honorable Mention All State Selection...2015-16 Wichita Eagle Class 4A-1 Girls All State Basketball Team Honorable Mention...2015-16 Topeka Capital Journal Class 4A-1 All State Honorable Mention Girls Basketball Team...Two-time North Central Kansas League All-League selection, including a nod on the First-Team this past season... Garnered back-to-back selections on the Manhattan Mercury Flinthills All-Area team...All-League performer during a junior year in which she finished second on the team in scoring and rebounding while helping Wamego advance to the Kansas Class 4A title game...Was the shortstop on Wamego's softball team and was a three-time NCKL All-League First Team selection...Played AAU for the Ohlde Elite in Morganville, Kan.

## Personal

Daughter of Mark and Tara Claussen...Intends to major in management.

## CAREER HIGHS

Points	6	vs. Brescia (11/26/16)
Rebounds	7	vs. Brescia (11/26/16)
Offensive Rebounds	3	vs. Brescia (11/26/16)
Defensive Rebounds	4	vs. Brescia (11/26/16)
Assists	2	vs. Brescia (11/26/16)
Steals	2	vs. Brescia (11/26/16)
Blocked Shots	-	-
Field Goals Made	1	vs. Brescia (11/26/16)
Field Goals Attempted	6	vs. Brescia (11/26/16)
3-Pointers Made	-	-
3-Pointers Attempted	1	vs. Brescia (11/26/16)
Free Throws Made	4	vs. Brescia (11/26/16)
Free Throws Attempted	4	vs. Brescia (11/26/16)
Minutes Played	23	vs. Brescia (11/26/16)

Season	GP-GS	Min/Avg	Total		3-Ptr		F-Throws		Rebounds				PF	FO	A	TO	Blk	Stl	Pts	Avg
			FG-FGA	Pct	FG-FGA	Pct	FT-FTA	Pct	Off	Def	Tot	Avg								
2016-17	4-0	32/8.0	1-6	.167	0-1	.000	4-4	1.000	3	4	7	1.8	3	0	2	4	0	2	6	1.5
Total	4-0	32/8.0	1-6	.167	0-1	.000	4-4	1.000	3	4	7	1.8	3	0	2	4	0	2	6	1.5





23

5-6 • FRESHMAN

G

KRISTEN NELSON

FARMINGTON, MICH.  
HARRISON H.S.

### High School

Recipient of the Buller Award, given to the Top Athlete at Harrison High School... Detroit News All-North Team selection... Ranked fourth on Oakland County's Top-50 Players list... Harrison's all-time leader in assists and scored over 1,000 career points... Led Harrison in scoring, steals and assists in both her junior and senior seasons.

### Personal

Daughter of Shaun and Kim Nelson... Has two siblings, one brother and one sister... Intends to major in business management.

### CAREER HIGHS

Points	13	vs. Brescia (11/26/16)
Rebounds	3	2x, last vs. Brescia (11/26/16)
Offensive Rebounds	1	2x, last vs. Brescia (11/26/16)
Defensive Rebounds	2	2x, last vs. Brescia (11/26/16)
Assists	5	vs. Brescia (11/26/16)
Steals	3	vs. Brescia (11/26/16)
Blocked Shots	-	-
Field Goals Made	4	vs. Brescia (11/26/16)
Field Goals Attempted	6	vs. Brescia (11/26/16)
3-Pointers Made	1	vs. Brescia (11/26/16)
3-Pointers Attempted	2	vs. Brescia (11/26/16)
Free Throws Made	4	vs. Brescia (11/26/16)
Free Throws Attempted	4	vs. Brescia (11/26/16)
Minutes Played	23	vs. Brescia (11/26/16)

Season	GP-GS	Min/Avg	Total		3-Ptr		F-Throws		Rebounds				PF	FO	A	TO	Blk	Stl	Pts	Avg
			FG-FGA	Pct	FG-FGA	Pct	FT-FTA	Pct	Off	Def	Tot	Avg								
2016-17	6-0	55/9.2	5-10	.500	1-3	.333	6-6	1.000	3	6	9	1.5	8	0	10	4	0	3	17	2.8
Total	6-0	55/9.2	5-10	.500	1-3	.333	6-6	1.000	3	6	9	1.5	8	0	10	4	0	3	17	2.8



31

6-3 • FRESHMAN

F/C

LAUREN HARTMAN

TREMONT, ILL.  
TREMONT H.S.

### High School

Excelled at volleyball, basketball and softball at Tremont High School... Earned All-Heart of Illinois Conference honors in all three sports... Averaged 12.8 points and 8.2 rebounds as a junior on a team that amassed a 27-2 record, went unbeaten in Heart of Illinois Conference play and brought home Tremont's first regional title since 1992... Selected to the 2016 Illinois Basketball Coaches Association (IBCA) All-State Third Team... Led the Lady Turks to their second-straight Heart of Illinois Conference championship.

### Personal

Daughter of Kelly and Joel Hartman... Has one sister, Renee... Intends to major in human health and science.

### CAREER HIGHS

Points	5	vs. Murray State (11/16/16)
Rebounds	16	at Purdue (11/20/16)
Offensive Rebounds	3	4x, last at SIUE (11/23/16)
Defensive Rebounds	13	at Purdue (11/20/16)
Assists	1	3x, last at SIUE (11/23/16)
Steals	2	vs. Murray State (11/16/16)
Blocked Shots	3	at Purdue (11/20/16)
Field Goals Made	2	2x, last at Purdue (11/20/16)
Field Goals Attempted	8	at Oklahoma (11/13/16)
3-Pointers Made	1	vs. Murray State (11/16/16)
3-Pointers Attempted	3	at Oklahoma (11/13/16)
Free Throws Made	3	at Oklahoma (11/13/16)
Free Throws Attempted	4	at Oklahoma (11/13/16)
Minutes Played	31	at Purdue (11/20/16)

Season	GP-GS	Min/Avg	Total		3-Ptr		F-Throws		Rebounds				PF	FO	A	TO	Blk	Stl	Pts	Avg
			FG-FGA	Pct	FG-FGA	Pct	FT-FTA	Pct	Off	Def	Tot	Avg								
2016-17	4-4	108/27.0	6-23	.261	1-9	.111	3-6	.500	12	35	47	11.8	11	1	3	2	4	4	16	4.0
Total	4-4	108/27.0	6-23	.261	1-9	.111	3-6	.500	12	35	47	11.8	11	1	3	2	4	4	16	4.0



34

6-1 • FRESHMAN

F/C

**NICOLE MARTIN**

JEFFERSON CITY, MO.  
JEFFERSON CITY H.S.

## High School

Was a three-sport athlete at Jefferson City... Averaged 16 points and seven rebounds per game as a junior...Two-time All-Jefferson County Conference and All-Area honoree... Earned a spot on the 2014-15 All-Central District team...Played AAU for the Missouri Lady Warriors...Finished fourth in the high jump at the state meet her junior year.

## Personal

Daughter of Joe and Pamela Martin... Both Joe and Pamela were collegiate athletes, with Joe starring on Lincoln University's football team, while Pamela played basketball for the Blue Tigers... Has seven older siblings, Angela, Tiffany, twins Joseph and Camilla, Jalen, Deborah, Kezia and one younger sister, Yolanda... Intends to major in pre-medical/biological science major.

## CAREER HIGHS

Points	17	vs. Brescia (11/26/16)
Rebounds	12	vs. Brescia (11/26/16)
Offensive Rebounds	5	vs. Brescia (11/26/16)
Defensive Rebounds	7	vs. Brescia (11/26/16)
Assists	1	at Oklahoma (11/13/16)
Steals	2	at UT Martin (11/29/16)
Blocked Shots	2	vs. Murray State (11/17/16)
Field Goals Made	7	vs. Brescia (11/26/16)
Field Goals Attempted	14	vs. Brescia (11/26/16)
3-Pointers Made	-	-
3-Pointers Attempted	-	-
Free Throws Made	3	vs. Brescia (11/26/16)
Free Throws Attempted	4	vs. Brescia (11/26/16)
Minutes Played	24	vs. Brescia (11/26/16)

Season	GP-GS	Min/Avg	Total		3-Ptr		F-Throws		Rebounds										Pts	Avg
			FG-FGA	Pct	FG-FGA	Pct	FT-FTA	Pct	Off	Def	Tot	Avg	PF	FO	A	TO	Blk	Stl		
2016-17	6-0	77/12.8	11-30	.367	0-0	.000	3-5	.600	8	17	25	4.2	6	0	1	4	2	4	25	4.2
Total	6-0	77/12.8	11-30	.367	0-0	.000	3-5	.600	8	17	25	4.2	6	0	1	4	2	4	25	4.2

## CAREER RANKINGS

### SCORING

	Player	Years	Pts.
1.	Cartaasha Macklin	2011-16	1,779
2.	Amy Rakers	1987-91	1,538
3.	Char Warring	1980-84	1,530
4.	Sue Faber	1979-83	1,507
5.	Petra Jackson	1982-86	1,475
6.	Dyana Pierre	2012-16	1,425
7.	D.D. Plab	1980-84	1,380
8.	<b>Rishonda Napier</b>	<b>2012-pres.</b>	<b>1,378</b>
9.	Connie Price	1980-84	1,271
	Molly McDowell	1999-03	1,271

### SCORING AVERAGE

	Player	Years	Avg.
1.	Jan Winkler	1974-76	16.1
2.	Carlai Moore	2005-07	15.3
3.	Teri Oliver	2009-12	14.1
4.	Amy Rakers	1987-91	13.9
5.	<b>Rishonda Napier</b>	<b>2012-pr.</b>	<b>13.7</b>
	Sue Faber	1979-83	13.7
7.	Cartaasha Macklin	2011-16	13.6
8.	Jayme Sweere	2005-08	13.2
9.	Char Warring	1980-84	13.1
10.	Petra Jackson	1982-86	12.9
	Bonnie Foley	1975-79	12.9

### FIELD GOALS MADE

	Player	Years	FGM
1.	Petra Jackson	1982-86	650
2.	Amy Rakers	1987-91	630
3.	Sue Faber	1979-83	629
4.	Cartaasha Macklin	2011-16	608
5.	Char Warring	1980-84	602
6.	D.D. Plab	1980-84	590
7.	Dyana Pierre	2012-16	581
8.	Bridgett Bonds	1984-88	516
	Terica Hathaway	1997-01	516
10.	Connie Price	1980-84	511

### FIELD GOALS ATTEMPTED

	Player	Years	FGA
1.	Cartaasha Macklin	2011-16	1,528
2.	Sue Faber	1979-83	1,423
3.	<b>Rishonda Napier</b>	<b>2012-pres.</b>	<b>1,343</b>
4.	D.D. Plab	1980-84	1,335
5.	Petra Jackson	1982-86	1,333
6.	Terica Hathaway	1997-01	1,323
7.	Dyana Pierre	2012-16	1,203
8.	Amy Rakers	1987-91	1,173
9.	Jayme Sweere	2005-08	1,170
10.	Jeri Hoffman	1975-79	1,155

### FIELD GOAL PCT.

	Player	Years	Pct.
1.	Char Warring	1980-84	.594
2.	Theia Hudson	1994-98	.590
3.	Bridgett Bonds	1984-88	.575
4.	Mary Berghuis	1984-88	.574
5.	Connie Price	1980-84	.571
6.	Carlai Moore	2005-07	.554
7.	Kelly Firth	1989-93	.547
8.	Leola Greer	1979-81	.539
9.	Amy Rakers	1987-91	.537
10.	Cozette Wallace	1983-87	.524

### FREE THROWS MADE

	Player	Years	FT
1.	Cartaasha Macklin	2011-16	465
2.	Molly McDowell	1999-03	367
3.	Char Warring	1980-84	326
4.	Amy Rakers	1987-91	278

5.	Nikki Gilmore	1992-96	268
6.	Dyana Pierre	2012-16	263
7.	Sue Faber	1979-83	251
8.	Connie Price	1980-84	249
9.	Kelly Firth	1989-93	239
10.	Theia Hudson	1994-98	238

### FREE THROWS ATTEMPTED

	Player	Years	FTA
1.	Char Warring	1980-84	635
2.	Cartaasha Macklin	2011-16	603
3.	Dyana Pierre	2012-16	460
4.	Molly McDowell	1999-03	436
5.	Theia Hudson	1994-98	416
6.	Connie Price	1980-84	408
7.	Sue Faber	1979-83	381
8.	Nikki Gilmore	1992-96	377
9.	Amy Rakers	1987-91	367
10.	Bridgett Bonds	1984-88	343

### FREE THROW PCT.

	Player	Years	Pct.
1.	Molly McDowell	1999-03	.842
2.	<b>Rishonda Napier</b>	<b>2012-pr.</b>	<b>.838</b>
3.	Erin Pauk	2005-08	.811
4.	D.D. Plab	1980-84	.806
5.	Petra Jackson	1982-86	.785
6.	Cartaasha Macklin	2011-16	.771
6.	Amy Hayden	2002-06	.770
7.	Jodi Heiden	2000-04	.767
8.	Amy Rakers	1987-91	.757
	Dana Pinkston	2002-04	.757
10.	Katrina Swingler	2007-11	.751

### REBOUNDING

	Player	Years	Reb.
1.	Dyana Pierre	2012-16	1,218
2.	Sue Faber	1979-83	1,014
3.	Bonnie Foley	1975-79	998
4.	Amy Rakers	1987-91	945
5.	Char Warring	1980-84	907
6.	Kelly Firth	1989-93	811
7.	Mary Berghuis	1984-88	778
8.	Connie Price	1980-84	744
9.	Bridgett Bonds	1984-88	717
10.	Azia Washington	2012-16	675

### REBOUNDING AVERAGE

	Player	Years	Avg.
1.	Bonnie Foley	1975-79	10.8
2.	Dyana Pierre	2013-16	10.3
3.	Sue Faber	1979-83	9.2
4.	Angenette Sumrall	1993-95	8.7
5.	Amy Rakers	1987-91	8.5
	Terica Hathaway	1997-01	8.5
7.	Char Warring	1980-84	7.7
8.	Jeri Hoffman	1975-79	7.5
9.	Alondray Rogers	1979-81	7.3
10.	Kelly Firth	1989-93	7.1
11.	Bridgett Bonds	1984-88	7.0
	Connie Price	1980-84	7.0

### 3-POINTERS MADE

	Player	Years	3FG
1.	Teri Oliver	2009-12	235
2.	<b>Rishonda Napier</b>	<b>2012-pres.</b>	<b>213</b>
3.	Karrie Redeker	1988-92	161
4.	Karen Powell	1990-94	157
5.	Danette Jones	2001-05	153
6.	<b>Kylie Giebelhausen</b>	<b>2014-pres.</b>	<b>125</b>
7.	Jordyn Courier	2011-14	109
8.	Molly McDowell	1999-03	104

9.	Kasia McClendon	1993-97	103
	Cartaasha Macklin	2011-16	98

### 3-POINTERS ATTEMPTED

	Player	Years	3FGA
1.	Teri Oliver	2009-12	702
2.	<b>Rishonda Napier</b>	<b>2012-pr.</b>	<b>617</b>
3.	Karen Powell	1990-94	464
4.	Danette Jones	2001-05	434
	Karrie Redeker	1988-92	434
6.	Jordyn Courier	2011-14	431
7.	<b>Kylie Giebelhausen</b>	<b>2014-pres.</b>	<b>359</b>
8.	Kasia McClendon	1993-97	327
9.	Molly McDowell	1999-03	312
10.	Cartaasha Macklin	2011-16	299

### 3-POINT PCT.

	Player	Years	Pct.
1.	Deanna Sanders	1987-89	.391
2.	Meredith Jackson	1996-99	.388
3.	Debbie Burris	2006-07	.373
4.	Karrie Redeker	1988-92	.371
5.	Erica Smith	2005-09	.356
6.	Erin Pauk	2005-08	.353
	Danette Jones	2001-05	.353
8.	Kaci Bailey	2005-09	.348
	<b>Kylie Giebelhausen</b>	<b>2014-pres.</b>	<b>.348</b>
10.	Daphney Desamours	2003-05	.347
11.	<b>Rishonda Napier</b>	<b>2012-pres.</b>	<b>.345</b>

### BLOCKS

	Player	Years	B
1.	Dyana Pierre	2012-16	162
2.	CiCi Shannon	2010-12	149
3.	Cathy Kampwerth	1985-89	104
4.	<b>Kylie Giebelhausen</b>	<b>2014-pres.</b>	<b>85</b>
5.	Mary Berghuis	1984-88	83
6.	Melaniece Bardley	1996-00	82
	Kristine Abramowski	1997-01	82
8.	Amy Rakers	1987-91	79
	Char Warring	1980-84	79
10.	Sue Faber	1979-83	61

### ASSISTS

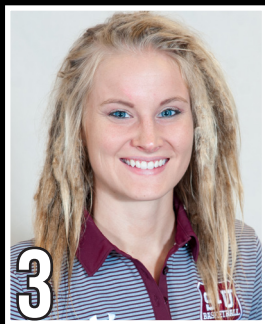
	Player	Years	A
1.	D.D. Plab	1980-84	508
2.	Cartaasha Macklin	2011-16	486
3.	Angie Rougeau	1989-93	382
4.	Kasia McClendon	1993-97	365
5.	Nikki Gilmore	1992-96	361
6.	Marialice Jenkins	1983-87	360
7.	Molly McDowell	1999-03	355
8.	Anita Scott	1989-93	325
9.	Dana Fitzpatrick	1985-89	323
10.	<b>Rishonda Napier</b>	<b>2012-pres.</b>	<b>317</b>
11.	Colleen Heimstead	1988-92	309

### STEALS

	Player	Years	S
1.	Kasia McClendon	1993-97	366
2.	Sue Faber	1979-83	203
3.	Molly McDowell	1999-03	198
4.	Petra Jackson	1982-86	189
5.	D.D. Plab	1980-84	177
6.	Erica Smith	2005-09	166
7.	Cartaasha Macklin	2011-16	164
8.	Bridgett Bonds	1984-88	157
9.	Nikki Gilmore	1992-96	141
10.	Anita Scott	1989-93	140



# SALUKI WOMEN'S BASKETBALL 2016-17



**OLIVIA BOWLING**

5-9 • So. • G  
New Haven, Ky.  
Elizabethtown H.S.



**BRITTNEY PATRICK**

5-6 • Fr. • G  
Bolingbrook, Ill.  
Bolingbrook H.S.



**RISHONDA NAPIER**

5-5 • R-Sr. • PG  
Burbank, Calif.  
Bellarmine-Jefferson H.S.



**CAITLYN CLAUSSEN**

6-0 • Fr. • G/F  
Manhattan, Kan.  
Wamego H.S.



**TIAJANEY HAWKINS**

5-10 • RS Fr. • G/F  
East Chicago, Ind.  
East Chicago Central H.S.



**KRISTEN NELSON**

5-9 • Fr. • G  
Farmington Hills, Mich.  
Harrison H.S.



**KIM NEBO**

6-1 • Sr. • F  
Katy, Texas  
Cypress Lakes H.S.



**LAUREN HARTMAN**

6-3 • Fr. • F/C  
Tremont, Ill.  
Tremont H.S.



**KYLIE GIEBELHAUSEN**

6-1 • Jr. • G  
East Peoria, Ill.  
East Peoria H.S.



**NICOLE MARTIN**

6-1 • Fr. • G  
Jefferson City, Mo.  
Jefferson City H.S.



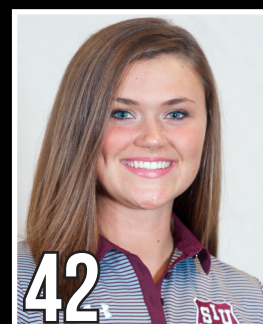
**CELINA VANHYFTE**

6-0 • Jr. • F/C  
Annawan, Ill.  
Annawan H.S.



**CARLIE CORRIGAN**

5-11 • Sr. • G/F  
Plainfield, Ill.  
Plainfield North H.S.



**ASHLEY HUMMEL**

6-1 • So. • F/C  
Hilliard, Ohio  
Hilliard Bradley H.S.



**CINDY STEIN**

Head Coach  
Fourth Season



**CHRISTELLE N'GARSANET**

Associate Head Coach  
Fourth Season



**KAT MARTIN**

Assistant Coach/  
Recruiting Coordinator  
Fourth Season



**NICOLE COLLIER**

Assistant Coach  
First Season



**JULIE BECK**

Director of Operations  
Fourth Season



**ADESUWA EBOMWONYI**

Video Coordinator  
Second Season