

2016 VOLLEYBALL

INDIANA STATE

SYCAMORES

MATCH NOTES

ISU Media Relations | Tim McCaughan - Assistant Director of Media Relations
p: 812.237.4159 | e: timothy.mccaughan@indstate.edu | GoSycamores.com



2016 >> SCHEDULE & RECORD

THE RECORD	OVERALL:	7-9
	Missouri Valley:	1-3
	Home:	2-2
	Away:	1-4
	Neutral:	4-3

THE SCHEDULE

AUGUST

A26	at South Alabama	Birmingham, Ala.	L, 3-2
A26	vs. Samford	Birmingham, Ala.	W, 3-0
A27	at Nicholls	Birmingham, Ala.	W, 3-0

SEPTEMBER

S2	at West Virginia	Charleston, W. Va.	L, 3-2
S2	vs. Morehead State	Charleston, W. Va.	W, 3-0
S3	vs. Marshall	Charleston, W. Va.	W, 3-2
S9	vs. UNCW	Denton, Texas	L, 3-0
S9	at North Texas	Denton, Texas	L, 3-0
S10	vs. Louisiana-Lafayette	Denton, Texas	W, 3-2
S13	at Butler	Indianapolis, Ind.	L, 3-1
S16	vs. Bradley*	ISU Arena	W, 3-1
S17	vs. Western Michigan	ISU Arena	L, 3-2
S24	vs. Loyola*	ISU Arena	L, 3-2
S27	vs. Eastern Illinois	ISU Arena	W, 3-1
S30	at Illinois State*	Normal, Ill.	L, 3-0

OCTOBER

O3	at Northern Iowa*	Cedar Falls, Iowa	L, 3-1
O7	at Southern Illinois*	Carbondale, Ill.	8:00 PM
O8	at Evansville*	Evansville, Ind.	8:00 PM
O14	vs. Wichita State*	ISU Arena	7:00 PM
O15	vs. Missouri State*	ISU Arena	7:00 PM
O21	at Loyola*	Chicago, Ill.	8:00 PM
O22	at Bradley*	Peoria, Ill.	8:00 PM
O28	vs. Illinois State*	ISU Arena	7:00 PM
O31	at Drake*	Des Moines, Iowa	8:00 PM

NOVEMBER

N4	vs. Evansville*	ISU Arena	7:00 PM
N5	vs. Southern Illinois*	ISU Arena	7:00 PM
N11	at Missouri State*	Springfield, Mo.	8:00 PM
N12	at Wichita State*	Wichita, Kan.	8:00 PM
N18	vs. Drake*	ISU Arena	7:00 PM
N19	vs. Northern Iowa*	ISU Arena	7:00 PM

* Missouri Valley Conference match Times listed in Eastern Time Zone



GAMEDAY CENTRAL

Indiana State

Southern Illinois

Evansville



OCTOBER 7-8 | DAVIES GYM/CARSON CENTER | CARBONDALE, ILL./EVANSVILLE, IND.

Record: 7-9, 1-3 MVC

Record: 13-6, 4-1 MVC

Record: 4-14, 0-5 MVC

Current Rank: NR

Kills/Set: 3.50 - Kynedi Nalls
Assists/Set: 9.83 - Rachel Griffin
Aces/Set: 0.34 - Cassie Kawa
Digs/Set: 3.97 - Shannon Murphy
Blocks/Set: 1.02 - Damadj Johnson

Current Rank: NR

Kills/Set: 2.82 - Andrea Estrada
Assists/Set: 6.13 - Meg Viggars
Aces/Set: 0.26 - Alex Rosignol
Digs/Set: 3.55 - Mariana Pilon
Blocks/Set: 1.34 - McKenzie Dorris

Current Rank: NR

Kills/Set: 2.94 - Mildrelis Rodriguez
Assists/Set: 6.83 - Jelena Merseli
Aces/Set: 0.19 - Rachel Tam
Digs/Set: 2.65 - Mildrelis Rodriguez
Blocks/Set: 1.16 - Erlicia Griffith

OPENING SERVE

SETTING THE STAGE

Indiana State will look to break a two-match losing streak as they hit the road for a pair of Missouri Valley Conference matches beginning Friday at Southern Illinois before traveling to Evansville for a matchup with the Purple Aces Saturday night.

SERIES HISTORY

All Time Series: SIU, 17-47
Last Meeting: 2015, L, 3-1 (Away)
Under Coach Dahl-Skinner: 3-15

All Time Series: UE, 41-28

Last Meeting: 2015, W, 3-1 (Away)
Under Coach Dahl-Skinner: 10-8

THE HEAD COACH

Traci Dahl-Skinner
9th season (98-165)

LAST TIME OUT

Indiana State's comeback fell short at Northern Iowa, 3-1 (25-12, 25-22, 21-25, 25-19), Monday night in Cedar Falls. Senior Kynedi Nalls led the Sycamores with a match high 20 kills in the loss while Cassie Kawa and Sarah Peterson each added six kills apiece. Rachel Griffin recorded her fourth double-double of the season after assisting on 33 kills and picking up 10 digs. Northern Iowa was led by

Amie Held who finished with 18 kills and Piper Thomas who had 15 kills on the night.

SPANGLER ON THE BRINK OF HISTORY

Indiana State senior Bree Spangler is just 32 digs away from the 1000 for her career. Earlier this season, the Coldwater, Mich. native surpassed the 1000 kill mark. Spangler would become just the fourth Sycamore in program history to record 1000 kills and 1000 digs.

SYCAMORES OPEN MVC PLAY WITH WIN OVER BRADLEY

Indiana State's MVC opener against Bradley was historic on several fronts. As the Sycamores opened their 33rd season of Missouri Valley Conference (formerly Gateway Conference) play, it marked just the third time the Sycamores have opened the league slate with a victory. It was just the second victory at home to open league play in 12 all-time attempts and was the first MVC opening victory for the program under ninth-year head coach Traci Dahl-Skinner. A big reason for the Sycamores' success was the play of Bree Spangler who became the first Indiana State player in recent memory to record at least 20 kills and digs in the same match.

DOUBLE-DOUBLE

Kynedi Nalls joined teammates Bree Spangler

FOLLOW SYCAMORE VOLLEYBALL



GoSycamores.com



/SycamoreVolleyball



@IndStVB

2016 QUICK FACTS

General

Location Terre Haute, Ind.
 Founded 1865
 Enrollment 13,584
 Nickname Sycamores
 Colors Royal Blue & White
 Arena ISU Arena
 Capacity 500
 Affiliation Division I
 Conference Missouri Valley
 President Dr. Daniel J. Bradley
 Athletics Director Sherard Clinkscales
 Athletics Dept. Phone (812) 237-4040

2015 Team Information

Record 17-16
 MVC Record 6-12 (8th)
 Home / Away Record 10-7/5-8
 MVC Home / Away Record 4-5/2-7
 Letterwinners Returning / Lost 4/6
 Starters Returning / Lost 3 + libero / 3
 Newcomers 7

2016 Coaching / Staff Information

Head Coach Traci Dahl-Skinner
 Career Record 98-165 (9th Season)
 Record at ISU Same
 Assistant Coach Nicole Wilson (Missouri '07)
 Graduate Manager Jordan Sandoe
 Graduate Manager Carly Wishlow

Program History

First season 1977
 All-Time Record 464-745
 NCAA Tournaments/Last N/A
 MVC Tournaments/Last 8/2011
 Last Postseason Opponent
 Wichita State (2014 MVC Tournament, L, 0-3)

Athletics Media Relations

Volleyball SID Tim McCaughan
 Email timothy.mccaughan@indstate.edu
 Phone 812.237.4159



and Rachel Griffin as she recorded her first double-double of the season as she led the Sycamores to a 3-1 win over Eastern Illinois Tuesday night at the ISU Arena. Nalls recorded a career best 24 kills and 10 digs in the win. As a team, ISU has 12 double-doubles on the year with six coming from Spangler and five coming from Griffin.

NCAA RPI REPORT

The first edition of the NCAA RPI report for the 2016 season has been released and the Valley has four teams featured in the top-70. Wichita State leads the league at No. 42, while Southern Illinois (No. 59), UNI (No. 65), and Missouri State (No. 67) are also among the nation's top-70. The Valley is one of nine leagues to have four or more teams in the RPI's top-70, joining the Big Ten (11), Pac-12 (9), Big 12 (6), SEC (6), ACC (5), American Athletic (4), Big East (4), Big West (4) and West Coast (4).

STAR SPANGLER BANNER

Indiana State senior Bree Spangler now has 1,043 kills for her career which stands in eighth place on the Sycamore career charts. She needs just four more to pass Stacy Stanton (1991-94) for seventh place. Additionally she has 945 career digs and is just 55 away from becoming the eighth member of the 1,000 Dig Club. She would also join Cheryl Berg, Stacy Stanton and Kylee Osborne as the only Sycamores to record at least 1,000 career kills and 1,000 career digs.

TOURNAMENT WINS

Indiana State picked up their second tournament win as the Sycamores used victories over host Marshall and Morehead State to win the West Virginia Capital Classic. In the first week of the regular season, the Sycamores captured the Marriott Invitational, hosted by Samford. It is believed this is the first time in the history of the program that the Sycamore Volleyball program has won two tournaments away from ISU Arena in the same season. Under head coach Traci Dahl, the Sycamores have won at least one tournament in each of the last four years.

DAMADJ JOHNSON SOLID AT ISU CLASSIC

Indiana State freshman Damadj Johnson tallied 15 kills and owned a .258 attack percentage as the Sycamores split against Bradley and Western Michigan. She led the way at the net with nine total blocks. Johnson had eight kills and four blocks against Western Michigan after tallying seven kills and five blocks in the MVC opener against Bradley.

GRIFFIN NAMED MVP TWICE

For the second time in as many weeks, junior Rachel Griffin earned tournament MVP honors. This time the honor came at the Capital Classic one week after taking a similar honor at the Marriott Invitational. Over the three game stretch, Griffin posted 119 assists, averaging 9.15 per set as the Sycamores used victories over Morehead State and host Marshall to win the tournament. Griffin added 23 digs, 6.5 total blocks and one service ace in

securing the team tournament win. In the opener, the Sycamores battled Big 12 foe West Virginia close and Griffin tallied 49 assists with two kills, two blocks and one service ace. She and the Sycamores made quick work of Morehead State in the second game of the tournament as she had 27 assists, one kill, six digs and 1.5 blocks in the three set sweep. Indiana State played their second five set match of the tournament and with the victory over host Marshall secured the championship as Griffin posted 43 assists and 10 digs for the double-double. She added 3.0 total blocks in the victory.

DEFENSIVE SYCAMORES

The Sycamore defense continues to be strong and is a major reason for the program's 6-7 start to the season. ISU is fifth in the Missouri Valley Conference by limiting teams to just a .201 hitting percentage through the first 13 matches. The Sycamores are also second in the league in service aces averaging 1.34 per set. Both Cassie Kawa and Bree Spangler rank in the league's Top 10 for individual service aces. Kawa leads the MVC with 20 service aces, an average of .43 per set. Nationally, Kawa ranks 51st nationally in service aces per set and 80th in total service aces.

BACK TO BACK WINNERS

With its victory on November 13, 2015 at Evansville, Indiana State secured the program's first back-to-back winning seasons since 1981 & 1982. The Sycamores finished above .500 last season with a 17-16 overall record after compiling a 17-13 overall record in 2014. Indiana State will be vying for its first-ever third consecutive winning campaign in 2016.

SYCAMORES PICKED 7TH IN MVC

The Sycamores have been picked to finish seventh in the Missouri Valley Conference standings as announced late this summer by the league office. Wichita State was picked to defend its conference championship. Indiana State begins conference play on Friday, September 16 at home against Bradley as part of the Indiana State Tournament.

SMART SYCAMORES

ISU earned its 18th straight AVCA Team Academic Award for the 2015 season. The streak is the longest among all schools and ties Drury University (Division II) for the longest streak in the history of the award.

UP NEXT

The Sycamores return to the ISU Arena next weekend as they play host to Wichita State Friday, Oct. 14 before welcoming Missouri State Saturday, Oct. 15.

AROUND THE MVC

2016 PRESEASON COACHES POLI

1. Wichita State (7)	97
2. Missouri State (1)	85
3. Southern Illinois (1)	82
4. Northern Iowa (1)	72
5. Illinois State	57
6. Loyola	50
7. Indiana State	41
8. Drake	33
9. Bradley	18
10. Evansville	15

2016 MVC PRESEASON ALL-CONFERENCE

Kayla Haneline, UNI
 Lily Johnson, Missouri State
 Jaelyn Keene, Illinois State
 Abbie Lehman, Wichita State
 Andrea Estrada, Southern Illinois
 Emily Hiebert, Wichita State

MVC PLAYERS OF THE WEEK

Player (08/29): Lily Johnson, OH, Missouri St.
 Defense (08/29): Amie Held, L, Northern Iowa
 Freshman (08/29): Giorgia Civita, L, Wichita St.
 Player (09/06): Jaelyn Keene, MB, Illinois St.
 Defense (09/06): Maddy Moser, L, Loyola
 Freshman (09/06): Aubrey Cheffrey, OH, Missouri St.
 Player (09/12): Lynsey Wright, Jr., MB, Missouri State
 Defense (09/12): Kendyl Sorge, So., L, UNI
 Freshman (09/12): Daniele Messa, Fr., S, Missouri State
 Player (9/19): Jaelyn Keene, Jr., MB, Illinois State
 Defense (9/19): Courtney Pence, So. DS, Illinois State
 Freshman (9/19): Glogia Civita, Fr., L, Wichita State
 Player (9/27): Aly Dawson, Sr., OH, Illinois State
 Defense (9/27): Courtney Pence, So., DS, Illinois State
 Freshman (9/27): Delilah Wolf, Fr., S, Loyola
 Player (10/3): Lily Johnson, Jr., OH, Missouri State
 Defensive (10/3): Kendyl Sorge, So., L, UNI
 Freshman (10/3): Delilah Wolf, Fr., S, Loyola

THE LAST TIME INDIANA STATE ...

Won a match 3-0	vs. Morehead State (09/02/16)
Won a match 3-1	at. Evansville (11/13/15)
Won a match 3-2	vs. Louisiana-Lafayette (09/10/16)
Lost a match 0-3	at Illinois State (09/30/16)
Lost a match 1-3	at Northern Iowa (10/3/16)
Lost a match 2-3	vs. Loyola (09/24/16)
Beat a ranked team	
Beat a ranked team at a neutral site	
Beat a ranked team on the road	
Beat a Top 10 team	
Lost to a ranked team	at Creighton (11/08/12)
Won a match it trailed 2-0 (home)	vs. Saint Louis (10/22/13)
Won a match it trailed 2-0 (road)	at IUPUI (9/9/14)
Lost a match it led 2-0 (home)	vs. Western Michigan (09/17/16)
Lost a match it led 2-0 (road)	vs. West Virginia (09/02/15)
Had 100 or more kills	100, vs. Creighton (10/14/00)
Had 90-99 kills	
Had 80-89 kills	85, vs. Southwest Missouri (10/16/93)
Had 70-79 kills	77, vs. Valparaiso (9/19/15)
Had 220 or more attacks	243, vs. Creighton (10/14/00)
Had 200-219 attacks	201, at Robert Morris (9/5/14)
Had 10 or more service aces	10, vs. Northern Iowa (10/2/15)
Had 100 or more digs	100, vs. Evansville (10/20/06)
Had 90-99 digs	95, at Kent State (9/4/15)
Had 80-89 digs	89, vs. Drake (10/3/15)
Had 70-79 digs	72, vs. Western Michigan (09/17/16)
Had 25 or more team blocks	25.0, vs. Central Michigan (10/12/91)
Had 20-24 team blocks	24.0, vs. Drake (9/24/93)
Had 15-19 team blocks	17.0, vs. Louisiana-Lafayette (09/10/16)
Had 10-14 team blocks	12.0, vs. Marshall (09/03/16)
Hit .500 or better as a team528, vs. Chicago State (9/12/09)
Hit .450-.499 as a team486, vs. Savannah State (8/26/11)
Hit .400-.449 as a team400, vs. UT Martin (9/11/15)
Hit .350-.399 as a team396, vs. Nicholls State (8/27/16)
Hit .300-.349 as a team304, vs. Western Michigan (09-16-16)
Hit negative as a team	-.010, vs. Northern Iowa (9/24/11)
Held an opponent to .001-.100 hitting	-.047, vs. Morehead State (09/02/16)
Held an opponent to .000 or less hitting000, vs. Bradley (10/11/14)
Had a player with 75 or more assists	80, Megan Mirs vs. Drake (10/13/00)
Had a player with 70-74 assists	70, Loni Mackinson vs. Evansville (11/16/12)
Had a player with 60-69 assists	60, Erika Nord vs. SIU (9/27/14)
Had a player with 40 or more kills	
Had a player with 30 or more kills	30, Tishara Jespersen vs. Drake (10-19-96)
Had a player with 20 or more kills	24, Kynedi Nalls vs. Eastern Illinois (09/24/16)
Had a player with 15 or more blocks	
Had a player with 10-14 blocks	10 (4-6), Cassandra Willis at Kent State (9/4/15)
Had a player with 7 or more service aces	7, Morgan Dall vs. Appalachian St. (9/11/10)
Had a player with 40 or more digs	41, Kelly Spisak vs. Creighton (11/20/04)
Had a player with 30-39 digs	32, Molly Murphy vs. Evansville (11/22/13)
Had a player with 26-29 digs	28, Stephanie Bindernagel at Kent State (9/4/15)
Had a player with 20-25 digs	20, Bree Spangler vs. Western Michigan (09-17-16)
Had a player with a triple double	Alisha Polite at Evansville (9/14/07) - 10K, 40A, 14D
Had a player with 20 kills and 20 digs	Bree Spangler vs. Western Michigan (09/17/16)
Had two players with 20 or more kills	Morgan Dall (23), Bree Spangler (22)
Had two players with 10 or more blocks	vs. Illinois State (10/25/13)
Had two players with 10 or more blocks	Rhonda Sips (12), Tiffany Graham (11)
Had two players with 10 or more blocks	vs. Central Michigan (10/21/91)

2016 INDIANA STATE GAME HIGHS

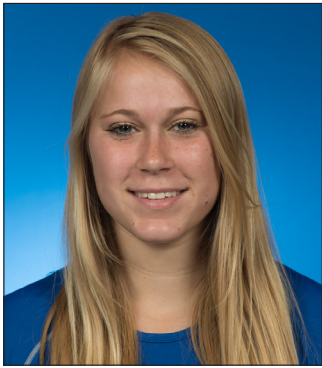
Three Sets	Individual	Team
Kills	13 Spangler & Nalls (Last, 09-09-16)	48 vs. Nicholls State (08-27-16)
Attacks	34 Kynedi Nalls vs. Morehead St. (09-02-16)	103 at North Texas (09-09-16)
Attack Pct.	.769 Cassie Kawa vs. Nicholls St. (08-27-16)	.396 vs. Nicholls St. (08-27-16)
Assists	38 Rachel Griffin vs. Nicholls St. (08-27-16)	44 vs. Nicholls St. (08-27-16)
Digs	17 Stephanie Bindernagel vs. Morehead St. (09-02-16)	51 at Illinois State (09-30-16)
Blocks	5 Damadj Johnson vs. Morehead St. (09-02-16)	9.0 twice (Last, 09-02-16)

Four Sets	Individual	Team
Kills	24 Bree Spangler vs. Eastern Illinois (09-27-16)	65 vs. Bradley (09-16-16)
Attacks	50 Bree Spangler vs. Bradley (09-16-16)	168 vs. Bradley (09-16-16)
Attack Pct.	.467 Damadj Johnson at Butler (09-13-16)	.304 vs. Bradley (09-16-16)
Assists	55 Rachel Griffin vs. Bradley (09-16-16)	62 vs. Bradley (09-16-16)
Digs	26 Shannon Murphy at Northern Iowa (10-3-16)	73 at Northern Iowa (10-3-16)
Blocks	5 Damadj Johnson vs. Bradley (09-16-16)	9.0 at Butler (09-13-16)

Five Sets	Individual	Team
Kills	22 Melody Burdette vs. South Alabama (08-26-16)	66 vs. South Alabama (08-26-16)
Attacks	45 Melody Burdette & Kynedi Nalls (Last, 09-02-16)	181 vs. Loyola (09-24-16)
Attack Pct.	.462 Kynedi Nalls vs. Western Michigan (09-17-16)	.312 vs. South Alabama (08-26-16)
Assists	55 Rachel Griffin vs. South Alabama (08-26-16)	60 vs. South Alabama (08-26-16)
Digs	21 Shannon Murphy vs. South Alabama (08-26-16)	72 vs. Western Michigan (09-17-16)
Blocks	9 Damadj Johnson vs. Louisiana-Lafayette (09-10-16)	17.0 vs. Louisiana-Lafayette (09-10-16)

PRONUNCIATION GUIDE

Kelcie Basan Basin
 Stephanie Bindernagel Bin-der-nay-gul
 Melody Burdette Burr-det
 Damadj Johnson Duh-MA-jay
 Cassie Kawa Ka-va
 Halle Lueck Lou-eck
 Makenzie Macek May-sek
 Kynedi Nalls Kennedy Nawls
 Danielle Waedekin Wade-a-kin



1 • Mackenzie Macek
Jr. • OH • 6-1
Rockford, Ill.



2 • Kelcie Basan
Fr. • DS/L • 5-6
Terre Haute, Ind.



3 • Stephanie Bindernagel
Jr. • DS/L • 5-7
Bainbridge, Ohio



4 • Sarah Peterson
Jr. • OH • 6-0
Seven Hills, Ohio



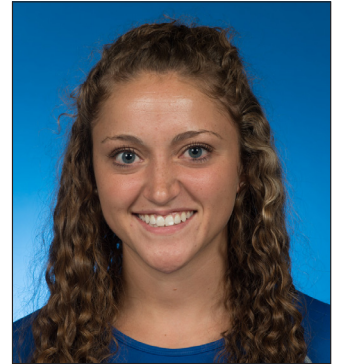
6 • Melody Burdette
Sr. • MB • 6-1
Long Beach, Calif.



8 • Rhiannon Morozoff
Fr. • OH • 5-11
Saskatoon, Saskatchewan



9 • Damadj Johnson
Fr. • MB • 6-0
East St. Louis, Ill.



10 • Rachel Griffin
Jr. • S • 5-10
Avon, Ind.



11 • Alex Toombs
Fr. • MH/OPP • 6-1
Saskatoon, Saskatchewan



12 • Bree Spangler
Sr. • OH • 6-1
Coldwater, Mich.



13 • Kynedi Nalls
Sr. • RS • 6-0
Fort Worth, Texas



14 • Cassie Kawa
Fr. • MB • 6-0
Lethbridge, Alberta



16 • Halle Lueck
Jr. • S • 5-9
Ely, Iowa



32 • Paige Hemmen
Fr. • DS/L • 5-8
St. Louis, Mo.



33 • Shannon Murphy
Sr. • DS • 5-10
Chicago, Ill.



Head Coach
Traci Dahl-Skinner

9th Season | Long Beach St. '97

- 9th Season as Head Coach (98-165 overall)
- First season at Indiana State: 2008
- Guided Sycamores to back-to-back winning seasons in 2014 & 2015
- Previous stops (as assistant coach): Hofstra (2004) and Cal State Fullerton (2005-07), Cheritos Community College (CA) (assistant coach, 1995-97)
- Taught high school and coached volleyball at Downey High School (1998-2004)
- Played collegiately at Long Beach State (1993-94), helping the 49ers to a NCAA National Championship in 1993, and NCAA Regionals appearance in 1994
- A second team AVCA All-American second team honoree and first team AVCA All-Region honoree
- Married husband, Jarrod, in summer 2014



Assistant Coach
Nicole Wilson

5th Season | Missouri '07

- 5th Season as Assistant Coach
- Previous coaching stop: McNeese State (assistant coach, 2010-12)
- Two-sport athlete and All-American at Missouri (2003-07)
- Finished her career as Mizzou's leader in career hitting percentage (.350), block assists (376) and blocks per game (1.07)
- Holds the single season record for hitting percentage in Tigers' history (.415 in 2005) and block assists (169 in 2005).
- 2005 AVCA Honorable Mention All-American, 2005 AVCA All-Central Region First Team, 2006 AVCA All-Central Region Honorable Mention, a two-time All-Big 12 Honorable Mention and an Academic All-Big 12 pick.
- Also played basketball for one season at Mizzou (2007-08)
- Native of Lincoln, Nebraska

2016 LEADERS

KILLS

DIGS

ASSISTS



Kynedi Nalls
224 Kills



Shannon Murphy
254 digs



Rachel Griffin
629 Assists

ATTACK %

BLOCKS

ACES



Damadj Johnson
.277 (93-32-220)



Damadj Johnson
62 Blocks



Cassie Kawa
20 Aces

Double-Doubles

Bree Spangler (6)
vs. South Alabama (13K, 12D)
vs. Nicholls St. (11K, 12D)
vs. West Virginia (13K, 12D)
at Butler (11K, 15D)
vs. Bradley (20K, 20D)
vs. Western Michigan (11K, 20D)

Rachel Griffin (5)
vs. Marshall (43A, 10D)
at Butler (36A, 15D)
vs. Bradley (55A, 10D)
vs. Eastern Illinois (47A, 10D)
at Northern Iowa (33A, 10D)

Kynedi Nalls (1)
vs. Eastern Illinois (24K, 10D)

IMPORTANT NUMBERS

6 - Bree Spangler owns six double-doubles already in 2016
3 - Number of consecutive seasons in which the Sycamores have won an early season tournament, including the 2016 Marriott Invitational and the Capital Classic.

9 - Nine home matches this season will be live on The Valley On ESPN3.

20 - Bree Spangler became the first Sycamore in recent memory to record 20 kills and 20 digs in the same match when she did in the MVC opener against Bradley.

22 - Melody Burdette's career-best number of kills in the season opener against South Alabama, which is the first time a Sycamore has gone over the 20-kill mark in a game since 2013

55 - Set assists for Rachel Griffin in the opener against South Alabama which is a new career high. Griffin came back with 55 more assists in the MVC opening victory over Bradley.

1,056 - Number of career kills from senior Bree Spangler as she is the 12th member of the ISU Volleyball 1,000 Kills Club. She needs only 32 more digs to become the 4th Sycamore in the history of the program to record at least 1,000 career kills and 1,000 career digs.

INSIDE THE NUMBERS

Missouri Valley

TEAM

Hitting Percentage (4th, .234)
Opponent Hitting Percentage (6th, .202)
Assists (8th, 11.25 per set)
Kills (8th, 12.32 per set)
Blocks (6th, 1.98 per set)
Service Aces (2nd, 1.35 per set)
Digs (7th, 14.28 per set)

INDIVIDUAL

Kills
Kynedi Nalls (3rd, 3.40 per set)
Assists
Rachel Griffin (3rd, 10.09 per set)
Service Aces
Cassie Kawa (3rd, 0.39 per set)
Bree Spangler (8th, 0.27 per set)
Blocks
Damadj Johnson (4th, 1.04 per set)
Digs
Shannon Murphy (9th, 3.70 per set)
Points
Kynedi Nalls (4th, 3.88 per set)

NCAA

TEAM

Aces Per Set (127th, 1.34 per set)
Assists Per Set (217th, 11.11 per set)
Blocks Per Set (142nd, 2.08 per set)
Digs Per Set (183rd, 14.08 per set)
Hitting Percentage (102nd, .230)
Kills Per Set (197th, 12.13)
Opponent Hitting Percentage (168th, .201)

INDIVIDUAL

Cassie Kawa - Service Aces Per Set (50th, 0.43)
Rachel Griffin - Assists Per Set (87th, 9.96)
Damadj Johnson - Blocks Per Set (129th, 1.10)
Rachel Griffin - Total Assists (73rd, 528)
Cassie Kawa - Service Aces (81st, 20)
Damadj Johnson - Total Blocks (137th, 55)

2016 Season Stats



2016 Indiana State Volleyball INS Combined Team Statistics (as of Oct 04, 2016) All matches



RECORD:	OVERALL	HOME	AWAY	NEUTRAL
ALL GAMES	7-9	2-2	1-4	4-3
CONFERENCE	1-3	1-1	0-2	0-0
NON-CONFERENCE	6-6	1-1	1-2	4-3

#	Player	sp	Attack				Set		Serve			Dig		Blocking					points			
			k	k/s	e	ta	pct	a	a/s	sa	se	sa/s	re	dig	dig/s	bs	ba	total		blk/s	be	bhe
3	Bindernagel,Stephani	51	2	0.04	0	3	.667	10	0.20	7	21	0.14	6	140	2.75	0	0	0	0.00	0	1	-
9	Johnson,Damadj	61	93	1.52	32	220	.277	4	0.07	0	1	0.00	1	10	0.16	9	53	62	1.02	11	1	-
13	Nalls,Kynedi	64	224	3.50	72	581	.262	2	0.03	7	18	0.11	1	77	1.20	2	41	43	0.67	6	0	-
14	Kawa, Cassie	58	66	1.14	25	174	.236	6	0.10	20	21	0.34	0	33	0.57	4	40	44	0.76	9	0	-
12	Spangler, Bree	55	142	2.58	45	433	.224	10	0.18	13	13	0.24	20	152	2.76	1	7	8	0.15	1	1	-
8	Morozoff,Rhiannon	5	10	2.00	5	24	.208	0	0.00	0	0	0.00	0	2	0.40	0	0	0	0.00	1	0	-
6	Burdette,Melody	53	120	2.26	52	328	.207	1	0.02	1	3	0.02	4	21	0.40	5	25	30	0.57	3	0	-
4	Peterson,Sarah	34	73	2.15	29	264	.167	1	0.03	0	1	0.00	0	19	0.56	0	6	6	0.18	0	0	-
10	Griffin,Rachel	64	33	0.52	15	110	.164	629	9.83	7	15	0.11	0	128	2.00	1	33	34	0.53	3	15	-
1	Macek, Makenzie	16	15	0.94	12	55	.055	1	0.06	2	4	0.12	1	8	0.50	0	3	3	0.19	0	1	-
32	Herrmen,Paige	20	0	0.00	0	0	.000	2	0.10	4	4	0.20	5	45	2.25	0	0	0	0.00	0	0	-
16	Lueck,Halle	35	1	0.03	1	6	.000	11	0.31	4	11	0.11	0	51	1.46	0	0	0	0.00	0	0	-
33	Murphy,Shannon	64	0	0.00	2	6	-.333	35	0.55	13	1	0.20	20	254	3.97	0	0	0	0.00	0	1	-
	TEAM	-	-	-	-	-	-	-	-	-	-	-	18	-	-	-	-	-	-	-	-	-
	INS	64	779	12.17	290	2204	.222	712	11.12	78	113	1.22	76	940	14.69	22	208	126.0	1.97	34	20	-
	Opponents	64	827	12.92	353	2279	.208	752	11.75	76	133	1.19	78	970	15.16	29	156	107.0	1.67	40	22	-

Team Statistics	INS	OPP
ATTACK		
Kills	779	827
Errors	290	353
Total Attacks	2204	2279
Attack Pct	.222	.208
Kills/Set	12.2	12.9
SET		
Assists	712	752
Assists/Set	11.1	11.8
SERVE		
Aces	78	76
Errors	113	133
Aces/Set	1.2	1.2
SERVE RECEPTIONS		
Errors	76	78
Errors/Set	1.2	1.2
DEFENSE		
Digs	940	970
Digs/Set	14.7	15.2
BLOCKING		
Block Solo	22	29
Block Assist	208	156
Total Blocks	126.0	107.0
Blocks/Set	2.0	1.7
Block Errors	34	40
Ball handling errors	20	22
ATTENDANCE		
Total	1044	3460
Dates/Avg Per Date	4/261	5/692
Neutral site #/Avg	7/104	
Current win streak	0	-
Home win streak	1	-

Date	Opponent	Score	Score by set	Att.
Aug 26	vs South Alabama	L 2-3	23-25,25-21,20-25,25-18,9-15	0
Aug 26	at Samford	w 3-0	25-18,25-19,25-13	347
Aug 27	vs Nicholls State	w 3-0	25-13,25-19,25-16	0
Sep 2	vs West Virginia	L 2-3	25-20,25-22,18-25,22-25,13-15	0
Sep 02	vs Morehead State	w 3-0	25-17,25-17,25-16	120
Sep 03	vs Marshall University	w 3-2	25-17,23-25,16-25,25-19,15-8	536
Sep 09	vs UNC-Wilmington	L 0-3	18-25,18-25,25-27	75
Sep 09	at North Texas	L 0-3	23-25,24-26,19-25	350
Sep 10	vs Louisiana-Lafayette	w 3-2	25-13,21-25,22-25,25-14,15-13	0
Sep 13	at Butler	L 1-3	21-25,25-20,20-25,18-25	307
*09/16/16	BRADLEY	w 3-1	20-25,29-27,25-21,28-26	365
09/17/16	WESTERN MICHIGAN	L 2-3	25-20,25-23,18-25,17-25,13-15	189
*09/24/16	LOYOLA	L 2-3	21-25,26-24,25-23,19-25,12-15	298
Sep 27	EIU	w 3-1	19-25,25-18,25-19,25-19	192
*09-30-16	at Illinois State	L 0-3	23-25,20-25,17-25	1017
*Oct 03	at UNI	L 1-3	12-25,22-25,25-21,19-25	1439

Record in 3-set matches: 3-3
Record in 4-set matches: 2-2
Record in 5-set matches: 2-4

2016 Season Stats (MVC ONLY)

2016 Indiana State Volleyball INS Combined Team Statistics (as of Oct 04, 2016) Conference matches

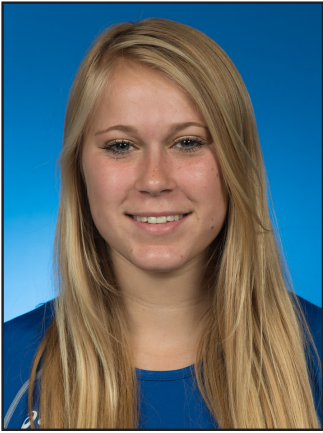
RECORD:	OVERALL	HOME	AWAY	NEUTRAL
ALL GAMES	1-3	1-1	0-2	0-0
CONFERENCE	1-3	1-1	0-2	0-0
NON-CONFERENCE	0-0	0-0	0-0	0-0

#	Player	sp	Attack				Set		Serve			Dig			Blocking					points		
			k	k/s	e	ta	pct	a	a/s	sa	se	sa/s	re	dig	dig/s	bs	ba	total	blk/s		be	bhe
6	Burdette, Melody	9	20	2.22	7	42	.310	0	0.00	0	3	0.00	0	4	0.44	3	5	8	0.89	2	0	-
8	Morozoff, Rhiannon	2	3	1.50	1	8	.250	0	0.00	0	0	0.00	0	0	0.00	0	0	0	0.00	0	0	-
13	Nalls, Kynedi	16	59	3.69	19	169	.237	0	0.00	1	3	0.06	0	22	1.38	0	11	11	0.69	1	0	-
12	Spangler, Bree	11	33	3.00	11	104	.212	1	0.09	1	3	0.09	10	43	3.91	0	0	0	0.00	0	0	-
1	Macek, Makenzie	5	11	2.20	5	30	.200	0	0.00	0	0	0.00	0	1	0.20	0	2	2	0.40	0	0	-
9	Johnson, Damadj	13	21	1.62	9	61	.197	2	0.15	0	0	0.00	0	3	0.23	4	10	14	1.08	2	0	-
4	Peterson, Sarah	16	39	2.44	16	149	.154	1	0.06	0	1	0.00	0	8	0.50	0	2	2	0.12	0	0	-
14	Kawa, Cassie	14	13	0.93	7	50	.120	0	0.00	2	2	0.14	0	5	0.36	1	7	8	0.57	2	0	-
32	Hermmen, Paige	11	0	0.00	0	0	.000	1	0.09	0	3	0.00	0	27	2.45	0	0	0	0.00	0	0	-
33	Murphy, Shannon	16	0	0.00	0	0	.000	11	0.69	2	0	0.12	5	84	5.25	0	0	0	0.00	0	0	-
3	Bindemagel, Stephani	12	0	0.00	0	0	.000	3	0.25	0	3	0.00	2	33	2.75	0	0	0	0.00	0	1	-
16	Lueck, Halle	7	0	0.00	0	3	.000	10	1.43	1	3	0.14	0	8	1.14	0	0	0	0.00	0	0	-
10	Griffin, Rachel	16	3	0.19	4	24	-.042	159	9.94	0	3	0.00	0	32	2.00	0	7	7	0.44	0	4	-
	TEAM	-	-	-	-	-	-	-	-	-	-	-	2	-	-	-	-	-	-	-	-	-
	INS	16	202	12.62	79	640	.192	188	11.75	7	24	0.44	19	270	16.88	8	44	30.0	1.88	7	5	-
	Opponents	16	252	15.75	86	653	.254	228	14.25	19	39	1.19	7	299	18.69	14	36	32.0	2.00	8	5	-

Team Statistics	INS	OPP
ATTACK		
Kills	202	252
Errors	79	86
Total Attacks	640	653
Attack Pct	.192	.254
Kills/Set	12.6	15.8
SET		
Assists	188	228
Assists/Set	11.8	14.2
SERVE		
Aces	7	19
Errors	24	39
Aces/Set	0.4	1.2
SERVE RECEPTIONS		
Errors	19	7
Errors/Set	1.2	0.4
DEFENSE		
Digs	270	299
Digs/Set	16.9	18.7
BLOCKING		
Block Solo	8	14
Block Assist	44	36
Total Blocks	30.0	32.0
Blocks/Set	1.9	2.0
Block Errors	7	8
Ball handling errors	5	5
ATTENDANCE		
Total	663	2456
Dates/Avg Per Date	2/332	2/1228
Neutral site #/Avg	0/0	
Current win streak	0	-
Home win streak	0	-

Date	Opponent	Score	Score by set	Att.
*09/16/16	BRADLEY	w 3-1	20-25, 29-27, 25-21, 28-26	365
*09/24/16	LOYOLA	L 2-3	21-25, 26-24, 25-23, 19-25, 12-15	298
*09-30-16	at Illinois State	L 0-3	23-25, 20-25, 17-25	1017
*Oct 03	at UNI	L 1-3	12-25, 22-25, 25-21, 19-25	1439

Record in 3-set matches: 0-1
Record in 4-set matches: 1-1
Record in 5-set matches: 0-1



1 MACKENZIE MACEK

OH - JUNIOR - 6-1
ROCKFORD, ILL. (ROCK VALLEY CC)
MAJOR: UNDECIDED

2016 Season Game Highs			
Kills	11	vs. Loyola	09-24-16
Attacks	30	vs. Loyola	09-24-16
Attack Pct.	.200	vs. Loyola	09-24-16
Assists	1	at Butler	09-13-16
Aces	2	at Butler	09-13-16
Digs	7	at Butler	09-13-16
Blocks	1	vs. Louisiana-Lafayette	09-10-16
Points	3.5	vs. Louisiana-Lafayette	09-10-16

Career Game Highs			
Kills	11	vs. Loyola	09-24-16
Attacks	30	vs. Loyola	09-24-16
Attack Pct.	.200	vs. Loyola	09-24-16
Assists	1	at Butler	09-13-16
Aces	2	at Butler	09-13-16
Digs	7	at Butler	09-13-16
Blocks	1	vs. Louisiana-Lafayette	09-10-16
Points	3.5	vs. Louisiana-Lafayette	09-10-16



2 KELCIE BASAN

DS/L - FRESHMAN - 5-6
TERRE HAUTE, IND. (SOUTH VIGO HS)
MAJOR: NURSING

2016 Season Game Highs			
Kills			N/A
Attacks			N/A
Attack Pct.			N/A
Assists			N/A
Aces			N/A
Digs			N/A
Blocks			N/A
Points			N/A

Career Game Highs			
Kills			N/A
Attacks			N/A
Attack Pct.			N/A
Assists			N/A
Aces			N/A
Digs			N/A
Blocks			N/A
Points			N/A



3 STEPHANIE BINDERNAGEL

DS/L - JUNIOR - 5-7
BAINBRIDGE, OHIO (KENSTON HS)
MAJOR: PHYSICAL EDUCATION/EXERCISE SCIENCE

2016 Season Game Highs			
Kills	1	2x, last vs. Eastern Illinois	09-27-16
Attacks	1	2x, last vs. Eastern Illinois	09-27-16
Attack Pct.	1.000	2x, last vs. Eastern Illinois	09-27-16
Assists	3	vs. South Alabama	08-26-16
Aces	4	vs. Morehead State	09-02-16
Digs	17	vs. Morehead State	09-02-16
Blocks			N/A
Points	4.0	vs. Morehead State	09-02-16

Career Game Highs			
Kills	1	3x last vs. South Alabama	08-26-16
Attacks	2	2x, last vs. Southern Utah	9-12-14
Attack Pct.	1.000	3x last vs. South Alabama	08-26-16
Assists	6	vs. Drake	10-3-15
Aces	5	vs. Arkansas-Pine Bluff	9-13-14
Digs	28	at Kent State	9-5-15
Blocks	0		
Points	6.0	vs. Arkansas-Pine Bluff	9-13-14



4 SARAH PETERSON

OH - JUNIOR - 6-0
SEVEN HILLS, OHIO (PADUA FRANCISCAN HS)
MAJOR: SPEECH AND LANGUAGE PATHOLOGY

2016 Season Game Highs			
Kills	15	vs. Bradley	09-16-16
Attacks	43	vs. Bradley	09-16-16
Attack Pct.	.667	at North Texas	09-09-16
Assists			N/A
Aces			N/A
Digs	4	vs. Bradley	09-16-16
Blocks	2	vs. Bradley	09-16-16
Points	15.5	vs. Bradley	09-16-16

Career Game Highs			
Kills	16	vs. Drake	10-17-14
Attacks	43	vs. Bradley	09-16-16
Attack Pct.	.800	vs. UT Martin (4-0-5)	9-12-15
Assists			N/A
Aces	1	vs. Evansville	10-17-15
Digs	5	2x last vs. Southern Illinois	10-16-15
Blocks	5.0	2x, last at Bradley	10-9-15
Points	19.0	vs. UNI	10-18-14



6 MELODY BURDETTE

MB - SENIOR - 6-1
LONG BEACH, CALIF. (DOWNEY HS)
MAJOR: PSYCHOLOGY

2016 Season Game Highs			
Kills	22	vs. South Alabama	08-26-16
Attacks	45	vs. South Alabama	08-26-16
Attack Pct.	.364	at Samford	08-26-16
Assists	1	vs. Louisiana-Lafayette	09-10-16
Aces	1	at Butler	09-13-16
Digs	3	2x, last vs. Bradley	09-16-16
Blocks	5	vs. Marshall	09-03-16
Points	23.5	vs. South Alabama	08-26-16

Career Game Highs			
Kills	22	vs. South Alabama	08-26-16
Attacks	49	vs. Missouri State	10-23-15
Attack Pct.	.364	at Samford	08-26-16
Assists	1	2x, last vs. UL-Lafayette	09-10-16
Aces	1	at Butler	09-13-16
Digs	3	5x, last vs. Bradley	09-16-16
Blocks	5.0	3x, last vs. Marshall	09-03-16
Points	23.5	vs. South Alabama	08-26-16



8 RHIANNON MOROZOFF

OH - FRESHMAN - 5-11
SASKATOON, SASKATCHEWAN (BETHLEHEM CATHOLIC HS)
MAJOR: EXERCISE SCIENCE

2016 Season Game Highs			
Kills	7	vs. Eastern Illinois	09-27-16
Attacks	16	vs. Eastern Illinois	09-27-16
Attack Pct.	.188	vs. Eastern Illinois	09-27-16
Assists			N/A
Aces			N/A
Digs	2	vs. Eastern Illinois	09-27-16
Blocks			N/A
Points	7	vs. Eastern Illinois	09-27-16

Career Game Highs			
Kills	7	vs. Eastern Illinois	09-27-16
Attacks	16	vs. Eastern Illinois	09-27-16
Attack Pct.	.188	vs. Eastern Illinois	09-27-16
Assists			N/A
Aces			N/A
Digs	2	vs. Eastern Illinois	09-27-16
Blocks			N/A
Points	7	vs. Eastern Illinois	09-27-16



9 DAMADJ JOHNSON

MB - FRESHMAN - 6-0
EAST ST. LOUIS, ILL. (EAST ST. LOUIS HS)
MAJOR: UNDECIDED

2016 Season Game Highs			
Kills	10	vs. West Virginia	09-02-16
Attacks	19	vs. West Virginia	09-02-16
Attack Pct.	.625	vs. Nicholls State	08-27-16
Assists	1	2x, last vs. Wilmington	09-09-16
Aces			N/A
Digs	2	vs. Bradley	09-16-16
Blocks	9	vs. Louisiana-Lafayette	09-10-16
Points	11.5	vs. West Virginia	09-02-16

Career Game Highs			
Kills	10	vs. West Virginia	09-02-16
Attacks	19	vs. West Virginia	09-02-16
Attack Pct.	.625	vs. Nicholls State	08-27-16
Assists	1	2x, last vs. Wilmington	09-09-16
Aces			N/A
Digs	2	vs. Bradley	09-16-16
Blocks	9	vs. Louisiana-Lafayette	09-10-16
Points	11.5	vs. West Virginia	09-02-16



10 RACHEL GRIFFIN

S - JUNIOR - 5-10
AVON, IND. (AVON)
MAJOR: PHYSICAL EDUCATION/EXERCISE SCIENCE

2016 Season Game Highs			
Kills	5	vs. Nicholls State	08-27-16
Attacks	11	at North Texas	09-09-16
Attack Pct.	.714	vs. Nicholls State	08-27-16
Assists	55	2x, last vs. Bradley	09-16-16
Aces	2	vs. Louisiana-Lafayette	09-10-16
Digs	15	at Butler	09-13-16
Blocks	6	vs. Marshall	09-03-16
Points	7.0	vs. Louisiana-Lafayette	09-10-16

Career Game Highs			
Kills	5	vs. Nicholls State	08-27-16
Attacks	11	at North Texas	09-09-16
Attack Pct.	.714	vs. Nicholls State	08-27-16
Assists	55	2x, last vs. Bradley	09-16-16
Aces	2	2x, last vs. UL-Lafayette	09-10-16
Digs	15	at Butler	09-13-16
Blocks	6	vs. Marshall	09-03-16
Points	7.0	vs. Louisiana-Lafayette	09-10-16



11 ALEX TOOMBS

MH/OPP - FRESHMAN - 6-1

SASKATOON, SASKATCHEWAN (BISHOP JAMES MAHONEY HS)

2016 Season Game Highs

Kills	N/A
Attacks	N/A
Attack Pct.	N/A
Assists	N/A
Aces	N/A
Digs	N/A
Blocks	N/A
Points	N/A

Career Game Highs

Kills	N/A
Attacks	N/A
Attack Pct.	N/A
Assists	N/A
Aces	N/A
Digs	N/A
Blocks	N/A
Points	N/A



12 BREE SPANGLER

OH - SENIOR - 6-1

COLDWATER, MICH. (COLDWATER HS)
MAJOR: SPEECH AND LANGUAGE PATHOLOGY

2016 Season Game Highs

Kills	20	vs. Bradley	09-16-16
Attacks	50	vs. Bradley	09-16-16
Attack Pct.	.522	at Samford	08-26-16
Assists	2	2x, last vs. West Virginia	09-02-16
Aces	2	5x, last vs. UL-Lafayette	09-10-16
Digs	20	2x, last vs. W. Michigan	09-17-16
Blocks	2	2x, last vs. UL-Lafayette	09-10-16
Points	21	vs. Bradley	09-16-16

Career Game Highs

Kills	22	vs. Evansville	9-26-14
Attacks	79	vs. Missouri State	11-22-14
Attack Pct.	.606	vs. Evansville (22-2-33)	9-26-14
Assists	3	2x, last vs. Chicago State	8-30-14
Aces	5	vs. UT Martin	9-11-15
Digs	24	at Robert Morris	9-5-14
Blocks	4.0	vs. Marshall	8-28-15
Points	23.5	vs. Evansville	9-26-14



13 KYNEDI NALLS

RS - SENIOR - 6-0

FORT WORTH, TEXAS (SAGINAW HS)
MAJOR: PSYCHOLOGY

2016 Season Game Highs

Kills	24	vs. Eastern Illinois	09-27-16
Attacks	51	vs. Eastern Illinois	09-27-16
Attack Pct.	.462	vs. Western Michigan	09-17-16
Assists	1	2x, last vs. Eastern Illinois	09-27-16
Aces	2	vs. Morehead State	09-02-16
Digs	8	vs. Louisiana-Lafayette	09-10-16
Blocks	5.0	vs. Louisiana-Lafayette	09-10-16
Points	26.5	vs. Eastern Illinois	09-27-16

Career Game Highs

Kills	24	vs. Eastern Illinois	09-27-16
Attacks	51	vs. Eastern Illinois	09-27-16
Attack Pct.	.611	vs. Wright State (12-1-18)	8-30-14
Assists	1	5x, last vs. Eastern Illinois	09-27-16
Aces	2	2x, last vs. Morehead St.	09-02-16
Digs	8	vs. Louisiana-Lafayette	09-10-16
Blocks	6.0	2x, last at Bradley (0-6)	10-9-15
Points	26.5	vs. Eastern Illinois	09-27-16



14 CASSIE KAWA

MB - FRESHMAN (RS) - 6-0

LETHBRIDGE, ALBERTA (CATHOLIC CENTRAL HS)
MAJOR: EDUCATION

2015 Season Game Highs

Kills	10	vs. Nicholls State	08-27-16
Attacks	25	vs. West Virginia	09-02-16
Attack Pct.	.769	vs. Nicholls State	08-27-16
Assists	2	vs. Louisiana-Lafayette	09-10-16
Aces	5	vs. Western Michigan	09-17-16
Digs	6	vs. West Virginia	09-02-16
Blocks	7	vs. Louisiana-Lafayette	09-10-16
Points	12.5	vs. Nicholls State	08-27-16

Career Game Highs

Kills	10	vs. Nicholls State	08-27-16
Attacks	25	vs. West Virginia	09-02-16
Attack Pct.	.769	vs. Nicholls State	08-27-16
Assists	2	vs. Louisiana-Lafayette	09-10-16
Aces	5	vs. Western Michigan	09-17-16
Digs	6	vs. West Virginia	09-02-16
Blocks	7	vs. Louisiana-Lafayette	09-10-16
Points	12.5	vs. Nicholls State	08-27-16



16 HALLE LUECK

S - JUNIOR - 5-9
ELY, IOWA (KIRKWOOD CC)
MAJOR: BUSINESS

2016 Season Game Highs

Kills	1	vs. Wilmington	09-09-16
Attacks	1	3x, last vs. W. Michigan	09-17-16
Attack Pct..1.000		vs. Louisiana-Lafayette	09-10-16
Assists	1	at Samford	08-26-16
Aces	2	vs. Western Michigan	09-17-16
Digs	9	vs. Western Michigan	09-17-16
Blocks			N/A
Points	2.0	vs. Western Michigan	09-17-16

Career Game Highs

Kills	1	vs. Wilmington	09-09-16
Attacks	1	3x, last vs. W. Michigan	09-17-16
Attack Pct..1.000		vs. Louisiana-Lafayette	09-10-16
Assists	1	at Samford	08-26-16
Aces	2	vs. Western Michigan	09-17-16
Digs	9	vs. Western Michigan	09-17-16
Blocks			N/A
Points	2.0	vs. Western Michigan	09-17-16



32 PAIGE HEMMEN

DS/L - FRESHMAN - 5-8
ST. LOUIS, MO. (ST. JOSEPH ACADEMY)
MAJOR: BUSINESS

2016 Season Game Highs

Kills			N/A
Attacks			N/A
Attack Pct.			N/A
Assists	1	vs. Loyola	09-24-16
Aces			N/A
Digs	16	vs. Loyola	09-24-16
Blocks			N/A
Points			N/A

Career Game Highs

Kills			N/A
Attacks			N/A
Attack Pct.			N/A
Assists	1	vs. Loyola	09-24-16
Aces			N/A
Digs	16	vs. Loyola	09-24-16
Blocks			N/A
Points			N/A



33 SHANNON MURPHY

DS - SENIOR - 5-10
CHICAGO, ILL. (MARIST HS)
MAJOR: CRIMINOLOGY

2016 Season Game Highs

Kills			N/A
Attacks	3	vs. Marshall	09-03-16
Attack Pct.			N/A
Assists	7	vs. Bradley	09-16-16
Aces	4	vs. Marshall	09-03-16
Digs	21	vs. South Alabama	08-26-16
Blocks			N/A
Points	4.0	vs. Marshall	09-03-16

Career Game Highs

Kills	2	vs. Robert Morris	09-14-13
Attacks	8	vs. Murray State	09-13-13
Attack Pct. .500		vs. IUPUI (1-0-2)	09-10-13
Assists	7	vs. Bradley	09-16-16
Aces	4	5x, last vs. Marshall	09-03-16
Digs	24	vs. Morehead State	8-29-15
Blocks			N/A
Points	4.0	6x, last vs. Marshall	09-03-16